



# Abbey Physic Community Garden



Annual Report and Financial Statement  
Year ending 2024

Charity Registration Number: 1119456

Company Number: 06015188

Abbey Place, Faversham, Kent, ME13 7BG

Tel 01795 539915 [communitygarden@abbeyphysic.org](mailto:communitygarden@abbeyphysic.org)

Website: [www.abbeyphysiccommunitygarden.org](http://www.abbeyphysiccommunitygarden.org)

Facebook: <https://www.facebook.com/AbbeyPhysic>

# Message from our Chair of Trustees

It is a privilege to be Chair of Trustees for such an excellent and appreciated charity, with a committed board of trustees, staff, volunteers and members, all with endless energy and ideas for pushing the garden forwards, keeping it evolving to meet the needs of our community.

This year has been full of celebration for our 30<sup>th</sup> anniversary, being a chosen charity by our Mayor and being awarded The King's Award for Voluntary Service, which is excellent recognition of all our volunteers.

We have also seen our piloted projects from 2023 become successfully embedded and the garden continues to develop a wide range of activities for and with our members, balancing activity with also providing a space for refuge. From this report, you can see the impact that the charity has achieved, and I want to say a big thank you to everyone, including our funders, for helping this all happen and protecting this magical place. At time of writing, we have just renewed our lease for ten more years, which is fantastic news (thank you to The Old Grammar School Charity Faversham) – but more of this in our 2025 report.

I take this opportunity to remember friends we have lost this past year – people we have been very grateful for knowing, even if only for a short time in our lives, you have made it richer, and this includes Gulliver Immink, Chris Ives and Mary Watts.

Thankyou to our two previous trustees who left their roles at the 2024 AGM - Lucia Dello-Iolo (Treasurer 2018-2024) and Sarah Porter (Secretary 2021-24). We also said goodbye to Millie van der Byl Williams as a valued member of staff.

I hope you enjoy this report and seeing all the achievements of our community over the past year.







# In Memory of a Friend and Trustee

On 18th April 2024, Gulliver, a good friend and trustee of the garden died. Gulliver had been a valued trustee since 2016 and he was passionate about protecting the garden as a refuge for support, friendship and healing - it was always Gulliver calling for quiet times in the garden where people can escape the busy humdrum of life.

Gulliver loved the garden itself, the trees and nature, and on a summer's evening, he'd often open up the garden so others could share his enjoyment of the tranquility he found there at this time of day.

Gulliver long expected his death, however he was determined to live well with his illness. He was warm and welcoming, generous and kind, always finding a compassionate and supportive comment for members and visitors to the garden.

I wanted to include Gulliver in our report – he was one of our many members who make our charity into a supportive and thriving community where every individual matters – Gulliver actively encouraged people to feel they matter and belong and he will have touched many people's lives.

*Helen Carr*



# About Us



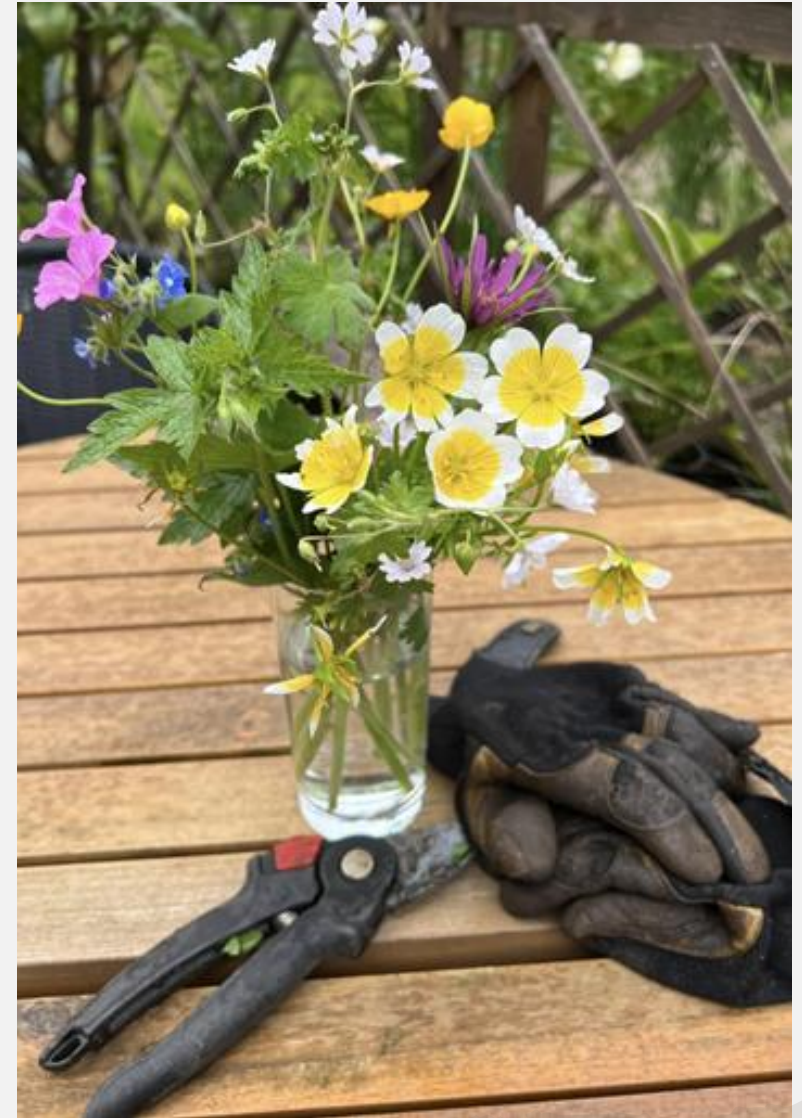
The Abbey Physic Community Garden is a half-acre, award winning, therapeutic community garden in the heart of Faversham, Kent.

Our aims are:

To help our members and the wider public maintain or improve their physical and mental health and wellbeing, build diverse skills and confidence, reduce social isolation and connect with their community. Through our commitment to equality and diversity and provision of inclusive services and support we aim to break down the stigma of mental ill health and build understanding and empathy.

# About Us

- The garden was established as a formal charity in 2007 however it began earlier than this and celebrates 30 years in 2024
- Our mission is **Growing a Healthy Community** – a reflection of both our focus on health and wellbeing and the importance of the community of peers who support each other with their lived experience of mental health and wellbeing and as carers
- The garden is open Mon-Fri 10am - 3pm and Sundays are staffed by volunteer members 11am - 2pm
- Garden membership aims to provide companionship and to reduce social isolation – **the charity is committed to tackling loneliness**
- Abbey Physic Community Garden provides an invaluable service for Faversham and wider across Kent. In this modern take on a 'Physic Garden', it is not herbs, or potions which provide healing, it is the garden itself, and the people who come here







## Current Areas of Focus for our Charity

### Direction of the charity is to:

- Improve accessibility to those who need us
- Refine our existing programme of activities and to introduce new opportunities according to evolving needs
- Develop long-term sustainability of the charity
- Continue evaluating activities and progress

### Impacts for users of the charity:

- Improve mood and wellbeing
- Increase confidence & sense of connection with others
- Increase understanding of and skills for selfcare







# Activities

The charity provides a wide range of activities that are both practical and therapeutic, usually both at the same time and these include:

- All year gardening
- A community kitchen and coffee cabin
- Faversham Men's Shed
- Singing and various music groups including ukulele and guitars
- Creative arts and crafts groups
- Guided meditation, Yoga and Qi Gong Tai Chi
- A poetry and a reading group
- A walking group
- A Happy Café
- Resistance training – Kung Fu Pandas

The garden also serves as a hub for community events, e.g. regular NHS Health Checks

Please see <https://www.abbeyphysic.org/activities/> for more details of activities



# 33 Core Activities across the Year


## 19 Core activities

All Year-round Gardening	Gardening for the Mind	Happy Cafes	Community Cooking	Bi-weekly Art
Faversham Men's Shed	Mindful Walking Group	NHS Health Checks	Qui Gong	Poetry
Pre-School Forest Sessions	Read & Write Yourself Happy	Self-defence	Singing	Strumming Sessions
Thursday Crafts Corner	W.I Gardening Group	Open to All Shed sessions	Saturday Yoga	

## 14 New activities in response to evolving member needs and interests

- 6 wk course Hands on Gardening
- 6 wk course Mindful Cooking
- Rise and Shine
- Kitchen Skills Training
- Men's Breakfast Club
- Drop in Gardening (recovery sessions)
- Coffee Cabin volunteering
- Permaculture
- Foraging
- Herbal Tonics
- Volunteer Training
- Friday Evening socials
- Forest Gardening
- Wildlife survey sessions






ABBEEY PHYSIC  
COMMUNITY GARDEN

# Mindful Kitchen

6 Week Course - Wednesdays 9.30– 11



- Learn how to support the mind and body through mindful cooking and eating
- Pick fresh ingredients from our kitchen garden
- Make and eat delicious healthy meals using the senses
- Have fun and make new friends

For course dates and to book your place  
Email:  
communitygarden@abbeyphysic.org  
Call: 01795 539915



ABBEEY PHYSIC  
COMMUNITY GARDEN

# Gardening for the Mind

6 Week Course  
Thursdays 10.30 – 12.30



- Explore the garden through practical activities using your senses.
- Make new friends
- Relax and have fun learning new tips for supporting your health and well being

For course dates and to book your place  
Email:  
communitygarden@abbeyphysic.org  
Call: 01795 539915




ABBEEY PHYSIC  
COMMUNITY GARDEN


# Community Kitchen Training

6 Week Course - Thursdays 10– 12.30



- Learn the basics in food hygiene and safety
- Gain experience making and serving food in a working kitchen
- Have fun and make new friends


For course dates and to book your place  
Email:  
communitygarden@abbeyphysic.org  
Call: 01795 539915



ABBEEY PHYSIC  
COMMUNITY GARDEN

# Hands on Gardening

6 Week Course  
Tuesdays 10 – 12.30



- Gain sustainable gardening tips and techniques
- Have fun and make new friends
- Gain gardening experience in our beautiful award-winning garden

For course dates and to book your place  
Email:  
communitygarden@abbeyphysic.org  
Call: 01795 539915







# Abbey Physic Community Garden – our year in numbers

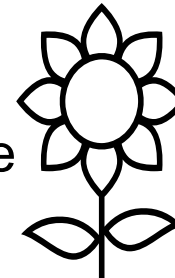
1,495

people reached  
(150% increase in 2 years)



£69,000

in kind volunteer time



30% increase from £53,000

211 individuals participated in  
one or more of our activities

45% increase in 2 years



6,032

Volunteer hours a year  
14% increase



59

people participated in our  
**new**  
6 weekly courses



645

staff run sessions



# We supported over 211 individuals through 532 activity sessions in 2024

Activity	No. attended	Activity	No. attended
Gardening courses	58	Permaculture	17
6 - week courses	59	Rise & Shine	12
Community Kitchen	56	Qi Gong	22
Men's Shed 2x week	29	W.I Gardening	21
Men's Breakfast Club	18	Little Green Folk	17
Thursday Crafts	21		
Wednesday Singing	22	Social only	25
Monday Strumming	17	Volunteering Support	28
Mindful Walking	15		
Resistance Training	15	Weekend Courses	40
Read & Write for Wellbeing	10	Saturday Morning Yoga	20
Poetry	10		







# Our Impact in Numbers

## Groups & Events hosted by APCG

**1,284 people  
reached**

University of Kent  
hosting 'Green Me'  
50

Embracing Life by  
Facing Death  
Event 65

Canterbury School  
of Visual Arts  
62

Memorials x 2  
250

30<sup>th</sup> Anniversary  
Party  
250

Wine'd Down  
Evening  
150

Curry & Carols  
80

Porchlight Annual  
Conference  
150

Windmill  
Community  
Garden 15

Catching Lives  
12

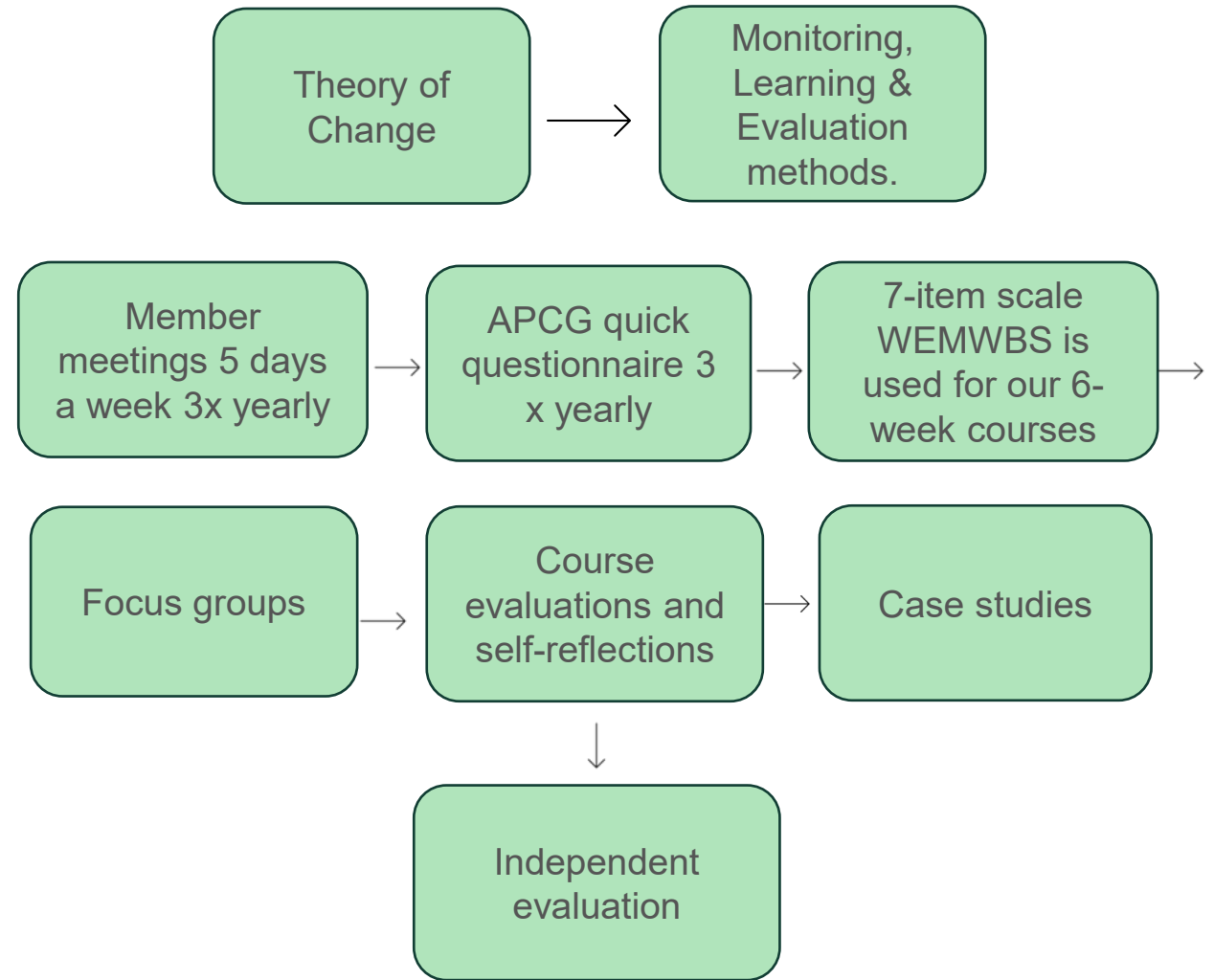
Faversham  
Refugee Support  
65

Medway  
Community  
Gardens 25

Faversham Literacy  
Festival 50

St Peters School  
60

Continual evaluating  
with our members is  
important to us





# Quotes from Members

A lifeline

A place where  
you can talk to  
anybody

Supporting with  
mental health  
softly and safely  
allows a stop  
gap of sorts

A place  
where no one  
judges

It just puts me in  
a different way  
of thinking

I feel  
understood

A healing  
place

# Community Partnerships - Working with over 50 organisations in 2024 and as a key member of Faversham Community Networking Group. Partnerships include:

## Referrers



**Porchlight**

Changing attitudes • Changing lives



Empowering women, ending domestic abuse



Kent and Medway  
NHS and Social Care Partnership Trust



Kent Community Health  
NHS Foundation Trust



SITTINGBOURNE PRIMARY  
CARE NETWORK  
SITTINGBOURNE  
HEALTHCARE MATTERS



NHS Foundation Trust



## Education Providers



## Groups



## Visiting Groups

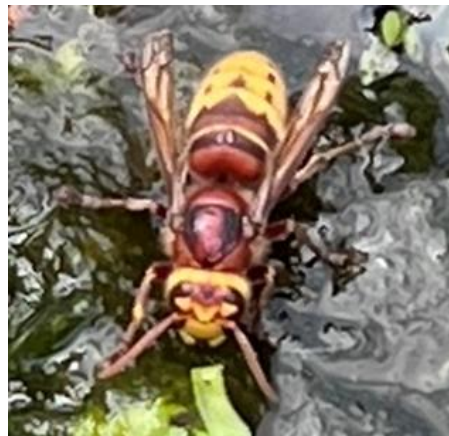


Kent Community  
Rail Partnership



# Looking after our Environment

- Green Flag Community Award 2024-25 (*'Cleanliness of the compost loo was really impressive'*, Green Flag Judge)
- No spray (using biodiverse pest control, i.e. garlic spray and companion planting) and peat free (producing own compost)
- No dig beds
- Focus on foraging, less weeding
- Growing techniques include lasagne for veg patches, Hügelkultur raised bed, dead hedges, vertical growing
- Seed saving and community seed swaps
- Use of heritage rainwater collection and bilge pump to move water
- Wildlife monitoring and moth nights
- Permaculture centre
- APCG is the home of East Kent Permaculture Learning Centre







# Gardening & Growing

- 58 people regularly participated in gardening this year
- 20 people attended 6-week Hands on Gardening courses
- 28 people attended gardener meetings and 27 are members on the Gardeners' WhatsApp
- 12 people attended monthly Forest Garden sessions
- There is improving communication and planning of plants/food for the Community Kitchen
- There is improving foraging knowledge





# Impacts of our Community Kitchen

- 16 people attended 6-wk Mindful Cooking courses
- 18 people attended Kitchen Skills courses
- Fresh meals were produced each weekday
- 56 people participated in cooking sessions, with a focus on healthy eating
- 2,626 meals were prepared, including 152 Love Lunches provided through our Pay It Forward scheme
- Reduced food miles by foraging ingredients
- Catered for 6 community events, plus Porchlight's Annual Conference for 150 people
- Produced our first Recipe Book

# A Productive Year for Faversham Men's Shed

29 regular shed members (50% increase)

Introduced new Men's Breakfast Club – 18 participants

35 Faversham Scouts gain DIY badges

Monthly coffee mornings & monthly 'open to all' sessions

£1300 raised by Tesco staff in recognition of men's mental health issues

Interview with ITV News Meridian & Helen Whately MP visits

Working with other charities

Red Zebra referrals

Promoted at the Axminster Tools roadshow

Hosts Resistance Training

New Leaf Support for Domestic Abuse women only sessions







## Impact of our Community Coffee Cabin

The Community Coffee Cabin is a welcoming hub for conversations and support.

It provides a wealth of volunteer opportunities with informal Barista training and serving refreshments to our members and visitors.

This is now open six days a week



# Students, Trainees and Work Experience



In 2024, we hosted 8 trainee GPs; Occupational Therapy Students from Canterbury Christ Church University; Visits from St Mary of Charity Primary School; Yr 12 & 13 pupils from Barton Grammar School , Archbishops School and Brogdale CIC Craftworks College for work experience; and we supported a Queen Elizabeth's Grammar School design and technology woodwork project



# Press and Media Coverage

## Faversham Eye



<https://www.favershameye.co.uk/post/abbey-physic-community-garden-celebrating-30-years-of-a-growing-healthy-community>

Video: [Growing flowers and food together - the new trend for old cottage garden style](#)

What an incredible interview with Jo Barker – at the APCG.

## ITV News – Men's Shed



Helen Whately MP visited APCG's Faversham Men's Shed to talk about the importance of men's mental health.



An audio story about the history, activities and impact of Abbey Physic Community Garden



Mayor's charity of the year 2024-2025

## Faversham Times







# 30<sup>th</sup> Anniversary Celebrations





# Staffing for Year 2024

Thank you to all our staff for their commitment in keeping the garden welcoming and well run. We have 8 members of staff, full- and part-time.

We had a consistent staffing team this year, until sadly Millie left us in December. This role is now re-appointed to for 2025.

Suzanne Campbell – Garden Manager

Louise Gray - Assistant Garden Manager

Millie van der Byl Williams - Finance, Administration and IT Lead

Jacqueline Hunt – Community Partnerships Lead

Alessa Correia-Leitch – Community Kitchen Project Lead

Karen Franczak – Community Kitchen Project Lead

Ian Hardie – Faversham Men's Shed Project Lead

Paul Muddle – Horticulture Trainer

We welcome Deborah Hope as our Finance Officer for 2025



# Organisation and Governance



We are a registered charity and a company limited by guarantee:

Charity Registration No 111945; Company Registration No 06015188

Our registered office is:

Abbey Physic Community Garden, Abbey Place, Faversham, ME13 7BG

Bank details:

Santander Business Banking, Bridle Road. Bootle, L30 4BG

Account title: Abbey Physic Community Garden.

Day to day management is the responsibility of the garden manager, Suzanne Campbell and her team – Louise Gray, Alessa Correia-Leitch, Karen Franczak, Jacqui Hunt, Paul Muddle and Ian Hardie.

There are regular member meetings to discuss and plan how the garden operates. Garden members appoint the trustees at the Annual General Meeting for a term of one year. Trustees are welcome to restand if they want to be reappointed.



# Organisation and Governance



Elected trustees during 2024:

- Helen Carr (Chair) appointed Sept 2020 and Chair Sept 2021
- Lucia Dello-Iolo (Treasurer) appointed June 2018 and Treasurer July 2018 – Aug 2024
- Philip Wyard (Treasurer) from Aug 2024
- Sarah Porter (Secretary) appointed Sept 2021 – Aug 2024
- Gulliver Immink appointed Sept 2016 - died 18 April 2024
- Imogen Tinkler appointed Sept 2023
- Andrew Ireland appointed Sept 2023
- Kate Bowman appointed Aug 2024
- Suzanne Wood appointed Aug 2024

Trustees are appointed at each annual general meeting by members.  
The Trustees met at least monthly during the year.

In our planning of the charity's activities, we have paid due regard to Charity Commission's guidance on public benefit, and on the standards expected of trustees.

Independent financial examiner for this set of accounts - Louise Shaw, with Philip Wyard as treasurer.

# Highlights of 2024

<b>Month</b>	<b>Events</b>
<b>Jan</b>	New – Nurture Gardening Winter Wednesdays, and we welcomed Occupational Therapy students for a placement. Ian Hardie, our Men's Shed Lead, was interviewed for BBC Radio Kent
<b>Feb</b>	Excitingly starting our 2 <sup>nd</sup> year of 3 Years' funding from Reaching Communities (The National Lottery Community Fund) . Love Lunches began in 2023 - a pay it forward scheme providing free lunches for those in need – this year we raised over 500 lunches for those financially struggling
<b>Mar</b>	Planting in the greenhouse, a pilot course started for Cookery for the Mind in March 2023 and this is now successfully established, we held a Faversham Seed Swap
<b>Apr</b>	There was a Faversham Men's Shed feature on Meridian News, highlighting this great work
<b>May</b>	Mental health awareness week – the Charity organised a Chatty Bench in the town centre, start of our summer BBQs, and nominated as one of two of the Faversham Mayor's charities for the year
<b>Jun</b>	Opened our doors as part of Faversham Open Gardens, Walking for the Mind (in partnership with Age UK) began in June 2023 and successfully continues, as part of Loneliness Awareness Week we had a week of our Chatty Bench in the town centre, we held a sponsored 30 laps of the garden to celebrate its 30 <sup>th</sup> anniversary, 34 cubs received their DIY badges from support of the Men's Shedders
<b>Jul</b>	Held a Faversham & Villages Refugee Solidarity Group event at the garden, a foraging evening and we hosted a large vibrant Summer Garden Party to celebrate our 30 Years as Abbey Physic Community Garden
<b>Aug</b>	Awarded the Green Flag Community Award
<b>Sept</b>	Hosted Wine'd Down evening event as part of Open Faversham and Faversham in Bloom awards held at the garden,
<b>Oct</b>	Visited by 54 delegates from across Europe – Green Me Project
<b>Nov</b>	Awarded The King's Award for Voluntary Service
<b>Dec</b>	New Men's Breakfast Club, Community wreath making sessions, and end of year Curry and Carols



# Our Financial Report

---



# Summary

- 2024 was the second year in which Abbey Physic Community Garden (APCG) continued activities funded by the latest three-year National Lottery Grant, Reaching Communities. The amount available for 2024 was £91k. With the additional income from other successful grant receipts, individual donations, and membership subscriptions it meant that the total income for the year was £193k.
- Staffing costs make up 82% of the expenditure of APCG. The Repairs and Maintenance costs were £6k.
- The total Expenditure for 2024 was £166k
- The net income was therefore £28k for 2024.
- The balance of funds carried forward at the end of 2024 was £139k. An increase of £28k over 2023
- The total expenditure of £166k exceeds the National Lottery Grant by £75k, so additional ad hoc fundraising, and donations remain an essential part of the income that allows the garden to continue.



# 2024 – Income

- 2024 Income
- In 2024 our income was £193k, which was £10k higher than in 2023, due to the receipt of more non-Lottery grant funding.
- Income received from membership increased slightly over 2023 by £1.7k
- The drop in Donations was due to a one-off donation in 2023 from the Henry Oldfield Trust of £20k.
- Grants were mostly restricted in nature, requiring the money to be spent on specific projects. Grant income was mostly from the National Lottery 3-year grant, however amongst the other grants there were significant grants from Orchard Community (£4.6k), Co-op Community (£5k), and Henry Smith (£10k)

Abbey Physic Garden					
STATEMENT OF FINANCIAL ACTIVITIES (Incorporating an Income and Expenditure Account)					
FOR THE YEAR ENDED 31 December 2024					
	Notes	Unrestricted Funds	Restricted Funds	Total 2024	Total 2023
		£	£	£	£
INCOMING RESOURCES	2				
Incoming resources from generated funds:					
Voluntary Income:					
Grants		450	131,385	131,835	123,211
Donations		13,720	0	13,720	34,551
Membership subscriptions		8,209	0	8,209	6,515
Activities for Generating Funds:					
Sales & events		12,253	0	12,253	6,202
Fundraising events		2,559	0	2,559	1,905
Community Kitchen		14,891	0	14,891	7,430
Optivo		844	0	844	
External Groups		0	0	0	0
Gift Aid Reclaimed		1,289	0	1,289	246
Trainees		5,562	0	5,562	1,853
Faversham Lottery		2,208	0	2,208	1,870
Investment Income:					
Bank interest				0	
Total Incoming Resources		61,985	131,385	193,370	183,783
RESOURCES EXPENDED	3				
Cost of generating funds:					
Purchases and miscellaneous costs		13,694	54	13,748	4,321
Operational and support costs		29,886	122,016	151,902	134,125
Governance costs		0			0
Total Expended Resources		43,579	122,070	165,650	138,446
NET MOVEMENT OF FUNDS	7	18,405	9,315	27,720	45,337
RECONCILIATION OF FUNDS					
Total Funds Brought Forward		59,319	52,115	111,434	66,097
Fund Balance Carried Forward		77,724	61,430	139,154	111,434

# 2024 - Expenditure

Abbey Physic Garden					
STATEMENT OF FINANCIAL ACTIVITIES (Incorporating an Income and Expenditure Account)					
FOR THE YEAR ENDED 31 December 2024					
	Notes	Unrestricted Funds	Restricted Funds	Total 2024	Total 2023
		£	£	£	£
INCOMING RESOURCES	2				
Incoming resources from generated funds:					
Voluntary Income:					
Grants		450	131,385	131,835	123,211
Donations		13,720	0	13,720	34,551
Membership subscriptions		8,209	0	8,209	6,515
Activities for Generating Funds:					
Sales & events		12,253	0	12,253	6,202
Fundraising events		2,559	0	2,559	1,905
Community Kitchen		14,891	0	14,891	7,430
Optivo		844	0	844	
External Groups		0	0	0	0
Gift Aid Reclaimed		1,289	0	1,289	246
Trainees		5,562	0	5,562	1,853
Faversham Lottery		2,208	0	2,208	1,870
Investment Income:					
Bank interest				0	
Total Incoming Resources		61,985	131,385	193,370	183,783
RESOURCES EXPENDED	3				
Cost of generating funds:					
Purchases and miscellaneous costs		13,694	54	13,748	4,321
Operational and support costs		29,886	122,016	151,902	134,125
Governance costs		0			0
Total Expended Resources		43,579	122,070	165,650	138,446
NET MOVEMENT OF FUNDS	7	18,405	9,315	27,720	45,337
RECONCILIATION OF FUNDS					
Total Funds Brought Forward		59,319	52,115	111,434	66,097
Fund Balance Carried Forward		77,724	61,430	139,154	111,434

- 2024 Expenditure

- Total Expenditure increased by £27k

From 2023 to 2024 from £138k to £165k

This was due to two specific reasons:

Staffing Costs increased by £17k

Other running costs increased by £10k.

N.B. This increase was matched by a similar increase in Community lunches income.



## 2024 – Net Movement in Funds

Charities measure the movement of funds, the difference between money received and spent, during a reporting period.

- In 2024, we spent £28k less than we received.
- In 2023, we spent £45k less than we received.
- In 2022, we spent £35k more than we received
- In 2021 we spent £34k more than we received.

# 2024 – The Balance Sheet

At the end of the year, the Abbey Physic Community Garden had £6k of fixed assets.

- The charity has one main current account with Santander, but there are other platforms such as Local Giving, Paypal and Stripe that are used to facilitate payment methods and income receipts. These feed into the main account but may have small balances at any specific point in time. At the end of 2024, there was £136k in the Santander bank account,
- The net cash balance of £136k was made up of £61k of restricted funds and £75k unrestricted funds.
- There are no loans so the total assets were £145kx.



# 2024 – Notes to The Accounts

NOTES TO THE FINANCIAL STATEMENTS						
For the Year Ended 31 December 2024						
1	Accounting Policies					
		Basis of Preparation				
		The financial statements have been prepared under the historical cost convention and are in				
		accordance with Financial Reporting Standard for Smaller Entities (effective January 2007),				
		the Companies Act 2006, and follow the recommendations in Accounting and Reporting by				
		Charities: Statement of Recommended Practice (issued 2005).				
		Quickbooks accounting software is used to explain income and expenditure but it does not contain all the asset calculations.				
		Grants and Voluntary Income				
		All grants and voluntary income are accounted for gross when receivable.				
		Resources Expended:				
		Depreciation				
		Assets acquired costing less than £2,500 are charged to revenue in the year of purchase:				
		Assets exceeding this purchase price: Pavillion, New Cabin, New kitchen units and island are depreciated by 10% straight line				
		Purchases and miscellaneous costs				
		Purchases and miscellaneous costs includes the direct costs of the activities. Where such costs relate to				
		more than function cost category, they have been split on an estimated basis as appropriate.				
		This was previously named charitable expenditure.				
		Unrestricted Funds				
		Unrestricted funds are donations and other incoming resources receivable or generated for the				
		objects of the charity without further specified purpose and are available as general funds.				
		Restricted Funds				
		Restricted funds are to be used for specific purposes as laid down by the donor. Expenditure				
		which meets criteria is charged to the fund.				

# 2024 – Notes to The Accounts

NOTES TO THE FINANCIAL STATEMENTS									
2	IncomingResources				Unrestricted	Restricted	Total		Total
					2024	2024	2024		2023
	Grants Received:				£	£			£
		Big Lottery	09/02/2024			22,875	22,875		24,125
			10/05/2024			22,875	22,875		24,125
			09/08/2024			22,875	22,875		24,125
			06/11/2024			22,875	22,875		24,125
		The Access Foundation	12/08/2024 & 17/09/2024			12,000	12,000		0
		Swale Borough Council	12/04/2024		250		250		3,761
		SBC Eastern Area Committee					-		0
		Faversham Town Council					-		500
							-		5,000
							-		450
		Benstead Trust					-		2,000
		Colyer Fergusson					-		5,000
		Henry Smith	08/07/2024						10,000
		Cantuarorum Foundation	18/06/2024			1,800			1,800
		Alpkit Foundation	21/06/2024		200		200		
		Albert Hunt	12/07/2024			2,000	2,000		
		Austin Hope	10/10/2024			1,000	1,000		
		H G Wills	15/08/2024			1,000	1,000		
		Arnold Clark	20/09/2024			750	750		
		Young SE	04/11/2024			1,000	1,000		
		Co-Operative Community Grant	19/12/2024			5,000	5,000		
		Orchard Community Energy	23/12/2024			4,635	4,635		
		Imperial Plastics	15/11/2024			700	700		
					450	131,385	131,835		123,211
	Donations:								
		Porchlight			1500		1500		-
		Organisation / Corporate Donations<£1000			2,145		2,145		1,497
		Personal Donations <£1000			10,075		10,075		6,054
		Cemrica (British Gas)						2,000	
		Henry Oxfield Trust						30,000	
		Colin Sharpe						5,000	
					13,720	-	13,720		34,551
	Membership Subscriptions:				8,209		8,209		6,515
	Sales:								
		Refreshments donations			9,472		9,472		5,618
		Garden & Mens shed sales			2,781		2,781		584
		Community Kitchen				14,891	14,891		7,430
	Trainees:					5,562	5,562		1,853
	Paid Courses					844	844		-
	Faversham Lottery:				2,208		2,208		1,870
	Fundraising Events:				2,559		2,559		1,905
	External Groups:						-		
	Gift Aid Reclaimed:				1,289		1,289		246
					47,815	-	47,815		26,021
	Total Incoming				61,985	131,385	193,370		183,783
ABBEY PHYSIC COMMUNITY GARDEN									
NOTES TO THE FINANCIAL STATEMENTS									
FOR THE YEAR ENDING 2024									



# 2024 – Notes to The Accounts

3	Resources Expended			Unrestricted	Restricted	Total	Total
				2,024	2,024	2,024	2023
				£	£		£
	Purchases and miscellaneous costs:						
		Garden supplies		6,840		6,840	2,224
		Grub Club Ingredients		-		-	-
		Groceries/Provisions		6,853		6,853	2,097
		Craft tools/Equipment		-		-	
		Mens Shed			54	54	
				13,694	54	13,748	4,321
	Operational and support costs:						
		Advertising		1,385	2,220	3,605	1,655
		Accounts/Auditing				-	
		Bank Charges		643		643	338
		Bees, Beehives and Chickens		160		160	
		Computer costs		905		905	915
		DBS checks		136		136	92
		Evaluation			2,500	2,500	-
		External Fundraising				-	-
		External Trainig Activity Providers			1,000	1,000	107
		Insurance		2,272		2,272	1,710
		Governance / Subscriptions		340		340	48
		Office supplies		696		696	1,053
		Other				-	-
		Printing and Stationery		949		949	1,184
		Professional Services				-	1,059
		Rent				-	178
		Repairs, renewals & maintenance		578	4,989	5,568	4,444
		Salaries /NI		17,943	96,046	113,989	96,932
		Sesional Workers			12,993	12,993	14,961
		Supplies		2,054		2,054	2,690
		Training		841		841	2,012
		Travel/Parking		38		38	60
		Utilities - Telephone / Internet		344	463	807	717
		Utilities - Rent, electric & Water			1,805	1,805	1,301
		Website costs		315		315	1,929
		Garden party costs		287		287	653
		Raising funds		-	-	-	87
				29,886	122,016	151,902	134,125
	Governance costs:						
		Companies House					
	No employee received emoluments of more than £50,000.						

# 2024 – Notes to The Accounts

4	Directors of the Charity						
	No member of the Board of Directors received any remuneration during the period.						
	Reimbursement of expenses to the Directors was zero.						
	The charity has Trustee Indemnity Insurance (effective from 1st November 2014).						
5	Taxation						
	The charity is exempt from Corporation Tax on its charitable activities.						
	ABBEY PHYSIC COMMUNITY GARDEN						
	NOTES TO THE FINANCIAL STATEMENTS (cont.)						
	FOR THE YEAR ENDED 31 December 2022						
6	Tangible Fixed Assets						
					2024	2023	Purchase Price
					£	£	
	Pavilion	Purchased 2009 10% straight line				-	
	New Cabin	Purchased 2017 10% straight line		3,000		4,000	10,000
	New units & Island	Purchased 2019 10% straight line			1,122	1,410	2,876
	Men's Shed	Purchased 2017 10% straight line		1,857		2,209	3,518
					5,980	7,619	16,394
7	Analysis of Net Assets between Funds						
				2024	2023	2022	
				Total	Total	Total	
				£	£	£	
	Restricted Funds			61,430	52,115	39,796	
	Unrestricted Funds			77,724	59,319	26,301	
				139,154	111,434	66,097	
	A positive balancing adjustment of £443.79 was added to the 2021 restricted funds total						
8	Incorporation						
	The Abbey Physic Community Garden is a company limited by guarantee, without a share capital, incorporated on 30 November 2006.						
	It took over the activities in the garden on 1 December 2006.						
	In the event of the company being wound up, members guarantee to pay £1 each towards the Garden's debts.						



# 2024 Notes to the Accounts

NOTES TO THE FINANCIAL STATEMENTS (cont.)				
SCHEDULE OF ONGOING RESTRICTED GRANTS AND DONATIONS				
Restricted Grants Carried forward to 2023				
Bal b/f	Grant Name	Grant Receipts in 2024	2024 Restricted exp.	bal c/f
31/12/2023				31/12/2024
5,121	Big Lottery	91,500	92,613	4,008
5,450	Faversham Town Council	0	5,450	0
4,050	Benstead Trust (incl. Colin Sharp)	0	4,050	0
1,667	Colyer Ferguson	0	1,667	0
4,169	Henry Smith	10,000	9,169	5,000
0	The Access Foundation/Philips & Connie	12,000	3,400	8,600
0	Swale Borough Council	0	0	0
0	Contiacorum Foundation	1,800	1,800	0
0	Alpkit Foundation	0	0	0
0	Albert Hunt	2,000	1,000	1,000
0	Austin Hope	1,000	250	750
0	H G Wells	1,000	1,000	0
0	Arnold Clark	750	750	0
0	Young SE	1,000	167	833
0	Co-Operative Community	5,000	0	5,000
0	Orchard Community Energy	4,635	0	4,635
0	Imperial Plastics	700	700	0
20,457	0	131,385	122,016	29,826

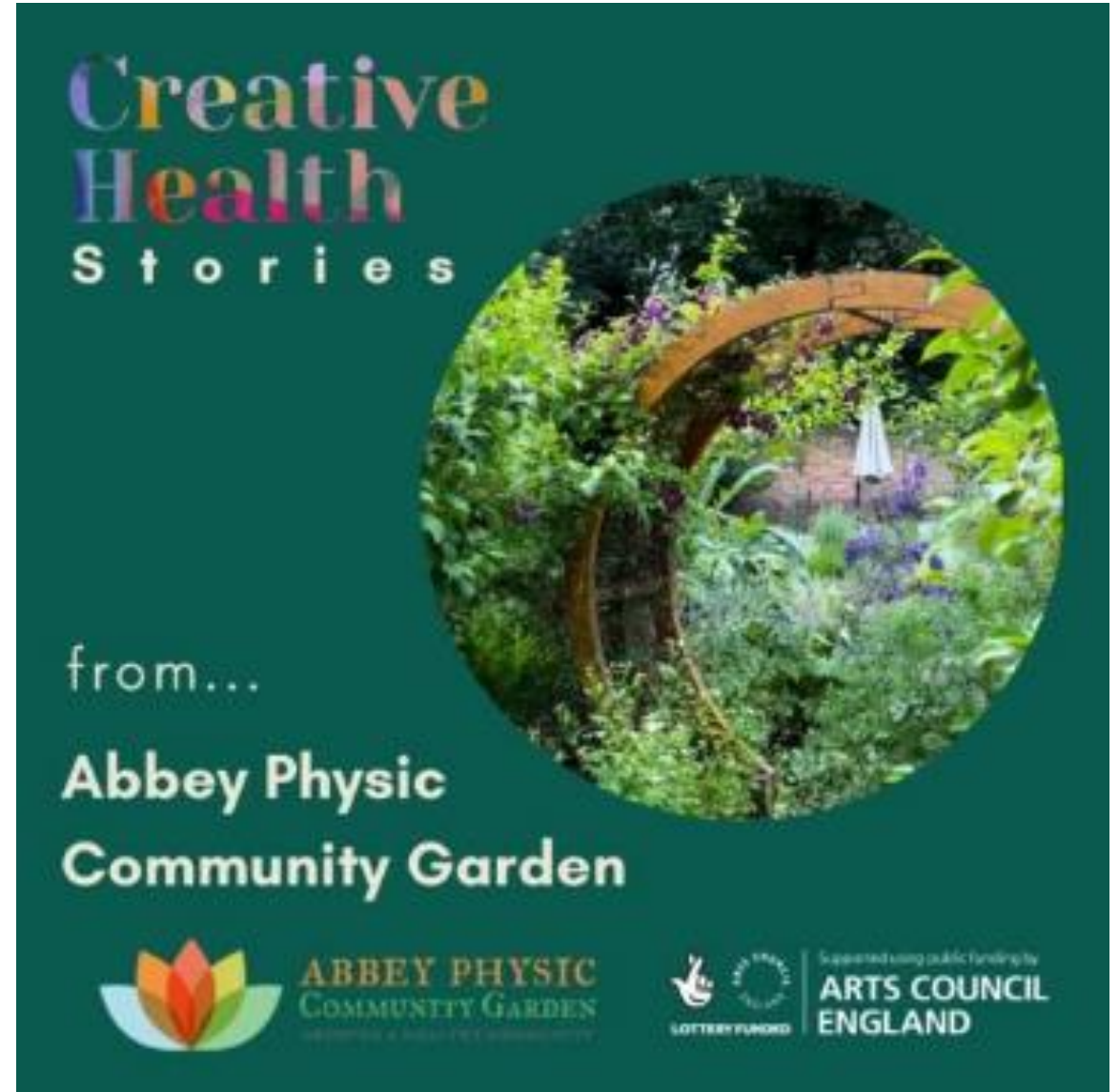
## Abbey Physic Community Garden

### **An audio story about the history, activities and impact of Abbey Physic Community Garden**

---

Laura Bailey has just released an excellent podcast about the garden and charity and the benefits that being a member and visitor brings to peoples' lives. During 2024, Laura interviewed people in the garden and Laura has successfully captured the many different ways in which the garden helps us all. A big thank you to Laura and to the Arts Council England for funding Laura in this exciting project.

Listen below, and read the full article on Laura's website here: <https://creative-health.co.uk/podcasts/abbey-physic-community-garden/>





We are incredibly thankful for all the support we receive from all our donors, sponsors, volunteers, members, staff and the community – helping us to support people when they need us

---

We would also like to say an extra special thanks to the following:

Our landlords – The Old Grammar School Charity Faversham

Key Funders - Reaching Communities England – The National Lottery Community Fund; The Swire Charitable Trust; Bensted's Charity; Centrica; Colyer-Fergusson Charitable Trust; Faversham Town Council; Henry Smith Charity County Grants; Henry Oldfield Trust; and Swale Borough Council; The Access Foundation; Co-operative Community ; Orchard Community Energy

Andrew Ireland, Trustee, leaving us as a trustee at our AGM 2025 – for all your support in 2024 to which this report refers.

Many thanks to Philip Wyard (Treasurer) in preparing the accounts and Louise Shaw for examining the accounts.

On behalf of the trustees,

Helen Carr, July 2025



ABBEY PHYSIC  
COMMUNITY GARDEN



The King's Award  
for Voluntary Service

## Abbey Physic Garden

### STATEMENT OF FINANCIAL ACTIVITIES (Incorporating an Income and Expenditure Account)

FOR THE YEAR ENDED 31 December 2024

	Notes	Unrestricted Funds £	Restricted Funds £	Total 2024 £	Total 2023 £
<b>INCOMING RESOURCES</b>	2				
Incoming resources from generated funds:					
Voluntary Income:					
Grants		450	131,385	131,835	123,211
Donations		13,720	0	13,720	34,551
Membership subscriptions		8,209	0	8,209	6,515
Activities for Generating Funds:					
Sales & events		12,253	0	12,253	6,202
Fundraising events		2,559	0	2,559	1,905
Community Kitchen		14,891	0	14,891	7,430
Optivo		844	0	844 -	
External Groups		0		0	0
Gift Aid Reclaimed		1,289	0	1,289	246
Trainees		5,562	0	5,562	1,853
Faversham Lottery		2,208	0	2,208	1,870
Investment Income:					
Bank interest				0	
<b>Total Incoming Resources</b>		61,985	131,385	193,370	183,783
<b>RESOURCES EXPENDED</b>	3				
Cost of generating funds:					
Purchases and miscellaneous costs		13,694	54	13,748	4,321
Operational and support costs		29,886	122,016	151,902	134,125
Governance costs		0			0
<b>Total Expended Resources</b>		43,579	122,070	165,650	138,446
<b>NET MOVEMENT OF FUNDS</b>	7	18,405	9,315	27,720	45,337
<b>RECONCILIATION OF FUNDS</b>					
Total Funds Brought Forward		59,319	52,115	111,434	66,097
<b>Fund Balance Carried Forward</b>		77,724	61,430	139,154	111,434



# Abbey Physic Garden

## BALANCE SHEET

**For the Year Ended 31 December 2024**

	Notes	2024 £	2023 £
<b>FIXED ASSETS</b>			
Tangible assets	6	0	0
Old Cabin			
New Cabin		3,000	4,000
New sink & Island units		1,122	1,410
Men's Shed		1,857	2,209
<b>CURRENT ASSETS</b>			
Debtors			
Bank deposits		136,238	110,571
Cash in hand		51	24
Paypal		2,449	766
Soldo		356	
Local giving		0	151
Izettle		0	0
Stripe		60	-38
<b>Net Current Assets</b>		<b>139,154</b>	<b>111,474</b>
<b>NET ASSETS</b>			
Represented by:			
Fixed Assets		5,980	7,619
Restricted Funds		43,487	52,115
Unrestricted Funds		95,668	59,319
Retained earnings			
<b>Total Funds</b>		<b>145,135</b>	<b>119,053</b>

For the year ending 31 December 2024 the company was entitled to exemption from audit under Section 477 of the Companies Act 2006 relating to small companies.

The members have not required the company to obtain an audit in accordance with Section 476 of the Companies Act 2006

The directors acknowledge their responsibilities for complying with the requirements of the Act with respect to accounting records and the preparation of accounts.

These accounts have been prepared in accordance with the provisions applicable to companies subject to the small companies' regime.

The accounts have been prepared in accordance with IAS / IFRS.

## INDEPENDENT EXAMINATION

I can confirm that the financial statements give a true and fair view of the state of the charity's affairs as at 31st December 2024.

Independent Examiner signature:

.....

Date:

.....

**NOTES TO THE FINANCIAL STATEMENTS**

For the Year Ended 31 December 2024

**1 Accounting Policies**

**Basis of Preparation**

The financial statements have been prepared under the historical cost convention and are in accordance with Financial Reporting Standard for Smaller Entities (effective January 2007), the Companies Act 2006, and follow the recommendations in Accounting and Reporting by Charities: Statement of Recommended Practice (issued 2005).

Quickbooks accounting software is used to explain income and expenditure but it does not contain all the asset calculations.

**Grants and Voluntary Income**

All grants and voluntary income are accounted for gross when receivable.

**Resources Expended:**

**Depreciation**

Assets acquired costing less than £2,500 are charged to revenue in the year of purchase:

Assets exceeding this purchase price: Pavillion, New Cabin, New kitchen units and island are depreciated by 10% straight line

**Purchases and miscellaneous costs**

Purchases and miscellaneous costs includes the direct costs of the activities. Where such costs relate to more than function cost category, they have been split on an estimated basis as appropriate.

This was previously named charitable expenditure.

**Unrestricted Funds**

Unrestricted funds are donations and other incoming resources receivable or generated for the objects of the charity without further specified purpose and are available as general funds.

**Restricted Funds**

Restricted funds are to be used for specific purposes as laid down by the donor. Expenditure which meets criteria is charged to the fund.

## NOTES TO THE FINANCIAL STATEMENTS

2	Incoming Resources		Unrestricted	Restricted	Total	Total
			2024	2024	2024	2023
			£	£		£
<b>Grants Received:</b>						
	Big Lottery	2/9/2024		22,875	22,875	24,125
		5/10/2024		22,875	22,875	24,125
		8/9/2024		22,875	22,875	24,125
		11/6/2024		22,875	22,875	24,125
	The Access Foundation	12/08/2024 & 17/09/2024		12,000	12,000	0
	Swale Borough Council	4/12/2024	250		250	3,761
	SBC Eastern Area Committee				-	0
	Faversham Town Council				-	500
					-	5,000
					-	450
	Benstead Trust				-	2,000
	Colyer Fergusson				-	5,000
	Henry Smith	7/8/2024		10,000	10,000	10,000
	Cantiacorum Foundation	6/18/2024		1,800	1,800	
	Alpkit Foundation	6/21/2024	200		200	
	Albert Hunt	7/12/2024		2,000	2,000	
	Austin Hope	10/10/2024		1,000	1,000	
	H G Wills	8/15/2024		1,000	1,000	
	Arnold Clark	9/20/2024		750	750	
	Young SE	11/4/2024		1,000	1,000	
	Co-Operative Community Grant	12/19/2024		5,000	5,000	
	Orchard Community Energy	12/23/2024		4,635	4,635	
	Imperial Plastics	11/15/2024		700	700	
			<b>450</b>	<b>131,385</b>	<b>131,835</b>	<b>123,211</b>
<b>Donations:</b>						
	Porchlight		1500		1500	-
	Organisation / Corporate Donations<£1000		2,145		2,145	1,497
	Personal Donations <£1000		10,075		10,075	6,054
	Centrica (British Gas)					2,000
	Henry Oldfield Trust					20,000
	Colin Sharpe					5,000
			<b>13,720</b>	<b>-</b>	<b>13,720</b>	<b>34,551</b>
<b>Membership Subscriptions:</b>						
			8,209		8,209	6,515
<b>Sales:</b>						
	Refreshments donations		9,472		9,472	5,618
	Garden & Mens shed sales		2,781		2,781	584
	Community Kitchen		14,891		14,891	7,430
			5,562		5,562	1,853
<b>Trainees:</b>						
	Paid Courses		844		844	-
<b>Faversham Lottery:</b>						
			2,208		2,208	1,870
<b>Fundraising Events:</b>						
			2,559		2,559	1,905
<b>External Groups:</b>						
					-	
<b>Gift Aid Reclaimed:</b>						
			1,289		1,289	246
			<b>47,815</b>	<b>-</b>	<b>47,815</b>	<b>26,021</b>
<b>Total Incoming</b>						
			<b>61,985</b>	<b>131,385</b>	<b>193,370</b>	<b>183,783</b>



NOTES TO THE FINANCIAL STATEMENTS  
FOR THE YE4

3	Resources Expended	Unrestricted 2,024 £	Restricted 2,024 £	Total 2,024	Total 2023 £
	<b>Purchases and miscellaneous costs:</b>				
	Garden supplies	6,840		6,840	2,224
	Grub Club Ingredients	-		-	-
	Groceries/Provisions	6,853		6,853	2,097
	Craft tools/Equipment	-		-	
	Mens Shed		54	54	
		<b>13,694</b>	<b>54</b>	<b>13,748</b>	<b>4,321</b>
	<b>Operational and support costs:</b>				
	Advertising	1,385	2,220	3,605	1,655
	Accounts/Auditing			-	
	Bank Charges	643		643	338
	Bees, Beehives and Chickens	160		160	
	Computer costs	905		905	915
	DBS checks	136		136	92
	Evaluation		2,500	2,500	-
	External Fundraising			-	-
	External Training Activity Providers		1,000	1,000	107
	Insurance	2,272		2,272	1,710
	Governance / Subscriptions	340		340	48
	Office supplies	696		696	1,053
	Other			-	-
	Printing and Stationery	949		949	1,184
	Professional Services			-	1,059
	Rent			-	178
	Repairs, renewals & maintenance	578	4,989	5,568	4,444
	Salaries /NI	17,943	96,046	113,989	96,932
	Sesional Workers		12,993	12,993	14,961
	Supplies	2,054		2,054	2,690
	Training	841		841	2,012
	Travel/Parking	38		38	60
	Utilities - Telephone / Internet	344	463	807	717
	Utilities - Rent, electric & Water		1,805	1,805	1,301
	Website costs	315		315	1,929
	<b>Garden party costs</b>	<b>287</b>		<b>287</b>	<b>653</b>
	<b>Raising funds</b>	<b>-</b>	<b>-</b>	<b>-</b>	<b>87</b>
		<b>29,886</b>	<b>122,016</b>	<b>151,902</b>	<b>134,125</b>
	<b>Governance costs:</b>				
	Companies House				

No employee received emoluments of more than £50,000.

4 **Directors of the Charity**

No member of the Board of Directors received any remuneration during the period.  
Reimbursement of expenses to the Directors was zero.  
The charity has Trustee Indemnity Insurance (effective from 1st November 2014).

5 **Taxation**

The charity is exempt from Corporation Tax on its charitable activities.

NOTES TO THE FINANCIAL STATEMENTS (cont.)  
For the year ended 31st December 2024

6	Tangible Fixed Assets		2024	2023 Purchase Price	
			£	£	
	Pavilion	Purchased 2009 10% straight line		-	
	New Cabin	Purchased 2017 10% straight line	3,000	4,000	10,000
	New units & Island	Purchased 2019 10% straight line	1,122	1,410	2,876
	Men's Shed	Purchased 2017 10% straight line	1,857	2,209	3,518
			5,980	7,619	16,394

7	Analysis of Net Assets between Funds		2024	2023	2022
			Total	Total	Total
			£	£	£
	Restricted Funds		43,487	52,115	39,796
	Unrestricted Funds		95,668	59,319	26,301
			139,155	111,434	66,097

A positive balancing adjustment of £443.79 was added to the 2021 restricted funds total

8 Incorporation  
The Abbey Physic Community Garden is a company limited by guarantee, without a share capital, incorporated on 30 November 2006.

It took over the activities in the garden on 1 December 2006.  
In the event of the company being wound up, members guarantee to pay £1 each towards the Garden's debts.

NOTES TO THE FINANCIAL STATEMENTS (cont.)  
SCHEDULE OF ONGOING RESTRICTED GRANTS AND DONATIONS  
Restricted Grants Carried forward to 2024

Bal b/f	Grant Name	Grant Receipts in 2024	2024 Restricted exp.	bal c/f
12/31/2023				12/31/2024
5,121	Big Lottery	91,500	92,613	4,008
5,450	Faversham Town Council	0	5,450	0
4,050	Benstead Trust (incl. Colin Sharp)	0	4,050	0
1,667	Colyer Ferguson	0	1,667	0
4,169	Henry Smith	10,000	9,169	5,000
0	The Access Foundation/Philips & Conni	12,000	3,400	8,600
0	Swale Borough Council	0	0	0
0	Contiacorum Foundation	1,800	1,800	0
0	Alpkit Foundation	0	0	0
0	Albert Hunt	2,000	1,000	1,000
0	Austin Hope	1,000	250	750
0	H G Wells	1,000	1,000	0
0	Arnold Clark	750	750	0
0	Young SE	1,000	167	833
0	Co-Operative Community	5,000	0	5,000
0	Orchard Community Energy	4,635	0	4,635
0	Imperial Plastics	700	700	0
20,457	0	131,385	122,016	29,826

## **Independent examiner's report to the trustees of Abbey Physic Community Garden**

I report to the trustees on my examination of the accounts of the Abbey Physic Community Garden for the year ended 31 December 2024.

### **Responsibilities and basis of report**

As the charity trustees of the Trust you are responsible for the preparation of the accounts in accordance with the requirements of the Charities Act 2011 ('the Act').

I report in respect of my examination of the Trust's accounts carried out under section 145 of the 2011 Act and in carrying out my examination I have followed all the applicable Directions given by the Charity Commission under section 145(5)(b) of the Act.

### **Independent examiner's statement**

I have completed my examination. I confirm that no material matters have come to my attention in connection with the examination giving me cause to believe that in any material respect:

1. accounting records were not kept in respect of the Trust as required by section 130 of the Act; or
2. the accounts do not accord with those records.

I have no concerns and have come across no other matters in connection with the examination to which attention should be drawn in this report in order to enable a proper understanding of the accounts to be reached.

Signed: 

Name: Lousie Shaw, CA

Relevant professional qualification or membership of professional bodies (if any):  
Institute of Chartered Accountants of Scotland, M24744

Address: Chase House, 55 Preston Street, Faversham, ME13 8PG

Date: 26<sup>th</sup> September 2024