

NEW LIFE CHRISTIAN CENTRE (WAKEFIELD)

England & Wales · Charity number 1119328

Details

Status Registered

Legal form Charitable company

Company number [06053366](#)

Registered 2007-05-22

Register [View on the Charity Commission register](#)

Contact

Address New Life Christian Centre
Glad Tidings Hall
George Street
Wakefield
West Yorkshire
WF1 1DL

Phone 01924383253

Email office@newlifewakefield.co.uk

Website www.newlifewakefield.co.uk

Activities

Objects: (A) TO ADVANCE THE CHRISTIAN FAITH IN ACCORDANCE WITH THE STATEMENT IN SUCH WAYS AND IN SUCH PARTS OF THE UNITED KINGDOM OR THE WORLD AS THE DIRECTORS FROM TIME TO TIME MAY THINK FIT;(B) TO RELIEVE SICKNESS AND FINANCIAL HARDSHIP AND TO PROMOTE AND PRESERVE GOOD HEALTH BY THE PROVISION OF FUNDS, GOODS OR SERVICES OF ANY KIND INCLUDING THROUGH THE PROVISION OF COUNSELLING AND SUPPORT IN SUCH PARTS OF THE UNITED KINGDOM OR THE WORLD AS THE DIRECTORS FROM TIME TO TIME THINK FIT; AND(C) TO ADVANCE EDUCATION IN SUCH WAYS AND IN SUCH PARTS OF THE UNITED KINGDOM OR THE WORLD AS THE DIRECTORS FROM TIME TO TIME MAY THINK FIT.

Activities: Church ministry to all ages in the local community. Affiliated to AOG. Supports several overseas missions.Educational facilities provided through pre school group.

Classification

- **How:** Makes Grants To Individuals, Makes Grants To Organisations, Provides Human Resources, Provides Buildings/facilities/open Space, Provides Services, Provides Advocacy/advice/information
- **What:** General Charitable Purposes, Education/training, The Prevention Or Relief Of Poverty, Overseas Aid/famine Relief, Religious Activities
- **Who:** Children/young People, Elderly/old People, People Of A Particular Ethnic Or Racial Origin, Other Charities Or Voluntary Bodies, The General Public/mankind

Geography

- **Area of benefit:** NOT DEFINED. IN PRACTICE WAKEFIELD
- City Of Wakefield

Finances

Period end	Income	Expenditure	Assets	Employees
2025-03-31	£631,044	£713,551	£714,547	20
2024-03-31	£610,282	£608,966	£797,054	20
2023-03-31	£531,452	£623,782	£795,738	13
2022-03-31	£535,790	£521,534	£888,068	17
2021-03-31	£453,133	£443,246	-	-

Trustees

Name	Role	Appointed
Rev Luke David Crompton	Chair	2023-09-01
Christopher John Schofield		2024-11-12
Peter Martin Cooper		2014-04-01

NEW LIFE CHRISTIAN CENTRE (WAKEFIELD)

England & Wales - Charity number 1119328

Accounts



AGM

Annual General Meeting

Annual Reports & Financial Statements
1st April 2024 to 31st March 2025
New Life Christian Centre (WAKEFIELD) t/a Connect City Church
Registered Company Number 6053366
Registered Charity Number 1119328

Contents

Board of Directors Review of Progress and Achievements

- Reference and Administrative Information
- Objectives, Organisation and Activities

Chairman's Annual Report

- Our Vision
- Our Focus from the New Year 2025
- CCC Board of Directors & Senior Leadership Team
- CCC Church Life
- CCC Mission
- New Life Pre School and Nursery
- Building Project
- Closing Remarks

Finance Report

- Statement of Trustees Responsibilities
- Independent Examiner's Report
- Statement of Financial Activities
- Balance Sheet
- Notes to the Accounts
- Statement of Financial Activities

Annual Reports & Financial Statements

1st April 2024 to 31st March 2025

New Life Christian Centre (WAKEFIELD) t/a Connect City Church

Registered Company Number 6053366

Registered Charity Number 1119328

Board of Directors' Review of Progress and Achievements for the year

1st April 2024 to 31st March 2025

Reference and Administrative Information

Charity Name: New Life Christian Centre (Wakefield) trading as Connect City Church (since 8th September 2024)

Charity Number: 1119328

Company Number: 6053366

Governing Instruments

Memorandum and Articles of Association incorporated on 15th January 2007 as amended on 13th March 2007.

New Life Christian Centre (Wakefield) is a company limited by guarantee, Registered Charity Number 1119328 was incorporated on 15th January 2007. It took over all assets and liabilities from New Life Christian Centre, Registered Charity Number 1051964 on 1st October 2007. The church operates from its premises at George Street, Wakefield, WF1 1DL.

Principal Address

George Street, Wakefield, West Yorkshire, WF1 1DL

Church Officers

Rev L Crompton – Chairman

Mrs N Baldwin – Finance Officer

Mrs J Masters – Administration and Operations

Senior Leadership Team Directors

Rev L Crompton

Mr PM Cooper

Mrs E Hibbert

Mr C Schofield – *appointed 12th November 2024*

Senior Leadership Team Members

Mrs S Renton

Mrs L Brown – *resigned 31st May 2024*

Mr P Whitfield

Mr R Walker

Dr T Ademola

Mr T Gordon – *resigned 16th August 2024*

Company Secretary

Rev L Crompton

Solicitors

Geldards Solicitors, Pride Place, Derby, DE24 8QR

Independent Examiner

Torevell Dent Ltd, Centre of Excellence, Hope Park, Trevor Foster Way, Bradford BD1 4EW

Bank

Virgin Money, 6-10 Northgate, Wakefield, WF1 1TA

Annual Reports & Financial Statements

1st April 2024 to 31st March 2025

New Life Christian Centre (Wakefield) t/a Connect City Church

Registered Company Number 6053366

Registered Charity Number 1119328

Objectives, Organisation and Activities

To advance the Christian faith in accordance with the statement in such ways and in such parts of the United Kingdom or the world as the directors from time to time may think fit.

To relieve sickness and financial hardship and to promote and preserve good health by the provision of funds, goods or services of any kind including through the provision of counselling and support in such parts of the United Kingdom or the world as the directors from time to time think fit.

To advance education in such ways and in such parts of the United Kingdom or the world as the directors from time to time may think fit.

Chairman's Report

Rev L Crompton



Chairman's Annual Report

May 1st 2024 – April 31st 2025

New Life Christian Centre Trading as Connect City Church
(Wakefield)

Our Vision

Our Church Community is all about Connection:

- Connection with God.
- Connection with One Another.
- Connection with the People of our City.

We outwork our vision through TEAMS.

God's best resource is people, and when people come together as teams!

TEAMS is also an acronym for what we are devoted to as we follow the early church in Acts 2;

- | | |
|--------------|--|
| ▪ Teaching | God's Holy, Living Guiding Word |
| ▪ Evangelism | Sharing Jesus' Salvation, Love & Kingdom |
| ▪ Adoration | Never ceasing in worship, prayer & praise |
| ▪ Mentoring | Discipleship, Development in Gifts & Calling |
| ▪ Sharing | Community, Fellowship & Unity together |

I believe all of these values are the values of the New Testament Church (in the book of Acts.) As we devote ourselves to these things, I am believing that God will not only grow our church in more ways than numerically, but that we will have a bigger impact in our communities and our city.

Here are a few elements of our church and what's going on:

Our Focus from the New Year 2025 ...

Go Make Disciples

Go . Glow . Sow . Grow



Along with our overarching vision of CONNECTION & TEAMS:-

Our outworking focus is the great commission.

Jesus quite simply called us to “Go make disciples.”

CCC Board of Directors and Senior Leadership Team

The Senior Leadership Team, (SLT), continued to meet to discuss the governance and finances of both the church and the nursery, and then the directors/trustees made their decisions accordingly.

As for our Vision meetings, with our growing ministry staff team, we felt it more appropriate to discuss vision, (spiritual aspects of the church), amongst the staff team. This of course is all done with full accountability to, and in co-operation with, the SLT, the Board of Directors/Trustees and the wider church.

During this time Christopher Schofield (November) was appointed as a Director and Trustee.

Thank you to our team of directors/trustees for supporting me and bringing incredible wisdom and expertise to some very important issues.

CCC Church Life

In September 2024 we changed our Church name from New Life Christian Centre to Connect City Church. We still remain officially as a company/organisation as New Life Christian Centre.

Connect Groups

We believe church isn't just for Sunday, it's Monday – Sunday 24/7.

Our Connect groups are small groups of people gathering together, whether that's in our church building, in people's homes or even in coffee shops or pubs. A connect group's purpose is to outwork the vision of our church, and will either consist of a bible study, outreach, prayer, social activity and some with a mix of all these.

Youth Ministry

During this period our placement Youth Pastor, Kuda, stepped down. Over the next period of time the youth was led by a team of helpers.

In February 2025 we appointed Charlotte Wrightson as our employed part time Youth Leader. Charlotte will be taking up training with our AoG bible college, Misio Dei, come September.

Children's Ministry

During this period, Connect Kidz (formerly New Life Kidz) was led by Kay Cox & Amy Joel. Like Connect Youth, we are thrilled with the huge progress we have seen in our Children's ministry. It is more organised, thematic, fun and also links our children and families into further church life.

Prayer

We are blessed and we will ever be a prayerful church because we know our God answers prayer! He has done so time and time again, brought breakthrough, healing, miracles and restoration. We are believing for even more in 2024 and beyond!

CCC Mission

We are privileged to be involved in all sorts of mission locally, nationally and around the world. Currently we prayerfully and financially support 16 independent missionaries or mission organisations, some of which are detailed below:

Locally

Community Awareness Programme: which helps support, feed and clothe disadvantaged people in Wakefield.

Christians Against Poverty Debt Centre: which helps free people in Wakefield from debt.

Nationally

Barry Woodward (via Proclaim Trust): an evangelist who uses his powerful testimony, (a former life of crime and drugs), to minister in prisons and many other places, sharing the hope and transformation that God can bring.

Sports Chaplaincy UK: a Christian charity that trains and supports chaplains in both grassroots and professional sport across the UK.

Worldwide

Vincent Borromeo: in Taranto Italy and founder of Youth Alive Italia, he helps with practical needs in his local community, as well as sharing the love of Jesus with people.

The Lupus: in Vaslui Romania. Several years ago we helped them open a private school - The Sunshine English Club – with a vision to teach English to children. This is to improve their future and further education. Some of the children are sponsored.

The Dunwells: in Dominican Republic via Mission Direct, helping their local community with practical needs as well as sharing the love of Jesus.

There are other organisations and people we are privileged to support – you will see more details of those we support in our annual accounts.

New Life Pre School and Nursery

From June 24 the Nursery had an interim period temporary management, then in February 25 we made a decision to appoint co-managers – Rachel Parker and Sarah Wood. We had our Graduation Service (children to primary school) in July 24 and our Nursery nativity in December 24.

We are so proud to have celebrated 40 years of the Nursery being founded, We thank God for all that He has done and continues to do!

CCC Building Project

During this period we have continued to renovate the church. Our most major project was restoring the ceiling, which entailed scaffolding being erected inside the main hall, the ceiling being plastered and then finished with painting.

A huge thank you to John Pearson and Rob Walker and other volunteers for really driving our building project forward.

Closing remarks

There are lots of other things I could talk about in this report, as there are so many things that happen behind the scenes and there are amazing people (often anonymous) who make it happen. I am very grateful!

I want to close by saying how excited I am for all that God has in store for us in the second half of 2025 and into 2026, and I'm confident that if we keep our eyes fixed on Him and stay focused and consistent with the vision He has given us, that as Jesus promised - "He will build His Church".

On behalf on the staff, leaders, teams and my family, THANKYOU so much!

Every blessing in Jesus name,

Ps Luke



Financial Report

Annual Reports & Financial Statements
1st April 2024 to 31st March 2025
New Life Christian Centre (WAKEFIELD) t/a Connect City Church
Registered Company Number 6053366
Registered Charity Number 1119328

Statement of Trustees Responsibilities

The Trustees are responsible for preparing the Annual Report and the Financial Statements in accordance with applicable law and the United Kingdom Generally Accepted Accounting Practice.

Charity law requires the Trustees to prepare Financial Statements for each financial year which give a true and fair view of the state of affairs of the charity and of its financial activities for the period. In preparing those Financial Statements the Trustees are required to:

- Select suitable accounting policies and then apply them consistently
- Make judgements and estimates that are reasonable and prudent
- State whether the policies adopted are in accordance with SORP 2005 and with applicable accounting standards, subject to any material departures and disclosed and explained in the Financial Statements
- Prepare the Financial Statements on an on-going concern basis unless it is inappropriate to assume that the charity will continue operating.

The Trustees are responsible for the keeping of proper accounting records which disclose with reasonable accuracy at any time the financial position of the charity and to enable them to ensure that the Financial Statements comply with the Companies Act 2006. They are also responsible for safeguarding the assets of the charity and hence for taking reasonable steps for the prevention and detection of fraud or other irregularities.

Signed on behalf of the Trustees

Rev L Crompton



Date

01/09/25

Annual Reports & Financial Statements

Period 1st April 2024 to 31st March 2025

New Life Christian Centre t/a Connect City Church - WAKEFIELD

Registered Company Number - 6053366

Registered Charity Number - 1119328

New Life Christian Centre (Wakefield)

A COMPANY LIMITED BY GUARANTEE

Financial Statements

For the year ended 31st March 2025

Charity Number 1119328

Company Number 6053366

NEW LIFE CHRISTIAN CENTRE (WAKEFIELD)

**Independent Examiner's Report to the Trustees of New Life Christian Centre (Wakefield)
For the Year Ended 31 March 2025**

I report on the accounts of the Trust for the year ended 31 March 2025, which are set out on the following pages.

Respective Responsibilities of Trustees and Examiner

As the charity's trustees you are responsible for the preparation of the accounts; you consider that the audit requirement of Section 145 of the Charities Act 2011 (the Act) does not apply. It is my responsibility to state, on the basis of procedures specified in the General Directions given by the Charity Commission under Section 145(5)(b) of the Act, whether particular matters have come to my attention.

Basis of Independent Examiner's Report

My examination was carried out in accordance with the general directions given by the Charity Commissioners. An examination includes a review of the accounting records kept by the charity and a comparison of the accounts presented with those records. It also includes consideration of any unusual items or disclosures in the accounts, and the seeking of explanations from you as trustees concerning any such matters. The procedures undertaken do not provide all the evidence that would be required in an audit and, consequently, I do not express an audit opinion on the view given by the accounts.

Independent Examiner's Statement

In connection with my examination, no matter has come to my attention:

- 1) Which gives me reasonable cause to believe that, in any material respects, the requirements
 - (a) To keep accounting records in accordance with S130 of the 2011 Act; and
 - (b) To prepare accounts which accord with the accounting records and to comply with the accounting requirements of the 2011 Acthave not been met; or

- 2) to which, in my opinion, attention should be drawn in order to enable a proper understanding of the accounts to be reached.


.....

S. J. Sutcliffe F.C.C.A.

Torevell Dent Limited

Chartered Certified Accountant

1-3 St Ann's Place

Pellon Lane

Halifax

HX1 5RB

Date:9/6/25.....

NEW LIFE CHRISTIAN CENTRE (WAKEFIELD)

Statement of Financial Activities For the Year Ended 31 March 2025

	Notes	Unrestricted Funds £	Restricted Funds £	2025 Total £	2024 Total £
<u>Income From:-</u>					
Donations and legacies		230,717	131	230,848	246,279
Charitable activities Pre School		-	357,752	357,752	326,929
Investment Income	2	3,568	1,173	4,741	7,172
Other	3	37,703	-	37,703	29,902
Total Income		271,988	359,056	631,044	610,282
<u>Expenditure On:-</u>					
Charitable activities	4	220,675	487,246	707,921	603,325
Other	4	4,355	1,275	5,630	5,641
Total Expenditure		225,030	488,521	713,551	608,966
Net Income/ Expenditure		46,958	(129,465)	(82,507)	1,316
Total Funds Brought Forward		442,534	354,520	797,054	795,738
Transfer between funds		-	-	-	-
Total Funds Carried Forward		489,492	225,055	714,547	797,054

NEW LIFE CHRISTIAN CENTRE (WAKEFIELD)

Balance Sheet

For the Year Ended 31 March 2025

	Notes	2025		2024	
		£	£	£	£
Fixed Assets					
Tangible assets	8		394,040		389,570
Current Assets					
Debtors	9	28,273		21,269	
Cash at bank and in hand		299,253		397,851	
Total Current Assets		327,526		419,120	
Liabilities					
Creditors:	10				
<i>Amounts falling due within one year</i>		(7,019)		(11,636)	
Net Current Assets			320,507		407,484
Total Net Assets	11		<u>714,547</u>		<u>797,054</u>
Funds of the charity					
Restricted Funds			225,055		354,520
Unrestricted funds			489,492		442,534
Total Funds	11		<u>714,547</u>		<u>797,054</u>

The company is entitled to exemption from audit under Section 477 of the Companies Act 2006 for the year year ended 31st March 2025. The Members have not required the Company to obtain an audit of its Financial Statements for the year ended 31st March 2025 in accordance with section 476 of the Companies Act.

The Directors acknowledge their responsibilities for:

- ensuring that the Company keeps accounting records which comply with sections 386 and 387 of the companies Act 2006 and;
- preparing financial statements which give a true and fair view of the state of affairs of the company as at the end of each financial year and of its profits or loss for each financial year in accordance with the requirements of Companies act 2006 relating to financial statements, so far as applicable to the Company.

These financial statements have been prepared in accordance with the special provision of Part 15 of the Companies act 2006 relating to small companies and with the Financial Reporting Standards (SORP) 102 (effective January 2015)

Approved by the Trustees on 9th June 2025 and signed on their behalf by:



Reverend. L. Crompton - Chairman



N Baldwin - Treasurer

NEW LIFE CHRISTIAN CENTRE (WAKEFIELD)

Notes to the Accounts

For the Year Ended 31 March 2025

1. Statement of Accounting Policies

a.) Basis of Accounting

The financial statements have been prepared in accordance with applicable accounting standards, the SORP FRS 102. The accounts are prepared under the historical cost convention in accordance with Charities SORP (FRS 102)

b.) Income and endowments

Income and endowments are reported gross

c.) Donations

Donations are credited in full to the financial statements on a cash basis.

Capital assets gifted are recorded at estimated market value in use at the time of the gift.

d.) Grants receivable

Grants are recognised as income when receivable.

e.) Direct charitable expenditure and other costs

Direct charitable expenditure comprises all expenditure directly relating to the objectives of the charity. When necessary, support costs are allowed between direct charitable expenditure and other costs on a basis designed to reflect the use of the resource.

Expenditure is included in the accounts when the liability is incurred and includes non-recoverable VAT.

f.) Fixed assets

The freehold property is stated at valuation value from 1997 with subsequent additions at cost. Other assets are stated at cost less depreciation.

Depreciation is provided on the following basis to write down the cost of the assets over their expected useful lives.

Land and Buildings	NIL (Depreciation is not provided on Land & Buildings)
Fixture and Fittings	20% on cost
Computers	33% on cost

Assets under £100 are not capitalised.

The gain that arose on the revaluation of Land and buildings was determined by an independent open market valuation at May 2017. The revaluation surplus totals £284,650.

g.) Restricted funds

Where funds have been received for specific purposes they are treated as restricted funds.

h.) Grants Payable

Grants payable are charges in the year as incurred

NEW LIFE CHRISTIAN CENTRE (WAKEFIELD)

**Notes to the Accounts (continued)
For the Year Ended 31 March 2025**

		2025 £	2024 £		
2. Investment Income					
Bank Interest		4,741	7,172		
		2025 £	2024 £		
3. Other Income					
Government VAT Scheme		17,303	9,502		
Rent received		20,400	20,400		
		37,703	29,902		
4. Total Expenditure					
		<u>Unrestricted</u>	<u>Restricted</u>		
		<u>Charitable</u>	<u>Charitable</u>	<u>2025</u>	<u>2024</u>
<u>Direct costs</u>	<u>Basis of</u>	<u>Activities</u>	<u>Activities</u>	<u>Total</u>	<u>Total</u>
<u>allocated to activities</u>	<u>Allocation</u>				
Grants (note 5)	Direct	20,340	1,200	21,540	31,220
Staff Costs (note 6)	Direct	129,108	307,368	436,476	393,258
Pre School costs	Direct	-	19,698	19,698	11,743
Property costs	Direct	28,378	138,416	166,794	122,216
Evangelistic/Youth Exp's	Direct	1,506	-	1,506	2,517
Depreciation	Direct	2,856	-	2,856	878
Training/Conferences	Direct	10,447	949	11,396	2,861
		<u>Unrestricted</u>	<u>Restricted</u>		
		<u>Charitable</u>	<u>Charitable</u>	<u>2025</u>	<u>2024</u>
<u>Support Costs</u>	<u>Basis of</u>	<u>Activities</u>	<u>Activities</u>	<u>Total</u>	<u>Total</u>
<u>allocated to activities</u>	<u>Allocation</u>				
Legal & Professional	Direct	4,901	6,292	11,193	7,606
Office	Direct	11,760	11,890	23,650	18,846
Insurance	Direct	3,669	-	3,669	3,113
Subscription/Licences	Direct	7,710	1,433	9,143	9,067
Other	Direct	4,355	1,275	5,630	5,641
		225,030	488,521	713,551	608,966

NEW LIFE CHRISTIAN CENTRE (WAKEFIELD)

Notes to the Accounts (continued)

For the Year Ended 31 March 2025

	2025	2024
	£	£
5. Grants		
Mission Support	21,540	31,220
	<u>21,540</u>	<u>31,220</u>

No individual grant under mission exceeded 5% of income

	2025	2024
	£	£
6. Staff Costs		
Wages & Salaries	402,944	356,425
National Insurance	25,985	22,408
Pensions	7,548	14,425
	<u>436,477</u>	<u>393,258</u>

Average number of staff (full time equivalents)

Church	5	4
Pre-School	11	12
	<u>16</u>	<u>16</u>

No employee received remuneration of more than £60,000.

	2025	2024
	£	£
7. Net Expenditure		
This is stated after charging:		
Depreciation	2,856	878
Independent Examiners Fee	1,584	1,500
	<u>4,440</u>	<u>2,378</u>
Trustee Remuneration and Expenses		
Remuneration	39,770	41,404
Expenses	-	761
	<u>44,210</u>	<u>44,543</u>

Two Trustees/Directors were in receipt of remuneration

	2025	2024
	£	£
Analysis of Trustee Remuneration:-		
Rev. K. Foster	-	22,394
Rev. L. Crompton	39,770	19,010
	<u>39,770</u>	<u>41,404</u>

NEW LIFE CHRISTIAN CENTRE (WAKEFIELD)

**Notes to the Accounts (continued)
For the Year Ended 31 March 2025**

8. Fixed Assets	<u>Freehold land & Buildings</u>	<u>Fixtures & Fittings</u>	<u>Total</u>
Costs			
At 1 April 2024	387,767	106,884	494,651
Additions		7,326	7,326
At 31 March 2025	<u>387,767</u>	<u>114,210</u>	<u>501,977</u>
Depreciation			
At 1 April 2024	-	105,081	105,081
Charge for the year	-	2,856	2,856
At 31 March 2025	<u>-</u>	<u>107,937</u>	<u>107,937</u>
Net Book Value			
At 31 March 2025	<u>387,767</u>	<u>6,273</u>	<u>394,040</u>
At 31 March 2024	<u>387,767</u>	<u>1,803</u>	<u>389,570</u>
		2025	2024
		£	£
9. Debtors			
Gift Aid		3,045	5,703
Prepayment and other Debtors		25,228	15,566
		<u>28,273</u>	<u>21,269</u>
		2025	2024
		£	£
10. Creditors: Amounts falling due within one year			
Accruals		3,848	4,985
Creditors		1,274	4,141
Fees Paid in advance		1,897	2,510
		<u>7,019</u>	<u>11,636</u>

NEW LIFE CHRISTIAN CENTRE (WAKEFIELD)

Notes to the Accounts (continued) For the Year Ended 31 March 2025

11. Analysis of funds

Fund balances	Restricted Funds	Unrestricted Funds	Total Funds
<i>Represented by:-</i>			
Tangible fixed assets		394,040	394,040
Current assets	225,055	102,471	327,526
Current Liabilities		(7,019)	(7,019)
	<u>225,055</u>	<u>489,492</u>	<u>714,547</u>

The restricted fund comprises of :-

Building fund	£(89,920)	Held for a possible extension
Pre School Fund	£309,103	Held to cover future expenditure
Missions Fund	£5,872	Used for payments in respect of Sunshine English Club

Restricted fund movements

	Building Fund	Mission Fund	Pre School Fund	Total
Balance 01.04.2024	20,523	5,772	328,225	354,520
Income	<u>271</u>	<u>100</u>	<u>358,685</u>	<u>359,056</u>
	20,794	5,872	686,910	713,576
Expenditure	<u>(110,714)</u>	<u>-</u>	<u>(377,807)</u>	<u>(488,521)</u>
	(89,920)	5,872	309,103	225,055
Transfers between funds	-	-	-	-
Balance 31.03.2025	<u>(89,920)</u>	<u>5,872</u>	<u>309,103</u>	<u>225,055</u>

NEW LIFE CHRISTIAN CENTRE (WAKEFIELD)

Statement of Financial Activities For the Year Ended 31 March 2025

<u>General Fund (Unrestricted)</u>	Year Ended Mar-25		Year Ended Mar-24	
	£	£	£	£
Income From:				
Offerings		58,159		89,360
Gift aid donations & gift aid		129,619		120,581
Pre school tithe, offerings & rent		20,400		20,400
Income tax recovered		40,879		34,469
Bank interest and dividends received		3,568		5,700
Miscellaneous income		17,303		9,503
Youth worker sponsorship		311		745
Fundraising		1,749		929
		<u>271,988</u>		<u>281,687</u>
 Expenditure On:-				
Staff salaries and national insurance	126,746		133,807	
Nest	2,362		9,776	
Conference, training and course expenses	10,447		7,561	
Service costs	1,766		2,031	
Health safety and employment law	2,495		2,494	
Computer costs	1,690		322	
Light, heat and water	13,774		20,931	
Insurance	3,669		3,113	
Cleaning and waste removal	1,433		518	
Building, repairs and maintenance	5,636		11,110	
Equipment expenses	5,769		506	
Postage, stationery and consumables	2,724		1,337	
Telephone and internet costs	7,346		4,308	
Reading materials	7		98	
Licences	1,553		1,595	
Independent examiners fee	1,584		1,500	
Payroll fees	458		403	
Subscriptions	6,157		6,072	
Sundry expenses	3,702		5,543	
Depreciation	2,856		878	
Grants	20,340		31,220	
Life Group	1,506		1,318	
Legal and professional	364		632	
Advertising and website	268		37	
Meals and entertainment	78		115	
Charitable donations	300		-	
		<u>225,030</u>		<u>247,225</u>
 Net Income/Income		<u><u>46,958</u></u>		<u><u>34,462</u></u>

NEW LIFE CHRISTIAN CENTRE (WAKEFIELD)

**Statement of Financial Activities
For the Year Ended 31 March 2025**

Building Fund (Restricted)

	Year Ended Mar-25		Year Ended Mar-24	
	£	£	£	£
Income From:				
Offerings	31		74	
Bank interest	<u>240</u>		<u>451</u>	
Total Income		271		525
Expenditure		110,714		57,724
Net (Expenditure)		<u>(110,443)</u>		<u>(57,199)</u>

Sunshine English Club (Restricted)

	Year Ended Mar-25		Year Ended Mar-24	
	£	£	£	£
Income		100		120
Expenditure		-		-
Net Income		<u>100</u>		<u>120</u>

NEW LIFE CHRISTIAN CENTRE (WAKEFIELD)

**Statement of financial activities
For the Year Ended 31 March 2025**

Pre School Fund (Restricted)

Income From:	Year Ended		Year Ended	
	Mar-25		Mar-24	
	£	£	£	£
Private fees		116,747		103,856
NEF - WMDC		180,004		131,971
Baby room		44,559		73,254
Interest received		933		1,021
School dinners		16,442		17,848
Miscellaneous		-		-
		<u>358,685</u>		<u>327,950</u>
Expenditure On:-				
Staff salaries and national insurance	302,182		245,026	
Nest	5,186		4,649	
School milk and catering	6,498		5,482	
Materials	13,200		6,261	
Training	939		715	
Subscriptions and donations	1,433		1,400	
Rent to N.L.C.C	20,400		20,400	
Light and heat	-		596	
Repairs and renewals	8,993		1,374	
Conference expenses	10		-	
Cleaning and waste removal	1,927		1,496	
Stationery and administration	4,271		9,646	
Computer costs	593		79	
Telephone and internet	7,026		3,117	
Health, safety and employment law	1,813		2,076	
Grants	1,200		-	
Legal and professional	403		501	
Advertising	1,133		-	
Entertaining	23		-	
Payroll fees	458		-	
Sundry expenses	120		-	
Fundraising	-		1,199	
		<u>377,807</u>		<u>304,017</u>
Net (Expenditure) / Income		<u>(19,122)</u>		<u>23,933</u>

NEW LIFE CHRISTIAN CENTRE (WAKEFIELD)

England & Wales - Charity number 1119328

Accounts

A vertical blue bar on the left side of the page, consisting of two adjacent rectangular sections of different shades of blue.

AGM

Annual General Meeting

Annual Reports & Financial Statements

Period 1st April 2023 to 31st March 2024

New Life Christian Centre - WAKEFIELD

Registered Company Number - 6053366

Registered Charity Number - 1119328

Contents

- Board of Directors Review of Progress and Achievements
 - Reference and Administrative Information
 - Objectives, Organisation and Activities
 - Mission Statement

- Chairman's Annual Report
 - Introduction
 - Board of Directors & Senior Leadership Team
 - Church Ministry
 - Life Groups
 - Youth & Children Ministry
 - Prayer
 - Batley Church Ablaze
 - Guest Speakers/Ministries
 - New Life PreSchool & Nursery
 - Building Project

- Finance Report
 - Statement of Trustees Responsibilities
 - Independent Examiner's Report
 - Statement of Financial Activities
 - Balance Sheet
 - Notes to the Accounts
 - Statement of Financial Activities

- Meet the Team

Annual Reports & Financial Statements

Period 1st April 2023 to 31st March 2024
New Life Christian Centre - WAKEFIELD
Registered Company Number - 6053366
Registered Charity Number - 1119328

Board of Directors' Review of Progress and Achievements

For the year ended 1st April 2023 to 31st March 2024

Reference and Administrative Information

Charity Name: New Life Christian Centre (Wakefield)

Charity Number: 1119328

Company Number: 6053366

Governing Instruments: Memorandum and Articles of Association incorporated on 15th January 2007 as amended on 13th March 2007

Principal Address: George Street, Wakefield, West Yorkshire, WF1 1DL

Church Officers

Rev K. Foster – Chairman *Resigned 30th September 2023*

Rev L Crompton – Chairman *Appointed 1st October 2023*

Mrs N Baldwin - Finance Officer

Mrs J Masters – Administration and Operations

Senior Leadership Team Directors

Rev. K. Foster – *Resigned 30th September 2023*

Rev L Crompton – *Appointed 1st October 2023*

Mr. P. M. Cooper

Mr P Wood – *Resigned 30th July 2023*

Mrs E Hibbert – *Appointed 12th March 2024*

Senior Leadership Team Members

Mrs J. Foster – *Resigned 30th September 2023*

Mrs S Renton

Mrs L. Brown

Mr P. Whitfield

Mr R Walker

Dr T Ademola

Mr T Gordon

Company Secretary

Rev. K. Foster – *Resigned 30th September 2023*

Rev L Crompton – *Appointed 1st October 2023*

Solicitors

Geldards Solicitors

Pride Place

Derby DE24 8QR

Independent Examiner

Torevell Dent Ltd.

Centre of Excellence, Hope Park

Trevor Foster Way

Bradford BD1 4EW

Bank

Yorkshire Bank, 6-10 Northgate, Wakefield, WF1 1TA

The New Life Christian Centre, Wakefield, a company limited by guarantee, Registered Charity Number 1119328, was incorporated on 15th January 2007. It took over all assets and liabilities from New Life Christian Centre, Registered Charity Number 1051964, on 1st October 2007. The Church operates from its premises at George Street, Wakefield, WF1 1DL.

Annual Reports & Financial Statements

Period 1st April 2023 to 31st March 2024

New Life Christian Centre - WAKEFIELD

Registered Company Number - 6053366

Registered Charity Number - 1119328

Objectives, Organisation and Activities

To advance the Christian faith in accordance with the statement in such ways and in such parts of the United Kingdom or the world as the directors from time to time may think fit.

To relieve sickness and financial hardship and to promote and preserve good health by the provision of funds, goods or services of any kind including through the provision of counselling and support in such parts of the United Kingdom or the world as the directors from time to time think fit.

To advance education in such ways and in such parts of the United Kingdom or the world as the directors from time to time may think fit.

Mission Statement

Our vision, prayer and desire are to see God's Kingdom come through:

Loving God

Loving People

Loving Life

We are committed to Loving God:

By having a loving relationship with the Lord Jesus Christ based on Biblical truth.

By living a life of worship, prayer and obedience.

By allowing the Holy Spirit to speak into and work through our lives.

We are committed to Loving People:

By leading people into a personal relationship with Jesus.

By encouraging spiritual growth and development in every believer.

By having an awareness of individual needs and providing practical support.

By encouraging the love and acceptance of every individual inside and outside of the church.

By recognising and releasing individual ministries to serve the church and wider community.

We are committed to Loving Life:

By promoting friendship and fellowship within the church.

By sharing life together in various social and other gatherings outside of the church.

By enjoying the 'life in all its fullness' promised by Jesus.

We exist as individuals to know God and to make him known. As a church, our vision and call are to love God, to love people and to love life. These three themes run through all we do at NLCC and are outworked in a varied church programme for all ages and in our support of organisations, projects and individuals in a local, national and international context.

Annual Reports & Financial Statements

Period 1st April 2023 to 31st March 2024

New Life Christian Centre - WAKEFIELD

Registered Company Number - 6053366

Registered Charity Number - 1119328



CHAIRMAN'S report

Rev L Crompton

Annual Reports & Financial Statements

Period 1st April 2023 to 31st March 2024

New Life Christian Centre - WAKEFIELD

Registered Company Number - 6053366

Registered Charity Number - 1119328

Chairman's Annual Report 2023 - 2024

This is my first year as Chairman of the board at NLCC and Lead Pastor of New Life Church. It is a huge privilege to lead the church and the organization.

I am so thankful to all the staff within this period - Sarah Renton (Women's Ministry), Kuda Mubaiwa, (Youth Ministry), Kay Cox and Amy Joel (Children's Ministry), Jo Masters (Operations & Admin) and Nicola Baldwin (Finance Officer). We have an incredible team, making this transition of leadership so much smoother and allowing to us be more effective in working out our vision.

On behalf of myself and my wife Janna, I want also to say a massive thank you, Kevin and Janet Foster, for passing on the baton. You are incredibly missed, and we are grateful to stand on your shoulders and with God's help, continue to build on the great work you've done here in Wakefield.

1. Board of Directors and Senior Leadership Team

The Senior Leadership Team, (SLT) continues to meet alternately online and in person monthly to discuss business and the finances of the church, and then the directors/trustees make the decisions accordingly.

As for our Vision meetings, with our growing ministry staff team, we felt it more appropriate to discuss vision (spiritual aspects of the church) amongst the staff team. This of course is all with full accountability to, and co-operation with the SLT and the board.

2. Church Ministry

In May 2023 when I took over as Lead Pastor, I shared my vision as to how I saw the church moving forward. This wasn't a radical change but a continuation of our previous/current values and vision under Pastor Kevin. The vision is in two parts which coincide together:

1. “To know Jesus and make Him known”

2. That we would be a Devoted Church;

Devoted to:

- God (Father, Jesus & Holy Spirit)
- Being a Pentecostal Church
- The Gospel
- Discipleship
- God’s word
- Prayer
- Holiness
- Helping the poor & those in need
- Fellowship and unity.

All of these values, I believe, are the values of the New Testament Church (in the book of Acts). As we devote ourselves to these things, I’m believing that God will not only grow our church in more ways than numerically, but that we’ll have a bigger impact in our communities and city.

I want to thank every single person in our church - the staff, the wider leadership team, all our volunteers and the congregation for standing with us and helping us facilitate and outwork our vision. God bless you all!

Here are a few elements of our church and what’s going on:

Life Groups

We are blessed with all our Life Groups that run mostly midweek. Some are Bible studies, some are social but all exist to be fruitful, an encouragement, equipping people to live the life that God always wanted us to live – AN ABUNDANT ONE!

Thank you to all the leaders who open up their homes, who give up their time, who again are on board and committed to the vision of the church.

Youth and Children's Ministry

Our Youth Pastor Kuda has been doing a great job with our NL Youth.

Many of our Youth have taken part in a number of services and it's so wonderful to see them integrated and serving in the church family.

Our Children Pastors, Kay and Amy, are also doing a great job with our NL Kidz. They have built a really good team of volunteers who support them, as well as devising a really clear programme which parents can follow closely. The NL Kidz, like the Youth, have been taking part in our services.

Both ministries have been growing, and we are blessed to welcome more young people and their families into our church family.

Prayer

We have moved our prayer meetings away from the online platform and meet every week on a Wednesday at noon. We still meet once a month on Tuesday evening. We're blessed and we'll ever be a prayerful church because we know our God answers prayer! He has done so time and time again, brought breakthrough, healing, miracles and restoration. We are believing for even more in 2024 and beyond!

Batley Church Ablaze

Sarah Renton continued to do an amazing job as Lead Pastor of the Church. With the help of the Worship Leader Steve Lloyd and other volunteers, excitingly, the church is growing and we're excited to see what God will do next year.

On top of this, throughout the week, the church has a wonderful impact in the community, supporting and feeding disadvantaged people in the community.

Guest Ministries/Speakers

We have had a number of ministries and guest speakers coming and sharing with us on a Sunday morning. We had Becky Murray from One by One, Bethan Stevens from Compassion UK and Barry Woodward from Proclaim Trust (speaking at CAP).

Missions

We are privileged to be involved in all sorts of mission, locally, nationally and around the world. We currently prayerfully and financially support 16 independent missionaries or mission organisations, some of which are detailed below:

Locally

Community Awareness Programme: which helps support, feed and clothe disadvantaged people in Wakefield.

CAP Debt centre: which helps free people in Wakefield from debt.

Nationally

Barry Woodard (via Proclaim Trust): an evangelist who uses his testimony of a former life of crime and drugs to minister in prisons and places that would benefit.

Worldwide

Vincent Borromeo: in Tarranto Italy and founder of Youth Alive Italia.

The Lupus: in Vaslui Romania, teach English to children, some of whom are sponsored. Every year we join them for a summer camp in Romania, having fun, teaching English and sharing Jesus with them.

3. New Life Pre School and Nursery

The Nursery was led by Lisa Brown during this period. As was the case in the previous year there were difficulties, but as ever, the team pulled together and continued to deliver the very best education and care to our children. We had our Graduation service in July, celebrating all the little children going on to primary school.

Coming up is the 40 year anniversary from when the Nursery was founded. We thank God for this achievement and everyone involved.

4. Building Project

We continue moving forward in refurbishing and refreshing our church. There has been tremendous progress, starting with repairing the roof, replacing and repairing of the windows, new LED lighting across the whole building, installation of a new ambient toilet on main level, installation of a new corridor to the back offices, a new kitchen installed in the back offices, as well as general painting and new flooring in areas that desperately needed it.

A huge thank you to John Pearson and Rob Walker and other volunteers for really driving the building project forward.

A vertical blue bar on the left side of the page, consisting of two adjacent rectangular sections of different shades of blue.

Financial Report

Annual Reports & Financial Statements

Period 1st April 2023 to 31st March 2024

New Life Christian Centre - WAKEFIELD

Registered Company Number - 6053366

Registered Charity Number - 1119328

Statement of Trustees Responsibilities

The Trustees are responsible for preparing the Annual Report and the Financial Statements in accordance with applicable law and the United Kingdom Generally Accepted Accounting Practice.

Charity law requires the Trustees to prepare Financial Statements for each financial year which give a true and fair view of the state of affairs of the charity and of its financial activities for the period. In preparing those Financial Statements the Trustees are required to:

- Select suitable accounting policies and then apply them consistently
- Make judgements and estimates that are reasonable and prudent
- State whether the policies adopted are in accordance with SORP 2005 and with applicable accounting standards, subject to any material departures and disclosed and explained in the Financial Statements
- Prepare the Financial Statements on an on-going concern basis unless it is inappropriate to assume that the charity will continue operating.

The Trustees are responsible for the keeping of proper accounting records which disclose with reasonable accuracy at any time the financial position of the charity and to enable them to ensure that the Financial Statements comply with the Companies Act 2006. They are also responsible for safeguarding the assets of the charity and hence for taking reasonable steps for the prevention and detection of fraud or other irregularities.

Signed on behalf of the Trustees



Rev L Crompton

19.11.24

Date

Annual Reports & Financial Statements

Period 1st April 2023 to 31st March 2024
New Life Christian Centre - WAKEFIELD
Registered Company Number - 6053366
Registered Charity Number - 1119328

NEW LIFE CHRISTIAN CENTRE (WAKEFIELD)

**Independent Examiner's Report to the Trustees of New Life Christian Centre (Wakefield)
For the Year Ended 31 March 2024**

I report on the accounts of the Trust for the year ended 31 March 2024, which are set out on the following pages.

Respective Responsibilities of Trustees and Examiner

As the charity's trustees you are responsible for the preparation of the accounts; you consider that the audit requirement of Section 145 of the Charities Act 2011 (the Act) does not apply. It is my responsibility to state, on the basis of procedures specified in the General Directions given by the Charity Commission under Section 145(5)(b) of the Act, whether particular matters have come to my attention.

Basis of Independent Examiner's Report

My examination was carried out in accordance with the general directions given by the Charity Commissioners. An examination includes a review of the accounting records kept by the charity and a comparison of the accounts presented with those records. It also includes consideration of any unusual items or disclosures in the accounts, and the seeking of explanations from you as trustees concerning any such matters. The procedures undertaken do not provide all the evidence that would be required in an audit and, consequently, I do not express an audit opinion on the view given by the accounts.

Independent Examiner's Statement

In connection with my examination, no matter has come to my attention:

- 1) Which gives me reasonable cause to believe that, in any material respects, the requirements
 - (a) To keep accounting records in accordance with S130 of the 2011 Act; and
 - (b) To prepare accounts which accord with the accounting records and to comply with the accounting requirements of the 2011 Acthave not been met; or
- 2) to which, in my opinion, attention should be drawn in order to enable a proper understanding of the accounts to be reached.



G. J. Sutcliffe F.C.C.A.

Torevell Dent Limited

Chartered Certified Accountant

1-3 St Ann's Place

Pellon Lane

Halifax

HX1 5RB

Date:15/11/24.....

New Life Christian Centre (Wakefield)

A COMPANY LIMITED BY GUARANTEE

Financial Statements

For the year ended 31st March 2024

Charity Number 1119328

Company Number 6053366

NEW LIFE CHRISTIAN CENTRE (WAKEFIELD)

Statement of Financial Activities For the Year Ended 31 March 2024

	Notes	Unrestricted Funds £	Restricted Funds £	2024 Total £	2023 Total £
<u>Income From:-</u>					
Donations and legacies		246,085	194	246,279	176,945
Charitable activities					
Pre School		-	326,929	326,929	302,868
Investment Income	2	5,700	1,472	7,172	2,578
Other	3	29,902	-	29,902	49,061
Total Income		281,687	328,595	610,282	531,452
<u>Expenditure On:-</u>					
Charitable activities	4	241,584	361,741	603,325	613,862
Other	4	5,641	-	5,641	9,920
Total Expenditure		247,225	361,741	608,966	623,782
Net Income/ Expenditure		34,462	(33,146)	1,316	(92,330)
Total Funds Brought Forward		408,072	387,666	795,738	888,068
Transfer between funds				-	-
Total Funds Carried Forward		442,534	354,520	797,054	795,738

NEW LIFE CHRISTIAN CENTRE (WAKEFIELD)

Balance Sheet For the Year Ended 31 March 2024

	Notes	2024		2023	
		£	£	£	£
Fixed Assets					
Tangible assets	8		389,570		375,001
Current Assets					
Debtors	9	21,269		15,567	
Cash at bank and in hand		<u>397,851</u>		<u>422,422</u>	
Total Current Assets		419,120		437,989	
Liabilities					
Creditors:	10				
<i>Amounts falling due within one year</i>		<u>(11,636)</u>		<u>(17,252)</u>	
Net Current Assets			407,484		420,737
Total Net Assets	11		<u><u>797,054</u></u>		<u><u>795,738</u></u>
Funds of the charity					
Restricted Funds			354,520		387,666
Unrestricted funds			442,534		408,072
Total Funds	11		<u><u>797,054</u></u>		<u><u>795,738</u></u>

The company is entitled to exemption from audit under Section 477 of the Companies Act 2006 for the year year ended 31st March 2024. The Members have not required the Company to obtain an audit of its Financial Statements for the year ended 31st March 2023 in accordance with section 476 of the Companies Act.

The Directors acknowledge their responsibilities for:

- ensuring that the Company keeps accounting records which comply with sections 386 and 387 of the companies Act 2006 and;
- preparing financial statements which give a true and fair view of the state of affairs of the company as at the end of each financial year and of its profits or loss for each financial year in accordance with the requirements of Companies act 2006 relating to financial statements, so far as applicable to the Company.

These financial statements have been prepared in accordance with the special provision of Part 15 of the Companies act 2006 relating to small companies and with the Financial Reporting Standards (SORP) 102 (effective January 2015)

Approved by the Trustees on 8/11/24 and signed on their behalf by:



Reverend. L. Crompton - Chairman



N Baldwin - Treasurer

NEW LIFE CHRISTIAN CENTRE (WAKEFIELD)

Notes to the Accounts

For the Year Ended 31 March 2024

1. Statement of Accounting Policies

a.) Basis of Accounting

The financial statements have been prepared in accordance with applicable accounting standards, the SORP FRS 102. The accounts are prepared under the historical cost convention in accordance with Charities SORP (FRS 102)

b.) Income and endowments

Income and endowments are reported gross

c.) Donations

Donations are credited in full to the financial statements on a cash basis.

Capital assets gifted are recorded at estimated market value in use at the time of the gift.

d.) Grants receivable

Grants are recognised as income when receivable.

e.) Direct charitable expenditure and other costs

Direct charitable expenditure comprises all expenditure directly relating to the objectives of the charity. When necessary, support costs are allowed between direct charitable expenditure and other costs on a basis designed to reflect the use of the resource.

Expenditure is included in the accounts when the liability is incurred and includes non-recoverable VAT.

f.) Fixed assets

The freehold property is stated at valuation value from 1997 with subsequent additions at cost. Other assets are stated at cost less depreciation.

Depreciation is provided on the following basis to write down the cost of the assets over their expected useful lives.

Land and Buildings	NIL (Depreciation is not provided on Land & Buildings)
Fixture and Fittings	20% on cost
Computers	33% on cost

Assets under £100 are not capitalised.

The gain that arose on the revaluation of Land and buildings was determined by an independent open market valuation at May 2017. The revaluation surplus totals £284,650.

g.) Restricted funds

Where funds have been received for specific purposes they are treated as restricted funds.

h.) Grants Payable

Grants payable are charges in the year as incurred

NEW LIFE CHRISTIAN CENTRE (WAKEFIELD)

Notes to the Accounts (continued) For the Year Ended 31 March 2024

	2024 £	2023 £
2. Investment Income		
Bank Interest	7,172	2,578

	2024 £	2023 £
3. Other Income		
Insurance claim	-	4,681
Government VAT Scheme	9,502	23,980
Rent received	20,400	20,400
JRS Grants	-	-
	<u>29,902</u>	<u>49,061</u>

4. Total Expenditure

<u>Direct costs allocated to activities</u>	<u>Basis of Allocation</u>	<u>Unrestricted Charitable Activities</u>	<u>Restricted Charitable Activities</u>	<u>2024 Total</u>	<u>2023 Total</u>
Grants (note 5)	Direct	31,220	-	31,220	20,290
Staff Costs (note 6)	Direct	143,583	249,675	393,258	368,079
Pre School costs	Direct	-	11,743	11,743	11,522
Property costs	Direct	40,626	81,590	122,216	166,507
Evangelistic/Youth Exp's	Direct	1,318	1,199	2,517	1,655
Depreciation	Direct	878	-	878	-
Training/Conferences	Direct	2,146	715	2,861	17,990

<u>Support Costs allocated to activities</u>	<u>Basis of Allocation</u>	<u>Unrestricted Charitable Activities</u>	<u>Restricted Charitable Activities</u>	<u>2024 Total</u>	<u>2023 Total</u>
Legal & Professional	Direct	5,029	2,577	7,606	5,678
Office	Direct	6,004	12,842	18,846	10,675
Insurance	Direct	3,113	-	3,113	2,815
Subscription/Licences	Direct	7,667	1,400	9,067	8,651
Other	Direct	5,641	-	5,641	9,920

<u>247,225</u>	<u>361,741</u>	<u>608,966</u>	<u>623,782</u>
----------------	----------------	----------------	----------------

NEW LIFE CHRISTIAN CENTRE (WAKEFIELD)

Notes to the Accounts (continued) For the Year Ended 31 March 2024

	2024	2023
	£	£
5. Grants		
Mission Support	31,220	20,290
	<u>31,220</u>	<u>20,290</u>

No individual grant under mission exceeded 5% of income

	2024	2023
	£	£
6. Staff Costs		
Wages & Salaries	356,425	338,446
National Insurance	22,408	22,749
Pensions	14,425	6,884
	<u>393,258</u>	<u>368,079</u>

Average number of staff (full time equivalents)

Church	4	6
Pre-School	12	12
	<u>16</u>	<u>18</u>

No employee received remuneration of more than £60,000.

	2024	2023
	£	£
7. Net Expenditure		
This is stated after charging:		
Depreciation	878	-
Independent Examiners Fee	1,500	1,260
	<u>2,378</u>	<u>1,260</u>
Trustee Remuneration and Expenses		
Remuneration	41,404	42,654
Expenses	761	1,090
	<u>44,543</u>	<u>45,004</u>

Two Trustee/Director was in receipt of remuneration

	2024	2023
	£	£
Analysis of Trustee Remuneration:-		
Rev. K. Foster	22,394	42,654
Rev. L. Compton	19,010	-
	<u>41,404</u>	<u>42,654</u>

NEW LIFE CHRISTIAN CENTRE (WAKEFIELD)

Notes to the Accounts (continued) For the Year Ended 31 March 2024

8. Fixed Assets	<u>Freehold land & Buildings</u>	<u>Fixtures & Fittings</u>	<u>Total</u>
Costs			
At 1 April 2023	375,000	104,204	479,204
Additions	12,767	2,680	15,447
At 31 March 2024	<u>387,767</u>	<u>106,884</u>	<u>494,651</u>
Depreciation			
At 1 April 2023	-	104,203	104,203
Charge for the year	-	878	878
At 31 March 2024	<u>-</u>	<u>105,081</u>	<u>105,081</u>
Net Book Value			
At 31 March 2024	<u>387,767</u>	<u>1,803</u>	<u>389,570</u>
At 31 March 2023	<u>375,000</u>	<u>1</u>	<u>375,001</u>

	2024 £	2023 £
9. Debtors		
Gift Aid	5,703	5,163
Prepayment and other Debtors	15,566	10,404
	<u>21,269</u>	<u>15,567</u>

	2024 £	2023 £
10 Creditors: Amounts falling due within one year		
Accruals	4,985	4,450
Creditors	4,141	11,066
Fees Paid in advance	2,510	1,736
	<u>11,636</u>	<u>17,252</u>

NEW LIFE CHRISTIAN CENTRE (WAKEFIELD)

Notes to the Accounts (continued) For the Year Ended 31 March 2024

11. Analysis of funds

Fund balances	Restricted Funds	Unrestricted Funds	Total Funds
<i>Represented by:-</i>			
Tangible fixed assets	-	389,570	389,570
Current assets	354,520	64,600	419,120
Current Liabilities	-	(11,636)	(11,636)
	<u>354,520</u>	<u>442,534</u>	<u>797,054</u>

The restricted fund comprises of :-

Building fund	£20,523	Held for a possible extension
Pre School Fund	£328,225	Held to cover future expenditure
Missions Fund	£5,772	Used for payments in respect of Sunshine English Club

Restricted fund movements

	Building Fund	Mission Fund	Pre School Fund	Total
Balance 01.04.2023	77,722	5,652	304,292	387,666
Income	525	120	327,950	328,595
	<u>78,247</u>	<u>5,772</u>	<u>632,242</u>	<u>716,261</u>
Expenditure	(57,724)	-	(304,017)	(361,741)
	<u>20,523</u>	<u>5,772</u>	<u>328,225</u>	<u>354,520</u>
Transfers between funds	-	-	-	-
Balance 31.03.2024	<u>20,523</u>	<u>5,772</u>	<u>328,225</u>	<u>354,520</u>

NEW LIFE CHRISTIAN CENTRE (WAKEFIELD)

Statement of Financial Activities For the Year Ended 31 March 2024

<u>General Fund (Unrestricted)</u>	Year Ended Mar-24		Year Ended Mar-23	
	£	£	£	£
Income From:				
Offerings		89,360		34,794
Gift aid donations & gift aid		120,581		110,634
Pre school tithe, offerings & rent		20,400		20,400
Income tax recovered		34,469		24,171
Bank interest and dividends received		5,700		1,860
Miscellaneous income		9,503		27,331
Youth worker sponsorship		745		654
Fundraising		929		5,392
		<u>281,687</u>		<u>225,236</u>
Expenditure On:-				
Staff salaries and national insurance	133,807		121,961	
Nest	9,776		2,421	
Conference, training and course expenses	7,561		10,696	
Service costs	2,031		3,336	
Health safety and employment law	2,494		1,116	
Computer costs	322		271	
Light, heat and water	20,931		11,835	
Insurance	3,113		2,815	
Cleaning and waste removal	518		324	
Building, repairs and maintenance	11,110		30,627	
Equipment expenses	506		1,393	
Postage, stationery and consumables	1,337		3,655	
Telephone and internet costs	4,308		3,192	
Reading materials	98		59	
Licences	1,595		1,401	
Independent examiners fee	1,500		1,260	
Payroll fees	403		739	
Subscriptions	6,072		6,111	
Sundry expenses	5,543		9,186	
Depreciation	878		-	
Grants	31,220		20,290	
Life Group	1,318		1,655	
Legal and professional	632		378	
Advertising and website	37		52	
Meals and entertainment	115		744	
Church Ablaze	-		675	
		<u>247,225</u>		<u>236,192</u>
Net Income/(expenditure)		<u><u>34,462</u></u>		<u><u>(10,956)</u></u>

NEW LIFE CHRISTIAN CENTRE (WAKEFIELD)

**Statement of Financial Activities
For the Year Ended 31 March 2023**

Building Fund (Restricted)

	Year Ended Mar-24		Year Ended Mar-23	
	£	£	£	£
Income From:				
Offerings	74		1,180	
Bank interest	451		277	
Total Income		525		1,457
Expenditure		57,724		95,062
Net (Expenditure)		(57,199)		(93,605)

Sunshine English Club (Restricted)

	Year Ended Mar-24		Year Ended Mar-23	
	£	£	£	£
Income		120		120
Expenditure		-		-
Net Income		120		120

NEW LIFE CHRISTIAN CENTRE (WAKEFIELD)

Statement of financial activities For the Year Ended 31 March 2024

Pre School Fund (Restricted)

Income From:	Year Ended		Year Ended	
	Mar-24		Mar-23	
	£	£	£	£
Private fees		103,856		96,376
NEF - WMDC		131,971		141,424
Baby room		73,254		50,757
Interest received		1,021		441
School dinners		17,848		14,311
Miscellaneous		-		1,330
		<u>327,950</u>		<u>304,639</u>
Expenditure On:-				
Staff salaries and national insurance	245,026		239,234	
Nest	4,649		4,463	
School milk and catering	5,482		4,692	
Materials	6,261		6,830	
Training	715		6,550	
Advertising and website	-		374	
Subscriptions and donations	1,400		1,139	
Rent to N.L.C.C	20,400		20,400	
Light and heat	596		-	
Repairs and renewals	1,374		1,890	
Cleaning and waste removal	1,496		1,640	
Stationery and administration	9,646		-	
Computer software	79		176	
Telephone and internet	3,117		2,955	
Health, safety and equipment law	2,076		2,042	
Legal and professional	501		143	
Fundraising	1,199		-	
		<u>304,017</u>		<u>292,528</u>
Net Income		<u><u>23,933</u></u>		<u><u>12,111</u></u>



Meet the Team.....

Ministry Team

Lead Pastor

Luke Crompton

Children's Pastors

Kay Cox and Amy Joel

Ladies Ministry

Sarah Renton

Senior Leadership Team

Martin Cooper – Finance and Director/Trustee

Elisabeth Hibbert – Director/Trustee

Sarah Renton – Ladies Ministry

Paul Whitfield – Team Member

Robert Walker – Building Project Manager

Temitope Ademola – Mental Health & Wellness

Rachel Parker and Sarah Wood – New Life PreSchool
& Nursery

Officers

Nicola Baldwin – Finance Officer

Joanna Masters – Administration and Operations

Annual Reports & Financial Statements

Period 1st April 2023 to 31st March 2024

New Life Christian Centre - WAKEFIELD

Registered Company Number - 6053366

Registered Charity Number - 1119328

NEW LIFE CHRISTIAN CENTRE (WAKEFIELD)

England & Wales - Charity number 1119328

Accounts



Annual Reports & Financial Statements

Period 1st April 2022 to 31st March 2023

New Life Christian Centre - WAKEFIELD

Registered Company Number - 6053366

Registered Charity Number - 1119328

Contents

- Board of Directors Review of Progress and Achievements
 - Reference and Administrative Information
 - Objectives, Organisation and Activities
 - Mission Statement

- Chairman's Annual Report
 - Review
 - Board of Directors & Senior Leadership Team
 - New Life Pre School & Nursery
 - Church Ministry
 - Youth & Children
 - Missions
 - City Vision/Vision Wakefield
 - AoG
 - Future Plans & Goals for 2022/23

- Finance Report
 - Statement of Trustees Responsibilities
 - Independent Examiner's Report
 - Statement of Financial Activities (summary)
 - Balance Sheet
 - Notes to the Accounts
 - Statement of Financial Activities (detail)

- Meet the Team

Annual Reports & Financial Statements

Period 1st April 2022 to 31st March 2023
New Life Christian Centre - WAKEFIELD
Registered Company Number - 6053366
Registered Charity Number - 1119328

Board of Directors' Review of Progress and Achievements

For the year ended 1st April 2022 to 31st March 2023

Reference and Administrative Information

Charity Name: New Life Christian Centre (Wakefield)

Charity Number: 1119328

Company Number: 6053366

Governing Instruments: Memorandum and Articles of Association incorporated on 15th January 2007 as amended on 13th March 2007

Principal Address: George Street, Wakefield, West Yorkshire, WF1 1DL

Church Officers

Rev K Foster - Chairman

Mrs N Baldwin - Finance Officer

Mrs J Masters - Secretary to Senior Leadership Team

Senior Leadership Team Directors

Rev K Foster

Mr P M Cooper

Mrs S Gordon - Resigned April 2022

Mr P Wood

Senior Leadership Team Members

Mrs J Foster

Mr L Crompton

Mrs S Renton

Mrs L Brown

Mr P Whitfield

Mr R Walker

Dr T Ademola

Mr T Gordon

Company Secretary

Rev K Foster

Solicitors

Geldards Solicitors

Pride Place

Derby DE24 8QR

Independent Examiner

Torevell Dent Ltd.

Centre of Excellence, Hope Park

Trevor Foster Way

Bradford BD1 4EW

Bank

Yorkshire Bank, 6-10 Northgate, Wakefield, WF1 1TA

The New Life Christian Centre, Wakefield, a company limited by guarantee, Registered Charity Number 1119328, was incorporated on 15th January 2007. It took over all assets and liabilities from New Life Christian Centre, Registered Charity Number 1051964, on 1st October 2007. The Church operates from its premises at George Street, Wakefield, WF1 1DL.

Annual Reports & Financial Statements

Period 1st April 2022 to 31st March 2023

New Life Christian Centre - WAKEFIELD

Registered Company Number - 6053366

Registered Charity Number - 1119328

Objectives, Organisation and Activities

To advance the Christian faith in accordance with the statement in such ways and in such parts of the United Kingdom or the world as the directors from time to time may think fit.

To relieve sickness and financial hardship and to promote and preserve good health by the provision of funds, goods or services of any kind including through the provision of counselling and support in such parts of the United Kingdom or the world as the directors from time to time think fit.

To advance education in such ways and in such parts of the United Kingdom or the world as the directors from time to time may think fit.

Mission Statement

Our vision, prayer and desire are to see God's Kingdom come through:

Loving God

Loving People

Loving Life

We are committed to Loving God:

By having a loving relationship with the Lord Jesus Christ based on Biblical truth.

By living a life of worship, prayer and obedience.

By allowing the Holy Spirit to speak into and work through our lives.

We are committed to Loving People:

By leading people into a personal relationship with Jesus.

By encouraging spiritual growth and development in every believer.

By having an awareness of individual needs and providing practical support.

By encouraging the love and acceptance of every individual inside and outside of the church.

By recognising and releasing individual ministries to serve the church and wider community.

We are committed to Loving Life:

By promoting friendship and fellowship within the church.

By sharing life together in various social and other gatherings outside of the church.

By enjoying the 'life in all its fullness' promised by Jesus.

We exist as individuals to know God and to make him known. As a church, our vision and call are to love God, to love people and to love life. These three themes run through all we do at NLCC and are outworked in a varied church programme for all ages and in our support of organisations, projects and individuals in a local, national and international context.

Annual Reports & Financial Statements

Period 1st April 2022 to 31st March 2023

New Life Christian Centre - WAKEFIELD

Registered Company Number - 6053366

Registered Charity Number - 1119328

A vertical yellow bar on the left side of the page, consisting of two parallel lines with a thin white gap between them.

CHAIRMAN'S **report**

Rev K Foster

Annual Reports & Financial Statements

Period 1st April 2022 to 31st March 2023

New Life Christian Centre - WAKEFIELD

Registered Company Number - 6053366

Registered Charity Number - 1119328

NLCC Chairmans Annual Report 2022-23

This will be my last annual report as Senior Pastor after announcing to the Senior Leadership Team in June 22 and subsequently to the church membership in Jan 23, that I would be retiring in September 23 after 40 years in the ministry.

It has been my honour and privilege to serve alongside you these last 19 years and it gives me great joy to know that Luke Crompton will be my successor and will work alongside Sarah Renton (Women's Ministry); Kuda Mumbaiiwa (Youth Ministry) and a new Children's worker, in the season ahead.

I am confident that this new ministry team will take the church to new levels in God and that God will bless the church members and the city through them. They will each take up their new roles from May 23.

The Church has operated from two campuses-Wakefield and Batley. Both have grown significantly in the year with attendances up in Wakefield and a great church established in Batley under Sarah Renton's leadership. 50 people have completed the Growth Track membership Course and have become members- this is unprecedented in the life of the church. Increased Church attendance has seen a rise in offerings and engagement in church activities and operations.

At Wakefield New Life, the building project continued with the roof completed and all windows either replaced or refurbished- this has come at great cost but the church is now watertight and ready for the next phase of internal works.

As a result of this building work, the charity made a total operating loss of £92330 in the year, but saw the day to day church account running at a profit of £11321.

At Batley Church Ablaze, the church made an operating loss of £11286 in the year but over half of this was due to the installation of a new boiler and refurbishment of existing chairs. The latter three months of the financial year saw the church breaking even- a positive sign of ongoing financial sustainability.

The New Life Pre School and Nursery was restricted in its operation as a result of the building work but made tremendous efforts to sustain levels of education and children's activity. The Nursery itself made an operating profit of £5817.

As churches, we are so blessed to have Nicola Baldwin as our Finance Officer- her work has enabled us to make excellent financial decisions and to look forward positively in our financial planning.

Alongside her, Jo masters as our PA (and so much more) has helped to ensure the smooth running of much that goes on at New Life. Thankyou Jo for all your years of love and support

The church continued to operate online with Sunday ministry and mid-week reflections being well received by congregation members and by many more from those 'outside' the church.

Alongside the paid staff, our volunteers rose to the changed needs of the children and members and went the extra mile on many occasions to ensure that the ministry of the church and nursery prospered- to everyone who served in any capacity, a big thankyou!

This report reflects the prayers, the love and the commitment of each person and each department in the church and to the God who has answered our prayers and really helped us throughout this year.

We continue to be very positive about the future of the church and its ministry and of our commitment to serving the communities of Wakefield, Batley and beyond.

The year ahead affords us yet another exciting opportunity to start afresh and to consider new avenues of ministry and service, knowing and believing that God will do abundantly more than we can ever ask, think, or imagine.

Finally, as I prepare for my retirement in September 23, I am deeply grateful to God for my wife Janet who has stood with and by me throughout our time in Wakefield and indeed, in all these years of ministry. She has given so much to the church and has gone many an extra mile to minister to leaders, to the women, to the SLT and to the congregation. Her love and prayers have sustained me through some of the most difficult days and I could not have done it all without her. Her wisdom, love and compassion to the members of New Life has been exemplary and I honour her for all she is and has done.

So, it is with grateful thanks to God and to his people, that I submit this annual report. I say success, success, success to you all in the years ahead and give to you, the assurance of our continued love and prayers for Luke, Janna, Caleb and the church as you get to know Jesus and make him known.

1. Board of Directors and Senior Leadership Team

The SLT continued to meet each month alternating online (Business) and face to face (Vision). I am grateful for their support in the appointment of and transition to, a new ministry team. Particular discussions in the year, centred around reaching young adults and families and we have seen God start to do a work amongst us. The following changes to personnel occurred in the year:- Sandra Gordon resigned in April 2022.

2. New Life Pre School and Nursery led by Lisa Brown operated under difficult staffing conditions in the year but continued to offer excellent education to young children. Post Covid, the children once again shared in Graduation, Christmas and Mother's Day Services on a Sunday. After many months of hard work, the team achieved their Curiosity Setting Accreditation-congratulations to all the staff.

3. Church Ministry

Sunday Services-Wakefield. Attendances have grown in the year and after the reintroduction of the Growth Track membership course, 50 people have become members in the first half of 2023. 80+ new people started to attend in the year which is a fulfilment of Gods word to us in Jan 22, that we should open the gates for others to join us-we did, and they have!

We have had few guest speakers in the year as we wanted to re-establish post covid, a pattern of ministry from our existing pastoral team. However, we welcomed Barry Woodward (Proclaim Trust) who spoke at CAP and Batley, Becky Murray (One by One) who spoke at Wakefield, and Johny Hague (Elim-Hebdon Bridge) who spoke at both campuses.

All services continued to be live streamed and attracted many from outside the church-further additions to our technical and communication equipment has greatly enhanced the in person and online experience.

Our thanks go once again to our stewarding team; worship team and sound team who have blessed us so much in the year with their passion and their desire to help us through a challenging period.

Post Covid, we did not recommence our evening service at Wakefield as we decided, to focus all our efforts in supporting the new evening service in Batley.

Batley After a request for help from the three remaining members of the Batley Christian Fellowship, the newly named Church Ablaze was launched in May 2022 with Sarah Renton as leader. Steve Lloyd has led worship and other members of the New Life have attended and have added their support to the 'new' church. There is always a great sense of the presence of God in the church and people from the local area have joined ensuring a healthy congregation each week. Sarah has made great contact with local groups and the MP Kim Leadbeater.

Our Easter online conference (The Weekend that changed the World) was held again in the year with guest speaker Paul Weaver. Paul shared with us valuable local insights into the Easter story (having worked in Jerusalem for a number of years). Sarah and Kevin also ministered powerfully. This conference has always been well received but now that Covid is nowhere near as prevalent, the need for an online conference is diminished, so we will not continue next year.

Mid-Week reflections. These have continued each Wednesday throughout the year with Martin Cooper, Paul Wood; Henry Drabble, Luke Crompton; Sarah Renton and Kevin Foster each taking their turn to minister-these have really blessed the congregation and continue to attract an 'audience' beyond the local church.

Prayer Meetings These have taken place online/face to face at both campuses, on alternate Tuesday's, attracting between 10-30 people each week. We have seen many answers to prayer over the year for which we praise God.

Life Groups- Our thanks go to all the leaders of these mid-week small groups that have continued in the year and, have grown in number and in attendance. We began a monthly Songs of Praise Service at the Hepworth House Care home in the year attracting, between 12-24 residents.

Social Media. Our Facebook Groups, New Life Church, New Life Loving and Caring; and At home but making waves, have enabled members to keep in touch and to share prayer and other needs. In addition, our Youtube Channel has given members the opportunity to view weekly services-our thanks to Luke Crompton for facilitating this for us

Bible Reading Plan Many people have enjoyed reading the Old Testament together in 2023 having read the Old and New Testament Prophetic books in 2022.

4. Youth and Children's New Life Youth

NL Youth

We have continued to meet with our Young people on a Friday Night. We have seen the group grow in lots of ways; and there's a real sense of community and togetherness.

We have fellowshiped together, had fun and had some really meaningful discussions cultural subjects and how the Bible speaks into them.

It's been really great to see how the Youth have developed their own worship team, plan and lead their own services and how they have really stepped out with their gifts and talents with real confidence, it's really exciting.

We are excited about the transition and the future for our Youth with our new incoming Youth pastor.

Cross Project

We have continued our partnership with the Cross project (A Christian schools work charity in Wakefield) going into local high schools, teaching some RE classes and also running a lunch club.

We were excited with the Cross Project, to invite Bible school students, to help deliver a lesson at one particular high school over a week to the whole of year 7.

Wakefield AFC

For a period we provided Chaplaincy to a local football team here in Wakefield. Working with the staff and volunteers pastorally as well as volunteering on match days. This was a great experience and was a real blessing to serve in this way.

Romania – Sunshine English Club

We have managed to visit Leo & Daniella twice over the last 12 months at Sunshine English Club we helped build and continue to support.

We helped lead a summer camp in 2022 and again at Easter 2023. This was as ever a wonderful experience; teaching English, having fun with lots of young people as well as sharing our Christ in a relevant way within their context.

NL Kidz

NL Kidz has also grown in lots of positive ways. We are so thankful for the children that join us for Sunday school, being able to bring as much encouragement, care and bible teaching and application into their lives as possible.

We also met together once a month on a evening for Rockstarz! This being another opportunity to connect with children and their families.

We are excited about the transition and the future for New Life Children with our new children's pastors, Kay Cox and Amy Joel.

5. Missions-We support prayerfully and financially,16 people, projects and agencies in the UK and throughout the World in reaching out to help people in physical, emotional and spiritual poverty. In particular we support....

Community Awareness Programme-The charity was birthed at New Life and the chairman, secretary and some of the trustees are members of the church. Elisabeth Hibbert continues to lead the 'Thursday Out' programme(7-9pm) and we have seen attendance rise again Mon -Friday (10am -2pm) as Covid restrictions were lifted. The charity cares for vulnerable adults and families and offers a one stop programme to clients. Many continue to be helped re housing, employment, universal credit claims etc. Despite a projected financial loss, the charity was able to produce a surplus in the year.

Romania-we were able to attend and help run, two camps in the year-one in the summer of 22 and the other at Easter 23-both were very successful. The church and nursery continue to sponsor children at the Sunshine English School in Vaslui and to work alongside Leo and Daniela Lupu in this ministry.

Vincent Borromeo Youth Alive Italia. We were able to express our support for Vincent through regular giving and took up a Christmas Day offering for him. Kevin and Luke met with Vincent in Manchester in March 23 to discuss supporting him further. Vincent has won two awards for his work with the local community in Tarranto.

Proclaim Trust We continued to sponsor the annual Fixed Conference for recovering addicts-over 700 people attended the conference again in 2022. Barry Woodward spoke at CAP and at Batley in the year.

6. City Vision/Vision Wakefield Pastors Kevin and Luke have continued to be involved in numerous workshops and weekly prayer meetings with leaders from other churches in the city. We have undertaken and led numerous prayer walks and building on the success of last year, from Easter 23-Pentecost 23 have helped to organise another Pray Down Every Street initiative in the Wakefield District.

7. AoG Under the leadership of Glyn Barrett, we have continued to grow as a movement and the vision to plant 400 churches in the next six years is on target with 26 churches planted in year one. Kevin continued in his role as leader of the Yorkshire AoG Churches and has attended numerous fellowship hubs in the county. Luke completed his MiT course and received his ministerial status at the 2023 AoG Conference in Harrogate. Paul Wood will complete his training in May 2024. Kuda Mumbaiiwa will commence his Missio Dei training, in Sept 23.

9. Future Plans and goals for 2023-24

Our goal is to further develop our programme and vision that will enable us to fulfil the desire to know Jesus and to make him known on and through, both campuses.

We are believing and planning for a further exciting season of growth under Luke Crompton's leadership, and to the furthering of our influence in the city and county. In the coming year we plan to:

Ensure a smooth transition of leadership from Kevin to Luke from May 23.

Develop and grow a leadership team and support base to work alongside Sarah Renton, at the Batley Town Campus (Church Ablaze).

Develop and grow a leadership team and support base to work alongside Kuda Mumbaiiwa and New Life Youth.

Develop and grow a leadership team and support base for the new Children's and Family Pastor, to work with New Life Kids.

Develop our prayer, nurture, evangelistic, leadership; social and life group 'in person' programmes for both campuses.

Promote a long-term strategy for the direction and vision of the church involving stakeholders from both campuses.

Create an exciting outreach programme to serve the local community utilising all talents in the churches and both old and new life groups.

Develop and update the Growth Track membership course.

Enhance our music sound in house and online.

Refurbish both campus buildings.

Develop further links with and to, our social and mission partners who are serving God in the UK and around the world.

To further foster our links with AoG in the UK and in Yorkshire and to actively seek to be part of their vision to plant 400 churches in the next 6 years.

To further foster our links with Vision Wakefield and to embrace the city-wide vision to reach everyone in our district with the good news of Jesus Christ.



Statement of Trustees Responsibilities

The Trustees are responsible for preparing the Annual Report and the Financial Statements in accordance with applicable law and the United Kingdom Generally Accepted Accounting Practice.

Charity law requires the Trustees to prepare Financial Statements for each financial year which give a true and fair view of the state of affairs of the charity and of its financial activities for the period. In preparing those Financial Statements the Trustees are required to:

- Select suitable accounting policies and then apply them consistently
- Make judgements and estimates that are reasonable and prudent
- State whether the policies adopted are in accordance with SORP 2005 and with applicable accounting standards, subject to any material departures and disclosed and explained in the Financial Statements
- Prepare the Financial Statements on a on-going concern basis unless it is inappropriate to assume that the charity will continue operating.

The Trustees are responsible for the keeping of proper accounting records which discloses with reasonable accuracy at any time the financial position of the charity and to enable them to ensure that the Financial Statements comply with the Companies Act 2006. They are also responsible for safeguarding the assets of the charity and hence for taking reasonable steps for the prevention and detection of fraud or other irregularities.

Signed on behalf of the Trustees

A handwritten signature in black ink, appearing to read "K Foster", written over a horizontal line.

Reverend K Foster

Chairman

A handwritten date in black ink, "25th September 2023", written over a horizontal line.

Date

Annual Reports & Financial Statements

Period 1st April 2022 to 31st March 2023
New Life Christian Centre - WAKEFIELD
Registered Company Number - 6053366
Registered Charity Number - 1119328

NEW LIFE CHRISTIAN CENTRE (WAKEFIELD)

Independent Examiner's Report to the Trustees of New Life Christian Centre (Wakefield) For the Year Ended 31 March 2023

I report on the accounts of the Trust for the year ended 31 March 2023, which are set out on pages 10 to 16.

Respective Responsibilities of Trustees and Examiner

As the charity's trustees you are responsible for the preparation of the accounts; you consider that the audit requirement of Section 145 of the Charities Act 2011 (the Act) does not apply. It is my responsibility to state, on the basis of procedures specified in the General Directions given by the Charity Commission under Section 145(5)(b) of the Act, whether particular matters have come to my attention.

Basis of Independent Examiner's Report

My examination was carried out in accordance with the general directions given by the Charity Commissioners. An examination includes a review of the accounting records kept by the charity and a comparison of the accounts presented with those records. It also includes consideration of any unusual items or disclosures in the accounts, and the seeking of explanations from you as trustees concerning any such matters. The procedures undertaken do not provide all the evidence that would be required in an audit and, consequently, I do not express an audit opinion on the view given by the accounts.

Independent Examiner's Statement

In connection with my examination, no matter has come to my attention:

- 1) Which gives me reasonable cause to believe that, in any material respects, the requirements
 - (a) To keep accounting records in accordance with S130 of the 2011 Act; and
 - (b) To prepare accounts which accord with the accounting records and to comply with the accounting requirements of the 2011 Acthave not been met; or
- 2) to which, in my opinion, attention should be drawn in order to enable a proper understanding of the accounts to be reached.


.....

S. J. Sutcliffe F.C.C.A.
Torevell Dent Limited
Chartered Certified Accountant
1-3 St Ann's Place
Pellon Lane
Halifax
HX1 5RB

Date: 20/10/23.....

New Life Christian Centre (Wakefield)

A COMPANY LIMITED BY GUARANTEE

Financial Statements

For the year ended 31st March 2023

Charity Number 1119328

Company Number 6053366

NEW LIFE CHRISTIAN CENTRE (WAKEFIELD)

**Statement of Financial Activities
For the Year Ended 31 March 2023**

	Notes	Unrestricted Funds £	Restricted Funds £	2023 Total £	2022 Total £
<u>Income From:-</u>					
Donations and legacies		175,645	1,300	176,945	206,869
Charitable activities					
Pre School		-	302,868	302,868	305,913
Investment Income	2	1,860	718	2,578	661
Other	3	47,731	1,330	49,061	22,347
Total Income		225,236	306,216	531,452	535,790
<u>Expenditure On:-</u>					
Charitable activities	4	226,272	387,590	613,862	519,958
Other	4	9,920	-	9,920	1,576
Total Expenditure		236,192	387,590	623,782	521,534
Net Income/ Expenditure		(10,956)	(81,374)	(92,330)	14,256
Total Funds Brought Forward		524,428	363,640	888,068	873,812
Transfer between funds		(105,400)	105,400	-	-
Total Funds Carried Forward		408,072	387,666	795,738	888,068

NEW LIFE CHRISTIAN CENTRE (WAKEFIELD)

Balance Sheet

For the Year Ended 31 March 2023

	Notes	2023		2022	
		£	£	£	£
Fixed Assets					
Tangible assets	8		375,001		375,001
Current Assets					
Debtors	9	15,567		10,576	
Cash at bank and in hand		<u>422,422</u>		<u>515,130</u>	
Total Current Assets		437,989		525,706	
Liabilities					
Creditors:	10				
<i>Amounts falling due within one year</i>		<u>(17,252)</u>		<u>(12,639)</u>	
Net Current Assets			420,737		513,067
Total Net Assets	11		<u>795,738</u>		<u>888,068</u>
Funds of the charity					
Restricted Funds			387,666		363,640
Unrestricted funds			408,072		524,428
Total Funds	11		<u>795,738</u>		<u>888,068</u>

The company is entitled to exemption from audit under Section 477 of the Companies Act 2006 for the year year ended 31st March 2023. The Members have not required the Company to obtain an audit of its Financial Statements for the year ended 31st March 2023 in accordance with section 476 of the Companies Act.

The Directors acknowledge their responsibilities for:

- ensuring that the Company keeps accounting records which comply with sections 386 and 387 of the companies Act 2006 and;
- preparing financial statements which give a true and fair view of the state of affairs of the company as at the end of each financial year and of its profits or loss for each financial year in accordance with the requirements of Companies act 2006 relating to financial statements, so far as applicable to the Company.

These financial statements have been prepared in accordance with the special provision of Part 15 of the Companies act 2006 relating to small companies and with the Financial Reporting Standards (SORP) 102 (effective January 2015)

Approved by the Trustees on 18/10/23 and signed on their behalf by:

Reverend. K. Foster - Chairman

N Baldwin - Treasurer

NEW LIFE CHRISTIAN CENTRE (WAKEFIELD)

Notes to the Accounts For the Year Ended 31 March 2023

1. Statement of Accounting Policies

a.) Basis of Accounting

The financial statements have been prepared in accordance with applicable accounting standards, the SORP FRS 102. The accounts are prepared under the historical cost convention in accordance with Charities SORP (FRS 102)

b.) Income and endowments

Income and endowments are reported gross

c.) Donations

Donations are credited in full to the financial statements on a cash basis.

Capital assets gifted are recorded at estimated market value in use at the time of the gift.

d.) Grants receivable

Grants are recognised as income when receivable.

e.) Direct charitable expenditure and other costs

Direct charitable expenditure comprises all expenditure directly relating to the objectives of the charity. When necessary, support costs are allowed between direct charitable expenditure and other costs on a basis designed to reflect the use of the resource.

Expenditure is included in the accounts when the liability is incurred and includes non-recoverable VAT.

f.) Fixed assets

The freehold property is stated at valuation value from 1997 with subsequent additions at cost. Other assets are stated at cost less depreciation.

Depreciation is provided on the following basis to write down the cost of the assets over their expected useful lives.

Land and Buildings	NIL (Depreciation is not provided on Land & Buildings)
Fixture and Fittings	20% on cost
Computers	33% on cost

Assets under £100 are not capitalised.

The gain that arose on the revaluation of Land and buildings was determined by an independent open market valuation at May 2017. The revaluation surplus totals £284,650.

g.) Restricted funds

Where funds have been received for specific purposes they are treated as restricted funds.

h.) Grants Payable

Grants payable are charges in the year as incurred

NEW LIFE CHRISTIAN CENTRE (WAKEFIELD)

Notes to the Accounts (continued)

For the Year Ended 31 March 2023

	2023	2022
	£	£
2. Investment Income		
Bank Interest	2,578	661

	2023	2022
	£	£
3. Other Income		
Insurance claim	4,681	-
Government VAT Scheme	23,980	-
Rent received	20,400	20,400
JRS Grants	-	1,947
	<u>49,061</u>	<u>22,347</u>

4. Total Expenditure

		<u>Unrestricted</u>	<u>Restricted</u>		
	<u>Direct costs</u>	<u>Charitable</u>	<u>Charitable</u>	<u>2023</u>	<u>2022</u>
	<u>allocated to activities</u>	<u>Activities</u>	<u>Activities</u>	<u>Total</u>	<u>Total</u>
a	Grants (note 5)	20,290	-	20,290	22,055
b	Staff Costs (note 6)	124,382	243,697	368,079	360,731
c	Pre School costs	-	11,522	11,522	10,913
d	Property costs	47,515	118,992	166,507	95,731
e	Evangelistic/Youth Exp's	1,655	-	1,655	2,313
f	Depreciation	-	-	-	729
g	Training/Conferences	11,440	6,550	17,990	6,442

		<u>Unrestricted</u>	<u>Restricted</u>		
	<u>Support Costs</u>	<u>Charitable</u>	<u>Charitable</u>	<u>2023</u>	<u>2022</u>
	<u>allocated to activities</u>	<u>Activities</u>	<u>Activities</u>	<u>Total</u>	<u>Total</u>
h	Legal & Professional	3,493	2,185	5,678	4,680
i	Office	7,170	3,505	10,675	7,152
j	Insurance	2,815	-	2,815	2,308
k	Subscription/Licences	7,512	1,139	8,651	6,904
l	Other	9,920	-	9,920	1,576

<u>236,192</u>	<u>387,590</u>	<u>623,782</u>	<u>521,534</u>
----------------	----------------	----------------	----------------

NEW LIFE CHRISTIAN CENTRE (WAKEFIELD)

Notes to the Accounts (continued) For the Year Ended 31 March 2023

	2023	2022
	£	£
5. Grants		
Mission Support	20,290	22,055
	<u>20,290</u>	<u>22,055</u>

No individual grant under mission exceeded 5% of income

	2023	2022
	£	£
6. Staff Costs		
Wages & Salaries	338,446	332,496
National Insurance	22,749	21,714
Pensions	6,884	6,521
	<u>368,079</u>	<u>360,731</u>

Average number of staff (full time equivalents)

Church	6	5
Pre-School	12	12
	<u>18</u>	<u>17</u>

No employee received remuneration of more than £60,000.

	2023	2022
	£	£
7. Net Expenditure		
This is stated after charging:		
Depreciation	-	729
Independent Examiners Fee	1,260	1,260
	<u>1,260</u>	<u>1,989</u>
Trustee Remuneration and Expenses		
Remuneration	42,654	41,412
Expenses	1,090	401
	<u>45,004</u>	<u>43,802</u>

One Trustee/Director was in receipt of remuneration

	2023	2022
	£	£
Analysis of Trustee Remuneration:-		
Rev. K. Foster	42,654	41,412
	<u>42,654</u>	<u>41,412</u>

NEW LIFE CHRISTIAN CENTRE (WAKEFIELD)

**Notes to the Accounts (continued)
For the Year Ended 31 March 2023**

8. Fixed Assets	<u>Freehold land & Buildings</u>	<u>Fixtures & Fittings</u>	<u>Total</u>
<u>Costs</u>			
At 1 April 2022	375,000	104,204	479,204
Additions	-	-	-
At 31 March 2023	<u>375,000</u>	<u>104,204</u>	<u>479,204</u>
<u>Depreciation</u>			
At 1 April 2022	-	104,203	104,203
Charge for the year	-	-	-
At 31 March 2023	<u>-</u>	<u>104,203</u>	<u>104,203</u>
<u>Net Book Value</u>			
At 31 March 2023	<u>375,000</u>	<u>1</u>	<u>375,001</u>
At 31 March 2022	<u>375,000</u>	<u>1</u>	<u>375,001</u>

	2023	2022
	£	£
9. Debtors		
Gift Aid	5,163	2,141
Prepayment and other Debtors	10,404	8,435
	<u>15,567</u>	<u>10,576</u>

	2023	2022
	£	£
10. Creditors: Amounts falling due within one year		
Accruals	4,450	3,198
Creditors	11,066	3,601
Fees Paid in advance	1,736	5,840
	<u>17,252</u>	<u>12,639</u>

NEW LIFE CHRISTIAN CENTRE (WAKEFIELD)

Notes to the Accounts (continued)

For the Year Ended 31 March 2023

11. Analysis of funds

Fund balances	Restricted Funds	Unrestricted Funds	Total Funds
<i>Represented by:-</i>			
Tangible fixed assets	-	375,001	375,001
Current assets	387,666	50,323	437,989
Current Liabilities	-	(17,252)	(17,252)
	<u>387,666</u>	<u>408,072</u>	<u>795,738</u>

The restricted fund comprises of :-

Building fund	£77,722	Held for a possible extension
Pre School Fund	£304,292	Held to cover future expenditure
Missions Fund	£5,652	Used for payments in respect of Sunshine English Club

Restricted fund movements

	Building Fund	Mission Fund	Pre School Fund	Total
Balance 01.04.2022	65,927	5,532	292,181	363,640
Income	<u>1,457</u> 67,384	<u>120</u> 5,652	<u>304,639</u> 596,820	<u>306,216</u> 669,856
Expenditure	<u>(95,062)</u> (27,678)	<u>-</u> 5,652	<u>(292,528)</u> 304,292	<u>(387,590)</u> 282,266
Transfers between funds	105,400	-	-	105,400
Balance 31.03.2023	<u>77,722</u>	<u>5,652</u>	<u>304,292</u>	<u>387,666</u>

NEW LIFE CHRISTIAN CENTRE (WAKEFIELD)

Statement of Financial Activities For the Year Ended 31 March 2023

General Fund (Unrestricted)	Year Ended Mar-23		Year Ended Mar-22	
	£	£	£	£
Income From:				
Offerings		34,794		89,757
Gift aid donations & gift aid		110,634		92,101
Pre school tithe, offerings & rent		20,400		20,400
Income tax recovered		24,171		23,966
Bank interest and dividends received		1,860		373
Miscellaneous income		27,331		-
Youth worker sponsorship		654		490
Fundraising		5,392		290
		<u>225,236</u>		<u>227,377</u>
Expenditure On:-				
Staff salaries and national insurance	121,961		120,782	
Nest	2,421		2,135	
Conference, training and course expenses	10,696		3,126	
Service costs	3,336		2,574	
Health safety and employment law	1,116		468	
Computer costs	271		521	
Evangelistic expenses	-		1,600	
Light, heat and water	11,835		12,116	
Insurance	2,815		2,308	
Cleaning and waste removal	324		1,605	
Building, repairs and maintenance	30,627		10,820	
Equipment expenses	1,393		1,435	
Postage, stationery and consumables	3,655		1,297	
Telephone and internet costs	3,192		2,341	
Reading materials	59		136	
Licences	1,401		607	
Independent examiners fee	1,260		1,260	
Payroll fees	739		706	
Subscriptions	6,111		4,678	
Sundry expenses	9,186		1,440	
Depreciation	-		154	
Grants	20,290		22,055	
Life Group	1,655		713	
Legal and professional	378		168	
Advertising and website	52		152	
Meals and entertainment	744		334	
Church Ablaze	675		334	
		<u>236,192</u>		<u>195,865</u>
Net (expenditure)/ Income		<u><u>(10,956)</u></u>		<u><u>31,512</u></u>

NEW LIFE CHRISTIAN CENTRE (WAKEFIELD)

**Statement of Financial Activities
For the Year Ended 31 March 2023**

Building Fund (Restricted)

	Year Ended Mar-23		Year Ended Mar-22	
	£	£	£	£
Income From:				
Offerings	1,180		145	
Bank interest	<u>277</u>		<u>118</u>	
Total Income		1,457		263
Expenditure		95,062		44,948
Net (Expenditure)/Income		<u><u>(93,605)</u></u>		<u><u>(44,685)</u></u>

Sunshine English Club (Restricted)

	Year Ended Mar-23		Year Ended Mar-22	
	£	£	£	£
Income		120		120
Expenditure		-		-
Net Income		<u><u>120</u></u>		<u><u>120</u></u>

NEW LIFE CHRISTIAN CENTRE (WAKEFIELD)**Statement of financial activities
For the Year Ended 31 March 2023****Pre School Fund (Restricted)**

Income From:	Year Ended Mar-23		Year Ended Mar-22	
	£	£	£	£
Private fees	96,376		94,075	
NEF - WMDC	141,424		154,594	
Baby room	50,757		46,267	
Interest received	441		170	
School dinners	14,311		10,977	
Miscellaneous	1,330		-	
Government JRS Grants	-		1,947	
	<hr/>	304,639	<hr/>	308,030
Expenditure On:-				
Staff salaries and national insurance	239,234		233,428	
Nest	4,463		4,386	
School milk and catering	4,692		4,385	
Materials	6,830		6,528	
Training	6,550		2,982	
Advertising and website	374		31	
Subscriptions and donations	1,139		1,619	
Rent to N.L.C.C	20,400		20,400	
Repairs and renewals	1,890		747	
Cleaning and waste removal	1,640		1,086	
Stationery and administration	-		26	
Computer software	176		-	
Telephone and internet	2,955		2,784	
Depreciation	-		575	
Health, safety and equipment law	2,042		1,982	
Legal and professional	143		96	
Fundraising	-		-	
	<hr/>	292,528	<hr/>	281,055
Net Income		<hr/> 12,111 <hr/>		<hr/> 26,975 <hr/>



Meet the Team

Senior Pastor

Kevin Foster

Youth Pastor

Luke Crompton

Pastor - Batley

Sarah Renton

Senior Leadership Team

Martin Cooper - Finance

Paul Whitfield - Worship Team Leader

Paul Wood - Outreach & Missions

Robert Walker - Building Project Manager

Janet Foster - Life Groups

Temitope Ademola - Mental Health & Wellness

Lisa Brown - New Life PreSchool & Nursery

Tim Gordon - Special Needs & 13-30's Leader

Officers

Nicola Baldwin - Finance Officer

Joanna Masters - Secretary

Annual Reports & Financial Statements

Period 1st April 2022 to 31st March 2023

New Life Christian Centre - WAKEFIELD

Registered Company Number - 6053366

Registered Charity Number - 1119328

NEW LIFE CHRISTIAN CENTRE (WAKEFIELD)

England & Wales - Charity number 1119328

Accounts

A large graphic for the Annual General Meeting. It features a dark maroon background with several overlapping geometric shapes in shades of orange, yellow, red, and teal. The text 'ANNUAL GENERAL MEETING' is centered in a large, bold, white, sans-serif font. Two thin yellow horizontal lines are positioned above and below the text.

ANNUAL GENERAL MEETING

Annual Reports and Financial Statements

Period 1st April 2021 - 31st March 2022

New Life Christian Centre - WAKEFIELD

Registered Company Number - 6053366

Registered Charity Number - 1119328

Contents

- Reference and Administrative Information

- Objectives, Organisation and Activities

- Chairman's Annual Report
 - Review
 - Board of Directors & Senior Leadership Team
 - New Life Pre School & Nursery
 - Church Ministry
 - Youth & Children
 - Missions
 - Ministerial Training
 - City Vision/Vision Wakefield
 - AoG
 - Future Plans & Goals for 2022/23

- Finance Report
 - Independent Examiner's Report
 - Statement of Financial Activities
 - Balance Sheet
 - General Fund
 - Building Fund & Sunshine English Club
 - Pre School Fund

Annual Reports & Financial Statements

Period 1st April 2021 to 31st March 2022
New Life Christian Centre - WAKEFIELD
Registered Company Number - 6053366
Registered Charitu Number - 1119328

Board of Directors' Review of Progress and Achievements For the year ended 1st April 2021 to 31st March 2022

Reference and Administrative Information

Charity Name: New Life Christian Centre (Wakefield)

Charity Number: 1119328

Company Number: 6053366

Governing Instruments: Memorandum and Articles of Association incorporated on 15th January 2007 as amended on 13th March 2007

Principal Address: George Street, Wakefield, West Yorkshire, WFI IDL

Church Officers

Rev. K. Foster - Chairman

Mrs N. Baldwin - Finance Officer

Mrs J. Masters - Secretary to Senior Leadership Team

Senior Leadership Team Directors

Rev. K. Foster

Mr. P. M. Cooper

Mrs. S. Gordon

Mr Paul Wood

Mr Johnathan Gledhill - Resigned 1st November 2021

Senior Leadership Team Members

Mrs J. Foster

Mr L. Crompton

Mrs L. Brown

Mr P. Whitfield

Company Secretary

Rev Kevin Foster

Solicitors

Geldards Solicitors

Pride Place

Derby DE24 8QR

Independent Examiner

Torevell Dent Ltd.

Centre of Excellence, Hope Park

Trevor Foster Way

Bradford BD1 4EW

Bank

Yorkshire Bank, 6-10 Northgate, Wakefield, WFI ITA

The New Life Christian Centre, Wakefield, a company limited by guarantee, Registered Charity Number 1119328, was incorporated on 15th January 2007. It took over all assets and liabilities from New Life Christian Centre, Registered Charity Number 1051964, on 1st October 2007. The Church operates from its premises at George Street, Wakefield, WFI IDL.

Annual Reports & Financial Statements

Period 1st April 2021 to 31st March 2022

New Life Christian Centre - WAKEFIELD

Registered Company Number - 6053366

Registered Charity Number - 1119328

Objectives, Organisation and Activities

To advance the Christian faith in accordance with the statement in such ways and in such parts of the United Kingdom or the world as the directors from time to time may think fit.

To relieve sickness and financial hardship and to promote and preserve good health by the provision of funds, goods or services of any kind including through the provision of counselling and support in such parts of the United Kingdom or the world as the directors from time to time think fit.

To advance education in such ways and in such parts of the United Kingdom or the world as the directors from time to time may think fit.

Mission Statement

Our vision, prayer and desire are to see God's Kingdom come through:

Loving God

Loving People

Loving Life

We are committed to Loving God:

By having a loving relationship with the Lord Jesus Christ based on Biblical truth.

By living a life of worship, prayer and obedience.

By allowing the Holy Spirit to speak into and work through our lives.

We are committed to Loving People:

By leading people into a personal relationship with Jesus.

By encouraging spiritual growth and development in every believer.

By having an awareness of individual needs and providing practical support.

By encouraging the love and acceptance of every individual inside and outside of the church.

By recognising and releasing individual ministries to serve the church and wider community.

We are committed to Loving Life:

By promoting friendship and fellowship within the church.

By sharing life together in various social and other gatherings outside of the church.

By enjoying the 'life in all its fullness' promised by Jesus.

We exist as individuals to know God and to make him known. As a church, our vision and call are to love God, to love people and to love life. These three themes run through all we do at NLCC and are outworked in a varied church programme for all ages and in our support of organisations, projects and individuals in a local, national and international context.

Annual Reports & Financial Statements

Period 1st April 2021 to 31st March 2022

New Life Christian Centre - WAKEFIELD

Registered Company Number - 6053366

Registered Charity Number - 1119328

NLCC Chairmans Annual Report

The last two years have been unprecedented in the life of the church, of the nation and indeed, the world.

The Covid outbreak that began in January/February 2020 and the subsequent lockdowns and restrictions imposed by the government in the months following, affected us all.

In the year ending March 2022, the church was shut down on numerous occasions but thankfully, not as many times nor for as long, as in the previous year. The nursery continued to operate though had to close for two Covid outbreaks amongst the staff and children.

In the periods of enforced closure, the church continued to operate online with Sunday ministry and mid-week reflections being well received by congregation members and by many more from those 'outside' the church. Some Life Groups returned to face to face/in person meetings in the year but most members have been cautious in their returning to Sunday and mid-week gatherings.

Staff at the church and the nursery worked incredibly hard to sustain the work and are to be thanked for all their superb efforts.

Alongside the paid staff, our volunteers rose to the changed needs of the children and members and went the extra mile on many occasions to ensure that the ministry of the church and nursery continued.

The congregation gave willingly and generously-this giving, along with promising figures from the nursery saw an operating profit at the financial year end of £14256. We were especially grateful for a generous gift which with gift aid, totalled £31,456-this was given to help pay for new technical video and communication equipment which has now been fitted.

During the year, our vision was divided into two parts: The next Hundred Days (13/3-18/7) which sought to draw people back to church and to begin restoring and refurbishing the building, and the First Hundred Days (19/7-26/10), which sought to re-establish some of the pre lockdown programme and continue with the refurbishing programme.

The first phase of the refurbishment of the building began in the summer of 2021-the roof and parts of the windows were repaired at a total cost of £53467 and we all have benefitted from a non leaky roof! The boiler was repaired and so the building has been not just dry, but warm!

Discussions took place with the leadership of the Batley Christian Fellowship who asked us to help them in keeping their church open and functioning. Sarah Renton agreed to become their new leader and the New Life Church Wakefield Board of Directors, have taken over the responsibility of leading the Batley church. The goal was to commence the church on 1st May 2022 under the name Church Ablaze.

In the last month of the year, Russia invaded Ukraine and the church responded generously in supporting Leo and Daniela Lupu in Vaslui, Romania. In all their work with refugees

As Chairman, I am personally so thankful for the prayers and support of the church when from September-December 2021, I was absent due to me having prostate cancer. Luke, Nicola and Jo, the Senior Leadership team and the whole church, stepped up to help ensuring the church continued to function well in my absence.

So, it is with grateful thanks to God and to his people, that we submit this annual report.

It reflects the prayers, the love and the commitment of each person and each department in the church and to the God who has answered our prayers and really helped us throughout this year.

We continue to be very positive about the future of the church and its ministry and of our commitment to serving the community of Wakefield and beyond.

The year ahead affords us yet another exciting opportunity to start afresh and to consider new avenues of ministry and service, knowing and believing that God will do abundantly more than we can ever ask, think, or imagine.

1. Board of Directors and Senior Leadership Team

The SLT continued to meet online each month but towards the latter months of the year, had face to face meetings.

Johnathan Gledhill and Sandra Gordon stepped down from the team and Rob Walker (Building), Sarah Renton (Batley); Temi Ademola (Mental Health and Wellbeing) and Tim Gordon (18-30's and Special Needs) were welcomed onto the team.

We are grateful to God for Sandra who served us for 8 years and ministered to so many in that time as leader of our Care Team.

Russell Trudgen our architect, spoke at two of our meetings and met regularly with the 'Building Group' of Rob Walker, Luke Crompton and Kevin Foster. Plans have been agreed and submitted to the Listed Building Dept at the local council. Russell will present these plans to the church congregation in the year ahead.

Repairs were made to the roof and boiler and a new laser projector, screen and media equipment was installed enhancing the worship experience in house and online. Our hope is that the windows will be completed in the summer of 2022 allowing for internal decoration and refurbishment to take place in the year ahead.

2. New Life Pre School and Nursery has been a wonderful constant throughout the years of the pandemic. It continued to open when covid was at its worse to enable key workers to help on the front line and has been open throughout the last year (except for two brief closures due to staff having Covid) offering support to families through what has been the most difficult of seasons.

Led by Lisa Brown and Rachel Parker, the staff have been incredible and have gone the extra mile on so many occasions to ensure that the children's education has been both sustained and enhanced by the 'curiosity' approach to learning.

The nursery returned to 'profit' in the financial year-another reflection of the effort of the whole team to turn the situation around from the previous year when numbers were restricted due to covid

3. Church Ministry

Sunday Services. In person services were restored in the year but people were asked to maintain social distancing and to wear masks. The vast majority of pre covid attendees have returned but a number of others have not. New people have joined us in the year and have added significantly to attendance and to the momentum and future thinking of the church

All services were also live streamed and attracted many from outside the church-new technical and communication equipment has greatly enhanced the in person and online experience.

Our thanks go in particular to our stewarding team; worship team and sound team who have blessed us so much in the year with their passion and their desire to help us through a challenging period.

Two special online conferences were held in the year and were very well received:-

- a. Easter-Weekend that Changed the World Conference with special guests Becky Murray and James Aladirin.

- b. Pentecost-Empower weekend with special guests Andrew Murray and Glyn Barratt

Mid-Week reflections. These have continued each Wednesday throughout the year with Martin Cooper, Paul Wood; Henry Drabble, Luke Crompton; Sarah Renton and Kevin Foster each taking their turn to minister-these have really blessed the congregation and have attracted an 'audience' beyond the local church

Prayer Meetings These have taken place online each Tuesday at Midday and have attracted between 15-20 faithful people each week

Life Groups-The number of life groups were once again reduced from pre covid levels but have continued to encourage everyone who attends. New groups began in the year ie Creative Writing at Costa ; Genesis Family at CAP; Intra Cultural Church at NLCC. Our thanks go to all the leaders of these and other groups that have continued in the year.

Social Media. Our Facebook Groups:-New Life Church, New Life Loving and Caring; and At home but making waves have enabled members to keep in touch and to share prayer and other needs. In addition, our Youtube Channel has given members the opportunity to view weekly services-our thanks to Luke Crompton for facilitating this for us

Bible Reading Plan Many people enjoyed reading the New Testament Together each day in 2021-we have started reading together in 2022, the Old and New Testament Prophetical books.

Batley Part of the Vision for the year was either to plant a new church or to re-establish an existing church. Discussions took place with the leadership of the AoG Church at Batley who have subsequently handed over the leadership of the church to New Life. The 'new' church began under the name Church Ablaze, on 1/5/22 so effectively we are one church in two locations-the Wakefield Campus and the Batley Campus

4. Youth and Children's

NL Youth

While it's been a really challenging year for us in not being able to fully gather together, we did manage to continue with our Friday Night Youth together mostly on ZOOM.

Young people like everyone have struggled, and it's been a privilege to encourage them, to lift them up, to have fun and to stick close together.

NL Kidz

We launched a Youtube/Facebook channel early on in lockdown, and released a 15/20 minute NL Kidz video each week. Again, to keep them connected, to keep the children and their families encouraged

March 2022 we gladly managed to have NL Kidz back in person.

Cross Project

We were still involved going into secondary schools in Wakefield over the last year. We ran a lunch club and delivered lessons at Easter, Christmas and other occasions.

Wakefield AFC

We still provided chaplaincy, matchday and committee support for our City's Non-league up and coming football club.

We also have had the privilege of financially sponsoring two players from the football club and we'll continue to support them

5. Missions-We support prayerfully and financially, 16 people, projects and agencies in the UK and throughout the World in reaching out to help people in physical, emotional and spiritual poverty.

Community Awareness Programme-The charity was birthed at New Life and the chairman, secretary and some of the trustees are members of the church. Elisabeth Hibbert continues to lead the 'Thursday Out' programme(7-9pm) and we have seen attendance rise again Mon -Friday (10am -2pm) as Covid restrictions were lifted. The charity cares for vulnerable adults and families and offers a one stop programme to clients. Many had their covid vaccines at the centre and have been helped re housing, employment, universal credit claims etc. It was a difficult year financially and reserves had to be utilised to maintain the level of care.

Ukraine/Romania-In the last month of the year, Russia invaded Ukraine and the church responded wonderfully in financially supporting Leo and Daniela Lupu in Vaslui Romania. They as individuals helped refugees and facilitated vital foodstuffs and supplies being sent to the people still living in Ukraine. Generous donations from Royston Bethel Church, Maltby Full Life Church, and the Sandal and Walton Methodist Churches meant that £15891 was sent to help meet the need. Because of Covid, we were unable to send a team to run the summer camp in Romania but we are hoping to do so in 2022. The church and nursery continue to sponsor children at the Sunshine English School

Vincent Borromeo Youth Alive Italia. From the surplus of the previous year, a sum of £6500 was sent to enable the completion of a community hub in Tarranto called @206. The centre is now up and running and ministering into the community.

Proclaim Trust We agreed to increase our monthly offering to the trust in order to sponsor the annual Fixed Conference for recovering addicts-over 700 people attended the conference.

6. Ministerial Training

The Church has sponsored Luke Crompton and Paul Wood on the AoG ministry training programme. Paul has completed year one and Luke, year two, of the three year programme-both have done exceptionally well. Luke will become an accredited minister of AoG at the conference in May 23.

7. City Vision/Vision Wakefield Pastors Kevin and Luke have been involved in numerous workshops and weekly prayer meetings with leaders from other churches in the city. We have undertaken numerous prayer walks together and from Easter 22-Pentecost 22 organised a Pray Down Every Street initiative in the Wakefield District.

8. AoG Under the leadership of Glyn Barrett, we have continued to grow as a movement and have a vision to plant 400 churches in the next six years. Kevin continued in his role as leader of the Yorkshire AoG Churches and has attended numerous fellowship hubs in the county. Kevin and Janet were honoured at the 2022 conference for their work and for coming back so strongly after illness.

9. Future Plans and goals for 2022-23

Our goal is to develop a programme and vision that will further enable us to fulfil the desire to know Jesus and to make him known on both campuses.

This involves re-establishing some of the things we did pre covid, looks forward to an exciting season of growth and the furthering our influence in the city and county, involves the refurbishment of both buildings and seeks to create a long-term strategy and vision for the future direction and leadership of the church. In the coming year we will seek to:-

Re-establish and develop our prayer, nurture, evangelistic, leadership; social and life group 'in person' programmes for both campuses.

We aim to start new groups for 18-30's and couples; develop our discipleship programme and 'reaching out/bridge building' groups as well as introduce bi monthly plus one services.

We aim to utilise major national and sporting events eg Queen's Jubilee/Commonwealth Games/World Cup to reach out into the community

Re-establish and grow the Batley Town Campus (Church Ablaze) and to re-launch in September, into the local community

Re-establish the Growth Track membership course for both campuses from Sept 2022.

Re-establish and develop further links with and to, our social and mission partners who are serving God in the UK and around the world.

To further foster our links with AoG in the UK and in Yorkshire and to actively seek to be part of their vision to plant 400 churches in the next 6 years

To further foster our links with Vision Wakefield and to embrace the city wide vision to reach everyone in our district with the good news of Jesus Christ

Restoring the building-Wakefield Campus:-Windows to be refurbished and restored; Interior re decorated; new disabled toilet; kitchen; sound desk and creche facilities on the first floor. New Lighting, chairs and carpets for the main hall at the Wakefield City Campus.

Restoring the building-Batley Campus:- To create new signage on the outside of the building and to ensure that the interior, is best suited for the season ahead.

To create a long-term strategy for the future leadership; direction and vision of the church involving stakeholders from both campuses.



Annual Reports and Financial Statements

Period 1st April 2021 - 31st March 2022

New Life Christian Centre - WAKEFIELD

Registered Company Number - 6053366

Registered Charity Number - 1119328



Statement of Trustees Responsibilities

The Trustees are responsible for preparing the Annual Report and the Financial Statements in accordance with applicable law and the United Kingdom Generally Accepted Accounting Practice.

Charity law requires the Trustees to prepare Financial Statements for each financial year which give a true and fair view of the state of affairs of the charity and of its financial activities for the period. In preparing those Financial Statements the Trustees are required to:

- Select suitable accounting policies and then apply them consistently
- Make judgements and estimates that are reasonable and prudent
- State whether the policies adopted are in accordance with SORP 2005 and with applicable accounting standards, subject to any material departures and disclosed and explained in the Financial Statements
- Prepare the Financial Statements on a on-going concern basis unless it is inappropriate to assume that the charity will continue operating.

The Trustees are responsible for the keeping of proper accounting records which discloses with reasonable accuracy at any time the financial position of the charity and to enable them to ensure that the Financial Statements comply with the Companies Act 2006. They are also responsible for safeguarding the assets of the charity and hence for taking reasonable steps for the prevention and detection of fraud or other irregularities.

Signed on behalf of the Trustees

Reverend K Foster

Chairman

11.10.2022

Date

Annual Reports & Financial Statements

Period 1st April 2021 to 31st March 2022

New Life Christian Centre - WAKEFIELD

Registered Company Number - 6053366

Registered Charity Number - 1119328

New Life Christian Centre (Wakefield)

A COMPANY LIMITED BY GUARANTEE

Financial Statements

For the year ended 31st March 2022

Charity Number 1119328

Company Number 6053366

NEW LIFE CHRISTIAN CENTRE (WAKEFIELD)

Independent Examiner's Report to the Trustees of New Life Christian Centre (Wakefield) For the Year Ended 31 March 2022

I report on the accounts of the Trust for the year ended 31 March 2022, which are set out on pages 10 to 16.

Respective Responsibilities of Trustees and Examiner

As the charity's trustees you are responsible for the preparation of the accounts; you consider that the audit requirement of Section 145 of the Charities Act 2011 (the Act) does not apply. It is my responsibility to state, on the basis of procedures specified in the General Directions given by the Charity Commission under Section 145(5)(b) of the Act, whether particular matters have come to my attention.

Basis of Independent Examiner's Report

My examination was carried out in accordance with the general directions given by the Charity Commissioners. An examination includes a review of the accounting records kept by the charity and a comparison of the accounts presented with those records. It also includes consideration of any unusual items or disclosures in the accounts, and the seeking of explanations from you as trustees concerning any such matters. The procedures undertaken do not provide all the evidence that would be required in an audit and, consequently, I do not express an audit opinion on the view given by the accounts.

Independent Examiner's Statement

In connection with my examination, no matter has come to my attention:

- 1) Which gives me reasonable cause to believe that, in any material respects, the requirements
 - (a) To keep accounting records in accordance with S130 of the 2011 Act; and
 - (b) To prepare accounts which accord with the accounting records and to comply with the accounting requirements of the 2011 Acthave not been met; or
- 2) to which, in my opinion, attention should be drawn in order to enable a proper understanding of the accounts to be reached.



.....
S. J. Sutcliffe F.C.C.A.
Torevell Dent Limited
Chartered Certified Accountant
1-3 St Ann's Place
Pellon Lane
Halifax
HX1 5RB

Date: 23/10/22

NEW LIFE CHRISTIAN CENTRE (WAKEFIELD)

Statement of Financial Activities For the Year Ended 31 March 2022

	Notes	Unrestricted Funds £	Restricted Funds £	2022 Total £	2021 Total £
<u>Income From:-</u>					
Donations and legacies		206,604	265	206,869	158,591
Charitable activities					
Pre School		-	305,913	305,913	246,347
Investment Income	2	373	288	661	881
Other	3	20,400	1,947	22,347	47,314
Total Income		227,377	308,413	535,790	453,133
<u>Expenditure On:-</u>					
Charitable activities	4	193,955	326,003	519,958	438,487
Other	4	1,576	-	1,576	4,759
Total Expenditure		195,531	326,003	521,534	443,246
Net Income/ Expenditure		31,846	(17,590)	14,256	9,887
Total Funds Brought Forward		492,582	381,230	873,812	863,925
Total Funds Carried Forward		524,428	363,640	888,068	873,812

NEW LIFE CHRISTIAN CENTRE (WAKEFIELD)

**Balance Sheet
For the Year Ended 31 March 2022**

	Notes	2022		2021	
		£	£	£	£
Fixed Assets					
Tangible assets	8		375,001		375,730
Current Assets					
Debtors	9	10,576		9,695	
Cash at bank and in hand		<u>515,130</u>		<u>498,514</u>	
Total Current Assets		525,706		508,209	
Liabilities					
Creditors:	10				
<i>Amounts falling due within one year</i>		<u>(12,639)</u>		<u>(10,127)</u>	
Net Current Assets			513,067		498,082
Total Net Assets	11		<u><u>888,068</u></u>		<u><u>873,812</u></u>
Funds of the charity					
Restricted Funds			363,640		381,230
Unrestricted funds			524,428		492,582
Total Funds	11		<u><u>888,068</u></u>		<u><u>873,812</u></u>

The company is entitled to exemption from audit under Section 477 of the Companies Act 2006 for the year year ended 31st March 2022. The Members have not required the Company to obtain an audit of its Financial Statements for the year ended 31st March 2022 in accordance with section 476 of the Companies Act.

The Directors acknowledge their responsibilities for:

- ensuring that the Company keeps accounting records which comply with sections 386 and 387 of the companies Act 2006 and;
- preparing financial statements which give a true and fair view of the state of affairs of the company as at the end of each financial year and of its profits or loss for each financial year in accordance with the requirements of Companies act 2006 relating to financial statements, so far as applicable to the Company.

These financial statements have been prepared in accordance with the special provision of Part 15 of the Companies act 2006 relating to small companies and with the Financial Reporting Standards (SORP) 102 (effective January 2015)

Approved by the Trustees on 23/0/22 and signed on their behalf by:


.....
Reverend. K. Foster - Chairman


.....
N Baldwin - Treasurer

NEW LIFE CHRISTIAN CENTRE (WAKEFIELD)

Notes to the Accounts

For the Year Ended 31 March 2022

1. Statement of Accounting Policies

a.) Basis of Accounting

The financial statements have been prepared in accordance with applicable accounting standards, the SORP FRS 102. The accounts are prepared under the historical cost convention in accordance with Charities SORP (FRS 102)

b.) Income and endowments

Income and endowments are reported gross

c.) Donations

Donations are credited in full to the financial statements on a cash basis.

Capital assets gifted are recorded at estimated market value in use at the time of the gift.

d.) Grants receivable

Grants are recognised as income when receivable.

e.) Direct charitable expenditure and other costs

Direct charitable expenditure comprises all expenditure directly relating to the objectives of the charity. When necessary, support costs are allowed between direct charitable expenditure and other costs on a basis designed to reflect the use of the resource.

Expenditure is included in the accounts when the liability is incurred and includes non-recoverable VAT.

f.) Fixed assets

The freehold property is stated at valuation value from 1997 with subsequent additions at cost. Other assets are stated at cost less depreciation.

Depreciation is provided on the following basis to write down the cost of the assets over their expected useful lives.

Land and Buildings	NIL (Depreciation is not provided on Land & Buildings)
Fixture and Fittings	20% on cost
Computers	33% on cost

Assets under £100 are not capitalised.

The gain that arose on the revaluation of Land and buildings was determined by an independent open market valuation at May 2017. The revaluation surplus totals £284,650.

g.) Restricted funds

Where funds have been received for specific purposes they are treated as restricted funds.

h.) Grants Payable

Grants payable are charges in the year as incurred

NEW LIFE CHRISTIAN CENTRE (WAKEFIELD)

**Notes to the Accounts (continued)
For the Year Ended 31 March 2022**

	2022	2021
	£	£
2. Investment Income		
Bank Interest	661	881

	2022	2021
	£	£
3. Other Income		
Miscellaneous Income	-	900
Rent received	20,400	20,400
JRS Grants	1,947	26,014
	<u>22,347</u>	<u>47,314</u>

4. Total Expenditure

<u>Direct costs</u> <u>allocated to activities</u>	<u>Basis of</u> <u>Allocation</u>	<u>Unrestricted</u> <u>Charitable</u> <u>Activities</u>	<u>Restricted</u> <u>Charitable</u> <u>Activities</u>	<u>2022</u> <u>Total</u>	<u>2021</u> <u>Total</u>
Grants (note 5)	Direct	22,055	-	22,055	27,720
Staff Costs (note 6)	Direct	122,917	237,814	360,731	352,146
Pre School costs	Direct	-	10,913	10,913	4,736
Property costs	Direct	25,976	67,181	93,157	31,875
Evangelistic/Youth Exp's	Direct	4,887	-	4,887	902
Depreciation	Direct	154	575	729	1,096
Training/Conferences	Direct	3,460	2,982	6,442	1,745

<u>Support Costs</u> <u>allocated to activities</u>	<u>Basis of</u> <u>Allocation</u>	<u>Unrestricted</u> <u>Charitable</u> <u>Activities</u>	<u>Restricted</u> <u>Charitable</u> <u>Activities</u>	<u>2022</u> <u>Total</u>	<u>2021</u> <u>Total</u>
Legal & Professional	Direct	2,602	2,078	4,680	4,759
Office	Direct	4,311	2,841	7,152	4,285
Insurance	Direct	2,308	-	2,308	2,442
Subscription/Licences	Direct	5,285	1,619	6,904	8,784
Other	Direct	1,576	-	1,576	2,756

<u>195,531</u>	<u>326,003</u>	<u>521,534</u>	<u>443,246</u>
----------------	----------------	----------------	----------------

NEW LIFE CHRISTIAN CENTRE (WAKEFIELD)

Notes to the Accounts (continued) For the Year Ended 31 March 2022

	2022	2021
	£	£
5. Grants		
Mission Support	22,055	27,720
	<u>22,055</u>	<u>27,720</u>

No individual grant under mission exceeded 5% of income

	2022	2021
	£	£
6. Staff Costs		
Wages & Salaries	332,496	317,024
National Insurance	21,714	24,849
Pensions	6,521	10,273
	<u>360,731</u>	<u>352,146</u>

Average number of staff (full time equivalents)

Church	5	5
Pre-School	12	12
	<u>17</u>	<u>17</u>

No employee received remuneration of more than £60,000.

	2022	2021
	£	£
7. Net Expenditure		
This is stated after charging:		
Depreciation	729	1,096
Independent Examiners Fee	1,260	1,290
	<u>1,989</u>	<u>2,386</u>
Trustee Remuneration and Expenses		
Remuneration	41,412	40,800
Expenses	401	-
	<u>43,802</u>	<u>43,186</u>

One Trustee/Director was in receipt of remuneration

	2022	2021
	£	£
Analysis of Trustee Remuneration:-		
Rev. K. Foster	41,412	40,800
	<u>41,412</u>	<u>40,800</u>

NEW LIFE CHRISTIAN CENTRE (WAKEFIELD)

**Notes to the Accounts (continued)
For the Year Ended 31 March 2022**

8. Fixed Assets	<u>Freehold land & Buildings</u>	<u>Fixtures & Fittings</u>	<u>Total</u>
<u>Costs</u>			
At 1 April 2021	375,000	104,204	479,204
Additions	-	-	-
At 31 March 2022	<u>375,000</u>	<u>104,204</u>	<u>479,204</u>
<u>Depreciation</u>			
At 1 April 2021	-	103,474	103,474
Charge for the year	-	729	729
At 31 March 2022	<u>-</u>	<u>104,203</u>	<u>104,203</u>
<u>Net Book Value</u>			
At 31 March 2022	<u>375,000</u>	<u>1</u>	<u>375,001</u>
At 31 March 2021	<u>375,000</u>	<u>730</u>	<u>375,730</u>

	2022	2021
	£	£
9. Debtors		
Gift Aid	2,141	3,031
Prepayment and other Debtors	8,435	6,664
	<u>10,576</u>	<u>9,695</u>

	2022	2021
	£	£
10 Creditors: Amounts falling due within one year		
Accruals	3,198	8,410
Fees Paid in advance	9,441	1,717
	<u>12,639</u>	<u>10,127</u>

NEW LIFE CHRISTIAN CENTRE (WAKEFIELD)

Notes to the Accounts (continued) For the Year Ended 31 March 2022

11. Analysis of funds

Fund balances	Restricted Funds	Unrestricted Funds	Total Funds
<i>Represented by:-</i>			
Tangible fixed assets	-	375,001	375,001
Current assets	369,480	156,226	525,706
Current Liabilities	(5,840)	(6,799)	(12,639)
	<u>363,640</u>	<u>524,428</u>	<u>888,068</u>

The restricted fund comprises of :-

Building fund	£65,927	Held for a possible extension
Pre School Fund	£292,181	held to cover future expenditure
Missions Fund	£5,532	used for payments in respect of Sunshine English Club

Restricted fund movements

	Building Fund	Mission Fund	Pre School Fund	Total
Balance 01.04.2021	110,612	5,412	265,206	381,230
Income	<u>263</u>	<u>120</u>	<u>308,030</u>	<u>308,413</u>
Expenditure	(44,948)	-	(281,055)	(326,003)
Balance 31.03.2022	<u>65,927</u>	<u>5,532</u>	<u>292,181</u>	<u>363,640</u>

NEW LIFE CHRISTIAN CENTRE (WAKEFIELD)

**Statement of Financial Activities
For the Year Ended 31 March 2022**

<u>General Fund (Unrestricted)</u>	Year Ended Mar-22		Year Ended Mar-21	
	£	£	£	£
Income From:				
Offerings		89,757		40,162
Gift aid donations & gift aid		92,101		95,596
Pre school tithe, offerings & rent		20,400		20,400
Income tax recovered		23,966		22,113
Bank interest and dividends received		373		386
Miscellaneous income		-		900
Youth worker sponsorship		490		310
Fundraising		290		110
		<u>227,377</u>		<u>179,977</u>
 Expenditure On:-				
Staff salaries and national insurance	120,782		107,292	
Nest	2,135		4,745	
Conference, training and course expenses	3,126		337	
Service costs	2,574		89	
Health safety and employment law	468		468	
Computer costs	521		280	
Evangelistic expenses	1,600		800	
Light, heat and water	12,116		1,613	
Insurance	2,308		2,442	
Cleaning and waste removal	1,605		919	
Building, repairs and maintenance	10,820		5,972	
Equipment expenses	1,435		922	
Postage, stationery and consumables	1,297		895	
Telephone and internet costs	2,341		1,448	
Reading materials	136		75	
Licences	607		1,105	
Independent examiners fee	1,260		1,290	
Payroll fees	706		706	
Subscriptions	4,678		5,106	
Sundry expenses	1,440		2,681	
Depreciation	154		436	
Grants	22,055		27,720	
Life Group	713		102	
Legal and professional	168		418	
Advertising and website	152		36	
Meals and entertainment	334		81	
		<u>195,531</u>		<u>167,978</u>
 Net Income		<u><u>31,846</u></u>		<u><u>11,999</u></u>

NEW LIFE CHRISTIAN CENTRE (WAKEFIELD)

**Statement of Financial Activities
For the Year Ended 31 March 2022**

Building Fund (Restricted)

	Year Ended Mar-22		Year Ended Mar-21	
	£	£	£	£
Income From:				
Offerings	145		180	
Bank interest	<u>118</u>		<u>213</u>	
Total Income		263		393
Expenditure		44,948		-
Net (Expenditure)/Income		<u>(44,685)</u>		<u>393</u>

Sunshine English Club (Restricted)

	Year Ended Mar-22		Year Ended Mar-21	
	£	£	£	£
Income		120		120
Expenditure		-		-
Net Income		<u>120</u>		<u>120</u>

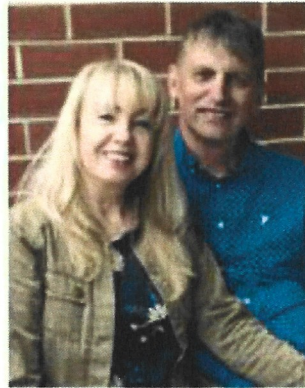
NEW LIFE CHRISTIAN CENTRE (WAKEFIELD)

Statement of financial activities For the Year Ended 31 March 2022

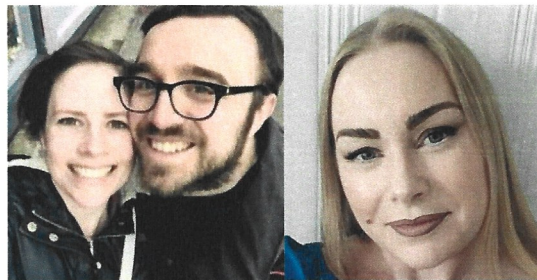
Pre School Fund (Restricted)

Income From:	Year Ended Mar-22		Year Ended Mar-21	
	£	£	£	£
Private fees	94,075		63,171	
NEF - WMDC	154,594		158,692	
Baby room	46,267		19,194	
Interest received	170		282	
School dinners	10,977		5,290	
Government JRS Grants	1,947		26,014	
	<u>308,030</u>		<u>272,643</u>	
Expenditure On:-				
Staff salaries and national insurance	233,428		229,836	
Nest	4,386		10,273	
School milk and catering	4,385		3,165	
Materials	6,528		1,571	
Training	2,982		1,327	
Advertising and website	31		90	
Subscriptions and donations	1,619		2,573	
Rent to N.L.C.C	20,400		20,400	
Repairs and renewals	747		256	
Cleaning and waste removal	1,086		1,704	
Stationery and administration	26		38	
Computer software	-		257	
Telephone and internet	2,784		1,241	
Depreciation	575		660	
Health, safety and equipment law	1,982		1,781	
Legal and professional	96		96	
Fund raising	-		-	
	<u>281,055</u>		<u>275,268</u>	
Net Income/ (Expenditure)	<u>26,975</u>		<u>(2,625)</u>	

MEET THE TEAM - 2022



Senior Pastor Kevin and Janet Foster



Pastor Luke
and Janna
Crompton

Pastor Sarah
Renton

Nicola Baldwin - Finance Officer

Paul Whitfield - Worship

Martin Cooper - Finance

Robert Walker - Building

Janet Foster - Life Groups

Tim Gordon - Special Needs & 13-30's

Paul Wood - Out Reach and Missions

Temi Ademola - Mental Health & Wellness

Lisa Brown - Pre School

Annual Reports and Financial Statements

Period 1st April 2021 - 31st March 2022

New Life Christian Centre - WAKEFIELD

Registered Company Number - 6053366

Registered Charity Number - 1119328

NEW LIFE CHRISTIAN CENTRE (WAKEFIELD)

England & Wales - Charity number 1119328

Accounts



NEWLIFE
CHRISTIAN CENTRE

AGM
ANNUAL GENERAL MEETING

Annual Reports & Financial Statements – Period 1st April 2020 through 31st March 2021
NEW LIFE CHRISTIAN CENTRE - WAKEFIELD
REGISTERED COMPANY NUMBER 6053366
REGISTERED CHARITY NUMBER 1119328

CONTENTS

- Reference and Administrative Information

- Objectives, Organisation and Activities

- Chairman's Annual Report
 - Review of Ministry
 - Future Plans
 - Board of Directors and Senior Leadership Team
 - New Life Pre School and Nursery
 - Church Ministry
 - Missions
 - Ministerial Training
 - City Vision
 - AOG
 - Statements of Trustees' Responsibilities

- Treasurer's Report
 - Independent Examiner's Report
 - Statements of Financial Activities
 - Balance Sheet
 - General Fund (Unrestricted)
 - Building Fund/Sunshine Club
 - Pre - School Fund (Restricted)

Board of Directors' Review of Progress and Achievements

For the year ended 1st April 2020 to 31st March 2021

Reference and Administrative Information

Charity Name: New Life Christian Centre (Wakefield)

Charity Number: 1119328

Company Number: 6053366

Governing Instruments: Memorandum and Articles of Association incorporated on 15th January 2007 as amended on 13th March 2007

Principal Address: George Street, Wakefield, West Yorkshire, WFI IDL

Church Officers

Rev. K. Foster - Chairman

Mrs N. Baldwin - Finance Officer

Mrs J. Masters - Secretary to Senior Leadership Team

Senior Leadership Team Directors

Rev. K. Foster

Mr. P. M. Cooper

Mrs. S. Gordon

Mr Paul Wood

Mr Johnathan Gledhill

Senior Leadership Team Members

Mrs J. Foster

Mr L. Crompton

Mrs L. Brown

Mr P. Whitfield

Company Secretary

Rev Kevin Foster

Solicitors

Geldards Solicitors

Pride Place

Derby DE24 8QR

Independent Examiner

Torevell Dent Ltd.

Centre of Excellence, Hope Park

Trevor Foster Way

Bradford BDI 4EW

Bank

Yorkshire Bank, 6-10 Northgate, Wakefield, WFI ITA

The New Life Christian Centre, Wakefield, a company limited by guarantee. Registered Charity Number 1119328, was incorporated on 15th January 2007. It took over all assets and liabilities from New Life Christian Centre, Registered Charity Number 1051964, on 1st October 2007. The Church operates from its premises at George Street, Wakefield, WFI IDL.

Annual Reports & Financial Statements – Period 1st April 2020 through 31st March 2021

Registered Company Number 6053366. Registered Charity Number 1119328

newlifeccwakefield.com

Objectives, Organisation and Activities

To advance the Christian faith in accordance with the statement in such ways and in such parts of the United Kingdom or the world as the directors from time to time may think fit.

To relieve sickness and financial hardship and to promote and preserve good health by the provision of funds, goods or services of any kind including through the provision of counselling and support in such parts of the United Kingdom or the world as the directors from time to time think fit.

To advance education in such ways and in such parts of the United Kingdom or the world as the directors from time to time may think fit.

Mission Statement

Our vision, prayer and desire are to see God's Kingdom come through:

Loving God

Loving People

Loving Life

We are committed to Loving God:

By having a loving relationship with the Lord Jesus Christ based on Biblical truth.

By living a life of worship, prayer and obedience.

By allowing the Holy Spirit to speak into and work through our lives.

We are committed to Loving People:

By leading people into a personal relationship with Jesus.

By encouraging spiritual growth and development in every believer.

By having an awareness of individual needs and providing practical support.

By encouraging the love and acceptance of every individual inside and outside of the church.

By recognising and releasing individual ministries to serve the church and wider community.

We are committed to Loving Life:

By promoting friendship and fellowship within the church.

By sharing life together in various social and other gatherings outside of the church.

By enjoying the 'life in all its fullness' promised by Jesus.

We exist as individuals to know God and to make him known. As a church, our vision and call are to love God, to love people and to love life. These three themes run through all we do at NLCC and are outworked in a varied church programme for all ages and in our support of organisations, projects and individuals in a local, national and international context.

NLCC Chairman's Annual Report 2020-2021

At the end of an unprecedented year, I recall the opening page of last year's annual report as it sought to reflect on the previous year and to look forward and into, the uncertain future that Covid 19 might present to us.

I quote,

'The financial year ending March 2020, coincided with the outbreak in the March 2020, of Covid 19. Individuals and families were faced with the accompanying national lockdown and the closing of many businesses and all churches in the UK.

Although this only affected the final three weeks of the financial year, continued closure of churches and the repercussions socially and financially, will reverberate into the new financial year and beyond, as all charities and businesses seek to recover.

It is in this light and with an unknown future, that we are very pleased to believe in a God who has not changed nor has he been restricted by the virus- God has still been working.

Further we are glad to be part of a church that has never been limited to the four walls of a building. Wherever the people are, wherever they work and live, the church is! The Church has still been working.

We believe that Jesus is the same, yesterday, today and forever and that God does not change.

I am therefore confident that whatever 2020-2021 holds for NLCC, that the God who has supplied our needs and carried us pre Covid 19, will continue to do so, post Covid 19.

*Our confidence rests not in our own ability to ride this storm, but in God's sacrificial and loving commitment to us as his body, his bride, his children, his church-**he** holds the future!'*

As we look back on the year, we can see that our confidence was not misguided and we can say, 'Hitherto has the Lord helped us.' The Lord has kept working in and through us and he has supplied our every need.

In the year God promised us that we would 'lose none that he had given to us' through Covid 19 and he has been faithful to that promise. Some of our

members have been seriously ill and in hospital with Covid but all have come through for which we give thanks to God.

The church congregation have been faithful in their giving and despite not being able to physically meet for much of the year, the offerings increased compared to the previous year.

We are grateful to the work of our Finance Officer Nicola Baldwin, who has introduced a new and updated system of accounts and has kept us abreast of the numerous and fluctuating financial developments in the year.

This all contributed to the charity ending the year with an operating surplus of £9887.

Although a difficult year in every way for the nursery (see below), the end of year figures left NLCC in a better financial position than last year and way beyond the budget forecast of April/May 2020.

It has been a year of plusses and minuses, joys and sorrows, developments and restrictions. These resulted in new ways of delivering Christian ministry and a greater number of people involved in 'being church' ie looking after others and caring for their neighbours.

One of our deep sorrows came in November 2020, when after a long battle with cancer, we lost our dear brother Ernest Hibbert. Ernest was part of NLCC both as a man and a boy, and he gave so much to NLCC and to this city. Ernest served the church as a deacon, elder, Mr fix it, a musician, a sound man, co-founded the Community Awareness Programme and so much more. We salute his memory and greatly miss his friendship but we know that he has gone to a great reward in heaven.

Throughout the year we sensed that Jesus had been building his church and we believe that we will be stronger in every way after the restrictions are lifted.

God has given us an exciting vision for the season ahead. It's a vision to Re-connect and Restore, to Re-affirm and Release, to Refresh and Renew, to Re-purpose and Re-envision. The vision is in two parts:-

- 1. The Next 100 Days** ie from 13th March- 18th July-this date was changed according to govt policy re Covid (a vision *for* the church and *to* the building)
- 2. The First 100 Days** ie from 19th July-26th October (a vision *with* the church and *to* the building).

The congregation and department heads have been asked to contribute their ideas to the second part of this vision.

So, it is with grateful thanks to God and to his people, that we submit this annual report.

It reflects the prayers, the love and the commitment of each person and each department in the church and to the God who has answered our prayers and really helped us throughout this year of the pandemic.

We are positive about the future of the church and its ministry and of our commitment to serving the community of Wakefield and beyond.

The year ahead affords us an exciting opportunity to start afresh and to consider new avenues of ministry and service, knowing and believing that God will do abundantly more than we can ever ask, think, or imagine.

1. Board of Directors and Senior Leadership Team

The SLT met via zoom on a monthly basis throughout the year, with each member continuing to bring their unique blend of gifts to the table. I am grateful to them all for their love and support in this, the strangest of years.

The SLT agreed that Church should be 'closed' for Sunday Services at various stages of the year in accordance with government Covid guidelines.

In June 2020, the SLT agreed to the refurbishment and possible extension of the existing NLCC property. Russell Trudgen of Arctic Associates was employed to produce a building survey and a needs and option review based on a questionnaire sent to department leaders.

We envisage a two phase process of development of the building ie,

Phase One (2021) Repair, Redecoration, Refurb of building/facilities.

Phase Two (2022) Restructuring of the building.

Rob Walker was co-opted onto the team late in the year. Rob is responsible for the building and refurbishment programme and we are grateful for his work and input so far in facilitating progress on the project.

2. New Life Pre School and Nursery.

The Pre School faced a very difficult year despite remaining open for all but two weeks in the year. (It was closed for the two weeks as members of staff and children had Covid)

The SLT made a decision in March 2020, that the setting would remain open for the children of key workers only (as per government guidelines). This decision was made in the full knowledge that during the lockdown months, the nursery would operate at a loss.

Although it was envisaged that this would mean a substantial loss, as a result of the hard work of staff and in particular Lisa; Rachel, and John, the setting ended up with a deficit of only £5198 in the financial year. Had there had been no lockdown, it has been estimated that the nursery would have seen a surplus of over £30,000.

All the staff are to be congratulated on the way they came and worked together as a team to help the children in their setting, and for the love and commitment they have for each child's education.

3. Church Ministry

'In person' activities were limited in the year but, the SLT sought to encourage engagement and connection with as many people as possible online. We are grateful for the work of Janet Foster and Luke Crompton who enabled many of our older members to access the various social media platforms. Janet alongside Sandra Gordon, also sought to ensure that as many as possible were cared for and able to engage with each other via phone and zoom. David and Marjorie Ogier cared for and connected with so many of our elderly members.

a. All our Sunday services were relayed online and when possible 'in person.' A feature of these meetings was the input from various members of the congregation and from those around the world who we prayerfully and financially support.

Our services were supported by the New Life Worship Team led by Paul Whitfield. He, Kay and Martin were able to put together nearly 50 worship videos for us to use-our thanks go to the whole team for all their efforts again this year.

The Sunday services also featured input from Luke and Janna who presented a shorter version of their regular Sunday afternoon, New Life Kidz programme. They continued to minister to the children and their families throughout the year.

The 'In Person' Sunday services could not have operated without the wonderful stewarding team led by Andi Hill-thank you all so very much.

Also a big thankyou to the two David's, who have produced a beautiful looking garden with lots of spring flowers at the front of the building.

After each online service members, were able to connect together on zoom-this was a valuable tool in keeping us all in contact with one another.

b. Online mid-week reflections were introduced-these were brought initially (Mar-Aug) by Kevin and Janet and then (from Sept) Luke, Paul, Henry, Sarah, Martin and Kevin. Thank you to everyone for helping us to stay strong in our faith through these reflections and in particular to Paul Wood who has broadcast his reflection every week as part of Monday Night Church.

Over 70,000 Facebook views have been recorded for these online broadcasts, plus many more on YouTube and on our website.

I am grateful to Luke for all his work in ensuring these social media platforms were up and ready to facilitate this 'new way' of sharing the Christian message.

c. An online 'Tuesday at Midday' Prayer Meeting and a Tuesday 'Day of Prayer' was introduced and witnessed many answers to prayer.

d. The number of Life Groups were reduced because of Covid but some continued online: These included Monday Night Church; Fresh Start; Kintsugi; Alpha; Revival Prayer; Wool Masters; Women's and Men's Bible studies and the Portuguese speaking community. Our thanks go to all the leaders of the Life Groups who have risen to the challenge and created opportunities for people to pray, connect and engage together as best as they were able.

To aid the groups and to help individual members, we subscribed to Right Now Media-a library resource of thousands of Christian messages and teaching from respected preachers from all around the world.

e. C6 groups were introduced in the year to aid communication and contact between members. With no prescriptive format, each group member was encouraged to stay in touch with each other.

f. Three new Facebook pages enabled members to share stories, prayer requests and needs with each other-these have been a real help to everyone.

g. A bible reading plan for 2021 was produced based on the wisdom books in the bible-this has been followed by many in the church.-ESV bibles were made available to anyone who wanted to follow the reading plan in a different bible.

h. We subscribed to Blue Mountain cards and the church family sent various e cards throughout the year to thank and encourage.

i. Luke and Janna continued to support members of the Ignite Youth Group both online and when possible, by meeting them in the church, via text/phone or meeting with them for a walk. Luke also continued his role as chaplain for Wakefield AFC and in local schools via the Cross Project.

4. Missions

Sadly, we have not been able to visit any of the people and projects we support (due to Covid), but we have kept in touch with them all via email, phone, Facetime and text etc.

We acknowledge the amazing work they have done, especially those who have operated with few of the support mechanisms that we have had in the UK. We honour them all for their love and commitment.

We are now the official sending church for the AoG Missionary to Italy Vincent Borromeo. (Vincent is an associate member of NLCC). He has continued in lockdown to refurbish a building in Tarranto (called @206) and NLCC helped him in various ways to finance the project. We are hopeful that the project will be completed in 2021.

Leo and Daniela Lupu at the Sunshine English School in Vaslui, Romania have had a year of great testing due to serious health issues and Covid. We hope that 2022 will see us taking a team to Romania to run the Summer Camp.

Margaret Gordon from Fountain of Life is planning to retire in 2021-she has done an amazing work and we honour her for her amazing service.

The Community Awareness Programme helped 697 different people in the year offering food, advice, clothing and much, much, more. An average of 70+ people attended each day, and we acknowledge the incredible work of the trustees and manager Kevin Dobson in this period.

NLCC were a sponsor of the online 'Fixed Conference' in October 2020. Over 3, 000 addicts, ex addicts and those who support them watched the day event, which featured an interview with Graham Brown, one of our own members.

5. Ministerial Training

Luke Crompton completed the first year of three years training to gain ministerial status with AOG. Paul Wood begins his first year of AOG training in May 2021 and in Sept 20, Phil Mc Kenning began his ministerial training with the Church of England. We continue to pray for God's blessing on all three!

6. City Vision.

A big positive to come out of the year of lockdown, has been the way in which church leaders in Wakefield MDC have come together every Monday for prayer and in regular workshops to plan on how to share Christ together.

Out of these workshops came a Christmas Video which included Pastor Kevin, our worship team and CAP. A mobile advertising unit with the Christmas message toured the city and 50,000 Christmas Cards were sent into local homes.

There are many new initiatives planned for 2021/2 involving prayer and outreach.

7. AoG

Kevin Foster our Senior Pastor was appointed the Yorkshire Zone leader of AoG in January 2020 and is now responsible for 60 ministers in the county. During the year he appointed three hub leaders who keep in regular contact with the ministers via online hub meetings to which all the AoG pastors in the churches can attend.

Two Zone meetings were arranged by Kevin in the year alongside national online conferences and events.

Summary

Once again, NLCC has been blessed by staff and volunteers who have gone the extra mile, particularly in lockdown, to ensure that people have been loved and cared for.

As I said last year, the gathered church has not been able to meet, but the scattered church has been alive and well.

Janet my wife, has been the most wonderful support and help to me personally and to so many of the congregation throughout the year. She has been my biggest supporter and greatest source of encouragement-thank you so much.

My thanks go also to my PA. Jo Masters, who has enabled us as a church and myself as an individual, to run the church smoothly and efficiently in the past year. Jo has worked over and above on so many occasions.

My thanks go again to Luke Crompton, who has helped us technically and administratively in these unprecedented days, and to Nicola Baldwin our finance officer, for all she has done in the last year to further regulate and administer our finances.

My thanks go last but certainly not least, to all the members of New Life who has been the church 'out there' in the community over the past year. Thankyou for all you have done to serve the Lord and all the love and support you shown to each other and to us as a leadership.

Future plans and Goals for the year 2021-22

Covid Restrictions are due to be 'fully lifted' after the 19th July 2021. It is difficult to plan a way forward with any certainty at this stage, as some restrictions may be maintained for some while after this proposed date. Government guidance will determine the dates when we can re-commence our Life groups that meet in people's homes and some of our other ministries.

We will maintain an online presence each Sunday and mid-week for the foreseeable future and indeed, will continue with these when 'things get back to normal.'

The two-part vision outlined earlier ie The Next Hundred Days and the First One Hundred Days, expresses our hopes for the first six months of the year

ahead. We will review the situation vis a vis our plans for Oct-March, in the summer of 2021.

Our desire and passion, is to continue to see the Kingdom of God grow in and through us, and to bless the communities in which we live to demonstrate that Jesus is reigning in our lives. We have already witnessed countless acts of love and kindness towards each other and towards others and I am sure these will continue in the season ahead.

We are very excited at what God has in store for us and we look forward to the year ahead with great expectation.

What is certain, is that if we love the Lord with all our hearts, then we will truly love our neighbours and be able to show them Christ in many loving and practical ways.

The year ahead gives us the opportunity to know him more and to show him more-let's do both!

Thank you all for all your incredible love, prayers and support.

Kevin Foster (Senior Pastor and Chair)

STATEMENT OF TRUSTEES' RESPONSIBILITIES

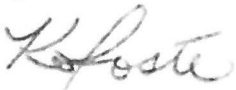
The Trustees are responsible for preparing the Annual Report and the financial statements in accordance with applicable law and the United Kingdom Generally Accepted Accounting Practice.

Charity law requires the Trustees to prepare Financial Statements for each financial year which give a true and fair view of the state of affairs of the charity and of its financial activities for the period. In preparing those Financial Statements the Trustees are required to:

- a) Select suitable accounting policies and then apply them consistently;
- b) Make judgements and estimates that are reasonable and prudent;
- c) State whether the policies adopted are in accordance with SORP 2005 and with applicable accounting standards, subject to any material departures and disclosed and explained in the Financial Statements.
- d) Prepare the Financial Statements on-going concern basis unless it is inappropriate to assume that the charity will continue operating.

The Trustees are responsible for the keeping of proper accounting records which discloses with reasonable accuracy at any time the financial position of the charity and to enable them to ensure that the Financial Statements comply with the Companies Act 2006. They are also responsible for safeguarding the assets of the charity and hence for taking reasonable steps for the prevention and detection of fraud or other irregularities.

Signed on behalf of the Trustees

A handwritten signature in cursive script, appearing to read "K Foster".

.....
Reverend K Foster
Chairman

Date 2/9/21.....



New Life Christian Centre (Wakefield)

A COMPANY LIMITED BY GUARANTEE

Financial Statements

For the year ended 31st March 2021

Charity Number 1119328

Company Number 6053366

NEW LIFE CHRISTIAN CENTRE (WAKEFIELD)

Independent Examiner's Report to the Trustees of New Life Christian Centre (Wakefield) For the Year Ended 31 March 2021

I report on the accounts of the Trust for the year ended 31 March 2021, which are set out on pages 10 to 16

Respective Responsibilities of Trustees and Examiner

As the charity's trustees you are responsible for the preparation of the accounts; you consider that the audit requirement of Section 145 of the Charities Act 2011 (the Act) does not apply. It is my responsibility to state, on the basis of procedures specified in the General Directions given by the Charity Commission under Section 145(5)(b) of the Act, whether particular matters have come to my attention.

Basis of Independent Examiner's Report

My examination was carried out in accordance with the general directions given by the Charity Commissioners. An examination includes a review of the accounting records kept by the charity and a comparison of the accounts presented with those records. It also includes consideration of any unusual items or disclosures in the accounts, and the seeking of explanations from you as trustees concerning any such matters. The procedures undertaken do not provide all the evidence that would be required in an audit and, consequently, I do not express an audit opinion on the view given by the accounts.

Independent Examiner's Statement

In connection with my examination, no matter has come to my attention:

- 1) Which gives me reasonable cause to believe that, in any material respects, the requirements
 - (a) To keep accounting records in accordance with S130 of the 2011 Act; and
 - (b) To prepare accounts which accord with the accounting records and to comply with the accounting requirements of the 2011 Acthave not been met; or

- 2) to which, in my opinion, attention should be drawn in order to enable a proper understanding of the accounts to be reached.



S. J. Sutcliffe F.C.C.A.

Torevell Dent Limited

Chartered Certified Accountant

1-3 St Ann's Place

Pellon Lane

Halifax

HX1 5RB

Date: 6 September 2021

NEW LIFE CHRISTIAN CENTRE (WAKEFIELD)

**Statement of Financial Activities
For the Year Ended 31 March 2021**

	Notes	Unrestricted Funds £	Restricted Funds £	2021 Total £	2020 Total £
<u>Income From:-</u>					
Donations and legacies		158,291	300	158,591	150,215
Charitable activities					
Pre School		-	246,347	246,347	317,757
Grants		-	-	-	75
Investment Income	2	386	495	881	1,383
Other	3	21,300	26,014	47,314	18,300
Total Income		179,977	273,156	453,133	487,730
<u>Expenditure On:-</u>					
Charitable activities	4	165,096	273,391	438,487	441,332
Other	4	2,882	1,877	4,759	6,351
Total Expenditure		167,978	275,268	443,246	447,683
Net Income/ Expenditure		11,999	(2,112)	9,887	40,047
Total Funds Brought Forward		480,583	383,342	863,925	823,878
Total Funds Carried Forward		492,582	381,230	873,812	863,925

NEW LIFE CHRISTIAN CENTRE (WAKEFIELD)

Balance Sheet

For the Year Ended 31 March 2021

	Notes	2021		2020	
		£	£	£	£
Fixed Assets					
Tangible assets	8		375,730		376,826
Current Assets					
Debtors	9	9,695		9,740	
Cash at bank and in hand		<u>498,514</u>		<u>489,934</u>	
Total Current Assets		508,209		499,674	
Liabilities					
Creditors:	10				
<i>Amounts falling due within one year</i>		<u>(10,127)</u>		<u>(12,575)</u>	
Net Current Assets	11		498,082		487,099
Total Net Assets			<u>873,812</u>		<u>863,925</u>
Funds of the charity					
Restricted Funds			381,230		383,342
Unrestricted funds			492,582		480,583
Total Funds			<u>873,812</u>		<u>863,925</u>


The company is entitled to exemption from audit under Section 477 of the Companies Act 2006 for the year year ended 31st March 2021. The Members have not required the Company to obtain an audit of its Financial Statements for the year ended 31st March 2021 in accordance with section 476 of the Companies Act.

The Directors acknowledge their responsibilities for:


- ensuring that the Company keeps accounting records which comply with sections 386 and 387 of the companies Act 2006 and;
- preparing financial statements which give a true and fair view of the state of affairs of the company as at the end of each financial year and of its profits or loss for each financial year in accordance with the requirements of Companies act 2006 relating to financial statements, so far as applicable to the Company.

These financial statements have been prepared in accordance with the special provision of Part 15 of the Companies act 2006 relating to small companies and with the Financial Reporting Standards (SORP) 102 (effective January 2015)

Approved by the Trustees on and signed on their behalf by:



 Reverend. K. Foster - Chairman



 N Baldwin - Treasurer

The notes on page 12 - 16 form part of these financial statements.

NEW LIFE CHRISTIAN CENTRE (WAKEFIELD)

Notes to the Accounts For the Year Ended 31 March 2021

1. Statement of Accounting Policies

a.) Basis of Accounting

The financial statements have been prepared in accordance with applicable accounting standards, the SORP FRS 102. The accounts are prepared under the historical cost convention in accordance with Charities SORP (FRS 102)

b.) Income and endowments

Income and endowments are reported gross

c.) Donations

Donations are credited in full to the financial statements on a cash basis.

Capital assets gifted are recorded at estimated market value in use at the time of the gift.

d.) Grants receivable

Grants are recognised as income when receivable.

e.) Direct charitable expenditure and other costs

Direct charitable expenditure comprises all expenditure directly relating to the objectives of the charity. When necessary, support costs are allowed between direct charitable expenditure and other costs on a basis designed to reflect the use of the resource. Expenditure is included in the accounts when the liability is incurred and includes non-recoverable VAT.

f.) Fixed assets

The freehold property is stated at valuation value from 1997 with subsequent additions at cost. Other assets are stated at cost less depreciation.

Depreciation is provided on the following basis to write down the cost of the assets over their expected useful lives.

Land and Buildings	NIL (Depreciation is not provided on Land & Buildings)
Fixture and Fittings	20% on cost
Computers	33% on cost

Assets under £100 are not capitalised.

The gain that arose on the revaluation of Land and buildings was determined by an independent open market valuation at May 2017. The revaluation surplus totals £284,650.

g.) Restricted funds

Where funds have been received for specific purposes they are treated as restricted funds.

h.) Grants Payable

Grants payable are charges in the year as incurred

NEW LIFE CHRISTIAN CENTRE (WAKEFIELD)

**Notes to the Accounts (continued)
For the Year Ended 31 March 2021**

	2021 £	2020 £
2. Investment Income		
Bank Interest	881	1,383

	2021 £	2020 £
3. Other Income		
Miscellaneous Income	900	300
Rent received	20,400	18,000
JRS Grants	26,014	-
	<u>47,314</u>	<u>18,300</u>

4. Total Expenditure

<u>Direct costs allocated to activities</u>	<u>Basis of Allocation</u>	<u>Unrestricted Charitable Activities</u>	<u>Restricted Charitable Activities</u>	<u>2021 Total</u>	<u>2020 Total</u>
Grants (note 5)	Direct	27,720	-	27,720	26,042
Staff Costs (note 6)	Direct	112,037	240,109	352,146	329,506
Pre School costs	Direct	-	4,736	4,736	7,050
Property costs	Direct	9,515	22,360	31,875	47,135
Evangelistic/Youth Exp's	Direct	902	-	902	7,069
Depreciation	Direct	436	660	1,096	2,040
Training/Conferences	Direct	418	1,327	1,745	7,284

<u>Support Costs allocated to activities</u>	<u>Basis of Allocation</u>	<u>Unrestricted Charitable Activities</u>	<u>Restricted Charitable Activities</u>	<u>2021 Total</u>	<u>2020 Total</u>
Legal & Professional	Direct	2,882	1,877	4,759	3,783
Office	Direct	2,659	1,626	4,285	6,022
Insurance	Direct	2,442	-	2,442	2,412
Subscription/Licences	Direct	6,211	2,573	8,784	7,067
Other	Direct	2,756	-	2,756	2,273

<u>167,978</u>	<u>275,268</u>	<u>443,246</u>	<u>447,683</u>
----------------	----------------	----------------	----------------

NEW LIFE CHRISTIAN CENTRE (WAKEFIELD)

Notes to the Accounts (continued) For the Year Ended 31 March 2021

	2021	2020
	£	£
5. Grants		
Mission Support	27,720	26,042
	<u>27,720</u>	<u>26,042</u>

No individual grant under mission exceeded 5% of income

	2021	2020
	£	£
6. Staff Costs		
Wages & Salaries	317,024	294,511
National Insurance	24,849	20,918
Pensions	10,273	13,840
Staff Expenses	-	237
	<u>352,146</u>	<u>329,506</u>

Average number of staff (full time equivalents)

Church	5	5
Pre-School	12	12
	<u>17</u>	<u>17</u>

No employee received remuneration of more than £60,000.

	2021	2020
	£	£
7. Net Expenditure		
This is stated after charging:		
Depreciation	1,096	2,040
Independent Examiners Fee	1,290	1,362
	<u>2,386</u>	<u>3,402</u>
Trustee Remuneration and Expenses		
Remuneration	40,800	42,418
Expenses	-	5,244
	<u>43,186</u>	<u>51,064</u>

Two Trustee/Directors were in receipt of remuneration

	2021	2020
	£	£
Analysis of trustee Remuneration:-		
Rev. K. Foster	40,800	39,307
Rev. J. Robinson	-	3,111
	<u>40,800</u>	<u>42,418</u>

NEW LIFE CHRISTIAN CENTRE (WAKEFIELD)

**Notes to the Accounts (continued)
For the Year Ended 31 March 2021**

8. Fixed Assets	<u>Freehold land & Buildings</u>	<u>Fixtures & Fittings</u>	<u>Total</u>
<u>Costs</u>			
At 1 April 2020	375,000	104,204	479,204
Additions	-	-	-
At 31 March 2021	<u>375,000</u>	<u>104,204</u>	<u>479,204</u>
<u>Depreciation</u>			
At 1 April 2020	-	102,378	102,378
Charge for the year	-	1,096	1,096
At 31 March 2021	<u>-</u>	<u>103,474</u>	<u>103,474</u>
<u>Net Book Value</u>			
At 31 March 2021	<u>375,000</u>	<u>730</u>	<u>375,730</u>
At 31 March 2020	<u>375,000</u>	<u>1,826</u>	<u>376,826</u>
		2021	2020
		£	£
9. Debtors			
Gift Aid		3,031	1,867
Prepayment and other Debtors		6,664	7,873
		<u>9,695</u>	<u>9,740</u>
		2021	2020
		£	£
10 Creditors: Amounts falling due within one year			
Accruals		8,410	8,099
Fees Paid in advance		1,717	4,476
		<u>10,127</u>	<u>12,575</u>

NEW LIFE CHRISTIAN CENTRE (WAKEFIELD)

Notes to the Accounts (continued) For the Year Ended 31 March 2021

11. Analysis of funds

Fund balances	Restricted Funds	Unrestricted Funds	Total Funds
<i>Represented by:-</i>			
Tangible fixed assets	575	375,155	375,730
Current assets	382,372	125,837	508,209
Current Liabilities	<u>(1,717)</u>	<u>(8,410)</u>	<u>(10,127)</u>
	<u>381,230</u>	<u>492,582</u>	<u>873,812</u>

The restricted fund comprises of :-

Building fund	£110,612	Held for a possible extension
Pre School Fund	£265,206	held to cover future expenditure
Missions Fund	£5,412	used for payments in respect of Sunshine English Club

Restricted fund movements

	Building Fund	Mission Fund	Pre School Fund	Total
Balance 01.04.2020	110,219	5,292	267,831	383,342
Income	<u>393</u>	<u>120</u>	<u>272,643</u>	<u>273,156</u>
	110,612	5,412	540,474	656,498
Expenditure	-	-	(275,268)	(275,268)
Balance 31.03.2021	<u>110,612</u>	<u>5,412</u>	<u>265,206</u>	<u>381,230</u>

NEW LIFE CHRISTIAN CENTRE (WAKEFIELD)**Statement of Financial Activities
For the Year Ended 31 March 2021**

General Fund (Unrestricted)	Year Ended Mar-21		Year Ended Mar-20	
	£	£	£	£
Income From:				
Offerings		40,162		27,022
Gift aid donations & gift aid		95,596		90,834
Pre school tithe, offerings & rent		20,400		18,000
Income tax recovered		22,113		26,446
Bank interest and dividends received		386		347
Miscellaneous income		900		300
Youth worker sponsorship		310		1,356
Fundraising		110		124
		<u>179,977</u>		<u>164,429</u>
Expenditure On:-				
Staff salaries and national insurance	107,292		103,413	
Nest	4,745		4,851	
Staff expenses	-		237	
Young peoples work	-		1,024	
Conference, training and course expenses	337		3,077	
Service costs	89		1,681	
Events costs	-		1,958	
Health safety and employment law	468		132	
Computer costs	280		-	
Evangelistic expenses	800		2,200	
Light, heat and water	1,613		8,904	
Insurance	2,442		2,412	
Cleaning and waste removal	919		806	
Building, repairs and maintenance	5,972		6,490	
Equipment expenses	922		2,648	
Postage, stationery and consumables	895		2,329	
Telephone and internet costs	1,448		1,772	
Reading materials	75		100	
Licences	1,105		982	
Independent examiners fee	1,290		1,362	
Payroll fees	706		1,115	
Subscriptions	5,106		6,085	
Sundry expenses	2,681		2,173	
Depreciation	436		776	
Grants	27,720		26,042	
Life Group	102		2,819	
Legal and professional	418		-	
Advertising and website	36		-	
Meals and entertainment	81		1,850	
		<u>167,978</u>		<u>187,238</u>
Net Income/(Expenditure)		<u><u>11,999</u></u>		<u><u>(22,809)</u></u>

NEW LIFE CHRISTIAN CENTRE (WAKEFIELD)

**Statement of Financial Activities
For the Year Ended 31 March 2021**

Building Fund (Restricted)

	Year Ended Mar-21		Year Ended Mar-20	
	£	£	£	£
Income From:				
Offerings	180		910	
Bank interest	213		530	
Total Income		393		1,440
Expenditure		-		-
Net Income		<u>393</u>		<u>1,440</u>

Sunshine English Club (Restricted)

	Year Ended Mar-21		Year Ended Mar-20	
	£	£	£	£
Income		120		3,523
Expenditure		-		(2,586)
Net Income		<u>120</u>		<u>937</u>

NEW LIFE CHRISTIAN CENTRE (WAKEFIELD)

Statement of financial activities For the Year Ended 31 March 2021

Pre School Fund (Restricted)

Income From:	Year Ended Mar-21		Year Ended Mar-20	
	£	£	£	£
Private fees	63,171		116,403	
NEF - WMDC	158,692		129,512	
Baby room	19,194		53,985	
Other grants received	-		75	
Interest received	282		506	
School dinners	5,290		12,002	
Fund raising	-		5,855	
Government JRS Grants	26,014		-	
	<u>272,643</u>		<u>318,338</u>	
Expenditure On:-				
Staff salaries and national insurance	229,836		212,016	
Nest	10,273		8,989	
School milk and catering	3,165		5,664	
Materials	1,571		1,386	
Training	1,327		1,333	
Advertising and website	90		708	
Subscriptions and donations	2,573		-	
Rent to N.L.C.C	20,400		18,000	
Repairs and renewals	256		3,180	
Cleaning and waste removal	1,704		2,840	
Stationery and administration	38		54	
Computer software	257		62	
Telephone and internet	1,241		1,097	
Depreciation	660		1,264	
Health, safety and equipment law	1,781		1,174	
Legal and professional	96		-	
Fund raising	-		92	
	<u>275,268</u>		<u>257,859</u>	
Net (Expenditure)/ Income	<u><u>(2,625)</u></u>		<u><u>60,479</u></u>	

2020 – MEET THE TEAM

Senior Pastor Kevin Janet Foster



Youth Pastor Luke Janna Crompton



Senior Leadership Team

Nicola Baldwin – Finance Officer

Sandra Gordon – Pastoral/Visitations

Martin Cooper – Finance

Lisa Oldroyd – Pre School

Janet Foster – Life Groups

Paul Whitfield – Worship

Johnathon Gledhill – Outreach Work

Paul Wood – Missions

