

BLOOMING BLOSSOMS TRUST

England & Wales - Charity number 1119198

Details

Other names SHEVES ACHIM RECEPTION TRUST

Status Registered

Legal form Trust

Registered 2007-05-15

Register [View on the Charity Commission register](#)

Contact

Address 79 Gladesmore Road
London
N15 6TL

Phone 020 71128760

Email info@bloomingblossomstrust.org.uk

Website www.bloomingblossomstrust.org.uk

Activities

Objects: 1) THE ADVANCEMENT OF THE ORTHODOX JEWISH FAITH2) THE ADVANCEMENT OF ORTHODOX JEWISH RELIGIOUS EDUCATION AND3) THE RELIEF OF POVERTY HARDSHIP AND DISTRESS AMONG PERSONS OF THE JEWISH FAITH.

Activities: We empower children from disadvantaged households and those with atypical development to navigate life changes, milestones, and crises. By easing these transitions, we help them build resilience and acquire the tools needed to cope with challenges. Improving access to out-of-school play, learning and community involvement that is designed and directed by children and their families.

Classification

- **How:** Makes Grants To Individuals, Makes Grants To Organisations, Provides Services
- **What:** Education/training, Disability, Other Charitable Purposes
- **Who:** Children/young People, People With Disabilities, Other Charities Or Voluntary Bodies

Geography

- **Area of benefit:** NOT DEFINED IN PRACTICE HACKNEY
- Throughout London

Finances

Period end	Income	Expenditure	Assets	Employees
2025-03-31	£444,017	£411,480	-	-
2024-03-31	£402,211	£395,140	-	-
2023-03-31	£564,793	£663,258	£46,589	0
2022-03-31	£490,622	£445,748	-	-
2021-03-31	£528,324	£589,943	£100,181	1

Trustees

Name	Role	Appointed
JOEL FRANKEL		2016-11-24
Sara Lew		2018-11-27
Yoel Fischer		

BLOOMING BLOSSOMS TRUST

England & Wales - Charity number 1119198

Accounts

– ANNUAL ACCOUNTS 2025 –

SHREK THE SHEEP

FROM FLEECE to FREEDOM



CONTENTS

YOUTH VOICE	3
LETTER OF THE CHAIR	4
MISSION & VISION	5
OBJECTIVES & VALUES	6
ACHIEVING STRATEGIC OBJECTIVES	7
PROJECTS	8-10
IMPACT & EVALUATION	11
TRUSTEES' REPORT	12
INDEPENDENT EXAMINER'S REPORT	13
STATEMENT OF FINANCIAL ACTIVITIES	14
BALANCE SHEET	15
NOTES TO THE FINANCIAL STATEMENTS	16-20

Independent Examiner:
Menacem Oberlander MAAT
Accounts Completed Ltd
137 Church Parade,
Canvey Island, SS8 9RD

Administration Address:
79 Gladesmore Road
London
N15 6TL

Trustees:
Sara Lew
Yoel Fischer
Joel Frankel

Charity no:
1119198



ONCE UPON A TIME IN THE HILLS OF NEW ZEALAND. THERE WAS A SHEEP NAMED SHREK.

For six long years, from 1998 until 2004, Shrek wandered alone, hiding from the shepherds who wanted to shear his wool. He feared the process, so he stayed out of sight — high in the mountains, away from his flock. Over the years, his fleece grew and grew, until it weighed nearly 27 kilograms. It covered his eyes, slowed his steps, and made every movement heavy.

When he was finally found, Shrek was gently sheared, and for the first time in years, he could see, breathe, and move freely. Shrek became an international celebrity. He was taken to parliament to meet the then-New Zealand Prime Minister, Helen Clark, to celebrate his 10th birthday.

Shrek became the subject of children's books and made charity appearances. He inspired many children to overcome their fears and traumas and embrace life's challenges come what may.

When I first came across this old story, I laughed. The idea of a sheep hiding in the mountains for six years to avoid a haircut sounded almost silly. But when I read more, it really struck me. Shrek wasn't just hiding. He was scared.



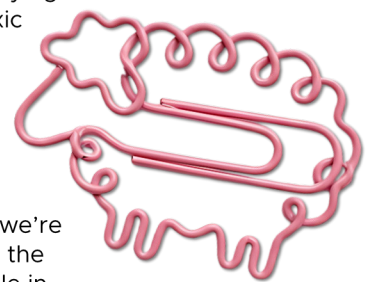
He thought staying away would keep him safe, but the longer he stayed hidden, the heavier his fleece became — until it was so big he could barely move. His fleece was so heavy that it contained enough wool to make 20 large men's suits, weighing 27kg in contrast to an average Merino fleece weighing around 4.5kg. When he was finally found and sheared, he looked completely different: lighter, freer, and so much happier.

It made me think about the children and young people we work with at **Blooming**

Blossoms Trust — and honestly, about myself too. Sometimes we hide behind the things that weigh us down: fear, self-doubt, or feeling like we don't fit in. But when someone believes in us, when they make space for us to be ourselves, we start to shed that weight. We become who we really are.

I'm 15, and I've always tried to hide the fact that I'm dyslexic. Reading has never come easy to me, and I used to dread being asked to read out loud at school. I'd avoid eye contact, mumble, or find excuses. I thought if I stayed quiet, no one would notice. But hiding it just made me feel heavier inside, like Shrek carrying all that extra fleece. When I joined **Blooming Blossoms Trust**, something changed.

I met people who didn't judge me for how I read, admired me for my inner strengths. I was given chances to lead, create, and speak, even when I wasn't sure I could. Slowly, I started to let go of the fear and shame I'd been carrying. I began to see that being dyslexic isn't something to hide, it's just part of who I am, and it even helps me see the world in unique ways.



Shrek's story taught me that sometimes we all hide because we're scared — but hiding only makes the load heavier. When we let people in, when we trust them enough to see us as we are, that's when we can finally feel free.

That's what this charity does. It helps young people like me stop hiding. It helps us believe that we are enough, just as we are — fleece and all. And that's why the Youth Panel chose Shrek's story, to continue inspiring our youth and helping them shed their superfluous fleece.

Ruth Stein
Youth Ambassador



I'm delighted to report on another successful year here at Blooming Blossoms and I absolutely adore Shrek the Sheep, the theme chosen by our Youth Panel.

At **Blooming Blossoms Trust**, we often meet children and young people who, like Shrek, have been carrying invisible weight of poverty, anxiety, learning differences, and the pressure to fit into a world that doesn't always understand them. Many have learned to stop hiding, overcome their social anxiety and see themselves in a positive light.

Our work is all about helping them shed those burdens. We worked tirelessly to find and support young people who, like Shrek, may feel hidden or weighed down by challenges, whether that's anxiety, dyslexia, social barriers, or the pressures of poverty. Through projects such as Be Scene – Be Heard, Feeling, Talking, Walking Garden, and Feel Blue? Go Green, we've provided safe spaces for children to grow, explore their strengths, and find their voices.

Our work is not about children's diagnosis or problems but how we can build on their strengths - however unusual that strength. We want to create beautiful garments of the superfluous fleece. We prioritize marginalized young people who may face additional challenges due to learning disabilities and societal barriers. By providing them with a platform to participate actively and contribute meaningfully, we aim to uplift their voices and empower them to overcome obstacles.

None of this would be possible without our incredible staff, volunteers, and supporters – the shepherds who guide, nurture, and celebrate every step of progress. Together, we've helped young people shed fears, gain confidence, and step into brighter futures.

Shrek's story reminds us that transformation takes patience, persistence, and care. Our commitment for the coming year is to continue building opportunities where every young person can feel seen, valued, and empowered.

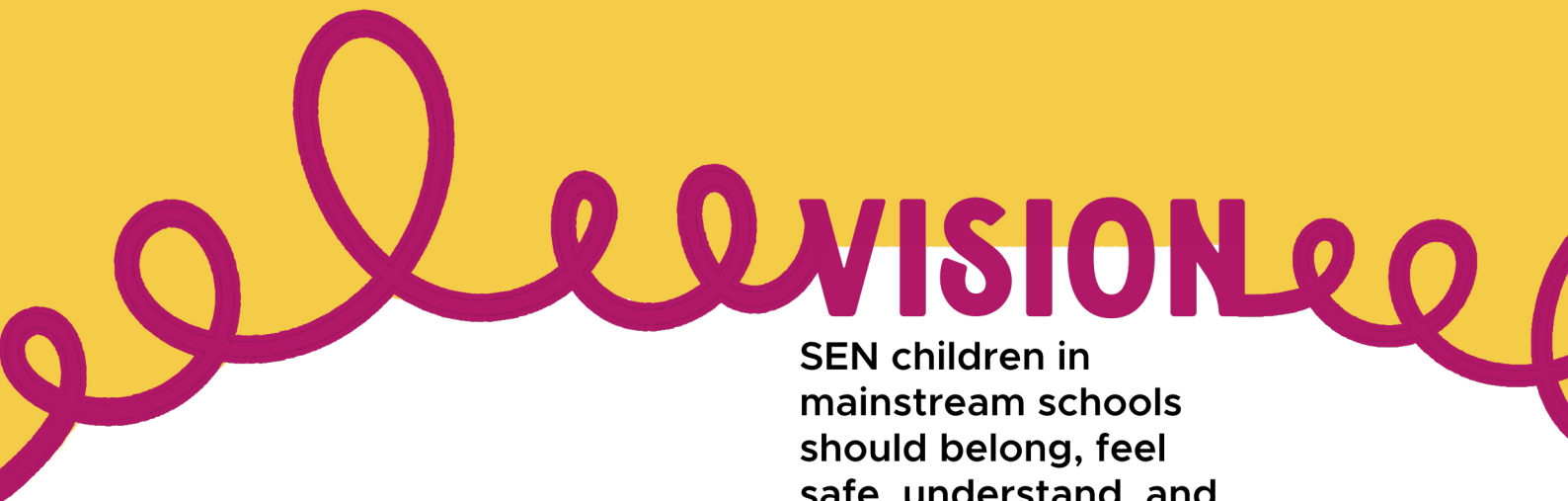
Like Shrek's fleece, the challenges our young people face can feel overwhelming, however with care, community, and opportunity, those very challenges can be transformed into something beautiful. Each story of growth, each skill learned, and each spark of confidence gained reminds us that freedom and transformation are possible for everyone.

Because every Shrek deserves to be found.
Every child deserves to be seen.
And every burden deserves to be lifted.

Sarah Cew

Chair

MESSAGE OF THE CHAIR



SEN children in mainstream schools should belong, feel safe, understand, and be understood.

Provide a safe, supportive space where children and young people gain skills, confidence, and social abilities to thrive with their peers.



MISSION



OUR OBJECTIVES



Help SEN children's confidence, resilience, sense of agency and self-protection.



Help SEN children attain academic success through supplementing learning with various conventional and innovative therapies.



Give SEN children a safe space to have fun, meet with friends, and explore talents and skills.



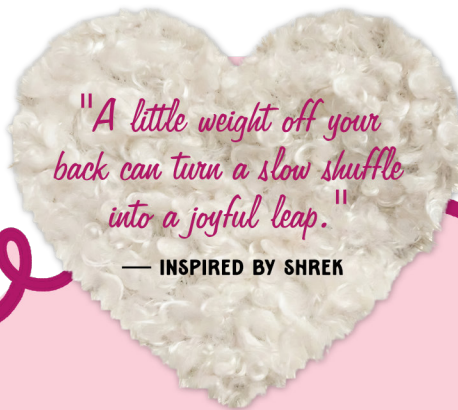
Reduce stigma and social isolation for learning disabled children and offer various opportunities for integration socially during out of school hours.



Support siblings of SEN children by giving them special time too so that they don't feel deprived.



Support SEN children and their families during the Cost of Living crisis, by stepping with food parcels and clothing distributions.



We believe that all children can.

OUR VALUES



Treat every child with love and compassion, regardless of background or abilities.



We take ownership of our mistakes as well as achievements.



We are sensitive to children's individual needs.



We celebrate every success no matter.



We raise the bar for staff and users



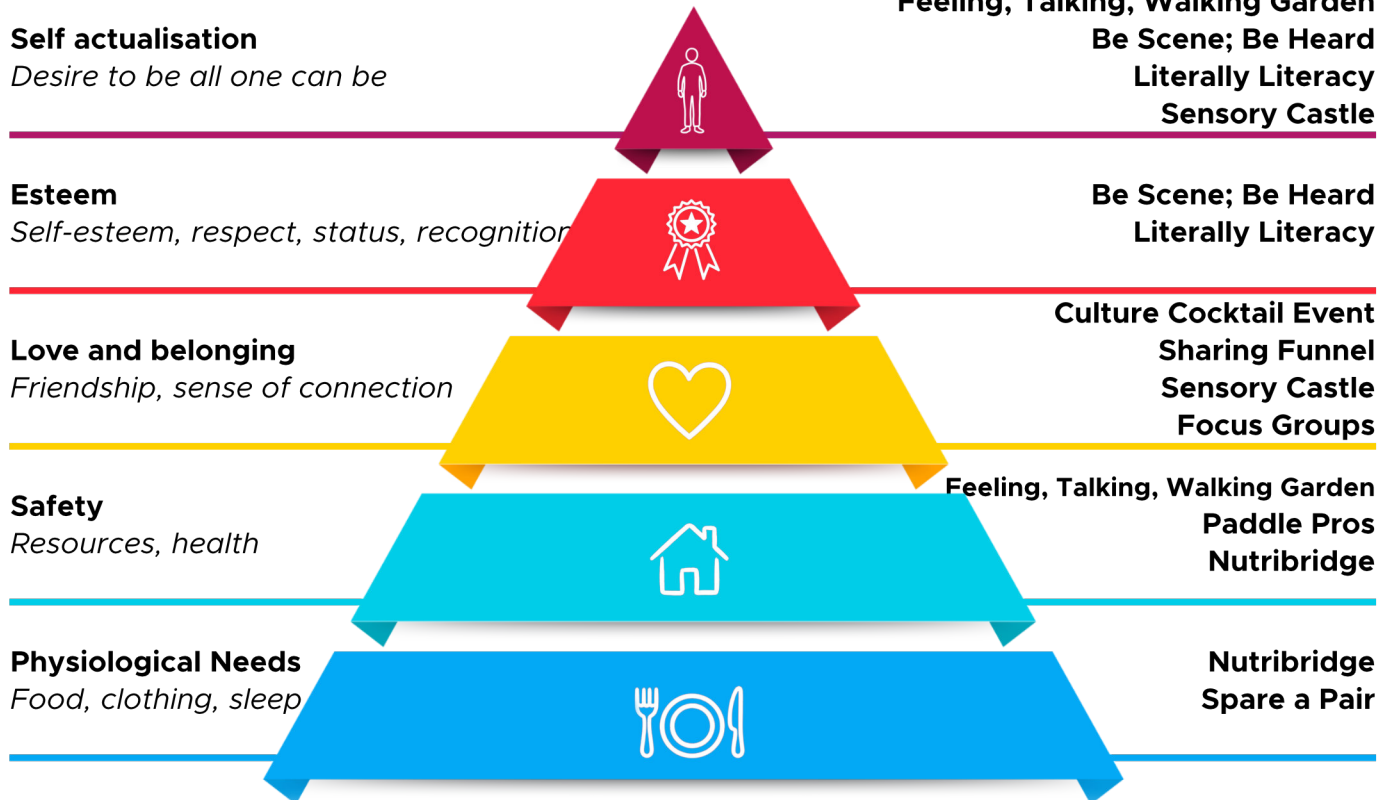
We are motivated and passionate to help SEN succeed.



Our core goal is to be a safe place where SEN children can just be.

MASLOW'S HIERARCHY OF NEEDS

BLOOMING BLOSSOMS' RESPONSE



ACHIEVING STRATEGIC OBJECTIVES

Building a diversified range of services

Our diversified services strategy is built on the theory of the Hierarchy of Needs model identified by Professor Abraham Maslow. This theory posts that to effectively fulfil a person's high-level needs, such as self-actualisation and being all one can be, lower-level needs must be met first, such as nutrition and social acceptance.

Today, Blooming Blossoms Trust provides disadvantaged children with early intervention, holistic, multi-support services which meets more of their needs, helping them shed superfluous fleece. The diagram below shows how our diverse services meet different levels of need across the different levels of Maslow's theory of the Hierarchy of Needs.



LITERACY LITERALLY

Serves 53 children weekly

For some children the instructions in their math text books feels like Russian; others struggle to demystify social cues and gestures and struggle to communicate basic ideas. Literally literacy operates bi-weekly during after school hours and employs latest researched methods to support children to reach peer level literacy targets and to communicate effectively, so that they can understand and feel understood. The program builds communication skills, academic ability, and self-confidence, helping young people feel heard.

THE FEELING, TALKING, WALKING SENSORY GARDEN

Serves 68 children weekly

You'll find Abe role playing mum, baking an earth cake at the mud kitchen, sprinkling pebbles for sprinkles. Rachel is fingering the moist pine leaves, Leeba is watering the tomato plant and Michelle is measuring the raised boxes to calculate how much space to allot for growing pansies. Rechy is just running, enjoying the ample space to release her pent up energy. The sensory garden is abuzz with children in their elements, learning, connecting with nature with peers and themselves. Children engage in structured and creative activities that help them regulate sensory responses, manage anxiety, and develop coping strategies.

My son refused to walk on the streets in Autumn. Every time we had to leave outdoors was a warzone. The wonderful hues of orange, the crispy leaves we all love crunching on – they overwhelmed him so, so badly. He just couldn't take them. His teacher referred him to the Feeling, Talking, Walking Garden and honestly, I can't thank you enough. After the first session he stopped throwing the tantrums. By his third session, when I came to pick him up, he was jumping and giggling amidst an exciting amber leaf fight. I couldn't believe my eyes!

SIMON'S MOM, AGE 8



SENSORY CASTLE

Serves 40 children weekly

A child with SPD - Sensory Processing Disorder feels like a foreigner in a far-flung country. Every day textures, sounds and tastes can overload them and make them feel like they are jumping out of their own skin. The sound of pencil scratching on paper can feel like exploding cannonballs and the taste and texture of bread can feel like steel wool or metal on a filling. These experiences impact the way they learn, live and socialize. Amidst all this sensory stress, children with SPD and sensory integration difficulties can find refuge and healing in a special kingdom, equipped with trapezium swings, lighting effects, soft padding floors and walls. The Sensory room is a space designed to help children learn to regulate their brain's negative reactions to external stimuli by developing coping skills for when they experience sensory over and under load. This room is also utilized by our Occupational Therapist and play therapist who delivers group and 1-1 OT therapy which builds development, life and academic foundation skills.



I was terrified of falling into the same black hole that swallowed me last winter. The kayaking keeps me afloat literally! Thank you!

ESTELLE. AGE 16



Thank you everyone from Blossoms. I love the new purple coat you gave me. It's so cozy and warm. And how did you know that purple is my favourite colour?

LIZZY AGE 6

PADDLE PROS

Serves 25 children and young people

Our Paddle Pros project is a specialised outdoor program offering vital support to 25 young people facing the challenges of winter blues, particularly Seasonal Affective Disorder (SAD). It's more than just kayaking and canoeing; it's about creating a supportive, enriching environment during the winter months. This initiative is structured around harnessing the therapeutic and recreational benefits of the kayaking and canoeing sport, with the overarching goal of enhancing the physical and mental well-being of our participants during the winter months.

SPARE A PAIR

Serves 500 children and young people

Spare a Pair aims to address financial hardship and fill an essential human need. The project distributes 500 pairs of new socks, undergarments, and gently used coats to disadvantaged children struggling socially and academically due to lack of respectable clothing, caused by the current Cost of Living crisis. We recognize that wearing decent garments can be an empowering, transformative experience, giving the wearer the self-esteem and confidence necessary to succeed at school and the way you see yourself. When you feel and look your best, you exude confidence and ability.



BE SCENE - BE HEARD

Serves 82 children and young people

Be Scene - Be Heard addresses challenges faced by individuals with Autism, to whom the world can feel like a perplexing maze of events, people, places, sounds, and sights. By dismantling barriers, and talking to them in a language that speaks to them, our project opens new musical vistas and expands horizons. Participants engage in hands-on music activities, exploring various instruments and musical techniques while listening to diverse genres. They collaborate on quarterly group projects involving composition and community performances, fostering creativity and self-expression. Our performances are a departure from traditional staging; our singers and musicians immerse themselves among the audience, erasing the boundaries between performers and spectators. Audiences are able to experience music through all their senses-seeing, hearing, smelling, touching, and even tasting-as the musical journey unfolds around them. It's a truly transformational journey that boost their self-esteem and confidence and makes the world an easier, less perplexing place to live in.

NUTRIBRIDGE: CROSSING THE NUTRITION DIVIDE

Serves 75 children weekly

Food insecurity and food poverty is surging among disadvantaged children due to the persistent Cost of Living Crisis. As parents grapple with the tough choice between fuel and food, our recent survey indicates that 83% of them are opting to skip meals to ensure their children are fed. Despite these sacrifices, children continue to face challenges in school, experiencing poor concentration, social difficulties, and academic setbacks. At the same time, food waste is surging in exponentially. Nutribridge empowers young individuals aged 11-18 with essential nutrition, cookery and budgeting skills, utilising surplus food that would otherwise go to waste. During the 16 week course participants learn how to shop, prepare and cook their own meals in a cost-effective, healthy and most importantly – delicious and appealing way – so that they able to cook healthily and tastefully beyond the project end. They also take home meals for their siblings. The program teaches about balanced diets, meal prep hacks and budgeting/plannings skills. To prolong the project's impacts we then distribute an interactive monthly recipe and tip sharing publication, supporting beneficiaries beyond the immediate project duration. The project aims to equip participants with practical knowledge to navigate the kitchen, make informed food choices, and prepare nourishing meals. Through engaging sessions, the program emphasizes the reduction of food waste and promotes food sustainability by incorporating surplus food donations.

Thank you so much for the yummy suppers. I wait by the window for my sister to bring them home. We can't believe she cooked them herself, cause they're just too delicious!

RAY. 6





IMPACT AND EVALUATION

Certificates of achievement are awarded to children who have reached a personal milestone. This can be learning to button their shirt, maintaining eye contact for longer periods or looking out for verbal cues. Their achievement has a direct impact on the daily life for both themselves and their families.

All children referred to our centre undergo an initial intake assessment covering core academic skills, social awareness, emotional mental health intake and executive functioning ability. Our evaluation team also consults with child's teachers and parents to glean more information. Once areas to be worked on is signposted, specialist therapists evaluate each child based on therapy modalities systems for detailed assessment.

We recently established the Sharing Funnel, a platform for youth providers, stakeholders, and young people to exchange experiences. This helps

us make vital changes in communities and respond to what young people identify as the current need. We also run monthly focus groups, where a mic is passed around ensuring every Youth Provision participant can share their thoughts on our work and how we can improve it to better meet their needs and support their futures.

We use surveys with easy-read and picture versions so all young people can share their views. Our approach ensures youth involvement is real and not tokenistic. We provide support so young people feel confident sharing ideas, knowing their input shapes real decisions. This includes breaking up meetings for young with attention issues, using visuals, and helping access. Staff encourage them to contribute, creating safe, inclusive spaces where they feel valued and see the impact of their voices on the services and decisions that affect them.

Monitoring Methods



1) The user's reported satisfaction with services they have received.



2) Sharing Funnel



3) Focus Groups

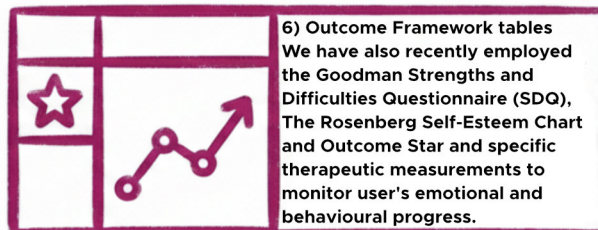


4) The achievement of therapy/intervention goals



5) The directly-measured impact of services on users' skills, attainment and well-being. The methods we employ to measure outcomes in these areas at midpoint and end point intervals are:

- User satisfaction surveys
- Therapy Outcome Measures



6) Outcome Framework tables
We have also recently employed the Goodman Strengths and Difficulties Questionnaire (SDQ), The Rosenberg Self-Esteem Chart and Outcome Star and specific therapeutic measurements to monitor user's emotional and behavioural progress.



TRUSTEES' REPORT FOR THE YEAR ENDED 31 MARCH 2025

The trustees present their annual report and financial statements for the year ended 31 March 2025.

The financial statements have been prepared in accordance with the accounting policies set out in note 1 to the financial statements and comply with the charity's governing document, the Charities Act 2011 and "Accounting and Reporting by Charities: Statement of Recommended Practice applicable to charities preparing their accounts in accordance with the Financial Reporting Standard applicable in the UK and Republic of Ireland (FRS 102)" (effective 1 January 2019).

Objectives and Activities:

We empower children from disadvantaged households and those with atypical development to navigate life changes, milestones, and crises. By easing these transitions, we help them build resilience and acquire the tools needed to cope with challenges. Improving access to out-of-school play, learning and community involvement that is designed and directed by children and their families.

The objectives and activities are further described in the accompanying pages.

Public Benefit:

The trustees have taken due heed of their obligations relating to Public Benefit Duty affecting charities, as well as to their obligations under the Equalities Act 2010. The Trustees are satisfied that they meet their obligations.

Achievements and performance

The charity is dependent on income from voluntary donations and grants. Total incoming resources during the year were £444,017 (2024: £402,211.) Charitable expenditure amounted to £411,480 (2024: £395,140.)

Financial Review

Reserves policy

The charity's policy is to maintain reserves equivalent to at least 3 months of core running costs. This level of reserves is intended to provide financial stability, ensuring that the charity can continue its essential operations in the event of unexpected funding shortfalls or unforeseen expenses. This level of reserves has been maintained throughout the year. The Reserves Policy is reviewed annually to ensure it remains appropriate for the charity's needs and circumstances

Structure, governance and management

The charity is a trust governed by its declaration of trust, dated 25 December 2006, as amended on 23 November 2015.

The trustees who served during the year and up to the date of signature of the financial statements were:

Sara Lew
Yoel Fischer
Joel Frankel

The day to day affairs of the Charity are administered by the Board of Trustees. It is not currently the intention of the Trustees of the Charity to appoint new trustees. Should the situation change in the future, the Trustees will apply suitable recruitment and training procedures. None of the trustees has any beneficial interest in the charity.

The trustee report was approved by the trustees on 1st September 2025, and is signed on its behalf by:

Mrs Sara Lew
Trustee



INDEPENDENT EXAMINER'S REPORT TO THE TRUSTEES OF BLOOMING BLOSSOMS TRUST

I report to the trustees on my examination of the financial statements of Blooming Blossoms Trust (the charity) for the year ended 31 March 2025.

Responsibilities and basis of report

As the trustees of the charity you are responsible for the preparation of the financial statements in accordance with the requirements of the Charities Act 2011 (the 2011 Act).

I report in respect of my examination of the charity's financial statements carried out under section 145 of the 2011 Act. In carrying out my examination I have followed all the applicable Directions given by the Charity Commission under section 145(5)(b) of the 2011 Act.

Independent examiner's statement

Since the charity's gross income exceeded £250,000 your examiner must be a member of a body listed in section 145 of the 2011 Act. I confirm that I am qualified to undertake the examination because I am a member of the Association of Accounting Technicians (AAT), which is one of the listed bodies.

I have completed my examination. I confirm that no matters have come to my attention in connection with the examination giving me cause to believe that in any material respect:

- 1) accounting records were not kept in respect of the charity as required by section 130 of the 2011 Act; or
- 2) the financial statements do not accord with those records; or
- 3) the financial statements do not comply with the applicable requirements concerning the form and content of accounts set out in the Charities (Accounts and Reports) Regulations 2008 other than any requirement that the accounts give a true and fair view which is not a matter considered as part of an independent examination.

I have no concerns and have come across no other matters in connection with the examination to which attention should be drawn in this report in order to enable a proper understanding of the financial statements to be reached.

Menacem Oberlander MAAT

Accounts Completed Ltd
137 Church Parade,
Canvey Island, SS8 9RD

Dated: 1st November 2025

STATEMENT OF FINANCIAL ACTIVITIES FOR THE YEAR ENDED 31 MARCH 2025

Notes:	2025 Unrestricted £	2025 Restricted £	2025 Total £	2024 Total £
Income and endowments from				
Donations and legacies 3	382,700	61,317	444,017	402,211
Expenditure on charitable activities				
Charitable activities 4	351,960	59,520	411,480	395,140
Net Income / (Expenditure)	<u>30,740</u>	<u>1,797</u>	<u>32,537</u>	<u>7,071</u>
Reconciliation of funds				
Total funds bought forward	19,753	33,907	53,660	46,589
Total funds carried forward	<u>50,493</u>	<u>35,704</u>	<u>86,197</u>	<u>53,660</u>

STATEMENT OF FINANCIAL POSITION AS AT 31 MARCH 2025

	Notes	2025 Unrestricted £	2025 Restricted £	2025 Total £	2024 Total £
Fixed Assets					
tangible assets	7	2091	-	2091	2460
Current Assets					
Cash at bank		49,480	33,904	83,384	52,160
Debtors	8	824	1800	1,824	-
		<u>50,304</u>	<u>35,704</u>	<u>86,008</u>	<u>52,160</u>
Current Liabilities					
Creditors within 1 year	9	(1,902)	-	(1,902)	(960)
Net Current Assets					
		<u>48,402</u>	<u>35,704</u>	<u>84,106</u>	<u>51,200</u>
Net Assets					
		<u>50,493</u>	<u>35,704</u>	<u>86,197</u>	<u>53,660</u>
Fund Analysis:					
Restricted funds				35,704	33,907
Unrestricted funds				50,493	19,753
Total funds				<u>86,197</u>	<u>53,660</u>

The financial statements were approved by the trustees on 1st September 2025.

Mrs Sara Lew
Trustee



NOTES TO THE FINANCIAL STATEMENTS FOR THE YEAR ENDED 31 MARCH 2025

1 Accounting policies

Charity information

The charity is an unincorporated charity governed by its trust document.

1.1 Accounting convention

The financial statements have been prepared in accordance with the charity's governing document, the Charities Act 2011, FRS 102 "The Financial Reporting Standard applicable in the UK and Republic of Ireland" ("FRS 102") and the Charities SORP "Accounting and Reporting by Charities: Statement of Recommended Practice applicable to charities preparing their accounts in accordance with the Financial Reporting Standard applicable in the UK and Republic of Ireland (FRS 102)" (effective 1 January 2019). The charity is a Public Benefit Entity as defined by FRS 102. The charity has taken advantage of the provisions in the SORP for charities not to prepare a Statement of Cash Flows.

The financial statements have departed from the Charities (Accounts and Reports) Regulations 2008 only to the extent required to provide a true and fair view. This departure has involved following the Statement of Recommended Practice for charities applying FRS 102 rather than the version of the Statement of Recommended Practice which is referred to in the Regulations but which has since been withdrawn.

The financial statements are prepared in sterling, which is the functional currency of the charity. Monetary amounts in these financial statements are rounded to the nearest £.

The financial statements have been prepared under the historical cost convention, modified to include the revaluation of freehold properties and to include investment properties and certain financial instruments at fair value. The principal accounting policies adopted are set out below.

1.2 Going concern

At the time of approving the financial statements, the trustees have a reasonable expectation that the charity has adequate resources to continue in operational existence for the foreseeable future. Thus the trustees continue to adopt the going concern basis of accounting in preparing the financial statements.

1.3 Charitable funds

Unrestricted funds are available for use at the discretion of the trustees in furtherance of their charitable objectives. Restricted funds are subject to specific conditions by donors as to how they may be used. The purposes and uses of the restricted funds are set out in the notes to the financial statements. Endowment funds are subject to specific conditions by donors that the capital must be maintained by the charity.

1.4 Income

Income is recognised when the charity is legally entitled to it after any performance conditions have been met, the amounts can be measured reliably, and it is probable that income will be received. Cash donations are recognised on receipt. Other donations are recognised once the charity has been notified of the donation, unless performance conditions require deferral of the amount. Income tax recoverable in relation to donations received under Gift Aid or deeds of covenant is recognised at the time of the donation. Legacies are recognised on receipt or otherwise if the charity has been notified of an impending distribution, the amount is known, and receipt is expected. If the amount is not known, the legacy is treated as a contingent asset.



NOTES TO THE FINANCIAL STATEMENTS (CONT) FOR THE YEAR ENDED 31 MARCH 2025

1.5 Expenditure

Expenditure is recognised once there is a legal or constructive obligation to transfer economic benefit to a third party, it is probable that a transfer of economic benefits will be required in settlement, and the amount of the obligation can be measured reliably. Expenditure is classified by activity. The costs of each activity are made up of the total of direct costs and shared costs, including support costs involved in undertaking each activity. Direct costs attributable to a single activity are allocated directly to that activity. Shared costs which contribute to more than one activity and support costs which are not attributable to a single activity are apportioned between those activities on a basis consistent with the use of resources. Central staff costs are allocated on the basis of time spent, and depreciation charges are allocated on the portion of the asset's use.

1.6 Tangible fixed assets

Tangible fixed assets are initially measured at cost and subsequently measured at cost or valuation, net of depreciation and any impairment losses. Depreciation is recognised so as to write off the cost or valuation of assets less their residual values over their useful lives on the following bases:

Plant and equipment - 40% RBM

Fixtures and fittings - 15% RBM

The gain or loss arising on the disposal of an asset is determined as the difference between the sale proceeds and the carrying value of the asset, and is recognised in the statement of financial activities.

Investment property

Investment property, which is property held to earn rentals and/or for capital appreciation, is initially recognised at cost, which includes the purchase cost and any directly attributable expenditure. Subsequently it is measured at fair value at the reporting end date. The surplus or deficit on revaluation is recognised in profit or loss.

Impairment of fixed assets

At each reporting end date, the charity reviews the carrying amounts of its tangible assets to determine whether there is any indication that those assets have suffered an impairment loss. If any such indication exists, the recoverable amount of the asset is estimated in order to determine the extent of the impairment loss (if any).

Cash and equivalents

Cash and cash equivalents include cash in hand, deposits held at call with banks, other short-term liquid investments with original maturities of three months or less, and bank overdrafts. Bank overdrafts are shown within borrowings in current liabilities.

Basic financial assets

Basic financial assets, which include debtors and cash and bank balances, are initially measured at transaction price including transaction costs and are subsequently carried at amortised cost using the effective interest method unless the arrangement constitutes a financing transaction, where the transaction is measured at the present value of the future receipts discounted at a market rate of interest. Financial assets classified as receivable within one year are not amortised.



NOTES TO THE FINANCIAL STATEMENTS (CONT) FOR THE YEAR ENDED 31 MARCH 2025

Basic financial liabilities

Basic financial liabilities, including creditors and bank loans are initially recognised at transaction price unless the arrangement constitutes a financing transaction, where the debt instrument is measured at the present value of the future payments discounted at a market rate of interest. Financial liabilities classified as payable within one year are not amortised. Debt instruments are subsequently carried at amortised cost, using the effective interest rate method. Trade creditors are obligations to pay for goods or services that have been acquired in the ordinary course of operations from suppliers. Amounts payable are classified as current liabilities if payment is due within one year or less. If not, they are presented as non-current liabilities. Trade creditors are recognised initially at transaction price and subsequently measured at amortised cost using the effective interest method.

Financial liabilities are derecognised when the charity's contractual obligations expire, are discharged or are cancelled.

Employee benefits

The cost of any unused holiday entitlement is recognised in the period in which the employee's services are received. Termination benefits are recognised immediately as an expense when the charity is demonstrably committed to terminate the employment of an employee or to provide termination benefits.

2 Critical accounting estimates and judgements

In the application of the charity's accounting policies, the trustees are required to make judgements, estimates and assumptions about the carrying amount of assets and liabilities that are not readily apparent from other sources. The estimates and associated assumptions are based on historical experience and other factors that are considered to be relevant. Actual results may differ from these estimates. The estimates and underlying assumptions are reviewed on an ongoing basis. Revisions to accounting estimates are recognised in the period in which the estimate is revised where the revision affects only that period, or in the period of the revision and future periods where the revision affects both current and future periods. Judgements made by the directors in the application of these accounting policies that have significant effect on the financial statements and estimates with a significant risk of material adjustment in the next year are as follows.

Property valuation

The valuation of the charity's investment property is subject to a degree of uncertainty, as the value depends on various factors including the nature of the property, its location and expected future net rental values, market yields and comparable market transactions, and is made on the basis of assumptions which may not prove to be accurate.

NOTES TO THE FINANCIAL STATEMENTS (CONT)

FOR THE YEAR ENDED 31 MARCH 2025

3 Donations and legacies

	2025 Unrestricted £	2025 Restricted £	2025 Total £	2024 Total £
Donation	229,773	-	229,773	275,883
Grant	152,927	61,317	214,244	126,328
	<u>382,700</u>	<u>61,317</u>	<u>444,017</u>	<u>402,211</u>

	2025 Unrestricted £	2025 Restricted £	2025 Total £	2024 Total £
4 Expenditure on Charitable activities				
Charitable activities	303,340	59,520	362,860	362,065
Depreciation	369		369	430
Salaries	39,503	-	39,503	20,729
(5) share of support costs	7,424		7,424	5,852
(6) share of governance cost	1,324		1,324	6,064
	<u>351,960</u>	<u>59,520</u>	<u>411,480</u>	<u>395,140</u>

5 Support costs				
Administrative Expenses	6,794	-	6,794	5,160
Insurance	630	-	630	692
	<u>7,424</u>	<u>-</u>	<u>7,424</u>	<u>5,852</u>

6 Governance Costs				
Accountancy	1,310	-	1,310	960
legal and professional fee				4,356
Bank charges	14	-	14	748
	<u>1,324</u>	<u>-</u>	<u>1,324</u>	<u>6,064</u>

7 Tangible Fixed Assets

	Fixtures and Fittings £
Cost	
at 1 April 2024 and at 31 March 2025	<u>5,100</u>
Depreciation	
at 1 April 2024	2,640
Charge for the year	369
At 31 March 2025	<u>3,009</u>
Net Book Value	
At 31 March 2025	<u>2,091</u>
At 31 March 2024	<u>2,460</u>



NOTES TO THE FINANCIAL STATEMENTS (CONT) FOR THE YEAR ENDED 31 MARCH 2025

	2025 Total £	2024 Total £
8 Debtors		
Accrued Income	1,800	-
Other debtors	824	-
	<u>2,624</u>	<u>-</u>
9 Creditors		
Accruals: Accounting fees	890	960
Other accruals	52	-
Other creditors	960	-
	<u>1,902</u>	<u>960</u>

10 Trustees

None of the trustees received any remuneration, benefits or expenses paid during the year.

11 Employees

The average number of employees was 6 (2024: 6).

12 Taxation

The charity is exempt from tax on income and gains falling within section 505 of the Taxes Act 1988 or section 252 of the Taxation of Chargeable Gains Act 1992 to the extent that these are applied to its charitable objects.

13 Related party transactions

Relatives of the trustees benefited from charitable services on the same terms as general recipients.

There are no other disclosable related party transactions to report.

*"Shed the heaviness,
step lighter,
live brighter."*

— INSPIRED BY SHREK

SHREK THE SHEEP
**FROM FLEECE
FREEDOM**
to

BLOOMING BLOSSOMS TRUST

England & Wales - Charity number 1119198

Accounts

A Tapestry of Diversity

Accounts for Year Ending
31st March 2024




Blooming
BlossomsTrust



A Floral Kaleidoscope

A tapestry of hope, opportunity and growth.

Just as different species of plants, fruits, and flowers thrive in unique climates and environments, Blooming Blossoms recognises that young people require tailored support systems to flourish. We use a strengths based approach built on the innate abilities each child possesses, allowing them develop at their own pace in their own unique way.

Blooming Blossoms Trust knows this and so do you. This year you enabled us to support 160 children in tailor made environment, letting them bloom more beautiful than anyone would ever think.

We interweave environmental development and youth social action in all our activities, committed to contributing to a safer and healthier environment.

Together, we create an environment where young people can flourish and become the best versions of themselves, despite their disabilities. Together, the floral kaleidoscope forms a beautiful tapestry of diversity, one that will benefit society for years to come.

Our Objectives:

1. Help SEN children's confidence, resilience, sense of agency and self-protection.
2. Help SEN children attain academic success through supplementing learning with various conventional and innovative therapies.
3. Give SEN children a safe space to have fun, meet with friends, and explore talents and skills.
4. Reduce stigma and social isolation for learning disabled children and offer various opportunities for integration socially during out of school hours.
5. Support siblings of SEN children by giving them special time too so that they don't feel deprived.
6. Support SEN children and their families during the Cost of Living crisis, by stepping with food parcels and clothing distributions.

Everybody is a genius. But if you judge a fish by its ability to climb a tree, it will live its whole life believing that it is stupid.

-Albert Einstein

Our Vision

SEN children in mainstream schools should belong, feel safe, understand, and be understood.

Our Values

- Believe:** We believe that all children can.
- Love:** Treat every child with love, regardless of background or abilities.
- Ownership:** We take ownership of our mistakes as well as achievements.
- Sensitive:** We are sensitive to children's individual needs.
- Success:** We celebrate every success no matter.
- Optimistic:** We raise the bar for staff and users.
- Motivated:** We are motivated and passionate to help SEN succeed.
- Safe:** Our core goal is to be safe space where SEN children can just be.

Message of the Chair

Nature's a vibrant palette. And so are children.

Just as different species of plants, fruits, and flowers thrive in unique climates and environments, Blooming Blossoms recognises that young people require tailored support systems to flourish. Especially in today's trying environment, with Cost of Living crisis going stronger than ever. Our commitment to environmental stewardship is interwoven with our efforts to empower marginalized youth, using means such as nature, gardening, and environmental social action activities as catalysts for positive change.

We firmly believe in the inherent worth and capabilities of every individual and embrace the rich tapestry of diversity that makes each person unique. Our vision centres on creating a safe and inclusive space where young people, regardless of their backgrounds or abilities, are given equal opportunities to grow and thrive. By harnessing their differences and strengths, we foster an environment that encourages self-discovery, self-expression, and personal growth.

Some plants need extra care. We are here to provide that care.

Our work is not about children's diagnosis or problems but how we can build on their strengths – however unusual that strength. The more unique the colour, the more magnificent our tapestry will be.

We prioritize marginalized young people who may face additional challenges due to learning disabilities and societal barriers. By providing them with a platform to participate actively and contribute meaningfully, we aim to uplift their voices and empower them to overcome obstacles.

Together we create a brighter future, one stitch at a time.

Through nature-based activities and hands-on experiences, we help instil a sense of belonging, purpose, and agency in their lives. Together, we create an environment where they can flourish and become the best versions of themselves. Together, the floral kaleidoscope forms a beautiful tapestry of diversity, one that will benefit society for years to come.

Our work is grounded in the views of people with lived experience, including families and children with additional needs or disabilities. We are a learning organization that draws from national research, robust monitoring and evaluation and the involvement of our beneficiaries to develop and provide services.

Whilst we celebrate the great impact we've had on our families, we know that we face an equally challenging year ahead. We must be ready to respond again, but with the strength of our fantastic supporters behind us, we know we can meet whatever the next year brings. Whatever life may bring, our tapestry's close knit. Together we will make it to a cleaner, greener and more successful future.



A huge **THANK YOU** to all our supporters for getting us through one of the most uncertain and challenging years in the charity's history. You have made all of this possible. Stich by stich, thread by thread we're creating a sustainable, beautiful future.

Thank you!

Didymus
Bernard Sunley Foundation
Felicity Wilde Charitable Trust
DS Smith Charitable Foundation
Grocers Company
Tottenham Grammar School
Foundation
Hackney Community
ALA Green Charitable Trust
Travers Smith Foundation
Youth Music
Jewish Child's Day
Stone King Foundation
Hospital Saturday Fund
Aviva
National Lottery
Banham Foundation
Nineveh Charitable Trust
Helianthus Charitable Trust
Invesco Cares Foundation
Aubrey Orchard Lisle Charitable Trust
Reuben Foundation
Souter Charitable Trust
Invesco Cares Foundation
Sir James Roll Charitable Trust
Jean & Leslie Connor Charitable Trust
Crispa Charitable Trust
Tula Trust
The Grace Trust

Message From Young Ambassador

I am going to be loud and proud of my ADHD. This is my personal journey with Blooming Blossoms, and how it helped me find my place in the tapestry of diversity.

Life was hard. I was being forced to fit in a round space, despite being a square peg. But Blossoms changed that. They celebrated my individual strengths, showing me how my extra energy can empower those around me. They trained me to be a social ambassador and I blossomed in my new role, leading more young people like me to make a positive impact for those around us.

We cut hedges, mowed lawns of elderly people, cleaned local parks and ponds and even organised a recycling fair for local youth. Joining Blooming Blossoms exposed me to the wonders of nature and different people. As I nurtured and cared for different plant species and planted flowers for elderly people, I realized that just like these plants, I, too, had the potential to grow and flourish, despite my challenges. It was a revelation, understanding that just like these plants, I, too, could flourish and thrive in my unique way.

What truly made the difference, though, was the sense of community and inclusivity I found within Blooming Blossoms. Everyone there is committed to celebrating diversity, and that meant I am valued for who I am, regardless of my ADHD.

My journey with Blooming Blossoms has not only transformed me into a more confident and engaged young person but has also shown me how embracing diversity enriches our collective tapestry. It's empowering to see how Blooming Blossoms enables marginalised youth like me to flourish and become valuable contributors, weaving our unique threads into the vibrant fabric of a diverse and inclusive society.

The brighter the thread, the more unique the colour, the more exquisite the tapestry. Stich by stich my friends and I are making the world a brighter, nicer place.

Projects



Literacy Literally

Serves 53 children weekly

For some children the instructions in their math text books feels like Russian; others struggle to demystify social cues and gestures and struggle to communicate basic ideas. Literally literacy operates bi-weekly during after school hours and employs latest researched methods to support children to reach peer level literacy targets and to communicate effectively, so that they can understand and feel understood.

The Feeling, Talking, Walking Sensory Garden

Serves 68 children weekly

You'll find Abe role playing mum, baking an earthcake at the mud kitchen, sprinkling pebbles for sprinkles. Rachel is fingering the moist pine leaves, Leeba is watering the tomato plant and Michelle is measuring the raised boxes to calculate how much space to allot for growing pansies. Rechy is just running, enjoying the ample space to release her pent up energy. The sensory garden is abuzz with children in their elements, learning, connecting with nature with peers and themselves.

Sensory Castle

Serves 40 children weekly

A child with SPD - Sensory Processing Disorder feels like a foreigner in a far-flung country. Every day textures, sounds and tastes can overload them and make them feel like they are jumping out of their own skin. The sound of pencil scratching on paper can feel like exploding cannonballs and the taste and texture of bread can feel like steel wool or metal on a filling. These experiences impact the way they learn, live and socialize. Amidst all this sensory stress, children with SPD and sensory integration difficulties can find refuge and healing in a special kingdom, equipped with trapezium swings, lighting effects, soft padding floors and walls. The Sensory room is a space designed to help children learn to regulate their brain's negative reactions to external stimuli by developing coping skills for when they experience sensory over and under load. This room is also utilized by our Occupational Therapist and play therapist who delivers group and 1-1 OT therapy which builds development, life and academic foundation skills.



Paddle Pros

Serves 32 children and young people weekly.

Our Paddle Pros project is a specialised outdoor program offering vital support to 25 young people facing the challenges of winter blues, particularly Seasonal Affective Disorder (SAD). It's more than just kayaking and canoeing; it's about creating a supportive, enriching environment during the winter months. This initiative is structured around harnessing the therapeutic and recreational benefits of the kayaking and canoeing sport, with the overarching goal of enhancing the physical and mental well-being of our participants during the winter months.

The Paddle Pros project is so much fun! I've learned to be confident in the water, and I've made friends who love kayaking just like me. I can't wait to come back every week!

- Zoe age 8

Spare a Pair

Serves 500 children annually

Spare a Pair aims to address financial hardship and fill an essential human need. The project distributes 500 pairs of new socks, undergarments, and gently used coats to disadvantaged children struggling socially and academically due to lack of respectable clothing, caused by the current Cost of Living crisis. We recognize that wearing decent garments can be an empowering, transformative experience, giving the wearer the self-esteem and confidence necessary to succeed at school and the way you see yourself. When you feel and look your best, you exude confidence and ability.

Be Scene Be Heard

Serves 70 children annually

Be Scene - Be Heard addresses challenges faced by individuals with Autism, to whom the world can feel like a perplexing maze of events, people, places, sounds, and sights. By dismantling barriers, and talking to them in a language that speaks to them, our project opens new musical vistas and expands horizons. Participants engage in hands-on music activities, exploring various instruments and musical techniques while listening to diverse genres. They collaborate on quarterly group projects involving composition and community performances, fostering creativity and self-expression. Our performances are a departure from traditional staging; our singers and musicians immerse themselves among the audience, erasing the boundaries between performers and spectators. Audiences are able to experience music through all their senses—seeing, hearing, smelling, touching, and even tasting—as the musical journey unfolds around them. It's a truly transformational journey that boost their self-esteem and confidence and makes the world an easier, less perplexing place to live in.

Spare a Pair made me feel warm and cozy, not just because of the clothes but because someone cares about us. It's like getting a big hug from the program, and it makes me smile.

- Emma age 13

Thank you everyone from Blossoms. I love the new purple coat you gave me. It's so cozy and warm. And how did you know that purple is my favourite colour?

- Lizzy age 6



Blooming Blossoms Weekly Activities

Sunday	Monday	Tuesday	Wednesday	Thursday
Paddle Pros	Literacy Literally	The Feeling Walking Talking Garden	Be Scene Be Heard	Sensory Castle



Impact and Evaluation

Certificates of achievement are awarded to children who have reached a personal milestone. This can be learning to button their shirt, maintaining eye contact for longer periods or looking out for verbal cues. Their achievement has a direct impact on the daily life for both themselves and their families.

All children referred to our Centre undergo an initial intake assessment covering core academic skills, social awareness, emotional mental health intake and executive functioning ability. Our evaluation team also consults with child's teachers and parents to glean more information. Once areas to be worked on is signposted, specialist therapists evaluate each child based on therapy modalities systems for detailed assessment.

Monitoring methods:

- 1) The user's reported satisfaction with services they have received,
- 2) The achievement of therapy /intervention goals,
- 3) The directly-measured impact of services on users' skills, attainment and well-being.

The methods we employ to measure outcomes in these areas at midpoint and end point intervals are:

- 1) User satisfaction surveys
- 2) Therapy Outcome Measures
- 3) Outcome Framework tables

We have also recently employed the Goodman Strengths and Difficulties Questionnaire (SDQ), The Rosenberg Self-Esteem Chart and Outcome Star and specific therapeutic measurements to monitor user's emotional and behavioural progress.



REGISTERED CHARITY NUMBER: 1119198

**REPORT OF THE TRUSTEES AND
UNAUDITED FINANCIAL STATEMENTS
FOR THE YEAR ENDED 31 MARCH 2024
FOR
BLOOMING BLOSSOMS TRUST**

BLOOMING BLOSSOMS TRUST

**CONTENTS OF THE FINANCIAL STATEMENTS
FOR THE YEAR ENDED 31 MARCH 2024**

	Page
Report of the Trustees	20 to 21
Independent Examiner's Report	22
Statement of Financial Activities	23
Balance Sheet	24
Cash Flow Statement	25
Notes to the Cash Flow Statement	26
Notes to the Financial Statements	27 to 32
Detailed Statement of Financial Activities.....	32 to 33

Venitt and Greaves
Chartered Accountants
115 Craven Park Road
South Tottenham
London
N15 6BL

**BLOOMING BLOSSOMS TRUST
REPORT OF THE TRUSTEES
FOR THE YEAR ENDED 31 MARCH 2024**

The trustees present their report with the financial statements of the charity for the year ended 31 March 2024. The trustees have adopted the provisions of Accounting and Reporting by Charities: Statement of Recommended Practice applicable to charities preparing their accounts in accordance with the Financial Reporting Standard applicable in the UK and Republic of Ireland (FRS 102) (effective 1 January 2019).

Children with learning disabilities, immigrant children with communication difficulties, gifted children with higher need for stimulation, autistic children who communicate differently and some children, for no clear reason, feel like elephants in their classrooms. They fail academically. They are loners socially, and misunderstood by their families. They squeeze and twist themselves to fit the box, but usually don't succeed. In this process they are hurting and desperate to be understood and valued for who they are.

At Blossoms we use a strengths based approach built on the innate abilities each child possesses, because like every seed needs a unique environment in order to flourish, so does every child need a unique environment to blossom. Blooming Blossoms Trust knows this and so do you. This year you enabled us to support 160 children to forgo their boxes and bloom more beautiful than anyone would ever think.

Our Vision:

a) SEN children in mainstream schools should belong, feel safe, understand, and be understood.

Values:

- a) Believe: We believe that all children can.
- b) Love: Treat every child with love, regardless of background or abilities.
- c) Ownership: We take ownership of our mistakes as well as achievements.
- d) Sensitive: We are sensitive to children's individual needs.
- e) Success: We celebrate every success no matter.
- f) Optimistic: We raise the bar for staff and users.
- g) Motivated: We are motivated and passionate to help SEN children succeed.
- h) Safe: Our core goal is to be a safe space where SEN children can just be.

OBJECTIVES AND ACTIVITIES

Objectives and aims

Blooming Blossoms Trust is constituted by trust deed dated 25 December 2006 and its objects are:

1. Help develop SEN children's confidence, resilience, sense of agency and self protection.
2. Help SEN children attain academic success through supplementing learning with various conventional and innovative therapies.
3. Give SEN children a safe space to have fun, meet with friends and explore talents and skills.
4. Reduce stigma and social isolation for learning disabled children and offer various opportunities for integration socially during out of school hours.
5. Support siblings of SEN children by giving them special time too so that they don't feel deprived.

Significant activities

The financial results of the Company's activities for the period ended 31 March 2024 are fully reflected in the attached financial statements together with the notes thereon. The trustees are satisfied with the results and activities of the company for the year and do not anticipate any significant changes in the forthcoming year.

**BLOOMING BLOSSOMS TRUST
REPORT OF THE TRUSTEES
FOR THE YEAR ENDED 31 MARCH 2024**

OBJECTIVES AND ACTIVITIES

Public benefit

The trustees have referred to the guidance contained in the Charity Commission's general guidance on public benefit when reviewing the aims and objectives and in planning the charity's future activities. The aims of the charitable company for the public benefit are detailed in the Objectives and Activities section of the report.

ACHIEVEMENT AND PERFORMANCE

Charitable activities

During the year under review the charity received donations that amounted to £402,211 (2023: £564,783) and the charity spent £390,770 (2023: £660,646) on charitable donations.

FINANCIAL REVIEW

Reserves policy

The reserves policy is to ensure that there is a sufficient stream of income to meet the ongoing calls made on the charity including the possibility of providing capital assets for the needs of charitable institutions

FUTURE PLANS

There are no current plans to change the activities or modus operandi in the foreseeable future.

STRUCTURE, GOVERNANCE AND MANAGEMENT

Governing document

The charity is controlled by its governing document, a trust deed and constitutes an unincorporated charity. Recruitment and appointment of new trustees It is not currently the intention of the trustees of the charity to appoint new trustees. Should this situation change in the future, the trustees will select suitable recruitment and training procedures.

Risk management

The trustees have a duty to identify and review the risks to which the charity is exposed and to ensure appropriate controls are in place to provide reasonable assurance against fraud and error.

REFERENCE AND ADMINISTRATIVE DETAILS

Registered Charity number

1119198

Principal address

79 GLADESMORE ROAD
LONDON
N15 6TL

Trustees

Mrs S Lew
J Frankel
Y Fischer

Independent Examiner

Venitt and Greaves
Chartered Accountants
115 Craven Park Road
South Tottenham
London
N15 6BL

Approved by order of the board of trustees on 21 May 2024 and signed on its behalf by:

Mrs S Lew - Trustee

**INDEPENDENT EXAMINER'S REPORT TO THE TRUSTEES OF
BLOOMING BLOSSOMS TRUST**

Independent examiner's report to the trustees of BLOOMING BLOSSOMS TRUST

I report to the charity trustees of the Trust on my examination of the accounts of BLOOMING BLOSSOMS TRUST (the Trust) for the year ended 31 March 2024.

Responsibilities and basis of report

As the charity trustees of the Trust you are responsible for the preparation of the accounts in accordance with the requirements of the Charities Act 2011 ('the Act').

I report in respect of my examination of the Trust's accounts carried out under Section 145 of the Act and in carrying out my examination I have followed all applicable Directions given by the Charity Commission under Section 145(5)(b) of the Act.

Independent examiner's statement

Since your charity's gross income exceeded £250,000 your examiner must be a member of a listed body. I can confirm that I am qualified to undertake the examination because I am a member of the Institute of Chartered Accountants in England and Wales, which is one of the listed bodies.

I have completed my examination. I confirm that no material matters have come to my attention in connection with the examination giving me cause to believe that in any material respect:

1. accounting records were not kept in respect of the Trust as required by Section 130 of the Act; or
2. the accounts do not accord with those records; or
3. the accounts do not comply with the applicable requirements concerning the form and content of accounts set out in the Charities (Accounts and Reports) Regulations 2008 other than any requirement that the accounts give a true and fair view which is not a matter considered as part of an independent examination.

I have no concerns and have come across no other matters in connection with the examination to which attention should be drawn in this report in order to enable a proper understanding of the accounts to be reached.

M A Venitt, A.C.A

Venitt and Greaves
Chartered Accountants
115 Craven Park Road
South Tottenham
London
N15 6BL
21 May 2024

**STATEMENT OF FINANCIAL ACTIVITIES
FOR THE YEAR ENDED 31 MARCH 2024**

	Notes	Unrestricted fund £	Restricted fund £	31.3.24 Total funds £	31.3.23 Total funds £
INCOME AND ENDOWMENTS FROM					
Donations and legacies	2	275,884	126,327	402,211	564,783
Investment income	3	-	-	-	10
Total		<u>275,884</u>	<u>126,327</u>	<u>402,211</u>	<u>564,793</u>
EXPENDITURE ON					
Charitable activities					
Charitable activities	4	259,584	131,186	390,770	660,646
Other		4,370	-	4,370	2,612
Total		<u>263,954</u>	<u>131,186</u>	<u>395,140</u>	<u>663,258</u>
NET INCOME/(EXPENDITURE)		11,930	(4,859)	7,071	(98,465)
RECONCILIATION OF FUNDS					
Total funds brought forward		7,823	38,766	46,589	145,054
TOTAL FUNDS CARRIED FORWARD		<u>19,753</u>	<u>33,907</u>	<u>53,660</u>	<u>46,589</u>

BALANCE SHEET					
31 MARCH 2024					
	Notes	Unrestricted fund £	Restricted fund £	31.3.24 Total funds £	31.3.23 Total funds £
FIXED ASSETS					
Tangible assets	8	2,460	-	2,460	2,890
CURRENT ASSETS					
Cash at bank		18,253	33,907	52,160	44,659
CREDITORS					
Amounts falling due within one year	9	(960)	-	(960)	(960)
NET CURRENT ASSETS		<u>17,293</u>	<u>33,907</u>	<u>51,200</u>	<u>43,699</u>
TOTAL ASSETS LESS CURRENT LIABILITIES		<u>19,753</u>	<u>33,907</u>	<u>53,660</u>	<u>46,589</u>
NET ASSETS		<u>19,753</u>	<u>33,907</u>	<u>53,660</u>	<u>46,589</u>
FUNDS	10				
Unrestricted funds				19,753	7,823
Restricted funds				33,907	38,766
TOTAL FUNDS				<u>53,660</u>	<u>46,589</u>

CASH FLOW STATEMENT			
FOR THE YEAR ENDED 31 MARCH 2024			
	Notes	31.3.24 £	31.3.23 £
Cash flows from operating activities			
Cash generated from operations	i	7,501	(97,005)
Net cash provided by/(used in) operating activities		<u>7,501</u>	<u>(97,005)</u>
Cash flows from investing activities			
Interest received		-	10
Net cash provided by investing activities		<u>-</u>	<u>10</u>
Change in cash and cash equivalents in the reporting period		<u>7,501</u>	<u>(96,995)</u>
Cash and cash equivalents at the beginning of the reporting period		<u>44,659</u>	<u>141,654</u>
Cash and cash equivalents at the end of the reporting period		<u>52,160</u>	<u>44,659</u>

The financial statements were approved by the Board of Trustees and authorised for issue on 21 May 2024 and were signed on its behalf by:

Y Fischer - Trustee

J Frankel - Trustee

S Lew - Trustee

The notes form part of these financial statements

The notes form part of these financial statements

**NOTES TO THE CASH FLOW STATEMENT
FOR THE YEAR ENDED 31 MARCH 2024**

1. RECONCILIATION OF NET INCOME/(EXPENDITURE) TO NET CASH FLOW FROM OPERATING ACTIVITIES			
		31.3.24	31.3.23
		£	£
Net income/(expenditure) for the reporting period (as per the Statement of Financial Activities)		7,071	(98,465)
Adjustments for:			
Depreciation charges		430	510
Interest received		-	(10)
Increase in creditors		-	960
		<u>7,501</u>	<u>(97,005)</u>
Net cash provided by/(used in) operations		<u>7,501</u>	<u>(97,005)</u>

2. ANALYSIS OF CHANGES IN NET FUNDS

	At 1.4.23	Cash flow	At 31.3.24
	£	£	£
Net cash			
Cash at bank	44,659	7,501	52,160
	<u>44,659</u>	<u>7,501</u>	<u>52,160</u>
Total	<u>44,659</u>	<u>7,501</u>	<u>52,160</u>

The notes form part of these financial statements

**NOTES TO THE FINANCIAL STATEMENTS
FOR THE YEAR ENDED 31 MARCH 2024**

1. ACCOUNTING POLICIES

Basis of preparing the financial statements

The financial statements of the charity, which is a public benefit entity under FRS 102, have been prepared in accordance with the Charities SORP (FRS 102) 'Accounting and Reporting by Charities: Statement of Recommended Practice applicable to charities preparing their accounts in accordance with the Financial Reporting Standard applicable in the UK and Republic of Ireland (FRS 102) (effective 1 January 2019)', Financial Reporting Standard 102 'The Financial Reporting Standard applicable in the UK and Republic of Ireland' and the Charities Act 2011. The financial statements have been prepared under the historical cost convention.

Income

All income is recognised in the Statement of Financial Activities once the charity has entitlement to the funds, it is probable that the income will be received and the amount can be measured reliably.

Expenditure

Liabilities are recognised as expenditure as soon as there is a legal or constructive obligation committing the charity to that expenditure, it is probable that a transfer of economic benefits will be required in settlement and the amount of the obligation can be measured reliably. Expenditure is accounted for on an accruals basis and has been classified under headings that aggregate all cost related to the category. Where costs cannot be directly attributed to particular headings they have been allocated to activities on a basis consistent with the use of resources.

Governance costs

Governance costs are associated with the governance arrangements of the charity and relate to the general running of the charity. These costs include audit, legal advice for Trustees and costs associated with meeting constitutional and statutory requirements such as the cost of Trustee meetings and the preparation of the statutory accounts.

Tangible fixed assets

Depreciation is provided at the following annual rates in order to write off each asset over its estimated useful life.

Fixtures and fittings - 15% on reducing balance

Taxation

The charity is exempt from tax on its charitable activities.

Fund accounting

Unrestricted funds can be used in accordance with the charitable objectives at the discretion of the trustees.

Restricted funds can only be used for particular restricted purposes within the objects of the charity. Restrictions arise when specified by the donor or when funds are raised for particular restricted purposes.

Further explanation of the nature and purpose of each fund is included in the notes to the financial statements.

Continued...

**NOTES TO THE FINANCIAL STATEMENTS - continued
FOR THE YEAR ENDED 31 MARCH 2024**

2. DONATIONS AND LEGACIES

	31.3.24	31.3.23
	£	£
Donations	275,883	505,107
Grants	126,328	59,676
	<u>402,211</u>	<u>564,783</u>

Grants received, included in the above, are as follows:

	31.3.24	31.3.23
	£	£
Other grants	126,328	59,676

3. INVESTMENT INCOME

	31.3.24	31.3.23
	£	£
Deposit account interest	-	10
	<u>-</u>	<u>10</u>

4. CHARITABLE ACTIVITIES COSTS

	Direct Costs £	Support costs (see note 5) £	Totals £
Charitable activities	382,794	7,976	390,770

5. SUPPORT COSTS

	Finance £	Other 3 £	Governance costs £	Totals £
Other resources expended	14	-	4,356	4,370
Charitable activities	734	6,282	960	7,976
	<u>748</u>	<u>6,282</u>	<u>5,316</u>	<u>12,346</u>

6. TRUSTEES' REMUNERATION AND BENEFITS

There were no trustees' remuneration or other benefits for the year ended 31 March 2024 nor for the year ended 31 March 2023.

Trustees' expenses

There were no trustees' expenses paid for the year ended 31 March 2024 nor for the year ended 31 March 2023.

**NOTES TO THE FINANCIAL STATEMENTS - continued
FOR THE YEAR ENDED 31 MARCH 2024**

7. COMPARATIVES FOR THE STATEMENT OF FINANCIAL ACTIVITIES

	Unrestricted fund £	Restricted fund £	Total funds £
INCOME AND ENDOWMENTS FROM			
Donations and legacies	505,107	59,676	564,783
Investment income	10	-	10
Total	<u>505,117</u>	<u>59,676</u>	<u>564,793</u>

**EXPENDITURE ON
Charitable activities**

Charitable activities	481,868	178,778	660,646
Other	2,612	-	2,612
Total	<u>484,480</u>	<u>178,778</u>	<u>663,258</u>

NET INCOME/(EXPENDITURE)

	20,637	(119,102)	(98,465)
--	--------	-----------	----------

RECONCILIATION OF FUNDS

Total funds brought forward	(12,814)	157,868	145,054
TOTAL FUNDS CARRIED FORWARD	<u>7,823</u>	<u>38,766</u>	<u>46,589</u>

8. TANGIBLE FIXED ASSETS

		Fixtures and fittings £
COST		
At 1 April 2023 and 31 March 2024		5,100
DEPRECIATION		
At 1 April 2023		2,210
Charge for year		430
At 31 March 2024		2,640
NET BOOK VALUE		
At 31 March 2024		2,460
At 31 March 2023		2,890

This page does not form part of the statutory financial statements.

**NOTES TO THE FINANCIAL STATEMENTS - continued
FOR THE YEAR ENDED 31 MARCH 2024**

9.	CREDITORS: AMOUNTS FALLING DUE WITHIN ONE YEAR			
		31.3.24	31.3.23	
		£	£	
	Other creditors	960	960	
		<u> </u>	<u> </u>	
10.	MOVEMENT IN FUNDS			
		At 1.4.23	At	
		£	31.3.24	
			£	
	Unrestricted funds			
	General fund	7,823	11,930	19,753
	Restricted funds			
	Restricted	38,766	(4,859)	33,907
	TOTAL FUNDS	<u>46,589</u>	<u>7,071</u>	<u>53,660</u>

Net movement in funds, included in the above are as follows:

		Incoming	Resources	Movement
		resources	expended	in funds
		£	£	£
	Unrestricted funds			
	General fund	275,884	(263,954)	11,930
	Restricted funds			
	Restricted	126,327	(131,186)	(4,859)
	TOTAL FUNDS	<u>402,211</u>	<u>(395,140)</u>	<u>7,071</u>

Comparatives for movement in funds

		At 1.4.22	Net	At
		£	movement	31.3.23
			in funds	£
			£	
	Unrestricted funds			
	General fund	(12,814)	20,637	7,823
	Restricted funds			
	Restricted	157,868	(119,102)	38,766
	TOTAL FUNDS	<u>145,054</u>	<u>(98,465)</u>	<u>46,589</u>

Continued...

**NOTES TO THE FINANCIAL STATEMENTS - continued
FOR THE YEAR ENDED 31 MARCH 2024**

10. MOVEMENT IN FUNDS - continued

Comparative net movement in funds, included in the above are as follows:

		Incoming	Resources	Movement
		resources	expended	in funds
		£	£	£
	Unrestricted funds			
	General fund	505,117	(484,480)	20,637
	Restricted funds			
	Restricted	59,676	(178,778)	(119,102)
	TOTAL FUNDS	<u>564,793</u>	<u>(663,258)</u>	<u>(98,465)</u>

A current year 12 months and prior year 12 months combined position is as follows:

		At 1.4.22	Net	At
		£	movement	31.3.24
			in funds	£
			£	
	Unrestricted funds			
	General fund	(12,814)	32,567	19,753
	Restricted funds			
	Restricted	157,868	(123,961)	33,907
	TOTAL FUNDS	<u>145,054</u>	<u>(91,394)</u>	<u>53,660</u>

A current year 12 months and prior year 12 months combined net movement in funds, included in the above are as follows:

		Incoming	Resources	Movement
		resources	expended	in funds
		£	£	£
	Unrestricted funds			
	General fund	781,001	(748,434)	32,567
	Restricted funds			
	Restricted	186,003	(309,964)	(123,961)
	TOTAL FUNDS	<u>967,004</u>	<u>(1,058,398)</u>	<u>(91,394)</u>

11. RELATED PARTY DISCLOSURES

There were no related party transactions for the year ended 31 March 2024.

Continued...

**DETAILED STATEMENT OF FINANCIAL ACTIVITIES
FOR THE YEAR ENDED 31 MARCH 2024**

	31.3.24	31.3.23
	£	£
INCOME AND ENDOWMENTS		
Donations and legacies		
Donations	275,883	505,107
Grants	126,328	59,676
	<u>402,211</u>	<u>564,783</u>
Investment income		
Deposit account interest	-	10
	<u>402,211</u>	<u>564,793</u>
Total incoming resources		
	<u>402,211</u>	<u>564,793</u>
EXPENDITURE		
Charitable activities		
Family crisis support	77,649	126,005
Educational support	18,404	8,104
Happy Haven learning assessments	-	76,600
LSA and therapists	39,550	78,778
Recreational and seasonal activities	1,168	12,599
Transport	6,461	5,207
Mental health support	41,747	88,816
Parent support project	11,870	33,500
Refreshments	-	14,904
School supplies and uniform grants	7,743	47,136
Fund raising	2,137	5,000
IT expenses	5,487	3,971
Learning assessments	48,717	138,182
Volunteer events	6,996	2,697
Wages	20,729	8,866
Be Scene, Be Heard	19,500	-
Venue hire	2,500	-
Feel Blue? Go Green!	22,133	-
Spare a Pair	50,003	-
	<u>382,794</u>	<u>650,365</u>
Support costs		
Finance		
Bank charges	748	32
Other 3		
Insurance	692	527
Light and heat	1,876	243
Telephone	-	1,649
Postage and stationery	3,284	6,338
Depreciation of tangible fixed assets	430	510
	<u>6,282</u>	<u>9,267</u>

**DETAILED STATEMENT OF FINANCIAL ACTIVITIES
FOR THE YEAR ENDED 31 MARCH 2024**

	31.3.24	31.3.23
	£	£
Other 3		
Governance costs		
Legal and professional fees	4,356	2,634
Accountancy and legal fees	960	960
	<u>5,316</u>	<u>3,594</u>
Total resources expended	<u>395,140</u>	<u>663,258</u>
Net income/(expenditure)	<u>7,071</u>	<u>(98,465)</u>

This page does not form part of the statutory financial statements.

BLOOMING BLOSSOMS TRUST

England & Wales - Charity number 1119198

Accounts

A Tapestry of Diversity

Accounts for Year Ending
31st March 2023




Blooming
Blossoms Trust



A Floral Kaleidoscope

A tapestry of hope, opportunity and growth.

Just as different species of plants, fruits, and flowers thrive in unique climates and environments, Blooming Blossoms recognises that young people require tailored support systems to flourish. We use a strengths based approach built on the innate abilities each child possesses, allowing them develop at their own pace in their own unique way.

Blooming Blossoms Trust knows this and so do you. This year you enabled us to support 160 children in tailor made environment, letting them bloom more beautiful than anyone would ever think.

We interweave environmental development and youth social action in all our activities, committed to contributing to a safer and healthier environment.

Together, we create an environment where young people can flourish and become the best versions of themselves, despite their disabilities. Together, the floral kaleidoscope forms a beautiful tapestry of diversity, one that will benefit society for years to come.

Our Objectives:

1. Help SEN children's confidence, resilience, sense of agency and self-protection.
2. Help SEN children attain academic success through supplementing learning with various conventional and innovative therapies.
3. Give SEN children a safe space to have fun, meet with friends, and explore talents and skills.
4. Reduce stigma and social isolation for learning disabled children and offer various opportunities for integration socially during out of school hours.
5. Support siblings of SEN children by giving them special time too so that they don't feel deprived.
6. Support SEN children and their families during the Cost of Living crisis, by stepping with food parcels and clothing distributions.

Everybody is a genius. But if you judge a fish by its ability to climb a tree, it will live its whole life believing that it is stupid.

-Albert Einstein

Our Vision

SEN children in mainstream schools should belong, feel safe, understand, and be understood.

Our Values

- Believe:** We believe that all children can.
- Love:** Treat every child with love, regardless of background or abilities.
- Ownership:** We take ownership of our mistakes as well as achievements.
- Sensitive:** We are sensitive to children's individual needs.
- Success:** We celebrate every success no matter.
- Optimistic:** We raise the bar for staff and users.
- Motivated:** We are motivated and passionate to help SEN succeed.
- Safe:** Our core goal is to be safe space where SEN children can just be.

Message of the Chair

Nature's a vibrant palette. And so are children.

Just as different species of plants, fruits, and flowers thrive in unique climates and environments, Blooming Blossoms recognises that young people require tailored support systems to flourish. Especially in today's trying environment, with Cost of Living crisis going stronger than ever. Our commitment to environmental stewardship is interwoven with our efforts to empower marginalized youth, using means such as nature, gardening, and environmental social action activities as catalysts for positive change.

We firmly believe in the inherent worth and capabilities of every individual and embrace the rich tapestry of diversity that makes each person unique. Our vision centres on creating a safe and inclusive space where young people, regardless of their backgrounds or abilities, are given equal opportunities to grow and thrive. By harnessing their differences and strengths, we foster an environment that encourages self-discovery, self-expression, and personal growth.

Some plants need extra care. We are here to provide that care.

Our work is not about children's diagnosis or problems but how we can build on their strengths – however unusual that strength. The more unique the colour, the more magnificent our tapestry will be.

We prioritize marginalized young people who may face additional challenges due to learning disabilities and societal barriers. By providing them with a platform to participate actively and contribute meaningfully, we aim to uplift their voices and empower them to overcome obstacles.

Together we create a brighter future, one stitch at a time.

Through nature-based activities and hands-on experiences, we help instil a sense of belonging, purpose, and agency in their lives. Together, we create an environment where they can flourish and become the best versions of themselves. Together, the floral kaleidoscope forms a beautiful tapestry of diversity, one that will benefit society for years to come.

Our work is grounded in the views of people with lived experience, including families and children with additional needs or disabilities. We are a learning organization that draws from national research, robust monitoring and evaluation and the involvement of our beneficiaries to develop and provide services.

Whilst we celebrate the great impact we've had on our families, we know that we face an equally challenging year ahead. We must be ready to respond again, but with the strength of our fantastic supporters behind us, we know we can meet whatever the next year brings. Whatever life may bring, our tapestry's close knit. Together we will make it to a cleaner, greener and more successful future.



A huge **THANK YOU** to all our supporters for getting us through one of the most uncertain and challenging years in the charity's history. You have made all of this possible. Stich by stich, thread by thread we're creating a sustainable, beautiful future.

Thank you!

Card Factory Foundation
Cherry Family Foundation
AbbVie UK Foundation
Gisela Graham Foundation
Anton Jurgens Charitable Foundation
Hedley Foundation
Mrs Smith and Mount Trust
John Thaw Foundation
Voice4Change
Screwfix Foundation
Hays Travel Foundation
Parry Family Charitable Trust
Doreen Hood Charity
Together For London
WO Street Charitable Foundation
Edward Gostling Foundation
Cash For Kids
Julia and Hans Rausing Trust
Sheldon Holiday Fund
Bentley Foundation
Voice4Change
Hobson Foundation

Message From Young Ambassador

I am going to be loud and proud of my ADHD. This is my personal journey with Blooming Blossoms, and how it helped me find my place in the tapestry of diversity.

Life was hard. I was being forced to fit in a round space, despite being a square peg. But Blossoms changed that. They celebrated my individual strengths, showing me how my extra energy can empower those around me. They trained me to be a social ambassador and I blossomed in my new role, leading more young people like me to make a positive impact for those around us.

We cut hedges, mowed lawns of elderly people, cleaned local parks and ponds and even organised a recycling fair for local youth. Joining Blooming Blossoms exposed me to the wonders of nature and different people. As I nurtured and cared for different plant species and planted flowers for elderly people, I realized that just like these plants, I, too, had the potential to grow and flourish, despite my challenges. It was a revelation, understanding that just like these plants, I, too, could flourish and thrive in my unique way.

What truly made the difference, though, was the sense of community and inclusivity I found within Blooming Blossoms. Everyone there is committed to celebrating diversity, and that meant I am valued for who I am, regardless of my ADHD.

My journey with Blooming Blossoms has not only transformed me into a more confident and engaged young person but has also shown me how embracing diversity enriches our collective tapestry. It's empowering to see how Blooming Blossoms enables marginalised youth like me to flourish and become valuable contributors, weaving our unique threads into the vibrant fabric of a diverse and inclusive society.

The brighter the thread, the more unique the colour, the more exquisite the tapestry. Stich by stich my friends and I are making the world a brighter, nicer place.

Projects



Literacy Literally

Serves 44 children weekly

For some children the instructions in their math text books feels like Russian; others struggle to demystify social cues and gestures and struggle to communicate basic ideas. Literally literacy operates bi-weekly during after school hours and employs latest researched methods to support children to reach peer level literacy targets and to communicate effectively, so that they can understand and feel understood.

The Feeling, Talking, Walking Sensory Garden

Serves 60 children weekly

You'll find Abe role playing mum, baking an earthcake at the mud kitchen, sprinkling pebbles for sprinkles. Rachel is fingering the moist pine leaves, Leeba is watering the tomato plant and Michelle is measuring the raised boxes to calculate how much space to allot for growing pansies. Rechy is just running, enjoying the ample space to release her pent up energy. The sensory garden is abuzz with children in their elements, learning, connecting with nature with peers and themselves.

Sensory Castle

Serves 32 children weekly

A child with SPD - Sensory Processing Disorder feels like a foreigner in a far-flung country. Every day textures, sounds and tastes can overload them and make them feel like they are jumping out of their own skin. The sound of pencil scratching on paper can feel like exploding cannonballs and the taste and texture of bread can feel like steel wool or metal on a filling. These experiences impact the way they learn, live and socialize. Amidst all this sensory stress, children with SPD and sensory integration difficulties can find refuge and healing in a special kingdom, equipped with trapezium swings, lighting effects, soft padding floors and walls. The Sensory room is a space designed to help children learn to regulate their brain's negative reactions to external stimuli by developing coping skills for when they experience sensory over and under load. This room is also utilized by our Occupational Therapist and play therapist who delivers group and 1-1 OT therapy which builds development, life and academic foundation skills.



Paddle Pros

Serves 25 children and young people weekly.

Our Paddle Pros project is a specialised outdoor program offering vital support to 25 young people facing the challenges of winter blues, particularly Seasonal Affective Disorder (SAD). It's more than just kayaking and canoeing; it's about creating a supportive, enriching environment during the winter months. This initiative is structured around harnessing the therapeutic and recreational benefits of the kayaking and canoeing sport, with the overarching goal of enhancing the physical and mental well-being of our participants during the winter months.

The Paddle Pros project is so much fun! I've learned to be confident in the water, and I've made friends who love kayaking just like me. I can't wait to come back every week!

- Zoe age 8

Spare a Pair

Serves 500 children annually

Spare a Pair aims to address financial hardship and fill an essential human need. The project distributes 500 pairs of new socks, undergarments, and gently used coats to disadvantaged children struggling socially and academically due to lack of respectable clothing, caused by the current Cost of Living crisis. We recognize that wearing decent garments can be an empowering, transformative experience, giving the wearer the self-esteem and confidence necessary to succeed at school and the way you see yourself. When you feel and look your best, you exude confidence and ability.

Be Scene Be Heard

Serves 60 children annually

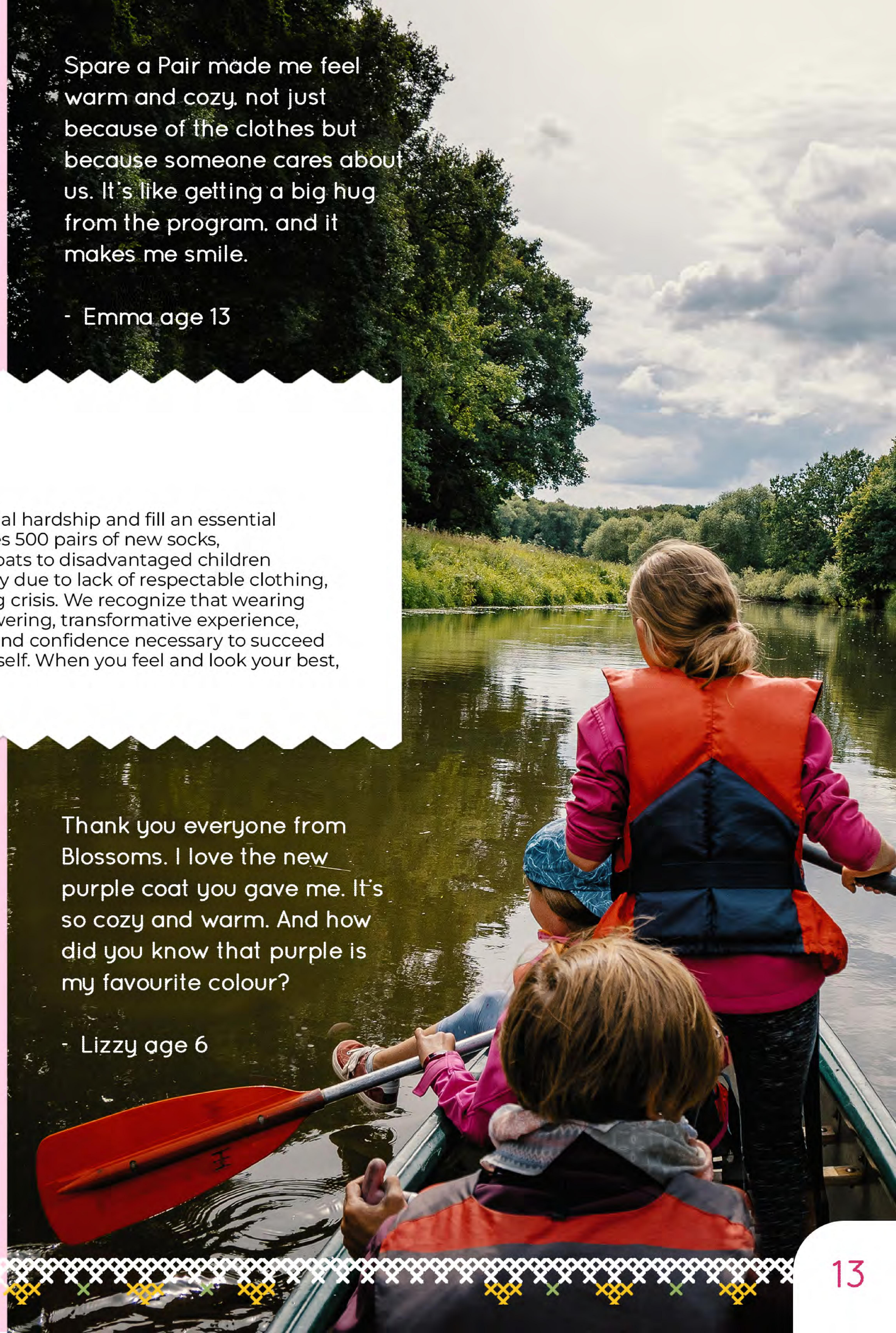
Be Scene - Be Heard addresses challenges faced by individuals with Autism, to whom the world can feel like a perplexing maze of events, people, places, sounds, and sights. By dismantling barriers, and talking to them in a language that speaks to them, our project opens new musical vistas and expands horizons. Participants engage in hands-on music activities, exploring various instruments and musical techniques while listening to diverse genres. They collaborate on quarterly group projects involving composition and community performances, fostering creativity and self-expression. Our performances are a departure from traditional staging; our singers and musicians immerse themselves among the audience, erasing the boundaries between performers and spectators. Audiences are able to experience music through all their senses—seeing, hearing, smelling, touching, and even tasting—as the musical journey unfolds around them. It's a truly transformational journey that boost their self-esteem and confidence and makes the world an easier, less perplexing place to live in.

Spare a Pair made me feel warm and cozy, not just because of the clothes but because someone cares about us. It's like getting a big hug from the program, and it makes me smile.

- Emma age 13

Thank you everyone from Blossoms. I love the new purple coat you gave me. It's so cozy and warm. And how did you know that purple is my favourite colour?

- Lizzy age 6



Blooming Blossoms Weekly Activities

Sunday

Paddle Pros

Monday

Literacy Literally

Tuesday

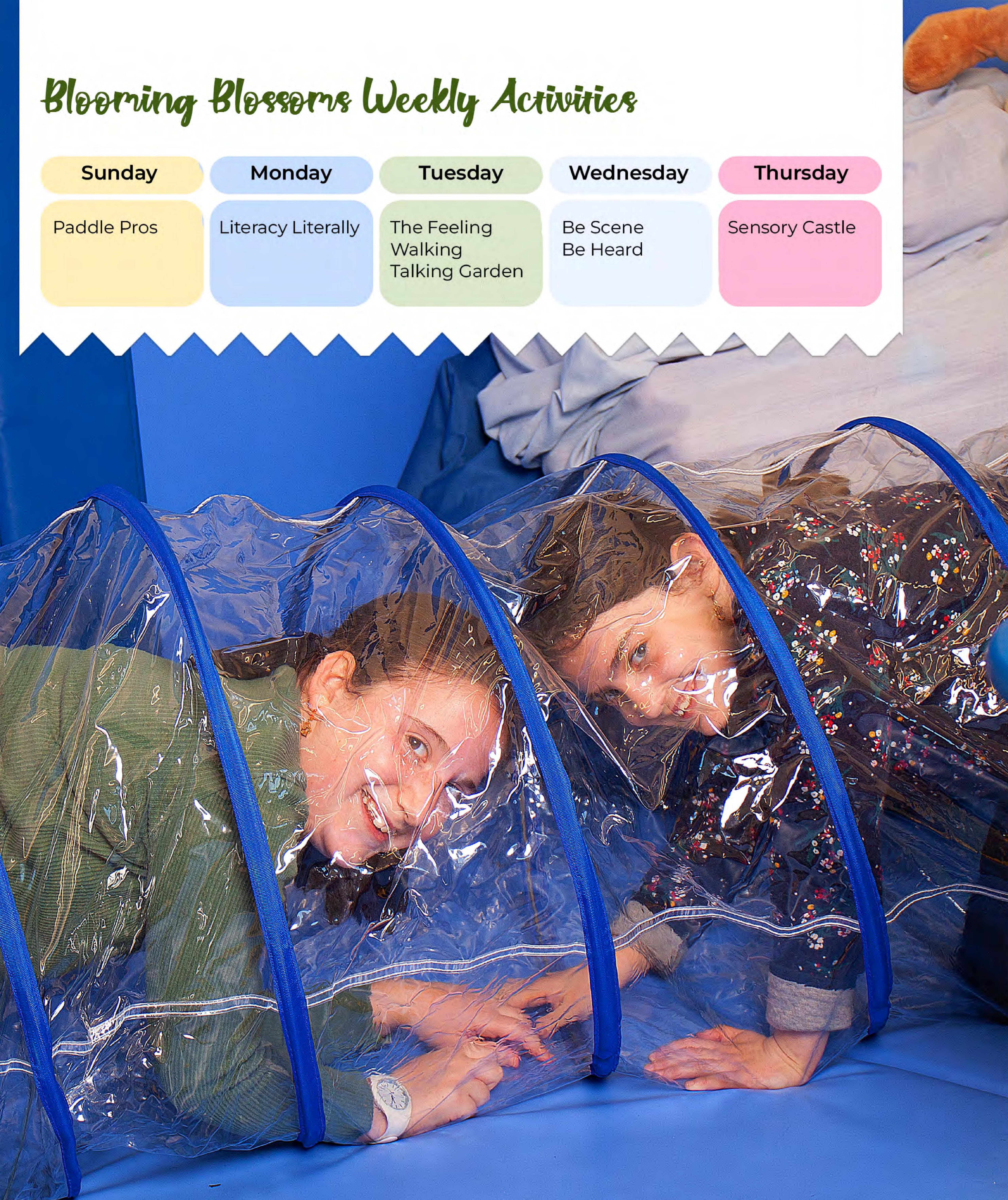
The Feeling
Walking
Talking Garden

Wednesday

Be Scene
Be Heard

Thursday

Sensory Castle



Impact and Evaluation

Certificates of achievement are awarded to children who have reached a personal milestone. This can be learning to button their shirt, maintaining eye contact for longer periods or looking out for verbal cues. Their achievement has a direct impact on the daily life for both themselves and their families.

All children referred to our Centre undergo an initial intake assessment covering core academic skills, social awareness, emotional mental health intake and executive functioning ability. Our evaluation team also consults with child's teachers and parents to glean more information. Once areas to be worked on is signposted, specialist therapists evaluate each child based on therapy modalities systems for detailed assessment.

Monitoring methods:

- 1) The user's reported satisfaction with services they have received,
- 2) The achievement of therapy /intervention goals,
- 3) The directly-measured impact of services on users' skills, attainment and well-being.

The methods we employ to measure outcomes in these areas at midpoint and end point intervals are:

- 1) User satisfaction surveys
- 2) Therapy Outcome Measures
- 3) Outcome Framework tables

We have also recently employed the Goodman Strengths and Difficulties Questionnaire (SDQ), The Rosenberg Self-Esteem Chart and Outcome Star and specific therapeutic measurements to monitor user's emotional and behavioural progress.

Case Study



Anna, a young girl on the Autism Spectrum Disorder (ASD) faced multiple sensory and developmental issues, which were amplified when her family was suddenly evicted from their home, forcing them to relocate to a cramped basement flat. The living conditions in this new environment exacerbated Anna's sensory sensitivities, leading to increased anxiety and overwhelm.

Seeking a supportive environment, her family enrolled her in a local after-school club for children with SEN needs. This club, partly funded and low-cost, initially seemed like a promising option. It offered space for play and social interaction, which Anna sorely needed. However, the lack of structure, noisy yet fun atmosphere made it difficult for Anna to cope.

Anna's OT referred her to Blooming Blossoms' Sensory Castle. The program offered one-on-one sensory integration sessions and free occupational therapy inspired sessions by an OT trainee under the supervision of a professional. The consistency of daily sessions helped her navigate her sensory challenges, promoting emotional regulation and a sense of safety and structure.

She also had the opportunity to explore her passion for numbers and details in the Seasonal Mad Discovery Lab. This unique experience allowed her to channel her interests into the field of engineering, particularly in relation to electronic toys. Not only did this provide Anna with a sense of fulfilment and purpose, but it also introduced her to a potential career path.

During this challenging period, Anna's family was grappling with financial difficulties, further intensified by their eviction. They received clothing from a local clothing bank, but due to Anna's sensory sensitivities, most of the clothing items were unsuitable for her. Thanks to our Spare a Pair donors we issued a pre-paid clothing card, allowing Anna to personally select clothing that matched her specific sensory needs. This not only relieved some of the family's financial burdens but also brought comfort and relief to Anna during a difficult time.

REGISTERED CHARITY NUMBER: 1119198

**REPORT OF THE TRUSTEES AND
UNAUDITED FINANCIAL STATEMENTS
FOR THE YEAR ENDED 31 MARCH 2023
FOR
BLOOMING BLOSSOMS TRUST**

BLOOMING BLOSSOMS TRUST

**CONTENTS OF THE FINANCIAL STATEMENTS
FOR THE YEAR ENDED 31 MARCH 2023**

	Page
Report of the Trustees	20 to 21
Independent Examiner's Report	22
Statement of Financial Activities	23
Balance Sheet	24
Cash Flow Statement	25
Notes to the Cash Flow Statement	26
Notes to the Financial Statements	27 to 32

Venitt and Greaves
Chartered Accountants
115 Craven Park Road
South Tottenham
London
N15 6BL

**BLOOMING BLOSSOMS TRUST
REPORT OF THE TRUSTEES
FOR THE YEAR ENDED 31 MARCH 2023**

Significant activities

The financial results of the Company's activities for the period ended 31 March 2023 are fully reflected in the attached financial statements together with the notes thereon. The trustees are satisfied with the results and activities of the company for the year and do not anticipate any significant changes in the forthcoming year.

OBJECTIVES AND ACTIVITIES

Public benefit

The trustees have referred to the guidance contained in the Charity Commission's general guidance on public benefit when reviewing the aims and objectives and in planning the charity's future activities. The aims of the charitable company for the public benefit are detailed in the Objectives and Activities section of the report.

ACHIEVEMENT AND PERFORMANCE

Charitable activities

During the year under review the charity received donations that amounted to £564,783 (2022: £490,622) and the charity spent £660,646 (2022: £446,248) on charitable donations.

FINANCIAL REVIEW

Reserves policy

The reserves policy is to ensure that there is a sufficient stream of income to meet the ongoing calls made on the charity including the possibility of providing capital assets for the needs of charitable institutions.

FUTURE PLANS

There are no current plans to change the activities or modus operandi in the foreseeable future.

STRUCTURE, GOVERNANCE AND MANAGEMENT

Governing document

The charity is controlled by its governing document, a trust deed and constitutes an unincorporated charity.

Recruitment and appointment of new trustees

It is not currently the intention of the trustees of the charity to appoint new trustees. Should this situation change in the future, the trustees will select suitable recruitment and training procedures.

Risk management

The trustees have a duty to identify and review the risks to which the charity is exposed and to ensure appropriate controls are in place to provide reasonable assurance against fraud and error.

**BLOOMING BLOSSOMS TRUST
REPORT OF THE TRUSTEES
FOR THE YEAR ENDED 31 MARCH 2023**

REFERENCE AND ADMINISTRATIVE DETAILS

Registered Charity number

1119198

Principal address

79 GLADESMORE ROAD
LONDON
N15 6TL

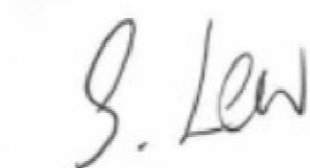
Trustees

Mrs S Lew
J Frankel
Y Fischer

Independent Examiner

Venitt and Greaves
Chartered Accountants
115 Craven Park Road
South Tottenham
London
N15 6BL

Approved by order of the board of trustees on 16 January 2024 and signed on its behalf by:



Mrs S Lew - Trustee

**INDEPENDENT EXAMINER'S REPORT TO THE TRUSTEES OF
BLOOMING BLOSSOMS TRUST**

Independent examiner's report to the trustees of BLOOMING BLOSSOMS TRUST

I report to the charity trustees on my examination of the accounts of BLOOMING BLOSSOMS TRUST (the Trust) for the year ended 31 March 2023.

Responsibilities and basis of report

As the charity trustees of the Trust you are responsible for the preparation of the accounts in accordance with the requirements of the Charities Act 2011 ('the Act').

I report in respect of my examination of the Trust's accounts carried out under Section 145 of the Act and in carrying out my examination I have followed all applicable Directions given by the Charity Commission under Section 145(5)(b) of the Act.

Independent examiner's statement

Since your charity's gross income exceeded £250,000 your examiner must be a member of a listed body. I can confirm that I am qualified to undertake the examination because I am a member of the Institute of Chartered Accountants in England and Wales, which is one of the listed bodies.

I have completed my examination. I confirm that no material matters have come to my attention in connection with the examination giving me cause to believe that in any material respect:

1. accounting records were not kept in respect of the Trust as required by Section 130 of the Act; or
2. the accounts do not accord with those records; or
3. the accounts do not comply with the applicable requirements concerning the form and content of accounts set out in the Charities (Accounts and Reports) Regulations 2008 other than any requirement that the accounts give a true and fair view which is not a matter considered as part of an independent examination.

I have no concerns and have come across no other matters in connection with the examination to which attention should be drawn in this report in order to enable a proper understanding of the accounts to be reached.

M A Venitt, A.C.A
Venitt and Greaves
Chartered Accountants
115 Craven Park Road
South Tottenham
London
N15 6BL
16 January 2024
Page

**STATEMENT OF FINANCIAL ACTIVITIES
FOR THE YEAR ENDED 31 MARCH 2023**

	Notes	Unrestricted fund £	Restricted fund £	31.3.23 Total funds £	31.3.22 Total funds £
INCOME AND ENDOWMENTS FROM					
Donations and legacies	2	505,107	59,676	564,783	490,622
Investment income	3	10	-	10	-
Total		<u>505,117</u>	<u>59,676</u>	<u>564,793</u>	<u>490,622</u>
EXPENDITURE ON					
Charitable activities	4				
Charitable activities		481,868	178,778	660,646	446,248
Other		2,612	-	2,612	-
Total		<u>484,480</u>	<u>178,778</u>	<u>663,258</u>	<u>446,248</u>
NET INCOME/(EXPENDITURE)		20,637	(119,102)	(98,465)	44,374
RECONCILIATION OF FUNDS					
Total funds brought forward		(12,814)	157,868	145,054	100,680
TOTAL FUNDS CARRIED FORWARD		<u>7,823</u>	<u>38,766</u>	<u>46,589</u>	<u>145,054</u>

**BALANCE SHEET
31 MARCH 2023**

	Notes	Unrestricted fund £	Restricted fund £	31.3.23 Total funds £	31.3.22 Total funds £
FIXED ASSETS					
Tangible assets	8	2,890	-	2,890	3,400
CURRENT ASSETS					
Cash at bank		5,893	38,766	44,659	157,868
CREDITORS					
Amounts falling due within one year	9	(960)	-	(960)	(16,214)
NET CURRENT ASSETS		<u>4,933</u>	<u>38,766</u>	<u>43,699</u>	<u>141,654</u>
TOTAL ASSETS LESS CURRENT LIABILITIES		<u>7,823</u>	<u>38,766</u>	<u>46,589</u>	<u>145,054</u>
NET ASSETS		<u><u>7,823</u></u>	<u><u>38,766</u></u>	<u><u>46,589</u></u>	<u><u>145,054</u></u>
FUNDS	11				
Unrestricted funds				7,823	(12,814)
Restricted funds				38,766	157,868
TOTAL FUNDS				<u><u>46,589</u></u>	<u><u>145,054</u></u>

**CASH FLOW STATEMENT
FOR THE YEAR ENDED 31 MARCH 2023**

	Notes	31.3.23 £	31.3.22 £
Cash flows from operating activities			
Cash generated from operations	1	(97,005)	46,074
Net cash (used in)/provided by operating activities		<u>(97,005)</u>	<u>46,074</u>
Cash flows from investing activities			
Interest received		10	-
Net cash provided by investing activities		<u>10</u>	<u>-</u>
Change in cash and cash equivalents in the reporting period		<u>(96,995)</u>	<u>46,074</u>
Cash and cash equivalents at the beginning of the reporting period	2	<u>141,654</u>	<u>95,580</u>
Cash and cash equivalents at the end of the reporting period	2	<u><u>44,659</u></u>	<u><u>141,654</u></u>

The financial statements were approved by the Board of Trustees and authorised for issue on 16 January 2024 and were signed on its behalf by:

Y Fischer

Y Fischer - Trustee

J Frankel

J Frankel - Trustee

S. Lew

S Lew - Trustee

The notes form part of these financial statements

The notes form part of these financial statements

**NOTES TO THE CASH FLOW STATEMENT
FOR THE YEAR ENDED 31 MARCH 2023**

1. RECONCILIATION OF NET (EXPENDITURE)/INCOME TO NET CASH FLOW FROM OPERATING ACTIVITIES			
	31.3.23	31.3.22	
	£	£	
Net (expenditure)/income for the reporting period (as per the Statement of Financial Activities)	(98,465)	44,374	
Adjustments for:			
Depreciation charges	510	1,700	
Interest received	(10)	-	
Increase in creditors	960	-	
	<u>(97,005)</u>	<u>46,074</u>	
2. ANALYSIS OF CASH AND CASH EQUIVALENTS			
	31.3.23	31.3.22	
	£	£	
Notice deposits (less than 3 months)	44,659	157,868	
Overdrafts included in bank loans and overdrafts falling due within one year	-	(16,214)	
	<u>44,659</u>	<u>141,654</u>	

3. ANALYSIS OF CHANGES IN NET FUNDS			
	At 1.4.22	Cash flow	At 31.3.23
	£	£	£
Net cash			
Cash at bank	157,868	(113,209)	44,659
Bank overdraft	(16,214)	16,214	-
	<u>141,654</u>	<u>(96,995)</u>	<u>44,659</u>
Total	<u>141,654</u>	<u>(96,995)</u>	<u>44,659</u>

The notes form part of these financial statements

**NOTES TO THE FINANCIAL STATEMENTS
FOR THE YEAR ENDED 31 MARCH 2023**

1. ACCOUNTING POLICIES

Basis of preparing the financial statements

The financial statements of the charity, which is a public benefit entity under FRS 102, have been prepared in accordance with the Charities SORP (FRS 102) 'Accounting and Reporting by Charities: Statement of Recommended Practice applicable to charities preparing their accounts in accordance with the Financial Reporting Standard applicable in the UK and Republic of Ireland (FRS 102) (effective 1 January 2019)', Financial Reporting Standard 102 'The Financial Reporting Standard applicable in the UK and Republic of Ireland' and the Charities Act 2011. The financial statements have been prepared under the historical cost convention.

Income

All income is recognised in the Statement of Financial Activities once the charity has entitlement to the funds, it is probable that the income will be received and the amount can be measured reliably.

Expenditure

Liabilities are recognised as expenditure as soon as there is a legal or constructive obligation committing the charity to that expenditure, it is probable that a transfer of economic benefits will be required in settlement and the amount of the obligation can be measured reliably. Expenditure is accounted for on an accruals basis and has been classified under headings that aggregate all cost related to the category. Where costs cannot be directly attributed to particular headings they have been allocated to activities on a basis consistent with the use of resources.

Governance costs

Governance costs are associated with the governance arrangements of the charity and relate to the general running of the charity. These costs include audit, legal advice for Trustees and costs associated with meeting constitutional and statutory requirements such as the cost of Trustee meetings and the preparation of the statutory accounts.

Tangible fixed assets

Depreciation is provided at the following annual rates in order to write off each asset over its estimated useful life.

Fixtures and fittings - 15% on reducing balance

Taxation

The charity is exempt from tax on its charitable activities.

Fund accounting

Unrestricted funds can be used in accordance with the charitable objectives at the discretion of the trustees.

Restricted funds can only be used for particular restricted purposes within the objects of the charity. Restrictions arise when specified by the donor or when funds are raised for particular restricted purposes.

Further explanation of the nature and purpose of each fund is included in the notes to the financial statements.

Continued...

**NOTES TO THE FINANCIAL STATEMENTS - continued
FOR THE YEAR ENDED 31 MARCH 2023**

2. DONATIONS AND LEGACIES

	31.3.23	31.3.22
	£	£
Donations	505,107	386,078
Grants	59,676	104,544
	<u>564,783</u>	<u>490,622</u>

Grants received, included in the above, are as follows:

	31.3.23	31.3.22
	£	£
Other grants	<u>59,676</u>	<u>104,544</u>

3. INVESTMENT INCOME

	31.3.23	31.3.22
	£	£
Deposit account interest	<u>10</u>	<u>-</u>

4. CHARITABLE ACTIVITIES COSTS

	Direct Costs £	Support costs (see note 5) £	Totals £
Charitable activities	<u>656,703</u>	<u>3,943</u>	<u>660,646</u>

5. SUPPORT COSTS

	Finance £	Other 3 £	Governance costs £	Totals £
Other resources expended	32	-	2,580	2,612
Charitable activities	<u>-</u>	<u>1,037</u>	<u>2,906</u>	<u>3,943</u>
	<u>32</u>	<u>1,037</u>	<u>5,486</u>	<u>6,555</u>

6. TRUSTEES' REMUNERATION AND BENEFITS

There were no trustees' remuneration or other benefits for the year ended 31 March 2023 nor for the year ended 31 March 2022.

Trustees' expenses

There were no trustees' expenses paid for the year ended 31 March 2023 nor for the year ended 31 March 2022.

Continued...

**NOTES TO THE FINANCIAL STATEMENTS - continued
FOR THE YEAR ENDED 31 MARCH 2023**

7. COMPARATIVES FOR THE STATEMENT OF FINANCIAL ACTIVITIES

	Unrestricted fund £	Restricted fund £	Total funds £
INCOME AND ENDOWMENTS FROM			
Donations and legacies	<u>338,567</u>	<u>152,055</u>	<u>490,622</u>
EXPENDITURE ON			
Charitable activities			
Charitable activities	<u>303,875</u>	<u>142,373</u>	<u>446,248</u>
NET INCOME	34,692	9,682	44,374
RECONCILIATION OF FUNDS			
Total funds brought forward	<u>(47,506)</u>	<u>148,186</u>	<u>100,680</u>
TOTAL FUNDS CARRIED FORWARD	<u>(12,814)</u>	<u>157,868</u>	<u>145,054</u>

8. TANGIBLE FIXED ASSETS

COST	Fixtures and fittings £
At 1 April 2022 and 31 March 2023	<u>5,100</u>
DEPRECIATION	
At 1 April 2022	1,700
Charge for year	<u>510</u>
At 31 March 2023	<u>2,210</u>
NET BOOK VALUE	
At 31 March 2023	<u>2,890</u>
At 31 March 2022	<u>3,400</u>

Continued...

**NOTES TO THE FINANCIAL STATEMENTS - continued
FOR THE YEAR ENDED 31 MARCH 2023**

9. CREDITORS: AMOUNTS FALLING DUE WITHIN ONE YEAR

	31.3.23	31.3.22
	£	£
Bank loans and overdrafts (see note 10)	-	16,214
Other creditors	960	-
	<u>960</u>	<u>16,214</u>

10. LOANS

An analysis of the maturity of loans is given below:

	31.3.23	31.3.22
	£	£
Amounts falling due within one year on demand:		
Bank overdrafts	-	16,214
	<u>-</u>	<u>16,214</u>

11. MOVEMENT IN FUNDS

	At 1.4.22	Net movement in funds	At 31.3.23
	£	£	£
Unrestricted funds			
General fund	(12,814)	20,637	7,823
Restricted funds			
Restricted	157,868	(119,102)	38,766
TOTAL FUNDS	<u>145,054</u>	<u>(98,465)</u>	<u>46,589</u>

Net movement in funds, included in the above are as follows:

	Incoming resources	Resources expended	Movement in funds
	£	£	£
Unrestricted funds			
General fund	505,117	(484,480)	20,637
Restricted funds			
Restricted	59,676	(178,778)	(119,102)
TOTAL FUNDS	<u>564,793</u>	<u>(663,258)</u>	<u>(98,465)</u>

Continued...

**NOTES TO THE FINANCIAL STATEMENTS - continued
FOR THE YEAR ENDED 31 MARCH 2023**

11. MOVEMENT IN FUNDS - continued

Comparatives for movement in funds

	At 1.4.21	Net movement in funds	At 31.3.22
	£	£	£
Unrestricted funds			
General fund	(47,506)	34,692	(12,814)
Restricted funds			
Restricted	148,186	9,682	157,868
TOTAL FUNDS	<u>100,680</u>	<u>44,374</u>	<u>145,054</u>

Comparative net movement in funds, included in the above are as follows:

	Incoming resources	Resources expended	Movement in funds
	£	£	£
Unrestricted funds			
General fund	338,567	(303,875)	34,692
Restricted funds			
Restricted	152,055	(142,373)	9,682
TOTAL FUNDS	<u>490,622</u>	<u>(446,248)</u>	<u>44,374</u>

A current year 12 months and prior year 12 months combined position is as follows:

	At 1.4.21	Net movement in funds	At 31.3.23
	£	£	£
Unrestricted funds			
General fund	(47,506)	55,329	7,823
Restricted funds			
Restricted	148,186	(109,420)	38,766
TOTAL FUNDS	<u>100,680</u>	<u>(54,091)</u>	<u>46,589</u>

Continued...

**NOTES TO THE FINANCIAL STATEMENTS - continued
FOR THE YEAR ENDED 31 MARCH 2023**

11. MOVEMENT IN FUNDS - continued

A current year 12 months and prior year 12 months combined net movement in funds, included in the above are as follows:

	Incoming resources £	Resources expended £	Movement in funds £
Unrestricted funds			
General fund	843,684	(788,355)	55,329
Restricted funds			
Restricted	211,731	(321,151)	(109,420)
TOTAL FUNDS	<u>1,055,415</u>	<u>(1,109,506)</u>	<u>(54,091)</u>

12. RELATED PARTY DISCLOSURES

There were no related party transactions for the year ended 31 March 2023.

**DETAILED STATEMENT OF FINANCIAL ACTIVITIES
FOR THE YEAR ENDED 31 MARCH 2023**

	31.3.23 £	31.3.22 £
INCOME AND ENDOWMENTS		
Donations and legacies		
Donations	505,107	386,078
Grants	59,676	104,544
	<u>564,783</u>	<u>490,622</u>
Investment income		
Deposit account interest	10	-
Total incoming resources	<u>564,793</u>	<u>490,622</u>
EXPENDITURE		
Charitable activities		
Family crisis support	126,005	149,648
Educational support	8,104	52,202
Happy Haven learning assessments	76,600	80,908
LSA and therapists	78,778	9,263
No Tiers Tears	-	7,523
Recreational and seasonal activities	12,599	26,206
Relief of poverty	-	3,000
Transport	5,207	-
Mental health support	88,816	60,768
Parent support project	33,500	16,829
Refreshments	14,904	1,917
School supplies and uniform grants	47,136	9,596
Fund raising	5,000	-
IT expenses	3,971	-
Learning assessments	138,182	-
Volunteer events	2,697	3,858
Wages	8,866	-
	<u>650,365</u>	<u>421,718</u>
Support costs		
Finance		
Bank charges	32	150
Other 3		
Insurance	527	8,292
Light and heat	243	-
Telephone	1,649	2,688
Postage and stationery	6,338	10,486
Depreciation of tangible fixed assets	510	1,700
	<u>9,267</u>	<u>23,166</u>

This page does not form part of the statutory financial statements.

**DETAILED STATEMENT OF FINANCIAL ACTIVITIES
FOR THE YEAR ENDED 31 MARCH 2023**

	31.3.23	31.3.22
	£	£
Other 3		
Governance costs		
Legal and professional fees	2,634	546
Accountancy and legal fees	960	668
	<u>3,594</u>	<u>1,214</u>
 Total resources expended	 <u>663,258</u>	 <u>446,248</u>
 Net (expenditure)/income	 <u><u>(98,465)</u></u>	 <u><u>44,374</u></u>

This page does not form part of the statutory financial statements



BLOOMING BLOSSOMS TRUST

England & Wales - Charity number 1119198

Accounts

CELEBRATING SMALL VICTORIES



ACCOUNTS FOR YEAR ENDING 31ST MARCH 2022



Not all children fit in the box

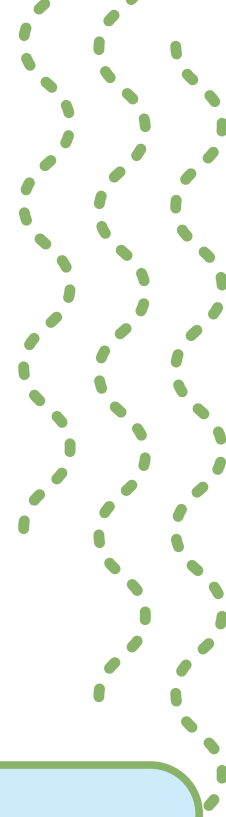
Children with learning disabilities, immigrant children with communication difficulties, gifted children with higher need for stimulation, autistic children who communicate differently and some children, for no clear reason, feel like elephants in their classrooms. They fail academically. They are loners socially, and misunderstood by their families. They squeeze and twist themselves to fit the box, but usually don't succeed. In this process they are hurting and desperate to be understood and valued for who they are.

At Blossoms we use a strengths based approach built on the innate abilities each child possesses, because like every seed needs a unique environment in order to flourish, so does every child need a unique environment to blossom. Blooming Blossoms Trust knows this and so do you. This year you enabled us to support 160 children to forgo their boxes and bloom more beautiful than anyone would ever think.



Success is rarely the result of one swell swoop, but more often the culmination of many, many small victories.

Joseph M. Marshall III



Our Vision:

SEN children in mainstream schools should belong, feel safe, understand, and be understood.

Values:

Believe: We believe that all children can.

Love: Treat every child with love, regardless of background or abilities.

Ownership: We take ownership of our mistakes as well as achievements.

Sensitive: We are sensitive to children's individual needs.

Success: we celebrate every success no matter.

Optimistic : We raise the bar for staff and users.

Motivated: We are motivated and passionate to help SEN children succeed.

Safe: Our core goal is to be a safe space where SEN children can just be.

Objectives:

1. Help develop SEN children's confidence, resilience, sense of agency and self protection.
2. Help SEN children attain academic success through supplementing learning with various conventional and innovative therapies.
3. Give SEN children a safe space to have fun, meet with friends and explore talents and skills.
4. Reduce stigma and social isolation for learning disabled children and offer various opportunities for integration socially during out of school hours.
5. Support siblings of SEN children by giving them special time too so that they don't feel deprived.



Message of Chair

They said that life should resume to normal.

Restrictions have eased and routine has resumed its pace. Our projects are all running strong now, and we appreciate each meeting where we can be with the sweet children face-to-face and taste their growth and feel their joy as they reach and succeed mini victories each day.

But this has not been a Normal Year for any of us and yet we are not happy to go back to Normal.

Normal must remain a cycle on the washing machine.

The children we support are pioneers in a special community, a movement where children can forget their boxes.

Our work is not about children's diagnosis or problems but how we can build on their strengths- however unusual that strength.

We celebrate Small Victories.

For children with additional needs, successes are harder to reach.

Celebrating mini success is an incredible way to nourish and encourage their progress and growth. For the children, their parents and our organization. By praising mini victories and little steps, no matter how big or small, we unlock one of the most powerful tools to support and connect with the amazing cohort of kids we work with. Golda apologized even if she felt that Orit instigated her. Toby kept her shoes on all morning; Benny didn't allow himself to be bullied. Rebecca used words not hands and Aidel ate a full meal without recording the calories or punishing herself for eating.

Our work is grounded in the views of people with lived experience, including families and children with additional needs or disabilities. We are a learning organization that draws from national research, robust monitoring and evaluation and the involvement of our beneficiaries to develop and provide services.

A huge THANK YOU to all our supporters for getting us through one of the most uncertain and challenging years in the charity's history. You have made all of this possible. A Special mention to The Julia & Hans Raising Trust for core funding which helped us survive and for the continued support from the National Lottery Community Fund, Aubrey Orchard Lisle Charitable Trust and The Sobell foundation. Thank you!

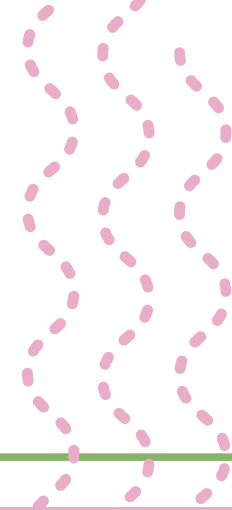
Whilst we celebrate the great impact we've had our families and our organisation face an equally challenging year ahead. We must be ready to respond again, but with the strength of our fantastic supporters behind us, we know we can meet whatever the next year brings

S. Lew

A journey of a thousand miles begins with a single step



Message From Young Ambassador:



I am going to be Loud and Proud of my ADHD.

Before I joined Blossoms, I felt like a taut coil or a locked spring. I spend most of my class time at the other end of the door. I couldn't contain my energy and started hundreds of projects and leaving it there. Then I was assessed at Blossoms and my diagnosis became a game changer. I learned to identify my challenges, name it and tackle it.

Meeting other teens with ADHD and anxiety and talking about my experience has helped a lot. Being with people who experience the world in a similar way is so liberating, exhilarating and it's a huge relief to know you're not alone. This and the show has helped me process labels and feel pride rather than shame. It's helped me realise that ADHD is a framework with which to adjust, because once we ADHD-ers have the things we need, we're able to thrive.

While it doesn't shy away from the difficulties it absolutely celebrates the positives of ADHD; the fun, laughter, curiosity, spontaneity, being able to hyper-focus on things for hours and never running out of things to say.

My team and I initiated a special support group for fellow ADHD teens and we are a proud and determined group. You are invited to our drive thru exhibition this Summer Holidays and one more message-

Look for small victories. Each small victory, even if it is just sitting for 5min longer, gives you confidence. You realize that these little victories make you feel great, and you keep going. You realize that being paralyzed by fear of failure is worse than failure.

Every expert was
once a beginner

The Feeling.Talking.Walking Sensory Garden: SERVES 60 Children weekly

You'll find Abe role playing mum, baking an earthcake at the mud kitchen, sprinkling pebbles for sprinkles. Rachel is fingering the moist pine leaves, Leeba is watering the tomato plant and Michelle is measuring the Raised boxes to calculate how much space to allot for growing pansies. Rechy is just running, enjoying the ample space to release her pent up energy. The sensory garden is abuzz with children in their elements, learning, connecting with nature with peers and themselves.

Sensory Castle: Serves 32 children weekly

A child with SPD - Sensory Processing Disorder feels like a foreigner in a far-flung country. Every day textures, sounds and tastes can overload them and make them feel like they are jumping out of their own skin. The sound of pencil scratching on paper can feel like exploding cannonballs and the taste and texture of bread can feel like steel wool or metal on a filling. These experiences impact the way they learn, live and socialize. Amidst all this sensory stress, children with SPD and sensory integration difficulties can find refuge and healing in a special kingdom, equipped with trapezium swings, lighting effects, soft padding floors and walls. The Sensory room is a space designed to help children learn to regulate their brain's negative reactions to external stimuli by developing coping skills for when they experience sensory over and under load. This room is also utilized by our Occupational Therapist and play therapist who delivers group and 1-1 OT therapy which builds development, life and academic foundation skills.



Projects:

Literacy Literally: Serves 44 children weekly

For some children the instructions in their math text books feels like Russian; others struggle to demystify social cues and gestures and struggle to communicate basic ideas. Literally literacy operates bi-weekly during after school hours and employs latest researched methods to support children to reach peer level literacy targets and to communicate effectively, so that they can understand and feel understood.

Daddy Buddies:

Daddy Buddies is a parent-led project aimed at supporting young and teenage fathers in the everyday but not-always-easy job of being a parent to SEN Child as well as any child. Our main goals are to support parents to believe that they are their children's best advocate, learn skills to parent better and build the extended support networks that other parents take for granted. Project involves weekly stay+play sessions, mentoring, workshops and peer support sessions.

Covid-19 Recovery Scheme:

Children with sen needs were disproportionately impacted by Covid-19. Our recovery program was custom built for each child. We advocated for beneficiaries and supported them with crises meal provisions, case management, tutoring, mentoring and connecting them with available resources and services



Impact and evaluation:

Certificates of achievement are awarded to children who have reached a personal milestone. This can be learning to button their shirt, maintaining eye contact for longer periods or looking out for verbal cues. Their achievement has a direct impact on the daily life for both themselves and their families.

All children referred to our Centre undergo an initial intake assessment covering core academic skills, social awareness, emotional mental health intake and executive functioning ability. Our evaluation team also consults with child's teachers and parents to glean more information. Once areas to be worked on is signposted, specialist therapists evaluate each child based on therapy modalities systems for detailed assessment.

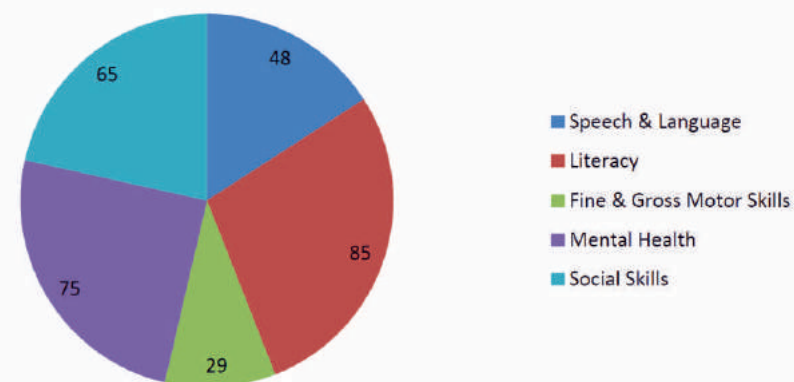
Monitoring methods:

- 1) The user's reported satisfaction with services they have received,
- 2) The achievement of therapy/intervention goals,
- 3) The directly-measured impact of services on users' skills, attainment and well-being.

The methods we employ to measure outcomes in these areas at midpoint and end point intervals are 1) User satisfaction surveys 2) Therapy Outcome Measures 3) Outcome Framework tables

We have also recently employed the Goodman Strengths and Difficulties Questionnaire (SDQ), The Rosenberg Self-Esteem Chart and Outcome Star and specific therapeutic measurements to monitor user's emotional and behavioural progress.

Amount of users improved skills



Don't try to rush progress. Remember - a step forward, no matter how small, is a step in the right direction. Keep believing.

Case Studies:

Until Year One, my teachers called me genius; the neighbors said I was brilliant. I could fix phones that were tossed away. Draw 3D shapes and paint life live scenes. Tell you which day of the week you birthday would be in two years' time without looking at a calendar and do 1000 piece puzzles effortlessly.

But I was clueless when it came to making friends, or staying seated all morning long. My classmates laughed at me when I spoke about favorite species of amphibians. If they were not making fun of me, they were asking me to design fancy dresses which I do in my spare time.

School was a nightmare, in Year 3, my mum was told to take me for a psychological and educational evaluation and the doctor said that I'm a medical exception. I have features of Autism, ADHD, ODD, Anxiety, Depression, SPD and more problems, but don't fit neatly into any category. When I asked a substitute permission to leave the classroom for a second time one morning, she asked me why. I said I have special needs. She told me that I don't have special needs, but a problem called laziness and excuses. That night my mum and I sobbed until we were so parched that I was shocked that there were still tears left over. We went to so many professionals and no one could really help us.

I was skeptical when we first came to

Blossoms. My mum was worried that without a statement or diagnosis, we wouldn't be able to afford their services. Blossoms was different to all of them. The only questions they asked was what they can do to make me more comfortable, happy and successful and how we can build on my strengths.

I was invited to join all different clubs that were similar to other services yet so different, Sensory Castle, Walking Feeling Garden but my favorite club was a special fashion and fabrics course for Autistic Artists

I want to continue developing my creative self through writing poetry, painting and one day designing my own fashion line. I want to inspire people around the world to believe in themselves and to value who they are regardless of their mental health struggles. We all have a story to share. Despite what people look like on the outside, we don't know their story. Don't be afraid to speak up, share your story, and change the future. One of my favorite quotes is "You can have a bad day without having a bad life." This quote always reminds me that things can get better.

I have been a part of the Blossoms Youth Advisory Board for 6 month now. I spend 2 hours each month to attend meeting but it's worth the time to be able to know I can help others by telling my story



Trustees Report

The Trustees presents this report with the financial statements of the charity for the period ending 31 March 2022. The Trustees confirm that the annual report and the financial statements of the charity comply with the current statutory requirements, the requirements of the charity's governing document and the provisions of the Statement of Recommended Practice (SORP) "Accounting and Reporting by Charities" issued in February 2005.

Status and Administration

Blooming Blossoms Trust is a charity and is constituted as a trust dated 25 December 2006, as amended on 23 November 2015.

Charitable Activities

The Activities of the Charity are:

- 1) To provide remedial support for academically challenged, special needs children and young people to enable them to blossom,
- 2) to support for families with a special needs child, and to provide social and recreational activities to young people.
- 3) The promotion of any other exclusively charitable objects and purposes which the trustees see fit, provided that they are regarded as charitable by the law of England and Wales.

The trustees confirm that they have given due regard the Charity Commission's guidance on public benefit and on advancing education and fee charging.

Trustees

Trustees The Trustees in office throughout the year were Mr. Yoel Fischer, Mrs Sara Lew and Mr. Joel Frankel.

No trustee nor any person connected with them received any remuneration during the year.

Funding

Blooming Blossoms Trust is currently financed through grants from charitable trust and local donors. private donations.

Membership

Blooming Blossoms Trust is currently not a member of any roof body or professional organisation.

Reserves Policy

Our Reserves Policy is to maintain sufficient level of reserves to enable normal operating activities to continue over a period of up to three months should a shortfall in income occur and to take account of potential risks and contingencies that may arise from time to time.

Risk Assessment

The Trustees have assessed the major risks to which the charity is exposed, in particular those related to the operations and finances of the charity, and are satisfied that systems are in place to mitigate their exposure to major risks.

Responsibilities of Trustees

Charity Law requires the Trustee to prepare financial statements for each financial year which give a true and fair view of the state of affairs of the charity as at the Balance Sheet Date, and of its incoming resources, including income and expenditure for the financial year. In preparing those financial statements, the Trustees should follow best practice and

- a. Select suitable accounting policies and apply them consistently,
- b. Make judgements and estimates that are reasonable and prudent,
- c. Follow applicable accounting standards and the Charities SORP 2015, disclosing and explaining any departures in the financial statements.
- d. Prepare the financial statements on the going concern basis unless it is inappropriate to assume that the charity will continue in operation.

The Trustees are also responsible for maintaining proper accounting records which disclose with reasonable accuracy at any time the financial position of the charity and to enable them as Trustees to ensure that the financial statements comply with Charity Law. The Trustees are also responsible for safeguarding the charity's assets and hence for taking reasonable steps for the prevention and detection of fraud and other regularities.

Independent Examination

An independent examiner's report will be prepared by De Claron Ltd.

Approved by the Trustees of Blooming Blossoms Trust on 31st March 2022 and signed on behalf of them all.



Mrs Sara Lew
31st March 2022

INDEPENDENT EXAMINER' S REPORT TO THE MEMBERS OF

Blooming Blossoms Trust

for the Year Ending 31 March 2022

Independent Examiner's Report to the Trustees of Blooming Blossoms Trust
We report on the accounts of the charity for the year ended 31 March 2022.

Respective responsibilities of trustees and examiner Staff

The charity' s trustees are responsible for the preparation of the accounts. The charity' s trustees consider that an audit is not required for this year under the Charities Act 2011 and that an independent examination is needed.

It is our responsibility to:

- examine the accounts under the 2011 Act;
- to follow the procedures laid down in the General Directions given by the Charity Commissioners of the 2011 Act and;
- to state whether particular matters have come to our attention.

Basis of independent examiner' s report

Our examination was carried out in accordance with the General Directions given by the Charity Commissioners. An examination includes a review of the accounting records kept by the charity and a comparison of the accounts presented with those records. It also includes consideration of any unusual items or disclosures in the accounts, and seeking explanations from you the trustees concerning any such matters. The procedures undertaken do not provide all the evidence that would be required in an audit, and consequently we do not express an audit opinion on the view given by the accounts.

Independent examiner' s statement

The accounts were constituted from notes, information and explanation of the trustees. We found nothing unusual or suspicious in the records presented to us.

In connection with our examination, no other matter except that referred to above, has come to our attention to which, in our opinion, attention should be drawn in order to enable a proper understanding of the accounts to be reached.



De Claron Ltd
3a The Vale
LONDON NW11 8SB

21 April 2022

BLOOMING BLOSSOMS TRUST
STATEMENT OF FINANCIAL ACTIVITIES
for the Period Ending 31 March 2022

	31.03.22		31.03.21	
	Un-Restr Funds	Restricted Funds	Un-Restr Funds	Restricted Funds
	£	£	£	£
Incoming Resources				
Donations	318,567	67,511	305,220	172,014
Grants	20,000	84,544	50,000	
Investments			1,000	
Total Incoming Resources	338,567	152,055	356,220	172,014
TOTAL INCOMING RESOURCES		490,622		528,234
Resources Expended				
Fundraising Costs			10,766	
Charitable Expenditure				
Charitable Activities	417,359		555,262	
Covid Relief Donation			230,837	
Educational Resources	1,932		1,528	
Educational Support	50,270			
Family Crisis Support	149,648			
Far-Apart-Yet-Clost-At-Heart			7,500	
Happy Haven Learning Assessments	80,908		70,600	
LSA and Therapists	9,263		49,234	
Mental Health Supprt	60,768			
No Tiers Tears	7,523		27,420	
Parent Support Project	16,829			
Recreational & Seasonal Activities	26,206		474	
Relief of Poverty	3,000		165,800	
Refreshments	1,416		500	
School Supplies and Uniform Grant	9,596			
Stationary & Officer Supplies			96	
Transport			1,273	
Governance Costs	28,389		23,915	
Accounting	668		710	
Bank Charges	150		171	
Data Processing and Printing	1,550		2,993	
Technology Depreciation of equipment	1,700		1,700	
Insurance	8,292		6,850	
Legal and Professional Costs	546		3,032	
Postage	8,936		800	
Telephone	2,688		1,059	
Volunteer Training	3,858		6,600	
Total Charitable Expenditure	445,748	-	589,943	-
Net Incoming Resources	(107,181)	152,055	(233,723)	172,014
		44,874		(61,709)
Funds Brought Forward	(167,840)	268,020	65,883	96,006
Total Funds	(275,021)	420,075	(167,840)	268,020
Total Funds		145,054		100,180

BLOOMING BLOSSOMS TRUST
BALANCE SHEET
for the Period Ending 31 March 2022

Notes	31.03.22		31.03.21	
	£	£	£	£
FIXED ASSETS				
3				
Fixtures and Fittings	3,400		5,100	
		3,400		5,100
CURRENT ASSETS				
Debtors	-		-	
Cash in Hand and in the Bank	141,654		95,580	
		141,654		95,580
CURRENT LIABILITIES				
Creditors: Amount Falling Within Period	-		-	
CURRENT ASSETS LESS CURRENT LIABILITIES:		141,654		95,580
LONG TERM LIABILITIES		-		-
TOTAL ASSETS LESS CURRENT LIABILITIES:		145,054		100,680
TOTAL ASSETS LESS TOTAL LIABILITIES:		145,054		100,680
Unrestricted Funds		100,058		69,469
Restricted Funds		44,996		31,211
TOTAL ASSETS:		£ 145,054		£ 100,680

ON BEHALF OF THE BOARD:

J Frankel - Trustee

30 May 2022

BLOOMING BLOSSOMS TRUST
Notes to the Financial Statements
for the Period Ending 31 March 2022

1 ACCOUNTING POLICIES

Basis of preparation of financial statements

These financial statements have been prepared in accordance with the Statement of Recommended Practice (SORP), "Accounting and Reporting by Charities" published in February 2005.

Charity status

The charity is a trust. The member of the charity is the trustee named on page 1

Fund accounting

General funds are unrestricted funds which are available for use at the discretion of the trustee in furtherance of the general objectives of the charity and which have not been designated for other purposes.

Income

All incoming resources are included in the Statement of Financial Activities when the charity is legally entitled to the income and the amount can be quantified with reasonable accuracy.

Expenditure

All expenditure is accounted for on a cash basis and has been included under expense categories that aggregate all costs for allocation to activities. Where costs cannot be directly attributed to particular activities they have been allocated on a basis consistent with the use of the resources.

Management and administration costs are those incurred in connection with administration of the charity and compliance with constitutional and statutory requirements.

Going Concern

The accounts have been prepared on a going concern basis as the trustee consider the charity will continue to operate for a period of at least twelve months from the date of the approval of these accounts.

Tangible fixed assets

Depreciation is provided at the following annual rates in order to write off each asset over its estimated useful life:

Freehold Property	-	20% on reducing balance
Fixtures and Fittings	-	10% on reducing balance

2 NET INCOME

During the year the trustee did not receive any remuneration, benefits in kind or reimbursement of expenses.

3. TANGIBLE FIXED ASSETS	Fixtures and Fittings
COST:	
At 1st April 2021	5,100
Write Off	-
Additions	-
At 31st March 2022	<u>5,100</u>
DEPRECIATION:	
At 1st April 2021	1,700
Write Off	-
Charge for year	1,700
At 31st March 2022	<u>3,400</u>
NET BOOK VALUE:	
At 31st March 2022	<u>3,400</u>
At 31st March 2021	<u>1,700</u>



Trustees:

**Mrs Sara Lew
Mr Yoel Fischer
Mr Joel Frankel**

Administration Address:

**79 Gladesmore Road
South Tottenham
London N15 6TL**

Charity No:

1119198

Independent Examiner:

**De Claron Ltd
Unit A
3 The Vale
London NW11 8SB**

Bankers:

**Barclays Bank Plc
1 Churchill Place
London E14 5HP**

BLOOMING BLOSSOMS TRUST

England & Wales - Charity number 1119198

Accounts

CELEBRATING SMALL VICTORIES



ACCOUNTS FOR YEAR ENDING
31ST MARCH 2021



Not all children fit in the box

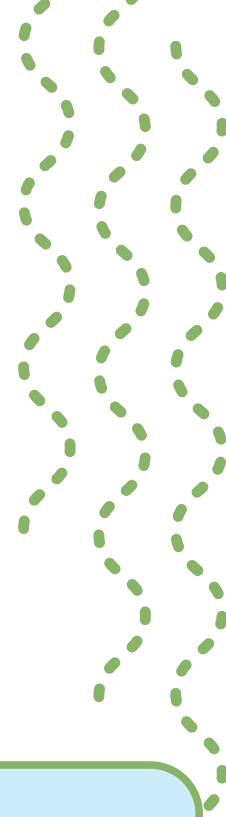
Children with learning disabilities, immigrant children with communication difficulties, gifted children with higher need for stimulation, autistic children who communicate differently and some children, for no clear reason, feel like elephants in their classrooms. They fail academically. They are loners socially, and misunderstood by their families. They squeeze and twist themselves to fit the box, but usually don't succeed. In this process they are hurting and desperate to be understood and valued for who they are.

At Blossoms we use a strengths based approach built on the innate abilities each child possesses, because like every seed needs a unique environment in order to flourish, so does every child need a unique environment to blossom. Blooming Blossoms Trust knows this and so do you. This year you enabled us to support 160 children to forgo their boxes and bloom more beautiful than anyone would ever think.



Success is rarely the result of one swell swoop, but more often the culmination of many, many small victories.

Joseph M. Marshall III



Our Vision:

SEN children in mainstream schools should belong, feel safe, understand, and be understood.

Values:

Believe: We believe that all children can.

Love: Treat every child with love, regardless of background or abilities.

Ownership: We take ownership of our mistakes as well as achievements.

Sensitive: We are sensitive to children's individual needs.

Success: we celebrate every success no matter.

Optimistic : We raise the bar for staff and users.

Motivated: We are motivated and passionate to help SEN children succeed.

Safe: Our core goal is to be a safe space where SEN children can just be.

Objectives:

1. Help develop SEN children's confidence, resilience, sense of agency and self protection.
2. Help SEN children attain academic success through supplementing learning with various conventional and innovative therapies.
3. Give SEN children a safe space to have fun, meet with friends and explore talents and skills.
4. Reduce stigma and social isolation for learning disabled children and offer various opportunities for integration socially during out of school hours.
5. Support siblings of SEN children by giving them special time too so that they don't feel deprived.



Message of Chair

As we reflect on one of the most challenging years in our history, we are filled with overwhelming pride to be part of the Blooming Blossoms Family. There is no one I know that has been left untouched and unaffected by Covid-19. For children with pre-existing learning, social and emotional disabilities, the disparities were amplified. But we had enough, ruminating and worrying about Covid's adverse impact on us as a charity, the children we serve and the community. The very word Covid-19 as an excuse and explanation for everything going wrong dredges up the bile in my throat and makes me feel nauseous. As a community we are stronger than Covid.

Our amazing, adaptable special needs children taught us how to ride the waves. They are so valiant. We experienced Post Traumatic Growths. We are stronger. We have asked tough questions and shifted and revamped our governance and operative model. Every day we take small steps to improve our impact and expedite healing and support for the children we serve. Small steps that lead to great sustainable change. Mini victories to a secure a BIG WIN.

Our theme, 'Celebrating small victories' is still going strong.

For children with additional needs, successes are harder to reach. Celebrating mini success is an incredible way to nourish and encourage their progress and growth. For the children, their parents and our organisation. By praising mini victories and little steps, no matter how big or small, we unlock one of the most powerful tools to support and connect with the amazing cohort of kids we work with; Rivi learned to write his name, Leah made a first friend, Toby wears her face mask and Gitty won her class spelling bee. Rebecca used words not hands and Yossi expressed he was feeling angry instead of hitting.

Our work is grounded in the views of people with lived experience, including families and children with additional needs or disabilities. We are a learning organisation that draws from national research, robust monitoring and evaluation and the involvement of our beneficiaries to develop and provide services.

The focus for 2021/22 will be to bolster the resilience of the organisation to be able to continue delivering support to children and young people affected by COVID-19. We will maintain capacity to be able to respond quickly should the impact of COVID-19 mean that we have to rapidly transform how our support is delivered.

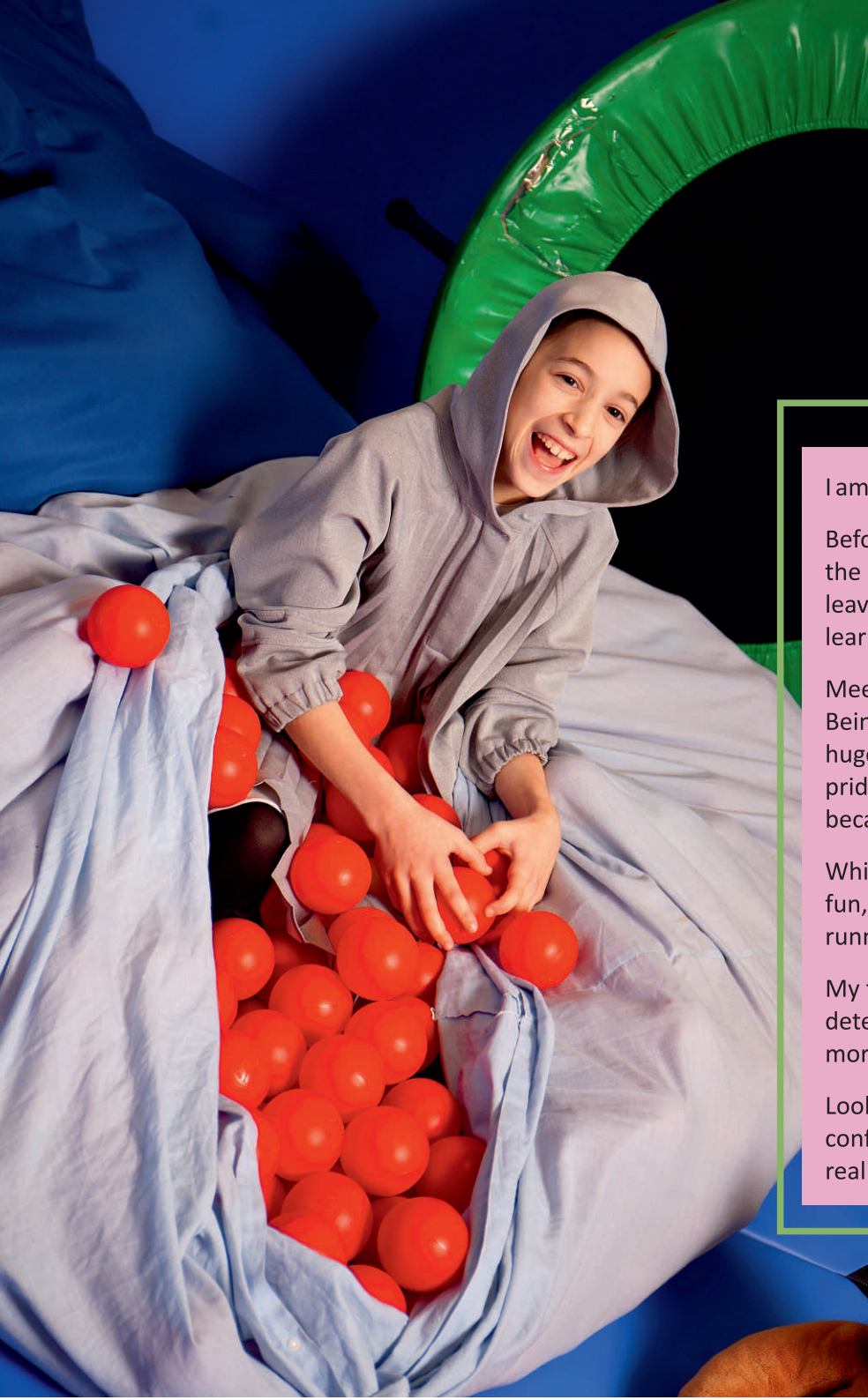
We will also improve our monitoring and evaluation processes, building on the insightful data that has been produced from our monitoring reports and through customising a CAD software for tracking unique progress tools

Together, we will stay the course with fearless determination and renewed resolve for a better future. We hope you are moved and inspired as we share how Blooming Blossoms perseveres even in the most difficult of times. We will not rest until every child feels that they belong, that they are safe, that they understand and are understood.

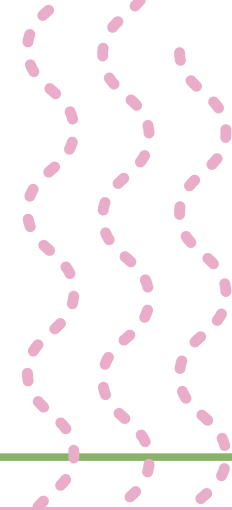
A huge THANK YOU to all our supporters for getting us through one of the most uncertain and challenging years in the charity's history. You have made all of this possible. A Special mention to The Julia & Hans Rausing Trust for core funding which helped us survive and for the continued support from Aubrey Orchard Lisle Charitable Trust and The Sobell foundation. Thank you!

Whilst we celebrate the great impact we've had in an uncertain year, our families and our organisation face an equally challenging year ahead. We must be ready to respond again, but with the strength of our fantastic supporters behind us, we know we can meet whatever the next year brings.

A journey of a thousand miles begins with a single step



Message From Young Ambassador:



I am going to be Loud and Proud of my ADHD.

Before I joined Blossoms, I felt like a taut coil or a locked spring. I spend most of my class time at the other end of the door. I couldn't contain my energy and started hundreds of projects and leaving it there. Then I was assessed at Blossoms and my diagnosis became a game changer. I learned to identify my challenges, name it and tackle it.

Meeting other teens with ADHD and anxiety and talking about my experience has helped a lot. Being with people who experience the world in a similar way is so liberating, exhilarating and it's a huge relief to know you're not alone. This and the show has helped me process labels and feel pride rather than shame. It's helped me realise that ADHD is a framework with which to adjust, because once we ADHD-ers have the things we need, we're able to thrive.

While it doesn't shy away from the difficulties it absolutely celebrates the positives of ADHD; the fun, laughter, curiosity, spontaneity, being able to hyper-focus on things for hours and never running out of things to say.

My team and I initiated a special support group for fellow ADHD teens and we are a proud and determined group. You are invited to our drive thru exhibition this Summer Holidays and one more message-

Look for small victories. Each small victory, even if it is just sitting for 5min longer, gives you confidence. You realize that these little victories make you feel great, and you keep going. You realize that being paralyzed by fear of failure is worse than failure.

Every expert was
once a beginner

The Feeling.Talking.Walking Sensory Garden: SERVES 60 Children weekly

You'll find Abe role playing mum, baking an earthcake at the mud kitchen, sprinkling pebbles for sprinkles. Rachel is fingering the moist pine leaves, Leeba is watering the tomato plant and Michelle is measuring the Raised boxes to calculate how much space to allot for growing pansies. Rechy is just running, enjoying the ample space to release her pent up energy. The sensory garden is abuzz with children in their elements, learning, connecting with nature with peers and themselves.

Sensory Castle: Serves 32 children weekly

A child with SPD - Sensory Processing Disorder feels like a foreigner in a far-flung country. Every day textures, sounds and tastes can overload them and make them feel like they are jumping out of their own skin. The sound of pencil scratching on paper can feel like exploding cannonballs and the taste and texture of bread can feel like steel wool or metal on a filling. These experiences impact the way they learn, live and socialize. Amidst all this sensory stress, children with SPD and sensory integration difficulties can find refuge and healing in a special kingdom, equipped with trapezium swings, lighting effects, soft padding floors and walls. The Sensory room is a space designed to help children learn to regulate their brain's negative reactions to external stimuli by developing coping skills for when they experience sensory over and under load. This room is also utilized by our Occupational Therapist and play therapist who delivers group and 1-1 OT therapy which builds development, life and academic foundation skills.



Projects:

Literacy Literally: Serves 44 children weekly

For some children the instructions in their math text books feels like Russian; others struggle to demystify social cues and gestures and struggle to communicate basic ideas. Literally literacy operates bi-weekly during after school hours and employs latest researched methods to support children to reach peer level literacy targets and to communicate effectively, so that they can understand and feel understood.

Daddy Buddies:

Daddy Buddies is a parent-led project aimed at supporting young and teenage fathers in the everyday but not-always-easy job of being a parent to SEN Child as well as any child. Our main goals are to support parents to believe that they are their children's best advocate, learn skills to parent better and build the extended support networks that other parents take for granted. Project involves weekly stay+play sessions, mentoring, workshops and peer support sessions.

Covid-19 Recovery Scheme:

Children with sen needs were disproportionately impacted by Covid-19. Our recovery program was custom built for each child. We advocated for beneficiaries and supported them with crises meal provisions, case management, tutoring, mentoring and connecting them with available resources and services



Impact and evaluation:

Certificates of achievement are awarded to children who have reached a personal milestone. This can be learning to button their shirt, maintaining eye contact for longer periods or looking out for verbal cues. Their achievement has a direct impact on the daily life for both themselves and their families.

All children referred to our Centre undergo an initial intake assessment covering core academic skills, social awareness, emotional mental health intake and executive functioning ability. Our evaluation team also consults with child's teachers and parents to glean more information. Once areas to be worked on is signposted, specialist therapists evaluate each child based on therapy modalities systems for detailed assessment.

Monitoring methods:

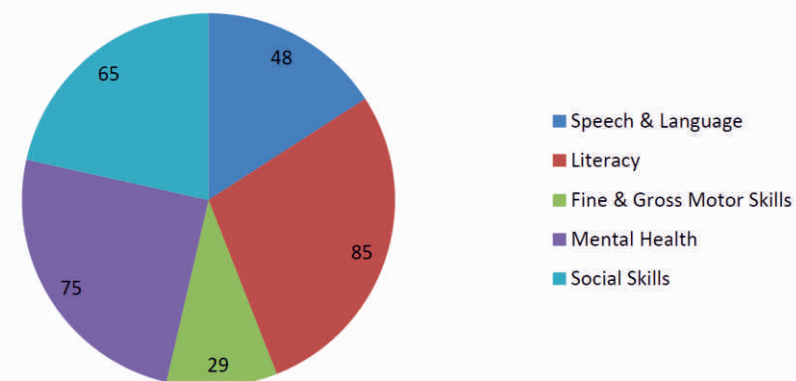
- 1) The user's reported satisfaction with services they have received,
- 2) The achievement of therapy/intervention goals,
- 3) The directly-measured impact of services on users' skills, attainment and well-being.

The methods we employ to measure outcomes in these areas at midpoint and end point intervals are 1) User satisfaction surveys 2) Therapy Outcome Measures 3) Outcome Framework tables

We have also recently employed the Goodman Strengths and Difficulties Questionnaire (SDQ), The Rosenberg Self-Esteem Chart and Outcome Star and specific therapeutic measurements to monitor user's emotional and behavioural progress.

Impact on our Users

Amount of users improved skills



Don't try to rush progress. Remember - a step forward, no matter how small, is a step in the right direction. Keep believing.

Case Studies:

Esty craves movement and therefore finds it difficult to stay in her seat or to sit still for circle time. She likes to run at speed down corridors. She needs movement to keep her brain alert; when she feels she needs movement she impulsively leaves her seat to stand up or run about the room. When she engages in physical sensory activity she appears calmer and more engaged because her sensory need has been met.

She also seeks proprioceptive, or deep pressure, input. Her enjoyment of rough and tumble play at home and in the playground demonstrates her need for intensive input to her muscles and joints. She likes tight hugs from adults because these offer deep pressure input. Unfortunately she does not understand that others do not seek similar input and that her overly boisterous play is hurting others. These sensory processing difficulties are further intensified by her limited social understanding. She is unable to read the cues from other children that her behaviour is upsetting them and she does not understand the rules of the playground games.

Her parents shared that these difficulties were even worse during Lockdown and her moods were yo-yoing more variable than before. She was the first child to try our Feeling, Talking, Walking sensory garden. Even before the garden was completed in full, Esty visited the garden every single day after school, sometimes with her mentor at Blossoms, some days with her parents.

As part of a sensory diet prescribed to a cohort of kids with sensory difficulties, she helped us reorganize the raised boxes for planting using her profound gardening knowledge. She releases her excess energy in the garden and explores its engaging sensory features. Feedback came first from her mother who shared that putting her to sleep was becoming less of a battle and that she was less testy with her siblings, her teachers also shared that she is more relaxed and focused after she visits our garden and she herself tells us that the garden is her safe space which calms and grounds her.



BLOOMING BLOSSOMS TRUST

Report Of The Trustees

The Trustees present their annual report with accounts of the Charity for the Year Ended 31 March 2021.

Status and Administration

The Charity, constituted by trust deed, dated 25th December 2006, and is a Registered Charity.

Charitable Objects

The Objects of the Charity are

- 1) To provide remedial support for academically challenged, special needs children and young people to enable them to blossom,
- 2) to support for families with a special needs child, and to provide social and recreational activities to young people.
- 3) The promotion of any other exclusively charitable objects and purposes which the trustees see fit, provided that they are regarded as charitable by the law of England and Wales.

Trustees

The Trustees in office throughout the year were

Mr. Yoel Fischer
Mrs Sara Lew
Mr. Joel Frankel

Reserves Policy

It is the policy of the charity to maintain unrestricted funds, which are the free reserves of the charity at a level which equates to approximately three months unrestricted expenditure. This provides sufficient fund to cover management and administration costs. The Trustees are delighted that we have reached this position this year.

RESPONSIBILITIES OF THE TRUSTEES

Charity Law requires the Trustees to prepare financial statements for each financial year which give a true and fair view of the state of affairs of the charity as at the Balance Sheet Date, and of its incoming resources, including income and expenditure for the financial year.

In preparing those financial statements, the Trustees should follow best practice and

- a. Select suitable accounting policies and the apply them consistently.
- b. Make judgements and estimates that are reasonable and prudent.
- c. Follow applicable accounting standards and the Charities SORP 2015, disclosing and explaining any departures in the financial statements.
- d. Prepare the financial statements on the going concern basis unless it is inappropriate to assume that the charity will continue in operation.

The Trustees are responsible for maintaining proper accounting records which disclose with reasonable accuracy at any time the financial position of the charity and to enable them as Trustees to ensure that the financial statements comply with the Charity Law.

The Trustees are also responsible for safeguarding the charity's assets and hence for taking reasonable steps for the prevention and detection of fraud and other regularities.

Board Of Trustees

The members of the Board Of Trustees are set out on Page 1.

Approved by The Trustees of Blooming Blossoms Trust on 25 October 2021,
and signed on behalf of them all.

Trustee

Blooming Blossoms Trust
Statement Of Financial Activities
For The Year Ended 31 March 2021

Notes	Unrestricted Funds £	Restricted Funds	2021 Total Funds £	2020 Total Funds £
INCOMING RESOURCES				
Activities to further the Charity's Objects				
2	305,220	172,014	477,234	<u>396,317</u>
	<u>50,000</u>		<u>50,000</u>	<u>0</u>
	1,000	0	1,000	0
	<u>356,220</u>	<u>172,014</u>	<u>528,234</u>	<u>396,317</u>
RESOURCES EXPENDED				
Costs of Generating Funds				
	10,766	0	10,766	<u>3,063</u>
	<u>345,454</u>	<u>172,014</u>	<u>517,468</u>	<u>393,254</u>
Charitable Expenditure				
	555,262	0	555,262	377,075
3	<u>23,915</u>	<u>0</u>	<u>23,915</u>	<u>10,918</u>
	<u>579,177</u>	<u>0</u>	<u>579,177</u>	<u>387,993</u>
3	<u>589,943</u>	<u>0</u>	<u>589,943</u>	<u>391,056</u>
	(233,723)	172,014	(61,709)	5,261
	<u>65,883</u>	<u>268,021</u>	<u>161,890</u>	<u>156,629</u>
	0	0	0	0
9	<u>£ (167,840)</u>	<u>£ 440,035</u>	<u>£ 100,181</u>	<u>£ 161,890</u>

Blooming Blossoms Trust
Balance Sheet at 31 March 2021

Notes	2021 £	2020 £
Fixed Assets		
Tangible Assets	5,103	6,803
	<u>5,103</u>	<u>6,803</u>
Current Assets		
Cash at Bank and in Hand	95,578	155,587
	<u>95,578</u>	<u>155,587</u>
Creditors : Amounts falling due within one year	(500)	(500)
	<u>95,078</u>	<u>155,087</u>
Net Current Assets	<u>95,078</u>	<u>155,087</u>
Total Assets less Current Liabilities	<u>100,181</u>	<u>161,890</u>
Net Assets		
	<u>£ 100,181</u>	<u>£ 161,890</u>
Restricted Funds		
	268,021	96,007
	<u>(167,840)</u>	<u>65,883</u>
Total Funds	<u>£ 100,181</u>	<u>£ 161,890</u>

Approved by the Trustees on 25 October 2021, and signed on behalf of them all.

Trustee
Mr. Yoel Fischer

The notes on pages 6 to 8 form part of these accounts.

Blooming Blossoms Trust
Notes To The Accounts -31st March 2021

1) **Principal Accounting Policies**

Basis of Accounting

The Accounts have been prepared under the historical cost convention in accordance with the Charities Act (Accounts and Reports) 2011, and the Financial Reporting Standard for Smaller Entities 102, and follow the recommendations in Accounting and Reporting By Charities: Statement of Recommended Practice (effective from April 2015).

Cash Flow

The accounts do not include a cash flow statement because the charity as a small reporting entity is exempt from the requirement to prepare such a statement.

Donations and Fund Accounting

Donations received for the general and main purposes of the Charity is included as unrestricted funds in the Statement of Financial Activities when receivable.

Donations and Grants for activities restricted by the donors are taken to restricted funds if the wishes and conditions of the donor are legally binding on the Trustees.

Resources Expended

Resources expended are accounted for on an accruals basis. Certain expenditure is apportioned to cost categories based on estimated amount attributable to that activity in the year. These estimates are based on the time and level of activity as appropriate.

Governance Costs are those incurred in connection with administration of the charity and compliance with constitutional and statutory requirements.

The irrecoverable element of VAT is included with the item of expense to which it relates.

Tangible Fixed Assets

Depreciation is provided after taking into account of any grants receivable at the following annual rates in order to write off each asset over its estimated useful life

	25% on net book value					
	Unrestricted		Restricted		Total	
	2021	2021	2020	2020	2020	2020
Donations Received	355,220	172,014	477,234	396,317	0	396,317
Grants Received				4,000	40,688	44,688
Interest Received Total	1,000	0	1,000	0	0	0
Income	£ 356,220	£ 172,014	£ 528,234	£ 400,317	£ 40,688	£ 441,005

Charitable Activities

Cost of Activities In Furtherance of the Charity's Objects

	2021		2020		Total 2020	
	Unrestricted	Restricted	Unrestricted	Restricted		
Covid Relief Donations	230,837	0	230,837	23,680	0	23,680
Educational Resources	1,528	0	1,528	0	0	0
Far Apart, Yet Close At Heart	7,500		7,500			
Happy Haven - Learning Assessments	70,200		70,200	184,553	21,000	205,553
LSA and Therapists	49,234	0	49,234			
No Tears Tiers	27,420		27,420			
Parent Support				32,000		32,000
Recreational and Seasonal Activities	474		474	92,372		92,372
Relief of Poverty Covid Project	165,800		165,800	11,500		11,500
Refreshments	500		500	10,000		10,000
Stationery, Officer and Senco Supplies	96		96	1,970		1,970
Travel	1,273		1,273			

Total Cost of Furtherance Of Charitable Objects

Governance Costs

	555,262	0	555,262	354,105	22,970	377,075
	23,915	£ 0	23,915	10,918	£ 0	10,918
	579,177		579,177	365,023	22,970	387,993
	10,766	0	10,766	3,063	0	3,063

Cost of Generating Funds

Total Cost of Activities In Furtherance of Charitable Objects

	£ 589,943	£ 0	£ 589,943	£ 368,086	£ 22,970	£ 391,056
--	-----------	-----	-----------	-----------	----------	-----------

4)

Governance Costs

Accounting	710	0	710	500	0	500
Bank Charges	171	0	171	110	0	110
	2,993		2,993	45	0	45
Data Processing and Transfer and Technology Depreciation of Equipment	1,700	0	1,700	2,267	0	2,267
	6,850	0	6,850	7,420	0	7,420
						0
Legal Cost	3,032	0	3,032	0	0	0
Office Supplies	800	0	800	0	0	0
Postage, Printing and Stationery	0	0	0	0	0	0
Utilities						
Telephone	1,059	0	1,059	576	0	576
Volunteer Training	6,600		6,600	0	0	0
	£ 23,915	£ 0	£ 23,915	£ 10,918	£ 0	£ 10,918

Blooming Blossoms Trust

Notes To The Accounts - 31 March 2021

5) Tangible Fixed Assets

	Equipment	Total
Cost or valuation	£	£
At 31 March 2020	16,123	16,123
Additions	0	0
At 31 March 2021	<u>16,123</u>	<u>16,123</u>
Depreciation		
At 31 March 2020	9,320	9,320
Charge for the year	1,700	1,700
At 31 March 2021	<u>11,020</u>	<u>11,020</u>

Valuation

31 March 2021	£ 5,103	£ 5,103
31 March 2020	£ 6,803	£ 6,803

6) Creditors: Amounts falling due within 1 year

Bank Loans and Overdrafts	0	0
Debt due within one year	0	0
Accruals and Provisions	500	500
	<u>£ 500</u>	<u>£ 500</u>

7) Net Assets of The Charity's Funds

	Fixed Assets	Net Current Assets	Long Term Liabilities	Fund Balances
	£	£	£	£
Restricted Funds	0	0	0	0
Unrestricted Funds	5,103	95,078	0	100,181
Total Funds	<u>£ 5,103</u>	<u>£ 95,078</u>	<u>£ 0</u>	<u>£ 100,181</u>

8) Restricted Funds

	Balance at 31 March 2020	Income	Expended	Transfers and Investment Gains and Losses	Balance at 31 March 2021
	£	£	£		£
General Reserve	96,007	172,014	0	0	268,021
Total Funds	<u>£ 96,007</u>	<u>£ 172,014</u>	<u>£ 0</u>	<u>£ 0</u>	<u>£ 268,021</u>

9) Unrestricted Funds

	Balance at 31 March 2020	Income	Expended	Transfers and Investment Gains and Losses	Balance at 31 March 2021
	£	£	£		£
General Reserve	65,883	356,220	589,943	0	(167,840)
Total Funds	<u>£ 65,883</u>	<u>£ 356,220</u>	<u>£ 589,943</u>	<u>£ 0</u>	<u>£ (167,840)</u>

10) Related Party Transactions

No trustee nor any person connected with them received any remuneration, or claimed any expense, during the year, from this or any related Charity. There were no Related Party Transactions in the Year.

**Accountants Report to the Trustees on the Unaudited Accounts of the Charity
Blooming Blossoms Trust
For the Year Ended 31 March 2019**

We report on the financial statements of Blooming Blossoms Trust for the Year Ended 31 March 2019 which comprise the Statement of Financial Activities, the Balance Sheet and the related notes. These financial statements have been prepared, under the historical cost convention, and in accordance with the recommendations in Accounting and Reporting By Charities: Statement of Recommended Practice (Issued 2015), and the Financial Reporting Standard for Smaller Entities 102 (effective 2016), and the accounting policies set out therein.

Respective Responsibilities Of Trustees and Reporting Accountants

As described on page 3, the trustees of the charity are responsible for the preparation of the accounts, and they consider that the audit requirement of section 144 of the Charities Act 2011 (the Act) does not apply. It is our responsibility to state, on the basis of procedures specified in the General Directions given by the Charity Commissioners under section 144 of the Act, whether particular matters have come to our attention.

Basis of Accountant's Report

Our examination was carried out in accordance with the General Directions given by the Charity Commissioners. An examination includes a review of the accounting records kept by the charity and a comparison of the accounts presented with those records. It also includes consideration of any unusual items or disclosures in the accounts, and seeking explanations from you as trustees concerning any such matters. These procedures provide only the assurance expressed in our opinion. The procedures undertaken do not provide all the evidence that would be required in an audit, and consequently we do not express an audit opinion on the view given by the accounts.

Opinion

- In our opinion, no matter has come to our attention,
- 1) which gives us reasonable cause to believe that, in any material respect, the requirements
 - a) to keep accounting records in accordance with section 130 of the Act; and
 - b) to prepare accounts which accord with the accounting records and to comply with the accounting requirements of the 2011 Act have not been met; or
 - 2) to which, in our opinion, attention should be drawn in order to enable a proper understanding of the accounts to be reached.

Reporting Accountant

Carl Rosen
50 Craven Park Road
South Tottenham
London N15 6AR

Date 25 October 2021





Trustees:

**Mrs Sara Lew
Mr Yoel Fischer
Mr Joel Frankel**

Administration Address:

**79 Gladesmore Road
South Tottenham
London N15 6TL**

Charity No:

1119198

Independent Examiner:

**Carl Rosen ACCA
50 Craven Park Road
South Tottenham
London N15 6AB**

Bankers:

**Barclays Bank Plc
1 Churchill Place
London E14 5HP**