

2024-2025

ANNUAL REPORT

Chair's Introduction



Welcome to our Annual report. I hope you enjoy reading about what has been happening at Pathways.

It has been another challenging year for those facing homelessness in our communities and another busy year for Pathways. We have supported over 800 people experiencing homelessness or at risk of eviction, a figure which has sadly risen again. At one point during the year we were forced to run a waiting list for our support, something we have never had to do before but with a lot of hard work from the team the waiting list has gone and we are able to offer immediate support again.

We continue to provide housing support, tenancy support and activity groups as well as clothing and emergency supplies. We support and facilitate care for those dealing with physical and mental health needs, substance and alcohol misuse.

We help people rebuild their lives with whatever they need, be it a toothbrush or a copy of their birth certificate. And perhaps most important of all, we offer a warm welcome and a place of hope.

This year we have faced triumphs and disappointments. You will read about our Art Auction in Sian's report which was such a highlight, showcasing the skills of those who use our service. Our tireless staff and volunteers achieve triumphs every week. And our trustees work hard in the background trying to keep everything afloat. We have said goodbye to our last founder trustees this year and I would like to pay tribute to Sue Walker for all the work she has done for Pathway in various roles since 2006. We have been fortunate in that we welcomed two new trustees in January 2024 who have brought new skills and energy to the Board. As of March 2025 we now have 8 Trustees plus a secretary to the Board, all of

whom work hard as volunteers on Pathways behalf throughout the year. However, on the other hand, we have lost half our funded specialist nurse provision this year, down to 3 days per week, putting a lot of pressure on Tom our remaining nurse. Sian's report expands on this.

Last year I said that finding suitable single premises for Pathways would be a priority but this has proved frustratingly difficult. In April 2024 we attempted to buy a property at auction but were unsuccessful, despite generous interest-free and low-rate loan pledges. We are currently attempting to lease the same property, but at the moment, continue to work out of two terraced properties on Saltergate.

Sian pays tribute to our generous funders in her report and I would like to reiterate our gratitude for each and every donation. I know that as supporters of Pathways you share our vision of everyone in our communities having a place to call home. And your generous support gives us huge encouragement to continue providing a beacon of hope for those facing homelessness in our boroughs.

Cathy Madden
Chair of Trustees.



CEO's report

Another hugely busy year at Pathways. This year we have supported 824 people in our community who are experiencing homelessness or are at risk of eviction. Every year I have mixed feelings about this number. I am so proud of our team for working tirelessly to support so many people but also saddened and frustrated that this many people still need our help. Across the country, homelessness continues to rise, so the support we offer at Pathways is needed more than ever.



**824 people
supported**

Our housing team has had a year of change and achievement. With our long-term Housing Manager, Nicky, moving on to a new role and Cathryn returning to Pathways as Housing Manager, it has been a time of transition. Despite all of this, the team has worked relentlessly to bring our waiting list down to zero. I am extremely proud of the hard work and dedication that made this possible. None of us ever feel comfortable telling someone who is homeless that they will have to wait for support, and it is such a relief to know that people can now access full support quickly. The team also supported 353 people into accommodation this year despite the ongoing difficulties with housing availability, particularly in the private rented sector.



**353
people
housed**


Our nursing team has faced a tough year, with Tina moving on to the perinatal team and then finding out that funding for the role was frozen, meaning we were unable to recruit. Sadly, this reduced our capacity to support people experiencing homelessness and

mental health difficulties. Tom has continued to work with his characteristic calmness and dedication, reaching some of the most vulnerable people who might struggle to access support anywhere else. The nursing team may be small, but it remains mighty and continues to achieve amazing results for people who would otherwise fall through the net.

Our focus on recovery work, first introduced last year, has gone from strength to strength. With a new full-time recovery worker, Bec, we have been able to dedicate time and energy to fully developing this project. Bec has made the role her own, building trusting relationships with some of the most vulnerable people we support and helping them to engage with recovery services. Her kind and empathetic approach has helped many clients not only access recovery support but also reconnect with other services. We have seen a number of these clients secure stable housing and now benefit from multi-agency support.

Our tenancy support worker, Jules, continues to work incredibly hard to help people remain in accommodation. From helping people access furniture and set up bills to ensuring that all their wider needs are met, Jules has supported some very complex clients this year. Her commitment has prevented many people from returning to homelessness and helped them start to build a new life.

Our groups continue to flourish, with 177 different people attending throughout the year. It is always a pleasure to see how these groups develop. There is a real family feel, with people supporting and caring for one another and new members made to feel welcome from the moment they arrive. Watching



**177 people in
groups**

people's confidence grow is inspiring. Groups provide a vital safety net, particularly when people first move into accommodation, which can be as difficult as homelessness itself. Having a safe space and a community to belong to helps people feel positive, connected, and resilient as they move forward.

Our volunteers have been amazing once again this year. They have supported our groups, helped with fundraising, assisted at our drop-in, and cooked some fantastic meals. The volunteer team brings warmth, energy, and compassion to everything they do. Their willingness to help and their genuine care for the people we support make such a difference to the atmosphere and success of our service.

A particular highlight this year was our first ever art exhibition and auction. The creativity and talent displayed by the people we support was incredible. In our field of work, we often focus on what people need or the difficulties they face, so it was wonderful to celebrate their strengths and creativity instead. Showcasing their art was a proud and joyful moment for everyone involved.

I would like to express my deepest gratitude to our funders and partners. To Chesterfield Borough Council, Bolsover District Council, and North East Derbyshire District Council for their continued support and partnership. To the Lloyds Foundation for their ongoing support and invaluable guidance, particularly through challenging times. To the Police and Crime Commissioner for their continued belief in our work. To Derbyshire County Council for including us in the recovery network and helping ensure that people experiencing homelessness have easier access to recovery support. To the National Lottery for its ongoing funding and to Foundation Derbyshire for its continued support, helping us to provide food and essential items for people in crisis.

Funding is always a challenge for charities, particularly in the current climate, so it was a huge and unexpected relief to receive £50,000 from the Postcode Lottery this year. We had previously applied for funding but were unsuccessful due to high competition, so to be chosen later following a local Chesterfield win was a wonderful surprise. This funding enabled us to maintain our services despite rising costs and increasing demand.

The generosity of our local community continues to move me deeply. Last Christmas, our rucksack appeal received an overwhelming response. Our request was shared far and wide, and we received so many beautifully filled rucksacks full of thoughtful and useful items. The kindness and consideration shown by so many individuals, businesses, and community groups was incredible. A special thank you goes to those who acted as drop-off points and helped make this initiative such a success.

As many people know, Pathways has been looking for a more suitable building for many years, somewhere we can bring all our services together under one roof. This year we made a major effort to buy a building at auction, and although we were ultimately outbid, there is still hope on the horizon. We are now in discussions about renting the same building, which would be a fantastic opportunity for us. I want to thank our Chair, Cathy Madden, for her tireless efforts to make this happen, securing potential funding and loans and keeping the vision alive.

Pathways could not do what it does without our close partnerships and supporters. From the local councils and homelessness teams to P3 Outreach, the Law Centre, Unemployed Workers Centre, DRP, Probation, Church on the Bus, supported housing providers, and our new recovery partners, every collaboration helps us achieve better outcomes for the people we support. To everyone who fundraises, donates food, clothing, or essential items, and to those who give regular financial support, thank you. We simply could not provide the level of care and comfort we do without you.

Finally, a heartfelt thank you to the people we support. You continue to teach me so much, make me smile, and remind me every day of why this work matters. Your resilience and humour, even in the toughest circumstances, never cease to amaze me.

Looking ahead, I am hopeful that by this time next year we will be well on our way to moving into a new building that truly reflects the heart of Pathways. I am also excited that we have secured new funding from Derbyshire County Council's Public Health team to launch a trial Recovery Space from April. It's a quick turnaround, but with the experience and commitment we already have in recovery work and group support, I am confident that we will make it a success. This new initiative will provide people in recovery with a safe space to build confidence, develop skills, and create supportive networks.

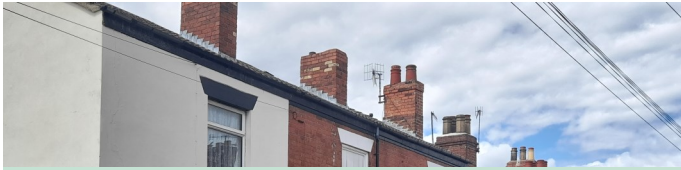
As always, I am incredibly proud of our team, our volunteers, and our partners, and deeply grateful for the continued trust and generosity of our community. Together, we are making a real difference, one person, one story, one pathway at a time.

Sian Jones

CEO



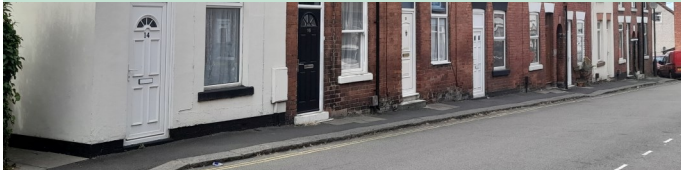
The Support We Offer



Housing Advice and Support



Specialist Nursing



Tenancy Support



Recovery Service



Women's Service



Activities



Provisions



Housing

Over the past year our housing team has been extremely busy at Pathways. Cathryn started in May as Housing & Homelessness Manager; she had previously worked at Pathways as Office Manager before moving to the Southwest where she worked on the frontline with rough sleepers and in tenancy support for 4 years.

We have seen an increase in the number of referrals and a sharp increase in people rough sleeping since February has kept us busier than ever. We are working extremely hard to support people rough sleeping to access suitable accommodation as quickly as possible, but this places a huge demand on staff time as many people in this situation are also in need of basic provisions alongside massive levels of wrap around support including mental health, accessing a GP and benefits, gaining ID and a bank account, and support to access other support services.

Over 70% of people we support have a multiple complex needs and struggle to maintain tenancies or access services without ongoing support.

During 2024 – 2025 we supported 353 of our clients into housing.



**Over 70% have
complex
needs**

Since Covid our waiting list had consistently been at around 100+ people needing support to find suitable housing but with the hard work and dedication of the team this has reduced to zero on several occasions over the last year, although sadly quickly increases and currently averages between 0 and 40 at any one time.

In the latter half of 2024 we saw an increase in clients presenting to our drop ins who had been granted refugee status and subsequently evicted from Home Office asylum seekers' accommodation; the team and clients overcame difficulties with language barriers with the help of "Google Translate" and other communication methods to help support these clients into suitable move on accommodation.

We have seen an increase in families, couples and people in full time employment asking for support; this is perhaps partly due to Section 21 (no fault) evictions, changing legislation and landlord responsibilities, and the decrease in availability of affordable private rented sector properties, in addition to the continuing cost of living increases we are all facing.

The biggest reason for homelessness that we are seeing continues to be due to relationship/family breakdown.

We all look forward to continuing to support our clients, but always with the hope that one day we will be able to see an end to homelessness.



Billy's Story



When Billy first came through our doors at Pathways back in December 2024, he was tired, guarded, and unsure of who he could trust. A 51-year-old man with strong roots in Bolsover, Billy had recently found himself without a home after a difficult relationship breakdown. Bolsover District Council had placed him in temporary B&B accommodation — a short-term fix for a man facing long-term challenges.

Billy lives with schizophrenia, anxiety, and depression — conditions that make day-to-day life an uphill battle. Add a history of substance use into the mix, and you begin to understand just how heavy the weight was that Billy was carrying.

In the early days, things were tough. Trust didn't come easily to Billy, and his emotions were often unpredictable. Not long after our support began, he was asked to leave the B&B due to his mental health. Understandably, this shook him. But thanks to a collaborative effort with Cheryl at Bolsover Council, we found him another place to stay — buying us all some much-needed time to figure out a longer-term plan.

Billy became a regular at our drop-in sessions — popping in for food, toiletries, a coffee, or just a chat. Slowly but surely, he began to open up. Behind the chaotic behaviour was a man who wanted change, who wanted stability, who just wanted a chance.

We knocked on a lot of doors for Billy. Many supported housing providers felt his needs were too high. It was frustrating, but we didn't give up. We referred him to the Healthy Futures Programme run by Derventio — and finally, the door opened. Billy was accepted. When we told him, he was over the moon.

But life doesn't always follow a straight path. Just one month in, his mental health began to spiral again. He was overwhelmed and,

unfortunately, was evicted. It was a painful setback — but it wasn't the end.

We reopened Billy's case at Pathways and, once again, Bolsover Council stepped in with another temporary B&B placement. There was a condition, though: one more incident, and he'd lose the support. The pressure was real.

Through it all, Billy kept showing up — to our drop-ins, to conversations, to himself. He fought through rejection after rejection from housing providers, but we kept searching. In March 2025, we made a new move: a referral to RSAP (a Framework project offering intensive support). We knew it was the right fit. Bolsover agreed — and so did RSAP. Billy was accepted.

That was the good news. The bad? The property needed repairs, and the move-in date kept getting pushed back. It's now October, and Billy's still waiting.

But here's the incredible part: **he hasn't given up.**

He still pops in every day for a chat and a coffee (even if he can't remember our names and just calls us "Miss"). He's started going to groups, staying engaged, and looking after himself. Sure, he gets frustrated — who wouldn't? But every time, he comes to us to talk it through and leaves feeling calmer. He's learning, growing, and holding on — and we couldn't be prouder.

Billy worked closely with our mental health nurse Tom and our recovery worker Becs. He's built trust where it was once broken. And though he's hard on himself, the progress he's made speaks volumes.

We know he'll thrive with Framework once that move finally happens. Until then, we'll be right here — cheering him on, one coffee at a time.

Billy's story is far from over — but already, it's one of resilience, hope, and the power of second (and third, and fourth) chances.

Specialist Nurse



Over the past year, my work has centred on ensuring that some of our most vulnerable community members receive timely, safe, and effective mental health support. By providing crisis intervention, emotional stabilisation, and clear pathways into statutory and voluntary services, I have helped clients navigate moments of acute distress and move towards greater stability and resilience.

A key part of this impact has been connecting clients with the right support at the right time. Through referrals to GP services, Talking Mental Health Derbyshire, Vita Health, SAIL, the Derbyshire Bereavement Hub, Adult Social Care, the Safeguarding Team, and The Elm Foundation, clients have been able to access specialist help tailored to their needs. These partnerships ensure that people experiencing trauma, bereavement, abuse, mental ill-health, or social isolation are not left to cope alone.

Close collaboration with organisations such as Derbyshire Recovery Partnership, Community Mental Health Teams, Probation, MAPPA, Criminal Justice Liaison Teams, and HMP Nottingham has strengthened safety planning and continuity of care for clients facing complex or high-risk circumstances. This multi-agency approach has been essential in reducing harm and supporting clients to move forward in their recovery.

Therapeutic support for clients has also grown this year. My supervision of counselling student Kay Slater enabled clients to benefit from free counselling provision, and new funding now ensures ongoing access to counselling through Space Counselling. This expands the emotional and psychological support available to those who would otherwise struggle to obtain it.

I contributed to the local hepatitis C testing programme, helping to identify health risks early and connect clients with vital medical support. Although the local programme is currently paused, clients continue to be

signposted to Derbyshire Recovery Partnership for testing, ensuring no lapse in care.

Within Pathways, I have played an active role in our recovery groups, encouraging engagement, referring clients, and supporting one client to take on a peer mentor role. Together, we have developed a structured plan to enable him to share his lived experience safely and meaningfully—strengthening our peer-led support offer and empowering clients to become part of others’ recovery journeys.

To help safeguard vulnerable individuals, I attend VARM meetings, inpatient reviews, and the community mental health multidisciplinary team meeting every eight weeks. My involvement ensures that our clients’ voices are heard and that we contribute to coordinated, accountable decision-making.

Finally, as a student mentor, I have supported nursing students on placement with Pathways, helping develop future professionals’ understanding of homelessness, trauma, and recovery-focused practice. This work strengthens the wider health network and embeds compassionate, informed care in the next generation of practitioners.



Tenancy Support



Tenancy support continues to run well this year, with Jules, our tenancy support worker, working with some of our most complex cases. She builds trusting relationships and works holistically with people to ensure their support needs are being met and give them the best chance to remain housed.

One of the biggest challenges people face is around their health, both physical and mental. Jules supports people to attend appointments and advocates for them at the GP, hospital and other health services, to ensure they are building confidence with appointments and that their voice is being heard in relation to their care.

Alongside building people's confidence to manage their own tenancies with routines around bills, prioritising and household management, Jules supports people to ensure they are on the correct benefits. She helps people navigate the system and has helped a number of the people she works with gain PIP.

People often face loneliness when first moving into a new home, having been part of a bigger community, particularly when rough sleeping or sofa surfing. Jules supports people to settle into their new community and ensures they are able to access support networks by helping secure bus passes and opportunities to join groups either at Pathways or around Chesterfield. She has also supported some people into new volunteering opportunities, helping them gain further confidence and also new skills.

Much of Jules role is also care coordinating between all the support agencies who may be involved with an individual. She works closely with our partner agencies such as council tenancy support workers, social services, DRP, recovery projects, probation, GPs and the hospital. This collaborative approach improves risk management, prevents individuals from falling through gaps in provision, and enables a more holistic response to complex circumstances. Through shared information, joint planning, and consistent communication, multi-agency working significantly enhances client safety, strengthens recovery pathways, and maximises the impact of every service involved.

Activity Groups

Pathways offer a wide range of activity groups throughout the week. These groups allow us to build trusting relationships and work in a person-centred way to encourage people within the homeless community to feel safe and access support at a pace which suits them.

The groups improve overall physical and mental health and build self-esteem and confidence through a range of activities and the opportunity to build new support networks. The friendships formed at our groups have moved outside of Pathways with people supporting each other outside of group times. Our groups have a family feel and the friendly atmosphere allows new people to settle in quickly.

We run groups almost every day of the week including: Games Group, Social Café, Art and Craft Group, Gardening Group, Rough Sleeper Breakfast, Women's Group, Well-being Group and Music Group. We also run SMART recovery sessions every Wednesday evening.

Activities this year have included Archery, pizza making, wire and bead trees, designing Christmas cards, and many more.



Barry's Story



Today, Alan lives in supported accommodation and is planning to start his own business—a dream that once felt out of reach. But just a year ago, his life looked very different.

Back then, Alan found himself homeless after spending eight weeks in a hostel. One day, he was told they could no longer keep him there; someone else needed the room. Just like that, he had nowhere to go.

The day before he had to leave, Alan bought a tent and a travel case, knowing he'd soon be sleeping outside. He returned to the hostel and began packing everything he owned, carefully sealing his clothes in plastic bags to keep them dry. The next morning, he left Derby and headed to Chesterfield to meet with his offender manager—his probation officer. At the time, Alan was wearing both a GPS and alcohol monitoring tag. Ironically, the GPS tag was removed on the same day he became homeless.

His probation officer did his best to help. They spent hours together searching for accommodation, and he gave Alan a food bank voucher so he could get something to eat.

Alan spent the rest of that day in the library, staying warm until it closed. That evening, he found a quiet spot near the Ravenside Retail Park, beside the dual carriageway on Chatsworth Road, with the River Hipper flowing just behind. Without a sleeping bag, he used his carefully packed clothes to lie on through the night.

The next morning, Alan walked to Pathways to register as homeless and grabbed a rough sleepers' breakfast. After explaining his situation, he was signposted to Chesterfield Borough Council to make his homelessness official in the system.

Later that night, he visited the soup kitchen at Grace Chapel, where a church-run charity called *Church on the Bus* provided hot meals and, thankfully, a sleeping bag. The volunteers were kind, genuinely interested in his story, and offered both food and support. He left that night with enough provisions to get by and returned to pitch his tent once more.

Over time, Alan settled into a routine. He spent his days in the library, keeping warm and staying close to his appointments. Throughout September, Pathways helped him arrange interviews with various housing associations.

Eventually, Alan was invited to attend Pathways' Wellbeing Days—simple activities like games, art, and shared meals. That hot food meant more than he could express. It reminded him that he was still part of something. He even got involved in their December art exhibit, helping to complete a piece called "*Bob*." These small moments began to rebuild his sense of purpose and self-worth.

As the nights grew colder, Alan invested in a four-season sleeping bag and a small gas camping stove so he could cook or make a hot drink. When SWEP (Severe Weather Emergency Protocol) was activated, he chose not to use it—he had a solid setup, and more importantly, all his support systems were in Chesterfield. P3 continued to check in on him, and he felt more prepared than most for the winter ahead.

Nearly three months passed living this way—rough sleeping, surviving. Despite the circumstances, Alan had created a small sense of stability. Then, out of the blue, he received a phone call from the housing association. They had a place for him.

He moved in the next day.

That moment—finally having a roof over his head—was overwhelming. Alan felt excitement, relief, and deep gratitude. He was finally home.

Out of the Shadows

We launched our women's service "Out of the Shadows" in 2023 in recognition that traditional homelessness services are not always accessible to women, particularly the most vulnerable women who would benefit from our support.

Male dominated spaces can be intimidating to approach so having a dedicated space for women only allows people to approach us who may not feel comfortable coming to our drop in or groups, particularly those who have fled domestic abuse or have other trauma that prevents them from engaging with our busy service. It also provides the opportunity for women who have young children with them to access our support in a calmer, less intimidating space.

We offer a weekly housing drop in and group attended and staffed entirely by women. The group is warm and supportive with the women who attend bonding, crying and laughing at the same time as building skills and confidence.

This year the group have taken part in lots of different activities including baking scones, creating vases from old books, needle felting and some trips out for afternoon tea and pottery painting.



Art Exhibition and Auction

In December 2024 Pathways hosted our first Art Exhibition and Auction.

So often in this line of work people are asked what their needs are and what will help them, which is important, but when these are often the main or only questions asked of you, it can impact your self-esteem. The exhibition was an opportunity to showcase the talent and creativity people have and provided a huge confidence and self esteem boost for those involved.

We held the event at West Studios, a dedicated art exhibition space and held a launch event and silent auction, raising funds to enable us to continue supporting people. The exhibition contained a mixture of individual and collaborative pieces including "Bob" as a centre piece, a life sized statue that had our rough sleepers experiences, in their words, written all over him.



Paths to Recovery

This year our multi stage recovery project evolved to take on a full time recovery worker, Bec, who could work one on one with people in the very early stages of their recovery. Some of the people she worked with this year hadn't even considered reducing their substance use or accessing support for any other issues they may face, but with dedicated, flexible, holistic support are now engaging with Derbyshire Recovery Partnership (the treatment service for our area), their GPs, mental health services, probation, benefits services and housing. In particular, she worked hard to engage some of the long term rough sleepers who have always struggled to engage with us and other services and they are now in settled housing and engaging with a range of support to meet their needs.

To celebrate recovery month in September we held a graffiti event where people could come and work on both individual projects and our inspirational boards. We had a big BBQ and served mocktails which had been designed by the wellbeing group.

The final stage of this project is peer mentoring and volunteering. We had 3 new peer mentors graduate and start to volunteer with us this year, giving them the opportunity to build their own skills and confidence but also provide visible recovery to others so they can begin to believe they can do it to.



Adam's Story



Pathways first became aware of Adam in 2022, but despite encouragement from staff and members of the public, he did not seek support until 2023. At that time, very little was known about him beyond the fact he was rough sleeping, vulnerable, using substances, and clearly struggling with his mental health.

When Adam finally presented, he disclosed that he had fled his property nearly a year earlier after being burgled and violently beaten. Terrified of returning, he refused all help from the police, council, or support agencies, which led to him losing his tenancy permanently. This experience created deep mistrust and resentment toward services. Although he completed a housing assessment, his engagement remained minimal. He visited drop-ins occasionally for provisions but never attended follow-up appointments, despite agreeing to them. He also refused to carry a mobile phone, making meaningful support almost impossible.

Adam then began attending the weekly rough sleepers' breakfast. Staff observed that although he was extremely vulnerable, he was also kind, polite, and selfless—often giving away his coat to others who were cold. He tried to make people smile but would not let anyone get close to him or accept help himself.

When the Recovery Worker joined Pathways, she regularly supported these breakfasts and slowly built rapport with Adam and others at a pace they felt comfortable with. Over time, she and Adam developed a friendly, playful connection. He enjoyed chatting with her but still kept all personal aspects of his life guarded.

In January 2025, Adam arrived at breakfast and unexpectedly asked the Recovery Worker to accompany him to a GP appointment that same morning. He was frightened to go alone. Despite the team being short-staffed, cover was arranged—this was the first time he had ever requested support.

While waiting for the appointment, Adam began opening up. The Recovery Worker encouraged him to be honest with the GP and to accept help from the services trying to support him. Although it was difficult, he spoke openly during the appointment, and a wraparound support plan was created.

Adam had been under DRP and Bayheath House, but his engagement had been very limited. He was on a methadone script due to a long history of injecting heroin and crack but had not used either since 2022. He still smoked mamba daily and bought street pregabalin.

After that appointment, Adam's engagement transformed. He began checking in at Pathways daily to show he was safe and took the Recovery Worker around the town to point out where he slept in case she ever needed to find him. He started attending weekly psychosocial sessions and became willing to work on reducing his substance use and improving his mental health. He also accepted help to set up his benefits and finally agreed to carry a mobile phone so he could receive appointment reminders. He began attending every appointment with Pathways, his GP, and DRP.

As trust continued to grow, Adam shared more about the dangers he faced on the streets—having belongings stolen and being attacked multiple times by gang members. With encouragement, he eventually agreed to engage with the council and was placed in temporary accommodation. He also began working with P3, who have since housed him in his own property.

Adam now continues to engage fully with all services. He is on a pregabalin reduction plan, is slowly reducing his mamba use, and still checks in regularly with the Recovery Worker. Most importantly, he now talks about a future he wants for himself—something he never believed possible. He recently attended his first wellbeing group and even joined in with baking alongside other clients.

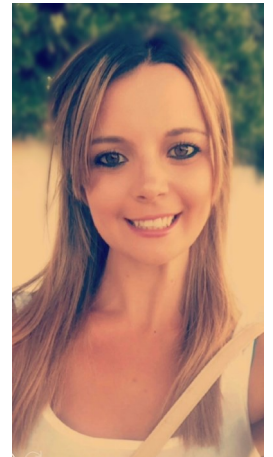
Volunteers

Every year we say the same thing but it remains true, we couldn't run the service we do without our fabulous team of volunteers.

The team do so many different things at Pathways including supporting the housing staff team at drop in, helping at activity groups, cooking, sorting out donations and any other tasks which come up.

In 2024/25 they have volunteered for a total of 958 hours!!

They give up their own valuable time to support us and the people we work with and we're so grateful for their time and efforts.



Thank you

The work of Pathways could not continue without our generous funders and donors. We are always grateful for the money and supplies we receive that help us to support people who are homeless or at risk of becoming so.

We're also particularly grateful to everyone who donated to our Rucksack Appeal this year. The number of rucksacks received was incredible and we were able to help many people with the generous donations.

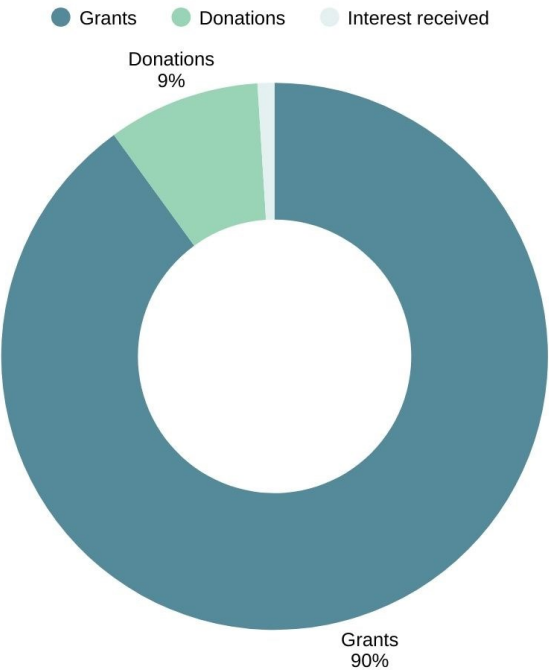


Thank you



Finances

Income for year ending 31 March 25



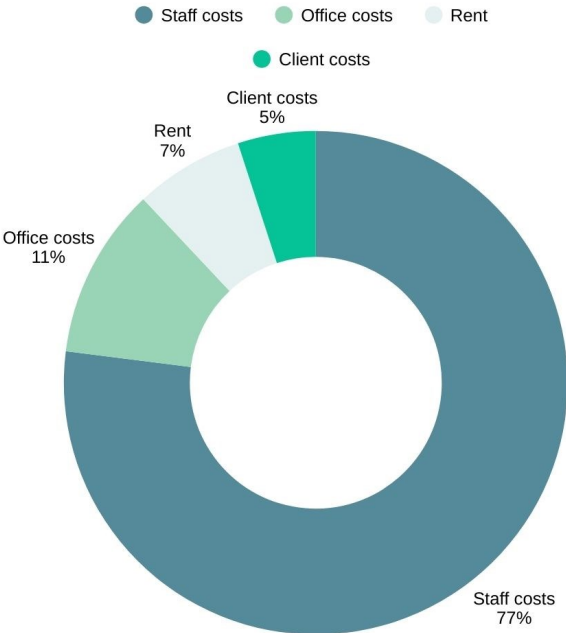
Income

Income	£	%
Grants	381,272	90
Donations	37,105	9
Interest	3,415	1
Total	421,792	

Expenditure

Expenditure	£	%
Staff costs	298,888	77
Office costs	40,765	11
Rent	27,271	7
Client costs	18,687	5
Other	2,334	0.5
Total	387,945	

Expenditure for year ending 31 March 25



Board of Trustees

Chair: Cathy Madden

Treasurer: Emily Coy

Frank Bacon

Ian Birchmore

Carl Cunningham

Alison Gibson

Stuart Joce

Sandra Johnson

Laura Newbould-Jones

David Rourke

Pathways of Chesterfield
120 Saltergate
Chesterfield
S40 1NG

Pathways is a registered charity. No 1118638

Private company limited 10689076

www.pathwaysofchesterfield.co.uk

**Report of the Trustees and
Unaudited Financial Statements
For The Year Ended 31 March 2025
for
Pathways of Chesterfield**

Nuvo Accountancy Limited
Unit 6, Acorn Business Park
Woodseats Close
Sheffield
South Yorkshire
S8 0TB

Pathways of Chesterfield

Contents of the Financial Statements For The Year Ended 31 March 2025

	Page
Report of the Trustees	1
Independent Examiner's Report	2
Statement of Financial Activities	3
Balance Sheet	4
Notes to the Financial Statements	5 to 11

Pathways of Chesterfield
Report of the Trustees
For The Year Ended 31 March 2025

The trustees present their report with the financial statements of the charity for the year ended 31 March 2025. The trustees have adopted the provisions of Accounting and Reporting by Charities: Statement of Recommended Practice applicable to charities preparing their accounts in accordance with the Financial Reporting Standard applicable in the UK and Republic of Ireland (FRS 102) (effective 1 January 2019).

OBJECTIVES AND ACTIVITIES

Objectives and aims

The aim of the charity is to prevent homelessness. Its mission is to eradicate rough sleeping in the community and to support those without a permanent home to obtain and maintain one.

Significant activities

The charity provides a centre that is a place of acceptance, empowerment and change where clients are given the help, skills and the confidence to resolve their issues of homelessness.

On a basic level it provides a place of social contact and shelter, with services such as food provision, emergency clothing and bedding if required. Trained support staff deliver an effective service of constructive and beneficial interventions to clients, which provide a catalyst for change and break the cycle of homelessness.

STRUCTURE, GOVERNANCE AND MANAGEMENT

Governing document

The charity is controlled by its governing document, a deed of trust and constitutes an unincorporated charity.

REFERENCE AND ADMINISTRATIVE DETAILS

Registered Charity number

1118638

Principal address

120 Saltergate
Chesterfield
S40 1NG

Trustees

F H Bacon (resigned 17.7.25)
Mrs S C Walker (resigned 18.7.24)
Dr C A Madden
Ms E J Coy (resigned 21.8.25)
S Joce
Ms L E Newbould-Jones
Ms A Gibson
C Cunningham
J Hargreaves (appointed 17.7.25)
I Birchmore

Independent Examiner

Julie Holderness FCCA ACA
Nuvo Accountancy Limited
Unit 6, Acorn Business Park
Woodseats Close
Sheffield
South Yorkshire
S8 0TB

Approved by order of the board of trustees on 27 November 2025 and signed on its behalf by:

Dr C A Madden - Trustee

Independent Examiner's Report to the Trustees of Pathways of Chesterfield

Independent examiner's report to the trustees of Pathways of Chesterfield

I report to the charity trustees on my examination of the accounts of Pathways of Chesterfield (the Trust) for the year ended 31 March 2025.

Responsibilities and basis of report

As the charity trustees of the Trust you are responsible for the preparation of the accounts in accordance with the requirements of the Charities Act 2011 ('the Act').

I report in respect of my examination of the Trust's accounts carried out under Section 145 of the Act and in carrying out my examination I have followed all applicable Directions given by the Charity Commission under Section 145(5)(b) of the Act.

Independent examiner's statement

Since your charity's gross income exceeded £250,000 your examiner must be a member of a listed body. I can confirm that I am qualified to undertake the examination because I am a member of the Association of Chartered Certified Accountants, which is one of the listed bodies.

I have completed my examination. I confirm that no material matters have come to my attention in connection with the examination giving me cause to believe that in any material respect:

1. accounting records were not kept in respect of the Trust as required by Section 130 of the Act; or
2. the accounts do not accord with those records; or
3. the accounts do not comply with the applicable requirements concerning the form and content of accounts set out in the Charities (Accounts and Reports) Regulations 2008 other than any requirement that the accounts give a true and fair view which is not a matter considered as part of an independent examination.

I have no concerns and have come across no other matters in connection with the examination to which attention should be drawn in this report in order to enable a proper understanding of the accounts to be reached.

Julie Holderness FCCA ACA
The Association of Chartered Certified Accountants

Nuvo Accountancy Limited
Unit 6, Acorn Business Park
Woodseats Close
Sheffield
South Yorkshire
S8 0TB

27 November 2025

Pathways of Chesterfield

**Statement of Financial Activities
For The Year Ended 31 March 2025**

	Notes	Unrestricted fund £	Restricted funds £	2025 Total funds £	2024 Total funds £
INCOME AND ENDOWMENTS FROM					
Donations and legacies		95,275	323,102	418,377	431,352
Investment income	2	3,415	-	3,415	1,833
Total		<u>98,690</u>	<u>323,102</u>	<u>421,792</u>	<u>433,185</u>
EXPENDITURE ON					
Charitable activities					
Charitable activities		117,920	278,113	396,033	316,086
Governance costs		4,581	-	4,581	5,153
Other		354	980	1,334	-
Total		<u>122,855</u>	<u>279,093</u>	<u>401,948</u>	<u>321,239</u>
NET INCOME/(EXPENDITURE)					
Transfers between funds	10	(24,165) 43,883	44,009 (43,883)	19,844 -	111,946 -
Net movement in funds		<u>19,718</u>	<u>126</u>	<u>19,844</u>	<u>111,946</u>
RECONCILIATION OF FUNDS					
Total funds brought forward		66,724	110,203	176,927	64,981
TOTAL FUNDS CARRIED FORWARD		<u><u>86,442</u></u>	<u><u>110,329</u></u>	<u><u>196,771</u></u>	<u><u>176,927</u></u>

The notes form part of these financial statements

Pathways of Chesterfield

Balance Sheet 31 March 2025

	Notes	Unrestricted fund £	Restricted funds £	2025 Total funds £	2024 Total funds £
FIXED ASSETS					
Tangible assets	7	11,505	901	12,406	8,990
CURRENT ASSETS					
Debtors	8	37,559	43,150	80,709	32,878
Cash at bank		88,489	159,597	248,086	256,110
		<u>126,048</u>	<u>202,747</u>	<u>328,795</u>	<u>288,988</u>
CREDITORS					
Amounts falling due within one year	9	(51,112)	(93,318)	(144,430)	(121,051)
NET CURRENT ASSETS		<u>74,936</u>	<u>109,429</u>	<u>184,365</u>	<u>167,937</u>
TOTAL ASSETS LESS CURRENT LIABILITIES		<u>86,441</u>	<u>110,330</u>	<u>196,771</u>	<u>176,927</u>
NET ASSETS		<u>86,441</u>	<u>110,330</u>	<u>196,771</u>	<u>176,927</u>
FUNDS	10				
Unrestricted funds				86,441	66,724
Restricted funds				110,330	110,203
TOTAL FUNDS				<u>196,771</u>	<u>176,927</u>

The financial statements were approved by the Board of Trustees and authorised for issue on 27 November 2025 and were signed on its behalf by:

C A Madden - Trustee

Pathways of Chesterfield

Notes to the Financial Statements For The Year Ended 31 March 2025

1. ACCOUNTING POLICIES

Basis of preparing the financial statements

The financial statements of the charity, which is a public benefit entity under FRS 102, have been prepared in accordance with the Charities SORP (FRS 102) 'Accounting and Reporting by Charities: Statement of Recommended Practice applicable to charities preparing their accounts in accordance with the Financial Reporting Standard applicable in the UK and Republic of Ireland (FRS 102) (effective 1 January 2019)', Financial Reporting Standard 102 'The Financial Reporting Standard applicable in the UK and Republic of Ireland' and the Charities Act 2011. The financial statements have been prepared under the historical cost convention.

Income

All income is recognised in the Statement of Financial Activities once the charity has entitlement to the funds, it is probable that the income will be received and the amount can be measured reliably.

Expenditure

Liabilities are recognised as expenditure as soon as there is a legal or constructive obligation committing the charity to that expenditure, it is probable that a transfer of economic benefits will be required in settlement and the amount of the obligation can be measured reliably. Expenditure is accounted for on an accruals basis and has been classified under headings that aggregate all cost related to the category. Where costs cannot be directly attributed to particular headings they have been allocated to activities on a basis consistent with the use of resources.

Tangible fixed assets

Depreciation is provided at the following annual rates in order to write off each asset over its estimated useful life.

Improvements to property	- Straight line over the life of the lease
Plant and machinery	- 20% on reducing balance
Fixtures and fittings	- 33% on reducing balance and 20% on reducing balance
Computer equipment	- 33% on reducing balance

Taxation

The charity is exempt from tax on its charitable activities.

Fund accounting

Unrestricted funds can be used in accordance with the charitable objectives at the discretion of the trustees.

Restricted funds can only be used for particular restricted purposes within the objects of the charity. Restrictions arise when specified by the donor or when funds are raised for particular restricted purposes.

Further explanation of the nature and purpose of each fund is included in the notes to the financial statements.

Hire purchase and leasing commitments

Rentals paid under operating leases are charged to the Statement of Financial Activities on a straight line basis over the period of the lease.

Pension costs and other post-retirement benefits

The charity operates a defined contribution pension scheme. Contributions payable to the charity's pension scheme are charged to the Statement of Financial Activities in the period to which they relate.

Pathways of Chesterfield

Notes to the Financial Statements - continued For The Year Ended 31 March 2025

2. INVESTMENT INCOME

	2025	2024
	£	£
Bank interest received	<u>3,415</u>	<u>1,833</u>

3. SUPPORT COSTS

	Governance costs £
Charitable activities	9,053
Governance costs	<u>3,616</u>
	<u>12,669</u>

Governance costs include £718 (2024: £654) in respect of the Independent Examiner's fee.

4. TRUSTEES' REMUNERATION AND BENEFITS

There were no trustees' remuneration or other benefits for the year ended 31 March 2025 nor for the year ended 31 March 2024.

Trustees' expenses

There were no trustees' expenses paid for the year ended 31 March 2025 nor for the year ended 31 March 2024.

5. STAFF COSTS

	2025	2024
	£	£
Wages and salaries	271,457	218,131
Social security costs	17,294	12,565
Other pension costs	<u>6,815</u>	<u>6,252</u>
	<u>295,566</u>	<u>236,948</u>

The average monthly number of employees during the year was as follows:

	2025	2024
Support workers	9	8
Management	<u>3</u>	<u>3</u>
	<u>12</u>	<u>11</u>

No employees received emoluments in excess of £60,000.

Pathways of Chesterfield

Notes to the Financial Statements - continued For The Year Ended 31 March 2025

6. COMPARATIVES FOR THE STATEMENT OF FINANCIAL ACTIVITIES

	Unrestricted fund £	Restricted funds £	Total funds £
INCOME AND ENDOWMENTS FROM			
Donations and legacies	112,320	319,032	431,352
Investment income	1,833	-	1,833
Total	<u>114,153</u>	<u>319,032</u>	<u>433,185</u>
EXPENDITURE ON			
Charitable activities			
Charitable activities	93,158	222,928	316,086
Governance costs	5,153	-	5,153
Total	<u>98,311</u>	<u>222,928</u>	<u>321,239</u>
NET INCOME	15,842	96,104	111,946
Transfers between funds	14,779	(14,779)	-
Net movement in funds	30,621	81,325	111,946
RECONCILIATION OF FUNDS			
Total funds brought forward	36,103	28,878	64,981
TOTAL FUNDS CARRIED FORWARD	<u>66,724</u>	<u>110,203</u>	<u>176,927</u>

7. TANGIBLE FIXED ASSETS

	Improvements to property £	Plant and machinery £	Fixtures and fittings £	Computer equipment £	Totals £
COST					
At 1 April 2024	9,245	1,561	6,841	15,517	33,164
Additions	-	-	486	6,597	7,083
Disposals	-	(99)	(75)	(9,813)	(9,987)
At 31 March 2025	<u>9,245</u>	<u>1,462</u>	<u>7,252</u>	<u>12,301</u>	<u>30,260</u>
DEPRECIATION					
At 1 April 2024	7,357	1,192	4,160	11,465	24,174
Charge for year	629	70	608	1,025	2,332
Eliminated on disposal	-	(82)	(69)	(8,501)	(8,652)
At 31 March 2025	<u>7,986</u>	<u>1,180</u>	<u>4,699</u>	<u>3,989</u>	<u>17,854</u>
NET BOOK VALUE					
At 31 March 2025	<u>1,259</u>	<u>282</u>	<u>2,553</u>	<u>8,312</u>	<u>12,406</u>
At 31 March 2024	<u>1,888</u>	<u>369</u>	<u>2,681</u>	<u>4,052</u>	<u>8,990</u>

Pathways of Chesterfield

Notes to the Financial Statements - continued For The Year Ended 31 March 2025

8. DEBTORS: AMOUNTS FALLING DUE WITHIN ONE YEAR

	2025	2024
	£	£
Trade debtors	46,226	-
Prepayments and accrued income	34,483	32,878
	<u>80,709</u>	<u>32,878</u>

9. CREDITORS: AMOUNTS FALLING DUE WITHIN ONE YEAR

	2025	2024
	£	£
Trade creditors	13,285	4,167
Accruals and deferred income	131,145	116,884
	<u>144,430</u>	<u>121,051</u>

10. MOVEMENT IN FUNDS

	At 1.4.24	Net movement in funds	Transfers between funds	At 31.3.25
	£	£	£	£
Unrestricted funds				
General fund	66,724	(24,166)	43,883	86,441
Restricted funds				
Hub funding	69,551	17,901	(3,767)	83,685
Outreach	312	(312)	-	-
Welfare provision	23,769	19,530	(22,528)	20,771
Activities	16,571	6,891	(17,588)	5,874
	<u>110,203</u>	<u>44,010</u>	<u>(43,883)</u>	<u>110,330</u>
TOTAL FUNDS	<u>176,927</u>	<u>19,844</u>	<u>-</u>	<u>196,771</u>

Net movement in funds, included in the above are as follows:

	Incoming resources	Resources expended	Movement in funds
	£	£	£
Unrestricted funds			
General fund	98,690	(122,856)	(24,166)
Restricted funds			
Hub funding	243,489	(225,588)	17,901
Outreach	-	(312)	(312)
Welfare provision	49,255	(29,725)	19,530
Activities	30,358	(23,467)	6,891
	<u>323,102</u>	<u>(279,092)</u>	<u>44,010</u>
TOTAL FUNDS	<u>421,792</u>	<u>(401,948)</u>	<u>19,844</u>

Pathways of Chesterfield

Notes to the Financial Statements - continued For The Year Ended 31 March 2025

10. MOVEMENT IN FUNDS - continued

Comparatives for movement in funds

	At 1.4.23 £	Net movement in funds £	Transfers between funds £	At 31.3.24 £
Unrestricted funds				
General fund	36,103	15,842	14,779	66,724
Restricted funds				
Hub funding	9,331	72,345	(12,125)	69,551
Outreach	(1,282)	1,594	-	312
Tenancy support	13,368	(10,869)	(2,499)	-
Welfare provision	997	22,927	(155)	23,769
Activities	6,464	10,107	-	16,571
	<u>28,878</u>	<u>96,104</u>	<u>(14,779)</u>	<u>110,203</u>
TOTAL FUNDS	<u>64,981</u>	<u>111,946</u>	<u>-</u>	<u>176,927</u>

Comparative net movement in funds, included in the above are as follows:

	Incoming resources £	Resources expended £	Movement in funds £
Unrestricted funds			
General fund	114,153	(98,311)	15,842
Restricted funds			
Hub funding	239,167	(166,822)	72,345
Outreach	1,750	(156)	1,594
Tenancy support	-	(10,869)	(10,869)
Welfare provision	42,987	(20,060)	22,927
Activities	35,128	(25,021)	10,107
	<u>319,032</u>	<u>(222,928)</u>	<u>96,104</u>
TOTAL FUNDS	<u>433,185</u>	<u>(321,239)</u>	<u>111,946</u>

Pathways of Chesterfield

Notes to the Financial Statements - continued For The Year Ended 31 March 2025

10. MOVEMENT IN FUNDS - continued

A current year 12 months and prior year 12 months combined position is as follows:

	At 1.4.23 £	Net movement in funds £	Transfers between funds £	At 31.3.25 £
Unrestricted funds				
General fund	36,103	(8,324)	58,662	86,441
Restricted funds				
Hub funding	9,331	90,246	(15,892)	83,685
Outreach	(1,282)	1,282	-	-
Tenancy support	13,368	(10,869)	(2,499)	-
Welfare provision	997	42,457	(22,683)	20,771
Activities	6,464	16,998	(17,588)	5,874
	<u>28,878</u>	<u>140,114</u>	<u>(58,662)</u>	<u>110,330</u>
TOTAL FUNDS	<u>64,981</u>	<u>131,790</u>	<u>-</u>	<u>196,771</u>

A current year 12 months and prior year 12 months combined net movement in funds, included in the above are as follows:

	Incoming resources £	Resources expended £	Movement in funds £
Unrestricted funds			
General fund	212,843	(221,167)	(8,324)
Restricted funds			
Hub funding	482,656	(392,410)	90,246
Outreach	1,750	(468)	1,282
Tenancy support	-	(10,869)	(10,869)
Welfare provision	92,242	(49,785)	42,457
Activities	65,486	(48,488)	16,998
	<u>642,134</u>	<u>(502,020)</u>	<u>140,114</u>
TOTAL FUNDS	<u>854,977</u>	<u>(723,187)</u>	<u>131,790</u>

FUND DESCRIPTIONS

(a) Unrestricted funds

Unrestricted funds represent the free funds of the charity.

(b) Restricted funds

Hub

The hub provides a drop-in service and appointments for vulnerable homeless people with the aim of supporting them holistically.

Outreach

Street outreach to engage people who are rough sleeping and encourage them to access services and find accommodation.

Pathways of Chesterfield

Notes to the Financial Statements - continued For The Year Ended 31 March 2025

10. MOVEMENT IN FUNDS - continued

Tenancy support

Provision of support to people moving out of homelessness with their tenancy.

Welfare provision

Welfare provision for clients including mobile telephones, home starter packs and rent in advance.

Activities

Activities and volunteer co-ordinator role to provide activity groups and co-ordinate volunteers.

11. RELATED PARTY DISCLOSURES

There were no related party transactions for the year ended 31 March 2025.

**Report of the Trustees and
Unaudited Financial Statements
For The Year Ended 31 March 2025
for
Pathways of Chesterfield**

Nuvo Accountancy Limited
Unit 6, Acorn Business Park
Woodseats Close
Sheffield
South Yorkshire
S8 0TB

Pathways of Chesterfield

Contents of the Financial Statements For The Year Ended 31 March 2025

	Page
Report of the Trustees	1
Independent Examiner's Report	2
Statement of Financial Activities	3
Balance Sheet	4
Notes to the Financial Statements	5 to 11

Pathways of Chesterfield
Report of the Trustees
For The Year Ended 31 March 2025

The trustees present their report with the financial statements of the charity for the year ended 31 March 2025. The trustees have adopted the provisions of Accounting and Reporting by Charities: Statement of Recommended Practice applicable to charities preparing their accounts in accordance with the Financial Reporting Standard applicable in the UK and Republic of Ireland (FRS 102) (effective 1 January 2019).

OBJECTIVES AND ACTIVITIES

Objectives and aims

The aim of the charity is to prevent homelessness. Its mission is to eradicate rough sleeping in the community and to support those without a permanent home to obtain and maintain one.

Significant activities

The charity provides a centre that is a place of acceptance, empowerment and change where clients are given the help, skills and the confidence to resolve their issues of homelessness.

On a basic level it provides a place of social contact and shelter, with services such as food provision, emergency clothing and bedding if required. Trained support staff deliver an effective service of constructive and beneficial interventions to clients, which provide a catalyst for change and break the cycle of homelessness.

STRUCTURE, GOVERNANCE AND MANAGEMENT

Governing document

The charity is controlled by its governing document, a deed of trust and constitutes an unincorporated charity.

REFERENCE AND ADMINISTRATIVE DETAILS

Registered Charity number

1118638

Principal address

120 Saltergate
Chesterfield
S40 1NG

Trustees

F H Bacon (resigned 17.7.25)
Mrs S C Walker (resigned 18.7.24)
Dr C A Madden
Ms E J Coy (resigned 21.8.25)
S Joce
Ms L E Newbould-Jones
Ms A Gibson
C Cunningham
J Hargreaves (appointed 17.7.25)
I Birchmore

Independent Examiner

Julie Holderness FCCA ACA
Nuvo Accountancy Limited
Unit 6, Acorn Business Park
Woodseats Close
Sheffield
South Yorkshire
S8 0TB

Approved by order of the board of trustees on 27 November 2025 and signed on its behalf by:

Dr C A Madden - Trustee

Independent Examiner's Report to the Trustees of Pathways of Chesterfield

Independent examiner's report to the trustees of Pathways of Chesterfield

I report to the charity trustees on my examination of the accounts of Pathways of Chesterfield (the Trust) for the year ended 31 March 2025.

Responsibilities and basis of report

As the charity trustees of the Trust you are responsible for the preparation of the accounts in accordance with the requirements of the Charities Act 2011 ('the Act').

I report in respect of my examination of the Trust's accounts carried out under Section 145 of the Act and in carrying out my examination I have followed all applicable Directions given by the Charity Commission under Section 145(5)(b) of the Act.

Independent examiner's statement

Since your charity's gross income exceeded £250,000 your examiner must be a member of a listed body. I can confirm that I am qualified to undertake the examination because I am a member of the Association of Chartered Certified Accountants, which is one of the listed bodies.

I have completed my examination. I confirm that no material matters have come to my attention in connection with the examination giving me cause to believe that in any material respect:

1. accounting records were not kept in respect of the Trust as required by Section 130 of the Act; or
2. the accounts do not accord with those records; or
3. the accounts do not comply with the applicable requirements concerning the form and content of accounts set out in the Charities (Accounts and Reports) Regulations 2008 other than any requirement that the accounts give a true and fair view which is not a matter considered as part of an independent examination.

I have no concerns and have come across no other matters in connection with the examination to which attention should be drawn in this report in order to enable a proper understanding of the accounts to be reached.

Julie Holderness FCCA ACA
The Association of Chartered Certified Accountants

Nuvo Accountancy Limited
Unit 6, Acorn Business Park
Woodseats Close
Sheffield
South Yorkshire
S8 0TB

27 November 2025

Pathways of Chesterfield

**Statement of Financial Activities
For The Year Ended 31 March 2025**

	Notes	Unrestricted fund £	Restricted funds £	2025 Total funds £	2024 Total funds £
INCOME AND ENDOWMENTS FROM					
Donations and legacies		95,275	323,102	418,377	431,352
Investment income	2	3,415	-	3,415	1,833
Total		<u>98,690</u>	<u>323,102</u>	<u>421,792</u>	<u>433,185</u>
EXPENDITURE ON					
Charitable activities					
Charitable activities		117,920	278,113	396,033	316,086
Governance costs		4,581	-	4,581	5,153
Other		354	980	1,334	-
Total		<u>122,855</u>	<u>279,093</u>	<u>401,948</u>	<u>321,239</u>
NET INCOME/(EXPENDITURE)					
Transfers between funds	10	(24,165) 43,883	44,009 (43,883)	19,844 -	111,946 -
Net movement in funds		<u>19,718</u>	<u>126</u>	<u>19,844</u>	<u>111,946</u>
RECONCILIATION OF FUNDS					
Total funds brought forward		66,724	110,203	176,927	64,981
TOTAL FUNDS CARRIED FORWARD		<u><u>86,442</u></u>	<u><u>110,329</u></u>	<u><u>196,771</u></u>	<u><u>176,927</u></u>

The notes form part of these financial statements

Pathways of Chesterfield

Balance Sheet 31 March 2025

	Notes	Unrestricted fund £	Restricted funds £	2025 Total funds £	2024 Total funds £
FIXED ASSETS					
Tangible assets	7	11,505	901	12,406	8,990
CURRENT ASSETS					
Debtors	8	37,559	43,150	80,709	32,878
Cash at bank		88,489	159,597	248,086	256,110
		<u>126,048</u>	<u>202,747</u>	<u>328,795</u>	<u>288,988</u>
CREDITORS					
Amounts falling due within one year	9	(51,112)	(93,318)	(144,430)	(121,051)
NET CURRENT ASSETS		<u>74,936</u>	<u>109,429</u>	<u>184,365</u>	<u>167,937</u>
TOTAL ASSETS LESS CURRENT LIABILITIES		<u>86,441</u>	<u>110,330</u>	<u>196,771</u>	<u>176,927</u>
NET ASSETS		<u>86,441</u>	<u>110,330</u>	<u>196,771</u>	<u>176,927</u>
FUNDS	10				
Unrestricted funds				86,441	66,724
Restricted funds				110,330	110,203
TOTAL FUNDS				<u>196,771</u>	<u>176,927</u>

The financial statements were approved by the Board of Trustees and authorised for issue on 27 November 2025 and were signed on its behalf by:

C A Madden - Trustee

Pathways of Chesterfield

Notes to the Financial Statements For The Year Ended 31 March 2025

1. ACCOUNTING POLICIES

Basis of preparing the financial statements

The financial statements of the charity, which is a public benefit entity under FRS 102, have been prepared in accordance with the Charities SORP (FRS 102) 'Accounting and Reporting by Charities: Statement of Recommended Practice applicable to charities preparing their accounts in accordance with the Financial Reporting Standard applicable in the UK and Republic of Ireland (FRS 102) (effective 1 January 2019)', Financial Reporting Standard 102 'The Financial Reporting Standard applicable in the UK and Republic of Ireland' and the Charities Act 2011. The financial statements have been prepared under the historical cost convention.

Income

All income is recognised in the Statement of Financial Activities once the charity has entitlement to the funds, it is probable that the income will be received and the amount can be measured reliably.

Expenditure

Liabilities are recognised as expenditure as soon as there is a legal or constructive obligation committing the charity to that expenditure, it is probable that a transfer of economic benefits will be required in settlement and the amount of the obligation can be measured reliably. Expenditure is accounted for on an accruals basis and has been classified under headings that aggregate all cost related to the category. Where costs cannot be directly attributed to particular headings they have been allocated to activities on a basis consistent with the use of resources.

Tangible fixed assets

Depreciation is provided at the following annual rates in order to write off each asset over its estimated useful life.

Improvements to property	- Straight line over the life of the lease
Plant and machinery	- 20% on reducing balance
Fixtures and fittings	- 33% on reducing balance and 20% on reducing balance
Computer equipment	- 33% on reducing balance

Taxation

The charity is exempt from tax on its charitable activities.

Fund accounting

Unrestricted funds can be used in accordance with the charitable objectives at the discretion of the trustees.

Restricted funds can only be used for particular restricted purposes within the objects of the charity. Restrictions arise when specified by the donor or when funds are raised for particular restricted purposes.

Further explanation of the nature and purpose of each fund is included in the notes to the financial statements.

Hire purchase and leasing commitments

Rentals paid under operating leases are charged to the Statement of Financial Activities on a straight line basis over the period of the lease.

Pension costs and other post-retirement benefits

The charity operates a defined contribution pension scheme. Contributions payable to the charity's pension scheme are charged to the Statement of Financial Activities in the period to which they relate.

Pathways of Chesterfield

Notes to the Financial Statements - continued For The Year Ended 31 March 2025

2. INVESTMENT INCOME

	2025	2024
	£	£
Bank interest received	3,415	1,833
	<u>3,415</u>	<u>1,833</u>

3. SUPPORT COSTS

	Governance costs
	£
Charitable activities	9,053
Governance costs	3,616
	<u>12,669</u>

Governance costs include £718 (2024: £654) in respect of the Independent Examiner's fee.

4. TRUSTEES' REMUNERATION AND BENEFITS

There were no trustees' remuneration or other benefits for the year ended 31 March 2025 nor for the year ended 31 March 2024.

Trustees' expenses

There were no trustees' expenses paid for the year ended 31 March 2025 nor for the year ended 31 March 2024.

5. STAFF COSTS

	2025	2024
	£	£
Wages and salaries	271,457	218,131
Social security costs	17,294	12,565
Other pension costs	6,815	6,252
	<u>295,566</u>	<u>236,948</u>

The average monthly number of employees during the year was as follows:

	2025	2024
Support workers	9	8
Management	3	3
	<u>12</u>	<u>11</u>

No employees received emoluments in excess of £60,000.

Pathways of Chesterfield

Notes to the Financial Statements - continued For The Year Ended 31 March 2025

6. COMPARATIVES FOR THE STATEMENT OF FINANCIAL ACTIVITIES

	Unrestricted fund £	Restricted funds £	Total funds £
INCOME AND ENDOWMENTS FROM			
Donations and legacies	112,320	319,032	431,352
Investment income	1,833	-	1,833
Total	<u>114,153</u>	<u>319,032</u>	<u>433,185</u>
EXPENDITURE ON			
Charitable activities			
Charitable activities	93,158	222,928	316,086
Governance costs	5,153	-	5,153
Total	<u>98,311</u>	<u>222,928</u>	<u>321,239</u>
NET INCOME	15,842	96,104	111,946
Transfers between funds	14,779	(14,779)	-
Net movement in funds	30,621	81,325	111,946
RECONCILIATION OF FUNDS			
Total funds brought forward	36,103	28,878	64,981
TOTAL FUNDS CARRIED FORWARD	<u>66,724</u>	<u>110,203</u>	<u>176,927</u>

7. TANGIBLE FIXED ASSETS

	Improvements to property £	Plant and machinery £	Fixtures and fittings £	Computer equipment £	Totals £
COST					
At 1 April 2024	9,245	1,561	6,841	15,517	33,164
Additions	-	-	486	6,597	7,083
Disposals	-	(99)	(75)	(9,813)	(9,987)
At 31 March 2025	<u>9,245</u>	<u>1,462</u>	<u>7,252</u>	<u>12,301</u>	<u>30,260</u>
DEPRECIATION					
At 1 April 2024	7,357	1,192	4,160	11,465	24,174
Charge for year	629	70	608	1,025	2,332
Eliminated on disposal	-	(82)	(69)	(8,501)	(8,652)
At 31 March 2025	<u>7,986</u>	<u>1,180</u>	<u>4,699</u>	<u>3,989</u>	<u>17,854</u>
NET BOOK VALUE					
At 31 March 2025	<u>1,259</u>	<u>282</u>	<u>2,553</u>	<u>8,312</u>	<u>12,406</u>
At 31 March 2024	<u>1,888</u>	<u>369</u>	<u>2,681</u>	<u>4,052</u>	<u>8,990</u>

Pathways of Chesterfield

Notes to the Financial Statements - continued For The Year Ended 31 March 2025

8. DEBTORS: AMOUNTS FALLING DUE WITHIN ONE YEAR

	2025	2024
	£	£
Trade debtors	46,226	-
Prepayments and accrued income	34,483	32,878
	<u>80,709</u>	<u>32,878</u>

9. CREDITORS: AMOUNTS FALLING DUE WITHIN ONE YEAR

	2025	2024
	£	£
Trade creditors	13,285	4,167
Accruals and deferred income	131,145	116,884
	<u>144,430</u>	<u>121,051</u>

10. MOVEMENT IN FUNDS

	At 1.4.24	Net movement in funds	Transfers between funds	At 31.3.25
	£	£	£	£
Unrestricted funds				
General fund	66,724	(24,166)	43,883	86,441
Restricted funds				
Hub funding	69,551	17,901	(3,767)	83,685
Outreach	312	(312)	-	-
Welfare provision	23,769	19,530	(22,528)	20,771
Activities	16,571	6,891	(17,588)	5,874
	<u>110,203</u>	<u>44,010</u>	<u>(43,883)</u>	<u>110,330</u>
TOTAL FUNDS	<u>176,927</u>	<u>19,844</u>	<u>-</u>	<u>196,771</u>

Net movement in funds, included in the above are as follows:

	Incoming resources	Resources expended	Movement in funds
	£	£	£
Unrestricted funds			
General fund	98,690	(122,856)	(24,166)
Restricted funds			
Hub funding	243,489	(225,588)	17,901
Outreach	-	(312)	(312)
Welfare provision	49,255	(29,725)	19,530
Activities	30,358	(23,467)	6,891
	<u>323,102</u>	<u>(279,092)</u>	<u>44,010</u>
TOTAL FUNDS	<u>421,792</u>	<u>(401,948)</u>	<u>19,844</u>

Pathways of Chesterfield

Notes to the Financial Statements - continued For The Year Ended 31 March 2025

10. MOVEMENT IN FUNDS - continued

Comparatives for movement in funds

	At 1.4.23 £	Net movement in funds £	Transfers between funds £	At 31.3.24 £
Unrestricted funds				
General fund	36,103	15,842	14,779	66,724
Restricted funds				
Hub funding	9,331	72,345	(12,125)	69,551
Outreach	(1,282)	1,594	-	312
Tenancy support	13,368	(10,869)	(2,499)	-
Welfare provision	997	22,927	(155)	23,769
Activities	6,464	10,107	-	16,571
	<u>28,878</u>	<u>96,104</u>	<u>(14,779)</u>	<u>110,203</u>
TOTAL FUNDS	<u>64,981</u>	<u>111,946</u>	<u>-</u>	<u>176,927</u>

Comparative net movement in funds, included in the above are as follows:

	Incoming resources £	Resources expended £	Movement in funds £
Unrestricted funds			
General fund	114,153	(98,311)	15,842
Restricted funds			
Hub funding	239,167	(166,822)	72,345
Outreach	1,750	(156)	1,594
Tenancy support	-	(10,869)	(10,869)
Welfare provision	42,987	(20,060)	22,927
Activities	35,128	(25,021)	10,107
	<u>319,032</u>	<u>(222,928)</u>	<u>96,104</u>
TOTAL FUNDS	<u>433,185</u>	<u>(321,239)</u>	<u>111,946</u>

Pathways of Chesterfield

Notes to the Financial Statements - continued For The Year Ended 31 March 2025

10. MOVEMENT IN FUNDS - continued

A current year 12 months and prior year 12 months combined position is as follows:

	At 1.4.23 £	Net movement in funds £	Transfers between funds £	At 31.3.25 £
Unrestricted funds				
General fund	36,103	(8,324)	58,662	86,441
Restricted funds				
Hub funding	9,331	90,246	(15,892)	83,685
Outreach	(1,282)	1,282	-	-
Tenancy support	13,368	(10,869)	(2,499)	-
Welfare provision	997	42,457	(22,683)	20,771
Activities	6,464	16,998	(17,588)	5,874
	<u>28,878</u>	<u>140,114</u>	<u>(58,662)</u>	<u>110,330</u>
TOTAL FUNDS	<u>64,981</u>	<u>131,790</u>	<u>-</u>	<u>196,771</u>

A current year 12 months and prior year 12 months combined net movement in funds, included in the above are as follows:

	Incoming resources £	Resources expended £	Movement in funds £
Unrestricted funds			
General fund	212,843	(221,167)	(8,324)
Restricted funds			
Hub funding	482,656	(392,410)	90,246
Outreach	1,750	(468)	1,282
Tenancy support	-	(10,869)	(10,869)
Welfare provision	92,242	(49,785)	42,457
Activities	65,486	(48,488)	16,998
	<u>642,134</u>	<u>(502,020)</u>	<u>140,114</u>
TOTAL FUNDS	<u>854,977</u>	<u>(723,187)</u>	<u>131,790</u>

FUND DESCRIPTIONS

(a) Unrestricted funds

Unrestricted funds represent the free funds of the charity.

(b) Restricted funds

Hub

The hub provides a drop-in service and appointments for vulnerable homeless people with the aim of supporting them holistically.

Outreach

Street outreach to engage people who are rough sleeping and encourage them to access services and find accommodation.

Pathways of Chesterfield

Notes to the Financial Statements - continued For The Year Ended 31 March 2025

10. MOVEMENT IN FUNDS - continued

Tenancy support

Provision of support to people moving out of homelessness with their tenancy.

Welfare provision

Welfare provision for clients including mobile telephones, home starter packs and rent in advance.

Activities

Activities and volunteer co-ordinator role to provide activity groups and co-ordinate volunteers.

11. RELATED PARTY DISCLOSURES

There were no related party transactions for the year ended 31 March 2025.