

ANNUAL REPORT AND ACCOUNTS 2023-24



ALMT

Partnerships worth sharing

Image: MCCF



1	Message from the Chair
3	The people behind the ALMT
4	Principal activities
5-6	Responding to need/Measuring impact
7	The grant-making cycle
8	Income explained
9-10	Co-Funding Scheme/Key Partnerships
11	Bereavement Support
12-	Grief and Bereavement Support
14-24	Projects funded
25	Independent Examiner's report
26	Balance Sheet
27	Statement of financial activities
28-30	Notes to the financial statements
31	Thank you

CONTENTS

MESSAGE FROM THE CHAIR

I remain profoundly impressed by our exceptional charity partners, whose unwavering dedication enhances children's prospects globally. The Angus Lawson Memorial Trust (ALMT) has steadfastly navigated a dynamic world, continuing to extend vital funding to those most in need both domestically and internationally. It was particularly heartening to learn from a recent survey just how much our enduring commitment is appreciated by our partners. Nevertheless, the survey also underscored the increasingly formidable funding landscape that many organizations face, significantly affecting their capacity to support the youth.

Remarkably, despite these challenges, our projects in 2024 engaged over 28,000 children and young people, delivering an average of 252 hours of support per individual: a monumental triumph. The breadth of these initiatives is vast, encompassing everything from homework assistance and youth clubs to providing vaccines and nutrition for infants; from mental health and trauma support to facilitating water access in schools and distributing mosquito nets. At the ALMT, we are unwavering in our pursuit to remain proactive and approachable amidst these formidable circumstances, actively seeking projects in high-need areas such as Afghanistan, the Democratic Republic of Congo, and Lebanon.

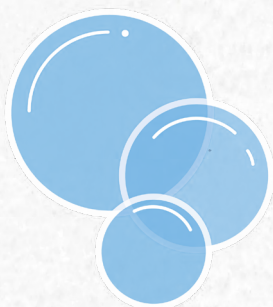
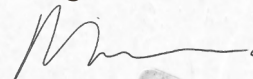
Bereavement support continues to stand as a cornerstone of our mission. With our esteemed patron, Jenni Thomas OBE, we collaborated with writer Sarah Thompson to produce a book encapsulating Jenni's empathetic methodology. "After a Child Dies, Parents' Grief" will serve as a future guide for grieving families, cementing Jenni's enduring legacy by continuing to offer indispensable support to those experiencing bereavement.

Our corporate alliance with RenaissanceRe is flourishing, exemplified by their triumphant ascent of Mount Kenya in November 2023, which amassed £48,652. Their steadfast commitment to the co-funding model and participation in fundraising challenges reinforce our initiatives significantly.

Our co-funding partnerships endow us with a robust framework, allowing us to act as proactive funders and achieve impacts far greater than we could in solitude. A shining example of this is our long-standing collaboration with partners such as the Mac Bevan Charitable Trust and the Tom Love Trust, honouring Tom's legacy by supporting projects he treasured, both in the UK and Africa.

None of our achievements would be feasible without the relentless support of our friends, supporters, the ALMT board of trustees, and our dedicated staff whose unwavering dedication makes all this possible.

With gratitude to all,







THE ALMT PARTNERS WITH INDIVIDUALS AND COMPANIES TO PROVIDE TARGETED GRANTS AND SUPPORT TO ORGANISATIONS WORKING TOWARDS ITS SHARED MISSION TO IMPROVE THE QUALITY OF LIFE FOR THE WORLD'S MOST MARGINALISED CHILDREN AND YOUNG PEOPLE.

The ALMT is a registered charity, number 1117735, governed by its Declaration of Trust and its Articles of Association. The ALMT partners with individuals and companies to provide targeted grants and support to organisations working towards its shared mission to improve the quality of life for the world's most marginalised children and young people.

TRUSTEES

Fiona Fairbairn – Partners' Committee
 Debbie Hofmeyr – Partners' Committee
 Edward Hutton – Trustee
 Kara Lawson – Founder
 Nick Lawson – Founder, Chair
 Geoffrey Love – Trustee (appointed 2024)
 Jonathan Potter – Trustee
 Wasim Rehman – Partners' Committee
 Silvie Tonello – Partners' Committee (resigned 2024)
 Alex de Winton – Partners' Committee

EMPLOYEES

Rebecca Pirt - Trust Director, Sept 2022-Present
 Kate Richardson – Grants Officer, Sept 2022-Present
 Silvie Tonello – Graphic Designer, May 2024-April 2025

PATRON

Jenni Thomas OBE

NEW TRUSTEES CAN BE RECOMMENDED BY A BOARD OR STAFF MEMBER AND ELECTED AT TRUSTEES MEETINGS. THERE IS NO MINIMUM OR MAXIMUM LENGTH OF TERM. TRUSTEES DO NOT RECEIVE REMUNERATION FOR THEIR ROLE.

REGISTERED ADDRESS:

Ravensmere
 Cryers Hill Road
 Cryers Hill
 High Wycombe
 HP15 6LJ

BANKERS:

HSBC
 1-3 Bishopsgate
 Cornhill
 London
 EC2N 3AQ

SOLICITORS:

Kidd Rapinet LLP
 29 Harbour Exchange
 Square
 London
 E14 9GE

ACCOUNTANTS:

Sampson Fielding Ltd
 34-35 Clarges Street
 Mayfair
 London
 W1J 7EJ

THE TRUST PROVIDES FUNDING FOR PROJECTS ENGAGED IN IMPROVING THE QUALITY OF LIFE FOR THE WORLD'S MOST MARGINALISED CHILDREN AND YOUNG PEOPLE, ENABLING THEM TO HOPE FOR A BRIGHTER FUTURE.

In 2023-24, the Trust funded a total of 35 projects around the world. The ALMT is interested in early intervention projects which address the root causes of inequality and look for innovative and creative solutions to proven problems. The trust is most interested in funding projects that effect longer term change for the most disadvantaged young people. This ensures a positive impact for children and a high social return on any investment made by the Trust and its Donors.

Funding is prioritised for grassroots partners with an average annual income of no more than £1,000,000 over a five-year period. Organisations new to the ALMT can apply for an annual grant between £3,000-£25,000 and existing partners may be able to apply

for up to 3 years funding. It should be noted that most grants are below this upper limit with an average in 2023-2024 of £15,344.

Applicants must be registered charities or Charitable Incorporated Organisations with representation in the UK. The ALMT will also consider applications from schools and school PTAs in the UK where funding will support disadvantaged children's learning outside school and benefit the wider community.

We work with partner organisations directly involved in project implementation and do not fund grant-making bodies to make grants on our behalf. Instead we seek solicited applications through supporters, charity partners and members of the team.

APPLICATION PROCESS

STAGE 1

A written application, cover sheet and detailed project budget

STAGE 2

A meeting/call/project visit with a member of the ALMT Partners' Committee.

STAGE 3

Application is discussed evaluated and approved/rejected at a Board meeting.

From time to time, The ALMT Board of Trustees may also express a wish to focus support on other particular areas or on a specific cohort of children.

APPLICATIONS CONSIDERED:

- Bereavement and palliative care for families, adults, children and young people
- Projects and initiatives that enable disadvantaged or vulnerable children and young people to participate fully in society and increase social mobility
- Educational scholarships and learning support for children and young people
- From time to time, The ALMT Board of Trustees may also express a wish to focus support on other particular areas or on a specific cohort of children.

APPLICATIONS NOT CONSIDERED:

- Construction
- Research
- Party political activities
- The promotion of religion
- Disproportionate overhead and management costs

RESPONDING TO THE NEED

THE ALMT CONTINUES TO WORK TOWARDS NINE OF THE UNITED NATIONS SUSTAINABLE DEVELOPMENT GOALS (DSG'S). THE FOLLOWING PAGES DEMONSTRATE WHICH PROJECTS, SUPPORTED IN 2023/24 RESPOND TO EACH GOAL. MANY PARTNER PROJECTS REPOND TO MUTLIPLE SDG'S.

NO POVERTY – 18 PROJECTS

AFRIL, Achieve, Change and Engagement, Aspire, Carers Worldwide, Forever Angels, Future For All, Immediate Theatre, Kidasha, Miracles, Rwanda Action, Starfish Greathearts Foundation, Street Action, The Congo Tree, The Magpie Project, The Mango Tree



ZERO HUNGER – 9 PROJECTS

AFRIL, Future For All, Miracles, Link International Innovation and Asilomar Foundation, Linda Norgrove Foundation, Starfish Greathearts Foundation, Street Action



GOOD HEALTH AND WELL-BEING – 26 PROJECTS

AFRIL, The Butterfly Tree, The Magpie Project, Carers Worldwide, Miracles, Starfish Greathearts Foundation, Future For All, AFRIL, Peace Players, StreetLife, Alsama Project, Link International Innovation and Asilomar Foundation, AFRIL, Forever Angels, Children Heard and Seen, Kidasha, 1001Fontaines, The Congo Tree, Linda Norgrove Foundation, Achieve, Change and Engagement, Street Action, MCCF, Acorns, Slowianka Leisure Centre

QUALITY EDUCATION – 27 PROJECTS

1001 Fontaines, AFRIL, Alsama Project, Aspire, Carers Worldwide, Children's Book Project, Children Heard and Seen, Exeter University, Future For All, Hull Children's University, Immediate Theatre, Kidasha, MCCF, Peace Players, Quest for Learning, Rwanda Action, Streetlife, Summer Hype, Starfish Greathearts Foundation, Street Action, The Butterfly Tree, The Congo Tree, The Mango Tree



20

19

18



GENDER EQUALITY – 5 PROJECTS

Acorns, Forever Angels, MCCF, Linda Norgrove Foundation, The Mango Tree.

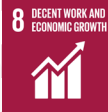
CLEAN WATER AND SANITATION – 2 PROJECTS

Village Water, 1001 Fontaines



DECENT WORK AND ECONOMIC GROWTH – 11 PROJECTS

Carers Worldwide, Exeter University, Forever Angels, Future for All, Immediate Theatre, Link International Innovation and the Asilomar Foundation, Rwanda Action, Street Action, Streetlife, Summer Hype, The Mango Tree



REDUCED INEQUALITIES – 17 PROJECTS

AFRIL, Alsama Project, Aspire, Carers Worldwide, Children's Book Project, Children Heard and Seen, Exeter University, Hull Children's University, Immediate Theatre, Kidasha, Peace Players, Quest for Learning, Rwanda Action, Streetlife, Summer Hype, The Magpie Project



PEACE JUSTICE AND STRONG INSTITUTIONS – 5 PROJECTS

Acorns, Children Heard and Seen, Kidasha, Peace Players, The Congo Tree

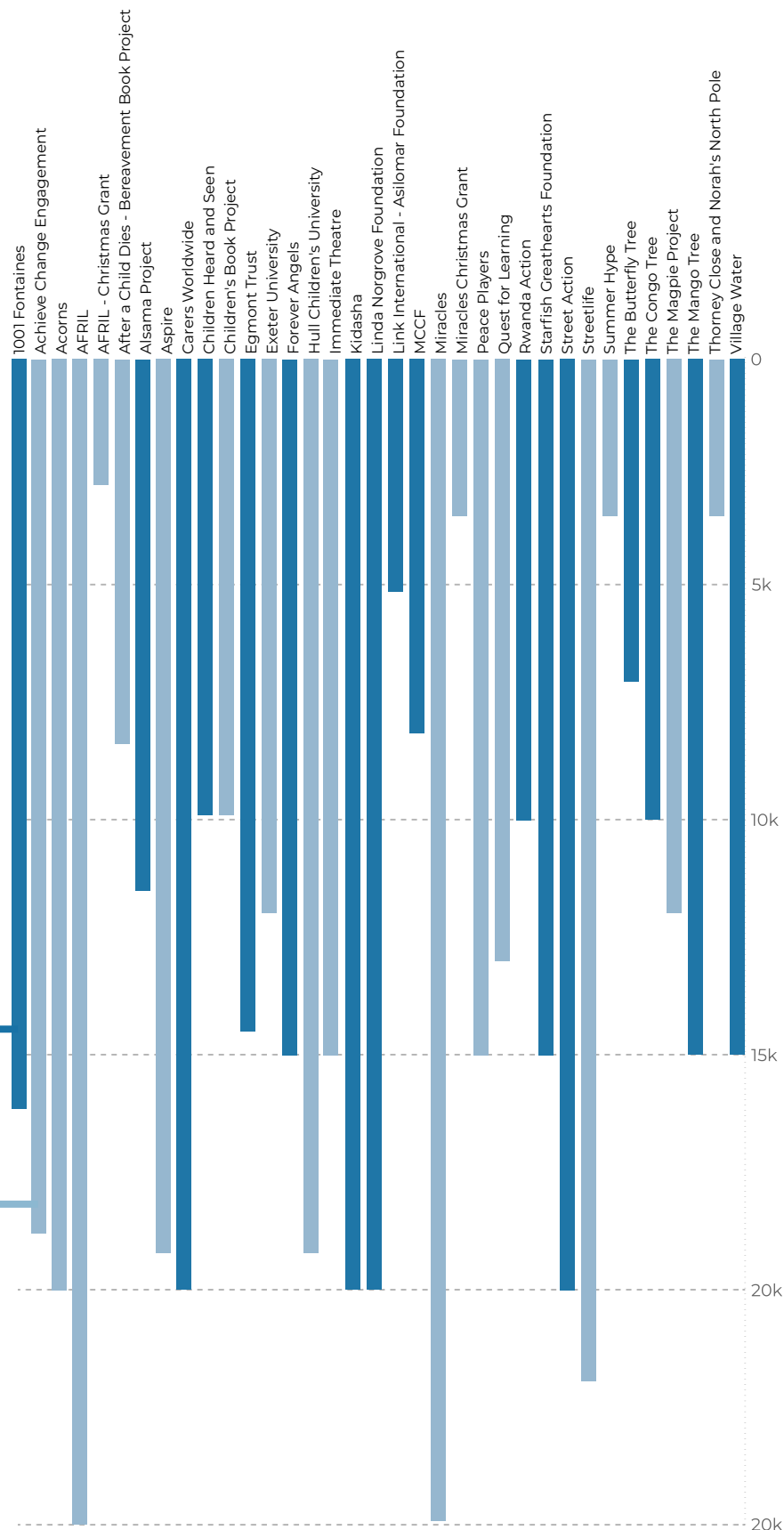
MEASURING IMPACT

WE PRIORITISE SUPPORT FOR THE MOST MARGINALISED CHILDREN AND YOUNG PEOPLE WORLDWIDE, STRIVING TO IMPROVE THEIR QUALITY OF LIFE.

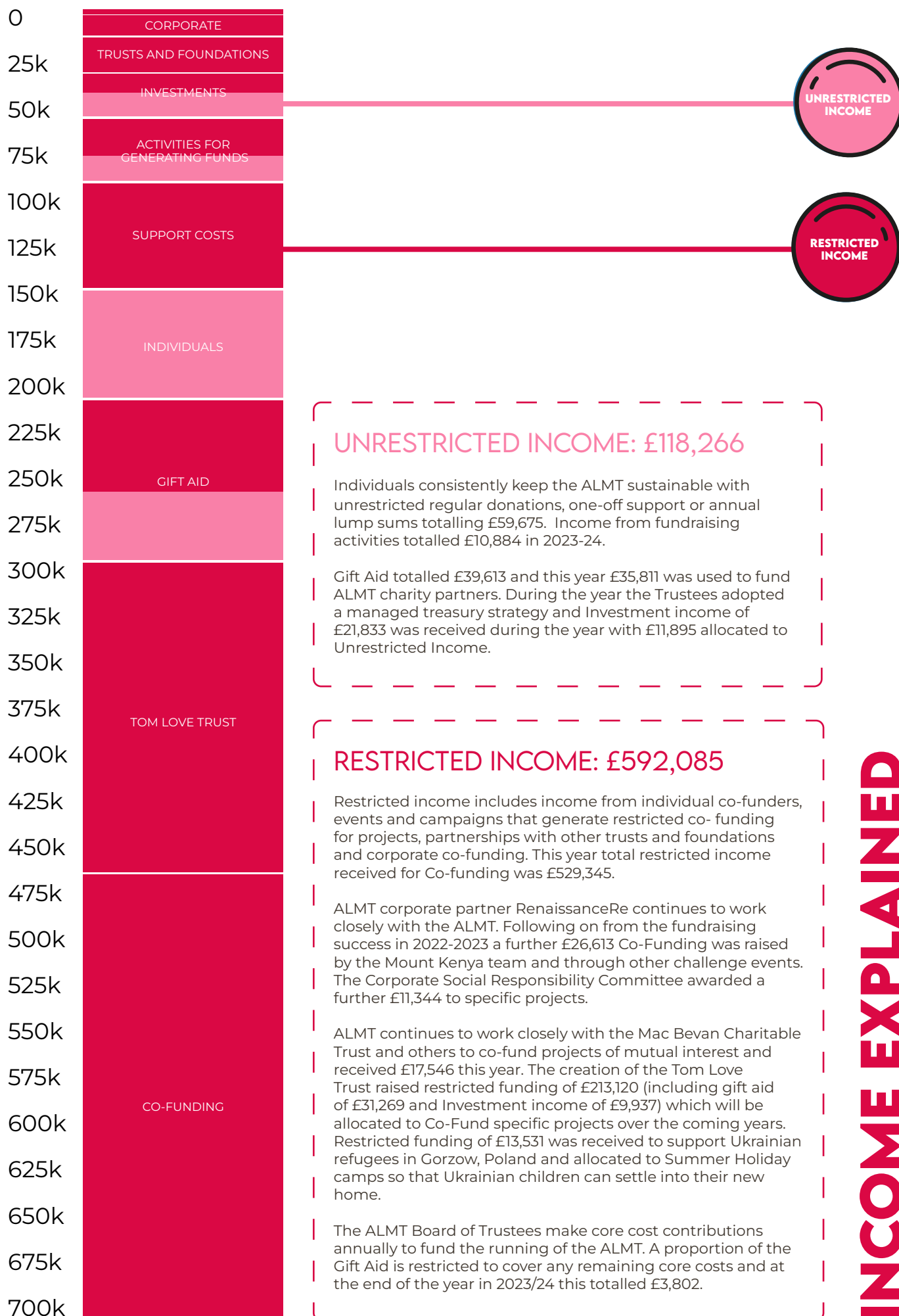
GRANT MAKING CYCLE

IN THE FINANCIAL YEAR 2023-2024, £257,602 OF FUNDING WENT TOWARDS UK PROJECTS AND £279,435 WENT TOWARDS WORLDWIDE PROJECTS.

TOTAL GRANTS MADE OF £537,037.



DURING THE FINANCIAL YEAR 2023-2024 ALMT TRUSTEES MET THREE TIMES AND AWARDED FUNDING OF £478,928 THROUGH SCHEDULED BOARD MEETINGS. FURTHER GRANTS OF £58,109 WERE MADE TO PROJECTS IN POLAND SUPPORTING UKRAINIAN REFUGEE CHILDREN



INCOME EXPLAINED

CO-FUNDING SCHEME

CO-FUNDING WITH THE ALMT ALLOWS INDIVIDUALS, TRUSTS AND FOUNDATIONS, AND COMPANIES TO CONTRIBUTE FUNDS DIRECTLY TO INDIVIDUAL, VETTED AND APPROVED PROJECTS.

This year the Mac Bevan Charitable Trust and The Tom Love Trust continued to work with the ALMT's growing network of Co-Funders to support vetted and approved projects run by small, ground-breaking organisations.

This way of giving allows Co-Funders full access to project applications, budgets, project visits, and reports, from a wide portfolio of amazing small organisations who have been fully vetted by ALMT professionals. Co-Funders can allocate 100% of their donation directly to a project and chat with the team at ALMT about specific areas of interest. Co-Funding can be on a regular basis, as

and when a project is of interest, or within agreed annual limits allocated at each ALMT Board meeting three times per year.

The ALMT splits the grant amounts into percentages, dependent on how many Co-Funders are interested in supporting the project. This might be simply a 50/50 split or could include any number of Co-Funders donating smaller amounts to the ALMT to make up the full grant request. At the end of the year, Co-Funders receive bespoke reports. The report provides graphs, statistics, highlights, case studies, images and feedback on the co-funded projects.

“

I realised that the objectives of the ALMT and what we wanted to achieve were almost identical

Geoff Love
The Tom Love Trust

”

£529,345

CO-FUNDING
RAISED FOR
PARTNER
ORGANISATIONS

81%

of project funding
was through the
Co-Funding
Scheme

THE TOM LOVE TRUST

Tom Love was an inspirational young man who will never be able to reach his full potential as he tragically passed away in December 2022 at the age of just 21, whilst living and working in the DRC. Tom was the most amazing friend, brother and son who had the best outlook on life. He loved adventure and people across the world. He had a profound impact on people everywhere he went.

In 2022, the ALMT joined forces with Tom's family and friends to honour his passions and values. The Tom Love Trust aims to support children and young people in deprived areas of the UK and Africa: places which Tom had very close to his heart. Similar to other key Co-Funding partnerships, The ALMT works closely with the Trust and, after each board meeting, presents a range of recently funded projects for possible Co-Funding.

In 2023/24 The Tom Love Trust has contributed £84,582 of co-funding with £48,028 going to projects in Africa and £36,554 funding projects in the UK.

GORZOW FUND

The ALMT continued to work with the Gorzow Fund this year to provide activities for Ukrainian refugees in Gorzow Poland. This year saw the provision of holiday activities over the Christmas and Summer breaks along with a language course for newly arrived children. For many refugee families, whilst they have managed to find some work they remain isolated and are unable to afford activities for their children. As a result of this funding, children were able to access ice skating, swimming lessons, holiday activities and trips to the theatre and create friendships with their Polish peers. Since its inception in 2022 this project has supported 1,250 young people making a profound difference to children and families as they take refuge in Poland from the conflict in Ukraine.

KEY PARTNERSHIPS



CORPORATE PARTNERSHIP WITH RENAISSANCERE

The ongoing partnership with RenaissanceRe Holdings Ltd has been running since 2017 and continues to go from strength to strength.

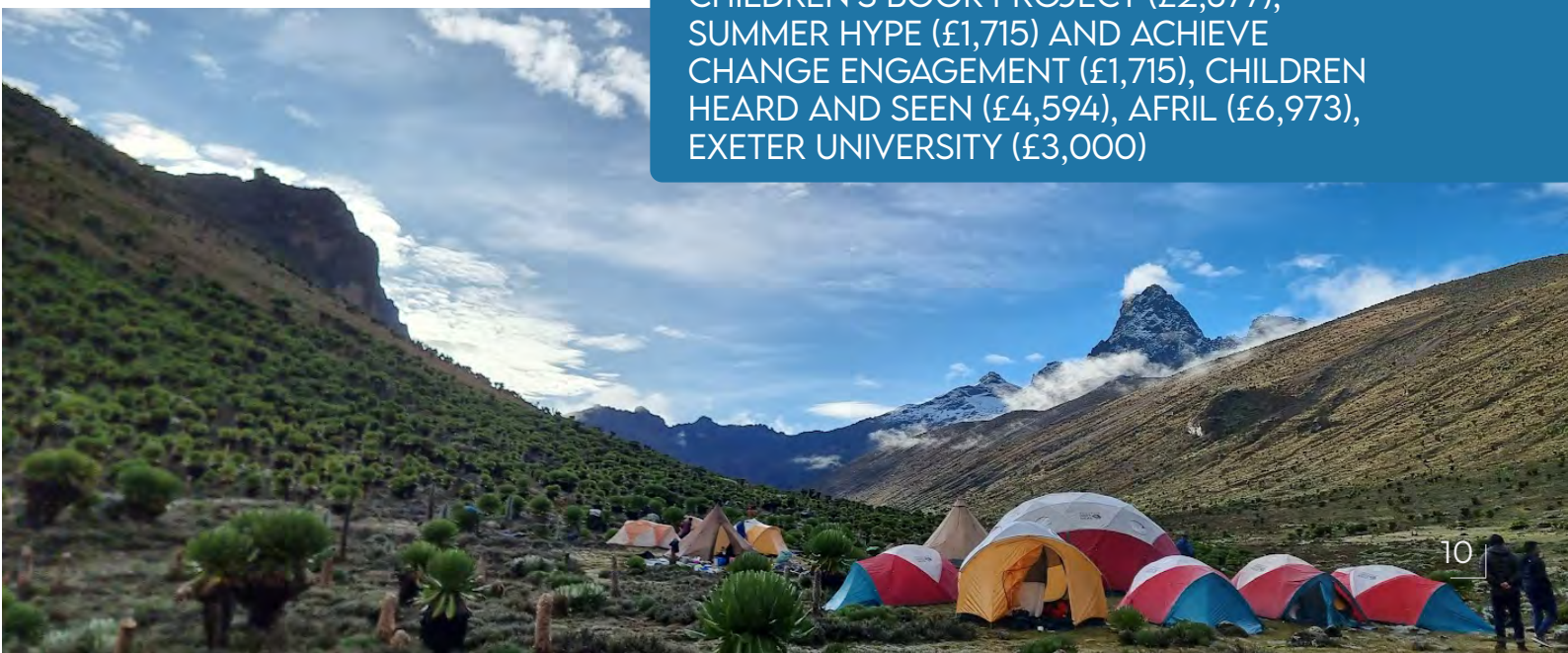
This year saw the completion of the RenRe team's epic challenge to climb Mount Kenya in November 2023. Despite appalling weather during their ascent, they battled through and raised an amazing £48,652 for ALMT projects. Whilst in Kenya the group were also able to visit the Alive and Kicking project (which received £24,745 funding in 2022/2023). The Mount Kenya team subsequently chose where to direct remaining funds. Not content with climbing one of the world's major mountains, the RenaissanceRe team continued to enter challenge events throughout the year and raise funds for other ALMT projects

After each ALMT board meeting, newly funded projects and opportunities are presented to the Corporate Social Responsibility committee at RenRe where they are discussed and presented for potential Co-Funding. The team at RenaissanceRe is an engaged and proactive partner providing valuable and considered funding alongside introductions to potential projects. The company also have a fantastic employee fundraising matching scheme in place, leveraging the teams' efforts and raising even more for the ALMT and our partners. The ALMT is also able to facilitate presentations from specific project partners as well as volunteering opportunities for company members.

Total funding this year of £35,251.50 has been directed to a wide range of projects including those tackling holiday hunger for families living in poverty, providing education for young refugees and young people who are at risk of exclusion from education, specific support for families with a parent in prison, ongoing mental health support and holiday activities.

The ALMT offers a unique corporate partnership opportunity, conducting all the due diligence and monitoring for projects and organisations supported, offering the experience and expertise necessary to ensure accountability in grant making, and also bringing together beneficiaries and employees.

PARTNERS FUNDED THIS YEAR:
 IMMEDIATE THEATRE (£4,644), MIRACLES (£6,242), THE MAGPIE PROJECT (£3,000),
 CHRISTMAS SUPPORT (£2,000), THE CHILDREN'S BOOK PROJECT (£2,877),
 SUMMER HYPE (£1,715) AND ACHIEVE CHANGE ENGAGEMENT (£1,715), CHILDREN
 HEARD AND SEEN (£4,594), AFRIL (£6,973), EXETER UNIVERSITY (£3,000)



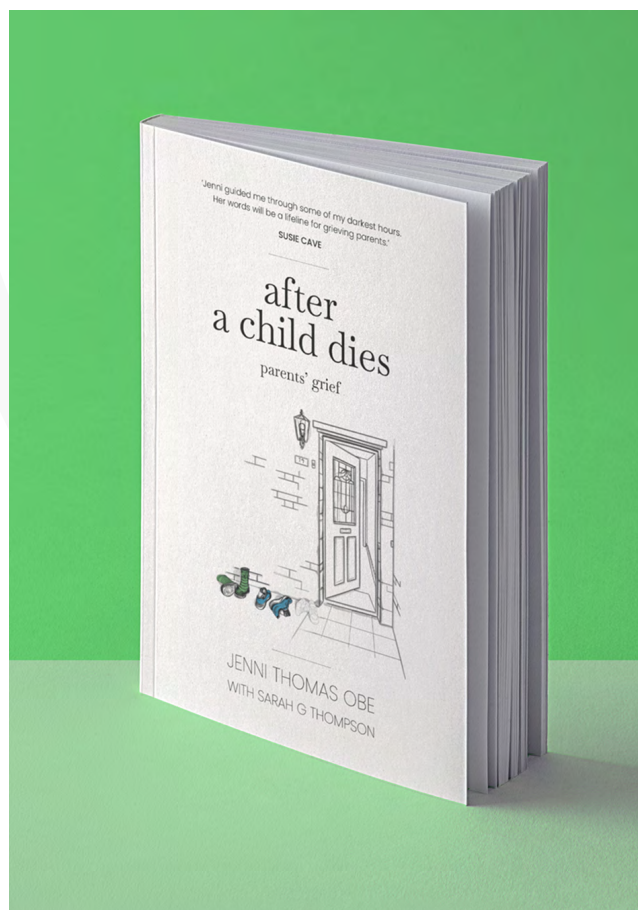
JENNI THOMAS OBE IS WIDELY RECOGNISED IN THE UK AS A LEADING AUTHORITY IN GRIEF SUPPORT AND EDUCATION IN RELATION TO A CHILD'S DEATH AND A CHILD BEING BEREAVED.

Following a lifetime of supporting bereaved families, this year the ALMT has been working to distil Jenni Thomas' experience and knowledge into a book which will provide a lasting legacy for grieving fathers, mothers and children.

As Jenni Thomas looks to retire, 'After a Child Dies; parents' grief' will provide background context on Jenni's work with subsequent chapters looking at parental grief and what happens when a baby, a child and an adult child dies. The book goes on to explore parents' relationships and what siblings and other children need. Each chapter also offers examples of activities that other families have found helpful in the past.

This year, the ALMT employed Sarah Thompson as a ghost-writer to work closely with Jenni and ensure that her voice comes through the finished manuscript. Silvie Wallington was commissioned to create illustrations for the book which also contains a foreword by Nick Lawson.

The book will be self-published on Amazon in 2025 and be made freely available to families. Following this, families will be able to purchase the book and any royalties will go towards supporting other ALMT projects.



AFTER A CHILD DIES,
PARENTS' GRIEF

AVAILABLE APRIL 2025



PAGES 12-24 PROVIDE A SUMMARY OF ALL THE PROJECTS SUPPORTED BY THE ALMT IN THE YEAR 1ST OCTOBER 2023 - 30TH SEPTEMBER 2024.

For each funded programme the page includes a summary of the activities, the partner organisation website, its geographical location, icons to demonstrate which SDGs the project responds to, and its duration.

THE PROJECTS



Sustainable, safe, drinking water solutions - Madagascar

Partner www.1001fontaines.com
Funding £16,000
Duration 1 years 2023-2024

Madagascar is one of the poorest countries in the world and according to statistical data from the Ministry of National Education in Madagascar, 85% of primary schools are not supplied with drinking water. Each year, 3.5 million school days are lost in the country due to water-borne diseases.



ALMT funding will provide safe drinking water to 8,000 of the 16,000 pupils in 12 primary schools in Tamatave, representing 50% of the planned impact for the upcoming academic year. These students, aged between 5 and 12 years, come from economically disadvantaged backgrounds and lack access to safe water at home. The project will also run workshops, raising awareness on the importance of hygiene and the consumption of safe drinking water for health.

Supporting people to improve their mental health - UK

Partner www.a-c-e.org.uk
Funding £19,966
Duration 3 years 2023-2026

This grant will extend the work of the cognitive behavioural therapist in order to support more disadvantaged young people in Lancashire to improve their mental health and emotional well-being.

Cognitive Behavioural Therapy (CBT) is particularly effective for people suffering with complex cases of anxiety, depression, phobias, and Obsessive Compulsive Disorder. This application will increase the hours of the CBT therapist to two days a week and recruit and support two CBT students on placement. This will result in 40 young people receiving help each year. The project will also continue to support increased clinical supervision hours.



Supporting families affected by domestic violence - UK

Partner www.acornsproject.org.uk
Funding £20,000
Duration 3 years 2022-2025

Cases of domestic abuse remain high and this project continues to support Acorns to reduce waiting list times as well as improving their ability to see children from the same family 'in tandem'; therefore offering them a better service.

This project enables Acorns to maintain their current provision within the Northumberland Recovery Service and continue to provide therapeutic support for 100-120 children and young people. Acorns is experienced at offering a range of services for children and young people aged 4-25, their non-abusing carers and other family members including: counselling and play; music and art therapy; practical and well-being support; and outreach services.





Supporting asylum seekers, vulnerable migrants and refugees - UK

Partner www.afril.org.uk
Funding £19,522
Duration 3 years 2024-2027

Rainbow Club is a supplementary Saturday school for asylum seeking, refugee and vulnerable migrant children in Southeast London. The majority of Rainbow Club parents are unemployed and living in poverty with 66% having no settled housing. Living in a stressful and unstable home environment has a significant impact on displaced children's educational attainment, opportunities, confidence and well-being.



AFRIL's Saturday school provides 38 weeks of specialist English and Maths tuition, alongside creative activities, sports, and well-being support to 120 primary age children. In addition, it provides school trips, holiday workshops and a youth volunteering programme from the premises of St Saviour's Primary School in central Lewisham.

Offering new horizons to refugee teenagers and women Lebanon

Partner www.alsamaproject.com
Funding £11,731
Duration 1 year 2023-2024

Alsama's mission is to educate, empower, and offer new horizons to teenagers living in Lebanon's refugee camps. Primarily hailing from Syrian or Syrian/Palestinian backgrounds, these children live in poverty and have been failed by both the Lebanese schooling system and prevailing sentiment that they should either begin working or marry during childhood.

This grant will provide psychological support to Alsama's new school in Bourj El Barajneh refugee camp for 220 students. The project aims to limit the drop-out rate of students, improve well-being and access to professional support, reduce early marriage and increase skills within the staff team.



Working with children in poverty to close the educational attainment gap - UK

Partner www.aspireni.org
Funding £18,272
Duration 1 year 2024-2025

Aspire NI exists to work with children in Northern Ireland to help close the educational attainment gap that exists between children living in poverty and their peers. By the time children from low-income families reach primary school, they are already up to a year behind middle-income children in terms of cognitive skills.

ALMT funding will pay for the staff time to deliver weekly after-school homework sessions for 40 primary children; skills academies on a Saturday morning for 30 children and a Summer programme for 35 young people. The project aims to raise attainment, aspiration and school attendance whilst providing extra-curricular opportunities and building community cohesion.





Envisioning a world in which every carer is valued - Bangladesh

Partner www.carersworldwide.org
Funding £19,925
Duration 3 years 2023-2026



This three-year grant builds on the successful establishment of two Community Caring Centres (CCCs) with ALMT funding in 2022-2023. High-quality services provide long-term benefit through learning and therapy for disabled children; respite care for primary carers and professional development for the staff from the centres.

Engagement with local government and the wider community aims to promote long term sustainability and social inclusion.

In year one, ALMT funding aims to provide over 1,275 hours of learning support for 30 children and their carers at the Ghoradia and Dhorenda Community Caring Centres.

Activity days for children with a parent in prison- UK

Partner www.childrenheardandseen.co.uk
Funding £9,188
Duration 1 years 2024

Children Heard and Seen (CHAS) was established in 2014 to provide support for children with a parent in prison. Although there is no statutory database to identify children with a parent in prison, estimates suggest that up to 310,000 children are affected in the UK.

This proposal will provide monthly activities for 50 children and families who have a parent in prison living in Berkshire. The monthly activities aim to reduce isolation, support healthy childhood development, improve emotional well-being, and improve educational and life outcomes.



Redistributing books to children with a parent in prison - UK

Partner www.childrensbookproject.co.uk
Funding £9,590
Duration 1 years 2024

It is estimated that each year in England and Wales there are up to 310,000 children with a parent in prison, with around 17,000 of these children affected by maternal imprisonment.

The 'Share a Story' programme uses regular gifts of carefully chosen beautiful new books to bridge the gap between a child and their parent in prison. This grant will source and distribute 25,600 books to circa 5,120 children during the year helping to raise self-esteem, forge connections between family members (even at a distance) and increase a child's access to interesting reading material and promote reading for pleasure.





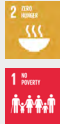
Additional help during the Christmas holidays - UK

Partner Multiple
Funding £9,578
Duration 1 year 2023-2024

Once again the ALMT provided additional funding to three organisations over the Christmas holidays. Norah's North Pole in Sunderland was awarded £3,350 to provide Christmas gifts for over 3,000 of the most disadvantaged children in poverty across the city.

AFRIL was awarded a further £2,700 to provide additional support for refugee families in Lewisham over Christmas.

Miracles received £3,528 to provide Feed London holiday food parcels to families living in extreme poverty for the holiday period.



Working to reduce the impact of HIV and AIDS on children - Malawi

Partner www.egmonttrust.org
Funding £14,500
Duration 1 years 2024

Malawi is one of the countries most affected by HIV and AIDS in Sub-Saharan Africa. Future 4 All (F4A), in partnership with Egmont Trust, is working with AIDS-affected families in rural Malawi to improve the incomes of the poorest families so that they can provide greater care and education for their children.

The project will reach 670 people in Ntcheu and, by introducing a holistic programme of activities, aims to sustainably increase household income and significantly improve Early Childhood Development for local families. The project will also fund secondary school scholarships for 20 children affected by HIV and AIDS.



Bespoke Outreach Programme for Marginalised Boys- UK

Partner www.exeter.ac.uk
Funding £12,000
Duration 2 years 2024-2025

Community Exe has been created in response to the national problem of young men from disadvantaged backgrounds being the most under-represented group in higher education. It offers the unique opportunity for marginalized boys (aged 14+) to access a tailored and progressive intervention at a critical early stage.

Community Exe will enable 100 participants to gain experience of a range of subjects and industries that have been carefully selected to align with hobbies and extra-curricular areas of interest, such as sport, youth leadership, music, communication, AI and technology. The team hope that 50 participants will go on to the Exeter Scholar's programme which acts as a feeder for university.





Feeding and Nurturing Orphaned Babies - Tanzania

Partner www.foreverangels.org
Funding £14,774
Duration 1 year 2024

Each year in Tanzania, around 11,000 maternal deaths occur, with 30 women dying daily during childbirth due to AIDS/HIV, complications, and malnutrition.



This project reduces infant mortality by offering vital support to 20 malnourished babies and their families, providing six months of nutrition as well as delivering weekly preventative health training, and economic empowerment for caregivers (usually grandmothers or aunts) to increase their capability of caring for their own families. Funding will also build capacity through training staff members enabling the team to support between 75-150 malnourished babies and their families in subsequent years.

Literacy support for Children in Care- UK

Partner www.hullchildrensuniversity.com
Funding £19,725
Duration 2 years 2024-2026

The Letterbox Club is a literacy and numeracy programme designed to provide children in care aged 7-11 years old and who are behind in education with support outside the classroom encouraging them to engage in additional educational activities including reading and maths.

This two-year project will lead to an improved reading age and a reduction in the gap between reading and chronological age for 25 children in care in Hull. The learning materials sent out in the Letterbox Club are thematically wide-ranging, attractive and lead to improved confidence, enjoyment of reading and significant progress each year.



Drama for young people at risk of exclusion - UK

Partner www.immediate-theatre.com
Funding £15,480
Duration 1 year 2023-2024



Interactions aims to meet the gap in support for young people (aged 13-19) who have been excluded from inner-city schools by engaging them in positive and creative activities. This two year programme will result in improved health and well-being and greater ability to achieve potential for excluded young people.

Each year the project will engage 30 young people through 6 week programmes in Pupil Referral Units and School Exclusion projects with an additional 15 young people referred directly onto the weekly evening sessional work. The project will work with at least 45 young people a year with at least 60% showing positive progression.





Developing safe spaces for children in slum communities - Nepal

Partner www.kidasha.org
Funding £19,659
Duration 1 year 2024

Kidasha's overall aim is to increase the aspiration and resilience of the most marginalised, hardest to reach children and young people growing up in urban poverty in Nepal by protecting them from neglect, abuse and exploitation.



This project will work in partnership with local slum communities to establish five safe spaces (hubs) where children and adolescents can enjoy learning and fun activities and develop an active voice within their communities. The hubs will open after school for 6 days each week and provide places where children can share problems and report abuse. This will improve school attendance, learning progression, and reduce school dropout for up to 375 children.

Medical support and essential aid for mothers and children - Afghanistan

Partner www.lindanorgrovefoundation.org
Funding £20,000
Duration 3 years 2022-2025

This project initially planned to provide food packages to female led households whilst offering female students the chance to study medicine. However, following the closure of universities for female students in 2022, the educational outcomes became unachievable. ALMT funding has been re-directed to fund a clinic in Herat, western Afghanistan, supporting mothers and children suffering from extreme economic hardship and malnutrition. This includes weighing babies, medical treatment, and managing cases of malnourished children.

It's not unusual for pregnant women in Afghanistan to have little access to health care; no prenatal care, no paediatric care for babies or infants and not have enough food or clothing. This project is therefore vital to baby and mother's survival.



Asilomar Permaculture Project - Kenya

Partner www.link-international.org/asilomar
Funding £5,209
Duration 1 year 2024

Asilomar is located in Kilifi County which has one of the highest number of stunted children in Kenya with one in every three children affected. Asilomar is intended to be a learning and demonstration centre for the community including schools, to show how you can grow nutrient-dense food even in harsh climatic conditions where rainfall is minimal and soil quality is poor.

ALMT funding will teach 60 children at the neighbouring secondary school how to set up vegetable gardens in the school grounds. This pilot project will run sessions twice a week and also provide a nutrient-rich meal to all participants.





Girls' rights to play sport Girls' rights to play sport - Nepal

Partner www.lords.org/mcc/mcc-foundation
Funding £8,560
Duration 1 year 2023

The Madhesh Province of Nepal faces some of the highest levels of poverty and social issues in the country. Evidence shows that one of the biggest barriers to education for girls in the area is child marriage and gender inequality as it forces many girls to drop out of school at an early age.



Working with local partners, Cricket Without Boundaries and Sabal Nepal, this project will build on a successful pilot and use cricket to promote girls' right to play sports, and move freely in their community. The project will reach 500 girls and focus on developing confidence, communication and self-advocacy. It will be match-funded over a 2 year period.

Crisis support for struggling families in London - UK

Partner www.miraclesthecharity.org
Funding £24,967
Duration 3 year 2024-2027

Miracles receives referrals to work with families facing poverty and crises when they really need help. Over a third of London's children are living in poverty. Families often experience depression and isolation brought on by job loss and an insecure financial future. Miracles works with hospitals as well as charities, social work teams, refuges and Citizens Advice.

The project supports families with Feed London Food Boxes and crisis funding and referrals come from a range of partners including Great Ormond Street, Hackney Ark and Royal Marsden. Targeted emergency support is provided for families facing a significant life crisis, such as child illness and/or domestic violence.



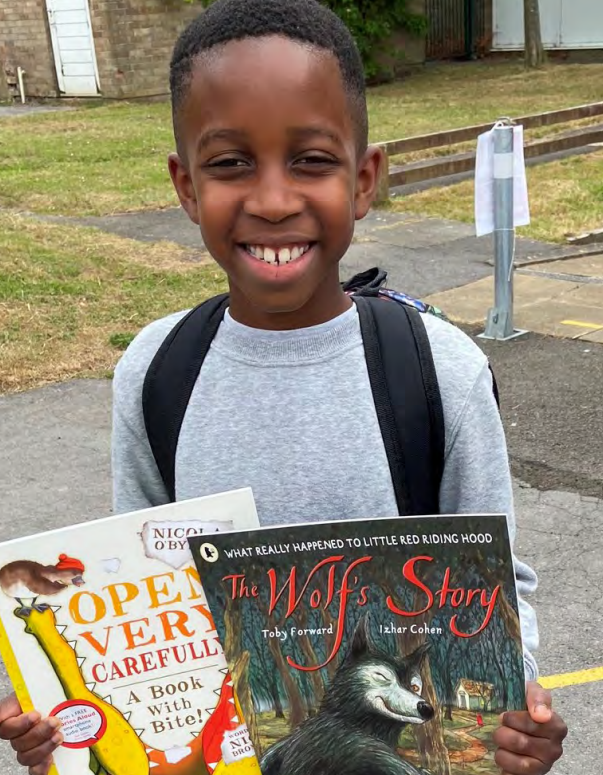
Building peaceful and thriving communities through sport - UK

Partner www.peaceplayers.org
Funding £15,000
Duration 1 year 2024

The Good Friday Agreement has eliminated some of the physical boundaries and acute violence of the Troubles, but at its core, Northern Ireland remains a starkly divided society. This project will use sport to bring Catholic and Protestant youth from neighbouring schools and communities together.

ALMT funding will encourage and facilitate positive attitudinal change towards people from different backgrounds for 260 young people. The community relations, games, activities, and conversations facilitated through a sporting lens will challenge stereotypes, and prejudices and increase understanding and respect for difference.



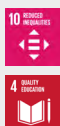


Numeracy support for disadvantaged primary pupils - UK

Partner www.questforlearning.org.uk
Funding £13,088
Duration 1 years 2023

Quest for Learning delivers literacy and numeracy support to disadvantaged primary school children in Oxfordshire who are struggling in school, and training support for teachers and teaching assistants. 29% of Oxford's children live in poverty with disadvantaged children typically ending primary school over a year behind their peers.

Following a successful first year, this project will continue to address educational inequality by enhancing the numeracy skills and self-confidence of 132 children from disadvantaged communities. Experienced tutors will work in five schools to support the children through twice-weekly "NumSkills" sessions for nine weeks to boost their mental maths skills and fluency, improve their confidence and self-belief and achieve higher assessment results.



Skills and Employment for young people with disabilities - Rwanda

Partner www.rwanda-action.org
Funding £9,690
Duration 1 year 2024

In rural areas of Rwanda disability is not well understood and many children with a disability find it impossible to find paid employment and hence a route to independence when they finish school. The Alivera Village was designed to give young people with disabilities work experience prior to helping them find employment or setting up their own enterprise projects.

This project will extend the capacity of the village to 32 apprenticeships for young people with disabilities and will cover care costs and living expenses along with a contribution to the running costs of the farm and village overall. By the end of the project 28 young people with disabilities will gain employment.



Providing physical activity, recreation, relaxation and wellness services - Poland

Partner www.slowianka.pl
Funding £58,109
Duration 1 year 2023-2024

Building on successful previous programmes, the Slowianka Leisure Centre offered another programme of activities in Gorzow for Ukrainian refugee children alongside local Polish children during the school holidays. Each child enjoyed a full range of activities including swimming lessons, ice skating, floating slides, sports, art lessons, games and lunch.

The project included the provision of a Ukrainian co-ordinator and translator so that information is shared with parents. Children also attended a swimming course along with a Polish language course. The project aims to help children feel settled in their new 'temporary' homes; improve mental health and well-being by enabling them to forge new friendships; reduce holiday hunger; improve swimming ability; and increase integration between refugee children and local residents.





Early Years support for rural families - South Africa

Partner www.starfish-greathearts.org
Funding £15,000
Duration 2 years 2023-2025

The team at Starfish Greathearts Foundation is continuing to work with teachers and caregivers to support pre-school children and families in the KwaZulu Natal region of South Africa. In these very remote and often impoverished rural communities, child sickness and mortality are high, overwhelmingly from preventable diseases, including diarrhoea, pneumonia, undernutrition and HIV. The project targets 450 children from 0-5 years with early learning support and incorporates health, nutrition and cognitive development.



The flexible delivery model includes home visits alongside support at crèches and also incorporates ante-natal care. All enrolled children and caregivers have access to healthcare and the documents they need to obtain health cards, immunisations and referral to local health services. Food parcels are also supplied to families in need.

Road to school project - Burundi

Partner www.streetaction.org
Funding £19,471
Duration 3 year 2023-2026

The Road to School project in Bujumbura and Gasorwe, Burundi, works with street-connected children raising aspirations and empowering them to leave street life and be re-integrated into society.

This three year project will support 92 students to attend school - 50 of them for the first time. The project offers holistic care and alongside academic tuition provides full accommodation and healthcare. Students living at the New Generation accommodation receive three meals a day, whilst those living elsewhere receive breakfast and lunch daily. They also receive psychosocial and wellbeing support.



Providing emergency shelter and support to vulnerable UK

Partner www.wearestreetlife.org
Funding £22,000
Duration 1 year 2024



Streetlife provides support and shelter to vulnerable and often homeless young people aged 16-25 in Blackpool. More and more young people are experiencing multiple disadvantage with experiences of domestic abuse, addictions, criminal activity, as well as homelessness undermining well-being and resilience.

ALMT funding will pay for a part-time youth worker to co-ordinate and run a more holistic programme of weekly activities which are based on the NHS' "5 steps to mental well-being": connecting with people; physical activity; learning new skills; giving to others; and connecting to the present.



Summer camp and leadership training - UK

Partner www.summerhype.org
Funding £3,500
Duration 3 years 2023-2026

Following a previous grant to Summer Hype in 2018- 2021, the organisation has gone from strength to strength and the team is now looking to develop their leadership training for disadvantaged young people from Hackney. This year's funding from ALMT therefore enabled them to extend their residential summer camp to young leaders.



Twenty-eight 16-year-old participants will attend the camp and receive Leadership training, supported by five previous young leaders. Over the week of the camp participants will improve in confidence; try new things, plan different types of sessions and strengthen leadership skills, including CV writing and interview preparation.

Malaria prevention for primary school children - Zambia

Partner www.thebutterflytree.org.uk
Funding £7,000
Duration 3 year 2024-2027

Two thirds of the population of Zambia live on less than £1 a day. In 2024, drought caused crop failure and water shortages reached an all-time low with rivers, streams and even boreholes becoming dry. Aside from climate challenges and water insecurity, malaria is a major health issue in Zambia. There are an estimated 20,000 cases of malaria per day, with one in five children under five infected with malaria parasites.

This grant was used to purchase mosquito nets and then distribute them to school children in rural areas of the Kazungula District, where malaria is prevalent. In total, 1,320 mosquito nets were distributed to children and teachers at Kauwe Primary and Secondary school to help prevent contracting malaria, and to reduce absenteeism.



Building Young Leaders- DRC

Partner www.thecongotree.org.uk
Funding £9,987
Duration 1 year 2023-2024



Many young people in eastern Democratic Republic of Congo are growing up in extreme poverty, with limited or no access to consistent schooling, primary healthcare, or employment opportunities to support social mobility. All are victims of the ongoing cycle of active conflict and generational trauma and violence.

This project will enable at least 61 young people to develop their leadership skills and commit to getting involved in problem-solving in their respective communities by running social action and creative enterprise projects.



Reducing the impact of poverty - UK

Partner www.themagpieproject.org
Funding £12,000
Duration 1 years 2024

The Magpie Project supports pre-school children and their mums who are living in temporary or insecure accommodation or are homeless in Newham and surrounding boroughs. Research has shown that living in poor quality accommodation has an impact on children's bodies and physical development.



The project will improve physical coordination, confidence, mobility and motor skills for 100, 0-5 year olds. The dance and movement sessions will both reduce developmental delay and increase opportunities for concerns to be referred to appropriate health professionals. Properly fitted shoes, will improve children's ability to explore physical movements outside the sessions and keep feet, warm, dry and supported.

Learning and Skills for Life - Kenya

Partner www.themangotree.org
Funding £14,904
Duration 1 year 2024

Founded in response to the HIV crisis, The Mango Tree has been working in Homabay County in Western Kenya to provide education for orphaned children and young people for the past 20 years.

Orphans, girls and disabled children are particularly at risk of being left behind in the education system and are also at greater risk of abuse. This project will provide targeted education support for 292 vulnerable children so that they have the tools and resilience to thrive. ALMT funding will also support six disabled children with surgery or additional support at the Kijabe Mission Hospital so that they can attend school.



Water provision and sanitation for schools - Mozambique

Partner www.villagewater.org
Funding £15,000
Duration 3 year 2021-2024

Many schools in Mozambique have no safe water supply and poor or non-existent sanitation or handwashing facilities. This project has enabled Village Water, the only provider working in the area, to work closely with local government to map the area and identify exactly where there are gaps in provision. Over three-years Village Water will support Chimoio District's water and sanitation priorities by providing solar-powered systems, toilets, showers and washing facilities and hygiene promotion for approx 8000 pupils and teachers



The project continues to improve health and wellbeing, reduce absences from waterborne infections and increase girls' attendance through washroom facilities, menstrual health promotion and production of reusable sanitary towels.





I report on the accounts of the Trust for the year ended September 2024 which are set out on the following pages.

RESPECTIVE RESPONSIBILITIES OF TRUSTEES AND EXAMINER

The charity's Trustees are responsible for the preparation of the accounts. The charity's Trustees consider that:

- an audit is not required for this year under the dispensation referred to above - an independent examination is needed.

It is my responsibility to:

- examine the accounts under section 145 of the 2011 Act
- to follow the procedures laid down in the general Directions given by the Charity Commission under section 145(5)(b) of the 2011 Act
- state whether particular matters have come to my attention.

BASIS OF INDEPENDENT EXAMINER'S REPORT

My examination was carried out in accordance with the general Directions given by the Charity Commission. An examination includes a review of the accounting records kept by the charity and a comparison of the accounts presented with those records. It also includes consideration of any unusual items or disclosures in the accounts and seeking explanations from you as Trustees concerning any such matters. The procedures undertaken do not provide all the evidence that would be required in an audit, and consequently no opinion is given as to whether the accounts present a 'true and fair view' and the report is limited to those matters set out in the statement below.

INDEPENDENT EXAMINER'S STATEMENT

In connection with my examination, no matter has come to my attention:

1. which gives me reasonable cause to believe that in any material respect the requirements:
 - a. to keep accounting records in accordance with section 130 of the 2011 Act: and
 - b. to prepare accounts which accord with the accounting records and comply with the accounting requirements of the 2011 Act have not been met; or
2. to which, in my opinion, attention should be drawn in order to enable a proper understanding of the accounts to be reached.

J.D.Blythe FCA
206 Upper Richmond Road West
London SW14 8AH

24th July 2025

THE ANGUS LAWSON MEMORIAL TRUST

BALANCE SHEET

As at 30 September 2024

	Note	2024		2023	
		£	£	£	£
FIXED ASSETS					
Tangible assets			0		0
CURRENT ASSETS					
Debtors		0		0	
Cash at bank and in hand		845,882		761,681	
		<u>845,882</u>		<u>761,681</u>	
CREDITORS: amounts falling due within one year		<u>0</u>		<u>0</u>	
NET CURRENT ASSETS			<u>845,882</u>		<u>761,681</u>
TOTAL ASSETS LESS CURRENT LIABILITIES			845,882		761,681
CREDITORS: amounts falling due after one year			0		0
NET ASSETS			<u><u>845,882</u></u>		<u><u>761,681</u></u>
FUNDS					
Unrestricted funds:					
General funds			391,197		375,340
Restricted funds:					
Bereavement fund		339		17,478	
Tom Love Fund		437,775		320,163	
Co-Funding Fund		16,572		48,700	
Support				0	
			<u>454,685</u>		<u>386,341</u>
			<u><u>845,882</u></u>		<u><u>761,681</u></u>

The financial statements were approved, and authorised for issue, by the Trustees on
 XXXX 2025 and signed on their behalf by:



Nick Lawson



Jonathan Potter

BALANCE SHEET

STATEMENT OF FINANCIAL ACTIVITIES

THE ANGUS LAWSON MEMORIAL TRUST

STATEMENT OF FINANCIAL ACTIVITIES
For the year ended 30 September 2024

	Note	Unrestricted Fund 2024 £	Bereavement Fund 2024 £	Co-Funding Fund 2024 £	Support Fund 2024 £	Total Funds 2024 £	Total Funds 2023 £
INCOMING RESOURCES							
Incoming resources from generated funds:							
Voluntary income	2	56,535	3,140	256,403	58,938	375,016	409,882
Activities for generating funds	3	10,884		26,613		37,497	102,295
Investment income	4	11,895		9,938		21,833	2,562
Trusts and Foundations/Schools and Universities	5			17,546		17,546	31,786
Income for the Gorzow partnership	7			1,031		1,031	112,277
Income for the Tom Love Partnership	8			171,914		171,914	332,133
Total Gift Aid	2	35,624	188	45,901	3,802	85,515	46,658
TOTAL INCOMING RESOURCES		114,938	3,328	529,345	62,740	710,351	1,037,592
RESOURCES EXPENDED							
Cost of generating voluntary income	9	68	70	808	6,105	7,051	3,635
Costs of generating funds		68	70	808	6,105	7,051	3,635
Costs of Charitable activities:							
Grant Giving	10	99,013		286,936		385,949	470,431
Tom Love Trust	9,10			95,509		95,509	15,631
Optikey Partnership	9,10					0	10,000
Gorzow Pamtership	9,10			60,609		60,609	41,259
Bereavement Services	9		20,397			20,397	12,273
Support costs	9				56,636	56,636	58,130
Governance costs						0	
Total Costs of Charitable activities:		99,013	20,397	443,054	56,636	619,099	607,723
TOTAL RESOURCES EXPENDED		99,081	20,467	443,862	62,740	626,150	611,358
NET MOVEMENT IN FUNDS		15,857	-17,139	85,483	0	84,201	426,234
TOTAL FUNDS AT 1 OCTOBER 2023		375,340	17,478	368,863	0	761,681	335,447
TOTAL FUNDS AT 30 SEPTEMBER 2024		391,197	339	454,346	0	845,882	761,680

FOR THE YEAR ENDED 30TH SEPTEMBER 2024

THE ANGUS LAWSON MEMORIAL TRUST

NOTES TO THE FINANCIAL STATEMENTS For the year ended 30 September 2024

1. ACCOUNTING POLICIES

Basis of preparation of financial statements

The financial statements have been prepared under the historical cost convention and in accordance with applicable accounting standards and the Charities SORP (Statement of Recommended Practice).

Fund accounting

General funds are unrestricted funds which are available for use at the discretion of the Trustees in furtherance of the general objects of the Charity and which have not been designated for other purposes.

Designated funds comprise unrestricted funds that have been set aside by the Trustees for particular purposes. The aim and use of each designated fund is set out in the notes to the financial statements.

Restricted funds are funds which are to be used in accordance with specific restrictions imposed by donors which have been raised by the Charity for particular purposes. The cost of raising and administering such funds are charged against the specific fund. The aim and use of each restricted fund is set out in the notes to the financial statements.

Income Tax recoverable

Income Tax recoverable in relation to investment income or Gift Aid donations is recognised at the time the relevant income is receivable.

Income Tax reclaimed on donations from individuals is included as unrestricted unless the donor requests that it is also restricted as part of the donation.

Incoming resources

All incoming resources are included in the Statement of Financial Activities when the Charity is legally entitled to the income and the amount can be quantified with reasonable accuracy.

Gifts in kind donated for distribution are included at valuation and recognised as income when they are distributed. Donated facilities are included at the value to the Charity where this can be quantified and a third party is bearing the cost. No amounts are included in the financial statements for services donated by volunteers.

Resources expended

All expenditure is accounted for on an accruals basis and has been included under expense categories that aggregate all costs for allocation to activities.

NOTES TO THE FINANCIAL STATEMENT

	2024 £	2024 £	2024 £	2023 £
Donations:				
Individuals	59,675		59,675	73,244
Gift Aid	35,811	5,935	41,746	40,901
Support Cost contributions		58,938	58,938	54,600
	95,486	64,873	160,359	168,745
Schools and Universities			-	-
Corporate		11,344	11,344	185,406
Co-funding (see below)		288,828	288,828	500,993
	95,486	365,045	460,531	855,144

Co-funding enables our donors to finance specific projects

3. ACTIVITIES FOR GENERATING FUNDS

	Unrestricted Funds 2024 £	Restricted Funds 2024 £	Total Funds 2024 £	Total Funds 2023 £
Events - Co-Funding Fund	10,884	26,613	37,497	96,478
Events - Bereavement fund			-	-
Events - general			-	5,817
	10,884	26,613	37,497	108,053

4. INVESTMENT INCOME

	2024 £	2023 £
Interest receivable from:		
Cash at bank	11,895	2,562
	11,895	2,562

5. TRUSTS AND FOUNDATIONS

	Unrestricted Funds 2024 £	Restricted Funds 2024 £	Total Funds 2024 £	Total Funds 2023 £
Trusts and Foundations		17,546	17,546	71,834
School and Universities			0	0
	-	17,546	17,546	71,834

7. GORZOW PARTNERSHIP

	Unrestricted Funds 2024 £	Restricted Funds 2024 £	Total Funds 2024 £	Total Funds 2023 £
Individuals			0	76,171
Corporate		1,031	1,031	0
Trusts and Foundations/Schools and Universities			0	36,106
Gift Aid for Gorzow Partnership		12,500	12,500	
	-	1,031	13,531	113,027

Gorzow Partnership funding is restricted for activities with Ukrainian refugee children in Poland.

8. TOM LOVE TRUST FUND

	Restricted Funds 2024 £	Total Funds 2024 £	Total Funds 2023 £
Individuals	144,660	144,660	235,278
Corporate	7,669	7,669	56,806
Trusts and Foundations/Schools and Universities	19,585	19,585	40,048
Interest Receivable	9,938	9,938	
Gift Aid for Tom Love Trust Fund	31,269	31,269	
	-	213,120	338,454

Tom Love Trust funding is restricted for projects which support children and young people in deprived areas of the UK and Africa

	Grant Costs 2024	Grants Given 2024	Support Costs 2024	Total 2024	Total 2023
Grants (see Note 10)		385,949		385,949	470,431
Optikey				-	10,000
Gorzow Partnership Fund		58,109	2,500	60,609	41,259
Tom Love Trust		84,583	10,926	95,509	15,631
Bereavement Support	12,000	8,397		20,397	12,273
Total charitable expenditure	12,000	537,037	13,426	562,464	549,593
Costs of generating funds	5,799	946	306	7,051	3,653
Support Costs	51,879		4,757	56,636	58,112
Governance Costs				-	0
	69,677	537,983	18,489	626,150	611,358

10. GRANTS	Unrestricted Fund 2024 £	Co-Fund 2024 £	Total 2024 £	Total 2023 £
1001 Fontaines		16,000	16,000	
Achieve Change Engagement	8,268	11,698	19,966	19,966
Acoms	5,000	15,000	20,000	20,000
AfriKids			-	9,366
AFRIL	8,750	16,250	25,000	18,386
AFRIL - Christmas Grant	478	2,222	2,700	
After a Child Dies - Bereavement Book Project	8,397		8,397	
Alive and Kicking			-	24,746
Alsama Project	5,809	5,923	11,732	-
Aspire	1,827	16,445	18,272	-
Bibic			-	17,820
BOSP			-	11,075
Carers Worldwide		19,925	19,925	-
Chess in Schools and Communities			-	13,500
ChildHope			-	16,862
Children Heard and Seen		9,188	9,188	
Children's Book Project	2,877	6,713	9,590	-
Cost of Living Campaign - HCU			-	30,000
Cost of Living Campaign - Katherine Low Settlement			-	5,000
Cost of Living Campaign - Miracles			-	30,045
Cost of Living Campaign - Restore Hope			-	17,500
Cost of Living Campaign - Thorney Close			-	12,000
Cost of Living Campaign - Streetlife			-	13,700
Downside Fisher Youth Club			-	9,908
Egmont Trust		14,415	14,415	-
Exeter University	3,000	9,000	12,000	
Forever Angels		14,774	14,774	
Hull Children's University	9,715	9,863	19,577	-
Immediate Theatre	1,548	13,932	15,480	15,480
Kidasha	9,830	9,830	19,659	-
Linda Norgrove Foundation	10,000	10,000	20,000	20,000
Link International - Asilomar Foundation	1,042	4,167	5,209	-
MCCF	4,280	4,280	8,560	8,560
Miracles		24,967	24,967	24,620
Miracles Christmas Grant		3,528	3,528	
Newman Holiday Trust			-	20,000
The New Normal			-	9,357
Optikey			-	10,000
Peace Players		15,000	15,000	
Quest for Learning	3,926	9,162	13,088	8,249
Rwanda Action		9,690	9,690	-
SAFE			-	15,690
SCEC			-	7,708
School in a Bag			-	14,922
Slowianka Leisure Centre (Gorzow)		58,109	58,109	41,259
Starfish Greathearts Foundation		15,000	15,000	14,675
Street Action	7,994	11,478	19,471	19,471
Streetlife	9,285	12,715	22,000	-
Summer Hype	35	3,465	3,500	-
The Avenues			-	7,063
The Butterfly Tree		7,000	7,000	
The Congo Tree		9,987	9,987	
The Magpie Project	3,000	9,000	12,000	
The Mango Tree		14,904	14,904	
Thorney Close and Norah's North Pole	2,350	1,000	3,350	-
Tourettes Action			-	15,393
Village Water		15,000	15,000	15,000
	107,410	429,627	537,037	537,320

10. STAFF NUMBERS AND COSTS	2024 £	2023 £
Wages and salaries	57,677	48,926
Bereavement Services	12,000	12,273
	£ 69,677	£ 61,199

During the year there was 0 (2022: 0) full time members of staff, 1 Bereavement Counsellor, 0 consultants (2022:0), and 3 (2022: 2) part time members of staff

THANK YOU

A HUGE THANK YOU TO EVERYONE WE WORK WITH: OUR CHARITY PARTNERS, ALL OF OUR CO-FUNDERS, AND THE FOLLOWING VOLUNTEERS, TRUSTS AND FOUNDATIONS AND COMPANIES:

John Lawson, Jonathan Groom, Sandgrove Capital, The Mac Bevan Charitable Trust, RenaissanceRe and the Mount Kenya Team, Goldman Sachs, Sona Asset Management, Rosemarie Nathanson Charitable Trust, Coltrane Asset Management, Kingston Estates, The Tom Love Trust and all donors, Helen Pattison, Dan Lawson, Rachel Riley, and all of our other supporters without whom none of this would be possible.



Image: Kidasha



Charity number: 1117735
www.almt.org