

REGISTERED COMPANY NUMBER: 05903838 (England and Wales)  
REGISTERED CHARITY NUMBER: 1117322

**REPORT OF THE TRUSTEES AND  
AUDITED FINANCIAL STATEMENT FOR THE YEAR ENDED  
31 AUGUST 2024**

**FOR**

**GREATWOOD CHARITY LIMITED**  
Limited by guarantee

**GREATWOOD CHARITY LIMITED**  
**Contents of the Financial Statements**  
**for the Year Ended 31 August 2024**

	Page
Report of the Trustees	1 - 15
Report of the Independent Auditors	16 - 18
Statement of Financial Activities	19 - 20
Balance Sheet	21 - 12
Cash Flow Statement	23
Notes to the Financial Statements	24 - 35

**Greatwood Charity Limited**  
**Trustees Report**  
**for the year ended 31 August 2024**

Trustees who are also Directors of the Charity for the purposes of the Companies Act 2006, present their report with the financial statements of the Charity for the year ended 31 August 2024. The Trustees have adopted the provisions of the Accounting and Reporting by Charities: Statement of Recommended Practice applicable to charities preparing their accounts in accordance with the Financial Reporting Standard applicable in the UK and Republic of Ireland (FRS 102).

The Trustees confirm that the Annual Report and Financial Statements of the Company comply with the current statutory requirements, the requirements of the Company's governing document and the provisions of the Statement of Recommended Practice (SORP) 'Accounting and Reporting by Charities'.

The Company also trades under the names Greatwood Caring for Retiring Racehorses and Children with Special Needs and Greatwood.

## **OBJECTIVES AND ACTIVITIES**

### **Objectives and aims**

The Charity's objects (the objects) are:

- (a) the welfare of sick, neglected, injured and retired racehorses and their relief from suffering
- (b) the relief of the suffering of such other horses and other animals which are sick, injured or neglected as the charity shall think fit
- (c) the provision of recreational facilities to enable disabled and underprivileged children to participate in therapy programmes with the horses and other animals which the charity cares for with the object of improving their condition of life and assisting in their treatment and care.
- (d) the provision of an educational programme for the benefit of children with disabilities and/or special educational needs and/or underprivileged children whereby the children learn about the animals that the charity cares for and learn about the countryside and the environment which sustains those animals and to provide the children with the opportunity to experience and learn about the countryside and its conservation generally.
- (e) the provision of educational and recreational programmes for the benefit of adults with disabilities and/or mental health/emotional or learning difficulties and/or from a disadvantaged background whereby they participate in programmes with horses and/or within the Greatwood environment with the object of improving their condition of life and assisting in improving employment opportunities.
- (f) the provision of an educational programme for the benefit of adults with disabilities and/or special educational need and/or underprivileged adults whereby the adults learn about the animals that the charity cares for and learn about the countryside and the environment which sustains those animals and to provide the adults with the opportunity to experience and learn about the countryside and its conservation generally.

The Trustees have referred to the guidance contained in the Charity Commission's guidance on public benefit when reviewing the Charity's aims and objectives and in planning its future activities.

## **OBJECTIVES AND ACTIVITIES**

### **Public Benefit**

Greatwood confirms that it complies with its duty in line with the Charities Act 2011 and that there is due regard to the public benefit guidance published by the Commission. The charity trustees have regard to the commission's public benefit guidance when exercising any powers of duties to which the guidance is relevant.

Greatwood carries out the charity's purpose for public benefit and is an integral part of a charity's purposes. To further comply with the Charity Commission's guidance on Public Benefit, Greatwood's activities can be accessed and inclusive to all ages in the community as opposed to solely young people (as was the case prior to adding the additional object f).

## Greatwood Charity Limited

### Trustees Report (continued) for the year ended 31 August 2024

Greatwood satisfies the two key principles given by the Charity Commission as follows:

Principle 1 – the identifiable benefit or benefits are all related to the aims of the charity

- promoting the environment and animal welfare
- assisting the young/aged or disabled
- advancement of education

Principle 2 – the beneficiaries are appropriate to the aims principle and the opportunity to benefit is not unreasonably restricted either geographically or financially.

Horseracing remains the second largest spectator sport in Great Britain; Greatwood satisfies any possible public concern regarding the welfare of former racehorses.

Greatwood was the first charity to utilise former racehorses in educational programmes for children and young people. Greatwood aims to transform the lives of vulnerable and disadvantaged children and young people aged 5-24, from challenging environments through inspiration and aspiration, by providing a unique learning and sensory experience that would be impossible for them without visiting Greatwood.

Greatwood is accredited by The Wiltshire Council as an Alternative Provider of Personalised Learning and a Provider of Positive Activities for Young People.

Members of the public are invited to Greatwood and can participate in any educational programmes and are actively welcomed to volunteer at Greatwood.

Following the success of the pilot initiative in taking a former racehorse to visit a care home in Marlborough, Greatwood demonstrated its commitment to serve the local community and widen its outreach by arranging weekly visits to two care homes during the summer months.

Greatwood acts as a catalyst for individuals from any walk of life to achieve success and employment within the industry, thereby improving mental wellbeing, self-esteem and a sense of worth with the direct aim of making a real difference to their future lives and careers as well as facilitating their social mobility.

#### **Risk Management**

The trustees confirm that the major risks to which the charity is exposed, as identified by the trustees, have been reviewed and systems and procedures established to manage those risks.

**Protection of the children** under our care from harm is the highest operational priority of Greatwood and is therefore the source of the greatest potential risk. The charity has Safeguarding and Child Protection policies in place which are reviewed at least annually. All school staff are subject to mandatory training around safeguarding and child protection. The safeguarding practices are regularly reviewed by both dependent and independent persons and bodies. These reviews are in full accordance with relevant legislation and best practice. Full training and support are given to all relevant staff.

The assessment of risk in decrease of funding from The Racing Industry outlined in the year end 2022 accounts was correct. Despite being invited to bid for funding from the newly appointed (British Horseracing Authority) Horse Welfare Board, the Trustees and Directors declined. Greatwood had been invited to take in horses directly out of training. The horses entering the charity would have a commercial value and wouldn't necessarily require charitable intervention. This would not comply with The Charity Commission guidance on Public Benefit.

The increased cost of living has affected and will continue to affect utilities, fertiliser, fuel, and hard food thus rendering unpredictability in cash flow forecasts and budgets.

Increased cost of staffing owing to the rising rates of both National Insurance and Tax together with The National Living wage increase will affect the number of staff that can be employed, this in turn will affect the number of horses that can come under Greatwood's umbrella.

**Greatwood Charity Limited**  
**Trustees Report (continued)**  
**for the year ended 31 August 2024**

The upsurge in the cost of living could result in either rehomed horses having to return to us, or a noticeable increase in the number of horses in the 'at risk' category needing charitable intervention.

Maintaining Greatwood's hallmark of leadership, sustainability, innovation and evidence of outcomes in the light of the above risks makes it a challenge for Greatwood to continue exhibiting these traits and the implications of these factors upon fundraising.

The SEND market is highly competitive due to the devolution and reduction of school budgets, competition from schools' in house teams and other SEND providers. The puts downward pressure on fees and leads to fewer referrals.

Increased number of other organisations adopting Animal Assisted Intervention thereby diluting funding streams.

**Reserves Policy**

The charity holds both restricted and unrestricted reserves to meet its charitable objectives. Restricted reserves exist for both the educational programmes and for capital items within Greatwood.

The Trustees have agreed a policy that the unrestricted funds held by the Charity not committed or invested in tangible fixed assets ('free reserves') should be equivalent to twelve months, or 100%, of the resources expended. In 2024 this latter figure equated £670,225 (2023 £640,492). The level of free reserves stood at £451,142 (2023 £413,132).

**Volunteers**

Greatwood is mindful of the benefits that volunteers can bring to the charity, and actively encourages their participation. Volunteering allows a connection within the community by bringing people together and giving them a sense of belonging. This engagement reduces stress, improves mood and boosts self esteem whilst building social support networks and promoting new advocates.

Companies are increasingly able to understand and act on their obligations to stakeholders and the broader community. As a result, over the last year Greatwood has built a strong relationship with the volunteers from Nationwide, Octopus and Zoetis Open Reach, Newbury Racecourse, and there has been a commitment to continue in 2025.

**STRATEGIC REPORT**  
**ACHIEVEMENT AND PERFORMANCE**

**Main Activities and Achievement During the Year**

*Recognising the secret of sustainability is navigating ever changing circumstances.*

Greatwood updated the business plan is maintained as a working document and adjusts the adopted strategies to reflect the following:

- An ever-increasing age of the horses requiring charitable intervention.
- A greater need for sustainable funding to compensate for the lack of financial support from The An increased demand for new and varied educational programmes to support the learners.
- An increase in the need to support mental health and enhance social impact.
- The necessity to employ professionals in the mental health field.
- A positive and active approach to collaborate partnerships with other charities.

## Greatwood Charity Limited

### Trustees Report (continued) for the year ended 31 August 2024

An average of 35 horses were kept on the farm and used for Animal Assisted Intervention. Twelve horses were taken in requiring charitable intervention. Complying with Greatwood's Euthanasia Policy and as a result of advanced age, infirmity and veterinary issues, twelve horses had to be put to sleep. Three horses were rehomed.

As a result of this community outreach three additional care homes requested weekly visits and Mahlervous completed a series of visits to Savernake View Care Home. These visits will be repeated in the spring of next year when the weather will be more clement for the residents of care homes. Greatwood has connected with Alzheimers Support (Kennet Muddy Boots), this group of 25 individuals enjoyed their first intervention and more visits will be planned for 2025. The immediate feedback was that the interaction with the horses prompted many recollections and memories and promoted a significant improvement in their wellbeing.

There has been a conscious determination to widen our partnerships with other charities. Greatwood accepted residential groups from Youth Action Wiltshire and Youth Adventure Trust. Greatwood has also worked with some service users from Charity Fear Free who are survivors of domestic abuse.

Considerable effort has been done this academic year to raise Greatwood's profile within the local community. Local schools were offered free 'Nurture mornings' which proved to be a great success. Local primary schools in the Marlborough area who have previously not been partners brought a total of 37 children. Contacting these local schools resulted in many enquiries and a booking being made for September 2024.

This academic year has seen the Education team welcome 161 different children and young people from 34 different schools and agencies. Eight of these students were long term bookings and attended Greatwood all academic year. Greatwood has received bookings from not only long standing partner schools, but also from 6 new schools/agencies.

Jane Hemmingway, 1st4Sport EQA – visited in April and concluded that Greatwood was a **'superb facility with excellent motivational staff'**

88% of Developing Confidence students, 100% of Get Going Students and 100% of Interpersonal Skills students have passed their courses this year.

## STRATEGIC REPORT

### ACHIEVEMENT AND PERFORMANCE

#### Main Activities and Achievement During the Year

##### Education

In line with the charity's overarching objectives, the alternative education provision delivered by Greatwood continues to work as a transitional aid to encourage learners back into full-time education. In addition, the programmes offered promote continued positive engagement and the development of transferrable skills for future employment.

Greatwood continues to follow the eight general principles of good practice, as defined in the Code of Good Impact Practice (2013), which allows us to focus on the significance of our educational programmes and record the difference they make to both individuals and to wider society. This process involves determining the actual impact we want to have and how best to achieve it – by delivering the required sessions in a suitable and authentic way, by collecting and collating data, and by learning from and disseminating the information gathered.

## Greatwood Charity Limited

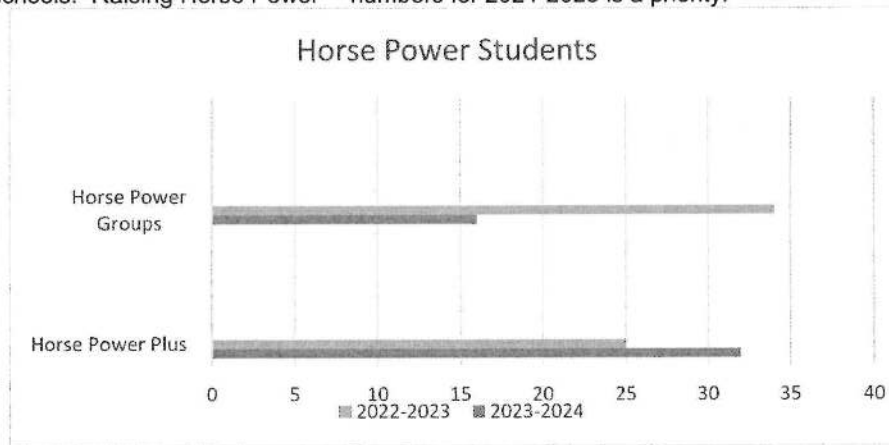
### Trustees Report (continued) for the year ended 31 August 2024

#### Current alternative education programmes on offer

##### Horse Power™ and Horse Power Plus™

Horse Power™ and Horse Power Plus™ continue to be popular provision for Primary Learners. This year the Horse Power™ programme has been extended, so progression and effectiveness can be ensured. This was in response to Greatwood attracting many long-term 1:1 Horse Power Plus™ learners, with commissioners wanting to book placements for the whole academic year. Horse Power Plus™, our 1:1 provision, is offered as a six week block, and is now followed by Horse Power Extra™. After these 12 weeks, Greatwood work closely with teachers or parents to identify specific targets to focus on, ensuring provision is as meaningful and effective as possible. These targets can be used to measure progress, which is then shared with commissioners.

A total of 48 referrals were made to Horse Power™ and Horse Power Plus™ in the academic year. 32 of these were Horse Power plus™ students accessing 1:1 provision, a rise of 28% on last year. Horse Power group bookings are down 53% on last year, possibly reflecting a lack of budget in primary schools. Raising Horse Power™ numbers for 2024-2025 is a priority.

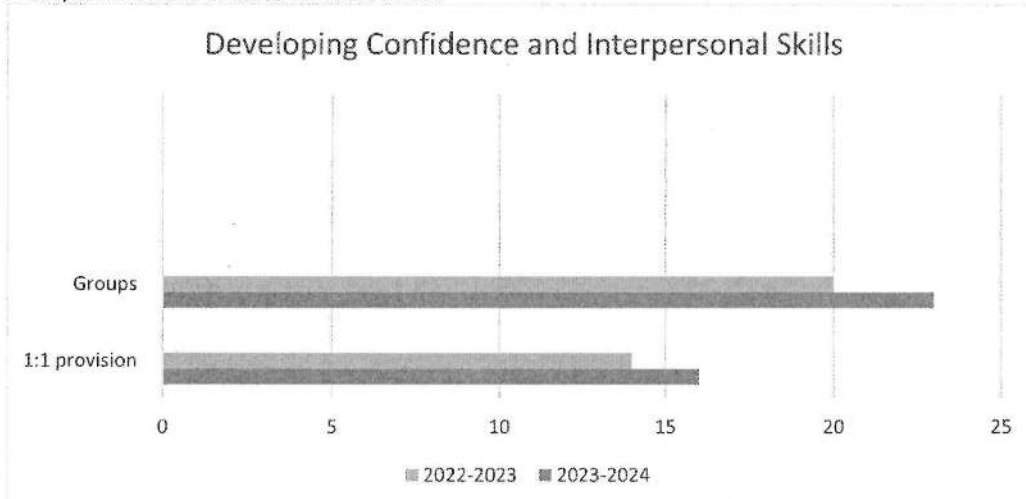


## Greatwood Charity Limited

### Trustees Report (continued) for the year ended 31 August 2024

#### Developing Confidence

Greatwood's Developing Confidence continues to be offered as a 1:1 and group provision. Accredited by NOCN, on successful completion students gain a qualification worth 3 Level 1 credits. Interpersonal Skills, another accredited NOCN programme that provides progression for Developing Confidence students has grown in popularity this year. Interpersonal Skills is also worth 3 Level 1 credits. Students successfully completing both Developing Confidence and Interpersonal Skills gain an NOCN Level 1 Award in Skills for Employment, Training and Personal Development. A total of 40 learners successfully completed Developing Confidence or Interpersonal Skills in 2023-2024, an increase of 22% on 2022-2023.



#### Post 16 Provision

1<sup>st</sup>4Sport accredited Get Going (EL2 Award in Assisting with Basic Care of Horses) took place twice this academic year, in April and August. This course is specially targeted at young people not in education, employment or training (NEET). With some strategic and targeted marketing, numbers rose from 3 students in April, to 7 in August. During the week long programmes, learners were warmly welcomed to Ollie Sangster and William Muir's racing yards for visits providing an invaluable insight into life in the racing industry. All students who enrolled on Get Going successfully completed their qualification.

#### Functional sSkills

A year long placement for a 1:1 student was commissioned by the Wiltshire Council Special Educational Needs team for 2023-2024. The Functional Skills student came twice weekly, and a programme of study was devised to combine classroom study with opportunities to apply learning to real life and practical situations on the yard and in the Greatwood kitchen and garden. The Functional Skills student passed her Summer Examinations in English and Maths, at Level 1 and Entry Level 3 respectively.

#### Short Courses and Pilot Programmes

##### Nurture Mornings

To raise the profile of Greatwood with schools in the immediate local area Nurture Mornings were offered, and the take-up was very positive. Another important aim of these mornings, consistent with Greatwood's overarching objectives, was to boost the well-being, self-esteem and resilience of children. A total of 36 primary-aged children from 6 local primary schools who had no current connection with Greatwood came and spent time with the horses and other animals. Feedback from these mornings was very positive.



**Greatwood Charity Limited**

**Trustees Report (continued)  
for the year ended 31 August 2024**

**Youth Action Wiltshire and Youth Adventure Trust**

This year Greatwood welcomed a total of 53 Young People from Youth Action Wiltshire (YAW) and Youth Adventure Trust.

As well as Taster days for both organisations, YAW Overnight Residentials were piloted using the refurbished Bungalow. These residentials proved to be a great success and provided an opportunity for a well-deserved, relaxed and fun break for the young carers that Youth Action Wiltshire support. The feedback from the young carers on taster days and overnight residentials was extremely positive. In total, responses on exit questionnaires gave the following data:

*Today had a positive effect on my mood: 100% agreed*

*Being around the animals makes me feel calm: 92% agreed*

*Being around the animals makes me feel happy: 100% agreed*

*Greatwood is a safe and welcoming place: 100% agreed*

**Fear Free**

Greatwood welcomed some service users from the Charity Fear Free, who are survivors of domestic abuse. The day was very positively received, in total, responses on exit questionnaires gave the following data:

*Today had a positive effect on my mood: 100% agreed*

*Being around the animals makes me feel calm: 100% agreed*

*Being around the animals makes me feel happy: 100% agreed*

*Greatwood is a safe and welcoming place: 100% agreed*

Three more days are planned for 2024-2025.

## Greatwood Charity Limited

### Trustees Report (continued) for the year ended 31 August 2024

#### **Continued Professional Development**

Since starting in January, Greatwood's Head of Education, Kirsten, has completed Designated Safeguarding Lead (DSL) training and Youth Mental Health first Aid training. Prevent training was undertaken by Helen Yeadon, Sasha Thorbek, and Vicky Candy. Online safety and harms training, making Greatwood's safeguarding and emotional wellbeing practice robust.

Kirsten has enrolled on a self-study Level 4 Award in the Internal Quality Assurance of Assessment Processes and Practice. This course ensures she can play an effective part in the assessment of the accredited programmes, as on successful completion, she will qualify immediately for the role of an IQA. Safer Recruitment was completed by Helen Yeadon. Vicky Candy to complete in September 2023. Vicky Candy completed GPDR training.

Billie Lorraine (groom) completed Emergency First Aid At Work.

To strengthen Greatwood's approach to the mental health and wellbeing of students, Teaching Assistant Robyn is on the waiting list to enrol on an Emotional Literacy Support Assistant (ELSA) course for 2024-2025.

For the purposes of robust safeguarding, Robyn has completed her Prevent and Online Safety and Harms Training.

To support the learning opportunities that come from growing and cooking, Robyn also completed a Hazard Analysis and Critical Control Point course. Robyn Dudley completed Level 1 2 & 3 Food Hygiene.

Susie Vigar Smith completed the Level 3 certificate in assessing vocational achievement.

Vicky Candy completed a Diversity and Inclusion course and Youth Mental First Aid Course.

Sasha Thorbek completed DMI course to become a Certified Digital Marketing Specialist in Social Media.

#### **1st4sport Entry Level Award in Basic Knowledge of the Horseracing Industry (Entry 3)**

Also new for 2024-25, this course will be piloted as a progression after Get Going (1st4sport Entry Level Award in Assisting with Basic Care of Horses, Entry 2)

The aim of this course is to get students closer to the world of work and introduce them to possibilities in the racing industry.

#### **Student Case Studies**



##### **EFM**

EFM first came to Greatwood in August 2023 for Get Going (Entry Level 2 Award in the Basic Care of Horses). E was being educated at home after a very difficult, and at times traumatic, time in mainstream school due to the mental health difficulties she was experiencing. E was also struggling with dyslexia and awaiting assessment for other special educational needs.

E felt an affinity with the horses and enrolled onto Initial Bit (Entry Level 3, Recognising, Putting On, and Cleaning Saddle and Bridle) keen to continue her studies at Greatwood. This period wasn't always easy for E, but the consistency of Greatwood helped. E built trusting relationships with the education team, and she began to identify Greatwood as her "safe place"

We wanted to continue to support E, so she enrolled on her third Greatwood course, NOCN accredited L1 course Developing confidence working with animals. E did indeed gain confidence greatly over this period. During this time, E built friendships with some other Greatwood students and was able to sit some of her GCSE examinations. On completion of her course said 'coming to Greatwood has really helped me to build confidence and learn new skills. It has been the best part of my week'

Now E is studying Animal Care at Lackham College and is volunteering at a donkey sanctuary. Her mum Caroline said "E didn't feel like she belonged anywhere. Greatwood was hugely positive for her"

**Greatwood Charity Limited  
Trustees Report (continued)  
for the year ended 31 August 2024**

**MH**

M first came to Greatwood as a Horse Power™ student with the target of improving his self-esteem and confidence and to promote independence and communication. Educated at home, M's mum was keen that he was introduced to other experiences.

Horse Power™ was a great success for M, and keen to stay at Greatwood he progressed to NOCN accredited Developing Confidence and then Interpersonal Skills. During this time, M grew in confidence around horses and people. The Greatwood team have come to know M as a bright and funny young man, who has become more resilient and able to face new challenges. M has now joined a shooting club and has discovered that he has a real talent, winning competitions and making new friends. He also has a part time job.

M is continuing his studies at Greatwood for another academic year, this time to study for another NOCN accredited qualification, Assisting with the Care of Animals. This provides M with real progression, he is now learning about relevant legislations, feeding, and monitoring health and physical condition of the horses.



M's mum reported: "When M started Greatwood he was incredibly anxious, unsure of himself and shut down due to autistic burnout centered around the school and learning environment. After a year spent learning with Robyn at Greatwood, M is becoming the version of himself he has always wanted to be. His confidence and self-esteem have been built and increased, he has learnt valuable skills and has rediscovered a joy for learning. This would not have been achieved without Robyn and the team at Greatwood"



**CE**

C's placement at Greatwood was commissioned by the Wiltshire Council Special Education Needs Team. C was keen to continue studying Maths and English and had a love of horses. Things had not been easy for C, she had found education challenging due to a diagnosis of Autism and extreme anxiety. She also had dyslexia and dyspraxia which made learning difficult. The Greatwood team's first goal was to make sure that C was made to feel welcome and safe. Trusting relationships were built and C went from strength to strength, gaining confidence in her abilities as a learner. Classroom based learning studying for Functional Skills English and Maths were supported by real life problem solving on the yard working with the horses.

C passed her Level 1 Functional Skills English Examination and her Entry Level 3 Maths examination in the Summer. C will be continuing her studies at Greatwood, hoping to gain a Level 2 English and Level 1 Maths qualification.

## **Greatwood Charity Limited**

### **Trustees Report (continued) for the year ended 31 August 2024**

#### **Plans for the Future:**

##### **New Teacher recruited**

Greatwood appointed Ben Ferris a highly experienced teacher, to join the Education Team on a part time basis for the 24 – 25 academic year.

##### **New Provision**

After a review of Greatwood Education provision, in addition to existing core programmes, the following courses are being added in 2024-2025.

##### **Lift off**

Post review, it was apparent that progression from Developing Confidence for students aged 11-13 was required.

Lift Off is an activity-based programme designed by ASDAN that develops soft skills and builds self-esteem. It consists of activities designed to develop learners' skills in 18 key characteristics that will aid their progression.

ASDAN has conducted research on the effectiveness of Lift Off, and key findings show that the programme closes the gap for disadvantaged learners, meaning disadvantaged learners taking part in the programme make the most progress. It has a proven positive impact on participants' experiences of school and their feelings of confidence.

##### **Developing Confidence Together**

Developing Confidence continues to be offered to small groups from schools, and also as 1:1 provision. In the academic year 2023-2024, 55% of our 1:1 Developing Confidence students were Educated other than in School (EOTIS). Developing Confidence Together has the aim of providing students who have not got the opportunity for social interaction in their daily lives to be part of a small group. This is an important part of Greatwood's strategic plan to support the wellbeing and life chances of students and participants and to help widen our reach and appeal to EOTIS students and parents/caregivers.

##### **Assisting with the Care of Animals**

Assisting with the Care of Animals is another NOCN accredited Level 1 unit that has been added for 2024-2025 to improve and ensure quality of provision for students who wish to study at Greatwood for longer periods of time. This course provides a good progression for students who have completed Developing Confidence.

##### **Back to Nature**

Back to Nature is a course that has been designed to ensure effective provision for adults with the aim of enabling participants to make links in their community and experience the benefits of being around the Greatwood thoroughbreds. Adults who can self-refer are welcomed, but relationships have also been made with partner organisations, including Cotswold House (please see below) and the Avalon Centre, a purpose-built neurological centre for men and women over the age of 18 years, who have an acquired brain injury.

Cotswold House (an award-winning specialist in adult eating disorders) is based at Savernake Hospital and part of the Oxford Health NHS Foundation. Following successful visits to Greatwood earlier in 2024, the Trust have requested Greatwood to create a four-week programme designed specifically to support the needs of both their inpatients and day patients. It is planned to continue the community outreach programmes in taking a former racehorse to visit care homes and to increase this to include two/three care homes and Cotswold House at Savernake Hospital.

The annual Guardians Day will be held in June 2025 followed by The Presentation Day in July 2025.

##### **Looking Ahead**

There is to be a continued focus on generating more Greatwood Guardians during the coming year, together with a plan to approach the Winter Appeal in a fresh way to stimulate a greater interest and response. There is also a plan to find out more about our Guardians and the best ways to communicate with them.

**Greatwood Charity Limited**  
**Trustees Report (continued)**  
**for the year ended 31 August 2024**

**Charity Administration**

The E-newsletter maintains an open rate of 58.9%, above the average of 28% for the charity sector (2024 statistics NPtechforgood.com, Neonone.com). On average, an additional 40% of newsletters are sent by post each time, a number which is slowly decreasing as more contacts move to email. Newsletters are sent to all Guardians, as well as key individuals and high value donors.

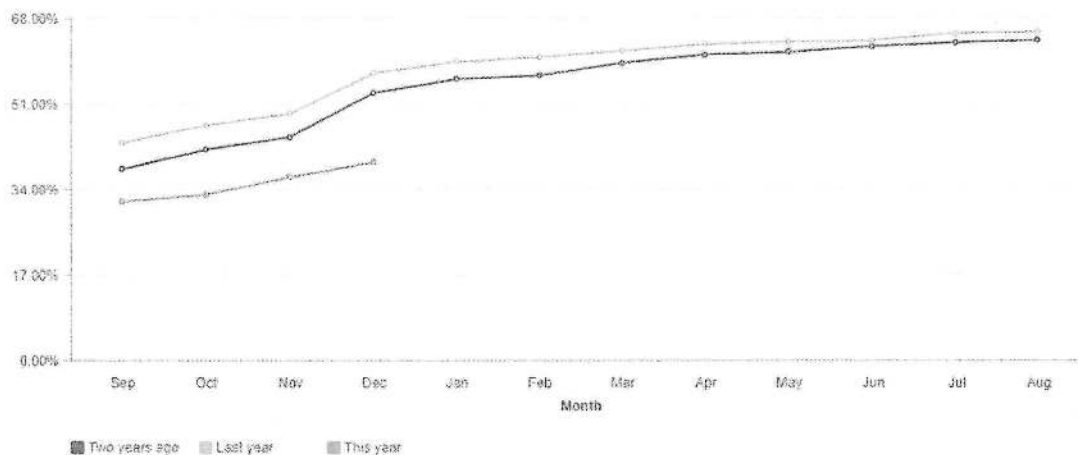
An on-site audit was carried out by Wiltshire Council in October 2023, during which our Central records database of staff and their safeguarding details was fully compliant.

**Raiser's Edge reporting**

**Gifts by constituent code**



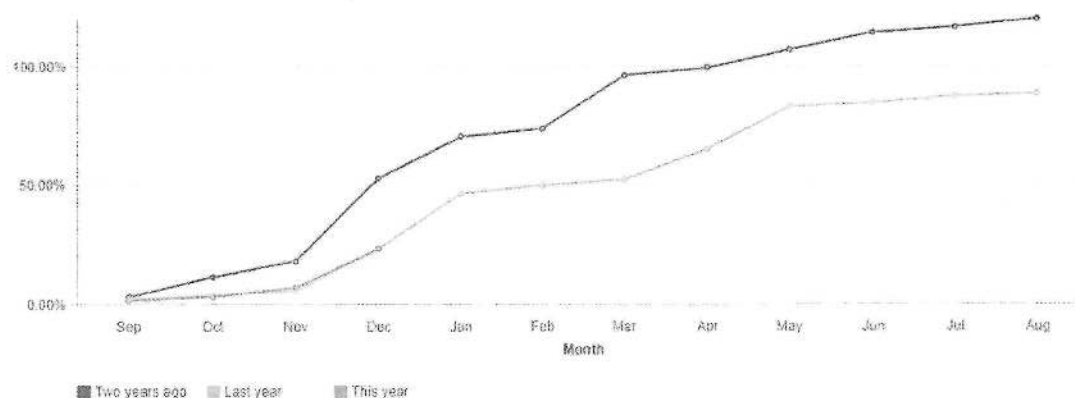
**Year over year donor retention**



**Greatwood Charity Limited**  
**Trustees Report (continued)**  
**for the year ended 31 August 2024**

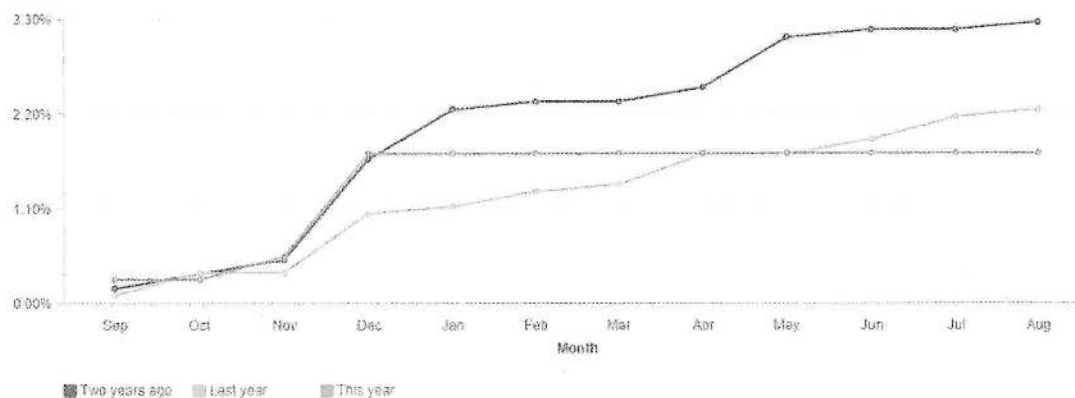
Donor retention by the end of the financial year had increased by 1.63%, just above the level seen in the previous year. Retained revenue has decreased, but is still almost 10% higher than in 2021-22.

**Year over year retained revenue**



The donor recapture rate is lower than in 2022 – 2023; Greatwood recaptures most donors through the Winter Appeal in November and December each year. Recaptured donors are those who have given after more than 15 months since their previous gift. As the Winter Appeal is only every 12 months, it can be seen that different donors are recaptured each year.

**Year over year donor recaptures**



**Other Areas**

**Efficiency**

Raiser's Edge NXT is extensively used for data recording, gift processing, analysis and reporting. It is also utilised for producing and direct emailing of the e-newsletters and event information.

## **Greatwood Charity Limited**

### **Trustees Report (continued) for the year ended 31 August 2024**

#### **Fundraising channels**

- Regular donations
  - The average Guardian donation gift has stayed at £10.
  - Lottery entries were comparable to the previous year.
- Winter Appeal 2023
  - Despite best efforts, the Winter Appeal donations were reduced by almost 50%. This will be restructured for 2024.

#### **Policies**

The annual audit of policies was begun in August, to be completed during the Autumn, with the addition of newly required policies and the updating of those already in place. These are held onsite and uploaded to the Greatwood website.

**Greatwood Charity Limited**

**Trustees Report (continued)  
for the year ended 31 August 2024**

**REFERENCES AND ADMINISTRATIVE DETAILS**

**Registered Company Number**  
05903838 (England and Wales)

**Registered Charity Number**  
1117322

**Registered Office**  
Rainscombe Hill Farm  
Marlborough  
Wiltshire  
SN8 4DT

<b>Trustees</b>	
Mrs H Yeadon MBE	Director
Mr R Powell	Director
Mrs A K Cocks	Director
Mr I James	Director

**Company Secretary**  
Mrs H Yeadon MBE

**Independent Auditors**  
Wenn Townsend Chartered Accountants  
Gosditch House  
5 Gosditch Street  
Cirencester  
Gloucestershire  
GL7 2AG

**Bankers**  
Weatherbys  
Sanders Road  
Wellingborough  
Northamptonshire  
NN8 4BX

**Solicitors**  
Awdry Bailey & Douglas  
33 St Johns Street  
Devizes  
SN10 1BW

**Bookkeepers**  
AMM Bookkeeping & Accountancy  
4 Longlands  
West End Gardens  
Fairford  
Gloucestershire  
GL7 4LG



**Greatwood Charity Limited**  
**Trustees Report (continued)**  
**for the year ended 31 August 2024**

**STATEMENT OF TRUSTEES RESPONSIBILITIES**

The Trustees (who are also the Directors of Greatwood Charity Limited for the purposes of company law) are responsible for preparing the Report of the Trustees and the Financial Statements in accordance with applicable law and United Kingdom Accounting Standards (United Kingdom Generally Accepted Accounting Practice).

Company law requires the Trustees to prepare Financial Statements for each financial year which give a true and fair view of the state of affairs of the charitable company and of the incoming resources and application of resources, including the income and expenditure of the charitable company for that period. In preparing those Financial Statements, the Trustees are required to:-

- Select suitable accounting policies and then apply them consistently;
- observe the methods and principles in the Charity SORP;
- make judgements and estimates that are reasonable and prudent;
- prepare the Financial Statements on the going concern basis unless it is inappropriate to presume that the charitable company will continue in business.

The Trustees are responsible for keeping adequate accounting records which disclose with reasonable accuracy at any time the financial position of the charitable company and to enable them to ensure that the Financial Statements comply with the Companies Act 2006. They are also responsible for safeguarding the assets of the charitable company, and hence for taking reasonable steps for the prevention and detection of fraud and other irregularities.

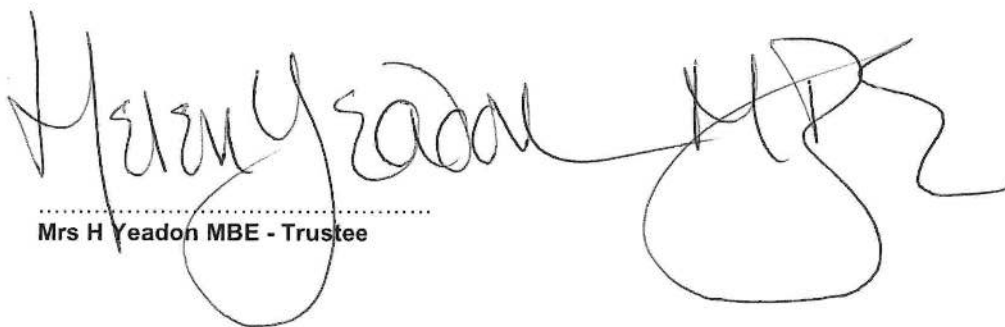
In so far as the Trustees are aware:-

- There is no relevant audit information of which the charitable company's auditors are unaware;
- The Trustees have taken all steps that they ought to have taken to make themselves aware of any relevant audit information and to establish that the auditors are aware of that information.

**AUDITORS**

The auditors, Wenn Townsend Chartered Accountants, will be proposed for reappointment at the forthcoming Annual General Meeting.

Report of the Trustees incorporating a strategic report, approved by order of the Board of Trustees, as the Company Directors, on 12 February 2025 and signed on the Board's behalf by:



.....  
Mrs H Yeadon MBE - Trustee

## Greatwood Charity Limited

### Report of the Independent Auditors to the Trustees for the Year Ended 31 August 2024

#### Opinion

We have audited the financial statements of Greatwood Charity Ltd (the 'Charity') for the year ended 31 August 2024 which comprise the Statement of Financial Activities, the Balance Sheet and notes to the financial statements, including a summary of significant accounting policies. The financial reporting framework that has been applied in their preparation is applicable law and United Kingdom Accounting Standards, including Financial Reporting Standard FRS 102, the Financial Reporting Standard applicable in the UK and Republic of Ireland (United Kingdom Generally Accepted Accounting Practice).

In our opinion the financial statements:

- give a true and fair view of the state of the Charity's affairs as at 31 August 2024, and of its incoming resources and application of resources for the year then ended;
- have been properly prepared in accordance with United Kingdom Generally Accepted Accounting Practice; and
- have been prepared in accordance with the requirements of the Charities Act 2011.

#### Basis for opinion

We conducted our audit in accordance with International Standards on Auditing (UK) (ISAs (UK)) and applicable law. Our responsibilities under those standards are further described in the Auditor's responsibilities for the audit of the financial statements section of our report. We are independent of the Charity in accordance with the ethical requirements that are relevant to our audit of the financial statements in the UK, including the FRC's Ethical Standard, and we have fulfilled our other ethical responsibilities in accordance with these requirements. We believe that the audit evidence we have obtained is sufficient and appropriate to provide a basis for our opinion.

#### Conclusions relating to going concern

We have nothing to report in respect of the following matters in relation to which the ISAs (UK) require us to report to you where:

- the Trustees' use of the going concern basis of accounting in the preparation of the financial statements is not appropriate; or
- the Trustees have not disclosed in the financial statements any identified material uncertainties that may cast significant doubt about the Charity's ability to continue to adopt the going concern basis of accounting for a period of at least twelve months from the date when the financial statements are authorised for issue.

#### Other information

The Trustees are responsible for the other information. The other information comprises the information included in the Trustees' annual report, other than the financial statements and our auditor's report thereon. Our opinion on the financial statements does not cover the other information and, except to the extent otherwise explicitly stated in our report, we do not express any form of assurance conclusion thereon.

In connection with our audit of the financial statements, our responsibility is to read the other information and, in doing so, consider whether the other information is materially inconsistent with the financial statements or our knowledge obtained in the audit or otherwise appears to be materially misstated. If we identify such material inconsistencies or apparent material misstatements, we are required to determine whether there is a material misstatement in the financial statements or a material misstatement of the other information. If, based on the work we have performed, we conclude that there is a material misstatement of this other information, we are required to report that fact.

We have nothing to report in this regard.

## **Greatwood Charity Limited**

### **Report of the Independent Auditors to the Trustees for the Year Ended 31 August 2024**

#### **Matters on which we are required to report by exception**

We have nothing to report in respect of the following matters where the Charities (Accounts and Reports) Regulations 2008 require us to report to you if, in our opinion:

- the information given in the Report of the Trustees is inconsistent in any material respect with the financial statements; or
- sufficient accounting records have not been kept; or
- the financial statements are not in agreement with the accounting records and returns; or
- we have not received all the information and explanations we require for our audit.

#### **Responsibilities of Trustees**

As explained more fully in the Trustees' responsibilities statement, set out on page 17, the Trustees are responsible for the preparation of financial statements which give a true and fair view, and for such internal control as the Trustees determine is necessary to enable the preparation of financial statements that are free from material misstatement, whether due to fraud or error.

In preparing the financial statements, The Trustees are responsible for assessing the Charitable Company's ability to continue as a going concern, disclosing, as applicable, matters related to going concern and using the going concern basis of accounting unless the Trustees either intend to liquidate the Charity or to cease operations, or have no realistic alternative but to do so.

#### **Auditor's responsibilities for the audit of the financial statements**

As explained more fully in the Trustees' responsibilities statement set out on page 10, the Trustees (who are also the directors of the Charitable Company for the purposes of company law) are responsible for the preparation of the financial statements and for being satisfied that they give a true and fair view, and for such internal control as the Trustees determine is necessary to enable the preparation of financial statements that are free from material misstatement, whether due to fraud or error.

In preparing the financial statements, the Trustees are responsible for assessing the Charitable Company's ability to continue as a going concern, disclosing, as applicable, matters related to going concern and using the going concern basis of accounting unless the Trustees either intend to liquidate the Charitable Company or to cease operations, or have no realistic alternative but to do so.

#### **Auditor's responsibilities for the audit of the financial statements**

Our objectives are to obtain reasonable assurance about whether the financial statements as a whole are free from material misstatement, whether due to fraud or error, and to issue an auditor's report that includes our opinion. Reasonable assurance is a high level of assurance but is not a guarantee that an audit conducted in accordance with ISAs (UK) will always detect a material misstatement when it exists. Misstatements can arise from fraud or error and are considered material if, individually or in the aggregate, they could reasonably be expected to influence the economic decisions of users taken on the basis of these financial statements.

Irregularities, including fraud, are instances of non-compliance with laws and regulations. We design procedures in line with our responsibilities, outlined above, to detect material misstatements in respect of irregularities, including fraud. The specific procedures for this engagement and the extent to which these are capable of detecting irregularities, including fraud is detailed below:

- Enquiry of management, those charged with governance and the entity's solicitors around actual and potential litigation claims;
- Enquiry of entity staff in tax and compliance functions to identify any instances of non-compliance with laws and regulations;

**Greatwood Charity Limited**

**Report of the Independent Auditors to the Trustees  
for the Year Ended 31 August 2024**

- Reviewing minutes of meetings of those charged with governance;
- Reviewing financial statement disclosures and testing to supporting documentation to assess compliance with applicable laws and regulations;
- Performing audit work over the risk of management override of controls, including testing of journal entries and other adjustments for appropriateness, evaluating the business rationale of significant transactions outside the normal course of business and reviewing accounting estimates for bias.

Because of the inherent limitations of an audit, there is a risk that we will not detect all irregularities, including those leading to a material misstatement in the financial statements or non-compliance with regulation. This risk increases the more that compliance with a law or regulation is removed from the events and transactions reflected in the financial statements, as we will be less likely to become aware of instances of non-compliance. The risk is also greater regarding irregularities occurring due to fraud rather than error, as fraud involves intentional concealment, forgery, collusion, omission or misrepresentation.

As part of an audit in accordance with ISAs (UK), we exercise professional judgment and maintain professional scepticism throughout the audit. We also:

- Identify and assess the risks of material misstatement of the financial statements, whether due to fraud or error, design and perform audit procedures responsive to those risks, and obtain audit evidence that is sufficient and appropriate to provide a basis for our opinion. The risk of not detecting a material misstatement resulting from fraud is higher than for one resulting from error, as fraud may involve collusion, forgery, intentional omissions, misrepresentations, or the override of internal control.
- Obtain an understanding of internal control relevant to the audit in order to design audit procedures that are appropriate in the circumstances, but not for the purpose of expressing an opinion on the effectiveness of the Charitable Company's internal control.
- Evaluate the appropriateness of accounting policies used and the reasonableness of accounting estimates and related disclosures made by the Trustees.
- Conclude on the appropriateness of the Directors' use of the going concern basis of accounting and, based on the audit evidence obtained, whether a material uncertainty exists related to events or conditions that may cast significant doubt on the Charitable Company's ability to continue as a going concern. If we conclude that a material uncertainty exists, we are required to draw attention in our auditor's report to the related disclosures in the financial statements or, if such disclosures are inadequate, to modify our opinion. Our conclusions are based on the audit evidence obtained up to the date of our auditor's report. However, future events or conditions may cause the Charitable Company to cease to continue as a going concern.
- Evaluate the overall presentation, structure and content of the financial statements, including the disclosures, and whether the financial statements represent the underlying transactions and events in a manner that achieves fair presentation.

We communicate with those charged with governance regarding, among other matters, the planned scope and timing of the audit and significant audit findings, including any significant deficiencies in internal control that we identify during our audit.

Wenn Townsend Chartered Accountants  
Eligible to act as an auditor in terms of Section 1212 of the Companies Act 2006  
Gosditch House  
5 Gosditch Street  
Cirencester  
Gloucestershire GL7 2AG  
Date: 13 February 2025

Greatwood Charity Limited

Statement of Financial Activities including Income and Expenditure Account  
for the Year Ended 31 August 2024

				31 Aug 24	Year Ended 31 Aug 23
		Unrestricted Fund £	Restricted Funds £	Designated Fund £	Total Fund £
<b>INCOME AND ENDOWMENTS FROM</b>					
Donations and legacies	2	503,779	-	-	503,779
<b>Charitable activities</b>	5				
Horse welfare		-	39,438	-	39,438
Education and therapy		-	123,007	-	123,007
Fundraising activities	3	33,354	-	-	33,354
Investment income	4	14,252	-	-	14,252
Other income		15,742	-	-	15,742
<b>Total</b>		567,127	162,445	-	729,572
<b>EXPENDITURE ON</b>					
Raising funds	6	60,085	-	-	60,085
<b>Charitable activities</b>	7				
Horse welfare		310,491	11,628	-	322,119
Education and therapy		155,742	132,269	-	288,011
<b>Total</b>		526,318	143,897	-	670,215
<b>NET EXPENDITURE/(INCOME)</b>		40,809	18,548	-	59,357
Investment property revaluation		-	-	10,911	10,911
<b>Transfers between funds</b>	17	-	-	-	-
Net movement in funds		40,809	18,548	10,911	70,268
<b>RECONCILIATION OF FUNDS</b>					
<b>Total funds brought forward</b>		471,077	41,108	315,470	827,655
<b>TOTAL FUNDS CARRIED FORWARD</b>		511,886	59,656	326,381	897,923

**CONTINUING OPERATIONS**

All income and expenditure have arisen from continuing activities

The notes form part of these financial statements

Greatwood Charity Limited

Statement of Financial Activities including Income and Expenditure Account  
for the Year Ended 31 August 2024

2023 Comparative Balances

		31 Aug 23			
		Unrestricted Fund £	Restricted Funds £	Designated Fund £	Total Fund £
<b>INCOME AND</b>					
<b>ENDOWMENTS FROM</b>					
Donations and legacies	2	409,161	-	-	409,161
<b>Charitable activities</b>	5				
Horse welfare		-	3,271	-	3,271
Education and therapy		-	153,976	-	153,976
Fundraising activities	3	32,946	-	-	32,946
Investment income	4	3,320	-	-	3,320
Other income		11,560	-	-	11,560
<b>Total</b>		456,987	157,247	-	614,234
<b>EXPENDITURE ON</b>					
Raising funds	6	63,702	-	-	63,702
<b>Charitable activities</b>	7				
Horse welfare		300,480	3,271	-	303,751
Education and therapy		97,182	175,857	-	273,039
<b>Total</b>		461,364	179,128	-	640,492
<b>NET EXPENDITURE/(INCOME)</b>					
Investment property revaluation		(4,377)	(21,881)	-	(26,258)
				21,824	21,824
<b>Transfers between funds</b>	17	-	-	-	-
Net movement in funds		(4,377)	(21,881)	21,824	(4,434)
<b>RECONCILIATION OF FUNDS</b>					
<b>Total funds brought forward</b>		475,454	62,989	293,646	832,089
<b>TOTAL FUNDS CARRIED FORWARD</b>		471,077	41,108	315,470	827,655

**Greatwood Charity Limited**

**Balance sheet  
At 31 August 2024**

		Unrestricted Fund £	Restricted Funds £	Designated Fund	31 Aug 24 Total Fund £	31 Aug 23 Total Fund £
	Note					
<b>FIXED ASSETS</b>						
Tangible assets	12	58,768	52,833	76,381	187,982	149,987
Intangible assets	12a	1,976	-	-	1,976	5,999
		<hr/>	<hr/>	<hr/>	<hr/>	<hr/>
		60,744	52,833	76,381	189,958	155,986
<b>CURRENT ASSETS</b>						
Stocks	13	13,699	-	-	13,699	15,229
Debtors	14	23,320	-	-	23,320	23,211
Prepayments and accrued income	14	44,625	-	-	44,625	171,781
Cash at bank and in hand		413,130	6,823	250,000	669,953	487,674
		<hr/>	<hr/>	<hr/>	<hr/>	<hr/>
		494,774	6,823	250,000	751,597	697,985
<b>CREDITORS</b>						
Accounts falling due within one year	15	(43,632)	-	-	(43,632)	(26,226)
		<hr/>	<hr/>	<hr/>	<hr/>	<hr/>
<b>NET CURRENT ASSETS</b>		451,142	6,823	250,000	707,965	671,669
		<hr/>	<hr/>	<hr/>	<hr/>	<hr/>
<b>TOTAL ASSETS LESS CURRENT LIABILITIES</b>		511,886	59,656	326,381	897,923	827,655
		<hr/>	<hr/>	<hr/>	<hr/>	<hr/>
<b>NET ASSETS</b>		511,886	59,656	326,381	897,923	827,655
		<hr/>	<hr/>	<hr/>	<hr/>	<hr/>

The notes form part of these financial statements



Greatwood Charity Limited

Balance sheet (continued)  
At 31 August 2024

	Notes 16	31 Aug 24 Total Fund £	31 Aug 23 Total Fund £
<b>FUNDS</b>			
<b>Unrestricted Funds:</b>			
General Fund		511,886	471,077
<b>Restricted Funds:</b>			
Restricted Funds - Education		1,908	4,094
Restricted Funds - Outside classroom		1,150	1,464
Restricted Funds - Classroom		693	2,046
Restricted Funds - Poo picker		1,483	1,943
Restricted Funds - CCTV		5,109	6,884
Restricted Funds - Bungalow		17,913	23,201
Restricted Funds - Sensory garden		659	930
Restricted Funds - Garden		781	545
Restricted Funds - iPads		1,917	-
Restricted Funds - CRM		-	1
Restricted Funds - Horse box		27,810	-
Restricted Funds - Education EBSR		233	-
		59,656	41,108
<b>Designated Fund</b>			
Property Purchase		326,381	315,470
<b>TOTAL FUNDS</b>		897,923	827,655

The Charitable Company is entitled to exemption from audit under Section 477 of the Companies Act 2006 for the period ended 31 August 2024.

The members have not deposited notice, pursuant to Section 476 of the Companies Act 2006 requiring an audit of these financial statements.

The Trustees acknowledge their responsibilities for

- ensuring that the Charitable Company keeps accounting records that comply with Sections 386 and 387 of the Companies Act 2006 and
- preparing financial statements which give a true and fair view of the state of affairs of the Charitable Company as at the end of each financial year, and of its surplus or deficit for each financial year in accordance with the requirements of Sections 394 and 395 and which otherwise comply with the requirements of the Companies Act 2006 relating to financial statements, so far as is applicable to the Charitable Company.

These financial statements have been audited under the requirements of Section 144 of the Charities Act 2011 and have been prepared in accordance with the provisions applicable to small companies subject to the small companies regime in accordance with FRS102 SORP.

The financial statements were approved by the Board of Trustees on 12 February 2025 and were signed on its behalf by:

Mrs H Yeadon MBE – Trustee

The notes form part of these financial statement



**Greatwood Charity Limited**  
**Cash Flow Statement**  
**for the year ended 31 August 2024**

		31 Aug 24	31 Aug 23
	Notes	£	£
<b>Cash flows from operating activities:</b>			
Cash generated from operations	20	237,711	(125,059)
Finance costs		(773)	(657)
		<hr/>	<hr/>
<b>Net cash provided by (used in) operating activities</b>		236,938	(125,716)
		<hr/>	<hr/>
<b>Cash flows from investing activities:</b>			
Purchase of tangible fixed assets		(68,911)	(57,220)
Purchase of intangible fixed assets		-	(144)
Sale of tangible fixed assets		-	1,080
Interest received		14,252	3,320
		<hr/>	<hr/>
<b>Net cash provided by (used in) investing activities</b>		(54,659)	(52,964)
		<hr/>	<hr/>
<b>Cash and cash equivalents in the reporting period</b>		182,279	(178,680)
<b>Cash and cash equivalents at the beginning of the reporting period</b>		487,674	666,354
		<hr/>	<hr/>
<b>Change in cash and cash equivalents at the end Of the reporting period</b>		669,953	487,674
		<hr/>	<hr/>

The notes form part of these financial statements

## Greatwood Charity Limited

### Notes to the Financial Statements for the year ended 31 August 2024

#### General information

The company is a private company limited by guarantee, registered and incorporated in England and Wales. The address of the registered office is Rainscombe Hill Farm, Clench Common, Marlborough, Wiltshire SN8 4DT.

#### 1. ACCOUNTING POLICIES

##### Basis of preparing the financial statements

The financial statements of the Charitable Company, which is a public benefit entity under FRS 102, have been prepared in accordance with the Charities SORP (FRS 102) 'Accounting and Reporting by Charities: Statement of Recommended Practice applicable to charities preparing their accounts in accordance with the Financial Reporting Standard applicable in the UK and Republic of Ireland (FRS 102), Financial Reporting Standard 102 "The Financial Reporting Standard applicable in the UK and Republic of Ireland" and the Companies Act 2006. The financial statements have been prepared under the historical cost convention.

The Charity has taken advantage of the concession available to small charities not to categorise incoming and expended resources by activity but to disclose them in natural categories.

##### Going concern

The Charity has considered going concern and has taken the view that this is not an issue.

##### Income

All income is recognised in the Statement of Financial Activities once the Charity has entitlement to the funds, it is probable that the income will be received and the amount can be measured reliably.

##### Expenditure

Liabilities are recognised as expenditure as soon as there is a legal or constructive obligation committing the Charity to that expenditure. It is probable that a transfer of economic benefits will be required in settlement, and the amount of the obligation can be measured reliably. Expenditure is accounted for on an accruals basis and has been classified under headings that aggregate all costs related to the category. Where costs cannot be directly attributed to particular headings they have been allocated to activities on a basis consistent with the use of resources.

##### Allocation and apportionment of costs

Costs directly allocated to activities are directly identifiable as wholly or mainly in support of the Charity's objectives.

Support costs have been directly attributed to the objects of the Charity where possible. The remaining support costs, overheads and other costs not directly attributable to particular functional activity categories have been apportioned over the relevant categories on the basis of management estimates for the amount attributable to that activity in the year.

Governance costs are those incurred in connection with enabling the Charity to comply with external regulation, constitutional and statutory requirements and in providing support to the Trustees in the discharge of their statutory duties.

##### Fixed assets

Depreciation is provided at the following annual rates in order to write off each asset over its estimated useful life.

Improvements to property	- 10% on cost
Plant and machinery	- 25% on cost
Fixtures and fittings	- 25% on cost
Motor vehicles	- 20% on cost
Intangible assets	- 25% on cost

## Greatwood Charity Limited

### Notes to the Financial Statements (continued) for the year ended 31 August 2024

#### Stocks

Stocks are valued at the lower of cost and net realisable value, after making due allowance for obsolete and slow-moving items.

#### Taxation

The Charity is exempt from corporation tax on its charitable activities.

#### Funding accounting

Unrestricted funds can be used in accordance with the charitable objectives at the discretion of the Trustees. Designated funds are unrestricted funds set aside by the Directors out of unrestricted general funds for specific future purposes or projects

Restricted funds can only be used for particular restricted purposes within the objects of the Charity. Restrictions arise when specified by the donor or when funds are raised for particular restricted purposes.

Further explanation of the nature and purpose of each fund is included in the notes to the financial statements.

#### Hire purchase and leasing commitments

Rentals paid under operating leases are charged to the Statement of Financial Activities on a straight-line basis over the period of the lease.

#### Pension costs and other post-retirement benefits

The Charitable Company operates a defined contribution pension scheme. Contributions payable to the Charitable Company's pension scheme are charged to the Statement of Financial Activities in the period to which they relate.

## 2. DONATIONS AND LEGACIES

	Year ended 31 Aug 24 £	Year ended 31 Aug 23 £
Donations	54,829	73,041
Gift Aid	14,615	11,678
Legacies	327,353	240,487
Grants	106,982	83,955
Donated services and facilities	-	-
	<hr/>	<hr/>
	503,779	409,161

Grants received, included in the above, are as follows:

	Year ended 31 Aug 24 £	Year ended 31 Aug 23 £
Retraining of Racehorses	41,500	21,000
Various	65,482	62,955
	<hr/>	<hr/>
	106,982	83,955

Greatwood Charity Limited

Notes to the Financial Statements (continued)  
for the year ended 31 August 2024

3. FUNDRAISING ACTIVITIES

	Year ended 31 Aug 24 £	Year ended 31 Aug 23 £
Open day	6,939	-
Sponsorships	10,000	13,800
Lottery	6,814	7,304
Collections	460	-
Appeals	8,668	11,660
Sundry activities	473	182
	<hr/>	<hr/>
	33,354	32,946
	<hr/>	<hr/>

4. INVESTMENT INCOME

	Year ended 31 Aug 24 £	Year ended 31 Aug 23 £
Deposit account interest	14,252	3,320
	<hr/>	<hr/>

5. INCOME FROM CHARITABLE ACTIVITIES

		Year ended 31 Aug 24 £	Year ended 31 Aug 23 £
Horse welfare	Activity		
Grants	Horse welfare	39,438	3,271
	Horse welfare	-	-
		<hr/>	<hr/>
		39,438	3,271
		<hr/>	<hr/>
Education & Therapy programmes	Education & Therapy	47,282	42,505
Grants	Education & Therapy	75,725	111,471
		<hr/>	<hr/>
		123,007	153,976
		<hr/>	<hr/>

**Greatwood Charity Limited**

**Notes to the Financial Statements (continued)  
for the year ended 31 August 2024**

**6. RAISING FUNDS COSTS**

**Raising donations and legacies**

	Year ended 31 Aug 24 £	Year ended 31 Aug 23 £
Staff costs	50,314	51,192
Open Day	1,280	398
Appeals	836	2,401
Walk of Fame	-	21
Lottery	4,312	4,450
Support costs	3,343	5,240
	<hr/>	<hr/>
	60,085	63,702
	<hr/>	<hr/>

**7. CHARITABLE ACTIVITIES COSTS**

	Direct costs £	Support costs £	Totals £
Horse welfare	189,271	152,983	342,254
Education & Therapy	132,848	135,028	267,876
	<hr/>	<hr/>	<hr/>
	332,119	288,011	610,130
	<hr/>	<hr/>	<hr/>

**Greatwood Charity Limited**

**Notes to the Financial Statements (continued)  
for the year ended 31 August 2024**

**8. SUPPORT COSTS**

	Management £	Finance £	Information technology £	Human Resources £
Raising donations and Legacies	-	-	3,343	-
Horse welfare	117,259	13,412	6,688	3,365
Education & Therapy	95,939	13,412	6,688	6,729
	<u>213,198</u>	<u>26,824</u>	<u>16,719</u>	<u>10,094</u>
	General Costs £	Governance costs £	Totals £	
Raising donations and legacies	-	-	3,343	
Horse welfare	6,989	5,270	152,983	
Education & Therapy	6,990	5,270	135,028	
	<u>13,979</u>	<u>10,540</u>	<u>291,354</u>	

**9. NET INCOME/(EXPENDITURE)**

Net income/(expenditure) is stated after charging/(crediting):

	Year ended 31 Aug 24 £	Year ended 31 Aug 23 £
Auditing of accounts	5,540	5,200
Other non-audit services	5,000	2,896
Depreciation – owned assets	34,939	36,470
Hire of plant and machinery	5,430	7,123
Surplus on disposal of fixed asset	-	(18)
	<u>          </u>	<u>          </u>

Greatwood Charity Limited

Notes to the Financial Statements (continued)  
for the year ended 31 August 2024

10. TRUSTEES' REMUNERATION AND BENEFITS

No Trustee received any remuneration or expenses in their capacity as a Trustee during the period.

Please also see note 19.

**Trustees' expenses**

There were no Trustees' expenses paid for the year ended 31 August 2024 nor for the period ended 31 August 2023.

11. STAFF COSTS

	Year ended 31 Aug 24 £	Year ended 31 Aug 23 £
Wages and salaries	281,947	274,742
Social security costs	20,797	21,922
Other pension costs	11,330	9,243
	<hr/>	<hr/>
	314,074	305,907
	<hr/>	<hr/>

The average monthly number of employees during the period was as follows:

	Year ended 31 Aug 24 £	Year ended 31 Aug 23 £
Administration	3	3
Equine Welfare	6	7
Education	3	3
	<hr/>	<hr/>
	12	13
	<hr/>	<hr/>

No employees received emoluments in excess of £60,000

Greatwood Charity Limited

Notes to the Financial Statements (continued)  
for the year ended 31 August 2024

12. TANGIBLE FIXED ASSETS

	Land	Short leasehold £	Improvements to property £	Plant and machinery £
<b>COST</b>				
At 1 September 2023	65,470	3,055	238,179	163,046
Additions	10,911	-	-	6,827
Disposals	-	-	-	-
	<hr/>	<hr/>	<hr/>	<hr/>
At 31 August 2024	76,381	3,055	238,179	169,873
	<hr/>	<hr/>	<hr/>	<hr/>
<b>DEPRECIATION</b>				
At 1 September 2023	-	2,673	188,938	135,731
Charge for year	-	382	6,998	14,853
Disposals	-	-	-	-
	<hr/>	<hr/>	<hr/>	<hr/>
At 31 August 2024	-	3,055	195,936	150,584
	<hr/>	<hr/>	<hr/>	<hr/>
<b>NET BOOK VALUE</b>				
At 31 August 2024	76,381	-	42,243	19,289
	<hr/>	<hr/>	<hr/>	<hr/>
At 31 August 2023	65,470	382	49,241	27,315
	<hr/>	<hr/>	<hr/>	<hr/>
		Fixtures and Fittings £	Motor vehicles £	Totals £
<b>COST</b>				
At 1 September 2023		77,370	50,527	597,647
Additions		13,026	38,147	68,911
Disposals		-	-	-
		<hr/>	<hr/>	<hr/>
At 31 August 2024		90,396	88,674	666,558
		<hr/>	<hr/>	<hr/>
<b>DEPRECIATION</b>				
At 1 September 2023		69,791	50,527	447,660
Charge for year		5,504	3,179	30,916
Disposals		-	-	-
		<hr/>	<hr/>	<hr/>
At 31 August 2024		75,295	53,706	478,576
		<hr/>	<hr/>	<hr/>
<b>NET BOOK VALUE</b>				
At 31 August 2024		15,101	34,968	187,982
		<hr/>	<hr/>	<hr/>
At 31 August 2023		7,579	-	149,987
		<hr/>	<hr/>	<hr/>



Greatwood Charity Limited

Notes to the Financial Statements (continued)  
for the year ended 31 August 2024

12A. INTANGIBLE ASSETS

	Year ended 31 Aug 24 £	Year ended 31 Aug 23 £
B/fwd	52,466	52,322
Additions	-	144
	<hr/>	<hr/>
	52,466	52,466
	<hr/>	<hr/>
B/fwd	46,467	37,100
Charge for year	4,023	9,367
	<hr/>	<hr/>
	50,490	46,467
	<hr/>	<hr/>
Net book value at 31 August	1,976	5,999
	<hr/>	<hr/>

13. STOCKS

	Year ended 31 Aug 24 £	Year ended 31 Aug 23 £
Stocks	13,699	15,229
	<hr/>	<hr/>

14. DEBTORS: AMOUNTS FALLING DUE WITHIN ONE YEAR

	31 Aug 24 £	31 Aug 23 £
Trade debtors	23,320	23,211
Prepayments	23,042	13,384
Accrued income	21,583	158,397
	<hr/>	<hr/>
	67,945	194,992
	<hr/>	<hr/>

15. CREDITORS: AMOUNTS FALLING DUE WITHIN ONE YEAR

	31 Aug 24 £	31 Aug 23 £
Trade creditors	19,515	9,107
Social security and other taxes	6,003	6,066
Auto Enrolment Pension	1,309	999
Accruals and deferred income	16,805	10,054
	<hr/>	<hr/>
	43,632	26,226
	<hr/>	<hr/>

Greatwood Charity Limited

Notes to the Financial Statements (continued)  
for the year ended 31 August 2024

16. MOVEMENT IN FUNDS

	31 Aug 23 £	Net movement in funds £	Transfers between funds £	31 Aug 24 £
<b>Unrestricted funds</b>				
General fund	471,077	40,809	-	511,886
<b>Restricted funds:</b>				
Restricted Funds - Education	4,094	(2,186)	-	1,908
Restricted Funds - Outside classroom	1,464	(314)	-	1,150
Restricted Funds - Classroom	2,046	(1,353)	-	693
Restricted Funds - Poo picker	1,943	(460)	-	1,483
Restricted Funds – CCTV	6,884	(1,775)	-	5,109
Restricted Funds - Bungalow	23,201	(5,288)	-	17,913
Restricted Funds - Sensory garden	930	(271)	-	659
Restricted Funds - Garden	545	236	-	781
Restricted Funds - iPads	-	1,917	-	1,917
Restricted Funds – Education EBSR	-	233	-	233
Restricted Funds – Horse Box	-	27,810	-	27,810
Restricted Funds - CRM	1	(1)	-	-
Restricted Funds - Horses	-	-	-	-
	<hr/>	<hr/>	<hr/>	<hr/>
	41,108	18,548	-	59,656
	<hr/>	<hr/>	<hr/>	<hr/>
<b>Designated Fund</b>				
Property Purchase	315,470	10,911	-	326,381
	<hr/>	<hr/>	<hr/>	<hr/>
<b>TOTAL FUNDS</b>	827,655	70,268	-	897,923
	<hr/>	<hr/>	<hr/>	<hr/>

Greatwood Charity Limited

Notes to the Financial Statements (continued)  
for the year ended 31 August 2024

MOVEMENT IN FUNDS – continued

	Income £	Expenditure £	Transfer £	Movement Funds £
Net movement in funds, included in the above are as follows:-				
<b>Unrestricted funds</b>				
General fund	567,127	(526,318)	-	40,809
<b>Restricted funds</b>				
Restricted Funds - Education	103,007	(105,193)	-	(2,186)
Restricted Funds - Outside classroom	-	(314)	-	(314)
Restricted Funds - Classroom	-	(1,353)	-	(1,353)
Restricted Funds - Poo picker	-	(460)	-	(460)
Restricted Funds - CCTV	-	(1,775)	-	(1,775)
Restricted Funds - Bungalow	-	(5,288)	-	(5,288)
Restricted Funds - Sensory garden	-	(271)	-	(271)
Restricted Funds - Garden	1,000	(764)	-	236
Restricted Funds - iPads	2,000	(83)	-	1,917
Restricted Funds -Education EBSR	17,000	(16,767)	-	233
Restricted Funds – Horse Box	30,338	(2,528)	-	27,810
Restricted Funds - CRM	-	(1)	-	(1)
Restricted Funds - Horses	9,100	(9,100)	-	-
	<hr/>	<hr/>	<hr/>	<hr/>
	162,445	(143,897)	-	18,548
	<hr/>	<hr/>	<hr/>	<hr/>
<b>Designated Fund</b>				
Property Purchase	10,911	-	-	10,911
	<hr/>	<hr/>	<hr/>	<hr/>
<b>TOTAL FUNDS</b>	<hr/> 740,483	<hr/> (670,215)	<hr/> -	<hr/> 70,268

**Greatwood Charity Limited**

**Notes to the Financial Statements (continued)  
for the year ended 31 August 2024**

**MOVEMENT IN FUNDS – continued**

<b>Name of Unrestricted Fund</b>	<b>Description, nature and purpose of the fund</b>
General Fund	The "free reserves" after allowing for all designated funds.
<b>Name of Restricted Fund</b>	<b>Description, nature and purpose of the fund</b>
Education	Funds made available for expenditure on education.
Classroom	For the building, decorating and equipping of the new classroom.
CCTV	To purchase CCTV.
Garden	To purchase garden equipment.
Sensory garden	To layout and plant a sensory garden.
Poo picker	To purchase poo picker.
Rugs	To purchase horse rugs.
CRM	To purchase Cloud management software and hosting solutions.
Kickstart	For employment help.
Bungalow	For Bungalow improvement
iPads	For the purchase of iPads
Horsebox	For the purchase of a horsebox
Education EBSR	Funds specifically for EBSR education
Outside classroom	For equipping an outside classroom.
Horses	For expenditure on horses
<b>Name of Designated Fund</b>	<b>Description, nature and purpose of fund</b>
Property Purchase	The designated fund has been set up for the purpose of looking to purchase the site when the lease expires.

**17. CONTINGENT LIABILITIES**

No provision for contingent liabilities has been made as this is not applicable for this Charity for this or the preceding year.

**18. CAPITAL COMMITMENTS**

No provision for capital commitments has been included in these accounts as it is not applicable for this Charity for this or the preceding period.

**19. RELATED PARTY DISCLOSURES**

During the year the Company paid a salary of £40,000 (2023 - £40,000) to Mrs H Yeadon in her capacity as Managing Director, for her services to the company as she is obliged to live on the premises and be on call 24 hours a day, 7 days a week in case of problems with the animals and horses used for the educational programmes. She works full time for the Charity, managing the office, developing and managing the delivery of the educational programmes, running the fundraising and supervising the welfare of the animals.

Pension contributions of £1,013 (2023 - £1,013) were paid in respect of Mrs H Yeadon.

**Greatwood Charity Limited**

**Notes to the Financial Statements (continued)  
for the year ended 31 August 2024**

**20. RECONCILIATION OF NET INCOME TO NET CASH FLOW FROM OPERATING ACTIVITIES**

	Year ended 31 Aug 24 £	Year ended 31 Aug 23 £
<b>Net income for the reporting period (as per the statement of financial activities)</b>	70,268	(4,424)
<b>Adjustments for:</b>		
Depreciation charges	34,939	36,470
Profit on disposal of fixed assets	-	(18)
Interest received	(14,252)	(3,320)
Finance costs	773	657
Decrease/(Increase) in stocks	1,530	1,690
Decrease/(Increase) in debtors	127,047	(154,777)
(Increase)/Decrease in creditors	17,406	1,327
	<hr/>	<hr/>
	237,711	125,059
	<hr/>	<hr/>

**21. OPERATING LEASES**

Total future minimum payments under non-cancellable leases are as follows:

	31 Aug 24 £	31 Aug 23 £
Lease on property		
Within 1 year		42,500
More than 1 year	-	-

**Greatwood Charity Limited**

**Detailed Statement of Financial Activities (continued)  
for the year ended 31 August 2024**

	Year ended 31 Aug 24 £	Year ended 31 Aug 23 £
<b>INCOME AND ENDOWMENTS</b>		
<b>Donations and legacies</b>		
Donations	54,829	73,041
Gift aid	14,615	11,678
Legacies	327,353	240,487
Grants	106,982	83,955
Donated services and facilities	-	-
	<hr/>	<hr/>
	503,779	409,161
	<hr/>	<hr/>
<b>Fundraising activities</b>		
Open day	6,939	-
Sponsorships	10,000	13,800
Lottery	6,814	7,304
Collections	460	-
Appeals	8,668	11,660
Sundry activities	473	182
	<hr/>	<hr/>
	33,354	32,946
	<hr/>	<hr/>
<b>Investment income</b>		
Deposit account interest	14,252	3,320
	<hr/>	<hr/>
<b>Charitable activities</b>		
Education and therapy programmes	47,282	42,505
Horse welfare	39,438	3,271
Grants	75,725	111,471
	<hr/>	<hr/>
	162,445	157,247
	<hr/>	<hr/>
<b>Other income</b>		
Gain on sale of tangible fixed assets	-	18
Rental income	9,518	5,436
Miscellaneous income	1,301	-
Rural farm payment	4,923	6,106
	<hr/>	<hr/>
	15,742	11,560
	<hr/>	<hr/>
<b>Total incoming resources</b>	729,572	614,234
	<hr/>	<hr/>

**This page does not form part of the statutory financial statements**

**Greatwood Charity Limited**

**Detailed Statement of Financial Activities (continued)  
for the year ended 31 August 2024**

	Year ended 31 Aug 24 £	Year ended 31 Aug 23 £
<b>EXPENDITURE</b>		
<b>Raising donations and legacies</b>		
Wages	45,000	45,000
Social security	4,151	5,029
Pensions	1,163	1,163
Open day	1,280	398
Appeals	836	2,401
Walk of fame	-	21
Purchases	-	-
Lottery and just giving costs	4,312	4,450
	<hr/>	<hr/>
	56,742	58,462
	<hr/>	<hr/>
<b>Charitable activities</b>		
Wages	186,947	189,742
Social security	12,382	12,654
Pensions	9,154	7,067
Sub-contract workers	37,199	23,377
Education expenses	896	223
Veterinary costs	24,558	27,629
Farriers costs	8,598	6,988
Equipment repair and renewals	2,803	5,075
Feed and other horse costs	21,140	28,998
Sensory garden depreciation	410	534
Plant and machinery depreciation	14,853	14,130
Motor vehicles depreciation	3,179	-
	<hr/>	<hr/>
	322,119	316,417
	<hr/>	<hr/>

**This page does not form part of the statutory financial statements**

Greatwood Charity Limited

Detailed Statement of Financial Activities (continued)  
for the year ended 31 August 2024

	Year ended 31 Aug 24 £	Year ended 31 Aug 23 £
<b>Support costs</b>		
<b>Management</b>		
Wages	40,000	40,000
Social security	4,264	4,239
Pensions	1,013	1,013
Hire of photocopier	5,063	6,273
Rates and water	5,430	7,124
Insurance	16,342	16,739
Light and heat	35,265	13,099
Cleaning	3,186	3,410
Advertising	62	718
Premises expenses	43,575	40,638
Rent	42,500	42,500
Short leasehold depreciation	382	382
Improvements to property depreciation	6,588	7,320
Fixtures and fittings depreciation	5,504	4,737
Intangible depreciation	4,023	9,367
	<hr/>	<hr/>
	213,198	197,559
	<hr/>	<hr/>
<b>Finance</b>		
Bookkeeping	19,112	11,699
Postage and stationery	1,636	2,060
Bank charges	1,765	1,730
Legal and professional	3,538	6,986
Credit charges	773	657
	<hr/>	<hr/>
	26,824	23,132
	<hr/>	<hr/>
<b>Information Technology</b>		
Telephone	4,663	3,716
Computer costs	11,240	11,090
Website costs	816	1,212
	<hr/>	<hr/>
	16,719	16,018
	<hr/>	<hr/>

This page does not form part of the statutory financial statements



**Greatwood Charity Limited**

**Detailed Statement of Financial Activities (continued)  
for the year ended 31 August 2024**

	Year ended 31 Aug 24 £	Year ended 31 Aug 23 £
<b>Human resources</b>		
HR Insurance	3,322	3,830
Other staff costs	2,665	1,914
Recruitment	715	317
Staff training	3,392	932
	<hr/>	<hr/>
	10,094	6,993
	<hr/>	<hr/>
<b>General Costs</b>		
Waste disposal	1,933	2,247
Motor expenses	7,898	6,508
Travelling	656	1,439
Subscriptions	1,169	1,277
Licences	484	390
Refreshments	717	734
Sundries	1,122	1,220
Doubtful debts	-	-
	<hr/>	<hr/>
	13,979	13,815
	<hr/>	<hr/>
<b>Governance costs</b>		
Auditors' remuneration	10,540	8,096
	<hr/>	<hr/>
	10,540	8,096
	<hr/>	<hr/>
<b>Total resources expended</b>	670,215	640,492
	<hr/>	<hr/>
<b>Net income</b>	59,357	(26,258)
	<hr/>	<hr/>

**This page does not form part of the statutory financial statements**