

**ANNIE MAWSON'S SUNBEAMS MUSIC TRUST**

**(A company limited by guarantee)**

**UNAUDITED TRUSTEES' REPORT AND FINANCIAL STATEMENTS FOR THE  
YEAR ENDED 31 MAY 2025**



**CELEBRATING ITS 33<sup>rd</sup> ANNIVERSARY 1992-2025**

**Company registration number: 05794153**

**Charity number: 1117159**

**ANNIE MAWSON'S SUNBEAMS MUSIC TRUST**  
**(A company limited by guarantee)**

**CONTENTS**

	<b>Page</b>
<b>Reference and Administrative details of the Charity, its Trustees and Advisers</b>	<b>1</b>
<b>Foreword by Michael Lawson-Johnson</b>	<b>2</b>
<b>Trustees' report</b>	<b>3-12</b>
<b>Annual report by Annie Mawson MBE, Chief Executive</b>	<b>13-14</b>
<b>Report from the Acting Treasurer, Linda Addison</b>	<b>15</b>
<b>Report from the Chairman, Dr Ife Akintunde LLB</b>	<b>16</b>
<b>Statement of Trustees' Responsibilities</b>	<b>17</b>
<b>Independent Examiner's report</b>	<b>18</b>
<b>Statement of Financial Activities</b>	<b>19</b>
<b>Statement of Financial Position</b>	<b>20</b>
<b>Notes to the Financial Statements</b>	<b>21-33</b>



**'OUR MISSION'**

**'Sunbeams strives to improve the quality of life of  
children and adults of all ages with disabilities  
through the creative power of music'**

**[www.sunbeamsmusic.org](http://www.sunbeamsmusic.org)**

# **ANNIE MAWSON'S SUNBEAMS MUSIC TRUST**

**(A company limited by guarantee)**

## **Reference and Administrative Details of the Charity, its Trustees and Advisers for the Year Ended 31 May 2025**

### **Trustees and Directors**

Dr I. O. Akintunde, Chair  
Mrs L.C. Addison, Treasurer  
Mrs I. Henderson  
Mrs R. C. Seager  
Mrs K. Addison  
Mrs E.A Mawson (Resigned 06 November 2024)  
Mr M.J Lawson-Johnson (Resigned 06 November 2024)  
Mr Ian Elson (Appointed 24 February 2025)  
Mr Theo Lewthwaite (Appointed 05 December 2024)

### **Company Registered Number**

05794153

### **Charity Registered Number**

1117159

### **Registered Office**

Sunbeams Music Centre, Stoller House, Redhills, Penrith, Cumbria, CA11 0DT

### **Company Secretary**

M. J. Lawson-Johnson, MRSM

### **Chief Executive**

Annie Mawson MBE, MRSM

### **Accountants**

Saint and Co Chartered Accountants, Wavell Drive, Rosehill Industrial Estate, Carlisle, CA1 2SA

### **Musical Patrons**

Liam Fray – The Courteeners  
Philip Glass  
Justin Pearson – Managing Director and Artistic Director of the National Symphony Orchestra

### **Supportive Patrons**

Lord Archer of Weston-Super-Mare  
Susan Bagot MBE  
Lady Eileen Carey  
The Rt. Rev. Richard Garrard  
The Rt. Rev. Bishop Laurie Green  
Ian Gregg CBE  
Julia Linnette

Lord Melvyn Bragg  
Hal Bagot  
Sir James Cropper KCVO  
Neville Howard  
Vicki Green  
Larry Sullivan

# **ANNIE MAWSON'S SUNBEAMS MUSIC TRUST**

## **FOREWORD BY MICHAEL LAWSON-JOHNSON,** **DIRECTOR OF DEVELOPMENT AND EVALUATION**

### **MUSIC AND OUR LIVING ENVIRONMENT:**

Melody is based on harmonious proportions and mathematics is the descriptive key to understanding it.

This principle was first discovered by the Roman architect Marcus Pollio Vitruvius in c80 – 7bc. Vitruvius found that physical proportion when related to mathematical interpretation of sound – had a direct impact on architecture resulting in spaces being either sympathetic to inhabit or directly not.

This was, and still is the way of mankind, forgotten - until rediscovered by Andrea Palladio in 1529 and then ignored until the 1920s.

Music provides an enduring expression of life and life's drama that transcends memory and adheres to the unconscious – to be awakened by a musical prompt, evoking the emotion connected to its source. This awakening is strong enough to promote the senses of both taste and smell, along with near perfect recall of music and vocals, even in the case of Alzheimer's.

Music affects every aspect of our lives and possibly most affecting those who say they dislike music! Music has been used to aid the transition of venom through the body by South American tribes since before memory. There are endless examples of the power of music throughout many civilizations around the planet. It is only our homogenous Western life-style that has forgotten or perhaps lost touch, in our arrogance and pharmacological self – indulgence.

If music affects upon the foetus in the womb and the acoustic ear is fully developed by 5 months it follows that when some of us emerge the effects of music are already existing.

Music affects the foetus in the womb as the acoustic ear is fully developed at 5 months. A newborn child made no response to a dog barking. Why? because she/he had heard it all before. It follows that the embryonic foetus also recollects music and voice.

This is only a part of what Sunbeams strives to address.

We at Sunbeams believe our community is judged by the way they nurture and include people who are not able to ask for help. Through our Music For Life® and Music for Dignity® programmes, the mute will find a voice and the vocal a vocabulary with which to be heard. Our whole premise is based round the urgent need to provide a lasting, relevant and positive intervention to the lives of people with special needs. For the last 33 years, Sunbeams has proven itself time after time to be effective, cutting edge and viable.

As an organisation, Sunbeams innovates and thrives through challenge, and has adapted over the years to encompass all the strategic and dynamic changes inherent in the governance of a charity for the people we serve.

Michael Lawson-Johnson

26 January 2026

# **ANNIE MAWSON'S SUNBEAMS MUSIC TRUST**

## **TRUSTEES' REPORT**

Annie Mawson's Sunbeams Music Trust was founded by Annie 33 years ago in 1992 following her career as a Special Needs teacher and alongside her profession as an International Harpist and Singer. Annie was spurred on to found Sunbeams with the closure of Roundhills Special School in Kendal and being told at the following interview that she was "too outrageous and eccentric" to ever be employed again!

She has proven them wrong!

Not just for the success of the charity but also for being the instigator, alongside her husband, Michael, in raising over £2.5 million to build the **Sunbeams Music Centre**, from which the Sunbeams Team delivers their mission.

Sunbeams Music Centre has increased delivery of Community Music Therapy to children and adults with Special Needs in the North of England and beyond. The Centre is a single-storey 550m2 construction, comprising Workshop/Training/ Performance Hall, 5 Music Therapy Rooms, Recording Studio, Meeting Room, Kitchen, Administration facilities, Exhibition Space, Sensory Garden and woodland. On the fringe of the Lake District, on the A66/M6 axis Junction 40 at Penrith, overlooking Ullswater Valley, the green field site with transformational therapeutic qualities was generously donated, following which a lengthy fund-raising period began for the Centre. This included a number of sponsored "endurance challenges" by MawsonKerr Architects and friends of the charity such as a Forrest Gump style 24-hour coast to coast, climbing 21 mountains in 21 hours, and a 24-hour bicycle ride round 276 miles of Cumbria's circumference!

***"Music has always been important to me. It always has been and always will be. Without Sunbeams Music, my life is not worth living."***

This is why we have built our National Centre of Excellence for these people with profound and complex needs – as no other organisation was fulfilling their long-term needs and aspirations. Completion of this iconic and stunning Sunbeams Music Centre marked a significant milestone in an extraordinary journey for Annie Mawson's Sunbeams Music Trust as well as MawsonKerr Architects. From the outset this was no ordinary project. The journey began 20 years ago in 2005 as a university thesis project for MawsonKerr director Will Mawson who was studying the charity as part of his final year project at Newcastle University. In an unusual turn of events this became a live project following unanimous approval by the Board of Trustees. We say unusual, as very few University Final Year projects ever come to fruition.

The architecture is intended to reflect synthesis between the natural context, a contemporary vernacular and musical union; housing several unique functions it is also importantly an outward facing advert for the charity. The design team's resultant building is designed to embody musical qualities of rhythm, timbre and melody within the landscape; shaped along the curved natural contours it grows with a crescendo at the canopy to the eastern main entrance. Inserted along the rhythmical elevation are a series of playful introverted volumes housing key activities. Trying to be completely inclusive without appearing institutional was an important design driver. There are a number of specialist inclusive features that make the building unique in the county, and indeed the UK – as recognised when Will Mawson won the acclaimed "Architect of the Year in 2016. In order to fully understand what makes Sunbeams so special, it is crucial that you visit the Centre. If you do, you will meet an incredible group of people in Sunbeams Music Trust who are devoted to their mission. Some of the daily accolades received include:

***"Thank you so much for putting so much love for people who honour you the most, and need you much-ly!"***

***"I came to see a building and left with so much more than I could ever have anticipated. You and your story are truly inspiring and the Sunbeams Centre beyond brilliant. The work of the Sunbeams Team is remarkable and clearly has a profound and positive meaning for your beneficiaries. To my mind, the Centre is the sheltered, nurturing, creative, outward-looking and quietly confident expression of Sunbeams – in a sublime and woody nutshell. A place full of delight"***

***"I came, I saw, I marvelled – this place is just amazing. Well done to everyone involved!"***

***"What a wonderful welcome and visit – by RIBA Architects. An inspiring building and very moving."***





# **ANNIE MAWSON'S SUNBEAMS MUSIC TRUST**

## **TRUSTEES' REPORT (Continued)**

### **WHAT WE DO:**

#### **Community Music Therapy**

##### **MISSION STATEMENT:**

"Through Music for Life®, Sunbeams helps disadvantaged individuals improve their quality of life and self-esteem through the creative freedom of music."

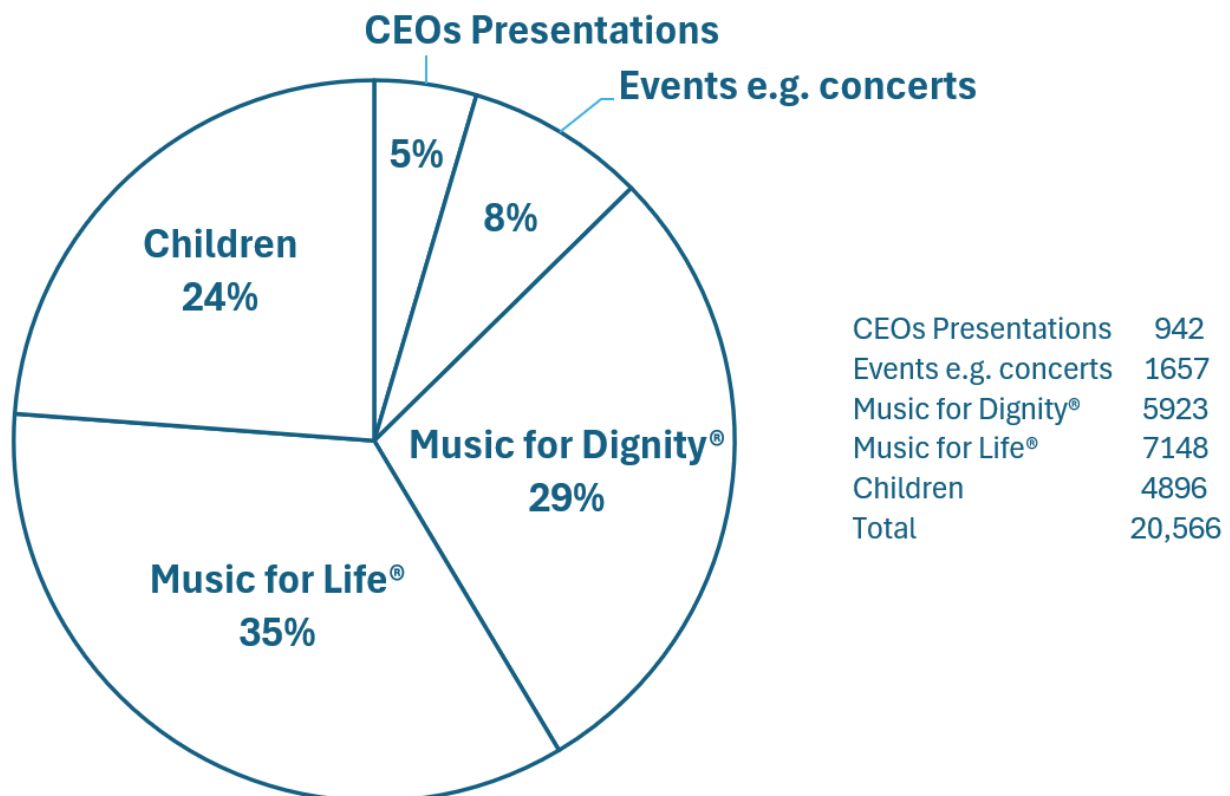
##### **OUR OVERALL AIM:**

'To relieve sickness and assist in the remedial treatment of children and adults suffering from physical, emotional, psychological and other mental health problems by the provision of Community Music therapy'.

Sunbeams Music Trust is now a flagship charity within Cumbria and the North of England. We feature regularly on Local and National Media when Annie describes the impact of the Sunbeams 'Music For Life®' and 'Music For Dignity®' programmes upon the Sunbeams beneficiaries.

8 Specialist Graduate Musicians now deliver our Music For Life® and Music For Dignity® programmes, every month, and many weekly, free of charge wherever possible to 2,000+ beneficiaries. We aim to improve the quality of life, the emotional and mental health and self-esteem of groups of children with complex medical needs, adults with disabilities and severe learning disabilities, elderly people with advanced dementia, adults with mental health problems in venues throughout Cumbria and in our award-winning iconic Sunbeams Music Centre, built in 2016.

### **BENEFICIARY VISITS JUNE 2024 - MAY 2025**





# **ANNIE MAWSON'S SUNBEAMS MUSIC TRUST**

## **TRUSTEES' REPORT (Continued)**

### **1.1 Sunbeams Music For Life® Programme including Family Days**

Music for Life® is a specialist and innovative programme, pioneered by Sunbeams Founder, Annie Mawson in 1992. Through structured interactive workshops, specially trained professional musicians use music as a tool for therapeutic and developmental benefit for groups of disabled and disadvantaged children and adults.

8 dedicated, well-qualified Sunbeams Musicians (Post-Graduates in Music Therapy, Community Music, Social Care, Counselling) deliver our Sunbeams Music For Life® programme to:

A) Over 400 children every month with Severe Learning and Physical Disabilities throughout Cumbria. Covid-19 is still a barrier to vulnerable children with life-limiting diseases, so for those 100+ still being shielded, some delivery still uses ZOOM as our digital platform. The children who want face-to-face Music For Life® sessions have a wide range of disabilities, mental health issues, childhood Alzheimer's, autism, Down's Syndrome, sensory impairments, emotional and behavioural difficulties and rare syndromes such as Cri du Chat, Ehlers Syndrome' and Metachromatic Leukodystrophy (MLD).



*Sunbeams Family Days*

A) Children with complex needs see Sunbeams as “their lifeline” as we have a proven track-record of engaging with severely disabled/disadvantaged children for **33 years**.

***“Sunbeams to me is family. Without it, we would have no-one, we would have nothing.”***

*“I have learnt so much about my daughter’s ability – not her disability. It is amazing to see her grow in these sessions, despite her complex physical and learning difficulties. As a family we have already gained enormous interactions during the Sunbeams Music workshops. We do hope they will always continue....”*

***“Sunbeams gives us hope. Until your life is touched by a child with additional needs, you can’t really appreciate the value of a charity like Sunbeams. Sunbeams workshops are truly life-changing.”***

B) Adults with severe Learning disabilities aged 21-60+

#### Examples of the aims:

- improve communication, self-expression, self-acceptance, motivation and self-esteem, reaffirming beneficiaries’ identity and improving feelings of well-being
- promote positive behavioural changes in adults with

profound multi-handicap and severe learning disabilities

- show disabled people and their family/carers that a better quality of life can be achieved



*Sunbeams Music for Life® Sessions*



# **ANNIE MAWSON'S SUNBEAMS MUSIC TRUST**

## **TRUSTEES' REPORT (Continued)**

- break down barriers of perception of marginalised disabled people in the wider community

See Evidence in Sunbeams Office and website: [www.sunbeamsmusic.org](http://www.sunbeamsmusic.org)

### **1.2 Sunbeams Music For Dignity® programme**

As with Music For Life®, Sunbeams Music For Dignity® is a specialist programme, using live music to improve health and well-being. The emphasis of the therapeutic delivery is tailored towards the physiological effects upon the individual. The programme is for beneficiaries with a wide range of physical and mental disabilities, including children with life-limiting illnesses. The programme is in particular response to demand from elderly frail patients due to the lack of participatory health and well-being activities for people with all degrees of Dementia.

#### **Examples of the aims:**

- create cerebral connections between the beneficiaries' short-term and long-term memory – connections which already exist but which have been deflected or suffered trauma and/or disability
- improve mental health by promoting feelings of well-being
- enhance the comfort of elderly clients in palliative care
- improve communication, self-esteem and empowerment
- improve physical health through improved posture and breathing, by encouraging gentle movement of limbs, improving flexibility and mobility through dancing
- provide dementia sufferers with a form of communication when verbal skills are lost
- promote meaningful reminiscence and promoting memory recall through familiar songs leading to improvements in personal recall
- Promote positive changes in emotional state and thus reduce loneliness



### **1.3 Sunbeams Concert Troupe**

Although the Troupe have not been well enough to perform around the County since Covid, they have continued to receive weekly Music Sessions via Zoom – as they are still being sheltered following their fears of Covid. We hope to encourage them to come to the Centre and hopefully perform at intimate concerts in 2025-2026 when they will continue to delight audiences whilst challenging individual attitudes towards disability. This will break down barriers of prejudice and strengthen communities. The members of the Sunbeams Concert Troupe have themselves always been transformed by their self-improvement and development, which has led to their social inclusion within their communities.

**We long for this to resume.**

## **ANNIE MAWSON'S SUNBEAMS MUSIC TRUST**

### **TRUSTEES' REPORT (Continued)**

#### **1.4. Presentations.**

Our Chief Executive, Annie Mawson MBE, enjoys an international reputation as one of the finest ambassadors for Cumbria's economy and heritage and Sunbeams contribution to transforming lives through the power of music. Annie has continued to deliver an average of 3 presentations and lectures per month to groups e.g. Soroptimists, Rotary Clubs, Chamber of Commerce, corporate professionals, on the impact of Arts in Health with regard to the positive benefits of the work of Sunbeams. Presentations have also included private invitations from the Lord Lieutenant, the High Sheriff, and Cumbria Community Foundation.

Evaluations received include:

*"Your performance was super and your traditional stories complemented the forward-looking elements of our event perfectly"*

*"An excellent presentation. Very thought provoking. I left feeling invigorated following a period of work here bureaucracy and politics made me feel like quitting. I may stick it out now".*

*"I thoroughly enjoyed the conference. Congratulations on your programme and organisation. I thought you succeeded in re-energising issues following such a difficult time for rural communities."*

*"Nice balance of information, stimulation and fun. One of the most relevant. Informative and useful events I've attended for some time."*

#### **1.5 World-Class Concerts.**

Sunbeams has continued with its Concert Programme, bringing world class musicians to Cumbria thus developing its ethos to deliver concerts in rurally isolated areas thereby providing increased access and participation in the Arts for those previously excluded. All concerts have received high attendance as a result of the calibre of visiting musicians, world class artistes who want to support the work of the charity. such as The London Youth Singers, O Duo, Annette Wardell, Aquarelle Guitar Quartet, The Locrian Ensemble, musicians from The Royal Society of Musicians of which our Patron, Justin Pearson is a Governor.

#### **1.6 Sunbeams Party Days!**

The Sunbeams Music Party Day again took place in the Summer of 2024 and combined an eclectic mixture of International world-class musicians, Peppa Pig! and much acclaimed local talent, headlined by the inimitable Wrong Direction - Sunbeams Musicians, led by Annie.

This success – in dry weather when all around was raining - attracted over 250 people and is definitely going to be a regular Annual Event.





## ANNIE MAWSON'S SUNBEAMS MUSIC TRUST

### TRUSTEES' REPORT (Continued)

## 2. Specialist Venue Services

The Sunbeams Music Centre will provide event/conference/meeting space for business organisations and the opportunity for multiple self-employed community musicians, and/or therapists, allied professionals in Health, Education and Social Care to rent the therapy rooms, recording facilities and performance space.

In the leasing market, there is a growing demand especially not just from Multi-National Corporations, but also Cumbrian organisations whom we are starting to see include green buildings as a criteria when sourcing for office/conference/meeting/space. Companies also hope to enhance the productivity and well-being of their employees by taking up space in sustainable developments. The demand for green buildings and green architecture is growing as businesses now have corporate requirements that restrict them to taking up new space only in sustainable projects. We are thrilled that Sunbeams Music Centre fulfils these requirements – hence the demand has grown this year.

Our bespoke facilities, combined with our other services have set us apart from the competition. All previous Annual Reports and the Sunbeams Website have detailed all our green credentials and the passiv-haus architecture design by Will Mawson RIBA ([www.mawsonkerr.co.uk](http://www.mawsonkerr.co.uk)) who won Architect of the Year in 2016 for this, our Sunbeams Music Centre.

### 2.1 Recording Studio Hire

Specialist recording facilities designed by Acoustician, Dr.Douglas Doherty, and with our experienced Sound Engineer Pete Ord can also serve budding Disadvantaged and Disabled People. This facility for regional and national artists has really picked-up post-Covid, even though there has to be a real juggling act between use of Yasmin's Room, the Performance Hall and Recording Studio!

**RECORDING STUDIO**

**VOUCHERS AVAILABLE NOW!**

**Need the perfect gift  
for the singer in your life?**

Give 1 or 2 singers the experience of a professional recording session: the **ULTIMATE** gift for the budding pop star!

**SILVER, GOLD and PLATINUM**  
packages available now (£60-£140)

📍 Sunbeams Music Centre, Redhills, Penrith, CA110DT  
Home to Annie Mawson's Sunbeams Music Trust

Call 01768 892909 or visit  
[www.thestudioatsunbeams.co.uk](http://www.thestudioatsunbeams.co.uk)  
for more info

**THE STUDIO  
AT SUNBEAMS**

### 2.2 Performance Hall Hire - Events

The Glassical Hall - named after our first musical patron, Philip Glass - offers a specialist acoustically designed facility with a sprung floor, a facility which is unique to Eden. Real opportunities providing access for all for disabled dance artistes, able-bodied dancers, and dance companies.

This Specialist service is also available as a unique facility in Cumbria for conferences used by both regional and national businesses as well as providing a perfect facility for our World-Class Concerts. **But the most successful use is by our own beneficiaries who come alive with such joy and profound excitement and exhilaration during the Music For Life® and Dignity® sessions.**



## **ANNIE MAWSON'S SUNBEAMS MUSIC TRUST**

### **TRUSTEES' REPORT (Continued)**

#### **2.3 Therapy Room Hire**

The therapy spaces were specially designed to be inward looking, solid volumes to ensure the clients focus is entirely on the musician. Surrounding spaces provide naturally lit, uplifting vistas for mental stimulation. The main workshop spaces are laid out to facilitate and monitor user development.

#### **2.4 Meeting Room Hire (the Wolfson Room)**

This facility at M6/A66 axis is available for hire from regional and national companies. In this reported year, the Meeting Room has been utilized consistently throughout the year by 27 organisations, because of Sunbeams reputation for hospitality, green credentials and of course improved connectivity access on M6/A66 corridor.



**Sunbeams Music Centre**

**THE GLASSICAL PERFORMANCE HALL**  
Perfect for presentations, concerts & conferences  
Holds up to 100 delegates seated theatre style  
LCD projector and screen  
Sprung dance floor  
Baby grand piano  
P.A. system

**MEETING ROOM HIRE**  
Redhills Penrith

**THE WOLFSON MEETING ROOM**  
Perfect for staff training days, AGMs...  
Seats up to 16 delegates  
LCD projector and screen

**For more information:**  
Visit [www.sunbeamsmusic.org](http://www.sunbeamsmusic.org)  
Or contact Annie:  
✉ [annie@sunbeamsmusic.org](mailto:annie@sunbeamsmusic.org)

### **3. Woodland and Sensory Garden**

A requirement of the planning consent, the garden and woodland include a wide range of sensory experiences, providing a valuable resource for our users - educationally, recreationally and therapeutically. Sunbeams existing Sensory Garden consists of beautiful outdoor harps/tuba/xylophone interspersed with plum, pear and apple trees, Christmas and Chestnut trees, raised beds with sweet-smelling herbs and plants and even a monkey puzzle tree!

Thanks to a Grant from "Thriving Places: Westmorland and Furness", new paths are all interlinked and make for a wonderful therapeutic Cultural Eco-System which will enrich the lives of these beneficiaries. For the first time ever, because of this funding, the children and older people, including wheelchair users, can wander through the intertwining trees, plants and sensory instruments, enriching their spiritual, cognitive development and well-being as well as their reflection, and aesthetic experiences as described by the Millennium Ecosystem Assessment.



## ANNIE MAWSON'S SUNBEAMS MUSIC TRUST

### TRUSTEES' REPORT (Continued)

#### **4. Volunteers**

Sunbeams works with host organisations who provide volunteer support at each music session/workshop. In addition, we have 37 dedicated volunteers, all with enhanced DBS clearance, who assist in delivery of programmes. As media attention and holiday activities have grown, we have seen a vast increase in demand for our services and work-place training and experience in the unique delivery of our programmes.

As numbers are increasing in our projects, more volunteers are required in order for there to be a high level of support provided. Integration is vital to successful outcomes. Therefore, the role of a volunteer is both demanding and challenging. Our volunteers play a discreet but essential role in encouraging group cohesion and individual learning by providing 1-1 contact. They may also be required to assist in practical matters encountered by disabled people. Individuals are selected through interview process and provided with induction training, including Sunbeams policies and procedures for undertaking work with vulnerable children/adults.

Placements are offered to individuals showing the most aptitude and empathy towards the challenges our beneficiaries face. Lynn Rose, our volunteer musician truly epitomises these attributes.

Lynn first came to Sunbeams when she performed with MUGs (Morland Ukulele Group). She had been looking for a volunteer opportunity that would enable her to make a positive difference. As a keen ukulele, guitar player and singer, she recognises the joy music can bring to the lives of others. Volunteering at Sunbeams proved to be the perfect fit.



Lynn regularly helps at the Music for Dignity® Sessions with attendees meeting every two weeks. The Community Music Therapy is delivered by Musicians, Will Harris on piano and Mark Stephenson on ukulele.

*'There is always a lot of laughter in the room along with wonderful singing. It is the best feeling to see everyone leave with a big smile on their face and looking forward to getting together again'* says Lynn.

In her family Lynn talks about her experience with her Dad, who has dementia. *"I have seen the powerful way in which music brings him to a place of joy and normality where he easily remembers words and sings along to familiar songs. When we sing together it is like a light has been turned on and he is in a happy place."*

These are the experiences Sunbeams bring at Music for Dignity®.



## ANNIE MAWSON'S SUNBEAMS MUSIC TRUST

### TRUSTEES' REPORT (Continued)

#### 5. Trustees

We were thrilled and proud to welcome 2 new Trustees with very special qualities to the Sunbeams Board, in 2024.

##### IAN ELSON

- *"Most importantly as the parent of a child who gained so much, during her short life, from Sunbeams and having first-hand experience of the joy that the sessions gave her and us as a family, I am pleased to bring a parent's perspective to the Board."*
- *Currently I'm Chair for our local Scout Group. I deal with managing the governance for the Group".*

Ian acted for a number of years as a technical advisor to 'The Passage': a large charity in London that works to help homeless people get off the streets. He provided technical input and assisted with major refurbishment projects across of their buildings in Central London, sitting on a dedicated Project Board.

##### THEO LEWTHWAITE.

Theo is a young property solicitor working in Penrith. It was through this work that Theo first met Annie and Michael, and they quickly built a good rapport. Theo was struck by the warmth and kindness of all at Sunbeams, and was quickly enveloped into that fold by Annie! When asked to come aboard as a Trustee, he was happy to accept.

Theo contributes his knowledge and familiarity with legal queries to the board, not to mention reducing the average age somewhat! He particularly enjoys discussing future developments and funding streams for Sunbeams, as well as helping his fellow Trustees where he can.



L-R. Karen Addison, Theo Lewthwaite, Ife Akintunde. Ian Elson, Linda Addison, Becca Seager.

FRONT. Isa Henderson, Annie Mawson, Michael Lawson-Johnson



## **ANNIE MAWSON'S SUNBEAMS MUSIC TRUST**

### **ANNUAL REPORT BY ANNIE MAWSON MBE, CHIEF EXECUTIVE**

That is what we are doing at Sunbeams for Cumbria. We have built “something exciting” which has created new jobs, new growth, new optimism, new hope for people of all ages with disabilities. Our expertise and knowledge are endorsed by the Cumbrian MPs, our funders and communities – which have been crucial in our drive to build an iconic Centre of Excellence meeting demand from the disabled community of the whole of Cumbria.

Our achievements are an indication of the strong infrastructure of the charity, including Trustees/Directors, Staff, and Volunteers, as well as the remarkable professionalism, dedication and talent of the musicians which all contribute to the ongoing high standard and quality of Sunbeams services. Leadership and staff are outstanding, with experience, qualifications, skills – and empathy, to deliver Sunbeams’ vision and mission. Award-winning Sunbeams is renowned for high-quality of service, outcomes/outputs delivery and quality of care.

*“This is an extremely well-managed project with experienced, committed and incredibly well-trained staff, helpers and musicians involved in the delivery. The group are passionately committed to their work, concerned with the development of the families, particularly the disabled children they work with-many of whom are emotionally challenging with shortened life-expectancy and deeply debilitating illnesses. This, coupled with a project which is over-achieving against it's targets, results in a very strong project”*

A National Funder

Sunbeams is committed to the people it serves. In transforming the lives of the disabled and severely disadvantaged people with whom we work, our overriding vision is for the improvement of their quality of life. Therefore, we endorse the Vision of the 2025 Cumbria Economic Strategy (CES) – as Sunbeams is one of the “innovative and sustainable projects which has secured a better quality of life for current and future generations.”

Thus, the provision of our architectural unique and inspirational Sunbeams Centre has helped to promote the inclusion, the independence and empowerment, the self-determination and self-advocacy, though never forgetting the vulnerability of the beneficiaries. Sunbeams has helped to establish the equal access and opportunity to which all communities should aspire and which Sunbeams embodies.

I would like to thank the whole Sunbeams Team who deliver our Music for Life® and Music For Dignity® Programmes in 43 projects throughout the whole of Cumbria. THANKYOU also to the Cumbrian communities for their unswerving and loyal support since 1992, as we strive to make a real difference to peoples’ lives through the power of music.

We are deeply grateful.

Our whole ethos is based round the urgent need to provide a lasting, relevant and positive intervention to the lives of people with special needs. For the last 33 years, Sunbeams has proven itself time after time to be effective, cutting edge and viable – as encapsulated in our Sunbeams National Music Centre – our building which will ensure that our disabled community will have equal access to services and make Cumbria a real and truly inclusive society.

As I said on the flagship BBC Radio 4 TODAY programme, and will keep ON saying...

*“Sunbeams Music For Life® wants to reach the unreachablees”*

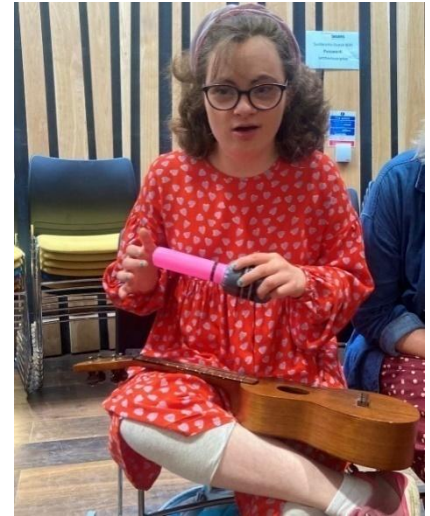
It is this mission that is the fundamental driving force for everyone involved with Sunbeams – especially the staff, who have worked tirelessly and passionately to raise funds and generate pledges not only for the Centre but also for all for the ongoing projects.

Our projects can best be described by quoting Debbie, mother of gorgeous Lucy:

## ANNIE MAWSON'S SUNBEAMS MUSIC TRUST

### ANNUAL REPORT BY ANNIE MAWSON MBE, CHIEF EXECUTIVE (Continued)

*"Sunbeams is a place where there is time for Lucy and her friends to participate fully. If asked a question, there is time for her to process the question and find an answer. This is something not often possible in the wider community, when speed and quick thinking are the norm. Sunbeams is a place where our children get it right, where they can succeed. Out there in the world they are so often made to feel they get it wrong. Sunbeams is a lesson to all of society in inclusion. It only takes looking at people differently and seeing their potential and ability; then accommodating, supporting and celebrating difference, and suddenly it all works. Too often our children experience lip-service to inclusion, at Sunbeams it is real!"*



DO PLEASE WATCH THIS WONDERFUL VIDEO

<https://www.bbc.co.uk/teach/bring-the-noise/children-in-need-annie-mawsons-sunbeam-trust/zh78cqt>

We will also never forget the words of a young man suffering from brain-damage following a car accident – Michael. He saw the Centre as being

***"A sustainable legacy for people with disabilities – like me – but for long after my day".***

It took Michael 10 minutes to say this in slow measured speech.... But this was his vision. And it remains ours.#



*Annie Mawson*

Feb.4<sup>th</sup> 2026

**REPORT FROM THE ACTING TREASURER, LINDA ADDISON**

It is a pleasure to report upon another year in which finances of the charity have strengthened.

In the year to 31 May 2025, total income increased from £467,899 in the previous year to £494,484. This was largely due to a very generous legacy left by a long term friend of Chief Executive, Annie Mawson for which we are incredibly grateful, and also to interest earned on investment income. In addition, we continued to be successful in securing grants and donations from a wide range of bodies and were most grateful to them for their support. This enabled us to extend the car park at the Centre for disabled users, install ecogrid paths and re-varnish the Centre's exterior.

Fundraising and our income from businesses who hire our rooms at the Centre for external meetings remained strong and hire of our recording studio secured a steady income. Fundraising events including concerts and events thrived and we would like to thank all those individuals for their fundraising efforts including all the volunteers through the various events held. The Family Day in the summer once again was a great success for beneficiaries, their family and friends and our supporters.

Expenditure rose modestly, given general inflation during the year, from £348,776 in the previous year to £383,624 but was tightly controlled and well under budget.

The net outcome, after depreciation of £57,519, shows a surplus of £53,340, a strong outcome which has strengthened Sunbeams cash reserves and balance sheet .

We continue to be very conscious of inflationary pressures, both upon costs themselves and what they mean for the ability of individuals to donate and also, that significant elements of our income are from one off events rather than regular sources, accepting this is likely to be the case for a charity of our size. However, with continued investment in our committed team and strong financial reserves we are in a positive position to deal with the challenging external environment and look forward to the future with full belief and confidence in our mission that "Sunbeams strives to improve the quality of life of children and adults of all ages with disabilities through the creative power of music".

*Linda Addison*



**REPORT FROM THE CHAIRMAN, DR IFEOLU AKINTUNDE LLB**

As I pondered this year's report, I was reminded of several things. First is how Annie Mawson's Sunbeams Music Trust has grown over the years, and particularly this past year. Since my last report, two new trustees have joined us, Ian Elson and Theo Lewthwaite. They bring to the Board some well needed skills as well as youthful vigour. We were sorry to lose our finance officer John Kidd, but fortunately, we now have an enthusiastic, highly motivated and excellent replacement in Tracy Scott. We've also taken the bold step of adding a fundraising officer, Jules Blundell. She is already laying the foundations and building the connections that should ensure increased funding for our projects.

Our accounts and reports catch the main headlines, the growth, the achievements over the years. However, to get the spirit, you have to be a part of what we do. You can only get that when you attend the events, see the lifechanging activities and experience the Sunbeams Vibe. In all the growth, members still retain the ethos of Sunbeams. Those who attend our events can testify to the family atmosphere, even in a large crowd. New staff and trustees have joyfully embraced the dynamism and enthusiasm of Sunbeams, as though they have always been a part of the family. And of course, we have the indefatigable Annie Mawson as CEO, along with Michael as Director of Evaluation and the other staff members, Liesl, Vanessa and Pete, still working hard, but making it look easy.

I'm struggling to capture the atmosphere of Annie Mawson's Sunbeams Music Trust in this short report. Sunbeams is so full of fun and joy. It's amazing how our beneficiaries react. They start by being people with disabilities, sometimes severe, sometimes life threatening. When they join us, they are excited and joyful, moving to the music, playing instruments, full of the joys of life. The reports are great, but I encourage you all to visit, attend events, enjoy the atmosphere, be a part of the family. Then you may understand the difference between written reports and atmosphere.

Thanks to all those who make this possible. Thanks to the musicians, whether professional or in the audience. Thanks also to the event organisers, volunteers, participants and donors. Thanks to those who attend the events for swaying to the music, beating shakers or doing anything else to bring the atmosphere. It would be so different without you. Thanks to the amazing staff and trustees for making it happen in such innovative and heartwarming ways. Thanks for making the difference in the lives of so many. This is why it's such a pleasure and honour being Chairman of the Board.

IFEOLU AKINTUNDE

## **ANNIE MAWSON'S SUNBEAMS MUSIC TRUST**

### **TRUSTEES' RESPONSIBILITIES STATEMENT**


The Trustees (who are also directors of Annie Mawson's Sunbeams Music Trust for the purpose of company law) are responsible for preparing the Trustees' Report and Financial Statements in accordance with applicable law and United Kingdom Accounting Standards (United Kingdom Generally Accepted Accounting Practice).

Company law requires the Trustees to prepare financial statements for each financial year. Under company law the Trustees must not approve the financial statements unless they are satisfied that they give a true and fair view of the state of affairs of the charitable company and of the incoming resources and application of resources, including the income and expenditure, of the charitable company for that period. In preparing the financial statements, the Trustees are required to:

- Select suitable accounting policies and then apply them consistently
- Observe the methods and principles in the Charities SORP
- Make judgements and accounting estimates that are reasonable and prudent
- Prepare the financial statements on the going concern basis unless it is inappropriate to presume the charitable company will continue in operation.

The Trustees are responsible for keeping adequate accounting records that are sufficient to show and explain the charitable company's transactions and disclose with reasonable accuracy at any time the financial position of the charitable company and enable them to ensure that the financial statements comply with the Companies Act 2006. They are also responsible for safeguarding the assets of the charitable company and hence for taking reasonable steps for the prevention and detection of fraud and other irregularities.

This report was approved by the Trustees on 26 January 2026 and signed on their behalf by:



Dr I. O. Akintunde, LLB

Chair of the Trustees

# **ANNIE MAWSON'S SUNBEAMS MUSIC TRUST**

**(A company limited by guarantee)**

## **Independent Examiner's Report to the Trustees of Annie Mawson's Sunbeams Music Trust**

I report to the charity Trustees on my examination of the financial statements of Annie Mawson's Sunbeams Music Trust (the Company) for the year ended 31 May 2025.

### **Responsibilities and Basis of Report**

As the Trustees of the Company (and its directors for the purposes of company law) you are responsible for the preparation of the financial statements in accordance with the requirements of the Companies Act 2006 ('the 2006 Act').

Having satisfied myself that the financial statements of the Company are not required to be audited under Part 16 of the 2006 Act and are eligible for independent examination, I report in respect of my examination of the Company's financial statements carried out under section 145 of the Charities Act 2011 ('the 2011 Act'). In carrying out my examination I have followed the Directions given by the Charity Commission under section 145(5)(b) of the 2011 Act.

### **Independent Examiner's Statement**

Since the company's gross income exceeded £250,000 your examiner must be a member of a body listed in section 145 of the 2011 Act. I confirm that I am qualified to undertake the examination because I am a member of the Institute of Chartered Accountants in England and Wales (ICAEW), which is one of the listed bodies.

I have completed my examination. I confirm that no matters have come to my attention in connection with the examination giving me cause to believe:

1. accounting records were not kept in respect of the Company as required by section 386 of the 2006 Act; or
2. the financial statements do not accord with those records; or
3. the financial statements do not comply with the accounting requirements of section 396 of the 2006 Act other than any requirement that the accounts give a 'true and fair' view which is not a matter considered as part of an independent examination; or
4. the financial statements have not been prepared in accordance with the methods and principles of the Statement of Recommended Practice for accounting and reporting by charities applicable to charities preparing their accounts in accordance with the Financial Reporting Standard applicable in the UK and Republic of Ireland (FRS 102).

I have no concerns and have come across no other matters in connection with the examination to which attention should be drawn in this report in order to enable a proper understanding of the financial statements to be reached.

Stuart Farrer, FCA  
Saint & Co, Chartered Accountants, Carlisle  
Date: 26 January 2026



# **ANNIE MAWSON'S SUNBEAMS MUSIC TRUST**

## **Statement of Financial Activities incorporating Income and Expenditure Account For the Year Ended 31 May 2025**

	Note	Unrestricted funds 2025 £	Restricted funds 2025 £	Total funds 2025 £	Total funds 2024 £
<b>Income from:</b>					
Donations and legacies	2	231,782	122,158	353,940	297,453
Charitable activities	3	33,631	-	33,631	32,248
Other trading activities	4,5	72,397	-	72,397	116,524
Investments	6	34,516	-	34,516	17,820
Profit on disposal of fixed assets	10	-	-	-	3,854
<b>Total Income</b>		<b>372,326</b>	<b>122,158</b>	<b>494,484</b>	<b>467,899</b>
<b>Expenditure on:</b>					
Raising funds	9	16,245	-	16,245	23,977
Charitable activities	7,8,9	266,198	101,181	367,379	324,799
		<b>282,443</b>	<b>101,181</b>	<b>383,624</b>	<b>348,776</b>
<b>Net income/(expenditure) before depreciation</b>		<b>89,883</b>	<b>20,977</b>	<b>110,859</b>	<b>119,123</b>
Depreciation and amortisation	7,8	4,983	52,537	57,519	59,621
<b>Total expenditure</b>		<b>287,426</b>	<b>153,718</b>	<b>441,144</b>	<b>408,397</b>
<b>Net income/(expenditure) and net movement in funds</b>		<b>84,900</b>	<b>(31,560)</b>	<b>53,340</b>	<b>59,502</b>
<b>Reconciliation of funds:</b>					
Total funds brought forward		954,151	2,085,674	3,039,825	2,980,323
Net income/(expenditure) in the year		84,900	(31,560)	53,340	59,502
Total funds carried forward		<u>1,039,051</u>	<u>2,054,114</u>	<u>3,093,165</u>	<u>3,039,825</u>

There were no other recognised gains or losses in the year, or in the prior year.

The notes on pages 22 to 34 form part of these financial statements.

# ANNIE MAWSON'S SUNBEAMS MUSIC TRUST

## Statement of Financial Position as at 31 May 2025

	Note	£	2025 £	£	2024 £
<b>Fixed Assets</b>					
Intangible assets	13		<b>548</b>		625
Fixed assets	14		<b>2,078,780</b>		2,106,221
			<b>2,079,328</b>		2,106,846
<b>Current Assets</b>					
Debtors	15	<b>19,436</b>		15,612	
Cash at bank and in hand		<b>1,008,890</b>		932,402	
		<b>1,028,326</b>		948,014	
<b>Creditors</b>					
Amounts falling due within one year	16	<b>14,489</b>		15,035	
<b>Net Current Assets</b>			<b>1,013,837</b>		932,979
<b>Net Assets</b>			<b>3,093,165</b>		3,039,825
<b>Charity Funds</b>					
Unrestricted funds - General	18		<b>67,563</b>		301,316
Unrestricted funds - Designated	18		<b>963,702</b>		652,835
Restricted funds - grant and donor funds	18		-		1,239
Restricted funds - other, including the Sunbeams Centre	18,20		<b>2,061,900</b>		2,084,435
<b>Total Funds</b>			<b>3,093,165</b>		3,039,825

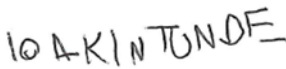
The Charitable Company is entitled to the exemption from the audit requirement contained in section 477 of the Companies Act 2006, for the year ended 31 May 2025.

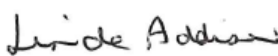
The Directors / Trustees acknowledge their responsibilities for complying with the requirements of the Companies Act 2006 with respect to accounting records and the preparation of financial statements.

The Members have not required the Charitable Company to obtain an audit of its financial statements for the year in question in accordance with section 476.

These financial statements have been prepared in accordance with the provisions applicable to companies subject to the small companies regime.

The financial statements were approved and authorised for issue by the Directors / Trustees on 26 January 2026 and signed on their behalf by:

  
I.O. Akintunde, Chair

  
L.C. Addison, Treasurer

The notes on pages 22 to 34 form part of these financial statements.

# **ANNIE MAWSON'S SUNBEAMS MUSIC TRUST**

**(A company limited by guarantee)**

## **Notes to the Financial Statements for the Year Ended 31 May 2025**

### **1. Accounting Policies**

#### **1.1 Basis of preparation of financial statements**

The financial statements have been prepared in accordance with Accounting and Reporting by Charities: Statement of Recommended Practice applicable to charities preparing their accounts in accordance with the Financial Reporting Standard applicable in the UK and Republic of Ireland (FRS 102) (effective 1 January 2019) – (Charities SORP (FRS 102)), the Financial Reporting Standard applicable in the UK and Republic of Ireland (FRS 102) and the Companies Act 2006.

Annie Mawson's Sunbeams Music Trust meets the definition of a public benefit entity under FRS 102. Assets and liabilities are initially recognised at historical cost or transaction value unless otherwise stated in the relevant accounting policy.

#### **1.2 Company status**

The charity is a company limited by guarantee. In the event of the charity being wound up, the liability in respect of the guarantee is limited to £1 per member of the charity.

#### **1.3 Income**

All income is recognised once the charity has entitlement to the income, it is probable that the income will be received and the amount of income receivable can be measured reliably.

For legacies, entitlement is taken as the earlier of the date on which either: the charity is aware that probate has been granted, the estate has been finalised and notification has been made the executor(s) to the Trust that distribution will be made, or when a distribution is received from the estate. Receipt of a legacy, in whole or in part, is only considered probable when the amount can be measured reliably and the charity has been notified of the executor's intention to make a distribution. Where legacies have been notified to the charity, or the charity is aware of the granting of probate, and the criteria for income recognition have not been met, then the legacy is treated as a contingent asset and disclosed if material.

Grants are included in the Statement of Financial Activities on a receivable basis. The balance of income received for specific purposes but not expended during the period is shown in the relevant funds on the Balance Sheet. Where income is received in advance of entitlement of receipt, its recognition is deferred and included in creditors as deferred income. Where entitlement occurs before income is received, the income is accrued.

Donated services or facilities are recognised when the charity has control over the item, any conditions associated with the donated item have been met, the receipt of economic benefit from the use of the charity of the item is probable and that economic benefit can be measured reliably. In accordance with the Charities SORP (FRS 102), the general volunteer time of the Friends is not recognised; please refer to the Trustees' Report for more information about their contribution.

On receipt, donated professional services and donated facilities are recognised on the basis of the value of the gift to the charity which is the amount the charity would have been willing to pay to obtain services or facilities of equivalent economic benefit on the open market; a corresponding amount is then recognised in expenditure in the period of receipt.

Income tax recoverable in relation to donations received under Gift Aid or deeds of covenant is recognised at the time of the donation.

Income tax recoverable in relation to investment income is recognised at the time the investment income is receivable.

# **ANNIE MAWSON'S SUNBEAMS MUSIC TRUST**

## **Notes to the Accounts (continued)**

Other income is recognised in the period in which it is receivable and to the extent the goods have been provided or on completion of the service.

### **1.4 Expenditure**

Expenditure is recognised once there is a legal or constructive obligation to transfer economic benefit to a third party, it is probable that a transfer of economic benefits will be required in settlement and the amount of the obligation can be measured reliably. Expenditure is classified by activity. The costs of each activity are made up of the total of direct costs and shared costs, including support costs involved in undertaking each activity. Direct costs attributable to a single activity are allocated directly to that activity. Shared costs which contribute to more than one activity and support costs which have not attributable to a single activity are apportioned between those activities on a basis consistent with the use of resources. Central staff costs are allocated on the basis of time spent, and depreciation charges allocated on the portion of the asset's use.

Fundraising costs are those incurred in seeking voluntary contributions and do not include the costs of disseminating information in support of the charitable activities. Support costs are those costs incurred directly in support of expenditure on the objects of the charity and include project management carried out at the Centre. Governance costs are those incurred in connection with administration of the charity and compliance with constitutional and statutory requirements.

Costs of generating funds are costs incurred in attracting voluntary income, and those incurred in trading activities that raise funds.

Charitable activities and Governance costs are costs incurred on the charity's educational operations, including support costs and costs relating to the governance of the charity apportioned to charitable activities.

All expenditure is inclusive of irrecoverable VAT.

### **1.5 Intangible fixed assets and amortisation**

Intangible fixed assets are capitalised and recognised when future economic benefits are probable and the cost or value of the asset can be measured reliably. Intangible assets are initially recognised at cost and are subsequently measured at cost net of amortisation and any provision for impairment. The charity has registered the trademarks of Music for Life® and Music for Dignity® and is amortising the cost over the estimated useful life of 20 years.

### **1.1 Tangible fixed assets and depreciation**

All assets costing more than £200 are capitalised.

A review for impairment of a fixed asset is carried out if events or changes in circumstances indicate that the carrying value of any fixed asset may not be recoverable. Shortfalls between the carrying value of fixed assets and their recoverable amounts are recognised as impairments. Impairment losses are recognised in the Statement of Financial Activities Incorporating Income and Expenditure Account. Tangible fixed assets are carried at cost, net of depreciation and any provision for impairment. Depreciation is not charged on freehold land. Depreciation is provided at rates calculated to write off the cost of fixed assets, less their estimated residual value, over their expected useful lives on the following bases:



## **ANNIE MAWSON'S SUNBEAMS MUSIC TRUST**

### **Notes to the Accounts (continued)**

Freehold land	-	Land is not depreciated
Long-term leasehold property	-	The Centre has been depreciated at 2% per annum, straight line, from 1 April 2019; other items are depreciated at 5% per annum, straight line.
Motor vehicles	-	25% reducing balance
Musical instruments	-	25% reducing balance
Fixtures and fittings	-	15% and 25% reducing balance

#### **1.2 Interest receivable**

Interest on funds held on deposit is included when receivable and the amount can be measured reliably by the charity; this is normally upon notification of the interest paid or payable by the Bank.

#### **1.3 Debtors**

Trade and other debtors are recognised at the settlement amount after any trade discount offered. Prepayments are valued at the amount prepaid net of any trade discounts due.

#### **1.4 Cash at Bank and in hand**

Cash at bank and in hand includes cash and highly liquid investments with a maturity of up to 24 months from the date of the opening of the deposit or similar account.

#### **1.5 Liabilities and provisions**

Liabilities are recognised when there is an obligation at the balance sheet date as a result of a past event, it is probable that a transfer of economic benefit will be required in settlement, and the amount of the settlement can be estimated reliably. Liabilities are recognised at the amount that the charity anticipates it will pay to settle the debt or the amount it has received as advanced payments for the goods or services it must provide. Provisions are measured at the best estimate of the amounts required to settle the obligation. Where the effect of the time value of money is material, the provision is based on the present value of those amounts, discounted at the pre-tax discount rate that reflects the risks specific to the liability. The unwinding of the discount is recognised within interest payable and similar charges.

#### **1.6 Financial instruments**

The charity only has financial assets and financial liabilities of a kind that qualify as basic instruments. Basic financial instruments are initially recognised at transaction value and subsequently measured at their settlement value.

#### **1.7 Taxation**

The charity is exempt from corporation tax on its charitable activities.

#### **1.13 Pensions**

The charity operates a defined contribution pension scheme and the pension charge represents the amounts payable by the charity to the fund in respect of the year.

#### **1.14 Fund accounting**

General funds are unrestricted funds which are available for use at the discretion of the Trustees in furtherance of the general objectives of the charity and which have not been designated for other purposes.

## **ANNIE MAWSON'S SUNBEAMS MUSIC TRUST**

### **Notes to the Accounts (continued)**

These include the Music for Life ® and Music for Dignity ® Fund, which has been classified by the Trustees with effect from 1 June 2019 as a Designated Fund, with its balance to be used solely for the provision of the Charity's objectives.

Restricted funds are funds which are to be used in accordance with specific restrictions imposed by donors.

#### **1.15 Going Concern**

The trustees consider that there are no material uncertainties about the charity's ability to continue as a going concern nor any significant areas of uncertainty that affect the carrying value of assets held by the charity.

The charity has net current assets of £1,013,837 and net assets of £3,093,165 at the year end, following a surplus in the year of £53,340. The charity does not rely on creditors for financial support and has maintained strong cash reserves. The Trustees have prepared cash flow forecasts to show that this cash reserve will be sufficient to allow the charity to continue its service provision for a period of at least 12 months from signing the financial statements. As such, they believe the going concern basis to be appropriate for the year to 31 May 2026.

#### **2. Income from Donations, Grants and Legacies**

	Unrestricted funds 2025 £	Restricted funds 2025 £	Total 2025 £	Total 2024 £
Donations	61,853	-	61,853	146,831
Legacies	169,929	-	169,929	54,151
The National Lottery Community Fund - RC North East and Cumbria Region	-	64,940	64,940	61,740
The National Lottery Cost of Living Fund	-	13,788	13,788	13,788
Cumbria Music Hub	-	-	-	5,333
Hadfield Charitable Trust	-	-	-	5,000
Westmorland and Furness Council / Cumbria County Council Holiday Activities and Food Programme	-	1,827	1,827	10,610
Westmorland & Furness Council Access for All	-	26,009	26,009	-
Douglas Bader Foundation	-	5,000	5,000	-
Cumbria Chamber of Commerce - Website Work	-	500	500	-
Highways England - Social Value Application	-	5,994	5,994	-
Skipton BS Grant - Beanbags	-	100	100	-
The Decommissioning Alliance	-	2,000	2,000	-
Cumbria Community Foundation: The Laurence Fund	-	2,000	2,000	-
Total donations, grants and legacies	<b>231,782</b>	<b>122,158</b>	<b>353,940</b>	<b>297,453</b>
Total 2024	200,982	96,471	297,453	

# **ANNIE MAWSON'S SUNBEAMS MUSIC TRUST**

## **Notes to the Accounts (continued)**

### **Information on Restricted Funds with receipts in 2024-25**

- The National Lottery Community Fund - RC North East and Cumbria Region - a grant towards "Digital Sunbeams" - to provide a digital platform to deliver our Music for Life® programme to young adults with severe learning and physical disabilities in South Lakes, Eden, Carlisle and Allerdale areas. They use Zoom as their platform and work with up to 29 organisations and 188 young adults.
- The National Lottery Community Fund: Grant towards elements related to Cost of Living
- Westmorland and Furness Council / Cumbria County Council Holiday Activities and Food Programme - to deliver Sunbeams Music For Life® Programme at our specialist Sunbeams Music Centre for 64 children/young people aged 4 – 21 years with severe disabilities and complex medical needs.
- To provide Community Music Therapy using Music in fun and exciting ways for therapeutic and educational benefit. Each activity day to include a nutritious and hearty lunch to enable the families to engage in food education and healthy eating agenda.
- Westmorland & Furness Council Access for All - For extension of car-park and eco-grid paths into the Centre improving accessibility to meet the constant demand from disabled people of all ages.
- Douglas Bader Foundation - To support the delivery of Sunbeams Music For Life® Project
- Cumbria Chamber of Commerce - grant re website work by Apple Designs.
- Highways England Social Value Application - To enhance the exterior of sensory garden and purchase of storage workshop to give added value to Sunbeams delivery to wheelchair users
- Skipton BS Grant - To purchase 2 large beanbags for the sensory room.
- The Decommissioning Alliance - To support the delivery of Sunbeams Music For Life® and Music For Dignity® projects in West Cumbria at COSC, Bethshan and Bethany Care Homes and Gregory House, Workington
- Cumbria Community Foundation: The Laurence Fund towards re-started Music for Dignity® project – "Songs and Scones"

### **3. Income from Charitable Activities**

	<b>Unrestricted funds 2025 £</b>	<b>Restricted funds 2025 £</b>	<b>Total 2025 £</b>	<b>Total 2024 £</b>
Music for Life ® / Music for Dignity ®	<b>33,631</b>	<b>-</b>	<b>33,631</b>	32,248
Total 2024	32,248	-	32,248	



# **ANNIE MAWSON'S SUNBEAMS MUSIC TRUST**

## **Notes to the Accounts (continued)**

### **4. Fundraising Income**

All fundraising income is received by unrestricted funds

	<b>Total 2025 £</b>	<b>Total 2024 £</b>
Fundraising	<b>17,836</b>	69,137

### **5. Trading Activities**

All trading activities are in respect of unrestricted funds

	<b>Total 2025 £</b>	<b>Total 2024 £</b>
Charity Trading Income – gross	<b>54,561</b>	47,387
Trading Expenses (see note 9)	<b>(7,813)</b>	(6,465)
Net income from trading activities	<b>46,748</b>	40,922

### **6. Investment Income**

All investment income is received by unrestricted funds

	<b>Total 2025 £</b>	<b>Total 2024 £</b>
Bank and building society interest received	<b>34,516</b>	17,820

**ANNIE MAWSON'S SUNBEAMS MUSIC TRUST**

**Notes to the Accounts (continued)**

**7. Direct Costs**

	<b>2025</b>	<b>2024</b>
	<b>£</b>	<b>£</b>
Musicians' Fees	<b>47,636</b>	48,703
Motor, travel and subsistence	<b>9,327</b>	9,640
Volunteers' expenses	<b>253</b>	1,052
Staff training and conferences	<b>1,344</b>	957
Premises hire	-	360
Wages and salaries	<b>197,678</b>	153,970
National insurance	<b>16,581</b>	11,559
Pension cost	<b>8,629</b>	6,851
Sensory Garden	<b>1,083</b>	3,197
Westmorland and Furness Council / Cumbria County Council Holidays and Activities Food Programme	-	2,257
Music sessions non-musicians' costs	<b>2,611</b>	1,674
Depreciation	<b>55,820</b>	57,405
Total	<b>340,961</b>	297,625

**8. Support Costs**

	<b>2025</b>	<b>2024</b>
	<b>£</b>	<b>£</b>
Insurance	<b>7,664</b>	7,213
Light and heat	<b>10,235</b>	10,947
Telephone/internet	<b>3,050</b>	3,189
General office expenses	<b>1,202</b>	707
Premises expenses	<b>21,304</b>	20,166
Centre support assistance	<b>1,083</b>	1,744
Repairs and renewals	<b>3,315</b>	5,719
Sundry	<b>830</b>	503
Computer and IT	<b>1,833</b>	1,022
Wages and salaries	<b>27,192</b>	29,826
Depreciation	<b>1,623</b>	2,139
Governance costs	<b>4,530</b>	3,543
Amortisation - intangible fixed assets	<b>77</b>	77
	<b>83,937</b>	86,795

Governance costs include accountancy, legal, professional and bank charges, and Trustees' expenses.

# **ANNIE MAWSON'S SUNBEAMS MUSIC TRUST**

## **Notes to the Accounts (continued)**

### **9. Analysis of Expenditure by Type**

	<b>Staff costs 2025 £</b>	<b>Depreciation and amortisation 2025 £</b>	<b>Other costs 2025 £</b>	<b>Total 2025 £</b>	<b>Total 2024 £</b>
On raising voluntary income	-	-	8,432	8,432	17,512
On fundraising trading	-	-	7,813	7,813	6,465
Costs of raising funds			16,245	16,245	23,977
Music for Life ® / Music for Dignity ® (note 7 & 8)	250,081	57,519	117,299	424,899	384,420
	250,081	57,519	133,544	441,144	408,397
Total 2024	202,206	59,621	146,570	408,397	

### **10. Net income/expenditure**

This is stated after charging/(crediting):

	<b>2025 £</b>	<b>2024 £</b>
Depreciation of tangible fixed assets		
- owned by the charity	57,442	59,544
Profit on disposal of fixed assets	-	(3,854)
Amortisation of intangible fixed asset	77	77

Trustees' expenses paid were £588 (2024 - £208).

### **11. Independent Examiner's Remuneration**

The Independent Examiner's Remuneration amounts to a fee of £1,225 (2024 - £1,085).

### **12. Staff Costs**

Staff costs were as follows:

	<b>2025 £</b>	<b>2024 £</b>
Wages and Salaries	222,212	181,282
Social security costs	19,064	14,072
Pension costs	8,805	6,851
	250,081	202,205



## **ANNIE MAWSON'S SUNBEAMS MUSIC TRUST**

### **Notes to the Accounts (continued)**

	<b>2025</b>	2024
Average number of persons employed	<b>8</b>	6

The key management personnel of the charity comprise the Trustees, including the Chief Executive. No trustees, including the Chief Executive, received any remuneration in respect of their role as trustees in either the current or previous year.

The remuneration of the key management personnel in the year (including employer pension contributions and employer national insurance contributions), was £70,762 (2024 - £66,796).

The number of employees whose remuneration fell within the following bands was:

	2025	2024
£60,000 - £70,000	1	1

This measure excludes employer national insurance contributions, unlike that in the previous paragraph.

#### **Important note**

The majority of staff time is spent on the direct delivery of the charity's activities including musical activities. It is therefore appropriate to combine Musicians' Fees and approximately 85% of staff costs when comparing costs

### **13. Intangible fixed assets**

	Trademarks £
Cost	
At 1 June 2024 and 31 May 2025	1,549
Amortisation	
At 1 June 2024	924
Charge for the year	<u>77</u>
At 31 May 2025	<u>1,001</u>
At 31 May 2025	<u>548</u>
At 31 May 2024	625

The charity has registered the following trademarks:

Music for Life ®

Music for Dignity ®

# **ANNIE MAWSON'S SUNBEAMS MUSIC TRUST**

## **Notes to the Accounts (continued)**

### **14. Tangible Fixed Assets**

	Sunbeams Centre £	Musical Instruments £	Fixtures and fittings £	Total £
Cost				
At 1 June 2024	2,277,330	30,022	182,793	2,490,145
Additions	29,505	146	350	30,001
Disposals	-	-	-	-
At 31 May 2025	2,306,835	30,168	183,143	2,520,146
Depreciation				
At 1 June 2024	227,609	24,249	132,066	383,924
Charge for year	46,323	1,480	9,639	57,442
Disposals	-	-	-	-
At 31 May 2025	273,932	25,729	141,705	441,366
Net book value				
At 31 May 2025	2,032,903	4,439	41,438	2,078,780
At 31 May 2024	2,049,721	5,773	50,727	2,106,221

The Sunbeams Centre is held on a 99 year lease.

### **15. Debtors**

	2025 £	2024 £
Trade debtors	<b>13,008</b>	10,651
Prepayments	<b>6,428</b>	4,961
	<b>19,436</b>	15,612

### **16. Creditors - amounts falling due within one year**

	2025 £	2024 £
Trade creditors	<b>6,403</b>	3,794
Other taxation and social security	<b>4,529</b>	4,367
Other creditors	<b>1,045</b>	569
Accruals	<b>1,392</b>	3,410
Deferred income	<b>1,120</b>	2,895

# **ANNIE MAWSON'S SUNBEAMS MUSIC TRUST**

## **Notes to the Accounts (continued)**

<b>14,489</b>	<b>15,035</b>
---------------	---------------

### **17. Pension commitments**

The charity operates two defined contribution pension schemes.

The assets of the schemes are held separately from those of the charity in an independently administered fund.

The pension cost charge represents contributions payable by the charity of £8,805 (2024 - £6,851). £1,045 was payable to the funds at 31 May 2025 and is included within other creditors in note 16.

### **18. Statement of Funds**

#### **Statement of Funds - Current Year**

	Balance at 31 May 2024 £	Income £	Expenditure £	Transfers £	Balance at 31 May 2025 £
<b>Unrestricted funds</b>					
General funds	278,905	54,631	(98,339)	(185,062)	50,135
Tangible fixed assets	22,411	-	(4,983)	-	17,428
Non-designated unrestricted funds	301,316	54,631	(103,321)	(185,062)	67,563
Designated funds - Music for Life ®	652,835	501,897	(184,104)	(6,926)	963,702
Total unrestricted funds	954,151	556,528	(287,426)	(191,988)	1,031,265
<b>Restricted funds</b>					
Grant and donor funds	1,239	115,564	(101,181)	(15,622)	-
Tangible fixed assets	36,570	-	(6,136)	496	30,930
Intangible fixed assets	625	-	(77)	-	548
Sunbeams Music Centre	2,047,240	-	(46,323)	29,505	2,030,422
Total restricted funds	2,085,674	115,564	(153,718)	14,379	2,061,900
<b>Total funds</b>	<b>3,039,825</b>	<b>672,092</b>	<b>(441,143)</b>	<b>(177,609)</b>	<b>3,093,165</b>

**The non-designated unrestricted funds as at 31 May 2025 amounted to £67,563 (2024 - £ 301,316).**



# **ANNIE MAWSON'S SUNBEAMS MUSIC TRUST**

## **Notes to the Accounts (continued)**

### **Statement of Funds - Prior Year**

	Balance at 31 May 2023 £	Income £	Expenditure £	Transfers	Balance at 31 May 2024 £
<b>Unrestricted funds</b>					
General funds	194,777	118,644	(34,516)	-	278,905
Tangible fixed assets	22,735	-	(6,643)	6,319	22,411
Non-designated unrestricted funds	217,512	118,644	(41,159)	6,319	301,316
Designated funds - Music for Life ®	602,134	252,784	(195,764)	(6,319)	652,835
Total unrestricted funds	819,646	371,428	(236,923)	0	954,151
<b>Restricted funds</b>					
Grant and donor funds	23,264	96,471	(118,496)	-	1,239
Tangible fixed assets	43,850	-	(7,280)	-	36,570
Intangible fixed assets	702	-	(77)	-	625
Sunbeams Music Centre	2,092,861	-	(45,621)	-	2,047,240
Total restricted funds	2,160,677	96,471	(171,474)	0	2,085,674
<b>Total funds</b>	2,980,323	467,899	(408,397)		3,039,825

### **19. Analysis of Net Assets between Funds**

	Unrestricted funds 2025 £	Restricted funds 2025 £	Total funds 2025 £
Current assets	1,028,326	-	1,028,326
Creditors, accruals and deferred income	(14,489)	-	(14,489)
Tangible fixed assets, including the Sunbeams Music Centre	17,428	2,061,352	2,078,780
Intangible fixed assets	-	548	548
	1,031,265	2,061,900	3,093,165

# **ANNIE MAWSON'S SUNBEAMS MUSIC TRUST**

## **Notes to the Accounts (continued)**

	Unrestricted funds 2024 £	Restricted funds 2024 £	Total funds 2024 £
Current assets	946,775	1,239	948,014
Creditors, accruals and deferred income	(15,035)	-	(15,035)
Tangible fixed assets, including the Sunbeams Music Centre	22,411	2,083,810	2,106,221
Intangible fixed assets	-	625	625
	<u>954,151</u>	<u>2,085,674</u>	<u>3,039,825</u>

### **20. Restricted Funds Balances**

	<b>2025 £</b>	<b>2024 £</b>
General Restricted Fund - including the Centre, Stoller House	<b>2,061,900</b>	2,084,436
National Lottery Community Fund	<b>(3,058)</b>	(7,275)
National Lottery Cost of Living Fund	<b>2,223</b>	2,847
Julia and Hans Rausing Trust	-	4,622
Hadfield Charitable Trust	-	692
Cumbria Music Hub	<b>(5,030)</b>	352
Douglas Bader	<b>2,878</b>	-
HAF	<b>838</b>	-
Access for All	<b>7</b>	-
TDA	<b>2,000</b>	-
CCF Laurence	<b>142</b>	-
Total	<u><b>2,061,900</b></u>	<u>2,085,674</u>

The National Lottery Community Fund received a further tranche of funding on 11 July 2025.

Cumbria Music Hub received a further tranche of funding on 4th June and 30th July 2025.

### **21. Related Party Transactions**

Other than as disclosed in notes 10 and 12, there are no related party transactions which require disclosure.