

Charity registration number 1114199 (England and Wales)

Company registration number 5624606

**HOME-START SURREY HEATH**  
**ANNUAL REPORT AND UNAUDITED FINANCIAL STATEMENTS**  
**FOR THE YEAR ENDED 31 MARCH 2025**

# HOME-START SURREY HEATH

## LEGAL AND ADMINISTRATIVE INFORMATION

---

<b>Trustees</b>	Chris Foster Anne Reynolds Andrew Mint - Chair Omair Nazimi Zara Martin Crystal Williams Jonathan Virgoe Julian Hamilton - Treasurer	(Appointed 1 July 2024) (Appointed 1 July 2024)
<b>Secretary</b>	Stephnie Waight (Manager)	
<b>Charity number</b>	1114199	
<b>Company number</b>	5624606	
<b>Principal address</b>	Unit 1 Stuart House Plantation Row Camberley Surrey GU15 3ER	
<b>Registered office</b>	Unit 1 Stuart House Plantation Row Camberley Surrey	
<b>Independent examiner</b>	Linda Dunford FCCA CTA Warner Wilde Limited Chartered Certified Accountants 4 Marigold Drive Bisley Surrey GU24 9SF	
<b>Bankers</b>	Lloyds TSB 19-23 Obelisk Way Camberley Surrey GU15 3SE	

---

# HOME-START SURREY HEATH ANNUAL REVIEW



## WELCOME TO OUR REVIEW OF 2024/25

### ABOUT US

Founded in 1989, Home-Start Surrey Heath is an independent charity that this year proudly celebrated 35 years of supporting families in our community. We offer a free, unique home-visiting support service for families living in Surrey Heath with at least one child under the age of five. Our core model — volunteer-led, compassionate, and non-judgemental home-visiting support — is complemented by a wide range of activities, group sessions, and targeted services. This flexible approach allows us to respond to diverse needs and make a real difference. Our ambition is to reach even more parents with young children, offering early support that works for them and helps prevent crisis before it happens.

We have an affiliation with Home-Start UK, the country's leading family support charity, and we are one of eight local Home-Starts under the umbrella of Home-Start Surrey.

### OUR VISION

We want to ensure that all parents living in Surrey Heath get the support they need to give their children the best possible start in life. Our focus is on the early years, the most crucial time in a child's development.

# HOME-START SURREY HEATH

## CONTENTS

---

	<b>Page</b>
Trustees' report	1 - 14
Independent examiner's report	15
Statement of financial activities	16
Balance sheet	17
Notes to the financial statements	18 - 29

---

# HOME-START SURREY HEATH

## TRUSTEES' REPORT (INCLUDING DIRECTORS' REPORT) FOR THE YEAR ENDED 31 MARCH 2025

---

The trustees present their annual report and financial statements for the year ended 31 March 2025.

The financial statements have been prepared in accordance with the accounting policies set out in note 1 to the financial statements and comply with the charity's governing document, the Companies Act 2006 and "Accounting and Reporting by Charities: Statement of Recommended Practice applicable to charities preparing their accounts in accordance with the Financial Reporting Standard applicable in the UK and Republic of Ireland (FRS 102) (effective 1 January 2019)".

### **Objectives and activities**

The Charity's purpose is to provide families with young children, wide ranging practical and emotional support, to enable those children to have the best possible start in life.

Full details of the activities undertaken by the Charity in the year are presented in the following pages.

The trustees have paid due regard to guidance on public benefit issued by the Charity Commission in deciding what activities the charity should undertake.

The trustees have assessed the major risks to which the charity is exposed, and are satisfied that systems are in place to mitigate exposure to the major risks.

### **Structure, governance and management**

Home Start Surrey Heath ("the Charity") is a registered charity and private company which is limited by guarantee, incorporated in England and Wales.

The Charity is part of the UK federation of local Home-Start charities. As such It is obliged to follow the Home-Start Handbook (a guide to responsibilities, standards and practice), alongside the Home-Start Agreement and Home-Start Quality Standards.

The Charity's Trustees are elected by its members or may be co-opted by other Trustees, such appointments being subject to re-election at the next Annual General Meeting..

None of the trustees have any beneficial interest in the company.

The Trustees as charity trustees have control of the Charity and its property and funds.

Each Trustee is a Director of the Company and is also required to be a Member of the Charity, and guarantee to contribute £1 in the event of a winding up.

Membership is open to any person who is interested in furthering the objects of the Charity and is approved by the Trustees.

Trustee Board meetings are held every two months with the Charity's Manager in attendance.

The charity has four part-time employees including the Manager.

The Manager has responsibility for the day-to-day running of the Charity.

## OUR MISSION

Home-Start Surrey Heath (HSSH) aims to put children and families at the centre of all we do. We tailor our support to the unique needs of each family, improving family resilience, increasing the confidence and independence of parents, and strengthening their relationships with the local community.

## OUR TEAM

### Trustees at 31/3/25

Chair – Mike Allen	(resigned 12/05/2025)
Vice-Chair – Dr Andrew Mint	
Treasurer – Julian Hamilton	(appointed 01/07/2024)
Christine Foster	
Anne Reynolds	
Omar Nazimi	
Crystal Williams	
Zara Martin	
Jon Virgoe	(appointed 01/07/2024)
Ash Patel	(resigned 09/09/2024)
Ros McGibbon	(resigned 11/11/2024)
Gillian Rowe	(resigned 11/11/2024)

Volunteer's local  
knowledge of services is  
amazing and she  
introduced us to places  
and people we wouldn't  
know about otherwise

### Staff

We have a small staff team who all work part time and who bring complementary skills to the charity. They work well together to support both our team of dedicated volunteers and the families we work with.

Manager – Stephnie Waight  
Family Support Co-ordinator - Melanie James  
Family Support Co-ordinator - Dorothy Meara  
Office Manager & Pram Walk & Talk Leader – Sam Ball.

## VOLUNTEERS

We would like to extend our heartfelt thanks to our incredible team of volunteers, whose dedication and generosity have been at the heart of our work this past year. Your compassion, commitment, and countless hours of support have made a real difference to the families we serve. By giving your time, your skills, and your kindness, you have brought hope and stability to parents and young children. Your support has made a lasting impact during times of challenge.

We simply could not do what we do without you. Thank you for being such an essential part of the Home-Start Surrey Heath family.



**Thank you to our fabulous volunteers this year**

**A**



## **Volunteer Story**

I started volunteering with Home-Start in February 2024 after retiring from a busy teaching career. I chose to volunteer with Home-Start for a number of reasons. My main reason was that I had been supported by the charity nearly 30 years ago, when I was a young mum with a new-born baby. I was feeling isolated and was suffering from postnatal depression. I didn't know anyone in the area and felt alone all day, with my husband working long hours. I was lucky enough to be offered a weekly visit from a volunteer. I really looked forward to those visits; the interaction with another adult helped my mental health improve and I became more confident in my new role as a mother. Another reason for volunteering was that I really love working with children and families in general. I missed the daily contact with families that had been a part of my life as a teacher, for over forty years. So this was an ideal opportunity for me to do something in retirement that I have enjoyed and been doing all my life.

In my role today, I feel I'm able to give back a little of what I received all those years ago. I can make a difference to a child's life by supporting a vulnerable family. It has been very rewarding to work alongside three families, so far, and I know that I have been able to give them support to cope with the many challenges that come along once you become a parent. I look forward to my weekly visits, and would recommend Home-Start to anyone who enjoys spending time with young families.

## **WHERE WE ARE NOW**

I was honoured to take over as Chair of the Trustee Board at Home-Start Surrey Heath in May 2025, following the dedicated leadership of our outgoing Chair, Mike Allen, who had served the Charity with passion and commitment over the past couple of years. I would like to take this opportunity to thank him on behalf of the whole Board and staff team for his exceptional stewardship and the positive legacy left behind. Under his guidance, Home-Start Surrey Heath navigated challenging times with resilience and continued to grow in both impact and reputation.

As I step into the role, I feel incredibly fortunate to join such a committed team of trustees, staff, and volunteers, all of whom share a deep belief in the value of early intervention and in strengthening families from the very start of their journey. Over the past year, the Charity has continued to offer vital emotional and practical support to local families facing difficult circumstances. With the cost-of-living crisis continuing to place strain on many households, our services remain not just relevant but essential. It is clear that the demand

for early years and family support is growing, and I am proud of how the team has responded with compassion, professionalism, and flexibility.

The Charity's strong volunteer model remains at the heart of what we do, and it's been inspiring to see the impact that these one-to-one relationships can have. Our staff team, led by Stephnie, continues to work tirelessly behind the scenes to ensure that volunteers are well trained, supported, and able to make a real difference.

As we look ahead, we remain focused on ensuring the long-term sustainability of Home-Start Surrey Heath. This includes strengthening our fundraising capacity, broadening awareness of our work, and continuing to collaborate with local partners to meet emerging needs in the community. I would like to thank my fellow trustees for their time, wisdom and support, and to extend our deepest gratitude to our funders, volunteers, staff, and supporters. Together, we are creating foundations for life for the families who need us most.

Dr Andrew Mint, Chair of Trustees, Home-Start Surrey Heath, July 2025

## **TREASURER'S REPORT - JULIAN HAMILTON**

During the Financial Year 2024-25, Home-Start Surrey Heath experienced a dip in total income compared to 2023-24, which had been a very strong year for fundraising and donations. Total costs over the year were in line with expectations.

We are aware that the strong year-end balance shown in the 2023-24 Financial Report may have given the impression that the Charity did not require further support. We believe this may have discouraged some potential donors. In contrast, this year's report shows a lower year-end balance, which we hope better reflects the ongoing need for support and encourages greater engagement from our community of funders and supporters.



## HOME-START SURREY HEATH

### TRUSTEES' REPORT (CONTINUED) (INCLUDING DIRECTORS' REPORT)

FOR THE YEAR ENDED 31 MARCH 2025

Looking ahead, we anticipate that our operating costs will increase by approximately 5% per year in both 2025–26 and 2026–27 on a like-for-like basis. To help us strengthen our fundraising efforts and raise the profile of our work, we plan to appoint a fifth member of staff in 2025–26. This investment in our future will support the long-term sustainability of the Charity and enhance our capacity to support local families.

The Charity's reserves policy is to maintain a minimum of 6 months' operating costs to ensure stability and continuity of service during periods of uncertainty.

Reserves at 31 March 2025 were £75,,095; £7,743 restricted funds, £37,352 unrestricted and 30,000 designated.

In March 2025, the board of trustees agreed that those trustees who serve more than 12 years in their governance role are deemed to be of notable benefit to our charity in providing continuity and experience to our Board. Their contribution is regularly examined by our other trustees, to ensure our Governance function is up to-date and relevant, to support the parents of Surrey Heath and to give every child the best start in life.

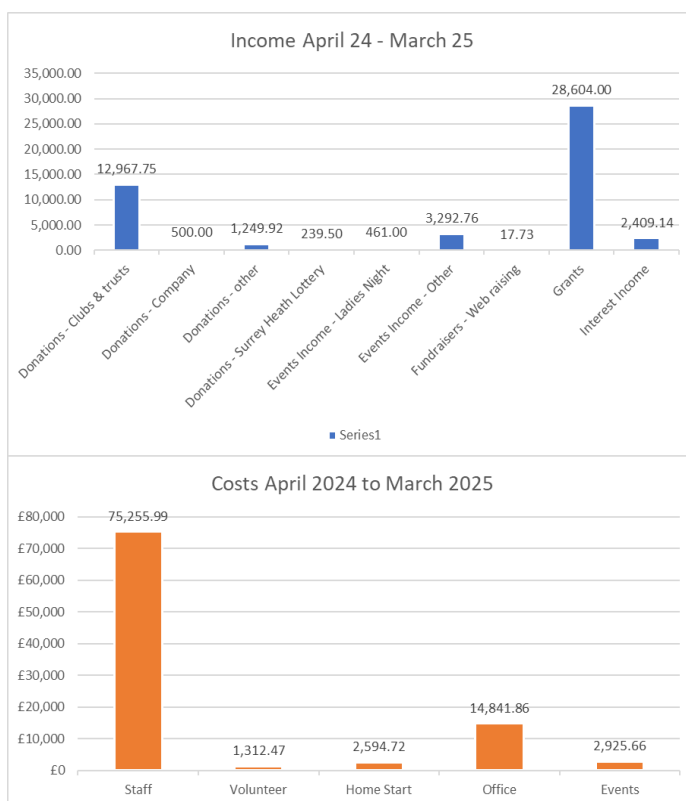
### MANAGER'S REPORT

2024 was a special year for Home-Start Surrey Heath, as we proudly celebrated our 35th anniversary. While our ethos, values, and purpose continue to guide everything we do, the community we serve — and the challenges families face — have changed significantly over the years.

Families are now facing increasingly complex and difficult circumstances, shaped by factors such as the financial crisis, a stagnant economy, reductions in public spending, Brexit, the pandemic, the cost-of-living crisis, and the growing impacts of climate change. These pressures have dramatically altered the lives of children, young people, and their families across the UK — and our local community is no exception.

As a result, we are seeing more families under intense strain, and it has become harder than ever to recruit and retain volunteers. Since the pandemic, and particularly as a result of the ongoing cost-of-living crisis, there has been a national trend of declining volunteer numbers. Despite this, we know that our free, compassionate, relational support is more vital than ever — and like many charities, we are navigating a very challenging environment to survive and thrive.

This makes the dedication of our volunteers and supporters — both past and present — even more remarkable. We are deeply grateful to everyone who has given their time, their energy, and their financial support to help families in our community feel less alone.



Our early support services play a crucial role in delivering positive outcomes for babies, young children, and their families, particularly for those facing challenges with housing, debt, mental health, domestic abuse, and supporting children with special educational needs and disabilities (SEND). However, the ongoing cuts to early intervention funding, combined with rising demand and cost pressures, have made this work increasingly difficult. Sadly, we are seeing the consequences of these reductions: rising levels of child poverty and homelessness, and a significant decline in the mental health and wellbeing of children and young people, and their parents. The significant cuts to preventative services are also contributing to a rise in the need for costly and late-stage statutory interventions, particularly for children with special educational needs.

Despite these challenges, the compassion and commitment shown by our team, our volunteers, and our supporters continue to shine through. Above all, we remain determined to ensure that no family feels alone in raising their children.

Looking ahead, we remain optimistic and determined. We are strengthening our volunteer recruitment efforts, expanding partnerships within the community, and seeking new funding opportunities to secure and grow our services. By remaining flexible, creative, and committed to early intervention, we are confident that we can continue to meet the evolving needs of families. With the ongoing passion of our team, volunteers, and supporters, we will rise to the challenges ahead and ensure that every family who needs us receives the support, encouragement, and hope they deserve.

Stephnie Waight

## What do parents say?

***"Home-Start were the only people that were able to deliver help to me and I dare say, it will take me years to come to fully process how much of a difference you/my volunteer made".***

***"She feels like a Mum to me, knowing she's coming on Monday stops me getting the Sunday evening blues".***

***"The support was extremely useful. The children were given 1:1 time. I was less stressed during the visits. I could breathe and my mental health improved."***

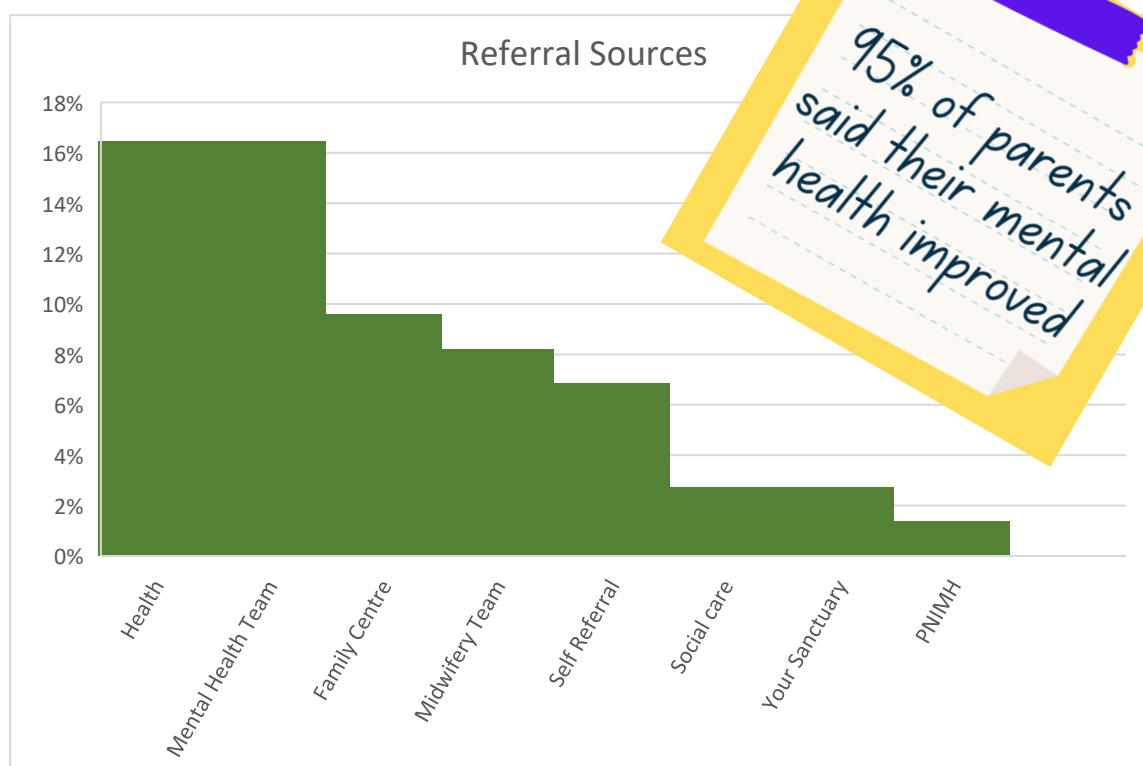
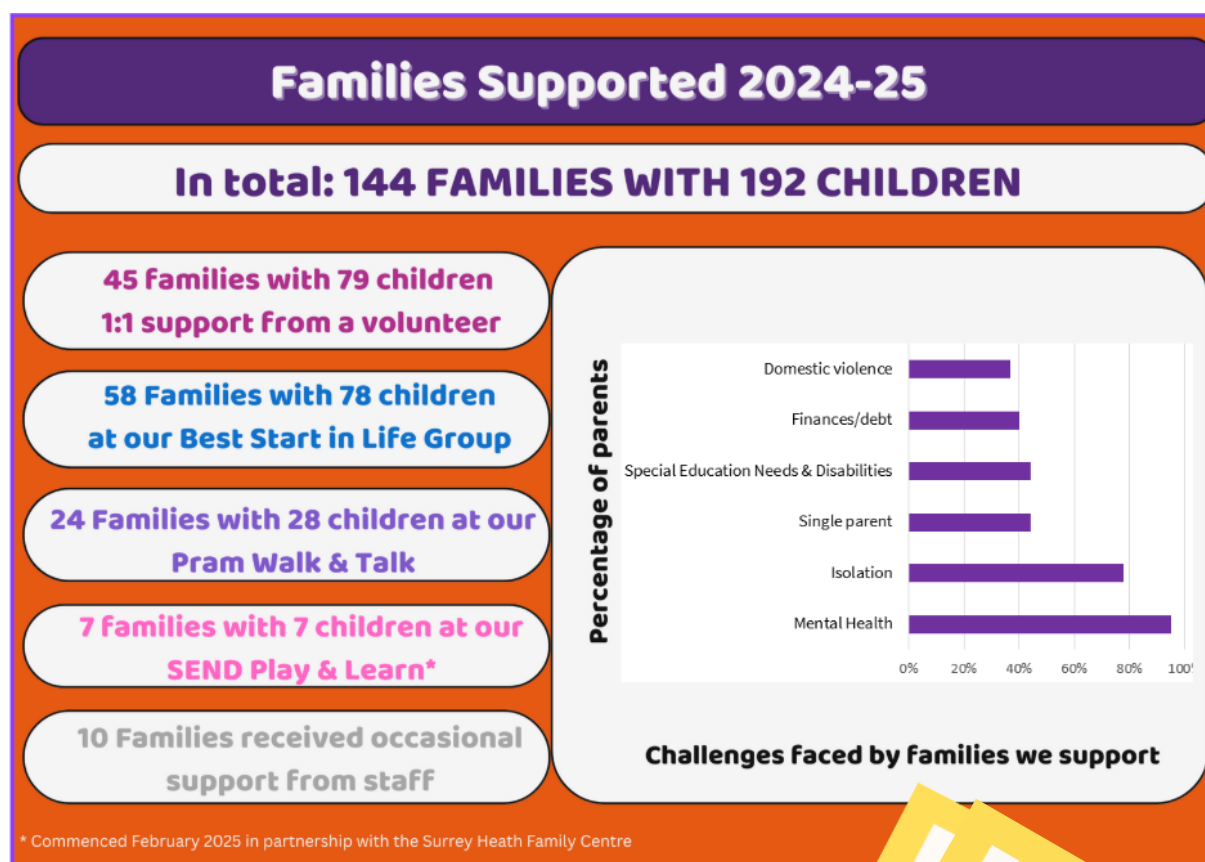
“

It was very hard being a new parent in a different country. Not just the language, everything is different - the health system and hospitals. Home-Start support has been great at finding my way through everything. Volunteer helped me to build a network of friends and local support. She also helped me to go to groups and medical appointments.

”

*I feel so much better than when I first contacted Home-Start. I was really overwhelmed by everything but having the volunteer's support has made a huge difference to my family and I.*

## NUMBERS & STATISTICS



## OUR FAMILY GROUPS

Our popular weekly Best Start in Life (BSIL) group takes place every Tuesday from 10:00 to 11:30 at High Cross Church. We are very grateful to **Carly from the Surrey Heath Family Centre**, who joins us every other week to support families. She provides advice on training opportunities and activities at the Family Centre, and delights the children with a much-loved story time at the end of each session. We're also joined regularly by **Irena, an Early Years Health Practitioner from the CHES team (Community Health Early Support)** and Home-Start's lead in Surrey. Irena has recently delivered targeted sessions on topics such as sleep, nutrition, sensory needs, attention, and focus, giving families practical strategies they can use at home. We sincerely thank her for her contribution. In addition, we welcome visits from (amongst others) Citizens Advice, Early Support Workers, and a community nursery nurse, offering families access to a wide range of expertise and support. A big thank you to **Benjamin, a student social worker** who joined us for his Master's placement, for all his help. Benjamin's energy and enthusiasm have brought so much fun to the sessions, and it has been great to see how much the children have enjoyed having him around, particularly during the Easter Egg Hunt. We really appreciate everything he's done, not just with the children but also with the parents and carers. His calm and friendly presence has helped to create a welcoming and supportive atmosphere. We'll all miss his big smile and positivity each week. Finally, a huge thank you to Christine, Debbie, Elaine and Nicola - your help is invaluable.

Our weekly Pram Walk takes place every Thursday from 10:30 to 11:30 at Frimley Lodge Park and has become, like our BSIL group, a well-established and valued part of the week for local families. Come rain or shine, Sam and our dedicated volunteer **Christine** lead the walk, helping to make it such a positive and welcoming space.

In February 2025, we were delighted to launch a new SEND Play & Learn group (term-time) in partnership with the Surrey Heath Family Centre. This group will continue to grow and evolve in response to the needs of the families attending.

## Activities throughout the year

In 2024, we rolled out Big Hopes Big Future (BHBF) across Home-Start Surrey Heath — Home-Start UK's school readiness programme for families with children aged 18 months to 5 years. The aim is to support children's ability to engage with nursery and school life, strengthen parents' involvement in early learning, and build volunteers' confidence in promoting home-based learning.

Volunteers receive tailored training and an Activity Pack focused on four key domains: **Language Skills, Daily Living Skills, Cognitive Skills, and Behaviour**. These resources can be used during 1:1 home visits or in group settings to help children and parents build confidence and key early skills.

Originally piloted in 2015 and expanded with funding from the Masonic Charitable Foundation in 2019, BHBF has consistently delivered strong outcomes. Evaluation data shows that over 85% of participating Home-Starts report improved home learning environments and stronger parent engagement with nurseries and schools. Children supported through the programme are better prepared to manage the transition to early education.

With nearly 600,000 children starting school each September — and estimates suggesting almost half are not fully ready — BHBF plays a vital role in closing the gap. Volunteers help children develop foundational skills such as early literacy, numeracy, social routines, and independence (e.g., holding a pencil, recognising their name, and toilet training).

If you would like more information about BHBF, or to see its impact first hand, please get in touch, or watch our new short film, which features staff, a volunteer, and a parent reflecting on the programme's impact:

<https://www.youtube.com/watch?v=ll2Zj8-Gfkc>



## Celebrating 35 years!

Established in 1989, Home-Start Surrey Heath was 35 years old in May 2024, and we held our AGM and 35th Anniversary Celebration in November. Mike Allen, chair of our board of trustees, conducted the AGM, the more formal part of the event, and informed everyone that “we are older than Taylor Swift” who was born in December 1989!

Alan a father of a young, now 4-year-old child, then spoke movingly about the support he received from his volunteer Jo. He said how isolation had a huge impact on his mental health, and through dark times, how “having someone to listen to you each week was monumental”. He also said “I don’t know how things would have gone if it wasn’t for Home-Start”.

Peter Grigg, CEO of Home-Start UK, then rounded off proceedings by saying how Home-Start knits into the fabric of society and paid thanks to all staff, volunteers and trustees for their hard work.

A huge thank you to everyone who came along to support us and here’s to another 35!



We are deeply grateful to the individuals, schools, businesses, and community groups who have supported us this year. Their generosity and commitment make a real difference to the families we work with. So many funders, donors, volunteers and supporters stepped up to help our cause and we’re so grateful to all who supported us and the families that we stand alongside. With your support, we can make sure we’re there for more parents and families now and in the future.

Albert Edward Lodge; Albert Hunt Trust; Barnardo's (and the team at Surrey Heath Family Centre); BBC Children in Need; BDB Pitman's Trust; Camberley WI; Camberley 41 Club; Collingwood College Students; Community Foundation for Surrey; Co-op; Councillor J Quinn; Frimley Fuel Allotments; Groundwork; Heatherside Coffee Morning Committee; Hyster Vale; Rotary Club of Camberley; SGN (Southern Gas Network); St Faiths Charitable Trust; Surrey Governors Association; Surrey Heath Lottery; Surrey Heath Show Committee; Tesco Sandhurst; Voluntary Services North Surrey and Windlesham School.



## AND SPECIAL THANKS TO....

Our fantastic team of volunteers who are part of our fundraising committee – Anne (and her family and friends including Paul, Emma and Ash, who all have helped at many of our events), Angela, Chris, Jo, Lydia and Joanna (and her friends and family including Betty a generous supporter and donor), who put on various events throughout the year. Over the past year they have raised OVER £3000 for us at amongst others the Lightwater Fair, an afternoon tea, Heatherside coffee morning, a ladies shopping night and a Paint & Sip and we sincerely thank them for their invaluable help and support – it's not an easy task sourcing raffle prizes, manning stalls and hosting events, so a big thank you all.

A special thank you to the students of Collingwood School for choosing us as one of their charities. They organised a hugely successful cake sale (which sold out completely!) and a brilliant movie night screening of Home Alone, complete with popcorn and soft drinks. What an inspiring group of young people—their genuine understanding of the importance of volunteering and giving back to the local community is truly commendable. They are a credit to their school and a shining example of young leadership.



We are also incredibly thankful to the Camberley 41 Club and the Rotary Club of Camberley for their extremely generous donations, raised through their wonderful Santa collections. Also, thank you to two of the local WIs for their kind donations of raffle prizes.



Our heartfelt thanks go to Hyster-Yale and their staff for launching an amazing Angel Christmas Tree Appeal on our behalf, buying thoughtful gifts for children supported by Home-Start. We're also grateful to Jo at Voluntary Support North Surrey for helping to make this happen, and to Enterprise for their kind donation of Easter eggs for local children.

We are especially thankful to Frimley Fuel Allotments for their continued generosity and steadfast support in funding our work.



A sincere thank you to the volunteers of the Heatherside Pop-Up Coffee Shop, who have raised funds for our charity—and so many others—through their popular monthly coffee mornings.

And finally, a big thank you also to the local residents who come along and support us at our events, we're extremely grateful for your support.

## Co-op Community Fund

We were delighted to be selected as part of the Co-Op UK Local Community Fund from October 24 to October 25. We are one of 3 charities in the area and one of 2500 local causes chosen out of 7000 applications – quite an achievement.

Local causes are chosen by Co-Op members who choose their local charity project and if you haven't done so already, we would be delighted if you would join up either online or via the app (costs £1) and choose us as your cause – to find out more visit: <https://membership.coop.co.uk/causes/87112> – the more people that join up as a member, the more funds we will receive out of a share of £6000 – please share far and wide – you don't have to be in Surrey, anyone in the UK can sign up and choose us.



Final grant award will be in November 2025, based on the number of members who choose us – we are guaranteed a minimum of £1000 over the year.

## St Michaels Fun Day

In March 2025, thanks to Mila Ekkel, Community Link Officer for Surrey Heath and the new Ministers at the Camberley Baptist Church, we ran a stall at the weekend event - a vibrant hub of connection, creativity, and community. Over 125 residents and local people from across the area — including families from Colombia, Turkey, Ukraine, and Poland — popped in to the day full of shared stories and meaningful activities.

The primary aim of the event was to build stronger partnerships within the St Michael's community, fostering collaboration between residents, local organisations, and service providers. Central to this was the goal of gathering meaningful neighbourhood insights from residents we have traditionally found harder to reach. It also aimed to build trust between the community and those delivering services, while amplifying the voices of residents whose perspectives are often underrepresented. As well as Home-Start, partners included: Surrey Heath Borough Council, Surrey Libraries, The Hope Hub, Vision 4 Youth, Neurodiverse Support Group, Accent Housing, Strategic Health & Wellbeing Services, Places Leisure, and the Camberley Repair Café, Surrey Adult Learning and Camberley Baptist Church.



## Looking forward to

# 2025-2026

We are looking forward to 2 new groups this coming year - a SEND Play & Learn which started in February in partnership with the Surrey Heath Family Centre, which we hope will continue to grow and offer support and friendship for those families who have children with additional needs. And a Baby Beginnings Group starting 12<sup>th</sup> May 2025 for new parents with babies up to 6 months old.

We are also delighted to have been chosen as Pine Ridge Golf Club's charity for the Golf Day on 4<sup>th</sup> June and both Solent Charity FC Camberley and Camberley 41 Club's charity of the year and we look forward to working with them.

We have recently been successful in achieving very good outcomes following completion of 2 of our self assessments; 1. in Governance and 2. Family Support and look forward to continuing with the remaining self-assessments throughout the year to ensure sure we are delivering the best possible support to families, volunteers, and the community.



## HOME-START SURREY HEATH

### TRUSTEES' REPORT (CONTINUED) (INCLUDING DIRECTORS' REPORT)

FOR THE YEAR ENDED 31 MARCH 2025

In May 2025, Councillor Louise Ashbery was chosen as the 53rd Mayor of Surrey Heath. We were extremely honoured and delighted to have been chosen as one of her charities of the year, along with Surrey Heath Mencap. We look forward to working with Louise over the coming year.

And finally, Dad Matters initiative will be rolled out across Surrey Heath to help fathers build the best possible relationships with their families. We will work closely with the Dad Matters team to enhance support for dads during the first 1001 days of their parenting journey. The offer will include outreach services and drop-ins at maternity centres and community venues, alongside 1:1 peer support. Dads will be signposted to relevant services and given help to access information that supports their understanding of fatherhood. The programme will also focus on raising awareness of mental health, stress, and anxiety among new dads. This targeted support for fathers and co-parents addresses a significant gap in early years provision—one that is too often overlooked.



**The Mayor, Councillor Louise Ashbery**



### FOR SUPPORT, TO VOLUNTEER OR TO DONATE CONTACT:

**HOME-START SURREY HEATH, UNIT 1, STUART HOUSE, PLANTATION ROW, CAMBERLEY, SURREY GU15 3ER**

**T: 01276 681121**

**E: [OFFICE@HOME-STARTSURREYHEATH.ORG.UK](mailto:OFFICE@HOME-STARTSURREYHEATH.ORG.UK)**

**W: [WWW.HOME-STARTSURREYHEATH.ORG.UK](http://WWW.HOME-STARTSURREYHEATH.ORG.UK)**

# HOME-START SURREY HEATH

## TRUSTEES' REPORT (CONTINUED)(INCLUDING DIRECTORS' REPORT) FOR THE YEAR ENDED 31 MARCH 2025

---

The trustees' report was approved by the Board of Trustees.



Andrew Mint - Chair

Trustee

Dated: 1 Oct 2025

# HOME-START SURREY HEATH

## INDEPENDENT EXAMINER'S REPORT

### TO THE TRUSTEES OF HOME-START SURREY HEATH

---

I report to the trustees on my examination of the financial statements of Home-Start Surrey Heath (the charity) for the year ended 31 March 2025.

#### **Responsibilities and basis of report**

As the trustees of the charity (and also its directors for the purposes of company law), you are responsible for the preparation of the financial statements in accordance with the requirements of the Companies Act 2006.

Having satisfied myself that the financial statements of the charity are not required to be audited under Part 16 of the 2006 Act and are eligible for independent examination, I report in respect of my examination of the charity's financial statements carried out under section 145 of the Charities Act 2011 (the 2011 Act). In carrying out my examination I have followed all the applicable Directions given by the Charity Commission under section 145(5)(b) of the 2011 Act.


An examination includes a review of the accounting records kept by the charity and a comparison of the accounts presented with those records. It also includes consideration of any unusual items or disclosures in the accounts, and seeking explanations from the trustees concerning any such matters. The procedures undertaken do not provide all the evidence that would be required in an audit, and consequently no opinion is given as to whether the accounts present a 'true and fair' view and the report is limited to those matters set out in the statement below.

#### **Independent examiner's statement**

I have completed my examination. I confirm that no matters have come to my attention in connection with the examination giving me cause to believe that in any material respect:

- 1 accounting records were not kept in respect of the charity as required by section 386 of the Companies Act 2006.
- 2 the financial statements do not accord with those records; or
- 3 the financial statements do not comply with the accounting requirements of section 396 of the Companies Act 2006 other than any requirement that the financial statements give a true and fair view, which is not a matter considered as part of an independent examination; or
- 4 the financial statements have not been prepared in accordance with the methods and principles of the Statement of Recommended Practice for accounting and reporting by charities applicable to charities preparing their financial statements in accordance with the Financial Reporting Standard applicable in the UK and Republic of Ireland (FRS 102).

I have no concerns and have come across no other matters in connection with the examination to which attention should be drawn in this report in order to enable a proper understanding of the financial statements to be reached.



#### **Linda Dunford FCCA CTA**

Warner Wilde Limited  
Chartered Certified Accountants  
4 Marigold Drive  
Bisley  
Surrey  
GU24 9SF  
Date: 08/10/2025

# HOME-START SURREY HEATH

## STATEMENT OF FINANCIAL ACTIVITIES INCLUDING INCOME AND EXPENDITURE ACCOUNT

**FOR THE YEAR ENDED 31 MARCH 2025**

		Unrestricted funds 2025 £	Restricted funds 2025 £	Total 2025 £	Unrestricted funds 2024 £	Restricted funds 2024 £	Total 2024 £
	Notes						
<b>Income from:</b>							
Donations and legacies	3	43,177	1,000	44,177	122,225	18,000	140,225
Other trading activities	4	3,771	-	3,771	4,064	-	4,064
Investments	5	2,760	-	2,760	2,021	-	2,021
<b>Total income</b>		<u>49,708</u>	<u>1,000</u>	<u>50,708</u>	<u>128,310</u>	<u>18,000</u>	<u>146,310</u>
<b>Expenditure on:</b>							
Raising funds	6	236	-	236	-	-	-
Charitable activities	7	90,192	6,408	96,600	87,480	7,143	94,623
<b>Total expenditure</b>		<u>90,428</u>	<u>6,408</u>	<u>96,836</u>	<u>87,480</u>	<u>7,143</u>	<u>94,623</u>
<b>Net income/(expenditure)</b>		<u>(40,720)</u>	<u>(5,408)</u>	<u>(46,128)</u>	<u>40,830</u>	<u>10,857</u>	<u>51,687</u>
Transfers between funds		<u>1,065</u>	<u>(1,065)</u>	<u>-</u>	<u>3,464</u>	<u>(3,464)</u>	<u>-</u>
<b>Net movement in funds</b>	9	<u>(39,655)</u>	<u>(6,473)</u>	<u>(46,128)</u>	<u>44,294</u>	<u>7,393</u>	<u>51,687</u>
<b>Reconciliation of funds:</b>							
Fund balances at 1 April 2024		<u>107,007</u>	<u>14,216</u>	<u>121,223</u>	<u>62,713</u>	<u>6,823</u>	<u>69,536</u>
<b>Fund balances at 31 March 2025</b>		<u>67,352</u>	<u>7,743</u>	<u>75,095</u>	<u>107,007</u>	<u>14,216</u>	<u>121,223</u>

The statement of financial activities includes all gains and losses recognised in the year. All income and expenditure derive from continuing activities.

# HOME-START SURREY HEATH

## BALANCE SHEET

AS AT 31 MARCH 2025

	Notes	2025 £	£	2024 £	£
<b>Fixed assets</b>					
Tangible assets	13		157		508
<b>Current assets</b>					
Debtors	14	2,321		1,757	
Cash at bank and in hand		76,055		123,003	
		78,376		124,760	
<b>Creditors: amounts falling due within one year</b>	15	(3,438)		(4,045)	
<b>Net current assets</b>			74,938		120,715
<b>Total assets less current liabilities</b>			75,095		121,223
<b>The funds of the charity</b>					
Restricted income funds	17		7,743		14,216
Unrestricted funds	18		67,352		107,007
			75,095		121,223

The company is entitled to the exemption from the audit requirement contained in section 477 of the Companies Act 2006, for the year ended 31 March 2025.

The directors acknowledge their responsibilities for complying with the requirements of the Companies Act 2006 with respect to accounting records and the preparation of financial statements.

The members have not required the company to obtain an audit of its financial statements for the year in question in accordance with section 476.

These financial statements have been prepared in accordance with the provisions applicable to companies subject to the small companies regime.

The financial statements were approved by the trustees on 1<sup>st</sup> October 2025



Andrew Mint - Chair  
Trustee



Julian Hamilton - Treasurer  
Trustee

Company registration number 5624606 (England and Wales)

# HOME-START SURREY HEATH

## NOTES TO THE FINANCIAL STATEMENTS

### FOR THE YEAR ENDED 31 MARCH 2025

---

#### 1 Accounting policies

##### Charity information

Home-Start Surrey Heath is a private company limited by guarantee incorporated in England and Wales. The registered office is Unit 1, Stuart House, Plantation Row, Camberley, Surrey.

#### 1.1 Accounting convention

The financial statements have been prepared in accordance with the charity's governing document, the Companies Act 2006 and "Accounting and Reporting by Charities: Statement of Recommended Practice applicable to charities preparing their accounts in accordance with the Financial Reporting Standard applicable in the UK and Republic of Ireland (FRS 102) (effective 1 January 2019)". The charity is a Public Benefit Entity as defined by FRS 102.

The charity has taken advantage of the provisions in the SORP for charities applying FRS 102 Update Bulletin 1 not to prepare a Statement of Cash Flows.

The financial statements are prepared in sterling, which is the functional currency of the charity. Monetary amounts in these financial statements are rounded to the nearest £.

The accounts have been prepared under the historical cost convention. The principal accounting policies adopted are set out below.

#### 1.2 Going concern

At the time of approving the financial statements, the trustees have a reasonable expectation that the charity has adequate resources to continue in operational existence for the foreseeable future. Thus the trustees continue to adopt the going concern basis of accounting in preparing the financial statements.

#### 1.3 Charitable funds

Unrestricted funds are available for use at the discretion of the trustees in furtherance of their charitable objectives.

Restricted funds are subject to specific conditions by donors or grantors as to how they may be used. The purposes and uses of the restricted funds are set out in the notes to the financial statements.

Endowment funds are subject to specific conditions by donors that the capital must be maintained by the charity.

#### 1.4 Income

Income is recognised when the charity is legally entitled to it after any performance conditions have been met, the amounts can be measured reliably, and it is probable that income will be received.

Cash donations are recognised on receipt. Other donations are recognised once the charity has been notified of the donation, unless performance conditions require deferral of the amount. Income tax recoverable in relation to donations received under Gift Aid or deeds of covenant is recognised at the time of the donation.

Legacies are recognised on receipt or otherwise if the charity has been notified of an impending distribution, the amount is known, and receipt is expected. If the amount is not known, the legacy is treated as a contingent asset.

# HOME-START SURREY HEATH

## NOTES TO THE FINANCIAL STATEMENTS (CONTINUED) FOR THE YEAR ENDED 31 MARCH 2025

---

### 1 Accounting policies

(Continued)

#### 1.5 Expenditure

Basic financial liabilities, including creditors and bank loans are initially recognised at transaction price unless the arrangement constitutes a financing transaction, where the debt instrument is measured at the present value of the future payments discounted at a market rate of interest. Financial liabilities classified as payable within one year are not amortised.

Debt instruments are subsequently carried at amortised cost, using the effective interest rate method.

Trade creditors are obligations to pay for goods or services that have been acquired in the ordinary course of operations from suppliers. Amounts payable are classified as current liabilities if payment is due within one year or less. If not, they are presented as non-current liabilities. Trade creditors are recognised initially at transaction price and subsequently measured at amortised cost using the effective interest method.

#### 1.6 Tangible fixed assets

Tangible fixed assets are initially measured at cost and subsequently measured at cost, net of depreciation and any impairment losses.

Depreciation is recognised so as to write off the cost or valuation of assets less their residual values over their useful lives on the following bases:

Fixtures, fittings & equipment	20% reducing balance
Computers	20% straight line

The gain or loss arising on the disposal of an asset is determined as the difference between the sale proceeds and the carrying value of the asset, and is recognised in the statement of financial activities.

#### 1.7 Impairment of fixed assets

At each reporting end date, the charity reviews the carrying amounts of its tangible assets to determine whether there is any indication that those assets have suffered an impairment loss. If any such indication exists, the recoverable amount of the asset is estimated in order to determine the extent of the impairment loss (if any).

#### 1.8 Cash and cash equivalents

Cash and cash equivalents include cash in hand, deposits held at call with banks, other short-term liquid investments with original maturities of three months or less, and bank overdrafts. Bank overdrafts are shown within borrowings in current liabilities.

#### 1.9 Financial instruments

The charity has elected to apply the provisions of Section 11 'Basic Financial Instruments' and Section 12 'Other Financial Instruments Issues' of FRS 102 to all of its financial instruments.

Financial instruments are recognised in the charity's balance sheet when the charity becomes party to the contractual provisions of the instrument.

Financial assets and liabilities are offset, with the net amounts presented in the financial statements, when there is a legally enforceable right to set off the recognised amounts and there is an intention to settle on a net basis or to realise the asset and settle the liability simultaneously.

# HOME-START SURREY HEATH

## NOTES TO THE FINANCIAL STATEMENTS (CONTINUED) FOR THE YEAR ENDED 31 MARCH 2025

---

### 1 Accounting policies

(Continued)

#### **Basic financial assets**

Basic financial assets, which include debtors and cash and bank balances, are initially measured at transaction price including transaction costs and are subsequently carried at amortised cost using the effective interest method unless the arrangement constitutes a financing transaction, where the transaction is measured at the present value of the future receipts discounted at a market rate of interest. Financial assets classified as receivable within one year are not amortised.

#### **Basic financial liabilities**

Basic financial liabilities, including creditors and bank loans are initially recognised at transaction price unless the arrangement constitutes a financing transaction, where the debt instrument is measured at the present value of the future payments discounted at a market rate of interest. Financial liabilities classified as payable within one year are not amortised.

Debt instruments are subsequently carried at amortised cost, using the effective interest rate method.

Trade creditors are obligations to pay for goods or services that have been acquired in the ordinary course of operations from suppliers. Amounts payable are classified as current liabilities if payment is due within one year or less. If not, they are presented as non-current liabilities. Trade creditors are recognised initially at transaction price and subsequently measured at amortised cost using the effective interest method.

#### **Derecognition of financial liabilities**

Financial liabilities are derecognised when the charity's contractual obligations expire or are discharged or cancelled.

#### **1.10 Employee benefits**

The cost of any unused holiday entitlement is recognised in the period in which the employee's services are received.

Termination benefits are recognised immediately as an expense when the charity is demonstrably committed to terminate the employment of an employee or to provide termination benefits.

#### **1.11 Retirement benefits**

Payments to defined contribution retirement benefit schemes are charged as an expense as they fall due.

#### **1.12 Debtors**

Debtors are recognised at the amount due after any trade discount offered. Prepayments are valued at the amount prepaid after any discounts due.

#### **1.13 Creditors**

Creditors are recognised where the charity has a present obligation arising from a past event that is likely to result in a transfer of funds to a third party and the amount due can be measured or estimated reliably. Creditors are recognised after taking account of any discounts due.

### 2 Critical accounting estimates and judgements

In the application of the charity's accounting policies, the trustees are required to make judgements, estimates and assumptions about the carrying amount of assets and liabilities that are not readily apparent from other sources. The estimates and associated assumptions are based on historical experience and other factors that are considered to be relevant. Actual results may differ from these estimates.

The estimates and underlying assumptions are reviewed on an ongoing basis. Revisions to accounting estimates are recognised in the period in which the estimate is revised where the revision affects only that period, or in the period of the revision and future periods where the revision affects both current and future periods.



# HOME-START SURREY HEATH

## NOTES TO THE FINANCIAL STATEMENTS (CONTINUED) FOR THE YEAR ENDED 31 MARCH 2025

### 3 Income from donations and legacies

	Unrestricted funds 2025 £	Restricted funds 2025 £	Total 2025 £	Unrestricted funds 2024 £	Restricted funds 2024 £	Total 2024 £
Donations and gifts	14,373	1,000	15,373	9,592	-	9,592
Grants	28,604	-	28,604	112,633	18,000	130,633
Donated goods and services	200	-	200	-	-	-
	<u>43,177</u>	<u>1,000</u>	<u>44,177</u>	<u>122,225</u>	<u>18,000</u>	<u>140,225</u>
<b>Donations and gifts</b>						
Albert Hunt Trust	6,000	-	6,000	-	-	-
St Faith's Charitable Trust	3,125	-	3,125	-	-	-
Surrey Heath Lottery	240	-	240	298	-	298
Mychett Ministeries	-	-	-	2,000	-	2,000
Camberley 41 Club	1,230	-	1,230	1,830	-	1,830
Pine Ridge Ladies	-	-	-	3,030	-	3,030
Rotary Clubs	863	-	863	1,250	-	1,250
Other	2,915	1,000	3,915	1,184	-	1,184
	<u>14,373</u>	<u>1,000</u>	<u>15,373</u>	<u>9,592</u>	<u>-</u>	<u>9,592</u>
<b>Grants</b>						
Surrey County Council	-	-	-	22,233	-	22,233
BBC Children in Need	-	-	-	30,000	-	30,000
Bennelong	-	-	-	12,900	-	12,900
Community Foundation for Surrey	5,000	-	5,000	-	5,000	5,000
National Lottery	-	-	-	10,000	10,000	20,000
Garfield Weston	-	-	-	7,500	-	7,500
Barnardos	15,000	-	15,000	-	-	-
Frimley Allotments	-	-	-	20,000	3,000	23,000
Home Start UK / SGN	8,604	-	8,604	-	-	-
Other	-	-	-	10,000	-	10,000
	<u>28,604</u>	<u>-</u>	<u>28,604</u>	<u>112,633</u>	<u>18,000</u>	<u>130,633</u>

# HOME-START SURREY HEATH

## NOTES TO THE FINANCIAL STATEMENTS (CONTINUED) FOR THE YEAR ENDED 31 MARCH 2025

---

### 4 Income from other trading activities

	Unrestricted funds 2025 £	Unrestricted funds 2024 £
Fundraising events	3,771	4,064

### 5 Income from investments

	Unrestricted funds 2025 £	Unrestricted funds 2024 £
Interest receivable	2,760	2,021

### 6 Expenditure on raising funds

	Unrestricted funds 2025 £	Unrestricted funds 2024 £
<b>Fundraising and publicity</b>		
Other fundraising costs	236	-

# HOME-START SURREY HEATH

## NOTES TO THE FINANCIAL STATEMENTS (CONTINUED) FOR THE YEAR ENDED 31 MARCH 2025

### 7 Expenditure on charitable activities

	Charitable activities 2025 £	Charitable activities 2024 £
<b>Direct costs</b>		
Staff costs	69,101	68,552
Depreciation and impairment	452	613
Volunteer expenses	929	524
Staff expenses	1,834	1,838
Premises	7,344	7,344
Stationery, printing and copying	2,022	2,547
Telephone and internet	1,589	1,255
Levy to consultancy and subscriptions	2,868	1,174
Family events	5,524	4,613
	<u>91,663</u>	<u>88,460</u>
<b>Share of support and governance costs (see note 8)</b>		
Support	3,549	4,825
Governance	1,388	1,338
	<u>96,600</u>	<u>94,623</u>
<b>Analysis by fund</b>		
Unrestricted funds	90,192	87,480
Restricted funds	6,408	7,143
	<u>96,600</u>	<u>94,623</u>

### 8 Support costs allocated to activities

	2025 £	2024 £
Volunteer training	384	287
Sundries and consumables	168	106
Insurance	859	1,162
Professional fees	858	443
Staff training	491	660
IT and computer costs	789	2,167
Governance costs	1,388	1,338
	<u>4,937</u>	<u>6,163</u>
<b>Analysed between:</b>		
Charitable activities	<u>4,937</u>	<u>6,163</u>

# HOME-START SURREY HEATH

## NOTES TO THE FINANCIAL STATEMENTS (CONTINUED) FOR THE YEAR ENDED 31 MARCH 2025

---

<b>9</b>	<b>Net movement in funds</b>	<b>2025</b>	<b>2024</b>
		<b>£</b>	<b>£</b>
	The net movement in funds is stated after charging/(crediting):		
	Fees payable for the independent examination of the charity's financial statements	1,388	1,338
	Depreciation of owned tangible fixed assets	452	613
		<u>          </u>	<u>          </u>

### 10 Trustees

None of the trustees (or any persons connected with them) received any remuneration during the year, Nil (2024: two) trustees were reimbursed a total of £Nil (2024- £253).

### 11 Employees

The average monthly number of employees during the year was:

	<b>2025</b>	<b>2024</b>
	<b>Number</b>	<b>Number</b>
	4	4
	<u>          </u>	<u>          </u>

#### Employment costs

	<b>2025</b>	<b>2024</b>
	<b>£</b>	<b>£</b>
Wages and salaries	64,580	64,069
Other pension costs	4,521	4,483
	<u>          </u>	<u>          </u>
	69,101	68,552
	<u>          </u>	<u>          </u>

There were four part time staff equating to approximately 2 (2024: 2) full time equivalents.

There were no employees whose annual remuneration was more than £60,000.

	<b>2025</b>	<b>2024</b>
	<b>£</b>	<b>£</b>
Aggregate compensation	25,712	28,798
	<u>          </u>	<u>          </u>

### 12 Taxation

The charity is exempt from taxation on its activities because all its income is applied for charitable purposes.

# HOME-START SURREY HEATH

## NOTES TO THE FINANCIAL STATEMENTS (CONTINUED) FOR THE YEAR ENDED 31 MARCH 2025

### 13 Tangible fixed assets

	Fixtures, fittings & equipment £	Computers £	Total £
<b>Cost</b>			
At 1 April 2024	-	3,064	3,064
Additions	100	-	100
	<u>100</u>	<u>3,064</u>	<u>3,164</u>
At 31 March 2025	100	3,064	3,164
<b>Depreciation and impairment</b>			
At 1 April 2024	-	2,555	2,555
Depreciation charged in the year	10	442	452
	<u>10</u>	<u>2,997</u>	<u>3,007</u>
At 31 March 2025	10	2,997	3,007
<b>Carrying amount</b>			
At 31 March 2025	90	67	157
	<u>90</u>	<u>67</u>	<u>157</u>
At 31 March 2024	-	508	508
	<u>-</u>	<u>508</u>	<u>508</u>

### 14 Debtors

	2025 £	2024 £
<b>Amounts falling due within one year:</b>		
Other debtors	2,108	1,757
Prepayments and accrued income	213	-
	<u>2,321</u>	<u>1,757</u>

### 15 Creditors: amounts falling due within one year

	2025 £	2024 £
Other taxation and social security	1,276	2,308
Trade creditors	315	190
Other creditors	461	442
Accruals	1,386	1,105
	<u>3,438</u>	<u>4,045</u>

### 16 Retirement benefit schemes

	2025 £	2024 £
<b>Defined contribution schemes</b>		
Charge to profit or loss in respect of defined contribution schemes	4,521	4,483
	<u>4,521</u>	<u>4,483</u>

# HOME-START SURREY HEATH

## NOTES TO THE FINANCIAL STATEMENTS (CONTINUED) FOR THE YEAR ENDED 31 MARCH 2025

### 16 Retirement benefit schemes

(Continued)

### 17 Restricted funds

The restricted funds of the charity comprise the unexpended balances of donations and grants held on trust subject to specific conditions by donors as to how they may be used.

	At 1 April 2024 £	Incoming resources £	Resources expended £	Transfers £	At 31 March 2025 £
Frimley Fuel Allotments - Antenatal	2,450	-	(1,385)	(1,065)	-
Family Fund	740	-	(50)	-	690
National Lottery Pram Walk	4,000	-	(2,959)	-	1,041
National Lottery BSIL	5,831	-	(576)	-	5,255
CIN Booster	420	-	(420)	-	-
SCJ	7	-	-	-	7
Poverty Fund - CFS	768	-	(518)	-	250
Surrey Heath show Committee	-	500	(500)	-	-
Baby Beginnings	-	500	-	-	500
	<u>14,216</u>	<u>1,000</u>	<u>(6,408)</u>	<u>(1,065)</u>	<u>7,743</u>

#### Previous year:

	At 1 April 2023 £	Incoming resources £	Resources expended £	Transfers £	At 31 March 2024 £
Frimley Fuel Allotments - Antenatal	-	3,000	(550)	-	2,450
Family Fund	740	-	-	-	740
National Lottery Pram Walk	-	4,000	-	-	4,000
National Lottery BSIL	-	6,000	(169)	-	5,831
CIN Booster	840	-	(420)	-	420
SCJ	811	-	(804)	-	7
Poverty Fund - CFS	4,432	5,000	(4,664)	(4,000)	768
St Faith's	-	-	(536)	536	-
	<u>6,823</u>	<u>18,000</u>	<u>(7,143)</u>	<u>(3,464)</u>	<u>14,216</u>

# HOME-START SURREY HEATH

## NOTES TO THE FINANCIAL STATEMENTS (CONTINUED) FOR THE YEAR ENDED 31 MARCH 2025

### 17 Restricted funds

(Continued)

Frimley Fuel Allotments:

The Family Fund: This provides funds for emergency needs identified within families such as for safety equipment (stair gates etc.) or food or other necessities

Henry Smith - for 1 co-ordinator salary

SCJ - covering volunteer expenses, excluding the prep training course

BSIL - Best Start In Life family group for children activities and parent group activities

PWT - Pram Walk and Talk for parents and children outdoor activities

### 18 Unrestricted funds

The unrestricted funds of the charity comprise the unexpended balances of donations and grants which are not subject to specific conditions by donors and grantors as to how they may be used. These include designated funds which have been set aside out of unrestricted funds by the trustees for specific purposes.

	At 1 April 2024 £	Incoming resources £	Resources expended £	Transfers £	At 31 March 2025 £
Designated Redundancy Contingent	18,000	-	-	7,000	25,000
Dads Matter Reserve	-	-	-	5,000	5,000
General funds	89,007	49,708	(90,428)	(10,935)	37,352
	<u>107,007</u>	<u>49,708</u>	<u>(90,428)</u>	<u>1,065</u>	<u>67,352</u>
<b>Previous year:</b>	<b>At 1 April 2023 £</b>	<b>Incoming resources £</b>	<b>Resources expended £</b>	<b>Transfers £</b>	<b>At 31 March 2024 £</b>
Designated Redundancy Contingent	18,000	-	-	-	18,000
General funds	44,713	128,310	(87,480)	3,464	89,007
	<u>62,713</u>	<u>128,310</u>	<u>(87,480)</u>	<u>3,464</u>	<u>107,007</u>

Designated Redundancy Contingent: The trustees estimate approx. £25,000 required to cover the staff redundancy costs should the charity become the victim of closing down in the future.

Dads Matters: Potential contribution for a new Surrey wide project expanding to Surrey Heath in 2026.

# HOME-START SURREY HEATH

## NOTES TO THE FINANCIAL STATEMENTS (CONTINUED) FOR THE YEAR ENDED 31 MARCH 2025

### 19 Analysis of net assets between funds

	Unrestricted funds 2025 £	Restricted funds 2025 £	Total 2025 £
<b>At 31 March 2025:</b>			
Tangible assets	157	-	157
Current assets/(liabilities)	67,195	7,743	74,938
	<u>67,352</u>	<u>7,743</u>	<u>75,095</u>
	Unrestricted funds 2024 £	Restricted funds 2024 £	Total 2024 £
<b>At 31 March 2024:</b>			
Tangible assets	88	420	508
Current assets/(liabilities)	106,919	13,796	120,715
	<u>107,007</u>	<u>14,216</u>	<u>121,223</u>

### 20 Operating lease commitments

#### Lessee

The operating leases represent rentals payable for a Xerox photocopier. The lease is for a minimum period of 3 years, extendable to 5.

At the reporting end date the charity had outstanding commitments for future minimum lease payments under non-cancellable operating leases, which fall due as follows:

	2025 £	2024 £
Within one year	1,217	1,217
Between two and five years	913	2,130
	<u>2,130</u>	<u>3,347</u>

### 21 Related party transactions

There were no disclosable related party transactions during the year (2024 - none).



# HOME-START SURREY HEATH

## NOTES TO THE FINANCIAL STATEMENTS (CONTINUED) *FOR THE YEAR ENDED 31 MARCH 2025*

---

### **22 Contingent Liability**

The charity did participate in a multi-employer scheme which was a defined benefit scheme in the UK. It is not possible for the company to obtain sufficient information to enable it to account for the scheme as a defined benefit scheme. Therefore it accounts for the scheme as a defined contribution scheme.

The charity ceased contributions into the scheme in September 2013.

Home-Start Surrey Heath is not currently required to make any contribution to the funding deficit.

The potential debt, based on information as at 30 September 2024, is disclosed as a contingent liability.

The estimate of the potential amount due on withdrawal from the pension scheme is £1,774.