



Hull & East Riding Breast Friends

Annual Report

1st November 2024 – 31st October 2025



Patron: HRH The Duchess of Kent

Supporting local people
affected by breast cancer

www.herbreastfriends.org.uk

Registered Charity No. 1114143

Board of Trustees 2024 – 2025



Chair
Pam Trays



Vice Chair
Sandra Cooper



Treasurer
Steve Henderson



Trustee
Colleen Barber



Trustee
Melanie Clark



Trustee
De Hempstock



Trustee
Lynne Maskell



Trustee
Simon Trays



Trustee
Lynda Whincup



Honorary Trustee
Eric Jones



Charity Manager
Jayne Beck



Charity Administrator
Rebecca Davison

Contents

Board of Trustees 2022-2025	2
Mission, Values & Vision	2
Welcome & Chair's report	3
2024 – 2025 in Pictures	4
Charitable objectives	5
Objectives One	5
Objectives Two	6
Objectives Three	6–7
HER Breast Friends in 2024-2025	8
Structure, Governance & Management	9
Who's who	9
Fundraising & Support	10
Statement of Account	11
How you can help	11

Mission Statement

Our aim is to help create a supportive environment for those affected by breast cancer, by promoting a positive approach to living with the disease, offering encouragement and inspiration, and by raising funds for breast cancer treatment and research.

Our Vision

To develop a long term strategy for the development of **HER Breast Friends** as an organisation, offering real solutions for those affected by breast cancer in a positive and supportive environment.

Our Values

Every member will feel welcomed and valued. We will aim to maintain professionalism and confidentiality at all times. We will promote laughter, happiness, self-esteem and we will move the group forward with confidence.

Welcome & Chair's Report:

It is my pleasure to once again welcome you to the Hull & East Riding Breast Friends Annual Report for 2024/2025.

Another year of unprecedented achievements in our history, starting in November when we received the amazing news that HER Breast Friends had been chosen as a recipient of The King's Award for Voluntary Service. The equivalent to an MBE! An unbelievable achievement, a very proud moment and I believe, justified recognition of the tremendous hard work and dedication of all our volunteers since 2005. Volunteers are the backbone of the Charity, whether being part of our Board of Trustees, assisting in Wig or Bra Fittings, donating their skills as a Therapist or Counsellor, helping spread the breast awareness message, creating items for our Patient Gift Packs or to sell and raise funds, putting together information packs, providing raffle and tombola prizes, the list goes on. To those amazing set of individuals who give their time and energy freely, a huge THANK YOU. Together we really do make a difference.

2025 saw the beginning of celebrations for our 20th year supporting local people affected by breast cancer. 20 years in the community relying on fundraising, donations and support from businesses, without which we could not provide the first class service that we do.

Since moving to our new home in March 2024, we have seen a vast uptake in our services which put more pressure on the office and our volunteers. Thanks to a grant received from a local business, this year we have employed a part time administrator, Rebecca, to assist our Charity Manager, Jayne, in the day to day running of the Charity.

Also, this year, we were excited to receive a grant from the Pink Ribbon Foundation to purchase a van. This will help us not only in our numerous daily activities but also fulfil a dream of expanding our services to reach the rural communities within the County which we will roll out next year.

In September we received the sad news of the passing of HRH Katharine, The Duchess of Kent, who has been our Patron since 2015. A firm supporter of the Charity she will be sadly missed.

2024/2025 has been another good year financially for HER Breast Friends thanks to outstanding fundraising efforts, donations and grants received. A huge thank you to everyone for your support in whatever form that may have taken from attending one of our Charity events to cake sales, individual and team challenges, choosing us as a Charity of the Year for your company or group or purchasing Charity Merchandise. Everything, whether big or small, has helped someone local in need of support whilst going through breast cancer, including their family, friends or colleagues.

After 5 years as Chair, I am stepping down as Chairman of this amazing Charity which I have been a part of since 2010. The memories, friends and support I and my family have received, has been phenomenal and I wish HER Breast Friends every success over the forthcoming years, continuing to give strength, hope and friendship to all those in need of our services.



//
There are no strangers here, only friends you haven't yet met.
//

WB Yeats



I hope you will enjoy reading about all that the Charity has been involved in and achieved this year. Your continued support is so gratefully appreciated and means everything to us.

Forever forwards,
Take care and keep smiling,

**Pam Trays
Chair**



We are delighted to announce that we have been awarded the King's Award for Voluntary Service. It is a huge recognition for our volunteers, both past and present, and the hard work and dedication they have shown over the years supporting local people affected by breast cancer. Thank you so much to our nominee for our nomination. We are incredibly proud to be honoured by His Majesty with this award.



2024-2025 in pictures





Charitable objectives

The prevention of sickness and promotion of health particularly with regard to breast cancer by...

Objective 1

Promoting awareness of the available relevant support and advice networks serving Yorkshire and North East Lincolnshire.

Objective 2

Raising funds for breast cancer research and treatment.

Objective 3

Helping create a positive view and environment for all affected by breast cancer.



Objective 1

Promoting awareness of the available relevant support & advice networks serving Yorkshire & North East Lincolnshire.

Providing support for people affected by breast cancer by promoting awareness of relevant support and advice networks in our defined area and of some of the more national help lines available is very important to us. We have an information library within our Charity premises for anyone to access. We also supply this information in our Patient Gift Packs as well as being available at all our events such as the Pink Pamper Day and Breast Awareness Talks. Our own Charity information folders are distributed around the local hospitals, Drs surgeries and libraries. As they travel around the County our volunteer Breast Awareness Team deliver the important message of the signs and symptoms of primary and secondary breast cancer to both men and women, how to check your breasts, help dispel some of the myths and fears and how an early diagnosis could make a difference. Also encouraging the importance of attending for breast screening whilst promoting what support we can give to those diagnosed and other facilities available in and beyond our area. Our Website and Social media networks help spread this information even further.

Objective 2

Raising funds for breast cancer research and treatment.



Since the Charity was founded in 2005, how we raise and spend our funds has changed.

However, each year we set aside funds for any requests or suggestions that maybe brought to the Board of Trustees for consideration which in turn are brought to our members at the AGM to help decide on what funds may be spent.

HER Breast Friends is not a research or medical charity however we are often approached by study and research facilities for participation and feedback

to help improve treatments and services for those going through breast cancer. For instance, The University of Leeds researching women with advanced breast cancer and The Rosetta Study. The University of Hull Faculty of Health research on Advising Trainee Clinical Psychologists on 'lived' experience of Secondary Breast Cancer.

We also worked with Leo Cancer Care testing a prototype radio therapy chair.

In house, ensuring our volunteer Buddleia therapists receive up to date training to provide the best possible treatments in order to boost someone's wellbeing, on, during and after treatment.

Likewise, our Person-Centred Counselling provides extra support for those who require it.

//
I love what the Charity does, what it stands for, how it helps people, the friendly welcome, the support... just everything! Whilst going through, my own breast cancer journey, getting the lovely gift pack in the hospital, I have found solace and so much positivity and support from HER Breast Friends – Thank you xx.
//



Objective 3

Helping create a positive view and environment for all affected by breast cancer.

The ethos of HER Breast Friends focuses on positivity. Providing friendship and support with understanding that comes through knowing the road someone may be travelling on.

That support begins at the very start of someone's treatment when they receive our information booklet, a seat belt cushion and Patient Gift pack. During 2024/2025 we gave out 500 of these.

This support continues for as long as is needed through our services and activities such as coffee mornings and Pink Pamper Day. Just knowing there are people who understand is such a comfort for many.

Patient Gift Packs

Likewise, our Patient Gift Packs that we deliver to the local hospitals, which contain our information folder of all we can provide, plus a beautiful heart cushion and fun stress busting dammit doll made by our Wednesday Crafters and supporters, let people know they are not alone, we are here if they need us.



Bra Service

Our Bra Service is housed in a dedicated, comfortable, and private room offering the best possible individual service including a FREE Bra Measuring and Fitting Service by fully trained volunteers. Fittings are by appointment only. Our Knitted Boobies and Aqua Boobies are FREE for anyone who wishes to try them. Unlike the traditional prosthesis which can only be worn from about 6 weeks after surgery, our Knitted and Aqua Boobies can be worn straight away and pop into any bra or swimsuit.

Buddleia Complementary Therapies

A full range of complementary and beauty therapies are offered in our dedicated, comfortable, and private therapy rooms by therapists all fully qualified, insured, DBS checked and who know how to adapt therapies for cancer patients, so you can be assured the treatment you receive is safe for you, delivered in a welcoming and supporting environment. Therapies given are by appointment only.

Second Friends

Second Friends provides a supportive environment for those living with secondary breast cancer in our local area, by people who appreciate and understand some of the challenges it brings. Our group meets on the second Saturday each month and provides an opportunity to share information, to chat and to gain support from those with similar experiences.

The Wig Bank

The Wig Bank has a large selection of donated and new wigs in various styles and colours, plus scarves, bandanas and other accessories. Open to all cancer and hair loss clients. Run by volunteers, all our wigs are washed and prepared to ensure they are in tip top condition before being presented for viewing. A FREE care pack including shampoo, conditioner, hair spray plus wig stand, brush and wig cap is given to every client who selects a wig.

Wednesday Crafters

The therapeutic benefit of arts and crafts for those affected by illness is well documented and the group engage in various activities from knitting and sewing to card making. Our group also supports the Patient Gift Packs given to the hospitals, by making the Heart Cushions and Dammit Dolls as well as knitting the Knitted Boobies and Aqua Boobies. EVERYONE is welcome to join in and learn a new skill, or just sit, watch, and chat over a drink.

Person Centred Counselling

Our Person-centred Counselling offers the opportunity to talk in confidence with someone who is trained to listen. By appointment only, our Counsellors can help you understand what you are feeling and through discussions help reduce any pain or distress these feelings may cause.

Pink Pamper Day

Our fabulous signature event, the Pink Pamper Day caters for up to 100 local people affected by breast cancer, providing a free day of beauty and complementary therapies, inspiring workshops, lunch, relaxation, encouragement, fun and laughter. Many lasting friendships have been formed on these days. We are always looking for sponsors to support this event, whether by providing a raffle prize, an item for our gift bags or maybe sponsor a place for someone.

MONTHLY COFFEE MORNING

Held on the 1st Saturday of each month on Floor 8, K2 Tower between 10am and 12noon. ALL WELCOME, members and non-members.

SECOND FRIENDS COFFEE MORNING

Held on the 2nd Saturday of each month on Floor 8, K2 Tower between 10am and 12noon. All those with secondary breast cancer diagnosis welcome. Members and non-members.





HER Breast Friends



1st Nov 2024 – 31st Oct 2025

November: The Charity's 20th Anniversary year and what a way to start with the announcement that the Charity had WON The King's Award for Voluntary Service – what an honour and achievement for our amazing volunteers! December Our beautifully decorated Christmas Trees were unveiled in Beverley Minster and Hull Minster for all to enjoy. Our Volunteers were treated to a theatre visit and party as a thank you for all their efforts over the year. We welcomed Leo Cancer Care, who were trailing a new prototype chair for radiotherapy. Volunteers were invited to try the chair and offer Leo Cancer Care much needed and important feedback.

January arrived and we held our AGM in our new premises! Our Board of Trustees was re-elected with the addition of 2 new Trustees – ready for the coming year. February saw many social and fundraising events take place including Quiz Night, talks and more. We also had a visit from Big Picture, funded by The Matthew Good Foundation to produce a promotional video of **HER Breast Friends**. Filming took all day – a very exciting time! March and the Charity attended the Social Prescribing event in Princes Quay, raising awareness of the services, activities and support we offer. April saw the first of what would be four Royal invitations. Our Vice Chair attended a reception at Buckingham Palace by invitation of the King and Queen. Thanks to a grant received, we welcomed our new Charity Administrator Rebecca to the team. May and VE Day celebrations ensued with our Afternoon Tea. The Pink Pamper Day welcomed 97 guests affected by breast cancer who enjoy a free day of pampering, workshops, entertainment, lunch and friendship. The second of our four Royal appointments saw the Chair and Charity Manager attend the Garden Party at Buckingham Palace. June soon arrived with our 148ft – K2 Tower Abseil Challenge. 27 people braved the drop, with more than 120 people supporting on the day, raising a magnificent £7341.14 for the Charity. Big Picture delivered an incredible promotional video, showcasing all the fantastic work the Charity does. July and August were upon us and we gave talks, attended more events and raised awareness. Withernsea Golf Club held their annual Am-Am raising funds for the Charity, and lots of fun was had by all.

September brought the sad news that our Patron: HRH The Duchess of Kent had passed. Two of our volunteers were invited to attend the Requiem Mass at Westminster Cathedral. Later in the month the Charity welcomed HM Lord-Lieutenant of the East Riding of Yorkshire, Mr Jim Dick OBE to present the King's Award for Voluntary Service to the Charity. Volunteers were invited to receive the award and enjoy a wonderful and memorable evening. Our Buddleia Therapists undertook training in 'Massage for Cancer Care – Professional Practice', ensuring the continuation of our caring and professional service offered. Chair Pam Trays won the BBC Make a Difference Award for Volunteer of the Year! The Charity launches its 'Your Charity Lottery' – a suggestion made by volunteers at this year's AGM.

October and our annual Breast Awareness Event in St Stephens took place. This year our volunteers were joined by the Honley Ladies Choir as part of their Abreast the M62 event. A van was purchased through a grant kindly donated by The Pink Ribbon Foundation, allowing the Charity to fulfil the long-term goal of taking our services and support to remote and rural areas within our area of operation. The month ended with a fourth Royal invitation for nine of our volunteers to attend The Princess of Wales Annual Carol Service at Westminster Abbey, in December.

With a remarkable and very exciting year over, the Charity looks forward to another year, with hope enthusiasm, positivity, determination and above all else... friendship!



Volunteers

Our wonderful volunteers continue to be a vital and essential part of the Charity and all that we offer. Coming from all walks of life and with their own reasons to help, our volunteers are an integral part of the Charity and its success. The Charity is blessed to have such a dedicated team of volunteers who share and support the Charity's vision and values and who gave 5180 hours to the Charity this year! Our volunteers really are the very best of the best, and we are extremely proud to have them as part of the team!

Thank you xx

Structure, Governance and Management

Hull & East Riding Breast Friends is a registered Charity and a member of the Fundraising Standards Board. The Charity is an unincorporated association and its governing document is a constitution.

Applications from prospective trustees are put forward to trustee meetings and then elected by the membership at the AGM.

Organisational Structure

The board members are all trustees and include officers of the Charity. All have a duty to act in the best interests of the Charity. The board meets every 6 – 8 weeks and any sub-committees meet regularly during the year. All members of the board and sub-committees are volunteers. The board delegates the day-to-day running of the affairs of the Charity to the Charity Manager, Jayne Beck who is employed by the Charity, and is assisted by a small team of volunteers.

Trustees' Transactions and Declarations of Interest

The group has a duty to disclose any material transactions between the group and the trustees; this would include payments received by themselves for goods and services provided by the group. None of the trustees have had any transactions with the group other than to give their time and skills freely.

Risk Management

The trustees assess the major risks to which the Charity is exposed, in particular those related to the operations and finances of the Charity, and continue to take measures to reduce those risks to an acceptable minimum.

Public Benefit

The trustees believe they have complied with the duty of the Charities Act to have due regard to guidance published by the Charity Commission in respect of public benefit. This is known as the 'public benefit requirement' and the beneficiaries of the Charity must be appropriate to its aims. The trustees have paid due regard to this in deciding which activities the Charity should undertake and how funds are used.

Statement on Policy of Reserves

The Charity holds a level of accrued funds because its income is almost entirely dependent on donations. Our policy is to hold sufficient resources to continue the charitable activities of the group for one year.



Who's Who

HER Breast Friends

Founder

Jan Jones

Chair

Pam Trays

Vice Chair

Sandra Cooper

Treasurer

Stephen Henderson

Trustees

Colleen Barber

Lynne Maskell

De Hempstock

Eric Jones

Simon Trays

Melanie Clark

Lynda Whincup

Charity Manager

Jayne Beck

Charity Administrator

Rebecca Davison

Administrative & Reference Details

Bank

HSBC 3 – 54 Jameson Street,
Kingston upon Hull, HU1 3JX

HER Breast Friends address

Floor 8 – K2 Tower
60 Bond Street
Hull
HU1 3EN



£600.00

could keep our Buddleia Complementary Therapy room open for a month.



£25.00

provides a patient gift pack for those who have undergone surgery for breast cancer.



£35.00

provides a wig starter pack to help care for a wig whilst required.



Fundraising & Support

The Charity has been overwhelmed with the generosity received in 2024-2025. During these continued difficult times, people have continued to support our work. Here is just a snapshot of the overwhelming support received:

- **The Pink Ribbon Foundation** donated £21,500 for the purchase of van.
- **Lisa Davison** collected and donated £13.32 in one of our Pink boxes.
- **Jenny & Terry Watts** for their donated raffle, tombola, homemade cards and sweet cups.
- **Matthew Good Foundation**, who funded Big Picture to produce a promotional film of the Charity.
- **Judith Hotham** who donated £155 plus gift aid from the sale of her amazing, handmade crocheted dolls and animals at David Lloyds Health Club.
- **Becki Winter & Danholme Good Logistics** who donated £750.
- **Kalem Bennett** who completed the Hull 10K in his racing chair, raising a fabulous £205.00.
- **Cllr Pat Smith** who donated £845.20 in her civic year, as one of her chosen charities.
- **De Hempstock** for donating £100 from the sale of her beautiful Christmas wreaths.
- **Jackie Read** for donating £450 from her skydive!
- **Knit One Stitch One** for donating £33.70 from having one of our Pink tubs on their counter.
- **Ladies in Red** for their donation of £200 collected during a talk given..
- **Mally Fortnum** who donated a whopping £811.42 from his retirement party.
- **27 Daredevils** who took part in our 148ft K2 Tower Hull Abseil Challenge, collectively raising £7371.
- **Martin Howman** and Family for their gift of £389.15 in memory of their wonderful Wife and Mum – Shirley.
- **Phillips 66 Humber Refinery** for donating £1000 and a wonderful raffle prize.
- **Breast Care Unit, Castle Hill Hospital** for sale of HBF merchandise in their unit.
- **Sitta Ladies** for making and donating beautiful Heart cushions and Dammit Dolls to go into our Patient Gift Packs.
- **Stella Colyer** for her donation of £100 plus lots of raffle and craft items.
- **Mrs Whitehead** for her £5 monthly standing order.
- **School Nursing & Health Visiting Team** for donating £180.12 from their bake sale.
- **Ben Parry & The Avenues Pub** for holding a Charity Fun Day and raising £155.80 for HBF.
- **Hudgell Solicitors** for donating £64.06 raised from their bake sale day.
- **Hollie & Family** for their whopping donation of £2000 from their amazing Lavender Ball.
- **Eileen Hodgson** who held a coffee morning raising a huge £800.00.
- **Charity Manager Jayne** for taking on the Great North Swim, raising £160.
- **Karen Okra** for her donation of £20.
- **The Kerry Key Foundation** for their donation of an incredible £5000.
- **Beverley RUFC Ladies Day** for raising £2005.
- **Neil Baxter & Family**, and all at Withernsea Golf Club for their incredible donation of £2500 from their Charity Am-Am.
- **De La Pole Lodge Ladies Night** for donating £555 in lieu of gifts on the night.

How you can help

Membership

By joining **HER Breast Friends** you are not only showing your support for the Charity but your fees help toward our running costs.

Gift Aid

If you are a tax payer complete a Gift Aid form and the Government donates money back in return, currently 25p for every pound.

Merchandise/Collection Boxes

If you are interested in having any merchandise to sell or a collection box, please contact us.

Webshop

All Charity merchandise and other purchases can be made online via our Webshop at <https://herbreastfriends.org.uk/shop/>

Volunteer

Offer your time as a volunteer.

Raffle/Tombola Prizes

Donate any unwanted gifts for us to use as raffle or tombola prizes.

Donations

If you would like to donate online, please visit our website www.herbreastfriends.org.uk and click on the 'donate now' button on our homepage. We also accept card payments in the office.

If you would like to make a regular donation, please contact us for 'Standing order' details or download the form, from our website <https://herbreastfriends.org.uk/downloads/>

Just Giving at:

HER Breast Friends – JustGiving

Easyfundraising at:

www.easyfundraising.org.uk/herbreastfriends

Room Hire

Hire one of our fully AV equipped meetings rooms. Call 01482 221368 for more details.

CAF QR Donation Code



Your Charity Lottery

<https://www.yourcharitylottery.org.uk/who-we-help/our-beneficiaries/community-groups/her-breast-friends>

- **Nicola King** for donating £354 from her Pamper & Tropic fundraising day.
- **Richard and Steph** for giving their time to teach a 'Flash Mob' dance routine to our volunteers for the 20th Anniversary Ball.
- **Maria & Michael Sissons** for their donations of £372.84 from their Tea Party.
- **Bridbeat Charity Singers** for raising £252 from their concert.
- **Hedon Craft Club** for their donation of £75.
- **Provincial Grand Mark Lodge of North & East Yorkshire** for their donation of £1000.
- **Hull 4 Heros** for donating £80.15 from their bake sale.
- **Derringham Bank Methodist Church** for raising and donating £100.

This is only a snapshot of the unbelievable support given to the Charity over the past 12 months. Without the continued support from wonderful individuals, companies and organisations, the Charity could not continue to support local people affected by breast cancer. As always, THANK YOU never seems quite enough, but from everyone who has gained support from **HER Breast Friends** – A huge heartfelt thank you!



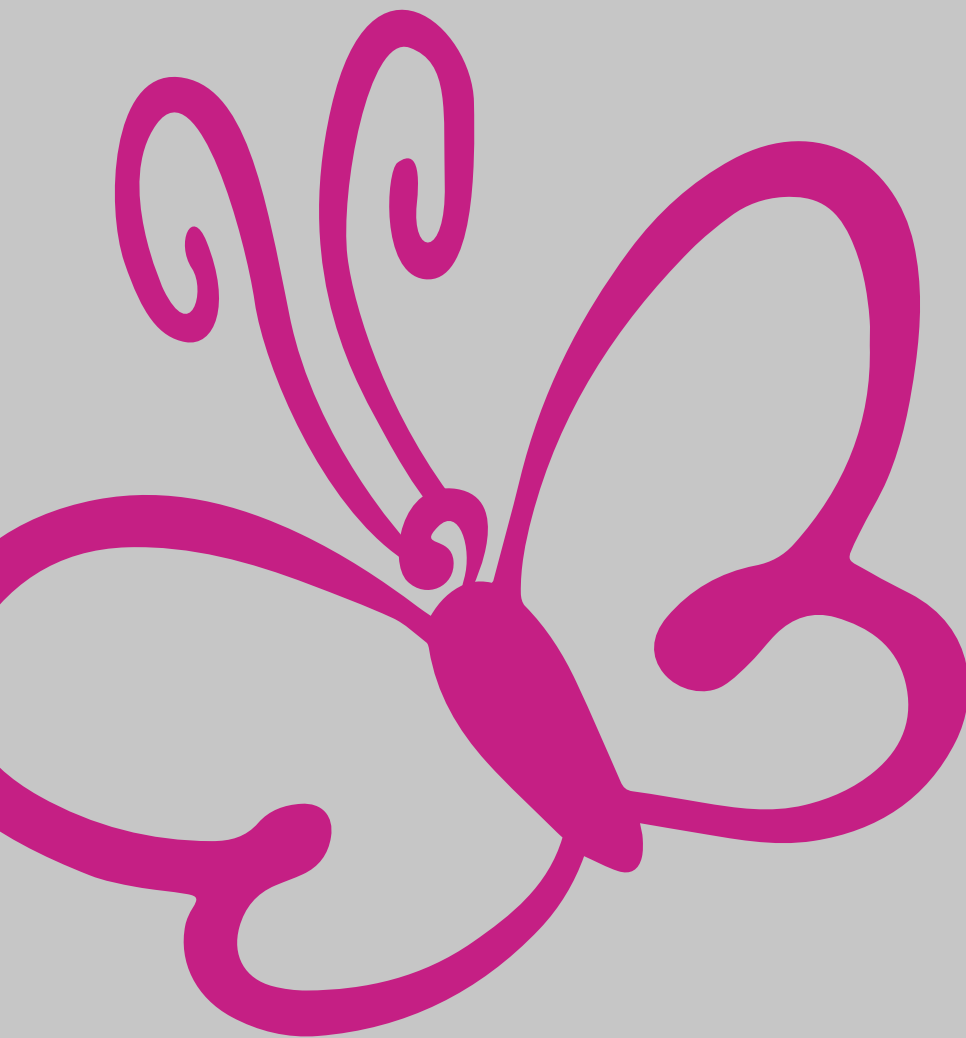
Statement of Account

Financial Year End – 31st October 2025

	2025 £	2024 £
Reserves as at 1st November 2024	31,229.72	56,866.79
Contingency Funds for 2024/25	-100,000.00	-74,000.00
Income During Year	140,799.52	80,181.92
Expenditure During Year	118,708.33	79,818.99
Net Increase in Funds for Year	22,091.19	362.93
Adjustment for Historic Reserve Movement		
Contingency Funds for 2024/25	-110,000.00	-100,000.00
Current reserves as at 31st October 2025	43,320.91	31,229.72

Statement of Policy on Reserves

The Charity holds a level of contingency funds because its income is almost entirely dependent on donations. **HER Breast Friends** policy is to hold contingency funds to continue the charitable activities of the group for 12 months. The current accrual increased to £110,000 to reflect the envisaged annual costs; increased rent and property costs of new premises, salaries, major events, and activities etc., that are needed to allow the Charity to function at its' normal levels.



Hull & East Riding Breast Friends

Supporting local people
affected by breast cancer

www.herbreastfriends.org.uk

Registered Charity No. 1114143



How to contact us

For further help or information please get in touch with us
via the following...

Address:

HER Breast Friends, 60 Bond Street, Hull, HU1 3EN

Opening hours:

Monday - Friday, 10am - 4pm

Telephone:

01482 221368

Email:

generalenquiries@herbreastfriends.org.uk

Follow us on social media:

Facebook: Hull & East Riding Breast Friends

X: @HERbreastfriend

Instagram: HER Breast Friends





**Hull & East Riding
Breast Friends**

Registered Charity No.1114143
www.herbreastfriends.org.uk

HER Breast Friends

Management Report

27th January 2026

Prepared by Jayne Beck

Table of Contents

Profit & Loss	3
Balance Sheet	5
Cash Flow	6

Profit & Loss

Report comparing FY 2024 and FY 2025

	FY 2025 (£)	FY 2024 (£)	Variance
Revenue			
Membership	604.39	448.69	34.7%
Monthly Meeting	66.18	143.20	(53.8%)
Gift Aid	310.11	417.12	(25.7%)
Donations	59,873.72	51,463.70	16.3%
Interest	156.56	767.03	(79.6%)
Grants	23,200.00	1,100.00	2009.1%
Donation - Wig Bank	543.41	910.59	(40.3%)
Donation - Budleia	2,009.00	1,222.35	64.4%
Donation - Craft Club	676.74	795.74	(15%)
Donation - Breast Awareness	1,173.10	537.00	118.5%
Herbf Activities Income	5,906.42	17,343.70	(65.9%)
Sales of Merchandise	2,980.79	2,854.20	4.4%
Bra Bank	(112.50)	127.82	(188%)
Annual Ball income	6,191.41	0.00	-
eBay	22.50	6.00	275%
Second Friends	(226.60)	(90.34)	(150.8%)
PCC	300.00	655.70	(54.2%)
Napoleons Charity Night 2023	0.00	225.00	(100%)
Identities Nov 2023	0.00	202.00	(100%)
Christmas Raffles	0.00	379.19	(100%)
Volunteers Lunch	(561.45)	(123.68)	(354%)
Napoleons Charity Night 2024	0.00	210.00	(100%)
Swap Shop	92.77	583.51	(84.1%)
Stadium Charities	28,829.00	0.00	-
Donatin - Abseil	8,525.10	0.00	-
Vintage Tea	(10.08)	0.00	-
Website income	(217.20)	0.00	-
Room Booking	458.95	0.00	-
Donatin - Unique Salon	2.40	0.00	-
Your Charity Lottery	4.80	0.00	-
Total Revenue	140,799.52	80,178.52	75.6%
Gross Profit			
	140,799.52	80,178.52	75.6%
Administrative expenses			
Salaries			
Salaries	(38,379.27)	(28,299.59)	(35.6%)
Total Salaries	(38,379.27)	(28,299.59)	(35.6%)
Rent and rates			
Rent	(24,996.00)	(15,338.53)	(63%)
Heat and lighting	(1,080.00)	(600.00)	(80%)
Insurance	(539.03)	(521.99)	(3.3%)
Rates	(2,847.00)	0.00	-
Total Rent and rates	(29,462.03)	(16,460.52)	(79%)
Communications			
Telephone	(791.76)	(1,048.41)	24.5%

Profit & Loss

	FY 2025 (£)	FY 2024 (£)	Variance
Total Communications	(791.76)	(1,048.41)	24.5%
General administration			
General admin	(1,761.56)	(895.83)	(96.6%)
Subscriptions	0.00	30.00	(100%)
Printing and stationery	(3,743.07)	(1,499.66)	(149.6%)
Cleaning	(1,769.41)	(688.44)	(157%)
Postage and packaging	(1,326.01)	(881.83)	(50.4%)
Purchase of Merchandise	(2,529.65)	(1,882.56)	(34.4%)
Pamper Day	3,351.25	(3,119.06)	207.4%
AGM	(114.59)	(406.10)	71.8%
Patient Packs	(805.86)	(380.07)	(112%)
Goodwill - Flowers	(955.15)	(492.20)	(94.1%)
Members Support Scheme	0.00	(100.00)	100%
Event	(2,177.29)	(316.04)	(588.9%)
Craft Club Expenses	(824.72)	(1,397.43)	41%
Wig Bank - Expenses	(1,141.65)	(1,059.44)	(7.8%)
Budleia - Expenses	(4,140.68)	(1,316.89)	(214.4%)
Purchase of Equipment	0.00	(1,400.00)	100%
Breast Awareness Expenses	(3,004.86)	(840.00)	(257.7%)
Charity Move	0.00	(9,576.83)	100%
Travel	(283.13)	(25.48)	(1011.2%)
Accounting fees	(377.28)	(310.32)	(21.6%)
Dance Class	(1,275.00)	(497.00)	(156.5%)
Herbf Ball	(1,284.67)	0.00	-
Website & IT costs	(4,342.47)	(5,541.65)	21.6%
Sundry costs	(2,081.47)	(137.08)	(1418.4%)
Photocopying	0.00	(1,273.16)	100%
Van	(19,488.00)	0.00	-
Total General administration	(50,075.27)	(34,007.07)	(47.2%)
Total Administrative Expenses	(118,708.33)	(79,815.59)	(48.7%)
Operating Profit	22,091.19	362.93	5986.9%
Profit Before Tax	22,091.19	362.93	5986.9%
Net Profit	22,091.19	362.93	5986.9%

Balance Sheet

Report comparing FY 2024 and FY 2025

	FY 2025 (£)	FY 2024 (£)	Variance
Current assets			
Trade debtors			
Trade debtors	0.00	3,557.67	(100%)
Total Trade debtors	0.00	3,557.67	(100%)
Cash			
Bonus Saver	9,268.92	9,112.36	1.7%
Shawbrook	80,000.00	80,000.00	0%
Current Account	63,884.12	38,189.07	67.3%
Petty Cash	124.90	407.62	(69.4%)
HBF Credit Card	0.00	0.00	0%
Total Cash	153,277.94	127,709.05	20%
Current liabilities			
Trade creditors			
Trade creditors	42.97	(37.00)	216.1%
Total Trade creditors	42.97	(37.00)	216.1%
Net Assets	153,320.91	131,229.72	16.8%
Equity			
Retained earnings	131,229.72	130,866.79	0.3%
Net profit	22,091.19	362.93	5986.9%
Total Equity	153,320.91	131,229.72	16.8%
Shareholders Equity	153,320.91	131,229.72	16.8%

Cash Flow

Report comparing FY 2024 and FY 2025

	FY 2025 (£)	FY 2024 (£)	Variance
Revenue			
Christmas Raffles	0.00	379.19	(100%)
Donations	59,836.72	51,463.69	16.3%
Donation - Wig Bank	543.41	910.59	(40.3%)
Donation - Budleia	2,009.00	1,222.35	64.4%
Membership	604.39	448.69	34.7%
Sales of Merchandise	2,980.79	2,854.20	4.4%
Gift Aid	310.11	417.12	(25.7%)
Herbf Activities Income	20,335.42	17,343.70	17.2%
Bra Bank	(112.50)	122.10	(192.1%)
Identities Nov 2023	0.00	202.00	(100%)
Donation - Craft Club	676.74	795.74	(15%)
Monthly Meeting	66.18	143.20	(53.8%)
Donation - Breast Awareness	1,173.10	537.00	118.5%
Volunteers Lunch	(561.45)	(123.68)	(354%)
eBay	22.50	6.00	275%
Second Friends	(226.60)	(90.34)	(150.8%)
PCC	300.00	655.70	(54.2%)
Grants	37,600.00	1,100.00	3318.2%
Napoleons Charity Night 2023	0.00	225.00	(100%)
Swap Shop	92.77	583.51	(84.1%)
Napoleons Charity Night 2024	0.00	210.00	(100%)
Interest	156.56	767.03	(79.6%)
Annual Ball income	6,191.41	0.00	-
Donatin - Abseil	8,525.10	0.00	-
Website income	2,260.80	0.00	-
Room Booking	458.95	0.00	-
Vintage Tea	(10.08)	0.00	-
Donatin - Unique Salon	2.40	0.00	-
Your Charity Lottery	4.80	0.00	-
Vehicle	(19,488.00)	0.00	-
Total Revenue	123,752.52	80,172.79	54.4%
Total Income			
	123,752.52	80,172.79	54.4%
Administrative expenses			
General administration			
Event	(2,177.29)	(316.04)	(588.9%)
Printing and stationery	(3,743.07)	(2,811.87)	(33.1%)
Budleia - Expenses	(4,140.68)	(1,327.97)	(211.8%)
AGM	(114.59)	(406.10)	71.8%
Accounting fees	(377.28)	(310.32)	(21.6%)
Website & IT costs	(3,262.80)	(9,041.65)	63.9%
General admin	(1,761.56)	(895.83)	(96.6%)
Craft Club Expenses	(824.72)	(1,397.43)	41%
Wig Bank - Expenses	(1,141.65)	(1,059.44)	(7.8%)
Purchase of Merchandise	(2,529.65)	(1,882.56)	(34.4%)
Postage and packaging	(1,326.01)	(881.83)	(50.4%)
Cleaning	(1,769.41)	(688.44)	(157%)

Cash Flow

	FY 2025 (£)	FY 2024 (£)	Variance
Purchase of Equipment	0.00	(1,400.00)	100%
Goodwill - Flowers	(955.15)	(492.20)	(94.1%)
Charity Move	0.00	(9,576.83)	100%
Pamper Day	3,351.25	(3,119.06)	207.4%
Patient Packs	(805.86)	(380.07)	(112%)
Dance Class	(1,275.00)	(497.00)	(156.5%)
Subscriptions	0.00	30.00	(100%)
Members Support Scheme	0.00	(100.00)	100%
Breast Awareness Expenses	(3,004.86)	(840.00)	(257.7%)
Photocopying	0.00	(58.16)	100%
Sundry costs	(2,081.47)	(137.08)	(1418.4%)
Travel	(283.13)	(25.48)	(1011.2%)
Herbf Ball	(1,284.67)	0.00	-
Total General administration	(29,507.60)	(37,615.36)	21.6%
Rent and rates			
Rent	(24,996.00)	(15,838.34)	(57.8%)
Insurance	(539.03)	(521.99)	(3.3%)
Heat and lighting	(1,080.00)	(600.00)	(80%)
Rates	(2,847.00)	0.00	-
Total Rent and rates	(29,462.03)	(16,960.33)	(73.7%)
Salaries			
Salaries	(38,379.27)	(28,299.59)	(35.6%)
Total Salaries	(38,379.27)	(28,299.59)	(35.6%)
Communications			
Telephone	(791.76)	(1,048.41)	24.5%
Total Communications	(791.76)	(1,048.41)	24.5%
Funds Generated From Operations	25,611.86	(3,750.90)	782.8%
Financing Cash Flow	25,611.86	(3,750.90)	782.8%
Investing Cash Flow	25,611.86	(3,750.90)	782.8%
Total After Drawings	25,611.86	(3,750.90)	782.8%
Adjustment			
Adjustment	(42.97)	10.00	(529.7%)
Net Cash Movements	25,568.89	(3,740.90)	783.5%
Cash Balance			
Cash Flow	25,568.89	(3,740.90)	783.5%
Total Cash Balance	153,277.94	127,709.05	20%



CHARITY COMMISSION
FOR ENGLAND AND WALES

Independent examiner's report on the accounts

Section A

Independent Examiner's Report

**Report to the trustees/
members of**

Charity Name
HULL AND EAST RIDING BREAST FRIENDS

**On accounts for the year
ended**

31st October 2025

**Charity no
(if any)**

1114143

Set out on pages

(remember to include the page numbers of additional sheets)

I report to the trustees on my examination of the accounts of the above charity ("the Trust") for the year ended **31 /10 /2025**

**Responsibilities and
basis of report**

As the charity's trustees, you are responsible for the preparation of the accounts in accordance with the requirements of the Charities Act 2011 ("the Act").

I report in respect of my examination of the Trust's accounts carried out under section 145 of the 2011 Act and in carrying out my examination, I have followed all the applicable Directions given by the Charity Commission under section 145(5)(b) of the Act.

**Independent
examiner's statement**

[The charity's gross income exceeded £250,000 and I am qualified to undertake the examination by being a qualified member of [insert name of applicable listed body]]. *Delete [] if not applicable.*

I have completed my examination. I confirm that no material matters have come to my attention in connection with the examination (other than that disclosed below *) which gives me cause to believe that in, any material respect:

- the accounting records were not kept in accordance with section 130 of the Charities Act; or
- the accounts did not accord with the accounting records; or
- the accounts did not comply with the applicable requirements concerning the form and content of accounts set out in the Charities (Accounts and Reports) Regulations 2008 other than any requirement that the accounts give a 'true and fair' view which is not a matter considered as part of an independent examination.

I have no concerns and have come across no other matters in connection with the examination to which attention should be drawn in this report in order to enable a proper understanding of the accounts to be reached.

** Please delete the words in the brackets if they do not apply.*

Signed: SL Tate

28/03/2026

Name: SARAH LOUISE TATE

**Relevant professional
qualification(s) or body**

CIMA

(if any):

--

Address:

18 ALBEMARLE ROAD

BILTON

HU11 4DR

Section B**Disclosure**

Only complete if the examiner needs to highlight material matters of concern (see CC32, Independent examination of charity accounts: directions and guidance for examiners).

Give here brief details of any items that the examiner wishes to disclose.

--