

Hull & East Riding Breast Friends

Annual Report

1st November 2021 – 31st October 2022



Patron: HRH The Duchess of Kent

Supporting local people
affected by breast cancer

www.herbreastfriends.org.uk

Registered Charity No. 1114143



**Smiles are impossible
to measure, yet it is
the true measurement
of all we do.**

Jan Jones, Founder



Welcome & Chair's Report:

Contents

Chairman's report	2-3
Mission statement, vision & values	4
Charitable objectives	5
Objectives One	5
Objectives Two	6
Objectives Three	6-7
HER Breast Friends in 2020-2021	8
Structure, Governance & Management	9
Who's who	9
Fundraising & Support	10
Bursary & Statement of Account	11
How you can help	11

Welcome to **HER Breast Friends** Annual report for 2021-2022. A year that has thankfully, been more, can I say, 'normal' than the previous two, with all our services and activities running as they should. Services such as the Wig Bank, Bra Service and Buddleia Therapies which are in more demand each year. Breast Awareness talks, providing information on signs and symptoms to look out for to hopefully ensure that early diagnosis is received and promote the importance of breast screening. It's good to talk but it's much better talking face to face.

This year I am proud to report on two new services to the Charity, Second Friends and Person Centred Counselling, both much needed in our community.

Second Friends, a group for those living with secondary breast cancer. Providing a supportive environment with a chance to meet and chat with people who appreciate and understand the challenges each are going through. A group unique to this area.

Person Centred Counselling, providing a safe and confidential space for those who may need a little bit extra support.

However, with the introduction of these new services it has made us realise we need more space and are therefore looking for larger, affordable premises, not easy in the current climate!

As we rely on donations and fundraising for 100% of our income, I am so grateful and appreciative of those that have raised funds for us. From cake, book, and tombola stalls, to walking the Three Peaks or running a marathon. Without this support what we do would not be possible. Likewise, to corporate benefactors and supporters such as Design Signage Solutions Ltd, and Women in Business Hull who kept us as their Charity of the Year for the third year!

As we head into 2023 and the winter months of uncertainty with the current cost of living, I give thanks to the great work, vision and prudence of our Trustees, and Charity Manager, to ensure we can continue once again doing our utmost to support, encourage and uplift those affected by breast cancer.

Tasks that we could not do, without our army of fabulous volunteers without whom, the Charity would not function. Volunteers who themselves have been affected in some way by the disease. They have once again pulled out all the stops to ensure whether newly diagnosed or living with or beyond a diagnosis of breast cancer, they and their family and friends, receive the quality of support they deserve.

A breast cancer diagnosis changes and transforms you, just like our symbol, the butterfly. A beautiful symbol with many similar meanings across different cultures. Just like those meanings, the band of friendship that I am proud to say surrounds us at HER Breast Friends remains positive, giving strength, hope and comfort to anyone who needs us.

Whatever comes along next year we will face it together and I hope you will continue to be together with us, after all, together is a beautiful place to be.

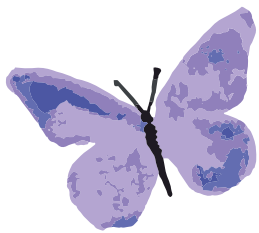
Keep smiling
Pam x

*A friend is one of the
NICEST
things you can have,
and one of the
BEST
things you can be.*
- Anon

//
**There are no strangers
here, only friends you
haven't yet met.**
//

WB Yeats





Mission Statement

Our aim is to help create a supportive environment for those affected by breast cancer, by promoting a positive approach to living with the disease, offering encouragement and inspiration, and by raising funds for breast cancer treatment and research.

Our Vision

To develop a long term strategy for the development of **HER Breast Friends** as an organisation, offering real solutions for those affected by breast cancer in a positive and supportive environment.

Our Values

Every member will feel welcomed and valued. We will aim to maintain professionalism and confidentiality at all times. We will promote laughter, happiness, self-esteem and we will move the group forward with confidence.



Charitable objectives

The prevention of sickness and promotion of health particularly with regard to breast cancer by...

Objective 1

Promoting awareness of the available relevant support and advice networks serving Yorkshire and North East Lincolnshire.

Objective 2

Raising funds for breast cancer research and treatment.

Objective 3

Helping create a positive view and environment for all affected by breast cancer.



Objective 1

Promoting awareness of the available relevant support & advice networks serving Yorkshire & North East Lincolnshire.

Within our premises in Hull, we hold numerous booklets and information on services both local and national that can provide support or advice, as well as our own information booklet that we distribute around the hospitals and local area and can also be found in our Patient Gift Packs, giving details of all our services which are there to try and improve someone's journey with breast cancer.

Our volunteer breast awareness team were also out and about again this year spreading the message of the signs and symptoms to look out for, helping to promote the difference an early diagnosis could make, and the importance of breast screening.

Connections with the local hospitals, and various community groups remains strong.

Objective 2

Raising funds for breast cancer research and treatment.

After many years of donating funds for various items used by our local NHS hospitals to help improve the quality of someone's treatment, Last year after two years of unpredictable fund raising, we focused on how we could best help those that came to the Charity for support.

This year we have funded a vital group needed in our area for those diagnosed with secondary breast cancer.

Many with secondary breast cancer can feel forgotten and alone, as their experience with breast cancer is different to those diagnosed with primary breast cancer. They needed a voice. To share their experiences and challenges with people who could fully appreciate



and understand the challenges each face. The group meets every second Saturday and have also set up an online connection that can be used at any time, so no one needs to feel alone.

Objective 3

Helping create a positive view and environment for all affected by breast cancer.

Of all our objectives, this is probably what HER Breast Friends is best known for.

Patient Gift Packs

Receiving a diagnosis of breast cancer is a frightening time for both patient and those around them. To know that there is a group that fully understands what you are going through and the challenges you may face is such a boost to the moral. Through our Patient Gift Packs, described by one recipient as 'a bag of love' information on all our services and activities can be found including those of national organisations. Each pack includes our beautiful handmade cushion,

comforting to hug but more useful when travelling home to relieve the pressure of the seat belt on surgery sites and a fun stress busting Dammit Doll made by our Wednesday crafters and supporters.

246 packs were donated to hospitals this year. But just knowing there is someone who understands whether that be just a chat over the telephone, at the Charity or at one of our various activities, it ensures they know they are not alone.

//
I have recently had surgery and am currently undergoing chemotherapy. I would like to say thank you so much for the pack that I received after surgery. The cushion was and still is a game changer/ life saver! It has helped so much, and I cannot thank you enough //



Bra Service

Our Bra Service is housed in a dedicated, comfortable, and private room offering the best possible individual service including a FREE Bra Measuring and Fitting Service by fully trained volunteers. Fittings are by appointment only. We have a range of Amoena mastectomy bras and swimwear at affordable prices. Our Knitted Boobies and Aqua Boobies are FREE for anyone who wishes to try them, and can be worn from approximately 6 weeks after surgery and fit in any bra or swimsuit.

Buddleia Complementary Therapies

A full range of complementary and beauty therapies are offered in our dedicated, comfortable, and private therapy rooms by therapists all fully qualified, insured and DBS checked. Therapies given are by appointment only. All our therapists know how to adapt therapies for cancer patients so you can be assured of a welcoming, safe, and supportive environment.

Second Friends

Recently formed, our Second Friends Group is unique to this area. The group provides a supportive environment for those with a secondary breast cancer diagnosis, by people who appreciate and understand the challenges each are going through. Friendships are formed through shared experiences, and no one needs to feel alone. Our group meets every second Saturday in each month and is funded by donations.

The Wig Bank

The Wig Bank has a large selection of donated and new wigs in various styles and colours, plus scarves, bandannas and other accessories. Open to all cancer and hair loss clients. Run by volunteers, all our wigs are washed and prepared to ensure they are in tip top condition before being presented for viewing. A FREE care pack including shampoo, conditioner, hair spray plus wig stand, brush and wig cap is given to every client who selects a wig.

Wednesday Crafters

Our Wednesday Crafters meet at our premises every Wednesday afternoon. The therapeutic benefit of arts and crafts for those affected by illness is well documented and the group engages in various activities from knitting and sewing, to card making and macramé. The group also supports the Patient Gift Packs given to the hospitals, by making the Heart Cushions and Dammit Dolls, as well as knitting the Knitted Boobies and Aqua Boobies. EVERYONE is welcome to join in and learn a new skill, or just sit, watch, and chat over a drink.

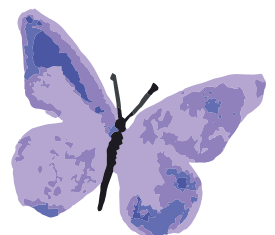
Pink Pamper Day

Our fabulous signature event, the Pink Pamper Day caters for up to 100 local people affected by breast cancer, providing a free day of beauty and complementary therapies, inspiring workshops, lunch, relaxation, encouragement, fun and laughter. Many lasting friendships have been formed on these days. We are always looking for sponsors to support this event, whether by providing a raffle prize, an item for our gift bags or maybe sponsor a place for someone.



MONTHLY COFFEE MORNING

Held on the 1st Saturday of each month at The Octagon, between 10am and 12noon. ALL WELCOME, members, and non-members.



HER Breast Friends



1st Nov 2021 – 31st Oct 2022

2021 – 2022 started much brighter than the previous year, as lockdown restrictions eased. The Charity doors re-opened, and the work started to get the services, activities, and much needed support back on track!

November to December The services and activities were soon back up to full strength, re-establishing our contacts with members, volunteers, and supporters. It was wonderful to enter a Christmas Tree in the Beverley Christmas Tree Festival and the Hull Minster, Lord Mayor's Tree Festival once again. The trees adorned with beautiful 'Angels', made by the Wednesday Crafters and Volunteers.

January arrived and with it a new service offered - Second Friends. Unique to this area, our Second Friends Group provides a supportive environment for those with a secondary breast cancer diagnosis, by people who appreciate and understand the challenges faced. The Group meets every second Saturday of each month. The Charity AGM and Luncheon was held on 29th January 2022 at The Village Hotel, where legal matters of the Charity were presented and documented. With the new Board of Trustees in place, the Charity was excited for the coming months ahead.

March and the Monthly Meeting saw guest speaker and member Margaret Wharf discuss and delight in the world of morse code! The Charity also took part in International Women's Week at Hull Central Library. March also saw the re-launch of The Butterfly Effect Competition, which was initially launched in 2020, but scuppered by COVID-19.

May was the month of this year's signature event, the Pink Pamper Day. 89 guests who have been affected by breast cancer, enjoyed a free day of pampering, workshops, entertainment and lunch. It was a fabulous day, supported by our amazing volunteers, therapists, and workshop facilitators.

June soon came along, and with it our 1st of 3 subsidised theatre trips of the year. 15 members went along to the Beverley Memorial Hall to watch The Little Shop of Horrors. June is also the Charity's Pink Butterfly Month; Cake sales, Garden Parties, and sponsored challenges, were undertaken by our supporters, which provided much needed funds for the Charity.

July saw the closing date of The Butterfly Effect Competition. 15 entries were collected, ready to be photographed and prepared for a mini tour around the city, for the public to vote for the winners.

October and the Breast Awareness Month was upon us in no time. The Voting for the Butterfly Effect Competition closed, and the winners would be announced at The Butterfly Ball in November 2022. October also brought along the plans for another new service – Person Centred Counselling, to launch in December 2022.

So, with another year done, the Charity looks forward to a new year, with hope, enthusiasm, positivity, determination and above all else... friendship!

Volunteers

Our wonderful volunteers continue to be a vital and essential part of the Charity and all that we offer. Coming from all walks of life and with their own reasons to help, our volunteers are an integral part of the Charity and its success. The Charity is blessed to have such a dedicated team of volunteers who share and support the Charity's vision and values. Our volunteers really are the very best of the best, and we are extremely proud to have them as part of the team! **Thank you xx**



Structure, Governance and Management

Hull & East Riding Breast Friends is a registered Charity and a member of the Fundraising Standards Board. The Charity is an unincorporated association and its governing document is a constitution.

Applications from prospective trustees are put forward to trustee meetings and then elected by the membership at the AGM.

Organisational Structure

The board members are all trustees and include officers of the Charity. All have a duty to act in the best interests of the Charity. The board meets every 4 – 6 weeks and any sub-committees meet regularly during the year. All members of the board and sub-committees are volunteers. The board delegates the day-to-day running of the affairs of the Charity to the Charity Manager, Jayne Beck who is employed by the Charity, and is assisted by a small team of volunteers.

Trustees' Transactions and Declarations of Interest

The group has a duty to disclose any material transactions between the group and the trustees; this would include payments received by themselves for goods and services provided by the group. None of the trustees have had any transactions with the group other than to give their time and skills freely.

Risk Management

The trustees assess the major risks to which the Charity is exposed, in particular those related to the operations and finances of the Charity, and continue to take measures to reduce those risks to an acceptable minimum.

Public Benefit

The trustees believe they have complied with the duty of the Charities Act to have due regard to guidance published by the Charity Commission in respect of public benefit. This is known as the 'public benefit requirement' and the beneficiaries of the Charity must be appropriate to its aims. The trustees have paid due regard to this in deciding which activities the Charity should undertake and how funds are used.

Statement on Policy of Reserves

The Charity holds a level of accrued funds because its income is almost entirely dependent on donations. Our policy is to hold sufficient resources to continue the charitable activities of the group for one year.



Who's Who

HER Breast Friends

Patron & Founder

Jan Jones

Chair

Pam Trays

Vice Chair

Sandra Cooper

Treasurer

Stephen Henderson

Trustees

Colleen Barber
Lynne Maskell
Maggie Farmer
Derek Grantham
De Hempstock
Eric Jones
Simon Trays

Charity Manager

Jayne Beck

Administrative & Reference Details

Bank

HSBC 3 – 54 Jameson Street,
Kingston upon Hull, HU1 3JX

HER Breast Friends address

Pod 6, The Octagon
Walker Street
Hull
HU3 2RA



£500.00

could keep our Buddleia Complementary Therapy room open for a month.

£15.00

provides a patient gift pack for those who have undergone surgery for breast cancer.

£30.00

provides a wig starter pack to help care for a wig whilst required.



Fundraising & Support

The Charity has been overwhelmed with the generosity received in 2021-2022. During these continued difficult times, people have continued to support our work. Here is just a snapshot of the amazing support received:

- Aimee Fenn raised £241 by holding a bun sale at the Willerby & Kirkella pre-school.
- The ALMONO Group donated £150.
- Amanda Burton and daughter, donated £434.46 in memory of their Mum and Grandma.
- Annette Ford organised a 'Name the Teddy' and raised £50.
- Annette Clayton made some fabulous Dammit Dolls which went into our Patient Gift Packs.
- ASDA Mt Pleasant; Tesco St Stephens and Morrisons Holderness Road, all donated hampers for our Butterfly Ball raffle.
- Billie Rhodes donated another £250 from the sale of knitted dolls, bringing the total raised to £4680.
- Catherine Kirk raised £200 plus Gift Aid, in lieu of presents for her 60th birthday.
- Christie Crawforth, family & friends raised an astounding £1568.73 through their 'Vanity Fair' event in October 2022.
- Clair Green donated some no longer needed beautiful wigs to our Wig Bank.
- The Constable Arms, Sporatley raised £1258.63 from 2 charity events.
- Unique Salons held their 'Big Bra Walk' in August 2022, raising a massive £5232.50, in memory of friend and colleague Caroline Abuelo.
- Tony Beck donated £218, raised in memory of his Mum Ivy.
- Smailes Goldie Group donated £115 as part of their Charity Campaign, £22k in 2022.
- Sue Peck, donated £700 from a charity day held in memory of her daughter Jemma.
- Susie Buybse of Red B4 Bookshop in Australia donated a well travelled £30.
- Mr T Kilcullen donated some beautiful wigs, bras and bra tops to our Wig Bank and Bra Service.
- Skidby Lakes Golf Club held a 'Pink Day' raising £440.
- Our Wednesday Crafters and Volunteers for all the handmade Dammit Dolls, Heart Shaped Cushions and Seatbelt Cushions, for our Patient Gift Packs.
- Anthony Harrison and family for donating £658.50, in memory of Wife, Mum & Grandma Pam.
- Nicky Cooper donated wigs and accessories to our Wig Bank.
- Paul Gillatt sent in a donation of £10 to the Charity.
- The Mayor of Beverley chose the Charity as one of 2 'Charity of the Year' recipients, raising a fabulous £407.
- Janice Connor donated £50 to sponsor the Beverley Festival Christmas Tree.
- Becki Winter & Tracey Keenan-Smith for volunteering at The Pink Pamper Day and donating an incredible £1000.
- Cath Leach for donating £8.97 by filling one of the Charity's pink collection boxes with pennies.
- Jackie Read donated £44 from the sale of homegrown fruit.
- Staff at Hessle Police Station donated a wonderful £86.59.
- Jude Hotham sold her amazing, crocheted items, raising an incredible £124.33.
- Hugh Fitz Baldric placed a Pink Tub on their bar and raised £40.

How you can help

Membership

By joining **HER Breast Friends** you are not only showing your support for the Charity but your fees help toward our running costs.

Gift Aid

If you are a tax payer complete a Gift Aid form and the Government donates money back in return, currently 25p for every pound.

Merchandise/Collection Boxes

If you are interested in having any merchandise to sell or a collection box, please contact us.

Webshop

All Charity merchandise and other purchases can be made online via our Webshop at <https://herbreastfriends.org.uk/shop/>

Volunteer

Offer your time as a volunteer.

eBay for Charity

We are registered with eBay so when selling items on eBay you can choose to donate a percentage, or all, of the sale price to us.

Raffle/Tombola Prizes

Donate any unwanted gifts for us to use as raffle or tombola prizes.

Donations

If you would like to donate online, please visit our website www.herbreastfriends.org.uk and click on the 'donate now' button on our homepage. We also accept card payments in the office.

If you would like to make a regular donation, please contact us for 'Standing order' details or download the form, from our website <https://herbreastfriends.org.uk/downloads/>

Smile Amazon at: <https://smile.amazon.co.uk>

Easyfundraising at: www.easyfundraising.org.uk/herbreastfriends

Sharing your Story

If you have a story we would love to hear it. Talking to people about the work of the Charity and what it has done for you can make a positive difference that can be translated not only into raising funds, but awareness.

- **Richard Tempest** ran the GNR and Hull Half Marathon raising an astounding £500.
- **Eileen Hubbard, family, and friends** raised a fabulous £650 from holding a tombola at the East Coast Run event, Sewerby Hall and Burton Constable Hall.
- **Lorraine Styles** donated £50 from a cheeky win at bingo!
- **Everyone who 'ticked' the Gift Aid box** enabling the Charity to claim £1325.08!

This is only a snapshot of the unbelievable support given to the Charity over the past 12 months. Without the continued support from wonderful individuals, companies and organisations, the Charity could not continue to support local people affected by breast cancer. As always, THANK YOU never seems quite enough, but from everyone who has gained support from **HER Breast Friends** – A huge heartfelt thank you!



Support Scheme

HER Breast Friends is not a grant giving organisation but does recognise that occasionally a small amount of financial help is the best way the Charity can support people going through breast cancer. A breast cancer diagnosis can mean extra expenses, which may be difficult or impossible to fund for those already on a low or reduced income. The Support Fund is open for applications from anyone who has, or is receiving treatment for breast cancer, resides in the Charity's area of operation and has a specific need for support from this fund.

Statement of Account

Financial Year End – 31st October 2022

	2022 £	2021 £
Reserves as at 1st November 2021	13,973.87	488.87
Contingency Funds for 2020/21	-74,000.00	-74,000.00
Income During Year	48,500.62	48,723.00
Expenditure During Year	46,229.12	35,238.00
Net Increase in Funds for the Year	2,271.50	13,485.00
Contingency Funds for 2021/22	-74,000.00	-74,000.00
Current Reserves as at 31st October 2022	16,245.37	13,973.87

Statement of Policy on Reserves

The Charity holds a level of contingency funds because its income is almost entirely dependent on donations. HER Breast Friends policy is to hold contingency funds to continue the charitable activities of the group for 2 years. The current accrual is £74,000 reflects the envisaged annual costs; salaries, major events, and activities etc., that are needed to allow the Charity to function at its' normal levels.



Hull & East Riding Breast Friends

Supporting local people
affected by breast cancer

www.herbreastfriends.org.uk

Registered Charity No. 1114143

How to contact us

For further help or information please get in touch with us
via the following...

Address:

HER Breast Friends, Pod 6, The Octagon, Walker Street, Hull, HU3 2RA

Opening hours:

Monday - Friday, 10am - 4pm

Telephone:

01482 221368

Email:

generalenquiries@herbreastfriends.org.uk

Follow us on social media:

Facebook: Hull & East Riding Breast Friends

Twitter: @herbreastfriend

Instagram: HER Breast Friends





**Hull & East Riding
Breast Friends**

Registered Charity No.1114143
www.herbreastfriends.org.uk

HER Breast Friends

Management Report

21st June 2023

Prepared by Jayne Beck

Table of Contents

Profit & Loss	3
Balance Sheet	5
Cash Flow	6

Profit & Loss

Report comparing FY 2021 and FY 2022

	FY 2022 (£)	FY 2021 (£)	Variance
Revenue			
Membership	363.79	319.20	14%
Monthly Meeting	31.27	0.00	-
Gift Aid	0.00	618.89	(100%)
Donations	34,548.48	41,435.01	(16.6%)
Interest	20.09	58.43	(65.6%)
Grants	1,000.00	2,250.00	(55.6%)
Donation - Wig Bank	1,381.35	1,061.90	30.1%
Donation - Budleia	662.93	296.83	123.3%
Donation - Craft Club	501.62	369.80	35.6%
Donation - Breast Awareness	240.66	6.38	3672.1%
Project Income	3,515.78	340.40	932.8%
Sales of Merchandise	1,449.82	1,490.20	(2.7%)
Pink Butterfly Week	231.00	0.00	-
Bra Bank	(175.25)	121.10	(244.7%)
Your Personal Breast Challenge 2020	0.00	145.00	(100%)
Charity Christmas cards	0.00	(116.50)	100%
Christmas Hamper Raffle	0.00	53.00	(100%)
Easter Raffle 2021	0.00	273.21	(100%)
Annual Ball income	3,929.82	0.00	-
Easter Raffle 2022	202.39	0.00	-
Little Shop of Horror Tickets 2022	(41.00)	0.00	-
9to5 Musical	150.00	0.00	-
Butterfly Ball Raffle 2022	487.87	0.00	-
Total Revenue	48,500.62	48,722.85	(0.5%)
Gross Profit			
	48,500.62	48,722.85	(0.5%)
Administrative expenses			
Salaries			
Salaries	(22,723.91)	(20,790.60)	(9.3%)
Total Salaries	(22,723.91)	(20,790.60)	(9.3%)
Rent and rates			
Rent and rates	(2,076.00)	(1,440.00)	(44.2%)
Insurance	(544.04)	(567.88)	4.2%
Total Rent and rates	(2,620.04)	(2,007.88)	(30.5%)
Communications			
Telephone	(936.00)	(792.00)	(18.2%)
Total Communications	(936.00)	(792.00)	(18.2%)
General administration			
General admin	(556.55)	(1,128.53)	50.7%
Subscriptions	(3.99)	0.00	-
Printing and stationery	(2,220.02)	(1,644.83)	(35%)
Cleaning	(520.65)	(226.92)	(129.4%)
Postage and packaging	(1,328.04)	(694.54)	(91.2%)
Purchase of Merchandise	(734.42)	(740.00)	0.8%
Pamper Day	(682.81)	(939.48)	27.3%
AGM	(401.25)	(98.50)	(307.4%)

Profit & Loss

Patient Packs	(1,286.59)	(1,944.49)	33.8%
Goodwill - Flowers	(541.40)	(404.50)	(33.8%)
Event	(912.15)	(94.08)	(869.5%)
Craft Club Expenses	(836.32)	(343.57)	(143.4%)
Wig Bank - Expenses	(1,270.01)	(782.65)	(62.3%)
Budleia - Expenses	(997.58)	(1,015.53)	1.8%
Purchase of Equipment	0.00	(68.84)	100%
Accounting fees	(90.00)	(99.00)	9.1%
Dance Class	27.00	0.00	-
Bursary	(109.00)	0.00	-
HBF15 - Butterfly Ball	(5,376.61)	0.00	-
Website	(760.80)	(282.48)	(169.3%)
Butterfly Effect	823.00	0.00	-
Storage Facility	(2,015.00)	(1,140.00)	(76.8%)
eBay	(155.98)	0.00	-
Total General administration	(19,949.17)	(11,647.94)	(71.3%)
<hr/>			
Total Administrative Expenses	(46,229.12)	(35,238.42)	(31.2%)
Operating Profit	2,271.50	13,484.43	(83.2%)
Profit Before Tax	2,271.50	13,484.43	(83.2%)
Net Profit	2,271.50	13,484.43	(83.2%)

Balance Sheet

Report comparing FY 2021 and FY 2022

	FY 2022 (£)	FY 2021 (£)	Variance
Current assets			
Trade debtors			
Trade debtors	67.66	0.00	-
Total Trade debtors	67.66	0.00	-
Cash			
Bonus Saver	23,049.48	23,029.39	0.1%
Current Account	68,256.17	64,705.13	5.5%
Petty Cash	201.18	246.31	(18.3%)
HBF Credit Card	(17.82)	(17.82)	0%
Total Cash	91,489.01	87,963.01	4%
Current liabilities			
Trade creditors			
Trade creditors	(1,523.09)	(200.93)	(658%)
Total Trade creditors	(1,523.09)	(200.93)	(658%)
Net Assets	90,033.58	87,762.08	2.6%
Equity			
Retained earnings	87,762.08	74,277.65	18.2%
Net profit	2,271.50	13,484.43	(83.2%)
Total Equity	90,033.58	87,762.08	2.6%
Shareholders Equity	90,033.58	87,762.08	2.6%

Cash Flow

Report comparing FY 2021 and FY 2022

	FY 2022 (£)	FY 2021 (£)	Variance
Revenue			
Donations	34,548.48	41,435.01	(16.6%)
Your Personal Breast Challenge 2020	0.00	145.00	(100%)
Donation - Wig Bank	1,381.35	1,061.90	30.1%
Charity Christmas cards	0.00	113.50	(100%)
Grants	1,000.00	2,250.00	(55.6%)
Interest	20.09	58.43	(65.6%)
Donation - Breast Awareness	240.66	6.38	3672.1%
Christmas Hamper Raffle	0.00	53.00	(100%)
Sales of Merchandise	1,449.82	1,490.20	(2.7%)
Membership	363.79	319.20	14%
Easter Raffle 2021	0.00	273.21	(100%)
Donation - Craft Club	501.62	369.80	35.6%
Bra Bank	(120.53)	72.10	(267.2%)
Donation - Budleia	662.93	296.83	123.3%
Gift Aid	0.00	618.89	(100%)
Project Income	3,515.78	340.40	932.8%
Monthly Meeting	31.27	0.00	-
Easter Raffle 2022	202.39	0.00	-
Annual Ball income	3,929.82	0.00	-
Little Shop of Horror Tickets 2022	(41.00)	0.00	-
Pink Butterfly Week	231.00	0.00	-
Butterfly Ball Raffle 2022	487.87	0.00	-
9to5 Musical	150.00	0.00	-
Total Revenue	48,555.34	48,903.85	(0.7%)

Total Income	48,555.34	48,903.85	(0.7%)
---------------------	------------------	------------------	---------------

Administrative expenses

General administration			
Patient Packs	(1,286.59)	(1,944.49)	33.8%
Postage and packaging	(1,328.04)	(694.54)	(91.2%)
Wig Bank - Expenses	(1,482.94)	(569.72)	(160.3%)
Printing and stationery	(2,039.65)	(1,761.09)	(15.8%)
General admin	(556.55)	(1,152.53)	51.7%
Accounting fees	(90.00)	(99.00)	9.1%
Event	(912.15)	(324.08)	(181.5%)
Budleia - Expenses	(997.58)	(1,015.53)	1.8%
Goodwill - Flowers	(541.40)	(404.50)	(33.8%)
Website	(760.80)	(270.48)	(181.3%)
AGM	(401.25)	(98.50)	(307.4%)
Craft Club Expenses	(836.32)	(343.57)	(143.4%)
Purchase of Equipment	0.00	(68.84)	100%
Cleaning	(520.65)	(226.92)	(129.4%)
Storage Facility	(2,015.00)	(1,140.00)	(76.8%)
Purchase of Merchandise	(734.42)	(740.00)	0.8%
Pamper Day	(682.81)	(939.48)	27.3%
Bursary	(109.00)	0.00	-
eBay	(155.98)	0.00	-
Butterfly Effect	823.00	0.00	-
Subscriptions	(3.99)	0.00	-
Dance Class	27.00	0.00	-

Cash Flow

HBF15 - Butterfly Ball	(4,076.61)	0.00	-
Total General administration	(18,681.73)	(11,793.27)	(58.4%)
Salaries			
Salaries	(22,723.91)	(20,790.60)	(9.3%)
Total Salaries	(22,723.91)	(20,790.60)	(9.3%)
Rent and rates			
Rent and rates	(2,076.00)	(1,560.00)	(33.1%)
Insurance	(544.04)	(567.88)	4.2%
Total Rent and rates	(2,620.04)	(2,127.88)	(23.1%)
Communications			
Telephone	(936.00)	(864.00)	(8.3%)
Total Communications	(936.00)	(864.00)	(8.3%)
Current assets			
Trade debtors			
Trade debtors	(67.66)	0.00	-
Total Trade debtors	(67.66)	0.00	-
Current liabilities			
Trade creditors			
Trade creditors	0.00	49.00	(100%)
Total Trade creditors	0.00	49.00	(100%)
Funds Generated From Operations	3,526.00	13,377.10	(73.6%)
Financing Cash Flow	3,526.00	13,377.10	(73.6%)
Investing Cash Flow	3,526.00	13,377.10	(73.6%)
Total After Drawings	3,526.00	13,377.10	(73.6%)
Net Cash Movements	3,526.00	13,377.10	(73.6%)
Cash Balance			
Cash Flow	3,526.00	13,377.10	(73.6%)
Total Cash Balance	91,489.01	87,963.01	4%