

HOME START

Kettering Area

Annual Report and Accounts
2024/2025



The William Knibb Centre
Montagu Street
Kettering
Northamptonshire
NN16 8AE

t: 01536 484 318
m: 07935 402 179

www.homestartkettering.org.uk
admin@homestartkettering.org.uk

 [homestart.ketteringarea](https://www.facebook.com/homestart.ketteringarea)

 [HSKettering](https://twitter.com/HSKettering)

Home-Start Kettering Area Company Details

Home-Start Kettering Area was established in 1994 to provide families with children under five support and friendship.

We work with local volunteers, trustees and funders to provide vital services for families in the area including Kettering, Desborough, Rothwell and surrounding villages.



Registered Charity Name

Home-Start Kettering Area

Charity Registration Number

1114030

Registered Office and Operational Address

William Knibb Centre
Montagu Street
Kettering
Northamptonshire
NN16 8AE

Company Registration Number

5709942

Patron

Lady Gayle Robinson
Crispin Holborow

Board of Trustees

Keith Wright (Chair)
Chris Arthurs (Safeguarding & GDPR)
Beccy Hurrell (Finance Lead)
Bernadette Leather (Fundraising Lead)
Ruth Wright (Volunteer Rep)
Keli Watts
Sue Stokes (Resigned July 24)
Abbie Underwood (from Nov 24)
Marie Cox (from Nov 24)

Staff Members

Nikki Farrar-Hayton (Manager)
Donna Rockett (Office Administrator)
Mary Docherty (Family Support Coordinator) (From July 24)

Bankers

Natwest
16 High Street
Kettering
NN16 8S2

Accountants

Bewers Turner & Co
Portland House
13 Station Rd
Kettering
NN15 7HH

This report covers Home-Start Kettering Area activities and financial statements.

Home-Start Kettering Area is committed to the safeguarding of children and families. A full list of our policies are available to view at our office, including Safeguarding, Code of Conduct, Health and Safety, Information Governance, Confidentiality and Data Protection.

**HOME
START**
Kettering Area

Reach the family - Reach the child



What we do

Home-Start helps families with young children deal with whatever life throws at them. We support parents as they learn to cope, improve their confidence and build better lives for their children. The benefits of our support include improved health and well-being and better family relationships.

We provide one-to-one support for parents

Our volunteers visit the family's home for 2-3 hours every week. The support is tailored to the needs of the parents and children and usually lasts for up to 6 months. Parents and volunteers often develop a deeply trusting relationship which can lead to powerful change within the family.

Why it matters

What goes on inside a family determines the opportunities and life chances children have. Children who are raised in a stable, loving, family environment are more likely to have a positive and healthy future. But being a parent isn't easy and sometimes life can get in the way. Circumstances throw you off course and everything else can take a back seat. A young child caught up in this can miss out on the love, routine and stimulation that are so vital for their future.



Our Values

- We offer families choice
- We work in partnership – with each other, with families and with other agencies
- We work in a spirit of openness, encouragement and enjoyment
- We are flexible and responsive to the needs of families

Home-Start works because most of our volunteers are parents and everyone completes 6 weeks comprehensive preparation. They understand how hard it can be. They work alongside parents, in their own homes, to help them cope with the stresses and strains of life and make sure they have the skills, time and strength they need to nurture their children.

Our vision:

Home-Start wants to see a society in which every parent has the support they need to give their children the best possible start in life.

**HOME
START**
Kettering Area

Chair's Report – Keith Wright



As I reflect on my second full year as Chair of Home-Start Kettering Area (my third as a trustee), I do so with an immense sense of pride and gratitude.

One of our key strengths is our volunteer network - which remains a pillar of our success. The commitment and compassion shown by our volunteers continues to inspire me, and the positive impact they make is clear to see in the families we support. A huge thank you must go to our Manager, Nikki Farrar-Hayton, whose leadership in this area is exemplary.

I am delighted that we have further strengthened our Board of Trustees. We were delighted to welcome Marie Cox and Abbie Underwood, who bring valuable expertise in marketing and safeguarding respectively. Their contributions are already making a positive difference to our strategic direction and governance.

We were also thrilled to secure additional support from the John Armitage Foundation, enabling us to expand our team with the appointment of Mary Docherty - our third member of staff. Mary's arrival marks an exciting new chapter in our operational capacity, enhancing the support we can offer local families through groups.

Financially, we have maintained a robust position despite challenging external conditions. My thanks go to Beccy Hurrell, who has led this area on behalf of the Trustee Board. I also extend my thanks to our Friends Committee. This was chaired by David Gwinn, who stepped down in January. Thanks to David for his support over the many years.

We've secured a number of strategic grant wins, and with the generosity of our donors, each contribution has made a meaningful difference.

Special thanks go to the following funders for their generous and ongoing support:

The High Sheriff Initiative Fund, Maud Elkington Charitable Trust, Kettering Town Council, Northamptonshire Community Foundation, Michael Guest Charitable Foundation, North Northamptonshire Council, Stockburn Memorial Trust, and Bowers, Turner & Co.

We continued to benefit from being part of NNBN this year, forging valuable local partnerships. I extend my thanks to Simon and Marie Cox for facilitating this, and to Poppy Design Studio for their continued support with our website and annual report.

Finally, some heartfelt acknowledgements:

To our volunteers – You are the heartbeat of our charity. Thank you for the time, care and commitment you bring every day.

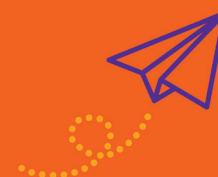
To Nikki Farrar-Hayton, Donna Rockett and now Mary Docherty – Your dedication and passion embody the spirit of Home-Start.

To our Trustees – Thank you for your insight, challenge, and support. It's a privilege to work alongside each of you.

To our funders – Your generosity underpins everything we do.

To the families – Thank you for trusting us. We hope our support has helped you feel stronger, more confident, and more connected.

*With sincere thanks,
Keith Wright*



**HOME
START**
Kettering Area

Manager's Report – Nikki Farrar-Hayton

As I sit down to write this, I find it hard to believe that this is my 25th year working for Home-Start Kettering. What a journey it's been! I am immensely proud of everything we have achieved together in that time—and even more excited about what lies ahead.

This year has been one of growth, celebration, and deep gratitude. It also hasn't been without its challenges. The cost-of-living crisis continues to weigh heavily on many families, with the housing crisis adding even more pressure. But in true Home-Start Kettering spirit, we've come together—staff, volunteers, funders, referrers, and families—to make sure that no one feels alone.

We've had the privilege of supporting:

- 80 families with one-to-one weekly home visiting support,
- 12 families with group-only support, and an additional 110 families through office-based support, including food parcels, help with energy bills, back-to-school support, nappies, formula, and other essentials.

Altogether, that's 531 children and 297 parents who have been supported by our amazing team this year.

I'm thrilled to share that thanks to a generous donation of £25,000 a year for 3 years from the John Armitage Charitable Trust, we welcomed Mary Docherty to the team on 1st July 2024 as our new Family Support Coordinator. Mary has brought fresh energy and vision to her role. She set up and now runs the hugely successful Little Stars Stay and Play as well as the drop-in for families at The Green Patch. She also oversees volunteer support to families and has become an invaluable part of our team. We are so lucky to have her!

And speaking of luck—we are blessed to have 36 incredible volunteers who have given their time, care, and compassion to support families this year. We simply couldn't do what we do without them. Behind the scenes, the ever-wonderful Donna Rockett, our Office Administrator, keeps everything running smoothly. Donna has been with us for nearly 11 years, and there's no way we could deliver the level of support we do without her quiet efficiency and dedication.

We've also helped families with more complex needs:

3 families successfully appealed their PIP award decisions,

2 families were supported in moving from temporary accommodation into permanent homes.

We were honoured (and very excited!) to be nominated for a 2025 King's Award. The visit from the "King's Men" back in February brought so much joy and recognition to the team and the work we do. We won't know the outcome until the autumn, but I'm already so proud of this nomination—it's a testament to the impact we're having locally.

This year also marked 30 years of Home-Start Kettering supporting local families. What an incredible milestone! We marked it in true Home-Start style—with hard work, compassion, and joy—and we're already looking forward to the next 30 years. We know how special Christmas is for families, and thanks to the generous support of so many people throughout the year, we were able to host a magical party for 25 families and 60 children. Father Christmas even had his own grotto where he met with every family, spoke with each child, and gave out presents. It was a truly heartwarming event.

We also know how tough the long summer holidays can be for many. That's why we were delighted to take 28 families and 90 children to Wicksteed Park, where everyone had wristbands to enjoy all the rides, a backpack filled with essentials and goodies, and a delicious picnic. Watching families laugh and make memories together was an absolute highlight of the year. I'd like to say a huge thank you to:

Our funders, all of whom are acknowledged on page 19—for making this work possible,

Our Trustees, who ensure we continue to deliver high-quality, responsive services,

Referrers, for trusting us to walk alongside the families they support,

Our volunteers, for their time, heart, and dedication,

And most of all, the amazing families we support, for their trust in us and for allowing us into their lives.

I'm filled with gratitude as I look back—and full of hope as I look forward. Here's to another year of walking alongside local families, and to many more years of love, laughter, and support.





Family Stories

Aaron

I have been asked by Home-Start to write something about my experience of been involved with Home-Start, and the reason why I and my three children came to the attention of Home-Start. So here we go.

The reason why we were referred to Home-Start was because, unknowing to me at the time, I had just come out of a very controlling and abusive relationship of 13 years and 3 children later. My ex-partner left me with nothing apart from my three children and I won't lie; it has been a living nightmare.

So, from the moment I met Nikki She understood our situation and wanted to help. She'd mentioned what Home-Start was all about, I knew she understood what we've been through, and I knew she would be able to help us. She arranged for us to have a volunteer come to the house once a week and he has been amazing. To think he gives up his own time to spend time with us and listen to me moaning on. It's incredible and when I think about what Home-Start have done in terms of helping me pay my gas and electricity bill, helping me with my food shopping, which felt like a massive weight had been lifted off my shoulders, but more importantly, sorting my head out.

Home-Start also helped with the DIY jobs around my house. They also run a toddler's group which is totally funded by Home-Start and it's really nice to see my son being able to interact with other children his own age, give me the chance to talk to adults my age. They also provided Christmas presents and Easter gifts, items of clothing and bedding for my children, which really warms my heart, because when you go through the abuse that we had suffered, you start to think nobody cares and you're on your own, but Home-Start has proved me wrong. I am so grateful.



I hope Home-Start can continue their work to support other families with similar situations to us and I'm sure with all the donations and the sponsorship that comes their way, they will continue to do the utmost, to make sure the money goes to the people that need it the most. So, thank you, Home-Start from the bottom of my heart, and one day I hope to repay you.



**HOME
START**
Kettering Area

Little Stars Stay and Play

Since starting the group in September, the number of families that have utilised the group has been fantastic. At the group we have different toys and activities out each week, we offer outside play with balance bikes, walk along toys, scooters, ride on toys, balls to kick and throw, chalk boards and chalks. Being outside allows the children to join in with activities such as running, skipping, jumping, biking, balancing which all helps with their gross motor skills.

Different activities that we have offered are, Play-Doh, painting, colouring, junk modelling, water play, messy play, instrument making plus lots more. Each week we have trays out with different activities to do to help with fine motor skills, such as threading, moving balls with plastic tweezers from one pot to another, catching magnetic sea creatures, threading, nuts and bolts turning, Duplo which are all good for helping them develop their fine motor skills.

We have a baby area where we put out age-appropriate sensory toys for the babies for the parents to interact with them and give the babies experiences of different sounds, touch, materials which is all good for a babies development. All babies and children have access to the sensory room which has different lights and toys to play with, this is a calming space for parents and the children.

At the end of each session, we have song time where we encourage parents and children to join in. The engagement for this is good and over the weeks the children are learning the songs and being more interactive with them. They enjoy Old McDonald had a Farm, The Wheels on the Bus, Wind the Bobbin up and songs that have actions that they can copy. We then always finish off song time with Twinkle, Twinkle so the children know that it is the end of the session.

Each week the children come in with a smile on their face and over the time they have been coming have grown in confidence and most of the children will now play independently and checking that their parent or carer is still there every so often. We had children at the start not wanting to leave their adult, they would not really interact with others, however through coming regularly and seeing familiar faces the parents and children are much more comfortable with interacting with others and the children go off and explore on their own.



“

Thanks for today, I was really worried and anxious about bringing the twins today, but you all were so lovely and understanding

Great playgroup, lots of different activities, good outdoor space. The volunteers are very engaging. The boys always get excited to attend.”

Just wanted to say thank you for today, I think this is going to be a lifeline to me.

Thank you for today I enjoyed it seeing new faces and my daughter loved it too thank you

28

Number of families
accessed group

29

Number of under 5s
accessed group

12

families
Average weekly
attendance

11

Number of under
1s accessed group





Volunteer Report - Jane

I first heard about Home-Start when a friend of mine sent me an advertisement about a new volunteer course. Straight away this seemed like the sort of organisation that I would like to get involved with.

I had retired early and, with two grown up children that didn't need so much from me anymore, I had plenty of spare time. Helping families that needed support was something that really resonated with me. When I first became a mother, I didn't have parents that could help or family nearby and most of my friends had older children. Initially I remember feeling overwhelmed and lonely. Being a mum can be isolating and scary so being in a position to help other families cope with life as a parent felt like something I really wanted to do.

The preparation course was very interesting, interactive and contained all the information we needed for the role. Nikki delivered the course brilliantly and after the first session I knew this was for me. Everyone in the office is always there to guide and support you, so you can always contact someone for guidance or to just talk things through if situations have been a bit challenging.

When you start with your first family Nikki gives you a full report on the needs of the family and a basic idea of what areas they may need help in. The most important thing as a volunteer is to go in with a listening ear, open heart and mind. Sometimes you may be the first person they have been able to confide in.

My first family was a lady who had three young children and where English was not her first language, who was very isolated and lonely. From the very beginning I was so humbled that this young mother let me into her home and was so welcoming. The thing that struck me most is the trust families have in you.

She talked about her situation and what she needed help with and we just chatted a lot. Sometimes I was the only person she spoke to that week. I helped her navigate various government systems, find new primary schools for her children and fun activities for the children to do. When I moved onto my next family, I felt content that I had helped this lady and made a difference to her family's life. However most importantly, my belief in the power of Home-Start was initiated.

As a volunteer, sometimes I found myself questioning what I can really do to help. But the answer is to listen, validate and comfort. Never underestimate the power of just talking and listening to a family. The system can be hard to navigate, especially when families have multiple children and services they use. In providing your time, you can unpick their concerns, guide families and be someone they can trust. Being part of Home-Start is one of the most rewarding things I have ever done.

**HOME
START**
Kettering Area

Family Report – Fiorela

One year ago, I was pregnant and in a meeting I had with the midwife, I told her that I felt very stressed, alone and physically and emotionally exhausted. I was in a very difficult situation. The midwife told me that there are associations that can help and support you. She asked me if I would like her to contact them, I accepted and she found me the opportunity to have support from Home-Start.



It all started here, Nikki came to my house and did not hesitate to help me in any way. At the second meeting I met my volunteer Jane, a noble loving, smiling, unique women I would say.

As soon as I had the baby I was very fragile, postpartum I needed someone and Jane was there for everything. She helped me find a school for the children because their school was too far away in Rushden, she helped sourcing the school uniform and the registration. For me Kettering was a new town I did not know. Jane helped me find childcare places for the children to play but above all I had a friend who I didn't hesitate to tell anything that was worrying me. Jane never said no to anything I asked of her. Being a single mother of three children without any family members close by is very difficult, it affects me emotionally, mentally...But Jane stood by me and very quickly became part of my family. I don't speak English well and I'm writing this message in Albanian, I hope Google translate will translate it correctly the way I want to express myself in Albanian.

Thank you for allowing me to be part of Home-Start.

With much love, Fiorela



**HOME
START**
Kettering Area





Patron - Crispin Holborow

I first heard of Home-Start Kettering when the school my children attended chose to support it as their charity of the year. At that stage, I had no real understanding of the important work you do, but it was telling that the school children voted for it as the charity they most wanted to support.

I was later reintroduced to Home-Start Kettering during my year as High Sheriff. It was one of the first charities I visited, and it created an instant impact. I was struck by the dedication of the team, working tirelessly to support such a vital cause. It still amazes me today how a handful of people can have such a meaningful impact on this part of Northamptonshire.

Throughout my year as High Sheriff, I was repeatedly reminded of the importance of prevention in helping keep people on the right path, and I am always aware that Home Start is one of the key charities that is so effective in this space—bridging the gap between social services and the families so desperately in need.

I felt an instant rapport with the team and still can't believe how such a small group of people can make such a meaningful difference to our local community.

When they asked me to become a patron I was delighted to accept in order to support them in any way I can.



Volunteer Report - Christine

After my volunteer training at the beginning of 2024, I was allocated my first family who Nikki introduced me to, to discuss how I could help.

I struggled to get mum and the children out and about despite various suggestions due to mum's anxiety. I did manage to take the eldest out to a nearby park on several occasions and then I would take him to nursery which then turned into the school run during my time. This allowed mum not to be overwhelmed with getting out the door with 3 children with time restrictions.

As we got to know each other she felt confident to leave me babysitting if she had a doctor's appointment or needed to get something from the shop or chemist. She would talk constantly to me quite openly about her struggles. As she had explored all that was available to her all I could do was listen. I think only twice she asked about me and my life but it wasn't about me.

During my 6 months she never once cancelled on me. I did feel a bit useless at times but went at her pace, she wasn't one to be pushed.

On my last day she said to me, I shall miss our Thursday mornings, you never once judged me. And really that was enough.

Referrer's Report – Lizzie Baker

Greenfields Primary School and Nursery have been lucky enough to have had support from Home-Start Kettering for over ten years.

We have a great working relationship and have had extensive support from Nikki and Donna and the wonderful volunteers.

Many of our families have benefitted from the support of a Home-Start volunteer, who have been matched with the family to ensure they are the right person to help. This help comes in different ways, from helping to attend appointments, helping to take children out in the community setting, helping with cooking and budgeting and being someone to talk to – an independent friendly listener and advisor.

We have sought support from their Foodbank and help with signposting families to the appropriate services. We have seen how working with Home-Start benefits our families, helping them to make what can be challenging and difficult decisions, helping them to access and more importantly to engage with services and ultimately improve their lives and those of their children – significantly improving outcomes for children. We truly value our relationship with Home-Start and know that we can pick up the phone and ask for help when needed.

Thank you for all your support and the fantastic job you do.

Greenfields Primary Nursery and School



**HOME
START**
Kettering Area



Family Support Co-ordinator - Mary

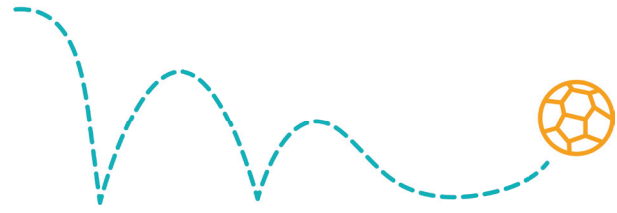
I applied for the role of Family Support Coordinator as I had previously been a volunteer with Home-Start Kettering, and I loved being able to give my time to families in need. Seeing the difference Home-Start make to families made me really want to support families in need. I had a few years where I was unable to volunteer due to work and family commitments, but then I became ill with covid and I was forced to leave my job as Assistant Practitioner on a Children's Ward at Kettering Hospital, I moved on to a role in a mum and baby unit which was managed by a private company who only seemed to care about making money and not supporting mums to enable them to keep their babies. When I saw the advert for the role at Home-Start Kettering, I knew I had to apply. My family and friends said this would be a great job for me and on the day of the interview, I was very nervous as honesty it is my dream job. When I received the call to offer me the role, I was over the moon and could not wait to let my family and friends know.

I started my role on July 1st, 2024, where I spent 4 weeks shadowing Nikki to ensure I was fully equipped for supporting families and volunteers. After the 4 weeks shadowing, I began having my own caseload, starting with families that had already been matched with volunteers which I took over from Nikki. In September 2024 I started the Little Stars Stay and Play group for our Home-Start families. Referrers can refer for group only support if they feel the family would benefit from attending a non-judgemental group. The group has been very well supported and continues to be accessed each week by a good number of families. The feedback from the parents and carers is extremely positive and I have included some in my group report on page 7.

Since starting my role, I have attended 16 EHA's, 30 1-1s with volunteers, 19 initial assessments, 9 family reviews and 4 end reviews. I have assisted a family to request an EHC plan, and 2 families fill in paperwork for Autism and ADHD paperwork.

From April two new groups will be starting, an outdoors stay and play at the Green Patch which will give our families the opportunity to enjoy the outdoors, there will be lots of messy play and learning about nature and growing our food. The second group is a parent support group which will offer support and advice, arts and crafts plus tea and toast. This is a group for adults only who have children in nursery or school to come and have some time to themselves and will run once a month.

I have been in my role for 9 months and absolutely love the job, I feel like I have fitted in well into the team and I have built good relationships with the volunteers and families. Each day is different, which I enjoy and I feel so humbled to be able to be part of a family's journey whilst they are with us and to work alongside such amazing volunteers who make coming to work each day so worthwhile.



Safeguarding Trustee Report - Chris Arthurs

If you have read the Annual Report over the last 12 years, you may have noticed that my Safeguarding Report has changed little from year to year. This has been because our responsibility to safeguard the adults and children we work with, and each other, is ongoing.

This year is different as I am very happy to be introducing Abbie Underwood as taking on the role from today as I step down as a Trustee. Abbie is very well qualified to take on the responsibility of Lead Safeguarding Trustee and is very much on the ball with modern day Safeguarding issues, including being safe on-line and the use of social media. I will still be a Volunteer, focussing on short term financial advice and DIY, and I hope to work with Home-Start Kettering for as long as I am useful.

Home-Start is an amazing organisation and all of our supporters – Volunteers, Staff, Trustees, Donors, and Families contribute to our success. I have been aware of Home-Start's excellent work since the '70's and it is a privilege to be part of that success.

The founder, Margaret Harrison, wrote:

“A touch of human kindness and a sense of hope can lead irrevocably to greater personal wellbeing, it can rekindle that twinkle in the eye, a spring in the step, and the sound of laughter. A Home-Start Volunteer backed up by the Home-Start community can lead to a cycle of people helping each other again with ever widening circle of friendship. Together let's continue to share the magic and our humanity with families.”

I think many of us will have seen some of that in our work with Home-Start Kettering.

And remember, if you have the slightest doubt about the safety or well-being of anyone in our community don't hesitate to contact Nikki, Abbie or Ruth. Better safe than sorry.

Chris Arthurs

Volunteer Rep - Ruth

We are heading into our 30th year at Home-Start Kettering - yes 30!!!! 30 years of supporting local families. Thats a lot of families and a lot of volunteers! I think that is worth celebrating. I'd like to say what a wonderful year it's been. Our fantastic volunteers have supported our local families in many ways, food parcels, home visits, Christmas packages, Christmas party, Easter eggs, a great day at Wicksteed Park... there is too much to list!

Home-Start Kettering is always willing to help; we really are an amazing team. Being a trustee and a volunteer for Home-Start has shown me just how kind people are.

Things have been tough, with energy prices and bills climbing in general. People understandably having to look for work and put volunteering on hold, leaving us with a shortage of volunteers at times but we have pulled together and continued to help our families, showing them they are not alone. It really does make a massive difference. We've all needed that smiley face to knock on the door at times and I feel Home-Start has some of the best smiles. We are always looking for more friendly faces to join us, please get in touch or spread the word.

Thank you to all our volunteers old and new and thank you to all that support us in our work.

Here's to our 30th year Kettering Home-Start! Lots more smiles to come :)



Source of Referrals Received

42%

Health Visitors

16%

Schools/Nurseries

9%

Family Support Services



6%

Portage

7%

Other Health

8%

Mental Health Navigators

1%

Self Referrals

3%

Social Services

4%

Police/Domestic Abuse Services

3%

Midwives

HOME
START

Kettering Area

Friends of Home-Start Report – Bernadette



Raising funds for Home-Start Kettering is always a top priority and we couldn't do it without the dedication of our Friends of Home-Start.

2024 saw our 30th year supporting local families and we set ourselves the challenge of raising £30,000. Thanks to the support of so many people we smashed our target.

In May the UE Group held a fantastic Golf Day raising £2200, Cllr Jim Hakewill featured on Find it Fix it Flog it and donated £500. In June, the village of Old held a Bridge Drive Raffle for us and raised £195, Gill Parton's annual Open Day raised £1600. Our Chair, Keith Wright walked 30 miles and raised £1000 and our inaugural Family Fun Day raised £365. In July, Cary's Sky Dive raised £1000.

October started off with our annual Bingo and Curry night and was a huge success raising £1500. The 23rd Kettering Scouts took a team of us on an adventure with a 15-mile hike armed with a map and compass, we had to find our way to camp where we slept in hammocks. Thanks to everyone involved, we raised £2000.

November saw our Annual Quiz Night in Walgrave with another fantastic amount raised, over £3000. Geddington Kites Ladies Rounders Team end of season bash raised £500 which was match funded so £1000 was donated!

In December, our new Patron, Crispin Holborow held a festive evening in the beautiful Thorpe Malsor Hall and £500 was raised. Michael Docherty ran his first Half Marathon and on the same day Mary held a Coffee Morning and between them £300 was raised!

Kettering Bhangra Classes held a charity dance class for us and raised a fantastic £700! It was great fun and a few of us were even brave enough to try it.

We have more fantastic events coming up this year. We are in our second year of partnering with Hanwood Park who provide us space and support for our Family Fun Day. We have the always popular Curry and Bingo night coming up in the autumn along with our Annual Quiz Night, a Fashion Show and we are excited to be involved with the 2nd Kettering Half Marathon in 2026. If you'd like to enter and raise funds for us, get in touch. We're always looking for fresh ideas and enthusiasm and we would love to welcome new members to the Friends team. Whether you have a passion for organising events or are happier helping in the background, we would be delighted if you joined us! Contact the office for details of our next meeting.

Thank you to everyone who supports our events, the Friends of Home-Start who plan and run them and the many volunteers who give their time to help. We are very grateful to you all and your support really makes a difference to every Home-Start family.



The Year in Numbers

Over
700
volunteer
visits



volunteer time with families

Over
1000

Friends hours donated
to Home-Start
Kettering

Summer Trip 2024

28
families



90
children

69
adults

136

wristbands
given to families

186

picnics



4000

volunteer hours
in total

Over

£34,000

raised through
fundraising



Christmas 2024

57 families

153 children

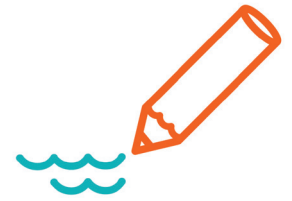
**HOME
START**

Kettering Area

Financial Statement

Incoming Resources	24/25	23/24
Grants	50,730	58,345
Donations and Fundraising	32,176	50,302
Gift Aid	1,971	2,752
Bank Interest	2,002	944
Total Income	86,879	112,343
Charitable Expenditure		
Service Delivery	98,085	73,724
Administrative Overheads	8,368	6,168
Depreciation	503	378
	106,956	80,270





Treasurer's Report - Beccy Hurrell

I want to start this report off by saying a huge thank you to the Friends of Home-Start Kettering, donors and grant providers – everyone who has been involved in raising funds to ensure that we are still in a strong financial position at the end of 2024-25. However, we have had to draw on reserves this year.

We know that the cost of living continues to remain high. We are so thankful to everyone who is able to support us both with time and with finances. We wouldn't be here without either of these things. Please do look at the 'Thank You' page to see how many people believe in what we do. This year has seen us have an impact on more families than before.

We were fortunate to continue to receive funding from the John Armitage Charitable Trust, which has enabled us to have Mary on board as our Family Support Coordinator. The impact her work is having is fantastic to see, and has been growing throughout this first year.

2024 saw us celebrate 30 years of Home-Start Kettering Area, and we set ourselves the challenge of raising £30,000 through fundraising and donations, outside of the grants that we apply for and report on each year. I am delighted to say that we exceed that target by over £4,000.

We are incredibly grateful for the ongoing efforts of the Friends of Home-Start Kettering, who tirelessly organise events and activities to boost our fundraising. A big thank you to Nikki and Donna, for their exceptional work in sourcing grants and managing our finances daily. Their dedication is invaluable to our continued success.

Despite all the support we've received, we are beginning to struggle with our unrestricted funds. These are the funds that enable us to pay Nikki and Donna, and cover our administration expenses – IT, stationery, office equipment. Most grants do not allow us to use them for these purposes – and without these things Home-Start Kettering wouldn't exist, and we wouldn't be able to use the funds we do receive that make such a difference in our area. Please, if you are able to, think about setting up a standing order each month – as Tesco say; "Every little helps". If you're not able to do that, but can volunteer some time to help with fundraising it would be so appreciated by all.

Once again, our grateful thanks to everybody who has supported us in any way. The families and children are still there, needing our support. Our waiting list continues to grow. The need for new volunteers and new fundraising ideas still remains.

Your unwavering support and commitment to our cause makes a difference in the lives of many.



Thank You



23rd Kettering Scout Group
All Saints Church
Ann Ireland
Asda Kettering
Barton Seagrave Primary School
Bewers, Turner & Co
Biker Masons
Braybrook Church
Cadent
Cary McQueen
Chris Arthurs
Cllr Anne Lee
Cllr Craig Skinner
Cllr Dez Dell
Cllr Emily Fedorowycz
Cllr Jim Hakewill
Cllr John Hunter
Cllr Keli Watts
Cllr Maggie Don
Crispin Holborow
Currys Kettering
David Donoghue
David Gwinn
David Wilson Homes
Dawn Coles
Dezign2decorate
Dr Trevor Morgan
Dunelm Kettering
EA Timson Trust
Family Hub
Faraway Children's Charity
GB Appliances
Geddington Church
Geddington Kites Ladies Rounders Team
Geddington Primary School
Gill Parton
GMB Union
Groundworks
Hanwood Park
Havelock Infant and Junior School
Hawthorn School
Hayfield Cross School
Health Visitor Team
Howdens
Howdens Raunds Distribution centre
Howdens Wellingborough
Jim Hakewill
John Armitage Charitable Trust
Kafe Bloc
Kettering Community Unit
Kettering Bhangra Classes
Kettering Family Hub
Kettering Green Party
Kettering Lions
Kettering Science Academy
Kettering Town Council
Kieran Hayes Carpentry
Lady Gayle Robinson
Latimer Arts College
Linus Quilts
Loddington Church and School
Loz Anstey
Mash Dance
Massive Hits Radio
Maud Elkington Charitable Trust
Mawsley School
Mega Care Nursing & Care
Michael Docherty
Michael Guest Foundation
Mike & Rayna Smith
Millbrook Infant School
MIND Kettering
Morrisons Kettering
MP Rosie Wrighting
NNBN
North Northamptonshire Council
Northamptonshire Community Foundation
Nursery Connections
Old Bridge Drive
Peter Wilson Family Trust
Pharmacy 2 u
Poppy Design Studio
Purchasing for Parks & Purchasing for Business
Rotary Club of Kettering Huxloe
Sainsburys Desborough
Sainsburys Kettering
Sarah Frankham
Sarah Watkins
Shurgard
Solace Trust
Sorooptimists
Spratton School
St Andrew's Church
St Peter's School
Steve Barnett
Stockburn Memorial Trust
Stuart Bates
Sulina Chatburn
Terracycle
Tesco Kettering
The Green Patch
The Hut Cafe
UE Group
Walgrave Benefice
Willowbrook Adventure
Woodcroft Scout Centre

Risk Management and Key Policies

The Trustees ensure that the major risks to which Home-Start is exposed are reviewed and assessed and that systems are in place to mitigate those risks. The Trustees have agreed a risk assessment policy for which they have overall responsibility. All key policies within the organisation are regularly reviewed and updated as appropriate to reflect any legislative changes and the latest developments and thinking in relation to best practice.

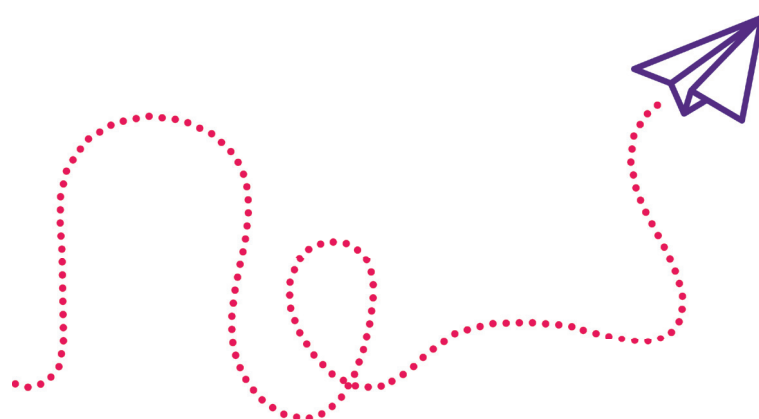
Home-Start's work is primarily of a long term, fixed nature. The objects of the Charity are:

- To safeguard, protect and preserve the good health, both mental and physical of children and their parents.
- To prevent cruelty to or maltreatment of children.
- To relieve sickness, poverty and need amongst children and parents of children.
- To promote education of the public in better standards of childcare within the area of Kettering and its environs.

Reserves Policy

The Trustees have reviewed the Charity's needs for reserves in line with the guidance issued by the Charity Commission and agreed to set aside reserves equal to six months of running costs, set at £53,000 for the upcoming year.

At 31st March 2025 the Charity held £52,120 in unrestricted funds, close to the target level, and £46,914 in restricted funds for specific purposes. The Trustees consider the financial position to be stable and adequate for ongoing operations.





Volunteers

Without you, none of this could happen...

Abbie	Gill	Krassy	Rita
Abigail	Helen	Laina	Ruth
Algernon	Jane A	Laura	Sandy
Alison	Jane P	Lisa	Sara
Amanda	Jane W	Louise T	Sonal
Beccy	Jayne	Louise K	Sue
Bernadette	Jenny	Luisa	Teresa
Catherine	Joanne	Lynda	Tina
Chris	Jody	Marie	Tor
Christine	June	Michelle	Trudy
David	Keith	Olajumoke	Ursula
Elaine	Keli	Rayna	

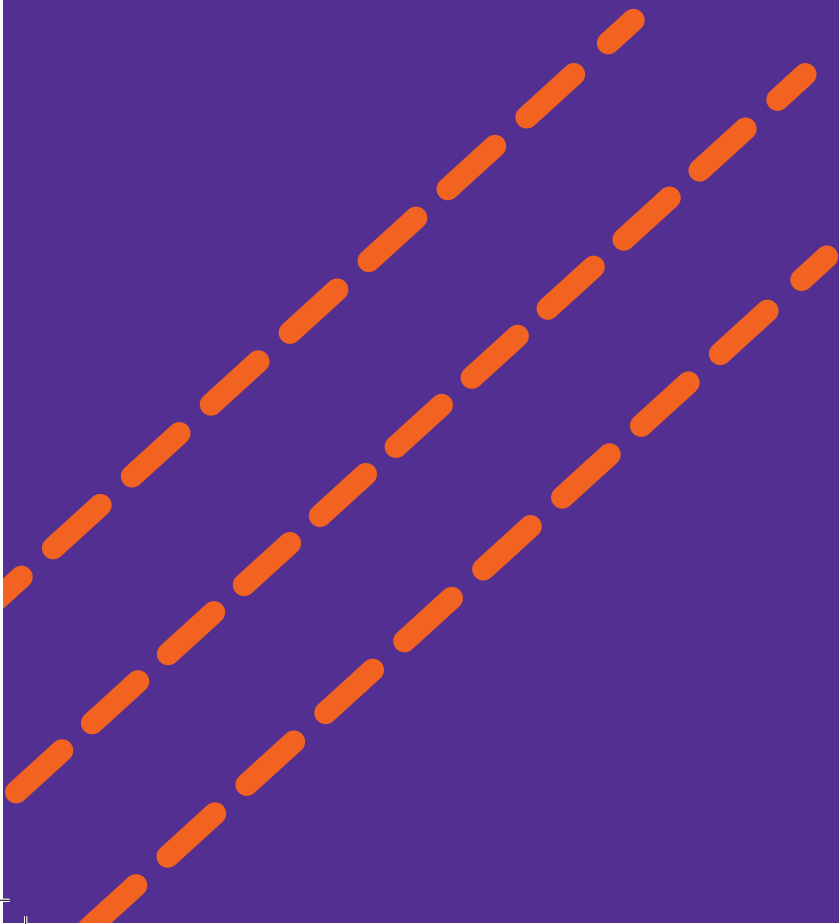


**HOME
START**
Kettering Area



Kettering Area

**Because
tomorrow
starts today**



REGISTERED COMPANY NUMBER: 05709942 (England and Wales)
REGISTERED CHARITY NUMBER: 1114030

**REPORT OF THE TRUSTEES AND
UNAUDITED FINANCIAL STATEMENTS
FOR THE YEAR ENDED 31ST MARCH 2025
FOR
HOME-START KETTERING AREA**

Bewers Turner & Co LLP
Chartered Accountants
Portland House
11-13 Station Road
Kettering
Northamptonshire
NN15 7HH

HOME-START KETTERING AREA

CONTENTS OF THE FINANCIAL STATEMENTS FOR THE YEAR ENDED 31ST MARCH 2025

	Page
Report of the Trustees	1 to 2
Statement of Financial Activities	3
Balance Sheet	4 to 5
Notes to the Financial Statements	6 to 12
Detailed Statement of Financial Activities	13

HOME-START KETTERING AREA

REPORT OF THE TRUSTEES FOR THE YEAR ENDED 31ST MARCH 2025

The trustees who are also directors of the charity for the purposes of the Companies Act 2006, present their report with the financial statements of the charity for the year ended 31st March 2025. The trustees have adopted the provisions of Accounting and Reporting by Charities: Statement of Recommended Practice applicable to charities preparing their accounts in accordance with the Financial Reporting Standard applicable in the UK and Republic of Ireland (FRS 102) (effective 1 January 2019).

Please visit the charity commissions website to see the full Trustees report.

OBJECTIVES AND ACTIVITIES

Objectives and aims

Home-Start helps families with young children deal with whatever life throws at them. We support parents as they learn to cope, improve their confidence and build better lives for their children. The benefits of our support include improved health and well-being and better family relationships.

FINANCIAL REVIEW

Financial position

Income for this year was £86,879 which was an increase compared to 2023-24 and with total expenditure of £106,956, this results in net deficit for the year of £20,077.

Reserves policy

The Trustees have reviewed the Charity's needs for reserves in line with the guidance issued by the Charity Commission and agreed to set aside 6 months running costs at any one time to safeguard the Charity's service commitment in the event of delays in receipt of Grants or long term staff sickness. This figure has been agreed as £50,000 for the upcoming financial year, the figure may need to increase for future years.

STRUCTURE, GOVERNANCE AND MANAGEMENT

Governing document

The charity is controlled by its governing document, a deed of trust, and constitutes a limited company, limited by guarantee, as defined by the Companies Act 2006.

Risk management

The trustees have a duty to identify and review the risks to which the charity is exposed and to ensure appropriate controls are in place to provide reasonable assurance against fraud and error.

The Trustees ensure that the major risks to which Home-Start is exposed are reviewed and assessed and that systems are in place to mitigate those risks. The Trustees have agreed a risk assessment policy for which they have overall responsibility.

All key policies within the organisation are regularly reviewed and updated as appropriate to reflect any legislative changes and the latest developments and thinking in relation to best practice.

REFERENCE AND ADMINISTRATIVE DETAILS

Registered Company number

05709942 (England and Wales)

Registered Charity number

1114030

HOME-START KETTERING AREA
REPORT OF THE TRUSTEES
FOR THE YEAR ENDED 31ST MARCH 2025

Registered office

The Zone, William Knibb Centre
Montagu Street
Kettering
Northamptonshire
NN16 8AE

Trustees

C W Arthurs
Ms S L Stokes (resigned 5/7/2024)
K Wright
Ms R J Hurrell
K R Watts
Mrs R Wright
Ms B Leather
A Underwood (appointed 19/11/2024)

Company Secretary

Ms N L A Farrar-Hayton

Approved by order of the board of trustees on and signed on its behalf by:

.....
Trustee

HOME-START KETTERING AREA

STATEMENT OF FINANCIAL ACTIVITIES FOR THE YEAR ENDED 31ST MARCH 2025

	Notes	Unrestricted fund £	Restricted fund £	2025 Total funds £	2024 Total funds £
INCOME AND ENDOWMENTS FROM					
Donations and legacies	2	37,647	47,230	84,877	111,399
Investment income	3	2,002	-	2,002	944
Total		39,649	47,230	86,879	112,343
EXPENDITURE ON					
Charitable activities					
Services provided		70,714	26,789	97,503	72,272
Family Purchases		1,017	1,688	2,705	4,126
Volunteer costs		2,178	4,570	6,748	3,872
Total		73,909	33,047	106,956	80,270
NET INCOME/(EXPENDITURE)					
Transfers between funds	11	(34,260) 26,588	14,183 (26,588)	(20,077) -	32,073 -
Net movement in funds		(7,672)	(12,405)	(20,077)	32,073
RECONCILIATION OF FUNDS					
Total funds brought forward		59,792	59,319	119,111	87,038
TOTAL FUNDS CARRIED FORWARD		52,120	46,914	99,034	119,111

The notes form part of these financial statements

HOME-START KETTERING AREA

BALANCE SHEET 31ST MARCH 2025

	Notes	Unrestricted fund £	Restricted fund £	2025 Total funds £	2024 Total funds £
FIXED ASSETS					
Tangible assets	8	945	1,381	2,326	1,507
CURRENT ASSETS					
Debtors	9	230	-	230	-
Cash at bank and in hand		52,612	45,533	98,145	118,519
		<u>52,842</u>	<u>45,533</u>	<u>98,375</u>	<u>118,519</u>
CREDITORS					
Amounts falling due within one year	10	(1,667)	-	(1,667)	(915)
NET CURRENT ASSETS		<u>51,175</u>	<u>45,533</u>	<u>96,708</u>	<u>117,604</u>
TOTAL ASSETS LESS CURRENT LIABILITIES		<u>52,120</u>	<u>46,914</u>	<u>99,034</u>	<u>119,111</u>
NET ASSETS		<u>52,120</u>	<u>46,914</u>	<u>99,034</u>	<u>119,111</u>
FUNDS	11				
Unrestricted funds				52,120	59,792
Restricted funds				46,914	59,319
TOTAL FUNDS				<u>99,034</u>	<u>119,111</u>

The charitable company is entitled to exemption from audit under Section 477 of the Companies Act 2006 for the year ended 31st March 2025.

The members have not required the company to obtain an audit of its financial statements for the year ended 31st March 2025 in accordance with Section 476 of the Companies Act 2006.

The trustees acknowledge their responsibilities for

- ensuring that the charitable company keeps accounting records that comply with Sections 386 and 387 of the Companies Act 2006 and
- preparing financial statements which give a true and fair view of the state of affairs of the charitable company as at the end of each financial year and of its surplus or deficit for each financial year in accordance with the requirements of Sections 394 and 395 and which otherwise comply with the requirements of the Companies Act 2006 relating to financial statements, so far as applicable to the charitable company.

The notes form part of these financial statements

HOME-START KETTERING AREA

BALANCE SHEET - continued 31ST MARCH 2025

These financial statements have been prepared in accordance with the provisions applicable to charitable companies subject to the small companies regime.

The financial statements were approved by the Board of Trustees and authorised for issue on and were signed on its behalf by:

.....
Trustee

The notes form part of these financial statements

HOME-START KETTERING AREA

NOTES TO THE FINANCIAL STATEMENTS FOR THE YEAR ENDED 31ST MARCH 2025

1. ACCOUNTING POLICIES

Basis of preparing the financial statements

The financial statements of the charitable company, which is a public benefit entity under FRS 102, have been prepared in accordance with the Charities SORP (FRS 102) 'Accounting and Reporting by Charities: Statement of Recommended Practice applicable to charities preparing their accounts in accordance with the Financial Reporting Standard applicable in the UK and Republic of Ireland (FRS 102) (effective 1 January 2019)', Financial Reporting Standard 102 'The Financial Reporting Standard applicable in the UK and Republic of Ireland' and the Companies Act 2006. The financial statements have been prepared under the historical cost convention.

Income

All income is recognised in the Statement of Financial Activities once the charity has entitlement to the funds, it is probable that the income will be received and the amount can be measured reliably.

Expenditure

Liabilities are recognised as expenditure as soon as there is a legal or constructive obligation committing the charity to that expenditure, it is probable that a transfer of economic benefits will be required in settlement and the amount of the obligation can be measured reliably. Expenditure is accounted for on an accruals basis and has been classified under headings that aggregate all cost related to the category. Where costs cannot be directly attributed to particular headings they have been allocated to activities on a basis consistent with the use of resources.

Tangible fixed assets

Depreciation is provided at the following annual rates in order to write off each asset over its estimated useful life.

Fixtures and fittings	- 20% on reducing balance
Computer equipment	- 20% on reducing balance

Taxation

The charity is exempt from corporation tax on its charitable activities.

Fund accounting

Unrestricted funds can be used in accordance with the charitable objectives at the discretion of the trustees.

Restricted funds can only be used for particular restricted purposes within the objects of the charity. Restrictions arise when specified by the donor or when funds are raised for particular restricted purposes.

Pension costs and other post-retirement benefits

The charitable company operates a defined contribution pension scheme. Contributions payable to the charitable company's pension scheme are charged to the Statement of Financial Activities in the period to which they relate.

HOME-START KETTERING AREA

NOTES TO THE FINANCIAL STATEMENTS - continued FOR THE YEAR ENDED 31ST MARCH 2025

2. DONATIONS AND LEGACIES

	2025	2024
	£	£
Fund raising activities	10,722	50,302
Donations	21,454	-
Gift aid	1,971	2,752
Grants	50,730	58,345
	<u>84,877</u>	<u>111,399</u>

Grants received, included in the above, are as follows:

	2025	2024
	£	£
Maud Elkington	-	2,500
Constance Travis	2,000	-
Faraway Childrens Charity	620	555
Kettering Town Council	1,500	1,790
Northants Community Aid	-	2,000
Stockburn Memorial Trust	2,750	4,000
Household Support Fund Grant 2024	-	5,000
John Armitage Foundation	25,000	25,000
Michael Guest	5,000	10,000
North Northamptonshire Council	8,360	5,500
Poverty Hurts	-	2,000
Cadent	4,500	-
Groundworks	1,000	-
	<u>50,730</u>	<u>58,345</u>

3. INVESTMENT INCOME

	2025	2024
	£	£
Deposit account interest	<u>2,002</u>	<u>944</u>

HOME-START KETTERING AREA

NOTES TO THE FINANCIAL STATEMENTS - continued FOR THE YEAR ENDED 31ST MARCH 2025

4. NET INCOME/(EXPENDITURE)

Net income/(expenditure) is stated after charging/(crediting):

	2025 £	2024 £
Depreciation - owned assets	<u>502</u>	<u>378</u>

5. TRUSTEES' REMUNERATION AND BENEFITS

There were no trustees' remuneration or other benefits for the year ended 31st March 2025 nor for the year ended 31st March 2024.

Trustees' expenses

There were no trustees' expenses paid for the year ended 31st March 2025 nor for the year ended 31st March 2024.

6. STAFF COSTS

The average monthly number of employees during the year was as follows:

	2025	2024
Support	2	1
Management	1	1
	<u>3</u>	<u>2</u>

No employees received emoluments in excess of £60,000.

7. COMPARATIVES FOR THE STATEMENT OF FINANCIAL ACTIVITIES

	Unrestricted fund £	Restricted fund £	Total funds £
INCOME AND ENDOWMENTS FROM			
Donations and legacies	53,054	58,345	111,399
Investment income	944	-	944
Total	<u>53,998</u>	<u>58,345</u>	<u>112,343</u>
EXPENDITURE ON			
Charitable activities			
Services provided	63,499	8,773	72,272
Family Purchases	322	3,804	4,126
Volunteer costs	1,615	2,257	3,872
Total	<u>65,436</u>	<u>14,834</u>	<u>80,270</u>

HOME-START KETTERING AREA

NOTES TO THE FINANCIAL STATEMENTS - continued FOR THE YEAR ENDED 31ST MARCH 2025

7. COMPARATIVES FOR THE STATEMENT OF FINANCIAL ACTIVITIES - continued

	Unrestricted fund £	Restricted fund £	Total funds £
NET INCOME/(EXPENDITURE)	(11,438)	43,511	32,073
RECONCILIATION OF FUNDS			
Total funds brought forward	71,230	15,808	87,038
TOTAL FUNDS CARRIED FORWARD	<u>59,792</u>	<u>59,319</u>	<u>119,111</u>

8. TANGIBLE FIXED ASSETS

	Fixtures and fittings £	Computer equipment £	Totals £
COST			
At 1st April 2024	1,708	8,442	10,150
Additions	756	565	1,321
At 31st March 2025	<u>2,464</u>	<u>9,007</u>	<u>11,471</u>
DEPRECIATION			
At 1st April 2024	1,614	7,029	8,643
Charge for year	107	395	502
At 31st March 2025	<u>1,721</u>	<u>7,424</u>	<u>9,145</u>
NET BOOK VALUE			
At 31st March 2025	<u>743</u>	<u>1,583</u>	<u>2,326</u>
At 31st March 2024	<u>94</u>	<u>1,413</u>	<u>1,507</u>

HOME-START KETTERING AREA

NOTES TO THE FINANCIAL STATEMENTS - continued FOR THE YEAR ENDED 31ST MARCH 2025

9. DEBTORS: AMOUNTS FALLING DUE WITHIN ONE YEAR

	2025 £	2024 £
Other debtors	230	-

10. CREDITORS: AMOUNTS FALLING DUE WITHIN ONE YEAR

	2025 £	2024 £
Trade creditors	223	-
Social security and other taxes	1,444	915
	1,667	915

11. MOVEMENT IN FUNDS

	At 1/4/24 £	Net movement in funds £	Transfers between funds £	At 31/3/25 £
Unrestricted funds				
General fund	59,792	(34,260)	26,588	52,120
Restricted funds				
Restricted Funds	59,319	14,183	(26,588)	46,914
TOTAL FUNDS	119,111	(20,077)	-	99,034

Net movement in funds, included in the above are as follows:

	Incoming resources £	Resources expended £	Movement in funds £
Unrestricted funds			
General fund	39,649	(73,909)	(34,260)
Restricted funds			
Restricted Funds	47,230	(33,047)	14,183
TOTAL FUNDS	86,879	(106,956)	(20,077)

HOME-START KETTERING AREA

NOTES TO THE FINANCIAL STATEMENTS - continued FOR THE YEAR ENDED 31ST MARCH 2025

11. MOVEMENT IN FUNDS - continued

Comparatives for movement in funds

	At 1/4/23 £	Net movement in funds £	At 31/3/24 £
Unrestricted funds			
General fund	71,230	(11,438)	59,792
Restricted funds			
Restricted Funds	15,808	43,511	59,319
TOTAL FUNDS	<u>87,038</u>	<u>32,073</u>	<u>119,111</u>

Comparative net movement in funds, included in the above are as follows:

	Incoming resources £	Resources expended £	Movement in funds £
Unrestricted funds			
General fund	53,998	(65,436)	(11,438)
Restricted funds			
Restricted Funds	58,345	(14,834)	43,511
TOTAL FUNDS	<u>112,343</u>	<u>(80,270)</u>	<u>32,073</u>

A current year 12 months and prior year 12 months combined position is as follows:

	At 1/4/23 £	Net movement in funds £	Transfers between funds £	At 31/3/25 £
Unrestricted funds				
General fund	71,230	(45,698)	26,588	52,120
Restricted funds				
Restricted Funds	15,808	57,694	(26,588)	46,914
TOTAL FUNDS	<u>87,038</u>	<u>11,996</u>	<u>-</u>	<u>99,034</u>

HOME-START KETTERING AREA

NOTES TO THE FINANCIAL STATEMENTS - continued FOR THE YEAR ENDED 31ST MARCH 2025

11. MOVEMENT IN FUNDS - continued

A current year 12 months and prior year 12 months combined net movement in funds, included in the above are as follows:

	Incoming resources £	Resources expended £	Movement in funds £
Unrestricted funds			
General fund	93,647	(139,345)	(45,698)
Restricted funds			
Restricted Funds	105,575	(47,881)	57,694
TOTAL FUNDS	<u>199,222</u>	<u>(187,226)</u>	<u>11,996</u>

12. RELATED PARTY DISCLOSURES

There were no related party transactions for the year ended 31st March 2025.

HOME-START KETTERING AREA

DETAILED STATEMENT OF FINANCIAL ACTIVITIES FOR THE YEAR ENDED 31ST MARCH 2025

	2025 £	2024 £
INCOME AND ENDOWMENTS		
Donations and legacies		
Fund raising activities	10,722	50,302
Donations	21,454	-
Gift aid	1,971	2,752
Grants	50,730	58,345
	<u>84,877</u>	<u>111,399</u>
Investment income		
Deposit account interest	2,002	944
Total incoming resources	<u>86,879</u>	<u>112,343</u>
EXPENDITURE		
Support costs		
Management		
Wages	71,825	53,881
Social security	1,460	-
Pensions	4,226	3,258
Rates and water	-	413
Insurance	1,062	799
Telephone	1,546	978
Postage and stationery	296	1,365
Advertising	2	518
Sundries	620	658
Events & outings	11,695	3,795
Expenses - staff	1,732	2,911
Subscriptions & fees	2,485	1,437
Training	2,357	1,882
Expenses - volunteers	4,442	3,872
Depreciation of tangible and heritage assets	503	377
	<u>104,251</u>	<u>76,144</u>
Family purchases		
Exceptional family purchases	2,705	4,126
Total resources expended	<u>106,956</u>	<u>80,270</u>
Net (expenditure)/income	<u>(20,077)</u>	<u>32,073</u>

This page does not form part of the statutory financial statements

REGISTERED COMPANY NUMBER: 05709942 (England and Wales)
REGISTERED CHARITY NUMBER: 1114030

**REPORT OF THE TRUSTEES AND
UNAUDITED FINANCIAL STATEMENTS
FOR THE YEAR ENDED 31ST MARCH 2025
FOR
HOME-START KETTERING AREA**

Bewers Turner & Co LLP
Chartered Accountants
Portland House
11-13 Station Road
Kettering
Northamptonshire
NN15 7HH

HOME-START KETTERING AREA

CONTENTS OF THE FINANCIAL STATEMENTS FOR THE YEAR ENDED 31ST MARCH 2025

	Page
Report of the Trustees	1 to 2
Statement of Financial Activities	3
Balance Sheet	4 to 5
Notes to the Financial Statements	6 to 12
Detailed Statement of Financial Activities	13

HOME-START KETTERING AREA

REPORT OF THE TRUSTEES FOR THE YEAR ENDED 31ST MARCH 2025

The trustees who are also directors of the charity for the purposes of the Companies Act 2006, present their report with the financial statements of the charity for the year ended 31st March 2025. The trustees have adopted the provisions of Accounting and Reporting by Charities: Statement of Recommended Practice applicable to charities preparing their accounts in accordance with the Financial Reporting Standard applicable in the UK and Republic of Ireland (FRS 102) (effective 1 January 2019).

Please visit the charity commissions website to see the full Trustees report.

OBJECTIVES AND ACTIVITIES

Objectives and aims

Home-Start helps families with young children deal with whatever life throws at them. We support parents as they learn to cope, improve their confidence and build better lives for their children. The benefits of our support include improved health and well-being and better family relationships.

FINANCIAL REVIEW

Financial position

Income for this year was £86,879 which was an increase compared to 2023-24 and with total expenditure of £106,956, this results in net deficit for the year of £20,077.

Reserves policy

The Trustees have reviewed the Charity's needs for reserves in line with the guidance issued by the Charity Commission and agreed to set aside 6 months running costs at any one time to safeguard the Charity's service commitment in the event of delays in receipt of Grants or long term staff sickness. This figure has been agreed as £50,000 for the upcoming financial year, the figure may need to increase for future years.

STRUCTURE, GOVERNANCE AND MANAGEMENT

Governing document

The charity is controlled by its governing document, a deed of trust, and constitutes a limited company, limited by guarantee, as defined by the Companies Act 2006.

Risk management

The trustees have a duty to identify and review the risks to which the charity is exposed and to ensure appropriate controls are in place to provide reasonable assurance against fraud and error.

The Trustees ensure that the major risks to which Home-Start is exposed are reviewed and assessed and that systems are in place to mitigate those risks. The Trustees have agreed a risk assessment policy for which they have overall responsibility.

All key policies within the organisation are regularly reviewed and updated as appropriate to reflect any legislative changes and the latest developments and thinking in relation to best practice.

REFERENCE AND ADMINISTRATIVE DETAILS

Registered Company number

05709942 (England and Wales)

Registered Charity number

1114030

HOME-START KETTERING AREA
REPORT OF THE TRUSTEES
FOR THE YEAR ENDED 31ST MARCH 2025

Registered office

The Zone, William Knibb Centre
Montagu Street
Kettering
Northamptonshire
NN16 8AE

Trustees

C W Arthurs
Ms S L Stokes (resigned 5/7/2024)
K Wright
Ms R J Hurrell
K R Watts
Mrs R Wright
Ms B Leather
A Underwood (appointed 19/11/2024)

Company Secretary

Ms N L A Farrar-Hayton

Approved by order of the board of trustees on and signed on its behalf by:

.....
Trustee

HOME-START KETTERING AREA

STATEMENT OF FINANCIAL ACTIVITIES FOR THE YEAR ENDED 31ST MARCH 2025

	Notes	Unrestricted fund £	Restricted fund £	2025 Total funds £	2024 Total funds £
INCOME AND ENDOWMENTS FROM					
Donations and legacies	2	37,647	47,230	84,877	111,399
Investment income	3	2,002	-	2,002	944
Total		39,649	47,230	86,879	112,343
EXPENDITURE ON					
Charitable activities					
Services provided		70,714	26,789	97,503	72,272
Family Purchases		1,017	1,688	2,705	4,126
Volunteer costs		2,178	4,570	6,748	3,872
Total		73,909	33,047	106,956	80,270
NET INCOME/(EXPENDITURE)					
Transfers between funds	11	(34,260) 26,588	14,183 (26,588)	(20,077) -	32,073 -
Net movement in funds		(7,672)	(12,405)	(20,077)	32,073
RECONCILIATION OF FUNDS					
Total funds brought forward		59,792	59,319	119,111	87,038
TOTAL FUNDS CARRIED FORWARD		52,120	46,914	99,034	119,111

The notes form part of these financial statements

HOME-START KETTERING AREA

BALANCE SHEET 31ST MARCH 2025

	Notes	Unrestricted fund £	Restricted fund £	2025 Total funds £	2024 Total funds £
FIXED ASSETS					
Tangible assets	8	945	1,381	2,326	1,507
CURRENT ASSETS					
Debtors	9	230	-	230	-
Cash at bank and in hand		52,612	45,533	98,145	118,519
		<u>52,842</u>	<u>45,533</u>	<u>98,375</u>	<u>118,519</u>
CREDITORS					
Amounts falling due within one year	10	(1,667)	-	(1,667)	(915)
NET CURRENT ASSETS		<u>51,175</u>	<u>45,533</u>	<u>96,708</u>	<u>117,604</u>
TOTAL ASSETS LESS CURRENT LIABILITIES		<u>52,120</u>	<u>46,914</u>	<u>99,034</u>	<u>119,111</u>
NET ASSETS		<u>52,120</u>	<u>46,914</u>	<u>99,034</u>	<u>119,111</u>
FUNDS	11				
Unrestricted funds				52,120	59,792
Restricted funds				46,914	59,319
TOTAL FUNDS				<u>99,034</u>	<u>119,111</u>

The charitable company is entitled to exemption from audit under Section 477 of the Companies Act 2006 for the year ended 31st March 2025.

The members have not required the company to obtain an audit of its financial statements for the year ended 31st March 2025 in accordance with Section 476 of the Companies Act 2006.

The trustees acknowledge their responsibilities for

- ensuring that the charitable company keeps accounting records that comply with Sections 386 and 387 of the Companies Act 2006 and
- preparing financial statements which give a true and fair view of the state of affairs of the charitable company as at the end of each financial year and of its surplus or deficit for each financial year in accordance with the requirements of Sections 394 and 395 and which otherwise comply with the requirements of the Companies Act 2006 relating to financial statements, so far as applicable to the charitable company.

The notes form part of these financial statements

HOME-START KETTERING AREA

BALANCE SHEET - continued 31ST MARCH 2025

These financial statements have been prepared in accordance with the provisions applicable to charitable companies subject to the small companies regime.

The financial statements were approved by the Board of Trustees and authorised for issue on and were signed on its behalf by:

.....
Trustee

The notes form part of these financial statements

HOME-START KETTERING AREA

NOTES TO THE FINANCIAL STATEMENTS FOR THE YEAR ENDED 31ST MARCH 2025

1. ACCOUNTING POLICIES

Basis of preparing the financial statements

The financial statements of the charitable company, which is a public benefit entity under FRS 102, have been prepared in accordance with the Charities SORP (FRS 102) 'Accounting and Reporting by Charities: Statement of Recommended Practice applicable to charities preparing their accounts in accordance with the Financial Reporting Standard applicable in the UK and Republic of Ireland (FRS 102) (effective 1 January 2019)', Financial Reporting Standard 102 'The Financial Reporting Standard applicable in the UK and Republic of Ireland' and the Companies Act 2006. The financial statements have been prepared under the historical cost convention.

Income

All income is recognised in the Statement of Financial Activities once the charity has entitlement to the funds, it is probable that the income will be received and the amount can be measured reliably.

Expenditure

Liabilities are recognised as expenditure as soon as there is a legal or constructive obligation committing the charity to that expenditure, it is probable that a transfer of economic benefits will be required in settlement and the amount of the obligation can be measured reliably. Expenditure is accounted for on an accruals basis and has been classified under headings that aggregate all cost related to the category. Where costs cannot be directly attributed to particular headings they have been allocated to activities on a basis consistent with the use of resources.

Tangible fixed assets

Depreciation is provided at the following annual rates in order to write off each asset over its estimated useful life.

Fixtures and fittings	- 20% on reducing balance
Computer equipment	- 20% on reducing balance

Taxation

The charity is exempt from corporation tax on its charitable activities.

Fund accounting

Unrestricted funds can be used in accordance with the charitable objectives at the discretion of the trustees.

Restricted funds can only be used for particular restricted purposes within the objects of the charity. Restrictions arise when specified by the donor or when funds are raised for particular restricted purposes.

Pension costs and other post-retirement benefits

The charitable company operates a defined contribution pension scheme. Contributions payable to the charitable company's pension scheme are charged to the Statement of Financial Activities in the period to which they relate.

HOME-START KETTERING AREA

NOTES TO THE FINANCIAL STATEMENTS - continued FOR THE YEAR ENDED 31ST MARCH 2025

2. DONATIONS AND LEGACIES

	2025	2024
	£	£
Fund raising activities	10,722	50,302
Donations	21,454	-
Gift aid	1,971	2,752
Grants	50,730	58,345
	<u>84,877</u>	<u>111,399</u>

Grants received, included in the above, are as follows:

	2025	2024
	£	£
Maud Elkington	-	2,500
Constance Travis	2,000	-
Faraway Childrens Charity	620	555
Kettering Town Council	1,500	1,790
Northants Community Aid	-	2,000
Stockburn Memorial Trust	2,750	4,000
Household Support Fund Grant 2024	-	5,000
John Armitage Foundation	25,000	25,000
Michael Guest	5,000	10,000
North Northamptonshire Council	8,360	5,500
Poverty Hurts	-	2,000
Cadent	4,500	-
Groundworks	1,000	-
	<u>50,730</u>	<u>58,345</u>

3. INVESTMENT INCOME

	2025	2024
	£	£
Deposit account interest	<u>2,002</u>	<u>944</u>

HOME-START KETTERING AREA

NOTES TO THE FINANCIAL STATEMENTS - continued FOR THE YEAR ENDED 31ST MARCH 2025

4. NET INCOME/(EXPENDITURE)

Net income/(expenditure) is stated after charging/(crediting):

	2025 £	2024 £
Depreciation - owned assets	<u>502</u>	<u>378</u>

5. TRUSTEES' REMUNERATION AND BENEFITS

There were no trustees' remuneration or other benefits for the year ended 31st March 2025 nor for the year ended 31st March 2024.

Trustees' expenses

There were no trustees' expenses paid for the year ended 31st March 2025 nor for the year ended 31st March 2024.

6. STAFF COSTS

The average monthly number of employees during the year was as follows:

	2025	2024
Support	2	1
Management	1	1
	<u>3</u>	<u>2</u>

No employees received emoluments in excess of £60,000.

7. COMPARATIVES FOR THE STATEMENT OF FINANCIAL ACTIVITIES

	Unrestricted fund £	Restricted fund £	Total funds £
INCOME AND ENDOWMENTS FROM			
Donations and legacies	53,054	58,345	111,399
Investment income	944	-	944
Total	<u>53,998</u>	<u>58,345</u>	<u>112,343</u>
EXPENDITURE ON			
Charitable activities			
Services provided	63,499	8,773	72,272
Family Purchases	322	3,804	4,126
Volunteer costs	1,615	2,257	3,872
Total	<u>65,436</u>	<u>14,834</u>	<u>80,270</u>

HOME-START KETTERING AREA

NOTES TO THE FINANCIAL STATEMENTS - continued FOR THE YEAR ENDED 31ST MARCH 2025

7. COMPARATIVES FOR THE STATEMENT OF FINANCIAL ACTIVITIES - continued

	Unrestricted fund £	Restricted fund £	Total funds £
NET INCOME/(EXPENDITURE)	(11,438)	43,511	32,073
RECONCILIATION OF FUNDS			
Total funds brought forward	71,230	15,808	87,038
TOTAL FUNDS CARRIED FORWARD	<u>59,792</u>	<u>59,319</u>	<u>119,111</u>

8. TANGIBLE FIXED ASSETS

	Fixtures and fittings £	Computer equipment £	Totals £
COST			
At 1st April 2024	1,708	8,442	10,150
Additions	756	565	1,321
At 31st March 2025	<u>2,464</u>	<u>9,007</u>	<u>11,471</u>
DEPRECIATION			
At 1st April 2024	1,614	7,029	8,643
Charge for year	107	395	502
At 31st March 2025	<u>1,721</u>	<u>7,424</u>	<u>9,145</u>
NET BOOK VALUE			
At 31st March 2025	<u>743</u>	<u>1,583</u>	<u>2,326</u>
At 31st March 2024	<u>94</u>	<u>1,413</u>	<u>1,507</u>

HOME-START KETTERING AREA

NOTES TO THE FINANCIAL STATEMENTS - continued FOR THE YEAR ENDED 31ST MARCH 2025

9. DEBTORS: AMOUNTS FALLING DUE WITHIN ONE YEAR

	2025 £	2024 £
Other debtors	230	-

10. CREDITORS: AMOUNTS FALLING DUE WITHIN ONE YEAR

	2025 £	2024 £
Trade creditors	223	-
Social security and other taxes	1,444	915
	1,667	915

11. MOVEMENT IN FUNDS

	At 1/4/24 £	Net movement in funds £	Transfers between funds £	At 31/3/25 £
Unrestricted funds				
General fund	59,792	(34,260)	26,588	52,120
Restricted funds				
Restricted Funds	59,319	14,183	(26,588)	46,914
TOTAL FUNDS	119,111	(20,077)	-	99,034

Net movement in funds, included in the above are as follows:

	Incoming resources £	Resources expended £	Movement in funds £
Unrestricted funds			
General fund	39,649	(73,909)	(34,260)
Restricted funds			
Restricted Funds	47,230	(33,047)	14,183
TOTAL FUNDS	86,879	(106,956)	(20,077)

HOME-START KETTERING AREA

NOTES TO THE FINANCIAL STATEMENTS - continued FOR THE YEAR ENDED 31ST MARCH 2025

11. MOVEMENT IN FUNDS - continued

Comparatives for movement in funds

	At 1/4/23 £	Net movement in funds £	At 31/3/24 £
Unrestricted funds			
General fund	71,230	(11,438)	59,792
Restricted funds			
Restricted Funds	15,808	43,511	59,319
TOTAL FUNDS	<u>87,038</u>	<u>32,073</u>	<u>119,111</u>

Comparative net movement in funds, included in the above are as follows:

	Incoming resources £	Resources expended £	Movement in funds £
Unrestricted funds			
General fund	53,998	(65,436)	(11,438)
Restricted funds			
Restricted Funds	58,345	(14,834)	43,511
TOTAL FUNDS	<u>112,343</u>	<u>(80,270)</u>	<u>32,073</u>

A current year 12 months and prior year 12 months combined position is as follows:

	At 1/4/23 £	Net movement in funds £	Transfers between funds £	At 31/3/25 £
Unrestricted funds				
General fund	71,230	(45,698)	26,588	52,120
Restricted funds				
Restricted Funds	15,808	57,694	(26,588)	46,914
TOTAL FUNDS	<u>87,038</u>	<u>11,996</u>	<u>-</u>	<u>99,034</u>

HOME-START KETTERING AREA

NOTES TO THE FINANCIAL STATEMENTS - continued FOR THE YEAR ENDED 31ST MARCH 2025

11. MOVEMENT IN FUNDS - continued

A current year 12 months and prior year 12 months combined net movement in funds, included in the above are as follows:

	Incoming resources £	Resources expended £	Movement in funds £
Unrestricted funds			
General fund	93,647	(139,345)	(45,698)
Restricted funds			
Restricted Funds	105,575	(47,881)	57,694
TOTAL FUNDS	<u>199,222</u>	<u>(187,226)</u>	<u>11,996</u>

12. RELATED PARTY DISCLOSURES

There were no related party transactions for the year ended 31st March 2025.

HOME-START KETTERING AREA

DETAILED STATEMENT OF FINANCIAL ACTIVITIES FOR THE YEAR ENDED 31ST MARCH 2025

	2025 £	2024 £
INCOME AND ENDOWMENTS		
Donations and legacies		
Fund raising activities	10,722	50,302
Donations	21,454	-
Gift aid	1,971	2,752
Grants	50,730	58,345
	<u>84,877</u>	<u>111,399</u>
Investment income		
Deposit account interest	2,002	944
Total incoming resources	<u>86,879</u>	<u>112,343</u>
EXPENDITURE		
Support costs		
Management		
Wages	71,825	53,881
Social security	1,460	-
Pensions	4,226	3,258
Rates and water	-	413
Insurance	1,062	799
Telephone	1,546	978
Postage and stationery	296	1,365
Advertising	2	518
Sundries	620	658
Events & outings	11,695	3,795
Expenses - staff	1,732	2,911
Subscriptions & fees	2,485	1,437
Training	2,357	1,882
Expenses - volunteers	4,442	3,872
Depreciation of tangible and heritage assets	503	377
	<u>104,251</u>	<u>76,144</u>
Family purchases		
Exceptional family purchases	2,705	4,126
Total resources expended	<u>106,956</u>	<u>80,270</u>
Net (expenditure)/income	<u>(20,077)</u>	<u>32,073</u>

This page does not form part of the statutory financial statements