



ANNUAL REPORT

2024-2025

Helping to change the lives of
children across the Isle of Wight.

INTRODUCTION

At Home-Start Isle of Wight, our vision is simple but powerful — to help build happy, healthy, and secure families across our Island community. We believe that every parent deserves the support they need to give their children the best possible start in life.

Through our network of dedicated and caring volunteers, we walk alongside families with young children, offering both practical help and emotional support when it's needed most. By listening, understanding, and responding to each family's individual challenges, we help them find confidence, stability, and hope for the future.

We're here for parents when they need us most — because childhood can't wait.

This Annual Report reflects how that vision has come to life over the past year — through the hard work of our staff and volunteers, the dedication of our trustees, and the resilience and strength of the families we are proud to support.

OUR YEAR IN NUMBERS



167

Families supported

331

Children nurtured

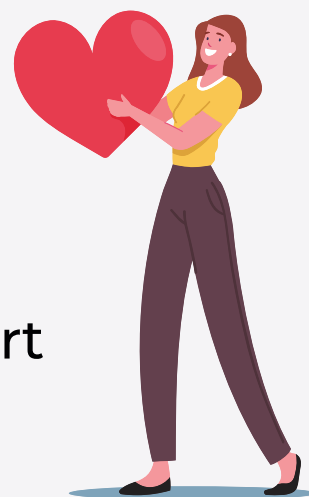


41

Volunteers supported
our work during the year

104

Families received 1:1
home-visiting support



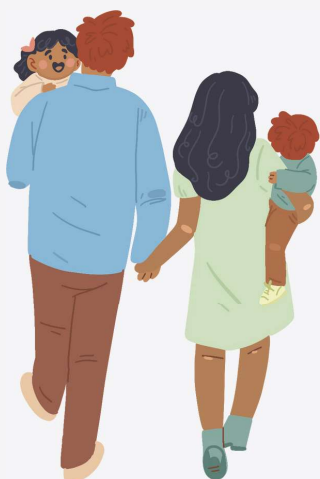
4

Family Group sessions
offered each week plus
school holiday activities

OUR YEAR IN NUMBERS

119

Families accessed
group support

**66**

Families received both
sources of support

152

Referrals were received
during the year

**2**

Baby group sessions
offered each week

9

Staff and

10

trustees



CHAIR'S REPORT

This year, Home-Start Isle of Wight has continued to make a real difference to families across the Island. Supporting more families than ever by offering practical and emotional support through our home visiting and group sessions.

We know that, with the cost-of-living increases, growing unemployment, the housing crisis and many other factors which are negatively impacting the physical and mental wellbeing of so many families with young children, the need for support from Home-Start IOW will continue to grow. We need to be ready to play our part as effectively as we can.

Having started the year uncertain about the future, I'm delighted to say that through hard work and determination, we are now in a very positive position — and focused on keeping up the momentum to ensure Home-Start Isle of Wight continues to thrive for years to come.

Maureen O'Flynn, Acting Chair of Trustees

If you would like to join us and be part of something special please send an email to admin@homestartiw.org



A FAMILY'S STORY



When I had my baby I had no idea that I would struggle. I had always been quite confident around babies and felt like I should be able to cope well with becoming a Mum. It was a real shock to me when I found myself feeling really overwhelmed. My health visitor suggested Home-Start. I was a bit uncertain at first as I wasn't sure what they could do and felt embarrassed about needing help. The person who came to see me was really nice and they explained that it was completely up to me and that I could decide whether or not to accept the help. I was feeling so low that I decided to give it a try.

I'm so glad I did. I was given a lovely volunteer. We got on straight away and she made me feel really comfortable about having her at my house and I found I could be really honest with her about how much I was struggling. One of the most important things she did at first was simply listen and remind me that I was doing a good job. She helped me see that my baby was content and thriving. She also offered practical support — like watching him while I had a shower — which made such a difference. It gave me a sense that things could start to feel a bit more normal again. I was feeling very anxious about going out on my own with my baby in the pram, it was like outside had become really scary to me. I knew this was not right but I couldn't seem to do it on my own. Once I felt ready we started going out for walks. We didn't go very far at first but it really helped me see that it wasn't as bad as I was imagining. It made it so much easier doing it with someone.

A FAMILY'S STORY CONT'D



Just being able to talk to someone when I was walking helped me not feel so worried. We started going a bit further each time and eventually we managed to walk to a baby group together. It was so good to finally meet some other Mums with young babies because they were all struggling with different things too and talking with them really helped me see that I was not failing.

As my little boy started to get a bit older and began sleeping better things did become a lot easier and I started to feel more like my old self again. My volunteer kept coming for quite a while as her support was making such a difference. She would play with my son or cuddle him if he was sleepy and I could get some things organised which really helped me feel much more on top of things.

The way she encouraged me really boosted my confidence and I began to see that I was doing well and could see that my son was happy. I cannot thank her enough and I'm not sure if she will ever know just how much difference she made to me and my son. I am so grateful and hope that one day when my son is older, I might be able to help someone else in the same way.



A VOLUNTEER'S STORY



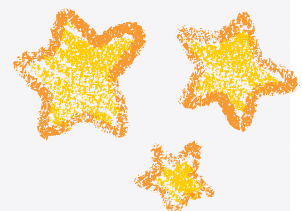
When I arrived on the Isle of Wight three years ago my luggage included a suitcase of the skills acquired in life as a Primary school teacher, Mum of three grown up children and a contact centre volunteer. I wanted to become part of my new community and researched volunteering possibilities. Home-Start appealed to me as the importance of giving children their best start in life is very close to my heart. I wanted to still be of help to young children without the challenges of teaching a class of 30.

At present I am supporting my fourth family. Each placement has been very different; I have enjoyed learning from this and adapting the training to meet the needs of each family.

Volunteering with Home-Start has been one of the most rewarding experiences I have enjoyed. Saying goodbye at the end of several months is not always easy, but the joy of knowing that each family is in a better place and no longer requiring Home-Start help brings a big smile. I feel privileged to have been a small part of the family's lives.

The Home-Start team is a wonderful group of people — always encouraging, supportive, and easy to reach with any questions or concerns. I would thoroughly recommend joining the Home-Start IOW team. In fact, in addition to being a home visiting volunteer, I am about to embark on a new chapter as a trustee and look forward to being able to support the team in new ways.

Ali



FAMILY GROUP UPDATE

From Leanne Hyde - Family Group Co-ordinator

This year there has been a noticeable increase in families needing support in several areas. Many parents need support with their children's behaviour or meeting their children's additional needs. We have seen an increase in parents asking for help to access specialist services such as the Children's Disabilities team. Financial hardship is very common with families seeking help from Foodbanks and accessing our supermarket vouchers, children's clothes and nappies.

In addition to these practical needs many parents are experiencing challenges with their own mental health, including depression and feeling isolated which can make it difficult for them to cope day to day and engage fully with their children .

The children have loved the messy sensory play with spaghetti, mud, water, cereals and paints. Parents who were once hesitant now happily encourage their children to join in and they recognise the fun and developmental benefits of getting messy - something they previously wouldn't have considered doing. Singing is one of the children's favourite activities and by repeating songs each week the children are learning the words and actions. It is lovely to see the confidence they have built up over the weeks.



FAMILY GROUP UPDATE CONT'D

Group outings during the school holidays included an Easter egg hunt at the park, visits to the beach to dip their feet in the sea and a visit to a Pumpkin patch. Many parents told us that it was their first time trying these activities as they felt confident to try new things when supported by the team.

Many of the families attending our group sessions are facing huge challenges in their lives. Our groups give them a safe space to connect, build confidence and reduce isolation. Parents can share experiences, access advice and support and give their children opportunities to play learn and develop their skills .

It is wonderful to see the adults and children grow in confidence, form friendships and connect with other things in their local community.

We could not have achieved so much this year without the support, knowledge and dedication of our amazing Family Group volunteers.

Words from a parent attending our Newport Family Group:

“I was really anxious at first, but I was encouraged to come along and made to feel welcome. They didn't judge me and when I spoke to other parents I realised they felt the same as me which helped a lot!”



BUMPS & BABIES UPDATE

From Anne-Marie Owen, Bumps & Babies Project Worker

The Bumps & Babies project feels very much part of Home-Start IOW now. It's wonderful to see our families grow with confidence over time. Families are offered six 1:1 visits from 28 weeks' gestation. During this time, they can receive guidance on what they might need for their hospital bag, information about local services and groups available, advice on entitlement to financial support, infant feeding support and enabling them to feel empowered to make the right decisions for their family at this time.

Families are also encouraged to come along to our Baby Group sessions, where they can meet other new parents, access advice and information on their baby's development such as weaning, infant feeding, sleep, baby milestones and baby massage. They can also seek support with benefits, home safety, self-care and mental wellbeing. We have fantastic volunteers supporting the groups, Joya and Jane have a wealth of knowledge and experience, they provide great reassurance and support to our families; it is a privilege to be working alongside them. They help to make our groups nurturing, informative and a safe space. Having two staff members and a volunteer also means we can give more 1:1 support during groups when needed. This is particularly beneficial if families are going through a difficult time.

BUMPS & BABIES UPDATE CONT'D

Quote from a Mum attending a Baby Group:

"I felt anxious about joining the baby group. A staff member met me outside to help me feel calm. We walked in together and it's been brilliant since then. I feel more confident as a mum and I've made new friends, something I thought I would never do. My baby loves the singing and the massage, I love the toast!"



SPECIAL ACHIEVEMENTS

Going the Extra Mile: Calvin's Ultra Challenge for Home-Start

When West Wight runner Calvin Wright signed up for the Isle of Wight Ultra Challenge, he knew he was taking on one of the toughest endurance events on the Island. The 66-mile route, starting from Chale Showground at dawn and looping clockwise around the Island, attracts almost 2,000 participants each year. For Calvin, it wasn't just about testing his limits—it was about raising vital funds and awareness for Home-Start Isle of Wight.

Despite recovering from a serious injury in 2018 that once left him convinced he would never run a marathon again, Calvin felt inspired to take on the Ultra after a friend suggested it earlier this year. "Long-distance running is very much like being part of a family," he explains. "The key is to surround yourself with people who can act as mentors—people who have been there before, who know the environment, and who say 'yes, that is possible' when you doubt yourself."

That sense of encouragement and support resonates deeply with Calvin's reason for choosing Home-Start Isle of Wight. "Home-Start does exactly this," he says. "Its volunteers are excellent advocates for families—supporting them to have a voice, ensuring people know what their world is really like, and how they can best be supported."



SPECIAL ACHIEVEMENTS

Through his challenge, Calvin raised over £900 to support our work with Island parents and carers of pre-school children. His journey reflects the spirit of Home-Start: determination, resilience, and the belief that with the right support, no one has to face life's challenges alone.

Story courtesy of IOW Echo

Our award-winning volunteer, Margaret

When Margaret was nominated for the Home-Start UK 'Volunteer of the Year' award none of us were prepared for what happened next! Firstly, Margaret was the overall winner – this was no surprise to us. Margaret has dedicated over 20 years to helping Island families. First as a home visiting volunteer and then as a trustee. What we were not expecting was to be contacted by national volunteer award body to say that Margaret had been nominated for their Patron's award. So, we headed off to Wembley for the prestigious BQF Awards starting with a drinks reception with HRH The Princess Royal.

It was a wonderful evening and a very fitting tribute to Margaret's years of dedication. Margaret was so surprised to hear her name announced as the winner of the Patron's award!



SPECIAL ACHIEVEMENTS

25 Year Celebration for Claire

In August it was Silver Anniversary celebrations for Office Manager Claire Funnell who started at the scheme on 16th August 1999! When Claire joined Home-Start in August 1999 she was a young Mum with a new baby, she worked 12 hours per week and in her own words she 'used to type letters and answer the phone'. How things have changed - as the scheme has got bigger and the team has grown Claire's role has changed enormously. We are so proud of Claire and she is very special to the whole Home-Start IOW family.



“Home-Start has been a huge part of my life. When I first joined, I was a young mum with a tiny baby, looking for a part-time job that would fit around family life. Over the years, as my children have grown, so has my role — I’ve taken on more hours and responsibilities, and I’m now the Office Manager, handling all the finances for the scheme. I don’t know where the last 25 years have gone! I’m incredibly proud to continue to be part of an organisation that makes a real difference to families, just as it did for me.”

SPECIAL ACHIEVEMENTS

The Big Give Christmas Challenge

This year, we participated in The Big Give for the first time. This match-funding campaign allows charities to double their donations by securing match funding. We were thrilled to meet and exceed our £2,000 target, enabling us to claim the full match amount. This means we raised just over £4,000!

**Christmas
Challenge**

BigGive

Farewell to Karen

It was with sadness that in January we said goodbye to our chair of trustees, Karen Rivlin. Karen served as Chair for 5 years and, before that as a home visiting volunteer. During her tenure, we grew stronger as a team and achieved so much together. She will be greatly missed.

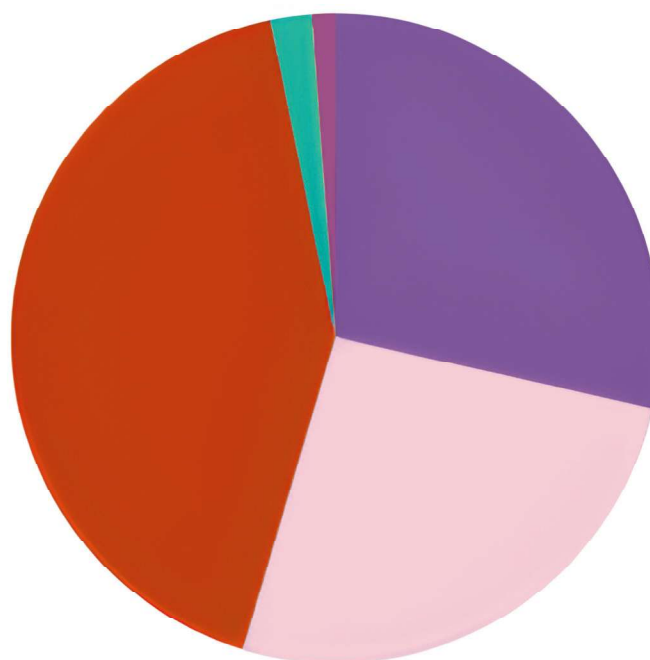
"I leave with huge pride in what has been accomplished and have optimism for the future. I'll continue to support and advocate for all the vital work that Home-Start IOW carries out. Thank you for your trust, collaboration, and friendship over the last five years—it's been an honour to be part of Home-Start IOW."



FINANCIAL STATUS

INCOME SUMMARY	Total
TOTAL INCOMING RESOURCES	£379,249
GRANTS	£99,004
CONTRACTS	£108,034
FUNDRAISING	£7,794
DONATIONS	£160,005
GIFT AID & BANK INTEREST	£4,412

Income Sources



● Contracts ● Grants ● Donations ● Fundraising ● Gift Aid and Bank Interest

FINANCIAL STATUS CONT'D

WE WOULD LIKE TO THANK

Home-Start I.O.W relies on external sources of funding to deliver its objectives. This year funds were received from: NHS (ICB), Isle of Wight Council, Michael and Betty Little Trust, Henry Smith Charity, JMC Plant Hire, John Lewis Plc, East Medina Lodge, Hants & IOW Masonic Charity, Garfield Weston, WightDash, SGN, Pears Foundation via HSUK, Awards for All, Lloyds bank (Newport), Lloyds Foundation, The Big Give Christmas Challenge Campaign, SNG, Jack Thompson, Bembridge WI, Brighstone WI, Neighbourly

In addition, funds were raised through a variety of community events, donations received in memory and by a number of generous individuals who made personal donations. This year Home-Start I.O.W used the services of a freelance fundraising consultant.

Statutory accounts are available on request.

DONATE AND SUPPORT US

Your donation helps us be there for families across the Isle of Wight. Scan the QR code to support our work today.



THE IMPACT OF OUR WORK

85%

of parents felt more confident in managing their children's behaviour

78%

of parents felt more confident in supporting their child's development

75%

parents reported an improvement in their emotional wellbeing

86%

of parents felt less isolated

87%

of parents reported an improvement in managing things at home such as routines



(of the parents who identified a need at the start of support and completed a review during the year)

THE IMPACT OF OUR WORK

CONT'D

COMMENTS FROM PARENTS

”

"I am so grateful for the support. It has made a big difference to my confidence. I can get out more now with my baby and not worry so much"

"I'm not sure where we would be now if we hadn't had the support. Home-Start has been a life saver for my family"

"I always know when you have been because my wife always seems so much lighter" – words from a Dad to the volunteer

"I love the baby group because it's not busy. I wouldn't come if it was"



FINAL MESSAGE

Here at Home-Start Isle of Wight we have had a fantastic year, and really grown as an organisation in terms of the service we provide and our ability to get the message of what we do out across our Island community. We are so proud of the strength of our team of dedicated staff members, our ever-growing army of volunteers and the backbone of support provided by the board of trustees.

It's clear from the strategy and planning work we have done over the past few months that Home-Start IOW has a strong vision for the future – and a focus that always remains family-centred, placing parents, carers and children at the heart of everything we do.

THANK YOU!



Natalie Silvester Photography



DONATE



GET INVOLVED



SUBSCRIBE



REGISTERED CHARITY NUMBER: 1113958
COMPANY REGISTERED NUMBER: 5743981

admin@homestartiow.org
www.homestartisleofwight.org.uk
01983 533357

FIND US AT:
EXCHANGE HOUSE, ST CROSS LANE
NEWPORT
ISLE OF WIGHT. PO30 5BZ

**HOME
START**
Isle of Wight



Company number: 05743981

Charity number: 1113958

HOME-START I.O.W
(A COMPANY LIMITED BY GUARANTEE)

ACCOUNTS
FOR THE YEAR ENDED 31 MARCH 2025

HOME-START I.O.W

ACCOUNTS

FOR THE YEAR ENDED 31 MARCH 2025

CONTENTS

PAGE

Legal and Administrative Information

1

Trustees' Report

2 to 5

Independent Examiner's Report

6

Statement of Financial Activities

7

Balance Sheet

8

Notes to the Accounts

9 to 12

HOME-START I.O.W

LEGAL AND ADMINISTRATIVE INFORMATION

FOR THE YEAR ENDED 31 MARCH 2025

Patron	J Griffin MBE
Directors/Trustees	M Rylands (Resigned 03/10/2024) J McKean K Rivlin (Resigned 16/01/2025) L Nehorai (Resigned 03/10/2024) J Bailey H Hadfield (Resigned 03/09/2024) T Hastain S Gearing (Resigned 30/04/2025) M O'Flynn J Young (Appointed 03/10/2024)
Secretary	A Griffiths
The Registered Office:	Exchange House St Cross lane Newport Isle of Wight PO30 5BZ
Company Number:	05743981
Charity Number:	1113958
Independent Examiner:	A H Cross & Co Limited Chartered Certified Accountants 10 Pyle Street Newport Isle of Wight PO30 1JW
Bankers:	HSBC Bank plc 101 St James Street Newport Isle of Wight PO30 1HX

HOME-START I.O.W

TRUSTEES' REPORT

FOR THE YEAR ENDED 31 MARCH 2025

The Trustees present their report and the accounts for the year ended 31 March 2025. The accounts have been prepared in accordance with the accounting policies set out in the notes to the accounts and comply with applicable law and the requirements of the Statement of Recommended Practice, "Accounting and Reporting by Charities" (SORP 2005) issued by the Charity Commission for England and Wales (revised in June 2008) and are in accordance with the Financial Reporting Standard for Smaller Entities (effective April 2008).

Structure, Governance and Management

The company was incorporated as a company limited by guarantee on 15 March 2006 and is registered with the Charity Commission number 1113958.

The appointment of Trustees is carried out by method of election by the Trustees of the company.

Vision, Mission, Values and Activities

Vision

Our vision is for "Happy, healthy and secure families on the Isle of Wight"

Mission

"Home-Start Isle of Wight offers practical and emotional support for Island families to build skills and confidence, and create the best future for their children"

Values

Our values underpin the ways that we - staff, trustees and volunteers - work, and in the decisions we take:

- We put families first.
- We are inclusive, responsive and respectful.
- We inspire everyone in the Home-Start community.

We know we can't fix every problem facing our families and carers, but our track record tells a story of how Home-Start Isle of Wight really does make a difference to our Island communities.

Activities for the year ended 31 March 2025

All the activities undertaken by Home-Start I.O.W are for the express purpose of furthering its charitable aims as outlined in its mission above and in accordance with its governing documents. Thus the Trustees are assured these activities fulfil their duties under Section 4 of the Charities Act 2006 to have due regard to public benefit guidance published by the Charity Commission.

HOME-START I.O.W

TRUSTEES' REPORT continued

FOR THE YEAR ENDED 31 MARCH 2025

Service delivery this year:

Home-Visiting Project - Volunteers with parenting/ caring experience, are trained, vetted and visit families in their own homes on a regular weekly basis, to offer support to families whose children are potentially vulnerable to risk factors, which could impact adversely on their development and well-being. Volunteers provide emotional and practical support which is individual to each family, supporting them in their homes and helping families engage in activities, and access services in their communities.

Family Group Project - Family Group sessions run each week during term time. These sessions provide a safe and stimulating environment for parents and their young children to socialise and learn together through play. During the year, group sessions have taken place in Shanklin, Sandown, East Cowes, Newport and Ryde.

Bumps & Babies Project - The project takes referrals for expectant and new parents to offer support and guidance during the first crucial months of parenthood. In addition, Baby Group sessions run throughout the year are aimed at new parents and their young babies. The sessions support parents with mild to moderate mental health needs to gain confidence, meet other new parents and receive support and guidance from trained staff and volunteers. During the year Baby Group sessions have taken place in Sandown and Newport.

Supporting Families Programme - We continue to work with the Isle of Wight Council on the Supporting Families programme. This contract requires Home-Start I.O.W to offer targeted support to a number of families who are experiencing specific difficulties including mental health, domestic abuse, worklessness and/or school attendance.

During the year, Home-Start I.O.W supported 167 families across the Island, with 331 children (233 under 5 years and 98 over 5 years). Many of the families supported during the year were experiencing multiple and complex difficulties.

Home-Start I.O.W could not operate without the commitment and dedication of the volunteer team. Without their outstanding contribution of time, energy and commitment we could not have achieved so much for families across the Isle of Wight. During the year 41 volunteers supported the work of the scheme.

Home-Start I.O.W has an open referral system, referrals are accepted from a wide range of professionals and from families themselves. 152 referrals for support were received during the year.

An initial assessment visit is carried out for all referrals received, and support is offered based on the needs identified by the family. The offer of support may be restricted by the resources available. Home-Start I.O.W recognises the diversity of families in all its work, respecting the cultural, racial and religious traditions that make them distinct.

Home-Start I.O.W is committed to safeguarding and promoting the well-being of children. Home-Start I.O.W works in partnership with a range of other agencies to achieve positive outcomes for families and plays a full part in the Early Help Assessment process and works closely with colleagues within Children's Services to support families and children subject to a Child in Need or Child Protection plan.

HOME-START I.O.W

TRUSTEES' REPORT continued

FOR THE YEAR ENDED 31 MARCH 2025

Sources of Funding

Home-Start I.O.W relies on external sources of funding to deliver its objectives.

This year funds were received from:

NHS (ICB), Isle of Wight Council, Michael and Betty Little Trust, Henry Smith Charity, JMC Plant Hire, John Lewis Plc, East Medina Lodge, Hants & IOW Masonic Charity, Garfield Weston, WightDash, SGN, Pears Foundation via HSUK, Awards for All, Lloyds bank (Newport), Lloyds Foundation, The Big Give Christmas Challenge Campaign, SNG, Jack Thompson, Bembridge WI, Brighstone WI, Neighbourly

In addition, funds were raised through a variety of community events, donations received in memory and by a number of generous individuals who made personal donations.

Plans for the Future

As Home-Start I.O.W is reliant on external funding, future delivery of its service will rely on the continuity of sufficient funds to maintain its core service. Therefore, fund raising is an on-going activity for the organisation and it is recognised that the current economic climate presents a significant challenge, which demands a creative and dynamic approach.

Home-Start I.O.W will continue to deliver its core objectives by recruiting and training volunteers, liaising with other professionals and working with families to promote the best possible outcomes for their children. Any expansion and development of the organisation will be in line with the Home-Start I.O.W Strategic Plan, and

Financial Review

Reserves

The charity operates within its financial capacity and has sufficient reserves to meet its regular outgoings and commitments.

Responsibilities of the Trustees

Company law requires the Trustees to prepare financial statements for each financial year which give a true and fair view of the affairs of the charitable company as at the balance sheet date and of its incoming resources and application of resources, including income and expenditure, for the financial year. In preparing those financial statements, the Trustees should follow best practise and:

- Select suitable accounting policies and apply them consistently;
- Make judgements and estimates that are reasonable and prudent; and
- Prepare financial statements on the going concern basis unless it is inappropriate to assume that the company will continue on that basis.

The Trustees are responsible for maintaining proper accounting records which disclose with reasonable accuracy at any time the financial position of the charitable company and to enable them that the financial statements comply with the Companies Act 2006. The Trustees are also responsible for safeguarding the assets

HOME-START I.O.W

TRUSTEES' REPORT continued

FOR THE YEAR ENDED 31 MARCH 2025

This report was approved by the Board of Trustees and signed on its behalf.


.....

M O'Flynn

Vice Chairperson

HOME-START I.O.W

INDEPENDENT EXAMINER'S REPORT

FOR THE YEAR ENDED 31 MARCH 2025

I report on the accounts of the company for the year ended 31 March 2025 which are set out on pages 7 and 8 and the related notes.

Respective Responsibilities of Trustees and examiner

The Trustees (who are also directors of the company for the purposes of company law) are responsible for the preparation of the accounts. The Trustees consider that an audit is not required for this year under section 144(2) of the Charities Act 2011 (the 2011 Act) and that an independent examination is needed.

Having satisfied myself that the charity is not subject to an audit under company law and is eligible for

Basis of Independent Examiner's Report

My examination was carried out in accordance with the General Directions given by the Charity Commission. An examination includes a review of the accounting records kept by the charity and a comparison of the accounts with those records. It also includes consideration of any unusual items or disclosures in the accounts, and seeking explanations from you as Trustees concerning any such matters. The procedures undertaken do not provide all the evidence that would be required in an audit and consequently no opinion is given as to whether the accounts present a 'true and fair view' and the report is limited to those matters set in the statement

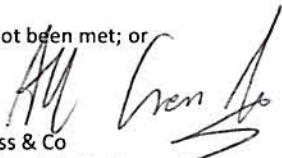
Independent Examiner's Statement

In connection with our examination, no matter has come to my attention:

(1) which gives me reasonable cause to believe that in any material respect the requirements:

- to keep accounting records in accordance with section 386 of the Companies Act 2006; and
- to prepare accounts which accord with accounting records, comply with the accounting requirements of section 396 of the Companies Act 2006 and with the methods and principles of the Statement of Recommended Practice: Accounting and Reporting by Charities

have not been met; or


A H Cross & Co
For and on behalf of

A H Cross & Co Limited
Chartered Certified Accountants
10 Pyle Street
Newport
Isle of Wight
PO30 1JW

Date2025

HOME-START I.O.W

STATEMENT OF FINANCIAL ACTIVITIES

FOR THE YEAR ENDED 31 MARCH 2025

	<u>Notes</u>	<u>Unrestricted</u> <u>Funds</u> <u>2025</u>	<u>Restricted</u> <u>Funds</u> <u>2025</u>	<u>Total</u> <u>Funds</u> <u>2025</u>	<u>Total</u> <u>Funds</u> <u>2024</u>
INCOMING RESOURCES					
INCOMING RESOURCES FROM GENERATED FUNDS					
Voluntary income - donations		-	-	0	0
Investment income - bank interest		2,316	-	2,316	2,125
INCOMING RESOURCES FROM CHARITABLE ACTIVITIES					
Funding	3	14,400	127,313	141,713	229,560
Grants	3	4,000	64,604	68,604	21,000
Donations	3	156,226	500	156,726	6,641
Fundraising		4,159	3,635	7,794	16,668
Gift aid		2,096	-	2,096	0
Other incoming resources		-	-	0	1,588
TOTAL INCOMING RESOURCES		183,197	196,052	379,249	277,582
RESOURCES EXPENDED					
Cost of charitable activities	4	108,936	136,634	245,570	218,000
Governance costs	4	5,914	-	5,914	5,313
TOTAL RESOURCES EXPENDED		114,850	136,634	251,484	223,313
NET INCOMING RESOURCES		68,347	59,418	127,765	54,269
Taxation		-	-	0	0
NET MOVEMENT IN FUNDS		68,347	59,418	127,765	54,269
TRANSFER IN FUNDS		-	-	0	0
TOTAL FUNDS BROUGHT FORWARD		177,428	28,935	206,363	152,094
TOTAL FUNDS CARRIED FORWARD	£	245,775	£ 88,353	£ 334,128	£ 206,363

HOME-START I.O.W

BALANCE SHEET

AT 31 MARCH 2025

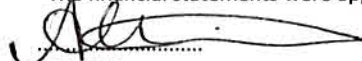
	<u>Notes</u>	<u>At 31 March</u> <u>2025</u>	<u>At 31 March</u> <u>2024</u>
FIXED ASSETS			
Tangible assets	8	<u>2,206</u>	<u>1,574</u>
CURRENT ASSETS			
Debtors - prepayments		1,600	-
Cash at bank		<u>331,888</u>	<u>207,117</u>
		<u>333,488</u>	<u>207,117</u>
CREDITORS Amounts falling due within one year			
Other creditors and accruals		<u>1,566</u>	<u>2,328</u>
NET CURRENT ASSETS		331,922	204,789
NET ASSETS		£ <u>334,128</u>	£ <u>206,363</u>
FUNDS OF THE CHARITY			
Unrestricted funds		245,775	177,428
Restricted funds		88,353	28,935
TOTAL CHARITY FUNDS		£ <u>334,128</u>	£ <u>206,363</u>

The directors are satisfied that the company is entitled to exemption from the requirement to obtain an audit under section 477 of the Companies Act 2006 and that members have not required the company to obtain an audit in accordance with section 476 of the Act. However, in accordance with section 145 of the Charities Act 2011, the accounts have been examined by an Independent Examiner whose report appears on page 6.

The directors acknowledge their responsibilities for complying with the requirement of the Companies Act 2006 with respect to accounting records and the preparation of accounts.

The accounts have been prepared in accordance with the provisions in Part 15 of the Companies Act 2006 applicable to companies subject to the small companies regime and in accordance with the Financial Reporting Standard for Smaller Entities (effective April 2008).

The financial statements were approved by the board of Trustees and signed on their behalf.


A Griffiths
Company Secretary

The notes on pages 9 to 12 form part of these accounts.

HOME-START I.O.W

NOTES TO THE ACCOUNTS

FOR THE YEAR ENDED 31 MARCH 2025

1. ACCOUNTING POLICIES

The financial statements have been prepared in accordance with the Financial Reporting Standards for Smaller Entities (FRSSE) effective April 2008, and all other applicable accounting standards, as modified by the Statement of recommended Practice for Accounting and Reporting issued by the Charity Commissioners for England and Wales (revised June 2008) (the SORP). The accounts have been drawn up in accordance with the provisions of the Charities (Accounts and Reports) Regulations 2008 and the Companies Act 2006 and include the results of the charity's operations which are described in the Trustees' Report, all of which are continuing.

Accounting Convention

These accounts have been prepared under the historical cost convention and in accordance with the Financial Reporting Standards for Smaller Entities (effective April 2008).

Incoming Resources - recognition of incoming resources

These are included in the Statement of Financial Activities (SOFA) when:

- The charity becomes entitled to the resources;
- the Trustees are virtually certain they will receive the resources; and

Resources Expended

All expenditure is accounted for on an accruals basis and has been classified under headings that aggregate all the cost relating to the charity's main activities.

Grants and donations

Grants and donations are only included in the SOFA when the charity has unconditional entitlement to the resources. Grants are deferred where they relate to future period activities.

Expenditure and Liabilities

Liabilities are recognised as soon as there is a legal or constructive obligation committing the charity to pay out resources.

Charitable expenditure

Given the size of the charity, all office costs are incurred in support of the charity's mission and activities including co-ordination of volunteers and are shown as direct charitable expenditure.

Governance costs

Include costs of the preparation and examination of statutory accounts, the cost of Trustee meetings and the cost of any legal advice to Trustees on governance or constitutional matters. Any little expenditure has been expensed to volunteer expenditure and is shown as other direct service provision.

Pensions

Contributions are paid to a defined contribution scheme. Pension costs represent the total of these

HOME-START I.O.W

NOTES TO THE ACCOUNTS continued

FOR THE YEAR ENDED 31 MARCH 2025

1. ACCOUNTING POLICIES continued

Tangible fixed assets and depreciation

All tangible fixed assets are stated at cost less depreciation. Depreciation has been provided at the following rate in order to write off the assets (less their residual value) over their estimated useful economic lives.

Computers 20% straight line basis

Fund Accounting

The charity maintains a general unrestricted fund which represents funds which are expendable at the discretion of the Trustees in furtherance of the objectives of the charity. There is no formal policy of transfer between funds or the allocation of funds.

Taxation

As a registered charity, the company is exempt from income and corporation tax to the extent that the income and gains are applicable to charitable purposes only. Value Added Tax is not recoverable by the

2. LEGAL STATUS OF THE CHARITY, COMMENCEMENT AND CONTINUATION OF ACTIVITIES

The charity is a company limited by guarantee and has no share capital. The liability of each member in the event of winding up is limited to £1. It took over the assets and liabilities and activities on the non-company

3. CHARITABLE ACTIVITIES

Funding

	<u>2025</u>	<u>2024</u>
BBC Children in need	-	27,916
Strengthening Families	28,800	15,600
National Lottery Grant	-	76,702
Home-Start UK partnerships	-	-
Students	400	800
Henry Smith	30,400	30,800
Early Help Capacity Building Grant (EHCBG)	-	14,963
John Smith	3,279	3,279
ICB / NHS	76,000	59,500
NHS Infant Feeding Fund	2,834	-
	£ 141,713	£ 229,560

Grants

MBLT	4,000	20,000
John Lewis PLC	1,000	1,000
Garfield Weston	20,000	-
Action Funder Sovereign	6,000	-
SGN	8,604	-
Home-Start PEARS	9,000	-
Awards for All	20,000	-
Other small grants	-	-
	£ 68,604	£ 21,000

HOME-START I.O.W

NOTES TO THE ACCOUNTS continued

FOR THE YEAR ENDED 31 MARCH 2025

3. CHARITABLE ACTIVITIES continued

Donations

	<u>2025</u>	<u>2024</u>
Family Fund	125	-
Accessibility Fund	375	-
WightDash	147,000	-
Other small donations	9,226	6,641
£	<u>156,726</u>	<u>£ 6,641</u>

4. ANALYSIS OF RESOURCES EXPENDED

Charitable activities

	<u>2025</u>	<u>2024</u>
Charitable activity direct expense	1,698	-
Direct service provision		
- staff	158,476	143,117
- other	10,617	14,929
Support costs/ office costs		
- staff	41,493	38,321
- other	25,886	19,458
Professional fees	7,400	2,175
	<u>245,570</u>	<u>218,000</u>
Governance costs		
- independent accountant	-	720
- other including AGM	5,914	4,593
- Trustee expenses	-	-
	<u>5,914</u>	<u>5,313</u>
£	<u>251,484</u>	<u>£ 223,313</u>

5. STAFF COSTS AND NUMBERS

The trust employs one scheme manager, six field staff and two administration assistants.

Staff costs in the year were:

	<u>2025</u>	<u>2024</u>
Gross	183,639	167,141
Employer's NIC	8,727	7,294
Pension	7,603	7,003
£	<u>199,969</u>	<u>£ 181,438</u>

No employees received remuneration in excess of £60,000.

The trust contributes to a defined contribution pension scheme. The amount outstanding at the end of the year is £Nil.

HOME-START I.O.W

NOTES TO THE ACCOUNTS continued

FOR THE YEAR ENDED 31 MARCH 2025

6. TRUSTEES REMUNERATION OR EXPENSES

	<u>2025</u>	<u>2024</u>
Remuneration	-	-
Expenses	-	-
	£ <u>0</u>	£ <u>0</u>

7. TAXATION

The company acquired charitable status in the year ended 31 March 2006 and is not liable to U.K. corporation tax.

8. FIXED ASSETS

	<u>Computer</u>
<u>Cost</u>	
At 1 April 2024	6,453
Additions in year	<u>1,470</u>
At 31 March 2025	<u>7,923</u>
<u>Depreciation</u>	
At 1 April 2024	-4,879
Charge for the year	<u>-838</u>
At 31 March 2025	<u>-5,717</u>
<u>Net book value</u>	£ <u>2,206</u>

9. CONTROL

The charity is controlled by the Trustees.

Company number: 05743981

Charity number: 1113958

HOME-START I.O.W
(A COMPANY LIMITED BY GUARANTEE)

ACCOUNTS
FOR THE YEAR ENDED 31 MARCH 2025

HOME-START I.O.W

ACCOUNTS

FOR THE YEAR ENDED 31 MARCH 2025

CONTENTS

PAGE

Legal and Administrative Information

1

Trustees' Report

2 to 5

Independent Examiner's Report

6

Statement of Financial Activities

7

Balance Sheet

8

Notes to the Accounts

9 to 12

HOME-START I.O.W

LEGAL AND ADMINISTRATIVE INFORMATION

FOR THE YEAR ENDED 31 MARCH 2025

Patron	J Griffin MBE
Directors/Trustees	M Rylands (Resigned 03/10/2024) J McKean K Rivlin (Resigned 16/01/2025) L Nehorai (Resigned 03/10/2024) J Bailey H Hadfield (Resigned 03/09/2024) T Hastain S Gearing (Resigned 30/04/2025) M O'Flynn J Young (Appointed 03/10/2024)
Secretary	A Griffiths
The Registered Office:	Exchange House St Cross lane Newport Isle of Wight PO30 5BZ
Company Number:	05743981
Charity Number:	1113958
Independent Examiner:	A H Cross & Co Limited Chartered Certified Accountants 10 Pyle Street Newport Isle of Wight PO30 1JW
Bankers:	HSBC Bank plc 101 St James Street Newport Isle of Wight PO30 1HX

HOME-START I.O.W

TRUSTEES' REPORT

FOR THE YEAR ENDED 31 MARCH 2025

The Trustees present their report and the accounts for the year ended 31 March 2025. The accounts have been prepared in accordance with the accounting policies set out in the notes to the accounts and comply with applicable law and the requirements of the Statement of Recommended Practice, "Accounting and Reporting by Charities" (SORP 2005) issued by the Charity Commission for England and Wales (revised in June 2008) and are in accordance with the Financial Reporting Standard for Smaller Entities (effective April 2008).

Structure, Governance and Management

The company was incorporated as a company limited by guarantee on 15 March 2006 and is registered with the Charity Commission number 1113958.

The appointment of Trustees is carried out by method of election by the Trustees of the company.

Vision, Mission, Values and Activities

Vision

Our vision is for "Happy, healthy and secure families on the Isle of Wight"

Mission

"Home-Start Isle of Wight offers practical and emotional support for Island families to build skills and confidence, and create the best future for their children"

Values

Our values underpin the ways that we - staff, trustees and volunteers - work, and in the decisions we take:

- We put families first.
- We are inclusive, responsive and respectful.
- We inspire everyone in the Home-Start community.

We know we can't fix every problem facing our families and carers, but our track record tells a story of how Home-Start Isle of Wight really does make a difference to our Island communities.

Activities for the year ended 31 March 2025

All the activities undertaken by Home-Start I.O.W are for the express purpose of furthering its charitable aims as outlined in its mission above and in accordance with its governing documents. Thus the Trustees are assured these activities fulfil their duties under Section 4 of the Charities Act 2006 to have due regard to public benefit guidance published by the Charity Commission.

HOME-START I.O.W

TRUSTEES' REPORT continued

FOR THE YEAR ENDED 31 MARCH 2025

Service delivery this year:

Home-Visiting Project - Volunteers with parenting/ caring experience, are trained, vetted and visit families in their own homes on a regular weekly basis, to offer support to families whose children are potentially vulnerable to risk factors, which could impact adversely on their development and well-being. Volunteers provide emotional and practical support which is individual to each family, supporting them in their homes and helping families engage in activities, and access services in their communities.

Family Group Project - Family Group sessions run each week during term time. These sessions provide a safe and stimulating environment for parents and their young children to socialise and learn together through play. During the year, group sessions have taken place in Shanklin, Sandown, East Cowes, Newport and Ryde.

Bumps & Babies Project - The project takes referrals for expectant and new parents to offer support and guidance during the first crucial months of parenthood. In addition, Baby Group sessions run throughout the year are aimed at new parents and their young babies. The sessions support parents with mild to moderate mental health needs to gain confidence, meet other new parents and receive support and guidance from trained staff and volunteers. During the year Baby Group sessions have taken place in Sandown and Newport.

Supporting Families Programme - We continue to work with the Isle of Wight Council on the Supporting Families programme. This contract requires Home-Start I.O.W to offer targeted support to a number of families who are experiencing specific difficulties including mental health, domestic abuse, worklessness and/or school attendance.

During the year, Home-Start I.O.W supported 167 families across the Island, with 331 children (233 under 5 years and 98 over 5 years). Many of the families supported during the year were experiencing multiple and complex difficulties.

Home-Start I.O.W could not operate without the commitment and dedication of the volunteer team. Without their outstanding contribution of time, energy and commitment we could not have achieved so much for families across the Isle of Wight. During the year 41 volunteers supported the work of the scheme.

Home-Start I.O.W has an open referral system, referrals are accepted from a wide range of professionals and from families themselves. 152 referrals for support were received during the year.

An initial assessment visit is carried out for all referrals received, and support is offered based on the needs identified by the family. The offer of support may be restricted by the resources available. Home-Start I.O.W recognises the diversity of families in all its work, respecting the cultural, racial and religious traditions that make them distinct.

Home-Start I.O.W is committed to safeguarding and promoting the well-being of children. Home-Start I.O.W works in partnership with a range of other agencies to achieve positive outcomes for families and plays a full part in the Early Help Assessment process and works closely with colleagues within Children's Services to support families and children subject to a Child in Need or Child Protection plan.

HOME-START I.O.W

TRUSTEES' REPORT continued

FOR THE YEAR ENDED 31 MARCH 2025

Sources of Funding

Home-Start I.O.W relies on external sources of funding to deliver its objectives.

This year funds were received from:

NHS (ICB), Isle of Wight Council, Michael and Betty Little Trust, Henry Smith Charity, JMC Plant Hire, John Lewis Plc, East Medina Lodge, Hants & IOW Masonic Charity, Garfield Weston, WightDash, SGN, Pears Foundation via HSUK, Awards for All, Lloyds bank (Newport), Lloyds Foundation, The Big Give Christmas Challenge Campaign, SNG, Jack Thompson, Bembridge WI, Brighstone WI, Neighbourly

In addition, funds were raised through a variety of community events, donations received in memory and by a number of generous individuals who made personal donations.

Plans for the Future

As Home-Start I.O.W is reliant on external funding, future delivery of its service will rely on the continuity of sufficient funds to maintain its core service. Therefore, fund raising is an on-going activity for the organisation and it is recognised that the current economic climate presents a significant challenge, which demands a creative and dynamic approach.

Home-Start I.O.W will continue to deliver its core objectives by recruiting and training volunteers, liaising with other professionals and working with families to promote the best possible outcomes for their children. Any expansion and development of the organisation will be in line with the Home-Start I.O.W Strategic Plan, and

Financial Review

Reserves

The charity operates within its financial capacity and has sufficient reserves to meet its regular outgoings and commitments.

Responsibilities of the Trustees

Company law requires the Trustees to prepare financial statements for each financial year which give a true and fair view of the affairs of the charitable company as at the balance sheet date and of its incoming resources and application of resources, including income and expenditure, for the financial year. In preparing those financial statements, the Trustees should follow best practise and:

- Select suitable accounting policies and apply them consistently;
- Make judgements and estimates that are reasonable and prudent; and
- Prepare financial statements on the going concern basis unless it is inappropriate to assume that the company will continue on that basis.

The Trustees are responsible for maintaining proper accounting records which disclose with reasonable accuracy at any time the financial position of the charitable company and to enable them that the financial statements comply with the Companies Act 2006. The Trustees are also responsible for safeguarding the assets

HOME-START I.O.W

TRUSTEES' REPORT continued

FOR THE YEAR ENDED 31 MARCH 2025

This report was approved by the Board of Trustees and signed on its behalf.


.....

M O'Flynn

Vice Chairperson

HOME-START I.O.W

INDEPENDENT EXAMINER'S REPORT

FOR THE YEAR ENDED 31 MARCH 2025

I report on the accounts of the company for the year ended 31 March 2025 which are set out on pages 7 and 8 and the related notes.

Respective Responsibilities of Trustees and examiner

The Trustees (who are also directors of the company for the purposes of company law) are responsible for the preparation of the accounts. The Trustees consider that an audit is not required for this year under section 144(2) of the Charities Act 2011 (the 2011 Act) and that an independent examination is needed.

Having satisfied myself that the charity is not subject to an audit under company law and is eligible for

Basis of Independent Examiner's Report

My examination was carried out in accordance with the General Directions given by the Charity Commission. An examination includes a review of the accounting records kept by the charity and a comparison of the accounts with those records. It also includes consideration of any unusual items or disclosures in the accounts, and seeking explanations from you as Trustees concerning any such matters. The procedures undertaken do not provide all the evidence that would be required in an audit and consequently no opinion is given as to whether the accounts present a 'true and fair view' and the report is limited to those matters set in the statement

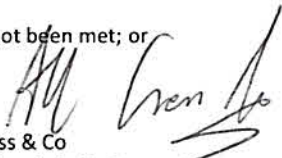
Independent Examiner's Statement

In connection with our examination, no matter has come to my attention:

(1) which gives me reasonable cause to believe that in any material respect the requirements:

- to keep accounting records in accordance with section 386 of the Companies Act 2006; and
- to prepare accounts which accord with accounting records, comply with the accounting requirements of section 396 of the Companies Act 2006 and with the methods and principles of the Statement of Recommended Practice: Accounting and Reporting by Charities

have not been met; or


A H Cross & Co
For and on behalf of

A H Cross & Co Limited
Chartered Certified Accountants
10 Pyle Street
Newport
Isle of Wight
PO30 1JW

Date2025

HOME-START I.O.W

STATEMENT OF FINANCIAL ACTIVITIES

FOR THE YEAR ENDED 31 MARCH 2025

	<u>Notes</u>	<u>Unrestricted Funds 2025</u>	<u>Restricted Funds 2025</u>	<u>Total Funds 2025</u>	<u>Total Funds 2024</u>
INCOMING RESOURCES					
INCOMING RESOURCES FROM GENERATED FUNDS					
Voluntary income - donations		-	-	0	0
Investment income - bank interest		2,316	-	2,316	2,125
INCOMING RESOURCES FROM CHARITABLE ACTIVITIES					
Funding	3	14,400	127,313	141,713	229,560
Grants	3	4,000	64,604	68,604	21,000
Donations	3	156,226	500	156,726	6,641
Fundraising		4,159	3,635	7,794	16,668
Gift aid		2,096	-	2,096	0
Other incoming resources		-	-	0	1,588
TOTAL INCOMING RESOURCES		183,197	196,052	379,249	277,582
RESOURCES EXPENDED					
Cost of charitable activities	4	108,936	136,634	245,570	218,000
Governance costs	4	5,914	-	5,914	5,313
TOTAL RESOURCES EXPENDED		114,850	136,634	251,484	223,313
NET INCOMING RESOURCES		68,347	59,418	127,765	54,269
Taxation		-	-	0	0
NET MOVEMENT IN FUNDS		68,347	59,418	127,765	54,269
TRANSFER IN FUNDS		-	-	0	0
TOTAL FUNDS BROUGHT FORWARD		177,428	28,935	206,363	152,094
TOTAL FUNDS CARRIED FORWARD	£	245,775	£ 88,353	£ 334,128	£ 206,363

HOME-START I.O.W

BALANCE SHEET

AT 31 MARCH 2025

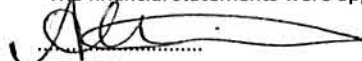
	<u>Notes</u>	<u>At 31 March</u> <u>2025</u>	<u>At 31 March</u> <u>2024</u>
FIXED ASSETS			
Tangible assets	8	<u>2,206</u>	<u>1,574</u>
CURRENT ASSETS			
Debtors - prepayments		1,600	-
Cash at bank		<u>331,888</u>	<u>207,117</u>
		<u>333,488</u>	<u>207,117</u>
CREDITORS Amounts falling due within one year			
Other creditors and accruals		<u>1,566</u>	<u>2,328</u>
NET CURRENT ASSETS		331,922	204,789
NET ASSETS		£ <u>334,128</u>	£ <u>206,363</u>
FUNDS OF THE CHARITY			
Unrestricted funds		245,775	177,428
Restricted funds		88,353	28,935
TOTAL CHARITY FUNDS		£ <u>334,128</u>	£ <u>206,363</u>

The directors are satisfied that the company is entitled to exemption from the requirement to obtain an audit under section 477 of the Companies Act 2006 and that members have not required the company to obtain an audit in accordance with section 476 of the Act. However, in accordance with section 145 of the Charities Act 2011, the accounts have been examined by an Independent Examiner whose report appears on page 6.

The directors acknowledge their responsibilities for complying with the requirement of the Companies Act 2006 with respect to accounting records and the preparation of accounts.

The accounts have been prepared in accordance with the provisions in Part 15 of the Companies Act 2006 applicable to companies subject to the small companies regime and in accordance with the Financial Reporting Standard for Smaller Entities (effective April 2008).

The financial statements were approved by the board of Trustees and signed on their behalf.


A Griffiths
Company Secretary

The notes on pages 9 to 12 form part of these accounts.

HOME-START I.O.W

NOTES TO THE ACCOUNTS

FOR THE YEAR ENDED 31 MARCH 2025

1. ACCOUNTING POLICIES

The financial statements have been prepared in accordance with the Financial Reporting Standards for Smaller Entities (FRSSE) effective April 2008, and all other applicable accounting standards, as modified by the Statement of recommended Practice for Accounting and Reporting issued by the Charity Commissioners for England and Wales (revised June 2008) (the SORP). The accounts have been drawn up in accordance with the provisions of the Charities (Accounts and Reports) Regulations 2008 and the Companies Act 2006 and include the results of the charity's operations which are described in the Trustees' Report, all of which are continuing.

Accounting Convention

These accounts have been prepared under the historical cost convention and in accordance with the Financial Reporting Standards for Smaller Entities (effective April 2008).

Incoming Resources - recognition of incoming resources

These are included in the Statement of Financial Activities (SOFA) when:

- The charity becomes entitled to the resources;
- the Trustees are virtually certain they will receive the resources; and

Resources Expended

All expenditure is accounted for on an accruals basis and has been classified under headings that aggregate all the cost relating to the charity's main activities.

Grants and donations

Grants and donations are only included in the SOFA when the charity has unconditional entitlement to the resources. Grants are deferred where they relate to future period activities.

Expenditure and Liabilities

Liabilities are recognised as soon as there is a legal or constructive obligation committing the charity to pay out resources.

Charitable expenditure

Given the size of the charity, all office costs are incurred in support of the charity's mission and activities including co-ordination of volunteers and are shown as direct charitable expenditure.

Governance costs

Include costs of the preparation and examination of statutory accounts, the cost of Trustee meetings and the cost of any legal advice to Trustees on governance or constitutional matters. Any little expenditure has been expensed to volunteer expenditure and is shown as other direct service provision.

Pensions

Contributions are paid to a defined contribution scheme. Pension costs represent the total of these

HOME-START I.O.W

NOTES TO THE ACCOUNTS continued

FOR THE YEAR ENDED 31 MARCH 2025

1. ACCOUNTING POLICIES continued

Tangible fixed assets and depreciation

All tangible fixed assets are stated at cost less depreciation. Depreciation has been provided at the following rate in order to write off the assets (less their residual value) over their estimated useful economic lives.

Computers 20% straight line basis

Fund Accounting

The charity maintains a general unrestricted fund which represents funds which are expendable at the discretion of the Trustees in furtherance of the objectives of the charity. There is no formal policy of transfer between funds or the allocation of funds.

Taxation

As a registered charity, the company is exempt from income and corporation tax to the extent that the income and gains are applicable to charitable purposes only. Value Added Tax is not recoverable by the

2. LEGAL STATUS OF THE CHARITY, COMMENCEMENT AND CONTINUATION OF ACTIVITIES

The charity is a company limited by guarantee and has no share capital. The liability of each member in the event of winding up is limited to £1. It took over the assets and liabilities and activities on the non-company

3. CHARITABLE ACTIVITIES

Funding

	<u>2025</u>	<u>2024</u>
BBC Children in need	-	27,916
Strengthening Families	28,800	15,600
National Lottery Grant	-	76,702
Home-Start UK partnerships	-	-
Students	400	800
Henry Smith	30,400	30,800
Early Help Capacity Building Grant (EHCBG)	-	14,963
John Smith	3,279	3,279
ICB / NHS	76,000	59,500
NHS Infant Feeding Fund	2,834	-
	£ 141,713	£ 229,560

Grants

MBLT	4,000	20,000
John Lewis PLC	1,000	1,000
Garfield Weston	20,000	-
Action Funder Sovereign	6,000	-
SGN	8,604	-
Home-Start PEARS	9,000	-
Awards for All	20,000	-
Other small grants	-	-
	£ 68,604	£ 21,000

HOME-START I.O.W

NOTES TO THE ACCOUNTS continued

FOR THE YEAR ENDED 31 MARCH 2025

3. CHARITABLE ACTIVITIES continued

Donations

	<u>2025</u>	<u>2024</u>
Family Fund	125	-
Accessibility Fund	375	-
WightDash	147,000	-
Other small donations	9,226	6,641
£	<u>156,726</u>	<u>£ 6,641</u>

4. ANALYSIS OF RESOURCES EXPENDED

Charitable activities

	<u>2025</u>	<u>2024</u>
Charitable activity direct expense	1,698	-
Direct service provision		
- staff	158,476	143,117
- other	10,617	14,929
Support costs/ office costs		
- staff	41,493	38,321
- other	25,886	19,458
Professional fees	7,400	2,175
	<u>245,570</u>	<u>218,000</u>
Governance costs		
- independent accountant	-	720
- other including AGM	5,914	4,593
- Trustee expenses	-	-
	<u>5,914</u>	<u>5,313</u>
£	<u>251,484</u>	<u>£ 223,313</u>

5. STAFF COSTS AND NUMBERS

The trust employs one scheme manager, six field staff and two administration assistants.

Staff costs in the year were:

	<u>2025</u>	<u>2024</u>
Gross	183,639	167,141
Employer's NIC	8,727	7,294
Pension	7,603	7,003
£	<u>199,969</u>	<u>£ 181,438</u>

No employees received remuneration in excess of £60,000.

The trust contributes to a defined contribution pension scheme. The amount outstanding at the end of the year is £Nil.

HOME-START I.O.W

NOTES TO THE ACCOUNTS continued

FOR THE YEAR ENDED 31 MARCH 2025

6. TRUSTEES REMUNERATION OR EXPENSES

	<u>2025</u>	<u>2024</u>
Remuneration	-	-
Expenses	-	-
	£ <u>0</u>	£ <u>0</u>

7. TAXATION

The company acquired charitable status in the year ended 31 March 2006 and is not liable to U.K. corporation tax.

8. FIXED ASSETS

	<u>Computer</u>
<u>Cost</u>	
At 1 April 2024	6,453
Additions in year	<u>1,470</u>
At 31 March 2025	<u>7,923</u>
<u>Depreciation</u>	
At 1 April 2024	-4,879
Charge for the year	<u>-838</u>
At 31 March 2025	<u>-5,717</u>
<u>Net book value</u>	£ <u>2,206</u>

9. CONTROL

The charity is controlled by the Trustees.