



Isle of Wight

# ANNUAL REPORT 2023–2024

HELPING TO CHANGE THE LIVES OF  
CHILDREN ACROSS THE ISLE OF WIGHT



# INTRODUCTION

At Home-Start IOW we have a very clear vision: to help sustain happy, healthy and secure families on the Isle of Wight. We do this by supporting young children and their families across the Island, working with dedicated volunteers to identify the challenges each family faces, and providing practical solutions that really make a difference.

We are there for parents when they need us the most – because childhood can't wait.



# OUR YEAR IN NUMBERS

**157**

Families supported

**318**

Children nurtured

**37** Volunteers supported our work during the year

**113** Families received 1:1 home-visiting support

**4** Family Group sessions offered each week plus school holiday activities

**92** Families accessed Group support - **48** families received both sources of support

**148** Referrals were received during the year

**9** Staff and **10** trustees

**2** Baby group sessions offered each week

# CHAIR'S REPORT

Dear supporter

Home-Start Isle of Wight is all about our volunteers - the amazing people who give their time, experience and expertise to ensure families in our community can give their children the best start.

Trained and supported by our professional and hard-working staff, the home visiting and group support volunteers spend time with parents and children offering practical and emotional support. Raising children is hard work and all of us need someone to be there to encourage, listen and offer help when we need it.

We are so proud of Margaret – recently named national Home-Start UK 'Volunteer of the Year' - please read on to find out more about her story.

Our trustees bring professional and personal experience to their roles overseeing the running of the charity and giving specialist input. We are lucky to have trustees from a range of backgrounds working together to move forward and introduce new ideas, but never losing sight of our core values.

Several professionals offer their time as Associates to the Board giving advice in a range of areas such as human resources, safeguarding, social media, IT and corporate relationships. Volunteers who organise events are essential in raising much-needed funds and spreading the word about who we are and what we do.



# CHAIR'S REPORT

Our patron Judi Griffin is a tireless champion of Home-Start IOW. She has supported our cause for many years, never missing an opportunity to tell people about who we are and fundraising through events at Bluebells café - the delicious cream tea is not to be missed!

We are also grateful to those who freely give their time helping to move office furniture after the recent flood, donating toys, clothes and furniture, transporting large items by trailer, painting the office, sorting washing and ironing baby clothes... and more!

Finally, as this will be my last Annual Review before handing over the Chair position early next year, I would like to say what an enormous privilege it has been. I feel confident that the future of Home-Start IOW is in very capable hands: with a talented staff; a group of dedicated volunteers; and a strong and diverse board of trustees.

What a team!

*Karen Rivlin, Chair of Trustees*

*June 2024*

If you would like to be part of Home-Start IOW please get in touch  
[admin@homestartiow.org](mailto:admin@homestartiow.org)

## A PARENT'S STORY



When I was first referred to Home-Start IOW I felt completely overwhelmed as a single mum to a one-year-old son. Having not been on the Isle of Wight for that long after facing homelessness, we were living in temporary accommodation trying to rebuild our lives. I felt very isolated as I had no social connections and my mental health deteriorated.

As a first-time parent I struggled to establish a solid routine for my son and felt a lot of uncertainty around my capabilities as a mum. Home-Start provided me with a volunteer who instantly made me feel reassured and that I was no longer struggling on my own. She went above and beyond to help me and my son, and carried on supporting us until she was certain that we were in a much better place.

The support she provided included showing me all the local stay and play groups, attending them with me until I felt comfortable to go alone. She gave me a lot of praise and motivation which I really needed at that point in life, because I had no confidence or self-esteem. On my toughest days she provided emotional support, being a lovely compassionate person who always listened without judgement.

As well as emotional support, she also provided practical advice with bulk cooking, meal planning, budgeting, debt management and helping me to understand my son's milestones through play and outdoor activities. Home-Start gave me hope and had an enormous positive impact on my life and will always hold a special place in my heart. The team were there for me during an extremely difficult time and helped me to turn my life around for the better.

I will never be able to thank them enough!

Davina

# A VOLUNTEER'S STORY



A year ago, I moved to the beautiful Isle of Wight and have been overwhelmed with the community spirit and support for one another that I have found here.

After hearing a motivational speech about the amazing work of the Home-Start volunteers, I was inspired to become involved. Although I work full time, I am fortunate to have Thursday afternoons free and the staff accommodated my schedule, enabling me to complete my training and learn more about being a volunteer.

I had a lot of help during the training process before being assigned to my first family. I must admit, going into my family introduction meeting, I was a little nervous and honestly doubted my capability to support my family. We had an instant connection and I quickly felt comfortable talking through the areas Mum needed support. We had great fun: baking and cooking together; getting very messy with a paint brush; and talking through bills and finance to make every day a little easier.

I am super-proud of Mum in how much she has absorbed and learnt in such a short period of time, developing hidden skills and self-assurance, and it's wonderful to see the family succeeding and attempting new things. Mum is now teaching me how to bake and adapt recipes, and it's great to see the family experimenting and getting healthier.

I feel so fortunate to be part of the Home-Start family and to have the opportunity to make a positive impact. Every week I leave my family with a fuller heart and excitement for the next visit. I'm looking forward to continuing my journey with Home-Start and helping many more families. If you are considering becoming a volunteer, this is an excellent opportunity to give back to our island community and help support families with young children.

Nicola

# FAMILY GROUP UPDATE

Sarah Wright, Lead Co-ordinator writes:

Over the past 12 months, Home-Start's Family Groups have seen some important changes. Having said goodbye to our activities co-ordinator Anne-Marie as she took her passion and expertise over to the Bumps and Babies project, we appointed Leanne to the newly created space in the Family Group team. She quickly introduced some wonderful activities to the sessions and, while the transition caused a little anxiety for some of our parents, they soon embraced the change.

We run four sessions across the Island and have benefited from additional volunteer support. We would like to take the opportunity to thank Joya, Maureen and Stacey for the time they give to Family Groups - it is much appreciated. The legacy of Covid has had a real impact on how our parents access family groups, we had noticed sporadic attendance and increased anxiety, confirming our belief in the importance of socialisation for parents. With hard work from Rachael, Leanne and Anne-Marie, we've been able to increase the consistent group attendance, with a noticeable and positive impact on the children.





# FAMILY GROUP UPDATE

Leanne Hyde, Family Group Activities Co-ordinator writes:

Home-Start groups are special because they provide a supportive environment where parents can connect with others who are experiencing similar joys and challenges of parenthood. Baby and toddler groups provide valuable early socialisation experiences, as well as opportunities for sensory exploration and learning through play.

Volunteers play a crucial role in our groups for several reasons: providing additional supervision and assistance, ensuring each child receives individual attention; bringing diverse skills, experiences and perspectives which enrich the learning environment; and offering unique opportunities for children to explore and grow. We appreciate their contribution, fresh ideas and creative activities and their dedication adds significantly to the success and effectiveness of our Home-Start groups.

A mum who attends our East Cowes group says:

“After having my baby I got Postnatal depression, I sat indoors just crying all the time and I was too scared to go to the doctor. When I agreed to a Home-Start referral, I was very reluctant.

The initial visit was nerve-wracking, but it was explained that I could get support with people the same as me in a family group - so I agreed to go.”

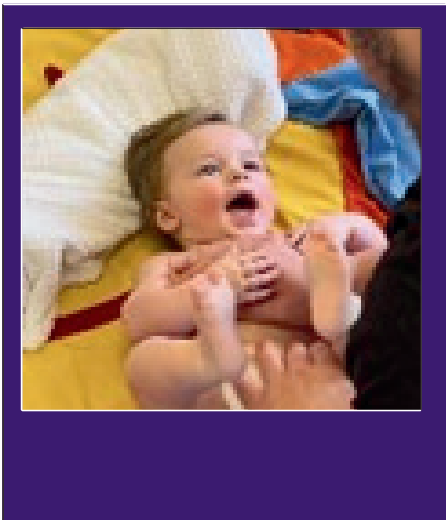
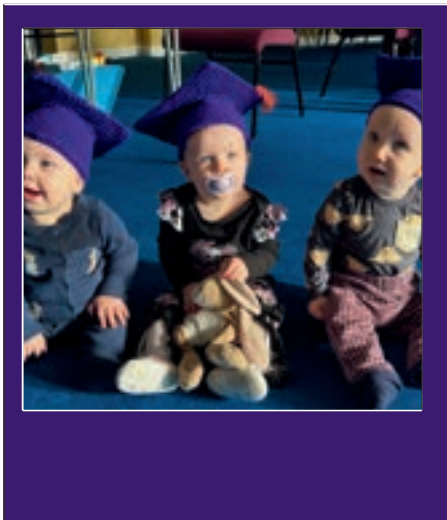
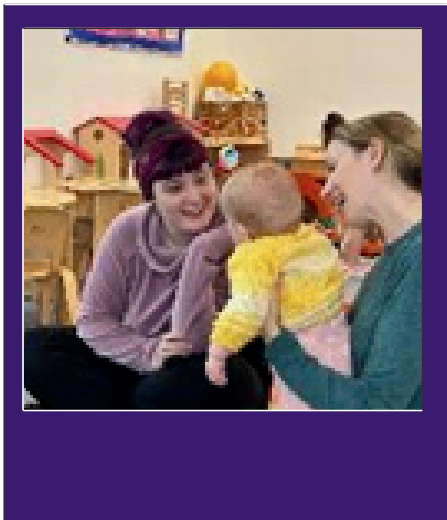
“Going to group means we get out, my child gets to go out and I was helped to access my GP to treat my anxiety and depression, allowing me to get medication which makes things manageable. I now feel there is an end to it, it will get better.”

# BUMPS & BABIES UPDATE

Sally Evans, Project Co-ordinator writes:

It’s been such an exciting time for Home-Start’s newest project! Our weekly baby groups in Sandown and Newport, run by Sally and Anne-Marie and supported by our Home-Start volunteer Joya, are well-established and proving popular with families. The project runs a ten-week programme, exploring a different theme each week including: weaning; sleep; baby massage; self-care and birth reflection. We’ve been joined by several guest speakers such as The Footprint Trust, Maternity Voices Partnership and NHS Talking Therapies.

Over the past 12 months, the project has supported 48 families with 29 families attending our baby groups. Support includes group sessions, volunteer support and targeted one-to-one support for families. In a recent review, 100% of families felt their mental health had improved as a direct result of being a part of Home-Start’s baby groups. We held our first ‘graduation ceremony’ in 2023, when five of our families completed the programme, moving on to family or toddler groups.



# BUMPS & BABIES UPDATE

Quote from Sally Evans, Bumps & Babies Co-ordinator writes:

**“Being a part of the Bumps & Babies Project is such an honour. It’s so heartwarming to see babies and parents thrive, and our groups are a great way to share information with families on a variety of topics. It’s a privilege to be able to see the families grow, and to support them at such an exciting and often stressful time is incredibly rewarding”.**

A Bumps & Babies group family says:

**“Our group has given me a reason to leave the house. It’s great to come to somewhere so welcoming, and to see the babies getting on so well and recognising each other every week. We love it, it feels like we’re part of a community, everybody is so welcoming”.**

External Service Provider says:

**“I have noticed a significant difference in wellbeing, and this has been massively contributed to by the support Home-Start has given. The mum has spoken so positively about the baby group, and also the one-to-one contact and support. I think the combination of Home-Start’s help, finding the right medication, and learning skills through one of our wellbeing courses has been the right combination – a great example of collaborative working.”**



# HOME-START HIGHLIGHTS

## MARGARET’S AWARD

“National award for Isle of Wight charity volunteer Margaret” – that was the headline in the local newspaper after our Home-Start IOW trustee and volunteer was awarded the highest recognition from the charity nationally.

Margaret Rylands has volunteered at Home-Start IOW since 1999, and has been a trustee for almost the same amount of time. She’s been described as a “lifeline” by the families she has helped. Volunteers, trustees, staff and families who had been supported by Margaret gathered at Briddlesford Farm to watch the national ceremony in February and see Margaret win the biggest award of them all!





# HOME-START HIGHLIGHTS

## ROYAL VISIT



We were honoured to welcome HRH The Duchess of Gloucester to Home-Start Isle of Wight in 2023. The Duchess visited our Newport office, meeting with staff, trustees and volunteers – including a roundtable discussion about the increasing number of parents and carers experiencing anxiety and isolation while raising a young family on the Island. It meant so much to all the team that she was able to take the time during her Island visit to meet with us and find out more about what we do.





# HOME-START HIGHLIGHTS

## HURSTS' CHARITY OF THE YEAR

We were delighted to be the Island hardware store chain's 'Charity of the Year' in 2023/24 – raising almost £4,400! This was done through a Hursts' sponsored bike ride in August, an in-branch exercise bike event, funds staff collected during the Newport Illuminated Carnival and donations given on the company's 'Celebration Day' last May.



## CHRISTMAS PRESENTS

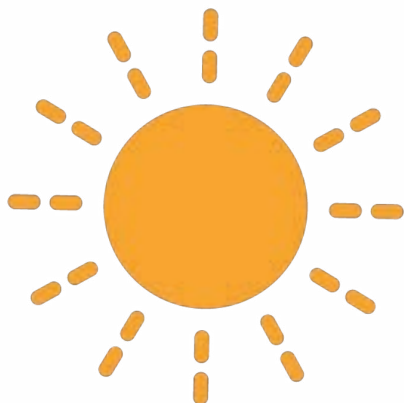
Every year we are lucky to be involved in the 'Island Toy Appeal' and in 2023 we were absolutely delighted to also receive support from the Masonic Lodge in Ryde and the Lidl Christmas Toy bank. The extra items received this year meant we were able to give many more families a very special Christmas!



# HOME-START HIGHLIGHTS

## ALL KINDS OF WOMEN

A group of seven women from the Island came together to celebrate and honour the many kinds of women in our world – raising almost £700 for Home-Start. These talented women created a song titled 'All Kinds of Women' with lyrics written by Jean G-Owen and music composed by Ross Westrop. In March 2024, WomenKind recorded their song at MusicCraft CIC in Newport with Side House Recordings in honour of International Women's Day and to fundraise for Home-Start IOW.



# HOME-START HIGHLIGHTS

## WINTER CAMPAIGN - FROM OUR FAMILY TO YOURS

Following the success of our first winter campaign last year, in January we launched our fundraising effort to help support Island families with a £25 food voucher. The 'Kick-Start with Home-Start' campaign aims to support struggling families looking after very young children to buy fresh food and essentials. The campaign was a complete success and we achieved our fundraising aim – thanks to support from many donations from people across the Island.



### HOME-START IOW LAUNCHES £25 FOOD VOUCHER CAMPAIGN TO SUPPORT ISLAND FAMILIES

14th January 2024 14:02  
James Rann - Digital News Reporter

LOCAL COMMUNITY NEWS

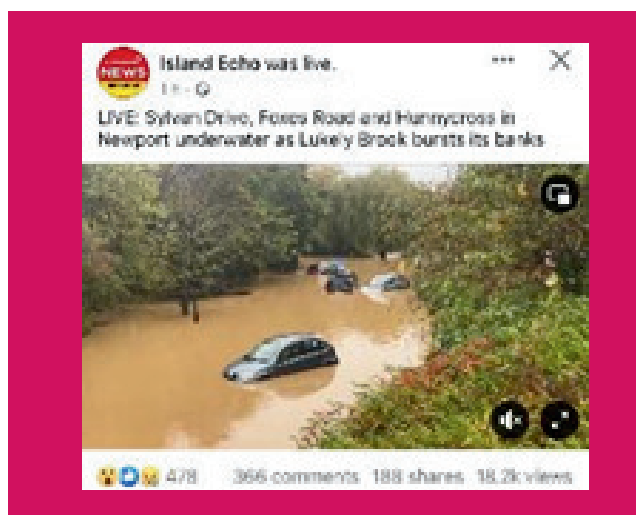


# HOME-START HIGHLIGHTS

## FLOOD ALERT

On October 25, 2023 our Home-Start office was one of many Newport properties to be flooded. The team worked quickly to salvage everything possible and move into a temporary office in the same building. A few weeks has become a few months -

but the team has got on with it and ensured everything has been 'business as usual'. We look forward to getting back into our office very soon!



## JACK THOMPSON

We were so thrilled to be chosen as this new interior design store's partner charity for their beauty events with Nature's Journey – which raised more than £1,000 over two evening events last Autumn.



# HOME-START HIGHLIGHTS

## EVENTS

Home Start Isle of Wight has been actively engaging with the community through a variety of events, reflecting its commitment to supporting local families. Highlights include participating in the Hursts Cycle Ride, having a dedicated Events team running stalls at the Seaview Regatta and fete, IOW Day, an Open Garden event at Haseley Manor, and the Tesco Charity Day. We had fun with a Pebble Drop round the Island, joined in the festive spirit of the Carnival and delighted guests with a charming Cream Tea at Briddlesford Farm. These events not only raise vital funds but also build community awareness about Home Start's invaluable services.





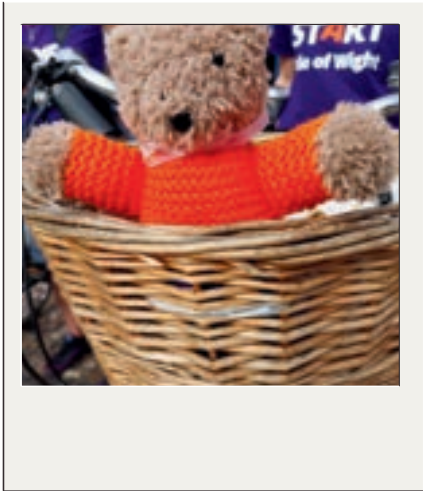
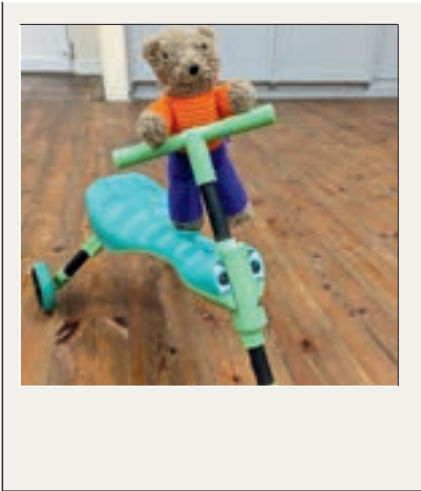
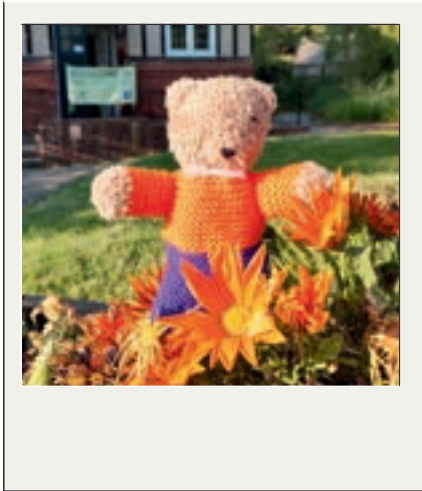
# HOME-START HIGHLIGHTS

## QUALITY ASSURED ACCREDITATION

Home-Start IOW was one of the first schemes to take part in the revised Home-Start UK Quality Assurance programme. The process was a great opportunity to review things and we are delighted to have received our mark of accreditation. Well done to everyone involved!



## MASCOT TED OUT AND ABOUT



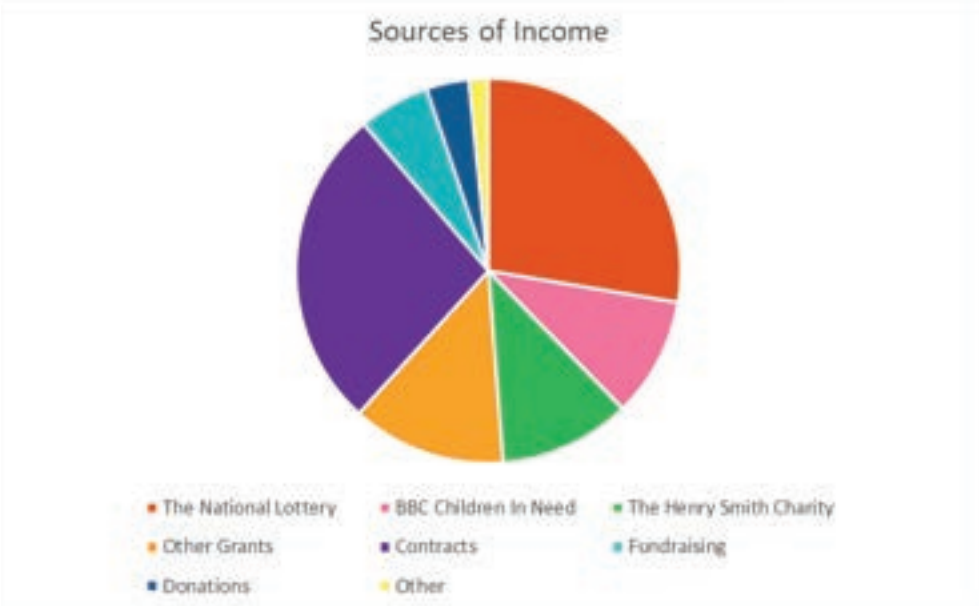
# FINANCIAL STATUS

INCOME SUMMARY	Total
TOTAL INCOMING RESOURCES	£277,582
THE NATIONAL LOTTERY	£76,702
BBC CHILDREN IN NEED	£27,916
THE HENRY SMITH	£30,800
OTHER GRANTS	£35,963
CONTRACTS	£75,100
FUNDRAISING	£16,668
DONATIONS	£9,191
OTHER	£4,514

EXPENDITURE SUMMARY	Total
TOTAL EXPENDITURE	£223,313
SALARIES AND RELATED COSTS	£187,382
RUNNING COSTS	£32,541
OTHER	£3,390
END OF THE YEAR RESERVES	£120,176



# FINANCIAL STATUS



## WE WOULD LIKE TO THANK

The National Lottery, BBC Children in Need, NHS, Isle of Wight Council, Michael and Betty Little Trust, The Henry Smith Charity, JMC Plant Hire, John Lewis Plc, Hursts (Charity of the Year), Helping Hands via Community Action IW, Isle of Wight Caravan and Motorhome Club, Air Partners, The Masonic Lodge Yarborough, Medina Lodge 35, Jack Thompson and Nature’s Journey, Womenkind, Classic Cottages, The Propellor Inn, Carisbrooke WI and Brighstone WI and Bluebells Café.

In addition, funds were raised through donations to our January campaign ‘From our home to yours’, annual Cream Tea event at Bluebells Café, an Open Garden event at Haseley Manor and events run during Seaview Regatta. During the year the work of Home-Start I.O.W was also supported by a number of generous individuals who made personal donations.

Statutory accounts are available on request



# STRATEGY & FUTURE PLANS

At Home-Start Isle of Wight we are acutely aware of the current difficulties facing families with young children. We see evidence of these problems every day.

The rising cost of living means many families are unable to cover heating bills, increasingly higher rents, or to afford food to feed their children. Some are in debt, others have lost their jobs.

Nationally, there's been a huge rise in the number of people experiencing problems with their mental health. Caregivers can feel overwhelmed, and for many children, their wellbeing and social development has suffered since the pandemic.

Here on the Isle of Wight the local picture only adds to these problems.

Our mission "Home-Start Isle of Wight offers practical and emotional support for Island families to build skills and confidence, and create the best future for their children".



# STRATEGY & FUTURE PLANS

## OBJECTIVES

### SERVICE DELIVERY

Strategic objective: Home-Start IOW will provide a wide range of support, designed to meet the needs of families with young children on the Isle of Wight.

- ✓ Support 80% (target) of eligible families through staff and volunteer home-visiting
- ✓ Run well-attended groups filling 80% (target) of maximum capacity with regular families, in a wider range of locations
- ✓ Increase and diversify our volunteer base
- ✓ Further develop links with other organisations
- ✓ Strengthen staff skills and further refine roles

### RAISING OUR PROFILE

Strategic objective: Home-Start IOW is a well-known, well-loved organisation

- ✓ Upgrade and improve our digital presence – quality and quantity
- ✓ Increase our reach via radio, TV and newspapers
- ✓ Organise or participate in Island events and fairs





# STRATEGY & FUTURE PLANS

## FINANCIAL SUSTAINABILITY AND ACCOUNTABILITY

Strategic objective: Home-Start IOW will raise funds from diverse sources and ensure effective delivery, growth and sustainability

- ✓ Work to a robust five-year strategic plan for funding: 40% grants; 20% LA; 20% donations; 20% corporate
- ✓ Have contingency plans in place for all financial risks
- ✓ Use our funds efficiently and effectively

## REMAINING RELEVANT & EFFECTIVE

Strategic objective: Home-Start IOW has systems and processes in place to ensure we stay on-track with our plans, adapting to ensure maximum impact

- ✓ Monitor our staff and trustees, ensuring all are well-informed
- ✓ Review, reflect and refine our annual strategy in line with changing contexts and priorities
- ✓ Assess our impact over this strategic period and feed results into the next strategy



# THE IMPACT OF OUR WORK

## COMMENTS FROM PARENTS

**"I like the socialisation and being with other parents who understand." Parent**

**"By coming here my baby gets to socialise and do activities she wouldn't normally do at home." Parent**

**"I get to talk to other parents and know that there are other people going through the same as me." Parent**

**"I believe in Home-Start. I'm here because I was ready to give back." Parent and volunteer**

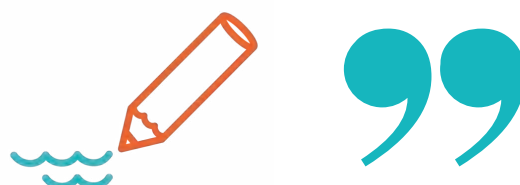
## FROM REGULAR REVIEWS CARRIED OUT

**94% of parents reported an improvement in their emotional wellbeing**

**78% reported improvement in household functioning including routines and budgeting**

**87% felt less isolated**

**92% felt more confident in supporting their child's development**



# FINAL MESSAGE

Here at Home-Start Isle of Wight we have had a fantastic year, and really grown as an organisation in terms of the service we provide and our ability to get the message of what we do out across our Island community. We are so proud of the strength of our team of dedicated staff members, our ever-growing army of volunteers and the backbone of support provided by the board of trustees.

It's clear from the strategy and planning work we have done over the past few months that Home-Start IOW has a strong vision for the future – and a focus that always remains family-centred, placing parents, carers and children at the heart of everything we do.

THANK YOU!

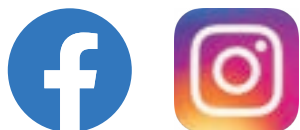




REGISTERED CHARITY NUMBER: 1113958  
COMPANY REGISTERED NUMBER: 5743981

admin@homestartiow.org  
www.homestartisleofwight.org.uk  
01983 533357

FIND US AT:  
EXCHANGE HOUSE, ST CROSS LANE  
NEWPORT  
ISLE OF WIGHT. PO30 5BZ



Company number: 05743981

Charity number: 1113958

HOME-START I.O.W  
(A COMPANY LIMITED BY GUARANTEE)

ACCOUNTS  
FOR THE YEAR ENDED 31 MARCH 2024



HOME-START I.O.W

ACCOUNTS

for the year ended 31 March 2024

CONTENTS

PAGE

Legal and Administrative Information

1

Trustees' Report

2 to 5

Independent Examiner's Report

6

Statement of Financial Activities

7

Balance Sheet

8

Notes to the Accounts

9 to 12

HOME-START I.O.W

LEGAL AND ADMINISTRATIVE INFORMATION

for the year ended 31 March 2024

Patron	J Griffin MBE
Directors/Trustees	M Rylands J McKean T Barker (Treasurer) (Resigned 13/10/2023) K Rivlin (Chair) L Nehorai J Bailey H Hadfield T Hastain S Gearing (Appointed 05/04/2023) M O'Flynn (Appointed 05/04/2023)
Secretary	A Griffiths
The Registered Office:	Exchange House St Cross lane Newport Isle of Wight PO30 5BZ
Company Number:	05743981
Charity Number:	1113958
Independent Examiner:	A H Cross & Co Limited Chartered Certified Accountants 16 Quay Street Newport Isle of Wight PO30 5BG
Bankers:	HSBC Bank plc 101 St James Street Newport Isle of Wight PO30 1HX

## HOME-START I.O.W

### TRUSTEES' REPORT

#### for the year ended 31 March 2024

The Trustees present their report and the accounts for the year ended 31 March 2024. The accounts have been prepared in accordance with the accounting policies set out in the notes to the accounts and comply with applicable law and the requirements of the Statement of Recommended Practice, "Accounting and Reporting by Charities" (SORP 2005) issued by the Charity Commission for England and Wales (revised in June 2008) and are in accordance with the Financial Reporting Standard for Smaller Entities (effective April 2008).

#### Structure, Governance and Management

The company was incorporated as a company limited by guarantee on 15 March 2006 and is registered with the Charity Commission number 1113958.

The appointment of Trustees is carried out by method of election by the Trustees of the company.

#### Vision, Mission, Values and Activities

##### Vision

Our vision is for "Happy, healthy and secure families on the Isle of Wight"

##### Mission

"Home-Start Isle of Wight offers practical and emotional support for Island families to build skills and confidence, and create the best future for their children"

##### Values

Our values underpin the ways that we - staff, trustees and volunteers - work, and in the decisions we take:

- We put families first.
- We are inclusive, responsive and respectful.
- We inspire everyone in the Home-Start community.

We know we can't fix every problem facing our families and carers, but our track record tells a story of how Home-Start Isle of Wight really does make a difference to our Island communities.

#### Activities for the year ended 31 March 2024

All the activities undertaken by Home-Start I.O.W are for the express purpose of furthering its charitable aims as outlined in its mission above and in accordance with its governing documents. Thus the Trustees are assured these activities fulfil their duties under Section 4 of the Charities Act 2006 to have due regard to public benefit guidance published by the Charity Commission.

HOME-START I.O.W

TRUSTEES' REPORT continued

for the year ended 31 March 2024

Service Delivery this year:

Home-Visiting Project - Volunteers with parenting/ caring experience, are trained, vetted and visit families in their own homes on a regular weekly basis, to offer support to families whose children are potentially vulnerable to risk factors, which could impact adversely on their development and well-being. Volunteers provide emotional and practical support which is individual to each family, supporting them in their homes and helping families engage in activities, and access services in their communities.

Family Group Project - Family Group sessions run each week during term time. These sessions provide a safe and stimulating environment for parents and their young children to socialise and learn together through play. During the year, group sessions have taken place in Shanklin, East Cowes, Newport and Ryde.

Bumps & Babies Project - The project takes referrals for expectant and new parents to offer support and guidance during the first crucial months of parenthood. In addition, Baby Group sessions run throughout the year and are aimed at new parents and their young babies. The sessions support parents with mild to moderate mental health needs to gain confidence, meet other new parents and receive support and guidance from trained staff and volunteers. During the year Baby Group sessions have taken place in Sandown and Newport.

Supporting Families Programme - We continue to work with the Isle of Wight Council on the Supporting Families programme. This contract requires Home-Start I.O.W to offer targeted support to a number of families who are experiencing specific difficulties including mental health, domestic abuse, worklessness and/or school attendance.

During the year, Home-Start I.O.W supported 157 families across the Island, with 318 children (222 under 5 years and 96 over 5 years). Many of the families supported during the year were experiencing multiple and complex difficulties.

Home-Start I.O.W could not operate without the commitment and dedication of the volunteer team. Without their outstanding contribution of time, energy and commitment we could not have achieved so much for families across the Isle of Wight. During the year 37 volunteers supported the work of the scheme.

Home-Start I.O.W has an open referral system, referrals are accepted from a wide range of professionals and from families themselves. 148 referrals for support were received during the year.

An initial assessment visit is carried out for all referrals received, and support is offered based on the needs identified by the family. The offer of support may be restricted by the resources available. Home-Start I.O.W recognises the diversity of families in all its work, respecting the cultural, racial and religious traditions that make them distinct.

Home-Start I.O.W is committed to safeguarding and promoting the well-being of children. Home-Start I.O.W works in partnership with a range of other agencies to achieve positive outcomes for families and plays a full part in the Early Help Assessment process and works closely with colleagues within Children's Services to support families and children subject to a Child in Need or Child Protection plan.



## HOME-START I.O.W

### TRUSTEES' REPORT continued

for the year ended 31 March 2024

#### Sources of Funding

Home-Start I.O.W relies on external sources of funding to deliver its objectives.

This year funds were received from:

The National Lottery, BBC Children in Need, NHS, Isle of Wight Council, Michael and Betty Little Trust, The Henry Smith Charity, JMC Plant Hire, John Lewis Plc, Hursts (Charity of the Year), Isle of Wight Caravan and Motorhome Club, Air Partners, The Masonic Lodge Yarborough, Medina Lodge 35, Jack Thompson and Nature's Journey, Bluebells Café, Classic Cottages, The Propellor Inn, Carisbrooke WI, Brighstone WI.

In addition, funds were raised through generous donations to our January campaign 'From our home to yours', annual Cream Tea event at Bluebells Café, an Open Garden event at Haseley Manor and events run during Seaview Regatta. During the year the work of Home-Start I.O.W was also supported by a number of generous individuals who made personal donations.

#### Plans for the Future

As Home-Start I.O.W is reliant on external funding, future delivery of its service will rely on the continuity of sufficient funds to maintain its core service. Therefore, fund raising is an on-going activity for the organisation and it is recognised that the current economic climate presents a significant challenge, which demands a creative and dynamic approach.

Home-Start I.O.W will continue to deliver its core objectives by recruiting and training volunteers, liaising with other professionals and working with families to promote the best possible outcomes for their children. Any expansion and development of the organisation will be in line with the Home-Start I.O.W Strategic Plan, and will focus on providing a quality service that is responsive to local need.

#### Financial Review

##### Reserves

The charity operates within its financial capacity and has sufficient reserves to meet its regular outgoings and commitments.

##### Responsibilities of the Trustees

Company law requires the Trustees to prepare financial statements for each financial year which give a true and fair view of the affairs of the charitable company as at the balance sheet date and of its incoming resources and application of resources, including income and expenditure, for the financial year. In preparing those financial statements, the Trustees should follow best practise and:

- Select suitable accounting policies and apply them consistently;
- Make judgements and estimates that are reasonable and prudent; and
- Prepare financial statements on the going concern basis unless it is inappropriate to assume that the company will continue on that basis.

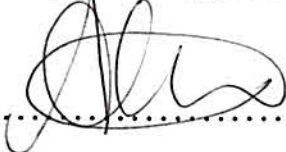
The Trustees are responsible for maintaining proper accounting records which disclose with reasonable accuracy at any time the financial position of the charitable company and to enable them to see that the financial statements comply with the Companies Act 2006. The Trustees are also responsible for safeguarding the assets of the charitable company and hence for taking reasonable steps for the prevention and detection of fraud and other irregularities.

HOME-START I.O.W

TRUSTEES' REPORT continued

for the year ended 31 March 2024

This report was approved by the Board of Trustees and signed on its behalf.

  
.....

A Griffiths

Company Secretary

HOME-START I.O.W

INDEPENDENT EXAMINER'S REPORT

for the year ended 31 March 2024

I report on the accounts of the company for the year ended 31 March 2024 which are set out on pages 7 and 8 and the related notes.

Respective Responsibilities of Trustees and examiner

The Trustees (who are also directors of the company for the purposes of company law) are responsible for the preparation of the accounts. The Trustees consider that an audit is not required for this year under section 144(2) of the Charities Act 2011 (the 2011 Act) and that an independent examination is needed.

Having satisfied myself that the charity is not subject to an audit under company law and is eligible for independent examination, it is my responsibility to:

- examine the accounts under section 145 of the 2011 Act;.
- to follow the procedures laid down by the General Directions given by the Charity Commissioners under section 145(5) (b) of the 2011 Act; and.
- to state whether particular matters have come to my attention.

Basis of Independent Examiner's Report

My examination was carried out in accordance with the General Directions given by the Charity Commission. An examination includes a review of the accounting records kept by the charity and a comparison of the accounts with those records. It also includes consideration of any unusual items or disclosures in the accounts, and seeking explanations from you as Trustees concerning any such matters. The procedures undertaken do not provide all the evidence that would be required in an audit and consequently no opinion is given as to whether the accounts present a 'true and fair view' and the report is limited to those matters set in the statement below.

Independent Examiner's Statement

In connection with our examination, no matter has come to my attention:

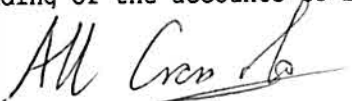
(1) which gives me reasonable cause to believe that in any material respect the requirements:

- to keep accounting records in accordance with section 386 of the Companies Act 2006; and

- to prepare accounts which accord with accounting records, comply with the accounting requirements of section 396 of the Companies Act 2006 and with the methods and principles of the Statement of Recommended Practice: Accounting and Reporting by Charities

have not been met; or

(2) to which, in my opinion, attention should be drawn in order to enable a proper understanding of the accounts to be reached.



A H Cross & Co Limited  
Chartered Certified Accountants  
16 Quay Street  
Newport  
Isle of Wight  
PO30 5BG

Date .....1/8/.....2024



HOME-START I.O.W

STATEMENT OF FINANCIAL ACTIVITIES

for the year ended 31 March 2024

		<u>Unrestricted</u>	<u>Restricted</u>	<u>Total</u>	<u>Total</u>
		<u>Funds</u>	<u>Funds</u>	<u>Funds</u>	<u>Funds</u>
	<u>Notes</u>	<u>2024</u>	<u>2024</u>	<u>2024</u>	<u>2023</u>
INCOMING RESOURCES					
INCOMING RESOURCES FROM					
GENERATED FUNDS					
Voluntary income - donations		-	-	0	0
Investment income - bank interest		2,125	-	2,125	348
INCOMING RESOURCES FROM					
CHARITABLE ACTIVITIES					
Funding	3	6,400	223,160	229,560	120,028
Grants	3	21,000	-	21,000	27,288
Donations		6,641	-	6,641	5,619
Fundraising		16,668	-	16,668	5,703
Other incoming resources		-	1,588	1,588	-
TOTAL INCOMING RESOURCES		<u>52,834</u>	<u>224,748</u>	<u>277,582</u>	<u>158,986</u>
RESOURCES EXPENDED					
Cost of charitable activities	4	27,500	190,500	218,000	171,891
Governance costs	4	-	5,313	5,313	5,079
TOTAL RESOURCES EXPENDED		<u>27,500</u>	<u>195,813</u>	<u>223,313</u>	<u>176,970</u>
NET INCOMING RESOURCES		25,334	28,935	54,269	(17,984)
Taxation		-	-	0	0
NET MOVEMENT IN FUNDS		25,334	28,935	54,269	(17,984)
TRANSFER IN FUNDS		-	-	0	0
TOTAL FUNDS BROUGHT FORWARD		152,094	-	152,094	170,078
TOTAL FUNDS CARRIED FORWARD		<u>£ 177,428</u>	<u>£ 28,935</u>	<u>£ 206,363</u>	<u>£ 152,094</u>



HOME-START I.O.W

BALANCE SHEET

at 31 March 2024

	<u>Notes</u>	<u>At 31 March</u> <u>2024</u>	<u>At 31 March</u> <u>2023</u>
FIXED ASSETS			
Tangible assets	8	<u>1,574</u>	<u>2,090</u>
CURRENT ASSETS			
Debtors - prepayments		-	2,600
Cash at bank		<u>207,117</u>	<u>150,128</u>
		<u>207,117</u>	<u>152,728</u>
CREDITORS Amounts falling due within one year			
Other creditors and accruals		<u>2,328</u>	<u>2,724</u>
NET CURRENT ASSETS		<u>204,789</u>	<u>150,004</u>
NET ASSETS		£ <u>206,363</u>	£ <u>152,094</u>
FUNDS OF THE CHARITY			
Unrestricted funds		177,428	152,094
Restricted funds		<u>28,935</u>	<u>-</u>
TOTAL CHARITY FUNDS		£ <u>206,363</u>	£ <u>152,094</u>

The directors are satisfied that the company is entitled to exemption from the requirement to obtain an audit under section 477 of the Companies Act 2006 and that members have not required the company to obtain an audit in accordance with section 476 of the Act. However, in accordance with section 145 of the Charities Act 2011, the accounts have been examined by an Independent Examiner whose report appears on page 6.

The directors acknowledge their responsibilities for complying with the requirement of the Companies Act 2006 with respect to accounting records and the preparation of accounts.

The accounts have been prepared in accordance with the provisions in Part 15 of the Companies Act 2006 applicable to companies subject to the small companies regime and in accordance with the Financial Reporting Standard for Smaller Entities (effective April 2008).

The financial statements were approved by the board of Trustees and signed on their behalf.



K Rivlin  
Trustee

The notes on pages 9 to 12 form part of these accounts.

## HOME-START I.O.W

### NOTES TO THE ACCOUNTS

for the year ended 31 March 2024

#### 1 ACCOUNTING POLICIES

The financial statements have been prepared in accordance with the Financial Reporting Standard for Smaller Entities (FRSSE) effective April 2008, and all other applicable accounting standards, as modified by the Statement of recommended Practice for Accounting and Reporting issued by the Charity Commissioners for England and Wales (revised June 2008) (the SORP). The accounts have been drawn up in accordance with the provisions of the Charities (Accounts and Reports) Regulations 2008 and the Companies Act 2006 and include the results of the charity's operations which are described in the Trustees' Report, all of which are continuing.

#### Accounting Convention

These accounts have been prepared under the historical cost convention and in accordance with the Financial Reporting Standards for Smaller Entities (effective April 2008).

#### Incoming Resources - recognition of incoming resources

These are included in the Statement of Financial Activities (SOFA) when:

- The charity becomes entitled to the resources;
- the Trustees are virtually certain they will receive the resources; and
- the monetary value can be measured with sufficient reliability.

Where the incoming resources have related expenditure the incoming resources and related expenditure are reported gross in the SOFA.

#### Resources Expended

All expenditure is accounted for on an accruals basis and has been classified under headings that aggregate all the cost relating to the charity's main activities.

Resources expended include attributable VAT which cannot be recovered.

#### Grants and donations

Grants and donations are only included in the SOFA when the charity has unconditional entitlement to the resources. Grants are deferred where they relate to future period activities.

#### Expenditure and Liabilities

Liabilities are recognised as soon as there is a legal or constructive obligation committing the charity to pay out resources.

#### Charitable expenditure

Given the size of the charity, all office costs are incurred in support of the charity's mission and activities including co-ordination of volunteers and are shown as direct charitable expenditure.

#### Governance costs

Include costs of the preparation and examination of statutory accounts, the cost of Trustee meetings and the cost of any legal advice to Trustees on governance or constitutional matters. Any little expenditure has been expensed to volunteer expenditure and is shown as other direct service provision.

#### Pensions

Contributions are paid to a defined contribution scheme. Pension costs represent the total of these contributions payable on behalf of employees in the year.

## HOME-START I.O.W

### NOTES TO THE ACCOUNTS

for the year ended 31 March 2024

#### 1 ACCOUNTING POLICIES (cont'd)

##### Tangible fixed assets and depreciation

All tangible fixed assets are stated at cost less depreciation. Depreciation has been provided at the following rate in order to write off the assets (less their residual value) over their estimated useful economic lives.

Computers            20% straight line basis

##### Fund Accounting

The charity maintains a general unrestricted fund which represents funds which are expendable at the discretion of the Trustees in furtherance of the objectives of the charity. There is no formal policy of transfer between funds or the allocation of funds.

##### Taxation

As a registered charity, the company is exempt from income and corporation tax to the extent that the income and gains are applicable to charitable purposes only. Value Added Tax is not recoverable by the company, and therefore included in the relevant costs in the Statement of Financial Activities.

#### 2 LEGAL STATUS OF THE CHARITY. COMMENCEMENT AND CONTINUATION OF ACTIVITIES

The charity is a company limited by guarantee and has no share capital. The liability of each member in the event of winding up is limited to £1. It took over the assets and liabilities and activities on the non-company organisation of the same name and charity number 1064329 on 1 April 2006.

The continuation of the charity's activities is dependant on future funding part of which has been secured. The level of activity undertaken will depend upon the funding obtained.

#### 3 FUNDING AND GRANTS

	<u>2024</u>	<u>2023</u>
BBC Children in need	27,916	27,827
Strengthening Families	15,600	17,400
National Lottery Grant	76,702	74,801
Home-Start UK partnerships	-	-
Students	800	-
Henry Smith	30,800	-
Early Help Capacity Building Grant (EHCBG)	14,963	-
John Smith	3,279	-
ICB / NHS	59,500	-
MBLT	20,000	20,000
John Lewis PLC	1,000	450
Other small grants	-	6,838
	<u>£ 250,560</u>	<u>£ 147,316</u>



HOME-START I.O.W

NOTES TO THE ACCOUNTS

for the year ended 31 March 2024

4 ANALYSIS OF RESOURCES EXPENDED

<u>Charitable activities</u>		<u>2024</u>	<u>2023</u>
Direct service provision	- staff	143,117	111,138
	- other	14,929	13,201
Support costs/ office costs	- staff	38,321	26,764
	- other	19,458	19,988
Professional fees		2,175	800
		<u>218,000</u>	<u>171,891</u>
Governance costs	- independent accountant	720	720
	- other including AGM	4,593	4,359
	- Trustee expenses	-	-
		<u>5,313</u>	<u>5,079</u>
		<u>£ 223,313</u>	<u>£ 176,970</u>

5 STAFF COSTS AND NUMBERS

The trust employs one scheme manager, six field staff and two administration assistants.

Staff costs in the year were:

	<u>2024</u>	<u>2023</u>
Gross	167,141	127,383
Employer's NIC	7,294	4,723
Pension	7,003	5,796
	<u>£ 181,438</u>	<u>£ 137,902</u>

No employees received remuneration in excess of £60,000.

The trust contributes to a defined contribution pension scheme. The amount outstanding at the end of the year is £1,033.33.

6 TRUSTEES REMUNERATION OR EXPENSES

	<u>2024</u>	<u>2023</u>
Remuneration	-	-
Expenses	-	-
	<u>£ 0</u>	<u>£ 0</u>

7 TAXATION

The company acquired charitable status in the year ended 31 March 2006 and is not liable to U.K. corporation tax.



HOME-START I.O.W

NOTES TO THE ACCOUNTS

for the year ended 31 March 2024

8 FIXED ASSETS

Computer

Cost

At 1 April 2023

6,131

Additions in year

322

At 31 March 2024

6,453

Depreciation

At 1 April 2023

4,041

Charge for the year

838

At 31 March 2024

4,879

Net book value

£ 1,574

9 CONTROL

The charity is controlled by the Trustees.

Company number: 05743981

Charity number: 1113958

HOME-START I.O.W  
(A COMPANY LIMITED BY GUARANTEE)

ACCOUNTS  
FOR THE YEAR ENDED 31 MARCH 2024

HOME-START I.O.W

ACCOUNTS

for the year ended 31 March 2024

CONTENTS

PAGE

Legal and Administrative Information

1

Trustees' Report

2 to 5

Independent Examiner's Report

6

Statement of Financial Activities

7

Balance Sheet

8

Notes to the Accounts

9 to 12

HOME-START I.O.W

LEGAL AND ADMINISTRATIVE INFORMATION

for the year ended 31 March 2024

Patron	J Griffin MBE
Directors/Trustees	M Rylands J McKean T Barker (Treasurer) (Resigned 13/10/2023) K Rivlin (Chair) L Nehorai J Bailey H Hadfield T Hastain S Gearing (Appointed 05/04/2023) M O'Flynn (Appointed 05/04/2023)
Secretary	A Griffiths
The Registered Office:	Exchange House St Cross lane Newport Isle of Wight PO30 5BZ
Company Number:	05743981
Charity Number:	1113958
Independent Examiner:	A H Cross & Co Limited Chartered Certified Accountants 16 Quay Street Newport Isle of Wight PO30 5BG
Bankers:	HSBC Bank plc 101 St James Street Newport Isle of Wight PO30 1HX

## HOME-START I.O.W

### TRUSTEES' REPORT

#### for the year ended 31 March 2024

The Trustees present their report and the accounts for the year ended 31 March 2024. The accounts have been prepared in accordance with the accounting policies set out in the notes to the accounts and comply with applicable law and the requirements of the Statement of Recommended Practice, "Accounting and Reporting by Charities" (SORP 2005) issued by the Charity Commission for England and Wales (revised in June 2008) and are in accordance with the Financial Reporting Standard for Smaller Entities (effective April 2008).

#### Structure, Governance and Management

The company was incorporated as a company limited by guarantee on 15 March 2006 and is registered with the Charity Commission number 1113958.

The appointment of Trustees is carried out by method of election by the Trustees of the company.

#### Vision, Mission, Values and Activities

##### Vision

Our vision is for "Happy, healthy and secure families on the Isle of Wight"

##### Mission

"Home-Start Isle of Wight offers practical and emotional support for Island families to build skills and confidence, and create the best future for their children"

##### Values

Our values underpin the ways that we - staff, trustees and volunteers - work, and in the decisions we take:

- We put families first.
- We are inclusive, responsive and respectful.
- We inspire everyone in the Home-Start community.

We know we can't fix every problem facing our families and carers, but our track record tells a story of how Home-Start Isle of Wight really does make a difference to our Island communities.

#### Activities for the year ended 31 March 2024

All the activities undertaken by Home-Start I.O.W are for the express purpose of furthering its charitable aims as outlined in its mission above and in accordance with its governing documents. Thus the Trustees are assured these activities fulfil their duties under Section 4 of the Charities Act 2006 to have due regard to public benefit guidance published by the Charity Commission.



HOME-START I.O.W

TRUSTEES' REPORT continued

for the year ended 31 March 2024

Service Delivery this year:

Home-Visiting Project - Volunteers with parenting/ caring experience, are trained, vetted and visit families in their own homes on a regular weekly basis, to offer support to families whose children are potentially vulnerable to risk factors, which could impact adversely on their development and well-being. Volunteers provide emotional and practical support which is individual to each family, supporting them in their homes and helping families engage in activities, and access services in their communities.

Family Group Project - Family Group sessions run each week during term time. These sessions provide a safe and stimulating environment for parents and their young children to socialise and learn together through play. During the year, group sessions have taken place in Shanklin, East Cowes, Newport and Ryde.

Bumps & Babies Project - The project takes referrals for expectant and new parents to offer support and guidance during the first crucial months of parenthood. In addition, Baby Group sessions run throughout the year and are aimed at new parents and their young babies. The sessions support parents with mild to moderate mental health needs to gain confidence, meet other new parents and receive support and guidance from trained staff and volunteers. During the year Baby Group sessions have taken place in Sandown and Newport.

Supporting Families Programme - We continue to work with the Isle of Wight Council on the Supporting Families programme. This contract requires Home-Start I.O.W to offer targeted support to a number of families who are experiencing specific difficulties including mental health, domestic abuse, worklessness and/or school attendance.

During the year, Home-Start I.O.W supported 157 families across the Island, with 318 children (222 under 5 years and 96 over 5 years). Many of the families supported during the year were experiencing multiple and complex difficulties.

Home-Start I.O.W could not operate without the commitment and dedication of the volunteer team. Without their outstanding contribution of time, energy and commitment we could not have achieved so much for families across the Isle of Wight. During the year 37 volunteers supported the work of the scheme.

Home-Start I.O.W has an open referral system, referrals are accepted from a wide range of professionals and from families themselves. 148 referrals for support were received during the year.

An initial assessment visit is carried out for all referrals received, and support is offered based on the needs identified by the family. The offer of support may be restricted by the resources available. Home-Start I.O.W recognises the diversity of families in all its work, respecting the cultural, racial and religious traditions that make them distinct.

Home-Start I.O.W is committed to safeguarding and promoting the well-being of children. Home-Start I.O.W works in partnership with a range of other agencies to achieve positive outcomes for families and plays a full part in the Early Help Assessment process and works closely with colleagues within Children's Services to support families and children subject to a Child in Need or Child Protection plan.

## HOME-START I.O.W

### TRUSTEES' REPORT continued

for the year ended 31 March 2024

#### Sources of Funding

Home-Start I.O.W relies on external sources of funding to deliver its objectives.

This year funds were received from:

The National Lottery, BBC Children in Need, NHS, Isle of Wight Council, Michael and Betty Little Trust, The Henry Smith Charity, JMC Plant Hire, John Lewis Plc, Hursts (Charity of the Year), Isle of Wight Caravan and Motorhome Club, Air Partners, The Masonic Lodge Yarborough, Medina Lodge 35, Jack Thompson and Nature's Journey, Bluebells Café, Classic Cottages, The Propellor Inn, Carisbrooke WI, Brighstone WI.

In addition, funds were raised through generous donations to our January campaign 'From our home to yours', annual Cream Tea event at Bluebells Café, an Open Garden event at Haseley Manor and events run during Seaview Regatta. During the year the work of Home-Start I.O.W was also supported by a number of generous individuals who made personal donations.

#### Plans for the Future

As Home-Start I.O.W is reliant on external funding, future delivery of its service will rely on the continuity of sufficient funds to maintain its core service. Therefore, fund raising is an on-going activity for the organisation and it is recognised that the current economic climate presents a significant challenge, which demands a creative and dynamic approach.

Home-Start I.O.W will continue to deliver its core objectives by recruiting and training volunteers, liaising with other professionals and working with families to promote the best possible outcomes for their children. Any expansion and development of the organisation will be in line with the Home-Start I.O.W Strategic Plan, and will focus on providing a quality service that is responsive to local need.

#### Financial Review

##### Reserves

The charity operates within its financial capacity and has sufficient reserves to meet its regular outgoings and commitments.

##### Responsibilities of the Trustees

Company law requires the Trustees to prepare financial statements for each financial year which give a true and fair view of the affairs of the charitable company as at the balance sheet date and of its incoming resources and application of resources, including income and expenditure, for the financial year. In preparing those financial statements, the Trustees should follow best practise and:

- Select suitable accounting policies and apply them consistently;
- Make judgements and estimates that are reasonable and prudent; and
- Prepare financial statements on the going concern basis unless it is inappropriate to assume that the company will continue on that basis.

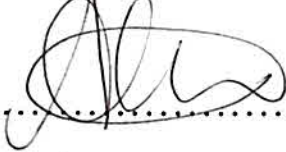
The Trustees are responsible for maintaining proper accounting records which disclose with reasonable accuracy at any time the financial position of the charitable company and to enable them to see that the financial statements comply with the Companies Act 2006. The Trustees are also responsible for safeguarding the assets of the charitable company and hence for taking reasonable steps for the prevention and detection of fraud and other irregularities.

HOME-START I.O.W

TRUSTEES' REPORT continued

for the year ended 31 March 2024

This report was approved by the Board of Trustees and signed on its behalf.

  
.....

A Griffiths

Company Secretary



HOME-START I.O.W

INDEPENDENT EXAMINER'S REPORT

for the year ended 31 March 2024

I report on the accounts of the company for the year ended 31 March 2024 which are set out on pages 7 and 8 and the related notes.

Respective Responsibilities of Trustees and examiner

The Trustees (who are also directors of the company for the purposes of company law) are responsible for the preparation of the accounts. The Trustees consider that an audit is not required for this year under section 144(2) of the Charities Act 2011 (the 2011 Act) and that an independent examination is needed.

Having satisfied myself that the charity is not subject to an audit under company law and is eligible for independent examination, it is my responsibility to:

- examine the accounts under section 145 of the 2011 Act;.
- to follow the procedures laid down by the General Directions given by the Charity Commissioners under section 145(5) (b) of the 2011 Act; and.
- to state whether particular matters have come to my attention.

Basis of Independent Examiner's Report

My examination was carried out in accordance with the General Directions given by the Charity Commission. An examination includes a review of the accounting records kept by the charity and a comparison of the accounts with those records. It also includes consideration of any unusual items or disclosures in the accounts, and seeking explanations from you as Trustees concerning any such matters. The procedures undertaken do not provide all the evidence that would be required in an audit and consequently no opinion is given as to whether the accounts present a 'true and fair view' and the report is limited to those matters set in the statement below.

Independent Examiner's Statement

In connection with our examination, no matter has come to my attention:

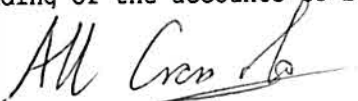
(1) which gives me reasonable cause to believe that in any material respect the requirements:

- to keep accounting records in accordance with section 386 of the Companies Act 2006; and

- to prepare accounts which accord with accounting records, comply with the accounting requirements of section 396 of the Companies Act 2006 and with the methods and principles of the Statement of Recommended Practice: Accounting and Reporting by Charities

have not been met; or

(2) to which, in my opinion, attention should be drawn in order to enable a proper understanding of the accounts to be reached.



A H Cross & Co Limited  
Chartered Certified Accountants  
16 Quay Street  
Newport  
Isle of Wight  
PO30 5BG

Date .....1/8/.....2024



HOME-START I.O.W

STATEMENT OF FINANCIAL ACTIVITIES

for the year ended 31 March 2024

		<u>Unrestricted</u>	<u>Restricted</u>	<u>Total</u>	<u>Total</u>
		<u>Funds</u>	<u>Funds</u>	<u>Funds</u>	<u>Funds</u>
	<u>Notes</u>	<u>2024</u>	<u>2024</u>	<u>2024</u>	<u>2023</u>
INCOMING RESOURCES					
INCOMING RESOURCES FROM					
GENERATED FUNDS					
Voluntary income - donations		-	-	0	0
Investment income - bank interest		2,125	-	2,125	348
INCOMING RESOURCES FROM					
CHARITABLE ACTIVITIES					
Funding	3	6,400	223,160	229,560	120,028
Grants	3	21,000	-	21,000	27,288
Donations		6,641	-	6,641	5,619
Fundraising		16,668	-	16,668	5,703
Other incoming resources		-	1,588	1,588	-
TOTAL INCOMING RESOURCES		<u>52,834</u>	<u>224,748</u>	<u>277,582</u>	<u>158,986</u>
RESOURCES EXPENDED					
Cost of charitable activities	4	27,500	190,500	218,000	171,891
Governance costs	4	-	5,313	5,313	5,079
TOTAL RESOURCES EXPENDED		<u>27,500</u>	<u>195,813</u>	<u>223,313</u>	<u>176,970</u>
NET INCOMING RESOURCES		25,334	28,935	54,269	(17,984)
Taxation		-	-	0	0
NET MOVEMENT IN FUNDS		25,334	28,935	54,269	(17,984)
TRANSFER IN FUNDS		-	-	0	0
TOTAL FUNDS BROUGHT FORWARD		152,094	-	152,094	170,078
TOTAL FUNDS CARRIED FORWARD		<u>£ 177,428</u>	<u>£ 28,935</u>	<u>£ 206,363</u>	<u>£ 152,094</u>

HOME-START I.O.W

BALANCE SHEET

at 31 March 2024

	<u>Notes</u>	<u>At 31 March</u> <u>2024</u>	<u>At 31 March</u> <u>2023</u>
FIXED ASSETS			
Tangible assets	8	<u>1,574</u>	<u>2,090</u>
CURRENT ASSETS			
Debtors - prepayments		-	2,600
Cash at bank		<u>207,117</u>	<u>150,128</u>
		<u>207,117</u>	<u>152,728</u>
CREDITORS Amounts falling due within one year			
Other creditors and accruals		<u>2,328</u>	<u>2,724</u>
NET CURRENT ASSETS		<u>204,789</u>	<u>150,004</u>
NET ASSETS		£ <u>206,363</u>	£ <u>152,094</u>
FUNDS OF THE CHARITY			
Unrestricted funds		177,428	152,094
Restricted funds		<u>28,935</u>	<u>-</u>
TOTAL CHARITY FUNDS		£ <u>206,363</u>	£ <u>152,094</u>

The directors are satisfied that the company is entitled to exemption from the requirement to obtain an audit under section 477 of the Companies Act 2006 and that members have not required the company to obtain an audit in accordance with section 476 of the Act. However, in accordance with section 145 of the Charities Act 2011, the accounts have been examined by an Independent Examiner whose report appears on page 6.

The directors acknowledge their responsibilities for complying with the requirement of the Companies Act 2006 with respect to accounting records and the preparation of accounts.

The accounts have been prepared in accordance with the provisions in Part 15 of the Companies Act 2006 applicable to companies subject to the small companies regime and in accordance with the Financial Reporting Standard for Smaller Entities (effective April 2008).

The financial statements were approved by the board of Trustees and signed on their behalf.



K Rivlin  
Trustee

The notes on pages 9 to 12 form part of these accounts.

## HOME-START I.O.W

### NOTES TO THE ACCOUNTS

for the year ended 31 March 2024

#### 1 ACCOUNTING POLICIES

The financial statements have been prepared in accordance with the Financial Reporting Standard for Smaller Entities (FRSSE) effective April 2008, and all other applicable accounting standards, as modified by the Statement of recommended Practice for Accounting and Reporting issued by the Charity Commissioners for England and Wales (revised June 2008) (the SORP). The accounts have been drawn up in accordance with the provisions of the Charities (Accounts and Reports) Regulations 2008 and the Companies Act 2006 and include the results of the charity's operations which are described in the Trustees' Report, all of which are continuing.

#### Accounting Convention

These accounts have been prepared under the historical cost convention and in accordance with the Financial Reporting Standards for Smaller Entities (effective April 2008).

#### Incoming Resources - recognition of incoming resources

These are included in the Statement of Financial Activities (SOFA) when:

- The charity becomes entitled to the resources;
- the Trustees are virtually certain they will receive the resources; and
- the monetary value can be measured with sufficient reliability.

Where the incoming resources have related expenditure the incoming resources and related expenditure are reported gross in the SOFA.

#### Resources Expended

All expenditure is accounted for on an accruals basis and has been classified under headings that aggregate all the cost relating to the charity's main activities.

Resources expended include attributable VAT which cannot be recovered.

#### Grants and donations

Grants and donations are only included in the SOFA when the charity has unconditional entitlement to the resources. Grants are deferred where they relate to future period activities.

#### Expenditure and Liabilities

Liabilities are recognised as soon as there is a legal or constructive obligation committing the charity to pay out resources.

#### Charitable expenditure

Given the size of the charity, all office costs are incurred in support of the charity's mission and activities including co-ordination of volunteers and are shown as direct charitable expenditure.

#### Governance costs

Include costs of the preparation and examination of statutory accounts, the cost of Trustee meetings and the cost of any legal advice to Trustees on governance or constitutional matters. Any little expenditure has been expensed to volunteer expenditure and is shown as other direct service provision.

#### Pensions

Contributions are paid to a defined contribution scheme. Pension costs represent the total of these contributions payable on behalf of employees in the year.



## HOME-START I.O.W

### NOTES TO THE ACCOUNTS

for the year ended 31 March 2024

#### 1 ACCOUNTING POLICIES (cont'd)

##### Tangible fixed assets and depreciation

All tangible fixed assets are stated at cost less depreciation. Depreciation has been provided at the following rate in order to write off the assets (less their residual value) over their estimated useful economic lives.

Computers            20% straight line basis

##### Fund Accounting

The charity maintains a general unrestricted fund which represents funds which are expendable at the discretion of the Trustees in furtherance of the objectives of the charity. There is no formal policy of transfer between funds or the allocation of funds.

##### Taxation

As a registered charity, the company is exempt from income and corporation tax to the extent that the income and gains are applicable to charitable purposes only. Value Added Tax is not recoverable by the company, and therefore included in the relevant costs in the Statement of Financial Activities.

#### 2 LEGAL STATUS OF THE CHARITY. COMMENCEMENT AND CONTINUATION OF ACTIVITIES

The charity is a company limited by guarantee and has no share capital. The liability of each member in the event of winding up is limited to £1. It took over the assets and liabilities and activities on the non-company organisation of the same name and charity number 1064329 on 1 April 2006.

The continuation of the charity's activities is dependant on future funding part of which has been secured. The level of activity undertaken will depend upon the funding obtained.

#### 3 FUNDING AND GRANTS

	<u>2024</u>	<u>2023</u>
BBC Children in need	27,916	27,827
Strengthening Families	15,600	17,400
National Lottery Grant	76,702	74,801
Home-Start UK partnerships	-	-
Students	800	-
Henry Smith	30,800	-
Early Help Capacity Building Grant (EHCBG)	14,963	-
John Smith	3,279	-
ICB / NHS	59,500	-
MBLT	20,000	20,000
John Lewis PLC	1,000	450
Other small grants	-	6,838
	<u>£ 250,560</u>	<u>£ 147,316</u>



HOME-START I.O.W

NOTES TO THE ACCOUNTS

for the year ended 31 March 2024

4 ANALYSIS OF RESOURCES EXPENDED

		<u>2024</u>	<u>2023</u>
<u>Charitable activities</u>			
Direct service provision	- staff	143,117	111,138
	- other	14,929	13,201
Support costs/ office costs	- staff	38,321	26,764
	- other	19,458	19,988
Professional fees		2,175	800
		<u>218,000</u>	<u>171,891</u>
Governance costs	- independent accountant	720	720
	- other including AGM	4,593	4,359
	- Trustee expenses	-	-
		<u>5,313</u>	<u>5,079</u>
		<u>£ 223,313</u>	<u>£ 176,970</u>

5 STAFF COSTS AND NUMBERS

The trust employs one scheme manager, six field staff and two administration assistants.

Staff costs in the year were:

	<u>2024</u>	<u>2023</u>
Gross	167,141	127,383
Employer's NIC	7,294	4,723
Pension	7,003	5,796
	<u>£ 181,438</u>	<u>£ 137,902</u>

No employees received remuneration in excess of £60,000.

The trust contributes to a defined contribution pension scheme. The amount outstanding at the end of the year is £1,033.33.

6 TRUSTEES REMUNERATION OR EXPENSES

	<u>2024</u>	<u>2023</u>
Remuneration	-	-
Expenses	-	-
	<u>£ 0</u>	<u>£ 0</u>

7 TAXATION

The company acquired charitable status in the year ended 31 March 2006 and is not liable to U.K. corporation tax.

HOME-START I.O.W

NOTES TO THE ACCOUNTS

for the year ended 31 March 2024

8 FIXED ASSETS

	<u>Computer</u>
<u>Cost</u>	
At 1 April 2023	6,131
Additions in year	<u>322</u>
At 31 March 2024	<u>6,453</u>
<u>Depreciation</u>	
At 1 April 2023	4,041
Charge for the year	<u>838</u>
At 31 March 2024	<u>4,879</u>
<u>Net book value</u>	<u>£ 1,574</u>

9 CONTROL

The charity is controlled by the Trustees.