



Isle of Wight



Annual Report 2021 - 2022

We want everyone on the Isle of Wight
to know about Home-Start...



We are an Island based charity that works with volunteers to support families who are facing challenges.

We look to help families build a better life giving children the best possible future.

Our volunteers are committed, passionate and skilled; working in partnership with parents and carers. Our aim is to be there for every family that needs us because childhood can't wait.





OUR YEAR IN NUMBERS

131 Families supported

54 Families accessed
group support

288 Children supported

86 Families received 1:1 home
visiting support

HOW WE SUPPORTED

5 Family Group session every week

39 Volunteers giving 1:1 visits

Trustees = 9

Staff = 6



REFERRALS = 118

- Health Visitors = 68
- Social Care = 12
- Domestic Abuse Teams = 12
- Education = 6
- Self-referrals = 4
- Professionals = 10
- Other charities = 4
- Other Services = 2

WHAT PARENTS TOLD US

- 97% - experienced improved mental health
- 91% - felt less isolated
- 89% - better engaged with their children's learning & development
- 86% - more confidence in parenting
- 100% - increased self-esteem
- 88% - established good routines and budget planning





OUR RESPONSE IN LOCKDOWN

At Home-Start IOW we responded by continuing to take referrals throughout all the lockdowns. Staff and volunteers offered doorstep visits and phone support when face to face was not possible.

Parents were given the opportunity to attend online parent support sessions which focused on a range of topics including sleep, routines, toilet training and understanding challenging behaviour. These sessions gave parents the chance to get advice, share their worries and connect with other parents experiencing similar difficulties.

As restrictions eased families received garden visits and volunteers arranged to meet up outside.

We were so impressed with how readily everyone embraced the use of technology to make the best of a difficult situation. We could not have predicted how much could be achieved over Zoom!



"Not only have I grown in confidence and made some lifelong friends, but the children have also gained confidence and look forward to any meet ups, whether it be out and about or online. Home-Start really has been my lifeline and I feel so lucky to have been introduced to them"

FAMILY STORY

- I was struggling terribly with taking my three boys out, I just couldn't manage them alone. My partner was working Monday to Friday, and I was working weekends. Our Home-Start volunteer was exactly what I needed. I felt so low because I couldn't go anywhere with them which meant they were missing out on so much.

Our volunteer was wonderful, hands on, with the best attitude, she and I managed every crazy scenario with laughter and fun. My favourite day of the week was when she was coming. The boys loved her, and I loved seeing them interact with someone other than me. Seeing how delighted they were to be able to go out made me incredibly happy. I couldn't have asked for a better person. The hours and support she gave enabled me to eventually take the boys out alone which has been the best ever outcome for me as a Mum. She encouraged a new way of communicating, problem solving and playing. Even as a young adult with no children she built an amazing relationship with us all that we completely loved and valued.

It meant my children could enjoy trips to Tapnell farm, soft plays, Robin hill and Blackgang chine. It brought us a guaranteed positive experience each week. They had a regular visitor who they loved and trusted and who we could talk about when they weren't there and look forward to the next visit. They learned to behave and listen better to someone other than Mum and this meant when lockdown came and our volunteer couldn't come the transition to managing alone was so much smoother.

Aside from the volunteer visits, Home-Start provided a group we attended when possible. It was the only group I ever went to because it felt like a small safe environment where I could ask for help.

It gave me a safety net and the tools and knowledge to get to the point where I'm at today. My boys and I go to theme parks alone, to restaurants and supermarkets and people are so amazed to see how well I can manage. These positive moments, of which we have so many now balance the harder times and the work-load involved in having three very young children. I feel a massive sense of success rather than failure and so much of this is from the support of Home-Start.

Home-Start understood exactly how I felt when I had to open-up and ask for help at a really difficult time in my life. They have all played such a valuable part to the amazingly happy successful family we have become. They've even sent a sleep expert who gave us the confidence to make the transition to beds and this was a massive turning point where life just got so much easier.

Mum of 3 under 5



VOLUNTEER'S STORY



I saw a poster in my village asking people to become Home-Start volunteers. After many years as a special needs teacher and a Portage home teacher now retired, I applied. Four years on I have supported five different families.

It's always a bit daunting meeting a new family but so rewarding to see the children grow and develop and establish a relationship with the parents.

Support comes in many forms. With my first family, they had 2 young children and then twins. I was an extra pair of hands to play, help with meals, sort out medical appointments and even view properties with them. With another family who I supported for a year, it was help with eating healthy meals, batch cooking and sleep training. Also help sorting their house out and giving Mum some time to herself. It can be a challenge, even when welcomed, some families have difficult, entrenched problems. As a volunteer we can walk alongside them but not always bring about change.

Some of the most rewarding aspects of being a Home-Start volunteer has been supporting a family with a baby with special needs. Often it is just listening or letting Mum get on with other things.

Lockdown was a challenge for everyone, particularly young families. I never did meet the Mum I supported with a weekly phone call.

Being invited into someone's home is a privilege. It takes time to build up trust and lovely when you can laugh together and feel you can help.

Genny



OUR NEW PROJECT 'RIGHT FROM THE START'



We have seen an increase in referrals for families with very young children. Having a baby in lockdown has caused many parents to feel alone, unsure and worried. Many have been isolated, separated from friends and family and deprived of much needed practical help and emotional support.

Parents feel alone, anxious and describe feeling a little lost. They have been denied the opportunity to get together with other parents to share stories, gain confidence and have fun. The lifting of restrictions was, for many the opportunity they needed to get out and meet others but, for many parents the anxiety about mixing and lack of confidence in themselves has been an enormous barrier.

With this in mind we set up our Right from the Start group for parents with young babies. This small, invitation only group was set up as a pilot project supported by a grant from Sovereign Housing. This is helping us meet the need in one area and, if further funding is secured we hope to be able to offer in other locations.

"Thank you so much for inviting us. It has been so good to meet other Mums in the same situation as me. I have felt really bad that my baby was missing out and it was lovely to see him with the other babies today"

Mum with a 6 month old



HIGHLIGHTS OF THE YEAR



HOME-START HEROES

Four childhood friends took their place in the Home-Start hall of fame when they took on the IOW Ultra Challenge.

Calling themselves the Culver Downers the four walked a gruelling 106KM raising over £11,000. You are all Home-Start Heroes! After the event one of the team said: "It was very tough and we are all still feeling it, physically and mentally, however, it is great to know that the money raised will go to a very good cause".



GIVING A LITTLE LOVE



We have been so grateful for all the support we have received from John Lewis and partners. Because of them we have been able to provide some really lovely items to families at a time when they needed them most. From welly boots and warm coats to bedding to slow cookers, from treats at Easter to hampers at Christmas, the items have made such a difference. Thank you

FINANCE REPORT

INCOME

| | |
|----------------------------------|-----------------|
| The National Lottery | £64,000 |
| Strengthening Families Programme | £22,000 |
| BBC Children In Need | £28,000 |
| Grants & Donations | £58,000 |
| Other (inclu HSUK) | £21,000 |
| TOTAL | £193,000 |

EXPENDITURE

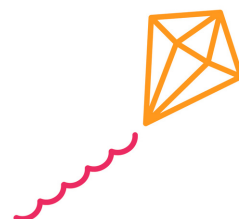
| | |
|----------------|-----------------|
| Staff | £119,000 |
| Premises | £21,000 |
| Other | £7,000 |
| TOTAL | £147,000 |
| SURPLUS | £46,000 |



Thank you:

The National Lottery, BBC Children in Need, Isle of Wight Council, Postcode Society Trust, Michael and Betty Little Trust, Comic Relief, JMC Plant Hire, Hampshire and IOW Community Foundation, Home-Start UK/John Lewis Partnership, Waitrose East Cowes, IW Foundation, Ryde Masonic Lodge, Hampshire and IOW Masonic Grand Charity, Hose Rhodes Dickson, The AIM Foundation, Home-Start Hampshire/PEARS, Sovereign Housing, Home-Start UK/Brook Trust, Appley WI and donations through the Charities Aid Foundation.

Statutory accounts are available on request



OUR STRATEGY



We have developed a robust and ambitious plan for our service over the next three years:

-Service diversification and expanding our reach: We aim to be there for every family that needs us.

-Financial sustainability: As the need for our services increases we are looking for more funding for our core service and special projects to enable us to help more Island families.

-Raising our profile: We want the whole Isle of Wight community to know who we are, how we can help and how they can help us.

-Digital engagement: Online support through storytime and singing sessions, parenting sessions and digital working now run alongside our face to face work and enhance our support.

-Growing and developing as a team: Our commitment is to improve, evolve and embrace change to meet the changing needs of our community.

We want to help as many families on the Isle of Wight as possible. Raising young children can be incredibly isolating, and we hear time and time again how living on an Island can make that feeling of being cut off from friends and family feel even more acute.

We emerge from the pandemic, with mental health in sharp focus and the cost of living challenging many of our Island communities, the need for our work is crucially important.



AND FINALLY



We are working to ensure that Home-Start Isle of Wight is ready to meet the needs of our families. We are ready to increase our funding, develop our trustee team, support and equip our staff and expand our volunteer group.

The biggest thanks go to our families, volunteers, staff, trustees and supporters.
You are all Home-Start Isle of Wight.

Thank you



Thank you to all who support us



Find us at:

- admin@homestartiow.org
- www.homestartisleofwight.org.uk
- 01983 533357

Exchange House, St Cross Lane
Newport
Isle of Wight. PO30 5BZ

Registered Charity Number: 1113958
Company Registered Number: 5743981

Company number: 05743981

Charity number: 1113958

HOME-START I.O.W.
(A COMPANY LIMITED BY GUARANTEE)

ACCOUNTS
FOR THE YEAR ENDED 31 MARCH 2022

HOME-START I.O.W.

ACCOUNTS

for the year ended 31 March 2022

CONTENTS

PAGE

| | |
|--------------------------------------|---------|
| Legal and Administrative Information | 1 |
| Trustees' Report | 2 to 5 |
| Independent Examiner's Report | 6 |
| Statement of Financial Activities | 7 |
| Balance Sheet | 8 |
| Notes to the Accounts | 9 to 12 |

HOME-START I.O.W.

LEGAL AND ADMINISTRATIVE INFORMATION

for the year ended 31 March 2022

| | |
|------------------------|--|
| Patron | J Griffin MBE |
| Directors/Trustees | M Rylands J McKean T Barker (Treasurer) K Rivlin (Chair) W Loader L Nehorai T Wray (resigned 14/03/2022) J Bailey (appointed 29/11/2021) H Hadfield (appointed 29/11/2021) T Hastain (appointed 29/11/2021) |
| Secretary | A Griffiths |
| The Registered Office: | Exchange House St Cross lane Newport Isle of Wight PO30 5BZ |
| Company Number: | 05743981 |
| Charity Number: | 1113958 |
| Independent Examiner: | A H Cross & Co Limited Chartered Certified Accountants 16 Quay Street Newport Isle of Wight PO30 5BG |
| Bankers: | HSBC Bank plc 101 St James Street Newport Isle of Wight PO30 1HX |

HOME-START I.O.W.

TRUSTEES' REPORT

for the year ended 31 March 2022

The trustees present their report and the accounts for the year ended 31 March 2022. The accounts have been prepared in accordance with the accounting policies set out in the notes to the accounts and comply with applicable law and the requirements of the Statement of Recommended Practice, "Accounting and Reporting by Charities" (SORP 2005) issued by the Charity Commission for England and Wales (revised in June 2008) and are in accordance with the Financial Reporting Standard for Smaller Entities (effective April 2008).

Structure, Governance and Management

The company was incorporated as a company limited by guarantee on 15 March 2006 and is registered with the Charity Commission number 1113958.

The appointment of trustees is carried out by method of election by the trustees of the company.

Mission, Vision and Activities

Mission

Home-Start I.O.W. is to be there for every family that needs us because childhood can't wait.

Vision

Its vision is to be a trusted voluntary service supporting the local community working in partnership with parents through challenging times to give their family the best possible future.

Activities for the year ended 31 March 2022

All the activities undertaken by Home-Start I.O.W. are for the express purpose of furthering its charitable aims as outlined in its mission above. Thus the trustees are assured these activities fulfil their duties under Section 4 of the Charities Act 2006 to have due regard to public benefit guidance published by the Charity Commission.

Volunteers with parenting/caring experience, are trained, vetted and visit families in their own homes on a weekly basis, to offer support to families whose children are potentially vulnerable to risk factors, which could impact adversely on their development and well-being. Volunteers provide emotional and practical support which is individual to each family, supporting them in their homes and helping families engage in activities, and access services in their communities.

In addition to home visiting, staff run 'invitation only' group sessions each week during term time. These sessions provide a safe and stimulating environment for parents and their young children to socialise and learn together through play. During the year, group sessions have taken place in Shanklin, East Cowes, Newport and Ryde. In addition virtual groups and online activity sessions have been offered to families when lockdown restrictions prevented face to face meetings.

HOME-START I.O.W.

TRUSTEES' REPORT continued

for the year ended 31 March 2022

We continue to work with the Isle of Wight Council on the Strengthening Families programme. This contract requires Home-Start I.O.W. to offer targeted support to a number of families who are experiencing specific difficulties with mental health, domestic abuse, worklessness and/or school attendance.

During the year, Home-Start I.O.W. supported 131 families across the Island, with 288 children (201 under 5 years and 87 over 5 years). Many of the families supported during the year were experiencing multiple and complex difficulties.

Home-Start I.O.W. could not operate without the commitment and dedication of the volunteer team. Without their outstanding contribution of time, energy and commitment we could not have achieved so much for families across the Island. During this year 39 volunteers supported the work of this scheme. Due to the restrictions caused by Covid-19 the support offered during the year was a combination of home visiting, telephone and video call.

Home-Start I.O.W. has an open referral system, referrals are accepted from a wide range of professionals and from families themselves. 118 referrals for support were received during the year.

An initial assessment visit is carried out for all referrals received, and support is offered based on the needs identified by the family. The offer of support may be restricted by the resources available. Home-Start I.O.W. recognises the diversity of families in all its work, respecting the cultural, racial and religious traditions that make them distinct.

Home-Start I.O.W. is committed to safeguarding and promoting the well-being of children. Home-Start I.O.W. works in partnership with other agencies to achieve positive outcomes for families and plays a full part in the Early Help Assessment process and works closely with colleagues within Children's Services to support families and children subject to a Child in Need or Child Protection plan.

TRUSTEES' REPORT continued

for the year ended 31 March 2022

Sources of Funding

Home-Start I.O.W. relies on external sources of funding to deliver its objectives.

This year funding was received from:

The National Lottery, BBC Children in Need, Isle of Wight Council, Postcode Society Trust, Michael and Betty Little Trust, Comic Relief, JMC Plant Hire, Hampshire and IOW Community Foundation, Home-Start UK/John Lewis Partnership, Waitrose East Cowes, IW Foundation, Ryde Masonic Lodge, Hampshire and IOW Masonic Grand Charity, Hose Rhodes Dickson, The AIM Foundation, Home-Start Hampshire/PEARS, Sovereign Housing, Home-Start UK/Brook Trust, Appley WI and donations through the Charities Aid Foundation.

In addition, funds were raised by a team completing the Isle of Wight Ultra Challenge. The team received generous sponsorship from a large number of businesses and individuals. Funds were also raised through an annual Cream Tea event. During the year Home-Start IOW received a number of generous donations from individuals.

This year Home-Start IOW used the services of a freelance fundraising consultant.

Plans for the Future

As Home-Start I.O.W. is reliant on external funding, future delivery of its service will rely on the continuity of sufficient funds to maintain its core service. Therefore, fund raising is an on-going activity for the organisation and it is recognised that the current economic climate presents a significant challenge, which demands a creative and dynamic approach.

Home-Start I.O.W. will continue to deliver its core objectives by recruiting and training volunteers, liaising with other professionals and working with families to promote the best possible outcomes for their children. Any expansion and development of the organisation will be in line with the Home-Start I.O.W. Strategic Plan, and will focus on providing a quality service that is responsive to local need.

Financial Review

Reserves

The charity operates within its financial capacity and has sufficient reserves to meet its regular outgoings and commitments.

Responsibilities of the Trustees

Company law requires the Trustees to prepare financial statements for each financial year which give a true and fair view of the affairs of the charitable company as at the balance sheet date and of its incoming resources and application of resources, including income and expenditure, for the financial year. In preparing those financial statements, the Trustees should follow best practise and:

- Select suitable accounting policies and apply them consistently;
- Make judgements and estimates that are reasonable and prudent; and
- Prepare financial statements on the going concern basis unless it is inappropriate to assume that the company will continue on that basis.

The Trustees are responsible for maintaining proper accounting records which disclose with reasonable accuracy at any time the financial position of the charitable company and to enable them that the financial statements comply with the Companies Act 2006. The Trustees are also responsible for safeguarding the assets of the charitable company and hence for taking reasonable steps for the prevention and detection of fraud and other irregularities.

HOME-START I.O.W.

TRUSTEES' REPORT continued

for the year ended 31 March 2022

This report was approved by the Board of Trustees and signed on its behalf.

A handwritten signature in dark ink, appearing to be 'A. Griffiths', is written over a horizontal dotted line.

A Griffiths

Company Secretary

HOME-START I.O.W.

INDEPENDENT EXAMINER'S REPORT

for the year ended 31 March 2022

I report on the accounts of the company for the year ended 31 March 2022 which are set out on pages 7 and 8 and the related notes.

Respective Responsibilities of trustees and examiner

The trustees (who are also directors of the company for the purposes of company law) are responsible for the preparation of the accounts. The trustees consider that an audit is not required for this year under section 144(2) of the Charities Act 2011 (the 2011 Act) and that an independent examination is needed.

Having satisfied myself that the charity is not subject to an audit under company law and is eligible for independent examination, it is my responsibility to:

- examine the accounts under section 145 of the 2011 Act;
- to follow the procedures laid down by the General Directions given by the Charity Commissioners under section 145(5) (b) of the 2011 Act; and.
- to state whether particular matters have come to my attention.

Basis of Independent Examiner's Report

My examination was carried out in accordance with the General Directions given by the Charity Commission. An examination includes a review of the accounting records kept by the charity and a comparison of the accounts with those records. It also includes consideration of any unusual items or disclosures in the accounts, and seeking explanations from you as trustees concerning any such matters. The procedures undertaken do not provide all the evidence that would be required in an audit and consequently no opinion is given as to whether the accounts present a 'true and fair view' and the report is limited to those matters set in the statement below.

Independent Examiner's Statement

In connection with our examination, no matter has come to my attention:

(1) which gives me reasonable cause to believe that in any material respect the requirements:

- to keep accounting records in accordance with section 386 of the Companies Act 2006; and

- to prepare accounts which accord with accounting records, comply with the accounting requirements of section 396 of the Companies Act 2006 and with the methods and principles of the Statement of Recommended Practice: Accounting and Reporting by Charities

have not been met; or

(2) to which, in my opinion, attention should be drawn in order to enable a proper understanding of the accounts to be reached.

A H Cross & Co

For and on behalf of

A H Cross & Co Limited
Chartered Certified Accountants
16 Quay Street
Newport
Isle of Wight
PO30 5BG

Date 31 May 2022

STATEMENT OF FINANCIAL ACTIVITIESfor the year ended 31 March 2022

| | | <u>Unrestricted</u> | <u>Restricted</u> | <u>Total</u> | <u>Total</u> |
|-----------------------------------|--------------|---------------------|-------------------|------------------|------------------|
| | | <u>Funds</u> | <u>Funds</u> | <u>Funds</u> | <u>Funds</u> |
| | <u>Notes</u> | <u>2022</u> | <u>2022</u> | <u>2022</u> | <u>2021</u> |
| INCOMING RESOURCES | | | | | |
| INCOMING RESOURCES FROM | | | | | |
| GENERATED FUNDS | | | | | |
| Voluntary income - donations | | - | - | 0 | 0 |
| Investment income - bank interest | | 5 | - | 5 | 12 |
| INCOMING RESOURCES FROM | | | | | |
| CHARITABLE ACTIVITIES | | | | | |
| Grants | 3 | 25,800 | 145,903 | 171,703 | 180,192 |
| Donations | | 6,026 | - | 6,026 | 10,984 |
| Other incoming resources | | 15,062 | - | 15,062 | 6,190 |
| TOTAL INCOMING RESOURCES | | <u>46,893</u> | <u>145,903</u> | <u>192,796</u> | <u>197,378</u> |
| RESOURCES EXPENDED | | | | | |
| Cost of charitable activities | 4 | - | 141,744 | 141,744 | 131,197 |
| Governance costs | 4 | - | 4,947 | 4,947 | 3,015 |
| TOTAL RESOURCES EXPENDED | | <u>0</u> | <u>146,691</u> | <u>146,691</u> | <u>134,212</u> |
| NET INCOMING RESOURCES | | 46,893 | -788 | 46,105 | 63,166 |
| Taxation | | - | - | 0 | 0 |
| NET MOVEMENT IN FUNDS | | 46,893 | -788 | 46,105 | 63,166 |
| TRANSFER IN FUNDS | | -788 | 788 | 0 | 0 |
| TOTAL FUNDS BROUGHT FORWARD | | 123,973 | - | 123,973 | 60,807 |
| TOTAL FUNDS CARRIED FORWARD | | £ <u>170,078</u> | £ <u>0</u> | £ <u>170,078</u> | £ <u>123,973</u> |

HOME-START I.O.W.

BALANCE SHEET

at 31 March 2022


| | <u>Notes</u> | <u>At 31 March</u> <u>2022</u> | <u>At 31 March</u> <u>2021</u> |
|---|--------------|-----------------------------------|-----------------------------------|
| FIXED ASSETS | | | |
| Tangible assets | 6 | <u>2,414</u> | <u>1,275</u> |
| CURRENT ASSETS | | | |
| Debtors - prepayments | | 5,055 | 1,620 |
| Cash at bank | | <u>165,252</u> | <u>122,656</u> |
| | | <u>170,307</u> | <u>124,276</u> |
| DEBTORS Amounts falling due within one year | | | |
| Other creditors and accruals | | <u>2,643</u> | <u>1,578</u> |
| NET CURRENT ASSETS | | <u>167,664</u> | <u>122,698</u> |
| NET ASSETS | | £ <u>170,078</u> | £ <u>123,973</u> |
| FUNDS OF THE CHARITY | | | |
| Unrestricted funds | | 170,078 | 123,973 |
| Restricted funds | | <u>0</u> | <u>-</u> |
| | | £ <u>170,078</u> | £ <u>123,973</u> |
| TOTAL CHARITY FUNDS | | | |

The directors are satisfied that the company is entitled to exemption from the requirement to obtain an audit under section 474 of the Companies Act 2006 and that members have not required the company to obtain an audit in accordance with section 476 of the Act. However, in accordance with section 145 of the Charities Act 2011, the accounts have been examined by an Independent Examiner whose report appears on page 6.

The directors acknowledge their responsibilities for complying with the requirement of the Companies Act 2006 with respect to accounting records and the preparation of accounts.

The accounts have been prepared in accordance with the provisions in Part 15 of the Companies Act 2006 applicable to companies subject to the small companies regime and in accordance with the Financial Reporting Standard for Smaller Entities (effective April 2008).

The financial statements were approved by the board of Trustees and signed on their behalf.



N Rivlin
Trustee

The notes on pages 9 to 12 form part of these accounts.

NOTES TO THE ACCOUNTS

for the year ended 31 March 2022

1 ACCOUNTING POLICIES

The financial statements have been prepared in accordance with the Financial Reporting Standard for Smaller Entities (FRSSE) effective April 2008, and all other applicable accounting standards, as modified by the Statement of recommended Practice for Accounting and Reporting issued by the Charity Commissioners for England and Wales (revised June 2008) (the SORP). The accounts have been drawn up in accordance with the provisions of the Charities (Accounts and Reports) Regulations 2008 and the Companies Act 2006 and include the results of the charity's operations which are described in the Trustees' Report, all of which are continuing.

Accounting Convention

These accounts have been prepared under the historical cost convention and in accordance with the Financial Reporting Standards for Smaller Entities (effective April 2008).

Incoming Resources - recognition of incoming resources

These are included in the Statement of Financial Activities (SOFA) when:

- The charity becomes entitled to the resources;
 - the trustees are virtually certain they will receive the resources; and
 - the monetary value can be measured with sufficient reliability.
- Where the incoming resources have related expenditure the incoming resources and related expenditure are reported gross in the SOFA.

Resources Expended

All expenditure is accounted for on an accruals basis and has been classified under headings that aggregate all the cost relating to the charity's main activities.

Resources expended include attributable VAT which cannot be recovered.

Grants and donations

Grants and donations are only included in the SOFA when the charity has unconditional entitlement to the resources. Grants are deferred where they relate to future period activities.

Expenditure and Liabilities

Liabilities are recognised as soon as there is a legal or constructive obligation committing the charity to pay out resources.

Charitable expenditure

Given the size of the charity, all office cost are incurred in support of the charity's mission and activities including co-ordination of volunteers and are shown as direct charitable expenditure.

Governance costs

Include costs of the preparation and examination of statutory accounts, the cost of trustee meetings and cost of any legal advice to trustees on governance or constitutional matters.

Pensions

Contributions are paid to a defined contribution scheme. Pension costs represent the total of these contributions payable on behalf of employees in the year.

NOTES TO THE ACCOUNTS

for the year ended 31 March 2022

1 ACCOUNTING POLICIES (cont'd)

Tangible fixed assets and depreciation

All tangible fixed assets are stated at cost less depreciation. Depreciation has been provided at the following rate in order to write off the assets (less their residual value) over their estimated useful economic lives.

Computers 20% straight line basis

Fund Accounting

The charity maintains a general unrestricted fund which represents funds which are expendable at the discretion of the trustees in furtherance of the objectives of the charity. There is no formal policy of transfer between funds or the allocation of funds.

Taxation

As a registered charity, the company is exempt from income and corporation tax to the extent that the income and gains are applicable to charitable purposes only. Value Added Tax is not recoverable by the company, and therefore included in the relevant costs in the Statement of Financial Activities.

2 LEGAL STATUS OF THE CHARITY, COMMENCEMENT AND CONTINUATION OF ACTIVITIES

The charity is a company limited by guarantee and has no share capital. The liability of each member in the event of winding up is limited to £1. It took over the assets and liabilities and activities on the non-company organisation of the same name and charity number 1064329 on 1 April 2006.

The continuation of the charity's activities is dependant on future funding part of which has been secured. The level of activity undertaken will depend upon the funding obtained.

3 GRANTS

| | <u>2022</u> | <u>2021</u> |
|-------------------------------------|------------------|------------------|
| BBC Children in need | 27,918 | 26,613 |
| Comic Relief | 1,750 | - |
| Barnardo's | - | 56,307 |
| MBLT | 15,000 | - |
| Postcode Society Trust | 16,489 | - |
| IW Council - Strengthening Families | 22,050 | 12,200 |
| National Lottery Grant | 63,951 | 28,743 |
| Garfield Weston | - | 10,000 |
| Home-Start UK partnerships | 11,400 | 17,819 |
| IWC Discretionary Fund | - | 10,000 |
| Other small grants | 13,145 | 18,510 |
| | <u>£ 171,703</u> | <u>£ 180,192</u> |

NOTES TO THE ACCOUNTSfor the year ended 31 March 20224 ANALYSIS OF RESOURCES EXPENDED

| | | <u>2022</u> | <u>2021</u> |
|------------------------------|--------------------------|------------------|------------------|
| <u>Charitable activities</u> | | | |
| Direct service provision | - staff | 94,645 | 86,347 |
| | - other | 8,790 | 3,101 |
| Support costs/ office costs | - staff | 22,885 | 19,759 |
| | - other | 13,229 | 13,798 |
| Professional fees | | 2,195 | 8,192 |
| | | <u>141,744</u> | <u>131,197</u> |
| Governance costs | - independent accountant | 780 | 660 |
| | - other including AGM | 4,167 | 2,355 |
| | - trustee expenses | - | - |
| | | <u>4,947</u> | <u>3,015</u> |
| | | <u>£ 146,691</u> | <u>£ 134,212</u> |

5 STAFF COSTS AND NUMBERS

The trust employs one scheme manager, four field staff and one administration assistant.

Staff costs in the year were:

| | <u>2022</u> | <u>2021</u> |
|----------------|------------------|------------------|
| Gross | 108,089 | 96,752 |
| Employer's NIC | 3,714 | 4,478 |
| Pension | <u>5,727</u> | <u>4,876</u> |
| | <u>£ 117,530</u> | <u>£ 106,106</u> |

No employees received remuneration in excess of £60,000.

The trust contributes to a defined contribution pension scheme. The amount outstanding at the end of the year is £1,002.59.

6 TRUSTEES REMUNERATION OR EXPENSES

| | <u>2022</u> | <u>2021</u> |
|--------------|-------------|-------------|
| Remuneration | - | - |
| Expenses | <u>-</u> | <u>-</u> |
| | <u>£ 0</u> | <u>£ 0</u> |

7 TAXATION

The company acquired charitable status in the year ended 31 March 2006 and is not liable to U.K. corporation tax.

HOME-START I.O.W.

NOTES TO THE ACCOUNTS

for the year ended 31 March 2022

8 FIXED ASSETS

Computer

Cost

At 1 April 2021

3,860

Additions in year

1,822

At 31 March 2022

5,682

Depreciation

At 1 April 2021

2,585

Charge for the year

683

At 31 March 2022

3,268

Net book value

£ 2,414

9 CONTROL

The charity is controlled by the Trustees.

Company number: 05743981

Charity number: 1113958

HOME-START I.O.W.
(A COMPANY LIMITED BY GUARANTEE)

ACCOUNTS
FOR THE YEAR ENDED 31 MARCH 2022

HOME-START I.O.W.

ACCOUNTS

for the year ended 31 March 2022

CONTENTS

PAGE

| | |
|--------------------------------------|---------|
| Legal and Administrative Information | 1 |
| Trustees' Report | 2 to 5 |
| Independent Examiner's Report | 6 |
| Statement of Financial Activities | 7 |
| Balance Sheet | 8 |
| Notes to the Accounts | 9 to 12 |

HOME-START I.O.W.

LEGAL AND ADMINISTRATIVE INFORMATION

for the year ended 31 March 2022

| | |
|------------------------|--|
| Patron | J Griffin MBE |
| Directors/Trustees | M Rylands J McKean T Barker (Treasurer) K Rivlin (Chair) W Loader L Nehorai T Wray (resigned 14/03/2022) J Bailey (appointed 29/11/2021) H Hadfield (appointed 29/11/2021) T Hastain (appointed 29/11/2021) |
| Secretary | A Griffiths |
| The Registered Office: | Exchange House St Cross lane Newport Isle of Wight PO30 5BZ |
| Company Number: | 05743981 |
| Charity Number: | 1113958 |
| Independent Examiner: | A H Cross & Co Limited Chartered Certified Accountants 16 Quay Street Newport Isle of Wight PO30 5BG |
| Bankers: | HSBC Bank plc 101 St James Street Newport Isle of Wight PO30 1HX |

HOME-START I.O.W.

TRUSTEES' REPORT

for the year ended 31 March 2022

The trustees present their report and the accounts for the year ended 31 March 2022. The accounts have been prepared in accordance with the accounting policies set out in the notes to the accounts and comply with applicable law and the requirements of the Statement of Recommended Practice, "Accounting and Reporting by Charities" (SORP 2005) issued by the Charity Commission for England and Wales (revised in June 2008) and are in accordance with the Financial Reporting Standard for Smaller Entities (effective April 2008).

Structure, Governance and Management

The company was incorporated as a company limited by guarantee on 15 March 2006 and is registered with the Charity Commission number 1113958.

The appointment of trustees is carried out by method of election by the trustees of the company.

Mission, Vision and Activities

Mission

Home-Start I.O.W. is to be there for every family that needs us because childhood can't wait.

Vision

Its vision is to be a trusted voluntary service supporting the local community working in partnership with parents through challenging times to give their family the best possible future.

Activities for the year ended 31 March 2022

All the activities undertaken by Home-Start I.O.W. are for the express purpose of furthering its charitable aims as outlined in its mission above. Thus the trustees are assured these activities fulfil their duties under Section 4 of the Charities Act 2006 to have due regard to public benefit guidance published by the Charity Commission.

Volunteers with parenting/caring experience, are trained, vetted and visit families in their own homes on a weekly basis, to offer support to families whose children are potentially vulnerable to risk factors, which could impact adversely on their development and well-being. Volunteers provide emotional and practical support which is individual to each family, supporting them in their homes and helping families engage in activities, and access services in their communities.

In addition to home visiting, staff run 'invitation only' group sessions each week during term time. These sessions provide a safe and stimulating environment for parents and their young children to socialise and learn together through play. During the year, group sessions have taken place in Shanklin, East Cowes, Newport and Ryde. In addition virtual groups and online activity sessions have been offered to families when lockdown restrictions prevented face to face meetings.

HOME-START I.O.W.

TRUSTEES' REPORT continued

for the year ended 31 March 2022

We continue to work with the Isle of Wight Council on the Strengthening Families programme. This contract requires Home-Start I.O.W. to offer targeted support to a number of families who are experiencing specific difficulties with mental health, domestic abuse, worklessness and/or school attendance.

During the year, Home-Start I.O.W. supported 131 families across the Island, with 288 children (201 under 5 years and 87 over 5 years). Many of the families supported during the year were experiencing multiple and complex difficulties.

Home-Start I.O.W. could not operate without the commitment and dedication of the volunteer team. Without their outstanding contribution of time, energy and commitment we could not have achieved so much for families across the Island. During this year 39 volunteers supported the work of this scheme. Due to the restrictions caused by Covid-19 the support offered during the year was a combination of home visiting, telephone and video call.

Home-Start I.O.W. has an open referral system, referrals are accepted from a wide range of professionals and from families themselves. 118 referrals for support were received during the year.

An initial assessment visit is carried out for all referrals received, and support is offered based on the needs identified by the family. The offer of support may be restricted by the resources available. Home-Start I.O.W. recognises the diversity of families in all its work, respecting the cultural, racial and religious traditions that make them distinct.

Home-Start I.O.W. is committed to safeguarding and promoting the well-being of children. Home-Start I.O.W. works in partnership with other agencies to achieve positive outcomes for families and plays a full part in the Early Help Assessment process and works closely with colleagues within Children's Services to support families and children subject to a Child in Need or Child Protection plan.

TRUSTEES' REPORT continued

for the year ended 31 March 2022

Sources of Funding

Home-Start I.O.W. relies on external sources of funding to deliver its objectives.

This year funding was received from:

The National Lottery, BBC Children in Need, Isle of Wight Council, Postcode Society Trust, Michael and Betty Little Trust, Comic Relief, JMC Plant Hire, Hampshire and IOW Community Foundation, Home-Start UK/John Lewis Partnership, Waitrose East Cowes, IW Foundation, Ryde Masonic Lodge, Hampshire and IOW Masonic Grand Charity, Hose Rhodes Dickson, The AIM Foundation, Home-Start Hampshire/PEARS, Sovereign Housing, Home-Start UK/Brook Trust, Appley WI and donations through the Charities Aid Foundation.

In addition, funds were raised by a team completing the Isle of Wight Ultra Challenge. The team received generous sponsorship from a large number of businesses and individuals. Funds were also raised through an annual Cream Tea event. During the year Home-Start IOW received a number of generous donations from individuals.

This year Home-Start IOW used the services of a freelance fundraising consultant.

Plans for the Future

As Home-Start I.O.W. is reliant on external funding, future delivery of its service will rely on the continuity of sufficient funds to maintain its core service. Therefore, fund raising is an on-going activity for the organisation and it is recognised that the current economic climate presents a significant challenge, which demands a creative and dynamic approach.

Home-Start I.O.W. will continue to deliver its core objectives by recruiting and training volunteers, liaising with other professionals and working with families to promote the best possible outcomes for their children. Any expansion and development of the organisation will be in line with the Home-Start I.O.W. Strategic Plan, and will focus on providing a quality service that is responsive to local need.

Financial Review

Reserves

The charity operates within its financial capacity and has sufficient reserves to meet its regular outgoings and commitments.

Responsibilities of the Trustees

Company law requires the Trustees to prepare financial statements for each financial year which give a true and fair view of the affairs of the charitable company as at the balance sheet date and of its incoming resources and application of resources, including income and expenditure, for the financial year. In preparing those financial statements, the Trustees should follow best practise and:

- Select suitable accounting policies and apply them consistently;
- Make judgements and estimates that are reasonable and prudent; and
- Prepare financial statements on the going concern basis unless it is inappropriate to assume that the company will continue on that basis.

The Trustees are responsible for maintaining proper accounting records which disclose with reasonable accuracy at any time the financial position of the charitable company and to enable them that the financial statements comply with the Companies Act 2006. The Trustees are also responsible for safeguarding the assets of the charitable company and hence for taking reasonable steps for the prevention and detection of fraud and other irregularities.

HOME-START I.O.W.

TRUSTEES' REPORT continued

for the year ended 31 March 2022

This report was approved by the Board of Trustees and signed on its behalf.

A handwritten signature in dark ink, appearing to be 'A. Griffiths', written over a horizontal dotted line.

A Griffiths

Company Secretary

HOME-START I.O.W.

INDEPENDENT EXAMINER'S REPORT

for the year ended 31 March 2022

I report on the accounts of the company for the year ended 31 March 2022 which are set out on pages 7 and 8 and the related notes.

Respective Responsibilities of trustees and examiner

The trustees (who are also directors of the company for the purposes of company law) are responsible for the preparation of the accounts. The trustees consider that an audit is not required for this year under section 144(2) of the Charities Act 2011 (the 2011 Act) and that an independent examination is needed.

Having satisfied myself that the charity is not subject to an audit under company law and is eligible for independent examination, it is my responsibility to:

- examine the accounts under section 145 of the 2011 Act;
- to follow the procedures laid down by the General Directions given by the Charity Commissioners under section 145(5) (b) of the 2011 Act; and.
- to state whether particular matters have come to my attention.

Basis of Independent Examiner's Report

My examination was carried out in accordance with the General Directions given by the Charity Commission. An examination includes a review of the accounting records kept by the charity and a comparison of the accounts with those records. It also includes consideration of any unusual items or disclosures in the accounts, and seeking explanations from you as trustees concerning any such matters. The procedures undertaken do not provide all the evidence that would be required in an audit and consequently no opinion is given as to whether the accounts present a 'true and fair view' and the report is limited to those matters set in the statement below.

Independent Examiner's Statement

In connection with our examination, no matter has come to my attention:

(1) which gives me reasonable cause to believe that in any material respect the requirements:

- to keep accounting records in accordance with section 386 of the Companies Act 2006; and

- to prepare accounts which accord with accounting records, comply with the accounting requirements of section 396 of the Companies Act 2006 and with the methods and principles of the Statement of Recommended Practice: Accounting and Reporting by Charities

have not been met; or

(2) to which, in my opinion, attention should be drawn in order to enable a proper understanding of the accounts to be reached.

A H Cross & Co

For and on behalf of

A H Cross & Co Limited
Chartered Certified Accountants
16 Quay Street
Newport
Isle of Wight
PO30 5BG

Date 31 May 2022

STATEMENT OF FINANCIAL ACTIVITIESfor the year ended 31 March 2022

| | | <u>Unrestricted</u> | <u>Restricted</u> | <u>Total</u> | <u>Total</u> |
|-----------------------------------|--------------|---------------------|-------------------|------------------|------------------|
| | | <u>Funds</u> | <u>Funds</u> | <u>Funds</u> | <u>Funds</u> |
| | <u>Notes</u> | <u>2022</u> | <u>2022</u> | <u>2022</u> | <u>2021</u> |
| INCOMING RESOURCES | | | | | |
| INCOMING RESOURCES FROM | | | | | |
| GENERATED FUNDS | | | | | |
| Voluntary income - donations | | - | - | 0 | 0 |
| Investment income - bank interest | | 5 | - | 5 | 12 |
| INCOMING RESOURCES FROM | | | | | |
| CHARITABLE ACTIVITIES | | | | | |
| Grants | 3 | 25,800 | 145,903 | 171,703 | 180,192 |
| Donations | | 6,026 | - | 6,026 | 10,984 |
| Other incoming resources | | 15,062 | - | 15,062 | 6,190 |
| TOTAL INCOMING RESOURCES | | <u>46,893</u> | <u>145,903</u> | <u>192,796</u> | <u>197,378</u> |
| RESOURCES EXPENDED | | | | | |
| Cost of charitable activities | 4 | - | 141,744 | 141,744 | 131,197 |
| Governance costs | 4 | - | 4,947 | 4,947 | 3,015 |
| TOTAL RESOURCES EXPENDED | | <u>0</u> | <u>146,691</u> | <u>146,691</u> | <u>134,212</u> |
| NET INCOMING RESOURCES | | 46,893 | -788 | 46,105 | 63,166 |
| Taxation | | - | - | 0 | 0 |
| NET MOVEMENT IN FUNDS | | 46,893 | -788 | 46,105 | 63,166 |
| TRANSFER IN FUNDS | | -788 | 788 | 0 | 0 |
| TOTAL FUNDS BROUGHT FORWARD | | 123,973 | - | 123,973 | 60,807 |
| TOTAL FUNDS CARRIED FORWARD | | £ <u>170,078</u> | £ <u>0</u> | £ <u>170,078</u> | £ <u>123,973</u> |

HOME-START I.O.W.

BALANCE SHEET

at 31 March 2022


| | <u>Notes</u> | <u>At 31 March</u> <u>2022</u> | <u>At 31 March</u> <u>2021</u> |
|---|--------------|-----------------------------------|-----------------------------------|
| FIXED ASSETS | | | |
| Tangible assets | 6 | <u>2,414</u> | <u>1,275</u> |
| CURRENT ASSETS | | | |
| Debtors - prepayments | | 5,055 | 1,620 |
| Cash at bank | | <u>165,252</u> | <u>122,656</u> |
| | | <u>170,307</u> | <u>124,276</u> |
| DEBTORS Amounts falling due within one year | | | |
| Other creditors and accruals | | <u>2,643</u> | <u>1,578</u> |
| NET CURRENT ASSETS | | <u>167,664</u> | <u>122,698</u> |
| NET ASSETS | | £ <u>170,078</u> | £ <u>123,973</u> |
| FUNDS OF THE CHARITY | | | |
| Unrestricted funds | | 170,078 | 123,973 |
| Restricted funds | | 0 | - |
| | | £ <u>170,078</u> | £ <u>123,973</u> |
| TOTAL CHARITY FUNDS | | | |

The directors are satisfied that the company is entitled to exemption from the requirement to obtain an audit under section 474 of the Companies Act 2006 and that members have not required the company to obtain an audit in accordance with section 476 of the Act. However, in accordance with section 145 of the Charities Act 2011, the accounts have been examined by an Independent Examiner whose report appears on page 6.

The directors acknowledge their responsibilities for complying with the requirement of the Companies Act 2006 with respect to accounting records and the preparation of accounts.

The accounts have been prepared in accordance with the provisions in Part 15 of the Companies Act 2006 applicable to companies subject to the small companies regime and in accordance with the Financial Reporting Standard for Smaller Entities (effective April 2008).

The financial statements were approved by the board of Trustees and signed on their behalf.



N Rivlin
Trustee

The notes on pages 9 to 12 form part of these accounts.

NOTES TO THE ACCOUNTS

for the year ended 31 March 2022

1 ACCOUNTING POLICIES

The financial statements have been prepared in accordance with the Financial Reporting Standard for Smaller Entities (FRSSE) effective April 2008, and all other applicable accounting standards, as modified by the Statement of recommended Practice for Accounting and Reporting issued by the Charity Commissioners for England and Wales (revised June 2008) (the SORP). The accounts have been drawn up in accordance with the provisions of the Charities (Accounts and Reports) Regulations 2008 and the Companies Act 2006 and include the results of the charity's operations which are described in the Trustees' Report, all of which are continuing.

Accounting Convention

These accounts have been prepared under the historical cost convention and in accordance with the Financial Reporting Standards for Smaller Entities (effective April 2008).

Incoming Resources - recognition of incoming resources

These are included in the Statement of Financial Activities (SOFA) when:

- The charity becomes entitled to the resources;
 - the trustees are virtually certain they will receive the resources; and
 - the monetary value can be measured with sufficient reliability.
- Where the incoming resources have related expenditure the incoming resources and related expenditure are reported gross in the SOFA.

Resources Expended

All expenditure is accounted for on an accruals basis and has been classified under headings that aggregate all the cost relating to the charity's main activities.

Resources expended include attributable VAT which cannot be recovered.

Grants and donations

Grants and donations are only included in the SOFA when the charity has unconditional entitlement to the resources. Grants are deferred where they relate to future period activities.

Expenditure and Liabilities

Liabilities are recognised as soon as there is a legal or constructive obligation committing the charity to pay out resources.

Charitable expenditure

Given the size of the charity, all office cost are incurred in support of the charity's mission and activities including co-ordination of volunteers and are shown as direct charitable expenditure.

Governance costs

Include costs of the preparation and examination of statutory accounts, the cost of trustee meetings and cost of any legal advice to trustees on governance or constitutional matters.

Pensions

Contributions are paid to a defined contribution scheme. Pension costs represent the total of these contributions payable on behalf of employees in the year.

NOTES TO THE ACCOUNTS

for the year ended 31 March 2022

1 ACCOUNTING POLICIES (cont'd)

Tangible fixed assets and depreciation

All tangible fixed assets are stated at cost less depreciation. Depreciation has been provided at the following rate in order to write off the assets (less their residual value) over their estimated useful economic lives.

Computers 20% straight line basis

Fund Accounting

The charity maintains a general unrestricted fund which represents funds which are expendable at the discretion of the trustees in furtherance of the objectives of the charity. There is no formal policy of transfer between funds or the allocation of funds.

Taxation

As a registered charity, the company is exempt from income and corporation tax to the extent that the income and gains are applicable to charitable purposes only. Value Added Tax is not recoverable by the company, and therefore included in the relevant costs in the Statement of Financial Activities.

2 LEGAL STATUS OF THE CHARITY, COMMENCEMENT AND CONTINUATION OF ACTIVITIES

The charity is a company limited by guarantee and has no share capital. The liability of each member in the event of winding up is limited to £1. It took over the assets and liabilities and activities on the non-company organisation of the same name and charity number 1064329 on 1 April 2006.

The continuation of the charity's activities is dependant on future funding part of which has been secured. The level of activity undertaken will depend upon the funding obtained.

3 GRANTS

| | <u>2022</u> | <u>2021</u> |
|-------------------------------------|------------------|------------------|
| BBC Children in need | 27,918 | 26,613 |
| Comic Relief | 1,750 | - |
| Barnardo's | - | 56,307 |
| MBLT | 15,000 | - |
| Postcode Society Trust | 16,489 | - |
| IW Council - Strengthening Families | 22,050 | 12,200 |
| National Lottery Grant | 63,951 | 28,743 |
| Garfield Weston | - | 10,000 |
| Home-Start UK partnerships | 11,400 | 17,819 |
| IWC Discretionary Fund | - | 10,000 |
| Other small grants | 13,145 | 18,510 |
| | <u>£ 171,703</u> | <u>£ 180,192</u> |

NOTES TO THE ACCOUNTSfor the year ended 31 March 20224 ANALYSIS OF RESOURCES EXPENDED

| | | <u>2022</u> | <u>2021</u> |
|------------------------------|--------------------------|------------------|------------------|
| <u>Charitable activities</u> | | | |
| Direct service provision | - staff | 94,645 | 86,347 |
| | - other | 8,790 | 3,101 |
| Support costs/ office costs | - staff | 22,885 | 19,759 |
| | - other | 13,229 | 13,798 |
| Professional fees | | 2,195 | 8,192 |
| | | <u>141,744</u> | <u>131,197</u> |
| Governance costs | - independent accountant | 780 | 660 |
| | - other including AGM | 4,167 | 2,355 |
| | - trustee expenses | - | - |
| | | <u>4,947</u> | <u>3,015</u> |
| | | <u>£ 146,691</u> | <u>£ 134,212</u> |

5 STAFF COSTS AND NUMBERS

The trust employs one scheme manager, four field staff and one administration assistant.

Staff costs in the year were:

| | <u>2022</u> | <u>2021</u> |
|----------------|------------------|------------------|
| Gross | 108,089 | 96,752 |
| Employer's NIC | 3,714 | 4,478 |
| Pension | <u>5,727</u> | <u>4,876</u> |
| | <u>£ 117,530</u> | <u>£ 106,106</u> |

No employees received remuneration in excess of £60,000.

The trust contributes to a defined contribution pension scheme. The amount outstanding at the end of the year is £1,002.59.

6 TRUSTEES REMUNERATION OR EXPENSES

| | <u>2022</u> | <u>2021</u> |
|--------------|-------------|-------------|
| Remuneration | - | - |
| Expenses | <u>-</u> | <u>-</u> |
| | <u>£ 0</u> | <u>£ 0</u> |

7 TAXATION

The company acquired charitable status in the year ended 31 March 2006 and is not liable to U.K. corporation tax.

HOME-START I.O.W.

NOTES TO THE ACCOUNTS

for the year ended 31 March 2022

8 FIXED ASSETS

Computer

Cost

At 1 April 2021

3,860

Additions in year

1,822

At 31 March 2022

5,682

Depreciation

At 1 April 2021

2,585

Charge for the year

683

At 31 March 2022

3,268

Net book value

£ 2,414

9 CONTROL

The charity is controlled by the Trustees.