

Wythenshawe Community Initiative Ltd

REPORT AND UNAUDITED ACCOUNTS FOR THE YEAR ENDED 31 MARCH 2022

Contents

Contents	1
Trustees' Report and Financial Statements for the period to 31 March 2022	2
Trustees' Report	3
Donations in kind and volunteers	21
Financial Review	23
Independent Examiner's Report	26
Accounts for the year ending 31 March 2022	27

Trustees' Report and Financial Statements for the period to 31 March 2022

Registered Charity Number

1112990

Company number

05564192

Principal Office:

Woodhouse Park Family Centre
7 Stoneacre Road
Wythenshawe
Manchester
M22 1BP

Trustees at the date this report was approved

Christine Greenhalgh (Chair)
Fiona Hatch (Treasurer)
Eula Mesquita
Sarah Lynch

Bankers

National Westminster Bank plc
Barclays Bank plc

Independent Examiner

S Weighell FCA
3 Wellgreen Close
Hale
Altrincham
WA15 8PT

Trustees' Report

The Trustees, two of whom are also directors for the purposes of company law, present their annual report together with the unaudited financial statements of the Charity for the year ended 31 March 2022 which are also prepared to meet the requirements of a Directors' Report and Accounts for Companies Act purposes.

The financial statements have been prepared in accordance with the accounting policies set out in note 1 to the accounts and comply with the Memorandum and Articles of Association, the Charities Act 2011, the Companies Act 2006 and Accounting and Reporting by Charities: Statement of Recommended Practice applicable to charities preparing their accounts in accordance with the Financial Reporting Standard applicable in the UK and Republic of Ireland (FRS102) (effective 1 January 2015).

Trustees

The Trustees who served throughout the year and at the date of this report are listed on page 2.

Structure Governance and Management

The Charity is a company limited by guarantee. The members of the Company are the directors named on page 1. In the event of the Company being wound up, the liability in respect of the guarantee is limited to £1 per member of the Company. The Charity's governance arrangements and structure are set out in the Memorandum and Articles of Association. The Trustees are the Management Committee, which comprises the Chairperson, the Treasurer and the other trustees as listed on page 1. New Trustees are recruited from a range of groups including user groups and other interested members of the local community including professional people who come into contact with us, employees, ex-employees and representatives of the United Reformed Church, from which organisation we lease our premises.

The major risks to which the Charity is exposed, as identified by the Trustees, have been reviewed and systems, procedures and initiatives to manage those risks have been established, or are presently being considered, by the Trustees.

Objectives and Activities

The principal objectives of the Charity are:

- 1) Alleviating the hardship and distress of children resident in the area of benefit, caused by the break-up of marriage and family and to preserve and protect their good mental and physical health by providing and maintaining a centre and facilities.
- 2) Advancing the education of the public and providing facilities in the interests of social welfare for recreation and leisure time occupation with the object of improving the conditions of life of those persons.
- 3) Relieving poverty, in particular by the provision of advice, information and support.

The Charity operates in Woodhouse Park in particular and the district of Wythenshawe in general.

We have had due regard to the public benefit guidance published by the Charity Commission in compliance with its duties under section 4 of the Charities Act 2006. The guidance sets out two key principles:

The organisation must have an identifiable benefit.

The benefit must be to the public or section of the public.

We confirm that we meet these requirements.

Principal Activities

2021/22 has been another rollercoaster of a year due to ongoing impact of COVID 19 and the rising spectre of the Cost of Living crisis. Who would have thought we would start the year in lockdown yet again, but this time the novelty of Zoom parties, baking banana bread and long family walks had worn off, and the impact of enforced social isolation was really being felt. At least this time we were prepared and ready to respond quickly as changes to guidance for service delivery came thick and fast. We continued to prioritise face to face delivery wherever safe and possible, recognising the extreme negative effect the lack of social contact was having on children and families. Yet again the vital role of small community-based charities shone through as we were able to respond agilely to the increased demand for services as lockdown restrictions and guidance gradually relaxed and society began to adapt to a new kind of normal.

Some highlights of the year....



We were honoured to be visited by the new Leader of Manchester City Council, Bev Craig, who was very keen to hear about the issues facing us and our local community



Here's our after school club receiving a giant donation from our local taxi firm Club Cars. The donation meant even more as we were nominated for it by the community



Some of our young people heading off to do the sponsored walk they organised to raise money for the Centre

Family Support – Bright Futures

The Headlines

27 families
supported

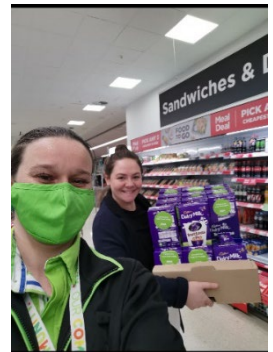
80% children
showed
improved
emotional
resilience

20 agencies
worked with

The story

April - Bright Futures is now successfully delivering several sessions each week. We deliver weekly play sessions for the children, and this has been successful – we have even been asked by a local primary school to deliver this work in school. We are offering families weekly support groups, workshops, courses, Facebook and WhatsApp support alongside 1-1 support with families. From next week families will be able to access weekly parent walks, family plays at the park and a weekly coffee morning at the centre.

We managed to provide all 24 families with Easter eggs thanks to ASDA Wythenshawe. Wythenshawe Food Bank agreed to offer us weekly leftovers of food/snacks to use in our centre or leave for families using the centre to collect.



May - We have now been offering coffee mornings and walks and these have been well attended. Families seem to really enjoy parenting walks and plays at the park. The play sessions are really well attended and some of the reasons children were referred to Bright Futures appears to be reducing.

I have delivered the play programme we offer at the centre at St John Fisher and Thomas More using their nurture room as this was successful with lots of positive feedback from children, parents and teachers.

June - We have had more families use the after school plays and walks in the park. We have ordered some sports and game equipment to try and encourage children to socialise and have something other than the park pay area. A lot of the children in the project don't get out to the park or outdoors so this should support that. Asda has put Bright Futures forward for the green tokens in store so this should be exciting and help raise awareness about the project and centre



July - We have had a few plays in the park, I have joined and encouraged lots of families to access Wythenshawe Games and even been poached into joining in on some of the activities too! We have also held a book event and invited families to receive brand new free books and we did a comic strip and booking making workshop. 23 families attended this event.

We also held a teddy bear picnic which was very successful with 18 families attending. Unfortunately, the heavens opened, and our picnic didn't quite go ahead but we had fun and games inside and parents chatted and had a cup of tea. Children got to choose a brand-new teddy to take home.

August - Over the last month Bright Futures has enjoyed some lovely trips with the families to sunny Southport and Alton Towers. I have also been finishing off some work with the families as they have been working with the project for 12 months now. Charlotte and I have created some final plans for the children doing the bright future play sessions offering sibling work and final work to cover some of the things they have been learning over the last 12 months to support their emotional wellbeing. I have had some positive meetings with local schools and other services with some lovely feedback for the support Bright Futures has given to local families and schools. I have already started receiving referrals for the new year and I feel excited to meet some more families and children

Some of the feedback received

School – 'One of the children came up to me and thanked me for making the referral to bright futures as it's really helped'

Children when asked 'What do you enjoy the most about coming to bright futures on a Friday?' answered 'Making friends', 'Being able to talk', 'Getting away from home'

Mum – 'It's been life changing over the last year as cheesy as that sounds we are all doing so well as a family'

October - It's been sad to start to say goodbye to some of the families and children but lovely at the same time to see that they have engaged well and benefited from the support of Bright Futures and the centre and that they feel more independent and empowered to continue on their journeys without that weekly support from a support worker as such. It's so nice to see better emotional regulation and resilience within the family units and children themselves.

December – has involved providing support to enable families to move forward without weekly support, as well as preparing the children who have been attending sessions to get ready to leave. We are encouraging these children to access after school club. Mission Christmas provided some amazing presents for the families this year.

We also ran an information morning at the centre on the week of Christmas where local business sold their products, we had debt and employment advisors along with a fitness instructor giving out gym passes and doing health checks. We did a raffle to fundraise for the centre.

January - We have done our inductions and started our first play session which has gone well. We have also encouraged parents to have a coffee upstairs which has been nice to see parents exchanging numbers and even one group setting up a WhatsApp group.

We had our first fitness session this week which went well and judging by this parent feedback they have enjoyed it too!

'Its so nice to come and chat and feel like you're not alone'

'First gym session in a don't know how long. Can't wait for the next one'

'I had such a laugh today pushing myself to do something id never usually do. Really enjoyed'

February - This month we have been watching the new children settle into the centre and taking part in the bright futures play programme. We were nominated for the Asda online green token vote and won. The community champion came out to see the centre and was really impressed with all the work that goes on at the centre. We have also been linking in very closely with the local parent led group SENSitive who provide a support group each week to parents and carers of children with SEND which fits in nicely due to the large numbers of SEND referrals we are receiving. They have been putting on different training and workshops and many of the parents have been attending.

March - This month we celebrated International Women's Day and co-hosted an event with FreshStart Smart at the Forum library. Asda donated some lovely lunch, cakes, coffee, and tea. Wythenshawe Foodbank donated some beautiful beauty items for the women. We played music, chatted, laughed and Fresh Start Smart gave free hand massages. We had over 30 people attend. The Forum library gave us the space and the local radio promoted the event. We have also been linking in closely with Safespots, a local charity with a space for women who have experienced any domestic abuse or trauma. They have allocated some spaces on their freedom programme and yoga sessions for our mums.

The Difference we made

The Musungwa family were referred by a local primary school. Middle child Tak was struggling to make friends, be independent, transition into school in the mornings, and do other activities outside of school. Tak often kept worries or thoughts to himself, and mum and school wanted Tak to develop his social and communication skills. Tak has a diagnosis of Autism. Mum was feeling very overwhelmed. As a single mother of 6 children mum was happy to accept any support from Bright Futures.

We looked at home life, and identified routine was a stress factor as the household had lots of people, and Tak would often become overwhelmed with routines, especially if mum had to change things last minute. We reached out to a service who delivered workshops and created vision boards for SEND children and families. Mum loved the workshop and said the routine board and visual pictures has changed everything. Mum reported home life is much smoother and calmer as everyone can just look at the board and know exactly what's going on.

We had several meetings throughout the year with school which looked at Tak being given a key worker, earlier drop off times, and additional support during the school day. I also suggested a diary for Tak to use to tell someone if something has happened. After the suggestions were made by BF, mum and school were fully on board and tried them. Mum and school reported a huge difference with few meltdowns at the gates and during the school day.

Tak completed 12 months of the play programme, and school, family centre staff and mum noticed a difference in confidence and self-esteem. Tak made some good friends during the sessions too.

The family enjoyed some lovely family trips and described it as the first year she had been able to take the children to some lovely places.



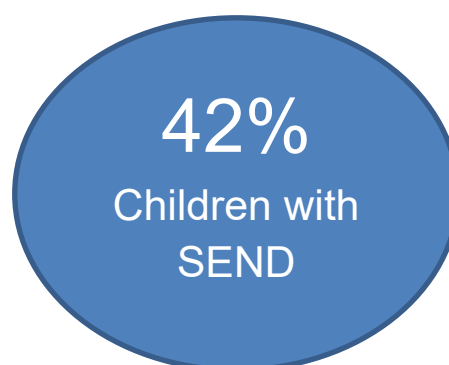
Mum engaged with any meetings, groups, workshops and then engaged with the fitness sessions and committed to going to the gym 3 times a week. Mum lost loads of weight and was given an award by the gym for most committed member to their goal they had seen and gave mum 6 free PT sessions. Mum now comes to this year's Bright Future sessions and supports the new mums by being present.

After looking at daughter time we came up with idea of monthly daughter dates, and mum has stuck to this too.

Mums feedback from the support was 'Bright Futures has been a lifeline, I never thought I'd see this much difference. Tak has grown so much now. I would recommend the support to any local families'

Early Years – Stepping Stones Pre-school Playgroup

The Headlines



The Story

April - We received great feedback from some of our parents of child/ren with additional needs who were very thankful for all the time we've spent helping them to get a referral to the local SEND support scheme. They said they felt like they were "finally going in the right direction" and that they "couldn't have done it without us". We supported an Arabic family to complete all the social communication pathway paperwork for their son.

We had a new child starting who has never been left anywhere before so mum was very anxious on his first day. However, she did say that the induction process had reassured her that he would be happy here. He took my hand and didn't look back (although he did say "oooo your hand is so cold" which made us all laugh). We were all surprised that he was ready to do a full session as early as day 3 and how much character he is displaying already.

May - We did lots of activities around crossing the road safely (including children making their own sets of traffic lights and stop/go signs, which they have loved playing with as a group). We rounded the theme off with a walk to the local crossing, so we could practice what we had learned about what red, amber and green lights mean. The children were very excited to show us what they had remembered, and all received a well-deserved certificate as a reward

After working with a parent for some length of time around issues that affect her and her son, she has finally got to the stage where she is comfortable enough to accept a referral to Bright Futures.

June - A child who had never eaten with us started to take food to a separate table and eat a little bit. (This may not seem like a huge achievement, but it had taken 6 months and the team were really pleased.) He also sometimes joined in with a group activity such as painting or cutting out, which had been another progress target. Several of our parents have said how much they have needed and appreciated the food donations outside the building. After a visit from a speech and language therapist to assess one of our children, she praised how all the staff communicate with the group, saying *"I usually have lots of advice and suggestions, but I honestly can't think of anything you guys aren't doing already"*

July – As we said goodbye to some of our children leaving for school nursery here is some of the feedback we received from their parents.

“This fantastic place and staff have massively helped my child to progress in all areas including learning, speech, writing and behaviour.”

“It has helped H so much in getting ready to start school. I wouldn’t want her anywhere else. It’s worth the travelling.”

“My favourite things about Stepping Stones are the staff and the progress. The way how they treating the kids.”



September -The start of a new term and we have had a full register (and a long waiting list for next term). The new children all settled in surprisingly well. When asked how they heard about us, one of the parents said “I saw a little girl skipping out of here really happy and I asked her mum about the nursery”

Children spent the first few weeks getting used to the routine and anticipating what’s coming next, which helps them feel secure.

Our newest child had previously experienced problems settling into other care settings and her parents were very anxious about her starting with us. However she settled with us quickly and the other children welcomed her into the group in the lovely way they always do.

November - We had a busy month with the children, incorporating Remembrance Day, Science Day, road safety week, Children in need and Diwali. The children created some lovely things to take home to their parents, including poppies, sensory bottles, Pudsey bears, traffic lights, (We took the children on a trip using the crossing and traffic lights), and the children also made a candle holder for Diwali.

The children really enjoy creating and making their own snacks and being able to make choices with their food.

January - The children returned after the Christmas break as if they hadn’t been away - a clear indicator of the positive relationships they had started to form.

We focused on primary colours and developing independence this term and the children tried lots of new sensory and taste experiences (some more successful than others). Five of the children attending are all younger siblings of past attenders. We hope this shows that we have left a lasting impression on these parents/carers, so that they want to return to us again and again



March - At the start of every half term we started to share the planned learning goals with parent/carers. This included supporting activity/discussion ideas that can be used at home. This helped us to strengthen our partnership with parents, so that we were better equipped to enrich the children’s experiences and improve their school readiness.

The difference we made

A was first registered with us in June 2021 by her then foster carers. After induction I spoke with her health visitor, as there had been developmental concerns raised at her 2-year check. Even after gradual admission A was very withdrawn and showed no signs of progress. Unfortunately, the following month we had some serious safeguarding concerns. We followed our procedures and worked closely with the police and her social worker. A had to be removed from this placement and because it was then the summer break, we had no feedback as to where she had been placed.

On our return in September A's grandad telephoned to say she was now living with him and asked if could return to us. On coming back A was a much more confident little girl. Although she became angry very easily, with lots of extra support she began to make slow but steady progress in all areas of development. We met with grandad and the other agencies involved regularly to discuss next steps. She became a really happy child, who was popular with both children and adults.

Sadly, in June 2022 A's grandad passed away and again her world was disrupted. Grandma was keen for A to stay in her care and so we helped with paperwork, and attended some difficult meetings to support her. A's behaviour became very challenging, but the strong relationships already built enabled us to support her through this confusing time.

In July we began working with the local primary school around a supported transition. She started with them in September and at her handover review both grandma and the school SENDCO reported that she is settling in well.

Early Years - Willowbank Homeless Refuge Creche

The Headlines

21

Children
attended

3

Refuges
supported

500

Hours of
creche

The story

April - Over the Easter holidays we were able to have more of the older children on sessions and we did activities like cooking, which they could then eat for their snack, and egg hunts. We also had one little boy come back who used to come when he was a baby and left to go to school.

Since the weather has been getting nicer we were been able to do more activities in the garden and we have been on some trips to nearby parks. We have also started doing more gardening and we have made some bird feeders for the birds and squirrels. We have also put an order in for flowers and seeds to do more planting in the planters. The children have loved seeing how the sunflowers are growing in the green house.

May - This month we have made our garden brighter, we now have two new big planters with lots of plants in and we have started to grow some fruit for the children to pick and eat. We also did some autism awareness training and it was so helpful, we have put it into practice with one of our little girls and sessions are now running more smoothly for her and us as staff.

One of the mums said to us she can tell her little girl has settled in so well with us and she is glad she has come out of her shell.

June - We have done lots of messy play this month and the children have loved it especially the new children we have had down, also due to the good weather we have been on a few trips to the park. We have also carried on with our gardening and our strawberries have started to grow, the children have loved being able to pick their own fruit, wash it and then eat it.

July/August - Numbers have been high due to the six weeks holidays starting, it's been lovely to see the older children as we don't get to see them that often anymore as they are in school. We have done lots of water and messy play because of the lovely weather, the children have loved it.

We have also done a Wood Street mission application for some clothes for the creche and we have received some donations of books and arts and craft packs.

September - Over the past few weeks, we have tried to get as many trips into the parks as possible with the nice weather that we have had and we have managed to organise a trip to the Wacky Warehouse free of charge for some of our older children, we plan to do this sometime in October.

We also have some local councillors coming into creche to find out more about our service and what we do.

October - This month we have found a local library that does a story time session on Wednesdays for free, so we plan to take the children each week. As it's coming up to Halloween the children have been decorating the creche room, we have also done lots of Halloween arts and crafts and pumpkin carving, which the children have enjoyed. We have also used the inside of our pumpkin mess to do messy play and feed the wildlife in our garden.

November - This month we got to go on our trip to the Wacky Warehouse. The children loved it and it was so good to see their faces light up and have a lovely morning, the parents were also really happy that their children had got to experience something they wouldn't have been able to afford to do themselves.

We have also got more new families to start this month, some were a little hesitant at first to leave their children as they are only a few months old but now they feel comfortable with us and we love having the babies each week.

Dec/Jan - We have been doing lots of Christmas activities, it was lovely to see the children getting so excited. We made our own little Christmas trees and baubles to make a Christmas display board. We were able to give out our Wood Street Mission presents to the children before we broke up for Christmas as well it was so nice to see how grateful the families are and put a smile on their faces. We also got given little presents and cards back to us with lots of nice messages in from the parents to say how much they appreciate us.

January - It's been lovely coming back to work and seeing all the children again and watching how much they are progressing we have four babies at the moment, and it's been great to see how much they are growing and being more active. Over the past two months three of our families have moved out as they have been successfully rehoused.

February - This month we made Valentine's arts and crafts with the children, we made little poems and put them with handprints. Our little babies have started sitting up and becoming more interactive with the toys, its lovely to watch them grow. One of our older children has started speaking a lot more English to us, as this isn't her first language it's amazing to watch her speak two different languages at such a young age. Our older children came down over the half term, it was good to be able to do different activities as well as see some new faces.



March - We have started getting the garden ready for summer, we also have a new greenhouse and bird feeder. The little ones have loved putting the seeds out for the birds. While the weather has been nice we have been having picnics in the garden and we have also been able to get the sand out and use the bikes, the children have loved it.

One of our babies is on the move now and has started crawling, he has been coming down to creche since he was a few weeks old so it is nice to see his progress. We have also made Mother's Day cards, the older children were so happy and excited to show their mums what they had made them.



The difference we made

Qashang started using the crèche in November for her son Raha when he was just 11 weeks old. Qashang wanted to Raha to learn new things and grow up around other children. She was also looking for some support and help for herself. Since coming to crèche, Raha has become much more sociable, and Quashang also reports she feels a lot more confident to leave Raha as she knows that he is happy in crèche and he does not cry. Quashang told us - "It's great, you do amazing things, and you are so nice to me and Raha".

Over the past year it's been so nice to watch Raha grow into a lovely little boy and see how much he has changed and developed and see how much we have supported Qushang and helped her. They have now moved to a different refuge, but they still travel to us to use the creche.

Play – After-school Club & Playscheme

The headlines

1739

Attendances at
our sessions

140

children and
their families
helped

24% children
with SEND

The story

April - Our highlights this month have been Easter playscheme it ran smoothly and all the children had so much fun.

We have also been making a lot of use of the messy room now it's had a fresh coat of paint and all clean, the children have really enjoyed being in this room and we one child said "I love this room it's so calming it's so beautiful I could just fall asleep" which is great feedback as that is the vibe we were going for. We have found giving children who struggle with behaviour more responsibility and making them junior volunteers has improved behaviour overall. We have had some children who attend Bright Futures sessions come to our afterschool club which is amazing as this is exactly what we want



May - We have been doing lots of healthy eating activities with the younger children, they made their own vegetable kebabs and 'lunchables', we taught the younger children the importance of using knives safely and they really enjoyed the responsibility of being able to use the knives themselves. One child said, "I love cooking it calms me and I'm never able to do it at home."

The planter that the children worked on at Easter is thriving and the children love the responsibility of watering it and maintaining it.

One of new children who has just started came out and the first thing she said to her mum was "this is the best day ever can I come again tomorrow?"

Our children also really enjoyed celebrating Eid and talked about the importance of celebrating it and acknowledging all cultures.

June - Our highlights this month have been how much fun all the new children seem to be having on the sessions, we have incorporated lots of role play for the children to take part in open ended activities which they absolutely love.



We have been celebrating the Euros this month and all the children have painted the flag of each country taking part. We plan to have an England party next week (even in England don't win.)

We created our own after school club play, the children were in charge of everything and even created their own props and costumes.

We took some of the children litter picking outside the building and up the street – the children loved doing this and we plan to take them litter picking in the park during the summer holidays.

September - After a VERY busy summer we have finally been able to return to Afterschool club being an open access service. Afterschool club is thriving and we have received lots of new members since being back open. Our highlights have been our Roald Dahl week, the children really enjoyed the themed days, and one little girl was very excited as one of the days were 'Matilda' and her name was Matilda, she was coming up with lots of suggestions on what we could do, some not so realistic -decorate cakes with her face printed on them! We have created a junior volunteer programme, it consists of 6 sessions and so far we have completed: Week 1 induction to junior volunteer, Week 2 First aid and Week 3 learning how to run activities. We have had each young person attend on one of our play sessions to help out and they have all done fantastic. The course has been going really well and were excited for the last three weeks.

Our good news story is one of the children was running for head boy at school and came to our session and read his speech out in front of everyone, he got teary eyed while reading and was very nervous but managed to finish his speech, we later found out he hadn't gotten the position at school which promoted us to create our own 'Afterschool Club council'. We had anybody who wanted to join write a speech to why they think they would be a good asset and then read it out to everyone. We were very proud of all who gave it a go and have picked our Afterschool council. They will be the voice for the children and we plan to do 5 minute discussions at the end of each month where the children can feed back any ideas/issue they have with Afterschool Club to the council who can then feedback to staff.



October - We had the Flying Seagull project come to visit with their circus show during our playscheme which the children absolutely loved! We are hoping for another visit from them in the middle of December which will be amazing. Our Halloween parties all ran really well and the children seemed to have a really fun time we had lot's asking if they could come all week.

We have celebrated Black History month, the children enjoyed the activities we had planned and were really interested in the display we had made and many of them added to it, with either pictures or paragraphs on how they were proud of their skin colour.



- We created medicines with herbs to celebrate the work of Mary Seacole.
- We created traffic light snacks in honour of Garrett Morgan
- We made microphones to honour the strong black influence on today's music culture

- We decorated biscuits like footballs in honour of Wythenshawe's very own Marcus Rashford

November - We have had another busy month this week. We made some bath bombs which turned into science experiments (this got VERY messy) But was very much enjoyed by the children.

We also celebrated Diwali, we made lanterns to light up our centre and made some art inspired by Rangoli, we also tried some delicious snacks that are eaten on Diwali.

The children really enjoyed creating poppy cups and making healthy snacks in the shape of poppies for Remembrance Day. The children especially enjoyed learning from our display which included real life examples of war paperwork used during the war and photos which had the stories behind them.

We have also been making up activity packs to drop off to children who are having isolate.



December - We have been doing lots of cooking this month the children have really enjoyed this. We had one child comment "Are you really going to let me use the pan on my own?" and another "I never get to cook at home this is the best."

We have been lucky enough that a play therapist has wanted to do her work experience with us, we have successfully referred two children to her and she will be coming in every Monday and Tuesday to work with them.

January – We held a Christmas/New Year party which the children really enjoyed and they were all very grateful when they were given presents at the end.

We have a few children who are extra emotional this term and we have seen a change in behaviour, we plan to address this by dealing with this by giving them more one on one time and extra support in the sessions to make better choices.

We have had a few children who attend the club lose a family member and one parent reached out for support for her child. Staff have completed an online Grief training that just helped with what to say to the child and how best to support them

Club Cars were also doing a vote on Facebook to win £1000, many of the Afterschool club parents tagged us in the post to win and wrote some lovely things about us which was really nice. Club cars came to visit us during Afterschool club and the children were really excited to hold the big cheque.



One of our junior volunteers is doing really well and is a natural with the children, it's really nice to see him making his own games up and the children really look up to him

Afterschool Club Council:

What you have enjoyed about Afterschool club this month:

Play leaders Charlotte, Jess and Macauley. Playing outside. Making crafts. All the new drawing books and tracing paper. Toy vehicles. Playing with friends and meeting new people.

What you would like to happen next month in Afterschool Club: McDonalds, play on the iPad more. Have a pyjama party.



*Good news story: We have Two new member who having joined Afterschool Club Council Amy and Ava 😊
Club cars came to give a check and take a picture.
Ava moved up a level in Gymnastics.*

January - During this month we have been celebrating Children's Mental Health week. The theme was all about growth. We talked about growing as a person ourselves and planted



cross so we were able to see the growth happening in a plant. We also made a Growing Together wall, where we used flowers to showcase the achievements we had made in our lives and hot air balloons with the names of people who had helped us grow as people.

The children take part in weekly litter picks to help keep the gardens looking nice and clean, this is something the children really enjoy and ask to do so we do hope in the summer to be able to them litter

picking round the streets and local parks.

We celebrated Chinese New Year this month by trying some traditional Chinese food and making dragons. The children also enjoyed looking at the Chinese calendar to see what their Chinese zodiac animal was.

“Why does the time in afterschool go so fast”

“You make me happy when I come you treat me good that’s why I come”

“Thank you for making my life exciting”

Afterschool Club Council:

What you have enjoyed about Afterschool club this month: We liked making the food this month. We liked playing games when it was raining. I love that Charlotte and Jess are here.

What you would like to happen next month in Afterschool Club: More food

Good news story: I went to Karate and got two new tabs on my belt.



March - We celebrated International Women's month, we made crowns in honour of Queen Elizabeth and had an inspirational women's treasure hunt.

We had a fab time celebrating pancake day by making and decorating our pancakes. We also took part in science week and did many experiments that the children really enjoyed. Our favourite feedback this month was from one of our junior volunteers who has been attending the Centre for several years now –

"I can stand anywhere in this room and it will bring back such a good memory"

The difference we made

Harry joined Afterschool club when he was five years old having previously attended Stepping Stones playgroup, he is now nine. He has been attending Afterschool regularly for the past 3 years. He rarely misses a week and attends every playscheme or event we have on. Harry has sensory processing disorder and has recently been diagnosed with ADHD. Harry struggles in school and his teachers struggle to understand him. Here at afterschool club is a place for Harry to be himself with staff who understand him and his needs really well. Harry even chooses to come here on his birthday and has said "Can I have my party here with you guys?"

Harry has come on so much, especially in this past year, by attending our sessions. He is learning social skills - how to play with other children and even just how to tolerate having other children around him. Harry knows that there will always be a place for him at the family centre and he is able to let his creative side shine here. He has made a special bond with one member of staff and calls her "his best friend". He is now able to express his emotions when he comes to the session, which he struggled with before, and will now let us know if he's had a bad day in school or not, which helps us with how we choose our/words/actions towards him for the session.

"Harry struggles with socialisation it really got him ready for school, and now with his diagnosis the team really help, they're amazing with him. From after-school club to bright futures the way Harry has changed with the help from the centre. It's Harry's favourite place to go he loves everyone there, especially Jessica. The staff are the nicest, kindest, generous people I have ever met. I'd be lost without them and so would Harry." Angela, Harry's mum.

Partnerships

We couldn't have achieved what we have this year without the support of some amazing partners

- Wythenshawe Youth and Play Alliance
- Heart & Soul
- Manchester Play Partnership
- Play Therapy

Training and Employment

As always we try to ensure our staff and volunteers have access to a range of training and development opportunities The training undertaken this year has included:

- | | |
|--------------------------------|----------------------------------|
| * Practical Safeguarding | * Our Boards Autism Workshop |
| * Designated Safeguarding Lead | * Understanding Unconscious bias |
| * LEAD+ Leadership programme | * Diabetes |

2021/22 supporters

Of course none of the work outline above would be possible without the funding and support provided by a wide variety of funders, businesses and individuals and we offer our heartfelt thanks and appreciation to the following organisations and individuals who have helped us make such a difference to children and families this year.

Corporate supporters

Club Cars

Asda Green Token scheme

Steris Wythenshawe

Grant Funders

The National Lottery Community Fund – Reaching Communities

Young Manchester

Comic Relief/Groundwork

Arnold Clark Foundation

Asda Foundation

Buzz Manchester

Manchester Active

Individual Fundraisers/Donations

Bright Futures children

The Shatarsky family

Sarah Lynch

Hazel Reeves

Ann Walters (Arc Training)

‘In Kind’ Donations of time, products or services

Manchester Libraries

Wythenshawe Community Housing Group

Inspire/Gunner Cooke

Adam’s Garden Maintenance Service

BW3

The Flying Seagull Project

We would also like to thank Sue Weighell of Delta Solutions for providing her accountancy services.

In addition, we are indebted to the United Reformed Church (North West) Trust for granting us the continued use of our premises without charge.

Financial Review

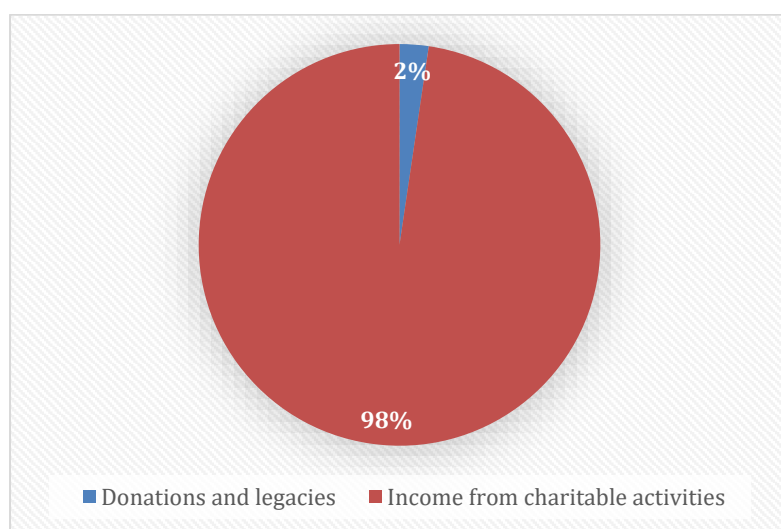
The Trustees review the financial position of the charity as part of the regular Trustee meetings and are satisfied that the income of the fund is sufficient to meet annual operating expenditure.

Results for the year

Incoming resources were £175,429 and total expenditure was £185,910. There was a reduction in funds of £10,481.

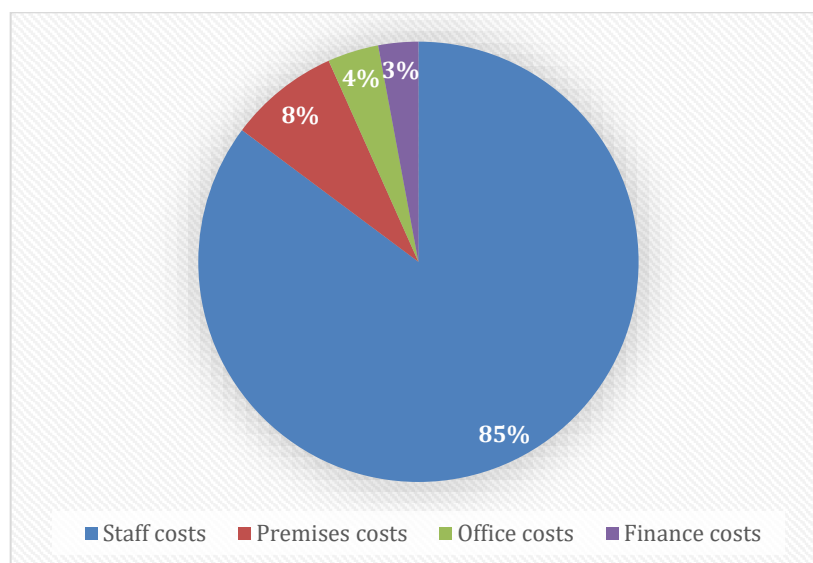
Where do our funds come from?

Income of £175,429....



How do we spend our money?

Expenditure of £185,910.....



Reserves Policy

As required by the Charity Commission the Trustees have adopted the following reserves policy:

1. We will maintain the sum of £15,000, or such amount as is determined from time to time by the Management Committee, as a contingency fund (designated reserve) for the sole purpose of bridging a gap in the receipt of funding income.
2. In addition to the above sum we will recognise as a restricted reserve at the end of our financial year any income, received by us for the purpose of funding a specific post, activity or expense, to the extent that the income has not been used for that purpose during the year.
3. Subject to meeting the ongoing expenditure needs of the organisation we will aim to maintain our unrestricted funds at a level equivalent to six months' worth of current running costs.

Finally, for the avoidance of doubt the Trustees confirm that at the year end:

1. no restricted funds are in deficit
2. no funds were held by the Trustees as Custodian Trustees.

Statement of Trustees' responsibilities

In the attached accounts set out on pages 27 to 34, the Trustees have prepared financial statements for the period up to 31 March 2022. In preparing such statements the Trustees are required to:

- select suitable accounting policies and apply them consistently;
- make judgements and estimates that are reasonable and prudent;
- state whether applicable accounting standards and statements of recommended practice have been followed, subject to any departures disclosed and explained in the financial statements; and
- prepare the financial statements on the going concern basis unless it is inappropriate to presume the Foundation will continue in its operational existence.

The Trustees are responsible for keeping proper accounting records which disclose with reasonable accuracy at the time the financial position of the Foundation and to enable them to ensure that the financial statements comply with the Charities Act 2011. They are also responsible for safeguarding the assets of the Foundation and hence for taking reasonable steps for the prevention and detection of fraud and other irregularities.

The report was approved by the trustees on 12th December 2022 and signed on its behalf by:



CHRISTINE GREENHALGH
CHAIR



SARAH LYNCH
TRUSTEE

Independent Examiner's Report

Report to the trustees/members of	Wythenshawe Community Initiative Ltd
--	--------------------------------------


On accounts for the year ended	31 March 2022	Charity No	1121682
---------------------------------------	---------------	-------------------	---------

Set out on pages	27 to 34
-------------------------	----------

Respective responsibilities of trustees and examiner	<p>The charity's trustees are responsible for the preparation of the accounts. The charity's trustees consider that an audit is not required for this year under section 144 of the Charities Act 2011 (the Charities Act) and that an independent examination is needed.</p> <p>It is my responsibility to:</p> <ul style="list-style-type: none"> - examine the accounts under section 15 of the Charities Act, - to follow the procedures laid down in the general Directions given by the Charity Commission (under section 145(5)(b) of the Charities Act, and particular - to state whether particular matters have come to my attention
---	---

Basis of independent examiner's statement	<p>My examination was carried out in accordance with general Directions given by the Charity Commission. An examination includes a review of the accounting records kept by the charity and a comparison of the accounts presented with those records. It also includes consideration of any unusual items or disclosures in the accounts, and seeking explanations from the trustees concerning any such matters. The procedures undertaken do not provide all the evidence that would be required in an audit, and consequently no opinion is given as to whether the accounts present a 'true and fair' view and the report is limited to those matters set out in the statement below.</p>
--	--

Independent examiner's statement	<p>In connection with my examination, no matter has come to my attention which gives me reasonable cause to believe that in, any material respect, the requirements:</p> <ul style="list-style-type: none"> - to keep accounting records in accordance with section 130 of the Charities Act; and - to prepare accounts which accord with the accounting records and comply with the accounting requirements of the Charities Act <p>have not been met; or</p> <ul style="list-style-type: none"> - to which, in my opinion, attention should be drawn in order to enable a proper understanding of the accounts to be reached.
---	--

Signed:		Date:	14/12/2022
----------------	---	--------------	------------

Name:	Susan Weighell FCA
--------------	--------------------

Relevant professional qualification:	Fellow of the Institute of Chartered Accountants in England & Wales
---	---

Address:	3 Wellgreen Close, Hale, Altrincham, WA15 8PT
-----------------	---

Accounts for the year ending 31 March 2022

2020

2019

Statement of Financial Activities for the year ended 31 March 2022

	Notes	Unrestricted funds	Restricted funds	Designated funds	Total funds 2022	Prior Period Total funds 2021
		£	£	£	£	£
Income and endowments from:						
Income from charitable activities	2	87,964	83,373	0	171,337	77,038
Donations and legacies	4	4,092	0	0	4,092	798
Other trading activities	5	0	0	0	0	4,179
Income from investments	3	0	0	0	0	0
Total income		92,056	83,373	0	175,429	82,015
Expenditure on:						
Charitable activities	6	98,434	87,476	0	185,910	107,750
Total expenditure		98,434	87,476	0	185,910	107,750
Net income/(expenditure)		(6,378)	(4,103)	0	(10,481)	(25,735)
Transfers between funds		(8,743)	8,743	0	0	0
Net movement in funds		(15,121)	4,640	0	(10,481)	(25,735)
Total funds brought forward		15,087	0	12,000	27,087	34,540
Total funds carried forward		(34)	4,640	12,000	16,606	8,805

Accounts for the year ending 31 March 2022

Balance Sheet as at 31 March 2022

	Notes	£	2022 £	2021 £
Fixed Assets	8		2	2
Current Assets				
Debtors	9	9,085		7,058
Cash at bank and in hand		37,226		16,945
		<u>46,311</u>		<u>24,003</u>
Current Liabilities				
Creditors and accruals	10	29,707		15,200
Net current assets			16,604	8,803
Net assets			<u>16,606</u>	<u>8,805</u>
The funds of the charity				
Designated funds	11		12,000	8,680
Restricted income funds	12		4,640	125
Unrestricted funds	13		(34)	0
Total charity funds			<u>16,606</u>	<u>8,805</u>

The directors are satisfied that the company is entitled to exemption from the requirement to obtain an audit under section 477 of the Companies Act 2006 relating to small companies.

The members have not required the company to obtain an audit in accordance with section 476 of the Act.

The directors acknowledge their responsibilities for complying with the requirements of the Companies Act 2016 With respect to accounting records and the preparation of accounts.

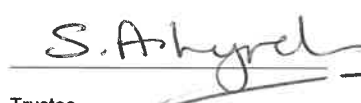
The accounts have been prepared in accordance with the provisions in Part 15 of the Companies Act 2006 applicable to companies subject to the small companies regime.

Approved by the trustees on 12th DECEMBER 2022 and signed on its behalf by



Chair

CHRISTINE GREENHALGH



Trustee

SARAH LYNCH

Notes to the accounts for the year ending 31 March 2022

1) Accounting policies

The charity is a company limited by guarantee. The members of the Company are the directors named on page 1. In the event of the Charity being wound up, the liability in respect of the guarantee is limited to £1 per member of the Charity.

The principal accounting policies adopted, judgements and key sources of estimation uncertainty in the preparation of the financial statements are as follows:

a) *Basis of preparation*

The financial statements have been prepared in accordance with Accounting and Reporting by Charities: Statement of Recommended Practice applicable to charities preparing their accounts in accordance with the Financial Reporting Standard applicable in the UK and Republic of Ireland (FRS 102) (effective 1 January 2015) – (Charities SORP (FRS 102)), the Financial Reporting Standard applicable in the UK and Republic of Ireland (FRS 102) and the Companies Act 2006.

The Charity meets the definition of a public benefit entity under FRS 102. Assets and liabilities are recognised at historical cost or transaction value unless otherwise stated in the relevant accounting policy notes.

The financial statements are prepared on a going concern basis. There are no material uncertainties in respect of the charity's ability to continue as a going concern for the foreseeable future, based on latest strategic plans and financial budgets.

b) *Income Recognition*

Income from grants and donations is recognised once the Charity has entitlement to the income, any performance conditions attached to the item(s) of income have been met, it is probable that the income will be received and the amount can be measured reliably.

Income from creche facilities is recognised as earned as the related services are provided.

Interest receivable on funds held on deposit is included when receivable and the amount can be measured reliably by the Charity; this is normally upon notification of the interest paid or payable by the bank.

c) *Expenditure and irrecoverable VAT*

Expenditure is recognised once there is a legal or constructive obligation to make a payment to a third party, it is probable that settlement will be required and the amount of the obligation can be measured reliably.

Irrecoverable VAT is charged as a cost against the activity for which the expenditure was incurred.

Governance costs include those incurred in the governance of the charity and its assets and are primarily associated with constitutional and statutory requirements, including the independent examiner's fees and legal costs.

d) *Depreciation*

Tangible fixed assets are stated at cost less accumulated depreciation. Depreciation is charged so as to write down the value of the assets over their expected useful lives at the following rates:

Computer equipment - 20% per annum straight line

Office equipment - 20% per annum straight line

e) *Debtors*

Debtors are recognised at the settlement amount due after any trade discount offered. Prepayments are valued at the amount prepaid.

f) *Cash at bank and in hand*

Cash at bank and cash in hand and deposits with a short maturity of three months or less from the date of acquisition or the date of opening the deposit or similar account.

g) *Creditors and provisions*

Creditors and provisions are recognised where the Charity has a present obligation resulting from a past event that will probably result in the transfer of funds to a third party and the amount due to settle the obligation can be measured or estimated reliably. Creditors and provisions are normally recognised at their settlement amounts after allowing for any trade discounts due.

h) Fund Accounting

Funds held by the Charity can be one of:

- i) Unrestricted general funds – which can be used in accordance with the Foundation's objects at the discretion of the Trustees;
- ii) Designated funds- which are funds set aside by the Trustees out of unrestricted general funds for specific future purposes or projects;
or
- iii) Restricted funds – which are funds that can only be used for particular restricted purposes within the objects of the Foundation.
Restrictions arise when specified by the donor or when funds are raised for particular restricted purposes.

Further details of each fund are shown in notes 11,14 and 16.

Notes to the accounts for the year ending 31 March 2022

2) Income from charitable activities

	Notes	Unrestricted funds	Restricted funds	Designated funds	Total funds 2022	Prior Period Total funds 2021
		£	£	£	£	£
Referral fees		0			0	1,230
Contact fees		0			0	1,749
Toddler Group Voluntary contributions		849			849	454
Playscheme fees		3,111			3,111	2,900
PL Playscheme		15,000	46,765		61,765	10,000
EY Stepping Stones			31,074		31,074	28,029
Play Group fees		5,201			5,201	1,543
Grants		34,721			34,721	5,000
Mobile creche		29,083			29,083	0
Equipment and activities			500		500	0
PL ASC					0	9,920
TNL Bright Sparks					0	16,213
NIF Equipment			5,034		5,034	0
Total		87,964	83,373	0	171,337	77,038
		0				

3) Investment income

	Notes	Unrestricted funds	Restricted funds	Designated funds	Total funds 2022	Prior Period Total funds 2021
		£	£	£	£	£
None received		0			0	0
Total		0	0	0	0	0

4) Donations

	Notes	Unrestricted funds	Restricted funds	Designated funds	Total funds 2022	Prior Period Total funds 2021
		£	£	£	£	£
Donations		4,092	0		4,092	798
Total		4,092	0	0	4,092	798

5) Other trading activities

	Notes	Unrestricted funds	Restricted funds	Designated funds	Total funds 2022	Prior Period Total funds 2021
		£	£	£	£	£
Rent received		0			0	4,179
Total		0	0	0	0	4,179

6) Expenditure on from charitable activities

	Notes	Unrestricted funds	Restricted funds	Designated funds	Total funds 2022	Prior Period Total funds 2021
		£	£	£	£	£
Staff costs		78,325	78,028		156,353	89,557
Rates		3,359	0		3,359	1,413
Insurance		2,102	0		2,102	1,842
Repairs and maintenance		1,638	42		1,680	1,454
Light and heat		1,591	0		1,591	3,809
Operating lease payments		0	0		0	727
Cleaning and gardening		411	0		411	226
Equipment		0	6,617		6,617	1,337
Postage and stationery		1,390	5		1,395	383
Bank charges		370	0		370	436
Audit and accountancy		3,615	0		3,615	1,933
Telephone		3,236	12		3,248	2,973
Subscriptions		517	0		517	671
Publicity and advertising		0	0		0	175
Travel		0	115		115	67
Activities and trips		0	2,404		2,404	0
Sundry		305	0		305	747
Refreshments		167	14		181	0
Training		14	238		252	0
Interest paid		1,395	0		1,395	0
Total		98,434	87,476	0	185,910	107,750

7) Net (expenditure)/income is stated after charging

		2022	2021
		£	£
Independent examination	540	540	540
Total	540	540	540

8) Fixed Assets

	Office Equipment	Computer Equipment	Total
	£	£	£
Cost			
At 1 April 2021 and 31 March 2022	691	2,194	2,885
Depreciation			
At 1 April 2021 and 31 March 2022	690	2,193	2,883
Net book value			
At 1 April 2021 and 31 March 2022	1	1	2

9) Debtors: amounts falling due within one year

	2022	2021
	£	£
Prepayments and trade debtors	9,085	7,058
Total	9,085	7,058

10) Creditors: amounts falling due within one year

	2022 £	2021 £
Accruals and deferred income	8,969	9,157
Pension and Paye/Nic due	19,388	5,658
Trade creditors	1,350	385
Total	29,707	15,200

11) Statement of funds

	Brought forward £	Incoming resources £	Resources expended £	Transfer between funds £	Carried forward £
Unrestricted funds					
Designated funds	12,000	0	0	0	12,000
Restricted funds	0	83,373	(87,475)	8,742	4,640
Unrestricted funds	15,087	92,056	(98,435)	(8,742)	(34)
Total	27,087	175,429	(185,910)	0	16,606

12) Restricted funds

	NIF Equipment £	Equipment & Activities £	EY Stepping Stones £	PL Playscheme £	Total £
Brought forward	0	0	0	0	0
Income	5,034	500	31,074	46,765	83,373
Expenditure	(394)	(500)	(38,351)	(48,230)	(87,475)
Transfers from other funds	0	0	7,278	1,465	8,743
Carried forward	4,640	0	0	0	4,640

13) Analysis of staff costs, trustee remuneration and expenses and cost of key management personnel

	2022 £	2021 £
Wages and salaries including social security	152,509	85,174
Pension costs	3,844	4,382
Total	156,353	89,556

No employee had employee benefits in excess of £60,000

The Charity's Trustees were not paid or received any other benefits from the Charity or its subsidiary during the year. The trustees were not reimbursed any expenses by the Charity during the year. No trustee received payment for professional or other services supplied to the Charity.

The key management personnel of the Charity comprise the Trustees. The employee benefits of the key management personnel of the Charity were Nil.

14) Staff numbers

	2022 £	2021 £
Number of employees	12	9
Total	<u>12</u>	<u>9</u>

15) Designated reserves

The balance on the designated reserve represents amounts set aside to cover salaries (for one month) in the event of a gap in the receipt of grants

16) Related party transactions

The Company has a wholly owned subsidiary, Planet Child's Play Community Interest Company, which incorporated on 15 August 2013

One of the trustees (Ms C Greenhalgh) is a Director of Planet Child's Play

At the end of the year Planet Child's Play was owed £nil (2021:nil) by the charity