



Norton Hall Children and Family Centre

(A Charitable company, founded in 2006)

Trustees Annual Report and Financial Statements For the year ended 31 March 2023



Charity number 1112752
Company number 05052641

CONTENTS

Pages

Trustees Report for YE23	2-10
Independent Examiner's Report	11
Statement of Financial Activities	12
Balance Sheet	13
Notes forming part of the financial statements	14-22

TRUSTEES REPORT

The Trustees are pleased to present their report and independently examined financial statements for the year ending 31st March 2023, which are also prepared to meet the requirements for a directors' report and accounts for Companies Act purposes.

The financial statements have been prepared in accordance with the accounting policies set out in note 1 to the accounts and comply with the Charity's governing document, applicable law, the Charities Act 2011, the Companies Act 2006, and the requirements of the Statement of Recommended Practice, "Accounting and Reporting by Charities" (SORP) issued in March 2005.

REFERENCE AND ADMINISTRATIVE INFORMATION

Charity name:	Norton Hall Children and Family Centre
Charity registration number:	1112752
Company registration number:	05052641
Registered Office:	Ralph Road, Saltley, BIRMINGHAM B8 1NA.

Trustees

› Ms Wendy Kerr, Chair	Appointed 30 th April 2015
› Mr Iftikar Karim, Secretary	Appointed 6 th Dec 2004
› Ms Ghazala Parveen	Appointed 10 th Sept 2015
› Mr John Freeman	Appointed 23 rd Feb 2004
› Ms Maryam Khan	Appointed 30 th April 2015

Secretary

Mr Iftikar Karim

Chief Executive Officer

Suzanne Knipe

Bankers

Unity Bank,
9 Brindley Place, Birmingham B1 2HB

Independent Examiner

P & W Social Accountants
The Barn,
173 Church Road
Northfield, Birmingham B31 2LX.

CHAIR'S REVIEW

I am very proud to present my summary of this year's report for the Norton Hall Children and Family Centre. We support our local community in the Ward End and Alum Rock areas of East Birmingham. Our operations include running the Dolphin Women's Centre in Ward End Park.

Once again this has been a very busy and eventful year, as our charity has continued to support some of the most vulnerable and disadvantaged women, children, and families in East Birmingham.

The cost-of-living crisis has impacted on the demand for our services and again we have noticed a significant increase in people seeking advice and support, particularly with debt and financial distress. During the pandemic we created a food service for those families who were really struggling, and over the year we gave 1,400 food parcels to 250 families, and almost 6,000 hot meals to around 400 children.

At Norton Hall our Sunflower Community preschool Nursery was inspected by OFSTED and received a GOOD report. We developed a new programme which successfully accelerated children's learning in language and communication, so as to meet the national educational average on starting school.

We have seen a huge milestone year for our Dolphin Centre as we commenced a major redevelopment project for the building and its grounds in Ward End Park. The project is due to be completed in July 2023, and our training and education services for women have been temporarily relocated.

We have already started to see the benefits of cross over between the Centres. Children from Norton Hall have participated in outdoor activities in the specially created Forest School area in the Dolphin Centre grounds. Via Forest School we are introducing children and young people from our inner-city community to a range of nature-based activities.

Despite the upheavals of the Dolphin Centre project, and the pressures of the cost-of-living crisis on our funding, I am proud to report that last year we supported over 1,400 local women, children, and young people to improve their wellbeing and life chances.

Over the last two years, we have grown our services by 36% in response to huge demand. Developments at the Dolphin Centre have increased our establishment costs significantly. Whilst we grew our income to £730k, we just about broke even, leaving us with less than three months reserves. 96% of our expenditure was spent on supporting beneficiaries, and only 4% on governance and fundraising.

Alongside recruiting a new Treasurer, our plans for the coming year include continuing our food project, and to engage local positive role models as volunteer mentors for our young beneficiaries.

We want to use an unused Terrace at the Dolphin centre to grow produce for our Café, and develop new training and work experience opportunities for women, including those with learning disabilities.

Thank you to all our partners and funders for their much-valued support throughout this year. Your support is needed now more than ever as we set out to realise our ambitious plans.

Finally, a big thank you to my fellow Trustees, and our dedicated staff and volunteer teams, whose hard work provides such a valuable service to the community.

Ms Wendy Kerr

Chair of Trustees

OBJECTIVES

Background

Whilst established in its current form in 2006, the charity has a strong track record (50 years) of community-based service delivery. Since 2013, our operations include running the Dolphin Women's Centre in Ward End Park. Our mission is to support local children, young people and women to overcome disadvantage.

Charitable objectives

The objects of the charity, as set out in its Memorandum of Association are:

1. To relieve poverty and advance health and education in Hodge Hill, Ladywood and Small Heath (Birmingham). To address the needs of disadvantaged women and children by providing:
 - a. a community nursery and provision for out of school childcare, and generally promoting the development of childcare provision aimed at meeting the needs of low income families.
 - b. holiday play schemes and other children's play provision.
 - c. support and provision for young people, including youth work with girls and young women.
 - d. opportunities for education, training and personal development.
 - e. support for the economic advancement of women, including supporting women into employment and enterprise.
- f. such further facilities as may be beneficial for the wider community in the area of benefit.
2. To promote and organise co-operation in the achievement of the above purposes.

ACHIEVEMENTS AND PERFORMANCE

At both Norton Hall and within our Dolphin Centre services we have been able to respond to the increase in demand for our services through the hard work and dedication of our staff, volunteers, and Trustees. Our Trustees, most of our workforce and our volunteers are from the local community. Our partners played a crucial role in our success; their expertise enhances and broadens the support we can provide.

Norton Hall Children and Family Centre

Sunflower community nursery

At Norton Hall's Nursery we provide pre-school education for local children whose educational starting point in life is significantly lower than the national average.

This year we were inspected by OFSTED and received a 'GOOD' report.

We developed a new intensive programme which successfully accelerated children's learning in language and communication.

We worked in partnership with four other local Nursery Schools to create a 'Stronger Practice Hub', a new initiative funded through the Department for Education Covid Recovery Programme.

Through this Hub we have shared our skills and learning with 32 other local childcare providers, to continue to improve early years outcomes for all local children.



Outcomes

The objective of our Nursery work is to develop strong foundations for pre-school children.

Over the last year we provided early years education for 63 local children, of whom 89% came from families who have English as a second language. Outcomes achieved included that:

- › All children attending our accelerated learning programme met the national educational average when they left us, ready to start school in September.

Children attending the Nursery:

- › Get on better with others, creating the foundations to develop future relationships.
- › Are ready for school, creating strong foundations for future academic attainment.
- › Have improved speech and language, creating strong literacy and numeracy foundations.
- › Progressed developmentally, reducing the gap in attainment for disadvantaged children.

Children & Young People and their families

The programmes we deliver have continued to develop, supporting some of our most vulnerable children and young people (aged 8-16) and their families.

Supporting parents on low incomes

We provide all year round after school and holiday childcare, at an affordable cost. Many of the working parents we support are on low wages, and / or are single parents. Over the last year we supported 56 local parents with safe and affordable after school and holiday childcare through several programmes.

During and post pandemic and working with Fareshare, we have been feeding families. Either by providing nutritious hot meals/ snacks to children during activities and / or by giving food parcels. This year we started seeing children coming to play sessions so hungry their behaviour had become challenging.

We began giving them breakfast when they arrived to maintain them until we provided a hearty lunch, alongside a range of snacks throughout the day. Last year we provided almost 1,400 food parcels to 250 families, and almost 6,000 hot meals to nearly 400 children.

Positive activities

Most of the children we look after participate in positive activities after school and during evenings, weekends and school holidays.

This year we provided girls and boy groups, and a broad range of sports, arts, drama, forest school and social activities, enabling children to gain new interests and skills and develop self-confidence.

Over the last year 390 local children and young people participated in our positive activities, of whom 63% were children with special educational needs.



One to one mentoring

We continued to provide a bespoke support service for young people struggling with emerging mental health issues or other social and emotional challenges. Many young people benefiting from mentoring have initially participated in our positive activities.

Parent feedback:

"Without the support of Norton Hall, my son would have been placed in emergency services to keep him safe from his own challenges." "Norton Hall's after school club helps single working parents like me and provides security and a place of safety for the children. There's a large range of activities that my kids always love."

Forest school and environmental programme

Utilising the new forest school space at the Dolphin Centre, we have been able to provide outdoor nature play activities for 143 local children throughout the school summer holidays. We developed an environmental programme and have been able to introduce children from our urban inner-city community to a range of nature-based activities.

Outcomes

The objective of our work with children and young people is to improve their life chances. Our activities help children gain resilience, improve their emotional wellbeing, and gain confidence to navigate and manage their often difficult and challenging life circumstances.

Over the last year a total of 460 vulnerable and children and young people benefited from our activities. These children:

- › Had increased confidence and improved social skills, enabling them to make friends, maintain relationships and feel happier and less isolated.
- › Were more able to manage their feelings, resulting in fewer emotional outbursts at home and school and therefore reducing the risk of exclusion from school.
- › Had improved emotional wellbeing, with improved self-esteem; being less likely to self-harm, become involved in drugs/ other high-risk behaviours and less likely to require statutory mental health services.
- › Had improved academic attainment, improving their life chances as children were more likely to stay in education and progress into further education.

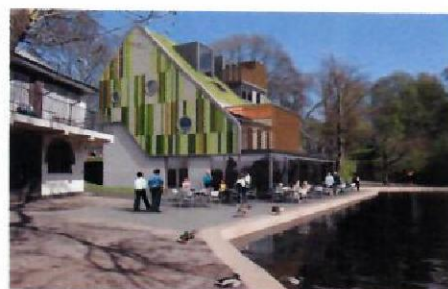
Teacher feedback

"I cannot praise Norton Hall highly enough. I have seen some amazing results from the work they have done. I feel it is important to have this resource in the area as it is vital to be able to offer vulnerable children an opportunity to have a positive play experience and supportive environment."

Dolphin Women's Centre

This year has been a milestone year for the Centre as we began refurbishing and extending the building and developing the grounds. The vision for the Centre's redevelopment was informed by extensive consultation with our local community.

The project entails extensive refurbishment and extension of the Dolphin Centre building including a green energy retrofit. We are creating a lakeside café (see right) for local people to enjoy when they visit the Park. This will offer women opportunities to be trained and gain work experience in a range of hospitality areas.



We have made large-scale environmental improvements to the wider parkland, upgrading paths and signage around the lake, the Wash Brook, and woodland area. We have planted more trees and created a clearing which has created a safe space in which to deliver our Forest School and Therapeutic Nature Activity programme.

Together with the Friends of Ward End Park we regenerated and improved an overgrown and neglected community garden. Within the garden we have created an allotment area, in which to grow produce for the Café. This again is providing opportunities for local women to gain work experience and receive training in a range of gardening, environment and horticultural areas.

The project commenced in July 2022, is due to be completed in July 2023 and necessitated the temporary relocation of our services for women. It is being realised in collaboration with Birmingham City Council Landscape Practice Group and the Friends of Ward End Park.

Funding for the scheme was managed on our behalf by Birmingham City Council. It included grants from the European Regional Development Fund; the Greater Birmingham and Solihull Local Enterprise Partnership's Growing Places Fund; the East Birmingham Programme; HS2's Community & Environment Fund and Birmingham City Council's Community Infrastructure Levy funds.

Outcomes

The objective of our work at the Centre is to empower women to overcome inequality.

We are proud to report that - despite the upheaval of the redevelopment project- we provided education, training, employment, health and wellbeing support for 922 women during the year.

Our work means that women participating in our activities:

- › Have improved English language skills - enabling them to progress to further education and training and improving their employment prospects.
- › Have improved their digital literacy skills -enabling them to utilise technology for navigate life in today's technological world.
- › Have increased confidence - enabling them to achieve their personal goals and become more independent.
- › Have improved emotional wellbeing, reduced anxiety, stress, and low mood - resulting in a positive impact on their family and home life.
- › Experience reduced isolation, with new friendships and new support groups - encouraging greater community cohesion.

'Nosheen' had been at home, caring for her children and not in work for 13 years. Being out of work had really affected her confidence and she wasn't sure what she could do about it; even if she was to apply for a job, she didn't have anyone she could ask for a reference. When Nosheen's youngest child started nursery, she decided to send out CV's out to local schools with a view to getting some volunteering experience whilst the children were at school/nursery, but she did not get responses.

Whilst carrying out an online search Nosheen came across the Dolphin Centre. She contacted the Manager and was asked to come in immediately. During the meeting she was advised that she could pick days/times that suited her and start straightaway. After 3 months of volunteering the Manager asked Nosheen if she would like to support her with enrolments - one of the busiest times of the academic year - and Nosheen really enjoyed it. During the summer Nosheen asked to be considered for any vacancies at the Centre. She initially obtained a short-term contract which has turned into a permanent post and has now been with us for 5 years!

Nosheen told us how grateful she was to have been given the opportunity, saying: "I am in awe of what being at the Dolphin Centre has done for me. My confidence has grown immensely, and I feel that I can in turn give back to the community by supporting others. The Dolphin Centre is a safe, friendly space- everyone is so welcoming."

FINANCIAL REVIEW

The Trustees agreed a budget for the year with three main cost centres: 1. The Sunflower Nursery; 2. Children and Young Peoples Services; and 3. The Dolphin Women's Centre.

The Income and Expenditure Account shows total incoming resources for the year ending 31st March 2023 (YE23) of £729,792 (YE22: £625,915).

Resources expended amounted to £729,748 (YE22: £682,576), which left a net surplus of £44 (YE22: £56,661 deficit). Total net assets at the year-end amounted to £380,684 (YE22: £380,639) of which 142,249 was restricted funds (YE22 £169,236).

96% of our expenditure was spent on supporting beneficiaries: 70% on the salaries of our expert team, 13% on activity costs, and 13% on premises costs across our two Centres. 4% was spent on governance and fundraising.

Reserves policy and position

Due to uncertainties and the short-term nature of much of the charity's funding, the Trustees policy is to hold sufficient reserves in the Unrestricted Fund (free reserves) to allow it to operate for a period of 3-6 months.

Current free reserves are at £148,436, which equates to just over two months of the YE24 budget of £801k. Designated funds of £90k are held to cover possible redundancies and ongoing building maintenance. This policy is reviewed annually by Trustees.

Income generation

The charity has limited assets and its primary source of funding (90% in YE23) was charitable activities income sourced through partnerships with other charities, local authorities and schools, with the remainder Trusts and Lottery and donations from individuals. Where grants are given for specific purposes, they are treated as Restricted Funds. In YE23, there were 10 restricted grants and tracking and managing these funds is part of the charity's financial management.

Acknowledgements

We would like to thank all our partners for their much-valued support throughout this year, including Birmingham City Council Landscape Practice Group, The Friends of Ward End Park, Family Action, The Childrens Society, Birmingham Education Partnership, 26 local schools, Birmingham Adult Education Service, The Pioneer Group, local Family Support Teams and Safeguarding Hubs, Workers Education Association, Jobcentre Plus, Birmingham MENCAP, Birmingham MIND, Birmingham Healthy Minds, Disability Resource Centre, Sampad and Salt Road Artists.

Also, a special thank you to our funders: the National Lottery Community Fund, Sport Birmingham, Roger and Douglas Charitable Trust, Birmingham City Council, Midland Mencap, Children's Quarter and Street Games.

A big thank you to our dedicated staff team staff whose hard work provides a valuable service to the community. Thank you to our Trustees, who give their time and expertise on a voluntary basis. Finally, a huge thank you to our team of dedicated local volunteers, who give their time to support the day-to-day work of the charity.

STRUCTURE, GOVERNANCE AND MANAGEMENT

Governing document

The charitable company is constituted as a not-for-profit Company Limited by Guarantee having no share capital. It is also a charity registered with the Charity Commission.

The charity is governed by its Memorandum and Articles of Association, and the policies made from time to time by its Trustees, who are also Directors of the charitable company.

Trustees are elected at the AGM, with one third standing down each year. They have the power to co-opt up to three further Trustees, and at least 60% must be women. Following the passing of our Treasurer, we are recruiting for a new Treasurer.

Public benefit

The Trustees, having considered section 4 of the Charities Act 2006, have satisfied themselves that they have complied with the duty to have regard to the Public Benefit guidance published by the Charity Commission.

The activities and achievements of the charity are outlined in this Report and the Trustees believe that the Report demonstrates that the charity is providing public benefit.

Independent examination

The Trustees have appointed P&W Social Accountants to undertake this role. This report has been prepared in accordance with the special provisions of Part 15 of the Companies Act 2006 relating to small companies.

Responsibilities of the Trustees

Company law requires the Trustees to prepare financial statements for each financial year which give a true and fair view of the state of affairs of the charitable company as at the balance sheet date and of its incoming resources and application of resources, including income and expenditure, for the financial period. In preparing those financial statements, the Trustees should follow best practice and:

- › select suitable accounting policies and then apply them consistently.
- › make judgements and estimates that are reasonable and prudent; and,
- › prepare the financial statements on the going concern basis unless it is inappropriate to assume that the charity will continue on that basis.

The Trustees are responsible for maintaining proper accounting records which disclose with reasonable accuracy at any time the financial position of the charitable company and to enable them to comply with the Companies Act 2006. The Trustees are also responsible for safeguarding the assets of the charity and hence for taking steps for the prevention and detection of fraud and other regularities. The Trustees who served during the period under review and up to the date of this report are set out on page 2.

Risk management

The Trustees have assessed risks to which the charity is exposed and are satisfied that systems are in place to mitigate our exposure to the major risks. Trustees are confident that sufficient funding will be available to continue to run the charity for the next 12 months and have contingency plans in place to deal with a shortfall in funding within one or more of its current activities.

Management structure

The day-to-day financial management is devolved to the Chief Executive - Suzanne Knipe. The Board receives quarterly management accounts, showing the actual performance compared to budget.

We have a culturally diverse staff team, balanced in age and gender. Many of our staff live locally and some are 'home grown', starting with us as volunteer young leaders. Our qualified and experienced team have a wide range of complementary skills and qualifications.

These include Youth Work and academic qualifications in for example, Play Work and Mentoring Qualifications (to Level 2 or 3), Therapeutic Counselling, Psychology, 'Trauma Informed Practice' and Drawing and Talking Therapy.

During the year we established and recruited to a new position of Environmental Manager who is also our Forest School Trainer and is responsible for developing our environmental programme of work.

Future plans

Trustees have reviewed the financial position of the charity over the next 12 months which has included a review of the budget for the YE24 and anticipated funding into YE25.

We aim to build reserves over the next year and have set an income target that is higher than our planned spend to help us realise this goal.

Over the last two years, we have grown our services by 36% in response to huge demand. Our plans for the coming year in our work with children and families are to continue to grow and upskill our staff team, and to engage local positive role models as volunteer mentors - particularly young Asian males.

Our plans for the Dolphin centre include the creation of a Terrace allotment and expansion of our community allotments to grow produce for our Café, whilst providing horticultural and environmental training and work experience opportunities for local women. We will also develop new training and work experience opportunities within our Café for young women with learning disabilities.

Approved by the Trustees and signed on their behalf by:

A handwritten signature in black ink, appearing to read 'M. J. Karim', written over a horizontal line.

Mr Iftikar Karim, Secretary

INDEPENDENT EXAMINER'S REPORT

I report to the Trustees on my examination of the accounts of the charitable company for the year ended 31 March 2023.

Responsibilities and basis of report

As the charitable company's Trustees (also its directors for the purposes of company law) you are responsible for the preparation of the accounts in accordance with the requirements of the Companies Act 2006 ('the 2006 Act').

I have satisfied myself that the accounts of the charitable company are not required to be audited under Part 16 of the 2006 Act and are eligible for independent examination. I report in respect of my examination of your charity's accounts as carried out under section 145 of the Charities Act 2011 ('the 2011 Act'). In carrying out my examination I have followed the Directions given by the Charity Commission under section 145(5)(b) of the 2011 Act.

Independent Examiner's statement

Since the Company's gross income exceeded £250,000 your examiner must be a member of a body listed in section 145 of the Act. I can confirm that I am qualified to undertake the examination because I am a member of the Institute of Chartered Accountants in England & Wales, which is one of the listed bodies.

I have completed my examination. I can confirm that no matters have come to my attention in connection with the examination giving me cause to believe that:

1. Accounting records were not kept in respect of the Company as required by section 386 of the 2006 Act; or that,
2. The accounts do not accord with those records; or that,
3. The accounts do not comply with the accounting requirements of section 396 of the 2006 Act, other than any requirement that the accounts give a 'true and fair' view which is not a matter considered as part of an independent examination; or that,
4. The accounts have not been prepared in accordance with the methods and principles of the Statement of Recommended Practice for accounting and reporting by charities, applicable to charities preparing their accounts in accordance with the Financial Reporting Standard applicable in the UK and Republic of Ireland (FRS102).

I have no concerns and have come across no other matters in connection with the examination to which attention should be drawn in this report in order to enable a proper understanding of the accounts to be reached.

Signed by:

Date of signature: 27TH Nov 2023



P & W Social Accountants

The Barn

173 Church Road,

Northfield, Birmingham B31 2LX

FINANCIAL STATEMENTS FOR THE YEAR ENDING 31 MARCH 2023

Statement of Financial Activities (incorporating an Income and Expenditure Account)

	Notes	Unrestricted Funds £	Designated Funds £	Restricted Funds	2023 Total Funds £	2022 Total Funds £
INCOME FROM:						
Voluntary income	2	59,744	0	14,579	74,323	36,254
Charitable activities	3	442,869	0	212,601	655,470	589,661
TOTAL INCOME		502,613	0	227,180	729,793	625,915
EXPENDITURE ON:						
Raising voluntary income	4	14,114	0	0	14,114	12,122
Charitable Activities	4	461,467	0	254,167	715,634	670,454
TOTAL EXPENDITURE		475,581	0	254,167	729,748	682,576
NET INCOME/(EXPENDITURE)		27,033	0	-26,987	45	-56,661
Transfers between funds		0	0	0	0	0
NET MOVEMENT IN FUNDS		27,033	0	-26,987	45	-56,661
RECONCILIATION OF FUNDS:						
Total funds brought forward		121,403	90,000	169,236	380,639	313,687
TOTAL FUNDS CARRIED FORWARD		148,436	90,000	142,249	380,684	257,027

The statement of financial activities includes all gains and losses recognised in the year. All income and expenditure derive from continuing activities

Balance Sheet

		2023	2022
		£	£
	Notes		
FIXED ASSETS			
Tangible assets	6	176,316	190,495
CURRENT ASSETS			
Debtors & prepayments	7	43,249	42,326
Cash at bank & in hand		190,415	224,005
		<u>233,664</u>	<u>266,331</u>
CREDITORS			
Amounts falling due within one year	8	29,295	76,187
NET CURRENT ASSETS		<u>204,369</u>	<u>190,144</u>
NET ASSETS		<u><u>380,685</u></u>	<u><u>380,639</u></u>
FUNDS OF THE CHARITY	10		
Unrestricted funds		148,436	121,403
Designated funds		90,000	90,000
Restricted funds		<u>142,249</u>	<u>169,236</u>
TOTAL FUNDS		<u><u>380,684</u></u>	<u><u>380,639</u></u>

For the year ending 31st March 2023 the company was entitled to exemption from audit under section 477 of the Companies Act 2006 relating to small companies.

Director's responsibilities:

The members have not required the company to obtain an audit of its accounts for the year in question in accordance with section 476 of the Companies Act 2006. However, in accordance with Section 145 of the Charities Act 2011, the financial statements have been examined by an Independent Examiner, whose report is included in these accounts. The Directors acknowledge their responsibilities for complying with the requirements of the Companies Act 2006 with respect to accounting records and the preparation of accounts. These accounts have been prepared in accordance with the provisions applicable to companies subject to the small companies regime.

Signed on behalf of the Board by:

Approved by the Board on:



Mr Iftikar Karim, Secretary

Date:

29/11/2023

The notes on the following pages form part of the financial statements

Notes to the Financial statements

Note

1. ACCOUNTING POLICIES

Basis of preparation

The financial statements have been prepared in accordance with Accounting and Reporting by Charities: Statement of Recommended Practice applicable to charities preparing their accounts in accordance with the Financial Reporting Standard applicable in the UK and Republic of Ireland (FRS102)(effective 1 January 2019) - (Charities SORP (FRS102)), the Financial Reporting Standard applicable in the UK and Republic of Ireland (FRS102) and the Companies Act 2006.

Norton Hall Children and Family Centre meets the definition of a public benefit entity under FRS102. Assets and liabilities are initially recognised at historical cost or transaction value unless otherwise stated in the relevant accounting policy note(s).

The Charity Commission's guidance on public benefit organisations supports the conclusion that Norton Hall Children and Family Centre is a public benefit entity. The reporting currency is £ Sterling.

Preparation of the accounts on a going concern basis

The financial statements have been prepared on a going concern basis which assumes that the Company will continue to operate. The validity of this assumption is dependent upon the continuance of support from the Company's key grant funders and in response to the progress made by the Company in pursuing a viable budget including the obtaining of further grants and other funds. The Company's current business plan shows that the Company will be able to operate in the foreseeable future. Based on this understanding, the directors believe that it remains appropriate to prepare the financial statements on a going concern basis. The financial statements do not include any adjustments which would result from the basis of preparation being inappropriate.

Tangible fixed assets

Depreciation is provided at the following annual rates in order to write off each asset over its estimated useful life (assets with a cost below £1,000 are not capitalised) :

Fixtures, fittings & equipment	-25% per annum straight line
	- 25 years straight
Improvements to property	line

Income

Items of income are recognised and included in the accounts when all of the following criteria are met:

- The charity has entitlement to the funds;
- any performance conditions attached to the item(s) of income have been met or are fully within the control of the charity;
- there is sufficient certainty that receipt of the income is considered probable; and
- the amount can be measured reliably.

Expenditure

Expenditure is recognised once there is a legal or constructive obligation to make a payment to a third party, it is probable that settlement will be required and the amount of the obligation can be measured reliably.

Expenditure is classified under the following activity headings:

- Costs of raising funds comprise staff costs and other direct costs involved in the raising of funds for the charity;

- Expenditure on charitable activities includes the direct costs of activities undertaken to further the purposes of the charity and their associated support & governance costs.

Irrecoverable VAT is charged as a cost against the activity for which the expenditure was incurred.

Taxation

The charity is exempt from corporation tax on its charitable activities.

Fund Accounting

Unrestricted Funds can be used in accordance with the charitable objectives at the discretion of the trustees.

Restricted funds can only be used for the particular restricted purposes within the objects of the charity. Restrictions arise when specified by the donor or when funds are raised for a particular restricted purpose.

Further explanation of the nature and purpose of each fund is included in the notes to the financial statements.

Debtors

Trade and other debtors are recognised at the settlement amount due after any trade discount offered. Prepayments are valued at the amount prepaid after taking account of any trade discounts due.

Cash at bank and in hand

Cash at bank and cash in hand includes cash and short term highly liquid investments with a short maturity of three months or less from the date of acquisition or opening of the deposit or similar account.

Creditors and provisions

Creditors and provisions are recognised where the charity has a present obligation resulting from a past event that will probably result in the transfer of funds to a third party and the amount due to settle the obligation can be measured or estimated reliably. Creditors and provisions are normally recognised at their settlement amount after allowing for any trade discounts due.

Pension costs

The Company operates a money purchase pension scheme for employees. Employer contributions are charged as an expense in the period to which they relate and are allocated to activities in line with the related salary cost.

Note

2. VOLUNTARY INCOME

	2023 £	2022 £
Donations	59,744	9,569
Trusts & Company grants		
Good Things Foundation	0	9,145
HS2 Community & Environment Fund	0	12,540
Longhurst Foundation	0	5,000
Roger & Douglas Turner Charitable Trust	5,000	0
Sport Birmingham - Together Fund	9,579	0
Total Trust & company grants	14,579	26,685
TOTAL VOLUNTARY INCOME	74,323	36,254

3. CHARITABLE ACTIVITIES INCOME

	2023 £	2022 £
Birmingham CC - Building Development	12,500	12,500
Birmingham CC - Early Years SENCO	12,930	7,170
Birmingham CC – Holiday Activity & Food	126,565	109,239
Birmingham CC - Neighbourhood Network Scheme	4,960	0
Birmingham CC - Neighbourhood Development Support Unit	2,500	0
Birmingham CC - Pupil Premium	1,935	819
Birmingham CC - Valuing Worth Norton Hall	26,211	26,211
Birmingham CC - Valuing Worth Dolphin Centre	25,000	25,000
HMRC - Coronavirus Job Retention Scheme	0	12,404
West Mids Combined Authority - Commonwealth Games Legacy	0	9,700
	212,601	203,043
Income from charitable activities:		
Norton Hall - Nursery	128,382	104,934
Norton Hall - Children and Young People	281,325	249,266
Dolphin Women's Centre	33,163	32,418
	442,869	386,618
TOTAL CHARITABLE ACTIVITIES INCOME	655,470	589,661

Note

4. EXPENDITURE	2023	2022
Charitable Activities:	£	£
Establishment costs	99,494	129,272
Staff costs	500,809	428,683
Direct cost of activities	100,184	94,764
Depreciation	14,179	14,179
FutureBuilders loan interest	88	357
Independent Examiner's Fee	880	800
Finance costs	0	2,400
	715,634	670,454
Raising voluntary income		
Staff costs	10,220	11,322
Other direct costs	800	800
External support	3,094	
	14,114	12,122
Total expenditure	729,748	682,576

5. STAFF COSTS, TRUSTEES REMUNERATION AND EXPENSES

There were no trustees remuneration or other benefits for the year ended 31st March 2023 nor for

the year ended 31st March 2022.

No expenses were paid to Trustees during the year (2022: £Nil).

STAFF COSTS	2023	2022
	£	£
Wages and salaries	468,345	405,564
Employer costs - National Insurance	34,388	27,415
Pension costs	8,296	7,026
	511,029	440,005

The average number of full-time equivalent employees during the year was as follows:

18 18

No employees had emoluments in excess of £60,000 (2021: nil).

Key management personnel comprise the Chief Executive Officer and Operations and Finance Manager whose combined employee benefits totalled £81,582 (2022: £64,922) including pension contributions.

6. TANGIBLE FIXED ASSETS

Costs

As at 31st March 2022

Additions

At 31 March 2023

Depreciation

As at 31st March 2022

Charge for the year

At 31 March 2023

Net Book Value

31st March 2023

31st March 2022

Fixtures, fittings & equip	Total
£	
53,350	53,350
0	0
53,350	53,350
53,350	53,350
0	0
53,350	53,350
0	0
0	0

Note

7. DEBTORS: AMOUNTS FALLING DUE WITHIN ONE YEAR

	2023	2022
	£	£
Trade Debtors	38,869	38,972
Prepayments	4,380	3,354
Total Debtors	43,249	42,326

8. CREDITORS: AMOUNTS FALLING DUE WITHIN ONE YEAR

	2023	2022
	£	£
Trade Creditors	18,492	65,046
Tax and social security	9,923	5,685
Accrued expenses	880	800
Future Builders Loan	0	4,656
	29,295	76,187

9. ANALYSIS OF NET ASSETS BETWEEN FUNDS

	Unrestricted Funds	Restricted Funds	Designated Funds	2023 Total Funds	2022 Total Funds
	£	£	£	£	£
Fixed Assets	-126,034	126,034	0	0	190,495
Net Current Assets	274,470	16,214	90,000	380,684	190,144
	148,436	142,248	90,000	380,684	380,639

Note

10. FUNDS

	Opening Balance	Income	Expenditure	Transfers	Balance
	£	£	£	£	£
Unrestricted Funds					
General Fund	121,403	502,613	475,581	0	148,436
Designated Fund - Maintenance & Redundancy Reserve	90,000	0	0	0	90,000
Restricted Funds					
Birmingham CC - Building Development	0	12,500	12,500	0	0
Birmingham CC - Early Years SENCO	0	12,930	12,930	0	0
Birmingham CC – Holiday Activity & Food	11,745	126,565	138,310	0	0
Birmingham CC - Neighbourhood Development Support Unit	0	2,500	0	0	2,500
Birmingham CC - Neighbourhood Network Scheme	0	4,960	824	0	4,136
Birmingham CC - Pupil Premium	0	1,935	1,935	0	0
Birmingham CC - Valuing Worth Norton Hall	0	26,211	26,211	0	0
Birmingham CC - Valuing Worth Dolphin Centre	0	25,000	25,000	0	0
Capital Assets Fund	140,213	0	14,179	0	126,034
Good Things Foundation	5,487	0	5,487	0	0
Longhurst Foundation	4,000	0	4,000	0	0
West Mids Combined Authority - Commonwealth Games Legacy	7,791	0	7,791	0	0
Roger & Douglas Turner Charitable Trust	0	5,000	5,000		0
Sport Birmingham - Together Fund	0	9,578	0	0	9,578
Total Restricted Funds	169,236	227,179	254,167	0	142,248
Total All Funds	380,639	729,792	729,748	0	380,684

Fund Descriptions

Birmingham CC - Building Development: funding (sourced from ERDF) to project manage the refurbishment of the Dolphin Centre.

Norton Hall Children and Family Centre Trustees Report and Financial Statements for the Year Ending 31st March 2023

Birmingham CC - Early Years SENCO: funding to support nursery provision for those with additional needs.

Birmingham CC – Holiday Activity & Food: funding (sourced from DfE) towards free school holiday food and fun activities

Birmingham CC - Neighbourhood Development Support Unit: funding towards increasing utilities costs.

Birmingham CC - Neighbourhood Network Scheme: funding to deliver basic English classes to women

Birmingham CC - Pupil Premium: funding to provide improved nursery facilities and activities

Birmingham CC - Valuing Worth Norton Hall: funding to offset the rent of the properties used by the charity

Birmingham CC - Valuing Worth Dolphin Centre: funding to offset the rent of the properties used by the charity

Capital assets Fund: funding towards the capitalised costs of the improvements made to the leasehold properties

Good Things Foundation: funding to support women with digital literacy.

Longhurst Foundation: towards gardening and environmental activities for women

Roger & Douglas Turner Charitable Trust: towards work supporting children and young people

Sport Birmingham - Together Fund: funding for children's sport and physical activity

West Mids Combined Authority - Commonwealth Games Legacy: funding for activities and services for women

11. COMMITMENTS

The total of future minimum lease payments under non- cancellable operating leases are:

Within one year - £1,210 (£1,210 comparative)

Between one and five years - £907 (£2,117 comparative)

12. RELATED PARTY TRANSACTIONS

There were no transactions with related parties during the year or previous year that require disclosure in these accounts.

Comparative statement of Financial Activities incorporating an Income and Expenditure Account) for the year ended 31st March 2022
Note 13.

	Unrestricted Funds £	Total Funds £	Restricted Funds £	Total Funds £
INCOME FROM:				
Voluntary income	9,569	0	51,211	60,780
Charitable activities	386,618	0	178,517	565,135
TOTAL INCOME	396,187	10,220	229,728	625,915
EXPENDITURE ON:				
Raising voluntary income	12,122	0	0	12,122
Charitable Activities	370,479	20,000	279,975	670,454
TOTAL EXPENDITURE	382,601	20,000	279,975	682,576
NET INCOME and net movement in funds for year	13,586	(9,780)	(50,247)	(56,661)
Transfers between funds	(53,580)	50,000	3,580	0
NET MOVEMENT IN FUNDS	(39,994)	60,000	(46,667)	(56,661)
RECONCILIATION OF FUNDS:				
Total funds brought forward	161,397	60,000	215,903	437,300
TOTAL FUNDS CARRIED FORWARD	121,403	90,000	169,236	380,639