

Supporting the Arts, Medical Welfare
and the Environment

Report and Accounts 2022



© Orchestras for All

Company Limited by Guarantee No. 5638406
Registered in England and Wales
Charity Registration No. 1112457

Cover photo: Orchestras for All

Orchestras for All is the only non-auditioned, fully inclusive national youth orchestra in the world - the perfect platform for young people to express themselves, boosting the confidence and self-esteem of members and providing, when necessary, a safe space for those with challenging home or school lives. Young musicians are nominated by teachers, community music leaders, social workers and charity partners around the UK for showing their ongoing dedication and commitment to music in the face of significant barriers.

A grant awarded during the year is supporting a four-day orchestral course at the Royal Birmingham Conservatoire in 2022 for 100 young people who face barriers to accessing ensemble music making.

**Report and Accounts
for year ended 31st March 2022**

TABLE OF CONTENTS

	Page
Trustees' Report	
Historical Background	5
Governing Document	6
Measuring Impact and Public Benefit	6
Charitable Objective and Mission	6
Governance	7
Financial Review 2021/22	9
Grants 2021/22	13
Trustees' Responsibilities	34
Accounts for the Year Ended 31st March 2022	
Auditor's Report	36
Statement of Financial Activities	41
Balance Sheet	42
Statement of Cash Flows	43
Notes to the Accounts	44
Appendix 1	
Examples of charities supported during 2021/22	24
Appendix 2	
Grants awarded in 2020/21 and 2021/22	49

Trustees' Report for the year ended 31st March 2022

Trustees

Andrew Jackson (*Chairman*)
Amelia Beringer
Nina Camilleri
Henry Freeland RIBA
Michael O'Brien MD FRCP
Julia Sibley MBE
Andrew Wimble

(The Trustees are also Directors of the Charitable Company)

Executive Director

Jane Thorne

Auditor

RSM UK Audit LLP
Portland
25 High Street
Crawley, West Sussex
RH10 1BG

Bankers

CAF (Charities Aid Foundation)
25 Kings Hill Avenue
West Malling
Kent ME19 4TA

Investment Managers

Cazenove Capital Management
1 London Wall Place
London EC2Y 5AU

Investec Wealth & Investment
30 Gresham Street
London EC2V 7QN

Solicitors

Macfarlanes LLP
20 Cursitor Street
London EC4A 1LT

Registered Office

6 Trull Farm Buildings, Tetbury, Gloucestershire, GL8 8SQ

www.doylycartecharitabletrust.org Email: info@doylycartecharitabletrust.org

Historical Background

The D'Oyly Carte Charitable Trust (the Charity) was founded by Dame Bridget D'Oyly Carte as an endowed grant-making charity in 1972 - fifty years ago.

Dame Bridget was the grand-daughter of Richard D'Oyly Carte, the theatrical impresario who built and opened the Savoy Theatre in 1881 and then the Savoy Hotel in 1889.

A Director and Vice-Chairman of The Savoy Group (which included the Savoy Hotel and the Savoy Theatre), and head of the D'Oyly Carte Opera Company from 1948-82, Dame Bridget established The D'Oyly Carte Charitable Trust to support her personal charitable interests. Certain charities in which Dame Bridget took a special interest during her lifetime continue to be supported by the Trustees, including The D'Oyly Carte Opera Trust.

1998 marked a turning point in the history of the Charity when the Trustees, after taking legal and financial advice, and with the approval of the Charity Commissioners, agreed to sell the Charity's shares in The Savoy Hotel PLC (The Savoy Group) to Blackstone Hotel Acquisitions Company. This sum formed the capital assets of the Charity which have since been invested in a diversified portfolio of investments.

Over the years the Trustees have sought in their grant-making to uphold the aims, interests and values of Dame Bridget, whilst adapting to the changing needs of the modern charitable world.

The Trustees continue to feel immensely privileged and proud to be able to support such a diverse range of charities seeking in some way to enhance and improve people's lives. The Trustees' objective is to do this by using the funds to create enrichment, impact and inspiration in the best possible way through the Charity's mission and capital.



Dame Bridget D'Oyly Carte
1908-1985

Governing Document

The D'Oyly Carte Charitable Trust became a Company Limited by Guarantee in 2005. In November that year a new company (No. 5638406 Registered in England) was formed and subsequently registered in December 2005 by the Charity Commission as The D'Oyly Carte Charitable Trust under Charity Registration No. 1112457.

The D'Oyly Carte Charitable Trust 'the Company' is governed by a Memorandum and Articles of Association dated 14th September 2005 and the operations and assets transferred to 'the Company' as from 1st April 2006. The initial members of 'the Company' were the subscribers to the Memorandum and Articles of Association, and, in relation to the Companies Act 2006, the Trustees are also Directors of 'the Company'.

Measuring Impact and Public Benefit

As a grant-making trust, providing public benefit is at the heart of the Charity's activity, as demonstrated in the pages that follow in this Report. The Trustees consider that they have complied with their duty in Section 17 of the Charities Act 2022* and have due regard for the guidance of the Charity Commission on public benefit when reviewing the Charity's aims and objectives and in planning future activities and setting grant making policy.

Charitable Objective and Mission

The Charity's objective is to make grants to registered charities concerned with the advancement of such exclusively charitable objects as the Trustees shall from time to time determine, in particular (but not limited to) the advancement of the arts, health and medical welfare and environmental protection or improvement, especially within the priorities of its grants policy.

The grantmaking review on pages 13 - 33 and the full list of grants on pages 49 – 64 demonstrate that this objective continues to be achieved.

The majority of the Charity's grant-making is reactive and is measured against what individual charities are seeking to achieve. In most cases The D'Oyly Carte Charitable Trust is one of several funders and cannot therefore take sole credit for the outcomes achieved.

The Trustees aim to create impact and enrichment by supporting work that enhances people's lives and life chances, well-being and the living environment, and this is where public benefit is most directly achieved.

* The Charities Bill received Royal Assent in February 2022 and passed into law as the Charities Act 2022

Governance

Trustees

The Trustees of The D'Oyly Carte Charitable Trust are committed to applying the highest standards of ethical conduct and integrity in its business activities.

The Trustees, also being Directors of the Company, and the Executive Director (the Company Secretary), recognise their duty to ensure that the Charity is compliant with the law and they are committed to good governance and to implementing and enforcing effective systems throughout the organisation to prevent any improper conduct arising in their business dealings.

The Governing Document allows for up to a maximum of ten and a minimum of three Trustees (also Directors for the purpose of company law) and those Trustees who served during the year were Andrew Jackson (Chairman), Amelia Beringer, Nina Camilleri, Henry Freeland, Dr. Michael O'Brien, Julia Sibley and Andrew Wimble (Chairman of the Investment Committee).

The Trustees regularly discuss succession planning and the balance of skills on the Board to make informed decisions, and, when required, new Trustees are selected based on the experience and knowledge they can contribute to the aims of the Charity. Potential Trustees are interviewed by two Trustees and the Executive Director, and a recommendation is then placed before the Board of Trustees. All Trustees are involved with other charities and give their time voluntarily.

The Trustees are also the Members of 'the Company' and, under the terms of its Articles, every Member promises, if the Charity is dissolved while he or she remains a member, or within 12 months afterwards, to pay up to £10 towards the costs of dissolution and the liabilities incurred by the Charity while he or she was a member.

Charity Governance Code

Trustees regularly review Charity Commission guidance and publications in order to ensure that the principles and recommended practice for good governance are observed.

During the year, the Trustees reviewed the Charity Governance Code 2020 and agreed that they would continue to observe its principles and to use the Code as a tool for continuous improvement towards the highest standards. A Charity Governance Code Compliance Record will be updated annually.

Appointment of Auditor

At the Annual General Meeting of the Charity held in July 2021 RSM Audit UK LLP was reappointed as Auditor until the next AGM in July 2022.

Register of Trustees' Interests

In accordance with the Charity Commissioners' guidance that charity trustees who may have a personal interest in any matter before the trustees should declare that interest and refrain from taking part in any discussion relating to it, a Register of Trustees' interests is maintained and updated annually.

Trustees are required to disclose all relevant interests and register them with the Executive Director, and, in accordance with the Charity's policy, withdraw from decisions where a conflict of interest arises.

Diversity, Equity and Inclusion

The Trustees value diversity in its widest sense and are committed to meeting the needs of all parts of society and to ensure inclusivity and equity in their approach.

Fundraising

In accordance with section 162a of the Charities Act 2022 the Charity is required to make a statement regarding fundraising activities. The legislation defines fundraising as 'soliciting or otherwise procuring money or other property for charitable purposes'. The Charity does not undertake fundraising from the general public; therefore the Trustees do not consider it necessary to design specific procedures to monitor such activities.

Key Management Personnel

The Directors consider that the Board of Directors, who are the Trustees of the Charity, and the Executive Director comprise the key management personnel of the Charity in charge of directing, controlling and operating the Charity. All Directors give their time freely and no member of the Board of Directors received remuneration in the year. Details of Directors' expenses and related party transactions are disclosed in note 6 in the accounts (nil in the year under review).

The day to day management of the Charity is carried out by the Executive Director, supported by The Trust Partnership (www.thetrustpartnership.com) in the administration of grants, accounting and book-keeping.

The Executive Director's remuneration for her time spent on the Charity's affairs is reviewed annually, firstly by the Remuneration Committee who then make a recommendation to the Trustees. The Executive Director is neither a Trustee nor a Director of the Company. She is an employee of The Savoy Hotel Ltd. and her remuneration is cross-charged to the Charity and paid through The Savoy's payroll on a monthly basis. The Trust Partnership invoices the Charity monthly for its services.

Hospitality Register

A Hospitality Register is maintained to record visits made by Trustees and staff to grant beneficiaries or charities requesting grants, so as to monitor performance and standards in relation to grants made or applications received.

Against the background of the Charity's work as defined in its objects, the Trustees consider the risk of the Charity contravening The Bribery Act 2010 to be very small. For the avoidance of doubt, however, the Trustees expressly prohibit anyone associated with the Charity from offering, giving, soliciting or accepting any bribe (of whatever nature) in order to advantage in any way the Charity, applicant charities, themselves or persons/businesses connected with either.

Financial Review 2021/22

Investment Management

The Trustees have the authority to delegate discretionary powers of investment and all investments held by the Charity are managed in accordance with these powers.

The Trustees continue to keep the management of their investments under regular review and subject to satisfactory service and performance, the Charity's Investment Managers are reappointed on an annual basis.

In line with good governance, an independent review of the performance of the Charity's Investment Managers last took place in January 2020, and for the year ended 31st March 2022 the Charity's portfolio continued to be managed by Cazenove Capital Management (CCM) and Investec Wealth & Investment Ltd. (IW&I).

During the year, the Investment Committee continued to keep in close contact with the Investment Managers who presented to the full Board of Trustees in July 2021. Quarterly valuations and minutes of meetings are circulated to all Trustees, and the Chairman of the Investment Committee reports on the Charity's investments to the Board of Trustees at their meetings throughout the year.

Investment Policy and Objectives

The financial objective of the Charity is to maintain the real value of the capital assets whilst generating a stable and sustainable return to fund grant making. The assets are invested for Total Return and the Trustees extend the financial objective by distributing limited expenditure from capital to meet application needs where necessary, and where income resources are inadequate.

Investment Policy Statement

The Trustees have an Investment Policy Statement in place with their Investment Managers that sets out the long-term investment objective, risk profile, strategic asset allocation and investment restrictions. It is reviewed annually, firstly by the Investment Committee and then by the Board of Trustees.

Responsible Investing

The Investment Committee discusses and agrees a policy with the Investment Managers in respect of Socially Responsible Investments, taking into consideration the Charity's mission and Charity Commission guidance. Discussion around additional exclusions is ongoing with an updated Investment Policy Statement and Ethical Investment Policy expected to be ratified by the Trustees in July 2022.

Investment Review 2021/22

Markets started the year well, supported by the rapid roll-out of Covid-19 vaccines and continued support from governments and central banks around the world. Growth in domestic consumption within the US was particularly strong, helping US equity markets reach all-time highs during the year. Towards the end of 2021 the emergence of the Omicron variant caused some investor uncertainty with fears that it could derail the global economic recovery, though most markets were able to look through the potential impact as investors focused on economic resilience and corporate earnings. There was however a divergence in market performance, with Emerging Markets, notably China, struggling to keep pace with western markets given increased regulatory scrutiny in certain sectors as well as renewed Covid-19 outbreaks, leading to new lockdowns in some major Chinese cities.

Russia's invasion of Ukraine at the beginning of 2022 caused a global shock. In addition to the tragic human implications and consequences, there were also impacts on markets. Commodity prices soared given Russia is a key producer of several important commodities including oil, gas, and wheat. This amplified existing concerns over inflation pressures, which could force central banks to raise interest rates more quickly than initially anticipated, which has weighed on investor sentiment.

The Charity, which has a long-term performance target of CPI+4% over a rolling 5 year period, alongside composite benchmarks for short-term performance monitoring for each Investment Manager, experienced steady asset growth over the period and the value at the year-end was £66,472,463, an increase in value of 5% over the previous year (2021: £63,296,903).

The portfolio managed by CCM achieved a total return for the financial year of 9.6% which was ahead of the bespoke benchmark return of 9.3%. The long-term target return of CPI+4% posted an estimated 11.3% by comparison.

The portfolio managed by IW&I generated a positive return as the majority of the period witnessed further economic recovery from the global pandemic. The total return achieved for the financial year was 6.0% which was behind the bespoke benchmark return of 10.5%. The long-term target return of CPI +4% posted an estimated 10.7% by comparison.

Over the period the Charity's total income amounted to £1,180,399 compared to £1,304,886 in the previous year, a decrease of 9.5% . Grants agreed amounted to £1,804,716 which was an increase of 4.8% compared to the previous year when grants totalling £1,722,204 were agreed. The Charity's total return strategy requires a distribution policy of a flat amount of £1,800,000 per annum divided between the two Investment Managers in proportion to the value of each respective portfolio.

There was a reduction in support costs during the year from £130,448 to £128,472, a decrease of 1.5%. The costs of raising funds (Investment Management fees) increased by 8.7% from £227,994 to £247,875.

Reserves Policy

The Trust Fund represents an amount allocated by the Trustees to secure the long term future of the Charity by ensuring there are adequate resources to meet anticipated charitable obligations. The Trustees monitor investment performance and continue to set the Investment Managers the task of producing the best financial return with an acceptable level of risk.

It is the policy of the Trustees to protect a core of investments and cash assets to generate income for future years' grant awards. The reserve balance at the end of the year increased from £63,471,888 in 2021 to £66,471,869.

Going Concern

As a result of the strong reserves position the Trustees remain confident that the Charity will remain a going concern. The Trustees consider the value of the investment portfolio and the forecast investment income will be sufficient to sustain the Charity in the next twelve months and the longer term.

Internal Controls

The Trustees have a duty to ensure that adequate systems and procedures are in place to safeguard the Charity's assets. The Investment Committee is empowered by the Trustees to ensure that appropriate internal controls are implemented and monitored and that the risks are managed and controlled.

Risk Management

The Trustees are satisfied that appropriate policies, protection, systems and checks are in place in order to mitigate exposure to major risks. The Trustees and Executive Director review the Risks Register regularly and risk continued to be a common theme at Trustees' meetings during the year.

The principal risks relate to investment performance and operational risks in terms of grant-making arising from system malfunctions or fraudulent applications.

1. **Investments and Grant-making capacity:** The Trustees regularly review the performance of the Charity's investment portfolios in accordance with the Charity's investment policy which balances risk with investment returns.
2. **Operational processes:** Internal procedures and computer systems are regularly reviewed and updated and all grant applications are screened by the grants administration team. The ability of computer systems to allow for remote working, and for Trustees to meet online, as permitted in the Charity's Governing Document, has been tested during the pandemic and proved to be effective and robust.
3. **Status and Reputation:** The Trustees regularly discuss reputational risk and a clear framework for assessment and decision making on grant applications is in place.
4. **Conflicts of Interest:** The Charity has a Conflicts of Interest policy which is reviewed annually by the Trustees and the Executive Director.
5. **Ethical and Environment:** The Charity has an Investment Policy Statement in place with its Investment Managers which is reviewed and agreed annually. An Ethical Investment Policy is expected to be ratified by the Trustees in July 2022.

The Charity requires its Investment Managers to take a carbon aware approach to investments in fossil fuel companies and to consider absence of harm when making investments. The Trustees are satisfied that their investment managers have suitable policies in place regarding their stock selection to evaluate their corporate behaviour and ensure that this complies with the latest Environmental Social and Governance (ESG) practices.

6. **Safeguarding:** The Trustees recognise that Safeguarding is a key priority for all charities, and for projects working with children and young people, or vulnerable adults, the Charity requires that all applicant charities confirm during the application process that up-to-date Safeguarding Policies and Procedures are in place in line with Charity Commission regulatory expectations.
7. **Pandemic:** Due to the unprecedented global impact of COVID-19, the implications of pandemic on both the Charity's assets and operations have been highlighted on the Risk Register as an ongoing risk.

At the time of the last Risk Review in March 2022 the Trustees considered that effective risk mitigation was in place.

The Charity's Grant-making

The Trustees make grants for charitable activity which they hope will enhance and improve the quality of life for people, especially those who are disadvantaged in some way. The Trustees concentrate this activity by supporting charities in specific areas of interest connected with the arts, medical welfare and the environment, as reflected in their Grant-making Priorities.

The Charity invites applications from registered charities whose operational area is within the United Kingdom, for the benefit of residents of the United Kingdom. Applications from individuals are not considered.

Registered charities wishing to apply for a grant are requested to do so online via the Charity's website www.doylycartecharitabletrust.org. Applicants are required to study the Charity's online Guidelines before submitting an application to ensure full compliance, and an eligibility portal indicates whether an application can proceed to the online application form.

Once an application has been submitted via the website an automatically generated response confirms receipt to the applicant, with a copy of the application form attached. Full application guidance is available on the website, and, if needed, additional help can be obtained by telephoning the Charity's Grants Administrators on 0203 637 3003 or by emailing info@doylycartecharitabletrust.org.

The Trustees consider applications three times a year at their Board meetings held in March, July and November, and the majority of grants awarded are on a one-off basis. Term grants are very occasionally agreed to charities whose work the Trustees know well, for a maximum period of three years.

The Charity is always oversubscribed with applications and inevitably has to make difficult decisions. Trustees do not consider requests from charities that have had an application turned down until two years have elapsed after the date of rejection.

The legacy of Covid-19 will be felt for some time yet, and many charities have had to demonstrate huge resilience and determination to survive in order to continue the vital support they provide to the people and communities that need it the most. The Charity has continued with its objective to be responsive to where need is greatest, and during the year under review has supported a wide range of charitable activity within its stated priorities, seeking to enrich lives and wellbeing, to enable people to enjoy and benefit from everything the arts can bring them and to help bring about effective solutions for those in need.

Grant-making Priorities 2021-2023

Notwithstanding the Charity's overall charitable objectives for the public benefit, the Trustees regularly review their policies, objectives and guidelines, and, following a full review in November 2020, determined that their grant-making priorities for the three years 2021-2023 would focus on:-

The Arts

- Promotion of access, education, excellence, and diversity in the arts with emphasis on choral singing for children and young people to encourage recruitment into choirs
- Performance development opportunities in the performing arts for those in the early stages of their careers, encouraging involvement in the community through performances and workshops for the benefit of those with special needs and those who would otherwise have no opportunity to hear or participate in a live performance
- Support for charities seeking to engage with, and inspire, young people on the fringes of society through music and drama projects to improve their employability and diminish the risk of social exclusion

Medical Welfare

- Provision of music and art therapy to improve quality of life
- Support for charities concerned with alleviating the suffering of adults and children with medical conditions who have difficulty finding support through traditional sources
- The welfare of those who care for others through the provision of breaks for carers and projects and schemes that allow young carers to enjoy being children

The Environment

- Conservation of the countryside and its woodlands, with emphasis on the encouragement of voluntary work and active involvement in hands-on activities, particularly activities that bring about positive changes in the lives of young people and help them to experience the value of nature
- Rural crafts and skills in heritage conservation, with emphasis on increasingly rare skills that would otherwise be lost
- Social and therapeutic horticulture: projects that use gardening or other environmental activities to bring about positive changes in the lives of those who are living with disabilities or ill-health

Grant-making Restrictions/Exclusions

The Charity is unlikely to support/respond to applications relating to the following:

- Advocacy
- Animal welfare
- Campaigning or lobbying
- Capital projects or developments
- Community transport organisations or services, air ambulances, requests for vehicles
- Conferences and Seminars
- Counselling and psychotherapy services
- Drug abuse or alcoholism rehabilitation
- Educational projects linked to the National Curriculum
- Endowments
- Exhibitions
- Expeditions and overseas travel
- Feasibility studies
- Festivals (other than those dedicated to the arts)
- General and round-robin appeals
- Grant-making organisations
- Individuals
- Large national charities
- Local or national authorities
- Medical Research
- NHS hospitals for operational services
- Nurseries and Playgroups (other than those for special needs children)
- Organisations that are not Registered Charities (or accepted as Exempt Charities)
- Prisons
- Projects taking place or benefiting people outside the UK
- Recordings and commissioning of new works
- Religious causes and activities
- Routine maintenance of religious or historic buildings
- Sport
- Statutory services including state schools (other than those for pupils with disabilities)
- Umbrella organisations
- Universities, Further Education Colleges, and Independent Schools (other than those dedicated to the arts)

Grant Monitoring and Evaluation

The public benefit of funding by the Charity is measured against the achievements of the charities funded by the Charity. Grant recipients are required to meet the Charity's reporting requirements which are communicated when a grant is awarded.

The Charity's grant monitoring and reporting process aims to be 'light touch' and is intended to give Trustees an idea of what each grant has achieved as well as the challenges individual charities face.

The Charity seeks to avoid a disproportionate reliance on complex procedures both in the application process and in systematic attempts to evaluate the benefit achieved by its grants. The benefit of understanding the impact of a small grant that has made a huge difference to someone's quality of life is often outweighed by the effort in attempting to prove it.

The Trustees endorse the belief that a good relationship between the funder and the funded should be based on trust and mutual respect on both sides.

Grant recipients are sent an online link in order to submit their report on the benefit achieved by the Charity's grant within twelve months of receiving it; and, as many of the Charity's grants contribute to projects also supported by one or several other donors, we happily accept information that has been prepared for another funder if appropriate.

Above all, it is the guiding policy of the Trustees to make the best possible use of the Charity's resources in supporting a wide cross-section of charitable activities within the Charity's stated remit.

The Trustees hope that they achieve this successfully by making carefully considered grant decisions and by seeking to ensure that their grants are used effectively without imposing disproportionate reporting conditions on grantees.

Grant Applications 2021/22

During the year, 781 applications were made to the Charity and were eligible for consideration under the Charity's Guidelines.

The Trustees have continued their commitment to make grants to smaller charities that do not enjoy a high profile in order to create significant impact on the work of the charity concerned; and, recognising the day-to-day funding needs of charities, the Trustees continue to consider applications for core costs, in particular to enable charities to reach more participants through paid volunteer co-ordination.

Balancing the number of applications with funds available for distribution continues to be a concern for the Trustees and it is their aim to ensure that grant applicants have a reasonable chance of success, in line with standard grant making practice. During the year the upper grant range for applications was increased from £5,000 to £6,000.

During the year, 244 first-time applications were received compared to 302 last year: 112 new Arts applications, 92 new Medical Welfare applications and 40 new Environmental applications. Of these first-time applications 64 were successful and 25 new Arts grants, 17 new Medical Welfare grants and 22 new Environmental grants were awarded.

Grant Awards 2021/22

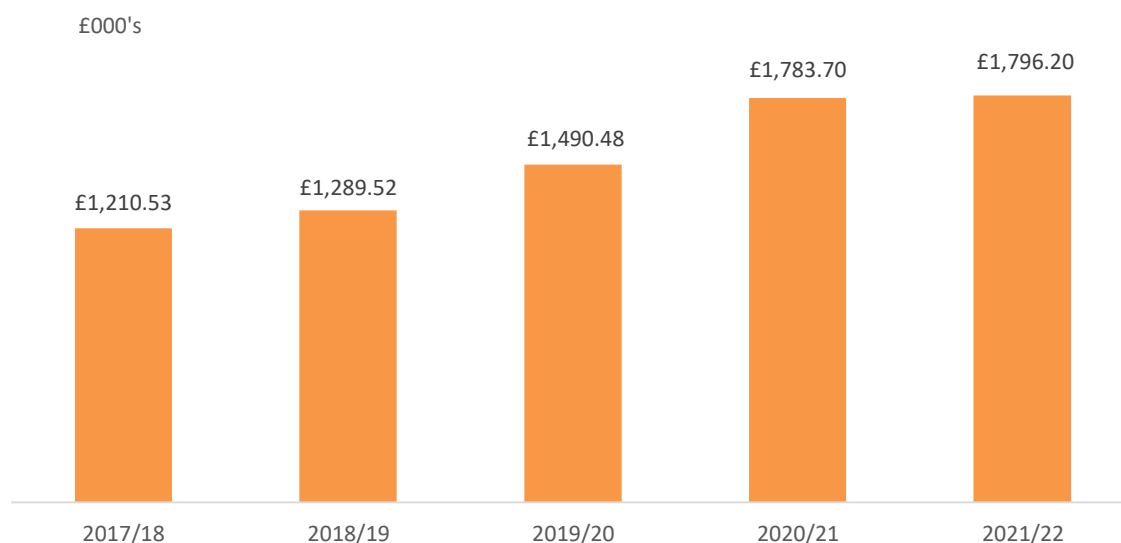
During the year, the Trustees paid a total of £1,796,216 in grants to 488 charities. This was an increase in value compared to the previous year when 510 grants totalling £1,783,704 were paid. Grants agreed during the year but not yet paid at the end of the year amounted to £132,000 (2021: £123,500).

The Trustees' decision-making on grants in the period continued to follow the procedures laid down and applied in past years. The distribution of grants between the sectors Arts, Medical Welfare and the Environment continues to be flexible, allowing Trustees to respond to the number and quality of applications.

Charitable Trusts and Foundations, as independent grant-makers, exist to create a better society - and have the distinctive opportunity to determine their own agenda. Whatever the cause, the Trustees seek to direct their funds to where they can make a major difference, and this aim steers them away from large national charities and significant appeals.

The Trustees recognise the vital impact their funding can make, and the encouragement it can give, particularly to smaller charities seeking to deliver projects that influence with positivity, and provide desperately needed services in the community for people, both young and old, who face significant challenges and difficulties in life.

Annual Grants Paid 2018 – 2022



Arts

213 grants were paid to Arts charities, involving a total distribution of £798,242 – an increase on the previous year when a total of £770,922 was distributed to 217 charities.

Medical Welfare

£692,868 was distributed to 194 Medical/Welfare charities, compared to £762,663 in the previous year distributed among 224 charities.

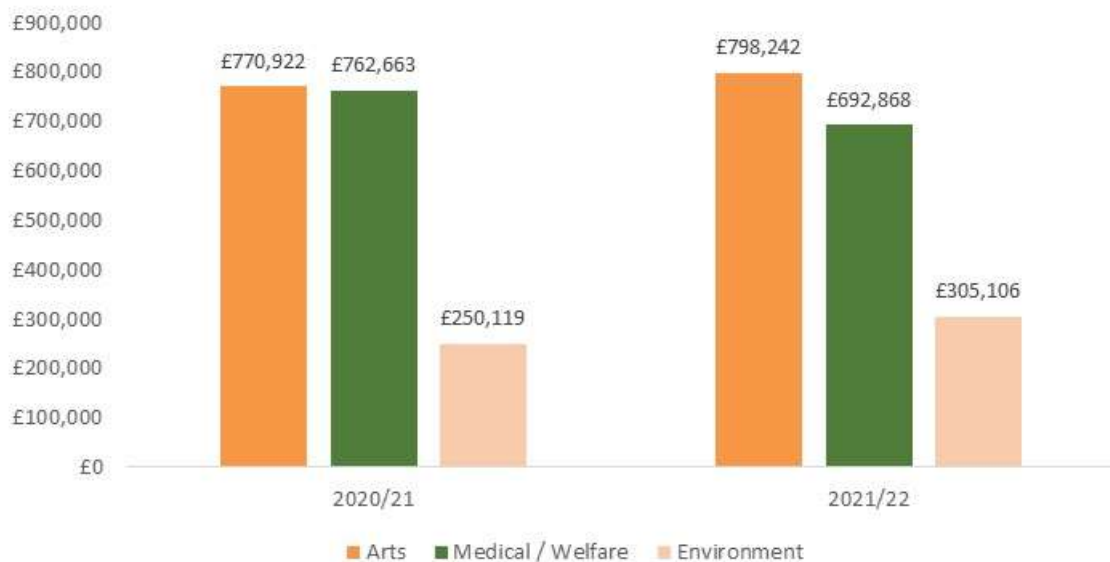
Environment

81 grants were paid to Environmental charities during the year amounting to £305,106 compared to £250,119 distributed in the previous year to 69 charities.

A selection of grants awarded during the year, under each of the Charity's priority areas, are featured in Appendix 1 on pages 24 – 33 and all grants paid during the year are included in the full list of grants in Appendix 2 on pages 49 – 64.

The Trustees expect their level of grant-making in 2022/23 to be at a broadly similar level to the year under review, though this will be dependent on income levels.

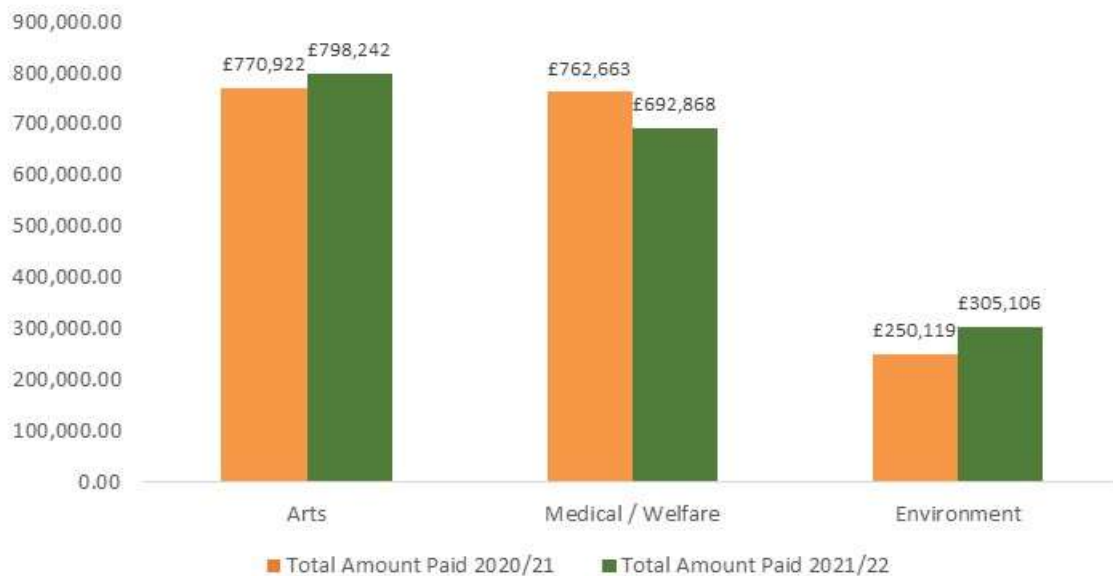
Grants Distribution 2020/21 and 2021/22



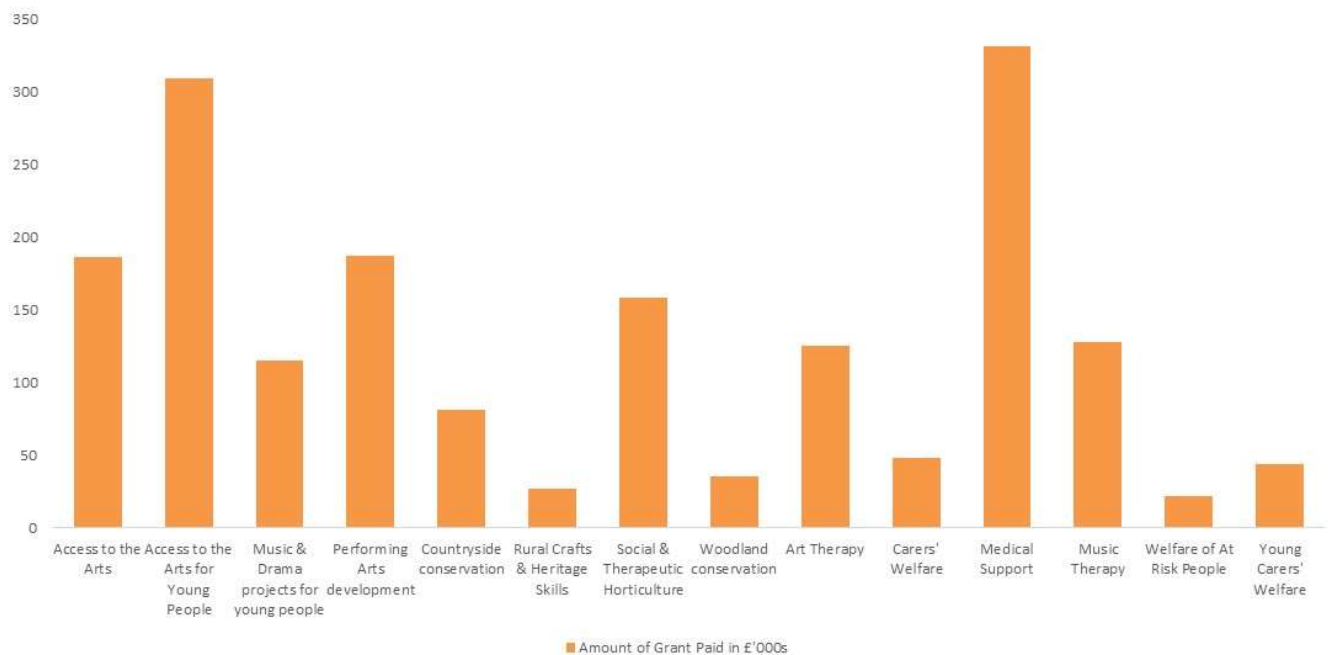
Grants paid by Sector 2018 – 2022



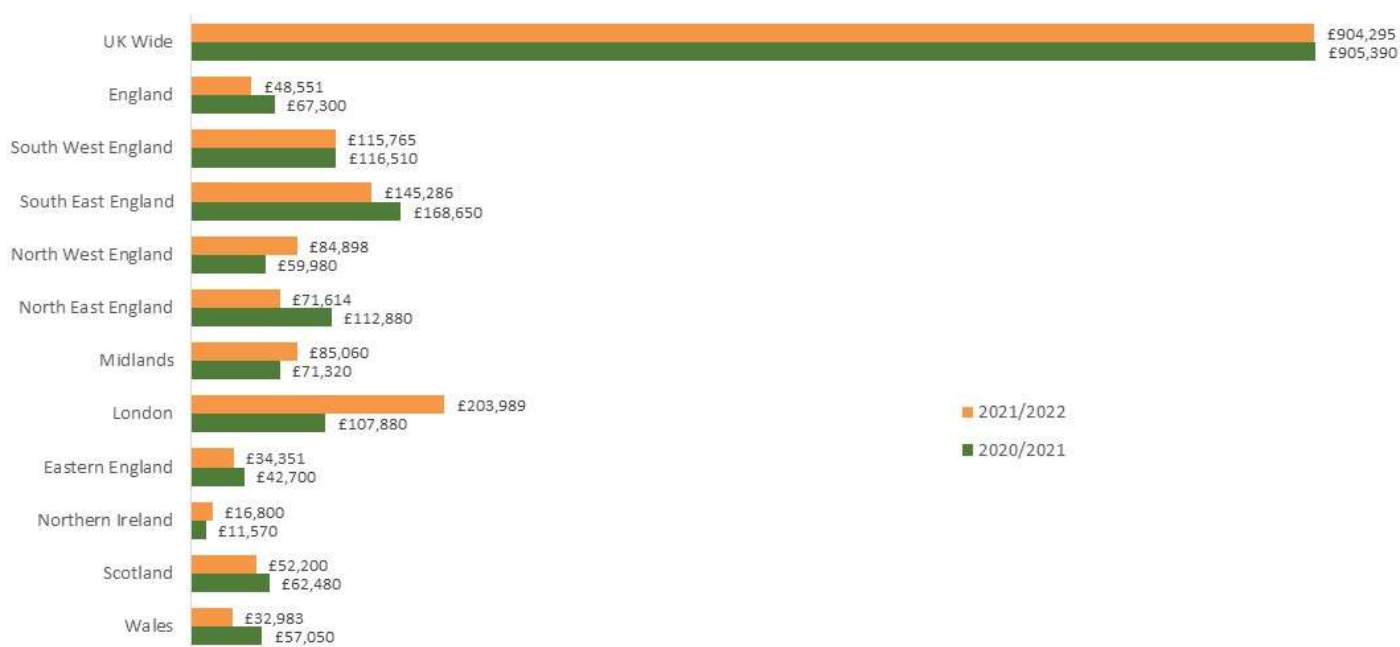
Distribution of Grants Paid by Sector 2021/22



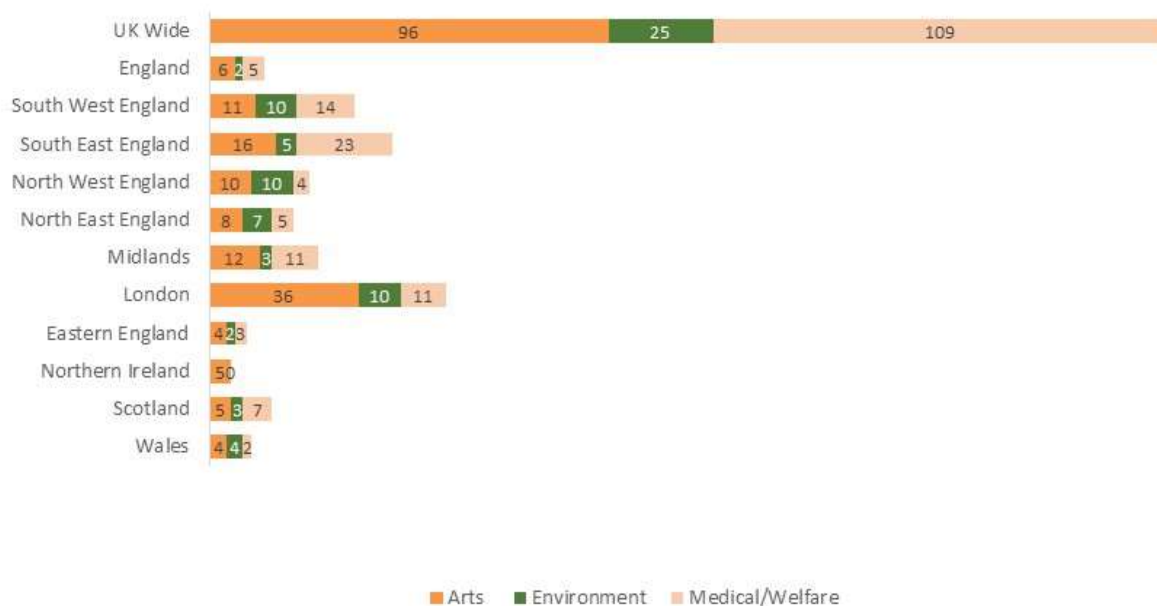
Grants paid by Subcategory 2021/22



Distribution of Grants Paid by Area Served 2021/22



Sector Split of Number of Grants Paid by Region 2021/22



Supporting Excellence in the Arts, Crafts and Horticulture

The Trustees have continued their practice of making a few regular exceptional grants outside their general grant-giving range to outstanding arts conservatoires and centres of excellence to help exceptionally talented students from the United Kingdom to realise their full potential and give themselves wholly to the training on offer. The distribution of this bursary funding is assessed and awarded by each institution, not by the Charity.

Five annual arts bursary grants of £10,000 are currently being awarded as follows:

City & Guilds of London Art School	2020 - 2022
Guildhall School Trust	2020 - 2022
Royal Academy of Dramatic Art	2020 - 2022
Royal Academy of Music (The D'Oyly Carte Memorial Award)	2022 - 2024
Royal Northern College of Music	2020 - 2022

During the year the Trustees awarded two additional exceptional annual grants of £10,000 per annum for three years to The Queen Elizabeth Scholarship Trust to support excellence in British craftsmanship and to The Royal Horticultural Society in support of horticultural apprenticeships.

The D'Oyly Carte Opera Trust and The Savoy Operas

The Trustees continued their support for The D'Oyly Carte Opera Trust's joint education work with Scottish Opera during the year and agreed a further grant of £20,000, the fifth exceptional grant awarded by the Trustees since 2016 to support The D'Oyly Carte Opera Trust's ongoing collaboration with Scottish Opera and the performance of Gilbert & Sullivan's Savoy Operas. The Trustees' support of The D'Oyly Carte Opera Trust acknowledges their shared heritage and the operas' national importance and resurgence in popularity.

Supporting the UK's Hospices

In addition to grant awards to many individual hospices around the UK, the Charity has supported the important work of Hospice UK for over thirty years. The second instalment of the Charity's current three year commitment of £15,000 per annum was paid in November 2021, and was again unrestricted in order to allow flexibility in its use to support and safeguard the sustainability of hospices and palliative care settings throughout the UK.

The D'Oyly Carte Chair in Medicine and the Arts

The Trustees of The D'Oyly Carte Charitable Trust established The D'Oyly Carte Chair in Medicine and the Arts at King's College London (KCL) in 2001 with a £2 million endowment to stimulate high quality teaching, research and public debate in the field of medicine and its relationship to literature, philosophy and other arts, including those of performance.

Professor Brian Hurwitz undertook these responsibilities from 2002 - 2020 and reported regularly to the Charity, and annually to a KCL D'Oyly Carte Chair Advisory Board as a source of guidance and advice for the Chair, and as a financial audit and review body.

During the year the Trustees finalised their discussions with KCL on the best way to build on Professor Hurwitz's outstanding legacy, and in particular how the Charity's original wish that the endowment should help develop the skills in communication, patient engagement and empathy of MBBS students, could be further developed.

As a result, the Trustees have agreed with KCL that their endowment will in future fund a Senior Lecturer in Arts and Health, to be based in the Faculty of Life Sciences and Medicine, to develop and deliver teaching and research in medicine and the humanities, creating connections, external interfaces and partnerships between the performing arts and medicine and health related disciplines for MBBS students. Trustee Dr. Michael O'Brien participated in the KCL recruitment process in September 2021 resulting in Dr. Alexandra Mermikides, Doctoral Programme Leader at the Guildhall School of Music and Drama, being appointed to the role from the end of February 2022.

Professor Hurwitz passes to Dr. Mermikides an outstanding legacy of research and teaching at KCL - the first university to establish a focus on Health and Humanities back in 2001, and the Trustees look forward to seeing her role develop.

The D'Oyly Carte Charitable Trust 1972-2022 50th Anniversary Trustee Nominations

To mark the 50th Anniversary of the Charity on 14th December 2022, a budget of £70,000 has been allocated to allow for each Trustee to nominate a charity reflecting their personal interests for a Golden Anniversary Grant, subject to the approval of the Board of Trustees. These grants of £10,000 each will be awarded at the end of 2022 and will be outside the Charity's normal guidelines.

APPENDIX 1 – Examples of charities supported during the year

Arts Priority: Promotion of access, education and excellence and diversity in the arts with emphasis on choral singing for children and young people to encourage recruitment into choirs

B:Music A grant is currently supporting Community Spirit, Birmingham Symphony Hall's annual mass singing programme that has brought together diverse communities since 2009 to celebrate the City, enhance social inclusion, connectedness and friendships, support local residents' skills development and to increase positivity and wellbeing.

Following a series of singing workshops with Black Voices, one of B:Music's Associate Artists and the UK's leading black acapella group, 300 individuals from up to ten choirs will celebrate their collective voice and the vital contribution that they make to the cultural life of Birmingham, by performing a showcase event at Symphony Hall in July 2022.



© B:Music

Community Spirit is an inclusive project that welcomes the participation of singers of all ages, abilities, backgrounds and needs. Regular performers in this project include Black Voices and the Halas Homes Sing and Sign Choir as well as choirs made up of people with learning difficulties, at risk of homelessness, in recovery from addiction or from economically disadvantaged areas in Birmingham.

Arts Priority: Performance development opportunities in the performing arts for those in the early stages of their careers, encouraging involvement in the community through performances and workshops for the benefit of those with special needs and those who would otherwise have no opportunity to hear or participate in a live performance

Opera Holland Park In its 10th anniversary year, OHP's Young Artists Scheme has received a further grant from the Charity in support of the artistic development of talented young artists by providing a platform for them to gain experience at a pivotal point in their careers. In 2022, twelve emerging young artists (9 singers, 1 conductor, 1 director and 1 répétiteur) will rehearse and perform their own production of Eugene Onegin, treated as professionals, gaining valuable paid experience in a supportive and nurturing environment. All will have been chosen for their ambition and ability to make the most of the opportunity and to use this springboard to take their careers to the next level.

Six weeks of daily rehearsals start in April culminating in 2 public performances in June 2022 accompanied by the OHP chorus and City of London Sinfonia before paying audiences of 650. Rehearsing in the same building, the young artists have unique access to their main cast mentors, while learning how to work in a professional environment with the support and encouragement of the mainstage director and conductor. The Young Artists receive additional language, stagecraft and vocal coaching, and benefit from their own 'sitprobe' rehearsal with the full orchestra.



Members of the Opera Holland Park Chorus in OHP's 2021 Young Artist production of *The Marriage of Figaro*
© Ali Wright

As part of the OHP Inspire Education and Outreach Programme the young artists also take part in community outreach projects – they perform two Schools Matinee performances, deliver educational workshops and lead workshops for people with dementia.

Arts Priority: Support for charities seeking to engage with, and inspire, young people on the fringes of society through music and drama projects to improve their employability

Changing Tunes seeks to engage people with lived experience of the criminal justice system in music programmes that unlock their creativity and individual potential. It supports participants to share their artistic work and lived experiences with audiences, helping them to break free from the stigma of their past and to re-frame their identities.

The charity pursues its mission by running long-term music and mentoring programmes in prisons, secure children's homes and post-release.



© Changing Tunes

A grant this year has supported the launch of the Young Voices programme which will grow trauma-informed music rehabilitation work with disadvantaged young people through weekly music sessions at St Matthias Pupil Referral Units (Brentry and Fishpond sites, in Bristol) and at Vinney Green Secure Children's Home, Bristol, and Hillside Secure Children's Home, Wales.

This project aims to engage, inspire and nurture young people who are excluded, disadvantaged and in many cases have experienced trauma.

Through long-term, person-centred music programmes, Changing Tunes helps these young people to develop their individual potential, their transferable skills and their life prospects, building self-esteem, confidence, improved mental health, resilience, healthy relationships, belonging and positive identities.

Medical Welfare priority: Provision of music and art therapy to improve quality of life

Cianna's Smile is a Reading based charity offering information, support, and activities for children in the Thames Valley and Swindon with Sickle Cell Disease, a lifelong inherited debilitating health condition afflicting the Black, Asian and minority ethnic (BAME) communities who find themselves vulnerable, suffering and excluded because of this hereditary life-threatening genetic blood disorder which results, in most circumstances, with at least one parent being a full time carer.



© Cianna's Smile/Berni Palumbo

Cianna's Smile focuses on supporting children and families affected through providing activities and respite care to reduce social isolation, as well as through the provision of health information, education and campaigns to raise awareness of the condition.

Suffering from Sickle Cell complications often leaves children missing a lot of school and social interaction due to being in hospital or being unwell at home. A grant this year is supporting art and music therapy activities, and home art therapy packages in particular.

Medical Welfare priority: Provision of music and art therapy to improve quality of life

The Spitz Charitable Trust works extensively with vulnerable disabled people in care homes and hospitals in North London. Using live music, it provides entertainment, relief, community connections, and creative outlets, reducing isolation and improving quality of life.

The charity has a reputation for truly thoughtful work, providing high quality programmes that include interactive group music sessions, 1:1 bedroom concerts for bed-bound residents, individualised song-writing, and relaxed social parties to bring together the communities.



© Spitz Charitable Trust/Hannah Lovell

A grant award during the year is supporting interactive live-music sessions at Bridgeside Lodge Care Home in North London, bringing comfort, stimulation, and respite to the community. The activities are interactive and inclusive, using music, dance/ movement, and the spoken word. Each session is led by professional and sensitive musicians and activities are designed to meet the emotional and social needs of the beneficiaries.

Live music has widely proven benefits for both mental and physical health. Sessions encourage a positive response to treatment, promoting recovery, hope, and healing.

Medical Welfare priority: Support for charities concerned with alleviating the suffering of adults and children with medical conditions who have difficulty finding support through traditional sources

Canine Partners for Independence Assistance dogs are trained to meet the needs of individuals with even the most complex physical disabilities and this charity helps adults aged 18 and over (both civilians and former service personnel) who have a physical disability or condition that affects their daily life and limits their independence.

Canine Partners has been rebuilding its activities following the impact of the Covid-19 pandemic. Their priorities are to increase the number of puppies being trained, to bring older dogs still out in volunteer homes back in to take their Advanced Training classes and to place dogs with the people on the waiting list.

Many activities were paused during 2020 and much of 2021, including the breeding or recruitment of new puppies. This has left capacity to train and place dogs with applicants severely impacted.



© Canine Partners

A grant this year is helping with both the recruitment of puppies, the training of older dogs and the assessment of applicants and creation of their partnerships. The results will give many adults with physical disabilities the opportunity to lead a more independent life, the reassurance that they have help at hand and the motivation to pursue their goals including returning to education or employment.

Medical Welfare priority: The welfare of those who care for others through the provision of breaks for carers and projects and schemes that allow young carers to enjoy being children

Edinburgh Young Carers is one of the most well established and largest organisations in Scotland dedicated to working with and supporting young carers (YCs).

A grant this year has contributed to the costs of short residential breaks for young carers during the 2022 school holidays. These 2–5-day breaks help to ensure that YCs have some of the same opportunities as their peers by taking a short break away from their caring responsibilities.

YCs have little opportunity to participate in the activities enjoyed by their peers. This is felt especially keenly during the summer months when they are often busy with their caring responsibilities and are unable to take time for themselves. Their ability to socialise is limited and their confidence can be shattered. This in turn can cause feelings of isolation and exclusion. Very few have ever experienced a holiday of any kind, either because of parental ill health, financial hardship, or both. For a night or two (longer for older children) they can be like any other young person on holiday. They can relax, make unforgettable memories and try different activities, acquire new skills and form new peer friendships.



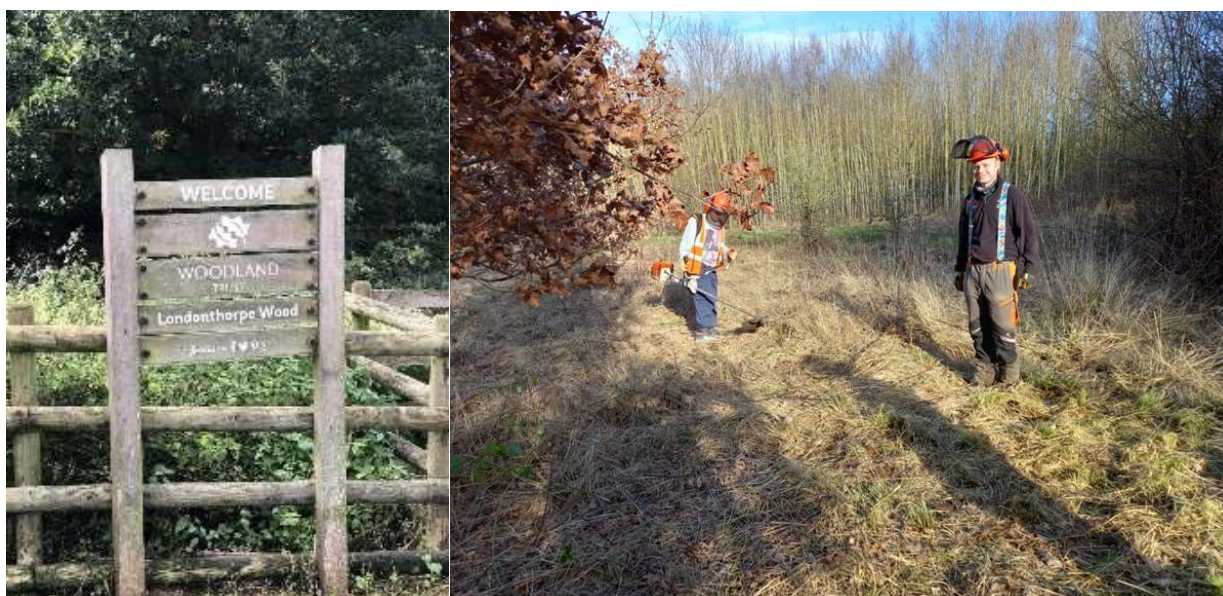
© Edinburgh Young Carers

Without additional support, these children will continue to experience isolation and anxiety, which may lead to them missing school, or result in long-term poor mental health. Our services, and in particular our residential respite breaks, support them to minimise these disadvantages. The breaks are offered at no cost to the child or their family.

Environment priority: Conservation of the countryside and its woodlands, with emphasis on the encouragement of voluntary work and active involvement in hands-on activities, particularly activities that bring about positive changes in the lives of young people and help them experience the value of nature

The Woodland Trust This year marks 50 years since a group of friends gathered around a kitchen table in Devon to discuss saving a local wood - and the Woodland Trust was born! Now, as the UK's largest woodland conservation charity, it uses the influence of its 500,000 members and supporters to protect and restore the UK's ancient woods and trees.

A grant award during the year is supporting the delivery of a programme of Woodland Skills and Heritage Conservation training courses targeted at local unemployed 18-25 year olds, as part of an ambitious National Lottery Heritage Fund project which is uniting the National Trust's historic landscape to the east of Belton House near Grantham and the Woodland Trust's Loundthorpe Wood, one of the 1,000 woods it cares for in the UK.



© The Woodland Trust

Participants learn tree ID skills, how to plant and establish trees, thinning and woodland maintenance, strimmer and brush cutter handling, pruning, coppicing, dead hedging and habitat creation, and basic methods of forest management.

The course, delivered in partnership with social enterprise Hill Holt Wood, includes first aid training thanks to support from a local business, and works hand in hand with local Job Centres to recruit participants and set them on the road to finding employment.

Environment priority: Crafts and Skills in heritage conservation, with emphasis on increasingly rare skills that would otherwise be lost

The Wilderness Trust Situated in the hills of Powys in Wales, The Wilderness Trust believes that when people make deeper connections with the natural world it increases both their sense of wellbeing and their desire to care for our environment, creating a healthier, happier planet.

A grant award this year is supporting the teaching of rural crafts and skills and promoting the conservation of woodlands surrounding the charity's Stone Age Centre in Newchapel. The fields are surrounded by semi-mature hedges that will benefit from being laid, and among the fields is a coppiced woodland that will be managed by the beneficiaries of this grant for coppicing hedging stakes, making hay rakes and for fixing any tool handles.



© Wilderness Trust

Hedge-laying, coppicing, tool making and scything all require skills that are fast being lost to the local community due to the relatively inexpensive use of fencing, the materials for which are acquired using highly energy intensive industrial techniques and which are from unsustainable sources.

The Wilderness Trust aims to give to the local people, of all ages, abilities and backgrounds, the agency to be able to manage the local landscape in an ecologically sound, low-cost and highly enjoyable way, by teaching them to lay hedges, coppice woodland and to scythe meadows for hay.

Environment priority: Social and therapeutic horticulture - projects that use gardening or other environmental activities to bring about positive changes in the lives of those who are living with disabilities or ill-health

Veterans Outdoors seeks to promote and protect the mental health and well-being of British military veterans by providing support, horticultural therapy, other outdoor well-being activities, and treatment and care of such persons who may be in need of socialisation and rehabilitation.



© Veterans Outdoors

A grant during the year is supporting the delivery of two ten week programmes of 'Soil to Supper' social and horticultural therapy for up to 24 military veterans in Devon.

The programme is taking place in the walled garden at Dartington Hall, enabling participants to learn how the experts grow the best fruit and veg.

Over ten weeks veterans will learn the secrets of soil, ground clearance, sewing, planting and harvesting, and how working with the soil, plants and the rhythms of nature can improve our emotional well-being.

Many military veterans struggle to settle after leaving the Forces, leading to social isolation and loneliness. For many mental health concerns such as PTSD do not begin to emerge for many years, or are exacerbated over time, yet veterans rarely engage with mainstream mental health services as they lack understanding of the things they have seen and experienced. As a veteran led charity, key staff are themselves veterans who understand the mindset, experiences and challenges of beneficiaries, and speak the same language.

With the guidance of an onsite Welfare Officer the charity's team is able to gently engage and guide the veterans towards better mental health by bringing them together for this programme of social and therapeutic horticulture - using plants and gardens to improve physical and mental health, as well as communication and thinking skills and a sense of purpose and achievement.

Trustees' Responsibilities

The Trustees (who are also directors of The D'Oyly Carte Charitable Trust Limited for the purposes of Company law) are responsible for preparing the Trustees' Report and the financial statements in accordance with applicable law and United Kingdom Accounting Standards (United Kingdom Generally Accepted Accounting Practice).

Company law requires the Trustees to prepare financial statements for each financial year which give a true and fair view of the state of affairs of the charitable company and of the incoming resources and application of resources, including the income and expenditure, of the charitable company for that period. In preparing these financial statements, the Trustees are required to:

- select suitable accounting policies and then apply them consistently;
- observe the methods and principles in the Charities SORP;
- make judgments and estimates that are reasonable and prudent;
- state whether applicable UK Accounting Standards have been followed, subject to any material departures disclosed and explained in the financial statements;
- prepare the financial statements on the going concern basis unless it is inappropriate to presume that the charitable company will continue in business.

The Trustees are responsible for keeping proper accounting records that disclose with reasonable accuracy at any time the financial position of the charitable company and enable them to ensure that the financial statements comply with the Companies Act 2006. They are also responsible for safeguarding the assets of the charitable company and hence for taking reasonable steps for the prevention and detection of fraud and other irregularities.

The Trustees are responsible for the maintenance and integrity of the corporate and financial information included on the charitable company's website. Legislation in the United Kingdom governing the preparation and dissemination of financial statements may differ from legislation in other jurisdictions.

Trustees' Responsibilities (continued)

In so far as the Trustees are aware at the time of approving our Trustees' Annual Report:

- there is no relevant audit information of which the charitable company's auditor is unaware; and
- the Trustees have taken all steps that they ought to have taken to make themselves aware of any relevant audit information and to establish that the auditor is aware of that information.

This report is prepared in accordance with the provisions applicable to companies entitled to the small companies exemption.

Auditor: The auditor, RSM UK Audit LLP, Chartered Accountants, has indicated its willingness to continue in office.

Approved by the Trustees on 20th July 2022 and signed by:

(signed Andrew Jackson)

Andrew Jackson
Chairman

(signed Jane Thorne)

Jane Thorne
Executive Director & Company Secretary

Independent Auditor's Report to the Members of The D'Oyly Carte Charitable Trust

Opinion

We have audited the financial statements of The D'Oyly Carte Charitable Trust Limited (the 'charitable company') for the year ended 31 March 2022 which comprise Statement of Financial Activities, the Balance Sheet, the Statement of Cash flows and notes to the financial statements, including significant accounting policies. The financial reporting framework that has been applied in their preparation is applicable law and United Kingdom Accounting Standards, including FRS 102 "The Financial Reporting Standard applicable in the UK and Republic of Ireland" (United Kingdom Generally Accepted Accounting Practice).

In our opinion the financial statements:

- give a true and fair view of the state of the charitable company's affairs as at 31 March 2022 and of its incoming resources and application of resources, including its income and expenditure, for the year then ended;
- have been properly prepared in accordance with United Kingdom Generally Accepted Accounting Practice; and
- have been prepared in accordance with the requirements of the Companies Act 2006.

Basis for opinion

We conducted our audit in accordance with International Standards on Auditing (UK) (ISAs (UK)) and applicable law. Our responsibilities under those standards are further described in the Auditor's responsibilities for the audit of the financial statements section of our report. We are independent of the charitable company in accordance with the ethical requirements that are relevant to our audit of the financial statements in the UK, including the FRC's Ethical Standard and we have fulfilled our other ethical responsibilities in accordance with these requirements. We believe that the audit evidence we have obtained is sufficient and appropriate to provide a basis for our opinion.

Conclusions relating to going concern

In auditing the financial statements, we have concluded that the trustees' use of the going concern basis of accounting in the preparation of the financial statements is appropriate.

Based on the work we have performed, we have not identified any material uncertainties relating to events or conditions that, individually or collectively, may cast significant doubt on the charitable company's ability to continue as a going concern for a period of at least twelve months from when the financial statements are authorised for issue.

Our responsibilities and the responsibilities of the trustees with respect to going concern are described in the relevant sections of this report.

Independent Auditor's Report to the Members of The D'Oyly Carte Charitable Trust (continued)

Other information

The other information comprises the information included in the Trustees' Report other than the financial statements and our auditor's report thereon. The trustees are responsible for the other information contained within the Trustees' Report. Our opinion on the financial statements does not cover the other information and, except to the extent otherwise explicitly stated in our report, we do not express any form of assurance conclusion thereon.

Our responsibility is to read the other information and, in doing so, consider whether the other information is materially inconsistent with the financial statements or our knowledge obtained in the course of the audit or otherwise appears to be materially misstated. If we identify such material inconsistencies or apparent material misstatements, we are required to determine whether this gives rise to a material misstatement in the financial statements themselves. If, based on the work we have performed, we conclude that there is a material misstatement of this other information, we are required to report that fact.

We have nothing to report in this regard.

Opinion on other matters prescribed by the Companies Act 2006

In our opinion, based on the work undertaken in the course of the audit:

- the information given in the Trustees' Report, which includes the Directors' Report prepared for the purposes of company law, for the financial year for which the financial statements are prepared is consistent with the financial statements; and
- the Directors' Report included within the Trustees' Report has been prepared in accordance with applicable legal requirements.

Matters on which we are required to report by exception

In the light of the knowledge and understanding of the charitable company and its environment obtained in the course of the audit, we have not identified material misstatements in the Directors' Report included within the Trustees' Report.

We have nothing to report in respect of the following matters where the Companies Act 2006 requires us to report to you if, in our opinion:

- adequate accounting records have not been kept, or returns adequate for our audit have not been received from branches not visited by us; or
- the financial statements are not in agreement with the accounting records and returns; or
- certain disclosures of trustees' remuneration specified by law are not made; or

Independent Auditor's Report to the Members of The D'Oyly Carte Charitable Trust (continued)

- we have not received all the information and explanations we require for our audit; or
- the Trustees were not entitled to prepare the financial statements in accordance with the small companies' regime and take advantage of the small companies exemption from the requirement to prepare a Strategic Report or in preparing the Trustees' Report.

Responsibilities of trustees

As explained more fully in the Statement of Trustees' responsibilities set out on pages 34 and 35, the trustees (who are also the directors of the charitable company for the purposes of company law) are responsible for the preparation of the financial statements and for being satisfied that they give a true and fair view, and for such internal control as the trustees determine is necessary to enable the preparation of financial statements that are free from material misstatement, whether due to fraud or error.

In preparing the financial statements, the trustees are responsible for assessing the charitable company's ability to continue as a going concern, disclosing, as applicable, matters related to going concern and using the going concern basis of accounting unless the trustees either intend to liquidate the charitable company or to cease operations, or have no realistic alternative but to do so.

Auditor's responsibilities for the audit of the financial statements

Our objectives are to obtain reasonable assurance about whether the financial statements as a whole are free from material misstatement, whether due to fraud or error, and to issue an auditor's report that includes our opinion. Reasonable assurance is a high level of assurance, but is not a guarantee that an audit conducted in accordance with ISAs (UK) will always detect a material misstatement when it exists. Misstatements can arise from fraud or error and are considered material if, individually or in the aggregate, they could reasonably be expected to influence the economic decisions of users taken on the basis of these financial statements.

The extent to which the audit was considered capable of detecting irregularities, including fraud

Irregularities are instances of non-compliance with laws and regulations. The objectives of our audit are to obtain sufficient appropriate audit evidence regarding compliance with laws and regulations that have a direct effect on the determination of material amounts and disclosures in the financial statements, to perform audit procedures to help identify instances of non-compliance with other laws and regulations that may have a material effect on the financial statements, and to respond appropriately to identified or suspected non-compliance with laws and regulations identified during the audit.

Independent Auditor's Report to the Members of The D'Oyly Carte Charitable Trust (continued)

In relation to fraud, the objectives of our audit are to identify and assess the risk of material misstatement of the financial statements due to fraud, to obtain sufficient appropriate audit evidence regarding the assessed risks of material misstatement due to fraud through designing and implementing appropriate responses and to respond appropriately to fraud or suspected fraud identified during the audit.

However, it is the primary responsibility of management, with the oversight of those charged with governance, to ensure that the entity's operations are conducted in accordance with the provisions of laws and regulations and for the prevention and detection of fraud.

In identifying and assessing risks of material misstatement in respect of irregularities, including fraud, the audit engagement team:

- obtained an understanding of the nature of the sector, including the legal and regulatory framework that the charitable company operates in and how the charitable company is complying with the legal and regulatory framework;
- inquired of management, and those charged with governance, about their own identification and assessment of the risks of irregularities, including any known actual, suspected or alleged instances of fraud;
- discussed matters about non-compliance with laws and regulations and how fraud might occur including assessment of how and where the financial statements may be susceptible to fraud

As a result of these procedures we consider the most significant laws and regulations that have a direct impact on the financial statements are FRS 102, Charities SORP (FRS 102), Companies Act 2006, Charities Act 2011 and the charitable company's governing document. We performed audit procedures to detect non-compliances which may have a material impact on the financial statements which included reviewing the financial statements including the Trustees' Report, remaining alert to new or unusual transactions which may not be in accordance with the governing documents.

The audit engagement team identified the risk of management override of controls as the area where the financial statements were most susceptible to material misstatement due to fraud. Audit procedures performed included but were not limited to testing manual journal entries and other adjustments, evaluating the business rationale in relation to significant, unusual transactions and transactions entered into outside the normal course of business and challenging judgments and estimates.

A further description of our responsibilities for the audit of the financial statements is located on the Financial Reporting Council's website at <http://www.frc.org.uk/auditorsresponsibilities>. This description forms part of our auditor's report.

Independent Auditor's Report to the Members of The D'Oyly Carte Charitable Trust (continued)

Use of our report

This report is made solely to the charitable company's members, as a body, in accordance with Chapter 3 of Part 16 of the Companies Act 2006. Our audit work has been undertaken so that we might state to the charitable company's members those matters we are required to state to them in an auditor's report and for no other purpose. To the fullest extent permitted by law, we do not accept or assume responsibility to anyone other than the charitable company and the charitable company's members as a body, for our audit work, for this report, or for the opinions we have formed.

(signed RSM UK AUDIT LLP)

Zoe Longstaff-Tyrrell (Statutory Auditor)
For and on behalf of RSM UK AUDIT LLP, Statutory Auditor
Chartered Accountants
Portland
25 High Street
Crawley, West Sussex,
RH10 1BG

Date: 20th July 2022

Statement of Financial Activities for the year ended 31st March 2022

		2022 Unrestricted Funds £	2021 Unrestricted Funds £
	Note		
Income			
Investment income	2	1,180,399	1,304,886
Total income		1,180,399	1,304,886
Expenditure			
Costs of raising funds:			
Investment management costs	3	247,875	227,994
Expenditure on charitable activities:			
Arts	4	841,141	775,528
Medical welfare	4	722,374	808,060
Environment	4	369,673	269,064
Total expenditure on charitable activities:		1,933,188	1,852,652
Total expenditure		2,181,063	2,080,646
Net gains on investments	7	4,000,645	10,579,908
Net income and net movement in funds for the year		2,999,981	9,804,148
Reconciliation of Funds			
Total Funds Brought Forward	11	63,471,888	53,667,740
Total Funds Carried Forward	11,12	66,471,869	63,471,888

The notes on pages 44-48 form part of these accounts

Balance Sheet as at 31st March 2022

Company No. 5638406

	Note	At 31st March 2022		At 31st March 2021	
		£	£	£	£
Fixed Assets					
Investments	7		66,472,463		63,296,903
Current Assets					
Debtors	8	46,008		76,134	
Cash at Bank and in hand		<u>164,395</u>		<u>314,450</u>	
		210,403		390,584	
Current Liabilities					
Creditors: amounts falling due within one year	9	<u>(170,997)</u>		<u>(160,599)</u>	
Net Current Assets			39,406		229,985
Total Assets Less Current Liabilities			66,511,869		63,526,888
Creditors: amounts falling due after more than one year	10		(40,000)		(55,000)
Net Assets			66,471,869		63,471,888
Funds					
Unrestricted Funds	11		66,471,869		63,471,888
			66,471,869		63,471,888

These accounts are prepared in accordance with the provisions applicable to Companies entitled to the small Companies exemption.

These accounts were authorised and approved by the Directors on 20th July 2022 and signed on their behalf by:

(signed Andrew Jackson)

.....
Andrew Jackson
Director

(signed Andrew Wimble)

.....
Andrew Wimble
Director

The notes on pages 44-48 form part of these accounts

Statement of Cash Flows for the year ended 31st March 2022

	Note	2022 Unrestricted Funds £	2021 Unrestricted Funds £
Cash used in operating activities	15	(2,155,539)	(2,146,117)
Cash flows from investing activities:			
Investment income		1,180,399	1,304,886
Purchase of investments		(13,862,269)	(38,906,449)
Proceeds of disposals of investments		14,541,590	39,920,460
Receipts from / (payments to) investment portfolio cash		145,764	(125,853)
Cash provided by investing activities		2,005,484	2,193,044
 (Decrease) / Increase in cash and cash equivalents in the year		(150,055)	46,927
Cash and cash equivalents at the beginning of the year		314,450	267,523
Total cash and cash equivalents at the end of the year		164,395	314,450
Cash balance comprises			
Cash at bank		164,395	314,450

The notes on pages 44-48 form part of these accounts

Notes to the Accounts for the year ended 31st March 2022

1 Accounting Policies

a) Basis of Accounting

The financial statements have been prepared in accordance with Accounting and Reporting by Charities: Statement of Recommended Practice applicable to charities preparing their accounts in accordance with the Financial Reporting Standard applicable in the UK and Republic of Ireland (FRS 102) (effective 1 January 2019) - (Charities SORP (FRS 102)), the Financial Reporting Standard applicable in the UK and Republic of Ireland (FRS 102) and the Companies Act 2006.

The D'Oyly Carte Charitable Trust constitutes a public benefit entity as defined by FRS 102.

It is the policy of the Trustees to protect a core of investments and cash assets to generate income for future years' grant awards. The reserve balance at the end of the fiscal year increased from £63,471,888 in 2021 to £66,471,869. The Trustees consider that the Charity is deemed to be a going concern and do not consider the ongoing COVID-19 pandemic will impact on the financial sustainability of the Charity. The Trustees consider the value of the portfolio and the forecast investment income will be sufficient to sustain the Charity in the next twelve months and the longer term. Income levels are expected to continue at the same level as in 2021/22. The Trustees will continue to review their reserves policy and the level of grants they make on an annual basis.

b) Income and Expenditure

All income and expenditure arising during the year is dealt with through the Statement of Financial Activities. Accruals and prepayments are made where appropriate.

c) Grants Payable

Grants payable are recognised when they are committed and included as creditors until they are paid.

d) Status

The charity is a Company (Registration Number 5638406) Limited by Guarantee and has no share capital. It is constituted under Memorandum and Articles of Association and has been granted charitable status by the Charity Commission (Charity Registration Number 1112457). In the event of the charity being wound up, the liability in respect of the guarantee is the charity.

e) Taxation

The Company is a Registered Charity and as such its income and gains falling within Sections 471 to 489 of the Corporation Tax Act 2010 or Section 286 of the Taxation of Chargeable Gains Act 1992 are exempt from corporation tax to the extent that they are applied to its charitable objectives.

f) Value Added Tax

Value Added Tax is not recoverable by the charity and as such is included in the relevant costs in the Statement of Financial Activities.

g) Fixed Assets

Fixed Assets are recorded at cost or, in cases where fixed assets have been donated to the charity, at valuation at the time of acquisition.

h) Depreciation

Depreciation is calculated so as to write off the cost of an asset, less its estimated residual value, over the useful economic life of that asset as follows:

Computer Equipment: 33.33% p.a. on a straight line basis.

i) Investments

Investments are stated at market value. Realised and unrealised gains and losses on investments are dealt with in the Statement of Financial Activities. Investment income plus associated tax recoverable is credited to income on an accruals basis, using dates of payments for dividends, and daily accrual for interest.

j) Debtors

Other debtors are recognised at the settlement amount. Prepayments are valued at the amount prepaid.

The notes on pages 44-48 form part of these accounts

Notes to the Accounts for the year ended 31st March 2022 (cont'd)

k) Cash at Bank and in hand

Cash at bank and in hand includes cash and short term liquid investments.

l) Costs of raising funds

The costs relate to investment management fees for both income generation and capital maintenance.

m) Allocation of support costs

Support costs are those functions that assist the work of the charity but do not directly undertake charitable activities. Support costs include back office costs, finance and governance costs which support the Company's programmes and activities. These have been allocated in full to expenditure on charitable activities on the basis of grants paid in the period.

n) Liabilities

Liabilities are recognised when the entity has a present obligation to transfer economic benefits as a result of past transactions or events, that will probably result in the transfer of funds to a third party and the amount can be measured or estimated reliably. Creditors are recognised at their settlement amount after allowing for any trade discounts due.

o) Financial Instruments

The charity only has financial assets and financial liabilities of a kind that qualify as basic financial instruments. Basic financial instruments are initially recognised at transaction value and subsequently measured at their settlement value.

	2022 £	2021 £
2 Investment income		
Listed investments	<u>1,180,399</u>	<u>1,304,886</u>
3 Costs of raising funds		
Investment management costs	<u>247,875</u>	<u>227,994</u>
4 Charitable activities		
Cost of grantmaking		
Arts	841,141	775,528
Medical Welfare	722,374	808,060
Environment	<u>369,673</u>	<u>269,064</u>
	<u>1,933,188</u>	<u>1,852,652</u>
Grants committed but not yet paid at start of period	(123,500)	(185,000)
Grants paid during the period (Appendix 1)	1,796,216	1,783,704
Grants committed but not paid at end of period	<u>132,000</u>	<u>123,500</u>
	<u>1,804,716</u>	<u>1,722,204</u>
Support and governance costs (see note 5)	<u>128,472</u>	<u>130,448</u>
Total cost of charitable activities	<u>1,933,188</u>	<u>1,852,652</u>

Support costs have been allocated on a pro-rata basis on the level of grants paid under each category in the year.

The notes on pages 44-48 form part of these accounts

Notes to the Accounts for the year ended 31st March 2022 (cont'd)

	Arts	Medical	Environment	2022 £
5 Support and governance costs				
Administrative fees*	31,706	27,229	13,935	72,870
Grant administration	7,462	6,409	3,280	17,151
Sundry	5,063	4,349	2,226	11,638
Audit fees	4,491	3,856	1,973	10,320
Accountancy fees	5,072	4,356	2,229	11,657
Other legal and professional fees	2,104	1,807	925	4,836
	55,898	48,006	24,568	128,472
				2021
	Arts	Medical	Environment	£
Administrative fees*	30,394	31,669	10,545	72,608
Grant administration	11,086	11,551	3,846	26,483
Sundry	2,360	2,458	818	5,636
Audit fees	4,068	4,240	1,412	9,720
Accountancy fees	5,179	5,396	1,797	12,372
Other legal and professional fees	1,519	1,583	527	3,629
	54,606	56,897	18,945	130,448

* Administrative fees represent a charge from Savoy Hotel Ltd for the provision of the services of the Executive Director. The D'Oyly Carte Charitable Trust has no employees.

	2022 £	2021 £
Net expenditure for the year		
This is stated after charging:		
Auditor's remuneration:		
Audit fee	10,320	9,720

6 Remuneration of employees and key management personnel

The Charity considers its key management personnel comprise the Trustees and Executive Director. The total employment benefits, including employer pension costs of key management personnel were £nil (2021: £nil). There were no employees in this charity in 2021 or 2022.

No Trustee received any remuneration from the charity nor were reimbursed any expenses during the year (2021: £nil).

	Year ended 31-Mar-22	2021
	£	£
7 Investment assets		
Listed investment:		
Market value at 1st April 2021	62,475,194	52,909,297
Additions during the year at cost	13,862,269	38,906,449
Disposal proceeds	(14,541,590)	(39,920,460)
Realised Gains	879,394	3,061,517
Un-realised Gains / (Losses)	3,121,251	7,518,391
	4,000,645	
Market value at 31st March 2022	65,796,518	62,475,194
Cash held for Investment	675,945	821,709
Total Investment value at 31st March 2022	66,472,463	63,296,903

The notes on pages 44-48 form part of these accounts

Notes to the Accounts for the year ended 31st March 2022 (cont'd)

7 Investment assets (continued)

Investment at market value comprised:

	UK	Overseas	Total
	£	£	£
Pooled Investment Vehicles	21,760,961	38,489,544	60,250,505
Fixed Interest Securities	1,641,266	3,904,747	5,546,013
Cash	675,945	-	675,945
	<u>24,078,172</u>	<u>42,394,291</u>	<u>66,472,463</u>

Historical Cost of Investments 54,846,862

All the Trust's Investments are held in the United Kingdom.

8 Debtors and prepayments

	2022	2021
	£	£
Interest and dividends receivable	43,133	56,241
Prepayments	<u>2,875</u>	<u>19,893</u>
	<u>46,008</u>	<u>76,134</u>

9 Creditors: amounts falling due within one year

Audit fee	10,320	9,720
Accountancy and bookkeeping fees	2,606	2,520
Grants payable	92,000	68,500
Other creditors	<u>66,071</u>	<u>79,859</u>
	<u>170,997</u>	<u>160,599</u>

10 Creditors: amounts falling due after more than one year

Grants payable	<u>40,000</u>	<u>55,000</u>
----------------	---------------	---------------

11 Unrestricted Funds

General Funds		
Balance at 1st April 2021	63,471,888	53,667,740
Increase during the year	<u>2,999,981</u>	<u>9,804,148</u>
Balance at 31st March 2022	<u>66,471,869</u>	<u>63,471,888</u>

12 Analysis of Net Assets Between Funds

	Investments	Other net Liabilities	2022 Total
	£	£	£
Unrestricted funds	<u>66,472,463</u>	<u>(594)</u>	<u>66,471,869</u>
	Investments	Other net Assets	2021 Total
	£	£	£
Unrestricted funds	<u>63,296,903</u>	<u>174,985</u>	<u>63,471,888</u>

13 Charity Trustee Insurance

A premium of £2,114 was paid during the year (2021: £2,114) in respect of Professional Indemnity Insurance (authorised by an order from the Charity Commission dated 13th April 1999).

The notes on pages 44-48 form part of these accounts

Notes to the Accounts for the year ended 31st March 2022 (cont'd)

14 Ultimate Controlling Party

The Directors are of the opinion that no one party exercises ultimate control of the Company. No transactions have taken place between Directors and the Company that are reportable under Financial Reporting Standards.

15 Reconciliation of net movement in funds to net cash flow from operating activities

	2022	2021
	£	£
Net movement in funds	2,999,981	9,804,148
Deduct interest income shown in investing activities	(1,180,399)	(1,304,886)
(Deduct net gains) on investments	(4,000,645)	(10,579,908)
Decrease / (Increase) in debtors	30,126	(1,157)
(Decrease) in creditors	(4,602)	(64,314)
Net cash used in operating activities	(2,155,539)	(2,146,117)

The notes on pages 44-48 form part of these accounts

APPENDIX 2: GRANTS PAID

	Year Ended 31-Mar-22	Year Ended 31-Mar-21
	£	£
Abbeyfield Reading Society	1,000	-
Abram Wilson Foundation for Creative Arts	-	3,500
Absolute Classics	4,000	3,500
Acheinu Cancer Support	3,500	4,240
Acorns Children's Hospice Trust, Birmingham	4,000	3,500
Action for Family Carers	-	-
Action for Pulmonary Fibrosis	3,500	-
Action on Pre-eclampsia	-	3,250
Activate Performing Arts	-	-
Activiteens	3,500	3,500
Activity Club for Children with Special Needs, Berkshire	-	3,000
Add-NI Children's Charity	-	3,000
Afrocats	-	3,000
Agatha Christie Festival Limited	3,000	3,000
Age Exchange	5,296	-
Albany 2001 Company	4,750	4,000
Alder Hey Children's Charity	4,960	-
Alex, The Leukodystrophy Charity	4,000	-
Alive Activities Limited	-	5,000
Alkaptonuri Society	-	3,000
Allsports Glos	-	4,668
Alternative Theatre Company Ltd	3,500	-
Amber Trust	-	3,000
Amscordi Ltd	4,000	3,000
Anaphylaxis Campaign	3,000	-
Andover Trees	-	3,500
Annie Mawson's Sunbeams Music Trust	-	3,000
Apollo Music Projects	4,000	3,000
Ardent Theatre Company	3,000	-
Arkbound Foundation	-	3,000
Armonico Consort Limited	3,000	-
Art Against Knives	3,500	-
Art Therapy	-	3,500
Arts 4 Dementia	4,000	-
Arts at the Old Fire Station	-	3,000
Arts Connection - Cyswllt Celf	-	3,000
Arts Educational Schools	2,500	-
Arts For All	-	3,000
Arts for Health Milton Keynes	-	3,000
Association for Rehabilitation of Communication & Oral Skills	3,500	-
Asthma Relief	4,000	-
Asthma UK	-	3,000
Ataxia-Telangiectasia Society	4,000	-
Aurora Orchestra	-	3,500
Autism Bedfordshire	-	3,000
Autism Early Support	-	3,000
Awards for Young Musicians	-	5,000
Axminster & Lyme Cancer Support	-	620
B:Music	3,000	-
Back-Up Trust	4,000	-
Bacup Consortium Trust	3,500	-
Ballet Rambert Limited	4,000	-
Bamboozle Theatre Company	3,500	-
Bampton Classical Opera	3,000	3,500
Barbican Centre Trust	4,000	-
Carried forward	108,506	105,778

APPENDIX 2: GRANTS PAID (continued)

	Year Ended 31-Mar-22	Year Ended 31-Mar-21
	£	£
Brought forward	108,506	105,778
Barnsley Hospital Charity	-	3,000
Barnsley Museums and Heritage Trust	-	3,000
Basingstoke and Alton Cardiac Rehabilitation Charity	-	3,000
Bath Area Play Area	-	3,000
Battersea Arts Centre	4,000	-
Beat Routes	-	3,000
Benedetti Foundation	5,000	-
Berlioz Sesquicentenary Committee	3,000	3,500
Beyond Limits	-	2,000
BID Services	-	3,000
Big Brum Theatre in Education Company	-	3,500
Birmingham Centre for Arts Therapies	3,500	3,000
Birmingham Hippodrome Theatre Trust Ltd	4,000	-
Birmingham Opera Company	-	3,500
Birmingham Royal Ballet	3,000	-
Blackburn Youth Zone	4,000	-
Black British Classical Foundation	3,000	-
Blackfriars Settlement	3,500	-
Blue Elephant Theatre	-	3,000
Blyth Star Enterprises	-	4,000
Blythe House Hospicecare, Derbyshire	3,000	-
Boaty Theatre Company	-	2,500
Bodmin & District Woodturners	-	3,500
Book Music & Lyrics	-	3,000
Booth Centre	4,000	4,720
BOSP Brighter Opportunities Through Supported Play	-	4,000
Brain and Spine Foundation	3,000	3,000
Brainwave Centre Ltd	5,000	-
Break	-	3,000
Breast Cancer Haven	-	3,000
Brighton Dome & Festival Ltd	3,000	-
Brighton Early Music Festival Ltd	3,000	-
Bristol Avon Rivers Trust	3,500	-
Bristol Ensemble Ltd	-	5,000
Bristol Natural History Consortium	-	3,500
Bristol Old Vic and Theatre Royal Trust Limited	3,000	3,000
British Liver Trust	4,000	3,500
British Museum	-	3,500
British Stammering Association	4,000	-
British Thyroid Foundation	-	3,453
British Trust for Ornithology	4,000	-
British Youth Opera	-	5,000
Britten Pears Arts	-	3,000
Bromley by Bow Centre	3,000	-
Brunswick Organic Nursery	4,000	-
BulliesOut	-	3,000
Bumblebee Conservation Trust	-	5,000
Bury Metropolitan Arts Association	3,500	-
Cais Ltd.	-	3,500
Calibre Audio Library	5,000	-
Cambridge Cyrenians	3,500	4,000
Cambridge Youth Opera	3,500	-
Camden Arts Centre	3,000	-
Cancer Campaign in Suffolk	-	3,000
Cancer United	3,000	-
Carried forward	209,506	221,451

APPENDIX 2: GRANTS PAID (continued)

	Year Ended 31-Mar-22	Year Ended 31-Mar-21
	£	£
Brought forward	209,506	221,451
CancerCare North Lancashire and South Cumbria	4,352	-
Canine Partners for Independence	5,000	5,000
Canterbury Festival	-	3,000
Capital Theatres	3,000	-
Cardboard Citizens	4,000	-
Care for Carers	-	1,840
Care for Veterans	-	5,000
Carer Support Wiltshire	-	4,000
Carers' Centre Bath and North East Somerset	4,000	5,000
Carers' Centre Bristol and South Gloucestershire	4,000	-
Carers' Resource	3,500	-
Carers Trust Bucks and Milton Keynes	3,500	-
Caring & Sharing Trust	-	3,500
Carmarthen and District Youth Opera	3,000	-
Carousel	-	3,500
Caryl Jenner Productions Ltd. (Unicorn Theatre London Ltd)	4,000	-
Carymoor Environmental Trust	3,000	-
Caterham Barracks Community Trust	-	4,200
Caveroma Alliance UK	4,000	-
Caxton House Settlement	3,500	-
Centre 404	3,000	-
Centre for Innovation in Voluntary Action	3,000	-
Cerebra for Brain Injured Children	-	3,000
Chailey Heritage Foundation	4,000	-
Chain Reaction Theatre	-	4,916
Changing Faces	3,000	3,000
Changing Tunes	4,000	-
Chantry Dance Company	-	3,000
Chapter (West Cheshire) Ltd	3,500	-
Charles Wood Festival of Music (Charles Wood Summer School)	3,000	-
Charlie House	3,000	-
Chaseley Trust	-	3,000
Chelsea Physic Garden Company	-	3,000
Cheltenham Festivals	3,000	-
Cherry Trees	-	3,000
Cheshire Young Carers	-	4,000
Chichester Diocesan Association	-	4,000
Chichester Festival Theatre	4,000	3,500
Chichester Ship Canal Trust	-	3,500
Child Brain Injury Trust	-	5,000
Children with Cancer and Leukaemia Advice and Support for Parents	-	3,500
Children with Cancer Fund	4,272	-
Children's Adventure Farm Trust	-	4,960
Children's Aid Team	-	3,000
Children's Heart Unit Fund (CHUF)	4,000	3,500
Children's Hospital Charity	4,500	3,500
Children's Hospice South West	-	3,500
Children's Leukaemia Society	5,000	3,500
Children's Trust	3,000	-
Chilli Studios (Newcastle and Gateshead Arts Studio) Ltd.	3,400	2,430
Chiltern Centre	-	3,000
Choir with No Name	-	3,000
Christie Charity	-	3,000
Christmas for Kids	-	3,500
Carried forward	316,030	339,797

APPENDIX 2: GRANTS PAID (continued)

	Year Ended 31-Mar-22	Year Ended 31-Mar-21
	£	£
Brought forward	316,030	339,797
Chronicle Sunshine Fund	3,400	2,750
Cianna's Smile	2,643	-
City and Guilds of London Art School	10,000	10,000
City of Birmingham Symphony Orchestra	-	3,500
Citywise Mentoring Ltd	1,175	-
Clapton Common Boys Club	3,500	-
Classical Opera & The Mozartists	-	3,000
Cleft Lip and Palate Association	-	3,000
Clod Ensemble	4,000	4,700
Clonter Farm Music Trust	-	5,000
Clydesdale Community Initiatives	3,290	-
Cobalt	-	3,000
Comar	-	1,150
Combat Stress	-	5,000
Community Equality Disability Action (CEDA)	3,000	-
Community Focus	-	3,000
Compaid Trust	-	3,500
Conservation Volunteers	3,500	-
Contemporary Music for All	5,000	-
Cope Children's Trust	4,000	-
Corrine Burton Memorial Trust	3,500	3,000
Cornwall Museums Partnership	3,500	-
Cornwall Theatre Co	-	1,425
Corporation of the Hall of Arts and Sciences	5,000	-
Cotswold Friends	4,000	-
Council for the Protection of Rural England	-	2,000
Coventry Boys & Girls	-	3,500
Courtyard Trust	3,000	-
Cpotential	4,144	3,500
Creative Dimension Trust	4,000	5,000
Creative Futures (UK) Limited	-	3,000
Creative Youth	4,000	-
Crohn's & Colitis UK	-	3,000
Culpepper Community Garden Association	4,701	4,000
Cumbria Youth Alliance	-	3,000
Curious School of Puppetry	-	3,000
Cystic Fibrosis Trust	3,000	-
Dance 4	-	3,500
Dartington Hall Trust	-	-
Darts (Doncaster Community Arts)	4,000	-
Dash Arts	-	3,000
Deafblind Scotland	-	3,000
Delphi Trust	1,500	-
Dementia Support	3,000	3,000
Dimbleby Cancer Care	-	3,000
Diocese of Leeds Music Department	-	3,000
Disability Challengers	-	3,000
Dog Assist in Disability	-	2,000
Dogs for Good	5,000	-
Double R Arts	3,500	-
Douglas Macmillan Hospice, Stoke-on-Trent	3,000	-
D'Oyly Carte Opera Trust	20,000	-
Drake Music	4,350	-
Drake Music Scotland	3,000	-
Drama Express	1,000	-
Carried forward	446,733	445,322

APPENDIX 2: GRANTS PAID (continued)

	Year Ended 31-Mar-22 £	Year Ended 31-Mar-21 £
Brought forward	446,733	445,322
Drama Expressions for Children	-	3,500
DreamArts	-	3,000
Dulwich Picture Gallery	3,500	-
Earl Mountbatten Hospice, Isle of Wight	3,000	3,500
Earth Trust	3,500	4,000
East Anglia Children's Hospices	4,312	-
East Sussex of Blind and Partially Sighted People	-	3,000
ECHO for Extra Choices in Herefordshire Limited	3,500	-
EcoLocal	-	4,000
Ecology Centre	-	3,500
Eden-Rose Coppice Trust	-	4,000
Edinburgh Children's Hospital Charity	-	3,500
Edinburgh Headway	-	2,500
Edinburgh Young Carers	3,500	-
Edward Barnsley Educational Trust	5,000	4,000
Ehlers-Danlos Support UK	4,000	3,000
Elgar Festival	3,000	-
ellenor	4,000	3,500
Elmhurst Ballet School	-	3,500
Embracing Arts	3,500	-
Encephalitis Support Group	4,000	-
English Music Festival	3,500	3,000
English National Ballet	-	5,000
English National Ballet School	3,500	-
English National Opera	3,500	-
English Stage Company (Royal Court Theatre)	-	3,500
English Touring Opera	-	4,000
English Touring Theatre	-	4,000
Enrych Oxfordshire	3,000	-
Environment Centre	3,500	-
EOS Network	3,500	-
Epilepsy Scotland	-	3,000
ERIC (Education and Resources for Improving Childhood Continence)	5,000	-
Eric Liddell Centre	-	2,000
Ethel Trust	4,775	4,775
Extratime	3,500	-
Families United Network	3,000	3,000
FarmAbility	4,000	-
Farm Inspiration	-	4,000
Farnham Youth Choir	2,959	-
Federation of Jewish Services	-	1,927
Fellowship Afloat Charitable Trust	4,224	-
Fife Young Carers	-	4,886
Finding Rhythms	-	4,500
Five Towns Plus Hospice, Pontefract	-	2,500
Florence Nightingale Hospice Charity, Buckinghamshire	3,000	-
Flute Theatre	-	5,000
Footsteps	-	3,000
Force Cancer	-	2,592
Forest Farm Peace Garden	3,500	-
Forest Harvest	1,000	-
Forest of Dean Children's Opportunity Centre	4,000	-
Forget Me Not Children's Hospice, Huddersfield	-	3,500
Forget-me-not Chorus	-	5,000
Foundation for Young Musicians	4,500	-
Carried forward	555,503	563,002

APPENDIX 2: GRANTS PAID (continued)

	Year Ended 31-Mar-22 £	Year Ended 31-Mar-21 £
Brought forward	555,503	563,002
Foundation for Conductive Education	-	3,000
Foundling Museum	-	3,500
Fourth Choir	-	1,535
Fourth Monkey Education	-	3,640
Freedom from Torture	-	3,500
Friends of Ashton School (SEN), Glasgow	-	1,500
Friends of Thomas Wolsey School (SEN), Ipswich	-	3,500
Friends of Tower Hamlets Cemetery Park	3,500	4,000
Friends of Victoria School (SEN), Birmingham	3,000	3,000
Frozen Light	4,000	3,000
Future Trees Trust	3,500	3,000
Futures Theatre	3,500	-
Gabrieli	3,500	-
Garage Art Group	-	3,000
Garage Trust Ltd.	4,000	-
Garden House Hospice Care, Hertfordshire	3,500	3,500
Garsington Opera Limited	3,000	-
Garwood Foundation	-	3,500
Gateway into the Community	3,280	-
Gene People	4,000	-
Genetic Disorders UK	-	3,000
Georgian Theatre (Richmond) Trust	-	2,500
Glasgow Children's Hospital Charity	4,000	3,500
Gloucestershire Young Carers	3,500	-
Golden-Oldies Charity	-	3,050
Good Companions	-	4,000
Grace House North East	-	3,000
Graeae Theatre Co Ltd	4,000	-
Grange Centre	-	3,500
Greentop Community Circus Centre	3,000	3,000
Groundwork Cheshire, Lancashire and Merseyside	4,000	-
Groundwork London	3,534	-
Groundwork Wales	-	3,500
Group B Strep Support	2,500	-
Growing Well	-	4,000
Growing Works	-	4,000
Guildhall School Trust	10,000	10,000
Hackney Shed	-	3,500
Hackney Youth Orchestras Trust	3,000	-
Haemochromatosis UK	2,500	-
Halle Concerts Society	-	3,500
Hampshire Cultural Trust	-	3,500
Haven House Foundation	3,000	-
Haworth Riding for the Disabled Group	2,540	2,800
Hazel Hill Trust	3,500	-
Headway Suffolk	-	3,500
Headway Thames Valley	-	3,500
Hearing Dogs for Deaf People	-	5,000
Hearts & Minds Ltd	3,910	-
Helen & Douglas House	-	3,500
Help Musicians UK	-	5,000
Henry Dancer Days	3,000	-
Hereford Gilbert & Sullivan Operatic Society	-	3,000
Heron Corn Mill (Beetham) Ltd	3,000	-
Hestercombe Gardens Trust	-	2,000
Carried forward	653,267	692,027

APPENDIX 2: GRANTS PAID (continued)

	Year Ended 31-Mar-22 £	Year Ended 31-Mar-21 £
Brought forward	653,267	692,027
Hijinx Theatre	3,500	-
Historic Chapels Trust	-	2,500
HMDT Music	3,500	-
Holborn Community	-	3,500
Home From Hospital Care	3,000	-
Honeypot Children's Charity	4,000	3,000
Hope House Children's Hospices, Shropshire	3,000	-
HorseBack UK	2,500	-
Horsely, Bookham & Leatherhead Riding for the Disabled	-	3,000
Horticultural Therapy Trust	4,000	-
Horton Chapel Arts & Heritage Society	3,000	-
Hospice of St. Francis, Berkhamstead	3,000	-
Hospice UK	15,000	15,000
Icon Theatre	-	3,400
Iford Arts	3,565	-
IJAD Dance	-	3,000
Imaginate	-	4,000
Imagine If Theatre Company	3,500	-
Imagine The Day	-	1,500
Independence at Home	-	4,000
Independent Arts	3,000	-
INK (From Pen to Performance)	4,000	-
Inspire Arts Trust	-	3,480
Institute of Integrated Systematic Therapy	-	3,000
Integrated Neurological Services	-	3,000
InterAct Stroke Support	-	4,000
International Guitar Foundation and Festivals	4,000	-
Involve Kent	-	3,500
Isabel Hospice, Hertfordshire	3,000	-
Jamie's Farm	3,500	-
Jewish Deaf Association	3,500	-
Jigsaw Trust	4,000	4,000
John Muir Trust	-	3,000
John Taylor Hospice, Birmingham	-	3,500
Joss Searchlight	-	2,500
JPC Community Farm	-	4,356
Jubilee Opera Trust	3,500	-
Jumbulance Trust	-	3,500
Katharine House Hospice, Stafford	3,000	3,000
Katharine Low Settlement	-	-
Katie Piper Foundation	3,110	3,000
Keats-Shelley Memorial Association	3,000	-
Keech Hospice Care, Bedfordshire	3,000	-
Kent Film Foundation	3,000	-
Kent Sinfonia	-	5,000
Keynote Opera	3,500	-
Kids Cancer Charity	2,200	-
Kids in Control	3,000	-
Kids Inspire	4,000	-
KidsOut	-	4,000
Kidz r Us	-	2,250
Kiln Theatre	3,500	-
Kirkwood Hospice, Huddersfield	3,000	-
Kisharon	3,000	-
Kneehigh Theatre Trust	-	3,000
Carried forward	770,642	793,013

APPENDIX 2: GRANTS PAID (continued)

	Year Ended 31-Mar-22 £	Year Ended 31-Mar-21 £
Brought forward	770,642	793,013
Koestler Trust	5,242	4,628
Lake District Foundation	4,000	-
Lake District Summer Music	3,936	-
Lakelands Hospice, Northamptonshire	-	3,000
Laughter Specialists Charitable Trust	4,500	-
Leeds Cares	-	2,570
Leeds International Pianoforte Competition	-	3,000
Leeds Vocal Movement	-	1,875
Leicestershire Chorale	-	3,000
Leigh Building Preservation Trust	3,500	-
Lennox Children's Cancer Fund	3,000	3,000
Levens Choir	-	-
Lewis-Manning Hospice Care, Dorset	3,000	-
Life Now Ltd	3,000	-
Lightbox	3,500	-
Lily Foundation	-	3,500
Lindengate	4,000	4,000
LinkAble Working Ltd	2,213	-
Listening Books	4,000	3,000
Literacy Pirates	3,000	-
Literature Works	-	3,700
Little Angel Theatre	4,000	5,000
Little Miracles CIO	3,380	-
Little Ouse Headwaters Project	4,000	-
Live Music Now (London and South East)	4,000	3,000
London Bel Canto Festival	-	4,700
London Handel Society Ltd	2,650	3,000
London Music Masters	-	4,000
London Philharmonic Orchestra	3,000	3,000
London Song Festival	2,000	1,500
London Symphony Orchestra Ltd	-	3,000
London Youth Choirs	5,000	5,000
Longborough Festival Opera	3,500	-
Longfield (Cotswold Care Hospice)	3,300	-
Lowry Centre Trust	4,000	3,000
Lullaby Trust	-	3,500
Lung Productions CIO	3,500	3,000
Lymphoma Action	-	3,000
Macclesfield Youth Brass Band	4,935	-
Macular Society	-	3,500
MADE4U IN ML2	3,500	-
Maggie Keswick Jencks Cancer Caring Trust	4,000	-
Mahogany Opera Group	-	5,000
Malvern Theatres Trust Ltd	2,500	-
Manaton & East Dartmoor Theatre	-	3,500
Manchester Camerata	3,500	-
Manchester Collective	3,500	-
Marian Consort	4,000	-
Marine Conservation Society	3,000	-
Mark Elie Dance Foundation	3,000	-
Marlborough Theatre Productions Ltd	3,500	-
Martha Trust	3,500	-
Martin House Children's Hospice, Wetherby	3,500	-
Martineau Gardens	3,000	-
Carried forward	905,298	884,986

APPENDIX 2: GRANTS PAID (continued)

	Year Ended 31-Mar-22 £	Year Ended 31-Mar-21 £
Brought forward	905,298	884,986
Martlets Hospice Limited, East Sussex	3,000	-
Mary Hare Foundation	-	3,000
Mary Stevens Hospice, Stourbridge	3,500	3,500
MASKK (Manor After School and Kids Klubs)	-	2,500
MATA Regal Theatre	-	3,500
Mayhew	-	3,000
Meath Trust: Supporting People with Epilepsy	-	3,000
Medical Detection Dogs	-	5,000
Medical Engineering Resource Unit	5,000	-
Melodians Steel Orchestra	-	5,000
Mid Wales Opera	3,500	-
Middlesex Association for the Blind	3,000	-
Midlands Arts Centre	3,000	-
Mid & South Essex Hospitals Charity	-	3,000
Milestones Trust	4,000	-
Milton Keynes Islamic Arts & Culture	4,000	-
MindFood	4,000	-
Miracles	-	5,000
Mitchell's Miracles Neuroblastoma Charity	-	3,000
Mobility Trust	3,000	3,000
Moira Anderson Foundation	4,000	-
Montgomeryshire Youth Theatre	4,000	3,000
Moonshine Theatre Co	-	3,000
Mornington Trust	-	3,000
Moor Trees	-	3,000
Motor Neurone Disease Association	-	3,000
Motus Dance	4,000	3,500
Mountview Academy of Theatre Arts	3,500	3,000
Mousetrap Theatre Projects	-	3,000
MS Society	3,000	-
Muddy Fork	-	5,000
Mudchute Association	3,500	-
Muirhead Outreach	-	3,000
Mulberry Centre	3,000	-
Multiple Sclerosis Trust	3,000	-
Multiple System Atrophy Trust	4,000	-
Music @ Malling Ltd	3,000	3,000
Music & Theatre for All	5,000	-
Music in Detention	-	3,000
Music of Life Foundation	-	3,500
Music24	3,500	3,500
Musicians Benevolent Fund	5,000	-
MusicLinks Ltd	3,500	-
Mustard Seed Autism	-	3,000
Mustard Tree	4,000	-
My Life Films Ltd	4,000	-
MyTIME	-	5,000
Nash Concert Society Trust	-	2,500
National Association of Laryngectomy Clubs	3,000	-
National Centre for Writing	3,500	-
National Children's Orchestra of GB	-	3,000
National Gallery	4,500	-
National Maritime Museum	-	3,500
National Museum of Wales	-	3,750
National Rheumatoid Arthritis Society	2,500	2,500
Carried forward	1,014,798	996,236

APPENDIX 2: GRANTS PAID (continued)

	Year Ended 31-Mar-22 £	Year Ended 31-Mar-21 £
Brought forward	1,014,798	996,236
National Student Drama Festival	4,000	3,500
National Youth Ballet of GB	-	3,500
National Youth Choir of Scotland	4,000	3,000
National Youth Jazz Collective	-	4,800
Neuromuscular Centre	-	3,500
New Adventures Charity	-	3,500
New Diorama	3,500	-
New English Ballet Theatre	4,000	3,500
Newhampton Arts Centre	3,000	-
Newlife the Charity for Disabled Children	4,000	-
NICE - Centre for Movement Disorders	3,500	-
Noah's Ark Children's Hospice, Barnet	3,000	-
Nordoff-Robbins Music Therapy	3,000	2,500
Norfolk Carers Support/Norfolk Family Carers	3,500	-
Norfolk Deaf Association	-	3,000
Norfolk Hospice	4,565	-
North Argyll Eventide	-	3,500
North Devon Hospice	-	3,500
North Tyneside Disability Forum	-	1,560
North Yorkshire Music	-	5,000
Northamptonshire Music and Performing Arts Trust	4,000	-
Northern Ballet	4,500	4,243
Northern Opera Group	3,000	-
Northern Shape	4,000	-
Norwich Puppet Theatre	-	3,000
Nottingham Music Service	3,000	-
Nucleo Project	3,500	-
Oakhaven Hospice Trust, Hampshire	3,500	-
Oakleaf Enterprise	-	3,000
Odd Arts	-	3,000
OHMI (One Handed Musical Instrument) Trust	-	3,000
Old Vic Theatre Trust 2000	3,000	-
Olympias Music Foundation	-	3,000
Only Connect UK	3,000	-
Open Door Charity	-	3,500
OpenUp Music	-	3,500
Opera Brava	5,000	5,000
Opera Circus	3,000	-
Opera Holland Park	4,000	-
Opera North Limited	-	4,000
Opera Prelude	3,500	-
ORA Choir	3,000	3,000
Orchard Project (Cause) Ltd.	3,500	3,000
Orchestras for All	5,000	3,500
Orchestras Live	-	3,000
Orchestra's of St John's	-	3,000
Organisation for New Music and Sound	-	3,000
Orpheus Centre Trust	4,000	5,000
Our Special Friends	4,000	-
Ouseburn Farm Charity Ltd	3,000	-
Outward Bound Trust	-	3,188
Ovacome	4,000	-
Over the Wall	4,000	5,000
Oxford Conservation Volunteers	-	300
Oxford Hospitals Charity	4,000	-
Carried forward	1,136,363	1,107,827

APPENDIX 2: GRANTS PAID (continued)

	Year Ended 31-Mar-22 £	Year Ended 31-Mar-21 £
Brought forward	1,136,363	1,107,827
Oxford Leader Ltd	3,000	-
Oxford Philharmonic Orchestra Trust	4,000	-
Oxford Playhouse Trust	3,000	-
Oxfordshire Association for the Blind	-	3,000
PACE Centre	-	3,720
Paces Sheffield	-	4,000
Paddington Farm Trust	4,000	-
Pakistan Welfare Association, Slough	-	3,500
Park Theatre	4,000	-
Parkinsons Disease Society of the United Kingdom	3,000	3,000
Paul Strickland Scanner Centre	-	860
PBC Foundation (UK) Ltd	2,500	2,500
Peer Productions	4,000	4,000
Pegasus Opera Company	-	4,000
Pegasus Theatre Trust	3,000	-
Pembroke Coast National Park	-	3,000
Pentabus Arts Ltd	-	3,000
People's Orchestra	2,880	-
Perkisound CIO	-	4,000
Perth Autism Support	-	3,500
Peter Pan Centre for Children with Special Needs	4,388	3,000
Philharmonia Ltd	3,000	-
Pilgrims Hospices in East Kent	1,569	-
Pituitary Foundation	4,000	-
Plantlife International	3,500	-
Plasma of Hope	-	3,000
Play Adventures & Community Enrichment (PACE)	-	4,000
Play for Progress	-	3,500
Play Midlothian	3,500	-
Playlist for Life	4,000	3,000
Polka Children's Theatre Limited	4,000	-
Polycystic Kidney Disease Charity	-	3,000
Prime Cut Productions	5,000	-
Prince & Princess of Wales Hospice, Glasgow	3,000	2,500
Princess Alice Hospice, Surrey	3,500	-
Prodigal Arts	-	1,500
Prospects Foundation	3,500	-
Prostate Cancer UK	4,000	-
Punchdrunk	-	2,500
Pursuing Independent Paths	3,000	-
Pushkin Trust	2,300	-
Queen Alexandra College, Birmingham	4,149	1,369
Queen Elizabeth Scholarship Trust	10,000	5,000
Rabble Theatre	3,500	-
Rainbow Hub North West Ltd.	-	3,000
Reach Learning Disability	-	3,500
Reach Volunteering	-	3,000
Readathon (Read for Good)	4,000	3,500
Red Squirrel Survival Trust	-	4,000
Redthread Youth Ltd	-	3,000
RE-engage	-	2,500
Remap 2010	3,500	-
Rennie Grove Hospice Care, Hertfordshire	3,902	-
Response Organisation	-	3,000
Retina UK	4,000	3,000
Carried forward	1,255,051	1,210,776

APPENDIX 2: GRANTS PAID (continued)

	Year Ended 31-Mar-22 £	Year Ended 31-Mar-21 £
Brought forward	1,255,051	1,210,776
Revitalise Respite Holidays	3,850	-
Rework Ltd	2,400	-
RicNic	4,000	3,000
Rimrose Valley Friends	3,500	-
Rockinghorse Children's Charity	-	2,939
Rodolfus Foundation Ltd.	3,500	-
Ronald McDonald House Charities	4,000	-
Rose Road Association	4,000	-
Rosemary Foundation Limited	-	3,000
Roundabout, Croydon	-	3,000
Roundabout Ltd., Sheffield	-	5,000
Rowans Hospice, Waterlooville	-	1,000
Rowcroft Hospice, Torquay	-	3,500
Royal Academy of Dramatic Art	10,000	10,000
Royal Academy of Music	10,000	10,000
Royal Ballet School	-	5,000
Royal Botanic Garden Edinburgh	-	4,600
Royal College of Music	3,500	5,000
Royal Court Liverpool Trust Ltd	5,050	-
Royal Drawing School	-	5,000
Royal Horticultural Society	10,000	4,683
Royal Hospital for Neuro-disability	-	3,000
Royal Marsden Cancer Charity	4,000	-
Royal National College for the Blind	3,500	-
Royal National Theatre	3,000	-
Royal Northern College of Music	10,000	10,000
Royal Opera House Covent Garden Foundation	3,000	-
Royal Philharmonic Orchestra	4,000	3,500
Royal School of Needlework	-	4,500
Royal Scottish National Orchestra Society Ltd	2,500	2,500
Royal Society for Blind Children	-	3,500
Royal Society for the Blind	-	3,500
Royal Star & Garter Homes	3,500	-
Royal Trinity Hospice, London	-	3,500
Royal Welsh College of Music	-	4,800
Ruddi's Retreat/Gwennie's Getaways	3,500	-
Rude Mechanical Theatre	-	1,000
S Pinter Youth Project	3,000	-
Saint Catherine's Hospice Trust, Scarborough	3,000	3,000
SameYou	3,000	-
Samling Institute for Young Artists	4,000	-
SANDS (Stillbirth and Neonatal Death Charity)	-	3,500
School Ground Sounds	3,000	3,000
Scleroderma & Raynauds UK	-	3,000
Scotswood Natural Community Garden	-	3,500
Scottish Book Trust	-	3,500
Scottish Chamber Orchestra Limited	3,000	-
Scottish Huntington's Association	3,000	-
Scottish Youth Dance	3,000	-
Second Chance Children's Charity	3,500	-
SELFA (Skipton Extended Learning for All)	-	2,920
Sense: The National Deafblind and Rubella Association	5,000	-
SERVE	4,000	2,500
Severn Arts	-	3,500
Severndroog Castle Building	-	3,500
Carried forward	1,393,351	1,348,218

APPENDIX 2: GRANTS PAID (continued)

	Year Ended 31-Mar-22 £	Year Ended 31-Mar-21 £
Brought forward	1,393,351	1,348,218
Shakespeare Link	-	1,800
Shaldon Festival	1,000	-
Shaper/Caper	-	3,000
Share Community	-	3,500
Shared Earth Trust	4,000	4,000
Shiva Trust	-	4,000
Sick Children's Trust	-	3,500
Side by Side	-	4,000
SignHealth	-	3,000
Sinfonia Cymru	-	3,000
Sinfonietta Productions Ltd	4,000	-
Sing Inside	-	1,000
Sirona Therapeutic Horsemanship CIO	-	5,000
Skylight Circus in Education	-	3,000
SNAP (Special Needs and Parents)	-	3,500
Snibston and Desford Colliery Bands	2,000	-
Society for Horticultural Therapy (TA Thrive)	4,000	-
Society for Mucopolysaccharide Diseases	3,500	-
Soho Theatre Company	-	3,000
Sound Connections	-	5,000
Soundabout	3,000	-
SoundCafe Leicester	-	4,821
Soundmix	4,000	-
Soundroom Community Music Charity	-	3,350
Soundwell Music Therapy Trust	3,000	-
South Bucks Hospice	4,000	-
South East Dance Limited	3,000	-
Southbank Sinfonia	3,000	1,500
Spark Arts for Children	3,000	-
Special Stars Foundation	2,000	-
Species Recovery Trust	-	-
Spinal Injuries Association	-	3,000
Spinal Muscular Atrophy UK	3,000	-
Spinning Wheel Ltd.	-	4,000
Spitalfields Festival Ltd	4,000	4,000
Spitz Charitable Trust	3,000	2,500
SPLASH - Special Play and Leisure After School Hours	3,500	4,000
Splash Wiltshire / Community First	-	4,490
SS John & Elizabeth Charity	3,000	-
St. Ann's Hospice, Staffordshire	4,000	-
St. Barnabas House, Worthing	4,000	3,500
St. Catherine's Hospice, Preston	-	3,000
St. Clare West Essex Hospice Care Trust	4,000	-
St. Davids Hospice Care, Newport	1,483	-
St. Columba's Hospice, Edinburgh	-	3,500
St. Elizabeth Hospice, Suffolk	3,000	-
St. Georges Bristol	3,500	-
St. Georges Hospital Charity	3,500	-
St. Joseph's Hospice Association	3,500	-
St. Joseph's Hospice, Hackney	4,000	1,050
St. Kentigern Hospice, Denbighshire	3,000	-
St. Leonard's Hospice, York	3,000	-
St. Luke's Hospice (Harrow and Brent) Ltd	-	3,500
St. Luke's Hospital, Oxford	3,000	3,000
St. Margaret's Hospice, Somerset	3,500	3,500
Carried forward	1,496,834	1,451,229

APPENDIX 2: GRANTS PAID (continued)

	Year Ended 31-Mar-22 £	Year Ended 31-Mar-21 £
Brought forward	1,496,834	1,451,229
St Michael's Hospice (incorporating the Freda Pearce Foundation), Hereford	4,000	-
St Michael's Hospice, North Hampshire	4,000	-
St. Mungo's	-	4,000
St. Oswald's Hospice Ltd, Newcastle upon Tyne	3,000	-
St. Peter and St. James Charitable Trust, Lewes	-	3,500
St. Richard's Hospice Foundation, Worcester	3,500	3,500
St Wilfrid's Centre	3,680	-
St. Wilfred's Hospice, Eastbourne	3,000	3,500
STTA (St. Ann's Allotments)	3,500	-
Stannington Brass Band	-	2,000
Starlight Children's Foundation	3,000	-
Steel City Choristers	3,500	-
Steps Charity	-	3,500
Sterts Arts and Environmental Centre	-	3,000
Stick 'n' Step	-	3,000
Stockport Progress and Recovery Centre	3,500	-
Strathcarron Hospice, Scottish Highlands	-	3,500
Streetwise Opera	-	5,000
Stretford Children's Theatre	-	4,800
Strongbones Children's Charitable Trust	4,500	-
Stroud Valleys Project	3,500	-
Student Hubs	-	3,000
Studio 3 Arts	-	3,500
Studio Wayne McGregor	3,000	-
Sudbury Neighbourhood Centre	1,200	-
Sue Ryder	4,000	-
Suffolk Philharmonic Orchestra	-	3,640
Sunbeams Play	-	4,000
Support Arts Gardening Education (SAGE)	-	3,000
Support After Murder & Manslaughter	4,000	-
Support Dogs Limited	4,000	-
Surfers Against Sewage	-	2,500
Swansea Music Art Digital	2,500	-
Sydenham Garden	3,500	-
Syncope Trust	-	3,000
Take A Part CIO	-	3,000
Talawa Theatre Company	-	3,000
Tara Arts Group Ltd	4,500	-
Target Ovarian Cancer	2,000	3,000
Teapot Trust	-	3,500
Teeside Hospice	-	3,000
Temple Trust	-	3,000
Tenovus	-	3,000
Theatre Development Trust	-	4,000
Theatre Royal Haymarket Masterclass Trust	-	3,000
Theatre Royal (Plymouth) Limited	1,500	-
Theatre Shed Ltd	-	5,000
Thetford Voices	1,750	-
Thickskin Theatre	3,500	3,500
Third Angel	3,000	-
Three Choirs Festival Association Ltd	3,500	-
Three Spires Singers	-	2,400
Tiny Tim's Children's Centre	-	3,000
Tobacco Factory Arts Trust	3,500	-
Tommy's	-	5,000
Carried forward	1,584,964	1,560,569

APPENDIX 2: GRANTS PAID (continued)

	Year Ended 31-Mar-22 £	Year Ended 31-Mar-21 £
Brought forward	1,584,964	1,560,569
Tortoise in a Nutshell	3,000	-
Totnes Caring Ltd	3,000	-
Tourette Syndrome (UK) Association	3,500	3,000
Towersey Foundation	4,000	-
Transform Theatre	-	3,000
Traverse Theatre (Scotland) Ltd	4,000	-
Trees for Cities	4,000	3,500
Trinity Community Arts	-	-
Trussell Trust	-	10,000
Trust Links	-	4,000
Trust Music	3,000	-
Tuberous Sclerosis Association	4,000	-
Tunnell Trust	4,000	-
Tuppenny Barn Education	4,000	-
Twisting Ducks Theatre Company CIO	5,898	-
Two Moors Festival	3,000	3,000
Ty Gobaith Children's Hospice, Oswestry	-	3,500
Ty Hafan: The Children's Hospice in Wales	3,500	3,000
Tyne Rivers Trust	4,000	4,290
UK Young Artists	-	4,000
Ulster Orchestra Society Ltd	-	4,018
Ulster Touring Opera Ltd	4,000	-
Ulster Youth Orchestra	3,500	-
Union Chapel Project	-	3,000
Up n Away	-	3,000
Uplands Enterprise Trust	4,000	-
Us in a Bus	4,000	-
Venture Trust	4,000	-
Veterans Farm-able Foundation	-	3,000
Veterans' Growth	4,000	-
Veterans Outdoors	4,000	-
Vietnamese Mental Health Services	3,000	-
Voices Foundation	-	3,000
Wac Arts	-	3,000
Wag & Company North East Friendship Dogs	-	4,576
Wakefield Hospice	3,000	3,500
Wallace and Gromit's Children's Foundation	3,000	-
Wallace Collection	4,000	4,000
Walton Lea Partnership	-	3,900
Walworth Garden	3,500	-
Warwickshire Association for the Blind	4,180	-
Warwickshire Social Inclusion	-	3,000
Warwickshire Young Carers	3,500	-
Watermill Theatre Ltd	-	3,000
Waters Edge Arts / Edge Theatre & Arts Centre	3,500	-
Wayward Productions Ltd	-	4,000
We Are GROW	4,500	-
Welsh Chamber Orchestra	-	5,000
Welsh Dance Theatre Trust Ltd	4,000	-
Welsh National Opera Limited	3,000	-
Wessex Cancer Trust	-	2,898
Wessex Children's Hospice Trust	4,000	-
Wessex Heritage Trust	-	3,500
West Berkshire Mencap	-	5,000
Westwood 2015 Ltd	3,600	-
Carried forward	1,712,142	1,663,251

APPENDIX 2: GRANTS PAID (continued)

	Year Ended 31-Mar-22	Year Ended 31-Mar-21
	£	£
Brought forward	1,712,142	1,663,251
Wey & Arun Canal Trust	-	4,000
Weybridge Men's Shed	2,000	3,500
Whirlow Hall Farm Trust Ltd	4,000	3,000
Whizz-Kidz	-	5,000
Wilderness Trust	3,500	-
Wildfowl & Wetland Trust	4,000	4,000
Wildlife Trust Avon	3,500	4,000
Wildlife Trust Beds, Cambs & Northants	4,000	-
Wildlife Trust Derbyshire	3,975	-
Wildlife Trust Devon	4,000	-
Wildlife Trust Durham	4,000	-
Wildlife Trust Kent	-	3,585
Wildlife Trust Nottinghamshire	-	4,000
Wildlife Trust Scotland	3,500	-
Wildlife Trust Suffolk	-	3,000
Wiltshire Treehouse	-	1,500
Wiltons Music Hall	2,250	-
Winchester Hospice	-	4,344
Winchester Hospice Fundraising Charity	3,500	-
Winston's Wish	-	3,000
Woking & Sam Beare Hospice	3,000	3,500
Wolverhampton Youth Zone	3,000	-
Woodland Centre Trust (Camp Mohawk)	4,000	3,500
Woodland Trust	3,500	-
Woodlarks Camp Site	-	4,000
Woodmeadow Trust	3,500	-
World Heat Beat Music Academy Ltd.	4,849	-
Wycombe Youth Action	-	2,606
Wye and Usk Foundation	4,000	4,000
Wyldwood Arts	-	3,500
Wysing Art Centre	-	3,700
XLP	5,000	-
Ydance	-	3,010
Yorkshire Dales Millennium Trust	4,000	4,000
Yorkshire's Brain Tumour Charity	-	3,000
Young at Art Ltd	-	4,339
Young and Inspired	3,500	-
Young Epilepsy	-	3,000
Young Lewisham Project	3,500	5,000
Young Music Makers of Dyfed	-	3,000
Young Musicians' Symphony Orchestra	-	3,000
Young People First	-	3,500
Young Urban Arts Foundation	-	3,139
Youth Adventure Trust	-	5,000
Youth Hostel Association	-	4,230
Youth Music Centre	-	5,000
Zion Arts Centre	-	3,500
	1,796,216	1,783,704