



Parish Nursing Ministries UK

TRUSTEES & DIRECTORS ANNUAL REPORT & FINANCIAL STATEMENTS

For the year ending 31st March 2021



Company number 5451295

Charity number 1111680

Registered Address. The Hope Centre, 26 North Street, Peterborough, PE1 2RA



Contents

PNMUK Reference and administrative information	- 3 -
Introduction from the Chair and Chief Executive	- 4 -
Trustees Annual Report 2020/21	- 6 -
Independent Examiner's Report and Financial statements	- 15 -

PNMUK Reference and administrative information

Charity details:

Charity name:	Parish Nursing Ministries UK (PNMUK)
Registered Charity number	1111680
Country of Registration	England and Wales
Registered Company number	5451295
Country of Incorporation	United Kingdom
Registered Office	The Hope Centre, 26 North Street, Peterborough, PE1 2RA
Website	www.parishnursing.org.uk
Twitter	@parishnursinguk
Facebook	@parishnursingministriesuknational

Trustees:

Debra Chand	Chair
Jonathan Edwards	Vice-chair
Steve Fouch	
Joanne Morse	
Amanda Allchorn	Appointed 27 th February 2021

Chief Executive Officer:

Sue Bretherick	Appointed April 2020
----------------	----------------------

Independent Examiner:

Kerry Hilliard ACA FCCA CTA for and on behalf of:
Stephenson Smart & Co
36 Tyndall Court
Commerce Road
Lynchwood
Peterborough
PE2 6LR

Bankers:

Lloyds Bank

Introduction from the Chair and Chief Executive

Over this pandemic year, parish nurses have bravely reached out to communities in need. From urban doorsteps to village settings and coastal communities, their presence has brought physical, social, and spiritual care to local people.

As a Christian mission, Parish Nursing Ministries UK works to inspire, set up, equip, and support parish nursing services in churches and faith settings countrywide. We have had to respond swiftly to the challenge of operating during a pandemic. Meeting virtually, the trustees assessed the many risks and issues arising, including ensuring the safety of nurses, tackling the negative impact on our finances, and responding strategically and lovingly in a hurting world.

The team rapidly transformed our support and training programmes online, ensuring the same high quality that enables parish nurses to feel confident and equipped in their roles. While the annual conference had to be deferred as lockdowns restricted meeting in person, we introduced mid-year virtual events, bringing churches and nurses throughout the UK to pray together and celebrate God's faithfulness.

God has indeed been faithful. We have felt buoyed up even when the going has been very tough. We have received timely donations, gifts, and prayers to meet need, and though disrupted, many services have adapted and even become stronger.

Supported by PNMUK, churches across the UK have reached out through their parish nurses to bring spiritual healthcare to people in the local community. Together, we have given health advice and a warm welcome to asylum seekers and refugees, delivered drug and alcohol counselling, reduced, or prevented chronic or life-threatening health conditions, supported carers and people with dementia, and consoled people at the end of life.

We've reached out to ex-prisoners living on the streets, anxious young mums struggling to pay their bills, and clinically vulnerable residents isolated at home. We've advised on diet, exercise and weight control, de-mystified medical terminology, reassured enquirers about vaccines, and sign-posted to helpful support.

And we've talked to people about faith and God, comforted families through pain and loss, and prayed with many who are new to faith, struggling with faith, or in their last days.

This year has shown us how interconnected our health and wellbeing is with everyday life. Across diverse communities, we've seen how isolation and loneliness, food poverty, digital exclusion, poor housing, and economic deprivation can harm our health and life chances. Even advancing telehealth, with potential to empower patients and resolve some problems early, has left many feeling even more excluded. We long to meet face-to-face, to feel heard and supported, to be human together.

The pandemic leaves behind broken lives in need of repair physically, mentally, and spiritually. In offering holistic healthcare, parish nursing has a vital role to play in helping to meet these needs and the huge gaps left as the NHS struggles to cope with demand.

At the heart of this response, we will need to inspire more churches, to recruit and train more nurses, and set up more services, so that every community can be blessed by a Parish Nurse. This is the challenge before us, in Christ's name.

Debra Chand (Chair of Trustees) and Sue Bretherick (Chief Executive)

PNMUK is a wonderful organisation of nurses who work within their own parishes, to support sick and vulnerable patients, not just medically, but emotionally - giving care and time and spiritual love to all they serve.

I feel honoured to be a patron of PNMUK because the work the nurses do is so worthwhile. I have had the opportunity to meet with many of them to hear the stories of many of those they have helped in unique, loving, and creative ways, which makes them an invaluable part of the communities they serve.

Fiona Castle, Patron, PNMUK

'I have followed the development of Parish Nurses in the UK with admiration and gratitude. Parish Nurses offer an invaluable ministry which provides pastoral support and spiritual encouragement to a growing number of people with a wide variety of needs. They have my enthusiastic support.'

Bishop James Newcombe, Bishop of Carlisle, Lead for the Lords on health and social care (House of Lords)

Trustees Annual Report 2020/21

Our charitable objects:

The objects, as set out in the Memorandum of Association are:

- A) the preservation and protection of good health among communities throughout the UK by the provision of assistance in funding the costs and training of parish nurses and by assisting in the education and training of said parish nurses.
- B) the advancement of the Christian faith throughout the UK by the promotion of parish nursing and assisting in the establishment and training of parish nurse initiatives.
- C) to support specific overseas parish nursing initiatives

Activities

Education of qualified registered nurses to enable them to become parish nurses and work with their church to provide health care (physical, mental, and spiritual), advice and advocacy to their local community. PNMUK offers ongoing support for 'in post' nurses and their appointing churches, as well as continuing education for parish nurses - training days and an annual symposium.

The trustees have had due regard to the Charities Commission's guidance on public benefit at all relevant times.

Our Vision and Mission:

PNMUK exists as a central UK wide resource organisation, equipping and supporting parish nursing services across the UK. Our vision is to equip and support churches and Christian organisations to practically establish and run an effective parish nursing health ministry, as an expression of care and missional outreach to their local communities.

The charity seeks to envision and work alongside churches and Christian organisations in every region in a productive partnership, to help establish teams of parish nurses, providing high quality, sustainable, parish nursing services to their congregations and local communities.

We aim to enable these services to be operating as a recognised and valued part of the local community, making a measurable difference to the wholistic health and wellbeing of individuals and communities.

In so doing, our hope is for parish nursing to be a viable expression of the mission of the church or Christian organisation, to bring God's love to a hurting world.

Activities and Achievements over the past year.

We supported **95** parish nurses working within **81** parish nursing services across the UK in 2020/21.

We trained **20** new parish nurses in 2020/21.

We accredited **5** parish nursing services in 2020/21.

We supported **5** new churches to set up a service on the pathway to accreditation next year.

We partnered with **81** churches and Christian organisations in 2020/21.

“It could be talking through a hospital letter or talking to GP’s about safeguarding concerns. Or sitting with someone in the last stages of life, knowing that you are in no hurry to leave. Or listening to a young mum who is struggling with sleepless nights, paying bills, and trying to find herself through it all... With so many isolated, I routinely called and visited where possible to help people to feel part of a community, to know that they are not alone. I spent a lot of time talking about the vaccines, helping to dispel the rumours around them. I also, when asked, talked to people about faith and God, praying with people in their last days of life.”

Sarah Male, Parish Nurse, St Goran Cornwall

Changes to the Board of Trustees

Debra Chand was appointed Chair of the Board of Trustees in April 2020. Debra has been a trustee of PNMUK since 2014 and with a background in charity management and leadership brings renewed energy to see the work of PNMUK enhanced and expanded over the coming years.

Amanda Allchorn was appointed to the Board in Feb 2021, with a background in Corporate Social Responsibility, National Church Communications Leadership, and other senior charity leadership roles.

The Board of Trustees stepped up to a new level of activity and engagement, specifically to mitigate risk relating to the change of senior leadership as well as financial risk as the pandemic swept in.

Changes to the leadership team

The long-planned change in the senior leadership of PNMUK went ahead, despite the pandemic in April 2020. The decision to proceed with and establish the new CEO and Director of Nursing roles was a strategic decision and was not lightly implemented. Due consideration was given by the Trustees to all options in terms of the timing of this transition.

Sue Bretherick took up post as new CEO, with a primary focus to work alongside the Board strategically to ensure the integrity and continuity of vision and to prepare PNMUK for a step change in growth and reach. Sue brings with her a background in grassroots charity development, charity management and senior charity leadership.

Anne Taylor joined as our new Director of Nursing. Anne is a Queen's Nurse, with experience in District Nursing and briefly as a PCG/PCT Board member. Anne maintains her role with the Open University as a Practice Tutor and Academic Assessor. She is leading on maintaining up to date professional advice and support, ensuring continued high standards for our parish nurses in their varied roles, as well as working alongside our Regional Nurse Coordinators to resource and support our church partners. Anne has been well placed to be responsive and supportive to the immediate challenges that parish nurses have faced within this pandemic.

Within the operational team, we welcomed three new Regional Nurse Coordinators, thereby maintaining capacity to support our partners over course of the year. An exciting milestone was achieved in appointing the first PNMUK Regional Nurse Coordinator for Northern Ireland, with the hope that we will see growth in this part of the UK.

We are also thrilled to have piloted a part-time dedicated Lead Educator role, thereby enhancing both the delivery and development of our education offer. Additional sessional educators have also joined the educator team, all of whom have now gained the Westberg Educator qualification.

COVID19 impact

The significant focus on health, combined with an increase in people searching for greater meaning in their lives amidst the anxieties of the pandemic and recovery, has acted as a timely reminder of the wholistic work of parish nursing, and that parish nurses have a vital role to play in the years ahead. Parish nurses across the UK have been a lifeline for many in 2020, as many stories from the frontline testify. During the trauma of this historic time, the nursing profession has been rightly celebrated around the entire world. Wholistic needs across our communities rose dramatically in 2020/21, and nurses across society have tirelessly served and cared for their communities, sometimes to their own detriment. Against this backdrop, the beauty of what our parish nurses offer: **the intentional care of the mind, body, soul, and spirit**, has proved to 'go the distance'.

Many of our church partners leant on the expertise of their parish nurses, to advise and implement ever changing guidance and rules around the restrictions caused by Covid19, that impacted on church life, meetings, and buildings. Throughout, PNMUK (national office) offered continuous, focussed up to date professional guidance and signposting to parish nurses. In all, we maintained a vital, robust level of equipping and support to both parish nurses and our church/Christian organisation partners.

The Board received regular Risk Register updates, with specific focus on COVID-19 related risks to the charity, throughout the course of the year. The decision to not furlough any staff (as a measure to mitigate financial risk) under the government retention scheme was made in line with the critical level of the workload and need to offer continuous support to our partners and nurses at the frontline. Risk of disengagement with our beneficiaries was mitigated by increased use of digital communications and social media. Risk to core functions, staff safety and public safety were all mitigated by adapting working patterns to remote working using digital platforms and implementing ongoing guidance within the legal pandemic restrictions.

How did lockdown affect parish nursing services? “Well, our first thought was, ‘what do we do now?’ For those first couple of weeks when we were all figuring out how to continue our work, I was focusing more on the needs of our wider congregation - many of whom are elderly so were isolating. There were a lot of phone call check ins and prayer runs for the people who live in the parish and the services and agencies supporting them.... Another example is a gentleman who has been on the streets for a while and has a really bad leg ulcer. I spent time trying to encourage him to access support and get his leg examined with a view to getting some treatment. It's all about finding a way into conversation and keep offering the support until the person accepts it. I passed on the man's details to the city centre PCSOs who became involved with him, and we managed to get him to access support - it's that joined up thinking and strong links between services that are having a real impact on the streets. I'm just a small part of the picture - there's so much great work going on, every single day.”

Michaela Suckling, Parish Nurse, Sheffield.

Annual Symposium

Due to Government restrictions, we were unable to hold the residential PNMUK Annual Symposium in March 2021 but delivered an online event instead. This attracted a higher-than-normal attendance (9% increase on the 2020 Symposium, and 18% increase on the 2019 Symposium), and significantly boosted morale amongst parish nurses and associates attending. The highlight of the 2-day event, was the sharing of first-hand stories from parish nurses across the UK, of their work and impact under the pandemic. As usual, the Board of Trustees all engaged as active participants in the event, ensuring direct contact with our beneficiaries and partners.

Resources

The pandemic has hit us hard. Our financial resources were in a marginal, but steady decline over-the year, and we are so grateful for the contributions from our church partners, monthly donors and one-off donations which remained our main source of income. No new streams of income were accessed this year, but the Board and Chief Executive have an ambitious goal of diversifying income streams over the next 3 financial years. Expenditure (specifically travel costs) declined significantly in line with lockdown restrictions, thereby keeping finances steady and ensuring we were well placed to action a fundraising strategy in the new financial year.

Crucially, we pressed ahead with a timely digital overhaul in April and May 2020, as already planned prior to the pandemic and funded by the Hinchley Charitable Trust. An updated website, new CRM system and moving to a paperless system all placed us in a strong position to maintain our core business over the year. Specifics include:

- The Preparation for Parish Nursing Practice course, which certificates a nurse in parish nursing, was adapted to an online platform and delivered to full capacity in April and November 2020.
- All Communities of Practice for the parish nurses, offering crucial peer and professional support as facilitated by the Regional Nurse Coordinators, were delivered via Zoom; attendance was notably higher over the course of the year as these proved easier to access and enjoyed overwhelming success.

The charity was therefore able to maintain and key support for parish nursing services, as well as equip new parish nurses, in preparation for when restrictions ease, thereby ensuring individuals and communities benefitting from parish nursing across the UK remain at the heart of all we do.

Five parish nursing services requested financial support to continue to offer their services over the year. Financial support for services that meet the Trustees requirements - these being: having a clear and measurable impact whilst aiming to achieve long-term sustainability in raising their own funds - was taken from restricted funds donated by the Mercer Charitable Foundation as well as St Paul's Camberley.

Financial Review

Finance remained a background challenge in 2020/21, having been highlighted pre-pandemic as a key area of development for the next 3 years. However, the Covid-19 pandemic resulted in the critical element of this priority being addressed by a decrease in operational expenditure thereby stabilizing the decline in finances over the financial year.

The trustees continued to monitor the financial position over the course of the year. Measures introduced by the UK Government under Covid, including the Govt furlough scheme were considered but deemed not suitable for application given the pressing capacity requirements of the charity. In addition, the CEO submitted a small number of grant applications to Charitable Trusts and Foundations to start the process of diversifying income streams for the next financial year.

Our financial position was stabilized by a grant from a private donor, as well as small ongoing income from our education offer and our online parish nursing event.

Financial Review (continued)

We also received several ad hoc and regular donations from a small number of Churches and personal donors and supporter.

We are grateful to our grant funders and to all our donors for their consistent financial support throughout a tough year, without which, we could not continue our work.

Income

In 2020/21 our income came from:

- Personal and Church donations
- Grant funding – carried over
- Annual Partnership Contributions
- Education and other ad hoc income

How We Spent It

The main areas of expenditure are as follows:

- Staff Salaries
- Overheads (office, equipment etc.)
- IT inputs and development

Summary of Our Financial Position

We ended the year with a Total income of £92,932 and expenditure £106,080 with total reserves carried forward of £110,525.

Reserves Policy

Our reserves policy was reviewed by Trustees in year. They confirmed that we would hold sufficient reserves to ensure our recurrent outgoings (salaries and rent) for a period of three months and any creditors can be paid. Our total reserves should not fall below £50,000. At the year-end unrestricted reserves were £105,705 and restricted reserves were £4,820.

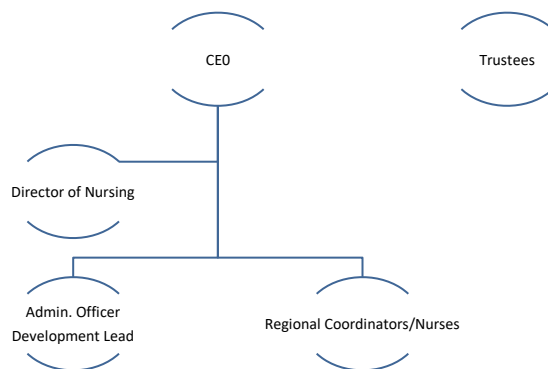
Financial Statements

Our financial accounts and statements can be found from page 14 of this report.

Structure and Management

We remain a small team with a flat management structure that enables direct lines of communication and engagement between the central team; the external consultants (finance and IT) and the operational regional nursing team. Lines of managerial responsibility are through to the CEO and lines of professional accountability for staff that are registered nurses or midwives are through the Director of Nursing.

The structure is represented below.



Looking forward

2020/21 leant itself to review and strengthening. Key areas of development were identified and actioned as follows:

- To develop the governance of the organisation by furthering the capacity and expertise on the Board through recruiting new Trustees to enhance and add to the current skill sets represented at governance level.
- To improve on our accessibility to church and Christian organisation partners through better engagement platforms and a more streamlined process of partnering with PNMUK. We also hope to attract more ecumenical diversity in this way.
- To continue to work towards financial sustainability by diversifying income streams as well as increasing our financial resources to support change and growth
- To improve our data collection and collation to further evidence the impact of parish nursing on the ground across the UK to share this with our partners and stakeholders

We remain on a trajectory of new ways of working.

PNMUK is committed to boldly maximising the new opportunities before us. We will continue to ensure that personal engagement and relationship through PNMUK Regional Nurse Coordinators and the central team, is at the heart of all we do. This will mean leveraging a blended model of delivery going forward.

The remote working infrastructure that was already in place, supported by the central Peterborough office base, has leant itself well to this season. The goal is now to embed good practice learned over the past year and plug the gaps that have opened within the pandemic, to provide a model that will support healthy growth in the next 3 years. base, has leant itself well to this season. The goal is now to embed good practice learned over the past year and plug the gaps that have opened within the pandemic, to provide a model that will support healthy growth in the next 3 years.

The pandemic leaves behind broken lives in need of repair physically, mentally, and spiritually. parish nursing, as a wholistic ministry of health underpinned by spiritual care, has a vital role to play, alongside other ministries within churches, in addressing loneliness, those isolated by old age or disability or lifestyle pressures, the rising mental health crisis and the huge gaps left as the NHS struggles to cope with demand.

Despite the challenges of the year, and building firmly on our rich legacy, we have redoubled our efforts, positioned ourselves and adapted our working practices, to ensure that we have been available, offering a heightened and flexible level of support to our partners throughout.

The Christian community has much to give, and by partnering with churches and Christian organisations, Parish Nursing Ministries UK is committed to reinforcing and enlarging our role as a central resource in supporting and equipping in the years ahead to reach more communities through Parish Nursing across the UK.

“Just yesterday, a family who had run out of food rang to ask if we could provide a food parcel for them. After liaising with the council’s chairperson, we managed to secure a parcel for them and have it delivered it within three hours. Such joint efforts have been invaluable... Villagers ring for information or, knowing they will be welcomed, just come to the door for help or advice. They make contact on behalf of a family or neighbours who would welcome a visit. And they turn to the service for comfort in times of loss and despair. Although the focus of our work is in and around Hensall, we also support some people across the wider parish of Great Snaith who have approached us for help. Depending on need, we may see some people just once, others more frequently, and several each week.”
Rev Dr Michael Wright (Supporting Minister) Hensall.

Signed on behalf of the board of trustees

...Debra Chand...

D Chand – Chair of the board of trustees

11/11/2021

.....

Date

PARISH NURSING MINISTRIES UK
INDEPENDENT EXAMINERS REPORT AND FINANCIAL STATEMENTS
FOR THE YEAR ENDED 31 MARCH 2021

INDEPENDENT EXAMINER'S REPORT TO THE TRUSTEES OF PARISH NURSING MINISTRIES UK

Independent examiner's report to the trustees of Parish Nursing Ministries UK ('the Company')

I report to the charity trustees on my examination of the accounts of the Company for the year ended 31 March 2021.

Responsibilities and basis of report

As the charity's trustees of the Company (and also its directors for the purposes of company law) you are responsible for the preparation of the accounts in accordance with the requirements of the Companies Act 2006 ('the 2006 Act')

Having satisfied myself that the accounts of the Company are not required to be audited under Part 16 of the 2006 Act and are eligible for independent examination, I report in respect of my examination of your charity's accounts as carried out under section 145 of the Charities Act 2011 ('the 2011 Act'). In carrying out my examination I have followed the Directions given by the Charity Commission under section 145(5) (b) of the 2011 Act.

Independent examiner's statement

I have satisfied my examination. I confirm that no matters have come to my attention in connection with the examination giving me cause to believe:

1. accounting records were not kept in respect of the Company as required by section 386 of the 2006 Act; or
2. the accounts do not accord with those records; or
3. the accounts do not comply with the accounting requirements of section 396 of the 2006 Act other than any requirement that the accounts give a true and fair view which is not a matter considered as part of an independent examination; or
4. the accounts have not been prepared in accordance with the methods and principles of the statement of Recommended Practice for accounting and reporting by charities [applicable to charities preparing their accounts in accordance with the Financial Reporting Standard applicable in the UK and Republic of Ireland (FRS 102)].

I have no concerns and have come across no other matters in connection with the examination to which attention should be drawn in this report in order to enable a proper understanding of the accounts to be reached.

This report is made solely to the charitable company's members, as a body, in accordance with Chapter 3 of part 16 of the Companies Act 2006. Our independent examination work has been undertaken so that we might state to the charitable company's members those matters we are required to state to them in an independent examiner's report and for no other purpose. To the fullest extent permitted by law we do not accept or assume responsibility to anyone other than the charitable company and the charitable company's members as a body, for our independent examination work for this report, or for the opinions we have formed.



Kerry Hilliard ACA FCCA CTA
for and on behalf of Stephenson Smart & Co

36 Tyndall Court
Commerce Road
Lynchwood
Peterborough
Cambridgeshire
PE2 6LR

Date: ____13/11/21____

PARISH NURSING MINISTRIES UK STATEMENT OF FINANCIAL ACTIVITIES (INCORPORATING AN INCOME AND EXPENDITURE ACCOUNT) FOR THE YEAR ENDED 31 MARCH 2021

		Unrestricted Funds	Restricted Funds	Total	Total
		2021	2021	2021	2020
	Notes	£	£	£	£
Income and endowments from:					47,526
Donations and legacies		42,642	-	42,642	84,568
Charitable activities	2	51,878	(1,690)	50,188	208
Other trading activities	5	-	-	-	
	3				
Investment income	4	102	-	102	206
Total income		94,622	(1,690)	92,932	132,508
<hr/>					
Expenditure on:					
Raising funds		-	-	-	-
Charitable activities	6	104,175	1,905	106,080	115,171
		<hr/>	<hr/>	<hr/>	<hr/>
		104,175	1,905	106,080	115,171
<hr/>					
Net (expenditure)/income for the year		(9,553)	(3,595)	(13,148)	17,337
Transfers between funds	16	<u>21,364</u>	<u>(21,364)</u>	<u>-</u>	-
Net movement in funds		11,811	(24,959)	(13,148)	17,337
RECONCILIATION OF FUNDS					
Total funds brought forward		93,894	29,779	123,673	106,336
<hr/>					
TOTAL FUNDS CARRIED FORWARD		<u>105,705</u>	<u>4,820</u>	<u>110,525</u>	<u>123,673</u>

BALANCE SHEET AT 31 MARCH 2021

	Notes	Unrestricted Funds 2021 £	Restricted Funds 2021 £	Total 2021 £	Total 2020 £
FIXED ASSETS:					
Tangible assets	12	1,382	-	1,382	379
CURRENT ASSETS					
Debtors	13	22,768	-	22,768	19,079
Cash at bank and in hand		85,564	4,820	90,384	108,929
					<hr/>
		<hr/>	<hr/>	<hr/>	
		108,332	4,820	113,152	128,008
CREDITORS					
Amounts falling due within one year	14	4,009	-	4,009	4,714
					<hr/>
		<hr/>	<hr/>	<hr/>	
NET CURRENT ASSETS		104,323	4,820	109,143	123,294
		<hr/>	<hr/>		<hr/>
TOTAL ASSETS LESS CURRENT LIABILITIES		105,705	4,820	110,525	123,673
		<hr/>			<hr/>
NET ASSETS		105,705	4,820	110,525	123,673
		<hr/>			<hr/>
FUNDS					
Unrestricted funds	16			105,705	93,894
Restricted funds				4,820	29,779
					<hr/>
TOTAL FUNDS				110,525	123,673
					<hr/>

**BALANCE SHEET - CONTINUED AT
31 MARCH 2021**

The charitable company is entitled to exemption from audit under Section 477 of the Companies Act 2006 for the year ended 31 March 2021.

The members have not required the company to obtain an audit of its financial statements for the year ended 31 March 2021 in accordance with Section 476 of the Companies Act 2006

The trustees acknowledge their responsibility for

- (a) ensuring that the charitable company keeps accounting records that comply with Sections 386 and 387 of the Companies Act 2006 and
- (b) preparing financial statements which give a true and fair view of the state of affairs of the charitable company as at the end of each financial year and of its surplus or deficit for each financial year in accordance with the requirements of the Companies Act 2006 relating to financial statements, so far as applicable to the charitable company.

These financial statements have been prepared in accordance with the provisions applicable to charitable companies subject to the small companies regime.

The financial statements were approved by the board of trustees on ...XXXXXXXXX.... and were signed on its behalf by:

...Debra Chand...

D Chand – Trustee

**NOTES TO THE FINANCIAL STATEMENTS FOR
THE YEAR ENDED 31 MARCH 2021**

1. ACCOUNTING POLICIES

Basis of preparing the financial statements

The financial statements of the charitable company which is a public benefit entity under FRS 102, have been prepared in accordance with the Charities SORP (FRS 102) 'Accounting and Reporting by Charities: Statement of Recommended Practice applicable to charities preparing their accounts in accordance with the Financial Reporting Standard applicable in the UK and Republic of Ireland (FRS 102) (effective 1 January 2019)', Financial Reporting Standard 102 'The Financial Reporting Standard applicable in the UK and Republic of Ireland' and the Companies Act 2006. The financial statements have been prepared under the historical convention.

The charity has taken advantage of the provisions in the SORP for charities applying FRS 102 Update Bulletin 1 not to prepare a Statement of Cash Flows.

Parish Nursing Ministries UK is a charity and company limited by guarantee, registered in England and Wales. The charity's number and registered office can be found on the Company Information page.

Income

All income is recognised in the Statement of Financial Activities once the charity has entitlement to the funds, it is probable that the income will be received, and the amount can be measured reliably.

Expenditure

Liabilities are recognised as expenditure as soon as there is a legal or constructive obligation committing the charity to that expenditure, it is probable that a transfer of economic benefits will be required in settlement and the amount of the obligation can be measured reliably. Expenditure is accounted for on an accruals basis and has been classified under headings that aggregate all cost related to the category. Where costs cannot be directly attributed to particular headings they have been allocated to activities on a basis consistent with the use of resources.

Tangible fixed assets

Items are only considered as fixed assets if the value is greater than £200. Fixed assets are depreciated by an appropriate amount and using a method of depreciation appropriate to the asset. Depreciation is applied on 31 March including assets acquired in the accounting year. The assets held are depreciated by 20% per annum on a straight-line basis.

Fixed assets are stated at cost less accumulated depreciation and accumulated impairment losses. Where parts of an item of property, plant and equipment have different useful lives, they are accounted for as separate items of property, plant and equipment.

Depreciation methods, useful lives and residual values are reviewed at each balance sheet date. The selection of these residual values and estimated lives requires the exercise of judgement. The directors are required to assess whether there is an indication of impairment to the carrying value of assets. In making the assessment, judgements are made in estimating value in use. The directors consider that the individual carrying value of assets are supportable by their value in use.

Taxation

The charity is exempt from corporation tax on its charitable activities.

Fund accounting

Unrestricted funds can be used in accordance with the charitable objectives at the discretion of the trustees.

Restricted Funds can only be used for particular restricted purposes within the objects of the charity. Restrictions arise when specified by the donor or when funds are raised for particular restricted purposes.

Further explanation of the nature and purpose of each fund is included in the notes to the financial statements.

PARISH NURSING MINISTRIES UK NOTES TO THE FINANCIAL STATEMENTS - CONTINUED FOR THE YEAR ENDED 31 MARCH 2021

1. ACCOUNTING POLICIES – continued

Pension costs and other post-retirement benefits

The charitable company operates a defined contribution pension scheme. Contributions payable to the charitable company's pension scheme are charged to the Statement of Financial Activities in the period to which they relate.

Financial instruments

Cash and cash equivalents in the balance sheet comprise cash at banks and in hand and short term deposits with an original maturity date of three months or less.

Debtors and creditors with no stated interest rate and receivable or payable within one year are recorded at transaction price. Any losses arising from impairment are recognised in the statement of financial activities.

Financial liabilities and equity instruments are classified according to the substance of the contractual arrangements entered into. An equity instrument is any contract that evidences a residual interest in the assets of the entity after deducting all of its financial liabilities.

Where the contractual obligations of financial instruments are equivalent to a similar debt instrument, those financial instruments are classed as financial liabilities. Financial liabilities are presented as such in the balance sheet. Finance costs and gains or losses relating to the financial liabilities are included in the profit and loss account. Finance costs are calculated so as to produce a constant rate of return on the outstanding liability.

Reserves

Reserves maintained are commensurate with financial needs.

Significant judgements and estimates

The preparation of financial statements requires the use of certain critical accounting estimates. It also requires management to exercise its judgement in the process of applying the company accounting policies. The areas involving a higher degree of judgement or complexity, or areas where assumptions and estimates are significant to the financial statements are disclosed within the individual accounting policies.

2. DONATIONS AND LEGACIES

	2021 £	2020 £
Donations	31,869	13,032
Gift Aid	5,273	6,593
Grants	5,500	27,901
	<u>42,642</u>	<u>47,526</u>

3. OTHER TRADING ACTIVITIES

	2021 £	2020 £
Shop Income	-	208
	<u> </u>	<u> </u>

PARISH NURSING MINISTRIES UK NOTES TO THE FINANCIAL STATEMENTS - CONTINUED FOR THE YEAR ENDED 31 MARCH 2021

4. INVESTMENT INCOME

	2021 £	2020 £
Deposit account interest	102	206
	<u> </u>	<u> </u>

5. INCOME FROM CHARITABLE ACTIVITIES

	2021 £	2020 £
Course and symposium fees	7,206	39,766
Coordinator income Charitable activities	42,782	44,774
Miscellaneous income Charitable activities	200	28
	<u>50,188</u>	<u>84,568</u>

6. CHARITABLE ACTIVITIES COSTS

Totals	Direct costs	Support costs (note 7)	(note 8)
	£	£	£
Charitable activities	2,867	103,213	106,080
	<u> </u>	<u> </u>	<u> </u>

NOTES TO THE FINANCIAL STATEMENTS FOR THE YEAR ENDED 31 MARCH 2021

7. DIRECT COSTS OF CHARITABLE ACTIVITIES

2021 £	2020 £
-----------	-----------

PARISH NURSING MINISTRIES UK

- CONTINUED

Course costs	1,204,566	Symposium costs	100,14,771		
Coordinator costs				1,563	9,359
				<u>2,867</u>	<u>24,696</u>

8. SUPPORT COSTS

	Management	Finance	Governance	Totals
		£	£	£
Charitable activities	98,024	321	4,868	103,213
	<u>98,024</u>	<u>321</u>	<u>4,868</u>	<u>103,213</u>

Support costs, included in the above, are as follows:

8. SUPPORT COSTS - continued

	2021	2020		
Management			£	£
Staff costs			82,745	68,990
Pensions	1,069,536	Rent 6,614,706	Insurance	1,289,955
Telephone & IT	5,497,113	Postage and stationery	200,994	
Advertising			162	4,400
Sundries			98	511
Depreciation of fixed assets			350	455
			<u>98,024</u>	<u>85,044</u>
Finance			2021	2020
			£	£
Bank charges			321	372
			<u>372</u>	<u>372</u>

Governance	2021 £	2020 £
Trustees Expenses	-	158
Independent Examiner fees – independent examination	330	400
Independent Examiner fees – accounts production	750	900
Accountancy and legal fees	3,788	3,601
	<hr/>	<hr/>
	4,868	5,059
	<hr/>	<hr/>

9. NET INCOME/(EXPENDITURE)

Net income/(expenditure) is stated after charging/(crediting):

2021	2020		
		£	£
Independent Examiner fees – independent examination		330	400
Independent Examiner fees – accounts production		750	900
Depreciation – owned assets		350	455
		<hr/>	<hr/>

NOTES TO THE FINANCIAL STATEMENTS FOR THE YEAR ENDED 31 MARCH 2021**10. TRUSTEES REMUNERATION AND BENEFITS**

There were no trustees' remuneration or other benefits for the year ended 31 March 2021 nor for the year ended 31 March 2020.

Trustees' expenses

	2021 £	2020 £
Trustees' expenses	-	158
	<u> </u>	<u> </u>

Expense reimbursements were paid to no trustees (2020: 1) during the year for travel and subsistence.

11. STAFF COSTS

	2021 £	2020 £
Wages and salaries	82,488	68,990
Social security costs	257	-
Pension	1,069	536
	<u>83,814</u>	<u>69,526</u>

During the year, key management personnel were paid £24,500 (2020: £24,000). No staff were paid over £60,000 during the year (2020: 0).

The average number of employees during the year was 11 (2020: 10).

12. TANGIBLE FIXED ASSETS

	Computer Equipment £
COST	
At 1 April 2020	3,108
Additions 1,353 Disposals (1,104)	
At 31 March 2021	<u>3,357</u>

DEPRECIATION

At 1 April 2020	2,729
Depreciation charged in the year	350
Depreciation eliminated on disposals	(1,104)

At 31 March 2021	1,975
------------------	-------

NET BOOK VALUE

At 31 March 2021	1,382
------------------	-------

At 31 March 2020	379
------------------	-----

NOTES TO THE FINANCIAL STATEMENTS FOR THE YEAR ENDED 31 MARCH 2021**13. DEBTORS: AMOUNTS FALLING DUE WITHIN ONE YEAR**

	2021 £	2020 £
Trade debtors	5,262	8,406
Prepayments and accrued income	17,506	10,673
	<u>22,768</u>	<u>19,079</u>

14. CREDITORS: AMOUNTS FALLING DUE WITHIN ONE YEAR

	2021 £	2020 £
Trade creditors	1,594	1,454
Accruals and deferred income	2,415	3,260
	<u>4,009</u>	<u>4,714</u>

15. LEASING ARRANGEMENTS

Minimum lease payments under non-cancellable operating leases fall due as follows:

	2021	2020
	£	£
Within one year	-	3,173
Between one and five years	-	-
	<u> </u>	<u> </u>
	<u> </u>	<u>3,173</u>

16. MOVEMENT IN FUNDS

	At 1/4/20	Incoming	Resources	Transfers	At 31/3/21
	£	Resources	Expended	between	£
		£	£	funds	
				£	
Unrestricted funds					
General fund	93,894	94,622	(104,175)	21,364	105,705
Restricted funds					
Ely Diocese Fund	3,605	(1,690)	(929)	(2,629)	-
St Pauls Fund	236			(236)	-
Liz and Terry Bramall Foundation	4,932		(976)	(3,499)	504
Mercer Fund	21,006			(15,000)	4,316
	<u> </u>	<u> </u>	<u> </u>	<u> </u>	
Total Restricted	<u>29,779</u>	<u>(1,690)</u>	<u>(1,905)</u>	<u>(21,364)</u>	
	<u>4,820</u>				
TOTAL FUNDS	<u>123,673</u>	<u>92,932</u>	<u>(106,080)</u>	<u>-</u>	<u>110,525</u>

16. MOVEMENT IN FUNDS - continued

Comparatives for movements in funds

	At 1/4/19 £	Incoming Resources £	Resources Expended £	Transfers between funds £	At 31/3/20 £
Unrestricted funds					
General fund	83,223	101,630	(107,879)	16,920	93,894
Restricted funds					
Ely Diocese Fund 5,483 - - (1,878) 3,605					
St Pauls Fund 1,512 - - (1,276) 236					
Liz and Terry Bramall Foundation	4,932	-	-	-	4,932
Mercer Fund	11,186	27,506	(3,920)	(13,766)	21,006
Co-op Funding	-	3,372	(3,372)	-	-
Total Restricted	23,113	30,878	(7,292)	(16,920)	29,779
TOTAL FUNDS	<u>106,336</u>	<u>132,508</u>	<u>(115,171)</u>	<u>-</u>	<u>123,673</u>

The grant from the Liz and Terry Bramall Foundation is to support the funding of Parish Nursing across Yorkshire.

Mercers Fund is a two-year grant from Mercers Philanthropic Trust received in July 2018. The first payment of £24,889 was made in August 2018 and a further £27,901 was paid in August 2019. The grant is to support the following:

- To enable PNMUK to provide ongoing coordination to the 42 existing parish nursing projects (as at August 2018) in London, East, and North East England so that they can continue to improve health and wellbeing in their local communities.
- To increase the number of parish nursing projects in the target areas to 52 by 2020.
- To evaluate the impact of the parish nursing services in these areas.
- To effectively promote parish nursing through the provision of improved marketing and communication materials.

The transfer of funds from restricted to unrestricted funds in 2021 relates to the following:

- From Mercer Fund to General Funds was to subsidise the coordination costs of the existing parish nursing projects in the regions covered by the grant.
- From St Paul's to General Funds relates to monthly payroll costs relating to the project which have been initially paid out through General Funds.
- From Ely Diocese Fund to General Funds relates to monthly payroll costs relating to the project which have been initially paid out through General Funds.
- From Liz and Terry Bramall Foundation to General Funds relates to monthly payroll costs relating to the project which have been initially paid out through General Funds.

17. RELATED PARTY DISCLOSURES

There were no related part transactions for the year ended 31 March 2021 nor 31 March 2020.

**PARISH NURSING MINISTRIES UK DETAILED STATEMENT OF FINANCIAL ACTIVITIES FOR
THE YEAR ENDED 31 MARCH 2021**

	2021	2020
	£	£
INCOME AND ENDOWMENTS		
Donations and legacies		
Donations	31,869	13,032
Gift Aid	5,273	6,593
Grants	5,500	27,901
	42,642	47,526
Other trading activities		
Shop Income	-	208
Investment income		
Deposit account interest	102	206
Charitable activities		
Course and symposium fees	7,206	39,766
Coordinator income	42,782	44,774
Miscellaneous income	200	28
	50,188	84,568
Total incoming resources	92,932	132,508
EXPENDITURE		
Charitable activities		
Course costs	1,204	566
Symposium costs	100	14,771
Coordinator costs	1,563	9,359
	2,867	24,696
Support costs - Management		
Staff costs	82,745	68,990
Pensions	1,069	536
Rent	6,614	7,069
Insurance	1,289	955
Telephone & IT	5,497	1,134
Postage and stationery	200	994

Advertising	162	4,400
Sundries	98	511
Depreciation of fixed assets	350	455
	<hr/>	<hr/>
	98,024	85,044

This page does not form part of the statutory financial statements

**PARISH NURSING MINISTRIES UK DETAILED STATEMENT OF FINANCIAL ACTIVITIES -
CONTINUED FOR THE YEAR ENDED 31 MARCH 2021**

	2021	2020
	£	£
Support costs - Finance		
Bank charges	321	372
Support costs – Governance		
Trustees Expenses	-	158
Independent Examiner fees – independent examination	330	400
Independent Examiner fees – accounts production	750	900
Accountancy and legal fees	3,788	3,601
	<hr/>	<hr/>
	4,868	5,059
Total resources expended	106,080	115,171
	<hr/>	<hr/>
Net income	(13,148)	17,337
	<hr/>	<hr/>