

Adroddiad CCB - 2021
AGM Report - 2021

HOME START

Ceredigion

Llawr Cyntaf /1st Floor
37 Stryd Fawr /High Street
Llanbedr Pont Steffan/Lampeter - SA48 7AW
Tel/Ffôn: (01570) 218546
[:homestartaberaeron@gmail.com](mailto:homestartaberaeron@gmail.com)



Ymddiriedolwyr/Trustees

Annwen Bell	Cadeirydd/Chair
Jan Young	Trysorydd/Treasurer
Cen Llwyd	Ymddiriedolwr/ Trustee
Mary Davies	Ymddiriedolwr/Trustee
Miriam Menhennet	Ymddiriedolwr/Trustee

Aelod o Staff/ Staff Members

Sharon Morris	Rheolwr y Cynllun/Scheme Manager
Angela Morgan	Trefnydd y Cynllun/Scheme Organiser
Avril Gartland	Swyddog Gwirfoddolwyr/Volunteer Officer Gweithiwr Cymorth Amenedigol/Perinatal Support Worker
Dona Hage	Gweinyddwr y Cynllun/Scheme Administrator Cydylnnydd HWB / HUB Co-Ordinator
Lena Brown	Gweithiwr Cymorth Dechrau Da/Support Worker Dechrau Da
Val Morris	Project Worker/Gweithwr Prosiect

2020/2021

Adroddiad Cadeirydd yr Ymddiriedolwyr
Chair of Trustees Report

The last year has brought many challenges to the way we live and work in which Home-Start Ceredigion has had to adapt to. This time last year we thought that we would be going back to "normal" and revert back to home visiting and play groups but unfortunately not. Home-Start Ceredigion has had to ensure that their families are supported even though it hasn't been done face to face which has been done really well.

I would like to thank Sharon and her team of staff who have worked so hard in challenging circumstances. A huge thank you goes to each and every volunteer who has given their time in the last year. Home-Start Ceredigion would be nothing without our volunteers. Thanks also goes to all the members of the management committee for their dedication and support. I thank those who financially enable the scheme to support so many families and young children. And finally thank you to our parents and children who make what we do feel so worthwhile. I hope going into the new normal that we can still carry on doing the great job that we are doing. Giving families in Ceredigion the best support possible

Annwen
Chairperson



Scheme Manager Report 2021

Over the years there have been many changes in how the service is structured, funded, monitored and evaluated, however, the one constant throughout remains the core business of providing one to one volunteer support to families, in their own homes – this unique service has stood the test of time and proved a lasting endurance as relevant today as it was in 1992 when the scheme started. My journey started with Home-Start in 1995 as a volunteer and I have enjoyed my journey and the opportunities it has given, and I am proud that I have been a manager since 2002. We reach a milestone in 2022 with us celebrating 30 years of service to our community and we aim to celebrate with families, volunteers past and present

We are very grateful to all our funders, big and small. We are lucky to be supported by a variety of grant-giving organisations as well as individual donors and the hundreds of people who come to our fundraising events or do a sponsored challenge for us

As with all small charities a sustainable income stream is vital to allow us to continue providing our much-needed services. Like many others, one of our biggest challenges in the current climate is securing the income we need to continue our vital work as we are a self-funding scheme. Our success in securing grants has enabled us to develop a strong staff team approach and consolidated our previous experience, skills and professional practice in working with families and young children to deliver a high-quality service and build on our reputation.

Covid pandemic impacted heavily on vulnerable families in Ceredigion. The scheme's consultations with families throughout the pandemic have shown increased levels of concerns in families about their children's, and even more so, parents' mental health. Many families are experiencing stress over job insecurity and their current/future financial situation, with many already living in poverty and many more likely to enter poverty as the economic consequences of the pandemic take hold. Pre-existing social anxieties have been amplified by the effects of lockdowns, restrictions and fear of the virus, leading to many families becoming even more socially isolated and lacking confidence to mix with other families and/or access public services. This is further exacerbated by many families experiencing anxiety about returning to the use of public transport. These impacts have led to a significant increase in the number of families seeking support from Home-Start Ceredigion over the coming months, many agencies have been highly appreciative of Home-Start Ceredigion's leading role in providing emergency support for families throughout the pandemic.

Online support:

During Covid 100% of our families were offered online support through telephone calls, facetime, closed Facebook groups

- 76% initially took up this support but this rose to 87% as Covid progressed.
- 53% received telephone support
- 53% by text/email
- 90% visited/accessed closed Facebook pages
- 59% took part in online activities provided by us
- 89% used our cooking/craft ideas
- 395 care packages including food packs, hygiene products, craft packs, clothing, toys, furniture, per food were dropped at families doorstep

Regular consultation with our families has shown us that they would like face to face contact and groups to resume but would also like us to continue to receive online support as they feel they share a role in developing productive ways with us that will help them find their feet after Covid and give them the confidence to lower their isolation and loneliness which will lead them to give their children more opportunities and feel part of a community again

Families and volunteers remain at the heart of everything we do and we are continually recruiting volunteers to increase the numbers of families supported.

Our volunteers including trustees and staff, give time, commitment, skills and experience to help support families with young children. We are extremely proud of the work we do and celebrate our success in bringing together parents who support parents in their own homes with young children. Home-Start Ceredigion has been a firm deeply rooted fixture throughout this community with local people supporting local families.

'Surround yourself with people who believe in you and are going to lift you higher'

'Ability is what you are capable of doing, motivation determines what you do, Attitude determines how well you do it'

Sharon

Adroddiad y Trysorydd 2020/2021

Cafwyd cefnogaeth i Gynllun Home-start Ceredigion gan :

Loteri

Teuluoedd yn 1af. / Cefnogaeth i deuluoedd

Cronfa Garfield Weston Foundation / Gweithiwr Ymateb Cyflym

Plant mewn angen / Cynllun Barod i'r Ysgol

Home-start UK /Cefnogaeth Teuluoedd mewn Gwaith

Rhoddion:

Cyngor Tref Llanbed

Cronfa Ystwythder Covid Cymru

Cronfa Betty Lawes

Mae'r gefnogaeth i Home-start yma yng Ngeredigion yn cael ei werthfawrogi yn fawr fel y gallwn barhau i fod yma i fod o gymorth i deuluoedd y Sir. Mae'n staff bob amser yn ystyried gofynion teuluoedd wrth gynnig cynlluniau newydd.

Mae'r pandemic Covid 19 wedi atal ein gwaith allan yn y gymuned y flwyddyn yma a bu rhaid i'n staff gydymffurfio gyda rheolau Llywodraeth Cymru. Diolch i'r sffaff i gyd am addasu i weithio yn rhithiol

Mae cefnogaeth ariannol dros 3 blynedd diwethaf y Lotteri,sef prif fynhonnell ein cyllid, yn dod i ben eleni ac fe gytunodd y Pwyllgor Rheoli i gontractio D Green i weithio gyda Rheolwr y Cynllun i baratoi Cynllun Busnes am y 3 blynedd nesaf i'w ddefnyddio ar gyfer ceisiadau grant.

Bu rhaid i ni droi lawr cynnig Barcud o swyddfa ar safle datblygiad Creuddyn yn nhref Llanbed o ystyried ein sefyllfa ariannol. Ni allem gymryd y cynnig ar ôl derbyn pris y rhent.Byddwn yn ailedrych ar sefyllfa ein swyddfa pan byddwn yn ailedrych ar delerau ein swyddfa cyfredol.

Mae mwyafrif ein cefnogaeth ariannol yn amodol at wariant penodedig ac roedd y gwariant i gyd o fewn ein cytundeb.

Mae ein cronfa rhydd yn cael ei defnyddio ar gyfer unrhyw broiect ychwanegol ,costau na ellir ei rhoi gogyfer a chronfeydd eraill ee. Codi cyflogau sffaff i fod o fewn NJC Payscles a gytunwyd gan y Pwyllgor Rheoli.

Cedwir swm penodol wrth law ar gyfer gwariant posibilrwydd.

Treasurer's report 2020/2021

The Home-start Scheme in Ceredigion was supported by:

Lottery for Salaries Office costs, travel expenses, volunteer's expenses training and rent & premises costs

Families First / Family support

Garfield Weston Foundation / Fast response Worker

Children in Need/School ready program

Home-start UK / working families

Donations:

Lampeter Town Council

Wales Covid Resilience Fund

Betty Lawes Foundation

We greatly appreciate this financial support as it has enabled the Scheme to continue and expand our services. Staff members ensure that the needs of families are considered when offering new services. Due to Covid 19 virus restrictions all staff members adjusted work practices to conform with Welsh Government rules.

As we come to the final year of Lottery funding which was our main source of income the Management Committee contracted Mr. D Green to work with our Scheme Manager to prepare a 3year business plan in preparation to be used in grant applications.

The offer of office space from Barcud in the new development at Lampeter had to be turned down due to our financial situation to commit to the rent in the long term. This will be reviewed when our current office agreement is discussed.

Reserves are constantly reviewed along with holding a reasonable amount in Contingency Fund.

Most of our funding is restricted for specific projects and spending is within the budget agreed by funders.

The general fund has been used to finance any other services and costs that are not covered by restricted grants i.e. staff salary, remuneration according to NJC pay scales as agreed by MC in April 2021.

Detailed statement of financial Activities.

For The Year Ending 31March 2021

INCOMING RESOURCES	2021	2020
<u>Voluntary Income</u>		
Donations	1,000	513
Grants	251,300	224,286
Management fees	1,200	2,445
	<hr/> 253,500	<hr/> 227,224
<u>Activities for generating funds</u>		
Fundraising	2,101	199
<u>Investment Income</u>		
Deposit account interest	13	66
Total incoming resources	<hr/> 255,614	<hr/> 227,509
RESOURCES EXPENDED		
<u>Charitable activities</u>		
Wages	125,318	133,791
Rent	6,811	7,059
Insurance	885	1,256
Volunteer and scheme expenses (inc travel)	3,373	8,471
Training & Courses	(175)	4,014
Support Groups	5,847	5,889
Vouchers	3,425	-
Caerphilly share of grant	30,187	28,106
	<hr/> 175,671	<hr/> 188,586
<u>Governance costs</u>		
Accountancy	1,500	1,500
Legal Fees	-	2,270
	<hr/> 1,500	<hr/> 3,770
<u>Support costs</u>		
<u>Management</u>		
Office expenses	8,698	9,623
Tig Fee	3,389	2,009
Consultancy	1,925	-
	<hr/> 14,012	<hr/> 11,632
Total resources expended	191,183	203,988
Net income	<hr/> <u>64,431</u>	<hr/> <u>23,521</u>

Audited by Hatfield & John Accountants
Sharon Morris
Scheme Manager

*Christmas gifts donated
by Salvation Army, 52
Lives and White Stuff*



*Coedwig Gymunedol Long Wood
Community Woodland*



We have been ever so fortunate to Long Wood Community again for receiving logs to keep our families warm through these cold Winter months. Long Wood is a 300 acre site of mixed woodland just North of Lampeter in Ceredigion. The woods are owned and managed by the local community For the people .

Rydym wedi bod mor ffodus i Gymuned Long Wood eto am dderbyn boncyffion i gadw ein teuluoedd yn gynnes trwy fisoedd oer y Gaeaf. Mae Long Wood yn 300 safle erw o goetir cymysg ychydig i'r Gogledd o Lamped yng Ngheredigion. Mae'r goedwig yn eiddo ac a reolir gan y gymuned leol ar gyfer y bobl.



Helpwyr bach Home-Start little helpers



Ar dechrau'r flwyddyn buodd plant a gefnogir gan Home-Start yn awyddus i ddangos eu sgiliau ac annog plant eraill i baratoi a rhannu eu ryseitiau.



At the start of 2021 we had some Home-Start supported children eager to show their skills and encourage other children to prepare and share their recipes.

Dyma stori a wnaeth un o'n teuluoedd ysgrifennu amdano'i daith ac fe'i cyhoeddwyd i Home-Start UK.

This is a story written by one of our families about her journey and published to Home-Start UK.

Victoria faced a triple whammy – a new baby, a new town and then lockdown. She tells us her story for today's [#FridayFocus](#)

"Moving to Wales with my husband felt like a dream come true. Then baby Jake arrived and everything changed. Naturally we were delighted with him, but once he was born the reality of being four hours from family and friends hit home. I was on maternity leave and, with time on my hands, started to feel quite isolated. I didn't know anyone nearby and realised how much I missed my family. I felt like I didn't quite know what I was doing. I needed human contact, and Jake needed to see other children.

"Attending [Home-Start Ceredigion](#)'s weekly playgroup in the village pre-lockdown made me feel part of the community and with that, the loneliness I felt started to melt away. Chatting to other local families lifted my mood massively. Soon the groups became a highlight of my week. Attending them gave me something to get dressed up for.

"The area we live in is very Welsh speaking. At the play group Jake would hear Welsh songs and stories. I wasn't made to feel left out at all, and it was lovely to expose Jake to the Welsh language.

"Attending a play group may not feel a big deal, but to us it was huge. It made me feel part of the community. We continued to go to the groups until Jake was 18 months old, and then lockdown happened. Despite this, Home-Start stayed in touch.

"Throughout lockdown Home-Start sent us the most incredible activity packs. Lena from Home-Start Ceredigion would send me a WhatsApp video to go along with the packs. Jake loves watching Lena on the iPad and working through the packs together gives us a focus. The activity packs are in English and Welsh – so again I feel it is really benefiting both of us and helping us to integrate into our new community.

"Lockdown has been hard, and of course, I'm desperate for the play groups to return, but the packs have helped to keep our mood lifted. The time and thought that has gone into these packs is staggering. It's incredibly touching to see how much effort Home-Start has made to keep in contact with us."

Mawrth 2021

March 2021



"...the loneliness I felt started to melt away..."

Victoria, new mum

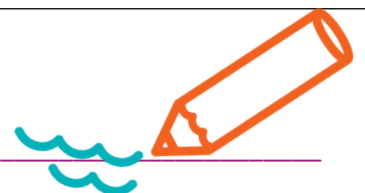
HOME START
Ceredigion

Prosiect Barod i'r Ysgol School Ready Project



Here are a few pictures of our families partaking in our School Ready project. Lena has been busy making up educational packs and a video explaining what to do for our children of pre-school age.

Dyma ychydig o luniau o'n teuluoedd yn cymryd rhan yn ein prosiect Barod i'r Ysgol. Mae Lena wedi bod yn brysur yn llunio pecynnau addysgol a fideo yn egluro beth i'w wneud i'n plant o oedran cyn-ysgol.



Gwirfoddolwr Newydd 2021 / Newly trained volunteers 2021

Croeso i'n gwirfoddolwyr a gafodd eu hyfforddi'n ddigidol ar TEAMS 2021.
Welcome to our newly digitally trained on TEAMS volunteers of 2021.



**Lauren
Habgood-
Turtle**

**Hayley
Legg**

**Sam
Eynon**

**Jerri
Evens**

**Paige
Heaton**

Cefnogaeth Home-Start Ceredigion support 2020/2021

Total number of families supported	167
Total Number of children supported	272
Total number of families supported by Home-visiting (phone support)	39
Total number of families supported by group (Digitally)	113
Total number of families supported by School Ready (Digitally)	15
Families supported through our HUB Services	31
Duration of support	4,658 hours
Total number of volunteers	22

As Covid struck only a handful of volunteers were happy to continue their support over the phone. 6 families were supported by volunteers as well as our staff, the other 33 families were supported by our staff.

Vegetable growing



Buom yn ffodus i dderbyn rhodd gan y banc bwyd i brynu hadau a phlanhigion i greu ein gardd lysiau fach yng nghefn ein swyddfeydd, lle gall teuluoedd a'u blant fynychu a helpu i ofalu am y planhigion.

We were fortunate to receive a donation from the food bank to buy seeds and plants to create our own little vegetable garden at the back of our offices, where Families and their children can attend and help look after the plants



HOME START

Ceredigion

Yn dechrau Ionawr 18fed 2021.

Yma ar ein tudalen Facebook, yn wythnosol, byddwn yn rhannu gweithgareddau hwyllog a hawdd i chi gael gwneud gyda'r holl teulu.

Starting on January 18th 2021

Here on our Facebook page, we will be sharing fun and easy activities weekly that you can make at home with all the family.



HOME START

Ceredigion

Young Mum's Group

Are you a mum under 21?

**Do you have a baby and/or child, or
are pregnant?**

**Would you like to meet other young
parents?**



- Parenting information
- Time for you
- Fun activities
- Cooking
- Personal development

**If you want more information, contact us
on 01570 218 546 or Facebook message us.**



Grŵp tadau Dad's Group.

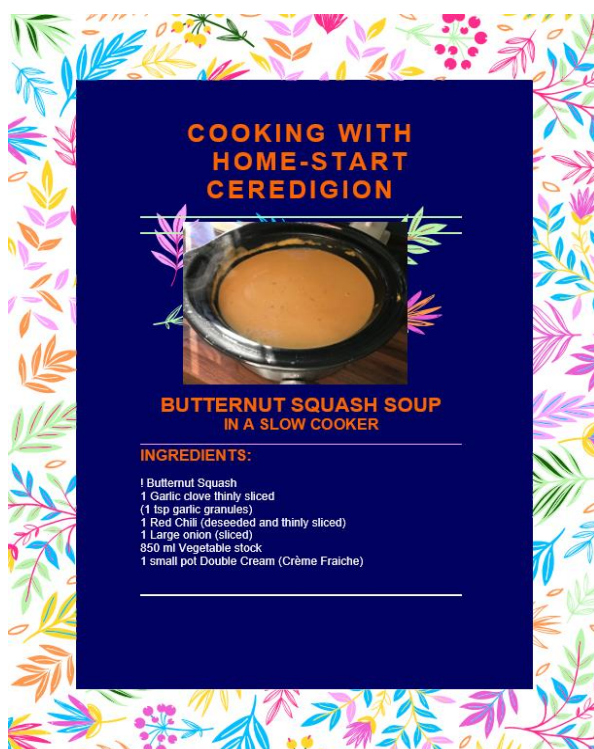


Os ydych yn byw yn Sîr Ceredigion, os ydych yn dad neu yn gwybod am tadau, eisiau cymdeithasu gyda tadau eraill, rhannu storïau am gofalu plant ag i cysylltu gyda'n gilydd.

Os mae ganddo chi diddordeb, ymunwch a ni ar ein tudalen Facebook Grŵp tadau.

If you live in Ceredigion, if you are a dad or know a dad who might want to hang out with other dads, share some parenting stories and connect.

If you are interested, please join Home-Start dad's group.



Here is an example of a recipe we made. We filmed ourselves making these recipes and shared them on Home-Start Ceredigion's Facebook page.

1st Floor, 37 High Street, Lampeter, Ceredigion, SA48 7AW
T 01570 218546
E homestartberaeron@gmail.com
F www.facebook.com/HSeredigion

Man chwarae tu allan

Os hoffech chi archebu sesiwn chwarae am ddim yng nghefn
ein swyddfeydd yn Lanbedr Pont Steffan, cysylltwch a ni
yma ar ein tudalen Facebook.
Lluniau i ddilyn.

**HOME
START**
Ceredigion



Outdoor Play area

If you would like to book a free play session at the rear of
our offices in Lampeter, please message us here on
Facebook .
Pictures to follow.



Hoffen rhoi ddiolch i pawb sydd wedi cyfrannu i ni dros y flwyddyn diwethaf:

We would like to thank everybody for their kind donations over the past year.

- ❖ Food Bank
- ❖ 52Lives
- ❖ Salvation Army
- ❖ Betty Lawes Foundation
- ❖ Lottery
- ❖ CAVO
- ❖ Home-Start UK
- ❖ Lampeter Town Council
- ❖ Families First
- ❖ Garfield and Weston
- ❖ Lampeter FareShare project
- ❖ Bluestone (Hand sanitisers)
- ❖ Longwood Woodland project
- ❖ Sainsburys
- ❖ CO-OP
- ❖ Wales Resilience Fund
- ❖ St Thomas Church & Friends
- ❖ White Stuff
- ❖ InKind Direct

REGISTERED COMPANY NUMBER: 05441452 (England and Wales)
REGISTERED CHARITY NUMBER: 1110771

REPORT OF THE TRUSTEES AND
UNAUDITED FINANCIAL STATEMENTS FOR THE YEAR ENDED
31 MARCH 2021
FOR
HOME-START CEREDIGION

HATFIELD & JOHN
1 NORTH ROAD
ABERAERON
Ceredigion
SA46 0JD

HOME-START CEREDIGION
CONTENTS OF THE FINANCIAL STATEMENTS
For The Year Ended 31 March 2021

	Page
Report of the Trustees	1
Independent Examiner's Report	2
Statement of Financial Activities	3
Balance Sheet	4
Notes to the Financial Statements	5 to 9
Detailed Statement of Financial Activities	10

HOME-START CEREDIGION

REPORT OF THE TRUSTEES For The Year Ended 31 March 2021

The trustees who are also directors of the charity for the purposes of the Companies Act 2006, present their report with the financial statements of the charity for the year ended 31 March 2021. The trustees have adopted the provisions of the Statement of Recommended Practice (SORP) 'Accounting and Reporting by Charities' issued in March 2005.

REFERENCE AND ADMINISTRATIVE DETAILS

Registered Company number
05441452 (England and Wales)

Registered Charity number
1110771

Registered office
1st Floor
37 High Street
Lampeter
Ceredigion
SA48 7AW

Trustees
C LLWYD
A DAVIES
M MENHENNETT
S CODNER
J YOUNG
A BELL
J CLACK

- resigned 12.2.2021

Company Secretary
S MORRIS

Independent examiner
HATFIELD & JOHN
1 NORTH ROAD
ABERAERON
Ceredigion
SA46 0JD

STRUCTURE, GOVERNANCE AND MANAGEMENT

Governing document

The charity is controlled by its governing document, a deed of trust, and constitutes a limited company, limited by guarantee, as defined by the Companies Act 2006.

Risk management

The trustees have a duty to identify and review the risks to which the charity is exposed and to ensure appropriate controls are in place to provide reasonable assurance against fraud and error.

FINANCIAL REVIEW

Reserves policy

Based on a realistic assessment of the reserves needed the trustees consider that the appropriate level of free reserves is 20% of annual expenditure. This is based on the following considerations :-

- a) the need to provide for potential redundancy expenses in case of a disruption to funding
- b) to provide for any shortfall in funds generated to cover the costs of running the scheme
- c) to protect against unforeseen events

The trustees consider that at present a contingency reserve of £20,000 is required.

Monies held in the unrestricted account fund is constantly reviewed and used to support any shortfall in essential staff costs. There is also a sum held for contingency costs.

Approved by order of the board of trustees on and signed on its behalf by:

3.9.2021
.....
Trustee

**INDEPENDENT EXAMINER'S REPORT TO THE TRUSTEES OF
HOME-START CEREDIGION**

I report on the accounts of the company for the year ended 31 March 2021, which are set out on pages three to nine.

Responsibilities and basis of report

As the charity's trustees (and also the directors for the purposes of company law) you are responsible for the preparation of the accounts in accordance with the requirements of the Companies Act 2006.

Having satisfied myself that the charity is not subject to audit under company law and is eligible for independent examination, I have examined your charity's accounts as required under section 145 of the Charities Act 2011 ('the Act'). In carrying out my examination I have followed the Directions given by the Charity Commission under section 145(5)(b) of the 2011 Act.


My role is to state whether any material matters have come to my attention giving me cause to believe:

1. that accounting records were not kept as required by section 386 of the Companies Act 2006; or
2. that the accounts do not accord with those records; or
3. that the accounts do not comply with the accounting requirements of section 396 of the Companies Act 2006 and with the methods and principles of the Charities Statement of Recommended Practice applicable to charities preparing their accounts in accordance with the Financial Reporting Standard applicable in the UK and Republic of Ireland; or
4. that there is further information needed for a proper understanding of the accounts.

Independent examiner's statement

Since your charity's gross income exceeded £250,000 your examiner must be a member of a listed body. I can confirm that I am qualified to undertake the examination because I am a registered member of ACA which is one of the listed bodies.

I have completed my examination and have no concerns in respect of the matters (1) to (4) listed above and, in connection with following the Directions of the Charity Commission I have found no matters that require drawing to your attention.



DALE HATFIELD
ACA
HATFIELD & JOHN
1 NORTH ROAD
ABERAERON
Ceredigion
SA46 0JD

Date: 03 Sep 2021

HOME-START CEREDIGION

STATEMENT OF FINANCIAL ACTIVITIES
For The Year Ended 31 March 2021

		Unrestricted funds £	Restricted funds £	2021 Total funds £	2020 Total funds £
	Notes				
INCOMING RESOURCES					
Incoming resources from generated funds					
Voluntary income		1,200	252,300	253,500	227,244
Activities for generating funds	2	2,101	-	2,101	199
Investment income	3	13	-	13	66
		<u>3,314</u>	<u>252,300</u>	<u>255,614</u>	<u>227,509</u>
Total incoming resources					
RESOURCES EXPENDED					
Charitable activities					
Family Support		-	187,758	187,758	200,218
Fund raising		1,925	-	1,925	-
Governance costs		-	1,500	1,500	3,770
		<u>1,925</u>	<u>189,258</u>	<u>191,183</u>	<u>203,988</u>
Total resources expended					
NET INCOMING RESOURCES BEFORE TRANSFERS					
		<u>1,389</u>	<u>63,042</u>	<u>64,431</u>	<u>23,521</u>
Gross transfers between funds	9	<u>(500)</u>	<u>500</u>	<u>-</u>	<u>-</u>
Net incoming/(outgoing) resources		<u>889</u>	<u>63,542</u>	<u>64,431</u>	<u>23,521</u>
RECONCILIATION OF FUNDS					
Total funds brought forward		<u>50,798</u>	<u>45,734</u>	<u>96,532</u>	<u>73,011</u>
TOTAL FUNDS CARRIED FORWARD		<u><u>51,687</u></u>	<u><u>109,276</u></u>	<u><u>160,963</u></u>	<u><u>96,532</u></u>

The notes form part of these financial statements

HOME-START CEREDIGION

BALANCE SHEET
At 31 March 2021

	Notes	Unrestricted funds £	Restricted funds £	2021 Total funds £	2020 Total funds £
CURRENT ASSETS					
Cash at bank		51,687	112,785	164,472	99,716
CREDITORS					
Amounts falling due within one year	8	-	(3,509)	(3,509)	(3,184)
NET CURRENT ASSETS		<u>51,687</u>	<u>109,276</u>	<u>160,963</u>	<u>96,532</u>
TOTAL ASSETS LESS CURRENT LIABILITIES		51,687	109,276	160,963	96,532
NET ASSETS		<u>51,687</u>	<u>109,276</u>	<u>160,963</u>	<u>96,532</u>
FUNDS	9				
Unrestricted funds				51,687	50,798
Restricted funds				109,276	45,734
TOTAL FUNDS				<u>160,963</u>	<u>96,532</u>

The charitable company is entitled to exemption from audit under Section 477 of the Companies Act 2006 for the year ended 31 March 2021.

The members have not required the company to obtain an audit of its financial statements for the year ended 31 March 2021 in accordance with Section 476 of the Companies Act 2006.

The trustees acknowledge their responsibilities for

- ensuring that the charitable company keeps accounting records that comply with Sections 386 and 387 of the Companies Act 2006 and
- preparing financial statements which give a true and fair view of the state of affairs of the charitable company as at the end of each financial year and of its surplus or deficit for each financial year in accordance with the requirements of Sections 394 and 395 and which otherwise comply with the requirements of the Companies Act 2006 relating to financial statements, so far as applicable to the charitable company.

These financial statements have been prepared in accordance with the special provisions of Part 15 of the Companies Act 2006 relating to charitable small companies and with the Financial Reporting Standard for Smaller Entities (effective January 2015).

The financial statements were approved by the Board of Trustees on 3.9.2021 and were signed on its behalf by:



Trustee

NOTES TO THE FINANCIAL STATEMENTS
For The Year Ended 31 March 2021

1. ACCOUNTING POLICIES**Accounting convention**

The financial statements have been prepared under the historical cost convention, and in accordance with the Financial Reporting Standard for Smaller Entities (effective April 2008), the Companies Act 2006 and the requirements of the Statement of Recommended Practice, Accounting and Reporting by Charities.

Incoming resources

All incoming resources are included on the Statement of Financial Activities when the charity is legally entitled to the income and the amount can be quantified with reasonable accuracy.

Resources expended

Expenditure is accounted for on an accruals basis and has been classified under headings that aggregate all cost related to the category. Where costs cannot be directly attributed to particular headings they have been allocated to activities on a basis consistent with the use of resources.

Grants offered subject to conditions which have not been met at the year end date are noted as a commitment but not accrued as expenditure.

Tangible fixed assets

Depreciation is provided at the following annual rates in order to write off each asset over its estimated useful life.

Plant and machinery etc - 33% on cost

Taxation

The charity is exempt from corporation tax on its charitable activities.

Fund accounting

Unrestricted funds can be used in accordance with the charitable objectives at the discretion of the trustees.

Restricted funds can only be used for particular restricted purposes within the objects of the charity. Restrictions arise when specified by the donor or when funds are raised for particular restricted purposes.

Further explanation of the nature and purpose of each fund is included in the notes to the financial statements.

2. ACTIVITIES FOR GENERATING FUNDS

	2021	2020
	£	£
Fundraising	2,101	199
	<u> </u>	<u> </u>

3. INVESTMENT INCOME

	2021	2020
	£	£
Deposit account interest	13	66
	<u> </u>	<u> </u>

4. NET INCOMING/(OUTGOING) RESOURCES

Net resources are stated after charging/(crediting):

	2021	2020
	£	£
Other operating leases	6,811	7,059
	<u> </u>	<u> </u>

HOME-START CEREDIGION

NOTES TO THE FINANCIAL STATEMENTS - CONTINUED For The Year Ended 31 March 2021

5. TRUSTEES' REMUNERATION AND BENEFITS

There were no trustees' remuneration or other benefits for the year ended 31 March 2021 nor for the year ended 31 March 2020.

Trustees' expenses

There were no trustees' expenses paid for the year ended 31 March 2021 nor for the year ended 31 March 2020.

6. STAFF COSTS

	2021 £	2020 £
Wages and salaries	<u>125,318</u>	<u>133,791</u>

The average monthly number of employees during the year was as follows:

	2021 7	2020 7
Family Support	<u>7</u>	<u>7</u>

No employees received emoluments in excess of £60,000.

7. TANGIBLE FIXED ASSETS

	Plant and machinery etc £
COST	
At 1 April 2020 and 31 March 2021	<u>3,845</u>
DEPRECIATION	
At 1 April 2020 and 31 March 2021	<u>3,845</u>
NET BOOK VALUE	
At 31 March 2021	<u>-</u>
At 31 March 2020	<u>-</u>

8. CREDITORS: AMOUNTS FALLING DUE WITHIN ONE YEAR

	2021 £	2020 £
Other creditors	<u>3,509</u>	<u>3,184</u>

HOME-START CEREDIGION

NOTES TO THE FINANCIAL STATEMENTS - CONTINUED
For The Year Ended 31 March 2021

9. MOVEMENT IN FUNDS

	At 1.4.20 £	Net movement in funds £	Transfers between funds £	At 31.3.21 £
Unrestricted funds				
General fund	50,798	1,389	(500)	51,687
Restricted funds				
Big Lottery Fund	37,837	37,551	-	75,388
Garfield Weston Foundation	1,909	13,131	-	15,040
Families First	492	2,988	-	3,480
Home-Start UK	3,735	7,453	-	11,188
Children in Need	1,761	(171)	-	1,590
Lampeter Town Council	-	(492)	500	8
Wales Covid Resilience Fund	-	198	-	198
Betty Lawes Foundation	-	2,384	-	2,384
	<u>45,734</u>	<u>63,042</u>	<u>500</u>	<u>109,276</u>
TOTAL FUNDS	<u>96,532</u>	<u>64,431</u>	<u>-</u>	<u>160,963</u>

Net movement in funds, included in the above are as follows:

	Incoming resources £	Resources expended £	Movement in funds £
Unrestricted funds			
General fund	3,314	(1,925)	1,389
Restricted funds			
Big Lottery Fund	175,863	(138,312)	37,551
Garfield Weston Foundation	15,000	(1,869)	13,131
Families First	35,701	(32,713)	2,988
Home-Start UK	11,250	(3,797)	7,453
Children in Need	9,986	(10,157)	(171)
Lampeter Town Council	1,001	(1,493)	(492)
Wales Covid Resilience Fund	999	(801)	198
Betty Lawes Foundation	2,500	(116)	2,384
	<u>252,300</u>	<u>(189,258)</u>	<u>63,042</u>
TOTAL FUNDS	<u>255,614</u>	<u>(191,183)</u>	<u>64,431</u>

HOME-START CEREDIGION

NOTES TO THE FINANCIAL STATEMENTS - CONTINUED
For The Year Ended 31 March 2021

9. MOVEMENT IN FUNDS - continued

Comparatives for movement in funds

	At 1.4.19 £	Net movement in funds £	At 31.3.20 £
Unrestricted Funds			
General fund	47,730	3,068	50,798
Community for Work	(861)	861	-
	<u>46,869</u>	<u>3,929</u>	<u>50,798</u>
Restricted Funds			
Big Lottery Fund	24,944	12,893	37,837
Garfield Weston Foundation	-	1,909	1,909
Families First	(342)	834	492
Home-Start UK	322	3,413	3,735
Children in Need	1,218	543	1,761
	<u>26,142</u>	<u>19,592</u>	<u>45,734</u>
TOTAL FUNDS	<u>73,011</u>	<u>23,521</u>	<u>96,532</u>

Comparative net movement in funds, included in the above are as follows:

	Incoming resources £	Resources expended £	Movement in funds £
Unrestricted funds			
General fund	3,308	(240)	3,068
Community for Work	861	-	861
	<u>4,169</u>	<u>(240)</u>	<u>3,929</u>
Restricted funds			
Big Lottery Fund	149,110	(136,217)	12,893
Garfield Weston Foundation	15,000	(13,091)	1,909
Families First	41,629	(40,795)	834
Home-Start UK	7,727	(4,314)	3,413
Children in Need	9,874	(9,331)	543
	<u>223,340</u>	<u>(203,748)</u>	<u>19,592</u>
TOTAL FUNDS	<u>227,509</u>	<u>(203,988)</u>	<u>23,521</u>

HOME-START CEREDIGION

NOTES TO THE FINANCIAL STATEMENTS - CONTINUED
For The Year Ended 31 March 2021

9. MOVEMENT IN FUNDS - continued

A current year 12 months and prior year 12 months combined position is as follows:

	At 1.4.19 £	Net movement in funds £	Transfers between funds £	At 31.3.21 £
Unrestricted funds				
General fund	47,730	4,457	(500)	51,687
Community for Work	(861)	861	-	-
Restricted funds				
Big Lottery Fund	24,944	50,444	-	75,388
Garfield Weston Foundation	-	15,040	-	15,040
Families First	(342)	3,822	-	3,480
Home-Start UK	322	10,866	-	11,188
Children in Need	1,218	372	-	1,590
Lampeter Town Council	-	(492)	500	8
Wales Covid Resilience Fund	-	198	-	198
Betty Lawes Foundation	-	2,384	-	2,384
	<u>26,142</u>	<u>82,634</u>	<u>500</u>	<u>109,276</u>
TOTAL FUNDS	<u>73,011</u>	<u>87,952</u>	<u>-</u>	<u>160,963</u>

A current year 12 months and prior year 12 months combined net movement in funds, included in the above are as follows:

	Incoming resources £	Resources expended £	Movement in funds £
Unrestricted funds			
General fund	6,622	(2,165)	4,457
Community for Work	861	-	861
	<u>7,483</u>	<u>(2,165)</u>	<u>5,318</u>
Restricted funds			
Big Lottery Fund	324,973	(274,529)	50,444
Garfield Weston Foundation	30,000	(14,960)	15,040
Families First	77,330	(73,508)	3,822
Home-Start UK	18,977	(8,111)	10,866
Children in Need	19,860	(19,488)	372
Lampeter Town Council	1,001	(1,493)	(492)
Wales Covid Resilience Fund	999	(801)	198
Betty Lawes Foundation	2,500	(116)	2,384
	<u>475,640</u>	<u>(393,006)</u>	<u>82,634</u>
TOTAL FUNDS	<u>483,123</u>	<u>(395,171)</u>	<u>87,952</u>

HOME-START CEREDIGION

DETAILED STATEMENT OF FINANCIAL ACTIVITIES
For The Year Ended 31 March 2021

	2021 £	2020 £
INCOMING RESOURCES		
Voluntary income		
Donations	1,000	513
Grants	251,300	224,286
Management fees	1,200	2,445
	<u>253,500</u>	<u>227,244</u>
Activities for generating funds		
Fundraising	2,101	199
Investment income		
Deposit account interest	13	66
	<u>13</u>	<u>66</u>
Total incoming resources	<u>255,614</u>	<u>227,509</u>
RESOURCES EXPENDED		
Charitable activities		
Wages	125,318	133,791
Rent	6,811	7,059
Insurance	885	1,256
Volunteer and scheme expenses (inc travel)	3,373	8,471
Training & courses	(175)	4,014
Support groups	5,847	5,889
Vouchers	3,425	-
Caerphilly share of grant	30,187	28,106
	<u>175,671</u>	<u>188,586</u>
Governance costs		
Accountancy	1,500	1,500
Legal fees	-	2,270
	<u>1,500</u>	<u>3,770</u>
Support costs		
Management		
Office expenses	8,698	9,623
Tig Fee	3,389	2,009
Consultancy	1,925	-
	<u>14,012</u>	<u>11,632</u>
Total resources expended	<u>191,183</u>	<u>203,988</u>
Net income	<u>64,431</u>	<u>23,521</u>

REGISTERED COMPANY NUMBER: 05441452 (England and Wales)
REGISTERED CHARITY NUMBER: 1110771

REPORT OF THE TRUSTEES AND
UNAUDITED FINANCIAL STATEMENTS FOR THE YEAR ENDED
31 MARCH 2021
FOR
HOME-START CEREDIGION

HATFIELD & JOHN
1 NORTH ROAD
ABERAERON
Ceredigion
SA46 0JD

HOME-START CEREDIGION
CONTENTS OF THE FINANCIAL STATEMENTS
For The Year Ended 31 March 2021

	Page
Report of the Trustees	1
Independent Examiner's Report	2
Statement of Financial Activities	3
Balance Sheet	4
Notes to the Financial Statements	5 to 9
Detailed Statement of Financial Activities	10

HOME-START CEREDIGION

REPORT OF THE TRUSTEES For The Year Ended 31 March 2021

The trustees who are also directors of the charity for the purposes of the Companies Act 2006, present their report with the financial statements of the charity for the year ended 31 March 2021. The trustees have adopted the provisions of the Statement of Recommended Practice (SORP) 'Accounting and Reporting by Charities' issued in March 2005.

REFERENCE AND ADMINISTRATIVE DETAILS

Registered Company number
05441452 (England and Wales)

Registered Charity number
1110771

Registered office
1st Floor
37 High Street
Lampeter
Ceredigion
SA48 7AW

Trustees
C LLWYD
A DAVIES
M MENHENNETT
S CODNER
J YOUNG
A BELL
J CLACK

- resigned 12.2.2021

Company Secretary
S MORRIS

Independent examiner
HATFIELD & JOHN
1 NORTH ROAD
ABERAERON
Ceredigion
SA46 0JD

STRUCTURE, GOVERNANCE AND MANAGEMENT

Governing document

The charity is controlled by its governing document, a deed of trust, and constitutes a limited company, limited by guarantee, as defined by the Companies Act 2006.

Risk management

The trustees have a duty to identify and review the risks to which the charity is exposed and to ensure appropriate controls are in place to provide reasonable assurance against fraud and error.

FINANCIAL REVIEW

Reserves policy

Based on a realistic assessment of the reserves needed the trustees consider that the appropriate level of free reserves is 20% of annual expenditure. This is based on the following considerations :-

- a) the need to provide for potential redundancy expenses in case of a disruption to funding
- b) to provide for any shortfall in funds generated to cover the costs of running the scheme
- c) to protect against unforeseen events

The trustees consider that at present a contingency reserve of £20,000 is required.

Monies held in the unrestricted account fund is constantly reviewed and used to support any shortfall in essential staff costs. There is also a sum held for contingency costs.

Approved by order of the board of trustees on and signed on its behalf by:

3.9.2021
.....
Trustee

**INDEPENDENT EXAMINER'S REPORT TO THE TRUSTEES OF
HOME-START CEREDIGION**

I report on the accounts of the company for the year ended 31 March 2021, which are set out on pages three to nine.

Responsibilities and basis of report

As the charity's trustees (and also the directors for the purposes of company law) you are responsible for the preparation of the accounts in accordance with the requirements of the Companies Act 2006.

Having satisfied myself that the charity is not subject to audit under company law and is eligible for independent examination, I have examined your charity's accounts as required under section 145 of the Charities Act 2011 ('the Act'). In carrying out my examination I have followed the Directions given by the Charity Commission under section 145(5)(b) of the 2011 Act.


My role is to state whether any material matters have come to my attention giving me cause to believe:

1. that accounting records were not kept as required by section 386 of the Companies Act 2006; or
2. that the accounts do not accord with those records; or
3. that the accounts do not comply with the accounting requirements of section 396 of the Companies Act 2006 and with the methods and principles of the Charities Statement of Recommended Practice applicable to charities preparing their accounts in accordance with the Financial Reporting Standard applicable in the UK and Republic of Ireland; or
4. that there is further information needed for a proper understanding of the accounts.

Independent examiner's statement

Since your charity's gross income exceeded £250,000 your examiner must be a member of a listed body. I can confirm that I am qualified to undertake the examination because I am a registered member of ACA which is one of the listed bodies.

I have completed my examination and have no concerns in respect of the matters (1) to (4) listed above and, in connection with following the Directions of the Charity Commission I have found no matters that require drawing to your attention.



DALE HATFIELD
ACA
HATFIELD & JOHN
1 NORTH ROAD
ABERAERON
Ceredigion
SA46 0JD

Date: 03 Sep 2021

HOME-START CEREDIGION

STATEMENT OF FINANCIAL ACTIVITIES
For The Year Ended 31 March 2021

		Unrestricted funds £	Restricted funds £	2021 Total funds £	2020 Total funds £
	Notes				
INCOMING RESOURCES					
Incoming resources from generated funds					
Voluntary income		1,200	252,300	253,500	227,244
Activities for generating funds	2	2,101	-	2,101	199
Investment income	3	13	-	13	66
		<u>3,314</u>	<u>252,300</u>	<u>255,614</u>	<u>227,509</u>
Total incoming resources		3,314	252,300	255,614	227,509
RESOURCES EXPENDED					
Charitable activities					
Family Support		-	187,758	187,758	200,218
Fund raising		1,925	-	1,925	-
Governance costs		-	1,500	1,500	3,770
		<u>1,925</u>	<u>189,258</u>	<u>191,183</u>	<u>203,988</u>
Total resources expended		1,925	189,258	191,183	203,988
NET INCOMING RESOURCES BEFORE TRANSFERS					
		<u>1,389</u>	<u>63,042</u>	<u>64,431</u>	<u>23,521</u>
Gross transfers between funds	9	(500)	500	-	-
Net incoming/(outgoing) resources		889	63,542	64,431	23,521
RECONCILIATION OF FUNDS					
Total funds brought forward		50,798	45,734	96,532	73,011
		<u>51,687</u>	<u>109,276</u>	<u>160,963</u>	<u>96,532</u>
TOTAL FUNDS CARRIED FORWARD		51,687	109,276	160,963	96,532

The notes form part of these financial statements

HOME-START CEREDIGION

BALANCE SHEET
At 31 March 2021

	Notes	Unrestricted funds £	Restricted funds £	2021 Total funds £	2020 Total funds £
CURRENT ASSETS					
Cash at bank		51,687	112,785	164,472	99,716
CREDITORS					
Amounts falling due within one year	8	-	(3,509)	(3,509)	(3,184)
NET CURRENT ASSETS		<u>51,687</u>	<u>109,276</u>	<u>160,963</u>	<u>96,532</u>
TOTAL ASSETS LESS CURRENT LIABILITIES		51,687	109,276	160,963	96,532
NET ASSETS		<u>51,687</u>	<u>109,276</u>	<u>160,963</u>	<u>96,532</u>
FUNDS	9				
Unrestricted funds				51,687	50,798
Restricted funds				109,276	45,734
TOTAL FUNDS				<u>160,963</u>	<u>96,532</u>

The charitable company is entitled to exemption from audit under Section 477 of the Companies Act 2006 for the year ended 31 March 2021.


The members have not required the company to obtain an audit of its financial statements for the year ended 31 March 2021 in accordance with Section 476 of the Companies Act 2006.

The trustees acknowledge their responsibilities for

- ensuring that the charitable company keeps accounting records that comply with Sections 386 and 387 of the Companies Act 2006 and
- preparing financial statements which give a true and fair view of the state of affairs of the charitable company as at the end of each financial year and of its surplus or deficit for each financial year in accordance with the requirements of Sections 394 and 395 and which otherwise comply with the requirements of the Companies Act 2006 relating to financial statements, so far as applicable to the charitable company.

These financial statements have been prepared in accordance with the special provisions of Part 15 of the Companies Act 2006 relating to charitable small companies and with the Financial Reporting Standard for Smaller Entities (effective January 2015).

The financial statements were approved by the Board of Trustees on 3.9.2021 and were signed on its behalf by:



Trustee

NOTES TO THE FINANCIAL STATEMENTS
For The Year Ended 31 March 2021

1. ACCOUNTING POLICIES**Accounting convention**

The financial statements have been prepared under the historical cost convention, and in accordance with the Financial Reporting Standard for Smaller Entities (effective April 2008), the Companies Act 2006 and the requirements of the Statement of Recommended Practice, Accounting and Reporting by Charities.

Incoming resources

All incoming resources are included on the Statement of Financial Activities when the charity is legally entitled to the income and the amount can be quantified with reasonable accuracy.

Resources expended

Expenditure is accounted for on an accruals basis and has been classified under headings that aggregate all cost related to the category. Where costs cannot be directly attributed to particular headings they have been allocated to activities on a basis consistent with the use of resources.

Grants offered subject to conditions which have not been met at the year end date are noted as a commitment but not accrued as expenditure.

Tangible fixed assets

Depreciation is provided at the following annual rates in order to write off each asset over its estimated useful life.

Plant and machinery etc - 33% on cost

Taxation

The charity is exempt from corporation tax on its charitable activities.

Fund accounting

Unrestricted funds can be used in accordance with the charitable objectives at the discretion of the trustees.

Restricted funds can only be used for particular restricted purposes within the objects of the charity. Restrictions arise when specified by the donor or when funds are raised for particular restricted purposes.

Further explanation of the nature and purpose of each fund is included in the notes to the financial statements.

2. ACTIVITIES FOR GENERATING FUNDS

	2021	2020
	£	£
Fundraising	2,101	199
	<u> </u>	<u> </u>

3. INVESTMENT INCOME

	2021	2020
	£	£
Deposit account interest	13	66
	<u> </u>	<u> </u>

4. NET INCOMING/(OUTGOING) RESOURCES

Net resources are stated after charging/(crediting):

	2021	2020
	£	£
Other operating leases	6,811	7,059
	<u> </u>	<u> </u>

HOME-START CEREDIGION

NOTES TO THE FINANCIAL STATEMENTS - CONTINUED For The Year Ended 31 March 2021

5. TRUSTEES' REMUNERATION AND BENEFITS

There were no trustees' remuneration or other benefits for the year ended 31 March 2021 nor for the year ended 31 March 2020.

Trustees' expenses

There were no trustees' expenses paid for the year ended 31 March 2021 nor for the year ended 31 March 2020.

6. STAFF COSTS

	2021 £	2020 £
Wages and salaries	<u>125,318</u>	<u>133,791</u>

The average monthly number of employees during the year was as follows:

	2021 7	2020 7
Family Support	<u>7</u>	<u>7</u>

No employees received emoluments in excess of £60,000.

7. TANGIBLE FIXED ASSETS

	Plant and machinery etc £
COST	
At 1 April 2020 and 31 March 2021	<u>3,845</u>
DEPRECIATION	
At 1 April 2020 and 31 March 2021	<u>3,845</u>
NET BOOK VALUE	
At 31 March 2021	<u>-</u>
At 31 March 2020	<u>-</u>

8. CREDITORS: AMOUNTS FALLING DUE WITHIN ONE YEAR

	2021 £	2020 £
Other creditors	<u>3,509</u>	<u>3,184</u>

HOME-START CEREDIGION

NOTES TO THE FINANCIAL STATEMENTS - CONTINUED
For The Year Ended 31 March 2021

9. MOVEMENT IN FUNDS

	At 1.4.20 £	Net movement in funds £	Transfers between funds £	At 31.3.21 £
Unrestricted funds				
General fund	50,798	1,389	(500)	51,687
Restricted funds				
Big Lottery Fund	37,837	37,551	-	75,388
Garfield Weston Foundation	1,909	13,131	-	15,040
Families First	492	2,988	-	3,480
Home-Start UK	3,735	7,453	-	11,188
Children in Need	1,761	(171)	-	1,590
Lampeter Town Council	-	(492)	500	8
Wales Covid Resilience Fund	-	198	-	198
Betty Lawes Foundation	-	2,384	-	2,384
	<u>45,734</u>	<u>63,042</u>	<u>500</u>	<u>109,276</u>
TOTAL FUNDS	<u>96,532</u>	<u>64,431</u>	<u>-</u>	<u>160,963</u>

Net movement in funds, included in the above are as follows:

	Incoming resources £	Resources expended £	Movement in funds £
Unrestricted funds			
General fund	3,314	(1,925)	1,389
Restricted funds			
Big Lottery Fund	175,863	(138,312)	37,551
Garfield Weston Foundation	15,000	(1,869)	13,131
Families First	35,701	(32,713)	2,988
Home-Start UK	11,250	(3,797)	7,453
Children in Need	9,986	(10,157)	(171)
Lampeter Town Council	1,001	(1,493)	(492)
Wales Covid Resilience Fund	999	(801)	198
Betty Lawes Foundation	2,500	(116)	2,384
	<u>252,300</u>	<u>(189,258)</u>	<u>63,042</u>
TOTAL FUNDS	<u>255,614</u>	<u>(191,183)</u>	<u>64,431</u>

HOME-START CEREDIGION

NOTES TO THE FINANCIAL STATEMENTS - CONTINUED
For The Year Ended 31 March 2021

9. MOVEMENT IN FUNDS - continued

Comparatives for movement in funds

	At 1.4.19 £	Net movement in funds £	At 31.3.20 £
Unrestricted Funds			
General fund	47,730	3,068	50,798
Community for Work	(861)	861	-
	<u>46,869</u>	<u>3,929</u>	<u>50,798</u>
Restricted Funds			
Big Lottery Fund	24,944	12,893	37,837
Garfield Weston Foundation	-	1,909	1,909
Families First	(342)	834	492
Home-Start UK	322	3,413	3,735
Children in Need	1,218	543	1,761
	<u>26,142</u>	<u>19,592</u>	<u>45,734</u>
TOTAL FUNDS	<u>73,011</u>	<u>23,521</u>	<u>96,532</u>

Comparative net movement in funds, included in the above are as follows:

	Incoming resources £	Resources expended £	Movement in funds £
Unrestricted funds			
General fund	3,308	(240)	3,068
Community for Work	861	-	861
	<u>4,169</u>	<u>(240)</u>	<u>3,929</u>
Restricted funds			
Big Lottery Fund	149,110	(136,217)	12,893
Garfield Weston Foundation	15,000	(13,091)	1,909
Families First	41,629	(40,795)	834
Home-Start UK	7,727	(4,314)	3,413
Children in Need	9,874	(9,331)	543
	<u>223,340</u>	<u>(203,748)</u>	<u>19,592</u>
TOTAL FUNDS	<u>227,509</u>	<u>(203,988)</u>	<u>23,521</u>

HOME-START CEREDIGION

NOTES TO THE FINANCIAL STATEMENTS - CONTINUED
For The Year Ended 31 March 2021

9. MOVEMENT IN FUNDS - continued

A current year 12 months and prior year 12 months combined position is as follows:

	At 1.4.19 £	Net movement in funds £	Transfers between funds £	At 31.3.21 £
Unrestricted funds				
General fund	47,730	4,457	(500)	51,687
Community for Work	(861)	861	-	-
Restricted funds				
Big Lottery Fund	24,944	50,444	-	75,388
Garfield Weston Foundation	-	15,040	-	15,040
Families First	(342)	3,822	-	3,480
Home-Start UK	322	10,866	-	11,188
Children in Need	1,218	372	-	1,590
Lampeter Town Council	-	(492)	500	8
Wales Covid Resilience Fund	-	198	-	198
Betty Lawes Foundation	-	2,384	-	2,384
	<u>26,142</u>	<u>82,634</u>	<u>500</u>	<u>109,276</u>
TOTAL FUNDS	<u>73,011</u>	<u>87,952</u>	<u>-</u>	<u>160,963</u>

A current year 12 months and prior year 12 months combined net movement in funds, included in the above are as follows:

	Incoming resources £	Resources expended £	Movement in funds £
Unrestricted funds			
General fund	6,622	(2,165)	4,457
Community for Work	861	-	861
	<u>7,483</u>	<u>(2,165)</u>	<u>5,318</u>
Restricted funds			
Big Lottery Fund	324,973	(274,529)	50,444
Garfield Weston Foundation	30,000	(14,960)	15,040
Families First	77,330	(73,508)	3,822
Home-Start UK	18,977	(8,111)	10,866
Children in Need	19,860	(19,488)	372
Lampeter Town Council	1,001	(1,493)	(492)
Wales Covid Resilience Fund	999	(801)	198
Betty Lawes Foundation	2,500	(116)	2,384
	<u>475,640</u>	<u>(393,006)</u>	<u>82,634</u>
TOTAL FUNDS	<u>483,123</u>	<u>(395,171)</u>	<u>87,952</u>

HOME-START CEREDIGION

DETAILED STATEMENT OF FINANCIAL ACTIVITIES
For The Year Ended 31 March 2021

	2021 £	2020 £
INCOMING RESOURCES		
Voluntary income		
Donations	1,000	513
Grants	251,300	224,286
Management fees	1,200	2,445
	<u>253,500</u>	<u>227,244</u>
Activities for generating funds		
Fundraising	2,101	199
Investment income		
Deposit account interest	13	66
	<u>13</u>	<u>66</u>
Total incoming resources	<u>255,614</u>	<u>227,509</u>
RESOURCES EXPENDED		
Charitable activities		
Wages	125,318	133,791
Rent	6,811	7,059
Insurance	885	1,256
Volunteer and scheme expenses (inc travel)	3,373	8,471
Training & courses	(175)	4,014
Support groups	5,847	5,889
Vouchers	3,425	-
Caerphilly share of grant	30,187	28,106
	<u>175,671</u>	<u>188,586</u>
Governance costs		
Accountancy	1,500	1,500
Legal fees	-	2,270
	<u>1,500</u>	<u>3,770</u>
Support costs		
Management		
Office expenses	8,698	9,623
Tig Fee	3,389	2,009
Consultancy	1,925	-
	<u>14,012</u>	<u>11,632</u>
Total resources expended	<u>191,183</u>	<u>203,988</u>
Net income	<u>64,431</u>	<u>23,521</u>