

# **Report of the Trustees and Financial Statements for the Year Ended 30 April 2022**

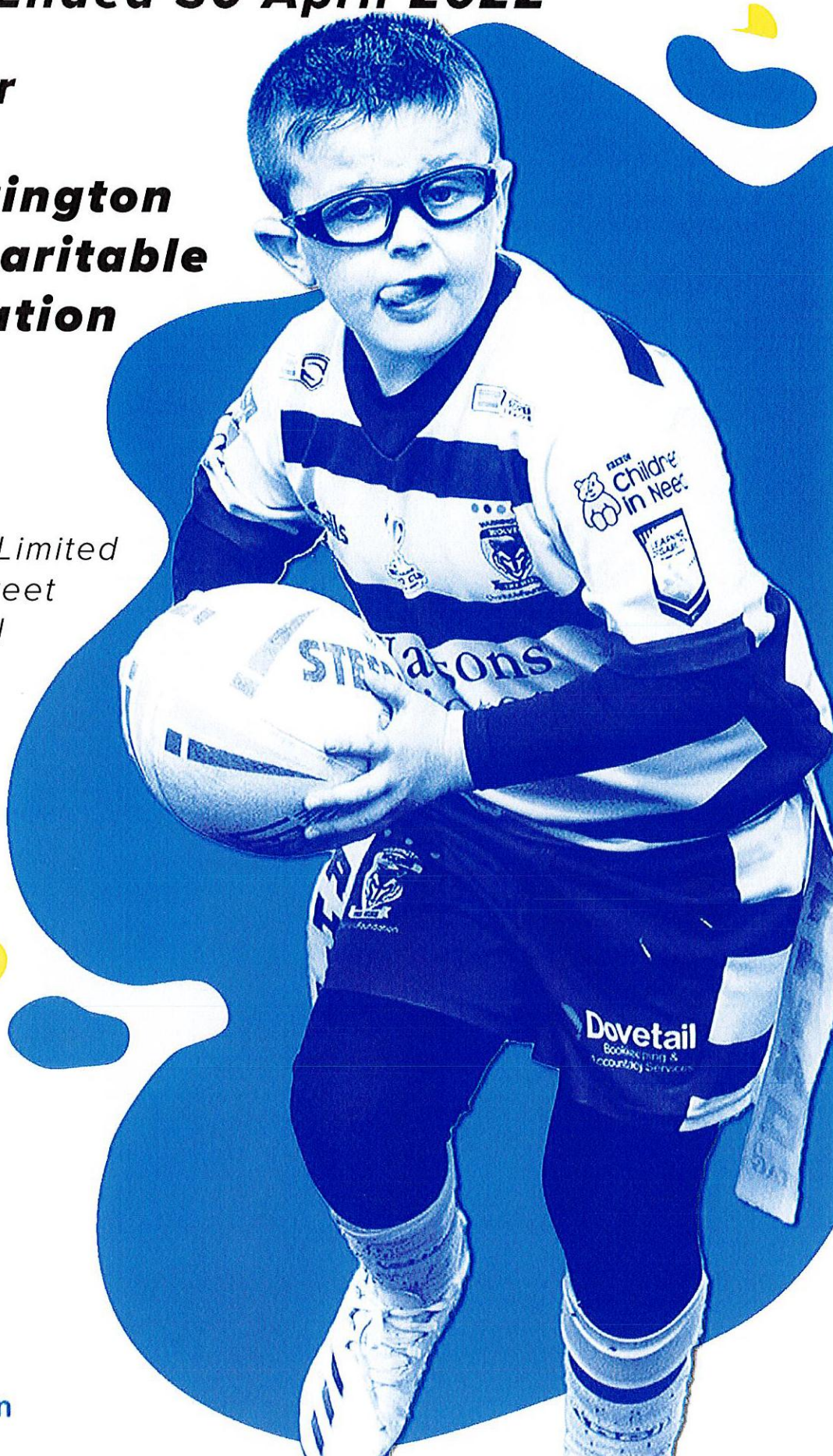
**for**

## **The Warrington Wolves Charitable Foundation**

Xeinadin Audit Limited  
116 Duke Street  
Liverpool  
L1 5JW



CharitableFoundation





# **Warrington Wolves Foundation**

## **Contents of the Financial Statements for the Year Ended 30 April 2022**

	<b>Page</b>
<b>Report of the Trustees</b>	<b>1 to 10</b>
<b>Report of the Independent Auditors</b>	<b>11 to 14</b>
<b>Statement of Financial Activities</b>	<b>15</b>
<b>Balance Sheet</b>	<b>16</b>
<b>Cash Flow Statement</b>	<b>17</b>
<b>Notes to the Cash Flow Statement</b>	<b>18</b>
<b>Notes to the Financial Statements</b>	<b>19 to 27</b>
<b>Detailed Statement of Financial Activities</b>	<b>28 to 29</b>





## **Warrington Wolves Foundation**

### **Report of the Trustees for the Year Ended 30 April 2022**

The trustees who are also directors of the charity for the purposes of the Companies Act 2006, present their report with the financial statements of the charity for the year ended 30 April 2022. The trustees have adopted the provisions of Accounting and Reporting by Charities: Statement of Recommended Practice applicable to charities preparing their accounts in accordance with the Financial Reporting Standard applicable in the UK and Republic of Ireland (FRS 102) (effective 1 January 2019).

#### **OBJECTIVES AND ACTIVITIES**

##### **Objectives and aims**

The charity's objectives are for the benefit of the public generally and, in particular, the inhabitants of Warrington and Cheshire and their surrounding areas:-

- to promote community participation in healthy recreation by providing facilities for the playing of Rugby League and other sports ("facilities" means land, buildings, equipment and organising sporting activities);
- to provide and assist in providing facilities for sport, recreation or other leisure time occupation such persons who have need for such facilities by reason of their youth, age, ethnicity, infirmity or disablement, poverty or social and economic circumstances or for the public at large in the interests of social welfare and with the object of improving their conditions of life.
- to advance the education of adults, young people and children through such means as the Trustees think fit in accordance with the law of charity.

##### **Significant activities**

The challenges of the pandemic and key personnel pressures have had notable effects that the Trustees have recognised and identified the risks and the opportunities that need to be addressed. The Foundation Director has been tasked to implement a Strategic Review from Trustee leadership to operational planning.

The pandemic has provided huge challenges and never has our community needed our support more. We have returned to delivery with clear focus and commitment as we experience a high level of demand and changing behaviour. The 5 Ways to Well-Being that we introduced during the pandemic, have been embedded into our work along with a new resilience within our organisation to adapt to situations that arise and a team commitment to changing lives through our work.

#### **ACHIEVEMENT AND PERFORMANCE**

##### **Charitable activities**

The pandemic caused huge disruption to our activities and The Rugby League World Cup was postponed to October 2022 and our most needy participants were unable to engage due to their vulnerability.

All fundraising events were cancelled, and this presented funding challenges. The government's Furlough Scheme, pandemic-targeted adaptability grants and good relationships with grant providers to suspend project delivery, saw the free reserves rise considerably.

The Challenges faced by Trustees due to covid and personal issues with key personnel meant they have needed to step in and support with a closer, supportive leadership role.

This has helped them understand and tackle the planning and management of reserves being spent in the areas of need.

The Trustees have always recognised potential risks and uncertainty through financial review. The Finance Key Pillar Group has recommended an Investment Policy to support sustainability which has now been agreed and will be implemented.

The key to our renewed focus and motivation has been the Senior Mangers' commitment to the Operational Plans in our key delivery areas of activity covering Rugby League, Disability, Health & Well Being, Education, Community Engagement and Heritage. These will form part of this Annual Review.



## **Warrington Wolves Foundation**

### **Report of the Trustees for the Year Ended 30 April 2022**

#### **ACHIEVEMENT AND PERFORMANCE**

##### **Fundraising activities**

Warrington Wolves Charitable Foundation are committed to responsible fundraising practice and regular monitoring. As a member of the Fundraising Regulator, we agree to ensure our legal, open, honest and respectful. These standards for fundraising are set out in the code of fundraising Practice. Please see our website for details.

- We will commit to high standards
- We will be clear, honest and open
- We will be respectful
- We will be fair and reasonable
- We will be accountable and responsible

The Charity complies with Data Protection Act requirements and will protect members data.

#### **FINANCIAL REVIEW**

##### **Reserves policy**

On 30th April 2022 the Foundation held reserves of £513,252 (2021 - £481,190) of which £128,079 (2021 - £210,450) is already committed through restricted funds as detailed in Note 17 of the financial statements. This leaves £385,173 (2021 - £270,740) of free reserves. The Trustees carefully manage the financial position and will continue to take appropriate advice where necessary. The Trustees, together with The Foundation Director, continue to seek new sources of unrestricted income to boost the Charity's free reserves to an appropriate level. This is so as to provide sufficient funds to cover management, administration and support costs and to respond to unexpected events in the short term without disruption to the Charity's activities.

Our Reserves Policy takes into account the recommended approach for small Charities such as:

- Risk of unforeseen emergencies
- Risk of unforeseen operational costs
- Uncertainty over future income
- Planned spending commitments that cannot be met by future income alone
- An amount to cover short-term deficits in cash budgets

We are currently in the process of reviewing our Reserves Policy and our position is reviewed each year on an on-going basis.

#### **FUTURE PLANS**

The implementation of the Strategic Review will provide a stronger and more resilient organisation. A new Strategy is due to be launched in 2023, with a new look Trustee Board with the skills and experience to lead the Key Pillar groups and support the Strategy to achieve our ambitions.

Building on the strength of our operational and financial planning, new roles will be introduced in community engagement and volunteering. These areas will have considerable impact on the excitement of The Rugby League World Cup and the Warrington Wolves new season, 2023.

The knowledge and evidence provided by our Views system will ensure we understand our community and are meeting its needs and how we best impact on it.

We will be looking at welcoming back our key fundraising events, in particular our celebratory Gala Dinner.

The introduction of our Investment Policy will also see us launch our 'Once a Wire Always a Wire' Legacy Fund. The Trustees will continue to be focused on the sustainability of the organisation and its activities.

2022/23 will be an exciting year of change and continued support for our community in challenging times.

#### **STRUCTURE, GOVERNANCE AND MANAGEMENT**

##### **Governing document**

The charity is controlled by its governing document, a deed of trust, and constitutes a limited company, limited by guarantee, as defined by the Companies Act 2006.





Using the **power of sport**, Inspiring Futures has been able to engage with **young people aged between 11 and 14 years** who have been identified as being **vulnerable** and likely to engage in risky behaviours, **Anti-Social Behaviour** and crime.

The innovative intervention programme was funded by the Youth Endowment Fund in partnership with the Rugby Football League. The programme has helped us to develop partnerships with local community safety agencies including Cheshire Police to deliver sessions to promote positive aspirational messages alongside Warrington Wolves players.

### The project has;

- Built resilience, self-confidence and character in young people
- Supported positive choices and provided young people with the ability to engage positively with society
  - Improved critical thinking skills
- Provided a healthy, stable and supportive framework at home and in school



Anthony is 13 years old and lives with his Mum, Dad and 3 siblings. His family have been open to social care since 2011 with reports of abuse at home and an increase in missing from home episodes. In the past year Anthony has been caught carrying knives and getting into fights with other young people. These traits continued into the home where Anthony has overpowered his big brother and his dad and has been arrested for domestic violence

Anthony was referred to the summer's Tap Out programme. Before he joined us at Tap Out, he was reported missing from home, a total of 246 hours in three months. From day one he was invested in the programme and got involved in all the activities throughout the week, in particular taking charge of the CCTV operation earning him the nickname

"Sgt. Deeley" between the staff. Whilst Anthony was on the programme there was a noticeable difference in him and his home life, he was not going missing which meant his relationship with his parents improved and his family were more supportive. In the weeks following the programme he has shown better attitude and improved relationships.

**1795** YOUNG PEOPLE ENGAGED  
**5** HIGH SCHOOLS  
**49** ACCREDITED LEADERSHIP QUALIFICATIONS







# RUGBY LEAGUE

## WALKING TOUCH FAMILY

Following the Women and Girls and Disability game development, the last 12 months has seen the introduction and the fantastic growth of our Walking Touch Rugby League sessions. A physical activity session aimed at providing an opportunity for anyone looking for a fantastic entry level to physical activity and Rugby League.

This session has grown into a true  
Walking Rugby Community.

**65 registered players** with an average of  
**30 players per week** across our sessions.  
Over **150 hours of coaching hours**  
**delivered**

This session has become far more than a physical activity session, and with the social connections, camaraderie, and support for each other it is described by our Community Coach Mark Isherwood as a walking touch family.

“FAMILY”  
“BANTER”  
“SUPPORT”

*98% of participants said  
they felt more connected  
and confident in  
themselves through  
taking part in the  
Walking Rugby  
sessions.*









# HEALTH & WELLBEING



*A revolutionary approach to tackling men's mental health by bringing organisations together to work in collaboration*

## How:

- Develop a workforce of 'community connectors' to build relationships and deliver a timetable of activities encouraging men to seek support.
- Deliver weekly activities that would bring men together in a supported environment.
- Provide immediate access to professional talking therapy.
- Create a training and mentoring programme to allow individuals to become volunteers
- Be part of an annual event to raise awareness and tackle the stigma of mental health.



**509 MEN**  
**6 MENTAL HEALTH 1st AIDERS QUALIFIED**

**10 MEN RECEIVED PROFESSIONAL TALKING THERAPY**

**10 NEW VOLUNTEERS**

**2789 SOCIAL MEDIA FOLLOWERS**

**LEVELS OF PHYSICAL ACTIVITY INCREASED BY 400%**

Tony is 65 and recently retired, due to ill-health. He soon found himself **isolated and lonely**.

Work provided regular routine which was beneficial to his emotional wellbeing. His social circle comprised of colleagues and their partners which vanished, leaving him feeling alone.

Tony tried to maintain a daily structure, such as walking to the shop for a paper, watching TV and reading but none of them made him feel any better.

A friend suggested that he try a new fitness circuit that had recently started through the Warrington Wolves. He was initially worried that he would be out of his depth but decided to give it a go regardless.

Having spoken with Doug (the coach), he was immediately at ease and agreed to attend a session. As soon as he walked through the door he realised that there were other men with similar health conditions.

Tony was excited and anxious in equal measure and **hasn't looked back since**.

Unbeknown to anyone, he was experiencing persistent low mood and signs of depression and he now credits the weekly sessions for **saving his life**. The camaraderie amongst the men has helped create **new friendships**.

Tony's **mental health improved** significantly as a result, but he is also finding that he is able to manage his **long-term health** condition much better through building muscle strength and improving his flexibility.

Tony is now the first to meet new participants, because in his own words he **'knows how they feel'**. He ensures that he buddies up with them on, offering words of encouragement and a listening ear to anyone who may be struggling with their own mental health.







# COMMUNITY ENGAGEMENT

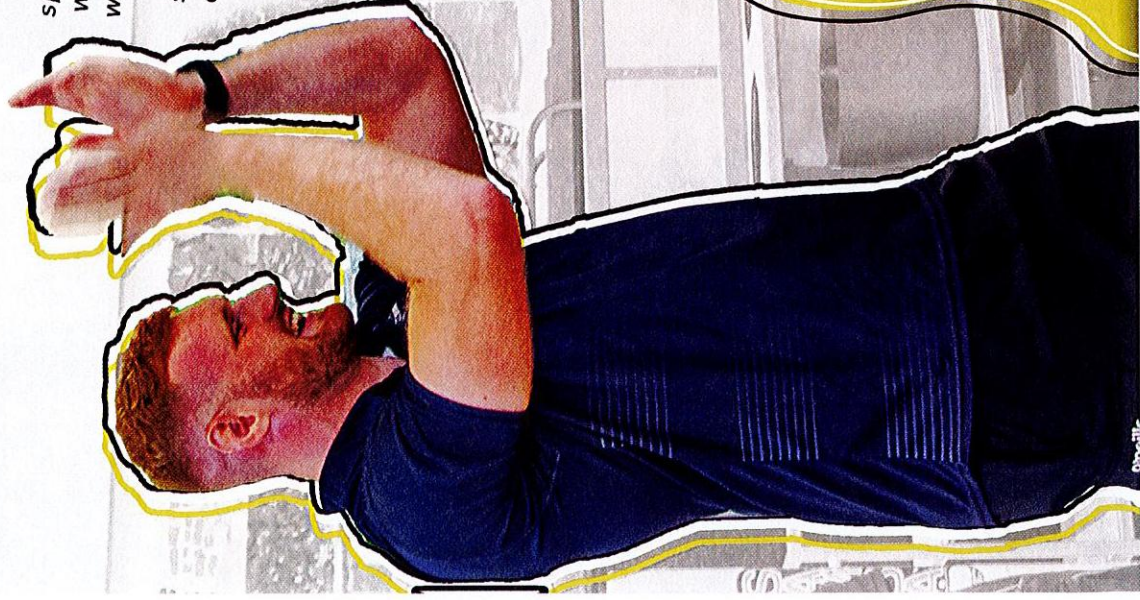
## UNITY AND BELONGING

The Wolves Foundation are a registered charity reliant on grants, donations, and

sponsorship to continue our good work in the community. However, we also handle and support many charitable requests from our supporters, other charities, and community groups and are able to co-ordinate a charitable collection at each of the Warrington Wolves home Super League fixtures which support some of those charities and groups we work closely with.

As well as providing positive activities, we believe we help build stronger communities by bringing people together. We are able to bring people of all different backgrounds to interact and integrate by taking part, volunteering and spectating.

And who better to be inspiring role models to lead our activities with encouragement and passion than our very own players. Plus, not to forget our Mascot, Wolfie, who brings out the best and fun in everyone.



**105**  
PLAYER  
APPEARANCES

**126**  
WOLFIE  
APPEARANCES

**205**  
CHARITY  
REQUESTS







# DISABILITY

**THE DISABILITY PROJECT CONTINUES TO OFFER A DIVERSE, EXCITING NUMBER OF ACTIVITY SESSIONS AIMED AT INCREASING PARTICIPATION, CONFIDENCE & INDEPENDENCE.**

This year we also have;

- **80** Disability Rugby League players accessing the PDRL, LDRL and Wheelchair teams.
- **6** international players selected to play Rugby League at the 2021 World Cup for England, Scotland & Wales.

- Annual Arts Showcase performed by our Wolfprint groups.
- Delivered a music festival for people with disabilities; "Wolfella", attended by over **50** young people & adults.

- **3** inclusive coaching workshops providing local coaches with the skills to offer inclusive environments.
- Worked with social care partners to provide weekly sports sessions for **31** adults with disabilities.

- Supplied specialist coaches to **6** schools, delivering PE & enrichment to **65** Children with disabilities.

- **75** members of Wolfclub, our inclusive Youth Club, that have amassed **1580** hours of activity.

Jack has Autism and a learning delay. He joined us at Wolfclub in 2016. Jack found structure difficult to follow and only engaged sporadically, resulting in him doing his own thing a lot of the time!

A collaborative approach between Foundation staff and Jack's support network has seen a steady improvement in Jack at all activities that he attends. Jacks progress has accelerated rapidly and has led to him joining a cricket team, improving his skills and representing

Warrington Wolves with pride in competitions, proudly wearing his club shirt!

Jack has also joined our visual arts programme, Wolfprint. He enjoys music and has started to learn to read music and loves to dance!

More importantly, Jack has now grown in confidence and brings his Rapid Prompting Board along so that he can chat with his friends and staff!

Jack recently performed at our Annual Showcase, watched by a very proud family!

# JACK







## **Warrington Wolves Foundation**

### **Report of the Trustees for the Year Ended 30 April 2022**

#### **STRUCTURE, GOVERNANCE AND MANAGEMENT**

##### **Organisational structure**

A review of Trusteeship leadership and development of a new strategy for 2023 has identified the opportunity to look at the Key Pillar action groups. Several current Board Members will step down while new Trustees will be introduced to support the new Strategy and commitment to the future.

The Chair and The Foundation Director will oversee the process with support of Governance and People Key pillars, supporting the change and to improve channels of communication.

##### **Wider network**

The Trustees confirm that they have complied with the duty in Section 4 of the Charities Act 2006 to have due regard to the Charity Commission's general guidance on public benefit "Charities and Public Benefit".

##### **Risk management**

The responsibility of management and the control of the charity rests with the trustees and their involvement in key areas of the management process is essential.

The Risk Register is reviewed by the full board annually and reviewed as an item of Agenda at Board Meetings. Each Key Pillar group have responsibility potential risks link their area of expertise.

#### **REFERENCE AND ADMINISTRATIVE DETAILS**

##### **Registered Company number**

05421006 (England and Wales)

##### **Registered Charity number**

1110734

##### **Registered office**

Halliwel Stadium  
Winwick Road  
Warrington  
Cheshire  
WA2 7NE

##### **Trustees**

P M Astley  
C J Austin  
Ms P Eden  
J S Gartside  
Ms K N Houghton  
S A Hurst  
Ms P M Kitto  
Ms K J Simpson  
A Yates

##### **Company Secretary**

D Blackburn

##### **Auditors**

Xeinadin Audit Limited  
2 Hilliards Court  
Chester Business Park  
Chester  
CH4 9QP





## Warrington Wolves Foundation

### Report of the Trustees for the Year Ended 30 April 2022

#### SENIOR MANAGEMENT TEAM

N Kelly (Foundation Director)  
J Howes (Sports & Lifestyles Manager)  
A Brady (Disability Manager)  
L Mitchell (Rugby League Manager)  
D Blackburn (Finance and Support Manager)

#### STATEMENT OF TRUSTEES' RESPONSIBILITIES

The trustees (who are also the directors of Warrington Wolves Foundation for the purposes of company law) are responsible for preparing the Report of the Trustees and the financial statements in accordance with applicable law and United Kingdom Accounting Standards (United Kingdom Generally Accepted Accounting Practice).

Company law requires the trustees to prepare financial statements for each financial year which give a true and fair view of the state of affairs of the charitable company and of the incoming resources and application of resources, including the income and expenditure, of the charitable company for that period. In preparing those financial statements, the trustees are required to

- select suitable accounting policies and then apply them consistently;
- observe the methods and principles in the Charity SORP;
- make judgements and estimates that are reasonable and prudent;
- prepare the financial statements on the going concern basis unless it is inappropriate to presume that the charitable company will continue in business.

The trustees are responsible for keeping proper accounting records which disclose with reasonable accuracy at any time the financial position of the charitable company and to enable them to ensure that the financial statements comply with the Companies Act 2006. They are also responsible for safeguarding the assets of the charitable company and hence for taking reasonable steps for the prevention and detection of fraud and other irregularities.

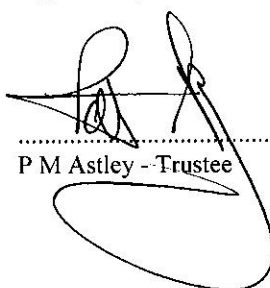
In so far as the trustees are aware:

- there is no relevant audit information of which the charitable company's auditors are unaware; and
- the trustees have taken all steps that they ought to have taken to make themselves aware of any relevant audit information and to establish that the auditors are aware of that information.

#### AUDITORS

The auditors, Xeinadin Audit Limited, will be proposed for re-appointment at the forthcoming Annual General Meeting.

Approved by order of the board of trustees on 29.9.2022 and signed on its behalf by:

  
.....  
P M Astley - Trustee



## **Report of the Independent Auditors to the Members of Warrington Wolves Foundation**

### **Opinion**

We have audited the financial statements of Warrington Wolves Foundation (the 'charitable company') for the year ended 30 April 2022 which comprise the Statement of Financial Activities, the Balance Sheet, the Cash Flow Statement and notes to the financial statements, including a summary of significant accounting policies. The financial reporting framework that has been applied in their preparation is applicable law and United Kingdom Accounting Standards (United Kingdom Generally Accepted Accounting Practice).

In our opinion the financial statements:

- give a true and fair view of the state of the charitable company's affairs as at 30 April 2022 and of its incoming resources and application of resources, including its income and expenditure, for the year then ended;
- have been properly prepared in accordance with United Kingdom Generally Accepted Accounting Practice; and
- have been prepared in accordance with the requirements of the Companies Act 2006.

### **Basis for opinion**

We conducted our audit in accordance with International Standards on Auditing (UK) (ISAs (UK)) and applicable law. Our responsibilities under those standards are further described in the Auditors' responsibilities for the audit of the financial statements section of our report. We are independent of the charitable company in accordance with the ethical requirements that are relevant to our audit of the financial statements in the UK, including the FRC's Ethical Standard, and we have fulfilled our other ethical responsibilities in accordance with these requirements. We believe that the audit evidence we have obtained is sufficient and appropriate to provide a basis for our opinion.

### **Conclusions relating to going concern**

In auditing the financial statements, we have concluded that the trustees' use of the going concern basis of accounting in the preparation of the financial statements is appropriate.

Based on the work we have performed, we have not identified any material uncertainties relating to events or conditions that, individually or collectively, may cast significant doubt on the charitable company's ability to continue as a going concern for a period of at least twelve months from when the financial statements are authorised for issue.

Our responsibilities and the responsibilities of the trustees with respect to going concern are described in the relevant sections of this report.

### **Other information**

The trustees are responsible for the other information. The other information comprises the information included in the Annual Report, other than the financial statements and our Report of the Independent Auditors thereon.

Our opinion on the financial statements does not cover the other information and, except to the extent otherwise explicitly stated in our report, we do not express any form of assurance conclusion thereon.

In connection with our audit of the financial statements, our responsibility is to read the other information and, in doing so, consider whether the other information is materially inconsistent with the financial statements or our knowledge obtained in the audit or otherwise appears to be materially misstated. If we identify such material inconsistencies or apparent material misstatements, we are required to determine whether this gives rise to a material misstatement in the financial statements themselves. If, based on the work we have performed, we conclude that there is a material misstatement of this other information, we are required to report that fact. We have nothing to report in this regard.

### **Opinions on other matters prescribed by the Companies Act 2006**

In our opinion, based on the work undertaken in the course of the audit:

- the information given in the Report of the Trustees for the financial year for which the financial statements are prepared is consistent with the financial statements; and
- the Report of the Trustees has been prepared in accordance with applicable legal requirements.



## **Report of the Independent Auditors to the Members of Warrington Wolves Foundation**

### **Matters on which we are required to report by exception**

In the light of the knowledge and understanding of the charitable company and its environment obtained in the course of the audit, we have not identified material misstatements in the Report of the Trustees.

We have nothing to report in respect of the following matters where the Companies Act 2006 requires us to report to you if, in our opinion:

- adequate accounting records have not been kept or returns adequate for our audit have not been received from branches not visited by us; or
- the financial statements are not in agreement with the accounting records and returns; or
- certain disclosures of trustees' remuneration specified by law are not made; or
- we have not received all the information and explanations we require for our audit; or
- the trustees were not entitled to take advantage of the small companies exemption from the requirement to prepare a Strategic Report or in preparing the Report of the Trustees.

### **Responsibilities of trustees**

As explained more fully in the Statement of Trustees' Responsibilities, the trustees (who are also the directors of the charitable company for the purposes of company law) are responsible for the preparation of the financial statements and for being satisfied that they give a true and fair view, and for such internal control as the trustees determine is necessary to enable the preparation of financial statements that are free from material misstatement, whether due to fraud or error.

In preparing the financial statements, the trustees are responsible for assessing the charitable company's ability to continue as a going concern, disclosing, as applicable, matters related to going concern and using the going concern basis of accounting unless the trustees either intend to liquidate the charitable company or to cease operations, or have no realistic alternative but to do so.





## **Report of the Independent Auditors to the Members of Warrington Wolves Foundation**

### **Our responsibilities for the audit of the financial statements**

Our objectives are to obtain reasonable assurance about whether the financial statements as a whole are free from material misstatement, whether due to fraud or error, and to issue a Report of the Independent Auditors that includes our opinion. Reasonable assurance is a high level of assurance, but is not a guarantee that an audit conducted in accordance with ISAs (UK) will always detect a material misstatement when it exists. Misstatements can arise from fraud or error and are considered material if, individually or in the aggregate, they could reasonably be expected to influence the economic decisions of users taken on the basis of these financial statements.

The extent to which our procedures are capable of detecting irregularities, including fraud is detailed below:

In identifying and assessing risks of material misstatement in respect of irregularities, including fraud and non-compliance with laws and regulations, our procedures included the following:

- We enquired of management and those charged with governance, which included obtaining and reviewing supporting documentation, concerning the charity's policies and procedures relating to:
- Identifying, evaluating, and complying with laws and regulations and whether they were aware of any instances of non-compliance;
- Detecting and responding to the risks of fraud and whether they have knowledge of any actual, suspected, or alleged fraud;
- The internal controls established to mitigate risks related to fraud or non-compliance with laws and regulations.
- We inspected the minutes of meetings of those charged with governance.
- We obtained an understanding of the legal and regulatory framework that the charity operates in, focusing on those laws and regulations that had a material effect on the financial statements or that had a fundamental effect on the operations of the charity from our professional and sector experience.
- We communicated applicable laws and regulations throughout the audit team and remained alert to any indications of non-compliance throughout the audit.
- We reviewed any reports made to regulators.
- We reviewed the financial statement disclosures and tested these to supporting documentation to assess compliance with applicable laws and regulations.
- We performed analytical procedures to identify any unusual or unexpected relationships that may indicate risks of material misstatement due to fraud.
- In addressing the risk of fraud through management override of controls, we tested the appropriateness of journal entries and other adjustments, assessed whether the judgements made in making accounting estimates are indicative of a potential bias and tested significant transactions that are unusual or those outside the normal course of business.

Because of the inherent limitations of an audit, there is a risk that we will not detect all irregularities, including those leading to a material misstatement in the financial statements or non-compliance with regulation. This risk increases the more that compliance with a law or regulation is removed from the events and transactions reflected in the financial statements, as we will be less likely to become aware of instances of non-compliance. The risk is also greater regarding irregularities occurring due to fraud rather than error, as fraud often involves intentional concealment, forgery, collusion, omission or misrepresentation.

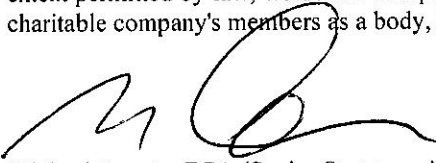
A further description of our responsibilities for the audit of the financial statements is located on the Financial Reporting Council's website at [www.frc.org.uk/auditorsresponsibilities](http://www.frc.org.uk/auditorsresponsibilities). This description forms part of our Report of the Independent Auditors.



**Report of the Independent Auditors to the Members of  
Warrington Wolves Foundation**

**Use of our report**

This report is made solely to the charitable company's members, as a body, in accordance with Chapter 3 of Part 16 of the Companies Act 2006. Our audit work has been undertaken so that we might state to the charitable company's members those matters we are required to state to them in an auditors' report and for no other purpose. To the fullest extent permitted by law, we do not accept or assume responsibility to anyone other than the charitable company and the charitable company's members as a body, for our audit work, for this report, or for the opinions we have formed.



Michael Caputo, FCA (Senior Statutory Auditor)  
for and on behalf of Xeinadin Audit Limited  
2 Hilliards Court  
Chester Business Park  
Chester  
CH4 9QP

Date: ..... 29.9.2021 .....



**Warrington Wolves Foundation**

**Statement of Financial Activities  
for the Year Ended 30 April 2022**

	Notes	Unrestricted fund £	Restricted fund £	30.4.22 Total funds £	30.4.21 Total funds £
<b>INCOME AND ENDOWMENTS FROM</b>					
Donations and legacies	2	57,644	17,780	75,424	64,293
<b>Charitable activities</b>					
Charitable activities		161,000	123,903	284,903	231,735
Other trading activities	3	245,272	28,537	273,809	139,424
Other income	5	-	-	-	112,753
<b>Total</b>		<u>463,916</u>	<u>170,220</u>	<u>634,136</u>	<u>548,205</u>
<b>EXPENDITURE ON</b>					
Raising funds	6	18,794	4,920	23,714	11,043
<b>Charitable activities</b>					
Charitable activities	7	328,632	249,728	578,360	264,902
Other	8	-	-	-	112,753
<b>Total</b>		<u>347,426</u>	<u>254,648</u>	<u>602,074</u>	<u>388,698</u>
<b>NET INCOME/(EXPENDITURE)</b>		116,490	(84,428)	32,062	159,507
<b>Transfers between funds</b>	17	(2,057)	2,057	-	-
<b>Net movement in funds</b>		114,433	(82,371)	32,062	159,507
<b>RECONCILIATION OF FUNDS</b>					
<b>Total funds brought forward</b>		270,740	210,450	481,190	321,683
<b>TOTAL FUNDS CARRIED FORWARD</b>		<u>385,173</u>	<u>128,079</u>	<u>513,252</u>	<u>481,190</u>

The notes form part of these financial statements





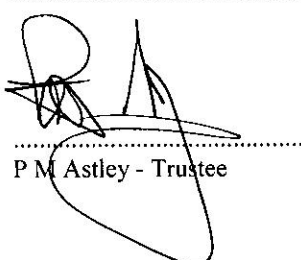
# Warrington Wolves Foundation

## Balance Sheet 30 April 2022

	Notes	Unrestricted fund £	Restricted fund £	30.4.22 Total funds £	30.4.21 Total funds £
<b>FIXED ASSETS</b>					
Tangible assets	14	-	46	46	1,471
<b>CURRENT ASSETS</b>					
Debtors	15	22,125	12,494	34,619	25,123
Cash at bank		363,754	234,533	598,287	563,986
		<u>385,879</u>	<u>247,027</u>	<u>632,906</u>	<u>589,109</u>
<b>CREDITORS</b>					
Amounts falling due within one year	16	(89,968)	(29,732)	(119,700)	(109,390)
<b>NET CURRENT ASSETS</b>		<u>295,911</u>	<u>217,295</u>	<u>513,206</u>	<u>479,719</u>
<b>TOTAL ASSETS LESS CURRENT LIABILITIES</b>		<u>295,911</u>	<u>217,341</u>	<u>513,252</u>	<u>481,190</u>
<b>NET ASSETS</b>		<u>295,911</u>	<u>217,341</u>	<u>513,252</u>	<u>481,190</u>
<b>FUNDS</b>	17				
Unrestricted funds				385,173	270,740
Restricted funds				<u>128,079</u>	<u>210,450</u>
<b>TOTAL FUNDS</b>				<u>513,252</u>	<u>481,190</u>

These financial statements have been prepared in accordance with the provisions applicable to charitable companies subject to the small companies regime.

The financial statements were approved by the Board of Trustees and authorised for issue on 29.09.2022 and were signed on its behalf by:

  
P M Astley - Trustee

The notes form part of these financial statements





**Warrington Wolves Foundation**

**Cash Flow Statement  
for the Year Ended 30 April 2022**

	Notes	30.4.22 £	30.4.21 £
<b>Cash flows from operating activities</b>			
Cash generated from operations	1	34,301	200,220
		<hr/>	<hr/>
Net cash provided by operating activities		34,301	200,220
		<hr/>	<hr/>
<b>Change in cash and cash equivalents in the reporting period</b>		34,301	200,220
<b>Cash and cash equivalents at the beginning of the reporting period</b>		563,986	363,766
		<hr/>	<hr/>
<b>Cash and cash equivalents at the end of the reporting period</b>		598,287	563,986
		<hr/>	<hr/>

The notes form part of these financial statements





**Warrington Wolves Foundation**

**Notes to the Cash Flow Statement  
for the Year Ended 30 April 2022**

<b>1. RECONCILIATION OF NET INCOME TO NET CASH FLOW FROM OPERATING ACTIVITIES</b>			
		30.4.22	30.4.21
		£	£
<b>Net income for the reporting period (as per the Statement of Financial Activities)</b>		32,062	159,507
<b>Adjustments for:</b>			
Depreciation charges		1,425	2,828
(Increase)/decrease in debtors		(9,496)	32,806
Increase in creditors		10,310	5,079
		<u>34,301</u>	<u>200,220</u>
<b>Net cash provided by operations</b>		<u>34,301</u>	<u>200,220</u>
 <b>2. ANALYSIS OF CHANGES IN NET FUNDS</b>			
	At 1.5.21	Cash flow	At 30.4.22
	£	£	£
<b>Net cash</b>			
Cash at bank	563,986	34,301	598,287
	<u>563,986</u>	<u>34,301</u>	<u>598,287</u>
	<u>563,986</u>	<u>34,301</u>	<u>598,287</u>
<b>Total</b>	<u>563,986</u>	<u>34,301</u>	<u>598,287</u>

The notes form part of these financial statements



## **Warrington Wolves Foundation**

### **Notes to the Financial Statements for the Year Ended 30 April 2022**

#### **1. ACCOUNTING POLICIES**

##### **Basis of preparing the financial statements**

The financial statements of the charitable company, which is a public benefit entity under FRS 102, have been prepared in accordance with the Charities SORP (FRS 102) 'Accounting and Reporting by Charities: Statement of Recommended Practice applicable to charities preparing their accounts in accordance with the Financial Reporting Standard applicable in the UK and Republic of Ireland (FRS 102) (effective 1 January 2019)', Financial Reporting Standard 102 'The Financial Reporting Standard applicable in the UK and Republic of Ireland' and the Companies Act 2006. The financial statements have been prepared under the historical cost convention.

Warrington Wolves Charitable Foundation is a private company limited by guarantee incorporated in England, United Kingdom. The address of the registered office is given in the company information on page 1 of these financial statements.

The financial statements have been prepared on a going concern basis as the trustees believe that no material uncertainties exist. The trustees have considered the level of funds held and the expected level of income and expenditure for 12 months from authorising these financial statements. The budgeted income and expenditure is sufficient with the level of reserves for the charity to continue as a going concern.

##### **Income**

All income is recognised in the Statement of Financial Activities once the charity has entitlement to the funds, it is probable that the income will be received and the amount can be measured reliably.

For donations to be recognised the charity will have been notified of the amounts and the settlement date in writing. If there are conditions attached to the donation and this requires a level of performance before entitlement can be obtained then income is deferred until those conditions are fully met or the fulfilment of those conditions is within the control of the charity and it is probable that they will be fulfilled.

Income from trading activities includes income earned from fundraising events and trading activities to raise funds for the charity. Income is received in exchange for supplying goods and services in order to raise funds and is recognised when entitlement has occurred.

Income from government and other grants are recognised at fair value when the charity has entitlement after any performance conditions have been met, it is probable that the income will be received and the amount can be measured reliably. If entitlement is not met then these amounts are deferred.

##### **Expenditure**

Liabilities are recognised as expenditure as soon as there is a legal or constructive obligation committing the charity to that expenditure, it is probable that a transfer of economic benefits will be required in settlement and the amount of the obligation can be measured reliably. Expenditure is accounted for on an accruals basis and has been classified under headings that aggregate all cost related to the category. Where costs cannot be directly attributed to particular headings they have been allocated to activities on a basis consistent with the use of resources.

##### **Tangible fixed assets**

Depreciation is provided at the following annual rates in order to write off each asset over its estimated useful life.

Plant and machinery	- 25% on cost
Fixtures and fittings	- 25% on cost
Computer equipment	- 33% on cost

##### **Taxation**

The charity is exempt from corporation tax on its charitable activities.

##### **Fund accounting**

Unrestricted funds can be used in accordance with the charitable objectives at the discretion of the trustees.





# Warrington Wolves Foundation

## Notes to the Financial Statements - continued for the Year Ended 30 April 2022

### 1. ACCOUNTING POLICIES - continued

#### Fund accounting

Restricted funds can only be used for particular restricted purposes within the objects of the charity. Restrictions arise when specified by the donor or when funds are raised for particular restricted purposes.

Further explanation of the nature and purpose of each fund is included in the notes to the financial statements.

#### Pension costs and other post-retirement benefits

The charitable company operates a defined contribution pension scheme. Contributions payable to the charitable company's pension scheme are charged to the Statement of Financial Activities in the period to which they relate.

#### Debtors and creditors receivable / payable within one year

Debtors and creditors with no stated interest rate and receivable or payable within one year are recorded at transaction price. Any losses arising from impairment are recognised in expenditure.

### 2. DONATIONS AND LEGACIES

	30.4.22	30.4.21
	£	£
Donations	24,545	34,788
Sponsorship	50,879	29,505
	<u>75,424</u>	<u>64,293</u>

### 3. OTHER TRADING ACTIVITIES

	30.4.22	30.4.21
	£	£
Fundraising events	35,722	8,209
Coaching and activities	174,393	77,285
Service charges	15,950	15,900
Contributions	47,744	38,030
	<u>273,809</u>	<u>139,424</u>

### 4. INCOME FROM CHARITABLE ACTIVITIES

	30.4.22	30.4.21
	£	£
Grants	284,903	231,735
Activity Charitable activities		

### 5. OTHER INCOME

	30.4.22	30.4.21
	£	£
CJRS Income	-	112,753





**Warrington Wolves Foundation**

**Notes to the Financial Statements - continued  
for the Year Ended 30 April 2022**

**6. RAISING FUNDS**

**Other trading activities**

	30.4.22	30.4.21
	£	£
Bad debts	(580)	5,283
Refreshments	993	84
Fundraising expenses	23,301	5,676
	<u>23,714</u>	<u>11,043</u>

**7. CHARITABLE ACTIVITIES COSTS**

	Direct Costs £
Charitable activities	<u>578,360</u>

**8. OTHER**

	30.4.22	30.4.21
	£	£
Furloughed staff	<u>-</u>	<u>112,753</u>

**9. NET INCOME/(EXPENDITURE)**

Net income/(expenditure) is stated after charging/(crediting):

	30.4.22	30.4.21
	£	£
Depreciation - owned assets	1,425	2,828
Auditor's remuneration	<u>5,535</u>	<u>3,768</u>

**10. TRUSTEES' REMUNERATION AND BENEFITS**

There were no trustees' remuneration or other benefits for the year ended 30 April 2022 nor for the year ended 30 April 2021.

**Trustees' expenses**

There were no trustees' expenses paid for the year ended 30 April 2022 nor for the year ended 30 April 2021.



**Warrington Wolves Foundation**

**Notes to the Financial Statements - continued  
for the Year Ended 30 April 2022**

**11. STAFF COSTS**

	30.4.22	30.4.21
	£	£
Wages and salaries	293,318	233,188
Social security costs	23,758	18,533
Other pension costs	10,595	9,634
	<u>327,671</u>	<u>261,355</u>

The average monthly number of employees during the year was as follows:

	30.4.22	30.4.21
Administration	2	3
Service delivery	9	6
	<u>11</u>	<u>9</u>

No employees received emoluments in excess of £60,000.

The trustees consider key management personnel to be comprised of the foundation director and the departmental managers.

The total amount of employee benefits, including salaries, received by key management personnel was £179,366 (2021: £153,759).

**12. COMPARATIVES FOR THE STATEMENT OF FINANCIAL ACTIVITIES**

	Unrestricted fund £	Restricted fund £	Total funds £
<b>INCOME AND ENDOWMENTS FROM</b>			
Donations and legacies	59,404	4,889	64,293
<b>Charitable activities</b>			
Charitable activities	139,294	92,441	231,735
Other trading activities	131,689	7,735	139,424
Other income	-	112,753	112,753
<b>Total</b>	<u>330,387</u>	<u>217,818</u>	<u>548,205</u>
<b>EXPENDITURE ON</b>			
Raising funds	5,072	5,971	11,043
<b>Charitable activities</b>			
Charitable activities	158,383	106,519	264,902
Other	-	112,753	112,753
<b>Total</b>	<u>163,455</u>	<u>225,243</u>	<u>388,698</u>
<b>NET INCOME/(EXPENDITURE)</b>	166,932	(7,425)	159,507
<b>Transfers between funds</b>	<u>(7,494)</u>	<u>7,494</u>	<u>-</u>





**Warrington Wolves Foundation**

**Notes to the Financial Statements - continued  
for the Year Ended 30 April 2022**

**12. COMPARATIVES FOR THE STATEMENT OF FINANCIAL ACTIVITIES - continued**

	Unrestricted fund £	Restricted fund £	Total funds £
Net movement in funds	159,438	69	159,507

**RECONCILIATION OF FUNDS**

Total funds brought forward	111,302	210,381	321,683
<b>TOTAL FUNDS CARRIED FORWARD</b>	<u>270,740</u>	<u>210,450</u>	<u>481,190</u>

**13. SUPPORT COSTS**

Support costs incurred in the year in relation to charitable activities were as follows:

	30.04.22 £	30.04.21 £
Wages	34,565	34,419
Social security	3,967	3,487
Room / venue hire	3,502	1,293
Insurance	1,164	535
Service charge	-	330
Irrecoverable VAT	566	397
Auditor's remuneration	5,535	3,768
Depreciation	157	311
	<u>49,543</u>	<u>44,540</u>

**14. TANGIBLE FIXED ASSETS**

	Plant and machinery £	Fixtures and fittings £	Computer equipment £	Totals £
<b>COST</b>				
At 1 May 2021 and 30 April 2022	<u>10,000</u>	<u>22,757</u>	<u>29,873</u>	<u>62,630</u>
<b>DEPRECIATION</b>				
At 1 May 2021	10,000	22,757	28,402	61,159
Charge for year	<u>-</u>	<u>-</u>	<u>1,425</u>	<u>1,425</u>
At 30 April 2022	<u>10,000</u>	<u>22,757</u>	<u>29,827</u>	<u>62,584</u>
<b>NET BOOK VALUE</b>				
At 30 April 2022	<u>-</u>	<u>-</u>	<u>46</u>	<u>46</u>
At 30 April 2021	<u>-</u>	<u>-</u>	<u>1,471</u>	<u>1,471</u>



**Warrington Wolves Foundation**

**Notes to the Financial Statements - continued  
for the Year Ended 30 April 2022**

<b>15. DEBTORS: AMOUNTS FALLING DUE WITHIN ONE YEAR</b>	<b>30.4.22</b>	<b>30.4.21</b>
	£	£
Trade debtors	15,383	16,048
Other debtors	1,252	2,205
Prepayments and accrued income	17,984	6,870
	<u>34,619</u>	<u>25,123</u>
 <b>16. CREDITORS: AMOUNTS FALLING DUE WITHIN ONE YEAR</b>	 <b>30.4.22</b>	 <b>30.4.21</b>
	£	£
Trade creditors	34,266	10,415
Social security and other taxes	4,310	7,731
Other creditors	2,213	790
Accruals and deferred income	78,911	90,454
	<u>119,700</u>	<u>109,390</u>

Included within Accruals and deferred income is deferred income received in relation to future years of £56,237 (2021 - £70,884)





**Warrington Wolves Foundation**

**Notes to the Financial Statements - continued  
for the Year Ended 30 April 2022**

**17. MOVEMENT IN FUNDS**

	At 01.05.21	Net Moveme nt in funds	Transfers between funds	At 30.04.22
	£	£	£	£
<b>Unrestricted funds</b>				
General fund	270,740	116,490	(2,057)	385,173
	<u>270,740</u>	<u>116,490</u>	<u>(2,057)</u>	<u>385,173</u>
<b>Restricted funds</b>				
Community RL Coaches	52,277	(54,328)	2,051	-
Children's University	857	-	-	857
Golden Gates Housing Trust	270	(188)	-	82
Heritage Lottery Wire 2 Wolves	8,371	(616)	-	7,755
Short Breaks Tender	6,797	(1,375)	-	5,422
Wolf Print Music	13,613	(1,297)	-	12,316
WBC Sports Tender	85,595	(46,357)	-	39,238
Warrington PCT Obesity Project	688	-	-	688
Wolf Print 2	-	3,973	-	3,973
Count me in	2,848	-	-	2,848
RL Cares Cultural Partnership	4,164	-	-	4,164
Young Trustees Gambia Visit	-	(6)	6	-
Handball	531	-	-	531
RL Cares Health Offload	34,439	15,766	-	50,205
	<u>210,450</u>	<u>(84,428)</u>	<u>2,057</u>	<u>128,079</u>
	<u>481,190</u>	<u>32,062</u>	<u>-</u>	<u>513,252</u>

Net movement in funds, included in the above are as follows:

	Incoming Resource s £	Outgoing Resource s £	Net movement in funds £
<b>Unrestricted funds</b>			
General fund	436,546	(320,056)	116,490
<b>Restricted funds</b>			
Community RL Coaches	35,672	(90,000)	(54,328)
Golden Gates Housing Trust	-	(188)	(188)
Heritage Lottery Wire 2 Wolves	-	(616)	(616)
Short Breaks Tender	-	(1,375)	(1,375)
WBC Sports Tender	2,873	(49,230)	(46,357)
Young Trustees Gambia Visit	-	(6)	(6)
Wolf Print 2	114,436	(110,463)	3,973
Wolf Print Music	148	(1,445)	(1,297)
RL Cares Health 'Offload' Project	17,720	(1,954)	15,766
	<u>170,849</u>	<u>(255,277)</u>	<u>(84,428)</u>
<b>TOTAL FUNDS</b>	<u>607,395</u>	<u>(575,333)</u>	<u>32,062</u>



**Warrington Wolves Foundation**

**Notes to the Financial Statements - continued  
for the Year Ended 30 April 2022**

**17. MOVEMENT IN FUNDS - continued**

- Community RL Coaches- supports salaries and equipment costs to deliver a comprehensive schools and community club development programme.
- Golden Gates Housing Trust - assists the employment of engagement officers to deliver sports related programmes in housing trust estates.
- Heritage Lottery Wire 2 Wolves - funding to employ P/T officer and deliver web based app and support a volunteer programme.
- Warrington Borough Council Short Breaks Tender - provides the funding to deliver a sport and arts led Youth Club for young people with additional needs.
- Arts Council England Wolf Print Music - provides funding for equipment to deliver a music project.
- Children's University - funded by schools to support the aspirations of pupils through lifelong learning.
- Warrington Borough Council Sports Tender - provides a sports development network to support participation.
- Warrington PCT Obesity Project for young people and their families.
- Children in Need Wolf Print 2 - provides salary funding and equipment for sports and arts activities for young people with additional needs
- Active Cheshire Count Me In - provides salary support to provide inclusive activities for the most vulnerable.
- Warrington Wolves contribute to salaries to support the core costs of the community programme.
- Rugby League Cares Cultural Partnership - funding provides part-time salary to deliver Arts Awards across the Foundation projects.
- Handball. This represents monies held for the handball team.
- RL Cares Health Offload - to introduce, implement, develop and manage a mental health programme for at risk men in the local area.

**Transfers between funds**

Transfers made to restricted funds from unrestricted funds have been made to ensure restricted funds are not in deficit at the year end.

Transfers made between unrestricted funds have been made to transfer any balances remaining on the fund at the end of the project back to the general fund.

The above transfers have been agreed with the donor / grantor.



# **Warrington Wolves Foundation**

## **Notes to the Financial Statements - continued for the Year Ended 30 April 2022**

### **18. EMPLOYEE BENEFIT OBLIGATIONS**

The National Employment Savings Scheme (NEST), a government auto-enrolment workplace pension scheme, is available to employees. NEST is a defined contribution scheme that was created as part of the government workplace pension reforms under the Pensions Act 2008. The contributions are allocated between restricted and unrestricted funds on the same basis as salary expenses.

During the year there were contributions paid of £13,440 (2021: £11,250). There was a liability as at the year ended 30 April 2022 of £1,245 (2021: £2,520).

### **19. RELATED PARTY DISCLOSURES**

There were no related party transactions for the year ended 30 April 2022.

### **20. ANALYSIS OF RESERVES**

	<b>30.4.22</b>	<b>30.4.21</b>
	<b>£</b>	<b>£</b>
Total reserves	513,252	481,190
Less:		
Restricted funds	(128,079)	(210,450)
Fixed assets unrestricted	-	-
	<hr/>	<hr/>
Freely available reserves	385,173	270,740
	<hr/>	<hr/>





**Warrington Wolves Foundation**

**Detailed Statement of Financial Activities  
for the Year Ended 30 April 2022**

	30.4.22 £	30.4.21 £
<b>INCOME AND ENDOWMENTS</b>		
<b>Donations and legacies</b>		
Donations	24,545	34,788
Sponsorship	50,879	29,505
	<hr/> 75,424	<hr/> 64,293
<b>Other trading activities</b>		
Fundraising events	35,722	8,209
Coaching and activities	174,393	77,285
Service charges	15,950	15,900
Contributions	47,744	38,030
	<hr/> 273,809	<hr/> 139,424
<b>Charitable activities</b>		
Grants	284,903	231,735
<b>Other income</b>		
CJRS Income	-	112,753
	<hr/>	<hr/>
<b>Total incoming resources</b>	634,136	548,205
<b>EXPENDITURE</b>		
<b>Other trading activities</b>		
Bad debts	(580)	5,283
Refreshments	993	84
Fundraising expenses	23,301	5,676
	<hr/> 23,714	<hr/> 11,043
<b>Charitable activities</b>		
Wages	293,318	120,435
Social security	23,758	18,533
Pensions	10,595	9,634
Room / venue hire	31,837	11,755
Insurance	10,585	4,862
Advertising	4,886	2,100
Sundries	728	-
Repairs and maintenance	1,017	-
Motor expenses	14,900	3,913
Subscriptions	6,652	3,802
Training	5,384	413
Service charge	-	3,000
Postage and stationery	1,859	3,256
IT support	4,751	97
Coaching and tuition	104,301	30,062
Carried forward	514,571	211,862

This page does not form part of the statutory financial statements



**Warrington Wolves Foundation**

**Detailed Statement of Financial Activities  
for the Year Ended 30 April 2022**

	30.4.22 £	30.4.21 £
<b>Charitable activities</b>		
Brought forward	514,571	211,862
Irrecoverable vat	5,145	3,612
Professional fees	11,112	12,679
Mobile /Top up expenses	480	693
Auditors remuneration	5,535	3,768
Kit and equipment	40,092	29,460
Depreciation of tangible fixed assets	1,425	2,828
	<hr/> 578,360	<hr/> 264,902
<b>Other</b>		
Furloughed staff	-	112,753
	<hr/> 602,074	<hr/> 388,698
Total resources expended		
	<hr/> 32,062	<hr/> 159,507
<b>Net income</b>	<hr/> <hr/>	<hr/> <hr/>

This page does not form part of the statutory financial statements

