

Company Registration Number - 05316940

The Charity Registration Number is :- 1110421

GENESIS IMPACT

Report and Accounts

31 July 2025

GENESIS IMPACT

Report and accounts for the year ended 31 July 2025

Contents

	Page
Charity information	1
Trustees' Annual Report	1
Statement of directors' responsibilities	32
Independent Accountant's Report	33
<i>Funds Statements:-</i>	
Statement of Financial Activities	12
Movements in funds	0
Revenue Funds	15
Income and Expenditure account	16
Summary of funds	16
Balance sheet	17
Notes to the accounts	19



GENESIS IMPACT



2024-2025 ANNUAL TRUSTEE'S REPORT



Table of Contents

Front cover photo:
young students
attending our Aspire!
programme session.

→	01	Welcome from the Chair of the Board of Trustees
→	02	About Us, What We Do and Our Vision
→	05	Our Programmes
→	10	This year in Numbers
→	11	Raising Aspirations
→	12	Case Study
→	13	Community Involvement
→	15	Changes in the way we work
→	16	Making the most of the strengths of our community
→	17	A Deeper look into our Impact.
→	18	Changes to our programmes

Table of Contents

→	19	Plans for the coming year and beyond
→	22	Our Partners
→	23	Photos

WELCOME FROM THE CHAIR OF THE BOARD OF TRUSTEES

What a year it has been for Genesis Impact! It has been a privilege to serve as Chair of the Trustees during a year of remarkable growth, increased community and expanded corporate partnerships amid the execution of a clear vision on how we further deepen our program continuity and reach new places with influence and make change, for the better.

The impact in this year has been substantial with over a 130 Primary pupils, 250 teenagers and 35+ young people empowered through workshops and mentoring across 3 boroughs. We have successfully supported 125 Parents and Carers as well as 45 families through their most difficult and challenging times.

In addition to that we have been able to expand and strengthen our core program including Aspire for ages 9-11, Acclivity for age 16-18 and Acclivity Tu for vocational pathways. This is in addition to the core programs we have maintained for years, including Bible Club and initiatives that provide whole family well-being support. The partnerships we are forming with the community from local schools, our Alumni, community and corporate businesses like MSCI continue to help us extend our reach and improve our program delivery.

As we look ahead towards our 30th year, I am excited for how deep we can take our programs and how far we can expand them. Unfortunately, I will not be able to participate in this growth as Chair of Trustees as I step down from my role this year. I do so with immense pride and gratitude, having witnessed the dedication of our teams, the passion of our volunteers, the resilience of our young people, and the dedication of the families that we serve.

Having been a beneficiary of Genesis Impact's services many years ago, to helping the organisation make the decisions that today helps it serve others has been nothing short of a blessing. I am very confident that organisation will continue to flourish and its leadership will continue to help it grow with steadfast integrity.

I am extremely grateful to my fellow Trustees (past & present) for their support and help, and especially to Foluke Akingbolagun for her unwavering leadership, continuous counsel and deeply ingrained integrity.

Thank you for allowing me to be part of this journey and even as I champion from afar, I am excited to see the continued growth of the organisation the incredible things to come as a 30th of the approaches.

God Bless you all



Babafemi Taiwo

Chair of the Board of Trustees, Genesis Impact

Genesis Impact

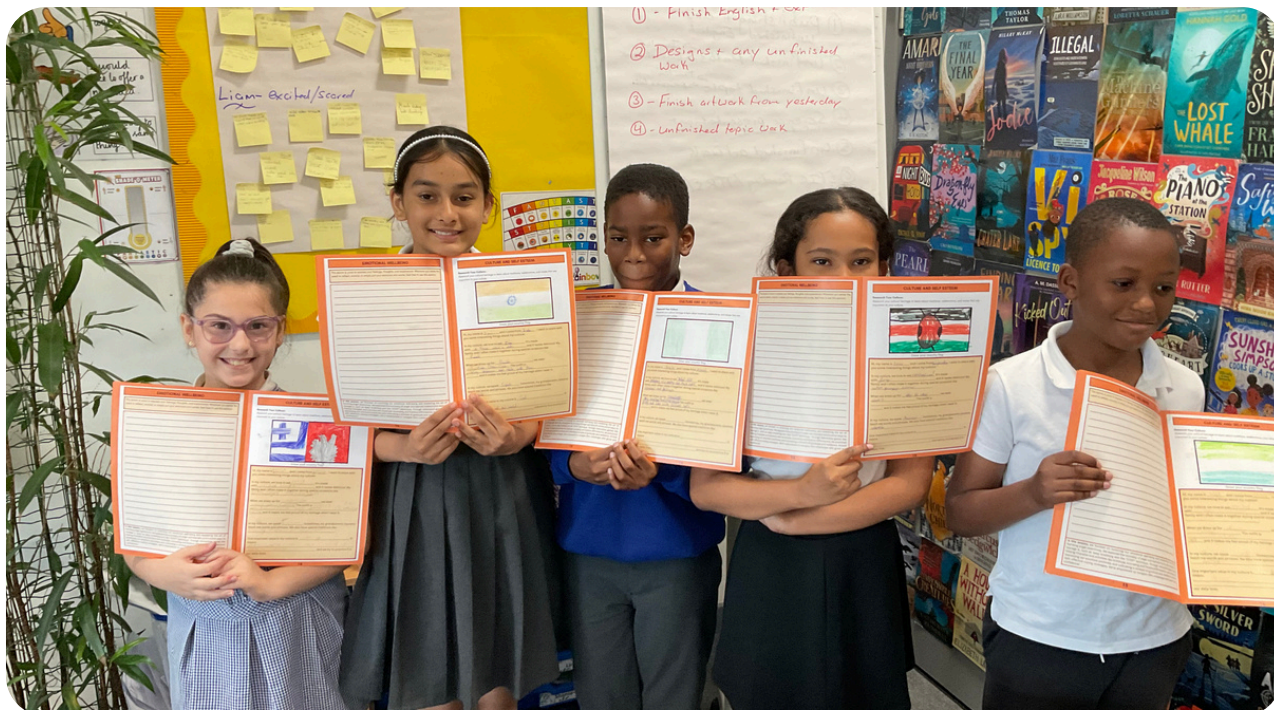


Photo: Children participating in an Aspire! session

About Us

We are a London based social mobility charity working with a network of schools, community groups and organisations in the corporate and vocational sectors. Since 1997, we have worked collectively to invest in students to nurture young talent and empower parents to develop new skills and positive parenting behaviour.

What We Do

- We foster social mobility within the community by empowering and inspiring young people from underserved backgrounds
- We provide young people with professional mentors
- We curate career workshops for students aged 16 - 18 years old
- We create a support network of professionals for young people to tap into
- We support whole family wellbeing; from primary and secondary school, right through to parents

Genesis Impact



Photo: students participating in an Aspire! session

Short Term Impact

Our workshops and programmes provide an opportunity for Black, Asian or socially under-represented young people to prepare professionally, mentally and culturally to step into the professional workforce. We also provide support to the parents of students to equip with them with practical tools for managing children with behaviour issues. Lastly, we work with parents to empower them to learn new skills and seek higher education or employment.

Long Lasting Change

Young people excel into higher education and build a professional support network with organisations who champion inclusivity and social mobility.

Genesis Impact



Photo: Acclivity mentors with Genesis Impact CEO and staff member at Acclivity Award Ceremony

Vision

At Genesis Impact, we envision a world where every young person, regardless of background, has the opportunity to achieve their full potential and thrive in the professional world. We believe that talent should never be limited by circumstance, and through mentorship, education, and career support, we aim to break down barriers to social mobility.

Our vision is to create a future where young people are equipped with the skills, confidence, and connections needed to succeed in their chosen careers. By fostering an ecosystem of support, opportunity, and empowerment, we strive to build a more inclusive and equitable society; one where ambition is nurtured, potential is realised, and success is accessible to all.

Mission

Our mission is to improve social mobility by empowering young people through mentoring, career workshops and support, enabling them to build confidence, and prepare them to be equipped to step into the professional workforce.

Our Programmes



Photo: Aspire! students with their teacher and Genesis Impact staff

Aspire!

Aspire! is our junior leadership programme for children aged 9-11. The face-to-face sessions support children from Black, Asian and underserved communities with skills to boost their self-esteem and raise aspirations for their future. Session topics include: Introduction to Leadership; Mental and Emotional Well-Being; Confidence and Self-Esteem; Communication and resilience; Careers workshop and My community and I.

Acclivity

The Acclivity Programme is the flagship initiative Genesis Impact offer to young people aged 16-18 years old providing mentoring from professionals working in the corporate sector.

The 8-month holistic mentoring programme prepares high achieving youth from underserved communities; professionally, mentally and culturally for corporate life. The mentor works with the student to enhance their soft skills, to build confidence and work towards empowering the student to be readily equipped to step into the professional work environment.

Our Programmes



Photo: Corporate partner lead giving welcome speech at our Acclivity Award Ceremony, Oct 2024

Acclivity Tu

The Acclivity Tu Programme is an initiative focused on providing emotional and psychological support to low achieving students, from underserved communities who have vocational aspirations.

The 8-month mentoring programme matches students with mentors working within varying vocational sectors and industries, partnering students with the mentors based on their interests, goals and backgrounds.

For students participating in both Acclivity or Acclivity Tu, we offer two group career workshops. These online sessions feature leaders who have grown up in similar environments, sharing their journeys to success and providing valuable insights.

Students have the opportunity to engage directly with panelists from both professional and vocational sectors, broadening their awareness of career pathways they may not have previously considered. These workshops spark ambition, encourage curiosity, and help young people envision new possibilities for their futures.

Our Programmes



Photo: Bible Club Children Activity at St Augustine's Primary School

Bible Club

The Genesis Impact Bible Club has been successfully running in the borough of Bexley for 16 years. The aim of the club is to teach young children the importance of knowing who God is, understanding His deep love for them, and spending time in God's word. This year, we were blessed to deliver sessions to 20 children at St Augustine's School, furthering our mission to reach and inspire young hearts.

We intend for our Key Stage 2 pupils to leave every session with strengthened faith, meaningful interaction with like-minded young Christians, and—most importantly—having had fun learning about the word of God.

Quotes from Our Pupils

“ My Favourite things is learning from our teacher ”

“ I really enjoy the games we play and how they teach us about the Bible ”

“ I like it when we read Bible stories in the class. It's my favourite time of the day. ”

Our Programmes



Photo: Parents from our SEND Programme Award Ceremony

Whole Family Wellbeing

Whole Family Wellbeing programme is designed for schools and communities where our young leadership programme, Aspire!, is running. It addresses the social and family issues that could otherwise prevent participants from achieving their full potential.

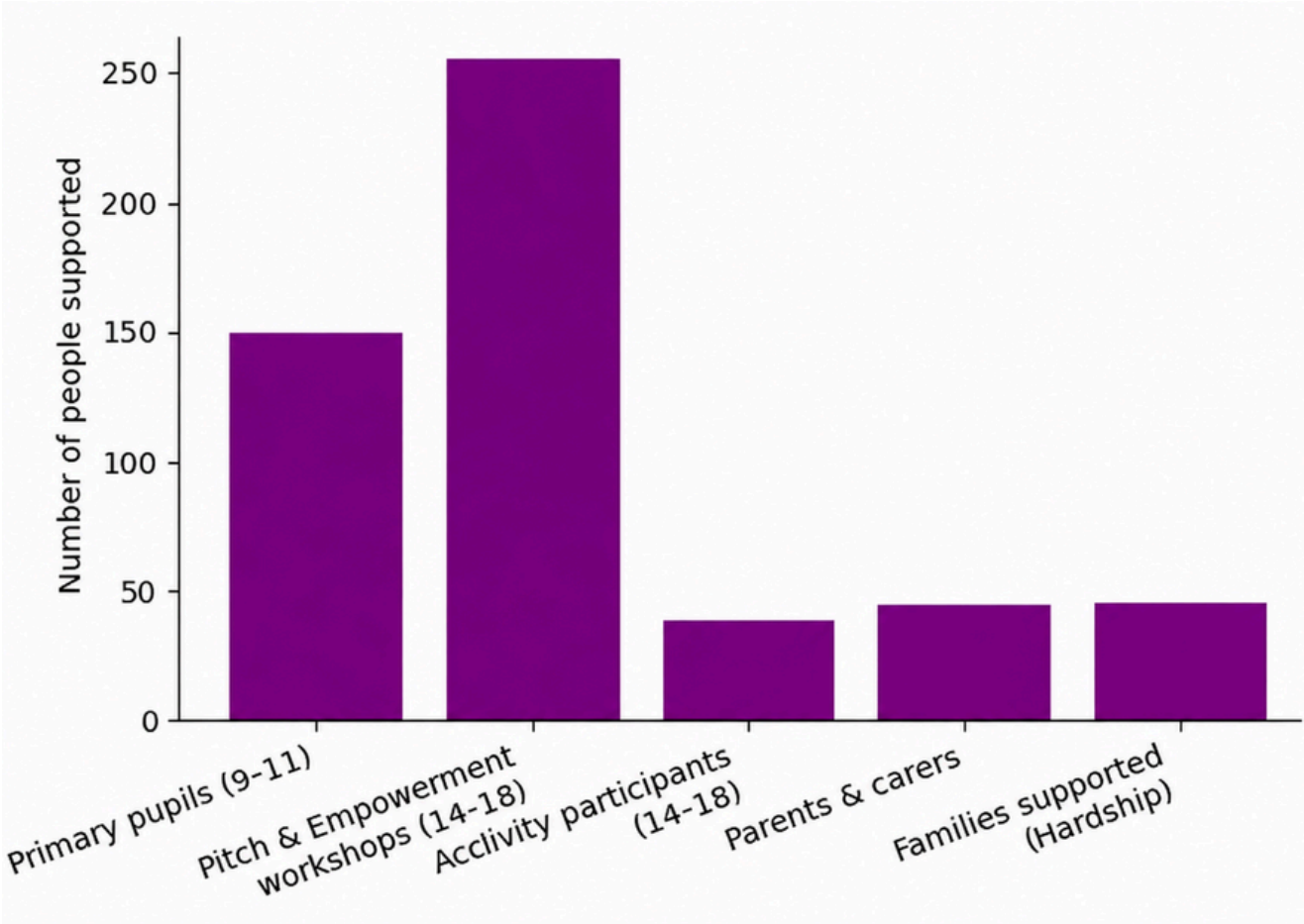
As a parent/carer and child focused course it empowers family units to ensure that we achieve an enriching and long-lasting impact. Session outline include: Positively You - Emotional and Mental Wellbeing; (Keeping Children Safe); Handling Anger in Families; Raising Aspirations; Hardship Support and Creative Craft Making.

Pitch & Empowerment Workshops

Our Pitch & Empowerment Workshops allow Genesis Impact to engage directly with primary and secondary school students, introducing them to the power of leadership and mentorship on a large scale. These sessions serve as a key entry point for students, helping them understand how the right mindset, guidance, and support can positively shape their academic, personal, and professional futures.

This year in numbers

- 152 (9-11 year olds) across five primary schools
- 255 students (14-18 years old) benefitted from Pitch & Empowerment workshops
- 38 young people aged 14 - 18 across 3 boroughs (Bexley, Greenwich, Lewisham)
- 125 parents and carers benefitted from sessions and empowerment
- 45 families supported through our Hardship Fund, enabling 97 children to receive Christmas gifts and experience joy during a challenging time.



→	9-11 year olds	152
→	14-18 year olds	38
→	Pitch & Empowerment Workshop	255

Raising Aspirations

National Lottery

This year, Genesis Impact entered the second year of its three-year National Lottery funding award for the 'Raising Aspirations' project.

Funding for our 'Raising Aspirations' project has been instrumental in enabling Genesis Impact to continue its vital work, empowering communities and fostering meaningful change. With this support, we have been able to expand our outreach, develop our impactful programmes and provide essential resources to those who need it the most through our hardship funds. The funding has allowed us to create opportunities for growth, inclusion and support, ensuring our initiatives remain accessible and effective in making a lasting difference.

Aspire!

Funding for the Aspire! programme has allowed us to reach more students and deepen our impact. With these resources, we have enhanced our personalised support and mentorship, empowering students to achieve both their academic and personal goals. As one student shared, *"The Aspire! programme has made me a better leader and helped to control my anger"*

Acclivity

As a result of the funding, we have been able to enhance our mentorship programme, providing more comprehensive training for mentors and better support for mentees. This has led to stronger relationships and more meaningful outcomes. A mentor mentioned, *"Being part of Acclivity has been incredibly rewarding. The support and training I received have made a real difference in my ability to guide and inspire my mentees."*

Acclivity Tu

The funding has allowed us to introduce new initiatives and resources that have significantly improved the experience for our participants. We have been able to offer more workshops, networking opportunities, and career guidance. One participant said, *"Acclivity Tu has opened doors for me that I never thought possible. The programme has been a game-changer for my educational and career aspirations"*

Community Involvement

We continued to actively involve community members in our work through a range of initiatives and programmes. Local volunteers played an important role in supporting our events, workshops, mentoring programmes, and community activities, helping to ensure that our services remained relevant and responsive to the needs of the young people and families we support.

Three of our trustees, who were themselves members of Genesis youth clubs when they were younger, continued to contribute directly to programme delivery alongside 21 Genesis Impact alumni. Together, they supported the delivery of the Aspire and Acclivity programmes, volunteering their time to guide and mentor young people in relation to their aspirations, confidence, and future careers. Many also supported our Christmas outreach initiative by helping to prepare and deliver hampers to low-income families during the festive period.

We continued to deliver cultural sessions and activities designed to celebrate the rich heritage and traditions within our community, helping to foster a sense of pride, identity, and belonging among participants. During the year, we once again brought schools together for a joint Aspire and Whole Family Well-Being celebration event, recognising the achievements and progress of participating young people and families. The event was attended by school leaders, parents and carers, community members, and Genesis Impact alumni professionals, who shared their career journeys and experiences with attendees.

Community Involvement

We are currently planning a joint award ceremony with our corporate partner MSCI that will bring all the schools and participants of the Acclivity and Acclivity Tu programmes together to celebrate their achievements.

We have partnered with Smiley Ark, a local after-school provision, for mutual learning and sharing of experiences.

The Aspire! Programme workbook was evaluated by a local Kumon lead and two headteachers from Deptford Park School and Morden Mount. Based on their feedback, we have made amendments to the Aspire! workbook to incorporate differentiated learning strategies and make it more inclusive for students with Special Educational Needs and Disabilities (SEND).



Photo: Aspire! workbook



Original activity page



Amended activity page

Changes in the way we work

Community involvement has significantly influenced our approach and operations. By listening to the voices of those we serve, we have been able to adapt our programmes to better address their needs. For instance, feedback from the headteacher of a school that participated in the Aspire programme highlighted the importance of continuity. Pupils who participated in the junior leadership programme can then progress to an intermediate programme, further raising their

aspirations and engagement with learning. This feedback has prompted us to review the programme as to how we can extend our work with the young people, beyond their completion of Aspire! as they enter Year 7 in secondary school

Additionally, we are working on expanding our networking events to ensure that our Acclivity participants can continue to access valuable information and connect with a broad spectrum of professionals even after they have completed the programme.

2



Increase in school partnerships

2

Corporate Partnership targets

Making the most of the strengths of our community

We leveraged the talents of our community members to create a supportive and inclusive environment. An example of this was when we hired the services of one of our parents from the community, who had previously been a recipient of one of our programmes, to provide the catering for our awards ceremonies through her own registered catering business. We also continued to see former participants and community members give back by helping to create new opportunities for the next generation of young people through education and work experience initiatives

Legal & General

During the year, Genesis Impact was also pleased to secure an exciting partnership opportunity with Legal & General through one of our Genesis Impact alumni. As a result of this relationship, five Genesis Impact students were offered places on Legal & General's 2026 Asset Management Insight Week at their London offices.

The programme will provide Year 12 and Year 13 students with exposure to careers in investments, technology, marketing, relationship management, and real assets, alongside insights into sustainability, wellbeing, and workplace inclusivity within the finance sector. Students who complete the programme will also receive a Certificate of Achievement.

This opportunity reflects the long-term impact of Genesis Impact's community network and the full-circle nature of our work, with former participants now helping to create professional pathways and opportunities for the next generation of young people.

Ade's Food Store

Supporting Families Through Partnership with Ade Food Store

Genesis Impact is proud to continue our five-year partnership with Ade Food Store, a local business specialising in African food produce. Recognising the needs of the communities we serve, particularly families from African backgrounds in low-income households; we forged this partnership to provide essential food support. Through our work with primary schools, where this demographic is prominent, we identified a gap in access to culturally relevant food.

By collaborating with Ade Food Store, we have been able to supply families with food that meets their cultural needs, ensuring it is both appreciated and utilised effectively. This partnership has made a meaningful difference, helping many families access nutritious meals without financial strain.

Smiley-Ark After School Club

A Strong Partnership with Smiley Ark to Support Young People

Genesis Impact is proud to have a strong and collaborative partnership with Smiley Ark, a local after-school club dedicated to supporting young people. By working together, we enhance each other's impact, ensuring that children and families receive the support they need.

Our partnership includes regularly referring our services to the schools we have relationships with, respectively, helping to highlight the need for vital services and expanding our collective reach. Additionally, the founder of Smiley Ark plays a key role within Genesis Impact, serving as one of our Safeguarding Leads and further strengthening the protection and wellbeing of the children we support. Their involvement extends even further, as their founder generously hosts our annual award ceremony for our young children aged 9-11 participating in the Aspire! programme, celebrating their achievements in a meaningful and memorable way.

A deeper look into our impact

Programme	How It Helped	Impact & Evidence
Aspire!	Empowered children from underserved backgrounds with essential skills to boost self-esteem and aspirations for their future	132 , (9-11 year old) pupils participated in two rounds of 8 -week sessions across 6 primary schools.
Acclivity & Acclivity Tu	Prepared high-achieving students from underserved communities for professional success through mentorship and skills-building Supported vocationally inclined youth with career readiness, practical skills and industry mentorship	Reached 220 pupils across sixth form schools Mentees developed leadership, teamwork and problem skills Provided mentorship from 22 professionals to 38 young people
Whole Family Wellbeing	Helped families cope with COVID-19 impact, financial pressures and mental health challenges	95% of families reported improvements in confidence, stress management and aspirations.

Participating schools for Aspire! programme

- Twin Oaks Primary School (Lewisham)
- Christ Church Primary School (Bexley)
- St. Paul's Primary School (Bexley)
- Modern Mount Primary School (Greenwich)
- Deptford Park Primary School (Lewisham)
- St Joseph's Primary School (Lewisham)

Participating schools for Acclivity and Acclivity TU programmes

- Trinity School 6th Form (Bexley)
- Christ Church the King College (Bexley)
- Woolwich Poly (Greenwich)
- Wilmington Academy (Kent)

Changes to our programmes

Changes we have made to the programme based on our experience.

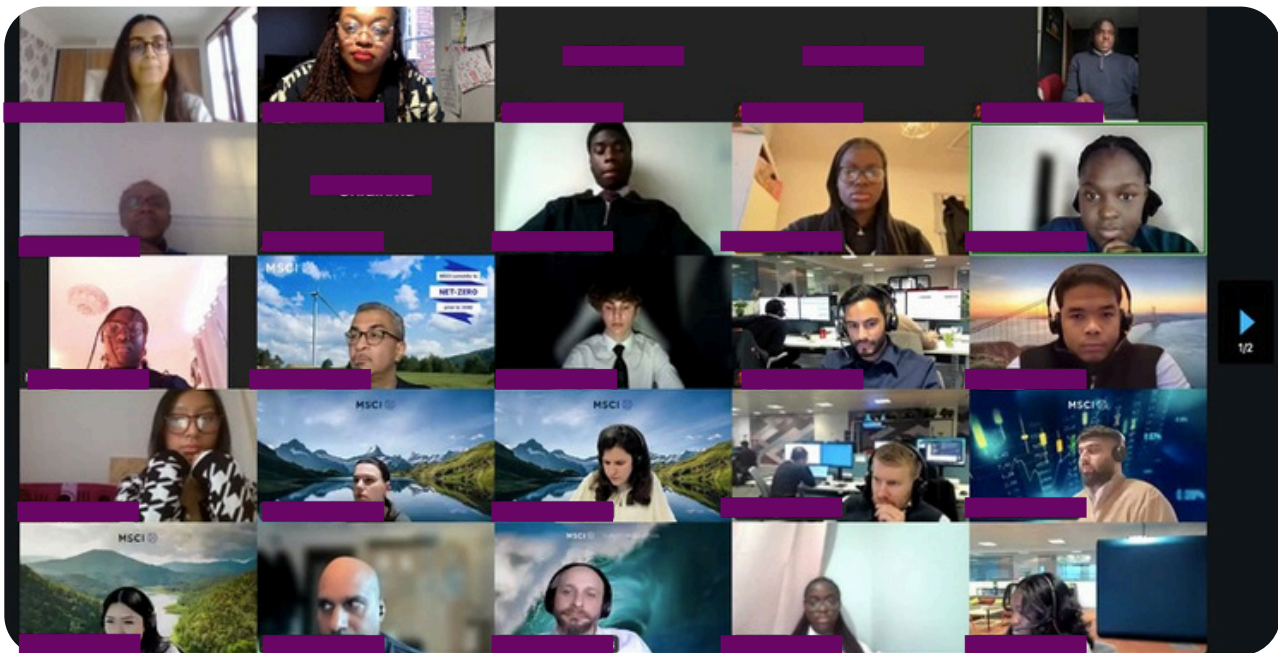


Photo: Acclivity Online Launch event with new mentees and mentors

Acclivity & Acclivity Tu

- Group Workshops:** We have introduced two group workshops to offer a wider range of professionals, enriching the sessions and making them more diverse for the young people. By providing two workshop options, participants can choose which one to attend, ensuring that no one misses out on valuable insights and experiences and alternative careers are being showcased.
- Joint Awards Ceremony:** We are currently planning a joint awards ceremony that will involve our corporate partners, schools, community leaders, all the young people, and their families. This event will celebrate the achievements and progress of our participants, fostering a sense of community and recognition.
- Diverse Mentorship:** Our mentors are drawn from around 25 companies and the Black Leadership Network, bringing a wealth of experience and diverse perspectives. This diverse mentorship pool ensures that our young people receive guidance and support from professionals who understand their unique challenges and aspirations.
- Enhanced Workbooks:** We have enriched the Acclivity and Acclivity Tu workbooks with comprehensive guidance notes for mentors. These enhancements are designed to help mentors deliver their sessions more effectively, ensuring a more engaging and impactful experience for the participants.

Plans for the coming year and Beyond



Photo: Aspire! students participating in session activities

Looking Ahead

Programmes

Aspire!

Schools we've worked with: Modern Mount School (Greenwich), Christ Church Primary, St Paul's, St Augustine's (Bexley)

Expanding Programme Scope: Based on our experience delivering the programme and the feedback from pupils and school leads, we aim to make the programme more comprehensive. This would mean introducing a tiered approach that ensures continuity, fosters aspirations, and creates a lasting impact on the children.

The GI team will come together to discuss the continued development of the programmes.

We will be looking at :

- **Initial 8-Week Junior Leadership Sessions:** Introducing essential leadership skills and fostering a sense of responsibility and ambition among the young participants.

Plans for coming year and beyond

Looking Ahead

Programmes

Aspire!

- **Intermediate Sessions:** Comprising skills and careers workshops and providing practical leadership opportunities within the school and community. These sessions will help bridge the gap between early leadership training and more advanced aspirations.
- **Early Secondary School Stage (Yrs 7 & 8):** Offering continuous engagement opportunities through Alumni membership and maintaining contact with the programme three times a year. This stage will ensure that participants remain connected and supported as they progress through their educational journey.

Acclivity

Over the past year, the Acclivity programme continued to grow following the successful expansion into additional schools. Building on the strong outcomes previously achieved at Woolwich Poly (Greenwich), we delivered the programme across Woolwich Poly, Wilmington Academy (Bexley), and Trinity School Sixth Form (Bexley). Participants across all schools demonstrated meaningful growth in confidence, communication skills, career readiness, and future aspirations through their engagement with mentors and programme activities.

Due to the continued demand and positive impact of the programme, we are preparing for further growth in the upcoming academic year. From September 2025, planned participant places include:

- 20 places at Woolwich Poly (Greenwich)
- 10 places at Wilmington Academy (Bexley)
- 10 places at Trinity School Sixth Form (Bexley)

This planned expansion reflects both the success of the programme to date and our ongoing commitment to increasing access to high-quality mentoring and aspiration-raising opportunities for young people across South East London.

By increasing the number of participants, we aim to reach more socially disadvantaged youth and provide them with the essential skills and mentorship needed for success in their academic and professional lives. The programme will continue to offer high-quality professional mentoring, ensuring that each participant receives personalised guidance, support, and opportunities for growth. This comprehensive approach will help them build confidence, develop critical skills, and aspire to achieve their fullest potential. By fostering a supportive and engaging environment, we are confident that the Acclivity programme will continue to make a positive difference in the lives of the young people we serve.

Enhancing Collaboration and Partnerships: We will continue to strengthen our existing collaborations and seek new partnerships with schools, community leaders, and corporate partners. This will help us provide more resources, opportunities, and support to the young people we serve.

Monitoring and Evaluation: We will implement a robust monitoring and evaluation framework to assess the effectiveness of our programmes and identify areas for improvement. This will enable us to make data-driven decisions and continuously enhance the impact of our initiatives.

Plans for coming year and beyond

Looking Ahead

Programmes

Acclivity

Celebrating Achievements: We plan to organise events to celebrate the achievements of our participants, such as joint awards ceremonies involving schools, community leaders, corporate partners, and the families of the young people. These events will foster a sense of community and recognise the hard work and dedication of everyone involved.

By implementing these plans, we aim to create a more sustainable and impactful programme that empowers young people to reach their full potential and make a positive difference in their communities.

We plan to engage with school leads to gather their input and collaboratively refine and develop the above initiatives. This collaborative approach will ensure the success of our programmes and align them with the unique needs and insights of each school.

Acclivity Tu

Over the past year, the Acclivity Tu programme was successfully delivered at Trinity School Sixth Form, where participants engaged positively with the vocational activities, mentoring, and career development sessions provided through the programme. Pupils demonstrated increased confidence, stronger employability skills, and enthusiasm for exploring future pathways and opportunities.

Building on the success of the programme at Trinity School, we are now preparing to expand Acclivity Tu to Wilmington Academy in the coming academic year. This planned expansion will allow us to extend access to vocational mentoring, skills development, and career guidance to additional young people who may benefit from increased support and aspiration-raising opportunities.

Through the continued growth of Acclivity Tu, we aim to empower more young people to develop practical skills, build confidence in their future pathways, and positively contribute to their communities.

Plans for coming year and beyond

Looking Ahead

Programmes

REACH

Genesis Impact is excited to launch and further develop the REACH: Address the MESS programme in partnership with the South London and Maudsley NHS Foundation Trust (SLaM). The programme has been designed to support the mental, emotional, and spiritual wellbeing of young men within the borough of Lewisham, while helping to reduce the stigma surrounding conversations around mental health.

Delivered within trusted community and church settings, the REACH programme will provide culturally grounded group sessions focused on identity, resilience, wellbeing, and healthy coping strategies. Through facilitated discussions, mentoring, practical wellbeing tools, and reflective activities, participants will be encouraged to build healthier routines, strengthen confidence, and develop positive support networks.

As Genesis Impact continues to respond to the growing need for accessible and community-led mental health support, we believe the REACH programme will become an important part of our wider commitment to empowering underserved communities and supporting long-term wellbeing outcomes for young people and families.

InREACH

Genesis Impact is preparing to launch the INREACH programme in partnership with the South London and Maudsley NHS Foundation Trust (SLaM). The programme will deliver culturally grounded evening and weekend activities for adults on inpatient mental health wards in Lewisham, with a focus on supporting men from underserved and racialised communities.

The programme will combine physical wellbeing, creative expression, and mentoring activities designed to support emotional regulation, confidence, and connection during inpatient stays. Activities will include movement and fitness sessions, alongside spoken word, storytelling, and creative writing workshops.

INREACH will also help create stronger pathways into community support following discharge, connecting participants to Genesis Impact's wider programmes, including REACH and Acclivity. Through this work, we aim to provide accessible and culturally informed wellbeing support in partnership with the NHS.

Case Study

Case Study

Case Study: Mentorship Journey of Moreen under Delali

My name is Moreen, I am 17 years old and I was very interested on becoming an aspiring architect in the future as it was something I had been interested in since young, having family influence my future and my creativity on top of that.

Before joining Acclivity I was slightly nervous in terms of my career as it was something seen almost impossible to do without certain specifications in education for example maths and physics. I was also quite unmotivated to continue having that ambition as I believed I wouldn't be good enough to actually become a qualified architect.

I applied to the programme for some guidance as the change from secondary school to sixth form was huge and I was quite lost in terms of how to manage everything. School, Daily routine's, Leisure and Social life. I was hoping to meet someone with experience to give me tips and motivate me to keep going

My experience was astronomical. I was able to learn time management, finance management and just how to cope healthily with school and life without overworking myself or creating unrealistic goals. Taking part in the programme involved me being listened to, someone to help me when I couldn't help myself and leave the sessions feeling refreshed and relieved knowing that I got the help and advice needed.

I had the best mentor called Delali, she was very patient with me and very understanding with my experiences.

She made the sessions very fun and engaging which made me feel safer and more involved without being pressured in the moment to speak about myself.

I am much more confident in myself and with all the advice Delali has given me, I believe I can achieve a lot if I just put my mind to it and work hard without making unrealistic goals for myself. Also to give myself a break when needed

I am more driven to the fact that I will become an architect no matter what it takes and I love that my mentor has sparked that ambition in me that I had from a young age.

Case Study

Case Study

Case Study: Mentee, Rayhan

I'm a sixth form student studying A-levels with ambitions in finance. Before Acclivity, I was academically driven but unsure how to turn that ambition into a clear professional pathway.

I felt confident in exams, but although my career options were broad, I lacked clarity and real-world exposure.

I applied after hearing a speaker sent to my school emphasise that "it's not what you know, but who you know." That perspective stood out to me. I wanted mentorship, exposure, and a clearer understanding of how to navigate competitive careers.

The programme involved workshops, mentoring sessions, and goal-setting. It pushed me to reflect on my strengths and refine them to their full potential.

My mentor provided guidance and direction. They challenged my thinking and helped me map out my long-term goals more strategically.

I've developed stronger communication skills, clearer career direction, and greater confidence in my own abilities within professional environments.

I now approach opportunities strategically rather than passively, with greater clarity and confidence.

My ambition hasn't changed, but my understanding of career growth has. I'm more intentional and forward-thinking about my goals.

It has meant access, to opportunities, people, and resources that have broadened my perspective.

If your future goals matter to you, apply. It will challenge you, grow your confidence, and give you practical tools to succeed.

Feedback

We have received insightful feedback from students and parents on our programmes, school/6th form and corporate partners. Their observations and experiences have been invaluable in understanding the impact of our programmes and identifying areas for improvement.

Testimonial 1

Aspire! Programme - Head Teacher Observation

Child A –

The pupil engaged positively with the Aspire sessions and expressed a clear interest in developing as a leader in the future. Through the programme, she gained greater self-awareness and confidence in her abilities. As a result, she now holds a leadership role within school and demonstrates increased confidence following completion of Aspire.

Child B –

At the start of the year, the pupil lacked confidence in sharing ideas during lessons, particularly when tasks felt challenging. Following participation in Aspire, the pupil has shown greater self-belief and is more willing to contribute in class, even when unsure of the answer. The class teacher has observed a noticeable increase in confidence during teaching sessions.

Testimonial 2

Aspire! Parents Programme - Parents Feedback

“Thank you very much for the Aspire Class for the past few weeks, It has been very useful and enjoyable. I would like to join more!”

“I can confirm, I did positive communication with my son this week, he opened and told me more about what his day was like. Thank you so much for your time and your work! ”

Testimonial 3

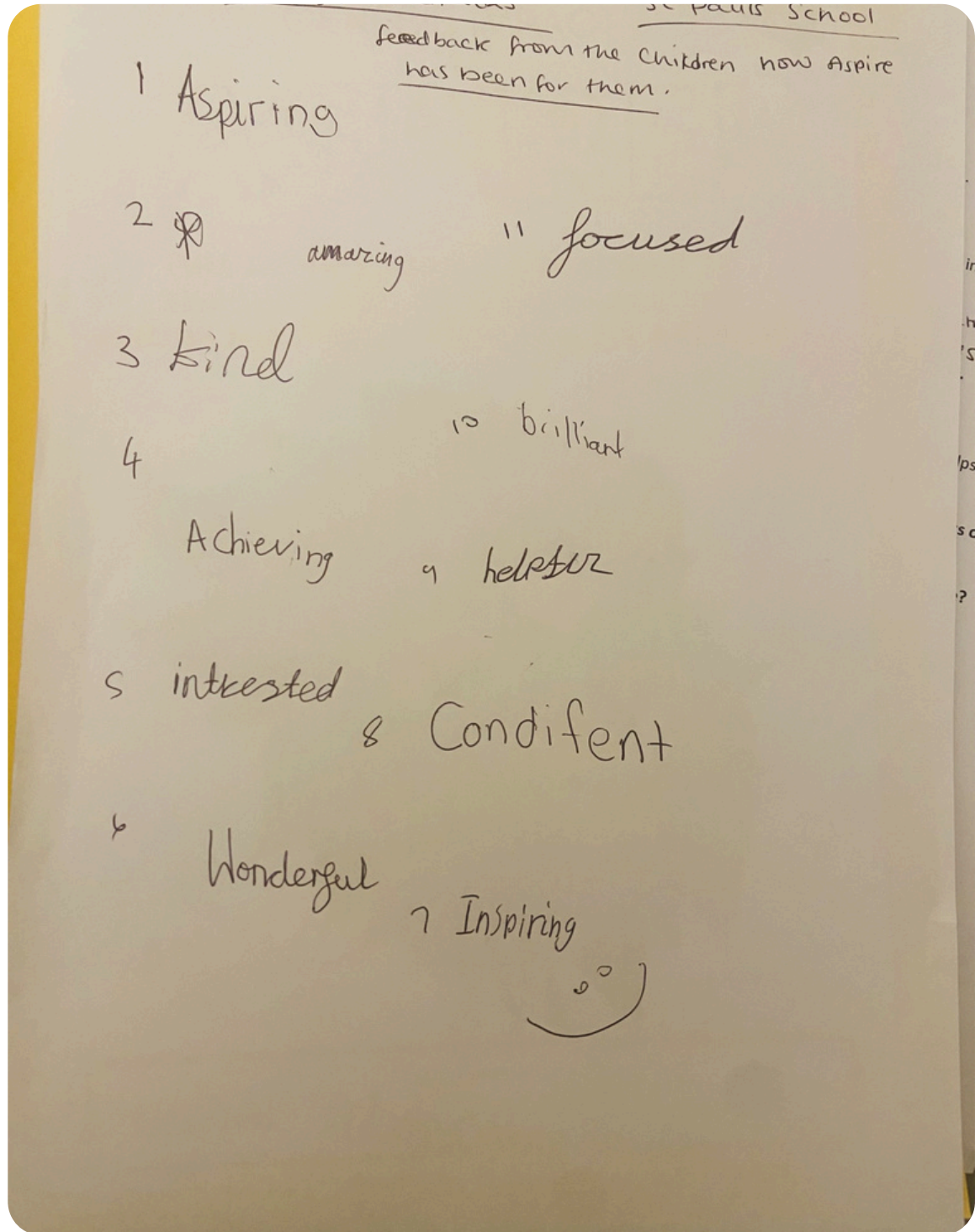
Acclivity Programme - Head Teacher at our Partner School

“The Acclivity Programme does something that schools can’t. It gives students a different voice and dedicated one-to-one time that’s completely focused on them. It’s really superb. The mentors have been great, and our pupils have found it incredibly valuable. Having a mentor’s full attention for a whole hour is something they truly appreciated.”

Feedback

(continued) Testimonial 3

Aspire! Programme, students using one word to describe Aspire!



OUR PARTNERS THIS YEAR

CHRIST BELIEVER'S CHURCH, ERITH



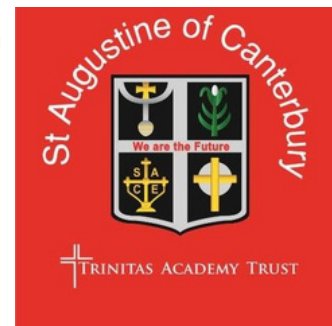
ST. JOSEPH'S
CATHOLIC PRIMARY SCHOOL



MSCI



THAMESMEAD TM



**South London
and Maudsley**
NHS Foundation Trust

Photos

Aspire! Award Ceremony, July 2024



Photos

Aspire! Programme session in one of our Primary Schools



Photos

Christmas Gift Wrapping



Contact Us

Email

info@genesisimpact.org



Website

www.genesisimpact.org



GENESIS IMPACT

GENESIS IMPACT

Company Registration Number - 05316940

Trustees' Annual Report for the year ended 31 July 2025

The Trustees present their Report and Accounts for the year ended 31 July 2025, which also comprises the Directors' Report required by the Companies Act 2006.

Reference and administrative details

The charity name.

The legal name of the charity is:- GENESIS IMPACT.

The charity is also known by its operating name, Genesis Impact.

The charity's areas operation and UK charitable registration.

The charity is registered in England & Wales with the Charity Commission in England & Wales (CCEW) with charity number 1110421.

.

The charity does not operate in any overseas jurisdictions.

Legal structure of the charity

The charity is constituted as a company limited by guarantee, registered under the Companies Acts . The governing document of the charity is the Memorandum and Articles of Association establishing the company under company legislation.

There are no restrictions in the governing documents on the operation of the Charity or on its investment powers other than those imposed by Charity Law.

By operation of law all, trustees are directors under the Companies Act 2006 and all directors are trustees under Charities legislation and have responsibilities, as such, under both company and charity legislation.

The principal operating address, telephone number, email and web addresses of the charity are:-

53 Disraeli Close

London,

SE28 8AW

Telephone 07771 822807

Email Address info@genesisimpact.org Web address www.genesisimpact.org

The registered office of the charity for Companies Act purposes is the same as the operating address shown above.

GENESIS IMPACT

Company Registration Number - 05316940

Trustees' Annual Report for the year ended 31 July 2025

The Trustees in office on the date the report was approved were:-

Victoria Towobola
Abimbola Olabode
Christiana Parson
Oluwatomipe Akingbolagun
Yvonne Abimbola

Financial review

The charity's financial position at the end of the year ended 31 July 2025

The financial position of the charity at 31 July 2025 and comparatives for the prior period, as more fully detailed in the accounts, can be summarised as follows:-

	2025	2024
	£	£
Net income	286	6,683
Unrestricted Revenue Funds available for the general purposes of the charity	4,406	3,548
Restricted Revenue Funds	5,777	6,349
Total Funds	10,183	9,897

Details of The Independent Examiner

Ms F Popoola B.Sc (Econs) FCCA CTA ATT (Fellow)

Member of Chartered Certified Accountants

36A Goodmayes Road

Ilford

Essex

IG3 9UR

GENESIS IMPACT

Company Registration Number - 05316940

Trustees' Annual Report for the year ended 31 July 2025

Statement of the Directors' and Trustees' Responsibilities

The charity's trustees are responsible for the preparation of the accounts in accordance with the terms of the Companies Act 2006, the Charities Act 2011 and the Charities (Accounts and Reports) Regulations 2008. Notwithstanding the explicit requirement in the extant statutory regulations, the Charities (Accounts and Reports) Regulations 2008, to prepare the financial statements in accordance with the SORP 2005, in view of the fact that the SORP 2005 has been withdrawn, the Trustees determined to interpret this responsibility as requiring them to follow current best practice and prepare the accounts according to the FRS 102 SORP (Statement of Recommended Practice for Accounting and Reporting by Charities) 2019, applicable to all accounting periods beginning on or after 1st January 2019), (The SORP), .

In particular, the Companies Act 2006 and charity law require the Board of Trustees to prepare financial statements for each financial year which give a true and fair view of the state of affairs of the charity as at the end of the financial year and of the surplus or deficit of the charity. In preparing those financial statements the Board is required to :-

- to prepare the accounts in accordance with United Kingdom Generally Accepted Accounting Practice (United Kingdom Accounting Standards and applicable law).
- select suitable accounting policies and apply them consistently;
- make judgements and estimates that are reasonable and prudent;
- prepare the financial statements on the going concern basis unless it is inappropriate to presume that the charity will continue in business;
- state whether applicable accounting standards and statements of recommended practice have been followed, subject to any material departures disclosed and explained in the financial statements;

The law requires that the trustees must not approve the accounts unless they are satisfied that they give a true and fair view of the state of affairs of the charity and of the surplus or deficit of the charity for the year.

The Trustees are also responsible for maintaining adequate accounting records which disclose with reasonable accuracy at any time the financial position of the charity and which are sufficient to show and explain the charity's transactions and enable them to ensure that the financial statements comply with the Companies Act 2006 and comply with regulations made under the Charities Act. They are also responsible for safeguarding the assets of the charity and hence for taking reasonable steps for the prevention and detection of fraud and other irregularities.

The Trustees are also responsible for the contents of the Trustees' report, and the statutory responsibility of the Independent Examiner in relation to the Trustees' report is limited to examining the report and ensuring that , on the face of the report, there are no material inconsistencies with the figures disclosed in the financial statements.

GENESIS IMPACT

Company Registration Number - 05316940

Trustees' Annual Report for the year ended 31 July 2025

Method of preparation of accounts - Small company provisions

The financial statements are set out on pages 12 to 20.

The financial statements have been prepared implementing the FRS 102 SORP (Statement of Recommended Practice for Accounting and Reporting by Charities) 2019, applicable to all accounting periods beginning on or after 1st January 2019), (The SORP), and in accordance with the Financial Reporting Standard 102, (effective 1st January 2016)

These financial statements have been prepared in accordance with the provisions in Part 15 of the Companies Act 2006. applicable to companies subject to the small companies regime.

This report was approved by the board of trustees on 28 April 2026.

Ms V Towobola

Director and Trustee

GENESIS IMPACT

Report of the Independent Examiner to the Trustees of the charitable company on the accounts for the year ended 31 July 2025

I report to the Trustees on my examination of the financial statements of the charitable company on pages 12 to 20 for the year ended 31 July 2025 which have been prepared in accordance with the Charities Act 2011 (the Act) and with the Financial Reporting Standard 102, (effective 1st January 2016) as modified by FRS 102 SORP (Statement of Recommended Practice for Accounting and Reporting by Charities) 2019, applicable to all accounting periods beginning on or after 1st January 2019), (The SORP), published by the Charity Commission in England & Wales (CCEW) , and under the historical cost convention and the accounting policies set out on page 19.

Respective responsibilities of the Trustees and the Independent Examiner and the basis of the report

As described on page 32, you, the charitable company's Trustees, who are also the Directors of the Company for the purposes of Company law, are responsible for the preparation of the financial statements in accordance with the Companies Act 2006, the Charities Act 2011 and all other applicable law and with United Kingdom Generally Accepted Accounting Practice, applicable to smaller entities, and for being satisfied that the financial statements give a true and fair view.

The Trustees consider that the audit requirement of Section 144(1) of the Charities Act 2011 (the Act) does not apply, and that there is no requirement in the memorandum and articles of the charity for the conducting of an audit, and that the accounts do not require an audit in accordance with Part 16 of the Companies Act 2006 and that no member or members have requested an audit pursuant to Section 476 of the Companies Act 2006. As a consequence, the Trustees have elected that the financial statements be subject to independent examination.

Having satisfied myself that the financial statements are not required to be audited under any legal provision, or otherwise, and are eligible for independent examination, it is my responsibility to:-

- a) examine the financial statements of the charity under Section 145 of the Act;
- b) follow the applicable procedures in the Directions given by the Charity Commission under section 145(5)(b) of the Act.

Basis of Independent Examiner's Statement and scope of work undertaken

I report in respect of my examination of the charity's financial statements carried out under s145 of the Act. In carrying out my examination, I have followed all the applicable Directions given by the Charity Commission under section 145(5)(b) of the Act setting out the duties of an independent examiner in relation to the conducting of an independent examination. An independent examination includes a review of the accounting records kept by the charitable company and of the accounting systems employed by the charitable company and a comparison of the financial statements presented with those records. It also includes consideration of any unusual items or disclosures in the financial statements, and seeking explanations from you, as Trustees, concerning such matters. The purpose of the examination is to establish as far as possible that there have been no breaches of charity legislation and that, on a test basis of evidence relevant to the amounts and disclosures made, the financial statements comply with the SORP.

The procedures undertaken do not provide all the evidence that would be required in an audit, and information supplied by the Trustees in the course of the examination is not subjected to audit tests or enquiries and does not cover all the matters that an auditor would consider in arriving at an opinion. The planning and conduct of an audit goes beyond the limited assurance that an independent examination can provide

Consequently, I do not express an audit opinion on the view given by the financial statements, and in particular, I express no opinion as to whether the financial statements give a true and fair view of the affairs of the charity, and my report is limited to the matters set out in the statement below.

GENESIS IMPACT

I planned and performed my examination so as to satisfy myself that the objectives of the independent examination are achieved and before finalising the report I obtained written assurances from the Trustees of all material matters.

Independent Examiner's Statement, Report and Opinion

Subject to the limitations upon the scope of my work as detailed above, I have completed my examination: and can confirm that:-

The accounts of this charitable company are not required to be audited under Part 16 of the Companies Act 2006;

This is a report in respect of an examination carried out under 145 of the Act and in accordance with Directions given by the Charity Commission under section 145(5)(b) of the Act which may be applicable;

and that no material matters have come to my attention in connection with the examination giving me cause to believe that in any material respect:-

accounting records were not kept in respect of the charity as required by Section 386 of the Companies Act 2006 and Section 130 of The Charities Act 2011;

the financial statements do not accord with those records; or

the financial statements do not comply with the applicable requirements concerning the form and content of accounts set out in section 396 of the Companies Act 2006 other than any requirement that the accounts give a 'true and fair' view, which is not a matter considered as part of an independent examination;

have not been prepared in accordance with the methods and principles set out in the FRS 102 SORP (Statement of Recommended Practice for Accounting and Reporting by Charities) 2019, applicable to all accounting periods beginning on or after 1st January 2019), (The SORP).

I have no concerns and have come across no other matters in connection with the examination to which attention should be drawn in this report in order to enable a proper understanding of the financial statements to be reached.

Ms F Popoola B.Sc (Econs) FCCA CTA ATT (Fellow) - Independent Examiner

Chartered Certified Accountants

36A Goodmayes Road

Ilford

Essex

IG3 9UR

This report was signed on 28 April 2026

GENESIS IMPACT - Statement of Financial Activities for the year ended 31 July 2025

Statement of Financial Activities (including the Income and Expenditure Account for the year ended 31 July 2025, as required by the Companies Act 2006)

	SOR P Ref	Current year Unrestricted Funds 2025 £	Current year Restricted Funds 2025 £	Current year Total Funds 2025 £	Prior Year Total Funds 2024 £
Income & Endowments from:					
Donations & Legacies	A1	9,096	51,828	60,924	67,688
Investments	A4	-	-	-	8
Total income	A	9,096	51,828	60,924	67,696
Expenditure on:					
Charitable activities	B2	8,238	52,400	60,638	61,013
Total expenditure	B	8,238	52,400	60,638	61,013
Net income for the year		858	(572)	286	6,683
Net income after transfers	A-B-C	858	(572)	286	6,683
Net movement in funds		858	(572)	286	6,683
Reconciliation of funds:-	E				
Total funds brought forward		3,548	6,349	9,897	3,214
Total funds carried forward		4,406	5,777	10,183	9,897

The 'SORP Ref' indicated above is the classification of income set out in the formal SORP documents. As required by paragraph 4.60 of the SORP, the brought forward and carried forward funds above have been agreed to the Balance Sheet.

A separate Statement of Total Recognised Gains and Losses is not required as this statement includes all recognised gains and losses.

All the prior year transactions were unrestricted items, and no further analysis is required

All activities derive from continuing operations

All activities derive from continuing operations

The notes attached on pages 19 to 20 form an integral part of these accounts.

GENESIS IMPACT - Statement of Financial Activities for the year ended 31 July 2025

Movements in revenue and capital funds for the year ended 31 July 2025

Revenue accumulated funds

	Unrestricted Funds 2025 £	Restricted Funds 2025 £	Total Funds 2025 £	Last year Total Funds 2024 £
Accumulated funds brought forward	3,548	6,349	9,897	3,214
Recognised gains and losses before transfers	858	(572)	286	6,683
	4,406	5,777	10,183	9,897
Closing revenue funds	4,406	5,777	10,183	9,897

Summary of funds	Unrestricted and Designated funds 2025 £	Restricted Funds 2025 £	Total Funds 2025 £	Last Year Total Funds 2024 £
Revenue accumulated funds	4,406	5,777	10,183	9,897

The notes attached on pages 19 to 20 form an integral part of these accounts.

GENESIS IMPACT

Income and Expenditure Account for the year ended 31 July 2025 as required by the Companies Act 2006

	2025 £	2024 £
Income		
Income from operations	60,924	67,688
Investment income		
Interest receivable	-	8
Gross income in the year before exceptional items	60,924	67,696
Gross income in the year including exceptional items	60,924	67,696
Expenditure		
Charitable expenditure, excluding depreciation and amortisation	59,736	60,141
Governance costs	902	872
Realised losses on disposals of social investments which are programme related	-	-
Total expenditure in the year	60,638	61,013

GENESIS IMPACT - Statement of Financial Activities for the year ended 31 July 2025

GENESIS IMPACT - Statement of Financial Activities for the year ended 31 July 2025

Net income before tax in the financial year	286	6,683
Tax on surplus on ordinary activities	-	-
Net income after tax in the financial year	286	6,683
Retained surplus for the financial year	286	6,683

All activities derive from continuing operations

In accordance with the provisions of the Companies Act 2006, the headings and subheadings used in the Income and Expenditure account have been adapted to reflect the special nature of the charity's activities.

The notes attached on pages 19 to 20 form an integral part of these accounts.

GENESIS IMPACT - Balance Sheet as at 31 July 2025

	Note	SORP Ref	2025 £	2024 £
Current assets		B		
Cash at bank and in hand		B4	11,173	10,797
Creditors: amounts falling due within one year	7	C1	<u>(990)</u>	<u>(900)</u>
Net current assets			10,183	9,897
The total net assets of the charity			<u>10,183</u>	<u>9,897</u>

The total net assets of the charity are funded by the funds of the charity, as follows:-

Restricted funds				
Restricted Revenue Funds	10	D2	5,777	6,349
			5,777	6,349
Unrestricted Funds				
Unrestricted Revenue Funds	10	D3	4,406	3,548
			4,406	3,548
Designated Funds			-	-
Total charity funds			<u>10,183</u>	<u>9,897</u>

The 'SORP Ref' indicated above is the classification of Balance Sheet items as set out in the formal SORP documents. As required by paragraph 4.60 of the SORP, the brought forward and carried forward funds above have been agreed to the SOFA..

The directors are satisfied that the company is entitled to exemption from the requirement to obtain an audit under section 477 of the Companies Act 2006.

The member has not required the company to obtain an audit in accordance with section 476 of the Act.

The directors acknowledge their responsibilities for complying with the requirements of the Companies Act 2006 with respect to accounting records and the preparation of accounts.

The charity is subject to Independent Examination under charity legislation, and the report of the Independent Examiner is on page 11.

The financial statements have been prepared in accordance with the provisions in Part 15 of the Companies Act 2006. applicable to companies subject to the small companies regime.

Ms V Towobola

Trustee

Approved by the board of trustees on 28 April 2026

The notes attached on pages 19 to 20 form an integral part of these accounts.

GENESIS IMPACT

Notes to the Accounts for the year ended 31 July 2025

1 Accounting policies

Policies relating to the production of the accounts.

Basis of preparation and accounting convention

The accounts have been prepared on the accruals basis, under the historical cost convention, and in accordance with the Financial Reporting Standard 102, (effective 1st January 2016) and 'FRS 102 SORP (Statement of Recommended Practice for Accounting and Reporting by Charities) 2019, applicable to all accounting periods beginning on or after 1st January 2019), (The SORP), published by the Charity Commission in England & Wales (CCEW) , and in accordance with all applicable law in the charity's jurisdiction of registration, except that the charity has prepared the financial statements in accordance with the FRS 102 SORP (Statement of Recommended Practice for Accounting and Reporting by Charities) 2019, applicable to all accounting periods beginning on or after 1st January 2019), (The SORP), in preference to the previous SORP, the SORP 2005, which has been withdrawn, notwithstanding the fact that the extant statutory regulations, the Charities (Accounts and Reports) Regulations 2008 refer explicitly to the SORP 2005. This has been done to accord with current best practice.

Going Concern

The charitable activities are entirely dependent on continuing grant aid and voluntary donations as well as trading revenues. As a consequence, the going concern basis is dependent on the future flow of these uncertain funding streams. Accordingly, the Trustees have obtained forecasts and, after reviewing the financial forecasts for future periods to 31 July 2024, the Trustees are satisfied that, at the time of approving the financial statements, it is appropriate to adopt the going concern basis in preparing the financial statements. Other than these matters, the Trustees are not aware of any material uncertainties about the charity's ability to continue as a going concern.

Policies relating to expenditure on goods and services provided to the charity.

Recognition of liabilities and expenditure

A liability, and the related expenditure, is recognised when a legal or constructive obligation exists as a result of a past event, and when it is more likely than not that a transfer of economic benefits will be required in settlement, and when the amount of the obligation can be measured or reliably estimated..

Liabilities arising from future funding commitments and constructive obligations, including performance related grants, where the timing or the amount of the future expenditure required to settle the obligation are uncertain, give rise to a provision in the accounts, which is reviewed at the accounting year end. The provision is increased to reflect any increases in liabilities, and is decreased by the utilisation of any provision within the period, and reversed if any provision is no longer required. These movements are charged or credited to the respective funds and activities to which the provision relates.

Policies relating to assets, liabilities and provisions and other matters.

Debtors

Debtors are measured at their recoverable amounts at the balance sheet date.

Creditors and provisions

Creditors and provisions are recognised when there is an obligation at the reporting date as a result of a past event and it is probable that economic benefit will be transferred to settle the obligation and the amount of the obligation can be reliably determined.

GENESIS IMPACT

Notes to the Accounts for the year ended 31 July 2025

Fund Accounting

Unrestricted funds are available for use at the discretion of the trustees in furtherance of the general objectives of the charity.

Designated funds - there are no designated funds

Restricted funds are subjected to restrictions on their expenditure imposed by the donor or through the terms of an appeal or as implied by law.

There are no endowment funds.

2 Liability to taxation

The Trustees consider that the charity satisfies the tests set out in Paragraph 1 Schedule 6 of the Finance Act 2010 for UK corporation tax purposes. Accordingly, the Charity is potentially exempt from taxation in respect of income or capital gains received within categories covered by chapter 3 part 11 of the Corporation Tax Act 2010 or Section 256 of the Taxation of Chargeable Gains Act 1992, to the extent that such income or gains are applied exclusively on the specific charitable objects of the charity and for no other purpose. Value Added Tax is not recoverable by the charity, and is therefore included in the relevant costs in the Statement of Financial Activities.

3 Winding up or dissolution of the charity

If upon winding up or dissolution of the charity there remain any assets, after the satisfaction of all debts and liabilities, the assets represented by the accumulated fund shall be transferred to some other charitable body or bodies having similar objects to the charity.

4 The contribution of volunteers

The charity depends on the support of its volunteers, which is much appreciated. The charity had a number of volunteers that supported the charity at various events. The volunteers and the charity accept and agree that no contract of employment is created by these arrangements.

No employees received emoluments (excluding pension costs) in excess of £60,000 per annum.

5 Remuneration and payments to Trustees and persons connected with them

7 Creditors: amounts falling due within one year	2025	2024
	£	£
Accruals	990	900
8 Income and Expenditure account summary	2025	2024
	£	£
At 1 August 2024	9,897	3,214
Surplus after tax for the year	286	6,683
At 31 July 2025	<u>10,183</u>	<u>9,897</u>

GENESIS IMPACT

Notes to the Accounts for the year ended 31 July 2025

9 Particulars of how particular funds are represented by assets and liabilities

At 31 July 2025	Unrestricted funds £	Designated funds £	Restricted funds £	Total Funds £	Total Funds £
Current Assets	5,396		5,777	11,173	11,173
Current Liabilities	(990)	-	-	(990)	(990)
	4,406	-	5,777	10,183	10,183
At 1 August 2024	Unrestricted funds £	Designated funds £	Restricted funds £	Total Funds £	Total Funds £
Current Assets	4,448	-	6,349	10,797	10,797
Current Liabilities	(900)	-	-	(900)	(900)
	3,548	-	6,349	9,897	9,897

10 Change in total funds over the year as shown in Note 9 , analysed by individual funds

	Funds brought forward from 2024 £	Movement in funds in 2025 See Note 11 £	Transfers between funds in 2025 See Note 0 £	Funds carried forward to 2026 £	Funds carried forward to 2026 £
<i>Unrestricted and designated funds:-</i>					
Unrestricted Revenue Funds	3,548	858	-	4,406	4,406
Total unrestricted and designated funds	3,548	858	-	4,406	4,406
<i>Restricted funds:-</i>					
National Lottery	6,349	9,563	-	15,912	15,912
Total restricted funds	6,349	9,563	-	15,912	15,912
Total charity funds	9,897	10,421	-	20,318	20,318

GENESIS IMPACT

Notes to the Accounts for the year ended 31 July 2025

11 Analysis of movements in funds over the year as shown in Note 10

	Income	Expenditure	Other Gains & Losses	Movement in funds	Movement in funds
	2025	2025	2025	2025	2025
	£	£	£	£	£
<i>Unrestricted and designated funds:-</i>					
Unrestricted Revenue Funds	9,096	(8,238)	-	858	858
<i>Restricted funds:-</i>					
National Lottery	41,828	(42,400)	-	(572)	(572)
MSCI	10,000	(10,000)	-	-	-
	60,924	(60,638)	-	286	286

12 The purposes for which the funds as

Unrestricted and designated funds:-

Unrestricted Revenue Funds

These funds are held for the meeting the objectives of the charity, and to provide reserves for future activities, and , subject to charity legislation, are free from all restrictions on

Restricted funds:-

National Lottery

These funds are for a project aimed at raising the aspirations for ethnic minority children, youth and families

MSCI

These are funds from a corporate philanthropic donor towards the delivery of community projects

Thamesmead Community Grant

These funds are to support community projects

13 Ultimate controlling party

The charity is under the control of its legal members.

Every member of the charity is obliged to contribute such amount as may be required not exceeding £10 to the assets of the company in the event of its being wound up while he or she is a member, or within one year after he or she ceases to be a member.

GENESIS IMPACT

Detailed analysis of income and expenditure for the year ended 31 July 2025 as required by the SORP 2015

This analysis is classsified by conventional nominal descriptions and not by activity.

14 Donations, Grants and Legacies

	Current year Unrestricted Funds 2025 £	Current year Restricted Funds 2025 £	Current year Total Funds 2025 £	Prior Year Total Funds 2024 £
Donations and gifts from individuals				
Donations and gifts from individuals (Include HMRC refunds on gift aided donations)	9,096	-	9,096	14,291
Total donations and gifts from individuals	9,096	-	9,096	14,291

	Current year Unrestricted Funds 2025 £	Current year Restricted Funds 2025 £	Current year Total Funds 2025 £	Prior Year Total Funds 2024 £
Revenue grants and donations from non public bodies				
National Lottery	-	41,828	41,828	43,397
MSCI	-	10,000	10,000	10,000
Total private sector revenue grants	-	51,828	51,828	53,397

Revenue grants and donations from non public bodies (Include Gift Aid donations from subsidiaries) - Prior Year analysis

	Prior Year Unrestricted Funds 2024 £	Prior Year Restricted Funds 2024 £	Prior Year Total Funds 2024 £	
Total Donations, Grants and Legacies				
Total Donations, Grants and Legacies	9,096	51,828	60,924	67,688

A1

GENESIS IMPACT

Detailed analysis of income and expenditure for the year ended 31 July 2025 as required by the SORP 2015

15 Investment income

	Current year Unrestricted Funds	Current year Restricted Funds	Current year Total Funds	Prior Year Total Funds
	2025	2025	2025	2024
	£	£	£	£
Bank Interest Receivable	-	-	-	8
Total investment income	-	-	-	8

A4

16 Expenditure on charitable activities - Direct spending

<i>Current Year</i>	Current year Unrestricted Funds	Current year Restricted Funds	Current year Total Funds	Prior Year Total Funds
	2025	2025	2025	2024
	£	£	£	£
Marketing and advertising of charitable services	61	250	311	400
Administration	3,662	5,054	8,716	10,216
Events	715	-	715	1,083
Trainers Fees	500	39,246	39,746	40,343
Total direct spending	4,938	44,550	49,488	52,042

B2a

17 Expenditure on charitable activities- Grant funding of activities

<i>Current Year</i>	Current year Unrestricted Funds	Current year Restricted Funds	Current year Total Funds	Prior Year Total Funds
	2025	2025	2025	2024
	£	£	£	£
Grants made to individuals	50	900	950	900
Total grantmaking costs	50	900	950	900

B2c

18 Support costs for charitable activities

<i>Current Year</i>	Current year Unrestricted Funds	Current year Restricted Funds	Current year Total Funds	Prior Year Total Funds
	2025	2025	2025	2024
	£	£	£	£
Volunteer costs				
Training and welfare - volunteers	-	2,500	2,500	3,030
Travel and subsistence - volunteers	-	250	250	370
Volunteers' costs	-	500	500	500

GENESIS IMPACT

Detailed analysis of income and expenditure for the year ended 31 July 2025 as required by the SORP 2015

Administrative overheads

Telephone, fax and internet	240	-	240	240
Stationery and printing	316	-	316	149
Membership subscriptions	597	-	597	399
Equipment expenses	-	400	400	1,703
Fitness initiatives	-	3,000	3,000	-
Software licences and expenses	834	-	834	218
Sundry expenses	301	-	301	530

Professional fees paid to advisors other than the auditor or examiner

Other legal and professional	-	300	300	-
------------------------------	---	-----	-----	---

Financial costs

Bank charges	60	-	60	60
--------------	----	---	----	----

Support costs before reallocation	2,348	6,950	9,298	7,199
Total support costs - Current Year	2,348	6,950	9,298	7,199

The basis of allocation of costs between activities is described under accounting policies	-	-	-	-
--------------------------------------------------------------------------------------------	---	---	---	---

Administrative overheads

The basis of allocation of costs between activities is described under accounting policies

19 Other Expenditure - Governance costs

<i>Current Year</i>	Current year Unrestricted Funds	Current year Restricted Funds	Current year Total Funds	Prior Year Total Funds
	2025	2025	2025	2024
	£	£	£	£
Independent Examiner's fees	510	-	510	480
Insurance	392	-	392	392
Total Governance costs	902	-	902	872

20 Total Charitable expenditure

<i>Current Year</i>		Current year Unrestricted Funds	Current year Restricted Funds	Current year Total Funds	Prior Year Total Funds
		2025	2025	2025	2024
		£	£	£	£
Total direct spending	B2a	4,938	44,550	49,488	52,042
Total grantmaking costs	B2c	50	900	950	900
Total support costs	B2d	2,348	6,950	9,298	7,199
Total Governance costs	B2e	902	-	902	872
Total charitable expenditure	B2	8,238	52,400	60,638	61,013

GENESIS IMPACT

Detailed analysis of income and expenditure for the year ended 31 July 2025 as required by the SORP 2015

<i>Prior Year</i>		Prior Year Unrestricted Funds	Prior Year Restricted Funds	Prior Year Total Funds
		2024	2024	2024
		£	£	£
Total direct spending	B2a	52,042	-	52,042
Total grantmaking costs	B2c	900	-	900
Total support costs	B2d	7,199	-	7,199
Total Governance costs	B2e	872	-	872
Total charitable expenditure	B2	61,013	-	61,013