



GENESIS IMPACT



2023-2024 ANNUAL TRUSTEE'S REPORT



Table of Contents

Front cover photo:
young students
attending our Aspire!
programme session and
our Raising Aspirations
group visit to
Bloomberg.

→	01	Welcome from the Chair of the Board of Trustees
→	02	About Us, What We Do and Our Vision
→	05	Our Programmes
→	10	This year in Numbers
→	11	Raising Aspirations
→	12	Case Study
→	13	Community Involvement
→	15	Changes in the way we work
→	16	Making the most of the strengths of our community
→	17	A Deeper look into our Impact.
→	18	Changes to our programmes

Table of Contents

→	19	Plans for the coming year and beyond
→	22	Our Partners
→	23	Photos



Photo: Genesis Impact and MSCI Team Photo

WELCOME FROM THE CHAIR OF THE BOARD OF TRUSTEES

It's been a year of continuing progress at Genesis Impact. Reflecting on the successes of last year and the incredible efforts of our staff and volunteers, I am very encouraged by the expansion of the Acclivity programme, with MSCl, to introduce a new Acclivity Tu and a new avenue to help steer career decisions through workshops, mentors and success stories.

Our Bible Club continues to remain popular, back for its 15th year, in a sign that young hearts are keen to know more about who God is and what He thinks about them and His plans for their lives.

We have seen much fruit from our focus on empowerment and leadership extending our sessions from Parents to Students through the Pitch & Empowerment workshops. It is no accident that 65% of the people we engaged this year were 14-18 years old!

We continue to support those who are in the greatest need and I am incredibly proud that our "Raising Aspirations" project was awarded three years of funding from the National Lottery so we can create and foster opportunities for growth, inclusion and support.

Looking forward, we continue to seek new opportunities to increase our partner network. The work is not easy but we remain steadfast in our mission. My encouragement is for you to come alongside us and help us to deliver on lasting impact in the lives of our communities, young, old or in-between.

If you know of any organisations, corporations or donors who share the same values as us and are keen to invest in the lives of our communities, please do not hesitate to contact us.



Babafemi Taiwo
Chair of the Board of Trustees, Genesis Impact

Genesis Impact



Photo: Children participating in an Aspire! session

About Us

We are a London based social mobility charity working with a network of schools, community groups and organisations in the corporate and vocational sectors. Since 1997, we have worked collectively to invest in students to nurture young talent and empower parents to develop new skills and positive parenting behaviour.

What We Do

- We foster social mobility within the community by empowering and inspiring young people from underserved backgrounds
- We provide young people with professional mentors
- We curate career workshops for students aged 16 - 18 years old
- We create a support network of professionals for young people to tap into
- We support whole family wellbeing; from primary and secondary school, right through to parents

Genesis Impact



Photo: students participating in an Aspire! session

Short Term Impact

Our workshops and programmes provide an opportunity for Black, Asian or socially under-represented young people to prepare professionally, mentally and culturally to step into the professional workforce. We also provide support to the parents of students to equip with them with practical tools for managing children with behaviour issues. Lastly, we work with parents to empower them to learn new skills and seek higher education or employment.

Long Lasting Change

Young people excel into higher education and build a professional support network with organisations who champion inclusivity and social mobility.

Genesis Impact



Photo: Acclivity mentors with Genesis Impact CEO and staff member at Acclivity Award Ceremony

Vision

At Genesis Impact, we envision a world where every young person, regardless of background, has the opportunity to achieve their full potential and thrive in the professional world. We believe that talent should never be limited by circumstance, and through mentorship, education, and career support, we aim to break down barriers to social mobility.

Our vision is to create a future where young people are equipped with the skills, confidence, and connections needed to succeed in their chosen careers. By fostering an ecosystem of support, opportunity, and empowerment, we strive to build a more inclusive and equitable society; one where ambition is nurtured, potential is realised, and success is accessible to all.

Mission

Our mission is to improve social mobility by empowering young people through mentoring, career workshops and support, enabling them to build confidence, and prepare them to be equipped to step into the professional workforce.

Our Programmes



Photo: Aspire! students with their teacher and Genesis Impact staff

Aspire!

Aspire! is our junior leadership programme for children aged 9-11. The face-to-face sessions support children from Black, Asian and underserved communities with skills to boost their self-esteem and raise aspirations for their future. Session topics include: Introduction to Leadership; Mental and Emotional Well-Being; Confidence and Self-Esteem; Communication and resilience; Careers workshop and My community and I.

Acclivity

The Acclivity Programme is the flagship initiative Genesis Impact offer to young people aged 16-18 years old providing mentoring from professionals working in the corporate sector.

The 8-month holistic mentoring programme prepares high achieving youth from underserved communities; professionally, mentally and culturally for corporate life. The mentor works with the student to enhance their soft skills, to build confidence and work towards empowering the student to be readily equipped to step into the professional work environment.

Our Programmes



Photo: Corporate partner lead giving welcome speech at our Acclivity Award Ceremony, Oct 2024

Acclivity Tu

The Acclivity Tu Programme is an initiative focused on providing emotional and psychological support to low achieving students, from underserved communities who have vocational aspirations.

The 8-month mentoring programme matches students with mentors working within varying vocational sectors and industries, partnering students with the mentors based on their interests, goals and backgrounds.

For students participating in both Acclivity or Acclivity Tu, we offer two group career workshops. These online sessions feature leaders who have grown up in similar environments, sharing their journeys to success and providing valuable insights.

Students have the opportunity to engage directly with panelists from both professional and vocational sectors, broadening their awareness of career pathways they may not have previously considered. These workshops spark ambition, encourage curiosity, and help young people envision new possibilities for their futures.

Our Programmes



Photo: Bible Club Children Activity at St Augustine's Primary School

Bible Club

The Genesis Impact Bible Club has been successfully running in the borough of Bexley for 15 years. The aim of the club is to teach young children the importance of knowing who God is, understanding His deep love for them, and spending time in God's word. This year, we were blessed to deliver sessions to 20 children at St Augustine's School, furthering our mission to reach and inspire young hearts.

We intend for our Key Stage 2 pupils to leave every session with strengthened faith, meaningful interaction with like-minded young Christians, and—most importantly—having had fun learning about the word of God.

Quotes from Our Pupils

“ I love learning about God and doing Activities ”

“ My favourite thing is the playing fun games and learning about the Bible ”

“ I love playing Bible Bingo with my friends! ”

Our Programmes



Photo: Parents from our SEND Programme Award Ceremony

Whole Family Wellbeing

Whole Family Wellbeing programme is designed for schools and communities where our young leadership programme, Aspire!, is running. It addresses the social and family issues that could otherwise prevent participants from achieving their full potential.

As a parent/carer and child focused course it empowers family units to ensure that we achieve an enriching and long-lasting impact. Session outline include: Positively You - Emotional and Mental Wellbeing; (Keeping Children Safe); Handling Anger in Families; Raising Aspirations; Hardship Support and Creative Craft Making.

Pitch & Empowerment Workshops

Our Pitch & Empowerment Workshops allow Genesis Impact to engage directly with primary and secondary school students, introducing them to the power of leadership and mentorship on a large scale. These sessions serve as a key entry point for students, helping them understand how the right mindset, guidance, and support can positively shape their academic, personal, and professional futures.

Other Programmes

Circle of Parents

This partnership between Genesis Impact, parents, and schools and the wider community, fosters collaboration and empowers participants to contribute ideas, plan events, and develop leadership skills. Through initiatives like Book Club, Sewing Club, and Coffee Mornings, it promotes cohesion and offers a supportive environment for parents/carers to build friendships and share information.

SEND Support

The SEND programme provides clear information and support for parents and families of children who have special needs such as autism, ADHD and disabilities.

Parenting Pre Teens

These sessions offer practical advice and tips on effective parenting techniques for teens. It provides guidance to support their social, behavioural, and emotional needs.

Faith-Based Parenting Support: Nurturing Safe, Resilient Families

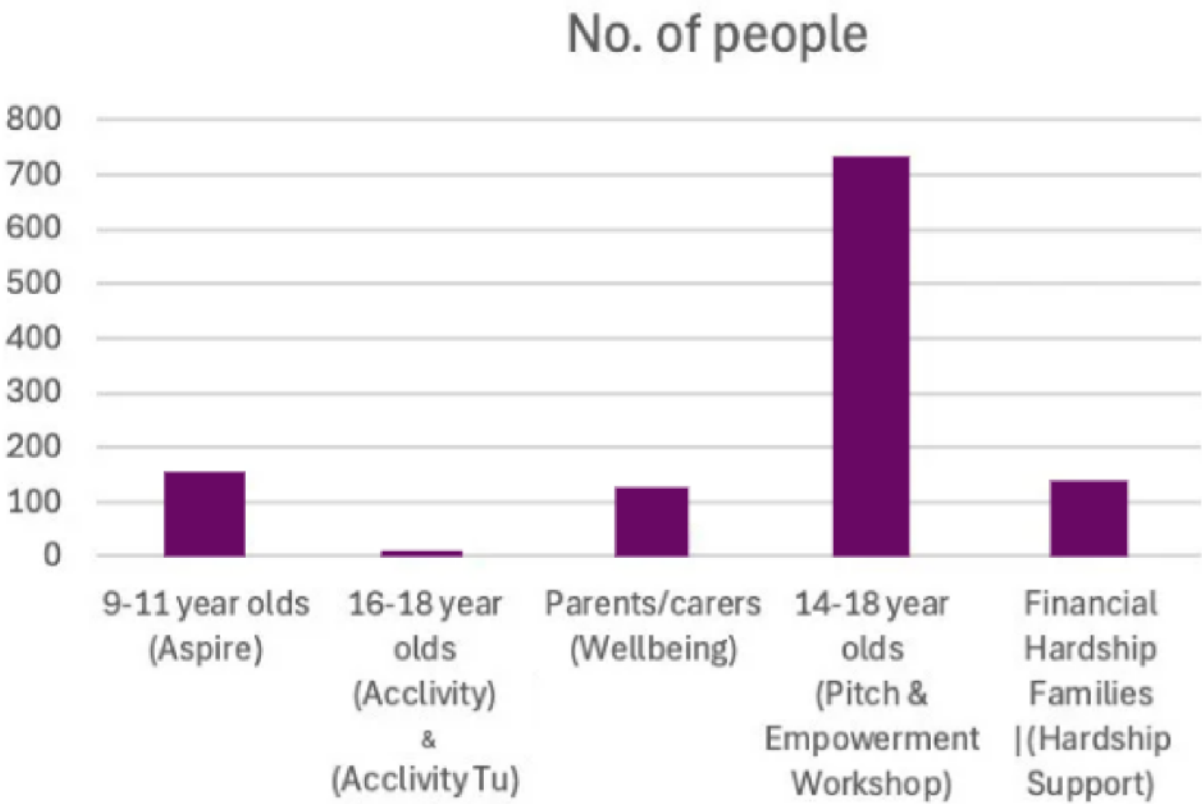
This year, we delivered our Keeping Children Safe programme alongside sessions on Positive Discipline Strategies and Managing Anger in the Family. These workshops were offered to parents within church communities, providing a faith-based approach to parenting that reinforces biblical values while equipping families with practical tools for raising children in a safe, nurturing environment.



Photo: Parent Celebration in our Thamesmead Community

This year in numbers

- 147 (9-11 year olds)
- 730 students (14-18 years old) attended Pitch & Empowerment workshops
- 16 young people aged 14 - 18 across 3 boroughs (Bexley, Greenwich, Lewisham)
- 124 parents and carers
- 108 families supported via the Hardship support



→	9-11 year olds	147
→	14-18 year olds	16
→	Pitch & Empowerment Workshop	730

Raising Aspirations

National Lottery

This year, Genesis Impact was awarded three years of funding from the National Lottery for the 'Raising Aspirations' project."

Funding for our 'Raising Aspirations' project has been instrumental in enabling Genesis Impact to continue its vital work, empowering communities and fostering meaningful change. With this support, we have been able to expand our outreach, develop our impactful programmes and provide essential resources to those who need it the most through our hardship funds. The funding has allowed us to create opportunities for growth, inclusion and support, ensuring our initiatives remain accessible and effective in making a lasting difference.

Aspire!

Funding for the Aspire! programme has allowed us to reach more students and deepen our impact. With these resources, we have enhanced our personalised support and mentorship, empowering students to achieve both their academic and personal goals. As one student shared, *"The Aspire! programme has made me a better leader and helped to control my anger"*

Acclivity

As a result of the funding, we have been able to enhance our mentorship programme, providing more comprehensive training for mentors and better support for mentees. This has led to stronger relationships and more meaningful outcomes. A mentor mentioned, *"Being part of Acclivity has been incredibly rewarding. The support and training I received have made a real difference in my ability to guide and inspire my mentees."*

Acclivity Tu

The funding has allowed us to introduce new initiatives and resources that have significantly improved the experience for our participants. We have been able to offer more workshops, networking opportunities, and career guidance. One participant said, *"Acclivity Tu has opened doors for me that I never thought possible. The programme has been a game-changer for my educational and career aspirations"*

Case Study

Case Study: Mentorship Journey of Joseph under Gbenga

Genesis Impact provides a platform for mentorship, fostering leadership and personal development in young people. Gbenga, an experienced mentor of both adults and youths, is currently embarking on a new challenge mentoring Joseph, a young and ambitious mentee. Motivated by the vision of shaping future leaders from an early age, Gbenga eagerly took on this mentorship opportunity.

Understanding Joseph's Aspirations

From the first meeting, Joseph demonstrated focus and determination. He aspires to build a successful career. During their sessions, Joseph articulates his goals clearly, displaying a strong sense of direction. He had already taken significant steps towards his ambitions, including creating shareable materials on his favourite topics.

Recognising Joseph's proactive approach, Gbenga guides him in refining his goals and aligning them with his priorities. Their discussions reinforce Joseph's commitment to growth and progress, an aspect that stood out to Gbenga as a mentor.

Overcoming Challenges

Like any journey, Joseph's path to building a name for himself, is not without obstacles. A significant setback occurred when he had a IT technical fault, resulting in the loss of much of his previous work. Despite this, Joseph remains resilient. He viewed the challenge as an opportunity to rebuild, demonstrating perseverance and a positive mindset; qualities essential for long-term success.

Mutual Learning and Growth

Beyond offering guidance, Gbenga finds the mentorship process deeply rewarding. Through his interactions with Joseph, he continues to gain greater insight into the perspectives and innovative thinking of young people. This experience strengthens his ability to relate to and support younger generations effectively. The mentorship journey is not just about Joseph's development—it is also enriching Gbenga's understanding of mentorship and leadership.

Impact of the Acclivity Programme

Gbenga said: "The mentorship programme provided by Genesis Impact is structured to address critical areas of development for young individuals. I firmly believe in its potential to shape future leaders, and my experience mentoring Joseph has reinforced my confidence in the programme's impact." As he continues the mentorship with Joseph, he looks forward to see Joseph's progress and witness him surpass his goals and achieve greatness.

This case study highlights the transformative power of mentorship, both for the mentee and the mentor; and showcases the importance of structured programmes in unlocking young people's potential.

Community Involvement

We actively involved community members in our work through various initiatives and programmes. We encouraged local volunteers to participate in our events, workshops, and mentorship programmes. By engaging with the community, we ensured that our services are tailored to meet their specific needs and preferences.

For example, three of our trustees, who were Genesis youth club members when they were younger, and 21 GI Alumni collaborated with us to deliver the robust, enriching, and impactful Aspire and Acclivity programmes. They volunteered their time to guide and support young people in their career aspirations. They were also part of the team of volunteers to wrap and deliver Christmas hampers to low-income families in need, over the Christmas period.



Photo: Professional Football coach providing keynote at Aspire! Award Ceremony

Additionally, we delivered cultural sessions and activities that highlight the rich heritage and traditions of our community, fostering a sense of pride and belonging. We celebrated the achievements of the Aspire! students and the participants of the Whole Family Well-Being programme by bringing three schools together for an awards ceremony. This event was widely attended by school leads, families, community members, and GI alumni professionals who showcased and shared their careers and experiences.

Genesis Impact has built a strong collaborative partnership with the CEO of the U.S.-based charity Foundation for Free Education Enterprise, which also runs mentorship programmes in underserved communities. Through this relationship, both charities have benefited from valuable mutual learning and the exchange of best practices. After reviewing our Aspire! workbook, the CEO was impressed by our approach and committed to leading a workshop for our Acclivity participants during his next visit to the UK, further strengthening our shared mission to empower young people.

Community Involvement

We are currently planning a joint award ceremony with our corporate partner MSCl that will bring all the schools and participants of the Acclivity and Acclivity Tu programmes together to celebrate their achievements.

We have partnered with Smiley Ark, a local after-school provision, for mutual learning and sharing of experiences.

The Aspire! Programme workbook was evaluated by a local Kumon lead and two headteachers from Deptford Park School and Morden Mount. Based on their feedback, we have made amendments to the Aspire! workbook to incorporate differentiated learning strategies and make it more inclusive for students with Special Educational Needs and Disabilities (SEND).



Photo: Aspire! workbook



Original activity page



Amended activity page

Changes in the way we work

Community involvement has significantly influenced our approach and operations. By listening to the voices of those we serve, we have been able to adapt our programmes to better address their needs. For instance, feedback from the headteacher of a school that participated in the Aspire programme highlighted the importance of continuity. Pupils who participated in the junior leadership programme can then progress to an intermediate programme, further raising their

aspirations and engagement with learning. This feedback has prompted us to review the programme as to how we can extend our work with the young people, beyond their completion of Aspire! as they enter Year 7 in secondary school

Additionally, we are working on expanding our networking events to ensure that our Acclivity participants can continue to access valuable information and connect with a broad spectrum of professionals even after they have completed the programme.



Increase in school partnerships



Corporate Partnership targets

Making the most of the strengths of our community

We leveraged the talents of our community members to create a supportive and inclusion environment. An example of this was when we hired the services of one of our parents from the community; a recipient of one of our programmes, to provide the catering for our awards ceremonies under her own registered catering business.

Ade's Food Store

Supporting Families Through Partnership with Ade Food Store

Genesis Impact is proud to continue our five-year partnership with Ade Food Store, a local business specialising in African food produce. Recognising the needs of the communities we serve, particularly families from African backgrounds in low-income households; we forged this partnership to provide essential food support. Through our work with primary schools, where this demographic is prominent, we identified a gap in access to culturally relevant food.

By collaborating with Ade Food Store, we have been able to supply families with food that meets their cultural needs, ensuring it is both appreciated and utilised effectively. This partnership has made a meaningful difference, helping many families access nutritious meals without financial strain.

Smiley-Ark After School Club

A Strong Partnership with Smiley Ark to Support Young People

Genesis Impact is proud to have a strong and collaborative partnership with Smiley Ark, a local after-school club dedicated to supporting young people. By working together, we enhance each other's impact, ensuring that children and families receive the support they need.

Our partnership includes regularly referring our services to the schools we have relationships with, respectively, helping to highlight the need for vital services and expanding our collective reach. Additionally, the founder of Smiley Ark plays a key role within Genesis Impact, serving as one of our Safeguarding Leads and further strengthening the protection and wellbeing of the children we support. Their involvement extends even further, as their founder generously hosts our annual award ceremony for our young children aged 9-11 participating in the Aspire! programme, celebrating their achievements in a meaningful and memorable way.

A deeper look into our impact

Programme	How It Helped	Impact & Evidence
Aspire!	Empowered children from underserved backgrounds with essential skills to boost self-esteem and aspirations for their future	147 , (9-11 year old) pupils participated in two rounds of 8 -week sessions across 5 primary schools. Celebrated achievements with an award ceremony attended by 95 people
Acclivity Programme	Prepared high-achieving students from underserved communities for professional success through mentorship and skills-building	Reached 225 pupils across 3 sixth form schools Mentees developed leadership, teamwork and problem skills Provided mentorship from 22 professionals to 38 young people
Acclivity Tu	Supported vocationally inclined youth with career readiness, practical skills and industry mentorship	Reached 320 pupils at Trinity and Woolwich Poly secondary school Included career guidance, practical workshops and mentorship Built relationship with local businesses for support and employment pathways Supported 44 parents and carers
Whole Family Wellbeing	Helped families cope with COVID-19 impact, financial pressures and mental health challenges	95% of families reported improvements in confidence, stress management and aspirations.

Participating schools for Aspire! programme

St. Augustine's
Primary School
(Bexley)

Christ Church
Primary School
(Bexley)

St. Paul's Primary
School (Bexley)

Modern Mount
Primary School
(Greenwich)

Participating schools for Acclivity and Acclivity TU programmes

Trinity School
6th Form
(Bexley)

Christ Church the
King College (Bexley)

Woolwich Poly
(Greenwich)

Changes to our programmes

Changes we have made to the programme based on our experience.

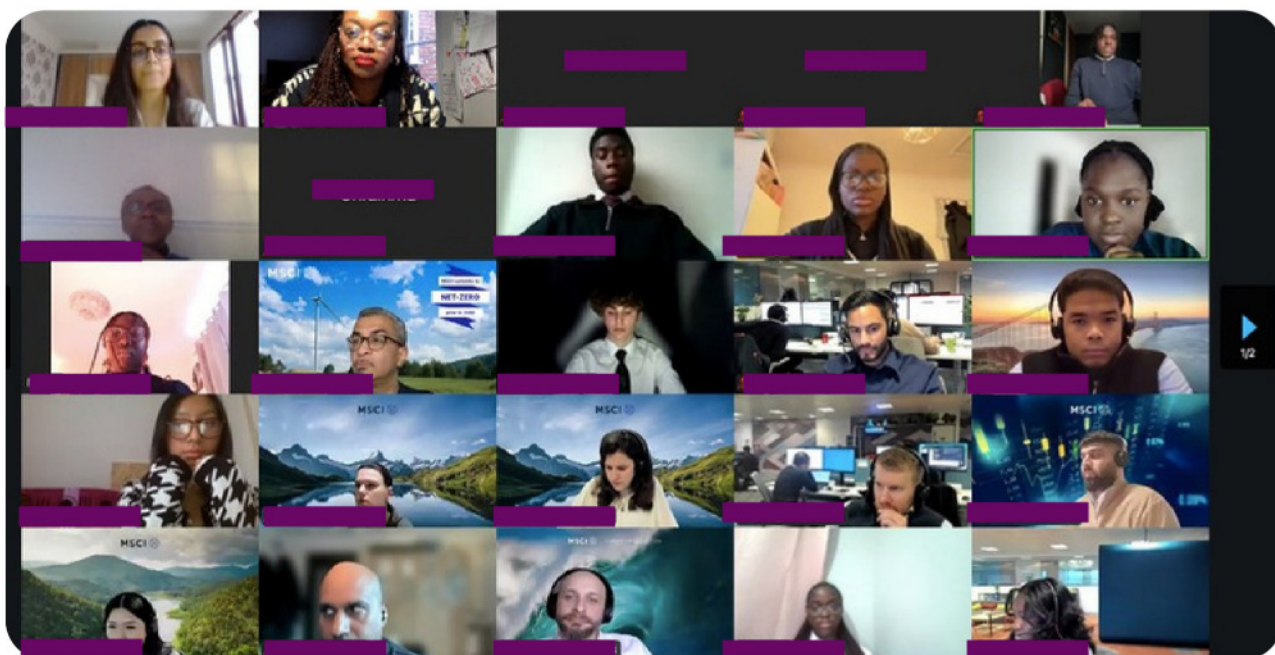


Photo: Acclivity Online Launch event with new mentees and mentors

Acclivity & Acclivity Tu

- Group Workshops:** We have introduced two group workshops to offer a wider range of professionals, enriching the sessions and making them more diverse for the young people. By providing two workshop options, participants can choose which one to attend, ensuring that no one misses out on valuable insights and experiences and alternative careers are being showcased.
- Joint Awards Ceremony:** We are currently planning a joint awards ceremony that will involve our corporate partners, schools, community leaders, all the young people, and their families. This event will celebrate the achievements and progress of our participants, fostering a sense of community and recognition.
- Diverse Mentorship:** Our mentors are drawn from around 25 companies and the Black Leadership Network, bringing a wealth of experience and diverse perspectives. This diverse mentorship pool ensures that our young people receive guidance and support from professionals who understand their unique challenges and aspirations.
- Enhanced Workbooks:** We have enriched the Acclivity and Acclivity Tu workbooks with comprehensive guidance notes for mentors. These enhancements are designed to help mentors deliver their sessions more effectively, ensuring a more engaging and impactful experience for the participants.

Plans for the coming year and Beyond



Photo: Aspire! students participating in session activities

Looking Ahead

Programmes

Aspire!

Schools we've worked with: Modern Mount School (Greenwich), Christ Church Primary, St Paul's, St Augustine's (Bexley)

Expanding Programme Scope: Based on our experience delivering the programme and the feedback from pupils and school leads, we aim to make the programme more comprehensive. This would mean introducing a tiered approach that ensures continuity, fosters aspirations, and creates a lasting impact on the children.

The GI team will come together to discuss the continued development of the programmes.

We will be looking at :

- **Initial 8-Week Junior Leadership Sessions:** Introducing essential leadership skills and fostering a sense of responsibility and ambition among the young participants.

Plans for coming year and beyond

Looking Ahead

Programmes

Aspire!

- **Intermediate Sessions:** Comprising skills and careers workshops and providing practical leadership opportunities within the school and community. These sessions will help bridge the gap between early leadership training and more advanced aspirations.
- **Early Secondary School Stage (Yrs 7 & 8):** Offering continuous engagement opportunities through Alumni membership and maintaining contact with the programme three times a year. This stage will ensure that participants remain connected and supported as they progress through their educational journey.

Acclivity

Over the past year, the Acclivity programme was delivered exclusively at Woolwich Poly (Greenwich), where it received an enthusiastic response from participants who demonstrated meaningful growth in both skills and aspirations. While our initial plans included wider implementation, we are now preparing to expand the programme from September 2024 to include additional schools: Christ The King Sixth Form, Trinity School Sixth Form (Bexley), and Wilmington Academy (Bexley). We remain committed to building on the success at Woolwich Poly and look forward to offering more places as we extend our reach in the coming academic year. Our expansion plan includes

- 10 places at Wilmington Academy
- 10 places at Christ The King
- 10 places at Trinity School

By increasing the number of participants, we aim to reach more socially disadvantaged youth and provide them with the essential skills and mentorship needed for success in their academic and professional lives. The programme will continue to offer high-quality professional mentoring, ensuring that each participant receives personalised guidance, support, and opportunities for growth. This comprehensive approach will help them build confidence, develop critical skills, and aspire to achieve their fullest potential. By fostering a supportive and engaging environment, we are confident that the Acclivity programme will continue to make a positive difference in the lives of the young people we serve.

Enhancing Collaboration and Partnerships: We will continue to strengthen our existing collaborations and seek new partnerships with schools, community leaders, and corporate partners. This will help us provide more resources, opportunities, and support to the young people we serve.

Monitoring and Evaluation: We will implement a robust monitoring and evaluation framework to assess the effectiveness of our programmes and identify areas for improvement. This will enable us to make data-driven decisions and continuously enhance the impact of our initiatives.

Plans for coming year and beyond

Looking Ahead

Programmes

Acclivity

Celebrating Achievements: We plan to organise events to celebrate the achievements of our participants, such as joint awards ceremonies involving schools, community leaders, corporate partners, and the families of the young people. These events will foster a sense of community and recognise the hard work and dedication of everyone involved.

By implementing these plans, we aim to create a more sustainable and impactful programme that empowers young people to reach their full potential and make a positive difference in their communities.

We plan to engage with school leads to gather their input and collaboratively refine and develop the above initiatives. This collaborative approach will ensure the success of our programmes and align them with the unique needs and insights of each school.

Acclivity Tu

The Acclivity Tu programme is set to launch at Trinity School in Bexley Borough. We anticipate that pupils will engage well and show enthusiasm for the wide range of activities and sessions designed to inspire and develop their potential.

Building on this upcoming launch, we are excited to announce our plans to expand the programme's reach to two additional schools by September. This expansion will enable us to offer more underserved youth access to valuable vocational training and career guidance, helping them build essential skills and confidence.

Through the growth of Acclivity Tu, we aim to empower more young people to achieve their full potential and positively impact their communities.

OUR PARTNERS THIS YEAR

CHRIST BELIEVER'S CHURCH, ERITH



Christ Church (Erith)
C of E Primary School



Photos

Aspire! Award Ceremony, July 2024



Photos

Acclivity Programme Award Ceremony, October 2023



Photos

Aspire! Programme session in one of our Primary Schools



Photos

Christmas Gift Wrapping



Contact Us

Email

info@genesisimpact.org



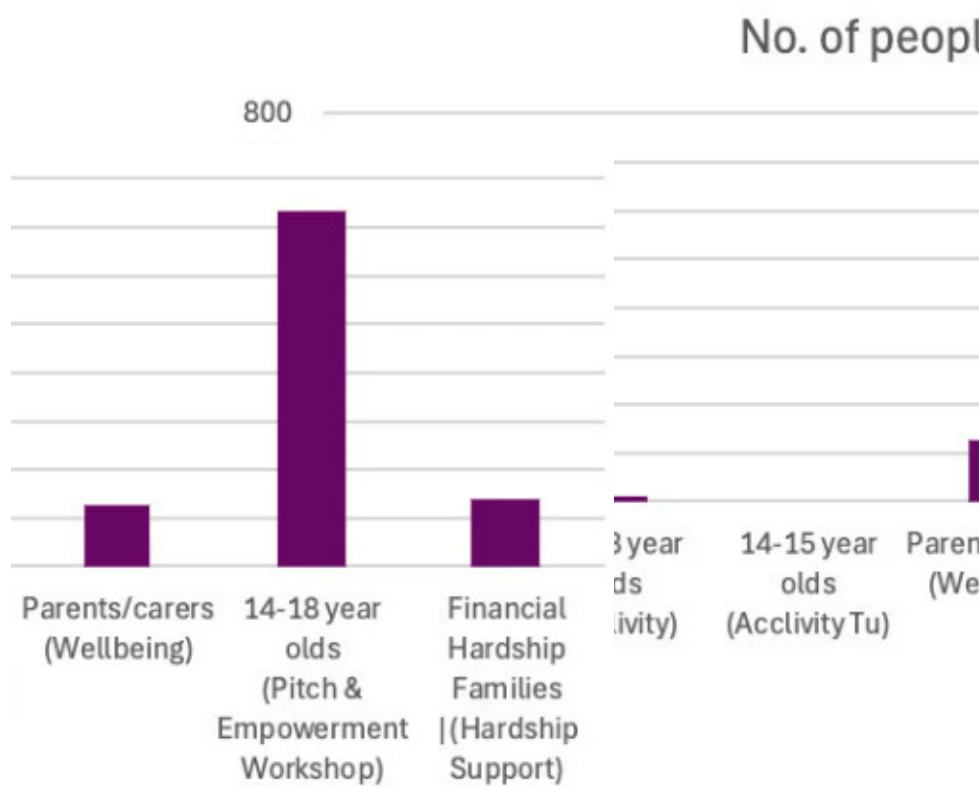
Website

www.genesisimpact.org



GENESIS IMPACT

&
(AcclivityTu)



GENESIS IMPACT

Company Registration Number - 05316940

Trustees' Annual Report for the year ended 31 July 2024

Statement of the Directors' and Trustees' Responsibilities

The charity's trustees are responsible for the preparation of the accounts in accordance with the terms of the Companies Act 2006, the Charities Act 2011 and the Charities (Accounts and Reports) Regulations 2008. Notwithstanding the explicit requirement in the extant statutory regulations, the Charities (Accounts and Reports) Regulations 2008, to prepare the financial statements in accordance with the SORP 2005, in view of the fact that the SORP 2005 has been withdrawn, the Trustees determined to interpret this responsibility as requiring them to follow current best practice and prepare the accounts according to the FRS 102 SORP (Statement of Recommended Practice for Accounting and Reporting by Charities) 2019, applicable to all accounting periods beginning on or after 1st January 2019), (The SORP), .

In particular, the Companies Act 2006 and charity law require the Board of Trustees to prepare financial statements for each financial year which give a true and fair view of the state of affairs of the charity as at the end of the financial year and of the surplus or deficit of the charity. In preparing those financial statements the Board is required to :-

- to prepare the accounts in accordance with United Kingdom Generally Accepted Accounting Practice (United Kingdom Accounting Standards and applicable law).
- select suitable accounting policies and apply them consistently;
- make judgements and estimates that are reasonable and prudent;
- prepare the financial statements on the going concern basis unless it is inappropriate to presume that the charity will continue in business;
- state whether applicable accounting standards and statements of recommended practice have been followed, subject to any material departures disclosed and explained in the financial statements;

The law requires that the trustees must not approve the accounts unless they are satisfied that they give a true and fair view of the state of affairs of the charity and of the surplus or deficit of the charity for the year.

The Trustees are also responsible for maintaining adequate accounting records which disclose with reasonable accuracy at any time the financial position of the charity and which are sufficient to show and explain the charity's transactions and enable them to ensure that the financial statements comply with the Companies Act 2006 and comply with regulations made under the Charities Act. They are also responsible for safeguarding the assets of the charity and hence for taking reasonable steps for the prevention and detection of fraud and other irregularities.

The Trustees are also responsible for the contents of the Trustees' report, and the statutory responsibility of the Independent Examiner in relation to the Trustees' report is limited to examining the report and ensuring that , on the face of the report, there are no material inconsistencies with the figures disclosed in the financial statements.

GENESIS IMPACT

Company Registration Number - 05316940

Trustees' Annual Report for the year ended 31 July 2024

Method of preparation of accounts - Small company provisions

The financial statements are set out on pages 12 to 20.

The financial statements have been prepared implementing the FRS 102 SORP (Statement of Recommended Practice for Accounting and Reporting by Charities) 2019, applicable to all accounting periods beginning on or after 1st January 2019), (The SORP), and in accordance with the Financial Reporting Standard 102, (effective 1st January 2016)

These financial statements have been prepared in accordance with the provisions in Part 15 of the Companies Act 2006. applicable to companies subject to the small companies regime.

This report was approved by the board of trustees on 30 April 2025.

Mr B Taiwo

Director and Trustee

GENESIS IMPACT

Report of the Independent Examiner to the Trustees of the charitable company on the accounts for the year ended 31 July 2024

I report to the Trustees on my examination of the financial statements of the charitable company on pages 12 to 20 for the year ended 31 July 2024 which have been prepared in accordance with the Charities Act 2011 (the Act) and with the Financial Reporting Standard 102, (effective 1st January 2016) as modified by FRS 102 SORP (Statement of Recommended Practice for Accounting and Reporting by Charities) 2019, applicable to all accounting periods beginning on or after 1st January 2019), (The SORP), published by the Charity Commission in England & Wales (CCEW) , and under the historical cost convention and the accounting policies set out on page 19.

Respective responsibilities of the Trustees and the Independent Examiner and the basis of the report

As described on page 32, you, the charitable company's Trustees, who are also the Directors of the Company for the purposes of Company law, are responsible for the preparation of the financial statements in accordance with the Companies Act 2006, the Charities Act 2011 and all other applicable law and with United Kingdom Generally Accepted Accounting Practice, applicable to smaller entities, and for being satisfied that the financial statements give a true and fair view.

The Trustees consider that the audit requirement of Section 144(1) of the Charities Act 2011 (the Act) does not apply, and that there is no requirement in the memorandum and articles of the charity for the conducting of an audit, and that the accounts do not require an audit in accordance with Part 16 of the Companies Act 2006 and that no member or members have requested an audit pursuant to Section 476 of the Companies Act 2006. As a consequence, the Trustees have elected that the financial statements be subject to independent examination.

Having satisfied myself that the financial statements are not required to be audited under any legal provision, or otherwise, and are eligible for independent examination, it is my responsibility to:-

- a) examine the financial statements of the charity under Section 145 of the Act;
- b) follow the applicable procedures in the Directions given by the Charity Commission under section 145(5)(b) of the Act.

Basis of Independent Examiner's Statement and scope of work undertaken

I report in respect of my examination of the charity's financial statements carried out under s145 of the Act. In carrying out my examination, I have followed all the applicable Directions given by the Charity Commission under section 145(5)(b) of the Act setting out the duties of an independent examiner in relation to the conducting of an independent examination. An independent examination includes a review of the accounting records kept by the charitable company and of the accounting systems employed by the charitable company and a comparison of the financial statements presented with those records. It also includes consideration of any unusual items or disclosures in the financial statements, and seeking explanations from you, as Trustees, concerning such matters. The purpose of the examination is to establish as far as possible that there have been no breaches of charity legislation and that, on a test basis of evidence relevant to the amounts and disclosures made, the financial statements comply with the SORP.

The procedures undertaken do not provide all the evidence that would be required in an audit, and information supplied by the Trustees in the course of the examination is not subjected to audit tests or enquiries and does not cover all the matters that an auditor would consider in arriving at an opinion. The planning and conduct of an audit goes beyond the limited assurance that an independent examination can provide

GENESIS IMPACT

Consequently, I do not express an audit opinion on the view given by the financial statements, and in particular, I express no opinion as to whether the financial statements give a true and fair view of the affairs of the charity, and my report is limited to the matters set out in the statement below.

I planned and performed my examination so as to satisfy myself that the objectives of the independent examination are achieved and before finalising the report I obtained written assurances from the Trustees of all material matters.

Independent Examiner's Statement, Report and Opinion

Subject to the limitations upon the scope of my work as detailed above, I have completed my examination: and can confirm that:-

The accounts of this charitable company are not required to be audited under Part 16 of the Companies Act 2006;

This is a report in respect of an examination carried out under 145 of the Act and in accordance with Directions given by the Charity Commission under section 145(5)(b) of the Act which may be applicable;

and that no material matters have come to my attention in connection with the examination giving me cause to believe that in any material respect:-

accounting records were not kept in respect of the charity as required by Section 386 of the Companies Act 2006 and Section 130 of The Charities Act 2011;

the financial statements do not accord with those records; or

the financial statements do not comply with the applicable requirements concerning the form and content of accounts set out in section 396 of the Companies Act 2006 other than any requirement that the accounts give a 'true and fair' view, which is not a matter considered as part of an independent examination;

have not been prepared in accordance with the methods and principles set out in the FRS 102 SORP (Statement of Recommended Practice for Accounting and Reporting by Charities) 2019, applicable to all accounting periods beginning on or after 1st January 2019), (The SORP).

I have no concerns and have come across no other matters in connection with the examination to which attention should be drawn in this report in order to enable a proper understanding of the financial statements to be reached.

Ms F Popoola B.Sc (Econs) FCCA CTA ATT (Fellow) - Independent Examiner

Chartered Certified Accountants

36A Goodmayes Road

Ilford

Essex

IG3 9UR

This report was signed on 30 April 2025

GENESIS IMPACT - Statement of Financial Activities for the year ended 31 July 2024

Statement of Financial Activities (including the Income and Expenditure Account for the year ended 31 July 2024, as required by the Companies Act 2006)

	SOR P Ref	Current year Unrestricted Funds 2024 £	Current year Restricted Funds 2024 £	Current year Total Funds 2024 £	Prior Year Total Funds 2023 £
Income & Endowments from:					
Donations & Legacies	A1	14,291	53,397	67,688	60,814
Investments	A4	8	-	8	-
Total income	A	14,299	53,397	67,696	60,814
Expenditure on:					
Charitable activities	B2	17,179	43,834	61,013	64,147
Total expenditure	B	17,179	43,834	61,013	64,147
Net income for the year		(2,880)	9,563	6,683	(3,333)
Net income after transfers	A-B-C	(2,880)	9,563	6,683	(3,333)
Net movement in funds		(2,880)	9,563	6,683	(3,333)
Reconciliation of funds:-					
Total funds brought forward		3,214	-	3,214	6,547
Total funds carried forward		334	9,563	9,897	3,214

The 'SORP Ref' indicated above is the classification of income set out in the formal SORP documents. As required by paragraph 4.60 of the SORP, the brought forward and carried forward funds above have been agreed to the Balance Sheet.

A separate Statement of Total Recognised Gains and Losses is not required as this statement includes all recognised gains and losses.

All the prior year transactions were unrestricted items, and no further analysis is required

All activities derive from continuing operations

GENESIS IMPACT - Statement of Financial Activities for the year ended 31 July 2024

Movements in revenue and capital funds for the year ended 31 July 2024

Revenue accumulated funds

	Unrestricted Funds 2024 £	Restricted Funds 2024 £	Total Funds 2024 £	Last year Total Funds 2023 £
Accumulated funds brought forward	3,214	-	3,214	6,547
Recognised gains and losses before transfers	(2,880)	9,563	6,683	(3,333)
	334	9,563	9,897	3,214
Closing revenue funds	334	9,563	9,897	3,214

Summary of funds	Unrestricted and Designated funds 2024 £	Restricted Funds 2024 £	Total Funds 2024 £	Last Year Total Funds 2023 £
Revenue accumulated funds	334	9,563	9,897	3,214

The notes attached on pages 19 to 20 form an integral part of these accounts.

GENESIS IMPACT - Statement of Financial Activities for the year ended 31 July 2024

GENESIS IMPACT

Income and Expenditure Account for the year ended 31 July 2024 as required by the Companies Act 2006

	2024 £	2023 £
<i>Income</i>		
Income from operations	67,688	60,814
Investment income		
Interest receivable	8	-
Gross income in the year before exceptional items	67,696	60,814
Gross income in the year including exceptional items	67,696	60,814
<i>Expenditure</i>		
Charitable expenditure, excluding depreciation and amortisation	60,141	63,335
Governance costs	872	812
Realised losses on disposals of social investments which are programme related	-	-
Total expenditure in the year	61,013	64,147
Net income before tax in the financial year	6,683	(3,333)
Tax on surplus on ordinary activities	-	-
Net income after tax in the financial year	6,683	(3,333)
Retained surplus for the financial year	6,683	(3,333)

All activities derive from continuing operations

In accordance with the provisions of the Companies Act 2006, the headings and subheadings used in the Income and Expenditure account have been adapted to reflect the special nature of the charity's activities.

The notes attached on pages 19 to 20 form an integral part of these accounts.

GENESIS IMPACT - Balance Sheet as at 31 July 2024

	SOR		2024	2023
	Note	P Ref	£	£
Current assets		B		
Cash at bank and in hand		B4	10,797	3,634
Creditors: amounts falling due within one year	8	C1	(900)	(420)
Net current assets			9,897	3,214
The total net assets of the charity			<u>9,897</u>	<u>3,214</u>

The total net assets of the charity are funded by the funds of the charity, as follows:-

Restricted funds					
Restricted Revenue Funds	11	D2	9,563	-	-
			9,563		-
Unrestricted Funds					
Unrestricted Revenue Funds	11	D3	334	3,214	
			334		3,214
Designated Funds					
			-		-
Total charity funds			<u>9,897</u>	<u>3,214</u>	

The 'SORP Ref' indicated above is the classification of Balance Sheet items as set out in the formal SORP documents. As required by paragraph 4.60 of the SORP, the brought forward and carried forward funds above have been agreed to the SOFA..

The directors are satisfied that the company is entitled to exemption from the requirement to obtain an audit under section 477 of the Companies Act 2006.

The member has not required the company to obtain an audit in accordance with section 476 of the Act.

The directors acknowledge their responsibilities for complying with the requirements of the Companies Act 2006 with respect to accounting records and the preparation of accounts.

The charity is subject to Independent Examination under charity legislation, and the report of the Independent Examiner is on page 11.

The financial statements have been prepared in accordance with the provisions in Part 15 of the Companies Act 2006. applicable to companies subject to the small companies regime.

Mr B Taiwo

Trustee

Approved by the board of trustees on 30 April 2025

The notes attached on pages 19 to 20 form an integral part of these accounts.

GENESIS IMPACT

Notes to the Accounts for the year ended 31 July 2024

1 Accounting policies

Policies relating to the production of the accounts.

Basis of preparation and accounting convention

The accounts have been prepared on the accruals basis, under the historical cost convention, and in accordance with the Financial Reporting Standard 102, (effective 1st January 2016) and 'FRS 102 SORP (Statement of Recommended Practice for Accounting and Reporting by Charities) 2019, applicable to all accounting periods beginning on or after 1st January 2019), (The SORP), published by the Charity Commission in England & Wales (CCEW) , and in accordance with all applicable law in the charity's jurisdiction of registration, except that the charity has prepared the financial statements in accordance with the FRS 102 SORP (Statement of Recommended Practice for Accounting and Reporting by Charities) 2019, applicable to all accounting periods beginning on or after 1st January 2019), (The SORP), in preference to the previous SORP, the SORP 2005, which has been withdrawn, notwithstanding the fact that the extant statutory regulations, the Charities (Accounts and Reports) Regulations 2008 refer explicitly to the SORP 2005. This has been done to accord with current best practice.

Going Concern

The charitable activities are entirely dependent on continuing grant aid and voluntary donations as well as trading revenues. As a consequence, the going concern basis is dependent on the future flow of these uncertain funding streams. Accordingly, the Trustees have obtained forecasts and, after reviewing the financial forecasts for future periods to 31 July 2024, the Trustees are satisfied that, at the time of approving the financial statements, it is appropriate to adopt the going concern basis in preparing the financial statements. Other than these matters, the Trustees are not aware of any material uncertainties about the charity's ability to continue as a going concern.

Policies relating to expenditure on goods and services provided to the charity.

Recognition of liabilities and expenditure

A liability, and the related expenditure, is recognised when a legal or constructive obligation exists as a result of a past event, and when it is more likely than not that a transfer of economic benefits will be required in settlement, and when the amount of the obligation can be measured or reliably estimated..

Liabilities arising from future funding commitments and constructive obligations, including performance related grants, where the timing or the amount of the future expenditure required to settle the obligation are uncertain, give rise to a provision in the accounts, which is reviewed at the accounting year end. The provision is increased to reflect any increases in liabilities, and is decreased by the utilisation of any provision within the period, and reversed if any provision is no longer required. These movements are charged or credited to the respective funds and activities to which the provision relates.

Allocating costs to activities

Direct costs that are specifically related to an activity are allocated to that activity. Shared direct costs and support costs are apportioned between activities.

The basis for apportionment, which is consistently applied, and proportionate to the circumstances, is :-

Staffing - on the basis of time spent in connection with any particular activity.

Staffing - on a per capita basis, based on the number of people employed within any particular activity.

Premises related costs - on the proportion of floor area occupied by a particular activity.

Non specific support costs - on the basis of the usage of resources, in terms of time taken, capacity used, request made or other measures

Estimation techniques used in apportioning costs - give details

GENESIS IMPACT

Notes to the Accounts for the year ended 31 July 2024

Policies relating to assets, liabilities and provisions and other matters.

Debtors

Debtors are measured at their recoverable amounts at the balance sheet date.

Creditors and provisions

Creditors and provisions are recognised when there is an obligation at the reporting date as a result of a past event and it is probable that economic benefit will be transferred to settle the obligation and the amount of the obligation can be reliably determined.

Fund Accounting

Unrestricted funds are available for use at the discretion of the trustees in furtherance of the general objectives of the charity.

Designated funds - there are no designated funds

Restricted funds are subjected to restrictions on their expenditure imposed by the donor or through the terms of an appeal or as implied by law.

There are no endowment funds.

2 Liability to taxation

The Trustees consider that the charity satisfies the tests set out in Paragraph 1 Schedule 6 of the Finance Act 2010 for UK corporation tax purposes. Accordingly, the Charity is potentially exempt from taxation in respect of income or capital gains received within categories covered by chapter 3 part 11 of the Corporation Tax Act 2010 or Section 256 of the Taxation of Chargeable Gains Act 1992, to the extent that such income or gains are applied exclusively on the specific charitable objects of the charity and for no other purpose. Value Added Tax is not recoverable by the charity, and is therefore included in the relevant costs in the Statement of Financial Activities.

3 Winding up or dissolution of the charity

If upon winding up or dissolution of the charity there remain any assets, after the satisfaction of all debts and liabilities, the assets represented by the accumulated fund shall be transferred to some other charitable body or bodies having similar objects to the charity.

5 The contribution of volunteers

The charity depends on the support of its volunteers, which is much appreciated. The charity had a number of volunteers that supported the charity at various events. The volunteers and the charity accept and agree that no contract of employment is created by these arrangements.

No employees received emoluments (excluding pension costs) in excess of £60,000 per annum.

6 Remuneration and payments to Trustees and persons connected with them

No trustees or persons connected with them received any remuneration from the charity, or any related entity.

8 Creditors: amounts falling due within one year

	2024	2023
	£	£
Accruals	900	420

GENESIS IMPACT

Notes to the Accounts for the year ended 31 July 2024

9 Income and Expenditure account summary	2024	2023
	£	£
At 1 August 2023	3,214	6,547
Surplus after tax for the year	6,683	(3,333)
At 31 July 2024	9,897	3,214

10 Particulars of how particular funds are represented by assets and liabilities

At 31 July 2024	Unrestricted funds	Designated funds	Restricted funds	Total Funds	Total Funds
	£	£	£	£	£
Current Assets	1,234		9,563	10,797	10,797
Current Liabilities	(900)	-	-	(900)	(900)
	334	-	9,563	9,897	9,897

At 1 August 2023	Unrestricted funds	Designated funds	Restricted funds	Total Funds	Total Funds
	£	£	£	£	£
Current Assets	3,634	-	-	3,634	3,634
Current Liabilities	(420)	-	-	(420)	(420)
	3,214	-	-	3,214	3,214

11 Change in total funds over the year as shown in Note 10 , analysed by individual funds

	Funds brought forward from 2023	Movement in funds in 2024	Transfers between funds in 2024	Funds carried forward to 2025	Funds carried forward to 2025
	£	See Note 12	See Note 0	£	£
<i>Unrestricted and designated funds:-</i>					
Unrestricted Revenue Funds	3,214	(2,880)	-	334	334
Total unrestricted and designated funds	3,214	(2,880)	-	334	334

GENESIS IMPACT

Notes to the Accounts for the year ended 31 July 2024

Restricted funds:-

National Lottery	-	9,563	-	9,563	9,563
Total restricted funds	-	9,563	-	9,563	9,563
Total charity funds	3,214	6,683	-	9,897	9,897

12 Analysis of movements in funds over the year as shown in Note 11

	Income	Expenditure	Other Gains & Losses	Movement in funds	Movement in funds
	2024	2024	2024	2024	2024
	£	£	£	£	£
<i>Unrestricted and designated funds:-</i>					
Unrestricted Revenue Funds	14,299	(17,179)	-	(2,880)	(2,880)
<i>Restricted funds:-</i>					
National Lottery	40,397	(30,834)	-	9,563	9,563
MSCI	10,000	(10,000)	-	-	-
Thamesmead Community Grant	3,000	(3,000)	-	-	-
	67,696	(61,013)	-	6,683	6,683

13 The purposes for which the funds as

Unrestricted and designated funds:-

Unrestricted Revenue Funds

These funds are held for the meeting the objectives of the charity, and to provide reserves for future activities, and , subject to charity legislation, are free from all restrictions on

Restricted funds:-

National Lottery

These funds are for a project aimed at raising the aspirations for ethnic minority children, youth and families

MSCI

These are funds from a corporate philanthropic donor towards the delivery of community projects

Thamesmead Community Grant

These funds are to support community projects

14 Ultimate controlling party

The charity is under the control of its legal members.

Every member of the charity is obliged to contribute such amount as may be required not exceeding £10 to the assets of the company in the event of its being wound up while he or she is a member, or within one year after he or she ceases to be a member.

GENESIS IMPACT

Detailed analysis of income and expenditure for the year ended 31 July 2024 as required by the SORP 2015

This analysis is classsified by conventional nominal descriptions and not by activity.

15 Donations, Grants and Legacies

	Current year Unrestricted Funds	Current year Restricted Funds	Current year Total Funds	Prior Year Total Funds
	2024	2024	2024	2023
	£	£	£	£
Donations and gifts from individuals				
Donations and gifts from individuals (Include HMRC refunds on gift aided donations)	14,291	-	14,291	20,814
Total donations and gifts from individuals	14,291	-	14,291	20,814

	Current year Unrestricted Funds	Current year Restricted Funds	Current year Total Funds	Prior Year Total Funds
	2024	2024	2024	2023
	£	£	£	£
Revenue grants from government and public bodies				
London Borough of Bexley	-	-	-	20,000
London Borough of Brent	-	-	-	10,000
Total public sector revenue grants	-	-	-	30,000

	Current year Unrestricted Funds	Current year Restricted Funds	Current year Total Funds	Prior Year Total Funds
	2024	2024	2024	2023
	£	£	£	£
Revenue grants and donations from non public bodies				
National Lottery	-	40,397	40,397	-
MSCI	-	10,000	10,000	10,000
Thamesmead Community Grant	-	3,000	3,000	-
Total private sector revenue grants	-	53,397	53,397	10,000

GENESIS IMPACT

Detailed analysis of income and expenditure for the year ended 31 July 2024 as required by the SORP 2015

16 Investment income

		Current year Unrestricted Funds	Current year Restricted Funds	Current year Total Funds	Prior Year Total Funds
		2024	2024	2024	2023
		£	£	£	£
Bank Interest Receivable		8	-	8	-
Total investment income	A4	8	-	8	-

17 Expenditure on charitable activities - Direct spending

		Current year Unrestricted Funds	Current year Restricted Funds	Current year Total Funds	Prior Year Total Funds
<i>Current Year</i>		2024	2024	2024	2023
		£	£	£	£
Marketing and advertising of charitable services		-	400	400	500
Administration		6,662	3,554	10,216	12,520
Events		1,083	-	1,083	150
Trainers Fees		6,563	33,780	40,343	47,879
Total direct spending	B2a	14,308	37,734	52,042	61,049

18 Expenditure on charitable activities- Grant funding of activities

		Current year Unrestricted Funds	Current year Restricted Funds	Current year Total Funds	Prior Year Total Funds
<i>Current Year</i>		2024	2024	2024	2023
		£	£	£	£
Grants made to individuals		-	900	900	-
Total grantmaking costs	B2c	-	900	900	-

GENESIS IMPACT

Detailed analysis of income and expenditure for the year ended 31 July 2024 as required by the SORP 2015

19 Support costs for charitable activities

<i>Current Year</i>	Current year Unrestricted Funds	Current year Restricted Funds	Current year Total Funds	Prior Year Total Funds
	2024	2024	2024	2023
	£	£	£	£
<i>Volunteer costs</i>				
Training and welfare - volunteers	30	3,000	3,030	743
Travel and subsistence - volunteers	170	200	370	-
Volunteers' costs	-	500	500	-
<i>Administrative overheads</i>				
Telephone, fax and internet	240	-	240	240
Stationery and printing	149	-	149	150
Information and publications	-	-	-	100
Membership subscriptions	399	-	399	264
Equipment expenses	203	1,500	1,703	-
Software licences and expenses	218	-	218	228
Sundry expenses	530	-	530	286
Equipment,repairs,expenses and maintenance	-	-	-	60
<i>Professional fees paid to advisors other than the auditor or examiner</i>				
Consultancy fees	-	-	-	150
<i>Financial costs</i>				
Bank charges	60	-	60	65
Support costs before reallocation	1,999	5,200	7,199	2,286
Total support costs - Current Year	1,999	5,200	7,199	2,286

The basis of allocation of costs between activities is described under accounting policies

All the expenditure in the prior year was unrestricted.

Administrative overheads

The basis of allocation of costs between activities is described under accounting policies

GENESIS IMPACT

Detailed analysis of income and expenditure for the year ended 31 July 2024 as required by the SORP 2015

20 Other Expenditure - Governance costs

<i>Current Year</i>	Current year Unrestricted Funds	Current year Restricted Funds	Current year Total Funds	Prior Year Total Funds
	2024	2024	2024	2023
	£	£	£	£
Independent Examiner's fees	480	-	480	420
Insurance	392	-	392	392
Total Governance costs	872	-	872	812

All the expenditure in the prior year was unrestricted.

21 Total Charitable expenditure

<i>Current Year</i>		Current year Unrestricted Funds	Current year Restricted Funds	Current year Total Funds	Prior Year Total Funds
		2024	2024	2024	2023
		£	£	£	£
Total direct spending	B2a	14,308	37,734	52,042	61,049
Total grantmaking costs	B2c	-	900	900	-
Total support costs	B2d	1,999	5,200	7,199	2,286
Total Governance costs	B2e	872	-	872	812
Total charitable expenditure	B2	17,179	43,834	61,013	64,147

All the expenditure in the prior year was unrestricted.

<i>Prior Year</i>		Prior Year Unrestricted Funds	Prior Year Restricted Funds	Prior Year Total Funds
		2023	2023	2023
		£	£	£
Total direct spending	B2a	61,049	-	61,049
Total support costs	B2d	2,286	-	2,286
Total Governance costs	B2e	812	-	812
Total charitable expenditure	B2	64,147	-	64,147