



# Annual Report

2024-25





# Contents

3	Chair's Review
4	About us
5-6	Our Values & Our Services
7-8	The scale of the Issue
9	The effects of Trauma
10	Head of Services Reflections
11-12	Focus on some of our services
13	Admin update
14	Training update
15-18	Our Impact – making a difference
19	Feedback
20	Funding thanks
21	CEO review
22-23	Treasurers report
24-25	Statement of Financial Activities

# Chair's Review

2024/25 has been a year full of energy, dynamism, innovation and development in the way we work, as we follow through on our ambitious strategy in a funding environment more challenging than ever.

We continue to see steady increases in the number of individuals and families wanting to use our services, such that we are supporting more people from a broader geographical area than ever before. They tell us we support them to become more emotionally stable and help them to effectively manage symptoms such as anxiety, depression and post-traumatic stress disorder arising from the traumas they have been exposed to. Providing an appropriate therapeutic and safe environment for that to happen has necessitated creative approaches to accommodation and relationships with other agencies to optimise our resources enabling us to be in the right place for each person at the right time.

Maintaining our high standards of professionalism and continuing to be a leader in using trauma informed approaches to our work comes at a cost. The current political and financial policies put considerable strain on our finances and scope to respond to both the growing number of people who need

our support and the increasingly complex experiences they have had. Sadly, many of our traditional sources of funding are disappearing and we have to compete against much larger national charities in complex application processes for ever smaller grants. Compete we do and will continue to do so.

We can't do any of what we do without our compassionate and enthusiastic skilled team of staff, volunteers, ambassadors, funders and Trustees. Thank you for all you do; it maybe a perceived small part to you but it can have a huge impact for someone else; in these tough times, please keep doing what you do for us.

2025/26 will likely be no less challenging, we remain excited rather than daunted and know that with your support we can continue to make a significant difference to those in Cumbria and Lancashire who need our help.

**Dr. Paula Cook**



# About Us

We are an independent charity that provides specialist support services to adults, children and young people who have experienced sexual violence or exploitation, including rape, sexual assault and childhood sexual abuse.

We strive to provide high quality, specialist trauma informed services within a safe, non-judgemental environment.

Our mission is to empower people affected by rape, sexual abuse or sexual violence to recover from their trauma so they can lead safe and fulfilling lives.

Through a trauma informed approach we....

## **Realise**

We realise the damaging consequences of traumatic experiences and the opportunities that exist for healing through safe relationships.

---

## **Recognise**

We recognise the signs of trauma, and seek to address the underlying causes.

---

## **Respond**

We respond with empathy, integrating the knowledge of trauma into our policies and practice.

---

## **Resist**

We resist retraumatising people and aim to de-escalate the deep anxiety that adversity can cause.

---

## **Recover**

We support people who have experienced trauma to recover from their trauma, by enabling them to live in the present without being overwhelmed by the thoughts and feelings of the past.





# Our Values

## Safety

We recognise the impact of shame, we create safe spaces and make people feel safe, by building trusted relationships.

---

## Trusted

We avoid judgement and understand shaming and blaming language can damage people and harm relationships. We are emotionally aware. We believe and do not judge.

---

## Choice

We ensure that the people using our services have a voice and their choices are important, We understand that everyone's experience matters.

---

## Collaboration

We work together to achieve the best possible outcome, we are person centred and see the person's strengths, building upon them. We are reflective and learn together.

---

## Empowerment

We seek to make a difference, innovate and be the change we want to see. We make a difference, we are transparent, and take responsibility.

# Our Services



**Trauma Informed Counselling**, F2F, telephone and online counselling, Pre-trial work, Play & Art Therapy for adults, Children and Young People.



**Wellbeing Programme** – supporting people to stabilise their lives and connect with their community through grounding, stabilisation, advocacy, practical & emotional support for adults and Young People.



**Prevention** – raising awareness and educating through training in schools, community groups and to professionals across the voluntary and statutory sectors.



**Peer support & Groups** – safe spaces for people to share, connect and build supportive relationships and strengthen their resilience.



**Family Collaboration** – working with parents/carers, friends of people affected by rape and sexual abuse to understand the impact of trauma.

# The scale of the issue

- **1 in 4 women** have been raped or sexually assaulted since the age of 16 - 'Office of National Statistics' 2025
- **1 in 6 children** have been sexually abused - 'NSPCC' 2011
- **1 in 18 men** have been raped or sexually assaulted since the age of 16 - 'Office of National Statistics' 2025
- **71,227 rapes** were recorded by police between 1 July 2024 and 30 June 2025 - 'Office of National Statistics' 2025

Fewer than **3 in 100 rapes** (2.7%) recorded by police in 2024 resulted in someone being **charged** that same year - Let alone convicted - 'Home Office' 2025.

But reports to the Police are only the tip of the iceberg as 5 in 6 women who are raped don't report – and the same is true for 4 in 5 men. Most people tell someone else what has happened. Why don't they tell the Police?

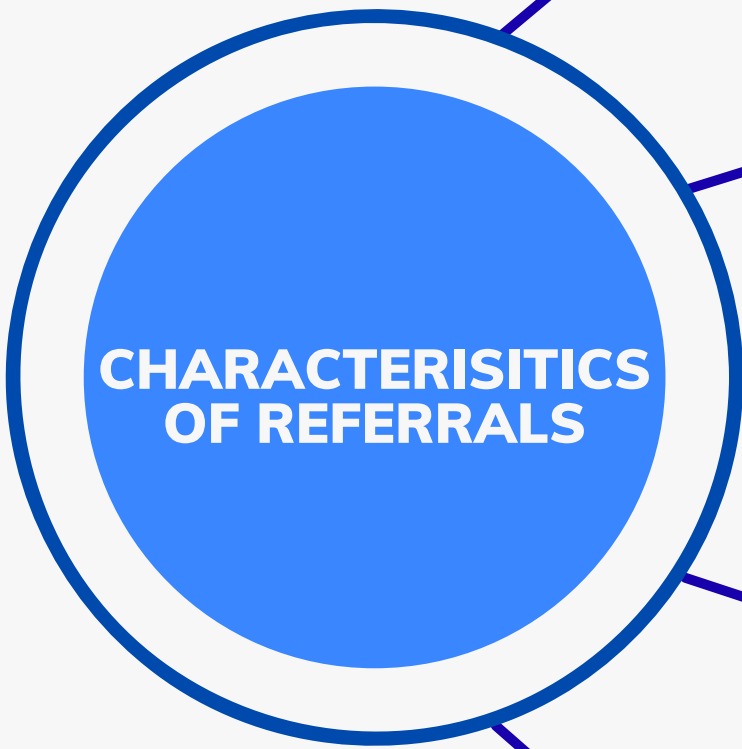
- 35% said 'embarrassment'
- 39% said they didn't think the police could help
- 31% said they thought it would be humiliating
- 24% thought the Police would not believe them.

MOJ research conducted in 2023 to recommission services found that people preferred services that were independent of the criminal justice system and had a preference to be supported by an organisation whose sole purpose is to help people who have experienced sexual violence.

Whilst reports to the Police continue at a low level, referrals to Birchall have increased further since last year rising to 1035 unique individuals in 2024/5.

**548 Organisational Referrals  
(53%)**

**487 Self Referrals (47%)**



**1**

**GENDER**

Identifying as female remained static at 83% (829)  
Identifying as male reduced slightly at 14% (144)  
identifying as neither male or female increased to 3% (28)

**2**

**SEXUALITY**

600 (60%) identified as heterosexual  
52 (5%) as Gay or Lesbian  
84 (8%) as bisexual  
64 (6%) as some other sexuality.  
19% of all referrals coming from the LGBTQ+ community.

**3**

**ETHNICITY**

85% of referrals (851) were from people who identified as white or white British  
7% belonging to Asian or Asian British, black or black British, Chinese, mixed or dual race or any other ethnic group.

**4**

**DISABILITY**

50% of the people reported having some form of disability.  
72% of people reporting a disability, report that disability is related to their mental health.

**5**

**AGE**

14% children and young people (4-17)  
41% 18-34 year age group  
35% between 35 and 54 with 10% of clients over 55.

**971 people on the waiting list  
for all services on 31.3.25.**

**Fastest growing area of  
demand is Blackpool.**

# The effects of trauma

Experiences of abuse can lead to significant trauma, and for some, the effects may persist long-term without appropriate support. These traumatic experiences can impact various aspects of an individual's life, including their physical health, emotional well-being, impulse control, and self-perception.

Additionally, trauma can influence cognitive functions such as thinking, learning, and concentration, as well as the ability to form and maintain relationships. Many individuals who have faced abuse may also experience mental health challenges, including depression, anxiety, and PTSD (Post-Traumatic Stress Disorder).

Some common responses to trauma can manifest as nightmares, panic attacks, self-harm, and suicidal thoughts or attempts. The emotions tied to such experiences are often complex and overwhelming, encompassing feelings like anger, shame, and guilt. Trusting others and building connections can be particularly challenging for those affected.

Issues such as low self-esteem, poor self-care, and declining physical and mental health may also arise. In coping with these difficulties, some individuals may resort to drugs or alcohol. Others might engage in self-harming behaviours or develop eating disorders.

However, through therapeutic support services, individuals have the opportunity to process their trauma and work toward recovery. Many find that as they receive help, they experience improvements in their mental and physical health. This journey often leads to renewed educational or employment opportunities, and fosters involvement in community activities, which can enhance social support networks. Ultimately, this support aims to assist individuals in healing and moving forward from their past experiences, with the goal of improving their overall quality of life.





# Head of Services Update

## Overview:

This year has seen significant progression from the foundations we established last year. Our commitment to delivering high-quality support services has continued to strengthen our connections with the wider community engaging with clients from different backgrounds and geographies. Building on previous growth, we have developed our model of work further to reach individuals who have experienced rape and sexual abuse at an even earlier stage. Our approach to early intervention approach remains central to reducing the long-term impact of trauma and improving recovery outcomes.

As our reach has widened, the number of people coming forward, many experiencing extreme social isolation, has continued to rise. Despite increasing the number of appointments to over 280 per week, our waiting list has once again grown, reflecting the scale of demand across the region. This continues to present a significant challenge to balance the provision of outcome-focused, trauma-informed support with our desire to help more people and provide responsive services to keep people safe.

## New Initiatives:

Building on last year's developments, we introduced a new assessment and triage system which has already made a noticeable difference, enabling people to receive support, guidance, and advocacy support at a much earlier point in their journey. We have also successfully rolled out group programmes across all areas, giving people more options for connection, peer support, and therapeutic engagement. This year, our collaborative work with statutory and child and adult community mental health providers has strengthened further. We are now more integrated

into wider services, establishing valuable links that improve continuity of care and create clearer recovery pathways.

## Monitoring and Evaluation:

We have continued to develop how we monitor our work has continued to develop, with a stronger focus on understanding how accessible our services are to people from diverse communities. By tracking personal characteristics and trauma levels, we have gained clearer insight into which groups remain under-represented and how trauma intersects with their personal needs. This year, we also launched a project to review the entire client journey, ensuring that people with the highest levels of need are prioritised effectively. Over the coming year, we look forward to deepening our evaluation processes to increase efficiency and introduce new ways of working to meet increasingly complex and diverse needs people present with.

## Conclusion:

Reflecting on the progress made since last year, we are proud of the positive impact our services continue to have on people of all ages and communities across Lancashire and Cumbria. While challenges remain, our increased integration with partner services, improved pathways, and new triage and group offerings have strengthened our ability to respond to the growing need more quickly. We remain committed to our mission and look forward to building on these achievements in the coming year. Together, we can continue to create supportive, connected communities and provide essential services to those who need them most. Thank you for your ongoing support and collaboration.

Nicola Lord - Head of Services.



# Focus on some of our services.

## Counselling

### **Children's & Young Persons therapy:**

In the past year, we enhanced our children's offer developing further the peripatetic model for play therapists giving them greater flexibility to deliver from family hubs and schools providing more choice and flexibility. Our dedicated counselling service for young people has adapted to receiving an increasing number of complex cases from CAMHS. We are proud to report that we have successfully provided services to 172 children and young people during this period, making a significant positive impact on their wellbeing and development.

### **Adult therapy:**

Over the past year, our trauma counselling services for adults have experienced significant growth, reaching a total of 360 individuals. Our dedication to improving mental health and emotional well-being has enabled us to engage with people who will not report the incident or engage with statutory services, demonstrated by over 20% of referrals coming from people who have no other form of support. Referrals from health professionals also continue to rise, with professionals requesting that we help people manage trauma before they engage with specialist health services. As people coming to us earlier experience a higher level of distress non attendance has increased. We are now introducing new ways of increasing session utilisation to ensure a minimum of 85% attendance.

### **Pretrial therapy:**

In the past year, 78 individuals engaged in pretrial therapy, providing them with valuable tools to manage their emotions and develop healthy coping mechanisms. With trials taking up to 5 years most clients require multiple interventions, particularly at the end as around 50% of cases lead to no conviction.

## Wellbeing Service

The Wellbeing Service has continued to provide vital support to individuals focusing on mental health, physical health, and social wellbeing. This year has been marked by enhanced collaborative working, and innovative approaches to engaging communities less served. Wellbeing practitioners attend numerous meetings directly associated with client needs, including Domestic Abuse and Stalking Forums, Family Network meetings addressing issues related to family courts, and local Integrated Care Communities meetings involving multiple services. These engagements enable wellbeing workers to maintain up-to-date knowledge of services both nationally and locally, ensuring clients receive comprehensive support and their needs inform service developments.

Reflective practice has been introduced for all wellbeing practitioners, with the goal of developing self-awareness and professional growth, improving the quality of client support through critical reflection, and strengthening resilience and emotional wellbeing among staff. Efforts have also focused on identifying hard-to-reach communities and developing strategies for engagement. Key initiatives included outreach in rural and farming communities as well as dedicated work in Barrow to connect with isolated populations.

## Groups

This year, we continued to deliver the Moving Forward Group, alongside the Parent Carer Group and look to move them online as well as expanding delivery locations for face to face groups. Plans for the new year include walking groups to promote physical and mental wellbeing and arts and crafts groups to encourage creativity and social connection. Digital resources have been expanded with wellbeing workers creating audio resources for grounding and meditation, which will be available via the self-help section on the Birchall website, providing accessible tools for emotional regulation.

# Key Achievements

Staff development has been a priority, with all staff now equipped to deliver the Moving Forward Group through the Train the Trainer day exercise that saw experienced staff supporting and coaching less experienced staff to deliver group work. Partnership work has continued under our Domestic Abuse contract, with wellbeing workers based at the Refuge and Women's Community Matters, maintaining strong collaborative relationships.

The reduction in ISVA provision has significantly impacted the wellbeing service. Practitioners have worked to remain within boundaries while acknowledging the re-traumatising effects of the justice system. Training from Survivors Trust has improved understandings of criminal justice processes, and the concept of Kaleidoscopic Justice has been introduced, recognising that justice is not linear but multifaceted, encompassing emotional, social, and restorative dimensions beyond traditional legal outcomes.

## Feedback

20-year-old female presenting with severe anxiety, emotional regulation difficulties, and trauma-related triggers. She felt invalidated by her support network and felt isolated. Using a range of grounding techniques, cognitive tools and reflective sessions she experienced a significant change successfully applying for work and re engaging with the her University Course. She stated, *"I feel empowered to assert boundaries and manage my anxiety. I've learned that my feelings are valid, and I can communicate them effectively."*

Another client fed back: *"The Wellbeing Worker has helped me significantly and has started a healing journey which has already started to change my life for the better. She has not only been kind, patient, understanding and relatable but has also taken the time to learn how my mind works, explaining things to me in ways that make me consider alternative ways of thinking whilst meeting my need to understand the whys and what's and making helpful adjustments for my ADHD. Whilst this is only the beginning of my healing journey, I've never been able to get past the first hurdle despite having many other forms of help; this time has been very different. Wellbeing Worker genuinely cares and has a natural talent for the role she is in and I will forever be grateful for the help she has given me."*

## Conclusion

Demand for services continues to rise, and the ever-increasing waiting list necessitates changes to service delivery models in the coming year. Planned enhancements include the introduction of new types of group activities, digital resources, and streamlined, structured sessions to ensure that rather than just waiting people are connected and engaged to meet immediate needs. The Service has demonstrated resilience, adaptability, and commitment to improving lives despite challenges.

Through collaboration, innovation, and reflective practice, we have strengthened our capacity to support individuals and communities effectively.

### Senior Practitioners



Sophie Dabbs



Alan Lee



Clare Warriner

# Admin Update

This year has been a big step forward for Birchall's Administration Team. What started a few years ago with just one administrator has grown into a team of five, showing how much our service has expanded and how important admin is to keep everything running smoothly.

The team is the first point of contact for people using our services, answering questions, offering support, and helping guide them through referrals and allocations. Their work is busy, thoughtful, and full of care.

In April 2024, we started using an interpreter service to help clients who speak different languages. We also created simple guides for staff, so everyone feels confident working with interpreters and making sure communication is clear and respectful.

In February 2025, we introduced a new triage system and updated assessment forms to help us better understand what people need when they first get in touch so we can maintain their safety. We also made our referral process more trauma-informed, so people feel safer and more supported from the start.

Behind the scenes, the team has worked hard to introduce new administrative processes and make admin tasks smoother and more efficient.

We have also worked collaboratively with the Operational Management Team to secure and manage new locations in our drive to make our services available in every locality.

Our daily admin meetings have become a key part of our routine. They help us stay connected as a team, plan our day, and support each other.

As more requests come in from the police for counselling notes, especially under the pre-trial CPS guidelines, the team has built up their knowledge and skills. They now play a big role in checking, editing, and preparing notes, always making sure people give clear informed consent and that all sensitive data is only shared if it is relevant to the line of inquiry.

The Administration Team continues to grow in confidence, knowledge, and impact. Their work might be behind the scenes, but it's at the heart of everything we do.



**Laura Gleaves - Senior Administrator**



# Training Update

## Training Update

Over the past year, we have significantly enhanced our training offer to ensure it meets the evolving needs of our staff, clients, and partner organisations in an ever-changing environment. Our focus has remained on equipping staff with the key skills and knowledge needed to navigate emerging challenges confidently, while maintaining the highest standards of support. At the same time, we have continued to expand our training provision for external services, strengthening community awareness and professional practice across the region.

## Internal Training

This year, we placed strong emphasis on developing a comprehensive and responsive internal training programme. Our priority has been to ensure staff feel confident and well equipped to meet the increasingly complex needs of the people accessing our services. Training has been delivered through a blended model of in-person sessions, online learning, e-learning modules, and structured group reflection.

Using iSpring software integrated within our Moodle platform, we created bespoke digital modules tailored to the realities of our work. These include Pre-Trial Note Taking, Supporting Neurodivergent Individuals, and a four-part trauma-focused course adapted from our core face-to-face training. All staff successfully completed these modules, which now form part of our mandatory induction for new starters.

We introduced a more structured annual training timetable featuring two organisation-wide Away Days and two dedicated training days. Away Days this year focused on developing the triage process, while training

days concentrated on strengthening our knowledge around the LGBTQ+ community. Additional specialist learning opportunities were offered throughout the year, covering managing conflicts, suicide prevention, first aid, and mentoring.

We undertook a review of all internal mandatory training following the withdrawal of services from our previous provider. To ensure compliance and quality, we audited all completed staff training and conducted a detailed Training Needs Analysis to identify future development priorities. In addition, we introduced staff drop-in sessions to provide an open forum for questions and feedback on the new triage process, supporting a smooth transition and reinforcing our commitment to continuous improvement.

## External Training

We continued to respond to training requests from external agencies, schools, and colleges, assessing each on a case-by-case basis. Trauma training remained central to our offer and we continued to deliver the trauma informed training across Cumbria to be rolled out as an e-learning module over the next year.

## Looking Forward

Next year, we plan to launch a dedicated section to training on the website, offering our e-learning modules for purchase, deliver paid for training events available for external agencies to book, develop training for clients around psychoeducation and face to face Harmful Sexual Behaviour training for schools. We remain committed to providing high-quality, accessible learning that strengthens safety, understanding, and resilience across our communities.

**Sarah Griffith - Training Co-Ordinator**





# Our Impact – Statistics for the year:

Referrals for the year were at 1035, steadily rising as the year progressed settling to approximately 100 per month by year end. A change from the previous year with agency referrals now outweighing self-referrals (548 compared to 487).



**3200**

people accessed advice and information at community events.




**186**

students in FE colleges attended consent events from Burnley in the East across to Barrow and Blackpool in the West.



**162**

children and young people at risk attended face to face and peer workshops across 14 schools.



**125**

people attended training events across Cumbria and South Lancashire including groups from social care, the police and specialist health services.



**“ I never thought I would ever find my real self. I now have optimism for the future, and I will use what I have learned to carry on working on being me, with a strength and understanding I would have never found on my own.”**

**We helped 1012 people in total providing 11,545 therapeutic sessions across the year.**



**266**

people  
received  
wellbeing  
support  
(an average  
of 14  
sessions)



**464**

people  
received  
adult  
counselling  
(an average  
of 21  
sessions)



**115**

children and  
young people  
accessed  
play therapy  
and specialist  
counselling.



**56**

people  
attended our  
parent carer  
groups and  
Moving  
Forward  
groups.



**55**

people  
attended our  
friends and  
family  
counselling.



**89**

people  
received  
pretrial  
support  
(an average  
of 12  
sessions)

# Alex's Story



When Alex first contacted our service, they were struggling to cope with the impact of sexual violence they had experienced some years earlier. Like many survivors, Alex felt overwhelmed, isolated, and unsure where to turn. They described feeling anxious, disconnected from others, and blamed themselves for what had happened.

From their first contact, Alex was met with belief, compassion, and choice. Our team worked at Alex's pace, ensuring they felt safe and in control at every stage. Through one-to-one support sessions, Alex was able to talk openly for the first time about their experiences, knowing they would not be judged or pressured. Simply being heard and believed was a powerful first step in their healing journey.

Over time, Alex engaged in specialist trauma-informed counselling, where they began to understand how trauma had affected their thoughts, emotions, and relationships. Together with their counsellor, Alex developed grounding techniques to manage anxiety and learned strategies to cope with flashbacks and difficult emotions. They received practical support, including information about their options and advocacy to help them navigate other services.

Healing was not a linear process, and there were moments when things felt challenging. However, Alex consistently told us that having a safe, supportive space made a significant difference. Gradually, they reported feeling more confident, less alone, and more connected to themselves and others.

By the end of their time with our service, Alex spoke about feeling a renewed sense of hope. While the impact of trauma had not disappeared, they felt better equipped to manage it and to move forward with their life on their own terms.

Alex's journey reflects the resilience of survivors and the importance of specialist, survivor-centred support in helping people reclaim their sense of safety, strength, and self-worth.

# Casey's Story



Casey accessed our wellbeing service and attended the Moving Forward group to address isolation and the long-term impact of sexual violence. At the point of referral, Casey reported feeling emotionally overwhelmed, disconnected from others, and uncertain about how to move forward. Support was provided in a trauma-informed, survivor-led way, ensuring Casey felt believed, respected, and able to engage at a pace that felt safe for them.

Through the wellbeing service, Casey developed a greater understanding of how trauma had affected their emotional responses, relationships, and sense of safety. They worked on building emotional stability through practical coping and grounding strategies, which helped to reduce anxiety and manage periods of distress in everyday life. This support also helped Casey begin to re-establish routines and improve their overall sense of wellbeing.

Attendance at the Moving Forward group played a key role in reducing Casey's isolation. Connecting with others who had shared similar experiences helped Casey feel less alone and increased their confidence to engage with others. Group participation supported peer connection, normalised their experiences, and strengthened their sense of belonging and self-worth.

By the end of their engagement with the service, Casey reported feeling more emotionally stable, more confident, and better equipped to manage the ongoing impact of trauma. While challenges remained, Casey described feeling more resilient, hopeful, and able to move forward with greater connection, understanding, and control over their life.



# Client Feedback.

"My son has gone from being off the scale angry and confused with his emotions to being able to have a better understanding of his feelings and is able to turn behaviours around more positively a lot more than he ever has."

"It has been really beneficial – shared experiences and really good content. Already I feel I have more of an understanding of impact on my child/family and have been able to be more understanding and deal with negative situations with my child better."

**Parent/Carer group feedback**

"Thank you for your support. I'm moving forward and managing my self-harm better."

"I feel more empowered to do things more such as getting out of the house and enjoying my life instead of sitting in and feeling depressed."

**Feedback on dealing with depression**

"My therapist has been amazing. I have such bad anxiety and since leaving care, getting my own flat after moving out of a refuge after a year, in an area that I'm not from, I was isolating myself every day. I couldn't even walk to the shop, but she came to me to provide therapeutic support and since receiving support from her I am now going out a lot more. She helped me get an interview at college and supported me through it all."

"The girls really took to their counsellors, and they were happy to see them. During their counselling we received a letter from the paediatrician following up from when one of the children was admitted as an in-patient to hospital with an eating disorder, he had commented on how he really saw the benefits that they got from counselling, even how they interacted changed and was visibly clear."

**Sibling sisters with two separate play therapists.**



# Funding Thanks

2024/5 was a year of relative financial stability but also one that was characterised by the frenetic activity involved in mitigating the risks of several multi year contracts from Trusts and Foundations coming to an end on 31st March 2025. Statutory funding continues to represent a significant proportion of funding representing almost 60% of our overall income. The vast majority of this funding comes from the MOJ with small contributions from the Police and Crime Commissioners Office (£43K in Lancashire and £23K in Cumbria). Whilst we are grateful for this kind award the funding from the PCC only helps us to deal with a fraction of cases that are referred by the Police and Victim Services.

To reduce risks of over reliance from one source we have been holding discussions with the ICB to introduce funding for the 23% of our cases that are referred by health professionals. Whilst this should represent approximately £230K of our income they only award us £23K for South Cumbria which is disappointing.

Despite assurances that commissioners would build on the good work of Mental Health Transformation providers new services were commissioned for both CYP and Adults mental health services and awarded to national and regional providers meaning much of the costs will leave the region.

Competition in Trusts and Foundations sector is becoming fierce with an increasing number of applicants applying for a limited number of grants. Whilst we have the honour of continuing support from some of our local Trusts and Foundations (Francis Scott, Walney Extension Fund and the John Fisher Foundation). This year we have also been honoured to receive funding from CRH Foundation Trust to support our Wellbeing Programme to reach out to people with intersectional needs. Thank you for your support.

We thank the Henry Smith Foundation for the award of the Flex fund which allows us some certainty for the year. We know that there is no guarantee that funding will continue from some of the larger national Trusts such as The Big Lottery and Children In Need but we continue to work in partnership with other organisations where we can to submit compelling bids and secure our future.

Consequently, there is a greater need than ever to review how we can work to diversify our income base particularly through increases in our unrestricted income.



# CEO Review

This year marks a significant period of transition for our organisation as we move into a new chapter of leadership. Our focus is firmly on strengthening our resilience and responsiveness by introducing innovative ways of working to meet rising demand. We are committed to building a more empowering organisation, drawing on the expertise of our staff and clients ensuring that our services remain accessible, responsive, and aligned with the evolving needs of the communities we work in.

Looking ahead, our strategic priorities are clear. First, we will work to create a more sustainable funding base. The funding environment is becoming increasingly challenging, with some Trusts and Foundations that have previously supported us regularly, now moving away from funding rape and sexual abuse. We also face a significant level of uncertainty on how departments of Health, Justice, and the Home Office intend to collaborate to support us in the community sector. In the face of this uncertainty, we will redouble efforts to garner support from community groups and our wider network of supporters to raise the vital funds required to maintain our Reserves. This will help us manage the risks associated with a higher percentage of statutory funding and ensure financial resilience for the future.

Second, we will deepen partnership working across the sector to reduce duplication and improve efficiency. By collaborating more effectively, we can maximise the impact of finite resources and reach more individuals who need our help.

We will also transform our services to provide support earlier through shorter wellbeing interventions and a wider range of self help materials, helping people to “wait well” by accessing timely assistance. Alongside this, we will increase the availability of therapeutic, social, and activity groups, ensuring that those who come to us remain connected and supported throughout their journey.

These priorities are not just organisational ambition, they are shaped by the voices of our staff and the people who we have listened to over the last 12 months. Their insights guide our commitment to innovation and inclusivity, ensuring that every step we take reflects real needs and lived experiences.

Together, we will continue to adapt, collaborate, and lead with purpose, building a future where support is not only available but accessible, timely, and transformative.

Of course, none of this is possible without our amazing team at Birchall. Everyone is committed to the work that they do, they quite literally save lives and give people the opportunity to write their own next chapter.

Thank you for all your support, enthusiasm, knowledge and kindness. I think the next year will be our best yet!

**Jay Rushi - CEO**



**The Birchall Trust has ended the financial year April 2024-March 2025 with a healthy financial balance of £476,820 (2024: £520,817). The funds are made up of an unrestricted balance of £385,903 and a restricted balance of £90,917.**

The unrestricted funds of £385,903 provide the charity with the security of a 'Reserves Policy'. The reserves policy has two elements. A six month 'wind down' period, should the charity fail to secure funding support in the future (see annual accounts for details). Along with a small contingency reserved to cover emergencies or other unexpected events. Restricted funds will be used to continually develop and implement our strategy and deliver the charity's objectives.

*In the same way as previous years, I have analysed the end of year accounts using the three key ratio's. Fundraising and administration costs to total expenditure (FACE up 1%), Administration costs to total expenditure (ACE up 1%) and fundraising costs to total expenditure (FCE no change). (Fig 1)*

The Birchall Trust has made substantial progress in strengthening the delivery of our services. Through the implementation of innovative procedures and the expansion of our skilled team, we are now better positioned than ever to provide high-quality, tailored support that meets the diverse and individual needs of our clients. Our unwavering commitment to those we support drives us to continually review and refine, ensuring that we consistently achieve the best possible outcomes for our clients. We are encouraged by the positive impact these developments have already made and remain dedicated to sustaining this momentum as we continue our journey of growth, innovation, and excellence

# Treasurers Report

Looking ahead, we anticipate a more challenging funding environment, with greater competition for limited resources. To secure our long-term sustainability, The Birchall Trust will intensify its efforts to strengthen funding streams, diversify income, and build strategic partnerships. We remain confident in our ability to adapt and respond effectively. Through the expertise, dedication, and collaboration of our team, we will continue to deliver our essential services and uphold our commitment to supporting those in need.

## How have we spent our funds?

Over the past year, we've been able to increase our charitable spend by an additional £114,000, reaching more individuals and families in need than ever before. This success is a testament to our effective financial management, which has allowed us to deliver all this while maintaining tight control over our operating costs(Fig 2 and 3). We are incredibly grateful to our funders for their generosity and unwavering belief in our mission. Their support has empowered us to expand our reach and amplify our efforts. Together, we've overcome obstacles and seized new opportunities, turning challenges into stepping stones for success. We're excited to continue this journey, driven by our passion for making a difference and the invaluable partnerships we've cultivated along the way. Thank you for believing in us and the importance of our work!

**Simon Hanson**



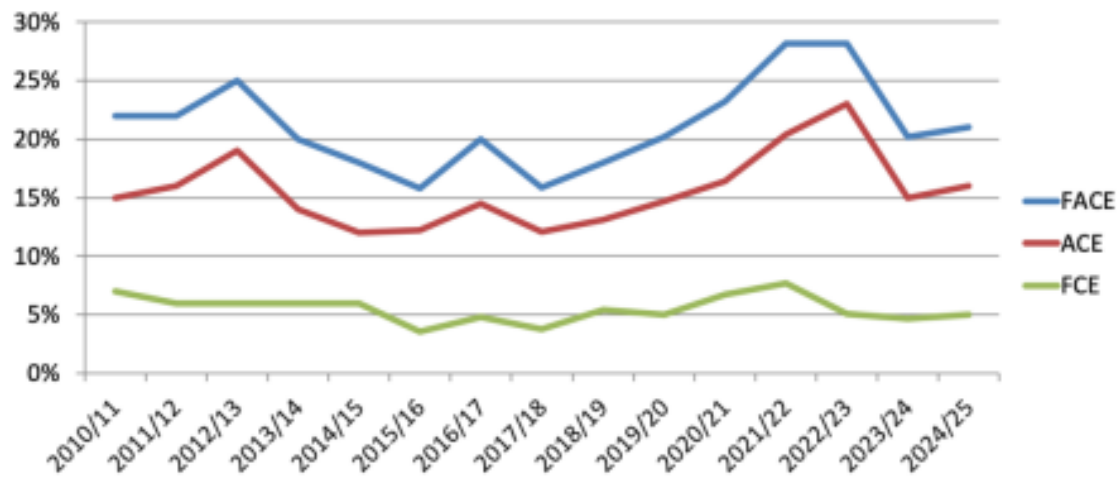


Fig 1 – Key Ratios

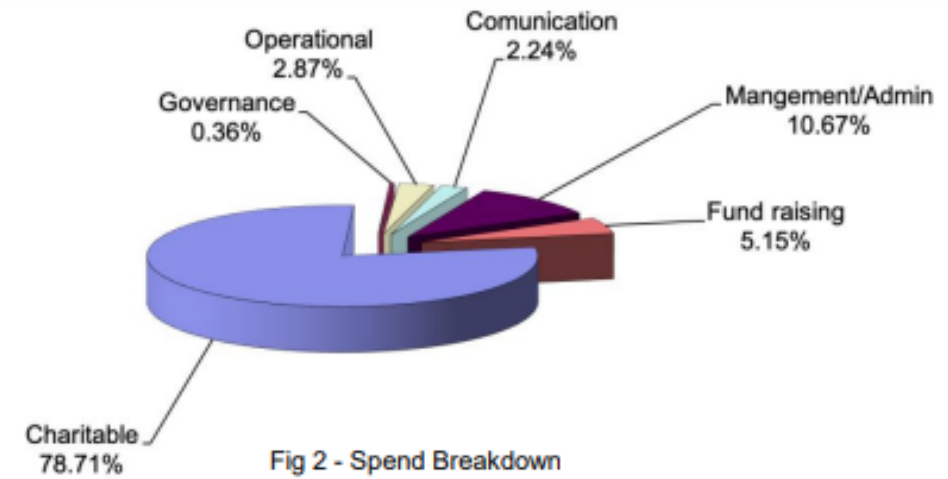


Fig 2 - Spend Breakdown

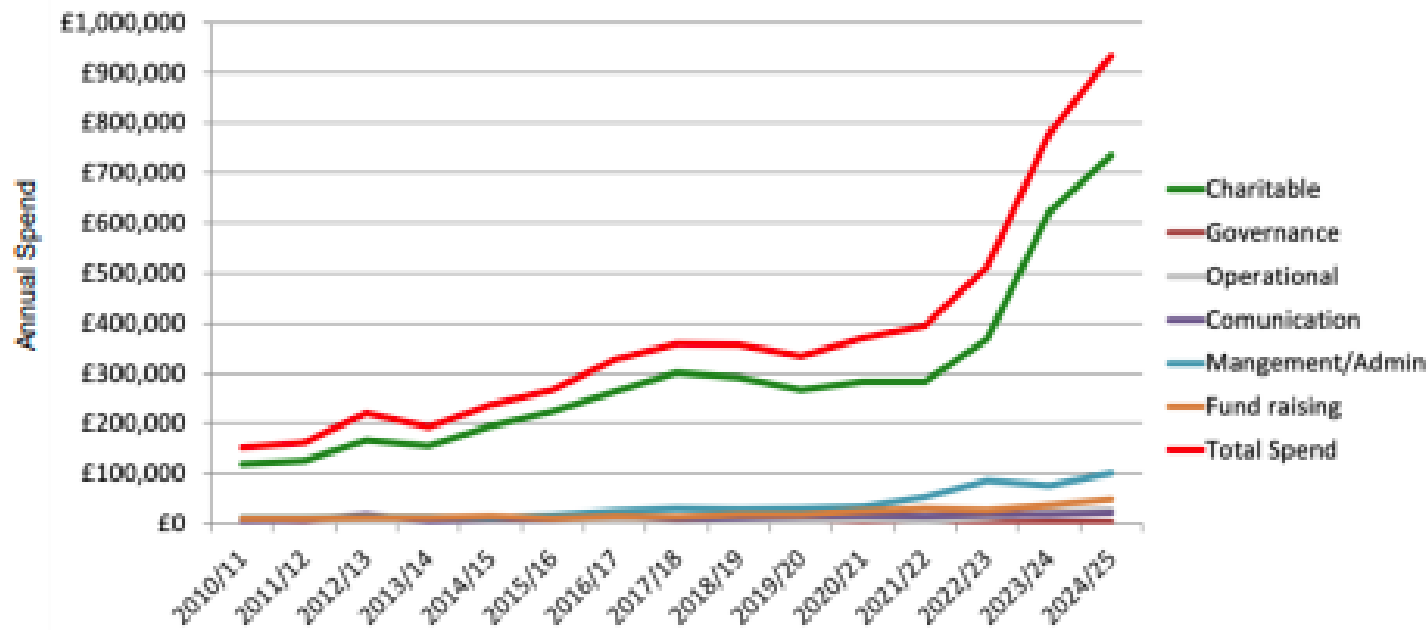


Fig 3 - Spend History

# Statement of Financial Activities

For the Year Ended 31 March 2025

	Unrestricted Funds £	Restricted Funds £	2025 Total Funds £	2024 Total Funds £
<b>INCOME AND ENDOWMENTS FROM</b>				
<b>Charitable activities</b>				
Counselling advice & support	26,984	850,783	877,767	842,360
Other trading activities	-	-	-	(2)
Investment income	12,757	-	12,757	11,889
<b>Total</b>	<b>39,741</b>	<b>850,783</b>	<b>890,524</b>	<b>854,247</b>
<b>EXPENDITURE ON</b>				
<b>Charitable activities</b>				
Counselling advice & support	113,374	821,147	934,521	778,059
<b>NET INCOME/(EXPENDITURE)</b>	<b>(73,633)</b>	<b>29,636</b>	<b>(43,997)</b>	<b>76,188</b>
<b>RECONCILIATION OF FUNDS</b>				
Total funds brought forward	459,536	61,281	520,817	444,629
<b>TOTAL FUNDS CARRIED FORWARD</b>	<b>358,903</b>	<b>90,917</b>	<b>476,820</b>	<b>520,817</b>



# Balance Sheet

31 March 2025

	Unrestricted Funds £	Restricted Funds £	2025 Total Funds £	2024 Total Funds £
<b>FIXED ASSETS</b>	<b>4,945</b>	<b>-</b>	<b>4,945</b>	<b>9,889</b>
Tangible assets				
<b>CURRENT ASSETS</b>	<b>383,880</b>	<b>90,917</b>	<b>474,797</b>	<b>513,544</b>
Cash at bank				
<b>CREDITORS</b>				
Amounts falling due within one year	(2,922)	-	(2,922)	(2,616)
<b>NET CURRENT ASSETS</b>	<b>380,958</b>	<b>90,917</b>	<b>471,875</b>	<b>510,928</b>
<b>TOTAL ASSETS LESS CURRENT LIABILITIES</b>	<b>385,903</b>	<b>90,917</b>	<b>476,820</b>	<b>520,817</b>
<b>NET ASSETS</b>	<b>385,903</b>	<b>90,917</b>	<b>476,820</b>	<b>520,817</b>
<b>FUNDS</b>				
Unrestricted funds			385,903	459,536
Restricted funds			90,917	61,281
<b>TOTAL FUNDS</b>			<b>476,820</b>	<b>520,817</b>



Other than where specifically noted, all written content has been anonymised to ensure the safety of people who use our service. The images and names in this document do not relate to anyone mentioned.



**Get In Touch!**

[enquiries@birchalltrust.org.uk](mailto:enquiries@birchalltrust.org.uk)

[www.birchalltrust.org.uk](http://www.birchalltrust.org.uk)

Registered Charity No: 1109637 · Company Number: 5424196

**REGISTERED COMPANY NUMBER: 05424196 (England and Wales)**  
**REGISTERED CHARITY NUMBER: 1109637**

**REPORT OF THE TRUSTEES AND**  
**UNAUDITED FINANCIAL STATEMENTS FOR THE YEAR ENDED 31 MARCH 2025**  
**FOR**  
**THE BIRCHALL TRUST**

Taylor, Robertson & Willett Ltd  
95 King Street  
Lancaster  
Lancashire  
LA1 1RH

**THE BIRCHALL TRUST**

**CONTENTS OF THE FINANCIAL STATEMENTS**  
**for the Year Ended 31 March 2025**

	<b>Page</b>
<b>Report of the Trustees</b>	1 to 2
<b>Independent Examiner's Report</b>	3
<b>Statement of Financial Activities</b>	4
<b>Balance Sheet</b>	5 to 6
<b>Cash Flow Statement</b>	7
<b>Notes to the Cash Flow Statement</b>	8
<b>Notes to the Financial Statements</b>	9 to 16
<b>Detailed Statement of Financial Activities</b>	17 to 18

## **THE BIRCHALL TRUST**

### **REPORT OF THE TRUSTEES** **for the Year Ended 31 March 2025**

The trustees who are also directors of the charity for the purposes of the Companies Act 2006, present their report with the financial statements of the charity for the year ended 31 March 2025. The trustees have adopted the provisions of Accounting and Reporting by Charities: Statement of Recommended Practice applicable to charities preparing their accounts in accordance with the Financial Reporting Standard applicable in the UK and Republic of Ireland (FRS 102) (effective 1 January 2019).

#### **FINANCIAL REVIEW**

##### **Reserves policy**

At the end of the financial year the combined funds of the charity totalled £476,820 (2024: £520,817). This figure may appear substantial, however it will deplete rapidly if the charity fails to secure future funding.

The funds carried forward into the next financial year are made up of an unrestricted balance of £385,903 and a restricted balance of £90,917.

The unrestricted funds of £385,903 provide the charity with the security of a 'Reserves Policy'. The reserves policy is calculated to accommodate a 6 month 'wind-down' period, should the charity fail to secure funding support in the future (see breakdown below). The reserves policy also includes Contingency Funds designated for other unforeseen emergencies or other unexpected needs:

- Reserves Policy (6 month wind-down)	
o Staff / Redundancies	£140,098
o Counselling services	£151,167
o Rent, services, Property conversion & Removals	£77,203
o Governance, Communication, Travel & Expense	£4,500
	<b>£372,968</b>
 - Reserves Policy - Contingency	 <b>£12,935</b>

The restricted funds of £90,917 have been granted by the charity's funders for specific reportable activities with respect to delivering services in the next financial year.

#### **STRUCTURE, GOVERNANCE AND MANAGEMENT**

##### **Governing document**

The charity is controlled by its governing document, a deed of trust, and constitutes a limited company, limited by guarantee, as defined by the Companies Act 2006.

#### **REFERENCE AND ADMINISTRATIVE DETAILS**

##### **Registered Company number**

05424196 (England and Wales)

##### **Registered Charity number**

1109637

##### **Registered office**

60 Hartington Street  
Barrow In Furness  
Cumbria  
LA14 5SR



**THE BIRCHALL TRUST**

**REPORT OF THE TRUSTEES**  
**for the Year Ended 31 March 2025**

**Trustees**

S P Hanson

M E Taylor - Chair (resigned 22.4.25)

J Brown

Dr P Cook

C McIntyre (resigned 1.7.25)

L Wyre (appointed 22.4.25)

D Sissons (appointed 1.6.25)

**Independent Examiner**

Taylor, Robertson & Willett Ltd

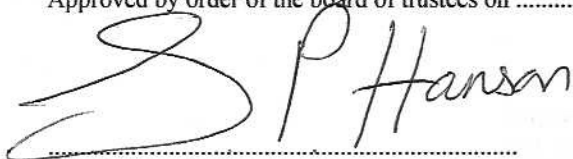
95 King Street

Lancaster

Lancashire

LA1 1RH

Approved by order of the board of trustees on 29/10/25 and signed on its behalf by:

A handwritten signature in black ink, appearing to read 'S P Hanson', is written over a dotted line.

S P Hanson - Trustee

**INDEPENDENT EXAMINER'S REPORT TO THE TRUSTEES OF  
THE BIRCHALL TRUST**

**Independent examiner's report to the trustees of The Birchall Trust ('the Company')**

I report to the charity trustees on my examination of the accounts of the Company for the year ended 31 March 2025.

**Responsibilities and basis of report**

As the charity's trustees of the Company (and also its directors for the purposes of company law) you are responsible for the preparation of the accounts in accordance with the requirements of the Companies Act 2006 ('the 2006 Act').

Having satisfied myself that the accounts of the Company are not required to be audited under Part 16 of the 2006 Act and are eligible for independent examination, I report in respect of my examination of your charity's accounts as carried out under Section 145 of the Charities Act 2011 ('the 2011 Act'). In carrying out my examination I have followed the Directions given by the Charity Commission under Section 145(5) (b) of the 2011 Act.

**Independent examiner's statement**

Since your charity's gross income exceeded £250,000 your examiner must be a member of a listed body. I can confirm that I am qualified to undertake the examination because I am a member of the Association of Chartered Certified Accountants, which is one of the listed bodies.

I have completed my examination. I confirm that no matters have come to my attention in connection with the examination giving me cause to believe:

1. accounting records were not kept in respect of the Company as required by Section 386 of the 2006 Act; or
2. the accounts do not accord with those records; or
3. the accounts do not comply with the accounting requirements of Section 396 of the 2006 Act other than any requirement that the accounts give a true and fair view which is not a matter considered as part of an independent examination; or
4. the accounts have not been prepared in accordance with the methods and principles of the Statement of Recommended Practice for accounting and reporting by charities (applicable to charities preparing their accounts in accordance with the Financial Reporting Standard applicable in the UK and Republic of Ireland (FRS 102)).

I have no concerns and have come across no other matters in connection with the examination to which attention should be drawn in this report in order to enable a proper understanding of the accounts to be reached.

Handwritten signature of Stephen Paul Slater in black ink, followed by the letters 'FCCA'.

Mr Stephen Paul Slater

Taylor, Robertson & Willett Ltd  
95 King Street  
Lancaster  
Lancashire  
LA1 1RH

9 September 2025

**THE BIRCHALL TRUST****STATEMENT OF FINANCIAL ACTIVITIES**  
**for the Year Ended 31 March 2025**

	Notes	Unrestricted fund £	Restricted funds £	2025 Total funds £	2024 Total funds £
<b>INCOME AND ENDOWMENTS FROM</b>					
<b>Charitable activities</b>	4				
Counselling, advice & support		26,984	850,783	877,767	842,360
Other trading activities	2	-	-	-	(2)
Investment income	3	12,757	-	12,757	11,889
<b>Total</b>		<u>39,741</u>	<u>850,783</u>	<u>890,524</u>	<u>854,247</u>
<b>EXPENDITURE ON</b>					
<b>Charitable activities</b>	5				
Counselling, advice & support		113,374	821,147	934,521	778,059
<b>NET INCOME/(EXPENDITURE)</b>		<b>(73,633)</b>	<b>29,636</b>	<b>(43,997)</b>	<b>76,188</b>
<b>RECONCILIATION OF FUNDS</b>					
Total funds brought forward		459,536	61,281	520,817	444,629
<b>TOTAL FUNDS CARRIED FORWARD</b>		<u><u>385,903</u></u>	<u><u>90,917</u></u>	<u><u>476,820</u></u>	<u><u>520,817</u></u>

The notes form part of these financial statements

**THE BIRCHALL TRUST****BALANCE SHEET****31 March 2025**

	Notes	Unrestricted fund £	Restricted funds £	2025 Total funds £	2024 Total funds £
<b>FIXED ASSETS</b>					
Tangible assets	11	4,945	-	4,945	9,889
<b>CURRENT ASSETS</b>					
Cash at bank		383,880	90,917	474,797	513,544
<b>CREDITORS</b>					
Amounts falling due within one year	12	(2,922)	-	(2,922)	(2,616)
<b>NET CURRENT ASSETS</b>		<u>380,958</u>	<u>90,917</u>	<u>471,875</u>	<u>510,928</u>
<b>TOTAL ASSETS LESS CURRENT LIABILITIES</b>		<u>385,903</u>	<u>90,917</u>	<u>476,820</u>	<u>520,817</u>
<b>NET ASSETS</b>		<u>385,903</u>	<u>90,917</u>	<u>476,820</u>	<u>520,817</u>
<b>FUNDS</b>	13				
Unrestricted funds				385,903	459,536
Restricted funds				<u>90,917</u>	<u>61,281</u>
<b>TOTAL FUNDS</b>				<u>476,820</u>	<u>520,817</u>

The charitable company is entitled to exemption from audit under Section 477 of the Companies Act 2006 for the year ended 31 March 2025.

The members have not required the company to obtain an audit of its financial statements for the year ended 31 March 2025 in accordance with Section 476 of the Companies Act 2006.

The trustees acknowledge their responsibilities for

- (a) ensuring that the charitable company keeps accounting records that comply with Sections 386 and 387 of the Companies Act 2006 and
- (b) preparing financial statements which give a true and fair view of the state of affairs of the charitable company as at the end of each financial year and of its surplus or deficit for each financial year in accordance with the requirements of Sections 394 and 395 and which otherwise comply with the requirements of the Companies Act 2006 relating to financial statements, so far as applicable to the charitable company.



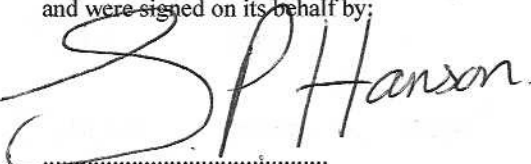
**THE BIRCHALL TRUST**

**BALANCE SHEET - continued**

**31 March 2025**

These financial statements have been prepared in accordance with the provisions applicable to charitable companies subject to the small companies regime.

The financial statements were approved by the Board of Trustees and authorised for issue on 29/10/25 and were signed on its behalf by:

A large, stylized handwritten signature in black ink, appearing to read 'S P Hanson'.

S P Hanson - Trustee

The notes form part of these financial statements

**THE BIRCHALL TRUST****CASH FLOW STATEMENT**  
**for the Year Ended 31 March 2025**

	Notes	2025 £	2024 £
<b>Cash flows from operating activities</b>			
Cash generated from operations	1	<u>(51,504)</u>	<u>70,198</u>
Net cash (used in)/provided by operating activities		<u>(51,504)</u>	<u>70,198</u>
<b>Cash flows from investing activities</b>			
Purchase of tangible fixed assets		-	(14,833)
Interest received		<u>12,757</u>	<u>11,889</u>
Net cash provided by/(used in) investing activities		<u>12,757</u>	<u>(2,944)</u>
<b>Change in cash and cash equivalents in the reporting period</b>		<u>(38,747)</u>	<u>67,254</u>
<b>Cash and cash equivalents at the beginning of the reporting period</b>		<u>513,544</u>	<u>446,290</u>
<b>Cash and cash equivalents at the end of the reporting period</b>		<u><u>474,797</u></u>	<u><u>513,544</u></u>

The notes form part of these financial statements

## THE BIRCHALL TRUST

### NOTES TO THE CASH FLOW STATEMENT for the Year Ended 31 March 2025

#### 1. RECONCILIATION OF NET (EXPENDITURE)/INCOME TO NET CASH FLOW FROM OPERATING ACTIVITIES

	2025 £	2024 £
Net (expenditure)/income for the reporting period (as per the Statement of Financial Activities)	(43,997)	76,188
Adjustments for:		
Depreciation charges	4,944	4,944
Interest received	(12,757)	(11,889)
Increase in creditors	306	955
Net cash (used in)/provided by operations	<u>(51,504)</u>	<u>70,198</u>

#### 2. ANALYSIS OF CHANGES IN NET FUNDS

	At 1/4/24 £	Cash flow £	At 31/3/25 £
Net cash			
Cash at bank	<u>513,544</u>	<u>(38,747)</u>	<u>474,797</u>
	<u>513,544</u>	<u>(38,747)</u>	<u>474,797</u>
Total	<u>513,544</u>	<u>(38,747)</u>	<u>474,797</u>

The notes form part of these financial statements

## **THE BIRCHALL TRUST**

### **NOTES TO THE FINANCIAL STATEMENTS** **for the Year Ended 31 March 2025**

#### **1. ACCOUNTING POLICIES**

##### **Basis of preparing the financial statements**

The financial statements of the charitable company, which is a public benefit entity under FRS 102, have been prepared in accordance with the Charities SORP (FRS 102) 'Accounting and Reporting by Charities: Statement of Recommended Practice applicable to charities preparing their accounts in accordance with the Financial Reporting Standard applicable in the UK and Republic of Ireland (FRS 102) (effective 1 January 2015)', and the Companies Act 2006. The financial statements have been prepared under the historical cost convention.

##### **Income**

All income is recognised in the Statement of Financial Activities once the charity has entitlement to the funds, it is probable that the income will be received and the amount can be measured reliably.

##### **Expenditure**

Liabilities are recognised as expenditure as soon as there is a legal or constructive obligation committing the charity to that expenditure, it is probable that a transfer of economic benefits will be required in settlement and the amount of the obligation can be measured reliably. Expenditure is accounted for on an accruals basis and has been classified under headings that aggregate all cost related to the category. Where costs cannot be directly attributed to particular headings they have been allocated to activities on a basis consistent with the use of resources.

##### **Tangible fixed assets**

Depreciation is provided at the following annual rates in order to write off each asset over its estimated useful life.

Computer equipment            -    33% on cost

##### **Taxation**

The charity is exempt from corporation tax on its charitable activities.

##### **Fund accounting**

Unrestricted funds can be used in accordance with the charitable objectives at the discretion of the trustees.

Restricted funds can only be used for particular restricted purposes within the objects of the charity. Restrictions arise when specified by the donor or when funds are raised for particular restricted purposes.

Further explanation of the nature and purpose of each fund is included in the notes to the financial statements.

##### **Pension costs and other post-retirement benefits**

The charitable company operates a defined contribution pension scheme. Contributions payable to the charitable company's pension scheme are charged to the Statement of Financial Activities in the period to which they relate.



**THE BIRCHALL TRUST****NOTES TO THE FINANCIAL STATEMENTS - continued**  
**for the Year Ended 31 March 2025****2. OTHER TRADING ACTIVITIES**

	<b>2025</b>	<b>2024</b>
	<b>£</b>	<b>£</b>
Rent & services	-	(2)
	<u>          </u>	<u>          </u>

**3. INVESTMENT INCOME**

	<b>2025</b>	<b>2024</b>
	<b>£</b>	<b>£</b>
Bank interest	<b>12,757</b>	11,889
	<u>          </u>	<u>          </u>

**4. INCOME FROM CHARITABLE ACTIVITIES**

		<b>2025</b>	<b>2024</b>
	Activity	<b>£</b>	<b>£</b>
Donations	Counselling, advice & support	<b>25,929</b>	25,672
Training and consultancy	Counselling, advice & support	<b>1,055</b>	73,673
Grants	Counselling, advice & support	<b>850,783</b>	743,015
		<u>          </u>	<u>          </u>
		<b>877,767</b>	842,360
		<u>          </u>	<u>          </u>

Grants received, included in the above, are as follows:

	<b>2025</b>	<b>2024</b>
	<b>£</b>	<b>£</b>
The Henry Smith Charity	<b>90,000</b>	30,000
Francis C Scott Trust	<b>27,500</b>	12,500
BBC Children In Need	-	34,150
The National Lottery Community Fund	<b>97,438</b>	96,559
Sir John Fisher Foundation	<b>20,000</b>	-
Freida Scott Charitable Trust	<b>12,000</b>	16,000
CPCC SafetyNet	-	40,519
Walney Extension Community Fund	-	10,000
The Pilgrim Trust	<b>30,378</b>	35,648
CPCC MOJ Male Support Fund	-	11,073
Cumbria Community Foundation	<b>10,000</b>	10,000
Cumbria County Council DLUHC Grant	<b>31,268</b>	16,216
Henry Smith Foundation - COVID	<b>40,000</b>	20,000
Cumbria MOJ - Additional Therapy	<b>17,967</b>	31,941
MOJ Lancashire LPCC	<b>58,025</b>	43,025
National Lottery (KYN)	<b>22,205</b>	21,559
MOJ Lancs Rape Support Fund	<b>313,033</b>	209,076
MOJ Cumbria Rape Support Fund	<b>62,769</b>	43,468
ICB NHS Lancashire	-	61,281
CRH Foundaton	<b>18,200</b>	-
	<u>          </u>	<u>          </u>
	<b>850,783</b>	743,015
	<u>          </u>	<u>          </u>

**THE BIRCHALL TRUST**

**NOTES TO THE FINANCIAL STATEMENTS - continued**  
**for the Year Ended 31 March 2025**

**5. CHARITABLE ACTIVITIES COSTS**

	Direct Costs £	Support costs (see note 6) £	Totals £
Counselling, advice & support	<u>735,587</u>	<u>198,934</u>	<u>934,521</u>

**6. SUPPORT COSTS**

	Management £	Other £	Governance costs £	Totals £
Counselling, advice & support	<u>190,662</u>	<u>4,944</u>	<u>3,328</u>	<u>198,934</u>

**7. NET INCOME/(EXPENDITURE)**

Net income/(expenditure) is stated after charging/(crediting):

	2025 £	2024 £
Depreciation - owned assets	<u>4,944</u>	<u>4,944</u>

**8. TRUSTEES' REMUNERATION AND BENEFITS**

There were no trustees' remuneration or other benefits for the year ended 31 March 2025 nor for the year ended 31 March 2024.

**Trustees' expenses**

Trustees received £0.00 (2024: £0.00) in total for stationery and travel expenses. The maximum received by one Trustee was £0.00 (2024: £0.00).

**9. STAFF COSTS**

	2025 £	2024 £
Wages and salaries	639,549	510,694
Other pension costs	13,754	10,673
	<u>653,303</u>	<u>521,367</u>

The average monthly number of employees during the year was as follows:

	2025	2024
Support staff	<u>27</u>	<u>22</u>

No employees received emoluments in excess of £60,000.

**THE BIRCHALL TRUST**

**NOTES TO THE FINANCIAL STATEMENTS - continued**  
**for the Year Ended 31 March 2025**

**10. COMPARATIVES FOR THE STATEMENT OF FINANCIAL ACTIVITIES**

	Unrestricted fund £	Restricted funds £	Total funds £
<b>INCOME AND ENDOWMENTS FROM</b>			
<b>Charitable activities</b>			
Counselling, advice & support	99,345	743,015	842,360
Other trading activities	(1)	(1)	(2)
Investment income	11,889	-	11,889
<b>Total</b>	<u>111,233</u>	<u>743,014</u>	<u>854,247</u>
<b>EXPENDITURE ON</b>			
<b>Charitable activities</b>			
Counselling, advice & support	<u>22,832</u>	<u>755,227</u>	<u>778,059</u>
<b>NET INCOME/(EXPENDITURE)</b>	88,401	(12,213)	76,188
<b>Transfers between funds</b>	<u>34,027</u>	<u>(34,027)</u>	<u>-</u>
<b>Net movement in funds</b>	122,428	(46,240)	76,188
<b>RECONCILIATION OF FUNDS</b>			
Total funds brought forward	337,108	107,521	444,629
<b>TOTAL FUNDS CARRIED FORWARD</b>	<u><u>459,536</u></u>	<u><u>61,281</u></u>	<u><u>520,817</u></u>

**11. TANGIBLE FIXED ASSETS**

	Computer equipment £
<b>COST</b>	
At 1 April 2024 and 31 March 2025	<u><b>14,833</b></u>
<b>DEPRECIATION</b>	
At 1 April 2024	<b>4,944</b>
Charge for year	<u><b>4,944</b></u>
At 31 March 2025	<u><b>9,888</b></u>
<b>NET BOOK VALUE</b>	
At 31 March 2025	<u><u><b>4,945</b></u></u>
At 31 March 2024	<u><u>9,889</u></u>

**THE BIRCHALL TRUST****NOTES TO THE FINANCIAL STATEMENTS - continued**  
**for the Year Ended 31 March 2025****12. CREDITORS: AMOUNTS FALLING DUE WITHIN ONE YEAR**

	2025	2024
	£	£
Accrued expenses	<u>2,922</u>	<u>2,616</u>

**13. MOVEMENT IN FUNDS**

	At 1/4/24 £	Net movement in funds £	At 31/3/25 £
<b>Unrestricted funds</b>			
General fund	459,536	(73,633)	385,903
<b>Restricted funds</b>			
The Henry Smith Charity	-	63,000	63,000
Sir John Fisher Foundation	-	7,697	7,697
The National Lottery Community Fund	-	5,000	5,000
ICB NHS Lancashire	61,281	(61,281)	-
CRH Foundation	-	15,220	15,220
	<u>61,281</u>	<u>29,636</u>	<u>90,917</u>
<b>TOTAL FUNDS</b>	<u>520,817</u>	<u>(43,997)</u>	<u>476,820</u>



**THE BIRCHALL TRUST****NOTES TO THE FINANCIAL STATEMENTS - continued**  
**for the Year Ended 31 March 2025****13. MOVEMENT IN FUNDS - continued**

Net movement in funds, included in the above are as follows:

	Incoming resources £	Resources expended £	Movement in funds £
<b>Unrestricted funds</b>			
General fund	39,741	(113,374)	(73,633)
<b>Restricted funds</b>			
Francis C Scott Trust	27,500	(27,500)	-
The Henry Smith Charity	90,000	(27,000)	63,000
Sir John Fisher Foundation	20,000	(12,303)	7,697
The National Lottery Community Fund	97,438	(92,438)	5,000
Freida Scott Charitable Trust	12,000	(12,000)	-
The Pilgrim Trust	30,378	(30,378)	-
MOJ Lancashire LPCC	58,025	(58,025)	-
Cumbria Community Foundation	10,000	(10,000)	-
Cumbria County Council DLUHC Grant	31,268	(31,268)	-
Henry Smith Foundation - COVID	40,000	(40,000)	-
Cumbria MOJ - Additional Therapy	17,967	(17,967)	-
National Lottery (KYN)	22,205	(22,205)	-
MOJ Lancs Rape Support Fund	313,033	(313,033)	-
MOJ Cumbria Rape Support Fund	62,769	(62,769)	-
ICB NHS Lancashire	-	(61,281)	(61,281)
CRH Foundation	18,200	(2,980)	15,220
	<hr/>	<hr/>	<hr/>
	850,783	(821,147)	29,636
	<hr/>	<hr/>	<hr/>
<b>TOTAL FUNDS</b>	<b>890,524</b>	<b>(934,521)</b>	<b>(43,997)</b>
	<hr/> <hr/>	<hr/> <hr/>	<hr/> <hr/>

**THE BIRCHALL TRUST****NOTES TO THE FINANCIAL STATEMENTS - continued**  
**for the Year Ended 31 March 2025****13. MOVEMENT IN FUNDS - continued****Comparatives for movement in funds**

	At 1/4/23 £	Net movement in funds £	Transfers between funds £	At 31/3/24 £
<b>Unrestricted funds</b>				
General fund	337,108	88,401	34,027	459,536
<b>Restricted funds</b>				
Francis C Scott Trust	15,000	(15,000)	-	-
The Henry Smith Charity	28,075	(28,075)	-	-
The National Lottery Community Fund	-	2,042	(2,042)	-
Freida Scott Charitable Trust	7,836	(7,836)	-	-
CPCC SafetyNet	10,586	(10,586)	-	-
Walney Extension Community Fund	-	10,000	(10,000)	-
The Pilgrim Trust	-	5,000	(5,000)	-
Henry Smith Foundation - COVID	17,424	(17,424)	-	-
Cumbria MOJ - Additional Therapy	-	7,985	(7,985)	-
Cumbria County Council Trauma Work	28,600	(19,600)	(9,000)	-
ICB NHS Lancashire	-	61,281	-	61,281
	<hr/> 107,521	<hr/> (12,213)	<hr/> (34,027)	<hr/> 61,281
<b>TOTAL FUNDS</b>	<hr/> 444,629	<hr/> 76,188	<hr/> -	<hr/> 520,817

## **THE BIRCHALL TRUST**

### **NOTES TO THE FINANCIAL STATEMENTS - continued** **for the Year Ended 31 March 2025**

#### **13. MOVEMENT IN FUNDS - continued**

Comparative net movement in funds, included in the above are as follows:

	Incoming resources £	Resources expended £	Movement in funds £
<b>Unrestricted funds</b>			
General fund	111,233	(22,832)	88,401
<b>Restricted funds</b>			
BBC Children In Need	34,150	(34,150)	-
Francis C Scott Trust	12,500	(27,500)	(15,000)
The Henry Smith Charity	30,000	(58,075)	(28,075)
The National Lottery Community Fund	96,558	(94,516)	2,042
Freida Scott Charitable Trust	16,000	(23,836)	(7,836)
CPCC SafetyNet	40,519	(51,105)	(10,586)
Walney Extension Community Fund	10,000	-	10,000
The Pilgrim Trust	35,648	(30,648)	5,000
CPCC MOJ Male Support Fund	11,073	(11,073)	-
MOJ Lancashire LPCC	43,025	(43,025)	-
Cumbria Community Foundation	10,000	(10,000)	-
Cumbria County Council DLUHC Grant	16,216	(16,216)	-
Henry Smith Foundation - COVID	20,000	(37,424)	(17,424)
Cumbria MOJ - Additional Therapy	31,941	(23,956)	7,985
Cumbria County Council Trauma Work	-	(19,600)	(19,600)
National Lottery (KYN)	21,559	(21,559)	-
MOJ Lancs Rape Support Fund	209,076	(209,076)	-
MOJ Cumbria Rape Support Fund	43,468	(43,468)	-
ICB NHS Lancashire	61,281	-	61,281
	<hr/> 743,014	<hr/> (755,227)	<hr/> (12,213)
<b>TOTAL FUNDS</b>	<hr/> <hr/> 854,247	<hr/> <hr/> (778,059)	<hr/> <hr/> 76,188

#### **14. RELATED PARTY DISCLOSURES**

There were no related party transactions for the year ended 31 March 2025.

**THE BIRCHALL TRUST****DETAILED STATEMENT OF FINANCIAL ACTIVITIES**  
**for the Year Ended 31 March 2025**

	2025 £	2024 £
<b>INCOME AND ENDOWMENTS</b>		
<b>Other trading activities</b>		
Rent & services	-	(2)
<b>Investment income</b>		
Bank interest	12,757	11,889
<b>Charitable activities</b>		
Donations	25,929	25,672
Training and consultancy	1,055	73,673
Grants	850,783	743,015
	<hr/>	<hr/>
	877,767	842,360
<b>Total incoming resources</b>	<hr/>	<hr/>
	890,524	854,247
<b>EXPENDITURE</b>		
<b>Charitable activities</b>		
Staff costs for client support	505,479	408,655
Rent & services - counselling rooms	50,777	33,255
Counselling equipment	875	905
Refurbish counselling rooms	3,874	2,232
Travelling	10,821	11,488
Counsellors	88,832	87,380
Clinical supervision	9,926	7,333
Training	3,886	944
Service provision partner	61,117	57,820
Event management	-	11,245
	<hr/>	<hr/>
	735,587	621,257
<b>Support costs</b>		
<b>Management</b>		
Wages	134,070	102,039
Pensions	13,754	10,673
Rent & services	2,672	1,750
Insurance	3,708	3,421
Telephone	5,034	4,484
Postage and stationery	393	767
Sundries	8,545	8,821
Professional fees for service development	13,682	10,431
Office equipment	1,589	2,263
Carried forward	183,447	144,649

This page does not form part of the statutory financial statements

**THE BIRCHALL TRUST****DETAILED STATEMENT OF FINANCIAL ACTIVITIES**  
**for the Year Ended 31 March 2025**

	2025 £	2024 £
<b>Management</b>		
Brought forward	<b>183,447</b>	144,649
Bank charges	<b>238</b>	215
IT & website	<b>6,977</b>	4,030
	<hr/>	<hr/>
	<b>190,662</b>	148,894
 <b>Other</b>		
Depreciation of tangible fixed assets	<b>4,944</b>	4,944
 <b>Governance costs</b>		
Travel & meetings	<b>148</b>	324
Accountancy fees	<b>3,180</b>	2,640
	<hr/>	<hr/>
	<b>3,328</b>	2,964
 Total resources expended	<hr/>	<hr/>
	<b>934,521</b>	778,059
 Net (expenditure)/income	<hr/>	<hr/>
	<b>(43,997)</b>	76,188
	<hr/>	<hr/>

This page does not form part of the statutory financial statements

**REGISTERED COMPANY NUMBER: 05424196 (England and Wales)**  
**REGISTERED CHARITY NUMBER: 1109637**

**REPORT OF THE TRUSTEES AND**  
**UNAUDITED FINANCIAL STATEMENTS FOR THE YEAR ENDED 31 MARCH 2025**  
**FOR**  
**THE BIRCHALL TRUST**

Taylor, Robertson & Willett Ltd  
95 King Street  
Lancaster  
Lancashire  
LA1 1RH



**THE BIRCHALL TRUST**

**CONTENTS OF THE FINANCIAL STATEMENTS**  
**for the Year Ended 31 March 2025**

	<b>Page</b>
<b>Report of the Trustees</b>	1 to 2
<b>Independent Examiner's Report</b>	3
<b>Statement of Financial Activities</b>	4
<b>Balance Sheet</b>	5 to 6
<b>Cash Flow Statement</b>	7
<b>Notes to the Cash Flow Statement</b>	8
<b>Notes to the Financial Statements</b>	9 to 16
<b>Detailed Statement of Financial Activities</b>	17 to 18

## **THE BIRCHALL TRUST**

### **REPORT OF THE TRUSTEES** **for the Year Ended 31 March 2025**

The trustees who are also directors of the charity for the purposes of the Companies Act 2006, present their report with the financial statements of the charity for the year ended 31 March 2025. The trustees have adopted the provisions of Accounting and Reporting by Charities: Statement of Recommended Practice applicable to charities preparing their accounts in accordance with the Financial Reporting Standard applicable in the UK and Republic of Ireland (FRS 102) (effective 1 January 2019).

#### **FINANCIAL REVIEW**

##### **Reserves policy**

At the end of the financial year the combined funds of the charity totalled £476,820 (2024: £520,817). This figure may appear substantial, however it will deplete rapidly if the charity fails to secure future funding.

The funds carried forward into the next financial year are made up of an unrestricted balance of £385,903 and a restricted balance of £90,917.

The unrestricted funds of £385,903 provide the charity with the security of a 'Reserves Policy'. The reserves policy is calculated to accommodate a 6 month 'wind-down' period, should the charity fail to secure funding support in the future (see breakdown below). The reserves policy also includes Contingency Funds designated for other unforeseen emergencies or other unexpected needs:

- Reserves Policy (6 month wind-down)	
o Staff / Redundancies	£140,098
o Counselling services	£151,167
o Rent, services, Property conversion & Removals	£77,203
o Governance, Communication, Travel & Expense	£4,500
	<b>£372,968</b>
 - Reserves Policy - Contingency	 <b>£12,935</b>

The restricted funds of £90,917 have been granted by the charity's funders for specific reportable activities with respect to delivering services in the next financial year.

#### **STRUCTURE, GOVERNANCE AND MANAGEMENT**

##### **Governing document**

The charity is controlled by its governing document, a deed of trust, and constitutes a limited company, limited by guarantee, as defined by the Companies Act 2006.

#### **REFERENCE AND ADMINISTRATIVE DETAILS**

##### **Registered Company number**

05424196 (England and Wales)

##### **Registered Charity number**

1109637

##### **Registered office**

60 Hartington Street  
Barrow In Furness  
Cumbria  
LA14 5SR

**THE BIRCHALL TRUST**

**REPORT OF THE TRUSTEES**  
**for the Year Ended 31 March 2025**

**Trustees**

S P Hanson

M E Taylor - Chair (resigned 22.4.25)

J Brown

Dr P Cook

C McIntyre (resigned 1.7.25)

L Wyre (appointed 22.4.25)

D Sissons (appointed 1.6.25)

**Independent Examiner**

Taylor, Robertson & Willett Ltd

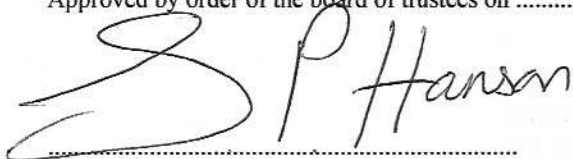
95 King Street

Lancaster

Lancashire

LA1 1RH

Approved by order of the board of trustees on 29/10/25 and signed on its behalf by:

A handwritten signature in black ink, appearing to read 'S P Hanson', is written over a dotted line.

S P Hanson - Trustee

**INDEPENDENT EXAMINER'S REPORT TO THE TRUSTEES OF  
THE BIRCHALL TRUST**

**Independent examiner's report to the trustees of The Birchall Trust ('the Company')**

I report to the charity trustees on my examination of the accounts of the Company for the year ended 31 March 2025.

**Responsibilities and basis of report**

As the charity's trustees of the Company (and also its directors for the purposes of company law) you are responsible for the preparation of the accounts in accordance with the requirements of the Companies Act 2006 ('the 2006 Act').

Having satisfied myself that the accounts of the Company are not required to be audited under Part 16 of the 2006 Act and are eligible for independent examination, I report in respect of my examination of your charity's accounts as carried out under Section 145 of the Charities Act 2011 ('the 2011 Act'). In carrying out my examination I have followed the Directions given by the Charity Commission under Section 145(5) (b) of the 2011 Act.

**Independent examiner's statement**

Since your charity's gross income exceeded £250,000 your examiner must be a member of a listed body. I can confirm that I am qualified to undertake the examination because I am a member of the Association of Chartered Certified Accountants, which is one of the listed bodies.

I have completed my examination. I confirm that no matters have come to my attention in connection with the examination giving me cause to believe:

1. accounting records were not kept in respect of the Company as required by Section 386 of the 2006 Act; or
2. the accounts do not accord with those records; or
3. the accounts do not comply with the accounting requirements of Section 396 of the 2006 Act other than any requirement that the accounts give a true and fair view which is not a matter considered as part of an independent examination; or
4. the accounts have not been prepared in accordance with the methods and principles of the Statement of Recommended Practice for accounting and reporting by charities (applicable to charities preparing their accounts in accordance with the Financial Reporting Standard applicable in the UK and Republic of Ireland (FRS 102)).

I have no concerns and have come across no other matters in connection with the examination to which attention should be drawn in this report in order to enable a proper understanding of the accounts to be reached.

Handwritten signature of Stephen Paul Slater in black ink, followed by the letters 'FCCA'.

Mr Stephen Paul Slater

Taylor, Robertson & Willett Ltd  
95 King Street  
Lancaster  
Lancashire  
LA1 1RH

9 September 2025

**THE BIRCHALL TRUST****STATEMENT OF FINANCIAL ACTIVITIES**  
**for the Year Ended 31 March 2025**

		Unrestricted fund £	Restricted funds £	2025 Total funds £	2024 Total funds £
	Notes				
<b>INCOME AND ENDOWMENTS FROM</b>					
<b>Charitable activities</b>	4				
Counselling, advice & support		26,984	850,783	877,767	842,360
Other trading activities	2	-	-	-	(2)
Investment income	3	12,757	-	12,757	11,889
<b>Total</b>		<u>39,741</u>	<u>850,783</u>	<u>890,524</u>	<u>854,247</u>
 <b>EXPENDITURE ON</b>					
<b>Charitable activities</b>	5				
Counselling, advice & support		<u>113,374</u>	<u>821,147</u>	<u>934,521</u>	<u>778,059</u>
 <b>NET INCOME/(EXPENDITURE)</b>		<b>(73,633)</b>	<b>29,636</b>	<b>(43,997)</b>	<b>76,188</b>
 <b>RECONCILIATION OF FUNDS</b>					
Total funds brought forward		<u>459,536</u>	<u>61,281</u>	<u>520,817</u>	<u>444,629</u>
 <b>TOTAL FUNDS CARRIED FORWARD</b>		<u><u>385,903</u></u>	<u><u>90,917</u></u>	<u><u>476,820</u></u>	<u><u>520,817</u></u>

The notes form part of these financial statements

**THE BIRCHALL TRUST****BALANCE SHEET****31 March 2025**

	Notes	Unrestricted fund £	Restricted funds £	2025 Total funds £	2024 Total funds £
<b>FIXED ASSETS</b>					
Tangible assets	11	4,945	-	4,945	9,889
<b>CURRENT ASSETS</b>					
Cash at bank		383,880	90,917	474,797	513,544
<b>CREDITORS</b>					
Amounts falling due within one year	12	(2,922)	-	(2,922)	(2,616)
<b>NET CURRENT ASSETS</b>		<u>380,958</u>	<u>90,917</u>	<u>471,875</u>	<u>510,928</u>
<b>TOTAL ASSETS LESS CURRENT LIABILITIES</b>		<u>385,903</u>	<u>90,917</u>	<u>476,820</u>	<u>520,817</u>
<b>NET ASSETS</b>		<u>385,903</u>	<u>90,917</u>	<u>476,820</u>	<u>520,817</u>
<b>FUNDS</b>	13				
Unrestricted funds				385,903	459,536
Restricted funds				<u>90,917</u>	<u>61,281</u>
<b>TOTAL FUNDS</b>				<u>476,820</u>	<u>520,817</u>

The charitable company is entitled to exemption from audit under Section 477 of the Companies Act 2006 for the year ended 31 March 2025.

The members have not required the company to obtain an audit of its financial statements for the year ended 31 March 2025 in accordance with Section 476 of the Companies Act 2006.

The trustees acknowledge their responsibilities for

- (a) ensuring that the charitable company keeps accounting records that comply with Sections 386 and 387 of the Companies Act 2006 and
- (b) preparing financial statements which give a true and fair view of the state of affairs of the charitable company as at the end of each financial year and of its surplus or deficit for each financial year in accordance with the requirements of Sections 394 and 395 and which otherwise comply with the requirements of the Companies Act 2006 relating to financial statements, so far as applicable to the charitable company.



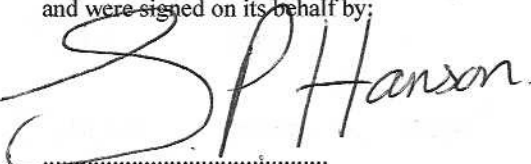
**THE BIRCHALL TRUST**

**BALANCE SHEET - continued**

**31 March 2025**

These financial statements have been prepared in accordance with the provisions applicable to charitable companies subject to the small companies regime.

The financial statements were approved by the Board of Trustees and authorised for issue on 29/10/25 and were signed on its behalf by:

A large, stylized handwritten signature in black ink that reads "S P Hanson". The signature is written over a dotted line.

S P Hanson - Trustee

The notes form part of these financial statements

**THE BIRCHALL TRUST****CASH FLOW STATEMENT**  
**for the Year Ended 31 March 2025**

	Notes	2025 £	2024 £
<b>Cash flows from operating activities</b>			
Cash generated from operations	1	<u>(51,504)</u>	<u>70,198</u>
Net cash (used in)/provided by operating activities		<u>(51,504)</u>	<u>70,198</u>
<b>Cash flows from investing activities</b>			
Purchase of tangible fixed assets		-	(14,833)
Interest received		<u>12,757</u>	<u>11,889</u>
Net cash provided by/(used in) investing activities		<u>12,757</u>	<u>(2,944)</u>
<b>Change in cash and cash equivalents in the reporting period</b>		<u>(38,747)</u>	<u>67,254</u>
<b>Cash and cash equivalents at the beginning of the reporting period</b>		<u>513,544</u>	<u>446,290</u>
<b>Cash and cash equivalents at the end of the reporting period</b>		<u><u>474,797</u></u>	<u><u>513,544</u></u>

The notes form part of these financial statements

## THE BIRCHALL TRUST

### NOTES TO THE CASH FLOW STATEMENT for the Year Ended 31 March 2025

#### 1. RECONCILIATION OF NET (EXPENDITURE)/INCOME TO NET CASH FLOW FROM OPERATING ACTIVITIES

	2025 £	2024 £
Net (expenditure)/income for the reporting period (as per the Statement of Financial Activities)	(43,997)	76,188
Adjustments for:		
Depreciation charges	4,944	4,944
Interest received	(12,757)	(11,889)
Increase in creditors	306	955
Net cash (used in)/provided by operations	<u>(51,504)</u>	<u>70,198</u>

#### 2. ANALYSIS OF CHANGES IN NET FUNDS

	At 1/4/24 £	Cash flow £	At 31/3/25 £
Net cash			
Cash at bank	<u>513,544</u>	<u>(38,747)</u>	<u>474,797</u>
	<u>513,544</u>	<u>(38,747)</u>	<u>474,797</u>
Total	<u>513,544</u>	<u>(38,747)</u>	<u>474,797</u>

The notes form part of these financial statements

## **THE BIRCHALL TRUST**

### **NOTES TO THE FINANCIAL STATEMENTS** **for the Year Ended 31 March 2025**

#### **1. ACCOUNTING POLICIES**

##### **Basis of preparing the financial statements**

The financial statements of the charitable company, which is a public benefit entity under FRS 102, have been prepared in accordance with the Charities SORP (FRS 102) 'Accounting and Reporting by Charities: Statement of Recommended Practice applicable to charities preparing their accounts in accordance with the Financial Reporting Standard applicable in the UK and Republic of Ireland (FRS 102) (effective 1 January 2015)', and the Companies Act 2006. The financial statements have been prepared under the historical cost convention.

##### **Income**

All income is recognised in the Statement of Financial Activities once the charity has entitlement to the funds, it is probable that the income will be received and the amount can be measured reliably.

##### **Expenditure**

Liabilities are recognised as expenditure as soon as there is a legal or constructive obligation committing the charity to that expenditure, it is probable that a transfer of economic benefits will be required in settlement and the amount of the obligation can be measured reliably. Expenditure is accounted for on an accruals basis and has been classified under headings that aggregate all cost related to the category. Where costs cannot be directly attributed to particular headings they have been allocated to activities on a basis consistent with the use of resources.

##### **Tangible fixed assets**

Depreciation is provided at the following annual rates in order to write off each asset over its estimated useful life.

Computer equipment            -    33% on cost

##### **Taxation**

The charity is exempt from corporation tax on its charitable activities.

##### **Fund accounting**

Unrestricted funds can be used in accordance with the charitable objectives at the discretion of the trustees.

Restricted funds can only be used for particular restricted purposes within the objects of the charity. Restrictions arise when specified by the donor or when funds are raised for particular restricted purposes.

Further explanation of the nature and purpose of each fund is included in the notes to the financial statements.

##### **Pension costs and other post-retirement benefits**

The charitable company operates a defined contribution pension scheme. Contributions payable to the charitable company's pension scheme are charged to the Statement of Financial Activities in the period to which they relate.

**THE BIRCHALL TRUST****NOTES TO THE FINANCIAL STATEMENTS - continued**  
**for the Year Ended 31 March 2025****2. OTHER TRADING ACTIVITIES**

	<b>2025</b>	<b>2024</b>
	<b>£</b>	<b>£</b>
Rent & services	-	(2)
	<u>          </u>	<u>          </u>

**3. INVESTMENT INCOME**

	<b>2025</b>	<b>2024</b>
	<b>£</b>	<b>£</b>
Bank interest	<b>12,757</b>	11,889
	<u>          </u>	<u>          </u>

**4. INCOME FROM CHARITABLE ACTIVITIES**

		<b>2025</b>	<b>2024</b>
	Activity	<b>£</b>	<b>£</b>
Donations	Counselling, advice & support	<b>25,929</b>	25,672
Training and consultancy	Counselling, advice & support	<b>1,055</b>	73,673
Grants	Counselling, advice & support	<b>850,783</b>	743,015
		<u>          </u>	<u>          </u>
		<b>877,767</b>	842,360
		<u>          </u>	<u>          </u>

Grants received, included in the above, are as follows:

	<b>2025</b>	<b>2024</b>
	<b>£</b>	<b>£</b>
The Henry Smith Charity	<b>90,000</b>	30,000
Francis C Scott Trust	<b>27,500</b>	12,500
BBC Children In Need	-	34,150
The National Lottery Community Fund	<b>97,438</b>	96,559
Sir John Fisher Foundation	<b>20,000</b>	-
Freida Scott Charitable Trust	<b>12,000</b>	16,000
CPCC SafetyNet	-	40,519
Walney Extension Community Fund	-	10,000
The Pilgrim Trust	<b>30,378</b>	35,648
CPCC MOJ Male Support Fund	-	11,073
Cumbria Community Foundation	<b>10,000</b>	10,000
Cumbria County Council DLUHC Grant	<b>31,268</b>	16,216
Henry Smith Foundation - COVID	<b>40,000</b>	20,000
Cumbria MOJ - Additional Therapy	<b>17,967</b>	31,941
MOJ Lancashire LPCC	<b>58,025</b>	43,025
National Lottery (KYN)	<b>22,205</b>	21,559
MOJ Lancs Rape Support Fund	<b>313,033</b>	209,076
MOJ Cumbria Rape Support Fund	<b>62,769</b>	43,468
ICB NHS Lancashire	-	61,281
CRH Foundaton	<b>18,200</b>	-
	<u>          </u>	<u>          </u>
	<b>850,783</b>	743,015
	<u>          </u>	<u>          </u>

**THE BIRCHALL TRUST**

**NOTES TO THE FINANCIAL STATEMENTS - continued**  
**for the Year Ended 31 March 2025**

**5. CHARITABLE ACTIVITIES COSTS**

	Direct Costs £	Support costs (see note 6) £	Totals £
Counselling, advice & support	<u>735,587</u>	<u>198,934</u>	<u>934,521</u>

**6. SUPPORT COSTS**

	Management £	Other £	Governance costs £	Totals £
Counselling, advice & support	<u>190,662</u>	<u>4,944</u>	<u>3,328</u>	<u>198,934</u>

**7. NET INCOME/(EXPENDITURE)**

Net income/(expenditure) is stated after charging/(crediting):

	2025 £	2024
Depreciation - owned assets	<u>4,944</u>	<u>4,944</u>

**8. TRUSTEES' REMUNERATION AND BENEFITS**

There were no trustees' remuneration or other benefits for the year ended 31 March 2025 nor for the year ended 31 March 2024.

**Trustees' expenses**

Trustees received £0.00 (2024: £0.00) in total for stationery and travel expenses. The maximum received by one Trustee was £0.00 (2024: £0.00).

**9. STAFF COSTS**

	2025 £	2024
Wages and salaries	639,549	510,694
Other pension costs	13,754	10,673
	<u>653,303</u>	<u>521,367</u>

The average monthly number of employees during the year was as follows:

	2025	2024
Support staff	<u>27</u>	<u>22</u>

No employees received emoluments in excess of £60,000.



**THE BIRCHALL TRUST****NOTES TO THE FINANCIAL STATEMENTS - continued**  
**for the Year Ended 31 March 2025****10. COMPARATIVES FOR THE STATEMENT OF FINANCIAL ACTIVITIES**

	Unrestricted fund £	Restricted funds £	Total funds £
<b>INCOME AND ENDOWMENTS FROM</b>			
<b>Charitable activities</b>			
Counselling, advice & support	99,345	743,015	842,360
Other trading activities	(1)	(1)	(2)
Investment income	11,889	-	11,889
<b>Total</b>	<u>111,233</u>	<u>743,014</u>	<u>854,247</u>
<b>EXPENDITURE ON</b>			
<b>Charitable activities</b>			
Counselling, advice & support	<u>22,832</u>	<u>755,227</u>	<u>778,059</u>
<b>NET INCOME/(EXPENDITURE)</b>	88,401	(12,213)	76,188
<b>Transfers between funds</b>	<u>34,027</u>	<u>(34,027)</u>	<u>-</u>
<b>Net movement in funds</b>	122,428	(46,240)	76,188
<b>RECONCILIATION OF FUNDS</b>			
Total funds brought forward	337,108	107,521	444,629
<b>TOTAL FUNDS CARRIED FORWARD</b>	<u><u>459,536</u></u>	<u><u>61,281</u></u>	<u><u>520,817</u></u>

**11. TANGIBLE FIXED ASSETS**

	Computer equipment £
<b>COST</b>	
At 1 April 2024 and 31 March 2025	<u><b>14,833</b></u>
<b>DEPRECIATION</b>	
At 1 April 2024	<b>4,944</b>
Charge for year	<u><b>4,944</b></u>
At 31 March 2025	<u><b>9,888</b></u>
<b>NET BOOK VALUE</b>	
At 31 March 2025	<u><u><b>4,945</b></u></u>
At 31 March 2024	<u><u>9,889</u></u>

**THE BIRCHALL TRUST****NOTES TO THE FINANCIAL STATEMENTS - continued**  
**for the Year Ended 31 March 2025****12. CREDITORS: AMOUNTS FALLING DUE WITHIN ONE YEAR**

	<b>2025</b>	<b>2024</b>
	<b>£</b>	<b>£</b>
Accrued expenses	<b><u>2,922</u></b>	<b><u>2,616</u></b>

**13. MOVEMENT IN FUNDS**

	<b>At 1/4/24</b>	<b>Net movement in funds</b>	<b>At 31/3/25</b>
	<b>£</b>	<b>£</b>	<b>£</b>
<b>Unrestricted funds</b>			
General fund	<b>459,536</b>	<b>(73,633)</b>	<b>385,903</b>
<b>Restricted funds</b>			
The Henry Smith Charity	-	<b>63,000</b>	<b>63,000</b>
Sir John Fisher Foundation	-	<b>7,697</b>	<b>7,697</b>
The National Lottery Community Fund	-	<b>5,000</b>	<b>5,000</b>
ICB NHS Lancashire	<b>61,281</b>	<b>(61,281)</b>	-
CRH Foundation	-	<b>15,220</b>	<b>15,220</b>
	<b><u>61,281</u></b>	<b><u>29,636</u></b>	<b><u>90,917</u></b>
<b>TOTAL FUNDS</b>	<b><u>520,817</u></b>	<b><u>(43,997)</u></b>	<b><u>476,820</u></b>

**THE BIRCHALL TRUST****NOTES TO THE FINANCIAL STATEMENTS - continued**  
**for the Year Ended 31 March 2025****13. MOVEMENT IN FUNDS - continued**

Net movement in funds, included in the above are as follows:

	Incoming resources £	Resources expended £	Movement in funds £
<b>Unrestricted funds</b>			
General fund	39,741	(113,374)	(73,633)
<b>Restricted funds</b>			
Francis C Scott Trust	27,500	(27,500)	-
The Henry Smith Charity	90,000	(27,000)	63,000
Sir John Fisher Foundation	20,000	(12,303)	7,697
The National Lottery Community Fund	97,438	(92,438)	5,000
Freida Scott Charitable Trust	12,000	(12,000)	-
The Pilgrim Trust	30,378	(30,378)	-
MOJ Lancashire LPCC	58,025	(58,025)	-
Cumbria Community Foundation	10,000	(10,000)	-
Cumbria County Council DLUHC Grant	31,268	(31,268)	-
Henry Smith Foundation - COVID	40,000	(40,000)	-
Cumbria MOJ - Additional Therapy	17,967	(17,967)	-
National Lottery (KYN)	22,205	(22,205)	-
MOJ Lancs Rape Support Fund	313,033	(313,033)	-
MOJ Cumbria Rape Support Fund	62,769	(62,769)	-
ICB NHS Lancashire	-	(61,281)	(61,281)
CRH Foundation	18,200	(2,980)	15,220
	<hr/>	<hr/>	<hr/>
	850,783	(821,147)	29,636
	<hr/>	<hr/>	<hr/>
<b>TOTAL FUNDS</b>	<b>890,524</b>	<b>(934,521)</b>	<b>(43,997)</b>
	<hr/> <hr/>	<hr/> <hr/>	<hr/> <hr/>

**THE BIRCHALL TRUST****NOTES TO THE FINANCIAL STATEMENTS - continued**  
**for the Year Ended 31 March 2025****13. MOVEMENT IN FUNDS - continued****Comparatives for movement in funds**

	At 1/4/23 £	Net movement in funds £	Transfers between funds £	At 31/3/24 £
<b>Unrestricted funds</b>				
General fund	337,108	88,401	34,027	459,536
<b>Restricted funds</b>				
Francis C Scott Trust	15,000	(15,000)	-	-
The Henry Smith Charity	28,075	(28,075)	-	-
The National Lottery Community Fund	-	2,042	(2,042)	-
Freida Scott Charitable Trust	7,836	(7,836)	-	-
CPCC SafetyNet	10,586	(10,586)	-	-
Walney Extension Community Fund	-	10,000	(10,000)	-
The Pilgrim Trust	-	5,000	(5,000)	-
Henry Smith Foundation - COVID	17,424	(17,424)	-	-
Cumbria MOJ - Additional Therapy	-	7,985	(7,985)	-
Cumbria County Council Trauma Work	28,600	(19,600)	(9,000)	-
ICB NHS Lancashire	-	61,281	-	61,281
	<u>107,521</u>	<u>(12,213)</u>	<u>(34,027)</u>	<u>61,281</u>
<b>TOTAL FUNDS</b>	<u>444,629</u>	<u>76,188</u>	<u>-</u>	<u>520,817</u>

## **THE BIRCHALL TRUST**

### **NOTES TO THE FINANCIAL STATEMENTS - continued** **for the Year Ended 31 March 2025**

#### **13. MOVEMENT IN FUNDS - continued**

Comparative net movement in funds, included in the above are as follows:

	Incoming resources £	Resources expended £	Movement in funds £
<b>Unrestricted funds</b>			
General fund	111,233	(22,832)	88,401
<b>Restricted funds</b>			
BBC Children In Need	34,150	(34,150)	-
Francis C Scott Trust	12,500	(27,500)	(15,000)
The Henry Smith Charity	30,000	(58,075)	(28,075)
The National Lottery Community Fund	96,558	(94,516)	2,042
Freida Scott Charitable Trust	16,000	(23,836)	(7,836)
CPCC SafetyNet	40,519	(51,105)	(10,586)
Walney Extension Community Fund	10,000	-	10,000
The Pilgrim Trust	35,648	(30,648)	5,000
CPCC MOJ Male Support Fund	11,073	(11,073)	-
MOJ Lancashire LPCC	43,025	(43,025)	-
Cumbria Community Foundation	10,000	(10,000)	-
Cumbria County Council DLUHC Grant	16,216	(16,216)	-
Henry Smith Foundation - COVID	20,000	(37,424)	(17,424)
Cumbria MOJ - Additional Therapy	31,941	(23,956)	7,985
Cumbria County Council Trauma Work	-	(19,600)	(19,600)
National Lottery (KYN)	21,559	(21,559)	-
MOJ Lancs Rape Support Fund	209,076	(209,076)	-
MOJ Cumbria Rape Support Fund	43,468	(43,468)	-
ICB NHS Lancashire	61,281	-	61,281
	<hr/> 743,014	<hr/> (755,227)	<hr/> (12,213)
<b>TOTAL FUNDS</b>	<hr/> 854,247	<hr/> (778,059)	<hr/> 76,188

#### **14. RELATED PARTY DISCLOSURES**

There were no related party transactions for the year ended 31 March 2025.

**THE BIRCHALL TRUST****DETAILED STATEMENT OF FINANCIAL ACTIVITIES**  
**for the Year Ended 31 March 2025**

	2025 £	2024 £
<b>INCOME AND ENDOWMENTS</b>		
<b>Other trading activities</b>		
Rent & services	-	(2)
<b>Investment income</b>		
Bank interest	12,757	11,889
<b>Charitable activities</b>		
Donations	25,929	25,672
Training and consultancy	1,055	73,673
Grants	850,783	743,015
	<hr/>	<hr/>
	877,767	842,360
<b>Total incoming resources</b>	<hr/>	<hr/>
	890,524	854,247
<b>EXPENDITURE</b>		
<b>Charitable activities</b>		
Staff costs for client support	505,479	408,655
Rent & services - counselling rooms	50,777	33,255
Counselling equipment	875	905
Refurbish counselling rooms	3,874	2,232
Travelling	10,821	11,488
Counsellors	88,832	87,380
Clinical supervision	9,926	7,333
Training	3,886	944
Service provision partner	61,117	57,820
Event management	-	11,245
	<hr/>	<hr/>
	735,587	621,257
<b>Support costs</b>		
<b>Management</b>		
Wages	134,070	102,039
Pensions	13,754	10,673
Rent & services	2,672	1,750
Insurance	3,708	3,421
Telephone	5,034	4,484
Postage and stationery	393	767
Sundries	8,545	8,821
Professional fees for service development	13,682	10,431
Office equipment	1,589	2,263
Carried forward	183,447	144,649

This page does not form part of the statutory financial statements



**THE BIRCHALL TRUST****DETAILED STATEMENT OF FINANCIAL ACTIVITIES**  
**for the Year Ended 31 March 2025**

	2025 £	2024 £
<b>Management</b>		
Brought forward	<b>183,447</b>	144,649
Bank charges	<b>238</b>	215
IT & website	<b>6,977</b>	4,030
	<hr/>	<hr/>
	<b>190,662</b>	148,894
 <b>Other</b>		
Depreciation of tangible fixed assets	<b>4,944</b>	4,944
 <b>Governance costs</b>		
Travel & meetings	<b>148</b>	324
Accountancy fees	<b>3,180</b>	2,640
	<hr/>	<hr/>
	<b>3,328</b>	2,964
 Total resources expended	<hr/>	<hr/>
	<b>934,521</b>	778,059
 Net (expenditure)/income	<hr/>	<hr/>
	<b>(43,997)</b>	76,188
	<hr/>	<hr/>

This page does not form part of the statutory financial statements