 **mind** in Somerset

**We are Mind in Somerset,  
the mental health charity.**

**We are here to help.**

**You can give Mindline a call 24/7**

**No one should face poor mental health alone.**

**We are here.**

**Call Mindline 24/7 on**

**01823 276 892**

 **mind**  
**in Somerset**

**Accounts and Impact Statement**

**2024/2025**

**[www.mindinsomerset.org.uk](http://www.mindinsomerset.org.uk)**

**Company no. 05148414**

**Charity no. 1109626**



# Our values with you at heart!



Mind in Somerset's Vision and Values apply not only to all our service provision but also to how we treat each other and how we act as an employer.

Our Values provide a Framework for not only what we do but how we do it.



## **Collaborative**

We work better together



## **Accountable**

We are responsible for our own actions



## **Respectful**

We treat people how we like to be treated



## **Inclusive**

We celebrate everyone's uniqueness



## **Compassionate**

"We empathise, we care, we support"



**Mindline  
received  
83,400  
calls!**



**We facilitate  
interpretation  
to over 200  
languages**



**We received  
786 calls  
from or  
about young  
people**



**We Delivered  
44 training  
courses  
running for  
14,955  
minutes!**

**We provided  
2,102 crisis  
safe space  
appointments**



**294 service  
users  
attended  
our art  
groups**



**Our crisis  
team  
supported  
1.1k service  
users**



**Somerset  
Suicide  
Bereavement  
Service  
delivered 812  
sessions of  
support**

**130k visited  
our social  
media pages  
and our  
content had  
over 1 million  
impressions**



**We  
provided  
1,288 hours  
of low cost  
counselling**



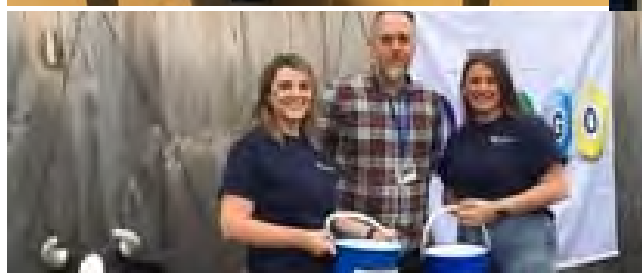
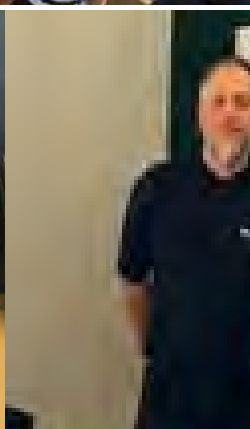




# Our Year in Pictures

 mind in Somerset







**131 Staff  
across**



**6 Offices  
delivered**

**62 Services  
working with**

**Over 20  
partners**

**Supported by over  
60 volunteers**

**And 12 Trustees**

**Answered over  
83,000 calls**

**Supporting 1 in 21 Somerset  
residents through more than 62,000  
interventions**





# **We work together for better mental health in Somerset**

No single organisation can meet the growing and complex mental health needs of Somerset alone. Our impact is made possible through strong local partnerships that connect health, social care, community, and voluntary services around the people who need support.

A cornerstone of our partnership work is Open Mental Health, Somerset's countywide mental health alliance. Delivered in partnership with Somerset NHS Foundation Trust. Open Mental Health provides a single, accessible route into community mental health support.

Through Open Mental Health, Mind in Somerset plays a key role in:

- Offering early intervention and preventative support
- Supporting people with complex or long-term mental health needs
- Reducing pressure on statutory and crisis services
- Ensuring people do not fall through gaps between services

This collaborative approach means people can access the right help at the right time, without needing to navigate multiple systems alone.

These partnerships allow us to:

- Reach people earlier, before they reach crisis
- Provide seamless referral pathways between services
- Deliver support that is rooted in local communities and lived experience



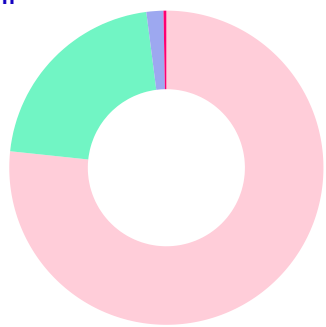
**“Partnership working allows us to offer joined-up support that puts people, not services, at the centre.”**



# Where our income came from Income: £3,426,933

99p of every £1 spent went directly towards delivering mental health support and related charitable activities across Somerset!

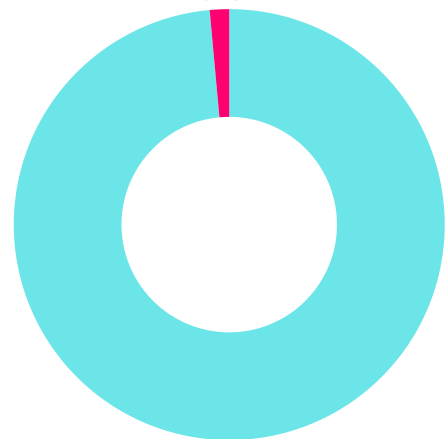
Donations & legacies: (21%)  
£0.73m



Charitable activities: (77%)  
£2.63m

## How we spent our money Expenditure: £3,450,447

Raising funds: (1%)  
1.4%



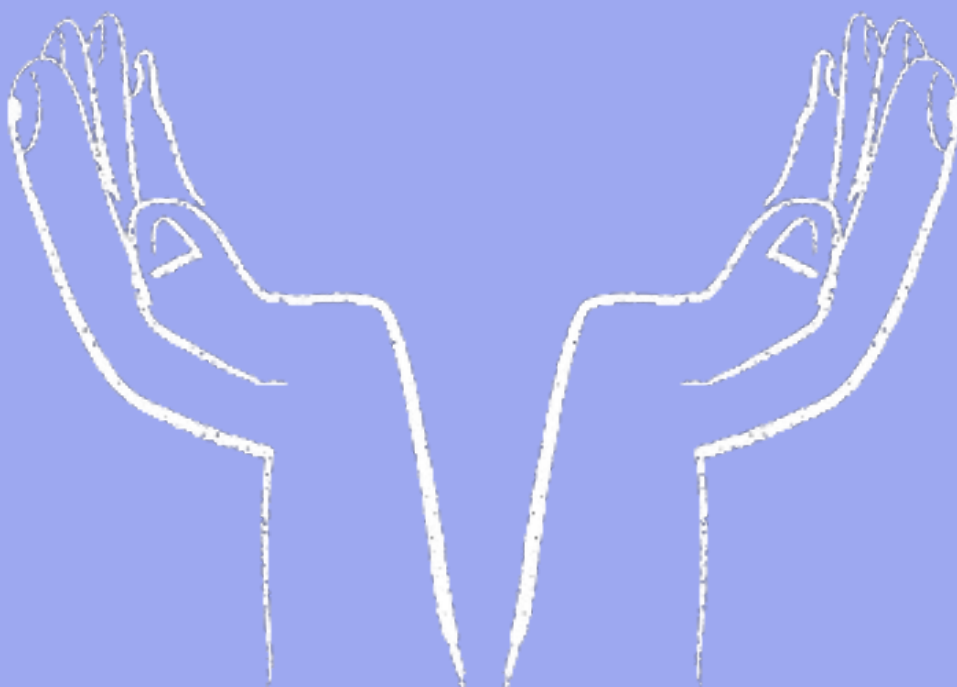
Charitable activities: (99%)  
98.6%

In 2024–25, Mind in Somerset deliberately invested more into services than we received in income, using a small amount of our reserves to protect and strengthen support for people experiencing mental health problems. Trustees closely monitor our finances to ensure we remain sustainable while continuing to meet growing demand across Somerset.



**“An individual a little while ago, who wasn’t keen on services, reluctantly joined. They had lost their partner to suicide and had given up their dream of university. They worked on their feelings and personal safety, also looking at their wellbeing. They returned to university, and I believe are on the way to graduating. They mentioned this would not be possible without the support of the project.”**

**– Alex, Peer Suicide Prevention Worker**





## Mind in Somerset

### Reference and administrative details

#### For the year ended 31 March 2025

---

<b>Company number</b>	05148414
<b>Charity number</b>	1109626
<b>Registered office and operational address</b>	21 Canon Street Taunton Somerset England TA1 1SW
<b>Trustees</b>	<p>Trustees, who are also directors under company law, who served during the year and up to the date of this report were as follows:</p> <p>Geoffrey Pateman (Chair) Hugh Andrews (Treasurer) appointed 19 April 2024 Rowan Brooks Rowen Campbell Dr John Cox Frances Geatches Helen Loxton appointed 3 September 2025 Lynda Marshall Rebecca Miles Ruth Morley resigned 29 January 2025 Dr Christopher Norris Michelle Smith appointed 14 May 2025 Nigel Stone</p>
<b>Company secretary</b>	<p>Michelle Smith appointed 1 October 2025 Frances Geatches resigned 1 October 2025</p>
<b>Chief executive officer</b>	Alexander Priest
<b>Bankers</b>	Lloyds Bank UK 25 Gresham Street London EC2V 7HN
<b>Auditors</b>	Godfrey Wilson Limited Chartered accountants and statutory auditors 5th Floor Mariner House 62 Prince Street Bristol BS1 4QD



## **Mind in Somerset**

### **Report of the trustees**

#### **For the year ended 31 March 2025**

---

The trustees present their report along with the financial statements of the charity for the year ended 31 March 2025.

Reference and administrative information set out on page 10 forms part of this report. The financial statements comply with current statutory requirements, the Memorandum and Articles of Association and the Statement of Recommended Practice - Accounting and Reporting by Charities (effective from January 2019).

#### **Public Benefit**

The trustees report that the charitable activities described in "Objectives and activities" and "Achievements and performance" and "Plans for the future periods" paragraphs are for the public benefit. The trustees also confirm that they have complied with section 4 of the Charities Act 2011 to have due regard to the public benefit guidance published by the Charity Commission.

#### **Structure, governance and management**

Mind in Somerset ("MiS") is an independent charity, registered number 1109626 and a company limited by guarantee, registered number 05148414, registered address: 21 Canon Street, Taunton, Somerset TA1 1SW.

The governing document is the memorandum and Articles of Association dated 17 May 2004 and updated February 2022.

The following trustees who are also directors for the purposes of company law, served during the year and post year end:

H Andrews	(appointed 19/04/2024)
R Brooks	
R Campbell	
Dr J Cox	
F Geatches	
H Loxton	(appointed 03/09/2025)
L Marshall	
R Miles	
R Morley	(resigned 29/01/2025)
Dr C Norris	
G Pateman	
M Smith	(appointed 14/05/2025)
N S Stone	

None of the trustees has any beneficial interest in the company. All of the trustees are members of the company and guarantee to contribute £10 in the event of liquidation of the company.

The trustees attend board meetings monthly, sometimes these meetings are held 'virtually'.

**Lifetime Honorary  
Presidents Patron**

Maureen Street, Jean Grant  
Simon Shepherd



## **Mind in Somerset**

### **Report of the trustees**

#### **For the year ended 31 March 2025**

---

##### **Chair's Report**

This is the sixth full year as a single Mind entity after the merger between the two constituent charities, South Somerset Mind and Taunton and West Somerset Mind, on 1 October 2018.

The developments noted below have given the charity the opportunity to apply for and been successful in obtaining greater funding and the upshot of this is that the charity had, by the end of the financial year, an income of nearly £3.5 million and a healthy reserve, which can also be seen in the attached accounts.

Within 2024/25 nearly all significant services were successful in obtaining re-funding where it was required. Over half our services are now contracted through the Open Mental Health partnership and most of these were, from April 2024, contracted on a 3-to-5-year basis, giving the charity greater security with which it can plan for the future.

Mind in Somerset now has a presence in each of the five largest centres of population in the county (Taunton, Yeovil, Shepton Mallet, Bridgwater and Minehead) from which service user support is provided and has also acquired some free office space in premises in Weston Super Mare (within the administrative county of North Somerset). It owns the freehold (debt-free) for the 3 largest premises (Taunton, Yeovil and Shepton Mallet).

Mind Charity shop in Taunton, which opened in August 2019, is managed by National Mind but Mind in Somerset provided a significant investment into the setting up of the shop and takes a concomitant share of the profits and losses. The shop has consistently made surpluses and this has continued into 2024/25 with a return to Mind in Somerset of over £9k. This means that our charity has significantly more than covered its capital outlay over a period of 5 years. Further surpluses are anticipated and the current lease which fell due in April 2024 was successfully renegotiated. Our shop offers affordable goods to the community, it creates opportunities for volunteering and skill development and provides us with a High Street presence in Taunton.

##### **Plans for the Future of the Charity**

The charity is anxious to increase all areas of their work, but this will depend on additional funding, which is regularly being examined. The charity is very much aware of the increasing demand for its services and that there are still gaps in our service provision. The charity is also aware of the relative paucity of community mental health services in North Somerset. It has been our aim significantly to develop services in this area. However, significant funding has yet to materialise and, therefore, these plans have been put on hold. On the other hand, we have moved our Taunton HQ from Sussex Lodge to better accommodation within the town centre at Canon Street which is providing improved facilities for service users and potential charity partners. We now share this accommodation with SARSAS (Somerset and Avon Rape and Sexual Abuse Support). It is a specialist support service for individuals of all genders who have experienced rape or sexual abuse at any point in their lives, offering emotional, practical, and therapeutic support. The work of SARSAS thus provides considerable synergy with our own objectives.

Undoubtedly, the most disappointing decision that the charity had to make in April 2025 was to close a large part of its mental health youth service provision. This was due to the continued absence of significant funding for the service coupled with financial pressures. These pressures are outlined in detail below in the Financial Review.



## **Mind in Somerset**

### **Report of the trustees**

#### **For the year ended 31 March 2025**

---

The economic environment also creates challenges for the charity in obtaining funding for remaining services which are, either in part or in full, not fully funded, and in maintaining the level of its fundraising activities.

Despite these many challenges, Mind in Somerset believes that the many services it provides are of high quality; this is evidenced by the feedback it receives from service users, the quality metrics by which services are measured and the success of its contract re-commissioning.

The directors/trustees are fully aware that all of the above would not happen without the excellent work that the Chief Executive and Chief Operating Officer and their staff put in on a daily basis. They would like to thank them for all that they do and also to thank the numerous volunteers that are now involved in the charity. Without volunteers, no charity would survive, and they form a very important part of the organisation.

#### **Objectives and activities**

##### **a. POLICIES AND OBJECTIVES**

Our objectives are to:

- promote good mental health;
- encourage greater understanding of mental health issues;
- provide high quality mental health services and support; and
- enable genuine service user involvement and consultation in the development of services.

Policies and procedures are reviewed on a regular basis by the Policies and Quality Group, which is a Committee of the Board and the minutes of which are reported to the Board. The Charity is reviewed by the national parent charity to assess, amongst other things, whether policies and procedures meet National Mind objectives and standards.

In planning and setting their objectives, the Charity trustees have complied with the duty to have due regard to guidance published by the Charity Commission on public benefit. In particular, they review that all of Mind in Somerset's activities are aimed at the betterment of its service users. Currently Mind in Somerset does not itself undertake any trading activities which are not related to its core objectives, though it has a minority stakeholder in a partnership with the national Mind organisation in the charity shop in Taunton, mentioned above. This quickly established itself and has become a valuable addition to both a local presence and the financial support of the charity. Other than this venture Mind in Somerset does not plan to undertake any trading activities which are unrelated to its mental health objective.

##### **b. ACTIVITIES FOR ACHIEVING OBJECTIVES**

Provision of services, advice, support and information in the field of mental health, but not exclusively and may cover other areas of need. This is done by:

- providing human resources;
- provision of buildings / facilities / open space;
- offering services;
- providing advocacy /advice / information;
- sponsoring or undertaking research; and
- engaging in other charitable activities.

All activities pursued by the Charity are aimed at promoting improvements to individual and society's mental health and wellbeing.



## **Mind in Somerset**

### **Report of the trustees**

#### **For the year ended 31 March 2025**

---

In “normal” times significant numbers of people, up to 25%, will experience a mental health problem. The work of Mind is an important part of the overall provision of mental health services and the work of Mind in Somerset seeks to identify and deliver this support within our local area. Much of our work is preventative in nature. It thus benefits the individual and families in reducing the incidence and impact of mental health issues, it benefits the economy by reducing the incidence of mental health issues in the workplace and it can also thereby benefit the pressure on the public purse. From a purely economic standpoint, the majority of our services can be seen as an investment which have a rate of return defined by the reduction in need for future expenditure.

#### **c. MAIN ACTIVITIES UNDERTAKEN TO FURTHER THE CHARITY'S PURPOSES FOR PUBLIC BENEFIT**

The main activities are:

- The provision of services which seek to address the mental health needs of individuals and assist them to live fulfilling lives;
- The contribution to a wider pattern of care through constructive partnerships with other providers, and referring agencies; and
- The provision of advice and support within our area of operation for anyone experiencing a mental health problem.

The people who access our services are at the heart of everything we do. Our services are available to help prevent mental health issues developing or escalating and support those who have been affected by a mental health issue. We want to ensure we have a focus on service users and that they have a positive experience of involvement with our organisation.

#### **Achievements and performance**

##### **a. REVIEW OF ACTIVITIES**

2024-25 has continued to see the successful delivery - and the beneficial impact on many lives – of our services. For example, relevant NHS 111 calls are now routed to our 24 hour Mindline service. Its success has led to further funding increases to expand this critical service for the community.

We have continued our policy of working closely with partners both within and without the Open Mental Health alliance – some of whom are located in our buildings - so that together we can provide services that more effectively meet the needs of our users.

The economic background to our work has been challenging, with the cost of living crisis impacting many of our service users, as well as having a detrimental effect on fundraising. In common with most charities we have seen a decline in corporate and individual giving and obtaining grant funding remains a challenge.

We have made a small deficit of £24k for the year. Our reserves now stand at £1,116k, including cash balances of £499k. This has been achieved through careful management and cost control by the management team led by both the Chief Executive Officer and the Chief Operating Officer.

In addition, the receipt of a generous legacy has enabled us to fund the purchase of new premises in Taunton without taking on debt – a more flexible and welcoming space than our previous leased building.



## **Mind in Somerset**

### **Report of the trustees**

#### **For the year ended 31 March 2025**

---

It has been particularly pleasing to see the many examples of positive feedback from our users across our range of services. The quality of our provision is very important to us and we were delighted once again to be awarded the Mind Quality Mark – the result of a comprehensive triannual audit of our whole organisation by reviewers from National Mind, other local Minds and service users. The MQM team noted “Mind in Somerset is ambitious, values driven and influential and its culture is one of care and collaboration and this, together with strategic thinking has translated into significant growth. A sizable number of effective services are offered at hubs across Somerset and through outreach.”

#### **Financial Review**

##### **a. GOING CONCERN**

After making appropriate enquiries, the trustees have a reasonable expectation that the charity has adequate resources available to it to continue in operational existence for the foreseeable future. For this reason, they continue to adopt the going concern basis in preparing the financial statements.

##### **b. RESERVES POLICY**

Unrestricted funds are needed to:

- provide funds which can be designated to specific projects to enable these projects to be undertaken at short notice;
- continue existing projects once the funding specifically obtained for the project has been fully expended; and
- improve the administration and infrastructure of the organisation for the longer term.

The Trustees consider it prudent that core unrestricted reserves should be sufficient to cover three months management and administration costs, estimated to be £2236k. At 31 March 2025 the balance sheet shows core unrestricted funds (free reserves) of £242k, in line with this policy. The Trustees have reviewed the existing projects, activities and income sources and plan to ensure that reserves continue to reach the required level.

The level of reserves is monitored by reference to monthly management financial reports. There is also a rolling programme to review policy and risk management at the Finance and Operations Group which meets regularly throughout the year and the minutes of which are reported to subsequent Board meetings. The healthy position of the reserves enabled the purchase of 21 Canon Street in Taunton during the year to provide improved facilities for our community mental health services.

The charity does not hold any funds as a custodian trustee.

##### **c. FINANCIAL POSITION**

The statement of financial activities shows a slight reduction in total income to £3,427k, including a generous legacy of £225k. Our costs increased – to £3,450k – resulting in a deficit for the year of £24k (2024 (restated): surplus of £181k). Our overall funds therefore at 31 March 2025 are £1,116k (2024 (restated): £1,140k).

The Board of Trustees has approved a budget for 2025/26 of £3,286k total income. This was prepared on a conservative basis and shows a £49k deficit which is well within the surplus unrestricted reserves held at 31 March 2025. This budget deficit arises primarily from continued inflation outstripping the increases in contract services income, and the increase in the costs of employers' national insurance. Trustees have actively reviewed costs and activities, and will continue to do so, to ensure the charity moves to a break-even or surplus position in future years.



## **Mind in Somerset**

### **Report of the trustees**

#### **For the year ended 31 March 2025**

---

The Trustees are confident that the charity has adequate resources for the foreseeable future to carry out its objectives.

#### **Structure, Governance and Management**

##### **a. CONSTITUTION**

The charity is registered as a charitable company limited by guarantee and was incorporated on 8 June 2004 and this registration was transferred to Mind in Somerset on 1 October 2018. It is also a registered charity. The company is governed by its memorandum and articles of association.

It is one of the local associations affiliated to National Mind covering most major towns and rural areas.

##### **b. METHOD OF APPOINTMENT OR ELECTION OF TRUSTEES**

New Trustees are appointed by the Board of Trustees at a regular board meeting or the AGM as appropriate. Four trustees from each of Mind in Taunton and West Somerset and South Somerset Mind were appointed as trustees of Mind in Somerset at 1 October 2018. Four trustees appointed at that date remain on the Board, so that most trustees have been appointed by Board since that date. The organisation seeks to recruit trustees with skills, values and experience that compliment and benefit the organisation. Individuals with personal experience of mental ill health are actively encouraged to volunteer throughout the organisation, particularly at Board level. The organisation provides training and support to any individual who is able to volunteer.

##### **c. ORGANISATIONAL STRUCTURE AND DECISION MAKING**

The management of the charity is the responsibility of the Directors/Trustees. As well as overall corporate responsibility, each director/trustee has a 'portfolio' of individual responsibilities. As well as Chair, Treasurer and Company Secretary, there are Directors for Fundraising, Communications, HR, IT/Digital, Mental Health, Equality and Diversity, Counselling and Influencing and Participation.

The Trustee Board have a clearly identified and specified scheme of financial delegation for the Charity and this is reviewed annually by the Trustee Board. The Chief Executive has a specific duty and role within the organisation concerning financial control and works closely with the Finance Team. At its inception Mind in Somerset established a Finance and Operations Group with the Treasurer as Chair. It has the remit of decision and review of operational procedures. It meets monthly and its recommendations are reviewed by the Board for ratification and approval. The other formal Committee of the Board is the Policies and Quality Committee which reviews the charity's policies, its quality measures and the Mind Quality Management standards.

Decisions are made after consultation with service users and there is a clear set of policies and procedures showing how decisions are made and new ideas explored. There is a network of organisational meetings and working groups that are aimed at shaping policy, strategic direction and consultation. Board members may champion specific projects as well as holding specific portfolios on the Board such as finance, IT or HR.

Day to day activities are carried out by employed staff and volunteers under the supervision of the Chief Executive Officer and the Chief Operating Officer, supported by a Senior Management Team.



## **Mind in Somerset**

### **Report of the trustees**

#### **For the year ended 31 March 2025**

---

##### **d. RISK MANAGEMENT**

The Trustees have assessed the major risks to which the charity is exposed, in particular those related to the operations and finances of the charity and are satisfied that systems and procedures are in place to mitigate our exposure to the major risks. The Trustees have developed a Risk Register which is reviewed by the Finance and Operations Group every two to three months. The outcomes are then reported to Board and the Chair has the responsibility of keeping the risk register up to date. Included in the overall risk register are sub-registers for individual areas, including Information Governance and Strategic Plan achievement.

##### **e. FUNDRAISING**

Mind in Somerset employs paid professional staff to organise fundraising events and co-ordinate the activities of our supporters and volunteers in the wider community. Fundraising is managed through a paid Funding Manager, a member of the Senior Management Team, and the Funding Manager is supported by a team which includes both paid staff and volunteers. The Board has a strategic oversight of fundraising and one member of the Board is the nominated lead on its behalf. Mind in Somerset does not use professional fundraisers or involve commercial participators. There have been no complaints about fundraising activity this year. An ethical fundraising policy has been developed for the charity and this has been made available to all staff. As a result, all of the fundraising guidance and working practices have been updated so that they are compliant.

Included in this policy are the following:

Mind in Somerset will not accept any of the following; where the donation:

- Was known to have direct connections with immoral or illegal activity (in line with the Fundraising Regulator's code of fundraising practice and National Mind's guidelines);
- Was known to be associated with criminal sources;
- Would help further the donor's personal objectives, which conflict with those of Mind in Somerset;
- Would otherwise significantly damage our reputation; and
- May harm relationships with partners, donors or stakeholders.

In addition:

- All personal information collected by Mind in Somerset is confidential, not for sale, nor to be given away, nor disclosed to any third party without consent;
- Nobody directly or indirectly employed by or volunteering for Mind in Somerset accept commission or bonuses for fundraising activities on behalf of the organisation; and
- No general solicitations are undertaken by telephone or door-to-door.

##### **PLANS FOR FUTURE PERIODS**

###### **FUTURE DEVELOPMENTS**

The Trustees recognise the position of the charity as set out in this Annual Report and have put in place measures to improve the esteem with which it is held by all its stakeholders – its service users, its staff and volunteers, national Mind, other local Minds, its funders and its fundraisers. To this end it has set out a number of strategic objectives for 2026 which are set out below and which it is the intention to refine further over the forthcoming months so that all stakeholders may have an increasingly positive view of both its ethos and its performance.



## **Mind in Somerset**

### **Report of the trustees**

#### **For the year ended 31 March 2025**

---

##### **Key strategic objectives:**

1. That all current services are recommissioned (unless there are clear operational or value reasons not to do so).
2. That the financial health and resilience of the charity is maintained.
3. That Influencing and Participation work is enhanced through greater engagement, especially with regard to the promotion of diversity.
4. That we continue in our quest to become a good employer.
5. That the Board seeks to take opportunities offered to stabilise and expand the charity and, in particular, to increase the number of service users whom it seeks to assist. Particular opportunities may arise in respect of further expansion of its counselling service and through Mindline developments.
6. That the charity seeks to develop further the indicators it uses to measure the effectiveness of the charity in improving the mental health of the people of Somerset.
7. That our digital strategy references significant current developments in the digital field.
8. That the charity's fundraising capability is stabilised and developed.

The Board reviews its progress against these objectives on a regular basis through objective key performance indicators and they form one of the principal ways in which the effectiveness of the charity is measured.

##### **Summary**

There is no doubt that 2026 will present significant challenges to Mind in Somerset, primarily due to the financial problems outlined in the Financial Review above. The Board are intent to mitigate these risks through measures promoting internal effectiveness. But of at least equal importance are the benefits gained through partnering with others. It is important that we are outward facing in local mental health systems and the wider community. Mind in Somerset has already seen the benefits within Somerset of a number of partnerships, especially the Open Mental Health partnership referenced above. There now comes the opportunity, sponsored by national Mind, called the "Mind Sustainability Plan" - to look wider within the 'Mind family' and, in particular, within the South West. A number of proposals are being considered including sharing services and establishing formalised partnership arrangements with other local Minds in the region to enable a joined up response to statutory funders.

Above all, the Board is confident the charity will continue to provide the high quality services to those who use them.

##### **Statement of responsibilities of the trustees**

The trustees (who are also directors of the charity for the purposes of company law) are responsible for preparing the trustees' report and the financial statements in accordance with applicable law and United Kingdom Accounting Standards, including Financial Reporting Standard 102: The Financial Reporting Standard applicable in the UK and Republic of Ireland (United Kingdom Generally Accepted Accounting Practice).



## **Mind in Somerset**

### **Report of the trustees**

#### **For the year ended 31 March 2025**

---

Company law requires the trustees to prepare financial statements for each financial year, which give a true and fair view of the state of affairs of the charity and of the income and expenditure of the charity for that period. In preparing those financial statements the trustees are required to:

- select suitable accounting policies and then apply them consistently;
- observe the methods and principles in the Charities SORP;
- make judgements and accounting estimates that are reasonable and prudent;
- state whether applicable UK accounting standards and statements of recommended practice have been followed, subject to any material departures disclosed and explained in the financial statements; and
- prepare the financial statements on the going concern basis unless it is inappropriate to presume that the charity will continue in operation.

The trustees are responsible for keeping proper accounting records which disclose with reasonable accuracy at any time the financial position of the charity and which enable them to ensure that the financial statements comply with the Companies Act 2006. The trustees are also responsible for safeguarding the assets of the charity and hence for taking reasonable steps for the prevention and detection of fraud and other irregularities.

The trustees are responsible for the maintenance and integrity of the corporate and financial information included on the charitable company's website. Legislation in the United Kingdom governing the preparation and dissemination of financial statements may differ from legislation in other jurisdictions.

Members of the charity guarantee to contribute an amount not exceeding £10 to the assets of the charity in the event of winding up. The trustees are members of the charity but this entitles them only to voting rights. The trustees have no beneficial interest in the charity.

#### **Auditors**

Godfrey Wilson Limited were appointed as auditors to the charitable company during the year and have expressed their willingness to continue in that capacity.

Approved by the trustees on 10 December 2025 and signed on their behalf by

*G W Pateman*

Geoffrey Pateman - Chair



## **Independent auditors' report**

### **To the members of**

#### **Mind in Somerset**

---

#### **Opinion**

We have audited the financial statements of Mind in Somerset (the 'charity') for the year ended 31 March 2025 which comprise the statement of financial activities, balance sheet, statement of cash flows and the related notes to the financial statements, including a summary of significant accounting policies. The financial reporting framework that has been applied in their preparation is applicable law and United Kingdom Accounting Standards, including Financial Reporting Standard 102: The Financial Reporting Standard applicable in the UK and Republic of Ireland (United Kingdom Generally Accepted Accounting Practice).

In our opinion, the financial statements:

- give a true and fair view of the state of the charity's affairs as at 31 March 2025 and of its incoming resources and application of resources, including its income and expenditure, for the year then ended;
- have been properly prepared in accordance with United Kingdom Generally Accepted Accounting Practice; and
- have been prepared in accordance with the requirements of the Companies Act 2006.

#### **Basis for opinion**

We conducted our audit in accordance with International Standards on Auditing (UK) (ISAs (UK)) and applicable law. Our responsibilities under those standards are further described in the Auditor's responsibilities for the audit of the financial statements section of our report. We are independent of the charity in accordance with the ethical requirements that are relevant to our audit of the financial statements in the UK, including the FRC's Ethical Standard, and the provisions available for small entities, in the circumstances set out in note 9 to the financial statements, and we have fulfilled our other ethical responsibilities in accordance with these requirements. We believe that the audit evidence we have obtained is sufficient and appropriate to provide a basis for our opinion.

#### **Conclusions relating to going concern**

In auditing the financial statements, we have concluded that the trustees' use of the going concern basis of accounting in the preparation of the financial statements is appropriate.

Based on the work we have performed, we have not identified any material uncertainties relating to events or conditions that, individually or collectively, may cast significant doubt on the charity's ability to continue as a going concern for a period of at least twelve months from when the financial statements are authorised for issue.

Our responsibilities and the responsibilities of the trustees with respect to going concern are described in the relevant sections of this report.

#### **Other information**

The other information comprises the information included in the annual report other than the financial statements and our auditor's report thereon. The trustees are responsible for the other information. Our opinion on the financial statements does not cover the other information and, except to the extent otherwise explicitly stated in our report, we do not express any form of assurance conclusion thereon.



## **Independent auditors' report**

### **To the members of**

#### **Mind in Somerset**

---

In connection with our audit of the financial statements, our responsibility is to read the other information and, in doing so, consider whether the other information is materially inconsistent with the financial statements or our knowledge obtained in the audit or otherwise appears to be materially misstated. If we identify such material inconsistencies or apparent material misstatements, we are required to determine whether there is a material misstatement in the financial statements or a material misstatement of the other information. If, based on the work we have performed, we conclude that there is a material misstatement of this other information, we are required to report that fact.

We have nothing to report in this regard.

#### **Opinion on other matters prescribed by the Companies Act 2006**

In our opinion, based on the work undertaken in the course of the audit:

- the information given in the trustees' report, which includes the directors' report prepared for the purposes of company law, for the financial year for which the financial statements are prepared is consistent with the financial statements; and
- the directors' report included within the trustees' report have been prepared in accordance with applicable legal requirements.

#### **Matters on which we are required to report by exception**

In the light of the knowledge and understanding of the company and its environment obtained in the course of the audit, we have not identified material misstatements in the directors' report included within the trustees' report. We have nothing to report in respect of the following matters in relation to which the Companies Act 2006 requires us to report to you if, in our opinion:

- adequate accounting records have not been kept or returns adequate for our audit have not been received from branches not visited by us; or
- the financial statements are not in agreement with the accounting records and returns; or
- certain disclosures of trustees' remuneration specified by law are not made; or
- we have not received all the information and explanations we require for our audit.

#### **Responsibilities of the trustees**

As explained more fully in the trustees' responsibilities statement set out in the trustees' report, the trustees (who are also the directors of the charitable company for the purposes of company law) are responsible for the preparation of the financial statements and for being satisfied that they give a true and fair view, and for such internal control as the trustees determine is necessary to enable the preparation of financial statements that are free from material misstatement, whether due to fraud or error.

In preparing the financial statements, the trustees are responsible for assessing the charity's ability to continue as a going concern, disclosing, as applicable, matters related to going concern and using the going concern basis of accounting unless the trustees either intend to liquidate the charity or to cease operations, or have no realistic alternative but to do so.



## **Independent auditors' report**

### **To the members of**

#### **Mind in Somerset**

---

#### **Our responsibilities for the audit of the financial statements**

Our objectives are to obtain reasonable assurance about whether the financial statements as a whole are free from material misstatement, whether due to fraud or error, and to issue an auditor's report that includes our opinion. Reasonable assurance is a high level of assurance, but is not a guarantee that an audit conducted in accordance with ISAs (UK) will always detect a material misstatement when it exists. Misstatements can arise from fraud or error and are considered material if, individually or in the aggregate, they could reasonably be expected to influence the economic decisions of users taken on the basis of these financial statements.

Irregularities, including fraud, are instances of non-compliance with laws and regulations. We design procedures in line with our responsibilities, outlined above, to detect material misstatements in respect of irregularities, including fraud. The procedures we carried out and the extent to which they are capable of detecting irregularities, including fraud, are detailed below:

(1) We obtained an understanding of the legal and regulatory framework that the charity operates in, and assessed the risk of non-compliance with applicable laws and regulations. Throughout the audit, we remained alert to possible indications of non-compliance.

(2) We reviewed the charity's policies and procedures in relation to:

- Identifying, evaluating and complying with laws and regulations, and whether they were aware of any instances of non-compliance;
- Detecting and responding to the risk of fraud, and whether they were aware of any actual, suspected or alleged fraud; and
- Designing and implementing internal controls to mitigate the risk of non-compliance with laws and regulations, including fraud.

(3) We inspected the minutes of trustee meetings.

(4) We enquired about any non-routine communication with regulators and reviewed any reports made to them.

(5) We reviewed the financial statement disclosures and assessed their compliance with applicable laws and regulations.

(6) We performed analytical procedures to identify any unusual or unexpected transactions or balances that may indicate a risk of material fraud or error.

(7) We assessed the risk of fraud through management override of controls and carried out procedures to address this risk. Our procedures included:

- Testing the appropriateness of journal entries;
- Assessing judgements and accounting estimates for potential bias;
- Reviewing related party transactions; and
- Testing transactions that are unusual or outside the normal course of business.

Because of the inherent limitations of an audit, there is a risk that we will not detect all irregularities, including those leading to a material misstatement in the financial statements or non-compliance with regulation. Irregularities that arise due to fraud can be even harder to detect than those that arise from error as they may involve deliberate concealment or collusion.



## **Independent auditors' report**

### **To the members of**

#### **Mind in Somerset**

---

A further description of our responsibilities for the audit of the financial statements is located on the Financial Reporting Council's website at: [www.frc.org.uk/auditorsresponsibilities](http://www.frc.org.uk/auditorsresponsibilities). This description forms part of our auditor's report.

#### **Use of our report**

This report is made solely to the charity's members, as a body, in accordance with Chapter 3 of Part 16 of the Companies Act 2006. Our audit work has been undertaken so that we might state to the charity's members those matters we are required to state to them in an auditor's report and for no other purpose. To the fullest extent permitted by law, we do not accept or assume responsibility to anyone other than the charity's members as a body, for our audit work, for this report, or for the opinions we have formed.

*William Guy Blake*

Date: 10 December 2025

**William Guy Blake ACA**  
**(Senior Statutory Auditor)**

For and on behalf of:

**GODFREY WILSON LIMITED**

Chartered accountants and statutory auditors  
5th Floor Mariner House  
62 Prince Street  
Bristol  
BS1 4QD



## Mind in Somerset

### Statement of financial activities (incorporating an income and expenditure account)

For the year ended 31 March 2025

		Restricted	Unrestricted	2025 Total £	Restated 2024 Total £
	Note	£	£		
<b>Income from:</b>					
Donations and legacies	4	253,777	475,063	<b>728,840</b>	684,590
Charitable activities	5	2,154,051	476,204	<b>2,630,255</b>	2,800,478
Other trading activities	6	-	59,125	<b>59,125</b>	41,749
Investments		-	8,713	<b>8,713</b>	14,039
<b>Total income</b>		<u>2,407,828</u>	<u>1,019,105</u>	<b>3,426,933</b>	3,540,856
<b>Expenditure on:</b>					
Raising funds		-	49,131	<b>49,131</b>	52,555
Charitable activities		<u>2,482,272</u>	<u>919,044</u>	<b>3,401,316</b>	3,307,555
<b>Total expenditure</b>	8	<u>2,482,272</u>	<u>968,175</u>	<b>3,450,447</b>	3,360,110
<b>Net income / (expenditure)</b>		(74,444)	50,930	<b>(23,514)</b>	180,746
Transfers between funds		<u>(3,714)</u>	<u>3,714</u>	-	-
<b>Net movement in funds</b>	9	(78,158)	54,644	<b>(23,514)</b>	180,746
<b>Reconciliation of funds:</b>					
Total funds brought forward		<u>87,934</u>	<u>1,052,063</u>	<b>1,139,997</b>	959,251
<b>Total funds carried forward</b>		<u>9,776</u>	<u>1,106,707</u>	<b>1,116,483</b>	1,139,997

All of the above results are derived from continuing activities. There were no other recognised gains or losses other than those stated above. Movements in funds are disclosed in note 18 to the accounts.

Prior year income and expenditure have been restated as set out in note 2 to the accounts.



## Mind in Somerset

### Balance sheet

As at 31 March 2025

	Note	£	2025 £	Restated 2024 £
<b>Fixed assets</b>				
Tangible assets	12		<u>864,707</u>	<u>531,797</u>
			<b>864,707</b>	531,797
<b>Current assets</b>				
Stock	13	819		1,927
Debtors	14	109,587		295,606
Cash at bank and in hand		<u>498,630</u>		<u>602,473</u>
		<b>609,036</b>		900,006
<b>Liabilities</b>				
Creditors: amounts falling due within 1 year	15	<u>(357,260)</u>		<u>(291,806)</u>
<b>Net current assets</b>			<u>251,776</u>	<u>608,200</u>
<b>Net assets</b>	17		<u><u>1,116,483</u></u>	<u><u>1,139,997</u></u>
<b>Funds</b>	18			
Restricted funds			9,776	87,934
Unrestricted funds				
General funds			<u>1,106,707</u>	<u>1,052,063</u>
<b>Total charity funds</b>			<u><u>1,116,483</u></u>	<u><u>1,139,997</u></u>

These accounts have been prepared in accordance with the special provisions applicable to companies subject to the small companies' regime.

Approved by the trustees on 10 December 2025 and signed on their behalf by

*G W Pateman*

Geoffrey Pateman - Chair



## Mind in Somerset

### Statement of cash flows

For the year ended 31 March 2025

	2025 £	Restated 2024 £
<b>Cash used in operating activities:</b>		
Net movement in funds	(23,514)	180,746
Adjustments for:		
Gift of property	(225,000)	-
Depreciation charges	51,488	69,317
Interest from investments	(8,713)	(14,039)
(Profit) on the sale of fixed assets	(27,123)	-
Decrease in stock	1,108	398
Decrease / (increase) in debtors	186,019	(93,137)
Increase / (decrease) in creditors	65,454	(106,543)
<b>Net cash provided by operating activities</b>	<b>19,719</b>	<b>36,742</b>
<b>Cash flows from investing activities:</b>		
Dividends, interest and rents from investments	8,713	14,039
Proceeds from the sale of property, plant and equipment	282,090	-
Purchase of tangible fixed assets	(414,365)	(67,384)
<b>Net cash (used in) investing activities</b>	<b>(123,562)</b>	<b>(53,345)</b>
<b>Increase / (decrease) in cash and cash equivalents in the year</b>	<b>(103,843)</b>	<b>(16,603)</b>
Cash and cash equivalents at the beginning of the year	602,473	619,076
<b>Cash and cash equivalents at the end of the year</b>	<b>498,630</b>	<b>602,473</b>

The charity has not provided an analysis of changes in net debt as it does not have any long term financing arrangements.



## Mind in Somerset

### Notes to the financial statements

#### For the year ended 31 March 2025

---

#### 1. Accounting policies

##### a) General information and basis of preparation

Mind in Somerset is a charitable company limited by guarantee registered in England and Wales. The registered office address is 21 Canon Street, Taunton, Somerset, England TA1 1SW.

The financial statements have been prepared in accordance with Accounting and Reporting by Charities: Statement of Recommended Practice applicable to charities preparing their accounts in accordance with the Financial Reporting Standard applicable in the UK and Republic of Ireland (FRS 102) (effective 1 January 2019) - (Charities SORP (FRS 102)), the Financial Reporting Standard applicable in the UK and Republic of Ireland (FRS 102) and the Companies Act 2006.

Mind in Somerset meets the definition of a public benefit entity under FRS 102. Assets and liabilities are initially recognised at historical cost or transaction value unless otherwise stated in the relevant accounting policy note.

##### b) Going concern basis of accounting

The accounts have been prepared on the assumption that the charity is able to continue as a going concern, which the trustees consider appropriate having regard to the current level of unrestricted reserves. There are no material uncertainties about the charity's ability to continue as a going concern.

##### c) Income

Income is recognised when the charity has entitlement to the funds, any performance conditions attached to the item of income have been met, it is probable that the income will be received and the amount can be measured reliably.

Income from the government and other grants, whether 'capital' grants or 'revenue' grants, is recognised when the charity has entitlement to the funds, any performance conditions attached to the grants have been met, it is probable that the income will be received and the amount can be measured reliably and is not deferred.

For legacies, entitlement is taken as the earlier of the date on which either: the charity is aware that probate has been granted, the estate has been finalised and notification has been made by the executor(s) to the Trust that a distribution will be made, or when a distribution is received from the estate. Receipt of a legacy, in whole or in part, is only considered probable when the amount can be measured reliably and the charity has been notified of the executor's intention to make a distribution. Where legacies have been notified to the charity, or the charity is aware of the granting of probate, and the criteria for income recognition have not been met, then the legacy is treated as a contingent asset and disclosed if material.

Income received in advance of provision of a specified service is deferred until criteria for income recognition are met.



Notes to the financial statements

For the year ended 31 March 2025

---

**1. Accounting policies (continued)**

**d) Donated services and facilities**

Donated professional services and donated facilities are recognised as income when the charity has control over the item, any conditions associated with the donated item have been met, the receipt of economic benefit from the use by the charity of the item, is probable and the economic benefit can be measured reliably. In accordance with the Charities SORP (FRS 102), general volunteer time is not recognised.

On receipt, donated professional services and donated facilities are recognised on the basis of the value of the gift to the charity which is the amount the charity would have been willing to pay to obtain services or facilities of equivalent economic benefit on the open market; a corresponding amount is then recognised in expenditure in the period of receipt.

**e) Interest receivable**

Interest on funds held on deposit is included when receivable and the amount can be measured reliably by the charity: this is normally upon notification of the interest paid or payable by the bank.

**f) Funds accounting**

Unrestricted funds are available to spend on activities that further any of the purposes of the charity. Restricted funds are donations which the donor has specified are to be solely used for particular areas of the charity's work or for specific projects being undertaken by the charity.

**g) Allocation of support and governance costs**

Support costs are those functions that assist the work of the charity but do not directly undertake charitable activities. Governance costs are the costs associated with the governance arrangements of the charity, including the costs of complying with constitutional and statutory requirements and any costs associated with the strategic management of the charity's activities. These costs have been allocated between cost of raising funds and expenditure on charitable activities based on the proportion of staff time as follows:

	2025	2024
Raising funds	1.5%	1.0%
Charitable activities	98.5%	99.0%

**h) Tangible fixed assets**

Depreciation is provided at rates calculated to write down the cost of each asset to its estimated residual value over its expected useful life. The depreciation rates in use are as follows:

Furniture, fixtures and fittings	25% straight line
MIND shop fixtures and fittings	20% straight line
Property improvements (within freehold land and buildings)	4 - 40 years
Freehold land and buildings	2.5% straight line

Items of equipment are capitalised where the purchase price exceeds £500.



**1. Accounting policies (continued)**

**i) Stock**

Stock is included at the lower of cost or net realisable value. Donated items of stock are recognised at fair value which is the amount the charity would have been willing to pay for the items on the open market.

**j) Debtors**

Trade and other debtors are recognised at the settlement amount due after any trade discount offered. Prepayments are valued at the amount prepaid net of any trade discounts due.

**k) Cash at bank and in hand**

Cash at bank and cash in hand includes cash and short term highly liquid investments with a short maturity of three months or less from the date of acquisition or opening of the deposit or similar account.

**l) Creditors**

Creditors and provisions are recognised where the charity has a present obligation resulting from a past event that will probably result in the transfer of funds to a third party and the amount due to settle the obligation can be measured or estimated reliably. Creditors and provisions are normally recognised at their settlement amount after allowing for any trade discounts due.

**m) Financial instruments**

The charitable company only has financial assets and financial liabilities of a kind that qualify as basic financial instruments. Basic financial instruments are initially recognised at transaction value and subsequently measured at their settlement value with the exception of bank loans which are subsequently recognised at amortised cost using the effective interest method.

**n) Pension costs**

The company operates a defined contribution pension scheme for its employees. There are no further liabilities other than that already recognised in the SOFA.

**o) Foreign currency transactions**

Transactions in foreign currencies are translated at rates prevailing at the date of the transaction. Balances denominated in foreign currencies are translated at the rate of exchange prevailing at the year end.

**p) Accounting estimates and key judgements**

In the application of the charity's accounting policies, the trustees are required to make judgements, estimates and assumptions about the carrying values of assets and liabilities that are not readily apparent from other sources. The estimates and underlying assumptions are based on historical experience and other factors that are considered to be relevant. Actual results may differ from these estimates.

The estimates and underlying assumptions are reviewed on an ongoing basis. Revisions to accounting estimates are recognised in the period in which the estimate is revised if the revision affects only that period, or in the period of the revision and future periods if the revision affects both current and future periods.

The key sources of estimation uncertainty that have a significant effect on the amounts recognised in the financial statements are depreciation, accrued and deferred income, and gifts in kind as described in notes h, c, and d above.



Notes to the financial statements

For the year ended 31 March 2025

2. Prior period restatement

Prior year income has been restated to recognise grant income at the entitlement date, as described in note 1c to the accounts. As a result of the restatement restricted income in the prior year has increased by £55,000, and deferred income has decreased by the same.

Prior year income and expenditure has also been reclassified as follows: £208,250 income from room hire and £95,217 income from training and counselling have been reclassified from other trading activities to charitable activities. Total prior year expenditure has been re-allocated across the statutory headings.

3. Prior period comparatives: statement of financial activities

	Restricted £	Unrestricted £	Restated 2024 Total £
<b>Income from:</b>			
Donations and legacies	260,359	424,231	684,590
Charitable activities	2,284,088	516,390	2,800,478
Other trading activities	-	41,749	41,749
Investments	-	14,039	14,039
<b>Total income</b>	<b>2,544,447</b>	<b>996,409</b>	<b>3,540,856</b>
<b>Expenditure on:</b>			
Raising funds	-	52,555	52,555
Charitable activities	2,448,108	859,447	3,307,555
<b>Total expenditure</b>	<b>2,448,108</b>	<b>912,002</b>	<b>3,360,110</b>
<b>Net income / (expenditure)</b>	<b>96,339</b>	<b>84,407</b>	<b>180,746</b>
Transfers between funds	(34,753)	34,753	-
<b>Net movement in funds</b>	<b>61,586</b>	<b>119,160</b>	<b>180,746</b>



**Mind in Somerset**

**Notes to the financial statements**

**For the year ended 31 March 2025**

**4. Income from donations and legacies**

	Restricted £	Unrestricted £	2025 Total £
Donations	-	161,803	<b>161,803</b>
Legacies	-	227,994	<b>227,994</b>
Grants	253,777	85,266	<b>339,043</b>
<b>Total income from donations and legacies</b>	<b>253,777</b>	<b>475,063</b>	<b>728,840</b>

**Prior period comparative:**

	Restricted £	Unrestricted £	2024 Total £
Donations	-	192,287	192,287
Legacies	-	144,184	144,184
Grants	260,359	87,760	348,119
<b>Total income from donations and legacies</b>	<b>260,359</b>	<b>424,231</b>	<b>684,590</b>

**5. Income from charitable activities**

	Restricted £	Unrestricted £	2025 Total £
Contracts and performance related grants	2,154,051	177,673	<b>2,331,724</b>
Room hire	-	211,675	<b>211,675</b>
Training and counselling	-	86,856	<b>86,856</b>
<b>Total income from charitable activities</b>	<b>2,154,051</b>	<b>476,204</b>	<b>2,630,255</b>

**Prior period comparative:**

	Restricted £	Unrestricted £	Restated 2024 Total £
Contracts and performance related grants	2,284,088	212,922	2,497,010
Room hire	-	208,250	208,250
Training and counselling	-	95,218	95,218
<b>Total income from charitable activities</b>	<b>2,284,088</b>	<b>516,390</b>	<b>2,800,478</b>



**6. Income from other trading activities**

	<b>2025</b>	Restated
	<b>Total</b>	2024
	<b>£</b>	Total
		<b>£</b>
Fundraising events	<b>22,991</b>	32,137
Shop sales	<b>9,011</b>	9,612
Profit on disposal	<b>27,123</b>	-
	<u><b>59,125</b></u>	<u>-</u>
<b>Total income from other trading activities</b>	<u><b>59,125</b></u>	<u>41,749</u>

Income from other trading activities was fully unrestricted in the current and prior year.

**7. Government grants**

The charitable company receives government grants, defined as grant funding from the NHS, Somerset Council and other local town councils to fund charitable activities. The total value of such grants in the period ending 31 March 2025 was £214,667 (2024: £193,465).



## Mind in Somerset

### Notes to the financial statements

For the year ended 31 March 2025

#### 8. Total expenditure

	Raising funds £	Charitable activities £	Support and governance costs £	2025 Total £
Employment costs (note 10)	36,631	2,458,887	242,717	2,738,235
Office costs	6,569	267,166	12,924	286,659
Repairs and maintenance	-	107,555	-	107,555
Other staff costs	1,016	68,214	6,733	75,963
Project costs	-	56,461	-	56,461
Travel and subsistence	-	51,373	4,201	55,574
Depreciation	-	51,488	-	51,488
Self-employment costs	484	32,482	3,206	36,172
Training	-	16,697	-	16,697
Audit fee	-	-	12,240	12,240
Governance	-	-	7,222	7,222
Legal and professional	-	-	6,181	6,181
<b>Sub-total</b>	44,700	3,110,323	295,424	3,450,447
Allocation of support and governance costs	4,431	290,993	(295,424)	-
<b>Total expenditure</b>	<b>49,131</b>	<b>3,401,316</b>	<b>-</b>	<b>3,450,447</b>

Total governance costs were £19,462 (2024: £11,460)



**Mind in Somerset**

**Notes to the financial statements**

**For the year ended 31 March 2025**

**8. Total expenditure (continued)**

**Prior period comparative (restated)**

	Raising funds £	Charitable activities £	Support and governance costs £	2024 Total £
Employment costs (note 10)	35,787	2,402,241	237,124	2,675,152
Other staff costs	1,399	93,857	9,265	104,521
Self-employment costs	813	54,544	5,384	60,741
Project costs	-	24,556	-	24,556
Office costs	11,655	260,444	12,599	284,698
Repairs and maintenance	-	16,178	-	16,178
Depreciation	-	69,317	-	69,317
Travel and subsistence	-	55,087	4,505	59,592
Training	-	44,095	-	44,095
Legal and professional	-	-	9,800	9,800
Audit fee	-	-	8,640	8,640
Governance	-	-	2,820	2,820
<b>Sub-total</b>	<b>49,654</b>	<b>3,020,319</b>	<b>290,137</b>	<b>3,360,110</b>
Allocation of support and governance costs	2,901	287,236	(290,137)	-
<b>Total expenditure</b>	<b>52,555</b>	<b>3,307,555</b>	<b>-</b>	<b>3,360,110</b>



## Mind in Somerset

### Notes to the financial statements

#### For the year ended 31 March 2025

##### 9. Net movement in funds

This is stated after charging:

	2025 £	2024 £
Depreciation	51,488	69,317
Operating lease payments	17,686	37,383
Trustees' remuneration	Nil	Nil
Trustees' reimbursed expenses	161	Nil
Auditors' remuneration (excluding VAT):		
▪ Statutory audit	10,250	8,640
▪ Other services	Nil	2,350

During the year 3 trustees (2024: none) were reimbursed for travel and subsistence expenses.

In common with other charities of our size and nature we use our auditors to assist with the preparation of the financial statements.

##### 10. Staff costs and numbers

Staff costs were as follows:

	2025 £	2024 £
Salaries and wages	2,396,896	2,338,382
Social security costs	184,463	179,477
Pension costs	145,028	146,801
Redundancy payments	11,848	10,492
	<u>2,738,235</u>	<u>2,675,152</u>

Included in redundancy payments are termination costs comprising of statutory redundancy payments, and ex gratia payments. Redundancy and termination costs have been funded from unrestricted general funds (note 18).

	2025 No.	2024 No.
Employees earning more than £60,000 during the year:		
Between £60,000 and £70,000	-	1
Between £70,000 and £80,000	1	-
Between £80,000 and £90,000	-	-

No employee earned more than £60,000 during the year.

The key management personnel of the charitable company comprise the Trustees, Chief Executive Officer, and Chief Operating Officer. The total employee benefits of the key management personnel were £192,917 (2024: £189,349).



## Mind in Somerset

### Notes to the financial statements

#### For the year ended 31 March 2025

#### 10. Staff costs and numbers (continued)

	<b>2025 No.</b>	2024 No.
Average head count	<u><b>128</b></u>	<u><b>126</b></u>

#### 11. Taxation

The charity is exempt from corporation tax as all its income is charitable and is applied for charitable purposes.

#### 12. Tangible fixed assets

	Freehold land and buildings £	MIND Shop fixtures and fittings £	Furniture fixtures and fittings £	<b>Total £</b>
<b>Cost</b>				
At 1 April 2024	570,047	18,140	164,936	<b>753,123</b>
Additions in year	632,871	-	6,494	<b>639,365</b>
Disposals	<u>(255,279)</u>	<u>-</u>	<u>(6,339)</u>	<u><b>(261,618)</b></u>
At 31 March 2025	<u>947,639</u>	<u>18,140</u>	<u>165,091</u>	<u><b>1,130,870</b></u>
<b>Depreciation</b>				
At 1 April 2024	82,398	18,140	120,788	<b>221,326</b>
Charge for the year	35,695	-	15,793	<b>51,488</b>
On disposals	<u>(312)</u>	<u>-</u>	<u>(6,339)</u>	<u><b>(6,651)</b></u>
At 31 March 2025	<u>117,781</u>	<u>18,140</u>	<u>130,242</u>	<u><b>266,163</b></u>
<b>Net book value</b>				
<b>At 31 March 2025</b>	<u><b>829,858</b></u>	<u><b>-</b></u>	<u><b>34,849</b></u>	<u><b>864,707</b></u>
At 31 March 2024	<u>487,649</u>	<u>-</u>	<u>44,148</u>	<u>531,797</u>

Included within freehold land and buildings is a property received under a legacy, redeveloped, and sold within the year. It has been treated as a tangible fixed asset on the grounds that the property was under renovation for the full period held, and is exempt from disclosure as an investment property. The income from the gain on disposal of the property was £27,123.



**Mind in Somerset**

**Notes to the financial statements**

**For the year ended 31 March 2025**

**13. Stock**

	2025 £	2024 £
Merchandise	<u>819</u>	<u>1,927</u>

**14. Debtors**

	2025 £	2024 £
Trade debtors	81,982	78,094
Prepayments	25,712	33,670
Accrued income	<u>1,893</u>	<u>183,842</u>
	<u>109,587</u>	<u>295,606</u>

**15. Creditors: amounts falling due within 1 year**

	2025 £	Restated 2024 £
Trade creditors	107,481	48,116
Accruals	99,720	90,461
Other taxation and social security	37,861	47,172
Deferred income (see note 16)	84,190	73,169
Other creditors	<u>28,008</u>	<u>32,888</u>
	<u>357,260</u>	<u>291,806</u>

**16. Deferred income**

	2025 £	Restated 2024 £
At 1 April	73,169	167,189
Deferred during the year	84,190	73,169
Released during the year	<u>(73,169)</u>	<u>(167,189)</u>
At 31 March	<u>84,190</u>	<u>73,169</u>

Deferred income relates to grant income received in advance, for a specified period, or funding received but where the charity is unable to recognise the funding as there are conditions that are not in its control.



**Mind in Somerset**

**Notes to the financial statements**

**For the year ended 31 March 2025**

**17. Analysis of net assets between funds**

	Restricted funds £	General funds £	Total funds £
Tangible fixed assets	-	864,707	<b>864,707</b>
Current assets	9,776	599,260	<b>609,036</b>
Current liabilities	-	(357,260)	<b>(357,260)</b>
<b>Net assets at 31 March 2025</b>	<b>9,776</b>	<b>1,106,707</b>	<b>1,116,483</b>

**Prior period comparative**

	Restricted funds £	General funds £	Restated Total funds £
Tangible fixed assets	-	531,797	531,797
Current assets	87,934	812,072	900,006
Current liabilities	-	(291,806)	(291,806)
<b>Net assets at 31 March 2024</b>	<b>87,934</b>	<b>1,052,063</b>	<b>1,139,997</b>



## Mind in Somerset

### Notes to the financial statements

For the year ended 31 March 2025

#### 18. Movements in funds

	At 1 April 2024 £	Income £	Expenditure £	Transfers between funds £	At 31 March 2025 £
<b>Restricted funds</b>					
<i>Together for Mental Health:</i>	7,384	-	(5)	-	<b>7,379</b>
<i>Somerset Community Foundation:</i>					
- Food & Mood	191	-	(176)	(15)	-
- Help through Winter	-	20,000	(20,000)	-	-
<i>Mind:</i>					
- Time to Talk	2,061	-	-	-	<b>2,061</b>
- Self Supported Health	1,202	116,192	(112,073)	-	<b>5,321</b>
<i>Taunton Aid in Sickness</i>	262	347	(264)	-	<b>345</b>
<i>Bridging the Gap</i>	575	1,008	(1,008)	-	<b>575</b>
<i>Open Mental Health:</i>					
- Mendip recovery	-	218,341	(218,996)	-	<b>(655)</b>
- Mindline 24/7	-	996,619	(985,845)	-	<b>10,774</b>
- Crisis	-	273,164	(277,104)	-	<b>(3,940)</b>
- Hub contribution	-	27,753	(27,753)	-	-
- Family safeguarding	-	94,557	(95,758)	-	<b>(1,201)</b>
- Suicide peer prevention	-	64,959	(67,136)	-	<b>(2,177)</b>
- Hearing voices	-	20,820	(21,667)	-	<b>(847)</b>
- Community Rehab	-	144,128	(141,261)	-	<b>2,867</b>
- Step Up	-	48,884	(43,689)	-	<b>5,195</b>
- Displaced People	-	37,787	(37,201)	-	<b>586</b>
- Time to Connect	-	8,699	(9,895)	1,196	-
- Somerset West & Taunton	-				
Recovery	-	218,341	(239,679)	-	<b>(21,338)</b>
<i>Somerset County Council:</i>					
- Connect Community					
Champions	55,000	-	(54,497)	-	<b>503</b>
<i>Street Parish Council Youth Group</i>	4,607	-	(4,607)	-	-
<i>Wolfson capital grant</i>	-	27,705	(35,952)	8,247	-
<i>Green grants scheme</i>	-	23,972	(23,972)	-	-
<i>DWP</i>	432	18,340	(18,574)	(198)	-
<i>NGED Community Matters</i>	6,424	7,619	(4,126)	(9,917)	-
<i>Other restricted funds</i>	9,796	38,593	(41,034)	(3,027)	<b>4,328</b>
<b>Total restricted funds</b>	<b>87,934</b>	<b>2,407,828</b>	<b>(2,482,272)</b>	<b>(3,714)</b>	<b>9,776</b>
<b>Unrestricted funds</b>					
General funds	1,052,063	1,019,105	(968,175)	3,714	<b>1,106,707</b>
<b>Total unrestricted funds</b>	<b>1,052,063</b>	<b>1,019,105</b>	<b>(968,175)</b>	<b>3,714</b>	<b>1,116,483</b>
<b>Total funds</b>	<b>1,139,997</b>	<b>3,426,933</b>	<b>(3,450,447)</b>	<b>-</b>	<b>1,116,483</b>



## Mind in Somerset

### Notes to the financial statements

#### For the year ended 31 March 2025

---

#### 18. Movements in funds (continued)

##### Purposes of restricted funds

*Together for Mental Health:* Together for Mental Health funding is from Somerset County Council to plan, deliver and monitor the Somerset Mind Partnership Capacity Building Programme.

*Somerset Community Foundation:*

- Food & Mood A grant to provide catering equipment, training and culinary services.
- Help through Winter Supporting people needing warm and safe places to go at Winter.

*Mind:*

- Time to Talk Known locally as Time to Connect, was a grant to run a fun event day in Taunton for children and young people.
- Self Supported Health A free, 6-week guided programme, including the materials to understand and manage your feelings. Users are called regularly for support.

*Taunton Aid in Sickness* Taunton Aid In Sickness Fund supports counselling for service users who live in Taunton

*Bridging the Gap* A support and advocacy project for tenants of Somerset West and Taunton Housing who have mental wellbeing issues.

*Open Mental Health:*

- Mendip recovery Provides co-ordination of services in Mendip, leading on the one to one support and group offers.
- Mindline 24/7 Funding for our telephone service which runs as part of Open Mental Health via Rethink Mental Illness, 24 hours per day, 7 days per week.
- Crisis Funding for our Crisis Safe Space services in Yeovil and Taunton 7 days per week.
- Hub contribution Contribution to running our Hubs throughout the Taunton, West Somerset, and Mendip areas.
- Family safeguarding Funded through OMH with Somerset Council to deliver mental health support to parents of children where social services are overseeing safeguarding concerns, working with domestic abuse and drug and alcohol services.
- Suicide peer prevention OMH project using people with lived experience of suicide to support people to build positive strategies to move them away from thoughts of suicide.
- Hearing voices Providing training and peer groups to people who experience sensory perceptions that those around them may not.
- Community Rehab Reducing the number of people who go in and out of inpatient settings by breaking the cycle with support in the community.



## Mind in Somerset

### Notes to the financial statements

For the year ended 31 March 2025

---

#### 18. Movements in funds (continued)

##### Purposes of restricted funds (continued)

###### *Open Mental Health (continued):*

- |                                    |                                                                                                                      |
|------------------------------------|----------------------------------------------------------------------------------------------------------------------|
| - Step Up                          | Peer workers to support people in OMH accommodation to avoid an inpatient admission.                                 |
| - Displaced People                 | Working across the county in welcome hubs to provide mental health input for refugees and asylum seekers.            |
| - Time to Connect                  | A grant to run a fun event day in Taunton for children and young people.                                             |
| - Somerset West & Taunton recovery | Provides co-ordination of services in Taunton and Somerset West, leading on the one to one support and group offers. |

###### *Somerset County Council:*

- |                               |                                                                               |
|-------------------------------|-------------------------------------------------------------------------------|
| - Connect community champions | Secondment of 2 senior managers to develop the early help system in Somerset. |
|-------------------------------|-------------------------------------------------------------------------------|

###### *Street Parish Council Youth Group*

Funding to provide a youth group in Street.

###### *Wolfson capital grant*

Funding to support the refurbishment of four supported accommodation units in Yeovil.

###### *Green grants scheme*

Funding to support the replacement of the boilers in Yeovil.

###### *DWP*

Provides support to improve employees' access to work.

###### *NGED Community Matters*

Community day warm spaces grant in venues throughout Somerset.

###### *Other restricted funds*

A mixture of grant funding to support activities, groups, and projects run by Mind in Somerset.

##### **Purposes of transfers**

Transfers between funds relate to the combining of restricted projects, and bringing completed projects to £nil.

##### **Funds in deficit**

The funds in deficit relate to Open Mental Health restricted projects, which are ongoing after the balance sheet date.



## Mind in Somerset

### Notes to the financial statements

For the year ended 31 March 2025

#### 18. Movements in funds (continued)

Prior period comparative (restated)

	At 1 April 2023 £	Income £	Expenditure £	Transfers between funds £	At 31 March 2024 £
<b>Restricted funds</b>					
<i>Together for Mental Health:</i>					
- TTC	7,384	-	-	-	7,384
<i>Somerset Community Foundation:</i>					
- Hinkley Point C	11,462	-	(10,665)	(797)	-
- Food & Mood	2,617	-	(2,426)	-	191
<i>Mind:</i>					
- Ukraine Peer Group	-	-	(729)	729	-
- Time to Talk	-	4,500	(2,439)	-	2,061
- Self Supported Health	-	60,096	(58,894)	-	1,202
<i>Taunton Aid in Sickness</i>	262	-	-	-	262
<i>Bridging the Gap</i>	575	-	-	-	575
<i>Open Mental Health:</i>					
- Locality Lead	-	52,349	(52,378)	29	-
- Mindline 24/7	-	828,998	(829,515)	517	-
- Mindline Plus & Navigator	-	46,230	(46,352)	122	-
- Mindline Text & Chat	-	19,219	(19,085)	(134)	-
- After furlough peer work	-	5,167	(4,810)	(357)	-
- Crisis	-	300,967	(307,520)	6,553	-
- Countrywide specialism	-	35,113	(33,832)	(1,281)	-
- Specialist activity and groups	-	106,102	(105,129)	(973)	-
- Discharge service	-	86,763	(86,761)	(2)	-
- Family safeguarding	-	130,083	(128,632)	(1,451)	-
- Premises	-	31,039	(31,039)	-	-
- Suicide peer prevention	-	63,177	(61,506)	(1,671)	-
- Winter pressures	-	20,794	(20,796)	2	-
- Peripatetic	-	85,434	(82,654)	(2,780)	-
- SMWS Wellbeing Somerset	-	198,926	(193,391)	(5,535)	-
- Hearing voices	-	17,895	(17,982)	87	-
- Engagement forum	-	19,412	(20,226)	814	-
- Community Rehab	-	123,967	(120,416)	(3,551)	-
- Step Up	-	37,394	(35,894)	(1,500)	-
- Capacity payment	-	(5,703)	(11,800)	17,503	-
- Displaced People	-	26,123	(25,319)	(804)	-
- Mindline	-	28,968	(30,354)	1,386	-
- Text and Chat	-	17,381	(12,423)	(4,958)	-
- Time to Connect	-	8,290	(9,816)	1,526	-
Subtotal carried forward	22,300	2,348,684	(2,362,783)	3,474	11,675



## Mind in Somerset

### Notes to the financial statements

For the year ended 31 March 2025

#### 18. Movements in funds (continued)

Prior period comparative (restated) (continued)

	At 1 April 2023 £	Income £	Expenditure £	Transfers between funds £	At 31 March 2024 £
Subtotal brought forward	22,300	2,348,684	(2,362,783)	3,474	11,675
<i>Somerset County Council:</i>					-
- Connect Community Champions	-	110,000	(55,001)	1	55,000
<i>Street Parish Council Youth Group</i>	-	5,565	(958)	-	4,607
<i>Mental Health Empowering Minds</i>	-	9,976	(3,805)	(6,171)	-
<i>DWP</i>	-	18,659	(18,227)	-	432
<i>NGED Community Matters</i>	-	9,999	(3,575)	-	6,424
<i>Wolfson Capital Grant</i>	-	32,295	(238)	(32,057)	-
<i>Other restricted funds</i>	4,048	9,269	(3,521)	-	9,796
<b>Total restricted funds</b>	<u>26,348</u>	<u>2,544,447</u>	<u>(2,448,108)</u>	<u>(34,753)</u>	<u>87,934</u>
<b>Unrestricted funds</b>					
General funds	<u>932,903</u>	<u>996,409</u>	<u>(912,002)</u>	<u>34,753</u>	<u>1,052,063</u>
<b>Total unrestricted funds</b>	<u>932,903</u>	<u>996,409</u>	<u>(912,002)</u>	<u>34,753</u>	<u>1,052,063</u>
<b>Total funds</b>	<u>959,251</u>	<u>3,540,856</u>	<u>(3,360,110)</u>	<u>-</u>	<u>1,139,997</u>

#### 19. Operating lease commitments

The charity had operating leases at the year end with total future minimum lease payments as follows:

	2025 £	2024 £
Amount falling due:		
Within 1 year	29,916	43,738
Within 1 - 5 years	35,242	38,463
	<u>65,158</u>	<u>82,201</u>

#### 20. Related party transactions

There were no related party transactions in the current or prior period.