

HOME START

Winchester
and Districts

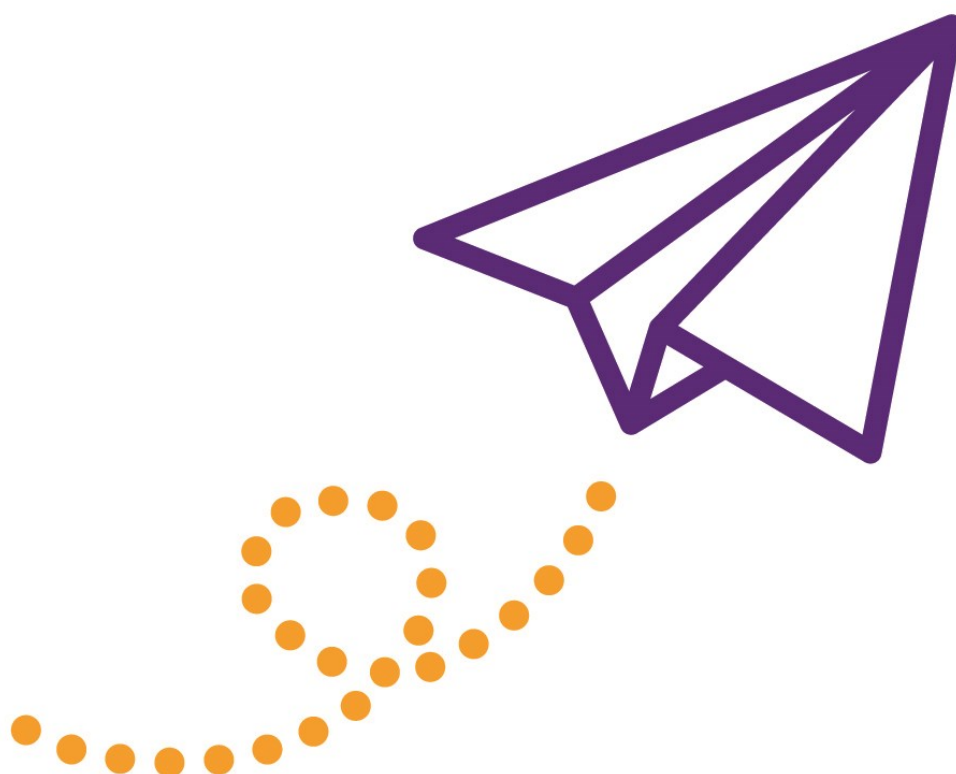


ANNUAL REPORT AND ACCOUNTS 2022/23



CONTENTS

- 3. Because Childhood Can't Wait**
- 4. Chair's Report**
- 5. Key Information**
- 6. Team News**
- 8. Fundraising**
- 9. How you can help us**
- 11. Treasurer's Report & Annual Accounts**
- 13. Independent Examiner's Report**
- 14. Statement of Financial Activities**
- 24. Structure, Governance & Management**



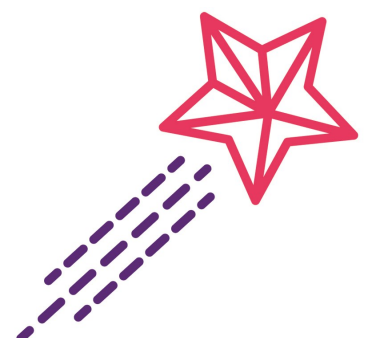
BECAUSE CHILDHOOD CAN'T WAIT....

We believe that children need a happy and secure childhood and that parents play the key role in giving their children a good start in life. The earliest years make the biggest impact so we want to see a society in which every parent has the support they need to give their children the best possible start.

We offer free support to young families within the Winchester area and surrounding districts with at least one child under five who are going through difficult times including:

- Loneliness and isolation
- Relationship difficulties
- Coping with twins, triplets or several pre-school children
- Ill health - physical or mental
- Disabilities and special needs
- Lone parenting
- First time parenthood and new babies
- Children's behavioural problems
- Unemployment or economic difficulties

Home-Start Winchester and Districts is one of over 180 schemes within the national Home-Start movement. Our service is provided by a team of volunteers who are recruited, trained and given on-going support by our Service Manager & Service Co-ordinator. Volunteers offer informal, friendly and confidential support, for at least two hours per week usually for between six and 12 months, although periods of more than a year are not uncommon for families with more complex needs. Our service is overseen by a Board of volunteer trustees who bring a range of professional skills and expertise to the organisation.



CHAIR'S REPORT

After the challenges of the prior two-years, the core team and our fantastic volunteers returned to normal service, with a real sense of enthusiasm and focus. Our crucial home-visit support resumed without restrictions, and our groups once again were back up to speed; which could not have come at a more important time, as the number of referrals rose.

The core team, led by Liz Stannard, as ever responded to the needs of our families, and once again grew as we welcomed Bonnie Stagg to the Home-Start 'family'. Along with Sue, Jane, Charlotte and Liz Brown, the team successfully planned and delivered a wide range of events and experiences for our families, as well as some new initiatives. One of note being a pilot group for young teenage mum's in Eastleigh. The Summer Fun Club was held for the third year running, and despite the heat was a great success. As in previous years, it created many great memories for those who attended. Thanks to all those who made the event possible.

As ever, we could not achieve what we do throughout the year without our volunteers. How lucky we are to have such a group of committed members of our Home-Start family, who help in many different ways: through home-visits, at the groups, other family support occasions and at many of our fundraising events. During the year we welcomed our latest cohort of new volunteers who completed their five weeks of training, all of whom added to the depth of support we are able to provide. That said, we are always in need of more support, so we will continue to run training courses for more volunteers to meet the constant flow of referrals we receive from more and more families in our area.

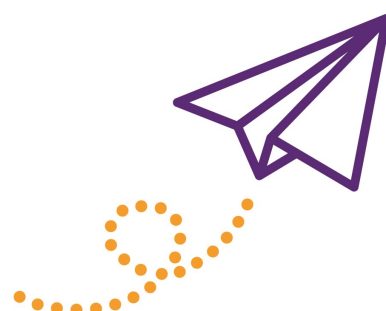
Not only did our team and range of services expand during the year, but so did our Board of Trustees. We welcomed Joanna Chapman-Andrews and Tina Gericke during the first half of the year, both with Home-Start volunteering experience, and then later in the year Jane Skelton, a retired Home-Start Senior Coordinator, joined the Board. The three of them bring a wealth of front-line Home-Start related experience.

While we could not achieve what we do without the amazing commitment of our core team and army of fantastic volunteers, overseen by a great Board of Trustees, we could not function without our wide range of financial supporters. From individual donors, our 'Friends of Home-Start', corporate sponsors, trusts and foundations, the contribution from the city council, and the commitments of our volunteers on the Home-Start Events Team, all of their collective contributions are essential; never more than now at a time of increasing costs and demands on our services. Without Home-Start Winchester & District many families in Winchester and the surrounding area would have nowhere else to access the support they need. A very big thank you to you all, as each year we face the challenge of raising sufficient funds to meet our financial obligations.

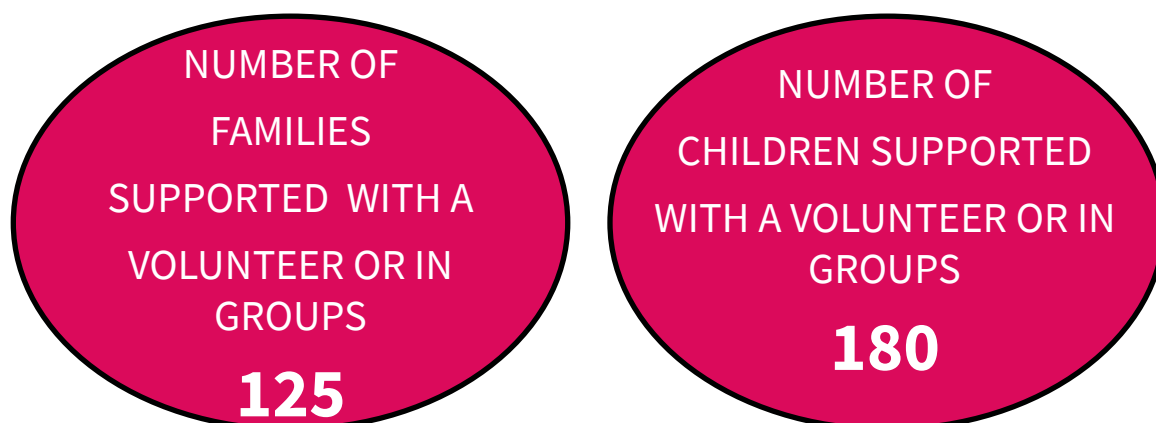
Finally, as I sign off and hand over the Chair's baton of responsibility to Stephanie Durrant, a number of very personal thank you's. For all the support and camaraderie I have received from my fellow Trustees over the last few years, to the core team for their commitment and patience, to our fantastic volunteers for their dedication and selflessness, and to all those who have financially supported Home-Start Winchester & District. Last, but certainly not least, thank you to our two amazingly supportive Patrons, Alison Wakeham and Sally Stewart; always there whenever we need them.

Barry Page,

Chair & Trustee



KEY INFORMATION for 2022/2023



FACTS AND FIGURES FOR FAMILIES SUPPORTED BY A VOLUNTEER

FAMILY NEEDS		
MANAGING CHILDREN'S BEHAVIOUR	34	
BEING INVOLVED IN CHILDREN'S DEVELOPMENT	41	
PARENTS COPING WITH OWN PHYSICAL HEALTH		13
PARENTS COPING WITH OWN MENTAL HEALTH		51
PARENTS COPING WITH LONLINESS & ISOLATION		55
PARENTS' SELF ESTEEM	45	
COPING WITH CHILD'S PHYSICAL HEALTH	9	
COPING WITH CHILD'S MENTAL HEALTH	15	
MANAGING THE HOUSEHOLD BUDGET	13	
DAY-TO-DAY RUNNING OF HOUSEHOLD	19	
STRESS CAUSED BY CONFLICT IN FAMILY	16	
COPING WITH MULTIPLE BIRTHS/CHILDREN UNDER 5	14	
PARENT'S OWN LEARNING NEEDS	3	

FAMILY CIRCUMSTANCES		
UNSUITABLE HOUSING	16	
FAMILY MEMBER IN PRISON	2	
REFUGEE/ASYLUM SEEKER	4	
1 OR MORE PARENT EMPLOYED	13	
DEBT/FINANCIAL WORRIES	18	
SPEECH AND LANGUAGE	12	
LONE PARENT	33	
DISABILITIES	20	
TEENAGE PREGNANCY	4	
MENTAL HEALTH ISSUES	52	

TEAM NEWS

Spring Term 2022

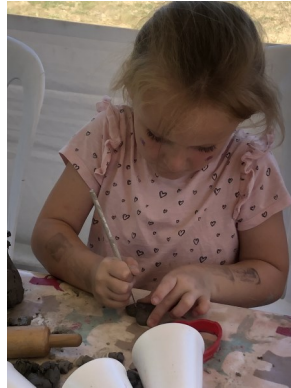


Home-start
well-being course



This quarter we had the opportunity to pilot a well-being course for parents as well as a group for children with developmental delay—Best Start. We also received funding from the Worthy Churches to set up a weekly drop-in at Tubbs Hall at Kings Worthy where the children share a healthy meal together and the parents have the opportunity to chat.

Summer Fun Club



We hosted another wonderfully successful Summer Fun Club in marquees on the meadow at Lanterns. This was enjoyed by 51 parents and 81 children and was supported by a small team of volunteers. There were lots of things to do and many friendships were made.

TEAM NEWS CONTINUED

Autumn Term 2022

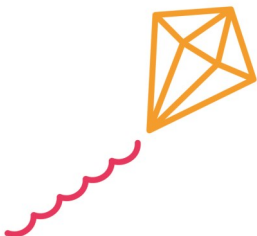


In October we welcomed Bonnie Stagg to the Home-Start team as Family Group Leader and as part of her role she set up a weekly group for very young mums in Eastleigh. We celebrated Christmas with a two course lunch for all our families at the Salvation Army Hall catered by Munch and Liz and Helen were privileged to be invited to the Royal Foundation carol service at Westminster Abbey.

Spring Term 2023



This term we enjoyed working alongside Babs Isaac, the CAP Coach, to offer a budgeting course to our families funded by Winchester City Council. As the world has opened up after COVID we have attended various networking events including a Volunteer Fayre run by Community First. Our very first Easter walk and Easter egg hunt with families was a great success and we welcomed Volunteer Group 20 to the Home-Start family.



FUNDRAISING

The Events Team has run a number of fundraising events over the past year.



We kicked off with our annual Quiz Night on April Fools' Day. Over 100 people attended the event which was held in Itchen Abbas Village Hall and was generously sponsored by IVC. We also held a raffle and one lucky couple won a week's holiday in The Algarve. There were other fantastic prizes donated by Leckford Water Gardens; The Flowers Pots Inn and the Waitrose Fishing Lake.

The Swing Band evening in June was held in the magnificent 15th century Pinglestone Barn kindly made available to us by Lord and Lady Wakeham. The Kasbah Swing Band provided musical treats from the Big Band era and guests were served a Hog Roast from Soles Butchers in Alresford with home-made salads and desserts created by the Events Team. Bill Rawles Classic Cars were the generous sponsors of the evening and brought with them a 1961 Austin Healey racing car which proved a great hit with the boys!



We were incredibly grateful to Rick Stein's Restaurant in Winchester who kindly held a Coffee and Cake morning in support of Home-Start for the second year running. Shoppers were persuaded in for a reviving cup of coffee and a slice of cake.



The annual Car Boot Sale was held in Bramdean on a boiling hot day in August. The location was generously made available to us by Sally and Alastair Stewart, Home-Start Winchester patron and Home-Start national patron respectively. Buyers who braved the heat were rewarded with some great bargains, but we'd like more sellers this year, so clear out your cupboards!

The Bake Sale in St. Maurice's Covert in Winchester was held on a freezing cold day in December. Friends and family were pressed into making cakes, bread, cupcakes, mince pies and brownies and the biscuit treats for dogs sold out in minutes!

Our Christmas card was designed last year by Alresford artist, Emma Trickle and was generously sponsored by Dutton Gregory, Solicitors. It was tough year for charity Christmas card sales. At the beginning there was no obvious charity card shop on the High Street; many people are now sending e-cards due to the price of postage; and also the last posting date was brought forward due to the postal strike. However, we still managed to sell over 450 packs.

I am incredibly grateful to the wonderful team of fabulous women who serve on the Events Group. They are tireless, enthusiastic and innovative and none of these events would be possible without them.

Chrissie Barlow

Chair of Events Group

How you can help us

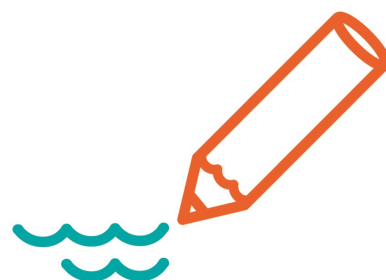
Our services are provided free to families and are largely funded by individual donations, proceeds from fundraising activities, sponsorship and grants from charitable trusts and third parties including Winchester City Council and BBC Children in Need.

Local authority funding has been reduced in recent years and fundraising is more challenging whilst the need for our support has grown. The challenge now is to raise funds from new sources and we are asking people to commit to supporting us by making a regular monthly payment.

Become a Friend of Home-Start Winchester

The Friends of Home-Start Winchester programme was launched in summer 2020 and we are keen to see it develop further. Whilst all fundraising is obviously beneficial, this is the 'gold standard'. It is tax and time efficient for the donor and gives us financial security, allowing us to plan ahead. A standing order for £10 per month will enable us to provide emergency food vouchers while giving £30 per month will support a place in one of our family groups. Please will you help our families by becoming a Friend of Home-Start Winchester?

Email: friends@home-startwinchester.org.uk for more details.

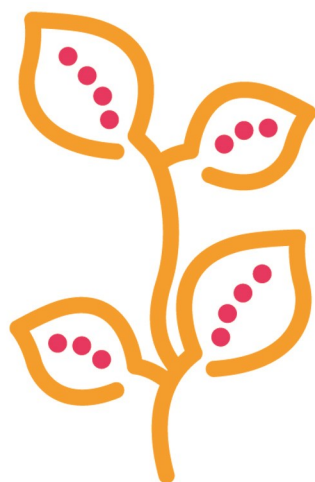


Other ways you can help

Organise an event for us—From wine tastings, to choir concerts to Grand Balls we would welcome the opportunity to be your charity partner.

Taking part in a sponsored event? - Please consider selecting us as your chosen charity.

Corporate partners—Could your company sponsor one of our events? Or make us your chari-



Could YOU be a Trustee?

Our trustees (or Board) have responsibility for overseeing the charity's governance, management and strategic direction. They play a very important role in helping to set the priorities for our local Home-Start.

Our Board is chaired by Barry Page who runs a friendly, efficient group who bring a range of different skills to the Home-Start table.

There are also two sub-groups, the Events Group and the Bids Team with responsibilities for fundraising activities and preparing applications to charitable trusts and grant making organisations.

Some people have been trustees for many years, others are relative newcomers: there's room for everyone! Trusteeship can be rewarding for many reasons - from a sense of making a difference to your local community to forging new experiences and relationships. Email trustee@homestartwinchester.org if you think you could add something to the team.

Could YOU be a volunteer?

Anyone with parenting experience is qualified to be a volunteer. But at another level we're looking for people with very special skills of empathy, friendliness, adaptability and common sense.

Volunteers are trained, supported and supervised to Home-Start UK national standards. If you could spare two hours a week to work with families who are going through their most challenging times, please contact info@home-startwinchester.org.uk



Your skills and experience could help families from all backgrounds through their most challenging times.

Financial Report

Treasurer's Year-End Report - Period 1st April 2022 to 31st March 2023

Income and Expenditure

In the 12-month period April 2022 to March 2023 the Charity has achieved:

Income **£110,836**
(£98,463 restated)

Expenditure **£110,648**
(£95,158)

This performance has increased our Net Current Assets by **£188** to **£88,395** (£88,207, restated).

With Covid-19 still having an impact the Trustees nevertheless set a target at the start of this year to break even. I am delighted to announce that we have met the target. This has been achieved by strict cost controls together with magnificent contributions from a number of fundraising activities and grants providers.

The Trustees wish to thank all our sponsors for their most generous support. The full detail is laid out in the following accounts.

Balance Sheet

The Balance Sheet shown later in the report shows that as at the 31st March 2023 the charity had total net assets of

£88,395 (£88,207, restated) made up of:

Restricted Funding of **£8,394**
(£8,736) Unrestricted Funding of
£47,201 (£56,671, restated)

Designated Funding of **£32,800**
(£22,800)

It also shows our Cash at Bank and in Hand on 31st March 2023 stood at **£106,324** (£119,997) showing a decrease of **£13,673** on our starting Balance and reflecting a more challenging year for raising Income. Last year following an excellent fundraising effort we were able to bring forward **£31,790** (restated) and whilst some of this excess has been used we are still able to defer **£17,929** to the following financial year 2023-24.

Funding sources

Our challenge continues to be to find alternative funding sources, particularly for Core Funding which is always more difficult to source than Project Funding. The identification of funding in addition to our normal Revenue Streams is key.

Events

Our **Fundraising Events Team** headed by Chrissie have had an excellent year, raising **£13,819** (£12,608). Highlights were the Quiz, Golf Day, Swing Band Party and Christmas Cards.

Grants & Trusts

The Grants and Trusts Team have had another good year. Charitable Trusts, year on year become more demanding so it is particularly pleasing that the hard work put in by Martin and his small team has enabled them to raise the magnificent total of **£75,646** for 2022/23. In addition to this total they have raised a further **£17,729** which has been deferred to be spent in 2023/24.

We are grateful in particular for the continued support of Winchester City Council, Hampshire County Council, BBC Children in Need, Brooks Charitable Trust, The Oak Foundation, the Ex-Pat Foundation and other Charitable and Family Trusts.

Donations

The **Donations** income stream has had another good year raising **£21,011**. Utilita continues to provide regular wonderful support.

Reserves & Investment Policy

A large part of the charity's reserves is held in a 90-day notice account with Scottish Widows. The balance in this account as at 31st March 2023 stood at **£53,675**.

The Charity also holds funds in a CAF Gold account and a small amount is held within a CAF Cash account to meet all short-term commitments. As at 31 March 2023 the combined balance in these two accounts was **£49,297**.

The Trustees continue to review the charity's needs for unrestricted reserves in light of the financial risks to the organisation and in line with the guidance issued by the Charity Commission.

R i s k Assessment

The Trustees and Senior Staff maintain rolling funding and expenditure budgets including an assessment of the major risks to which the charity is exposed through regular discussions at Board meetings. Identified external risks to funding have been included in our three-year strategic plan which includes cash flow projections and an analysis of the major risks to our current and future funding sources. This is updated each year.

Internal control risks are minimised by the implementation of procedures for authorisation of all transactions and activities. Procedures are in place to ensure compliance with health and safety of staff, volunteers, and families. All procedures are based on national Home-Start policies and are reviewed and updated periodically to ensure that they meet the needs and legal requirements of the charity. The results have been incorporated into the Charity's strategic and work plans.

I thank Vicki for undertaking an independent review of our accounts and Community First Winchester for preparing the monthly salary statements for our staff.

I would also like to thank Sue Barham, our Office Manager, who continues to apply her considerable skills and experience to running the accounts on a day-to-day basis.

Mike Davies

Treasurer,

June 2023

Home-Start Winchester and Districts

FINANCIAL STATEMENTS FOR THE YEAR ENDED 31st MARCH 2023

Company Number:
5350249 Registered
Charity Number:
1108170

HOME-START WINCHESTER AND DISTRICTS INDEPENDENT EXAMINER'S REPORT TO THE TRUSTEES FOR THE YEAR

ENDING 31st MARCH 2023

I report on the accounts for the year ending 31st March 2023, which are set out on the following pages.

Respective responsibilities of directors and independent examiner

The charity's Trustees are responsible for the preparation of the accounts in accordance with the requirements of the Charities Act 2011 ("the Act"). The charity's Trustees consider that an audit is not required for this year (under section 144 of the Act) and that an independent examination is needed (under section 145 of the Act).

I report in respect of my examination of the charity's accounts carried out under section 145 of the 2011 Act and in carrying out my examination, I have followed all the applicable Directions given by the Charity Commission under section 145(5)(b) of the Act.

Basis of independent examiner's report

My examination was carried out in accordance with the General Directions given by the Charity Commission for England and Wales. An examination includes a review of the accounting records kept by the charity and a comparison of the accounts presented with those records. It also includes consideration of any unusual items or disclosures in the records and seeking explanations from you as trustees concerning any such matters. The procedures undertaken do not provide all the evidence that would be required in an audit, and consequently I do not express an audit opinion on the view given by the accounts.

Independent examiner's statement

In connection with my examination, no matter has come to my attention which gives me reasonable cause to believe that, in any material respect:

the accounting records were not kept in accordance with section 130 of the Act; or
the accounts did not accord with the accounting records; or
the accounts did not comply with the applicable requirements concerning the form and content of accounts set out in the Charities (Accounts and Reports) Regulations 2008 other than any requirement that the accounts give a 'true and fair' view which is not a matter considered as part of an independent examination.

I have no concerns and have come across no other matters in connection with the examination to which attention should be drawn in this report in order to enable a proper understanding of the accounts to be reached.

Victoria Tibbitts, FCA
(ICAEW)

June 2023

**HOME-START WINCHESTER AND DISTRICTS STATEMENT OF FINANCIAL ACTIVITIES
(SOFA)**

**(INCLUDING AN INCOME AND EXPENDITURE ACCOUNT) FOR THE 12 MONTH PERIOD
ENDING 31ST MARCH 2023**

These accounts reflect the period 1st April 2022 to 31st March 2023.

This statement of financial activities includes all gains and losses in the year.

SOFA	Notes	Unrestricted Fund 2022/23	Designated Fund 2022/23	Restricted Funds 2022/23	Total Funds 2022/23	Total Funds 2021/22 (restated)
<u>Incoming resources</u>						
<i>Voluntary income:</i>						
Donations & grants	1(b), 2	64,911		31,746	96,657	83,566
<i>Activities for generating funds:</i>						
Fundraising events	6	13,619		0	13,619	14,859
Investment Income:						
Interest—All Accounts		560		0	560	38
Total incoming resources		79,090	0	31,746	110,836	98,463
Resources expended						
Costs of generating voluntary income	11	0	0	0	0	0
Charitable expenditure	11	61,963	0	32,088	94,051	82,281
Governance costs	11	16,597	0	0	15,597	12,877
Total resources expended		78,560	0	32,088	110,648	95,158
Gross transfers to & from funds	10	-10,000	10,000	0	0	0
Net movement of funds		-9,470	10,000	-342	188	3,305
Reconciliation of funds						
Total funds brought forward		56,671	22,800	8,736	88,207	84,902
<u>Total funds carried forward</u>		47,201	32,800	8,394	88,395	88,207

All incoming resources and resources expended derive from continuing activities

Balance Sheet

<u>Balance Sheet</u>		<u>31st March 2023</u>			
		<u>31/03/2023</u>		<u>31/03/2022</u>	
				(restated)	
	£	£		£	£
<u>Current Assets</u>					
Debtors: Prepayments		3,379		2,751	
Cash at bank and in hand		102,945		117,246	
		106,324		119,997	
<u>Liabilities</u>					
<u>Creditors falling due within</u>		17,929		31,790	
		17,929		31,790	
<u>Net Assets</u>		88,395			88,207
Represented by:					
Restricted funds		8,394		8,736	
Unrestricted funds		47,201		56,671	
Designated funds		32,800		22,800	
<u>Total Funds</u>		88,395			88,207

For the year ending 31 March 2023 the charity was entitled to exemption from audit under Section 477 of the Companies Act 2006.

The members have not required the company to obtain an audit of its financial statements for the year ended 31st March 2023 in accordance with Section 476 of the Companies Act 2006.

The directors acknowledge their responsibilities for complying with the requirements of the Act with respect to accounting records and for the preparation of accounts.

These accounts have been prepared in accordance with the provisions applicable to companies subject to small companies' regime.

Barry Page
Chair of Trustees
June 2023

HOME-START WINCHESTER AND DISTRICTS
NOTES TO THE FINANCIAL STATEMENTS
FOR THE YEAR ENDING 31st MARCH 2023

1. Accounting Policies

The principal accounting policies are summarised below. The accounting policies have been applied consistently throughout the year and in the preceding year.

(a) Basis of accounts

The accounts have been prepared under the historical cost convention. The financial statements have been prepared in accordance with the Statement of Recommended Practice (SORP), "Accounting and Reporting by Charities" published in March 2005 and applicable accounting standards (FRS 102).

(b) Fund accounting

The unrestricted funds are generally those which are available for use at the discretion of the trustees in furtherance of the general objectives of the charity and which have not been designated for other purposes. Restricted funds are funds which are to be used in accordance with specific restrictions imposed by donors or which have been raised by the charity for particular purposes. The cost of raising and administering such funds are charged against the specific fund.

Designated Funds are Unrestricted Funds used to manage revenue risks and to set aside funds for committed projects, in line with the guidance issued by the Charity Commission.

(c) Income recognition

Grants and donations are included in the Statement of Financial Activities (SOFA) when the charity is legally entitled to the income and the amount can be quantified with reasonable accuracy. Deferred income represents amounts received for future periods and is released to incoming resources in the period for which it has been received.

Bank interest is recognised on an accruals basis.

(d) Resources expended

All expenditure is accounted for on an accruals basis and is recognised when there is a legal or constructive obligation to pay for the expenditure. Costs relating to charitable activities comprise those incurred by the Charity in the delivery of its activities and services for its beneficiaries. It includes both costs that can be allocated directly to such activities and those costs of an indirect nature necessary to support them.

Management and administration (governance) costs are those incurred in connection with the administration of the charity and compliance with constitutional and statutory requirements.

All costs are allocated between the expenditure categories of the SOFA on the basis designed to reflect the use of the resource. Costs relating to a particular activity are allocated directly; others are apportioned on an appropriate basis such as estimated usage as set out in Note 11.

(e) Cash at bank and in Hand

Cash at bank and in hand includes short-term, highly liquid investments accessible within 3 months.

(f) Prior year adjustment

Donations received had incorrectly been deferred in the prior year. As a result, the prior year comparatives have been restated, increasing income in the year to 31 March 2022 by £1,500, reducing the deferred income recognised as at 31 March 2022 by £19,500 and reducing the total unrestricted funds brought forward at 1 April 2022 by £18,000.

NOTES TO THE FINANCIAL STATEMENTS (CONTINUED)

2 & 3. Grants & Trusts

The Grants and Trusts Team raised a magnificent total of £93,375 which included £29,225 brought forward from the previous financial year. £17,720 was received later in the year and was carried forward to be spent in 2023/24.

It can be seen from the table below the extent of the generosity of many contributors.

Grants & Trusts—1 Apr 22-31 Mar 23	Purpose	Restricted 2022-23	Unrestricted 2022-23	Total 2022-23	Deferred To 2023-24
WCC Annual Grant	Core Funding		9,900	9,900	
WCC Drawings	Families	1,729		1,729	1,729
Garfield Weston Year 3	Families	1,000		1,000	
Broks Charitable Trust	Families	10,780		10,780	6,000
BBC Children in Need	Families	9,466		9,466	
BBC Children in Need Money Heroes	Families	1,000		1,000	
HSUK Warm Spaces	Families	1,000		1,000	
PCC Kings Worthy (Tubbs Group)	Families	2,000		2,000	
Richard Kirkman Trust	Core Funding		1,000	1,000	
Plastow Family Trust	Core Funding		1,500	1,500	
Imperium	Core Funding		3,000	3,000	
Oak Foundation	Core Funding		20,000	20,000	
Ex-Pat Foundation	Core Funding	12,500	18,500	31,000	10,000
Totals		39,475	53,900	93,375	17,729

4. Trustee Remuneration & Related Party Transactions

No Trustee or related person received any remuneration during the period. No Trustee or other person related to the charity had any personal interest in any contract or transaction entered into by the charity during the year.

5. Taxation

The company is registered as a charity in accordance with the Charities Act 2003 and is not liable to taxation on its income. No tax charges have arisen in the charity during the year.

6a. Fundraising Events

Our Fundraising Events Team raised **£13,619**, special mention going to the Swing Band evening, and the successful sales of our Christmas Cards.

Events 1 Apr22—31 Mar 23	Income	Expenditure	Net Income
Quizzes	3,194	737	2,457
Charity Golf Days	1,655	120	1,535
Dog Walk	755	76	679
Christmas Cards	2,670	1,210	1,461
Car Boot	1,253		1,253
Swing Band Party ticket and bar sales	2,702	1,220	1,482
Rick Stein's Coffee Morning	390		390
Murder Mystery Evening	529	12	517
St Maurice's Cake Sale—December 2022	470	35	435
Total	13,619	3,410	10,209

6b. Fundraising Donations

Donations raised **£21,011** plus **£19,600** received later in the year and carried forward to 2023/24. Special mention to the generosity of our loyal supporter Utilita.

Donations 1 Apr 22—31 Mar 23	Income	Deferred to
Brought Forward from 21/22		
Friends Donations	6,817	
Utilita	6,000	
Other Donations	8,194	
Carried Forward to 23/24		
Total	21,011	

7. Staff Costs and Numbers

Staff Costs (6)	2022-23		2021-22
	£		£
Salaries and wages	66,303		53,600
Social Security costs (NI) including pensions	8,733		10,887
Total	75,037		64,487
	2022-23		2021-22
	Number		Number
Senior Co-ordinator	0.70		0.70
Co-ordinator	0.65		0.65
Office Manager	0.65		0.65
Family Drop Co-ordinator	0.30		0.30
Family Group Leader	0.10		0.10
Family Group Leader	0.10		0.00
Total	2.50		2.40

8/9 Debtors & Creditors

Debtors	<u>2022/23</u>		<u>2021/22</u>
Quiz Deposit	0		250
Dog Walk	0		39
Summer Fun Club Marquee Deposit	0		250
Premier Insurance	187		173
Lanterns Rent	1,688		1,458
Charity Log—Dizons	391		397
Home-Start UK Annual Fee	885		0
HSUK Legal & Accident Insurance	0		70
Drop Box Annual Licence	229		115
Website Hosting Annual License	0		0
Total	3,379		2,751
Creditors falling due within one year	<u>2022/23</u>		<u>2021/22</u>
Deferred income			
Ex-Pat Foundation	10,000		0

Oak Foundation	0	20,000
Brooks Trust	6,000	4,000
Garfield Weston Trust	0	1,000
BBC CinN Money Heroes	0	1,000
Golf Day	200	0
Dog Walk	0	755
Quiz	0	1,810
J Porter	0	0
WCC Annual Grant	1,729	1,900
BBC Children in Need	0	1,325
Total	17,929	31,790

Income is deferred where conditions that limit recognition of that income have not been met.

10 Movement in Funds

	At 1st April 2021 (restated)		Incoming Resources (restated)		Outgoing Resources			At 31st March 2022 (restated)
	£		£		£			£
Restricted Funds								
All Restricted Funds	3,286		33,589		28,139			8,736
Total restricted funds	3,286		33,589		28,139			8,736
Unrestricted funds								
General funds	58,816		64,874		67,019			56,671
Designated funds	22,800		-		-			22,800
Total unrestricted funds	81,616		64,874		67,019			79,471
Total funds	84,902		98,463		95,158			88,207

	At 1st April 2022 (restated)		Incoming Resources		Outgoing Resources		Transfer between reserves	At 31st March 2023
	£		£		£		£	£
Restricted Funds								
All Restricted Funds	8,736		31,746		32,088			8,394
Total restricted funds	8,736		31,746		32,088			8,394
Unrestricted funds								
General funds	56,671		79,090		78,560		-10,000	47,201
Designated fund	22,800		-		0		10,000	32,800
Total unrestricted funds	79,471		79,090		78,560			80,001
Total funds	88,207		110,836		110,648		-	88,395

11. Total Resources Expended

	Core charitable	Governance	Parenting Course	Volunteer Prep	Family Drop -in Groups	Family services	2022/23 Totals	2021/22 Totals
Costs directly allocated to activities	£	£	£	£	£	£	£	£
Wages, NI, Pensions	15,007		0	7,504	7,504	33,766	63,781	54,814
Staff expenses	179	134		90	90	403	896	284
Trustee expenses	0	119		0	0	0	119	0
Volunteer expenses	542	406		271	271	1,219	2,708	2,301
Training	411	308	0	205	205	924	2,054	1,793
Projects	477	358	0	239	239	1,074	2,386	0
Covid other expenses							0	1,448
Covid staff expenses							0	67
Groups	839	629	0	420	420	1,888	4,196	3,304
Parenting	64	48	0	32	32	144	320	
Family outings	102	77	0	51	51	230	510	38
Summer Fun Club	1,057	793	0	529	529	2,379	5,287	5,972
Direct total	18,679	2,872	0	9,339	9,339	42,027	82,256	70,021
Support costs allocated to activities								
Wages, Ni, Pensions		11,255					11,255	9,673

Stationery & postage	40	30		20	20	90	199	291
Telephone	268	201		134	134	604	1,342	1,718
Photocopying	106	80		53	53	239	532	1,348
Insurance	205	154	0	103	103	462	1,026	874
Capital items	427	320	0	213	213	960	2,133	0
Other Fees & Subscriptions	441	331	0	221	221	992	2,205	1,942
HSUK Fees	172	129	0	86	86	387	861	2,195
Fundraising	682	511	0	341	341	1,534	3,410	2,251
Bank charges	13	10	0	7	7	30	67	72
Accommodation	751	563	0	375	375	1,689	3,754	3,571
Sundry expenses	322	241	0	161	161	724	1,609	1,203
Support Total	3,427	13,826	0	1,714	1,714	7,712	28,393	25,138
Overall Total	22,106	16,698	0	11,053	11,053	49,739	110,649	95,159

12. Designated Funds

<u>Designated Fund</u>	<u>31-Mar-23</u>	<u>01-Apr-22</u>
Revenue Unpredictability Provision		
a. WCC	0	0
b. BBC Children in Need	0	0
c. HCC Councillors	800	800
d. Other Charitable Trusts	10,000	10,000
e. Donations	5,000	5,000
f. Events	5,000	5,000
Total of Revenue Unpredictability	20,800	20,800
Capital Equipment—Replacement Liability	2,000	2,000
Project Fund towards Scheme Expansion	10,000	0
Cost of Closing the charity	0	0
Designated Fund Total	32,800	22,800

The Trustees each year review the charity's financial requirements, establishing Designated Funds to manage revenue risks and to set aside funds for committed projects, in line with the guidance issued by the Charity Commission. Designated Funds plus Restricted and Unrestricted Funds constitute the charity's Reserves.

Structure, Governance and Management

Home-Start Winchester and Districts was incorporated as a company limited by guarantee in 2005 and is registered under the Charities Act 1993 and the Companies Acts 1985 and 1989. It is governed by a Memorandum and Articles of Association and by its Board of Trustees. It has a legal agreement with Home-Start UK to follow their national Standards and Methods of Practice. Its year end is 31st March.

Registered charity name: Home-Start Winchester and Districts

Charity registration number: 1108170

Company registration number: 5350249

Registered office and operational address:

Lanterns Nursery School

Bereweke Road

Winchester

SO22 6AJ

Telephone: 01962 851177

Bankers:

CAF Bank Limited, 25 Kings Hill Avenue, West Malling, Kent, ME19 4JQ

Trustees:

Barry Page- Chair

Mike Davies—Treasurer

Martin Tomsett - Company Secretary & Vice Chair

Chrissie Barlow

Joanna Chapman – Andrews (Co-opted)

Stephanie Durrant

Tina Gericke (Co-opted)

Gill Longman

Hilary North (Co-opted)

Jane Skelton (Co-opted)

Jackie Sumner

Graham Winyard

Patrons

Sally Stewart

Alison Wakeham

Staff:

Liz Stannard—Service Manager

Jane Read—Service Co-ordinator

Sue Barham—Office Manager

Charlotte Howard—Family Group Co-Ordinator

Liz Brown—Family Group Leader

Bonnie Stagg—Family Group Leader

Independent Examiner: Vicki Tibbitts