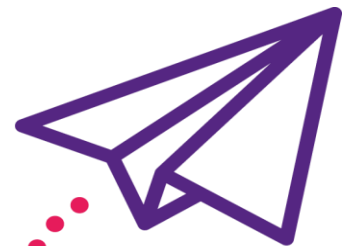






# Contents

Because Childhood Can't Wait	3
Chair's Report	4
Staff Team Report	6
Our Groups & Working in Partnership	8
Reflections from a Volunteer	9
My Home-Start Experience	10
Fundraising	11
Activities and Events	13
How You Can Help	14
Treasurer's Report and Annual Accounts	16
Independent Examiner's Report	18
Statement of Financial Activities	19
Structure, Governance and Management	27





We believe that children need a happy and secure childhood and that parents play the key role in giving their children a good start in life. The earliest years make the biggest impact so we want to see a society in which every parent has the support they need to give their children the best possible start.

We offer free support to young families within the Winchester area and surrounding districts with at least one child under five who are going through difficult times including:

- Loneliness and isolation
- Relationship difficulties
- Coping with twins, triplets or several pre-school children
- Ill health - physical or mental
- Disabilities and special needs
- Lone parenting
- First time parenthood and new babies
- Children's behavioural problems
- Unemployment or economic difficulties

Home-Start Winchester and Districts is one of over 180 schemes within the national Home-Start movement. Our service is provided by a team of **volunteers** who are recruited, trained and given on-going support by our **Service Manager & Service Co-ordinator**. Volunteers offer informal, friendly and confidential support, for at least two hours once per week usually for between six and 12 months, although periods of more than a year are not uncommon for families with more complex problems. Our service is overseen by a Board of volunteer **trustees** who bring a range of professional skills and expertise to the organisation.



## Chair's Report

While 2020/21 was a year of resilience and adaptation, 2021/22 was focused on how to move forward: for both the families we support and the charity. As we emerge from the era of lockdown and start to realise the long-term impacts on health and social care, we now face a new set of pressures in our lives, as the rise in cost-of-living starts to become the new reality.

Whether you look at the global or national scene, or closer to home in our own local communities, life is getting more complex and, sadly for many, more difficult. With the continued decline in national and local government funded social services, the need for support from charities such as Home-Start Winchester & District increases: without us many families would have no access to emotional and practical support. It has been good to see Home-Start UK create greater representation and awareness of the importance of early learning and children's development at the national level. For some time, the local Home-Start schemes have been calling out for this to happen. We are now seeing a greater profile through various media channels and involvement in government committees. Home-Start UK has also been reviewing the range of practical support it provides to local schemes across the country, and my thanks to Graham Winyard who has represented Winchester & Districts' interests during this process.

The year saw a gradual return to our full range of services, albeit in a 'start-stop-start' manner, as periods of lockdowns and restrictions prevailed. Our new family group in Winnall finally opened, and as the year closed out the team prepared to start another new group at Tubbs Hall, Kings Worthy. Our wonderful volunteers returned to home visits, for which I thank each and every one of them for all that they do for our families. It was a real delight to welcome the latest cohorts of new volunteers to the Home-Start team, at the end of their seven weeks training in June 2021 and March 2022. Our commitment to all our Volunteers is to provide ongoing support, guidance and training as our home-visiting service remains at the heart of our charity.

The core team also expanded, as we welcomed onboard Charlotte Howard. She joined as our Family Group Coordinator, and with the support and experience of Liz Brown, is leading the expansion of our family groups. This will see additional groups being started and a wider range of training and support being available to families who attend. Under the overall leadership of Liz Stannard, our Service Manager, the core team of Jane Read, Sue Barham, Charlotte and Liz, and legion of Volunteers, have achieved many great moments for the families we supported during the year. Two of the Trustees, Stephanie Durrant and Jackie Sumner, have given their time during the year to support the team and they have also supported our safeguarding initiatives and responsibilities.

All of the support we provide to families depends on fundraising, and without the generosity of individuals, a few corporate organisations and grants from trusts, foundations and from Winchester City Council we would not exist. A big Thank You, to all of those who have supported the charity over the last year, many of whom continue to do so year-after-year. Within this, words of thanks to our *Friends of Home-Start*, who make regular donations, and to our Events Committee, chaired by Chrissie Barlow, who soldiered on despite the restrictions preventing the majority of our traditional fundraising events.

The biggest contributor to our running costs remains awards from grants and foundations, as well as local societies and organisations. Our Bids Team, chaired by Martin Tomsett, who also takes on the lion's share of writing bids and applications, were successful in securing invaluable sums of money. Each year it becomes more challenging to essentially 'compete' against many other worthy charities for such grants, so a big thank you to Martin and the rest of the Committee for all their efforts.



Once again, our financial management and oversight has, thankfully, been in the very capable hands of our Treasurer Mike Davies, and we ended the year with a good financial foundation. Our reserves afford us the confidence to push ahead with plans to expand the range of support and services we provide to a growing number of families being referred to the charity. The challenge remains to raise sufficient funds each year to meet the demand. Mike also dons his 'Quiz-Master' hat during the year to run the successful fundraising quiz, and he also organises an annual golf day.

Creating awareness of what Home-Start Winchester & District is about, what we do and how we help families is a vital task. Thanks to the leadership from Gill Longman, supported by Hilary North, the charity has regularly had coverage in the local media and across the various social media channels. A special mention to Alex Stewart for all his efforts and patience running our *Twitter* account for a number of years. During the year a new initiative was undertaken by Hilary and Gill to revamp our website, the result of which is a fresh, more user-friendly and relevant face to the charity. Going forward, we will ensure it remains current and an effective channel to communicate what is happening at Home-Start, as well as and an easy way of getting access to help and support.

Sadly, we said farewell to two of our Trustees during the year, as they stood down from the Board. Carolyn Beech had chaired the Events Committee for a number of years, as well as provided valuable input on a range of HR related matters. April Chidgey, well known by many families and those associated with Home-Start for her roles as a Volunteer and a Trustee over 10 years, retired in September, and she is certainly missed. Luckily for the charity, April has remained involved as a member of the Events Committee.

A final thank you to our two fantastic Patrons; Alison Wakeham and Sally Stewart. Both quietly give a great deal of moral and practical support to the Board and the charity throughout the year, and we remain grateful for their continued involvement.

While the Board's principal role is to ensure the governance and running of the charity is in compliance with the appropriate rules and regulations, which I affirm is the case, the Board, with involvement from the core team, spent significant time over the last year reviewing and developing a new strategy. While the process is not quite finalised, the experiences of families, the charity, and society at large over the last two-years, have informed the need to evolve and adapt. I intend to share more detail over the coming 12-months, but in essence the focus will be ensuring we have resources to meet the increased demand from across Winchester and the surrounding districts. Our services and facilities will be broader, some targeted to meet the needs of specific families, while we need to be able to respond to the increasing complexities of the family situations referred to Home-Start. We will also look to enhance the engagement with our volunteers, with a specific initiative to increase the level of communication, inclusion and training we provide.

Finally, we are embarking on an initiative to improve the engagement we have with a number of external stakeholders; many of whom are important to the charity's support to families or our financial position. My personal thanks to everyone who has helped to make the last year a success.

Barry Page  
Chair &

# Team Report 2021-22

## April



To celebrate the re-opening of our family groups Liz B presents all the parents with a well-being pack donated by Waitrose Winchester.

## May



Children have opportunities to renew their friendships at our family groups.

## June



Patrons, trustees and staff join 12 volunteers in celebrating the completion of their training at St Barnabas, Weeke.

## July



The trustee board approve hybrid working for staff - we love working in the office but the coffee's better at home!!

## August



Pizza for lunch at the Summer Family Fun Club. Thank you Dominos, Weeke!

## September



The team move into a dedicated office space in Lanterns (it doesn't always look this tidy!!)



## October



We are delighted to welcome Charlotte Howard to the team - our first Family Group Co-ordinator.

## November



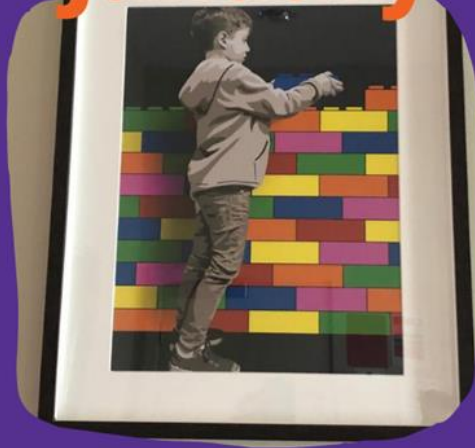
Downtime for the team - escape room followed by supper. Getting out of the room took a little longer than expected but we made it in the end!

## December



Thank you Prince's Mead for all the lovely Christmas presents which Father Christmas gives to everyone at our fabulous Christmas event.

## January



Look what we got for Christmas. Thank you Hendog for brightening up our office.

## February



Volunteers and staff connect with Citizens Advice Winchester to do online training in Advice First Aid.

## March



The 19th cohort of volunteers complete their training and celebrate with cake.



## Our Groups

It's been quite a year for groups! We realised quite early on after the pandemic that several community groups were not going to restart so our family groups were needed more than ever. Some families were cautious about returning and so we kept a lot of the covid safety procedures in place and gradually relaxed them as people got more confident.

Numbers were slow to start with, but it was brilliant to see the adults and children renewing their friendships and tentatively making new ones as the weeks progressed.

We also ran a baby group for children under 2 and their parents who had not had the opportunity to mix due to lockdowns. We gradually integrated these families into our larger groups when they were ready.

Our Tuesday group made a permanent move to Winnall Community Centre post covid and this group is going from strength to strength. The Lanterns family group, sponsored by Children in Need, is growing in popularity too.

We are grateful to our group volunteers who turn up week after week come rain or shine – they really add continuity to the groups. We have also been lucky enough to recruit parent helpers this year who no longer have a child at the group but who are a great resource for the families.

We have realised the need for more groups in different locations and so Charlotte Howard as Family Group Co-ordinator will be actively looking to start new groups this year.

What families say about Home-Start groups:

“Invaluable”

“I love watching my child coming out of his shell”

“Group day is the best day of the week”

“I don't find it easy to make friends, but at this group there is always someone to talk to”



## Working in Partnership

This year we have been able to run two 10-week positive parenting courses (The Nurturing Programme), one in the Autumn and one in the Spring. We are working in partnership with Christchurch, Winchester who have led the course for us and we have provided an essential creche, which has enabled mums to focus without the distraction of their children. This course has been hugely successful for our parents; to have two hours of focused time to talk about parenting has been invaluable. All the parents attending have spoken very highly of the three ladies leading it.

Some of the parents have made firm friends and continue to support each other. The group dynamic is an empowering aspect of the course as the parents' felt isolation and lack of confidence in parenting has been reduced through shared experience.

The feedback we have received has all been positive and many concepts have been learned. One mum said how she has learnt the power of a parent and the importance of boundaries for the first time. Another mum said how enlightening it was and she now operates in a much more positive way towards her children, which in return they have picked up on and are being positive towards mum too!

We see the immense value of this course and we will continue to work with Christchurch to provide it again this year.





## Reflections from a Volunteer

There is no typical visit for a Home-Start Volunteer. During two hours a week, with well over a dozen families, I have had a wide range of experiences, some straightforward, others challenging.

It has often been useful to go alongside a mum to give her the confidence to cope with a new or difficult task. One, after severe illness, although a qualified driver, had previously been afraid to collect her children from school.

I have accompanied mums to Job Centre & Probation Service appointments, medical and mental health appointments, or made their attendance possible by waiting outside with their small children.

I have found myself needing to do things that were new to me too. I once needed to track down a scrap car dealer to remove a mum's wrecked car after it had been set on fire in a country layby. Another time a bank manager was persuaded to write off a small but rising debt when a mum had mistakenly overdrawn by just £10.

Often my input is easy, but still appreciated. I planted a little garden with a needy seven-year-old to give the mum a chance to spend quality time after work with her baby. I pushed a buggy alongside a mum using a disability scooter who dearly wanted to meet her other children from school, just once a week. Another mum was taught to use a slow cooker, which, needing no attention, provided a great hot meal at the end of the day. I demonstrated to another family the joys of a cost-free sunny walk alongside the river and showed the children how to play Poohsticks from the bridge.

Every day is different!

## Could YOU be a volunteer?

**Anyone with parenting experience is qualified to be a volunteer. But at another level we're looking for people with very special skills of empathy, friendliness, adaptability and common sense.**

**Volunteers are trained, supported and supervised to Home-Start UK national standards. If you could spare two hours a week to work with some of Winchester and District's most vulnerable families, contact [info@homestartwinchester.org.uk](mailto:info@homestartwinchester.org.uk)**

# My Home-Start Experience

"I was in a pretty bad way when Home-Start first met me. My flat was damp and unsuitable, my relationship had broken down and my little boy was challenging. We weren't getting any sleep because of the very noisy neighbours so we were exhausted and frustrated. My physical health is poor, and I was embarrassed to go out. I hadn't had much of a childhood, so I didn't really know how to be a good mum and I had no one to ask. My volunteer was brilliant. She gave me confidence, let me talk and gradually I started to go out with her. She even took me shopping and sometimes came with me to hospital appointments. I was devastated when my support ended 'cos we had been together for nearly a year. But I really wanted to stay involved with Home-Start - it's all the extras they support you with too: Basic Bank and Storehouse vouchers when you need them, stuff at Christmas, stuff for the kids. So, I braved it and went along to their summer club thing. In fact, they sent a taxi for me, so I had to go! But I didn't regret it. Both me and my son had a good time – he enjoyed playing outside in the garden, I liked the craft and we both liked the pizzas. I met some more Home-Start people there and so when the local group started after the holidays I decided to go along. It was just after Covid so there weren't many people which suited me and I got to know the staff and volunteers. We still go now – there is always someone to chat to especially when I am having a difficult day. It really breaks our week up and gives us something to look forward to.

When Home-Start suggested I attend a 10-week Nurture Programme I thought I would give it a go. And I am SO glad I did. It was brilliant. I loved every moment and I learnt so much. Plus, I had a couple of hours on my own each week because there was a creche. I learnt how to be a better mum and how to cope better on my own.

We've moved now as well so things are going much better for us. I sometimes wonder what life would have been like if Home-Start hadn't come into our lives. Well, all I can say is that I don't think we would be where we are now!! Thank you, Home-Start!"



# Fundraising

We were delighted when the easing of Covid restrictions meant that we could start organising fundraising events again.

We kicked off in August with a Car Boot sale at a new location in Bramdean, kindly sponsored by Hellards Estate Agents. Sadly, the weather was not in our favour and light but steady rain for most of the morning deterred both sellers and buyers. But we still made a profit and were very grateful to our patron, Sally Stewart, who supplied the location, and to her enterprising sons who were on hand every time it looked as if an area of the field was getting bogged down. We will hold another Car Boot sale at the same location in August 2022 and hope for better weather.



The Judi Dench evening in October at the Theatre Royal, Winchester was a huge success and was a sell-out. In conversation with John Miller, Dame Judi delighted her audience with stories and anecdotes from her long and distinguished acting career. She was given a standing ovation which was repeated at the restaurant next door where she went for an after-theatre supper. We were incredibly grateful to John Miller for initiating the evening and to a generous sponsor.

On a freezing cold, but fortunately dry, Saturday at the beginning of December we held a Bake Sale in St. Maurice's Covert, Winchester. Friends and family of the team donned their aprons and produced an astounding number of mince pies, bread, brownies, biscuits and cakes of every flavour possible. We opened for business at 10am and were sold out by lunchtime. It took members of the selling team longer to thaw out, however!







Our Christmas Card sold nearly 1000 packs last year. Designed once again by local artist, Daphne Vaughan, and sponsored by Dutton Gregory Solicitors, it was sold in Winchester and village shops, by enthusiastic supporters and in the Winchester Combined Charities Card Society shop. Card sales in 2022 are going to be more challenging as there is unlikely to be a charity card shop in the city.

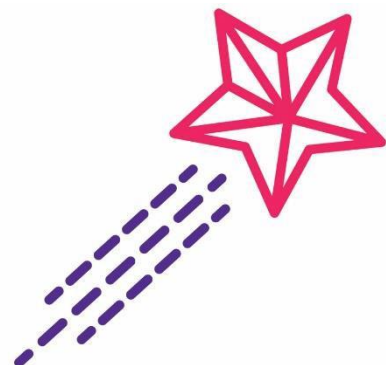
In March, we held our annual Dog Walk, sponsored by Gay Dog Boarding Kennels and Cattery. Two- and four-footed walkers set off from the beautiful 15th century barn in Old Alresford kindly made available to us by our patron, Alison Wakeham. The weather was kind, and the two footed walkers were welcomed back to the barn with home-made soups and a ploughman's lunch, while the four-footed walkers got a bowl of water!



I am so grateful to everyone who gives their time and energies to run these events and to the people who support them. They are invaluable to our fundraising efforts.

Sadly, we have recently seen the departure of two long-standing members of the Events Group, Barbara Tomsett and Marion Robinson. We would like to thank them for years of dedicated hard-work, innovative ideas and support. They will be missed.

Chrissie Barlow



# Activities and Events

## Summer Fun Club

In August, we once again ran a Summer Fun Club for our families. This was held in three marquees on the meadow at Lanterns and was attended by 33 adults and 53 children who enjoyed a variety of crafts and activities including a visit from Mill Cottage Mobile Farm, a drumming workshop run by Winnall Rock School and a dance session with Integr8Dance.

The Mayor of Winchester, Councillor Vivienne Achwal, visited and the highlight of her visit for the children was being allowed to try on her Mayoral chain.

Dominos provided pizzas for lunch on two of the days. On the other days, a picnic lunch was provided.





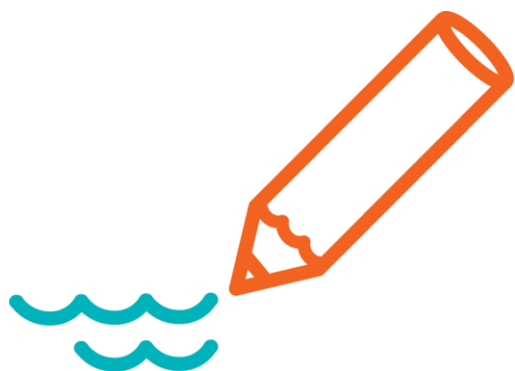
## How you can help us

Our services are provided free to families and are largely funded by individual donations, proceeds from fundraising activities, sponsorship and grants from charitable trusts and third parties including Winchester City Council and BBC Children in Need.

Local authority funding has been reduced in recent years and the Covid-19 pandemic has made fundraising more challenging while the need for our support has grown. The challenge now is to raise funds from new sources, and we are asking people to commit to supporting us by making a regular monthly payment.



## Become a Friend of Home-Start Winchester



The Friends of Home-Start Winchester programme was launched in summer 2020 and we are keen to see it develop further. While all fundraising is obviously beneficial, this is the “gold standard.” It is tax and time efficient for the donor and gives us financial security, allowing us to plan ahead. A standing order for £10 per month will support a place in one of our family groups while giving £30 per month would provide core support to a family for a whole year. Please will you help us help our families by becoming a Friend of Home-Start Winchester? Email [friends@homestartwinchester.org.uk](mailto:friends@homestartwinchester.org.uk) for more details.

**Organise an event for us** – From wine tastings, to choir concerts to Grand Balls we would welcome the opportunity to be your charity partner.

**Taking part in a sponsored event?** – Please consider selecting us as your chosen charity.

**Corporate partners** – Could your company sponsor one of our events? Or make us your charity of the year?



## Could you be a trustee?

Our trustees (or Board) have responsibility for overseeing the charity's governance, management and strategic direction. They play a very important role in helping to set the priorities for our local Home-Start.

Our Board is chaired by Barry Page who runs a friendly, efficient group who bring a range of different skills to the Home-Start table.

The Board is supported by a Finance Committee, chaired by the Treasurer, which has specific responsibilities for financial and funding issues. There are also two sub-groups, the Events Group and the Bids Team with responsibilities for fundraising activities and preparing applications to charitable trusts and grant making organisations.

Some people have been trustees for many years, others are relative newcomers: there's room for everyone! Trusteeship can be rewarding for many reasons - from a sense of making a difference to your local community to forging new experiences and relationships. Email [trustee@homestartwinchester.org](mailto:trustee@homestartwinchester.org) if you think you could add something to the team.

**Your skills and  
experience could  
help some of  
Winchester's most  
vulnerable families**





# Financial Report

## Home-Start Winchester and Districts

### Treasurer's Year-End Report - Period 1st April 2021 to 31st March 2022

#### Income and Expenditure

In the 12-month period April 2021 to March 2022 despite the continuing presence of Covid-19 the Charity has had a good year achieving:

Income **£97,020** (£76,307)

Expenditure **£95,074** (£76,972)

This performance has increased our Net Current Assets by **£1,805** to **£68,707** (£66,902).

With Covid-19 restrictions continuing throughout the year the Trustees nevertheless set a target at the start of this year to break-even. I am delighted to announce that we have met the target and more. This has been achieved by strict cost controls together with magnificent contributions from a number of fundraising activities and grants providers.

The Trustees wish to thank all our sponsors for their most generous support. The full detail is laid out in the following accounts.

#### Balance Sheet

The Balance Sheet shown later in the report shows that as at the 31<sup>st</sup> March 2022 the charity had total net assets of **£68,707** (£66,902) made up of:

Restricted Funding of **£8,736** (£3,286)

Unrestricted Funding of **£37,171** (£40,816)

Designated Funding of **£22,800** (£22,800)

It also shows that our Cash at Bank and in Hand on 31<sup>st</sup> March 2022 stood at **£119,997** (£99,898). Testament to an excellent fundraising year this is an increase on our starting Balance and includes significant Income received later in the year totalling **£51,290** which has been deferred to the following financial year 2022-23.

#### Funding sources

Our challenge continues to be to find alternative funding sources, particularly for Core Funding which is always more difficult to source than Project Funding. The identification of funding in addition to our normal Revenue Streams is key.

#### Events

Our **Fundraising Events Team** headed by Chrissie, following a year when they had virtually to shut up shop, have Been able to run some successful events this year raising **£12,608** (£694). Highlights were the evening with Dame Judy Dench and Christmas Cards.

#### Grants & Trusts

**The Grants and Trusts Team** have had another excellent year. Charitable Trusts, year on year become more demanding so it is particularly pleasing that the hard work put in by Martin and his small team has enabled them to raise the magnificent total of **£55,787** for 2021/22. In addition, they have raised a further **£29,225** which has been deferred to be spent in 2021/22. We are grateful for the continued support of Winchester City Council, Hampshire County Council, BBC Children in Need, Brooks Charitable Trust and Garfield Weston together with a number of contributions from other Charitable and Family Trusts including a magnificent contribution from the Oak Foundation.

## **Donations**

The **Donations** income stream has had another good year raising **£45,779**.

Utilita continue to provide regular wonderful support and additionally our generous individual supporters have donated between them **£12,555**.

### **Reserves & Investment Policy**

A large part of the charity's reserves are held in a 90-day notice account with Scottish Widows. The balance in this account currently stands at **£53,516**.

The Charity also holds funds in a CAF Gold account and a small amount is held within a CAF Cash account to meet all short-term commitments. As at 31 March 2022 the combined balance in these two accounts was **£66,876**.

The Trustees continue to review the charity's needs for unrestricted reserves in light of the financial risks to the organisation and in line with the guidance issued by the Charity Commission. As at 31<sup>st</sup> March 2022 our Unrestricted Fund held **£37,171** which represents approximately five months Expenditure.

### **Risk assessment**

The Trustees and Senior Staff maintain rolling funding and expenditure budgets including an assessment of the Major risks to which the charity is exposed through regular discussions at Board meetings. Identified external risks to funding have been included in our three-year strategic plan which includes cash flow projections and an analysis of the major risks to our current and future funding sources. This is updated each year.

Internal control risks are minimised by the implementation of procedures for authorisation of all transactions and activities. Procedures are in place to ensure compliance with health and safety of staff, volunteers and families. All procedures are based on national Home-Start policies and are reviewed and updated periodically to ensure that they meet the needs and legal requirements of the charity. The results have been incorporated into the Charity's strategic and work plans.

I thank Michael Kerby for undertaking an independent review of our accounts and Community First Winchester for preparing the monthly salary statements for our staff.

I would also like to thank Sue Barham our Office Manager who continues to apply her considerable skills and experience to running the accounts on a day-to-day basis.

**Mike Davies**

*Treasurer, June 2022*



## Home-Start Winchester and Districts

### FINANCIAL STATEMENTS FOR THE YEAR ENDED 31<sup>ST</sup> MARCH 2022

**Company Number: 5350249**

**Registered Charity Number: 1108170**

#### **HOME-START WINCHESTER AND DISTRICTS INDEPENDENT EXAMINER'S REPORT TO THE TRUSTEES FOR THE YEAR ENDING 31<sup>ST</sup> MARCH 2022**

I report on the accounts for the year ending 31<sup>st</sup> March 2022, which are set out on the following pages.

#### **Respective responsibilities of directors and independent examiner**

The charity's Trustees are responsible for the preparation of the accounts. The charity's Trustees consider that an audit is not required for this year (under section 43(2) of the Charities Act 1993 (the 1993 Act)) and that an independent examination is needed.

It is my responsibility to:

- Examine the accounts (under section 43(3)(a) of the 1993 Act)
- To follow the procedures laid down in the General Directions given by the Charity Commissioners (under section 43(7)(b) of the 1993 Act) and
- To state whether particular matters have come to my attention.

#### **Basis of independent examiner's report**

My examination was carried out in accordance with the General Directions given by the Charity Commissioners. An examination includes a review of the accounting records kept by the charity and a comparison of the accounts presented with those records. It also includes consideration of any unusual items or disclosures in the records and seeking explanations from you as trustees concerning any such matters. The procedures undertaken do not provide all the evidence that would be required in an audit, and consequently I do not express an audit opinion on the view given by the accounts.

#### **Independent examiner's statement**

In connection with my examination, no matter has come to my attention:

which gives me reasonable cause to believe that in any material respect the requirements

- (a) To keep accounting records in accordance with section 41 of the 1993 Act and
- (b) To prepare accounts which accord with the accounting records and comply with the accounting requirements of the 1993 Act have not been met.

To which, in my opinion, attention should be drawn in order to enable a proper understanding of the accounts to be reached

Michael Kerby  
Auditor

June 2022:

# HOME-START WINCHESTER AND DISTRICTS STATEMENT OF FINANCIAL ACTIVITIES (SOFA)

(INCLUDING AN INCOME AND EXPENDITURE ACCOUNT) FOR THE 12 MONTH PERIOD ENDING 31<sup>ST</sup> MARCH 2022

These accounts reflect the period 1<sup>st</sup> April 2021 to 31<sup>st</sup> March 2022. This statement of financial activities includes all gains and losses in the year.

<b><u>SOFA</u></b>	<b>Notes</b>	<b>Unrestricted Fund 2021/22</b>	<b>Designated Fund 2021/22</b>	<b>Restricted Funds 2021/22</b>	<b>Total Funds 2021/22</b>	<b>Total Funds 2020/21</b>
<b><u>Incoming resources</u></b>						
<i>Voluntary income:</i>						
Donations & grants	1(b), 2	48477		33589	82066	75507
<i>Activities for generating funds:</i>						
Fundraising events	6	14859		0	14859	694
<i>Investment Income:</i>						
Interest - All Accounts		38		0	38	106
<b>Total incoming resources</b>		<b>63374</b>	<b>0</b>	<b>33589</b>	<b>96963</b>	<b>76307</b>
<b><u>Resources expended</u></b>						
Costs of generating voluntary income	11	0	0	0	0	0
Charitable expenditure	11	54142	0	28139	82281	65426
Governance costs	11	12877	0	0	12877	11546
<b>Total resources expended</b>	-	<b>67019</b>	<b>0</b>	<b>28139</b>	<b>95158</b>	<b>76972</b>
<b>Gross transfers to &amp; from funds</b>	10	0	0	0	0	0
<b>Net movement of funds</b>		<b>-3645</b>	<b>0</b>	<b>5450</b>	<b>1805</b>	<b>-664</b>
<b>Reconciliation of funds</b>						
Total funds brought forward		40816	22800	3286	66902	67566
<b>Total funds carried forward</b>		<b>37171</b>	<b>22800</b>	<b>8736</b>	<b>68707</b>	<b>66902</b>

All incoming resources and resources expended derive from continuing activities.

## Balance Sheet

<b><u>Balance Sheet</u></b>		<b><u>31 March 2022</u></b>			
	<b><u>31/03/2022</u></b>		<b><u>31/03/2021</u></b>		
	<b>£</b>	<b>£</b>	<b>£</b>	<b>£</b>	
<b><u>Current Assets</u></b>					
<b><u>Debtors</u></b>					
Prepayments	2,751		3,676		
Cash at bank and in hand	117,246		99,899		
	<u>119,997</u>		<u>103,575</u>		
<b><u>Creditors</u></b>					
Deferred Income-	51,290		36,673		
-	<u>51,290</u>		<u>36,673</u>		
<b><u>Net Current Assets</u></b>		<b>68,707</b>		<b>66,902</b>	
Represented by:					
<b>Restricted funds</b>		8,736		3,286	
<b>Unrestricted funds</b>		37,171		40,816	
<b>Designated Funds</b>		22,800		22,800	
<b>Total Funds</b>		<b>68,707</b>		<b>66,902</b>	

For the year ending 31 March 2022 the charity was entitled to exemption from audit under Section 477 of the Companies Act 2006.

The members have not required the company to obtain an audit of its financial statements for the year ended 31st March 2022 in accordance with Section 476 of the Companies Act 2006.

The directors acknowledge their responsibilities for complying with the requirements of the Act with respect to accounting records and for the preparation of accounts.

These accounts have been prepared in accordance with the provisions applicable to companies subject to small companies' regime.

Barry Page

Chair of Trustees

June 2022

**HOME-START WINCHESTER AND DISTRICTS  
NOTES TO THE FINANCIAL STATEMENTS  
FOR THE YEAR ENDING 31<sup>st</sup> MARCH 2022**

**1. Accounting Policies**

The principal accounting policies are summarised below. The accounting policies have been applied consistently throughout the year and in the preceding year.

**(a) Basis of accounts**

The accounts have been prepared under the historical cost convention. The financial statements have been prepared in accordance with the Statement of Recommended Practice (SORP), "Accounting and Reporting by Charities" published in March 2005 and applicable accounting standards.

**(b) Fund accounting**

The unrestricted funds are generally those which are available for use at the discretion of the trustees in furtherance of the general objectives of the charity and which have not been designated for other purposes. Restricted funds are funds which are to be used in accordance with specific restrictions imposed by donors or which have been raised by the charity for particular purposes. The cost of raising and administering such funds are charged against the specific fund.

Designated Funds are Unrestricted Funds used to manage revenue risks and to set aside funds for committed projects, in line with the guidance issued by the Charity Commission.

**(c) Income recognition**

Grants and donations are included in the Statement of Financial Activities (SOFA) when the charity is legally entitled to the income and the amount can be quantified with reasonable accuracy. Deferred income represents amounts received for future periods and is released to incoming resources in the period for which it has been received. Bank interest is recognised on a receipt basis.

**(d) Resources expended**

All expenditure is accounted for on an accruals basis and is recognised when there is a legal or constructive obligation to pay for the expenditure. Costs relating to charitable activities comprise those incurred by the Charity in the delivery of its activities and services for its beneficiaries. It includes both costs that can be allocated directly to such activities and those costs of an indirect nature necessary to support them. Management and administration (governance) costs are those incurred in connection with the administration of the charity and compliance with constitutional and statutory requirements.

All costs are allocated between the expenditure categories of the SOFA on the basis designed to reflect the use of the resource. Costs relating to a particular activity are allocated directly; others are apportioned on an appropriate basis such as estimated usage as set out in Note 11.



## NOTES TO THE FINANCIAL STATEMENTS (CONTINUED)

### 2 & 3. Grants & Trusts

The Grants and Trusts Team raised a magnificent total of **£85,012** which included **£18,673** brought forward from the previous financial year. **£29,225** was received later in the year and was carried forward to be spent in 2022/23. It can be seen from the table below the extent of the generosity of many contributors, but special mention must go to the Oak Foundation.

<b>Grants &amp; Trusts as at: 31 March 2022</b>	<b>Purpose</b>	<b>Restricted 2021-22</b>	<b>Unrestricted 2021-22</b>	<b>Total 2021-22</b>	<b>Deferred to 2022-23</b>
WCC Annual Grant	Core Funding		8,820	6,920	1,900
Garfield Weston Year 3	Families	5,000	0	4,000	1,000
Brooks Charitable Trust	Families	6,780	0	2,780	4,000
BBC Children in Need	Families	8,966		7,641	1,325
BBC C-in-N Money Heroes	Families	1,000		0	1,000
Caring for Families HSUK	Core Funding	3,168		3,168	
HCC Supporting Families	Families	10,000		10,000	
Imperium Trust Co	Core Funding		5,000	5,000	
J Porter	Families	500	0	500	
Bank of England	Core Funding		500	500	
Wolvesey Lodge of Masons	Core Funding		300	300	
Mayor's Charity	Core Funding		2,478	2,478	
Richard Kirkman Trust	Core Funding		1,000	1,000	
Hants & IOW Masonic Charity	Core Funding		1,000	1,000	
WCC Phones for Volunteers	Families	500		500	
Oak Foundation	Core Funding		30,000	10,000	20,000
<b>Totals</b>		<b>35,914</b>	<b>49,098</b>	<b>55,787</b>	<b>29,225</b>

### 4. Trustee Remuneration & Related Party Transactions

No Trustee or related person received any remuneration during the period. No Trustee or other person related to the charity had any personal interest in any contract or transaction entered into by the charity during the year.

### 5. Taxation

The company is registered as a charity in accordance with the Charities Act 1003 and is not liable to taxation on its income. No tax charges have arisen in the charity during the year.

## 6a. Fundraising Events

Our Fundraising Events Team raised **£12,608** with special mention going to the evening with Dame Judy Dench and the successful sales of our Christmas Cards

<b>Fundraising Events Summary April 2021 to March 2022</b>	<b>Income 2021-22</b>	<b>Expenditure 2021-22</b>	<b>Net Income 2021-22</b>
On-Line Quiz	420	0	420
Car Boot Sale	1563	125	1438
Judy Dench Event	6784	323	6461
Covert Cake Sale	865	35	830
Christmas Cards	5228	1768	3459
<b>Total</b>	<b>14,859</b>	<b>2,251</b>	<b>12,608</b>

## 6b. Fundraising Donations

Donations raised **£26,279** plus **£19,500** received later in the year and carried forward to 2022/23.

Special mention to the generosity of our loyal supporter Utilita.

<b>Donations Summary - April 2021 to March 2022</b>	<b>Income 2021/22</b>	<b>Deferred to 2022/23</b>
Brought Forward from 20/21	18000	
Friends Donations	12147	
Utilita	6000	
Gift Aid	3342	
Other Donations	6290	
Carried Forward to 22/23	-19500	19500
<b>Total</b>	<b>26,279</b>	<b>19,500</b>

## 7. Staff Costs and Numbers

<b>Staff Costs</b>	<b>2021/22</b>	<b>2020/21</b>
	<b>£</b>	<b>£</b>
Salaries and wages	53,600	48,215
Social security costs (NI)	10,887	10,125
<b>Total</b>	<b>64,487</b>	<b>58,340</b>
<b>Numbers of Staff</b>	<b>2021/22</b>	<b>2020/21</b>
	<b>Number</b>	<b>Number</b>
Senior Coordinator	0.70	0.70
Coordinator	0.65	0.65
Office Manager	0.65	0.55
Family Drop-in Group Leader	0.30	0.10
Family Drop-in Group Support Worker	0.10	0.05
<b>Total</b>	<b>2.40</b>	<b>2.05</b>

## 8/9 Debtors & Creditors

<b>Debtors</b>	<b><u>2021/22</u></b>	<b>-</b>	<b><u>2020/21</u></b>
Quiz Deposit	250	-	250
Summer Festival Marquee Deposit	250	-	250
Premier Insurance	173	-	151
Lanterns Rent	1,458	-	1,529
Charity Log - Dizions	397	-	444
Home-Start UK Annual Fee	0	-	821
HSUK Legal& Accident Insurance	69	-	78
Drop Box Annual Licence	115	-	109
Web Site Hosting Annual Licence	39	-	44
<b>Total</b>	<b>2,751</b>		<b>3,676</b>
<b>Creditors</b>	<b><u>2021/22</u></b>	<b>-</b>	<b><u>2020/21</u></b>
Donations	19,500	-	18,000
Oak Foundation	20,000	-	0
Brooks Trust	4,000	-	6,780
Garfield Weston Trust	1,000	-	5,000
BBC CinN Money Heroes	1,000	-	0
Imperium Trust	0	-	0
Caring for Families HSUK	0	-	3,168
Dog Walk	755	-	0
Quiz	1,810	-	0
J Porter	0	-	500
WCC Annual Grant	1,900	-	1,900
BBC Children in Need	1,325	-	1,325
<b>Total</b>	<b>51,290</b>		<b>36,673</b>

## 10. Movement in Restricted Funds

Movement of Funds	At 1st April 2021	Incoming Resources	Outgoing Resources			At 31st March 2022
	£	£	£			£
<b>Restricted Funds</b>						
All Restricted Funds	3286	33,589	28,139			8736
<b>Total Restricted Funds</b>	<b>3,286</b>	<b>33,589</b>	<b>28,139</b>			<b>8736</b>
<b>Unrestricted funds</b>						
General funds	40,816	63,374	67,019			37171
Designated fund	22,800	0	0			22800
<b>Total unrestricted funds</b>	<b>63,616</b>	<b>63,374</b>	<b>67,019</b>			<b>59971</b>
<b>Total funds</b>	<b>66,902</b>	<b>96,963</b>	<b>95,158</b>			<b>68707</b>

## 11. Total Resources Expended

	Core charitable activities	Governance	Parenting Course	Volunteer Prep courses	Family Drop-in group	Family Services	2021/22 Totals	2020/21 Totals
Costs directly allocated to activities	£	£	£	£	£	£	£	£
Wages, NI, Pensions	12,897		0	6,449	6,449	29,019	54,814	49,589
Staff expenses	57	43		28	28	128	284	234
Trustee Expenses	0	0	0	0	0	0	0	68
Volunteer expenses	460	345	0	230	230	1,035	2,301	480
Training	359	269	0	179	179	807	1,793	780
Mental Health Project	0	0	0	0	0	0	0	555
Covid Other Expenses	290	217	0	145	145	651	1,448	2,474
Covid Staff Expenses	13	10	0	7	7	30	67	2,057
Family Group Exp	0	0	0	0	3,304	0	3,304	295
Family outings	0	0	0	0	0	38	38	351
Summer School	0	0	0	0	0	5,972	5,972	4,312
<b>Direct Total</b>	<b>14,076</b>	<b>884</b>	<b>0</b>	<b>7,038</b>	<b>10,342</b>	<b>37,681</b>	<b>70,020</b>	<b>61,195</b>
Support costs allocated to activities								
Wages, NI, Pensions	0	9,673	0	0	0	0	9,673	8,751
Stationery & postage	58	44	0	29	29	131	291	53
Telephone	344	258	0	172	172	773	1,718	1,385
Photocopying	270	202	0	135	135	606	1,348	72
Insurance	175	131	0	87	87	394	874	772
Capital items & fees	388	291	0	194	194	874	1,942	1,568
HSUK Fee	439	329	0	219	219	988	2,195	716
Fundraising	450	338	0	225	225	1,013	2,251	0
Bank charges	14	11	0	7	7	32	72	61
Accommodation	714	536	0	357	357	1,607	3,571	1,929
Sundry expenses	241	180	0	120	120	541	1,203	477
<b>Support Total</b>	<b>3,093</b>	<b>11,993</b>	<b>0</b>	<b>1,546</b>	<b>1,546</b>	<b>6,959</b>	<b>25,138</b>	<b>15,784</b>
<b>Overall Total</b>	<b>17,169</b>	<b>12,877</b>	<b>0</b>	<b>8,584</b>	<b>11,888</b>	<b>44,640</b>	<b>95,158</b>	<b>76,979</b>



## 12. Designated Funds

<b><u>Designated Funds - 2021-22</u></b>	<b><u>31-Mar-22</u></b>	<b><u>01-Apr-21</u></b>
<b>Revenue Unpredictability Provision</b>		
a. WCC:	0	0
b. BBC Children in Need:	0	0
c. HCC Councillors:	800	800
d. Other Charitable Trusts	10,000	10,000
e. Donations	5,000	5,000
f. Events	<u>5,000</u>	<u>5,000</u>
<b>Total of Revenue Unpredictability</b>	<b>20,800</b>	<b>20,800</b>
<b>Capital Equipment - Replacement Liability</b>	<b>2,000</b>	<b>2,000</b>
<b>Project Fund towards Scheme Expansion</b>	<b>0</b>	<b>0</b>
<b>Cost of Closing the charity</b>	<b>0</b>	<b>0</b>
<b>Designated Fund Total</b>	<b>22,800</b>	<b>22,800</b>

The Trustees each year review the charity's financial requirements, establishing Designated Funds to manage revenue risks and to set aside funds for committed projects, in line with the guidance issued by the Charity Commission. Designated Funds plus Restricted and Unrestricted Funds constitute the charity's Reserves.



## Structure, Governance and Management

Home-Start Winchester and Districts was incorporated as a company limited by guarantee in 2005 and is registered under the Charities Act 1993 and the Companies Acts 1985 and 1989. It is governed by a Memorandum and Articles of Association and by its Board of Trustees. It has a legal agreement with Home-Start UK to follow their national Standards and Methods of Practice. Its year end is 31st March.

**Registered charity name:** Home-Start Winchester and Districts

**Charity registration number:** 1108170

**Company registration number:** 5350249

**Registered office and operational address:**

Lanterns Nursery School  
Bereweke Road  
Winchester  
SO22 6AJ  
Telephone: 01962 851177

**Bankers:**

CAF Bank Limited, 25 Kings Hill Avenue, Kings Hill, West Malling, Kent ME19 AJQ

**Trustees:**

Barry Page - Chair  
Mike Davies - Treasurer  
Martin Tomsett - Company Secretary & Vice Chair  
Chrissie Barlow  
Carolyn Beech – Resigned June 2021  
April Chidgey – Retired September 2021  
Stephanie Durrant  
Gill Longman  
Hilary North  
Jackie Sumner  
Graham Winyard

**Patrons:**

Sally Stewart  
Alison Wakeham

**Staff:**

Liz Stannard – Service Manager  
Jane Read – Service Co-ordinator  
Sue Barham - Office Manager  
Charlotte Howard – Family Group Co-ordinator  
Liz Brown - Family Group Leader

**Independent Examiner:** Michael Kerby FCA



**the earliest years make  
the biggest impact**



**No judgement, just compassionate,  
confidential help and expert support.**

**Starting in the home, our approach is as  
individual as the people we're helping.**

**Sharing local expertise to drive national  
and regional change.**

