

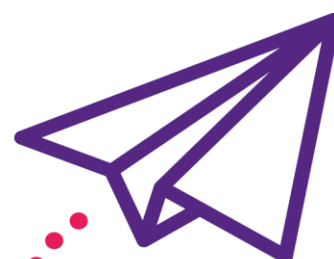


....a year like no other



Contents

Because childhood can't wait	3
Chair's report	4
Staff team report	6
Volunteering through lockdown	8
A family in lockdown	9
Fundraising	10
Christmas	12
Activities and Events	14
How you can help us	16
Treasurer's report and Annual Accounts	18
Independent Examiner's Report	20
Statement of Financial Activities	21
Structure, governance and management	30





We believe that children need a happy and secure childhood and that parents play the key role in giving their children a good start in life. The earliest years make the biggest impact so we want to see a society in which every parent has the support they need to give their children the best possible start.

We offer free support to young families within the Winchester area with at least one child under five who are going through difficult times including:

- Loneliness and isolation
- Relationship difficulties
- Coping with twins, triplets or several pre-school children
- Ill health - physical or mental
- Disabilities and special needs
- Lone parenting
- First time parenthood and new babies
- Children's behavioural problems
- Unemployment or economic difficulties

Home-Start Winchester and Districts is one of over 200 schemes within the national Home-Start movement. Our service is provided by a team of **volunteers** who are recruited, trained and given on-going support by our **staff co-ordinators**. Volunteers offer informal, friendly and confidential support, for at least two hours once per week usually for between six and 12 months, although periods of more than a year are not uncommon for families with more complex problems. Our service is overseen by a Board of volunteer **trustees** who bring a range of professional skills and expertise to the organisation.

Chair's Report

Resilient; adaptable; creative; generous and totally committed. That's how I would sum up our Staff, Volunteers, Supporters, my fellow Trustees and, most importantly, our Families over the past year. And that doesn't begin to do justice to any of them!

We began the year soon after the start of the first lockdown, with newly formed staff and trustee teams. There was a level of uncertainty, apprehension and concern about what the pandemic was all about and how we would need to adjust. We hoped it wouldn't last very long and we could soon get back to 'normal'; how misguided that was!

Very quickly the impact on all our lives became significant. "Stay at home", shielding, social distancing, self-isolation and home-schooling impacted everyone to differing degrees, but for our families, staff, trustees and volunteers the effects were very real. Home visits were no longer possible, our family groups ended and staff had to work remotely from home. Our planned schedule of vital fundraising events had to be cancelled and Board meetings moved onto Zoom.

It was a year in which everyone went "above and beyond" and for that I am immensely grateful. We are still trying to understand the impact the lockdowns and associated restrictions had and continue to have on our families. Many showed high levels of resilience and resolve. But, worryingly, we know too many were negatively impacted.

A big Thank You to all those who donated during the year and to those who became a 'Friend of Home-Start', making a one-off and/or regular donation. You have helped to make a big difference and continue to do so. But it didn't end there. Thanks to the efforts of a number of present and former trustees, and with support from staff, numerous applications were made for Covid-related grants from both local and national sources. None was guaranteed, and we were not always successful. But many bids were won and they have made a significant contribution.

I would like to thank our corporate sponsors, particularly Utilita who generously continue to make regular donations, and all the trusts and foundations who donated during the year. Without your support we could not make the level of difference we do to the parents and their children of Winchester and the surrounding area.

The impact on all our lives became significant.... It was a year in which everyone went "above and beyond".



Sometimes being chairman means joining Santa's team to select random lucky hamper winners!



Regular Board meetings and even the AGM were held on Zoom.

It was a year when humanity, humility and selflessness were much in evidence, not least on the part of our staff, volunteers, supporters and my fellow trustees.

Our Board of trustees has taken on a very different look this year since the retirement last year of our former Chair and Vice-chair. Our schedule of meetings continued online, including the AGM, ensuring governance of the charity was maintained. This was supplemented by fortnightly update meetings with the staff team and a two-part strategy meeting. It is truly a great Board of trustees. and we have wonderful support from our Patrons Alison Wakeham and Sally Stewart.

A particular word of thanks to our treasurer Mike Davies for steering us throughout the challenges of the year with his regular up-to-date financial reports. Stephanie Durrant must have often wondered what she'd committed herself to, after she agreed to join the Board shortly before the first lockdown: what a year to take on the shared responsibility for helping to run the charity! Later in the year Gill Longman joined the Board to lead our Marketing and Communications, taking over from Sue Gentry who had spent several years ensuring Home-Start was regularly promoted via various media. Thank you Sue! At our AGM we will say goodbye and an enormous thank you to April Chidgey who has not only been a Board member for nearly 10 years but also a hugely valued volunteer since 2009. April has been a complete stalwart of our team, fondly liked by everyone, she has made invaluable contributions to the many families she has supported, to the Board and our fundraising team.

As the year progressed, staff prepared for a resumption of "normal service" including the start of a new group in Winnall. We managed finally, to complete the training of the latest cohort of volunteers, without whom we couldn't provide our core service. By the end of March 2021 we were supporting 42 families (25 with volunteers; 17 at groups) and had 39 volunteers on our books, seven of whom are resting. Frustratingly, our desire to resume the full scope of our services, including the launch of a new family group in Winnall, was still being thwarted by lockdown and restrictions. But everyone was primed and ready for the government's phased 'road-map' back to normality.

So, while it was a year which won't be forgotten for reasons of isolation, financial, physical and mental hardship and, for some, the loss of loved ones, there are also some more positive reflections. It was a year when humanity, humility and selflessness were much in evidence, not least on the part of our staff, volunteers, supporters and my fellow trustees. Being the Chair is way easier when you have great people around you; and without your support the last year would have been a lot more difficult than it was. Thank you to you ALL.

Barry Page

Staff Team Report

Jane Read joined us in April last year. When we reordered the office to accommodate her and social distancing, we had no idea that she would not spend a full day working from her new desk for over a year.



Who would have thought that one of Jane's first visits to a new Home-Start family would be in a field of cows or that her entire induction would be on zoom?

This was a year when job descriptions were loosely held as Sue Barham orchestrated and delivered with the rest of the team not only food and activities, but also a friendly chat on hundreds of doorsteps over many weeks, while at the same time easing us from one familiar yet outdated database system to another.

New senior co-ordinator Liz Stannard's plans for building and developing the team were whittled down to one socially distanced fish and chip Christmas lunch and a shared pizza. Who says team building is more difficult via a screen? In place of groups, Liz Brown and Susan Baker's weekly telephone and video calls or doorstep visits became a regular fixture for the isolated households of previous family group members, offering vital connections and a raising of spirits. Liz recalls a WhatsApp session when her image was propped up in a dolls house while a child played around her and chatted endlessly to her on screen!

It was a year for collaborative working on a scale greater than ever before, and we became familiar faces (both virtual and real) at The Food Bank, Churches Together Christmas Project, The Storehouse and Community First. We went to appraisals, supervisions, family conferences, agency meetings and Home-Start meetings, met new referrers and got to know our supporting agencies much better, all through the magic of technology.

But if we thought our year was tricky, spare a thought for some of our families:

- The single parent who received a devastating diagnosis for her baby daughter just before lockdown and was totally unable to access the services that she or the baby needed.
- The parents whose fragile relationship finally gave out in a painful and acrimonious way leaving five children without contact with their Dad.
- The father devastated by the death of both his parents in the space of three months.
- The Mum who was so paralysed with anxiety and fear that she and her three children were unable to leave the house for several months.
- The new Mum who struggled to bond with her baby and longed for the support of friends and family.



Liz and Sue collect hamper donations from Waitrose. Part of the national "Give a Little Love" corporate partnership.

**Fantastic, flexible and
dedicated volunteers
have supported each family.**

We supported families who were shielding children and parents who were being shielded; saw families through relationship breakdowns, illness, chickenpox, mental health issues and new arrivals and were there for families living in high rise flats, one room in hostels and overcrowded homes. And through all this our fantastic, flexible and dedicated volunteers have imaginatively supported each family in whatever way they could and however they were allowed to, by building relationships, keeping communication channels open and gifting quality time and a listening ear to anyone who needed it.

It has been an extraordinary year and one that we will never forget. We have laughed and cried and been energised and exhausted in equal measure. Above all we have done it together, not for the families but with the families. Their resilience and determination have been an inspiration to us and we have all felt it a real privilege to support them during this time.

Liz Stannard



**When job descriptions were
loosely held...**

**Sue with a FareShare bakery
store!**

**Jane with husband Andy during
the May fundraising JOGLE.**

**Liz with a boot full of deliveries
for locked down families.**



Volunteering through lockdown

Melissa has been a volunteer for five years. In that time she has worked with four families. But she admits, the greatest challenge has been the past year with its three periods of lockdown and social distancing.

“I met my family in November 2019, we had three months of getting to know each other, meeting weekly, cuddling and playing with the children in their home, attending school meetings with the family and travelling on buses and in taxis. Then lockdown started.

“It was such a shame – and the timing felt terrible. Mum and I had built up quite a lot of trust and we were working through child development and self-esteem issues. So we decided together that I would continue to visit her every week with social distancing, on her doorstep. My weekly visit changed to bringing food, toys and books and checking in with Mum and the children. I usually stayed for 30 minutes to an hour listening and discussing any worries.

“During the year Mum’s family unfortunately suffered three significant traumas. A close family member became seriously unwell, another was involved with the police, and finally social services became involved causing much anxiety and worry. I had many phone calls through this time with Mum but I feel the face to face meetings were even more valuable.

“A year later I am extremely proud of my family. The children are more settled. The eldest is managing much better at school while the youngest has started pre-school and is very happy. The children get on better together and Mum is much more confident in her parenting. Her self-esteem has significantly improved: the difference in her and the children is really noticeable. She is incredibly capable and has now started supporting others.”



**Could YOU
be a
volunteer?**

Home-Start’s philosophy is very simple: It’s about parents helping parents. So, at one level, anyone with parenting experience is qualified to be a volunteer.

But at another level we’re looking for people with very special skills of empathy, friendliness, adaptability and common sense. Volunteers are trained, supported and supervised to Home-Start UK national standards.

If you could spare two hours a week to work with some of Winchester’s most vulnerable families contact info@homestartwinchester.org.uk

A family in lockdown

We first met Vicky in the cluttered, neglected garden of her parents' home. She was shy and nervous but proud of her eight-month baby daughter Clara, who greeted us with a cute, dribbly smile. In the house was Vicky's demanding and difficult brother who refused to allow visitors inside. Vicky was his carer while her parents worked. His controlling behaviour clearly reflected her experiences with Clara's father – and she was determined to have no further contact with him.

She explained that there was no room for her and Clara in the small house: she slept on a sofa with baby in a cot next to her. Her eyes filled with tears at the hopelessness of their situation. Clara had been born during lockdown and had met no other babies or small children. We felt overwhelmed by the challenges Vicky was facing – and the pressure worsened her chronic arthritis.



Maria, one of our volunteers with lots of experience of babies and early motherhood began visiting Vicky regularly. They went for walks and talked and talked. Maria helped Vicky with the paperwork needed to apply for council accommodation. Step by step life improved – and then went backwards as Vicky's fragile confidence collapsed and had to be rebuilt.

But at the end of last year Vicky and Clara moved into a flat of their own. They had nothing but a small case of essential clothing. Home-Start connected with other agencies to provide white goods and some second-hand furniture. Local volunteers and supporters rallied round to provide kitchen utensils, toys, curtains and soft furnishings. At Christmas lovely parents from Princes' Mead School provided presents for Clara.

Vicky is beginning to see light at the end of what seemed like her very dark tunnel. She has a lovely relationship with Maria but doesn't have the confidence to go out to parent groups with Clara. We have invited her to join our new small baby group to help both of them socialise and make new friends. Clara is giggling and crawling and ready to help her Mum make their next steps forward.

Fundraising

Traditional fundraising events were cancelled as Lockdown 1 took hold. Our golf tournament, car boot sale, autumn quiz and Christmas cake sale all had to be cancelled. Creativity and innovation helped plug the financial hole.

An exhausting but lucrative “JOGLE”

The first flash of inspiration came from new Senior Co-ordinator, Liz Stannard. She proposed a JOGLE – a virtual marathon trip from John O’Groats to Land’s End and back. The idea was supported enthusiastically by people at home who were keen to put their daily exercise to good use. Participants walked, cycled, jogged, scootered, galloped, and even swam outdoors because pools were closed. Sixty adults and seven children took part, raising an astounding £14,000 in fourteen days last May. The original trip would have been around 2,000 miles but enthusiasm proved infectious and the final distance “travelled” was 3,069 miles – enough for a further journey to Land’s End! Huge thanks to IVC cars of Alresford who sponsored the event.

Right:
Anne McPherson on Brenna.

Below right:
Christine Sacree exercised with the support of her grandson.

“Friends” help secure long term core funding

The uncertainties surrounding Covid and the state of public finances focussed our attention on the need to secure regular, long-term core funding.

Even in affluent Winchester, there are many families with young children who really struggle with issues such as poverty, isolation, low self-esteem, disability or mental health problems. With the difficulty of receiving state-funding we recognised that we increasingly need to secure long term core funding through the generosity of the local community.

The Friends of Home-Start Winchester programme was launched last summer. It led to a doubling of standing orders from private individuals and we are keen to see the programme develop further. While all fundraising is obviously beneficial this is the “gold standard”. It is tax and time efficient for the donor, gives us financial security and allows us to plan ahead.



Former Home-Start Mum Lena Poole watched by triplets Logan, Xander and Alastair cycled 150km on her static bike to say thank you for the support she had received.

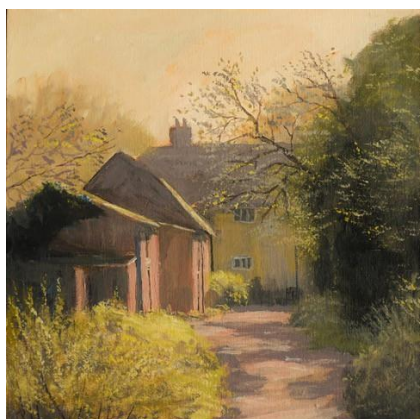




Claire Tomsett-Rowe

Jazz for cocktails

Technology came to our aid again in June when saxophonist Claire Tomsett-Rowe performed early evening *'Jazz for Cocktails'* live on our Facebook page. Her programme included many favourites from the Great American Songbook, including well-known numbers by George Gershwin, Irving Berlin and 'Fats' Waller. The concert attracted viewers from the UK, Europe and as far away as Melbourne, Australia and donations totalled over £1,700.



A painting of the Mill at Alresford by Richard Cox – one of 25 artworks sold by the ArtStart fundraising project.

ArtStart

In the autumn, ArtStart brought together artists from around Hampshire who were unable to sell their work when exhibitions and galleries were closed. Artists exhibited work in a range of media, prints and even mosaics on a bespoke website. The idea was the brainchild of Winchester photographer Michelle Quinton, who joined forces with our former trustee and current chair of the Alresford Art Society, Sue Gentry. Nearly £400 was raised as a percentage of money from each sale was donated to Home-Start Winchester. The idea took off at Christmas with people shopping online, glad of the opportunity to buy original presents.



Ali and Matt at the end of their "Keep calm and keep on pedalling" challenge.

New Year cycling

2021 got off to an energetic and profitable start thanks to cyclists Ali Longman and Matt Neal from Sutton Scotney. They set out to beat the January blues and cycled 1000km during the month raising over £1200 for us along the way.

Online for St Patrick's Day

In the spring we took entertainment online when over 60 people attended an online celebration of St. Patrick's Day. Ready-prepared meals were delivered to participants who tuned in to a Zoom festival which included Irish songs and dancing and a demonstration of lace making.

Christmas

Christmas doesn't usually have a section to itself in our Annual Report. But the combination of restrictions, changing tiers and impending further lockdown encouraged widespread generosity from the local community and businesses. It seemed that everyone rallied round to ensure our children and families weren't left behind.



Our Christmas fundraising was dominated by the excitement surrounding the national partnership with John Lewis and Waitrose. We had little notice of the "Give a Little Love" campaign but forged partnerships with three local Waitrose stores and the partnership's hotel at Leckford.

Initial funding provided money for 40 children plus their parents to visit the Theatre Royal's "Four Dames in Search of a Panto". Unfortunately, lockdown measures stopped families attending the second performance. A later tranche of money has provided the funding for our bespoke Mother and Baby group – specifically targeting new Mums with babies born in lockdown.

Partners at our local Waitrose in Winchester have been particularly generous – both at Christmas and into 2021. Jaxon and Kaitlyn were two of over 60 children to receive Advent calendars.



Meanwhile Mums (and babies) have been spoiled with some special wellbeing packs.



Ava was one of our lucky youngsters who did get to the panto. She sat in the front row and even got sprayed with water!



Santa didn't quite come to town in December but he did drop by for some FaceTime calls with our children. Graham Winyard demonstrates that our trustees are infinitely adaptable!

Early in December **Hotel du Vin** offered us two hampers containing a full Christmas lunch: turkey & all the trimmings, champagne, vegs, pudding. The hotel provided the turkeys while generous staff donated all the other items.

The only way to share the bounty was to dress chairman Barry in an elf's hat and ask him to pull out the names of two families at random from Santa's hat. Two days before Christmas, Hotel du Vin's night manager John Ray disguised as Santa went delivering....

One of the lucky Mums admitted she was overwhelmed: "This has been a tough year for almost every business, but especially for those in hospitality. **Through Home-Start I have made friendships that will last a lifetime. I have had my tears wiped, and I've learned so much.** In a year when the world has been turned upside down and things have seemed dark and gloomy, I am truly uplifted by the kindness and generosity of this donation."

Clothing retailer **White Stuff** has also created a national partnership with Home-Start. Lots of clothing goodies arrived in our office before Christmas and here's Lexi-Mai modelling her new hat, scarf and gloves. We were able to share the love and spread the goodies among children who needed them all around Winchester.



Staff and parents at Prince's Mead School once again brought toys and gifts for our children and families. The picture shows Carl the caretaker being one of Santa's little helpers as he handed over the Christmas treats.



Activities and Events

Activities and Events in the past year were inevitably hit by the pandemic. Face to face visits with families were replaced by phone calls and sadly the closure of our family groups.



An AGM on Zoom

The 2020 AGM was a virtual event shortly after the start of Lockdown1 - but it had important implications for the management of Home-Start. Former Chair Liz Cooper stood down and handed over to Barry Page. We also said goodbye to Deputy Chair Trevor Lewis. The Mayor of Winchester, Cllr Patrick Cunningham, “attended” one of his first engagements by joining us on what was then the novelty of meeting on Zoom.



Farewell to Anne

In May, we said goodbye to Anne MacPherson who became the first Co-ordinator of Home-Start Winchester when the scheme began in September 2005. Anne’s last day before retirement was spent in isolation at home with her husband Angus. But that didn’t stop the arrival of flowers, dozens of cards from families, staff and volunteers, a bottle of bubbly and a collection of over £1,000. Her last staff meeting on Zoom was gate-crashed by trustees and colleagues eager to say goodbye.



Summer Fun Club

The two-week Summer Fun Club brought families together to socialise following the hardships of the first lockdown and the challenge of educating children at home. Our staff had grown concerned about the impact of isolation and we wanted to support parents and prepare children for the return to school and nursery.

Social distancing was key and we created a mini village with three separate marquees - each with its own play area to keep the 15 families in 'pods'.

Each day play and craft activities were themed on popular children's stories including *The Very Hungry Caterpillar*, *We're Going on a Bear Hunt* and *Elmer the Elephant*. Each Tuesday there were special sessions where parents and children were able to try their hand at weaving, modelling with clay and making dream catchers.

The Fun Club also led to collaboration with several local businesses: the marquees were supplied by Medstead Marquees, lunches by Domino pizza and fish and chips from Rick Stein.



The Mayor of Winchester, Cllr Patrick Cunningham, who chose Home-Start as one of his charities, made a real-life appearance. He was warmly greeted by the youngsters who were fascinated by his mayoral chain and he quickly joined in the fun and games.





How you can help us

Our services are provided free to families and are largely funded by individual donations, proceeds from fundraising activities, sponsorship and grants from charitable trusts and third parties including Winchester City Council and BBC Children in Need.

Local authority funding has been reduced in recent years and the Covid-19 pandemic has made fundraising more challenging while the need for our support has grown. The challenge now is to raise funds from new sources and we are asking people to commit to supporting us by making a regular monthly payment.



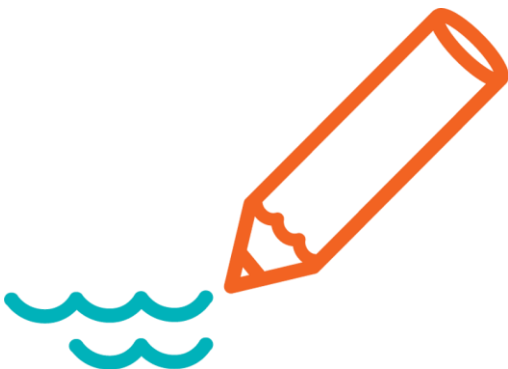
Become a Friend of Home-Start Winchester

The Friends of Home-Start Winchester programme was launched in summer 2020 and we are keen to see it develop further. While all fundraising is obviously beneficial, this is the “gold standard.” It is tax and time efficient for the donor and gives us financial security, allowing us to plan ahead. A standing order for £10 per month will support a place in one of our family groups while giving £30 per month would provide core support to a family for a whole year. Please will you help us help our families by becoming a Friend of Home-Start Winchester? Email friends@homestartwinchester.org.uk for more details.

Organise an event for us – From wine tastings, to choir concerts to Grand Balls we would welcome the opportunity to be your charity partner.

Taking part in a sponsored event? – Please consider selecting us as your chosen charity.

Corporate partners – Could your company sponsor one of our events? Or make us your charity of the year?



Could you be a trustee?

Our trustees (or Board) have legal responsibility for the charity's management and administration. They play a very important role in employing staff and helping to set the priorities for our local Home-Start.

Our Board is chaired by Barry Page who runs a friendly, efficient group who bring a range of different skills to the Home-Start table.

The Board is supported by a Finance Committee, chaired by the Treasurer, which has specific responsibilities for financial and funding issues. There are also two sub-groups, the Events Group and the Bids Team with responsibilities for fundraising activities and preparing applications to charitable trusts and grant making organisations respectively.

Some people have been trustees for many years, others are relative newcomers: there's room for everyone! Trusteeship can be rewarding for many reasons - from a sense of making a difference to your local community to forging new experiences and relationships. Email trustee@homestartwinchester.org if you think you could add something to the team.

**Your skills and
experience could
help some of
Winchester's most
vulnerable families**





Financial Report

Treasurer's Year-End Report - Period 1st April 2020 to 31st March 2021

Income and Expenditure

In the 12-month period April 2020 to March 2021 the Charity has had a break-even year achieving:

Income **£76,307** (2019/20 - £85,347)

Expenditure **£76,972** (£89,731)

This performance has slightly reduced our Net Current Assets by **£665** to **£66,901** (£67,566).

Despite the overwhelming presence of Covid-19 throughout the year the Trustees nevertheless set an extremely challenging target at the start of this year to break-even. I am delighted to announce that we have met our target. This has been achieved by strict cost controls together with magnificent contributions from a number of fundraising activities and Grants providers. The Trustees wish to thank all our sponsors for their most generous support. The full detail is laid out in the following accounts.

Balance Sheet

The Balance Sheet shown later in the report shows that as at the 31st March 2021 the charity had total net assets of **£66,901** (£67,566) made up of:

Restricted Funding of **£3,286** (£445)

Unrestricted Funding of **£40,806** (£44,321)

Designated Funding of **£22,800** (£22,800)

It also shows that our Cash at Bank and in Hand on 31st March 2021 stood at **£99,898** (£81,0138).

Testament to an excellent fundraising year, this is an increase on our starting Balance and includes significant Income received late in the year totalling **£36,673** which has been deferred to the following financial years 2021/22.

Funding sources

Our challenge continues to be to find alternative funding sources, particularly for Core Funding which is always more difficult to source than Project Funding. The identification of funding in addition to our normal Revenue Streams is key.

Events

Our **Fundraising Events Team** headed by their Chair Carolyn has effectively had to shut up shop due to Covid restrictions raising just **£694** (£16,495).

Grants & Trusts

The Grants and Trusts Team have had another excellent year. Charitable Trusts, year on year become more demanding so it is particularly pleasing that the hard work put in by Trevor, Martin, Chrissie and Carolyn has enabled them to raise the magnificent total of **£46,706** for this year and in addition have raised a further **£18,673** deferred to be spent in 2021/22.

We are grateful for the continued support of Winchester City Council, BBC Children in Need, Brooks Charitable Trust and Garfield Weston together with a number of significant contributions from other Charitable and Family Trusts.



Donations

The **Donations** income stream has had a bumper year. We set a target to raise **£17,500** and ended up raising an amazing **£46,801!!**

Utilita continue to provide regular wonderful support. Additionally, we are lucky to have such generous individual supporters who have donated between them **£21,090**.

Special mentions to Matt & Ali's Cycle Ride, Jazz for Cocktails and of course the very lucrative JOGLE.

Reserves & Investment Policy

A large part of the charity's reserves is held in a 90-day notice account with Scottish Widows. The balance in this account currently stands at **£53,489**.

The Charity also holds funds in a CAF Gold account and a small amount is held within a CAF Cash account to meet all short-term commitments. As at 31st March 2021 the combined balance in these two accounts was **£46,409**.

The Trustees continue to review the charity's needs for unrestricted reserves in light of the financial risks to the organisation and in line with the guidance issued by the Charity Commission. Currently our Unrestricted Fund holds **£40,816** which represents approximately six months' Expenditure.

Risk assessment

The Trustees and Senior Staff maintain rolling funding and expenditure budgets including an assessment of the major risks to which the charity is exposed through regular discussions at Board meetings. Identified external risks to funding have been included in our three-year strategic plan which includes cash flow projections and an analysis of the major risks to our current and future funding sources. This is updated each year.

Internal control risks are minimised by the implementation of procedures for authorisation of all transactions and activities.

Procedures are in place to ensure compliance with health and safety of staff, volunteers and families.

All procedures are based on national Home-Start policies and are reviewed and updated periodically to ensure that they meet the needs and legal requirements of the charity. The results have been incorporated into the Charity's strategic and work plans.

I thank Michael Kerby for undertaking an independent review of our accounts and Jean Field at Community First Winchester for preparing the monthly salary statements for our staff.

I would also like to give special thanks to Sue Barham our Office Manager who continues to apply her considerable skills and experience to running the accounts on a day-to-day basis.

Mike Davies

FINANCIAL STATEMENTS FOR THE YEAR ENDED 31ST MARCH 2021

Company Number: 5350249

Registered Charity Number: 1108170

HOME-START WINCHESTER AND DISTRICTS INDEPENDENT EXAMINER'S REPORT TO THE TRUSTEES FOR THE YEAR-ENDING 31st MARCH 2021

I report on the accounts for the year ending 31st.March 2021, which are set out on the following pages.

Respective responsibilities of directors and independent examiner

The charity's Trustees are responsible for the preparation of the accounts. The charity's Trustees consider that an audit is not required for this year (under section 43(2) of the Charities Act 1993 (the 1993 Act)) and that an independent examination is needed.

It is my responsibility to:

- Examine the accounts (under section 43(3)(a) of the 1993 Act)
- To follow the procedures laid down in the General Directions given by the Charity Commissioners (under section 43(7)(b) of the 1993 Act) and
- To state whether particular matters have come to my attention.

Basis of independent examiner's report

My examination was carried out in accordance with the General Directions given by the Charity Commissioners. An examination includes a review of the accounting records kept by the charity and a comparison of the accounts presented with those records. It also includes consideration of any unusual items or disclosures in the records, and seeking explanations from you as trustees concerning any such matters. The procedures undertaken do not provide all the evidence that would be required in an audit, and consequently I do not express an audit opinion on the view given by the accounts.

Independent examiner's statement

In connection with my examination, no matter has come to my attention which gives me reasonable cause to believe that in any material respect the requirements

- (a) To keep accounting records in accordance with section 41 of the 1993 Act and
- (b) To prepare accounts which accord with the accounting records and comply with the accounting requirements of the 1993 Act

have not been met and to which, in my opinion, attention should be drawn in order to enable a proper understanding of the accounts to be reached.

Michael Kerby

Dated:



STATEMENT OF FINANCIAL ACTIVITIES (SOFA)

(INCLUDING AN INCOME AND EXPENDITURE ACCOUNT) FOR THE 12 MONTH PERIOD
ENDING 31ST MARCH 2021

These accounts reflect the period 1st April 2020 to 31st March 2021. This statement of financial activities includes all gains and losses in the year.

SOFA	Notes	Unrestricted Fund 2020/21	Designated Fund 2020/21	Restricted Funds 2020/21	Total Funds 2020/21	Total Funds 2019/20
<u>Incoming resources</u>						
<i>Voluntary income:</i>						
Donations & grants	2, 3, 6(b)	46864		28643	75507	68634
<i>Activities for generating funds:</i>						
Fundraising events	6	694		0	694	16495
<i>Investment Income:</i>						
Interest - All Accounts		106		0	106	179
Sundries		0			0	7
Total incoming resources		47664	0	28643	76307	85315
<u>Resources expended</u>						
Voluntary Income Costs	11	0	0	0	0	0
Charitable expenditure	11	43104	0	22322	65426	76244
Governance costs	11	11546	0	0	11546	13455
Total resources expended	-	54650	0	22322	76972	89699
Gross transfers to/from funds	10	3490	0	-3490	0	0
Net movement of funds		-3496	0	2831	-665	-4384
<u>Reconciliation of funds</u>						
Total funds brought forward		44312	22800	454	67566	71950
Total funds carried forward		40816	22800	3286	66902	67566

All incoming resources and resources expended derive from continuing activities.

BALANCE SHEET

Balance Sheet as at:				
<u>31st March 2021</u>	31-Mar-21		31-Mar-20	
	£	£	£	£
<u>Current Assets</u>				
<u>Debtors</u>				
Prepayments	3,676		1,878	
Cash at bank and in hand	99,899		81,013	
		103,575		82,891
<u>Creditors</u>				
Deferred Income-		36,673		15,325
<u>Net Current Assets</u>		66,902		67,566
Represented by:				
Restricted funds		3,286		454
Unrestricted funds		40,816		44,312
Designated Funds		22,800		22,800
<u>Total Funds</u>		66,902		67,566

For the year ending 31 March 2021 the charity was entitled to exemption from audit under Section 477 of the Companies Act 2006.

The members have not required the company to obtain an audit of its financial statements for the year ended 31st March 2021 in accordance with Section 476 of the Companies Act 2006.

The directors acknowledge their responsibilities for complying with the requirements of the Act with respect to accounting records and for the preparation of accounts.

These accounts have been prepared in accordance with the provisions applicable to companies subject to small companies' regime.

Signed on Behalf of the Trustees

Mr Barry Page

Date:



NOTES TO THE FINANCIAL STATEMENTS FOR THE YEAR ENDING 31st MARCH 2021

1. Accounting Policies

The principal accounting policies are summarised below. The accounting policies have been applied consistently throughout the year and in the preceding year.

(a) Basis of accounts

The accounts have been prepared under the historical cost convention. The financial statements have been prepared in accordance with the Statement of Recommended Practice (SORP), "Accounting and Reporting by Charities" published in March 2005 and applicable accounting standards.

(b) Fund accounting

The unrestricted funds are generally those which are available for use at the discretion of the trustees in furtherance of the general objectives of the charity and which have not been designated for other purposes.

Restricted funds are funds which are to be used in accordance with specific restrictions imposed by donors or which have been raised by the charity for particular purposes. The cost of raising and administering such funds are charged against the specific fund.

Designated Funds are Unrestricted Funds used to manage revenue risks and to set aside funds for committed projects, in line with the guidance issued by the Charity Commission.

(c) Income recognition

Grants and donations are included in the Statement of Financial Activities (SOFA) when the charity is legally entitled to the income and the amount can be quantified with reasonable accuracy. Deferred income represents amounts received for future periods and is released to incoming resources in the period for which it has been received.

Bank interest is recognised on a receipt basis.

(d) Resources expended

All expenditure is accounted for on an accruals basis and is recognised when there is a legal or constructive obligation to pay for the expenditure.

Costs relating to charitable activities comprise those incurred by the Charity in the delivery of its activities and services for its beneficiaries. It includes both costs that can be allocated directly to such activities and those costs of an indirect nature necessary to support them.

Management and administration (governance) costs are those incurred in connection with the administration of the charity and compliance with constitutional and statutory requirements.

All costs are allocated between the expenditure categories of the SOFA on the basis designed to reflect the use of the resource. Costs relating to a particular activity are allocated directly; others are apportioned on an appropriate basis such as estimated usage as set out in Note 11.

2 & 3. Grants & Trusts

The Grants and Trusts Team raised a total of **£65,379**.

£19,963 of this total was designated for Restricted use by the Family Groups plus support for a New Baby Group Project.

£18,673 was received late in the year to be spent in 2021/22.

Fundraising Grants & Trusts	Purpose	Restricted 2020-21	Un-Restricted 2020-21	Total 2020-21	C/F to 2021-22
WCC Annual Grant	Core Funding	0	7,785	5,885	1,900
Garfield Weston Year 2	Families	10,000	0	5,000	5,000
Brooks Charitable Trust	Families	10,780	0	4,000	6,780
BBC Children in Need	Families	8,966	0	7,641	1,325
HSUK Emergency Grant	Core Funding	0	953	953	
HSUK Christmas Grant	Families	1,000		1,000	
Plastow Family Trust	Core Funding		1,500	1,500	
HIWCF Grant	Families	2,712		2,712	
Albert Hunt Trust	Families	3,000		3,000	
Rathbones	Core Funding		360	360	
Beechgrove Trust	Core Funding		500	500	
HCC Jackie Porter	Portaloos	1000		500	500
Caring for Families HSUK	New Baby Group	3168		0	3,168
Richard Kirkman Trust	Core Funding		1,000	1,000	
Winchester Churches	Summer School & Xmas Project	790		790	
CAF Grant	Core Funding		5,865	5,865	
Sylvia Adams	Families	4,000		4,000	
Truemark Trust	Core Funding		2,000	2,000	
Totals		45,416	19,963	46,706	18,673

4. Trustee Remuneration & Related Party Transactions

No Trustee or related person received any remuneration during the period. No Trustee or other person related to the charity had any personal interest in any contract or transaction entered into by the charity during the year.

5. Taxation

The company is registered as a charity in accordance with the Charities Act 1003 and is not liable to taxation on its income. No tax charges have arisen in the charity during the year.



6a. Fundraising Events

Our Fundraising Events Team raised **£694**.

6b. Fundraising Donations

Donations raised **£46,801**.

Donations	Income 2020-21	Expenditure 2020-21	Net Income 2020-21	Carried Forward to 2021-22
Friends Monthly SO Donations	5664		5,664	
Friends Ad Hoc Donations	12926		12,926	
Jogle inc. £500 IVC Sponsor	14144		14,144	
Jazz for Cocktails	1457		1,457	
Matt & Ali's Cycle	1452		1,452	
S J Lewin	500		500	
PCC Beauworth	100		100	
Freemasons	500		500	
John Lewis	333		333	
A Lorek - Tablets	2000		2,000	
Volunteer Expenses Donated	270	270	0	
Utilita	6000		6,000	
Gift Aid	0		0	
Friends of Lanterns	350		350	
Wolvesey Lodge Freemasons	200		200	
Waitrose	333		333	
Easyfundraising	81		81	
Collection Tins	144		144	
ArtStart	346		346	
Carried Forward to 2021-22				18,000
Total	46,801	270	46,531	18,000

7. Staff Costs and Numbers

Staff Costs	2020-21	2019-20
	£	£
Salaries and wages	48,215	45,936
Social security costs (NI) including Pensions	10,125	9,730
Total	58,340	55,666
	2020-21	2019-20
	Number	Number
Senior Coordinator	0.70	0.70
Coordinator	0.65	0.65
Office Manager	0.65	0.55
Family Drop-in Group Leader	0.10	0.10
Family Drop-in Group Support Worker	0.05	0.10
Total	2.15	2.10



8/9 Debtors & Creditors

Debtors	2020-21	2019-20
Quiz Deposit	250	250
Summer Festival Marquee Deposit	250	
Premier Insurance	151	170
Lanterns Rent	1,529	1,458
Charity Log – Dizions	444	
Home-Start UK Annual Fee	821	
HSUK Legal & Accident Insurance	78	
Drop Box Annual Licence	109	
Web Site Hosting Annual Licence	44	
Total	3,676	1,878
Creditors	2020-21	2019-20
Donations	18,000	0
Brooks Trust	6,780	4,000
Garfield Weston Trust	5,000	10,000
Caring for Families HSUK	3,168	
WCC Annual Grant	1,900	0
J Porter	500	0
BBC Children in Need	1,325	1,325
Total	36,673	15,325

10 Movement in Restricted Funds

Movement of Funds	At 1 st April 2020	Incoming Resources	Outgoing Resources	At 31 st March 2021
	£	£	£	£
Restricted Funds				
All Restricted Funds	454	25,153	22,322	3,285
Total restricted funds	454	25,153	22,322	3,285
Unrestricted funds				
General funds	44,312	51,154	54,650	40,816
Designated fund	22,800	0	0	22,800
Total unrestricted funds	67,112	51,154	54,650	63,616
Total funds	67,566	76,307	76,972	66,901

11 Total Resources Expended

<u>Expenditure Direct</u>	Core charitable activities	Governance	Volunteer Prep courses	Family Drop-in group	Family Services Unrestricted	Family Services Restricted	2020/21 Totals
Costs directly allocated to activities	£	£	£	£	£	£	
Wages, NI, Pensions	11,668		5,834	5,834	9,334	16,919	49,589
Staff expenses	47	35	23	23	37	68	234
Trustee Expenses	14	10	7	7	11	20	68
Volunteer expenseks	96	72	48	48	77	139	480
Training	156	117	78	78	125	226	780
Mental Health Project	111	83	56	56	89	161	555
Covid Other Exp	495	371	247	247	396	717	2,474
Covid Staff Exp	411	309	206	206	329	596	2,057
Family group exp.	59	44	30	30	47	86	295
Parenting Course	0	0	0	0	0	0	0
Family outings	70	53	35	35	56	102	351
Summer School	862	647	431	431	690	1,250	4,312
Direct Total	13,988	1,740	6,994	6,994	11,190	20,282	61,188
<u>Support costs allocated to activities</u>							
Wages, NI, Pensions		8,751					8,751
Stationery & postage	11	8	5	5	9	15	53
Telephone	277	208	139	139	222	402	1,385
Photocopying	14	11	7	7	12	21	72
Insurance	154	116	77	77	124	224	772
Capital Items & Fees	314	235	157	157	251	455	1,568
HSUK Fee	143	107	72	72	114	207	716
Fundraising	0	0	0	0	0	0	0
Bank charges	12	9	6	6	10	18	61
Sundry Items	95	72	48	48	76	138	477
Accommodation	386	289	193	193	309	559	1,929
Support Total	1,406	9,806	703	703	1,125	2,039	15,783
Overall Total	15,394	11,546	7,697	7,697	12,315	22,322	76,972



12 Designated Funds

Designated Funds - 2020-21	31-Mar-21	01-Apr-20
Revenue Unpredictability Provision		
a. WCC:	0	0
b. BBC Children in Need:	0	0
c. HCC Councillors:	800	800
d. Other Charitable Trusts	10,000	10,000
e. Donations	5,000	5,000
f. Events	5,000	5,000
Total of Revenue Unpredictability	20,800	20,800
Capital Equipment - Replacement Liability	2,000	2,000
Project Fund towards Scheme Expansion	0	0
Cost of Closing the charity	0	0
Designated Fund Total	22,800	22,800

The Trustees each year review the charity's financial requirements, establishing Designated Funds to manage revenue risks and to set aside funds for committed projects, in line with the guidance issued by the Charity Commission.

Designated Funds plus Restricted and Unrestricted Funds constitute the charity's Reserves.





Structure, Governance and Management

Home-Start Winchester and Districts was incorporated as a company limited by guarantee in 2005 and is registered under the Charities Act 1993 and the Companies Acts 1985 and 1989. It is governed by a Memorandum and Articles of Association and by its Board of Trustees. It has a legal agreement with Home-Start UK to follow their national Standards and Methods of Practice. Its year end is 31st March.

Registered charity name: Home-Start Winchester and Districts

Charity registration number: 1108170

Company registration number: 5350249

Registered office and operational address:

Lanterns Nursery School
Bereweek Road
Winchester
SO22 6AJ
Telephone: 01962 851177

Bankers:

CAF Bank Limited, 25 Kings Hill Avenue, Kings Hill, West Malling, Kent ME19 AJQ

Trustees:

Barry Page - Chair
Mike Davies - Treasurer
Martin Tomsett - Company Secretary & Vice Chair
Chrissie Barlow
Carolyn Beech
April Chidgey
Stephanie Durrant
Gill Longman (co-opted 22.10.20)
Hilary North (co-opted 24.3.21)
Jackie Sumner
Graham Winyard

Patrons:

Sally Stewart
Alison Wakeham

Staff:

Liz Stannard - Senior Co-ordinator
Jane Read - Co-ordinator
Sue Barham - Office Manager
Liz Brown - Family Group Leader
Susan Baker - Family Group worker

Independent Examiner: Michael Kerby FCA





**Winchester
and Districts**

No judgement, just compassionate,
confidential help and expert support.

Starting in the home, our approach is as
individual as the people we're helping.

Sharing local expertise to drive national
and regional change.





the earliest years make
the biggest impact



,

f
utilitaC

Supported by
eWincl-7i?c!u r

S""rl"rte.a b
rnrnt!J
Children
in Need
OBSC2001Ra...dwity-E"ji
J&W no.80.052&ndSC0IBid
eoSC01.95-57