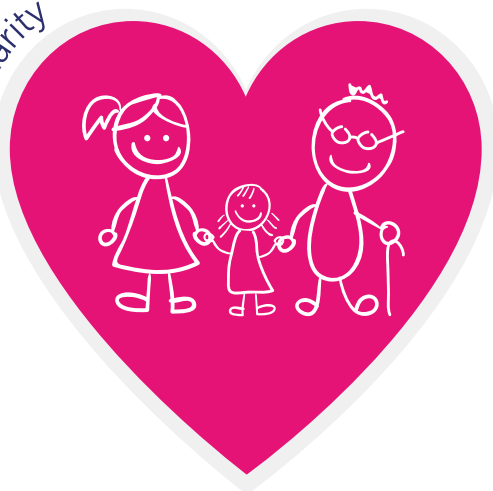




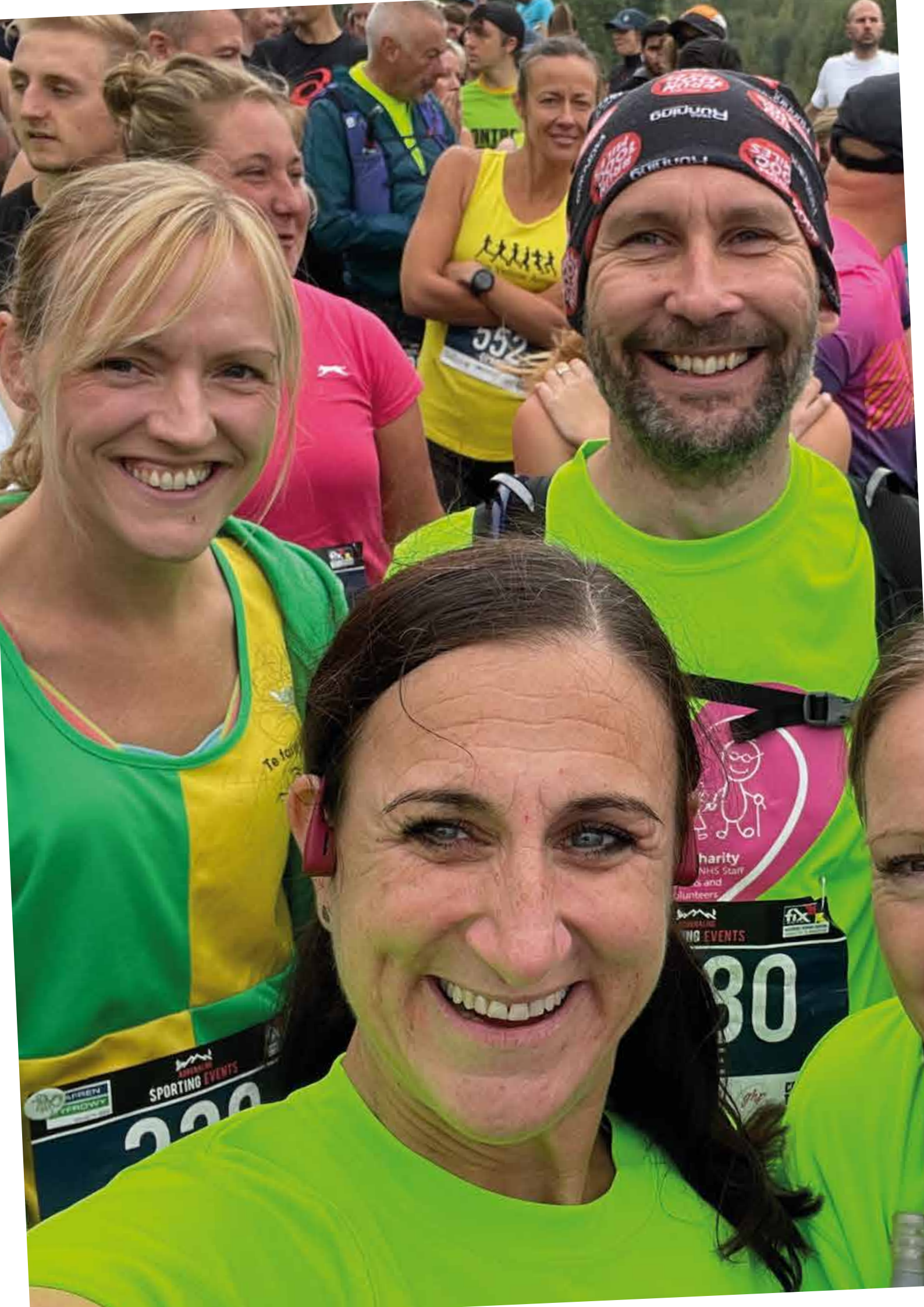
#SaTHCharity



2023 - 2024

ANNUAL REPORT AND ACCOUNTS

SATH CHARITY





CONTENTS

- 02 **Message from SaTH's
CEO and Chair**
- 03 **What we have achieved
together**
- 04 **Message from
Charitable Funds
Committee Chair**
- 06 **Highlights of the Year**
- 12 **Supporting Patients**
- 14 **Supporting Staff**
- 16 **Working in Partnership**
- 18 **How You Can Help**
- 19 **Financial Statements**





On behalf of the trustees of The Shrewsbury and Telford NHS Hospital Trust Charity (SaTH Charity), we are delighted to present this annual report and we would like to say a BIG thank you to all the amazing people who have supported the Charity over the past year.

The Charity's key aim is to support The Shrewsbury and Telford Hospital NHS Trust in delivering excellent patient care for all the communities we serve, by funding new equipment and facilities to improve patient experience and supporting and investing in our workforce.

We are so grateful for every donation that we receive, and although we have both joined the Trust relatively recently, we are so impressed by all the varied ways that funds are raised by our staff and supporters - including cake sales, raffles, sponsored skydives and (very competitive) football tournaments! We are also very grateful for the generous legacies and bequests that have been left to the Charity.

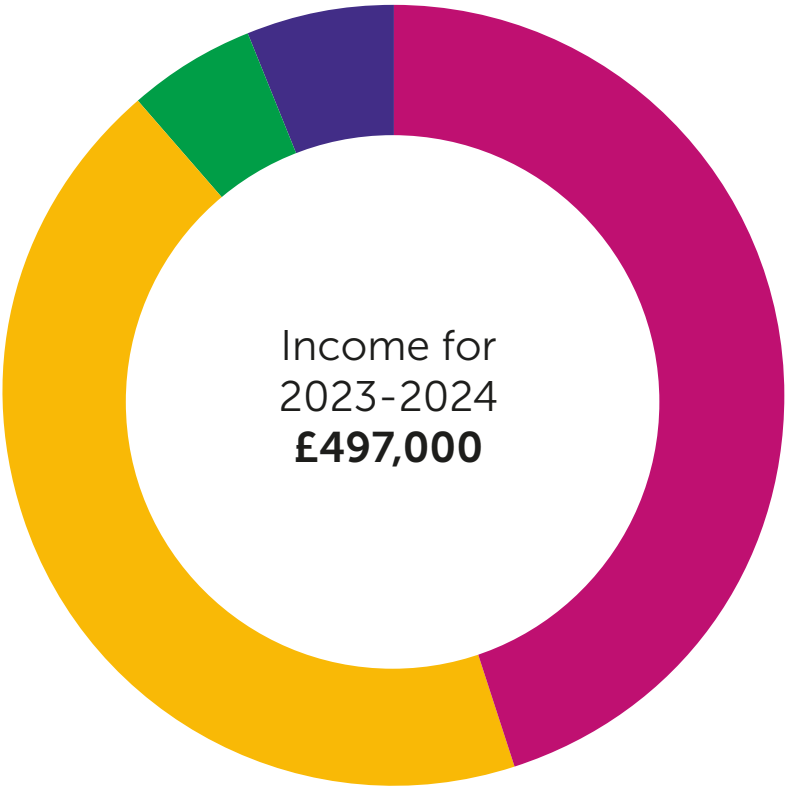
We would also like to send special thanks to the RSH League of Friends (now known as the Friends of the Shrewsbury and Telford Hospital) and Lingen Davies Cancer Fund for their ongoing support and partnership - this truly does make a huge difference for our patients.

This year has been a challenging one for most charities, so we are very pleased that we have seen a 39% increase in income from last year. We are so grateful to everyone in the communities we serve for continuing to support the Charity and to our own workforce who have also taken part in so many events to raise funds.

We have an exciting year ahead of us and this report provides some highlights of what the Charity has achieved in the last year and where the funds raised have been spent. As we look ahead we again wish to thank all of our supporters - this really wouldn't be possible without your wonderful generosity.

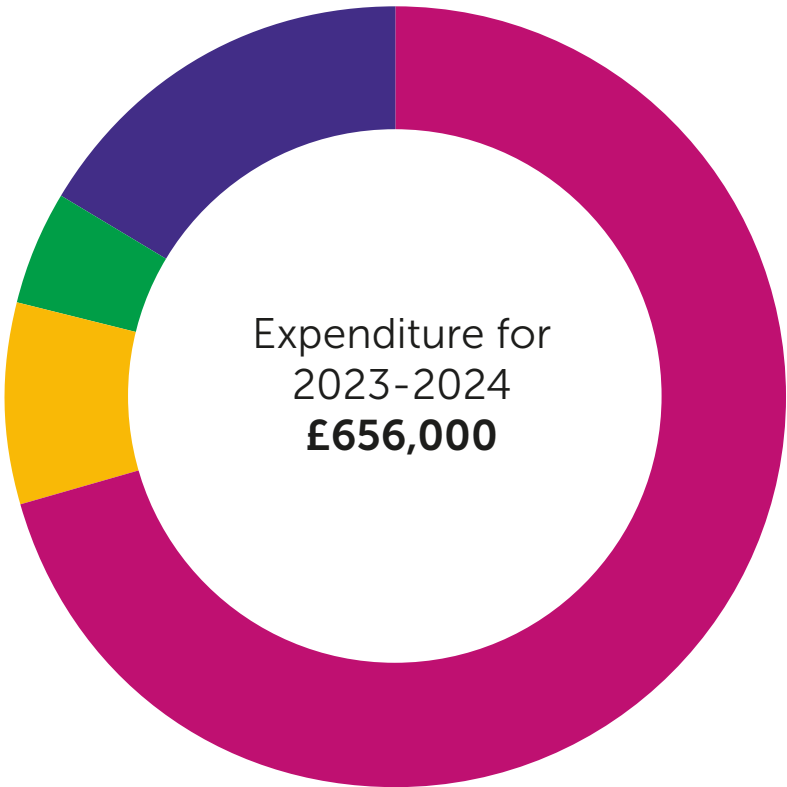
Thank you all so much.

WHAT WE HAVE ACHIEVED TOGETHER



- £224,000**
In Donations: from the voluntary efforts and fundraising of the general public
- £217,000**
In Legacies: we are fortunate to be remembered by some of the patients we care for
- £26,000**
From Investment Income
- £30,000**
From NHS Charities Together

- £464,000**
Supporting Patients
- £55,000**
Supporting Staff
- £30,000**
Marketing and Communications Officer (from NHS Charities Together Grant)
- £107,000**
Support Costs





As Chair of the Charitable Funds Committee for The Shrewsbury and Telford Hospital NHS Trust (SaTH), it is both a privilege and a source of immense pride to serve in this role. Our Charity's mission focuses on the positive impact we have on the lives of our patients and the dedicated staff who care for them, therefore witnessing the difference we make together is both humbling and inspiring.

This past year has been marked by considerable economic challenges, impacting both our patients and our staff. Despite this, I am continually amazed by the resilience and generosity of our supporters. Their dedication has allowed us to see a 39% increase in income, raising almost £500,000. This is a testament to the incredible commitment of our community, and we are deeply grateful for every contribution.

While finances are an important aspect of our work, the true measure of our success lies in how these



funds are used. In 2023/24, we invested over £500,000 to enhance patient care and support our people. One of the highlights was the £233,433 allocated to the Haematology department, which enabled the purchase of specialist chemotherapy chairs. This investment ensures that more cancer patients can receive the treatment they need throughout the year—a significant step forward in our commitment to patient care.

Collaboration is at the heart of our success, and we continue to work closely with our valued partner charities, including the League of Friends, the Lingen Davies Cancer Fund, NHS Charities Together, and Helpforce. These partnerships not only amplify our impact across Shropshire, Telford & Wrekin, and Mid-Wales, but they also enable us to extend our reach, ensuring that more patients receive the care they need. This year, we saw a successful collaborative approach with Lingen Davies and the League of Friends to fund specialist software for the radiotherapy department at the Royal Shrewsbury Hospital. The 'Auto-contouring software' uses artificial intelligence to plot patient treatment areas and has significantly reduced the time required by clinicians to plan treatment. This exciting project

exemplifies the power of working together, and we are eager to explore even more opportunities for partnership in the future, driving forward initiatives that enrich the care experience at our Trust.

Looking ahead, the hospital has several ambitious projects on the horizon, including the Hospitals Transformation Project (HTP). These initiatives promise to bring about significant charitable activity, helping us to realise the aspirations of our patients and their families, as expressed in the public events and focus groups held over the past year. As we embark on this journey, we will seek innovative and creative ways to bring these ideas to life.

On behalf of the Charitable Funds Committee and the Corporate Trustee, I want to extend my deepest thanks to everyone who has supported the SaTH Charity. Rest assured, we remain committed to ensuring that every penny is spent with the utmost care, making a tangible difference in the lives of those we serve. Together, we will continue to support The Shrewsbury and Telford Hospital NHS Trust in delivering outstanding healthcare to our community.



HIGHLIGHTS OF THE YEAR



The Charity team supported the Speech and Language and Dietetics Teams by liaising with our Supermarket Community Champions and collecting water and snacks for Nutrition and Hydration Week .

Local supermarkets and their customers, community organisations and businesses engaged with SaTH Charity to donate easter eggs to be shared across our services supporting children at Easter.



APRIL

MAY



The Trust has had a successful bid application approved by NHS Charities Together for £30K. The grant is to support the development of SaTH Charity (specifically around fundraising and improving the visibility of the charity).



The Works, a corporate supporter in Shrewsbury, sent in another amazing donation of items for the hospitals. This largely included books and activities for Children's services throughout the Trust, as well as for our patients living with dementia.

SaTH Charity's "Thank you" campaign put huge smiles on the faces of many of our staff. 360 staff were nominated by colleagues to receive a SaTH Charity Thank You Daisy. Each daisy came with a thank you card that had the text of why they had been nominated and by whom.



The Small Things Fund was particularly busy during the warmer weather and fridges led the way. Having a fridge to keep food in close to their place of work is a huge benefit for staff but is often overlooked.

JULY

JUNE

Providing support for patients is a core monthly activity; TVs were purchased for both Phlebotomy departments to keep children occupied whilst blood is taken.



The research and innovation team at SaTH raised over £600 when 8 members of the team trekked up Mount Snowdon to promote their work and raise money for the Research and Innovation Trust Fund.



HIGHLIGHTS OF THE YEAR

Nine colleagues raised over £2,000 for SaTH Charity when they put on their running shoes and completed the Lake Vyrnwy half marathon. Colleagues from across the Trust raised money which will go towards several different funds in different clinical areas under the SaTH Charity umbrella.



David Wilson homes donated £1,000 to our Dementia Fund recognising the impact this support makes to our patients and their families.



AUGUST



SaTH Charity funded patient safety boards, which were created by staff including information about clinical areas they need to focus on. Team huddles to discuss care are often held next to them.

SEPTEMBER

A dedicated staff room was created for staff working in general outpatient RSH to improve the wellbeing of staff who were struggling to take their breaks. This room gave staff an area to store and heat food and to take their breaks away from the busy clinic.



Recognising that not everybody is able to give financially, SaTH Charity had a knitted hearts appeal. Two identical small hearts are used, one goes to the family and the other stays with their loved one. This small gesture is appreciated by relatives.



The family of the much-loved, local butcher, William Dodd, completed a climb up Mount Snowdon to raise money in his memory for the ITU garden at RSH. This followed a sponsored swim the length of the channel at the local swimming bath.

NOVEMBER

OCTOBER

Our longtime supporter and now a Charity Ambassador, Sally Jamieson arranged a Halloween Party which was well attended and raised the profile of SaTH Charity. It also raised £710.03 for the Breast Cancer Fund.



Michael Philippou, who received treatment at the Chemotherapy Day Care Unit, sadly passed away in June. His family and friends wanted to thank the staff, who were "absolutely lovely" and looked after him so well. Michael's friends organised a sponsored bike ride and raised over £2,300 which was donated to the unit.



HIGHLIGHTS OF THE YEAR



Chris Davies and his partner Pixie are regular fundraisers for SaTH Charity, this Christmas they dressed up as the Grinch and helper to raise funds for the Children's Unit.

The charity worked with RAF Shawbury to arrange for Santa to visit the Children's Unit at PRH. Christmas can be a challenging time for patients, especially for children receiving treatment in hospital. To bring some extra festive cheer the team at RAF Shawbury transported Santa and his presents via helicopter!



DECEMBER



Nigel Lee, Director of Strategy and Partnerships at SaTH, and his son Flight Lieutenant Tom Lee climbed Mount Kilimanjaro in Tanzania in January. The father and son team raised £2,200 funds for SaTH Charity's Cancer Fund.

JANUARY

Local band "Longden Calling" features a member of our portering team at SaTH. They wanted to raise funds for SaTH Charity over this busy period and donned charity T-shirts at their gigs to raise £325 for the Children's Unit at PRH.



SaTH Charity's staff lottery is going from strength to strength. As well as it being great for staff to win one of the 10 monthly prizes, which range from £50 to £500, the other half of the lottery income is used to support our colleagues across the Trust.



February's Charity-supported Art Club provided an evening of interaction and fun for our staff who learnt how to create henna tattoos. Ensuring staff feel part of our organisation is vitally important for their wellbeing.

FEBRUARY

Captain Tom's Garden at RSH and the courtyard at PRH have been greatly appreciated by staff and patients. In March, to further enhance the garden at RSH, the Charity funded a laurel hedge to create a calmer environment and more privacy.



MARCH



Karen Breese, Dementia Nurse Specialist, and her partner Clive Coxon undertook the 'The Mammoth' a 26 hike mile across the muddy Shropshire Hills to raise money for patients living with Dementia.



Income raised for the charity can go a long way in providing additional comforts for our patients.

Every day patients across our hospitals feel the benefit of the generosity of people like you; from funding medical equipment and the latest research, to making our hospital a more comfortable and attractive place for patients of all ages.

With your help, we have funded important equipment to enhance our care. We have also been able to fund small but important items such as skylights in Swan Rooms for end of life care patients, tilt chairs for stroke patients and a specialist scope trolley for ITU.

YOUR FUNDRAISING HAS HELPED US PURCHASE:

- £33,062 – was invested in ITU which included an accessible outdoor area for patients to be able to go into a garden in their hospital bed.
- £26,883 – was spent to support the expansion of the chemotherapy courtyard to provide additional treatment areas in Chemotherapy.
- £9,575 - was invested in 5 tilt chairs for patients who are recovering from a stroke on Ward 15. The chairs support patients to mobilise early helping to prepare them for discharge, they reduce falls and decrease the risk of pressure ulcers.
- £8,487 – was invested in the Oral and Maxillofacial department to purchase an ultrasonic surgical system device to support orthognathic surgery, the device reduces complications and improves patient outcomes.



INVESTMENT IN HAEMATOLOGY BLOOD RESEARCH

Thanks to the generous donations from patients and relatives, the team were able to significantly expand the unit by reconfiguring the internal space to accommodate 4 additional treatment areas in the unit. This took the unit from 12 treatment chairs to 16 treatment chairs at a cost of £233,433.

To make space the nurses' station was moved and two previous treatment spaces were made into pods, which has increased privacy for patients receiving treatment.

The new pods and the 4 additional treatment areas received brand new equipment including treatment trolleys, drip stands and treatment chairs. The new chairs have many features that help patients to feel comfortable whilst being treated, treatments can last anywhere from 30 minutes to a full day. The chairs fully recline, they have wheels so if a patient is taken ill, they can be wheeled into a room. The chairs have a foot plate and two side trays for patients to put their drinks on, the staff encourage patients to drink lots of fluid whilst being treated.

During the extensive work on the unit the plumbing was moved to improve staff access to handwashing facilities.

CRITICAL CARE GARDEN RSH

Thanks to the kind donations of over £6,500 from William Dodd's family to the Charity, we were able to greatly improve the RSH Critical Care Garden for patients, visitors and their families.

The therapy team for ITU were key drivers in the process recognising the importance of getting patients outside in the fresh air and to enjoy the sights and sounds of the garden.



25 TVs FOR DIALYSIS PATIENTS

The charity purchased televisions for Hollinswood House, after the unit moved from PRH to its new location. Patients dialyse for 4 hours, 3-4 times a week. As part of the renal unit off-site move the feedback the team received from both patients and staff is to ensure there are TVs in place. Access to the TVs supports with the patient's mental health and wellbeing given the length of time they are connected to the dialysis machine.





The public appreciate that the hard work and dedication of staff should be recognised.

Major investment was made into the health and wellbeing of our staff via a grant to our Workforce Directorate of £40,000 to support schemes that would benefit staff.

In addition, money was invested in communal areas ranging from small items such as kettles, microwaves and fridges, to refurbishment of staff rooms and gardens.

The Trust used support from SaTH Charity to help them keep staff energised and ready to deliver the best clinical care they could.

EXAMPLES OF SPENDING

- £3,568 on side tables and chairs in day surgery for a staff wellbeing area.
- £1,800 on supporting the Reconditioning Games for patients, including training for staff and volunteers on how to safely deliver chair-based exercises for older adult patients to promote their independence and enhance their physical and mental health.
- £1,250 on a small thank you afternoon tea for almost 100 of our Volunteers during National Volunteer's Week in June.
- £1,183 on Christmas decal sticker decorations for ward areas for patients and staff to enjoy when in hospital over Christmas.
- £142 was donated to our library team to purchase 'quick read' books to give away to hospital staff to encourage them to take their break.



OUTDOOR SEATING FOR PATIENTS, VISITORS AND STAFF

Due to the popularity of the Captain Tom's area for visitors, patients and staff on both sites, we have increased the seating and purchased a mixture of park benches and picnic benches enabling everyone to enjoy the good weather and the benefits of fresh air, especially to aid patient's recovery.

INVESTMENT IN STAFF WELLBEING

Our amazing staff work tirelessly to support patients and their loved ones during their time with us. We are so grateful for all that they do and through the staff lottery, which is run to support the Small Things, Big Difference Fund we are able to support them.

Staff can apply for items that provide comfort like microwaves and fridges for their staff rooms and benches and tables for outdoors to enjoy their break times, which the NHS wouldn't fund. We know that these relatively small items can make a huge difference to staff morale. The fund agreed 191 requests last year, these requests ranged from a kettle, to improving an outside staff area. 32 fridges were also purchased for staff use.



INVESTMENT IN HEALTHCARE ART CLUB

The Healthcare Art Club was set up by Dr Pamela Sturges, who wanted to give her fellow staff from all professions a creative outlet. The monthly club was held with the primary purpose of supporting staff to make friends with a focus on improving wellbeing.

Sessions were for healthcare workers run by healthcare workers. Each session was well attended with a minimum of 15 people attending. Classes have covered activities such as L.S. Lowry painting, anatomy art, pottery painting, henna art and photography.





SaTH Charity continues to build on strong relationships with other local charities, who support the aim of improving patient experiences.

The Charity continues to strengthen its good relationships with the Royal Shrewsbury Hospital League of Friends (LoF) and Lingen Davies Cancer Fund charity to seek opportunities to work together in the future to fund joint ventures.

SaTH Charity is one of over 400 NHS linked charities in England and Wales who are eligible to join NHS Charities Together (NHS CT). As a member charity, the Charity has the opportunity to discuss matters of common concern and exchange information and experiences, join

together with others to lobby government departments and others, and to participate in conferences and seminars which offer support and education for staff and members of the Charitable Funds Assurance Committee.

As a member of NHS CT, the Charity has also been very grateful to be able to apply for their grant schemes.

NHS CT Development Grant enabled us to employ a Charity Marketing and Communications Officer to raise the visibility of the charity and forge stronger links with the community. Due to the success of the role, this post is now being funded by SaTH Charity.

DISCHARGE LOUNGE CHAIRS

The SaTH Charity and the Royal Shrewsbury Hospital League of Friends (LoF) bought six reclining chairs for the discharge lounge at Royal Shrewsbury Hospital, providing a more comfortable experience for patients.

Staff working on the discharge lounge contacted the charities to ask for support after recognising that they could significantly improve patient experience and care by providing reclining chairs.

The LoF bought four of the reclining chairs and SaTH Charity purchased two, which was a joint investment of £3,630. Previously patients were being seated on standard chairs in the discharge lounge whilst waiting for medication, letters and transport.

The chairs are now in place and give patients the opportunity to relax whilst they wait for the discharge process to be completed.



KNITTED ITEMS APPEAL

In January and February an appeal for items was made on SaTH Charity's social media for bonding squares and cardigans for the Neonatal Unit and blankets for patients living with dementia. The knitting and crochet community responded, and the charity has been receiving a steady stream of knitted items for the Dementia team and for the Neonatal Unit.

The knitters are based all around the UK with items coming from as far as Scotland and Cornwall. Nearly every item comes with a card detailing why the person wanted to create their knitted creation. We are so grateful for every bonding square, cardigan, teddy and blanket for dementia patients, every item is stitched with love and the quality of the work is inspiring.

The knitted items appeal has now closed but if you email the Charity team they can let you know if there are any other items they are in need of, the email address is sath.charity@nhs.net.



LIMBUS ARTIFICIAL INTELLIGENCE (AI) RADIOTHERAPY AUTO-CONTOURING SOFTWARE

SaTH Charity, Lingen Davies and RSH League of Friends linked up to fund special software for the radiotherapy department at the Royal Shrewsbury Hospital. Together they donated a total of £48,000 for a 3-year software license. The 'Auto-contouring software' can significantly reduce the time required to outline organs and some treatment areas by using Artificial Intelligence (AI), with radiotherapy clinicians, dosimetrists and medical physicists reviewing and adjusting outlines to deliver treatment only where required. It means that radiotherapy staff can reinvest their time and carry out other work, such as creating or evaluating treatment plans for cancer patients.





THE IMPORTANCE OF GIFT AID

Gift aid adds 25% extra on a donation and costs nothing to the donor. Donors must pay an amount of income tax and/or capital gains tax to be eligible, at least equal to the tax that the charity reclaims on your donations in the tax year.

Would you like to get involved with SaTH Charity?

If you feel inspired to support our hospitals and help us to make a difference for patients and their loved ones visit **www.sath.nhs.uk/about-us/charity** or email sath.charity@nhs.net We can help you if you want to donate, share some successful fundraising ideas or just chat through ideas if you want to learn more – fundraising can be fun and rewarding!

We have over 60 different funds under the umbrella of the Charity which cover all areas of services across the Trust from neonatal to end of life care, and everything in between.

If you are interested in fundraising for SaTH Charity, you could become a Charity Ambassador, whose role is to promote SaTH Charity within the community. We can offer training and support. If this is

something you would like to be part of contact us via sath.charity@nhs.net or via telephone 01743 492256.

Social media

One of the easiest ways people can help to support the Charity is to follow our social media platforms. Not only will you be kept up to date with our latest appeals, but every like, comment, share helps to raise awareness of SaTH Charity to potential supporters. It costs nothing to share our posts and reduces the need to use funds to advertise and communicate to the community we support.

FOLLOW US:

Facebook
@ShrewsburyandTelfordHospitalCharity
Instagram
@sathcharity

FINANCIAL STATEMENTS

Foreword

The Shrewsbury and Telford Hospital NHS Trust (Corporate Trustee) presents The Shrewsbury and Telford Hospital NHS Trust Charity (the Charity) independently examined annual report and accounts for the year ended 31 March 2024. Charitable funds are accounted for separately from other income received by The Shrewsbury and Telford Hospital NHS Trust.

The annual report and accounts have been prepared in accordance with the Statement of Recommended Practice: Accounting and Reporting by Charities preparing their accounts in accordance with the Financial Reporting Standard applicable in the UK and Republic of Ireland (FRS 102) issued in October 2019 and the Financial Reporting Standard applicable in the United Kingdom and Republic of Ireland (FRS 102) and the Charities Act 2011 and UK Generally Accepted Practice as it applies from 1 January 2019.

The annual report and accounts have been prepared to give a 'true and fair' view and have departed from the Charities (Accounts and Reports) Regulations 2008 only to the extent required to provide a 'true and fair view'. This departure has involved following Accounting and Reporting by Charities preparing their accounts in accordance with the Financial Reporting Standard applicable in the UK and Republic of Ireland (FRS 102) issued in October 2019 rather than the Accounting and Reporting by Charities: Statement of Recommended Practice effective from 1 April 2005 which has since been withdrawn.

Following Treasury's agreement to apply IAS 27 (Consolidation and Separate Financial Statements) to NHS Charities from 1 April 2013, The Shrewsbury and Telford Hospital NHS Trust has established that as the Trust is the Corporate Trustee of the linked Charity, it effectively has the power to exercise control so as to obtain economic benefits so therefore may need to consolidate its Charity Accounts into its NHS Trust Accounts. However the income, expenditure, assets and liabilities of the Charity are considered to be immaterial in the context of the accounts of The Shrewsbury and Telford Hospital NHS Trust and therefore the Charity's accounts have not been consolidated into its NHS Trust.

- **Helen Troalen, Director of Finance**

What we plan to do with your donations: our future plans

As it is four years since the start of the pandemic, the immediate impact of the pandemic is no longer reflected in the prior period comparatives and the accounts reflect the post-pandemic reality.

The longer term aim of the Charity is to continue applying income received from donations to benefit the public served by the Trust. The main source of income is given by the public through donations from grateful patients. We are continuing to look at increasing the ways that people can give. In particular, we are trying to increase the ways that people can give electronically. The grant income received from the national NHS Charities Together appeal has decreased over the last few years. The Charity's overall income has increased in this financial year due to several legacies received in year, which may represent the clearing of the backlog of estates waiting for probate.

It is the Charity's intention to continue to use its funds in broadly the same manner as in the past. The reconfiguration of patient services within Shropshire and the plans for redesigning patient care to meet the needs of the future will influence the priorities for spending charitable funds.

In 2024/25, we will continue to review our plans especially in the light of the increasing cost of living. We will achieve our mission by working with the NHS to fund equipment and research to develop the facilities to treat patients and to identify the treatments of tomorrow, as we actively seek to assist in equipping NHS staff with the skills they need.

Our role is not to replace or subsidise NHS healthcare, but to complement it. By working with the NHS, we aim to enhance the patient experience for people irrespective of their ethnicity, beliefs, or personal or family circumstances. We put this aim into practice by helping the patients, their families and carers, and visitors to the hospital.

Your support makes these plans possible and to help us, please consider making a donation.

How we manage the money

Within the Charity there are a number of restricted funds relating to particular wards and departments nominated by the donor. These are overseen by fund advisors who make recommendations on how to spend the money within the designated area within the boundaries of local guidance agreed by the Corporate Trustee.

The Charity also holds a level of unrestricted funds that are received with no particular preference expressed by donors. These funds can be accessed by all wards and departments for patient and staff welfare by following the Charity's policy and procedures. The level of unrestricted funds increased throughout the year.

The Corporate Trustee oversees the work of the fund advisors and has the power to revoke a fund advisor's remit or, subject to any specific donor restriction, direct the use to which funds are put.

The Shrewsbury and Telford Hospital NHS Trust Board devolves responsibility for the on-going management of funds to the Charitable Funds Committee which administers the funds on behalf of the Corporate Trustee. The Committee is required to:

- Control, manage and monitor the use of the fund's resources;
- Provide support, guidance and encouragement for all its income raising activities whilst managing and monitoring the receipt of all income;
- Ensure that 'best practice' is followed in the conduct of all its affairs fulfilling all of its legal responsibilities;
- Ensure that the Investment Policy approved by the NHS Trust Board as Corporate Trustee is adhered to and that performance is continually reviewed whilst being aware of ethical considerations;
- Keep the Trust Board fully informed on the activity, performance and risks of the Charity.

The Corporate Trustee approves decisions following recommendations from the Charitable Funds Committee. Additionally, copies of all policies relating to charitable funds are provided on the Trust’s intranet. Within the year quarterly investment reports have been provided by the Trust’s investment advisors.

The Trust’s Director of Finance is responsible for the day-to-day management and control of the administration of the Charity and reports to the Charitable Funds Committee. The Director of Finance has particular responsibility to ensure that the spending is in accordance with the objects and priorities agreed by the Charitable Funds Committee and the Trust Board:

- that the criteria for spending charitable monies are fully met;
- that full accounting records are maintained;
- that devolved decision making or delegated arrangements are in accordance with the policies and procedures set out by the Trust Board on behalf of the Corporate Trustee.

Our reserves policy

The Charity has established a reserves policy as part of their plans to provide long term support to The Shrewsbury and Telford Hospital NHS Trust for patient and staff welfare. The current reserves policy states:

“The Corporate Trustee recognises that the Charity is entirely dependent upon donations for its future viability which will inevitably be subject to fluctuations. With this in mind an unrestricted fund reserve is required to meet one year’s administration, fund-raising and support costs and thus ensure the Charity is able to operate as a going concern.”

As at 31 March 2024 the Charity holds restricted funds of £1,738,000 (2023: £1,898,000) and unrestricted funds of £468,000 (2023: £264,000). The description, nature and purpose of the restricted funds are contained within Note 23: Analysis of charitable funds.

The Corporate Trustee considers all unrestricted reserves to be free reserves and thus the level of free reserves is calculated as follows:

Free reserves	£468,000
Reserves policy	£107,000
Surplus Reserves	£361,000

Charitable fund advisors of restricted funds are encouraged to spend their funds appropriately within a reasonable period of receipt and not to keep any unnecessary reserves. However, the Charity and the Corporate Trustee are continually trying to improve processes to enable charitable funds to be more easily and appropriately accessed. Fund advisors are expected to submit annual spending plans each year for the Charitable Funds Committee to review. This will offer earlier benefit to patients and staff.

Our financial health: a strong balance sheet

The assets and liabilities of the Charity as at 31 March 2024 are stated below, compared with the position as at 31 March 2023.

The net assets of the Charitable Funds as at 31 March 2024 were £2,206,000 (2023: £2,162,000). Overall net assets increased by £44,000 (2023: £78,000 decrease) with an unrealised gain on the valuation of our investments of £203,000 (2023: £74,000 loss) and an excess of expenditure over income of £159,000 (2023: £4,000).

	31 March 2024	31 March 2023
	£000	£000
Fixed Asset Investments	2,185	2,175
Current Assets	66	26
Creditors falling due within one year	(45)	(39)
Total Net Assets	2,206	2,162
Funds		
Restricted funds	1,738	1,898
Unrestricted funds	468	264
Total Funds	2,206	2,162

About our investments

Investments are placed in a COIF (Charities Official Investment Fund) managed by CCLA Investment Management Ltd. This arrangement allows the Charity access to a wider portfolio of investments than would otherwise have been possible. This arrangement also ensures no investments are made in companies that would be contra to NHS principles. Investment performance is monitored by the Charitable Funds Committee which receives quarterly reports from the investment advisors.

An investment policy is in place, this is reviewed annually to ensure it continues to meet the needs of the Charity. The policy is designed to protect the Charity from undue adverse risk and inflation whilst ensuring the Charity's long, medium and short term objectives are met. A cash balance remains in a Royal Bank of Scotland deposit account to cover short term funding requirements.

Following detailed discussions with CCLA Investment Management Ltd the Charitable Funds Committee and the Corporate Trustee approved an investment plan during the year to retain the COIF deposit fund, but reduce the investment to £250,000, and transfer the balance of other funds to the COIF Ethical Investment Fund. During this year these investments generated income of £26,000 and an unrealised gain on investments of £203,000. This investment gain was credited to the unrestricted fund to recompense for the investment losses charged to the unrestricted fund in previous years.

These investment funds will be reviewed at Charitable Funds Committee meetings in the new financial year and the Committee will consider whether it needs to change the make-up of the Charity investments in the future.

The investment market began to recover in 2023/24 and it is hoped the investment financial performance in 2024/25 will improve further.

How we organise our affairs: reference and administrative details

The Charity is registered with the Charity Commission under the single Registered Number 1107883 following the merger of the Royal Shrewsbury Hospital (RSH) and the Princess Royal Hospital (PRH) in October 2003.

The object of the Charity is to apply income received from donations to any charitable purpose or purposes relating to the National Health Service to benefit the public served by the Trust.

The registered address of SATH Charity is: Royal Shrewsbury Hospital, Mytton Oak Road Shrewsbury, Shropshire, SY3 8XQ

Corporate Trustee

The Shrewsbury and Telford Hospital NHS Trust is the Corporate Trustee of the Charity. The Executive Directors and Non-executive Directors of the Trust Board share the responsibility for ensuring that the NHS body fulfils its duties as Corporate Trustee in managing the Charity and are responsible for deciding policy and ensuring it is implemented. Members are not individual trustees under charity law but act as agents on behalf of the Corporate Trustee.

As Corporate Trustee, all serving members of The Shrewsbury & Telford Hospital NHS Trust Board are required to ensure that:

- the income of the Charity is applied with complete fairness between the persons who are properly qualified to benefit from it;
- they act reasonably and prudently regarding any decisions made in respect of the Charity;
- they exercise the same degree of care in dealing with the administration of the funds as that of a prudent business person would exercise in managing his or her own affairs or those of someone else for whom he or she was responsible;
- they are able to demonstrate that its charitable aims are for the public benefit.

Our advisors

Investment managers	CCLA Investment Management Ltd	One Angel Lane, London, EC4R 3AB
Independent Examiners	Dyke Yaxley Limited	1 Brassey Road, Old Potts Way, Shrewsbury, SY3 7FA
Bankers	The Royal Bank of Scotland	Drummond House, 1 Redheughs Avenue, Edinburgh, EH12 9JN
Legal advisors	Hill Dickinson LLP	No.1 St. Paul's Square Liverpool, L3 9SJ

During the year, the following voting directors were members of the Corporate Trustee:

Chair	Dr Catriona McMahon Professor Trevor Purt Andrew Morgan	to 30.06.2024 Acting Chair from 01.07.2024 to 30.09.2024 from 01.10.2024
Chief Executive	Louise Barnett	to 13.09.2024
Interim Chief Executive	Jo Williams	from 14.09.2024
Assistant Chief Executive	Inese Robotham	
Non-Executive Director	Teresa Boughey David Brown Rajinder Dhaliwal Rosi Edwards Richard Miner Professor Trevor Purt	to 30.09.2024 from 01.08.2023
Associate NED	Simon Crowther Sarah Dunnett Dr Timothy Lyttle Wendy Nicholson	from 05.02.2024 from 01.02.2024 to 29.02.2024 from 13.03.2024
Medical Director	John Jones	
Director of Nursing	Hayley Flavell	
Acting Chief Operating Officer	Sarah Biffen	to 21.10.2024
Chief Operating Officer	Ned Hobbs	from 22.10.2024
Director of Finance	Helen Troalen	

During the year, the following voting directors were members of the Charitable Funds Committee:

Chair	Teresa Boughey
Non-Executive Director	David Brown Rajinder Dhaliwal Rosi Edwards
Director of Finance	Helen Troalen
Acting Chief Operating Officer	Sara Biffen

Charity governance, structure and management arrangements

The Corporate Trustee is responsible for deciding policy and making sure that it is implemented. Day to day management is delegated to the Director of Finance who is responsible for carrying out the decisions of the Corporate Trustee and for working with the professional advisors and with the employees of The Shrewsbury and Telford Hospital NHS Trust who provide the financial services to the Charity.

The Charitable Funds Committee provides detailed scrutiny of the Charity's activities, including income and expenditure and monitoring the performance of investments, and makes appropriate recommendations to the Corporate Trustee with regard to the Charity Commission's guidance on public benefit.

The finance department review any Charity Commission guidance and advise appropriately with specific issues being raised for the attention of the Corporate Trustee through the Trust's Charitable Funds Committee.

Trustee recruitment, appointment and induction

The Chair and Non-Executive Members of the Trust Board are appointed by NHS England under arrangements made by the Secretary of State for Health for a fixed term of not more than four years (renewable to a maximum of ten years in total). Executive members are subject to recruitment by the NHS Trust Board.

Non-Executive Members are selected to give a good mix of appropriate professional skills.

Members are given an opportunity to raise questions via the Corporate Trustee. Additionally, copies of policies relating to charitable funds are provided on the Trust's intranet.

Members are provided with several Charity Commission publications to assist them in fulfilling their roles. Within the year quarterly investment reports have been provided by the Trust's investment advisors.

Key management personnel remuneration

During the year none of the members of the NHS Trust Board or senior NHS Trust staff or parties related to them were beneficiaries of the Charity.

Neither any member of the NHS Trust Board nor the Corporate Trustee has received honoraria, emoluments or expenses in the year and the Corporate Trustee has purchased trustee indemnity insurance.

The Charity does not have any employees. The administration of the funds is carried out by employees from The Shrewsbury and Telford Hospital NHS Trust on NHS terms and conditions. Their remuneration is reviewed annually and is increased in accordance with the nationally agreed increases for their pay scales. The employees' salary and related employment costs are recharged to the Charity from the Trust.

Looking ahead: risk analysis

The Charity has a policy that any significant risks to which the Charity faces or is likely to encounter are reported to the Charitable Funds Committee. The Charitable Funds Committee review the risks that are applicable to the Charity and are satisfied that the risks to the Charity have been mitigated.

The Charitable Funds Committee reviews its investments at each meeting and considers the risks surrounding the Charity's investment strategy. This will need to be reviewed by the Committee during 2024/25 but it is hoped that the investment market will recover further during 2024 and the investment financial performance in 2024/25 will improve.

The Charity is reliant on donations to allow it to spend on charitable activities for the benefit of staff and patients at The Shrewsbury and Telford Hospital NHS Trust. If income falls the Charity would not be able to spend or enter into longer term commitments with the NHS hospitals we support.

NHS waiting times for treatment are getting longer. This is partly due to the impact of the pandemic but also demand continues to rise. There is a risk that the public's goodwill for the NHS will reduce making fundraising more difficult.

The cost of living remains a significant pressure on many people's lives. This is continuing to have an impact on the amount that people are able to donate to charity. This will be kept under review in 2024/25.

The NHS is, by its very nature, subject to national changes in government policy as well as local politically driven decisions. The Charitable Funds Committee regularly liaises with all of our NHS partners to understand any potential changes and identify any risks as it may mean initiatives or healthcare activities supported by the Charity are no longer delivered in the area.

Related parties

The Shrewsbury and Telford Hospital NHS Trust is the Corporate Trustee of the Charity and is therefore a related party. The Charity works closely with, and provides the majority of its funding to, The Shrewsbury and Telford Hospital NHS Trust which comprises of the Royal Shrewsbury Hospital and Princess Royal Hospital in Telford.

The Shrewsbury and Telford Hospital NHS Trust makes a number of administrative services, including accounts preparation, available to the Charity by agreement with the Corporate Trustee.

The Charity is one of over 230 NHS charities in England and Wales who are eligible to join NHS Charities Together. As a member charity, the Charity has the opportunity to discuss matters of common concern and exchange information and experiences, join together with others to lobby government departments and others, and to participate in conferences and seminars which offer support and education for staff and members of the Charitable Funds Committee. As a member of NHS Charities Together, the Charity has also been very grateful to receive grants from their national appeals.

Our relationship with the wider community

The ability of the Charity to continue its vital support for the two hospitals is dependent on its ability to maintain and increase donations from the general public. The Charity also continues to forge strong relationships with members of staff of the hospital without whose co-operation the ability to make an effective contribution would be much diminished.

It is hoped the Charity will continue its good relationships with other local charities such as the Royal Shrewsbury Hospital League of Friends and Lingen Davies Cancer Fund to seek opportunities to work together in the future to fund joint ventures.

Volunteers

On behalf of the Corporate Trustee, the Charitable Funds Committee would like to pay tribute to the members of staff who give their time out of hours in support of the work of the Charity and our fundraisers who do so much to encourage others to enrich lives through donations and fundraising activities.

STATEMENT OF TRUSTEE'S RESPONSIBILITIES IN RESPECT OF THE TRUSTEE'S ANNUAL REPORT AND ACCOUNTS

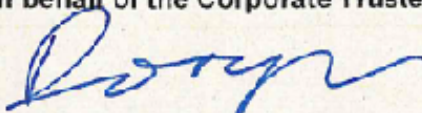
Under charity law, the Corporate Trustee is responsible for preparing the Corporate Trustee's annual report and accounts for each financial year which show a true and fair view of the state of affairs of the Charity and of the excess of expenditure over income for that period.

In preparing these financial statements, generally accepted accounting practice entails that the Corporate Trustee:

- selects suitable accounting policies and then apply them consistently
- makes judgements and estimates that are reasonable and prudent
- states whether the recommendations of the SORP FRS 102 have been followed, subject to any material departures disclosed and explained in the financial statements
- states whether the financial statements comply with the trust deed, subject to any material departures disclosed and explained in the financial statements
- prepares the financial statements on the going concern basis unless it is inappropriate to presume that the charity will continue its activities.

The Corporate Trustee is required to act in accordance with the trust deed of the Charity, within the framework of trust law. The Corporate Trustee is responsible for keeping proper accounting records, sufficient to disclose at any time, with reasonable accuracy, the financial position of the Charity at that time, and to enable the Corporate Trustee to ensure that, where any statements of accounts are prepared by them under section 132(1) of the Charities Act 2011, those statements of accounts comply with the requirements of regulations under that provision. The Corporate Trustee has general responsibility for taking such steps as are reasonably open to the Corporate Trustee to safeguard the assets of the Charity and to prevent and detect fraud and other irregularities.

Signed on behalf of the Corporate Trustee:

Signed: 

Name: ANDREW MORGAN

Date: 12/12/2024

INDEPENDENT EXAMINER'S REPORT

TO THE CORPORATE TRUSTEE OF THE SHREWSBURY AND TELFORD HOSPITAL NHS TRUST CHARITY

I report to the Corporate Trustee on my examination of the financial statements of The Shrewsbury and Telford Hospital NHS Trust Charity (the charity) for the year ended 31 March 2024 which are set out on pages 29 to 47.

Responsibilities and basis of report

As the Corporate Trustee of the charity you are responsible for the preparation of the financial statements in accordance with the requirements of the Charities Act 2011 (the 2011 Act).

I report in respect of my examination of the Charity's financial statements carried out under section 145 of the 2011 Act. In carrying out my examination I have followed all the applicable Directions given by the Charity Commission under section 145(5)(b) of the 2011 Act.

Independent examiner's statement

Since the charity's gross income exceeded £250,000 your examiner must be a member of a body listed in section 145 of the Act. I confirm that I am qualified to undertake the examination because I am a member the Association of Chartered Certified Accountants, which is one of the listed bodies.

I have completed my examination. I confirm that no matters have come to my attention in connection with the examination giving me cause to believe that in any material respect:

1. accounting records were not kept in respect of the Charity as required by section 130 of the 2011 Act; or
2. the financial statements do not accord with those records; or
3. the financial statements do not comply with the applicable requirements concerning the form and content of accounts set out in the Charities (Accounts and Reports) Regulations 2008 other than any requirement that the accounts give a true and fair view which is not a matter considered as part of an independent examination.

I have no concerns and have come across no other matters in connection with the examination to which attention should be drawn in this report in order to enable a proper understanding of the financial statements to be reached.

Audrey Williams FCCA
Dyke Yaxley Limited



1 Brassey Road
Old Potts Way
Shrewsbury
Shropshire
SY3 7FA

Dated: 13 December 2024
.....

Statement of Financial Activities for the year ending 31 March 2024

	Note	Unrestricted Funds	Restricted Funds	Total Funds 2024	Unrestricted Funds	Restricted Funds	Total Funds 2023
		£000	£000	£000	£000	£000	£000
Income from							
Donations and legacies	3	131	310	441	12	250	262
NHS Charities Together	4	0	30	30	0	43	43
Investments	7	26	0	26	9	43	52
Total incoming resources		157	340	497	21	336	357
Expenditure on							
Charitable activities		(153)	(473)	(626)	(38)	(277)	(315)
NHS Charities Together		0	(30)	(30)	0	(46)	(46)
Total expenditure	9	(153)	(503)	(656)	(38)	(323)	(361)
Net income/ (expenditure)		4	(163)	(159)	(17)	13	(4)
Gross transfer between funds	21	(3)	3	0	0	0	0
Net incoming/(outgoing) resources		1	(160)	(159)	(17)	13	(4)
Net gains/ (losses) on investments		203	0	203	(74)	0	(74)
Net Movement in funds		204	(160)	44	(91)	13	(78)
Reconciliation of Funds							
Total Funds brought forward	23	264	1,898	2,162	355	1,885	2,240
Total Funds carried forward	23	468	1,738	2,206	264	1,898	2,162

Balance Sheet as at 31 March 2024

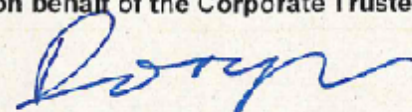
	Note	Unrestricted Funds £000	Restricted Funds £000	Total Funds 2024 £000	Unrestricted Funds £000	Restricted Funds £000	Total Funds 2023 £000
Fixed assets							
Investments	16	447	1,738	2,185	260	1,915	2,175
Total Fixed Assets		447	1,738	2,185	260	1,915	2,175
Current assets							
Debtors	17	1	0	1	0	3	3
Cash at bank and in hand	18	63	2	65	8	15	23
Total Current Assets		64	2	66	8	18	26
Liabilities							
Creditors falling due within one year	19	(43)	(2)	(45)	(4)	(35)	(39)
Net Current assets/(liabilities)		21	0	21	4	(17)	(13)
Total net assets or liabilities		468	1,738	2,206	264	1,898	2,162
The funds of the charity:							
Unrestricted income funds:	23	468	0	468	264	0	264
Restricted income funds		0	1,738	1,738	0	1,898	1,898
Total charity funds		468	1,738	2,206	264	1,898	2,162

Signed on behalf of the Corporate Trustee:

Signed:

Name:

Date:



ANDREW MORGAN

12/12/2024

Statement of Cash Flows for the year ending 31 March 2024

	Note	Total Funds 2024 £000	Total Funds 2023 £000
Cash flows from operating activities			
Net cash provided by (used in) operating activities	20	(177)	(35)
Cash flows from investing activities			
Dividends and interest from investments	7	26	52
Sale of investments	16	2,207	0
Purchase of investments	16	(2,014)	(49)
Net cash provided by (used in) investing activities		219	3
Change in cash and cash equivalents in the reporting period		42	(32)
Cash and cash equivalents at beginning of the reporting period	18	23	55
Cash and cash equivalents at the end of the reporting period	18	65	23

Notes to the Accounts**1. Accounting Policies****(a) Basis of preparation**

The Shrewsbury and Telford Hospital NHS Trust Charity is a registered charity with the Charities Commission in England and Wales, registration number 1107883. The registered office of the charity is Royal Shrewsbury Hospital, Mytton Oak Road, Shrewsbury, Shropshire, SY3 8XQ.

The financial statements have been prepared under the historic cost convention, with the exception of investments which are included at fair value.

The accounts (financial statements) have been prepared in accordance with the charity's trust deed, the Statement of Recommended Practice Accounting and Reporting by Charities preparing their accounts in accordance with the Financial Reporting Standard applicable in the UK and Republic of Ireland (FRS 102) issued in October 2019 and the Financial Reporting Standard applicable in the United Kingdom and Republic of Ireland (FRS 102) and the Charities Act 2011 and UK Generally Accepted Practice as it applies from 1 January 2019.

The accounts (financial statements) have been prepared to give a 'true and fair' view and have departed from the Charities (Accounts and Reports) Regulations 2008 only to the extent required to provide a 'true and fair view'. This departure has involved following Accounting and Reporting by Charities preparing their accounts in accordance with the Financial Reporting

Standard applicable in the UK and Republic of Ireland (FRS 102) issued in October 2019 rather than the Accounting and Reporting by Charities: Statement of Recommended Practice effective from 1 April 2005 which has since been withdrawn.

The financial statements are prepared in sterling, which is the functional currency of the charity. Monetary amounts in these financial statements are rounded to the nearest £000.

The Corporate Trustee considers that there are no material uncertainties about the Charity's ability to continue as a going concern. Donated income is almost back to pre-pandemic levels but continues to be affected by the cost-of-living crisis. The Charity has few on-going commitments so even a decrease in donations would not affect the Charity's ability to continue as a going concern. There are no material uncertainties affecting the current year's accounts.

The key risks to the Charity's continuing going concern status are a fall in investment returns or if there was a substantial fall in income from donations.

(b) Funds structure

The Charity's funds are a mixture of restricted and unrestricted.

Restricted funds are funds which are to be used in accordance with specific restrictions imposed by the donor at the time the donation was made.

Unrestricted funds comprise those funds which can be used at the Corporate Trustee's discretion for any purpose in furtherance of the charitable objects.

The major funds held in each of these categories are disclosed in note 23.

(c) Incoming resources

All incoming resources are recognised once the Charity has entitlement to the resources, it is probable (more likely than not) that the resources will be received and the monetary value of incoming resources can be measured with sufficient reliability.

Where there are terms or conditions attached to incoming resources, particularly grants, then these terms or conditions must be met before the income is recognised as the entitlement condition will not be satisfied until that point. Where terms or conditions have not been met or uncertainty exists as to whether they can be met then the relevant income is not recognised in the year but deferred and shown on the balance sheet as deferred income.

(d) Gifts in Kind

Gifts in kind, such as food and care packages are not accounted for when they are accepted and immediately distributed unless a single donation is material.

(e) Incoming resources from legacies

Legacies are accounted for as incoming resources either upon receipt or where the receipt of the legacy is probable. Receipt is probable when:

- Confirmation has been received from the representatives of the estate(s) that probate has been granted
- The executors have established that there are sufficient assets in the estate to pay the legacy and
- All conditions attached to the legacy have been fulfilled or are within the Charity's control.

If there is uncertainty as to the amount of the legacy and it cannot be reliably estimated then the legacy is shown as a contingent asset until all of the conditions for income recognition are met.

(f) Resources expended and irrecoverable VAT

All expenditure is accounted for on an accruals basis and has been classified under headings that aggregate all costs related to each category of expense shown in the Statement of Financial Activities. Expenditure is recognised when the following criteria are met:

- There is a present legal or constructive obligation resulting from a past event
- It is more likely than not that a transfer of benefits (usually a cash payment) will be required in settlement
- The amount of the obligation can be measured or estimated reliably.

Irrecoverable VAT is charged against the category of resources expended for which it was incurred.

(g) Recognition of expenditure and associated liabilities as a result of grants

During the past few years NHS Charities Together have provided grants to support the Charity. In 2023/24 the Charity was successful in being rewarded with a £30,000 grant to improve the visibility and presence of the Charity through the appointment for one year of a Marketing and Communications Officer.

(h) Allocation of support costs

Support costs are those costs which do not relate directly to a single activity. These include some staff recharges, costs of administration, external independent examination costs and IT system support. The support costs for 2023/24 have been netted off the investment gain and interest and allocated to unrestricted funds. The analysis of support costs are shown in note 12.

(i) Fundraising costs

The costs of generating funds are the costs attributable to generating income for the Charity. The fundraising costs attributable to charitable activities are apportioned across those activities in proportion to the average balances.

(j) Charitable activities

Costs of charitable activities comprise all costs incurred in the pursuit of the charitable objects of the Charity. These costs, where not wholly attributable, are apportioned between the categories of charitable expenditure in addition to the direct costs. The total costs of each category of charitable expenditure include an apportionment of support and fundraising costs as shown in note 9.

(k) Fixed asset investments

Investments are a form of basic financial instrument. Fixed asset investments are initially recognised at their transaction value and are subsequently measured at their fair value (market value) as at the balance sheet date. The Statement of Financial Activities includes the net gains and losses arising on revaluation and disposals throughout the year. Investments are included in the Balance Sheet at the current market value quoted by the investment advisors, excluding dividends.

The main form of financial risk faced by the Charity is that of volatility in equity markets and investment markets due to wider economic conditions, the attitude of investors to investment risk, and changes in sentiment concerning equities and within particular sectors or sub sectors. Further information on the Charity's investments can be found in note 16.

(l) Debtors

Debtors are amounts owed to the Charity. They are measured on the basis of their recoverable amount.

(m) Cash and cash equivalents

Cash at bank and in hand is held to meet the day to day running costs of the Charity as they fall due.

(n) Creditors

Creditors are amounts owed by the Charity. They are measured at the amount that the Charity expects to have to pay to settle the debt.

Amounts which are owed in more than a year are shown as long term creditors.

(o) Realised gains and losses

All gains and losses are taken to the Statement of Financial Activities as they arise. Realised gains and losses on investments are calculated as the difference between sales proceeds and opening market value (purchase date if later). Unrealised gains and losses are calculated as the difference between the market value at the year end and opening market value (or purchase date if later).

(p) Staff costs and pensions

The administration of the funds is carried out by employees from The Shrewsbury and Telford Hospital NHS Trust whose costs are recharged to the Charity. These staff members belong to the NHS Pension Scheme which is an unfunded defined benefit scheme which is accounted for as a defined contribution scheme. The recharge from The Shrewsbury and Telford Hospital NHS Trust includes the employer contributions to that scheme.

2. Related party transactions

The Shrewsbury and Telford Hospital NHS Trust makes a number of administrative services, including accounts preparation, available to the Charity by agreement with the Corporate Trustee. These are included within support costs – see note 12.

None of the members of The Shrewsbury and Telford Hospital NHS Trust Board or parties to them has undertaken any transactions with the Charity or received any benefit from the Charity in payment or kind. No Board member has received honoraria, emoluments or expenses in the year.

3. Income from donations and legacies

	Unrestricted Funds	Restricted Funds	Total Funds 2024	Unrestricted Funds	Restricted Funds	Total Funds 2023
	£000	£000	£000	£000	£000	£000
Donations	9	215	224	12	188	200
Legacies	122	95	217	0	62	62
Total	131	310	441	12	250	262

Donations are gifts from members of the public, patients, relatives of patients and staff.

Legacy income is only included in incoming resources where receipt is reasonably certain and the amount is known with certainty, or the legacy has been received. As at 31 March 2024, no legacies (31 March 2023: no legacies) have been accrued due to the uncertainty to the value of the residual value of the estate.

4. Analysis of income from charitable activities

In 2023/24 the Charity was rewarded with a £30,000 grant from NHS Charities Together to improve the visibility and presence of the Charity through the appointment for one year of a Marketing and Communications Officer. This need was identified by a gap analysis questionnaire created by NHS Charities Together that highlighted areas of potential improvement and actions to stimulate income growth.

	Unrestricted Funds	Restricted Funds	Total Funds 2024	Unrestricted Funds	Restricted Funds	Total Funds 2023
	£000	£000	£000	£000	£000	£000
NHS Charities Together	0	30	30	0	43	43
Total	0	30	30	0	43	43

5. Analysis income from other trading activities

There are no incoming resources from trading activities during this period (2023: nil).

6. Role of volunteers

Like all charities, The Shrewsbury and Telford Hospital NHS Trust Charity relies on volunteers to organise coffee mornings, raffles and events towards donations to the Charity. In accordance with the SORP, due to the absence of any reliable measurement basis, the contribution of volunteers is not recognised in the accounts.

7. Gross investment income

	Unrestricted Funds	Restricted Funds	Total Funds 2024	Unrestricted Funds	Restricted Funds	Total Funds 2023
	£000	£000	£000	£000	£000	£000
Fixed asset investments	26	0	26	9	43	52
Total	26	0	26	9	43	52

8. Analysis of expenditure on raising funds

The Charity incurred no expenditure on raising funds in the current period (2023: nil.)

9. Analysis of charitable expenditure

The Charity undertook direct charitable activities for the benefit of both staff and patients at the Shrewsbury and Telford Hospital NHS Trust. NHS Charities Together grant expenditure for 2024 relates to the appointment of a Marketing and Communications Officer.

	Activities undertaken directly	Support Costs	Total 2024
	£000	£000	£000
NHS Charities Together grants	30	0	30
NHS Charities Together - Patient welfare and amenities	27	6	33
Patient welfare and amenities	437	90	527
Staff welfare and amenities	55	11	66
Staff education, training and development	0	0	0
Total	549	107	656

	Activities undertaken directly	Support Costs	Total 2023
	£000	£000	£000
NHS Charities Together grants	43	3	46
NHS Charities Together - Patient welfare and amenities	37	1	38
Patient welfare and amenities	139	53	192
Staff welfare and amenities	55	23	78
Staff education, training and development	5	2	7
Total	279	82	361

10. Analysis of grants

The Charity does not make grants to individuals or to institutions other than The Shrewsbury and Telford Hospital NHS Trust. The Corporate Trustee operates a scheme of delegation for the majority of the charitable funds, under which fund advisors manage the day-to-day disbursements on their projects in accordance with the directions set out by the Corporate Trustee.

11. Movements in funding commitments

A reconciliation of the movements in provisions and funding commitments.

	Current liabilities	Non-current liabilities	Total 2024
	£000	£000	£000
Opening balance at 1 April 2023 (see note 19)	39	0	39
Additional commitments made during the year	549	0	549
Amounts paid during the year	(543)	0	(543)
Closing balance at 1 April 2024 (see note 19)	45	0	45

	Current liabilities	Non-current liabilities	Total 2023
	£000	£000	£000
Opening balance at 1 April 2022 (see note 19)	16	0	16
Additional commitments made during the year	279	0	279
Amounts paid during the year	(256)	0	(256)
Closing balance at 1 April 2023 (see note 19)	39	0	39

12. Allocation of support costs and fundraising costs

The support costs for 2023/24 have been netted off the investment gain and interest and allocated to unrestricted funds.

	Total 2024	Total 2023
	£000	£000
Independent Examination fees	3	3
Governance	3	3
Salaries and related costs	100	75
Just Giving/Cash carrier/Bank charges	3	2
Software Support	1	2
Total	107	82

	Unrestricted Funds	Restricted Funds	Total 2024
	£000	£000	£000
Charitable activities	107	0	107
Total	107	0	107

	Unrestricted Funds	Restricted Funds	Total 2023
	£000	£000	£000
Charitable activities	15	67	82
Total	15	67	82

The support costs for 2023/24 have been netted off the investment gain and interest and allocated to unrestricted funds to recompense for the investment losses charged to the unrestricted fund in previous years. The support costs for 2022/23 were apportioned across those activities in proportion to the average fund balance of all unrestricted and restricted funds.

13. Trustees' remuneration, benefits and expenses

The Shrewsbury and Telford Hospital NHS Trust Board is the Corporate Trustee of the Charity. The Executive Directors and Non-Executive Directors of the Trust Board do not receive any additional remuneration, benefits or expenses for their role in relation to the Charity (2023: nil).

14. Analysis of staff costs and remuneration of key management personnel

The Charity does not have any employees. The administration of the funds is carried out by employees from The Shrewsbury and Telford Hospital NHS Trust. The employees' salary and related costs are recharged to the Charity from the Trust. These are analysed as follows:

	Total 2024	Total 2023
	£000	£000
Salaries and wages	82	61
Social security costs	8	7
Employers pension contribution	10	7
Total	100	75

The average number of recharged full time equivalent employees during the year was 2.00 (2023: 1.73). The salaries recharged to charitable funds include small percentages of key management personnel involved in providing support services to charitable activities or the governance of the Charity.

No employees had emoluments in excess of £60,000 (2023: nil).

15. Independent Examiner's remuneration

The remuneration relating to the independent examination totalled £3,480 (2023: £2,820).

This remuneration relates solely to the independent examination with no other additional work undertaken (2023: nil).

16. Fixed asset investments

Movement in fixed asset investments

	Total 2024	Total 2023
	£000	£000
Market value brought forward	2,175	2,200
Deposits from Royal Bank of Scotland account	120	0
Dividends and interest	27	49
Withdrawals to Royal Bank of Scotland account	(340)	0
Add net gain/(loss) on revaluation	203	(74)
Market value as at 31 March	2,185	2,175

Fixed asset investments by type

	Units held as at 31 March 2024	Units held as at 31 March 2023	Total 2024	Total 2023
			£000	£000
Common investment funds				
Deposit Fund			255	998
Ethical Fund	366,740		1,930	-
Fixed Interest Account		999,226	-	1,177
Total			2,185	2,175

All investments are carried at their fair value.

Investments are placed in a COIF (Charities Official Investment Fund) managed by CCLA Investment Management Ltd.

17. Analysis of current debtors

Debtors under 1 year	Total 2024	Total 2023
	£000	£000
Accrued income	1	3
Total	1	3

18. Analysis of cash and cash equivalents

	Total 2024	Total 2023
	£000	£000
Royal Bank of Scotland accounts	65	23
Total cash and cash equivalents	65	23

19. Analysis of liabilities

	Total	Total
	2024	2023
	£000	£000
Creditors under 1 year		
Trade Creditors	42	19
Accruals	3	3
Other Creditors - NHS Charities Together community grants	0	17
Total	45	39

20. Reconciliation of net income/ (expenditure) to net cash flow from operating activities

	Total	Total
	2024	2023
	£000	£000
Net income/(expenditure) as per the statement of financial activities	44	(78)
Adjustments for:		
(Gains)/losses on investments	(203)	74
Dividends and interest from investments	(26)	(52)
(Increase) /decrease in debtors	2	(2)
Increase/(decrease) in creditors	6	23
Net cash provided by (used in) operating activities	(177)	(35)

21. Gross transfer between funds

During the year £3,000 was transferred from unrestricted funds to restricted funds (Dementia Fund) to support the purchase of activity boxes for patients coping with dementia.

22. Accounting for funds received as agent

Funds received by a charity as agent are not recognised as an asset in its accounts because the funds are not within its control. The Charity received funds from NHS Charities Together for other community organisations in 2023. The receipt of these funds as agent is not recognised as income nor is its distribution recognised as expenditure. The Charity did not receive any funds from NHS Charities Together for other community organisations in 2024.

	Total	Total
	2024	2023
	£000	£000
Balance b/f	17	0
Income received	0	112
Expenditure	(17)	(95)
Balance c/f	0	17

23. Analysis of charitable funds

Each of the restricted funds is designated for the welfare and benefit of staff and patients on the relevant ward/department within the Royal Shrewsbury Hospital and the Princess Royal Hospital, Telford.

a) Analysis of restricted fund movements 2024

	Balance b/fwd	Income	Expenditure	Transfer	Balance c/fwd
	£000	£000	£000	£000	£000
Shropshire Haematology Blood Research	509	132	(233)	0	408
Ward 23 Haematology/Oncology	154	14	(4)	0	164
Breast Cancer Fund	122	10	0	0	132
Respiratory RSH	78	4	0	0	82
Cardiology	59	6	0	0	65
Lottery Small Differences	51	35	(27)	0	59
Sub-Specialty Cancer Fund	102	0	(46)	0	56
Renal/Nephrology	62	9	(19)	0	52
Diabetes Hummingbird Centre	50	2	(4)	0	48
Stroke - Ward 21, Ward 22R	62	1	(17)	0	46
Pharmacy	41	4	0	0	45
Chemotherapy Day Centre	40	11	(6)	0	45
ITU RSH	43	13	(18)	0	38
Elderly Care Patients	38	1	(1)	0	38
Children's Oncology	39	0	(3)	0	36
Urology	23	3	0	0	26
Charities Together	49	30	(57)	0	22
Neonatal Unit	23	5	(5)	0	23
Vascular	22	0	0	0	22
Colorectal	20	1	0	0	21
Children's Unit	21	3	(4)	0	20
ITU PRH	33	1	(14)	0	20
Radiotherapy	19	0	0	0	19
AMU RSH	19	1	(2)	0	18
Swan Fund	16	20	(20)	0	16
Respiratory PRH	13	2	0	0	15
MSK T&O RSH	10	5	0	0	15
Midwife Led Units	14	0	0	0	14
Head and Neck General	13	3	(3)	0	13
Medical Wards RSH	11	2	0	0	13
Ophthalmology	9	1	0	0	10
Other funds below £10k (32 funds)	133	21	(20)	3	137
Total	1,898	340	(503)	3	1,738

b) Analysis of restricted fund movements 2023

	Balance b/fwd	Income	Expenditure	Balance c/fwd
	£000	£000	£000	£000
Shropshire Haematology Blood Research	429	105	(25)	509
Ward 23 Haematology/Oncology	153	9	(8)	154
Breast Cancer Fund	122	14	(14)	122
Sub-Specialty Cancer Fund	128	2	(28)	102
Respiratory RSH	76	5	(3)	78
NHS Charities Together	88	46	(85)	49
Stroke - Ward 21, Ward 22R	61	2	(1)	62
Renal/Nephrology	48	17	(3)	62
Cardiology	57	4	(2)	59
Lottery Small Differences	51	31	(31)	51
Diabetes Hummingbird Centre	38	14	(2)	50
ITU RSH	40	7	(4)	43
Pharmacy	39	5	(3)	41
Chemotherapy Day Centre	50	7	(17)	40
Children's Oncology	31	10	(2)	39
Elderly Care Patients	37	3	(2)	38
ITU PRH	35	2	(4)	33
Urology	22	4	(3)	23
Neonatal Unit	21	3	(1)	23
Vascular	22	0	0	22
Children's Unit	20	2	(1)	21
Colorectal	18	3	(1)	20
AMU RSH	19	1	(1)	19
Radiotherapy	16	5	(2)	19
Swan Fund	17	6	(7)	16
Midwife Led Units	14	0	0	14
Head and Neck General	16	0	(3)	13
Respiratory PRH	12	2	(1)	13
Audiology	11	0	0	11
Medical Wards RSH	10	1	0	11
MSK T&O RSH	10	1	(1)	10
Other funds below £10k (33 funds)	174	25	(68)	131
Total	1,885	336	(323)	1,898

Shropshire Haematology Blood Research is restricted to the Clinical Haematology Service based on the first floor of the Lingen Davies Centre at the Royal Shrewsbury Hospital – this includes an outpatient clinic and the Haematology Day Unit.

Ward 23 Haematology/Oncology is restricted to the designated Oncology & Haematology Ward at the Royal Shrewsbury Hospital. The Ward has a treatment/assessment bay that is used daily by both Oncology and Haematology. The ward covers treatment of a wide spectrum of malignant and non-malignant haematological disorders.

Breast Cancer Fund is restricted to breast cancer care to purchase much needed medical equipment and provide training for the specialist breast care nurses.

The other 32 funds below £10k are restricted to specific wards/departments within the Trust to purchase medical equipment, as well as enhancing and improving patient experience and comfort and provide additional training for staff.

(c) Analysis of unrestricted fund movements 2024

	Balance b/fwd	Income	Expenditure	Transfer	Unrealised Gain	Balance c/fwd
	£000	£000	£000	£000	£000	£000
SaTH General Fund	264	157	(153)	(3)	203	468
Total	264	157	(153)	(3)	203	468

(d) Analysis of unrestricted fund movement 2023

	Balance b/fwd	Income	Expenditure	Unrealised Loss	Balance c/fwd
	£000	£000	£000	£000	£000
SaTH General Fund	355	21	(38)	(74)	264
Total	355	21	(38)	(74)	264

The unrestricted funds include all donations for which a donor has not expressed any preference as to how the funds shall be spent. These funds are applied for any charitable purpose to the benefit of the patients and staff in any ward/department within the Royal Shrewsbury Hospital and the Princess Royal Hospital at the discretion of the Corporate Trustee.

24. Total return on investment

Long-term investments are placed in a COIF (Charities Official Investment Fund) managed by CCLA Investment Management Ltd. This arrangement allows the Charity access to a wider portfolio of investments than would otherwise have been possible. During the year the Corporate Trustee approved an investment plan to retain the COIF deposit fund, but reduce the investment to £250,000, and transfer the balance of other funds to the COIF Ethical Investment Fund.

	COIF Deposit Fund	COIF Fixed Interest Fund	COIF Ethical Investment Fund	Total
	£000	£000	£000	£000
Opening Balance as at 1 April 2023	998	1,177	0	2,175
Transfer between COIF and RBS	(80)	0	(140)	(220)
Dividends Received	0	7	0	7
Dividends transfer between funds	7	(7)	0	0
Transfer between funds	(690)	(1,177)	1,867	0
Interest Received	20	0	0	20
Unrealised Investment Gain/(Loss)	0	0	203	203
Closing Balance as at 31 March 2024	255	0	1,930	2,185

	COIF Deposit Fund	COIF Fixed Interest Fund	Total
	£000	£000	£000
Opening Balance as at 1 April 2022	949	1,251	2,200
Transfer between COIF and RBS	0	0	0
Dividends Received	0	32	32
Dividends transfer between funds	32	(32)	0
Interest Received	17	0	17
Unrealised Investment Gain/(Loss)	0	(74)	(74)
Closing Balance as at 31 March 2023	998	1,177	2,175