

# 2021 - 2022

## ANNUAL REPORT AND ACCOUNTS SATH CHARITY

---





# CONTENTS

- 02 Message from our CEO and Chair**
- 05 Message from Our Charitable Funds Chair**
- 06 Highlights of the Year**
- 10 Supporting Patients**
- 12 Supporting Staff**
- 14 Working in Partnership**
- 18 How You Can Help**
- 20 Financial Statements**

MESSAGE FROM OUR CHAIR AND CEO -  
Dr Catriona McMahon and Louise  
Barnett



On behalf of the trustees of The Shrewsbury and Telford NHS Hospital Trust Charity (SaTH Charity), we are delighted to present this annual report.

From our staff and our patients, we would like to express their sincere appreciation to everyone who has made a charitable donation during the year.

This gratitude is also extended to those external fundraising organisations and their volunteers who support the Charity in its objectives.


The Charity's key aim is to support The Shrewsbury and Telford Hospital NHS Trust deliver excellent patient care and improve health outcomes for all, funding new equipment and facilities to improve patient experience and investing in specialist training to advance the knowledge of our staff beyond what is affordable using the normal NHS budget.

SaTH Charity supports all patients irrespective of race, personal beliefs or financial position. Improving clinical need and outcome is by far the most important objective.

Thanks to the generosity of the people of Shropshire, Telford and Wrekin, and







"...we would like to say a big "Thank you" to all our supporters on behalf of all our workforce in the Trust for their kindness and generosity..."

Mid-Wales, the Hospitals received donations and legacies of £311,000 during the year and £335,000 from NHS Charities Together.

The nature of support received ranged from donations left with a ward sister by satisfied patients upon their discharge from hospital, through to a share of an individual's estate in line with their wishes upon their death. These funds continued to benefit both patients and staff within the hospitals. Ward donations are often used to provide a state of the art piece of equipment that improves the care which our clinical staff can provide.

This report provides an insight into our activities which are made possible by our

fundraisers, staff, stakeholders and other interested parties and it outlines some of the Charity's achievements during 2021/2022.

The year ahead is looking challenging however we have plans to build and develop partnerships with our community to help further deliver our ambitious plans as the trusted Charity of SaTH.

Finally, we would like to say a big "Thank you" to all our supporters on behalf of all our staff in the Trust for their kindness and generosity throughout what is one of the most challenging periods we have faced as your NHS.

**- Dr Catriona McMahon and Louise Barnett**





The Charity formed following the merger of the Royal Shrewsbury Hospital (RSH) and the Princess Royal Hospital (PRH) in October 2003.

In accordance with the Charities Act of 2011, it is listed with the Charity Commission under registered Charity no. 1107883. The Charity is known as SaTH Charity.

Funds received by the Charity are accepted and held and administered as 'funds held on trust' for purposes relating to the Health Service in accordance with the National Health Service Act 1977 and the National Health Service and Community Care Act 1990 and these funds are held on trust by the corporate body.

The Charity exists to raise funds and

receive donations for the benefit of the NHS. This is the patients of the Shrewsbury and Telford NHS Hospital Trust (SaTH). By securing donations, legacies, and sponsorship, the Charity can provide the 'icing on the cake' to make a real difference for patients, their families and the staff who look after them.

The object of the Charity is to apply income received from donations to any charitable purpose or purposes relating to the National Health Service to benefit the public served by the Trust.

The Corporate Trustee, who are Directors of the Trust Board who form the legal entity of Corporate Trustee, fulfils its legal duty by ensuring that funds are spent in accordance with the objects of each fund and in designating funds the Corporate Trustee respects the wishes of donors to benefit patient care and advance the good health and welfare of patients, carers and staff.



## MESSAGE FROM THE CHAIR OF OUR CHARITABLE FUNDS COMMITTEE

- Teresa Boughley



2021/2022 has been an immensely challenging year at the Shrewsbury and Telford Hospital NHS Trust. The teams here have all continued to deliver the best care they can despite the continuing pressures that we have faced, not least with the continuing global pandemic.

As a Non-Executive Director, it has been a true privilege to act as the Chair of the Charitable Funds Committee. This has enabled me to see first-hand how hard everyone works and the very many benefits that SaTH Charity provides to patients and our workforce alike. The charitable donations received make a real difference to the care we can provide to our patients through the provision of those things that we can't fund through our normal exchequer funding.

I have been so proud to work with the rest of the Charitable Funds Committee to make sure that the donations we received have been wisely and promptly spent to improve the care we give to our patients and to make sure we have

supported our workforce as much as we could during this time.

The challenges remain in 2022/23 as we continue to support the Trust on its recovery journey out of the pandemic and addressing the care needs of our local population. We know there will be similar pressures in the year ahead and, with my colleagues attending the Charitable Funds Committee, we will do all we can to support this important work. I would also like to thank all the people and communities that have supported the Charity – your support has been so valued and appreciated by our staff.

- **Thank you, Teresa Boughley**

**"...The Charitable donations received make a real difference to the care we can provide to our patients ..."**



# HIGHLIGHTS FROM THE YEAR



## APRIL

NHS THANK YOU RAINBOW DAISIES ARE SOLD TO RAISE MONEY FOR THE STAFF SUPPORT FUND - £3,815

NHS Thank You Daisies were designed by The British Ironwork Centre and sold to SaTH Charity at cost to help fundraise for Staff Support. We also gave rainbow daisies to staff to thank them.

Julia Clarke, Director of Public Participation, said "The daisy is a positive reminder of the pandemic and how the amazing NHS and its staff rose to the challenge"

## MAY

EXPANSION OF THE HAMAR CENTRE - £18,428

In 2020 we joined with MacMillan Cancer Service and other Charity partners to deliver a £500,000 project to redevelop our counselling and well-being services at the Hamar Help and Support which is for individuals with cancer and other life-threatening conditions. This included a new and larger MacMillan Cancer Support Centre within the Hamar Centre. This project was also supported by Lingen Davies and RSH League of Friends. The work was completed and the new facilities opened in 2021.



## JUNE

LOCAL COMPANY RECONOMY DONATED MONEY TOWARDS CAPTAIN TOM'S COURTYARD PRH - £14,600

Reconomy generated the funds as part of the company's 'Say Thanks This Summer' campaign. Paul Cox, CEO of Reconomy, said: "We're delighted with the outcome of this campaign, which has been the result of great engagement from our staff and our customers. Supporting our local community is very important, and the opportunity to say thanks to our NHS workers in such a tangible way has really caught the imagination of everyone at Reconomy"







## JULY

DONATION FROM MERRYTHOUGHT FOR SALES OF BEVAN THE BEAR -£1,000

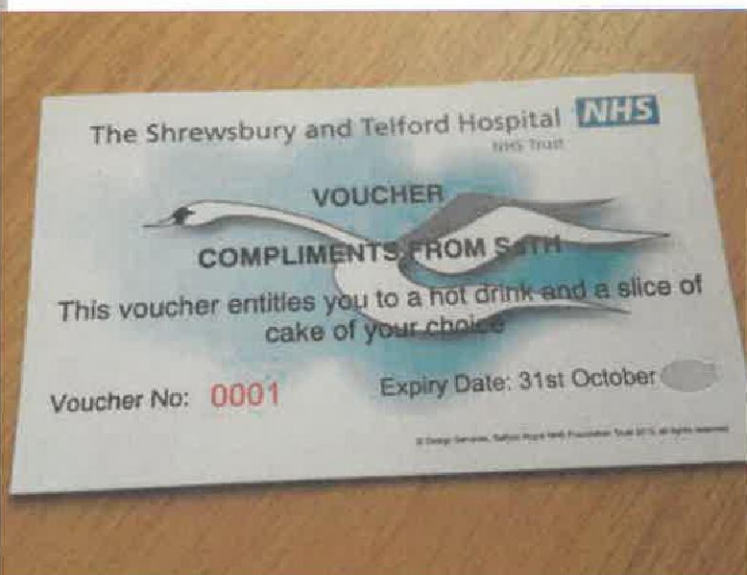
Bevan is a limited edition bear designed for the 70th birthday of the NHS. £15 from every bear sold is donated to SaTH Charity. The pandemic saw an increase in people purchasing the bear. Sarah Holmes, Managing Director of Merrythought, said: "We appreciate the difficulties that families and the NHS are facing at the moment, and are keen to see the Merrythought teddy bear giving some financial and emotional support to those affected by COVID-19."

## AUGUST

SWAN BAG VOUCHERS - £2,734

The vouchers funded by the Swan Fund allows people visiting loved ones at the end of life to have a complimentary hot drink and slice of cake at our cafe or restaurant. This can encourage relatives to take a short break and look after themselves.

The little things are the big things and make all the difference at the hardest of times.



## SEPTEMBER

FUNDRAISING FOR COLD CAP - £2,045

Mary Perry, Gina Shelton and Tara Innes were all treated for breast cancer at The Royal Shrewsbury Hospital in the last 12-18 months and chose to fundraise to help other patients going through treatment at the Lingen Davies Centre. Mary said "We are all under 35 years old and opted to have the cold cap to try and save our hair from falling out during chemo." Gina kept her hair throughout treatment and, whilst the cap didn't stop Mary and Tara's hair falling out, they have all attributed it to their fast regrowth once treatment had finished."



## HIGHLIGHTS FROM THE YEAR



### OCTOBER

SALLY RAISED MONEY FOR THE BREAST CANCER FUND - £2,465

Former patient Sally Jamieson held her annual 'check your pumpkins' event. The money was raised from various events including a carboot, a Halloween Hunt for Radbrook School, a raffle, and a spooky trail.

Sally said "Without your help and continued support this would not be possible. This money will support local people with breast cancer. We have also got an extremely important message out there 'check your pumpkins.'"

### NOVEMBER

HEFIN RICHARDS RAISED MONEY FOR ITU - £3,250

On 13th November Hefin Richards walked from his home in Llandrinio to Royal Shrewsbury Hospital for SaTH Charity. This achievement is very special as 12 months earlier he was in ITU battling COVID-19 and unable to take even just a few steps. Hefin credits Ward 32 & ITU as heroes who saved his life. Hefin Richards said "On the 13th of November, exactly 12 months after entering ITU, I walked 13 miles to the Emergency Department entrance and met two of the ITU nursing team who made me well again and kept me motivated and cared for."



### DECEMBER

SATH CHARITY CHRISTMAS FUN

SaTH Charity set out to raise money for the staff support fund. 2 sleighs full of prizes were raffled off to staff, over £1300 was raised. The charity also supported the Trust by inviting The Rock Choir along to sing for staff in the evening and handing out hot drinks and mince pies, purchasing stickers as decoration for staff to place in patient areas, and covering the cost of breakfast baps for staff working on Christmas Day.







## JANUARY

### ESTATES TEAM DRILL RAFFLE RAISED £215

A Wellington branch of Jewson's donated a prize for the PRH estates team to raffle and raise funds for the team to create displays to celebrate events throughout the year for staff, patients and visitors to enjoy.

The estates team decorate a courtyard in the hospital and a member of staff wrote on social media to say "Thank you to the estates team, the garden looks fabulous."

## FEBRUARY

### CHESTER RAISED MONEY FOR THE DEMENTIA FUND - £150

Instead of birthday presents, a generous young man called Chester chose to raise money to buy dolls for Dementia patients. Lucy Davies, Chester's Mum, said "After hearing about doll therapy for patients in hospital, Chester wanted to be able to raise money so he could donate these items instead of having birthday presents this year. We prepared a booklet for people at the party to explain about the dementia fund and they thought the charity idea was brilliant."



## MARCH

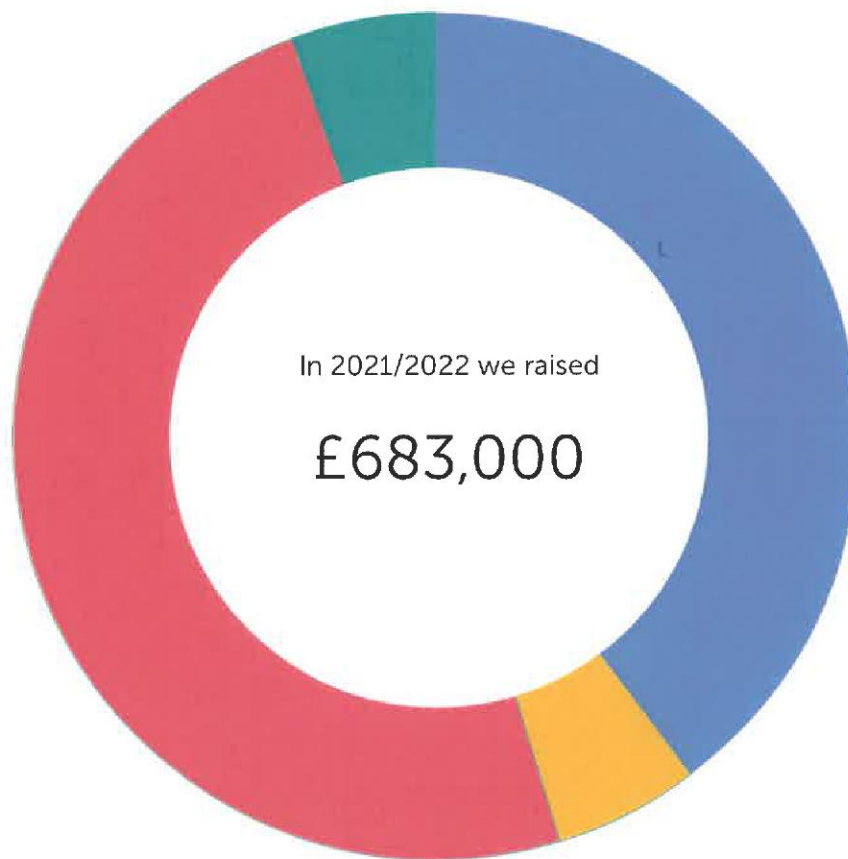
### ROTARY CLUB OF SHREWSBURY DONATION - £1,039

Each year Peter Love grows his beard to play the part of the Rotary Club Santa Claus and then holds a sponsored shave. This year he decided to raise money for 3 charities, one of which was the SaTH Swan Fund. Lead nurse Jules, said: "I would like to thank Peter and the Rotary Club for the kind donation to the Swan Fund. The fund allows us to improve some of our side rooms into Swan Rooms; we purchase things like CD players, mood lights, pictures, skylights and other items to improve the environment."



# WHAT WE'VE ACHIEVED TOGETHER

The pie chart shows our main sources of income:



**£272,000**

In Donations: from the voluntary efforts and fundraising of the general public range

**£39,000**

In Legacies: we are fortunate to be remembered by some of the patients we care for.

**£335,000**

From NHS Charities Together Grants

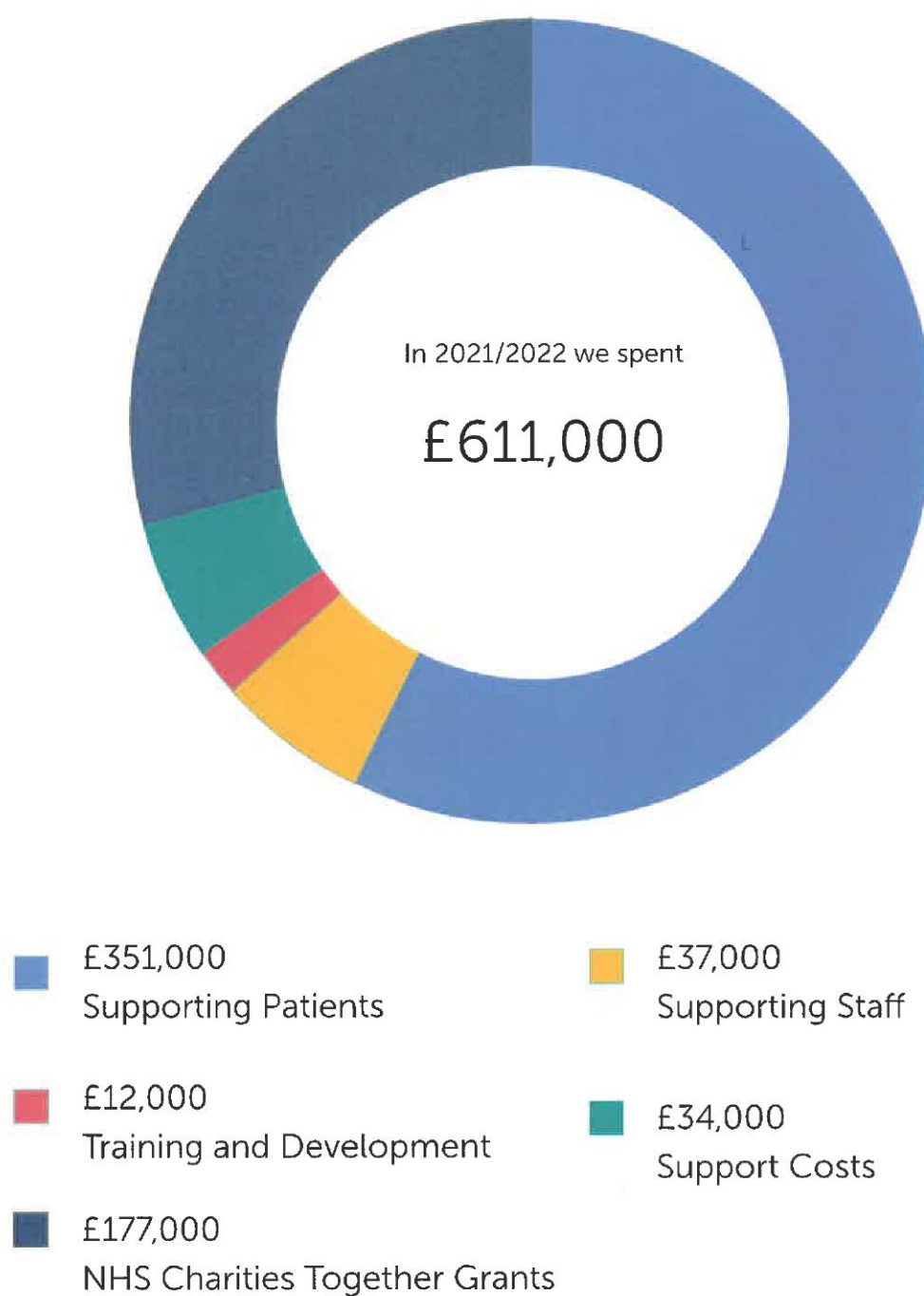
**£37,000**

From Investment Income



## WHERE YOUR MONEY WENT

The pie chart shows, our largest areas of spend:







Income raised for the charity can go a long way in providing additional comforts for our patients.

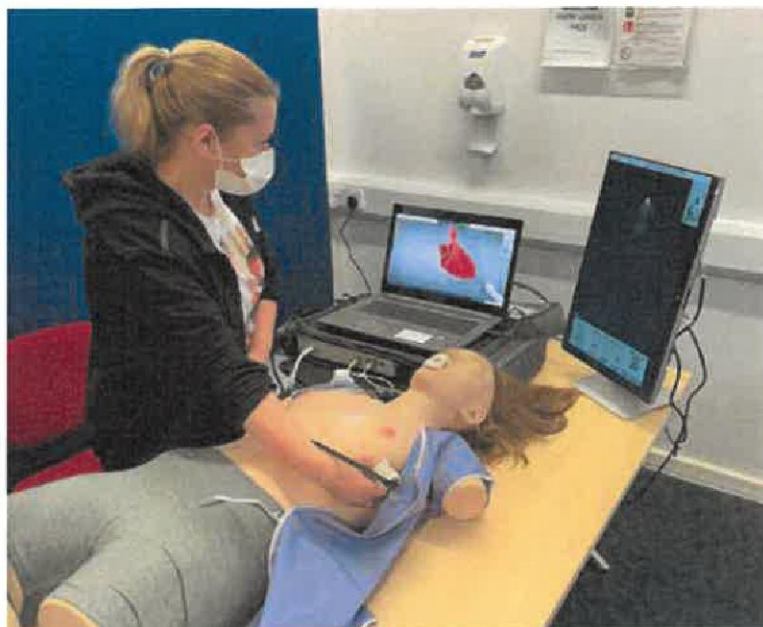
Every day patients across our hospitals feel the benefit of the generosity of people like you; from funding medical equipment and the latest research, to making our hospital a more comfortable and attractive place for patients of all ages.

With your help, we have funded important equipment to enhance our care. We have also been able to fund small but important equipment such as non-invasive mobile ultrasound machines, trolley stations and ipads.

**YOUR FUNDRAISING HAS HELPED US PURCHASE:**

- £30,000 contribution to an ultrasound training simulator (Bodyworks Eve and Heartworks Simulator)
- £18,428 - extension to the Hamar Centre
- £17,182 - Oncology Sonosite SII-Wave Ultrasound
- £33,000 2 Hilo Care Chairs and MotoMed Leg/Arm bed model for ITU/HDU at RSH
- £6,727 - Respiratory Ward/Fracture Clinic "Lavender Courtyard"
- £5,789 - Paediatric Bronchoscopy
- £4,900 - Oncology Arjo Scanner
- £2,340 - Ward 23 Skylights (End of Life Care)
- £2,000 - Part Donation funded: ZEISS ENT Microscope Audiology





### ULTRASOUND SIMULATOR

A ultrasound training simulator (Bodyworks Eve and Heartworks Simulator) was purchased for training healthcare professionals. BodyWorks Eve is an ultra-realistic female patient simulator designed for interactive Point of Care Ultrasound (PoCUS) scenario training. HeartWorks enables users to acquire a detailed knowledge of the heart anatomy and cardiac structures through a highly realistic and fully interactive model of the human heart.

"The simulator has transformed ultrasound training. It gets wide use amongst trainees, consultants and AHPs. It greatly shortens training time, complementing scanning on real patients." - **Dr Ashley Miller, Consultant in Intensive Care Medicine and Anaesthesia**

### LAVENDER GARDEN

A previously unloved space was redeveloped in a courtyard behind Ward 32/Fracture Clinic at RSH. The redevelopment was requested by the End of Life Care Team after a patient asked to go outside for a final time to feel the sun on their face. The Lavender Garden contains flower beds, a royal dome with light and heating for staff to take breaks, outdoor seating and room to wheel out patients beds down for fresh air if they wish.

"It is a great improvement, thank you to everyone involved in making this happen." - **Debbie Snooke, End of Life Care Nurse**



### WARD 23 SKYLIGHTS

Derek Saffhill and his family donated £3,000 to SaTH Charity in memory of his wife Lorraine who died after a six-year battle with cancer. SaTH Charity matched the funding to enable skylights to be installed in all six rooms siderooms.

"In Lorraine's last few days she was moved into a side room with a skylight which gave her great pleasure as she mentioned how nice it was to see the sky." - **Derek Saffhill**

"Almost immediately after they were installed, I received a letter from a patient saying what a difference it has made and that it allowed him to escape and imagine he was looking at the sky." **Peter Warren, Ward Manager**





## SUPPORTING OUR STAFF



2021 - 2022 remained a challenging year for NHS staff. We saw rises in COVID patients, continued enforcement of strict PPE, and constantly changing guidelines

The toll on our staff has been both mental and physical. The Charity has utilised its Small Things Make a Big Difference fund to support our staff. We continue to purchase outdoor seating and focus on purchasing items for staff rooms and redeveloping outdoor areas. We funded events to raise moral, and wellbeing items to help with the continued use of PPE.

A particular highlight was a thank you campaign for staff which allowed colleagues to nominate each other to receive a

NHS Thank You rainbow daisy with a card personalised with their message (see pictured above). Over 250 members of staff received a daisy with many saying how it lifted their spirits in a difficult time. Money for the small things fund is primarily raised via the staff lottery and pennies from heaven which is a payroll donation scheme.

### EXAMPLES OF SPENDING

- £113,838 on Captain Tom's Garden at RSH
- £14,239 on outdoor seating
- £8,693 for secure staff lockers
- £7,320 for a Royal Dome for AMU
- £2,019 wellbeing items
- £7,543 to enhance staff rooms and working environments
- £1,167 Staff initiatives



## SUPPORTING OUR STAFF - HIGHLIGHTS



### STAFF WELLBEING

SaTH Charity has been supporting monthly art-classes run by Dr Pamela Sturgess. The charity purchases the resources needed by the group and also refreshments for the evening when appropriate. Staff benefit from socialising with other colleagues, particularly those new to the Trust and potentially a long way from home.

"A great night with Healthcare Art Club doing portrait photography. A mixture of doctors, nurses and therapists were able to come together and learn new skills on lighting for portraits. Thanks to all who supported the event" - **Dr Pam Sturgess**

### INVESTMENT IN OUTDOOR SPACE

There was continued investment in outdoor seating for staff whilst social distancing measures remained in place. Outdoor seating, clearing courtyards, adding rain cover etc have been placed throughout all hospital locations.

"The Cancer Services team based at Mytton Oak House were thrilled to receive a picnic bench to provide somewhere to sit outside at lunch time. This is also used by other colleagues in the building as well." - **Member of Staff**



### THANK YOU

SaTH Charity gave staff the opportunity to nominate a colleague to receive an NHS Thank You Daisy in recognition of their hard work, support, kindness or maybe a special reason why they are appreciated. With such large amounts of time spent at work, co-workers are the people who can bring you happiness in stressful situations. The thank you daisies, and the accompanying card, brought a smile to staff at a really difficult and challenging time.

"Thank you for my daisy, it is beautiful. I feel very honoured to have had one of these and will be proud of place in my garden." **Debbie Wareing, Assistant Operational Manager**





The Charity also continues to forge strong relationships with members of staff of the hospital without whose co-operation the ability to make an effective contribution would be much diminished.

It is hoped the Charity will continue its good relationships with other local charities such as the Royal Shrewsbury Hospital League of Friends, Friends of the Princess Royal Hospital and Lingen Davies Charity to seek opportunities to work together in the future to fund joint ventures.

The Charity is one of over 400 NHS linked charities in England and Wales who are eligible to join NHS Charities Together (NHS CT). As a member charity, the Charity

has the opportunity to discuss matters of common concern and exchange information and experiences, join together with others to lobby government departments and others, and to participate in conferences and seminars which offer support and education for staff and members of the Charitable Funds Assurance Committee.

As a member of NHS CT, the Charity has also been very grateful to receive grants from their national emergency appeal.

Three projects have been supported in 2021/2022 with thanks to NHS CT funding: Captain Tom's Garden, Community Award, and Volunteering Futures Fund. More information is available on the following page.





### CAPTAIN TOM'S GARDEN

Work was completed on Captain, Sir Tom Moore's Garden at RSH. This project transformed the area outside the ward block into a garden with a walkway and lots of seating. With its closeness to the ward areas and wheelchair access, Capt. Tom's Garden has proven to be a haven for rest and reflection for colleagues, patients and visitors. The site was chosen following feedback from staff requesting the area to be developed.

"It's beautiful, just what RSH needed some where for people to go and sit peacefully. Thank you Captain Sir Tom and all those who took part in making this possible" - **Member of Staff**

### COMMUNITY AWARD

NHS Charities Together asked the NHS Charities of Shropshire and Telford and Wrekin to identify local charities who could help patients in the community to support admission avoidance and early discharge. A grant of £227,000 was awarded to nine local charities. SaTH Charity led on the management and distribution of the grant. Successful bids were offered to STAY Telford, Telford MIND, The Ark in Shrewsbury, Connect for Life, Shropshire Rural Communities Charity, Energise Shropshire Telford & Wrekin, Telford and Wrekin Council for Voluntary Service (CVS), Donnington Community Hub, and Sutton Hill Community Trus



### VOLUNTEERING FUTURES FUND

SaTH Charity received £43,324 from 'Volunteering Futures Fund' grant with a further payment of £43,324 due 2022/2023. NHS Charities Together has provided the grant, with matched funding from the Department for Digital Culture, Media and Sport (DCMS), to offer high-quality opportunities to youngsters who might not traditionally consider volunteering in the NHS. The project will target young people and underrepresented groups including communities facing socio-economic disadvantages, people from diverse ethnic backgrounds, and disabled young people. These new projects will help further develop crucial skills like team working and problem-solving, increase confidence and self-esteem, and build relationships and social networks.



## HOW YOU CAN HELP



The challenge facing the Charity in the future is to maintain and grow our support as it carries out its mission of improving patient and staff welfare.

- £10 would buy books, games and toys to support activities on our wards
- £1,000 would buy sky-lights for end of life Swan Rooms
- £5,000 would buy medical equipment for a ward/department
- £10,000 would refurbish a patient area
- £30,000 would purchase a cold cap for cancer patients

### GET INVOLVED

If you are interested in supporting our charity, please get in touch at [sath.charity@nhs.net](mailto:sath.charity@nhs.net).  
[www.sath.nhs.uk/charity](http://www.sath.nhs.uk/charity)

### COULD YOU VOLUNTEER?

All of our volunteers play an important role within our hospitals at SaTH, working alongside staff in a variety of departments. Volunteering is fun and rewarding, it allows you to meet new people, make new friends and try new things – it can even keep you active, mentally and physically. Our volunteers come from a wide range of backgrounds and we really value the different skills, outlooks and experiences that our volunteers bring to the organisation.

### THE IMPORTANCE OF GIFT AID

Gift aids add 25% extra on a donation and costs nothing to the donor. Donors must pay an amount of income tax and/or capital gains tax to be eligible, at least equal to the tax that the charity reclaims on your donations in the tax year.



# FINANCIAL STATEMENTS

## Foreword

The Shrewsbury and Telford Hospital NHS Trust (Corporate Trustee) presents The Shrewsbury and Telford Hospital NHS Trust Charity (the Charity) independently examined annual report and accounts for the year ended 31 March 2022. Charitable funds are accounted for separately from other income received by The Shrewsbury and Telford Hospital NHS Trust.

The annual report and accounts have been prepared in accordance with the Statement of Recommended Practice: Accounting and Reporting by Charities preparing their accounts in accordance with the Financial Reporting Standard applicable in the UK and Republic of Ireland (FRS 102) issued in October 2019 and the Financial Reporting Standard applicable in the United Kingdom and Republic of Ireland (FRS 102) and the Charities Act 2011 and UK Generally Accepted Practice as it applies from 1 January 2019.

The annual report and accounts have been prepared to give a 'true and fair' view and have departed from the Charities (Accounts and Reports) Regulations 2008 only to the extent required to provide a 'true and fair view'. This departure has involved following Accounting and Reporting by Charities preparing their accounts in accordance with the Financial Reporting Standard applicable in the UK and Republic of Ireland (FRS 102) issued in October 2019 rather than the Accounting and Reporting by Charities: Statement of Recommended Practice effective from 1 April 2005 which has since been withdrawn.

Following Treasury's agreement to apply IAS 27 (Consolidation and Separate Financial Statements) to NHS Charities from 1 April 2013, The Shrewsbury and Telford Hospital NHS Trust has established that as the Trust is the Corporate Trustee of the linked Charity, it effectively has the power to exercise control so as to obtain economic benefits so therefore may need to consolidate its Charity Accounts into its NHS Trust Accounts. However the income, expenditure, assets and liabilities of the Charity are considered to be immaterial in the context of the accounts of The Shrewsbury and Telford Hospital NHS Trust and therefore the Charity's accounts have not been consolidated into its NHS Trust.

- **Helen Troalen, Director of Finance**



### **What we plan to do with your donations: our future plans**

The longer term aim of the Charity is to continue applying income received from donations to benefit the public served by the Trust, whilst maintaining minimal levels of reserves. The grants received from the national appeal managed by NHS Charities Together meant that overall income has been largely unaffected in the past two years.

In 2020/21 a restricted fund was established for the grants received from NHS Charities Together and most of these grants have been spent during 2021/22. We expect to continue to receive money from NHS Charities Together as they develop their fundraising strategy. The majority of the income received from NHS Charities Together was to help our local partner organisations recover from the impact of the Covid-19 pandemic.

It is the Charity's intention to continue to use its funds in broadly the same manner as in the past. The reconfiguration of patient services within Shropshire and the plans for redesigning patient care to meet the needs of the future will influence the priorities for spending charitable funds.

In 2022/23, we will continue to review our plans especially in the light of the increasing cost of living at the end of the current financial year. We will achieve our mission by working with the NHS to develop the facilities to treat patients and to identify the treatments of tomorrow, as we actively seek to assist in equipping NHS staff with the skills they need. Your support makes these plans possible and to help us please consider making a donation.

### **How we manage the money**

Within the Charity there are a number of restricted funds relating to particular wards and departments nominated by the donor. These are overseen by fund advisors who make

recommendations on how to spend the money within the designated area within the boundaries of local guidance agreed by the Corporate Trustee.

The Charity also holds a level of unrestricted funds that are received with no particular preference expressed by donors. These funds can be accessed by all wards and departments for patient and staff welfare. The level of unrestricted funds decreased throughout the year.

The Corporate Trustee oversees the work of the fund advisors and has the power to revoke a fund advisor's remit or, subject to any specific donor restriction, direct the use to which funds are put.

The Shrewsbury and Telford Hospital NHS Trust Board devolves responsibility for the on-going management of funds to the Charitable Funds Assurance Committee which administers the funds on behalf of the Corporate Trustee. The Committee is required to:

- Control, manage and monitor the use of the fund's resources;
- Provide support, guidance and encouragement for all its income raising activities whilst managing and monitoring the receipt of all income;
- Ensure that 'best practice' is followed in the conduct of all its affairs fulfilling all of its legal responsibilities;
- Ensure that the approved Investment Policy approved by the NHS Trust Board as Corporate Trustee is adhered to and that performance is continually reviewed whilst being aware of ethical considerations;
- Keep the Trust Board fully informed on the activity, performance and risks of the Charity.

The Corporate Trustee approves decisions following recommendations from the Charitable Funds Committee. Additionally, copies of all



policies relating to charitable funds are provided on the Trust's intranet. Within the year quarterly investment reports have been provided by the Trust's investment advisors.

The Trust's Director of Finance is responsible for the day-to-day management and control of the administration of the Charity and reports to the Charitable Funds Committee. The Director of Finance has particular responsibility to ensure that the spending is in accordance with the objects and priorities agreed by the Charitable Funds Committee and the Trust Board:

- that the criteria for spending charitable monies are fully met;
- that full accounting records are maintained;
- that devolved decision making or delegated arrangements are in accordance with the policies and procedures set out by the Trust Board on behalf of the Corporate Trustee.

### **Our reserves policy**

The Charity has established a reserves policy as part of their plans to provide long term support to The Shrewsbury and Telford Hospital NHS Trust for patient and staff welfare. The current reserves policy states:

"The Corporate Trustee recognises that the Charity is entirely dependent upon donations for its future viability which will inevitably be subject to fluctuations. With this in mind an unrestricted fund reserve is required to meet one year's administration, fund-raising and support costs and thus ensure the Charity is able to operate as a going concern."

As at 31 March 2022 the Charity holds restricted funds of £1,885,000 (2021: £1,743,000) and unrestricted funds of £355,000 (2021: £521,000). The description, nature and purpose of the

restricted funds are contained within Note 22: Analysis of charitable funds.

The Corporate Trustee considers all unrestricted reserves to be free reserves and thus the level of free reserves is calculated as follows:

Unrestricted funds	£355,000
One year's administration, fundraising and support costs	£34,000
Free Reserves	£321,000

Charitable fund advisors of restricted funds are encouraged to spend their funds appropriately within a reasonable period of receipt and not to keep any unnecessary reserves. However the Charity and the Corporate Trustee are continually trying to improve processes to enable charitable funds to be more easily and appropriately accessed. Fund advisors are expected to submit annual spending plans by April each year for the Charitable Funds Committee to review. This will offer earlier benefit to patients and staff.

### **Our financial health: a strong balance sheet**

The assets and liabilities of the Charity as at 31 March 2022 are stated below, compared with the position as at 31 March 2021.



## FINANCIAL STATEMENTS

The net assets of the Charitable Funds as at 31 March 2022 were £2,240,000 (2021: £2,264,000). Overall net assets decreased by £24,000 (2021: £136,000 increase) with an unrealised loss on the valuation of our investments of £96,000 (2021: £19,000) and an excess of income over expenditure of £72,000 (2021: £155,000).

	31 March 2022	31 March 2021
	£000	£000
Fixed Asset Investments	2,200	2,284
Current Assets	56	49
Creditors falling due within one year	(16)	(69)
<b>Total Net Assets</b>	<b>2,240</b>	<b>2,264</b>
<b>Funds</b>		
Restricted funds	1,885	1,743
Unrestricted funds	355	521
<b>Total Funds</b>	<b>2,240</b>	<b>2,264</b>

### About our investments

Long-term investments are placed in a COIF (Charities Official Investment Fund) managed by CCLA Investment Management Ltd. This arrangement allows the Charity access to a wider portfolio of investments than would otherwise have been possible. This arrangement also ensures no investments are made in companies that would be contra to NHS principles. Investment performance is monitored by the Charitable Funds Assurance Committee which receives quarterly reports from the investment advisors.

An investment policy is in place, this is reviewed annually to ensure it continues to meet the needs of the Charity. The policy is designed to protect the Charity from undue adverse risk and inflation whilst ensuring the Charity's long, medium and short term objectives are met. A cash balance remains in a Royal Bank of Scotland deposit account to cover short term funding requirements.

Due to the uncertainty in the financial markets the Charitable Funds Assurance Committee maintained their investment strategy and portfolio allocation during the year generating income of £37,000 but an unrealised loss on investments of £96,000. This loss does not affect the day-to-day running of the Charity until the point that the investments are sold and the gain or loss realised. The investment income was apportioned between individual funds on the basis of average fund balances held during the year.

The Charitable Funds Assurance Committee has currently agreed to keep the investments in a fixed interest fund and a deposit fund. This will enable prompt access to these funds to support the Committee's policy of reducing the invested sums as a result of its aim to see money utilised early for patient benefit.



This will be reviewed at Charitable Funds Committee meetings to monitor if the Charity should change the make-up of the investment.

It is expected that the financial performance in 2022/23 will continue to be affected by the impact of the COVID-19 pandemic and global insecurity on the financial markets.

#### **How we organise our affairs: reference and administrative details**

The Charity is registered with the Charity Commission under the single Registered Number 1107883 following the merger of the Royal Shrewsbury Hospital (RSH) and the Princess Royal Hospital (PRH) in October 2003.

The object of the Charity is to apply income received from donations to any charitable purpose or purposes relating to the National Health Service to benefit the public served by the Trust.

The registered address of SATH Charity is:  
Royal Shrewsbury Hospital, Mytton Oak Road  
Shrewsbury, Shropshire, SY3 8XQ

#### **Corporate Trustee**

The Shrewsbury and Telford Hospital NHS Trust is the Corporate Trustee of the Charity. The Executive Directors and Non-executive Directors of the Trust Board share the responsibility for ensuring that the NHS body fulfils its duties as Corporate Trustee in managing the Charity and are responsible for deciding policy and ensuring it is implemented. Members are not individual trustees under charity law but act as agents on behalf of the Corporate Trustee.

As Corporate Trustee, all serving members of The Shrewsbury & Telford Hospital NHS Trust Board are required to ensure that:

- the income of the Charity is applied with complete fairness between the persons who are properly qualified to benefit from it;
- they act reasonably and prudently regarding any decisions made in respect of the Charity;
- they exercise the same degree of care in dealing with the administration of the funds as that of a prudent business person would exercise in managing his or her own affairs or those of someone else for whom he or she was responsible;
- they are able to demonstrate that its charitable aims are for the public benefit.

#### **Our advisors**

<b>Investment managers</b>	CCLA Investment Management Ltd	Senator House, 85 Queen Victoria Street, London, EC4V 4ET
<b>Independent Examiners</b>	Dyke Yaxley	1 Brassey Road, Old Potts Way, Shrewsbury, SY3 7FA
<b>Bankers</b>	The Royal Bank of Scotland plc	1 Redheughs Avenue, Edinburgh, EH12 9JN
<b>Legal advisors</b>	Hill Dickinson LLP	Pearl Assurance House Derby Square, Liverpool L2 9XL



During the year, the following voting directors held office:

<b>Chair</b>	Dr Catriona McMahon	
<b>Chief Executive</b>	Louise Barnett	
<b>Non-Executive Director</b>	Teresa Boughey Anthony Bristlin David Brown Prof. Clive Deadman Dr David Lee Prof. Trevor Purt	
<b>Medical Director</b>	Dr Arne Rose John Jones	to 30.09.2021 from 01.10.2021
<b>Director of Nursing</b>	Hayley Flavell	secondment from University Hospital Birmingham
<b>Chief Operating Officer</b>	Nigel Lee Sara Biffen (Acting)	to 13.03.2022 from 14.03.2022
<b>Director of Finance</b>	Helen Troalen	

The following directors have since been appointed up until the date of approving the accounts:

Associate Non-Executive Directors	Rajinder Dhaliwal Professor Julie Green Rosi Edwards	from 01.05.2022 from 01.05.2022 from 01.06.2022
-----------------------------------	--	---

During the year, the Charitable Fund Committee members were:

<b>Chair</b>	Teresa Boughey
<b>Non-Executive Director</b>	Prof Clive Deadman Prof Trevor Purt
<b>Director of Finance</b>	Helen Troalen
<b>Director of Public Participation</b>	Julia Clarke



---

## **Charity governance, structure and management arrangements**

The Corporate Trustee is responsible for deciding policy and making sure that it is implemented. Day to day management is delegated to the Director of Finance who is responsible for carrying out the decisions of the Corporate Trustee and for working with the professional advisors and with the employees of The Shrewsbury and Telford Hospital NHS Trust who provide the financial services to the Charity.

The Charitable Funds Committee provides detailed scrutiny of the Charity's activities, including income and expenditure and monitoring the performance of investments, and makes appropriate recommendations to the Corporate Trustee with regard to the Charity Commission's guidance on public benefit.

The finance department review any Charity Commission guidance and advise appropriately with specific issues being raised for the attention of the Corporate Trustee through the Trust's Charitable Funds Committee.

## **Trustee recruitment, appointment and induction**

Chair and Non-Executive Members of the Trust Board are appointed by NHS England under arrangements made by the Secretary of State for Health for a fixed term of not more than four years (renewable to a maximum of ten years in total). Executive members are subject to recruitment by the NHS Trust Board.

Non-Executive Members are selected to give a good mix of appropriate professional skills.

Members are given an opportunity to raise questions via the Corporate Trustee. Additionally, copies of policies relating to charitable funds are provided on the Trust's intranet.

Members are provided with a number of Charity Commission publications to assist them in fulfilling their roles. Within the year quarterly investment reports have been provided by the Trust's investment advisors.

## **Key management personnel remuneration**

During the year none of the members of the NHS Trust Board or senior NHS Trust staff or parties related to them were beneficiaries of the Charity.

Neither any member of the NHS Trust Board nor the Corporate Trustee has received honoraria, emoluments or expenses in the year and the Corporate Trustee has purchased trustee indemnity insurance.

The Charity does not have any employees. The administration of the funds is carried out by employees from The Shrewsbury and Telford Hospital NHS Trust on NHS terms and conditions. Their remuneration is reviewed annually and is increased in accordance with the nationally agreed increases for their pay scales. The employees' salary and related employment costs are recharged to the Charity from the Trust.

## **Looking ahead: risk analysis**

The Charity has a policy that any significant risks to which the Charity faces or is likely to encounter are reported to the Charitable Funds Committee. The Charitable Funds Committee review the risks that are applicable to the Charity and are satisfied that the risks to the Charity have been mitigated.

The Charitable Funds Committee reviews its investments at each meeting and considers the risks surrounding the Charity's investment strategy. This will need to be reviewed by the Committee during 2022/23 as the risk will be increased as a result of the impact of the COVID-19 pandemic and global insecurity on the financial markets.



The Charity is reliant on donations to allow it to spend on charitable activities for the benefit of staff and patients at The Shrewsbury and Telford Hospital NHS Trust. If income falls the Charity would not be able to spend or enter into longer term commitments with the NHS hospitals we support. The public's support of the NHS has been demonstrated through increased donations during the COVID-19 pandemic, particularly the national emergency appeal managed by NHS Charities Together. The social distancing measures in place in 2020 and 2021 affected fundraising events.

The NHS is struggling post pandemic, meaning that waiting times for treatment are getting longer. There is a risk that the goodwill shown for the NHS at the start of the pandemic is starting to wane which will make fundraising more difficult.

Towards the end of 2021/22, inflation and the cost of living has increased and this is having an impact on the amount that people are able to donate to charity. This will be kept under review in 2022/23.

Due to Covid-19 planned expenditure has not taken place. The Charitable Funds Committee has learnt from past experience and will endeavour to influence maximising expenditure in the future that meets the criteria laid down by the Charity.

The NHS is, by its very nature, subject to national changes in government policy as well as local politically driven decisions. The Charitable Funds Committee regularly liaises with all of our NHS partners to understand any potential changes and identify any risks as it may mean initiatives or healthcare activities supported by the Charity are no longer delivered in the area.

### **Related parties**

The Shrewsbury and Telford Hospital NHS Trust is the Corporate Trustee of the Charity and is therefore a related party. The Charity works closely with, and provides the majority of

its funding to, The Shrewsbury and Telford Hospital NHS Trust which comprises of the Royal Shrewsbury Hospital and Princess Royal Hospital in Telford.

The Shrewsbury and Telford Hospital NHS Trust makes a number of administrative services, including accounts preparation, available to the Charity by agreement with the Corporate Trustee.

The Charity is one of over 400 NHS charities in England and Wales who are eligible to join NHS Charities Together. As a member charity, the Charity has the opportunity to discuss matters of common concern and exchange information and experiences, join together with others to lobby government departments and others, and to participate in conferences and seminars which offer support and education for staff and members of the Charitable Funds Committee. As a member of NHS Charities Together, the Charity has also been very grateful to receive grants from their national emergency appeal.

### **Our relationship with the wider community**

The ability of the Charity to continue its vital support for the two hospitals is dependent on its ability to maintain and increase donations from the general public. The Charity also continues to forge strong relationships with members of staff of the hospital without whose co-operation the ability to make an effective contribution would be much diminished.

It is hoped the Charity will continue its good relationships with other local charities such as the Royal Shrewsbury Hospital League of Friends, Friends of the Princess Royal Hospital and Lingen Davies Charity to seek opportunities to work together in the future to fund joint ventures.



---

## STATEMENT OF TRUSTEE'S RESPONSIBILITIES IN RESPECT OF THE TRUSTEE'S ANNUAL REPORT AND ACCOUNTS

Under charity law, the Corporate Trustee is responsible for preparing the Corporate Trustee's annual report and accounts for each financial year which show a true and fair view of the state of affairs of the Charity and of the excess of expenditure over income for that period.

In preparing these financial statements, generally accepted accounting practice entails that the Corporate Trustee:

- selects suitable accounting policies and then apply them consistently
- makes judgements and estimates that are reasonable and prudent
- states whether the recommendations of the SORP FRS 102 have been followed, subject to any material departures disclosed and explained in the financial statements
- states whether the financial statements comply with the trust deed, subject to any material departures disclosed and explained in the financial statements
- prepares the financial statements on the going concern basis unless it is inappropriate to presume that the charity will continue its activities.

The Corporate Trustee is required to act in accordance with the trust deed of the Charity, within the framework of trust law. The Corporate Trustee is responsible for keeping proper accounting records, sufficient to disclose at any time, with reasonable accuracy, the financial position of the Charity at that time, and to enable the Corporate Trustee to ensure that, where any statements of accounts are prepared by them under section 132(1) of the Charities Act 2011, those statements of accounts comply with the requirements of regulations under that provision. The Corporate Trustee has general responsibility for taking such steps as are reasonably open to the Corporate Trustee to safeguard the assets of the Charity and to prevent and detect fraud and other irregularities.

### Signed on behalf of the Corporate Trustee

Signed:

Name: DR CATRIONA MCMAHON, CHAIR

Date: 16/12/22



# THE SHREWSBURY AND TELFORD HOSPITAL NHS TRUST CHARITY

## INDEPENDENT EXAMINER'S REPORT

### TO THE CORPORATE TRUSTEE OF THE SHREWSBURY AND TELFORD HOSPITAL NHS TRUST CHARITY

---

I report to the corporate trustee on my examination of the financial statements of The Shrewsbury and Telford Hospital NHS Trust Charity (the charity) for the year ended 31 March 2022.

#### Responsibilities and basis of report

As the corporate trustee of the charity you are responsible for the preparation of the financial statements in accordance with the requirements of the Charities Act 2011 (the 2011 Act).

I report in respect of my examination of the charity's financial statements carried out under section 145 of the 2011 Act. In carrying out my examination I have followed all the applicable Directions given by the Charity Commission under section 145(5)(b) of the 2011 Act.

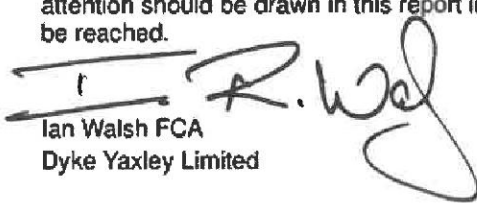
#### Independent examiner's statement

Since the charity's gross income exceeded £250,000 your examiner must be a member of a body listed in section 145 of the Act. I confirm that I am qualified to undertake the examination because I am a member the Institute of Chartered Accountants in England and Wales, which is one of the listed bodies.

I have completed my examination. I confirm that no matters have come to my attention in connection with the examination giving me cause to believe that in any material respect:

- 1 accounting records were not kept in respect of the charity as required by section 130 of the 2011 Act; or
- 2 the financial statements do not accord with those records; or
- 3 the financial statements do not comply with the applicable requirements concerning the form and content of accounts set out in the Charities (Accounts and Reports) Regulations 2008 other than any requirement that the accounts give a true and fair view which is not a matter considered as part of an independent examination.

I have no concerns and have come across no other matters in connection with the examination to which attention should be drawn in this report in order to enable a proper understanding of the financial statements to be reached.

  
Ian Walsh FCA  
Dyke Yaxley Limited

1 Brassey Road  
Old Potts Way  
Shrewsbury  
Shropshire  
SY3 7FA

Dated: 



## Statement of Financial Activities for the year ending 31 March 2022

	Note	Unrestricted Funds £000	Restricted Funds £000	Total Funds 2022 £000	Unrestricted Funds £000	Restricted Funds £000	Total Funds 2021 £000
<b>Income from</b>							
Donations and legacies	3	30	281	311	191	308	499
NHS Charities Together	4	0	335	335	0	180	180
Investments	7	7	30	37	10	35	45
<b>Total incoming resources</b>		<b>37</b>	<b>646</b>	<b>683</b>	<b>201</b>	<b>523</b>	<b>724</b>
<b>Expenditure on</b>							
Charitable activities	9	(107)	(326)	(433)	(90)	(416)	(506)
NHS Charities Together		0	(178)	(178)	0	(63)	(63)
<b>Total expenditure</b>		<b>(107)</b>	<b>(504)</b>	<b>(611)</b>	<b>(90)</b>	<b>(479)</b>	<b>(569)</b>
<b>Net income/ (expenditure)</b>		<b>(70)</b>	<b>142</b>	<b>72</b>	<b>111</b>	<b>44</b>	<b>155</b>
Net gains/ (losses) on investments		(96)	0	(96)	(11)	(8)	(19)
<b>Net Movement in funds</b>		<b>(166)</b>	<b>142</b>	<b>(24)</b>	<b>100</b>	<b>36</b>	<b>136</b>
<b>Reconciliation of Funds</b>							
Total Funds brought forward	22	521	1,743	2,264	421	1,707	2,218
<b>Total Funds carried forward</b>	<b>22</b>	<b>355</b>	<b>1,885</b>	<b>2,240</b>	<b>521</b>	<b>1,743</b>	<b>2,264</b>



## Balance Sheet as at 31 March 2022

	Note	Unrestricted Funds £000	Restricted Funds £000	Total Funds 2022 £000	Unrestricted Funds £000	Restricted Funds £000	Total Funds 2021 £000
<b>Fixed assets</b>							
Investments	16	315	1,885	2,200	534	1,750	2,284
<b>Total Fixed Assets</b>		<b>315</b>	<b>1,885</b>	<b>2,200</b>	<b>534</b>	<b>1,750</b>	<b>2,284</b>
<b>Current assets</b>							
Debtors	17	0	1	1	0	2	2
Cash at bank and in hand	18	40	15	55	11	36	47
<b>Total Current Assets</b>		<b>40</b>	<b>16</b>	<b>56</b>	<b>11</b>	<b>38</b>	<b>49</b>
<b>Liabilities</b>							
Creditors falling due within one year	19	0	(16)	(16)	(24)	(45)	(69)
<b>Net Current assets/(liabilities)</b>		<b>40</b>	<b>0</b>	<b>40</b>	<b>(13)</b>	<b>(7)</b>	<b>(20)</b>
<b>Total net assets or liabilities</b>		<b>355</b>	<b>1,885</b>	<b>2,240</b>	<b>521</b>	<b>1,743</b>	<b>2,264</b>
<b>The funds of the charity:</b>							
Unrestricted income funds:	22	355	0	355	521	0	521
Restricted income funds		0	1,885	1,885	0	1,743	1,743
<b>Total charity funds</b>		<b>355</b>	<b>1,885</b>	<b>2,240</b>	<b>521</b>	<b>1,743</b>	<b>2,264</b>

Signed on behalf of the Corporate Trustee

Signed:



Name: DR CATRIONA McMAHON, CHAIR

Date: 16/12/22



## Statement of Cash Flows for the year ending 31 March 2022

	Note	Total Funds 2022 £000	Total Funds 2021 £000
<b>Cash flows from operating activities</b>			
Net cash provided by (used in) operating activities	20	(17)	176
<b>Cash flows from investing activities</b>			
Dividends and interest from investments	7	37	45
Sale of investments	16	0	0
Purchase of investments	16	(12)	(220)
<b>Net cash provided by (used in) investing activities</b>		25	(175)
Change in cash and cash equivalents in the reporting period		8	1
Cash and cash equivalents at beginning of the reporting period	18	47	46
<b>Cash and cash equivalents at the end of the reporting period</b>	18	55	47

## Notes to the Accounts

## 1. Accounting Policies

## (a) Basis of preparation

The Shrewsbury and Telford Hospital NHS Trust Charity is a registered charity with the Charities Commission in England and Wales, registration number 1107883. The registered office of the charity is Royal Shrewsbury Hospital, Mytton Oak Road, Shrewsbury, Shropshire, SY3 8XQ.

The financial statements have been prepared under the historic cost convention, with the exception of investments which are included at fair value.

The accounts (financial statements) have been prepared in accordance with the charity's trust deed, the Statement of Recommended Practice Accounting and Reporting by Charities preparing their accounts in accordance with the Financial Reporting Standard applicable in the UK and Republic of Ireland (FRS 102) issued in October 2019 and the Financial Reporting Standard applicable in the United Kingdom and Republic of Ireland (FRS 102) and the Charities Act 2011 and UK Generally Accepted Practice as it applies from 1 January 2019.

The accounts (financial statements) have been prepared to give a 'true and fair' view and have departed from the Charities (Accounts and Reports) Regulations 2008 only to the extent required to provide a 'true and fair view'. This departure has involved following Accounting and Reporting by Charities preparing their accounts in accordance with the Financial Reporting

---

Standard applicable in the UK and Republic of Ireland (FRS 102) issued in October 2019 rather than the Accounting and Reporting by Charities: Statement of Recommended Practice effective from 1 April 2005 which has since been withdrawn.

The Corporate Trustee considers that there are no material uncertainties about the Charity's ability to continue as a going concern. The COVID-19 pandemic has had an impact on the Charity's donated income although this is partially offset by the generous donations made by members of the public in the first lockdown and restricted income from the NHS Charities Together national appeal. The charity has few on-going commitments so will not affect the Charity's ability to continue as a going concern. There are no material uncertainties affecting the current year's accounts.

The financial statements are prepared in sterling, which is the functional currency of the charity. Monetary amounts in these financial statements are rounded to the nearest £000.

In future years, the key risks to the Charity are a fall in income from donations or investment income.

**(b) Funds structure**

The Charity's funds are a mixture of restricted and unrestricted.

Restricted funds are funds which are to be used in accordance with specific restrictions imposed by the donor at the time the donation was made.

Unrestricted funds comprise those funds which can be used at the Corporate Trustee's discretion for any purpose in furtherance of the charitable objects.

The major funds held in each of these categories are disclosed in note 22.

**(c) Incoming resources**

All incoming resources are recognised once the Charity has entitlement to the resources, it is probable (more likely than not) that the resources will be received and the monetary value of incoming resources can be measured with sufficient reliability.

Where there are terms or conditions attached to incoming resources, particularly grants, then these terms or conditions must be met before the income is recognised as the entitlement condition will not be satisfied until that point. Where terms or conditions have not been met or uncertainty exists as to whether they can be met then the relevant income is not recognised in the year but deferred and shown on the balance sheet as deferred income.

**(d) Gifts in Kind**

Gifts in kind, such as food and care packages are not accounted for when they are accepted and immediately distributed unless a single donation is material.

**(e) Incoming resources from legacies**

Legacies are accounted for as incoming resources either upon receipt or where the receipt of the legacy is probable. Receipt is probable when:

- Confirmation has been received from the representatives of the estate(s) that probate has been granted
- The executors have established that there are sufficient assets in the estate to pay the legacy and
- All conditions attached to the legacy have been fulfilled or are within the Charity's control.



If there is uncertainty as to the amount of the legacy and it cannot be reliably estimated then the legacy is shown as a contingent asset until all of the conditions for income recognition are met.

(f) Resources expended and irrecoverable VAT

All expenditure is accounted for on an accruals basis and has been classified under headings that aggregate all costs related to each category of expense shown in the Statement of Financial Activities. Expenditure is recognised when the following criteria are met:

- There is a present legal or constructive obligation resulting from a past event
- It is more likely than not that a transfer of benefits (usually a cash payment) will be required in settlement
- The amount of the obligation can be measured or estimated reliably.

Irrecoverable VAT is charged against the category of resources expended for which it was incurred.

(g) Recognition of expenditure and associated liabilities as a result of grants

The Charity does not have any grants payments made to linked, related party or third party NHS bodies and non NHS bodies, in furtherance of the charitable objectives of the Charity.

(h) Allocation of support costs

Support costs are those costs which do not relate directly to a single activity. These include some staff recharges, costs of administration, external independent examination costs and IT system support. The support costs attributable to charitable activities are apportioned across those activities in proportion to the average fund balance. The analysis of support costs and the bases of apportionment applied are shown in note 12.

(i) Fundraising costs

The costs of generating funds are the costs attributable to generating income for the Charity. The fundraising costs attributable to charitable activities are apportioned across those activities in proportion to the average fund balance.

(j) Charitable activities

Costs of charitable activities comprise all costs incurred in the pursuit of the charitable objects of the Charity. These costs, where not wholly attributable, are apportioned between the categories of charitable expenditure in addition to the direct costs. The total costs of each category of charitable expenditure include an apportionment of support and fundraising costs as shown in note 9.

(k) Fixed asset investments

Investments are a form of basic financial instrument. Fixed asset investments are initially recognised at their transaction value and are subsequently measured at their fair value (market value) as at the balance sheet date. The Statement of Financial Activities includes the net gains and losses arising on revaluation and disposals throughout the year. Investments are included in the Balance Sheet at the current market value quoted by the investment advisors, excluding dividends.

The main form of financial risk faced by the Charity is that of volatility in equity markets and investment markets due to wider economic conditions, the attitude of investors to investment risk, and changes in sentiment concerning equities and within particular sectors or sub sectors. Further information on the Charity's investments can be found in note 16.

(l) Debtors

Debtors are amounts owed to the Charity. They are measured on the basis of their recoverable amount.

(m) Cash and cash equivalents

Cash at bank and in hand is held to meet the day to day running costs of the Charity as they fall due.

(n) Creditors

Creditors are amounts owed by the Charity. They are measured at the amount that the Charity expects to have to pay to settle the debt.

Amounts which are owed in more than a year are shown as long term creditors.

(o) Realised gains and losses

All gains and losses are taken to the Statement of Financial Activities as they arise. Realised gains and losses on investments are calculated as the difference between sales proceeds and opening market value (purchase date if later). Unrealised gains and losses are calculated as the difference between the market value at the year end and opening market value (or purchase date if later).

(p) Staff costs and pensions

The administration of the funds is carried out by employees from The Shrewsbury and Telford Hospital NHS Trust whose costs are recharged to the Charity. These staff members belong to the NHS Pension Scheme which is an unfunded defined benefit scheme which is accounted for as a defined contribution scheme. The recharge from The Shrewsbury and Telford Hospital NHS Trust includes the employer contributions to that scheme.

2. Related party transactions

The Shrewsbury and Telford Hospital NHS Trust makes a number of administrative services, including accounts preparation, available to the Charity by agreement with the Corporate Trustee. These are included within support costs – see note 12.

None of the members of The Shrewsbury and Telford Hospital NHS Trust Board or parties to them has undertaken any transactions with the Charity or received any benefit from the Charity in payment or kind. No Board member has received honoraria, emoluments or expenses in the year.

3. Income from donations and legacies

	Unrestricted Funds	Restricted Funds	Total Funds 2022	Unrestricted Funds	Restricted Funds	Total Funds 2021
	£000	£000	£000	£000	£000	£000
Donations	16	256	272	149	266	415
Legacies	14	25	39	42	42	84
<b>Total</b>	<b>30</b>	<b>281</b>	<b>311</b>	<b>191</b>	<b>308</b>	<b>499</b>



Donations are gifts from members of the public, patients, relatives of patients and staff.

Legacy income is only included in incoming resources where receipt is reasonably certain and the amount is known with certainty, or the legacy has been received. As at 31 March 2022 no legacies (31 March 2021: no legacies) has been accrued due to the certainty to the value of the residual value of the estate.

## 4. Analysis of income from charitable activities

In 2021/22, the charity received grants from the NHS Charities Together COVID-19 appeal.

	Unrestricted Funds	Restricted Funds	Total Funds 2022	Unrestricted Funds	Restricted Funds	Total Funds 2021
	£000	£000	£000	£000	£000	£000
NHS Charities Together	0	335	335	0	180	180
<b>Total</b>	<b>0</b>	<b>335</b>	<b>335</b>	<b>0</b>	<b>180</b>	<b>180</b>

## 5. Analysis income from other trading activities

There are no incoming resources from trading activities during this period (2021: nil).

## 6. Role of volunteers

Like all charities, The Shrewsbury and Telford Hospital NHS Trust Charity relies on volunteers to organise coffee mornings, raffles and events towards donations to the Charity although a lot of these arrangements stopped during the pandemic. In accordance with the SORP, due to the absence of any reliable measurement basis, the contribution of volunteers is not recognised in the accounts.

## 7. Gross investment income

	Unrestricted Funds	Restricted Funds	Total Funds 2022	Unrestricted Funds	Restricted Funds	Total Funds 2021
	£000	£000	£000	£000	£000	£000
Fixed asset investments	7	30	37	10	35	45
<b>Total</b>	<b>7</b>	<b>30</b>	<b>37</b>	<b>10</b>	<b>35</b>	<b>45</b>

---

8. Analysis of expenditure on raising funds

The Charity incurred no expenditure on raising funds in the current period (2021: nil.)

9. Analysis of charitable expenditure

The Charity undertook direct charitable activities for the benefit of both staff and patients at The Shrewsbury and Telford Hospital NHS Trust.

	Activities undertaken directly	Support Costs	Total 2022
	£000	£000	£000
NHS Charities Together - Grants	177	1	178
NHS Charities Together - Patient welfare and amenities	124	1	125
Patient welfare and amenities	227	28	255
Staff welfare and amenities	37	3	40
Staff education, training and development	12	1	13
<b>Total</b>	<b>577</b>	<b>34</b>	<b>611</b>

	Activities undertaken directly	Support Costs	Total 2021
	£000	£000	£000
NHS Charities Together - Grants	62	1	63
NHS Charities Together - Patient welfare and amenities	63	1	64
Patient welfare and amenities	260	21	281
Staff welfare and amenities	123	8	131
Staff education, training and development	29	1	30
<b>Total</b>	<b>537</b>	<b>32</b>	<b>569</b>

10. Analysis of grants

The Charity does not make grants to individuals or to institutions other than The Shrewsbury and Telford Hospital NHS Trust. The Corporate Trustee operates a scheme of delegation for the majority of the charitable funds, under which fund advisors manage the day to day disbursements on their projects in accordance with the directions set out by the Corporate Trustee.



11. Movements in funding commitments

	Activities undertaken directly	Support Costs	Total 2022
	£000	£000	£000
Opening balance at 1 April 2021 (see note 19)	69	0	69
Additional commitments made during the year	577	0	577
Amounts paid during the year	(630)	0	(630)
<b>Closing balance at 1 April 2022 (see note 19)</b>	<b>16</b>	<b>0</b>	<b>16</b>

	Activities undertaken directly	Support Costs	Total 2021
	£000	£000	£000
Opening balance at 1 April 2020 see note 19)	7	0	7
Additional commitments made during the year	537	0	537
Amounts paid during the year	(475)	0	(475)
<b>Closing balance at 1 April 2021 (see note 19)</b>	<b>69</b>	<b>0</b>	<b>69</b>

## 12. Allocation of support costs and fundraising costs

Support and fundraising costs have all been apportioned proportionately to average fund balances during the year.

	Total 2022	Total 2021
	£000	£000
Independent Examination fees	3	2
<b>Governance</b>	<b>3</b>	<b>2</b>
Salaries and related costs	29	28
Just Giving/Cash carrier/Bank charges	1	1
Software Support	1	1
<b>Total</b>	<b>34</b>	<b>32</b>

	Unrestricted Funds	Restricted Funds	Total 2022
	£000	£000	£000
Charitable activities	7	27	34
<b>Total</b>	<b>7</b>	<b>27</b>	<b>34</b>

	Unrestricted Funds	Restricted Funds	Total 2021
	£000	£000	£000
Charitable activities	7	25	32
<b>Total</b>	<b>7</b>	<b>25</b>	<b>32</b>



---

13. Trustees' remuneration, benefits and expenses

The Shrewsbury and Telford Hospital NHS Trust Board is the Corporate Trustee of the Charity. The Executive Directors and Non-Executive Directors of the Trust Board do not receive any additional remuneration, benefits or expenses for their role in relation to the Charity (2021: nil).

14. Analysis of staff costs and remuneration of key management personnel

The Charity does not have any employees. The administration of the funds is carried out by employees from The Shrewsbury and Telford Hospital NHS Trust. The employees' salary and related costs are recharged to the Charity from the Trust. These are analysed as follows:

	Total 2022	Total 2021
	£000	£000
Salaries and wages	24	23
Social security costs	2	2
Employers pension contribution	3	3
<b>Total</b>	<b>29</b>	<b>28</b>

---

The average number of recharged full time equivalent employees during the year was 0.73 (2021: 0.73) with all employee time involved in providing support services.

No employees had emoluments in excess of £60,000 (2021: nil).

15. Independent Examiner's remuneration

The remuneration relating to the independent examination totalled £3,555. This included £2,580 for 2021/22 and £975 not previously included in 2020/21 (2021: £1,527).

This remuneration relates solely to the independent examination with no other additional work undertaken (2021: nil).

16. Fixed asset investments

	Total 2022	Total 2021
	£000	£000
<b>Movement in fixed asset investments</b>		
Market value brought forward	2,284	2,083
Deposits from Royal Bank of Scotland account	125	175
Dividends and interest	37	45
Withdrawals to Royal Bank of Scotland account	(150)	0
Add net gain/(loss) on revaluation	(96)	(19)
<b>Market value as at 31 March</b>	<b>2,200</b>	<b>2,284</b>

---

**Fixed asset investments by type**

	Units held as at 31 March 2022	Units held as at 31 March 2021	Total 2022	Total 2021
	£000	£000	£000	£000
<b>Common investment funds</b>				
Deposit Fund			949	938
Fixed Interest Account	999,226	999,226	1,251	1,346
<b>Total</b>			2,200	2,284

All investments are carried at their fair value.

Investments are placed in a COIF (Charities Official Investment Fund) managed by CCLA Investment Management Ltd.

**17. Analysis of current debtors**

<b>Debtors under 1 year</b>	Total 2022	Total 2021
	£000	£000
Accruals for income owed to the Charity at 31 March	1	2
<b>Total</b>	1	2

**18. Analysis of cash and cash equivalents**

	Total 2022	Total 2021
	£000	£000
Royal Bank of Scotland accounts	55	47
<b>Total cash and cash equivalents</b>	55	47



---

19. Analysis of liabilities	Total	Total
	2022	2021
<b>Creditors under 1 year</b>	£000	£000
Trade Creditors	13	65
Accruals for sums owed by the Charity at 31 March	3	4
<b>Total</b>	<b>16</b>	<b>69</b>

---

20. Reconciliation of net income/ (expenditure) to net cash flow from operating activities

	Total	Total
	2022	2021
	£000	£000
Net income/(expenditure) as per the statement of financial activities	(24)	136
<b>Adjustments for:</b>		
(Gains)/losses on investments	96	19
Dividends and interest from investments	(37)	(45)
(Increase) /decrease in debtors	1	4
Increase/(decrease) in creditors	(53)	62
<b>Net cash provided by (used in) operating activities</b>	<b>(17)</b>	<b>176</b>

---

21. Transfers between funds

There were no transfers between funds during the period (2021: nil).

## 22. Analysis of charitable funds

## a) Analysis of restricted fund movements 2022

	Balance b/fwd	Income	Expenditure	Balance c/fwd
	£000	£000	£000	£000
Shropshire Haematology Blood Research	403	44	(18)	429
Ward 23 Haematology/Oncology	158	7	(12)	153
Sub-Specialty Cancer Fund	154	13	(39)	128
Breast Cancer Fund	100	27	(5)	122
NHS Charities Together	54	337	(303)	88
Respiratory RSH	64	13	(1)	76
Stroke - Ward 21, Ward 22R	53	9	(1)	61
Cardiology	50	9	(2)	57
Lottery Small Differences	53	39	(41)	51
Chemotherapy Day Centre	43	8	(1)	50
Renal/Nephrology	21	28	(1)	48
ITU RSH	56	8	(24)	40
Pharmacy	37	5	(3)	39
Diabetes Hummingbird Centre	37	1	0	38
Elderly Care Patients	35	9	(7)	37
ITU PRH	17	19	(1)	35
Children's Oncology	24	7	0	31
Endoscopy	20	4	(1)	23
Hamar Centre	23	0	(1)	22
Vascular	22	2	(2)	22
Urology	20	2	0	22
Neonatal Unit	20	7	(6)	21
Children's Unit	20	2	(2)	20
AMU RSH	18	1	0	19
Colorectal	17	1	0	18
Swan Fund	16	9	(8)	17
Radiotherapy	16	0	0	16
Head and Neck General	2	14	0	16
Midwife Led Units	14	0	0	14
Respiratory PRH	11	3	(2)	12
Audiology	20	0	(9)	11
A&E RSH	10	1	0	11
Other funds below £10k (32 funds)	135	17	(14)	138
<b>Total</b>	<b>1,743</b>	<b>646</b>	<b>(504)</b>	<b>1,885</b>



b) Analysis of restricted fund movements 2021

	Balance b/fwd	Income	Expenditure	Balance c/fwd
	£000	£000	£000	£000
Shropshire Haematology Blood Research	411	56	(64)	403
Ward 23 Haematology/Oncology	150	17	(9)	158
Sub-Specialty Cancer Fund	207	4	(57)	154
Breast Cancer Fund	94	10	(4)	100
Respiratory RSH	61	6	(3)	64
ITU RSH	37	29	(10)	56
NHS Charities Together	0	181	(127)	54
Stroke - Ward 21, Ward 22R	52	2	(1)	53
Lottery Small Differences	15	70	(32)	53
Cardiology	61	4	(15)	50
Chemotherapy Day Centre	21	24	(2)	43
Diabetes Hummingbird Centre	40	1	(4)	37
Pharmacy	32	5	0	37
Elderly Care Patients	32	5	(2)	35
Children's Oncology	26	1	(3)	24
Hamar Centre	31	2	(10)	23
Vascular	31	1	(10)	22
Renal/Nephrology	42	5	(26)	21
Neonatal Unit	39	4	(23)	20
Audiology	58	1	(39)	20
Endoscopy	22	1	(3)	20
Children's Unit	14	8	(2)	20
Urology	10	10	0	20
AMU RSH	3	15	0	18
ITU PRH	15	6	(4)	17
Colorectal	10	7	0	17
Swan Fund	17	6	(7)	16
Radiotherapy	11	11	(6)	16
Midwife Led Units	13	0	0	13
MSK T&O RSH	12	1	(2)	11
Respiratory PRH	10	1	0	11
A&E RSH	7	3	0	10
Other funds below £10k (35 funds)	123	26	(22)	127
<b>Total</b>	<b>1,707</b>	<b>523</b>	<b>(487)</b>	<b>1,743</b>

Each of the restricted funds is designated for the welfare and benefit of staff and patients on the relevant ward/department within the Royal Shrewsbury Hospital and the Princess Royal Hospital, Telford.

**Shropshire Haematology Blood Research** is restricted to the Haematology Unit at RSH. The purchase of four additional Haematology chairs has recently been agreed for just over £200,000. The four additional chairs will not only increase capacity but will give flexibility to the urgent patients needing IV treatments which will help avoid the patient having a hospital admission because there is no chair capacity available for urgent treatments.

**Ward 23 Haematology/Oncology** is restricted to haematology and oncology care including Ward 23 Oncology ward at RSH.

**Sub-Specialty Cancer Fund** is for the purpose of enhancing and improving patient experience and comfort in all the different specialties of a patient's cancer care.

**Breast Cancer Fund** is restricted to breast cancer care to purchase much needed medical equipment and provide training for the specialist breast care nurses.

**The other 32 funds below £10k** are restricted to specific wards/department within the Trust to purchase medical equipment, as well as enhancing and improving patient experience and comfort and provide additional training for staff.

(c) Analysis of unrestricted fund movements 2022

	Balance b/fwd	Income	Expenditure	Unrealised Loss	Balance c/fwd
	£000	£000	£000	£000	£000
SaTH General Fund	521	37	(107)	(96)	355
Total					

(d) Analysis of unrestricted fund movements 2021

	Balance b/fwd	Income	Expenditure	Balance c/fwd
	£000	£000	£000	£000
SaTH General Fund	413	201	(93)	521
Unrealised Gain Reserve	8	0	(8)	0
Total	421	201	(101)	521

The unrestricted funds include all donations for which a donor has not expressed any preference as to how the funds shall be spent. These funds are applied for any charitable purpose to the benefit of the patients and staff in any ward/department within the Royal Shrewsbury Hospital and Princess Royal Hospital at the discretion of the Corporate Trustee.



### 23. Total return on investment

Long-term investments are placed in a COIF (Charities Official Investment Fund) managed by CCLA Investment Management Ltd. This arrangement allows the Charity access to a wider portfolio of investments than would otherwise have been possible.

	COIF Deposits	COIF Fixed interest	Total
	£000	£000	£000
Opening Balance as at 1 April 2021	938	1,346	2,284
Transfer between COIF and RBS	(25)	0	(25)
Dividends Received	0	36	36
Dividends transfer between funds	36	(36)	0
Interest Received	0	1	1
Unrealised Investment Gain/(Loss)	0	(96)	(96)
Closing Balance as at 31 March 2022	949	1,251	2,200

	COIF Deposits	COIF Fixed interest	Total
	£000	£000	£000
Opening Balance as at 1 April 2020	718	1,365	2,083
Transfer between COIF and RBS	175	0	175
Dividends Received	0	45	45
Dividends transfer between funds	45	(45)	0
Interest Received	0	0	0
Unrealised Investment Gain/(Loss)	0	(19)	(19)
Closing Balance as at 31 March 2021	938	1,346	2,284