



**HOME
START**

**Rochdale
Borough**

2019 - 2020 Annual Report

Charity Number 1107258

Company in England & Wales Number 5282419

Contents

4	A Warm Welcome to our Annual Report
5	All About us
6	Hello from the Chairman
7	Home-Start Organisational Chart
8	Facts and figures of our service delivery
9	Our exciting projects
10-11	Emotional Health and wellbeing support for families
12-13	Support for Autism and Behavioural Difficulties
14	Supporting Families living in Bury
15	Supporting Parent Infant Mental Health
16	Volunteer Recruitment
17-18	Quotes and Evaluation
19	Meet the volunteer
	Finance
20	Treasurer's Report
21	Income and Expenditure
	Thank you
22	Remembering Warren

Abbreviations

HSRB – Home-Start Rochdale Borough

TAC/TAF – Team Around the Child/Family

CIN – Child In Need

CP – Child Protection

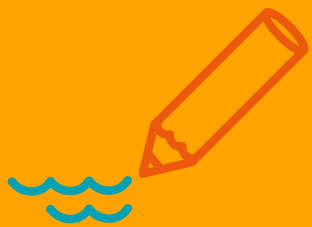
BBR – Bury, Bolton and Rochdale

CCG – Clinical Commissioning Group

CYP – Children and Young People

YP – Young Person

ADHD – Attention Deficit Hyperactivity Disorder



A warm welcome to our Annual Report!

Our Annual Report covers the work of the charity from 1st December 2019 – 30th November 2020.

Home-Start in Rochdale is celebrating over twenty years of supporting local families within Heywood, Middleton, Rochdale and Pennines. From September 2019, it was a pleasure to expand our area of provision, to support families living in Bury.

Starting from being a small family support charity, where just seven volunteers were recruited to support seven families, the service has now grown in strength to help 204 families and 351 children this year alone.

We have all been through such a difficult time during the covid pandemic and the restrictions and health complications have affected our supported families more than ever. Isolation and loneliness was at its highest level, meaning parents struggled with their emotional health and overall wellbeing. Relationships within the family households caused stress and anxieties. Families struggled to manage children's behaviours at home and to provide home schooling and entertainment.

The dedicated team of employees at Home-Start and their volunteers, adapted the service to make sure all our families had someone they could talk to and be there for them during these difficult times. Support was mainly provided online or during garden visits and our volunteers were recruited and trained online too. Although this wasn't an ideal situation, we were able to continue to deliver support with dedication and passion to help families with children under 12 years who needed our support.

This year, we completed two significant projects funded by Reaching Communities Lottery Fund. Our work within the BBR Project, working collaboratively with Home-Start Bolton and Bury, meant we could provide enhanced support for families with Autism and ADHD, help improve school readiness and train our workforce and volunteers in raising cultural awareness.

The Buddies for All Project helped reduce loneliness and isolation amongst the community of Middleton and Heywood, whilst encouraging families to engage with our range of services and offer their time to volunteer to help others in need.

We are extremely grateful for all the fundraisers who have gone out of their way, to raise additional funds for those struggling with food and fuel due to reduced or loss of income through no fault of their own. Our core budget will not stretch to allow us to help parents who genuinely struggled to provide fresh foods for their family.

We know for certain that the support needs of our families across Rochdale and Bury will increase over the next twelve months. It is therefore vital we make sure the charity has sufficient funds to not only deliver its core work, but also to provide additional help in areas where it is needed most. As with many other charitable organisations, raising money can be a challenge and competitive. We would like to acknowledge that the Trustees work hard to ensure the continued success, sustainability and growth of our charity.

I would like to thank our staff, Trustees and volunteers for working harder than ever during this year. Their determination and resilience shone through during lockdown, always going above and beyond to make sure families were supported throughout.

Thank you to all funders who have been hugely supportive to allow us the flexibility to help families in creative ways, whilst keeping everyone safe along the way until we can meet face to face once again.

Donna Arden McKenna – CEO

All about us

Home-Start Rochdale provides a special kind of support for families, which is a unique simple approach. A team of trained volunteers and our support team are here to offer help to families with children under the age of 12 years, through challenging times. We have the time to listen in confidence, providing parents with the opportunities to build their confidence, increase community connections and build coping strategies.

All our children deserve the best start in life, so the early years are of most importance to support parents to provide a stable, nurturing environment.

Our service has provided a lifeline of support for 204 families and 351 children during this year alone.

The support we offer

So we can meet the needs of all our families referred to Home-Start, we aim to make the support as flexible as possible.

- Regular home visiting support including teatime and weekend visits.
- Support for Emotional Health and Wellbeing.
- Weekly telephone and online support.
- WhatsApp Peer Support Groups.
- Support for Autism and ADHD.
- Parent Infant Mental Health Support for expectant parents and families with under 2's.
- Community outings.
- Clothing and household recycling.

As a result of our support, parents told us

- Isolation was reduced and they felt settled within their community.
- Stress and anxieties reduced and became more manageable.
- Relationships within the family improved.
- They felt better about themselves and their ability to parent well.
- Confidence and ability to manage challenging behaviours had improved.
- Debts became under control and the ability to manage household budgets.
- Access to their G.P Health Visitor and other health professionals became easier.
- Children enjoyed the Readiness for School activities, and they had more ideas to create fun activities within the home.
- Routines, sleep and mealtimes felt less stressful.

Our Vision

Home-Start Rochdale wants to see a society in which every parent and carer has the support they need to give their children the best possible start in life.

Our Mission Statement

HOME-START Rochdale offers emotional and practical support for parents with children from pre-birth to twelve, within local communities throughout the Borough of Rochdale.

We offer a unique service, recruiting and training volunteers to offer informal, friendly, and confidential support.

To help give children the best possible support in life, Home-Start supports parents as they grow in confidence, strengthen their relationships with their children and widen their links with the local community.

Our Values

We offer families choice.

We respect difference and equality.

We are part of our community.

We support long term change.

Hello from the Chairman of Home-Start Rochdale Borough

I would like to thank everyone for working so hard during the last year, especially as we were faced with redesigning our service to support families through the Covid 19 Pandemic.

The staff have worked above and beyond their usual roles, to make sure families could access support in a safe way, during these difficult times.

The support we offer for families across Rochdale and Bury continues to be strong and referrals continue to flow through every day.

We were delighted to welcome volunteers and two employees from the original Home-Start Bury Charity, to help us to continue to make a real difference to families lives.

Our relationships with partners and referrers continue to grow and we are proud to say we are a well-respected Family Support organisation within the Borough.

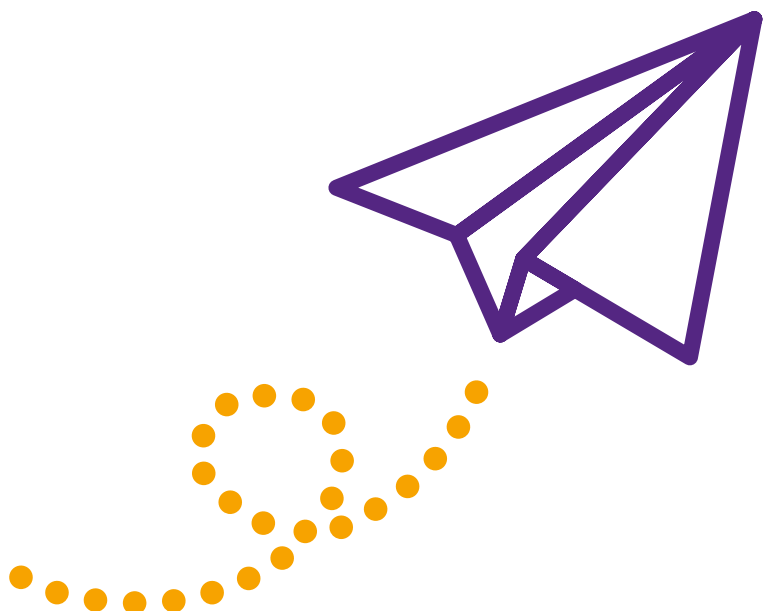
We recognise accessing funding will always be a challenge for Home-Start as with other voluntary sector providers. In the near future, we will need to find further funding to continue our fantastic work in the Bury area. If anybody could support us with achieving this, we would be very grateful.

In July 2021 the Trustees will agree to formally change their charitable name to Home-Start Rochdale and Bury.

My personal plan is to Retire from the organization, after 21 years of service next year. I have thoroughly enjoyed my experience and will look forward to watching the charity continue to grow and flourish from a distance.

Thank you to all of you for supporting me in my role as Chairperson.

Peter Brierley



Home-Start Rochdale Borough Organisational chart



Trustees

Peter Brierley – *Chairperson*
Margaret Woods – *Vice Chairperson*
Susan Richardson – *Treasurer*
Colin Smith – *Trustee*
Margaret Edwards – *Trustee and Safeguarding Lead*
Lynn Butterworth – *Trustee*
Warren Chadwick – *Trustee until August 2020*
Alex Eaton - *Trustee*

Management

Donna Arden-McKenna – *CEO*
Sharon Pearson – *Company Secretary/Finance & Office Manager*

Staff

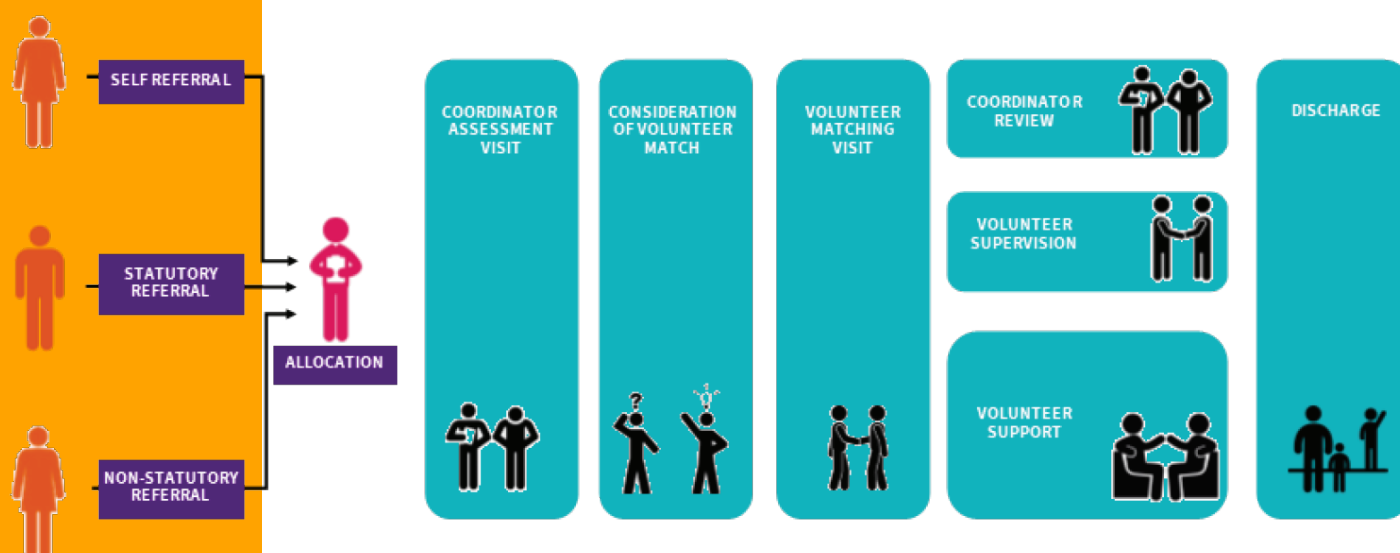
Sam Freeman – *Autism Coordinator*
Gill Marsden – *Coordinator*
Jess Healey – *PIMH Coordinator*
Alison Kirkpatrick – *Emotional Wellbeing Support Worker*
Gabby Heywood – *Support Worker*
Bernie Thomson – *Support Worker*
Roisin Pickering – *Family Engagement Support Worker for Autism & ADHD*
Mic – *Dad Matters Coordinator*

Home-Start Service delivery model

Home-Start in Rochdale has provided a lifeline of support for families for the last twenty-one years. More recently during this year, we have extended our reach, to help families living within Bury.

Supporting over 204 families each year we encourage any family to come forward who needs help and support, without the fear of being judged or criticised. We believe every child deserves the best start in life and our service can support parents on their journey, to help their child reach their full potential.

Experienced parent volunteers are recruited from the local community, to support families on a regular basis, helping to reduce stress, anxieties and the risk of crisis and breakdown.



Volunteers are trained to ensure they are fully equipped to successfully support a range of families presenting with different needs at Early Help Level.

Following an initial visit to assess what support the family require, a trained volunteer or support worker will be introduced as part of a matching process.

Ongoing support for families is then monitored by our Coordinators and Support Workers, to make sure parents feel empowered and confident to work towards the goals set by the parent themselves and professionals around them.

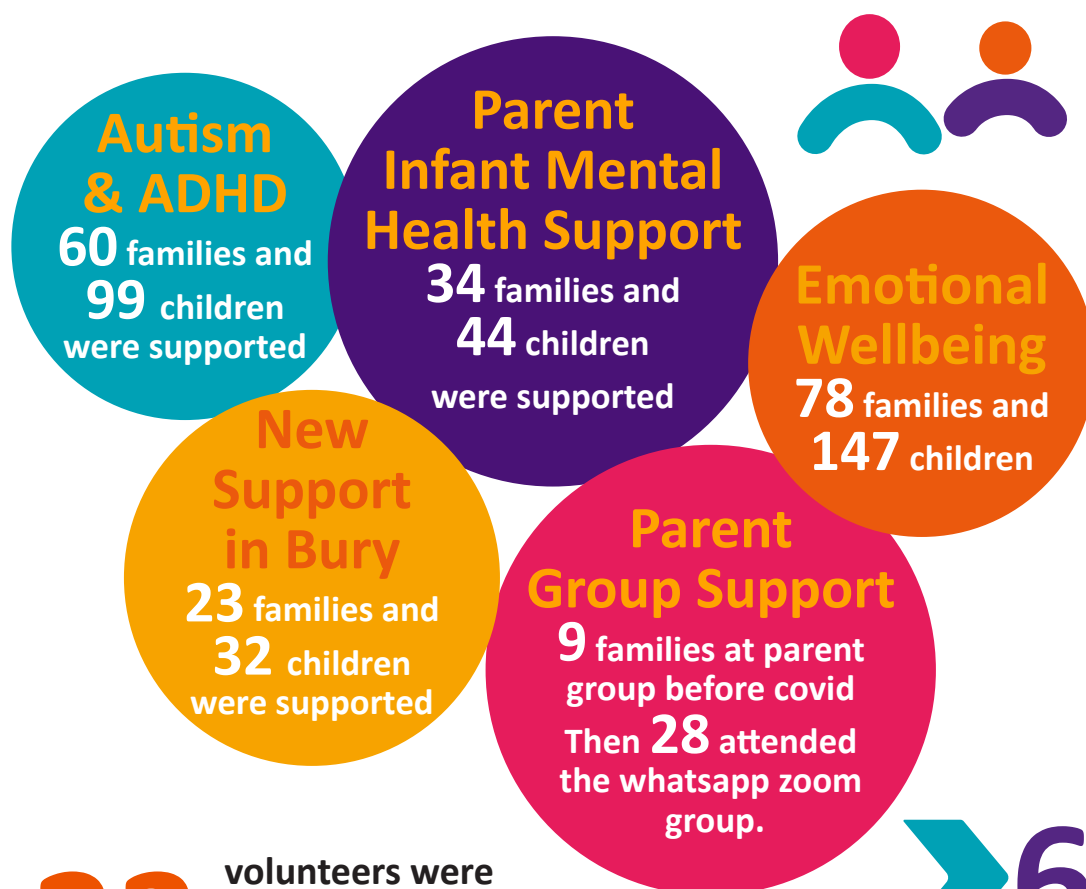
The Coordinator provides support and supervision for the volunteers and keeps in touch with the family to make sure the relationships are progressing well.

Regular reviews will take place to monitor progress or make changes the way we deliver the support effectively.

Facts & Figures of our service delivery



Total children supported = 351

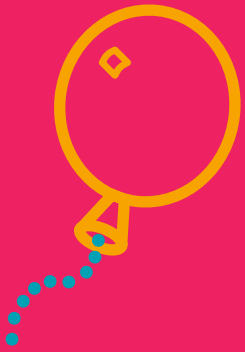


23

volunteers were available and several supported families by telephone during covid restrictions from 23rd March 2020.

6

volunteers were recruited and trained via zoom due to covid restrictions .



Emotional Health and Wellbeing Support for Families

In December 2019, many families were visited weekly in their own homes and out and about in the community. Families were being supported to improve their mental health, wellbeing, isolation, and parental conflict to help reduce stress and improve the overall wellbeing of the wider family.

Support was offered with managing their household bills, applying for eligible benefits, housing, and referrals into other voluntary and statutory services. Home-Start supported children with Christmas gifts and food parcels. Nobody expected that the New Year would bring a pandemic, which affected many of the Home-Start supported families.

March 2020 changed the world we knew, with absent parents and separated families struggling to see their children. Babies born during lock down were unable to meet their grandparents and family members. Socialisation with other children was little or non-existent. New parents could not access peer support from other new mums and practical support from their families. Bereavement due to COVID also affected some of our families.

Helping parents with the 5 Ways to Wellbeing played a crucial survival tip. Families were supported to self-manage their wellbeing and focus on the positives, take up new hobbies and interests, explore the outdoor where it was safe, say hello or smile to the person passing safely on the street or in the park.

Some families who already experience poor mental and physical wellbeing had their health appointments delayed for ongoing medical needs, therapy for counselling, peer support groups and even operations.

Schools and nurseries were closed, and families became isolated from their families and friends as COVID restrictions were in place. Due to the pandemic, anxiety escalated, and poor mental health deteriorated. Domestic abuse, parental conflict and poverty were higher than usual. Household routines had changed, impacting on adult and children's behaviours, leaving Home-Start families struggling.



It was presumed many families already had laptops, computers and WI FI access for home schooling and communication for their families and friends.

Some families did not have private gardens to play with the children. Frustration, stress, and fear became a normal part of life for some.

On a more positive note, new and existing parents found being at home, furloughed or out of work brought them closer to their children, being able to watch their child take their first steps and reaching their milestones. Creative play became fun, and some families found playtime a newfound activity, improving relationships within the household. Other families struggled to manage routines, children's behaviour, and mental health.

Home-Start was a lifeline and bridged the gap to the wider world for our supported families.

Weekly telephone and zoom calls took place to provide the opportunity for parents to offload their worries and difficulties to a Support Worker or volunteer.

Coping strategies and ideas were shared in a relaxed informal way, to enable parents to feel confident and stronger to manage their family life in a more positive manner.

Support to reduce the anxieties associated with attending essential appointments in a safe way, was always on offer to help parents care for their own medical needs.

Support to improve adult, child and family relationships helped families to remain stronger through the pandemic and help prevent breakdown.

Food, nappies, activity, and well-being packs were distributed to those most in need, providing parents with breathing space to manage the increase in demand for resources whilst staying indoors.

Pamper packs for parents needing some self-care during lockdown.



"Helped me get things out and helped me with things I was struggling with... helped me it's absolutely OK to talk." Thank you Ali

"Through this pandemic, the help we have received from home start has been amazing, without their help we would never have been able to get vouchers for food from school, which would have made things very difficult. The weekly conversation we have with Ali is a constant reminder that there's always someone there and we know that if we ran into trouble I could ring Ali and I know she would go out of her way to help us. we are both very grateful for the support from Home start, Many thanks from myself and my daughter, keep up the good work." LL/borough family.

"We would not be where we are today without your support, and I cannot express our gratitude on helping us adjust to life with Autism. We love you."
Rochdale Family
Sam Freeman – Autism & ADHD Coordinator.
Roisin Pickering – Family Engagement Worker for Autism & ADHD.

*"The pamper bag make me feel happy, my skin was so thankful because I didn't relax like that for while! Was a unexpected gift that lifted me and made smile!
Thank you so much for that amount of love in such small bag."*

Support For Autism, ADHD & Behavioural Difficulties

Here are some of the things we have supported families with this year.

- Challenging & Aggressive Behavior.
- Managing Anger & Meltdowns.
- Self-Harm & risk-taking behaviours.
- Sleep.
- Toileting.
- Eating/ Diet.
- Emotional support.
- Mental health of Children & Parents.
- Disability benefits for children & adults.
- Tribunal support.
- Understanding Autism & ADHD.
- Sensory Processing difficulties.
- Managing Puberty with Autism.
- Relationships.
- Anxiety.
- Parent referrals into LANC UK.
- Referrals into services for children.
- Zoom sessions with siblings.
- Attachment.
- Transition.
- School.
- Visuals and Timetables.
- Routines & Boundaries.
- Home safety.
- Food and hygiene essentials for families.

Over the last few years our Autism/ADHD service has gone from strength to strength and the need for support has increased dramatically.

Home-Start Rochdale are a key service in Rochdale to deliver Autism support to families with children under 12 years old.

We are also a service that is part of the pathway for Social and Communication difficulties, and we are funded by the CCG to deliver this support.

Referrals continue to come in daily and families are struggling more than ever.

Over the pandemic we have had to change the way we work with families, but we still managed to support a high number of parents and children.

PARENT QUOTE

"We would not be where we are today without your support, and I cannot express our gratitude on helping us adjust to life with Autism. We love you." Rochdale Family Sam Freeman – Autism & ADHD Coordinator.

Roisin Pickering – Family Engagement Worker for Autism & ADHD.

"Covid did not help but with a disabled child to take care of as well it has been extremely difficult."



Up to February 2020 we delivered this support face to face in family's homes but from March 2020 we delivered this support over Zoom and Via telephone support.

Telephone support has been part of our service over the last few years on Friday afternoon. It is flexible for working parents to access.

When the pandemic hit, we just opened this up to all the families we were supporting via home visiting and any other referrals that came through.

This worked extremely well for some of the parents who have anxiety not having to do face to face to tell their story.

We also understood the difficulties parents were facing being isolated, so we put together some wellbeing packs for parents and activity packs for children to keep them occupied during a very stressful time.

We are very proud of our Autism service here at Home-Start Rochdale.

Staff have personal as well as professional experience in Autism/ADHD and this makes parents appreciate talking to us who have been there and understand what they are going through.

Therefore, we are very pleased to have employed another member of staff to work alongside me so we can continue to deliver our Autism service the best we can.

Roisin is a Mum of two and has a child with Autism, so she understands the difficulties parents face who have children with disabilities.

To join a new team in the middle of the pandemic working from home is not easy but Roisin has worked hard to do the best job she can under the circumstances.

Group Support

Our group support service has been running for the last couple of years.

Due to Covid we only ran this group until February, as we have so many families that engage in group, we decided to start a WhatsApp group chat rather than have no group at all.

This has worked so well that it is still running, we have 28 families on the group, and it helps them to support each other when times are bad.

We share coping strategies and give advice and support on all the areas just like we do with our home visiting service.

This also reduces isolation and creates new friendships between parents.

The group is a drop-in service and supports families of children with additional needs.

The group works well as no diagnosis is necessary and the only criteria to attend is you must have a child/ren with additional needs.

We run twice a month, one in Middleton and one Rochdale.

The drop-in group support is very flexible for parents. We wanted to provide a service that was easier for parents to access, considering all the things they must deal with daily.

We know families sometimes do not get a chance to have breakfast as transition to school is difficult, so we now provide breakfast for parents as part of our drop-in service.

We offer emotional support, strategies, and a library/sensory table to see how the toys/strategies work. We also provide Readiness For School activities for children under 5 years old.

The group is free of charge and runs for two hours, there is no commitment to come to each one and it can be used flexibly when needed.

We have also run some park sessions for parents and children with disabilities.

We do have some new ventures in the pipeline for the next year which we are very excited about.



Sam's Sib's

Sib's last year celebrated 10 years of running.

I started Sib's which supports children who have a sibling on the Autistic Spectrum.

This is the only element of our service which needs a diagnosis due to the information we discuss in our sessions.

Children chat about their siblings and access support for their own emotional wellbeing.

Parents can stay and access group support in another part of the building if they need to.

The Sib's group celebrations were put on hold due to Covid but we are hoping next year we can have a big celebration inviting back families from where we started.

We are looking forward to the next year and what it holds for us here at Home-Start Rochdale.

PARENT QUOTE

*"It is fab! I could not cope now without my feeder Steve, and sanity keeper Sam"
"I could not keep going without the support from the group"*



CHILDRENS QUOTE

"I don't feel on my own anymore knowing there are lots of other kids just like me. I do not want it to end, can I come back again?"

Sam Freeman – Autism & ADHD Coordinator for Group & Sib's Lead

Supporting Families Living in Bury



Gill Marsden
Coordinator for
Bury



Bernie Thomson
Support Worker
for Bury

So as you can imagine it's been a difficult year for everyone.

Since Home-Start Bury closed in May 2019, Home-Start Rochdale have now extended the core offer to cover Bury.

Bernie joined the Team in March 2020 having previously worked as a Parent Support Adviser in four of Bury's primary schools; Latterly Bernie worked with Bury Home-Start.

Bernie has a wealth of knowledge and experience of providing support to families.

Bernie's knowledge of Bury has proved invaluable and we have rebuilt the links between referrers and donators.

We originally offered support to families living within the BL9 postcode area. We have now extended this to offer our service to support families living in the whole Borough of Bury. This support has been very well received and has seen an increase in referrals from primary schools.

Any family living in Bury with a child up to the age of 12 years, can access support from an experienced parent volunteer or Support Worker for 1-2 hours each week, who can visit them at home on a regular basis at a time and day that is most convenient.

This support has been restricted due to government guidelines and the support offered during this time was via telephone.

We have learnt new ways to work and support families using social media to our advantage, completing initial visits and support sessions via zoom and WhatsApp. This proved very popular and the children loved joining in with story time and rhymes.

We have supported the families with emergency food packages and essential baby items with the help from Porch Box and Children Centre hubs.

Dunelm Call Centre in Bury have continued to be very generous in donating household items as well as holding a toy collection for our charity.

We also provided activity packs for children and well-being packs for families during the school holidays.

Networking has also been completed via Zoom and Microsoft teams. Referrers have understood the difficulties and we have worked together to get the best outcomes for the families.

We had some amazing volunteers join our Team from the Bury scheme and they have continued to offer support to families across the Borough.

"Thankyou so much for all yours and the teams help, it really has meant a lot x"

DIRECT QUOTE FROM PARENT
"Hi hope your well a wanted to say a big Thankyou Bernidet for all the help an support you have gave me an aydin through out lockdown you have been the best support ever that a could ask for a had to go away to Pakistan because of my dads health i am back in the Uk now miss Bernidet miss out chats you were wonderful Thankyou for always being there for us."

"The support we have received from Home-Start has been fantastic and has really helped me and our family when we needed it the most."



Supporting Parent Infant Mental Health During the first 1001 Days

The Home-Start Charity has a dedicated Parent-Infant Mental Health Coordinator and a team of trained volunteers, who offer weekly practical and emotional support to parents that ordinarily takes place in the family home, or community. They support expectant parents and parents of under 2's living in the Rochdale Borough who have low level mental health difficulties or are experiencing difficulties.

Parent-Infant Mental Health is about promoting both a baby and the parent's mental health and relationships. It is to ensure that both get the support they need to enjoy a safe, nurturing and healthy relationship, to give baby the best start for a lifelong development. Home-Start encourages parents to be curious and keep baby in mind during all support with the family.

Parent-Infant Mental Health (PIMH) Coordinator, Jessica Healey continued to develop this scheme in 2019/2020. In December 2019, Jessica and CEO Donna Arden-McKenna recruited and trained six new volunteers. Home-Start Rochdale staff and volunteers are trained in Parent-Infant Mental Health to help parents appreciate and understand knowledge around bonding and attachment, infant brain development, birth, and the babies first year.

We work in partnership with HMR Early Attachment Service. This service brings together a range of professionals to offer the right level of support for each individual family. The main purpose of the Parent-Infant Mental Health partnership is to support parents to recognise and embrace the importance of their first relationship with their baby.

Due to the Covid-19 pandemic, staff and volunteer home visiting support to families ceased in March 2020. However, PIMH Coordinator Jessica Healey and the team of volunteers continued to support families. It was recognised, and recent research has evidenced the greater need for such support to families who were expecting, or with children under two due to the isolation faced. Having a baby at any time can be challenging but such challenges significantly increased for those who had 'lock down' babies. The scheme adapted and began to offer weekly telephone or online support. In May 2020, Jessica completed a virtual telephone/online befriender training course to 10 existing volunteers.

A Parent Infant Mental Health WhatsApp group was established for staff and volunteers, to offer peer support.

Between December 2019 and November 2020 over 34 PIMH families were referred to the Home-Start PIMH Peer Support Service.

PIMH Coordinator Jessica Healey left Home-Start in September 2020 to pursue a career in Adult Mental Health nursing.

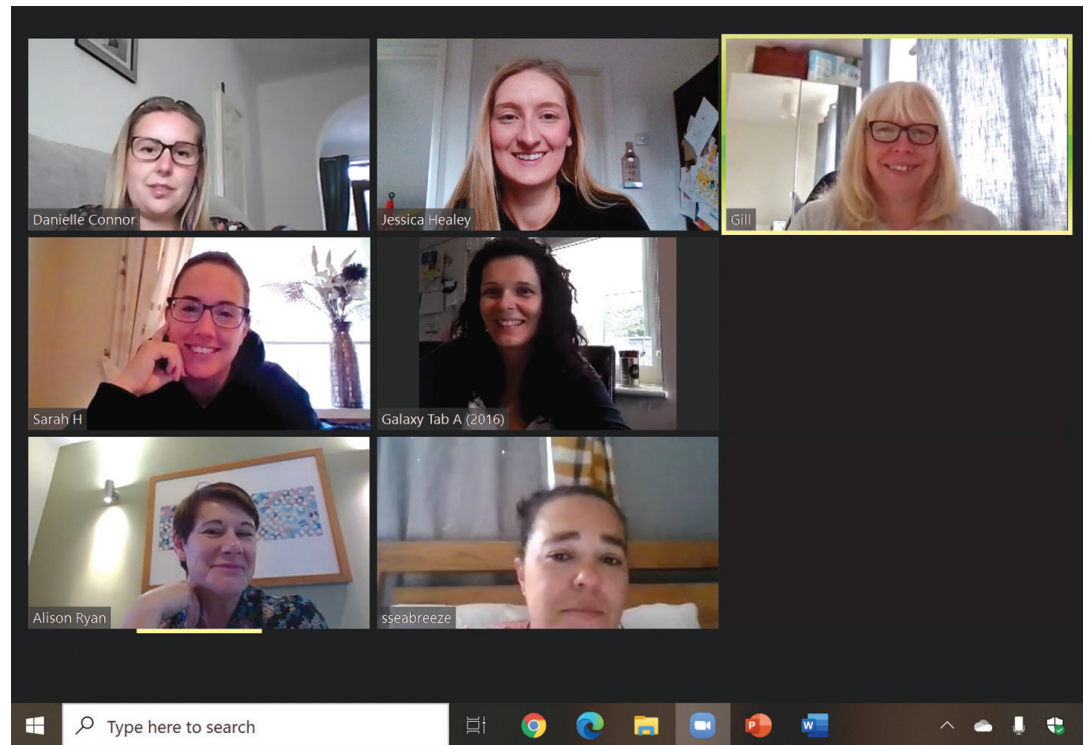
We wish her all the best! Staff and volunteers continued to support PIMH families.

Shelly Baker - New PIMH Coordinator

This support has been invaluable and one family gave this feedback:
"...We would be lost in madness had we not had the kind help, support and advice that you've given us. Thank you for always being there when we need you."
(Rochdale Family)



Volunteers recruited this year by Gill & Jess via zoom



A warm welcome to:

Danielle, Sarah, Patricia, Alison & Yolanda who joined our team to support families by telephone during the covid period.

Our telephone support volunteers can now attend a top up training session to move onto delivering weekly home visiting support as soon as it is safe to do so following Government Guidelines.

Parents appreciated having someone at the end of the phone, who listened and provided confidential support. Volunteers supported parents with:

- Emotional support
- Stress and anxieties
- Relationship difficulties
- Debt and budgeting
- Ideas to keep children entertained
- Managing children's behaviours
- Babies born in lockdown
- Access to food and essential items



Quotes and Evaluation

"Thank you for being such an amazing support to me since lockdown earlier this year. I am so grateful."

"You were always there at the end of the phone to listen to whatever I was struggling with. You helped me make sense of everything I had going on."

"The pamper pack made me take time out for myself – which I never do! I did feel a bit guilty spending time on myself, but it was a lovely treat. I might try to do some more of this."

"You reassured me during covid when we couldn't go outside. You helped me to cope with the children and gave me ideas about how we could keep busy and enjoy some family time together."

"Nothing was too much trouble. Home-Start supported me to access some spare food when we needed it most. The children enjoyed the baking kits at Easter time and we all made cupcakes together."

"The toys you gave at Christmas made it more magical. I didn't have to use my usual money to buy things for the girls, which meant we had enough gas to keep the house warm over Christmas. Thank you so much."

Feedback/quotes from referrers 2020

"I am emailing to pass on my thanks to you for the support you are giving to cyp across the HMR footprint. I have had clinical supervision with one of my team members today Sarah Jackson and she informed me of how helpful you have been in supporting a yp currently open to her. This is not the first time I have heard this and so wanted to ensure I took the time to say a huge thankyou on behalf of myself and my team."

Kind regards

Gaynor

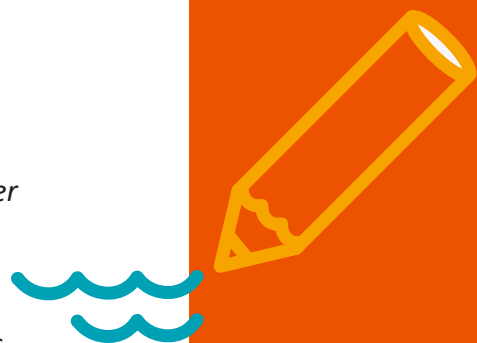
"Mum is really happy with the progress her children are making and is happy that things are being put into place before M starts reception."

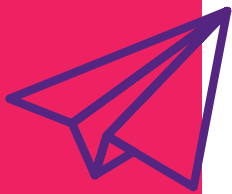
She said its amazing that she is getting support from you with ideas to help with her children and enjoys her weekly phone call to talk about her week – even though sometimes it's a rant."

"So thankyou for your support!"

Kind Regards,

Tayla Ashcroft





Quotes from GoFundMe

"Fantastic service. Special mention to our lovely volunteer and Sam who is still working hard to support families through lockdown and for supporting me and my babies for the last 5 years on and off. I wouldn't be where I am today without her and her team." Xx

(Sarah Richmond-Bunnell)

"Amazing charity close to my heart that supports families with all different needs and challenges! You are all wonderful at Homestart, special mention to Sam who continues to support families during this difficult time!" X

(Chelsea Sammon)

"The support me and my daughter got from our Homestart volunteer was invaluable. We were originally with Bury but transferred over to Rochdale when Bury shut down. The autism groups were fabulous too. Thank you Homestart."

(Claire and Milly)

Quotes from facebook

"Wonderful, caring and supportive."

"Thank you from the bottom of my heart Ali. You've really helped me a lot xx very glad I got to meet u."

Kate Blood

"Awww lovely ally, super proud of you, both so caring in work and at home, you are a star ally." xxx

Julie Miller

"Lovely lady supported a lot and a great asset to the organisation many thanks again keep up the good work."

Tyra Adam

"Ali supported me and my son a few years ago, will never forget what she did for us thank you Ali!" from Ellis & Jake xxx

Ellis Meara-Smith

"Jane Bell Sharon is lovely, always makes me feel welcome."

"Liz Anne Sharon is so nice and lovely. Very welcoming and understanding."

"Danielle Forbes Love this girl." xx

Gabby

"Sarita Dewan Jessica Healey you are fantastic at what you do!! Keep on championing parent infant health."

"Wonderful lady with a heart of gold. You are amazing!" xx

Rita Mucha

"Ali... youre amazing..and positive and a pleasure to know...xx be super proud of yourself girl." xx

Wendy Wrigley

Meet Volunteer Liz



Being a volunteer for Home-Start means being able to support families within our community and offer a bespoke package of care which will enrich and empower our families lives so they can make independent decisions for themselves and their dependents, to use the skills they already have in different ways to communicate and interact with their children.

For me it's about being there when families are ready to make change for whatever reason, they need that support to get themselves out of the starting block and move forward. I have been very privileged to see this with my families, being present to see families moving on.

As a volunteer being a part of Home-Start has supported me in terms of being able to keep abreast with the changes families face culturally, emotionally and financially. Being able to work with so many families from different backgrounds has been a humbling experience. Families have taught me so much and shown me what family/community means when faced with adversity.

One of the best things I enjoy when supporting my families is knowing when they are ready to go it alone and no longer need my support and in addition to this seeing them out in the community and having a catch up and listening to them confidently sharing how they are doing.



Treasurers Report

It is always a pleasure and a privilege to be writing this Report which is my 6th. Since the inception of Home-Start Rochdale Borough in 1999 many changes have evolved but our core remains the same.

However, applying for funding has become much more challenging due to diminishing funds and more Charities applying for it. Our successful bidding is all due to our expert funding team who have procured enough funds to continue with our essential work.

Obviously we are indebted, as always, to our funders, who are listed below, without whom we could not survive.

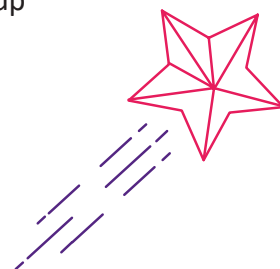
A very big thank you to all our funders, donors and of course our dedicated staff.

Sue Richardson
Treasurer



A huge thankyou to all our funders...

- The National Lottery Reaching Communities Fund
- Rochdale Metropolitan Borough Council
- HMR Clinical Commissioning Group
- Awards For All Lottery Fund
- Henry Smith Charity
- Home-Start UK
- The Mayors Fund
- John Lewis Fund
- Bury Voluntary Community Fund



and also to all those who made a generous donation to the charity.....

These funds and donations enabled us to support our families with emergencies, resources, school uniform and additional support such as trips, group support and 1-1 outings.



Emma completed a fun run to raise funds for the charity. Emma wanted to support the staff team and also to help families with emergency food items. Well done Emma and a big thankyou!

Audited by
Manchester Community Accountancy Service
Sharon Pearson – Finance Officer

Natwest Bank
Town Hall Square,
Rochdale OL16 1LL

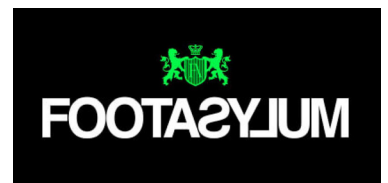
Income and Expenditure Account

	Year Ended 30 Nov 2020	Year Ended 30 Nov 2019		Year Ended 30 Nov 2020	Year Ended 30 Nov 2019
	£	£		£	£
Income			Expenditure		
Donations	3,653	10,671	Disclosure and Barring Checks	1,529	3,184
Investment Income	305	397	Events	578	1,721
Other	-	-	Advertising and marketing	854	1,474
Disclosure and Barring			Employment Costs	204,507	201,981
Service Income	3,251	6,064	Seconded Staff Costs	33,447	-
RAPS	-	341	Temporary Staff Costs	3,369	-
			Administration Support	478	-
Unrestricted grants:			Training	424	756
SIBS	1,000	-	Resources	1,165	2,064
			Childcare	-	400
Restricted grants:			Care Bags	22	125
Awards for All	-	9,409	Covid-19 Costs	1,985	-
Big Lottery BBR	75,178	27,022	SIBS Costs	168	1,014
Bury Voluntary Community	340	-	Home-Start Bolton Funding (BBR)	-	15,225
CCG PIMHS	27,727	35,165	Emergency Family Support	99	15
NCF	400	-	Volunteer Expenses	1,047	3,043
CCG Readiness for School	-	8,333	Group Support	-	30
CCG Autism	-	8,333	Family Support	423	589
CCG Autism & Emotional			Parent Group	870	2,411
Wellbeing	59,132	52,700	Mental Health Support	1,797	-
CCG Dad Matters	33,249	5,008	Activities	931	1,434
CCG Mental Health	-	8,333	Readiness for School	-	171
Henry Smith	18,350	-	Hospitality	130	518
Big Lottery BFA - Home-Start	27,057	122,955	Beneficiary Training	-	5,371
Big Lottery BFA - The Angel			Emergency Food Parcels	600	662
Project	-	(7,336)	Safe & Well	-	341
Big Lottery GM	20,000	-	Travel Expenses	10,001	13,796
The Mayor's Fund	-	500	Repairs & Maintenance	-	109
John Lewis Fund	1,000	-	Minor Equipment	443	-
Sure Start Children's Centres	40,000	40,000	Evaluation	3,930	1,000
Fundraising events	-	-	Telephone	2,899	1,597
Total Income	310,642	327,895	Rent	13,301	13,554
			Utilities	-	347
			Insurance	941	1,424
			Governance Costs	2,072	2,063
			Post, Printing & Stationery	4,878	3,948
			Depreciation	888	-
			Miscellaneous	-	-
			Total Expenditure	293,776	280,367
			Surplus/(deficit for year)	16,866	47,528



A huge thankyou to...

- Dunelm Bury offered household items and Easter Eggs to our families
- The Foot Asylum donating clothes and shoes to the families
- Hits Radio Toy Appeal
- Food donations/Food banks
- Holcombe & District Parish in Bury
- Parents who fundraised to made donations to the charity for emergencies and sibling group support
- A mum who donates every month to support families in Syke and Falinge
- We were given a generous donation of £200 to help families struggling to buy uniform for their children.



Remembering...



Our Trustee Warren Chadwick, who sadly passed away leaving us with some really funny memories as that was his character and his long-lasting effects on making the Home-Start charity sustainable for the future.



**Rochdale
Borough**



**For more information please contact:
Home-Start Rochdale Borough
Office OP2
Arrow Mill, Queensway,
Rochdale, OL11 2YW**

**T: 01706 629651
E: info.homestartrochdale@gmail.com
W: www.homestartrochdale.org.uk
F: facebook.com/homestartrochdale**

HOME-START ROCHDALE BOROUGH

Report of the trustees for the year ended 30th November 2020

The trustees present their annual directors' report and financial statements of the charity for the year ended 30th November 2020 which are also prepared to meet the requirements for a directors' report and accounts for Companies Act purposes.

The financial statements comply with the Charities Act 2011, the Companies Act 2006, the Memorandum and Articles of Association, and the Accounting and Reporting by Charities: Statement of Recommended Practice applicable to charities preparing their accounts in accordance with the Financial Reporting Standard applicable in the UK and Republic of Ireland (FRS 102) (effective 1 January 2015).

Objectives and activities

The charity's objects are, within the area of Middleton, Heywood, Pennines, Rochdale and Bury and its environment:

- to safeguard, protect and preserve the good health, both mental and physical, of children and parents of children;
- to prevent cruelty to or maltreatment of children;
- to relieve sickness, poverty and need amongst children and parents of children;
- to promote the education of the public in better standards of childcare.

The main activities are:

The trustees confirm that they have referred to the Charity Commission's guidance on public benefit when reviewing the Charity's aims and objectives, in planning future activities, and setting the policies for the year.

The charity furthers its charitable purposes for the public benefit through

- To promote or carry out research
- To provide advice
- To publish or distribute information
- To co-operate with other bodies
- To support, administer or set up other charities
- To raise funds (but not by means of taxable trading)
- To borrow money and give security for loans (but only in accordance with the restrictions imposed by the Charities Act 1993)
- To acquire or hire property of any kind
- To let or dispose of property of any kind (but only in accordance with the restrictions imposed by the Charities Act 1993)
- To make grants or loans of money and to give guarantees
- To set aside funds for special purposes or as reserves against future expenditure
- To deposit or invest funds in any manner (but to invest only after obtaining advice from a financial expert and having regard to the suitability of investments and the need for diversification)
- To delegate the management of investments to a financial expert, but only on terms that:
 - the investment policy is set down in writing for the financial expert by the Trustees
 - every transaction is reported promptly to the Trustees

HOME-START ROCHDALE BOROUGH

- the performance of the investments is reviewed regularly with the trustees
- the Trustees are entitled to cancel the delegation arrangement at any time
- the investment policy and the delegation arrangement are reviewed at least once a year
- all payments due to the financial expert are on a scale or at a level which is agreed in advance and are notified promptly to the Trustees on receipt
- the financial expert must not do anything outside the powers of the Trustees
- To arrange for investments or other property of the Charity to be held in the name of a nominee (being a corporate body registered or having an established place of business in England and Wales) under the control of the Trustees or of a financial expert acting under their instructions and to pay any reasonable fee required
- To insure the property of the Charity against any foreseeable risk and take out other insurance policies to protect the Charity when required
- To insure the Trustees against the costs of a successful defence to a criminal prosecution brought against them as charity trustees or against personal liability incurred in respect of any act or omission which is or is alleged to be a breach of trust or breach of duty, unless the Trustee concerned knew that, or was reckless whether, the act or omission was a breach of trust or breach of duty
- Subject to clause 5, to employ paid or unpaid agents, staff or advisers
- To enter into contracts to provide services to or on behalf of other bodies
- To establish subsidiary companies to assist or act as agents for the Charity
- To pay the costs of forming the Charity
- To do anything else within the law which promotes or helps to promote the Objects

A review of our achievements and performance

The main achievements during the year were by regularly attending trustee meetings and strategic planning meetings, director's work towards improving the quality of service in line with Home-Start's Quality Assurance practice standards. Early planning stages to expand the work of the charity into the Bury area have now begun.

Financial review

The charity has been financially secure during 2018/2019 to enable all of its objectives to be completed. Applications for additional funding to expand the work of the charity into Bury, will now take place.

Investment powers and policy

The trustees, having regard to the liquidity requirements of operating the charity, have kept available funds in an interest bearing deposit account.

Reserves policy and going concern

The balance held in unrestricted reserves at 30th November 2020 was £42,087 of which all are free reserves.

The trustees aim to maintain free reserves in unrestricted funds at a level which equates to approximately three months of unrestricted charitable expenditure. The trustees consider that this level will provide sufficient funds to respond to

HOME-START ROCHDALE BOROUGH

applications for grants and ensure that support and governance costs are covered.

The Charity's main source of income is grants and fees. The Trustees consider that it is appropriate to prepare the accounts on a going concern basis and, consequently, the accounts do not include any adjustments that would be necessary if these sources of income should cease.

Home Start Rochdale Borough receives funding from Sure Start Children's Centres, which is agreed in the Service Level Agreement to receive funding quarterly in arrears. Due to the year-end being mid-way through a quarter, this will show as a deficit until the payment is made, although agreed.

Risk management

The trustees have conducted a review of the major risks to which the charity is exposed and systems have been established to mitigate those risks.

Plans for Future Periods

The charity plans to continue with the core work of supporting families via home visiting. Group support sessions, online and telephone support will also be provided. Subject to further funding, the charity will provide additional supporting activities in the forthcoming years to meet the needs of parents in the community of Rochdale and Bury.

Structure, governance and management

Home-Start Rochdale Borough is a company limited by guarantee governed by its Memorandum and Articles of Association dated 3rd November 2004. It is registered as a charity with the Charity Commission and is constituted under a trust deed dated 14th December 2004.

Appointment of trustees

As set out in the Articles of Association trustees are elected annually by the members of the charitable company attending the Annual General meeting and serve for a period of three years.

Trustee induction and training

All Trustees receive a full induction and training and support from other Trustees and Home-Start UK. Trustees are already familiar with the practical work of the charity through meeting regularly with staff members and by attending relevant training provided by Home-Start UK

Organisation

The board of trustees administers the charity. The board normally meets bi-monthly. A Scheme Manager is appointed by the trustees to manage the day-to-day operations of the charity.

Related parties and co-operation with other organisations

None of our trustees receive remuneration or other benefit from their work with the charity. Any connection between a trustee or senior manager with any service providers must be disclosed to the full board of trustees in the same way

HOME-START ROCHDALE BOROUGH

as any other contractual relationship with a related party. In the current year no such related party transactions were reported.

Reference and administrative information

Charity Name: Home-Start Rochdale Borough

Charity Number: 1107258

Company Registration Number: 5282419

Directors and trustees

The directors of the charitable company (the charity) are its trustees for the purpose of charity law. The trustees and officers serving during the year and since the year end were as follows:

Key management personnel: Trustees and Directors

Peter Brierley	Chair of Trustees	
Susan Richardson	Treasurer	
Margaret Woods	Vice chairperson	
Margaret Edwards	Safeguarding Lead	
Colin Smith	Director and Trustee	
Warren Chadwick	Director and Trustee	(deceased July 2020)
Lynn Butterworth	Director and Trustee	
Sharon Pearson	Secretary	
Alexander Eaton	Director and Trustee	(appointed May 2020)

Managers

Donna Arden McKenna	Scheme Manager
Sharon Pearson	Finance and Office Manager

Registered Office

Arrow Mill Office OP2
Queensway
Rochdale
OL11 2YW

Independent Examiners

Community Accountancy Service Limited
The Grange
Pilgrim Drive
Beswick
Manchester

HOME-START ROCHDALE BOROUGH

M11 3TQ

Bankers

Nat West Bank
Rochdale Branch
Town Hall Square
Rochdale
OL16 1LL

Solicitors

Morton Michel Ltd (Insurance)
Alhambra House
9 St Michaels Road
Croydon
Surrey
CR0 3DD

Trustees responsibilities in relation to the financial statements

The charity trustees (who are also the directors of Home-Start Rochdale Borough for the purposes of company law) are responsible for preparing a trustees' annual report and financial statements in accordance with applicable law and United Kingdom Accounting Standards (United Kingdom Generally Accepted Accounting Practice).

Company law requires the charity trustees to prepare financial statements for each year which give a true and fair view of the state of affairs of the charitable company and of the incoming resources and application of resources, including the income and expenditure, of the charitable company for that period. In preparing the financial statements, the trustees are required to:

- Select suitable accounting principles and then apply them consistently;
- Observe the methods and principles in the applicable Charities SORP;
- Make judgments and estimates that are reasonable and prudent;
- State whether applicable accounting standards have been followed, subject to any material departures that must be disclosed and explained in the financial statements;
- Prepare the financial statements on a going concern basis unless it is appropriate to presume that the charity will continue in business.

The trustees are responsible for keeping proper accounting records that disclose with reasonable accuracy at any time the financial position of the charity and to enable them to ensure that the financial statements comply with the Companies

HOME-START ROCHDALE BOROUGH

Act 2006. They are also responsible for safeguarding the assets of the charity and taking reasonable steps for the prevention and detection of fraud and other irregularities.

By order of the board of trustees

Peter Brierley
Chair

Date: