

Wandsworth Community Empowerment Network

REPORT AND FINANCIAL STATEMENTS

31 MARCH 2022

Registered Charity Number: 1106354
Company Number: 04750617

Wandsworth Community Empowerment Network

**Index to the Financial Statements
For the year ended 31 March 2022**

Company Information	2
Report of the Management Committee	3 - 4
Report of the Accountants	5
Statement of Financial Activities	6
Balance Sheet	7
Notes to the Financial Statements	8 - 12

Wandsworth Community Empowerment Network**Company Information
For the Year Ended 31 March 2022****MANAGEMENT COMMITTEE:****Geetha Maheshwaran - Chair****Joan Robinson****Nathalie Gibson Wilson****Mohamed Ali - Treasurer****Naseem Aboobaker****Justin O'Kello****Bishop Delroy Powell****REGISTERED OFFICE:****Unit 44
DRCA
Charlotte Despard Avenue
London
SW11 5JE****REGISTERED NUMBER:****1106354 Charity****REGISTERED NUMBER:****04750617 Company****ACCOUNTANTS:****Augustus & Co
Chartered Certified Accountant
374 Ley Street
Ilford
Essex IG1 4AE****BANKERS:****CAF Bank Ltd
25 Kings Hill Avenue
Kings Hill
West Malling
Kent
ME19 4JQ**

Wandsworth Community Empowerment Network

Report of the Management Committee For the Year Ended 31 March 2022

The Management Committee submits its annual report and independently examined accounts for the year ended 31 March 2022.

PRINCIPAL ACTIVITY

Wandsworth Community Empowerment Network (WCEN) is a registered charity with the Charity Commission under charity # 1106354.

We are based in Wandsworth, but our work reaches out to Merton and other South West London Boroughs, as part of our growing collaboration and coproduction with South West London Clinical Commissioning Group, and our existing partnership with South West London and St Georges NHS Mental Health Trust, who cover this wider geographical space.

Our organisation is entirely a relational based network- in that we do all of our work through engagement and involvements of others, particularly through their spaces and venues. This includes one to one and groups meetings, training workshops, community led health clinics and conferences.

Management Committee

The committee comprised the following persons at 31st March 2022

Geetha Maheshwaran

Joan Robinson

Nathalie Gibson Wilson

Mohamed Ali

Naseem Aboobaker

Justin O'Kello

Bishop Delroy Powell

STATEMENT OF TRUSTEES' RESPONSIBILITIES

Company law requires the directors to prepare financial statements for each financial year, which give a true and fair view of the state of affairs of the company and of the profit or loss of the company for that period. In preparing those financial statements, the directors are required to

- select suitable accounting policies and then apply them consistently;
- make judgement and estimates that are reasonable and prudent;
- prepare the financial statements on a going concern basis unless it is inappropriate to presume that the company will continue in operation.

The directors are responsible for keeping proper accounting records which disclose with reasonable accuracy at any time the financial position of the company and to enable them to ensure that the financial statements comply with the Companies Act 2006. They are responsible for safeguarding the assets of the company and hence for taking responsible steps for the prevention and detection of fraud and other irregularities.

ACCOUNTANTS

The accountants, Augustus & Co., will be proposed for re-appointment in accordance with the Companies Act 2006.

Wandsworth Community Empowerment Network

Report of the Management Committee (continued)
For the Year Ended 31 March 2022

CORPORATE GOVERNANCE

The governing body is the Board of Management. The current membership of the Board is shown on page 3. The members of the Board are non-executive and unpaid. The Board meets regularly and retains full and effective control over the organisation.

INTERNAL CONTROL AND RISK MANAGEMENT

The Board has overall responsibility for all systems of internal financial control applied at Wandsworth Community Empowerment Network. The systems employed are designed to provide reasonable, but not absolute, assurance against material misstatement or loss.

RESERVES POLICY

It is the policy of the Board, taking account of the level of grant receivable from various funders, to seek each year to match income and expenditure so that Wandsworth Community Empowerment Network is both able to continue its activities and can maintain reserves sufficient to meet any foreseeable contingencies in the future.

PAYMENT TO CREDITORS

Wandsworth Community Empowerment Network aims to pay its creditors in accordance with terms agreed.

ON BEHALF OF THE BOARD OF MANAGEMENT COMMITTEE

Geetha Maheshwaran
Chair

Company no. 04750617

REPORT OF THE INDEPENDENT EXAMINERS

5

INDEPENDENT EXAMINER'S REPORT TO THE TRUSTEES OF WANDSWORTH COMMUNITY EMPOWERMENT NETWORK FOR THE YEAR ENDED 31ST MARCH 2022.

We report on the accounts of the charity for the year ended 31st 2022, which are set out on pages 6 to 12.

RESPECTIVE RESPONSIBILITIES OF THE TRUSTEES AND EXAMINER

The Trustees (who are also the directors of the company for the purposes of company law) are responsible for the preparation of the accounts. The Charity's Trustees consider that an audit is not required for this year under section 144(2) of the Charities Act 2011 (the Charities Act) and that an Independent Examination is needed. Since the charity's income for the year is over £250,000, we can confirm that we are a member of a body listed in section 145 of the 2011 Act to undertake the examination.

Having satisfied ourselves that the charity is not subject to an audit under part 16 of the Companies Act 2006 and the trustees have elected to have an Independent Examination, it is our responsibility to:

- examine the accounts under section 145 of the Charities Act;
- to follow the procedures laid down in General Directions given by the Charity Commission (under Section 145(5)(b) of the Charities Act; and
- to state whether particular matters have come to our attention.

BASIS OF INDEPENDENT EXAMINER'S REPORT

Our examination was carried out in accordance with the General Directions given by the Charity Commission. An examination includes a review of the accounting records kept by the charity and a comparison of the accounts presented with those records. It also includes consideration of any unusual items or disclosures in the accounts and seeking explanations from the Trustees concerning any such matters. The procedures undertaken do not provide all evidence that would be required in an audit and consequently no opinion is given as to whether the accounts present a 'true and fair view' and the report is limited to those matters that are set out in the statement below.

INDEPENDENT EXAMINER'S STATEMENT

In the course of our examination, no matter has come to our attention to indicate that:

- accounting records have not been kept in accordance with section 386 of the Companies Act 2006;
- the accounts do not accord with such records;
- where accounts are prepared on an accruals basis, whether they fail to comply with relevant accounting requirements under section 396 of the Companies Act 2006, or are not consistent with the Charities SORP (FRS102)
- any matter which the examiner believes should be drawn to the attention of the reader to gain a proper understanding of the accounts

____/____/2022

Augustus & Co
Chartered Certified Accountant
374 Ley Street
Ilford
Essex
IG1 4AE

WANDSWORTH COMMUNITY EMPOWERMENT NETWORK
STATEMENT OF FINANCIAL ACTIVITIES (Incorporating Income and Expenditure)
FOR THE YEAR ENDED 31 MARCH 2022

6

	Notes	Restricted Funds	Unrestricted Funds £	Total 2022 £	Total 2021 £
g Resources					
y Income		680,216	99,638	779,854	402,827
nt Income		-	113	113	101
coming Resources	2	680,216	99,751	779,967	402,928
es Expended					
haritable Expenditure	3/4	528,123	122,557	650,681	394,046
esources Expended	3	528,123	122,557	650,681	394,046
me/(-Expenditure) for year		152,093	-22,807	129,286	8,882
brought Forward		18,078	123,878	141,956	133,074
arried Forward	14	170,171	101,071	271,242	141,956

WANDSWORTH COMMUNITY EMPOWERMENT NETWORK
BALANCE SHEET
AS AT 31 MARCH 2022

7

	Notes	£	2022 £	£	2021 £
Assets					
Fixed Assets	10		2,496		5,017
Current Assets					
Debtors and Sundry Debtors	9	52,675		16,500	
Bank and in Hand		<u>575,712</u>		<u>192,733</u>	
		628,387		209,233	
Current Liabilities: Amounts Falling Due Within One Year	8	<u>359,641</u>		<u>72,294</u>	
Net Assets/(Liabilities)			<u>268,746</u>		<u>136,939</u>
Assets Less Current Liabilities			<u>271,242</u>		<u>141,956</u>
Reserves					
Reserves			170,171		18,078
Restricted Funds			<u>101,071</u>		<u>123,878</u>
Funds	14		<u>271,242</u>		<u>141,956</u>

Financial statements were approved by the directors on ____/____/2022 and were signed by:

Maheshwaran - Chair

The accompanying notes are an integral part of this balance sheet

**WANDSWORTH COMMUNITY EMPOWERMENT NETWORK
NOTES TO THE FINANCIAL STATEMENTS
FOR THE PERIOD ENDED 31 MARCH 2022**

8

Accounting Policies

The principal accounting policies are summarised below. The accounting policies have been applied consistently throughout the year and in the preceding year.

(a) Basis of accounting

The financial statements have been prepared under the historical cost convention, as modified by the inclusion of fixed asset investments at market value, and in accordance with the Companies Act 2006 Statement of Recommended Practice: Accounting and Reporting by Charities issued in March 2005.

(b) Fund accounting

Unrestricted funds are available for use at the discretion of the trustees in furtherance of the general objectives of the charity.

Designated funds are unrestricted funds earmarked by the Management Committee for particular purposes.

Restricted funds are subjected to restrictions on their expenditure imposed by the donor or through the terms of an appeal.

(c) Incoming resources

All incoming resources are included in the statement of financial activities when the charity is entitled to the income and the amount can be quantified with reasonable accuracy. The following specific policies are applied to particular categories of income:

- Voluntary income is received by way of grants, donations and gifts and is included in full in the Statement of Financial Activities when receivable. Grants, where entitled is not conditional on the delivery of a specific performance by the charity, are recognised when the charity becomes unconditionally entitled to the grant.
- Donated services and facilities are included at the value to the charity where this can be quantified. The value of services provided by volunteers has not been included in these accounts.

(d) Resources expended

Expenditure is recognised on an accrual basis as a liability is incurred. Expenditure includes any VAT which cannot be fully recovered, and is reported as part of the expenditure to which it relates:

- Costs of generating funds comprise the costs associated with attracting voluntary income and the costs of trading for fundraising purposes.
- Charitable expenditure comprises those costs incurred by the charity in the delivery of its activities and services for its beneficiaries. It includes both costs that can be allocated directly to such activities and those costs of an indirect nature necessary to support them.
- Governance costs include those costs associated with meeting the constitutional and statutory requirements of the charity and include the audit fees and costs linked to the strategic management of the charity.
- All costs are allocated between the expenditure and categories of the SoFA on a basis designed to reflect the use of the resource. Costs relating to a particular activity are allocated directly, others are apportioned on an appropriate basis e.g. floor areas.

(f) Pensions

Wandsworth Community Empowerment Network offers a stakeholder scheme to its employees and contributes to defined contribution schemes for certain of its other employees. These costs are expended in the Statement of Financial Activities as they become payable.

(g) Depreciation

Depreciation is provided at rates calculated to write off the cost or valuation, less estimated residual value of each asset over the expected useful life as follows:

Computers & Furniture at 20% on a straight line basis

**WANDSWORTH COMMUNITY EMPOWERMENT NETWORK
INCOME AND EXPENDITURE ACCOUNT
FOR THE PERIOD ENDED 31 MARCH 2022**

9

Incoming Resources

	Restricted	Unrestricted	2022 £	2021 £
NHS South West London CCG	53,000	-	53,000	-
NHS South West London CCG - EMHIP	479,925	-	479,925	-
NHS South West London CCG	2,460	-	2,460	8,266
Discovery Grant	-	-	-	5,000
Eventbrite Inc	-	-	-	1,815
London Borough of Wandsworth	-	-	-	3,103
Merton Voluntary Service	7,000	-	7,000	7,000
The London Community Foundation	28,000	-	28,000	9,432
Wimbledon Foundation	25,000	-	25,000	35,000
Citizens Advice Wandsworth	36,156	-	36,156	36,156
LankellyChase Foundation	-	1,000	1,000	104,727
National Lottery community Fund	-	-	-	111,836
SWL & STG Mental Health Trust	-	50,000	50,000	80,492
SWL & STG Mental Health Trust - Transformation func	48,675	16,225	64,900	-
PayPal Giving Fund	-	28,465	28,465	-
Sundry Donations	-	4,061	4,061	-
Total Income	680,216	99,751	779,967	402,827

Resources Expended

	Restricted	Unrestricted	2022	2021
Resources Expended				
Salaries & On Costs	205,709	92,563	298,272	172,557
Accountants Fees	1,368	912	2,280	2,280
Payroll Costs	404	269	673	997
Bank Charges	58	38	96	69
Other Charges	148	99	247	755
Rent, Heat, Light	7,109	4,739	11,848	9,458
HR Costs	2,984	1,989	4,973	-
Stationery	21	14	36	174
Telephone Costs	504	336	840	1,133
IT Costs	4,444	2,963	7,407	8,258
Marketing & Promotion	9,809	1,053	10,862	570
Refreshments	637	425	1,062	134
Welfare	394	263	657	361
Copier Costs	1,683	1,122	2,805	2,665
PPS	-	-	-	117
Insurance	546	364	910	894
Training	11,180	7,453	18,634	17,006
Travel	290	193	483	606
Freelance Workers	17,271	2,288	19,560	71,201
Direct Project Costs incl EMHIP	250,288	1,337	251,625	80,879
Building Renovations	13,476	-	13,476	20,120
Depreciation	-	4,136	4,136	3,813
	528,123	122,557	650,681	394,046

2021 total income of £402,827 made up of Restricted Income £ 339,302; Unrestricted Income £63,525

2021 total expenditure of £394,046 made up of Restricted Expenditure £346,076; Unrestricted Expenditure £47,970

**WANDSWORTH COMMUNITY EMPOWERMENT NETWORK
INCOME AND EXPENDITURE ACCOUNT
FOR THE PERIOD ENDED 31 MARCH 2022**

10

Management & Administration of the Charity

	Restricted	Unrestricted	2022	2021
Accountants Fees	1,368	912	2,280	2,280
Payroll Costs	404	269	673	997
Bank Charges	58	38	96	69
Other Charges	148	99	247	755
Insurance	546	364	910	894
Depreciation	-	4,136	4,136	3,813
	2,523	5,818	8,341	8,809

Staff Costs and Numbers

The average number of employees during the period was 13 (2021 - 9). At 31st March 2022, 13 staff were employed. The only emoluments to staff were salaries.

	2022 £	2021 £
Salaries & Fees	265,293	152,839
Social Security & Pension Costs	32,979	19,718
	298,272	172,557

1 employee received remuneration of more than £60,000 during the year (2021 - Nil)

considered as key management personnel but none of them receives a salary.

Net Income for the period

This is stated after charging

	2022 £	2021 £
Trustees' Expenses	-	-
Accountant's Remuneration	2,280	2,280
Depreciation	4,136	3,813

**WANDSWORTH COMMUNITY EMPOWERMENT NETWORK
INCOME AND EXPENDITURE ACCOUNT
FOR THE PERIOD ENDED 31 MARCH 2022**

11

Taxation

All income is applied for charitable purposes and therefore the charity is exempt from corporation tax.

Creditors: Amounts Falling Due Within One Year

	2022	2021
	£	£
Accruals	4,680	5,280
Other Taxes, Social Security & Pension	29,360	48,214
Deferred Income	286,218	-
Trade Creditors	39,383	18,800
	<u>359,641</u>	<u>72,294</u>

Debtors

	2022	2021
	£	£
Services Invoiced & Grants	48,675	12,500
Other Debtors & Pre-Payments	4,000	4,000
	<u>52,675</u>	<u>16,500</u>

Tangible Fixed Assets

Cost

At 1/4/2021	19,054
Additions	1,615
At 31/3/2022	<u>20,669</u>

Depreciation

At 1/4/2021	14,037
Charge for the year	4,136
At 31/3/2022	<u>18,173</u>

Net book Value

At 31/3/2022	<u>2,496</u>
At 31/3/2021	<u>5,017</u>

**WANDSWORTH COMMUNITY EMPOWERMENT NETWORK
NOTES TO THE FINANCIAL STATEMENTS
FOR THE YEAR PERIOD 31 MARCH 2022**

12

Contingent Liabilities

There were no contingent liabilities at the date of the report. (2021 - Nil)

Liability to Members

The charity is constituted as a company limited by guarantee. In the event of the charity being wound up members are required to contribute an amount not exceeding £1.

Trustee Remuneration & Related Party Transactions

No members of the management committee received any remuneration during the year.

No trustee or other person related to the charity had any personal interest in any contract or transaction entered into by the charity during the year (2021 - Nil)

Movement of Funds

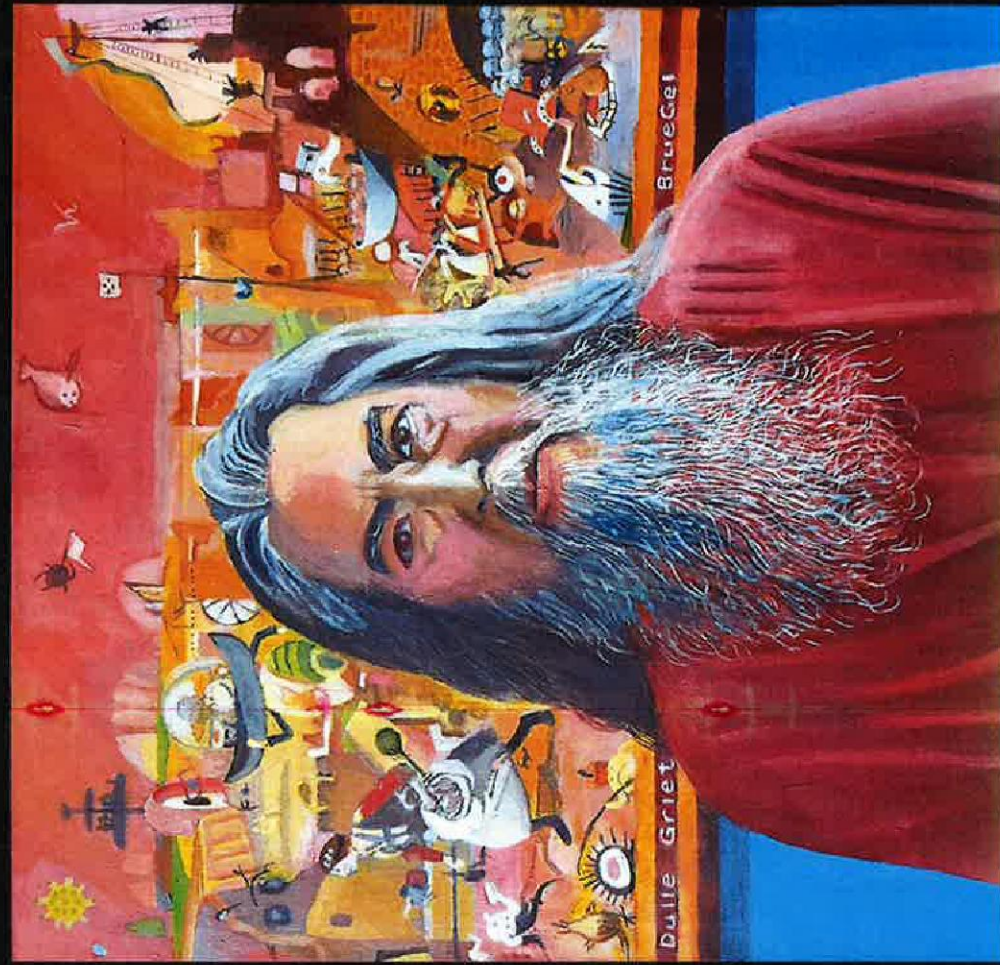
	At 1 April 2021	Incoming Resources	Outgoing Resources	At 31 March 2022
Unrestricted funds	123,878	99,751	122,557	101,071
	123,878	99,751	122,557	101,071
Restricted funds	18,078	680,216	528,123	170,171
	18,078	680,216	528,123	170,171

AGM 2021/22

**A look back at 2021/22 and
an update on the work
since April 2022**

21 December 2022





Mental Health

NHS
South West London and
St George's Mental Health
NHS Trust



Community Network for Family Care

Cohorts 1 - 4
x4 Refresher trainings

Cohort 5
- Introductory sessions
- 12 signed up in November



x 8
Black Mental
Health Forums
with an average
attendance of 28



Hub 1 continuation with Outpatient clinics, AFA, health clinics

Hub 2 Development and online Jan 2023

CFP Development

KI3 change of plan and development

KI5 Development

LEAP - Panel, Seni's Law, AMPHs, EIS, Advance Choice, Peer Support & training

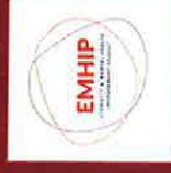
EMHIP Croydon, Merton, Richmond & SW London

Work across the system on EDI, anti-racism, strategy, corporate priorities and MH Community Transformation

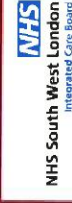


HOBV 2021 – Online Meeting and Video

HOBV14 - 310 People in attendance



EMHIP & 14th Annual Black Mental Health Conference 'HOBV'



9+ Community Led Health & Wellbeing Events

New Testament Assembly
Tooting Islamic Centre
Al Muzzmil Mosque
EMCA
Elays Network
Togetherness Centre
Shree Ganapathy Temple
Deeper Life Church



Weight Management

x2 Women's Groups
within Mushkil Aasaan

x2 12 week courses in
Merton

Physical Health

12 New Health Coaches trained across Wandsworth & Merton



NHS South West London
Integrated Care Board

23 newly
trained
Advice Frst
Aiders



Advice & Advocacy



Community Advice Hubs created
with funding to support

4 AFA Coffee Mornings

11 AFA Training Events

2021 Online Conference

2022 Cost of Living Conference

Pan-London and Future work

citizens
advice

Wandsworth

Children & Young People



#BlackMinds
Matter



3rd Children & Young People
Conference April 2022

Black Minds Matter Reborn

Podcast & Activities

Theatre trips

Schools Work

Thank you to those who make the Network work



- Community Leaders
- Community Members
- Community Spaces



- Partners
- Collaborators
- Funders



- Staff
- Volunteers
- Trustees