



COMFORT HOPE  
DIGNITY C  
HOPE D  
COMF  
DIGN  
HO  
C

# 25 YEARS OF GIVING



E  
RT  
ITY  
HOPE  
COMFORT  
DIGNITY  
COMFORT HOPE  
Y COMFORT

---

**ANNUAL REPORT  
AND ACCOUNTS 2025**

CONTENTS	
INTRODUCTION	3
25 YEARS OF GIVING	4
THE FUTURE	18
FINANCIAL STATEMENTS	19



OUR VISION

A fair society where nothing is wasted and nobody is in need.

OUR PURPOSE

To reduce poverty and protect the environment.

OUR THEORY OF CHANGE

- L Leverage the power of surplus goods
- I Inspire community action
- F Fulfil essential needs
- T Transform lives

# 2001 — 2026

## Celebrating 25 years of



It began with sisters Rama and Sujata, the closure of a printing works and a quantity of good, usable paper that was destined for the tip. Determined for it not to become landfill, the sisters diverted it to the hands of children on which to paint, draw and make things.

That was in 2001, a time when poverty in the UK was at approximately 12.5m — on a downward trend from the 1990s. Of this, 3.8m were children. Fast forward to 2026, where 14.5m people are living in poverty, 4.5m are children.\*

Our vision of a fair society where nothing is wasted and nobody is in need remains strong.

In 25 years we’ve helped over 8.2m vulnerable people, redistributing business excess stock to people in the UK who need it the most. Basic human essentials like shampoo, bedding, nappies, school uniforms and warm clothing, simultaneously saving 75,000 tonnes of CO2e emissions from landfill. We’ve given comfort, dignity and hope to vulnerable children and families, individuals experiencing homelessness, those struggling with mental health challenges or addictions, and isolated elderly people.

It’s quite an achievement, but we couldn’t have done it without everyone who has supported our journey, from those early

days, when we were known as Konnect9, to the present day. So many individuals and organisations have believed in us, giving us their trust, their goods, funds, their time and expertise. All to support our purpose to reduce poverty and protect the environment.

We couldn’t be more grateful, so a massive **THANK YOU** to everyone who’s supported us over the last 25 years, specifically (but not exclusively) funding bodies, company donors, charity partners, advisors, staff, volunteers, local communities, and all partners we’ve worked with closely, such as universities, NHS, and local authorities.

All of YOU have made all of this possible. Giving World has simply been the intermediary cog in a cycle of care, compassion and kindness.



**THANK YOU** - you’re all amazing!



8.2m +  
vulnerable  
beneficiaries helped.



75,000  
tonnes of CO2e  
emissions saved  
from landfill.

\*Action For Children, 2026



# 25 years in 25 stories

To celebrate 25 years, we'd like to share 25 stories that embody Giving World's spirit: giving comfort, dignity and hope.

## 1. Konnect9 opens its doors in November 2001...

...redistributing surplus paper from a former print works in Leicester to local schools and children's groups. The former print works became the charity's HQ.

Surplus is an unfortunate but natural cycle of business with unsold ranges, samples, or damaged stock/packaging. What we do with it can make a crucial difference.

"Since 2001, I have been a partner of the charity as a teacher at Saint Thomas More Primary School and then from 2011 as Headteacher at Stokes Wood Primary School. Initially, we received surplus paper and card, which to schools is an invaluable resource, saving the school hundreds of pounds."

"As the charity grew, Stokes Wood, a school in one of the topmost disadvantaged areas of Leicester, received not only stationery resources for use in school but also essential items to support our children and families at home. There is always a regular supply of school uniforms, household and hygiene products available. These are always welcomed by families who are struggling with the cost of living. It means their children have the same uniform as everyone else and don't have to worry about how they look or smell. As a result, children are happier to come to school, improving attendance and behaviour."

"Our children, families and the school are hugely grateful to the charity and its corporate donors for this invaluable support. We have received over £200,000 worth of essential, everyday items."

Jane Gadsby, Stokes Wood Primary School Headteacher, recalling how receiving business surplus impacted her school, the children and their families.

A SIMPLE CONCEPT:

**SURPLUS  
RESOURCES**

**+ KONNECT9**

**= MEETING  
NEEDS**

## 2. 2002: now formally registered with the Charity Commission, we became acutely aware of the growing number of young people living on the streets.

Imagine being homeless, on the streets, cold and hungry. What would be foremost in your mind? Getting a job? Entering a re-training scheme? Not so. Finding shelter would be the most important thing. But if that failed, as it does for so many, a thick pair of socks, a woolly jumper and a warm blanket would provide comfort. This is one of the needs we now met – warm clothing, a basic physical need.

"I hope the companies that make these donations realise how valuable they are, and what a difference they make in helping people like me towards a better life."

Beneficiary



Hope for  
**100**  
families

## 3. By 2004, the digital age was progressing rapidly, improving opportunities across communities and providing greater access to information than ever before.

However, whole swathes of society were (and still are) being excluded from using digital technology through a combination of fear and lack of opportunity, skills and resources.

So the year kicked off with the launch of our IT for Young People project, helping young people and their families in Leicester develop lifelong skills, to increase opportunities for employment.

Repurposing redundant hardware donated by companies and gifting it directly into the homes of children and young people for families to learn IT skills together, offered opportunity and hope for their futures.

## 4. Research in 2007 reveals that a staggering £1.7bn worth of surplus goods are produced by UK business' every year<sup>1</sup>.



5.8m  
live in 'deep  
poverty' in  
2008

## 5. Another alarming headline the following year: 13m people in the UK live in poverty. Of these 5.8m are in 'deep poverty' with a household income of at least one-third below the poverty line, the highest proportion on record<sup>2</sup>.

## 6. December 2008. In response to these distressing figures we were eager to launch



## an online platform matching surplus to need...

...providing an opportunity to make a sustained impact to the lives of children and families facing poverty and hardship across the UK. Whilst also reducing the waste of valuable assets and protecting our planet.

At the launch event, chief guest, the Lord Mayor of Leicester, invited local business and community leaders to join our mission to 'waste not, want not.'



Supported by several funding bodies, including the James Tudor Foundation.

Rod Shaw, Chief Executive, said, "The foundation discovered Konnect9 in 2006. We have been so impressed with the inspirational leadership and innovative developments that enable the charity to impact the lives of so many and accomplish so much that we chose to continue our support over the years."

"I am delighted with the excellent work Konnect9 is undertaking."

Stephen Woolfe, then President of the Leicestershire Chamber of Commerce



## 7. Awards, awards, awards!



BETTER  
NET AWARD  
2010



8. 2010: [www.givingworldonline.com](http://www.givingworldonline.com) expands to many parts of the East Midlands.



Four year old Ravi and his mum spent Christmas at a Nottingham safe house for women fleeing abuse. Comforted by Santa's sack of toys and gifts, Ravi said:

"This is the best Christmas I've ever had."

9. By 2010-11 the number of emergency food parcels distributed by the Trussell Trust rises to 60,000<sup>3</sup>, just 10 years after the opening of their first foodbank in 2000.

60,000  
emergency food  
parcels in  
2010-11



3. [www.commonslibrary.parliament.uk/research-briefings/cbp-8585/?utm\\_source=chatgpt.com](http://www.commonslibrary.parliament.uk/research-briefings/cbp-8585/?utm_source=chatgpt.com)

10. The growing need by 2011, our 10th year, sees the National Lottery backing the expansion of the online portal with a three-year grant, in order to reach disadvantaged people in areas of high deprivation across England.

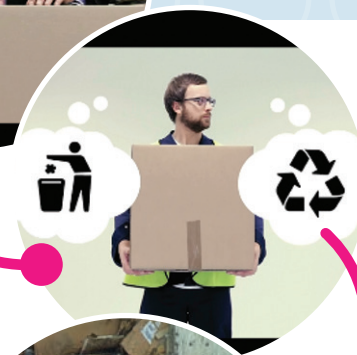


Started local,  
rolled out  
nationwide



11. The three-year grant from the National Lottery enabled us to strengthen the charity's infrastructure and governance. We employed more staff – now we are six – and officially changed the charity's name to:

We established a stakeholder group, acting as an independent Board of Advisors to the Trustees and management team, providing invaluable advice to help grow our reach and service model.



12. Continuing the celebrations of our 10th anniversary!

We celebrated via a partnership with Discovery Networks and a TV advert to raise awareness of Giving World.

Voiced by comedian David Mitchell, the campaign was aired on national TV, encouraging UK businesses to divert their surplus stock away from landfill to the people who needed it most.

As a result an additional 55 tons of new business surplus was donated in the year, almost a 50% increase from the previous year.

Discovery



"We save time and money while our surplus gets to people in need."



### 13. 2012: The increased capacity enabled expansion of our volunteering opportunities.

The Department of Health shared our vision, funding a three-year programme of support for people with long-term health conditions, offering a safe and nurturing space to socialise, make friends and learn new skills. The programme (later to be called GIFTED) helped participants build confidence and independence, reduce social isolation and improve their mental health.



Two of our first referrals to the programme, Debbie and Sharon, both came to volunteer at Giving World, via Social Care and Health.

For Sharon (pictured above left), Debbie was the first friend she had ever had.

They both started to volunteer for the same reasons, as Debbie explained:

*"I wanted to volunteer to build my confidence. I hadn't worked for 16 years."*

Sharon agreed, *"That's the same as me, I felt isolated at home and needed to go out and communicate with people. I had been in two really bad relationships and I became an alcoholic, started self-harming and got depressed and anxious."*

Both Sharon and Debbie found that the friendship formed became as important to them as the volunteering.

*"Over the last 13 years we've referred adults to the brilliant opportunities at Giving World. Offering people within adult social care the chance to develop their employability and volunteering skills within a supportive environment. Enabling them to move on to other opportunities with confidence, develop independence and achieve individual goals. The feeling of acceptance has enabled people to develop social skills and build lasting friendships. Thank you Giving World for supporting people to be part of the community."*

Caroline Spencer, Social Care & Health, Leicester City Council



14. In 2013, research by the University of Leicester, commissioned by

Giving World, identifies that company surplus in the UK now exceeds £2bn worth of goods each year, the equivalent of 80 Olympic-sized swimming pools.

**£2bn**  
surplus goods  
produced  
every year!



15. By the following year, in collaboration with Nottingham Trent University, we had developed a CO2e emissions calculator for each of the wide-ranging categories of donated products.

The calculator offers valuable data for donor companies and their CSR reporting, encouraging more sustainable practices in relation to excess stock.

*"We are proud to be the first UK carbon-neutral school wear company. We are committed to helping build a sustainable future for generations to come. That's why we've partnered with Giving World for our excess stock to support children in need with quality uniforms. And through our online Giving World account, we can see a real-time picture of our impact."*

Simon Holgate,  
Resource Planning Manager  
at Trutex Ltd



### 16. In 2016, an impact study commissioned by PBE reveals the long-term outcomes of Giving World's work.

*"Giving World's impact is wide ranging and goes beyond simple monetary terms... the goods donated have the potential to improve people's welfare, their life chances and can reduce their feelings of isolation with a positive impact on wellbeing."*

PBE (Pro Bono Economics)

*"Thank you for your continued support and making me feel that I matter and that I'm not alone."*





17. Now called GIFTED (Get Inspired For Training, Employment and Development), our volunteering and skills development programme grows from strength to strength. Young people and adults with learning disabilities, physical and mental health needs join a dual programme of structured developmental Basic Skills workshops and regular drop-in sessions, The Packing Lounge and The Packing Saloon. Funding was secured from the Lloyds TSB Foundation (2016-2017) and subsequent five-year funding from the National Lottery (2018-2023). Ongoing, GIFTED is supported by grant-giving trusts and foundations.

Evaluated by the University of Leicester, GIFTED is proven to deliver transformative support, each year helping over 100 people with complex needs (2025: 116 participants).

Central to the programme are the individual stories. Our people learn to travel independently for the first time, they count past 20 for the first time, and make their first friendships here. They laugh with each other, challenge each other, and drink tea with each other, all the while sorting and packing boxes of goods to deliver to someone who needs our help. Rather than being helped, they are helping others. The power of that simple notion cannot be underestimated.



over  
**100**  
participants  
each year



"GIFTED is a safe environment, but it's a real work environment too, where Thomas was able to work independently on something practical. It gave

him an opportunity to kick-start his career, he's now applied to college. It's a massive step for him, something his parents didn't think he would have the confidence to do."

Carmen Blades, Careers Co-Ordinator,  
Maplewell Hall (Special Education) School

"People like me who have disabilities get cut off from life choices and the things we want to do. Giving World opens up an opportunity for people with special needs to be equal in the workplace and helps us to make life decisions. The experience showed me how to work and what you can expect from a working environment. We're not just people who struggle; we want to be living an equal life."

Thomas

Thomas, a student at Maplewell Hall (Special Education) School, joined a six-week GIFTED work placement.

His careers advisor, Carmen Blades, said of his experience, "Thomas transformed when he came to Giving World. Immediately after his first GIFTED session he asked for more work experience."

He's since completed three more placements and is booked in for more, saying, 'I'm going to have to feed my family and get a house.'



Susan is a Peer Support Worker for Leicestershire Partnership NHS Trust's Community Mental Health Team. We first met Susan in 2019 as an in-patient at Bradgate Mental Health Unit, when she started to attend our Packing Saloon sessions there. Once discharged, Susan felt ready to progress to volunteering at Giving World in the Packing Lounge, building up her confidence and skills to then go on to train and secure employment in Leicestershire's mental health services for older people.

"My confidence had been knocked when I was an in-patient and the Packing Saloon helped me to get to the next stage of applying for opportunities within mental health. After being discharged, I wanted to use my experience and knowledge to help and support others in a similar situation."

Susan Sharp, Peer Support Worker,  
Leicestershire Partnership NHS Trust

As a Peer Support Worker, Susan was helping Jashvanti. Jashvanti was too frightened to go out of the house, she hadn't been out for over a year.



"Everybody looks out for each other, even when you're having a rough time. It's a safe place, a very safe place."

"Susan, my peer support worker, told me about the packing groups at Giving World and I'm still coming to Packing Lounge one year on. I really enjoy it as it's something different for me to get my confidence back and help other people. I hadn't travelled on buses by myself before, so Susan has been travel-training me and now I get the bus to and from Giving World on my own."

Jashvanti

"Attending Packing Lounge has boosted Jashvanti's confidence and self-esteem. The group is not too big and she feels part of a process which makes a big difference. Knowing the items go to people who need extra support is really important to Jashvanti. Her community nurse is so proud of how far she has come!"

Susan Sharp, Peer Support Worker for Jashvanti



"GIFTED is a really safe environment but it's a real work environment too."



18. In 2017, Founders Rama and Sujata are recognised with another award: Leicester Mercury Contribution to the Community.



£30k  
savings per  
year



19. Rebranding to [www.givingworld.org.uk](http://www.givingworld.org.uk) in 2019, we undertook a major back-end functionality and reporting upgrade, improving internal warehouse processes and achieving savings of circa £30k a year. Alongside the EU Digital Growth Fund, the VINCI Foundation supported the upgrade outlay.

"We have been involved with Giving World for a number of years now and our employees have been involved through volunteering on a number of projects. The work they do for the community is fantastic and we are thrilled to help the charity in its mission, simultaneously achieving the Foundation's aims to promote social cohesion and fight exclusion."

Ruth Ottley, Pension & Company Secretary for the VINCI UK Foundation

## 20. LOCKDOWN – the Covid-19 pandemic leads to an exponential rise in demand.

Supported by the invaluable guidance of our Trustee and Advisory Boards and the creativity and resilience of our small staff team, we successfully overcame supply chain disruptions, built new donor supply chains focused on the most needed essentials, and expanded our distribution networks to reach the most vulnerable.



"Due to a cancer diagnosis I found myself in the shielded group, unable to leave the house. My 17-year-old son was not allowed to go out either. As soon as I asked for help I received a care package of food, a warm duvet and other items from a charity called Giving World.

This made a huge difference to me and my son as it meant that I had food and other essentials, and we didn't have to leave the house."  
Beneficiary



21. By the end of 2021 we were distributing over 3m products each year, compared to 1m in 2019.

As we marked our 20th anniversary, we reached out to partners and stakeholders, asking them to capture, in a single word, what Giving World meant to them. Here's a snapshot of what they said:

3x  
more  
product  
distribution

UNITY AMAZING TRUSTWORTHY  
CREATIVE DIGNITY RELIEF  
SUSTAINABLE OPPORTUNITY  
CARING ESSENTIAL SHARING  
HELPFUL HOPE POSSIBILITIES  
REPORTING MEANINGFUL ASSURANCE  
UNDERSTANDING THOUGHTFUL  
GENEROUS COMFORT SECURITY  
INSPIRATIONAL SUPPORT LIFELINE

22. 2022: Post pandemic, the rising price of energy and the cost of living crisis prompt the first opening of warm banks in libraries and community centres throughout the UK.

23. 2024 -2025 - the number of emergency food parcels distributed by the Trussell Trust rises to a record 2.9m.<sup>4</sup>



 **Trussell**  
Ending hunger together

4. [www.commonslibrary.parliament.uk/research-briefings/cbp-8585/?utm\\_source=chatgpt.com](https://www.commonslibrary.parliament.uk/research-briefings/cbp-8585/?utm_source=chatgpt.com)



## 24. Our achievements in 2025

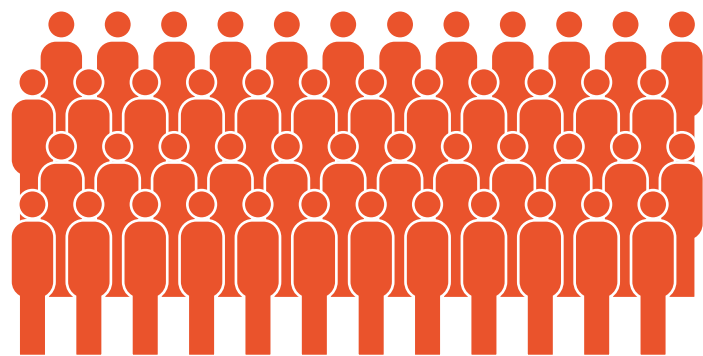
2025 was another busy and productive year, a direct response to the figures we've seen rising in previous years.



This year we helped...

# 729,723

vulnerable  
beneficiaries



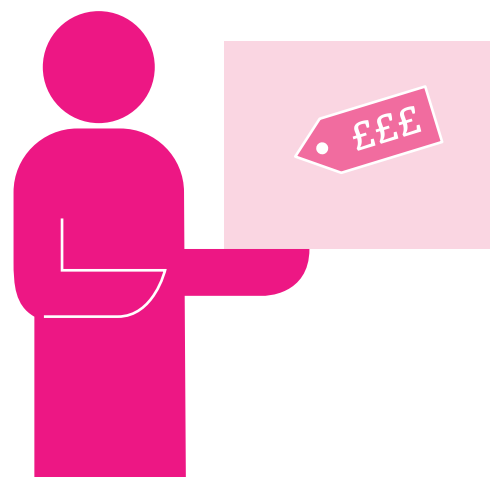
# 4,720

tonnes of CO<sub>2</sub>e  
emissions saved  
from landfill

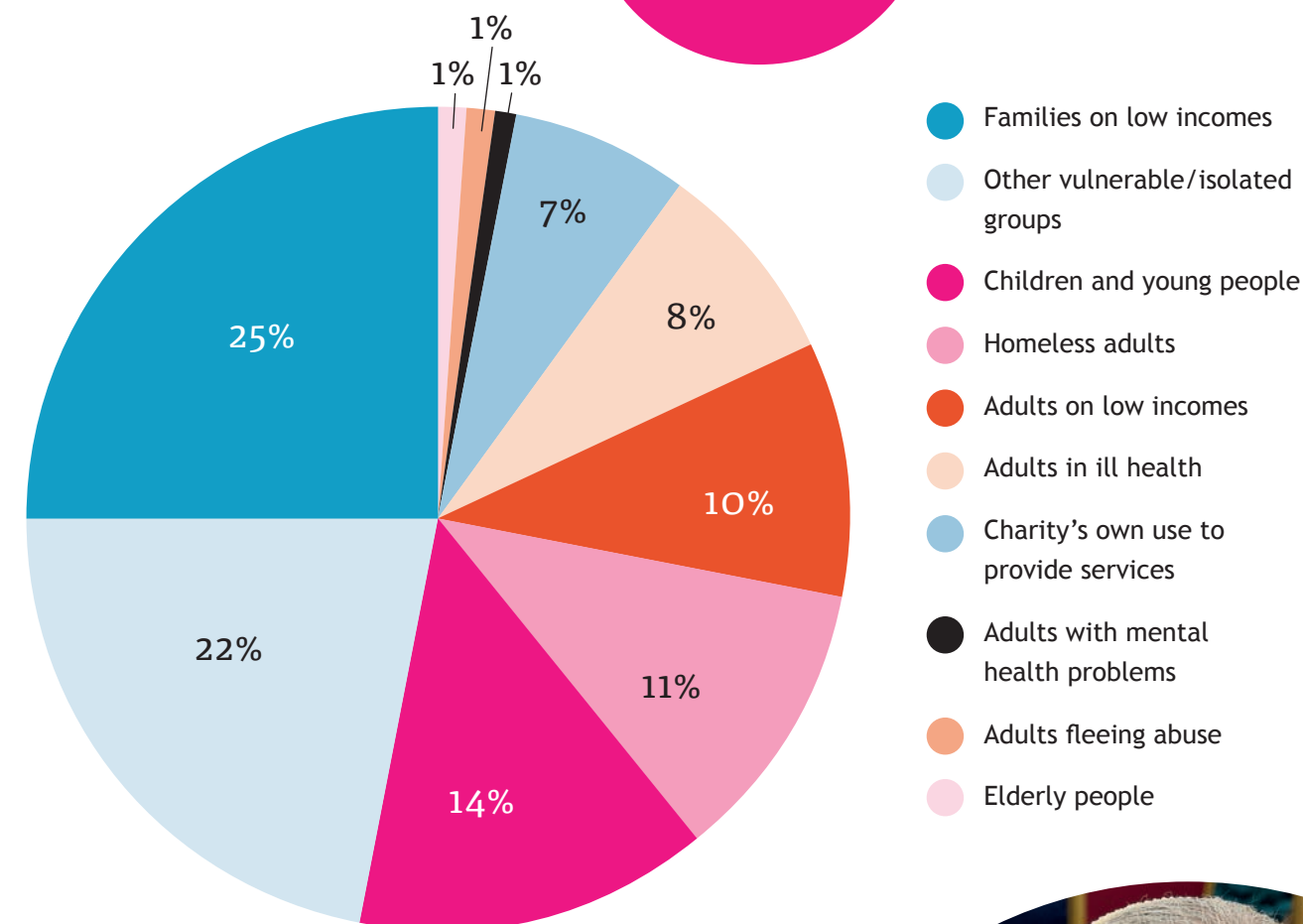


# £0.26

cost per  
beneficiary



Our beneficiaries by category:



"Thank you so much for the toys, my daughter hasn't stopped smiling."



"The hygiene items and warm clothing have been incredibly helpful. They eased our financial burden and allowed us to focus on other urgent needs."





25. Today in 2026, we continue to offer comfort, dignity and hope.

## COMFORT

**Noun:** a state of physical ease and well-being or relief from pain and grief.

Living alone, and following periods of ill health, retired nurse Joyce found her home increasingly cluttered and in disrepair. With family living away she felt isolated, overwhelmed and ashamed of her living conditions. The situation was impacting her mental health.

Joyce received help with cleaning her home along with a range of essential household items such as bedding, kitchen equipment and cooking pans. Transforming her living environment into a safe, comfortable and welcoming space once more.

"I am still a long way from being well, but I am very grateful for all the help."

Joyce, beneficiary



## 4.6m

Around 4.6 million pensioners (aged 65+) live alone.

ONS



## DIGNITY

**Noun:** the state or quality of being worthy of honour or respect.

"I find it hard to afford towels and tampons. Now I don't have to be embarrassed to ask for them anymore."

Beneficiary

"Being able to have a bin in my room where I can put my and my children's rubbish, may seem like a small thing, but it has made such a big difference in our small room."

Beneficiary

"These will really help to clothe my baby. Thank you."

Beneficiary



## 132,410

Over 132,000 households are homeless, living in cramped temporary accommodation, this includes over 172,000 children.

GOV UK

## HOPE

**Noun:** an optimistic state of mind that is based on an expectation of positive outcomes.

**Feedback from one of our charity partners:**

"We had the opportunity to deliver packages filled with assorted donated items to families living on low incomes. The gratitude and relief expressed were both humbling and eye-opening."

"One mother of three said, 'It's like the package arrived just when we needed it most. We've been trying to stretch every penny, and this took a bit of that pressure off. It may seem small to others, but for us, it means a lot.' She shared that having things like toiletries and personal care items made the home feel a little more manageable and brought a sense of dignity back to everyday routines."

"Another family, a father caring for his two children, expressed that the donation helped them feel supported in ways they hadn't experienced before. 'It wasn't just what was inside the box,' he said, 'It was the fact that someone thought of families like mine. It reminded me that we're not forgotten.'"

"Moments like this are a powerful reminder of the impact the donations have, not just in meeting practical needs, but in restoring dignity, hope, and connection."



"It was the fact that someone thought of families like mine. It reminded me that we're not forgotten."

"After going through what I've been through and having to restart my life with my children, it means a lot to know there are people out there for support and a helping hand. I hope that one day I can do the same for someone else."





# THE FUTURE...

According to a recent ONS public opinion and social survey, the cost of living crisis continues to be the single most reported issue of concern in the UK.

In the 2025 Joseph Rowntree Foundation report, it was revealed that “more than half of low-income households have had to go without heating to reduce their energy bills. Over five million households have cut back on or skipped meals because they cannot afford food and almost four million households have borrowed to pay for life’s essentials.”

Additionally, in MIND’s 2025 The Big Mental Health Report, one in five adults in England is living with a common mental health problem and rates are rising steadily. Adults in the most deprived areas have higher rates of mental health problems (26.2%) than those in the least deprived areas (16%). The cost of mental ill health in England is now estimated at £3 billion a year.



These statistics, rising year on year, mean that our story – the need for our services – continues.



“It has been my pleasure to work in partnership with Giving World and the charity’s GIFTED programme over the last 13 years. [There is clear evidence that coming together in social groups and then working to help others can help our mental health through improved mood, reduced anxiety and improved social connections.](#) Our Packing Saloon offers an ideal opportunity to tick all these boxes. I very much hope that we can continue our wonderful relationship long into the future.”

**Tim Sayers**  
Arts in Mental Health Co-ordinator,  
Leicestershire Partnership NHS Trust

“On behalf of our entire team, I want to extend our heartfelt gratitude for your recent donation of food and other essential items. Your generosity has enabled us to [provide much-needed support to many children and families on low incomes within our community, offering comfort and assistance and alleviating some of the daily pressures they face.](#) Your commitment to helping those in need is truly inspiring, and we are incredibly grateful for your ongoing partnership.”

**J Kalra**  
Headteacher, Tudor Primary School



# FINANCIAL STATEMENTS

FOR THE YEAR ENDED 31 DECEMBER 2025

REFERENCE & ADMINISTRATIVE DETAILS	20
TRUSTEES’ REPORT	20
INDEPENDENT EXAMINER’S REPORT	23
STATEMENT OF FINANCIAL ACTIVITIES	24
COMPARATIVE STATEMENT OF FINANCIAL ACTIVITIES	24
BALANCE SHEET	25
NOTES TO THE FINANCIAL STATEMENTS	26
DETAILED STATEMENT OF FINANCIAL ACTIVITIES	31



REFERENCE & ADMINISTRATIVE DETAILS

<b>Trustees</b> Pushpa Mistry Vardhana Bhalla Bindu Majithia	<b>Patrons</b> Charles Fowler M.A. Oxon Marthe Larson Dip.Art Oxon Arthur Bastings Therese Grankvist
<b>Secretary</b> Rama Bhalla	<b>Senior Management Team</b> Sujata Sabharwal, Resources Director Rama Bhalla, Projects Director
<b>Principal Office</b> 92 Burleys Way Leicester LE1 3BD	<b>Registered Office</b> 92 Burleys Way Leicester LE1 3BD
<b>Charity Registration Number</b> 1105883	<b>Company Registration Number</b> 05184361 The charity is incorporated in the UK
<b>Bankers</b> CAF Bank Ltd West Malling Kent	<b>Independent Examiner</b> Harley Luke FCA

TRUSTEES’ REPORT

The trustees present their report and the financial statements for the year ended 31 December 2025.

**Objectives and Activities**

**Aims and Objectives**

The company is registered as a charity and its Charitable Objects are:

- To relieve poverty and sickness and to advance education by the provision of financial aid, grants, goods, equipment and by other such means as are exclusively charitable as the trustees in their absolute discretion determine.

**Significant Activities**

We distribute brand new business excess stock to people living in poverty. Essential supplies are given for free to the most vulnerable in our communities, throughout the UK.

In 2025 we helped 729,773 people including vulnerable children, young people, low income families, individuals experiencing homelessness, those struggling with mental health challenges or addictions, and isolated elderly people, providing life essentials like shampoo, warm clothing and bedding.

Simultaneously saving hundreds of tonnes of business excess from landfill, equating to 4,720 tonnes of CO2e emissions saved. Additionally we collaborated with partners in the UK and Europe to deliver humanitarian aid in war torn Ukraine.

Our GIFTED therapeutic skills programme supported 116 vulnerable adults who experience complex needs (learning disabilities, autism, physical disabilities and mental health needs). They gain life and work skills, improve confidence and motivation, and reduce their social isolation.

Public Benefit

Giving World’s only mandate is to help people in need through the distribution of business surplus products for free to communities in need.

The trustees confirm that they have complied with the requirements of Section 17 of the Charities Act 2011 to have due regard to the Charity Commission’s guidance on public benefit.

**Financial Review**

**Financial Position**

Overall expenditure fell in 2025 due to a number of reasons. Firstly, planned building repairs had to be postponed, leading to an underspend in unrestricted capital funds. The repairs are now scheduled for 2026-27, the underspend has been carried forward as unrestricted funds. Second, we were able to secure a significantly lower utilities rate, now locked in until October 2026. And lastly, all assets are now fully depreciated.

Our goal is to help as many people as we can, and we continuously strive to make our monetary donations go further. With our lean operation, just 6 members of staff (4.6 FTE), in 2025 cost per intervention of goods at the point of need was just 26p per beneficiary helped.

That’s almost 400 people helped for every £100 of income.

**Reserves Policy**

Entering 2026, unrestricted reserves levels represent six months revenue operating costs. A capital underspend has been carried forward into 2026 due to scheduled building repairs being postponed in 2025 (see financial review above). The unrestricted capital fund will be utilised over 2026-27.

The continuing cost of living crisis means the demand for our service is both urgent and overwhelming. Going forward it is the Charity’s aim to maintain a reserves level of 5-6 months to be represented in the charity’s free unrestricted funds. Trustees feel this is a conscientious and prudent response in an increasingly unsettled economic and political climate, and the severe pressures facing the charitable sector, in particular small charities such as Giving World.

**Funds Materially in Deficit**

There are no funds in deficit.

**Going Concern**

There are no material uncertainties with the ability to continue.

**Principle funding sources**

Funding is received from a number of sources including grant giving Trusts and Foundations and a trading subsidiary Personal Care Packs. This is by way of gift aid funds received from the supply and distribution of Health Care Products.

The charity does not invest funds other than Cash Deposits with FCA approved Deposits and Savings Protection. The Investment of £100 in Personal Care Packs Ltd is stated at fair value.

**Structure, Governance and Management**

**Governing Document**

The charitable company is constituted under a Memorandum of Articles and is governed by its Articles of Association. The liability of its members in the event of the company being wound up is limited to £1.

Strategic Governance is through the Charity Trustees who set the overall parameters for the organisation, ensures it meets its charitable objectives and produces an annual report. Day to day



management is allocated to two Directors. The current team of trustees and directors are experienced community members with a range of financial, accounting and business development experience.

#### Trustee Selection Methods

Prospective new trustees are invited to attend meetings informally to gain an understanding of the organisation and their role and responsibilities. New trustees are given copies of the charity's legal documents, management information and accounts, together with general reading material about the charity and Charity Commission literature. This is followed by meetings with the Chair and other Trustees.

#### Statement of Trustees' Responsibilities

The trustees (who are also the directors of Giving World for the purposes of company law) are responsible for preparing the Trustees' Report and the financial statements in accordance with applicable law and United Kingdom Accounting Standards (United Kingdom Generally Accepted Accounting Practice).

Company law requires the trustees to prepare financial statements for each financial year. Under company law the trustees must not approve the financial statement unless they are satisfied that they give a true and fair view of the state of affairs of the charitable company and of the incoming resources and application of resources, including the income and expenditure, of the charitable company for that period. In preparing the financial statements the trustees are required to:

- select suitable accounting policies and then apply them consistently;
- observe the methods and principles in the Charity SORP;
- make judgments and accounting estimates that are reasonable and prudent; and
- prepare the financial statements on the going concern basis unless it is inappropriate to presume that the company will continue in business.

The trustees are responsible for keeping adequate accounting records which disclose with reasonable accuracy at anytime the financial position of the charitable company and to enable them to ensure that the accounts comply with the Companies Act 2006. They are also responsible for safeguarding the assets of the company and hence for taking reasonable steps for the prevention and detection of fraud and other irregularities.

The trustees are responsible for the maintenance and integrity of the corporate and financial information included on the charitable company's website. Legislation in the United Kingdom governing the preparation and dissemination of financial statements may differ from legislation in other jurisdictions.

#### Small Company Rules

This report has been prepared in accordance with the special provisions relating to companies subject to the small companies regime within Part 15 of the Companies Act 2006.

The trustees' report was approved by the board of trustees and signed on its behalf by:



**Bindu Majithia**  
Trustee

Date: 20 March 2026

## INDEPENDENT EXAMINER'S REPORT TO THE TRUSTEES OF GIVING WORLD

I report to the charity trustees on my examination of the accounts of the Company for the year ended 31 December 2025.

#### Responsibilities and Basis of Report

As the charity trustees of the Company (and also its directors for the purposes of company law), you are responsible for the preparation of the accounts in accordance with the requirements of the Companies Act 2006 ("the 2006 Act").

Having satisfied myself that the accounts of the Company are not required to be audited under Part 16 of the 2006 Act and are eligible for independent examination, I report in respect of my examination of your charity's accounts as carried out under section 145 of the Charities Act 2011 ('the 2011 Act'). In carrying out my examination I have followed the Directions given by the Charity Commission under section 145(5) (b) of the 2011 Act.

#### Independent Examiner's Statement

I confirm that I am qualified to undertake the examination because I am a member of ICAEW, which is one of the listed bodies.

I have completed my examination. I confirm that no matters have come to my attention in connection with the examination giving me cause to believe:

1. accounting records were not kept in respect of the Company as required by section 386 of the 2006 Act; or
2. the accounts do not accord with those records; or
3. the accounts do not comply with the accounting requirements of section 396 of the 2006 Act other than any requirement that the accounts give a 'true and fair view' which is not a matter considered as part of an independent examination; or
4. the accounts have not been prepared in accordance with the methods and principles of the Statement of Recommended Practice for accounting and reporting by charities applicable to charities preparing their accounts in accordance with the Financial Reporting Standard applicable in the UK and Republic of Ireland (FRS 102).

I have no concerns and have come across no other matters in connection with the examination to which attention should be drawn in this report in order to enable a proper understanding of the accounts to be reached.



**Harley Luke**  
ICAEW, FCA

38 Fairmead Road, N19 4DF  
Date: 20 March 2026



## STATEMENT OF FINANCIAL ACTIVITIES FOR THE YEAR ENDED 31 DECEMBER 2025 (including Income and Expenditure Account)

	Note	Unrestricted funds £	Restricted funds £	Total 2025 £	Total 2024 £
<b>INCOME AND ENDOWMENTS FROM:</b>					
Donations and legacies	4	155,578	48,251	203,829	163,195
Investments	5	8,492	—	8,492	7,318
<b>TOTAL INCOME</b>		<b>164,070</b>	<b>48,251</b>	<b>212,321</b>	<b>170,513</b>
<b>EXPENDITURE ON:</b>					
Charitable activity	6	(149,569)	(51,773)	(201,342)	(223,780)
Governance costs		(845)	—	(845)	(1,629)
<b>TOTAL EXPENDITURE</b>		<b>(150,414)</b>	<b>(51,773)</b>	<b>(202,187)</b>	<b>(225,409)</b>
<b>NET INCOME/(EXPENDITURE)</b>		<b>13,656</b>	<b>(3,522)</b>	<b>10,134</b>	<b>(54,896)</b>
Net movement in funds		13,656	(3,522)	10,134	(54,896)
<b>RECONCILIATION OF FUNDS:</b>					
Total funds brought forward		155,968	90,720	246,688	301,584
<b>TOTAL FUNDS CARRIED FORWARD</b>	<b>13</b>	<b>169,624</b>	<b>87,198</b>	<b>256,822</b>	<b>246,688</b>

### COMPARATIVE STATEMENT OF FINANCIAL ACTIVITIES FOR THE YEAR ENDED 31 DECEMBER 2024

	Note	Unrestricted funds £	Restricted funds £	Total 2024 £
<b>INCOME AND ENDOWMENTS FROM:</b>				
Donations and legacies	4	97,323	65,872	163,195
Investments	5	7,318	—	7,318
<b>TOTAL INCOME</b>		<b>104,641</b>	<b>65,872</b>	<b>170,513</b>
<b>EXPENDITURE ON:</b>				
Charitable activity	6	(184,622)	(39,158)	(223,780)
Governance costs		(1,629)	—	(1,629)
<b>TOTAL EXPENDITURE</b>		<b>(186,251)</b>	<b>(39,158)</b>	<b>(225,409)</b>
<b>NET EXPENDITURE</b>		<b>(81,610)</b>	<b>26,714</b>	<b>(54,896)</b>
Net movement in funds		(81,610)	26,714	(54,896)
<b>RECONCILIATION OF FUNDS:</b>				
Total funds brought forward		237,578	64,006	301,584
<b>TOTAL FUNDS CARRIED FORWARD</b>	<b>13</b>	<b>155,968</b>	<b>90,720</b>	<b>246,688</b>

The notes on pages 26 to 30 form part of these financial statements.

## BALANCE SHEET AS AT 31 DECEMBER 2025

	Note	Total funds 2025 £	Total funds 2024 £
<b>FIXED ASSETS:</b>			
Investments	10	100	100
		<b>100</b>	<b>100</b>
<b>CURRENT ASSETS:</b>			
Debtors	11	54,843	56,146
Cash at bank and in hand		236,497	193,297
		<b>291,340</b>	<b>249,443</b>
<b>CREDITORS: Amounts falling due within one year</b>	<b>12</b>	<b>(34,618)</b>	<b>(2,855)</b>
<b>NET CURRENT ASSETS (LIABILITIES)</b>		<b>256,722</b>	<b>246,588</b>
<b>TOTAL ASSETS LESS CURRENT LIABILITIES</b>		<b>256,822</b>	<b>246,688</b>
<b>NET ASSETS</b>		<b>256,822</b>	<b>246,688</b>
<b>FUNDS OF THE CHARITY:</b>			
Restricted funds		87,198	90,720
Unrestricted funds		169,624	155,968
<b>TOTAL FUNDS</b>	<b>13</b>	<b>256,822</b>	<b>246,688</b>

For the year ending 31 December 2025 the charitable company was entitled to exemption from audit under section 477 of the Companies Act 2006 relating to small companies.

The members have not required the charitable company to obtain an audit in accordance with section 476 of the Companies Act 2006.

The trustees acknowledge their responsibilities for complying with the requirements of the Act with respect to accounting records and the preparation of accounts.

These accounts have been prepared in accordance with the provisions applicable to companies subject to the small companies regime.

On behalf of the board



**Bindu Majithia**  
Trustee

Date: 20 March 2026

The notes on pages 26 to 30 form part of these financial statements.



NOTES TO THE FINANCIAL STATEMENTS FOR THE YEAR ENDED  
31 DECEMBER 2025

1 GENERAL INFORMATION

Giving World is a company limited by guarantee, incorporated in England & Wales, registered number 05184361 and registered charity number 1105883. The registered office is 92 Burleys Way, Leicester, LE1 3BD.

2 STATEMENT OF COMPLIANCE

The financial statements have been prepared in accordance with the Charities SORP (FRS 102) "Accounting and Reporting by Charities: Statement of Recommended Practice applicable to charities preparing their accounts in accordance with the Financial Reporting Standard applicable in the UK and Republic of Ireland (FRS 102) (effective 1 January 2019)", Financial Reporting Standard 102 "The Financial Reporting Standard applicable in the UK and Republic of Ireland" and the Companies Act 2006.

3 ACCOUNTING POLICIES

3.1 Basis of Preparation of Financial Statements

Giving World meets the definition of a public benefit entity under FRS 102. Assets and liabilities are initially recognised at historical cost or transaction value unless otherwise stated in the relevant accounting policy notes.

3.2 Financial Reporting Standard 102 - Reduced Disclosure Exemptions

The charitable company has taken advantage of the following disclosure exemptions in preparing these financial statements, as permitted by FRS 102 "The Financial Reporting Standard applicable in the UK and Republic of Ireland":

- the requirements of Section 7 Statement of Cash Flows and Section 3 Financial Statement Presentation paragraph 3.17 (d).

3.3 Going Concern Disclosure

The trustees consider that there are no material uncertainties about the charity's ability to continue as a going concern nor any significant areas of uncertainty that affect the carrying value of assets held by the charity.

3.4 Fund Accounting

Unrestricted funds can be used in accordance with the charitable objectives at the discretion of the trustees.

Restricted funds are to be used for specific purposes as laid down by the donor.

3.5 Incoming Resources

*Income and endowments*

All income is recognised once the charity has entitlement to the income, it is probable that the income will be received and the amount of the income receivable can be measured reliably.

*Grants receivable*

Grants are recognised when the charity has an entitlement to the funds and any conditions linked to the grants have been met. Where performance conditions are attached to the grant and are yet to be met, the income is recognised as a liability and included on the balance sheet as deferred income to be released.

*Investment income*

Dividends are recognised once the dividend has been declared and notification has been received of the dividend due.

3.6 Resources Expended

All expenditure is recognised once there is a legal or constructive obligation to that expenditure, it is probable settlement is required and the amount can be measured reliably. All costs are allocated to the applicable expenditure heading that aggregate similar costs to that category. Where costs cannot be directly attributed to particular headings they have been allocated on a basis consistent with the use of resources, with central staff costs allocated on the basis of time spent, and depreciation charges allocated on the portion of the asset's use. Other support costs are allocated based on the spread of staff costs.

*Charitable activities*

Charitable expenditure comprises those costs incurred by the charity in the delivery of its activities and services for its beneficiaries. It includes both costs that can be allocated directly to such activities and those costs of an indirect nature necessary to support them.

*Grant provisions*

Provisions for grants are made when the intention to make a grant has been communicated to the recipient but there is uncertainty about either the timing of the grant or the amount of grant payable.

*Governance costs*

These include the costs attributable to the charity's compliance with constitutional and statutory requirements, including audit, strategic management and trustees' meetings and reimbursed expenses.

3.7 Tangible Fixed Assets and Depreciation

Individual fixed assets costing £1000 or more are initially recorded at cost, less any subsequent accumulated depreciation and subsequent accumulated impairment losses.

Depreciation is provided on tangible fixed assets so as to write off the cost or valuation, less any estimated residual value, over their expected useful economic life as follows:

Plant & Machinery	20% Straight Line
-------------------	-------------------

3.8 Investments

Fixed asset investments, other than programme related investments, are included at market value at the balance sheet date. Realised gains and losses on investments are calculated as the difference between sales proceeds and their market value at the start of the year, or their subsequent cost, and are charged or credited to the Statement of Financial Activities in the period of disposal.

Unrealised gains and losses represent the movement in market values during the year and are credited or charged to the Statement of Financial Activities based on the market value at the year end.

3.9 Cash and Cash Equivalents

Cash and cash equivalents are basic financial assets and include cash in hand and deposits held at call with banks, other short-term highly liquid investments that mature in no more than three months from the date of acquisition and are readily convertible to a known amount of cash with insignificant risk of change in value, and bank overdrafts.



3.10 Taxation

The charity is considered to pass the tests set out in Paragraph 1 Schedule 6 of the Finance Act 2010 and therefore it meets the definition of a charitable company for UK corporation tax purposes. Accordingly, the charity is potentially exempt from taxation in respect of income or capital gains received within categories covered by Chapter 3 Part 11 of the Corporation Tax Act 2010 or Section 256 of the Taxation of Chargeable Gains Act 1992, to the extent that such income or gains are applied exclusively to charitable purposes.

4 INCOME FROM DONATIONS AND LEGACIES

	Unrestricted funds £	Restricted funds £	Total funds 2025 £
Donations and gifts	86,876	74,318	161,194
Gift aid	44,846	1,350	46,196
Accruals and deferred income	—	(27,417)	(27,417)
Donated goods, facilities and services	23,856	—	23,856
	155,578	48,251	203,829

	Unrestricted funds £	Restricted funds £	Total funds 2024 £
Donations and gifts	39,714	65,872	105,586
Gift aid	33,753	—	33,753
Donated goods, facilities and services	23,856	—	23,856
	97,323	65,872	163,195

5 INVESTMENT INCOME

	Unrestricted funds 2025 £	Unrestricted funds 2024 £
Bank interest receivable	8,492	7,318
	8,492	7,318

6 ANALYSIS OF EXPENDITURE

	Activities undertaken directly £	Support costs £	Total 2025 £
Charitable activity	201,342	—	201,342
Governance costs	—	845	845
	201,342	845	202,187

	Activities undertaken directly £	Support costs £	Total 2024 £
Charitable activity	223,780	—	223,780
Governance costs	—	1,629	1,629
	223,780	1,629	225,409

7 STAFF COSTS

	2025 £	2024 £
Staff costs were as follows:		
Wages and salaries	137,596	135,912

No employees received employee benefits (excluding employer pension costs) for the reporting period of more than £60,000.

8 AVERAGE NUMBER OF EMPLOYEES

Average number of employees during the year was: 4.6 FTE (2024: 4)

9 TANGIBLE ASSETS

	Plant & Machinery £
Cost - As at 1 January 2025	84,040
Cost - As at 31 December 2025	84,040
Depreciation - As at 1 January 2025	84,040
Depreciation - As at 31 December 2025	84,040
Net Book Value - As at 31 December 2025	—
Net Book Value - As at 1 January 2025	—

10 INVESTMENTS

	Subsidiaries £
Cost or Valuation - As at 1 January 2025	100
Cost or Valuation - As at 31 December 2025	100
Provision - As at 1 January 2025	—
Provision - As at 31 December 2025	—
Net Book Value - As at 31 December 2025	100
Net Book Value - As at 1 January 2025	100

11 DEBTORS

	2025 £	2024 £
Due within one year		
Trade debtors	80	—
Amounts owed by group undertakings	44,763	46,146
	44,843	46,146
Due after more than one year		
Amounts owed by group undertakings	10,000	10,000
	54,843	56,146



12 CREDITORS: AMOUNTS FALLING DUE WITHIN ONE YEAR

	2025 £	2024 £
Trade creditors	4,371	306
Taxation and social security	2,830	2,549
Accruals and deferred income	27,417	—
	34,618	2,855

13 MOVEMENT IN FUNDS

	As at 1 January 2025 £	Income £	Expenditure £	As at 31 December 2025 £
<b>UNRESTRICTED FUNDS</b>				
General:				
General unrestricted fund	155,968	164,070	(150,414)	169,624
<b>RESTRICTED FUNDS</b>				
Restricted	90,720	48,251	(51,773)	87,198
<b>TOTAL FUNDS</b>	<b>246,688</b>	<b>212,321</b>	<b>(202,187)</b>	<b>256,822</b>

	As at 1 January 2024 £	Income £	Expenditure £	As at 31 December 2024 £
<b>UNRESTRICTED FUNDS</b>				
General:				
General unrestricted fund	237,578	104,641	(186,251)	155,968
<b>RESTRICTED FUNDS</b>				
Restricted	64,006	65,872	(39,158)	90,720
<b>TOTAL FUNDS</b>	<b>301,584</b>	<b>170,513</b>	<b>(225,409)</b>	<b>246,688</b>

14 TRANSACTIONS WITH TRUSTEES

None of the trustees received any remuneration or any other benefits from an employment with the charity or a related entity during the current or previous year. No trustee expenses have been incurred.

15 RELATED PARTY DISCLOSURES

During the year the charity made the following related party transactions:

Premises made available to Charity

Giving World has been granted a lease for a period of 15 Years from 1 March 2011 at 92 Burleys Way. Two members of the SMT are related to the lessor of the Building. Lease renewal will be negotiated in 2026.

The annual rental is £9,500 which is below the current market value of £33,356 per annum. At the balance sheet date the amount due to/from Premises made available to Charity was £Nil.

16 COMPANY LIMITED BY GUARANTEE

The company is limited by guarantee and has no share capital.

Every member of the company undertakes to contribute to the assets of the company, in the event of a winding up, such an amount as may be required not exceeding £1.

DETAILED STATEMENT OF FINANCIAL ACTIVITIES  
FOR THE YEAR ENDED 31 DECEMBER 2025

	Total 2025 £	Total 2024 £
<b>INCOME AND ENDOWMENTS FROM: DONATIONS AND LEGACIES</b>		
Donations and gifts	161,194	105,586
Gift aid	46,196	33,753
Accrual and deferred income	(27,417)	—
Donated facilities	23,856	23,856
	203,829	163,195
<b>INVESTMENTS</b>		
Bank interest receivable	8,492	7,318
	8,492	7,318
<b>TOTAL INCOME</b>	<b>212,321</b>	<b>170,513</b>
<b>EXPENDITURE ON: CHARITABLE ACTIVITIES</b>		
Donated facilities	(23,856)	(23,856)
Wages and salaries	(137,596)	(135,912)
Travel and subsistence expenses	(220)	(261)
Volunteer costs	(237)	(333)
Training costs	—	(102)
Building maintenance	(1,412)	(4,686)
Utility charges	(7,957)	(14,519)
Rent costs	(9,500)	(9,500)
Computer software and maintenance costs	(349)	(9,278)
Repairs, renewals and maintenance	(1,127)	(1,864)
Insurance	(1,980)	(1,907)
Marketing and advertising costs	(477)	(1,195)
Data telecommunications costs	(1,045)	(996)
Carriage and freight	(14,666)	(10,606)
Printing, postage and stationery	(201)	(1,577)
Subscriptions	(432)	(2,239)
Other direct costs	(227)	(881)
Depreciation	—	(4,008)
Bank charges	(60)	(60)
	(201,342)	(223,780)
<b>GOVERNANCE COSTS</b>		
AGM/board meetings expenses	(845)	(1,629)
	(845)	(1,629)
	(202,187)	(225,409)
<b>NET INCOME/(EXPENDITURE)</b>	<b>10,134</b>	<b>(54,896)</b>





## CONTACT US

### Our address:

92 Burleys Way  
Leicester  
LE1 3BD

[www.givingworld.org.uk](http://www.givingworld.org.uk)

### Phone us:

0116 251 6205

### Email us:

[info@givingworld.org.uk](mailto:info@givingworld.org.uk)

Scan this code for more  
information:



With grateful thanks for their voluntary services to:  
Design: Hilary Barnes, [www.hilarybarnes.co.uk](http://www.hilarybarnes.co.uk)  
Photography: Peter Freeth, [genius.photo](http://genius.photo)  
Copy: Sarah Scott, [sascott78@yahoo.co.uk](mailto:sascott78@yahoo.co.uk)