



Coming Out of Lockdown

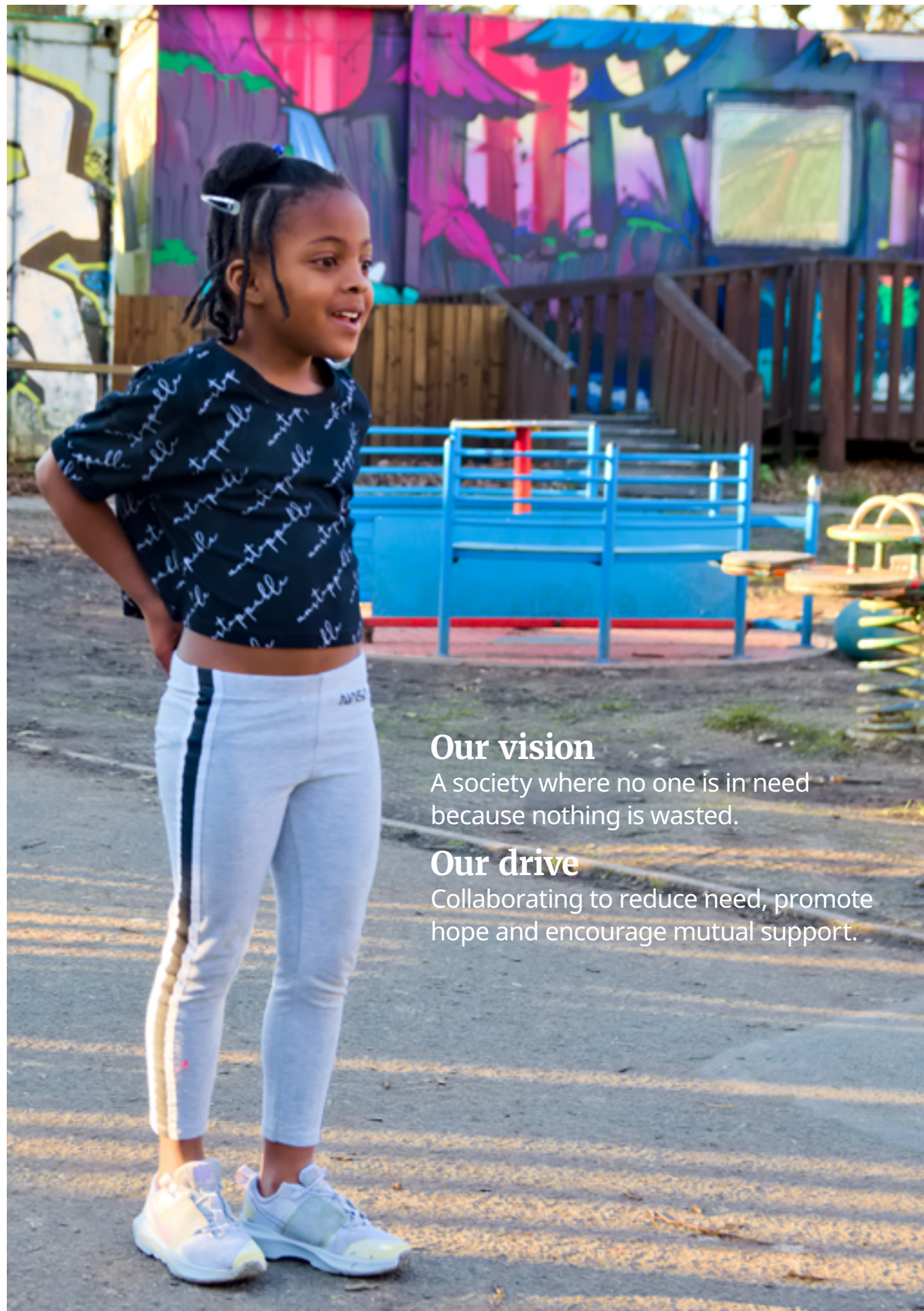
Annual Report & Accounts
2021





Contents

Our purpose	5
Emerging from lockdown in our 20th year	6
Our impact	8
The year in pictures	10
The year ahead	12
Financial Statements	14



Our vision

A society where no one is in need because nothing is wasted.

Our drive

Collaborating to reduce need, promote hope and encourage mutual support.



Our purpose

We exist to protect people in need from poverty by saving brand new business surplus products from going to waste, offering a simple solution to fight poverty and reduce landfill, two of the most relevant problems we face in the UK today.

A staggering £2bn of surplus goods is generated by UK businesses each year. At the same time 14.5m people live in poverty, a figure expected to rise as we face supply shortages, rising food prices and exponential fuel and heating costs.

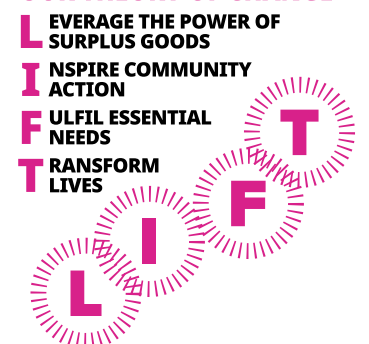
We provide business excess, life essentials like shampoo, bedding, nappies, washing powder, warm clothing, to the people who need them most around the UK, like vulnerable children and families, homeless people and those suffering addictions or mental health problems, lonely elderly and disabled people.

Each year we give peace of mind to thousands, providing the breathing space individuals and

families need to get back on their feet and take the next steps towards recovery, employment and happier, healthier lives.

At a cost of 34p per intervention, we continue to demonstrate our ability to do more with less (2020: 55p). We keep our costs low whilst achieving national coverage through our dedicated network of 8,000 Donor and Distribution partners. Donor Partners are private companies that trust us with their end of line and discontinued products. These goods are then distributed, for free, to people in need through our Distribution Partners, charities, community and neighbourhood groups.

OUR THEORY OF CHANGE





Emerging from lockdown in our 20th year

2021 saw us completing our 20th year. A year, at the end of which, we all hoped to be leaving behind us Covid lockdowns and social restrictions. The last two years have been a period of major transition for Giving World. We have come through it stronger and more efficient.

We cannot thank enough all our supporters, funders, donors, partners, and volunteers for their generosity and confidence in our work, enabling us to successfully navigate a challenging arena. The vital support we have received, particularly during 2020/21, has helped us to streamline and ramp up our operations to meet the need as we continue to face significantly increased demand.

In 2021 we redistributed **a record 3,279,566 life essential products** to **900,411** vulnerable individuals, children and families across every region of the UK (2020: 1.4m products to 619,356 people).

In all, in the 20 years since Giving World started, between 2001 and 2021, 13,735,872 products have been saved from landfill, representing 56,379 tonnes of CO2e emissions.

Importantly, over 5 million people in need have been helped.

As part of Giving World's 20th year celebrations last year, we asked our partners - company donors, supporters and charities - to express in one word what Giving World means to them, their beneficiaries, staff and volunteers.

There were so many responses we can't list them all but common among them are the 20 words shown opposite, testimonials of our 20 years.



IN 2021...
WE REDISTRIBUTED A RECORD

3,279,566
life essential products, to
900,411
vulnerable individuals





31.7%
FAMILIES ON LOW INCOME

Our impact

We measure our impact by means of a monitoring and evaluation system developed in partnership with the University of Leicester.

Recording our reach to ten main beneficiary categories, we survey beneficiaries throughout the year. The aim is to measure any 'improvements in life chances' and/or 'reduced feelings of isolation,' as a result of our intervention.

It is impossible to overstate the wide reaching impact the goods have on beneficiaries. We have powerful stories to tell of making low incomes stretch; preventing debt and high risk loans; reducing social isolation; and alleviating the effects of trauma and poverty.



18.1%
CHILDREN & YOUNG PEOPLE



9.4%
ADULTS ON LOW INCOME



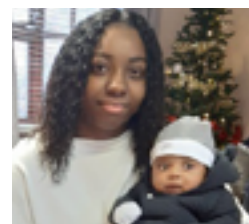
3.2%
ELDERLY PEOPLE



11.1%
CHARITY'S OWN USE



9.1%
HOMELESS ADULTS



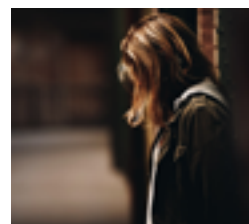
1.1%
ADULTS & CHILDREN FLEEING VIOLENCE



10.4%
ADULTS IN ILL HEALTH



5%
OTHER VULNERABLE/ ISOLATED GROUPS



0.9%
ADULTS WITH MENTAL HEALTH PROBLEMS

Just some of their stories...

"I was so grateful to receive a package with toiletries, cups and plates which helped me hugely in the refuge."



• **Diana is a cancer patient**, she said: 'Oh my goodness I was just thinking of getting an overdraft to get myself some clothes since my other ones are not fitting well. You just amaze me!'

• **David is elderly and blind**. Loneliness and isolation intensified during the pandemic, David was living alone and now shielding too. He said: 'You have been so kind helping me out with a box of goodies when I can't get out due to shielding. I have a guide dog and may get to the co-op once a week with help. Your donations of toiletries, warm clothes, hot meals and supplying sanitizer for me to leave in my hallway should I get a carer or visitor, has been brilliant. Thank you so much.'



• **The children ruined their duvet**, and we couldn't afford a new one. It helps keep us warm because we can't afford to heat the house.' A beneficiary describes how important the bedding received from Giving World is to her family.

• **Anny is a teenage parent** living in inner city London. She is grateful for the support she receives at a very difficult and demanding time in her life, she said: 'Thank you so much for the winter clothes for my baby. I do not have any and was wondering how I could buy them with no money left.'

• **'Domestic and sexual violence'** has been on the rise since the pandemic started and victims need as much support as possible,' says a community group in Chesterfield that rehomes victims. They add, 'Leaving an abusive situation means survivors have to go without essential items when already facing a difficult time so anxiety is high. It may seem a small thing but to be able to have clean clothes or a few items for their home means the absolute world to people in this situation.'

Sarah was rescued by the Police from an abusive relationship. She said: 'When the police arrived at the house they did not give me any time to pack, so I had to leave with my child without anything for baby and myself. I was so grateful to receive a package with toiletries, cups and plates which helped me hugely in the refuge.'

2021 IMPACT:
4,012 BENEFICIARIES SURVEYED

82.7%
reported an improvement in life chances

98.2%
reported reduced feelings of isolation



• **School children and young people** have been particularly hard hit by the pandemic, their learning and well-being deeply affected. Many schools expanded their support, not only to their pupils but also to the families experiencing hardship. A teacher in Lincolnshire expresses the impact of Giving World's support: 'Every item that you have donated is making a difference to our children. 79% of them qualify for free school meals, the threshold for qualifying being an annual household income of less than £7,000. This sort of money does not go a long way and the pandemic has exacerbated this. Some of our families had jobs in the gig economy that disappeared overnight and others relied on mutual childcare arrangements in order to work, which were not able to happen with the restrictions. It was the 'non-essentials' that went missing first: games, toys, art equipment and books. All those elements that we know are essential to the holistic upbringing of a young mind were no longer available to our families who had to prioritise food and rent. Thanks to your donations, we can put a little bit of colour back into the homes of our families.'



The year in pictures





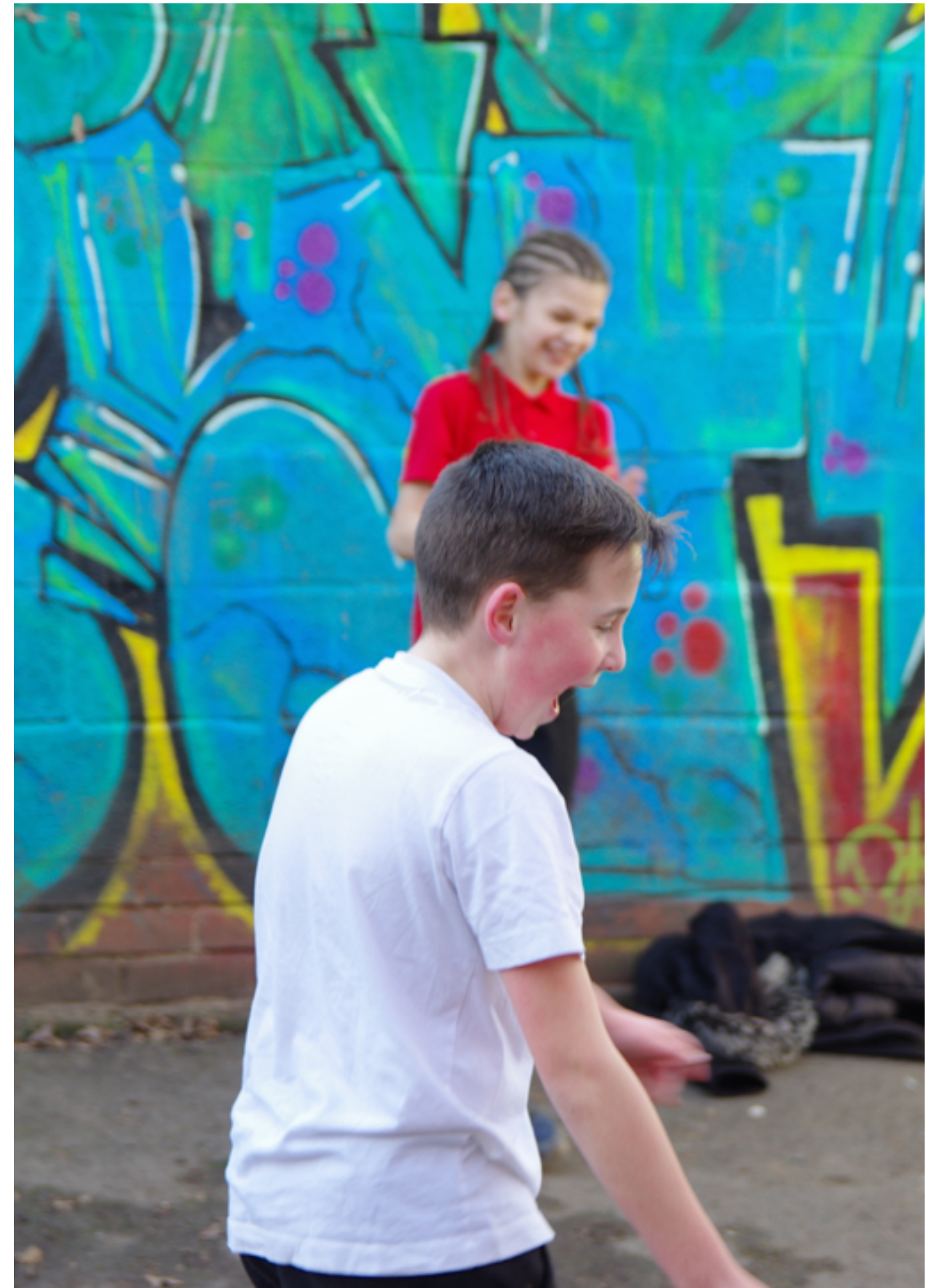
"We are committed to preventing generations of children and families from falling into disadvantage."

The year ahead

We are dealing with matters of such intertwined complexity in the world today that the mind truly boggles under the weight of it all: war in Europe, worsening supply chains, fuel and energy instability, rising prices, the list can go on.

However, at its most basic level what we know is that the severest impact will be felt by those already struggling financially. And there will be many, many more newly vulnerable children and families in the year ahead.

- We are committed to responding to the needs of people in poverty and those facing multiple inequities, collaborating with our business and charity partners to divert surplus stocks to fulfil needs.
- We are committed to preventing generations of children and families from falling into disadvantage.



Company registration number: 05184361
Charity registration number: 1105883

Contents

Reference and Administrative Details	16
Strategic Report	17
Trustees' Report	18 to 19
Statement of Trustees' Responsibilities	20
Independent Examiner's Report	21
Statement of Financial Activities	22
Balance Sheet	23
Notes to the Financial Statements	24 to 34

Giving World

Financial Statements

for the Year Ended 31 December 2021

John R Reeds FCA
48 St Peters Road
Buxton
Derbyshire
SK17 7DX

Reference and Administrative Details

Trustees

Narayan Mistry
Hilary Jenkinson
Pushpa Mistry
Ms Rama Bhalla

Secretary

Ms Rama Bhalla

Patrons

Charles Fowler M.A. Oxon
Marthe Larson Dip.Art Oxon
Arthur Bastings
Therese Grankvist

Senior Management Team

Ms Sujata Sabharwal, Resources Director
Ms Rama Bhalla, Projects Director

Principal Office

92 Burleys Way
Leicester
LE1 3BD

Registered Office

92 Burleys Way
Leicester
LE1 3BD

The charity is incorporated in United Kingdom.

Company Registration Number

05184361

Charity Registration Number

1105883

Bankers

CAF Bank Ltd
West Malling Kent

Independent Examiner

John R Reeds FCA
48 St Peters Road
Buxton
Derbyshire SK17 7DX

Strategic Report for the Year Ended 31 December 2021

The trustees, who are directors for the purposes of company law, present their strategic report for the year ended 31 December 2021, in compliance with s414C of the Companies Act 2006.

Achievements and performance

Key financial performance indicators

	Unit	2021	2020
Cost Per Beneficiary	Pence	33.60	55.00

Financial review

Policy on reserves

In order to ensure operations can continue without interruption or harm to the charity's services, we will as a result of the current Covid Pandemic transfer reserves level equal to eight months' operating costs, represented in the charity's free unrestricted funds.

Funds in deficit

There are no funds in deficit

Principal funding sources

Funding is received from a number of sources including grant giving Trusts and Foundations and its trading subsidiary Personal Care Packs.

Investment policy and objectives

The charity does not invest funds other than Cash Deposits with FCA approved Deposits and Savings Protection The Investment of £100 in Personal Care Packs Ltd is stated at fair value

The strategic report was approved by the trustees of the charity on June 4th 2022 and signed on its behalf by:



.....
Hilary Jenkinson
Trustee

Trustees' Report

The trustees, who are directors for the purposes of company law, present the annual report together with the financial statements of the charitable company for the year ended 31 December 2021.

Objectives and activities

Objects and aims

The company is registered as a charity and its Charitable Objects are:
To relieve poverty and sickness and to advance education by the provision of financial aid, grants, goods, equipment and by other such means as are exclusively charitable as the trustees in their absolute discretion determine.

We distribute new business end of line stock and equipment to people living in poverty across the UK. Essential supplies are given for free to the most vulnerable in our communities.

Objectives, strategies and activities

In 2021 we redistributed 3,279,566 (2020 1,408,622) brand new business surplus products to 900,411 (2020 619,539) people in need.

Public benefit

Giving World's only mandate is to help people in need through the distribution of business surplus products for free to communities in need.

The trustees confirm that they have complied with the requirements of section 17 of the Charities Act 2011 to have due regard to the public benefit guidance published by the Charity Commission for England and Wales.

Going concern

The Charity is adequately funded and there are no material uncertainties with the ability to continue of the value of assets.

Structure, governance and management

Nature of governing document

The charitable company is constituted under a Memorandum of Articles and is governed by its Articles of Association. The liability of its members in the event of the company being wound up is limited to £1.

Recruitment and appointment of trustees

Prospective new trustees are invited to attend meetings informally to gain an understanding of the organisation and their role and responsibilities. New trustees are given copies of the charity's legal documents, management information and accounts, together with general reading material about the charity and Charity Commission literature. This is followed by meetings with the Chair and other Trustees.

Arrangements for setting key management personnel remuneration

Key Management is involved in the distribution of surplus product, income generation and organising of volunteers with remuneration set by Trustees.

Organisational structure

Strategic Governance is through the Charity Trustees who set the overall parameters for the organisation, ensures it meets its charitable objectives and produces an annual report. Day to day management is allocated to two Directors. The current team of trustees and directors are experienced community members with a range of financial, banking and business development experience.

Trustees' Report

Relationships with related parties

Personal Care Packs Ltd

Personal Care Packs Ltd distributes by way of gift aid funds received from the supply and distribution of Health Care Products.

Financial instruments

Objectives and policies

The charity's activities expose it to a number of financial risks including credit risk, cash flow risk and liquidity risk. The use of financial derivatives is governed by the charity's policies approved by the board of trustees, which provide written principles on the use of financial derivatives to manage these risks. The charity does not use derivative financial instruments for speculative purposes.

Cash flow risk

Interest bearing assets and liabilities are held at fixed rate to ensure certainty of cash flows.

Credit risk

The Charity's principal financial assets are bank balances and cash, trade and other receivables, and investments. The credit risk on liquid funds and derivative financial instruments is limited because the counterparties are banks with high credit-ratings assigned by international credit-rating agencies. The Charity has no significant concentration of credit risk, with exposure spread over a large number of counterparties and customers.

Liquidity risk

Further details regarding liquidity risk can be found in the Statement of accounting policies in the financial statements.


Employment of disabled persons

The Company operates an equal opportunities policy.

Creditor payment policy

Payments are made within 30 days to suppliers

The annual report was approved by the trustees of the charity on June 4th 2022 and signed on its behalf by:


.....
Hilary Jenkinson
Trustee

Statement of Trustees' Responsibilities

The trustees (who are also the directors of Giving World for the purposes of company law) are responsible for preparing the trustees' report and the financial statements in accordance with the United Kingdom Accounting Standards (United Kingdom Generally Accepted Accounting Practice) and applicable law and regulations.

Company law requires the trustees to prepare financial statements for each financial year. Under company law the trustees must not approve the financial statements unless they are satisfied that they give a true and fair view of the state of affairs of the charitable company and of its incoming resources and application of resources, including its income and expenditure, for that period. In preparing these financial statements, the trustees are required to:

- select suitable accounting policies and apply them consistently;
- observe the methods and principles in the Charities SORP;
- make judgements and estimates that are reasonable and prudent;
- state whether applicable UK Accounting Standards have been followed, subject to any material departures disclosed and explained in the financial statements; and
- prepare the financial statements on the going concern basis unless it is inappropriate to presume that the charitable company will continue in business.

The trustees are responsible for keeping adequate accounting records that are sufficient to show and explain the charitable company's transactions and disclose with reasonable accuracy at any time the financial position of the charitable company and enable them to ensure that the financial statements comply with the Companies Act 2006. They are also responsible for safeguarding the assets of the charitable company and hence for taking reasonable steps for the prevention and detection of fraud and other irregularities.

Approved by the trustees of the charity on June 4th 2022 and signed on its behalf by:



.....
Hilary Jenkinson
Trustee

Independent Examiner's Report to the trustees of Giving World

I report to the charity trustees on my examination of the accounts of the charity for the year ended 31 December 2021 which are set out on pages 22 to 34.

Respective responsibilities of trustees and examiner

As the charity's trustees of Giving World (and also its directors for the purposes of company law) you are responsible for the preparation of the accounts in accordance with the requirements of the Companies Act 2006 ('the 2006 Act').

Having satisfied myself that the accounts of Giving World are not required to be audited under Part 16 of the 2006 Act and are eligible for independent examination, I report in respect of my examination of your charity's accounts as carried out under section 145 of the Charities Act 2011 ('the 2011 Act'). In carrying out my examination I have followed the Directions given by the Charity Commission under section 145(5)(b) of the 2011 Act.

Independent examiner's statement

Since Giving World's gross income exceeded £250,000 your examiner must be a member of a body listed in section 145 of the 2011 Act. I confirm that I am qualified to undertake the examination because I am a member of ICAEW, which is one of the listed bodies.

I have completed my examination. I confirm that no matters have come to my attention in connection with the examination giving me cause to believe:

1. accounting records were not kept in respect of Giving World as required by section 386 of the 2006 Act; or
2. the accounts do not accord with those records; or
3. the accounts do not comply with the accounting requirements of section 396 of the 2006 Act other than any requirement that the accounts give a 'true and fair view' which is not a matter considered as part of an independent examination; or
4. the accounts have not been prepared in accordance with the methods and principles of the Statement of Recommended Practice for accounting and reporting by charities [applicable to charities preparing their accounts in accordance with the Financial Reporting Standard applicable in the UK and Republic of Ireland (FRS 102)].

I have no concerns and have come across no other matters in connection with the examination to which attention should be drawn in this report in order to enable a proper understanding of the accounts to be reached.



.....
John R Reeds
ICAEW

48 St Peters Road
Buxton
Derbyshire
SK17 7DX

Date: June 4th 2022

Statement of Financial Activities for the Year Ended 31 December 2021
(Including Income and Expenditure Account and Statement of Total
Recognised Gains and Losses)

	Note	Unrestricted funds £	Restricted funds £	Total 2021 £	Total 2020 £
Income and Endowments from:					
Donations and legacies	3	244,160	150,790	394,950	459,557
Investment income	4	1,181	-	1,181	103
Total Income		245,341	150,790	396,131	459,660
Expenditure on:					
Charitable activities	5	182,535	140,425	322,960	365,756
Governance costs	6	445	400	845	508
Total Expenditure		182,980	140,825	323,805	366,264
Net income		62,361	9,965	72,326	93,396
Net movement in funds		62,361	9,965	72,326	93,396
Reconciliation of funds					
Total funds brought forward		164,751	119,422	284,173	190,777
Total funds carried forward	16	227,112	129,387	356,499	284,173
	Note	Unrestricted funds £	Restricted funds £	Total 2020 £	
Income and Endowments from:					
Donations and legacies	3	216,917	242,640	459,557	
Investment income	4	103	-	103	
Total income		217,020	242,640	459,660	
Expenditure on:					
Charitable activities	5	(164,616)	(201,648)	(366,264)	
Total expenditure		(164,616)	(201,648)	(366,264)	
Net income		52,404	40,992	93,396	
Net movement in funds		52,404	40,992	93,396	
Reconciliation of funds					
Total funds brought forward		112,347	78,430	190,777	
Total funds carried forward	16	164,751	119,422	284,173	

All of the charity's activities derive from continuing operations during the above two periods.

The funds breakdown for 2020 is shown in note 16.

(Registration number: 05184361)
Balance Sheet as at 31 December 2021

	Note	2021 £	2020 £
Fixed assets			
Tangible assets	11	12,024	16,032
Investments	12	100	100
		12,124	16,132
Current assets			
Debtors	13	69,218	56,128
Cash at bank and in hand	14	275,877	292,878
		345,095	349,006
Creditors: Amounts falling due within one year	15	(720)	(80,965)
Net current assets		344,375	268,041
Net assets		356,499	284,173
Funds of the charity:			
Restricted income funds			
Restricted funds		129,387	119,422
Unrestricted income funds			
General Reserves		227,112	164,751
Total funds	16	356,499	284,173

For the financial year ending 31 December 2021 the charity was entitled to exemption from audit under section 477 of the Companies Act 2006 relating to small companies.

Directors' responsibilities:

- The members have not required the charity to obtain an audit of its accounts for the year in question in accordance with section 476; and
- The directors acknowledge their responsibilities for complying with the requirements of the Act with respect to accounting records and the preparation of accounts.

These accounts have been prepared in accordance with the provisions applicable to companies subject to the small companies regime.

The financial statements on pages 22 to 34 were approved by the trustees, and authorised for issue on June 4th 2022 and signed on their behalf by:



Hilary Jenkinson
Trustee

Notes to the Financial Statements for the Year Ended 31 December 2021

1 Charity status

The charity is limited by share capital, incorporated in United Kingdom.

The address of its registered office is:
92 Burleys Way
Leicester
LE1 3BD

[Authorised for issue date](#)

2 Accounting policies

Summary of significant accounting policies and key accounting estimates

The principal accounting policies applied in the preparation of these financial statements are set out below. These policies have been consistently applied to all the years presented, unless otherwise stated.

Statement of compliance

The financial statements have been prepared in accordance with Accounting and Reporting by Charities: Statement of Recommended Practice applicable to charities preparing their accounts in accordance with the Financial Reporting Standard applicable in the UK and Republic of Ireland (FRS 102) (effective 1 January 2015) - (Charities SORP (FRS 102)), the Financial Reporting Standard applicable in the UK and Republic of Ireland (FRS 102). They also comply with the Companies Act 2006 and Charities Act 2011.

Basis of preparation

Giving World meets the definition of a public benefit entity under FRS 102. Assets and liabilities are initially recognised at historical cost or transaction value unless otherwise stated in the relevant accounting policy notes.

Going concern

The trustees consider that there are no material uncertainties about the charity's ability to continue as a going concern nor any significant areas of uncertainty that affect the carrying value of assets held by the charity.

Exemption from preparing a cash flow statement

The charity opted to early adopt Bulletin 1 published on 2 February 2016 and have therefore not included a cash flow statement in these financial statements.

Income and endowments

All income is recognised once the charity has entitlement to the income, it is probable that the income will be received and the amount of the income receivable can be measured reliably.

Grants receivable

Grants are recognised when the charity has an entitlement to the funds and any conditions linked to the grants have been met. Where performance conditions are attached to the grant and are yet to be met, the income is recognised as a liability and included on the balance sheet as deferred income to be released.

Investment income

Dividends are recognised once the dividend has been declared and notification has been received of the dividend due.

Notes to the Financial Statements for the Year Ended 31 December 2021

Expenditure

All expenditure is recognised once there is a legal or constructive obligation to that expenditure, it is probable settlement is required and the amount can be measured reliably. All costs are allocated to the applicable expenditure heading that aggregate similar costs to that category. Where costs cannot be directly attributed to particular headings they have been allocated on a basis consistent with the use of resources, with central staff costs allocated on the basis of time spent, and depreciation charges allocated on the portion of the asset's use. Other support costs are allocated based on the spread of staff costs.

Charitable activities

Charitable expenditure comprises those costs incurred by the charity in the delivery of its activities and services for its beneficiaries. It includes both costs that can be allocated directly to such activities and those costs of an indirect nature necessary to support them.

Grant provisions

Provisions for grants are made when the intention to make a grant has been communicated to the recipient but there is uncertainty about either the timing of the grant or the amount of grant payable.

Governance costs

These include the costs attributable to the charity's compliance with constitutional and statutory requirements, including audit, strategic management and trustees's meetings and reimbursed expenses.

Taxation

The charity is considered to pass the tests set out in Paragraph 1 Schedule 6 of the Finance Act 2010 and therefore it meets the definition of a charitable company for UK corporation tax purposes. Accordingly, the charity is potentially exempt from taxation in respect of income or capital gains received within categories covered by Chapter 3 Part 11 of the Corporation Tax Act 2010 or Section 256 of the Taxation of Chargeable Gains Act 1992, to the extent that such income or gains are applied exclusively to charitable purposes.

Tangible fixed assets

Individual fixed assets costing £1000 or more are initially recorded at cost, less any subsequent accumulated depreciation and subsequent accumulated impairment losses.

Depreciation and amortisation

Depreciation is provided on tangible fixed assets so as to write off the cost or valuation, less any estimated residual value, over their expected useful economic life as follows:

Asset class	Depreciation method and rate
Furniture and Equipment	20% Straight Line

Fixed asset investments

Fixed asset investments, other than programme related investments, are included at market value at the balance sheet date. Realised gains and losses on investments are calculated as the difference between sales proceeds and their market value at the start of the year, or their subsequent cost, and are charged or credited to the Statement of Financial Activities in the period of disposal.

Unrealised gains and losses represent the movement in market values during the year and are credited or charged to the Statement of Financial Activities based on the market value at the year end.

Trade debtors

Trade Debtors are amounts due from customers / Benefactors

Notes to the Financial Statements for the Year Ended 31 December 2021

Cash and cash equivalents

Cash and cash equivalents comprise cash on hand and call deposits, and other short-term highly liquid investments that are readily convertible to a known amount of cash and are subject to an insignificant risk of change in value.

Fund structure

Unrestricted income funds are general funds that are available for use at the trustees's discretion in furtherance of the objectives of the charity.

Restricted income funds are those donated for use in a particular area or for specific purposes, the use of which is restricted to that area or purpose.

3 Income from donations and legacies

	Unrestricted funds		Total 2021	Total 2020
	General £	Restricted funds £	£	£
Grants, including capital grants;				
Grants from other charities	244,160	150,790	394,950	459,557
	<u>244,160</u>	<u>150,790</u>	<u>394,950</u>	<u>459,557</u>

4 Investment income

	Unrestricted funds	Total 2021	Total 2020
	General £	£	£
Interest receivable and similar income;			
Interest receivable on bank deposits	1,181	1,181	103

Notes to the Financial Statements for the Year Ended 31 December 2021

5 Expenditure on charitable activities

	Unrestricted funds	Restricted funds	Total 2021	Total 2020
Note	General £	£	£	£
Grant funding of activities	95,698	42,211	137,909	168,966
Staff costs	<u>86,837</u>	<u>98,214</u>	<u>185,051</u>	<u>196,790</u>
	<u>182,535</u>	<u>140,425</u>	<u>322,960</u>	<u>365,756</u>

6 Analysis of governance and support costs

Governance costs

	Unrestricted funds	Restricted funds	Total 2021	Total 2020
	General £	£	£	£
Staff costs				
Wages and salaries	40	400	440	-
Independent examiner fees				
Examination of the financial statements	405	-	405	395
Other governance costs	<u>-</u>	<u>-</u>	<u>-</u>	<u>113</u>
	<u>445</u>	<u>400</u>	<u>845</u>	<u>508</u>

7 Trustees remuneration and expenses

No trustees, nor any persons connected with them, have received any remuneration from the charity during the year.

No trustees have received any reimbursed expenses or any other benefits from the charity during the year.

8 Staff costs

The aggregate payroll costs were as follows:

	2021 £	2020 £
Staff costs during the year were:		
Wages and salaries	<u>185,491</u>	<u>196,790</u>

The monthly average number of persons (including senior management team) employed by the charity during the year expressed as full time equivalents was as follows:

Notes to the Financial Statements for the Year Ended 31 December 2021

	2021 No	2020 No
Administration Staff	8	8

No employee received emoluments of more than £60,000 during the year.

9 Independent examiner's remuneration

	2021 £	2020 £
Examination of the financial statements	405	395

Notes to the Financial Statements for the Year Ended 31 December 2021

10 Taxation

The charity is a registered charity and is therefore exempt from taxation.

11 Tangible fixed assets

	Furniture and equipment £	Total £
Cost		
At 1 January 2021	84,040	84,040
At 31 December 2021	84,040	84,040
Depreciation		
At 1 January 2021	68,008	68,008
Charge for the year	4,008	4,008
At 31 December 2021	72,016	72,016
Net book value		
At 31 December 2021	12,024	12,024
At 31 December 2020	16,032	16,032

12 Fixed asset investments

	2021 £	2020 £
Other investments	100	100

13 Debtors

	2021 £	2020 £
Trade debtors	65	-
Due from group undertakings	69,157	56,128
VAT recoverable	(4)	-
	69,218	56,128

Group Undertakings includes £30,000 (2020: £30,000) receivable after more than one year.

	2021 £	2020 £
14 Cash and cash equivalents		
Cash on hand	8	58
Cash at bank	275,869	292,820
	275,877	292,878

Notes to the Financial Statements for the Year Ended 31 December 2021

15 Creditors: amounts falling due within one year

	2021 £	2020 £
Other taxation and social security	-	4,178
Other creditors	1,095	77,162
Accruals	(375)	(375)
	<u>720</u>	<u>80,965</u>

Notes to the Financial Statements for the Year Ended 31 December 2021

16 Funds

	Balance at 1 January 2021 £	Incoming resources £	Resources expended £	Balance at 31 December 2021 £
Unrestricted funds				
General	164,751	245,341	(182,980)	227,112
Restricted funds	<u>119,422</u>	<u>150,790</u>	<u>(140,825)</u>	<u>129,387</u>
Total funds	<u>284,173</u>	<u>396,131</u>	<u>(323,805)</u>	<u>356,499</u>
	Balance at 1 January 2020 £	Incoming resources £	Resources expended £	Balance at 31 December 2020 £
Unrestricted funds				
<i>General</i>				
General Reserves	112,347	217,020	(164,616)	164,751
Restricted funds				
Balance	<u>78,430</u>	<u>242,640</u>	<u>(201,648)</u>	<u>119,422</u>
Total funds	<u>190,777</u>	<u>459,660</u>	<u>(366,264)</u>	<u>284,173</u>

17 Related party transactions

During the year the charity made the following related party transactions:

Premises made available to Charity

Giving World has been granted a lease for a period of 15 Years from 1 March 2011 at 92 Burleys Way. Two members of the SMT are related to the lessor of the Building.

The annual rental is £9500 which is below the current market value of £40000 per annum.. At the balance sheet date the amount due to/from Premises made available to Charity was £Nil (2020 - £Nil).

Detailed Statement of Financial Activities for the Year Ended 31 December 2021

	2021	2021		
	Unrestricted funds			Total 2020
	General £	Restricted funds £	Total £	£
Income and Endowments from:				
Donations and legacies (analysed below)	244,160	150,790	394,950	459,557
Investment income (analysed below)	1,181	-	1,181	103
Total income	245,341	150,790	396,131	459,660
Expenditure on:				
Charitable activities (analysed below)	(182,980)	(140,825)	(323,805)	(366,264)
Total expenditure	(182,980)	(140,825)	(323,805)	(366,264)
Net income	62,361	9,965	72,326	93,396
Net movement in funds	62,361	9,965	72,326	93,396
Reconciliation of funds				
Total funds brought forward	164,751	119,422	284,173	190,777
Total funds carried forward	227,112	129,387	356,499	284,173

Detailed Statement of Financial Activities for the Year Ended 31 December 2021

	2021		2021	
	Unrestricted funds			Total
	General £	Restricted funds £	Total £	2020 £
<i>Donations and legacies</i>				
Restricted Voluntary Income	-	-	-	171,239
Big Lottery Grant	-	81,204	81,204	66,007
Voluntary Income	-	69,586	69,586	5,394
Voluntary Income	163,571	-	163,571	131,286
Gift Aid from subsidiary	29,389	-	29,389	26,131
Other Income	51,200	-	51,200	59,500
	244,160	150,790	394,950	459,557

	2021	2021	
	Unrestricted funds		
	General £	Total £	Total 2020 £
<i>Investment income</i>			
Interest on cash deposits	1,181	1,181	103
	1,181	1,181	103

	2021		2021	
	Unrestricted funds			Total
	General £	Restricted funds £	Total £	2020 £
<i>Charitable activities</i>				
Donated Services and Sponsorship	(51,200)	-	(51,200)	(59,500)
Freight and carriage	(9,231)	-	(9,231)	(20,425)
Building Refurbishment	-	(2,875)	(2,875)	-
Building Maintenance	(16,412)	-	(16,412)	(450)
Budiling Refurbishment	(11,211)	-	(11,211)	-
Staff and Volunteer Costs	-	(98,214)	(98,214)	(131,120)
Staff and Volunteer Costs	(86,837)	-	(86,837)	(65,670)
Rent	-	(9,500)	(9,500)	-
Rent	-	-	-	(9,500)
Light, heat and power	-	(6,202)	(6,202)	(4,980)
Insurance	-	(840)	(840)	(750)
Insurance	(1,091)	-	(1,091)	(1,500)

Detailed Statement of Financial Activities for the Year Ended 31 December 2021

	2021		2021	
	Unrestricted funds			Total 2020
	General £	Restricted funds £	Total £	£
Equipment repairs and Renewals	-	(3,024)	(3,024)	(4,489)
Equipment repairs and renewals	(1,420)	-	(1,420)	(133)
Telephone and fax	-	-	-	(1,881)
Telephone and fax	(1,848)	-	(1,848)	-
Computer software and maintenance costs	-	(5,640)	(5,640)	(7,549)
Computer software and maintenance costs	(2,200)	-	(2,200)	(1,552)
Printing, postage and stationery	(44)	-	(44)	(1,411)
Trade subscriptions	-	-	-	(264)
Sundry expenses	-	(12)	(12)	1
Sundry expenses	(256)	-	(256)	(92)
Travel and subsistence	(52)	-	(52)	(234)
Marketing	(139)	-	(139)	(3,070)
Bank charges	(97)	-	(97)	(60)
Business Development	-	(10,110)	(10,110)	(14)
Legal and professional fees	(497)	-	(497)	(305)
Depreciation of Equipment	-	(4,008)	(4,008)	(50,808)
Staff and Volunteer Costs	-	(400)	(400)	-
Staff and Volunteer Costs	(40)	-	(40)	-
Cost of trustee meetings	-	-	-	(58)
Cost Of Trustees Meetings	-	-	-	(55)
Independent examiner's fee	(405)	-	(405)	(395)
	(182,980)	(140,825)	(323,805)	(366,264)

Giving World

Email

info@givingworld.org.uk

Telephone

0116 251 6205

Website

givingworld.org.uk

Office address

92 Burleys Way
Leicester
LE1 3BD

Company registration number:
05184361

Charity registration number:
1105883

Graphic design:
keith.hagan.design@gmail.com

Photography:
peter@genius.photo

Further images courtesy of
Unsplash.com and Pixabay.com