

Home-Start Central Lancashire Annual Report 2024/2025

The Science of Support The Power of Connection



The Science of Support
The Power of Connection

PRESENTED FOR

Home-Start Central Lancashire
AGM 2025

HOME START

Central Lancashire

Home-Start Central Lancashire

Organisation and Leadership

Home-Start Central Lancashire is a family support charity and company limited by guarantee.

We work in a different way to statutory and many other services. Families choose to work with us and invite us into their homes and lives. We are an independent; non-judgmental; local community network of expert support and trained volunteers helping families with young children in their own homes and communities through their challenging times.

We are there for parents and children when they need us the most to support them through the struggles they are experiencing, so they can recognise their strengths and build on them.

Our Trustees have parenting and/or carer experience, a range of professional skills and diverse backgrounds. They are committed to the organisation providing quality family support; time; skills; and experience to ensuring the charity is well governed and supported.

Donna Hussain our current CEO began life as an only child; abandoned by her mother and raised by her grandparents in the County of Lancashire, in one of the most deprived areas of England

Donna is the founder, designer and developer of 'Sweet Chilli Parenting®'. She brings to the organisation professional experience; diverse lived experience; and a reputation for successful transformation. She advocates for families; social justice; trauma informed practice and therapeutic parenting.

Family Support Manager – Kerry Molyneaux joined our organisation in the summer of 2023. Previously Kerry worked in East Lancashire supporting diverse families living in high deprivation. She came to Home-Start wanting to be a part of something that was inclusive; empowered families and kept them together. Her lived experience; skills; and knowledge in part gained from raising her three children diagnosed with autism; and extensive experience supporting and safeguarding diverse families; contributes towards protecting our families and ensuring they have what they need to thrive.

"The Alchemy of Family Support", combines traditional and evolving support, with innovation to provide robust, progressive, early intervention and prevention family support, which has the potential to further complement and strengthen existing support services delivered by local partners. This could also ensure that families have access to identified learning and support, and what they need to overcome the 'imposed' challenges impacting their ability to advance and thrive in the 21st Century.



Organisation Strengths and Team Expertise

At Home-Start Central Lancashire, we have 30 years of experience supporting families in our local communities. Our team brings a wealth of expertise in early intervention, trauma-informed care, and family support.

Our Office Manager and Family Support Coordinators are qualified professionals with a combination of experience and qualifications including social care, early years education and development, and mental health services.

They lead a team of highly trained volunteers, some of whom have previous professional experience supporting families including retired midwives, health visitors, nutritionists etc. More importantly, all our volunteers live locally and have lived experience as parents or carers.

This lived experience, combined with rigorous training, allows them to engage with families with deep empathy and understanding, providing tailored support that addresses multiple and/or complex family challenges.

Our volunteers undergo extensive training, including areas such as safeguarding, mental health awareness, trauma-informed approaches, domestic violence and abuse, and childhood development. This ensures they have the necessary skills to assist families facing issues such as post-natal depression, isolation, bereavement, mental health challenges, intergenerational trauma, and more.

Additionally, our coordinators maintain a close working relationship with each family, overseeing volunteer efforts and ensuring support remains flexible and responsive to the changing needs of both volunteers and families.

The support and training we provide to our volunteers are highly regarded. Our volunteers are sometimes approached by our partner organisations for employment opportunities, or we support them to successfully secure jobs they were previously denied. This demonstrates the strength and quality of our volunteer program and the practical skills it instils.

We also actively support university students, particularly those studying health and social care, occupational therapy, and early childhood development. These students gain invaluable, hands-on experience with us, complementing their academic studies and giving them a real-world perspective on family support work. This collaboration strengthens our partnerships with local universities and ensures the future of quality of care for families.



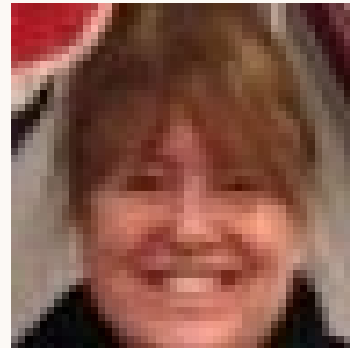
Who We Are



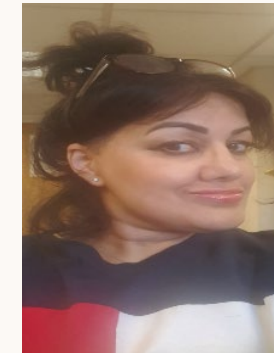
Chair of Trustees
Maureen Walkden



Vice-Chair Trustees
Jeannie Stirling



Trustee
Diane Gradwell



Trustee
Zaida Shah



Trustee
Cllr June Molineaux



Local Authority Rep
Cllr Aaron Beaver



Patron
Catherine Hoyle



CEO
Donna Hussain



Family Support Manager
Kerry Molineaux



Office Manager
Jennifer Coupe



Jorden Thompson
Family Support
Coordinator



Katie Walsh
Early Years and
Volunteer Coordinator



Becky Wood
Family Support
Coordinator



Joanna Steed
Family Support
Coordinator



Megan Alty
Family Support
Coordinator



Lauren Blair
Family Support
Coordinator



Our Vision

A future where every family, no matter their past, is strong, connected, and confident free from shame, fear, and exclusion.

- Where cycles of isolation and inequality are broken, and replaced with systems rooted in connection, compassion, and truth.**
- Where science and soul unite, empowering children, their caregivers, and communities to flourish with confidence and independence.**



The science of support -
the power of connection

Executive Summary

The past year has been one of resilience, innovation, and impact for Home-Start Central Lancashire. Against a backdrop of rising child poverty and with more than one in three children in Preston now growing up below the poverty line, our work has never been more vital.

Families across Chorley, South Ribble, West Lancashire, and Greater Preston continue to face multiple, complex challenges. Yet, through our trauma-informed, volunteer-led family support, we have been able to offer hope, stability, and practical change when it is needed most.

Over 1,200 families received support this year, each with their own story. Some, like Lisa, found a lifeline after years of crisis and isolation; others, like Sarah, discovered new strategies through Sweet Chilli Parenting® that transformed daily life with her children. Darren's recovery journey through Flip the Script showed the power of walking alongside parents tackling addiction, while Amal's story demonstrates how Vibes of Belonging can reduce isolation and help families new to the UK feel at home. These stories highlight not just the numbers, but the real lives being changed by early intervention.

Our model - The Alchemy of Family Support - continues to grow stronger. Alongside our core home-visiting, this year we -

- Expanded Budding Spirits parent and child groups to nurture early years development.
- Embedded Divergent Parent, recognising the unique strengths and challenges of neurodiverse parents.
- Strengthened our partnerships with the local universities to independently evaluate our impact, ensuring academic rigour underpins our practice.
- Invested in volunteer recruitment and wellbeing, with new local volunteers trained, many of whom go on to secure employment through the skills and confidence they gain.

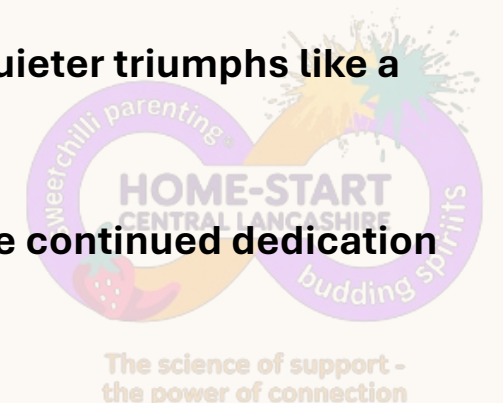
Financially, we have made strong progress, securing diverse income streams to stabilise our future and developing professional training programmes that generate independent income. We remain deeply grateful to our funders, partners, and donors whose belief in our work sustains us.

Looking ahead, our 2025–2028 Strategic Plan sets out bold ambitions to scale our services so that no family is left behind; to deepen evaluation so that the voices of families influence systems; and to ensure that every parent has the tools, confidence, and connection to break cycles of disadvantage.

This report reflects not only the measurable outcomes, improvements in emotional regulation, parenting confidence, and child development, but also the quieter triumphs like a parent answering the door for the first time, a child laughing again, a family daring to hope for a brighter future.

Our vision remains clear: a future where every family, no matter their past, is strong, connected, and confident free from shame, fear, and exclusion. With the continued dedication of our staff, volunteers, trustees, and partners, I am confident we will achieve it.

Donna Hussain
Chief Executive Officer



A message from the Chair of Trustees

Maureen Walkden 2024/2025

2024-2025 was another successful 12 months for Home-Start Central Lancashire. It has again been a privilege to serve as Chair of the Board of Trustees and be part of this success.

During the year, our CEO Donna Hussain was able to secure more funding and ensure the scheme could continue with and extend the support for families in Central Lancashire. Donna, the staff and volunteers worked tirelessly to make this happen. The role of the volunteers is a key part of our support for families which is centred on home visiting.

On behalf of the Trustees and myself I wish to thank them, Donna and her staff for all their hard work often in difficult and challenging circumstances.

Throughout 2024 Home-Start Central Lancashire worked closely with other agencies in the area. This has been a productive partnership and one we are keen to maintain and expand in the coming months. The Board of Trustees value the financial help received from our stake holders and thank them for continuing to believe in our work.

I also wish to thank my fellow trustees for their hard work and encouragement.

The Trustees are confident that Home-Start Central Lancashire will go from strength to strength and we look forward to the future with optimism.

**Best wishes to you all
Maureen.**



We are incredibly grateful for the dedication and impact of our volunteers, and this year we've made it a priority to show our appreciation in meaningful ways.

During Volunteers' Week, each volunteer received a personalised certificate in recognition of their valuable contribution. We partnered with West Lancs CVS and Preston CVS to organise a special dinner to celebrate their efforts.

Throughout the year, we shared messages of thanks through social media, text messages, and regular monthly newsletters especially to keep those who couldn't attend coffee mornings connected and informed. Christmas celebrations also gave us another opportunity to come together and express our thanks supported by Places for People who generously donated raffle prizes..

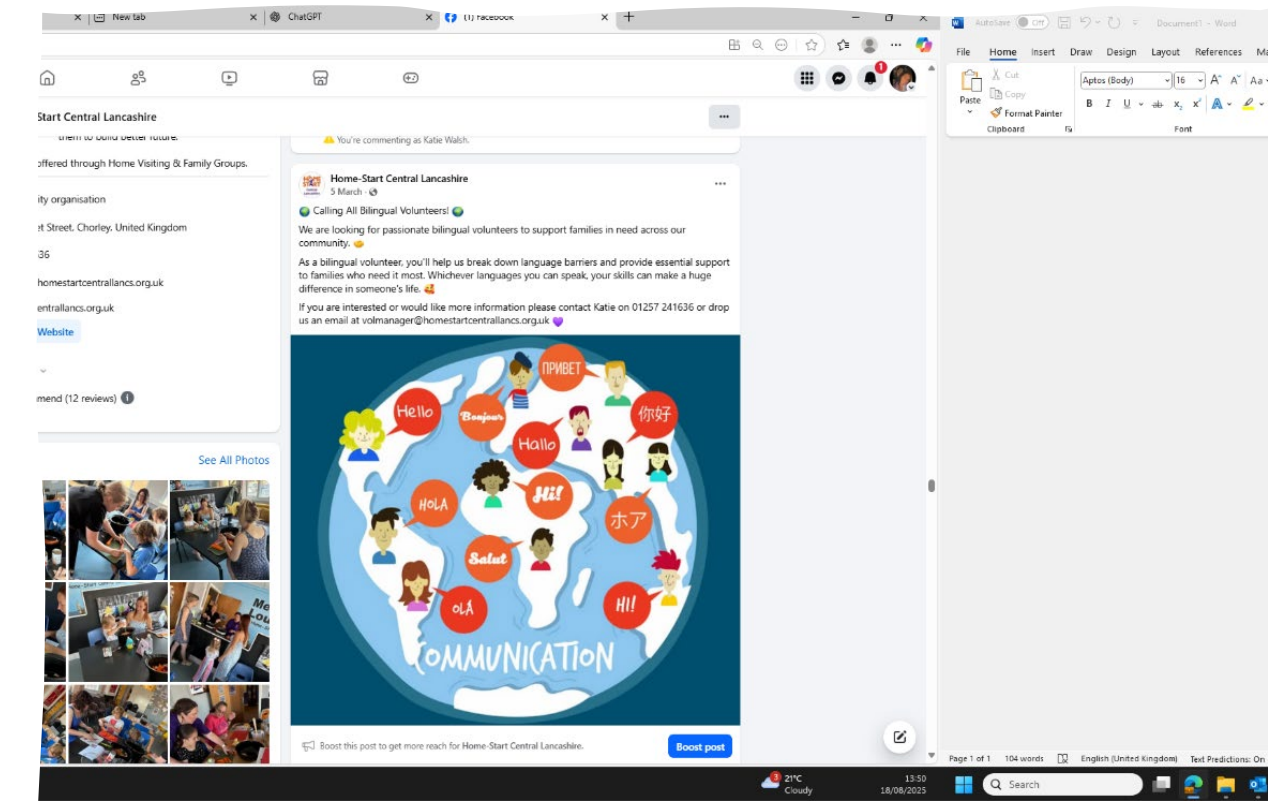
Feedback from families has consistently highlighted how much our volunteers are valued, and we remain committed to recognising the vital role they play in everything we do.



**A huge thanks to our
volunteers**

WE VALUE AND APPRECIATE YOU

- We have continued to strengthen our volunteer recruitment efforts through a range of targeted activities.
- Katie has represented our organisation at numerous events, including careers fairs at Edge Hill University and UCLAN, helping to engage students and graduates interested in giving back to their communities.
- We've also worked closely with West Lancs CVS and Preston CVS to connect with potential volunteers through local networks and community events.
- In addition, we've increased our outreach through social media campaigns, delivered targeted posts, and distributed flyers to schools to raise awareness and attract more volunteers from a diverse range of backgrounds.



Volunteer Success Story

This year, we were proud to see the journey of one of our dedicated volunteers, Megan, come full circle. Megan first joined us through a placement opportunity while studying at UCLan, volunteering with us throughout her three-year course. During that time, she developed valuable skills, gained hands-on experience, and made a real impact within our service.

We're delighted that Megan has now joined our team as a staff member.

Her progression from volunteer to employee is a fantastic example of how we not only support our volunteers but also create meaningful pathways for their future—giving back to those who give so much to us, here is Megans story:

“My volunteering journey with Home-Start Central Lancashire began 3 years ago as part of my university placement while studying Children, Schools and Families at UCLAN. In my first year, I supported two families each week, visiting them in their homes and offering emotional and practical support.

As I moved into my second and third year, I continued to support families and became involved in community-based support through volunteering at the Parent and Toddler group in Clayton Brook. These experiences helped me grow both personally and professionally and confirmed my passion for a career in family support.

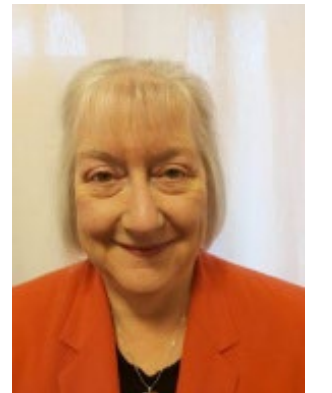
In March 2025, I was given the amazing opportunity to join the team as a Family Support Coordinator. Now, I get to be part of the same incredible team, just in a new capacity. I've come to see even more clearly just how vital our volunteers are in the support we offer at Home-Start Central Lancashire.”



Feedback From Volunteers



Heidi “You can do something for nothing but realise it's appreciated and for the greater good and that's what keeps me going , So thank you all for having faith in me”



Lesley "I volunteer because I want to give something back to society and I love doing it because I can see the difference I am making in peoples lives"



Aurora "I started volunteering to help others but along the way I discovered myself"



Valerie "It is important to me and very rewarding to be able to offer my skills and experience to make a difference in my community by helping to improve the lives of individual families in a small way"



Debbie "My time as a volunteer for home start has allowed me to challenge and develop myself with totally new skills since my retirement. The feedback I have received from families has made me role very rewarding as they have confirmed I have made a difference in their lives"



**The science of support -
the power of connection**

Feedback From Families

Mum of 2 supported by Rachel

“Mum said that she really enjoyed the support from the volunteer, mum said that she helped get out and about, had someone to talk to and was a good listener, mum said that she always turned up and was reliable.”



Mum of 2 received support from Carole

“Mum said that she has got on really well with Carole, she was really good with the children. We have been to the park, been for walks, we have played in the garden and Carole helped me with planting, it has been really nice to have someone to talk to and someone to go out with”



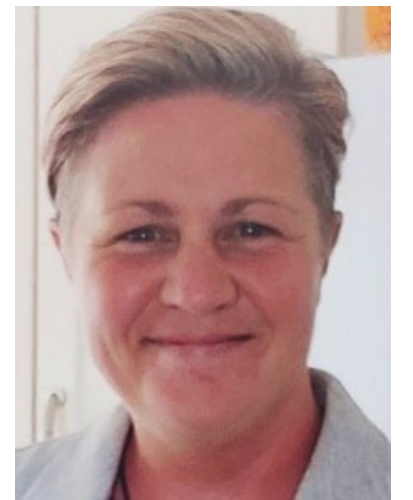
Mum of 1 supported by Julie W

“Julie is amazing, she is so lovely there has been no lows to the support only highs, Julie has been there, she has been a consistent support, and I really appreciate having her there, she kept me grounded and was brilliant with my eldest child, Julie made me feel like I am stronger, and I can stand up for myself and she was very reassuring’.



Mum of 6 supported by Heidi

“I am very thankful for the support, C5 really took to her and 'loves her'. C5 has really come out of his shell which was an outcome that I wanted to achieve, C5 loved his 'Heidi days'. The highs for the support is that Heidi managed to get C5 to try new foods and then continued and C5 tasted new foods at nursery.”



SOFOLGY VOLUNTEER EVENT

This year, we were excited to partner with Sofology to film a special feature in one of their stores, aimed at promoting our volunteer programme and encouraging others to get involved.

The film, which was later shared on televisions across their stores and across digital platforms, showcased the real impact of volunteering through powerful stories.

Our volunteers shared their personal experiences, staff highlighted the difference volunteers make to our service, and families took part to express the positive impact volunteers have had on their lives.

It was a fantastic opportunity to raise awareness, celebrate the contributions of our volunteers, and reach a wider audience with our message.

Scan the QR codes below for the full social media reels



The Alchemy of Family Support

This multidisciplinary approach gives parents a choice in the type of early intervention support they receive, reinforcing that their voices are heard and respected, which is crucial to implementing trauma-informed principles.

In addition to our core **home-visiting support**, **Sweet Chilli Parenting®**, and **Budding Spirits**, throughout 2025 we plan to further develop our newer initiatives in response to ongoing feedback, including -

Flip the Script – supporting parents to access and engage with addiction services more effectively.

Divergent Parent – supporting parents diagnosed with, awaiting diagnosis for, or suspected of having neurodiversity or attachment issues.

Vibes of Belonging – focusing on increasing awareness and support around inclusivity, equity, and cultural competence.

Breaking the Silence – Raising awareness amongst professionals about the impact of adult illiteracy and safeguarding implications.



Expanding vs. Maintaining Core Services

While we are expanding our services, it's important to clarify that programs like Flip the Script (supporting parents to engage better with addiction services), Divergent Parent (supporting neurodiverse parents), and Vibes of Belonging (focusing on Equality, Diversity, and Inclusion) are not separate elements.

Rather, these are enhancements within our core home-visiting service designed to address specific challenges that can affect family outcomes if not fully recognised and supported.

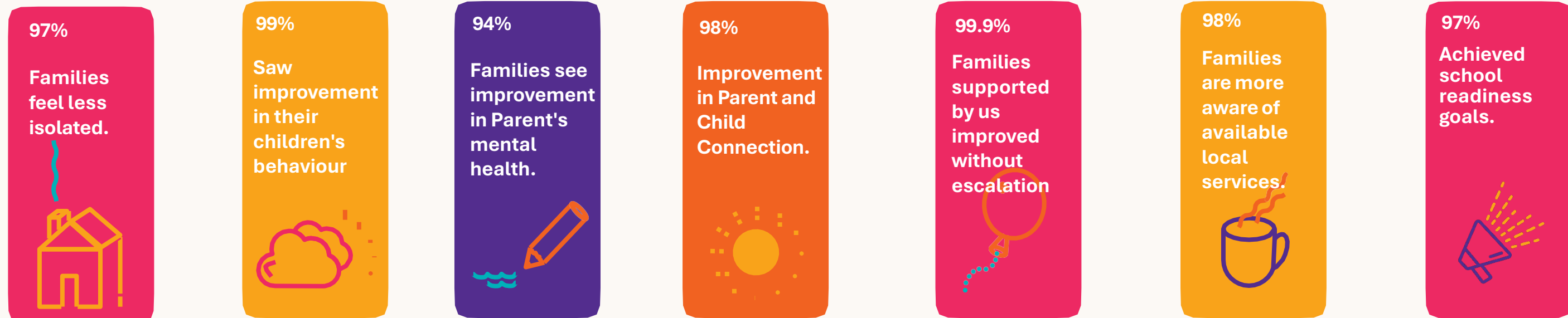
These enhancements ensure that our home-visiting service is responsive to the often diverse, complex, and underlying needs of families.



Home-Visiting Family Support

Over 1200 Families including over 3000 children were supported by Home-Start Central Lancashire during this year

Below gives an idea of the difference we make.





Impactful Stories

FAMILY TESTIMONIALS

"HomeStart changed our lives through unwavering support and kindness."

POSITIVE GROWTH

"With guidance, we learned to overcome challenges and move forward"

LASTING CONNECTIONS

"The friendships we built are lifelines in our journey."



The science of support -
the power of connection

Key Achievements

Celebrating Impactful
Moments in 2024/2025



Community Outreach

Expanded services to reach more families

Volunteer Training

Increased opportunities and
Formed strong connections with
local volunteers

Family Support

Provided support and resources to
over 1200 families

Partnership Growth

Collaborated with new and existing
organisations for support



Growth Statistics

Impact of Outreach on Local Families and Communities

1,200

Families Supported

Increased community engagement

98%

Satisfaction Rate

Families feel better supported



Budding Spirits

Clayton Brook Parent and Child Group

Since launching in September 2023, our Parent and Child Group has had a significant and positive impact on families in our community. The group has played a key role in reducing social isolation by offering a welcoming space where both children and adults can connect, build friendships, and develop trust.

Children have benefited from having regular access to engage in activities, and the opportunity to socialise with their peers, supporting their social and emotional development. Many of these children have since started nursery together, allowing them to form secure attachments and friendships ahead of time, which has made the transition into nursery smoother and less stressful for both children and their parents. The group has proven to be a valuable stepping stone in building confidence and community for families.





Clayton Brook Parent and Child group



Feedback From Families

MUM OF JACK AGED 3

"I loved coming to group because after moving to Clayton brook myself and my little boy didn't know anyone now, we both have made friends and feels like it made us more sociable also the girls who run the group were always there for us for support and guidance on daily life struggles and for that I'm truly grateful".


MUM OF ROSIE AGED 2

"The group is very welcoming and place to go with my daughter as it helps my daughter to build her confidence up more mix with other children. Also it's good for us mums to , to have brew chat whilst our children play."

MUM OF CHILD AGED 3

"Really enjoy the variety of activities and like the sensory tray, People are friendly, my child has enjoyed making new friends and playing with all the toys."

Budding Spirits Clayton Brook Parent and Child group Welcomes The Eric Wright Charitable Trust




RIGHT
LE TRUST

Grants

Learning Foundation

Water Park

Contact



Making real progress together

The Eric Wright Charitable Trust was established by Mr. Eric Wright in 1990, in the belief that the role of business in society is not to create wealth for the few but rather to help in building a strong community.

In fulfilment of this belief, he gifted his entire shareholding to the Trust make it the sole owner of the Eric Wright Group.

We were pleased to welcome members from Eric Wright, one of our key funders, to visit our group and see firsthand the impact their support has on the families we work with.

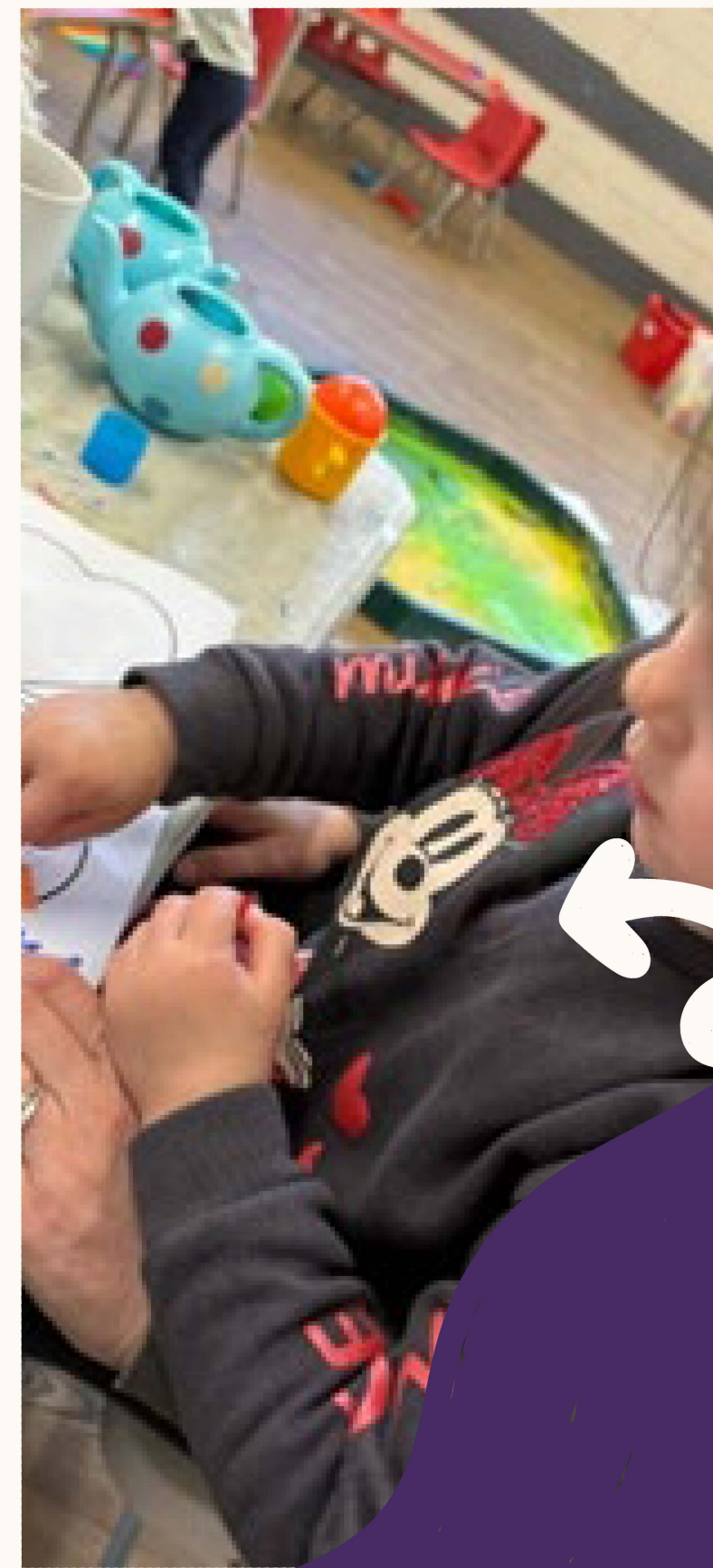
During their visit, they had the opportunity to meet parents and children, observe the activities taking place, and hear directly from families about how the group has benefited them.

Photos were also taken during the session to be shared on the Eric Wright website, helping to showcase the real-life impact of their funding.

Their visit was a valuable opportunity to highlight how their support helps reduce isolation, build friendships, and create a safe, welcoming space for families in our community.

Budding Spirits

Moss Side
Parent and
Child group



Budding Spirits

Moss Side Parent and Child Group

Our group in the Moss Side Community, began in October 2024 and has since become a vital part of our community, providing a supportive space for families to come together.

The group has been instrumental in reducing isolation by creating a friendly and inclusive environment where parents and carers can connect, share experiences, and build meaningful friendships.

At the same time, children have benefited from access to a wide range of fun and stimulating activities that support their early development and provide valuable opportunities for social interaction.

The group continues to grow in strength, helping to develop a sense of belonging for both adults and children alike.



Feedback From Families

MUM OF CHILDREN AGED 2 AND 4

“Really like the group and feel happy there. The children really enjoy it and Katie is great. Always feel welcomed and the others who attend are really nice”

MUM OF CHILD AGED 2

“Really enjoying the group, the other ladies are great and make it really welcoming”





SWEET CHILLI PARENTING®

A therapeutic approach to parenting

Key Impact Insights

Significant Improvement in Coping Ability

Participants starting with the lowest coping scores (0-1) showed the most dramatic improvements, with an average increase of 2.7 points on the 5 point scale.

Addressing Complex Needs

The workshops have successfully supported parents dealing with challenging situations, including ADHD, ASD, PDA profiles, childhood trauma, and SGO arrangements.

Diverse Referral Sources: The programme successfully attracts participants from multiple channels - education settings (52%), HSCL (26%), social services (13%), and community sources (9%)

Practical Skills Application: Participants consistently mentioned implementing specific strategies like boundaries, consequences, staying calm, and improved listening skills.

Universal Applicability

Success across diverse family situations (single parents, co-parents, grandparents, SGO arrangements) demonstrates the programme's broad





Participant Overview

Parent A

"I feel more confident, and it has helped me with new parenting skills... I have tools now to implement"

Parent B

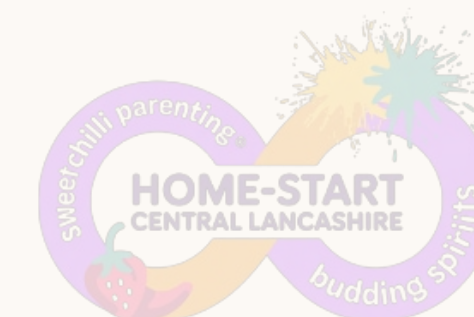
"The course has been great especially for me with SGO... has given me more confidence"

Parent C

"I can see where I was struggling before... I stay calm and learn"

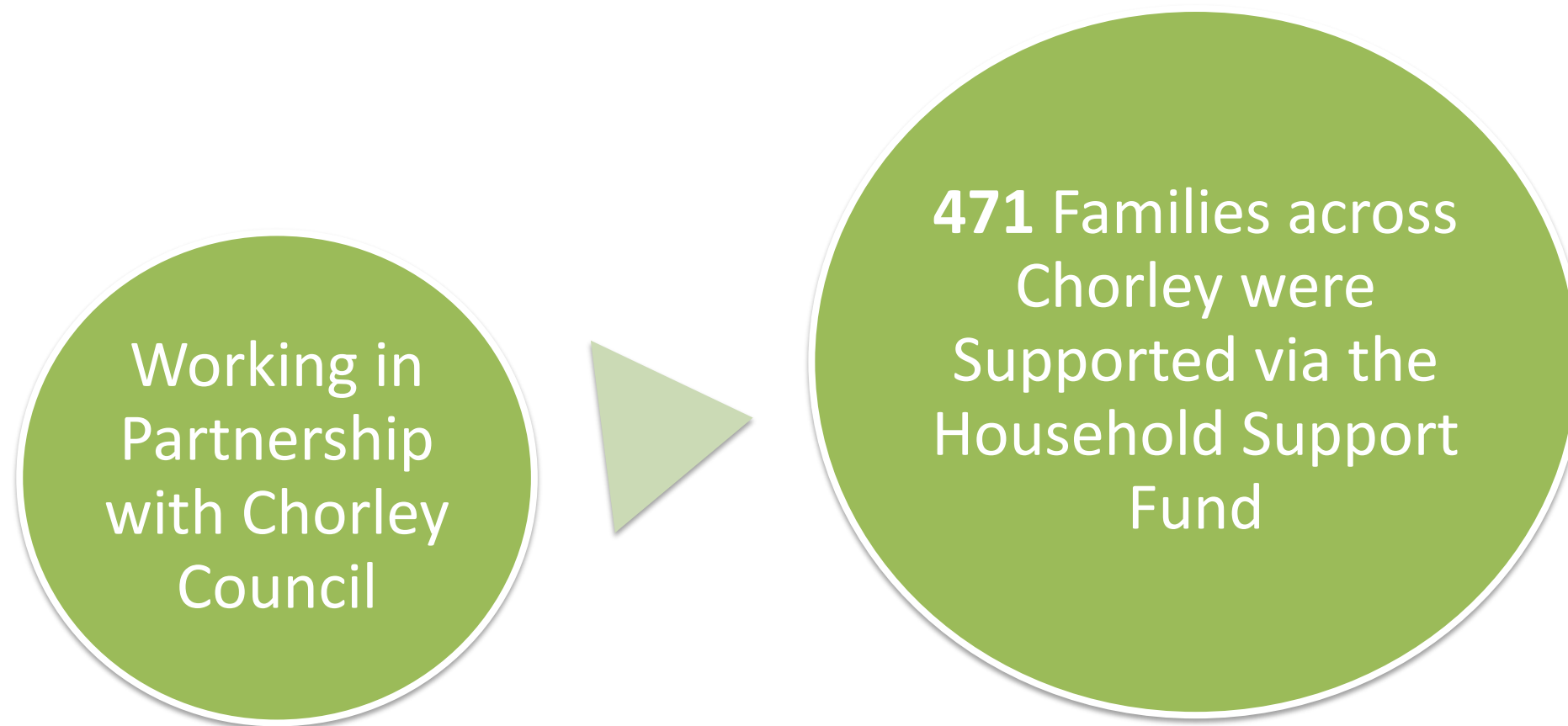
Parent D

"This course has been FANTASTIC - I have learnt so much more than other things I have tried"



The science of support -
the power of connection

Household Support Fund



GROUPS AND EVENTS @HSCL



Bringing Christmas 2024 Magic to Families

Every Child Got Something Just Right

We didn't just hand out random gifts - we really listened to what each family needed:

For our littlest ones: Soft sensory toys, musical books, and tummy time mats to help them explore their world

For the busy toddlers and young kids: Cars to zoom around the house, cuddly dolls, Bluey everything (because who doesn't love Bluey?), roaring dinosaurs, and loads of arts and crafts to keep those creative minds busy

For our older kids and teenagers: Gaming gear like Minecraft and Harry Potter stuff, Lynx gift sets (because smelling good matters!), make-up sets, and football equipment.

Going the Extra Mile

What made us really proud was seeing how our team thought about the whole family. Mums got shower gels and skincare treats, there were candles to make homes feel cozy, and we even remembered that parents deserve gifts too.

Those who donated:

We are so grateful for every donation that we received that enabled us to give gifts. We received donations from St George's and All Saints' church, St John's the Divine, Chorley, Coppull Parish, St Teresa's school in Penwortham, previously supported families, several members of the public, Places for People, Chorley Council, Asda, TSB Chorley, Tesco Chorley and Cash for Kids and their Mission Christmas campaign.

Thank you to everyone who donated



International

Day of the Family 2025



Our International Day of the Family event on May 15th, 2025, was a vibrant and inclusive celebration that brought together families from all cultures and backgrounds to enjoy a fun-filled day and connect with others in the community.

The event featured a variety of activities for children, including planting, hook-a-duck, and face painting, creating a lively and engaging atmosphere for all ages. Families also had the opportunity to enjoy baked potatoes and other food together, helping to create a warm, shared experience.

In addition to the fun, we welcomed several partner agencies who were on hand to offer information and support to parents, making the day not only enjoyable but also meaningful.

The event truly reflected the spirit of unity, belonging, and support that lies at the heart of our work with families.



SUMMER HOLIDAY GROUPS

THIS SUMMER, WE RAN TWO FREE HOLIDAY GROUPS THAT PROVIDED A FUN, SAFE, AND WELCOMING SPACE FOR CHILDREN TO PLAY, RECONNECT WITH FRIENDS, AND MAKE NEW ONES.

THESE SESSIONS GAVE CHILDREN THE CHANCE TO MIX WITH OTHERS THEY MAY NOT USUALLY MEET, HELPING TO BUILD CONFIDENCE AND SOCIAL SKILLS IN A RELAXED ENVIRONMENT.

FOR PARENTS AND CARERS, THE GROUPS OFFERED A SUPPORTIVE SPACE WHERE THEIR CHILDREN COULD ENGAGE IN MEANINGFUL PLAY DURING THE SCHOOL BREAK.

THE SESSIONS ALSO GAVE US THE OPPORTUNITY TO SPEAK WITH FAMILIES ABOUT OTHER SERVICES WE OFFER, SUCH AS OUR REGULAR PLAYGROUPS, SWEET CHILLI PARENTING COURSES, AND ADDITIONAL SUPPORT AVAILABLE THROUGHOUT THE YEAR—ENSURING FAMILIES STAY CONNECTED AND INFORMED BEYOND THE SUMMER HOLIDAYS.





Family Cooking

Workshops

Over the school holidays, we successfully ran three cooking workshops designed to support families with practical, budget-friendly cooking skills.

Each family could book onto one workshop, and as part of their participation, received a slow cooker to take home helping them continue cooking affordably beyond the session.

The workshops focused on essential skills such as meal planning, batch cooking, and cooking on a budget, all delivered in a relaxed, hands-on environment.

Children were actively involved throughout, learning alongside their parents, which not only made the sessions more engaging but also helped equip them with valuable life skills for the future.

These workshops offered a supportive space for families to learn together, build confidence in the kitchen, and make lasting changes to their approach to cooking at home.



Making Communities Stronger

Clayton Brook parent and child group
Clayton Brook Community Centre
Tunley Holme
PR5 8HL
Mondays 9:15-10:45

HOME
START
Central
Lancashire

HOME
START
Central
Lancashire



Moss Side parent and child group
Moss Side Community Centre
Dunkirk Lane
PR25 1TW
Thursdays 9:45-11:15

HOME
START
Central
Lancashire

HOME
START
Central
Lancashire



HOME
START
Central
Lancashire

THE BIG FAMILY AFTERNOON

COME AND HELP US CELEBRATE
INTERNATIONAL DAY OF THE FAMILY

AT OUR HOME-START CENTRAL LANCASHIRE CENTRE, PR7 2SL

THURSDAY 15TH MAY 2025

1:00PM - 16:30PM

Come along for an
afternoon filled
with laughter, fun,
and make some
unforgettable
memories

Event Highlights

**EXCITING GAMES & ACTIVITIES
FOOD & REFRESHMENTS
CRAFTS & FACE PAINTING
MEET OTHER LOCAL SERVICES**

Join Us for a
Spectacular
Family open
session!



Winter Play Day

Winter Play Day at Inspire, where we hosted activities such as bracelet making, colouring, and a lucky dip for children to enjoy.

The event brought together families in a festive and friendly atmosphere, providing a perfect opportunity for children to have fun and be creative.

With several other agencies also present, the day served as a valuable chance to meet new people, build connections, and share information about the wide range of services we offer to support families throughout the year.



Chorley Play day!

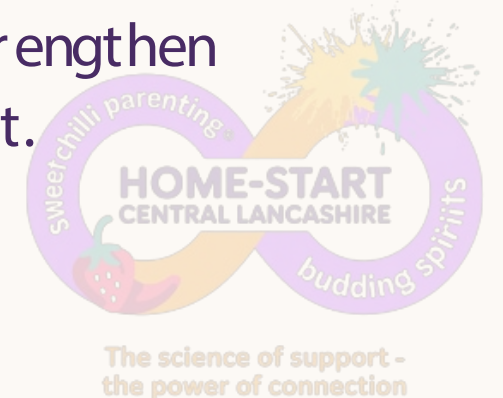


Chorley Play Day

We were delighted to attend the Devonshire Park Summer Play Day, where we provided a range of fun, creative activities for children, including hook-a-duck, headband making, bracelet crafting, and sun catcher decorating.

The event was a fantastic opportunity to engage with families in a relaxed, outdoor setting while offering children the chance to explore their creativity and have fun.

With many different services and organisations also in attendance, the day proved to be a valuable networking opportunity, allowing us to build connections, share information, and strengthen partnerships that benefit the families we support.



PARTNERSHIPS AND NETWORKING

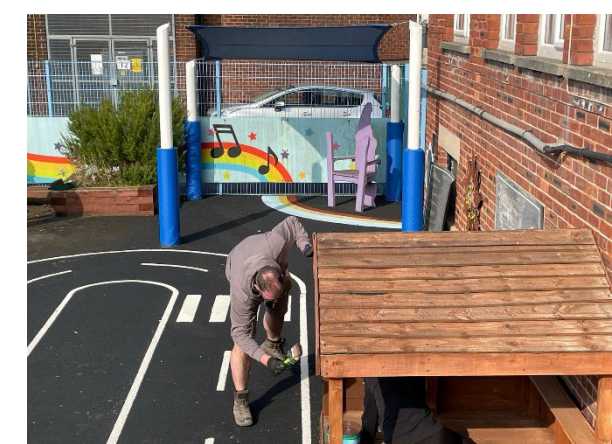
It has been a privilege to work alongside our many local partners this year. Their collaboration, expertise, and commitment to early intervention have strengthened our shared mission.

Together, we've been able to bridge gaps, create opportunities, and ensure families get the right support at the right time.

Collaborations embody what Home-Start Central Lancashire stands for - *The Science of Support. The Power of Connection*. We are deeply grateful for your shared commitment, and proud to stand alongside you all in this work.

Places for People Volunteering Day

We were delighted to welcome a team of staff from Places for People, who generously gave their time to volunteer with us for a day. Their support made a big difference, as they helped tidy and improve our outdoor area, creating a more welcoming and enjoyable space for everyone who visits.



The science of support -
the power of connection

ACKNOWLEDGEMENTS

Home-Start Central Lancashire would like to thank all the organisation's who have funded and supported us throughout the year 2024-2025

The National Lottery Big Fund
The Eric Wright Foundation
The Henry Smith Foundation
Chorley Council
South Ribble Council
Garfield Weston
Cadent
TrustHouse
Cash 4 Kids Rock FM

Thank you also to those organisations and individuals who have supported us with donations, gifts in kind, donated towards events or have worked in partnership with us, including –

Elizabeth Wilding – St Georges and All Saints Church
Margaret Doherty
St Lawrences Church
ASDA – Chorley
Chris Hobson
Places for People
Jesus Christ Latter Day Saints
TESCO – Chorley

St Johns the Divine
Peter and Pauline Lowther
TSB Chorley
Gregson Green Community

Kelly Geldard
Laura Toplis
Julie's Friend
Rachel Derbyshire

Coppull Parish Church
St. Theresa's Catholic School
Adlington Luncheon Club
David Wilson Homes





**Central
Lancashire**

TO GET IN TOUCH

EMAIL US AT

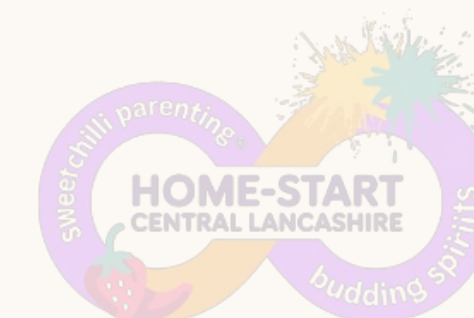
ADMIN@HOMESTARTCENTRALLANCS.ORG.UK

WEBSITE

www.homestartcentrallancs.org.uk

PHONE

0 1257 241636



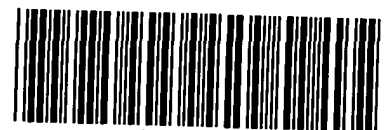
**The science of support -
the power of connection**

Registered number: 5214560
Charity number: 1105739

HOME START CENTRAL LANCASHIRE LTD
(A company limited by guarantee)

TRUSTEES' REPORT AND FINANCIAL STATEMENTS
FOR THE YEAR ENDED 31 MARCH 2025

TUESDAY



AEI1NY4Q

A28

23/12/2025

#54

COMPANIES HOUSE

HOME START CENTRAL LANCASHIRE LTD
(A company limited by guarantee)

CONTENTS

	Page
Trustees' report	1 - 5
Independent examiner's report	6 - 7
Statement of financial activities	8
Balance sheet	9
Statement of cash flows	10
Notes to the financial statements	11 - 25

HOME START CENTRAL LANCASHIRE LTD
(A company limited by guarantee)

TRUSTEES' REPORT
FOR THE YEAR ENDED 31 MARCH 2025

The Trustees present their annual report together with the financial statements of the Company for the 1 April 2023 to 31 March 2025. The Annual report serves the purposes of both a Trustees' report and a directors' report under company law. The Trustees confirm that the Annual report and financial statements of the charitable company comply with the current statutory requirements, the requirements of the charitable company's governing document and the provisions of the Statement of Recommended Practice (SORP) applicable to charities preparing their accounts in accordance with the Financial Reporting Standard applicable in the UK and Republic of Ireland (FRS102) (effective 1 January 2019).

Since the Company qualifies as small under section 382 of the Companies Act 2006, the Strategic report required of medium and large companies under the Companies Act 2006 (Strategic Report and Directors' Report) Regulations 2013 has been omitted.

Objectives and activities

a. Policies and objectives

Our Vision

That social inequalities are reduced, and every family receives the support they need so that parents, carers, and children can reach their full potential.

Our Aims

Home-Start Central Lancashire aims to increase the confidence, capacity, and independence of families by:

- Offering emotional and practical support along with friendship to parents and their children.
- Supporting families with a strength-based, trauma informed approach
- Visiting families in their own homes where the dignity and identity of each adult and child can be respected and protected.
- Promoting and encouraging early childhood development through play and learning.
- Introducing families to therapeutic parenting ideology and practice, while supporting them to implement strategies that are strength based and promote family healing.
- Reassuring parents that difficulties in bringing up children are not unusual and support and encourage them to enjoy family life.
- Developing a relationship with the family in which time can be shared and understanding can be developed.
- Identifying and working with local services and agencies that can further support families to reach their goals.

Home Start has a proven, lasting, and positive impact on the development of children and the health and welfare of the whole family. Providing support through our home visiting service, family groups, cookery workshops, and Sweet Chilli Parenting.

In setting objectives and planning for activities, the Trustees have given due consideration to general guidance published by the Charity Commission relating to public benefit, including the guidance 'Public benefit: running a charity (PB2)'.

HOME START CENTRAL LANCASHIRE LTD
(A company limited by guarantee)

TRUSTEES' REPORT (CONTINUED)
FOR THE YEAR ENDED 31 MARCH 2025

Objectives and activities (continued)

b. Activities undertaken to achieve objectives

The key activities of the charity are:

- Home visiting service – Experienced staff and trained and supervised volunteers support families in their own homes helping them with life's challenges to prevent family crisis or breakdown. The volunteers help parents to grow in confidence, build resilience, strengthen their relationships with their children and widen their links with the local community.
- Sweet Chilli Parent – Provides parents with an understanding of trauma, adverse childhood experience, brain development, and attachment theory. The program promotes strength-based therapeutic parenting strategies. This is delivered on a 1-2-1 basis with families as well as group sessions. 28 sessions had been delivered throughout the financial year.
- 48 Budding Spirits Early Learning development group sessions with parents, babies and toddlers.
- Training, support, and development for volunteers.
- Bespoke training for professionals – Developed to meet identified need and gaps in trauma informed approach practice for professionals who support families and individuals.
- Family Support groups - these provide the opportunity to engage in learning activities in a safe, welcoming environment where confidence and skills can be nurtured and also provide the opportunity to meet other families.
- Family cooking workshops - these provide the opportunity to engage in learning to cook nutritional food in a safe, welcoming environment. The workshops are facilitated both in group sessions and with families in their own homes alongside the family support they receive.

c. Volunteers

The Charity is indebted to many volunteers, without whom the charity could not operate.

The Charity is also indebted to its trustees who also offer services on a voluntary basis.

d. Main activities undertaken to further the Company's purposes for the public benefit

In meeting the objectives of the charitable company the Trustees have considered the Charity Commission guidance on public benefit and are satisfied that the activities undertaken during the year have provided significant benefit to the general public, particularly parents with young families, and their children and relatives.

Achievements and performance

a. Review of activities

During 2024 -2025 the Charity –

Supported families through home visiting, by virtual means, family groups, parenting programs, and cooking workshops.

Recruited, managed, trained, and developed volunteers.

Delivered family activities and play days.

Administered the 'Household Support Fund' to families.

Attended networking and promotional events across Lancashire.

HOME START CENTRAL LANCASHIRE LTD
(A company limited by guarantee)

TRUSTEES' REPORT (CONTINUED)
FOR THE YEAR ENDED 31 MARCH 2025

Financial review

a. Going concern

After making appropriate enquiries, the Trustees have a reasonable expectation that the Company has adequate resources to continue in operational existence for the foreseeable future. For this reason, they continue to adopt the going concern basis in preparing the financial statements. Further details regarding the adoption of the going concern basis can be found in the accounting policies.

b. Reserves policy

The charitable company aims to hold between 3 - 6 months running costs in reserves as per the Charities Commission guidelines.

Structure, governance and management

a. Constitution

Home Start Central Lancashire Ltd is registered as a charitable company limited by guarantee and was set up by a Trust deed. It has a registered charity number of 1105739.

b. Methods of appointment or election of Trustees

The management of the Company is the responsibility of the Trustees who are elected and co-opted under the terms of the Trust deed.

Any new trustees are identified and nominated by the existing board of trustees based on the skills and experience required from new trustees.

c. Policies adopted for the induction and training of Trustees

Any new trustees are given informal induction and training from existing trustees. Relevant information and Charity Commission publications regarding the responsibilities of trustees and information on the background to the charity are provided to all new trustees.

Reference and administrative details of the Company, its trustees and advisers

Maureen Walkden
Diane Gradwell
Jeannie Stirling
Zieda Ali
June Molyneaux

**Company registered
number**

5214560

**Charity registered
number**

1105739

HOME START CENTRAL LANCASHIRE LTD
(A company limited by guarantee)

TRUSTEES' REPORT (CONTINUED)
FOR THE YEAR ENDED 31 MARCH 2025

Registered office	112a Market Street Chorley Lancashire PR7 2SL
Company secretary	Donna Louise Hussain
Chief executive officer	Donna Louise Hussain
Accountants	CW Accountants Limited Office 5 The Boulevard Centre 45 Railway Road Blackburn Lancashire BB1 1EZ
Bankers	Royal Bank of Scotland 56 Market Street Chorley Lancashire PR7 2SD

Members' liability

The Members of the Company guarantee to contribute an amount not exceeding £1 to the assets of the Company in the event of winding up.

HOME START CENTRAL LANCASHIRE LTD
(A company limited by guarantee)

TRUSTEES' REPORT (CONTINUED)
FOR THE YEAR ENDED 31 MARCH 2025

Statement of Trustees' responsibilities

The Trustees (who are also the directors of the Company for the purposes of company law) are responsible for preparing the Trustees' report and the financial statements in accordance with applicable law and United Kingdom Accounting Standards (United Kingdom Generally Accepted Accounting Practice).

Company law requires the Trustees to prepare financial statements for each financial . Under company law, the Trustees must not approve the financial statements unless they are satisfied that they give a true and fair view of the state of affairs of the Company and of its incoming resources and application of resources, including its income and expenditure, for that period. In preparing these financial statements, the Trustees are required to:

- select suitable accounting policies and then apply them consistently;
- observe the methods and principles of the Charities SORP (FRS 102);
- make judgments and accounting estimates that are reasonable and prudent;
- state whether applicable UK Accounting Standards (FRS 102) have been followed, subject to any material departures disclosed and explained in the financial statements;
- prepare the financial statements on the going concern basis unless it is inappropriate to presume that the Company will continue in business.

The Trustees are responsible for keeping adequate accounting records that are sufficient to show and explain the Company's transactions and disclose with reasonable accuracy at any time the financial position of the Company and enable them to ensure that the financial statements comply with the Companies Act 2006. They are also responsible for safeguarding the assets of the Company and hence for taking reasonable steps for the prevention and detection of fraud and other irregularities.

Approved by order of the members of the board of Trustees on
and signed on their behalf by:

24/10/2025

GWalkden

Haureen Walkden

HOME START CENTRAL LANCASHIRE LTD
(A company limited by guarantee)

INDEPENDENT EXAMINER'S REPORT
FOR THE YEAR ENDED 31 MARCH 2025

Independent examiner's report to the Trustees of Home Start Central Lancashire Ltd ('the Company')

I report to the charity Trustees on my examination of the accounts of the Company for the year ended 31 March 2025.

Responsibilities and basis of report

As the Trustees of the Company (and its directors for the purposes of company law) you are responsible for the preparation of the accounts in accordance with the requirements of the Companies Act 2006 ('the 2006 Act').

Having satisfied myself that the accounts of the Company are not required to be audited under Part 16 of the 2006 Act and are eligible for independent examination, I report in respect of my examination of the Company's accounts carried out under section 145 of the Charities Act 2011 ('the 2011 Act'). In carrying out my examination I have followed the Directions given by the Charity Commission under section 145(5)(b) of the 2011 Act.

Independent examiner's statement

Since the Company's gross income exceeded £250,000 your examiner must be a member of a body listed in section 145 of the 2011 Act. I confirm that I am qualified to undertake the examination because I am a member of (enter body here), which is one of the listed bodies.

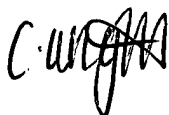
I have completed my examination. I confirm that no matters have come to my attention in connection with the examination giving me cause to believe:

1. accounting records were not kept in respect of the Company as required by section 386 of the 2006 Act; or
2. the accounts do not accord with those records; or
3. the accounts do not comply with the accounting requirements of section 396 of the 2006 Act other than any requirement that the accounts give a 'true and fair' view which is not a matter considered as part of an independent examination; or
4. the accounts have not been prepared in accordance with the methods and principles of the Statement of Recommended Practice for accounting and reporting by charities [applicable to charities preparing their accounts in accordance with the Financial Reporting Standard applicable in the UK and Republic of Ireland (FRS 102)].

I have no concerns and have come across no other matters in connection with the examination to which attention should be drawn in this report in order to enable a proper understanding of the accounts to be reached.

This report is made solely to the Company's Trustees, as a body, in accordance with Part 4 of the Charities (Accounts and Reports) Regulations 2008. My work has been undertaken so that I might state to the Company's Trustees those matters I am required to state to them in an Independent examiner's report and for no other purpose. To the fullest extent permitted by law, I do not accept or assume responsibility to anyone other than the Company and the Company's Trustees as a body, for my work or for this report.

Signed:



Dated:

24/10/2025

HOME START CENTRAL LANCASHIRE LTD
(A company limited by guarantee)

INDEPENDENT EXAMINER'S REPORT (CONTINUED)
FOR THE YEAR ENDED 31 MARCH 2025

Courtney Wright

FCCA

Office 5, The Boulevard Centre, 45 Railway Road, Blackburn, Lancashire, BB1 1EZ

HOME START CENTRAL LANCASHIRE LTD
(A company limited by guarantee)

**STATEMENT OF FINANCIAL ACTIVITIES (INCORPORATING INCOME AND EXPENDITURE ACCOUNT)
FOR THE YEAR ENDED 31 MARCH 2025**

	Note	Restricted funds 2025 £	Unrestricted funds 2025 £	Total funds 2025 £	Total funds 2024 £
Income from:					
Donations and legacies	3	160,875	96,127	257,002	200,232
Other trading activities		-	4,425	4,425	11,007
Investments	4	-	514	514	1,409
Total income		160,875	101,066	261,941	212,648
Expenditure on:					
Charitable activities		191,780	83,076	274,856	244,816
Total expenditure		191,780	83,076	274,856	244,816
Net movement in funds		(30,905)	17,990	(12,915)	(32,168)
Reconciliation of funds:					
Total funds brought forward		34,124	37,235	71,359	103,527
Net movement in funds		(30,905)	17,990	(12,915)	(32,168)
Total funds carried forward		3,219	55,225	58,444	71,359

The Statement of financial activities includes all gains and losses recognised in the year.

The notes on pages 11 to 25 form part of these financial statements.

HOME START CENTRAL LANCASHIRE LTD
(A company limited by guarantee)
REGISTERED NUMBER: 5214560

BALANCE SHEET
AS AT 31 MARCH 2025

	Note	2025 £	2024 £
Fixed assets			
		-	-
Current assets			
Debtors	10	-	750
Investments	11	62,786	61,907
Cash at bank and in hand		22,479	13,048
		<u>85,265</u>	<u>75,705</u>
Creditors: amounts falling due within one year	12	(26,821)	(4,346)
Net current assets		<u>58,444</u>	<u>71,359</u>
Total assets less current liabilities		<u>58,444</u>	<u>71,359</u>
Net assets excluding pension asset		<u>58,444</u>	<u>71,359</u>
Total net assets		<u>58,444</u>	<u>71,359</u>
Charity funds			
Restricted funds	13	3,219	34,124
Unrestricted funds	13	55,225	37,235
Total funds		<u>58,444</u>	<u>71,359</u>

The Company was entitled to exemption from audit under section 477 of the Companies Act 2006.

The members have not required the company to obtain an audit for the year in question in accordance with section 476 of Companies Act 2006.

The Trustees acknowledge their responsibilities for complying with the requirements of the Act with respect to accounting records and preparation of financial statements.

The financial statements have been prepared in accordance with the provisions applicable to entities subject to the small companies regime.

The financial statements were approved and authorised for issue by the Trustees on 24TH OCTOBER 2025 and signed on their behalf by:

The notes on pages 11 to 25 form part of these financial statements.

M. Walkden
MAULEN WALKDEN

HOME START CENTRAL LANCASHIRE LTD
(A company limited by guarantee)

STATEMENT OF CASH FLOWS
FOR THE YEAR ENDED 31 MARCH 2025

	2025	2024
	£	£
Cash flows from operating activities		
Net cash used in operating activities	9,560	(28,615)
Cash flows from investing activities		
Net cash provided by investing activities	-	-
Cash flows from financing activities		
Net cash provided by financing activities	-	-
Change in cash and cash equivalents in the year	9,560	(28,615)
Cash and cash equivalents at the beginning of the year	75,705	104,320
Cash and cash equivalents at the end of the year	85,265	75,705

The notes on pages 11 to 25 form part of these financial statements

HOME START CENTRAL LANCASHIRE LTD
(A company limited by guarantee)

NOTES TO THE FINANCIAL STATEMENTS
FOR THE YEAR ENDED 31 MARCH 2025

1. General information

Home Start Central Lancashire is a private limited company without share capital and a registered charity. The company was incorporated in England and Wales and has the following registered office address:
112a Market Street
Chorley
Lancashire
PR7 2SL

2. Accounting policies

2.1 Basis of preparation of financial statements

The financial statements have been prepared in accordance with the Charities SORP (FRS 102) - Accounting and Reporting by Charities: Statement of Recommended Practice applicable to charities preparing their accounts in accordance with the Financial Reporting Standard applicable in the UK and Republic of Ireland (FRS 102) (effective 1 January 2019), the Financial Reporting Standard applicable in the UK and Republic of Ireland (FRS 102) and the Companies Act 2006.

Home Start Central Lancashire Ltd meets the definition of a public benefit entity under FRS 102. Assets and liabilities are initially recognised at historical cost or transaction value unless otherwise stated in the relevant accounting policy.

2.2 Income

All income is recognised once the Company has entitlement to the income, it is probable that the income will be received and the amount of income receivable can be measured reliably.

Grants are included in the Statement of financial activities on a receivable basis. The balance of income received for specific purposes but not expended during the period is shown in the relevant funds on the Balance sheet. Where income is received in advance of entitlement of receipt, its recognition is deferred and included in creditors as deferred income. Where entitlement occurs before income is received, the income is accrued.

Income tax recoverable in relation to investment income is recognised at the time the investment income is receivable.

2.3 Expenditure

Expenditure is recognised once there is a legal or constructive obligation to transfer economic benefit to a third party, it is probable that a transfer of economic benefits will be required in settlement and the amount of the obligation can be measured reliably. Expenditure is classified by activity. The costs of each activity are made up of the total of direct costs and shared costs, including support costs involved in undertaking each activity. Direct costs attributable to a single activity are allocated directly to that activity. Shared costs which contribute to more than one activity and support costs which are not attributable to a single activity are apportioned between those activities on a basis consistent with the use of resources. Central staff costs are allocated on the basis of time spent, and depreciation charges allocated on the portion of the asset's use.

Expenditure on charitable activities is incurred on directly undertaking the activities which further the Company's objectives, as well as any associated support costs.

HOME START CENTRAL LANCASHIRE LTD
(A company limited by guarantee)

NOTES TO THE FINANCIAL STATEMENTS
FOR THE YEAR ENDED 31 MARCH 2025

2. Accounting policies (continued)

2.3 Expenditure (continued)

All expenditure is inclusive of irrecoverable VAT.

2.4 Interest receivable

Interest on funds held on deposit is included when receivable and the amount can be measured reliably by the Company; this is normally upon notification of the interest paid or payable by the institution with whom the funds are deposited.

2.5 Debtors

Trade and other debtors are recognised at the settlement amount after any trade discount offered. Prepayments are valued at the amount prepaid net of any trade discounts due.

2.6 Cash at bank and in hand

Cash at bank and in hand includes cash and short-term highly liquid investments with a short maturity of three months or less from the date of acquisition or opening of the deposit or similar account.

2.7 Liabilities and provisions

Liabilities are recognised when there is an obligation at the Balance sheet date as a result of a past event, it is probable that a transfer of economic benefit will be required in settlement, and the amount of the settlement can be estimated reliably.

Liabilities are recognised at the amount that the Company anticipates it will pay to settle the debt or the amount it has received as advanced payments for the goods or services it must provide.

Provisions are measured at the best estimate of the amounts required to settle the obligation. Where the effect of the time value of money is material, the provision is based on the present value of those amounts, discounted at the pre-tax discount rate that reflects the risks specific to the liability. The unwinding of the discount is recognised in the Statement of financial activities as a finance cost.

2.8 Financial instruments

The Company only has financial assets and financial liabilities of a kind that qualify as basic financial instruments. Basic financial instruments are initially recognised at transaction value and subsequently measured at their settlement value with the exception of bank loans which are subsequently measured at amortised cost using the effective interest method.

2.9 Pensions

The Company operates a defined contribution pension scheme and the pension charge represents the amounts payable by the Company to the fund in respect of the year.

HOME START CENTRAL LANCASHIRE LTD
(A company limited by guarantee)

NOTES TO THE FINANCIAL STATEMENTS
FOR THE YEAR ENDED 31 MARCH 2025

2. Accounting policies (continued)

2.10 Fund accounting

General funds are unrestricted funds which are available for use at the discretion of the Trustees in furtherance of the general objectives of the Company and which have not been designated for other purposes.

Designated funds comprise unrestricted funds that have been set aside by the Trustees for particular purposes. The aim and use of each designated fund is set out in the notes to the financial statements.

Restricted funds are funds which are to be used in accordance with specific restrictions imposed by donors or which have been raised by the Company for particular purposes. The costs of raising and administering such funds are charged against the specific fund. The aim and use of each restricted fund is set out in the notes to the financial statements.

Investment income, gains and losses are allocated to the appropriate fund.

HOME START CENTRAL LANCASHIRE LTD
(A company limited by guarantee)

**NOTES TO THE FINANCIAL STATEMENTS
FOR THE YEAR ENDED 31 MARCH 2025**

3. Income from donations and legacies

	Restricted funds 2025 £	Unrestricted funds 2025 £	Total funds 2025 £
Donations	1,625	1,627	3,252
Grants	159,250	94,500	253,750
	<u>160,875</u>	<u>96,127</u>	<u>257,002</u>
	<i>Restricted funds 2024 £</i>	<i>Unrestricted funds 2024 £</i>	<i>Total funds 2024 £</i>
Donations	1,563	509	2,072
Grants	160,722	37,438	198,160
	<u>162,285</u>	<u>37,947</u>	<u>200,232</u>

4. Investment income

	Unrestricted funds 2025 £	Total funds 2025 £
Investment income	514	514
	<i>Unrestricted funds 2024 £</i>	<i>Total funds 2024 £</i>
Investment income	1,409	1,409

HOME START CENTRAL LANCASHIRE LTD
(A company limited by guarantee)

**NOTES TO THE FINANCIAL STATEMENTS
FOR THE YEAR ENDED 31 MARCH 2025**

5. Analysis of Grant Income

	Restricted funds 2025 £	Unrestricted funds 2025 £	Total funds 2025 £
Grants			
Henry Smith	65,000	-	65,000
Chorley Council	-	76,625	76,625
Realise Wellness	1,250	-	1,250
Groundwork	375	-	375
Other small donations	-	1,626	1,626
National Lottery	81,250	-	81,250
Lancashire County Council	-	2,188	2,188
Eric Wright	13,000	-	13,000
South Ribble Borough Council	-	13,500	13,500
Home Start UK	-	2,188	2,188
Total 2025	160,875	96,127	257,002
	<i>Restricted funds 2024 £</i>	<i>Unrestricted funds 2024 £</i>	<i>Total funds 2024 £</i>
All grants	162,285	37,947	200,232

6. Independent examiner's remuneration

	2025 £	2024 £
Fees payable to the Company's independent examiner for the independent examination of the Company's annual accounts	450	450

HOME START CENTRAL LANCASHIRE LTD
(A company limited by guarantee)

NOTES TO THE FINANCIAL STATEMENTS
FOR THE YEAR ENDED 31 MARCH 2025

7. Staff costs

	2025	2024
	£	£
Wages and salaries	191,780	164,956
Social security costs	9,023	9,908
Contribution to defined contribution pension schemes	11,040	9,864
	<u>211,843</u>	<u>184,728</u>

The average number of persons employed by the Company during the year was as follows:

	2025	2024
	No.	No.
Operational	7	6
Administration	1	1
	<u>8</u>	<u>7</u>

No employee received remuneration amounting to more than £60,000 in either year.

HOME START CENTRAL LANCASHIRE LTD
(A company limited by guarantee)

**NOTES TO THE FINANCIAL STATEMENTS
FOR THE YEAR ENDED 31 MARCH 2025**

8. Analysis of direct costs on charitable activities

	Restricted funds 2025 £	Unrestricted funds 2025 £	Total funds 2025 £
Salaries with on costs	149,122	62,721	211,843
Utilities	15,044	5,052	20,096
Volunteer expenses	913	-	913
Bank charges	-	60	60
Project costs	10,775	-	10,775
Rent and rates	3,363	3,363	6,726
General office expenses	6,826	3,438	10,264
Staff resources	-	412	412
Cleaning	-	1,649	1,649
Repairs and maintenance	-	2,796	2,796
Training	802	-	802
Professional fees	1,023	1,022	2,045
Insurance	-	1,513	1,513
Management committee costs	3,912	-	3,912
Travel costs	-	-	-
Home Start levy	-	600	600
Accountancy	-	450	450
Total 2025	191,780	83,076	274,856

HOME START CENTRAL LANCASHIRE LTD
(A company limited by guarantee)

**NOTES TO THE FINANCIAL STATEMENTS
FOR THE YEAR ENDED 31 MARCH 2025**

	<i>Restricted funds 2024 £</i>	<i>Unrestricted funds 2024 £</i>	<i>Total funds 2024 £</i>
Salaries with on costs	107,091	77,637	184,728
Utilities	9,823	7,248	17,071
Volunteer expenses	1,024	319	1,343
Bank Charges	-	70	70
Project costs	10,795	-	10,795
Rent and rates	3,153	3,154	6,307
General office expenses	5,023	3,983	9,006
Staff resources	-	2,193	2,193
Repairs and maintenance	-	2,896	2,896
Training	183	-	183
Professional fees	1,982	1,533	3,515
Insurance	-	1,717	1,717
Management committee costs	150	-	150
Travel costs	53	-	53
Home Start Levy	-	4,339	4,339
Accountancy	-	450	450
Total 2024	139,277	105,539	244,816

9. Trustees' remuneration and expenses

During the year, no Trustees received any remuneration or other benefits (2024 - £NIL).

During the year ended 31 March 2025, no Trustee expenses have been incurred (2024 - £NIL).

10. Debtors

	2025 £	2024 £
Due within one year		
Prepayments and accrued income	-	750
	-	750

HOME START CENTRAL LANCASHIRE LTD
(A company limited by guarantee)

NOTES TO THE FINANCIAL STATEMENTS
FOR THE YEAR ENDED 31 MARCH 2025

11. Current asset investments

	2025	2024
	£	£
Listed investments	62,786	61,907

12. Creditors: Amounts falling due within one year

	2025	2024
	£	£
Other taxation and social security	-	3,384
Pension fund	921	512
Accruals and deferred income	25,900	450
	26,821	4,346

HOME START CENTRAL LANCASHIRE LTD
(A company limited by guarantee)

**NOTES TO THE FINANCIAL STATEMENTS
FOR THE YEAR ENDED 31 MARCH 2025**

13. Statement of funds

Statement of funds - current year

	Balance at 1 April 2024 £	Income £	Expenditure £	Balance at 31 March 2025 £
Unrestricted funds				
Designated funds				
Designated Funds - all funds	36,310	-	-	36,310
General funds				
General Funds - all funds	925	101,066	(83,076)	18,915
Total Unrestricted funds	37,235	101,066	(83,076)	55,225
Restricted funds				
The National Lottery	3,484	81,250	(82,658)	2,076
Eric Wright	-	13,000	(13,000)	-
Preston City Council - DA project	30,640	-	(30,640)	-
Henry Smith	-	65,000	(63,857)	1,143
Groundwork	-	375	(375)	-
Realise Wellness	-	1,250	(1,250)	-
	34,124	160,875	(191,780)	3,219
Total of funds	71,359	261,941	(274,856)	58,444

HOME START CENTRAL LANCASHIRE LTD
(A company limited by guarantee)

**NOTES TO THE FINANCIAL STATEMENTS
FOR THE YEAR ENDED 31 MARCH 2025**

13. Statement of funds (continued)

Statement of funds - prior year

	<i>Balance at 1 April 2023 £</i>	<i>Income £</i>	<i>Expenditure £</i>	<i>Balance at 31 March 2024 £</i>
Unrestricted funds				
Designated funds				
Designated Funds - all funds	36,310	-	-	36,310
General funds				
General Funds - all funds	56,101	50,363	(105,539)	925
Total Unrestricted funds	92,411	50,363	(105,539)	37,235
Restricted funds				
The National Lottery	9,008	75,000	(80,524)	3,484
Eric Wright	2,108	-	(2,108)	-
Household Support Fund	-	46,000	(46,000)	-
Skelton Bounty	-	1,563	(1,563)	-
Preston City Council - DA project	-	32,722	(2,082)	30,640
Henry Smith	-	7,000	(7,000)	-
	11,116	162,285	(139,277)	34,124
Total of funds	103,527	212,648	(244,816)	71,359

HOME START CENTRAL LANCASHIRE LTD
(A company limited by guarantee)

NOTES TO THE FINANCIAL STATEMENTS
FOR THE YEAR ENDED 31 MARCH 2025

14. Statement of funds

Designated funds - This fund is for 6 month running costs as per the Charities Commission best practice guidance. This includes; redundancies, notices, leases and running costs.

Restricted funds -

Chorley and Leyland Methodist church - This donation was received specifically to provide children's dinners as part of the holiday hunger project throughout the school holidays.

Eric Wright - This fund is to provide family support.

National Lottery Fund - This fund is for our core family support service and the development of 'Sweet Chilli Parenting' our parenting workshops.

Kickstart - These grants were received by the DWP to support young people gaining access to employment.

Household Support Fund - This fund is to support families in the community with essential goods and support.

Amazon/ M&S Fund - These funds are to provide family support.

15.

Summary of funds - current year

	Balance at 1 April 2024 £	Income £	Expenditure £	Balance at 31 March 2025 £
Designated funds	36,310	-	-	36,310
General funds	925	101,066	(83,076)	18,915
Restricted funds	34,124	160,875	(191,780)	3,219
	<u>71,359</u>	<u>261,941</u>	<u>(274,856)</u>	<u>58,444</u>

HOME START CENTRAL LANCASHIRE LTD
(A company limited by guarantee)

**NOTES TO THE FINANCIAL STATEMENTS
FOR THE YEAR ENDED 31 MARCH 2025**

15. Summary of funds (continued)

Summary of funds - prior year

	<i>Balance at 1 April 2023</i>	<i>Income</i>	<i>Expenditure</i>	<i>Balance at 31 March 2024</i>
	£	£	£	£
Designated funds	36,310	-	-	36,310
General funds	56,101	50,363	(105,539)	925
Restricted funds	11,116	162,285	(139,277)	34,124
	<u>103,527</u>	<u>212,648</u>	<u>(244,816)</u>	<u>71,359</u>

16. Analysis of net assets between funds

Analysis of net assets between funds - current year

	Restricted funds 2025 £	Unrestricted funds 2025 £	Total funds 2025 £
Current assets	3,219	82,046	85,265
Creditors due within one year	-	(26,821)	(26,821)
Total	<u>3,219</u>	<u>55,225</u>	<u>58,444</u>

Analysis of net assets between funds - prior year

	<i>Restricted funds 2024 £</i>	<i>Unrestricted funds 2024 £</i>	<i>Total funds 2024 £</i>
Current assets	34,124	41,581	75,705
Creditors due within one year	-	(4,346)	(4,346)
Total	<u>34,124</u>	<u>37,235</u>	<u>71,359</u>

HOME START CENTRAL LANCASHIRE LTD
(A company limited by guarantee)

**NOTES TO THE FINANCIAL STATEMENTS
FOR THE YEAR ENDED 31 MARCH 2025**

17. Reconciliation of net movement in funds to net cash flow from operating activities

	2025 £	2024 £
Net expenditure for the year (as per Statement of Financial Activities)	(12,915)	(32,168)
Adjustments for:		
Decrease in debtors	-	268
Increase in creditors	22,475	3,285
Net cash provided by/(used in) operating activities	9,560	(28,615)

18. Analysis of cash and cash equivalents

	2025 £	2024 £
Cash in hand	85,265	75,705
Total cash and cash equivalents	85,265	75,705

19. Analysis of changes in net cash

	At 1 April 2024 £	Cash flows £	At 31 March 2025 £
Cash at bank and in hand	13,048	9,431	22,479
Debt due within 1 year	(512)	(409)	(921)
Liquid investments	61,907	879	62,786
	74,443	9,901	84,344

20. Related party transactions

The Company has not entered into any related party transaction during the year, nor are there any outstanding balances owing between related parties and the Company at 31 March 2025.

HOME START CENTRAL LANCASHIRE LTD
(A company limited by guarantee)

NOTES TO THE FINANCIAL STATEMENTS
FOR THE YEAR ENDED 31 MARCH 2025

21. Post balance sheet events

There have been no significant events affecting the Company since the year end.

22. Controlling party

Those directors listed on the administrative page of the accounts control the Company.