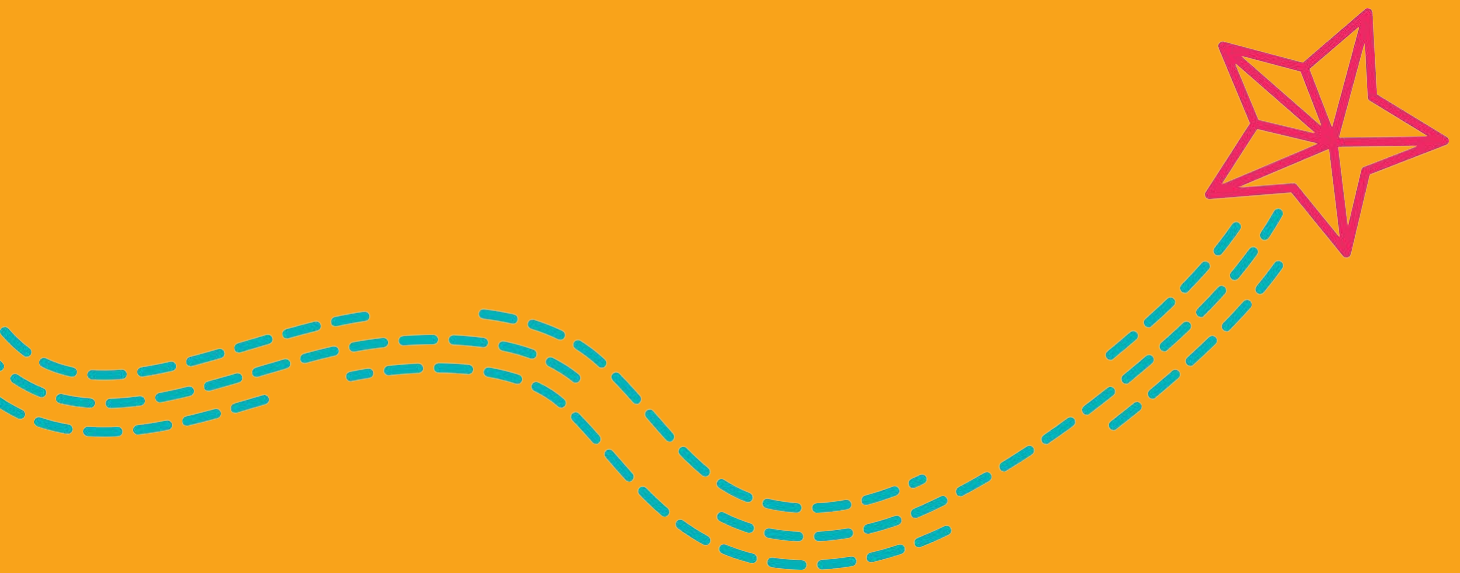




Central
Lancashire



**Home-Start
Central Lancashire
Annual Report
2023/2024**

Home-Start Central Lancashire at a glance

Home-Start Central Lancashire have been providing independent support for families in the local area since 1996. Initially as an unregistered community group, and later due to growth and demand we expanded our support offer and registered as a charity and company limited by guarantee in 2004. Although we are part of a wider network consisting of over 180 local Home-Starts, we remain financially independent, and our services are tailored to meet local need and priorities. Home-Start UK provide the branding for the network, and the Quality Assurance Framework and assessments. This ensures a consistent quality standard of good practice is instilled and maintained throughout all local Home-Starts.

We support families living in the most deprived neighbourhoods across West Lancashire, Chorley, South Ribble, and Greater Preston, alongside a large network of partners from across different sectors who we work in close collaboration with, to increase local resources, support and opportunities proving beneficial when tailoring our services to meet local area and individual family support needs.

Changes to traditional family life and structure over the past decade have been widely embraced and celebrated, but many families are struggling, and suffering from a continuing decline in supportive family networks and close relationships. Families report that this is a result of relationship breakdown, societal changes, cultural and ideological differences, and the continuing rise in health, financial, environmental, and socio-economic inequalities. Although the traditional family structure is no longer an expected cultural standard, ‘family’ remains fundamentally important to individuals throughout their lives. Families still bear the primary responsibility for the education and socialisation of children as well as instilling values of citizenship and belonging within local communities and society.

Developing new and old services to form ‘The Alchemy of Family Support’ and implementing the elements over the past year either as a standalone provision, or combined in a multi-disciplinary approach, has been of vital importance for ensuring we have got it right, and our services are supporting the evolving needs of families today whilst anticipating those of the future.



Who We Are 2023/2024



Patron

Catherine Hoyle

**Chair of Trustees
Maureen Walkden**

**Vice Chair of Trustees
Jeannie Stirling**

Trustee / Directors

Diane Gradwell

Zed Ali

**Sarah Taylor
(Resigned July 2024)**

Cllr June Molyneaux

Staff Members

Chief Executive Officer - Donna Hussain

Family Support Service Manager- Kerry Molineaux

Office Manager - Jennifer Coupe

Family Support Coordinators -

Jorden Thompson, Katie Walsh, Rebecca Woods, Joanna Steed.

Professional Services

Finance Administrator - Meriel Beattie.

Accountant Courtney Wright

**Thank you to those Trustees, staff , and Volunteers who have moved on
during 2023/2024**



Our Vision

That social inequalities are reduced, and every family receives the support they need so parents, carers, and children can become more independent, and reach their full potential.

Our Aims

Home-Start Central Lancashire aims to increase the confidence, capacity, and independence of families by.

- **Offering emotional and practical support along with friendship to parents and their children.**
- **Continuously improving our support services.**
- **Advocating for families and making sure their voices are heard.**
- **Supporting families with a strength-based, trauma informed approach.**
- **Working alongside local universities to inform academic research and development.**
- **Visiting families in their own homes where the dignity and identity of each adult and child can be respected and protected.**
- **Promoting and encouraging early childhood development through play and learning.**
- **Introducing families to therapeutic parenting ideology and strategies.**
- **Reassuring parents that difficulties in bringing up children are not unusual and support and encourage them to enjoy family life.**
- **Developing a relationship with the family in which time can be shared and understanding can be developed.**
- **Identifying and working with local services and agencies that can further support families to reach their goals.**

EXECUTIVE SUMMARY

The past 12 months have been transformative for Home-Start Central Lancashire. Our commitment to empowering families through tailored support has not only improved lives and attracted investment, but it has also strengthened our community ties and expanded our reach. This report summarises our impact, engagement with families and partners, and the successful piloting of innovative interventions such as Sweet Chilli Parenting and Budding Spirits.

Additionally, we outline our future for introducing new initiatives and expanding our services to address needs that are currently unmet.

Increased diverse funding from supporters over the past year and their encouragement to progress innovation, has been instrumental in bolstering our confidence and efforts to develop and deliver, enhanced support for families.

Embedding trauma informed learning, experience, and approaches throughout all areas of support and organisation, have provided the strengthened relationships and environment needed, to implement newly developed initiatives alongside our improved volunteer led Home-Visiting Support Service when combined form - 'The Alchemy of Family Support.'

Managing and coordinating service implementation, monitoring impact, conducting surveys and consultations, and trying to anticipate the response of families and collaborative partners, has only been possible because of the supportive combined efforts of Trustees, staff, volunteers, and wider stakeholders.

Maintaining and strengthening our core home-visiting support, whilst nurturing innovation and design from conception stage through to implementation, going on to monitor practice and impact, has been an incredible journey of excitement and learning, co-existing alongside doubt and anticipation, and propelled by optimism, inspiration, and faith. Relief finally emerging with the realisation that the effects of widening inequalities, poverty, and disadvantage, can be overcome with determination, and the right support.

Over the year it has become clear how important renewal, diversity, and strong connections are to unlocking sustainable achievement, potential, and investment.

Donna Hussain

Chief Executive Officer

A word from our Chair of Trustees

Maureen Walkden 2023/2024



It has been both a pleasure and a privilege to serve on the Board of Trustees of Home-Start Central Lancashire in the capacity of Chair over the past twelve months.

During another challenging year our CEO Donna Hussain, the staff, and Volunteers have worked tirelessly to provide support for families in Chorley, South Ribble, West Lancashire and Greater Preston. On behalf of the Board of Trustees and myself want to thank them all for their dedicated hard work.

Much has been achieved in partnership with other agencies in the region and we are grateful for their support. Continuing progress relies on the financial help of our many stakeholders and The Board of Trustees truly appreciate their commitment to our work.

I also wish to thank my fellow Trustees for their hard work and support throughout the past year.

The Board of Trustees look forward to the coming year with confidence knowing that Home-Start Central Lancashire has the staff and the volunteers to make a difference to the lives of many families in the region who face multiple challenges.

My best wishes to everyone involved in Home-Start Central Lancashire.

Maureen
Chair of Trustees



Key Findings of Family Support 2023/2024



The 'Alchemy of Family Support' initiative has made significant strides in enhancing the well-being of over 1150 families including over 3000 children over the past 12 months.

Noticeable improvements in the families we have supported, have been widely recognised by statutory services, educators, and a range of collaborative partners across all sectors. This has proved significant in validating the effectiveness of our efforts and inspiring continued commitment to empowering families and helping them reach their potential.

Moving forward, we aim to further strengthen our connections and continue to build on our successes to support and empower even more families in need.

Organisation achievements internally and externally

Our organisation has achieved significant internal and external milestones over the past year. Internally, we have incorporated a complete trauma informed approach, built staff confidence, well-being, and capacity, whilst overcoming workforce and volunteer challenges

This has resulted in an improved operational efficiency and nurtured a positive team culture. Externally, we have made a profound impact on the families we have supported, strengthened valuable partnerships, secured additional funding, increased public awareness, and developed a valuable partnership with local university research teams to progress the process of conducting research and evaluations to formally validate our work.

These achievements position us well for continued growth and success in supporting families in need.

Key Findings

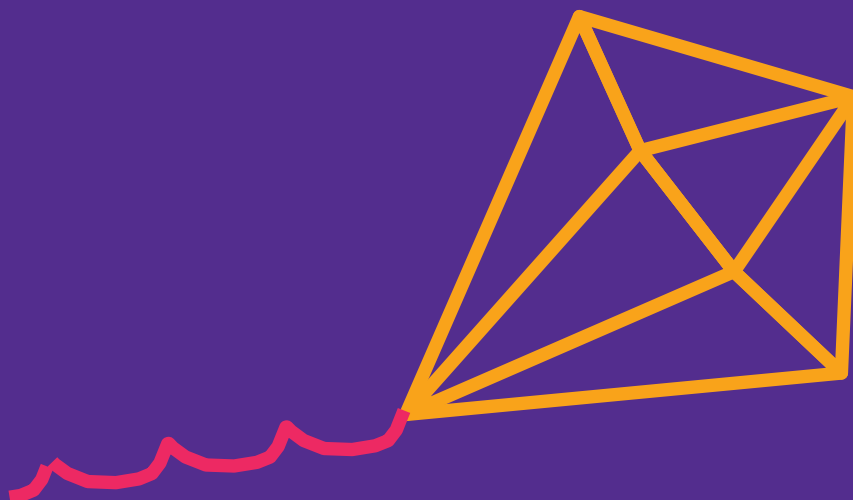
The Alchemy of Family Support

Early analysis of data from evaluations, feedback, and outcomes, suggest improvements made to our support service are proving effective for families and increasing outcomes.

Brief Summary of Outcomes from Combining Multi-Disciplinary Approaches:

- 1. Being able to offer a more multi-disciplinary approach to families has increased our capacity to address a range of needs simultaneously.**
- 2. Families have a choice of support options they can select from depending on their preferences, and their situation.**
- 3. Having a range of expertise means support is more informed and effective.**
- 4. A coordinated approach ensures that various aspects of a family's needs are met in a consistent manner, leading to better overall outcomes.**
- 5. Support allows for flexibility, meeting families where they are at, enabling them to set the pace of support.**
- 6. Our approach increases effective and sustainable improvements in both parent and child development.**

Looking at support provision through a 'Reach the parent, reach the child' lens, recognises the foundational role of parents in a child's life, and leverages their relationship to encourage a lasting positive impact on the development of parents, children, and family well-being.



Over 1150 Families and 3000 supported during 2023/2024.

Below is an overview of the impact reported by families and wider stakeholders

100%

Improved personalised assistance.



100%

Improved Community Connection



100%

Increased understanding of Adverse Childhood Experiences and Trauma



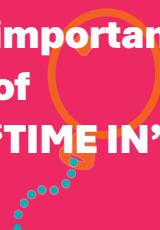
100%

Increased awareness of Emotional and behavioural regulation.



100%

Increased awareness of the importance of 'TIME IN'



99.99%

Relieved immediate financial pressure with the Household Support Fund



98.99%

Increased Family Stability



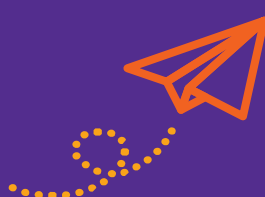
100%

Increased awareness of Early Years Development



98%

Improved Early Years Development



100%

Families felt better supported having a choice of support.



Impact in more detail

Home-Visiting Support

- **Improved personalised Assistance – Experienced Family Coordinators and trained volunteers providing tailored support to families in their own homes, promotes the comfortable environment for parents to share their challenges and receive guidance. The personalised attention and mindful approach have been effective in building confidence in parents and improved family dynamics.**
- **Community Connection – The involvement of key family coordinators and volunteers has strengthened community connections and developed a sense of shared responsibility among families.**

‘Sweet Chilli Parenting®’

- **Increased an understanding of Adverse Childhood Experiences (ACE’s) – Parents have gained crucial insights into how ACE’s impact brain development and emotional regulation. This knowledge has encouraged them to self-reflect and identify gaps in their own learning and childhood, empowering them to begin breaking negative cycles and develop healthier relationships with their children.**
- **Emotional Awareness and Regulation – learning to recognise the emotions preceding their children's behaviours, parents have become better at addressing the root cause of challenging behaviour, rather than the symptoms. This has led to more effective and compassionate parenting.**
- **Importance of ‘Time-in’ – Emphasising ‘staying close’ to children when their behaviour becomes challenging, and calmly naming the emotion they are expressing, has helped to reinforce positive attachments, and started the process of children identifying their feelings and the ability to regulate them.**

‘Sweet Chilli Parenting®,’ has achieved remarkable recognition, in feedback from families and external partners. Visible results are continuing to unlock potential for families.

Impact in more detail

The Household Support Fund

- **Relief of Immediate Pressures** - The fund has provided crucial resources to help families cope with the cost-of-living crisis, reducing short-term financial stress and allowing parents to focus more on their children's development and well-being.
- **Increased Stability** - Financial support has helped towards household stability, contributing to a more secure and supportive environment for children.

Parent and Pre-school Children's Community Group

- **Developmental Awareness** – Parents are learning for the first time about developmental milestones and expectations. This has led to a more informed and initiative-taking approach from parents who are keen to better support their child's growth.
- **Enhanced Child Development** – The group supports parents with practical tools and activities that improve cognitive, emotional, and social development, enabling meeting and/or exceeding developmental expectations.

The group has observed early improvements in cognitive development and social skills.

Inspiring 'Budding Spirits' - Igniting Brilliance in Little Leaders

The early positive impact of 'Sweet Chilli Parenting,' and the community based early years group, have inspired the conception of 'Budding Spirits' – Igniting Brilliance in Little Leaders. The initiative focuses attention on learning provision for both parents and children, to improve - positive attachment, emotional regulation, and key areas of development, thus increasing confidence and improving outcomes for parents, babies, and toddlers. In addition, parents will have the opportunity of support and encouragement while they implement their learning at home through our home-visiting service.

The positive transitions we have been fortunate enough to witness in families previously deemed hard to reach, and the connections we have strengthened, have inspired ideas to further develop the 'focused elements' that form 'The Alchemy of Family Support.'

Monitoring and Evaluation

We collect, record and measure impact through observation, family consultations, community events, surveys and feedback, volunteer reports, training evaluations, tracking key development and well-being indicators, and feedback from wider organisations and establishments.

Internal and external data collection, feedback, Quality Assurance standards, and evaluations provide us with objective assessments, comparative analysis and adherence to best practice ensuring effective support.

The success stories we have been privileged to capture, and wider stakeholder feedback, further highlight positive changes.

These methods confirm our effectiveness in improving family resilience and mitigating adverse childhood experience.

Overall, 'The Alchemy of Family Support' has created a transformative impact by integrating volunteer-led home visiting, Sweet Chilli Parenting, parent and preschool group, and trauma-informed training, complemented by financial support for families through the Household Support Fund. These combined efforts have significantly improved the emotional, psychological, and developmental well-being of both children and parents, enabling a stronger, more resilient community.

Identifying the ongoing needs of families

Families in the most disadvantaged communities face a multitude of challenges that have been exacerbated by socio-economic and health inequalities, the Cost-of-Living Crisis, and rapid societal changes driven by digital and technological advances that barely existed during the childhood of many of today's parents.

Recent analysis of data and feedback from parents and wider stakeholders have provided an overview of the challenges and ongoing needs of families.

A Full Report of Findings will be released early 2025

A Glimpse of 2025 and Beyond

As we look ahead to 2025, Home-Start Central Lancashire remains steadfast in our commitment to providing holistic, inclusive support for families.

Under the umbrella of 'The Alchemy of Family Support,' we will continue developing our multidisciplinary services, ensuring every family receives the comprehensive help they need.

We are proud to carry forward our initiative, 'Breaking the Silence around Adult Illiteracy in the UK,' encouraging adults to access crucial literacy support without stigma. Literacy is the foundation for family empowerment, and we are determined to address this silent challenge.

In 2025, we will introduce 'Vibes of Belonging - Where Every Heart Finds Its Beat,' a project embracing all families regardless of race, faith, spiritual beliefs, neurodivergence, or disabilities. We are committed to ensuring every family feels seen, heard, and supported in their unique journey.

Another key initiative, 'Flip The Script,' will focus on the devastating effects of addiction on individuals, families, and children. By raising awareness and helping families to access support, we aim to empower those affected by addiction to regain control of their lives, rebuild relationships, and secure a brighter future.

Our 'Beyond The Wall' arts project for parents will explore the therapeutic benefits of 'Graffiti Art,' leveraging social neuroscience to aid individuals in recovering from trauma and adverse childhood experiences.

Lastly, we will launch 'Divergent Parent,' raising awareness of neurodiversity among parents. Many parents face the challenges of neurodivergence in silence, and we aim to create safe spaces where they can share, learn, and thrive.

Our journey is guided by a vision of inclusive, empowering family support, ensuring no one is left behind. We look forward to continuing this mission in 2025 and beyond.

Volunteers

A Massive Thank You

to all of our wonderful volunteers who have given their time and energy to Home-Start Central Lancashire and their families this year 2023-2024.

We couldn't have done it without you!



VOLUNTEER TODAY



Christmas 2023

Breakfast with Santa – Supported by Asda Chorley & Places 4 People



Food Donated For Family Christmas Hampers 2023

by Gregson Green Community Centre



Some of the wonderful Christmas presents kindly donated by local businesses, organisations, schools, and local people 2023



Community events 2023/2024



Summer Activities 2024 at Home-Start Central Lancashire



Home-Start Community 2024

Parent and baby groups



Training 2023/2024

Over 160 training sessions delivered to professionals, volunteers, and Parents in our fully equipped training room and on the go in communities with our mobile training experience.



We offer a variety of training workshops including 'Trauma Informed Approach' for professionals and 'Sweet Chilli Parenting' for parents

For further enquiries please contact us on

01257 241636

What people say about us



FAMILY FEEDBACK –

“Thanks very very much for what you have helped me with, with the funding and also all the support you have given me with mental health issues and life support. Especially Jorden who has helped me in such a way! I really wish I can repay the personal help she has given me and my family, but that is not possible. Jorden is great!! Thanks very very much Jorden. Me and my family we thank you forever!! Thanks for everything you have helped me and my family in struggling times, from me and my family.”

“I can’t thank you enough I don’t know what we would have done. Me and my kids were in such a dark place and I didn’t realise how much my past was affecting me and how much I was blaming the kids. I got support from Jen with food vouchers, Becky supported my family and linked me with Julie who didn’t let me miss my debt appointments and Donna who didn’t judge and helped me learn how to be a better me and better parent. I wish I knew about trauma and time in before. Thank you Thank you Thank you”

What people say about us



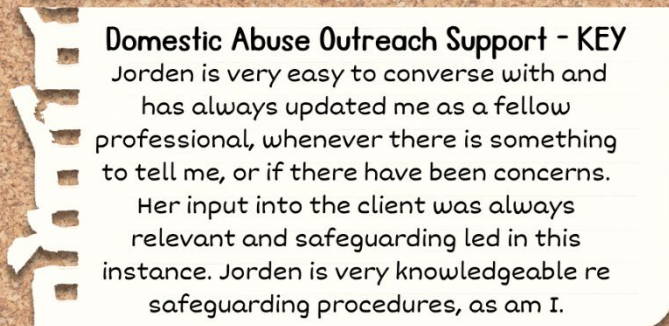
HSCL

REFERRER FEEDBACK



Family Support Worker - CFWS

Once again, thank you so much for your help and support. You have been a huge help to the family and to myself. All of your hard work and efforts are greatly appreciated!



Domestic Abuse Outreach Support - KEY

Jorden is very easy to converse with and has always updated me as a fellow professional, whenever there is something to tell me, or if there have been concerns.

Her input into the client was always relevant and safeguarding led in this instance. Jorden is very knowledgeable re safeguarding procedures, as am I.



Family Support Worker - St. Peter's Primary School

I have been referring families I work with to Home start over the last four years. Home start are my go to support due to the wide variety of support that they can offer. I have always found the support workers keep me updated with time scales and are keen to work alongside school to support in any way they can, either by attending meetings with parents or going to appointments. Families have been provided with equipment to help with safety as well as support and signposting given to acquire medical supplies. The feedback from the families has been very positive and all of them have found the support and advice invaluable in helping them to get back on their feet, at a pace they feel comfortable with.

INCLUSION, INTERSECTIONALITY, AND EQUITY

At Home-Start Central Lancashire, we prioritise accessibility and inclusivity to ensure a diverse range of families benefit from our services. We employ several strategies to enhance accessibility, including -

- 1. Community Outreach - Engaging directly with local communities through outreach programs, events, and partnerships to raise awareness about our services.**
- 2. Tailored Support - Offering flexible and personalised support plans that cater to the specific needs and circumstances of each family.**
- 3. Collaborative Partnerships - Working closely with local authorities, statutory services, healthcare providers, schools, and community organisations to extend our reach and provide integrated support.**
- 4. Cultural Sensitivity and Competence - Ensuring our services are culturally sensitive and responsive to the diverse backgrounds and experiences of families.**
- 5. Removing Barriers - Continuously evaluating and removing barriers to access, such as illiteracy, language barriers, transportation issues, and financial constraints.**

Despite these efforts, we recognise challenges in connecting with some marginalised groups, including isolated individuals and those facing severe economic hardship.

To address this, we are exploring targeted outreach strategies, collaborating with trusted community leaders, and adapting our services to better meet the needs of these underserved populations.

Our commitment remains steadfast in ensuring equitable access and support for all families in our community.

Thank you to All of our Partners 2023-2024

Home-Start Central Lancashire values collaboration and partnerships with multiple local and national organisations to enhance the support and services provided to families in the community.

These partnerships play a crucial role in addressing complex needs comprehensively and leveraging resources effectively. Here's an overview of how our organisation works in partnership.

Partnership Approach:

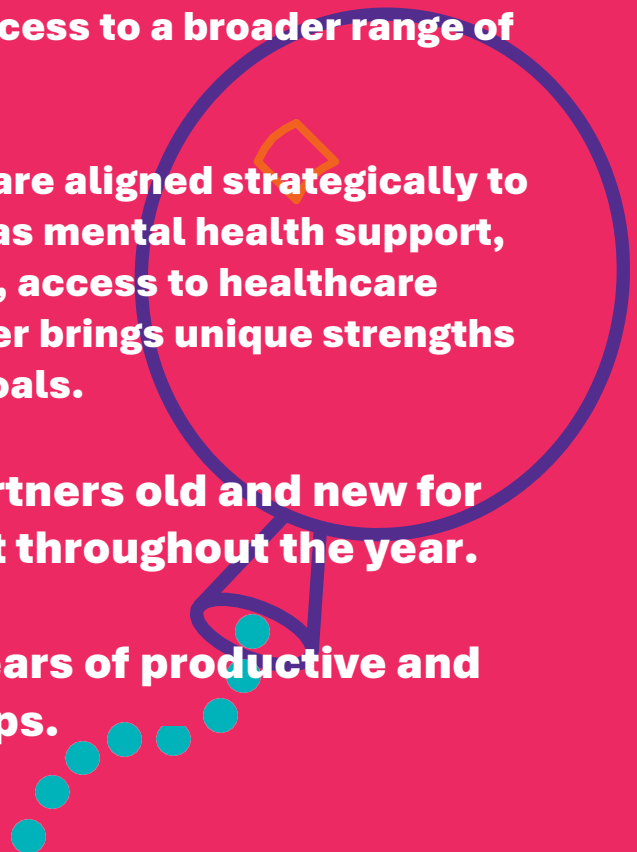
1. Collaborative Network - Home-Start Central Lancashire collaborates with local authorities, statutory services, healthcare providers, educational establishments, and community organisations, to create a holistic support network for families. These partnerships ensure that families receive integrated services tailored to their needs.

2. Shared Resources and Expertise - By partnering with diverse organisations, we can tap into their expertise, resources, and networks. This allows us to expand our reach, improve service delivery, and provide families with access to a broader range of support options.

3. Strategic Alignment - Partnerships are aligned strategically to address key community needs, such as mental health support, parenting education, social inclusion, access to healthcare services, and much more. Each partner brings unique strengths that contribute to achieving shared goals.

We would like to thank all our partners old and new for their support and encouragement throughout the year.

We look forward to many more years of productive and positive collaborative partnerships.



Acknowledgments

Home-Start Central Lancashire would like to thank all the organisation's who have funded and supported us throughout the year 2023-2024

**The National Lottery Big Fund
The Eric Wright Foundation
Chorley Council
South Ribble Council
Garfield Weston
The Henry Smith Foundation**

Thank you also to those organisations and individuals who have supported us with donations, gifts in kind, donated towards events or have worked in partnership with us, including:

Adlington Luncheon Club

The Vicarage

Cadent

Places 4 People

Asda – Chorley

Tesco Superstore Chorley

St Theresa's School

Weldbank Plastics

Calico Lounge

Gregson Green Community

Centre

Pickford's Pre-Cast

Concrete LTD

St James CofE School

Rachael Derbyshire

Margaret Doherty

Euxton Primary School

Inspire Youth Zone

Sandra Barber

**St George's and All Saints
Church**

**Peter and Pauline Lowther
Amanda**

**David and Pamela Short
Asda Foundation**

**Chorley & South Ribble
Football Fun**

Amanda Melvin

Kelly Geldard

Kay Shuttleworth

Jodie Gordon

Beth Rowlands

Sophie Ash

Jenna Townley

Matt Harding

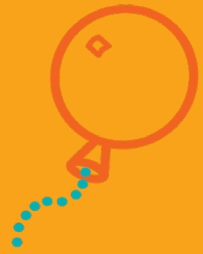
Chorley Buddies

St Mary's School

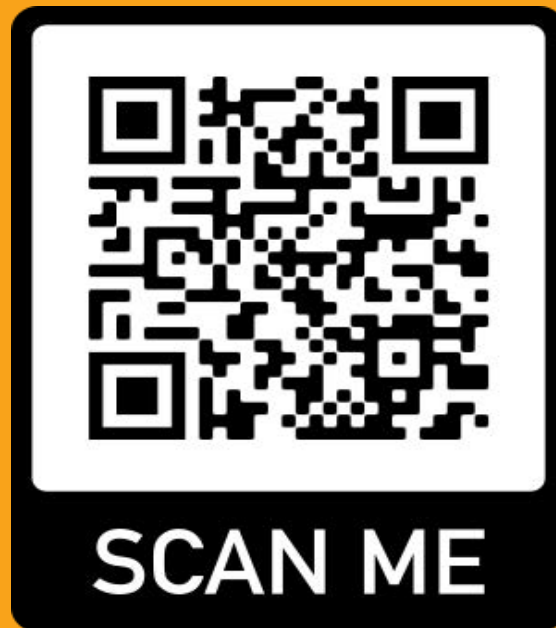
St Joseph's Primary School

St Laurence's Church

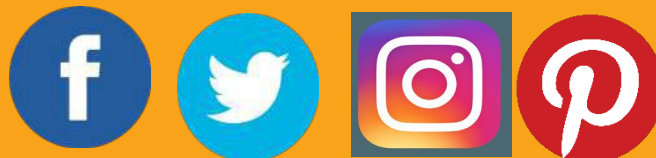
Jenny Cartwright



Central Lancashire



Please scan the QR Code above to access our social media sites and website



Tel 01257 241636

Visit

www.homestartcentrallancs.org.uk

HOME START CENTRAL LANCASHIRE LTD
(A company limited by guarantee)

TRUSTEES' REPORT AND FINANCIAL STATEMENTS
FOR THE YEAR ENDED 31 MARCH 2024

HOME START CENTRAL LANCASHIRE LTD
(A company limited by guarantee)

CONTENTS

	Page
Trustees' report	1 - 5
Independent examiner's report	6
Statement of financial activities	7
Balance sheet	8
Statement of cash flows	9
Notes to the financial statements	10 - 24

HOME START CENTRAL LANCASHIRE LTD
(A company limited by guarantee)

TRUSTEES' REPORT
FOR THE YEAR ENDED 31 MARCH 2024

The Trustees present their annual report together with the financial statements of the Company for the 1 April 2023 to 31 March 2024. The Annual report serves the purposes of both a Trustees' report and a directors' report under company law. The Trustees confirm that the Annual report and financial statements of the charitable company comply with the current statutory requirements, the requirements of the charitable company's governing document and the provisions of the Statement of Recommended Practice (SORP) applicable to charities preparing their accounts in accordance with the Financial Reporting Standard applicable in the UK and Republic of Ireland (FRS102) (effective 1 January 2019).

Since the Company qualifies as small under section 382 of the Companies Act 2006, the Strategic report required of medium and large companies under the Companies Act 2006 (Strategic Report and Directors' Report) Regulations 2013 has been omitted.

Objectives and activities

a. Policies and objectives

Our Vision

That social inequalities are reduced, and every family receives the support they need so that parents, carers, and children can reach their full potential.

Our Aims

Home-Start Central Lancashire aims to increase the confidence, capacity, and independence of families by:

- Offering emotional and practical support along with friendship to parents and their children.
- Supporting families with a strength-based, trauma informed approach
- Visiting families in their own homes where the dignity and identity of each adult and child can be respected and protected.
- Promoting and encouraging early childhood development through play and learning.
- Introducing families to therapeutic parenting ideology and practice, while supporting them to implement strategies that are strength based and promote family healing.
- Reassuring parents that difficulties in bringing up children are not unusual and support and encourage them to enjoy family life.
- Developing a relationship with the family in which time can be shared and understanding can be developed.
- Identifying and working with local services and agencies that can further support families to reach their goals.

Home Start has a proven, lasting, and positive impact on the development of children and the health and welfare of the whole family. Providing support through our home visiting service, family groups, cookery workshops, and Sweet Chilli Parenting.

In setting objectives and planning for activities, the Trustees have given due consideration to general guidance published by the Charity Commission relating to public benefit, including the guidance 'Public benefit: running a charity (PB2)'.

HOME START CENTRAL LANCASHIRE LTD
(A company limited by guarantee)

TRUSTEES' REPORT (CONTINUED)
FOR THE YEAR ENDED 31 MARCH 2024

Objectives and activities (continued)

b. Activities undertaken to achieve objectives

The key activities of the charity are:

- Home visiting service – Experienced staff and trained and supervised volunteers support families in their own homes helping them with life's challenges to prevent family crisis or breakdown. The volunteers help parents to grow in confidence, build resilience, strengthen their relationships with their children and widen their links with the local community.
- Sweet Chilli Parent – Provides parents with an understanding of trauma, adverse childhood experience, brain development, and attachment theory. The program promotes strength-based therapeutic parenting strategies. This is delivered on a 1-2-1 basis with families as well as group sessions. 28 sessions had been delivered throughout the financial year.
- 48 Budding Spirits Early Learning development group sessions with parents, babies and toddlers.
- Training, support, and development for volunteers.
- Bespoke training for professionals – Developed to meet identified need and gaps in trauma informed approach practice for professionals who support families and individuals.
- Family Support groups - these provide the opportunity to engage in learning activities in a safe, welcoming environment where confidence and skills can be nurtured and also provide the opportunity to meet other families.
- Family cooking workshops - these provide the opportunity to engage in learning to cook nutritional food in a safe, welcoming environment. The workshops are facilitated both in group sessions and with families in their own homes alongside the family support they receive.

c. Volunteers

The Charity is indebted to many volunteers, without whom the charity could not operate.

The Charity is also indebted to its trustees who also offer services on a voluntary basis.

d. Main activities undertaken to further the Company's purposes for the public benefit

In meeting the objectives of the charitable company the Trustees have considered the Charity Commission guidance on public benefit and are satisfied that the activities undertaken during the year have provided significant benefit to the general public, particularly parents with young families, and their children and relatives.

Achievements and performance

a. Review of activities

During 2023 -2024 the Charity –

- Supported families through home visiting, by virtual means, family groups, parenting programs, and cooking workshops.
- Recruited, managed, trained, and developed volunteers.
- Delivered family activities and play days.
- Administered the 'Household Support Fund' to families.
- Attended networking and promotional events across Lancashire.

HOME START CENTRAL LANCASHIRE LTD
(A company limited by guarantee)

TRUSTEES' REPORT (CONTINUED)
FOR THE YEAR ENDED 31 MARCH 2024

Financial review

a. Going concern

After making appropriate enquiries, the Trustees have a reasonable expectation that the Company has adequate resources to continue in operational existence for the foreseeable future. For this reason, they continue to adopt the going concern basis in preparing the financial statements. Further details regarding the adoption of the going concern basis can be found in the accounting policies.

b. Reserves policy

The charitable company aims to hold between 3 - 6 months running costs in reserves as per the Charities Commission guidelines.

Structure, governance and management

a. Constitution

Home Start Central Lancashire Ltd is registered as a charitable company limited by guarantee and was set up by a Trust deed. It has a registered charity number of 1105739.

b. Methods of appointment or election of Trustees

The management of the Company is the responsibility of the Trustees who are elected and co-opted under the terms of the Trust deed.

Any new trustees are identified and nominated by the existing board of trustees based on the skills and experience required from new trustees.

c. Policies adopted for the induction and training of Trustees

Any new trustees are given informal induction and training from existing trustees. Relevant information and Charity Commission publications regarding the responsibilities of trustees and information on the background to the charity are provided to all new trustees.

Reference and administrative details of the Company, its trustees and advisers

Maureen Walkden
Diane Gradwell
Jeannie Stirling
Zieda Ali
Sarah Taylor (resigned 8 June 2024)
June Molyneaux (appointed 11 January 2023)

**Company registered
number**

5214560

**Charity registered
number**

1105739

HOME START CENTRAL LANCASHIRE LTD
(A company limited by guarantee)

TRUSTEES' REPORT (CONTINUED)
FOR THE YEAR ENDED 31 MARCH 2024

Registered office	112a Market Street Chorley Lancashire PR7 2SL
Company secretary	Donna Louise Hussain
Chief executive officer	Donna Louise Hussain
Accountants	CW Accountants Limited Office 5 The Boulevard Centre 45 Railway Road Blackburn Lancashire BB1 1EZ
Bankers	Royal Bank of Scotland 56 Market Street Chorley Lancashire PR7 2SD

Members' liability

The Members of the Company guarantee to contribute an amount not exceeding £1 to the assets of the Company in the event of winding up.

HOME START CENTRAL LANCASHIRE LTD
(A company limited by guarantee)

TRUSTEES' REPORT (CONTINUED)
FOR THE YEAR ENDED 31 MARCH 2024

Statement of Trustees' responsibilities

The Trustees (who are also the directors of the Company for the purposes of company law) are responsible for preparing the Trustees' report and the financial statements in accordance with applicable law and United Kingdom Accounting Standards (United Kingdom Generally Accepted Accounting Practice).

Company law requires the Trustees to prepare financial statements for each financial . Under company law, the Trustees must not approve the financial statements unless they are satisfied that they give a true and fair view of the state of affairs of the Company and of its incoming resources and application of resources, including its income and expenditure, for that period. In preparing these financial statements, the Trustees are required to:

- select suitable accounting policies and then apply them consistently;
- observe the methods and principles of the Charities SORP (FRS 102);
- make judgments and accounting estimates that are reasonable and prudent;
- state whether applicable UK Accounting Standards (FRS 102) have been followed, subject to any material departures disclosed and explained in the financial statements;
- prepare the financial statements on the going concern basis unless it is inappropriate to presume that the Company will continue in business.

The Trustees are responsible for keeping adequate accounting records that are sufficient to show and explain the Company's transactions and disclose with reasonable accuracy at any time the financial position of the Company and enable them to ensure that the financial statements comply with the Companies Act 2006. They are also responsible for safeguarding the assets of the Company and hence for taking reasonable steps for the prevention and detection of fraud and other irregularities.

Approved by order of the members of the board of Trustees on
and signed on their behalf by:

HOME START CENTRAL LANCASHIRE LTD
(A company limited by guarantee)

INDEPENDENT EXAMINER'S REPORT
FOR THE YEAR ENDED 31 MARCH 2024

Independent examiner's report to the Trustees of Home Start Central Lancashire Ltd ('the Company')

I report to the charity Trustees on my examination of the accounts of the Company for the year ended 31 March 2024.

Responsibilities and basis of report

As the Trustees of the Company (and its directors for the purposes of company law) you are responsible for the preparation of the accounts in accordance with the requirements of the Companies Act 2006 ('the 2006 Act').

Having satisfied myself that the accounts of the Company are not required to be audited under Part 16 of the 2006 Act and are eligible for independent examination, I report in respect of my examination of the Company's accounts carried out under section 145 of the Charities Act 2011 ('the 2011 Act'). In carrying out my examination I have followed the Directions given by the Charity Commission under section 145(5)(b) of the 2011 Act.

Independent examiner's statement

I have completed my examination. I confirm that no matters have come to my attention in connection with the examination giving me cause to believe:

1. accounting records were not kept in respect of the Company as required by section 386 of the 2006 Act; or
2. the accounts do not accord with those records; or
3. the accounts do not comply with the accounting requirements of section 396 of the 2006 Act other than any requirement that the accounts give a 'true and fair' view which is not a matter considered as part of an independent examination; or
4. the accounts have not been prepared in accordance with the methods and principles of the Statement of Recommended Practice for accounting and reporting by charities [applicable to charities preparing their accounts in accordance with the Financial Reporting Standard applicable in the UK and Republic of Ireland (FRS 102)].

I have no concerns and have come across no other matters in connection with the examination to which attention should be drawn in this report in order to enable a proper understanding of the accounts to be reached.

This report is made solely to the Company's Trustees, as a body, in accordance with Part 4 of the Charities (Accounts and Reports) Regulations 2008. My work has been undertaken so that I might state to the Company's Trustees those matters I am required to state to them in an Independent examiner's report and for no other purpose. To the fullest extent permitted by law, I do not accept or assume responsibility to anyone other than the Company and the Company's Trustees as a body, for my work or for this report.

Signed:

Courtney Wright

Dated:

FCCA

Office 5, The Boulevard Centre, 45 Railway Road, Blackburn, Lancashire, BB1 1EZ

HOME START CENTRAL LANCASHIRE LTD
(A company limited by guarantee)

**STATEMENT OF FINANCIAL ACTIVITIES (INCORPORATING INCOME AND EXPENDITURE ACCOUNT)
FOR THE YEAR ENDED 31 MARCH 2024**

	Note	Restricted funds 2024 £	Unrestricted funds 2024 £	Total funds 2024 £	Total funds 2023 £
Income from:					
Donations and legacies	3	162,285	37,947	200,232	178,286
Other trading activities		-	11,007	11,007	7,126
Investments	4	-	1,409	1,409	1,039
Total income		162,285	50,363	212,648	186,451
Expenditure on:					
Charitable activities		139,277	105,539	244,816	244,174
Total expenditure		139,277	105,539	244,816	244,174
Net movement in funds		23,008	(55,176)	(32,168)	(57,723)
Reconciliation of funds:					
Total funds brought forward		11,116	92,411	103,527	161,250
Net movement in funds		23,008	(55,176)	(32,168)	(57,723)
Total funds carried forward		34,124	37,235	71,359	103,527

The Statement of financial activities includes all gains and losses recognised in the year.

The notes on pages 10 to 24 form part of these financial statements.

HOME START CENTRAL LANCASHIRE LTD
(A company limited by guarantee)
REGISTERED NUMBER: 5214560

BALANCE SHEET
AS AT 31 MARCH 2024

	Note	2024 £	2023 £
Fixed assets		-	-
Current assets			
Debtors	10	750	268
Investments	11	61,907	87,364
Cash at bank and in hand		13,048	16,956
		<u>75,705</u>	<u>104,588</u>
Creditors: amounts falling due within one year	12	(4,346)	(1,061)
Net current assets		<u>71,359</u>	<u>103,527</u>
Total assets less current liabilities		<u>71,359</u>	<u>103,527</u>
Net assets excluding pension asset		<u>71,359</u>	<u>103,527</u>
Total net assets		<u><u>71,359</u></u>	<u><u>103,527</u></u>
Charity funds			
Restricted funds	13	34,124	11,116
Unrestricted funds	13	37,235	92,411
Total funds		<u><u>71,359</u></u>	<u><u>103,527</u></u>

The Company was entitled to exemption from audit under section 477 of the Companies Act 2006.

The members have not required the company to obtain an audit for the year in question in accordance with section 476 of Companies Act 2006.

The Trustees acknowledge their responsibilities for complying with the requirements of the Act with respect to accounting records and preparation of financial statements.

The financial statements have been prepared in accordance with the provisions applicable to entities subject to the small companies regime.

The financial statements were approved and authorised for issue by the Trustees on and signed on their behalf by:

The notes on pages 10 to 24 form part of these financial statements.

HOME START CENTRAL LANCASHIRE LTD
(A company limited by guarantee)

STATEMENT OF CASH FLOWS
FOR THE YEAR ENDED 31 MARCH 2024

	2024 £	2023 £
Cash flows from operating activities		
Net cash used in operating activities	(28,615)	(32,306)
	<hr/>	<hr/>
Cash flows from investing activities		
	<hr/>	<hr/>
Net cash provided by investing activities	-	-
	<hr/>	<hr/>
Cash flows from financing activities		
	<hr/>	<hr/>
Net cash provided by financing activities	-	-
	<hr/>	<hr/>
Change in cash and cash equivalents in the year	(28,615)	(32,306)
Cash and cash equivalents at the beginning of the year	104,320	136,626
	<hr/>	<hr/>
Cash and cash equivalents at the end of the year	<u>75,705</u>	<u>104,320</u>

The notes on pages 10 to 24 form part of these financial statements

HOME START CENTRAL LANCASHIRE LTD
(A company limited by guarantee)

NOTES TO THE FINANCIAL STATEMENTS
FOR THE YEAR ENDED 31 MARCH 2024

1. General information

Home Start Central Lancashire is a private limited company without share capital and a registered charity. The company was incorporated in England and Wales and has the following registered office address:
112a Market Street
Chorley
Lancashire
PR7 2SL

2. Accounting policies

2.1 Basis of preparation of financial statements

The financial statements have been prepared in accordance with the Charities SORP (FRS 102) - Accounting and Reporting by Charities: Statement of Recommended Practice applicable to charities preparing their accounts in accordance with the Financial Reporting Standard applicable in the UK and Republic of Ireland (FRS 102) (effective 1 January 2019), the Financial Reporting Standard applicable in the UK and Republic of Ireland (FRS 102) and the Companies Act 2006.

Home Start Central Lancashire Ltd meets the definition of a public benefit entity under FRS 102. Assets and liabilities are initially recognised at historical cost or transaction value unless otherwise stated in the relevant accounting policy.

2.2 Income

All income is recognised once the Company has entitlement to the income, it is probable that the income will be received and the amount of income receivable can be measured reliably.

Grants are included in the Statement of financial activities on a receivable basis. The balance of income received for specific purposes but not expended during the period is shown in the relevant funds on the Balance sheet. Where income is received in advance of entitlement of receipt, its recognition is deferred and included in creditors as deferred income. Where entitlement occurs before income is received, the income is accrued.

Income tax recoverable in relation to investment income is recognised at the time the investment income is receivable.

2.3 Expenditure

Expenditure is recognised once there is a legal or constructive obligation to transfer economic benefit to a third party, it is probable that a transfer of economic benefits will be required in settlement and the amount of the obligation can be measured reliably. Expenditure is classified by activity. The costs of each activity are made up of the total of direct costs and shared costs, including support costs involved in undertaking each activity. Direct costs attributable to a single activity are allocated directly to that activity. Shared costs which contribute to more than one activity and support costs which are not attributable to a single activity are apportioned between those activities on a basis consistent with the use of resources. Central staff costs are allocated on the basis of time spent, and depreciation charges allocated on the portion of the asset's use.

Expenditure on charitable activities is incurred on directly undertaking the activities which further the Company's objectives, as well as any associated support costs.

HOME START CENTRAL LANCASHIRE LTD
(A company limited by guarantee)

NOTES TO THE FINANCIAL STATEMENTS
FOR THE YEAR ENDED 31 MARCH 2024

2. Accounting policies (continued)

2.3 Expenditure (continued)

All expenditure is inclusive of irrecoverable VAT.

2.4 Interest receivable

Interest on funds held on deposit is included when receivable and the amount can be measured reliably by the Company; this is normally upon notification of the interest paid or payable by the institution with whom the funds are deposited.

2.5 Debtors

Trade and other debtors are recognised at the settlement amount after any trade discount offered. Prepayments are valued at the amount prepaid net of any trade discounts due.

2.6 Cash at bank and in hand

Cash at bank and in hand includes cash and short-term highly liquid investments with a short maturity of three months or less from the date of acquisition or opening of the deposit or similar account.

2.7 Liabilities and provisions

Liabilities are recognised when there is an obligation at the Balance sheet date as a result of a past event, it is probable that a transfer of economic benefit will be required in settlement, and the amount of the settlement can be estimated reliably.

Liabilities are recognised at the amount that the Company anticipates it will pay to settle the debt or the amount it has received as advanced payments for the goods or services it must provide.

Provisions are measured at the best estimate of the amounts required to settle the obligation. Where the effect of the time value of money is material, the provision is based on the present value of those amounts, discounted at the pre-tax discount rate that reflects the risks specific to the liability. The unwinding of the discount is recognised in the Statement of financial activities as a finance cost.

2.8 Financial instruments

The Company only has financial assets and financial liabilities of a kind that qualify as basic financial instruments. Basic financial instruments are initially recognised at transaction value and subsequently measured at their settlement value with the exception of bank loans which are subsequently measured at amortised cost using the effective interest method.

2.9 Pensions

The Company operates a defined contribution pension scheme and the pension charge represents the amounts payable by the Company to the fund in respect of the year.

HOME START CENTRAL LANCASHIRE LTD
(A company limited by guarantee)

NOTES TO THE FINANCIAL STATEMENTS
FOR THE YEAR ENDED 31 MARCH 2024

2. Accounting policies (continued)

2.10 Fund accounting

General funds are unrestricted funds which are available for use at the discretion of the Trustees in furtherance of the general objectives of the Company and which have not been designated for other purposes.

Designated funds comprise unrestricted funds that have been set aside by the Trustees for particular purposes. The aim and use of each designated fund is set out in the notes to the financial statements.

Restricted funds are funds which are to be used in accordance with specific restrictions imposed by donors or which have been raised by the Company for particular purposes. The costs of raising and administering such funds are charged against the specific fund. The aim and use of each restricted fund is set out in the notes to the financial statements.

Investment income, gains and losses are allocated to the appropriate fund.

HOME START CENTRAL LANCASHIRE LTD
(A company limited by guarantee)

**NOTES TO THE FINANCIAL STATEMENTS
FOR THE YEAR ENDED 31 MARCH 2024**

3. Income from donations and legacies

	Restricted funds 2024 £	Unrestricted funds 2024 £	Total funds 2024 £
Donations	1,563	509	2,072
Grants	160,722	37,438	198,160
	<u>162,285</u>	<u>37,947</u>	<u>200,232</u>
	<u><u>162,285</u></u>	<u><u>37,947</u></u>	<u><u>200,232</u></u>
	<i>Restricted funds 2023 £</i>	<i>Unrestricted funds 2023 £</i>	<i>Total funds 2023 £</i>
Donations	-	3,561	3,561
Grants	136,894	37,831	174,725
	<u>136,894</u>	<u>41,392</u>	<u>178,286</u>
	<u><u>136,894</u></u>	<u><u>41,392</u></u>	<u><u>178,286</u></u>

4. Investment income

	Unrestricted funds 2024 £	Total funds 2024 £
Investment income	1,409	1,409
	<u>1,409</u>	<u>1,409</u>
	<u><u>1,409</u></u>	<u><u>1,409</u></u>
	<i>Unrestricted funds 2023 £</i>	<i>Total funds 2023 £</i>
Investment income	1,039	1,039
	<u>1,039</u>	<u>1,039</u>
	<u><u>1,039</u></u>	<u><u>1,039</u></u>

HOME START CENTRAL LANCASHIRE LTD
(A company limited by guarantee)

**NOTES TO THE FINANCIAL STATEMENTS
FOR THE YEAR ENDED 31 MARCH 2024**

5. Analysis of Grant Income

	Restricted funds 2024 £	Unrestricted funds 2024 £	Total funds 2024 £
Grants			
All grants:	-	-	-
Rock FM	7,000	-	7,000
Chorley Council	46,000	13,571	59,571
Preston City Council - DA Project	32,722	-	32,722
National Lottery	75,000	-	75,000
Garfield Weston	-	20,000	20,000
Cadent	-	2,188	2,188
Skelton Bounty	1,563	-	1,563
Home Start UK	-	2,188	2,188
Total 2024	162,285	37,947	200,232
	<i>Restricted funds 2023 £</i>	<i>Unrestricted funds 2023 £</i>	<i>Total funds 2023 £</i>
All grants	136,894	37,831	174,725

6. Independent examiner's remuneration

	2024 £	2023 £
Fees payable to the Company's independent examiner for the independent examination of the Company's annual accounts	450	350

HOME START CENTRAL LANCASHIRE LTD
(A company limited by guarantee)

**NOTES TO THE FINANCIAL STATEMENTS
FOR THE YEAR ENDED 31 MARCH 2024**

7. Staff costs

	2024	<i>2023</i>
	£	£
Wages and salaries	164,956	<i>163,765</i>
Social security costs	9,908	<i>9,805</i>
Contribution to defined contribution pension schemes	9,864	<i>8,178</i>
	<u>184,728</u>	<u><i>181,748</i></u>

The average number of persons employed by the Company during the year was as follows:

	2024	<i>2023</i>
	No.	No.
Operational	6	<i>7</i>
Administration	1	<i>1</i>
	<u>7</u>	<u><i>8</i></u>

No employee received remuneration amounting to more than £60,000 in either year.

HOME START CENTRAL LANCASHIRE LTD
(A company limited by guarantee)

**NOTES TO THE FINANCIAL STATEMENTS
FOR THE YEAR ENDED 31 MARCH 2024**

8. Analysis of direct costs on charitable activities

	Restricted funds 2024 £	Unrestricted funds 2024 £	Total funds 2024 £
Salaries with on costs	107,091	184,728	291,819
Utilities	9,823	17,071	26,894
Volunteer expenses	1,024	1,343	2,367
Bank charges	-	70	70
Project costs	10,795	10,795	21,590
Rent and rates	3,153	6,307	9,460
General office expenses	5,023	9,006	14,029
Staff resources	-	2,193	2,193
Cleaning	-	-	-
Repairs and maintenance	-	2,896	2,896
Training	183	183	366
Professional fees	1,982	3,515	5,497
Insurance	-	1,717	1,717
Management committee costs	150	150	300
Travel costs	53	53	106
Home Start levy	-	4,339	4,339
Accountancy	-	450	450
Total 2024	139,277	244,816	384,093

HOME START CENTRAL LANCASHIRE LTD
(A company limited by guarantee)

**NOTES TO THE FINANCIAL STATEMENTS
FOR THE YEAR ENDED 31 MARCH 2024**

	<i>Restricted funds 2023 £</i>	<i>Unrestricted funds 2023 £</i>	<i>Total funds 2023 £</i>
Salaries with on costs	91,821	89,927	181,748
Utilities	8,201	7,811	16,012
Volunteer expenses	-	547	547
Bank Charges	-	133	133
Project costs	24,743	-	24,743
Rent and rates	3,098	3,000	6,098
General office expenses	2,824	2,121	4,945
Staff resources	-	220	220
Cleaning	-	968	968
Repairs and maintenance	-	2,410	2,410
Training	-	45	45
Professional fees	-	2,271	2,271
Insurance	-	922	922
Management committee costs	-	519	519
Travel costs	643	-	643
Home Start Levy	-	1,600	1,600
Accountancy	-	350	350
Total 2023	131,330	112,844	244,174

9. Trustees' remuneration and expenses

During the year, no Trustees received any remuneration or other benefits (2023 - £NIL).

During the year ended 31 March 2024, no Trustee expenses have been incurred (2023 - £NIL).

10. Debtors

	2024 £	2023 £
Due within one year		
Prepayments and accrued income	750	268
	750	268

HOME START CENTRAL LANCASHIRE LTD
(A company limited by guarantee)

**NOTES TO THE FINANCIAL STATEMENTS
FOR THE YEAR ENDED 31 MARCH 2024**

11. Current asset investments

	2024	2023
	£	£
Listed investments	61,907	87,364

12. Creditors: Amounts falling due within one year

	2024	2023
	£	£
Other taxation and social security	3,384	-
Pension fund loan payable	512	-
Accruals and deferred income	450	1,061
	4,346	1,061

HOME START CENTRAL LANCASHIRE LTD
(A company limited by guarantee)

**NOTES TO THE FINANCIAL STATEMENTS
FOR THE YEAR ENDED 31 MARCH 2024**

13. Statement of funds

Statement of funds - current year

	Balance at 1 April 2023 £	Income £	Expenditure £	Balance at 31 March 2024 £
Unrestricted funds				
Designated funds				
Designated Funds - all funds	36,310	-	-	36,310
General funds				
General Funds - all funds	56,101	50,363	(105,539)	925
Total Unrestricted funds	92,411	50,363	(105,539)	37,235
Restricted funds				
The National Lottery	9,008	75,000	(80,524)	3,484
Eric Wright	2,108	-	(2,108)	-
Household Support Fund	-	46,000	(46,000)	-
Skelton Bounty	-	1,563	(1,563)	-
Preston City Council - DA project	-	32,722	(2,082)	30,640
Rock FM Cash for Kids	-	7,000	(7,000)	-
	11,116	162,285	(139,277)	34,124
Total of funds	103,527	212,648	(244,816)	71,359

HOME START CENTRAL LANCASHIRE LTD
(A company limited by guarantee)

**NOTES TO THE FINANCIAL STATEMENTS
FOR THE YEAR ENDED 31 MARCH 2024**

13. Statement of funds (continued)

Statement of funds - prior year

	<i>Balance at 1 April 2022 £</i>	<i>Income £</i>	<i>Expenditure £</i>	<i>Balance at 31 March 2023 £</i>
Unrestricted funds				
Designated funds				
Designated Funds - all funds	36,310	-	-	36,310
General funds				
General Funds - all funds	119,388	49,557	(112,844)	56,101
Total Unrestricted funds	155,698	49,557	(112,844)	92,411
Restricted funds				
The National Lottery	5,552	75,000	(71,544)	9,008
Eric Wright	-	16,000	(13,892)	2,108
Household Support Fund	-	40,000	(40,000)	-
Skelton Bounty	-	2,000	(2,000)	-
Preston City Council - DA project	-	1,000	(1,000)	-
Rock FM Cash for Kids	-	2,894	(2,894)	-
	5,552	136,894	(131,330)	11,116
Total of funds	161,250	186,451	(244,174)	103,527

HOME START CENTRAL LANCASHIRE LTD
(A company limited by guarantee)

**NOTES TO THE FINANCIAL STATEMENTS
FOR THE YEAR ENDED 31 MARCH 2024**

14. Statement of funds

Designated funds - This fund is for 6 month running costs as per the Charities Commission best practice guidance. This includes; redundancies, notices, leases and running costs.

Restricted funds -

Chorley and Leyland Methodist church - This donation was received specifically to provide children's dinners as part of the holiday hunger project throughout the school holidays.

Eric Wright - This fund is to provide family support.

National Lottery Fund - This fund is for our core family support service and the development of 'Sweet Chilli Parenting' our parenting workshops.

Kickstart - These grants were received by the DWP to support young people gaining access to employment.

Household Support Fund - This fund is to support families in the community with essential goods and support.

Amazon/ M&S Fund - These funds are to provide family support.

15.

Summary of funds - current year

	Balance at 1 April 2023 £	Income £	Expenditure £	Balance at 31 March 2024 £
Designated funds	36,310	-	-	36,310
General funds	56,101	50,363	(105,539)	925
Restricted funds	11,116	162,285	(139,277)	34,124
	<u>103,527</u>	<u>212,648</u>	<u>(244,816)</u>	<u>71,359</u>

HOME START CENTRAL LANCASHIRE LTD
(A company limited by guarantee)

**NOTES TO THE FINANCIAL STATEMENTS
FOR THE YEAR ENDED 31 MARCH 2024**

15. Summary of funds (continued)

Summary of funds - prior year

	<i>Balance at 1 April 2022</i>	<i>Income</i>	<i>Expenditure</i>	<i>Balance at 31 March 2023</i>
	£	£	£	£
Designated funds	36,310	-	-	36,310
General funds	119,388	49,557	(112,844)	56,101
Restricted funds	5,552	136,894	(131,330)	11,116
	<u>161,250</u>	<u>186,451</u>	<u>(244,174)</u>	<u>103,527</u>

16. Analysis of net assets between funds

Analysis of net assets between funds - current period

	Restricted funds 2024	Unrestricted funds 2024	Total funds 2024
	£	£	£
Current assets	34,124	41,581	75,705
Creditors due within one year	-	(4,346)	(4,346)
Total	<u>34,124</u>	<u>37,235</u>	<u>71,359</u>

Analysis of net assets between funds - prior period

	<i>Restricted funds 2023</i>	<i>Unrestricted funds 2023</i>	<i>Total funds 2023</i>
	£	£	£
Current assets	11,116	93,472	104,588
Creditors due within one year	-	(1,061)	(1,061)
Total	<u>11,116</u>	<u>92,411</u>	<u>103,527</u>

HOME START CENTRAL LANCASHIRE LTD
(A company limited by guarantee)

**NOTES TO THE FINANCIAL STATEMENTS
FOR THE YEAR ENDED 31 MARCH 2024**

17. Reconciliation of net movement in funds to net cash flow from operating activities

	2024 £	2023 £
Net expenditure for the period (as per Statement of Financial Activities)	(32,168)	(57,723)
Adjustments for:		
Decrease in debtors	268	27,834
Increase/(decrease) in creditors	3,285	(2,417)
Net cash used in operating activities	(28,615)	(32,306)

18. Analysis of cash and cash equivalents

	2024 £	2023 £
Cash in hand	75,705	104,320
Total cash and cash equivalents	75,705	104,320

19. Analysis of changes in net debt

	At 1 April 2023 £	Cash flows £	At 31 March 2024 £
Cash at bank and in hand	16,956	(3,908)	13,048
Debt due within 1 year	-	(512)	(512)
Liquid investments	87,364	(25,457)	61,907
	104,320	(29,877)	74,443

20. Related party transactions

The Company has not entered into any related party transaction during the year, nor are there any outstanding balances owing between related parties and the Company at 31 March 2024.

HOME START CENTRAL LANCASHIRE LTD
(A company limited by guarantee)

NOTES TO THE FINANCIAL STATEMENTS
FOR THE YEAR ENDED 31 MARCH 2024

21. Post balance sheet events

There have been no significant events affecting the Company since the year end.

22. Controlling party

Those directors listed on the administrative page of the accounts control the Company.

HOME START CENTRAL LANCASHIRE LTD
(A company limited by guarantee)

TRUSTEES' REPORT AND FINANCIAL STATEMENTS
FOR THE YEAR ENDED 31 MARCH 2024

HOME START CENTRAL LANCASHIRE LTD
(A company limited by guarantee)

CONTENTS

	Page
Trustees' report	1 - 5
Independent examiner's report	6
Statement of financial activities	7
Balance sheet	8
Statement of cash flows	9
Notes to the financial statements	10 - 24

HOME START CENTRAL LANCASHIRE LTD
(A company limited by guarantee)

TRUSTEES' REPORT
FOR THE YEAR ENDED 31 MARCH 2024

The Trustees present their annual report together with the financial statements of the Company for the 1 April 2023 to 31 March 2024. The Annual report serves the purposes of both a Trustees' report and a directors' report under company law. The Trustees confirm that the Annual report and financial statements of the charitable company comply with the current statutory requirements, the requirements of the charitable company's governing document and the provisions of the Statement of Recommended Practice (SORP) applicable to charities preparing their accounts in accordance with the Financial Reporting Standard applicable in the UK and Republic of Ireland (FRS102) (effective 1 January 2019).

Since the Company qualifies as small under section 382 of the Companies Act 2006, the Strategic report required of medium and large companies under the Companies Act 2006 (Strategic Report and Directors' Report) Regulations 2013 has been omitted.

Objectives and activities

a. Policies and objectives

Our Vision

That social inequalities are reduced, and every family receives the support they need so that parents, carers, and children can reach their full potential.

Our Aims

Home-Start Central Lancashire aims to increase the confidence, capacity, and independence of families by:

- Offering emotional and practical support along with friendship to parents and their children.
- Supporting families with a strength-based, trauma informed approach
- Visiting families in their own homes where the dignity and identity of each adult and child can be respected and protected.
- Promoting and encouraging early childhood development through play and learning.
- Introducing families to therapeutic parenting ideology and practice, while supporting them to implement strategies that are strength based and promote family healing.
- Reassuring parents that difficulties in bringing up children are not unusual and support and encourage them to enjoy family life.
- Developing a relationship with the family in which time can be shared and understanding can be developed.
- Identifying and working with local services and agencies that can further support families to reach their goals.

Home Start has a proven, lasting, and positive impact on the development of children and the health and welfare of the whole family. Providing support through our home visiting service, family groups, cookery workshops, and Sweet Chilli Parenting.

In setting objectives and planning for activities, the Trustees have given due consideration to general guidance published by the Charity Commission relating to public benefit, including the guidance 'Public benefit: running a charity (PB2)'.

HOME START CENTRAL LANCASHIRE LTD
(A company limited by guarantee)

TRUSTEES' REPORT (CONTINUED)
FOR THE YEAR ENDED 31 MARCH 2024

Objectives and activities (continued)

b. Activities undertaken to achieve objectives

The key activities of the charity are:

- Home visiting service – Experienced staff and trained and supervised volunteers support families in their own homes helping them with life's challenges to prevent family crisis or breakdown. The volunteers help parents to grow in confidence, build resilience, strengthen their relationships with their children and widen their links with the local community.
- Sweet Chilli Parent – Provides parents with an understanding of trauma, adverse childhood experience, brain development, and attachment theory. The program promotes strength-based therapeutic parenting strategies. This is delivered on a 1-2-1 basis with families as well as group sessions. 28 sessions had been delivered throughout the financial year.
- 48 Budding Spirits Early Learning development group sessions with parents, babies and toddlers.
- Training, support, and development for volunteers.
- Bespoke training for professionals – Developed to meet identified need and gaps in trauma informed approach practice for professionals who support families and individuals.
- Family Support groups - these provide the opportunity to engage in learning activities in a safe, welcoming environment where confidence and skills can be nurtured and also provide the opportunity to meet other families.
- Family cooking workshops - these provide the opportunity to engage in learning to cook nutritional food in a safe, welcoming environment. The workshops are facilitated both in group sessions and with families in their own homes alongside the family support they receive.

c. Volunteers

The Charity is indebted to many volunteers, without whom the charity could not operate.

The Charity is also indebted to its trustees who also offer services on a voluntary basis.

d. Main activities undertaken to further the Company's purposes for the public benefit

In meeting the objectives of the charitable company the Trustees have considered the Charity Commission guidance on public benefit and are satisfied that the activities undertaken during the year have provided significant benefit to the general public, particularly parents with young families, and their children and relatives.

Achievements and performance

a. Review of activities

During 2023 -2024 the Charity –

- Supported families through home visiting, by virtual means, family groups, parenting programs, and cooking workshops.
- Recruited, managed, trained, and developed volunteers.
- Delivered family activities and play days.
- Administered the 'Household Support Fund' to families.
- Attended networking and promotional events across Lancashire.

HOME START CENTRAL LANCASHIRE LTD
(A company limited by guarantee)

TRUSTEES' REPORT (CONTINUED)
FOR THE YEAR ENDED 31 MARCH 2024

Financial review

a. Going concern

After making appropriate enquiries, the Trustees have a reasonable expectation that the Company has adequate resources to continue in operational existence for the foreseeable future. For this reason, they continue to adopt the going concern basis in preparing the financial statements. Further details regarding the adoption of the going concern basis can be found in the accounting policies.

b. Reserves policy

The charitable company aims to hold between 3 - 6 months running costs in reserves as per the Charities Commission guidelines.

Structure, governance and management

a. Constitution

Home Start Central Lancashire Ltd is registered as a charitable company limited by guarantee and was set up by a Trust deed. It has a registered charity number of 1105739.

b. Methods of appointment or election of Trustees

The management of the Company is the responsibility of the Trustees who are elected and co-opted under the terms of the Trust deed.

Any new trustees are identified and nominated by the existing board of trustees based on the skills and experience required from new trustees.

c. Policies adopted for the induction and training of Trustees

Any new trustees are given informal induction and training from existing trustees. Relevant information and Charity Commission publications regarding the responsibilities of trustees and information on the background to the charity are provided to all new trustees.

Reference and administrative details of the Company, its trustees and advisers

Maureen Walkden
Diane Gradwell
Jeannie Stirling
Zieda Ali
Sarah Taylor (resigned 8 June 2024)
June Molyneaux (appointed 11 January 2023)

**Company registered
number**

5214560

**Charity registered
number**

1105739

HOME START CENTRAL LANCASHIRE LTD
(A company limited by guarantee)

TRUSTEES' REPORT (CONTINUED)
FOR THE YEAR ENDED 31 MARCH 2024

Registered office	112a Market Street Chorley Lancashire PR7 2SL
Company secretary	Donna Louise Hussain
Chief executive officer	Donna Louise Hussain
Accountants	CW Accountants Limited Office 5 The Boulevard Centre 45 Railway Road Blackburn Lancashire BB1 1EZ
Bankers	Royal Bank of Scotland 56 Market Street Chorley Lancashire PR7 2SD

Members' liability

The Members of the Company guarantee to contribute an amount not exceeding £1 to the assets of the Company in the event of winding up.

HOME START CENTRAL LANCASHIRE LTD
(A company limited by guarantee)

TRUSTEES' REPORT (CONTINUED)
FOR THE YEAR ENDED 31 MARCH 2024

Statement of Trustees' responsibilities

The Trustees (who are also the directors of the Company for the purposes of company law) are responsible for preparing the Trustees' report and the financial statements in accordance with applicable law and United Kingdom Accounting Standards (United Kingdom Generally Accepted Accounting Practice).

Company law requires the Trustees to prepare financial statements for each financial . Under company law, the Trustees must not approve the financial statements unless they are satisfied that they give a true and fair view of the state of affairs of the Company and of its incoming resources and application of resources, including its income and expenditure, for that period. In preparing these financial statements, the Trustees are required to:

- select suitable accounting policies and then apply them consistently;
- observe the methods and principles of the Charities SORP (FRS 102);
- make judgments and accounting estimates that are reasonable and prudent;
- state whether applicable UK Accounting Standards (FRS 102) have been followed, subject to any material departures disclosed and explained in the financial statements;
- prepare the financial statements on the going concern basis unless it is inappropriate to presume that the Company will continue in business.

The Trustees are responsible for keeping adequate accounting records that are sufficient to show and explain the Company's transactions and disclose with reasonable accuracy at any time the financial position of the Company and enable them to ensure that the financial statements comply with the Companies Act 2006. They are also responsible for safeguarding the assets of the Company and hence for taking reasonable steps for the prevention and detection of fraud and other irregularities.

Approved by order of the members of the board of Trustees on
and signed on their behalf by:

HOME START CENTRAL LANCASHIRE LTD
(A company limited by guarantee)

INDEPENDENT EXAMINER'S REPORT
FOR THE YEAR ENDED 31 MARCH 2024

Independent examiner's report to the Trustees of Home Start Central Lancashire Ltd ('the Company')

I report to the charity Trustees on my examination of the accounts of the Company for the year ended 31 March 2024.

Responsibilities and basis of report

As the Trustees of the Company (and its directors for the purposes of company law) you are responsible for the preparation of the accounts in accordance with the requirements of the Companies Act 2006 ('the 2006 Act').

Having satisfied myself that the accounts of the Company are not required to be audited under Part 16 of the 2006 Act and are eligible for independent examination, I report in respect of my examination of the Company's accounts carried out under section 145 of the Charities Act 2011 ('the 2011 Act'). In carrying out my examination I have followed the Directions given by the Charity Commission under section 145(5)(b) of the 2011 Act.

Independent examiner's statement

I have completed my examination. I confirm that no matters have come to my attention in connection with the examination giving me cause to believe:

1. accounting records were not kept in respect of the Company as required by section 386 of the 2006 Act; or
2. the accounts do not accord with those records; or
3. the accounts do not comply with the accounting requirements of section 396 of the 2006 Act other than any requirement that the accounts give a 'true and fair' view which is not a matter considered as part of an independent examination; or
4. the accounts have not been prepared in accordance with the methods and principles of the Statement of Recommended Practice for accounting and reporting by charities [applicable to charities preparing their accounts in accordance with the Financial Reporting Standard applicable in the UK and Republic of Ireland (FRS 102)].

I have no concerns and have come across no other matters in connection with the examination to which attention should be drawn in this report in order to enable a proper understanding of the accounts to be reached.

This report is made solely to the Company's Trustees, as a body, in accordance with Part 4 of the Charities (Accounts and Reports) Regulations 2008. My work has been undertaken so that I might state to the Company's Trustees those matters I am required to state to them in an Independent examiner's report and for no other purpose. To the fullest extent permitted by law, I do not accept or assume responsibility to anyone other than the Company and the Company's Trustees as a body, for my work or for this report.

Signed:

Courtney Wright

Dated:

FCCA

Office 5, The Boulevard Centre, 45 Railway Road, Blackburn, Lancashire, BB1 1EZ

HOME START CENTRAL LANCASHIRE LTD
(A company limited by guarantee)

**STATEMENT OF FINANCIAL ACTIVITIES (INCORPORATING INCOME AND EXPENDITURE ACCOUNT)
FOR THE YEAR ENDED 31 MARCH 2024**

	Note	Restricted funds 2024 £	Unrestricted funds 2024 £	Total funds 2024 £	<i>Total funds 2023 £</i>
Income from:					
Donations and legacies	3	162,285	37,947	200,232	178,286
Other trading activities		-	11,007	11,007	7,126
Investments	4	-	1,409	1,409	1,039
Total income		162,285	50,363	212,648	186,451
Expenditure on:					
Charitable activities		139,277	105,539	244,816	244,174
Total expenditure		139,277	105,539	244,816	244,174
Net movement in funds		23,008	(55,176)	(32,168)	(57,723)
Reconciliation of funds:					
Total funds brought forward		11,116	92,411	103,527	161,250
Net movement in funds		23,008	(55,176)	(32,168)	(57,723)
Total funds carried forward		34,124	37,235	71,359	103,527

The Statement of financial activities includes all gains and losses recognised in the year.

The notes on pages 10 to 24 form part of these financial statements.

HOME START CENTRAL LANCASHIRE LTD
(A company limited by guarantee)
REGISTERED NUMBER: 5214560

BALANCE SHEET
AS AT 31 MARCH 2024

	Note	2024 £	2023 £
Fixed assets		-	-
Current assets			
Debtors	10	750	268
Investments	11	61,907	87,364
Cash at bank and in hand		13,048	16,956
		<u>75,705</u>	<u>104,588</u>
Creditors: amounts falling due within one year	12	(4,346)	(1,061)
Net current assets		<u>71,359</u>	<u>103,527</u>
Total assets less current liabilities		<u>71,359</u>	<u>103,527</u>
Net assets excluding pension asset		<u>71,359</u>	<u>103,527</u>
Total net assets		<u><u>71,359</u></u>	<u><u>103,527</u></u>
Charity funds			
Restricted funds	13	34,124	11,116
Unrestricted funds	13	37,235	92,411
Total funds		<u><u>71,359</u></u>	<u><u>103,527</u></u>

The Company was entitled to exemption from audit under section 477 of the Companies Act 2006.

The members have not required the company to obtain an audit for the year in question in accordance with section 476 of Companies Act 2006.

The Trustees acknowledge their responsibilities for complying with the requirements of the Act with respect to accounting records and preparation of financial statements.

The financial statements have been prepared in accordance with the provisions applicable to entities subject to the small companies regime.

The financial statements were approved and authorised for issue by the Trustees on and signed on their behalf by:

The notes on pages 10 to 24 form part of these financial statements.

HOME START CENTRAL LANCASHIRE LTD
(A company limited by guarantee)

STATEMENT OF CASH FLOWS
FOR THE YEAR ENDED 31 MARCH 2024

	2024 £	2023 £
Cash flows from operating activities		
Net cash used in operating activities	(28,615)	(32,306)
	<hr/>	<hr/>
Cash flows from investing activities		
	<hr/>	<hr/>
Net cash provided by investing activities	-	-
	<hr/>	<hr/>
Cash flows from financing activities		
	<hr/>	<hr/>
Net cash provided by financing activities	-	-
	<hr/>	<hr/>
Change in cash and cash equivalents in the year	(28,615)	(32,306)
Cash and cash equivalents at the beginning of the year	104,320	136,626
	<hr/>	<hr/>
Cash and cash equivalents at the end of the year	<u>75,705</u>	<u>104,320</u>

The notes on pages 10 to 24 form part of these financial statements

HOME START CENTRAL LANCASHIRE LTD
(A company limited by guarantee)

NOTES TO THE FINANCIAL STATEMENTS
FOR THE YEAR ENDED 31 MARCH 2024

1. General information

Home Start Central Lancashire is a private limited company without share capital and a registered charity. The company was incorporated in England and Wales and has the following registered office address:
112a Market Street
Chorley
Lancashire
PR7 2SL

2. Accounting policies

2.1 Basis of preparation of financial statements

The financial statements have been prepared in accordance with the Charities SORP (FRS 102) - Accounting and Reporting by Charities: Statement of Recommended Practice applicable to charities preparing their accounts in accordance with the Financial Reporting Standard applicable in the UK and Republic of Ireland (FRS 102) (effective 1 January 2019), the Financial Reporting Standard applicable in the UK and Republic of Ireland (FRS 102) and the Companies Act 2006.

Home Start Central Lancashire Ltd meets the definition of a public benefit entity under FRS 102. Assets and liabilities are initially recognised at historical cost or transaction value unless otherwise stated in the relevant accounting policy.

2.2 Income

All income is recognised once the Company has entitlement to the income, it is probable that the income will be received and the amount of income receivable can be measured reliably.

Grants are included in the Statement of financial activities on a receivable basis. The balance of income received for specific purposes but not expended during the period is shown in the relevant funds on the Balance sheet. Where income is received in advance of entitlement of receipt, its recognition is deferred and included in creditors as deferred income. Where entitlement occurs before income is received, the income is accrued.

Income tax recoverable in relation to investment income is recognised at the time the investment income is receivable.

2.3 Expenditure

Expenditure is recognised once there is a legal or constructive obligation to transfer economic benefit to a third party, it is probable that a transfer of economic benefits will be required in settlement and the amount of the obligation can be measured reliably. Expenditure is classified by activity. The costs of each activity are made up of the total of direct costs and shared costs, including support costs involved in undertaking each activity. Direct costs attributable to a single activity are allocated directly to that activity. Shared costs which contribute to more than one activity and support costs which are not attributable to a single activity are apportioned between those activities on a basis consistent with the use of resources. Central staff costs are allocated on the basis of time spent, and depreciation charges allocated on the portion of the asset's use.

Expenditure on charitable activities is incurred on directly undertaking the activities which further the Company's objectives, as well as any associated support costs.

HOME START CENTRAL LANCASHIRE LTD
(A company limited by guarantee)

NOTES TO THE FINANCIAL STATEMENTS
FOR THE YEAR ENDED 31 MARCH 2024

2. Accounting policies (continued)

2.3 Expenditure (continued)

All expenditure is inclusive of irrecoverable VAT.

2.4 Interest receivable

Interest on funds held on deposit is included when receivable and the amount can be measured reliably by the Company; this is normally upon notification of the interest paid or payable by the institution with whom the funds are deposited.

2.5 Debtors

Trade and other debtors are recognised at the settlement amount after any trade discount offered. Prepayments are valued at the amount prepaid net of any trade discounts due.

2.6 Cash at bank and in hand

Cash at bank and in hand includes cash and short-term highly liquid investments with a short maturity of three months or less from the date of acquisition or opening of the deposit or similar account.

2.7 Liabilities and provisions

Liabilities are recognised when there is an obligation at the Balance sheet date as a result of a past event, it is probable that a transfer of economic benefit will be required in settlement, and the amount of the settlement can be estimated reliably.

Liabilities are recognised at the amount that the Company anticipates it will pay to settle the debt or the amount it has received as advanced payments for the goods or services it must provide.

Provisions are measured at the best estimate of the amounts required to settle the obligation. Where the effect of the time value of money is material, the provision is based on the present value of those amounts, discounted at the pre-tax discount rate that reflects the risks specific to the liability. The unwinding of the discount is recognised in the Statement of financial activities as a finance cost.

2.8 Financial instruments

The Company only has financial assets and financial liabilities of a kind that qualify as basic financial instruments. Basic financial instruments are initially recognised at transaction value and subsequently measured at their settlement value with the exception of bank loans which are subsequently measured at amortised cost using the effective interest method.

2.9 Pensions

The Company operates a defined contribution pension scheme and the pension charge represents the amounts payable by the Company to the fund in respect of the year.

HOME START CENTRAL LANCASHIRE LTD
(A company limited by guarantee)

NOTES TO THE FINANCIAL STATEMENTS
FOR THE YEAR ENDED 31 MARCH 2024

2. Accounting policies (continued)

2.10 Fund accounting

General funds are unrestricted funds which are available for use at the discretion of the Trustees in furtherance of the general objectives of the Company and which have not been designated for other purposes.

Designated funds comprise unrestricted funds that have been set aside by the Trustees for particular purposes. The aim and use of each designated fund is set out in the notes to the financial statements.

Restricted funds are funds which are to be used in accordance with specific restrictions imposed by donors or which have been raised by the Company for particular purposes. The costs of raising and administering such funds are charged against the specific fund. The aim and use of each restricted fund is set out in the notes to the financial statements.

Investment income, gains and losses are allocated to the appropriate fund.

HOME START CENTRAL LANCASHIRE LTD
(A company limited by guarantee)

**NOTES TO THE FINANCIAL STATEMENTS
FOR THE YEAR ENDED 31 MARCH 2024**

3. Income from donations and legacies

	Restricted funds 2024 £	Unrestricted funds 2024 £	Total funds 2024 £
Donations	1,563	509	2,072
Grants	160,722	37,438	198,160
	<u>162,285</u>	<u>37,947</u>	<u>200,232</u>
	<u><u>162,285</u></u>	<u><u>37,947</u></u>	<u><u>200,232</u></u>
	<i>Restricted funds 2023 £</i>	<i>Unrestricted funds 2023 £</i>	<i>Total funds 2023 £</i>
Donations	-	3,561	3,561
Grants	136,894	37,831	174,725
	<u>136,894</u>	<u>41,392</u>	<u>178,286</u>
	<u><u>136,894</u></u>	<u><u>41,392</u></u>	<u><u>178,286</u></u>

4. Investment income

	Unrestricted funds 2024 £	Total funds 2024 £
Investment income	1,409	1,409
	<u>1,409</u>	<u>1,409</u>
	<u><u>1,409</u></u>	<u><u>1,409</u></u>
	<i>Unrestricted funds 2023 £</i>	<i>Total funds 2023 £</i>
Investment income	1,039	1,039
	<u>1,039</u>	<u>1,039</u>
	<u><u>1,039</u></u>	<u><u>1,039</u></u>

HOME START CENTRAL LANCASHIRE LTD
(A company limited by guarantee)

**NOTES TO THE FINANCIAL STATEMENTS
FOR THE YEAR ENDED 31 MARCH 2024**

5. Analysis of Grant Income

	Restricted funds 2024 £	Unrestricted funds 2024 £	Total funds 2024 £
Grants			
All grants:	-	-	-
Rock FM	7,000	-	7,000
Chorley Council	46,000	13,571	59,571
Preston City Council - DA Project	32,722	-	32,722
National Lottery	75,000	-	75,000
Garfield Weston	-	20,000	20,000
Cadent	-	2,188	2,188
Skelton Bounty	1,563	-	1,563
Home Start UK	-	2,188	2,188
Total 2024	162,285	37,947	200,232
	<i>Restricted funds 2023 £</i>	<i>Unrestricted funds 2023 £</i>	<i>Total funds 2023 £</i>
All grants	136,894	37,831	174,725

6. Independent examiner's remuneration

	2024 £	2023 £
Fees payable to the Company's independent examiner for the independent examination of the Company's annual accounts	450	350

HOME START CENTRAL LANCASHIRE LTD
(A company limited by guarantee)

**NOTES TO THE FINANCIAL STATEMENTS
FOR THE YEAR ENDED 31 MARCH 2024**

7. Staff costs

	2024	<i>2023</i>
	£	£
Wages and salaries	164,956	<i>163,765</i>
Social security costs	9,908	<i>9,805</i>
Contribution to defined contribution pension schemes	9,864	<i>8,178</i>
	<u>184,728</u>	<u><i>181,748</i></u>

The average number of persons employed by the Company during the year was as follows:

	2024	<i>2023</i>
	No.	No.
Operational	6	<i>7</i>
Administration	1	<i>1</i>
	<u>7</u>	<u><i>8</i></u>

No employee received remuneration amounting to more than £60,000 in either year.

HOME START CENTRAL LANCASHIRE LTD
(A company limited by guarantee)

**NOTES TO THE FINANCIAL STATEMENTS
FOR THE YEAR ENDED 31 MARCH 2024**

8. Analysis of direct costs on charitable activities

	Restricted funds 2024 £	Unrestricted funds 2024 £	Total funds 2024 £
Salaries with on costs	107,091	184,728	291,819
Utilities	9,823	17,071	26,894
Volunteer expenses	1,024	1,343	2,367
Bank charges	-	70	70
Project costs	10,795	10,795	21,590
Rent and rates	3,153	6,307	9,460
General office expenses	5,023	9,006	14,029
Staff resources	-	2,193	2,193
Cleaning	-	-	-
Repairs and maintenance	-	2,896	2,896
Training	183	183	366
Professional fees	1,982	3,515	5,497
Insurance	-	1,717	1,717
Management committee costs	150	150	300
Travel costs	53	53	106
Home Start levy	-	4,339	4,339
Accountancy	-	450	450
Total 2024	139,277	244,816	384,093

HOME START CENTRAL LANCASHIRE LTD
(A company limited by guarantee)

**NOTES TO THE FINANCIAL STATEMENTS
FOR THE YEAR ENDED 31 MARCH 2024**

	<i>Restricted funds 2023 £</i>	<i>Unrestricted funds 2023 £</i>	<i>Total funds 2023 £</i>
Salaries with on costs	91,821	89,927	181,748
Utilities	8,201	7,811	16,012
Volunteer expenses	-	547	547
Bank Charges	-	133	133
Project costs	24,743	-	24,743
Rent and rates	3,098	3,000	6,098
General office expenses	2,824	2,121	4,945
Staff resources	-	220	220
Cleaning	-	968	968
Repairs and maintenance	-	2,410	2,410
Training	-	45	45
Professional fees	-	2,271	2,271
Insurance	-	922	922
Management committee costs	-	519	519
Travel costs	643	-	643
Home Start Levy	-	1,600	1,600
Accountancy	-	350	350
Total 2023	131,330	112,844	244,174

9. Trustees' remuneration and expenses

During the year, no Trustees received any remuneration or other benefits (2023 - £NIL).

During the year ended 31 March 2024, no Trustee expenses have been incurred (2023 - £NIL).

10. Debtors

	2024 £	2023 £
Due within one year		
Prepayments and accrued income	750	268
	750	268

HOME START CENTRAL LANCASHIRE LTD
(A company limited by guarantee)

**NOTES TO THE FINANCIAL STATEMENTS
FOR THE YEAR ENDED 31 MARCH 2024**

11. Current asset investments

	2024	2023
	£	£
Listed investments	61,907	87,364

12. Creditors: Amounts falling due within one year

	2024	2023
	£	£
Other taxation and social security	3,384	-
Pension fund loan payable	512	-
Accruals and deferred income	450	1,061
	4,346	1,061

HOME START CENTRAL LANCASHIRE LTD
(A company limited by guarantee)

**NOTES TO THE FINANCIAL STATEMENTS
FOR THE YEAR ENDED 31 MARCH 2024**

13. Statement of funds

Statement of funds - current year

	Balance at 1 April 2023 £	Income £	Expenditure £	Balance at 31 March 2024 £
Unrestricted funds				
Designated funds				
Designated Funds - all funds	36,310	-	-	36,310
General funds				
General Funds - all funds	56,101	50,363	(105,539)	925
Total Unrestricted funds	92,411	50,363	(105,539)	37,235
Restricted funds				
The National Lottery	9,008	75,000	(80,524)	3,484
Eric Wright	2,108	-	(2,108)	-
Household Support Fund	-	46,000	(46,000)	-
Skelton Bounty	-	1,563	(1,563)	-
Preston City Council - DA project	-	32,722	(2,082)	30,640
Rock FM Cash for Kids	-	7,000	(7,000)	-
	11,116	162,285	(139,277)	34,124
Total of funds	103,527	212,648	(244,816)	71,359

HOME START CENTRAL LANCASHIRE LTD
(A company limited by guarantee)

**NOTES TO THE FINANCIAL STATEMENTS
FOR THE YEAR ENDED 31 MARCH 2024**

13. Statement of funds (continued)

Statement of funds - prior year

	<i>Balance at 1 April 2022 £</i>	<i>Income £</i>	<i>Expenditure £</i>	<i>Balance at 31 March 2023 £</i>
Unrestricted funds				
Designated funds				
Designated Funds - all funds	36,310	-	-	36,310
General funds				
General Funds - all funds	119,388	49,557	(112,844)	56,101
Total Unrestricted funds	155,698	49,557	(112,844)	92,411
Restricted funds				
The National Lottery	5,552	75,000	(71,544)	9,008
Eric Wright	-	16,000	(13,892)	2,108
Household Support Fund	-	40,000	(40,000)	-
Skelton Bounty	-	2,000	(2,000)	-
Preston City Council - DA project	-	1,000	(1,000)	-
Rock FM Cash for Kids	-	2,894	(2,894)	-
	5,552	136,894	(131,330)	11,116
Total of funds	161,250	186,451	(244,174)	103,527

HOME START CENTRAL LANCASHIRE LTD
(A company limited by guarantee)

NOTES TO THE FINANCIAL STATEMENTS
FOR THE YEAR ENDED 31 MARCH 2024

14. Statement of funds

Designated funds - This fund is for 6 month running costs as per the Charities Commission best practice guidance. This includes; redundancies, notices, leases and running costs.

Restricted funds -

Chorley and Leyland Methodist church - This donation was received specifically to provide children's dinners as part of the holiday hunger project throughout the school holidays.

Eric Wright - This fund is to provide family support.

National Lottery Fund - This fund is for our core family support service and the development of 'Sweet Chilli Parenting' our parenting workshops.

Kickstart - These grants were received by the DWP to support young people gaining access to employment.

Household Support Fund - This fund is to support families in the community with essential goods and support.

Amazon/ M&S Fund - These funds are to provide family support.

15.

Summary of funds - current year

	Balance at 1 April 2023 £	Income £	Expenditure £	Balance at 31 March 2024 £
Designated funds	36,310	-	-	36,310
General funds	56,101	50,363	(105,539)	925
Restricted funds	11,116	162,285	(139,277)	34,124
	<u>103,527</u>	<u>212,648</u>	<u>(244,816)</u>	<u>71,359</u>

HOME START CENTRAL LANCASHIRE LTD
(A company limited by guarantee)

**NOTES TO THE FINANCIAL STATEMENTS
FOR THE YEAR ENDED 31 MARCH 2024**

15. Summary of funds (continued)

Summary of funds - prior year

	<i>Balance at 1 April 2022</i>	<i>Income</i>	<i>Expenditure</i>	<i>Balance at 31 March 2023</i>
	£	£	£	£
Designated funds	36,310	-	-	36,310
General funds	119,388	49,557	(112,844)	56,101
Restricted funds	5,552	136,894	(131,330)	11,116
	<u>161,250</u>	<u>186,451</u>	<u>(244,174)</u>	<u>103,527</u>

16. Analysis of net assets between funds

Analysis of net assets between funds - current period

	Restricted funds 2024	Unrestricted funds 2024	Total funds 2024
	£	£	£
Current assets	34,124	41,581	75,705
Creditors due within one year	-	(4,346)	(4,346)
Total	<u>34,124</u>	<u>37,235</u>	<u>71,359</u>

Analysis of net assets between funds - prior period

	<i>Restricted funds 2023</i>	<i>Unrestricted funds 2023</i>	<i>Total funds 2023</i>
	£	£	£
Current assets	11,116	93,472	104,588
Creditors due within one year	-	(1,061)	(1,061)
Total	<u>11,116</u>	<u>92,411</u>	<u>103,527</u>

HOME START CENTRAL LANCASHIRE LTD
(A company limited by guarantee)

**NOTES TO THE FINANCIAL STATEMENTS
FOR THE YEAR ENDED 31 MARCH 2024**

17. Reconciliation of net movement in funds to net cash flow from operating activities

	2024 £	2023 £
Net expenditure for the period (as per Statement of Financial Activities)	(32,168)	(57,723)
Adjustments for:		
Decrease in debtors	268	27,834
Increase/(decrease) in creditors	3,285	(2,417)
Net cash used in operating activities	(28,615)	(32,306)

18. Analysis of cash and cash equivalents

	2024 £	2023 £
Cash in hand	75,705	104,320
Total cash and cash equivalents	75,705	104,320

19. Analysis of changes in net debt

	At 1 April 2023 £	Cash flows £	At 31 March 2024 £
Cash at bank and in hand	16,956	(3,908)	13,048
Debt due within 1 year	-	(512)	(512)
Liquid investments	87,364	(25,457)	61,907
	104,320	(29,877)	74,443

20. Related party transactions

The Company has not entered into any related party transaction during the year, nor are there any outstanding balances owing between related parties and the Company at 31 March 2024.

HOME START CENTRAL LANCASHIRE LTD
(A company limited by guarantee)

NOTES TO THE FINANCIAL STATEMENTS
FOR THE YEAR ENDED 31 MARCH 2024

21. Post balance sheet events

There have been no significant events affecting the Company since the year end.

22. Controlling party

Those directors listed on the administrative page of the accounts control the Company.