



Central
Lancashire



Home-Start Central Lancashire Annual Report 2020

Home-Start Central Lancashire at a glance

Home-Start Central Lancashire is a Family Support Charity based in Chorley and works with families who have at least one child under the age of eleven, in communities across West Lancashire, Chorley, South Ribble and Greater Preston. We are a local branch of Home-Start UK and as such we have to pass strict Quality Assurance tests in order to operate. Home-Start UK provide infrastructure across the UK for all local Home-starts but they do not fund us and so we operate as an independent local charity.

Home-Start Central Lancashire have been providing support for families within the area since 1996. Due to growth and demand we officially registered as a charity and company limited by guarantee in 2004.

We provide early intervention and post intervention home-visiting family support. Starting in the home, our approach is as individual as the people we are helping. No judgment, it is just compassionate, confidential help and expert family support. At the heart of our work is home visiting volunteer support.

Families, many of them struggling with multiple and/or complex issues such as post-natal depression, isolation, physical health problems, bereavement, early childhood developmental issues, poor mental health and many other issues receive the expertise of a family Support Coordinator and the support of a trained volunteer who will spend at least two hours a week in a family's home supporting them in the ways they need. Depending on each family's needs and their complexities, our Coordinators and volunteers can spend between 3- 12 months providing them with family support.

The earliest years make the biggest impact and Home-Start makes sure those years count so that no child's future is limited. Children who are raised in a stable, loving, family environment are more likely to have a positive and healthy future.

Home-Start works because our home-visiting volunteers are parents/carers. They understand how hard it can be and work alongside parents, in their own homes, to help them cope with the stresses and strains of life and make sure they have the skills, confidence, and strength they need to nurture their children.

Home-Start Central Lancashire work closely with and alongside other local agencies from all sectors to provide rapid response and longer term multi agency support, for families who need more than one intervention to get their lives back on track and increase their capacity and independence.

We facilitate training, peer support groups, encourage positive friendships and support families to access available local services, education, and training, as well as lots of other support.

Who We Are 2020



Chair of Trustees
Jessica Wood

Vice Chair of Trustees
Jeannie Stirling

Trustee / Directors

Diane Gradwell

Maureen Walkden
Helen Connolly

Carole Lee

Olga Norris
Neil Williams

Ann Bridge

Staff

Business and Development Manager - Donna Hussain

Continuous Improvement Lead - Bernadette Aston

Learning and Development Officer - Moya Fletcher

Office Manager - Jennifer Coupe

Administrator - Eunice Weller

Family Support Coordinators - Jorden Thompson, Keelie Bentley, Shirley Gent, Ruksana Ali.

Finance Admin - Meriel Beattie



2020

EXECUTIVE SUMMARY

Throughout the recent lock down 2020/2021 caused by the COVID-19 pandemic, Home-Start Central Lancashire has continued to maintain and deliver family support services across Central Lancashire.

During 2020/2021 we have supported over 230 families and over 650 children.

As a result of the pandemic families have faced even more isolation, poverty, and a tremendous decrease in support and opportunities. This has contributed to the increase in number of referrals and families needing support to return to the 'new normal', and the increase of complex issues families are currently experiencing.

Parents and Carers are increasingly struggling to meet the physical and emotional demands of themselves and their children. Social isolation has risen significantly over the last few years due to families being more fragmented and fewer intergenerational households being the norm.

We have seen a 34% increase over the last year 2020/2021 in referrals from agencies and families themselves for early intervention and post intervention family support.

Across central Lancashire the majority of families referred to us live in the most deprived areas, many are living beneath the poverty line and are struggling not only financially but physically, mentally, and developmentally.

In the communities that we work in reports of domestic violence, child abuse, neglect, malnutrition, school absence/exclusions, youth crime and many other issues have risen by over 25%.

Over 85% of our families live in areas that are in the bottom 10% of deprivation across the UK according to the Office for National Statistics and over 80% of the families we support are living in poverty which is a high contributing factor for high rates of infant mortality, poor nutrition, health issues, developmental delay, increased neurodiversity, and below average life expectancy.

Lancashire has one of the highest rates across England of children living in care and school exclusions are amongst the highest across England.

Reduced school attendance during the pandemic, lack of digital resources and digital illiteracy of some parents across the County, has left many children facing increased problems trying to attain academic averages.

Rates of children self-harming and struggling with their mental health have also risen substantially. Waiting lists for support from mental and physical health agencies are getting longer which is resulting in families reaching crisis point and at higher risk of losing their children before support can be accessed.

Awareness of 'Adverse childhood experiences', and current research around 'Attachment Disorders' associated with adverse childhood experience, have proved that early intervention from nonjudgmental family support that is regular and consistent, can help reduce the impact and symptoms of attachment disorder and help to make families stronger, more independent and increase the safety and security of children.

During 2020/2021 our Board of Trustees made the decision to invest over £80,000 of unrestricted reserves into the operations of the charity to continue with improvements to our service and family support offer during the lock down. The reserves used had been saved from previous years when Home-Start Central Lancashire provided private creche services. The creche's had been successful and provided Home-Start Central Lancashire with some independent unrestricted income. When the government began providing free nursery places for children over two years old (more recently for children over one year), the need for private creche provision reduced and we were no longer able to raise an income from it.

Donna Hussain
Business and Development manager

Our Vision

That social inequalities are reduced and every family receives the support they need so that parents, carers and children can reach their full potential.

Our Aim

Home-Start Central Lancashire aims to increase the confidence, capacity and independence of families by;

- Offering emotional and practical support along with friendship to parents and their children.
- Supporting families using a trauma informed approach
- Visiting families in their own homes where the dignity and identity of each adult and child can be respected and protected.
- Promoting and encouraging early childhood development through play and learn.
- Helping to implement new parenting strategies and cope with challenging behaviour.
- Reassuring parents that difficulties in bringing up children are not unusual and support and encourage them to enjoy family life.
- Developing a relationship with the family in which time can be shared and understanding can be developed.
- Identifying and working with local services and agencies that can further support families to reach their goals.



What we do:

- Home-Start is there for parents when they need us most, because childhood cannot wait.
- Together with the family we identify issues that are affecting them. Most often these are multiple issues and many have previously gone unrecognised and unresolved.
- Identify local services/agencies and expertise then support the family to access and engage with other support.
- Our trained volunteers support and help families with young children through their challenging times.
- Change how parents think and feel about themselves
- Support families to make positive decisions and lifestyle changes
- Help parents cope with the challenges they are facing
- Improve social and economic outlook for families
- Increase access to local services and opportunities

Why we do it:

- To reduce inequalities for families.
- To improve family life and keep families together
- To increase awareness of help and support for families
- To promote positive relationships and raise awareness of the importance of family.
- To build stronger families and communities.
- The earliest years make the biggest impact. Home-Start makes sure those years count so that no child's future is limited.

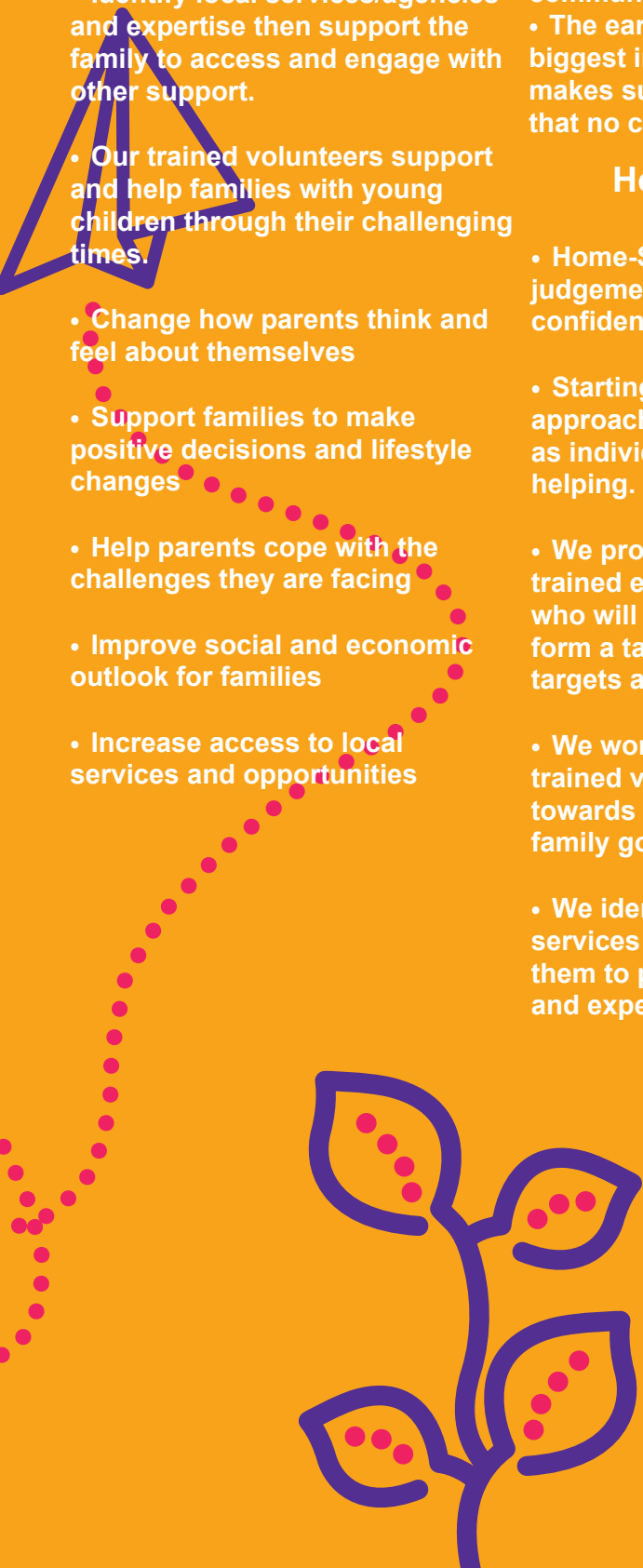
How we do it:

- Home-Start offers no judgement, just compassionate, confidential help and support.
- Starting in the home, our approach is trauma informed and as individual as the people we're helping.
- We provide each family with a trained experienced Coordinator who will work with the family to form a tailor made action plan of targets and goals.
- We work with the family and a trained volunteer to work towards targets and realising family goals.
- We identify other local support services and work alongside them to provide the best support and expertise for families.

Does what we do make a difference for the better?

Yes: Home-Start helps parents build better lives for their children. Independent research published in 2013 after three years studying families showed:

- Children whose parents have had the support of a Home-Start volunteer have a better start in life than those who don't.
- Children are still benefiting up to three years after their Home-Start volunteer has stopped visiting. Separate research into how well each family is coping and how resilient they are tells us families supported by Home-Start are less isolated, more resilient, show improved mental and physical health, see improvements in children's behaviour and well-being and have less stress and conflict in the family.
- The proportion of parents rating themselves as coping 'most of the time' rises from 29% at Home-Start's first visit to 72% after our support.
- Home-Start's support increases families' capacity to cope with the issues they are facing. At the beginning of support, the average level of coping for a family was 2. At the end of support, the majority were coping at level 4 or above.



Report 2020/21

Give a little – change a lot



- Home-Start Central Lancashire invested over £80,000 of reserves during 2020/2021 to ensure our family support service could continue supporting families throughout the COVID-19 Pandemic.

- We invested in a Business and Development Manager to implement innovation, restructure and change management. Improve our service offer, collaborative partnership working and bring us up to date with the latest research.

- We invested in a Learning and Development Officer and digital hub to improve our training package and to support staff and volunteers to access face to face and digital training opportunities alongside peer mentor support.

- We employed a Continuous improvement Lead to implement improved data collection and analysis systems and to support staff to make service delivery improvements.

Whilst investing in people, Home-Start Central Lancashire also invested in extra digital and training resources throughout 2020/2021.

Added investment enabled us to continue supporting families and prepare our staff and volunteers for the increased demands on our service and the relevant changes and improvements needed.

Our volunteers that continued with us throughout the pandemic provided over 5000 hours of telephone and video support to families across central Lancashire.

During Easter we worked over the Easter holidays delivering over 1000 Easter eggs, food parcels and emergency baby supplies to families donated to us by local businesses.

Christmas 2020, we delivered extra Christmas presents to over 100 households and over 400 children and young people.

During the pandemic our available volunteer capacity significantly reduced due to lock down restrictions, self isolating and shielding.

Despite the reduction we still managed to support over 230 families across Central Lancashire.

Report 2020/2021

Donna Hussain



This year began with the whole country and most of the world in lock-down due to a pandemic that no one could have ever anticipated.

Whilst most business's, agencies and organisation's had to close due to tight government restrictions, Home-Start Central Lancashire continued to offer support to families across Central Lancashire via whatever safe means we could.

During these unprecedented times, we continued to work alongside other local agencies to provide a rapid response support service for local families.

As part of our Rapid response we provided and delivered the following emergency supplies;

- Food
- Baby Milk & Baby food
- Nappies
- Food Vouchers
- Packed Lunches
- Learning and development Materials
- and much more.....

During 20/21 we also increased our digital and technological resources. This has enabled us to continue our support service via telephone, video link, email and face to face observing social distancing regulations.

Throughout July and August we opened our doors to families and provided daily group play and learn sessions which enabled families to begin integrating once again and to reduce social isolation that had massively impacted family life.

During the school holidays we also provided daily packed lunches for families struggling financially.

When the country went back into lock down for the second time Home-Start Central Lancashire continued to support families both in their homes and via digital means.

Donna Hussain Business and Development Manager
Home-Start Central Lancashire.



Collaborative Partnership Working

Current Partners

Statutory Services

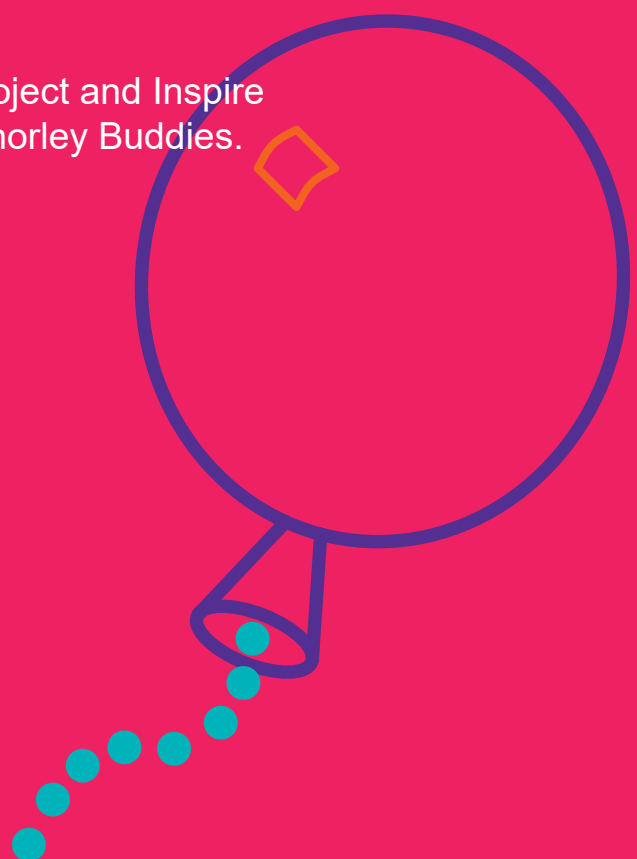
Local Authority Early action and Community services.
Children's Social care
Adult Social Care
Children's mental Health Services
Adult Mental Health Services
Police, Fire Brigade, Clinical Commissioning groups NHS, Perinatal, midwives & Health Visitors, schools and nurseries.
Housing and Council tax benefits departments
Social Housing departments

Third Sector

Local Community groups
Social Prescribers
Citizens Advice and local advocacy services
Lancashire Mind and local mental health services
Drug and Alcohol abuse services such as Tribal Project and Inspire
Befriending services such as friends for you and Chorley Buddies.
Youth Services and Youth Zones
Local food banks and Faith Establishments
Galloways for the blind
Deafway for the hard of hearing
Heartbeat
and many more,,,,,,

Private Sector

Virgin Care - Health Visitor Provision
Private nurseries
Local Supermarkets
Food establishments, takeaways and restaurants
Local businesses



Working With Families

With Multiple and Complex Needs

232 Families were supported by Home-Start central Lancashire during 2020/2021.

71%

Lone Parents



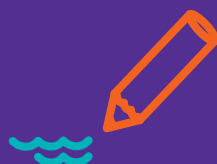
37%

Victims of
Substance
Abuse



57%

Victims of
Domestic
Abuse



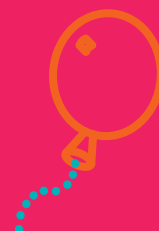
69%

Mental
Health
Difficulties



9%

Learning
Difficulties



32%

Post Natal
Depression



3%

Teenage
Pregnancies



46%

To a Child's
Behaviour
Including,
Adhd.
Attachment
Disorder.
Autism.

73%

Emotional
and Wellbeing
Difficulties



48%

Needed
Support for
Socialising
and
Isolation



Our Summer Activities 2020/2021

Our Challenge: Childhood Can't Wait

Throughout July and August 2020 we organised and facilitated daily play and learn sessions for parents/carers and their children.

We also ran a Dad and children's group to support single parent Dad's and those Dad's who are the primary carers for their children.

All the groups we ran enabled parents to reintegrate, socialise and take part in open discussions and peer support. All the children and young people who attended joined in age appropriate activities that encouraged learning whilst playing.



Throughout the Year 2020/2021



Top:
Baby milk, baby food and essential
food supplies we delivered.

Middle:
Donated Easter Eggs

Bottom:
Happy child receiving his Easter egg



Throughout the Year 2020/21



**Top Right - Nappies for
delivery**

**Middle Left - Family
receiving much needed
Christmas presents**

**Middle Right -
Christmas present
donations**

**Bottom - Tree
decorating**



Volunteers

A Big Thank You to our wonderful volunteers who have given their time and energy to Home-Start this year. We really couldn't do it without you!

Angela Baines Kath Parker
Ann Bridge Margaret Stoney Cath Boland
Jade Karanagh Helen Connolly Dana Debbie Van
Sheila Unsworth Jenny Chatterley Jackie Hill Irene Campbell
Paula Sandham Hannah Boulton Olga Norris
Cindy Busby Kirsty Greenwood
Guna Medne Jean Lyons Pam Yale
Rachael Barnard Claudia Shipley
Ruth Melling Maria Babu
Lianne Walmsley Nicola Ford
Gill Egan Julie Wane Julie Willis
Emma Partington Keelia Bentley
Den Josh McManus Lisa Steel
Rebecca Webster Berg
Sue Sharp
Gill Purslow Emily McDermott Janet Rigby Ruth Simmons Emily Birchall
Isabelle Butcher Fiona Kirby Jade Hammond Sophie Evans Jan Currie
Anne Kletz Leandra Roche Joan Balenski Joanna Smith Claire Caunce
Natasha Sloan Kelly Gaskell Myra McKay Amy Walsh Jill Kirby
Sue Mercer Raha Rahman Jo Crossland Demi-Lee Heath Eunice Kenyon
Joanne Gilleece Jane Forshaw Sharon Reay Lisa Collins Becky Neal
Julia Sandham Judith Schorah Sue Williams Amy Yates
Rebecca Smith Judy Ingman Marie Molyneux
Claire Townley Bernadette Phillips Liz Gregory
Emma Mohammed
Kathleen Bratby

VOLUNTEER TODAY



Acknowledgements

Home-Start Central Lancashire would like to thank the organisations who have funded us throughout the year:

Eric Wright Foundation
Chorley Council
Community Foundation for Lancashire
Home-Start UK
CO-OP

Thank you also to those organisations and individuals who have supported us with donations, gifts in kind or donated towards particular events or have worked in partnership with us, these include:

Adlington Luncheon Club
Ann Bridge
Debbie Holden Asda Chorley
Brindle St James's School
Chorley Community Team
Chorley Early intervention
Team
Chorley Mayor Hasina Khan
Chorley Football Club
Clayton Le Woods Womens
Institute
Convene IT
Co-op Stores in Lancashire
Coppice School
Coppull Parish Church
Ebb & Flo Bookshop Chorley
Gregson Green
GTD Healthcare
Help the Homeless
Inner Wheel Club
Inspire Youth Zone
Julie Clarkson
Kevills Solicitors

Lancashire Constabulary

Leyland & District Lions
Leyland Round Table

L Champ Funeral Services

Living Waters Church

Mr Reece Monk

Pamela Short Paulines Angels
Rock FM - Cash for Kids
Ruth Melling
Ruth Poar
Sephra Hussain

St Bede's RC Church
St James's CE School
St Paul's CE School Adlington
St Teresa's RC School Penwortham
The Grove
Volunteers of Astley Walled Garden
Waitrose
Weldbank Plastics



Central Lancashire



Tel: 01257 241636

Visit www.homestartcentrallancs.org.uk

Registered number: 5214560
Charity number: 1105739

HOME START CENTRAL LANCASHIRE LTD
(A company limited by guarantee)

UNAUDITED
TRUSTEES' REPORT AND FINANCIAL STATEMENTS
FOR THE YEAR ENDED 31 MARCH 2021

HOME START CENTRAL LANCASHIRE LTD
(A company limited by guarantee)

CONTENTS

	Page
Trustees' report	1 - 4
Independent examiner's report	5
Statement of financial activities	6
Balance sheet	7 - 8
Statement of cash flows	9
Notes to the financial statements	10 - 21

HOME START CENTRAL LANCASHIRE LTD
(A company limited by guarantee)

TRUSTEES' REPORT
FOR THE YEAR ENDED 31 MARCH 2021

The Trustees present their annual report together with the financial statements of the Home Start Central Lancashire Limited for the 1 April 2020 to 31 March 2021. The Annual report serves the purposes of both a Trustees' report and a directors' report under company law. The Trustees confirm that the Annual report and financial statements of the charitable company comply with the current statutory requirements, the requirements of the charitable company's governing document and the provisions of the Statement of Recommended Practice (SORP) applicable to charities preparing their accounts in accordance with the Financial Reporting Standard applicable in the UK and Republic of Ireland (FRS102) (effective 1 January 2019).

Since the Company qualifies as small under section 382 of the Companies Act 2006, the Strategic report required of medium and large companies under the Companies Act 2006 (Strategic Report and Directors' Report) Regulations 2013 has been omitted.

Objectives and activities

a. Policies and objectives

Our vision - helping families with children feel happy, confident and supported.

Our aim - Home Start reaches out to families with children through positive support and friendship. We encourage families to increase their confidence and independence, improve health and wellbeing whilst helping them to build better lives and futures.

Home Start has a proven, lasting and positive impact on the development of children and the health and welfare of the whole family. Providing support through our home visiting service, our family groups, small group sessions and People in Crisis project.

In setting objectives and planning for activities, the Trustees have given due consideration to general guidance published by the Charity Commission relating to public benefit, including the guidance 'Public benefit: running a charity (PB2)'.

b. Activities undertaken to achieve objectives

The key activities of the charity are:

- Home visiting service - trained and supervised volunteers support families in their own homes helping them to prevent family crisis or breakdown. The volunteers support parents as they grow in confidence, build resilience, strengthen their relationships with their children and widen their links with the local community.
- People in Crisis project - this started in July 2016, working in partnership with Citizens Advice Lancashire and KEY Unlocking Futures. This project aims to draw on the strength and experience of people facing hardship and crisis so that they can overcome immediate difficulties and be ready for future opportunities and challenges.
- Training support and development for volunteers.
- Holiday hunger project - provided children's dinners to families throughout school holidays, who are entitled and receive free school dinners.
- Family Support groups - these provide the opportunity to engage in learning activities in a safe, welcoming environment where confidence and skills can be nurtured and also provide the opportunity to meet other families.
- School holiday activities and events for the whole family including holiday food and fun sessions to help tackle issues of holiday hunger.

HOME START CENTRAL LANCASHIRE LTD
(A company limited by guarantee)

TRUSTEES' REPORT (CONTINUED)
FOR THE YEAR ENDED 31 MARCH 2021

Objectives and activities (continued)

c. Volunteers

The Charity is indebted to many volunteers, without whom the charity could not operate.

The Charity is also indebted to its trustees who also offer services on a voluntary basis.

d. Main activities undertaken to further the Company's purposes for the public benefit

In meeting the objectives of the charitable company the Trustees have considered the Charity Commission guidance on public benefit and are satisfied that the activities undertaken during the year have provided significant benefit to the general public, particularly parents with young families, and their children and relatives.

Achievements and performance

a. Review of activities

During 2020 - 2021 the Charity -

- Supported families through home visiting, by virtual means, family groups and small group support
- Managed, trained and supported volunteers.
- Delivered family, activities and play days over the summer holidays and during half term.

The below activities were either delivered by virtual means or postponed due to COVID:

- Family groups across Chorley, Leyland, Penwortham, Skelmersdale and Ormskirk.
- Dads group in chorley.
- Group sessions for baby sensory and bumps to babes.

Financial review

a. Going concern

After making appropriate enquiries, the Trustees have a reasonable expectation that the Company has adequate resources to continue in operational existence for the foreseeable future. For this reason, they continue to adopt the going concern basis in preparing the financial statements. Further details regarding the adoption of the going concern basis can be found in the accounting policies.

Structure, governance and management

a. Constitution

Home Start Central Lancashire Ltd is registered as a charitable company limited by guarantee and was set up by a Trust deed. It has a registered charity number of 1105739.

HOME START CENTRAL LANCASHIRE LTD
(A company limited by guarantee)

TRUSTEES' REPORT (CONTINUED)
FOR THE YEAR ENDED 31 MARCH 2021

Structure, governance and management (continued)

b. Methods of appointment or election of Trustees

The management of the Company is the responsibility of the Trustees who are elected and co-opted under the terms of the Trust deed.

Any new trustees are identified and nominated by the existing board of trustees based on the skills and experience required from new trustees.

c. Policies adopted for the induction and training of Trustees

Any new trustees are given informal induction and training from existing trustees. Relevant information and Charity Commission publications regarding the responsibilities of trustees and information on the background to the charity are provided to all new trustees.

Reference and administrative details of the Company, its trustees and advisers

Trustees	Helen Connolly (resigned 13 May 2021) Maureen Walkden Diane Gradwell Jeannie Stirling Carole Lee (resigned 15 January 2021) Neil Williams (resigned 16 June 2021) Jessica Wood (resigned 13 May 2021)
-----------------	---

Company registered number	5214560
----------------------------------	---------

Charity registered number	1105739
----------------------------------	---------

Registered office	112a Market Street Chorley Lancashire PR7 2SL
--------------------------	--

Company secretary	Donna Louise Hussain
--------------------------	----------------------

Chief executive officer	Donna Louise Hussain
--------------------------------	----------------------

Accountants	CW Accountants Limited Office 5 The Boulevard Centre 45 Railway Road Blackburn Lancashire BB1 1EZ
--------------------	---

HOME START CENTRAL LANCASHIRE LTD
(A company limited by guarantee)

TRUSTEES' REPORT (CONTINUED)
FOR THE YEAR ENDED 31 MARCH 2021

Bankers Royal Bank of Scotland
56 Market Street
Chorley
Lancashire
PR7 2SD

Members' liability

The Members of the Company guarantee to contribute an amount not exceeding £1 to the assets of the Company in the event of winding up.

Statement of Trustees' responsibilities

The Trustees (who are also the directors of the Company for the purposes of company law) are responsible for preparing the Trustees' report and the financial statements in accordance with applicable law and United Kingdom Accounting Standards (United Kingdom Generally Accepted Accounting Practice).

Company law requires the Trustees to prepare financial statements for each financial . Under company law, the Trustees must not approve the financial statements unless they are satisfied that they give a true and fair view of the state of affairs of the Company and of its incoming resources and application of resources, including its income and expenditure, for that period. In preparing these financial statements, the Trustees are required to:

- select suitable accounting policies and then apply them consistently;
- observe the methods and principles of the Charities SORP (FRS 102);
- make judgments and accounting estimates that are reasonable and prudent;
- state whether applicable UK Accounting Standards (FRS 102) have been followed, subject to any material departures disclosed and explained in the financial statements;
- prepare the financial statements on the going concern basis unless it is inappropriate to presume that the Company will continue in business.

The Trustees are responsible for keeping adequate accounting records that are sufficient to show and explain the Company's transactions and disclose with reasonable accuracy at any time the financial position of the Company and enable them to ensure that the financial statements comply with the Companies Act 2006. They are also responsible for safeguarding the assets of the Company and hence for taking reasonable steps for the prevention and detection of fraud and other irregularities.

Approved by order of the members of the board of Trustees on
and signed on their behalf by:



John Jackson
Director

HOME START CENTRAL LANCASHIRE LTD
(A company limited by guarantee)

**INDEPENDENT EXAMINER'S REPORT
FOR THE YEAR ENDED 31 MARCH 2021**

Independent examiner's report to the Trustees of Home Start Central Lancashire Ltd ('the Company')

I report to the charity Trustees on my examination of the accounts of the Company for the year ended 31 March 2021.

Responsibilities and basis of report

As the Trustees of the Company (and its directors for the purposes of company law) you are responsible for the preparation of the accounts in accordance with the requirements of the Companies Act 2006 ('the 2006 Act').

Having satisfied myself that the accounts of the Company are not required to be audited under Part 16 of the 2006 Act and are eligible for independent examination, I report in respect of my examination of the Company's accounts carried out under section 145 of the Charities Act 2011 ('the 2011 Act'). In carrying out my examination I have followed the Directions given by the Charity Commission under section 145(5)(b) of the 2011 Act.

Independent examiner's statement

I have completed my examination. I confirm that no matters have come to my attention in connection with the examination giving me cause to believe:

1. accounting records were not kept in respect of the Company as required by section 386 of the 2006 Act; or
2. the accounts do not accord with those records; or
3. the accounts do not comply with the accounting requirements of section 396 of the 2006 Act other than any requirement that the accounts give a 'true and fair' view which is not a matter considered as part of an independent examination; or
4. the accounts have not been prepared in accordance with the methods and principles of the Statement of Recommended Practice for accounting and reporting by charities [applicable to charities preparing their accounts in accordance with the Financial Reporting Standard applicable in the UK and Republic of Ireland (FRS 102)].

I have no concerns and have come across no other matters in connection with the examination to which attention should be drawn in this report in order to enable a proper understanding of the accounts to be reached.

This report is made solely to the Company's Trustees, as a body, in accordance with Part 4 of the Charities (Accounts and Reports) Regulations 2008. My work has been undertaken so that I might state to the Company's Trustees those matters I am required to state to them in an Independent examiner's report and for no other purpose. To the fullest extent permitted by law, I do not accept or assume responsibility to anyone other than the Company and the Company's Trustees as a body, for my work or for this report.

Signed:

Dated:

Courtney Wright

FCCA

Office 5, The Boulevard Centre, 45 Railway Road, Blackburn, Lancashire, BB1 1EZ

HOME START CENTRAL LANCASHIRE LTD
(A company limited by guarantee)

**STATEMENT OF FINANCIAL ACTIVITIES (INCORPORATING INCOME AND EXPENDITURE ACCOUNT)
FOR THE YEAR ENDED 31 MARCH 2021**

	Note	Restricted funds 2021 £	Unrestricted funds 2021 £	Total funds 2021 £	Total funds 2020 £
Income from:					
Donations and legacies	3	10,000	77,266	87,266	87,011
Other trading activities		-	5,405	5,405	11,720
Investments	4	-	435	435	1,789
Total income		10,000	83,106	93,106	100,520
Expenditure on:					
Raising funds		-	-	-	300
Charitable activities		13,363	213,944	227,307	174,177
Total expenditure		13,363	213,944	227,307	174,477
Net movement in funds		(3,363)	(130,838)	(134,201)	(73,957)
Reconciliation of funds:					
Total funds brought forward		3,363	356,292	359,655	433,612
Net movement in funds		(3,363)	(130,838)	(134,201)	(73,957)
Total funds carried forward		-	225,454	225,454	359,655

The Statement of financial activities includes all gains and losses recognised in the year.

The notes on pages 10 to 21 form part of these financial statements.

HOME START CENTRAL LANCASHIRE LTD
(A company limited by guarantee)
REGISTERED NUMBER: 5214560

BALANCE SHEET
AS AT 31 MARCH 2021

	Note	2021 £	2020 £
Fixed assets			
Tangible assets	8	-	12
		<u>-</u>	<u>12</u>
Current assets			
Debtors	9	7,172	255
Investments	10	110,974	211,763
Cash at bank and in hand		109,747	159,663
		<u>227,893</u>	<u>371,681</u>
Creditors: amounts falling due within one year	11	(2,439)	(12,038)
Net current assets		<u>225,454</u>	<u>359,643</u>
Total assets less current liabilities		<u>225,454</u>	<u>359,655</u>
Net assets excluding pension asset		<u>225,454</u>	<u>359,655</u>
Total net assets		<u><u>225,454</u></u>	<u><u>359,655</u></u>
Charity funds			
Restricted funds	12	-	3,363
Unrestricted funds	12	225,454	356,292
Total funds		<u><u>225,454</u></u>	<u><u>359,655</u></u>

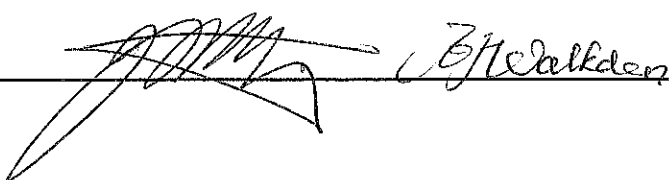
The Company was entitled to exemption from audit under section 477 of the Companies Act 2006.

The members have not required the company to obtain an audit for the year in question in accordance with section 476 of Companies Act 2006.

The Trustees acknowledge their responsibilities for complying with the requirements of the Act with respect to accounting records and preparation of financial statements.

The financial statements have been prepared in accordance with the provisions applicable to entities subject to the small companies regime.

The financial statements were approved and authorised for issue by the Trustees on and signed on their behalf by:



HOME START CENTRAL LANCASHIRE LTD
(A company limited by guarantee)
REGISTERED NUMBER: 5214560

BALANCE SHEET (CONTINUED)
AS AT 31 MARCH 2021

The notes on pages 10 to 21 form part of these financial statements.

HOME START CENTRAL LANCASHIRE LTD
(A company limited by guarantee)

STATEMENT OF CASH FLOWS
FOR THE YEAR ENDED 31 MARCH 2021

	2021 £	2020 £
Cash flows from operating activities		
Net cash used in operating activities	(150,705)	(58,321)
Cash flows from investing activities		
Net cash provided by investing activities	-	-
Cash flows from financing activities		
Net cash provided by financing activities	-	-
Change in cash and cash equivalents in the year	(150,705)	(58,321)
Cash and cash equivalents at the beginning of the year	371,426	429,747
Cash and cash equivalents at the end of the year	220,721	371,426

The notes on pages 10 to 21 form part of these financial statements

HOME START CENTRAL LANCASHIRE LTD
(A company limited by guarantee)

NOTES TO THE FINANCIAL STATEMENTS
FOR THE YEAR ENDED 31 MARCH 2021

1. General information

Home Start Central Lancashire is a private limited company without share capital and a registered charity. The company was incorporated in England and Wales and has the following registered office address:
112a Market Street
Chorley
Lancashire
PR7 2SL

2. Accounting policies

2.1 Basis of preparation of financial statements

The financial statements have been prepared in accordance with the Charities SORP (FRS 102) - Accounting and Reporting by Charities: Statement of Recommended Practice applicable to charities preparing their accounts in accordance with the Financial Reporting Standard applicable in the UK and Republic of Ireland (FRS 102) (effective 1 January 2019), the Financial Reporting Standard applicable in the UK and Republic of Ireland (FRS 102) and the Companies Act 2006.

Home Start Central Lancashire Ltd meets the definition of a public benefit entity under FRS 102. Assets and liabilities are initially recognised at historical cost or transaction value unless otherwise stated in the relevant accounting policy.

2.2 Income

All income is recognised once the Company has entitlement to the income, it is probable that the income will be received and the amount of income receivable can be measured reliably.

Grants are included in the Statement of financial activities on a receivable basis. The balance of income received for specific purposes but not expended during the period is shown in the relevant funds on the Balance sheet. Where income is received in advance of entitlement of receipt, its recognition is deferred and included in creditors as deferred income. Where entitlement occurs before income is received, the income is accrued.

Income tax recoverable in relation to investment income is recognised at the time the investment income is receivable.

2.3 Expenditure

Expenditure is recognised once there is a legal or constructive obligation to transfer economic benefit to a third party, it is probable that a transfer of economic benefits will be required in settlement and the amount of the obligation can be measured reliably. Expenditure is classified by activity. The costs of each activity are made up of the total of direct costs and shared costs, including support costs involved in undertaking each activity. Direct costs attributable to a single activity are allocated directly to that activity. Shared costs which contribute to more than one activity and support costs which are not attributable to a single activity are apportioned between those activities on a basis consistent with the use of resources. Central staff costs are allocated on the basis of time spent, and depreciation charges allocated on the portion of the asset's use.

Expenditure on raising funds includes all expenditure incurred by the Company to raise funds for its charitable purposes and includes costs of all fundraising activities events and non-charitable trading.

HOME START CENTRAL LANCASHIRE LTD
(A company limited by guarantee)

**NOTES TO THE FINANCIAL STATEMENTS
FOR THE YEAR ENDED 31 MARCH 2021**

2. Accounting policies (continued)

2.3 Expenditure (continued)

Expenditure on charitable activities is incurred on directly undertaking the activities which further the Company's objectives, as well as any associated support costs.

All expenditure is inclusive of irrecoverable VAT.

2.4 Tangible fixed assets and depreciation

Tangible fixed assets costing £NIL or more are capitalised and recognised when future economic benefits are probable and the cost or value of the asset can be measured reliably.

Tangible fixed assets are initially recognised at cost. After recognition, under the cost model, tangible fixed assets are measured at cost less accumulated depreciation and any accumulated impairment losses. All costs incurred to bring a tangible fixed asset into its intended working condition should be included in the measurement of cost.

Depreciation is charged so as to allocate the cost of tangible fixed assets less their residual value over their estimated useful lives, .

Depreciation is provided on the following bases:

Playground	- 20% straight line
Fixtures and fittings	- 25% straight line

2.5 Debtors

Trade and other debtors are recognised at the settlement amount after any trade discount offered. Prepayments are valued at the amount prepaid net of any trade discounts due.

2.6 Cash at bank and in hand

Cash at bank and in hand includes cash and short-term highly liquid investments with a short maturity of three months or less from the date of acquisition or opening of the deposit or similar account.

2.7 Liabilities and provisions

Liabilities are recognised when there is an obligation at the Balance sheet date as a result of a past event, it is probable that a transfer of economic benefit will be required in settlement, and the amount of the settlement can be estimated reliably.

Liabilities are recognised at the amount that the Company anticipates it will pay to settle the debt or the amount it has received as advanced payments for the goods or services it must provide.

Provisions are measured at the best estimate of the amounts required to settle the obligation. Where the effect of the time value of money is material, the provision is based on the present value of those amounts, discounted at the pre-tax discount rate that reflects the risks specific to the liability. The unwinding of the discount is recognised in the Statement of financial activities as a finance cost.

HOME START CENTRAL LANCASHIRE LTD
(A company limited by guarantee)

**NOTES TO THE FINANCIAL STATEMENTS
FOR THE YEAR ENDED 31 MARCH 2021**

2. Accounting policies (continued)

2.8 Financial instruments

The Company only has financial assets and financial liabilities of a kind that qualify as basic financial instruments. Basic financial instruments are initially recognised at transaction value and subsequently measured at their settlement value with the exception of bank loans which are subsequently measured at amortised cost using the effective interest method.

2.9 Pensions

The Company operates a defined contribution pension scheme and the pension charge represents the amounts payable by the Company to the fund in respect of the year.

2.10 Fund accounting

General funds are unrestricted funds which are available for use at the discretion of the Trustees in furtherance of the general objectives of the Company and which have not been designated for other purposes.

Designated funds comprise unrestricted funds that have been set aside by the Trustees for particular purposes. The aim and use of each designated fund is set out in the notes to the financial statements.

Restricted funds are funds which are to be used in accordance with specific restrictions imposed by donors or which have been raised by the Company for particular purposes. The costs of raising and administering such funds are charged against the specific fund. The aim and use of each restricted fund is set out in the notes to the financial statements.

Investment income, gains and losses are allocated to the appropriate fund.

HOME START CENTRAL LANCASHIRE LTD
(A company limited by guarantee)

**NOTES TO THE FINANCIAL STATEMENTS
FOR THE YEAR ENDED 31 MARCH 2021**

3. Income from donations and legacies

	Restricted funds 2021 £	Unrestricted funds 2021 £	Total funds 2021 £
Donations	-	12,332	12,332
Grants	10,000	33,367	43,367
Similar incoming resources	-	31,567	31,567
	<u>10,000</u>	<u>77,266</u>	<u>87,266</u>

	<i>Restricted funds 2020 £</i>	<i>Unrestricted funds 2020 £</i>	<i>Total funds 2020 £</i>
Donations	-	7,329	7,329
Grants	27,922	22,981	50,903
Similar incoming resources	-	28,779	28,779
	<u>27,922</u>	<u>59,089</u>	<u>87,011</u>

4. Investment income

	Unrestricted funds 2021 £	Total funds 2021 £
Investment income	<u>435</u>	<u>435</u>

	<i>Unrestricted funds 2020 £</i>	<i>Total funds 2020 £</i>
Investment income	<u>1,789</u>	<u>1,789</u>

HOME START CENTRAL LANCASHIRE LTD
(A company limited by guarantee)

**NOTES TO THE FINANCIAL STATEMENTS
FOR THE YEAR ENDED 31 MARCH 2021**

5. Independent examiner's remuneration

	2021 £	2020 £
Fees payable to the Company's independent examiner for the independent examination of the Company's annual accounts	<u>380</u>	<u>360</u>

6. Staff costs

	2021 £	2020 £
Wages and salaries	141,768	84,575
Social security costs	6,396	14,759
Contribution to defined contribution pension schemes	8,109	11,130
	<u>156,273</u>	<u>110,464</u>

The average number of persons employed by the Company during the year was as follows:

	2021 No.	2020 No.
Operational	6	4
Administration	1	2
	<u>7</u>	<u>6</u>

No employee received remuneration amounting to more than £60,000 in either year.

7. Trustees' remuneration and expenses

During the year, no Trustees received any remuneration or other benefits (2020 - £NIL).

During the year ended 31 March 2021, no Trustee expenses have been incurred (2020 - £NIL).

HOME START CENTRAL LANCASHIRE LTD
(A company limited by guarantee)

**NOTES TO THE FINANCIAL STATEMENTS
FOR THE YEAR ENDED 31 MARCH 2021**

8. Tangible fixed assets

	Plant and machinery £	Fixtures and fittings £	Total £
Cost or valuation			
At 1 April 2020	51,497	266	51,763
At 31 March 2021	51,497	266	51,763
Depreciation			
At 1 April 2020	51,489	262	51,751
Charge for the year	8	4	12
At 31 March 2021	51,497	266	51,763
Net book value			
At 31 March 2021	-	-	-
At 31 March 2020	8	4	12

9. Debtors

	2021 £	2020 £
Due within one year		
Trade debtors	6,903	-
Prepayments and accrued income	269	255
	7,172	255

10. Current asset investments

	2021 £	2020 £
Listed investments	110,974	211,763

HOME START CENTRAL LANCASHIRE LTD
(A company limited by guarantee)

NOTES TO THE FINANCIAL STATEMENTS
FOR THE YEAR ENDED 31 MARCH 2021

11. Creditors: Amounts falling due within one year

	2021 £	2020 £
Other taxation and social security	1,412	-
Accruals and deferred income	1,027	12,038
	<u>2,439</u>	<u>12,038</u>

HOME START CENTRAL LANCASHIRE LTD
(A company limited by guarantee)

**NOTES TO THE FINANCIAL STATEMENTS
FOR THE YEAR ENDED 31 MARCH 2021**

12. Statement of funds

Statement of funds - current year

	Balance at 1 April 2020 £	Income £	Expenditure £	Transfers in/out £	Balance at 31 March 2021 £
Unrestricted funds					
Designated funds					
Designated Funds - all funds	71,466	-	-	(35,156)	36,310
General funds					
General Funds - all funds	284,826	83,106	(213,944)	35,156	189,144
Total Unrestricted funds	356,292	83,106	(213,944)	-	225,454
Restricted funds					
Chorley and Leyland Methodist Church	3,363	-	(3,363)	-	-
Eric Wright	-	10,000	(10,000)	-	-
	3,363	10,000	(13,363)	-	-
Total of funds	359,655	93,106	(227,307)	-	225,454

HOME START CENTRAL LANCASHIRE LTD
(A company limited by guarantee)

**NOTES TO THE FINANCIAL STATEMENTS
FOR THE YEAR ENDED 31 MARCH 2021**

12. Statement of funds (continued)

Statement of funds - prior year

	<i>Balance at 1 April 2019 £</i>	<i>Income £</i>	<i>Expenditure £</i>	<i>Transfers in/out £</i>	<i>Balance at 31 March 2020 £</i>
Unrestricted funds					
Designated funds					
Designated Funds 1	135,349	-	-	(113,883)	21,466
Designated Funds 2	50,000	-	-	-	50,000
	<u>185,349</u>	<u>-</u>	<u>-</u>	<u>(113,883)</u>	<u>71,466</u>
General funds					
General Funds - all funds	232,639	22,035	(83,731)	113,883	284,826
Total Unrestricted funds	<u>417,988</u>	<u>22,035</u>	<u>(83,731)</u>	<u>-</u>	<u>356,292</u>
Restricted funds					
Chorley and Leyland Methodist Church	-	3,363	-	-	3,363
CAB - People In Crisis	-	28,779	(28,779)	-	-
Chorley Borough Council - Early Family Support	15,624	33,833	(49,457)	-	-
West Lancashire Borough Council	-	10,900	(10,900)	-	-
Asda - Holiday Hunger	-	950	(950)	-	-
Lancashire County Council	-	660	(660)	-	-
	<u>15,624</u>	<u>78,485</u>	<u>(90,746)</u>	<u>-</u>	<u>3,363</u>
Total of funds	<u>433,612</u>	<u>100,520</u>	<u>(174,477)</u>	<u>-</u>	<u>359,655</u>

HOME START CENTRAL LANCASHIRE LTD
(A company limited by guarantee)

**NOTES TO THE FINANCIAL STATEMENTS
FOR THE YEAR ENDED 31 MARCH 2021**

13. Statement of funds

Designated funds - This fund is for 6 month running costs as per the Charities Commission best practice guidance. This includes; redundancies, notices, leases and running costs.

Restricted funds -

Chorley and Leyland Methodist church - This donation was received specifically to provide children's dinners as part of the holiday hunger project throughout the school holidays.

Eric Wright - This fund is to provide family support.

14. Summary of funds

Summary of funds - current year

	Balance at 1 April 2020 £	Income £	Expenditure £	Transfers in/out £	Balance at 31 March 2021 £
Designated funds	71,466	-	-	(35,156)	36,310
General funds	284,826	83,106	(213,944)	35,156	189,144
Restricted funds	3,363	10,000	(13,363)	-	-
	<u>359,655</u>	<u>93,106</u>	<u>(227,307)</u>	<u>-</u>	<u>225,454</u>

Summary of funds - prior year

	Balance at 1 April 2019 £	Income £	Expenditure £	Transfers in/out £	Balance at 31 March 2020 £
Designated funds	185,349	-	-	(113,883)	71,466
General funds	232,639	22,035	(83,731)	113,883	284,826
Restricted funds	15,624	78,485	(90,746)	-	3,363
	<u>433,612</u>	<u>100,520</u>	<u>(174,477)</u>	<u>-</u>	<u>359,655</u>

HOME START CENTRAL LANCASHIRE LTD
(A company limited by guarantee)

NOTES TO THE FINANCIAL STATEMENTS
FOR THE YEAR ENDED 31 MARCH 2021

15. Analysis of net assets between funds

Analysis of net assets between funds - current year

	Unrestricted funds 2021 £	Total funds 2021 £
Current assets	227,893	227,893
Creditors due within one year	(2,439)	(2,439)
Total	225,454	225,454

Analysis of net assets between funds - prior year

	<i>Restricted funds 2020 £</i>	<i>Unrestricted funds 2020 £</i>	<i>Total funds 2020 £</i>
Tangible fixed assets	-	12	12
Current assets	3,363	368,318	371,681
Creditors due within one year	-	(12,038)	(12,038)
Total	(3,363)	(356,292)	(359,655)
Total	-	-	-

16. Reconciliation of net movement in funds to net cash flow from operating activities

	2021 £	2020 £
Net expenditure for the year (as per Statement of Financial Activities)	(134,201)	(73,957)
Adjustments for:		
Depreciation charges	12	10,299
Decrease/(increase) in debtors	(6,917)	1,326
Increase/(decrease) in creditors	(9,599)	4,011
Net cash used in operating activities	(150,705)	(58,321)

HOME START CENTRAL LANCASHIRE LTD
(A company limited by guarantee)

**NOTES TO THE FINANCIAL STATEMENTS
FOR THE YEAR ENDED 31 MARCH 2021**

17. Analysis of cash and cash equivalents

	2021 £	2020 £
Cash in hand	220,721	371,426
Total cash and cash equivalents	220,721	371,426

18. Analysis of changes in net debt

	At 1 April 2020 £	Cash flows £	At 31 March 2021 £
Cash at bank and in hand	159,663	(49,916)	109,747
Liquid investments	211,763	(100,789)	110,974
	371,426	(150,705)	220,721

Registered number: 5214560
Charity number: 1105739

HOME START CENTRAL LANCASHIRE LTD
(A company limited by guarantee)

UNAUDITED
TRUSTEES' REPORT AND FINANCIAL STATEMENTS
FOR THE YEAR ENDED 31 MARCH 2021

HOME START CENTRAL LANCASHIRE LTD
(A company limited by guarantee)

CONTENTS

	Page
Trustees' report	1 - 4
Independent examiner's report	5
Statement of financial activities	6
Balance sheet	7 - 8
Statement of cash flows	9
Notes to the financial statements	10 - 21

HOME START CENTRAL LANCASHIRE LTD
(A company limited by guarantee)

TRUSTEES' REPORT
FOR THE YEAR ENDED 31 MARCH 2021

The Trustees present their annual report together with the financial statements of the Home Start Central Lancashire Limited for the 1 April 2020 to 31 March 2021. The Annual report serves the purposes of both a Trustees' report and a directors' report under company law. The Trustees confirm that the Annual report and financial statements of the charitable company comply with the current statutory requirements, the requirements of the charitable company's governing document and the provisions of the Statement of Recommended Practice (SORP) applicable to charities preparing their accounts in accordance with the Financial Reporting Standard applicable in the UK and Republic of Ireland (FRS102) (effective 1 January 2019).

Since the Company qualifies as small under section 382 of the Companies Act 2006, the Strategic report required of medium and large companies under the Companies Act 2006 (Strategic Report and Directors' Report) Regulations 2013 has been omitted.

Objectives and activities

a. Policies and objectives

Our vision - helping families with children feel happy, confident and supported.

Our aim - Home Start reaches out to families with children through positive support and friendship. We encourage families to increase their confidence and independence, improve health and wellbeing whilst helping them to build better lives and futures.

Home Start has a proven, lasting and positive impact on the development of children and the health and welfare of the whole family. Providing support through our home visiting service, our family groups, small group sessions and People in Crisis project.

In setting objectives and planning for activities, the Trustees have given due consideration to general guidance published by the Charity Commission relating to public benefit, including the guidance 'Public benefit: running a charity (PB2)'.

b. Activities undertaken to achieve objectives

The key activities of the charity are:

- Home visiting service - trained and supervised volunteers support families in their own homes helping them to prevent family crisis or breakdown. The volunteers support parents as they grow in confidence, build resilience, strengthen their relationships with their children and widen their links with the local community.
- People in Crisis project - this started in July 2016, working in partnership with Citizens Advice Lancashire and KEY Unlocking Futures. This project aims to draw on the strength and experience of people facing hardship and crisis so that they can overcome immediate difficulties and be ready for future opportunities and challenges.
- Training support and development for volunteers.
- Holiday hunger project - provided children's dinners to families throughout school holidays, who are entitled and receive free school dinners.
- Family Support groups - these provide the opportunity to engage in learning activities in a safe, welcoming environment where confidence and skills can be nurtured and also provide the opportunity to meet other families.
- School holiday activities and events for the whole family including holiday food and fun sessions to help tackle issues of holiday hunger.

HOME START CENTRAL LANCASHIRE LTD
(A company limited by guarantee)

TRUSTEES' REPORT (CONTINUED)
FOR THE YEAR ENDED 31 MARCH 2021

Objectives and activities (continued)

c. Volunteers

The Charity is indebted to many volunteers, without whom the charity could not operate.

The Charity is also indebted to its trustees who also offer services on a voluntary basis.

d. Main activities undertaken to further the Company's purposes for the public benefit

In meeting the objectives of the charitable company the Trustees have considered the Charity Commission guidance on public benefit and are satisfied that the activities undertaken during the year have provided significant benefit to the general public, particularly parents with young families, and their children and relatives.

Achievements and performance

a. Review of activities

During 2020 - 2021 the Charity -

- Supported families through home visiting, by virtual means, family groups and small group support
- Managed, trained and supported volunteers.
- Delivered family, activities and play days over the summer holidays and during half term.

The below activities were either delivered by virtual means or postponed due to COVID:

- Family groups across Chorley, Leyland, Penwortham, Skelmersdale and Ormskirk.
- Dads group in chorley.
- Group sessions for baby sensory and bumps to babes.

Financial review

a. Going concern

After making appropriate enquiries, the Trustees have a reasonable expectation that the Company has adequate resources to continue in operational existence for the foreseeable future. For this reason, they continue to adopt the going concern basis in preparing the financial statements. Further details regarding the adoption of the going concern basis can be found in the accounting policies.

Structure, governance and management

a. Constitution

Home Start Central Lancashire Ltd is registered as a charitable company limited by guarantee and was set up by a Trust deed. It has a registered charity number of 1105739.

HOME START CENTRAL LANCASHIRE LTD
(A company limited by guarantee)

TRUSTEES' REPORT (CONTINUED)
FOR THE YEAR ENDED 31 MARCH 2021

Structure, governance and management (continued)

b. Methods of appointment or election of Trustees

The management of the Company is the responsibility of the Trustees who are elected and co-opted under the terms of the Trust deed.

Any new trustees are identified and nominated by the existing board of trustees based on the skills and experience required from new trustees.

c. Policies adopted for the induction and training of Trustees

Any new trustees are given informal induction and training from existing trustees. Relevant information and Charity Commission publications regarding the responsibilities of trustees and information on the background to the charity are provided to all new trustees.

Reference and administrative details of the Company, its trustees and advisers

Trustees	Helen Connolly (resigned 13 May 2021) Maureen Walkden Diane Gradwell Jeannie Stirling Carole Lee (resigned 15 January 2021) Neil Williams (resigned 16 June 2021) Jessica Wood (resigned 13 May 2021)
-----------------	---

Company registered number	5214560
----------------------------------	---------

Charity registered number	1105739
----------------------------------	---------

Registered office	112a Market Street Chorley Lancashire PR7 2SL
--------------------------	--

Company secretary	Donna Louise Hussain
--------------------------	----------------------

Chief executive officer	Donna Louise Hussain
--------------------------------	----------------------

Accountants	CW Accountants Limited Office 5 The Boulevard Centre 45 Railway Road Blackburn Lancashire BB1 1EZ
--------------------	---

HOME START CENTRAL LANCASHIRE LTD
(A company limited by guarantee)

TRUSTEES' REPORT (CONTINUED)
FOR THE YEAR ENDED 31 MARCH 2021

Bankers Royal Bank of Scotland
56 Market Street
Chorley
Lancashire
PR7 2SD

Members' liability

The Members of the Company guarantee to contribute an amount not exceeding £1 to the assets of the Company in the event of winding up.

Statement of Trustees' responsibilities

The Trustees (who are also the directors of the Company for the purposes of company law) are responsible for preparing the Trustees' report and the financial statements in accordance with applicable law and United Kingdom Accounting Standards (United Kingdom Generally Accepted Accounting Practice).

Company law requires the Trustees to prepare financial statements for each financial . Under company law, the Trustees must not approve the financial statements unless they are satisfied that they give a true and fair view of the state of affairs of the Company and of its incoming resources and application of resources, including its income and expenditure, for that period. In preparing these financial statements, the Trustees are required to:

- select suitable accounting policies and then apply them consistently;
- observe the methods and principles of the Charities SORP (FRS 102);
- make judgments and accounting estimates that are reasonable and prudent;
- state whether applicable UK Accounting Standards (FRS 102) have been followed, subject to any material departures disclosed and explained in the financial statements;
- prepare the financial statements on the going concern basis unless it is inappropriate to presume that the Company will continue in business.

The Trustees are responsible for keeping adequate accounting records that are sufficient to show and explain the Company's transactions and disclose with reasonable accuracy at any time the financial position of the Company and enable them to ensure that the financial statements comply with the Companies Act 2006. They are also responsible for safeguarding the assets of the Company and hence for taking reasonable steps for the prevention and detection of fraud and other irregularities.

Approved by order of the members of the board of Trustees on
and signed on their behalf by:



John Jackson
Director

HOME START CENTRAL LANCASHIRE LTD
(A company limited by guarantee)

**INDEPENDENT EXAMINER'S REPORT
FOR THE YEAR ENDED 31 MARCH 2021**

Independent examiner's report to the Trustees of Home Start Central Lancashire Ltd ('the Company')

I report to the charity Trustees on my examination of the accounts of the Company for the year ended 31 March 2021.

Responsibilities and basis of report

As the Trustees of the Company (and its directors for the purposes of company law) you are responsible for the preparation of the accounts in accordance with the requirements of the Companies Act 2006 ('the 2006 Act').

Having satisfied myself that the accounts of the Company are not required to be audited under Part 16 of the 2006 Act and are eligible for independent examination, I report in respect of my examination of the Company's accounts carried out under section 145 of the Charities Act 2011 ('the 2011 Act'). In carrying out my examination I have followed the Directions given by the Charity Commission under section 145(5)(b) of the 2011 Act.

Independent examiner's statement

I have completed my examination. I confirm that no matters have come to my attention in connection with the examination giving me cause to believe:

1. accounting records were not kept in respect of the Company as required by section 386 of the 2006 Act; or
2. the accounts do not accord with those records; or
3. the accounts do not comply with the accounting requirements of section 396 of the 2006 Act other than any requirement that the accounts give a 'true and fair' view which is not a matter considered as part of an independent examination; or
4. the accounts have not been prepared in accordance with the methods and principles of the Statement of Recommended Practice for accounting and reporting by charities [applicable to charities preparing their accounts in accordance with the Financial Reporting Standard applicable in the UK and Republic of Ireland (FRS 102)].

I have no concerns and have come across no other matters in connection with the examination to which attention should be drawn in this report in order to enable a proper understanding of the accounts to be reached.

This report is made solely to the Company's Trustees, as a body, in accordance with Part 4 of the Charities (Accounts and Reports) Regulations 2008. My work has been undertaken so that I might state to the Company's Trustees those matters I am required to state to them in an Independent examiner's report and for no other purpose. To the fullest extent permitted by law, I do not accept or assume responsibility to anyone other than the Company and the Company's Trustees as a body, for my work or for this report.

Signed:

Dated:

Courtney Wright

FCCA

Office 5, The Boulevard Centre, 45 Railway Road, Blackburn, Lancashire, BB1 1EZ

HOME START CENTRAL LANCASHIRE LTD
(A company limited by guarantee)

**STATEMENT OF FINANCIAL ACTIVITIES (INCORPORATING INCOME AND EXPENDITURE ACCOUNT)
FOR THE YEAR ENDED 31 MARCH 2021**

	Note	Restricted funds 2021 £	Unrestricted funds 2021 £	Total funds 2021 £	Total funds 2020 £
Income from:					
Donations and legacies	3	10,000	77,266	87,266	87,011
Other trading activities		-	5,405	5,405	11,720
Investments	4	-	435	435	1,789
Total income		10,000	83,106	93,106	100,520
Expenditure on:					
Raising funds		-	-	-	300
Charitable activities		13,363	213,944	227,307	174,177
Total expenditure		13,363	213,944	227,307	174,477
Net movement in funds		(3,363)	(130,838)	(134,201)	(73,957)
Reconciliation of funds:					
Total funds brought forward		3,363	356,292	359,655	433,612
Net movement in funds		(3,363)	(130,838)	(134,201)	(73,957)
Total funds carried forward		-	225,454	225,454	359,655

The Statement of financial activities includes all gains and losses recognised in the year.

The notes on pages 10 to 21 form part of these financial statements.

HOME START CENTRAL LANCASHIRE LTD
(A company limited by guarantee)
REGISTERED NUMBER: 5214560

BALANCE SHEET
AS AT 31 MARCH 2021

	Note	2021 £	2020 £
Fixed assets			
Tangible assets	8	-	12
		<u>-</u>	<u>12</u>
Current assets			
Debtors	9	7,172	255
Investments	10	110,974	211,763
Cash at bank and in hand		109,747	159,663
		<u>227,893</u>	<u>371,681</u>
Creditors: amounts falling due within one year	11	(2,439)	(12,038)
Net current assets		<u>225,454</u>	<u>359,643</u>
Total assets less current liabilities		<u>225,454</u>	<u>359,655</u>
Net assets excluding pension asset		<u>225,454</u>	<u>359,655</u>
Total net assets		<u><u>225,454</u></u>	<u><u>359,655</u></u>
Charity funds			
Restricted funds	12	-	3,363
Unrestricted funds	12	225,454	356,292
Total funds		<u><u>225,454</u></u>	<u><u>359,655</u></u>

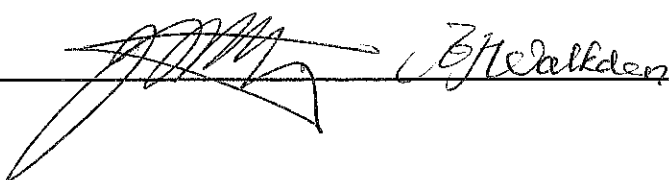
The Company was entitled to exemption from audit under section 477 of the Companies Act 2006.

The members have not required the company to obtain an audit for the year in question in accordance with section 476 of Companies Act 2006.

The Trustees acknowledge their responsibilities for complying with the requirements of the Act with respect to accounting records and preparation of financial statements.

The financial statements have been prepared in accordance with the provisions applicable to entities subject to the small companies regime.

The financial statements were approved and authorised for issue by the Trustees on and signed on their behalf by:



HOME START CENTRAL LANCASHIRE LTD
(A company limited by guarantee)
REGISTERED NUMBER: 5214560

BALANCE SHEET (CONTINUED)
AS AT 31 MARCH 2021

The notes on pages 10 to 21 form part of these financial statements.

HOME START CENTRAL LANCASHIRE LTD
(A company limited by guarantee)

STATEMENT OF CASH FLOWS
FOR THE YEAR ENDED 31 MARCH 2021

	2021 £	2020 £
Cash flows from operating activities		
Net cash used in operating activities	(150,705)	(58,321)
Cash flows from investing activities		
Net cash provided by investing activities	-	-
Cash flows from financing activities		
Net cash provided by financing activities	-	-
Change in cash and cash equivalents in the year	(150,705)	(58,321)
Cash and cash equivalents at the beginning of the year	371,426	429,747
Cash and cash equivalents at the end of the year	220,721	371,426

The notes on pages 10 to 21 form part of these financial statements

HOME START CENTRAL LANCASHIRE LTD
(A company limited by guarantee)

NOTES TO THE FINANCIAL STATEMENTS
FOR THE YEAR ENDED 31 MARCH 2021

1. General information

Home Start Central Lancashire is a private limited company without share capital and a registered charity. The company was incorporated in England and Wales and has the following registered office address:
112a Market Street
Chorley
Lancashire
PR7 2SL

2. Accounting policies

2.1 Basis of preparation of financial statements

The financial statements have been prepared in accordance with the Charities SORP (FRS 102) - Accounting and Reporting by Charities: Statement of Recommended Practice applicable to charities preparing their accounts in accordance with the Financial Reporting Standard applicable in the UK and Republic of Ireland (FRS 102) (effective 1 January 2019), the Financial Reporting Standard applicable in the UK and Republic of Ireland (FRS 102) and the Companies Act 2006.

Home Start Central Lancashire Ltd meets the definition of a public benefit entity under FRS 102. Assets and liabilities are initially recognised at historical cost or transaction value unless otherwise stated in the relevant accounting policy.

2.2 Income

All income is recognised once the Company has entitlement to the income, it is probable that the income will be received and the amount of income receivable can be measured reliably.

Grants are included in the Statement of financial activities on a receivable basis. The balance of income received for specific purposes but not expended during the period is shown in the relevant funds on the Balance sheet. Where income is received in advance of entitlement of receipt, its recognition is deferred and included in creditors as deferred income. Where entitlement occurs before income is received, the income is accrued.

Income tax recoverable in relation to investment income is recognised at the time the investment income is receivable.

2.3 Expenditure

Expenditure is recognised once there is a legal or constructive obligation to transfer economic benefit to a third party, it is probable that a transfer of economic benefits will be required in settlement and the amount of the obligation can be measured reliably. Expenditure is classified by activity. The costs of each activity are made up of the total of direct costs and shared costs, including support costs involved in undertaking each activity. Direct costs attributable to a single activity are allocated directly to that activity. Shared costs which contribute to more than one activity and support costs which are not attributable to a single activity are apportioned between those activities on a basis consistent with the use of resources. Central staff costs are allocated on the basis of time spent, and depreciation charges allocated on the portion of the asset's use.

Expenditure on raising funds includes all expenditure incurred by the Company to raise funds for its charitable purposes and includes costs of all fundraising activities events and non-charitable trading.

HOME START CENTRAL LANCASHIRE LTD
(A company limited by guarantee)

**NOTES TO THE FINANCIAL STATEMENTS
FOR THE YEAR ENDED 31 MARCH 2021**

2. Accounting policies (continued)

2.3 Expenditure (continued)

Expenditure on charitable activities is incurred on directly undertaking the activities which further the Company's objectives, as well as any associated support costs.

All expenditure is inclusive of irrecoverable VAT.

2.4 Tangible fixed assets and depreciation

Tangible fixed assets costing £NIL or more are capitalised and recognised when future economic benefits are probable and the cost or value of the asset can be measured reliably.

Tangible fixed assets are initially recognised at cost. After recognition, under the cost model, tangible fixed assets are measured at cost less accumulated depreciation and any accumulated impairment losses. All costs incurred to bring a tangible fixed asset into its intended working condition should be included in the measurement of cost.

Depreciation is charged so as to allocate the cost of tangible fixed assets less their residual value over their estimated useful lives, .

Depreciation is provided on the following bases:

Playground	- 20% straight line
Fixtures and fittings	- 25% straight line

2.5 Debtors

Trade and other debtors are recognised at the settlement amount after any trade discount offered. Prepayments are valued at the amount prepaid net of any trade discounts due.

2.6 Cash at bank and in hand

Cash at bank and in hand includes cash and short-term highly liquid investments with a short maturity of three months or less from the date of acquisition or opening of the deposit or similar account.

2.7 Liabilities and provisions

Liabilities are recognised when there is an obligation at the Balance sheet date as a result of a past event, it is probable that a transfer of economic benefit will be required in settlement, and the amount of the settlement can be estimated reliably.

Liabilities are recognised at the amount that the Company anticipates it will pay to settle the debt or the amount it has received as advanced payments for the goods or services it must provide.

Provisions are measured at the best estimate of the amounts required to settle the obligation. Where the effect of the time value of money is material, the provision is based on the present value of those amounts, discounted at the pre-tax discount rate that reflects the risks specific to the liability. The unwinding of the discount is recognised in the Statement of financial activities as a finance cost.

HOME START CENTRAL LANCASHIRE LTD
(A company limited by guarantee)

**NOTES TO THE FINANCIAL STATEMENTS
FOR THE YEAR ENDED 31 MARCH 2021**

2. Accounting policies (continued)

2.8 Financial instruments

The Company only has financial assets and financial liabilities of a kind that qualify as basic financial instruments. Basic financial instruments are initially recognised at transaction value and subsequently measured at their settlement value with the exception of bank loans which are subsequently measured at amortised cost using the effective interest method.

2.9 Pensions

The Company operates a defined contribution pension scheme and the pension charge represents the amounts payable by the Company to the fund in respect of the year.

2.10 Fund accounting

General funds are unrestricted funds which are available for use at the discretion of the Trustees in furtherance of the general objectives of the Company and which have not been designated for other purposes.

Designated funds comprise unrestricted funds that have been set aside by the Trustees for particular purposes. The aim and use of each designated fund is set out in the notes to the financial statements.

Restricted funds are funds which are to be used in accordance with specific restrictions imposed by donors or which have been raised by the Company for particular purposes. The costs of raising and administering such funds are charged against the specific fund. The aim and use of each restricted fund is set out in the notes to the financial statements.

Investment income, gains and losses are allocated to the appropriate fund.

HOME START CENTRAL LANCASHIRE LTD
(A company limited by guarantee)

**NOTES TO THE FINANCIAL STATEMENTS
FOR THE YEAR ENDED 31 MARCH 2021**

3. Income from donations and legacies

	Restricted funds 2021 £	Unrestricted funds 2021 £	Total funds 2021 £
Donations	-	12,332	12,332
Grants	10,000	33,367	43,367
Similar incoming resources	-	31,567	31,567
	<u>10,000</u>	<u>77,266</u>	<u>87,266</u>

	<i>Restricted funds 2020 £</i>	<i>Unrestricted funds 2020 £</i>	<i>Total funds 2020 £</i>
Donations	-	7,329	7,329
Grants	27,922	22,981	50,903
Similar incoming resources	-	28,779	28,779
	<u>27,922</u>	<u>59,089</u>	<u>87,011</u>

4. Investment income

	Unrestricted funds 2021 £	Total funds 2021 £
Investment income	<u>435</u>	<u>435</u>

	<i>Unrestricted funds 2020 £</i>	<i>Total funds 2020 £</i>
Investment income	<u>1,789</u>	<u>1,789</u>

HOME START CENTRAL LANCASHIRE LTD
(A company limited by guarantee)

**NOTES TO THE FINANCIAL STATEMENTS
FOR THE YEAR ENDED 31 MARCH 2021**

5. Independent examiner's remuneration

	2021 £	2020 £
Fees payable to the Company's independent examiner for the independent examination of the Company's annual accounts	<u>380</u>	<u>360</u>

6. Staff costs

	2021 £	2020 £
Wages and salaries	141,768	84,575
Social security costs	6,396	14,759
Contribution to defined contribution pension schemes	8,109	11,130
	<u>156,273</u>	<u>110,464</u>

The average number of persons employed by the Company during the year was as follows:

	2021 No.	2020 No.
Operational	6	4
Administration	1	2
	<u>7</u>	<u>6</u>

No employee received remuneration amounting to more than £60,000 in either year.

7. Trustees' remuneration and expenses

During the year, no Trustees received any remuneration or other benefits (2020 - £NIL).

During the year ended 31 March 2021, no Trustee expenses have been incurred (2020 - £NIL).

HOME START CENTRAL LANCASHIRE LTD
(A company limited by guarantee)

**NOTES TO THE FINANCIAL STATEMENTS
FOR THE YEAR ENDED 31 MARCH 2021**

8. Tangible fixed assets

	Plant and machinery £	Fixtures and fittings £	Total £
Cost or valuation			
At 1 April 2020	51,497	266	51,763
At 31 March 2021	51,497	266	51,763
Depreciation			
At 1 April 2020	51,489	262	51,751
Charge for the year	8	4	12
At 31 March 2021	51,497	266	51,763
Net book value			
At 31 March 2021	-	-	-
At 31 March 2020	8	4	12

9. Debtors

	2021 £	2020 £
Due within one year		
Trade debtors	6,903	-
Prepayments and accrued income	269	255
	7,172	255

10. Current asset investments

	2021 £	2020 £
Listed investments	110,974	211,763

HOME START CENTRAL LANCASHIRE LTD
(A company limited by guarantee)

NOTES TO THE FINANCIAL STATEMENTS
FOR THE YEAR ENDED 31 MARCH 2021

11. Creditors: Amounts falling due within one year

	2021 £	2020 £
Other taxation and social security	1,412	-
Accruals and deferred income	1,027	12,038
	<u>2,439</u>	<u>12,038</u>

HOME START CENTRAL LANCASHIRE LTD
(A company limited by guarantee)

**NOTES TO THE FINANCIAL STATEMENTS
FOR THE YEAR ENDED 31 MARCH 2021**

12. Statement of funds

Statement of funds - current year

	Balance at 1 April 2020 £	Income £	Expenditure £	Transfers in/out £	Balance at 31 March 2021 £
Unrestricted funds					
Designated funds					
Designated Funds - all funds	71,466	-	-	(35,156)	36,310
General funds					
General Funds - all funds	284,826	83,106	(213,944)	35,156	189,144
Total Unrestricted funds	356,292	83,106	(213,944)	-	225,454
Restricted funds					
Chorley and Leyland Methodist Church	3,363	-	(3,363)	-	-
Eric Wright	-	10,000	(10,000)	-	-
	3,363	10,000	(13,363)	-	-
Total of funds	359,655	93,106	(227,307)	-	225,454

HOME START CENTRAL LANCASHIRE LTD
(A company limited by guarantee)

**NOTES TO THE FINANCIAL STATEMENTS
FOR THE YEAR ENDED 31 MARCH 2021**

12. Statement of funds (continued)

Statement of funds - prior year

	<i>Balance at 1 April 2019</i> £	<i>Income</i> £	<i>Expenditure</i> £	<i>Transfers in/out</i> £	<i>Balance at 31 March 2020</i> £
Unrestricted funds					
Designated funds					
Designated Funds 1	135,349	-	-	(113,883)	21,466
Designated Funds 2	50,000	-	-	-	50,000
	<u>185,349</u>	<u>-</u>	<u>-</u>	<u>(113,883)</u>	<u>71,466</u>
General funds					
General Funds - all funds	232,639	22,035	(83,731)	113,883	284,826
Total Unrestricted funds	<u>417,988</u>	<u>22,035</u>	<u>(83,731)</u>	<u>-</u>	<u>356,292</u>
Restricted funds					
Chorley and Leyland Methodist Church	-	3,363	-	-	3,363
CAB - People In Crisis	-	28,779	(28,779)	-	-
Chorley Borough Council - Early Family Support	15,624	33,833	(49,457)	-	-
West Lancashire Borough Council	-	10,900	(10,900)	-	-
Asda - Holiday Hunger	-	950	(950)	-	-
Lancashire County Council	-	660	(660)	-	-
	<u>15,624</u>	<u>78,485</u>	<u>(90,746)</u>	<u>-</u>	<u>3,363</u>
Total of funds	<u>433,612</u>	<u>100,520</u>	<u>(174,477)</u>	<u>-</u>	<u>359,655</u>

HOME START CENTRAL LANCASHIRE LTD
(A company limited by guarantee)

**NOTES TO THE FINANCIAL STATEMENTS
FOR THE YEAR ENDED 31 MARCH 2021**

13. Statement of funds

Designated funds - This fund is for 6 month running costs as per the Charities Commission best practice guidance. This includes; redundancies, notices, leases and running costs.

Restricted funds -

Chorley and Leyland Methodist church - This donation was received specifically to provide children's dinners as part of the holiday hunger project throughout the school holidays.

Eric Wright - This fund is to provide family support.

14. Summary of funds

Summary of funds - current year

	Balance at 1 April 2020 £	Income £	Expenditure £	Transfers in/out £	Balance at 31 March 2021 £
Designated funds	71,466	-	-	(35,156)	36,310
General funds	284,826	83,106	(213,944)	35,156	189,144
Restricted funds	3,363	10,000	(13,363)	-	-
	<u>359,655</u>	<u>93,106</u>	<u>(227,307)</u>	<u>-</u>	<u>225,454</u>

Summary of funds - prior year

	Balance at 1 April 2019 £	Income £	Expenditure £	Transfers in/out £	Balance at 31 March 2020 £
Designated funds	185,349	-	-	(113,883)	71,466
General funds	232,639	22,035	(83,731)	113,883	284,826
Restricted funds	15,624	78,485	(90,746)	-	3,363
	<u>433,612</u>	<u>100,520</u>	<u>(174,477)</u>	<u>-</u>	<u>359,655</u>

HOME START CENTRAL LANCASHIRE LTD
(A company limited by guarantee)

NOTES TO THE FINANCIAL STATEMENTS
FOR THE YEAR ENDED 31 MARCH 2021

15. Analysis of net assets between funds

Analysis of net assets between funds - current year

	Unrestricted funds 2021 £	Total funds 2021 £
Current assets	227,893	227,893
Creditors due within one year	(2,439)	(2,439)
Total	225,454	225,454

Analysis of net assets between funds - prior year

	<i>Restricted funds 2020 £</i>	<i>Unrestricted funds 2020 £</i>	<i>Total funds 2020 £</i>
Tangible fixed assets	-	12	12
Current assets	3,363	368,318	371,681
Creditors due within one year	-	(12,038)	(12,038)
Total	(3,363)	(356,292)	(359,655)
Total	-	-	-

16. Reconciliation of net movement in funds to net cash flow from operating activities

	2021 £	2020 £
Net expenditure for the year (as per Statement of Financial Activities)	(134,201)	(73,957)
Adjustments for:		
Depreciation charges	12	10,299
Decrease/(increase) in debtors	(6,917)	1,326
Increase/(decrease) in creditors	(9,599)	4,011
Net cash used in operating activities	(150,705)	(58,321)

HOME START CENTRAL LANCASHIRE LTD
(A company limited by guarantee)

**NOTES TO THE FINANCIAL STATEMENTS
FOR THE YEAR ENDED 31 MARCH 2021**

17. Analysis of cash and cash equivalents

	2021 £	2020 £
Cash in hand	220,721	371,426
Total cash and cash equivalents	220,721	371,426

18. Analysis of changes in net debt

	At 1 April 2020 £	Cash flows £	At 31 March 2021 £
Cash at bank and in hand	159,663	(49,916)	109,747
Liquid investments	211,763	(100,789)	110,974
	371,426	(150,705)	220,721