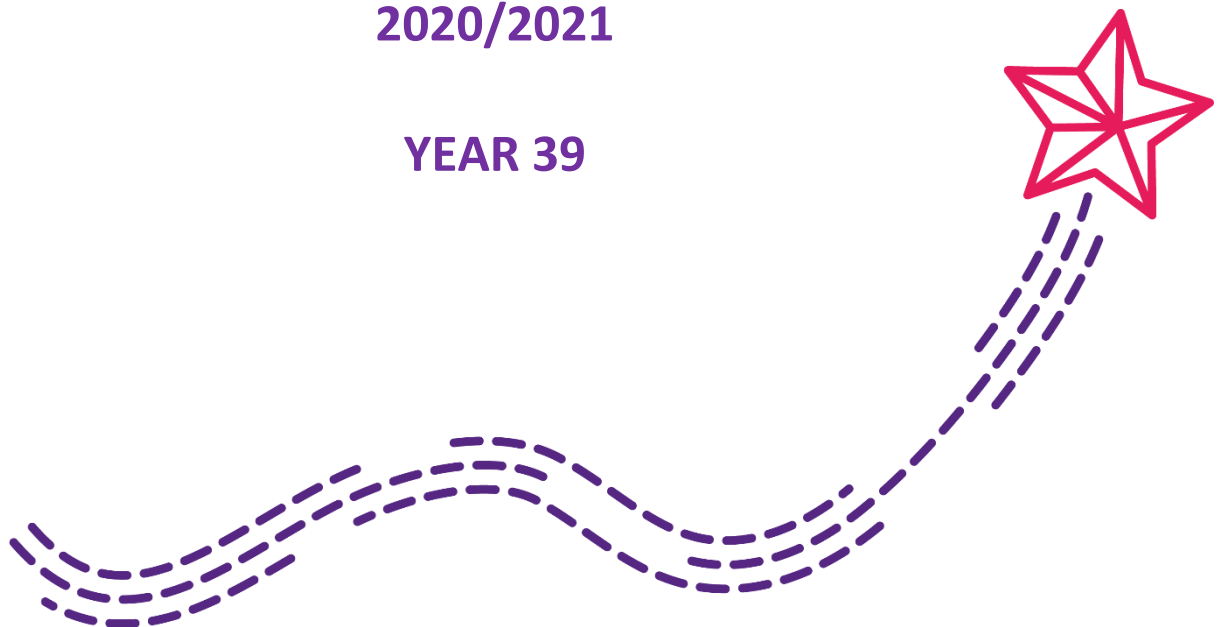




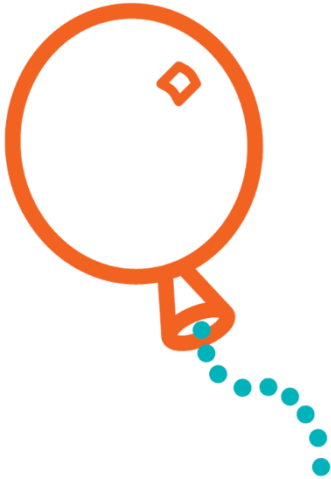
## Home-Start (Hull) Annual Report and Accounts 2020/2021

YEAR 39



## **We Are: Home-Start (Hull)**

Home-Start Hull is more than an organisation as a whole; we are the sum of all our parts. And without them we wouldn't be what we are!

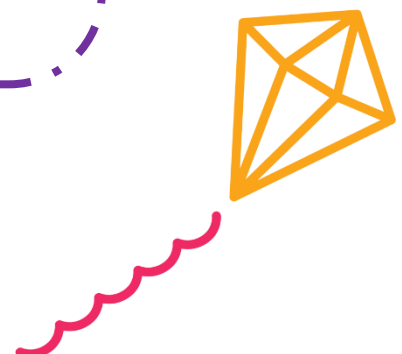


### **Trustees**

<b>Chairman:</b>	<b>Sam McGaw</b>
<b>Vice Chairman:</b>	<b>Audrey Marshall BEM</b>
<b>Treasurer:</b>	<b>Margaret Corless</b>
<b>Trustees:</b>	<b>Pam Owen Emma Pickering Lorna Morris Dave Edeson Heather Barnes Elaine Porter</b>
<b>Company Secretary:</b>	<b>Caroline Watson</b>
<b>Registered Members:</b>	<b>Shirley Gray Elizabeth Vokes</b>

### **Staff**

<b>Caroline Watson</b>	<b>Scheme Manager</b>
<b>Kelly Sykes-Moody</b>	<b>Administration and Finance Officer</b>
<b>Jo Boasman</b>	<b>Organiser</b>
<b>Phil Vincent</b>	<b>Organiser</b>
<b>Bridget Marvin-Smelt</b>	<b>Families in Mind Organiser</b>
<b>Charlotte Dunstan</b>	<b>Beverley Organiser</b>
<b>Gemma Brown</b>	<b>Sustainability Project Organiser</b>
<b>Helen Percy</b>	<b>Administrative Assistant</b>



## **Audrey Marshall BEM Retirement!**

Home-Start (Hull) was one of the first schemes to be set up nearly 40 years ago and, right from the start, there was a representative from the police on the steering group. Once the organisation became established, the police asked one of their police women to represent them on the trustee board. With few women on the police force when Audrey joined, she tended to end up dealing with situations involving women and/ or children and this gave her the perfect insight into working with families that was needed for Home-Start. Even after retiring from the force, Audrey continued in her voluntary capacity on the board and sat as the Chair for many years, only having a break for a few months. Alongside her many other commitments, supporting her extended family and friends, as well as being a member of Soroptimists, National Society of Retired Police Officers (NARPO) and very active in her church, Audrey has continued to sit on the Board of Trustees and has now done so for more years than she was in paid employment!

In 2016, Audrey decided that the time had come to step down from the position of Chair of the Board and took up the position of Vice Chair. Audrey has now decided that the time has come to enjoy her retirement and leave the board altogether.

We can't thank her enough for all her support, advice and guidance over the past 38 years and we look forward to spending time together in a more unofficial capacity.

On behalf of the Board of Trustees, staff, volunteers and families, we can't thank you enough for all your hard work and dedication to improving the lives of the people of Hull. You've earned a break!



## **What do we do?**

Home-Start is a voluntary organisation, which is committed to promoting the welfare of families with at least one child under five years of age.

Volunteers offer regular support, friendship and practical help to families under stress in their own homes helping to prevent family crisis and breakdown.

## **Our services**

### **Home Visiting Support**

Families are matched with a volunteer who provides home and community support to them for 2-3 hours per week

### **Families in Mind (FIM)**

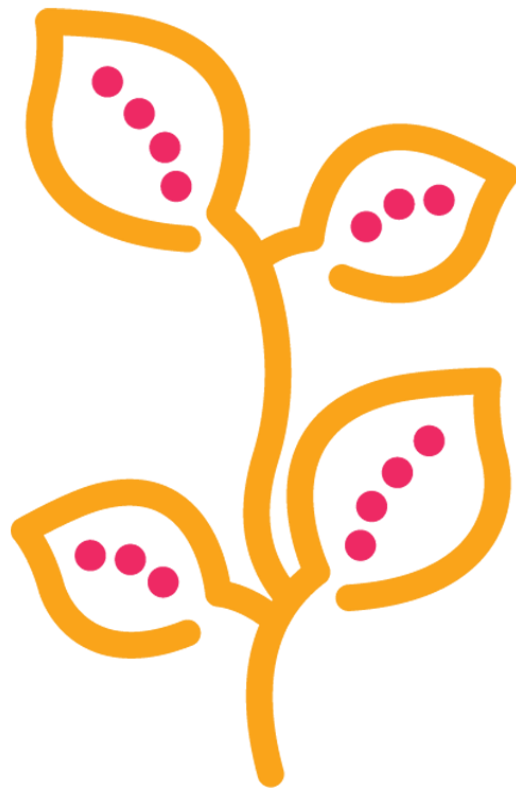
Home visiting support for families where parents have long term and enduring mental health problems

### **Big Hopes Big Future**

Home-visiting support for families to help their children be ready for school.

### **Beverley**

Our volunteer home-visiting support for families in Beverley.



## **Our aims**

As stated in the Standards and Methods of Practice of Local Home-Starts, we aim to increase the confidence and independence of the family by:



- Offering support, friendship and practical assistance.
- Visiting families in their own homes, where the dignity and identity of each adult and child can be respected and protected.
- Reassuring parents that difficulties in bringing up children are not unusual and encouraging them to enjoy family life.
- Developing a relationship with the family in which time can be shared and understanding can be developed – the approach is flexible to take account of different needs.
- Encouraging parents' strengths and emotional well-being for the ultimate benefit of their children.
- Encouraging families to widen their network of relationships and to use effectively the support and services available within the community.

## **HOME-START (HULL) VOLUNTEERS**

### **AS AT OCTOBER 2021**

*Volunteering is a creative and flexible act.  
It takes imagination, dedication and energy to perform.*

<b>PAM O</b>	<b>16 YEARS</b>	<b>NIKKI A</b>	<b>3 YEARS</b>
<b>LIZ R</b>	<b>12 YEARS</b>	<b>NICKY J</b>	<b>3 YEARS</b>
<b>KATHRYN Y</b>	<b>11 YEARS</b>	<b>MOLLIE B</b>	<b>3 YEARS</b>
<b>ELAINE P</b>	<b>10½</b>	<b>ANGIE A</b>	<b>3 YEARS</b>
	<b>YEARS</b>		
<b>KIM S</b>	<b>8¼ YEARS</b>	<b>TERESA B</b>	<b>2 YEARS</b>
<b>TERRI C</b>	<b>8¼ YEARS</b>	<b>ELAINE P</b>	<b>2 YEARS</b>
<b>SARAH U</b>	<b>7 YEARS</b>	<b>MICHELLE F</b>	<b>2 YEARS</b>
<b>DIANE N</b>	<b>6 ½</b>	<b>CHELSEY L</b>	<b>2 YEARS</b>
	<b>YEARS</b>		
<b>DAVID P</b>	<b>5 ½</b>	<b>CHELSEA C</b>	<b>2 YEARS</b>
	<b>YEARS</b>		
<b>CHRISTINE A</b>	<b>5 ½</b>	<b>SAM B</b>	<b>2 YEARS</b>
	<b>YEARS</b>		
<b>KATRINA I</b>	<b>5 YEARS</b>	<b>DEBBIE C</b>	<b>2 YEARS</b>
<b>FLORENCE O</b>	<b>5 YEARS</b>	<b>KRISTINA R</b>	<b>1 YEAR</b>
<b>RACHAEL P</b>	<b>5 YEARS</b>	<b>SYLVIA K</b>	<b>1 YEAR</b>
<b>KATH H</b>	<b>5 YEARS</b>	<b>STACEY P</b>	<b>1 YEAR</b>
<b>LAURA H</b>	<b>5 YEARS</b>	<b>VICKY B</b>	<b>1 YEAR</b>
<b>AMY G</b>	<b>4 YEARS</b>	<b>SOPHIE C</b>	<b>3 MONTHS</b>
<b>LEEANN T</b>	<b>4 YEARS</b>	<b>MARIE L</b>	<b>3 MONTHS</b>
<b>DEBBIE L</b>	<b>4 YEARS</b>	<b>JULIE I</b>	<b>3 MONTHS</b>
<b>SABRINA J</b>	<b>4 YEARS</b>	<b>LINDSEY B</b>	<b>1 MONTH</b>
<b>KATIE J</b>	<b>3 YEARS</b>	<b>FRANCESCA H</b>	<b>1 MONTH</b>
<b>TERESA B</b>	<b>3 YEARS</b>		

## **CHAIR'S REPORT 2021 – SAM MCGAW**

Thank you for taking the time and having the interest to read our Annual Report. Welcome!

There is much to be proud of in Home-Start Hull. Through the strange times of the ongoing pandemic, we have maintained a presence with our families, we have provided support to many of them above the expectations in "normal" times. Thanks to the dedication, commitment and flexibility of all our staff members, and acknowledging the response from our funders too, we have survived to start to look forward with some hope to the future.

Of course it has not been an easy year, and delivery practices have been amended and varied, but we have done what we set out to do which is to provide support to families where it is most needed. Our volunteers have done amazingly well to keep with us, and to keep providing support to families even when that has, of necessity, had to be remote. Thank you all volunteers.

Unprecedented times, and some sadnesses have occurred. Many have faced a cruel virus, social distancing became quite usual, and furlough became a common word. Our losses in people and areas of work are keenly felt. It has meant saying goodbye to Chris and Charlotte as we had to close our After School Club. During the year we said (virtually so far) goodbye to Jane our Treasurer who retired. We have also heard of the death of William Vokes, our former treasurer. Bill was one of our scheme "members", we will miss his cheerful support. We will miss the good advice, work and support of Audrey, for so many years the head of our Home-Start family as she retires from the Board of Trustees.

Equally there are signs of new work ahead that raise our hopes as Trustees. Many a "zoom" meeting has taken place, and my thanks to the other trustees for their support. We are up to the point of the "white knuckle ride" through bidding to funders for support for our work and to develop new opportunities in line with our ethos and skills. Of course I believe it is immensely worthwhile, but the bids have to be written, the deliverables identified and measured, and we may not succeed in the bidding. The next year will certainly be challenging, and full of interest. I greatly appreciate and want to record thanks to Caroline, our Scheme Manager, still steering the ship through the choppy waters with skill, commitment, expertise and cheerfulness.

Let us all hope for a calmer year ahead, reason to hope the pandemic is behind us, and fulfilment in knowing that, for many families we have been able to make a positive difference and brought a brighter future.





## **Caroline Watson -Scheme Managers Report**

This year seems to have gone on forever in a lot of ways. We've seen big changes to society and the way we work as an organisation. The pandemic has brought about new ways of working and we've moved forward with plans to go paperless. The one thing that has remained reassuringly constant through the last year, has been the commitment of our team in ensuring support to families who need it most.

Our families and volunteers have been so incredibly resilient and supportive and we've enjoyed having more time to chat and get to know them as staff have continued phone support up until September 2021. We are now finding our way back to home-visiting and trying to do so safely.

We moved to our new database, Charitylog in October 2020 and this has helped us to manage families, volunteers, staff and trustees remotely using one system. We are still getting used to it and making it work for us but once things are totally "back to normal", we are hoping we will be much more streamlined.

Christmas 2020 gave us the opportunity to take presents to all our families and goody bags to all our volunteers. It's the first time since I have been at Home-Start that we haven't had a party and Christmas dinner which was really sad and missed by us all but we certainly made the most of our doorstep visits to have a good chat and a catch up.

As soon as we were able to, we started holding events for families. We were lucky to have some amazing weather for our teddy bears picnic in West Park with a lovely lunch donated by Waitrose. It was so nice to be back enjoying being around people and see the children having a brilliant time. We managed a trip to Big Fun once that reopened and spent the summer at Playday events across the City.

We are now back in the office every day but in two separate bubbles. The mix of home working and office based is different for us but it's good to be able to do some work as a team again.



I was really sad when we finally had to admit defeat and close our After School Club at Easter this year. The club was another victim of COVID as the income became too unpredictable and working hours changed for families so need decreased. We received such glowing messages of support and thanks from the parents, it was truly a shame to wrap up all our hard work. I can't thank Chris and Charl enough for making it such a fun and exciting place for the children. We continue to maintain our Ofsted registration to keep our options open for future work in this area.

The year ahead is uncertain in some respects in terms of funding with our Families in Mind project coming to an end in October and the NHS Hull CCG contract finishing in March 2022, but we also have some exciting new work starting with funding from the CCG to pilot our school readiness programme, Big Hopes Big Future, and contribute to improving the lives of children for their education needs.

Beverley continues to be an area of development and we are talking to Normandy Barracks about providing support to families on the base.

I've definitely learnt from the past year that we never know what's coming next but one thing I am sure of is that the amazing volunteers, staff and trustees will continue to find a way to support the families who need us most. My thanks feels like it is never enough but it is truly heartfelt.

I was really saddened to hear about the loss of Bill Vokes and my heart goes out to his wife, Liz. Both have been such a constant source of support and encouragement since I joined Home-Start. Bill would call to chat about what was happening in the organisation and wish us all well. I know we will miss him and his big smile greatly. As a former treasurer, his expertise around the accounts were reassuring to me and he always offered to vote to accept the accounts at the AGM with the words, "It would be my great honour..." I will miss his faith in our work and operations.

I am so sorry to lose Audrey from our trustee's board. It was Audrey, alongside Chris Davies, who interviewed me when I applied for the Senior Organiser position. She has been a wise and supportive role model, always there to listen when I need her. I am looking forward to popping round for a cuppa and catching up at Christmas dinner (without bringing papers to sign). I am always amazed by the amount of time and energy she has put into Home-Start, as well as her other voluntary roles in other organisations. I admire her greatly but I suppose we should let her enjoy her retirement finally. Just remember, you don't get rid of us that easily!

## **ORGANISER'S REPORTS**

### **Phil Vincent- North Hull, North Carr and Riverside**

The past 12 Months has seen me continue my role as Organiser in the North Hull, North Carr and Riverside areas of the cities. It has been a strange year for us all with the pandemic and having to be more creative in how we attract new volunteers while supporting our existing volunteers and indeed our families. Much of the support offered has been over the telephone or through on line meetings on Zoom and Microsoft Teams. (Who had even heard of such technology 18months ago). But it has really helped us provide the best support we can for both families and volunteers alike.

I have been able to do some doorstep visits to families with much needed and appreciated items and gifts. I have also done similar with some of my volunteers which has been nice. Hopefully, now the restrictions have been lifted, we can once again start to do what we do best and home visit families and volunteers and provide much needed support to those in need. Fingers crossed we don't have another lockdown (Another word seldom used or even heard of 18 months ago).

As always a big thank you to all the volunteers who have continued to support families in these difficult and strange times. You are a credit to yourselves and Home-Start.

### **Jo Boasman – East, Parks & Wyke area**

This year has been another busy year of working from home to more recently a gradual return to the office and home visits. It has been lovely to see our families, old and new, after so long and have been welcomed back into their homes. Events for the majority have been scaled down with limited places but National Play Day was well attended and offered a good opportunity to catch up with other services after so long, it was nice to see people having fun ☺ Our volunteers continue to be amazing and committed to their role and are now looking forward to home visiting once again.

### **Bridget Marvin-Smelt - Families in Mind Project**

The Families in Mind project has been running since May 2016 and has now had its final year, and also the 6 month uplift we got during COVID has now finished.

The Families in Mind project aimed to support 25 families a year with dedicated volunteers. It has been a very different 20 months, from March 2019 onwards, but we have continued to support families just in a different way. The volunteers have all continued to support their families by telephone, and we have done welfare visits and drop offs of essentials. It has been positive that support has continued for all families even if it has been in a different way, and families have engaged well with it. There are new plans in the future and so I feel we will continue to give support in a variety of ways. There are funding bids in at present to be able to carry on this work for another three years which would be great if we were able to secure. At present in the interim I am continuing to support families and volunteers, with some home visiting now taking place which has been lovely, it's nice to see people face to face again.

The project is well known to other agencies and they are referring to the Families in Mind project even in these different times.

I continue to enjoy my work at Home-Start Hull and look forward to new challenges that it offers.



### **Charlotte Dunstan - Beverley Organiser**

Despite another challenging year of navigating our way through changes and restrictions brought about by the Covid-19 pandemic, we have continued to adapt our support for families as staff and volunteers. In the Beverley area we have offered telephone support throughout and once able, also visited a small number of families face-to-face in outside spaces. It has been fantastic to hear from volunteers and families the difference these opportunities for support and fun together have made.

When in-person contact with volunteers has not been possible, we have visited families on their doorsteps with supplies and gifts for the children. We have offered support when families have had to isolate. I know this contact, even if it has just been a text saying we are there if they need, has made a big difference at a challenging time.

I continue to keep close contact with other VCSE partners in the East Riding and now we are once again offering home visits I am working my way around visiting toddler groups and community centres to talk to families about what we do. I look forward to hopefully getting more families on board soon as the awareness of the scheme in Beverley continues to grow amongst other professionals in the East Riding.

### **Gemma Brown - Sustainability Project Organiser**

That was a long 3 weeks working from home, wasn't it? Having finally returned to the office only a few weeks ago I can now reflect back on what a weird time this has been. Yet throughout it we still managed to keep the service running, provide support to our families and appreciate exactly what kind of effort is needed for that. We have been super busy with funding applications, figuring out how we deliver our projects to the community and how the scheme will look in the new post covid world. Our social media has been buzzing and we are excited to move forward with enthusiasm and optimism. I haven't laid off the biscuits yet (a common theme amongst my AGM briefs), and whilst I'm glad to be back in the office I am going to miss my fridge at home. Always proud to work here amongst an incredible team seeing the amazing outcomes they achieve. Started off here for 6 months. Three and a half years later I'm still here, and truly still proud to be a part of it all.





## **Our thanks to the following for their support during 2020 - 2021**

**NHS HULL CCG  
SIR JAMES RECKITT CHARITY  
LIZ VOKES  
VAL WOOD  
PRESTON METHODIST CHURCH  
HULL MOTHERS UNION  
ANLABY WI  
LOUISE HUTTY  
HUMBER LEARNING CONSORTIUM  
ASDA HESSLE ROAD**

**NATIONAL LOTTERY COMMUNITY FUND  
BRELMS TRUST  
SHIRLEY GRAY  
RICHARD GORE  
MRS B CAWKWELL  
MOTHER HUMBER  
THE RANK FOUNDATION  
TWO RIDINGS FOUNDATION  
WAITROSE WILLERBY  
TESCO**







**Charity Registration No. 1105574**

**Company Registration No. 5200713 (England and Wales)**

**HOME-START (HULL)**  
**COMPANY LIMITED BY GUARANTEE**  
**ANNUAL REPORT AND UNAUDITED FINANCIAL STATEMENTS**  
**FOR THE YEAR ENDED 31 MARCH 2021**

**Fawley Judge & Easton**  
**Chartered Certified Accountants**  
**1 Parliament Street**  
**Hull**  
**East Yorkshire**  
**HU1 2AS**



# HOME-START (HULL) COMPANY LIMITED BY GUARANTEE LEGAL AND ADMINISTRATIVE INFORMATION

---

**Trustees**

Pamela Owen  
Sam McGaw  
Emma Pickering  
Lorna Morris  
Dave Edeson  
Heather Barnes  
Elaine Porter  
Margaret Corless

(Appointed 24 February  
2021)

**Secretary**

Caroline Watson

**Charity number**

1105574

**Company number**

5200713

**Independent examiner**

Fawley Judge & Easton  
Chartered Certified Accountants  
1 Parliament Street  
Hull  
East Yorkshire  
HU1 2AS

# HOME-START (HULL) COMPANY LIMITED BY GUARANTEE CONTENTS

---

	<b>Page</b>
Trustees' report	1 - 3
Independent examiner's report	4
Statement of financial activities	5
Balance sheet	6 - 7
Notes to the financial statements	8 - 17

---

**HOME-START (HULL)  
COMPANY LIMITED BY GUARANTEE  
TRUSTEES' REPORT (INCLUDING DIRECTORS' REPORT)  
FOR THE YEAR ENDED 31 MARCH 2021**

---

The trustees, who are also directors for the purposes of company law, present their report and the un-audited financial statements of the charity for the year ended 31 March 2021.

The accounts have been prepared in accordance with the accounting policies set out in note 1 to the accounts and comply with the charity's governing document, the Companies Act 2006 and the Statement of Recommended Practice, "Accounting and Reporting by Charities", issued in March 2005.

**Objectives and activities**

The charity's objects are to safeguard and preserve the good health, both mental and physical of children and parents of children, to prevent cruelty to or maltreatment of children, to relieve sickness, poverty and need amongst children and parents of children and to promote the education of the public in better standards of child care within the area of Hull and its environs. The policies adopted in furtherance of these objects are applied by the committee and there has been no change in these during the year.

To provide support to a minimum of 100 new families using home-visiting volunteers. This is our core work.  
To support an additional 25 families per year on our Families in Mind project funded by the National Lottery Community Fund. This project was granted funding and started in May 2016. The project supports parents with a mental illness.

To offer new volunteers the chance to complete the preparation training on various days and times throughout the year including evenings, weekends and summer holidays and to continue our offer to existing volunteers of specialist training from both within the organisation and from external providers.

To offer quality training to staff, volunteers and trustees through professional development opportunities and accredited modules, including additional external training in identified areas.

To start delivery of the work in Beverley.

To start an after school club to bring additional funding to the scheme.

The trustees have paid due regard to guidance issued by the Charity Commission in deciding what activities the charity should undertake.

Home Start Hull applies for funding of its activities through the application via tendering processes to be successful in each application. The result is Service Contracts or Grants are received to fulfil the specific area identified. The following

To increase the support available to families through both the core work and projects. Current target of 125 families.

To maintain current staffing levels and volunteer numbers.

To assess whether we need to expand our services to families

To maintain our current representation on the Trustees board.

To continue to develop the Fundraising Committee and discuss long-term goals for continuous fundraising ideas.

**HOME-START (HULL)**  
**COMPANY LIMITED BY GUARANTEE**  
**TRUSTEES' REPORT (CONTINUED)(INCLUDING DIRECTORS' REPORT)**  
**FOR THE YEAR ENDED 31 MARCH 2021**

---

**Achievements and performance**

The scheme supported 82 families this year through the core work, 25 through the Families in Mind project, and 9 through the Beverley pilot, by 80 home-visiting volunteers. The After School Club had 13 children attend at different points. The volunteers and families were supported by 9 trustees and 10 staff during the year. (Joanne Boasman, Gemma Brown, Charlotte Dunstan, Kelly Sykes, Bridget Marvin-Smelt, Helen Percy, Christine Ravn, Phil Vincent, Caroline Watson, and Charlotte Woolhouse.

All staff, volunteers and trustees continue to complete role appropriate training including Safeguarding Children's Partnership training.

We delivered four volunteer preparation courses recruiting a total of 8 new volunteers. All volunteers who opted for accreditation received the maximum award of 3 credits at level two through Certa. Accreditation has been reviewed during the year as it is no longer offered through Certa. We have led a piece of partnership work with other Local Home-Start's nationwide to set up a new Centre. 57% of volunteers leaving the scheme this year did so for work and training and attribute their success at interview to their experience and training with Home-Start (Hull). We offered additional training in the 'Prevent' strategy, Supporting Challenging Behaviour in Children, Mental Health Awareness, and Psychological First Aid training and offered 3 volunteer group support opportunities.

We have successfully completed the sixth year of our CCG contract and achieved the targets required by the service specification. This contract will come to an end in March 2022. We have received funding to help families deal with the impact of COVID-19 and have utilised our partnership with Waitrose at Willerby to offer further support.

Despite the outbreak of COVID-19, we have successfully continued to support families and volunteers via phone/ text/ email and delivered emergency supplies to families and volunteers during lockdown.

Unfortunately, the after school club had to be closed at the end of March 2021 due to the impact of COVID-19. Income was lower and unstable, a member of staff had to shield which meant high agency staff costs, and children isolating or no longer needing places due to changes in parent's working circumstances. We maintain our Ofsted registration to enable us to look at Early Years sustainable income routes in future.

The board have reviewed the reserves set aside by the scheme and are satisfied that they cover the necessary requirements identified in the Reserves Policy. The Reserves covers four months of running costs plus redundancy costs.

We continue to look for ways to provide additional funding for the scheme.

There have been no incidents or near misses regarding information governance.

**Financial review**

The executive committee review the financial position regularly throughout the year.

It is the policy of the charity that unrestricted funds which have not been designated for a specific use should be maintained at a level equivalent to between three and six month's expenditure. The trustees considers that reserves at this level will ensure that, in the event of a significant drop in funding, they will be able to continue the charity's current activities while consideration is given to ways in which additional funds may be raised. This level of reserves has been maintained throughout the year.

The Charity receives income from donations, grants and interest from its investment. For 2021 this income amounted to £263,751 (2020 £205,575). Its income is used to finance direct charitable expenditure and other indirect expenditure amounting to £223,690 (2020- £213,263). The Executive Committee report a net surplus before transfers of £40,061 for the year under review compared to a net deficit of £7,688 in 2020.

Our reserves include cash and bank balances of £153,829.

The trustees has assessed the major risks to which the charity is exposed, and are satisfied that systems are in place to mitigate exposure to the major risks.

**HOME-START (HULL)  
COMPANY LIMITED BY GUARANTEE  
TRUSTEES' REPORT (CONTINUED)(INCLUDING DIRECTORS' REPORT)  
FOR THE YEAR ENDED 31 MARCH 2021**

---

The Board recognise that over the next five years, the amount of funding from the CCG will decrease each year and have planned provision to cover a predicted shortfall as costs increase due to workplace pensions and increased costs associated with volunteer training and DBS checks.

We continue to look for ways to provide additional funding for the scheme

**Structure, governance and management**

The charity is a company limited by guarantee and has been registered as a charity.

The trustees, who are also the directors for the purpose of company law, and who served during the year and up to the date of signature of the financial statements were:

Audrey Marshall (Resigned 10 September 2021)

Pamela Owen

Jane Pollitt (Resigned 15 July 2020)

Sam McGaw

Emma Pickering

Lorna Morris

Dave Edeson

Heather Barnes

Elaine Porter

Margaret Corless (Appointed 24 February 2021)

The current trustees continue to seek new trustees as vacancies or skills profiles are required from the general public and those associated in the area the charity operates.

None of the trustees has any beneficial interest in the company. All of the trustees are members of the company and guarantee to contribute £1 in the event of a winding up.

The organisation is managed by an Executive Committee comprising of no fewer than 4 members and not more than 12 members. All the trustees sit on this committee.

Home Start Hull is a member of the Home Start UK organisation which provides areas of support to the organisation. Service Agreements are entered into with various providers operating in this area

The trustees' report was approved by the Board of Trustees.

**Caroline Watson**

Secretary

Dated: 7 October 2021

**HOME-START (HULL)  
COMPANY LIMITED BY GUARANTEE  
INDEPENDENT EXAMINER'S REPORT  
TO THE TRUSTEES OF HOME-START (HULL)**

---

I report to the trustees on my examination of the financial statements of Home-Start (Hull) (the charity) for the year ended 31 March 2021.

**Responsibilities and basis of report**

As the trustees of the charity (and also its directors for the purposes of company law) you are responsible for the preparation of the financial statements in accordance with the requirements of the Companies Act 2006 (the 2006 Act).

Having satisfied myself that the financial statements of the charity are not required to be audited under Part 16 of the 2006 Act and are eligible for independent examination, I report in respect of my examination of the charity's financial statements carried out under section 145 of the Charities Act 2011 (the 2011 Act). In carrying out my examination I have followed all the applicable Directions given by the Charity Commission under section 145(5)(b) of the 2011 Act.

**Independent examiner's statement**

Since the charity's gross income exceeded £250,000 your examiner must be a member of a body listed in section 145 of the 2011 Act. I confirm that I am qualified to undertake the examination because I am a member of ACCA, which is one of the listed bodies.

I have completed my examination. I confirm that no matters have come to my attention in connection with the examination giving me cause to believe that in any material respect:

- 1 accounting records were not kept in respect of the charity as required by section 386 of the 2006 Act; or
- 2 the financial statements do not accord with those records; or
- 3 the financial statements do not comply with the accounting requirements of section 396 of the 2006 Act other than any requirement that the accounts give a true and fair view which is not a matter considered as part of an independent examination; or
- 4 the financial statements have not been prepared in accordance with the methods and principles of the Statement of Recommended Practice for accounting and reporting by charities applicable to charities preparing their accounts in accordance with the Financial Reporting Standard applicable in the UK and Republic of Ireland (FRS 102).

I have no concerns and have come across no other matters in connection with the examination to which attention should be drawn in this report in order to enable a proper understanding of the financial statements to be reached.

Jonathan M Leathley  
**Fawley Judge & Easton**  
**Chartered Certified Accountants**  
1 Parliament Street  
Hull  
East Yorkshire  
HU1 2AS

Dated: 7 October 2021

**HOME-START (HULL)**  
**COMPANY LIMITED BY GUARANTEE**  
**STATEMENT OF FINANCIAL ACTIVITIES**  
**INCLUDING INCOME AND EXPENDITURE ACCOUNT**  
**FOR THE YEAR ENDED 31 MARCH 2021**

		Unrestricted funds 2021 £	Restricted funds 2021 £	Total 2021 £	Unrestricted funds 2020 £	Restricted funds 2020 £	Total 2020 £
	Notes						
<b>Income from:</b>							
Donations and legacies	3	42,597	-	42,597	23,348	-	23,348
Charitable activities	4	3,500	212,865	216,365	13,000	168,169	181,169
Other trading activities	5	3,631	-	3,631	-	-	-
Investments	6	1,159	-	1,159	1,058	-	1,058
<b>Total income</b>		<b>50,887</b>	<b>212,865</b>	<b>263,752</b>	<b>37,406</b>	<b>168,169</b>	<b>205,575</b>
<b>Expenditure on:</b>							
Raising funds	7	15,957	-	15,957	3,842	-	3,842
Charitable activities	8	32,553	175,181	207,734	25,530	183,891	209,421
<b>Total resources expended</b>		<b>48,510</b>	<b>175,181</b>	<b>223,691</b>	<b>29,372</b>	<b>183,891</b>	<b>213,263</b>
<b>Net incoming/ (outgoing) resources before transfers</b>		<b>2,377</b>	<b>37,684</b>	<b>40,061</b>	<b>8,034</b>	<b>(15,722)</b>	<b>(7,688)</b>
Gross transfers between funds		(5,178)	5,178	-	(5,773)	5,773	-
<b>Net (expenditure)/income for the year/ Net movement in funds</b>		<b>(2,801)</b>	<b>42,862</b>	<b>40,061</b>	<b>2,261</b>	<b>(9,949)</b>	<b>(7,688)</b>
Fund balances at 1 April 2020		112,453	-	112,453	110,192	9,949	120,141
<b>Fund balances at 31 March 2021</b>		<b>109,652</b>	<b>42,862</b>	<b>152,514</b>	<b>112,453</b>	<b>-</b>	<b>112,453</b>

The statement of financial activities includes all gains and losses recognised in the year.

All income and expenditure derive from continuing activities.

The statement of financial activities also complies with the requirements for an income and expenditure account under the Companies Act 2006.



**HOME-START (HULL)**  
**COMPANY LIMITED BY GUARANTEE**  
**BALANCE SHEET**  
**AS AT 31 MARCH 2021**

	Notes	2021 £	£	2020 £	£
<b>Fixed assets</b>					
Tangible assets	12		366		445
<b>Current assets</b>					
Cash at bank and in hand		153,829		140,830	
<b>Creditors: amounts falling due within one year</b>	13	(1,681)		(28,822)	
Net current assets			152,148		112,008
<b>Total assets less current liabilities</b>			152,514		112,453
<b>Income funds</b>					
CCG - NHS Hull		13,704		-	
TNL Community Fund - Families in Mind		29,158		-	
	15		42,862		-
<u>Unrestricted funds</u>					
Designated funds	16	64,390		64,369	
General unrestricted funds		45,262		48,084	
			109,652		112,453
			152,514		112,453

**HOME-START (HULL)  
COMPANY LIMITED BY GUARANTEE  
BALANCE SHEET (CONTINUED)  
AS AT 31 MARCH 2021**

---

The company is entitled to the exemption from the audit requirement contained in section 477 of the Companies Act 2006, for the year ended 31 March 2021.

The directors acknowledge their responsibilities for ensuring that the charity keeps accounting records which comply with section 386 of the Act and for preparing financial statements which give a true and fair view of the state of affairs of the company as at the end of the financial year and of its incoming resources and application of resources, including its income and expenditure, for the financial year in accordance with the requirements of sections 394 and 395 and which otherwise comply with the requirements of the Companies Act 2006 relating to financial statements, so far as applicable to the company.

The members have not required the company to obtain an audit of its financial statements for the year in question in accordance with section 476.

These financial statements have been prepared in accordance with the provisions applicable to companies subject to the small companies regime.

The financial statements were approved by the Trustees on 7 October 2021

Sam McGaw  
**Trustee**

**Company Registration No. 5200713**

# HOME-START (HULL)

## COMPANY LIMITED BY GUARANTEE

### NOTES TO THE FINANCIAL STATEMENTS

#### FOR THE YEAR ENDED 31 MARCH 2021

---

## 1 Accounting policies

### Charity information

Home-Start (Hull) is a private company limited by guarantee incorporated in England and Wales.

### 1.1 Accounting convention

The financial statements have been prepared in accordance with the charity's [governing document], the Companies Act 2006 and "Accounting and Reporting by Charities: Statement of Recommended Practice applicable to charities preparing their accounts in accordance with the Financial Reporting Standard applicable in the UK and Republic of Ireland (FRS 102) (effective 1 January 2019)". The charity is a Public Benefit Entity as defined by FRS 102.

The charity has taken advantage of the provisions in the SORP for charities applying FRS 102 Update Bulletin 1 not to prepare a Statement of Cash Flows.

The financial statements are prepared in sterling, which is the functional currency of the charity. Monetary amounts in these financial statements are rounded to the nearest £.

The financial statements have been prepared under the historical cost convention, modified to include the revaluation of freehold properties and to include investment properties and certain financial instruments at fair value. The principal accounting policies adopted are set out below.

### 1.2 Going concern

At the time of approving the financial statements, the trustees have a reasonable expectation that the charity has adequate resources to continue in operational existence for the foreseeable future. Thus the trustees continue to adopt the going concern basis of accounting in preparing the financial statements.

### 1.3 Charitable funds

Unrestricted funds are available for use at the discretion of the trustees in furtherance of their charitable objectives.

Restricted funds are subject to specific conditions by donors as to how they may be used. The purposes and uses of the restricted funds are set out in the notes to the financial statements.

Endowment funds are subject to specific conditions by donors that the capital must be maintained by the charity.

### 1.4 Income

Income is recognised when the charity is legally entitled to it after any performance conditions have been met, the amounts can be measured reliably, and it is probable that income will be received.

Cash donations are recognised on receipt. Other donations are recognised once the charity has been notified of the donation, unless performance conditions require deferral of the amount. Income tax recoverable in relation to donations received under Gift Aid or deeds of covenant is recognised at the time of the donation.

Legacies are recognised on receipt or otherwise if the charity has been notified of an impending distribution, the amount is known, and receipt is expected. If the amount is not known, the legacy is treated as a contingent asset.

### 1.5 Expenditure

Expenditure incurred by the organisation is accounted for on an accruals basis. Items relating to operational matters are charged to the SOFA, and any capital items to the Balance Sheet.

**HOME-START (HULL)**  
**COMPANY LIMITED BY GUARANTEE**  
**NOTES TO THE FINANCIAL STATEMENTS (CONTINUED)**  
**FOR THE YEAR ENDED 31 MARCH 2021**

---

**1 Accounting policies** **(Continued)**

**1.6 Tangible fixed assets**

Tangible fixed assets are initially measured at cost and subsequently measured at cost or valuation, net of depreciation and any impairment losses.

Depreciation is recognised so as to write off the cost or valuation of assets less their residual values over their useful lives on the following bases:

Fixtures, fittings & equipment	15% - written down value
--------------------------------	--------------------------

The gain or loss arising on the disposal of an asset is determined as the difference between the sale proceeds and the carrying value of the asset, and is recognised in net income/(expenditure) for the year.

**1.7 Impairment of fixed assets**

At each reporting end date, the charity reviews the carrying amounts of its tangible assets to determine whether there is any indication that those assets have suffered an impairment loss. If any such indication exists, the recoverable amount of the asset is estimated in order to determine the extent of the impairment loss (if any).

**1.8 Cash and cash equivalents**

Cash and cash equivalents include cash in hand, deposits held at call with banks, other short-term liquid investments with original maturities of three months or less, and bank overdrafts. Bank overdrafts are shown within borrowings in current liabilities.

***Basic financial assets***

Basic financial assets, which include debtors and cash and bank balances, are initially measured at transaction price including transaction costs and are subsequently carried at amortised cost using the effective interest method unless the arrangement constitutes a financing transaction, where the transaction is measured at the present value of the future receipts discounted at a market rate of interest. Financial assets classified as receivable within one year are not amortised.

***Basic financial liabilities***

Basic financial liabilities, including creditors and bank loans are initially recognised at transaction price unless the arrangement constitutes a financing transaction, where the debt instrument is measured at the present value of the future payments discounted at a market rate of interest. Financial liabilities classified as payable within one year are not amortised.

Debt instruments are subsequently carried at amortised cost, using the effective interest rate method.

Trade creditors are obligations to pay for goods or services that have been acquired in the ordinary course of operations from suppliers. Amounts payable are classified as current liabilities if payment is due within one year or less. If not, they are presented as non-current liabilities. Trade creditors are recognised initially at transaction price and subsequently measured at amortised cost using the effective interest method.

***Derecognition of financial liabilities***

Financial liabilities are derecognised when the charity's contractual obligations expire or are discharged or cancelled.

**HOME-START (HULL)**  
**COMPANY LIMITED BY GUARANTEE**  
**NOTES TO THE FINANCIAL STATEMENTS (CONTINUED)**  
**FOR THE YEAR ENDED 31 MARCH 2021**

**1 Accounting policies** **(Continued)**

**1.9 Employee benefits**

The cost of any unused holiday entitlement is recognised in the period in which the employee's services are received.

Termination benefits are recognised immediately as an expense when the charity is demonstrably committed to terminate the employment of an employee or to provide termination benefits.

**1.10 Leases**

Rentals payable under operating leases, including any lease incentives received, are charged as an expense on a straight line basis over the term of the relevant lease.

**2 Critical accounting estimates and judgements**

In the application of the charity's accounting policies, the trustees are required to make judgements, estimates and assumptions about the carrying amount of assets and liabilities that are not readily apparent from other sources. The estimates and associated assumptions are based on historical experience and other factors that are considered to be relevant. Actual results may differ from these estimates.

The estimates and underlying assumptions are reviewed on an ongoing basis. Revisions to accounting estimates are recognised in the period in which the estimate is revised where the revision affects only that period, or in the period of the revision and future periods where the revision affects both current and future periods.

**3 Donations and legacies**

	<b>Unrestricted funds</b>	Unrestricted funds
	<b>2021</b>	2020
	£	£
Donations and gifts	30,579	23,348
Job Retention Scheme	12,018	-
	<u>42,597</u>	<u>23,348</u>
	<u><u>42,597</u></u>	<u><u>23,348</u></u>

**HOME-START (HULL)**  
**COMPANY LIMITED BY GUARANTEE**  
**NOTES TO THE FINANCIAL STATEMENTS (CONTINUED)**  
**FOR THE YEAR ENDED 31 MARCH 2021**

**4 Charitable activities**

	CCG -NHS Hull	TNL Com'ty Fund - FIM	James Reckitt Charity	Uplift Project	Total 2021	Total 2020
	2021	2021	2021	2021		
	£	£	£	£	£	£
Sales within charitable activities	-	-	-	-	-	9,930
Performance related grants	114,945	58,456	3,500	39,464	216,365	171,239
	<u>114,945</u>	<u>58,456</u>	<u>3,500</u>	<u>39,464</u>	<u>216,365</u>	<u>181,169</u>
	<u><u>114,945</u></u>	<u><u>58,456</u></u>	<u><u>3,500</u></u>	<u><u>39,464</u></u>	<u><u>216,365</u></u>	<u><u>181,169</u></u>
Analysis by fund						
Unrestricted funds	-	-	3,500	-	3,500	13,000
Restricted funds	114,945	58,456	-	39,464	212,865	168,169
	<u>114,945</u>	<u>58,456</u>	<u>3,500</u>	<u>39,464</u>	<u>216,365</u>	<u>181,169</u>
	<u><u>114,945</u></u>	<u><u>58,456</u></u>	<u><u>3,500</u></u>	<u><u>39,464</u></u>	<u><u>216,365</u></u>	<u><u>181,169</u></u>

**For the year ended 31 March 2020**

	CCG -NHS Hull	TNL Com'ty Fund - FIM	James Reckitt Charity	Awards for All	Total 2020
	£	£	£	£	£
Sales within charitable activities	-	-	-	9,930	9,930
Performance related grants	111,924	46,315	13,000	-	171,239
	<u>111,924</u>	<u>46,315</u>	<u>13,000</u>	<u>9,930</u>	<u>181,169</u>
	<u><u>111,924</u></u>	<u><u>46,315</u></u>	<u><u>13,000</u></u>	<u><u>9,930</u></u>	<u><u>181,169</u></u>
Analysis by fund					
Unrestricted funds	-	-	13,000	-	13,000
Restricted funds	111,924	46,315	-	9,930	168,169
	<u>111,924</u>	<u>46,315</u>	<u>13,000</u>	<u>9,930</u>	<u>181,169</u>
	<u><u>111,924</u></u>	<u><u>46,315</u></u>	<u><u>13,000</u></u>	<u><u>9,930</u></u>	<u><u>181,169</u></u>

**HOME-START (HULL)**  
**COMPANY LIMITED BY GUARANTEE**  
**NOTES TO THE FINANCIAL STATEMENTS (CONTINUED)**  
**FOR THE YEAR ENDED 31 MARCH 2021**

**5 Other trading activities**

	<b>Unrestricted funds</b>	<b>Total</b>
	<b>2021</b>	<b>2020</b>
	<b>£</b>	<b>£</b>
Trading activity income: ASC	3,631	-
	<u>          </u>	<u>          </u>

**6 Investments**

	<b>Unrestricted funds</b>	<b>Unrestricted funds</b>
	<b>2021</b>	<b>2020</b>
	<b>£</b>	<b>£</b>
Interest receivable	1,159	1,058
	<u>          </u>	<u>          </u>

**7 Raising funds**

	<b>Unrestricted funds</b>	<b>Unrestricted funds</b>
	<b>2021</b>	<b>2020</b>
	<b>£</b>	<b>£</b>
<u>Fundraising and publicity</u>		
Fundraising costs	10,960	3,842
	<u>          </u>	<u>          </u>
<u>Trading costs</u>		
Other trading activities	4,997	-
	<u>          </u>	<u>          </u>
	<u>15,957</u>	<u>3,842</u>



**HOME-START (HULL)**  
**COMPANY LIMITED BY GUARANTEE**  
**NOTES TO THE FINANCIAL STATEMENTS (CONTINUED)**  
**FOR THE YEAR ENDED 31 MARCH 2021**

8 Charitable activities

		CCG - NHS Hull 2021 £	TNL Comm'ty Fund - FIM 2021 £	James Reckitt Charity 2021 £	Awards for All 2021 £	Uplift Project 2021 £	Total 2021 £	Total 2020 £
	<b>Staff costs</b>	96,975	20,367	10,180	-	25,189	152,711	155,386
Charitable expenses		23,172	101	-	-	2,333	25,606	28,074
		<u>120,147</u>	<u>20,468</u>	<u>10,180</u>	<u>-</u>	<u>27,522</u>	<u>178,317</u>	<u>183,460</u>
Share of support costs (see note 9)		7,515	9,120	-	-	11,942	28,577	25,121
Share of governance costs (see note 9)		840	-	-	-	-	840	840
		<u>128,502</u>	<u>29,588</u>	<u>10,180</u>	<u>-</u>	<u>39,464</u>	<u>207,734</u>	<u>209,421</u>
<b>Analysis by fund</b>								
Unrestricted funds		22,373	-	10,180	-	-	32,553	25,530
Restricted funds		106,129	29,588	-	-	39,464	175,181	183,891
		<u>128,502</u>	<u>29,588</u>	<u>10,180</u>	<u>-</u>	<u>39,464</u>	<u>207,734</u>	<u>209,421</u>
<b>For the year ended 31 March 2020</b>								
Unrestricted funds		19,213	-	6,317	-	-		25,530
Restricted funds		129,325	44,636	-	9,930	-		183,891
		<u>148,538</u>	<u>44,636</u>	<u>6,317</u>	<u>9,930</u>	<u>-</u>		<u>209,421</u>

**HOME-START (HULL)**  
**COMPANY LIMITED BY GUARANTEE**  
**NOTES TO THE FINANCIAL STATEMENTS (CONTINUED)**  
**FOR THE YEAR ENDED 31 MARCH 2021**

**9 Support costs**

	Support costs £	Governance costs £	2021 £	2020 £	Basis of allocation
Accommodation costs	16,102	-	16,102	10,503	
IT costs	3,555	-	3,555	5,374	
Telephone	649	-	649	1,649	
Utilities	1,629	-	1,629	977	
Office costs	6,642	-	6,642	4,011	
Professional fees	-	840	840	840	Governance
	<u>28,577</u>	<u>840</u>	<u>29,417</u>	<u>23,354</u>	
Analysed between					
Charitable activities	<u>28,577</u>	<u>840</u>	<u>29,417</u>	<u>25,961</u>	

Governance costs includes payments to the independent examiner of £840 (2020- £840) for professional fees.

**10 Trustees**

None of the trustees (or any persons connected with them) received any remuneration during the year.

**11 Employees**

The average monthly number of employees during the year was:

	2021 Number	2020 Number
Adminstration	2	2
Service delivery	8	8
Total	<u>10</u>	<u>10</u>
<b>Employment costs</b>	<b>2021 £</b>	<b>2020 £</b>
Wages and salaries	<u>152,711</u>	<u>155,386</u>

There were no employees whose annual remuneration was £60,000 or more.

**HOME-START (HULL)**  
**COMPANY LIMITED BY GUARANTEE**  
**NOTES TO THE FINANCIAL STATEMENTS (CONTINUED)**  
**FOR THE YEAR ENDED 31 MARCH 2021**

**12 Tangible fixed assets**

	Fixtures, fittings & equipment £
<b>Cost</b>	
At 1 April 2020	7,706
At 31 March 2021	<u>7,706</u>
<b>Depreciation and impairment</b>	
At 1 April 2020	7,261
Depreciation charged in the year	79
At 31 March 2021	<u>7,340</u>
<b>Carrying amount</b>	
At 31 March 2021	<u>366</u>
At 31 March 2020	<u>445</u>

**13 Creditors: amounts falling due within one year**

	2021 £	2020 £
Accruals and deferred income	<u>1,681</u>	<u>28,822</u>

**14 Retirement benefit schemes**

The charity operates a defined contribution pension scheme for all qualifying employees. The assets of the scheme are held separately from those of the charity in an independently administered fund.

**HOME-START (HULL)**  
**COMPANY LIMITED BY GUARANTEE**  
**NOTES TO THE FINANCIAL STATEMENTS (CONTINUED)**  
**FOR THE YEAR ENDED 31 MARCH 2021**

**15 Restricted funds**

The income funds of the charity include restricted funds comprising the following unexpended balances of donations and grants held on trust for specific purposes:

	Movement in funds				Movement in funds				Balance at 31 March 2021
	Balance at 1 April 2019	Incoming Resources	Outgoing Resources	Transfers	Balance at 1 April 2020	Incoming Resources	Outgoing Resources	Transfers	
	£	£	£	£	£	£	£	£	£
CCG - NHS Hull	9,949	111,924	(129,325)	7,452	-	114,945	(106,129)	4,888	13,704
The National Lottery Community Fund - Families in Mind	-	46,315	(44,636)	(1,679)	-	58,456	(29,588)	290	29,158
Awards for All	-	9,930	(9,930)	-	-	-	-	-	-
Uplift project	-	-	-	-	-	39,464	(39,464)	-	-
	<u>9,949</u>	<u>168,169</u>	<u>(183,891)</u>	<u>5,773</u>	<u>-</u>	<u>212,865</u>	<u>(175,182)</u>	<u>5,178</u>	<u>42,862</u>

**HOME-START (HULL)**  
**COMPANY LIMITED BY GUARANTEE**  
**NOTES TO THE FINANCIAL STATEMENTS (CONTINUED)**  
**FOR THE YEAR ENDED 31 MARCH 2021**

**16 Designated funds**

The income funds of the charity include the following designated funds which have been set aside out of unrestricted funds by the trustees for specific purposes:

	<b>Movement in funds</b>			<b>Movement in funds</b>			
	<b>Balance at 1 April 2019</b>	<b>Transfers in</b>	<b>Transfers out</b>	<b>Balance at 1 April 2020</b>	<b>Transfers in</b>	<b>Transfers out</b>	<b>Balance at 31 March 2021</b>
	<b>£</b>	<b>£</b>	<b>£</b>	<b>£</b>	<b>£</b>	<b>£</b>	<b>£</b>
Contingency fund	50,000	-	-	50,000	-	-	50,000
ASC	10,910	16,173	(16,397)	10,686	13,164	(23,850)	-
Beverley ORG	7,000	3,000	(6,317)	3,683	20,021	(10,180)	13,524
Covid Costs	-	-	-	-	3,720	(2,854)	866
	<u>67,910</u>	<u>19,173</u>	<u>(22,714)</u>	<u>64,369</u>	<u>36,905</u>	<u>(36,884)</u>	<u>64,390</u>

**17 Analysis of net assets between funds**

	<b>Unrestricted 2021</b>	<b>Restricted 2021</b>	<b>Total 2021</b>	<b>Unrestricted 2020</b>	<b>Restricted 2020</b>	<b>Total 2020</b>
	<b>£</b>	<b>£</b>	<b>£</b>	<b>£</b>	<b>£</b>	<b>£</b>
Fund balances at 31 March 2021 are represented by:						
Tangible assets	366	-	366	445	-	445
Current assets/ (liabilities)	109,286	42,862	152,148	112,008	-	112,008
	<u>109,652</u>	<u>42,862</u>	<u>152,514</u>	<u>112,453</u>	<u>-</u>	<u>112,453</u>

**18 Related party transactions**

There were no disclosable related party transactions during the year (2020 - none).

**Charity Registration No. 1105574**

**Company Registration No. 5200713 (England and Wales)**

**HOME-START (HULL)**  
**COMPANY LIMITED BY GUARANTEE**  
**ANNUAL REPORT AND UNAUDITED FINANCIAL STATEMENTS**  
**FOR THE YEAR ENDED 31 MARCH 2021**

**Fawley Judge & Easton**  
**Chartered Certified Accountants**  
**1 Parliament Street**  
**Hull**  
**East Yorkshire**  
**HU1 2AS**

# HOME-START (HULL) COMPANY LIMITED BY GUARANTEE LEGAL AND ADMINISTRATIVE INFORMATION

---

**Trustees**

Pamela Owen  
Sam McGaw  
Emma Pickering  
Lorna Morris  
Dave Edeson  
Heather Barnes  
Elaine Porter  
Margaret Corless

(Appointed 24 February  
2021)

**Secretary**

Caroline Watson

**Charity number**

1105574

**Company number**

5200713

**Independent examiner**

Fawley Judge & Easton  
Chartered Certified Accountants  
1 Parliament Street  
Hull  
East Yorkshire  
HU1 2AS



# HOME-START (HULL) COMPANY LIMITED BY GUARANTEE CONTENTS

---

	<b>Page</b>
Trustees' report	1 - 3
Independent examiner's report	4
Statement of financial activities	5
Balance sheet	6 - 7
Notes to the financial statements	8 - 17

---

**HOME-START (HULL)  
COMPANY LIMITED BY GUARANTEE  
TRUSTEES' REPORT (INCLUDING DIRECTORS' REPORT)  
FOR THE YEAR ENDED 31 MARCH 2021**

---

The trustees, who are also directors for the purposes of company law, present their report and the un-audited financial statements of the charity for the year ended 31 March 2021.

The accounts have been prepared in accordance with the accounting policies set out in note 1 to the accounts and comply with the charity's governing document, the Companies Act 2006 and the Statement of Recommended Practice, "Accounting and Reporting by Charities", issued in March 2005.

**Objectives and activities**

The charity's objects are to safeguard and preserve the good health, both mental and physical of children and parents of children, to prevent cruelty to or maltreatment of children, to relieve sickness, poverty and need amongst children and parents of children and to promote the education of the public in better standards of child care within the area of Hull and its environs. The policies adopted in furtherance of these objects are applied by the committee and there has been no change in these during the year.

To provide support to a minimum of 100 new families using home-visiting volunteers. This is our core work.  
To support an additional 25 families per year on our Families in Mind project funded by the National Lottery Community Fund. This project was granted funding and started in May 2016. The project supports parents with a mental illness.

To offer new volunteers the chance to complete the preparation training on various days and times throughout the year including evenings, weekends and summer holidays and to continue our offer to existing volunteers of specialist training from both within the organisation and from external providers.

To offer quality training to staff, volunteers and trustees through professional development opportunities and accredited modules, including additional external training in identified areas.

To start delivery of the work in Beverley.

To start an after school club to bring additional funding to the scheme.

The trustees have paid due regard to guidance issued by the Charity Commission in deciding what activities the charity should undertake.

Home Start Hull applies for funding of its activities through the application via tendering processes to be successful in each application. The result is Service Contracts or Grants are received to fulfil the specific area identified. The following

To increase the support available to families through both the core work and projects. Current target of 125 families.

To maintain current staffing levels and volunteer numbers.

To assess whether we need to expand our services to families

To maintain our current representation on the Trustees board.

To continue to develop the Fundraising Committee and discuss long-term goals for continuous fundraising ideas.

**HOME-START (HULL)**  
**COMPANY LIMITED BY GUARANTEE**  
**TRUSTEES' REPORT (CONTINUED)(INCLUDING DIRECTORS' REPORT)**  
**FOR THE YEAR ENDED 31 MARCH 2021**

---

**Achievements and performance**

The scheme supported 82 families this year through the core work, 25 through the Families in Mind project, and 9 through the Beverley pilot, by 80 home-visiting volunteers. The After School Club had 13 children attend at different points. The volunteers and families were supported by 9 trustees and 10 staff during the year. (Joanne Boasman, Gemma Brown, Charlotte Dunstan, Kelly Sykes, Bridget Marvin-Smelt, Helen Percy, Christine Ravn, Phil Vincent, Caroline Watson, and Charlotte Woolhouse).

All staff, volunteers and trustees continue to complete role appropriate training including Safeguarding Children's Partnership training.

We delivered four volunteer preparation courses recruiting a total of 8 new volunteers. All volunteers who opted for accreditation received the maximum award of 3 credits at level two through Certa. Accreditation has been reviewed during the year as it is no longer offered through Certa. We have led a piece of partnership work with other Local Home-Start's nationwide to set up a new Centre. 57% of volunteers leaving the scheme this year did so for work and training and attribute their success at interview to their experience and training with Home-Start (Hull). We offered additional training in the 'Prevent' strategy, Supporting Challenging Behaviour in Children, Mental Health Awareness, and Psychological First Aid training and offered 3 volunteer group support opportunities.

We have successfully completed the sixth year of our CCG contract and achieved the targets required by the service specification. This contract will come to an end in March 2022. We have received funding to help families deal with the impact of COVID-19 and have utilised our partnership with Waitrose at Willerby to offer further support.

Despite the outbreak of COVID-19, we have successfully continued to support families and volunteers via phone/ text/ email and delivered emergency supplies to families and volunteers during lockdown.

Unfortunately, the after school club had to be closed at the end of March 2021 due to the impact of COVID-19. Income was lower and unstable, a member of staff had to shield which meant high agency staff costs, and children isolating or no longer needing places due to changes in parent's working circumstances. We maintain our Ofsted registration to enable us to look at Early Years sustainable income routes in future.

The board have reviewed the reserves set aside by the scheme and are satisfied that they cover the necessary requirements identified in the Reserves Policy. The Reserves covers four months of running costs plus redundancy costs.

We continue to look for ways to provide additional funding for the scheme.

There have been no incidents or near misses regarding information governance.

**Financial review**

The executive committee review the financial position regularly throughout the year.

It is the policy of the charity that unrestricted funds which have not been designated for a specific use should be maintained at a level equivalent to between three and six month's expenditure. The trustees considers that reserves at this level will ensure that, in the event of a significant drop in funding, they will be able to continue the charity's current activities while consideration is given to ways in which additional funds may be raised. This level of reserves has been maintained throughout the year.

The Charity receives income from donations, grants and interest from its investment. For 2021 this income amounted to £263,751 (2020 £205,575). Its income is used to finance direct charitable expenditure and other indirect expenditure amounting to £223,690 (2020- £213,263). The Executive Committee report a net surplus before transfers of £40,061 for the year under review compared to a net deficit of £7,688 in 2020.

Our reserves include cash and bank balances of £153,829.

The trustees has assessed the major risks to which the charity is exposed, and are satisfied that systems are in place to mitigate exposure to the major risks.

**HOME-START (HULL)  
COMPANY LIMITED BY GUARANTEE  
TRUSTEES' REPORT (CONTINUED)(INCLUDING DIRECTORS' REPORT)  
FOR THE YEAR ENDED 31 MARCH 2021**

---

The Board recognise that over the next five years, the amount of funding from the CCG will decrease each year and have planned provision to cover a predicted shortfall as costs increase due to workplace pensions and increased costs associated with volunteer training and DBS checks.

We continue to look for ways to provide additional funding for the scheme

**Structure, governance and management**

The charity is a company limited by guarantee and has been registered as a charity.

The trustees, who are also the directors for the purpose of company law, and who served during the year and up to the date of signature of the financial statements were:

Audrey Marshall (Resigned 10 September 2021)

Pamela Owen

Jane Pollitt (Resigned 15 July 2020)

Sam McGaw

Emma Pickering

Lorna Morris

Dave Edeson

Heather Barnes

Elaine Porter

Margaret Corless (Appointed 24 February 2021)

The current trustees continue to seek new trustees as vacancies or skills profiles are required from the general public and those associated in the area the charity operates.

None of the trustees has any beneficial interest in the company. All of the trustees are members of the company and guarantee to contribute £1 in the event of a winding up.

The organisation is managed by an Executive Committee comprising of no fewer than 4 members and not more than 12 members. All the trustees sit on this committee.

Home Start Hull is a member of the Home Start UK organisation which provides areas of support to the organisation. Service Agreements are entered into with various providers operating in this area

The trustees' report was approved by the Board of Trustees.

**Caroline Watson**

Secretary

Dated: 7 October 2021

**HOME-START (HULL)  
COMPANY LIMITED BY GUARANTEE  
INDEPENDENT EXAMINER'S REPORT  
TO THE TRUSTEES OF HOME-START (HULL)**

---

I report to the trustees on my examination of the financial statements of Home-Start (Hull) (the charity) for the year ended 31 March 2021.

**Responsibilities and basis of report**

As the trustees of the charity (and also its directors for the purposes of company law) you are responsible for the preparation of the financial statements in accordance with the requirements of the Companies Act 2006 (the 2006 Act).

Having satisfied myself that the financial statements of the charity are not required to be audited under Part 16 of the 2006 Act and are eligible for independent examination, I report in respect of my examination of the charity's financial statements carried out under section 145 of the Charities Act 2011 (the 2011 Act). In carrying out my examination I have followed all the applicable Directions given by the Charity Commission under section 145(5)(b) of the 2011 Act.

**Independent examiner's statement**

Since the charity's gross income exceeded £250,000 your examiner must be a member of a body listed in section 145 of the 2011 Act. I confirm that I am qualified to undertake the examination because I am a member of ACCA, which is one of the listed bodies.

I have completed my examination. I confirm that no matters have come to my attention in connection with the examination giving me cause to believe that in any material respect:

- 1 accounting records were not kept in respect of the charity as required by section 386 of the 2006 Act; or
- 2 the financial statements do not accord with those records; or
- 3 the financial statements do not comply with the accounting requirements of section 396 of the 2006 Act other than any requirement that the accounts give a true and fair view which is not a matter considered as part of an independent examination; or
- 4 the financial statements have not been prepared in accordance with the methods and principles of the Statement of Recommended Practice for accounting and reporting by charities applicable to charities preparing their accounts in accordance with the Financial Reporting Standard applicable in the UK and Republic of Ireland (FRS 102).

I have no concerns and have come across no other matters in connection with the examination to which attention should be drawn in this report in order to enable a proper understanding of the financial statements to be reached.

Jonathan M Leathley  
**Fawley Judge & Easton**  
**Chartered Certified Accountants**  
1 Parliament Street  
Hull  
East Yorkshire  
HU1 2AS

Dated: 7 October 2021

**HOME-START (HULL)**  
**COMPANY LIMITED BY GUARANTEE**  
**STATEMENT OF FINANCIAL ACTIVITIES**  
**INCLUDING INCOME AND EXPENDITURE ACCOUNT**  
**FOR THE YEAR ENDED 31 MARCH 2021**

		Unrestricted funds 2021 £	Restricted funds 2021 £	Total 2021 £	Unrestricted funds 2020 £	Restricted funds 2020 £	Total 2020 £
	Notes						
<b>Income from:</b>							
Donations and legacies	3	42,597	-	42,597	23,348	-	23,348
Charitable activities	4	3,500	212,865	216,365	13,000	168,169	181,169
Other trading activities	5	3,631	-	3,631	-	-	-
Investments	6	1,159	-	1,159	1,058	-	1,058
<b>Total income</b>		<b>50,887</b>	<b>212,865</b>	<b>263,752</b>	<b>37,406</b>	<b>168,169</b>	<b>205,575</b>
<b>Expenditure on:</b>							
Raising funds	7	15,957	-	15,957	3,842	-	3,842
Charitable activities	8	32,553	175,181	207,734	25,530	183,891	209,421
<b>Total resources expended</b>		<b>48,510</b>	<b>175,181</b>	<b>223,691</b>	<b>29,372</b>	<b>183,891</b>	<b>213,263</b>
<b>Net incoming/ (outgoing) resources before transfers</b>		<b>2,377</b>	<b>37,684</b>	<b>40,061</b>	<b>8,034</b>	<b>(15,722)</b>	<b>(7,688)</b>
Gross transfers between funds		(5,178)	5,178	-	(5,773)	5,773	-
<b>Net (expenditure)/income for the year/ Net movement in funds</b>		<b>(2,801)</b>	<b>42,862</b>	<b>40,061</b>	<b>2,261</b>	<b>(9,949)</b>	<b>(7,688)</b>
Fund balances at 1 April 2020		112,453	-	112,453	110,192	9,949	120,141
<b>Fund balances at 31 March 2021</b>		<b>109,652</b>	<b>42,862</b>	<b>152,514</b>	<b>112,453</b>	<b>-</b>	<b>112,453</b>

The statement of financial activities includes all gains and losses recognised in the year.

All income and expenditure derive from continuing activities.

The statement of financial activities also complies with the requirements for an income and expenditure account under the Companies Act 2006.

**HOME-START (HULL)**  
**COMPANY LIMITED BY GUARANTEE**  
**BALANCE SHEET**  
**AS AT 31 MARCH 2021**

	Notes	2021 £	£	2020 £	£
<b>Fixed assets</b>					
Tangible assets	12		366		445
<b>Current assets</b>					
Cash at bank and in hand		153,829		140,830	
<b>Creditors: amounts falling due within one year</b>	13	(1,681)		(28,822)	
Net current assets			152,148		112,008
<b>Total assets less current liabilities</b>			152,514		112,453
<b>Income funds</b>					
CCG - NHS Hull		13,704		-	
TNL Community Fund - Families in Mind		29,158		-	
	15		42,862		-
<u>Unrestricted funds</u>					
Designated funds	16	64,390		64,369	
General unrestricted funds		45,262		48,084	
			109,652		112,453
			152,514		112,453

**HOME-START (HULL)  
COMPANY LIMITED BY GUARANTEE  
BALANCE SHEET (CONTINUED)  
AS AT 31 MARCH 2021**

---

The company is entitled to the exemption from the audit requirement contained in section 477 of the Companies Act 2006, for the year ended 31 March 2021.

The directors acknowledge their responsibilities for ensuring that the charity keeps accounting records which comply with section 386 of the Act and for preparing financial statements which give a true and fair view of the state of affairs of the company as at the end of the financial year and of its incoming resources and application of resources, including its income and expenditure, for the financial year in accordance with the requirements of sections 394 and 395 and which otherwise comply with the requirements of the Companies Act 2006 relating to financial statements, so far as applicable to the company.

The members have not required the company to obtain an audit of its financial statements for the year in question in accordance with section 476.

These financial statements have been prepared in accordance with the provisions applicable to companies subject to the small companies regime.

The financial statements were approved by the Trustees on 7 October 2021

Sam McGaw  
**Trustee**

**Company Registration No. 5200713**



# HOME-START (HULL)

## COMPANY LIMITED BY GUARANTEE

### NOTES TO THE FINANCIAL STATEMENTS

#### FOR THE YEAR ENDED 31 MARCH 2021

---

## 1 Accounting policies

### Charity information

Home-Start (Hull) is a private company limited by guarantee incorporated in England and Wales.

### 1.1 Accounting convention

The financial statements have been prepared in accordance with the charity's [governing document], the Companies Act 2006 and "Accounting and Reporting by Charities: Statement of Recommended Practice applicable to charities preparing their accounts in accordance with the Financial Reporting Standard applicable in the UK and Republic of Ireland (FRS 102) (effective 1 January 2019)". The charity is a Public Benefit Entity as defined by FRS 102.

The charity has taken advantage of the provisions in the SORP for charities applying FRS 102 Update Bulletin 1 not to prepare a Statement of Cash Flows.

The financial statements are prepared in sterling, which is the functional currency of the charity. Monetary amounts in these financial statements are rounded to the nearest £.

The financial statements have been prepared under the historical cost convention, modified to include the revaluation of freehold properties and to include investment properties and certain financial instruments at fair value. The principal accounting policies adopted are set out below.

### 1.2 Going concern

At the time of approving the financial statements, the trustees have a reasonable expectation that the charity has adequate resources to continue in operational existence for the foreseeable future. Thus the trustees continue to adopt the going concern basis of accounting in preparing the financial statements.

### 1.3 Charitable funds

Unrestricted funds are available for use at the discretion of the trustees in furtherance of their charitable objectives.

Restricted funds are subject to specific conditions by donors as to how they may be used. The purposes and uses of the restricted funds are set out in the notes to the financial statements.

Endowment funds are subject to specific conditions by donors that the capital must be maintained by the charity.

### 1.4 Income

Income is recognised when the charity is legally entitled to it after any performance conditions have been met, the amounts can be measured reliably, and it is probable that income will be received.

Cash donations are recognised on receipt. Other donations are recognised once the charity has been notified of the donation, unless performance conditions require deferral of the amount. Income tax recoverable in relation to donations received under Gift Aid or deeds of covenant is recognised at the time of the donation.

Legacies are recognised on receipt or otherwise if the charity has been notified of an impending distribution, the amount is known, and receipt is expected. If the amount is not known, the legacy is treated as a contingent asset.

### 1.5 Expenditure

Expenditure incurred by the organisation is accounted for on an accruals basis. Items relating to operational matters are charged to the SOFA, and any capital items to the Balance Sheet.

**HOME-START (HULL)**  
**COMPANY LIMITED BY GUARANTEE**  
**NOTES TO THE FINANCIAL STATEMENTS (CONTINUED)**  
**FOR THE YEAR ENDED 31 MARCH 2021**

---

**1 Accounting policies**

**(Continued)**

**1.6 Tangible fixed assets**

Tangible fixed assets are initially measured at cost and subsequently measured at cost or valuation, net of depreciation and any impairment losses.

Depreciation is recognised so as to write off the cost or valuation of assets less their residual values over their useful lives on the following bases:

Fixtures, fittings & equipment	15% - written down value
--------------------------------	--------------------------

The gain or loss arising on the disposal of an asset is determined as the difference between the sale proceeds and the carrying value of the asset, and is recognised in net income/(expenditure) for the year.

**1.7 Impairment of fixed assets**

At each reporting end date, the charity reviews the carrying amounts of its tangible assets to determine whether there is any indication that those assets have suffered an impairment loss. If any such indication exists, the recoverable amount of the asset is estimated in order to determine the extent of the impairment loss (if any).

**1.8 Cash and cash equivalents**

Cash and cash equivalents include cash in hand, deposits held at call with banks, other short-term liquid investments with original maturities of three months or less, and bank overdrafts. Bank overdrafts are shown within borrowings in current liabilities.

***Basic financial assets***

Basic financial assets, which include debtors and cash and bank balances, are initially measured at transaction price including transaction costs and are subsequently carried at amortised cost using the effective interest method unless the arrangement constitutes a financing transaction, where the transaction is measured at the present value of the future receipts discounted at a market rate of interest. Financial assets classified as receivable within one year are not amortised.

***Basic financial liabilities***

Basic financial liabilities, including creditors and bank loans are initially recognised at transaction price unless the arrangement constitutes a financing transaction, where the debt instrument is measured at the present value of the future payments discounted at a market rate of interest. Financial liabilities classified as payable within one year are not amortised.

Debt instruments are subsequently carried at amortised cost, using the effective interest rate method.

Trade creditors are obligations to pay for goods or services that have been acquired in the ordinary course of operations from suppliers. Amounts payable are classified as current liabilities if payment is due within one year or less. If not, they are presented as non-current liabilities. Trade creditors are recognised initially at transaction price and subsequently measured at amortised cost using the effective interest method.

***Derecognition of financial liabilities***

Financial liabilities are derecognised when the charity's contractual obligations expire or are discharged or cancelled.

**HOME-START (HULL)**  
**COMPANY LIMITED BY GUARANTEE**  
**NOTES TO THE FINANCIAL STATEMENTS (CONTINUED)**  
**FOR THE YEAR ENDED 31 MARCH 2021**

**1 Accounting policies** **(Continued)**

**1.9 Employee benefits**

The cost of any unused holiday entitlement is recognised in the period in which the employee's services are received.

Termination benefits are recognised immediately as an expense when the charity is demonstrably committed to terminate the employment of an employee or to provide termination benefits.

**1.10 Leases**

Rentals payable under operating leases, including any lease incentives received, are charged as an expense on a straight line basis over the term of the relevant lease.

**2 Critical accounting estimates and judgements**

In the application of the charity's accounting policies, the trustees are required to make judgements, estimates and assumptions about the carrying amount of assets and liabilities that are not readily apparent from other sources. The estimates and associated assumptions are based on historical experience and other factors that are considered to be relevant. Actual results may differ from these estimates.

The estimates and underlying assumptions are reviewed on an ongoing basis. Revisions to accounting estimates are recognised in the period in which the estimate is revised where the revision affects only that period, or in the period of the revision and future periods where the revision affects both current and future periods.

**3 Donations and legacies**

	<b>Unrestricted funds</b>	Unrestricted funds
	<b>2021</b>	2020
	£	£
Donations and gifts	30,579	23,348
Job Retention Scheme	12,018	-
	<u>42,597</u>	<u>23,348</u>
	<u><u>42,597</u></u>	<u><u>23,348</u></u>

**HOME-START (HULL)**  
**COMPANY LIMITED BY GUARANTEE**  
**NOTES TO THE FINANCIAL STATEMENTS (CONTINUED)**  
**FOR THE YEAR ENDED 31 MARCH 2021**

**4 Charitable activities**

	CCG -NHS Hull	TNL Com'ty Fund - FIM	James Reckitt Charity	Uplift Project	Total 2021	Total 2020
	2021	2021	2021	2021		
	£	£	£	£	£	£
Sales within charitable activities	-	-	-	-	-	9,930
Performance related grants	114,945	58,456	3,500	39,464	216,365	171,239
	<u>114,945</u>	<u>58,456</u>	<u>3,500</u>	<u>39,464</u>	<u>216,365</u>	<u>181,169</u>
	<u><u>114,945</u></u>	<u><u>58,456</u></u>	<u><u>3,500</u></u>	<u><u>39,464</u></u>	<u><u>216,365</u></u>	<u><u>181,169</u></u>
Analysis by fund						
Unrestricted funds	-	-	3,500	-	3,500	13,000
Restricted funds	114,945	58,456	-	39,464	212,865	168,169
	<u>114,945</u>	<u>58,456</u>	<u>3,500</u>	<u>39,464</u>	<u>216,365</u>	<u>181,169</u>
	<u><u>114,945</u></u>	<u><u>58,456</u></u>	<u><u>3,500</u></u>	<u><u>39,464</u></u>	<u><u>216,365</u></u>	<u><u>181,169</u></u>

**For the year ended 31 March 2020**

	CCG -NHS Hull	TNL Com'ty Fund - FIM	James Reckitt Charity	Awards for All	Total 2020
	£	£	£	£	£
Sales within charitable activities	-	-	-	9,930	9,930
Performance related grants	111,924	46,315	13,000	-	171,239
	<u>111,924</u>	<u>46,315</u>	<u>13,000</u>	<u>9,930</u>	<u>181,169</u>
	<u><u>111,924</u></u>	<u><u>46,315</u></u>	<u><u>13,000</u></u>	<u><u>9,930</u></u>	<u><u>181,169</u></u>
Analysis by fund					
Unrestricted funds	-	-	13,000	-	13,000
Restricted funds	111,924	46,315	-	9,930	168,169
	<u>111,924</u>	<u>46,315</u>	<u>13,000</u>	<u>9,930</u>	<u>181,169</u>
	<u><u>111,924</u></u>	<u><u>46,315</u></u>	<u><u>13,000</u></u>	<u><u>9,930</u></u>	<u><u>181,169</u></u>

**HOME-START (HULL)**  
**COMPANY LIMITED BY GUARANTEE**  
**NOTES TO THE FINANCIAL STATEMENTS (CONTINUED)**  
**FOR THE YEAR ENDED 31 MARCH 2021**

**5 Other trading activities**

	<b>Unrestricted funds</b>	<b>Total</b>
	<b>2021</b>	<b>2020</b>
	<b>£</b>	<b>£</b>
Trading activity income: ASC	3,631	-
	<u>          </u>	<u>          </u>

**6 Investments**

	<b>Unrestricted funds</b>	<b>Unrestricted funds</b>
	<b>2021</b>	<b>2020</b>
	<b>£</b>	<b>£</b>
Interest receivable	1,159	1,058
	<u>          </u>	<u>          </u>

**7 Raising funds**

	<b>Unrestricted funds</b>	<b>Unrestricted funds</b>
	<b>2021</b>	<b>2020</b>
	<b>£</b>	<b>£</b>
<u>Fundraising and publicity</u>		
Fundraising costs	10,960	3,842
	<u>          </u>	<u>          </u>
<u>Trading costs</u>		
Other trading activities	4,997	-
	<u>          </u>	<u>          </u>
	<u>15,957</u>	<u>3,842</u>

**HOME-START (HULL)**  
**COMPANY LIMITED BY GUARANTEE**  
**NOTES TO THE FINANCIAL STATEMENTS (CONTINUED)**  
**FOR THE YEAR ENDED 31 MARCH 2021**

8 Charitable activities

	CCG - NHS Hull 2021 £	TNL Comm'ty Fund - FIM 2021 £	James Reckitt Charity 2021 £	Awards for All 2021 £	Uplift Project 2021 £	Total 2021 £	Total 2020 £
<b>Staff costs</b>	96,975	20,367	10,180	-	25,189	152,711	155,386
Charitable expenses	23,172	101	-	-	2,333	25,606	28,074
	<u>120,147</u>	<u>20,468</u>	<u>10,180</u>	<u>-</u>	<u>27,522</u>	<u>178,317</u>	<u>183,460</u>
Share of support costs (see note 9)	7,515	9,120	-	-	11,942	28,577	25,121
Share of governance costs (see note 9)	840	-	-	-	-	840	840
	<u>128,502</u>	<u>29,588</u>	<u>10,180</u>	<u>-</u>	<u>39,464</u>	<u>207,734</u>	<u>209,421</u>
<b>Analysis by fund</b>							
Unrestricted funds	22,373	-	10,180	-	-	32,553	25,530
Restricted funds	106,129	29,588	-	-	39,464	175,181	183,891
	<u>128,502</u>	<u>29,588</u>	<u>10,180</u>	<u>-</u>	<u>39,464</u>	<u>207,734</u>	<u>209,421</u>
<b>For the year ended 31 March 2020</b>							
Unrestricted funds	19,213	-	6,317	-	-		25,530
Restricted funds	129,325	44,636	-	9,930	-		183,891
	<u>148,538</u>	<u>44,636</u>	<u>6,317</u>	<u>9,930</u>	<u>-</u>		<u>209,421</u>

**HOME-START (HULL)**  
**COMPANY LIMITED BY GUARANTEE**  
**NOTES TO THE FINANCIAL STATEMENTS (CONTINUED)**  
**FOR THE YEAR ENDED 31 MARCH 2021**

**9 Support costs**

	Support costs £	Governance costs £	2021 £	2020 £	Basis of allocation
Accommodation costs	16,102	-	16,102	10,503	
IT costs	3,555	-	3,555	5,374	
Telephone	649	-	649	1,649	
Utilities	1,629	-	1,629	977	
Office costs	6,642	-	6,642	4,011	
Professional fees	-	840	840	840	Governance
	<u>28,577</u>	<u>840</u>	<u>29,417</u>	<u>23,354</u>	
Analysed between					
Charitable activities	<u>28,577</u>	<u>840</u>	<u>29,417</u>	<u>25,961</u>	

Governance costs includes payments to the independent examiner of £840 (2020- £840) for professional fees.

**10 Trustees**

None of the trustees (or any persons connected with them) received any remuneration during the year.

**11 Employees**

The average monthly number of employees during the year was:

	2021 Number	2020 Number
Administration	2	2
Service delivery	8	8
Total	<u>10</u>	<u>10</u>
<b>Employment costs</b>	<b>2021 £</b>	<b>2020 £</b>
Wages and salaries	<u>152,711</u>	<u>155,386</u>

There were no employees whose annual remuneration was £60,000 or more.

**HOME-START (HULL)**  
**COMPANY LIMITED BY GUARANTEE**  
**NOTES TO THE FINANCIAL STATEMENTS (CONTINUED)**  
**FOR THE YEAR ENDED 31 MARCH 2021**

**12 Tangible fixed assets**

	Fixtures, fittings & equipment £
<b>Cost</b>	
At 1 April 2020	7,706
At 31 March 2021	<u>7,706</u>
<b>Depreciation and impairment</b>	
At 1 April 2020	7,261
Depreciation charged in the year	79
At 31 March 2021	<u>7,340</u>
<b>Carrying amount</b>	
At 31 March 2021	<u>366</u>
At 31 March 2020	<u>445</u>

**13 Creditors: amounts falling due within one year**

	2021 £	2020 £
Accruals and deferred income	<u>1,681</u>	<u>28,822</u>

**14 Retirement benefit schemes**

The charity operates a defined contribution pension scheme for all qualifying employees. The assets of the scheme are held separately from those of the charity in an independently administered fund.



**HOME-START (HULL)**  
**COMPANY LIMITED BY GUARANTEE**  
**NOTES TO THE FINANCIAL STATEMENTS (CONTINUED)**  
**FOR THE YEAR ENDED 31 MARCH 2021**

**15 Restricted funds**

The income funds of the charity include restricted funds comprising the following unexpended balances of donations and grants held on trust for specific purposes:

	Movement in funds				Movement in funds				Balance at 31 March 2021
	Balance at 1 April 2019	Incoming Resources	Outgoing Resources	Transfers	Balance at 1 April 2020	Incoming Resources	Outgoing Resources	Transfers	
	£	£	£	£	£	£	£	£	£
CCG - NHS Hull	9,949	111,924	(129,325)	7,452	-	114,945	(106,129)	4,888	13,704
The National Lottery Community Fund - Families in Mind	-	46,315	(44,636)	(1,679)	-	58,456	(29,588)	290	29,158
Awards for All	-	9,930	(9,930)	-	-	-	-	-	-
Uplift project	-	-	-	-	-	39,464	(39,464)	-	-
	<u>9,949</u>	<u>168,169</u>	<u>(183,891)</u>	<u>5,773</u>	<u>-</u>	<u>212,865</u>	<u>(175,182)</u>	<u>5,178</u>	<u>42,862</u>

**HOME-START (HULL)**  
**COMPANY LIMITED BY GUARANTEE**  
**NOTES TO THE FINANCIAL STATEMENTS (CONTINUED)**  
**FOR THE YEAR ENDED 31 MARCH 2021**

**16 Designated funds**

The income funds of the charity include the following designated funds which have been set aside out of unrestricted funds by the trustees for specific purposes:

	<b>Movement in funds</b>			<b>Movement in funds</b>			
	<b>Balance at 1 April 2019</b>	<b>Transfers in</b>	<b>Transfers out</b>	<b>Balance at 1 April 2020</b>	<b>Transfers in</b>	<b>Transfers out</b>	<b>Balance at 31 March 2021</b>
	<b>£</b>	<b>£</b>	<b>£</b>	<b>£</b>	<b>£</b>	<b>£</b>	<b>£</b>
Contingency fund	50,000	-	-	50,000	-	-	50,000
ASC	10,910	16,173	(16,397)	10,686	13,164	(23,850)	-
Beverley ORG	7,000	3,000	(6,317)	3,683	20,021	(10,180)	13,524
Covid Costs	-	-	-	-	3,720	(2,854)	866
	<u>67,910</u>	<u>19,173</u>	<u>(22,714)</u>	<u>64,369</u>	<u>36,905</u>	<u>(36,884)</u>	<u>64,390</u>

**17 Analysis of net assets between funds**

	<b>Unrestricted 2021</b>	<b>Restricted 2021</b>	<b>Total 2021</b>	<b>Unrestricted 2020</b>	<b>Restricted 2020</b>	<b>Total 2020</b>
	<b>£</b>	<b>£</b>	<b>£</b>	<b>£</b>	<b>£</b>	<b>£</b>
Fund balances at 31 March 2021 are represented by:						
Tangible assets	366	-	366	445	-	445
Current assets/ (liabilities)	109,286	42,862	152,148	112,008	-	112,008
	<u>109,652</u>	<u>42,862</u>	<u>152,514</u>	<u>112,453</u>	<u>-</u>	<u>112,453</u>

**18 Related party transactions**

There were no disclosable related party transactions during the year (2020 - none).