

HOME-START (HULL)

England & Wales · Charity number 1105574

Details

Status	Registered
Legal form	Charitable company
Company number	05200713
Registered	2004-08-20
Register	View on the Charity Commission register

Contact

Address	Home Start Centre 88 Saner Street Hull HU3 2TR
Phone	01482324063
Email	admin@homestarthull.org.uk
Website	www.homestarthull.org.uk

Activities

Objects: 4.1 The objects of the Charity are:4.1.1 to safeguard, protect and preserve the good health, both mental and physical, of children and parents of children;4.1.2 to prevent cruelty to or maltreatment of children;4.1.3 to relieve sickness, poverty and need amongst children and parents of children;4.1.4 to promote the education of the public in better standards of child care; principally but not exclusively within the area of Hull and its environs.

Activities: Home-Start is a vountary organisation that supports families with at least one child under five in their own home.

Classification

- **How:** Provides Human Resources, Provides Services, Provides Advocacy/advice/information
- **What:** General Charitable Purposes, Disability, The Prevention Or Relief Of Poverty
- **Who:** Children/young People, People With Disabilities

Geography

- **Area of benefit:** THE AREA OF HULL AND ITS ENVIRONS
- Kingston Upon Hull City

Finances

Period end	Income	Expenditure	Assets	Employees
2025-03-31	£329,191	£286,284	-	-
2024-03-31	£290,133	£286,579	-	-
2023-03-31	£220,866	£232,351	-	-
2022-03-31	£213,101	£210,731	-	-
2021-03-31	£233,240	£220,629	-	-

Trustees

Name	Role	Appointed
MR IAN ARTHUR SAMUEL MCGAW	Chair	
EMMA LOUISE PICKERING		2011-10-12
Elaine Porter		2019-10-03
Janet Burton		2022-09-07
LORNA MORRIS		2012-01-16
Lisa Georgina Moon		2026-01-14
Margaret Corless		2021-02-15
Oladipupo Frank Koiki		2024-11-13
PAMELA ANN OWEN		
Samuel John Branton		2026-05-13
Thamara Bulmer		2023-02-06

HOME-START (HULL)

England & Wales - Charity number 1105574

Accounts

Charity registration number 1105574

Company registration number 5200713 (England and Wales)

HOME-START (HULL)
COMPANY LIMITED BY GUARANTEE
ANNUAL REPORT AND UNAUDITED FINANCIAL STATEMENTS
FOR THE YEAR ENDED 31 MARCH 2025

Fawley Judge & Easton
Chartered Certified Accountants
1 Parliament Street
Hull
East Yorkshire
HU1 2AS

**HOME-START (HULL)
COMPANY LIMITED BY GUARANTEE
LEGAL AND ADMINISTRATIVE INFORMATION**

Trustees

Pamela Owen
Sam McGaw
Emma Pickering
Lorna Morris
Heather Barnes
Elaine Porter
Margaret Corless
Janet Burton
Thamara Bulmer
Ola Koiki

(Appointed 13 November
2024)

Secretary

Caroline Watson

Charity number

1105574

Company number

5200713

Independent examiner

Fawley Judge & Easton
Chartered Certified Accountants
1 Parliament Street
Hull
East Yorkshire
HU1 2AS

**HOME-START (HULL)
COMPANY LIMITED BY GUARANTEE
CONTENTS**

	Page
Trustees' report	1 - 3
Independent examiner's report	4
Statement of financial activities	5
Balance sheet	6
Notes to the financial statements	7 - 18

**HOME-START (HULL)
COMPANY LIMITED BY GUARANTEE
TRUSTEES' REPORT (INCLUDING DIRECTORS' REPORT)
FOR THE YEAR ENDED 31 MARCH 2025**

The trustees, who are also directors for the purposes of company law, present their report and the un-audited financial statements of the charity for the year ended 31 March 2024.

The accounts have been prepared in accordance with the accounting policies set out in note 1 to the accounts and comply with the charity's governing document, the Companies Act 2006 and the Statement of Recommended Practice, "Accounting and Reporting by Charities", issued in March 2005.

Objectives and activities

The charity's objects are to safeguard and preserve the good health, both mental and physical of children and parents of children, to prevent cruelty to or maltreatment of children, to relieve sickness, poverty and need amongst children and parents of children and to promote the education of the public in better standards of child care within the area of Hull and its environs. The policies adopted in furtherance of these objects are applied by the committee and there has been no change in these during the year.

To provide support to a minimum of 100 new families using home-visiting volunteers. This is our core work.

To support an additional 30 families per year on our Families in Mind project funded by the Henry Smith Charity since January 2022. This project supports parents with a lasting and enduring mental health condition.

To support an additional 100 families per year on the Start for Life Partners & Dads peer support project and Parent Infant Well Being (West Hull) project.

To identify funding for the Family Support Worker role

To offer 8 preparation courses for new volunteers, annual refresher training and at least one specialist training opportunity per year for all volunteers.

To offer at least one additional specialist training course per year to active volunteers, trustees and staff

To identify a Vice Chair of Trustees as part of our succession planning.

Identify new funding/grants for the core work, Families in Mind project, and Start for Life projects.

Public benefit

The trustees have paid due regard to guidance issued by the Charity Commission in deciding what activities the charity should undertake.

Activities

Home Start Hull applies for the funding of its activities through a tendering processes. Successful applications result in service contracts or grants received to deliver the specific area identified in the application. The following

To increase the support available to families through both the core work and projects. Current target of 230 families.

To maintain current staffing levels and volunteer numbers.

To assess whether we need to expand our services to families

To maintain our current representation on the Trustees board.

**HOME-START (HULL)
COMPANY LIMITED BY GUARANTEE
TRUSTEES' REPORT (INCLUDING DIRECTORS' REPORT) (CONTINUED)
FOR THE YEAR ENDED 31 MARCH 2025**

Achievements and performance

Significant activities and achievements against objectives

Our Local Home-Start supported 117 families this year through the core work, 34 through the Families in Mind project, 75 families through the Start for Life projects (not including NICU and Facebook group), by 50 home-visiting volunteers offering 1941 hours of support.

We have successfully secured funding for our Family Support Worker for one year who provides invaluable support to our most complex families whilst waiting for a suitable volunteer.

We have successfully secured and started delivery of an additional year of the Families in Mind project with further funding from the Henry Smith Charity.

We have successfully complete the second year of our Start for Life contracts and secured a further year of funding from Hull City Council.

The volunteers and families were supported by 10 trustees (one new trustee recruited during the year) and 11 staff during the year. (Joanne Boasman, Gemma Brown, Charlotte Dunstan, Lucy Jonas, Kelly Sykes-Moody, Bridget Marvin-Smelt, Charlotte Neale, Helen Percy, Phil Vincent, Katie Warren, Caroline Watson.)

All staff, volunteers and trustees continue to complete role appropriate training including Safeguarding Children's Partnership training.

We offered 8 and delivered 3 volunteer preparation courses, as well as one-to-one sessions, recruiting a total of 10 new volunteers. None of the volunteers chose to accredit the training during the year.

71% of volunteers leaving the scheme this year did so for work and training and we offered 4 student placements contributing to their educational experience.

We offered additional training in the 'Prevent' strategy, Hull Safeguarding Children's Partnership sources of stress, trans awareness, unintentional injuries and safer sleep, infant massage, dads champions, restraining orders, and Refresh.

The board have reviewed the reserves set aside by the scheme and are satisfied that they cover the necessary requirements identified in the Reserves Policy.

The Reserves covers three months of running costs plus redundancy costs.

We continue to look for ways to provide additional funding for the scheme and increase volunteer numbers.

There have been no incidents or near misses regarding information governance.

Financial review

The executive committee review the financial position regularly throughout the year.

The Charity receives income from a contract, donations, grants and investments. During 2024-2025 this amounted to £329,191. Its income is used to finance direct charitable expenditure and other expenditure amounting to £286,284.

Our reserves amount to £73,892 Unrestricted General Fund and £50,000 Designated Contingent Reserve Fund.

Reserves policy

It is the policy of the charity that unrestricted funds which have not been designated for a specific use should be maintained at a level equivalent to between three and six month's expenditure. The trustees consider that reserves at this level will ensure that, in the event of a significant drop in funding, they will be able to continue the charity's current activities while consideration is given to ways in which additional funds may be raised. This level of reserves has been maintained throughout the year.

**HOME-START (HULL)
COMPANY LIMITED BY GUARANTEE
TRUSTEES' REPORT (INCLUDING DIRECTORS' REPORT) (CONTINUED)
FOR THE YEAR ENDED 31 MARCH 2025**

Major risks

The trustees have assessed the major risks to which the charity is exposed, and are satisfied that systems are in place to mitigate exposure to the major risks.

Plans for future periods

The Board recognise that over the next five years, the amount of funding from the Hull Health & Care Partnership will decrease each year and have planned provision to cover a predicted shortfall as costs increase due to workplace pensions and increased costs associated with volunteer training and DBS checks.

We continue to look for ways to provide additional funding for the scheme

Structure, governance and management

The charity is a company limited by guarantee and has been registered as a charity.

The trustees, who are also the directors for the purpose of company law, and who served during the year and up to the date of signature of the financial statements were:

Pamela Owen
Sam McGaw
Emma Pickering
Lorna Morris
Heather Barnes
Elaine Porter
Margaret Corless
Janet Burton
Thamara Bulmer
Ola Koiki

(Appointed 13 November 2024)

Recruitment and appointment of trustees

The current trustees continue to seek new trustees as vacancies or skills profiles are required from the general public and those associated in the area the charity operates.

None of the trustees has any beneficial interest in the company. All of the trustees are members of the company and guarantee to contribute £1 in the event of a winding up.

Organisational structure

The organisation is managed by an Executive Committee comprising of no fewer than 4 members and not more than 12 members. All the trustees sit on this committee.

Relationship with related parties

Home Start Hull is a member of the Home Start UK organisation which provides areas of support to the organisation. Service Agreements are entered into with various providers operating in this area

The trustees' report was approved by the Board of Trustees.



Caroline Watson
Secretary

2 October 2025

**HOME-START (HULL)
COMPANY LIMITED BY GUARANTEE
INDEPENDENT EXAMINER'S REPORT
TO THE TRUSTEES OF HOME-START (HULL)**

I report to the trustees on my examination of the financial statements of Home-Start (Hull) (the charity) for the year ended 31 March 2025.

Responsibilities and basis of report

As the trustees of the charity (and also its directors for the purposes of company law), you are responsible for the preparation of the financial statements in accordance with the requirements of the Companies Act 2006.

Having satisfied myself that the financial statements of the charity are not required to be audited under Part 16 of the Companies Act 2006 and are eligible for independent examination, I report in respect of my examination of the charity's financial statements carried out under section 145 of the Charities Act 2011. In carrying out my examination I have followed the Directions given by the Charity Commission under section 145(5)(b) of the Charities Act 2011.

Independent examiner's statement

Since the charity's gross income exceeded £250,000, the independent examiner must be a member of a body listed in section 145 of the Charities Act 2011. I confirm that I am qualified to undertake the examination because I am a member of ACCA, which is one of the listed bodies.

I have completed my examination. I confirm that no matters have come to my attention in connection with the examination giving me cause to believe that in any material respect:

- 1 accounting records were not kept in respect of the charity as required by section 386 of the Companies Act 2006.
- 2 the financial statements do not accord with those records; or
- 3 the financial statements do not comply with the accounting requirements of section 396 of the Companies Act 2006 other than any requirement that the financial statements give a true and fair view, which is not a matter considered as part of an independent examination; or
- 4 the financial statements have not been prepared in accordance with the methods and principles of the Statement of Recommended Practice for accounting and reporting by charities applicable to charities preparing their financial statements in accordance with the Financial Reporting Standard applicable in the UK and Republic of Ireland (FRS 102).

I have no concerns and have come across no other matters in connection with the examination to which attention should be drawn in this report in order to enable a proper understanding of the financial statements to be reached.


James Wilkie
Fawley Judge & Easton
Chartered Certified Accountants
1 Parliament Street
Hull
East Yorkshire
HU1 2AS

Dated: 2 October 2025

**HOME-START (HULL)
COMPANY LIMITED BY GUARANTEE
STATEMENT OF FINANCIAL ACTIVITIES
INCLUDING INCOME AND EXPENDITURE ACCOUNT**

FOR THE YEAR ENDED 31 MARCH 2025

	Notes	Unrestricted funds 2025 £	Restricted funds 2025 £	Total 2025 £	Unrestricted funds 2024 £	Restricted funds 2024 £	Total 2024 £
Income from:							
Donations and legacies	3	16,798	-	16,798	7,526	-	7,526
Charitable activities	4	-	310,433	310,433	-	276,730	276,730
Other trading activities	5	-	-	-	4,100	-	4,100
Investments	6	1,960	-	1,960	1,777	-	1,777
Total income		<u>18,758</u>	<u>310,433</u>	<u>329,191</u>	<u>13,403</u>	<u>276,730</u>	<u>290,133</u>
Expenditure on:							
Raising funds	7	1,955	-	1,955	7,295	-	7,295
Charitable activities	8	1,434	282,895	284,329	3,159	276,125	279,284
Total expenditure		<u>3,389</u>	<u>282,895</u>	<u>286,284</u>	<u>10,454</u>	<u>276,125</u>	<u>286,579</u>
Net income		15,369	27,538	42,907	2,949	605	3,554
Transfers between funds		-	-	-	3,835	(3,835)	-
Net movement in funds	11	15,369	27,538	42,907	6,784	(3,230)	3,554
Reconciliation of funds:							
Fund balances at 1 April 2024		<u>108,523</u>	<u>38,430</u>	<u>146,953</u>	<u>101,739</u>	<u>41,660</u>	<u>143,399</u>
Fund balances at 31 March 2025		<u>123,892</u>	<u>65,968</u>	<u>189,860</u>	<u>108,523</u>	<u>38,430</u>	<u>146,953</u>

The statement of financial activities includes all gains and losses recognised in the year. All income and expenditure derive from continuing activities.

**HOME-START (HULL)
COMPANY LIMITED BY GUARANTEE
BALANCE SHEET
AS AT 31 MARCH 2025**

	Notes	2025 £	£	2024 £	£
Fixed assets					
Tangible assets	15		190		224
Current assets					
Cash at bank and in hand		190,868		227,667	
Creditors: amounts falling due within one year	16	<u>(1,198)</u>		<u>(80,939)</u>	
Net current assets			189,670		146,728
Total assets less current liabilities			<u>189,860</u>		<u>146,952</u>
Income funds					
Families In Mind		49,213		13,023	
Family Support Worker		16,755		22,537	
Warm Spaces		-		2,870	
	18		65,968		38,430
<u>Unrestricted funds</u>					
Designated funds	19	50,000		50,000	
General unrestricted funds		<u>73,892</u>		<u>58,523</u>	
			123,892		108,523
			<u>189,860</u>		<u>146,953</u>

The company is entitled to the exemption from the audit requirement contained in section 477 of the Companies Act 2006, for the year ended 31 March 2025.

The directors acknowledge their responsibilities for complying with the requirements of the Companies Act 2006 with respect to accounting records and the preparation of financial statements.

The members have not required the company to obtain an audit of its financial statements for the year in question in accordance with section 476.

These financial statements have been prepared in accordance with the provisions applicable to companies subject to the small companies regime.

The financial statements were approved by the Trustees on 2 October 2025



Sam McGaw
Trustee

Company registration number 5200713

**HOME-START (HULL)
COMPANY LIMITED BY GUARANTEE
NOTES TO THE FINANCIAL STATEMENTS
FOR THE YEAR ENDED 31 MARCH 2025**

1 Accounting policies

Charity information

Home-Start (Hull) is a private company limited by guarantee incorporated in England and Wales.

1.1 Accounting convention

The financial statements have been prepared in accordance with the charity's governing document, the Companies Act 2006, FRS 102 "The Financial Reporting Standard applicable in the UK and Republic of Ireland" and the Charities SORP "Accounting and Reporting by Charities: Statement of Recommended Practice applicable to charities preparing their accounts in accordance with the Financial Reporting Standard applicable in the UK and Republic of Ireland (FRS 102)". The charity is a Public Benefit Entity as defined by FRS 102.

The charity has taken advantage of the provisions in the SORP for charities not to prepare a statement of cash flows.

The financial statements are prepared in sterling, which is the functional currency of the charity. Monetary amounts in these financial statements are rounded to the nearest £.

The financial statements have been prepared under the historical cost convention, [modified to include the revaluation of freehold properties and to include investment properties and certain financial instruments at fair value]. The principal accounting policies adopted are set out below.

1.2 Going concern

At the time of approving the financial statements, the trustees have a reasonable expectation that the charity has adequate resources to continue in operational existence for the foreseeable future. Thus the trustees continue to adopt the going concern basis of accounting in preparing the financial statements.

1.3 Charitable funds

Unrestricted funds are available for use at the discretion of the trustees in furtherance of their charitable objectives.

Restricted funds are subject to specific conditions by donors or grantors as to how they may be used. The purposes and uses of the restricted funds are set out in the notes to the financial statements.

Endowment funds are subject to specific conditions by donors that the capital must be maintained by the charity.

1.4 Income

Income is recognised when the charity is legally entitled to it after any performance conditions have been met, the amounts can be measured reliably, and it is probable that income will be received.

Cash donations are recognised on receipt. Other donations are recognised once the charity has been notified of the donation, unless performance conditions require deferral of the amount. Income tax recoverable in relation to donations received under Gift Aid or deeds of covenant is recognised at the time of the donation.

Legacies are recognised on receipt or otherwise if the charity has been notified of an impending distribution, the amount is known, and receipt is expected. If the amount is not known, the legacy is treated as a contingent asset.

1.5 Expenditure

Expenditure incurred by the organisation is accounted for on an accruals basis. Items relating to operational matters are charged to the SOFA, and any capital items to the Balance Sheet.

**HOME-START (HULL)
COMPANY LIMITED BY GUARANTEE
NOTES TO THE FINANCIAL STATEMENTS (CONTINUED)
FOR THE YEAR ENDED 31 MARCH 2025**

1 Accounting policies (Continued)

1.6 Research and development expenditure

Research expenditure is written off against profits in the year in which it is incurred. Identifiable development expenditure is capitalised to the extent that the technical, commercial and financial feasibility can be demonstrated.

1.7 Tangible fixed assets

Tangible fixed assets are initially measured at cost and subsequently measured at cost or valuation, net of depreciation and any impairment losses.

Depreciation is recognised so as to write off the cost or valuation of assets less their residual values over their useful lives on the following bases:

Fixtures, fittings & equipment	15% - written down value
--------------------------------	--------------------------

The gain or loss arising on the disposal of an asset is determined as the difference between the sale proceeds and the carrying value of the asset, and is recognised in the statement of financial activities.

1.8 Impairment of fixed assets

At each reporting end date, the charity reviews the carrying amounts of its tangible assets to determine whether there is any indication that those assets have suffered an impairment loss. If any such indication exists, the recoverable amount of the asset is estimated in order to determine the extent of the impairment loss (if any).

1.9 Cash and cash equivalents

Cash and cash equivalents include cash in hand, deposits held at call with banks, other short-term liquid investments with original maturities of three months or less, and bank overdrafts. Bank overdrafts are shown within borrowings in current liabilities.

Basic financial assets

Basic financial assets, which include debtors and cash and bank balances, are initially measured at transaction price including transaction costs and are subsequently carried at amortised cost using the effective interest method unless the arrangement constitutes a financing transaction, where the transaction is measured at the present value of the future receipts discounted at a market rate of interest. Financial assets classified as receivable within one year are not amortised.

Basic financial liabilities

Basic financial liabilities, including creditors and bank loans are initially recognised at transaction price unless the arrangement constitutes a financing transaction, where the debt instrument is measured at the present value of the future payments discounted at a market rate of interest. Financial liabilities classified as payable within one year are not amortised.

Debt instruments are subsequently carried at amortised cost, using the effective interest rate method.

Trade creditors are obligations to pay for goods or services that have been acquired in the ordinary course of operations from suppliers. Amounts payable are classified as current liabilities if payment is due within one year or less. If not, they are presented as non-current liabilities. Trade creditors are recognised initially at transaction price and subsequently measured at amortised cost using the effective interest method.

Derecognition of financial liabilities

Financial liabilities are derecognised when the charity's contractual obligations expire or are discharged or cancelled.

**HOME-START (HULL)
COMPANY LIMITED BY GUARANTEE
NOTES TO THE FINANCIAL STATEMENTS (CONTINUED)
FOR THE YEAR ENDED 31 MARCH 2025**

1 Accounting policies (Continued)

1.10 Employee benefits

The cost of any unused holiday entitlement is recognised in the period in which the employee's services are received.

Termination benefits are recognised immediately as an expense when the charity is demonstrably committed to terminate the employment of an employee or to provide termination benefits.

2 Critical accounting estimates and judgements

In the application of the charity's accounting policies, the trustees are required to make judgements, estimates and assumptions about the carrying amount of assets and liabilities that are not readily apparent from other sources. The estimates and associated assumptions are based on historical experience and other factors that are considered to be relevant. Actual results may differ from these estimates.

The estimates and underlying assumptions are reviewed on an ongoing basis. Revisions to accounting estimates are recognised in the period in which the estimate is revised where the revision affects only that period, or in the period of the revision and future periods where the revision affects both current and future periods.

3 Income from donations and legacies

	Unrestricted funds 2025 £	Unrestricted funds 2024 £
Donations and gifts	16,798	7,526

**HOME-START (HULL)
COMPANY LIMITED BY GUARANTEE
NOTES TO THE FINANCIAL STATEMENTS (CONTINUED)
FOR THE YEAR ENDED 31 MARCH 2025**

4 Income from charitable activities

	Restricted funds 2025 £	Restricted funds 2024 £
Hull Health & Care Partnership		
Performance related grants	122,476	121,384
FSW-Hull & East Riding Charitable Trust		
Performance related grants	5,000	8,000
Families In Mind - Henry Smith Charity		
Performance related grants	89,700	59,900
Beverley Project - Brelms Trust CIO		
Performance related grants	-	380
Two Ridings Foundation/Home-Start UK - Breathing Spaces Fund		
Performance related grants	9,300	5,850
West Peer Support - Hull CC		
Performance related grants	40,000	80,216
Less: deferred income	-	(40,000)
Partners and Dads Service - Hull CC		
Performance related grants	43,957	81,000
Less: deferred income	-	(40,000)
	<u>310,433</u>	<u>276,730</u>

5 Income from other trading activities

	Unrestricted funds 2025 £	Unrestricted funds 2024 £
Other income	-	4,100
	<u>-</u>	<u>4,100</u>

6 Income from investments

	Unrestricted funds 2025 £	Unrestricted funds 2024 £
Interest receivable	1,960	1,777
	<u>1,960</u>	<u>1,777</u>

**HOME-START (HULL)
 COMPANY LIMITED BY GUARANTEE
 NOTES TO THE FINANCIAL STATEMENTS (CONTINUED)
 FOR THE YEAR ENDED 31 MARCH 2025**

7 Expenditure on raising funds

	Unrestricted funds 2025 £	Unrestricted funds 2024 £
Fundraising and publicity		
Fundraising agents	1,955	7,156
	<u> </u>	<u> </u>
Trading costs		
Other trading activities	-	139
	<u> </u>	<u> </u>
Total costs	<u>1,955</u>	<u>7,295</u>

**HOME-START (HULL)
 COMPANY LIMITED BY GUARANTEE
 NOTES TO THE FINANCIAL STATEMENTS (CONTINUED)
 FOR THE YEAR ENDED 31 MARCH 2025**

£ Expenditure on charitable activities:

	Core	Family Support Worker	Families In MindSpaces	Warm Spaces/ Breathing Spaces Fund	West Peer Support	Partners and Dads Service	Total
	2025 £	2025 £	2025 £	2025 £	2025 £	2025 £	2025 £
Direct costs							
Staff costs	111,939	10,782	42,754	796	36,961	37,386	240,618
Depreciation and impairment	34	-	-	-	-	-	34
Charitable Expenses	2,227	-	300	4,693	425	3,957	11,602
	<u>114,200</u>	<u>10,782</u>	<u>43,054</u>	<u>5,489</u>	<u>37,386</u>	<u>41,343</u>	<u>252,254</u>
Share of support and governance costs (see note 10)							
Support	8,310	-	10,459	6,678	2,614	2,614	30,675
Governance	1,400	-	-	-	-	-	1,400
	<u>123,910</u>	<u>10,782</u>	<u>53,513</u>	<u>12,167</u>	<u>40,000</u>	<u>43,957</u>	<u>284,329</u>
Analysis by fund							
Unrestricted funds	1,434	-	-	-	-	-	1,434
Restricted funds	122,476	10,782	53,513	12,167	40,000	43,957	282,895
	<u>123,910</u>	<u>10,782</u>	<u>53,513</u>	<u>12,167</u>	<u>40,000</u>	<u>43,957</u>	<u>284,329</u>

**HOME-START (HULL)
COMPANY LIMITED BY GUARANTEE
NOTES TO THE FINANCIAL STATEMENTS (CONTINUED)
FOR THE YEAR ENDED 31 MARCH 2025**

8 Expenditure on charitable activities

Previous year:	(Continued)											
Direct costs	2024	2024	2024	2024	2024	2024	2024	2024	2024	2024	2024	2024
Staff costs	£	£	£	£	£	£	£	£	£	£	£	£
Depreciation and impairment	£	£	£	£	£	£	£	£	£	£	£	£
Charitable Expenses	£	£	£	£	£	£	£	£	£	£	£	£
Core	104,622	6,765	46,880	3,901	2,100	37,177	30,786	232,231	40	-	-	40
Family Support Worker	5,026	-	220	886	883	425	-	7,440	5,026	-	-	7,440
Families In Mind	109,688	6,765	47,100	4,787	2,983	37,602	30,786	239,711	-	-	-	7,600
Beverley Project Spaces/Brea thing Spaces Fund	-	-	-	-	-	-	-	-	-	-	-	7,600
Warm Spaces/Brea thing Spaces Fund	-	-	-	-	-	-	-	-	-	-	-	7,600
West Peer Support	-	-	-	-	-	-	-	-	-	-	-	7,600
Partners and Dads Service	-	-	-	-	-	-	-	-	-	-	-	7,600
Total	109,688	6,765	47,100	4,787	2,983	37,602	30,786	239,711	-	-	-	7,600
Grant funding of activities (see note 9)	-	-	-	-	-	-	-	-	-	-	-	7,600
Share of support and governance costs (see note 10)	13,420	-	12,765	-	-	2,414	2,414	31,013	960	-	-	960
Support	960	-	-	-	-	(200)	200	-	-	-	-	-
Governance	124,068	6,765	59,865	4,787	2,983	39,816	41,000	279,284	-	-	-	-
Analysis by fund	3,159	-	-	-	-	-	-	3,159	120,909	6,765	39,816	276,125
Unrestricted funds	124,068	6,765	59,865	4,787	2,983	39,816	41,000	279,284	-	-	-	-
Restricted funds	-	-	-	-	-	-	-	-	-	-	-	-

HOME-START (HULL)
COMPANY LIMITED BY GUARANTEE
NOTES TO THE FINANCIAL STATEMENTS (CONTINUED)
FOR THE YEAR ENDED 31 MARCH 2025

9 Grants payable

	Partners and Dads Service 2024 £
Grants to institutions:	
Becoming Dad	7,600
	<u>7,600</u>

-

10 Support costs

	Support costs £	Governance costs £	2025 £	Support costs £	Governance costs £	2024 £
Accommodation costs	17,390	-	17,390	19,050	-	19,050
IT costs	4,908	-	4,908	2,929	-	2,929
Telephone	3,457	-	3,457	1,440	-	1,440
Utilities	1,920	-	1,920	1,792	-	1,792
Office costs	3,001	-	3,001	5,802	-	5,802
Professional fees	-	1,400	1,400	-	960	960
	<u>30,676</u>	<u>1,400</u>	<u>32,076</u>	<u>31,013</u>	<u>960</u>	<u>31,973</u>
Analysed between						
Charitable activities	<u>30,677</u>	<u>1,400</u>	<u>32,077</u>	<u>31,013</u>	<u>960</u>	<u>31,133</u>

Governance costs includes payments to the independent examiner of £960 (2024- £840) for professional fees.

11 Net movement in funds

	2025 £	2024 £
The net movement in funds is stated after charging/(crediting):		
Fees payable for the independent examination of the charity's financial statements	1,400	960
Depreciation of owned tangible fixed assets	34	40
	<u>1,434</u>	<u>1,000</u>

12 Trustees

None of the trustees (or any persons connected with them) received any remuneration during the year.

**HOME-START (HULL)
COMPANY LIMITED BY GUARANTEE
NOTES TO THE FINANCIAL STATEMENTS (CONTINUED)
FOR THE YEAR ENDED 31 MARCH 2025**

13 Employees

The average monthly number of employees during the year was:

	2025 Number	2024 Number
Administration	3	3
Service delivery	8	7
Total	<u>11</u>	<u>10</u>

Employment costs

	2025 £	2024 £
Wages and salaries	<u>240,618</u>	<u>232,231</u>

There were no employees whose annual remuneration was more than £60,000.

Remuneration of key management personnel

The remuneration of key management personnel was as follows:

14 Taxation

The charity is exempt from taxation on its activities because all its income is applied for charitable purposes.

15 Tangible fixed assets

	Fixtures, fittings & equipment £
Cost	
At 1 April 2024	<u>7,706</u>
At 31 March 2025	<u>7,706</u>
Depreciation and impairment	
At 1 April 2024	7,482
Depreciation charged in the year	34
At 31 March 2025	<u>7,516</u>
Carrying amount	
At 31 March 2025	<u>190</u>
At 31 March 2024	<u>224</u>

**HOME-START (HULL)
COMPANY LIMITED BY GUARANTEE
NOTES TO THE FINANCIAL STATEMENTS (CONTINUED)
FOR THE YEAR ENDED 31 MARCH 2025**

16 Creditors: amounts falling due within one year

	Notes	2025 £	2024 £
Deferred income	17	-	80,000
Accruals and deferred income		1,198	939
		<u>1,198</u>	<u>80,939</u>

17 Deferred income

	2025 £	2024 £
Other deferred income	-	80,000
	<u>-</u>	<u>80,000</u>

Deferred income is included in the financial statements as follows:

	2025 £	2024 £
Deferred income is included within:		
Current liabilities	-	80,000
	<u>-</u>	<u>80,000</u>
Movements in the year:		
Deferred income at 1 April 2024	80,000	-
Released from previous periods	(80,000)	-
Resources deferred in the year	-	80,000
	<u>-</u>	<u>80,000</u>
Deferred income at 31 March 2025	<u>-</u>	<u>80,000</u>

**HOME-START (HULL)
COMPANY LIMITED BY GUARANTEE
NOTES TO THE FINANCIAL STATEMENTS (CONTINUED)
FOR THE YEAR ENDED 31 MARCH 2025**

18 Restricted funds

The restricted funds of the charity comprise the unexpended balances of donations and grants held on trust subject to specific conditions by donors as to how they may be used.

	Balance at 1 April 2023		Movement in funds		Transfers		Balance at 1 April 2024		Movement in funds		Balance at 31 March 2025	
	£	£	Incoming Resources	Outgoing Resources	£	£	£	£	Incoming Resources	Outgoing Resources	£	£
Hull Health & Care Partnership - Core work	-	-	121,384	(120,911)	(473)	-	-	122,476	(122,476)	-	-	-
Sir James Reckitt Charity - BHBF	21,745	-	-	(1,464)	(20,281)	-	-	-	-	-	-	-
Henry Smith Charity - Families in Mind	13,765	-	59,900	(59,864)	(775)	13,026	-	89,700	(53,513)	49,213	-	-
Brelms Trust CIO - Beverley project	6,150	380	380	(4,787)	(1,743)	-	-	-	-	-	-	-
Family Support Worker	-	8,000	8,000	(5,300)	19,837	22,537	-	5,000	(10,782)	16,755	-	-
Hull CC - Partners and Dads	-	41,000	41,000	(40,800)	(200)	-	-	40,000	(40,000)	-	-	-
Two Ridings Foundation - Warm spaces	-	5,850	5,850	(2,983)	-	2,867	-	-	(2,867)	-	-	-
Hull CC - West Peer Support	-	40,216	40,216	(40,016)	(200)	-	-	40,000	(40,000)	-	-	-
Home-Start UK - Breathing Space Fund	-	-	-	-	-	-	-	9,300	(9,300)	-	-	-
Hull CC/Ideal Heating - Celebrating Dads	-	-	-	-	-	-	-	3,957	(3,957)	-	-	-
	41,660	276,730	276,730	(276,125)	(3,835)	38,430	310,433	(282,895)	65,968			

**HOME-START (HULL)
COMPANY LIMITED BY GUARANTEE
NOTES TO THE FINANCIAL STATEMENTS (CONTINUED)
FOR THE YEAR ENDED 31 MARCH 2025**

19 Unrestricted funds

The unrestricted funds of the charity comprise the unexpended balances of donations and grants which are not subject to specific conditions by donors and grantors as to how they may be used. These include designated funds which have been set aside out of unrestricted funds by the trustees for specific purposes.

	At 1 April 2024 £	Incoming resources £	Resources expended £	Transfers £	At 31 March 2025 £
Contingency fund	50,000	-	-	-	50,000
General funds	58,523	18,758	(3,389)	-	73,892
	<u>108,523</u>	<u>18,758</u>	<u>(3,389)</u>	<u>-</u>	<u>123,892</u>
Previous year:	At 1 April 2023 £	Incoming resources £	Resources expended £	Transfers £	At 31 March 2024 £
Contingency fund	50,000	-	-	-	50,000
General funds	51,739	13,403	(10,454)	3,835	58,523
	<u>101,739</u>	<u>13,403</u>	<u>(10,454)</u>	<u>3,835</u>	<u>108,523</u>

20 Analysis of net assets between funds

	Unrestricted 2025 £	Restricted 2025 £	Total Unrestricted 2025 £	Restricted 2024 £	Total 2024 £
Fund balances at 31 March 2025 are represented by:					
Tangible assets	190	-	190	224	224
Current assets/(liabilities)	123,702	65,968	189,670	38,430	146,728
	<u>123,892</u>	<u>65,968</u>	<u>189,860</u>	<u>38,430</u>	<u>146,952</u>

21 Related party transactions

There were no disclosable related party transactions during the year (2024 - none).

HOME-START (HULL)

England & Wales - Charity number 1105574

Accounts



Hull

Annual Report & Accounts 2023-2024



Our Aims



Our local community network of trained volunteers and expert staff-led support is there to help families with young children through their challenging times. We are there for parents when they need us most, because childhood can't wait.

At the heart of Home-Start's work is home visiting volunteer support. Dedicated volunteers work alongside parents, in their own homes, to help them cope with the stresses and strains of life and make sure they have the skills, confidence and strength they need to nurture their children.

Starting in the home, our approach is as individual as the people we're helping.

We are compassionate and free of judgment.

We offer confidential help and expert support.

Our work offers a vital lifeline to parents and helps to give children the best possible start in life.

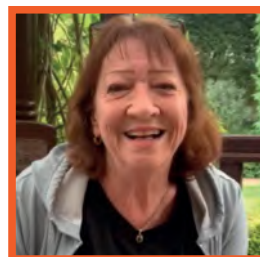
Our Team

Trustees

Sam McGaw
Chair of Trustees



Margaret Corless
Treasurer



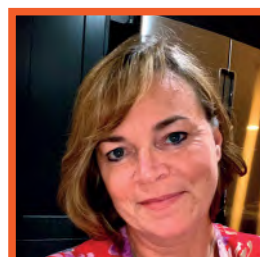
Lorna Morris
Safeguarding Advisor to the Board



Heather Barnes



Thamara Bulmer



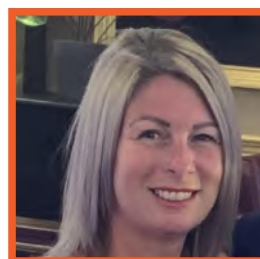
Our Team

Trustees

Pam Owen



Emma Pickering



Elaine Porter



Janet Burton



Val Wood
Our Patron





Our Team

Staff

Caroline Watson
Scheme Manager



Jo Boasman
Coordinator



Charlotte Dunstan
*Start for Life Parent Infant Well-Being
Peer Support Coordinator*



Bridget Marvin-Smelt
Families in Mind Coordinator



Phil Vincent
Coordinator



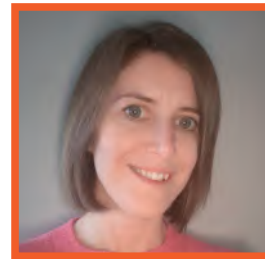
Lucy Jonas

Start for Life Partners and Dads Peer Support Coordinator



Katie Warren

Family Support Worker



Gemma Brown

Digital & Fundraising Officer



Kelly Sykes-Moody

Admin & Finance Officer



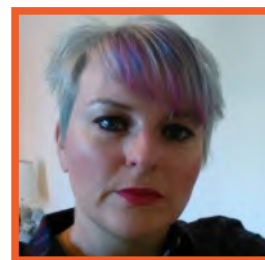
Helen Percy

Admin Assistant (Families in Mind)



Charlotte Neale

Admin Assistant



Chair of Trustees Report

We are proud that Home-Start has been working in Hull for over 40 years, and yet every year, as a charity funded largely by grants, we are looking closely at plans for survival and how to continue to offer the vital work we do, providing for local families help and support knowing the difference that has made to so many: hard work for staff and volunteers alike, but achieved with high standards and certainly something to celebrate. As the framework around us changes, we have to be responsive to new factors constantly and focus on the challenges of the well documented “cost of living crisis” affecting many of “our” families directly and also impacting on our funders.

Embracing new opportunities for family support has allowed modest expansion of our work and the workforce too, both staff and volunteers. Our traditional work through volunteers continues, ably supported by our small staff. The volunteers are crucial to demonstrating and delivering practical support in family situations, yet the demands across society for volunteers makes recruitment far harder. Continuing our presence with the families who are referred to us is essential and I congratulate the volunteers and the staff on all that has been achieved in the past year and commend their continuing work. My thanks also to our manager, her assistants in our supportive staff and the other Trustee Board members and Members of the charity for their help and support. Lastly, thank you to our funders and financial supporters – without that support the work would not continue.

I hope that you find interest and encouragement in this report which provides insight and a commentary on what we do and illustrates our activities and financial situation. Your interest is always appreciated.

Sam McGaw, Chair of Trustees



Scheme Manager Report

This year has seen our biggest changes since Home-Start (Hull) began, in the way we offer support to families. Our new Start for Life peer support projects have both offered informal drop-in peer support groups every week and the Partners & Dads project has also offered Saturday morning groups for Dads. We have increased the offer of phone support, as well as recorded a series of PODcasts and started a closed Facebook group. With more choice for families to decide when and how they get Home-Start support, we hope there is something for everyone, but we continue to respond to ideas and suggestions as they arise.

The core work and Families in Mind continue to be hugely successful with referrals flowing in continuously. The constant struggle with volunteer recruitment which has only become worse with the cost-of-living crisis effecting all families, Coordinator's have done more direct support themselves and, in October 2023, our new Family Support Worker started in post. Recruited from within our volunteer pool, Katie offers several weeks of support to some of our more complex families ensuring a timely intervention and breathing space to find an appropriate volunteer if ongoing support is needed.

Admin has continued to work hard at maintaining the Charitylog system to ensure we can demonstrate the impact of our work with families. In November 2023, Emma left to pursue her career in family support and complete the final year of her degree and we recruited Charlotte into the role. The team continues to go from strength to strength.

We have had a good opportunity to assess our service this year as we completed re-accreditation of the NCVQ Investing in Volunteers quality standard, and we are currently undertaking a full Home-Start UK Quality Assurance review. The whole team has worked hard to review our processes and practice to ensure we are offering the best possible standard of support to our volunteers and families and achieve this recognition.

A massive thank you as always to our incredible volunteers; without them Home-Start wouldn't exist. My thanks as ever to the staff who have really gone above and beyond this year, working evenings and weekends to ensure we reach as many families as possible. The trustees continue to be a huge support to the team and myself and I am so grateful to have their guidance.

Caroline Watson, Scheme Manager



Citywide Family Support Service

The past year has proved to be another very busy time for me. I have continued to build good working relationships with other services along with offering and organising much needed befriending support to those families in need across the city. I continue to work from the Acorns Family Hub one day each week which helps to build good working relationships. More recently I have delivered an Infant Massage course at Marfleet Family Hub and have another group planned for later in the year along with one to one sessions as and when needed. I have also been actively involved with numerous events at the Family Hubs, schools, antenatal sessions and the carousel events to promote our service and the amazing support our volunteers continue to offer parents/carers across the city. I also continue to promote and recruit prospective volunteers along with delivering the volunteer preparation course which can be completed on a one to one basis, online or as a group. This enables us to offer varied opportunities to meet their individual needs and recruit as many prospective volunteers as possible in these challenging times. To continue with my personal development I have undertaken Home-Start and local authority training as well as supporting volunteers to build on their personal learning and development. More recently I have also gained a diploma in Infant Massage, we can now offer this additional service to our families. Overall it has been lovely to see our families attend our numerous social events over the year such as seasonal parties, The Big Lunch, Dads event and Teddy Bears Picnic. Being part of these activities enables me to not only see but to also join in the fun.

Jo- Coordinator East, Parks & Wyke

The past 12 months has seen me continue my role as Coordinator in North, North Carr and the Riverside area of the city. As always, they are busy areas regarding referrals and families needing Home-Start support. I have continued to build relationships with referrers and the family hubs in my areas of the city. This has proved valuable in terms of referrals and knowing what is going on within the Hubs to enhance support for our families. It continues to prove challenging to recruit new volunteers, but we are out there spreading the word and attending events to try and recruit new volunteers. This year has seen me become involved in the dads work offering support and attending groups to help Lucy whenever needed, something I have found enjoyable. I have attended a variety of different training during the last 12 months, and I am part of the dads champion network as well as working alongside Lucy to develop Becoming Dad ante natal sessions in the city. I continue to learn and develop my role which is something I thoroughly enjoy. Finally, a big thankyou to all our volunteers for your continued support of our families. You are a credit to yourselves, and the most valuable asset Home-Start Hull has.

Phil- Coordinator North, North Carr & Riverside



Families in Mind project

Families in Mind is currently funded by The Henry Smith Charity to support at least 30 families per year, one to one, through both Coordinator, and importantly, volunteer support. I continue to offer telephone support to the families in the first instance, and some families find they want this support alone, as it suits their circumstances and mental health concerns. We have now entered the last year of the grant and we are hopeful of getting more funding to continue this important project. I enjoy my job supporting families and working with them to get the best outcomes for them. I have been doing the job of mental health project Coordinator for 15 years and can say no two days are the same. Working alongside the volunteers who have been tireless in their support of families is one of the best parts of the job; I am always grateful for all that they do and their continued hard work. The project aims to help parents manage their mental health in a way that is sustainable for them, and which considers the ups and down that go along with it. We aim to support them to cope better and keep their mental health on an even footing for them and their family. We help parents to enjoy their children, and to establish a good bond with their little ones, hopefully to break the cycle of poor mental health in families. I continue to undertake any courses that will assist me and Home-Start Hull in delivering our work. We engage with other agencies and attend events to promote both our support and volunteering opportunities to the public.

Bridget Marvin-Smelt, Families in Mind Coordinator





Start for Life projects

What an exciting time to be part of the Start for Life Partner and Dad's peer support project (PADS). The project focusses on supporting dads, expectant dads, stepdads and partners of mums with children aged 0-2. I have been out and about around the city connecting with families within all the family hubs, supporting the families at the antenatal classes, joining in with the monthly carousel at Hull Women's and Children's Hospital, speaking to parents and parents-to-be as well as attending the parent carer forums and events across the city. I have recently joined up with Humber Dads in NICU at Hull Women & Children's hospital to give extra support to dads and family members during this extremely stressful time. Over the past year, the PADS Facebook group page has gone from strength to strength, providing casual support and information that partners and dads may need. I have been trying different venues for groups around the city and trying to ensure there is something for everyone. The groups are an informal drop-in and a chance for dads, stepdads, grandads and partners of mums, to come and join together in a calm relaxing space to chat and have a cuppa and share experiences. I have more groups starting in September. We established a Working with PADS professionals' group to share best practice across different organisations and support the rollout of training such as the Institute of Health Visiting dads champion training. This group organised and delivered a Celebrating Dads event the week after Father's Day at Hull City Hall and this was attended by 20 organisations and over 1000 people. Working with our Digital and Funding Officer, we recorded a series of Podcasts (PADcast) in January 2024. This was supported by dads working in other organisations with the aim of providing a different way for dads to get digital peer support. The PADcasts have discussed issues facing PADS and the support available to them, as well as personal experiences of issues such as infant loss, mental health, separation. These are now on Youtube and Spotify.

Lucy Jonas- Partner and Dads Peer Support Coordinator

It has been a busy year for me supporting families on the PIWB project alongside some of our brilliant volunteers. Supporting the parent-infant relationship in the first 1001 days of a child's life (from conception to age 2) has been identified as one of the most important things we can do to improve outcomes for children. By supporting parents practically and emotionally at home, or by being alongside them to go to groups, our volunteers are giving mums and dads the support they need to build strong bonds with their little ones. As part of our package of support we have run two informal peer-support groups. These are unstructured, relaxed drop-in sessions where parents can chat with each other and I will be there for more support and, of course, to make sure there is a plentiful supply of tea! These are intentionally not activity focussed, to allow parents the time and space to socialise and share moments with their child. By doing this we remove any sense of pressure parents may feel – there is no need to book or stay for the whole group. In these groups I have seen mums who were reluctant at first to join groups grow in confidence and make connections with other parents, which is brilliant. Working alongside colleagues in Family Hubs (particularly at The Parks Hub where I run a group) has been great. It's fantastic to see our relaxed peer-support sitting alongside all the other great things happening in the Family Hubs. I have had the opportunity to build my skills professionally this year by training to be a Grobrain group facilitator and also completing an Infant Massage accreditation. These are both excellent ways to encourage a strong parent-infant relationship in the early days and so far I have enjoyed not only running a baby massage course but also visiting a family at home to do some massage sessions. I look forward in the coming year to running some massage and Grobrain sessions for our parents but to keep our informal Home-Start group ethos there will be an opportunity to socialise and get a brew afterwards for our mums and dads!

Charlotte Dunstan, Parent Infant Wellbeing (West Area) Coordinator

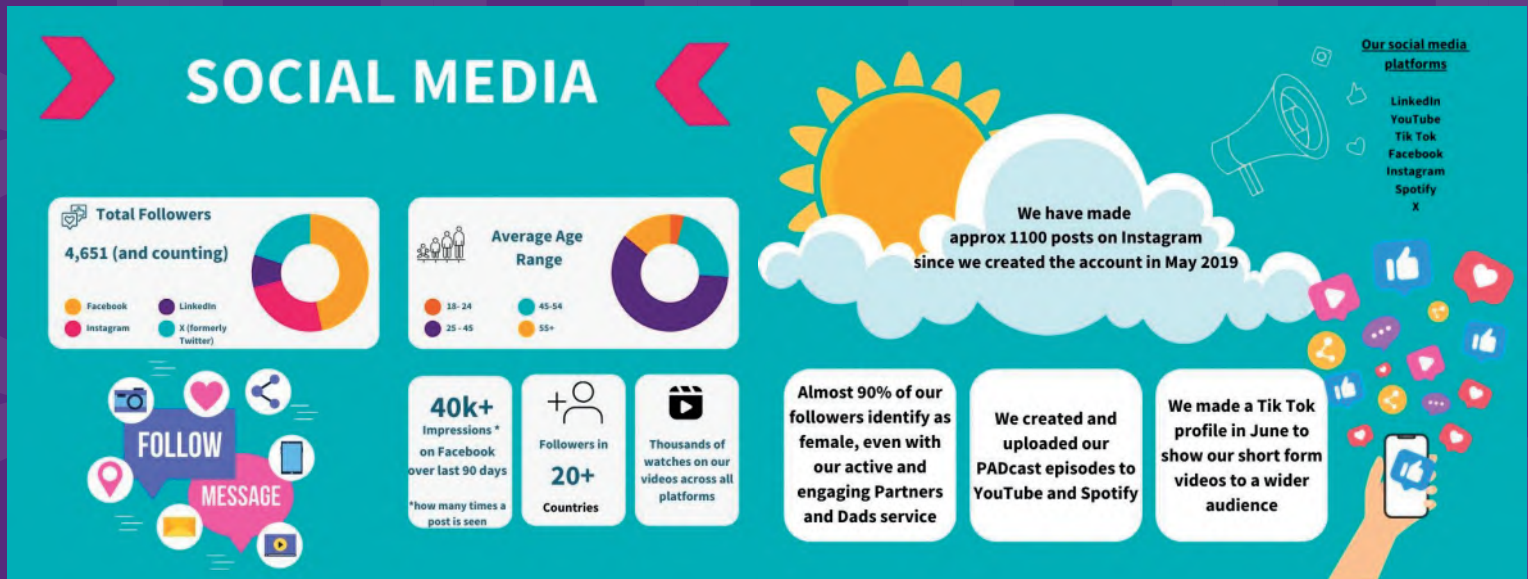
Fundraising & Social Media

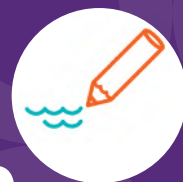
This year we decided to provide support in different ways, by listening to our beneficiaries and finding out what works for them. As a result, we were able to create a series of podcasts called PADcast that supported our partners and dads, at times and places that suited them. The podcast was well received with requests to listen from Hull City Council Children and Young Peoples Service, other schemes in the Home Start Network, and the Family Hubs network. They are currently available on our Home Start Hull YouTube and have amassed several hundred listens. This is a resource that can be reused and revisited for as long as required.

We now have a Tik Tik (not for staff dancing, sorry!), but to utilise a platform popular with a different demographic to our other platforms. Our fundraising continues, with multiple applications for small pots of money for events etc. We also keep our eyes peeled for larger pots to keep the core services running. Success is a mixed bag, indicative mostly of the increased demand rather than the quality of our applications.

Overall, we are happy with the increased awareness of our brand and our ethos, and are positive that we can achieve even more in the upcoming 12 months.

Gemma Brown, Digital & Funding Officer





Administration Team

We provide administrative support to all the staff, volunteers and trustees here at Home-Start (Hull) including maintaining our system, Charitylog, and always at the end of the phone for our amazing volunteers and our lovely families.

Administration and Finance Officer – Kelly Sykes-Moody

I have been at Home-Start (Hull) almost 9 years. We have an amazing Home-Start family and I love my job here. I am responsible for the day-to-day accounts and work alongside Caroline and Margaret to make sure we stay in budget. I support our amazing volunteers with Charitylog access issues and support Caroline with recruitment and HR. This year we have welcomed Charlotte to our admin team, who has settled in very well. I couldn't do what I do without the support of Helen and Charlotte.

Administration Assistant – Helen Percy

I've been with Home-Start Hull for 15 years and feel very proud to be part of our Home-Start family, as that is what we are. I've thoroughly enjoyed all the amazing experiences we have given our families and volunteers during that time and can't wait to see what next year will bring.

Administration Assistant – Charlotte Neale

I have been part of the Home-Start Hull team since November and have been welcomed by all the staff. I find it so rewarding to know that along with everyone else in the organisation, from Coordinators to volunteers, we are all making a positive difference to our families.



How we did this year

277

Total referrals

30

families supported from Families In Mind project

6

families supported in Beverley

141

for Partners and Dads, and Parent Infant Wellbeing Start For Life contracts

Impact

Home Start Hull made a difference to 412 new children and young people, offered placements to 7 students, and offered 8 volunteer preparation courses. We achieved NCVO Investing In Volunteers success for the second time - giving us another 3 years accreditation!

" I really appreciate the support from my volunteer and all of Home-Start. Without her I wouldn't be able to get stuff done at home or get to groups with all three children -anonymous feedback from end of year report

2023-2024 STATS

- 161 NEW families supported in 1 year
- 36 families with complex needs
- 6 new parents with a disability supported
- 25 children with a disability
- 20 New volunteers recruited
- 25 new BAME families supported
- 97% of families reported improvements from initial visit to end visit
- 100% of families contacted within 3 days of referral

2560
HOURS
OF SUPPORT
PROVIDED
BY VOLUNTEERS

751
Hours of
Coordinator r
support

67
VOLUNTEERS
PROVIDING
SUPPORT
OVER 1 YEAR

100%
OF FAMILIES REPORTED
AN OVERALL BENEFIT FROM SUPPORT

89%
OF VOLUNTEERS LEAVING THE
SCHEME DID SO FOR
WORK/EDUCATION/TRAINING

100%
OF VOLUNTEERS
CHOOSING TO ACCREDIT
ACHIEVED THIS!



Thank you to our volunteers

HOME-START (HULL) VOLUNTEERS AS FROM SEPTEMBER 2024.

PAM O 19 YEARS
KATHRYN Y 14 YEARS
ELAINE P 13½
KIM S 12 YEARS
TERRI C 11 YEARS
SARAH G 10 YEARS
NADIA C 8 YEARS
NIKKI A 6 YEARS
MOLLIE B 6 YEARS
SAM B 5 YEARS
DEBBIE C 5 YEARS
DONNA J 5 YEARS
EMMA B 2 ½ YEARS
CHRISTINE D 2 YEARS
ROSEMARY I 2 YEARS
TRACY H 2 YEARS
JOSEPHINE S 2 YEARS
EMMA B 2 YEAR
PHILIPPA K 2 YEAR
REBECCA W 18 MTHS
LU H 18 MTHS
VICTORIA G 18 MTHS



BRENDA K 18 MTHS
JULIA T 18 MTHS
MOLLIE D 18 MTHS
SAM S 18 MTHS
LOUISE T 18 MTHS
CHRIS R 18 MTHS
SHEENA T 18 MTHS
CHARLOTTE A 1 YEAR
VICTORIA S 1 YEAR
MARIE B 1 YEAR
DENISE D 1 YEAR
ROWENA H 1 YEAR
GEMMA M 1 YEAR
TEMI O 1 YEAR
LILIAN O 1 YEAR
GARY T 7 MTHS
TRACY W 7 MTHS
TRACEY B 6 MTHS
JANE D 6 MTHS
RUTA G 6 MTHS
LYDIA A 3 MTHS



Thank you to our funders and supporters



Amazon
R Gore
V Wood
L Vokes



2023-2024 in pictures



Charity registration number 1105574

Company registration number 5200713 (England and Wales)

HOME-START (HULL)
COMPANY LIMITED BY GUARANTEE
ANNUAL REPORT AND UNAUDITED FINANCIAL STATEMENTS
FOR THE YEAR ENDED 31 MARCH 2024

Fawley Judge & Easton
Chartered Certified Accountants
1 Parliament Street
Hull
East Yorkshire
HU1 2AS

**HOME-START (HULL)
COMPANY LIMITED BY GUARANTEE
LEGAL AND ADMINISTRATIVE INFORMATION**

Trustees

Pamela Owen
Sam McGaw
Emma Pickering
Lorna Morris
Heather Barnes
Elaine Porter
Margaret Corless
Janet Burton
Thamara Bulmer

Secretary

Caroline Watson

Charity number

1105574

Company number

5200713

Independent examiner

Fawley Judge & Easton
Chartered Certified Accountants
1 Parliament Street
Hull
East Yorkshire
HU1 2AS

HOME-START (HULL) COMPANY LIMITED BY GUARANTEE CONTENTS

	Page
Trustees' report	1 - 4
Independent examiner's report	5
Statement of financial activities	6
Balance sheet	7 - 8
Notes to the financial statements	9 - 20

**HOME-START (HULL)
COMPANY LIMITED BY GUARANTEE
TRUSTEES' REPORT (INCLUDING DIRECTORS' REPORT)
FOR THE YEAR ENDED 31 MARCH 2024**

The trustees, who are also directors for the purposes of company law, present their report and the un-audited financial statements of the charity for the year ended 31 March 2024.

The accounts have been prepared in accordance with the accounting policies set out in note 1 to the accounts and comply with the charity's governing document, the Companies Act 2006 and the Statement of Recommended Practice, "Accounting and Reporting by Charities", issued in March 2005.

Objectives and activities

The charity's objects are to safeguard and preserve the good health, both mental and physical of children and parents of children, to prevent cruelty to or maltreatment of children, to relieve sickness, poverty and need amongst children and parents of children and to promote the education of the public in better standards of child care within the area of Hull and its environs. The policies adopted in furtherance of these objects are applied by the committee and there has been no change in these during the year.

To provide support to a minimum of 100 new families using home-visiting volunteers. This is our core work.

To support an additional 30 families per year on our Families in Mind project funded by the Henry Smith Charity from January 2022. This project supports parents with a lasting and enduring mental health condition.

To support an additional 100 families per year on the Start for Life Partners & Dads peer support project and Parent Infant Well Being project.

To conclude and signpost on (where appropriate) the families under the Beverley and Leconfield projects.

To reevaluate the Big Hopes Big Future project in line with Home-Start UK and the Start for Life offer in Hull.

To offer 8 preparation courses for new volunteers, annual refresher training and at least one specialist training opportunity per year for all volunteers.

To offer quality training to staff, volunteers and trustees through professional development opportunities and accredited modules, including additional external training in identified areas.

To identify a Vice Chair of Trustees as part of our succession planning.

Public benefit

The trustees have paid due regard to guidance issued by the Charity Commission in deciding what activities the charity should undertake.

Activities

Home Start Hull applies for the funding of its activities through a tendering processes. Successful applications result in service contracts or grants received to deliver the specific area identified in the application. The following

To increase the support available to families through both the core work and projects. Current target of 230 families.

To maintain current staffing levels and volunteer numbers.

To assess whether we need to expand our services to families

To maintain our current representation on the Trustees board.

**HOME-START (HULL)
COMPANY LIMITED BY GUARANTEE
TRUSTEES' REPORT (INCLUDING DIRECTORS' REPORT) (CONTINUED)
FOR THE YEAR ENDED 31 MARCH 2024**

Achievements and performance

Significant activities and achievements against objectives

Our Local Home-Start supported 108 families this year through the core work, 30 through the Families in Mind project, 75 families through the Start for Life projects, 6 families on the Beverley project, by 67 home-visiting volunteers offering 2753 hours of support.

We have successfully completed the second year of our Hull Health & Care Partnership contract for the core work.

We have successfully recruited a new Family Support Worker from our volunteer group, and a new admin assistant.

We successfully delivered the second year of our Families in Mind Henry Smith Charity funded project.

We have successfully completed the first year of our Start for Life contracts.

We successfully concluded the Beverley support.

The volunteers and families were supported by 9 trustees and 12 staff during the year. (Joanne Boasman, Gemma Brown, Emma Brownlee (left November 2023), Charlotte Dunstan, Lucy Jonas (started May 2023), Kelly Sykes, Bridget Marvin-Smelt, Charlotte Neale (started November 2023), Helen Percy, Phil Vincent, Katie Warren, Caroline Watson.)

All staff, volunteers and trustees continue to complete role appropriate training including Safeguarding Children's Partnership training.

We delivered 5 volunteer preparation courses recruiting a total of 20 new volunteers. 100% of volunteers choosing to accredit their training have achieved the Intermediate certificate from Skills & Education Group.

89% of volunteers leaving the scheme this year did so for work and training and we offered 6 student placements contributing to their educational experience.

We offered additional training in the 'Prevent' strategy, Hull Safeguarding Children's Partnership sources of stress, Parental conflict, Born to Bond attachment, parent infant mental health, healthy eating and Mental Health First Aid.

The board have reviewed the reserves set aside by the scheme and are satisfied that they cover the necessary requirements identified in the Reserves Policy. The Reserves covers three months of running costs plus redundancy costs.

We continue to look for ways to provide additional funding for the scheme and increase volunteer numbers.

There have been no incidents or near misses regarding information governance.

Financial review

The executive committee review the financial position regularly throughout the year.

The Charity receives income from a contract, donations, grants and investments. During 2023-2024 this amounted to £290,133. Its income is used to finance direct charitable expenditure and other expenditure amounting to £286,579.

Our reserves amount to £58,523 Unrestricted General Fund and £50,000 Designated Contingent Reserve Fund.

**HOME-START (HULL)
COMPANY LIMITED BY GUARANTEE
TRUSTEES' REPORT (INCLUDING DIRECTORS' REPORT) (CONTINUED)
FOR THE YEAR ENDED 31 MARCH 2024**

Reserves policy

It is the policy of the charity that unrestricted funds which have not been designated for a specific use should be maintained at a level equivalent to between three and six month's expenditure. The trustees consider that reserves at this level will ensure that, in the event of a significant drop in funding, they will be able to continue the charity's current activities while consideration is given to ways in which additional funds may be raised. This level of reserves has been maintained throughout the year.

Major risks

The trustees have assessed the major risks to which the charity is exposed, and are satisfied that systems are in place to mitigate exposure to the major risks.

Plans for future periods

The Board recognise that over the next five years, the amount of funding from the Hull Health & Care Partnership will decrease each year and have planned provision to cover a predicted shortfall as costs increase due to workplace pensions and increased costs associated with volunteer training and DBS checks.

We continue to look for ways to provide additional funding for the scheme

Structure, governance and management

The charity is a company limited by guarantee and has been registered as a charity.

The trustees, who are also the directors for the purpose of company law, and who served during the year and up to the date of signature of the financial statements were:

Pamela Owen

Sam McGaw

Emma Pickering

Lorna Morris

Heather Barnes

Elaine Porter

Margaret Corless

Janet Burton

Thamara Bulmer

Recruitment and appointment of trustees

The current trustees continue to seek new trustees as vacancies or skills profiles are required from the general public and those associated in the area the charity operates.

None of the trustees has any beneficial interest in the company. All of the trustees are members of the company and guarantee to contribute £1 in the event of a winding up.

Organisational structure

The organisation is managed by an Executive Committee comprising of no fewer than 4 members and not more than 12 members. All the trustees sit on this committee.

Relationship with related parties

Home Start Hull is a member of the Home Start UK organisation which provides areas of support to the organisation. Service Agreements are entered into with various providers operating in this area

**HOME-START (HULL)
COMPANY LIMITED BY GUARANTEE
TRUSTEES' REPORT (INCLUDING DIRECTORS' REPORT) (CONTINUED)
*FOR THE YEAR ENDED 31 MARCH 2024***

The trustees' report was approved by the Board of Trustees.

Caroline Watson
Secretary

3 October 2024

**HOME-START (HULL)
COMPANY LIMITED BY GUARANTEE
INDEPENDENT EXAMINER'S REPORT
TO THE TRUSTEES OF HOME-START (HULL)**

I report to the trustees on my examination of the financial statements of Home-Start (Hull) (the charity) for the year ended 31 March 2024.

Responsibilities and basis of report

As the trustees of the charity (and also its directors for the purposes of company law) you are responsible for the preparation of the financial statements in accordance with the requirements of the Companies Act 2006 (the 2006 Act).

Having satisfied myself that the financial statements of the charity are not required to be audited under Part 16 of the 2006 Act and are eligible for independent examination, I report in respect of my examination of the charity's financial statements carried out under section 145 of the Charities Act 2011 (the 2011 Act). In carrying out my examination I have followed all the applicable Directions given by the Charity Commission under section 145(5)(b) of the 2011 Act.

Independent examiner's statement

Since the charity's gross income exceeded £250,000 your examiner must be a member of a body listed in section 145 of the 2011 Act. I confirm that I am qualified to undertake the examination because I am a member of ACCA, which is one of the listed bodies.

I have completed my examination. I confirm that no matters have come to my attention in connection with the examination giving me cause to believe that in any material respect:

- 1 accounting records were not kept in respect of the charity as required by section 386 of the 2006 Act; or
- 2 the financial statements do not accord with those records; or
- 3 the financial statements do not comply with the accounting requirements of section 396 of the 2006 Act other than any requirement that the accounts give a true and fair view which is not a matter considered as part of an independent examination; or
- 4 the financial statements have not been prepared in accordance with the methods and principles of the Statement of Recommended Practice for accounting and reporting by charities applicable to charities preparing their accounts in accordance with the Financial Reporting Standard applicable in the UK and Republic of Ireland (FRS 102).

I have no concerns and have come across no other matters in connection with the examination to which attention should be drawn in this report in order to enable a proper understanding of the financial statements to be reached.

Jonathan M Leathley

Fawley Judge & Easton

Chartered Certified Accountants

1 Parliament Street

Hull

East Yorkshire

HU1 2AS

Dated: 3 October 2024

**HOME-START (HULL)
COMPANY LIMITED BY GUARANTEE
STATEMENT OF FINANCIAL ACTIVITIES
INCLUDING INCOME AND EXPENDITURE ACCOUNT**

FOR THE YEAR ENDED 31 MARCH 2024

		Unrestricted funds 2024 £	Restricted funds 2024 £	Total 2024 £	Unrestricted funds 2023 £	Restricted funds 2023 £	Total 2023 £
	Notes						
Income from:							
Donations and legacies	3	7,526	-	7,526	14,081	-	14,081
Charitable activities	4	-	276,730	276,730	-	204,201	204,201
Other trading activities	5	4,100	-	4,100	2,053	-	2,053
Investments	6	1,777	-	1,777	531	-	531
Total income		<u>13,403</u>	<u>276,730</u>	<u>290,133</u>	<u>16,665</u>	<u>204,201</u>	<u>220,866</u>
Expenditure on:							
Raising funds	7	7,295	-	7,295	6,393	-	6,393
Charitable activities	8	3,159	276,125	279,284	7,818	218,140	225,958
Total expenditure		<u>10,454</u>	<u>276,125</u>	<u>286,579</u>	<u>14,211</u>	<u>218,140</u>	<u>232,351</u>
Net income/(expenditure)		2,949	605	3,554	2,454	(13,939)	(11,485)
Transfers between funds		3,835	(3,835)	-	(9,330)	9,330	-
Net movement in funds	11	6,784	(3,230)	3,554	(6,876)	(4,609)	(11,485)
Reconciliation of funds:							
Fund balances at 1 April 2023		<u>101,739</u>	<u>41,660</u>	<u>143,399</u>	<u>108,615</u>	<u>46,269</u>	<u>154,884</u>
Fund balances at 31 March 2024		<u>108,523</u>	<u>38,430</u>	<u>146,953</u>	<u>101,739</u>	<u>41,660</u>	<u>143,399</u>

The statement of financial activities includes all gains and losses recognised in the year. All income and expenditure derive from continuing activities.

**HOME-START (HULL)
COMPANY LIMITED BY GUARANTEE
BALANCE SHEET**

AS AT 31 MARCH 2024

	Notes	2024		2023	
		£	£	£	£
Fixed assets					
Tangible assets	15		224		264
Current assets					
Cash at bank and in hand		227,667		144,816	
Creditors: amounts falling due within one year	16	(80,938)		(1,682)	
Net current assets			146,729		143,134
Total assets less current liabilities			146,953		143,398
Income funds					
Families in Mind		13,023		13,765	
BHBF /FSW		22,537		21,745	
Bev Org		-		6,150	
Warm Spaces		2,870		-	
	18		38,430		41,660
<u>Unrestricted funds</u>					
Designated funds	19	50,000		50,000	
General unrestricted funds		58,523		51,739	
			108,523		101,739
			146,953		143,399

**HOME-START (HULL)
COMPANY LIMITED BY GUARANTEE
BALANCE SHEET (CONTINUED)
AS AT 31 MARCH 2024**

The company is entitled to the exemption from the audit requirement contained in section 477 of the Companies Act 2006, for the year ended 31 March 2024.

The directors acknowledge their responsibilities for complying with the requirements of the Companies Act 2006 with respect to accounting records and the preparation of financial statements.

The members have not required the company to obtain an audit of its financial statements for the year in question in accordance with section 476.

These financial statements have been prepared in accordance with the provisions applicable to companies subject to the small companies regime.

The financial statements were approved by the Trustees on 3 October 2024

Sam McGaw
Trustee

Company registration number 5200713

HOME-START (HULL) COMPANY LIMITED BY GUARANTEE NOTES TO THE FINANCIAL STATEMENTS FOR THE YEAR ENDED 31 MARCH 2024

1 Accounting policies

Charity information

Home-Start (Hull) is a private company limited by guarantee incorporated in England and Wales.

1.1 Accounting convention

The financial statements have been prepared in accordance with the charity's [governing document], the Companies Act 2006, FRS 102 "The Financial Reporting Standard applicable in the UK and Republic of Ireland" ("FRS 102") and the Charities SORP "Accounting and Reporting by Charities: Statement of Recommended Practice applicable to charities preparing their accounts in accordance with the Financial Reporting Standard applicable in the UK and Republic of Ireland (FRS 102)" (effective 1 January 2019). The charity is a Public Benefit Entity as defined by FRS 102.

The charity has taken advantage of the provisions in the SORP for charities not to prepare a Statement of Cash Flows.

The financial statements are prepared in sterling, which is the functional currency of the charity. Monetary amounts in these financial statements are rounded to the nearest £.

The financial statements have been prepared under the historical cost convention, [modified to include the revaluation of freehold properties and to include investment properties and certain financial instruments at fair value]. The principal accounting policies adopted are set out below.

1.2 Going concern

At the time of approving the financial statements, the trustees have a reasonable expectation that the charity has adequate resources to continue in operational existence for the foreseeable future. Thus the trustees continue to adopt the going concern basis of accounting in preparing the financial statements.

1.3 Charitable funds

Unrestricted funds are available for use at the discretion of the trustees in furtherance of their charitable objectives.

Restricted funds are subject to specific conditions by donors or grantors as to how they may be used. The purposes and uses of the restricted funds are set out in the notes to the financial statements.

Endowment funds are subject to specific conditions by donors that the capital must be maintained by the charity.

1.4 Income

Income is recognised when the charity is legally entitled to it after any performance conditions have been met, the amounts can be measured reliably, and it is probable that income will be received.

Cash donations are recognised on receipt. Other donations are recognised once the charity has been notified of the donation, unless performance conditions require deferral of the amount. Income tax recoverable in relation to donations received under Gift Aid or deeds of covenant is recognised at the time of the donation.

Legacies are recognised on receipt or otherwise if the charity has been notified of an impending distribution, the amount is known, and receipt is expected. If the amount is not known, the legacy is treated as a contingent asset.

1.5 Expenditure

Expenditure incurred by the organisation is accounted for on an accruals basis. Items relating to operational matters are charged to the SOFA, and any capital items to the Balance Sheet.

1.6 Research and development expenditure

**HOME-START (HULL)
COMPANY LIMITED BY GUARANTEE
NOTES TO THE FINANCIAL STATEMENTS (CONTINUED)
FOR THE YEAR ENDED 31 MARCH 2024**

1 Accounting policies

(Continued)

Research expenditure is written off against profits in the year in which it is incurred. Identifiable development expenditure is capitalised to the extent that the technical, commercial and financial feasibility can be demonstrated.

1.7 Tangible fixed assets

Tangible fixed assets are initially measured at cost and subsequently measured at cost or valuation, net of depreciation and any impairment losses.

Depreciation is recognised so as to write off the cost or valuation of assets less their residual values over their useful lives on the following bases:

Fixtures, fittings & equipment	15% - written down value
--------------------------------	--------------------------

The gain or loss arising on the disposal of an asset is determined as the difference between the sale proceeds and the carrying value of the asset, and is recognised in the statement of financial activities.

1.8 Impairment of fixed assets

At each reporting end date, the charity reviews the carrying amounts of its tangible assets to determine whether there is any indication that those assets have suffered an impairment loss. If any such indication exists, the recoverable amount of the asset is estimated in order to determine the extent of the impairment loss (if any).

1.9 Cash and cash equivalents

Cash and cash equivalents include cash in hand, deposits held at call with banks, other short-term liquid investments with original maturities of three months or less, and bank overdrafts. Bank overdrafts are shown within borrowings in current liabilities.

Basic financial assets

Basic financial assets, which include debtors and cash and bank balances, are initially measured at transaction price including transaction costs and are subsequently carried at amortised cost using the effective interest method unless the arrangement constitutes a financing transaction, where the transaction is measured at the present value of the future receipts discounted at a market rate of interest. Financial assets classified as receivable within one year are not amortised.

Basic financial liabilities

Basic financial liabilities, including creditors and bank loans are initially recognised at transaction price unless the arrangement constitutes a financing transaction, where the debt instrument is measured at the present value of the future payments discounted at a market rate of interest. Financial liabilities classified as payable within one year are not amortised.

Debt instruments are subsequently carried at amortised cost, using the effective interest rate method.

Trade creditors are obligations to pay for goods or services that have been acquired in the ordinary course of operations from suppliers. Amounts payable are classified as current liabilities if payment is due within one year or less. If not, they are presented as non-current liabilities. Trade creditors are recognised initially at transaction price and subsequently measured at amortised cost using the effective interest method.

Derecognition of financial liabilities

Financial liabilities are derecognised when the charity's contractual obligations expire or are discharged or cancelled.

**HOME-START (HULL)
COMPANY LIMITED BY GUARANTEE
NOTES TO THE FINANCIAL STATEMENTS (CONTINUED)
FOR THE YEAR ENDED 31 MARCH 2024**

1 Accounting policies (Continued)

1.10 Employee benefits

The cost of any unused holiday entitlement is recognised in the period in which the employee's services are received.

Termination benefits are recognised immediately as an expense when the charity is demonstrably committed to terminate the employment of an employee or to provide termination benefits.

2 Critical accounting estimates and judgements

In the application of the charity's accounting policies, the trustees are required to make judgements, estimates and assumptions about the carrying amount of assets and liabilities that are not readily apparent from other sources. The estimates and associated assumptions are based on historical experience and other factors that are considered to be relevant. Actual results may differ from these estimates.

The estimates and underlying assumptions are reviewed on an ongoing basis. Revisions to accounting estimates are recognised in the period in which the estimate is revised where the revision affects only that period, or in the period of the revision and future periods where the revision affects both current and future periods.

3 Income from donations and legacies

	Unrestricted funds 2024 £	Unrestricted funds 2023 £
Donations and gifts	7,526	14,081

HOME-START (HULL)
COMPANY LIMITED BY GUARANTEE
NOTES TO THE FINANCIAL STATEMENTS (CONTINUED)
FOR THE YEAR ENDED 31 MARCH 2024

4 Income from charitable activities

	Restricted funds 2024 £	Restricted funds 2023 £
Hull Health & Care Partnership		
Performance related grants	121,384	120,060
BHBF / FSW		
Performance related grants	8,000	19,838
Families In Mind - Henry Smith Charity		
Performance related grants	59,900	59,500
Beverley Project - Brelms Trust CIO		
Performance related grants	380	4,803
Warm Spaces - Two Ridings Foundation		
Performance related grants	5,850	-
West Peer Support - Hull CC		
Performance related grants	80,216	-
Less: deferred income	(40,000)	-
Partners and Dads Service - Hull CC		
Performance related grants	81,000	-
Less: deferred income	(40,000)	-
	<u>276,730</u>	<u>204,201</u>

5 Income from other trading activities

	Unrestricted funds 2024 £	Unrestricted funds 2023 £
Trading activity income:	4,100	2,053
	<u>4,100</u>	<u>2,053</u>

6 Income from investments

	Unrestricted funds 2024 £	Unrestricted funds 2023 £
Interest receivable	1,777	531
	<u>1,777</u>	<u>531</u>

HOME-START (HULL)
COMPANY LIMITED BY GUARANTEE
NOTES TO THE FINANCIAL STATEMENTS (CONTINUED)
FOR THE YEAR ENDED 31 MARCH 2024

7 Expenditure on raising funds

	Unrestricted funds 2024 £	Unrestricted funds 2023 £
Fundraising and publicity		
Fundraising costs	7,156	5,803
	<u> </u>	<u> </u>
Trading costs		
Other trading activities	139	590
	<u> </u>	<u> </u>
Total costs	<u>7,295</u>	<u>6,393</u>

**HOME-START (HULL)
COMPANY LIMITED BY GUARANTEE
NOTES TO THE FINANCIAL STATEMENTS (CONTINUED)**

FOR THE YEAR ENDED 31 MARCH 2024

8 Expenditure on charitable activities	Core BHF / FSW		Families In	Beverley	Warm	West Peer	Partners	Total
	2024	2024	Mind	Project	Spaces	Support	and Dads Service	
	£	£	£	£	£	£	£	£
Direct costs								
Staff costs	104,622	6,765	46,880	3,901	2,100	37,177	30,786	232,231
Depreciation and impairment	40	-	-	-	-	-	-	40
Charitable expenses	5,026	-	220	886	883	425	-	7,440
	109,688	6,765	47,100	4,787	2,983	37,602	30,786	239,711
Grant funding of activities (see note 9)	-	-	-	-	-	-	-	7,600
Share of support and governance costs (see note 10)								
Support	13,420	-	12,765	-	-	2,414	2,414	31,013
Governance	960	-	-	-	-	(200)	200	960
	124,068	6,765	59,865	4,787	2,983	39,816	41,000	279,284
Analysis by fund								
Unrestricted funds	3,159	-	-	-	-	-	-	3,159
Restricted funds	120,909	6,765	59,865	4,787	2,983	39,816	41,000	276,125
	124,068	6,765	59,865	4,787	2,983	39,816	41,000	279,284

HOME-START (HULL)
COMPANY LIMITED BY GUARANTEE
NOTES TO THE FINANCIAL STATEMENTS (CONTINUED)
FOR THE YEAR ENDED 31 MARCH 2024

Previous year:	Core BHBF / FSW		Families In	Beverley	Total
	2023	2023	Mind	Project	2023
	£	£	2023	2023	2023
	£	£	£	£	£
Direct costs					
Staff costs	116,910	6,216	45,749	12,913	181,788
Depreciation and impairment	47	-	-	-	47
Charitable expenses	5,268	7,315	580	1,162	14,325
	<u>122,225</u>	<u>13,531</u>	<u>46,329</u>	<u>14,075</u>	<u>196,160</u>
Share of support and governance costs (see note 10)					
Support	11,465	97	13,085	14	24,661
Governance	5,137	-	-	-	5,137
	<u>138,827</u>	<u>13,628</u>	<u>59,414</u>	<u>14,089</u>	<u>225,958</u>
Analysis by fund					
Unrestricted funds	7,818	-	-	-	7,818
Restricted funds	131,009	13,628	59,414	14,089	218,140
	<u>138,827</u>	<u>13,628</u>	<u>59,414</u>	<u>14,089</u>	<u>225,958</u>

9 Grants payable

	Partners and Dads Service 2024 £
Grants to institutions (1 grant):	
Becoming Dad	7,600
	<u>7,600</u>

-

**HOME-START (HULL)
COMPANY LIMITED BY GUARANTEE**
NOTES TO THE FINANCIAL STATEMENTS (CONTINUED)
FOR THE YEAR ENDED 31 MARCH 2024

10 Support costs

	Support costs	Governance costs	2024	Support costs	Governance costs	2023
	£	£	£	£	£	£
Accommodation costs	19,050	-	19,050	17,934	-	17,934
IT costs	2,929	-	2,929	1,794	-	1,794
Telephone	1,440	-	1,440	1,551	-	1,551
Utilities	1,792	-	1,792	1,860	-	1,860
Office costs	5,802	-	5,802	1,522	-	1,522
Professional fees	-	960	960	-	840	840
AGM costs	-	-	-	-	4,297	4,297
	<u>31,013</u>	<u>960</u>	<u>31,973</u>	<u>24,661</u>	<u>5,137</u>	<u>29,798</u>
Analysed between						
Charitable activities	<u>31,013</u>	<u>960</u>	<u>31,973</u>	<u>24,661</u>	<u>5,137</u>	<u>28,958</u>

Governance costs includes payments to the independent examiner of £960 (2023- £840) for professional fees.

11 Net movement in funds

2024
£

2023
£

The net movement in funds is stated after charging/(crediting):

Depreciation of owned tangible fixed assets	<u>40</u>	<u>47</u>
---	-----------	-----------

12 Trustees

None of the trustees (or any persons connected with them) received any remuneration during the year.

13 Employees

The average monthly number of employees during the year was:

	2024	2023
	Number	Number
Administration	3	3
Service delivery	7	6
Total	<u>10</u>	<u>9</u>

Employment costs

2024
£

2023
£

Wages and salaries	<u>232,231</u>	<u>181,788</u>
--------------------	----------------	----------------

**HOME-START (HULL)
COMPANY LIMITED BY GUARANTEE
NOTES TO THE FINANCIAL STATEMENTS (CONTINUED)
FOR THE YEAR ENDED 31 MARCH 2024**

13 Employees

(Continued)

There were no employees whose annual remuneration was more than £60,000.

Remuneration of key management personnel

The remuneration of key management personnel was as follows:

14 Taxation

The charity is exempt from taxation on its activities because all its income is applied for charitable purposes.

15 Tangible fixed assets

	Fixtures, fittings & equipment £
Cost	
At 1 April 2023	7,706
At 31 March 2024	7,706
Depreciation and impairment	
At 1 April 2023	7,442
Depreciation charged in the year	40
At 31 March 2024	7,482
Carrying amount	
At 31 March 2024	224
At 31 March 2023	264

16 Creditors: amounts falling due within one year

	Notes	2024 £	2023 £
Deferred income	17	80,000	-
Accruals and deferred income		938	1,682
		80,938	1,682

17 Deferred income

	2024 £	2023 £
Other deferred income	80,000	-

**HOME-START (HULL)
COMPANY LIMITED BY GUARANTEE
NOTES TO THE FINANCIAL STATEMENTS (CONTINUED)
FOR THE YEAR ENDED 31 MARCH 2024**

17 Deferred income

(Continued)

Deferred income is included in the financial statements as follows:

	2024	2023
	£	£
Deferred income is included within:		
Current liabilities	80,000	-
	<u> </u>	<u> </u>
Movements in the year:		
Deferred income at 1 April 2023	-	-
Resources deferred in the year	80,000	-
	<u> </u>	<u> </u>
Deferred income at 31 March 2024	80,000	-
	<u> </u>	<u> </u>

HOME-START (HULL)
COMPANY LIMITED BY GUARANTEE
NOTES TO THE FINANCIAL STATEMENTS (CONTINUED)
FOR THE YEAR ENDED 31 MARCH 2024

18 Restricted funds

The restricted funds of the charity comprise the unexpended balances of donations and grants held on trust subject to specific conditions by donors as to how they may be used.

	Movement in funds				Movement in funds				
	Balance at 1 April 2022 £	Incoming Resources £	Outgoing Resources £	Transfers £	Balance at 1 April 2023 £	Incoming Resources £	Outgoing Resources £	Transfers £	Balance at 31 March 2024 £
Hull Health & Care Partnership - Core work	1,618	120,060	(131,008)	9,330	-	121,384	(120,911)	(473)	-
Sir James Reckitt Charity - BHBf	15,535	19,838	(13,628)	-	21,745	-	(1,464)	(20,281)	-
Henry Smith Charity - Families in Mind	13,680	59,500	(59,414)	-	13,765	59,900	(59,864)	(775)	13,026
Brelms Trust CIO - Beverley project	15,436	4,803	(14,089)	-	6,150	380	(4,787)	(1,743)	-
Family Support Worker	-	-	-	-	-	8,000	(5,300)	19,837	22,537
Hull CC - Partners and Dads	-	-	-	-	-	41,000	(40,800)	(200)	-
Two Ridings Foundation - Warm spaces	-	-	-	-	-	5,850	(2,983)	-	2,867
Hull CC - West Peer Support	-	-	-	-	-	40,216	(40,016)	(200)	-
	<u>46,269</u>	<u>204,201</u>	<u>(218,139)</u>	<u>9,330</u>	<u>41,660</u>	<u>276,730</u>	<u>(276,125)</u>	<u>(3,835)</u>	<u>38,430</u>

**HOME-START (HULL)
COMPANY LIMITED BY GUARANTEE
NOTES TO THE FINANCIAL STATEMENTS (CONTINUED)
FOR THE YEAR ENDED 31 MARCH 2024**

19 Unrestricted funds

The unrestricted funds of the charity comprise the unexpended balances of donations and grants which are not subject to specific conditions by donors and grantors as to how they may be used. These include designated funds which have been set aside out of unrestricted funds by the trustees for specific purposes.

	At 1 April 2023	Incoming resources	Resources expended	Transfers	At 31 March 2024
	£	£	£	£	£
Contingency fund	50,000	-	-	-	50,000
General funds	51,739	13,403	(10,454)	3,835	58,523
	<u>101,739</u>	<u>13,403</u>	<u>(10,454)</u>	<u>3,835</u>	<u>108,523</u>

Previous year:	At 1 April 2022	Incoming resources	Resources expended	Transfers	At 31 March 2023
	£	£	£	£	£
Contingency fund	50,000	-	-	-	50,000
General funds	58,615	16,665	(14,211)	(9,330)	51,739
	<u>108,615</u>	<u>16,665</u>	<u>(14,211)</u>	<u>(9,330)</u>	<u>101,739</u>

20 Analysis of net assets between funds

	Unrestricted 2024	Restricted 2024	Total Unrestricted 2024	Total Unrestricted 2023	Restricted 2023	Total 2023
	£	£	£	£	£	£
Fund balances at 31 March 2024 are represented by:						
Tangible assets	224	-	224	264	-	264
Current assets/(liabilities)	108,299	38,430	146,729	101,474	41,660	143,134
	<u>108,523</u>	<u>38,430</u>	<u>146,953</u>	<u>101,738</u>	<u>41,660</u>	<u>143,398</u>

21 Related party transactions

There were no disclosable related party transactions during the year (2023 - none).



Home-Start Hull
Centre 88
Saner Street
Hull
HU3 2TR

Tel: 01482 324063
Email: admin@homestarthull.org.uk

Charity No. 1105574
Company No. 5200713

© Home Start UK Ltd

HOME-START (HULL)

England & Wales - Charity number 1105574

Accounts

Charity registration number 1105574

Company registration number 5200713 (England and Wales)

HOME-START (HULL)
COMPANY LIMITED BY GUARANTEE
ANNUAL REPORT AND UNAUDITED FINANCIAL STATEMENTS
FOR THE YEAR ENDED 31 MARCH 2023

Fawley Judge & Easton
Chartered Certified Accountants
1 Parliament Street
Hull
East Yorkshire
HU1 2AS

**HOME-START (HULL)
COMPANY LIMITED BY GUARANTEE
LEGAL AND ADMINISTRATIVE INFORMATION**

Trustees

Pamela Owen
Sam McGaw
Emma Pickering
Lorna Morris
Heather Barnes
Elaine Porter
Margaret Corless
Janet Burton

(Appointed 9 September
2022)

Thamara Bulmer

(Appointed 6 February
2023)

Secretary

Caroline Watson

Charity number

1105574

Company number

5200713

Independent examiner

Fawley Judge & Easton
Chartered Certified Accountants
1 Parliament Street
Hull
East Yorkshire
HU1 2AS

HOME-START (HULL) COMPANY LIMITED BY GUARANTEE CONTENTS

	Page
Trustees' report	1 - 3
Independent examiner's report	4
Statement of financial activities	5
Balance sheet	6 - 7
Notes to the financial statements	8 - 17

**HOME-START (HULL)
COMPANY LIMITED BY GUARANTEE
TRUSTEES' REPORT (INCLUDING DIRECTORS' REPORT)
FOR THE YEAR ENDED 31 MARCH 2023**

The trustees, who are also directors for the purposes of company law, present their report and the un-audited financial statements of the charity for the year ended 31 March 2023.

The accounts have been prepared in accordance with the accounting policies set out in note 1 to the accounts and comply with the charity's governing document, the Companies Act 2006 and the Statement of Recommended Practice, "Accounting and Reporting by Charities", issued in March 2005.

Objectives and activities

The charity's objects are to safeguard and preserve the good health, both mental and physical of children and parents of children, to prevent cruelty to or maltreatment of children, to relieve sickness, poverty and need amongst children and parents of children and to promote the education of the public in better standards of child care within the area of Hull and its environs. The policies adopted in furtherance of these objects are applied by the committee and there has been no change in these during the year.

To provide support to a minimum of 100 new families using home-visiting volunteers. This is our core work.

To support an additional 30 families per year on our Families in Mind project funded by the Henry Smith Charity from January 2022. This project has been adapted from our previous project supporting parents with mental illness.

To support an additional 8 families per year in Beverley funded by the Brelms Trust.

To support an additional 16 families per year at DST Leconfield funded by the Armed Forces Covenant Fund Trust.

To support an additional 16 children per year through the Big Hopes Big Future school readiness project.

To offer new volunteers the chance to complete the preparation training on various days and times throughout the year including evenings, weekends and summer holidays and to continue our offer to existing volunteers of specialist training from both within the organisation and from external providers.

To offer quality training to staff, volunteers and trustees through professional development opportunities and accredited modules, including additional external training in identified areas.

The trustees have paid due regard to guidance issued by the Charity Commission in deciding what activities the charity should undertake.

Home Start Hull applies for funding of its activities through the application via tendering processes to be successful in each application. The result is Service Contracts or Grants are received to fulfil the specific area identified. The following

To increase the support available to families through both the core work and projects. Current target of 125 families.

To maintain current staffing levels and volunteer numbers.

To assess whether we need to expand our services to families

To maintain our current representation on the Trustees board.

To continue to develop the Fundraising Committee and discuss long-term goals for continuous fundraising ideas.

HOME-START (HULL) COMPANY LIMITED BY GUARANTEE TRUSTEES' REPORT (INCLUDING DIRECTORS' REPORT) (CONTINUED) FOR THE YEAR ENDED 31 MARCH 2023

Achievements and performance

Our Local Home-Start supported 108 families this year through the core work, 31 through the Families in Mind project, 11 through the Beverley project, 14 through the DST Leconfield project and 14 families through the BHBF project (178 total), by 69 home-visiting volunteers offering 2684 hours of support.

We have successfully completed the first year of our Hull Health & Care Partnership contract for the core work.

We were successful in securing further funding for the BHBF project through Sir James Reckitt Charity.

We successfully delivered the first year of our Families in Mind Henry Smith Charity funded project.

We successfully delivered the DST Leconfield support.

We were successful bidders for two new peer support contracts through the Start for Life funding delivering support to parents with children aged 0-2.

The volunteers and families were supported by 9 trustees and 9 staff during the year. (Joanne Boasman, Gemma Brown, Emma Brownlee, Charlotte Dunstan, Kelly Sykes, Bridget Marvin-Smelt, Helen Percy, Phil Vincent, Caroline Watson.)

All staff, volunteers and trustees continue to complete role appropriate training including Safeguarding Children's Partnership training.

We delivered 5 volunteer preparation courses recruiting a total of 23 new volunteers. 100% of volunteers choosing to accredit their training have achieved the Intermediate certificate from Skills & Education Group.

66% of volunteers leaving the scheme this year did so for work and training and we offered 4 student placements contributing to their educational experience.

We offered additional training in the 'Prevent' strategy, Hull Safeguarding Children's Partnership sources of stress, Big Hopes Big Future school readiness, Parental conflict, suicide awareness, Born to Bond attachment, parent infant mental health.

The board have reviewed the reserves set aside by the scheme and are satisfied that they cover the necessary requirements identified in the Reserves Policy. The Reserves covers four months of running costs plus redundancy costs.

We continue to look for ways to provide additional funding for the scheme and increase volunteer numbers.

There have been no incidents or near misses regarding information governance.

Financial review

The executive committee review the financial position regularly throughout the year.

The Charity receives income from a contract, donations, grants and investments. During 2022-2023 this amounted to £220,866. Its income is used to finance direct charitable expenditure and other expenditure amounting to £232,351.

Our reserves amount to £51,739 Unrestricted General Fund and £50,000 Designated Contingent Reserve Fund.

It is the policy of the charity that unrestricted funds which have not been designated for a specific use should be maintained at a level equivalent to between three and six month's expenditure. The trustees consider that reserves at this level will ensure that, in the event of a significant drop in funding, they will be able to continue the charity's current activities while consideration is given to ways in which additional funds may be raised. This level of reserves has been maintained throughout the year.

**HOME-START (HULL)
COMPANY LIMITED BY GUARANTEE
TRUSTEES' REPORT (INCLUDING DIRECTORS' REPORT) (CONTINUED)
FOR THE YEAR ENDED 31 MARCH 2023**

The trustees have assessed the major risks to which the charity is exposed, and are satisfied that systems are in place to mitigate exposure to the major risks.

Plans for future periods

The Board recognise that over the next five years, the amount of funding from the Hull Health & Care Partnership will decrease each year and have planned provision to cover a predicted shortfall as costs increase due to workplace pensions and increased costs associated with volunteer training and DBS checks.

We continue to look for ways to provide additional funding for the scheme

Structure, governance and management

The charity is a company limited by guarantee and has been registered as a charity.

The trustees, who are also the directors for the purpose of company law, and who served during the year and up to the date of signature of the financial statements were:

Pamela Owen

Sam McGaw

Emma Pickering

Lorna Morris

Heather Barnes

Elaine Porter

Margaret Corless

Janet Burton

Thamara Bulmer

(Appointed 9 September 2022)

(Appointed 6 February 2023)

The current trustees continue to seek new trustees as vacancies or skills profiles are required from the general public and those associated in the area the charity operates.

None of the trustees has any beneficial interest in the company. All of the trustees are members of the company and guarantee to contribute £1 in the event of a winding up.

The organisation is managed by an Executive Committee comprising of no fewer than 4 members and not more than 12 members. All the trustees sit on this committee.

Home Start Hull is a member of the Home Start UK organisation which provides areas of support to the organisation. Service Agreements are entered into with various providers operating in this area

The trustees' report was approved by the Board of Trustees.

Caroline Watson

Secretary

5 October 2023

**HOME-START (HULL)
COMPANY LIMITED BY GUARANTEE
INDEPENDENT EXAMINER'S REPORT
TO THE TRUSTEES OF HOME-START (HULL)**

I report to the trustees on my examination of the financial statements of Home-Start (Hull) (the charity) for the year ended 31 March 2023.

Responsibilities and basis of report

As the trustees of the charity (and also its directors for the purposes of company law) you are responsible for the preparation of the financial statements in accordance with the requirements of the Companies Act 2006 (the 2006 Act).

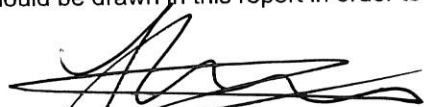
Having satisfied myself that the financial statements of the charity are not required to be audited under Part 16 of the 2006 Act and are eligible for independent examination, I report in respect of my examination of the charity's financial statements carried out under section 145 of the Charities Act 2011 (the 2011 Act). In carrying out my examination I have followed all the applicable Directions given by the Charity Commission under section 145(5)(b) of the 2011 Act.

Independent examiner's statement

I have completed my examination. I confirm that no matters have come to my attention in connection with the examination giving me cause to believe that in any material respect:

- 1 accounting records were not kept in respect of the charity as required by section 386 of the 2006 Act; or
- 2 the financial statements do not accord with those records; or
- 3 the financial statements do not comply with the accounting requirements of section 396 of the 2006 Act other than any requirement that the accounts give a true and fair view which is not a matter considered as part of an independent examination; or
- 4 the financial statements have not been prepared in accordance with the methods and principles of the Statement of Recommended Practice for accounting and reporting by charities applicable to charities preparing their accounts in accordance with the Financial Reporting Standard applicable in the UK and Republic of Ireland (FRS 102).

I have no concerns and have come across no other matters in connection with the examination to which attention should be drawn in this report in order to enable a proper understanding of the financial statements to be reached.



Jonathan M Leathley
Fawley Judge & Easton
Chartered Certified Accountants
1 Parliament Street
Hull
East Yorkshire
HU1 2AS

Dated: 5 October 2023

**HOME-START (HULL)
COMPANY LIMITED BY GUARANTEE
STATEMENT OF FINANCIAL ACTIVITIES
INCLUDING INCOME AND EXPENDITURE ACCOUNT**

FOR THE YEAR ENDED 31 MARCH 2023

	Notes	Unrestricted funds 2023 £	Restricted funds 2023 £	Total 2023 £	Unrestricted funds 2022 £	Restricted funds 2022 £	Total 2022 £
Income from:							
Donations and legacies	3	14,081	-	14,081	15,577	-	15,577
Charitable activities	4	-	204,201	204,201	-	191,264	191,264
Other trading activities	5	2,053	-	2,053	6,131	-	6,131
Investments	6	531	-	531	129	-	129
Total income		<u>16,665</u>	<u>204,201</u>	<u>220,866</u>	<u>21,837</u>	<u>191,264</u>	<u>213,101</u>
Expenditure on:							
Raising funds	7	6,440	-	6,440	1,921	-	1,921
Charitable activities	8	7,771	218,140	225,911	1,902	206,908	208,810
Total expenditure		<u>14,211</u>	<u>218,140</u>	<u>232,351</u>	<u>3,823</u>	<u>206,908</u>	<u>210,731</u>
Net incoming/(outgoing) resources before transfers							
		2,454	(13,939)	(11,485)	18,014	(15,644)	2,370
Gross transfers between funds		(9,330)	9,330	-	(19,051)	19,051	-
Net (expenditure)/income for the year/ Net movement in funds		<u>(6,876)</u>	<u>(4,609)</u>	<u>(11,485)</u>	<u>(1,037)</u>	<u>3,407</u>	<u>2,370</u>
Fund balances at 1 April 2022		<u>108,615</u>	<u>46,269</u>	<u>154,884</u>	<u>109,652</u>	<u>42,862</u>	<u>152,514</u>
Fund balances at 31 March 2023		<u><u>101,739</u></u>	<u><u>41,660</u></u>	<u><u>143,399</u></u>	<u><u>108,615</u></u>	<u><u>46,269</u></u>	<u><u>154,884</u></u>

The statement of financial activities includes all gains and losses recognised in the year.

All income and expenditure derive from continuing activities.

The statement of financial activities also complies with the requirements for an income and expenditure account under the Companies Act 2006.

**HOME-START (HULL)
COMPANY LIMITED BY GUARANTEE
BALANCE SHEET**

AS AT 31 MARCH 2023

	Notes	2023 £	£	2022 £	£
Fixed assets					
Tangible assets	13		264		311
Current assets					
Cash at bank and in hand		144,816		156,255	
Creditors: amounts falling due within one year	14	(1,681)		(1,682)	
Net current assets			143,135		154,573
Total assets less current liabilities			143,399		154,884
Income funds					
Core work		-		1,618	
Families in Mind		13,765		13,680	
BHBF		21,745		15,535	
Beverley Project		6,150		15,436	
	16		41,660		46,269
<u>Unrestricted funds</u>					
Designated funds	17	50,000		50,000	
General unrestricted funds		51,739		58,615	
			101,739		108,615
			143,399		154,884

**HOME-START (HULL)
COMPANY LIMITED BY GUARANTEE
BALANCE SHEET (CONTINUED)
AS AT 31 MARCH 2023**

The company is entitled to the exemption from the audit requirement contained in section 477 of the Companies Act 2006, for the year ended 31 March 2023.

The directors acknowledge their responsibilities for complying with the requirements of the Companies Act 2006 with respect to accounting records and the preparation of financial statements.

The members have not required the company to obtain an audit of its financial statements for the year in question in accordance with section 476.

These financial statements have been prepared in accordance with the provisions applicable to companies subject to the small companies regime.

The financial statements were approved by the Trustees on 5 October 2023



Sam McGaw
Trustee

Company registration number 5200713

HOME-START (HULL) COMPANY LIMITED BY GUARANTEE NOTES TO THE FINANCIAL STATEMENTS FOR THE YEAR ENDED 31 MARCH 2023

1 Accounting policies

Charity information

Home-Start (Hull) is a private company limited by guarantee incorporated in England and Wales.

1.1 Accounting convention

The financial statements have been prepared in accordance with the charity's [governing document], the Companies Act 2006, FRS 102 "The Financial Reporting Standard applicable in the UK and Republic of Ireland" ("FRS 102") and the Charities SORP "Accounting and Reporting by Charities: Statement of Recommended Practice applicable to charities preparing their accounts in accordance with the Financial Reporting Standard applicable in the UK and Republic of Ireland (FRS 102)" (effective 1 January 2019). The charity is a Public Benefit Entity as defined by FRS 102.

The charity has taken advantage of the provisions in the SORP for charities not to prepare a Statement of Cash Flows.

The financial statements are prepared in sterling, which is the functional currency of the charity. Monetary amounts in these financial statements are rounded to the nearest £.

The financial statements have been prepared under the historical cost convention, [modified to include the revaluation of freehold properties and to include investment properties and certain financial instruments at fair value]. The principal accounting policies adopted are set out below.

1.2 Going concern

At the time of approving the financial statements, the trustees have a reasonable expectation that the charity has adequate resources to continue in operational existence for the foreseeable future. Thus the trustees continue to adopt the going concern basis of accounting in preparing the financial statements.

1.3 Charitable funds

Unrestricted funds are available for use at the discretion of the trustees in furtherance of their charitable objectives.

Restricted funds are subject to specific conditions by donors as to how they may be used. The purposes and uses of the restricted funds are set out in the notes to the financial statements.

Endowment funds are subject to specific conditions by donors that the capital must be maintained by the charity.

1.4 Income

Income is recognised when the charity is legally entitled to it after any performance conditions have been met, the amounts can be measured reliably, and it is probable that income will be received.

Cash donations are recognised on receipt. Other donations are recognised once the charity has been notified of the donation, unless performance conditions require deferral of the amount. Income tax recoverable in relation to donations received under Gift Aid or deeds of covenant is recognised at the time of the donation.

Legacies are recognised on receipt or otherwise if the charity has been notified of an impending distribution, the amount is known, and receipt is expected. If the amount is not known, the legacy is treated as a contingent asset.

1.5 Expenditure

Expenditure incurred by the organisation is accounted for on an accruals basis. Items relating to operational matters are charged to the SOFA, and any capital items to the Balance Sheet.

**HOME-START (HULL)
COMPANY LIMITED BY GUARANTEE
NOTES TO THE FINANCIAL STATEMENTS (CONTINUED)
FOR THE YEAR ENDED 31 MARCH 2023**

1 Accounting policies

(Continued)

1.6 Tangible fixed assets

Tangible fixed assets are initially measured at cost and subsequently measured at cost or valuation, net of depreciation and any impairment losses.

Depreciation is recognised so as to write off the cost or valuation of assets less their residual values over their useful lives on the following bases:

Fixtures, fittings & equipment	15% - written down value
--------------------------------	--------------------------

The gain or loss arising on the disposal of an asset is determined as the difference between the sale proceeds and the carrying value of the asset, and is recognised in the statement of financial activities.

1.7 Impairment of fixed assets

At each reporting end date, the charity reviews the carrying amounts of its tangible assets to determine whether there is any indication that those assets have suffered an impairment loss. If any such indication exists, the recoverable amount of the asset is estimated in order to determine the extent of the impairment loss (if any).

1.8 Cash and cash equivalents

Cash and cash equivalents include cash in hand, deposits held at call with banks, other short-term liquid investments with original maturities of three months or less, and bank overdrafts. Bank overdrafts are shown within borrowings in current liabilities.

Basic financial assets

Basic financial assets, which include debtors and cash and bank balances, are initially measured at transaction price including transaction costs and are subsequently carried at amortised cost using the effective interest method unless the arrangement constitutes a financing transaction, where the transaction is measured at the present value of the future receipts discounted at a market rate of interest. Financial assets classified as receivable within one year are not amortised.

Basic financial liabilities

Basic financial liabilities, including creditors and bank loans are initially recognised at transaction price unless the arrangement constitutes a financing transaction, where the debt instrument is measured at the present value of the future payments discounted at a market rate of interest. Financial liabilities classified as payable within one year are not amortised.

Debt instruments are subsequently carried at amortised cost, using the effective interest rate method.

Trade creditors are obligations to pay for goods or services that have been acquired in the ordinary course of operations from suppliers. Amounts payable are classified as current liabilities if payment is due within one year or less. If not, they are presented as non-current liabilities. Trade creditors are recognised initially at transaction price and subsequently measured at amortised cost using the effective interest method.

Derecognition of financial liabilities

Financial liabilities are derecognised when the charity's contractual obligations expire or are discharged or cancelled.

1.9 Employee benefits

The cost of any unused holiday entitlement is recognised in the period in which the employee's services are received.

Termination benefits are recognised immediately as an expense when the charity is demonstrably committed to terminate the employment of an employee or to provide termination benefits.

**HOME-START (HULL)
COMPANY LIMITED BY GUARANTEE
NOTES TO THE FINANCIAL STATEMENTS (CONTINUED)
FOR THE YEAR ENDED 31 MARCH 2023**

2 Critical accounting estimates and judgements

In the application of the charity's accounting policies, the trustees are required to make judgements, estimates and assumptions about the carrying amount of assets and liabilities that are not readily apparent from other sources. The estimates and associated assumptions are based on historical experience and other factors that are considered to be relevant. Actual results may differ from these estimates.

The estimates and underlying assumptions are reviewed on an ongoing basis. Revisions to accounting estimates are recognised in the period in which the estimate is revised where the revision affects only that period, or in the period of the revision and future periods where the revision affects both current and future periods.

3 Donations and legacies

	Unrestricted funds	Unrestricted funds
	2023	2022
	£	£
Donations and gifts	14,081	14,873
Job Retention Scheme	-	704
	<u>14,081</u>	<u>15,577</u>

4 Charitable activities

	Core Work	BHBF	Families in Mind	Volunteer training	Total 2023	Total 2022
	2023	2023	2023	2023		
	£	£	£	£	£	£
Performance related grants	<u>120,060</u>	<u>19,838</u>	<u>59,500</u>	<u>4,803</u>	<u>204,201</u>	<u>191,264</u>
NHS Hull Health & Care Partnership	119,238	-	-	-	119,238	(117,244)
Hull CCG - BHBF	-	-	-	-	-	(23,855)
Henry Smith Charity	-	-	59,500	-	59,500	(29,600)
Brelms Trust CIO	-	-	-	4,803	4,803	(4,755)
AFCT	-	-	-	-	-	(7,224)
ABP	-	-	-	-	-	(2,853)
Pears Recovery & Resilience Grant	822	-	-	-	822	(5,733)
Sir James Reckitt Charity	-	19,838	-	-	19,838	-

**HOME-START (HULL)
COMPANY LIMITED BY GUARANTEE
NOTES TO THE FINANCIAL STATEMENTS (CONTINUED)
FOR THE YEAR ENDED 31 MARCH 2023**

4 Charitable activities

(Continued)

For the year ended 31 March 2022

	Core Work	BHBF	Families in Mind	Beverley project	Volunteer training	Total 2022
	£	£	£	£	£	£
Performance related grants	122,977	23,855	29,600	11,979	2,853	191,264
NHS Hull Health & Care Partnership	117,244	-	-	-	-	117,244
Hull CCG - BHBF	-	23,855	-	-	-	23,855
Henry Smith Charity	-	-	29,600	-	-	29,600
Brelms Trust CIO	-	-	-	4,755	-	4,755
AFCT	-	-	-	7,224	-	7,224
ABP	-	-	-	-	2,853	2,853
Pears Recovery & Resilience Grant	5,733	-	-	-	-	5,733

5 Other trading activities

	Unrestricted funds	Unrestricted funds
	2023	2022
	£	£
Trading activity income:	2,053	6,131

6 Investments

	Unrestricted funds	Unrestricted funds
	2023	2022
	£	£
Interest receivable	531	129

7 Raising funds

	Unrestricted funds	Unrestricted funds
	2023	2022
	£	£
<u>Fundraising and publicity</u>		
Fundraising costs	5,850	1,256

HOME-START (HULL)
COMPANY LIMITED BY GUARANTEE
NOTES TO THE FINANCIAL STATEMENTS (CONTINUED)
FOR THE YEAR ENDED 31 MARCH 2023

7	Raising funds						(Continued)
						_____	_____
	<u>Trading costs</u>					590	665
	Other trading activities					_____	_____
						6,440	1,921
						=====	=====
8	Charitable activities	Core Work	BHBF	Families in Mind	Beverley project	Total 2023	Total 2022
		2023	2023	2023	2023		
		£	£	£	£	£	£
	Staff costs	116,910	6,216	45,749	12,913	181,788	150,306
	Charitable expenses	5,268	7,315	580	1,162	14,325	30,609
		_____	_____	_____	_____	_____	_____
		122,178	13,531	46,329	14,075	196,113	180,915
	Share of support costs (see note 9)	11,465	97	13,085	14	24,661	27,055
	Share of governance costs (see note 9)	5,137	-	-	-	5,137	840
		_____	_____	_____	_____	_____	_____
		138,780	13,628	59,414	14,089	225,911	208,810
		=====	=====	=====	=====	=====	=====
	Analysis by fund						
	Unrestricted funds	7,771	-	-	-	7,771	1,902
	Restricted funds	131,009	13,628	59,414	14,089	218,140	206,908
		_____	_____	_____	_____	_____	_____
		138,780	13,628	59,414	14,089	225,911	208,810
		=====	=====	=====	=====	=====	=====

**HOME-START (HULL)
COMPANY LIMITED BY GUARANTEE
NOTES TO THE FINANCIAL STATEMENTS (CONTINUED)
FOR THE YEAR ENDED 31 MARCH 2023**

8 Charitable activities

(Continued)

For the year ended 31 March 2022

	Core Work £	BHBF £	Families in Mind £	Beverley project £	Awards for All £	Total 2022 £
Staff costs	105,971	5,701	34,450	4,184	-	150,306
Charitable expenses	25,029	1,456	(3,057)	4,328	2,853	30,609
	<u>131,000</u>	<u>7,157</u>	<u>31,393</u>	<u>8,512</u>	<u>2,853</u>	<u>180,915</u>
Share of support costs (see note 9)	10,025	1,164	13,684	2,182	-	27,055
Share of governance costs (see note 9)	840	-	-	-	-	840
	<u>141,865</u>	<u>8,321</u>	<u>45,077</u>	<u>10,694</u>	<u>2,853</u>	<u>208,810</u>
Analysis by fund						
Unrestricted funds	1,275	-	-	627	-	1,902
Restricted funds	140,590	8,321	45,077	10,067	2,853	206,908
	<u>141,865</u>	<u>8,321</u>	<u>45,077</u>	<u>10,694</u>	<u>2,853</u>	<u>208,810</u>

9 Support costs

	Support costs £	Governance costs £	2023 £	Support costs £	Governance costs £	2022 £
Accommodation costs	17,934	-	17,934	12,476	-	12,476
IT costs	1,794	-	1,794	1,484	-	1,484
Telephone	1,551	-	1,551	1,399	-	1,399
Utilities	1,860	-	1,860	1,442	-	1,442
Office costs	1,522	-	1,522	9,414	-	9,414
Professional fees	-	840	840	-	840	840
AGM costs	-	4,297	4,297	-	-	-
	<u>24,661</u>	<u>5,137</u>	<u>29,798</u>	<u>26,215</u>	<u>840</u>	<u>27,055</u>
Analysed between Charitable activities	<u>24,661</u>	<u>5,137</u>	<u>29,798</u>	<u>27,055</u>	<u>840</u>	<u>27,055</u>

Governance costs includes payments to the independent examiner of £840 (2022- £840) for professional fees.

**HOME-START (HULL)
COMPANY LIMITED BY GUARANTEE
NOTES TO THE FINANCIAL STATEMENTS (CONTINUED)
FOR THE YEAR ENDED 31 MARCH 2023**

10 Trustees

None of the trustees (or any persons connected with them) received any remuneration during the year.

11 Employees

The average monthly number of employees during the year was:

	2023	2022
	Number	Number
Administration	3	1
Service delivery	6	8
	<u>9</u>	<u>9</u>
Total	<u>9</u>	<u>9</u>
	2023	2022
	£	£
Employment costs		
Wages and salaries	181,788	150,306
	<u>181,788</u>	<u>150,306</u>

There were no employees whose annual remuneration was more than £60,000.

12 Taxation

The charity is exempt from tax on income and gains falling within section 505 of the Taxes Act 1988 or section 252 of the Taxation of Chargeable Gains Act 1992 to the extent that these are applied to its charitable objects.

13 Tangible fixed assets

	Fixtures, fittings & equipment
	£
Cost	
At 1 April 2022	7,706
At 31 March 2023	<u>7,706</u>
Depreciation and impairment	
At 1 April 2022	7,395
Depreciation charged in the year	47
At 31 March 2023	<u>7,442</u>
Carrying amount	
At 31 March 2023	<u>264</u>
At 31 March 2022	<u>311</u>

**HOME-START (HULL)
COMPANY LIMITED BY GUARANTEE
NOTES TO THE FINANCIAL STATEMENTS (CONTINUED)
FOR THE YEAR ENDED 31 MARCH 2023**

14 Creditors: amounts falling due within one year	2023	2022
	£	£
Accruals and deferred income	1,681	1,682
	<u> </u>	<u> </u>

15 Retirement benefit schemes

The charity operates a defined contribution pension scheme for all qualifying employees. The assets of the scheme are held separately from those of the charity in an independently administered fund.

**HOME-START (HULL)
COMPANY LIMITED BY GUARANTEE
NOTES TO THE FINANCIAL STATEMENTS (CONTINUED)
FOR THE YEAR ENDED 31 MARCH 2023**

16 Restricted funds

The income funds of the charity include restricted funds comprising the following unexpended balances of donations and grants held on trust for specific purposes:

	Balance at 1 April 2021		Movement in funds			Movement in funds			Balance at 31 March 2023		
	£	£	Incoming Resources	Outgoing Resources	Transfers	Balance at 1 April 2022	Incoming Resources	Outgoing Resources	Transfers	£	£
Core work	13,704		122,977	(140,590)	5,527	1,618	120,060	(131,008)	9,330	-	-
Sir James Reckitt Charity - BHBF	-		23,855	(8,320)	-	15,535	19,838	(13,628)	-	21,745	
Henry Smith Charity - Families in Mind	29,158		29,600	(45,078)	-	13,680	59,500	(59,414)	-	13,766	
Brelms Trust CIO - Beverley project	-		11,979	(10,067)	13,524	15,436	4,803	(14,089)	-	6,150	
ABP - Volunteer training	-		2,853	(2,853)	-	-	-	-	-	-	
	42,862		191,264	(206,908)	19,051	46,269	204,201	(218,139)	9,330	41,660	

**HOME-START (HULL)
COMPANY LIMITED BY GUARANTEE
NOTES TO THE FINANCIAL STATEMENTS (CONTINUED)
FOR THE YEAR ENDED 31 MARCH 2023**

17 Designated funds

The income funds of the charity include the following designated funds which have been set aside out of unrestricted funds by the trustees for specific purposes:

	Movement in funds			Movement in funds		
	Balance at 1 April 2021 £	Transfers in £	Transfers out £	Balance at 1 April 2022 £	Transfers in £	Balance at 31 March 2023 £
Contingency fund	50,000	-	-	50,000	-	50,000
Beverley project	13,524	5,351	(18,875)	-	-	-
Covid support	866	-	(866)	-	-	-
	<u>64,390</u>	<u>5,351</u>	<u>(19,741)</u>	<u>50,000</u>	<u>-</u>	<u>50,000</u>

18 Analysis of net assets between funds

	Unrestricted 2023 £	Restricted 2023 £	Total Unrestricted 2023 £	Unrestricted 2022 £	Restricted 2022 £	Total 2022 £
Fund balances at 31 March 2023 are represented by:						
Tangible assets	264	-	264	311	-	311
Current assets/(liabilities)	101,475	41,660	143,135	108,304	46,269	154,573
	<u>101,739</u>	<u>41,660</u>	<u>143,399</u>	<u>108,615</u>	<u>46,269</u>	<u>154,884</u>

19 Related party transactions

There were no disclosable related party transactions during the year (2022 - none).

HOME-START (HULL)

England & Wales - Charity number 1105574

Accounts

Charity Registration No. 1105574

Company Registration No. 5200713 (England and Wales)

HOME-START (HULL)
COMPANY LIMITED BY GUARANTEE
ANNUAL REPORT AND UNAUDITED FINANCIAL STATEMENTS
FOR THE YEAR ENDED 31 MARCH 2022

Fawley Judge & Easton
Chartered Certified Accountants
1 Parliament Street
Hull
East Yorkshire
HU1 2AS

**HOME-START (HULL)
COMPANY LIMITED BY GUARANTEE
LEGAL AND ADMINISTRATIVE INFORMATION**

Trustees

Pamela Owen
Sam McGaw
Emma Pickering
Lorna Morris
Heather Barnes
Elaine Porter
Margaret Corless
J Burton

(Appointed 9 September
2022)

Secretary

Caroline Watson

Charity number

1105574

Company number

5200713

Independent examiner

Fawley Judge & Easton
Chartered Certified Accountants
1 Parliament Street
Hull
East Yorkshire
HU1 2AS

HOME-START (HULL) COMPANY LIMITED BY GUARANTEE CONTENTS

	Page
Trustees' report	1 - 3
Independent examiner's report	4
Statement of financial activities	5
Balance sheet	6 - 7
Notes to the financial statements	8 - 17

**HOME-START (HULL)
COMPANY LIMITED BY GUARANTEE
TRUSTEES' REPORT (INCLUDING DIRECTORS' REPORT)
FOR THE YEAR ENDED 31 MARCH 2022**

The trustees, who are also directors for the purposes of company law, present their report and the un-audited financial statements of the charity for the year ended 31 March 2022.

The accounts have been prepared in accordance with the accounting policies set out in note 1 to the accounts and comply with the charity's governing document, the Companies Act 2006 and the Statement of Recommended Practice, "Accounting and Reporting by Charities", issued in March 2005.

Objectives and activities

The charity's objects are to safeguard and preserve the good health, both mental and physical of children and parents of children, to prevent cruelty to or maltreatment of children, to relieve sickness, poverty and need amongst children and parents of children and to promote the education of the public in better standards of child care within the area of Hull and its environs. The policies adopted in furtherance of these objects are applied by the committee and there has been no change in these during the year.

To provide support to a minimum of 100 new families using home-visiting volunteers. This is our core work.

To support an additional 25 families per year on our Families in Mind project funded by the National Lottery Community Fund until October 2021 and then by the Henry Smith Charity from January 2022. This project has been adapted from our previous project supporting parents with mental illness.

To offer new volunteers the chance to complete the preparation training on various days and times throughout the year including evenings, weekends and summer holidays and to continue our offer to existing volunteers of specialist training from both within the organisation and from external providers.

To offer quality training to staff, volunteers and trustees through professional development opportunities and accredited modules, including additional external training in identified areas.

To offer support to an additional 16 families in Beverley and the surrounding area. This project was funded provided by Two Ridings Fund and Brelms Trust jointly.

The trustees have paid due regard to guidance issued by the Charity Commission in deciding what activities the charity should undertake.

Home Start Hull applies for funding of its activities through the application via tendering processes to be successful in each application. The result is Service Contracts or Grants are received to fulfil the specific area identified. The following

To increase the support available to families through both the core work and projects. Current target of 125 families.

To maintain current staffing levels and volunteer numbers.

To assess whether we need to expand our services to families

To maintain our current representation on the Trustees board.

To continue to develop the Fundraising Committee and discuss long-term goals for continuous fundraising ideas.

HOME-START (HULL) COMPANY LIMITED BY GUARANTEE TRUSTEES' REPORT (CONTINUED)(INCLUDING DIRECTORS' REPORT) FOR THE YEAR ENDED 31 MARCH 2022

Achievements and performance

The scheme supported 102 families this year through the core work, 25 through the Families in Mind project, and 13 through the Beverley project, by 67 home-visiting volunteers.

We have successfully completed the final year of our NHS Hull CCG contract and achieved the targets required by the service specification. As a result of this, we have been able to secure a three-year contract for the core work from the Hull Health & Care Partnership.

We were successful in securing one year funding from NHS Hull CCG (now Hull Health & Care Partnership) to pilot the school readiness project Big Hopes Big Future starting from September 2021. This project supported 16 children during the first six months.

We were successful in our grant application to The Henry Smith Charity for three years funding for our Families in Mind project starting in January 2022.

We were successful in securing funding from the Armed Forces Covenant Fund Trust to begin working with families at DST Leconfield from April 2022.

The volunteers and families were supported by 9 trustees and 9 staff during the year. (Joanne Boasman, Gemma Brown, Charlotte Dunstan, Kelly Sykes, Bridget Marvin-Smelt, Helen Percy, Phil Vincent, Caroline Watson, and Kizzy White.)

All staff, volunteers and trustees continue to complete role appropriate training including Safeguarding Children's Partnership training.

We delivered 9 volunteer preparation courses recruiting a total of 16 new volunteers. We were able to offer accreditation to volunteers as of January 2022 through a partnership with Home-Start Birmingham who are acting as a centre with the Skills & Education Group. To date, 6 new volunteers have chosen to accredit at intermediate level.

75% of volunteers leaving the scheme this year (15 out of 20) did so for work and training and we offered 4 student placements contributing to their educational experience.

We offered additional training in the 'Prevent' strategy, Hull Safeguarding Children's Partnership sources of stress, Big Hopes Big Future school readiness, Parental conflict, suicide awareness, gambling awareness and mental health awareness.

Despite the ongoing impact of COVID-19, we have successfully continued to support families and volunteers via phone/ text/ email and have adapted our working model to cover any potential future lockdowns, updating technology to enable remote working and offering online training and meeting options.

The board have reviewed the reserves set aside by the scheme and are satisfied that they cover the necessary requirements identified in the Reserves Policy. The Reserves covers four months of running costs plus redundancy costs.

We continue to look for ways to provide additional funding for the scheme and increase volunteer numbers.

There have been no incidents or near misses regarding information governance.

Financial review

The executive committee review the financial position regularly throughout the year.

It is the policy of the charity that unrestricted funds which have not been designated for a specific use should be maintained at a level equivalent to between three and six month's expenditure. The trustees consider that reserves at this level will ensure that, in the event of a significant drop in funding, they will be able to continue the charity's current activities while consideration is given to ways in which additional funds may be raised. This level of reserves has been maintained throughout the year.

**HOME-START (HULL)
COMPANY LIMITED BY GUARANTEE
TRUSTEES' REPORT (CONTINUED)(INCLUDING DIRECTORS' REPORT)
FOR THE YEAR ENDED 31 MARCH 2022**

The Charity receives income from donations, grants and interest from its investment. For 2022 this income amounted to £213,101 (2021 £263,752). Its income is used to finance direct charitable expenditure and other indirect expenditure amounting to £208,810 (2021- £223,691). The Executive Committee report a net surplus before transfers of £2,370 for the year under review compared to a net surplus of £40,061 in 2021.

Our reserves include cash and bank balances of £156,255

The trustees have assessed the major risks to which the charity is exposed, and are satisfied that systems are in place to mitigate exposure to the major risks.

The Board recognise that over the next five years, the amount of funding from the CCG will decrease each year and have planned provision to cover a predicted shortfall as costs increase due to workplace pensions and increased costs associated with volunteer training and DBS checks.

We continue to look for ways to provide additional funding for the scheme

Structure, governance and management

The charity is a company limited by guarantee and has been registered as a charity.

The trustees, who are also the directors for the purpose of company law, and who served during the year and up to the date of signature of the financial statements were:

Audrey Marshall (Resigned 10 September 2021)

Pamela Owen

Sam McGaw

Emma Pickering

Lorna Morris

Dave Edeson (Resigned 13 December 2021)

Heather Barnes

Elaine Porter

Margaret Corless

J Burton (Appointed 9 September 2022)

The current trustees continue to seek new trustees as vacancies or skills profiles are required from the general public and those associated in the area the charity operates.

None of the trustees has any beneficial interest in the company. All of the trustees are members of the company and guarantee to contribute £1 in the event of a winding up.

The organisation is managed by an Executive Committee comprising of no fewer than 4 members and not more than 12 members. All the trustees sit on this committee.

Home Start Hull is a member of the Home Start UK organisation which provides areas of support to the organisation. Service Agreements are entered into with various providers operating in this area

The trustees' report was approved by the Board of Trustees.

Caroline Watson

Secretary

Dated: 29 September 2022

**HOME-START (HULL)
COMPANY LIMITED BY GUARANTEE
INDEPENDENT EXAMINER'S REPORT
TO THE TRUSTEES OF HOME-START (HULL)**

I report to the trustees on my examination of the financial statements of Home-Start (Hull) (the charity) for the year ended 31 March 2022.

Responsibilities and basis of report

As the trustees of the charity (and also its directors for the purposes of company law) you are responsible for the preparation of the financial statements in accordance with the requirements of the Companies Act 2006 (the 2006 Act).

Having satisfied myself that the financial statements of the charity are not required to be audited under Part 16 of the 2006 Act and are eligible for independent examination, I report in respect of my examination of the charity's financial statements carried out under section 145 of the Charities Act 2011 (the 2011 Act). In carrying out my examination I have followed all the applicable Directions given by the Charity Commission under section 145(5)(b) of the 2011 Act.

Independent examiner's statement

I have completed my examination. I confirm that no matters have come to my attention in connection with the examination giving me cause to believe that in any material respect:

- 1 accounting records were not kept in respect of the charity as required by section 386 of the 2006 Act; or
- 2 the financial statements do not accord with those records; or
- 3 the financial statements do not comply with the accounting requirements of section 396 of the 2006 Act other than any requirement that the accounts give a true and fair view which is not a matter considered as part of an independent examination; or
- 4 the financial statements have not been prepared in accordance with the methods and principles of the Statement of Recommended Practice for accounting and reporting by charities applicable to charities preparing their accounts in accordance with the Financial Reporting Standard applicable in the UK and Republic of Ireland (FRS 102).

I have no concerns and have come across no other matters in connection with the examination to which attention should be drawn in this report in order to enable a proper understanding of the financial statements to be reached.

Jonathan M Leathley
Fawley Judge & Easton
Chartered Certified Accountants
1 Parliament Street
Hull
East Yorkshire
HU1 2AS

Dated: 29 September 2022

**HOME-START (HULL)
COMPANY LIMITED BY GUARANTEE
STATEMENT OF FINANCIAL ACTIVITIES
INCLUDING INCOME AND EXPENDITURE ACCOUNT
FOR THE YEAR ENDED 31 MARCH 2022**

		Unrestricted funds 2022 £	Restricted funds 2022 £	Total Unrestricted funds 2022 £	Restricted funds 2021 £	Total 2021 £
	Notes					
Income from:						
Donations and legacies	3	15,577	-	15,577	27,927	27,927
Charitable activities	4	-	191,264	191,264	18,170	231,035
Other trading activities	5	6,131	-	6,131	3,631	3,631
Investments	6	129	-	129	1,159	1,159
Total income		<u>21,837</u>	<u>191,264</u>	<u>213,101</u>	<u>50,887</u>	<u>263,752</u>
Expenditure on:						
Raising funds	7	1,921	-	1,921	15,957	15,957
Charitable activities	8	1,902	206,908	208,810	32,553	207,734
Total expenditure		<u>3,823</u>	<u>206,908</u>	<u>210,731</u>	<u>48,510</u>	<u>223,691</u>
Net incoming/(outgoing) resources before transfers		18,014	(15,644)	2,370	2,377	40,061
Gross transfers between funds		(19,051)	19,051	-	(5,178)	-
Net (expenditure)/income for the year/ Net movement in funds		<u>(1,037)</u>	<u>3,407</u>	<u>2,370</u>	<u>(2,801)</u>	<u>40,061</u>
Fund balances at 1 April 2021		<u>109,652</u>	<u>42,862</u>	<u>152,514</u>	<u>112,453</u>	<u>112,453</u>
Fund balances at 31 March 2022		<u><u>108,615</u></u>	<u><u>46,269</u></u>	<u><u>154,884</u></u>	<u><u>109,652</u></u>	<u><u>152,514</u></u>

The statement of financial activities includes all gains and losses recognised in the year.

All income and expenditure derive from continuing activities.

The statement of financial activities also complies with the requirements for an income and expenditure account under the Companies Act 2006.

**HOME-START (HULL)
COMPANY LIMITED BY GUARANTEE
BALANCE SHEET**

AS AT 31 MARCH 2022

	Notes	2022		2021	
		£	£	£	£
Fixed assets					
Tangible assets	12		311		366
Current assets					
Cash at bank and in hand		156,255		153,829	
Creditors: amounts falling due within one year	13	(1,682)		(1,681)	
Net current assets			154,573		152,148
Total assets less current liabilities			154,884		152,514
Income funds					
Core work		1,618		13,704	
Families in Mind		13,680		29,158	
BHBF		15,535		-	
Beverley Project		15,436		-	
	15		46,269		42,862
<u>Unrestricted funds</u>					
Designated funds	16	50,000		64,390	
General unrestricted funds		58,615		45,262	
			108,615		109,652
			154,884		152,514

**HOME-START (HULL)
COMPANY LIMITED BY GUARANTEE
BALANCE SHEET (CONTINUED)
AS AT 31 MARCH 2022**

The company is entitled to the exemption from the audit requirement contained in section 477 of the Companies Act 2006, for the year ended 31 March 2022.

The directors acknowledge their responsibilities for complying with the requirements of the Companies Act 2006 with respect to accounting records and the preparation of financial statements.

The members have not required the company to obtain an audit of its financial statements for the year in question in accordance with section 476.

These financial statements have been prepared in accordance with the provisions applicable to companies subject to the small companies regime.

The financial statements were approved by the Trustees on 29 September 2022

Sam McGaw
Trustee

Company registration number 5200713

HOME-START (HULL) COMPANY LIMITED BY GUARANTEE NOTES TO THE FINANCIAL STATEMENTS FOR THE YEAR ENDED 31 MARCH 2022

1 Accounting policies

Charity information

Home-Start (Hull) is a private company limited by guarantee incorporated in England and Wales.

1.1 Accounting convention

The financial statements have been prepared in accordance with the charity's [governing document], the Companies Act 2006, FRS 102 "The Financial Reporting Standard applicable in the UK and Republic of Ireland" ("FRS 102") and the Charities SORP "Accounting and Reporting by Charities: Statement of Recommended Practice applicable to charities preparing their accounts in accordance with the Financial Reporting Standard applicable in the UK and Republic of Ireland (FRS 102)" (effective 1 January 2019). The charity is a Public Benefit Entity as defined by FRS 102.

The charity has taken advantage of the provisions in the SORP for charities not to prepare a Statement of Cash Flows.

The financial statements are prepared in sterling, which is the functional currency of the charity. Monetary amounts in these financial statements are rounded to the nearest £.

The financial statements have been prepared under the historical cost convention, [modified to include the revaluation of freehold properties and to include investment properties and certain financial instruments at fair value]. The principal accounting policies adopted are set out below.

1.2 Going concern

At the time of approving the financial statements, the trustees have a reasonable expectation that the charity has adequate resources to continue in operational existence for the foreseeable future. Thus the trustees continue to adopt the going concern basis of accounting in preparing the financial statements.

1.3 Charitable funds

Unrestricted funds are available for use at the discretion of the trustees in furtherance of their charitable objectives.

Restricted funds are subject to specific conditions by donors as to how they may be used. The purposes and uses of the restricted funds are set out in the notes to the financial statements.

Endowment funds are subject to specific conditions by donors that the capital must be maintained by the charity.

1.4 Income

Income is recognised when the charity is legally entitled to it after any performance conditions have been met, the amounts can be measured reliably, and it is probable that income will be received.

Cash donations are recognised on receipt. Other donations are recognised once the charity has been notified of the donation, unless performance conditions require deferral of the amount. Income tax recoverable in relation to donations received under Gift Aid or deeds of covenant is recognised at the time of the donation.

Legacies are recognised on receipt or otherwise if the charity has been notified of an impending distribution, the amount is known, and receipt is expected. If the amount is not known, the legacy is treated as a contingent asset.

1.5 Expenditure

Expenditure incurred by the organisation is accounted for on an accruals basis. Items relating to operational matters are charged to the SOFA, and any capital items to the Balance Sheet.

**HOME-START (HULL)
COMPANY LIMITED BY GUARANTEE
NOTES TO THE FINANCIAL STATEMENTS (CONTINUED)
FOR THE YEAR ENDED 31 MARCH 2022**

1 Accounting policies (Continued)

1.6 Tangible fixed assets

Tangible fixed assets are initially measured at cost and subsequently measured at cost or valuation, net of depreciation and any impairment losses.

Depreciation is recognised so as to write off the cost or valuation of assets less their residual values over their useful lives on the following bases:

Fixtures, fittings & equipment	15% - written down value
--------------------------------	--------------------------

The gain or loss arising on the disposal of an asset is determined as the difference between the sale proceeds and the carrying value of the asset, and is recognised in the statement of financial activities.

1.7 Impairment of fixed assets

At each reporting end date, the charity reviews the carrying amounts of its tangible assets to determine whether there is any indication that those assets have suffered an impairment loss. If any such indication exists, the recoverable amount of the asset is estimated in order to determine the extent of the impairment loss (if any).

1.8 Cash and cash equivalents

Cash and cash equivalents include cash in hand, deposits held at call with banks, other short-term liquid investments with original maturities of three months or less, and bank overdrafts. Bank overdrafts are shown within borrowings in current liabilities.

Basic financial assets

Basic financial assets, which include debtors and cash and bank balances, are initially measured at transaction price including transaction costs and are subsequently carried at amortised cost using the effective interest method unless the arrangement constitutes a financing transaction, where the transaction is measured at the present value of the future receipts discounted at a market rate of interest. Financial assets classified as receivable within one year are not amortised.

Basic financial liabilities

Basic financial liabilities, including creditors and bank loans are initially recognised at transaction price unless the arrangement constitutes a financing transaction, where the debt instrument is measured at the present value of the future payments discounted at a market rate of interest. Financial liabilities classified as payable within one year are not amortised.

Debt instruments are subsequently carried at amortised cost, using the effective interest rate method.

Trade creditors are obligations to pay for goods or services that have been acquired in the ordinary course of operations from suppliers. Amounts payable are classified as current liabilities if payment is due within one year or less. If not, they are presented as non-current liabilities. Trade creditors are recognised initially at transaction price and subsequently measured at amortised cost using the effective interest method.

Derecognition of financial liabilities

Financial liabilities are derecognised when the charity's contractual obligations expire or are discharged or cancelled.

**HOME-START (HULL)
COMPANY LIMITED BY GUARANTEE
NOTES TO THE FINANCIAL STATEMENTS (CONTINUED)
FOR THE YEAR ENDED 31 MARCH 2022**

1 Accounting policies (Continued)

1.9 Employee benefits

The cost of any unused holiday entitlement is recognised in the period in which the employee's services are received.

Termination benefits are recognised immediately as an expense when the charity is demonstrably committed to terminate the employment of an employee or to provide termination benefits.

2 Critical accounting estimates and judgements

In the application of the charity's accounting policies, the trustees are required to make judgements, estimates and assumptions about the carrying amount of assets and liabilities that are not readily apparent from other sources. The estimates and associated assumptions are based on historical experience and other factors that are considered to be relevant. Actual results may differ from these estimates.

The estimates and underlying assumptions are reviewed on an ongoing basis. Revisions to accounting estimates are recognised in the period in which the estimate is revised where the revision affects only that period, or in the period of the revision and future periods where the revision affects both current and future periods.

3 Donations and legacies

	Unrestricted funds	Unrestricted funds
	2022	2021
	£	£
Donations and gifts	14,873	15,909
Job Retention Scheme	704	12,018
	<u>15,577</u>	<u>27,927</u>

**HOME-START (HULL)
COMPANY LIMITED BY GUARANTEE
NOTES TO THE FINANCIAL STATEMENTS (CONTINUED)
FOR THE YEAR ENDED 31 MARCH 2022**

4 Charitable activities

	Core Work	BHBF	Families in Mind	Beverley project	Volunteer training	Total 2022	Total 2021
	2022	2022	2022	2022	2022		
	£	£	£	£	£	£	£
Performance related grants	(122,977)	(23,855)	(29,600)	(11,979)	(2,853)	(191,264)	(231,035)
	=====	=====	=====	=====	=====	=====	=====
Analysis by fund							
Unrestricted funds							(18,170)
Restricted funds	(122,977)	(23,855)	(29,600)	(11,979)	(2,853)	(191,264)	(212,865)
	=====	=====	=====	=====	=====	=====	=====
NHS Hull CCG	117,244					(117,244)	(114,945)
Hull CCG - BHBF		23,855				(23,855)	(3,500)
Henry Smith			29,600			(29,600)	(58,456)
Brelms Trust CIO				4,755		(4,755)	(39,464)
AFCT				7,224		(7,224)	(4,670)
ABP					2,853	(2,853)	(10,000)
Pears Recovery & Resilience Grant	5,733					(5,733)	

For the year ended 31 March 2021

	Core Work	Families in Mind	Beverley project	Awards for All	Total 2021
	£	£	£	£	£
Performance related grants	(114,945)	(58,456)	(18,170)	(39,464)	(231,035)
	=====	=====	=====	=====	=====
Analysis by fund					
Unrestricted funds			(18,170)		(18,170)
Restricted funds	(114,945)	(58,456)		(39,464)	(212,865)
	=====	=====	=====	=====	=====
	(114,945)	(58,456)	(18,170)	(39,464)	(231,035)
	=====	=====	=====	=====	=====

**HOME-START (HULL)
COMPANY LIMITED BY GUARANTEE
NOTES TO THE FINANCIAL STATEMENTS (CONTINUED)
FOR THE YEAR ENDED 31 MARCH 2022**

4	Charitable activities	(Continued)			
		Core Work	Families in Mind	Bev project	Awards for All
	NHS Hull CCG	114,945			(114,945)
	Hull CCG - BHBF			3,500	(3,500)
	TNL Community Fund		58,456		(58,456)
	TNL Community Fund uplift				39,464
	The Brelms Trust CIO			4,670	(4,670)
	Two Ridings			10,000	(10,000)
5	Other trading activities				
				Unrestricted funds	Unrestricted funds
				2022	2021
				£	£
	Trading activity income:			6,131	3,631
				<u> </u>	<u> </u>
6	Investments				
				Unrestricted funds	Unrestricted funds
				2022	2021
				£	£
	Interest receivable			129	1,159
				<u> </u>	<u> </u>
7	Raising funds				
				Unrestricted funds	Unrestricted funds
				2022	2021
				£	£
	<u>Fundraising and publicity</u>				
	Fundraising costs			1,256	10,960
				<u> </u>	<u> </u>
	<u>Trading costs</u>				
	Other trading activities			665	4,997
				<u> </u>	<u> </u>
				1,921	15,957
				<u> </u>	<u> </u>

**HOME-START (HULL)
COMPANY LIMITED BY GUARANTEE
NOTES TO THE FINANCIAL STATEMENTS (CONTINUED)
FOR THE YEAR ENDED 31 MARCH 2022**

9 Support costs

	Support costs £	Governance costs £	2022 £	2021 £	Basis of allocation
Accommodation costs	12,476	-	12,476	16,102	
IT costs	1,484	-	1,484	3,555	
Telephone	1,399	-	1,399	649	
Utilities	1,442	-	1,442	1,629	
Office costs	9,414	-	9,414	6,642	
Professional fees	-	840	840	840	Governance
	<u>26,215</u>	<u>840</u>	<u>27,055</u>	<u>29,417</u>	
Analysed between Charitable activities	<u>27,055</u>	<u>840</u>	<u>27,895</u>	<u>29,417</u>	

Governance costs includes payments to the independent examiner of £840 (2021- £840) for professional fees.

10 Trustees

None of the trustees (or any persons connected with them) received any remuneration during the year.

11 Employees

The average monthly number of employees during the year was:

	2022 Number	2021 Number
Adminstration	1	2
Service delivery	8	8
Total	<u>9</u>	<u>10</u>

Employment costs

	2022 £	2021 £
Wages and salaries	<u>150,306</u>	<u>152,711</u>

There were no employees whose annual remuneration was more than £60,000.

HOME-START (HULL)
COMPANY LIMITED BY GUARANTEE
NOTES TO THE FINANCIAL STATEMENTS (CONTINUED)
FOR THE YEAR ENDED 31 MARCH 2022

12 Tangible fixed assets	Fixtures, fittings & equipment	
	£	
Cost		
At 1 April 2021		7,706
		<u> </u>
At 31 March 2022		7,706
		<u> </u>
Depreciation and impairment		
At 1 April 2021		7,340
Depreciation charged in the year		55
		<u> </u>
At 31 March 2022		7,395
		<u> </u>
Carrying amount		
At 31 March 2022		311
		<u> </u>
At 31 March 2021		366
		<u> </u>

13 Creditors: amounts falling due within one year	2022	2021
	£	£
Accruals and deferred income	1,682	1,681
	<u> </u>	<u> </u>

14 Retirement benefit schemes

The charity operates a defined contribution pension scheme for all qualifying employees. The assets of the scheme are held separately from those of the charity in an independently administered fund.

**HOME-START (HULL)
COMPANY LIMITED BY GUARANTEE
NOTES TO THE FINANCIAL STATEMENTS (CONTINUED)
FOR THE YEAR ENDED 31 MARCH 2022**

15 Restricted funds

The income funds of the charity include restricted funds comprising the following unexpended balances of donations and grants held on trust for specific purposes:

	Movement in funds				Movement in funds			
	Incoming Resources	Outgoing Resources	Transfers	Balance at 1 April 2021	Incoming Resources	Outgoing Resources	Transfers	Balance at 31 March 2022
	£	£	£	£	£	£	£	£
Core work	114,945	(106,129)	4,888	13,704	122,977	(140,590)	5,527	1,618
BHBF	-	-	-	-	23,855	(8,320)	-	15,535
Families in Mind	58,456	(29,588)	290	29,158	29,600	(45,078)	-	13,680
Beverley project	-	-	-	-	11,979	(10,067)	13,524	15,436
Volunteer training	-	-	-	-	2,853	(2,853)	-	-
Awards for All	39,464	(39,464)	-	-	-	-	-	-
	<u>212,865</u>	<u>(175,182)</u>	<u>5,178</u>	<u>42,862</u>	<u>191,264</u>	<u>(206,908)</u>	<u>19,051</u>	<u>46,269</u>

**HOME-START (HULL)
COMPANY LIMITED BY GUARANTEE
NOTES TO THE FINANCIAL STATEMENTS (CONTINUED)
FOR THE YEAR ENDED 31 MARCH 2022**

16 Designated funds

The income funds of the charity include the following designated funds which have been set aside out of unrestricted funds by the trustees for specific purposes:

	Movement in funds			Movement in funds			Balance at 31 March 2022 £
	Balance at 1 April 2020 £	Transfers in £	Transfers out £	Balance at 1 April 2021 £	Transfers in £	Transfers out £	
Contingency fund	50,000	-	-	50,000	-	-	50,000
ASC	10,686	13,164	(23,850)	-	-	-	-
Beverley project	3,683	20,021	(10,180)	13,524	5,351	(18,875)	-
Covid support	-	3,720	(2,854)	866	-	(866)	-
	<u>64,369</u>	<u>36,905</u>	<u>(36,884)</u>	<u>64,390</u>	<u>5,351</u>	<u>(19,741)</u>	<u>50,000</u>

17 Analysis of net assets between funds

	Unrestricted 2022 £	Restricted 2022 £	Total 2022 £	Unrestricted 2021 £	Restricted 2021 £	Total 2021 £
Fund balances at 31 March 2022 are represented by:						
Tangible assets	311	-	311	366	-	366
Current assets/ (liabilities)	108,304	46,269	154,573	109,286	42,862	152,148
	<u>108,615</u>	<u>46,269</u>	<u>154,884</u>	<u>109,652</u>	<u>42,862</u>	<u>152,514</u>

18 Related party transactions

There were no disclosable related party transactions during the year (2021 - none).

HOME-START (HULL)

England & Wales - Charity number 1105574

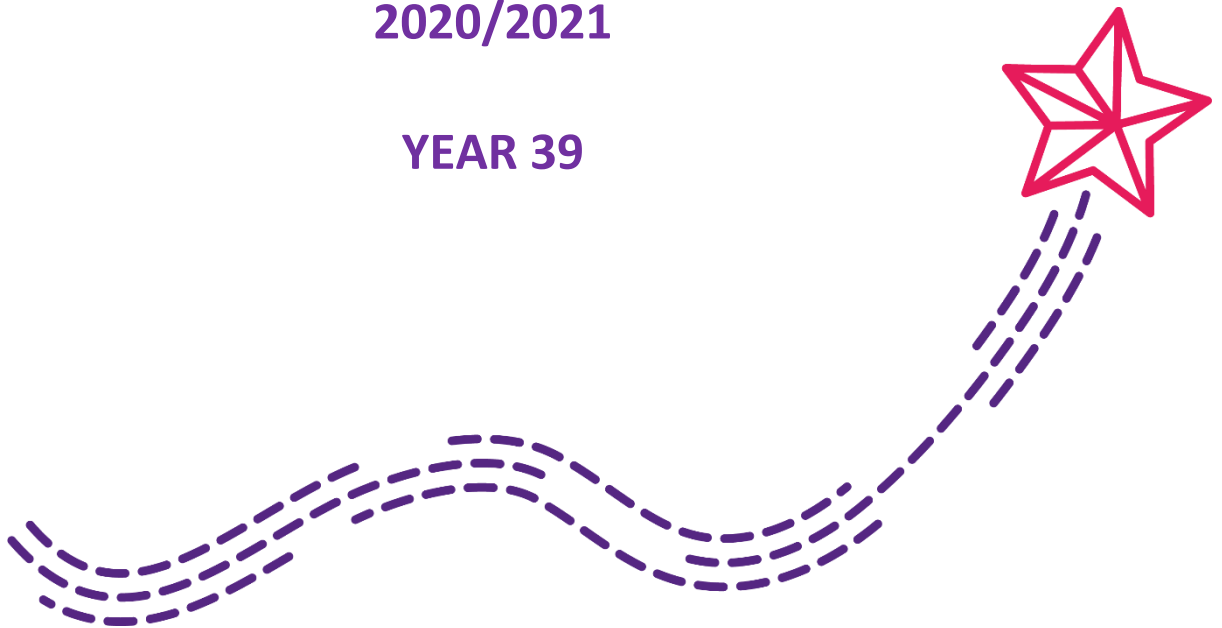
Accounts



Hull

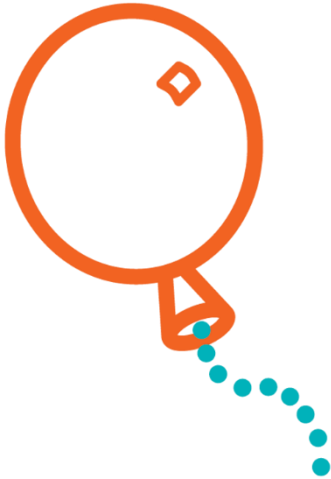
Home-Start (Hull) Annual Report and Accounts
2020/2021

YEAR 39



We Are: Home-Start (Hull)

Home-Start Hull is more than an organisation as a whole; we are the sum of all our parts. And without them we wouldn't be what we are!

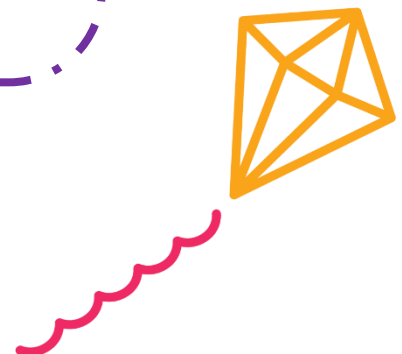


Trustees

Chairman:	Sam McGaw
Vice Chairman:	Audrey Marshall BEM
Treasurer:	Margaret Corless
Trustees:	Pam Owen Emma Pickering Lorna Morris Dave Edeson Heather Barnes Elaine Porter
Company Secretary:	Caroline Watson
Registered Members:	Shirley Gray Elizabeth Vokes

Staff

Caroline Watson	Scheme Manager
Kelly Sykes-Moody	Administration and Finance Officer
Jo Boasman	Organiser
Phil Vincent	Organiser
Bridget Marvin-Smelt	Families in Mind Organiser
Charlotte Dunstan	Beverley Organiser
Gemma Brown	Sustainability Project Organiser
Helen Percy	Administrative Assistant



Audrey Marshall BEM Retirement!

Home-Start (Hull) was one of the first schemes to be set up nearly 40 years ago and, right from the start, there was a representative from the police on the steering group. Once the organisation became established, the police asked one of their police women to represent them on the trustee board. With few women on the police force when Audrey joined, she tended to end up dealing with situations involving women and/ or children and this gave her the perfect insight into working with families that was needed for Home-Start. Even after retiring from the force, Audrey continued in her voluntary capacity on the board and sat as the Chair for many years, only having a break for a few months. Alongside her many other commitments, supporting her extended family and friends, as well as being a member of Soroptimists, National Society of Retired Police Officers (NARPO) and very active in her church, Audrey has continued to sit on the Board of Trustees and has now done so for more years than she was in paid employment!

In 2016, Audrey decided that the time had come to step down from the position of Chair of the Board and took up the position of Vice Chair. Audrey has now decided that the time has come to enjoy her retirement and leave the board altogether.

We can't thank her enough for all her support, advice and guidance over the past 38 years and we look forward to spending time together in a more unofficial capacity.

On behalf of the Board of Trustees, staff, volunteers and families, we can't thank you enough for all your hard work and dedication to improving the lives of the people of Hull. You've earned a break!



What do we do?

Home-Start is a voluntary organisation, which is committed to promoting the welfare of families with at least one child under five years of age.

Volunteers offer regular support, friendship and practical help to families under stress in their own homes helping to prevent family crisis and breakdown.

Our services

Home Visiting Support

Families are matched with a volunteer who provides home and community support to them for 2-3 hours per week

Families in Mind (FIM)

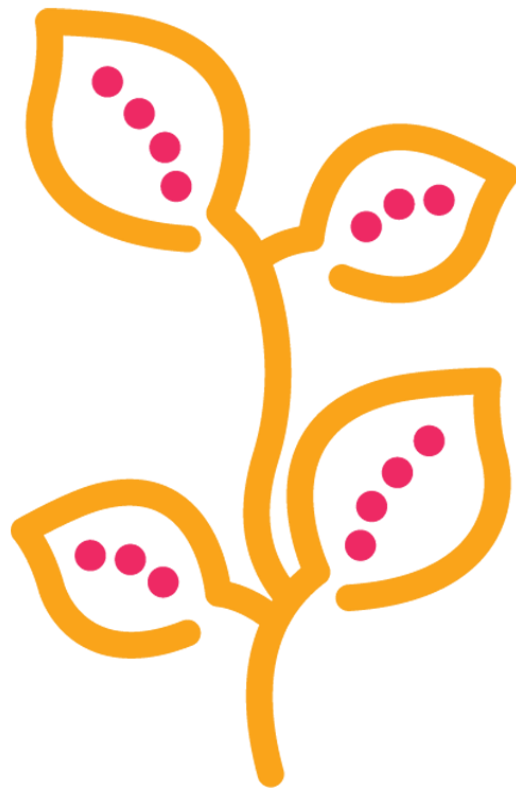
Home visiting support for families where parents have long term and enduring mental health problems

Big Hopes Big Future

Home-visiting support for families to help their children be ready for school.

Beverley

Our volunteer home-visiting support for families in Beverley.



Our aims

As stated in the Standards and Methods of Practice of Local Home-Starts, we aim to increase the confidence and independence of the family by:



- Offering support, friendship and practical assistance.
- Visiting families in their own homes, where the dignity and identity of each adult and child can be respected and protected.
- Reassuring parents that difficulties in bringing up children are not unusual and encouraging them to enjoy family life.
- Developing a relationship with the family in which time can be shared and understanding can be developed – the approach is flexible to take account of different needs.
- Encouraging parents' strengths and emotional well-being for the ultimate benefit of their children.
- Encouraging families to widen their network of relationships and to use effectively the support and services available within the community.

HOME-START (HULL) VOLUNTEERS
AS AT OCTOBER 2021

*Volunteering is a creative and flexible act.
 It takes imagination, dedication and energy to perform.*

PAM O	16 YEARS	NIKKI A	3 YEARS
LIZ R	12 YEARS	NICKY J	3 YEARS
KATHRYN Y	11 YEARS	MOLLIE B	3 YEARS
ELAINE P	10½	ANGIE A	3 YEARS
	YEARS		
KIM S	8¼ YEARS	TERESA B	2 YEARS
TERRI C	8¼ YEARS	ELAINE P	2 YEARS
SARAH U	7 YEARS	MICHELLE F	2 YEARS
DIANE N	6 ½	CHELSEY L	2 YEARS
	YEARS		
DAVID P	5 ½	CHELSEA C	2 YEARS
	YEARS		
CHRISTINE A	5 ½	SAM B	2 YEARS
	YEARS		
KATRINA I	5 YEARS	DEBBIE C	2 YEARS
FLORENCE O	5 YEARS	KRISTINA R	1 YEAR
RACHAEL P	5 YEARS	SYLVIA K	1 YEAR
KATH H	5 YEARS	STACEY P	1 YEAR
LAURA H	5 YEARS	VICKY B	1 YEAR
AMY G	4 YEARS	SOPHIE C	3 MONTHS
LEEANN T	4 YEARS	MARIE L	3 MONTHS
DEBBIE L	4 YEARS	JULIE I	3 MONTHS
SABRINA J	4 YEARS	LINDSEY B	1 MONTH
KATIE J	3 YEARS	FRANCESCA H	1 MONTH
TERESA B	3 YEARS		

CHAIR'S REPORT 2021 – SAM MCGAW

Thank you for taking the time and having the interest to read our Annual Report. Welcome!

There is much to be proud of in Home-Start Hull. Through the strange times of the ongoing pandemic, we have maintained a presence with our families, we have provided support to many of them above the expectations in "normal" times. Thanks to the dedication, commitment and flexibility of all our staff members, and acknowledging the response from our funders too, we have survived to start to look forward with some hope to the future.

Of course it has not been an easy year, and delivery practices have been amended and varied, but we have done what we set out to do which is to provide support to families where it is most needed. Our volunteers have done amazingly well to keep with us, and to keep providing support to families even when that has, of necessity, had to be remote. Thank you all volunteers.

Unprecedented times, and some sadnesses have occurred. Many have faced a cruel virus, social distancing became quite usual, and furlough became a common word. Our losses in people and areas of work are keenly felt. It has meant saying goodbye to Chris and Charlotte as we had to close our After School Club. During the year we said (virtually so far) goodbye to Jane our Treasurer who retired. We have also heard of the death of William Vokes, our former treasurer. Bill was one of our scheme "members", we will miss his cheerful support. We will miss the good advice, work and support of Audrey, for so many years the head of our Home-Start family as she retires from the Board of Trustees.

Equally there are signs of new work ahead that raise our hopes as Trustees. Many a "zoom" meeting has taken place, and my thanks to the other trustees for their support. We are up to the point of the "white knuckle ride" through bidding to funders for support for our work and to develop new opportunities in line with our ethos and skills. Of course I believe it is immensely worthwhile, but the bids have to be written, the deliverables identified and measured, and we may not succeed in the bidding. The next year will certainly be challenging, and full of interest. I greatly appreciate and want to record thanks to Caroline, our Scheme Manager, still steering the ship through the choppy waters with skill, commitment, expertise and cheerfulness.

Let us all hope for a calmer year ahead, reason to hope the pandemic is behind us, and fulfilment in knowing that, for many families we have been able to make a positive difference and brought a brighter future.



Caroline Watson - Scheme Managers Report

This year seems to have gone on forever in a lot of ways. We've seen big changes to society and the way we work as an organisation. The pandemic has brought about new ways of working and we've moved forward with plans to go paperless. The one thing that has remained reassuringly constant through the last year, has been the commitment of our team in ensuring support to families who need it most.

Our families and volunteers have been so incredibly resilient and supportive and we've enjoyed having more time to chat and get to know them as staff have continued phone support up until September 2021. We are now finding our way back to home-visiting and trying to do so safely.

We moved to our new database, Charitylog in October 2020 and this has helped us to manage families, volunteers, staff and trustees remotely using one system. We are still getting used to it and making it work for us but once things are totally "back to normal", we are hoping we will be much more streamlined.

Christmas 2020 gave us the opportunity to take presents to all our families and goody bags to all our volunteers. It's the first time since I have been at Home-Start that we haven't had a party and Christmas dinner which was really sad and missed by us all but we certainly made the most of our doorstep visits to have a good chat and a catch up.

As soon as we were able to, we started holding events for families. We were lucky to have some amazing weather for our teddy bears picnic in West Park with a lovely lunch donated by Waitrose. It was so nice to be back enjoying being around people and see the children having a brilliant time. We managed a trip to Big Fun once that reopened and spent the summer at Playday events across the City.

We are now back in the office every day but in two separate bubbles. The mix of home working and office based is different for us but it's good to be able to do some work as a team again.

I was really sad when we finally had to admit defeat and close our After School Club at Easter this year. The club was another victim of COVID as the income became too unpredictable and working hours changed for families so need decreased. We received such glowing messages of support and thanks from the parents, it was truly a shame to wrap up all our hard work. I can't thank Chris and Charl enough for making it such a fun and exciting place for the children. We continue to maintain our Ofsted registration to keep our options open for future work in this area.

The year ahead is uncertain in some respects in terms of funding with our Families in Mind project coming to an end in October and the NHS Hull CCG contract finishing in March 2022, but we also have some exciting new work starting with funding from the CCG to pilot our school readiness programme, Big Hopes Big Future, and contribute to improving the lives of children for their education needs.

Beverley continues to be an area of development and we are talking to Normandy Barracks about providing support to families on the base.

I've definitely learnt from the past year that we never know what's coming next but one thing I am sure of is that the amazing volunteers, staff and trustees will continue to find a way to support the families who need us most. My thanks feels like it is never enough but it is truly heartfelt.

I was really saddened to hear about the loss of Bill Vokes and my heart goes out to his wife, Liz. Both have been such a constant source of support and encouragement since I joined Home-Start. Bill would call to chat about what was happening in the organisation and wish us all well. I know we will miss him and his big smile greatly. As a former treasurer, his expertise around the accounts were reassuring to me and he always offered to vote to accept the accounts at the AGM with the words, "It would be my great honour..." I will miss his faith in our work and operations.

I am so sorry to lose Audrey from our trustee's board. It was Audrey, alongside Chris Davies, who interviewed me when I applied for the Senior Organiser position. She has been a wise and supportive role model, always there to listen when I need her. I am looking forward to popping round for a cuppa and catching up at Christmas dinner (without bringing papers to sign). I am always amazed by the amount of time and energy she has put into Home-Start, as well as her other voluntary roles in other organisations. I admire her greatly but I suppose we should let her enjoy her retirement finally. Just remember, you don't get rid of us that easily!

ORGANISER'S REPORTS

Phil Vincent- North Hull, North Carr and Riverside

The past 12 Months has seen me continue my role as Organiser in the North Hull, North Carr and Riverside areas of the cities. It has been a strange year for us all with the pandemic and having to be more creative in how we attract new volunteers while supporting our existing volunteers and indeed our families. Much of the support offered has been over the telephone or through on line meetings on Zoom and Microsoft Teams. (Who had even heard of such technology 18months ago). But it has really helped us provide the best support we can for both families and volunteers alike.

I have been able to do some doorstep visits to families with much needed and appreciated items and gifts. I have also done similar with some of my volunteers which has been nice. Hopefully, now the restrictions have been lifted, we can once again start to do what we do best and home visit families and volunteers and provide much needed support to those in need. Fingers crossed we don't have another lockdown (Another word seldom used or even heard of 18 months ago).

As always a big thank you to all the volunteers who have continued to support families in these difficult and strange times. You are a credit to yourselves and Home-Start.

Jo Boasman – East, Parks & Wyke area

This year has been another busy year of working from home to more recently a gradual return to the office and home visits. It has been lovely to see our families, old and new, after so long and have been welcomed back into their homes. Events for the majority have been scaled down with limited places but National Play Day was well attended and offered a good opportunity to catch up with other services after so long, it was nice to see people having fun ☺ Our volunteers continue to be amazing and committed to their role and are now looking forward to home visiting once again.

Bridget Marvin-Smelt - Families in Mind Project

The Families in Mind project has been running since May 2016 and has now had its final year, and also the 6 month uplift we got during COVID has now finished.

The Families in Mind project aimed to support 25 families a year with dedicated volunteers. It has been a very different 20 months, from March 2019 onwards, but we have continued to support families just in a different way. The volunteers have all continued to support their families by telephone, and we have done welfare visits and drop offs of essentials. It has been positive that support has continued for all families even if it has been in a different way, and families have engaged well with it. There are new plans in the future and so I feel we will continue to give support in a variety of ways. There are funding bids in at present to be able to carry on this work for another three years which would be great if we were able to secure. At present in the interim I am continuing to support families and volunteers, with some home visiting now taking place which has been lovely, it's nice to see people face to face again.

The project is well known to other agencies and they are referring to the Families in Mind project even in these different times.

I continue to enjoy my work at Home-Start Hull and look forward to new challenges that it offers.



Charlotte Dunstan - Beverley Organiser

Despite another challenging year of navigating our way through changes and restrictions brought about by the Covid-19 pandemic, we have continued to adapt our support for families as staff and volunteers. In the Beverley area we have offered telephone support throughout and once able, also visited a small number of families face-to-face in outside spaces. It has been fantastic to hear from volunteers and families the difference these opportunities for support and fun together have made.

When in-person contact with volunteers has not been possible, we have visited families on their doorsteps with supplies and gifts for the children. We have offered support when families have had to isolate. I know this contact, even if it has just been a text saying we are there if they need, has made a big difference at a challenging time.

I continue to keep close contact with other VCSE partners in the East Riding and now we are once again offering home visits I am working my way around visiting toddler groups and community centres to talk to families about what we do. I look forward to hopefully getting more families on board soon as the awareness of the scheme in Beverley continues to grow amongst other professionals in the East Riding.

Gemma Brown - Sustainability Project Organiser

That was a long 3 weeks working from home, wasn't it? Having finally returned to the office only a few weeks ago I can now reflect back on what a weird time this has been. Yet throughout it we still managed to keep the service running, provide support to our families and appreciate exactly what kind of effort is needed for that. We have been super busy with funding applications, figuring out how we deliver our projects to the community and how the scheme will look in the new post covid world. Our social media has been buzzing and we are excited to move forward with enthusiasm and optimism. I haven't laid off the biscuits yet (a common theme amongst my AGM briefs), and whilst I'm glad to be back in the office I am going to miss my fridge at home. Always proud to work here amongst an incredible team seeing the amazing outcomes they achieve. Started off here for 6 months. Three and a half years later I'm still here, and truly still proud to be a part of it all.



Our thanks to the following for their support during 2020 - 2021

NHS HULL CCG
SIR JAMES RECKITT CHARITY
LIZ VOKES
VAL WOOD
PRESTON METHODIST CHURCH
HULL MOTHERS UNION
ANLABY WI
LOUISE HUTTY
HUMBER LEARNING CONSORTIUM
ASDA HESSLE ROAD

NATIONAL LOTTERY COMMUNITY FUND
BRELMs TRUST
SHIRLEY GRAY
RICHARD GORE
MRS B CAWKWELL
MOTHER HUMBER
THE RANK FOUNDATION
TWO RIDINGS FOUNDATION
WAITROSE WILLERBY
TESCO





Charity Registration No. 1105574

Company Registration No. 5200713 (England and Wales)

HOME-START (HULL)
COMPANY LIMITED BY GUARANTEE
ANNUAL REPORT AND UNAUDITED FINANCIAL STATEMENTS
FOR THE YEAR ENDED 31 MARCH 2021

Fawley Judge & Easton
Chartered Certified Accountants
1 Parliament Street
Hull
East Yorkshire
HU1 2AS

**HOME-START (HULL)
COMPANY LIMITED BY GUARANTEE
LEGAL AND ADMINISTRATIVE INFORMATION**

Trustees

Pamela Owen
Sam McGaw
Emma Pickering
Lorna Morris
Dave Edeson
Heather Barnes
Elaine Porter
Margaret Corless

(Appointed 24 February
2021)

Secretary

Caroline Watson

Charity number

1105574

Company number

5200713

Independent examiner

Fawley Judge & Easton
Chartered Certified Accountants
1 Parliament Street
Hull
East Yorkshire
HU1 2AS

HOME-START (HULL) COMPANY LIMITED BY GUARANTEE CONTENTS

	Page
Trustees' report	1 - 3
Independent examiner's report	4
Statement of financial activities	5
Balance sheet	6 - 7
Notes to the financial statements	8 - 17

**HOME-START (HULL)
COMPANY LIMITED BY GUARANTEE
TRUSTEES' REPORT (INCLUDING DIRECTORS' REPORT)
FOR THE YEAR ENDED 31 MARCH 2021**

The trustees, who are also directors for the purposes of company law, present their report and the un-audited financial statements of the charity for the year ended 31 March 2021.

The accounts have been prepared in accordance with the accounting policies set out in note 1 to the accounts and comply with the charity's governing document, the Companies Act 2006 and the Statement of Recommended Practice, "Accounting and Reporting by Charities", issued in March 2005.

Objectives and activities

The charity's objects are to safeguard and preserve the good health, both mental and physical of children and parents of children, to prevent cruelty to or maltreatment of children, to relieve sickness, poverty and need amongst children and parents of children and to promote the education of the public in better standards of child care within the area of Hull and its environs. The policies adopted in furtherance of these objects are applied by the committee and there has been no change in these during the year.

To provide support to a minimum of 100 new families using home-visiting volunteers. This is our core work.
To support an additional 25 families per year on our Families in Mind project funded by the National Lottery Community Fund. This project was granted funding and started in May 2016. The project supports parents with a mental illness.

To offer new volunteers the chance to complete the preparation training on various days and times throughout the year including evenings, weekends and summer holidays and to continue our offer to existing volunteers of specialist training from both within the organisation and from external providers.

To offer quality training to staff, volunteers and trustees through professional development opportunities and accredited modules, including additional external training in identified areas.

To start delivery of the work in Beverley.

To start an after school club to bring additional funding to the scheme.

The trustees have paid due regard to guidance issued by the Charity Commission in deciding what activities the charity should undertake.

Home Start Hull applies for funding of its activities through the application via tendering processes to be successful in each application. The result is Service Contracts or Grants are received to fulfil the specific area identified. The following

To increase the support available to families through both the core work and projects. Current target of 125 families.

To maintain current staffing levels and volunteer numbers.

To assess whether we need to expand our services to families

To maintain our current representation on the Trustees board.

To continue to develop the Fundraising Committee and discuss long-term goals for continuous fundraising ideas.

HOME-START (HULL) COMPANY LIMITED BY GUARANTEE TRUSTEES' REPORT (CONTINUED)(INCLUDING DIRECTORS' REPORT) FOR THE YEAR ENDED 31 MARCH 2021

Achievements and performance

The scheme supported 82 families this year through the core work, 25 through the Families in Mind project, and 9 through the Beverley pilot, by 80 home-visiting volunteers. The After School Club had 13 children attend at different points. The volunteers and families were supported by 9 trustees and 10 staff during the year. (Joanne Boasman, Gemma Brown, Charlotte Dunstan, Kelly Sykes, Bridget Marvin-Smelt, Helen Percy, Christine Ravn, Phil Vincent, Caroline Watson, and Charlotte Woolhouse.

All staff, volunteers and trustees continue to complete role appropriate training including Safeguarding Children's Partnership training.

We delivered four volunteer preparation courses recruiting a total of 8 new volunteers. All volunteers who opted for accreditation received the maximum award of 3 credits at level two through Certa. Accreditation has been reviewed during the year as it is no longer offered through Certa. We have led a piece of partnership work with other Local Home-Start's nationwide to set up a new Centre. 57% of volunteers leaving the scheme this year did so for work and training and attribute their success at interview to their experience and training with Home-Start (Hull). We offered additional training in the 'Prevent' strategy, Supporting Challenging Behaviour in Children, Mental Health Awareness, and Psychological First Aid training and offered 3 volunteer group support opportunities.

We have successfully completed the sixth year of our CCG contract and achieved the targets required by the service specification. This contract will come to an end in March 2022. We have received funding to help families deal with the impact of COVID-19 and have utilised our partnership with Waitrose at Willerby to offer further support.

Despite the outbreak of COVID-19, we have successfully continued to support families and volunteers via phone/ text/ email and delivered emergency supplies to families and volunteers during lockdown.

Unfortunately, the after school club had to be closed at the end of March 2021 due to the impact of COVID-19. Income was lower and unstable, a member of staff had to shield which meant high agency staff costs, and children isolating or no longer needing places due to changes in parent's working circumstances. We maintain our Ofsted registration to enable us to look at Early Years sustainable income routes in future.

The board have reviewed the reserves set aside by the scheme and are satisfied that they cover the necessary requirements identified in the Reserves Policy. The Reserves covers four months of running costs plus redundancy costs.

We continue to look for ways to provide additional funding for the scheme.

There have been no incidents or near misses regarding information governance.

Financial review

The executive committee review the financial position regularly throughout the year.

It is the policy of the charity that unrestricted funds which have not been designated for a specific use should be maintained at a level equivalent to between three and six month's expenditure. The trustees considers that reserves at this level will ensure that, in the event of a significant drop in funding, they will be able to continue the charity's current activities while consideration is given to ways in which additional funds may be raised. This level of reserves has been maintained throughout the year.

The Charity receives income from donations, grants and interest from its investment. For 2021 this income amounted to £263,751 (2020 £205,575). Its income is used to finance direct charitable expenditure and other indirect expenditure amounting to £223,690 (2020- £213,263). The Executive Committee report a net surplus before transfers of £40,061 for the year under review compared to a net deficit of £7,688 in 2020.

Our reserves include cash and bank balances of £153,829.

The trustees has assessed the major risks to which the charity is exposed, and are satisfied that systems are in place to mitigate exposure to the major risks.

**HOME-START (HULL)
COMPANY LIMITED BY GUARANTEE
TRUSTEES' REPORT (CONTINUED)(INCLUDING DIRECTORS' REPORT)
FOR THE YEAR ENDED 31 MARCH 2021**

The Board recognise that over the next five years, the amount of funding from the CCG will decrease each year and have planned provision to cover a predicted shortfall as costs increase due to workplace pensions and increased costs associated with volunteer training and DBS checks.

We continue to look for ways to provide additional funding for the scheme

Structure, governance and management

The charity is a company limited by guarantee and has been registered as a charity.

The trustees, who are also the directors for the purpose of company law, and who served during the year and up to the date of signature of the financial statements were:

Audrey Marshall	(Resigned 10 September 2021)
Pamela Owen	
Jane Pollitt	(Resigned 15 July 2020)
Sam McGaw	
Emma Pickering	
Lorna Morris	
Dave Edeson	
Heather Barnes	
Elaine Porter	
Margaret Corless	(Appointed 24 February 2021)

The current trustees continue to seek new trustees as vacancies or skills profiles are required from the general public and those associated in the area the charity operates.

None of the trustees has any beneficial interest in the company. All of the trustees are members of the company and guarantee to contribute £1 in the event of a winding up.

The organisation is managed by an Executive Committee comprising of no fewer than 4 members and not more than 12 members. All the trustees sit on this committee.

Home Start Hull is a member of the Home Start UK organisation which provides areas of support to the organisation. Service Agreements are entered into with various providers operating in this area

The trustees' report was approved by the Board of Trustees.

Caroline Watson
Secretary
Dated: 7 October 2021

HOME-START (HULL) COMPANY LIMITED BY GUARANTEE INDEPENDENT EXAMINER'S REPORT TO THE TRUSTEES OF HOME-START (HULL)

I report to the trustees on my examination of the financial statements of Home-Start (Hull) (the charity) for the year ended 31 March 2021.

Responsibilities and basis of report

As the trustees of the charity (and also its directors for the purposes of company law) you are responsible for the preparation of the financial statements in accordance with the requirements of the Companies Act 2006 (the 2006 Act).

Having satisfied myself that the financial statements of the charity are not required to be audited under Part 16 of the 2006 Act and are eligible for independent examination, I report in respect of my examination of the charity's financial statements carried out under section 145 of the Charities Act 2011 (the 2011 Act). In carrying out my examination I have followed all the applicable Directions given by the Charity Commission under section 145(5)(b) of the 2011 Act.

Independent examiner's statement

Since the charity's gross income exceeded £250,000 your examiner must be a member of a body listed in section 145 of the 2011 Act. I confirm that I am qualified to undertake the examination because I am a member of ACCA, which is one of the listed bodies.

I have completed my examination. I confirm that no matters have come to my attention in connection with the examination giving me cause to believe that in any material respect:

- 1 accounting records were not kept in respect of the charity as required by section 386 of the 2006 Act; or
- 2 the financial statements do not accord with those records; or
- 3 the financial statements do not comply with the accounting requirements of section 396 of the 2006 Act other than any requirement that the accounts give a true and fair view which is not a matter considered as part of an independent examination; or
- 4 the financial statements have not been prepared in accordance with the methods and principles of the Statement of Recommended Practice for accounting and reporting by charities applicable to charities preparing their accounts in accordance with the Financial Reporting Standard applicable in the UK and Republic of Ireland (FRS 102).

I have no concerns and have come across no other matters in connection with the examination to which attention should be drawn in this report in order to enable a proper understanding of the financial statements to be reached.

Jonathan M Leathley
Fawley Judge & Easton
Chartered Certified Accountants
1 Parliament Street
Hull
East Yorkshire
HU1 2AS

Dated: 7 October 2021

**HOME-START (HULL)
COMPANY LIMITED BY GUARANTEE
STATEMENT OF FINANCIAL ACTIVITIES
INCLUDING INCOME AND EXPENDITURE ACCOUNT
FOR THE YEAR ENDED 31 MARCH 2021**

		Unrestricted funds 2021 £	Restricted funds 2021 £	Total 2021 £	Unrestricted funds 2020 £	Restricted funds 2020 £	Total 2020 £
	Notes						
Income from:							
Donations and legacies	3	42,597	-	42,597	23,348	-	23,348
Charitable activities	4	3,500	212,865	216,365	13,000	168,169	181,169
Other trading activities	5	3,631	-	3,631	-	-	-
Investments	6	1,159	-	1,159	1,058	-	1,058
Total income		<u>50,887</u>	<u>212,865</u>	<u>263,752</u>	<u>37,406</u>	<u>168,169</u>	<u>205,575</u>
Expenditure on:							
Raising funds	7	15,957	-	15,957	3,842	-	3,842
Charitable activities	8	32,553	175,181	207,734	25,530	183,891	209,421
Total resources expended		<u>48,510</u>	<u>175,181</u>	<u>223,691</u>	<u>29,372</u>	<u>183,891</u>	<u>213,263</u>
Net incoming/ (outgoing) resources before transfers		2,377	37,684	40,061	8,034	(15,722)	(7,688)
Gross transfers between funds		(5,178)	5,178	-	(5,773)	5,773	-
Net (expenditure)/income for the year/ Net movement in funds		<u>(2,801)</u>	<u>42,862</u>	<u>40,061</u>	<u>2,261</u>	<u>(9,949)</u>	<u>(7,688)</u>
Fund balances at 1 April 2020		<u>112,453</u>	<u>-</u>	<u>112,453</u>	<u>110,192</u>	<u>9,949</u>	<u>120,141</u>
Fund balances at 31 March 2021		<u><u>109,652</u></u>	<u><u>42,862</u></u>	<u><u>152,514</u></u>	<u><u>112,453</u></u>	<u><u>-</u></u>	<u><u>112,453</u></u>

The statement of financial activities includes all gains and losses recognised in the year.

All income and expenditure derive from continuing activities.

The statement of financial activities also complies with the requirements for an income and expenditure account under the Companies Act 2006.

**HOME-START (HULL)
COMPANY LIMITED BY GUARANTEE
BALANCE SHEET**

AS AT 31 MARCH 2021

	Notes	2021 £	£	2020 £	£
Fixed assets					
Tangible assets	12		366		445
Current assets					
Cash at bank and in hand		153,829		140,830	
Creditors: amounts falling due within one year	13	(1,681)		(28,822)	
Net current assets			152,148		112,008
Total assets less current liabilities			152,514		112,453
Income funds					
CCG - NHS Hull		13,704		-	
TNL Community Fund - Families in Mind		29,158		-	
	15		42,862		-
<u>Unrestricted funds</u>					
Designated funds	16	64,390		64,369	
General unrestricted funds		45,262		48,084	
			109,652		112,453
			152,514		112,453

**HOME-START (HULL)
COMPANY LIMITED BY GUARANTEE
BALANCE SHEET (CONTINUED)
AS AT 31 MARCH 2021**

The company is entitled to the exemption from the audit requirement contained in section 477 of the Companies Act 2006, for the year ended 31 March 2021.

The directors acknowledge their responsibilities for ensuring that the charity keeps accounting records which comply with section 386 of the Act and for preparing financial statements which give a true and fair view of the state of affairs of the company as at the end of the financial year and of its incoming resources and application of resources, including its income and expenditure, for the financial year in accordance with the requirements of sections 394 and 395 and which otherwise comply with the requirements of the Companies Act 2006 relating to financial statements, so far as applicable to the company.

The members have not required the company to obtain an audit of its financial statements for the year in question in accordance with section 476.

These financial statements have been prepared in accordance with the provisions applicable to companies subject to the small companies regime.

The financial statements were approved by the Trustees on 7 October 2021

Sam McGaw
Trustee

Company Registration No. 5200713

HOME-START (HULL) COMPANY LIMITED BY GUARANTEE NOTES TO THE FINANCIAL STATEMENTS FOR THE YEAR ENDED 31 MARCH 2021

1 Accounting policies

Charity information

Home-Start (Hull) is a private company limited by guarantee incorporated in England and Wales.

1.1 Accounting convention

The financial statements have been prepared in accordance with the charity's [governing document], the Companies Act 2006 and "Accounting and Reporting by Charities: Statement of Recommended Practice applicable to charities preparing their accounts in accordance with the Financial Reporting Standard applicable in the UK and Republic of Ireland (FRS 102) (effective 1 January 2019)". The charity is a Public Benefit Entity as defined by FRS 102.

The charity has taken advantage of the provisions in the SORP for charities applying FRS 102 Update Bulletin 1 not to prepare a Statement of Cash Flows.

The financial statements are prepared in sterling, which is the functional currency of the charity. Monetary amounts in these financial statements are rounded to the nearest £.

The financial statements have been prepared under the historical cost convention, modified to include the revaluation of freehold properties and to include investment properties and certain financial instruments at fair value. The principal accounting policies adopted are set out below.

1.2 Going concern

At the time of approving the financial statements, the trustees have a reasonable expectation that the charity has adequate resources to continue in operational existence for the foreseeable future. Thus the trustees continue to adopt the going concern basis of accounting in preparing the financial statements.

1.3 Charitable funds

Unrestricted funds are available for use at the discretion of the trustees in furtherance of their charitable objectives.

Restricted funds are subject to specific conditions by donors as to how they may be used. The purposes and uses of the restricted funds are set out in the notes to the financial statements.

Endowment funds are subject to specific conditions by donors that the capital must be maintained by the charity.

1.4 Income

Income is recognised when the charity is legally entitled to it after any performance conditions have been met, the amounts can be measured reliably, and it is probable that income will be received.

Cash donations are recognised on receipt. Other donations are recognised once the charity has been notified of the donation, unless performance conditions require deferral of the amount. Income tax recoverable in relation to donations received under Gift Aid or deeds of covenant is recognised at the time of the donation.

Legacies are recognised on receipt or otherwise if the charity has been notified of an impending distribution, the amount is known, and receipt is expected. If the amount is not known, the legacy is treated as a contingent asset.

1.5 Expenditure

Expenditure incurred by the organisation is accounted for on an accruals basis. Items relating to operational matters are charged to the SOFA, and any capital items to the Balance Sheet.

**HOME-START (HULL)
COMPANY LIMITED BY GUARANTEE
NOTES TO THE FINANCIAL STATEMENTS (CONTINUED)
FOR THE YEAR ENDED 31 MARCH 2021**

1 Accounting policies (Continued)

1.6 Tangible fixed assets

Tangible fixed assets are initially measured at cost and subsequently measured at cost or valuation, net of depreciation and any impairment losses.

Depreciation is recognised so as to write off the cost or valuation of assets less their residual values over their useful lives on the following bases:

Fixtures, fittings & equipment	15% - written down value
--------------------------------	--------------------------

The gain or loss arising on the disposal of an asset is determined as the difference between the sale proceeds and the carrying value of the asset, and is recognised in net income/(expenditure) for the year.

1.7 Impairment of fixed assets

At each reporting end date, the charity reviews the carrying amounts of its tangible assets to determine whether there is any indication that those assets have suffered an impairment loss. If any such indication exists, the recoverable amount of the asset is estimated in order to determine the extent of the impairment loss (if any).

1.8 Cash and cash equivalents

Cash and cash equivalents include cash in hand, deposits held at call with banks, other short-term liquid investments with original maturities of three months or less, and bank overdrafts. Bank overdrafts are shown within borrowings in current liabilities.

Basic financial assets

Basic financial assets, which include debtors and cash and bank balances, are initially measured at transaction price including transaction costs and are subsequently carried at amortised cost using the effective interest method unless the arrangement constitutes a financing transaction, where the transaction is measured at the present value of the future receipts discounted at a market rate of interest. Financial assets classified as receivable within one year are not amortised.

Basic financial liabilities

Basic financial liabilities, including creditors and bank loans are initially recognised at transaction price unless the arrangement constitutes a financing transaction, where the debt instrument is measured at the present value of the future payments discounted at a market rate of interest. Financial liabilities classified as payable within one year are not amortised.

Debt instruments are subsequently carried at amortised cost, using the effective interest rate method.

Trade creditors are obligations to pay for goods or services that have been acquired in the ordinary course of operations from suppliers. Amounts payable are classified as current liabilities if payment is due within one year or less. If not, they are presented as non-current liabilities. Trade creditors are recognised initially at transaction price and subsequently measured at amortised cost using the effective interest method.

Derecognition of financial liabilities

Financial liabilities are derecognised when the charity's contractual obligations expire or are discharged or cancelled.

**HOME-START (HULL)
COMPANY LIMITED BY GUARANTEE
NOTES TO THE FINANCIAL STATEMENTS (CONTINUED)
FOR THE YEAR ENDED 31 MARCH 2021**

1 Accounting policies (Continued)

1.9 Employee benefits

The cost of any unused holiday entitlement is recognised in the period in which the employee's services are received.

Termination benefits are recognised immediately as an expense when the charity is demonstrably committed to terminate the employment of an employee or to provide termination benefits.

1.10 Leases

Rentals payable under operating leases, including any lease incentives received, are charged as an expense on a straight line basis over the term of the relevant lease.

2 Critical accounting estimates and judgements

In the application of the charity's accounting policies, the trustees are required to make judgements, estimates and assumptions about the carrying amount of assets and liabilities that are not readily apparent from other sources. The estimates and associated assumptions are based on historical experience and other factors that are considered to be relevant. Actual results may differ from these estimates.

The estimates and underlying assumptions are reviewed on an ongoing basis. Revisions to accounting estimates are recognised in the period in which the estimate is revised where the revision affects only that period, or in the period of the revision and future periods where the revision affects both current and future periods.

3 Donations and legacies

	Unrestricted funds	Unrestricted funds
	2021	2020
	£	£
Donations and gifts	30,579	23,348
Job Retention Scheme	12,018	-
	<u>42,597</u>	<u>23,348</u>
	<u><u>42,597</u></u>	<u><u>23,348</u></u>

HOME-START (HULL)
COMPANY LIMITED BY GUARANTEE
NOTES TO THE FINANCIAL STATEMENTS (CONTINUED)
FOR THE YEAR ENDED 31 MARCH 2021

4 Charitable activities

	CCG -NHS Hull	TNL Com'ty Fund - FIM	James Reckitt Charity	Uplift Project	Total 2021	Total 2020
	2021	2021	2021	2021		
	£	£	£	£	£	£
Sales within charitable activities	-	-	-	-	-	9,930
Performance related grants	114,945	58,456	3,500	39,464	216,365	171,239
	<u>114,945</u>	<u>58,456</u>	<u>3,500</u>	<u>39,464</u>	<u>216,365</u>	<u>181,169</u>
	<u><u>114,945</u></u>	<u><u>58,456</u></u>	<u><u>3,500</u></u>	<u><u>39,464</u></u>	<u><u>216,365</u></u>	<u><u>181,169</u></u>
Analysis by fund						
Unrestricted funds	-	-	3,500	-	3,500	13,000
Restricted funds	114,945	58,456	-	39,464	212,865	168,169
	<u>114,945</u>	<u>58,456</u>	<u>3,500</u>	<u>39,464</u>	<u>216,365</u>	<u>181,169</u>
	<u><u>114,945</u></u>	<u><u>58,456</u></u>	<u><u>3,500</u></u>	<u><u>39,464</u></u>	<u><u>216,365</u></u>	<u><u>181,169</u></u>

For the year ended 31 March 2020

	CCG -NHS Hull	TNL Com'ty Fund - FIM	James Reckitt Charity	Awards for All	Total 2020
	£	£	£	£	£
Sales within charitable activities	-	-	-	9,930	9,930
Performance related grants	111,924	46,315	13,000	-	171,239
	<u>111,924</u>	<u>46,315</u>	<u>13,000</u>	<u>9,930</u>	<u>181,169</u>
	<u><u>111,924</u></u>	<u><u>46,315</u></u>	<u><u>13,000</u></u>	<u><u>9,930</u></u>	<u><u>181,169</u></u>
Analysis by fund					
Unrestricted funds	-	-	13,000	-	13,000
Restricted funds	111,924	46,315	-	9,930	168,169
	<u>111,924</u>	<u>46,315</u>	<u>13,000</u>	<u>9,930</u>	<u>181,169</u>
	<u><u>111,924</u></u>	<u><u>46,315</u></u>	<u><u>13,000</u></u>	<u><u>9,930</u></u>	<u><u>181,169</u></u>

**HOME-START (HULL)
COMPANY LIMITED BY GUARANTEE**
NOTES TO THE FINANCIAL STATEMENTS (CONTINUED)
FOR THE YEAR ENDED 31 MARCH 2021

5 Other trading activities

	Unrestricted funds	Total
	2021	2020
	£	£
Trading activity income: ASC	3,631	-
	<u>3,631</u>	<u>-</u>

6 Investments

	Unrestricted funds	Unrestricted funds
	2021	2020
	£	£
Interest receivable	1,159	1,058
	<u>1,159</u>	<u>1,058</u>

7 Raising funds

	Unrestricted funds	Unrestricted funds
	2021	2020
	£	£
<u>Fundraising and publicity</u>		
Fundraising costs	10,960	3,842
	<u>10,960</u>	<u>3,842</u>
<u>Trading costs</u>		
Other trading activities	4,997	-
	<u>4,997</u>	<u>-</u>
	<u>15,957</u>	<u>3,842</u>

HOME-START (HULL)
COMPANY LIMITED BY GUARANTEE
NOTES TO THE FINANCIAL STATEMENTS (CONTINUED)
FOR THE YEAR ENDED 31 MARCH 2021

8 Charitable activities

	CCG - NHS Hull 2021 £	TNL Comm'ty Fund - FIM 2021 £	James Reckitt Charity 2021 £	Awards for All 2021 £	Uplift Project 2021 £	Total 2021 £	Total 2020 £
Staff costs	96,975	20,367	10,180	-	25,189	152,711	155,386
Charitable expenses	23,172	101	-	-	2,333	25,606	28,074
	<u>120,147</u>	<u>20,468</u>	<u>10,180</u>	<u>-</u>	<u>27,522</u>	<u>178,317</u>	<u>183,460</u>
Share of support costs (see note 9)	7,515	9,120	-	-	11,942	28,577	25,121
Share of governance costs (see note 9)	840	-	-	-	-	840	840
	<u>128,502</u>	<u>29,588</u>	<u>10,180</u>	<u>-</u>	<u>39,464</u>	<u>207,734</u>	<u>209,421</u>
Analysis by fund							
Unrestricted funds	22,373	-	10,180	-	-	32,553	25,530
Restricted funds	106,129	29,588	-	-	39,464	175,181	183,891
	<u>128,502</u>	<u>29,588</u>	<u>10,180</u>	<u>-</u>	<u>39,464</u>	<u>207,734</u>	<u>209,421</u>
For the year ended 31 March 2020							
Unrestricted funds	19,213	-	6,317	-	-		25,530
Restricted funds	129,325	44,636	-	9,930	-		183,891
	<u>148,538</u>	<u>44,636</u>	<u>6,317</u>	<u>9,930</u>	<u>-</u>		<u>209,421</u>

**HOME-START (HULL)
COMPANY LIMITED BY GUARANTEE
NOTES TO THE FINANCIAL STATEMENTS (CONTINUED)
FOR THE YEAR ENDED 31 MARCH 2021**

9 Support costs

	Support costs £	Governance costs £	2021 £	2020 £	Basis of allocation
Accommodation costs	16,102	-	16,102	10,503	
IT costs	3,555	-	3,555	5,374	
Telephone	649	-	649	1,649	
Utilities	1,629	-	1,629	977	
Office costs	6,642	-	6,642	4,011	
Professional fees	-	840	840	840	Governance
	<u>28,577</u>	<u>840</u>	<u>29,417</u>	<u>23,354</u>	
Analysed between					
Charitable activities	<u>28,577</u>	<u>840</u>	<u>29,417</u>	<u>25,961</u>	

Governance costs includes payments to the independent examiner of £840 (2020- £840) for professional fees.

10 Trustees

None of the trustees (or any persons connected with them) received any remuneration during the year.

11 Employees

The average monthly number of employees during the year was:

	2021 Number	2020 Number
Adminstration	2	2
Service delivery	8	8
Total	<u>10</u>	<u>10</u>
Employment costs	2021 £	2020 £
Wages and salaries	<u>152,711</u>	<u>155,386</u>

There were no employees whose annual remuneration was £60,000 or more.

HOME-START (HULL)
COMPANY LIMITED BY GUARANTEE
NOTES TO THE FINANCIAL STATEMENTS (CONTINUED)
FOR THE YEAR ENDED 31 MARCH 2021

12 Tangible fixed assets

	Fixtures, fittings & equipment £
Cost	
At 1 April 2020	7,706
At 31 March 2021	<u>7,706</u>
Depreciation and impairment	
At 1 April 2020	7,261
Depreciation charged in the year	79
At 31 March 2021	<u>7,340</u>
Carrying amount	
At 31 March 2021	<u>366</u>
At 31 March 2020	<u>445</u>

13 Creditors: amounts falling due within one year

	2021 £	2020 £
Accruals and deferred income	<u>1,681</u>	<u>28,822</u>

14 Retirement benefit schemes

The charity operates a defined contribution pension scheme for all qualifying employees. The assets of the scheme are held separately from those of the charity in an independently administered fund.

HOME-START (HULL)
COMPANY LIMITED BY GUARANTEE
NOTES TO THE FINANCIAL STATEMENTS (CONTINUED)
FOR THE YEAR ENDED 31 MARCH 2021

15 Restricted funds

The income funds of the charity include restricted funds comprising the following unexpended balances of donations and grants held on trust for specific purposes:

	Movement in funds				Movement in funds				
	Balance at 1 April 2019 £	Incoming Resources £	Outgoing Resources £	Transfers £	Balance at 1 April 2020 £	Incoming Resources £	Outgoing Resources £	Transfers £	Balance at 31 March 2021 £
CCG - NHS Hull	9,949	111,924	(129,325)	7,452	-	114,945	(106,129)	4,888	13,704
The National Lottery Community Fund - Families in Mind	-	46,315	(44,636)	(1,679)	-	58,456	(29,588)	290	29,158
Awards for All	-	9,930	(9,930)	-	-	-	-	-	-
Uplift project	-	-	-	-	-	39,464	(39,464)	-	-
	<u>9,949</u>	<u>168,169</u>	<u>(183,891)</u>	<u>5,773</u>	<u>-</u>	<u>212,865</u>	<u>(175,182)</u>	<u>5,178</u>	<u>42,862</u>

**HOME-START (HULL)
COMPANY LIMITED BY GUARANTEE
NOTES TO THE FINANCIAL STATEMENTS (CONTINUED)
FOR THE YEAR ENDED 31 MARCH 2021**

16 Designated funds

The income funds of the charity include the following designated funds which have been set aside out of unrestricted funds by the trustees for specific purposes:

	Movement in funds			Movement in funds			Balance at 31 March 2021 £
	Balance at 1 April 2019 £	Transfers in £	Transfers out £	Balance at 1 April 2020 £	Transfers in £	Transfers out £	
Contingency fund	50,000	-	-	50,000	-	-	50,000
ASC	10,910	16,173	(16,397)	10,686	13,164	(23,850)	-
Beverley ORG	7,000	3,000	(6,317)	3,683	20,021	(10,180)	13,524
Covid Costs	-	-	-	-	3,720	(2,854)	866
	<u>67,910</u>	<u>19,173</u>	<u>(22,714)</u>	<u>64,369</u>	<u>36,905</u>	<u>(36,884)</u>	<u>64,390</u>

17 Analysis of net assets between funds

	Unrestricted 2021 £	Restricted 2021 £	Total 2021 £	Unrestricted 2020 £	Restricted 2020 £	Total 2020 £
Fund balances at 31 March 2021 are represented by:						
Tangible assets	366	-	366	445	-	445
Current assets/ (liabilities)	109,286	42,862	152,148	112,008	-	112,008
	<u>109,652</u>	<u>42,862</u>	<u>152,514</u>	<u>112,453</u>	<u>-</u>	<u>112,453</u>

18 Related party transactions

There were no disclosable related party transactions during the year (2020 - none).

Charity Registration No. 1105574

Company Registration No. 5200713 (England and Wales)

HOME-START (HULL)
COMPANY LIMITED BY GUARANTEE
ANNUAL REPORT AND UNAUDITED FINANCIAL STATEMENTS
FOR THE YEAR ENDED 31 MARCH 2021

Fawley Judge & Easton
Chartered Certified Accountants
1 Parliament Street
Hull
East Yorkshire
HU1 2AS

**HOME-START (HULL)
COMPANY LIMITED BY GUARANTEE
LEGAL AND ADMINISTRATIVE INFORMATION**

Trustees

Pamela Owen
Sam McGaw
Emma Pickering
Lorna Morris
Dave Edeson
Heather Barnes
Elaine Porter
Margaret Corless

(Appointed 24 February
2021)

Secretary

Caroline Watson

Charity number

1105574

Company number

5200713

Independent examiner

Fawley Judge & Easton
Chartered Certified Accountants
1 Parliament Street
Hull
East Yorkshire
HU1 2AS

HOME-START (HULL) COMPANY LIMITED BY GUARANTEE CONTENTS

	Page
Trustees' report	1 - 3
Independent examiner's report	4
Statement of financial activities	5
Balance sheet	6 - 7
Notes to the financial statements	8 - 17

**HOME-START (HULL)
COMPANY LIMITED BY GUARANTEE
TRUSTEES' REPORT (INCLUDING DIRECTORS' REPORT)
FOR THE YEAR ENDED 31 MARCH 2021**

The trustees, who are also directors for the purposes of company law, present their report and the un-audited financial statements of the charity for the year ended 31 March 2021.

The accounts have been prepared in accordance with the accounting policies set out in note 1 to the accounts and comply with the charity's governing document, the Companies Act 2006 and the Statement of Recommended Practice, "Accounting and Reporting by Charities", issued in March 2005.

Objectives and activities

The charity's objects are to safeguard and preserve the good health, both mental and physical of children and parents of children, to prevent cruelty to or maltreatment of children, to relieve sickness, poverty and need amongst children and parents of children and to promote the education of the public in better standards of child care within the area of Hull and its environs. The policies adopted in furtherance of these objects are applied by the committee and there has been no change in these during the year.

To provide support to a minimum of 100 new families using home-visiting volunteers. This is our core work.
To support an additional 25 families per year on our Families in Mind project funded by the National Lottery Community Fund. This project was granted funding and started in May 2016. The project supports parents with a mental illness.

To offer new volunteers the chance to complete the preparation training on various days and times throughout the year including evenings, weekends and summer holidays and to continue our offer to existing volunteers of specialist training from both within the organisation and from external providers.

To offer quality training to staff, volunteers and trustees through professional development opportunities and accredited modules, including additional external training in identified areas.

To start delivery of the work in Beverley.

To start an after school club to bring additional funding to the scheme.

The trustees have paid due regard to guidance issued by the Charity Commission in deciding what activities the charity should undertake.

Home Start Hull applies for funding of its activities through the application via tendering processes to be successful in each application. The result is Service Contracts or Grants are received to fulfil the specific area identified. The following

To increase the support available to families through both the core work and projects. Current target of 125 families.

To maintain current staffing levels and volunteer numbers.

To assess whether we need to expand our services to families

To maintain our current representation on the Trustees board.

To continue to develop the Fundraising Committee and discuss long-term goals for continuous fundraising ideas.

HOME-START (HULL) COMPANY LIMITED BY GUARANTEE TRUSTEES' REPORT (CONTINUED)(INCLUDING DIRECTORS' REPORT) FOR THE YEAR ENDED 31 MARCH 2021

Achievements and performance

The scheme supported 82 families this year through the core work, 25 through the Families in Mind project, and 9 through the Beverley pilot, by 80 home-visiting volunteers. The After School Club had 13 children attend at different points. The volunteers and families were supported by 9 trustees and 10 staff during the year. (Joanne Boasman, Gemma Brown, Charlotte Dunstan, Kelly Sykes, Bridget Marvin-Smelt, Helen Percy, Christine Ravn, Phil Vincent, Caroline Watson, and Charlotte Woolhouse.

All staff, volunteers and trustees continue to complete role appropriate training including Safeguarding Children's Partnership training.

We delivered four volunteer preparation courses recruiting a total of 8 new volunteers. All volunteers who opted for accreditation received the maximum award of 3 credits at level two through Certa. Accreditation has been reviewed during the year as it is no longer offered through Certa. We have led a piece of partnership work with other Local Home-Start's nationwide to set up a new Centre. 57% of volunteers leaving the scheme this year did so for work and training and attribute their success at interview to their experience and training with Home-Start (Hull). We offered additional training in the 'Prevent' strategy, Supporting Challenging Behaviour in Children, Mental Health Awareness, and Psychological First Aid training and offered 3 volunteer group support opportunities.

We have successfully completed the sixth year of our CCG contract and achieved the targets required by the service specification. This contract will come to an end in March 2022. We have received funding to help families deal with the impact of COVID-19 and have utilised our partnership with Waitrose at Willerby to offer further support.

Despite the outbreak of COVID-19, we have successfully continued to support families and volunteers via phone/ text/ email and delivered emergency supplies to families and volunteers during lockdown.

Unfortunately, the after school club had to be closed at the end of March 2021 due to the impact of COVID-19. Income was lower and unstable, a member of staff had to shield which meant high agency staff costs, and children isolating or no longer needing places due to changes in parent's working circumstances. We maintain our Ofsted registration to enable us to look at Early Years sustainable income routes in future.

The board have reviewed the reserves set aside by the scheme and are satisfied that they cover the necessary requirements identified in the Reserves Policy. The Reserves covers four months of running costs plus redundancy costs.

We continue to look for ways to provide additional funding for the scheme.

There have been no incidents or near misses regarding information governance.

Financial review

The executive committee review the financial position regularly throughout the year.

It is the policy of the charity that unrestricted funds which have not been designated for a specific use should be maintained at a level equivalent to between three and six month's expenditure. The trustees considers that reserves at this level will ensure that, in the event of a significant drop in funding, they will be able to continue the charity's current activities while consideration is given to ways in which additional funds may be raised. This level of reserves has been maintained throughout the year.

The Charity receives income from donations, grants and interest from its investment. For 2021 this income amounted to £263,751 (2020 £205,575). Its income is used to finance direct charitable expenditure and other indirect expenditure amounting to £223,690 (2020- £213,263). The Executive Committee report a net surplus before transfers of £40,061 for the year under review compared to a net deficit of £7,688 in 2020.

Our reserves include cash and bank balances of £153,829.

The trustees has assessed the major risks to which the charity is exposed, and are satisfied that systems are in place to mitigate exposure to the major risks.

**HOME-START (HULL)
COMPANY LIMITED BY GUARANTEE
TRUSTEES' REPORT (CONTINUED)(INCLUDING DIRECTORS' REPORT)
FOR THE YEAR ENDED 31 MARCH 2021**

The Board recognise that over the next five years, the amount of funding from the CCG will decrease each year and have planned provision to cover a predicted shortfall as costs increase due to workplace pensions and increased costs associated with volunteer training and DBS checks.

We continue to look for ways to provide additional funding for the scheme

Structure, governance and management

The charity is a company limited by guarantee and has been registered as a charity.

The trustees, who are also the directors for the purpose of company law, and who served during the year and up to the date of signature of the financial statements were:

Audrey Marshall	(Resigned 10 September 2021)
Pamela Owen	
Jane Pollitt	(Resigned 15 July 2020)
Sam McGaw	
Emma Pickering	
Lorna Morris	
Dave Edeson	
Heather Barnes	
Elaine Porter	
Margaret Corless	(Appointed 24 February 2021)

The current trustees continue to seek new trustees as vacancies or skills profiles are required from the general public and those associated in the area the charity operates.

None of the trustees has any beneficial interest in the company. All of the trustees are members of the company and guarantee to contribute £1 in the event of a winding up.

The organisation is managed by an Executive Committee comprising of no fewer than 4 members and not more than 12 members. All the trustees sit on this committee.

Home Start Hull is a member of the Home Start UK organisation which provides areas of support to the organisation. Service Agreements are entered into with various providers operating in this area

The trustees' report was approved by the Board of Trustees.

Caroline Watson
Secretary
Dated: 7 October 2021

HOME-START (HULL) COMPANY LIMITED BY GUARANTEE INDEPENDENT EXAMINER'S REPORT TO THE TRUSTEES OF HOME-START (HULL)

I report to the trustees on my examination of the financial statements of Home-Start (Hull) (the charity) for the year ended 31 March 2021.

Responsibilities and basis of report

As the trustees of the charity (and also its directors for the purposes of company law) you are responsible for the preparation of the financial statements in accordance with the requirements of the Companies Act 2006 (the 2006 Act).

Having satisfied myself that the financial statements of the charity are not required to be audited under Part 16 of the 2006 Act and are eligible for independent examination, I report in respect of my examination of the charity's financial statements carried out under section 145 of the Charities Act 2011 (the 2011 Act). In carrying out my examination I have followed all the applicable Directions given by the Charity Commission under section 145(5)(b) of the 2011 Act.

Independent examiner's statement

Since the charity's gross income exceeded £250,000 your examiner must be a member of a body listed in section 145 of the 2011 Act. I confirm that I am qualified to undertake the examination because I am a member of ACCA, which is one of the listed bodies.

I have completed my examination. I confirm that no matters have come to my attention in connection with the examination giving me cause to believe that in any material respect:

- 1 accounting records were not kept in respect of the charity as required by section 386 of the 2006 Act; or
- 2 the financial statements do not accord with those records; or
- 3 the financial statements do not comply with the accounting requirements of section 396 of the 2006 Act other than any requirement that the accounts give a true and fair view which is not a matter considered as part of an independent examination; or
- 4 the financial statements have not been prepared in accordance with the methods and principles of the Statement of Recommended Practice for accounting and reporting by charities applicable to charities preparing their accounts in accordance with the Financial Reporting Standard applicable in the UK and Republic of Ireland (FRS 102).

I have no concerns and have come across no other matters in connection with the examination to which attention should be drawn in this report in order to enable a proper understanding of the financial statements to be reached.

Jonathan M Leathley
Fawley Judge & Easton
Chartered Certified Accountants
1 Parliament Street
Hull
East Yorkshire
HU1 2AS

Dated: 7 October 2021

**HOME-START (HULL)
COMPANY LIMITED BY GUARANTEE
STATEMENT OF FINANCIAL ACTIVITIES
INCLUDING INCOME AND EXPENDITURE ACCOUNT
FOR THE YEAR ENDED 31 MARCH 2021**

		Unrestricted funds 2021 £	Restricted funds 2021 £	Total 2021 £	Unrestricted funds 2020 £	Restricted funds 2020 £	Total 2020 £
	Notes						
<u>Income from:</u>							
Donations and legacies	3	42,597	-	42,597	23,348	-	23,348
Charitable activities	4	3,500	212,865	216,365	13,000	168,169	181,169
Other trading activities	5	3,631	-	3,631	-	-	-
Investments	6	1,159	-	1,159	1,058	-	1,058
Total income		<u>50,887</u>	<u>212,865</u>	<u>263,752</u>	<u>37,406</u>	<u>168,169</u>	<u>205,575</u>
<u>Expenditure on:</u>							
Raising funds	7	15,957	-	15,957	3,842	-	3,842
Charitable activities	8	32,553	175,181	207,734	25,530	183,891	209,421
Total resources expended		<u>48,510</u>	<u>175,181</u>	<u>223,691</u>	<u>29,372</u>	<u>183,891</u>	<u>213,263</u>
Net incoming/ (outgoing) resources before transfers		2,377	37,684	40,061	8,034	(15,722)	(7,688)
Gross transfers between funds		(5,178)	5,178	-	(5,773)	5,773	-
Net (expenditure)/income for the year/ Net movement in funds		<u>(2,801)</u>	<u>42,862</u>	<u>40,061</u>	<u>2,261</u>	<u>(9,949)</u>	<u>(7,688)</u>
Fund balances at 1 April 2020		<u>112,453</u>	<u>-</u>	<u>112,453</u>	<u>110,192</u>	<u>9,949</u>	<u>120,141</u>
Fund balances at 31 March 2021		<u><u>109,652</u></u>	<u><u>42,862</u></u>	<u><u>152,514</u></u>	<u><u>112,453</u></u>	<u><u>-</u></u>	<u><u>112,453</u></u>

The statement of financial activities includes all gains and losses recognised in the year.

All income and expenditure derive from continuing activities.

The statement of financial activities also complies with the requirements for an income and expenditure account under the Companies Act 2006.

**HOME-START (HULL)
COMPANY LIMITED BY GUARANTEE
BALANCE SHEET**

AS AT 31 MARCH 2021

	Notes	2021 £	£	2020 £	£
Fixed assets					
Tangible assets	12		366		445
Current assets					
Cash at bank and in hand		153,829		140,830	
Creditors: amounts falling due within one year	13	(1,681)		(28,822)	
Net current assets			152,148		112,008
Total assets less current liabilities			152,514		112,453
Income funds					
CCG - NHS Hull		13,704		-	
TNL Community Fund - Families in Mind		29,158		-	
	15		42,862		-
<u>Unrestricted funds</u>					
Designated funds	16	64,390		64,369	
General unrestricted funds		45,262		48,084	
			109,652		112,453
			152,514		112,453

**HOME-START (HULL)
COMPANY LIMITED BY GUARANTEE
BALANCE SHEET (CONTINUED)
AS AT 31 MARCH 2021**

The company is entitled to the exemption from the audit requirement contained in section 477 of the Companies Act 2006, for the year ended 31 March 2021.

The directors acknowledge their responsibilities for ensuring that the charity keeps accounting records which comply with section 386 of the Act and for preparing financial statements which give a true and fair view of the state of affairs of the company as at the end of the financial year and of its incoming resources and application of resources, including its income and expenditure, for the financial year in accordance with the requirements of sections 394 and 395 and which otherwise comply with the requirements of the Companies Act 2006 relating to financial statements, so far as applicable to the company.

The members have not required the company to obtain an audit of its financial statements for the year in question in accordance with section 476.

These financial statements have been prepared in accordance with the provisions applicable to companies subject to the small companies regime.

The financial statements were approved by the Trustees on 7 October 2021

Sam McGaw
Trustee

Company Registration No. 5200713

HOME-START (HULL) COMPANY LIMITED BY GUARANTEE NOTES TO THE FINANCIAL STATEMENTS FOR THE YEAR ENDED 31 MARCH 2021

1 Accounting policies

Charity information

Home-Start (Hull) is a private company limited by guarantee incorporated in England and Wales.

1.1 Accounting convention

The financial statements have been prepared in accordance with the charity's [governing document], the Companies Act 2006 and "Accounting and Reporting by Charities: Statement of Recommended Practice applicable to charities preparing their accounts in accordance with the Financial Reporting Standard applicable in the UK and Republic of Ireland (FRS 102) (effective 1 January 2019)". The charity is a Public Benefit Entity as defined by FRS 102.

The charity has taken advantage of the provisions in the SORP for charities applying FRS 102 Update Bulletin 1 not to prepare a Statement of Cash Flows.

The financial statements are prepared in sterling, which is the functional currency of the charity. Monetary amounts in these financial statements are rounded to the nearest £.

The financial statements have been prepared under the historical cost convention, modified to include the revaluation of freehold properties and to include investment properties and certain financial instruments at fair value. The principal accounting policies adopted are set out below.

1.2 Going concern

At the time of approving the financial statements, the trustees have a reasonable expectation that the charity has adequate resources to continue in operational existence for the foreseeable future. Thus the trustees continue to adopt the going concern basis of accounting in preparing the financial statements.

1.3 Charitable funds

Unrestricted funds are available for use at the discretion of the trustees in furtherance of their charitable objectives.

Restricted funds are subject to specific conditions by donors as to how they may be used. The purposes and uses of the restricted funds are set out in the notes to the financial statements.

Endowment funds are subject to specific conditions by donors that the capital must be maintained by the charity.

1.4 Income

Income is recognised when the charity is legally entitled to it after any performance conditions have been met, the amounts can be measured reliably, and it is probable that income will be received.

Cash donations are recognised on receipt. Other donations are recognised once the charity has been notified of the donation, unless performance conditions require deferral of the amount. Income tax recoverable in relation to donations received under Gift Aid or deeds of covenant is recognised at the time of the donation.

Legacies are recognised on receipt or otherwise if the charity has been notified of an impending distribution, the amount is known, and receipt is expected. If the amount is not known, the legacy is treated as a contingent asset.

1.5 Expenditure

Expenditure incurred by the organisation is accounted for on an accruals basis. Items relating to operational matters are charged to the SOFA, and any capital items to the Balance Sheet.

**HOME-START (HULL)
COMPANY LIMITED BY GUARANTEE
NOTES TO THE FINANCIAL STATEMENTS (CONTINUED)
FOR THE YEAR ENDED 31 MARCH 2021**

1 Accounting policies (Continued)

1.6 Tangible fixed assets

Tangible fixed assets are initially measured at cost and subsequently measured at cost or valuation, net of depreciation and any impairment losses.

Depreciation is recognised so as to write off the cost or valuation of assets less their residual values over their useful lives on the following bases:

Fixtures, fittings & equipment	15% - written down value
--------------------------------	--------------------------

The gain or loss arising on the disposal of an asset is determined as the difference between the sale proceeds and the carrying value of the asset, and is recognised in net income/(expenditure) for the year.

1.7 Impairment of fixed assets

At each reporting end date, the charity reviews the carrying amounts of its tangible assets to determine whether there is any indication that those assets have suffered an impairment loss. If any such indication exists, the recoverable amount of the asset is estimated in order to determine the extent of the impairment loss (if any).

1.8 Cash and cash equivalents

Cash and cash equivalents include cash in hand, deposits held at call with banks, other short-term liquid investments with original maturities of three months or less, and bank overdrafts. Bank overdrafts are shown within borrowings in current liabilities.

Basic financial assets

Basic financial assets, which include debtors and cash and bank balances, are initially measured at transaction price including transaction costs and are subsequently carried at amortised cost using the effective interest method unless the arrangement constitutes a financing transaction, where the transaction is measured at the present value of the future receipts discounted at a market rate of interest. Financial assets classified as receivable within one year are not amortised.

Basic financial liabilities

Basic financial liabilities, including creditors and bank loans are initially recognised at transaction price unless the arrangement constitutes a financing transaction, where the debt instrument is measured at the present value of the future payments discounted at a market rate of interest. Financial liabilities classified as payable within one year are not amortised.

Debt instruments are subsequently carried at amortised cost, using the effective interest rate method.

Trade creditors are obligations to pay for goods or services that have been acquired in the ordinary course of operations from suppliers. Amounts payable are classified as current liabilities if payment is due within one year or less. If not, they are presented as non-current liabilities. Trade creditors are recognised initially at transaction price and subsequently measured at amortised cost using the effective interest method.

Derecognition of financial liabilities

Financial liabilities are derecognised when the charity's contractual obligations expire or are discharged or cancelled.

**HOME-START (HULL)
COMPANY LIMITED BY GUARANTEE
NOTES TO THE FINANCIAL STATEMENTS (CONTINUED)
FOR THE YEAR ENDED 31 MARCH 2021**

1 Accounting policies (Continued)

1.9 Employee benefits

The cost of any unused holiday entitlement is recognised in the period in which the employee's services are received.

Termination benefits are recognised immediately as an expense when the charity is demonstrably committed to terminate the employment of an employee or to provide termination benefits.

1.10 Leases

Rentals payable under operating leases, including any lease incentives received, are charged as an expense on a straight line basis over the term of the relevant lease.

2 Critical accounting estimates and judgements

In the application of the charity's accounting policies, the trustees are required to make judgements, estimates and assumptions about the carrying amount of assets and liabilities that are not readily apparent from other sources. The estimates and associated assumptions are based on historical experience and other factors that are considered to be relevant. Actual results may differ from these estimates.

The estimates and underlying assumptions are reviewed on an ongoing basis. Revisions to accounting estimates are recognised in the period in which the estimate is revised where the revision affects only that period, or in the period of the revision and future periods where the revision affects both current and future periods.

3 Donations and legacies

	Unrestricted funds	Unrestricted funds
	2021	2020
	£	£
Donations and gifts	30,579	23,348
Job Retention Scheme	12,018	-
	<u>42,597</u>	<u>23,348</u>
	<u><u>42,597</u></u>	<u><u>23,348</u></u>

HOME-START (HULL)
COMPANY LIMITED BY GUARANTEE
NOTES TO THE FINANCIAL STATEMENTS (CONTINUED)
FOR THE YEAR ENDED 31 MARCH 2021

4 Charitable activities

	CCG -NHS Hull	TNL Com'ty Fund - FIM	James Reckitt Charity	Uplift Project	Total 2021	Total 2020
	2021	2021	2021	2021		
	£	£	£	£	£	£
Sales within charitable activities	-	-	-	-	-	9,930
Performance related grants	114,945	58,456	3,500	39,464	216,365	171,239
	<u>114,945</u>	<u>58,456</u>	<u>3,500</u>	<u>39,464</u>	<u>216,365</u>	<u>181,169</u>
	<u><u>114,945</u></u>	<u><u>58,456</u></u>	<u><u>3,500</u></u>	<u><u>39,464</u></u>	<u><u>216,365</u></u>	<u><u>181,169</u></u>
Analysis by fund						
Unrestricted funds	-	-	3,500	-	3,500	13,000
Restricted funds	114,945	58,456	-	39,464	212,865	168,169
	<u>114,945</u>	<u>58,456</u>	<u>3,500</u>	<u>39,464</u>	<u>216,365</u>	<u>181,169</u>
	<u><u>114,945</u></u>	<u><u>58,456</u></u>	<u><u>3,500</u></u>	<u><u>39,464</u></u>	<u><u>216,365</u></u>	<u><u>181,169</u></u>

For the year ended 31 March 2020

	CCG -NHS Hull	TNL Com'ty Fund - FIM	James Reckitt Charity	Awards for All	Total 2020
	£	£	£	£	£
Sales within charitable activities	-	-	-	9,930	9,930
Performance related grants	111,924	46,315	13,000	-	171,239
	<u>111,924</u>	<u>46,315</u>	<u>13,000</u>	<u>9,930</u>	<u>181,169</u>
	<u><u>111,924</u></u>	<u><u>46,315</u></u>	<u><u>13,000</u></u>	<u><u>9,930</u></u>	<u><u>181,169</u></u>
Analysis by fund					
Unrestricted funds	-	-	13,000	-	13,000
Restricted funds	111,924	46,315	-	9,930	168,169
	<u>111,924</u>	<u>46,315</u>	<u>13,000</u>	<u>9,930</u>	<u>181,169</u>
	<u><u>111,924</u></u>	<u><u>46,315</u></u>	<u><u>13,000</u></u>	<u><u>9,930</u></u>	<u><u>181,169</u></u>

**HOME-START (HULL)
COMPANY LIMITED BY GUARANTEE**
NOTES TO THE FINANCIAL STATEMENTS (CONTINUED)
FOR THE YEAR ENDED 31 MARCH 2021

5 Other trading activities

	Unrestricted funds	Total
	2021	2020
	£	£
Trading activity income: ASC	3,631	-
	<u>3,631</u>	<u>-</u>

6 Investments

	Unrestricted funds	Unrestricted funds
	2021	2020
	£	£
Interest receivable	1,159	1,058
	<u>1,159</u>	<u>1,058</u>

7 Raising funds

	Unrestricted funds	Unrestricted funds
	2021	2020
	£	£
<u>Fundraising and publicity</u>		
Fundraising costs	10,960	3,842
	<u>10,960</u>	<u>3,842</u>
<u>Trading costs</u>		
Other trading activities	4,997	-
	<u>4,997</u>	<u>-</u>
	<u>15,957</u>	<u>3,842</u>

HOME-START (HULL)
COMPANY LIMITED BY GUARANTEE
NOTES TO THE FINANCIAL STATEMENTS (CONTINUED)
FOR THE YEAR ENDED 31 MARCH 2021

8 Charitable activities

	CCG - NHS Hull 2021 £	TNL Comm'ty Fund - FIM 2021 £	James Reckitt Charity 2021 £	Awards for All 2021 £	Uplift Project 2021 £	Total 2021 £	Total 2020 £
Staff costs	96,975	20,367	10,180	-	25,189	152,711	155,386
Charitable expenses	23,172	101	-	-	2,333	25,606	28,074
	<u>120,147</u>	<u>20,468</u>	<u>10,180</u>	<u>-</u>	<u>27,522</u>	<u>178,317</u>	<u>183,460</u>
Share of support costs (see note 9)	7,515	9,120	-	-	11,942	28,577	25,121
Share of governance costs (see note 9)	840	-	-	-	-	840	840
	<u>128,502</u>	<u>29,588</u>	<u>10,180</u>	<u>-</u>	<u>39,464</u>	<u>207,734</u>	<u>209,421</u>
Analysis by fund							
Unrestricted funds	22,373	-	10,180	-	-	32,553	25,530
Restricted funds	106,129	29,588	-	-	39,464	175,181	183,891
	<u>128,502</u>	<u>29,588</u>	<u>10,180</u>	<u>-</u>	<u>39,464</u>	<u>207,734</u>	<u>209,421</u>
For the year ended 31 March 2020							
Unrestricted funds	19,213	-	6,317	-	-		25,530
Restricted funds	129,325	44,636	-	9,930	-		183,891
	<u>148,538</u>	<u>44,636</u>	<u>6,317</u>	<u>9,930</u>	<u>-</u>		<u>209,421</u>

**HOME-START (HULL)
COMPANY LIMITED BY GUARANTEE
NOTES TO THE FINANCIAL STATEMENTS (CONTINUED)
FOR THE YEAR ENDED 31 MARCH 2021**

9 Support costs

	Support costs £	Governance costs £	2021 £	2020 £	Basis of allocation
Accommodation costs	16,102	-	16,102	10,503	
IT costs	3,555	-	3,555	5,374	
Telephone	649	-	649	1,649	
Utilities	1,629	-	1,629	977	
Office costs	6,642	-	6,642	4,011	
Professional fees	-	840	840	840	Governance
	<u>28,577</u>	<u>840</u>	<u>29,417</u>	<u>23,354</u>	
Analysed between					
Charitable activities	<u>28,577</u>	<u>840</u>	<u>29,417</u>	<u>25,961</u>	

Governance costs includes payments to the independent examiner of £840 (2020- £840) for professional fees.

10 Trustees

None of the trustees (or any persons connected with them) received any remuneration during the year.

11 Employees

The average monthly number of employees during the year was:

	2021 Number	2020 Number
Administration	2	2
Service delivery	8	8
Total	<u>10</u>	<u>10</u>
Employment costs	2021 £	2020 £
Wages and salaries	<u>152,711</u>	<u>155,386</u>

There were no employees whose annual remuneration was £60,000 or more.

HOME-START (HULL)
COMPANY LIMITED BY GUARANTEE
NOTES TO THE FINANCIAL STATEMENTS (CONTINUED)
FOR THE YEAR ENDED 31 MARCH 2021

12 Tangible fixed assets

	Fixtures, fittings & equipment £
Cost	
At 1 April 2020	7,706
At 31 March 2021	<u>7,706</u>
Depreciation and impairment	
At 1 April 2020	7,261
Depreciation charged in the year	79
At 31 March 2021	<u>7,340</u>
Carrying amount	
At 31 March 2021	<u>366</u>
At 31 March 2020	<u>445</u>

13 Creditors: amounts falling due within one year

	2021 £	2020 £
Accruals and deferred income	<u>1,681</u>	<u>28,822</u>

14 Retirement benefit schemes

The charity operates a defined contribution pension scheme for all qualifying employees. The assets of the scheme are held separately from those of the charity in an independently administered fund.

HOME-START (HULL)
COMPANY LIMITED BY GUARANTEE
NOTES TO THE FINANCIAL STATEMENTS (CONTINUED)
FOR THE YEAR ENDED 31 MARCH 2021

15 Restricted funds

The income funds of the charity include restricted funds comprising the following unexpended balances of donations and grants held on trust for specific purposes:

	Movement in funds				Movement in funds				Balance at 31 March 2021 £
	Balance at 1 April 2019 £	Incoming Resources £	Outgoing Resources £	Transfers £	Balance at 1 April 2020 £	Incoming Resources £	Outgoing Resources £	Transfers £	
CCG - NHS Hull	9,949	111,924	(129,325)	7,452	-	114,945	(106,129)	4,888	13,704
The National Lottery Community Fund - Families in Mind	-	46,315	(44,636)	(1,679)	-	58,456	(29,588)	290	29,158
Awards for All	-	9,930	(9,930)	-	-	-	-	-	-
Uplift project	-	-	-	-	-	39,464	(39,464)	-	-
	<u>9,949</u>	<u>168,169</u>	<u>(183,891)</u>	<u>5,773</u>	<u>-</u>	<u>212,865</u>	<u>(175,182)</u>	<u>5,178</u>	<u>42,862</u>

**HOME-START (HULL)
COMPANY LIMITED BY GUARANTEE
NOTES TO THE FINANCIAL STATEMENTS (CONTINUED)
FOR THE YEAR ENDED 31 MARCH 2021**

16 Designated funds

The income funds of the charity include the following designated funds which have been set aside out of unrestricted funds by the trustees for specific purposes:

	Movement in funds			Movement in funds			Balance at 31 March 2021 £
	Balance at 1 April 2019 £	Transfers in £	Transfers out £	Balance at 1 April 2020 £	Transfers in £	Transfers out £	
Contingency fund	50,000	-	-	50,000	-	-	50,000
ASC	10,910	16,173	(16,397)	10,686	13,164	(23,850)	-
Beverley ORG	7,000	3,000	(6,317)	3,683	20,021	(10,180)	13,524
Covid Costs	-	-	-	-	3,720	(2,854)	866
	<u>67,910</u>	<u>19,173</u>	<u>(22,714)</u>	<u>64,369</u>	<u>36,905</u>	<u>(36,884)</u>	<u>64,390</u>

17 Analysis of net assets between funds

	Unrestricted 2021 £	Restricted 2021 £	Total 2021 £	Unrestricted 2020 £	Restricted 2020 £	Total 2020 £
Fund balances at 31 March 2021 are represented by:						
Tangible assets	366	-	366	445	-	445
Current assets/ (liabilities)	109,286	42,862	152,148	112,008	-	112,008
	<u>109,652</u>	<u>42,862</u>	<u>152,514</u>	<u>112,453</u>	<u>-</u>	<u>112,453</u>

18 Related party transactions

There were no disclosable related party transactions during the year (2020 - none).