

Company No. 05178212
Charity No. 1105270

CORNWALL REFUGE TRUST
A COMPANY LIMITED BY GUARANTEE
ANNUAL REPORT AND UNAUDITED FINANCIAL STATEMENTS
31 MARCH 2023

PHILLIPS FRITH LLP
CHARTERED ACCOUNTANTS
REGISTERED AUDITORS
9 TREGARNE TERRACE
ST AUSTELL
CORNWALL

CONTENTS

Page

Trustees and Advisers	2
Trustees' Annual Report	3 - 9
Independent Examiner's Report	10
Statement of Financial Activities	11
Balance Sheet	12
Statement of Cash Flows	13
Notes to the Financial Statements	14- 28

TRUSTEES AND ADVISERS

31 MARCH 2023

PRINCIPAL AND REGISTERED OFFICE

Cornwall Refuge Trust
PO Box 80
TRURO
Cornwall
Registered Number: 1105270
Company Number: 05178212

SOLICITORS

Stephens Scown Solicitors LLP
1 High Cross Street
ST AUSTELL
Cornwall
PL25 4AX

TRUSTEES

Karen Furness
Kate Hamilton
Pam Thurlow
Nicky Houghton
Sarah Shobrook

BANKERS

HSBC Bank Plc
17 Boscawen Street
TRURO
Cornwall
TR1 2QZ

COMPANY SECRETARY

Kate Hamilton

MANAGEMENT COMMITTEE

Karen Furness - Chair
Pam Thurlow - Accounts Liaison Trustee
Kate Hamilton - Vice Chair
Nicky Houghton

Helen Luetchford
Sarah Shobrook
Ellen Richards
Stephanie Coole

INDEPENDENT EXAMINERS

Phillips Frith LLP
9 Tregarne Terrace
ST AUSTELL
Cornwall
PL25 4DD

CORNWALL REFUGE TRUST**TRUSTEES' ANNUAL REPORT FOR THE YEAR ENDED 31 MARCH 2023**

The Trustees have pleasure in presenting their report and financial statements for the year ended 31 March 2023, which we also prepared to meet the requirements for a directors' report and accounts for Companies Act purposes.

The financial statements comply with the Charities Act 2011, the Companies Act 2006 and Accounting and Reporting by Charities: Statement of Recommended Practice applicable to charities preparing their accounts in accordance with the Financial Reporting Standard applicable in the UK and Republic of Ireland (FRS 102) (effective 1 January 2019).

REFERENCE AND ADMINISTRATIVE DETAILS

Charity registration number: 1105270

Company registration number: 05178212

Principal Office and Advisors

These are detailed on page 2.

Trustees

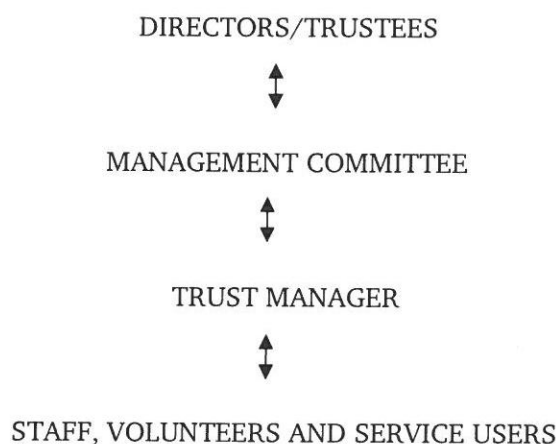
The names of trustees serving during the year and since the year end are shown on page 2.

Legal Status and Governing Document

Cornwall Refuge Trust (previously Cornwall Women's Refuge Trust) was incorporated by the Memorandum & Articles of Association dated 13 July 2004 as amended by special resolution on 18 February 2016. The Trust is a company limited by guarantee (registered number 05178212) and does not have a share capital. The Trust is also a registered charity (registered number 1105270). In accordance with Section 60 of the Companies Act 2006, the word 'limited' is omitted from the name. The liability of the members who constitute the Trust is limited to £1 per member.

STRUCTURE, GOVERNANCE AND MANAGEMENT

The Trust is run by a Board of Trustees. The Trustees are also directors of the company for the purposes of the Companies Act 2006.

CORNWALL REFUGE TRUST STRUCTURE

The day-to-day management of the Charity is delegated to the Trust manager Ellen Richards, who is assisted by the project managers for each of the projects. The Trustees meet as a full board at least six times per year including the Annual General Meeting to ensure that the governance of the Charity is implemented, to discuss the strategic direction of the Charity, to monitor financial performance, risk, human resources and operations, and all decisions reached are done so by a majority vote.

CORNWALL REFUGE TRUST**TRUSTEES ANNUAL REPORT FOR THE YEAR ENDED 31 MARCH 2023 (continued)****STRUCTURE, GOVERNANCE AND MANAGEMENT (continued)****Appointment and training of Trustees**

As set out in the Articles of Association, the Trustees are nominated by the existing management committee members. They are then invited to join the Trust by the Trust manager. The number of Trustees shall be not less than three. Trustees are invited to attend Trust training but the majority are already sufficiently experienced.

Pay policy for senior staff

All Trustees give of their time freely and no trustee received remuneration in the year. The pay of the senior staff is reviewed annually by the Management Committee. Salaries are set based on a pay scale and increment pay rises are given where employees have moved to a higher point on this scale.

PURPOSES AND ACTIVITIES**The purpose of the Charity**

The relief of poverty and distress among men and women who experience domestic violence and the children of those men and women.

Mission Statement

‘Cornwall Refuge Trust provides a safe, supportive environment for men, women and children who have escaped domestic abuse. We offer support and advice empowering the person for a safer and happier future.’

Aims of Charity for the public benefit

- To offer refuge to men, women and children who have escaped domestic abuse.
- To offer emotional support to the men, women and children who have come to the refuge and when they resettle in the community.
- To offer practical help to men and women who have come to the refuge.
- To offer support to all victims of domestic abuse in the community.
- To work with our partners to raise awareness of domestic abuse as an issue and how best to address it.
- To support team members so that we can work to our full potential.

Our objectives to accomplish the above aims are:-

- To manage the men's and women's refuges offering temporary accommodation to men, women and their children who are victims of domestic abuse.
- To provide comprehensive needs-led support to residents and therapeutical support to children in refuge.
- To provide a domestic abuse counselling project for *all* victims of domestic abuse over 16 years of age.
- To provide resettlement support to residents as they leave refuge to resettle in the community.
- To provide high quality advice and support to callers on the 24 hour domestic abuse helpline.
- To attend relevant forums and meetings to ensure CRT is kept up to date on local and national domestic abuse strategic planning.

OVERVIEW

Over the past 12 months we have continued to deliver high quality services and support to service users, including face to face and helpline support. We have continued to ensure that a high percentage of our income goes on frontline service delivery and have maintained consultation with service users at all times.

CORNWALL REFUGE TRUST**TRUSTEES' ANNUAL REPORT FOR THE YEAR ENDED 31 MARCH 2023 (continued)****OVERVIEW (continued)**

We have been able to maintain a service delivery for all projects by successful funding applications and working closely with the Local Authority, Cornwall Council. Our core business of refuge provision has been maintained for our female and male refuges, our children and families work and our resettlement programme, by the Local Authority. Our 24-hour domestic abuse helpline is also partly funded by the Local Authority.

Our Resettlement Project, which supports our residents as they leave refuge to set up homes in the community, greatly improves the likelihood of a successful outcome for families and individuals once they have left the refuge.

Our Volunteer Project, which includes Waves Counselling, was partly funded by the Local Authority via First Light, with additional funding from The Lloyds Bank Foundation and the Tudor Trust.

We have 8 Management Committee members, 5 of whom are Directors and Trustees, all offering their time and specialist skills voluntarily.

We have had a staff team of between 12 and 18 over the year, including full-time and part-time staff.

As a result of the covid pandemic we were not able to run our usual volunteer programmes during the last two years, but our Waves programme has now restarted and we had 7 volunteer counsellors by the end of the year. We have had no refuge volunteers this year.

PUBLIC BENEFIT

The Trustees have complied with their duty to have due regard to guidance published by the Charity Commission on the operation of the Public Benefit requirement.

ACHIEVEMENTS AND PERFORMANCE

We have been awarded the following grants:

- Cornwall Council (Local Authority) - Women's Refuge, Male Refuge, Child and Family Work, Resettlement Project and part funding for the 24/7 Helpline.
- First Light Southwest Ltd - part funding for the Waves Counselling Project.
- Lloyds Bank Foundation - from April 2019 for the Volunteer Project (including Waves) and core costs – ended March 2023
- Tudor Trust - From October 2019, initially for the Refuge Resettlement Project, the final year payment for the Waves Counselling Project delayed by one year until October 2022 due to the underspend in years 1 & 2, will end September 2023
- Tudor Trust Wellbeing grant for staff, trustees and volunteers (received February 2021)
- Big Lottery Awards for All - funding for Norda Child and Family Work (received October 2018 funding was initially for 1 year but some funds remain).
- The Pat Newman Memorial Trust – grant for running parenting classes
- Cornwall Community Foundation - Crisis Fund Grant - to assist with crisis expenses for residents.
- Cornwall Community Foundation Surviving Winter Grant (including DWP Household Support Grant) – to distribute to families and individuals in need (food, energy & water costs etc)
- Acts 435 - funding for ad hoc residents' needs (e.g. essential clothing, travel, mobile phones, moving costs, curtains and carpets for new homes)
- British Science Association – British Science Week grant for children's science activities
- Neighbourly & M&S Gifting Grants – grant towards the 24/7 Helpline
- Norman Family Charitable Trust – grant towards the Waves Counselling Project

CORNWALL REFUGE TRUST**TRUSTEES' ANNUAL REPORT FOR THE YEAR ENDED 31 MARCH 2023 (continued)****ACHIEVEMENTS AND PERFORMANCE (continued)**

We have again received many one-off financial donations this year from individuals and community groups. Additionally, we have received Gift Aid and some regular donations. In-kind donations include assistance from Hidden Help who supply furniture and home goods for residents moving out of refuge. Several church and community groups offer continued support with clothing, toiletries and homeware for both male and female residents and those moving out into the community. We are also well supported by the community for Easter and Christmas, helping our service users to enjoy these celebrations. This year we received a significant legacy from a lady who kindly bequeathed her entire estate to Cornwall Refuge Trust. These funds have allowed us to increase our designated fund which may be used towards purchasing our women's refuge building which we currently rent.

Cornwall Refuge Trust (CRT) projects have achieved the following service figures:

- Refuges - 36 adults and 20 children received comprehensive residential support (2021-22: 31 adults and 22 children)
- The Resettlement Project – 11 families and 18 single adults were successfully supported to resettle in the community (2021-22: 8 families, 16 single adults).
- The Helpline – 2870 support calls received or made within our 24-hour service (2021-22: 3658)
- The WAVES Project - 1036 referrals were made to WAVES, with 70% engagement in counselling (2021-22: 915, 70% engagement)

The Women's Refuge and Norda House

The level of support offered when entering our refuges is very comprehensive. From the point of receiving the referral, we assist with safety planning for the person or family to leave their abuser and area of risk. We support them to arrange safe transport and their rooms are prepared with welcome packs for both adults and children. Residents are supported to access benefits, including housing benefit, GP services and schools. We ensure emotional needs are met by offering support, a listening ear and a friendly welcoming environment.

For the period of their stay our residents are appointed a key worker who meets with them regularly and offers individual needs-led support for single adults and families. Support is offered to children and young people with therapeutic sessions, outings, activities, birthday and seasonal events and treats.

Additional services are offered by the refuges when residents are moving out to support them in establishing new homes in the community. These additional services include providing furnishings, emotional support on moving, support for children and young people, help with getting to know the community, accessing services and school placements.

The refuge and resettlement staff are dedicated, hardworking people who are passionate about what they do and go the extra mile in supporting residents.

The Volunteer Project & WAVES Counselling

The Waves Counselling Project has one full-time Coordinator / Project Manager who recruits, trains and supervises all counselling volunteers and sessional workers. Normally we also employ a part-time Volunteer Supervisor, who recruits, trains and supervises all refuge volunteers. However, since the start of the Covid-19 pandemic we have had to put our refuge volunteer project on hold for the time being.

Our counselling volunteers are mainly students studying counselling who are required to gain experience in counselling, whilst our refuge volunteers come from all walks of life. We are able to offer them all a vast array of training opportunities and professional supervision. There have been several volunteers who have gone on to be employed by CRT or other DA providers.

CORNWALL REFUGE TRUST**TRUSTEES' ANNUAL REPORT FOR THE YEAR ENDED 31 MARCH 2023 (continued)****ACHIEVEMENTS AND PERFORMANCE (continued)**

We continue to use qualified counsellors as sessional workers to assist the Waves manager in taking referrals and processing assessments, and to provide additional counselling sessions in order to reduce the Waves waiting list.

Donated services

Donated services were received from Phillips Frith LLP who do not charge for processing our wages and payroll. We have several community groups (including the Rotary Club, Inner Wheel Club, Lions Club, the Soroptomists, Women's Institute, Mothers' Union and many church groups and local businesses) who have donated to general funds, residents' support and the children's project, as well as gifts for adults and children, household items, money for school uniforms and funds for Christmas and Easter celebrations. Additionally, we received financial donations from individuals and donated items which were offered to refuge residents to assist in their resettlement.

CURRENT STATUS AND FUTURE PLANNING

Cornwall Refuge Trust will continue to deliver high quality, life changing services to those who have experienced domestic abuse. We continue to work closely with the Local Authority and other DASV providers to ensure our services continue and our high standards of support are maintained.

We plan to continue to offer excellent support to all those who enter our projects. We have a very dedicated team of staff and volunteers who have specialist skills and a work ethos that is outstanding.

Cornwall Council have extended all our existing contracts for male and female refuge provision, children and families work, resettlement work and helpline for one further year up until the end of March 2024.

We have also been awarded the tenders for male and female refuge provision (including children and families and resettlement work) for four years from April 2024.

We are seeking funding for our Waves Counselling Project for 2023-24 and beyond.

Our values are to lead and deliver domestic abuse services with passion and dedication; to be accountable and have integrity in all we do; to embrace diversity, and to always work towards a high quality of service delivery. We are determined to continue to strive to support those people harmed by abuse in the home, assisting them to move towards a safer and happier future.

FINANCIAL REVIEW

In 2023, CRT had a surplus of £198,118 (2022: surplus of £105,992). Total income increased by £112,090 to £756,457 (largely due to the legacy received).

The principle funding sources of the Charity continue to be grants received from various organisations which are used to support the running costs of both refuges and various counselling and support projects. Housing benefit is also received to help fund the running costs of both refuges, more detail is provided in notes 2 and 14 of these financial statements.

Expenditure has increased by £19,964 to £558,339.

Net assets increased to £1,043,096 (2022: £844,293). During the year the Charity had a positive cash flow of £195,841.

At 31 March 2023, the Charity held total cash balances of £818,295 (2022: £619,230).

CORNWALL REFUGE TRUST**TRUSTEES' ANNUAL REPORT FOR THE YEAR ENDED 31 MARCH 2023 (continued)****CURRENT STATUS AND FUTURE PLANNING****Reserves Policy**

It is the policy of the Cornwall Refuge Trust to maintain unrestricted funds, which are the free reserves of the Charity (excluding fixed assets), at a level which equates to the approximate six months total expenditure. This provides sufficient funds to cover management, administration, support costs and to respond to emergency expenditure which arises from time to time.

As at 31 March 2023 free reserves totalled £529,108. This compares with £286,716 at the previous year end.

The Trust holds £200,000 in a designated reserve to cover the costs of interim accommodation to assist those moving from intensive support in the Refuge to community living or for the potential purchase of suitable refuge accommodation. The designated reserves are not included in free reserves.

Restricted reserves held at 31 March 2023 amounted to £306,516 (2022: £350,010). A description of these funds is provided in note 14. Included in the restricted reserves is £216,578 (2022: £221,857) that relates to tangible fixed assets, which includes the freehold property.

The Charity now holds an expendable endowment fund, in the form of investments in Meteor Senior Life Settlements Sterling Fund. This investment was a gift from West Cornwall Youth Trust and the value of the year end was £7,472.

Total funds held by the Charity at 31 March 2023 amounted to £1,043,096 (2022: £844,293).

Risk Policy

The Trustees have examined the major strategic, business and operational risk which the Charity faces and confirm that systems have been established to enable regular reports to be produced so that the necessary steps can be taken to mitigate the exposure to these risks.

The principle risks to which the charity is exposed are:

- Risk of fraud perpetrated by trustees or employees of the charity
- Risk of accidental damage to the charity's property
- Risk of losing funding for support costs (Cornwall Council) and additional projects

Non-financial risks arising from fire and health and safety are managed by weekly health and safety checks of both refuges and the fire alarms are tested weekly by external companies. Regular health and safety awareness training is provided to staff.

Investment Policy

The management committee has considered the most appropriate policy for investing funds and has agreed that instant access to funds is currently necessary to enable the Charity to operate effectively. The funds, therefore, are currently held in bank deposit accounts with an approved UK regulated bank.

Going Concern

The accounts are prepared on a going concern basis which assumes the Trust will continue to operate for the foreseeable future. The trustees consider this to be appropriate having regard to the circumstances outlined in note 19.

CORNWALL REFUGE TRUST**TRUSTEES ANNUAL REPORT FOR THE YEAR ENDED 31 MARCH 2023 (continued)****TRUSTEES' RESPONSIBILITIES IN RELATION TO THE FINANCIAL STATEMENTS**

The Trustees (who are also directors of the Charity for the purposes of company law) are responsible for preparing the Trustees' Annual Report and the financial statements in accordance with applicable law and regulations.

Company law requires the Trustees to prepare financial statements for each financial year. Under that law the Trustees have elected to prepare the financial statements in accordance with United Kingdom Generally Accepted Accounting Practice (United Kingdom Accounting Standards and applicable law). Under company law the Trustees must not approve the financial statements unless they are satisfied that they give a true and fair view of the state of affairs of the charitable company and of its income and expenditure for that year. In preparing those financial statements, the Trustees are required to:

- select suitable accounting policies and apply them consistently;
- observe the methods and principles in the applicable Charities SORP;
- make judgements and estimates that are reasonable and prudent;
- prepare the financial statements on the going concern basis unless it is inappropriate to presume that the charitable company will continue in operation.

The Trustees are responsible for keeping adequate accounting records that are sufficient to show and explain the charitable company's transactions and disclose with reasonable accuracy at any time the financial position of the charitable company and to enable them to ensure that the financial statements comply with the Companies Act 2006. They are also responsible for safeguarding the assets of the charitable company and hence for taking reasonable steps for the prevention and detection of fraud and other irregularities. The Trustees are also responsible for ensuring that the assets are properly applied in accordance with charity law.

DISCLOSURE OF INFORMATION TO INDEPENDENT EXAMINER

The Trustees confirm that so far as they are aware at the time of approving the Annual Report, there is no relevant information of which the examiner is unaware. They have taken all the steps that they ought to have taken as Trustees in order to make themselves aware of any relevant information and to establish that the examiner is aware of that information.

This report has been prepared in accordance with the special provisions of Part 15 of the Companies Act 2006 relating to small companies.

By order of the board

KJ Furness

KJ Furness (Dec 20, 2023 17:05 GMT)

Karen Furness (Trustee)

Date: Dec 20, 2023

INDEPENDENT EXAMINER'S REPORT**TO THE MEMBERS OF THE CORNWALL REFUGE TRUST**

I report to the trustees on my examination of the financial statements of Cornwall Refuge Trust for the year ended 31 March 2023.

Responsibilities and basis of report

As the charity's trustees of the Company (who are also the directors of the company for the purposes of company law), you are responsible for the preparation of the accounts in accordance with the requirements of the Companies Act 2006 ("the 2006 Act").

Having satisfied myself that the accounts of Cornwall Refuge Trust are not required to be audited for this year under Part 16 of the 2006 Act and are eligible for independent examination, I report in respect of my examination of your charity's accounts as carried out under section 145 of the Charities Act 2011 ("the 2011 Act"). In carrying out my examination, I have followed the Directions given by the Charity Commission (under section 145(5)(b) of the 2011 Act. As the Trustees of Cornwall Refuge Trust you are responsible for the preparation of the financial statements in accordance with the requirements of the Charities Act 2011 (the 2011 Act).

Independent examiner's statement

The company's gross income exceeded £250,000 and I am qualified to undertake the examination by being a qualified member of the ICAEW.

I have completed my examination. I confirm that no matters have come to my attention in connection with the examination giving me cause to believe that in any material respect:

1. accounting records were not kept in accordance with section 386 of the Companies Act 2006; or
2. the financial statements do not accord with those records; or
3. the financial statements do not comply with the relevant accounting requirements under section 396 of the Companies Act 2006 other than any requirement that the accounts give a 'true and fair' view which is not a matter considered as part of an independent examination; or
4. the financial statements have not been prepared in accordance with the Charities SORP (FRS102)

I have no concerns and have come across no other matters in connection with the examination to which attention should be drawn in this report in order to enable a proper understanding of the financial statements to be reached.



Amy Sole
Independent Examiner
For and on behalf of:

PHILLIPS FRITH LLP
CHARTERED ACCOUNTANTS
9 Tregarne Terrace
ST AUSTELL

Date: 21.12.2023

CORNWALL REFUGE TRUST**STATEMENT OF FINANCIAL ACTIVITIES (INCLUDING INCOME AND EXPENDITURE ACCOUNT)
FOR THE YEAR ENDED 31 MARCH 2023**

	<u>Notes</u>	<u>Un- restricted funds</u>	<u>Restricted funds</u>	<u>Endowment funds</u>	<u>Total funds Y/E</u> <u>31/3/2023</u>	<u>Total funds Y/E</u> <u>31/3/2022</u>
		£	£	£	£	£
INCOME FROM:						
Donations and grants	2	200,321	444,168	-	644,489	551,736
Charitable activities:						
Housing benefit and personal service charges		107,190	-	-	107,190	90,367
Investment Income	3	2,350	-	-	2,350	53
Other		2,428	-	-	2,428	2,211
TOTAL INCOME		312,289	444,168	-	756,457	644,367
EXPENDITURE ON:	4					
Raising funds:						
Fundraising		-	3,004	-	3,004	2,480
Grants		-	4,910	-	4,910	3,394
		-	7,914	-	7,914	5,874
Charitable activities:						
Housing costs		65,898	228,576	780	295,254	280,574
Counselling and support projects		3,999	251,172	-	255,171	251,927
		69,897	479,748	780	550,425	532,501
TOTAL EXPENDITURE		69,897	487,662	780	558,339	538,375
NET INCOME/(EXPENDITURE) AND NET MOVEMENT IN FUNDS		242,392	(43,494)	(780)	198,118	105,992
Change in market value of investments		-	-	685	685	416
RECONCILIATION OF FUNDS:						
Total funds brought forward		486,716	350,010	7,567	844,293	737,885
TOTAL FUNDS CARRIED FORWARD		729,108	306,516	7,472	1,043,096	844,293

The statement of financial activities includes all gains and losses recognised in the year.

The notes on pages 17 – 28 form part of these accounts.

CORNWALL REFUGE TRUST**BALANCE SHEET****AS AT 31 MARCH 2023**

	<u>Notes</u>	<u>2023</u>		<u>2022</u>	
		£	£	£	£
FIXED ASSETS					
Tangible fixed assets	9		217,073		223,329
Investments	10		5,632		5,821
			<u>222,705</u>		<u>229,150</u>
CURRENT ASSETS					
Debtors	11	8,612		8,237	
Cash at bank and in hand		<u>818,295</u>		<u>619,230</u>	
		826,907		627,467	
CURRENT LIABILITIES					
Creditors – amounts falling due within one year	12	<u>(6,516)</u>		<u>(12,324)</u>	
NET CURRENT ASSETS			<u>820,391</u>		<u>615,143</u>
NET ASSETS			<u>1,043,096</u>		<u>844,293</u>
FUNDS					
Unrestricted funds					
Designated funds	14	400,000		200,000	
Other charitable purposes	14	<u>329,108</u>		<u>286,716</u>	
Total unrestricted funds			729,108		486,716
Restricted funds	14		306,516		350,010
Expendable endowment fund	14		<u>7,472</u>		<u>7,567</u>
TOTAL CHARITY FUNDS			<u>1,043,096</u>		<u>844,293</u>

For the financial year in questions the company was entitled to exemption from audit under Section 477 of the Companies Act 2006 relating to small companies. No members have required the company to obtain an audit under Section 476 of the Companies Act 2006. The directors acknowledge their responsibility for complying with the requirements of the Act with respect to accounting records and for the preparation of the accounts.

These accounts have been prepared in accordance with the provisions applicable to companies subject to the small companies' regime within Part 15 of the Companies Act 2006.

Approved by the Trustees and authorised for issue on Dec 20, 2023 2023 and signed on their behalf by:

KJ Furness
KJ Furness (Dec 20, 2023 17:05 GMT)

Karen Furness

K E Hamilton
K E Hamilton (Dec 20, 2023 17:05 GMT)

Kate Hamilton

Company Registration Number 05178212

The notes on pages 17 to 28 form part of these financial statements.

CORNWALL REFUGE TRUST
STATEMENT OF CASH FLOWS
YEAR ENDED 31 MARCH 2023

	<u>Notes</u>	£	<u>2023</u>	£	£	<u>2022</u>	£
CASH FLOWS FROM OPERATING ACTIVITIES:							
Net cash provided by operating activities	15		195,841			75,032	
CASH FLOWS FROM INVESTING ACTIVITIES							
Interest received		2,350			53		
Meteor shares sales income		874			1,287		
NET CASH PROVIDED BY INVESTING ACTIVITIES			3,224		1,340		
INCREASE IN CASH AND CASH EQUIVALENTS IN THE YEAR	16		199,065		76,372		
Increase in cash and cash equivalents in the year	16		199,065		76,372		
Cash and cash equivalents at the beginning of the year			619,230		542,858		
CASH AND CASH EQUIVALENTS AT THE END OF THE YEAR	16		818,295		619,230		

The notes on pages 17 to 28 form part of these financial statements.

CORNWALL REFUGE TRUST**NOTES TO THE FINANCIAL STATEMENTS****FOR THE YEAR ENDED 31 MARCH 2023****1 ACCOUNTING POLICIES****Charity Information**

Cornwall Refuge Trust is a private charitable company limited by guarantee and has no share capital, incorporated in England and Wales. The principal address is PO Box 80, Truro, Cornwall.

a) Basis of preparation and compliance with statutory requirements

The individual Charity's financial statements have been prepared in accordance with the Accounting and Reporting by Charities: Statement of Recommended Practice applicable to charities preparing their accounts in accordance with the Financial Reporting Standard applicable in the UK and Republic of Ireland (FRS 102) (effective 1 January 2019) – (Charities SORP (FRS 102)) (second edition – October 2019), the Financial Reporting Standard applicable in the UK and Republic of Ireland (FRS 102) and the Companies Act 2006.

The accounts are prepared in sterling, which is the functional currency of the Charity. Monetary amounts in these financial statements are rounded to the nearest £.

The Charity meets the definition of a public benefit entity under FRS 102. Assets and liabilities are initially recognised at historical cost or transaction value. The principal accounting policies adopted are set out below.

The financial statements have been prepared on the assumption that the Charity is able to carry on as a going concern, which the Trustees consider appropriate having regard to the circumstances outlined in note 19 to the financial statements. The Trustees have no material uncertainties about the Charity's ability to continue.

b) Fund accounting

The Charity has various types of funds for which it is responsible, and which require separate disclosure. These are as follows:

RESTRICTED FUNDS These are earmarked by the donor, or the terms of an appeal, for specific purposes within the overall aims of the Charity or for specific projects being undertaken by the Charity. The donation and income deriving therefrom will be used in accordance with the specific purposes.

UNRESTRICTED FUNDS Funds which are expendable at the discretion of the board in furtherance of the purposes of the Charity.

DESIGNATED FUNDS The board may at its discretion set aside unrestricted funds for specific purposes. The aim and use of each designated fund is set out in note 14. Discretionary reallocations between designated and general funds are treated as transfers in the notes to the financial statements.

EXPENDABLE ENDOWMENT FUND This was created by a gift of investments from the WCYT. The income from these investments is restricted as described in note 14.

A description of the specific funds in existence during the year is given in note 14.

c) Income

Income is recognised when the Charity has entitlement to the funds, any performance conditions attached to the item(s) of income have been met, it is probable that the income will be received and the amount can be measured reliably.

CORNWALL REFUGE TRUST**NOTES TO THE FINANCIAL STATEMENTS (continued)****FOR THE YEAR ENDED 31 MARCH 2023****1 ACCOUNTING POLICIES (continued)****c) Income (continued)****i) DONATIONS**

Donations and grants are recognised when receivable. Donations received for the general purposes of the Charity are included as unrestricted funds. Donations for activities restricted by the wishes of the donor are taken to restricted funds. Donations required to be retained as capital in accordance with the donor's wishes are accounted for as endowments - permanent or expendable according to the nature of the restriction.

ii) GRANTS AND GOVERNMENT GRANTS

Income from government and other grants, including capital grants, is recognised when the Charity has entitlement to the funds, it is probable that the income will be received and the amount can be measured reliably, except as follows:-

- when donors specify that grants given to the Charity must be used in future accounting years, the income is deferred until those years.
- when donors impose conditions which have to be fulfilled before the Charity becomes entitled to use such income, the income is deferred and not included in incoming resources until the pre-conditions for use have been met. A grant received before the recognition criteria are satisfied is recognised as a liability.

iii) FUNDRAISING EVENTS

Voluntary income arising from events, principally donations, is recognised in the period in which the event takes place.

iv) CHARITABLE ACTIVITIES

Income from charitable activities comprises of charges and benefits receivable for services such as housing benefits and personal service charges. These are accounted for in the year in which the service is provided.

d) Donated goods and services

Donated fixed assets are included in income at the estimated value of the gift to the charity when received, with the other entry being capitalised in fixed assets.

In accordance with the Charities SORP (FRS 102), the general volunteer time provided to the Charity is not recognised and is referred to in the trustees' annual report with more information about their contribution.

e) Expenditure

Expenditure is recognised once there is a legal or constructed obligation to make a payment to a third party, it is probable that settlement will be required and the amount of the obligation can be measured reliably. Expenditure is accounted for on an accruals basis and is classified under the following activity headings:

- Costs of raising funds comprise the costs of generating voluntary income and securing grants.
- Expenditure on charitable activities includes the costs incurred by the Charity in meeting the charitable purposes.
- Other expenditure represents those items not falling into any other heading.

CORNWALL REFUGE TRUST**NOTES TO THE FINANCIAL STATEMENTS (continued)****FOR THE YEAR ENDED 31 MARCH 2023****1 ACCOUNTING POLICIES (continued)****f) Allocation of support costs**

Support costs are those functions that assist the work of the Charity but do not directly undertake charitable activities. Support costs include management, administration, finance, personnel and governance costs which support the Charity's activities. These costs have been allocated between costs of raising funds and expenditure on charitable activities. The basis on which support costs have been allocated are set out in Note 5.

Governance costs comprise of all costs identified as wholly or mainly attributable to ensuring the public accountability of the Charity and its compliance with regulations. These costs include board expenses, legal advice and audit fees.

g) Tangible fixed assets and depreciation

Tangible fixed assets costing more than £1,000 are capitalised and included at cost including any incidental expenses of acquisition if in line with the donor documentation.

Depreciation is provided on all tangible fixed assets at rates calculated to write off the cost over their expected economic lives as follows:

Freehold property	- 50 years on the straight line method
Log Cabin	- 10% per annum on the straight line method
Computer equipment	- 25% per annum on the straight line method
Equipment	- 20% per annum on the straight line method

h) Fixed asset investments

Fixed asset investments are initially measured at transaction price excluding transaction costs, and are subsequently measured at fair value at each reporting date using the closing market price. Changes in fair value are recognised in the statement of financial activities for the year.

i) Cash and cash equivalents

Cash and cash equivalents are basic financial assets and include cash in hand, deposits held with banks and short-term liquid investments with original maturities of three months or less.

j) Financial instruments

The Charity only has financial assets and financial liabilities of a kind that qualify as basic financial instruments. Basic financial instruments are initially recognised at transaction value and subsequently measured at their settlement value.

k) Pension costs

Cornwall Refuge Trust offers the auto-enrolment pension scheme to its employees and makes contributions as detailed in note 17. The charity has no liability beyond making its contributions and paying across the deductions for the employee's contributions. The costs are expensed in the SOFA (see notes 5 and 7 for allocation method). Any difference between the share to the SOFA and the contributions payable to the scheme is shown as an asset or liability in the Balance Sheet.

l) Operating leases

Rentals applicable to operating leases are charged to the SOFA over the period in which the lease falls due.

CORNWALL REFUGE TRUST**NOTES TO THE FINANCIAL STATEMENTS (continued)****FOR THE YEAR ENDED 31 MARCH 2023**

2 INCOME FROM DONATIONS	<u>2023</u>	<u>2022</u>
	<u>£</u>	<u>£</u>
Donations and fundraising		
General donations	6,741	21,616
Housing cost donation	1,309	1,045
Counselling and support project donations	5,555	9,721
Fundraising events	126	57
Legacies	190,454	-
	<u>204,185</u>	<u>32,439</u>
Grants		
Housing cost grants	238,417	236,288
Counselling and support project grants	186,277	277,509
Other grants	12,610	5,500
Cost of living grants	3,000	-
	<u>440,304</u>	<u>519,297</u>
TOTAL	<u>644,489</u>	<u>551,736</u>

The income received from donations included £6,864 restricted donations (2022: £10,766). The income received from grants included £437,304 restricted grants (2022: £519,297). Details of restricted income has been included in note 14. The income received from grants included £263,574 (2022: £357,689) received from local authorities.

3 INVESTMENT INCOME	<u>2023</u>	<u>2022</u>
	<u>£</u>	<u>£</u>
Bank interest receivable	<u>2,350</u>	<u>53</u>
	<u>2,350</u>	<u>53</u>

CORNWALL REFUGE TRUST**NOTES TO THE FINANCIAL STATEMENTS (continued)****FOR THE YEAR ENDED 31 MARCH 2023****4 TOTAL RESOURCES EXPENDED**

	Activities undertaken directly £	Support costs £	Governance costs £	2023 Total £	2022 Total £
Cost of raising funds					
Fundraising	-	3,004	-	3,004	2,480
Grants	-	4,910	-	4,910	3,394
	-	7,914	-	7,914	5,874
Expenditure on charitable activities					
Housing costs	230,666	52,596	11,992	295,254	280,574
Counselling and support project	243,773	9,282	2,116	255,171	251,927
	474,439	61,878	14,108	550,425	532,501
Total resources expended	474,439	69,792	14,108	558,339	538,375

5 SUPPORT COSTS ALLOCATION

	Raising funds £	Charitable activities £	Governance activity £
Trust Manager's wages	4,686	24,309	293
Administrator's wages	2,791	23,721	1,395
Employer's pension contributions	437	13,848	292
Governance costs	-	-	12,128
Fundraising costs	-	-	-
Total support costs - year ended 31/3/2023	7,914	61,878	14,108
Total support costs - year ended 31/3/2022	5,859	49,706	13,875

Cost allocation includes an element of judgement and the Charity has had to consider the cost/benefit of detailed calculations and record keeping. The basis for support costs allocation of wages is the estimated percentage of time spent on each activity. Governance costs are made up of the following:

	2023 £	2022 £
Independent examination fees	89	6,692
Legal and professional fees	8,234	5,613
	8,323	12,305

Governance costs have been allocated on a consistent basis to previous years.

CORNWALL REFUGE TRUST**NOTES TO THE FINANCIAL STATEMENTS (continued)****FOR THE YEAR ENDED 31 MARCH 2023****6 TAXATION**

Cornwall Refuge Trust is a registered charity and is thus exempt from tax on income and gains falling within section 505 of the Taxes Act 1988 or s256 of the Taxation of Chargeable Gains Act 1992 to the extent that these are applied to its charitable objects. No tax charges have arisen in the Charity. There was no UK Corporation Tax payable by Cornwall Refuge Trust in 2023 or 2022.

7 STAFF COSTS AND TRUSTEES' REMUNERATION

	<u>2023</u>	<u>2022</u>
	£	£
Wages and salaries	298,232	289,100
Social Security costs	21,008	18,908
Pension contributions	14,577	13,861
	<u>333,817</u>	<u>321,869</u>

Pension costs are allocated to activities in proportion to the related staffing costs incurred. These are allocated to restricted and unrestricted funds depending on the contracted duties of the relevant employees.

The monthly average number of staff employed by the Charity during the year was made up as follows:

	No.	No.
Trust manager	1	1
Administrators	1	1
Project managers	1	1
Project workers	10	9
Children's worker	1	1
Counselling co-ordinator	1	1
	<u>15</u>	<u>14</u>

No employee earned more than £60,000 per annum. The Trust considered its key management personnel in the year to comprise of the trustees and the Trust manager. The total employment benefits including pension contributions of the key management personnel were £31,322 (2022: £18,314). The Trustees were not paid or reimbursed for expenses during the year. The Trustees received no remuneration during the year.

8 NET MOVEMENTS IN FUNDS

Net movement in funds is arrived at after charging:

	<u>2023</u>	<u>2022</u>
	£	£
Depreciation of tangible fixed assets	6,256	6,258
Auditors' remuneration:		
- other accountancy services	<u>89</u>	<u>6,692</u>

CORNWALL REFUGE TRUST**NOTES TO THE FINANCIAL STATEMENTS (continued)****FOR THE YEAR ENDED 31 MARCH 2023****9 TANGIBLE FIXED ASSETS**

	Freehold land and buildings	Log cabin	Computer equipment	Equipment	Total
Cost:	£	£	£	£	£
At 1 April 2022					
and at 31 March 2023	<u>263,931</u>	<u>11,555</u>	<u>2,334</u>	<u>32,127</u>	<u>309,947</u>
Depreciation:					
At 1 April 2022	42,074	11,555	1,852	31,137	86,618
Charge for the year	<u>5,279</u>	<u>-</u>	<u>482</u>	<u>495</u>	<u>6,256</u>
At 31 March 2023	<u>47,353</u>	<u>11,555</u>	<u>2,334</u>	<u>31,632</u>	<u>92,874</u>
Net Book Value:					
31 March 2023	<u>216,578</u>	<u>-</u>	<u>-</u>	<u>495</u>	<u>217,073</u>
31 March 2022	<u>221,857</u>	<u>-</u>	<u>482</u>	<u>990</u>	<u>223,329</u>

All fixed assets are held for charitable use.

10 FIXED ASSET INVESTMENTS

	Open-end investment fund £
Cost or valuation	
At 1 April 2022	5,821
Disposals	<u>(874)</u>
	4,947
Change in market value of investments	<u>685</u>
At 31 March 2023	<u>5,632</u>

This open-end investment fund was gifted to the Charity in 2019. There is no historical cost to the Charity. See note 14.

11 DEBTORS

	2023 £	2022 £
Trade debtors	4,017	5,390
Prepayments and accrued income	4,469	2,692
Other debtors	<u>126</u>	<u>155</u>
	<u>8,612</u>	<u>8,237</u>

CORNWALL REFUGE TRUST**NOTES TO THE FINANCIAL STATEMENTS (continued)****FOR THE YEAR ENDED 31 MARCH 2023****12 CREDITORS: AMOUNTS FALLING
DUE WITHIN ONE YEAR**

	<u>2023</u>	<u>2022</u>
	<u>£</u>	<u>£</u>
Trade creditors	-	-
Other taxes and Social Security	-	-
Accruals	6,516	12,324
Other creditors	-	-
	<u>6,516</u>	<u>12,324</u>

**13 ANALYSIS OF NET ASSETS
BETWEEN FUNDS**

	<u>Designated funds</u>	<u>Unrestricted funds</u>	<u>Restricted funds</u>	<u>Endowment funds</u>	<u>Total</u>
	<u>£</u>	<u>£</u>	<u>£</u>	<u>£</u>	<u>£</u>
Tangible fixed assets	-	495	216,578	5,632	222,705
Cash at bank and in hand	400,000	328,610	95,938	1,840	826,388
Other net current liabilities	-	3	(6,000)	-	(5,997)
TOTAL FUNDS	<u>400,000</u>	<u>329,108</u>	<u>306,516</u>	<u>7,472</u>	<u>1,043,096</u>

Analysis of net assets between funds – previous year

	<u>Designated funds</u>	<u>Unrestricted funds</u>	<u>Restricted funds</u>	<u>Endowment funds</u>	<u>Total</u>
	<u>£</u>	<u>£</u>	<u>£</u>	<u>£</u>	<u>£</u>
Tangible fixed assets	-	1,472	221,857	5,821	229,150
Cash at bank and in hand	200,000	279,701	137,783	1,746	619,230
Other net current liabilities	-	5,543	(9,630)	-	(4,087)
TOTAL FUNDS	<u>200,000</u>	<u>286,716</u>	<u>350,010</u>	<u>7,567</u>	<u>844,293</u>

CORNWALL REFUGE TRUST**NOTES TO THE FINANCIAL STATEMENTS (continued)****FOR THE YEAR ENDED 31 MARCH 2023****14 STATEMENT OF FUNDS****Analysis of movement in funds – current year**

	<u>Balance at 1 April 2022</u>	<u>Income</u>	<u>Expenditure</u>	<u>Transfers</u>	<u>Balance at 31 March 2023</u>
	<u>£</u>	<u>£</u>	<u>£</u>	<u>£</u>	<u>£</u>
Designated funds					
Move on house fund and/or property purchase fund	200,000	-	-	200,000	400,000
Total designated funds	200,000	-	-	200,000	400,000
Other charitable purposes	286,716	312,289	(69,897)	(200,000)	329,108
Total unrestricted funds	486,716	312,289	(69,897)	-	729,108
Restricted funds					
Realised Endowment Fund	45,492	-	-	-	45,492
Children's project	1,837	2,169	(1,887)	-	2,119
Helpline funding	302	11,000	(11,302)	-	-
Support Group – Women	1,785	1,309	(957)	-	2,137
Support Group – Men	777	1,380	(1,424)	-	733
WAVES donations and grants	27,112	30,006	(56,360)	-	758
Hardship fund – Women	176	1,500	(1,645)	-	31
Male Refuge Norda fund	199,487	-	(5,279)	-	194,208
Big Lottery Awards4All (Acorn Group)	419	-	-	-	419
West Cornwall Youth Trust	1,328	-	-	-	1,328
Acorn Group travel fund	465	-	-	-	465
Total restricted funds c/fwd	279,180	47,364	(78,854)	-	247,690

CORNWALL REFUGE TRUST**NOTES TO THE FINANCIAL STATEMENTS (continued)****FOR THE YEAR ENDED 31 MARCH 2023****14 STATEMENT OF FUNDS (continued)**

	<u>Balance at 1 April 2022</u>	<u>Income</u>	<u>Expenditure</u>	<u>Transfers</u>	<u>Balance at 31 March 2023</u>
Total restricted funds					
b/fwd	279,180	47,364	(78,854)	-	247,690
Outdoor play equipment fund	447	-	-	-	447
Male refuge donations	1,706	-	(1,078)	-	628
Big Lottery Awards4All (Norda					
Child and Family work)	2,911	-	(51)	-	2,860
BBC Children in Need	(124)	-	124	-	-
ACTS 435	1	1,460	(1,461)	-	-
The Tudor Trust Fund	22,625	32,000	(41,843)	-	12,782
Pat Newman Memorial Trust	2,500	-	-	-	2,500
Cornwall Council CYP					
Support Worker	11,643	44,907	(49,609)	-	6,941
Tudor Trust Team Wellbeing					
Grant	1,223	-	(1,223)	-	-
Cornwall Council Norda Grant	(327)	118,000	(117,673)	-	-
Cornwall Council Resettlement					
Project	20,734	41,250	(37,678)	-	24,306
DWP Household Support Grant	-				
Lloyds Bank Foundation	(46)	33,120	(33,074)	-	-
Staff Wellbeing Fund	1,000	-	-	-	1,000
Cornwall Council Disability					
Adaptations Fund	6,537	-	(505)	-	6,032
Cornwall Council Women's					
Refuge grant	-	120,417	(120,417)	-	-
Soroptimist School Uniform					
Grant	-	100	-	-	100
Surviving Winter Fund	-	3,500	(3,500)	-	-
Pirate FM Cash for Kids	-	1,250	(350)	-	900
DWP Household Support Grant	-	800	(470)	-	330
Total restricted funds	<u>350,010</u>	<u>444,168</u>	<u>(487,662)</u>	<u>-</u>	<u>306,516</u>
Expendable endowment					
fund	<u>7,567</u>	<u>685</u>	<u>(780)</u>	<u>-</u>	<u>7,472</u>
TOTAL FUNDS	<u>844,293</u>	<u>757,142</u>	<u>(558,339)</u>	<u>-</u>	<u>1,043,096</u>

CORNWALL REFUGE TRUST**NOTES TO THE FINANCIAL STATEMENTS (continued)****FOR THE YEAR ENDED 31 MARCH 2023****14 STATEMENT OF FUNDS (continued)****Analysis of movements in funds – previous year**

	Balance at 1 April 2021	Income	Expenditure	Transfers	Balance at 31 March 2022
	£	£	£	£	£
Designated funds					
Pet scheme	579	-	-	(579)	-
Move on house fund	70,000	-	-	130,000	200,000
Total designated funds	70,579	-	-	129,421	200,000
Other charitable purposes	359,023	114,720	(57,606)	(129,421)	286,716
Total unrestricted funds	429,602	114,720	(57,606)	-	486,716
Restricted funds					
Realised Endowment Fund	45,492	-	-	-	45,492
Cornwall Council Women's Refuge grant	664	118,288	(118,952)	-	-
Children's project	1,594	825	(582)	-	1,837
Helpline funding	-	18,017	(17,715)	-	302
Support Group – Women	3,021	1,325	(2,561)	-	1,785
Support Group – Men	1,292	438	(953)	-	777
WAVES donations	8,120	5,298	-	-	13,418
WAVES grant	2,759	115,000	(104,065)	-	13,694
Hardship fund – Women	83	1,500	(1,407)	-	176
Hardship fund – Men	385	-	(385)	-	-
Male Refuge Norda fund	204,766	-	(5,279)	-	199,487
Soroptimist uniform fund	45	100	(145)	-	-
Big Lottery Awards4All (Acorn Group)	419	-	-	-	419
West Cornwall Youth Trust	1,328	-	-	-	1,328
Acorn Group travel fund	465	-	-	-	465
Total restricted funds c/fwd	270,433	260,791	(252,044)	-	279,180

CORNWALL REFUGE TRUST**NOTES TO THE FINANCIAL STATEMENTS (continued)****FOR THE YEAR ENDED 31 MARCH 2023****14 STATEMENT OF FUNDS (continued)**

	<u>Balance at</u> <u>1 April 2021</u> <u>£</u>	<u>Income</u> <u>£</u>	<u>Expenditure</u> <u>£</u>	<u>Transfers</u> <u>£</u>	<u>Balance at 31</u> <u>March 2022</u> <u>£</u>
Total restricted funds					
b/fwd	270,433	260,791	(252,044)	-	279,180
Outdoor play equipment fund	800	-	(353)	-	447
Male refuge donations	685	1,045	(24)	-	1,706
Big Lottery Awards4All (Norda Child and Family work)	2,982	-	(71)	-	2,911
BBC Children in Need	863	4,167	(5,154)	-	(124)
ACTS 435	46	1,260	(1,305)	-	1
The Tudor Trust Fund	18,741	16,000	(12,116)	-	22,625
Pat Newman Memorial Trust	2,500	-	-	-	2,500
Cornwall Council CYP Support Worker	1,697	49,224	(39,278)	-	11,643
Wester Power Grant - Christmas	153	-	(153)	-	-
Tudor Trust Team Wellbeing Grant	2,000	-	(777)	-	1,223
Cornwall Council Norda Grant	-	118,000	(118,327)	-	(327)
Cornwall Council Resettlement Project	-	33,750	(13,016)	-	20,734
DWP Household Support Grant	-	4,000	(4,000)	-	-
Lloyds Bank Foundation	-	33,941	(33,987)	-	(46)
Staff Wellbeing Fund	-	1,000	-	-	1,000
Cornwall Council Disability Adaptations Fund	-	6,885	(348)	-	6,537
Total restricted funds	<u>300,900</u>	<u>530,063</u>	<u>(480,953)</u>	<u>-</u>	<u>350,010</u>
Expendable endowment fund	<u>7,383</u>	<u>416</u>	<u>(232)</u>	<u>-</u>	<u>7,567</u>
TOTAL FUNDS	<u>737,885</u>	<u>644,783</u>	<u>(538,375)</u>	<u>-</u>	<u>844,293</u>

Designated funds

The move on house fund is a designated fund has been set aside by the board to cover the costs of interim accommodation to assist those moving from intensive support in the Refuge to community living, or for the potential purchase of suitable refuge accommodation.

CORNWALL REFUGE TRUST**NOTES TO THE FINANCIAL STATEMENTS (continued)****FOR THE YEAR ENDED 31 MARCH 2023****14 STATEMENT OF FUNDS (continued)****Restricted funds**

The Realised Endowment Fund represents the monies received from the sale of the investments during 2015. These funds were used for improvements to Norda House in 2015 and 2016 and so became part of the fixed assets.

The Cornwall Council Women's Refuge grant (formally known as Supporting People grant) represents monies given by Cornwall Council towards the cost of the project workers wages and a proportion of the running costs of the Women's Refuge.

The children's project represents monies given by Noel Buxton and various donations towards the provision of children's activities and play materials.

The Helpline funding represents monies given by Cornwall Council and donations from PCC Devon and Cornwall in 2022 and 2023 towards the running costs of the domestic violence helpline.

The Support Group – Women fund includes various donations which were given towards the cost of running the Support Group for women who have suffered from domestic violence.

The Support Group – Men includes various donations given towards the costs of running the Support Group for men who have suffered from domestic violence.

The WAVES donations represent various donations given towards the costs of running the WAVES project.

The WAVES grant represents monies given by First Light towards the costs of running the WAVES project.

Big Lottery Fund Reaching Communities – Norda House Project represents monies given by the Big Lottery to run the male refuge.

The Hardship funds (Women and Men) represents monies given by the Cornwall Community Foundation to be used where there is need in genuine cases of hardship.

The Male Refuge Norda fund represents monies given by The Norda Trust to support the establishment of a male refuge.

The Soroptimist uniform fund represents monies given to fund school uniform for the children staying at the Refuges.

The Big Lottery Awards4All (Acorn Group) represents a grant given by the Big Lottery Fund towards the cost of employing sessional workers and to cover other costs associated with the running of the Acorn Parenting Group.

The West Cornwall Youth Trust represents money given by the West Cornwall Youth Trust towards activities for children and young people who come into the Refuge.

The Acorn Group travel fund represents monies given towards the cost of client travel to the Acorn Parenting Group.

The Cornwall Community Winter fund represents monies given towards the cost of providing warm clothing and heating costs for residents staying in the Refuges, outreach clients and those that are moving on.

The outdoor play equipment fund represents money given by St Austell Soroptimists to help fund replacing the children's outdoor play equipment at the women's refuge.

Male refuge donations includes various donations which were given towards the provision of support for men living in the male refuge.

The Big Lottery Awards4All (Norda Child and Family work) represents a grant given by the Big Lottery Fund towards the cost of employing a Children and Family worker and activities for families staying in Norda House.

The BBC Children in Need fund represents a grant provided in 2019 for the next three years to fund the part time salary of the Children and Family Support worker and activities to support children and young people who have been affected by domestic abuse and violence.

The ACTS 435 fund represents donations given by All Saints 435 to support the needs of the female residents staying at the refuge.

CORNWALL REFUGE TRUST**NOTES TO THE FINANCIAL STATEMENTS (continued)****FOR THE YEAR ENDED 31 MARCH 2023****14 STATEMENT OF FUNDS (continued)**

The Lloyds Bank Foundation fund represents grant money given by Lloyds Bank Foundation for England and Wales to fund the volunteer project as well as other core costs of the refuges and the WAVES counselling project. The Tudor Trust fund represents grant monies given by the Tudor Trust to fund two part time resettlement workers.

The Pat Newman Memorial Trust fund represents money given towards parenting classes for residents staying at the refuge.

The Cornwall Council CYP Support Worker grant represents money given towards the cost of wages for a new support worker at the refuge.

The Meteor Shares CYP fund represents income and expenses relating to the gifted shares from the West Cornwall Youth Trust, the capital and income are restricted to be used for activities for children and young adults who come into the refuge.

The Cornwall Council Norda Grant represents funding for the male refuge.

The Cornwall Council Resettlement grant represents a grant to fund resettlement workers to assist service users as they prepare to leave refuge.

The DWP Household Support grant represents funding to assist residents with essentials over the winter period 2022-22.

The Staff Wellbeing fund represents monies received with the intention of supporting staff of CRT.

The Cornwall Council Disability Adaptations Fund represents monies to be used to fund disability adaptations to the refuges.

Expendable endowment fund

The expendable endowment fund was established by a gift from West Cornwall Youth Trust in 2019 of a percentage of units held in Meteor Senior Life Settlements Sterling Fund. The Trustees have the power to spend the capital; both the capital and income are restricted to be used for activities for children and young adults who come into the Refuge.

15 RECONCILIATION OF NET MOVEMENT IN FUNDS TO NET CASH INFLOW FROM OPERATING ACTIVITIES

	<u>2023</u>	<u>2022</u>
	£	£
Net movement in funds	198,118	105,992
Depreciation	6,256	6,258
Interest receivable	(2,350)	(53)
(Decrease) in debtors	(376)	2,930
(Decrease) in trade creditors	(5,807)	(5,334)
(Decrease) in other taxes and Social Security	-	(5,297)
Increase in other creditors and accruals	-	328
(Decrease) in deferred income	-	(29,792)
	<hr/>	<hr/>
Net cash provided by operating activities	<u>195,841</u>	<u>75,032</u>

CORNWALL REFUGE TRUST**NOTES TO THE FINANCIAL STATEMENTS (continued)****FOR THE YEAR ENDED 31 MARCH 2023****16 CASH AND CASH EQUIVALENTS**

	<u>2022</u>	<u>Cash</u>	<u>2023</u>
	<u>£</u>	<u>Flow</u>	<u>£</u>
		<u>£</u>	
Cash at bank and in hand	<u>619,230</u>	<u>199,065</u>	<u>818,295</u>

17 PENSION COSTS

In 2018 the Charity started offering an auto-enrolment pension scheme to all employees. The contribution rate in 2022/23 was 3% for the employee and 5% for the employer contributions. The total pension cost to the Charity for the year was £14,577 (2022: £13,861). Outstanding contributions at 31 March 2023, included in other creditors, amounted to £Nil (2022: £Nil).

18 OPERATING LEASE COMMITMENTS

At 31 March 2023, the charity had total commitments for future minimum lease payments under non-cancellable operating leases, which fall due as follows:

	<u>2023</u>	<u>2022</u>
	<u>£</u>	<u>£</u>
Within one year	2,517	2,517
Between two and five years	<u>1,049</u>	<u>3,566</u>
	<u>3,566</u>	<u>6,083</u>

19 FUTURE OPERATIONS AND THE CURRENT ECONOMIC ENVIRONMENT

In common with many charities delivering services funded by local authorities, Cornwall Refuge Trust is under pressure to maintain or increase the work it does with fewer funds. Efficiencies are achieved wherever possible with more use of volunteer time and the Charity seeks to find alternative funding wherever possible.

The Trustees are not aware of any reason why they should not continue to adopt the going concern basis of accounting.

20 RELATED PARTIES

Two Trustees, Ms K Furness and Ms K Hamilton, are partners of Cornwall Law LLP. No payments were made to Cornwall Law LLP (2022: £Nil). There were no outstanding amounts due at the year end (2022: £Nil).

CORNWALL REFUGE TRUST**INCOME AND EXPENDITURE ACCOUNT - RESTRICTED****FOR THE YEAR ENDED 31 MARCH 2023**

	<u>Year ended</u> <u>31/3/2023</u>		<u>Year ended</u> <u>31/3/2022</u>	
	<u>£</u>	<u>£</u>	<u>£</u>	<u>£</u>
INCOME				
Cornwall Council Resettlement		41,250		33,750
Community Safety Partnership		120,417		118,288
Children's project funding		44,907		49,224
First Light - Waves		25,000		115,000
Big Lottery Reaching Communities Fund (Male Refuge)		118,000		118,000
BBC Children In Need		-		4,167
Lloyds Bank Foundation		33,120		33,941
The Tudor Trust		32,000		16,000
Cornwall Council Disabilities Adaptations		-		6,885
Cornwall Council Helpline		10,000		10,000
Other grants		12,510		6,000
Donations		6,964		18,808
		<u>444,168</u>		<u>530,063</u>
EXPENDITURE				
Wages and NI	311,090		300,574	
Counselling and Support project	93,432		91,362	
Insurance	1,503		4,196	
Rent	9,698		9,850	
Rates and water	3,542		4,206	
Electric and heating	4,439		5,588	
Telephone	4,615		8,093	
Advertising, postage and stationery	869		1,878	
Training and recruitment expenses	1,447		1,826	
Cleaning	792		872	
Repairs and Renewals - Property	5,603		174	
- General	3,783		8,479	
Residents costs	14,526		8,685	
Travelling and volunteers expenses	1,287		6,660	
Independent examination fees	1,777		5,019	
Professional fees	1,969		1,104	
GDPR compliance costs	911		41	
Sundry expenses	6,227		6,416	
Health and safety	3,754		3,518	
Fundraising expenses	-		37	
Depreciation	5,279		5,279	
IT Support	2,943		-	
Security	8,176		7,096	
		<u>(487,662)</u>		<u>(480,953)</u>
(DEFICIT)/SURPLUS FOR YEAR		<u>(43,494)</u>		<u>49,110</u>

CORNWALL REFUGE TRUST**INCOME AND EXPENDITURE ACCOUNT - UNRESTRICTED****FOR THE YEAR ENDED 31 MARCH 2023**

	Year ended 31/3/2023		Year ended 31/3/2022	
	£	£	£	£
INCOME				
Housing Benefit		99,788		83,493
Personal service charges		7,402		6,874
Donations		6,741		21,616
Legacies		190,454		-
Payphone, laundry and television etc		2,428		2,211
Investment income		2,350		53
Fundraising events		126		57
Other income		3,000		-
		<u>312,289</u>		<u>114,304</u>
EXPENDITURE				
Wages and NI	22,727		21,295	
Insurance	1,104		446	
Rent	10,377		9,850	
Rates and water	3,000		2,057	
Electric and heating	4,439		2,333	
Telephone and Internet	3,333		1,725	
Advertising, postage and stationery	491		1,081	
Training and recruitment expenses	-		239	
Cleaning	792		497	
Repairs and Renewals - Property	6,643		997	
- General	3,783		4,616	
Food and residents costs	603		439	
Television and video	336		335	
Travelling and volunteers expenses	83		262	
Audit/independent examiner fees	(1,688)		1,673	
Professional fees	6,265		4,509	
GDPR Compliance and storage	198		987	
Bank charges	172		219	
Sundry expenses	1,605		2,576	
Fundraising expenses	-		16	
Bad debts written off	-		59	
Depreciation	977		979	
Health and Safety	3,845		-	
IT Support	812		-	
		<u>(69,897)</u>		<u>(57,190)</u>
SURPLUS FOR YEAR		<u>242,392</u>		<u>57,114</u>