

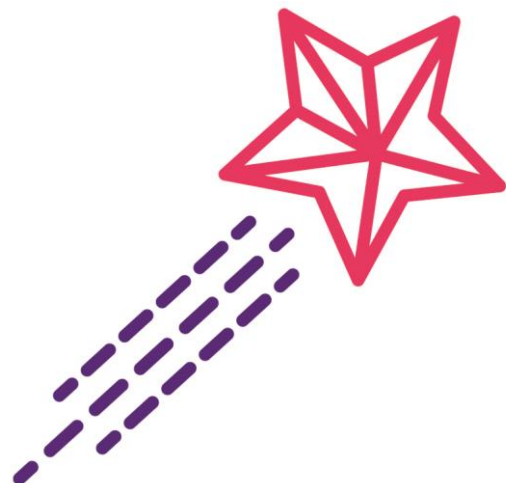


# **Home-Start Sutton**

## **Annual Report & Financial**

### **Statements**

#### **31<sup>st</sup> March 2022**



**Home-Start Sutton, a company limited by guarantee no 05165417. Charity no. 1104960 Registered office:  
Alexandra Gardens Children's Resource Centre, Stanley Road, Carshalton SM5 4LJ**

<b>CONTENTS</b>	<b>Page</b>
Contents	1
Reference and Administrative Details of the Charity	2
Chairperson's Statement	3
Report of the Board of Trustees	4
Independent Examiner's Report	15
Statement of Financial Activities (incorporating Income & Expenditure Report)	17
Balance Sheet	18
Notes to the Financial Statements	19
Staff and Volunteers	31
Acknowledgements	33

**Charity Number** 1104960

**Company Number** 05165417

**Principal Office and Registered Office**

Alexandra Gardens Children's Resource Centre  
Stanley Road  
Carshalton  
Surrey SM5 4LJ

**Telephone** 020 8647 6501

**Email** admin@homestartsutton.org.uk

<b>Trustees</b>	Janet Mountford	Chair
	Frances Smith	Treasurer
	Fran Boto	
	Peter Thomas	
	Tracey Holland	
	Pamela Roberts	
	Michele Rivers	

**Company Secretary**

Judith Armstrong

**Scheme Manager**

Judith Armstrong

**Independent Examiner**

Philip Warner  
108 Augustus Road  
London  
SW19 6ER

**Bankers**

Co-operative Bank plc  
P.O.Box 250  
Delf House  
Southway  
Skelmersdale WN8 6WT

Charities Official Investment Fund  
80 Cheapside  
London EC2V 6DZ

<b>Advisors</b>	Shona Newmark	Employment Law Advisor
-----------------	---------------	------------------------

**Personnel and Forward Planning Sub-Group**

Janet Mountford  
Frances Smith  
Pamela Roberts  
Michele Rivers

### Chair's Report April 2021- March 2022

It is my pleasure to once again be in the position to report on a further successful year for HomeStart Sutton despite the ongoing Covid scenario.

The knock on effect of Covid, lockdown, restrictions, and then the gradual reopening of life had a significant impact on us for a further year. Our staff, led by Judith, together with all of our volunteers continued to valiantly support a large number of families and children. The outcomes of this work are highlighted in the full Impact Report. The support offered was both practical and emotional with an emphasis on supporting the mental health of vulnerable families. It should not be underestimated how much contact through Zoom, 'phone, texts and walks in the park carried people through this time.

Our profile locally within both the Local Authority, Public Health and other statutory and voluntary services continues to grow and resulted in some significant funding becoming available to support the return to a new normal and continue into the future.

As a result of new funding for a number of projects we have been in the position of being able to increase our staff team with three new part-time Coordinator posts a part-time Volunteer Recruitment and Development Coordinator and a revised Administrator role. An internal staff restructure with the appointment internally of a Senior Coordinator and CEO allowed for clarification of roles and responsibilities.

As shown in the Impact Report our work has had many demonstrable positive outcomes for local families and although our Lottery funding ends in December 2022 we are in a financially healthier position than at any other time during my tenure as Chair. Huge thanks go to a range of people for this position. The Trustee Board's very successful Fundraising Committee, CEO Judith's work to achieving successful bids, Frances Smith for her magnificent work as Treasurer and to The Mayor of Sutton for nominating us for two years as one of her Charities.

My thanks go to all of them and all other donors and supporters, and of course our band of loyal Volunteers without whom we could not offer any services. Last but not least my thanks go to my fellow Trustees and particularly Judith and her whole staff for keeping going, mostly with a smile, through another year of the most testing of times.

Janet Mountford  
May 2022

The Trustees are pleased to present the report and financial statements of Home-Start Sutton for the year ended 31st March 2022. The report explains the activities of the charity that have made a significant contribution to the charity's purpose and provide public benefit.

### **STRUCTURE, GOVERNANCE AND MANAGEMENT**

#### Governing Document

Home-Start Sutton was incorporated by guarantee on 29th June 2004. It has no share capital and is a registered charity. In the event of the company being wound up the guarantee of each member is limited to £1. The governing document is the Memorandum and Articles of Association of the company and members of the Board of Trustees are the Directors of the company. The reference and administrative details of the charity are set out on page 2.

#### Appointment of Trustees

Under the Memorandum and Articles of Association the Trustees are elected at the Annual General Meeting. The Trustees appoint the officers of the charity (Chair, Vice-Chair, Treasurer and Secretary). The Trustees may subsequently co-opt any person duly qualified, to be a Trustee and that person will hold office until the next Annual General Meeting.

Officers and Trustees are elected to serve for a period of three years after which they must retire and can offer themselves for re-election at the next Annual General Meeting. All Trustees must be members of Home-Start Sutton.

The full complement of the Board of Trustees is 12 people. Whilst it is the charity's goal to maintain a full complement of Trustees, vacancies can exist as the charity endeavours to find suitable candidates. Trustees are sought in a variety of ways, including recommendation from existing Trustees, staff and supporters. When seeking new Trustees the Board carefully considers the skills and knowledge needed to support the on-going development of the charity and to that end seek people with relevant experience and expertise. Potential Trustees are scrutinised by two officers of the charity and are subject to interview.

#### Trustee Induction and Training

New Trustees undertake an induction programme with the Manager of the charity. This programme explains their duties and responsibilities as a Trustee and includes a tour of the office and an overview of the operations of the charity. Each year the Trustees, along with all the staff and volunteers undertake mandatory Safeguarding Training. On-going training is available to the Trustees through the Home-Start UK national organisation, Community Action Sutton and appropriate ad-hoc training courses as identified by the charity or individual trustees.

#### Trustee Responsibilities

The Trustees (who are also directors of Home-Start Sutton for the purposes of company law) are responsible for preparing the Trustee Annual Report and Financial Statements in accordance with applicable law and United Kingdom generally accepted accounting practice (UKGAAP).

Company law requires that the Trustees prepare financial statements for each financial year that give a true and fair view of the state of affairs of the charitable company and of its incoming resources and application of resources, including income and expenditure, for that period. In preparing these financial statements, the Board of Trustees are required to:-

- select suitable accounting policies and apply them consistently
- observe the methods and principles in the Charities SORP;
- make judgements and estimates that are reasonable and prudent;
- state whether applicable UK Accounting standards have been followed, subject to any material departures disclosed and explained in the financial statements; and
- prepare the financial statements on the going concern basis unless there is a reasonable expectation that the charity will be unable to continue in operation.

The Board of Trustees is responsible for keeping proper accounting records. These must disclose with reasonable accuracy, at any time, the financial position of the charitable company and enable them to ensure that the financial statements comply with the Companies Act 2006. They are also responsible for safeguarding the assets of the company and hence for taking reasonable steps for the prevention and detection of fraud and other irregularities.

Company law also requires that the Board of Trustees pay due regard to the public benefit guidance published by the Charity Commission and have a duty to achieve the purposes of the charitable company. In setting the charity's objectives, planning its activities and reviewing all proposed activities, the Trustees have given careful consideration to the Charity Commission's general guidance on public benefit. The Trustees review and approve the annual budget and periodically review the financial performance and reports of the company to ensure that it is operating in a manner consistent with achieving its purposes. In addition, the Trustees are of the opinion that the policies and procedures in place are sufficiently robust to ensure that the company achieves its purpose.

A scheme of delegation is in place and day-to-day responsibility for the running of the charity lies with the Scheme Manager, Judith Armstrong. As such, she is responsible for operating within the framework of the policies, forward plan and budgets to ensure the charity delivers the services specified and achieved its key performance indicators. In addition, the Manager is responsible for individual supervision of the staff team and ensuring that both the staff and the scheme volunteers continue to develop their skills and working procedures consistent with best practice. In turn the Manager of the charity is subject to bi-annual performance review with the charity's Chair.

### Trustee Meetings

Full Board of Trustees meetings are held six times per year to review and agree major areas of policy and business activity and to oversee the operational performance of the charity. Key Performance Indicators, Treasurer's Report and Risk Assessment are reviewed at every meeting and staff members attend the meetings on a rota basis to give the Trustees an update on the recent achievements and activities in their area.

In addition to the Trustee meetings, there are regular meetings of the Fundraising sub group and Personnel and Forward Planning Group, this group is charged with the development of long-term strategy for Home-Start Sutton and the management and support of the staff and personnel resources. Given the recent precarious funding situation, the group has continued to meet regularly to determine short-term resources and planning services and staffing resources accordingly. This group currently comprises the chair, the vice chair and two other trustees. The scheme manager also attends the meetings.

### Related Parties

Whilst Home-Start Sutton is an independent charitable company it is affiliated to Home-Start UK, the national umbrella organisation for UK Home-Start schemes. Consequently Home-Start Sutton has signed up to a national Home-Start agreement and works to the national organisation's standards and methods of practice. These standards commit the company to regular reviews of its operating procedures and subject the company to periodic audit reviews by the national organisation to ensure that the charity is conforming to the national procedures.

Additionally, as an affiliated scheme Home-Start Sutton benefits from the umbrella organisation's expertise and advice as regards new legislation, regulations and internal control procedures and Home-Start Sutton Trustees, staff and volunteers are able to take advantage of the comprehensive range of training courses run by the national organisation.

### Risk Assessment

The Board of Trustees has reviewed the major risks to which Home-Start is exposed and is satisfied that systems have or are being established to manage these risks.

The charity continues to review its procedures and policies to ensure that they are consistent with those best practices identified and documented by Home-Start UK, the national organisation. In addition it continues its focus on the following items:-

- 1. Risks to Future Funding:** The funding situation for Home Start-Sutton remains of longer-term concern. The scheme needs to continue to concentrate efforts on sustaining funding streams. There are limited independent funding bodies supporting Home-Start activities. The impact of COVID 19 on funding opportunities and the availability of funds is still being worked on by many trusts and funding sources, and while the need for our support will undoubtedly continue to increase the demand for available funding will also increase. The charity is therefore ever more mindful of the need to diversify funding streams and source to minimise risk to overall operations. Home-Start Sutton continues to work closely with the London Borough of Sutton (Children's Services, Health Services and Primary Care Networks) and to target grant making trusts.

The charity is working with Home-Start London a consortium of 13 London Home-Start schemes as regards potential for London-wide funding opportunities.

The charity continues to hold various sponsorship, sales and fundraising events locally to bring in sufficient monies to fund activities.

2. **Disclosure and Barring Checks:** Trustees, staff and volunteers are subject to enhanced Disclosure and Barring checks in line with Home-Start UK policies.
3. **Staff and Volunteer Training:** Ensuring that all staff and volunteers are properly trained, supported, supervised and motivated as they carry out their work for the charity.
4. **Internal Controls:** Ensuring that internal control risks are minimised by following procedures that require all transactions to be correctly authorised and recorded in the accounts of the charity.
5. **Safeguarding:** Ensuring that proper procedure and controls are in place to be able to identify and action instances of alleged or suspected abuse that come to the attention of Home-Start Sutton. Staff and trustees access local multi-disciplinary training and Home-Start UK safeguarding training in line with policy guidelines. A key element of the procedures is the on-going biennial training of all Trustees, staff and volunteers in the Safeguarding and Protection of Children.
6. **Legal Costs Cover:** Ensuring the maintenance of adequate insurance cover for the scheme to provide cover for employees, Trustees and volunteers carrying out work for and on behalf of Home-Start; this includes any claim resulting from alleged or actual abuse.
7. **Accommodation:** There remains the risk that were the charity to have to move offices it would have to pay a more expensive market level rent. This is not considered imminently likely whilst the charity is seen as providing valuable family support to Sutton residents. The charity remains open to conversations with other local organisations and networks regarding co-location, dependent on favourable financial and operational considerations.

### Membership

Membership is open to all who support the objects of the charitable company. At the 31<sup>st</sup> March 2022 there were 49 such members (2021–47 members).

### Valuing Volunteers and Benefit in Kind

During the year Home-Start Sutton worked with 99 volunteers, 3 office volunteers, 4 were group volunteers, 7 were peer advocates and 85 were home visiting volunteers. Assuming 99 trained volunteers (2021 – 80 volunteers) each giving between two and four hours weekly, working on an average of 3 hours a week for 46 weeks and using standard pay rates for similar grades of staff of £14.51 per hour, the value of the benefit in kind applicable to the charitable activity was as follows:-

2022	2021
£	£



---

Charitable activity - "Supporting parents with children"

**£198,235**

**£160,190**

---

### MISSION, OBJECTIVES AND ACTIVITIES

The Trustees have referred to the guidance in the Charity Commission's general guidance on public benefit and complied with section 17(5) of the 2011 Charities Act when reviewing the charity's aims and objectives and in planning its future activities. In particular the Trustees consider how planned activities will contribute to the aims and objectives they have set specifically taking into account the perceived needs in London Borough of Sutton and of the support services being supported and funded by individuals, grant bodies and the local authority.

#### Mission

Home-Start Sutton provides practical and emotional support to vulnerable families with children under five, living in the London Borough of Sutton, actively enabling parents to give "the best start" to their children.

#### Objectives

In the year under review the main charitable objectives of Home-Start Sutton for the public benefit are to:-

- safeguard, protect and preserve the mental and physical health of children and parents of young children;
- prevent cruelty to or maltreatment of children;
- relieve sickness, poverty and need amongst children and parents of young children;
- promote the education of the public in better standards of child care within Sutton and its environs; and
- undertake or participate in child and parent related activities that support the viability of the company and enhance the delivery of the existing services around Sutton.

In order to achieve this Home-Start Sutton needs to:-

- recruit, train and manage suitable volunteers to allow one-to-one support to families;
- have sufficient resources to fund the service and achieve the scheme objectives;
- offer a quality service that is valued by both parents and funding bodies;
- employ, train and motivate staff so as to provide the target services;
- be able to recruit Trustees with the relevant skills to manage the charity in its achievement of its long term objectives;

- ensure that the expertise and knowledge within Home-Start Sutton is leveraged to its maximum potential with central and local organisations working in Sutton; and
- ensure that all staff, volunteers and Trustees are regularly trained in and fully conversant with latest safeguarding regulations and procedures.

### Activities

Our delivered charitable activities were:

- 1 **Supporting parents with children**, Home-Start Sutton seeks to increase the confidence and independence of the family through the provision of a home-visiting service and appropriate family support groups. The support is targeted at families that have a child or children of five years of age or under and are resident in the London Borough of Sutton.

This support was given by a core of 10 part-time staff (7.3 full time equivalent) supported by a network of 96 volunteers who work to the following standards and methods of practice by:-

- visiting families in their own homes where the dignity and identity of each individual can be respected and protected;
- reassuring parents that difficulties in bringing up children are not unusual and encourage enjoyment of family life;
- developing a relationship with the family in which time can be shared and understanding can be developed; the approach is flexible to take account of different needs of individual families;
- offering support, friendship and practical assistance;
- encouraging the parents' strengths and emotional well-being for the ultimate benefit of their own children; and
- encouraging families to widen their network of relationships and to use effectively the support and services available within the community.
- In 2021/22 this support was adapted according to restrictions and remote/telephone/video support introduced to maintain connections and reduce isolation.

We have been very fortunate in 2021/22 to receive funding from LBS (London Borough of Sutton) to expand our parenting support offer, enabling us to increase our volunteer base and reach more families with 1:1 peer support.

- 2 **Advocacy Project**, Sutton Parent2Parent Independent Advocacy Service offers support to parents facing an Initial Child Protection Conference. The support is intensive over 2/3 meetings and provided by peer advocates who have experience of the process. In 2021/22 the Tudor Trust funding ended, and the London Borough of Sutton provided one-year funding enabling Home-Start Sutton to continue and develop the service offered to parents involved in the child protection process. The aims are to facilitate and enable parental engagement in

the child protection process, bridging any gap between the statutory services and the family for the ultimate benefit and well-being of the children/young people. In addition, high-quality training and support is offered to the peer advocates. Outcomes are monitored via direct feedback from parents, social workers and conference chairs. COVID had resulted in conferences moving to a remote format, this continued for review conferences, but initially moved to a hybrid approach and advocates supported families at the remote and in-person conferences.

The Trustee Board approved the activity on the basis that it:

- Provided an excellent opportunity to work closely with local Children's Services
- Providing support to vulnerable families.
- Provided the opportunity to build on the understanding of local authority child protection work which would be potentially beneficial in attracting funding.

3. **Connecting Families** – The National Lottery project funding until December 2022 enables Home-Start to extend our core service of home-visiting support to more families and included new service offers. The primary focus of the project is reducing isolation in families with young children. The additional strands of work are delivery of a parenting programme and school readiness work with families and specialist mental health training to volunteers. The correct choice of parenting programme was crucial to ensure the Home-Start ethos and model was not compromised, the Family Links Nurturing Parent Programme fits these criteria. During 2021-22 staff delivered 2 full courses, despite the COVID restrictions which were on and off during the year. The school readiness work has been 1:1 with families
4. **Family Groups** funded by BBC Children in Need until December 2022, to provide two weekly groups to support isolated families. A general family support group for parents and under 5's and the second group **Tea and Tots**, launched in 2020 focussing on mums and babies under 2 years.
5. **Perinatal Support** –we secured further funding to deliver **Maternal Journal** groups through HSUK, offering a block of 8 sessions to new mums with babies under 1 to explore the use of creative journaling for well-being. In addition, we have been able to secure funding to offer a perinatal peer support group, **Bringing Mums Together**, alongside Sutton Mental Health Foundation. The sessions were aimed at isolated mums who had become parents in lockdown and had mild to moderate mental ill-health. Both groups were held face to face, socially distanced.
- 6 **The Pod** temporary accommodation project is a weekly drop-in for parents and under 5's in temporary/emergency accommodation. At the Dolphin, Sutton on Friday mornings 10-12. Signposting, access to information, someone to talk to. Numbers were initially limited to be COVID safe but with restrictions lifting this has changed, we also offer 1:1 support to families who are unable to attend the drop-in. The sessions are supported by the Welfare Reform Team, Social Prescribing, Encompass and health, providing a temporary accommodation one-stop-shop. Funded by LBS (London Borough of Sutton) Public Health
- 7 **Transform - Nurturing Parent and Child Group** –we are part of the Transform partnership a new comprehensive domestic abuse service contract in the

- London Borough of Sutton. We are contracted to deliver two 11-week courses for parents and their children under 5 impacted by domestic abuse. This work aims to provide nurturing input for parents focussed on addressing their own and their children's emotional needs and direct support to the children through 1:1 and group play. In 2021/22 we were able to offer two courses face-to-face.
8. **Moving on Together** a joint project with Playwise, offering a comprehensive post-diagnosis service to families with a child who have just received a diagnosis of additional need. Home-Start provide training and support to parents with lived experience of having a child with an additional need who then provide 6 months of home-based 1:1 support to parents referred.
  9. **Children with Disabilities Framework** – Sutton Children's Services have commissioned a range of organisations, including Home-Start to provide support for families with a child with a disability. Home-Start are commissioned to provide support under improving family resilience. The service is 'drawn down' as and packages of support are agreed with the family.
  10. **Bridge the Gap** is a project funded by the Mayor of London's Young Londoners Fund and delivered in partnership with MAPS, the Volunteer Centre Sutton's youth mentoring project. The project started in January 2020. Home-Start provide family mentoring as part of a holistic offer to young people at risk of exclusion and their families. In 2021/22 LBS funding enabled the expansion of this service to additional families through the Esteem 21 project, aimed at tackling isolation and exclusion.
  11. **Circle of Security Parenting** an attachment-based parenting programme delivered in partnership with Sutton Children's Centre's and funded by LBS. The first programme started in February 2021.
  12. **Volunteer** recruitment, training and support. We delivered four volunteer preparation courses two online over Zoom, and two in person, over the year for 38 new volunteers and ongoing training for volunteers, including mandatory annual safeguarding refresher training.
  13. Additional **activities** included informal 'Walk and Talk' sessions for families, summer activities at the Ecology Centre and practical help with food, toiletries, and support to access grants for household items.

### ACHIEVEMENTS AND PERFORMANCE

Key achievements of Home-Start Sutton in the deliverance of its charitable activities in 2021/22 for the public benefit are recorded in the Chair's report.

### ANNUAL INFORMATION OUTCOMES UPDATE 2021/2022

We supported **175** families through the core services and **97** through advocacy. There were **640 children** in supported families

**This year we again have created a Social Impact Report to illustrate our outcomes.**

Please refer to this document for key outcomes information

#### Ethnic Origin of Families and Volunteers

Ethnic Origin			Core Families Supported	Advocacy Families	Volunteers	Staff	Trustees
Asian	Indian		3	2	6	0	0
	Pakistani		4	0	1	0	0
	Bangladeshi		2	0	1	0	0
Other Asian Background			9	4	2	0	0
Black	Caribbean		4	2	1	0	0
	African		3	2	1	0	0
Other Black Background			7	1	2	0	0
Chinese or other ethnic group			0	0	0	0	0
	Chinese		2	0	3	0	0
Any other ethnic group			10	9	7	1	0
Mixed	Any mixed background		10	10	3		0
White	British		108	45	68	8	7
	Irish		1	2	0	1	0
Other White Background			10	0	4	0	0

Nil responses			1	20	0	0	0
	TOTALS		175	97	99	10	7

### FINANCIAL REVIEW

Our turnover for the financial year ending March 31<sup>st</sup> 2022 was £509,367 (£274,741 in 2020/21) against which we had expenditure of £306,362 (£213,719 in 2020/21). The Income and Expenditure Account showed a surplus of £203,005 (surplus of £61,022 in 2020/21) with a net increase in the Restricted Fund Reserves of £44,781, from £42,569 to £87,350, and the Unrestricted Reserves increased by £158,224 and now stand at £263,014 of which £138,014 is the General Reserve.

2021/22 was a financially successful year where new projects commenced and core services became more stable following Covid 19 challenges. Some of the new projects were completed during a 12-month period however some projects would benefit from ongoing funding as they continue to provide important support to families. Discussions will be continuing with grant givers to secure continuation funding.

The biggest contributor to our restricted grant funded income of £342k continued to be the National Lottery for the Connecting Families Project (£101k) followed by the BBC Children in Need Project (£29k).

We were successful in securing funding for seven new projects during the year: City Bridge LCRF Wave 5 (£27k), LB Sutton Children's Wellbeing (£18k), LB Sutton Temporary Accommodation Ambassadors (£20k), Sutton Mental Health Foundation Perinatal (£7k), Moving on Together (£6k), LB Sutton Parenting Support (£30k) and HSUK Big Hopes Big Futures (£4k).

A donation was received from the Sutton Women's Aid that has been used to establish a development fund. The fund will contribute to staff and volunteer development and will also be used to secure and embed our perinatal and infant mental health provision.

The number of fundraising events were curtailed due to Covid-19 constraints, however Councillor Trish Fivey, the Mayor of Sutton, chose Home-start Sutton as one of her nominated charities for her extended term in office. We received over £8k from the Mayor's Charity during the year and there will be further receipts during 2022/23 from the more recent Mayor's Charity events. We also received a large number of generous donations which helped support our families through the year. Income from general donations and fundraising amounted to a magnificent sum of £40k and we are, as ever, very grateful to all of our benefactors.

Although 2021/22 was a very busy year, due to the dedication of our staff team, good financial management and the generosity of our benefactors the financial year ended successfully.

---

Looking forward, the financial year 2022/23 is expected to be another busy and challenging year. There are number of short -term projects that will come to an end and we have started planning for the end of our 3-year grants in December 2022. The Trustees have been in a position to set a budget for 2022/23 and are able to confirm that the organisation is a going concern.

### Reserves Policy

The core purpose of the charity is to provide its “Supporting Families with Children” activities to families experiencing difficulties that have (a) a child below five years of age and (b) live in the London Borough of Sutton.

As such the trustees have set a reserves policy whereby:-

- reserves are maintained at a level which ensures that Home-Start could continue with its above core activity during a short period of unforeseen difficulty;
- reserves are such as to enable an orderly rundown of the charity, notably in assisting vulnerable client families handover to other services, should Home-Start be unable to secure income to continue with its activities; and
- a proportion of reserves are maintained in a readily realisable form.

The calculation of the required level of reserves is an integral part of the scheme’s planning, budget and forecast cycle. It takes into account risks associated with:-

- the current economic environment;
- each stream of income and expenditure being different from that budgeted;
- the planned activity level;
- the organisation’s commitments;
- the organisation’s structure and its ability to meet child safeguarding, financial and other regulatory requirements; and
- new activities having different set-up costs, take-up and payment terms to that previously undertaken by the charity.

The Trustees periodically examine Home-Start Sutton’s requirement for reserves in the light of past experience and the current risks faced by the organisation. Generally, when the charity has on-going funding for much of its activities, the Trustees consider an Unrestricted General Reserve equivalent to at least three to six months normal expenditure is appropriate, namely between £75k and £150k. The General Unrestricted Reserve at 31 March 2022 was £138k. The Trustees took the decision to establish an Unrestricted Designated Development Fund from the Sutton Women’s Aid £126k donation.

### Investment Policy

Payments to Home-Start Sutton are generally quarterly in advance and as such, there are generally no funds available for long-term investment. Accordingly, having considered all the options available, the Board of Trustees have previously agreed that any surplus cash should be placed on short-term deposit. However, with the current level of reserve we will now look at the possibilities for further diversification of investments in order to achieve an improved interest return and to spread financial risk.

In selecting where to deposit the surplus monies Home-Start’s first priority is to minimise risk and then achieve a reasonable return. Accordingly, the monies are currently placed on deposit with the COIF Charities Deposit Fund, a common investment fund which has

an AAA credit rating from Fitch Ratings Agency in reflection of its low and diverse risk. Risk assessment criteria would be applied in deciding where to place any future investments. The charity remains aware of the need to monitor the performance and risk of investments especially during periods of financial market turbulence.

### Appointment of Auditors

The Trustees are satisfied that the company is entitled to exemption from audit under section 477 (small companies) of the Companies Act 2006 and that an independent examination is appropriate for the coming year.

The Trustees appointed Philip Warner as the Independent Examiner at the AGM 10<sup>th</sup> November 2021.

This report has been prepared in accordance with FRSSE SORP - Financial Regulation Standard for Smaller Entities Statement of Recommended Practice

Janet Mountford  
Chair

## **Independent Examiner's Report To The Trustees of Home-Start Sutton Charitable Company Charity Commission Number 1104960**

### **For the year to – 31<sup>st</sup> March 2022**

I report on the accounts of the charity for the year ended 31st March 2022, which comprise the statement of financial activities, balance sheet, statement of accounting policies and related notes. These financial statements have been prepared on the basis of the accounting policies set out therein.

This report is made solely to the Trustees as a body, in accordance with Section 145 of the Charities Act 2011. My examination has been undertaken so that I might state to the Trustees those matters I am required to state to them in an independent examiner's report and for no other purpose. To the fullest extent permitted by law, I do not accept or assume responsibility to anyone other than the charity and the Trustees as a body, for my examination, for this report, or for the opinions I have formed.

### **Respective responsibilities of Trustees and Examiner**

The charity's trustees are responsible for the preparation of the accounts. The charity's trustees consider that an audit is not required for this year under section 144 of the Charities Act 2011 (the Act) and that an independent examination is needed. The charity is preparing accrued accounts and I am qualified to undertake the examination by being a qualified member of the Chartered Institute of Management Accountants.

Having been satisfied that the charity is not subject to audit under company law and is eligible for independent examination it is my responsibility to:-



- examine the accounts (under section 145 of the Charities Act 2011);
- to follow the procedure laid down in the General Directions given by the Charity Commissioners (under section 145(5) of the Charities Act 2011); and
- to state whether particular matters have come to my attention.

## **Basis of Independent Examiner's Report**

My examination was carried out in accordance with the General Directions given by the Charity Commissioners. An examination includes a review of the accounting records kept by the charity and a comparison of the accounts presented with those records. It also includes consideration of any unusual items or disclosures in the accounts and seeking explanations from you as Trustees concerning any such matters. The procedures undertaken do not provide all the evidence that would be required in an audit, and consequently no opinion is given as to whether the accounts present a "true and fair view" and the report is limited to those matters set out in the statement below.

## **Independent Examiners Statement**

In connection with my examination, no matter has come to my attention:-

(1) which gives me reasonable cause to believe that in any material respect the requirements;

- to keep accounting records in accordance with section 130 of the Charities Act 2011; and
- to prepare accounts which accord with the accounting records and to comply with the accounting requirements of the Companies Act 2006 and with the methods and principles of the Statement of Recommended Practice; Accounting and Reporting by Charities (revised 2005) have not been met; or

(2) to which, in my opinion, attention should be drawn in order to enable a proper understanding of the accounts to be reached.



Philip Warner  
Chartered Institute of Management Accountants (8654555)

108 Augustus Road  
London  
SW19 6ER

12th July 2022



**Home-Start Sutton**  
**Statement of Financial Activities (incorporating Income & Expenditure Report)**  
**For the year to 31 March 2022**

	Notes	Unrestricted Funds £	Restricted Funds £	Total 2022 £	2021 £
<b>Income</b>					
Donations and Fundraising	3	165,590	0	165,590	19,895
Investment Income	4	222	0	222	140
Charitable Activities:					
"Supporting parents with children" income	5	0	341,285	341,285	212,190
Other Income	6	1,500	770	2,270	42,516
<b>Total Income</b>		<b>167,312</b>	<b>342,055</b>	<b>509,367</b>	<b>274,741</b>
<b>Expenditure</b>					
Expenditure on raising funds	7	2,676	-	2,676	4,345
Expenditure on Charitable Activities	8	6,412	297,274	303,686	209,374
<b>Total Expenditure</b>		<b>9,088</b>	<b>297,274</b>	<b>306,362</b>	<b>213,719</b>
<b>Net Income (Expenditure)</b>		<b>158,224</b>	<b>44,781</b>	<b>203,005</b>	<b>61,022</b>
<b>Net transfers between Funds</b>	19	-	0	0	0
<b>Net Movement in Funds</b>		<b>158,224</b>	<b>44,781</b>	<b>203,005</b>	<b>61,022</b>
<b>Reconciliation of funds</b>					
Total funds brought forward at 1st April		104,790	42,569	147,359	86,337
Total funds carried forward		<b>263,014</b>	<b>87,350</b>	<b>350,364</b>	<b>147,359</b>

The statement of financial activities includes all gains and losses recognised in the year.

All incoming resources and resources expended derive from continuing activities.

**Unrestricted Funds comprise**

General Reserve	138,014
Designated Development Fund	125,000

**Balance Sheet**  
**As at 31<sup>st</sup> March 2022**  
**Company Registration Number 5165417**

	<b>Note</b>	<b>March 2022 £</b>	<b>March 2021 £</b>
<b>Fixed Assets</b>			
Tangible Fixed Assets	15	<u>4,759</u>	<u>5,318</u>
<b>Current Assets</b>			
Debtors	16	18,938	1,649
Prepayments		1,089	200
Short Term Deposits at COIF		289,647	164,425
Cash at Bank and in hand		<u>167,708</u>	<u>57,123</u>
		<u>477,382</u>	<u>223,397</u>
<b>Liabilities: amounts falling due within 1 year</b>			
Deferred Income	17	92,168	43,439
Creditors & Accruals	18	<u>39,609</u>	<u>37,917</u>
		<u>131,777</u>	<u>81,356</u>
<b>Net Current Assets</b>		345,605	142,041
<b>Total Assets less Current Liabilities</b>		<u><b>350,364</b></u>	<u><b>147,359</b></u>
Represented by:			
<b>Funds</b>			
Unrestricted - General	19	138,014	104,790
Unrestricted - Designated Development	19	125,000	-
Restricted Funds	19	<u>87,350</u>	<u>42,569</u>
		<u><b>350,364</b></u>	<u><b>147,359</b></u>

These accounts have been prepared in accordance with the special provisions of Part 15 of the Companies Act 2006 relating to small companies and with the Financial Reporting Standards for Smaller Entities (effective January 2015). Directors are satisfied that the company is entitled to exemption from audit under section 477 (small companies) of the Companies Act 2006 and that; the members have not required the company to obtain an audit of its accounts for the year ended 31<sup>st</sup> March 2022 in accordance with section 476 and, the Directors acknowledge their responsibilities in complying with the Companies Act 2006 in respect to accounting records and the keeping of accounts.

Approved by the Board of Trustees on 25<sup>th</sup> April 2022 and signed on behalf of the Trustees.

Janet Mountford

Chair

Date:

12th July 2022

The notes on pages 19 to 29 form part of these accounts

## Home-Start Sutton

### Notes to the Financial Statements

---

#### **Note 1**     Accounting Policies

##### a)     Basis of Accounting

The Financial Statements are prepared under the historic cost convention and in accordance with the Companies Act 2006 and the Statement of Recommended Practice "Accounting and Reporting by Charities" (SORP 2015) issued in Jan 2015, and the FRSSE (Jan 2015)

##### b)     Fund Accounting

The Charity has various types of funds for which it is responsible and which require separate disclosure.

**Restricted Funds**     Funds subject to specific restrictions imposed by the donor or the purpose of the appeal.

**Unrestricted Funds**     Funds available for use at the discretion of the Trustees in furtherance of the objectives of Home-Start Sutton.

##### c)     Income

All income included in the statement of financial activities as soon as Home-Start Sutton is entitled to the income and the amount can be quantified with reasonable accuracy.

**Voluntary Income**     Comprises all income from donations and fundraising and is accounted for on a receivable basis.

**Incoming Resources from Charitable Activities**     This consists of revenue grants receivable from donors in support of "Supporting Families with Children". Grants are accounted for on an accrual basis and where unconditional entitlement is dependent upon fulfilment of conditions in a future accounting period, such Income is credited to deferred income and accounted for as a liability.

**Investment Income**     Comprises interest receivable on cash balances held in appropriate interest bearing deposits and benefits unrestricted reserves.

**Donated Facilities**     The value of services provided by volunteers in respect of home-visiting, accounting and administration has not been included in these accounts.

d) Expenditure

Expenditure is recognised on an accrual basis as a liability is incurred.

**Costs of Generating Funds** Comprise the costs associated with attracting future income.

**Charitable Expenditure** Comprises those costs incurred by the Charity in the delivery of its activities and services for its beneficiaries. It includes both costs that can be allocated directly to such activities and those costs of an indirect nature necessary to support them.

**Governance Costs** Include those costs associated with meeting the constitutional and statutory requirements of the Charity and include the independent examination fees and costs linked to the strategic management of the Charity.

e) Value Added Tax

The activities of the Charity are such that it is not registered for Vat and so all costs are charged gross of VAT.

f) Fixed Assets

Office Furniture & Equipment and Computer Equipment has been written off on a straight-line basis over 3 years.

**Note 2** **Legal Status**

The Charity is a company limited by guarantee and has no share capital. The liability of each member in the event of winding-up is limited to £1.

# Home-Start Sutton

## Notes to the Financial Statements

Note		Unrestricted Funds £	Restricted Funds £	Total 2022 £	Total 2021 £
<b>3</b>	<b><u>Donations and Fundraising</u></b>				
	Amazon	60	0	60	0
	CAF Regular Donors	5,248	0	5,248	3,993
	Carshalton Lavender Fields	0	0	0	750
	Charities Trust	2,416	0	2,416	1,997
	Church of the Good Shepherd	0	0	0	2,500
	Cheam Consolidated Churches	200	0	200	700
	Co-op LCF	3,512	0	3,512	4,145
	Charity Walk for Peace	800	0	800	0
	Easy Fundraising	167	0	167	0
	Homestart UK	2,000	0	2,000	0
	Iceland Wallington	0	0	0	700
	Jean Quested	240	0	240	225
	Ken Hindmarsh Legacy	3,000	0	3,000	0
	Quiz Night	0	0	0	1,125
	Mr & Mrs Webster	125	0	125	0
	Mayors Charity	8,360	0	8,360	0
	Pam Manisier	916	0	916	0
	Paypal	0	0	0	251
	Rotary Club of Cheam	500	0	500	0
	Rotary Club of Nonsuch	825	0	825	0
	Subsea 7	1,500	0	1,500	0
	Sutton Cristian Centre	250	0	250	0
	Suton Women's Aid	125,881	0	125,881	0
	T& KJ Haden-Scott	100	0	100	0
	Tudor Trust	0	0	0	2,000
	Virgin Money Giving	219	0	219	221
	Wallington Baptist Church Holy Trinity	356	0	356	150
	Waitrose Wallington and Cheam	1,167	0	1,167	167
	Wallington United Reformed Church	576	0	576	0
	Woodcote Golf Club	6,918	0	6,918	0
	Others	254	0	254	971
	<b>Total</b>	<b>165,590</b>	<b>0</b>	<b>165,590</b>	<b>19,895</b>

### **Note 4 Investment Income**

	Unrestricted Funds £	Restricted Funds £	Total 2022 £	Total 2021 £
COIF Interest Income	222	0	222	140
	<b>222</b>	<b>0</b>	<b>222</b>	<b>140</b>

# Home-Start Sutton

## Notes to the Financial Statements

### **Note 5** Incoming resources from "Supporting Parents with children" activity

	Unrestricted Funds £	Restricted Funds £	Total 2022 £	Total 2021 £
The National Lottery Connecting Families		101,155	101,155	99,693
BBC Children In Need		28,832	28,832	29,019
Advocacy		28,167	28,167	25,000
LB Sutton Children with Disabilities		3,141	3,141	405
LB Sutton Domestic Violence		10,354	10,354	13,981
Young Londoners Bridging the Gap		16,520	16,520	16,520
KGJ Fdn Connecting Families from the Start		5,000	5,000	5,000
City Bridge DCMS Wave 3		0	0	8,925
City Bridge LCRF Wave 5		26,618	26,618	0
LBS Childrens Wellbeing		18,333	18,333	0
LB Sutton Families in Temp Accom (POD)		20,000	20,000	8,333
LB Sutton Temp Accom Ambassadors		19,784	19,784	0
Sutton Giving Maternal Journal		6,789	6,789	5,314
Rebuild Maternal Journal		17,129	17,129	0
Moving On Together		6,000	6,000	0
Parenting Support		29,963	29,963	0
Big Hopes Big Futures		3,500	3,500	0
	<b>0</b>	<b>341,285</b>	<b>341,285</b>	<b>212,190</b>

### **Note 6**

#### **Other Income**

	Unrestricted Funds £	Restricted Funds £	Total 2022 £	Total 2021 £
Sutton Nursing Association	0	50	50	500
Family Holiday Association	0	720	720	0
Tudor Trust	0	0	0	4,000
LB Sutton Covid Response	0	0	0	5,000
City Bridge	0	0	0	6,708
LB Sutton Capacity Building	0	0	0	13,500
BBC Children in Need	1,000	0	1,000	2,600
LB Sutton Small Business	0	0	0	3,732
HSUK/John Lewis Ptnship	0	0	0	3,300
Sainsbury's	500	0	500	0
Other small grants	0	0	0	3,176
	<b>1,500</b>	<b>770</b>	<b>2,270</b>	<b>42,516</b>





# Home-Start Sutton

## Notes to the Financial Statements

### Note 7 Fundraising Costs

Staff Costs - Reallocation

General Office Costs - Realloc

Expenses

Unrestricted	Restr	Restr	Restr	Restr	Restr	Restr	Restr	Restr	Restr	Restr	Restr	Restr	Restr	Restr	Restr	Restr	Restricted	Total	Total
Funds	Lottery	BBC CIN	POD	Advocacy	C-w-D	DV	Young Lndners	Maternal Journal	Connect From Start	Tem Accom Ambssdors	Sutton Giv Mat Jnl	Parenting Support	BHBF	Moving On Together	LBS Child Wellbeing	Restr CB LCRF Wave 5	Total	Costs	2021
£	£	£	£	£	£	£	£	£	£	£	£	£	£	£	£	£	£	£	£
2,558																	0	2,558	3,492
0																	0	0	793
118																	0	118	60
2,676	0	0	0	0	0	0	0	0	0	0	0	0	0	0	0	0	0	2,676	4,345

### Note 8 "Supporting parents with children" costs

Group & Family Activities

Staff Salaries

Premises Costs

Staff & Volunteer Costs

General Office Costs

Bank Charges

Equipment

Depreciation

Membership & Affiliation

Governance Costs

Net contr to redund prov

Support Cost Allocation

Unrestricted	Restr	Restr	Restr	Restr	Restr	Restr	Restr	Restr	Restr	Restr	Restr	Restr	Restr	Restr	Restr	Restr	Restricted	Total	Total
Funds	Lottery	BBC CIN	POD	Advocacy	C-w-D	DV	Young Lndners	Maternal Journal	Connect From Start	Tem Accom Ambssdors	Sutton Giv Mat Jnl	Parenting Support	BHBF	Moving On Together	LBS Child Wellbeing	Restr CB LCRF Wave 5	Total	Costs	2021
£	£	£	£	£	£	£	£	£	£	£	£	£	£	£	£	£	£	£	£
504	383	334		10		0		2,597									3,324	3,828	9,488
820	87,554	22,353	17,806	23,394		11,289	14,102	190	3,060	7,920	5,809	19,065	2,830	1,003	13,315	23,022	252,712	253,532	187,498
3,134		4,708	1,860					1,010			396						7,974	11,108	2,243
2,152	5,147	1,106	286	1,560		66	143					1,533		22			9,863	12,015	4,054
11,587	35																35	11,622	3,724
0																	0	0	0
296																	0	296	379
2,664																	0	2,664	2,461
4,945																	0	4,945	4,175
2,632																	0	2,632	4,474
274																	0	274	(9,622)
(22,596)	3,831			3,000	3,141		1,500	1,200	1,940	2,000	584	2,800		600		2,000	22,596	0	0
6,412	96,950	28,501	19,952	27,964	3,141	11,355	15,745	4,997	5,000	9,920	6,789	23,398	2,830	1,625	13,315	25,022	296,504	302,916	208,874



## Home-Start Sutton

### Notes to the Financial Statements

#### **Note 8**    **Other costs**

	Unrestricted Funds £	Restricted Funds £	Total Costs £	Total 2021 £
Group & Family Activities		770	770	500
	<b>0</b>	<b>770</b>	<b>770</b>	<b>500</b>

#### **Note 9**    **Governance Costs**

	Unrestricted Funds £	Restricted Funds £	Total Funds £	2021 £
Staff Costs - Reallocation	1,293		1,293	2,498
General Office Costs - Reallocation	640		640	822
PQASSO (3 years from Jan18)	0		0	450
Trustee Expenses	144		144	204
AGM & Annual Report Expenses	55		55	0
Independent Examination Fee	500		500	500
	<b>2,632</b>	<b>0</b>	<b>2,632</b>	<b>4,474</b>

#### **Note**

#### **10**    **Support Cost Allocation**

Costs are charged to the activities Fundraising, 'Supporting Families with Children' and Governance on the following basis:

Third Party Costs and Charges      On a direct cost allocation to the appropriate individual activity.

Support Salary Cost      A detailed assessment is undertaken of the time spent by employees on the separate activities and the cost is allocated accordingly.

General Office Costs      All appropriate office costs were aggregated and a share allocated to fundraising and governance based on the ratio of their allocated salary cost.

#### Allocation of costs over individual funds

Costs within each expenditure category are allocated to specific funds consistent with the terms and conditions under which the donor gave the grant.

# Home-Start Sutton

## Notes to the Financial Statements

### **Note 11** Net income/expenditure

This is stated after charging:

	<b>2022</b>	<b>2021</b>
	<b>£</b>	<b>£</b>
Independent Examination Fee	500	500
Depreciation	2,664	2,461

### **Note 12** Staff Costs and Numbers

	<b>2022</b>	<b>2021</b>
	<b>£</b>	<b>£</b>
Salaries	233,004	162,901
Employers National Insurance	19,495	14,061
Pension incl enhanced pension	4,883	16,525
	<u>257,382</u>	<u>193,487</u>

	<b>2022</b>	<b>2021</b>
Average number of persons employed	10	8
Average full time equivalent	7.3	5
Sessional Workers	4	3
No employee earned in excess of £60,000 (2021 - nil)		

### **Note 13** Trustee Remuneration & Related Party Transactions

	<b>Number</b>	<b>2022</b>	<b>Number</b>	<b>2021</b>
		<b>£</b>		<b>£</b>
Trustee Travel & Parking	0	0	0	0
Trustee Insurance	all	101	all	0
Trustee Training & Conferences	0	42	0	(20)
		<u>143</u>		<u>(20)</u>

No Trustee or other person related to the Charity had any personal interest in any contract or transaction entered into by the Charity during the year (2021- Nil).

### **Note 14** Taxation

As a Charitable Company, Home-Start Sutton is exempt from tax on income and gains arising from its charitable activities.  
No tax charges have arisen for the Charity in 2022 (2021 - Nil)

# Home-Start Sutton

## Notes to the Financial Statements

<u>Note 15</u>	<u>Tangible Fixed Assets</u>	
		<b>Office and Computer Equipment</b>
		£
	<b>Cost</b>	
	As at 1st April 2021	11,513
	Additions	2,105
	Disposals	0
	As at 31 March 2022	<u>13,618</u>
	<b>Depreciation</b>	
	As at 1st April 2021	6,195
	Charge for year	2,664
	Disposals	0
	As at 31 March 2022	<u>8,859</u>
	<b>Net Book Value</b>	
	As at 31 March 2022	<u>4,759</u>
	As at 31 March 2021	<u>5,318</u>

<u>Note 16</u>	<u>Debtors</u>		
		<b>2022</b>	<b>2021</b>
		£	£
	LB Sutton C w Disabilities	972	0
	LBS Dom Violence (Cranstoun)	6,703	1,649
	Temp Accom (LBS)	3,333	0
	Sutton Vol Centre (Young Ldns)	7,930	0
		<u>18,938</u>	<u>1,649</u>

<u>Note 17</u>	<u>Deferred Income</u>		
		<b>2022</b>	<b>2021</b>
		£	£
	<b>Restricted Funds</b>		
	The National Lottery Connecting Families	24,143	25,670
	BBC Children In Need	0	0
	KGJ Fdn Connecting from the Start	0	5,000
	Families in Temp Accom (POD)	0	1,667
	Sutton Giving Maternal Journal	0	3,796
	Rebuild Maternal Journal	26,189	0
	Young Londoners Bridging the Gap	2,808	3,139
	Big Hopes Big Futures	875	0
	LBS Childrens Wellbeing	1,667	0
	City Bridge LCRF Wave 5	5,323	0
	LBS Rebuild Esteem	23,163	0
	Advocacy	8,000	4,167
		<u>92,168</u>	<u>43,439</u>

# Home-Start Sutton

## Notes to the Financial Statements

### Note 18                      Creditors and Accruals

	2022 £	2021 £
<b>Restricted Funds</b>		
Children in Need	276	363
Temp Accom (POD)	17	240
National Lottery	293	0
<b>Unrestricted Funds</b>		
Redundancy Provision	35,590	35,316
Accrued Holiday Pay	1,500	1,000
Independent Examiner	600	600
Other Sundry Accruals	1,333	398
	<u>39,609</u>	<u>37,917</u>

### Note 19                      Fund Balances

	Opening Balance 1.4.21 £	Incoming Resources £	Resources Expended £	Transfers between funds £	Closing Balance 31.3.22 £
<b>Restricted Funds</b>					
The National Lottery Connecting Families	8,671	101,155	(96,950)		12,876
BBC Children In Need	2,362	28,832	(28,501)		2,693
Womens Aid Caring Dads	11,597	0	0		11,597
LB Sutton Children with Disabilities	0	3,141	(3,141)		0
LB Sutton Domestic Violence	3,010	10,354	(11,355)		2,009
Advocacy	2,558	28,167	(27,964)		2,761
Young Londoners Bridging the Gap	3,571	16,520	(15,745)		4,346
KGJ Fdn Connecting Families from the Start	3,426	5,000	(5,000)		3,426
City Bridge LCRF Wave 5	0	26,618	(25,022)		1,596
LB Sutton Childrens Wellbeing	0	18,333	(13,315)		5,018
LB Sutton Families in Temp Accom (POD)	4,498	20,000	(19,952)		4,546
LB Sutton Temp Accom Ambassadors	0	19,784	(9,920)		9,864
Rebuild Maternal Journal incl Sutton Giving	2,876	17,129	(4,997)		15,008
Perinatal SMHF	0	6,789	(6,789)		0
Moving On Together	0	6,000	(1,625)		4,375
Parenting Support	0	29,963	(23,398)		6,565
Big Hopes Big Futures	0	3,500	(2,830)		670
	<u>42,569</u>	<u>341,285</u>	<u>(296,504)</u>	<u>0</u>	<u>87,350</u>
Other Restricted Income	0	770	(770)	0	0
<b>Unrestricted Funds</b>					
General	104,790	167,312	(9,088)	(125,000)	138,014
Designated Development *	0	0	0	125,000	125,000
<b>Total</b>	<u>147,359</u>	<u>509,367</u>	<u>(306,362)</u>	<u>0</u>	<u>350,364</u>

\*To secure/Imbed Perinatal and Infant MH Services and staff /volunteer development

# Home-Start Sutton

## Notes to the Financial Statements

<b>Note 20</b>	<b><u>Analysis of Net Assets Between Funds</u></b>			
	<b>Tangible Fixed Assets</b>	<b>Current Assets</b>	<b>Current Liabilities</b>	<b>Total 2022</b>
	<b>£</b>	<b>£</b>	<b>£</b>	<b>£</b>
<b>Restricted Funds</b>				
The National Lottery Connecting Families		37,312	(24,436)	12,876
BBC Children In Need		2,969	(276)	2,693
Womens Aid Caring Dads		11,597	0	11,597
LB Sutton Children with Disabilities		0	0	0
LB Sutton Domestic Violence Advocacy		2,009	0	2,009
Young Londoners Bridging the Gap		10,761	(8,000)	2,761
KGJ Fdn Connecting Families from the Start		7,154	(2,808)	4,346
City Bridge LCRF Wave 5		3,426	0	3,426
LB Sutton Childrens Wellbeing		6,919	(5,323)	1,596
LB Sutton Families in Temp Accom (POD)		6,685	(1,667)	5,018
LB Sutton Temp Accom Ambassadors		4,563	(17)	4,546
Rebuild Maternal Journal		9,864	0	9,864
Moving On Together		41,197	(26,189)	15,008
Parenting Support		4,375	0	4,375
Big Hopes Big Futures		6,565	0	6,565
LBS Rebuild Esteem		1,545	(875)	670
		23,163	(23,163)	0
	0	180,104	(92,754)	87,350
Other Restricted Income		0	0	0
<b>Unrestricted Funds</b>				
General	4,759	172,278	(39,023)	138,014
Designated Development		125,000	0	125,000
	4,759	477,382	(131,777)	350,364



This page has been deliberately left blank.

## Home-Start Sutton

### Staff and Volunteers

---

Employees and volunteers who have contributed to the success of Home-Start Sutton in the period under review:-

#### Staff

Judith Armstrong	Chief Executive Officer
Joanne Atkins	Family Group Co-ordinator (March 2021)
Emma Clements	Volunteer Recruitment and Development
Bev Daines	Family Support Co-ordinator
Rachel Davey	Family Support Co-ordinator (August 2021)
Charlotte Donovan	Finance and Business Support
Kim Farlow	Senior Family Support Co-ordinator
Sima Ganji	Group Worker (left December 2021)
Sharon Godwin	Play Worker (left March 2021)
Chantal Hayden	Family Support Co-ordinator
Gayle Sawyer	Family Support Co-ordinator
Victoria Thompson	Family Support Co-ordinator (July 2021)
JoJo Tsitropoulou	Play Worker (November 2021)
Helen Warwick	Group Worker and Play Worker (left November 2021)
Helen Wright	Volunteer Research secondee (June 2021-Jan 2022)

#### Volunteers

Nada Alane	Miranda French	Andrea Rivers
Liz Arriens *	Rebecca Gates *	Michele Rivers
Elkanah Arthur	Jackie Gossington *	Lesley Roberts
Alison Bardon	Denise Haseler	Mercedes Robinson
Cassandra Benham*	Wendy Hawkins	Charlotte Rogers
Maria Bickell	Lynda Hicks	Claire Shaw
Fran Boto	Sue Holley	Chantal Steele*
Diana Broad	Coleen Huggett	Paula Swann
Kathleen Burman	Anna Hunt	Jane Swindle
Veronica Calabro	Stacey Jarvis	Aysegul Takimoglou
Camiya Chacka	Manohari Jeyasingham	Mike Taylor
Sue Childs	Emma Jones	Phyllis Thompson
Katie Connaire	Celia Mathani *	Lorraine Thrower
Rachel Davey	Pamela Manisier	JoJo Tsitropoulou
Valerie Davis	Karen Mason	Lesley Turner
Fiona Denton	Anne-Marie Mika	Kate Webber
Denise Earwicker	Uzma Mobin	Fiona Webster
Angela Christopher-Ejemba		Kelly Whetren
Sue Elson	Suchitra Mulmudi	Gill Wong
Kirsty Ferrin	Paul McCarthy	Helen Wright
Suzanne Fitter	Kelly Larry	
Dawn Forbes	Stuart Phillips	
Mags Fox	Victoria Presswood	

#### Peer Advocates

Mags Fox	Paul McCarthy	Paula Swann *
----------	---------------	---------------

## Home-Start Sutton

### Staff and Volunteers

---

Sarah Kirkpatrick\*  
Kelly Larry

Amy Newbury \*  
Charlene Parker

Sandra Board  
Sue Holley

**\*denotes leavers in period**

## Home-Start Sutton

### Acknowledgements

---

In addition to those listed previously who have donated money to Home-Start Sutton, we would like to thank the following for their support: -

Al-Mizan Charitable Trust  
Anne Dodwell  
Bob Watson  
Church of the Good Shepherd  
Citizens Advice Bureau Sutton  
Community Action Sutton  
Community Champions  
Fran Boto  
Free Cakes for Kids Sutton  
Home-Start London  
Holy Trinity Church, Wallington  
Home-Start UK  
Jean and Rupert Quested  
Linus Project  
London Borough of Sutton  
Mrs Molly Latter  
Nisha Thiru  
PC Hamilton and PC Lambert  
Riverside Centre  
Shona Newmark  
St Oswalds Church Cheam  
St. Patricks Church Wallington  
Sue Elson  
Sutton Children's Centres  
Sutton and Cheam Rotary Club  
Sutton College  
Sutton Foodbank  
Sutton Health Visiting Teams  
Sutton Mental Health Foundation  
Sutton Nursing Association  
Sutton Vineyard Church  
Sutton Volunteer Centre  
Sutton Women's Centre  
The Grange Restaurant  
The Hygiene Bank  
Thomas Wall Centre  
Wallington Baptist Church  
Wallington Bowls Club