

Calderdale and
Huddersfield
NHS Charity



TOGETHER WE MAKE A DIFFERENCE

Calderdale and Huddersfield NHS Charity
Annual Report and Accounts 2024-25

Calderdale and Huddersfield NHS Charity are the official charity of Calderdale and Huddersfield NHS Foundation Trust.
Registered number 1103694

CONTENTS

Pages	Contents
03	A message from our Chair
04-08	Highlights and achievements from the year
09	Our year in numbers
11-42	Financial statements



A message from our Chair



Dear friends, supporters, colleagues and volunteers,

I am pleased to share with you the Calderdale and Huddersfield NHS Charity Accounts and Impact Report for 2024–25. It was an excellent year for us as a Charity as we put our new branding to good use with the launch of the Ray of Sunshine campaign for paediatrics.

The campaign supported the new five-year strategy for children and young people and is a great example of how the Trust and the Charity work together to provide compassionate care for the communities we serve.

I would like to express my sincere gratitude to our communities for their exceptional generosity. Whether through donations, fundraising activities or volunteering, your support has made a meaningful and lasting difference.

Thanks to this generosity, we have been able to fund a wide range of projects that enhance patient care and experience across our two acute hospitals and within the wider community, while also supporting the wellbeing of many Trust colleagues. This included the opening of our new Wellbeing Garden at Huddersfield Royal Infirmary.

Throughout this report, you will find other inspiring examples of the impact your support has made possible..

I hope you enjoy reading this year's report. Whatever your role in supporting CHFT Charity, please know that your commitment is truly appreciated.

Helen Hirst, Chair

Highlights and achievements



April 2024

Pennine Pneumatic Services:

Ava had to spend 32 days on NICU before being allowed home on Christmas Eve 2023. Jake Driver, Ava's father, works at Brighouse based Pennine Pneumatic Service, who donated £2,000 in recognition of the fantastic support and care given to the family during their time on the ward.

"To take Ava home of Christmas Eve was the best present ever, all the staff were absolutely amazing, and we couldn't thank them enough!" - Jake Driver

Manchester Marathon:

Jessica and Yasmin ran the Manchester Marathon to express their gratitude to the Neonatal Unit at Calderdale Royal Hospital for the amazing care provided to Jess's daughter. The duo raised an amazing amount of £3,522.50.

Bereavement Cards:

Thanks to kind donations, we have been able to continue the funding of Bereavement Cards. These cards are sent to the next of kin of all patients that sadly pass away in one of our hospitals. Providing a personalised approach and support for the bereaved family.

May 2024

Holmfirth High School:

A big shoutout to Holmfirth High School for raising an amazing amount of £1,000 by hosting a large charity day in aid of the Haematology Team after a teacher was treated for cancer.

Glideaway Bed:

Thanks to kind donations, CHFT Charity was able to fund a Glideaway Bed for Ward 6 at HRI. Relatives will benefit from being able to sleep on the ward with their loved one who is receiving End of Life Care.



June 2024

Amazing in Action:

June saw CHFT Charity officially launch their new AMAZING brand with a fun filled week full of activities, engagement and awareness raising. Throughout the week we had a flag raising ceremony, Football and Cricket tournament plus lots more!

Wellbeing Garden:

Thanks to kind donations and NHS Charities Together grant, we were able to fund a wellbeing garden for staff, patients and visitors. The space is split into seven zones, providing spaces for socialising, gentle exercise, as well as seclusion and reflection.

Yorkshire Fertility:

Thanks to generous donations, we were able to transform Yorkshire Fertility's counselling room from a clinical environment to a calming and confidential area where patients can feel more at ease.



“Amazing in Action Week was filled with fun, laughter, and excitement. Our new brand identity is simply amazing and just makes sense.”

- Emma Kovaleski, Charity Manager

July 2024

Big Hospital Walk:

The 7th July saw 50 walkers and many of our 4-legged furry friends walk from Calderdale Royal Hospital to Huddersfield Royal Infirmary for our annual Big Hospital Walk. What a success this event was, we're already looking forward to next years event!



Patient Diaries:



Thanks to generous donations into our ICU Charitable Funds, we have been able to fund Patient Diaries. These Diaries offer valuable support for patients to process their critical illness experience. They provide daily updates on the patient's condition and events at home, aiming to prevent depression, anxiety and PTSD whilst answering questions the patient may have.

Charity Headshave:

Gynaecology Ward Manager, Rachel Fielder, supported her colleague, Yvonne, who was undergoing cancer treatment and had sadly lost her hair, by shaving her own head in solidarity. Rachel and the team raised well over £1,000 which will support patients who attend the Cancer Support Centre at CRH.

“Yvonne's hair is her pride and joy, I have decided to take on this challenge to try and understand a part of what Yvonne is going through!” - Rachel Fielder

August 2024

Andy, Jude and the team:

A huge thanks and well done to Andy and the team for raising £3,779.93 by completing Helvellyn Hike. Andy decided to challenge himself, friends and family after Jude, his son, was diagnosed with Diabetes in 2023. The family received such great care and support which made them want to give back.

Creating a safe space:

Thanks to kind donations, we have been able to impact patients, visitors and colleagues who attend our Day Surgery Department at HRI by funding a bench. This bench is available to be used all year round, no matter the season as the bench is positioned in a secluded area.

“Creating a safe space where people can have a breather was important to us and there’s nothing better than getting some fresh air.”

- Tahir Yaqoob, Theatre Orderly



Stephen Ellis:

Another shoutout to such an amazing fundraiser of ours, Stephen Ellis, who raising the incredible amount of £4,585.80 in aid of the Stroke Ward. Stephen completed the 1,200-mile journey by foot from John O’Groats to Lands End after recovering from a stroke at CRH. He was so grateful to all the staff who took care of him that he wanted to do something amazing to say thank you and show his gratitude.



September 2024

Amazing Fundraisers:

We had some amazing fundraisers throughout September, who took on the Yorkshire 3 Peaks or the Great North Run. Anthony Thomas, MacMillian Nurse, said: “The half marathon was the hardest thing I’ve done physically but worth it to support our patients.”

Skydive for a reason:

Caysey Allison pledged to raise funds so that Ward 6 could purchase a much-needed recliner chair for patients she looks after on Ward 6. Caysey took to the skies and completed her 15,000ft tandem jump which in turn, enhanced the care and experience for patients.

“When the opportunity came up at CHFT Charity, I knew I had to take it, especially to raise funds for my ward!” - Caysey Allison

Gill Harries:

Gill, Deputy Director of Operations at CHFT completed Mount Kilimanjaro to raise funds for the Trust’s Maternity Bereavement Services. Gill absolutely enjoyed this challenge with her husband and friends, they managed to raise around £2,000 which is beyond amazing.





October 2024

Ray of Sunshine:

October saw the launch of our Ray of Sunshine Campaign, a dedicated campaign that will reduce avoidable distress and trauma for babies, children, young people and their families at CHFT. Our busy Bee mascot spent the month raising awareness and bringing sunshine to children and families at both hospitals.

Accessible play equipment for all:

Thanks to generous donations, the Rainbow Hub Team were able to purchase new outdoor play equipment that's accessible to all. These play items are essential for play development, helping to reduce anxiety.

Ray of Sunshine's first fundraiser:

Venkat Thiyagesh, Consultant Paediatrician, pledged to hike the Everest Base Camp, a whopping 5,364 metres of elevation! Venkat recognised the need for donations to support the enhancement of children and young people's experience and care at CHFT. Venkat raised around £2,000 for Ray of Sunshine.

November 2024

Amazing news:

Emma Kovaleski, Head of Charity and Emily Overend, Marketing Assistant won this month's Trust Star Award! The pair won the award for their hard work and help with launching the five-year Trust-wide strategy for the care of children and young people and the Ray of Sunshine Campaign.

Patient and Colleague Experience:

Thanks to kind donations, Claire Sibbald, Transformation Programme Manager, was able to host a Community Appointment Day for patients with long term pain. The day was a new and innovative way of working with the aim of bringing local community services under one roof to support people living with persistent pain to improve health and wellbeing.



December 2024

Christmas Cheer:

The CHFT Charity Team hosted many schools and community choirs at HRI and CRH throughout December to bring some festive joy. Plus, we organised for Huddersfield Town players and Huddersfield Giants players to visit, which brought many smiles to the faces of everyone.

Staff training day:

Thanks to generous donations, fundraising efforts and support, the Children's Diabetes Team was able to attend an LGBTQ+ awareness and training session. The session aimed to educate staff on understanding and raising awareness of LGBTQ+ issues, as well as how to best support patients who identify as part of the LGBTQ+ community.

"It was incredibly informative to learn more about the support services available and empower us further in our understandings of the challenges young people encounter."

- Amanda Grayson, Patient Advocate for Paediatric Diabetes Team

Sovereign Health Care:

A massive thanks to Sovereign Health Care for their generous donation of £8,000 in support of our Nursing and Midwifery Workforce. Last year's donation was put towards various initiatives, including a cohort of six colleagues trained to record digital stories to share the patient and carer voice. Their annual donation really does help to make amazing happen!



January 2025

Amazing fundraiser:

Our first fundraiser of 2025 was Jon, Colin and Ed who pledged to embark on a special challenge, walking 84 miles across Hadrian's Wall, coast to coast, to raise funds in support of CHFT's Children's Services.

"The Children's Ward team go above and beyond to provide not just excellent medical care, but also emotional support to children like Oscar, my son." - Jon Newsholme

February 2025

NHS Retirement Fellowship:

Thanks to the NHS Retirement Fellowship, we've been able to enlist #TeamSheila, who generously volunteered at a few events last year. Team Sheila has committed to supporting many of our events throughout 2025, including hosting many tombola stalls!



Colleague training:

Thanks to generous donations into our Eye Department Fund, Low Vision Practitioners were able to organise a Low Vision training day. The aims were to understand how patients with visual impairment can make use of technology, such as apps and settings on smart phones.



Generous donation:

Huge thanks to the Holme Valley Lions Club for their generous donation and delivery of emergency admission packs for patients. Two different packs were donated, one containing a shaving kit, whilst the other includes essential toiletries. This donation made a significant difference in the comfort and wellbeing of patients who find themselves unexpectedly admitted.

Family experience:

The amazing team on the Stroke Ward at Calderdale actively fundraised to purchase home comforts for their new refurbished old office space, transforming into a tranquil room. This now serves as a calm space for patients' loved ones who may need to stay for extended periods. Here they can relax, make a cup of tea or engage in conversation with the team.

March 2025

End-of-Life support:

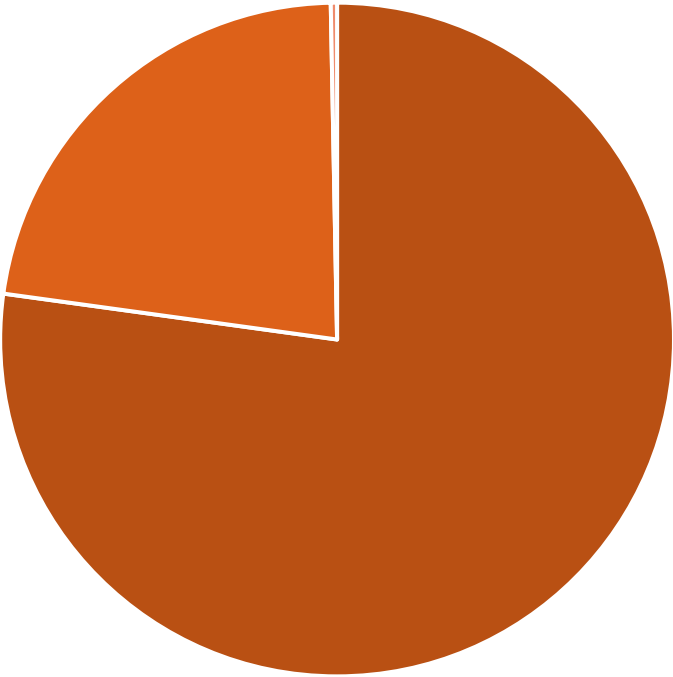
Thanks to generous donations, the Palliative Care Team successfully secured funding to purchase mouth care packs for families caring for patient in their final stages of life. Maintaining mouth care and a 'taste of pleasure' is essential during this critical time and can provide significant comfort and dignity. Prioritising mouth care in end-of-life support ensures the mouth remains moist, hydrated and comfortable. The mouth care packs contain a soft bristle 360-degree toothbrush and ultra-mild toothpaste.



Our year in numbers

INCOME

Donations	£257K
Legacies	£75K
Investments	£1K

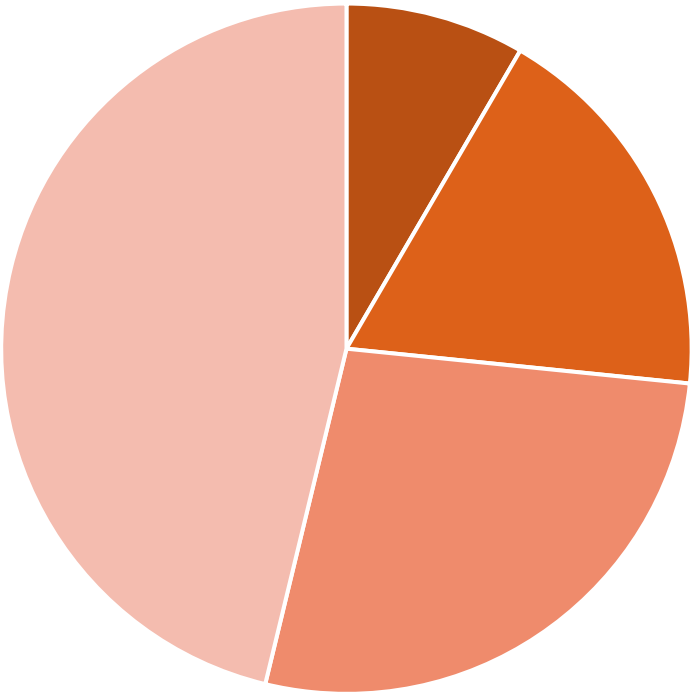


■ Donations ■ Legacies ■ Investments

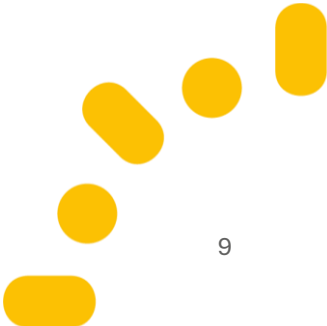


EXPENDITURE

New buildings and refurbishments	£30K
New equipment	£65k
Staff education and welfare	£97K
Patient education and welfare	£244K



■ New buildings and refurbishment ■ New equipment
■ Staff education and welfare ■ Patient education and welfare



Thank you for
making amazing
things happen.



Financial
Statement

Governance

Role and Responsibilities

The Charity has a Corporate Trustee: Calderdale and Huddersfield NHS Foundation Trust, governed by the law applicable to Trusts, principally the Trustee Act 2000 and the Charities Acts 2011. The NHS Foundation Trust Board devolved responsibility for the on-going management of funds to the Charitable Funds Committee which administers the funds on behalf of the Corporate Trustee.

The Executive Directors and Non-Executive Directors of the Trust Board share the responsibility for ensuring that the NHS body fulfils its duties as Corporate Trustee in managing the Charity.

Non-Executive Directors of the Trust Board are appointed by the Council of Governors, whilst Executive Directors are subject to recruitment by the NHS Foundation Trust Board. Members are not individual trustees under Charity Law but act as agents on behalf of the Corporate Trustee.

As Trustees, all are required to ensure that:

1. the income of the Charity is applied with complete fairness between the persons who are properly qualified to benefit from it,
2. they act reasonably and prudently regarding any decisions made in respect of the Charity,
3. they exercise the same degree of care in dealing with the administration of the funds as that of a prudent businessperson would exercise in managing his or her own affairs or those of someone else for whom he or she was responsible,
4. they are able to demonstrate that its charitable aims are for the public benefit.

Members of the Board who served during the financial year ending 31 March 2025 were as follows:

Name	Role	Date Commenced in Post / Left CHFT
B Brown	Chief Executive	04.01.2022
R Aitchison	Deputy Chief Executive	14.11.2022
G Boothby	Executive Director of Finance	07.03.2016
S Dunkley	Executive Director of Workforce and Organisational Development	01.02.2018
L Rudge	Chief Nurse	16.01.2023
D Birkenhead	Executive Medical Director	Left 01.11.2024
N Bhasin	Executive Medical Director	04.11.2024
H Hirst	Chair	01.07.2022
A Nelson	Non-Executive Director	Left 31.05.2024
P Wilkinson	Non-Executive Director	01.10.2019
D Sterling	Non-Executive Director	01.10.2019
N Broadbent	Non-Executive Director	01.09.2022
T Busby	Non-Executive Director	01.06.2022
J Wass	Non-Executive Director	07.03.2024
V Perrott	Non-Executive Director	25.04.2024

The Charitable Funds Committee is required to:

- Ensure that Charitable Fund expenditure is approved in line with the Trust's Scheme of Delegation and Standing Financial Instructions,
- Update and maintain Charitable Fund policies and procedures in accordance with Charity Commission guidance,
- Receive and review regular reports on Charitable Fund income and expenditure and on the investment of the Charity's funds,
- Ensure that the Trust's Charitable Funds are established and operated in accordance with relevant law,
- Approve the establishment of new designated funds on behalf of the Corporate Trustee,
- Ensure that audited accounts are completed, submitted to the Charity Commission and made available to the public,
- Ensure that policies and procedures are in place, which are in line with the Trust's Standing Financial Instructions and best practice elsewhere, to manage the investment of the Charity's funds,
- Support the development and growth of the Charity,
- Review and develop the Charitable Funds' Strategy.

Compliance

Calderdale and Huddersfield NHS Charity complies with the provisions of the Data Protection Act (2018) and the General Data Protection Regulations (2018) in so far as they apply to the operations of the Charity. There is a Privacy Policy in place which is available on the Charity website. During 2024/25 there were no reported breaches. Calderdale and Huddersfield NHS Charity additionally is registered and complies with the Code of Fundraising Practice.

Our **Fundraising Promise** aligns with the Code of Fundraising Practice and the Charity's social purpose to support those that need us, when they need us, and to do so with integrity and pride. A copy can be found on the Charity website.

The Fundraising team provides guidance, information, support and training wherever possible to ensure our fundraisers and volunteers have a rewarding experience and carry out their fundraising activities in a way that is legal, open, honest and respectful.

Supporters fundraising 'in aid of' Calderdale and Huddersfield NHS Charity are encouraged to register with the Fundraising team, where they will be given guidance and asked to sign a Fundraising Agreement, where appropriate. A letter of authority is also issued as required.

By signing up to fundraise in aid of Calderdale and Huddersfield NHS Charity, supporters agree to comply with our policy as well as the Fundraising Regulator's Code of Fundraising Practice. Wherever possible the Charity undertakes monitoring to ensure compliance. This includes regular contact with known supporters and reviewing fundraising materials published citing Calderdale and Huddersfield NHS Charity as the beneficiary of fundraising activities.

Calderdale and Huddersfield NHS Charity is proud to be registered with the Fundraising Regulator and received no complaints through this regulatory body in 2024/25.

Risk Management

The Corporate Trustee is responsible for:

- Keeping complete and up to date accounting records which disclose with reasonable accuracy at any time the financial position of the funds held on trust, to enable it to ensure that the accounts comply with requirements in the Charities Act 2011,
- Establishing and monitoring a system of internal control,
- Establishing arrangements for the prevention and detection of fraud and corruption.

Internal risks are minimised by the implementation of procedures and systems, which are designed to provide assurance against misstatement or loss and are reviewed periodically. They include:

- Delegation of authority and segregation of duties,
- Authorisation of all transactions and projects,
- Identification and management of risks,
- Regular reports by Audit Yorkshire (which provides an Internal Audit function).

Principal Risks:

- Fall in income from donations,
- Fall in investment market value.

The Charity has a Risk Register which records strategic and operational risks. Every risk is assessed against a matrix which measures likelihood and impact, both before and after mitigations have been applied, and a target risk score. Risks are added as they are identified and archived once they have reached their target score for a given period.

Complaints

Details about how to contact the Charity to make a complaint, alongside details of the Charity Commission and Fundraising Regulator can be found on the Charity website. During 2024/25 the Charity did not receive any complaints.

Charity Sector Governance and Partnerships

The Charity is regulated by the Charity Commission and is a member of the Fundraising Regulator, the self-regulatory scheme for fundraising in the UK. By being a member of the Fundraising Regulator the Charity has committed to its principles which are:

- We are committed to high standards
- We are honest and open
- We are clear
- We are respectful
- We are fair and reasonable
- We are accountable

The Charity has also documented a Fundraising Promise which can be found on the Charity website.

In addition, Calderdale and Huddersfield NHS Charity is one of over 240 NHS charities in England and Wales who are eligible to join the NHS Charities Together. As a member charity we have the opportunity to benchmark our fundraising activity with our peers, discuss matters of common concern and exchange information and experiences and to participate in conferences and seminars which offer support and education for our staff and trustees.

Governance Review

Our Committees

The Corporate Trustee designated responsibility for the overall strategic and governance of the Charity to the Charitable Funds Committee, The Charitable Funds Committee meets four times a year to ensure the proper management of funds, and these are spent in accordance with the wishes of the donor and the Objects of Calderdale and Huddersfield NHS Charity.

Public Benefit

The Corporate Trustee has a duty to comply with Section 17 of the Charities Act 2011 which outlines the Charity Commission's general guidance on public benefit. The Trustee confirms that this requirement is strongly embedded within the procedures for approving funding applications and spending plans and that Calderdale and Huddersfield NHS Charity has fulfilled the public benefit requirement.

As part of operational management the Trustee, Charitable Funds Committee, Operations Sub Committee and Charity Management team ensure that all funding applications and spending plans contain identifiable public benefits that are clear and meet the charitable objects of Calderdale and Huddersfield NHS Charity by supporting any NHS charitable purpose relating to Calderdale and Huddersfield NHS Foundation Trust and its patients. Calderdale and Huddersfield NHS Charity's strategic goals and the public benefit requirement are satisfied through funding a range of projects, examples of which can be found listed elsewhere in this Report under each of our priority areas.

Reserves Policy

The Reserves Policy will be reviewed annually by the Charitable Funds Committee.

Financial Review

Income

In 2024/25 the total incoming resources amounted to £345,000. This is a decrease of (£36,000) on the previous year's balance of £381,000; this was due to a decrease in legacies of (£106,000) and a decrease in investments (£3,000) which were then offset by an increase in donations of £61,000 & other income received of £13,000.

The total expenditure of the Charity exceeded the income received by £270,000. In addition, there was a negative movement of £36,000 arising from the revaluation of investment assets. As such, there was an overall decrease in the funds of (£305,351) to £2,207,741.

Expenditure

In 2024/25 the Charity spent £440,000 on charitable activities; this includes an allocation of the support costs that the Charity incurred in the administration of the fund of £37,944 comprising costs for independent review and other establishment costs which include online giving fees and printing and stationery costs.

The Charity also incurred costs of £147,000 in raising funds and £28,000 in other resources expended.

Going Concern

The accounts have been prepared on a going concern basis. At the end of the financial year Calderdale and Huddersfield NHS Charity had total net assets of £2.207 million, of which £1.321 million is in unrestricted funds. The Trustees have reviewed its commitment for the next 12 months and are confident that there are sufficient unrestricted free reserves to meet its commitments as they fall due. The Charity maintains an adequate cash position to meet its ongoing expenditure requirements. The Corporate Trustee considers that there are no material uncertainties about the Charity's ability to continue as a going concern.

Reserves Policy

The Corporate Trustee has a legal duty to apply charitable funds within a reasonable time of their receipt but should also hold some money in reserve. Within the Charity we therefore have three funds which form our reserves – the two General Purpose funds and the General Reserves fund. The balances on these, less any commitments, form the total of the Charity's Reserves.

The Corporate Trustee encourages the use of balances and intends that designated funds are spent within a reasonable period of receipt and therefore expects to only maintain a minimum reserve balance to allow the charity to remain operational and to mitigate unforeseen circumstances.

It is necessary to retain reserves over the longer term to:

- Reduce the impact of risks should the levels of income (including fluctuations in the value of investments) significantly reduce such that the Charity cannot meet its obligations.
- Ensure the Charity can cover its ongoing operational costs – these include governance costs such as salaries and audit fees and also fundraising costs.
- Meet the closure or transfer of the Charity's affairs should the need arise.

The Reserves Policy states *The Corporate Trustee aims to retain, as a minimum, a level of reserves sufficient to provide funding for **three months' operational costs** (including governance and fundraising costs) plus a buffer to allow for fluctuations in investment market values.*

Investment Policy and Performance

All investments are made in accordance with guidance issued by the Charity Commission; the Charity's investment manager is CCLA Investment Management Ltd.

The Charity seeks to balance ethical and socially responsible investment and risk. As such, the investment managers appointed by the Charity are restricted from investing directly in the processing and/or manufacture of tobacco products, and the portfolio of investment is widely diversified.

The investment objective is to provide a balance between long term capital growth, security, availability and maximisation of annual income.

At 31 March 2025, the market value of investments managed by the Charity's investment manager, CCLA Investment Management Ltd, was £2,209,000 compared to £2,346,000 at 31 March 2024.

During the financial year 2024/25, Calderdale and Huddersfield NHS Foundation Trust Charitable Funds made a £36,662 unrealised loss on investment assets; this is compared to an unrealised gain experienced in 2023/24 of £278,000. The Charity also liquidated £100,000.

REFERENCE AND ADMINISTRATIVE DETAILS

Calderdale and Huddersfield NHS Charity

Registered Charity Number

1103694

Governing Document

The governing document, dated 18 March 2004, is a Trust Deed setting out how the Charity should be operated and incorporates the regulations to which it must abide.

Principal and Registered Office

Calderdale & Huddersfield NHS Foundation Trust
Trust Headquarters, Acre Mills, Acre Street,
Lindley, Huddersfield, HD3 3EB.
T: 01484 344344

Charitable Objects

The object of the Charity is to apply income received from donations and legacies to any charitable purpose or purposes relating to the NHS to benefit the public served by the Trust. The Corporate Trustee fulfils its legal duty by ensuring that funds are spent in accordance with the objects of each fund and, in designating funds, the Corporate Trustee respects the wishes of donors to benefit patient care and advance the good health and welfare of patients, carers and staff.

The Corporate Trustee confirms that it has referred to the guidance contained in the Charity Commission's general guidance on public benefit when reviewing the Trust's aims and objectives and in planning future activities.

The longer term aim of the Charity is to continue applying income received from donations and legacies to benefit the public served by the Trust, whilst maintaining minimal levels of reserves.

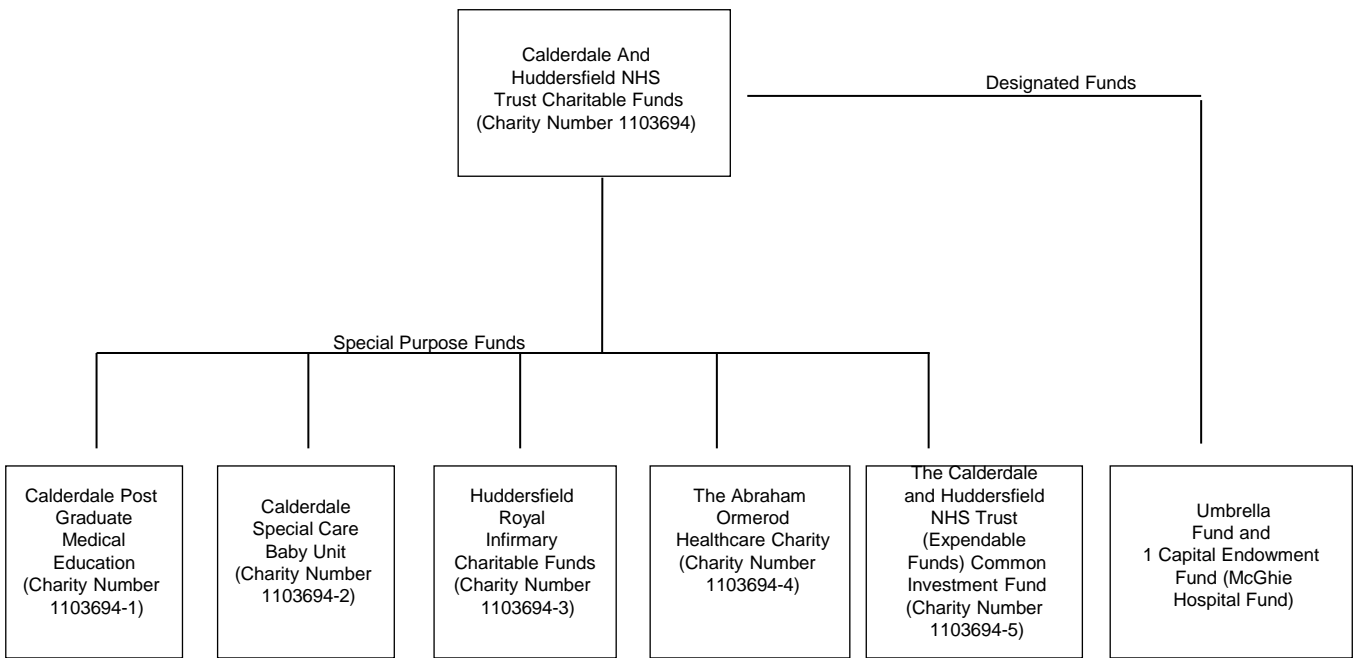
Impact and meeting the Objects

The Charity closely manages all aspects of charitable fund expenditure, reviewing and evaluating outcome and impact across all levels and purposes of funding.

Through ongoing monitoring and gathering of data related to the expenditure of donations, the Charity can showcase its impact through the form of case studies and outcome reporting, all of which is publicly available.

Fund Structure and Linked Charities

Calderdale and Huddersfield NHS Charity comprises of the Umbrella Fund and five Special Purpose Funds. Each of the five special purpose funds (linked charities) shares the same charity number as Calderdale and Huddersfield NHS Charity and has the same Trustee.



The designated funds receive income mainly through legacies and donations. On accepting such income no legal obligation is created as to its expenditure but it is the intention of the Corporate Trustee that any income received into Charitable Funds will be spent in line, as far as possible, with the wishes of the donor. It is to this end, therefore, that separate accounts are kept within the Umbrella fund for each of the designated funds.

The only income which the McGhie Hospital fund attracts is dividends on the capital investment. This fund is a permanent endowment; the income from the capital is to be split equally between the general purpose funds for Calderdale and Huddersfield.

Of the 5 special purpose funds registered with the Charity Commission, Calderdale Post Graduate Medical Education (PGME), Calderdale Special Care Baby Unit (SCBU) and Huddersfield Royal Infirmary also receive income from legacies and donations but have restrictions on where the funds can be spent.

The Calderdale and Huddersfield NHS Trust (Expendable Funds) Common Investment fund is a scheme that is registered with the Charity Commission that allows the Charity to combine the investment and money belonging to a number of funds into one pooled fund.

Each fund has at least one fund manager and funds are grouped by division.

The responsibility for approving expenditure of less than £500 from Charitable Funds has been delegated to the fund manager. For amounts that are greater than £500 further additional approval is required depending on the amount and type of expenditure. This could be a General Manager, Assistant Director of Nursing/Finance or higher level.

Fund Management

Calderdale and Huddersfield NHS Charity makes grants from both its unrestricted and restricted funds. The grants from restricted funds must be used in accordance with the conditions attached to the fund.

Unrestricted fund grants are made from general purpose funds and designated (earmarked) funds.

- **General funds.** These funds are received with no preference expressed by donors. The Charitable Funds Committee invites applications from any member of staff to this fund. Based on their knowledge of the Trust, the Committee agrees funding priorities and scores applications for quality and value for money.
- **Designated funds.** These contain donations where a particular part of the hospital or activity was nominated for support by the donor at the time their donation was made. Whilst their nomination is not binding on the Trustee, the designated funds reflect these nominations. The designated funds are overseen by fund managers who can make recommendations on how to spend the money within their designated area.

Professional Advisors

Principal Professional Advisors

Bankers

National Westminster Bank plc
8 Market Place
Huddersfield
HD1 2AL

Investment Managers

CCLA Investment Management Ltd
One Angel Lane
London
EC4V 4ET

Independent Examiner

Stirk Lambert & Co Chartered Accountants and Tax Advisors
Russell Chambers
61A, North Street
Keighley
West Yorkshire
BD21 3DS

Legal Advisors

Hempsons Solicitors
The Exchange
Station Parade
Harrogate
HG1 1TS

STATEMENT OF TRUSTEES' RESPONSIBILITIES IN RESPECT OF THE TRUSTEES' ANNUAL REPORT AND THE FINANCIAL STATEMENTS

Under charity law, the trustees are responsible for preparing a Trustees' Annual Report and the financial statements in accordance with applicable law and regulations. The trustees are required to prepare the financial statements in accordance with UK Accounting Standards, including FRS 102 *The Financial Reporting Standard applicable in the UK and Republic of Ireland*.

The financial statements are required by law to give a true and fair view of the state of affairs of the charity and of the incoming resources and application of resources for that period.

In preparing these financial statements, generally accepted accounting practice entails that the trustees:


- select suitable accounting policies and then apply them consistently;
- make judgements and estimates that are reasonable and prudent;
- state whether applicable UK Accounting Standards and the Statement of Recommended Practice have been followed, subject to any material departures disclosed and explained in the financial statements;
- state whether the financial statements comply with the trust deed (and rules), subject to any material departures disclosed and explained in the financial statements,
- assess the charity's ability to continue as a going concern, disclosing, as applicable, matters related to going concern; and
- use the going concern basis of accounting unless they either intend to liquidate the charity or to cease operations, or have no realistic alternative but to do so.

The trustees are required to act in accordance with the trust deed (and the rules) of the charity, within the framework of trust law. They are responsible for keeping accounting records which are sufficient to show and explain the charity's transactions and disclose at any time, with reasonable accuracy, the financial position of the charity at that time, and to enable the trustees to ensure that, where any statements of accounts are prepared by them under section 132(1) of the Charities Act 2011, those statements of accounts comply with the requirements of regulations under that provision. They are responsible for such internal control as they determine is necessary to enable the preparation of financial statements that are free from material misstatement, whether due to fraud or error, and have general responsibility for taking such steps as are reasonably open to them to safeguard the assets of the charity and to prevent and detect fraud and other irregularities.

The trustees are responsible for the maintenance and integrity of the financial and other information included on the charity's website. Legislation in the UK governing the preparation and dissemination of financial statements may differ from legislation in other jurisdictions.

By Order of the Corporate Trustee

Signed Mrs Helen Hirst, Chair

Signed Mr Stuart Baron, Interim Executive Director of Finance

Independent examiner's report to the Trustees of Calderdale and Huddersfield NHS Foundation Trust Charitable Funds

Richard Hudson

for and on behalf of Stirk Lambert & Co

Chartered Accountants & Tax Consultants

Stirk Lambert & Co is eligible to act as independent examiner under the Charities Act 2011 (ChA 2011)

Russell Chambers

61A, North Street

Keighley

West Yorkshire

BD21 3DS

12 December 2025

**Independent Examiner's Report to the Trustee of
of Calderdale & Huddersfield NHS Charity**

Independent examiner's report to the trustee of Calderdale & Huddersfield NHS Charity

I report to the charity trustee on my examination of the accounts of Calderdale & Huddersfield NHS Charity (the Trust) for the year ended 31 March 2025.

Responsibilities and basis of report

As the charity trustee of the Trust you are responsible for the preparation of the accounts in accordance with the requirements of the Charities Act 2011 ('the Act').

I report in respect of my examination of the Trust's accounts carried out under section 145 of the Act and in carrying out my examination I have followed all applicable Directions given by the Charity Commission under section 145(5)(b) of the Act.

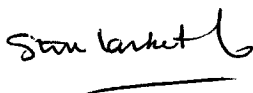
Independent examiner's statement

Since your charity's gross income exceeded £250,000 your examiner must be a member of a listed body. I can confirm that I am qualified to undertake the examination because I am a registered member of the Institute of Chartered Accountants in England & Wales which is one of the listed bodies.

I have completed my examination. I confirm that no material matters have come to my attention in connection with the examination giving me cause to believe that in any material respect:

1. accounting records were not kept in respect of the Trust as required by section 130 of the Act; or
2. the accounts do not accord with those records; or
3. the accounts do not comply with the applicable requirements concerning the form and content of accounts set out in the Charities (Accounts and Reports) Regulations 2008 other than any requirement that the accounts give a true and fair view which is not a matter considered as part of an independent examination.

I have no concerns and have come across no other matters in connection with the examination to which attention should be drawn in this report in order to enable a proper understanding of the accounts to be reached.



Richard J Hudson FCA
Stirk Lambert & Co
Chartered Accountants
Russell Chambers
61a North Street
Keighley
West Yorkshire
BD21 3DS

12 December 2025

CALDERDALE AND HUDDERSFIELD NHS FOUNDATION TRUST CHARITABLE FUNDS

ACCOUNTS – 2024/25

STATEMENT OF FINANCIAL ACTIVITIES FOR THE YEAR ENDED 31 MARCH 2025

		Unrestricted funds	Restricted funds	Endowment funds	2024/25 Total funds	2023/24 Total funds
	Notes	£'000	£'000	£'000	£'000	£'000
Income and endowments from:						
Donations and legacies	3	186	146	0	331	377
Charitable Activities	4	0	0	0	0	0
Investments	5	1	0	0	1	4
Other	5	13	0	0	13	0
Total incoming resources		199	146	0	345	381
Expenditure on:						
Raising funds	6	136	11	0	147	142
Charitable activities	7					
Purchase of new equipment		51	14	0	65	232
New building and refurbishment		29	1	0	30	40
Staff education and welfare		69	28	0	97	66
Patient education and welfare		141	103	0	244	167
Contribution to NHS		4	0	0	4	0
Total charitable activities		293	146	1	440	505
Other resources expended		13	15	0	28	0
Total expenditure	8	442	172	1	615	647
Net gains / (losses) on investments	13	(22)	(11)	(3)	(36)	278
Net income/(expenditure)		(264)	(38)	(4)	(306)	12
Transfers between funds	10	0	0	0	0	0
Net movement in funds		(264)	(38)	(4)	(306)	12
Reconciliation of Funds						
Total Funds brought forward		1,585	793	134	2,512	2,500
Total funds carried forward		1,321	756	130	2,207	2,512

CALDERDALE AND HUDDERSFIELD NHS FOUNDATION TRUST CHARITABLE FUNDS

ACCOUNTS – 2024/25

BALANCE SHEET AS AT 31 MARCH 2025

	Notes	Unrestricted funds £'000	Restricted funds £'000	Endowment funds £'000	Total at 31 March 2025 £'000	Total at 31 March 2024 £'000
Fixed assets						
Investments	13	1,325	756	128	2,209	2,346
Total fixed assets		1,325	756	128	2,209	2,346
Current assets						
Debtors	14	8	0	2	10	114
Cash and cash equivalents	15	84	26	0	110	124
Total current assets		92	26	2	120	238
Liabilities						
Creditors: amounts falling due within one year	16	(96)	(26)	0	(122)	(72)
Net current assets / (liabilities)		(4)	0	2	(2)	166
Total assets less current liabilities		1,321	756	130	2,207	2,512
Total net assets		1,321	756	130	2,207	2,512
Funds of the charity	19					
Endowment funds		0	0	130	130	134
Restricted income funds		0	756	0	756	793
Unrestricted income funds		1,321	0	0	1,321	1,585
Total funds		1,321	756	130	2,207	2,512

The accompanying notes form part of these financial statements.

CALDERDALE AND HUDDERSFIELD NHS FOUNDATION TRUST CHARITABLE FUNDS

ACCOUNTS – 2024/25

STATEMENT OF CASH FLOWS AS AT 31 MARCH 2025

CASH FLOW STATEMENT AS AT 31 MARCH 2025

	Note	Total at 31 March 2025 £'000	Total at 31 March 2024 £'000
Cash flows from operating activities:			
Net cash provided by (used in) operating activities	18	(129)	(465)
Cash flows from investing and other activities:			
Dividends from investments	5	1	4
Other income	5	13	0
Net cash provided by (used in) investing activities		14	4
Receipt from sale of investments	13	100	310
Net cash provided by financial investment		100	310
Change in cash and cash equivalents in the reporting period		(14)	(149)
Cash and cash equivalents at the beginning of the reporting period	15	124	273
Cash and cash equivalents at the end of reporting period	15	110	124

The notes 1-24 on the following pages form part of these accounts. The financial statements and the accompanying notes were approved by the Board of Directors on 26.11.25 and were signed on its behalf by Gary Boothby, Director of Finance.

Signed  Mrs Helen Hirst, Chair

CALDERDALE AND HUDDERSFIELD NHS FOUNDATION TRUST CHARITABLE FUNDS

ACCOUNTS – 2024/25

NOTES TO THE ACCOUNTS

1. Accounting policies

a) Basis of preparation

The financial statements have been prepared under the historic cost convention, except for investments which are included at fair value.

The financial statements have been prepared in accordance with the Statement of Recommended Practice: Accounting and Reporting by Charities preparing their accounts in accordance with the Financial Reporting Standard applicable in the UK and Republic of Ireland (FRS 102) issued in October 2019 and the Financial Reporting Standard applicable in the United Kingdom and Republic of Ireland (FRS 102) and the Charities Act 2011 and UK Generally Accepted Practice as it applies from 1 January 2019.

The financial statements have been prepared to give a 'true and fair' view and have departed from the Charities (Accounts and Reports) Regulations 2008 only to the extent required to provide a 'true and fair view'. This departure has involved following Accounting and Reporting by Charities preparing their accounts in accordance with the Financial Reporting Standard applicable in the UK and Republic of Ireland (FRS 102) issued in October 2019 rather than the Accounting and Reporting by Charities: Statement of Recommended Practice effective from 1 April 2005 which has since been withdrawn.

The Corporate Trustee considers that there are no material uncertainties about the Charity's ability to continue as a going concern.

b) Governance costs

Governance costs are classified as support costs and have therefore been apportioned across charitable activities, after a portion has been allocated to Raising Funds. These costs include costs related to the statutory audit and an apportionment of overhead and other support costs.

The analysis of support costs, including governance costs, is shown in note 9.

c) Structure of funds

Unrestricted income funds comprise those funds which the Corporate Trustee is free to use for any purpose in furtherance of its charitable objectives. Unrestricted funds include designated funds where the donor has made known their non-binding wishes or where the Corporate Trustee, at its discretion, has created a fund for a specific purpose.

Restricted funds are those which are to be used in accordance with specific restrictions imposed by the donor. The Charity has six restricted funds. The restrictions on CRH SCBU, CRH PGME and HRI Special Purpose funds (see note 19) primarily limit any expenditure from these funds to be undertaken for the benefit of the stated purpose contained in the fund title. The fourth and fifth restricted funds are the Abraham Ormerod fund and the Abraham Ormerod Reserve fund. They both have the same restriction, which is that the approved expenditure must, where possible, be for services provided for the benefit of people in the Todmorden area. The sixth restricted fund is the Covid 19 fund where the grants from NHS Charities Together were allocated.

Endowment Funds are where capital is held to generate income for charitable purposes with no discretion to spend capital. The Charity has one permanent endowment fund, McGhie Hospital.

CALDERDALE AND HUDDERSFIELD NHS FOUNDATION TRUST CHARITABLE FUNDS

ACCOUNTS – 2024/25

NOTES TO THE ACCOUNTS

d) Incoming resources

All incoming resources are recognised once the Charity has entitlement to the resources, it is probable (more likely than not) that the resources will be received, and the monetary value of incoming resources can be measured with sufficient reliability.

Donations are recognised when the Charity has been notified in writing of both the amount and settlement date.

Interest on funds held on deposit is included when receivable and the amount can be measured reliably by the Charity; this is normally upon notification of the interest paid or payable by the bank. Dividends are recognised once the dividend has been declared and notification has been received of the dividend due. This is normally upon notification by our investment advisor of the dividend yield of the investment portfolio.

e) Gifts in kind

Gifts in kind, such as food and care packages are not accounted for when they are accepted and immediately distributed unless a single donation is material.

Gifts of tangible assets such as mattresses and fridges are recognised as a donation at fair value (market price) on receipt and charitable expenditure when they are distributed.

Where gifts in kind are held before being distributed to beneficiaries, they are recognised at fair value as stock until they are distributed.

f) Incoming resources from legacies

Legacies are accounted for as incoming resources either upon receipt or where the receipt of the legacy is probable; this will be once confirmation has been received from representatives of the estate(s) that probate has been granted, the executors have established that there are sufficient assets in the estate to pay the legacy and all conditions attached to the legacy have been fulfilled or are within the Charity's control.

If there is uncertainty as to the amount of the legacy and it cannot be reliably estimated, then the legacy is shown as a contingent asset until all the conditions for income recognition are met (see Note 20 - Material legacies).

g) Resources expended

All expenditure is accounted for on an accruals basis and has been classified under headings that aggregate costs related to each category of expense shown in the Statement of Financial Activities. All expenditure is recognised once there is a legal constructive obligation committing the Charity to the expenditure.

h) Irrecoverable VAT

Irrecoverable VAT is charged against the category of resources expended for which it was incurred.

i) Allocation of support costs

Support costs are those costs which do not relate directly to a single activity. These include some staff costs, costs of administration and audit costs. They are allocated to charitable activities, across the funds in proportion to total expenditure, as shown in note 9, after a portion has been allocated to Raising Funds.

CALDERDALE AND HUDDERSFIELD NHS FOUNDATION TRUST CHARITABLE FUNDS

ACCOUNTS – 2024/25

NOTES TO THE ACCOUNTS

j) Fundraising costs

The costs of generating funds are those costs attributable to generating income for the Charity, other than those costs incurred in undertaking charitable activities. These are fundraising costs and they include expenses for fundraising activities and a fee paid to Calderdale & Huddersfield NHS Foundation Trust to pay the salary and overhead costs of the fundraising team – see note 6.

k) Charitable activities

Costs of Charitable Activities comprise all costs incurred in the pursuit of charitable objects of the Charity. These costs comprise direct costs and overhead and support costs.

l) Fixed asset investments

Investments are initially recognised at their transaction value and are subsequently measured at the current market value quoted by the investment analyst, as at the balance sheet date. The Statement of Financial Activities includes the net gains and losses arising on revaluation.

The main form of financial risk faced by the Charity is that of volatility in equity markets and investment markets due to wider economic conditions and the attitude of investors to investment risk.

m) Debtors

Debtors are amounts owed to the Charity. They are measured based on their recoverable amount.

n) Cash and cash equivalents

Cash at bank and in hand is held to meet the day to day running costs of the Charity as they fall due. Cash equivalents are balances held in the deposit account which are very liquid funds and are shown as part of 'Cash and cash equivalents' on the balance sheet. There is no impact on the total funds of the Charity. An analysis of Cash and cash equivalents is provided in note 15.

o) Creditors

Creditors are amounts owed by the Charity. They are measured at the amount that the Charity expects to have to pay to settle the debt.

p) Recognised gains and losses

All gains and losses are taken to the Statement of Financial Activities as they arise. Unrealised gains and losses are calculated as the difference between the market value at the year end and opening market value (or value at date of purchase if later).

CALDERDALE AND HUDDERSFIELD NHS FOUNDATION TRUST CHARITABLE FUNDS

ACCOUNTS – 2024/25

NOTES TO THE ACCOUNTS

2. Prior year comparatives by type of fund

The primary statements provide prior year comparatives in total; this note provides prior period comparatives for the Statement of Financial Activities and the Balance Sheet for each of the three types of funds that the Charity manages.

2a Unrestricted funds

Statement of financial activity for the year ended 31 March 2025

	2025 £'000	2024 £'000
Income and endowments from:		
Donations and legacies	186	371
Investments	1	4
Other	13	
Total income and endowments	199	375
Expenditure on:		
Raising funds	136	131
Charitable activities		
Purchase of new equipment	51	117
New building and refurbishment	29	29
Staff education and welfare	69	47
Patient education and welfare	141	165
Contribution to NHS	4	
Total charitable activities	293	358
Other resources expended	13	
Total expenditure	442	489
Net losses on investments	(22)	275
Net income/(expenditure)	(264)	161
Transfers between funds	0	0
Net movement in funds	(264)	161
Reconciliation of Funds		
Total Funds brought forward	1,585	1,424
Total funds carried forward	1,321	1,585

Balance sheet as at 31 March 2025

	2025 £'000	2024 £'000
Fixed assets		
Investments	1,325	1,445
Total fixed assets	1,325	1,445
Current assets		
Debtors	8	114
Cash and cash equivalents	84	98
Total current assets	92	212
Liabilities		
Creditors: amounts falling due within one year	(96)	(72)
Net current assets / (liabilities)	(4)	140
Total assets less current liabilities	1,321	1,585
Total net assets	1,321	1,585
Total unrestricted funds	1,321	1,585

CALDERDALE AND HUDDERSFIELD NHS FOUNDATION TRUST CHARITABLE FUNDS

ACCOUNTS – 2024/25

NOTES TO THE ACCOUNTS

2b Restricted funds

Statement of financial activity for the year ended 31 March 2025

	2025 £'000	2024 £'000
Income and endowments from:		
Donations and legacies	146	6
Charitable Activities	0	0
Total income and endowments	146	6
Expenditure on:		
Raising funds	11	11
Charitable activities		
Purchase of new equipment	14	115
New building and refurbishment	1	11
Staff education and welfare	28	19
Patient education and welfare	103	2
Total charitable activities	146	147
Other resources expended	15	0
Total expenditure	172	158
Net losses on investments	(11)	(9)
Net income/(expenditure)	(38)	(161)
Transfers between funds	0	0
Net movement in funds	(38)	(161)
Reconciliation of Funds		
Total Funds brought forward	793	954
Total funds carried forward	756	793

Balance sheet as at 31 March 2025

	2025 £'000	2024 £'000
Fixed assets		
Investments	756	767
Total fixed assets	756	767
Current assets		
Debtors	0	0
Cash and cash equivalents	26	26
Total current assets	26	26
Liabilities		
Creditors: amounts falling due within one year	(26)	0
Net current assets / (liabilities)	0	26
Total assets less current liabilities	756	793
Total net assets	756	793
Total restricted funds	756	793

CALDERDALE AND HUDDERSFIELD NHS FOUNDATION TRUST CHARITABLE FUNDS

ACCOUNTS – 2024/25

NOTES TO THE ACCOUNTS

2c Endowment funds

Statement of financial activity for the year ended 31 March 2025

	2025 £'000	2024 £'000
Expenditure on:		
Raising funds	0	0
Charitable activities		
Purchase of new equipment	0	0
New building and refurbishment	0	0
Staff education and welfare	0	0
Patient education and welfare	0	0
Total charitable activities	1	0
Other resources expended	0	0
Total expenditure	1	0
Net Gain / loss on investments	(3)	12
Net income/(expenditure)	(4)	12
Reconciliation of Funds		
Total Funds brought forward	134	122
Total funds carried forward	130	134

Balance sheet as at 31 March 2025

	2025 £'000	2024 £'000
Fixed assets		
Investments	128	134
Total fixed assets	128	134
Current assets		
Debtors	2	
Total current assets	2	0
Total assets less current liabilities	130	134
Total net assets	130	134
Total endowment funds	130	134

CALDERDALE AND HUDDERSFIELD NHS FOUNDATION TRUST CHARITABLE FUNDS

ACCOUNTS – 2024/25

NOTES TO THE ACCOUNTS

3. Analysis of voluntary income

	Unrestricted funds	Restricted funds	Endowment funds	2024/25 Total funds	2023/24 Total funds
	£'000	£'000	£'000	£'000	£'000
Donations	111	146	-	257	196
Corporate donations	-	-	-	-	-
Legacies	75	-	-	75	181
	186	146	-	331	377

4. Analysis of income from charitable activities (NHS Charities Together grants)

	Unrestricted funds	Restricted funds	Endowment funds	2024/25 Total funds	2023/24 Total funds
	£'000	£'000	£'000	£'000	£'000
Stage 3 Long Term Recovery Grant	-	-	-	-	0
Development Grant	-	-	-	-	0
	-	-	-	-	0

5. Total income from operating activities

Income from investments

	Unrestricted funds	Restricted funds	Endowment funds	2024/25 Total funds	2023/24 Total funds
	£'000	£'000	£'000	£'000	£'000
Fixed asset investments UK	1	-	-	1	4
	1	0	0	1	4

The dividends above relate to the McGhie Hospital fund; these are shared equally between both General Purpose funds.

CALDERDALE AND HUDDERSFIELD NHS FOUNDATION TRUST CHARITABLE FUNDS

ACCOUNTS – 2024/25

NOTES TO THE ACCOUNTS

Other Income

	Unrestricted funds £'000	Restricted funds £'000	Endowment funds £'000	2024/25 Total £'000	2023/24 Total £'000
Staff lottery deductions	13	-	-	13	-
	13	-	-	13	-

Other income is related to staff lottery deductions.

6. Analysis of income from charitable activities (NHS Charities Together grants)

In 2024/25 the Charity continued to use only one investment manager. For the current year, the fee for the COIF Charities Ethical Investment fund is 0.60% which is charged annually based on the capital balance (2023/24: 0.60%).

	Unrestricted funds £'000	Restricted funds £'000	Endowment funds £'000	2024/25 Total funds £'000	2023/24 Total funds £'000
Fundraising Costs	136	11	-	147	142
Support Costs	-	-	-	-	0
	136	11	-	147	142

The fundraising costs above include staff costs, memberships, marketing and resources and other fundraising event costs.

7. Analysis of charitable expenditure

The charity made grant support available to Calderdale and Huddersfield NHS foundation Trust for the purpose of equipment and contributions for staff and patient education, amenities, and welfare.

	Grant funded activity			Support costs				Total 2024/25				Total
	Unrestricted funds £'000	Restricted funds £'000	Total funds £'000	Unrestricted funds £'000	Restricted funds £'000	Endowment funds £'000	Total funds £'000	Unrestricted funds £'000	Restricted funds £'000	Endowment funds £'000	Total 2024/25 £'000	Total 2023/24 £'000
Purchase of new equipment	46	13	59	5	1	0	6	51	14	0	65	232
New building and refurbishment	26	1	27	3	0	0	3	29	1	0	30	40
Staff education, welfare and amenities	62	27	88	7	1	0	8	69	28	0	97	66
Patient education, welfare and amenities	126	99	225	14	5	0	19	141	103	0	244	167
Other	3	-	3	0	-	0	0	4	-	0	4	
	263	139	402	30	7	1	38	293	146	1	440	505

The Charity also made available grant support of £15,000 (2023/24: £0) – this was for Age Concern Todmorden and Todmorden Food Drop In Service.

CALDERDALE AND HUDDERSFIELD NHS FOUNDATION TRUST CHARITABLE FUNDS

ACCOUNTS – 2024/25

NOTES TO THE ACCOUNTS

8. Analysis of grants

The main beneficiary of the Charity is the related party, Calderdale and Huddersfield NHS Foundation Trust, but grants are also made to Locala Community Partnership. The Corporate Trustee operates a scheme of delegation through which all grant funded activity is managed by fund managers responsible for the day-to-day disbursements from their designated funds in accordance with the directions set out in the Charity standing orders and standing financial instructions.

	2024/25 £'000	2023/24 £'000
Raising funds	147	142
Grants made:		
NHS Foundation Trust	440	505
Locala Community Partnership	0	0
	440	505
Other Resources Expended	28	0
Total resources expended	615	647

9. Analysis of grants

Support and overhead costs are apportioned to charitable activities according to the value of transactions that have occurred within each activity in the year. Governance costs are those support costs which relate to the strategic and day to day management of the Charity.

	Raising Funds £'000	Charitable Activities £'000	2024/25 Total £'000	2023/24 Total £'000
Support and governance costs				
Financial services	-	21	21	22
Salaries and related costs	-	16	16	15
External and internal audit costs	-	2	2	3
Establishment costs	-	-	-	0
	0	38	38	40

CALDERDALE AND HUDDERSFIELD NHS FOUNDATION TRUST CHARITABLE FUNDS

ACCOUNTS – 2024/25

NOTES TO THE ACCOUNTS

Allocation of governance and support costs (cont.)

	Unrestricted funds £'000	Restricted funds £'000	Endowment funds £'000	2024/25 Total £'000	2023/24 Total £'000
Support and governance costs					
Raising funds	-	-	-	-	0
Charitable Activities	30	7	1	38	40
	30	7	1	38	40

	Unrestricted funds £'000	Restricted funds £'000	Endowment funds £'000	2024/25 Total £'000	2023/24 Total £'000
Support and governance costs for charitable activities					
Financial services	16	4	1	21	22
Salaries and related costs	12	3	1	16	15
External and internal audit costs	1	0	0	2	3
Establishment costs	-	-	-	-	0
	30	7	1	38	40

	Purchase of Equipment £'000	Staff Education and Welfare £'000	Patient Education and Welfare £'000	Building & Refurbishment £'000	Other £'000	2024/25 Total £'000	2023/24 Total £'000
Apportionment of support costs across charitable expenditure							
Financial services	3	5	11	2	0	21	22
Salaries and related costs	3	4	8	1	0	16	15
External and internal audit costs	0	0	1	0	0	2	3
Establishment costs	-	-	-	-	-	-	0
	6	9	19	3	1	38	40

CALDERDALE AND HUDDERSFIELD NHS FOUNDATION TRUST CHARITABLE FUNDS

ACCOUNTS – 2024/25

NOTES TO THE ACCOUNTS

10. Analysis of grants

There were no transfers between funds in 2024/25 (2023/24: nil).

11. Analysis of staff costs

The Charity does not directly employ any members of staff. The administration and fundraising are carried out by staff from the Trust and recharged to the Charity.

None of these staff received any other employee benefits in either year and nor did any individual receive employee benefits (excluding employer pension costs) above £60,000.

	£'000	2024/25		2023/24		2024/25		2023/24	
		Salaries	ER Pension/ ERS NI	Salaries	ER Pension/ ERS NI	Total		Total	
Admin		16	3	31	9	19		40	
Fundraising		133	33	99	24	166		123	
		149	36	130	33	185		162	

12. Auditor's / External Examiner remuneration

The External Examiners remuneration of £1,800.00 - inclusive of VAT (2023/24: £1,620 – inclusive of VAT) related solely to the independent examination, with no other additional work undertaken 2024/25.

13. Fixed asset investments

All investments are made in accordance with the guidance issued by the Charity Commission. The current investments are managed by CCLA.

Funds are either invested in the stock exchange, other securities or held to gain interest in the bank. The Charity's investment objective remains the same, that is, to provide a balance between long term capital growth, security, availability, and maximisation of annual income.

All investments are carried at their fair value.

CALDERDALE AND HUDDERSFIELD NHS FOUNDATION TRUST CHARITABLE FUNDS

ACCOUNTS – 2024/25

NOTES TO THE ACCOUNTS

Fixed asset investments (cont.)

There were no transfers between funds in 2024/25 (2023/24: nil).

Movement in year

	2024/25 £'000	2023/24 £'000
Market value at 1 April	2,346	2,378
Add : additions at cost	-	0
Less : disposals at market value and in year gain/(loss) on disposal	(100)	(310)
Add/Less : gain/loss on revaluation	(37)	278
Add : gain/(loss) on in year disposals	-	0
Less : movements in broker held bank accounts	-	0
Market value at 31 March	2,209	2,346

Investments in common investment funds

	Units held at 31 March 2025	31 March 2025 total £'000		Units held at 31 March 2024	31 March 2024 total £'000
CCLA Investments Management Ltd			CCLA Investments Management Ltd		
COIF Charities Ethical Investment Fund			COIF Charities Investment Fund		
Accumulation units	401,414	2,081	Accumulation units	432,074	2,211
Income units	43,332	129	Income units	43,332	134
	444,746	2,209		475,406	2,346

CALDERDALE AND HUDDERSFIELD NHS FOUNDATION TRUST CHARITABLE FUNDS

ACCOUNTS – 2024/25

NOTES TO THE ACCOUNTS

Risk strategy in terms of investments held with investment managers

In line with the investment objectives of the Charity, it is essential that the correct balance of risk and rewards is conveyed to the Investment Managers running the Charity portfolios.

The view of the Charitable Funds Committee is that risk levels should be based on Low and Medium risk.

Low risk

The Charity is prepared to accept a small degree of short-term volatility, in the hope of producing slightly higher returns. The Charity seeks to reduce the risk of returns being exceeded by inflation, while retaining a consistent pattern of returns and accepts the possibility of frequent but minor fluctuations in capital value.

Medium risk

The Charity is prepared to accept risk of some short-term volatility in the pursuit of returns over the medium to long term which should maintain capital after the effects of inflation and is aware that more significant fluctuations in capital are possible.

Liquidity risk

This is anticipated to be low as the Fund holds a diversified portfolio but one biased towards real assets including global equities, property and infrastructure, and with only modest exposure to bonds and cash.

Currency risk

There is an element of currency risk as there are some overseas equities within the portfolio, but these should be minimal as the portfolio is diversified.

CALDERDALE AND HUDDERSFIELD NHS FOUNDATION TRUST CHARITABLE FUNDS

ACCOUNTS – 2024/25

NOTES TO THE ACCOUNTS

14. Analysis of debtors

	31 March 2025 £'000	31 March 2024 £'000
Debtors under 1 year		
Other debtors	10	114
Total	10	114

Other debtors represent any sums owed to the Charity by a related party, Calderdale and Huddersfield NHS Foundation Trust £10k (2023/24 £2.4k) for income collected by the Trust on behalf of the Charity, donations received but not banked until April £0k (2023/24 £0.6k) and a legacy notified but not yet received £0k (2023/24 £110k).

15. Analysis of cash and cash equivalents

	31 March 2025 £'000	31 March 2024 £'000
Analysis of cash at bank		
National Westminster current account	(2)	0
Short term investments and deposits		
National Westminster deposit account	111	124
Total	110	124

16. Analysis of liabilities

	31 March 2025 £'000	31 March 2024 £'000
Creditors under 1 year		
Other creditors	(122)	(72)
	(122)	(72)

Other creditors mainly represent sums owed by the Charity to a related party, Calderdale and Huddersfield NHS Foundation Trust £63k (2023/24 £54k), for costs incurred by the NHS Foundation Trust on behalf of the Charity in the furtherance of the Charity's objectives. It also includes the cost of items or services received but not yet invoiced/receipted £59k (2023/24 £18k).

CALDERDALE AND HUDDERSFIELD NHS FOUNDATION TRUST CHARITABLE FUNDS

ACCOUNTS – 2024/25

NOTES TO THE ACCOUNTS

17. Provisions for liabilities and charges

The Charity does not have any provisions for liabilities and charges and, as such, has not disclosed any such liabilities and charges in the Statement of Financial Activities.

18. Reconciliation of net income/(expenditure) to net cash flow from operating activities

	31 March 2025 £'000	31 March 2024 £'000
Net income/(expenditure) for 2024/25 (as per SOFA)	(306)	12
Adjustments for:		
(Gains)/losses on investments	36	(278)
Dividends from investments	(1)	(4)
Other income	(13)	0
(Increase)/decrease in debtors	104	(70)
Increase/(decrease) in creditors	50	(124)
Net cash provided by (used in) operating activities	(129)	(465)

19. Analysis of charitable funds

	Balance at 31 March 2024 b/fwd	Incoming resources	Resources expended	Transfers	Gains and losses	Balance at 31 March 2025 c/fwd
	£'000	£'000	£'000	£'000	£'000	£'000
Endowment						
McGhie hospital	134	-	(1)	-	(3)	130
	<u>134</u>	<u>-</u>	<u>(1)</u>	<u>-</u>	<u>(3)</u>	<u>130</u>
Restricted						
CRH SCBU	15	4	(1)	-	-	18
CRH PGME	14	-	(12)	-	-	2
HRI special purpose fund	3	-	(0)	-	-	3
Covid 19 fund	148	-	(134)	-	-	14
Abraham Ormerod day hospital	62	-	(15)	-	-	47
Abraham Ormerod reserve	551	-	(5)	-	(11)	534
Bereavement Suite Fundraising Appeal Fund	-	114	(1)	-	-	113
Ray of Sunshine Fund	-	28	(3)	-	-	24
	<u>793</u>	<u>146</u>	<u>(172)</u>	<u>-</u>	<u>(11)</u>	<u>755</u>
Unrestricted						
Unrestricted funds	<u>1,585</u>	<u>199</u>	<u>(442)</u>	<u>-</u>	<u>(22)</u>	<u>1,321</u>
Total	<u>2,512</u>	<u>345</u>	<u>(615)</u>	<u>-</u>	<u>(36)</u>	<u>2,207</u>

All the unrestricted funds are designated funds and are available for any charitable purpose relating to the NHS but are mainly for the stated purpose contained in the fund title. This is in recognition of the non-binding wishes of donors when making their generous gifts.

In the interests of accountability and transparency a complete breakdown of all designated (earmarked) funds is available upon written request.

CALDERDALE AND HUDDERSFIELD NHS FOUNDATION TRUST CHARITABLE FUNDS

ACCOUNTS – 2024/25

NOTES TO THE ACCOUNTS

20. Material legacies

Legacy income is accounted for as incoming resources in the Statement of Financial Activities either upon receipt or where the legacy is probable. Material legacies are those which have been notified as at 31 March 2025 but not recognised as incoming resources in the Statement of Financial Activities due to the conditions for recognition not being met.

Notification received from	Date notification received	2024/25 Estimated value of legacy £'000	Notification received from	Date notification received	2023/24 Estimated value of legacy £'000
n/a	n/a	0	n/a	n/a	0
		<u>0</u>			<u>0</u>

21. Outstanding Approvals

Expenditure that has been approved internally but not yet delivered or services not yet provided has been summarised below.

Outstanding Expenditure Approvals as at 31 March 2025

	2024/25	2023/24
Fund Manager	Estimated value £'000	Estimated value £'000
Calderdale & Huddersfield NHS Foundation Trust	266	417
	<u>266</u>	<u>417</u>

22. Related party transactions

Calderdale and Huddersfield NHS Foundation Trust is the main related party to the Charity. Payments to creditors are made through the Trust and reimbursed from the Charitable Funds. The Trust paid £576,055 - 2023/24: £589,824 on behalf of the Charity.

CALDERDALE AND HUDDERSFIELD NHS FOUNDATION TRUST CHARITABLE FUNDS

ACCOUNTS – 2024/25

NOTES TO THE ACCOUNTS

23. Trustees' remuneration, benefits and expenses

During the year, no Board Member of the Trust received either remuneration or expenses and none of them, or key management staff, has undertaken any material transactions with the Calderdale and Huddersfield NHS Foundation Trust Charitable Funds. There were also no Trustee indemnity insurance costs during the year.

24. Role of volunteers

Our fund managers are, in effect, volunteers. There are about 200 Trust staff members who manage how the Charity's designated funds should be spent. Each fund manager has been delegated responsibility for approving expenditure of less than £500.