

A young girl with dark hair tied back, wearing a white t-shirt and dark blue pants, is sitting on a wooden bench and playing a cello. She is looking towards the right with a focused expression. To her left, another student is partially visible, also playing a cello. In the foreground, a hand from an adult is reaching out towards the girl, possibly guiding her. The background shows a music classroom with large windows and blue circular decorations on the wall.

**MUSIC  
OF  
LIFE**

**Annual  
Report &  
Accounts  
2020**



# Annual Report & Accounts 2020

## Contents

03	Charity Overview
04-05	Key Facts and Figures
08	Welcome from the Chair of Trustees
09	CEO's Report
10-15	<b>Case Studies</b>
10	– Individual Lessons Programme
11	– Music for Deaf Children
12	– Choirs at Special Needs Schools
14	– Lockdown 2020
15	– Plans for 2021
16-17	Trustees' Report
18	Independent Examiner's Report
19	Statement of Financial Activities
20	Balance Sheet
21	Statement of Cash Flows
22-25	Notes on Financial Statements
26	Thank You to Our Donors
27	Legal and Administrative Details



# Charity Overview

The charity was established in 2003 and since then has supported over 3,000 children. Our vision is of a world where disabled children and young people have the same access to music-making as any other child.

Through long-term engagement, the children experience the joy of making music, which positively impacts their academic performance, social life and health. Their schools, families and local communities also benefit from the improved health and well-being of the children.

We support children and young people aged 5 to 25 with a wide range of physical and learning disabilities, both individually and in group workshops in special needs schools. When they are ready, we help them to integrate into community community-based activities such as joining a youth choir or playing in a band, which helps to widen their social circles and gain acceptance from their non-disabled peers. It also helps non-disabled groups learn how to accommodate the needs of our students and to value their contribution.

## Our Vision

Our vision is for all disabled children and young people to be able to access, and benefit from, music-making opportunities.

## Our Mission

Our mission is to build and strengthen the life skills, well-being and confidence of disabled children and young people through music making

## Our Programmes

- Choirs at Special Schools
- Music for Deaf Children
- Individual Music Lessons
- Community Integration

5,442

INDIVIDUAL IN-PERSON MUSIC  
OPPORTUNITIES PROVIDED  
BY MUSIC OF LIFE IN 2020

8,681

THE NUMBER OF TIMES OUR  
EDUCATIONAL VIDEOS WERE  
VIEWED IN 2020

## 2020 YEAR IN NUMBERS



### Our beneficiaries' conditions\*

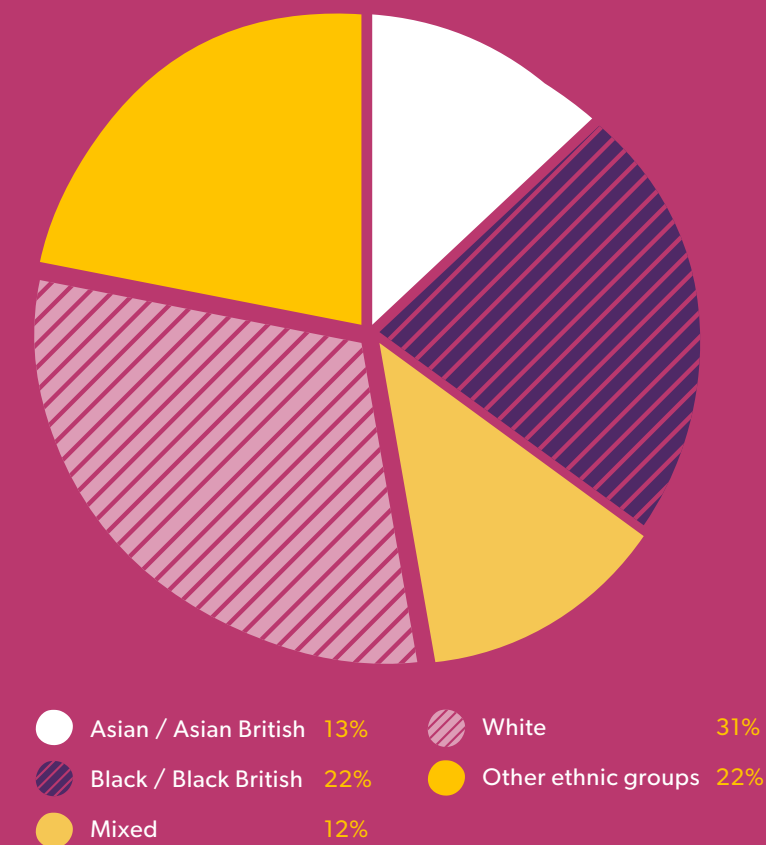
Autistic spectrum disorders	48%
Deaf / Hard of hearing	37%
Blind / Visually impaired	12%
Down's syndrome	09%
Cerebral palsy	12%
Other learning disabilities	22%
Other physical disabilities	12%
Beneficiaries on pupil premium	76%

\*Many of our students have more than one condition, therefore the total above exceeds 100%

### Summary of music provision

Voice	242
Keyboard	14
Music technology	5
Strings	27
Wind	20
Percussion/Other	86

### Ethnicity





“

**What a wonderful group of people you are and what wonderful students you have. Mia's smile while she was singing her solo is something I will never forget.**

”

Local music service education team member  
(partnership project at Royal Albert Hall)





# Welcome from the Chair of Trustees



When schools started telling us in March last year that, because of Covid-19, we couldn't come in to conduct our weekly choral workshops and music lessons with their children and young people with disabilities, we realised we had a very short time to completely reinvent ourselves!

Our teachers and workshops leaders, supported by the Board and our free-lance fundraiser, responded magnificently. Barely three weeks later, from the start of the Summer term, we were able to provide new videos each week for the children to follow at home, and online lessons for individual pupils. Through these new media, we continued to support the children who depend on us throughout the lockdown. Parents described our materials as a "lifeline", at a time when their children received little other teaching.

We are immensely grateful to London Funders, via City Bridge Trust, and the Arts Council who responded rapidly to the crisis, providing us with major emergency grants to cover the cost of adapting our programmes.

We made progress in a lot of areas. Income was maintained at a similar level to the previous year, excluding a one-off grant in 2019 of £50,000. Direct spending on programmes increased by 24%.

Highlights of the year included pupils from the Frank Barnes School for Deaf Children in Camden taking part, before the lockdown, in performing a major new work at the Camden Music Festival in the Royal Albert Hall; our first Music of Life Conference for teachers and our wider stakeholders, including existing and potential partners, funders, beneficiaries and researchers, held virtually in July with 64 participants; a greatly improved presence on social media thanks to Silvia Epure, an outstandingly capable and generous volunteer; the continuing development of our relationship with Music Services in a number of Boroughs and Counties.

The fundraising "scene" changed dramatically as a result of the pandemic. Grant-making trusts responded quickly and positively, permitting repurposing of existing grants and making new grants available to support continuity.

We greatly appreciated the on-going support of the Mercers' Charitable Trust, BBC Children in Need, a first time grant from the Leathersellers' Company Charitable Fund and a further grant from the Loveday Charitable Trust.

We were delighted to receive our first award from the John Lyons Charity in the form of a 3-year grant for work in schools for Deaf children and towards the cost of capacity-building. As a result we are currently training 10 new teachers to work with disabled children who will be ready to deliver our programmes commencing in the next academic year.

A direct impact of the pandemic however has been the loss of event income and a significant drop in the number of smaller, annual grants often from grant-makers located near our programmes. Core funding remains a significant challenge.

We doubled the number of Board meetings, getting together monthly at the start of the crisis. We appointed our first-ever Vice Chair, Catherine Clarke, who has been on the Board for four years. Cathy has also recently been elected to the Council of the Royal College of Music. We were also able to attract three new Trustees who bring distinct additional skills and expertise to an already strong Board.

Music of Life is in a very good position to increase its support of disabled children and young people. Our work is most impactful when we are in the room with the children, however we do now have a library of resources when needed. Our team of workshop leaders and teachers combine great enthusiasm and caring personalities with outstanding musical knowledge and teaching ability. With increased teaching capacity we will be able to meet the growing demand from special schools and individual pupils. Our work has been increasingly recognised with larger grants and we will continue to refine our evaluation and monitoring processes.

Ray Longbottom  
Chair of Trustees

# CEO's Report



**2020 is quite a year to report on! We got off to a flying start with carefully planned new projects and were happy to see our established programmes becoming increasingly ambitious, which included our Deaf students taking part in a dazzling performance at the Royal Albert Hall. Then at a stroke, we had to rethink everything we do in the space of just a few weeks and find a way to provide uninterrupted support to our children and their families throughout the first lockdown. We stayed true to our values and mission and fulfilled our commitments to the most vulnerable and isolated children and their families the best we could under the extraordinary circumstances.**

We started the year working live with three schools in the West Midlands where we were running our Choirs at Special Schools programme and adding a new school in Cambridge. Sadly, the plans to start a new school project had to be put on hold when we went into lockdown. The regular choirs had to stop too and our workshop leaders had to quickly adapt our provision to online training. Song tutorials were recorded in their home studios and sent out by the schools along with weekly homework assignments. We also uploaded the tutorials to our YouTube channel, which gave the students and their families quick and easy access to their favourite songs. From September, we introduced hybrid provision, consisting of online sessions for those schools that could not accommodate our workshops and in-class sessions with children at schools which we could access, one class bubble at a time. Some schools even managed Christmas performances streamed from their classrooms!

Our Music for Deaf Children programme has been thriving throughout the year, despite lockdowns and numerous logistical challenges in the schools. Our workshop leaders provided classroom sessions to all year groups and we offered individual music lessons to all KS2 children. We extended our provision to one new school in 2020 and continued to work with all four existing schools. Deaf and disabled children from the Frank Barnes school in Camden joined other school children in the performance of a new work at the Royal Albert Hall in March. Then came the lockdown and we had to switch from face-to-face sessions at the schools and so our workshop leaders started recording weekly video tutorials for each school. These lively videos, described by one parent as "the best free music resources currently available online", quickly attracted hundreds of views on our YouTube channel. A few Deaf children were able to continue their music lessons online.

Individual Lessons was the most disrupted project during lockdown. Despite our best efforts, many of our students were simply unable to cope with the online format even after we had teamed up with our provision partners – local music services and youth music groups – to ensure the teachers who deliver individual music lessons for Music of Life had received appropriate online safety training funded by the charity, issued all necessary policies and consent forms for parents, provided extra support to Music of Life teachers and parents to set up safe and efficient online lessons. Sadly, only about 20% of all lessons took place during the lockdown. From September 2020, we rapidly increased our provision of lessons offering more students the opportunity to join our partnership projects with Birmingham Services for Education and Young DaDa Ensemble in Liverpool and we also increased our intake in London. The overall number of students this year as a result has been greater than in previous years, but the number of lessons decreased.

We were very excited about our Online Conference in July, which provided a great opportunity to bring together all those people who have been part of Music of Life for many years without being able to get together. We told our story and heard from our key stakeholders, partners and beneficiaries, and launched our Teacher Training programme. Following this announcement, we conducted a series of interviews and recruited 10 young music practitioners who chose to learn from our experienced workshop leaders in a year-long programme that comprised online training, interactive face-to-face sessions, observations, shadowing and hands-on experience of working with groups of special needs children at our schools. We were delighted with their progress and fantastic attitude to learning, and they are already making a great contribution to the charity's work. We hope the programme will proceed to its planned in-school mode in the Summer term 2021 so that each of the newly graduated workshop leaders can start new projects for Music of Life during the 2021-22 academic year.

Maria Teterina  
CEO



# Individual Lessons Programme



The following quotes are drawn from Teacher Reports we introduced in 2020 to capture the extraordinary nature of the lessons during lockdown and their impact on students.



One parent whose two children were receiving weekly 1-1 lessons with me said that the lessons were invaluable for several reasons – not only were the children receiving some consistency in their learning, but they were also benefitting from weekly contact with someone who could communicate with them in their own language - BSL. The parent felt that this was very important for her children's mental health and well-being throughout lockdown, especially as they, as a Deaf family, were otherwise largely cut off from the rest of the school community.



Music has benefited my students by releasing their emotions and escaping any worries. Music has built up their confidence. Music has helped them to switch off for half an hour. Playing music has made them smile or go off humming to themselves.



Michael has continued to make excellent progress. He struggled at first with the abrupt change in habit and routine (as did we all) but once we had established a regular pattern and understood that we were in it for the long haul, he adapted well. A positive change in the lockdown is that Michael has had more time to practise. He has used this time well and seems to have enjoyed the extra hours available to him to play the piano. One other benefit of online lessons has been that we are both able to sit at our own piano and it is easier to demonstrate for him. Michael responds well to direct aural demonstrations rather than verbal explanations. This set-up is unusual in a private setting since most people cannot have two pianos. However, it has got me thinking about how this can be replicated when we return to in-person lessons.

I have been delighted and surprised with how easily our lessons have migrated online. Obviously, nothing can beat real human contact and the subtleties of non-verbal communication in a room. But I do believe the music-making itself has continued almost as before. The music-making has been of a profound benefit to Michael because it has enabled him to have a regular contact with me and carry on his music lessons, which is one of the few references back to 'normal life' that he has. It is also his passion and a huge part of his life and to deny it would have been unthinkable. I do believe our lessons together have contributed to his wellbeing throughout this period and it shows how important regular music-making is.



# Music for Deaf Children

By Eloise Garland,  
Music of Life workshop  
leader, musician, educator  
and Deaf campaigner.



There are profoundly deaf identical twin boys who started at the school in September. From my understanding they were asylum seekers and only arrived in the UK earlier this year. They have only very recently received cochlear implants and had never had any language input (signed or spoken) before starting at the school 2 months ago.

When I first met them in October they were totally cut off - they just stared and had completely blank faces. Absolutely no level of engagement would elicit a change in expression with either of them. Then 3 weeks ago in one of our music lessons, they both smiled for the first time while we were playing a game using drums and shakers.

Today, however, both boys had a major break-through and the teachers and TAs were stunned. We were playing the conducting game and learning the vocabulary loud/soft, fast/slow and STOP.

Two other children came up to sit in my chair and lead the class, and then one of the twins shot his hand up to ask to lead. He sat in my chair and proceeded to use all the vocabulary we had learnt to control the class. I was told this is the first time either of the twins have used expressive language in this way! After the first twin finished leading, the second one took a turn.

I am convinced that the power of music has helped the boys to understand the connection between language/actions/having the power to influence others, and I hope this has triggered a snowball effect where their language will begin to explode from here on. Thank you for the opportunities you have given to so many children like them through Music of Life. I feel so privileged to be working with you and to be part of such a wonderful team!





# Choirs at Special Needs Schools

Music of Life may be a small charity but its impact is huge

Lizzie Godwin, Assistant Head,  
Woodlands Special School, July 2020



**Lizzie Godwin,**  
**Assistant Head,**  
**Woodlands Special School,**  
**July 2020**

“

We value music immensely at Woodlands. It’s important for everyone’s enjoyment and wellbeing and it should be accessible to all. Music of Life brings the opportunity for our school to have a fully inclusive choir. Anyone who wants to be involved can be.

The youngest pupils in our choir are 5 and the oldest 19. The range of abilities and needs is vast but they are all included. We have pupils who sing everything; some who join in with the songs that they choose; others who like to move to the music; and those who make choices using alternative communication such as symbols or Makaton signing. Pupils join in at their own level, whatever they are comfortable with. And if they need to leave the room, they can; if they can only cope with 10 minutes of the session, that’s fine.

Music of Life is totally inclusive. It is one of the only times in school that we have pupils from across the school choosing to work together and enjoy each other’s company. The Music of Life sessions have helped to develop an identity for those involved in it and the relationships between the pupils, the staff, the workshop leaders and, importantly, the audience.

The sessions bring so much: the sense of community for both pupils and adults in the choir; the participation; the collaboration, both working together in school and with the other schools; the opportunities for the pupils to perform, when the parents get to see and hear them, not something that is always available to children with additional needs. We believe it to be very important and strive for it to happen but we do know that it’s not always the case. Music of Life brings that to our children. We passionately believe that young people should be given lots of choice in their life and through many of the different songs and activities they get to choose and take the songs further, so in their own way they are doing some composition.

”



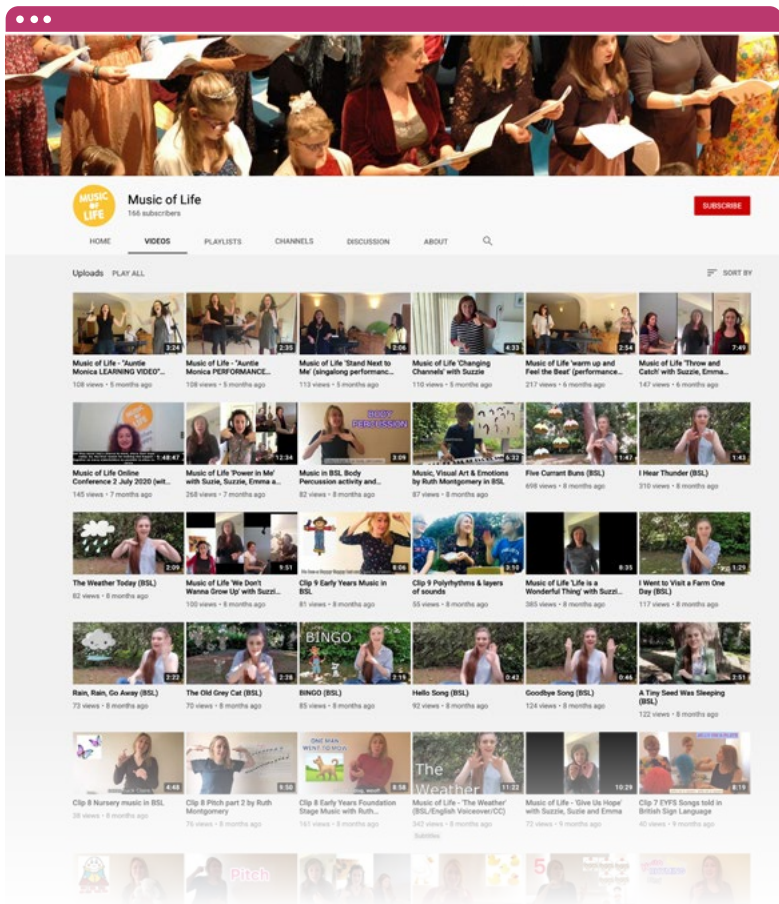


# Lockdown 2020

Music of Life is privileged to work with outstanding musicians and individuals. As a team, we were able to adapt to remote provision within a matter of days and carried on with the work of inspiring and nurturing the students through the production of weekly high-quality educational music materials that were referred to as “the best free educational lockdown resources available” by the parents.

Over 60 videos were created and uploaded to our YouTube channel and distributed to the schools between March and July 2020. This way of working will continue so long as schools are unable to invite music practitioners back in person.

In July we held our first online conference that brought together key Music of Life workshop leaders and teachers, experts in music education for special needs children, existing and prospective project partners. Recorded and fully subtitled, it is now available on our YouTube channel providing an excellent opportunity to learn about the scope of the organisation, its unique experience and knowledge. The speakers include Music of Life Patron Denise Leigh, programme leaders, project partners and direct beneficiaries.



# Plans for 2021



Although, like everyone, we have to be cautious about making firm plans in the middle of the pandemic, once the restrictions are lifted, Music of Life is in a strong position to resume normal activities and continue with our ambitious growth plans.

Our teacher training programme is ready to enter its final phase where our trainees will join our practitioners at schools and gain hands-on experience in preparing and delivering music sessions for children with a wide range of disabilities and special needs.

We were sad to have to postpone the Summer Celebration concert planned for June 2021 at Birmingham Town Hall with our West Midlands choirs. We will substitute it with in-school end of year projects that could be streamed and shared on the internet, to celebrate the achievement of our students during this most challenging academic year.

We have a number of schools waiting for our provision to start and a growing number of individual requests for lessons and career support. We are actively looking for new partnerships and development schemes that will allow us to reach out to many more disabled children than we are able to at present, without compromising the quality of our provision. Our growth

plans are ambitious, yet we recognise the funding and capacity limits we are facing. We are hoping that carefully considered partnerships will allow consistent growth and ensure the charity’s unique experience and knowledge are used to enable more external practitioners to provide better music opportunities to disabled students.

We are keen to learn more about the broader, multi-level impact of our work through research and further develop our monitoring and evaluation process. We will be seeking advice from experts in key areas that influence the work we do – education, disability, music, social services. We will continue to involve our students, their families, schools and support workers in our planning and decision making to ensure our provision addresses the most urgent need and is fully accessible to all our service users.



# Trustees' Report

For the year ending 31 December 2020

## Introduction

The Trustees who are also the Directors of the limited company have pleasure in presenting their Report together with the financial statements of Music of Life Foundation Charity for the year ended 31 December 2020.

Legal and administrative information set out on page 27 forms part of this Report. The financial statements comply with current statutory requirements, the Articles of Association, applicable law and Statement of Recommended Practice: Accounting and Reporting by Charities 2019.

## Structure, Governance & Management

Music of Life Foundation ("the Charity") is a company limited by guarantee governed by its Articles of Association dated 12 November 2003 and amended by special resolution on 11 July 2019 to bring the Charity's governing documents into line with current company and charity law and good practice. The Charity is registered at Companies House as No. 4963498. It is a charity registered with the Charity Commission as No. 1102827.

The Foundation is managed by a Board, the members of which have the legal status of directors of the charitable company and are its Trustees for the purpose of charity law. The Board meets twice per quarter to have a close view on performance against objectives and to have more flexibility to react to arising issues (e.g. COVID-19)

## Selection and Appointment of Trustees

The Trustees appoint new members by general agreement. Regular reviews are conducted to ensure that the Board has the necessary skills. New trustees take part in an induction process when they receive copies of the Charity's Articles of Association, are fully briefed on their obligations under charity and company law, and are given information on the decision-making processes, the financial performance of the Charity and the business plan.

Trustees with specific expertise brief the Board from time to time on current topics more broadly, trustees are encouraged to keep up-to-date with developments in the sector and to take advantage of the many training opportunities available from various bodies.

## Objectives and Activities of the Foundation for the Public Benefit

Music of Life Foundation's objectives are the advancement of the education of disabled children in the arts and in particular the art of music by:

- Providing access to facilities for study, for creative development and access to both standard and creative organisations, on equal terms with other children,
- Organising of national and international musical events, competitions and concerts in which disabled children can participate thus helping them to realise their potential, and
- Supporting research undertaken into the educational and therapeutic use of the arts and in particular the art of music for the benefit of disabled children.

When reviewing the Charity's aims and objectives, devising new programmes and setting policies for the year, the Trustees confirm that they have referred to the guidance contained in the Charity Commission's general guidance on public benefit and complied with their duty under Section s17(5) of the Charities Act 2011.

## Risk Management

The Trustees regularly review the major risks to which the Charity is exposed and take action where appropriate to mitigate them. The Trustees consider the unpredictability and short term nature of most of our funding to be the greatest risk in the short to medium term.

The COVID-19 pandemic has introduced additional risk to the Charity particularly in relation to funding. We have been granted Emergency Funding by two bodies during the year which has alleviated the risk in the short term.

## Financial Review

Total income was £151,770, a decrease of 27% on 2019 due to an exceptional unrestricted grant of £50,000 received in that year. As mentioned above we secured Emergency Funding of £63,800 from the Arts Council and The City Bridge Trust. These, together with previously secured multi-year grants have comprised the majority of the Charity's income in the year. There have been no fundraising events held during the year and we have seen a significant drop in the number of donations from smaller and local trust funds which have usually been a reliable source of income. We are very grateful to the trusts and foundations which have supported us during the year.

Raising unrestricted income continued to be challenging and was exacerbated by the postponement of the Royal Parks Half Marathon and the non-repeat nature of last year's major grant. Unrestricted income came in at £20,370 (2019: £67,715).

In 2020 our overall charitable expenditure increased by 21% to £127,818 (2019: £105,974). To cater for the growth in our programmes we commenced a teacher training programme – building capacity for our further expansion.

We start 2021 with project reserves at £115,765 - 33% higher than the start of the year. Due to the pandemic and children not being accessible, we have been unable to provide as many individual lessons as planned, resulting in a larger than normal carry-over of funds in these projects. For the Choral Workshops and our Deaf Programme, we anticipate that the reserves will cover the first two terms of 2021. In order to provide certainty for the schools and children we support, we need to continue our fundraising programme in order to have funding in place for the 2021/22 academic year.

In total, we are carrying forward reserves of £151,972 (2019: £140,827)

## Going Concern

Throughout the pandemic, we managed to maintain a steady level of support for our special schools and individual students. Several grant-makers recognised our contribution by providing major funding to adapt our programmes. We are now well-placed financially to return to in-school activities or to expand the provision of online materials, if necessary. The Board is actively engaged in a newly-formed sub-committee focused on diversifying our income streams and we are currently applying to an increasing number of Trusts and Foundations for support. The Board has adopted a rigorous risk assessment process to identify and mitigate any major risks. Consequently, the trustees believe that it is appropriate to continue to prepare the accounts on a going concern basis.

## Reserves Policy

The Trustees review the reserves policy at least annually, or on the occurrence of material changes in the Charity's activities. The Trustees have reviewed the Charity's requirements for reserves and have decided to hold a sufficient balance of unrestricted reserves to cover 3 to 6 months of planned expenditure to ensure financial stability

and act as a safeguard against unpredictable income streams. In general, we do not commit to projects until funding is secured. These funds are received at the start of a project while expenditure follows on a monthly basis. At the end of 2020, unrestricted reserves were £36,207 which represents cover of 7.2 months.

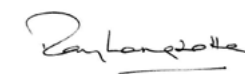
## Statement of Trustees' Responsibilities

The Trustees acknowledge their responsibilities for ensuring that the Charity keeps accounting records which comply with section 386 of the Companies Act 2006 and for preparing financial statements which give a true and fair view of the state of affairs of the company as at the end of the financial year and of its incoming resources and application of resources, including its income and expenditure, for the financial year in accordance with the requirements of sections 394 and 395 and which otherwise comply with the requirements of the Act relating to financial statements, so far as applicable to the company.

Each of the Trustees has confirmed that there is no information of which they are aware which is relevant to the independent examination, but of which the Examiner is unaware. They have further confirmed that they have taken appropriate steps to identify such relevant information and to establish that the Examiner is aware of such information.

This report has been prepared in accordance with the special provisions of Part 15 of the Act relating to small entities.

Approved by the Board on 9 April 2021 and signed on its behalf:



R A Longbottom  
Chair of Trustees



# Independent Examiner’s Report to the Trustees of Music of Life Foundation



JK Barnehurst Accounting Ltd

I report on the accounts of the charitable company for the year ended 31 December 2020 which are set out on pages 19 to 25.

**Respective responsibilities of trustees and examiner**

The trustees, who are also the directors of the charitable company for the purposes of company law, are responsible for the preparation of the accounts. The charity’s trustees consider that an audit is not required for this year under Section 144(2) of the Charities Act 2011 (the 2011 Act) and that an independent examination is required.

Having satisfied myself that the charity is not subject to audit under company law and is eligible for independent examination, it is my responsibility to:

- examine the accounts under Section 145 of the 2011 Act
- follow the procedures laid down in the General Directions given by the Charity Commission under Section 145(5)(b) of the 2011 Act; and
- state whether particular matters have come to my attention.

**Basis of the independent examiner’s report**

My examination was carried out in accordance with the General Directions given by the Charity Commission. An examination includes a review of the accounting records kept by the charity and a comparison of the accounts presented with those records. It also includes consideration of any unusual items or disclosures in the accounts, and seeking explanations from you as Trustees concerning any such matters. The procedures undertaken do not provide all the evidence that would be required in an audit, and consequently no opinion is given as to whether the accounts present a ‘true and fair view’ and the report is limited to those matters set out in the statements below.

**Independent examiner’s statement**

In connection with my examination, no matter has come to my attention:

(1) which gives me reasonable cause to believe that, in any material respect, the requirements

- to keep accounting records in accordance with Section 386 of the Companies Act 2006; and
- to prepare accounts which accord with the accounting records, comply with the accounting requirements of Sections 396 of the Companies Act 2006 and with the methods and principles of the Statement of Recommended Practice: Accounting and Reporting by Charities

have not been met; or

(2) to which, in my opinion, attention should be drawn in order to enable a proper understanding of the accounts to be reached.

Jing Lu, Chartered Certified Accountant

JK Barnehurst Accounting Ltd

Date: 9 April 2021

# Statement of Financial Activities (For the year ended 31 December 2020)

		2020			2019		
	Notes	Unrestricted Funds £	Restricted Funds £	Total 2020 £	Unrestricted Funds £	Restricted Funds £	Total 2019 £
<b>Income From</b>							
Donations	2	19,782	131,400	151,182	67,715	140,283	207,998
Investment Income		588	-	588	-	-	-
<b>Total Income</b>		<b>20,370</b>	<b>131,400</b>	<b>151,770</b>	<b>67,715</b>	<b>140,283</b>	<b>207,998</b>
<b>Expenditure on</b>							
Raising Funds		12,807	-	12,807	16,060	-	16,060
Charitable Activities		25,176	102,642	127,818	18,183	87,791	105,974
<b>Total Expenditure</b>	<b>3</b>	<b>37,983</b>	<b>102,642</b>	<b>140,625</b>	<b>34,243</b>	<b>87,791</b>	<b>122,034</b>
<b>Net Income/(Expenditure)</b>		<b>(17,613)</b>	<b>28,758</b>	<b>11,145</b>	<b>33,472</b>	<b>52,492</b>	<b>85,964</b>
<b>Reconciliation of funds</b>							
Total funds brought forward		53,820	87,007	140,827	20,348	34,515	54,863
<b>Total funds carried forward</b>		<b>36,207</b>	<b>115,765</b>	<b>151,972</b>	<b>53,820</b>	<b>87,007</b>	<b>140,827</b>



# Balance Sheet

At 31 December 2020

	Note	2020 £	2019 £
<b>Fixed Assets</b>	<b>6</b>	<b>1,116</b>	<b>1,200</b>
<b>Current Assets</b>			
Debtors	7	4,973	1,827
Cash at Bank		158,033	149,440
		<b>163,006</b>	<b>151,267</b>
Creditors: amounts falling due within one year	8	(12,150)	(11,640)
<b>Net current assets</b>		<b>150,856</b>	<b>139,627</b>
<b>Total net assets</b>		<b>151,972</b>	<b>140,827</b>
<b>The funds of the charity</b>			
Unrestricted funds	9	36,207	53,820
Restricted Funds	9, 10	115,765	87,007
<b>Total charity funds</b>		<b>151,972</b>	<b>140,827</b>

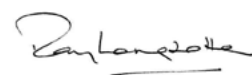
For the year ending 31 December 2020 the company was entitled to exemption from audit under Section 477 of the Companies Act 2006 relating to small companies.

Directors' responsibilities:

- The members have not required the company to obtain an audit of its accounts for the year ended 31 December 2020 in accordance with Section 476 of the Companies Act 2006;
- The directors acknowledge their responsibilities for complying with the requirements of the Act with respect to accounting records and the preparation of accounts.

The accounts have been prepared in accordance with the special provisions of Part 15 of the Companies Act 2006 relating to the small companies.

These accounts were approved by the Board on 9 April 2021 and were signed on its behalf by:



R A Longbottom  
Chair

# Statement of Cash Flows

For the year ended 31 December 2020

	2020 £	2019 £
<b>Cashflow from operating activities:</b>		
Net cash provided by (used in) operating activities	9,344	75,708
<b>Cashflow from investing activities:</b>		
Interest received	588	-
Purchases of property, plant and equipment	(1,339)	-
<b>Net cash from investing activities</b>	<b>(751)</b>	<b>-</b>
<b>Cashflow from financing activities:</b>	<b>-</b>	<b>-</b>
<b>Change in cash and cash equivalent in the reporting period</b>	<b>8,593</b>	<b>75,708</b>
Cash and cash equivalents at the beginning of the reporting period	149,440	73,732
<b>Cash and cash equivalents at the end of the reporting period</b>	<b>158,033</b>	<b>149,440</b>

## Reconciliation of net income/ (expenditure) to net cash flow from operating activities

	2020 £	2019 £
Net income/(expenditure) for the reporting period (as per the statement of financial activities)	10,557	85,964
Adjustment for:		
Depreciation charges	1,423	1,200
(Increase)/decrease in debtors	(3,146)	2,040
Increase/(decrease) in creditors	510	(13,496)
<b>Net cash provided by (used in) operating activities</b>	<b>9,344</b>	<b>75,708</b>



# Notes on Financial Statements

For the year ended 31 December 2020

1. Principal accounting policies

(a) Accounting convention

The financial statements have been prepared on a historical cost basis in accordance with Accounting and Reporting by Charities: Statement of Recommended Practice applicable to charities preparing their accounts in accordance with the Financial Reporting Standard applicable in the UK and Republic of Ireland (FRS 102) – (Charities SORP FRS 102), and the Companies Act 2006.

(b) Company status

The Charity is limited by guarantee. The members of the company are the trustees named on page 27. In the event of the Charity being wound up, the liability in respect of the guarantee is limited to £10 per member of the Charity.

(c) Income recognition

Income from voluntary grants, legacies and donations are included in the Statement of Financial Activities when received unless the grant specifically funds the Charity’s expenditure, in which case income and expenditure are allocated to the relevant period and matched.

(d) Resources expended

Resources expended are included in the Statement of Financial Activities on an accruals basis, inclusive of any VAT. Where costs cannot be directly attributed to particular headings they have been allocated to activities on a basis consistent with use of the resources.

Fundraising costs are those incurred in seeking voluntary contributions and do not include the costs of disseminating information in support of the charitable activities. Support costs are those costs incurred directly in support of expenditure on the objects of the Charity and include project management. Governance costs are those incurred in connection with administration of the Charity and compliance with constitutional and statutory requirements.

(e) Fund accounting

General funds are unrestricted funds which are available for use at the discretion of the trustees in furtherance of the general objectives of the Charity and which have not been designated for other purposes. Designated funds comprise unrestricted funds that have been set aside by the trustees for particular purposes. Income arising on designated funds can be used in accordance with the objects of the Charity and is included in unrestricted funds. Restricted funds are funds which are to be used in accordance with specific restrictions imposed by donors or which have been raised by the Charity for particular purposes. The cost of raising and administering such funds are charged against the specific fund.

(f) Tangible fixed assets

Tangible fixed assets are depreciated on a straight line basis over their estimated useful lives as follows:

- Office equipment and website - 20% per annum

2. Donations

	Unrestricted £	Restricted £	2020 Total £
<b>Donations for the year included:</b>			
City Bridge Trust		33,800	33,800
Arts Council England		30,000	30,000
The Mercers’ Charitable Foundation		25,000	25,000
John Lyons Charity		20,000	20,000
BBC Children In Need		10,000	10,000
Leathersellers’ Company Charitable Fund	10,000		10,000
Anonymous donor		10,000	10,000
Mark Loveday	5,000		5,000
Edith & Jack Griffith Trust		2,000	2,000
Other Trusts and Foundations		600	600
Events and individual donations	4,782		4,782
<b>Total</b>	<b>19,782</b>	<b>131,400</b>	<b>151,182</b>

3. Analysis of total expenditure

	Staff Costs £	Other Direct Costs £	Depreciation £	Governance costs £	2020 £	2019 £
Raising Funds	-	12,500	-	307	12,807	16,060
Charitable Activities	32,324	91,002	1,423	3,069	127,818	105,974
<b>Total for Charity</b>	<b>32,324</b>	<b>103,502</b>	<b>1,423</b>	<b>3,376</b>	<b>140,625</b>	<b>122,034</b>

Governance Costs Include	2020 (£)	2019 (£)
Payroll fee	276	276
Independent examiner fee	900	1,200
Annual report design	1,600	-
Trustees recruitment	600	4,800
Trustees expenses	-	-
<b>Total</b>	<b>3,376</b>	<b>6,276</b>

4. Staff Costs

	2020 £	2019 £
<b>Staff costs were as follows:</b>		
Salaries and National Insurance	31,566	30,943
Pension costs	758	745
<b>Total</b>	<b>32,324</b>	<b>31,688</b>

	2020 No.	2019 No.
Administration and support	1	1
<b>Total</b>	<b>1</b>	<b>1</b>

No member of staff was paid £60,000 or more during the year (2019 - nil).

5. Trustees remuneration and expenses

No Trustees received any remuneration in respect of their services as a member of the committee during the year(2019: £nil). Trustees were reimbursed £nil for travel and other expenses (2019: £nil).

# Notes on Financial Statements

(Continued...)

6. Tangible fixed assets

	2020			2019		
	Office Equipm't £	Website £	Total £	Office Equipm't £	Website £	Total £
<b>Cost</b>						
At 31 December 2019	4,566	6,000	10,566	4,566	6,000	10,566
Addition	1,339	-	1,339	-	-	-
Disposal	(563)	-	(563)	-	-	-
<b>At 31 December 2020</b>	<b>5,342</b>	<b>6,000</b>	<b>11,342</b>	<b>4,566</b>	<b>6,000</b>	<b>10,566</b>
<b>Depreciation</b>						
At 31 December 2019	4,566	4,800	9,366	4,566	3,600	8,166
Charge for the year	223	1,200	1,423	-	1,200	1,200
Disposal	(563)	-	(563)	-	-	-
<b>At 31 December 2020</b>	<b>4,226</b>	<b>6,000</b>	<b>10,226</b>	<b>4,566</b>	<b>4,800</b>	<b>9,366</b>
<b>Net book value</b>						
At 31 December 2020	1,116	-	1,116	-	1,200	1,200
At 31 December 2019	-	1,200	1,200	-	2,400	2,400

7. Debtors: Due within one year

	2020 £	2019 £
Prepayments	1,400	-
Accrued Income	3,573	1,827
<b>Total</b>	<b>4,973</b>	<b>1,827</b>

8. Creditors: amounts falling due within one year

	2020 (£)	2019 (£)
Trade Creditor	6,052	10,320
Accruals	6,098	1,320
<b>Total</b>	<b>12,150</b>	<b>11,640</b>

9. Movement in funds

	At 1 January 2020 £	Incoming Resources £	Resources Expended £	At 31 December 2020 £
Unrestricted Funds	53,820	20,370	(37,983)	36,207
Restricted Funds	87,007	131,400	(102,642)	115,765
<b>Total Funds</b>	<b>140,827</b>	<b>151,770</b>	<b>(140,625)</b>	<b>151,972</b>

The unrestricted funds represent the free funds of the Charity which are not allocated for particular purposes.

The restricted funds relate to the development of projects started within the year but not completed by the year end.

10. Restricted Funds

	Funds for Individual Lesson programmes £	Funds for Choral Workshops £	Funds for Deaf Schools Programme in London £	Emergency Funding for online provision and training £	Total £
Opening balance at 1st Jan 2020	37,922	29,651	19,434	-	87,007
New funds received	35,000	12,600	20,000	63,800	131,400
Transfer of funds to Project Administration	(1,492)	(950)	(1,933)	-	(4,375)
Expenses	(24,968)	(8,436)	(14,215)	(50,649)	(98,267)
<b>Closing funds at 31 December 2020</b>	<b>46,462</b>	<b>32,865</b>	<b>23,286</b>	<b>13,151</b>	<b>115,765</b>

11. Related party transactions

The Trustees in office during the year are listed on page 27. The trustees have no financial interests in the charity's results or assets and received no remuneration for acting in that capacity. There are no related party transactions for disclosure during the year.



# Thank You to Our Donors

With no public or statutory funding, we rely entirely on donations from individuals, trusts and foundations to support our work. The generosity of our benefactors helps us to ensure the sustainability and further development of our long-term programmes during this challenging period in the funding of music education.



Mark Loveday      Edith & Jack Griffith Trust

We would like to thank our individual supporters for their contributions that made it possible for us to enjoy more flexibility in our work during this difficult year:

- Mr and Mrs Bennett
- Mr M J Crane Q.C.
- Mr Kenneth Elliott
- Mrs Kathrine Puffett
- Mr Barry Short
- Mrs Marilyn Vincent



# Legal and Administrative Details

Charity number:	1102827
Company number:	4963498
Registered address:	54 Portland Place London W1B 1DY
Trustees:	Ray Longbottom (Chair) Harvey Jones Catherine Clarke (Vice Chair) Sarah Kolkman (Treasurer) Jeff Sutherland-Kay Robert Blencowe Theresa Veith (resigned 26 March 2020) Eleanor Chuck (resigned 5 February 2021) Clare Salters (appointed 2 November 2020) Kunal Jhanji (appointed 1 December 2020) Sophie Bruggemann (appointed 12 December 2020)
Team	Maria Teterina, Chief Executive Suzzie Vango, Head of Choirs at Special Schools programme Ruth Montgomery, Music for Deaf Children programme leader Suzie Purkis, Emma Cockbill, Eloise Garland, Workshop leaders Birgitta Clift, Fundraiser Shruti Soni, Accountant Silvia Epure, Social Media Producer (volunteer role) >50 music teachers and support musicians
Patrons	Evelyn Glennie CH, DBE Denise Leigh John Lubbock OBE
Our delivery partners	Birmingham Services for Education Camden Music Services, London DaDa Youth Ensemble, Liverpool
Banker:	The CAF Bank Ltd 25 Kings Hill Avenue Kings Hill West Malling Kent ME19 4JQ
Independent Examiner:	Jing Lu Chartered Certified Accountant JK Barnehurst Accounting Ltd 108 Manor Way Bexleyheath DA7 6JN



## Support us

You can donate to Music of Life on our website [musicoflife.org.uk/support-our-work/donate-to-our-work/donate-online](https://musicoflife.org.uk/support-our-work/donate-to-our-work/donate-online).

If you would like to find out more about how to support our work, including sponsoring a student or a school, please contact Maria Teterina, Chief Executive at [mteterina@mofl.co.uk](mailto:mteterina@mofl.co.uk) or by calling 020 7813 5472

## Contact us

**Music of Life Foundation**  
[mofl@mofl.co.uk](mailto:mofl@mofl.co.uk)

[www.musicoflife.org.uk](https://www.musicoflife.org.uk)

**Registered address:**  
54 Portland Place, London W1B 1DY