

**ANNUAL REPORT AND FINANCIAL STATEMENTS
FOR THE YEAR ENDED 31ST MARCH 2024**

**WANDSWORTH
MEDIATION SERVICE**

(A Company Limited by Guarantee)

CHARITY REGISTRATION No: 1102464

COMPANY REGISTRATION No: 04778659

Independent Examiners Ltd
2 Broadbridge Business Centre
Delling Lane
Bosham
West Sussex
PO18 8NF

WANDSWORTH MEDIATION SERVICE
(A Company Limited by Guarantee)

CONTENTS

Page 3	Legal and Administrative Information
Pages 4 to 9	Directors' Annual Report
Page 10	Independent Examiners Report to the Directors
Page 11	Statement of Financial Activities
Pages 12	Balance Sheet
Page 13 to 19	Notes to the Financial Statements

**WANDSWORTH MEDIATION SERVICE
(A Company Limited by Guarantee)**

LEGAL AND ADMINISTRATIVE INFORMATION

REGISTERED CHARITY NUMBER	1102464
REGISTERED COMPANY NUMBER	04778659
DATE OF INCORPORATION	28th May 2003
START OF FINANCIAL YEAR	1st April 2023
END OF FINANCIAL YEAR	31st March 2024
DIRECTORS AT 31ST MARCH 2024	Mr Stephen Ruttle Ms Hilary Suzanne Campbell Brodsky Ms Clare Jane de Beer Ms Katie Finch Mr Philip Alistair Guthrie Ms Sharon Crooks Ms Sarah Spreckley - Resigned on 04.03.24 Ms Sarah Jane Michele Beute - Appointed on 15.06.23 Mr Benedict Sunil Havey - Appointed on 15.06.23

The existing trustees appoint any new trustees following the provisions laid out in the organisation's governing instrument.

LEGAL STATUS Company Limited By Guarantee

GOVERNING INSTRUMENT Memorandum and Articles Of Association Incorporated 28th May 2003 as Amended by Special Resolution 23rd February 2004.

OBJECTS

(I) To promote for the public benefit, predominantly but not exclusively in the local area or community of the London Borough of Wandsworth, the provision of services directed towards mediation, conciliation or reconciliation as between persons, organisations, authorities or groups involved or likely to become involved in dispute or inter-personal conflict both generally and, in particular, in any situation where that dispute or conflict results from, or may lead to, acts of violence, nuisance, vandalism, racial abuse, unlawful activity or breakdown of public order.

(II) To advance for the public benefit the education of the public, particularly in the said local area or community of the London Borough of Wandsworth, in the purposes and methods of such mediation, conciliation, or reconciliation and in particular the understanding of the nature and causes of any such disputes or conflicts and of all means of managing them for the purposes of peaceful resolution in the interests of good citizenship.

REGISTERED OFFICE St Mark's Durie Hall, Battersea Rise, London SW11 1EJ

PRIMARY BANKERS Metro Bank, 1 Southampton Row, London WC1B 5HA

INDEPENDENT EXAMINER Independent Examiners Ltd
2 Broadbridge Business Centre
Delling Lane
Bosham
West Sussex
PO18 8NF

WANDSWORTH MEDIATION SERVICE
(A Company Limited by Guarantee)
DIRECTORS' ANNUAL REPORT
FOR THE YEAR ENDED 31ST OF MARCH 2024

Our Vision: Wandsworth Mediation Service ("WMS") aims to help people to confidently engage with and live with difference.

As WMS approaches its 20th Anniversary, we reflect on the broad range of services that we provide to support **people to engage with, resolve, and prevent conflict** - in our local community and beyond.

WMS were market pioneers in adopting a social enterprise model where volunteer commercial and workplace mediators waive their fees in favour of the charity to fund free conflict resolution services to the local community.

We are indebted to the WMS family of volunteer mediators, trainers, office team, and trustees for their dedication, time and expertise which enables us to offer these services. And to the family at St Mark's Church, Battersea Rise who kindly host our office space without charge.

As testament to our volunteers and team, and the impact and the calibre of our work, in 2023 we were awarded the King's Award for Voluntary Service, the highest award given to voluntary organisations in the UK. We were also shortlisted for the Best Charity 2024 Award from Wandsworth Chamber of Commerce. We are extremely honoured and grateful for these recognitions.



Our Services

We provide a range of services to support people to engage with difference, prevent conflict and resolve conflict.

Conflict Resolution Services

a. Free conflict support for Wandsworth residents:

Our panel of volunteer mediators and conflict coaches support local people to resolve conflict through:

- **Neighbour mediation:** for boundary disputes, noise nuisance claims, anti-social behaviour.
- **Family mediation:** to facilitate dispute resolution within families and between different families (parents, adult children, siblings), child contact arrangements (but not financial or divorce disputes).
- **Facilitated group conversations** between say a group of different families.
- **Homes for Ukraine mediation:** resolving host-guest issues, communication breakdown.
- **School mediation between parents and staff:** resolving issues over SEN, exclusion/disciplinary actions, admission process, discrimination, bullying.
- **Conflict coaching:** 1-1 support, helping people navigate disagreements with a colleague, friend or family member when that person doesn't wish to mediate.

WANDSWORTH MEDIATION SERVICE (A Company Limited by Guarantee)

DIRECTORS' ANNUAL REPORT (Continued) FOR THE YEAR ENDED 31ST OF MARCH 2024

Our Services (Continued)

b. CMC-accredited commercial services are provided by our panel of top-ranked mediation professionals. Our clients include large corporations and local authorities, as well as businesses and community organisations nationwide. All commercial fees generated are donated by our mediators to support our community work.

- **Workplace mediation:** for those having disputes with their colleagues or line managers, or those who aim to "leave well".
- **Commercial mediation:** landlord-tenant disputes, customer service issues, contract disputes, school fee disputes etc.

Training Services

We support children, young people and adults to develop the skills to resolve and avoid conflict:

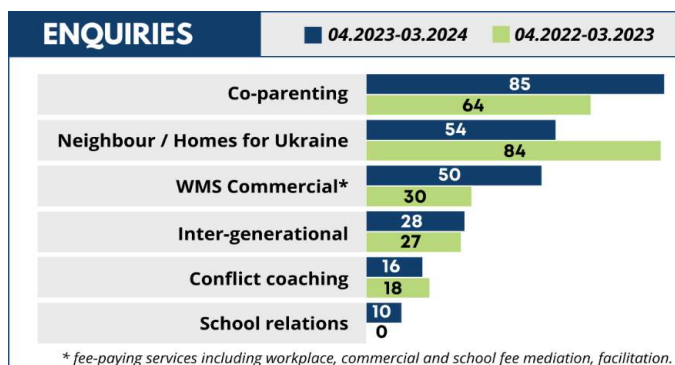
- **Primary school Peer Mediation Programme:** training 9–10 year olds in Year 5 to mediate playground disputes independently, equipping pupils with life-long skills which ripple out into their families and communities.
- **'Reflect' programme for secondary schools:** emotional regulation and conflict skills training for students struggling to manage their reactions in conflict situations, which leads to a positive impact on the whole school community.
- **Reducing Parental Conflict training for service providers:** equipping practitioners with skills to support co-parents who are in conflict over how they parent.
- **'Connect' course for managers:** equips managers with practical strategies for resolving workplace conflict and fostering stronger connections with colleagues and within teams.
- **'Connect' course for client-facing staff:** teaching constructive responses to conflict and improving communication skills to build rapport with stressed or agitated clients.
- **Tailored training sessions for organisations on conflict resolution and effective communication.** This is particularly focused on addressing personality clashes, team conflicts, or conflict with clients, patients or other service users.
- **Community workshops for local residents:** free training on how to communicate peacefully and resolve conflicts at home, work or in the wider community.
- **Supervision for mediators:**
 - Small group supervision sessions, involving reflective practice and peer to peer support.
 - Large group training on racism in mediation, safeguarding and keeping well whilst mediating.
 - We trained 4 new schools trainers from our mediation panels to run the Reflect course.

The 2023-2024 financial year in review

Conflict Resolution Services

Our charity received 243 mediation and conflict coaching enquiries this financial year (vs 223 in the last financial year), directly impacting well over 470 people. Some of these cases were mediated, some people had coaching sessions and others were signposted on to other agencies and organisations for support. Amongst the mediated cases across all panels, 97% were either partially or fully resolved.

As evident from the graph below, we have seen a drop in neighbour mediation and conflict coaching enquiries, but a significant rise in co-parenting and schools' relations enquiries. Additionally, there has been a 67% growth in demand for our fee-paying services ('WMS Commercial'), which includes workplace, commercial, faith-based, school fees and hybrid mediations, and facilitation.



**WANDSWORTH MEDIATION SERVICE
(A Company Limited by Guarantee)**

**DIRECTORS' ANNUAL REPORT (Continued)
FOR THE YEAR ENDED 31ST OF MARCH 2024**

The 2023-2024 financial year in review (continued)

The impact of the WMS' conflict resolution work is best left to our clients:

"I feared my daughter and I would be estranged forever and that was so hard to bear. Our relationship has gradually improved since the conflict coaching session. I'm slowly "getting her back". It's perhaps the best gift that anyone could ever give me..." (Conflict Coaching client, May 2023)

"It has enabled us to communicate reasonably with our neighbours, which we previously weren't able to do. It's brought a sense of peace to what was previously a stressful and aggressive environment" (Neighbour mediation client, January 2024)

"Things have been quite a lot better between the 4 of us. We have managed to meet up a few times, and it has been so much easier to talk to each other. [The mediators] and the rest of the team behind the scene helped us so much. You have all been extremely professional throughout, so skilled, and kind" (Inter-generational mediation client, August 2023)

"Excellent service with highly experienced and knowledgeable mediators, and at a fee the ordinary person can afford" (Commercial mediation client, April 2024)

"Professional, helpful and effective. Happy with the service I received" (Workplace mediation client, September 2023)

Training Services

Consistent with our social enterprise approach, we offer high quality training for a fee to commercial and corporate organisations which, combined with grant funding, allows us to offer free training to schools and community groups.

Children and Young People

- After running a **peer mediation course** at Sacred Heart Roehampton Primary School in January 2024 using Peaceworks materials, we have started developing our own brand-new peer mediation training for primary schools. This initiative is supported by educational specialists and funded by the Wimbledon Foundation Community Fund+. Our new programme will align with CMC standards and will be part of CMC's national research into peer mediation. We already have 5 schools on our waitlist, and anticipate more will express interest when we announce the offering in September 2024.

"I've most enjoyed learning about active listening because I think it's fun to learn that you don't just listen with your ears" (Year 5 peer mediator, Sacred Heart Roehampton Primary)

"Less issues are being brought to teachers' attention after lunch time or to playtime staff during lunch time" (staff member, Sacred Heart Roehampton Primary)

- Our unique **'Reflect' emotional regulation training for secondary school pupils with challenging behaviour** or at risk of exclusion has been redeveloped thanks to funding from the Battersea Power Station Foundation. We have trained up 5 new trainers and ran the course at St John's Bosco, Wandsworth, with exceptional feedback. There are currently 5 more schools on the waitlist for this programme.

"It gives you something to look forward to each week if you struggle at school. It's like motivation" (student participant, St John Bosco College).

"It helped me with my anger and emotions. Also to understand others' points of views" (student participant, St John Bosco College).

"Students have loved every week and are now asking if they can do more sessions. The older girls in particular have been noticeably improved around the school. We've seen fewer incidents of poor behaviour, and when there has been an issue they've demonstrated a level of maturity that wasn't there before" (Andrew Lane, Head of Learning, St John Bosco College).

**WANDSWORTH MEDIATION SERVICE
(A Company Limited by Guarantee)**

**DIRECTORS' ANNUAL REPORT (CONTINUED)
FOR THE YEAR ENDED 31ST MARCH 2024**

Training Services (continued)

Training for organisations

- We have secured a repeat commissioning of our **'Connect' workplace training for managers** at Richmond & Wandsworth Council to improve communication and understanding between colleagues to reduce workplace conflict. This training is in parallel with WMS being on the Council's panel for workplace mediation between their employees.

"Great workshop with practical skills to facilitate positive professional communication"

"I will try to really listen, not just on the surface but to hear what is going on in other person's life and to understand why they are reacting the way they are"

- We participated in the UK government's nationwide **Reducing Parental Conflict** (RPC) initiative, training local champions and service providers to support parents in conflict using mediation skills. The course was commissioned by Richmond & Wandsworth Council. We plan to deliver more training under the RPC umbrella in Autumn 2024.

"It has given a way into these difficult conversations with tools and exercises which can be tailored to suit each family"

"I have more knowledge and can use this in work and outside"

- We delivered several workshops for clients including an international anti-slavery organisation, a local church and a Foodbank. The aim was to improve employees' responses to conflict and their understanding of other people's conflict behaviours, ultimately improving connections and relationships in the workplace and community.

"Beautifully done! I feel you acknowledged our workplace and made it personal"

"Lightbulb moments aplenty!"

"Fantastic. Hugely valuable"

Impact statistics for training	Direct beneficiaries	Indirect beneficiaries	Total beneficiaries
Peer Mediation Programme at Sacred Heart Roehampton	65	650	715
Reflect Programme at St John's Bosco Secondary School	19	190	209
Connect workplace training for managers at Richmond & Wandsworth Council	11	110	121
Tailored training sessions for charities and other organisations.	43	430	473
Reducing Parental Conflict courses for Richmond & Wandsworth Council practitioners and those working in the community.	51	510	561
Totals	189	1890	2079

**WANDSWORTH MEDIATION SERVICE
(A Company Limited by Guarantee)**

**DIRECTORS' ANNUAL REPORT (CONTINUED)
FOR THE YEAR ENDED 31ST OF MARCH 2024**

Grants and Donations

Heartfelt appreciation to the team at St Marks where our office is hosted, and to those who support WMS with generous donations and grant funding. This year we are particularly grateful to:

- Battersea Power Station Foundation: for funding the review, updating and delivery of our Reflect programme to St. John's Bosco Secondary School in Wandsworth.
- Wandsworth Grant Fund (round 24): for funding to deliver the Reflect programme to 4 groups of secondary school pupils over 2-3 schools.
- Wimbledon Foundation Community Fund for funding to support our primary school peer mediation programme.
- Individuals who support us with one off and regular donations.

Championing equality, diversity, and inclusion across our services

We have an equal opportunity policy, and it is very important to us to have diversity in age, ethnicity, gender, belief, and background on our panels so that the people we support can feel connected with our volunteers. We continue to ensure that our services and materials reach all beneficiary groups, including those with mobility and other issues, and those with English as a second language. This involves offering a free translation service where needed (using a pool of volunteers or our council contacts), circulating flyers in different languages (e.g. in English, Ukrainian and Russian for our Homes for Ukraine project), matching mediators for specific needs (e.g. our faith-based cases) etc.

We champion EDI both internally and externally. In February 2024, we participated in DCMS's research into EDI of volunteering in England, which led to us updating our EDI questionnaires. In May 2024, we delivered a supervision session for our volunteers on racial biases in mediation. It was led by our trustee and mediator, Sharon Crooks, and served as an opportunity to reflect on challenges of mediation when racism or racial discrimination is either alleged by one of the parties upfront or arises during mediation.

*"As a member of an ethnic minority community, I particularly value that WMS takes extremely seriously its commitment **to ensuring all communities benefit from its services**. I have experienced for myself the **compelling and lasting benefits of WMS' constant efforts to ensure that diverse communities are represented in the team of volunteers.**" (WMS mediator)*

What lies ahead: strategic review and expanding our vision

We are undertaking a strategic review supported by the Cranfield Trust, to ensure that we channel our resources to make the most beneficial and lasting impact.

**WANDSWORTH MEDIATION SERVICE
(A Company Limited by Guarantee)**

**DIRECTORS ANNUAL REPORT (Continued)
FOR THE YEAR ENDED 31ST OF MARCH 2024**

Statement of Directors' Responsibilities:

The trustees (who are also the directors of Wandsworth Mediation Service for the purposes of company law) are responsible for preparing the trustees' report and the financial statements in accordance with applicable law and United Kingdom Accounting Standards (United Kingdom Generally Accepted Accounting Practice), including FRS 102 "The Financial Reporting Standard applicable in the UK and Republic of Ireland".

Company law requires the trustees to prepare financial statements for each financial year. Under company law the trustees must not approve the financial statements unless they are satisfied that they give a true and fair view of the state of affairs of the charitable company and of the incoming resources, including its income and expenditure, of the charitable company for that period. In preparing these financial statements, the trustees are required to:

- a.) select suitable accounting policies and apply them consistently;
- b.) observe the methods and principles in the Charities SORP;
- c.) make judgements and estimates that are reasonable and prudent;
- d.) state whether applicable accounting standard comprising FRS 102 and statements of recommended practice have been followed, subject to any material departures disclosed and explained in the financial statements; and
- e.) prepare the financial statements on the going concern basis unless it is inappropriate to presume that the charity will continue in operation.

The Trustees are responsible for keeping proper accounting records that can disclose with reasonable accuracy at any time the financial position of the charitable company and enable them to ensure that the financial statements comply with the section 476 of the Companies Act 2006. They are also responsible for safeguarding the assets of the charitable company and hence for taking reasonable steps for the prevention and detection of fraud and other irregularities.

Small companies provision statement:

This report has been prepared in accordance with the small companies regime under the Companies Act 2006.

I approve the attached statement of financial activities and balance sheet for the year ended 31st March 2024 and confirm that I have made available all information necessary for its preparation.

7th October 2024

Approved by the Directors on the

Signed on their behalf by Director Benedict Havey

Print Name: **BENEDICT HAVEY**

INDEPENDENT EXAMINER'S REPORT ON THE ACCOUNTS

Report to the trustees and members of Wandsworth Mediation Service on the accounts for the year ended 31st March 2024 set out on pages 11 to 12.

RESPONSIBILITIES AND BASIS OF REPORT

As the charity's trustees of the Company (who are also the directors of the company for the purposes of company law), you are responsible for the preparation of the accounts in accordance with the requirements of the Companies Act 2006 ("the 2006 Act").

Having satisfied myself that the accounts of the Wandsworth Mediation Service are not required to be audited for this year under Part 16 of the 2006 Act and are eligible for independent examination, I report in respect of my examination of your charity's accounts as carried out under section 145 of the Charities Act 2011 ("the 2011 Act"). In carrying out my examination, I have followed the Directions given by the Charity Commission (under section 145(5)(b) of the 2011 Act).

INDEPENDENT EXAMINER'S STATEMENT

I have completed my examination. I confirm that no material matters have come to my attention which gives me cause to believe that:

- accounting records were not kept in accordance with section 386 of the Companies Act 2006; or
- the accounts do not accord with such records; or
- the accounts do not comply with relevant accounting requirements under section 396 of the Companies Act 2006 other than any requirement that the accounts give a 'true and fair' view which is not a matter considered as part of an independent examination; or
- the accounts have not been prepared in accordance with the Charities SORP (FRS102).

I have no concerns and have come across no other matters in connection with the examination to which attention should be drawn in this report in order to enable a proper understanding of the accounts to be reached.

Zita Derbak MAAT, AATQB
Independent Examiners Ltd
2 Broadbridge Business Centre
Delling Lane
Bosham
West Sussex
PO18 8NF

Signature: 

Date: 08.10.2024

WANDSWORTH MEDIATION SERVICE
(A Company Limited by Guarantee)

Statement of Financial Activities
FOR THE YEAR ENDED 31ST OF MARCH 2024

	Notes	Unrestricted Funds £	Restricted Funds £	Total 2024 £	Total 2023 £
INCOME					
Donations & legacies	4a, 6	23,777	20,000	43,777	16,783
Investment Income	4b, 6	28	184	212	43
Charitable Activities	4c	33,589	-	33,589	47,294
Other Incoming Resources	4d	3,502	-	3,502	425
TOTAL INCOME		60,896	20,184	81,080	64,545
EXPENDITURE					
Cost of Charitable Activities	5a, 6	59,072	11,406	70,478	70,362
Governance Costs	5b	870	-	870	750
TOTAL EXPENDITURE		59,942	11,406	71,348	71,112
NET INCOME/(EXPENDITURE)		954	8,778	9,732	(6,567)
Total Funds Brought Forward		15,520	7,202	22,722	29,289
Transfers Between Funds		-	-	-	-
TOTAL FUNDS CARRIED FORWARD		16,474	15,980	32,454	22,722

Movements on all reserves and all recognised gains and losses are shown above.

The notes on pages 13 to 19 form part of these financial statements.

WANDSWORTH MEDIATION SERVICE
(A Company Limited by Guarantee)
COMPANY REGISTRATION No: 04778659
BALANCE SHEET
FOR THE YEAR ENDED 31ST OF MARCH 2024

	Notes	Unrestricted Funds £	Restricted Funds £	Total 31-Mar-24 £	Total 31-Mar-23 £
Fixed Assets					
Tangible Assets	3	-	-	-	-
Current Assets					
Debtors & Prepayments	8	1,086	-	1,086	628
Cash at Bank and in Hand	7	16,228	15,980	32,208	25,763
Total Current Assets		17,314	15,980	33,294	26,391
Creditors: amounts falling due within one year	9	840	-	840	3,669
NET CURRENT ASSETS		16,474	15,980	32,454	22,722
TOTAL ASSETS less current liabilities		16,474	15,980	32,454	22,722
Creditors: amounts falling due in more than one year	10	-	-	-	-
NET ASSETS		16,474	15,980	32,454	22,722
Funds of the Charity:					
General Funds		16,474	-	16,474	15,520
Restricted Funds	6	-	15,980	15,980	7,202
TOTAL FUNDS		16,474	15,980	32,454	22,722

For the financial year ending 31st March 2024 the Company was entitled to exemption from audit under section 477(2) of the Companies Act 2006 relating to small companies.

Directors' Responsibilities:

1. The members have not required the company to obtain an audit in accordance with section 476 of the Companies Act 2006; and
2. The directors acknowledge their responsibility for complying with the requirements of the Companies Act 2006 with respect to accounting records and for the preparation of accounts.

These financial statements have been prepared in accordance with the special provisions applicable to companies subject to the small companies' regime within Part 15 of the Companies Act 2006.

The financial statements on pages 11 and 12 were approved by the directors for issue.

Approved by the Directors on the 7th October 2024

Signed on their behalf by Director *Benedict Havey*

Print Name: **BENEDICT HAVEY**

**WANDSWORTH MEDIATION SERVICE
(A Company Limited by Guarantee)**

**NOTES TO THE FINANCIAL STATEMENTS
FOR THE YEAR ENDED 31ST MARCH 2024**

1. CHARITY STATUS

The charity is limited by guarantee, incorporated in England, and consequently does not have share capital. Each of the members is liable to contribute an amount not exceeding £1 towards the assets of the charity in the event of liquidation.

2. ACCOUNTING POLICIES

Basis of Preparation

The financial statements have been prepared in accordance with the Statement of Recommended Practice: Accounting and Reporting by Charities preparing their accounts in accordance with the Financial Reporting Standard applicable in the UK and Republic of Ireland ("FRS" 102) (effective 1 January 2015) - Charities SORP (FRS 102) and incorporating update bulletin 1, the Financial Reporting Standard applicable in the United Kingdom and Republic of Ireland (FRS 102) and the Companies Act 2006.

There has been no change to the accounting policies (Valuation rules and methods of accounting) since last year.

Wandsworth Mediation Service ("The Charity") meets the definition of a public benefit entity under FRS 102. Assets and liabilities are initially recognised at historical cost unless otherwise stated in the relevant accounting policy notes.

Assessment of Going Concern

Preparation of the accounts is on a going concern basis. The trustees consider that there are no material uncertainties about the Wandsworth Mediation Service's ability to continue as a going concern.

Cash Flow Statement

The company has taken advantage of the exemption in Financial Reporting Standard No 1 from the requirement to produce a cash flow statement.

Incoming Resources

Recognition of Incoming Resources

These are included in the Statement of Financial Activities ("SOFA") when:

- the charity becomes entitled to the resources;
- the trustees are virtually certain they will receive the resources; and
- the monetary value can be measured with sufficient reliability

Incoming Resources with Related Expenditure

Where incoming resources have related expenditure (as with fundraising or contract income) the incoming resource and related expenditure are reported gross in the SOFA.

Grants and Donations

Grants and Donations are only included in the SOFA when the charity has unconditional entitlement to the resources.

Tax Reclaims on Donations and Gifts

Incoming resources from tax reclaims are included in the SOFA at the same time as the gift to which they relate.

Contractual Income and Performance Related Grants

This is only included in the SOFA once the related goods or services has been delivered.

Gifts in Kind

Gifts in kind are accounted for at a reasonable estimate of their value to the charity or the amount actually realised. Gifts in kind for sale or distribution are included in the accounts as gifts only when sold or distributed by the charity. Gifts in kind for use by the charity are included in the SOFA as incoming resources when receivable.

**WANDSWORTH MEDIATION SERVICE
(A Company Limited by Guarantee)**

**NOTES TO THE FINANCIAL STATEMENTS (Continued)
FOR THE YEAR ENDED 31ST MARCH 2024**

2. ACCOUNTING POLICIES (Continued)

Incoming Resources (Continued)

Donated Services and Facilities

These are only included in incoming resources (with an equivalent amount in resources expended) where the benefit to the charity is reasonably quantifiable, measurable and material. The value placed on these resources is the estimated value to the charity of the service or facility received.

Volunteer Help

The value of any voluntary help received is not included in the accounts but is described in the trustees' annual report.

Investment Income

This is included in the accounts when receivable.

Expenditure and Liabilities

Liability Recognition

Liabilities are recognised as soon as there is a legal or constructive obligation committing the charity to pay out resources.

Governance Costs

Include costs of the preparation and examination of statutory accounts, the costs of the trustees' meetings and cost of any legal advice to trustees on governance or constitutional matters.

Operating Leases

Rental charges payable under operating leases are charged on a straight line basis over the terms of the lease.

Taxation

The charity is exempt from tax on its charitable activities.

Assets

Fixed Assets

Tangible fixed assets for use by the charity are capitalised if they can be used for more than one year and cost at least £1,500. They are valued at cost or, if gifted, at the value to the charity on receipt.

3. TANGIBLE FIXED ASSETS

The Charity held no tangible fixed assets during this or the previous financial year.

The annual commitments under non-cancelling operating leases and capital commitments are as follows:

31st March 2024: None
31st March 2023: None

WANDSWORTH MEDIATION SERVICE
(A Company Limited by Guarantee)

NOTES TO THE FINANCIAL STATEMENTS (Continued)
FOR THE YEAR ENDED 31ST MARCH 2024

4. INCOME	Note	Unrestricted Funds £	Restricted Funds £	TOTAL 2023/24 £	TOTAL 2022/23 £
a) Donations & Legacies					
Donations		11,697	-	11,697	1,626
Gift Aid Tax Recovered		2,080	-	2,080	375
Grants	6	10,000	20,000	30,000	14,782
		23,777	20,000	43,777	16,783
b) Investment Income					
Bank Interest	6	28	184	212	43
		28	184	212	43
c) Charitable Activities					
Commercial Income		11,739	-	11,739	20,344
Workplace mediation		3,750	-	3,750	14,600
Training Courses		17,900	-	17,900	11,800
Community Fee		200	-	200	550
		33,589	-	33,589	47,294
d) Other Incoming Resources					
Other Income		3,502	-	3,502	425
		3,502	-	3,502	425

WANDSWORTH MEDIATION SERVICE
(A Company Limited by Guarantee)

NOTES TO THE FINANCIAL STATEMENTS (Continued)
FOR THE YEAR ENDED 31ST MARCH 2024

5. EXPENDITURE		Unrestricted	Restricted	TOTAL	TOTAL
		Funds	Funds	2023/24	2022/23
	Note	£	£	£	£
a) Cost of Charitable Activities					
Contractors' Fees	6	30,123	5,222	35,345	30,657
Equipment Costs		4,020	-	4,020	3,257
Gifts & Donations		500	-	500	-
Insurance Costs		1,295	-	1,295	1,234
Mediation Fees		375	-	375	3,404
Membership Fees		215	-	215	1,118
Printing, Postage & Stationery		201	-	201	266
Professional Fees	6	3,473	5,227	8,700	24,913
Room Hire	6	500	135	635	500
Sundry Expenses	6	1,084	307	1,391	1,379
Telephone Costs		847	-	847	737
Trainers' Fees	6	584	111	695	135
Training Costs		70	-	70	2,699
Travel & Subsistence	6	24	218	242	63
Central Cost	6	6,420	36	6,456	-
Other expenditure	6	9,341	150	9,491	-
		59,072	11,406	70,478	70,362
b) Governance Costs					
Independent Examiner's Fee	9	870	-	870	750
		870	-	870	750

WANDSWORTH MEDIATION SERVICE
(A Company Limited by Guarantee)

NOTES TO THE FINANCIAL STATEMENTS (Continued)
FOR THE YEAR ENDED 31ST MARCH 2024

6. RESTRICTED FUNDS

CURRENT FINANCIAL YEAR	Total 1-Apr-23 £	Income £	Expenditure £	Transfers £	Total 31-Mar-24 £
Battersea Power Station Foundation Grant	5,427	53	4,825	-	655
National Lottery A4A	917	-	917	-	-
Wandsworth Grant Fund (20)	858	32	890	-	-
Wandsworth Grant Fund (24)	-	10,000	697	-	9,303
Wimbledon	-	10,099	4,077	-	6,022
TOTAL	7,202	20,184	11,406	-	15,980

PREVIOUS FINANCIAL YEAR	Total 1-Apr-22 £	Income £	Expenditure £	Transfers £	Total 31-Mar-23 £
Battersea Power Station Foundation Grant	16,957	37	11,567	-	5,427
National Lottery A4A	-	9,240	8,323	-	917
Wandsworth Grant Fund (20)	-	5,542	4,684	-	858
Wandsworth Grant Fund (Round 16)	2,260	-	2,640	380	-
TOTAL	19,217	14,819	27,214	380	7,202

Details of the restricted funds are given in the Directors' Annual Report.
The restricted funds are wholly represented by the Charity's cash reserves.

7. CASH AT BANK AND IN HAND

	Unrestricted Funds £	Restricted Funds £	Total 31-Mar-24 £	Total 31-Mar-23 £
Current account	6,960	-	6,960	16,142
Savings account	2	15,980	15,982	9,621
Reserve account	9,266	-	9,266	-
	16,228	15,980	32,208	25,763

WANDSWORTH MEDIATION SERVICE
(A Company Limited by Guarantee)

NOTES TO THE FINANCIAL STATEMENTS (Continued)
FOR THE YEAR ENDED 31ST MARCH 2024

8. DEBTORS AND PREPAYMENTS

	Unrestricted Funds £	Restricted Funds £	Total 31-Mar-24 £	Total 31-Mar-23 £
Prepayments	668	-	668	628
Gift Aid recoverable	418	-	418	-
	1,086	-	1,086	628

9. CREDITORS, ACCRUALS AND DEFERRED INCOME: AMOUNTS FALLING DUE WITHIN ONE YEAR

	Unrestricted Funds £	Restricted Funds £	Total 31-Mar-24 £	Total 31-Mar-23 £
Independent Examiner's Fee	840	-	840	750
Other Accruals	-	-	-	2,919
	840	-	840	3,669

10. CREDITORS AND ACCRUALS: AMOUNTS FALLING DUE IN MORE THAN ONE YEAR

The Charity held no long term liabilities during this or the previous financial period.

11. RECONCILIATION OF MOVEMENT ON CAPITAL AND RESERVES

The Company is Limited by Guarantee (04778659) and is a Charity registered with the Charity Commission (1102464) and does not have a Share capital and has no income subject to Corporation Tax.

	2023/24 £	2022/23 £
Profit / Deficit for the financial year	9,732	(6,567)
Other Recognised Gains	-	-
	9,732	(6,567)
Balance Brought Forward	22,722	29,289
Closing Funds at 31st March 2024	32,454	22,722

**WANDSWORTH MEDIATION SERVICE
(A Company Limited by Guarantee)**

**NOTES TO THE FINANCIAL STATEMENTS (Continued)
FOR THE YEAR ENDED 31ST MARCH 2024**

12. STAFF COSTS AND NUMBERS

The Company employed no staff during this or the previous financial year.

The Company engaged 5 (2022/23:5) self-employed contractors in this financial year to perform the Charitable Activities of the Company.

13. DIRECTORS AND OTHER RELATED PARTIES

During the financial period, after being appointed a director and trustee of WMS, Sarah Michele Beute received £1,000 on behalf of MB2B Consultants Ltd, where she is also a director, in contractors payments for training provided in furthering the Charity's objects.

Other than reimbursements for small items of expenditure on behalf of the charity, no other payments were made to Directors or any persons connected with them during this financial period. No other material transaction took place between the charity and a Director or any person connected with them.

14. RISK ASSESSMENT

The Directors actively review the major risks which the charity faces on a regular basis and believe that maintaining the free reserves stated, combined with the annual review of the controls over key financial systems carried out on an annual basis will provide sufficient resources in the event of adverse conditions. The Directors have also examined other operational and business risks which they face and confirm that they have established systems to mitigate the significant risks.

15. RESERVES POLICY

The charity, being mindful of Charity Commission guidance, aims to maximise the use of available funds for the benefit of the charity and therefore aim to retain a prudent level of unrestricted reserves, taking into consideration the running expenses and known liabilities of the charity, WMS aims to retain 3 months running costs of the organisation.

16. PUBLIC BENEFIT

The Charity acknowledges its requirement to demonstrate clearly that it must have charitable purposes or 'aims' that are for the public benefit. Details of how the charity has achieved this are provided in the Report of the Directors. The directors confirm that they have paid due regard to the Charity Commission guidance on public benefit before deciding what activities the charity should undertake.