

## Chairpersons Report—Penny Stephens



It has been another challenging year where funding is always at the forefront of our minds but despite this, we have managed to provide support and services to numerous families. All Family Support Coordinators continued to manage the many referrals that are received and families have been provided with their support throughout the year. We also continue to run two very successful Family Groups in both Dover and Deal.

During the year we have had staff and trustee changes and sadly Tracy our Scheme Manager for 26 years made the decision to retire to spend more time with her family, we are extremely grateful for all her hard work and vision for Home-start Dover District over those years. Over several months the team took on extra duties and responsibilities. We have now recruited Ruth, who previously worked as a Family Support Practitioner at Home-Start Dover District and has now transitioned to the manager role. This has allowed Ruth and the staff to continue with the excellent work that has always been provided by Home-start Dover District.

We have had a change in trustees, Graham who had been involved with Home-Start Dover District for many years has resigned due to health issues and we thank him for his support over the years. We have been lucky enough to recruit two new trustees, Carol and Jo who will bring different experiences and skills to the trustee board.

We continue to have social work degree students from the Kent universities, and they are gaining experience working with families that supports their ongoing education throughout their degree program.

The trustee board have been aware of the impact of the changes for volunteers and the staff team and are extremely grateful for all their hard work and the ability of the staff to cope with the extra pressures put upon them during this time.

We look forward to the coming year and prioritize fundraising so that we can continue to provide the excellent service to the families in the Dover District.

## Treasurer's Report—Pat Wheeler

At the beginning of the financial year we had a deficit budget of approximately £65,000. During the year we managed to obtain additional funding and donations which resulted in an overall surplus of £2,055 at the end of the financial year.

In April 2023 the Charity was successful with a 3 Year Big Lottery Grant of £287,646 and in July 2023 a 3 year grant of £98,361 was awarded by the Trusthouse Charitable Foundation towards our Embrace Project. We have received a 1 year grant of £20,000 from Garfield Weston and £4,000 from Mrs Smith and Mount Trust, both for the Embrace Project.

In 2023 we received 3 year funding of £30,000 (£10,00 per year) through the Kent Community Foundation to fund the Family Groups. We were also successful with a Lottery Awards For All grant of £18,003 to fund our Family Groups.

We received a 3 year grant of 45,000 (£15,000 per year) from Colyer Fergusson and £5,000 from the Phillip and Connie Foundation to fund our Outreach Project. We have also received funding from SGN to work in partnership with them for 2 years.

We are extremely grateful for all funding and donations received during this financial year and for the coming financial year which will enable us to continue to support many families through our home-visiting support and also through our Outreach Projects and Family Groups.

Total incoming resources for the year saw an increase from £192,435 to £213,319. Total expenditure decreased from £233,522 to £211,264.

The Trustees were able to offer a 5.0% pay increase to staff salaries this year and staff entitled to an 'incremental' rise received this as per their contracts. The Trustees continued to offer a contributory staff pension. We have been able to offer a full service this year and have supported many more families than we are funded for which represents extremely good value for money and a valued support to many families.



## Our Core Belief:

Home-Start Dover District believes that children need a happy and secure childhood and that parents play a key role in giving children a good start in life and helping them achieve their full potential.

## Our Mission:

Home-Start Dover District offers support, friendship and practical help to parents with young children.

Home-Start Dover District offers a unique service, recruiting and training volunteers – who have parenting experience – to visit families at home and to offer informal, friendly and confidential support.

In addition to this Home-Start Dover District offers services including family groups, Outreach Project and training courses.

To help give children the best possible start in life, Home-Start Dover District supports parents to grow in confidence, strengthen their relationships with children and widen their links with the local community.

## Our Vision:

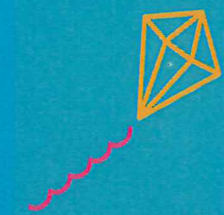
Home-Start Dover District wants to see a society in which every parent has the support they need to give their children the best possible start in life.

## Our Values:

Home-Start Dover District's values are the principles that Home-Start holds most dear and through which we work. They are: non-judgmental support, friendship, caring partnership, lightness of touch, trust and respect.

## Director/Trustee Members 2024— 2025

|                  |                             |             |
|------------------|-----------------------------|-------------|
| Penny Stephens   | Chairperson                 | Specialist  |
| Pat Wheeler      | Treasurer / Vice Chair      | Independent |
| Amy Papworth     | Specialist                  |             |
| Graham Hutchison | Specialist—Resigned 2.4.25  |             |
| Di Cawsey        | Volunteer Representative    |             |
| Diana Crossley   | Independent                 |             |
| Sarah Hindle     | Independent                 |             |
| Andrea Rees      | Independent                 |             |
| Paul Gates       | Independent—Resigned 2.4.25 |             |
| Julia Wood       | Independent                 |             |



## We received funding from:

The Big Lottery; Trusthouse; Garfield Weston; Home-Start UK; Kent Community Foundation; Colyer Fergusson; Social Enterprise Kent; Dover District Council; Co-op

## Our Partnerships:

Dover, Deal & Sandwich Children's Centres; Early Help and Preventative Services; Children's Social Work Services Dover; NHS-Eastern & Coastal Kent; Dover & Deal Foodbank; Neighbourly; Dover & District Volunteer Centre; Canterbury Christchurch University; University of Kent

## Our thanks to:

Dover Lions; Inkind Direct; Lidl; Project Linus; Danielle Brenchley; KMFM—Give a Gift Christmas Appeal



# HOME START

## Dover District



## ANNUAL REPORT 2024-2025



Home-Start Dover District,  
The Ark, Noah's Ark Road, Tower Hamlets,  
Dover, Kent, CT17 0DD. T/F: 01304 242314.  
E: [office@homestartdover.org.uk](mailto:office@homestartdover.org.uk)  
W: [www.homestartdover.org.uk](http://www.homestartdover.org.uk)

Bank: Nat West Dover Branch  
25 Market Square  
Dover Kent  
CT16 1XY

Auditors: Xeinadin Audit Ltd  
12 Conqueror Ct  
Sittingbourne  
Kent, ME10 5BH

Charity Registration No. 1102201 Company No. 4974145



Suzanne, Vicki, Tracy, Lorraine, Ruth, Claire & Rebecca,  
the dedicated Home-Start Team

### Scheme Manager's Report—Tracy Perrow

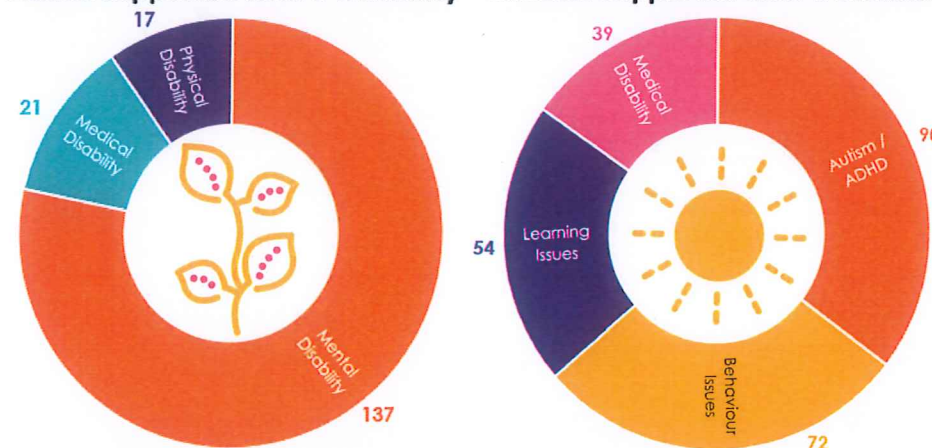
Writing this report is bittersweet for me. We have had, as usual a very busy and at times challenging year. Referrals have been constant and Claire and Vicki have been stoic with their visits and providing support for families. The continued cost of living crisis has meant that many families have struggled financially and we have been fortunate to be able to support them through food bank vouchers and providing a healthy breakfast for parents and children once a week at our family groups. Funding for the larger grants remains elusive but we have been successful in obtaining smaller grants from Dover and Deal Town Council and Dover District Council. It is reassuring to know that we are supported locally. We have endeavoured to secure corporate funding from local businesses, but to date this has proved a challenge for us despite working in partnership with other local Home-Start schemes. We also tried to work in partnership with the local family hubs by offering a perinatal infant-well-being service, but sadly this was not taken up by the local authority.

At the end of the year, after much soul-searching, I decided that it was time for me to retire after working 26 years with Home-Start. This was not an easy decision to make but I had to consider the demands of my family which sadly took priority. I will very much miss working with my wonderful colleagues, trustees and volunteers as Home-Start has played a huge part in my life. I know however the determination and dedication of the staff will keep the scheme going over the fourth coming years and I wish them every success in all that they do.

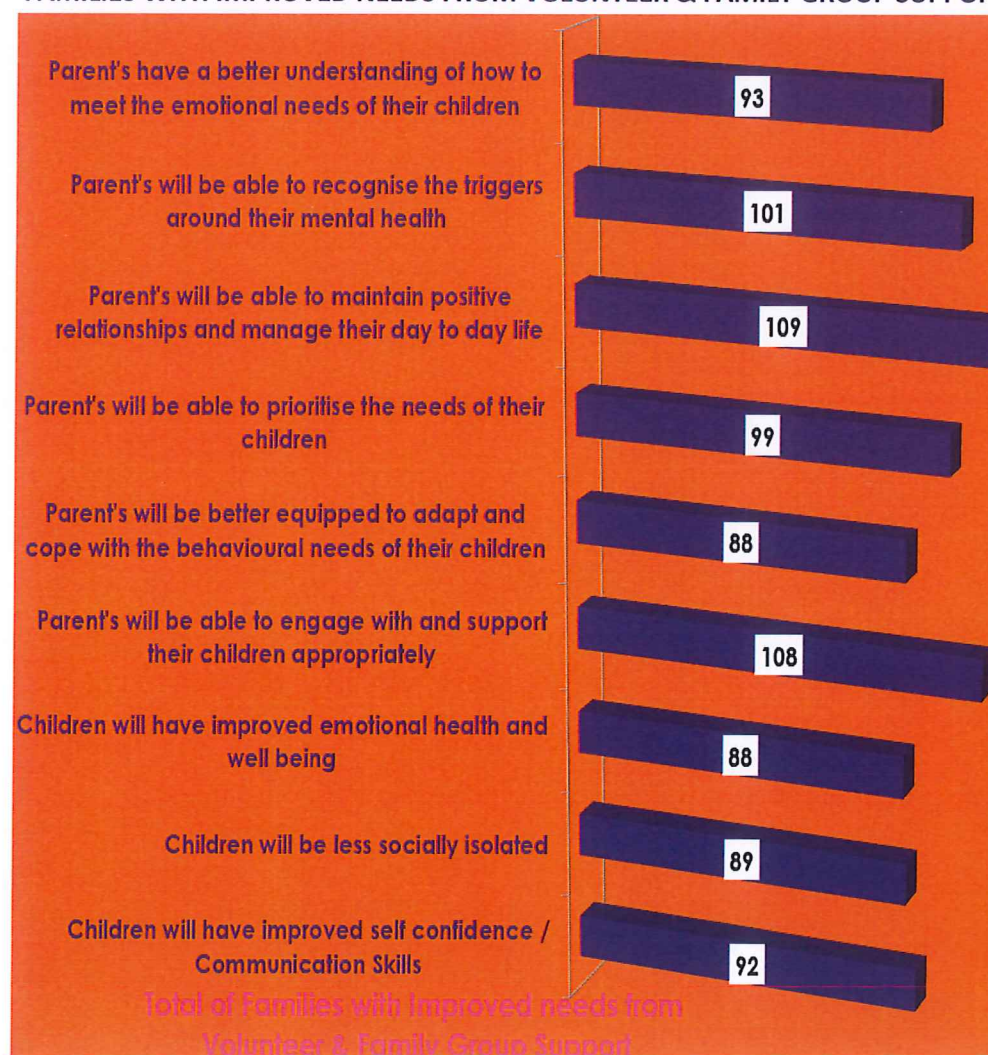
### Type of Support given through the year



### Adults supported with a Disability Children Supported with a Disability



### FAMILIES WITH IMPROVED NEEDS FROM VOLUNTEER & FAMILY GROUP SUPPORT



### VOLUNTEERS

Vicki A  
Lyn B  
Susan B  
Antony C  
Christine E  
Melanie E  
David F  
Anne G  
Julie G  
Twiggy H  
Chloe H  
Joan H  
Denise K  
Jennifer K  
Jo M  
Rachel M  
Teresa M  
Sharon O  
Miriam S  
Ruth S  
Carolina S  
Debbie T  
Susan W  
Christine W

### ENDED VOLUNTEERS

Katie A  
Jill C  
Lynn C  
Simone C  
Martelle D  
Joy H  
Davina J  
Jacqueline L  
Amanda O  
Anna-Marie O  
Glyn R



# THANK YOU VOLUNTEERS

During 2024-2025 our volunteers have offered over 2967 hours of support and friendship to families either through Home-Visiting Support or at our Dover and Deal Family Groups. 178 families were supported during 2024-2025 with 86% of the monitored family support outcomes showing significant improvements. The improvements achieved within the families we support would not be possible without our dedicated team of volunteers. A huge thank you to our 34 amazing volunteers.

Throughout 2024/2025 we supported 178 families and 381 children



### Scheme Manager Tracy Retires after 26 Years of Service!

Tracy started work for Home-Start Dover District on 21st September 1998 as an Organiser. The scheme at the time was supporting 58 families per year. Over the years Tracy set up and ran 3 very successful Family Support Groups and progressed to become Scheme Manager in 2012. During Tracy's time at Home-Start we received over 2800 referrals for families needing support. The scheme now supports an average of 180 families and over 300 children per year. Since Tracy became Scheme Manager she has managed to secure in excess of 2.8 million pounds through grants to ensure the continuation of the scheme. Tracy not only supported many families but also worked with, recruited and supported many amazing volunteers and staff members over the years. Tracy's dedication to Home-Start Dover District ensured the overall success of the scheme for over 26 years which is an amazing achievement and appreciated by everyone associated with Home-Start Dover District. Tracy will be very much missed but is wished a very happy and well deserved retirement with her family.



### Referral Source 2024-2025



REGISTERED COMPANY NUMBER: 04974145 (England and Wales)  
REGISTERED CHARITY NUMBER: 1102201

REPORT OF THE TRUSTEES AND  
FINANCIAL STATEMENTS  
FOR THE YEAR ENDED 31 MARCH 2025  
FOR  
HOME-START DOVER DISTRICT

Xeinadin Audit Ltd  
12 Conqueror Ct  
Sittingbourne  
Kent  
ME10 5BH

HOME-START DOVER DISTRICT

CONTENTS OF THE FINANCIAL STATEMENTS  
for the Year Ended 31 March 2025

---

|  | Page     |
|--|----------|
| Report of the Trustees                     | 1 to 5   |
| Report of the Independent Auditors         | 6 to 8   |
| Statement of Financial Activities          | 9        |
| Balance Sheet                              | 10       |
| Notes to the Financial Statements          | 11 to 18 |
| Detailed Statement of Financial Activities | 19 to 20 |

The trustees who are also directors of the charity for the purposes of the Companies Act 2006, present their report with the financial statements of the charity for the year ended 31 March 2025. The trustees have adopted the provisions of Accounting and Reporting by Charities: Statement of Recommended Practice applicable to charities preparing their accounts in accordance with the Financial Reporting Standard applicable in the UK and Republic of Ireland (FRS 102) (effective 1 January 2019).

## **OBJECTIVES AND ACTIVITIES**

### **Objectives and aims**

The objectives for which Home-Start is established are:

To safeguard, protect and preserve the good health, both mental and physical, of children and parents.

To prevent cruelty to or maltreatment of children.

To relieve sickness, poverty and need amongst children and parents.

To promote the education of the public in better standards of child care within the area of Dover and Deal and its environs.

In furtherance of the foregoing, but for no other purpose, Home-Start Dover District shall have the following powers:

Obtain, collect and receive money and funds by way of contributions, donations, affiliation fees, subscriptions, legacies, grants and any other lawful method, and accept and receive gifts of property of any description whether subject to any special trusts or not provided that Home-Start Dover District shall not undertake any permanent trading activities in raising funds for the said objects.

Procure and provide information.

Procure to be written and print, publish, issue and circulate gratuitously or otherwise any reports or periodicals, books, pamphlets, leaflets or other documents.

Arrange and provide for or join in arranging and providing for the holding of exhibitions, meetings, lectures and classes.

Promote, advance or undertake organised research and experimental work in connection with any of the above mentioned objects and publish the useful results or such research.

To do all such other lawful things as are necessary for the attainment of the above objects, or any of them including the holding of property and raising funds from statutory or voluntary sources.

In pursuance of the foregoing objects and powers, to ensure than an Equality, Fairness and Diversity Policy is actively implemented.

## **ACHIEVEMENTS AND PERFORMANCE**

### **Charitable activities**

At the beginning of the financial year we had a deficit budget of approximately £65,000. During the year we managed to obtain additional funding and donations which resulted in an overall surplus of £2,055 at the end of the financial year.

In April 2023 the Charity was successful with a 3 Year Big Lottery Grant of £287,646 and in July 2023 a 3 year grant of £98,361 was awarded by the Trusthouse Charitable Foundation towards our Embrace Project. We have received a 1 year grant of £20,000 from Garfield Weston and £4,000 from Mrs towards our Embrace Project Smith and Mount Trust both also for the Embrace Project.

In 2023 we received 3 year funding of £30,000 (£10,00 per year) through the Kent Community Foundation to fund the Family Groups. We were also successful with a Lottery Awards For All grant of £18,003 to fund our Family Groups.

We received a 3 year grant of 45,000 (£15,000 per year) from Colyer Fergusson and £5,000 from the Phillip and Connie Foundation to fund our Outreach Project. We have also received funding from SGN to work in partnership with them for 2 years.

We are extremely grateful for all funding and donations received during this financial year and for the coming financial year which will enable us to continue to support many families through our home-visiting support and also through our Outreach Projects and Family Groups.

Total incoming resources for the year saw an increase from £192,435 to £213,319. Total expenditure decreased from £233,522 to £211,264.

The Trustees were able to offer a 5.0% pay increase to staff salaries this year and staff entitled to an 'incremental' rise received this as per their contracts. The Trustees continued to offer a contributory staff pension.

We have been able to offer a full service this year and have supported many more families than we are funded for which represents extremely good value for money and a valued support to many families

## **FINANCIAL REVIEW**

### **Financial position**

As previously stated total incoming resources for the year saw an increase from £192,435 to £213,319. Total expenditure decreased from £233,522 to £211,264. This resulted in small surplus of £404 whereas the previous year incurred a deficit of £41,087.

The financial performance of the charity saw a slight increase in reserves going forward, with £206,132, part of which is ring-fenced for redundancy costs.

### **Principal funding sources**

The charity is dependant on grants, In April 2023 the Charity was successful with a 3 Year Big Lottery Grant of £287,646 and in July 2023 a 3 year grant of £98,361 was awarded by the Trusthouse Charitable Foundation towards our Embrace Project. We have received a 1 year grant of £20,000 from Garfield Weston and £4,000 from Mrs towards our Embrace Project Smith and Mount Trust both also for the Embrace Project.

In 2023 we received 3 year funding of £30,000 (£10,00 per year) through the Kent Community Foundation to fund the Family Groups. We were also successful with a Lottery Awards For All grant of £18,003 to fund our Family Groups.

We received a 3 year grant of 45,000 (£15,000 per year) from Colyer Fergusson and £5,000 from the Phillip and Connie Foundation to fund our Outreach Project. We have also received funding from SGN to work in partnership with them for 2 years.

## **FINANCIAL REVIEW**

### **Reserves policy**

The Trustees have agreed to maintain a minimum of six months up to a maximum of one year's running costs as a prudent measure to protect the charity against loss of major or core funding and any redundancy payment obligations or unforeseen circumstances. This policy is regularly reviewed and amended annually.

### **FUTURE PLANS**

Additional grants through funders and working in partnership with other Organisations are always being looked into to secure additional funding in the future.

Trustees regularly monitor the funding and Cash Flows and funding applications are being continually submitted to obtain additional funds.

New projects are continually being considered and implemented to enhance the support offered to families.

## **STRUCTURE, GOVERNANCE AND MANAGEMENT**

### **Governing document**

The charity is controlled by its governing document, a deed of trust, and constitutes a limited company, limited by guarantee, as defined by the Companies Act 2006.

## **REFERENCE AND ADMINISTRATIVE DETAILS**

### **Registered Company number**

04974145 (England and Wales)

### **Registered Charity number**

1102201

### **Registered office**

The Ark  
Noah's Ark Road  
Tower Hamlets  
Dover  
Kent  
CT17 0DD

### **Trustees**

Mr G Hutchison (resigned 2.4.25)  
Mrs A Papworth  
Ms P R Wheeler  
Mrs D P Cawsey  
Ms M P Stephens  
Ms D Crossley  
Ms S Hindle  
A B Rees  
Mr P Gates (resigned 2.4.25)  
Mrs J Wood

### **Company Secretary**

Ms S Letchford

#### REFERENCE AND ADMINISTRATIVE DETAILS

##### Auditors

Xeinadin Audit Ltd  
12 Conqueror Ct  
Sittingbourne  
Kent  
ME10 5BH

##### Bankers

Natwest Bank  
25 Market Square  
Dover  
Kent  
CT16 1XY

#### PUBLIC BENEFIT

The charity provides services for children and parents.

This work is best described on our website [www.home-startdoverdistrict.org.uk](http://www.home-startdoverdistrict.org.uk).

The trustees have paid due regard to Charity Commission guidance on public benefit in deciding what activities the charity should undertake.

#### STATEMENT OF TRUSTEES' RESPONSIBILITIES

The trustees (who are also the directors of Home-Start Dover District for the purposes of company law) are responsible for preparing the Report of the Trustees and the financial statements in accordance with applicable law and United Kingdom Accounting Standards (United Kingdom Generally Accepted Accounting Practice).

Company law requires the trustees to prepare financial statements for each financial year which give a true and fair view of the state of affairs of the charitable company and of the incoming resources and application of resources, including the income and expenditure, of the charitable company for that period. In preparing those financial statements, the trustees are required to

- select suitable accounting policies and then apply them consistently;
- observe the methods and principles in the Charity SORP;
- make judgements and estimates that are reasonable and prudent;
- prepare the financial statements on the going concern basis unless it is inappropriate to presume that the charitable company will continue in business.

The trustees are responsible for keeping proper accounting records which disclose with reasonable accuracy at any time the financial position of the charitable company and to enable them to ensure that the financial statements comply with the Companies Act 2006. They are also responsible for safeguarding the assets of the charitable company and hence for taking reasonable steps for the prevention and detection of fraud and other irregularities.

In so far as the trustees are aware:

- there is no relevant audit information of which the charitable company's auditors are unaware; and
- the trustees have taken all steps that they ought to have taken to make themselves aware of any relevant audit information and to establish that the auditors are aware of that information.

#### AUDITORS

The auditors, Xeinadin Audit Ltd, will be proposed for re-appointment at the forthcoming Annual General Meeting.

Approved by order of the board of trustees on 15/09/2025 and signed on its behalf by:

HOME-START DOVER DISTRICT

REPORT OF THE TRUSTEES  
for the Year Ended 31 March 2025

---



Ms P R Wheeler - Trustee

### **Opinion**

We have audited the financial statements of Home-Start Dover District (the 'charitable company') for the year ended 31 March 2025 which comprise the Statement of Financial Activities, the Balance Sheet and notes to the financial statements, including a summary of significant accounting policies. The financial reporting framework that has been applied in their preparation is applicable law and United Kingdom Accounting Standards (United Kingdom Generally Accepted Accounting Practice).

In our opinion the financial statements:

- give a true and fair view of the state of the charitable company's affairs as at 31 March 2025 and of its incoming resources and application of resources, including its income and expenditure, for the year then ended;
- have been properly prepared in accordance with United Kingdom Generally Accepted Accounting Practice; and
- have been prepared in accordance with the requirements of the Companies Act 2006.

### **Basis for opinion**

We conducted our audit in accordance with International Standards on Auditing (UK) (ISAs (UK)) and applicable law. Our responsibilities under those standards are further described in the Auditors' responsibilities for the audit of the financial statements section of our report. We are independent of the charitable company in accordance with the ethical requirements that are relevant to our audit of the financial statements in the UK, including the FRC's Ethical Standard, and we have fulfilled our other ethical responsibilities in accordance with these requirements. We believe that the audit evidence we have obtained is sufficient and appropriate to provide a basis for our opinion.

### **Conclusions relating to going concern**

In auditing the financial statements, we have concluded that the trustees' use of the going concern basis of accounting in the preparation of the financial statements is appropriate.

Based on the work we have performed, we have not identified any material uncertainties relating to events or conditions that, individually or collectively, may cast significant doubt on the charitable company's ability to continue as a going concern for a period of at least twelve months from when the financial statements are authorised for issue.

Our responsibilities and the responsibilities of the trustees with respect to going concern are described in the relevant sections of this report.

### **Other information**

The trustees are responsible for the other information. The other information comprises the information included in the Annual Report, other than the financial statements and our Report of the Independent Auditors thereon.

Our opinion on the financial statements does not cover the other information and, except to the extent otherwise explicitly stated in our report, we do not express any form of assurance conclusion thereon.

In connection with our audit of the financial statements, our responsibility is to read the other information and, in doing so, consider whether the other information is materially inconsistent with the financial statements or our knowledge obtained in the audit or otherwise appears to be materially misstated. If we identify such material inconsistencies or apparent material misstatements, we are required to determine whether this gives rise to a material misstatement in the financial statements themselves. If, based on the work we have performed, we conclude that there is a material misstatement of this other information, we are required to report that fact. We have nothing to report in this regard.

### **Opinions on other matters prescribed by the Companies Act 2006**

In our opinion, based on the work undertaken in the course of the audit:

- the information given in the Report of the Trustees for the financial year for which the financial statements are prepared is consistent with the financial statements; and
- the Report of the Trustees has been prepared in accordance with applicable legal requirements.

**Matters on which we are required to report by exception**

In the light of the knowledge and understanding of the charitable company and its environment obtained in the course of the audit, we have not identified material misstatements in the Report of the Trustees.

We have nothing to report in respect of the following matters where the Companies Act 2006 requires us to report to you if, in our opinion:

- adequate accounting records have not been kept or returns adequate for our audit have not been received from branches not visited by us; or
- the financial statements are not in agreement with the accounting records and returns; or
- certain disclosures of trustees' remuneration specified by law are not made; or
- we have not received all the information and explanations we require for our audit; or
- the trustees were not entitled to take advantage of the small companies exemption from the requirement to prepare a Strategic Report or in preparing the Report of the Trustees.

**Responsibilities of trustees**

As explained more fully in the Statement of Trustees' Responsibilities, the trustees (who are also the directors of the charitable company for the purposes of company law) are responsible for the preparation of the financial statements and for being satisfied that they give a true and fair view, and for such internal control as the trustees determine is necessary to enable the preparation of financial statements that are free from material misstatement, whether due to fraud or error.

In preparing the financial statements, the trustees are responsible for assessing the charitable company's ability to continue as a going concern, disclosing, as applicable, matters related to going concern and using the going concern basis of accounting unless the trustees either intend to liquidate the charitable company or to cease operations, or have no realistic alternative but to do so.

**Our responsibilities for the audit of the financial statements**

Our objectives are to obtain reasonable assurance about whether the financial statements as a whole are free from material misstatement, whether due to fraud or error, and to issue a Report of the Independent Auditors that includes our opinion. Reasonable assurance is a high level of assurance, but is not a guarantee that an audit conducted in accordance with ISAs (UK) will always detect a material misstatement when it exists. Misstatements can arise from fraud or error and are considered material if, individually or in the aggregate, they could reasonably be expected to influence the economic decisions of users taken on the basis of these financial statements.

The extent to which our procedures are capable of detecting irregularities, including fraud is detailed below:

Our objectives in performing the audit are to identify and assess the risk of material misstatement in the financial statements due to fraud and error and to obtain sufficient audit evidence to support this. We also evaluate and respond to the risk of material misstatements.

Audit procedures performed by the engagement team included:

- Obtaining an understanding of the legal and regulatory framework applicable to the entity.
- Discussing with management the controls used to reduce the risk of fraud, and testing these accordingly.
- Evaluating the overall presentation of the financial statements to determine whether the financial statements represent the underlying transactions and events in a manner that achieves fair presentation.

A further description of our responsibilities for the audit of the financial statements is located on the Financial Reporting Council's website at [www.frc.org.uk/auditorsresponsibilities](http://www.frc.org.uk/auditorsresponsibilities). This description forms part of our Report of the Independent Auditors.

REPORT OF THE INDEPENDENT AUDITORS TO THE MEMBERS OF  
HOME-START DOVER DISTRICT

---

**Use of our report**

This report is made solely to the charitable company's members, as a body, in accordance with Chapter 3 of Part 16 of the Companies Act 2006. Our audit work has been undertaken so that we might state to the charitable company's members those matters we are required to state to them in an auditors' report and for no other purpose. To the fullest extent permitted by law, we do not accept or assume responsibility to anyone other than the charitable company and the charitable company's members as a body, for our audit work, for this report, or for the opinions we have formed.



Nicholas Hume (Senior Statutory Auditor)  
for and on behalf of Xinadin Audit Ltd  
12 Conqueror Ct  
Sittingbourne  
Kent  
ME10 5BH

Date: .....

## HOME-START DOVER DISTRICT

STATEMENT OF FINANCIAL ACTIVITIES  
for the Year Ended 31 March 2025

|                                    | Notes | Unrestricted<br>funds<br>£ | Restricted<br>funds<br>£ | 31.3.25<br>Total<br>funds<br>£ | 31.3.24<br>Total<br>funds<br>£ |
|------------------------------------|-------|----------------------------|--------------------------|--------------------------------|--------------------------------|
| <b>INCOME AND ENDOWMENTS FROM</b>  |       |                            |                          |                                |                                |
| Donations and legacies             |       | 24,221                     | 186,514                  | 210,735                        | 189,412                        |
| Investment income                  | 2     | 2,584                      | -                        | 2,584                          | 3,022                          |
| <b>Total</b>                       |       | <u>26,805</u>              | <u>186,514</u>           | <u>213,319</u>                 | <u>192,434</u>                 |
| <b>EXPENDITURE ON</b>              |       |                            |                          |                                |                                |
| <b>Charitable activities</b>       |       |                            |                          |                                |                                |
| Family Support - Home Start        | 3     | 52,962                     | 132,245                  | 185,207                        | 209,766                        |
| Outreach                           |       | -                          | 26,057                   | 26,057                         | 23,756                         |
| <b>Total</b>                       |       | <u>52,962</u>              | <u>158,302</u>           | <u>211,264</u>                 | <u>233,522</u>                 |
| <b>NET INCOME/(EXPENDITURE)</b>    |       | (26,157)                   | 28,212                   | 2,055                          | (41,088)                       |
| <b>RECONCILIATION OF FUNDS</b>     |       |                            |                          |                                |                                |
| Total funds brought forward        |       | 157,933                    | 46,144                   | 204,077                        | 245,165                        |
| <b>TOTAL FUNDS CARRIED FORWARD</b> |       | <u><u>131,776</u></u>      | <u><u>74,356</u></u>     | <u><u>206,132</u></u>          | <u><u>204,077</u></u>          |

The notes form part of these financial statements


## HOME-START DOVER DISTRICT

BALANCE SHEET  
31 March 2025

|  | Notes | Unrestricted<br>funds<br>£ | Restricted<br>funds<br>£ | 31.3.25<br>Total<br>funds<br>£ | 31.3.24<br>Total<br>funds<br>£ |
|--|-------|----------------------------|--------------------------|--------------------------------|--------------------------------|
| <b>FIXED ASSETS</b>                          |       |                            |                          |                                |                                |
| Tangible assets                              | 7     | 4,583                      | 2,324                    | 6,907                          | 8,318                          |
| <b>CURRENT ASSETS</b>                        |       |                            |                          |                                |                                |
| Debtors                                      | 8     | 335                        | -                        | 335                            | 349                            |
| Cash at bank and in hand                     |       | 130,222                    | 90,191                   | 220,413                        | 221,434                        |
|  |       | 130,557                    | 90,191                   | 220,748                        | 221,783                        |
| <b>CREDITORS</b>                             |       |                            |                          |                                |                                |
| Amounts falling due within one year          | 9     | (3,364)                    | (18,159)                 | (21,523)                       | (26,024)                       |
| <b>NET CURRENT ASSETS</b>                    |       | 127,193                    | 72,032                   | 199,225                        | 195,759                        |
| <b>TOTAL ASSETS LESS CURRENT LIABILITIES</b> |       | 131,776                    | 74,356                   | 206,132                        | 204,077                        |
| <b>NET ASSETS</b>                            |       | 131,776                    | 74,356                   | 206,132                        | 204,077                        |
| <b>FUNDS</b>                                 | 10    |                            |                          |                                |                                |
| Unrestricted funds                           |       |                            |                          | 131,776                        | 157,933                        |
| Restricted funds                             |       |                            |                          | 74,356                         | 46,144                         |
| <b>TOTAL FUNDS</b>                           |       |                            |                          | 206,132                        | 204,077                        |

These financial statements have been prepared in accordance with the provisions applicable to charitable companies subject to the small companies regime.

The financial statements were approved by the Board of Trustees and authorised for issue on 15/09/2025 and were signed on its behalf by:



Ms P R Wheeler - Trustee

## 1. ACCOUNTING POLICIES

### **Basis of preparing the financial statements**

The financial statements of the charitable company, which is a public benefit entity under FRS 102, have been prepared in accordance with the Charities SORP (FRS 102) 'Accounting and Reporting by Charities: Statement of Recommended Practice applicable to charities preparing their accounts in accordance with the Financial Reporting Standard applicable in the UK and Republic of Ireland (FRS 102) (effective 1 January 2015)', Financial Reporting Standard 102 'The Financial Reporting Standard applicable in the UK and Republic of Ireland' and the Companies Act 2006. The financial statements have been prepared under the historical cost convention.

### **Income**

All income is recognised in the Statement of Financial Activities once the charity has entitlement to the funds, it is probable that the income will be received and the amount can be measured reliably.

### **Expenditure**

Liabilities are recognised as expenditure as soon as there is a legal or constructive obligation committing the charity to that expenditure, it is probable that a transfer of economic benefits will be required in settlement and the amount of the obligation can be measured reliably. Expenditure is accounted for on an accruals basis and has been classified under headings that aggregate all cost related to the category. Where costs cannot be directly attributed to particular headings they have been allocated to activities on a basis consistent with the use of resources.

### **Allocation and apportionment of costs**

Support costs include central functions and have been allocated to activity cost categories on a basis consistent with the use of resources, for example, allocating property costs by floor areas, or per capita, staff costs by the time spent and other costs by their usage.

### **Tangible fixed assets**

Depreciation is provided at the following annual rates in order to write off each asset over its estimated useful life.

|                     |                           |
|---------------------|---------------------------|
| Plant and machinery | - 25% on reducing balance |
| Computer equipment  | - 25% on reducing balance |

### **Taxation**

The charity is exempt from corporation tax on its charitable activities.

### **Fund accounting**

Unrestricted funds can be used in accordance with the charitable objectives at the discretion of the trustees.

Restricted funds can only be used for particular restricted purposes within the objects of the charity. Restrictions arise when specified by the donor or when funds are raised for particular restricted purposes.

Further explanation of the nature and purpose of each fund is included in the notes to the financial statements.

### **Pension costs and other post-retirement benefits**

The charitable company operates a defined contribution pension scheme. Contributions payable to the charitable company's pension scheme are charged to the Statement of Financial Activities in the period to which they relate.

**1. ACCOUNTING POLICIES - continued****Going concern**

These financial statements have been prepared on the going basis. The Trustees have considered the uncertainties in relation to the charity's future funding (set out in the trustees report pages 1 to 4) and are confident of the charity's ability to continue as a going concern.

**2. INVESTMENT INCOME**

|                          | 31.3.25      | 31.3.24      |
|--------------------------|--------------|--------------|
|                          | £            | £            |
| Deposit account interest | 2,584        | 3,022        |
|                          | <u>2,584</u> | <u>3,022</u> |

**3. CHARITABLE ACTIVITIES COSTS**

|                             | Direct<br>Costs<br>£ | Support<br>costs<br>£ | Totals<br>£    |
|-----------------------------|----------------------|-----------------------|----------------|
| Family Support - Home Start | 171,747              | 13,460                | 185,207        |
| Outreach                    | 26,057               | -                     | 26,057         |
|                             | <u>197,804</u>       | <u>13,460</u>         | <u>211,264</u> |

**Family Support:**

Home-Start Dover District offers support, friendship, emotional and practical help to parents with young children.

Home-Start Dover District offers a unique service, recruiting and training volunteers - who have parenting experience - to visit families at home who have at least one child aged five and under to offer informal, friendly and confidential support.

In addition to this we also offer emotional and practical support through two family groups.

All our services help give children the best possible start in life. Home-Start Dover District supports parents as they grow in confidence, strengthen their relationships with children and widen their links with the local community.

**Outreach:**

Home-Start Dover District also employ two Outreach Workers to deliver an Outreach Project to support families who are struggling with their own mental health or / and have a child who is neuro diverse.

**4. NET INCOME/(EXPENDITURE)**

Net income/(expenditure) is stated after charging/(crediting):

|                             | 31.3.25       | 31.3.24       |
|-----------------------------|---------------|---------------|
|                             | £             | £             |
| Auditors' remuneration      | 2,226         | 2,033         |
| Depreciation - owned assets | 1,411         | 1,412         |
| Other operating leases      | 15,379        | 23,756        |
|                             | <u>15,379</u> | <u>23,756</u> |

**5. TRUSTEES' REMUNERATION AND BENEFITS**

There were no trustees' remuneration or other benefits for the year ended 31 March 2025 nor for the year ended 31 March 2024.

**Trustees' expenses**

There were no trustees' expenses paid for the year ended 31 March 2025 nor for the year ended 31 March 2024.

**6. STAFF COSTS**

The average monthly number of employees during the year was as follows:

|       | 31.3.25  | 31.3.24  |
|-------|----------|----------|
|       | 7        | 7        |
| Staff | <u>7</u> | <u>7</u> |

No employees received emoluments in excess of £60,000.

**7. TANGIBLE FIXED ASSETS**

|                                   | Freehold<br>property<br>£ | Plant and<br>machinery<br>£ | Computer<br>equipment<br>£ | Totals<br>£   |
|-----------------------------------|---------------------------|-----------------------------|----------------------------|---------------|
| <b>COST</b>                       |                           |                             |                            |               |
| At 1 April 2024 and 31 March 2025 | <u>4,082</u>              | <u>19,842</u>               | <u>14,672</u>              | <u>38,596</u> |
| <b>DEPRECIATION</b>               |                           |                             |                            |               |
| At 1 April 2024                   | -                         | 19,326                      | 10,952                     | 30,278        |
| Charge for year                   | -                         | 171                         | 1,240                      | 1,411         |
| At 31 March 2025                  | <u>-</u>                  | <u>19,497</u>               | <u>12,192</u>              | <u>31,689</u> |
| <b>NET BOOK VALUE</b>             |                           |                             |                            |               |
| At 31 March 2025                  | <u>4,082</u>              | <u>345</u>                  | <u>2,480</u>               | <u>6,907</u>  |
| At 31 March 2024                  | <u>4,082</u>              | <u>516</u>                  | <u>3,720</u>               | <u>8,318</u>  |

NOTES TO THE FINANCIAL STATEMENTS - continued  
for the Year Ended 31 March 2025**8. DEBTORS: AMOUNTS FALLING DUE WITHIN ONE YEAR**

|                                | 31.3.25 | 31.3.24 |
|--------------------------------|---------|---------|
|                                | £       | £       |
| Prepayments and accrued income | 335     | 349     |

**9. CREDITORS: AMOUNTS FALLING DUE WITHIN ONE YEAR**

|                                 | 31.3.25       | 31.3.24       |
|---------------------------------|---------------|---------------|
|                                 | £             | £             |
| Social security and other taxes | -             | 5,950         |
| Other creditors                 | 1,230         | 38            |
| Accruals and deferred income    | 20,293        | 20,036        |
|                                 | <u>21,523</u> | <u>26,024</u> |

**10. MOVEMENT IN FUNDS**

|                                   | At 1.4.24<br>£ | Net<br>movement<br>in funds<br>£ | At<br>31.3.25<br>£ |
|-----------------------------------|----------------|----------------------------------|--------------------|
| <b>Unrestricted funds</b>         |                |                                  |                    |
| Families & Volunteers             | 157,933        | (26,157)                         | 131,776            |
| <b>Restricted funds</b>           |                |                                  |                    |
| Early Help Grant                  | 4,138          | 124                              | 4,262              |
| Young and Pregnant support        | 700            | -                                | 700                |
| Big Lottery Funding               | 23,397         | 26,080                           | 49,477             |
| Children in Need                  | 1,822          | (15)                             | 1,807              |
| National Lottery Awards for All   | -              | 1,651                            | 1,651              |
| Colyer Fergusson Charitable Trust | 15,000         | -                                | 15,000             |
| Trust House Charitable Foundation | 1,087          | 372                              | 1,459              |
|                                   | <u>46,144</u>  | <u>28,212</u>                    | <u>74,356</u>      |
| <b>TOTAL FUNDS</b>                | <u>204,077</u> | <u>2,055</u>                     | <u>206,132</u>     |

**10. MOVEMENT IN FUNDS - continued**

Net movement in funds, included in the above are as follows:

|  | Incoming<br>resources<br>£ | Resources<br>expended<br>£ | Movement<br>in funds<br>£ |
|--|----------------------------|----------------------------|---------------------------|
| <b>Unrestricted funds</b>                  |                            |                            |                           |
| Families & Volunteers                      | 26,805                     | (52,962)                   | (26,157)                  |
| <b>Restricted funds</b>                    |                            |                            |                           |
| Early Help Grant                           | -                          | 124                        | 124                       |
| Big Lottery Funding                        | 98,712                     | (72,632)                   | 26,080                    |
| Children in Need                           | -                          | (15)                       | (15)                      |
| National Lottery Awards for All            | 1,651                      | -                          | 1,651                     |
| Colyer Fergusson Charitable Trust          | 15,000                     | (15,000)                   | -                         |
| The Phillip and Connie Phillips Foundation | 5,000                      | (5,000)                    | -                         |
| The Kent Community Fund                    | 13,374                     | (13,374)                   | -                         |
| Garfield Western                           | 20,000                     | (20,000)                   | -                         |
| Trust House Charitable Foundation          | 32,777                     | (32,405)                   | 372                       |
|  | <u>186,514</u>             | <u>(158,302)</u>           | <u>28,212</u>             |
| <b>TOTAL FUNDS</b>                         | <u>213,319</u>             | <u>(211,264)</u>           | <u>2,055</u>              |

**Comparatives for movement in funds**

|  | At 1.4.23<br>£ | Net<br>movement<br>in funds<br>£ | At<br>31.3.24<br>£ |
|--|----------------|----------------------------------|--------------------|
| <b>Unrestricted funds</b>                  |                |                                  |                    |
| Families & Volunteers                      | 162,028        | (4,095)                          | 157,933            |
| <b>Restricted funds</b>                    |                |                                  |                    |
| Early Help Grant                           | 6,411          | (2,273)                          | 4,138              |
| Young and Pregnant support                 | 700            | -                                | 700                |
| Big Lottery Funding                        | 14,667         | 8,730                            | 23,397             |
| Children in Need                           | 1,837          | (15)                             | 1,822              |
| The Henry Smith Charity                    | 12,366         | (12,366)                         | -                  |
| Charities Aid Foundation                   | 3,659          | (3,659)                          | -                  |
| The KCC (Reconnect)                        | 14,537         | (14,537)                         | -                  |
| Colyer Fergusson Charitable Trust          | 15,000         | -                                | 15,000             |
| The Phillip and Connie Phillips Foundation | 5,994          | (5,994)                          | -                  |
| The Kent Community Fund                    | 7,966          | (7,966)                          | -                  |
| Trust House Charitable Foundation          | -              | 1,087                            | 1,087              |
|  | <u>83,137</u>  | <u>(36,993)</u>                  | <u>46,144</u>      |
| <b>TOTAL FUNDS</b>                         | <u>245,165</u> | <u>(41,088)</u>                  | <u>204,077</u>     |

**10. MOVEMENT IN FUNDS - continued**

Comparative net movement in funds, included in the above are as follows:

|  | Incoming<br>resources<br>£ | Resources<br>expended<br>£ | Movement<br>in funds<br>£ |
|--|----------------------------|----------------------------|---------------------------|
| <b>Unrestricted funds</b>                  |                            |                            |                           |
| Families & Volunteers                      | 15,550                     | (19,645)                   | (4,095)                   |
| <b>Restricted funds</b>                    |                            |                            |                           |
| Early Help Grant                           | -                          | (2,273)                    | (2,273)                   |
| Big Lottery Funding                        | 94,435                     | (85,705)                   | 8,730                     |
| Children in Need                           | -                          | (15)                       | (15)                      |
| The Henry Smith Charity                    | -                          | (12,366)                   | (12,366)                  |
| Charities Aid Foundation                   | -                          | (3,659)                    | (3,659)                   |
| The KCC (Reconnect)                        | -                          | (14,537)                   | (14,537)                  |
| Colyer Fergusson Charitable Trust          | 15,000                     | (15,000)                   | -                         |
| The Phillip and Connie Phillips Foundation | 6,625                      | (12,619)                   | (5,994)                   |
| The Kent Community Fund                    | 14,000                     | (21,966)                   | (7,966)                   |
| Garfield Western                           | 15,001                     | (15,001)                   | -                         |
| Trust House Charitable Foundation          | 31,823                     | (30,736)                   | 1,087                     |
|  | <u>176,884</u>             | <u>(213,877)</u>           | <u>(36,993)</u>           |
| <b>TOTAL FUNDS</b>                         | <u><u>192,434</u></u>      | <u><u>(233,522)</u></u>    | <u><u>(41,088)</u></u>    |

**10. MOVEMENT IN FUNDS - continued**

A current year 12 months and prior year 12 months combined position is as follows:

|  | At 1.4.23<br>£ | Net<br>movement<br>in funds<br>£ | At<br>31.3.25<br>£ |
|--|----------------|----------------------------------|--------------------|
| <b>Unrestricted funds</b>                  |                |                                  |                    |
| Families & Volunteers                      | 162,028        | (30,252)                         | 131,776            |
| <b>Restricted funds</b>                    |                |                                  |                    |
| Early Help Grant                           | 6,411          | (2,149)                          | 4,262              |
| Young and Pregnant support                 | 700            | -                                | 700                |
| Big Lottery Funding                        | 14,667         | 34,810                           | 49,477             |
| Children in Need                           | 1,837          | (30)                             | 1,807              |
| National Lottery Awards for All            | -              | 1,651                            | 1,651              |
| The Henry Smith Charity                    | 12,366         | (12,366)                         | -                  |
| Charities Aid Foundation                   | 3,659          | (3,659)                          | -                  |
| The KCC (Reconnect)                        | 14,537         | (14,537)                         | -                  |
| Colyer Fergusson Charitable Trust          | 15,000         | -                                | 15,000             |
| The Phillip and Connie Phillips Foundation | 5,994          | (5,994)                          | -                  |
| The Kent Community Fund                    | 7,966          | (7,966)                          | -                  |
| Trust House Charitable Foundation          | -              | 1,459                            | 1,459              |
|  | <u>83,137</u>  | <u>(8,781)</u>                   | <u>74,356</u>      |
| <b>TOTAL FUNDS</b>                         | <u>245,165</u> | <u>(39,033)</u>                  | <u>206,132</u>     |

**10. MOVEMENT IN FUNDS - continued**

A current year 12 months and prior year 12 months combined net movement in funds, included in the above are as follows:

|  | Incoming<br>resources<br>£ | Resources<br>expended<br>£ | Movement<br>in funds<br>£ |
|--|----------------------------|----------------------------|---------------------------|
| <b>Unrestricted funds</b>                  |                            |                            |                           |
| Families & Volunteers                      | 42,355                     | (72,607)                   | (30,252)                  |
| <b>Restricted funds</b>                    |                            |                            |                           |
| Early Help Grant                           | -                          | (2,149)                    | (2,149)                   |
| Big Lottery Funding                        | 193,147                    | (158,337)                  | 34,810                    |
| Children in Need                           | -                          | (30)                       | (30)                      |
| National Lottery Awards for All            | 1,651                      | -                          | 1,651                     |
| The Henry Smith Charity                    | -                          | (12,366)                   | (12,366)                  |
| Charities Aid Foundation                   | -                          | (3,659)                    | (3,659)                   |
| The KCC (Reconnect)                        | -                          | (14,537)                   | (14,537)                  |
| Colyer Fergusson Charitable Trust          | 30,000                     | (30,000)                   | -                         |
| The Phillip and Connie Phillips Foundation | 11,625                     | (17,619)                   | (5,994)                   |
| The Kent Community Fund                    | 27,374                     | (35,340)                   | (7,966)                   |
| Garfield Western                           | 35,001                     | (35,001)                   | -                         |
| Trust House Charitable Foundation          | 64,600                     | (63,141)                   | 1,459                     |
|  | <u>363,398</u>             | <u>(372,179)</u>           | <u>(8,781)</u>            |
| <b>TOTAL FUNDS</b>                         | <u>405,753</u>             | <u>(444,786)</u>           | <u>(39,033)</u>           |

**11. RELATED PARTY DISCLOSURES**

There were no related party transactions for the year ended 31 March 2025.

## HOME-START DOVER DISTRICT

DETAILED STATEMENT OF FINANCIAL ACTIVITIES  
for the Year Ended 31 March 2025

|                                 | 31.3.25<br>£   | 31.3.24<br>£   |
|---------------------------------|----------------|----------------|
| <b>INCOME AND ENDOWMENTS</b>    |                |                |
| <b>Donations and legacies</b>   |                |                |
| Donations, gifts and legacies   | 10,748         | 5,027          |
| Grants                          | 199,987        | 184,385        |
|                                 | <u>210,735</u> | <u>189,412</u> |
| <b>Investment income</b>        |                |                |
| Deposit account interest        | 2,584          | 3,022          |
| <b>Total incoming resources</b> | <u>213,319</u> | <u>192,434</u> |
| <b>EXPENDITURE</b>              |                |                |
| <b>Charitable activities</b>    |                |                |
| Wages                           | 149,122        | 150,096        |
| Social security                 | 2,303          | 3,391          |
| Pensions                        | 9,981          | 9,634          |
| Rent and room hire              | 15,379         | 23,756         |
| Insurance                       | 1,309          | 1,233          |
| Sundries                        | 6,630          | 6,534          |
| Forum and hardship expenses     | -              | 349            |
| Travelling and other expenses   | 6,492          | 12,638         |
| Subs & registration costs       | 1,360          | 364            |
| Welfare Costs                   | 3,817          | 8,912          |
| Plant and machinery             | 171            | 171            |
| Computer equipment              | 1,240          | 1,240          |
|                                 | <u>197,804</u> | <u>218,318</u> |
| <b>Support costs</b>            |                |                |
| <b>Management</b>               |                |                |
| Telephone                       | 1,164          | 934            |
| Postage and stationery          | 1,087          | 1,121          |
| Provisions and sundries         | 2,865          | 1,456          |
| Home-Start TIG fee              | 3,464          | 5,043          |
|                                 | <u>8,580</u>   | <u>8,554</u>   |
| <b>Finance</b>                  |                |                |
| Bank charges                    | 210            | 221            |
| <b>Information technology</b>   |                |                |
| Repairs and renewals            | 2,428          | 4,366          |

This page does not form part of the statutory financial statements

HOME-START DOVER DISTRICT

DETAILED STATEMENT OF FINANCIAL ACTIVITIES  
for the Year Ended 31 March 2025

|                                 | 31.3.25             | 31.3.24                |
|---------------------------------|---------------------|------------------------|
|                                 | £                   | £                      |
| <b>Information technology</b>   |                     |                        |
| <b>Governance costs</b>         |                     |                        |
| Auditors' remuneration          | 2,226               | 2,033                  |
| AGM Expenses                    | 16                  | 30                     |
|                                 | <u>2,242</u>        | <u>2,063</u>           |
| Total resources expended        | <u>211,264</u>      | <u>233,522</u>         |
| <b>Net income/(expenditure)</b> | <u><u>2,055</u></u> | <u><u>(41,088)</u></u> |

REGISTERED COMPANY NUMBER: 04974145 (England and Wales)  
REGISTERED CHARITY NUMBER: 1102201

REPORT OF THE TRUSTEES AND  
FINANCIAL STATEMENTS  
FOR THE YEAR ENDED 31 MARCH 2025  
FOR  
HOME-START DOVER DISTRICT

Xeinadin Audit Ltd  
12 Conqueror Ct  
Sittingbourne  
Kent  
ME10 5BH

HOME-START DOVER DISTRICT

CONTENTS OF THE FINANCIAL STATEMENTS  
for the Year Ended 31 March 2025

---

|  | Page     |
|--|----------|
| Report of the Trustees                     | 1 to 5   |
| Report of the Independent Auditors         | 6 to 8   |
| Statement of Financial Activities          | 9        |
| Balance Sheet                              | 10       |
| Notes to the Financial Statements          | 11 to 18 |
| Detailed Statement of Financial Activities | 19 to 20 |

The trustees who are also directors of the charity for the purposes of the Companies Act 2006, present their report with the financial statements of the charity for the year ended 31 March 2025. The trustees have adopted the provisions of Accounting and Reporting by Charities: Statement of Recommended Practice applicable to charities preparing their accounts in accordance with the Financial Reporting Standard applicable in the UK and Republic of Ireland (FRS 102) (effective 1 January 2019).

## **OBJECTIVES AND ACTIVITIES**

### **Objectives and aims**

The objectives for which Home-Start is established are:

To safeguard, protect and preserve the good health, both mental and physical, of children and parents.

To prevent cruelty to or maltreatment of children.

To relieve sickness, poverty and need amongst children and parents.

To promote the education of the public in better standards of child care within the area of Dover and Deal and its environs.

In furtherance of the foregoing, but for no other purpose, Home-Start Dover District shall have the following powers:

Obtain, collect and receive money and funds by way of contributions, donations, affiliation fees, subscriptions, legacies, grants and any other lawful method, and accept and receive gifts of property of any description whether subject to any special trusts or not provided that Home-Start Dover District shall not undertake any permanent trading activities in raising funds for the said objects.

Procure and provide information.

Procure to be written and print, publish, issue and circulate gratuitously or otherwise any reports or periodicals, books, pamphlets, leaflets or other documents.

Arrange and provide for or join in arranging and providing for the holding of exhibitions, meetings, lectures and classes.

Promote, advance or undertake organised research and experimental work in connection with any of the above mentioned objects and publish the useful results or such research.

To do all such other lawful things as are necessary for the attainment of the above objects, or any of them including the holding of property and raising funds from statutory or voluntary sources.

In pursuance of the foregoing objects and powers, to ensure that an Equality, Fairness and Diversity Policy is actively implemented.

## **ACHIEVEMENTS AND PERFORMANCE**

### **Charitable activities**

At the beginning of the financial year we had a deficit budget of approximately £65,000. During the year we managed to obtain additional funding and donations which resulted in an overall surplus of £2,055 at the end of the financial year.

In April 2023 the Charity was successful with a 3 Year Big Lottery Grant of £287,646 and in July 2023 a 3 year grant of £98,361 was awarded by the Trusthouse Charitable Foundation towards our Embrace Project. We have received a 1 year grant of £20,000 from Garfield Weston and £4,000 from Mrs towards our Embrace Project Smith and Mount Trust both also for the Embrace Project.

In 2023 we received 3 year funding of £30,000 (£10,00 per year) through the Kent Community Foundation to fund the Family Groups. We were also successful with a Lottery Awards For All grant of £18,003 to fund our Family Groups.

We received a 3 year grant of 45,000 (£15,000 per year) from Colyer Fergusson and £5,000 from the Phillip and Connie Foundation to fund our Outreach Project. We have also received funding from SGN to work in partnership with them for 2 years.

We are extremely grateful for all funding and donations received during this financial year and for the coming financial year which will enable us to continue to support many families through our home-visiting support and also through our Outreach Projects and Family Groups.

Total incoming resources for the year saw an increase from £192,435 to £213,319. Total expenditure decreased from £233,522 to £211,264.

The Trustees were able to offer a 5.0% pay increase to staff salaries this year and staff entitled to an 'incremental' rise received this as per their contracts. The Trustees continued to offer a contributory staff pension.

We have been able to offer a full service this year and have supported many more families than we are funded for which represents extremely good value for money and a valued support to many families

## **FINANCIAL REVIEW**

### **Financial position**

As previously stated total incoming resources for the year saw an increase from £192,435 to £213,319. Total expenditure decreased from £233,522 to £211,264. This resulted in small surplus of £404 whereas the previous year incurred a deficit of £41,087.

The financial performance of the charity saw a slight increase in reserves going forward, with £206,132, part of which is ring-fenced for redundancy costs.

### **Principal funding sources**

The charity is dependant on grants, In April 2023 the Charity was successful with a 3 Year Big Lottery Grant of £287,646 and in July 2023 a 3 year grant of £98,361 was awarded by the Trusthouse Charitable Foundation towards our Embrace Project. We have received a 1 year grant of £20,000 from Garfield Weston and £4,000 from Mrs towards our Embrace Project Smith and Mount Trust both also for the Embrace Project.

In 2023 we received 3 year funding of £30,000 (£10,00 per year) through the Kent Community Foundation to fund the Family Groups. We were also successful with a Lottery Awards For All grant of £18,003 to fund our Family Groups.

We received a 3 year grant of 45,000 (£15,000 per year) from Colyer Fergusson and £5,000 from the Phillip and Connie Foundation to fund our Outreach Project. We have also received funding from SGN to work in partnership with them for 2 years.

## **FINANCIAL REVIEW**

### **Reserves policy**

The Trustees have agreed to maintain a minimum of six months up to a maximum of one year's running costs as a prudent measure to protect the charity against loss of major or core funding and any redundancy payment obligations or unforeseen circumstances. This policy is regularly reviewed and amended annually.

## **FUTURE PLANS**

Additional grants through funders and working in partnership with other Organisations are always being looked into to secure additional funding in the future.

Trustees regularly monitor the funding and Cash Flows and funding applications are being continually submitted to obtain additional funds.

New projects are continually being considered and implemented to enhance the support offered to families.

## **STRUCTURE, GOVERNANCE AND MANAGEMENT**

### **Governing document**

The charity is controlled by its governing document, a deed of trust, and constitutes a limited company, limited by guarantee, as defined by the Companies Act 2006.

## **REFERENCE AND ADMINISTRATIVE DETAILS**

### **Registered Company number**

04974145 (England and Wales)

### **Registered Charity number**

1102201

### **Registered office**

The Ark  
Noah's Ark Road  
Tower Hamlets  
Dover  
Kent  
CT17 0DD

### **Trustees**

Mr G Hutchison (resigned 2.4.25)  
Mrs A Papworth  
Ms P R Wheeler  
Mrs D P Cawsey  
Ms M P Stephens  
Ms D Crossley  
Ms S Hindle  
A B Rees  
Mr P Gates (resigned 2.4.25)  
Mrs J Wood

### **Company Secretary**

Ms S Letchford

#### REFERENCE AND ADMINISTRATIVE DETAILS

##### Auditors

Xeinadin Audit Ltd  
12 Conqueror Ct  
Sittingbourne  
Kent  
ME10 5BH

##### Bankers

Natwest Bank  
25 Market Square  
Dover  
Kent  
CT16 1XY

#### PUBLIC BENEFIT

The charity provides services for children and parents.

This work is best described on our website [www.home-startdoverdistrict.org.uk](http://www.home-startdoverdistrict.org.uk).

The trustees have paid due regard to Charity Commission guidance on public benefit in deciding what activities the charity should undertake.

#### STATEMENT OF TRUSTEES' RESPONSIBILITIES

The trustees (who are also the directors of Home-Start Dover District for the purposes of company law) are responsible for preparing the Report of the Trustees and the financial statements in accordance with applicable law and United Kingdom Accounting Standards (United Kingdom Generally Accepted Accounting Practice).

Company law requires the trustees to prepare financial statements for each financial year which give a true and fair view of the state of affairs of the charitable company and of the incoming resources and application of resources, including the income and expenditure, of the charitable company for that period. In preparing those financial statements, the trustees are required to

- select suitable accounting policies and then apply them consistently;
- observe the methods and principles in the Charity SORP;
- make judgements and estimates that are reasonable and prudent;
- prepare the financial statements on the going concern basis unless it is inappropriate to presume that the charitable company will continue in business.

The trustees are responsible for keeping proper accounting records which disclose with reasonable accuracy at any time the financial position of the charitable company and to enable them to ensure that the financial statements comply with the Companies Act 2006. They are also responsible for safeguarding the assets of the charitable company and hence for taking reasonable steps for the prevention and detection of fraud and other irregularities.

In so far as the trustees are aware:

- there is no relevant audit information of which the charitable company's auditors are unaware; and
- the trustees have taken all steps that they ought to have taken to make themselves aware of any relevant audit information and to establish that the auditors are aware of that information.

#### AUDITORS

The auditors, Xeinadin Audit Ltd, will be proposed for re-appointment at the forthcoming Annual General Meeting.

Approved by order of the board of trustees on 15/09/2025 and signed on its behalf by:

HOME-START DOVER DISTRICT

REPORT OF THE TRUSTEES  
for the Year Ended 31 March 2025

---



Ms P R Wheeler - Trustee

### **Opinion**

We have audited the financial statements of Home-Start Dover District (the 'charitable company') for the year ended 31 March 2025 which comprise the Statement of Financial Activities, the Balance Sheet and notes to the financial statements, including a summary of significant accounting policies. The financial reporting framework that has been applied in their preparation is applicable law and United Kingdom Accounting Standards (United Kingdom Generally Accepted Accounting Practice).

In our opinion the financial statements:

- give a true and fair view of the state of the charitable company's affairs as at 31 March 2025 and of its incoming resources and application of resources, including its income and expenditure, for the year then ended;
- have been properly prepared in accordance with United Kingdom Generally Accepted Accounting Practice; and
- have been prepared in accordance with the requirements of the Companies Act 2006.

### **Basis for opinion**

We conducted our audit in accordance with International Standards on Auditing (UK) (ISAs (UK)) and applicable law. Our responsibilities under those standards are further described in the Auditors' responsibilities for the audit of the financial statements section of our report. We are independent of the charitable company in accordance with the ethical requirements that are relevant to our audit of the financial statements in the UK, including the FRC's Ethical Standard, and we have fulfilled our other ethical responsibilities in accordance with these requirements. We believe that the audit evidence we have obtained is sufficient and appropriate to provide a basis for our opinion.

### **Conclusions relating to going concern**

In auditing the financial statements, we have concluded that the trustees' use of the going concern basis of accounting in the preparation of the financial statements is appropriate.

Based on the work we have performed, we have not identified any material uncertainties relating to events or conditions that, individually or collectively, may cast significant doubt on the charitable company's ability to continue as a going concern for a period of at least twelve months from when the financial statements are authorised for issue.

Our responsibilities and the responsibilities of the trustees with respect to going concern are described in the relevant sections of this report.

### **Other information**

The trustees are responsible for the other information. The other information comprises the information included in the Annual Report, other than the financial statements and our Report of the Independent Auditors thereon.

Our opinion on the financial statements does not cover the other information and, except to the extent otherwise explicitly stated in our report, we do not express any form of assurance conclusion thereon.

In connection with our audit of the financial statements, our responsibility is to read the other information and, in doing so, consider whether the other information is materially inconsistent with the financial statements or our knowledge obtained in the audit or otherwise appears to be materially misstated. If we identify such material inconsistencies or apparent material misstatements, we are required to determine whether this gives rise to a material misstatement in the financial statements themselves. If, based on the work we have performed, we conclude that there is a material misstatement of this other information, we are required to report that fact. We have nothing to report in this regard.

### **Opinions on other matters prescribed by the Companies Act 2006**

In our opinion, based on the work undertaken in the course of the audit:

- the information given in the Report of the Trustees for the financial year for which the financial statements are prepared is consistent with the financial statements; and
- the Report of the Trustees has been prepared in accordance with applicable legal requirements.

**Matters on which we are required to report by exception**

In the light of the knowledge and understanding of the charitable company and its environment obtained in the course of the audit, we have not identified material misstatements in the Report of the Trustees.

We have nothing to report in respect of the following matters where the Companies Act 2006 requires us to report to you if, in our opinion:

- adequate accounting records have not been kept or returns adequate for our audit have not been received from branches not visited by us; or
- the financial statements are not in agreement with the accounting records and returns; or
- certain disclosures of trustees' remuneration specified by law are not made; or
- we have not received all the information and explanations we require for our audit; or
- the trustees were not entitled to take advantage of the small companies exemption from the requirement to prepare a Strategic Report or in preparing the Report of the Trustees.

**Responsibilities of trustees**

As explained more fully in the Statement of Trustees' Responsibilities, the trustees (who are also the directors of the charitable company for the purposes of company law) are responsible for the preparation of the financial statements and for being satisfied that they give a true and fair view, and for such internal control as the trustees determine is necessary to enable the preparation of financial statements that are free from material misstatement, whether due to fraud or error.

In preparing the financial statements, the trustees are responsible for assessing the charitable company's ability to continue as a going concern, disclosing, as applicable, matters related to going concern and using the going concern basis of accounting unless the trustees either intend to liquidate the charitable company or to cease operations, or have no realistic alternative but to do so.

**Our responsibilities for the audit of the financial statements**

Our objectives are to obtain reasonable assurance about whether the financial statements as a whole are free from material misstatement, whether due to fraud or error, and to issue a Report of the Independent Auditors that includes our opinion. Reasonable assurance is a high level of assurance, but is not a guarantee that an audit conducted in accordance with ISAs (UK) will always detect a material misstatement when it exists. Misstatements can arise from fraud or error and are considered material if, individually or in the aggregate, they could reasonably be expected to influence the economic decisions of users taken on the basis of these financial statements.

The extent to which our procedures are capable of detecting irregularities, including fraud is detailed below:

Our objectives in performing the audit are to identify and assess the risk of material misstatement in the financial statements due to fraud and error and to obtain sufficient audit evidence to support this. We also evaluate and respond to the risk of material misstatements.

Audit procedures performed by the engagement team included:

- Obtaining an understanding of the legal and regulatory framework applicable to the entity.
- Discussing with management the controls used to reduce the risk of fraud, and testing these accordingly.
- Evaluating the overall presentation of the financial statements to determine whether the financial statements represent the underlying transactions and events in a manner that achieves fair presentation.

A further description of our responsibilities for the audit of the financial statements is located on the Financial Reporting Council's website at [www.frc.org.uk/auditorsresponsibilities](http://www.frc.org.uk/auditorsresponsibilities). This description forms part of our Report of the Independent Auditors.

REPORT OF THE INDEPENDENT AUDITORS TO THE MEMBERS OF  
HOME-START DOVER DISTRICT

---

**Use of our report**

This report is made solely to the charitable company's members, as a body, in accordance with Chapter 3 of Part 16 of the Companies Act 2006. Our audit work has been undertaken so that we might state to the charitable company's members those matters we are required to state to them in an auditors' report and for no other purpose. To the fullest extent permitted by law, we do not accept or assume responsibility to anyone other than the charitable company and the charitable company's members as a body, for our audit work, for this report, or for the opinions we have formed.



Nicholas Hume (Senior Statutory Auditor)  
for and on behalf of Xinadin Audit Ltd  
12 Conqueror Ct  
Sittingbourne  
Kent  
ME10 5BH

Date: .....

## HOME-START DOVER DISTRICT

STATEMENT OF FINANCIAL ACTIVITIES  
for the Year Ended 31 March 2025

|                                    | Notes | Unrestricted<br>funds<br>£ | Restricted<br>funds<br>£ | 31.3.25<br>Total<br>funds<br>£ | 31.3.24<br>Total<br>funds<br>£ |
|------------------------------------|-------|----------------------------|--------------------------|--------------------------------|--------------------------------|
| <b>INCOME AND ENDOWMENTS FROM</b>  |       |                            |                          |                                |                                |
| Donations and legacies             |       | 24,221                     | 186,514                  | 210,735                        | 189,412                        |
| Investment income                  | 2     | 2,584                      | -                        | 2,584                          | 3,022                          |
| <b>Total</b>                       |       | <u>26,805</u>              | <u>186,514</u>           | <u>213,319</u>                 | <u>192,434</u>                 |
| <b>EXPENDITURE ON</b>              |       |                            |                          |                                |                                |
| <b>Charitable activities</b>       |       |                            |                          |                                |                                |
| Family Support - Home Start        | 3     | 52,962                     | 132,245                  | 185,207                        | 209,766                        |
| Outreach                           |       | -                          | 26,057                   | 26,057                         | 23,756                         |
| <b>Total</b>                       |       | <u>52,962</u>              | <u>158,302</u>           | <u>211,264</u>                 | <u>233,522</u>                 |
| <b>NET INCOME/(EXPENDITURE)</b>    |       | (26,157)                   | 28,212                   | 2,055                          | (41,088)                       |
| <b>RECONCILIATION OF FUNDS</b>     |       |                            |                          |                                |                                |
| Total funds brought forward        |       | 157,933                    | 46,144                   | 204,077                        | 245,165                        |
| <b>TOTAL FUNDS CARRIED FORWARD</b> |       | <u><u>131,776</u></u>      | <u><u>74,356</u></u>     | <u><u>206,132</u></u>          | <u><u>204,077</u></u>          |

The notes form part of these financial statements

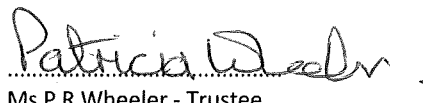
## HOME-START DOVER DISTRICT

BALANCE SHEET  
31 March 2025

|  | Notes | Unrestricted<br>funds<br>£ | Restricted<br>funds<br>£ | 31.3.25<br>Total<br>funds<br>£ | 31.3.24<br>Total<br>funds<br>£ |
|--|-------|----------------------------|--------------------------|--------------------------------|--------------------------------|
| <b>FIXED ASSETS</b>                          |       |                            |                          |                                |                                |
| Tangible assets                              | 7     | 4,583                      | 2,324                    | 6,907                          | 8,318                          |
| <b>CURRENT ASSETS</b>                        |       |                            |                          |                                |                                |
| Debtors                                      | 8     | 335                        | -                        | 335                            | 349                            |
| Cash at bank and in hand                     |       | 130,222                    | 90,191                   | 220,413                        | 221,434                        |
|  |       | 130,557                    | 90,191                   | 220,748                        | 221,783                        |
| <b>CREDITORS</b>                             |       |                            |                          |                                |                                |
| Amounts falling due within one year          | 9     | (3,364)                    | (18,159)                 | (21,523)                       | (26,024)                       |
| <b>NET CURRENT ASSETS</b>                    |       | 127,193                    | 72,032                   | 199,225                        | 195,759                        |
| <b>TOTAL ASSETS LESS CURRENT LIABILITIES</b> |       | 131,776                    | 74,356                   | 206,132                        | 204,077                        |
| <b>NET ASSETS</b>                            |       | 131,776                    | 74,356                   | 206,132                        | 204,077                        |
| <b>FUNDS</b>                                 | 10    |                            |                          |                                |                                |
| Unrestricted funds                           |       |                            |                          | 131,776                        | 157,933                        |
| Restricted funds                             |       |                            |                          | 74,356                         | 46,144                         |
| <b>TOTAL FUNDS</b>                           |       |                            |                          | 206,132                        | 204,077                        |

These financial statements have been prepared in accordance with the provisions applicable to charitable companies subject to the small companies regime.

The financial statements were approved by the Board of Trustees and authorised for issue on 15/09/2025 and were signed on its behalf by:



Ms P R Wheeler - Trustee

## 1. ACCOUNTING POLICIES

### **Basis of preparing the financial statements**

The financial statements of the charitable company, which is a public benefit entity under FRS 102, have been prepared in accordance with the Charities SORP (FRS 102) 'Accounting and Reporting by Charities: Statement of Recommended Practice applicable to charities preparing their accounts in accordance with the Financial Reporting Standard applicable in the UK and Republic of Ireland (FRS 102) (effective 1 January 2015)', Financial Reporting Standard 102 'The Financial Reporting Standard applicable in the UK and Republic of Ireland' and the Companies Act 2006. The financial statements have been prepared under the historical cost convention.

### **Income**

All income is recognised in the Statement of Financial Activities once the charity has entitlement to the funds, it is probable that the income will be received and the amount can be measured reliably.

### **Expenditure**

Liabilities are recognised as expenditure as soon as there is a legal or constructive obligation committing the charity to that expenditure, it is probable that a transfer of economic benefits will be required in settlement and the amount of the obligation can be measured reliably. Expenditure is accounted for on an accruals basis and has been classified under headings that aggregate all cost related to the category. Where costs cannot be directly attributed to particular headings they have been allocated to activities on a basis consistent with the use of resources.

### **Allocation and apportionment of costs**

Support costs include central functions and have been allocated to activity cost categories on a basis consistent with the use of resources, for example, allocating property costs by floor areas, or per capita, staff costs by the time spent and other costs by their usage.

### **Tangible fixed assets**

Depreciation is provided at the following annual rates in order to write off each asset over its estimated useful life.

|                     |                           |
|---------------------|---------------------------|
| Plant and machinery | - 25% on reducing balance |
| Computer equipment  | - 25% on reducing balance |

### **Taxation**

The charity is exempt from corporation tax on its charitable activities.

### **Fund accounting**

Unrestricted funds can be used in accordance with the charitable objectives at the discretion of the trustees.

Restricted funds can only be used for particular restricted purposes within the objects of the charity. Restrictions arise when specified by the donor or when funds are raised for particular restricted purposes.

Further explanation of the nature and purpose of each fund is included in the notes to the financial statements.

### **Pension costs and other post-retirement benefits**

The charitable company operates a defined contribution pension scheme. Contributions payable to the charitable company's pension scheme are charged to the Statement of Financial Activities in the period to which they relate.

**1. ACCOUNTING POLICIES - continued****Going concern**

These financial statements have been prepared on the going basis. The Trustees have considered the uncertainties in relation to the charity's future funding (set out in the trustees report pages 1 to 4) and are confident of the charity's ability to continue as a going concern.

**2. INVESTMENT INCOME**

|                          | 31.3.25      | 31.3.24      |
|--------------------------|--------------|--------------|
|                          | £            | £            |
| Deposit account interest | 2,584        | 3,022        |
|                          | <u>2,584</u> | <u>3,022</u> |

**3. CHARITABLE ACTIVITIES COSTS**

|                             | Direct<br>Costs<br>£ | Support<br>costs<br>£ | Totals<br>£    |
|-----------------------------|----------------------|-----------------------|----------------|
| Family Support - Home Start | 171,747              | 13,460                | 185,207        |
| Outreach                    | 26,057               | -                     | 26,057         |
|                             | <u>197,804</u>       | <u>13,460</u>         | <u>211,264</u> |

**Family Support:**

Home-Start Dover District offers support, friendship, emotional and practical help to parents with young children.

Home-Start Dover District offers a unique service, recruiting and training volunteers - who have parenting experience - to visit families at home who have at least one child aged five and under to offer informal, friendly and confidential support.

In addition to this we also offer emotional and practical support through two family groups.

All our services help give children the best possible start in life. Home-Start Dover District supports parents as they grow in confidence, strengthen their relationships with children and widen their links with the local community.

**Outreach:**

Home-Start Dover District also employ two Outreach Workers to deliver an Outreach Project to support families who are struggling with their own mental health or / and have a child who is neuro diverse.

**4. NET INCOME/(EXPENDITURE)**

Net income/(expenditure) is stated after charging/(crediting):

|                             | 31.3.25       | 31.3.24       |
|-----------------------------|---------------|---------------|
|                             | £             | £             |
| Auditors' remuneration      | 2,226         | 2,033         |
| Depreciation - owned assets | 1,411         | 1,412         |
| Other operating leases      | 15,379        | 23,756        |
|                             | <u>15,379</u> | <u>23,756</u> |

**5. TRUSTEES' REMUNERATION AND BENEFITS**

There were no trustees' remuneration or other benefits for the year ended 31 March 2025 nor for the year ended 31 March 2024.

**Trustees' expenses**

There were no trustees' expenses paid for the year ended 31 March 2025 nor for the year ended 31 March 2024.

**6. STAFF COSTS**

The average monthly number of employees during the year was as follows:

|       | 31.3.25  | 31.3.24  |
|-------|----------|----------|
|       | 7        | 7        |
| Staff | <u>7</u> | <u>7</u> |

No employees received emoluments in excess of £60,000.

**7. TANGIBLE FIXED ASSETS**

|                                   | Freehold<br>property<br>£ | Plant and<br>machinery<br>£ | Computer<br>equipment<br>£ | Totals<br>£   |
|-----------------------------------|---------------------------|-----------------------------|----------------------------|---------------|
| <b>COST</b>                       |                           |                             |                            |               |
| At 1 April 2024 and 31 March 2025 | <u>4,082</u>              | <u>19,842</u>               | <u>14,672</u>              | <u>38,596</u> |
| <b>DEPRECIATION</b>               |                           |                             |                            |               |
| At 1 April 2024                   | -                         | 19,326                      | 10,952                     | 30,278        |
| Charge for year                   | -                         | 171                         | 1,240                      | 1,411         |
| At 31 March 2025                  | <u>-</u>                  | <u>19,497</u>               | <u>12,192</u>              | <u>31,689</u> |
| <b>NET BOOK VALUE</b>             |                           |                             |                            |               |
| At 31 March 2025                  | <u>4,082</u>              | <u>345</u>                  | <u>2,480</u>               | <u>6,907</u>  |
| At 31 March 2024                  | <u>4,082</u>              | <u>516</u>                  | <u>3,720</u>               | <u>8,318</u>  |

NOTES TO THE FINANCIAL STATEMENTS - continued  
for the Year Ended 31 March 2025**8. DEBTORS: AMOUNTS FALLING DUE WITHIN ONE YEAR**

|                                | 31.3.25 | 31.3.24 |
|--------------------------------|---------|---------|
|                                | £       | £       |
| Prepayments and accrued income | 335     | 349     |

**9. CREDITORS: AMOUNTS FALLING DUE WITHIN ONE YEAR**

|                                 | 31.3.25 | 31.3.24 |
|---------------------------------|---------|---------|
|                                 | £       | £       |
| Social security and other taxes | -       | 5,950   |
| Other creditors                 | 1,230   | 38      |
| Accruals and deferred income    | 20,293  | 20,036  |
|                                 | 21,523  | 26,024  |

**10. MOVEMENT IN FUNDS**

|                                   | At 1.4.24<br>£ | Net<br>movement<br>in funds<br>£ | At<br>31.3.25<br>£ |
|-----------------------------------|----------------|----------------------------------|--------------------|
| <b>Unrestricted funds</b>         |                |                                  |                    |
| Families & Volunteers             | 157,933        | (26,157)                         | 131,776            |
| <b>Restricted funds</b>           |                |                                  |                    |
| Early Help Grant                  | 4,138          | 124                              | 4,262              |
| Young and Pregnant support        | 700            | -                                | 700                |
| Big Lottery Funding               | 23,397         | 26,080                           | 49,477             |
| Children in Need                  | 1,822          | (15)                             | 1,807              |
| National Lottery Awards for All   | -              | 1,651                            | 1,651              |
| Colyer Fergusson Charitable Trust | 15,000         | -                                | 15,000             |
| Trust House Charitable Foundation | 1,087          | 372                              | 1,459              |
|                                   | 46,144         | 28,212                           | 74,356             |
| <b>TOTAL FUNDS</b>                | 204,077        | 2,055                            | 206,132            |

**10. MOVEMENT IN FUNDS - continued**

Net movement in funds, included in the above are as follows:

|  | Incoming<br>resources<br>£ | Resources<br>expended<br>£ | Movement<br>in funds<br>£ |
|--|----------------------------|----------------------------|---------------------------|
| <b>Unrestricted funds</b>                  |                            |                            |                           |
| Families & Volunteers                      | 26,805                     | (52,962)                   | (26,157)                  |
| <b>Restricted funds</b>                    |                            |                            |                           |
| Early Help Grant                           | -                          | 124                        | 124                       |
| Big Lottery Funding                        | 98,712                     | (72,632)                   | 26,080                    |
| Children in Need                           | -                          | (15)                       | (15)                      |
| National Lottery Awards for All            | 1,651                      | -                          | 1,651                     |
| Colyer Fergusson Charitable Trust          | 15,000                     | (15,000)                   | -                         |
| The Phillip and Connie Phillips Foundation | 5,000                      | (5,000)                    | -                         |
| The Kent Community Fund                    | 13,374                     | (13,374)                   | -                         |
| Garfield Western                           | 20,000                     | (20,000)                   | -                         |
| Trust House Charitable Foundation          | 32,777                     | (32,405)                   | 372                       |
|  | <u>186,514</u>             | <u>(158,302)</u>           | <u>28,212</u>             |
| <b>TOTAL FUNDS</b>                         | <u>213,319</u>             | <u>(211,264)</u>           | <u>2,055</u>              |

**Comparatives for movement in funds**

|  | At 1.4.23<br>£ | Net<br>movement<br>in funds<br>£ | At<br>31.3.24<br>£ |
|--|----------------|----------------------------------|--------------------|
| <b>Unrestricted funds</b>                  |                |                                  |                    |
| Families & Volunteers                      | 162,028        | (4,095)                          | 157,933            |
| <b>Restricted funds</b>                    |                |                                  |                    |
| Early Help Grant                           | 6,411          | (2,273)                          | 4,138              |
| Young and Pregnant support                 | 700            | -                                | 700                |
| Big Lottery Funding                        | 14,667         | 8,730                            | 23,397             |
| Children in Need                           | 1,837          | (15)                             | 1,822              |
| The Henry Smith Charity                    | 12,366         | (12,366)                         | -                  |
| Charities Aid Foundation                   | 3,659          | (3,659)                          | -                  |
| The KCC (Reconnect)                        | 14,537         | (14,537)                         | -                  |
| Colyer Fergusson Charitable Trust          | 15,000         | -                                | 15,000             |
| The Phillip and Connie Phillips Foundation | 5,994          | (5,994)                          | -                  |
| The Kent Community Fund                    | 7,966          | (7,966)                          | -                  |
| Trust House Charitable Foundation          | -              | 1,087                            | 1,087              |
|  | <u>83,137</u>  | <u>(36,993)</u>                  | <u>46,144</u>      |
| <b>TOTAL FUNDS</b>                         | <u>245,165</u> | <u>(41,088)</u>                  | <u>204,077</u>     |

**10. MOVEMENT IN FUNDS - continued**

Comparative net movement in funds, included in the above are as follows:

|  | Incoming<br>resources<br>£ | Resources<br>expended<br>£ | Movement<br>in funds<br>£ |
|--|----------------------------|----------------------------|---------------------------|
| <b>Unrestricted funds</b>                  |                            |                            |                           |
| Families & Volunteers                      | 15,550                     | (19,645)                   | (4,095)                   |
| <b>Restricted funds</b>                    |                            |                            |                           |
| Early Help Grant                           | -                          | (2,273)                    | (2,273)                   |
| Big Lottery Funding                        | 94,435                     | (85,705)                   | 8,730                     |
| Children in Need                           | -                          | (15)                       | (15)                      |
| The Henry Smith Charity                    | -                          | (12,366)                   | (12,366)                  |
| Charities Aid Foundation                   | -                          | (3,659)                    | (3,659)                   |
| The KCC (Reconnect)                        | -                          | (14,537)                   | (14,537)                  |
| Colyer Fergusson Charitable Trust          | 15,000                     | (15,000)                   | -                         |
| The Phillip and Connie Phillips Foundation | 6,625                      | (12,619)                   | (5,994)                   |
| The Kent Community Fund                    | 14,000                     | (21,966)                   | (7,966)                   |
| Garfield Western                           | 15,001                     | (15,001)                   | -                         |
| Trust House Charitable Foundation          | 31,823                     | (30,736)                   | 1,087                     |
|  | <u>176,884</u>             | <u>(213,877)</u>           | <u>(36,993)</u>           |
| <b>TOTAL FUNDS</b>                         | <u><u>192,434</u></u>      | <u><u>(233,522)</u></u>    | <u><u>(41,088)</u></u>    |

**10. MOVEMENT IN FUNDS - continued**

A current year 12 months and prior year 12 months combined position is as follows:

|  | At 1.4.23<br>£ | Net<br>movement<br>in funds<br>£ | At<br>31.3.25<br>£ |
|--|----------------|----------------------------------|--------------------|
| <b>Unrestricted funds</b>                  |                |                                  |                    |
| Families & Volunteers                      | 162,028        | (30,252)                         | 131,776            |
| <b>Restricted funds</b>                    |                |                                  |                    |
| Early Help Grant                           | 6,411          | (2,149)                          | 4,262              |
| Young and Pregnant support                 | 700            | -                                | 700                |
| Big Lottery Funding                        | 14,667         | 34,810                           | 49,477             |
| Children in Need                           | 1,837          | (30)                             | 1,807              |
| National Lottery Awards for All            | -              | 1,651                            | 1,651              |
| The Henry Smith Charity                    | 12,366         | (12,366)                         | -                  |
| Charities Aid Foundation                   | 3,659          | (3,659)                          | -                  |
| The KCC (Reconnect)                        | 14,537         | (14,537)                         | -                  |
| Colyer Fergusson Charitable Trust          | 15,000         | -                                | 15,000             |
| The Phillip and Connie Phillips Foundation | 5,994          | (5,994)                          | -                  |
| The Kent Community Fund                    | 7,966          | (7,966)                          | -                  |
| Trust House Charitable Foundation          | -              | 1,459                            | 1,459              |
|  | <u>83,137</u>  | <u>(8,781)</u>                   | <u>74,356</u>      |
| <b>TOTAL FUNDS</b>                         | <u>245,165</u> | <u>(39,033)</u>                  | <u>206,132</u>     |

**10. MOVEMENT IN FUNDS - continued**

A current year 12 months and prior year 12 months combined net movement in funds, included in the above are as follows:

|  | Incoming<br>resources<br>£ | Resources<br>expended<br>£ | Movement<br>in funds<br>£ |
|--|----------------------------|----------------------------|---------------------------|
| <b>Unrestricted funds</b>                  |                            |                            |                           |
| Families & Volunteers                      | 42,355                     | (72,607)                   | (30,252)                  |
| <b>Restricted funds</b>                    |                            |                            |                           |
| Early Help Grant                           | -                          | (2,149)                    | (2,149)                   |
| Big Lottery Funding                        | 193,147                    | (158,337)                  | 34,810                    |
| Children in Need                           | -                          | (30)                       | (30)                      |
| National Lottery Awards for All            | 1,651                      | -                          | 1,651                     |
| The Henry Smith Charity                    | -                          | (12,366)                   | (12,366)                  |
| Charities Aid Foundation                   | -                          | (3,659)                    | (3,659)                   |
| The KCC (Reconnect)                        | -                          | (14,537)                   | (14,537)                  |
| Colyer Fergusson Charitable Trust          | 30,000                     | (30,000)                   | -                         |
| The Phillip and Connie Phillips Foundation | 11,625                     | (17,619)                   | (5,994)                   |
| The Kent Community Fund                    | 27,374                     | (35,340)                   | (7,966)                   |
| Garfield Western                           | 35,001                     | (35,001)                   | -                         |
| Trust House Charitable Foundation          | 64,600                     | (63,141)                   | 1,459                     |
|  | <u>363,398</u>             | <u>(372,179)</u>           | <u>(8,781)</u>            |
| <b>TOTAL FUNDS</b>                         | <u>405,753</u>             | <u>(444,786)</u>           | <u>(39,033)</u>           |

**11. RELATED PARTY DISCLOSURES**

There were no related party transactions for the year ended 31 March 2025.

## HOME-START DOVER DISTRICT

DETAILED STATEMENT OF FINANCIAL ACTIVITIES  
for the Year Ended 31 March 2025

|                                 | 31.3.25<br>£   | 31.3.24<br>£   |
|---------------------------------|----------------|----------------|
| <b>INCOME AND ENDOWMENTS</b>    |                |                |
| <b>Donations and legacies</b>   |                |                |
| Donations, gifts and legacies   | 10,748         | 5,027          |
| Grants                          | 199,987        | 184,385        |
|                                 | <u>210,735</u> | <u>189,412</u> |
| <b>Investment income</b>        |                |                |
| Deposit account interest        | 2,584          | 3,022          |
| <b>Total incoming resources</b> | <u>213,319</u> | <u>192,434</u> |
| <b>EXPENDITURE</b>              |                |                |
| <b>Charitable activities</b>    |                |                |
| Wages                           | 149,122        | 150,096        |
| Social security                 | 2,303          | 3,391          |
| Pensions                        | 9,981          | 9,634          |
| Rent and room hire              | 15,379         | 23,756         |
| Insurance                       | 1,309          | 1,233          |
| Sundries                        | 6,630          | 6,534          |
| Forum and hardship expenses     | -              | 349            |
| Travelling and other expenses   | 6,492          | 12,638         |
| Subs & registration costs       | 1,360          | 364            |
| Welfare Costs                   | 3,817          | 8,912          |
| Plant and machinery             | 171            | 171            |
| Computer equipment              | 1,240          | 1,240          |
|                                 | <u>197,804</u> | <u>218,318</u> |
| <b>Support costs</b>            |                |                |
| <b>Management</b>               |                |                |
| Telephone                       | 1,164          | 934            |
| Postage and stationery          | 1,087          | 1,121          |
| Provisions and sundries         | 2,865          | 1,456          |
| Home-Start TIG fee              | 3,464          | 5,043          |
|                                 | <u>8,580</u>   | <u>8,554</u>   |
| <b>Finance</b>                  |                |                |
| Bank charges                    | 210            | 221            |
| <b>Information technology</b>   |                |                |
| Repairs and renewals            | 2,428          | 4,366          |

This page does not form part of the statutory financial statements

HOME-START DOVER DISTRICT

DETAILED STATEMENT OF FINANCIAL ACTIVITIES  
for the Year Ended 31 March 2025

|                                 | 31.3.25        | 31.3.24         |
|---------------------------------|----------------|-----------------|
|                                 | £              | £               |
| <b>Information technology</b>   |                |                 |
| <b>Governance costs</b>         |                |                 |
| Auditors' remuneration          | 2,226          | 2,033           |
| AGM Expenses                    | 16             | 30              |
|                                 | <u>2,242</u>   | <u>2,063</u>    |
| Total resources expended        | <u>211,264</u> | <u>233,522</u>  |
| <b>Net income/(expenditure)</b> | <u>2,055</u>   | <u>(41,088)</u> |