



# Annual Report

## April 2020 - March 2021

Resolven Building Blocks  
Building Blocks Family Centre  
Resolven, Neath, SA11 4AB  
Tel: 01639 710076  
[www.buildingblocksfamilycentre.co.uk](http://www.buildingblocksfamilycentre.co.uk)

Registered Charity No. 1101314  
Registered Company No. 04589051

# Contents

Chairpersons Foreword	Page 3
Key achievements	Page 4
Employee Awards	Page 5
Jeremy Miles	Page 6
Trustees, Staff and Volunteers	Pages 7—10
Employee Training	Page 11
Childcare Services	Page 12 –13
Well-being 4 me	Pages 14
Talk it Through project	Pages 15
Talk2gether	Pages 16—17
Bounce Back Project	Pages 18 –19
Families Together 2	Pages 20 –22
Food Bank	Pages 23
Forward steps	Pages 25 –26
Mindfulness club pilot	Pages 28—29
Safe and Sound project	Pages 30—31
Working During the Pandemic	Pages 32
Funders, Supporters, Members	Page 33—35
Fundraising & Bonzo Bear Day	Page 36

# Chairpersons Foreword

I am pleased to introduce our 19th Building Blocks Family Centre Annual Report

This year we have had overcome various challenges due to Covid 19 pandemic, Our team have had to continually adapt our services to changing guidelines to ensure that our families and children still received the high standard of support that we provide. We also had to face the ongoing and the financial implications to ensure that we could come through the pandemic.



Once again our team, went above and beyond to ensure that the services provided during the pandemic met the ever changing needs of our families during an unprecedented year. As Chairperson, I am honoured to be in a position where during the last year over 813 children have been supported and 1734 parents

On behalf of the Trustees, I would like to thank the staff and volunteers for being there when we needed them, adjusting their roles accordingly and being there for families who needed them at the most crucial time. You have come together as a team and kept our services going, thank you!

I would also like to thank Ceri Pritchard for going above and beyond her role who managed to keep our Family Centre alive in the most darkest of times we have faced.

I would also like to thank all the funders that supported us during the pandemic which enabled us to diversify our services to meet the challenges of the pandemic.

We are looking forward to the new year ahead and will carry on “building the foundations of our families’ futures” together.

Nicola Gnojek

Chairperson

# Foreword from our Patron



The last year has been a particularly challenging one for all of us, as we battled against the pandemic. We owe a big debt of gratitude to those heroes in health, care services, the police, education, other key workers and to countless volunteers. We have relied on them all to help us through the crisis. At the same time, we have all done our bit to keep things going, often under the most difficult of conditions.

Inevitably, the impact has been felt by nurseries and childcare providers like Building Blocks, who play both a vital part in the local community and make an important contribution to our local economy. For those workers who have no choice but to continue working outside their home, knowing that their children are cared for by skilled, trusted child care workers here, means one less worry on their shoulders.

Working with young children and their families is physically and emotionally challenging work, even in normal times. It requires a superhuman level of patience and understanding, but early learning and child care are possibly the most important professions a person can choose. They are also possibly the most challenging. Thank you to Ceri and all the team for everything you do, I very much value being a patron of Resolven Building Blocks and look forward to continuing working with you and the local community.

Jeremy Miles MS

# Key Achievements

1. We have supported 162 children with disabilities or additional needs to help improve their quality of life through the development of social skills, speech, language and communication skills, confidence, self-esteem, independence skills.
2. We have supported 212 parents to help improve their parenting skills and improve their quality of life to help give their children the best start in life.
3. We have provided 41 children with free or subsidised childcare places to help build their early years development skills.
4. We have supported 924 adults and 610 children gained access to our food bank provision supporting families living in food poverty across Neath Port Talbot.
5. We have supported 276 parents to re-train to enable them to gain employment or retain their employment.
6. We have supported 322 parents to improve the quality of care that they provide their children.
7. We adapted our support services during the pandemic to meet families and children's needs during a difficult time.

# Employee Awards

Every year at Resolven Building Blocks we seek the views and opinions of our staff regarding the staff member they believe has gone above and beyond in their work roles with us. The awards are presented every year at our Annual General Meeting.

## Childcare Team—Employee of the Year 2020

Alisha Gnojek

## Manager of the Year 2020

Ceri Pritchard

## Community team employee of the year—2020

Rhian Peek

## Star of the Year 2020

Caitlin Gnojek





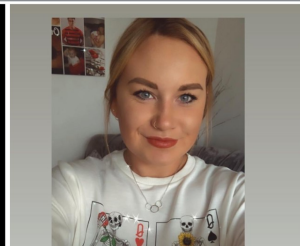
# Trustees and Volunteers

Name of Trustee	Role	Other Information
Mrs Nicola Gnojek	Chairperson	
Mrs Janet Harris	Secretary/Companies House Secretary	
Miss Hannah Morgan	Treasurer	
Miss Nicola Macey	Trustee/Director	
Mrs Caryn Williams	Trustee/Director	Appointed 12.4.20—resigned
Mrs Amy Benns	Trustee/Director	Resigned 3.3.21
Mrs Julie Howes	Trustee/Director	Appointed



**THANK YOU TO OUR TRUSTEES**

WE CAN'T DO IT WITHOUT YOU!



## Staffing/Casual Staff

Name	Job Title	Part time/ full time/ casual	Other Information
Ceri Pritchard	Centre Manager	Full Time	
Jeff Pritchard	Caretaker	Part Time	
Stacey Morgan	Childcare Manager	Part Time	
Natasha Pike	Childcare worker/ Children's One to one support worker	Part Time	
Liz Church	Childcare Manager	Part Time	
Aimee Hutchings	Childcare worker	Part Time	
Emma Grove	Childcare worker	Part Time	
Paula Salazar De Cos	Childcare worker /Speech, Lan- guage and Communication Chidlrens Worker	Full Time	
Samantha Gillespie	Childcare worker	Part Time	
Zoe Ganderton	Childcare worker	Part Time	
Casey Sullivan	Childcare worker	Part Time	
Natasha Williams	Childcare Worker	Part Time	
Alisha Ace	Childcare worker	Part Time	
Hannah Howells	Childcare Worker	Part Time	
Jenna Morgan	Childcare worker	Part Time	Left
Kirstie Morgan	Childcare Worker	Part Time	
Leanne Parry	Family Disability Worker	Part Time	Appointed 1/8/2020 Left 15/3/2021
Caitlin Gnojek	Assistant Family Development Officer	Full Time	
Christina James	Assistant Family development officer / one to one support worker	Part Time	
Gemma Bates	Assistant Family development officer	Part Time	
Shadean Thomas	Family Disability Worker	Part Time	
Stacey Harris	Family Disability Worker	Full Time	
Lauren Jones	Trainee Administrator	Part Time	Appointed 6/9/2020
Emma Davies	Administrator	Part Time	Left



## Staffing/Casual Staff

Name	Job Title	Part Time/ full	Other Information
Shannon Chambers	Speech, Language and Communication Development Manager	Part Time	
Laura Arnold	Disability and Family Play Co-ordinator	Part Time	
Rhian Peek	Childcare Worker/ Family, Play and Transition Worker /Food	Full Time	
Cherelle Mead	Family disability mental health and wellbeing officer	Part Time	
Rebecca Parfitt	Office Manager	Full Time	
Ellie Morgan	Administrator/Childcare	Casual	
Lauren Gnojek	Administrator/Childcare	Casual	
William Pritchard	Administrator	Casual	
Ellie Morgan	Administrator	Casual	



# Staff Training

Fire Awareness

The SEND code of practice

Improving children's learning through play

Child exploitation Level 2

Adverse childhood experiences Level 2

Autism Awareness Level 2

Health and Safety in education

Manual Handling

Harmful sexual behaviours

Sustained shared thinking in the early years

How to feed via a Naso-Gastric tube

Equality and inclusion in the early years

Safer people handling

Looked after children

Equality and diversity

Children's rights

Online safety

Being a key people in an early years setting

Providing a health food environment in the early years

Characteristics of effective teaching and early years learning

Trafficking and modern day slavery awareness

Mental wellbeing in children and young people level 2

Honour based abuse and arranged marriages

Infection control

Child protection Level 2

Child protection refresher

Child Neglect Level 2

ADHD awareness Level 2

Dyslexia Awareness Level 2

Overcoming loneliness

Child safeguarding

Substance misuse

Domestic abuse

First aid

Mindfulness in the classroom

Food hygiene

GDPR

Young carers

Reflective practice

Female genital mutilation

# Childcare Services

It has been a difficult year for our childcare provision with our childcare closing its doors for the first time ever since opening in 2007. The pandemic meant that we had to temporarily close. We re-opened our doors in July 2020 and upon returning, we recognised the impact that recent events would have had on the children's wellbeing and the challenges they might face on returning. We ensured all staff understood how to support all children on their return so that they could recognise any signs of upset, anxiety or stress in order to support them accordingly. Clear, developmental stage appropriate communication was provided to support children to make sense of the new guidelines on social distancing and hygiene through signs and displays, conversations, key workers, songs and games etc.

Our childcare service has been challenged during the year with lower numbers of children accessing our childcare services. The team decided to help our children re-settle into the childcare environment and support both children and parents with separation anxiety that has increased since returning from the lockdown. Alongside this our team have been working to improve the environment of our facilities by ensuring our children have stimulating environment to help them catch up with their child development milestones that the pandemic has impacted.



# Well-being 4 Me

We completed our third year of the service which is funded by Families First . Due to the pandemic we had to change and adapt the way our service was delivered, as we could not run our usual face to face sessions for 7 months out of the year. We instead came up with new ways of supporting children and families through the difficult time period. Therefore as we could not work children with disabilities face to face we developed the following:

- Tailored booklets for every child with a disability using our service was created and delivered to children so parents could continue supporting their children at home.
- Transition workshops were held via Facebook which we had over 31 parents join to get a better understanding on how to support their child with transitions back to school after the lockdown.
- Activities, advice and information were posted to our private Facebook group which had 106 members.  
34, 1-1 skype sessions were delivered to keep in contact with children and provide fun activities during the lockdown period.
- Transition booklets were created and provided to over 70 families.

100% reported an improvement in their families resilience and family relationship.



# Their Journey, Our Impact

C is an 11-year-old girl. She started sessions with us in March but was only able to attend 2 before sessions had to stop due to Covid-19. We kept in contact through lockdown and supported the family through skype sessions, phone calls, emails and the Facebook page.

Mum raised concerns around Cs behaviour and felt a lot of it was due to her being anxious about starting comprehensive school in September. We pointed her in the direction of Transition courses and also provided them with a transition booklet. Mum completed the training and also attended our Facebook workshop. We also created an anger management booklet with strategies that would support C in managing and reducing any meltdowns.

Mum said she has noticed an improvement in C's behaviour and was pleased with her progress. Sessions were then able to resume and C attended all 12 face to face sessions. We did a range of activities relating to her targets such as calm down activities, anger management, group games to encourage socialisation and activities around feelings and emotions. When finishing mum stated that C has 'learnt how to talk about her issues and it helps to reduce her anger. She has learnt ways to cope, which has helped to lower the meltdowns. She has felt comfortable and enjoyed coming, she is going to miss it.'



# Talk it Through

We were successful in securing 3 years of funding from the National Lottery Community Fund in 2020 as a result of a successful 12 month pilot project that was delivered between 2019-2020.

Talk it Through offers counselling sessions tailored specifically for children and young people with disabilities. We provide peer support group to enable children and young people with disabilities to interact with their peers who have similar experiences. We deliver a variety of workshops for parents specifically on mental health to provide them with tools and techniques to support their children and young people with disabilities struggling with their mental health. The service is a whole family approach.

We have helped 42 children and young people with disabilities build their emotional resilience and well-being

122 parents gained confidence and skills in dealing with their child with disability emotions.

As the project commenced during the pandemic it meant that we had to adapt some of the original project, the peer group could not be run however we commenced 'Pandemic pals' which was a pen pal service where children and young people could seek peer support through email or letters.

Counselling session went online or via telephone rather than face to face. Parents support was delivered via email, video conferencing and telephone. Online videos on parenting, mental health and coping strategies during lockdowns – 26 videos with over 20,000 views from parents.

Building Blocks Family Centre

Cronfa GYMUNEDOL COMMUNITY FUND

Understanding and managing anxiety in neurodiverse children & young people

A FREE online workshop for parents and carers

Friday 26th March 10.00am - Noon

The talk will cover understanding anxiety, common triggers for neurodiverse children and a range of therapeutic techniques including CBT and mindfulness.

To book a place email cherellemead@buildingblocksfamilycentre.co.uk Or call 07742250132

Elle Empowers Psychosomatic therapy & empowerment

"This talk gave me a much better understanding of what my son is going through, and how to offer him support" K.S. - Attendee 2020

# Their Journey, Our Impact

B mum came through to the project from our Forward Steps as she was struggling with B behaviours and managing her emotions. B would rage and kick off frequently and didn't understand their emotions or what to do with them. B was the only one of their siblings with a disability and found it difficult to express themselves and communicate. B confidence was very low and B would say they hated themselves. Mum had been trying to get support for B but no one seemed to be able to help, B was on waiting lists for support and had had ELSA sessions through the school which hadn't helped.

B mum came to our online workshop "Understanding and managing ASD and anxiety" where she learned some coping techniques and about the links between emotional literacy, sensory needs, anxiety and behaviour.

B then started having online sessions with out counsellor during lock-down. B was unsure at first, but after a few sessions started to engage really well and looked forward to each session. B learnt positive self-talk and self-nurturing, mindfulness and how to express emotions. During the sessions I would send out exercise or resources for B to use including a plant which we watered each morning as a reminder to grow their self-kindness along with their kindness plant.

B self-scored a 1 out of 5 for confidence on her first session, and a 3.5 out of 5 after 8 sessions. B was offered to continue with support from our project by attending our peer support wellbeing group but unfortunately due to mums works commitments B was unable to attend. We continue to invite mum to any workshops and support sessions and she knows we are here to chat if she needs us.

**'I really enjoy your feedback as I know I can take something away from it to help, B has really benefited from the sessions'**

B has now been referred to the integrated autism service and has a social worker who has thanked us as she responded well to the sessions. We continue to be in contact and support where we can.



# Talk2gether

Talk2Gether is a project funded by BBC Children in Need, this service helps to provide a fun and nurturing environment, with a range of play activities that will help promote children's speech, language and communication development. Through a range of positive play opportunities children will be encouraged to develop their skills:

**Speech      Language      Listening      Social      Confidence**

The Talk2gether service offers 2.5 hours twice a week for a 10 week period for children aged 0-5 years. We offer our services in schools and based in Building Blocks. We had to adapt our services during the year due to the pandemic, which meant stopping face to face delivery and look at alternative ways of delivering sessions. Our team adapted quickly working with children at home via video conferencing. Introducing a baby and parent sessions online to help parents who were concerned about their child SLC development due to the pandemic and offering 10 weeks of support via video conferencing. We developed videos on how to support your child at home with their speech, language and communication skills. Provided advice and support to those families who were struggling due to the lockdown.

During the year we have been able to support children with a whole range of difficulties and additional needs some of these are: speech disorder, sensory progressive disorder, global development delay, hearing difficulties, mental health or emotional difficulties, anger issues, social anxiety, attachment issues, low self-esteem and challenging behaviour, speech and language developmental delay and verbal and non-verbal communication difficulties, listening and attention difficulties.

49 children supported to improve their speech, language and communication skills, reduce frustration and develop friendships.

We work hard to provide inclusiveness for all children. Since the start of the project in 2016 we have supported 230 children in our Talk2gether service.

# Their Journey, Our Impact

L came into our setting this year with reduced vocabulary and L understand and listening skills were delayed by a year. Mam was concerned that L wouldn't be ready for school as L was delayed in all areas of development and had limited social and communications skills with their peers or adults and suspected Autism Spectrum Disorder.



L had never been to a childcare setting before however really enjoyed coming to the session. L engaged well in the SLC activities that we had tailored to L to help L expand their vocabulary, verbal and understanding. We set up activities to build on listening and attention skills that followed L interests, L loved dinosaurs so our activities were based around a dinosaur theme and we encouraged listening skills by asking L to find the dinosaurs roar. We used a wide range of activities and resources to help L development including pictures, signs, gestures, high interest games, rewards and visual timers/timelines all with intention of L enjoying, engaging and learning.

We provided L with 1-1 support for around 5 weeks and as L had progressed so well it was decided that L would gain more from being in a small group of children that were already working on their social and communication skills. L loved the group environment and was on the stepping stones for being ready to be able to attend school. Mam never thought L would progress and develop as much as they had and achieved this in such a small space of time. L development in SLC had caught up with the stage of development they should have been for their age.

L is now happy in school making lots of friends and learning new things in his education with a few hours 1-1 support for sensory support.

# Bounce Back Project

Bounce Back was a Community Foundation Wales Recovery Fund project which delivered 6 months of sessions for children with disabilities and additional needs including emotional and wellbeing needs who had been affected in some way by the pandemic. 40 children aged 3—11 years accessed the service, with each child receiving 1-1 care with sessions tailored around the support they required, with most of the children needing support in developing emotional resilience, building self-esteem, confidence and expressing their feelings.



The sessions provided children with a 1-1 children support worker who worked with the family and child to develop an individual play plan tailored to the needs of the child. This plan would aid with the monitoring and progress of the child over the 12 weeks of support. Parents were supported by having the tools to support their child with any needs which were identified during the families assessment.

Sessions were tailored around each individual child's needs and developmental needs with a variety of activities to engage the children in sessions which included:

- Arts and crafts – expressive arts, colouring and painting
- Calming activities – breathing techniques, walking, sensory play
- Emotional expression – positivity and calming jars, visions boards, emotion boards

Holiday club sessions were also held which were focused around mindfulness, emotions and coping with feelings during an emergency situation such as a pandemic. At the end of the service, evaluations were completed by the parents and age/development appropriate evaluations were carried out with the children.

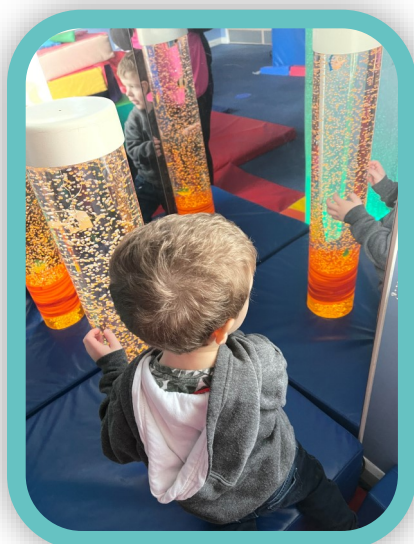
## Impact of the Service

33 parents reported an improvement in their child emotional resilience

The pandemic was still effecting some of the families who were accessing the service, with some of the children having to isolate which meant they were not able to complete the session in the building, staff adapted how they delivered the service for the families effected by creating 'Bounce back packs' which had information and activities and tools so that families were still having some form of support. Staff would also keep in regular contact by offering online sessions and phone calls to the family and child.

78% of children felt they had learned new skills around coping strategies

100% children said they felt comfortable in talking and expressing their feelings



# Their Journey, Our Impact

A parent contacted us to discuss concerns regarding their nearly 2 year old child. She explained that Child L was displaying behaviours that she felt could be a sign of autism but her biggest concern was that due to the pandemic, child L had not been around any other children and had only seen a few close relatives. She was finding it difficult to work from home as L would not leave her side and he didn't even like being in a different room to her.

We decided to prioritise L's separation anxiety and we offered him a placement with our bounce back project. When L entered the building, he was very upset and it was evident that he would not be able to do long sessions with us, instead we offered two 45 sessions per week and to ensure consistency, L had the same member of staff with him for each session.

He would not enter a room with other children or other staff members, instead we set up the sensory room for L and this was the room he would prefer to be in. After a few weeks of this approach, we introduced one or two children into the room with him and although at first he was slightly unsettled, he got used to this and seemed a lot happier. We were then able to build up the time he was with us to 2 hours.

Now, 3 months on, L has begun to explore our setting further, he enjoys going outside to play and has started going into the room with other children for short amount of time. His mother has said that she has seen a big improvement at home, and he will now play with some toys by himself. We are currently in the process of applying for a 1-1 support session for L so that he can attend the setting more hours with a 1-1 staff member to meet his developmental needs.

# Families Together 2

Families Together 2 is a project funded by the National Lottery Community Fund. Our project provides tailored family led support services that provide families in Neath Port Talbot with the opportunity to improve their family quality of life. We have now completed our third year of our project and we will now be entering the final year of our project. Over the past year we have supported families by providing:

- Tailored parenting support
- Accessible training and workshops in a range of subjects
- Disabled childcare support
- Transition support sessions for children
- Employability support
- Volunteering opportunities
- Information, signposting and advice
- Ongoing support during the COVID-19 pandemic

During the third year of our project we have provided support to 295 individuals. They have accessed our support in a range of ways including accessing our workshops, signposting or receiving childcare support.

Over year 3 of our project we were forced to adapt our delivery due to the COVID-19 pandemic. We realised quickly that we would no longer be able to run our face to face service and instead adapted to a virtual service to support our families. We did this by continuing to signpost our families to services that were still able to support them and having regular phone call contact with them. We also created an online support platform with the creation of our 'Moment A Day' page. We use this page to post information on service, provide training workshops, activity booklets, coffee evenings, quiz nights and updates from families across Neath Port Talbot. This virtual space was a positive place on social media during the pandemic where families could support each other through a difficult time.



We were forced to adapt our delivery due to the COVID-19 pandemic. We realised quickly that we would no longer be able to run our face to face service and instead adapted to a virtual service to support our families. We did this by continuing to signpost our families to services that were still able to support them and having regular phone call contact with them. We also created an online support platform with the creation of our 'Moment a Day' page. We use this page to post information on service, provide training workshops, activity booklets, and coffee evenings, and quiz nights and updates from families across Neath Port Talbot.

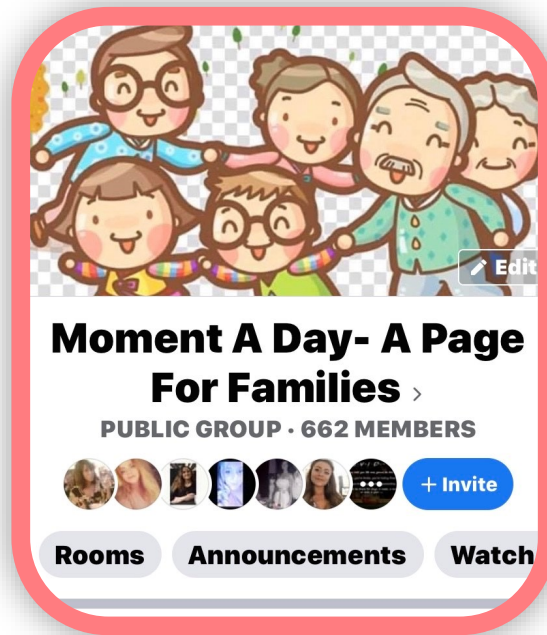
**Our page has continued to grow and now has 717 members who continue to access our support virtually.**

As restrictions began to lift following the COVID-19 pandemic, we began Time2Transition sessions for children aged 0-2 who had been affected by the pandemic and 2-4 year olds who were beginning their transition in to school. In these groups we provided 24 children with the opportunity to reduce separation anxiety, build confidence and build on their development milestones through play based sessions.

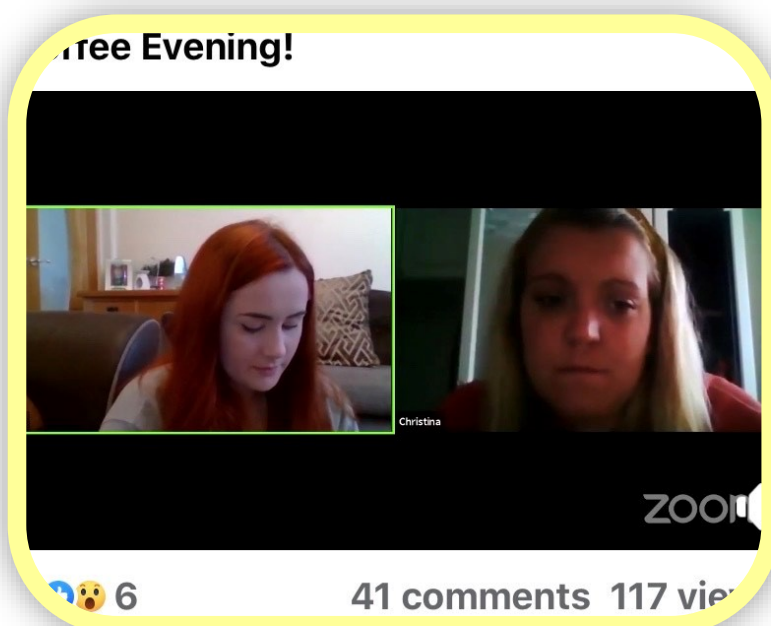
**116 families felt their family quality of life have improved as well as 92 families felt their parenting skills have improved**



Our members really enjoyed our virtual coffee evenings and quiz nights which started in May 2020. We covered a range of subjects including positivity, speech and language, building confidence, mindfulness and reducing stress. We received a lot of positive feedback about our live streams on Moment A Day, particularly that they “love the live streams, quizzes and especially the coffee evening. It is full of positivity and it’s lovely to talk to other parents and adults in a non-judgemental setting”



During the third year of our project we have provided support to 295 individuals.



# Building Blocks Food Bank

In April 2020 our food bank became an independent food bank in order to provide more support for families across Neath Port Talbot. At the start of the pandemic we saw a huge increase in the number of people using our food bank and our delivery service which was provided Neath Port Talbot wide.



Since becoming an independent food bank we have provided:

- 417 food parcels to families across Neath Port Talbot.
- Supported 924 adults.
- Supported 612 children.
- Delivered 390 parcels across Neath Port Talbot to those who would be unable to access due to lack of transport, isolation and disability.
- Provided Christmas presents for families facing financial hardship.

We now have a team of 12 volunteers who help with deliveries, creating parcels, collecting donations and stock rotations. Thank you to our funders, Community Foundation Wales, Awards for all Wales, WCVA Voluntary Emergency Fund, NPTCBC Food Poverty Grant .

**"I appreciate the help that I received today more than you know so thank you to all the staff"**

**"Thank you to everyone one that helped with it all this will never be forgotten"**

**"Without you, my kids would not be able to eat properly. I don't care about me but they are my world so I can never thank you enough"**



**WcVA  
CGGC**



# Forward Steps

The last year has seen the Forward Steps project having to make changes within how the service is delivered. Due to the Covid pandemic, support for families has been needed more than ever, with some of families needing an extension of the time they have support due to the challenges they are facing. At the end of September 2021, training was changed from being delivered face to face to being delivered remotely online, this worked well for the majority of families as it provided flexibility and has been more accommodating for them. The online training has been successful with good attendance being consistent throughout and it remains to be the main choice of training for families.

There has been an increase in the amount of referrals received for teenagers and older children; this has meant that training has needed to be adapted so that it's more beneficial for the parents/carers completing the training who have children within that age group. Weekly referrals have continued to be made to the service with a high number of families requiring support around their child's disability and managing challenging behaviour. There has also been an increase in children and young people needing more support around their mental health and wellbeing which has been significantly affected due to the pandemic.

During the upcoming months, the Forward Steps team look forward in continuing to support parents and families of children and young people with disabilities by offering advice, training and support tailored to each family's individual need.



# Their Journeys, Our Impact

A parent was referred to us regarding her daughter who had been placed on the ASD pathway. The parent was struggling with her daughter challenging behaviour at home, she was also refusing to attend school and she was struggling to sleep. The parent also wanted support to help her daughter improve her self-esteem and the parent wanted advice on how to help her daughter regulate her emotions better. A plan of support was agreed with the parent and attend our training programme being delivered online due to the pandemic. The training workshops provide parents with understanding and tools on understanding challenging behaviour, communication and setting boundaries and regulating emotions.

The parent informed us that they had learned a vast amount by attending our training programme and also had benefited from speaking to other parents in a similar situation to them. This made them not feel so alone. Alongside the training programme we also supported the family with phone calls, emails and text messages and kept in contact through difficult and challenging times. The Family Disability Workers provided the family with advice and information to help their daughter get a better sleep pattern and techniques and tips to help with their daughter meet her sensory needs. We were also able to help them with a referral through to Occupational Therapy.

The parent informed us that they had felt supported and the strategies implemented at home and having peer support from other parents really made a difference to their daughter and their family life.



# Mindfulness Club Pilot

We delivered 12 weeks of mindfulness club to 33 children from February – April 2021. The aim of the sessions was to help children aged 3 - 11 re-build their confidence, self-esteem and emotional resilience, and to help with low level anxiety such as separation anxiety, attachment issues and other low-level mental health issues that have developed due to the pandemic.

The sessions were split up into themes to allow the children to learn about each topic in depth, these included: - What is Mindfulness, Meditation, Gratitude, Emotions, Calming strategies, Mindful activities, Positivity, Resilience, Yoga, Apps & Technology, Kindness. Children had activity packs posted out weekly to them, with all the resources needed to engage in the sessions and create their own mental health tool kits. Due to the pandemic, all sessions were held online, and the children were put into 5 separate groups so class sizes were not overwhelming.

**33 children have improved self-confidence and self-esteem**

Children were able to get involved and share their experiences with others around the different topics being delivered, showing them that they are not alone in what they are experiencing and allowing opportunities to form new friendships. We did have the vision to move from online sessions to face-to-face delivery, however we felt it was safest to continue them online due to cases still being present in the area. We do not feel this compromised the project as the work was still delivered effectively and all children engaged and enjoyed it.

The pilot was funded by Third Sector Mental Health Service Provision, Swansea Bay University Health Board.

- 6 children aged 2- 3 years to have improved their attachment skills and emotional resilience
- 27 children had improved skills and understanding in managing their own mental well-being
- 27 children had improved emotional well-being



# Our Impact, Their Story

## Children Feedback

"I thought there was going to be a lot of meditation when I joined, but it wasn't. I learned lots of new things and my favourite part was doing the gratitude tree. When I feel upset I use the breathing exercise with the teddy bear and this makes me feel calmer and I feel ready for bed"

"I'm happy again and I know I'm not the only one that get sad sometimes"

"I liked the mindfulness club best because it showed me that other people have feelings like mine. I like to do mindful walking with my mum and sister and now when I do art sometimes I think about feelings to help me and it makes me feel calm"



# Our Impact, Their Story

## Parent Feedback

“My son joined the mindfulness club as he hasn't been able to do any of his social clubs etc. during lockdown and has missed interacting with peers. He sometimes struggles with his emotions and can have low self esteem. He was aware of mindfulness before he joined the club, however since participating in the club he has a greater understanding of what techniques to use to help him when he's feeling a certain way. He himself said that the club has helped him to 'see that other people my age also feel sad or worry sometimes'. He is much more comfortable now talking about emotions and feels less self conscious when he feels a certain way. Thank you for a wonderful club!”

“Due to COVID 19 I felt it was having a impact on my child's mental health and I decided to sign them up to the mindfulness club. Since attending the club they are much happier, it's had such a positive effect. They are using meditation regularly and they listen to calming music before they go to bed. This has been such a positive experience for my child”.





## Safe & Sound Project

The new changing facility has meant we have been able to ensure that children with disabilities in our care have been able to access good quality care and keep their dignity.

The wider impact of the project is that children with disabilities had the opportunity to have the same experiences as their peers without disabilities, meaning that children feel equal which brings confidence to a child's life. This will have a lasting effect on the children's lives as it helps with them being able to access a fully accessible service, empowering them with their independence and confidence.

We have also been able to train our staff and volunteers who work with children with disabilities and complex needs to use the hoist and equipment, enabling staff and volunteers to work with children safely and deliver high care to children with disabilities at our facility.

The hoist has been purchased and all sensory equipment is now in place, making it a wonderful and calm environment for children to be changed in with dignity. The room has really changed the opportunities that we can provide to children with disabilities at our facility. We have also been able to train individuals, 24 staff and volunteers in total to use the hoist safely.



# Their Journey, Our Impact

Child S is five years of age and has a diagnosis of global development delay with ongoing tests for other health conditions. Child S has a significant physical development delay and is currently unable to walk or crawl. Child S is getting older and it has meant that her 1-1 support worker is no longer able to lift her physically. Child S is totally dependent on an adult to meet her personal needs, it would not have been possible to change her without any changing equipment suitable for children with a physical disability. The hoist and changing bed ensures that Child S needs are being met in a suitable, dignified manner for her, ensuring she is safe and her physical needs are being met. It has meant that there are no barriers in placement with us and she can continue to attend the setting, which she has been attending since the age of 10 months.



# Working during the pandemic

## Lockdown – 24<sup>th</sup> March 2020 – July 2020

Covid-19 has been difficult for everyone and at Building Blocks Family Centre, we were no different. On the 23rd March 2020 we had to close our doors to the community for the first time in 12 years and unfortunately, many of our staff were placed on furlough as we could not continue to run our childcare services and we only had 2 parents who were key workers, who required childcare support so closing temporarily was a difficult decision for us. However, our project staff continued to work from home and we saw how we need to adapt our services to online delivery which meant we could support our families at a distance. Our biggest focus was adapting our food bank so that we could deliver parcels to families who couldn't physically leave their homes and we saw a heavy rise in food parcels with 101 parcels being delivered during lockdown period and they still continue to be high with families losing their work.

Our staff and volunteers were amazing and adapted quickly, making sure families were still receiving the support they needed during lockdown. As usual the team arose to the challenge. It was truly heart warming receiving the kind messages from families who we have been able to support and seeing that our staff and volunteers have been able to make a difference to their lives during such unprecedented times.



**Anonymous: "You have helped myself and my partner and children during this very difficult time and I am overwhelmed by the help you have given , to go out of your way to deliver food whilst I am low on money and my partner is out of work during this pandemic. Big thumbs up to you all"**

We also took to social media and started "moments a day" page which we encouraged residents in Neath Port Talbot to join. It was a place that was kept full of positivity throughout lock down. It was a place where people came together to share positive ideas and activities through the pandemic and keep upbeat, when we have been surrounded by such devastation.

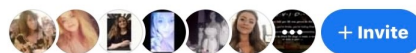
We've also held virtual quizzes for children, when connecting with their friends was so difficult due to school closures. We held regular coffee evenings through Facebook, to enable people to connect especially for those who felt isolated, lonely or struggling in such a difficult time. We also recorded podcasts to give our families lots of resources to support their families at home such as "how to help your child with meditation", "helping your child develop their speech and language", "how to support your child's mental health during lockdown" and so many more.

We held online workshops to help parents who are struggling with their sleep, children with challenging behaviour and transitioning to comprehensive school.



### **Moment A Day- A Page For Families >**

**PUBLIC GROUP · 662 MEMBERS**



**Rooms   Announcements   Watch**

**Anonymous: "Thank you Building Blocks for running this page, it has been my go to page during lockdown, when everything was doom and gloom I knew if I went to your page it would be happy and full of positivity which I really needed some days, so thank you"**

Our

Talk2gether team have continued to deliver our speech, language and communication support services online for children under the age of 5. This has meant that children have continued to get the early intervention

Our Talk2gether team continued to deliver our speech, language and communication support services online for children under the age of 5. This meant that children continued to get the early intervention support that they really need during lockdown, especially with childcare and schools closed.

Our Talk it Through service was also busy during the pandemic, making sure children with disabilities and their families received much needed emotional and well-being support, by providing online counselling, toolkits and weekly videos providing tips to keep calm and manage anxiety and emotional well-being.

Through lockdown our teams ensured that families didn't feel abandoned, alone or struggling and kept in regular contact with them making sure they got the right support at the right time or by just being that listening ear in such awful times.

**Anonymous: "Building Blocks staff has continued to provide much needed support during these unpredictable times and has ensured and adapted support that I received. Christina (Family Development Officer) has listened to my concerns particularly about my children's emotional well-being and she has found ways for me to support them at home, so thank you"**

...a listen to my meditation guide for children. This gives you an idea on how to meditate with your child and you can play this podcast to use with your children. I have a the script if you would like one to try it out for yourself

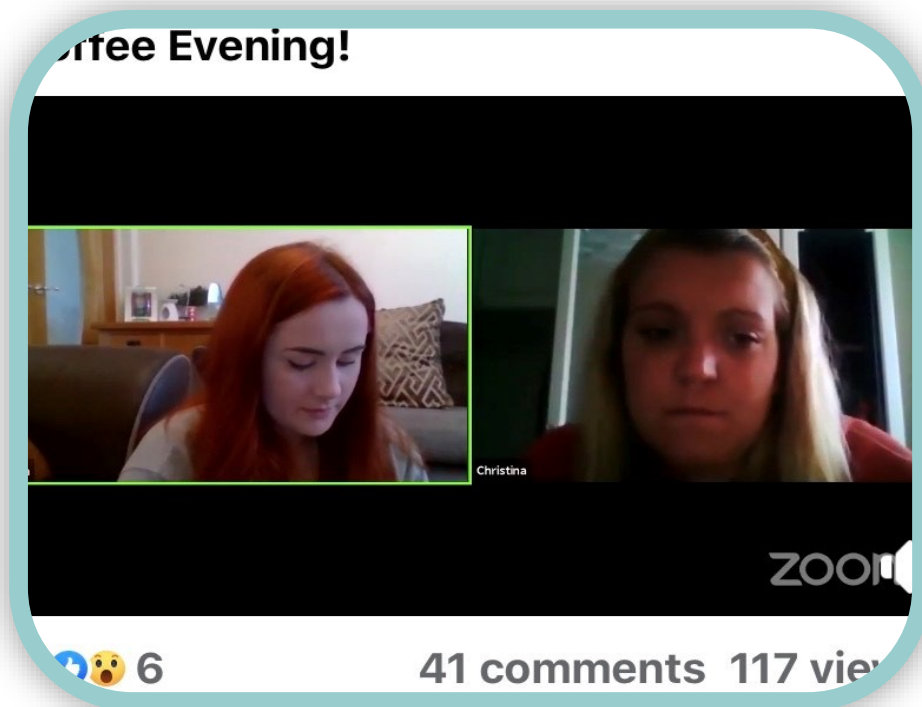


ANCHOR.FM

**meditation demonstration by Coffee**  
• A podcast on Anchor



During lockdown, if it wasn't for the support of the Moondance Foundation, Awards for All Wales, Community Foundation in Wales, Pen y Cy-moedd, Neath Port Talbot CVS (ICF, Comic Relief, Voluntary Emergency Fund), Edward Gosling Foundation, Marsh Charitable Trust, Muirhall Energy, WCVA Voluntary Emergency Fund, BBC Children In Need and National Lottery Community Fund, WCVA Thrive and Survive, Welsh Government Funding for their grants and funding support during this time, without their support we wouldn't be here today.



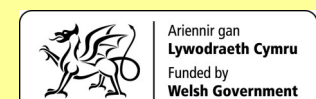
We also had a great deal of support from Neath Port Talbot Council for Voluntary Service, ensuring that we were able to keep our doors open to the community, making the connections and a listening ear at very difficult time for us.

We know more than ever the demand for our services is increasing and families need us more now than ever before. We have re-opened our door once more and we will continue to keep delivering the support services our children and families rely on for.

# Funders

We would like to thank the continuing support from our funders over the last year, without their support and commitment to us then we would not be able to reach those most in need.

- National Lottery Community Fund
- BBC Children in Need
- NPTCBC Families First
- Swansea CVS - ICF Funding
- WCVA Voluntary Emergency Fund
- Neath Port Talbot County Borough Council - Childcare Grant
- Moondance Foundation
- Edward Gosling Foundation
- Community Foundation Wales
- Neath Port Talbot County Borough Council – CWTCH Grant
- Neath Port Talbot County Borough Council – Childcare Offer Grant
- Neath Port Talbot County Borough Council – Childcare Sustainability Grant
- Marsh Christian Trust
- Pen y Cymoedd
- Neath Port Talbot County Borough Council – Voluntary Service Emergency Fund
- Neath Port Talbot County Borough Council – Food Poverty Grant
- Welsh Government – Tier 1 – Mental Health Funding
- Neath Port Talbot CVS – ICF Funding
- Neath Port Talbot CVS – Comic Relief
- WCVA Third Sector - Survive





# Thank you Members and Supporters

We would also like to thank the continued financial support from our members and supporters. For helping us raise funds through supporting our fundraising events, monthly donations, and all our fundraising efforts, We really can't do it without your continued support.

## Fundraising

We would like to thank the efforts of our fundraising volunteers who over the last year have continued to ensure that local fundraising events and raffles are held in order to raise funds for the charity.

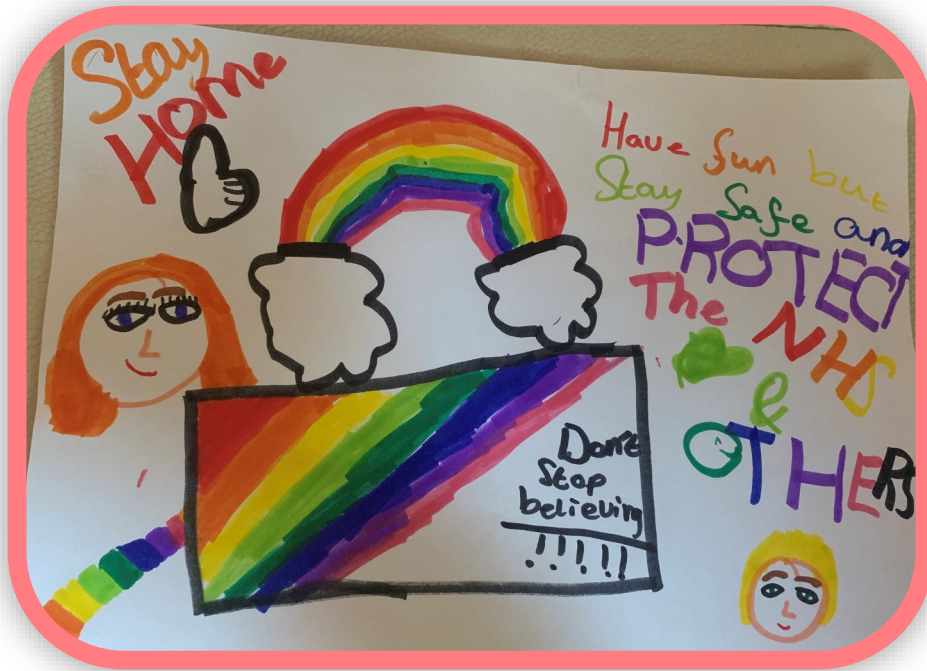
- Sponsored Walk Day
- Sponsored Hunger Day



## Bonzo Bear Day

This year we saw the introduction of our first Bonzo Bear Day held on Friday 25th October 2020. Bonzo Bear our mascot promoted all the good work the charity has been doing over the year and raising awareness to families of our existence. Bonzo Bear day was filled with lots of fun activities.





### **Resolven Building Blocks**

c/o Building Blocks Family Centre

Resolven ICC

Resolven

Neath

SA11 4AB

Tel: 01639 710076

Email: [office@buildingblocksfamilycentre.co.uk](mailto:office@buildingblocksfamilycentre.co.uk)

[www.buildingblocksfamilycentre.co.uk](http://www.buildingblocksfamilycentre.co.uk)



Building Blocks Family centre



@BBFamilyCentre



bbfcresolven

Registered Charity No. 1101314

Registered Company No. 4589051

**REGISTERED COMPANY NUMBER: 04589051**  
**REGISTERED CHARITY NUMBER: 1101314**

**UNAUDITED FINANCIAL STATEMENTS  
FOR THE YEAR ENDED  
31 MARCH 2021**

**FOR  
RESOLVEN BUILDING BLOCKS**

Bevan Buckland LLP  
Ground Floor  
Cardigan House  
Castle Court  
Swansea Enterprise Park  
Swansea  
SA7 9LA

## **RESOLVEN BUILDING BLOCKS**

### **CONTENTS OF THE FINANCIAL STATEMENTS FOR THE YEAR ENDED 31 MARCH 2021**

	<b>Page</b>
<b>Report of the Trustees</b>	<b>1 to 8</b>
<b>Independent Examiner's Report</b>	<b>9</b>
<b>Statement of Financial Activities</b>	<b>10</b>
<b>Balance Sheet</b>	<b>11 to 12</b>
<b>Cash Flow Statement</b>	<b>13</b>
<b>Notes to the Cash Flow Statement</b>	<b>14</b>
<b>Notes to the Financial Statements</b>	<b>15 to 27</b>

**RESOLVEN BUILDING BLOCKS**  
**REPORT OF THE TRUSTEES**  
**FOR THE YEAR ENDED 31 MARCH 2021**

The trustees who are also directors of the charity for the purposes of the Companies Act 2006, present their report with the financial statements of the charity for the year ended 31 March 2021. The trustees have adopted the provisions of Accounting and Reporting by Charities: Statement of Recommended Practice applicable to charities preparing their accounts in accordance with the Financial Reporting Standard applicable in the UK and Republic of Ireland (FRS 102) (effective 1 January 2019).

**OBJECTIVES AND ACTIVITIES**

Working Name: Building Blocks Family Centre

**Vision**

Building the foundations of our family's futures

**Mission Statement**

Building Blocks Family Centre provides a dedicated family service in the Neath Port Talbot area including family support, childcare, youth provision and training.

**We aim to:**

- To improve the quality of life of all children and families living in poverty or at a disadvantage in Neath Port Talbot.
- To improve the quality of children and young people and their families affected by disability.
- To enable residents of Neath Port Talbot to access employment, volunteering and training by providing childcare
- To provide a quality service that reflects identified needs of children, young people and families living in Neath Port Talbot
- To promote and provide opportunities for families to improve their health and wellbeing

**RESOLVEN BUILDING BLOCKS**  
**REPORT OF THE TRUSTEES**  
**FOR THE YEAR ENDED 31 MARCH 2021**

**OBJECTIVES AND ACTIVITIES**

**Objectives and activities**

**We achieve our aims by delivering:**

<b>Service</b>	<b>Description</b>
Talk it Through	Counselling sessions tailored specifically for children and young people with disabilities; peer support group to enable children and young people with disabilities to interact with their peers who have similar experiences; Workshops for parents, specifically on mental health, to provide them with tools and techniques to support their children and young people with disabilities.
Wellbeing 4 Me	A term time service that offers weekly play sessions for children and young people with a disability. Parent toddler sessions are delivered for families with children aged 0-3, to help encourage and support their child's development and work towards their early year's milestones. The sessions offer the opportunity for them to socialise together, make new friends, build confidence and increase their overall wellbeing.
Talk together	We support children 0 - 5 years with their speech, language and communication needs by offering a fun and nurturing environment, with a range of play activities that help promote children's development.
Forward Steps	Provides families who have a child/child with a disability with support to help strengthen families, and work with them to provide tailored support to suit their needs including therapeutic emotional support.
Families Together 2	A family led support services which enable families to get the best start in life. The aim is to empower families to build vital skills such as parenting, employability, confidence and provide advocacy to ensure families have the best support to meet their needs.
Food bank	Offering a delivery service once a week to our families across Neath Port Talbot which is manned by our volunteers and staff.
Childcare	We offer affordable and subsidised childcare for children aged 0-12 years for parents to return to education, work and volunteering.
Specialised One-To-One Disabled Childcare	We provide one to one childcare support for disabled children.
Family Hub and Family	Our centre is used on a regular basis by a variety of different services such as play therapy, training and family contact space.
Recycle Uniform Shop	Recycling shop offering free uniform to the community of Resolven.

**Public benefit**

During the year the Charity had due regard to the commission's public benefit guidance.

**RESOLVEN BUILDING BLOCKS**  
**REPORT OF THE TRUSTEES**  
**FOR THE YEAR ENDED 31 MARCH 2021**

**ACHIEVEMENT AND PERFORMANCE**

The charity has had a very good year delivering on all our objects and funded projects.

**Key Achievements**

1. We have supported 162 children with disabilities or additional needs to help improve their quality of life through the development of social skills, speech, language and communication skills, confidence, self-esteem and independence skills.
2. We have supported 212 parents to help improve their parenting skills and improve their quality of life to help give their children the best start in life.
3. We have provided 41 children with free or subsidised childcare places to help build their early years development skills.
4. We have supported 924 adults and 610 children gain access to our food bank provision supporting families living in food poverty across Neath Port Talbot.
5. We have supported 276 parents to re-train to enable them to gain employment, helped retain their employment or gain employment.
6. We have supported 322 parents to improve the quality of care they provide their children with disabilities.
7. 58 families with children with disabilities have received dedicated support with their mental health and well-being.
8. 94 children accessed dedicated support with their mental health and well-being.



**RESOLVEN BUILDING BLOCKS**  
**REPORT OF THE TRUSTEES**  
**FOR THE YEAR ENDED 31 MARCH 2021**

**FINANCIAL REVIEW**

**Principal funding sources**

We would like to thank all our funders who have supported us over the past year. Without their continued support, we would not be able to provide our dedicated services.

BBC Children in Need  
Community Foundation Wales  
Consortia with Interplay - Families First  
Edward Gosling Foundation  
IFAN Grant - Food Bank  
Marsh Christian Trust  
Moondance Foundation  
Neath Port Talbot County Borough Council  
Neath Port Talbot CVS  
Pen y Cymoedd  
Swansea CVS - ICF Funding  
The National Lottery Community Fund  
Wales Council for Voluntary Action (WCVA)  
Welsh Government - Tier 1 - Mental Health Funding

**BBC Children in Need**

The BBC Children in Need funding has been provided to deliver the Talk2Gether project. This service is providing a fun and nurturing environment, with a range of play activities that will help promote children's development in speech, language, and communication skills.

**Community Foundation Wales**

**Community Foundation Wales - Recovery Fund**

The foundation provided funding to deliver a pilot project 'Bounce Back' providing support to children with disabilities and additional learning needs to recover emotionally from the pandemic.

**Community Foundation Wales - Food Bank**

The foundation provided us with a grant towards the costs of delivering the foodbank.

**Consortia with Interplay - Families First**

We also have a consortium to deliver Lot 5 of the Families First Neath Port Talbot contract where we successfully secured the contract to deliver Wellbeing 4 Me To improve the well-being of Children and Young People with disabilities through the provision of a range of opportunities to develop their social, emotional, and learning skills.

**Edward Gosling Foundation**

We were provided with a grant towards core running costs.

**IFAN Grant - Food Bank**

We were provided with a grant towards running the food bank during the pandemic.

**Marsh Christian Trust**

The grant provided core funding.

**Moondance Foundation**

The Foundation provided us with core funding towards our running costs and to cover the Manager post.

**RESOLVEN BUILDING BLOCKS**  
**REPORT OF THE TRUSTEES**  
**FOR THE YEAR ENDED 31 MARCH 2021**

**Neath Port Talbot County Borough Council**

**Neath Port Talbot County Borough Council - Childcare Offer Grant**

The funding was provided to purchase toys and equipment for children.

**Neath Port Talbot County Borough Council - Childcare Sustainability Grant**

The grant provided core funding.

**Neath Port Talbot County Borough Council - CWTCH Grant**

The grant was used for core funding.

**Neath Port Talbot County Borough Council - Families First**

Families First is a Welsh Government programme designed to improve outcomes for Children, Young People and Families. It places an emphasis on early intervention, prevention and providing support for Families, rather than individuals. The aim of the programme is to provide early support for Families with the aim of preventing problems escalating.

We secured Families First lot 4 - Support Parents and Families affected by disability contract to deliver the Forward Steps service that:

- To improve the wellbeing of Parents and Families during the assessment process for ASD and ADHD.
- To improve the wellbeing of Parents and Families following the diagnosis of a disability
- To improve the parenting skills of Parents with a learning disability.

**Neath Port Talbot County Borough Council - Food Poverty Grant**

This grant provided funding for equipment for the operation of the food bank.

**Neath Port Talbot County Borough Council - Voluntary Service Emergency Fund**

The grant provided funding towards personal protective equipment and maintain safety of all.

**Neath Port Talbot CVS**

**Neath Port Talbot CVS - Comic Relief**

The funding provided enabled us to invest in mental well-being resources to help the children in our care with their well-being after the pandemic and supported us with costs towards personal protective equipment.

**Neath Port Talbot CVS - ICF Funding**

The grant funding enabled us to purchase capital equipment to ensure the organisation was safe in relation to the pandemic.

**Pen y Cymoedd**

The grant provided core funding.

**Swansea CVS - ICF Funding**

This funding supported costs for disabled children services.

**RESOLVEN BUILDING BLOCKS**  
**REPORT OF THE TRUSTEES**  
**FOR THE YEAR ENDED 31 MARCH 2021**

**The National Lottery Community Fund**

**The National Lottery Community Fund - Awards for All Wales**

The funding provided us with a grant towards the running of the food bank.

**The National Lottery Community Fund - Core Funding**

The grant provided core funding.

**The National Lottery Community Fund - Families Together**

The National Lottery Community Fund funding has been secured to deliver a Families Together 2 project which is an early intervention support programme to empower families across Neath Port Talbot.

**The National Lottery Community Fund - Talk it Through**

The funding has been secured to deliver the Talk it Through project which provides specialist counselling services for children with disabilities and support to their families.

**Wales Council for Voluntary Action (WCVA)**

**WCVA Third Sector Survive**

This funding was provided at 80% grant and 20% loan to help us survive after the decrease income with our childcare service due to the pandemic.

**WCVA Voluntary Emergency Fund**

We were provided with a grant towards running the food bank during the pandemic.

**Welsh Government - Tier 1 - Mental Health Funding**

The funding enabled us to run a mindfulness pilot for children 3 - 11 years who were affected by the pandemic.

**Reserves policy**

Resolven Building Blocks aims to build up reserves in future years to enable it to continue and expand the services they currently provide and develop new projects in the future. This policy will be reviewed annually or when significant changes occur within the organisation.

The charity aims to build up unrestricted funds to cover (1) redundancy payments to employees should the funding of the charity reduce in future years. (2) to cover four months running costs. (3) to cover planned major repair spend in the short term.

**Results for the year**

The charity's Statement of Financial Activities is shown on page 10 and comprises unrestricted and restricted funds, being those provided to assist in furthering the general objects of the company. An income and expenditure account is also included in Appendix 1.

**GOING CONCERN AND FUTURE PLANS**

The Covid pandemic still continues to have an impact on our charity, in particular our childcare services with numbers still low however as the pandemic eases we are hopeful that childcare numbers will increase to the previous levels. We have continued to sustain our services with the generous support of our funders and supporters and this has enabled us to continue to open our doors to families and children. The trustees are confident that they have sufficient funding to remain a going concern until the impact of the pandemic has reduced.

**RESOLVEN BUILDING BLOCKS**  
**REPORT OF THE TRUSTEES**  
**FOR THE YEAR ENDED 31 MARCH 2021**

**STRUCTURE, GOVERNANCE AND MANAGEMENT**

**Governing document**

The organisation is a charitable company limited by guarantee, incorporated on 13 November 2002 and registered as a charity on 22 December 2003. The company was established under a Memorandum of Association which established the objects and powers of the charitable company and is governed under its Articles of Association.

**Recruitment and appointment of new trustees**

The directors of the company are also charity Trustees for the purpose of charity law. The rules regarding the number of directors and their appointment, reappointment and removal are contained in the Articles of Association to which reference should be made. New Trustees are appointed by the Board of Trustees.

**Organisational structure**

Resolven Building Blocks is managed by a board of trustees with the day to day running carried out by Ceri Pritchard, Centre Manager (35 hours per week). There are two Childcare Manager's in post that job share in order to comply with CIW regulations and manage the childcare service.

**Induction and training of new trustees**

All new members meet with the Centre Manager and are given an introduction to the Charity and to the work of the Committee. Appropriate training material and information is distributed. Training opportunities are highlighted to committee members. Committee members are eligible for suitable further training if required. The Committee also held a Trustees and Staff Development session during the year.

**REFERENCE AND ADMINISTRATIVE DETAILS**

**Registered Company number**

04589051 (Not specified/Other)

**Registered Charity number**

1101314

**Registered office**

Resolven ICC  
Resolven  
Neath  
Neath Port Talbot  
SA11 4AB

**Trustees**

Mrs N S Gnojek  
Mrs J Pritchard (resigned 3.8.20)  
Mrs J M Harris  
Miss H Morgan  
Miss N J Macey  
Mrs A Benns  
Mrs J Elston (appointed 1.1.21) (resigned 12.6.21)  
J Howes (appointed 25.11.20)

**Company Secretary**

Mrs J M Harris

**RESOLVEN BUILDING BLOCKS**  
**REPORT OF THE TRUSTEES**  
**FOR THE YEAR ENDED 31 MARCH 2021**

**REFERENCE AND ADMINISTRATIVE DETAILS**

**Independent Examiner**

Bevan Buckland LLP  
Ground Floor  
Cardigan House  
Castle Court  
Swansea Enterprise Park  
Swansea  
SA7 9LA

**Bankers**

The Co-operative Bank  
P.O. Box 250  
Delf house  
Southway  
Skelmersdale  
WN8 6WT.

**FUNDS HELD AS CUSTODIAN FOR OTHERS**

None.

This report has been prepared in accordance with the special provisions of Part 15 of the Companies Act 2006 relating to small companies.

Approved by order of the board of trustees on Wednesday 25th November 2021 and signed on its behalf by:



.....  
Miss H Morgan - Trustee

**INDEPENDENT EXAMINER'S REPORT TO THE TRUSTEES OF  
RESOLVEN BUILDING BLOCKS**

**Independent examiner's report to the trustees of Resolven Building Blocks ('the Company')**

I report to the charity trustees on my examination of the accounts of the Company for the year ended 31 March 2021.

**Responsibilities and basis of report**

As the charity's trustees of the Company (and also its directors for the purposes of company law) you are responsible for the preparation of the accounts in accordance with the requirements of the Companies Act 2006 ('the 2006 Act').

Having satisfied myself that the accounts of the Company are not required to be audited under Part 16 of the 2006 Act and are eligible for independent examination, I report in respect of my examination of your charity's accounts as carried out under section 145 of the Charities Act 2011 ('the 2011 Act'). In carrying out my examination I have followed the Directions given by the Charity Commission under section 145(5) (b) of the 2011 Act.

**Independent examiner's statement**

Since your charity's gross income exceeded £250,000 your examiner must be a member of a listed body. I can confirm that I am qualified to undertake the examination because I am a registered member of Institute of Chartered Accountants in England and Wales which is one of the listed bodies.

I have completed my examination. I confirm that no matters have come to my attention in connection with the examination giving me cause to believe:

1. accounting records were not kept in respect of the Company as required by section 386 of the 2006 Act; or
2. the accounts do not accord with those records; or
3. the accounts do not comply with the accounting requirements of section 396 of the 2006 Act other than any requirement that the accounts give a true and fair view which is not a matter considered as part of an independent examination; or
4. the accounts have not been prepared in accordance with the methods and principles of the Statement of Recommended Practice for accounting and reporting by charities (applicable to charities preparing their accounts in accordance with the Financial Reporting Standard applicable in the UK and Republic of Ireland (FRS 102)).

I have no concerns and have come across no other matters in connection with the examination to which attention should be drawn in this report in order to enable a proper understanding of the accounts to be reached.



Henry Lloyd Davies  
Institute of Chartered Accountants in England and Wales  
Bevan Buckland LLP  
Ground Floor  
Cardigan House  
Castle Court  
Swansea Enterprise Park  
Swansea  
SA7 9LA

Date: ..... 25th / 11 / 2021



# RESOLVEN BUILDING BLOCKS

## STATEMENT OF FINANCIAL ACTIVITIES (INCORPORATING AN INCOME AND EXPENDITURE ACCOUNT) FOR THE YEAR ENDED 31 MARCH 2021

	Notes	Unrestricted funds £	Restricted funds £	2021 Total funds £	2020 Total funds £
<b>INCOME AND ENDOWMENTS FROM</b>					
Donations and legacies	2	104,361	-	104,361	236,779
<b>Charitable activities</b>	4				
Childcare Centre		226,941	372,354	599,295	281,260
Investment income	3	12	-	12	-
<b>Total</b>		<u>331,314</u>	<u>372,354</u>	<u>703,668</u>	<u>518,039</u>
<b>EXPENDITURE ON</b>					
<b>Charitable activities</b>	5				
Childcare Centre		126,857	361,243	488,100	529,529
<b>NET INCOME/(EXPENDITURE)</b>		<u>204,457</u>	<u>11,111</u>	<u>215,568</u>	<u>(11,490)</u>
<b>Transfers between funds</b>	17	10,744	(10,744)	-	-
<b>Net movement in funds</b>		<u>215,201</u>	<u>367</u>	<u>215,568</u>	<u>(11,490)</u>
<b>RECONCILIATION OF FUNDS</b>					
<b>Total funds brought forward</b>		5,643	18,862	24,505	35,995
<b>TOTAL FUNDS CARRIED FORWARD</b>		<u><u>220,844</u></u>	<u><u>19,229</u></u>	<u><u>240,073</u></u>	<u><u>24,505</u></u>

### CONTINUING OPERATIONS

All income and expenditure has arisen from continuing activities.

The results of the year derive from the continuing activities and there are no gains or losses other than those shown above.

The notes form part of these financial statements

# RESOLVEN BUILDING BLOCKS

## BALANCE SHEET 31 MARCH 2021

	Notes	Unrestricted funds £	Restricted funds £	2021 Total funds £	2020 Total funds £
<b>FIXED ASSETS</b>					
Intangible assets	11	1	-	1	1
Tangible assets	12	13,412	-	13,412	5,179
		<u>13,413</u>	<u>-</u>	<u>13,413</u>	<u>5,180</u>
<b>CURRENT ASSETS</b>					
Debtors	13	14,240	-	14,240	14,363
Cash at bank		209,127	19,229	228,356	22,024
		<u>223,367</u>	<u>19,229</u>	<u>242,596</u>	<u>36,387</u>
<b>CREDITORS</b>					
Amounts falling due within one year	14	(15,936)	-	(15,936)	(12,662)
<b>NET CURRENT ASSETS</b>		<u>207,431</u>	<u>19,229</u>	<u>226,660</u>	<u>23,725</u>
<b>TOTAL ASSETS LESS CURRENT LIABILITIES</b>		220,844	19,229	240,073	28,905
<b>CREDITORS</b>					
Amounts falling due after more than one year	15	-	-	-	(4,400)
<b>NET ASSETS</b>		<u>220,844</u>	<u>19,229</u>	<u>240,073</u>	<u>24,505</u>
<b>FUNDS</b>	17				
Unrestricted funds				220,844	5,643
Restricted funds				19,229	18,862
<b>TOTAL FUNDS</b>				<u>240,073</u>	<u>24,505</u>

The charitable company is entitled to exemption from audit under Section 477 of the Companies Act 2006 for the year ended 31 March 2021.

The members have not required the company to obtain an audit of its financial statements for the year ended 31 March 2021 in accordance with Section 476 of the Companies Act 2006.

The trustees acknowledge their responsibilities for

- ensuring that the charitable company keeps accounting records that comply with Sections 386 and 387 of the Companies Act 2006 and
- preparing financial statements which give a true and fair view of the state of affairs of the charitable company as at the end of each financial year and of its surplus or deficit for each financial year in accordance with the requirements of Sections 394 and 395 and which otherwise comply with the requirements of the Companies Act 2006 relating to financial statements, so far as applicable to the charitable company.

## RESOLVEN BUILDING BLOCKS

### BALANCE SHEET - continued 31 MARCH 2021

These financial statements have been prepared in accordance with the provisions applicable to charitable companies subject to the small companies regime.

The financial statements were approved by the Board of Trustees and authorised for issue on Wednesday 25th November 2021 and were signed on its behalf by:



.....  
H Morgan - Trustee



.....  
N S Gnojek - Trustee

**RESOLVEN BUILDING BLOCKS**

**CASH FLOW STATEMENT**  
**FOR THE YEAR ENDED 31 MARCH 2021**

	Notes	2021 £	2020 £
<b>Cash flows from operating activities</b>			
Cash generated from operations	1	222,985	(14,452)
Net cash provided by/(used in) operating activities		222,985	(14,452)
<b>Cash flows from investing activities</b>			
Purchase of tangible fixed assets		(13,065)	-
Interest received		12	-
Net cash (used in)/provided by investing activities		(13,053)	-
<b>Cash flows from financing activities</b>			
New loans in year		-	15,000
Loan repayments in year		(3,600)	(8,000)
Net cash (used in)/provided by financing activities		(3,600)	7,000
<b>Change in cash and cash equivalents in the reporting period</b>		206,332	(7,452)
<b>Cash and cash equivalents at the beginning of the reporting period</b>		22,024	29,476
<b>Cash and cash equivalents at the end of the reporting period</b>		228,356	22,024

The notes form part of these financial statements

# RESOLVEN BUILDING BLOCKS

## NOTES TO THE CASH FLOW STATEMENT FOR THE YEAR ENDED 31 MARCH 2021

### 1. RECONCILIATION OF NET INCOME/(EXPENDITURE) TO NET CASH FLOW FROM OPERATING ACTIVITIES

	2021 £	2020 £
<b>Net income/(expenditure) for the reporting period (as per the Statement of Financial Activities)</b>	215,568	(11,490)
<b>Adjustments for:</b>		
Depreciation charges	4,279	3,365
Loss on disposal of fixed assets	553	-
Interest received	(12)	-
Decrease/(increase) in debtors	123	(1,009)
Increase/(decrease) in creditors	2,474	(5,318)
<b>Net cash provided by/(used in) operations</b>	<u>222,985</u>	<u>(14,452)</u>

### 2. ANALYSIS OF CHANGES IN NET FUNDS

	At 1.4.20 £	Cash flow £	At 31.3.21 £
<b>Net cash</b>			
Cash at bank	<u>22,024</u>	<u>206,332</u>	<u>228,356</u>
	<u>22,024</u>	<u>206,332</u>	<u>228,356</u>
<b>Debt</b>			
Debts falling due within 1 year	(2,600)	(800)	(3,400)
Debts falling due after 1 year	(4,400)	4,400	-
	<u>(7,000)</u>	<u>3,600</u>	<u>(3,400)</u>
<b>Total</b>	<u>15,024</u>	<u>209,932</u>	<u>224,956</u>

The notes form part of these financial statements

## **RESOLVEN BUILDING BLOCKS**

### **NOTES TO THE FINANCIAL STATEMENTS FOR THE YEAR ENDED 31 MARCH 2021**

#### **1. ACCOUNTING POLICIES**

##### **Basis of preparing the financial statements**

The financial statements of the charitable company, which is a public benefit entity under FRS 102, have been prepared in accordance with the Charities SORP (FRS 102) 'Accounting and Reporting by Charities: Statement of Recommended Practice applicable to charities preparing their accounts in accordance with the Financial Reporting Standard applicable in the UK and Republic of Ireland (FRS 102) (effective 1 January 2019)', Financial Reporting Standard 102 'The Financial Reporting Standard applicable in the UK and Republic of Ireland' and the Companies Act 2006. The financial statements have been prepared under the historical cost convention.

##### **Income**

All income is recognised in the Statement of Financial Activities once the charity has entitlement to the funds, it is probable that the income will be received and the amount can be measured reliably.

##### **Expenditure**

Liabilities are recognised as expenditure as soon as there is a legal or constructive obligation committing the charity to that expenditure, it is probable that a transfer of economic benefits will be required in settlement and the amount of the obligation can be measured reliably. Expenditure is accounted for on an accruals basis and has been classified under headings that aggregate all cost related to the category. Where costs cannot be directly attributed to particular headings they have been allocated to activities on a basis consistent with the use of resources.

##### **Intangible fixed assets**

Amortisation is provided at an annual rate of 33% in order to write off each asset over its estimated useful life.

##### **Tangible fixed assets**

Depreciation is provided at the following annual rates in order to write off each asset over its estimated useful life.

Equipment - 20% on cost

##### **Taxation**

The charity is exempt from corporation tax on its charitable activities.

##### **Fund accounting**

Unrestricted funds can be used in accordance with the charitable objectives at the discretion of the trustees.

Restricted funds can only be used for particular restricted purposes within the objects of the charity. Restrictions arise when specified by the donor or when funds are raised for particular restricted purposes.

Further explanation of the nature and purpose of each fund is included in the notes to the financial statements.

##### **Hire purchase and leasing commitments**

Rentals paid under operating leases are charged to the Statement of Financial Activities on a straight line basis over the period of the lease.

##### **Capital Grants**

Grants received which are used to purchase capital items are treated as restricted funds in the balance sheet and released to the income and expenditure account over the life of the asset to which they relate.



## RESOLVEN BUILDING BLOCKS

### NOTES TO THE FINANCIAL STATEMENTS - continued FOR THE YEAR ENDED 31 MARCH 2021

#### 1. ACCOUNTING POLICIES - continued

##### Cash at bank and in hand

Cash at bank and cash in hand includes cash and short term highly liquid investments held within a deposit or similar account.

##### Debtors

Trade and other debtors are recognised at the settlement amount due after any trade discount offered. Prepayments are valued at the amount prepaid net of any trade discounts due.

##### Creditors

Creditors and provisions are recognised where the charity has a present obligation resulting from a past event that will probably result in the transfer of funds to a third party and the amount due to settle the obligation can be measured or estimated reliably. Creditors and provisions are normally recognised at their settlement amount after allowing for any trade discounts due.

##### Going Concern

The Covid pandemic still continues to have an impact on our charity, in particular our childcare services with numbers still low however as the pandemic eases we are hopeful that childcare numbers will increase to the previous levels. We have continued to sustain our services with the generous support of our funders and supporters and this has enabled us to continue to open our doors to families and children. The trustees are confident that they have sufficient funding to remain a going concern until the impact of the pandemic has reduced.

#### 2. DONATIONS AND LEGACIES

	2021	2020
	£	£
Fees	83,622	199,842
Other Income	20,739	36,937
	<u>104,361</u>	<u>236,779</u>

#### 3. INVESTMENT INCOME

	2021	2020
	£	£
Deposit account interest	<u>12</u>	<u>-</u>

# RESOLVEN BUILDING BLOCKS

## NOTES TO THE FINANCIAL STATEMENTS - continued FOR THE YEAR ENDED 31 MARCH 2021

### 4. INCOME FROM CHARITABLE ACTIVITIES

	Activity	2021 £	2020 £
Grants	Childcare Centre	599,295	281,260

Grants received, included in the above, are as follows:

	2021 £	2020 £
NPTCBC - Childcare Strategy	-	2,000
Other Grants	6,864	190
NPTCBC- Families First	80,102	82,515
BBC Children in Need	37,076	40,397
Ffynnon Oer Windfarm	-	2,000
Community Foundation in Wales - Recovery Fund	19,880	-
National Lottery Community Fund - Families Together	106,663	103,600
Garfield Weston Foundation	-	15,000
Neath Port Talbot CVS – Comic Relief	1,813	-
Families First - Interplay	39,418	28,903
Government Grant	51,131	1,050
Sir Jules Trust	-	750
Woodroffe Benton Foundation	-	500
Swansea CVS - ICF Funding	1,460	4,355
National Lottery Community Fund- Talk It Through	32,316	-
National Lottery Community Fund - Core Funding	10,256	-
National Lottery Community Fund-Awards for All Wales	6,350	-
Moondance Foundation	52,923	-
Community Foundation In Wales - Food Bank	4,821	-
Edward Gosling Foundation	5,000	-
WCVA Voluntary Emergency Fund	14,522	-
Marsh Christian Trust	300	-
Welsh Government - Tier 1 - Mental Health Funding	10,681	-
NPTCBC - Food Poverty	787	-
Pen Y Cymoedd	2,967	-
Neath Port Talbot – Voluntary Service Emergency Fund	1,463	-
Neath Port Talbot CVS – ICF Funding	7,694	-
Neath Port Talbot - CWTCH Grant	2,935	-
WCVA Third Sector Survive	72,000	-
IFAN Grant - Food bank	500	-
Neath Port Talbot – Childcare Offer Grant	4,373	-
Neath Port Talbot - Childcare Sustainability Grant	25,000	-
	599,295	281,260

## RESOLVEN BUILDING BLOCKS

### NOTES TO THE FINANCIAL STATEMENTS - continued FOR THE YEAR ENDED 31 MARCH 2021

#### 5. CHARITABLE ACTIVITIES COSTS

	Direct Costs £	Support costs (see note 6) £	Totals £
Childcare Centre	481,786	6,314	488,100

#### 6. SUPPORT COSTS

	Support costs £
Childcare Centre	6,314

#### 7. NET INCOME/(EXPENDITURE)

Net income/(expenditure) is stated after charging/(crediting):

	2021 £	2020 £
Depreciation - owned assets	4,279	3,014
Other operating leases	265	3,536
Deficit on disposal of fixed assets	553	-
Computer software amortisation	-	351

#### 8. TRUSTEES' REMUNERATION AND BENEFITS

There were no trustees' remuneration or other benefits for the year ended 31 March 2021 nor for the year ended 31 March 2020.

##### Trustees' expenses

There were no trustees' expenses paid for the year ended 31 March 2021 nor for the year ended 31 March 2020.

#### 9. STAFF COSTS

	2021 £	2020 £
Wages and salaries	369,906	418,839

# RESOLVEN BUILDING BLOCKS

## NOTES TO THE FINANCIAL STATEMENTS - continued FOR THE YEAR ENDED 31 MARCH 2021

### 9. STAFF COSTS - continued

The average monthly number of employees during the year was as follows:

	2021	2020
Management	6	4
Childcare	10	9
Administration	1	3
Maintenance	1	1
Community	8	8
Casual staff childcare/administration	5	6
	<u>31</u>	<u>31</u>

No employees received emoluments in excess of £60,000.

The staff numbers above include part time and full time staff.

### 10. COMPARATIVES FOR THE STATEMENT OF FINANCIAL ACTIVITIES

	Unrestricted funds £	Restricted funds £	Total funds £
<b>INCOME AND ENDOWMENTS FROM</b>			
Donations and legacies	236,779	-	236,779
<b>Charitable activities</b>			
Childcare Centre	1,240	280,020	281,260
<b>Total</b>	<u>238,019</u>	<u>280,020</u>	<u>518,039</u>
<b>EXPENDITURE ON</b>			
<b>Charitable activities</b>			
Childcare Centre	247,397	282,132	529,529
<b>NET INCOME/(EXPENDITURE)</b>	<u>(9,378)</u>	<u>(2,112)</u>	<u>(11,490)</u>
<b>RECONCILIATION OF FUNDS</b>			
Total funds brought forward	15,021	20,974	35,995
<b>TOTAL FUNDS CARRIED FORWARD</b>	<u>5,643</u>	<u>18,862</u>	<u>24,505</u>

# RESOLVEN BUILDING BLOCKS

## NOTES TO THE FINANCIAL STATEMENTS - continued FOR THE YEAR ENDED 31 MARCH 2021

### 11. INTANGIBLE FIXED ASSETS

	Computer software £
<b>COST</b>	
At 1 April 2020 and 31 March 2021	6,336
<b>AMORTISATION</b>	
At 1 April 2020 and 31 March 2021	6,335
<b>NET BOOK VALUE</b>	
At 31 March 2021	1
At 31 March 2020	1

### 12. TANGIBLE FIXED ASSETS

	Equipment £
<b>COST</b>	
At 1 April 2020	31,034
Additions	13,065
Disposals	(7,063)
At 31 March 2021	37,036
<b>DEPRECIATION</b>	
At 1 April 2020	25,855
Charge for year	4,279
Eliminated on disposal	(6,510)
At 31 March 2021	23,624
<b>NET BOOK VALUE</b>	
At 31 March 2021	13,412
At 31 March 2020	5,179

### 13. DEBTORS: AMOUNTS FALLING DUE WITHIN ONE YEAR

	2021 £	2020 £
Trade debtors	13,434	3,699
Other debtors	806	10,664
	14,240	14,363

# **RESOLVEN BUILDING BLOCKS**

## **NOTES TO THE FINANCIAL STATEMENTS - continued** **FOR THE YEAR ENDED 31 MARCH 2021**

### **14. CREDITORS: AMOUNTS FALLING DUE WITHIN ONE YEAR**

	2021	2020
	£	£
Other loans (see note 16)	3,400	2,600
Accruals	8,325	4,793
Trade creditors	1,593	2,421
Social security and other taxes	2,618	2,848
	<u>15,936</u>	<u>12,662</u>

### **15. CREDITORS: AMOUNTS FALLING DUE AFTER MORE THAN ONE YEAR**

	2021	2020
	£	£
Other loans (see note 16)	<u>-</u>	<u>4,400</u>

### **16. LOANS**

An analysis of the maturity of loans is given below:

	2021	2020
	£	£
Amounts falling due within one year on demand:		
Other loans	<u>3,400</u>	<u>2,600</u>
Amounts falling between one and two years:		
Other loans - 1-2 years	<u>-</u>	<u>4,400</u>



# RESOLVEN BUILDING BLOCKS

## NOTES TO THE FINANCIAL STATEMENTS - continued FOR THE YEAR ENDED 31 MARCH 2021

### 17. MOVEMENT IN FUNDS

	At 1.4.20 £	Net movement in funds £	Transfers between funds £	At 31.3.21 £
<b>Unrestricted funds</b>				
General funds	5,643	204,457	(163,256)	46,844
Designated Funds - Redundancy	-	-	20,000	20,000
Designated Funds - Running Costs	-	-	100,000	100,000
Designated Funds - Major Repairs	-	-	54,000	54,000
	<u>5,643</u>	<u>204,457</u>	<u>10,744</u>	<u>220,844</u>
<b>Restricted funds</b>				
BBC Children in Need	16,235	(8,853)	-	7,382
National Lottery Community Fund - Families Together	2,627	2,383	-	5,010
NPTCBC Families First	-	1,553	(1,553)	-
National Lottery Community Fund - Talk It Through	-	6,837	-	6,837
WCVA Voluntary Emergency Fund	-	2,991	(2,991)	-
Neath Port Talbot CVS – ICF Funding	-	4,160	(4,160)	-
Neath Port Talbot - Childcare Offer Grant	-	2,040	(2,040)	-
	<u>18,862</u>	<u>11,111</u>	<u>(10,744)</u>	<u>19,229</u>
<b>TOTAL FUNDS</b>	<u>24,505</u>	<u>215,568</u>	<u>-</u>	<u>240,073</u>

# RESOLVEN BUILDING BLOCKS

## NOTES TO THE FINANCIAL STATEMENTS - continued FOR THE YEAR ENDED 31 MARCH 2021

### 17. MOVEMENT IN FUNDS - continued

Net movement in funds, included in the above are as follows:

	Incoming resources £	Resources expended £	Movement in funds £
<b>Unrestricted funds</b>			
General funds	331,314	(126,857)	204,457
<b>Restricted funds</b>			
BBC Children in Need	37,076	(45,929)	(8,853)
Community Foundation in Wales - Recovery Fund	19,880	(19,880)	-
National Lottery Community Fund - Families Together	106,663	(104,280)	2,383
Neath Port Talbot CVS – Comic Relief	1,813	(1,813)	-
Families First - Interplay	39,418	(39,418)	-
NPTCBC Families First	80,102	(78,549)	1,553
Swansea CVS - ICF Funding	1,460	(1,460)	-
National Lottery Community Fund - Talk It Through	32,316	(25,479)	6,837
National Lottery Community Fund-Awards for All Wales	6,350	(6,350)	-
Community Foundation In Wales - Food Bank	4,821	(4,821)	-
WCVA Voluntary Emergency Fund	14,522	(11,531)	2,991
Welsh Government - Tier 1 - Mental Health Funding	10,681	(10,681)	-
NPTCBC Food Poverty	787	(787)	-
Neath Port Talbot – Voluntary Service Emergency Fund	1,463	(1,463)	-
Neath Port Talbot CVS – ICF Funding	7,694	(3,534)	4,160
Neath Port Talbot - CWTCH Grant	2,935	(2,935)	-
Neath Port Talbot - Childcare Offer Grant	4,373	(2,333)	2,040
	<u>372,354</u>	<u>(361,243)</u>	<u>11,111</u>
<b>TOTAL FUNDS</b>	<u>703,668</u>	<u>(488,100)</u>	<u>215,568</u>

# RESOLVEN BUILDING BLOCKS

## NOTES TO THE FINANCIAL STATEMENTS - continued FOR THE YEAR ENDED 31 MARCH 2021

### 17. MOVEMENT IN FUNDS - continued

#### Comparatives for movement in funds

	At 1.4.19 £	Net movement in funds £	At 31.3.20 £
<b>Unrestricted funds</b>			
General funds	15,021	(9,378)	5,643
<b>Restricted funds</b>			
BBC Children in Need	10,000	6,235	16,235
National Lottery Community Fund - Families Together	8,333	(5,706)	2,627
NPTCBC Families First	748	(748)	-
Families together	1,893	(1,893)	-
	<u>20,974</u>	<u>(2,112)</u>	<u>18,862</u>
<b>TOTAL FUNDS</b>	<u>35,995</u>	<u>(11,490)</u>	<u>24,505</u>

Comparative net movement in funds, included in the above are as follows:

	Incoming resources £	Resources expended £	Movement in funds £
<b>Unrestricted funds</b>			
General funds	238,019	(247,397)	(9,378)
<b>Restricted funds</b>			
NPTCBC - Childcare Strategy	2,000	(2,000)	-
BBC Children in Need	40,397	(34,162)	6,235
Ffynon Oer Windfarm	2,000	(2,000)	-
National Lottery Community Fund - Families Together	103,600	(109,306)	(5,706)
Garfield Weston Foundation	15,000	(15,000)	-
Families First - Interplay	28,903	(28,903)	-
NPTCBC Families First	82,515	(83,263)	(748)
Families together	-	(1,893)	(1,893)
Sir Jules Trust	750	(750)	-
Woodroffe Benton Foundation	500	(500)	-
Swansea CVS - ICF Funding	4,355	(4,355)	-
	<u>280,020</u>	<u>(282,132)</u>	<u>(2,112)</u>
<b>TOTAL FUNDS</b>	<u>518,039</u>	<u>(529,529)</u>	<u>(11,490)</u>

# RESOLVEN BUILDING BLOCKS

## NOTES TO THE FINANCIAL STATEMENTS - continued FOR THE YEAR ENDED 31 MARCH 2021

### 17. MOVEMENT IN FUNDS - continued

A current year 12 months and prior year 12 months combined position is as follows:

	At 1.4.19 £	Net movement in funds £	Transfers between funds £	At 31.3.21 £
<b>Unrestricted funds</b>				
General funds	15,021	195,079	(163,256)	46,844
Designated Funds - Redundancy	-	-	20,000	20,000
Designated Funds - Running Costs	-	-	100,000	100,000
Designated Funds - Major Repairs	-	-	54,000	54,000
	<u>15,021</u>	<u>195,079</u>	<u>10,744</u>	<u>220,844</u>
<b>Restricted funds</b>				
BBC Children in Need	10,000	(2,618)	-	7,382
National Lottery Community Fund - Families Together	8,333	(3,323)	-	5,010
NPTCBC Families First	748	805	(1,553)	-
Families together	1,893	(1,893)	-	-
National Lottery Community Fund - Talk It Through	-	6,837	-	6,837
WCVA Voluntary Emergency Fund	-	2,991	(2,991)	-
Neath Port Talbot CVS – ICF Funding	-	4,160	(4,160)	-
Neath Port Talbot - Childcare Offer Grant	-	2,040	(2,040)	-
	<u>20,974</u>	<u>8,999</u>	<u>(10,744)</u>	<u>19,229</u>
<b>TOTAL FUNDS</b>	<u>35,995</u>	<u>204,078</u>	<u>-</u>	<u>240,073</u>

## RESOLVEN BUILDING BLOCKS

### NOTES TO THE FINANCIAL STATEMENTS - continued FOR THE YEAR ENDED 31 MARCH 2021

#### 17. MOVEMENT IN FUNDS - continued

A current year 12 months and prior year 12 months combined net movement in funds, included in the above are as follows:

	Incoming resources £	Resources expended £	Movement in funds £
<b>Unrestricted funds</b>			
General funds	569,333	(374,254)	195,079
<b>Restricted funds</b>			
NPTCBC - Childcare Strategy	2,000	(2,000)	-
BBC Children in Need	77,473	(80,091)	(2,618)
Ffynon Oer Windfarm	2,000	(2,000)	-
Community Foundation in Wales - Recovery Fund	19,880	(19,880)	-
National Lottery Community Fund - Families Together	210,263	(213,586)	(3,323)
Garfield Weston Foundation	15,000	(15,000)	-
Neath Port Talbot CVS – Comic Relief	1,813	(1,813)	-
Families First - Interplay	68,321	(68,321)	-
NPTCBC Families First	162,617	(161,812)	805
Families together	-	(1,893)	(1,893)
Sir Jules Trust	750	(750)	-
Woodroffe Benton Foundation	500	(500)	-
Swansea CVS - ICF Funding	5,815	(5,815)	-
National Lottery Community Fund - Talk It Through	32,316	(25,479)	6,837
National Lottery Community Fund-Awards for All Wales	6,350	(6,350)	-
Community Foundation In Wales - Food Bank	4,821	(4,821)	-
WCVA Voluntary Emergency Fund	14,522	(11,531)	2,991
Welsh Government - Tier 1 - Mental Health Funding	10,681	(10,681)	-
NPTCBC Food Poverty	787	(787)	-
Neath Port Talbot – Voluntary Service Emergency Fund	1,463	(1,463)	-
Neath Port Talbot CVS – ICF Funding	7,694	(3,534)	4,160
Neath Port Talbot - CWTCH Grant	2,935	(2,935)	-
Neath Port Talbot - Childcare Offer Grant	4,373	(2,333)	2,040
	<u>652,374</u>	<u>(643,375)</u>	<u>8,999</u>
<b>TOTAL FUNDS</b>	<u>1,221,707</u>	<u>(1,017,629)</u>	<u>204,078</u>

Details of the above funds can be found in the financial review of the Trustees Report.

**RESOLVEN BUILDING BLOCKS**

**NOTES TO THE FINANCIAL STATEMENTS - continued  
FOR THE YEAR ENDED 31 MARCH 2021**

**18. RELATED PARTY DISCLOSURES**

There were no related party transactions for the year ended 31 March 2021 (2020 £nil).