

**Registered number: 04691516**  
**Charity number: 1098726**

**Worthing Women's Aid Trading as Safe In Sussex**  
**(A company limited by guarantee)**

**Unaudited**

**Trustees' report and financial statements**

**For the year ended 31 March 2025**

**Worthing Women's Aid Trading as Safe In Sussex**  
**(A company limited by guarantee)**

**Contents**

|  | Page    |
|--|---------|
| <b>Trustees' report</b>                  | 1 - 19  |
| <b>Independent examiner's report</b>     | 20      |
| <b>Statement of financial activities</b> | 21      |
| <b>Balance sheet</b>                     | 22 - 23 |
| <b>Statement of cash flows</b>           | 24      |
| <b>Notes to the financial statements</b> | 25 - 41 |

## **Worthing Women's Aid (trading as Safe in Sussex) (A Company Limited by Guarantee)**

### **Directors' and Trustees Report For the Year Ended 31 March 2025**

---

The Trustees of Safe in Sussex are pleased to present their annual report together with the financial statements for the year ended 31 March 2025. The financial statements have been prepared in accordance with the Statement of Recommended Practice (SORP2015) Accounting and Reporting by Charities FRS102, the Charities Act 2011 and the Companies Act 2006.

#### **Reference and Administration Details of the Charity**

|                    |   |
|--------------------|---|
| Charity number:    | 1098726   |
| Registered Number: | 04691516  |
| Principal Office:  | The Rear of 1 to 7 Elm Park<br>Ferring<br>Worthing<br>West Sussex<br>BN12 5RN |

#### **Welcome from the Chair and CEO**

##### **Standing Together Against Domestic Abuse in West Sussex**

We are pleased to welcome you to our 2024–2025 Annual Report, which provides an honest and unflinching look at the challenges—and the courage—at the heart of our work this year. Domestic abuse remains one of the most urgent social issues of our time. An estimated 2.3 million adults in England and Wales experienced domestic abuse in the last year alone. Of those, 1.6 million were women and 712,000 were men (Crime Survey for England and Wales). Here in Sussex, police received nearly 30,000 reports of domestic abuse. But these numbers tell only part of the story. We know the true scale is far greater, it is estimated that only 1 in 5 of domestic abuse incidents are reported to the police. Most abuse happens behind closed doors.

##### **A Year of Difficult Decisions and Determined Action**

This has been one of the most challenging years we have faced since we opened our doors in 1977. Back then, we began as a group of committed volunteers who recognised the desperate need to provide a place of safety for women and children fleeing domestic abuse and stepped in to fill that gap, opening our first refuge. Since then, we've grown into a vital lifeline for survivors of domestic abuse across West Sussex.

But this year, that lifeline was tested.

We faced unprecedented financial pressures. A sharp decline in both government and non-government funding opportunities, coupled with the ongoing cost of living crisis, meant rising costs across the board, from basic essentials like bedding for our refugees to complex needs like cyber security and building maintenance. The situation was made even more difficult by a sudden 53% rent increase on one of our refuge buildings.

Despite increasing demand for our services, we had to make the heart-breaking decision to reduce what we could offer. After careful analysis and reflection, we closed one of our four communal refuges, ended our outreach service, and scaled back specialist support for children in our refuges. These decisions also meant saying goodbye to valued colleagues, committed, skilled professionals who made a real difference in the lives of survivors.

### **Resilience in Action**

Yet even in the face of adversity, our team rose to the challenge.

This year, we responded to 1,031 referrals and provided ongoing support to 618 adults and children, figures that remain consistent with 2023/24, despite our reduced resources. We sharpened our focus on core refuge services and community groups, streamlined our operations, and prioritised the wellbeing of those we serve. Our earlier investment in solar energy began to pay off, reducing our running costs and environmental impact.

We also continued our vital work in partnership with organisations including West Sussex County Council's high risk domestic abuse service Worth, the Life Centre, My Sisters' House and the wider Women's Aid Federation. Together, we've worked to raise awareness of domestic abuse, press for improved services, and advocate for survivors' rights at both local and national levels.

## Looking Forward: A New Chapter of Hope

While this year brought many difficulties, it also strengthened our resolve. Client feedback across all services remains consistently high—with more than 90% of survivors telling us they feel safer, more able to cope, and more hopeful about their future as a result of our support.

Looking ahead, we are excited to launch our **Open the Door Appeal**, a bold step to rebuild and renew our capacity to offer safe, supported accommodation to those in crisis. We invite you to stand with us as we take this next step.

Throughout this report, you'll hear directly from those whose lives have been changed by our work. Their voices remind us why we do what we do—and why, with your help, we must keep going.

Thank you to our extraordinary staff, trustees, volunteers, our Patron and fundraiser extraordinaire Helen Hitchcock, our funders, anonymous and generous donors and all our supporters and partners for all you do, especially your resilience, compassion and commitment. Together, we continue to confront the national emergency of domestic abuse with hope, strength and action.



***Sharon Howard, CEO***



***Leslie Groves-Williams, Trustee Chair***

### **Trustee Grid - movements from last year's Trustee Report**

| <b>Trustee</b>         | <b>Trustee Role</b>   | <b>Appointment Date</b> | <b>Resigned</b> |
|------------------------|-----------------------|-------------------------|-----------------|
| Leslie Groves Williams | Chair                 | 13/1/2020               |                 |
| Karen Brown            | Treasurer             | 19/4/2021               |                 |
| Tana Jackson           | Company Secretary     | 19/7/2021               |                 |
| Liz Hall               | Deputy Chair          | 07/09/2022              |                 |
| Deborah Binks-Moore    | Trustee               | 30/11/2022              |                 |
| Katrina Haines         | HR Trustee            | 22/2/2023               |                 |
| Manisha Patel          | Property Investment   | 20/3/2024               |                 |
| Sandra Abbey           | Safeguarding          | 20/3/2024               | 09/01/2025      |
| Charlotte Carp         | Trustee               | 20/3/2024               |                 |
| Sarah Payne            | Strategy & Evaluation | 05/02/2025              |                 |

## **Structure, Governance and Management**

The charity is constituted as a company limited by guarantee. It has no share capital and is therefore governed by a memorandum and articles of association which are dated 10<sup>th</sup> March 2003. The Articles and Memorandum of Safe in Sussex were reviewed and updated in 2022 and amendments were approved by the Charity Commission. The liability of each member in the event of the winding up is limited to £1.

The Charity is administered by the Trustee Board, which allows for up to 12 elected Trustees (Directors) who meet five times per year for full Board meetings. Others attend the meeting by invitation of the Trustees and are non-voting observers. The Trustees are elected by the members, hold office for three years and are eligible for re-election up to a maximum of three terms. The Trustees have the power to co-opt further members to serve on the Trustee Board. In addition to full Board meetings, trustees participate in committees according to their expertise. The three committees are Finance and Income Generation, Risk and Compliance and Organisational Development.

One new Trustee joined the Board this financial year with excellent relevant skills and experience, replacing a trustee who stood down for other reasons. The focus of recruitment has been on ensuring that each Board member brings a specific area of expertise required for delivery of our Strategic Plan. A skills and diversity audit was conducted in 2022 and this has continued to be used to guide recruitment as Board members retire from their roles. There is one position for a former service user on the Board (currently vacant): most trustees bring lived experience of domestic abuse either from within their immediate family or through supporting extended family members or close friends.

Induction for new Trustees is a formal process, targeted at the specific needs of the organisation, using REACH volunteering and local volunteer sites to attract the right candidates with the right skills and backgrounds.

The Trustees continue to work hard and make good progress regarding the review of their governance effectiveness against the seven principles as set out in the Charity Governance Code. The charity has formally signed up to the code and will continue with an annual self-assessment at an annual away day. All trustees receive an induction and continuing development programme. One or two away days are now held each year to monitor and set the broad direction for the organisation, as well as to monitor the working of the Board and to provide ongoing capability building to ensure trustee knowledge and skills are kept up to date. Furthermore, we have introduced mandatory in-depth safeguarding training for trustees, alongside our existing induction training package. Trustees have also committed to making the most of free or low cost training to take one additional trustee training per year after their first year.

Trustees are responsible for the strategic direction of the organisation and the production of the overall strategic policy, in consultation with the management team. The Trustees ensure that any major decisions and developments are made in line with the Charity Commission's public benefit guidance, Safe in Sussex's Strategic Plan or are in sympathy with the overall aims and objectives.

Administrative procedures continue to have been improved to ensure that all decisions made and actions required are systematically followed up on, both between and at each Board meeting. All Trustee decisions are minuted and tracked as an integral part of the governance process. Operational decisions are delegated to the CEO and senior management team who are required to regularly report to the Trustee Board.

The Board continues to regularly input into and review an overarching Risk Register for all areas of the organisation. A section is planned to be reviewed at each Board meeting, meaning all sections will be reviewed on an annual basis. The Board has also updated our committee/working group areas of focus to reflect changing organisational needs.

The Board has continued to conduct an annual staff engagement survey and follow up pulse survey. Feedback by staff has allowed governors and management to take appropriate actions to improve staff engagement and to improve our learning and impact. Trustees continue to review organisational policies on rotation to ensure that policies remain up to date, appropriate and relevant.

The organisation remains vigilant of any potential conflicts of interest. No conflicts of interest have arisen during this financial year.

## **Objectives and Activities**

Established in 1977, Worthing Women's Aid, now trading as Safe in Sussex, has the following objectives:

1. **Increase community knowledge** of domestic abuse and healthy relationships (service providers, businesses, schools, general public); and **increase community ability and capacity to take action to prevent and respond to domestic abuse** (including schools, frontline public service professionals)
2. **Increase awareness of our services** to ensure that those who need to access our services are able to get support in a timely and holistic way.
3. **Deliver holistic services with a whole family approach.** This encompasses **prevention** (schools, outreach), **crisis response** (helpline, refuge), **support, including peer support**, (refuge, community groups) and **recovery** (groups)
4. **Improve inclusivity** of Safe in Sussex services (through reducing barriers for male and female victims/survivors, including minority ethnic communities, LGBTQ+ communities, and those with complex needs as well as through engaging clients systematically in quality assurance, and, for example, in translation of core literature).

2024/25 is the final year of Safe in Sussex's three-year planning cycle, although the core focus of current objectives will be retained for the next cycle commencing 2025/26.



**Clients supported**

Despite these challenges, Safe in Sussex managed 1,031 referrals in 2024/25, providing ongoing support to 618 adults and children: these numbers are comparable to 2023/24.

**Demographic data**

We ask our clients to provide demographic information so we can assess the extent to which our services reflect the local community and to identify any potential barriers to our service.

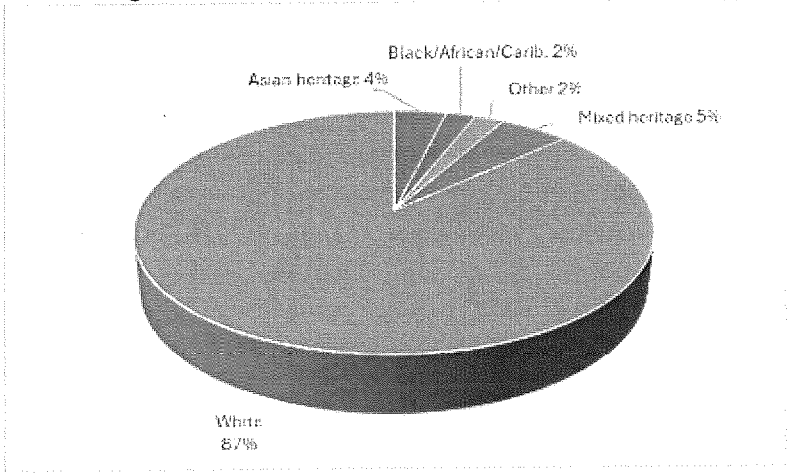
As part of our commitment to meeting the Women’s Aid Quality Standards we have undertaken a full review of our demographic data since 2021: this shows that our client profile is broadly representative of the communities we serve. We have developed a Diversity and Inclusion Action Plan in response to this review. The key focus of the action plan is on building relationships with community and faith groups and specialist services serving minoritised communities so we can ensure we work in effective partnership and that our services are accessible, without any unintended barriers.

**Gender identity and sexuality**

As our refuge and group services are available only to women, it is not surprising that women made up 98% of those who used our services in 2023/24. We have supported transgender clients in our service. 91.5% of those who were happy to give information on their sexuality reported that they were heterosexual. Of the remaining 8.5%, two thirds reported they were bi-sexual.

Our 1-2-1 community outreach service, which has been available to men, closed to new referrals at the end of 2024 and closed completely in April 2025 as a result of the challenging financial environment. This means that from 2025/26 Safe in Sussex will return to being a women’s only service. We work closely in partnership with other services where we cannot meet need e.g. with Mankind and Victim Support on services for men and with Paragon who provide dispersed safe accommodation in West Sussex for when our communal refuges are either full or would not effectively meet a potential resident’s needs.

**Ethnic Origin**



94% of those seeking help from Safe in Sussex were happy to provide data on their ethnic origin, this is a 10% improvement from last year.

The profile of those we supported broadly reflects the make-up of West Sussex, a county in which the 2021 census recorded that: 91% of the population was white, 4.3% of Asian heritage, 1.3% identified as Black/African/ Caribbean, 2.4% of mixed heritage and 1% other.

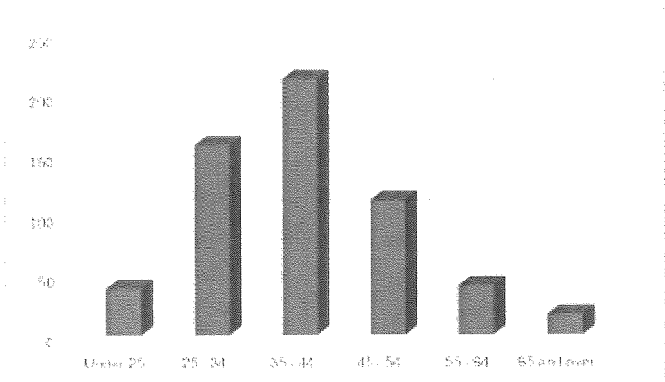
Only 6 clients requested support through an interpreter.

**Health**

There is an established link between domestic abuse as a causative factor of poor mental health, with women who have experienced domestic abuse three times more likely to be depressed. More than 1 in 3 of our clients reported a mental health condition in 2023/24 with 1 in 4 having an identified mental health need requiring additional support. 86 clients were living with poor physical health or a physical health impairment including a hearing or visual impairment; 20 were living with a long-term disability and 34 reported a learning disability.

Additional training on supporting those with complex mental health needs and managing trauma is an identified priority in our 2025/26 training plan.

**Age & Parenthood**



37% of our clients are 35-44, with a further 27% 25-34. Two thirds of our clients are caring for children: a total of 817 children between them. While we only provide services directly to children within our refuges, parents benefitting from any of our community services have access to information, advice and support on the impact of domestic abuse on children and on parenting issues. We are exploring running additional sessions on parenting children for those participating in our community groups in 2025/26, led by our Domestic Abuse Practitioners.

**Our Services**

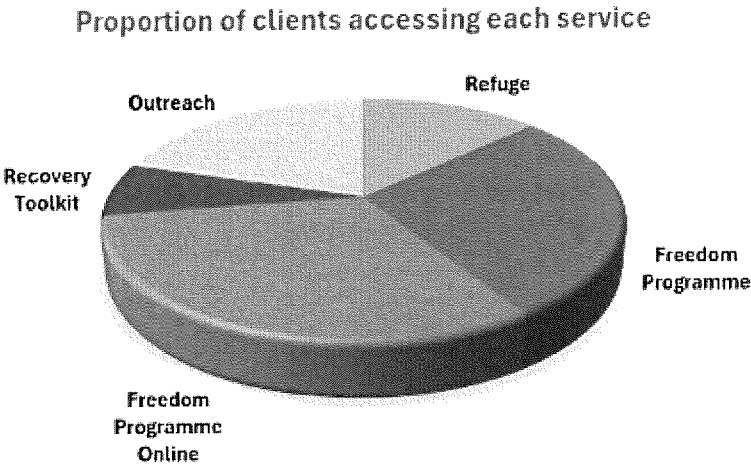
**Community Services**

The vast majority of those who use our services do so through our community groups – 429. In addition to our trained facilitators, a dedicated domestic abuse practitioner started attending groups on a regular basis half-way through the year so that participants who needed additional one-to-one support could receive it quickly. This was highly successful with 39 group participants receiving additional support in this way. This is a model we are expanding in 2025/26.

Our outreach service supported 143 people. This number reflects the fact that the service was closed to new referrals for the last quarter of the year. We made the difficult decision to close the outreach service at the end of 2024/25 as available funding was simply insufficient to offer the service at a level that ensured timely access to advice and support: we also found that many of those initially seeking this service could be effectively supported within our community groups, particularly if we could retain a domestic abuse practitioner support to help those with additional needs. Losing the outreach service and committed members of the Safe in Sussex team was devastating for us, especially at a time that the need for our services remains high. Ensuring our community groups are available and sustainable across the county is a financial priority for us in 2025/26.

**Refuge Services**

94 women and children were supported in refuge over the year. We were forced to reduce bed spaces this year, with the closure of one of our two fully self-funded sites, following an unaffordable rent rise of 53%. The closure inevitably had an impact on the number of women and children we could support, as the site needed to be closed to new referrals well in advance of the end of the tenancy to enable the building to be cleared and cleaned. The other two sites are partially supported by West Sussex County Council. Our Children in Need funding also came to an end this year, requiring us to revise the way we support children within the refuge.



**Client Satisfaction**

Despite these challenges, thanks to the expertise and dedication of our teams, satisfaction with our services remains high. Across our services more than 9 out of 10 clients feel: safer; better able to cope with the trauma they have experienced, with improved well-being and hope for the future.

**Strategic Plan Outcomes**

Our strategic plan highlights the outcomes that Safe in Sussex seeks to achieve. The strategic plan is supported by a monitoring and evaluation framework that provides results indicators for each outcome – both are due for review in 2025/26. The tables below highlight the principal indicators under each of our service outcomes. The subsequent text provides qualitative and quantitative data to demonstrate progress towards meeting out strategic outcomes.

| <b>Outcome 1: People living in West Sussex have increased knowledge about domestic abuse and healthy relationships</b> |   |                  |
|--|---|------------------|
| <b>Outputs</b>   | <b>Output indicators</b>  | <b>Numerator</b> |
| People accessing SIS community group programmes report increased knowledge of domestic abuse                           | Percentage of Freedom programme participants who reported increased knowledge of domestic abuse and its impact and said they could now identify abusive behaviour | 100%             |
| People in the community have increased knowledge on types and impact of abusive behaviour                              | Number of times SIS invited to present at community groups such as WI, etc.   | 15               |

During this year, we have continued to deliver our Community Group programmes across the county of West Sussex with a combination of online and face-to-face available. We resumed a group in Mid Sussex for one term and will be reopening the group for the whole of the academic year in 25/26 along with a group in the Horsham District.

The 10 week Freedom Programme is open to any woman who wants to find out more about domestic abuse. 404 women attended sessions in 2024/25 – a similar number to 2023/24. 1 in 4 group participants accessed additional one-to-one support from the domestic abuse practitioner who now regularly attends group sessions.

100% of programme participants said the programme had helped them understand domestic abuse and its impact and enabled them to identify abusive behaviours. More than nine out of 10 said the programme: had a positive impact on their lives; would enable them to identify the early warning signs of an abusive relationship; and had helped them improve their self-esteem and confidence.

Women who have completed programme evaluations told us of the positive impact they have experienced through attending our Freedom programme:

*"I feel supported by people who understand the issues, who don't judge me, who accept me and who are empowering me to understand and change my situation."*

*"It has helped me realise it was not my fault. I feel stronger now."*

*"It has been so important for me to feel I am not alone.....I know it's not me who's the problem."*

After completion of the Freedom Programme, women who have left an abusive relationship may go on to attend our 10 week Recovery Toolkit sessions. 50 women attended this year. This is a significant reduction from last year as we have found the online option is less effective. We are exploring an alternative approach in 25/26. Again the response to the programme was overwhelmingly positive, with 93% of participants reporting improved confidence and self-esteem:

*"This group has empowered me, given me confidence, knowledge and ultimately a bit of "me" back"*

*"I am socializing again, I hadn't done anything until I started the Recovery Toolkit. I couldn't have done without it, it's been so valuable."*

*"I have been given tools and skills to boost my confidence, knowing I am enough."*

We have continued to be proactive in sharing understanding of domestic abuse in the local community, directly engaging with over 1,000 people through running training, awareness events and talks at community groups.

| <b>Outcome 2: People living in West Sussex have increased awareness about where people can go for help and that they are entitled to get help as victims/survivors</b> |  |                       |
|--|--|-----------------------|
| <b>Outputs</b>   | <b>Output indicators</b>   | <b>Numerator</b>      |
| People living in West Sussex recognise that they are in an abusive relationship and make informed choices moving forward   | Number of referrals made to SIS  | 1031                  |
|  | Number of referrals made by SIS to other DA services   | 52                    |
| CYP/Adults who have accessed support from SIS share their experiences across various mediums to encourage others to take up support & reduce stigma of asking for help | Number of attendees attending the Lived Experience Group of former clients who advise us on our services | 8                     |
|  | Survivors give permission to share anonymised stories  | 73                    |
| West Sussex residents know that SIS can  | Increased interaction on website referral page, social   | Facebook Reach 26,315 |

|              |  |   |
|--------------|--|---|
| provide help | media, public events e.g. fundraising, knowledge of what help provided and how to access it  | Followers 2,575 – 2.4% increase on 23/24<br>Instagram<br>Reach 3.4k an increase of 78%<br>Followers 852 - an increase of 28%<br>Posts 678 – a 213% increase   |
|              | West Sussex residents report knowledge of SIS services with up-to-date information on what services are provided and how to access support | Self – Referral 403<br>WSCC Worth DA Service 244<br>Mental Health Services 66<br>Sussex domestic abuse services 68<br>Children’s Services 51<br>Health 41<br>Adult Social Services 8<br>Friends / Family 27<br>Housing/ Homelessness 29<br>Police 22<br>Probation 8<br>Other 52 |

Our referral sources demonstrate that the value of our services is widely known among our partners. In particular, self-referrals have increased 23% this year. The number of referrals between domestic abuse services, especially West Sussex County Council’s domestic abuse service, demonstrates the wider pressure on local services and the value of Safe in Sussex’s community groups as a means of providing ongoing emotional and recovery support.

The high volume of referrals from both statutory and voluntary mental health services reflects the ongoing complexity of mental health need we are seeing amongst those who seek our support.

We have made a significant improvement in using Instagram as a route to reach out to new audiences this year, but the lack of certainty about the future operation of our services has inevitably had an impact on our social media over the latter part of the year. A more proactive marketing strategy is being developed, helped by content generated by our volunteer ambassadors.

Our Lived Experience Group of former clients who advise us on our services continued to meet this year. There was an inevitable gap during the service reorganisation in the second half of the year, but the group will be reconvened in 2025/26 to discuss the service’s future strategy and particularly our plans on education and awareness.

| <b>Outcome 3: People living in West Sussex who have been affected by domestic abuse take action</b>    |   |   |
|--|---|---|
| <b>Outputs</b>   | <b>Output indicators</b>  | <b>Numerator</b>  |
| People in West Sussex have increased confidence & empowerment to not revert to an abusive relationship | Participants of Freedom Programme report they are able to identify the early warning signs of an abusive relationship | 95% of those who completed the evaluation form stated they would be able to identify the signs of an abusive relationship |

|   |  |   |
|---|--|---|
| People who come through refuge and outreach services go through the judicial system | Number of applications for court orders/orders made. | Support for 36 applications for court orders was given. 25 orders were made |
| People affected by domestic abuse contact SIS                                       | Number of self-referrals to SIS services             | 403 – this is a 23% increase on 23/24                                       |

We have not been able to actively promote our service in the way we might have wished this year given staff capacity, reduced bed spaces in our refuges along with uncertainty over future funding.

Increasing victim confidence in the criminal justice system is the area where we find it most difficult to make a positive impact. We have only been able to achieve this in 29% of the small number of cases where clients completed an evaluation form. Issues such as a lack of prosecutions, enforcement action and court delays continue to be factors. We supported clients with 36 court orders, including 21 applications for protective orders and family justice orders; 25 orders were granted.

| <b>Outcome 4: People living in West Sussex are able to access an effective co-ordinated statutory and voluntary service provision</b>    |   |                  |
|--|---|------------------|
| <b>Outputs</b>   | <b>Output indicators</b>                                    | <b>Numerator</b> |
| Services in Sussex (e.g. GP, social care, housing etc.) have increased understanding on how to support people affected by domestic abuse | SIS represented at and contributes to other agency meetings | 53               |

We have taken a proactive approach to building partnerships with statutory and voluntary sector partners over this period in support of effective service provision and availability. We are members of cross-county and cross-Sussex fora on issues including: policing, housing & homelessness, stalking, mental health, early help and supporting those with complex needs.

| <b>Outcome 5: SIS is an inclusive survivor led organisation with a whole family approach</b> |   |  |
|--|---|--|
| <b>Outputs/outcomes</b>  | <b>Output indicators</b>  | <b>Numerator</b>   |
| Clear mission statement about who SIS works with   | Publicity material, social media, website with accessibility tool | Our new website was launched in the summer. The website: is accessible; includes additional self-help information; and clear links to partner services |

This objective is likely to be changed in 2025/26 give our revised service offer. Between them, our clients in 2023/24 were parenting over 800 children. Our community group programmes include sessions on parenting and the impact of domestic abuse on children. Our team made 365 referrals to partner services & agencies over the course of the year, ensuring our clients were able to access the holistic support they needed on issues relating to the impact of abuse e.g. housing, mental health, safeguarding.

In our refuges our children's workers ensure that children are treated as victims of domestic abuse in their own right, providing supported play and arts and crafts activities to help children express their feelings, come to terms with their experiences and explore coping mechanisms. We are having to revise this model for 2025/26 given reductions in funding.

| <b>Outcome 6: SIS has the financial (and human) resources to meet the core strategic objectives</b> |  |                           |
|---|--|---------------------------|
| <b>Outputs</b>  | <b>Output indicators</b>                   | <b>Numerator</b>          |
| Repeat funding secured  | Number of successful grant applications    | 8 (5 were repeat funders) |
| Independence financial stability improved   | Number of paid training sessions delivered | 15                        |

It has been a difficult year for funding. Our existing contracts for grant funding from the Office of the Sussex Police & Crime Commissioner (which in turn rely on a grant from the Ministry of Justice) came to an end of this financial year. While some funding will continue for 2025/26, for which we are very grateful, we are no longer in a position to continue to subsidise our outreach service going forward. A number of major trusts and foundations have been closed to new applications, while the criteria for others have tightened in the face of escalating demand, which in some cases has meant we are no longer eligible to apply.

The rising cost of living has also impacted on the amount we have been able to raise through community fundraising. Our revised marketing and fundraising strategy for 2025/26 will look to move to more digital approaches and relying on the valuable contribution of our volunteer fundraising ambassadors.

While we have not been able to fund a training post this year, a programme of domestic abuse awareness and trauma informed practice training has been delivered. We also launched quarterly online webinars along with quarterly advice surgeries for employers, offering free half hour advice sessions on their obligations regarding domestic abuse.

Staffing levels have reduced over this period, reflecting financial pressures so we will end the year with approximately 15.61 FTE staff, compared with 19.36 FTE at the start of the financial year. A training plan and new performance management system has been developed over the course of the year to support staff, particularly as case complexity continues to increase.



## **Looking Forward to 2025/26**

Following the challenges of 2024/25 our priorities for 2025/2026 are to:

- restore refuge capacity to 2023 levels over the next 3 years, opening at least one new accessible self-contained dispersed refuge with appropriate support. This will be achieved through the purchase of accommodation using designated funds set aside in reserves plus a generous private donation
- offer face to face groups within reasonable travelling distance across West Sussex and will ensure there is no more than one term's wait for online programmes
- develop and deliver a programme of online and face to face awareness and training events including: domestic abuse awareness, trauma informed practice and healthy relationships.
- maintain high satisfaction rates with at least 9 out of 10 of those we support seeing improved outcomes

## **Financial Situation**

After an incredibly difficult year we were pleasantly surprised to finish the year with a deficit in our unrestricted funds that was less than budgeted.

Our refuge in the west of the county closed at the end of the August 2024 and the ambition we had to buy another communal refuge in that area and have it up and running by the end of 2024 had to be paused. The occupancy levels at the existing refuges were considerably below budget levels during this period and this, combined with the uncertainty over statutory funding streams after March 2025, meant that it was prudent to postpone any large capital expenditure projects in 2024/25.

At the end of 2024, we heard that we would not be successful for another three year round of funding from Children in Need. After 20+ years of funding, we were disappointed to hear we were no longer eligible but want to thank Children in Need for all their support over that time.

As a one-off, Children in Need have awarded us a legacy grant for six months in June 2025. This will enable us to compose a toolkit for anyone in the refuge team to be able to support any child coming in to refuge.

Having gone through that uncertain period the future now looks more settled. We have our statutory funding secured until March 2026 and the scope of that funding is broader than before. The occupancy levels at the refuges have improved and new managers have brought new ideas to their services which have refocused the purpose and efficiency of their departments. Although we start the 2025/26 financial year as a smaller organisation than before, we believe we are in a stronger position to face the challenges ahead.

Since the year end we have received a very generous and substantial donation that will kick start our 'Open the Door' campaign. We look to promoting this further as we approach the Autumn of 2025.

Once again, the generosity of individuals and local organisations who have contributed through donations and fundraising continue to surprise us even in these challenging economic times. Very special thanks goes to The Wickens Family Foundation who continue to support us, to our anonymous donor supporting the purchase of new refuge accommodation, and to Helen Hitchcock, our Patron, who promotes our charity and has raised thousands of pounds in doing so, especially through her Chennai to Goa Rally. Our Fundraising team continue to build relationships in the community and have increased our social media presence.

The Trustee Board is constantly mindful of managing our resources prudently and for best value. The unrestricted funding budget for 2025-2026 has produced a manageable deficit for this year and we hope that further funding will bring this down to a break even position. The Charity has sufficient free reserves to fund the difference between income and expenditure as detailed in the reserves policy below. For this reason, they continue to adopt the going concern basis in preparing the financial statements.

The remuneration of the organisation's senior leadership team was externally benchmarked in 2022. The senior leadership team's pay is reviewed in line with the rest of the organisation. Every 3 - 5 years the salaries will be benchmarked again to ensure they remain in line with market trends.

The Board are committed to paying for key strategic services from our unrestricted reserves for up to six months until alternative funding can be secured. If those outcomes do occur, it will absorb some of the surplus achieved in previous years. The Board are very aware of this and the continually changing situation and are looking at our long-term plan to develop other unrestricted funding streams to provide resilience in our finances.

## **Conclusion**

The board of Trustees would like to express their sincere gratitude to all the staff and volunteers who work so hard to ensure the delivery of a safe and high-quality professional service. The enthusiasm and commitment of both staff and volunteers is appreciated by the Board of Trustees and reflected in the overwhelmingly positive feedback received from service users through our evaluations.

## **Financial Review**

The results of the year are set out in the Statement of Financial Activities on page 21. A deficit of £26,933 (2024 surplus £76,961) was earned in the general unrestricted fund. A deficit of £85,479 (2024 deficit £7,326) occurred in the restricted funds

## **Reserves Policy**

The agreed basis of the reserves policy of Safe in Sussex is that it should protect the continuity of our core work if funding streams, especially short-term grants, are not renewed. This is to give our staff and service users confidence that the charity can continue to provide services. It is also intended to ensure that the organisation can continue to operate during periods of general financial instability such as high wage and cost inflation.

Finally, the policy also considers the long-term objectives of the charity to hold designated funds for expanding services and investing in assets.

To achieve these aims, the reserves requirement is split into several categories (see table below). This includes a designated reserves category the "Capital Purchase Fund" (CPF) which in 2024 was a ring-fenced amount set aside for a deposit on a new communal refuge to replace the rental property which we could no longer afford due to the rent increase. Due to challenges with this approach and the financial impact, the Board have reviewed the plan and agreed that the priority for the organisation should now be on buying outright a small self-contained unit to house a resident unsuitable for communal refuge accommodation. It is intended that further properties will be added to the portfolio in future, as the organisation's financial position allows, to give more options for housing a wider group of residents.

The total reserves requirement calculated for 2025/26 based on the annual budget and the longer term planned spending commitments is £388,901. This is split into general requirements of £188,901 and designated requirements of £200,000.

The unrestricted fund as at 31st March 2025 totalled £1,255,445 (2024 £1,282,378) of which £734,077 (2024 £747,901) was invested in tangible fixed assets. The charity therefore had free reserves of £521,368 (2024 £534,477) of which £200,000 has been designated to future projects. The charity therefore has operational reserves of £521,368 (2024 £534,477), £321,368 allowing for the designated fund. This is greater than the calculated requirement for the year commencing 1<sup>st</sup> April 2025, so the Trustees are satisfied that the level of reserves is sufficient. Whilst the reserves exceed the calculated requirement, the Trustees do not consider this excessive due to the potential uncertainty over future income streams.

| Reason                              | What might happen?  | Level of reserves required                         | Value for 2025/26 |
|-------------------------------------|---|--|-------------------|
| Unforeseen emergencies              | Properties need significant maintenance; need to employ extra staff due to sickness etc | General fund suggested                             | £10,000           |
| Budget deficit / budget contingency | The current budget does not cover the expected expenditure;                             | The full value of current deficit to be maintained | £28,026           |
|                                     | Costs increase during the year vs budget  | Keep 5% of expenditure budget as a contingency     | £24,124           |
|                                     | Annual salary review (planned for 1st October) cannot be funded from income             | 3% of salary costs                                 | £9,751            |
| Future income uncertainty           | WSCC contract income ends   | Contract now extended to 31/03/2026                | £0                |

|   |   |  |                 |
|---|---|--|-----------------|
|   | Refuge housing benefit & service charge income is lower than expected | Current occupancy in budget is 81%.<br>10% contingency of £262k  | £26,200         |
|   | Grants are not renewed leading to need to fund activity from reserves | For grants of less than 12 months duration, keep a further 6 months of costs in reserve.<br>Provision for non-renewal of PCC Community Group and Outreach grants which end 31/3/2026 | £70,800         |
| Refuge maintenance                                  | Further maintenance of buildings needed over and above budget         | Significant work has been done in prior years. Maintain reserves of £20k due to potential damp rectification   | £20,000         |
| <b>SUB-TOTAL GENERAL EXPENDITURE RESERVES</b>       |   |  | <b>£188,901</b> |
| Capital purchase fund                               | Purchase self-contained flat to house residents unsuitable for refuge | Designated fund to enable organisation to purchase a self-contained flat   | £200,000        |
| <b>SUB-TOTAL DESIGNATED RESERVES</b>                |   |  | <b>£200,000</b> |
| <b>TOTAL RESERVES REQUIRED AS AT 1st APRIL 2025</b> |   |  | <b>£388,901</b> |
| RESERVES BALANCE AS AT 31st MARCH 2025              |   |  | £521,368        |
| <b>SURPLUS / (SHORTFALL) IN REQUIRED RESERVES</b>   |   |  | <b>£132,467</b> |

## Risk Management

The trustees have a standing agenda item on risk management at Board meetings, as well as a dedicated committee focusing on risk and compliance. Trustees continue to identify the major risks to which the charity is exposed and constantly review the systems which are in place to mitigate those risks. The over-riding risk management policy document and risk register has been updated to include a more comprehensive operational, governance and financial risk policy document, which is regularly reviewed.

## Public Benefit

The current activities of the charity are detailed in the Annual Report. The Trustees confirm that they have referred to the guidance contained in the Charity Commission's guidance on public benefit when reviewing the company's aims and objectives and in planning future activities.

## Trustees' Financial Responsibilities

The Trustees (who are also Directors of Worthing Women's aid for the purpose of company law) are responsible for preparing the Directors' and Trustees report and financial statements in accordance with applicable law and United Kingdom Accounting Standards (generally accepted accounting practice).

Company law requires the Trustees to prepare financial statements for each financial year which gives a true and fair view of the state of affairs of the charitable company and of the incoming resources, including the income and expenditure, of the charitable company for the year. In preparing these financial statements the Trustees are required to:

- select suitable accounting policies and then apply them consistently;
- observe the methods and principles in the Charities SORP;
- make judgements and estimates that are reasonable and prudent;
- state whether UK Accounting Standards have been followed, subject to any material departures disclosed and explained in the financial statements;
- prepare the financial statements on the going concern basis unless it is inappropriate to assume that the charitable company will continue in operation.

The Trustees are responsible for keeping adequate accounting records which disclose, with reasonable accuracy at any time, the financial position of the charitable company and enable them to ensure that those financial statements comply with the Companies Act 2006. They are also responsible for the safeguarding the assets of the charitable company and hence for taking reasonable steps for the prevention and detection of fraud and other irregularities.

## Approval

The report of the Directors and Trustees has been prepared taking advantage of the small company exemption in Section 415A of the Companies Act 2006

The report was approved by the Trustees on 17th September 2025 and signed on their behalf by

*Leslie Groves Williams*

Leslie Groves-Williams (Chair of Trustees)

**Worthing Women's Aid Trading as Safe In Sussex  
(A company limited by guarantee)**

**Independent examiner's report  
For the year ended 31 March 2025**

**Independent examiner's report to the Trustees of Worthing Women's Aid Trading as Safe In Sussex ('the company')**

I report to the charity Trustees on my examination of the accounts of the company for the year ended 31 March 2025.

**Responsibilities and basis of report**

As the Trustees of the company (and its directors for the purposes of company law) you are responsible for the preparation of the accounts in accordance with the requirements of the Companies Act 2006 ('the 2006 Act').

Having satisfied myself that the accounts of the company are not required to be audited under Part 16 of the 2006 Act and are eligible for independent examination, I report in respect of my examination of the company's accounts carried out under section 145 of the Charities Act 2011 ('the 2011 Act'). In carrying out my examination I have followed the Directions given by the Charity Commission under section 145(5)(b) of the 2011 Act.

**Independent examiner's statement**

Since the company's gross income exceeded £250,000 your examiner must be a member of a body listed in section 145 of the 2011 Act. I confirm that I am qualified to undertake the examination because I am a member of ICAEW, which is one of the listed bodies.

I have completed my examination. I confirm that no matters have come to my attention in connection with the examination giving me cause to believe:

1. accounting records were not kept in respect of the company as required by section 386 of the 2006 Act; or
2. the accounts do not accord with those records; or
3. the accounts do not comply with the accounting requirements of section 396 of the 2006 Act other than any requirement that the accounts give a 'true and fair' view which is not a matter considered as part of an independent examination; or
4. the accounts have not been prepared in accordance with the methods and principles of the Statement of Recommended Practice for accounting and reporting by charities applicable to charities preparing their accounts in accordance with the Financial Reporting Standard applicable in the UK and Republic of Ireland (FRS 102).

I have no concerns and have come across no other matters in connection with the examination to which attention should be drawn in this report in order to enable a proper understanding of the accounts to be reached.

This report is made solely to the company's Trustees, as a body, in accordance with Part 4 of the Charities (Accounts and Reports) Regulations 2008. My work has been undertaken so that I might state to the company's Trustees those matters I am required to state to them in an Independent examiner's report and for no other purpose. To the fullest extent permitted by law, I do not accept or assume responsibility to anyone other than the company and the company's Trustees as a body, for my work or for this report.

Signed: *Kreston Reeves LLP*

Dated: 8 October 2025

Lucy Hammond

BSc FCA

**Kreston Reeves LLP**

Chartered Accountants  
9 Donnington Park, 85 Birdham Road, Chichester, PO20 7AJ

**Worthing Women's Aid Trading as Safe In Sussex**  
**(A company limited by guarantee)**

**Statement of financial activities (incorporating income and expenditure account)**  
**For the year ended 31 March 2025**

|                                    | Note | Unrestricted<br>funds<br>2025<br>£ | Restricted<br>funds<br>2025<br>£ | Total<br>funds<br>2025<br>£ | Total<br>funds<br>2024<br>£ |
|------------------------------------|------|------------------------------------|----------------------------------|-----------------------------|-----------------------------|
| <b>Income from:</b>                |      |                                    |                                  |                             |                             |
| Grants, Donations and Legacies     | 3    | 32,951                             | 252,173                          | 285,124                     | 420,448                     |
| Charitable activities              | 4    | 384,204                            | -                                | 384,204                     | 488,115                     |
| Other trading activities           | 6    | 33,129                             | -                                | 33,129                      | 35,672                      |
| Investments                        | 7    | 11,156                             | -                                | 11,156                      | 11,587                      |
| <b>Total income</b>                |      | <b>461,440</b>                     | <b>252,173</b>                   | <b>713,613</b>              | <b>955,822</b>              |
| <b>Expenditure on:</b>             |      |                                    |                                  |                             |                             |
| Raising funds                      |      | 46,334                             | -                                | 46,334                      | 45,625                      |
| Charitable activities              | 8    | 442,039                            | 337,652                          | 779,691                     | 840,602                     |
| <b>Total expenditure</b>           |      | <b>488,373</b>                     | <b>337,652</b>                   | <b>826,025</b>              | <b>886,227</b>              |
| <b>Net movement in funds</b>       |      | <b>(26,933)</b>                    | <b>(85,479)</b>                  | <b>(112,412)</b>            | <b>69,595</b>               |
| <b>Reconciliation of funds:</b>    |      |                                    |                                  |                             |                             |
| Total funds brought forward        |      | 1,282,378                          | 187,517                          | 1,469,895                   | 1,400,300                   |
| Net movement in funds              |      | (26,933)                           | (85,479)                         | (112,412)                   | 69,595                      |
| <b>Total funds carried forward</b> |      | <b>1,255,445</b>                   | <b>102,038</b>                   | <b>1,357,483</b>            | <b>1,469,895</b>            |

Included within unrestricted funds are £200,000 of designated funds, please see note 16 for more detail.

The Statement of financial activities includes all gains and losses recognised in the year.

The notes on pages 25 to 41 form part of these financial statements.

**Worthing Women's Aid Trading as Safe In Sussex**  
**(A company limited by guarantee)**  
**Registered number: 04691516**

**Balance sheet**  
**As at 31 March 2025**

|  | <b>Note</b> | <b>2025<br/>£</b> | <b>2024<br/>£</b> |
|--|-------------|-------------------|-------------------|
| <b>Fixed assets</b>                            |             |                   |                   |
| Tangible assets                                | 13          | <b>734,077</b>    | 747,901           |
|  |             | <b>734,077</b>    | 747,901           |
| <b>Current assets</b>                          |             |                   |                   |
| Debtors  | 14          | <b>19,934</b>     | 22,362            |
| Cash at bank and in hand                       |             | <b>627,043</b>    | 720,309           |
|  |             | <b>646,977</b>    | 742,671           |
| Creditors: amounts falling due within one year | 15          | <b>(23,571)</b>   | (20,677)          |
| <b>Net current assets</b>                      |             | <b>623,406</b>    | 721,994           |
| <b>Total assets less current liabilities</b>   |             | <b>1,357,483</b>  | 1,469,895         |
| <b>Total net assets</b>                        |             | <b>1,357,483</b>  | 1,469,895         |
| <b>Charity funds</b>                           |             |                   |                   |
| Restricted funds                               | 16          | <b>102,038</b>    | 187,517           |
| Unrestricted funds                             | 16          | <b>1,255,445</b>  | 1,282,378         |
| <b>Total funds</b>                             |             | <b>1,357,483</b>  | 1,469,895         |



**Worthing Women's Aid Trading as Safe In Sussex**  
**(A company limited by guarantee)**  
**Registered number: 04691516**

**Balance sheet (continued)**  
**As at 31 March 2025**

The company was entitled to exemption from audit under section 477 of the Companies Act 2006.

The members have not required the company to obtain an audit for the year in question in accordance with section 476 of Companies Act 2006.

The Trustees acknowledge their responsibilities for complying with the requirements of the Act with respect to accounting records and preparation of financial statements.

The financial statements have been prepared in accordance with the provisions applicable to entities subject to the small companies regime.

The financial statements were approved and authorised for issue by the Trustees and signed on their behalf by:



.....  
**Karen Brown**

Treasurer

Date: 17th September 2025

The notes on pages 25 to 41 form part of these financial statements.

**Worthing Women's Aid Trading as Safe In Sussex**  
**(A company limited by guarantee)**

**Statement of cash flows**  
**For the year ended 31 March 2025**

|  | <b>Note</b> | <b>2025<br/>£</b> | <b>2024<br/>£</b> |
|--|-------------|-------------------|-------------------|
| <b>Cash flows from operating activities</b>                |             |                   |                   |
| Net cash used in operating activities                      | 18          | <b>(97,480)</b>   | (15,746)          |
| <b>Cash flows from investing activities</b>                |             |                   |                   |
| Interest received  |             | <b>11,156</b>     | 11,587            |
| Purchase of tangible fixed assets                          |             | <b>(6,942)</b>    | (56,004)          |
| <b>Net cash provided by/(used in) investing activities</b> |             | <b>4,214</b>      | <b>(44,417)</b>   |
| <b>Change in cash and cash equivalents in the year</b>     |             | <b>(93,266)</b>   | <b>(60,163)</b>   |
| Cash and cash equivalents at the beginning of the year     |             | <b>720,309</b>    | 780,472           |
| <b>Cash and cash equivalents at the end of the year</b>    | 19          | <b>627,043</b>    | 720,309           |

The notes on pages 25 to 41 form part of these financial statements

**Worthing Women's Aid Trading as Safe In Sussex**  
**(A company limited by guarantee)**

**Notes to the financial statements**  
**For the year ended 31 March 2025**

**1. General information**

The charity is a private company, limited by guarantee, incorporated in England and Wales within the United Kingdom. The Trustees of the company are the members of the company named on page 1. In the event of the charity being wound up, the liability in respect of the guarantee is limited to £1 per member of the charity.

The address of the registered office is Rear of 1-7 Elm Park, Ferring, Worthing, West Sussex, BN12 5RN.

**2. Accounting policies**

**2.1 Basis of preparation of financial statements**

The financial statements have been prepared in accordance with the Charities SORP (FRS 102) - Accounting and Reporting by Charities: Statement of Recommended Practice applicable to charities preparing their accounts in accordance with the Financial Reporting Standard applicable in the UK and Republic of Ireland (FRS 102) (effective 1 January 2019), the Financial Reporting Standard applicable in the UK and Republic of Ireland (FRS 102) and the Companies Act 2006.

Worthing Women's Aid trading as Safe In Sussex meets the definition of a public benefit entity under FRS 102. Assets and liabilities are initially recognised at historical cost or transaction value unless otherwise stated in the relevant accounting policy.

**2.2 Going concern**

The financial statements have been prepared on a going concern basis as the trustees believe that no material uncertainties exist. The trustees have considered the level of funds held for 12 months from authorising these financial statements

**2.3 Income**

All income is recognised once the charity has entitlement to the income, it is probable that the income will be received and the amount of income receivable can be measured reliably.

Grants are included in the Statement of financial activities on a receivable basis. The balance of income received for specific purposes but not expended during the period is shown in the relevant funds on the Balance sheet. Where income is received in advance of entitlement of receipt, its recognition is deferred and included in creditors as deferred income. Where entitlement occurs before income is received, the income is accrued.

Donated services or facilities are recognised when the charity has control over the item, any conditions associated with the donated item have been met, the receipt of economic benefit from the use of the company of the item is probable and that economic benefit can be measured reliably. In accordance with the Charities SORP (FRS 102), the general volunteer time of the charity is not recognised and refer to the Trustees' report for more information about their contribution.

On receipt, donated professional services and facilities are recognised on the basis of the value of the gift to the charity which is the amount it would have been willing to pay to obtain services or facilities of equivalent economic benefit on the open market; a corresponding amount is then recognised in expenditure in the period of receipt.

**Worthing Women's Aid Trading as Safe In Sussex**  
**(A company limited by guarantee)**

**Notes to the financial statements**  
**For the year ended 31 March 2025**

**2. Accounting policies (continued)**

**2.4 Expenditure**

Expenditure is recognised once there is a legal or constructive obligation to transfer economic benefit to a third party, it is probable that a transfer of economic benefits will be required in settlement and the amount of the obligation can be measured reliably. Expenditure is classified by activity. The costs of each activity are made up of the total of direct costs and shared costs, including support costs involved in undertaking each activity. Direct costs attributable to a single activity are allocated directly to that activity. Shared costs which contribute to more than one activity and support costs which are not attributable to a single activity are apportioned between those activities on a basis consistent with the use of resources. Central staff costs are allocated on the basis of time spent, and depreciation charges allocated on the portion of the asset's use.

Fundraising costs are those incurred in seeking voluntary contributions and do not include the costs of disseminating information in support of the charitable activities. Support costs are those costs incurred directly in support of expenditure on the objects of the company and include project management carried out at Headquarters.

Costs of generating funds are costs incurred in attracting voluntary income, and those incurred in trading activities that raise funds.

Charitable activities and Governance costs are costs incurred on the charity's operations, including support costs and costs relating to the governance of the company apportioned to charitable activities.

**2.5 Government grants**

Government grants relating to tangible fixed assets are treated as deferred income and released to the Statement of financial activities over the expected useful lives of the assets concerned. Other grants are credited to the Statement of financial activities as the related expenditure is incurred.

**2.6 Tangible fixed assets and depreciation**

Tangible fixed assets costing £1,500 or more are capitalised and recognised when future economic benefits are probable and the cost or value of the asset can be measured reliably.

Tangible fixed assets are initially recognised at cost. After recognition, under the cost model, tangible fixed assets are measured at cost less accumulated depreciation and any accumulated impairment losses. All costs incurred to bring a tangible fixed asset into its intended working condition should be included in the measurement of cost.

Depreciation is charged so as to allocate the cost of tangible fixed assets less their residual value over their estimated useful lives.

Depreciation is provided on the following bases:

|                       |                     |
|-----------------------|---------------------|
| Freehold property     | - 2% straight line  |
| Office equipment      | - 25% straight line |
| Property improvements | - 20% straight line |

Freehold land is carried at cost and is not depreciated.

**Worthing Women's Aid Trading as Safe In Sussex**  
**(A company limited by guarantee)**

**Notes to the financial statements**  
**For the year ended 31 March 2025**

**2. Accounting policies (continued)**

**2.7 Interest receivable**

Interest on funds held on deposit is included when receivable and the amount can be measured reliably by the company; this is normally upon notification of the interest paid or payable by the institution with whom the funds are deposited.

**2.8 Debtors**

Trade and other debtors are recognised at the settlement amount after any trade discount offered. Prepayments are valued at the amount prepaid net of any trade discounts due.

**2.9 Cash at bank and in hand**

Cash at bank and in hand includes cash and short-term highly liquid investments with a short maturity of three months or less from the date of acquisition or opening of the deposit or similar account.

**2.10 Liabilities and provisions**

Liabilities are recognised when there is an obligation at the Balance sheet date as a result of a past event, it is probable that a transfer of economic benefit will be required in settlement, and the amount of the settlement can be estimated reliably.

Liabilities are recognised at the amount that the charity anticipates it will pay to settle the debt or the amount it has received as advanced payments for the goods or services it must provide.

Provisions are measured at the best estimate of the amounts required to settle the obligation. Where the effect of the time value of money is material, the provision is based on the present value of those amounts, discounted at the pre-tax discount rate that reflects the risks specific to the liability. The unwinding of the discount is recognised in the Statement of financial activities as a finance cost.

**2.11 Financial instruments**

The charity only has financial assets and financial liabilities of a kind that qualify as basic financial instruments. Basic financial instruments are initially recognised at transaction value and subsequently measured at their settlement value with the exception of bank loans which are subsequently measured at amortised cost using the effective interest method.

**2.12 Pensions**

The charity operates a defined contribution pension scheme and the pension charge represents the amounts payable by the company to the fund in respect of the year.

**2.13 Fund accounting**

General funds are unrestricted funds which are available for use at the discretion of the Trustees in furtherance of the general objectives of the company and which have not been designated for other purposes.

Designated funds comprise unrestricted funds that have been set aside by the Trustees for particular purposes. The aim and use of each designated fund is set out in the notes to the financial statements.

Restricted funds are funds which are to be used in accordance with specific restrictions imposed by donors or which have been raised by the company for particular purposes. The costs of raising and administering such funds are charged against the specific fund. The aim and use of each restricted fund is set out in the notes to the financial statements.

**Worthing Women's Aid Trading as Safe In Sussex**  
(A company limited by guarantee)

**Notes to the financial statements**  
**For the year ended 31 March 2025**

**3. Income from donations and legacies**

|           | <b>Unrestricted<br/>funds<br/>2025<br/>£</b> | <b>Restricted<br/>funds<br/>2025<br/>£</b> | <b>Total<br/>funds<br/>2025<br/>£</b> |
|-----------|--|--|---------------------------------------|
| Donations | 31,951                                       | 480  | <b>32,431</b>                         |
| Legacies  | 1,000  | -  | <b>1,000</b>                          |
| Grants    | -  | 251,693                                    | <b>251,693</b>                        |
|           | <u>32,951</u>                                | <u>252,173</u>                             | <u><b>285,124</b></u>                 |
|           |  |  |                                       |
|           | <b>Unrestricted<br/>funds<br/>2024<br/>£</b> | <b>Restricted<br/>funds<br/>2024<br/>£</b> | <b>Total<br/>funds<br/>2024<br/>£</b> |
| Donations | 26,002                                       | 480  | 26,482                                |
| Grants    | 88,858                                       | 305,108                                    | 393,966                               |
|           | <u>114,860</u>                               | <u>305,588</u>                             | <u>420,448</u>                        |

**4. Income from charitable activities**

|                             | <b>Unrestricted<br/>funds<br/>2025<br/>£</b> | <b>Total<br/>funds<br/>2025<br/>£</b> |
|-----------------------------|--|---------------------------------------|
| Refuge and Community Groups | <u>384,204</u>                               | <u><b>384,204</b></u>                 |
|                             |  |                                       |
|                             | <b>Unrestricted<br/>funds<br/>2024<br/>£</b> | <b>Total<br/>funds<br/>2024<br/>£</b> |
| Refuge and Community Groups | <u>488,115</u>                               | <u>488,115</u>                        |

**Worthing Women's Aid Trading as Safe In Sussex**  
**(A company limited by guarantee)**

**Notes to the financial statements**  
**For the year ended 31 March 2025**

**5. Analysis of income from charitable activities by type of income**

|                                     | <b>Unrestricted<br/>funds<br/>2025<br/>£</b> | <b>Total<br/>funds<br/>2025<br/>£</b> |
|-------------------------------------|--|---------------------------------------|
| Refuge - Housing Benefit            | 216,647                                      | <b>216,647</b>                        |
| Refuge - other income               | 62,225                                       | <b>62,225</b>                         |
| Training income                     | 7,200  | <b>7,200</b>                          |
| Service charge                      | 8,893  | <b>8,893</b>                          |
| West Sussex County Council Contract | 89,239                                       | <b>89,239</b>                         |
|                                     | <hr/>  | <hr/>                                 |
|                                     | 384,204                                      | <b>384,204</b>                        |

|                                     | <b>Unrestricted<br/>funds<br/>2024<br/>£</b> | <b>Total<br/>funds<br/>2024<br/>£</b> |
|-------------------------------------|--|---------------------------------------|
| Refuge - Housing Benefit            | 340,944                                      | 340,944                               |
| Refuge - other income               | 5,181  | 5,181                                 |
| Training income                     | 1,440  | 1,440                                 |
| Service charge                      | 17,241                                       | 17,241                                |
| West Sussex County Council Contract | 123,309                                      | 123,309                               |
|                                     | <hr/>  | <hr/>                                 |
|                                     | 488,115                                      | 488,115                               |

**6. Income from other trading activities**

**Income from fundraising events**

|                    | <b>Unrestricted<br/>funds<br/>2025<br/>£</b> | <b>Total<br/>funds<br/>2025<br/>£</b> |
|--------------------|--|---------------------------------------|
| Fundraising income | 33,129                                       | <b>33,129</b>                         |
|                    | <hr/>  | <hr/>                                 |

|                    | <b>Unrestricted<br/>funds<br/>2024<br/>£</b> | <b>Total<br/>funds<br/>2024<br/>£</b> |
|--------------------|--|---------------------------------------|
| Fundraising income | 35,672                                       | 35,672                                |
|                    | <hr/>  | <hr/>                                 |

**Worthing Women's Aid Trading as Safe In Sussex**  
(A company limited by guarantee)

**Notes to the financial statements**  
**For the year ended 31 March 2025**

**7. Investment income**

|                     | <b>Unrestricted<br/>funds<br/>2025<br/>£</b> | <b>Total<br/>funds<br/>2025<br/>£</b> |
|---------------------|--|---------------------------------------|
| Interest receivable | 11,156                                       | <b>11,156</b>                         |

|                     | <b>Unrestricted<br/>funds<br/>2024<br/>£</b> | <b>Total<br/>funds<br/>2024<br/>£</b> |
|---------------------|--|---------------------------------------|
| Interest receivable | 11,587                                       | 11,587                                |

**8. Analysis of expenditure on charitable activities**

**Summary by fund type**

|                             | <b>Unrestricted<br/>funds<br/>2025<br/>£</b> | <b>Restricted<br/>funds<br/>2025<br/>£</b> | <b>Total<br/>2025<br/>£</b> |
|-----------------------------|--|--|-----------------------------|
| Refuge and Community Groups | 442,039                                      | 308,041                                    | <b>750,080</b>              |
| Children support services   | -  | 29,611                                     | <b>29,611</b>               |
|                             | <b>442,039</b>                               | <b>337,652</b>                             | <b>779,691</b>              |

|                             | <b>Unrestricted<br/>funds<br/>2024<br/>£</b> | <b>Restricted<br/>funds<br/>2024<br/>£</b> | <b>Total<br/>2024<br/>£</b> |
|-----------------------------|--|--|-----------------------------|
| Refuge and Community Groups | 527,688                                      | 276,463                                    | 804,151                     |
| Children support services   | -  | 36,451                                     | 36,451                      |
|                             | <b>527,688</b>                               | <b>312,914</b>                             | <b>840,602</b>              |



**Worthing Women's Aid Trading as Safe In Sussex  
(A company limited by guarantee)**

**Notes to the financial statements  
For the year ended 31 March 2025**

**9. Analysis of expenditure by activities**

|                             | <b>Activities<br/>undertaken<br/>directly<br/>2025<br/>£</b> | <b>Support<br/>costs<br/>2025<br/>£</b> | <b>Total<br/>funds<br/>2025<br/>£</b> |
|-----------------------------|--|---|---------------------------------------|
| Refuge and Community Groups | 429,221  | 320,859                                 | <b>750,080</b>                        |
| Children support services   | 1,978  | 27,633                                  | <b>29,611</b>                         |
|                             | <u>431,199</u>   | <u>348,492</u>                          | <u><b>779,691</b></u>                 |

|                             | <b>Activities<br/>undertaken<br/>directly<br/>2024<br/>£</b> | <b>Support<br/>costs<br/>2024<br/>£</b> | <b>Total<br/>funds<br/>2024<br/>£</b> |
|-----------------------------|--|---|---------------------------------------|
| Refuge and Community Groups | 418,228  | 385,923                                 | 804,151                               |
| Children support services   | 1,952  | 34,499                                  | 36,451                                |
|                             | <u>420,180</u>   | <u>420,422</u>                          | <u>840,602</u>                        |

**Analysis of direct costs**

|                    | <b>Refuge and<br/>Community<br/>Groups<br/>2025<br/>£</b> | <b>Children<br/>support<br/>services<br/>2025<br/>£</b> | <b>Total<br/>funds<br/>2025<br/>£</b> |
|--------------------|---|---|---------------------------------------|
| Staff costs        | 417,817   | -   | <b>417,817</b>                        |
| Computer costs     | 100   | -   | <b>100</b>                            |
| Office expenses    | 1,435   | 675   | <b>2,110</b>                          |
| Travel             | 4,599   | -   | <b>4,599</b>                          |
| Training           | 3,270   | -   | <b>3,270</b>                          |
| Outings/Activities | -   | 1,053   | <b>1,053</b>                          |
| Supervision        | 2,000   | 250   | <b>2,250</b>                          |
|                    | <u>429,221</u>  | <u>1,978</u>  | <u><b>431,199</b></u>                 |

**Worthing Women's Aid Trading as Safe In Sussex**  
**(A company limited by guarantee)**

**Notes to the financial statements**  
**For the year ended 31 March 2025**

**9. Analysis of expenditure by activities (continued)**

**Analysis of direct costs (continued)**

|                    | Refuge and<br>Community<br>Groups<br>2024<br>£ | Children<br>support<br>services<br>2024<br>£ | Total<br>funds<br>2024<br>£ |
|--------------------|--|--|-----------------------------|
| Staff costs        | 399,210  | -  | 399,210                     |
| Sundry             | 2,711  | -  | 2,711                       |
| Office expenses    | 2,279  | -  | 2,279                       |
| Travel             | 3,971  | -  | 3,971                       |
| Training           | 7,757  | -  | 7,757                       |
| Outings/Activities | -  | 1,302  | 1,302                       |
| Supervision        | 2,300  | 650  | 2,950                       |
|                    | <u>418,228</u>                                 | <u>1,952</u>                                 | <u>420,180</u>              |

**Analysis of support costs**

|                                  | Refuge and<br>Community<br>Groups<br>2025<br>£ | Children<br>support<br>services<br>2025<br>£ | Total<br>funds<br>2025<br>£ |
|----------------------------------|--|--|-----------------------------|
| Staff costs                      | 107,096  | 27,057                                       | 134,153                     |
| Depreciation                     | 20,766   | -  | 20,766                      |
| Telephone                        | 10,689   | 563  | 11,252                      |
| Legal fees                       | 6,931  | -  | 6,931                       |
| Establishment costs              | 59,317   | 13   | 59,330                      |
| Light and heat                   | 17,879   | -  | 17,879                      |
| Insurance                        | 6,284  | -  | 6,284                       |
| Repairs and maintenance          | 47,034   | -  | 47,034                      |
| Cleaning                         | 2,303  | -  | 2,303                       |
| Computer costs                   | 25,927   | -  | 25,927                      |
| Printing, postage and stationery | 3,128  | -  | 3,128                       |
| Equipment                        | 4,708  | -  | 4,708                       |
| Office expenses                  | (22)   | -  | (22)                        |
| Travel                           | 2,443  | -  | 2,443                       |
| Governance costs                 | 6,376  | -  | 6,376                       |
|                                  | <u>320,859</u>                                 | <u>27,633</u>                                | <u>348,492</u>              |

During the year, of total costs £337,652 were restricted (2024: £312,914).

**Worthing Women's Aid Trading as Safe In Sussex**  
**(A company limited by guarantee)**

**Notes to the financial statements**  
**For the year ended 31 March 2025**

**9. Analysis of expenditure by activities (continued)**

**Analysis of support costs (continued)**

|                                  | Refuge and<br>Community<br>Groups<br>2024<br>£ | Children<br>support<br>services<br>2024<br>£ | Total<br>funds<br>2024<br>£ |
|----------------------------------|--|--|-----------------------------|
| Staff costs                      | 118,011  | 33,657                                       | 151,668                     |
| Depreciation                     | 12,423   | -  | 12,423                      |
| Telephone                        | 12,048   | 152  | 12,200                      |
| Legal fees                       | 4,854  | -  | 4,854                       |
| Establishment costs              | 87,710   | 469  | 88,179                      |
| Light and heat                   | 28,106   | -  | 28,106                      |
| Insurance                        | 7,202  | -  | 7,202                       |
| Repairs and maintenance          | 58,440   | -  | 58,440                      |
| Cleaning                         | 2,922  | -  | 2,922                       |
| Computer costs                   | 23,663   | -  | 23,663                      |
| Printing, postage and stationery | 3,957  | -  | 3,957                       |
| Equipment                        | 9,154  | -  | 9,154                       |
| Office expenses                  | 7,758  | -  | 7,758                       |
| Travel                           | 4,408  | 221  | 4,629                       |
| Governance costs                 | 5,267  | -  | 5,267                       |
|                                  | <u>385,923</u>                                 | <u>34,499</u>                                | <u>420,422</u>              |

**10. Independent examiner's remuneration**

The independent examiner's remuneration amounts to an independent examiner fee of £3,025 (2024 - £2,880).

**Worthing Women's Aid Trading as Safe In Sussex**  
**(A company limited by guarantee)**

**Notes to the financial statements**  
**For the year ended 31 March 2025**

**11. Staff costs**

|  | <b>2025</b>           | 2024           |
|--|-----------------------|----------------|
|  | <b>£</b>              | <b>£</b>       |
| Wages and salaries                                   | <b>542,155</b>        | 541,058        |
| Social security costs                                | <b>34,906</b>         | 34,665         |
| Contribution to defined contribution pension schemes | <b>18,179</b>         | 18,331         |
|  | <b><u>595,240</u></b> | <u>594,054</u> |

The average number of persons employed by the company during the year was as follows:

|       | <b>2025</b>      | 2024       |
|-------|------------------|------------|
|       | <b>No.</b>       | <b>No.</b> |
| Total | <b><u>28</u></b> | <u>28</u>  |

No employee received remuneration amounting to more than £60,000 in either year.

The total remuneration of key management personnel was £49,292 (2024 - £48,442).

During the year ended 31 March 2025, redundancy payments were made of £5,738.

**12. Trustees' remuneration and expenses**

During the year, no Trustees received any remuneration or other benefits (2024 - £NIL).

During the year ended 31 March 2025, expenses totalling £25 were reimbursed or paid directly to 1 Trustee (2024 - £155).

**Worthing Women's Aid Trading as Safe In Sussex**  
(A company limited by guarantee)

**Notes to the financial statements**  
**For the year ended 31 March 2025**

**13. Tangible fixed assets**

|                          | Freehold<br>property<br>£ | Office<br>equipment<br>£ | Property<br>improvements<br>£ | Total<br>£ |
|--------------------------|---------------------------|--------------------------|-------------------------------|------------|
| <b>Cost or valuation</b> |                           |                          |                               |            |
| At 1 April 2024          | 749,276                   | 22,864                   | 88,498                        | 860,638    |
| Additions                | -                         | 4,242                    | 2,700                         | 6,942      |
| At 31 March 2025         | 749,276                   | 27,106                   | 91,198                        | 867,580    |
| <b>Depreciation</b>      |                           |                          |                               |            |
| At 1 April 2024          | 60,556                    | 15,535                   | 36,646                        | 112,737    |
| Charge for the year      | 6,294                     | 2,450                    | 12,022                        | 20,766     |
| At 31 March 2025         | 66,850                    | 17,985                   | 48,668                        | 133,503    |
| <b>Net book value</b>    |                           |                          |                               |            |
| At 31 March 2025         | 682,426                   | 9,121                    | 42,530                        | 734,077    |
| At 31 March 2024         | 688,720                   | 7,329                    | 51,852                        | 747,901    |

**14. Debtors**

|                                | 2025<br>£ | 2024<br>£ |
|--------------------------------|-----------|-----------|
| <b>Due within one year</b>     |           |           |
| Other debtors                  | 8,229     | 15,564    |
| Prepayments and accrued income | 11,705    | 6,798     |
|                                | 19,934    | 22,362    |

**15. Creditors: Amounts falling due within one year**

|                                    | 2025<br>£ | 2024<br>£ |
|------------------------------------|-----------|-----------|
| Other taxation and social security | 8,362     | 8,829     |
| Other creditors                    | 8,235     | 5,541     |
| Accruals and deferred income       | 6,974     | 6,307     |
|                                    | 23,571    | 20,677    |

**Worthing Women's Aid Trading as Safe In Sussex**  
**(A company limited by guarantee)**

**Notes to the financial statements**  
**For the year ended 31 March 2025**

**16. Statement of funds**

**Statement of funds - current year**

|                                       | Balance at 1<br>April 2024<br>£ | Income<br>£    | Expenditure<br>£ | Balance at<br>31 March<br>2025<br>£ |
|---------------------------------------|---------------------------------|----------------|------------------|-------------------------------------|
| <b>Unrestricted funds</b>             |                                 |                |                  |                                     |
| <b>Designated funds</b>               |                                 |                |                  |                                     |
| Capital Purchase Fund                 | 200,000                         | -              | -                | 200,000                             |
| <b>General funds</b>                  |                                 |                |                  |                                     |
| General Funds                         | 1,082,378                       | 461,440        | (488,373)        | 1,055,445                           |
| <b>Total Unrestricted funds</b>       | <b>1,282,378</b>                | <b>461,440</b> | <b>(488,373)</b> | <b>1,255,445</b>                    |
| <b>Restricted funds</b>               |                                 |                |                  |                                     |
| Children's Support Service            | 7,220                           | 26,468         | (29,611)         | 4,077                               |
| The 7 Stars Foundation                | 2,364                           | -              | (159)            | 2,205                               |
| Another Way Women                     | 1,690                           | -              | (600)            | 1,090                               |
| Garfield Weston                       | 6,000                           | -              | (6,000)          | -                                   |
| PCC Intervention & Recovery Programme | 81,982                          | 110,944        | (192,926)        | -                                   |
| Sussex Community Foundation           | 9,952                           | -              | -                | 9,952                               |
| Eaton Fund                            | 2,499                           | 5,000          | (4,070)          | 3,429                               |
| PCC Womens IDVA                       | 20,909                          | -              | (20,909)         | -                                   |
| Mid Sussex District Council           | -                               | 3,255          | (3,255)          | -                                   |
| The Big Give                          | 6,160                           | -              | (6,160)          | -                                   |
| PCC IDVA Provision                    | 48,741                          | 67,954         | (63,962)         | 52,733                              |
| West Sussex County Council            | -                               | 28,552         | -                | 28,552                              |
| PCC Triage Worker                     | -                               | 10,000         | (10,000)         | -                                   |
|                                       | 187,517                         | 252,173        | (337,652)        | 102,038                             |
| <b>Total of funds</b>                 | <b>1,469,895</b>                | <b>713,613</b> | <b>(826,025)</b> | <b>1,357,483</b>                    |

**Worthing Women's Aid Trading as Safe In Sussex**  
**(A company limited by guarantee)**

**Notes to the financial statements**  
**For the year ended 31 March 2025**

**16. Statement of funds (continued)**

**Statement of funds - prior year**

|                                       | Balance at<br>1 April 2023<br>£ | Income<br>£    | Expenditure<br>£ | Balance at<br>31 March<br>2024<br>£ |
|---------------------------------------|---------------------------------|----------------|------------------|-------------------------------------|
| <b>Unrestricted funds</b>             |                                 |                |                  |                                     |
| <b>Designated funds</b>               |                                 |                |                  |                                     |
| Capital Purchase Fund                 | 200,000                         | -              | -                | 200,000                             |
| <b>General funds</b>                  |                                 |                |                  |                                     |
| General Funds                         | 1,005,457                       | 650,234        | (573,313)        | 1,082,378                           |
| <b>Total Unrestricted funds</b>       | <b>1,205,457</b>                | <b>650,234</b> | <b>(573,313)</b> | <b>1,282,378</b>                    |
| <b>Restricted funds</b>               |                                 |                |                  |                                     |
| Children's Support Service            | 5,317                           | 34,673         | (32,770)         | 7,220                               |
| The 7 Stars Foundation                | -                               | 2,500          | (136)            | 2,364                               |
| Children in Need Covid Response       | 10,875                          | -              | (10,875)         | -                                   |
| Another Way Women                     | -                               | 3,890          | (2,200)          | 1,690                               |
| Garfield Weston                       | -                               | 25,000         | (19,000)         | 6,000                               |
| PCC Intervention & Recovery Programme | 76,779                          | 110,943        | (105,740)        | 81,982                              |
| PCC Safe Spacing Funding              | -                               | 10,468         | (10,468)         | -                                   |
| Sussex Community Foundation           | 9,952                           | -              | -                | 9,952                               |
| Eaton Fund                            | 3,191                           | 5,000          | (5,692)          | 2,499                               |
| PCC - Community groups                | 15,855                          | -              | (15,855)         | -                                   |
| PCC Womens IDVA                       | 21,665                          | 39,000         | (39,756)         | 20,909                              |
| The Big Give                          | 10,287                          | 6,160          | (10,287)         | 6,160                               |
| PCC IDVA Provision                    | 40,922                          | 67,954         | (60,135)         | 48,741                              |
|                                       | <b>194,843</b>                  | <b>305,588</b> | <b>(312,914)</b> | <b>187,517</b>                      |
| <b>Total of funds</b>                 | <b>1,400,300</b>                | <b>955,822</b> | <b>(886,227)</b> | <b>1,469,895</b>                    |

**Worthing Women's Aid Trading as Safe In Sussex**  
**(A company limited by guarantee)**

**Notes to the financial statements**  
**For the year ended 31 March 2025**

**16. Statement of funds (continued)**

**Designated Fund**

The designated fund represents £200,000 for a Capital Purchase Fund. This is to fund the purchase of a property to be used as refuge accommodation.

**Restricted Funds**

Children's Support Service

BBC Children in Need

This grant came to an end in January 2025. We were disappointed that due to changes to the BBC Children in Need grant criteria, we were no longer eligible to receive this grant. However since the year end we have been awarded a legacy grant for 6 months to provide a lasting project resource that can be used in the refuge.

This fund also represents donations etc given towards the running of the children's service, but in particular to fund larger activities and toys and equipment for the playroom.

Children in Need Covid Response

This is a fund of money given to support children and young people in the community who are affected by domestic abuse and as a result of the pandemic. This project was finished last year.

Police and Crime Commissioner - Safe Space Funding

This was a grant awarded and spent in the year that enabled us to have specific training on management development, enhance our database and provide some laptops for our staff.

Sussex Community Foundation

This grant is to support our children's work.

Eaton Fund

We are delighted to continue with the purpose of this grant which enables us to buy essential items for the women that we work with. A third amount of £5,000 was received in May 2024.

Police and Crime Commissioner - Community Groups

This was given to us as a one-off grant to support our community group work. This completed in the previous year.

Police and Crime Commissioner - Women's IDVA

The funding to employ a Women's IDVA came to an end in the autumn of 2024.

The Big Give

This campaign has helped fund some of our Community group work. This funding was all used up in April 2024.

Police and Crime Commissioner - IDVA provision

The grant provides for 2 specialist IDVA positions and to support our work in the Community.

Police and Crime Commissioner - Intervention & Recovery Programme

This grant funds our IDVA led Outreach service and to support our work in the Community. The funding has been agreed until March 25.

Garfield Weston Foundation

We were delighted to be awarded this grant which goes towards the operating core costs of the charity. This grant is now complete.

The 7 Stars Foundation

We were grateful to receive this grant which means we can support our families to undertake exciting activities outside of the refuge.

Another Way Womens' Foundation

This grant was to enable us to train some of our staff to deliver a specific Domestic Abuse programme to support the women in the refuge.

Mid Sussex District Council (MSDC)

This funding enabled us to run one of our educational community groups within the mid Sussex area for one term.

Police and Crime Commissioner - Triage Worker

This funding enabled us to provide extra support towards the IDVA led Outreach service and ended on 31st March 2025.



**Worthing Women's Aid Trading as Safe In Sussex**  
**(A company limited by guarantee)**

**Notes to the financial statements**  
**For the year ended 31 March 2025**

**16. Statement of funds (continued)**

West Sussex County Council

This grant is to enable us to receive financial support for a room being available in the refuge to support a women who has no recourse to public funds. The project is to last until 31 March 2026.

**17. Analysis of net assets between funds**

**Analysis of net assets between funds - current year**

|                               | Unrestricted<br>funds<br>2025<br>£ | Restricted<br>funds<br>2025<br>£ | Total<br>funds<br>2025<br>£ |
|-------------------------------|------------------------------------|----------------------------------|-----------------------------|
| Tangible fixed assets         | 734,077                            | -                                | 734,077                     |
| Current assets                | 544,939                            | 102,038                          | 646,977                     |
| Creditors due within one year | (23,571)                           | -                                | (23,571)                    |
| <b>Total</b>                  | <b>1,255,445</b>                   | <b>102,038</b>                   | <b>1,357,483</b>            |

**Analysis of net assets between funds - prior year**

|                               | Unrestricted<br>funds<br>2024<br>£ | Restricted<br>funds<br>2024<br>£ | Total<br>funds<br>2024<br>£ |
|-------------------------------|------------------------------------|----------------------------------|-----------------------------|
| Tangible fixed assets         | 747,901                            | -                                | 747,901                     |
| Current assets                | 555,154                            | 187,517                          | 742,671                     |
| Creditors due within one year | (20,677)                           | -                                | (20,677)                    |
| <b>Total</b>                  | <b>1,282,378</b>                   | <b>187,517</b>                   | <b>1,469,895</b>            |

**Worthing Women's Aid Trading as Safe In Sussex**  
(A company limited by guarantee)

**Notes to the financial statements**  
**For the year ended 31 March 2025**

**18. Reconciliation of net movement in funds to net cash flow from operating activities**

|  | 2025<br>£       | 2024<br>£       |
|--|-----------------|-----------------|
| Net income/expenditure for the year (as per Statement of Financial Activities) | (112,412)       | 69,595          |
| <b>Adjustments for:</b>  |                 |                 |
| Depreciation charges   | 20,766          | 12,423          |
| Interest received  | (11,156)        | (11,587)        |
| Decrease in debtors  | 2,428           | 1,851           |
| (Decrease)/Increase in creditors   | 2,894           | (88,028)        |
| <b>Net cash used in operating activities</b>                                   | <b>(97,480)</b> | <b>(15,746)</b> |

**19. Analysis of cash and cash equivalents**

|  | 2025<br>£      | 2024<br>£      |
|--|----------------|----------------|
| Cash in hand                           | 627,043        | 720,309        |
| <b>Total cash and cash equivalents</b> | <b>627,043</b> | <b>720,309</b> |

**20. Analysis of changes in net debt**

|                          | At 1 April<br>2024<br>£ | Cash flows<br>£ | At 31 March<br>2025<br>£ |
|--------------------------|-------------------------|-----------------|--------------------------|
| Cash at bank and in hand | 720,309                 | (93,266)        | 627,043                  |
|                          | <b>720,309</b>          | <b>(93,266)</b> | <b>627,043</b>           |

**21. Capital commitments**

|  | 2025<br>£ | 2024<br>£ |
|--|-----------|-----------|
| <b>Contracted for but not provided in these financial statements</b> |           |           |
| Property improvements  | -         | 2,700     |

**Worthing Women's Aid Trading as Safe In Sussex**  
**(A company limited by guarantee)**

**Notes to the financial statements**  
**For the year ended 31 March 2025**

**22. Pension commitments**

The company operates a defined contributions pension scheme. The assets of the scheme are held separately from those of the company in an independently administered fund. The pension cost charge represents contributions payable by the company to the fund and amounted to £18,179 (2024 - £18,331). Contributions totalling £2,390 (2024 - £nil) were payable to the fund at the balance sheet.

**23. Operating lease commitments**

At 31 March 2025 the company had commitments to make future minimum lease payments under non-cancellable operating leases as follows:

|  | <b>2025</b>   | <b>2024</b> |
|--|---------------|-------------|
|  | <b>£</b>      | <b>£</b>    |
| Not later than 1 year                        | <b>32,816</b> | 45,016      |
| Later than 1 year and not later than 5 years | <b>64,085</b> | 98,471      |
|  | <b>96,901</b> | 143,487     |

**24. Related party transactions**

There were no related party transactions in the year that require disclosure under SORP 2019 (FRS 102).