



Registered Charity No: 1098204



The Ark Trust CIO

Trustees' Annual Report and Financial Statements

For the year ended 31st March 2024





## Contents

Charity Information	Page 1
Trustees' Report	Page 3
Statement of Financial Activities	Page 15
Notes to the Financial Statements	Page 21
Glossary	
Independent Examiner's Report	



## Charity Information

**Charity Number** 1098204

**Address** TRAX, Mill Ride (off Fernbank Road), North Ascot, Berkshire,  
SL5 8JW

### Trustees



Jon Codd (re-elected 18th January 2024)



Tommy Docherty



Stephanie Guest (re-elected 18th January 2024)



Muriel Hanley



John Horbury



Neil McGiffen



Antony Robinson (Chair)



Zoe Robinson (re-elected 18th January 2024)



Peter Tobin



Susanna Tyrrell

### Management



Andrea McCombie, Chief Executive

### Bankers

Banks look after our money

#### CAF Bank

25 King's Avenue  
West Malling  
Kent  
ME19 4JQ

#### HSBC UK

9 High Street  
Bracknell  
Berkshire  
RG12 1DN

#### Redwood Bank Limited

The Nexus Building, Broadway  
Letchworth Garden City  
Hertfordshire  
SG6 3TA

### Independent Examiner

Sandra Fogwill, Camberley, Surrey, GU17 0BN

Sandra checks the money we received is spent how we said it was and that we have followed all the rules.



## Trustees' Report

Some words in this report might be difficult to understand. To help we have added a **glossary** (list of words and their meanings) to the end of this report.

### Structure, Governance and Management



Since 25th August 2020 the Ark has been registered as a Charitable Incorporated Organisation (CIO) - It has, however, been a local charitable organisation for 40 years.



The Ark has a constitution. These are the rules that say what the charity does and how it is run.



The trustees **delegate** responsibility for the day-to-day operations and management of the charity to the Chief Executive.



Every year, at the AGM, members can put themselves forward to be elected and **appointed** to the trustee board. The board can also co-opt (ask people to join) the board during the year if needed. The maximum number of trustees the charity can have is 12.



Training and support for new trustees is provided and all trustees must have a satisfactory **DBS check** before their appointment is finalised.



All trustees give their time for free.



As a user-led organisation, we work towards 75% of the trustee board being people who could use the charity's services or access it's activities.



Voting membership of The Ark costs £10 (one off payment). In the event of The Ark stopping, this membership fee is each member's maximum contribution.

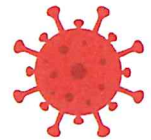
## Risk Management



Risk management means that we have thought about things that could affect The Ark and found ways to reduce any possible risk.

The most serious risks to the charity are:

- Loss of key staff
- Loss of key contracts
- Incident or accident in the building/community activity
- Car accident (volunteer driver project)
- Changes in legislation
- Mistake or error in the advice or support given
- Misconduct or safeguarding issue
- Data Security breach
- Fraud or theft
- A future pandemic (covid or other virus)



## Public Benefit



The trustees confirm they have **complied** with their duty to have due regard to the guidance on **public benefit** published by the Charity Commission and have kept this in mind when planning the services and activities of the charity.

## Social Value

The Ark takes into account the wider **economic, social and environmental impact** of it's actions and, through it's **Social Value** Policy, works towards ensuring these are positive.



## Fundraising Policy



The Ark is a member of the Fundraising Regulator—who provide advice and guidance for charities when raising funds (money).



The Ark does not pay professional fundraisers, individuals or companies to raise money for the charity.



When fundraising or asking for contributions towards activities, The Ark is mindful that many people who use it's services and attend activities are vulnerable and may also have a limited income.



The Ark does, when appropriate, raise funds from the public. We also have a donation button on our website.

## Volunteers



Our volunteers provide many hours of support and help and they are an essential part of the team.

During the year our volunteers provided **3,373** hours to support our local covid vaccination centre, **2,025** volunteer car journeys, **604** community response tasks (picking up prescriptions, shopping etc.) as well as supporting our befriending project, our social groups and helping to run our shop, Forget-me-Knot.



One of our volunteers gifted us access to an online volunteering management platform, Assemble, which they helped to develop, and this allows us to keep track of all our applications, DBS checks and training. Potential volunteers can access information on volunteer roles and apply online from a link on our website.



## Volunteer Spotlight

**Jackie** joined us as a volunteer during the pandemic as a community response area coordinator as well as undertaking tasks herself. She then also became a volunteer at the vaccine centre when it fully opened in January 2021. Jackie continues to volunteer with us as well as getting involved in other volunteering in the community with her dog Bailey, who has become a therapy dog visiting local schools.

*"Volunteering has been the most wonderful & humbling thing I have ever done, combining my love of social activities and need to help people get the best out of every day. Thank you so much everyone at The Ark for making it all possible."*

When Jackie mentioned to her husband **Paul**, who was retired, that the Ark was looking for volunteer drivers he jumped at the chance as he loved driving. After completing his DBS and necessary training he started to volunteer in February 2023 and reached over 500 driving jobs in a year!

*"I now enjoy the same sense of fulfilment and value to the community as Jackie does. I feel proud that I'm able to help elderly residents go out to socialise and love hearing their stories about their journey and experiences living in Bracknell."*



## Acknowledgements

We would like to acknowledge and thank the following groups and organisations for providing funding and other support during the year.

Baily Thomas Charitable Trust

Berkshire Community Foundation

Berkshire Primary Care

Bracknell Forest Council

Frimley Health and Care Integrated Care System

Google

Gu Honey

iNet Telecoms Ltd

Levelling Up Fund

London Hearts

Microsoft

Multiply Fund

National Lottery (Awards for All)

Pargiter Trust

Screwfix Foundation

Tesco, Bags for Life

Tesco, Martins Heron, Bracknell

Winkfield Parish Council

Wokefield Golf Club

The charity would also like to acknowledge and thank the individuals who have donated to our work during the year.

## Objectives and Aims

The Ark's objectives, our purpose, is to:



- Work with people in the South East of England with disabilities and/or long term health conditions, with carers of people with disabilities and/or long term health conditions and with young people who are not in education, employment or training.



- Support the community and voluntary sector in the area of operation of the charity, for the benefit of the public and to ensure the equality for all people to engage in **citizenship**.

The Ark aims to:



- **Advocate** the value of and to enhance the lives of disabled children, young people and adults by providing access to and engagement with creative arts, digital and new media.



- To use the creative arts, digital and new media as a means to inform and offer training to the wider community on disability issues.



- To provide information, advice and support to voluntary sector groups and individuals.



- To promote User Led Organisations.

As well as making sure projects, services and activities meet our objectives and aims, it is **very** important that people who use our services are involved in the planning, development, delivery and evaluation of these too.



## Achievements and Performance





## Arts, Education & Workshops



Over the year we have continued to run, loosely based on academic term times, drama and crafty coffee. These are all up to capacity (full). We would like to put on additional sessions in these but, mainly due to the lack of availability of the **R-Bus**, this is not possible.



This transport issue has also had a negative impact on shorter courses or one-off workshops. We are members of the Bracknell Forest Learning Disability & Autism Partnership and have raised this issue and highlighted it as a barrier for people wanting to attend all workshops, activities and social events—not just the Ark's.

## Festival Green Machine



During the year we attended 3 festivals; Teddy Rocks, Rock 'n' Ribs and Boomtown. From feedback, next year we will focus on the smaller festivals, like Teddy Rocks, so we can provide people with the opportunity to access festivals of different types of music or focus—such as the Bear Grylls Gone Wild festivals.

This year also saw the first Green Machine wedding. Congratulations to Simon and Claire who first met as festival volunteers.

## Forget-me-Knot



In some ways it has been a difficult year for Forget-me-Knot as costs, including the rent and electricity, have gone up while shop sales have gone down.



We also use Forget-me-Knot as a space for social and activity groups such as Knit & Natter and Carers Craft and these are very popular. It is also our meeting place when we arrange our regular local litter-picks and the monthly dementia carer advice drop-in service, held in partnership with Bracknell Dementia Advisory Service.

Next year we will be finishing the installation of the community defibrillator and increasing the number of groups that meet at Forget-me-Knot.



We will also be conducting a review with all staff and shop volunteers to look at ways to reduce costs, increase sales—including online—as well as looking to see if it will be possible to turn an area of the shop into a café and snack bar.

## Friday Night Project



This weekly disco remains very well attended with on average 60-70 people attending every week. Fancy Dress and Party nights (Halloween, Valentine's Day, Christmas etc.) are very popular!



We found out, through the local press, that the venue we have used for over 14 years, was at risk. A search for a venue large enough, in the Bracknell or Wokingham area, available every week was started, while lobbying Wokingham Council (who own the venue). We have received **assurance** that we will be able to stay if St Crispin's School take over the lease of the building.

## HIVE projects

### *Befriending*



Funded by Frimley ICB's Innovation fund, we have been providing befriending and other support to help decrease loneliness and social isolation in the under 75s.

### *Community Response*



Although this project no longer receives any funding, the charity is committed to continuing to run a scaled down service providing emergency, short term support; this is not intended to be a replacement for hospital discharge or social care support—which should be arranged and funded by the local authority and NHS.

The volunteer network provided **604** support tasks including shopping, prescription collection and foodbank parcel delivery during the year to local residents unable to leave their homes due to ill health.



### *Vaccination Centre Support*



The volunteer network continues to support our local vaccination centre with all vaccine programmes, not just Covid. It has also helped support other clinics—such as the recent Prostrate Cancer screening—providing **3373** hours of volunteering.

Berkshire Primary Care (the local GP Federation organisation) cover the costs of managing these volunteers.



## HIVE projects (continued)

### Volunteer Transport



The volunteer transport project has had a busy year! **2025** journeys have been made, supporting **137** local residents to access social clubs, day centres, visit friends, attend the dentist etc.

Over the year 21 volunteers have been involved, supported by Ark staff who coordinate the admin and undertake assessments.

### Night Owls



We have continued to offer a Night Owls event every month over the past year. Bowling, Laserquest and nightclubbing continue to be popular events. We've also included some new types of events such as Reading Pride and a karaoke evening. This has given people the opportunity to attend an evening out doing something they've not experienced before and to decide if they like it or not.



Next year we hope to recruit new volunteers, particularly drivers, so that we can increase the number of transport places we can offer.



As a Berkshire wide social group, we hope to include more events outside of Bracknell, Wokingham and Reading.

*"Night Owls group I always enjoy the outings...My highlight was when we did the nightclub outing. The cinema and Tangs outing was good fun...Every occasion is very well planned for the group" (Ryan)*

### Out and About



Trips or activities are held monthly and are balanced between those activities that are free/have a small cost such as picnic or walks in the local area, with the more expensive day trips such as theme parks or the theatre.

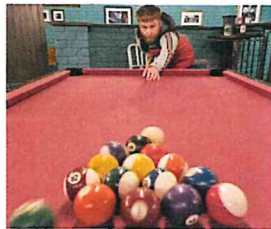


These trips are always fully booked as we can only transport a small group, and we often have to run a waiting list.

Future plans include another weekend break as the one to Bath was so popular.



## **Project 73 & Project 73+ (social groups for autistic adults receiving minimal or no social care support)**



### **P73**

Due to reduction in the size of the group, it now meets fortnightly with additional day trips to Comic Con up to twice a year.

The numbers have been falling because:

- Original members are now becoming too old to attend (upper age limit of 35)
- Transport, particularly after 9pm when there is a reliance on parents
- Introduction of subs to help with staff costs after initial funding finished
- Lack of appropriate signposting from local authority

Positively, at the end of the year, we had 3 requests for more information on this group. We have also made sure professionals, such as social prescribers, are aware of the group and who it is aimed at.

### **P73+**

A monthly meet up for those aged 30 and over. The venue is South Hill Park bar, which works well, and the group will sometimes, weather permitting, also go for a walk and occasionally pop into another local pub to play pool.

Although the group is currently small, up to 6, everyone who comes has told us that they really benefit from the evening once a month.

We are also encouraging those from Project 73 to transition before they are 35; they can attend both groups between 30-35.

## **Radio Marmalade**

Last year Radio Marmalade secured funding from the National Lottery 'Awards for All' programme to support the purchase of new equipment and the development of a user's guide, radio broadcasting lesson materials and website development.

Two of the trustees, Neil and Tommy, with the support of 2 members of staff, led on the project and the station was relaunched in November 2023 with a 73 hour sponsored live broadcast.

## SIGNAL4Carers



SIGNAL provides information, advice and support to unpaid carers (family/friends). By the end of the year **935** carers (an increase of 19% on last year) and 80 recent ex-carers were registered with the service alongside 32 professionals.

Our focus has been on community engagement as well as supporting individual carers with information, advice, signposting, referrals to other services as well as support with benefit applications. Sharon Bowden, the Carers Support Worker, was nominated for a Pride of Bracknell award by many of the carers she has supported (and won the Gold award at the start of April 2024).

As well as being a Carers Trust network partner, the issues faced by carers and the people they support are highlighted at multi-agency meetings/forums such as the Safeguarding Partnership Board and in work streams such as the development of Bracknell's new All Age Carers Strategy.

## Warm Welcome



With the support from the Berkshire Community Foundation we have been able to continue to run this free weekly session for people over 55.

It is a chance to meet and chat with other people, take part in activities such as bingo, craft and puzzles, and an opportunity to get information and advice from staff.



*'There are no strangers here; Only friends you haven't yet met.'*

*William Butler Yeats*





## Future plans

Over the last 3 years the organisation has received support from covid related funding streams which are no longer available. Like many charities, we are also seeing increased demand for our services and rising costs—such as utilities.

During the next year we will:



Forget-me-knot



- Work with the Royal Holloway University of London on a research project to **evaluate** our social activities such as Friday Night Project and Night Owls. This will help us show potential funders the benefits of these groups and activities.
- Look at what we are spending our money on to deliver our activities, support, services and projects and to see if there are ways we can reduce our costs.
- Decide if we will tender again for the Carers Support contract (the current contract ends on 31st December 2024). SIGNAL4Carers is supporting more and more people but the **contract value** has not increased for several years and may even be reduced next time.
- Look at ideas to increase Forget-me-Knot's income as it is struggling to meet it's running costs, especially with the increases in the cost of electricity and rent.
- Look at how we can continue to and increase working in partnership with other organisations and charities. This could be to share or reduce costs or maybe to apply for funding together.



*Celebrating the King's Coronation*



## Statement of Financial Activities



### Financial review

The financial results for the year met the trustees' expectations. The **prudence** of recent years' financial policy to build up to the optimum (best) amount of unrestricted reserves means the charity again enters the next financial year in a strong position to be able to survive any continuing negative financial impacts of the cost of living crisis.

### Statement of Trustees' responsibilities

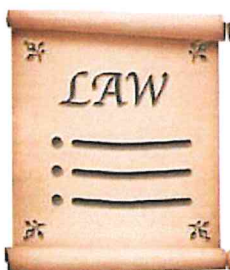
The charity's trustees must make sure that the charity keeps a record of the money it gets in and the money it spends.



Each year the charity must prepare their accounts and get them audited or examined by someone who is not part of The Ark. This means that someone who knows a lot about money, like an accountant, makes sure the accounts are okay.

In preparing these accounts, the Trustees follow best practice and:

- Select suitable accounting policies and then follow them
- Make judgements and estimates that are reasonable and prudent
- Financial statements comply with the **Charities Act 2011**



The trustees are also responsible for protecting the assets of The Ark. Assets means a useful or valuable thing.

Under section 144 of the **Charities Act 2011** the trustees consider that although an audit is not required for this year, an independent examination is needed.



### Remuneration policy for key management personnel

No employees received employee benefits (excluding employer pension costs) of more than £60,000 for the reporting period.



### Investment policy

The trustees have the power to invest the charity's funds and have made the decision, at this time, to take no risks financially and have placed £85,000 into a high interest, 90 day notice account. During this year a further £85,000 was placed in a 1 year **fixed rate** account, which **matures** at the end of April 2024.



### Reserves policy

The optimum, or best, level of reserves is based on 6 months turnover (income) minimum and no more than 9 months. Restricted reserves do not count towards this figure. We end this year with unrestricted reserves of £183,629 (which includes an allocation of £53,194 to cover redundancy and wind up costs if the charity was to close suddenly), which, although lower than last year, puts the charity in a good position going into 2024/25.



### Restricted funds

Restricted funds are used for specific purposes as laid down by the **donor** or contracting party. Expenditure which meets these criteria is charged to the fund together with a fair allocation of management and support costs. Where funds are not specifically allocated against expenditure in that year the balance is **deferred** and added to the balance brought forward on the restricted funds. It will be used in future years in line with the restrictions placed by the donor or stipulated in the contract.



### Particulars of any outstanding **Guarantee** given by the charity

The trustees declare that the charity has given no **guarantee** where potential liability is outstanding at the date of the **statement of assets and liabilities** other than the restricted funds detailed in the income and expenditure statement and mentioned above. This includes financial support received to the following projects: Community Defibrillator, Night Owls (Stay Up Late), Transport, Befriending and Workshops.



### Particulars of any outstanding debt

The trustees declare that the charity has **no** outstanding debts which are secured by an **express charge** on any of the assets of the charity at the date of the **statement of assets and liabilities**.



### Financial outlook

2024/25 will continue to be challenging for many charities; in many ways more difficult than the last 4 years. The trustees and CEO will work hard to seek alternative funding to **subsidise** charitable work streams and to reduce costs, whilst still continuing to support the increased needs of its beneficiaries.

## The Ark Trust CIO

### Statement of financial activities for the 12 months ended 31st March 2024

	Unrestricted funds 2024	Restricted funds 2024	Total funds 2024	Total funds 2023
	£	£	£	£
<b>Income from:</b>				
<i>Donations and legacies</i>				
Donations & gifts	3,725	3,318	7,043	9,313
Grants	2,100	116,465	118,565	156,213
Membership subs	0	0	0	40
<i>Charitable activities</i>				
Activity & holiday fees	49,601	0	49,601	43,056
Contracts	3,400	80,000	83,400	98,515
<i>Other trading activities</i>				
Interest income	2,960	0	2,960	1,674
Sale of fixed asset (surplus)	0	0	0	600
Shop sales	24,045	0	24,045	18,428
Less: COGS	<u>-1,298</u>	<u>0</u>	<u>-1,298</u>	<u>-1,000</u>
<b>Total incoming resources</b>	<b>84,533</b>	<b>199,783</b>	<b>284,316</b>	<b>326,839</b>
<b>Resources expended</b>				
<i>Staff &amp; professional fees</i>				
Activity & project delivery	42,731	113,924	156,655	167,454
Management/back office	<u>15,663</u>	<u>40,058</u>	<u>55,721</u>	<u>60,221</u>
	58,394	153,982	212,376	227,675
Utilities & communications	8,245	9,438	17,683	10,772
Activity & holiday costs	3,068	14,799	17,867	11,987
General overheads	8,880	17,307	26,187	31,638
Equipment & repairs	2,200	5,249	7,449	16,044
Transport & vehicle costs	394	9,464	9,858	1,825
Rent, rates & insurance	<u>16,606</u>	<u>5,607</u>	<u>22,213</u>	<u>22,214</u>
<b>Total resources expended</b>	<b><u>97,787</u></b>	<b><u>215,846</u></b>	<b><u>313,633</u></b>	<b><u>322,155</u></b>
<b>Surplus/loss</b>	<b>-13,254</b>	<b>-16,063</b>	<b>-29,317</b>	



## The Ark Trust CIO

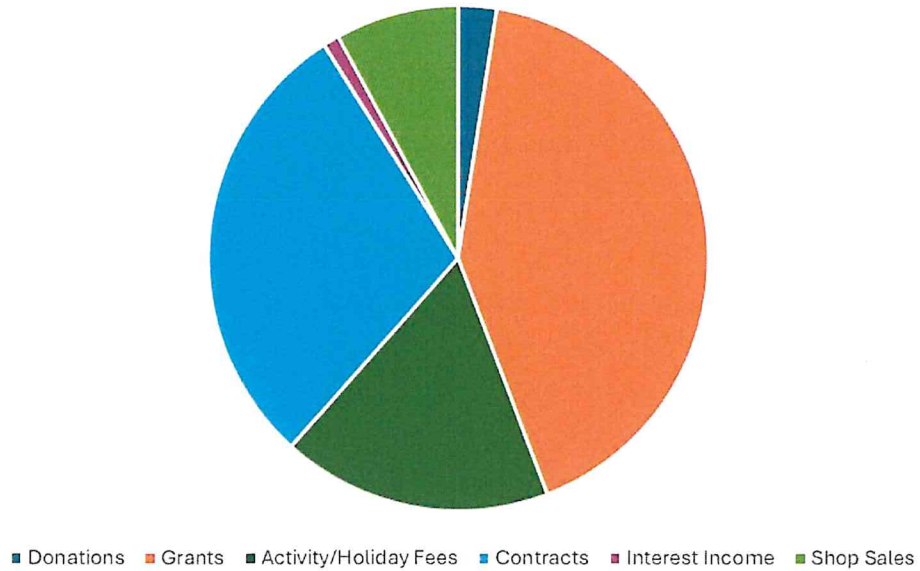
Statement of financial activities for the 12 months ended 31st March 2024 continued..

	Unrestricted	Restricted	Total
Net incoming resources April 1, 2023	196,883	37,899	234,782
Transfers between funds	0	0	0
Surplus at March 31, 2024	-13,254	-16,063	-29,317
<b>Funds at March 31, 2024</b>	<b>183,629</b>	<b>21,836</b>	<b>205,465</b>

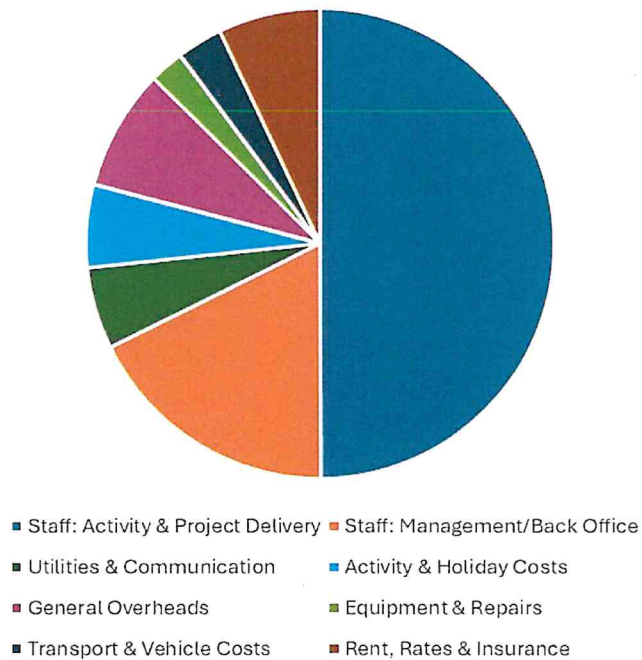
### Breakdown of unrestricted reserves allocation

Allocated/committed	53,194
Unallocated/Free	130,435
<b>Total</b>	<b>183,629</b>

Where our money comes from (£284,316)



How we spend our money (£313,633)



Although we spent more money than money received in the year, this was expected and over half of it was from the restricted fund.

We still have healthy reserves.

**Restricted £21,836, Allocated £53,194, Free/Unrestricted £130,435 = Total £205, 465**



## The Ark Trust CIO

Balance sheet as at 31st March 2024

	2024	2023
	£	£
<b>Fixed Assets</b>		
Tangible assets	22,409	31,030
<b>Current Assets</b>		
Debtors	16,817	7,826
Cash at bank and in hand	206,414	256,850
Prepayments and accrued income	<u>6,453</u>	<u>7,480</u>
	229,684	272,156
<b>Creditors</b>		
Amounts falling due within one year	6,293	6,733
Accruals and deferred income	<u>40,335</u>	<u>61,671</u>
	46,628	68,404
Net Current Assets less liabilities	183,056	203,752
<b>Total Assets less liabilities</b>	<b><u>205,465</u></b>	<b><u>234,782</u></b>
<b>Reserves</b>		
Unrestricted fund	130,435	159,500
Allocated/committed funds	53,194	37,383
Restricted fund	<u>21,836</u>	<u>37,899</u>
<b>Total reserves</b>	<b><u>205,465</u></b>	<b><u>234,782</u></b>

## Notes to the Financial Statements



These are the statements we have to make when we *file* (send) our accounts to the Charity Commission. They are not easy to read. If you would like to know more so you can understand them, please contact the Ark office who will arrange for you to have a briefing session.

### **Basis of preparation**

#### *Basis of accounting*

The accounts have been prepared in accordance with the Statements of Recommended Practice: Accounting and Reporting by Charities preparing their accounts in accordance with the Financial Reporting Standard applicable in the UK and Republic of Ireland (FRS 102), the Charities Act 2011 and UK Generally Accepted Practice as it applies from 1st January 2015.

Assets and liabilities are initially recognised at cost or transaction value unless otherwise stated in the relevant note(s) to these accounts.

The charity meets the definition of a public benefit entity as defined by FRS 102.

#### *Going concern*

These accounts are prepared on a going concern basis; the charity has sufficient resources and the trustees have no reason to believe that the charity will not continue to operate next year or for the foreseeable future.

#### *Change of accounting policy*

The financial statements have been prepared to give a 'true and fair' view and no changes have been made to the accounting policies adopted.

#### *Change to accounting estimates and material errors*

No changes to accounting estimates have occurred in the reporting period (3.46 FRS 102 SORP).

No material prior year errors have been identified in the reporting period (3.47 FRS102 SORP)

#### *Interest receivable*

Interest on funds held on deposit is included when receivable; this is upon notification of the interest paid/payable at the bank.



## **Income**

### *Recognition of income*

These are included in the Statement of Financial Activities (SoFA) when:

- The charity becomes entitled to the resources
- It is more likely than not that the charity will receive the resources
- The monetary value can be measured with sufficient reliability

### *Offsetting*

There has been no offsetting of assets and liabilities, or income and expenses, unless required or permitted by the FRS 102 SORP.

### *Volunteer help*

The value of any voluntary help received is not included in the accounts but is described in the trustees' annual report.

## **Expenditure and liabilities**

### *Liability recognition*

Liabilities are recognised where it is more likely than not that there is a legal or constructive obligation committing the charity to pay out resources and the amount of the obligation can be measured with reasonable certainty.

### *Governance and support costs*

Support costs include central functions and have been allocated to activities on a basis consistent with the use of resources.

### *Redundancy cost*

The charity made no redundancy payments during the reporting period.

### *Creditors*

The charity has creditors which are measured at settlement amounts less trade discounts.

### *Provisions for liabilities*

A liability is measured on recognition at its historical cost and then subsequently measured at the best estimate of the amount required to settle the obligation at the reporting date.

### *Debtors*

Debtors (including trade debtors and loans receivable) are measured on initial recognition at settlement amount after any trade discounts or amount advanced by the charity. Subsequently, they are measured at the cash value or other consideration expected to be received.

## Assets

### *Tangible fixed assets for use by charity*

These are capitalised if they can be used for more than one year and cost at least £750.

They are valued at cost.

The depreciation method is straight line, spread across the assets' useful life taking into account any residual value.

	Motor Vehicles	Fixtures & Fittings	Equipment
	£	£	£
<b>Cost or Value</b>			
At 1st April 2023	17,500	28,618	16,759
Additions	0	0	0
Disposals	0	0	0
At 31st March 2024	17,500	28,618	16,759
<b>Depreciation</b>			
At 1st April 2023	3,500	14,676	13,671
Adjustments for disposals	0	0	0
Charge for the period	1,750	4,641	2,230
At 31st March 2024	5,250	19,317	15,901
<b>Net Book Values</b>			
At the start of the year	14,000	13,942	3,088
At the end of the year	<b>12,250</b>	<b>9,301</b>	<b>858</b>



## Taxation

The charitable status of the organisation has been confirmed by the Inland Revenue. This means that the charity is not liable to corporation tax on its surplus or gains to the extent that they are applied for charitable purposes.

## Trustees remuneration, expenses and related party transaction

None of the trustees received any remuneration for their role during the year and there were no related party transactions. Trustees are offered reimbursement for travel expenses incurred—to remove any barrier to prevent attendance at meetings.

## Independent Examiner's Report

The Independent Examiner's report to the Trustees of The Ark Trust CIO is attached to this report.

## Declaration

The trustees declare that they have approved the trustee's report above.

## Signed on behalf of the charity trustee board by the following trustees:

Name: ZOE ROBINSON

Signature: 

Date: 02/11/24

Name: Stephanie Guest

Signature: 

Date: 02/11/24



## Contact information

Tel 01344 266899

Email [info@theark.org.uk](mailto:info@theark.org.uk)

## Glossary

**Advocate** – promote, speak up for.

**Appointed** – chosen to become a trustee.

**Assurance** – been told something to make us confident about what will happen, like a promise.

**Charities Act 2011** – An Act or law that says how charities must be run and how they must operate.

**Charity Commission**

**Citizenship** - people working together to make positive differences to the society in which they live – locally, nationally and globally.

**Complied** – met the requirements.

**Contract value** – How much we get paid for delivering a contract, like SIGNAL4Carers.

**DBS Check** - Disclosure and Barring Service check, is a criminal record check that employers/volunteer managers can request as part of the recruitment process.

**Deferred** – to put off or delay to a later time.

**Delegate** – to give responsibility and authority to someone.

**Donor** – a person or an organisation that gives money to the charity.

**Economic, social and environmental impact** – how the charity benefits local people financially (money), their community and the environment.

**Evaluate** – to look at how good/bad something is.

**Express charge** – using a large item, such as a building or vehicle you own, to guarantee a debt.

**Fixed rate** – the amount of interest paid/due remains the same for an agreed amount of time.

**Guarantee** – to promise or make a binding agreement.

**Matures** – some savings accounts pay the interest at the end of an agreed amount of time (this is when the account matures) - as long as you haven't taken any money out.

**Prudence** – being careful with money and financial decisions.

**Public benefit** – a legal requirement that the charity's work must benefit the public.

**R-Bus** – Bracknell Forest Council's learning disability transport service.

**Remuneration** – How much people (staff) are paid.

**Reserves** – money set aside in case needed or to spend at a future time.

**Social Value** – the positive impact on people and communities.

**Statement of assets and liabilities** – this tells us what we have (money, items) and what we owe to others.

**Subsidise** – fund/cover the costs of.



## **Independent examiner's report to the trustees of "The Ark Trust CIO"**

I report on the financial statements of the company for the year ended 31 March 2024. To the fullest extent permitted by law, I do not accept or assume responsibility to anyone other than the charity and the charity trustees as a body, for my work.

### **Respective responsibilities of trustees and examiner**

The trustees are responsible for the preparation of the accounts. The trustees consider that an audit is not required for this year under section 144(2) of the Charities Act 2011 (the 2011 Act) and that an independent examination is needed. The charity's gross income exceeded £250,000 and I am qualified to undertake the examination by being a qualified member of Chartered Institute of Management Accountants.

Having satisfied myself that the charity is not subject to audit under company law and is eligible for independent examination, it is my responsibility to:

- examine the accounts under section 145 of the 2011 Act
- to follow the procedures laid down in the general Directions given by the Charity Commission under section 145(5)(b) of the 2011 Act
- to state whether particular matters have come to my attention

### **Basis of independent examiner's report**

My examination was carried out in accordance with the general directions given by the Charity Commission. An examination includes a review of the accounting records kept by the charity and a comparison of the accounts presented with those records. It also includes consideration of any unusual items or disclosures in the accounts, and seeking explanations from you as trustees concerning any such matters. The procedures undertaken do not provide all the evidence that would be required in an audit and consequently no opinion is given as to whether the accounts present a 'true and fair view' and the report is limited to those matters set out in the statement below.

### **Independent examiner's statement**

In connection with my examination, no matter has come to my attention:

which gives me reasonable cause to believe that in any material respect the requirements:

- to keep accounting records in accordance with section 130 of the Companies Act 2011
- to prepare Financial Statements which accord with the accounting records, and comply with the accounting requirements of the Companies Act 2011.

have not been met; or

to which, in my opinion, attention should be drawn in order to enable a proper understanding of the accounts to be reached.

Name: S Fogwill

Relevant professional qualification or body: Chartered Institute of Management Accountants

Address: 24 Woodville Close, Blackwater, Camberley, GU17 0BN

Date: 7 November 2024

A handwritten signature in blue ink, appearing to read 'S Fogwill'. The signature is stylized, with a large 'S' and a long, sweeping underline that extends under the name.