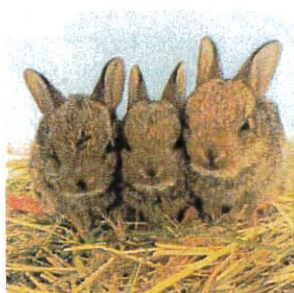




Registered company number: 04672215 (England and Wales)  
Registered charity numbers: 1097119, 1097119-1 and 1097119-2 (England and Wales)

**REPORT OF THE TRUSTEES AND AUDITED CONSOLIDATED FINANCIAL STATEMENTS  
FOR THE YEAR ENDED 31 DECEMBER 2021  
FOR  
SECRET WORLD WILDLIFE RESCUE (SWWR)**

Uniting Direction accounts  
incorporating:  
**SECRET WORLD LIMITED (company 03658761)  
THE BLUEBELL SETT CHARITABLE TRUST  
AND BLUEBELL SETT**



**Patrons:** Rose Buck, Lloyd Buck, Jilly Cooper CBE, Mike Dilger, Sarah Fisher, Anthony Head, Martin Hughes-Games, Simon King OBE, Dr Scott Miller MRCVS, Desmond Morris, Chris Packham CBE, Rhianna Pratchett, Valerie Singleton OBE, Chris Sperring MBE, Hannah Stitfall, Michaela Strachan



## CONTENTS OF THE FINANCIAL STATEMENTS FOR THE YEAR ENDED 31 DECEMBER 2021

|   |    |
|---|----|
| <b>LEGAL AND ADMINSTRATIVE DETAILS</b>                | 3  |
| Acknowledgements                                      | 4  |
| <b>WHAT WE DO</b>                                     | 5  |
| Our vision  | 5  |
| Our mission   | 5  |
| Where we work   | 6  |
| Public benefit  | 7  |
| <b>ACHIEVEMENTS AND PERFORMANCE</b>                   | 8  |
| Achievements of objectives                            | 9  |
| <b>STRUCTURE, GOVERNANCE AND MANAGEMENT</b>           | 10 |
| Legal structure                                       | 10 |
| Group structure                                       | 10 |
| Organisational structure                              | 10 |
| Trustee Governance and Recruitment                    | 10 |
| Risk Management                                       | 11 |
| <b>PEOPLE AND CULTURE</b>                             | 12 |
| Our supporters  | 12 |
| Our patrons   | 12 |
| Charity management, leadership and staffing           | 12 |
| Our staff and volunteers                              | 13 |
| <b>CEO'S REPORT</b>                                   | 14 |
| <b>FOUNDER'S REPORT</b>                               | 15 |
| <b>REVIEW OF MAIN CHARITY ACTIVITIES</b>              | 16 |
| New Pauline Kidner Wildlife Treatment Centre          | 16 |
| Volunteering report                                   | 17 |
| Animal care report                                    | 18 |
| Learning and education report                         | 22 |
| External relations and fundraising report             | 24 |
| Facilities report                                     | 28 |
| <b>FUTURE PLANS</b>                                   | 29 |
| <b>FINANCIAL REVIEW</b>                               | 30 |
| <b>STATEMENT OF THE TRUSTEES' RESPONSIBILITIES</b>    | 32 |
| <b>INDEPENDENT AUDITOR'S REPORT</b>                   | 33 |
| <b>CONSOLIDATED STATEMENT OF FINANCIAL ACTIVITIES</b> | 36 |
| <b>CONSOLIDATED BALANCE SHEET</b>                     | 37 |
| <b>CHARITY BALANCE SHEET</b>                          | 38 |
| <b>CONSOLIDATED STATEMENT OF CASH FLOWS</b>           | 39 |
| <b>NOTES TO THE FINANCIAL STATEMENTS</b>              | 40 |
| <b>DETAILED CONSOLIDATED PROFIT AND LOSS ACCOUNT</b>  | 50 |

## LEGAL AND ADMINISTRATIVE DETAILS

The Trustees, who are also directors of the Charity for the purposes of the Companies Act 2006, present their report with the financial statements of the Charity for the year ended 31 December 2021. The financial statements comply with the Charities Act 2011, the Companies Act 2006 and Accounting and Reporting by Charities: Statement of Recommended Practice applicable to charities preparing their accounts in accordance with United Kingdom Financial Reporting Standards (United Kingdom Generally Accepted Accounting Practices) including FRS 102 "The Financial Reporting Standard applicable in the UK and Republic of Ireland".

### LEGAL STATUS

**Registered company number:** 4672215 (England and Wales)

**Registered charity number:** 1097119 (England and Wales)

### Linked charities:

The Bluebell Sett Charitable Trust: charity number 1097119-2 (formerly 1078691)

Bluebell Sett: charity number 1097119-1 (formerly 1048323)

### Linked trading company:

Secret World Limited: 03658761 (England and Wales)

### REGISTERED OFFICE AND OPERATIONAL ADDRESS

New Road, East Huntspill, Highbridge, Somerset, TA9 3PZ

### TRUSTEES

Roger Branton (Chair to 07/10/2021)

Bel Deering (resigned 02/12/2021)

Wendy Goodwin (appointed 12/08/2021)

Elizabeth Hughes (appointed 12/08/2021)

Marie Negus (appointed 12/08/2021)

Mr Christopher Stenlake (Honorary Treasurer and Chair from 07/10/2021)

Co-opted:

Chris Pawson (co-opted 03/06/2021)

Dominic Phillips (co-opted 07/10/2021)

### CEO AND COMPANY SECRETARY

Ms Lesley Browne (resigned 07/04/2022)

### FOUNDER AND ADVISOR

Mrs Pauline Kidner

### EXTERNAL ADVISOR

Dr Elizabeth Mullineaux

BVM&S, DVM&S, CertSHP, MRCVS, RCVS Recognised Specialist In Wildlife Medicine (Mammalian)

### PATRONS

Lloyd Buck

Rose Buck

Jilly Cooper CBE

Mike Dilger

Sarah Fisher

Anthony Head

Martin Hughes-Games

Simon King OBE

Dr Scott Miller MRCVS

Desmond Morris

Chris Packham CBE

Rhianna Pratchett

Valerie Singleton OBE

Chris Sperring MBE

Hannah Stitfall

Michaela Strachan

**SECRET WORLD WILDLIFE RESCUE - CONSOLIDATED REPORT OF THE TRUSTEES – INCORPORATING  
THE REPORT OF THE DIRECTORS FOR THE YEAR ENDED 31 DECEMBER 2021**

**BANKERS**

CAF Bank Ltd, 25 Kings Hill Avenue, Kings Hill, West Malling, Kent, ME19 4JQ  
HSBC Bank Plc, 23 Fore Street, Bridgwater, Somerset, TA6 3LE

**AUDITOR**

Prentis & Co LLP, 115c Milton Rd, Cambridge CB4 1XE (from 01 January 2020)

**SOLICITORS**

Stewart Barratt, Acorn Solicitors, Acorn House, 50 Upper High Street, Taunton, Somerset,  
TA1 3PY  
John Shirley & Co, 24 College St, Burnham-on-Sea TA8 1AT

**FUNDRAISING REGULATOR**

Secret World Wildlife Rescue is registered with the Fundraising Regulator and agrees to adhere to the highest standard of good practice with their fundraising. The Charity follows The Code of Fundraising Practice which sets the standards that apply to fundraising carried out by all charitable institutions and third-party fundraisers in the UK.



**ACKNOWLEDGEMENTS**

The Trustees and management would like to place on record their thanks to the many people who contribute so much to enable our vital work to continue, particularly during this challenging year following the COVID-19 pandemic and during the building of the new Wildlife Treatment Centre:

- Our donors, friends and supporters, to whom we remain totally indebted.
- Our volunteers, without whom we would struggle to function effectively.
- Our supportive and dependable Patrons.
- Our dedicated and loyal staff.
- All the local businesses and trades-people and our long-standing corporate supporters for their assistance and commitment.

A sincere thank you to all who have supported Secret World Wildlife Rescue in any way.



## WHAT WE DO

### Our vision

- To prevent wildlife suffering needlessly and to inspire in everyone a love and understanding of wildlife and the countryside.

### Our mission

- Provide a rescue service caring for sick, injured and orphaned wildlife
- Rehabilitate the animals in our care and return them to the wild wherever possible
- Be a respected source of expertise and a centre of excellence where all British wildlife can receive the best care.
- Inspire learning about the world of British wildlife, encouraging everyone to

#### Rescue, Rehabilitate and Release:

- Animal welfare is at the heart of what we do.
- Secret World Wildlife Rescue is a place of safety for wildlife.
- We are always there for wildlife.



#### Respecting:

- We are focussed on using our resources wisely and celebrate the vital contribution of our supporters.
- We appreciate the devotion and passion of our volunteers and staff, recognising that each individual has an important role to play.

#### Sharing knowledge:

- We champion sharing our expertise and enthusiasm with the public and other professionals.
- By engaging the public in learning about British wildlife, we help them to reconnect with nature and encourage protection of its heritage.



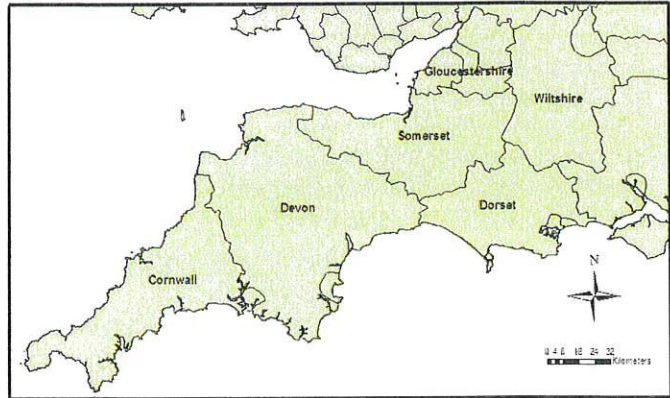
# SECRET WORLD WILDLIFE RESCUE - CONSOLIDATED REPORT OF THE TRUSTEES – INCORPORATING THE REPORT OF THE DIRECTORS FOR THE YEAR ENDED 31 DECEMBER 2021

## WHERE WE WORK

Southwest: Cornwall, Devon, Dorset, Somerset, Wiltshire, Bath and Northeast Somerset, South Gloucestershire and Bristol City.

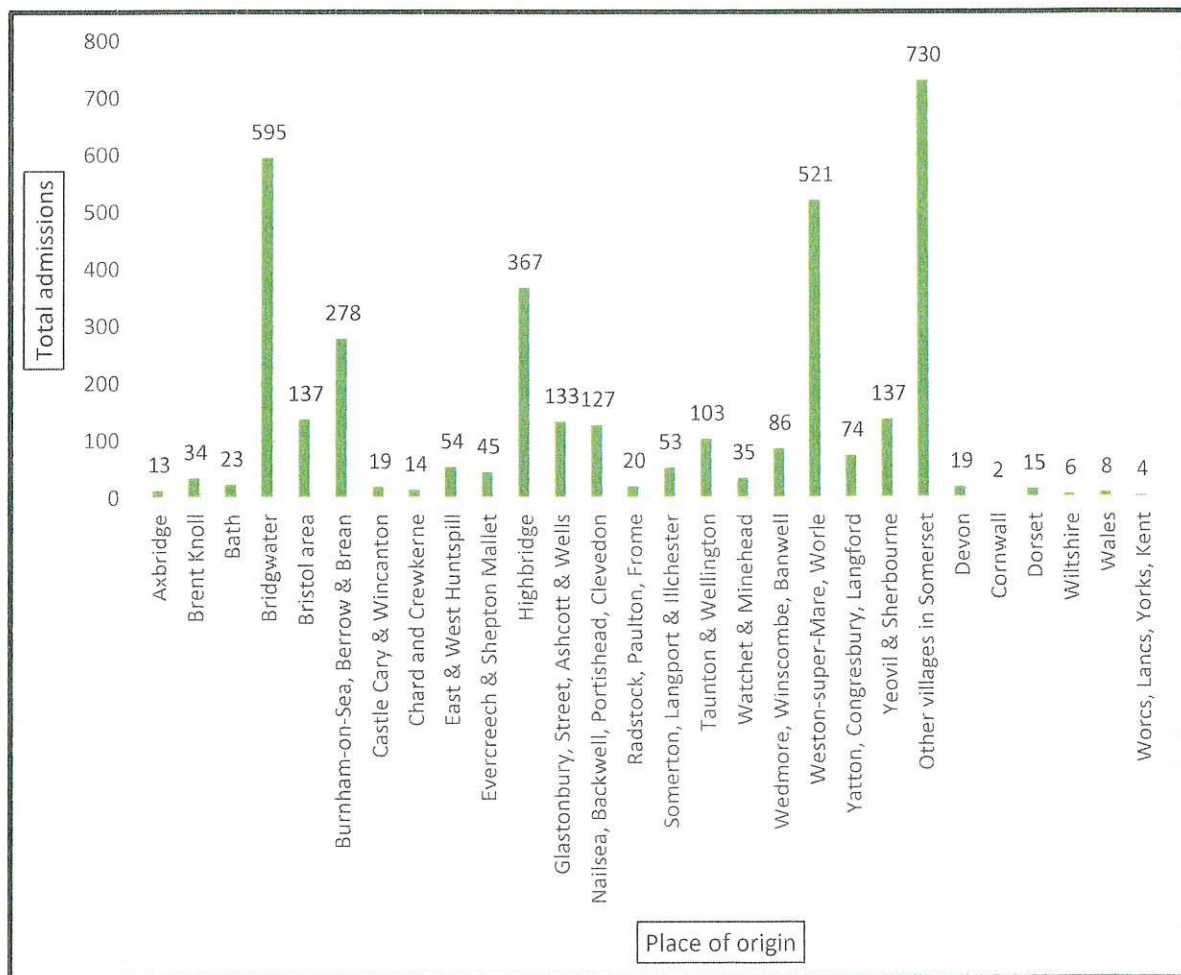
Some wildlife is also brought to us from as far afield as Yorkshire because of SWWR's specialist experience in rehabilitation, particularly of badgers.

Telephone and email advice is also provided to thousands of members of public, veterinary professionals, and other wildlife rehabilitators, across the UK and overseas.



## Chart showing the number of casualties admitted to SWWR in 2021 by place of origin

(the place of origin was unrecorded for 64 admissions)





# SECRET WORLD WILDLIFE RESCUE - CONSOLIDATED REPORT OF THE TRUSTEES – INCORPORATING THE REPORT OF THE DIRECTORS FOR THE YEAR ENDED 31 DECEMBER 2021

## PUBLIC BENEFIT

Secret World Wildlife Rescue's charitable objects are to undertake the care and rehabilitation of orphaned, injured or otherwise distressed wildlife; and to educate the public generally regarding wildlife with the aim of encouraging tolerance, appreciation and respect for all wildlife.

In shaping our objectives and planning our activities to meet these objects, the Trustees have considered the Charity Commission's guidance on public benefit and consider SWWR carries out its charity purposes for the public benefit as follows:

- We support our local community, free of charge, by rescuing orphaned, sick and injured wildlife casualties, rehabilitating these and releasing them back to the wild, whenever possible. For animals whose injuries are too severe to enable them to be returned to the wild, the Charity, working with veterinary professionals, provides a quick and humane end to their suffering. The public benefits from the knowledge that there is a centre of excellence which serves as a place of safety for wildlife casualties.
- We are a respected source of expertise about caring for wildlife casualties, and provide free help and advice by telephone, email, social media, and printed materials to members of the public, other wildlife rehabilitation centres, veterinary professionals, and others across the country.
- We provide volunteering opportunities for hundreds of local community members and companies that wish to support our work. Volunteers also come from further afield in the UK and sometimes from overseas. Many volunteers are students gaining work experience; some volunteers have special educational needs or disabilities and are gaining new social or work-based skills. Others are unemployed and working with us to learn new skills to help them regain their confidence and move forward finding jobs, while others are retired and looking to offer their skills in return for new social opportunities and the chance to contribute to a charity that they feel passionate about.



Volunteer fundraisers with resident birds of prey



Rescued hedgehog being examined by veterinary staff

- We inspire learning about the world of British wildlife, encouraging everyone to discover what they can do to protect it, so helping to protect our natural environment for current and future generations. We do this through our educational activities and by communicating with the public through local and national television, radio, newspapers, the internet, and social media.
- We support other national rescue services, such as the police service and fire brigade, in rescuing trapped or injured wildlife on roads and in other public places from situations that otherwise may place members of the public at risk.



## ACHIEVEMENTS AND PERFORMANCE IN 2021

The Trustees have pleasure in presenting their report, together with the financial statements for the Charity for the year ended 31st December 2021.

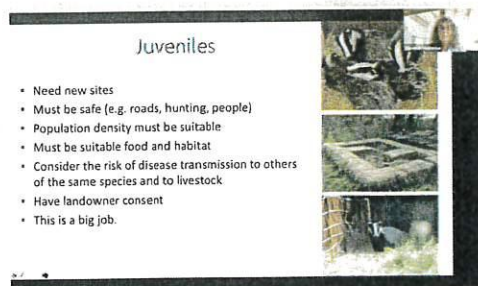
### Here are our KEY ACHIEVEMENTS IN 2021



Helped over 5,000 animals  
Advice given to help over 10,000 more



1,372 animals successfully released to the wild  
(Trail camera picture of released fox cubs)



Over 30 educational events delivered across  
all ages, via Zoom or in person  
(Zoom screen shot from wildlife course)

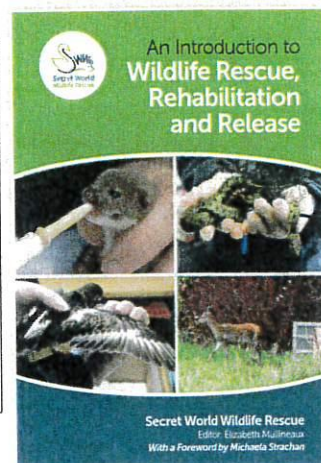


New Pauline Kidner Wildlife Treatment  
Centre completed

19,872 hours of volunteer time provided to  
the charity across all departments  
(volunteers engraving glass for the new building)



Our new  
SWWR book:  
*An Introduction  
to Wildlife  
Rescue  
Rehabilitation  
and Release*  
completed and  
self-published





## ACHIEVEMENT OF OBJECTIVES

### Strategic plan 2021-2023

An updated Strategic Plan for 2020-2022 was approved by the Board of Trustees in 2019. As a result of the impacts of the COVID-19 pandemic, the Board of Trustees reviewed the plan in 2020 and agreed to roll it over in its entirety to 2021-2023. The Strategic plan describes three major operational aims plus a further four 'enabling' aims which are required to achieve these. Each strategic aim is described with several key features, specific 3-year objectives and the priority objectives/activities that should have taken place in 2020. In 2021 the charity progressed well with these aims, in particular with the development of the new Wildlife Treatment Centre and the recruitment of new Trustees.

An overview of the seven aims in the current strategic plan is provided below:

### Strategic aims 2021- 2023

#### In order to achieve our vision and mission:

1. We will provide an appropriate **first-class animal care rescue, rehabilitation and release service** for sick, injured and orphaned British wildlife, re-affirming our position as a centre of excellence for high quality care.
2. We will provide **first-class learning, outreach and professional development** which inspires learning about the world of British wildlife, encouraging everyone to discover what they can do to protect it.
3. We will ensure **ongoing engagement with supporters, followers, media, other stakeholders and the general public** which is appropriate to each, broad-reaching and responsive to changing communication channels.

#### How we will achieve our strategic aims:

4. We will be **financially stable**, operating with an annual balanced budget with diversified sources of funding less reliant upon legacies; ensuring we manage our resources efficiently; and maintaining general reserves in line with our agreed reserves policy.
5. We will have constructed a **new Wildlife Treatment Centre**, incorporating the Charity headquarters, fit to serve the Charity for the foreseeable future.
6. We will have **robust and dynamic charity governance, leadership and management** which underpins the Charity and leads it forward, enabling our vision and values to be maintained, and which ensures the Charity operates in accordance with legislation and best practice.
7. We will have a **working environment** where staff and volunteers are **helped to fulfil their potential and are appreciated**; where we work within a **culture of equality and non-discrimination**; and **where all feel welcome** and an **integral member of the SWWR team**.



## STRUCTURE, GOVERNANCE AND MANAGEMENT

### LEGAL STRUCTURE

Secret World Wildlife Rescue (SWWR) is controlled by its governing document, the Memorandum and Articles of Association dated 20 February 2003 and constitutes a limited company, limited by guarantee, as defined by the Companies Act 2006.

Secret World Wildlife Rescue (SWWR) charity (registered in England and Wales, number: 1097119) was created to unite the existing charitable organisations, Bluebell Sett and The Bluebell Sett Charitable Trust. By uniting the organisations in this way, SWWR could become more efficient in the administration of the Charity and in the conduct of its operations. Bluebell Sett and The Bluebell Sett Charitable Trust have been retained only to receive legacies and regular donations. The results of these unincorporated entities are included in these financial statements. Audited accounts have been produced under the Uniting Direction order.

### GROUP STRUCTURE

Secret World Wildlife Rescue controls two unincorporated charitable trusts, Bluebell Sett and Bluebell Sett Charitable Trust. In addition, Secret World Wildlife Rescue also controls Secret World Ltd, a wholly owned trading subsidiary which operates the gift shop, charity shop, rental of the Bluebell Barn for weddings and external meetings, and other commercial activities which raise funds for the main Charity.

### ORGANISATIONAL STRUCTURE

Secret World Wildlife Rescue is the main operational Charity. It is governed by a Board of Trustees / Directors comprising a minimum of three and maximum of ten, responsible for the strategic governance, direction and management of the Charity. Trustees are actively engaged in developing SWWR's policies, processes and capabilities across all functions.



A total of eight Trustees served during the period of this report. The Trustees met for six Board meetings, all of which were held 'virtually' via Zoom communications because of the COVID-19 restrictions / lockdowns. This was in line with the Government's guidance (June 2020) that permitted, "for a temporary period, companies and other bodies to suspend members' ability to attend meetings in person and allowed them to convene meetings in a flexible way using a range of technologies." The AGMs for SWWR and its trading company, Secret Word Ltd, were held in person in August 2021. In addition, five extraordinary Trustee meetings were held 'virtually' via Zoom communications during 2021, mainly to deal with financial issues relating to the construction of the Wildlife Treatment Centre.

### TRUSTEE GOVERNANCE AND RECRUITMENT

After serving as a Trustee of SWWR for over four years, Dr Bel Deering decided to step down in December 2021 to devote more of her time to her family and work commitments. Dr Deering made significant contributions to Secret World Wildlife Rescue and helped to steer the Charity through some difficult times. The staff and volunteers would like to offer their sincere thanks to her for giving her advice, time and commitment to the Charity during her time on the Board.

Following a selective recruitment process, during 2021 the Trustees co-opted a further two individuals to complement the Board's existing skills matrix; it is anticipated that they will be invited to join the Board as full Trustees / Directors at the Charity's AGM in August 2022.

### Appointment of Trustees

SWWR has developed and maintained a rigorous process for the recruitment and appointment of its Trustees. Detailed job descriptions have been formulated and used when advertising vacancies which are



## SECRET WORLD WILDLIFE RESCUE - CONSOLIDATED REPORT OF THE TRUSTEES – INCORPORATING THE REPORT OF THE DIRECTORS FOR THE YEAR ENDED 31 DECEMBER 2021

advertised publicly. Prospective candidates are required to provide up-to-date CVs, complete a skills audit and attend an interview with a Board panel of at least two Trustees to ensure they have the skills needed. If selected from interview two suitable references are also sought and DBS checks are undertaken if appropriate for their role.

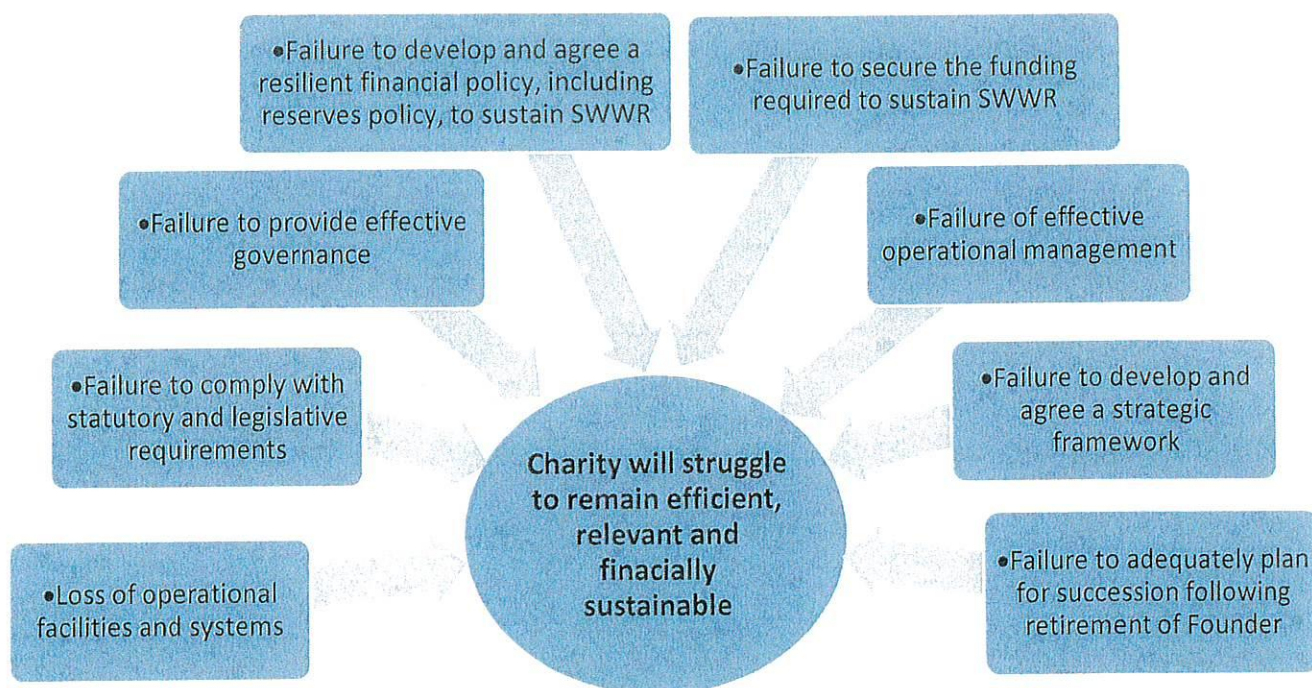
### Trustee Induction and Training

All prospective Trustees are required to have individually designed induction training. This involves them spending at least one day meeting senior management and other key staff and volunteers, as well as being briefed about key operational areas, including animal care and fundraising. Trustees are then encouraged to start using their specific strengths and experience to contribute to discussions, meetings and begin supporting and advising on specific initiatives that play to their strengths.

### RISK MANAGEMENT

The Trustees have a duty to identify and review the risks to which the Charity is exposed and ensure appropriate controls are in place to provide reasonable assurance against fraud and error. Unfortunately, in spite of this review process, it was impossible for the Charity to predict the global COVID-19 pandemic, and the impact this would have on the world as a whole, and specific aspects of the Charity's operational and strategic processes. Fortunately, having previously considered many of the more predictable risks, and mitigating against these risks, the Charity was in a robust position and dynamic enough to continue its operations throughout the pandemic.

Aside from the COVID-19 pandemic specifically, the ongoing operational, business, financial and reputational risks faced by the Charity are identified as follows:



The Trustees confirm that they have established systems to mitigate significant risks and have prioritised efforts regarding risks with highest probability and significant potential impact. A robust set of mitigating actions are in place with relevant managers, together with the Board of Trustees and the CEO taking ownership of their risks. This will give a greater control over risks and enable the Board and senior managers to plan preventative action before anything untoward occurs.



## PEOPLE AND CULTURE

### OUR SUPPORTERS

Secret World Wildlife Rescue would not exist and be able to undertake our work caring for British wildlife without the ongoing backing of our loyal supporters. In 2021 the impact of the COVID-19 pandemic continued to impact staffing, volunteering, and funding of the charity. At the same time the charity was working hard to build the new Pauline Kidner Wildlife treatment Centre and continue fundraising for this alongside core funding. Our amazing supporters stood by us throughout the year, often during difficult times for themselves and their families. We continue to be overwhelmed by the generosity of people giving their time and donations, both physical and financial, to the charity. We also felt the emotional care and warmth of the broader SWWR family throughout the year and for that we are especially grateful.

From us all at SWWR, please accept our sincere thanks for all your support in 2021.

### OUR PATRONS

All 16 of our incredible Patrons (listed on p3) continued to contribute to the Charity, in a diverse number of ways, during 2021. They gave their time, expertise, donated ball prizes and promoted the charity on social media and elsewhere. We are so grateful for the overwhelming dedication of these busy people to SWWR.



Michaela Strachan and Martin Hughes-Games got their hands dirty in the summer of 2021 mixing concrete for the new Wildlife Treatment Centre and helping to launch out 'Last Push' appeal for the new Wildlife Treatment Centre. Their subsequent social media posts about the new facility helped publicise the charity and encouraged donations towards completion of the Centre. We also thought they had potential great as builders!

Chris Packham included SWWR in a Facebook competition to win a portion of proceeds from sales of merchandise through his *Self-Isolating Bird Club* group. We were delighted to come 4th in a public vote and receive a donation of £500.

### OUR CHARITY MANAGEMENT, LEADERSHIP AND STAFFING

The CEO, Lesley Browne, had responsibility for the day-to-day running and management of the Charity, including overseeing the new build, in 2021 (see CEO's Report p14). Lesley was supported by an operational management team (OMT) of senior managers including the Charity Founder and Advisor Pauline Kidner (see Founder's Report p14) and Scientific Advisor, Dr Elizabeth Mullineaux. The Head of Animal Care Services (HoACS), Laura Benfield was on maternity leave until September 2021 with Section Leaders, Sarah Tingvoll and Dan Bryant ably taking on this role in her absence. When Laura returned part-time the HoACS role was shared between her and Sarah on a 4:1 ratio with Dan returning to his previous role. Facilities and Office Manager Andrew Mellamphy was responsible for the day-to-day running of the site and made up the final place on OMT. Finance Manager, Daniel Harding, attended the initial finance section of each meeting and worked on budgets with the other managers and the Board. Daniel also attended Board meetings with Lesley to present financial management reports. Several meetings in 2021 continued to be held remotely using Zoom, depending on Government guidelines which changed several times over the year. Zoom meetings worked efficiently, especially for those Advisors and Board members not based in Somerset.



## OUR STAFF AND VOLUNTEERS

SWWR provides 7 day a week, 365 day a year service for between 12-16 hours a day depending on time of year. This requires the services a large number of staff and volunteers, especially in the busy spring and summer seasons. During 2021 SWWR employed an average of 17 full-time and 10 part-time staff on the main site and at its charity shops. This equated to 24.5 WTE (Whole Time Equivalents). In addition, our casual workers performed an invaluable function covering evening shifts, weekends and staff absences, often at short notice.

The Government's COVID-19 furlough scheme continued, at least in part, until the end of September, allowing the charity to keep all its permanent staff on the payroll in 2021. In order to reduce the number of staff on site, particularly during the initial lockdown and because we were no longer able to keep our charity shops open or onsite educational activities running, several staff were placed on furlough throughout the year. This not only enabled us to ensure staff retained their jobs long-term, but also 2021 staff slowly returned to working on site, although some working from home for office staff continued throughout the year. COVID-19 remained a continued threat to the function of the charity especially as many staff are required to work in quite close spaces and assist each other with tasks which require close contact. Luckily the staff and volunteers managed to remain largely COVID-19 free and healthy throughout this period.

In 2021 we welcomed 4 new staff members to SWWR, Matt to Animal care, George to Education, Abby to Administration and Jane to reception. Charlotte moved from Administration to become our new Release Co-ordinator. The new team members have brought expertise and enthusiasm with them and are already well integrated into the team. Our amazing volunteers continued to support us during the year (for details of volunteering see p17), providing hours of their time across the site and at the charity shops. Although social events continued to be limited in 2021, several low-key staff and volunteers get togethers were organised when possible. Throughout the year the closed Staff and Volunteer Facebook page remained a great way of communicating with everyone, as well as through monthly site meetings (when these were permissible and practical) and regular Staff and volunteer bulletins. Staff CPD (see p23) also continued with a mixture of in-person and online provision throughout the year.

2021 was a challenging year for all our staff and volunteers, first with the unpredictable progression of the COVID-19 pandemic and also with the multiple changes of facilities associated with the new build (see Facilities Report p27). The Animal Care staff had an especially difficult time as they were in some ways most impacted upon by the site changes, but also because their role was made more difficult by the outbreak of avian influenza in the UK in the autumn. Avian flu required additional PPE as well as other biosecurity measures, but the staff and volunteers took all this in their stride with their usual enthusiasm.

The new building and ever-changing infectious disease requirements resulted in new updates to staff and volunteer policies and procedures, accompanied by appropriate staff training. Throughout all these changes staff and volunteers remained positive and excited at the prospects of moving into the new Wildlife treatment Centre. Although, inevitable, there have been some teething problems with the new facility, it has created a lovely environment in which to work (see New Wildlife Treatment Centre, p16) and of course a much-improved facility for our animals to be cared for in.



Staff enjoying wearing their avian influenza PPE



## CEO'S REPORT

Finally, after many years, our dream of a purpose-built wildlife facility in which to treat and care for sick, injured and orphaned wildlife has become true: we started moving into our beautiful new building in September 2021. This was possible only because of the ongoing generosity of our supporters, and we'd like to offer our most sincere thanks to every one of them for helping to make our vision a reality. It's truly remarkable that in less than a year, and during a period marred by the COVID-19 crisis, our new centre has risen out of the alluvial mud in Secret World Wildlife Rescue's car park into this magnificent bespoke facility. In recognition of our truly amazing Founder, and to celebrate all the support she's given to wildlife over the years, our new building will be named "The Pauline Kidner Wildlife Treatment Centre".



There are just so many people that we want to thank for supporting the construction of our Wildlife Treatment Centre and for helping us 'kit it out'. We hope to have a wildlife mural in our new reception area that will include the names of all who contributed anything: from children who gave us their pocket money, to the individuals and family trusts and foundations who so generously donated. Other supporters have given up their time for free to support us with professional contributions or other more practical tasks on site, and many companies have provided us with items free of charge or at discounted prices. We received generous donations to our 2021 autumn appeal which enabled us to buy new equipment for the centre, and others kindly donated items via our Amazon 'wish list'. There is one individual who merits a special personal acknowledgement: our volunteer Katarina ('Kat') McNabb. Kat is an architect who set us on our way with the planning process back in October 2019 and who has supported me throughout the whole process. I doubt we'd have ever reached this point so quickly without Kat's professional contributions.

Of course, the SWWR team of staff and volunteers also deserve heartfelt thanks for enduring incredibly difficult working conditions over the past few years and for never letting those interfere with their care for the wildlife on site. Our previous facilities presented us with many challenges: freezing cold portacabins with frozen pipes in winter, scorching hot and fly-filled portacabins in summer, no phones, no wi-fi or IT, having to use outside toilets, and being faced with long walks between our previous hospital and rehabilitation facilities, often carrying heavy animals in carriers. Now our wildlife casualty reception, hospital rooms, offices and staff room are all in the same building, supported by appropriate modern services. Once again, thank you to all our loyal and dedicated staff and volunteers who put up with the dreadful conditions on site over the years and let's all look forward together to the future in our new bespoke building.

There have also been several other highlights during the past year: we're very proud that earlier in the year, Pauline won the Charitable Contribution of the Year award for the "the individual who is constantly committed to making a difference to animal welfare in the UK or abroad" at the 2020 CEVA awards; four new staff joined our team and are already settling in well; and our Trustees have strengthened the charity's governance with the appointment new Board members and co-opted Trustees, all of whom bring a range of skills and experience to support the charity's management. Our new charity shop in Burnham-on-Sea's High Street has been a success, as are our online charity auctions, and our 'remote' educational activities continue to be very popular. But of course, our most significant achievement has been the help we are able to provide to thousands of wildlife casualties that come through our gates.

Lesley Browne CEO  
Autumn Newsletter 2021



## FOUNDER'S REPORT

In 2021 I was able to reduce my hours by handing over more responsibility to David Plant, our Fundraising Officer. He has managed very well and this year we have seen our appeals and fundraising exceed our expectations.

We have kept a very personal touch to our supporters offering to speak to them personally if they wished us to as we are aware of the isolation caused by the pandemic. We were all very pleased to eventually have contact with people at talks and events.



We took the decision not to have any open days during 2021 as many people are still very hesitant to go to public events. This saved us considerable time not having to organise these events and allowed us to concentrate more on social media and other virtual ways of keeping in contact with supporters. Certainly, the talks given by zoom meant that we were making contact with groups further afield and the zoom courses attracted delegates from abroad.

I now write articles for all the local villages which enables us to pass on advice and the stories of our work. We have also been fortunate to be featured by national magazines which makes more people aware of the work that we do.

It was strange not to have visitors in 2021 but enabled us to deal with our site looking more like a building site than a rescue centre. I have to thank staff and volunteers for their stoic efforts to deal with emergency situations without water, electric, phones and internet that often happened without any notice!

I was very flattered to have our new Wildlife Treatment Centre named after me. It is, of course an accumulation of many years of dedication from volunteers, staff and supporters that made it happen. I must also thank our CEO, Lesley Browne, whose continual determination meant that we saw the building slowly take shape.

Our education programme continues to grow, a part of our work that I feel is so important. One of the major events that we were involved with was the Born Free Foundation 'Resources for Vets'. This was a collaboration of vet practices and wildlife centres trying to create interest and understanding within the veterinary profession. It is with the driving force of Dr Liz Mullineaux that these courses, CPD, conferences and particularly our new course companion book on Wildlife Rescue, Rehabilitation and Release, that these became reality and I think it is only right to make public the huge amount of dedication that Liz has given over the years.

It is exciting to see the charity that I founded grow, and I am very pleased to remain involved with all aspects of the charity.

Pauline Kidner



## REVIEW OF MAIN CHARITY ACTIVITIES

### NEW PAULINE KIDNER WILDLIFE TREATMENT CENTRE

The main highlight of 2021 was the completion of our new Pauline Kidner Wildlife Treatment Centre. This was a huge achievement for the charity after many years trying to undertake this project. Despite the difficulties with our final fundraising during the COVID-19 pandemic, the Centre designed by SWWR volunteer architect Katarina McNabb became a reality. In May 2021 the building was about halfway to completion and the charity reception area moved out of the Cider Barn and into a shed. Pauline and Derek Kidner kindly allowed the charity to use rooms in the farmhouse whilst the final building works were being completed. The Centre was finally completed, and staff and animals moved into their new home, in September 2021.



Halfway there!



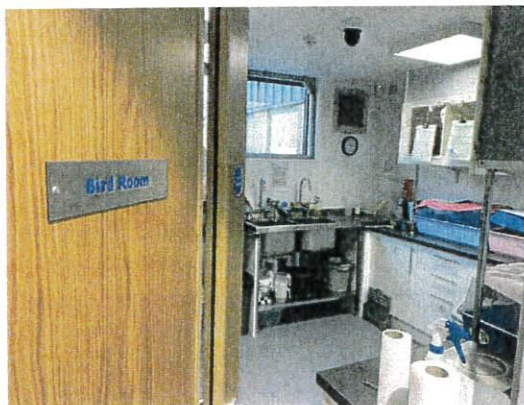
Completed Wildlife treatment Centre



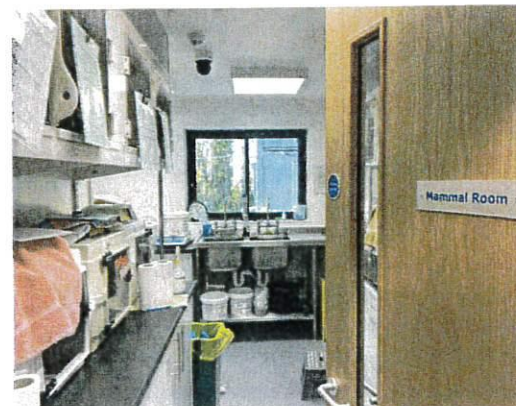
Reception



Assessment room



Bird room



Mammal room



**SECRET WORLD WILDLIFE RESCUE - CONSOLIDATED REPORT OF THE TRUSTEES – INCORPORATING  
THE REPORT OF THE DIRECTORS FOR THE YEAR ENDED 31 DECEMBER 2021**

## **VOLUNTEERING REPORT**

SWWR's Volunteers continue to contribute and add value to all departments and activities across the charity. At the end of 2021 we had 350 volunteers registered on our online Volunteer management system, this number has been steadily increasing since 2019 despite the impact of the COVID-19 pandemic. With fewer covid restrictions in 2021 volunteers contributed 17,446 hours at the charity's main site, which is up 33% on the previous year. This is equivalent to more than 9 full time posts across the organisation and equates to almost £159,449.87 in donated time at minimum wage (2021) which demonstrates the financial importance of volunteer team members. These hours do not include those contributed by our 120+ response drivers who collect injured or orphaned animals and take them to the nearest veterinary surgery or bring them directly to SWWR. At our new Charity shop on the Highstreet in Burnham-on-sea, volunteers donated over 2426 hours which is the equivalent of £21,615.66 donated time.

The breadth of involvement includes: rescuing animal casualties, staffing reception, caring for orphans, supporting the Animal Care team, assisting in charity shop activities, helping with community fundraising, volunteering at events, helping with courses, helping to maintain the SWWR facilities, gardening, administration, learning activities, and wildlife releases. Without the generosity and dedication of our volunteers we would not be able to function and achieve everything that we do.



Volunteers in action! Annie on reception, Carys feeding pigeons, Doug cleaning out goslings, Verity washing up animal feed bowls

### **Volunteer Recruitment**

Due to ongoing COVID restrictions and safety measures on site, SWWR did not run group volunteer introduction/induction sessions for the majority of 2021 and instead adapted these to an online format. Prospective volunteers were able to watch SWWR's volunteer induction, including general information for all volunteers and a section for Wildlife Care assistants covering animal handling, waste management and cleaning procedures, in a web-based format. Instead of group inductions on site the Head of Volunteering, Molly Ellis, gave individual prospective volunteers a tour of the site, and for Animal Care volunteers, a hands-on induction. This type of one-to-one practical induction gave new volunteers some good initial training but was very time consuming.

### **Corporate days**

Although ongoing COVID restrictions continued to limit volunteer groups on site, a wonderful group from Wessex Water came to help us on site back in April 2021. They helped us with painting aviaries and levelling our fawn paddock. Our hope is to have more volunteering groups coming in in 2022 to help achieve bigger jobs like aviary painting.

**We would like to extend our sincere thanks to all our amazing volunteers**



## ANIMAL CARE REPORT

### The year in numbers

In 2021, 3,681 wildlife casualties were admitted directly to SWWR (an increase on last year's total of 3,242). This is a reduced number compared to 2019 when 4,395 animals came through our doors. This can be attributed to having to run a reduced service over the past two years due to both the COVID-19 pandemic and development of the Wildlife Treatment Centre. Hopefully in 2022 with our new facilities and the pandemic situation improving we will again be able to operate at our full capacity. In addition to this direct care, over 2,000 animals were directed by us for immediate veterinary care at the nearest surgery to where they were found and over 10,000 other advice calls were taken. During 2021 we directly rehabilitated and released 1,372 back to the wild, including 45 foxes, 28 badgers, 46 bats, 34 birds of prey, 300 hedgehogs and 144 gulls. Almost 40% of admissions were successfully rehabilitated and released, a similar rate to previous years and to wildlife rehabilitation in general. Those animals not able to be rehabilitated and released were euthanised to prevent further suffering. Unusual admissions this year include a juvenile puffin (p20), a nightjar, a grey long-eared bat and a great crested grebe.



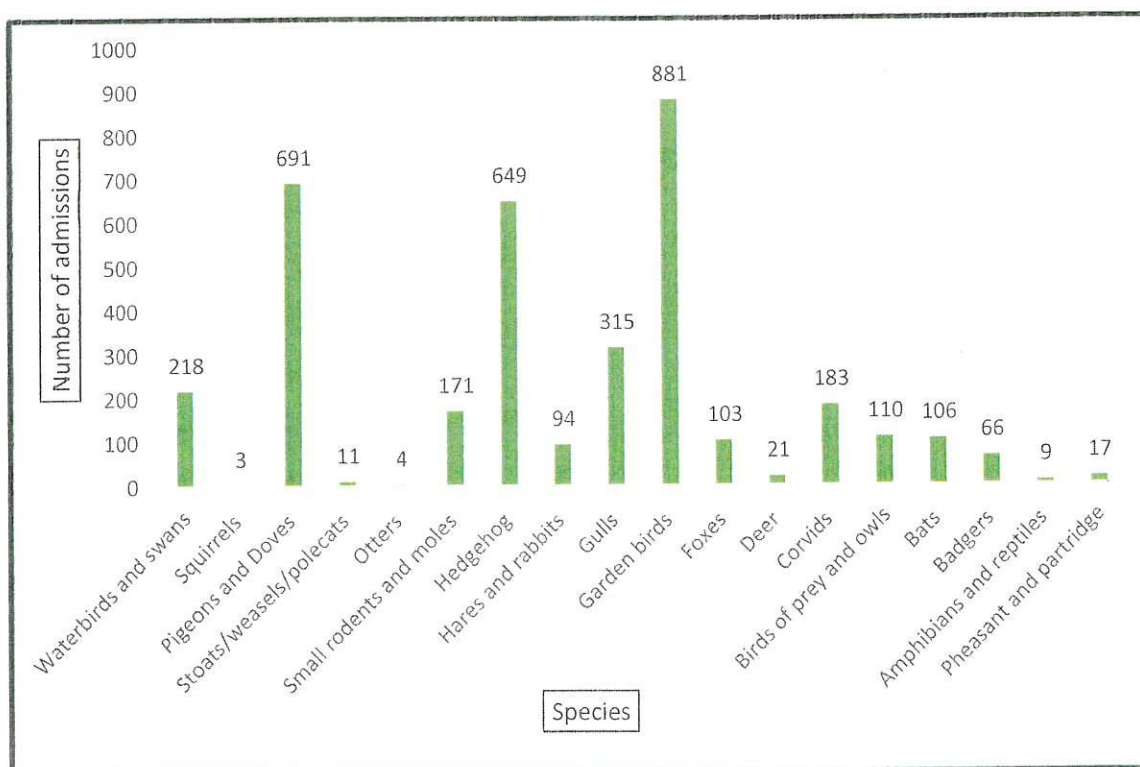
Nightjar



Long-eared bat

### Chart showing the number of casualties admitted to SWWR in 2021 by species

(the animal species was not recorded for 29 animals)





**SECRET WORLD WILDLIFE RESCUE - CONSOLIDATED REPORT OF THE TRUSTEES – INCORPORATING  
THE REPORT OF THE DIRECTORS FOR THE YEAR ENDED 31 DECEMBER 2021**

**The calendar year**

The year started off with a freezing cold snap. As we were still working on a temporary site in portacabins, this caused several problems with water and electricity supplies meaning our staff and volunteers were often working in less-than-ideal conditions. The cold weather also meant we had to do a temporary stop on hedgehog releases (we release healthy hedgehogs during winter providing the temperatures are above freezing) resulting in having to organise a lot of releases at once when the weather warmed up. We also started this year in another COVID-19 national lockdown and the difficulties that presented in terms of getting animals rescued and released and which staff and volunteers could come onto the site.



Very young fox cub being fed

As we went into March and orphan season began to get underway, we welcomed our first cubs of the year. Two litters of fox cubs came into our care, the first was disturbed when a shed was demolished in Weston-Super-Mare. Several attempts were made to reunite the cubs with their mother but unfortunately, she was never seen again, so they stayed with us for long term rehabilitation and eventual release. The second litter were some of the youngest we have ever seen, barely hours old. Unfortunately, their mother was confirmed dead, so they were fostered by our dedicated orphan rearers who had to feed them intensively day and night. We also took in our first 3 badger cubs in this month – two siblings Scrumpy and Suzy whose sett was destroyed by a bulldozer, and Precious who was found lost and wandering alone.

During this part of the year with the work on our new Animal Treatment Centre coming along at a fast pace, preparations were starting for us to move out of our old reception barn which had been sold. Temporary facilities in Pauline's farmhouse were kindly offered for use to provide us with an orphan room, assessment room and extra casualty space to see us through the summer. It took a large amount of work by our excellent maintenance team to prepare these facilities for use and to move everything out of our old areas. Reception also had to move into a portacabin, which came with its own challenges – for several weeks there was major disruption to our phone lines, with mobiles having to be used and reception staff having to go outside every time a call came through to obtain a signal. This was a really disruptive period, but eventually, due to everyone's hard work we got through it and by June we were fully settled in the temporary animal care and reception areas with a functional phone system up and running.

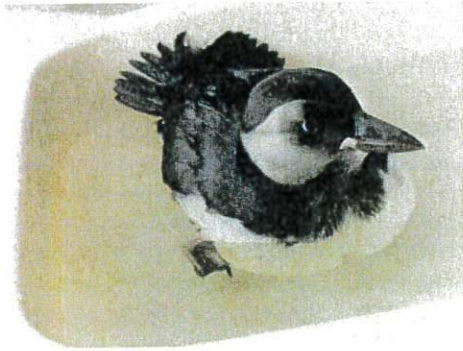
Whilst this was going on, the sections were rapidly filling up with our usual casualties, starting with garden birds, then corvids, then gulls, and ducklings coming in throughout. Badger and fox cub season was also in full swing, and at several points our accommodation for larger species became overwhelmed and we were having to reassess space each day to see what we could take in, especially as we receive a lot of cubs each year from other organisations that don't have the facilities to take them through the full period of rehabilitation.



Herring gull chicks



**SECRET WORLD WILDLIFE RESCUE - CONSOLIDATED REPORT OF THE TRUSTEES – INCORPORATING  
THE REPORT OF THE DIRECTORS FOR THE YEAR ENDED 31 DECEMBER 2021**



Puffin

As we moved into August and September our baby bird season began to come to its usual end and the juvenile hedgehog season began to get underway with our incubators and brooders rapidly filling up with underweight, sick or struggling hedgehogs. This also was the time when releases for our orphaned foxes, tawny and barn owls were being undertaken by our release team with the animals moving to soft release enclosures at suitable sites before going back to the wild. We also received our most unusual admission of the year in August, a juvenile puffin washed up on a local beach. The puffin responded well to supportive care and was eventually released.

October unfortunately saw the first confirmed case of 2021 of Avian Influenza (AI) in the UK. This disease has been prevalent in the winter months for the last few years, but this year has seen a record number of cases and has had a huge effect on how we've been able to admit and deal with avian casualties. The implications if we had an outbreak of AI are huge, so every bird must be triaged carefully outside of the building for any signs of the disease whilst wearing full PPE, before being admitted to the centre and fully isolated and barrier nursed whilst it continues to be monitored for symptoms. Footbaths have to be located on every entrance with a high dilution disinfectant to prevent cross contamination, resulting in huge costs in terms of cleaning chemicals and the PPE. Our resident birds of prey are also affected by these restrictions – to protect them from risk of infection they must remain in their aviaries at all times and be cared for by a separate team of volunteers in full PPE who have no contact with wild bird casualties.

Despite this somewhat stressful end to the year, November saw us fully moved out of the old portacabins and temporary areas and into our long-awaited new Wildlife Treatment Centre, and after several years of working in difficult circumstances to achieve this it really is exciting to be going into 2022 with brand new, modern facilities. The new treatment centre is made up of seven purpose-built hospital, isolation, orphan and assessment rooms, along with offices, reception and staff facilities. We are looking forward to what the next year will bring and caring for our patients in these highly improved facilities.



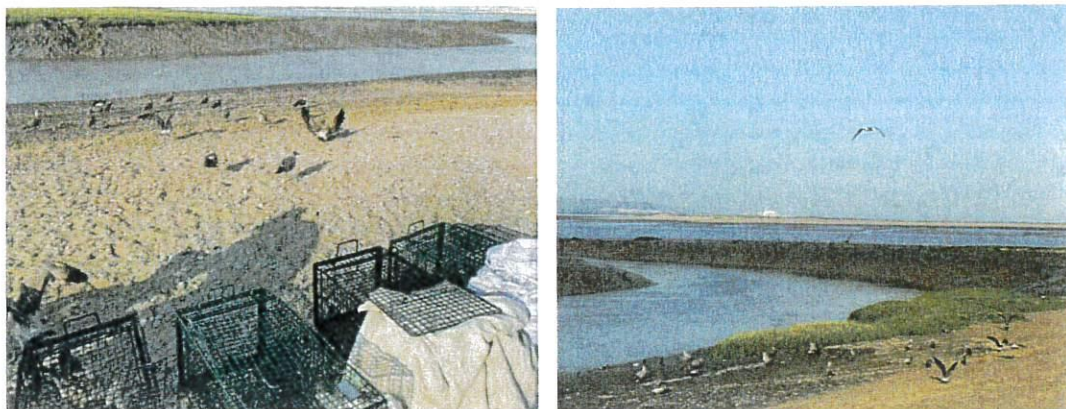
Animal care staff moving into the new building

### **Wildlife releases**

Charlotte started work as our new Release Co-ordinator in August, the beginning of the release season. At that time there were lots of animals ready for release, including 30 ducklings, nearly 100 juvenile gulls, 4 rabbits and a little owl. With the help of volunteer Steve, Charlotte started arriving at Secret World at 6am to release gulls and ducks before it was too warm and to give them some peace from the public on the morning of release. Gulls were released in groups of 30-50 birds at a time and drew an audience of members of the public, happy to see them returning to the wild.



SECRET WORLD WILDLIFE RESCUE - CONSOLIDATED REPORT OF THE TRUSTEES – INCORPORATING  
THE REPORT OF THE DIRECTORS FOR THE YEAR ENDED 31 DECEMBER 2021



Mass gull release

We admitted four orphaned Tawny owlets in 2021, and these were all able to go for release together. We also had two Barn owlets that fortunately were able to go back where they were found as orphans; they still needed a soft release back to the wild, but trail camera monitoring revealed that they didn't come back for support food, and the landowner saw them hunting separately at dusk through the winter, which is great to know.

A total of 16 badger cubs were released in three groups at safe locations, and we are still seeing trail camera footage of them living happily in the wild. It was a very special experience for Charlotte as she had personally reared or intensively cared for one or two badgers in each group. We also released 30 fox cubs in six groups; many of these built big complex dens in their pre-release enclosures on site. This was a challenge for the team as they all needed to be dug out and transported to their release site before the weather got too hot, which often meant digging commenced between 5am and 6am. The foxes were all very happy with their return to the wild. Unfortunately, one of them, Velvet, contracted mange shortly after her release. We were able to trap her, bring her back to the centre for treatment and release her back at the site for her 'third chance' back in the wild.



Badger cub release

We also saw more weasels and polecats than usual in 2021, this was a lovely experience for the team and returning them back to the wild was interesting. The weasels only came back for support for a few days, but the polecats were returning for a few weeks. We need to find more release sites for small mustelids in the future, in case we see similar numbers of these casualties.

A lot of the pre-release and soft release enclosures have been left with little to no maintenance over the last couple of years because we have been working with skeleton teams through the covid restrictions. We are working hard to get everything ready for our 2022 orphans.

#### ***Other animal care activities***

Alongside caring for the animals, many of the animal care team were involved in creating and delivering the adult education at SWWR (see below), including the 'Certificate in Wildlife Rehabilitation and Release'. Senior staff also contributed to the SWWR book (see below).



## LEARNING AND EDUCATION REPORT

### Children's and young adults' education

Our aim is to inspire a love of nature within people and encourage them to protect it. 2021 was a difficult year for the learning department with lockdowns and ongoing restrictions limiting the number of school visits. We were busy building our new wildlife treatment centre which meant the site was not suitable for visits for much of the year. During the period when we were unable to visit schools Sue put together a series of educational PowerPoints and resources to consolidate our offering once restrictions lifted.



Resident bird on school outreach

In October George joined the team as the new Learning and Engagement Officer and was quickly able to offer some outreach sessions to local school and guide groups by adapting the sessions Sue had put together. In October and November George visited three schools and a Brownie group and spoke about the work SWWR does and more specifically hedgehogs and badgers. Two of these outreach sessions included a visit from some of our resident birds of prey. Unfortunately, due to increasing coronavirus levels and avian influenza several learning sessions were cancelled or postponed towards the end of 2021. In 2022 we will be looking to increase our education outreach bookings and hopefully welcome visitors back on site for education visits and open days, this is of course dependent on the ongoing covid and avian flu situation.

### Adult Learning

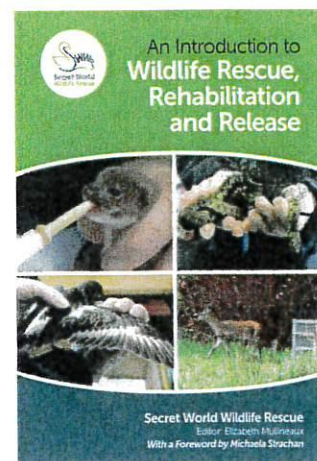
In 2021 we continued to run our ever-popular wildlife rescue and rehabilitation courses leading to the SWWR 'Certificate in Wildlife Rehabilitation and Release'. We delivered the courses over Zoom due to the ongoing coronavirus situation. These courses are for adults with a general interest in wildlife, as well as wildlife rehabilitators, vets, and veterinary nurses. We ran each of the four courses three times across the course of the year, making a total of 12 sessions. These attracted a total of 388 delegates from as far afield as Thurso in Scotland and the Isle of Wight, with delegates from The Netherlands, Poland, Germany, and Saudi Arabia also attending.



Animal capture and handling video for Zoom course

### Course companion book

Work continued in 2021 on a companion book, *An Introduction to Wildlife Rescue, Rehabilitation and Release*, to support the Certificate courses and be a stand-alone text on wildlife rehabilitation and release. The book was written by the senior animal care staff and edited by Scientific Advisor Liz. SWWR Patron Michaela Strachan was kind enough to write a lovely foreword for us. We are also indebted to Marion Jowett (copy editor) and Graeme Kovalewicz (type setter) for generously giving their time to SWWR and enabling us to publish something so professional. The book was finally completed and printed in December, ready for the staff to take home a copy for Christmas – the official publication date was 1<sup>st</sup> January 2022. We now hope the book will both raise funds for SWWR as well as helping to educate the next generation of wildlife rehabilitators.



**SECRET WORLD WILDLIFE RESCUE - CONSOLIDATED REPORT OF THE TRUSTEES – INCORPORATING  
THE REPORT OF THE DIRECTORS FOR THE YEAR ENDED 31 DECEMBER 2021**

**CPD for veterinary professionals**

As a result of the ongoing COVID-19 restrictions, our two annual courses 'Wildlife Course for Veterinary Professionals' were run online for a second year in 2021. These attracted a total of 37 vets, veterinary nurses, and students in these subjects.

**National conference**

We felt unable to organise a conference in early 2021 but began to plan a conference for early 2022 in East Huntspill village hall. Towards the end of 2021 it became clear that an in-person conference was unlikely to be able to go ahead due to the continuation of COVID-19 restrictions and the difficult decision to move the conference on-line was made, a decision was kindly supported by the venue. Our speakers were very understanding and adapted their talks for a conference on Zoom in early February 2022.

**Other courses and talks**

Although many of our on-site college course sessions were cancelled in 2021, our staff and Charity Advisors contributed to several external education courses and talks during 2021, including:

- Liz and Marlies continued to provide data and support to undergraduate and postgraduate student dissertation projects throughout the year, assisting over 20 individuals
- Pauline gave to several WI and community groups both in-person and via Zoom
- Towards the end of the year George, our Learning and Engagement Officer began to do outreach talks to school and other groups about our general work.
- Charlotte Wroe, our Wildlife Release Co-ordinator, is now giving talks showing people how much work goes into the release of our orphans, the surveying required to find suitable release sites, and post-release monitoring to illustrate the success of releases.
- Liz spoke to Western Counties Veterinary Association on *Triage and first Aid in Wildlife Casualties*
- Liz delivered lectures to students at Cambridge University Veterinary School talk
- Several staff members organised and attended the online WAWC conference
- An online course was delivered to Glasgow University's Ecological & Conservation Health Organization
- Liz presented a series of recorded lectures and a workshop on wildlife medicine for the British Small Animal Veterinary Association
- Liz delivered 4hrs of lectures on *An Introduction to Wildlife Rescue and Rehabilitation* to students at South Gloucestershire and Stroud College training
- SWWR helped deliver practical pathology sessions to the University of Bristol MSc course in Global Wildlife Health and Conservation
- Several staff members took part in producing the Born Free Foundation Resources for Vets: <https://www.bornfree.org.uk/resources-for-vets>.

**Staff continuing professional development (CPD):**

- Staff training week 18<sup>th</sup>-22<sup>nd</sup> February included:
  - Staff updates on; Health and Safety, Safeguarding, GDPR, COSHH, Policies and Procedures
  - Animal care talks on; Oiled birds, Disease control, Temperature control in first aid, Animal Care updates (avian flu, rabies etc.)
- Sarah attended the Garden Wildlife Health project update meeting on Zoom
- Katie attended Raptor awards 'Keeping birds of prey' course.

**External scientific collaborations:**

- Wildlife rehabilitators in The Netherlands via Intervisie Wildopvang
- Wildlife rehabilitators in Italy via Piacenza Wildlife Rescue Center
- Animal and Plant Health Agency re COVID-19 in animals
- Defra and APHA re avian influenza.



## EXTERNAL RELATIONS AND FUNDRAISING REPORT

### Overview

A second year of the pandemic meant a difficult fundraising environment again. Although we were unable to run any events at our centre, we were finally able to get back out into the community. Our volunteer bird handlers, supported by Fundraising Officer David, ran fundraising stalls at events during the summer. We were also booked for a few talks which Pauline and George (our new Learning and Engagement Officer) thoroughly enjoyed. Our Reception Supervisor Marlies continued her great work with online selling and auctions, enrolling on eBay's Charity Connect training programme. Our General Support Officer Charlotte was as adaptable as ever, managing our social media and helping out with just about everything! We were very pleased to welcome Abby as her replacement when Charlotte took on her new role as Release Co-ordinator. The capital appeal for our new Wildlife Treatment Centre was the focus of a lot of our efforts this year, and we were delighted that we could make this dream a reality thanks to the generous support of our donors and partners.

### Secret World Limited

Secret World Wildlife Rescue has a linked trading company, Secret World Limited, which manages activities outside of the charitable objects, purely to raise funds for SWWR's charitable purposes. This includes the wildlife training courses and conference, charity shops, online shop, and hire of the Bluebell Barn building, garden and attached marquee which are available for weekday and weekend events such as weddings, parties and as an external meeting venue. These activities bring commercial benefit to increase the Charity's income which in turn supports the SWWR's core activities of animal rescue, rehabilitation and release and educating the public generally regarding wildlife.

In 2021 our trading activities continued to be impacted by the COVID-19 pandemic; our charity shop in Burnham was closed for around 3 months and we were unable to take bookings for the Bluebell Barn. Our online wildlife courses continued to be popular and were attended by people from all over the UK and Europe, generating just under £16,000 of income.

The charity shop in Burnham-on-Sea has continued to perform well, generating over £121,000 of income despite being closed for a time due to COVID-19 restrictions early in the year. Associated costs were over £46,000, with an operating profit of over £75,000. The new premises has proved to be a great choice and the shop's profitability has fuelled our decision to open more charities shops in 2022. This is part of our strategy to reduce our dependency on legacy income.

In spite of the constraints resulting from the pandemic, our trading activities had a turnover of just under £175,000, with an operating profit of just under £143,000. This compares with an income of just under £30,000 and operating profit of over £13,000 in 2020, reflecting the impact of the pandemic on our trading activities last year.

Any remaining profits have been donated by the trading company to the charity (SWWR).



SWWR Adoption toys



Teemill owl sweatshirt



New Burnham-on-sea charity shop



SECRET WORLD WILDLIFE RESCUE - CONSOLIDATED REPORT OF THE TRUSTEES – INCORPORATING  
THE REPORT OF THE DIRECTORS FOR THE YEAR ENDED 31 DECEMBER 2021

External relations and fundraising highlights from 2021:

- 🐼 “Our Feathered Friends” Spring appeal, raising money for new equipment and bird care costs, received a very generous £25,270 total donations
- 🐼 We were one of the 500 £1,000 donation winners in Ecclesiastical Insurance’s ‘Movement for Good’ and received £500 from MyGivingCircle. Thanks to everyone who voted for us!
- 🐼 Pauline was the very deserving recipient of the Charitable Contribution of the Year award at the Ceva Animal Welfare Awards
- 🐼 Pauline featured in Woman and Home magazine’s “Animal Saviours” feature
- 🐼 Two of our patrons - Michaela Strachan and Martin Hughes-Games – visited together to see construction of our new Wildlife Treatment Centre. They were great sports, posing for pictures and helping launch our ‘Last Push’ appeal (see p12)
- 🐼 We received a donation of £500 from sales of Self-Isolating Bird Club’s merchandise after a poll on Facebook. SIBC is a Facebook group started by Chris Packham and friends during the first Covid-19 lockdown
- 🐼 Confuzzled’s 2021 virtual conference raised £8,016.12 for us as their Charity of the Year. They ran a charity auction, t-shirt sales and a JustGiving page for general donations
- 🐼 We received £7,718 in donations via Facebook, includes appeals for live foods and our new Wildlife Treatment Centre, and fundraisers created by supporters and other groups



- 🐼 Our ‘Summer Holidays’ raffle raised £1,913 through ticket sales and donations. Prizes included tickets for days out, and shopping and restaurant vouchers, all kindly donated

- 🐼 We were able to run fundraising stalls at a few events in the summer, including Bridgwater Quayside Festival, the Greyhound Trust Dog Show, Cheddar Car Boot Sale and Portishead Summer Show. It was lovely to get out and meet people after so long!

- 🐼 A couple of groups chose us to benefit from one of their monthly online auctions. The Animal

Rescue Auction Group raised an amazing £2,223 and ArtLovesAnimals donated a fantastic £300

- 🐼 Lots of people kindly gave up their time to raise money for us in 2021, raising thousands of pounds between them. A huge thanks to everyone who ran marathons, attended car boot sales, did sponsored bike rides and walks, held bake sales, and a number of other fantastic fundraisers





## SECRET WORLD WILDLIFE RESCUE - CONSOLIDATED REPORT OF THE TRUSTEES – INCORPORATING THE REPORT OF THE DIRECTORS FOR THE YEAR ENDED 31 DECEMBER 2021

- 🦉 Bids on our online Annual Auction totalled £3,570, with a few kind supporters paying extra for the items. This was run on Facebook for a 2<sup>nd</sup> year as we sadly cancelled our Auction and Ball
- 🦉 We also ran a series of auctions on our 'SWWR Auctions' Facebook page throughout the year, which raised a total of £1,831
- 🦉 Best-selling local author Damien Boyd donated a full set of signed books when he brought in a hedgehog that he had rescued. These will benefit our fundraising in 2022
- 🦉 Our wildlife adoptions continued to prove successful, with supporters donating monthly or purchasing an annual adoption as a gift. These generated a fantastic income of £41,295 in 2021
- 🦉 We welcomed new registrations for our 'Friends of Secret World', which raised a total £7,721 through monthly donations
- 🦉 Supporters gave very generously to our autumn 'Last Push' appeal for our new Wildlife Treatment Centre; we received almost £27,500 in donations towards this appeal



- 🦉 We had great success with the Aviva Community Fund, receiving £14,575 for a new 'animal ambulance', and £285 towards our on-site education for children

- 🦉 We took part in The Big Give Christmas Challenge. Our appeal was themed around swans, and we received £5,660 in donations which exceeded our target

- 🦉 We benefitted from a pub quiz and raffle at the Ritz Social Club in Burnham-on-Sea. It raised £133 and was a lovely night, attended by a few staff and volunteers. Our friends at The Cottage Inn also chose SWWR to benefit from their monthly quizzes, donating £750 and kindly hosting a number of our team for a rare staff night out



- 🦉 Sales of clothing through our Teemill store generated £240 of income

- 🦉 We launched a new website in February which has given us a fantastic online presence. Information is easier to find, and we've improved the donor experience for donations and our online gift shop

- 🦉 Lots of local businesses kindly hosted collection pots so customers could donate their change and it all adds up, raising a fantastic £2,400. One pub turned theirs into a very popular swear box!



- 🦉 Several rescues made local press, including a badger that had fallen into Bristol harbour, a baby puffin stranded on a local beach (see p20), and a family of ducks that required assistance from local fire and rescue services.



# SECRET WORLD WILDLIFE RESCUE - CONSOLIDATED REPORT OF THE TRUSTEES – INCORPORATING THE REPORT OF THE DIRECTORS FOR THE YEAR ENDED 31 DECEMBER 2021

## Grants, in-kind donations, and corporate support

It's not just cash donations that keep our charity running. We are only able to keep our doors open for British wildlife due to the incredibly kind individuals, groups, and businesses who donate products and expertise in support of our work. Donation points in local supermarkets and pet shops have given us a steady supply of pet food and cleaning products, and we have continued to use our Amazon wishlist for more specialist and urgently needed products. We are so grateful to everyone who uses these, and for responding to appeals for blankets, towels, and newspaper. You are saving us thousands of pounds a year and helping us concentrate cash donations where they are most needed.



We are extremely grateful to the following organisations for their support throughout the year:

- Hobson Charity LTD, The Fairfield Charitable Trust, and Olsen Animal Trust for their contributions to our Wildlife Treatment Centre appeal
- Animal Saviours, Animal Rescue Foundation, Jean Sainsbury Animal Welfare Trust, The Calypso Browning Trust, E B M Charitable Trust, and The Rose Animal Welfare Trust for helping with our day-to-day animal care costs
- Animal Defence Trust, Michael and Shirley Hunt Charitable Trust, The Norman Family Charitable Trust, Edna Smylie Memorial Fund, The Robert Clutterbuck Charitable Trust, The Stafford Trust, and Marjorie Coote Animal Charity Trust for helping purchase and build rescue and release equipment
- The William Dean Countryside and Educational Trust, Moto in the Community, and The Elmgrant Trust for contributions to our learning programme
- Somerset County Council for a grant to support our 2022 open weekends
- Burnham-on-Sea and Highbridge Town Council for our new charity shop sign, and Sedgemoor District Council for their assistance with government grants.

With so many generous corporate and professional supporters it is obviously impossible to list them all, but in 2021 particular thanks are due to the following local and national businesses / organisations for their significant support:

|                               |                              |                                  |
|-------------------------------|------------------------------|----------------------------------|
| Artwork by Angie              | ISCA Drones                  | Sentinel Security Systems        |
| Asda                          | Knight Frank                 | Sitemakers                       |
| Bakkavor                      | Longleat Safari Park         | Smart Ecology LTD                |
| Bath Oral Surgery Clinic      | Morrisons                    | Somerset Stairlifts and Mobility |
| Bird in Hand Bridgwater       | Mount Vets                   | Sopha                            |
| BSAVA                         | Next                         | Tecni LTD                        |
| CVS (UK) LTD                  | North Roofing LTD            | Tesco                            |
| Diverse Fine Foods            | Quantock Veterinary Hospital | The Black Cat Micropub           |
| Dragonfly Drones              | Rich's Cider                 | The Co-operative                 |
| Forest of Dean Wildlife Tours | Rob's Fish Bar               | The Cottage Inn Wembdon          |
| GB Property Management        | Rosemary Lodge Vet Hospital  | The Crusty Cob                   |
| Hollis Morgan                 | Sainsburys                   | The Food Warehouse by Iceland    |
| Howards Removals              | Sanders Garden Centre        | Wilson Leisure LTD               |
| Howdens Bridgwater            | Sentinel Security Systems    | Wren's Birds of Prey             |



## SECRET WORLD WILDLIFE RESCUE - CONSOLIDATED REPORT OF THE TRUSTEES – INCORPORATING THE REPORT OF THE DIRECTORS FOR THE YEAR ENDED 31 DECEMBER 2021

Our list of individual supporters is also too long to mention, but we are extremely grateful to all who contributed to Secret World Wildlife Rescue's work in any way during 2021. Without this type of support, the Charity would not be able to keep its doors open for wildlife casualties. A special thanks goes to the new owners of our old visitor centre, the Cider Barn, the Lilley family, who permitted us to continue using the building free of charge until May 2021.

### A HUGE THANK YOU TO ALL OUR SUPPORTERS

#### FACILITIES REPORT

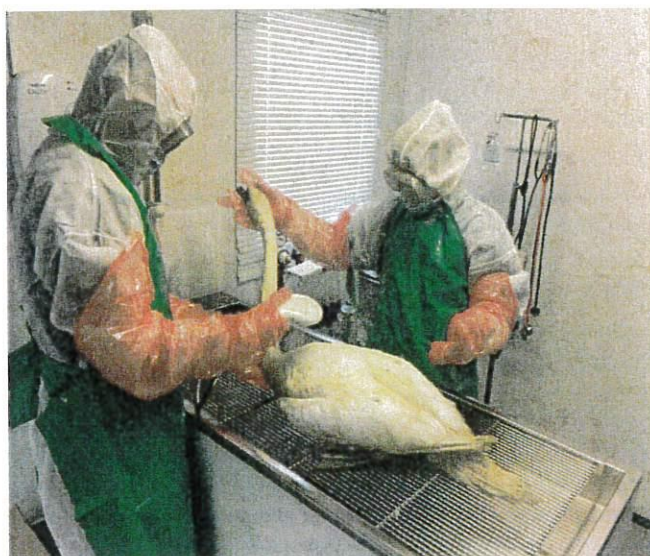
Management of the new build dominated the work of the facilities team throughout the year. The site, staff and any hospitalised animals had to move several times over the year. In April everyone moved from the old buildings into temporary accommodation, with movement and changes in layout of the portacabins being necessary to make this possible. A new temporary reception area was built in the carpark in an adapted shed. In September everything was moved again, this time into the new building. Although there are some ongoing snagging issues with the new building, it is already a much easier facility to manage and keep clean.

Whilst the new building was being constructed, the rest of the site required its normal maintenance, with winter repairs to outdoor pens and other facilities. A new aviary was also constructed for our resident barn owl.

In April we signed the lease on a new 'pop up' charity shop on the main street in Burnham-on-sea (see p24), a much better location than our previous shop. A new Mercedes-Benz Sprinter van was also purchased for the shop use.



Temporary reception building summer 2021



Animal care staff in AI appropriate PPE admitting a swan  
winter 2021

Disease control, both human and animal, remained a challenge in 2021. Ongoing COVID-19 advice from government required increase H&S, especially in the new office spaces, for the new build. A winter outbreak of avian influenza (AI) required re-roofing of some of the aviaries. AI also required an update in a raft of H&S and biosecurity precautions for staff, including the regular use of foot baths and increased use of PPE. It is hard to know how infections like these will affect us in the future and any new facilities, as was the case for the new Wildlife Treatment Centre, will need to consider these risks.



## FUTURE PLANS

- Following the construction of the new Wildlife Treatment Centre there is a lot to do to tidy up the site in preparation for spring 2022 when we hope to be able to welcome visitors to see the new centre and members of the public back for open days.
- During the construction of the Wildlife Treatment Centre other parts of the site have continued to age and now look especially in need of repair or replacement. In 2022 we will plan how best further develop and update the site to provide the highest level of wildlife care alongside pleasant and efficient working conditions for our staff and volunteers.
- Our on-site and school-age education programmes continued to be badly affected in 2021 and we hope to have these fully functioning again in 2022 as schools hopefully get back to normal after the COVID-19 pandemic. We also hope to be able to deliver our plans for learning and engagement opportunities for 16–19-year-olds.
- Our adult education courses have been very successful online, attracting an audience from around the UK and further afield. We have however not been able to offer the practical elements of the courses online. In 2022 we have to offer a practical day course at SWWR for those who have completed the online courses since 2020. This should help us to assess how best to deliver a hybrid model going forwards.
- Fundraising during 2021 continued to be heavily influenced by the COVID-19 pandemic, with almost all of our in-person supporter fundraising events cancelled. In 2022 we hope to be able to welcome visitors back to SWWR for open days, host a fundraising ball and take part in more live events both onsite and elsewhere. Our personal relationships with our supporters are a key part of SWWR and one that we have missed.
- Building up the Charity's reserves to the revised target of 6 months' expenditure will continue. Ensuring an adequate cash reserve to secure the Charity's financial sustainability in the future is paramount. This is particularly important considering the impact that the COVID-19 pandemic had upon income and the likely impact it will continue to have on charity funding in 2022.
- Efforts will also continue to reduce the Charity's dependence upon legacies. In 2022 we hope to open another 2 or 3 charity shops as one way of diversifying funding sources.
- Ongoing training for staff and volunteers is an integral aspect of the Charity's work to ensure our personnel team is safe and operating in line with the highest professional and legal standards. Health & Safety and other Policies and Procedures will require ongoing updating and relevant training as the SWWR facilities are changed and improved. An ongoing consideration of disease risk, both human and animal, will be key in 2022.
- The Board was strengthened considerably during 2021 by the recruitment of additional Trustees with a broad range of knowledge and experience. This group of individuals is now working very effectively together. The Trustees will continue in 2022 to recruit additional persons with relevant professional backgrounds to complete the required skills matrix.

**SECRET WORLD WILDLIFE RESCUE - CONSOLIDATED REPORT OF THE TRUSTEES – INCORPORATING  
THE REPORT OF THE DIRECTORS FOR THE YEAR ENDED 31 DECEMBER 2021**

**FINANCIAL REVIEW**

**Summary**

2021 was another challenging year for Secret World with the continuation of Covid 19 restrictions which meant that we had to continue to diversify our sources of income in order to continue operations during the construction of our new treatment centre. Fortunately, due to the generosity of our supporters, higher than normal legacies being left to the charity, and successful applications to grant making bodies we were able to have another very successful year which allowed us to finish the year in a strong position and see the completion of the treatment centre capital building project that we started in 2020.

Total income increased by 32% from 2020 to 2021 largely due to an increase in the amount received in legacy income. We also saw an increase of general donations due to the continuing appeal to raise funds for the capital appeal which was restricted for building work.

Operational expenditure increased by 16% between 2020 and 2021. Despite the continuation of some of the Covid 19 restrictions from last year, there has been some return to normality which has resulted in an increase in animal admissions. There have also been some extra costs resulting from the charity having to move into temporary accommodation around the site during the disruption caused by the building work going on on-site. We also saw an increase in staff costs from 2020 due to increases in salaries to account for cost-of-living increases and the increase in the national minimum wage in April 2021.

**Income**

During 2021, SWWR income totalled £1,375,837, which was a 32% increase on 2020. Our fundraising efforts and legacy receipts made up £1,126,229 of this income (82%) with the remainder coming from charity shop income, adoptions, and other trading income. Fundraising income increased by 15% over 2020. This increase was in part due to the continuing appeal to raise funds for the Wildlife Treatment Centre, with a large portion of total income either being restricted or designated for that capital project. This was an increase on efforts in 2020 when the buildings work only began at the end of that year.

One significant source of income in 2020 was legacies which made up £630,263 of our total income. This was a 79% increase in the amount received in 2020 (£351,755). These gifts were very much welcomed at a time when we were spending large amounts of the charities cash on our new building and helped ensure that we finished the year in a strong financial position. We also increased our grant income by 78% between 2020 and 2021. This increase is mainly due to additional grant fundraising done in order to raise funds for the capital building project with less grants in 2021 being for core costs.

**Expenditure**

The cost of raising funds increased by 7% from £160,052 in 2020 to £170,814 in 2021. There was a general increase across most of the areas that make up the cost of raising funds. This was generally made up of increases in staff and property costs.

Charitable expenditure increased by 17% (£111,432) between 2020 and 2021. Education costs increased by approximately £29,500 due to increases in education courses, and animal care costs increased by £81,720 mainly due to increases in staff costs and the increase in the number of animals being admitted to Secret World between 2020 and 2021.



**SECRET WORLD WILDLIFE RESCUE - CONSOLIDATED REPORT OF THE TRUSTEES – INCORPORATING  
THE REPORT OF THE DIRECTORS FOR THE YEAR ENDED 31 DECEMBER 2021**

**Reserves Policy**

Secret World Wildlife Rescue maintains a reserves policy for the following reasons:

- To maintain free reserves which are not invested in fixed assets or designated for a specific purpose at the higher of either:
- Three months of budgeted expenditure.
- The amount required to close down the charity.
- To hold reserves which are designated for a specified purpose.

Our reserves level is monitored and reported to our management and trustees on a bi-monthly basis. The level of reserves required is then reviewed annually when the budget is written.

Given the uncertain financial situation resulting from the COVID-19 pandemic, at their Board meeting in October 2020, the Charity's Trustees voted to change the reserves policy and work towards increasing the reserves target from three months to six months. Thus, while working towards a 5–6-month reserve target range for 2023 (based on identified risks the charity may face), it was agreed that, for 2021, the Charity should aim for a 3–4-month target, with a range of £200,000 - £258,000.

At the end of 2021, Secret World Wildlife Rescue's free reserves were £184,793 which is below the target range. £374,830 is already designated for the Capital Build Reserve project in the accounts, though most of this should be transferred back to the General Fund in 2022 as we only need to retain funds to complete the final payments due for the project which is in the region of £32,000.

**SECRET WORLD WILDLIFE RESCUE - CONSOLIDATED REPORT OF THE TRUSTEES -- INCORPORATING  
THE REPORT OF THE DIRECTORS FOR THE YEAR ENDED 31 DECEMBER 2021**

**STATEMENT OF TRUSTEES' RESPONSIBILITIES**

The Trustees (who are also Directors of Secret World Wildlife Rescue for the purposes of company law) are responsible for preparing the Trustees Report and financial statements in accordance with applicable law and United Kingdom Accounting Standards (United Kingdom Generally Accepted Accounting Practice).

Company law requires the Trustees to prepare financial statements for each financial year which give a true and fair view of the state of affairs of the charitable company and the group and of the incoming resources and application of resources, including the income and expenditure, of the charitable company and the group for that period. In preparing these financial statements, the Trustees are required to:

- select suitable accounting policies and then apply them consistently;
- make judgements and estimates that are reasonable and prudent;
- state whether applicable UK Accounting Standards and the Statement of Recommended Practice have been followed, subject to any material departures disclosed and explained in the financial statements;
- prepare the financial statements on a going concern basis unless it is inappropriate to assume the group will continue in operation.

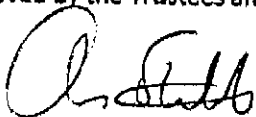
The Trustees are responsible for keeping proper accounting records that disclose, with reasonable accuracy at any time, the financial position of the charitable company and the group and to ensure that the financial statements comply with Charities Act 2011 and with the Companies Act 2006. They are also responsible for safeguarding the assets of the charitable company and the group and hence for taking reasonable steps for the prevention and detection of fraud and other irregularities. The Trustees are responsible for the maintenance and integrity of the corporate and financial information included on the Charity's website.

The Trustees confirm that as far as they are aware at the time of approving this annual report:-

1. There is no relevant audit information of which the charitable company and group's auditors are unaware; and
2. The Trustees have taken all steps that they ought to have taken to make themselves aware of any relevant audit information and to establish that the auditors are aware of that information.

This report has been prepared in accordance with the special provisions of Part 15 of the Companies Act 2006 relating to small companies and groups.

Approved by the Trustees and signed on their behalf by:



.....  
Christopher Stenlake, Chair of Trustees

Date ..... 04/08/2022 .....



## FINANCIAL STATEMENTS FOR THE YEAR ENDED 31 DECEMBER 2021

## INDEPENDENT AUDITOR'S REPORT TO THE MEMBERS OF SECRET WORLD WILDLIFE RESCUE

## OPINION

We have audited the financial statements of Secret World Wildlife Rescue (the Group) for the year ended 31st December 2021, which comprise Statement of Financial Activities, Balance Sheet, Cash Flow Statement and notes to the financial statements, including a summary of significant accounting policies. The financial reporting framework that has been applied in their preparation is applicable law and United Kingdom Accounting Standards, including Financial Reporting Standards 102: The Financial Reporting Standard applicable in the UK and Republic of Ireland (United Kingdom Generally Accepted Accounting Practice).

In our opinion, the financial statements:

- give a true and fair view of the state of the group and charity's affairs as at 31 December 2021 and of its incoming resources and application of resources for the year then ended;
- have been properly prepared in accordance with United Kingdom Generally Accepted Accounting Practice;
- have been prepared in accordance with the requirements of the Companies Act 2006 and Charities Act 2011.

## BASIS OF OPINION

We conducted our audit in accordance with International Standards on Auditing (UK) (ISAs (UK)) and applicable law. Our responsibilities under those standards are further described in the Auditor's responsibilities for the audit of the financial statements section of our report. We are independent of the group and charity in accordance with ethical requirements that are relevant to our audit of the financial statements in the UK, including the FRC's Ethical Standard, and we have fulfilled our other ethical responsibilities in accordance with these requirements. We believe that the audit evidence we have obtained is sufficient and appropriate to provide a basis for our opinion.

## CONCLUSIONS RELATING TO GOING CONCERN

In auditing the financial statements, we have concluded that the Trustees' use of the going concern basis of accounting in the preparation of the financial statements is appropriate.

Based on the work we have performed, we have not identified any material uncertainties relating to events or conditions that, individually or collectively, may cast significant doubt on the charity's ability to continue as a going concern for a period of at least twelve months from when the financial statements are authorised for issue.

Our responsibilities and the responsibilities of the Trustees with respect to going concern are described in the relevant sections of this report.

## OTHER INFORMATION

The trustees are responsible for the other information. The other information comprises the information included in the annual report other than the financial statements and our Auditor's report therein. Our opinion on the financial statements does not cover the other information and, except to the extent otherwise explicitly stated in our report, we do not express any form of assurance conclusion thereon.

In connection with our audit of the financial statements, our responsibility is to read the other information and, in doing so, consider whether the other information is materially inconsistent with the financial statements or our knowledge obtained in the audit or otherwise appears to be materially misstated. If we identify such material inconsistencies or apparent material misstatements, we are required to determine whether there is a material misstatement in the financial statements or a material misstatement of the other information. If, based on the work we have performed, we conclude that there is a material misstatement of this other information, we are required to report that fact.

We have nothing to report in this regard.

## FINANCIAL STATEMENTS FOR THE YEAR ENDED 31 DECEMBER 2021

## INDEPENDENT AUDITOR'S REPORT TO THE MEMBERS OF SECRET WORLD WILDLIFE RESCUE ...../continued

## OPINIONS ON OTHER MATTERS PRESCRIBED BY THE COMPANIES ACT 2006

In our opinion, based on the work undertaken in the course of the audit:

- the information given in the annual report for the financial year for which the financial statements are prepared is consistent with the financial statements; and
- the annual report has been prepared in accordance with applicable legal requirements.

## MATTERS ON WHICH WE ARE REQUIRED TO REPORT BY EXCEPTION

In the light of the knowledge and understanding of the group and charity and its environment obtained in the course of the audit, we have not identified material misstatements in the Annual Report.

We have nothing to report in respect of the following matters in relation to which the Companies Act 2006 requires us to report to you if, in our opinion:

- adequate accounting records have not been kept or returns adequate for our audit have not been received from branches not visited by us;
- the financial statements are not in agreement with the accounting records and returns;
- certain disclosures of trustees' remuneration specified by law are not made; or
- we have not obtained all the information and explanations necessary for the purposes of our audit.

## RESPONSIBILITIES OF THE TRUSTEES

As explained more fully in the trustees' responsibilities statement set out on page 32 the trustees are responsible for the preparation of the financial statements and for being satisfied that they give a true and fair view, and for such internal control as they determine is necessary to enable the preparation of financial statements that are free from material misstatement, whether due to fraud or error.

In preparing the financial statements, the trustees are responsible for assessing the group and charity's ability to continue as a going concern, disclosing, as applicable, matters related to going concern and using the going concern basis of accounting unless the trustees either intend to liquidate the group and charity or to cease operations, or have no realistic alternative but to do so.

## OUR RESPONSIBILITIES FOR THE AUDIT OF THE FINANCIAL STATEMENTS

We have been appointed as auditors under the Charities Act 2011 s144 and report in accordance with the regulations made under the Act and relevant regulations made or having effect there under.

Our objectives are to obtain reasonable assurance about whether the financial statements as a whole are free from material misstatement, whether due to fraud or error, and to issue an Auditor's report that includes our opinion. Reasonable assurance is a high level of assurance, but it not a guarantee that an audit conducted in accordance with ISAs (UK) will always detect a material misstatement when it exists. Misstatements can arise from fraud or error and are considered material if, individually or in the aggregate, they could reasonably be expected to influence the economic decisions of users taken on the basis of these financial statements.

## IDENTIFYING AND ASSESSING POTENTIAL RISKS RELATED TO IRREGULARITIES

Irregularities, including fraud, are instances of non-compliance with laws and regulations. We design procedures in line with our responsibilities, outlined above, to detect material misstatements in respect of irregularities, including fraud. The extent to which our procedures are capable of detecting irregularities, including fraud, is detailed below:

- We have considered the nature of the industry and sector, control environment and business performance, including the design of the charity's remuneration policies.
- We have enquired with management in regards to their own assessment of the risks of irregularities, including fraud.
- We have obtained relevant documentation and representations in order to form an opinion on potential irregularities, including fraud.
- Our audit work is limited to samples inherently used under International Auditing Standards, therefore not all transactions are reviewed so the detection of irregularities, including fraud is limited to this.



## FINANCIAL STATEMENTS FOR THE YEAR ENDED 31 DECEMBER 2021

## INDEPENDENT AUDITOR'S REPORT TO THE MEMBERS OF SECRET WORLD WILDLIFE RESCUE ...../continued

## IDENTIFYING AND ASSESSING POTENTIAL RISKS RELATED TO IRREGULARITIES - continued

- Any matter we identified having obtained and reviewed the charity's documentation of their policies and procedures relating to:
  - Identifying, evaluating and complying with laws and regulations and whether they are aware of any non-compliance.
  - Detecting and responding to the risks of fraud and whether they have knowledge of any actual, suspected or alleged fraud.
  - The internal controls established to mitigate risks of fraud or non-compliance with laws and regulations.

As a result of these procedures, we considered the opportunities and incentives that may exist within the organisation for fraud and identified the greatest potential for fraud is in relation to the overstatement of revenue. In common with all audits under ISAs (UK). We are also required to perform specific procedures to respond to the risk of management override.

We also obtained an understanding of the legal and regulatory environment and frameworks in which the charity operates, focusing on provisions of those laws and regulations that had a direct effect on the determination of material amounts and disclosures in the financial statements. The key laws and regulations we considered in this context included the UK Companies Act, Charities Act, and local tax legislation.

In addition, we considered provisions of other laws and regulations which do not have a direct effect on the financial statements, but compliance which may be fundamental for the charity to operate.

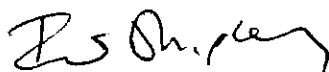
Relevant identified laws and regulations were communicated within the engagement team so they remained alert throughout the audit for indications of fraud or non-compliance.

A further description of our responsibilities for the audit of the financial statements is located on the Financial Reporting Council's website at: [www.frc.org.uk/auditorsresponsibilities](http://www.frc.org.uk/auditorsresponsibilities). This description forms part of our Auditor's report.

## USE OF OUR REPORT

This report is made solely to the group and charity's Trustees, as a body, in accordance with Chapter 3 of Part 16 of the Companies Act 2006.

Our audit work has been undertaken so that we might state to the group and charity's members those matters, we are required to state to them in a Auditor's report and for no other purpose. To the fullest extent permitted by law, we do not accept or assume responsibility to anyone other than the group or charity's members as a body, for our audit work, for this report, or for the opinions we have formed.



.....  
Ian Shipley FCCA, Senior Statutory Auditor

for and on behalf of Prentis & Co LLP, Chartered Accountants and Statutory Auditors

115c Milton Road  
Cambridge  
CB4 1XE

24<sup>th</sup> August 2022

Prentis & Co LLP is eligible to act as auditor in terms of section 1212 of the Companies Act 2006.

CONSOLIDATED STATEMENT OF FINANCIAL ACTIVITIES  
(INCORPORATING AN INCOME AND EXPENDITURE ACCOUNT)

FOR THE YEAR ENDED 31 DECEMBER 2021

|                                | Note | Unrestricted<br>Funds<br>2021<br>£ | Restricted<br>Funds<br>2021<br>£ | Total<br>Funds<br>2021<br>£ | Unrestricted<br>Funds<br>2020<br>£ | Restricted<br>Funds<br>2020<br>£ | Total<br>Funds<br>2020<br>£ |
|--------------------------------|------|------------------------------------|----------------------------------|-----------------------------|------------------------------------|----------------------------------|-----------------------------|
| <b>INCOME</b>                  |      |                                    |                                  |                             |                                    |                                  |                             |
| Donations and legacies         | 2    | 987,879                            | 138,350                          | 1,126,229                   | 656,788                            | 112,057                          | 768,845                     |
| Charitable Activities          |      |                                    |                                  |                             |                                    |                                  |                             |
| Education                      |      | 728                                | -                                | 728                         | 2,143                              | -                                | 2,143                       |
| Animal Care                    |      | 150                                | -                                | 150                         | 2,501                              | -                                | 2,501                       |
| Other trading activities       | 3    | 224,879                            | 402                              | 225,281                     | 183,231                            | -                                | 183,231                     |
| Investments                    | 4    | 844                                | -                                | 844                         | 967                                | -                                | 967                         |
| Other                          | 5    | 7,701                              | -                                | 7,701                       | 6,630                              | -                                | 6,630                       |
| Profit on sale of fixed assets |      | -                                  | -                                | -                           | 47,185                             | 975                              | 48,160                      |
| Government Grants              |      | 14,904                             | -                                | 14,904                      | 31,431                             | -                                | 31,431                      |
| <b>TOTAL INCOME</b>            |      | <b>1,237,085</b>                   | <b>138,752</b>                   | <b>1,375,837</b>            | <b>930,876</b>                     | <b>113,032</b>                   | <b>1,043,908</b>            |
| <b>EXPENDITURE</b>             |      |                                    |                                  |                             |                                    |                                  |                             |
| Raising Funds                  | 6    | 170,814                            | -                                | 170,814                     | 158,806                            | 1,246                            | 160,052                     |
| Charitable Activities:         | 7    |                                    |                                  |                             |                                    |                                  |                             |
| Animal Care                    |      | 614,261                            | 15,591                           | 629,852                     | 548,058                            | 74                               | 548,132                     |
| Education                      |      | 95,559                             | 18,558                           | 114,117                     | 49,722                             | 35,309                           | 85,031                      |
| Other expenditure              |      | 2,442                              | 2,983                            | 5,425                       | 3,595                              | 1,204                            | 4,799                       |
| <b>TOTAL EXPENDITURE</b>       |      | <b>883,076</b>                     | <b>37,132</b>                    | <b>920,208</b>              | <b>760,181</b>                     | <b>37,833</b>                    | <b>798,014</b>              |
| Net income                     |      | 354,009                            | 101,620                          | 455,629                     | 170,695                            | 75,199                           | 245,894                     |
| Gross transfers between funds  | 21   | -                                  | -                                | -                           | (10,996)                           | 10,996                           | -                           |
| Net income for the year        |      | 354,009                            | 101,620                          | 455,629                     | 159,699                            | 86,195                           | 245,894                     |
| Reconciliation of funds:       |      |                                    |                                  |                             |                                    |                                  |                             |
| Total funds brought forward    |      | 1,656,552                          | 339,955                          | 1,996,507                   | 1,496,853                          | 253,760                          | 1,750,613                   |
| Total funds carried forward    |      | 2,010,561                          | 441,575                          | 2,452,136                   | 1,656,552                          | 339,955                          | 1,996,507                   |



CONSOLIDATED BALANCE SHEET  
FOR THE YEAR ENDED 31 DECEMBER 2021

|  | Note | 2021<br>£      | £                | 2020<br>£        | £                |
|--|------|----------------|------------------|------------------|------------------|
| <b>FIXED ASSETS</b>                            |      |                |                  |                  |                  |
| Intangible assets                              | 11   |                | 867              |                  | -                |
| Tangible assets                                | 12   |                | 1,857,351        |                  | 1,017,453        |
| Investments                                    |      |                | 627              |                  | 627              |
|  |      |                | <u>1,858,845</u> |                  | <u>1,018,080</u> |
| <b>CURRENT ASSETS</b>                          |      |                |                  |                  |                  |
| Stocks   | 15   | 26,927         |                  | 16,044           |                  |
| Debtors  | 16   | 27,878         |                  | 23,364           |                  |
| Cash at bank and in hand                       |      | 580,547        |                  | 968,403          |                  |
|  |      | <u>635,352</u> |                  | <u>1,007,811</u> |                  |
| <b>LIABILITIES</b>                             |      |                |                  |                  |                  |
| Creditors: amounts falling due within one year | 17   | (32,061)       |                  | (19,384)         |                  |
| <b>NET CURRENT ASSETS</b>                      |      |                | <u>603,291</u>   |                  | <u>988,427</u>   |
| Total assets less current liabilities          |      |                | 2,462,136        |                  | 2,006,507        |
| Provision for liabilities                      | 19   |                | (10,000)         |                  | (10,000)         |
| <b>TOTAL NET ASSETS</b>                        |      |                | <u>2,452,136</u> |                  | <u>1,996,507</u> |
| <b>TOTAL FUNDS OF THE CHARITY</b>              |      |                |                  |                  |                  |
| Unrestricted funds                             | 21   |                | 2,010,561        |                  | 1,656,552        |
| Restricted funds                               | 21   |                | 441,575          |                  | 339,955          |
|  |      |                | <u>2,452,136</u> |                  | <u>1,996,507</u> |

The financial statements were approved by the Board of Trustees on its behalf by:

04 AUGUST 2022 and were signed on



.....  
Christopher Stenlake - Chair of Trustees

CHARITY BALANCE SHEET  
YEAR ENDED 31 DECEMBER 2021

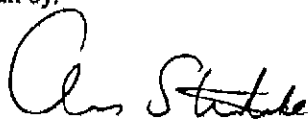
|  | Note | 2021<br>£      | £                | 2020<br>£        | £                |
|--|------|----------------|------------------|------------------|------------------|
| <b>FIXED ASSETS</b>                            |      |                |                  |                  |                  |
| Intangible assets                              | 11   |                | 867              |                  | -                |
| Tangible assets                                | 12   |                | 1,843,462        |                  | 1,017,453        |
| Investments                                    |      |                | 30,093           |                  | 30,093           |
|  |      |                | <u>1,874,422</u> |                  | <u>1,047,546</u> |
| <b>CURRENT ASSETS</b>                          |      |                |                  |                  |                  |
| Stocks   | 15   | 14,511         |                  | 15,768           |                  |
| Debtors  | 16   | 26,392         |                  | 26,979           |                  |
| Cash at bank and in hand                       |      | 517,144        |                  | 968,403          |                  |
|  |      | <u>558,047</u> |                  | <u>1,011,150</u> |                  |
| <b>LIABILITIES</b>                             |      |                |                  |                  |                  |
| Creditors: amounts falling due within one year | 17   | (28,410)       |                  | (19,918)         |                  |
| <b>NET CURRENT ASSETS</b>                      |      |                | 529,637          |                  | 991,232          |
| <b>Total assets less current liabilities</b>   |      |                | 2,404,059        |                  | 2,038,778        |
| Provision for liabilities                      | 19   | (10,000)       |                  | (10,000)         |                  |
| <b>TOTAL NET ASSETS</b>                        |      |                | <u>2,394,059</u> |                  | <u>2,028,778</u> |
| <b>TOTAL FUNDS OF THE CHARITY</b>              |      |                |                  |                  |                  |
| Unrestricted funds                             |      |                | 1,952,484        |                  | 1,688,823        |
| Restricted funds                               |      |                | 441,575          |                  | 339,955          |
|  |      |                | <u>2,394,059</u> |                  | <u>2,028,778</u> |

These financial statements have been audited under the requirements of Section 144 of the Charities Act 2011.

These financial statements have been prepared in accordance with the special provision of Part 15 of the Companies Act 2006 relating to small charitable companies and with the Financial Reporting Standard applicable in the UK (FRS 102) (effective 1st January 2019) - (Charities SORP (FRS 102)).

For the year ended 31st December 2021 the company was entitled to exemption from audit under Section 477 of the Companies Act 2006 relating to small companies but, as the company is a charity, it is subject to audit under the Charities Act 2011.

The financial statements were approved by the Board of Trustees on 04 August 2022 and were signed on its behalf by:



Christopher Stenlake - Chair of Trustees



CONSOLIDATED STATEMENT OF CASH FLOWS  
FOR THE YEAR ENDED 31 DECEMBER 2021

|  | Note | Total<br>Funds<br>2021<br>£ | Total<br>Funds<br>2020<br>£ |
|--|------|-----------------------------|-----------------------------|
| Cash flows from operating activities:                              |      |                             |                             |
| Net cash provided by /(used in) operating activities               | 23   | <u>543,256</u>              | <u>339,066</u>              |
| Proceeds from the sale of property, plant and equipment            |      | -                           | 196,519                     |
| Purchase of fixed assets   |      | <u>(931,112)</u>            | <u>(250,899)</u>            |
| Net cash used in investing activities                              |      | <u>(931,112)</u>            | <u>(54,380)</u>             |
| Change in cash and cash equivalents in the reporting period        |      | (387,856)                   | 284,686                     |
| Cash and cash equivalents at the beginning of the reporting period |      | 968,403                     | 683,717                     |
| Cash and cash equivalents at the end of the reporting period       |      | <u>580,547</u>              | <u>968,403</u>              |

## NOTES TO THE FINANCIAL STATEMENTS

FOR THE YEAR ENDED 31 DECEMBER 2021

## 1. ACCOUNTING POLICIES

## BASIS OF PREPARING THE FINANCIAL STATEMENTS

The financial statements have been prepared in accordance with Accounting and Reporting by Charities: Statement of Recommended Practice applicable to charities preparing their accounts in accordance with the Financial Reporting Standard applicable in the UK and Republic of Ireland (FRS 102) issued October 2019 (effective 1 January 2019) - (Charities SORP (FRS 102)), the Financial Reporting Standard applicable in the UK and Republic of Ireland (FRS 102) and the Companies Act 2006. The principal accounting policies adopted in the preparation of the financial statements are set out below.

Secret World Wildlife Rescue meets the definition of a public benefit entity under FRS 102. Assets and liabilities are initially recognised at historical cost or transaction value unless otherwise stated in the relevant accounting policy note(s).

## PREPARATION OF FINANCIAL STATEMENTS ON A GOING CONCERN BASIS

These financial statements have been prepared on a going concern basis as there are no material uncertainties about the group's ability to continue.

These financial statements are prepared in pound sterling which is also the Charity's functional currency. All amounts have been rounded to the nearest pound, unless otherwise indicated.

## GROUP FINANCIAL STATEMENTS

These financial statements consolidate the results of the Charity and Secret World Ltd.

## INCOMING RESOURCES

All incoming resources are included on the Statement of Financial Activities when the Charity is legally entitled to the income and the amount can be quantified with reasonable accuracy.

Grants receivable are recognised when all qualifying criteria have been satisfied and are stated gross within the Statement of Financial Activities, with capital and charitable activity expenditure also stated gross.

## RESOURCES EXPENDED

Expenditure is accounted for on an accruals basis and has been classified under headings that aggregate all cost related to the category.

## ALLOCATION AND APPORTIONMENT COSTS

Vehicle costs, mobile and land line costs, printing, postage, stationery, office machine maintenance and wages costs have been apportioned between management support costs, animal care and overheads to show a truer representation of direct animal care costs and education costs.

Water rates have been apportioned between overheads and animal care based on estimated consumption directly attributable to care of animals including laundry.

Management, animal care and fundraising wages have been apportioned between animal care, education and management based on the time spent by each staff on each activity during the year.

All other costs are already accurately split and do not require apportioning.

## INTANGIBLE FIXED ASSETS

The Charity previously capitalised the costs of creating a new website, incorporating an online shop. This has been amortised over 3 years on a straight line basis.



## NOTES TO THE FINANCIAL STATEMENTS

FOR THE YEAR ENDED 31 DECEMBER 2021

## 1. ACCOUNTING POLICIES...../continued

## TANGIBLE FIXED ASSETS

Individual fixed assets costing £100 or more are capitalised at cost.

Depreciation is provided at the following annual rates in order to write off the cost less estimated residual value of each asset over its estimated useful life.

|                          |  |
|--------------------------|--|
| Freehold property        | - straight line over 50 years on the cost of buildings and land is not depreciated         |
| Improvements to property | - straight line over the lease term of either 5 or 20 years                                |
| Plant and machinery      | - straight line over 4 or 10 years and 25% on reducing balance, depending on the asset use |
| Fixtures and fittings    | - 15% on reducing balance  |
| Motor vehicles           | - straight line over 4 years and 25% on reducing balance, depending on the asset use       |
| Computer equipment       | - straight line over 4 years   |

## STOCKS

Stocks are valued at the lower of cost and net realisable value, after making due allowance for obsolete and slow moving items. Stocks are valued on the first in first out basis.

## TAXATION

The Charity is currently exempt from Corporation Tax and VAT registration on its charitable activities.

## FUND ACCOUNTING

Unrestricted funds, including designated funds, can be used in accordance with the charitable objectives at the discretion of the Trustees.

Restricted funds can only be used for particular restricted purposes within the objects of the Charity. Restrictions arise when specified by the donor or when the funds are raised for particular restricted purposes.

Further explanation of the nature and purpose of each fund is included in the notes to the financial statements.

## HIRE PURCHASE AND LEASING COMMITMENTS

Rentals paid under operating leases are charged to the Statement of Financial Activities on a straight line basis over the period of the lease.

## PENSION COSTS AND OTHER POST-RETIREMENT BENEFITS

A pension scheme for eligible employees was introduced in January 2016. Secret World employees who meet the criteria for auto enrolment were automatically enrolled into the Work Save Pension Plan with Legal and General on 1 January 2016. The scheme is funded by contributions from the employees and a contribution of 3% from Secret World in 2021 (3%: 2020); this contribution will change in future years in accordance with government legislation.

## DONATED GOODS

Donated goods are recognised in the accounts as income under donations with an equivalent expense recognised under the appropriate heading in the Statement of Financial Activities e.g. Animal Care. Where assets are donated, they are again recognised as income under donations with an equivalent asset created under the appropriate heading. Donated goods are recognised on the basis of the value of the gift, being the amount the Charity would have had to spend to obtain the goods.

## NOTES TO THE FINANCIAL STATEMENTS

FOR THE YEAR ENDED 31 DECEMBER 2021

## 2. DONATIONS AND LEGACIES - GROUP

|           | Unrestricted<br>Funds<br>2021<br>£ | Restricted<br>Funds<br>2021<br>£ | Total<br>Funds<br>2021<br>£ | Unrestricted<br>Funds<br>2020<br>£ | Restricted<br>Funds<br>2020<br>£ | Total<br>Funds<br>2020<br>£ |
|-----------|------------------------------------|----------------------------------|-----------------------------|------------------------------------|----------------------------------|-----------------------------|
| Donations | 241,895                            | 109,419                          | 351,314                     | 223,875                            | 82,757                           | 306,632                     |
| Gift Aid  | 49,711                             | -                                | 49,711                      | 57,001                             | -                                | 57,001                      |
| Legacies  | 630,263                            | -                                | 630,263                     | 351,755                            | -                                | 351,755                     |
| Grants    | 66,010                             | 28,931                           | 94,941                      | 24,157                             | 29,300                           | 53,457                      |
|           | <u>987,879</u>                     | <u>138,350</u>                   | <u>1,126,229</u>            | <u>656,788</u>                     | <u>112,057</u>                   | <u>768,845</u>              |

In 2021 the Charity received an estimated £4,019 (2020: £2,680) worth of goods for use in Animal Care Services which has been recognised as a donation with the equivalent expense shown under animal care costs.

Grants received, included in the above, are as follows:

|             | Unrestricted<br>Funds<br>2021<br>£ | Restricted<br>Funds<br>2021<br>£ | Total<br>Funds<br>2021<br>£ | Unrestricted<br>Funds<br>2020<br>£ | Restricted<br>Funds<br>2020<br>£ | Total<br>Funds<br>2020<br>£ |
|-------------|------------------------------------|----------------------------------|-----------------------------|------------------------------------|----------------------------------|-----------------------------|
| Individuals | 62,210                             | 28,931                           | 91,141                      | 17,950                             | 29,300                           | 47,250                      |
| Corporate   | 3,800                              | -                                | 3,800                       | 6,207                              | -                                | 6,207                       |
|             | <u>66,010</u>                      | <u>28,931</u>                    | <u>94,941</u>               | <u>24,157</u>                      | <u>29,300</u>                    | <u>53,457</u>               |

## 3. OTHER TRADING ACTIVITIES - GROUP

|                     | Unrestricted<br>Funds<br>2021<br>£ | Restricted<br>Funds<br>2021<br>£ | Total<br>Funds<br>2021<br>£ | Unrestricted<br>Funds<br>2020<br>£ | Restricted<br>Funds<br>2020<br>£ | Total<br>Funds<br>2020<br>£ |
|---------------------|------------------------------------|----------------------------------|-----------------------------|------------------------------------|----------------------------------|-----------------------------|
| Fundraising events  | 32,162                             | 402                              | 32,564                      | 45,699                             | -                                | 45,699                      |
| Charity shop income | 105,775                            | -                                | 105,775                     | 77,711                             | -                                | 77,711                      |
| Social lotteries    | 3,023                              | -                                | 3,023                       | 4,609                              | -                                | 4,609                       |
| Animal Adoptions    | 41,341                             | -                                | 41,341                      | 39,417                             | -                                | 39,417                      |
| Other income        | 60                                 | -                                | 60                          | 185                                | -                                | 185                         |
| Trading income      | 42,518                             | -                                | 42,518                      | 15,610                             | -                                | 15,610                      |
|                     | <u>224,879</u>                     | <u>402</u>                       | <u>225,281</u>              | <u>183,231</u>                     | <u>-</u>                         | <u>183,231</u>              |

## 4. INVESTMENTS - GROUP

|                          | Unrestricted<br>Funds<br>2021<br>£ | Restricted<br>Funds<br>2021<br>£ | Total<br>Funds<br>2021<br>£ | Unrestricted<br>Funds<br>2020<br>£ | Restricted<br>Funds<br>2020<br>£ | Total<br>Funds<br>2020<br>£ |
|--------------------------|------------------------------------|----------------------------------|-----------------------------|------------------------------------|----------------------------------|-----------------------------|
| Deposit account interest | 844                                | -                                | 844                         | 967                                | -                                | 967                         |



## NOTES TO THE FINANCIAL STATEMENTS

FOR THE YEAR ENDED 31 DECEMBER 2021

## 5. OTHER INCOME - GROUP

|                                      | Unrestricted<br>Funds<br>2021<br>£ | Restricted<br>Funds<br>2021<br>£ | Total<br>Funds<br>2021<br>£ | Unrestricted<br>Funds<br>2020<br>£ | Restricted<br>Funds<br>2020<br>£ | Total<br>Funds<br>2020<br>£ |
|--------------------------------------|------------------------------------|----------------------------------|-----------------------------|------------------------------------|----------------------------------|-----------------------------|
| Other donations -<br>(Friends of SW) | 7,701                              | -                                | 7,701                       | 6,630                              | -                                | 6,630                       |

## 6. COSTS OF RAISING FUNDS - GROUP

|                               | Unrestricted<br>Funds<br>2021<br>£ | Restricted<br>Funds<br>2021<br>£ | Total<br>Funds<br>2021<br>£ | Unrestricted<br>Funds<br>2020<br>£ | Restricted<br>Funds<br>2020<br>£ | Total<br>Funds<br>2020<br>£ |
|-------------------------------|------------------------------------|----------------------------------|-----------------------------|------------------------------------|----------------------------------|-----------------------------|
| Fundraising costs including   |                                    |                                  |                             |                                    |                                  |                             |
| for resale                    | 17,038                             | -                                | 17,038                      | 25,649                             | 1,246                            | 26,895                      |
| Staff costs                   | 75,481                             | -                                | 75,481                      | 65,289                             | -                                | 65,289                      |
| Amortisation and depreciation | 20,923                             | -                                | 20,923                      | 19,237                             | -                                | 19,237                      |
| Property costs                | 37,358                             | -                                | 37,358                      | 30,326                             | -                                | 30,326                      |
| Office and IT costs           | 20,014                             | -                                | 20,014                      | 18,305                             | -                                | 18,305                      |
|                               | 170,814                            | -                                | 170,814                     | 158,806                            | 1,246                            | 160,052                     |

7. DIRECT CHARITABLE COSTS - GROUP  
CURRENT YEAR

|                               | 2021                |                |                           | Total   |
|-------------------------------|---------------------|----------------|---------------------------|---------|
|                               | Animal<br>Care<br>£ | Education<br>£ | Other<br>Expenditure<br>£ | £       |
| Direct costs                  | 119,365             | 200            | -                         | 119,565 |
| Staff costs                   | 423,391             | 54,459         | -                         | 477,850 |
| Amortisation and depreciation | 42,366              | 27,058         | -                         | 69,424  |
| Property costs                | 36,986              | 24,657         | -                         | 61,643  |
| Office and IT costs           | 7,744               | 7,743          | -                         | 15,487  |
| Governance                    | -                   | -              | 5,425                     | 5,425   |
|                               | 629,852             | 114,117        | 5,425                     | 749,394 |

DIRECT CHARITABLE COSTS - GROUP  
PRIOR YEAR

|                               | 2020                |                |                           | Total   |
|-------------------------------|---------------------|----------------|---------------------------|---------|
|                               | Animal<br>Care<br>£ | Education<br>£ | Other<br>Expenditure<br>£ | £       |
| Direct costs                  | 92,431              | 798            | -                         | 93,229  |
| Staff costs                   | 385,801             | 45,753         | -                         | 431,554 |
| Amortisation and depreciation | 34,826              | 24,404         | -                         | 59,230  |
| Property costs                | 32,370              | 11,372         | -                         | 43,742  |
| Office and IT costs           | 2,704               | 2,704          | -                         | 5,408   |
| Governance                    | -                   | -              | 4,799                     | 4,799   |
|                               | 548,132             | 85,031         | 4,799                     | 637,962 |

## NOTES TO THE FINANCIAL STATEMENTS

FOR THE YEAR ENDED 31 DECEMBER 2021

## 8. NET INCOMING/(OUTGOING) RESOURCES (GROUP)

|  | 31.12.21 | 31.12.20 |
|--|----------|----------|
| Net resources are stated after charging/(crediting): | £        | £        |
| Auditors' remuneration - current year                | 5,425    | 4,799    |
| Depreciation - owned assets                          | 89,118   | 77,161   |
| Website amortisation                                 | -        | 1,307    |
| Other operating leases                               | 30,195   | 14,639   |

## 9. TRUSTEES' REMUNERATION AND BENEFITS - GROUP AND CHARITY

There were no Trustees' remuneration or other benefits for the year ended 31 December 2021 nor for the period ended 31 December 2020.

## TRUSTEES' EXPENSES

Total Trustee expenses claimed were £87 for the year ended 31 December 2021 (2020: £Nil).

Total donations received from Trustees in the year were £1,840 (2020: £106).

## 10. STAFF COSTS - GROUP AND CHARITY

|                       | Year ended<br>31.12.21 | Year ended<br>31.12.20 |
|-----------------------|------------------------|------------------------|
|                       | £                      | £                      |
| Wages and salaries    | 504,411                | 454,742                |
| Social security costs | 31,331                 | 26,048                 |
| Other pension costs   | 17,589                 | 16,053                 |
|                       | <u>553,331</u>         | <u>496,843</u>         |

During 2021 there was a total of £Nil (2020: £Nil) paid in redundancy/termination payments.

The average monthly number of employees during the period was as follows (excluding casual workers):

|                             | Year ended<br>31.12.21 | Year ended<br>31.12.20 |
|-----------------------------|------------------------|------------------------|
| Shop                        | 4                      | 2                      |
| Fundraising                 | 3                      | 2                      |
| Animal care services        | 12                     | 12                     |
| Cleaning and maintenance    | 2                      | 2                      |
| Management                  | 2                      | 2                      |
| Volunteer co-ordinator      | 1                      | 1                      |
| Administrative and accounts | 1                      | 1                      |
| Learning                    | 1                      | 1                      |
|                             | <u>26</u>              | <u>23</u>              |

There were no employees with benefits in excess of £60,000 for the year ended 31 December 2021 (2020: Nil).

The key management personnel of the Charity in 2021 comprised the Trustees, Chief Executive Officer, Charity Founder and Advisor and Head of Animal Care Services.

The employee benefits of the key management personnel for 2021 were £79,966 (2020: £94,824).



## NOTES TO THE FINANCIAL STATEMENTS

## FOR THE YEAR ENDED 31 DECEMBER 2021

|  | 2021    | 2020    |
|--|---------|---------|
|  | Website | Website |
|  | £       | £       |
| 11. INTANGIBLE FIXED ASSETS - GROUP AND CHARITY COST |         |         |
| At 1 January   | 24,238  | 24,238  |
| Additions  | 1,200   | -       |
| At 31 December                                       | 25,438  | 24,238  |
| AMORTISATION   |         |         |
| At 1 January   | 24,238  | 22,931  |
| Charge for the year                                  | 333     | 1,307   |
| At 31 December                                       | 24,571  | 24,238  |
| NET BOOK VALUE AT 31 DECEMBER 2021                   | 867     | -       |

|   |                   |                          |                     |                       |                |                    |           |
|---|-------------------|--------------------------|---------------------|-----------------------|----------------|--------------------|-----------|
| 12a. TANGIBLE FIXED ASSETS - GROUP AND CHARITY - 2021 |                   |                          |                     |                       |                |                    |           |
|   | Freehold property | Improvements to property | Plant and Machinery | Fixtures and Fittings | Motor Vehicles | Computer Equipment | Total     |
|   | £                 | £                        | £                   | £                     | £              | £                  | £         |
| At 1 January 2021                                     | 413,834           | 919,532                  | 130,559             | 31,049                | 30,283         | 69,100             | 1,594,357 |
| Additions   | 880,711           | 14,584                   | 3,376               | 4,758                 | 15,100         | 11,383             | 929,912   |
| At 31 December 2021                                   | 1,294,545         | 934,116                  | 133,935             | 35,807                | 45,383         | 80,483             | 2,524,269 |
| DEPRECIATION  |                   |                          |                     |                       |                |                    |           |
| At 1 January 2021                                     | 818               | 356,767                  | 106,922             | 20,589                | 27,319         | 64,489             | 576,904   |
| Charge for the year                                   | 14,682            | 51,742                   | 17,623              | 1,834                 | 2,314          | 1,819              | 90,014    |
| At 31 December 2021                                   | 15,500            | 408,509                  | 124,545             | 22,423                | 29,633         | 66,308             | 666,918   |
| NET BOOK VALUE AT 31 DECEMBER 2021                    | 1,279,045         | 525,607                  | 9,390               | 13,384                | 15,750         | 14,175             | 1,857,351 |

|   |                   |                          |                     |                       |                |                    |           |
|---|-------------------|--------------------------|---------------------|-----------------------|----------------|--------------------|-----------|
| 12b. TANGIBLE FIXED ASSETS - GROUP AND CHARITY - 2020 |                   |                          |                     |                       |                |                    |           |
|   | Freehold property | Improvements to property | Plant and Machinery | Fixtures and Fittings | Motor Vehicles | Computer Equipment | Total     |
|   | £                 | £                        | £                   | £                     | £              | £                  | £         |
| At 1 January 2020                                     | 391,754           | 919,532                  | 130,022             | 31,049                | 30,283         | 64,032             | 1,566,672 |
| Additions   | 245,294           | -                        | 537                 | -                     | -              | 5,068              | 250,899   |
| Disposals   | (223,214)         | -                        | -                   | -                     | -              | -                  | (223,214) |
| At 31 December 2020                                   | 413,834           | 919,532                  | 130,559             | 31,049                | 30,283         | 69,100             | 1,594,357 |
| DEPRECIATION  |                   |                          |                     |                       |                |                    |           |
| At 1 January 2020                                     | 24,884            | 304,976                  | 87,472              | 18,743                | 26,331         | 64,032             | 526,438   |
| Charge for the year                                   | 2,629             | 51,791                   | 19,450              | 1,846                 | 988            | 457                | 77,161    |
| Eliminated on disposal                                | (26,695)          | -                        | -                   | -                     | -              | -                  | (26,695)  |
| At 31 December 2020                                   | 818               | 356,767                  | 106,922             | 20,589                | 27,319         | 64,489             | 576,904   |
| NET BOOK VALUE AT 31 DECEMBER 2020                    | 413,016           | 562,765                  | 23,637              | 10,460                | 2,964          | 4,611              | 1,017,453 |

Included in cost or valuation of land and buildings is freehold land of £167,040 (31/12/2020: £167,040).

The Visitor Centre and The Bluebell Sett Barn were sold in August 2020. A new build has been under construction from the 2020 financial year, and completed in the 2021 financial year. This and other related capital expenditure are included within freehold land and property, and are being depreciated on a straight line basis over their expected useful lives of 50 years.

## NOTES TO THE FINANCIAL STATEMENTS

FOR THE YEAR ENDED 31 DECEMBER 2021

13. FIXED ASSETS INVESTMENTS - CHARITY  
SUBSIDIARIES

Secret World Limited

Country of Incorporation: England and Wales

Nature of Business: Trading

|                                | %       | Year ended    | Year ended    |
|--------------------------------|---------|---------------|---------------|
| Class of shares:               | holding | 31.12.21      | 31.12.20      |
| Ordinary                       | 100.00  | £             | £             |
| Aggregate capital and reserves |         | 29,466        | 29,466        |
| Profit for the year            |         | 28,613        | 14,724        |
|                                |         | <u>58,079</u> | <u>44,190</u> |

The Charity was gifted 100% of the issued ordinary share capital of Secret World Ltd (Company number 03658761), a company incorporated in England and Wales. The Trustees deem the market value of these shares to be £Nil. The subsidiary undertaking is included within the consolidated accounts.

## 14. LINKED CHARITIES

Secret World Wildlife Rescue also controls two unincorporated charitable trusts, Bluebell Sett and The Bluebell Sett Charitable Trust. Shown below is a summary of Statement of Financial Activities and Balance Sheet for each trust.

## SUMMARY STATEMENT OF FINANCIAL ACTIVITIES

|                          | Bluebell Sett |          | The Bluebell Sett<br>Charitable Trust |              |
|--------------------------|---------------|----------|---------------------------------------|--------------|
|                          | 2021          | 2020     | 2021                                  | 2020         |
|                          | £             | £        | £                                     | £            |
| INCOME                   |               |          |                                       |              |
| Donations                | -             | -        | 7,036                                 | 7,654        |
| EXPENDITURE              |               |          |                                       |              |
| Donations made           | -             | -        | -                                     | -            |
| Transfers made           | -             | -        | (10,500)                              | (5,000)      |
| Net Income/(expenditure) | <u>-</u>      | <u>-</u> | <u>(3,464)</u>                        | <u>2,654</u> |

## SUMMARY BALANCE SHEET

|                              | Bluebell Sett |              | The Bluebell Sett<br>Charitable Trust |              |
|------------------------------|---------------|--------------|---------------------------------------|--------------|
|                              | 2021          | 2020         | 2021                                  | 2020         |
|                              | £             | £            | £                                     | £            |
| FIXED ASSETS                 |               |              |                                       |              |
| Tangible assets              | -             | -            | -                                     | -            |
| CURRENT ASSETS               |               |              |                                       |              |
| Bank                         | 3,307         | 3,307        | 1,899                                 | 5,363        |
| Total net assets/liabilities | <u>3,307</u>  | <u>3,307</u> | <u>1,899</u>                          | <u>5,363</u> |
| UNRESTRICTED FUNDS           | <u>3,307</u>  | <u>3,307</u> | <u>1,899</u>                          | <u>5,363</u> |

## NOTES TO THE FINANCIAL STATEMENTS

FOR THE YEAR ENDED 31 DECEMBER 2021

|     |   |               |               |               |               |
|-----|---|---------------|---------------|---------------|---------------|
| 15. | STOCK   | Group         |               | Charity       |               |
|     |   | 2021          | 2020          | 2021          | 2020          |
|     |   | £             | £             | £             | £             |
|     | Fundraising   | 11,122        | 6,584         | -             | 6,584         |
|     | Animal care services  | 14,511        | 9,184         | 14,511        | 9,184         |
|     | Shops   | 1,294         | 276           | -             | -             |
|     |   | <u>26,927</u> | <u>16,044</u> | <u>14,511</u> | <u>15,768</u> |
| 16. | DEBTORS   | Group         |               | Charity       |               |
|     |   | 2021          | 2020          | 2021          | 2020          |
|     |   | £             | £             | £             | £             |
|     | Trade debtors   | 224           | 3,115         | 224           | 3,115         |
|     | Other debtors   | 287           | 454           | 287           | 287           |
|     | Amounts owed from group undertakings  | -             | -             | 4,673         | 3,782         |
|     | Prepayments and accrued income  | 22,580        | 19,795        | 21,208        | 19,795        |
|     | VAT debtors   | 4,787         | -             | -             | -             |
|     |   | <u>27,878</u> | <u>23,364</u> | <u>26,392</u> | <u>26,979</u> |
| 17. | CREDITORS:  | Group         |               | Charity       |               |
|     | Amounts falling due within one year   | 2021          | 2020          | 2021          | 2020          |
|     |   | £             | £             | £             | £             |
|     | Trade creditors   | 16,626        | 4,759         | 12,976        | 4,759         |
|     | Social security and other taxes   | 9,819         | 6,366         | 9,819         | 6,366         |
|     | Pension   | 597           | 555           | 597           | 555           |
|     | Amounts owed to group undertakings  | -             | -             | -             | 534           |
|     | Accruals and deferred income  | 5,019         | 7,704         | 5,018         | 7,704         |
|     |   | <u>32,061</u> | <u>19,384</u> | <u>28,410</u> | <u>19,918</u> |
| 18. | OPERATING LEASE COMMITMENTS - GROUP AND CHARITY   |               |               | 2021          | 2020          |
|     | The following operating lease payments are committed to be paid:                            |               |               | £             | £             |
|     | Total future commitments  |               |               | <u>21,900</u> | <u>14,796</u> |
| 19. | PROVISIONS - GROUP AND CHARITY  |               |               | 2,021         | 2,020         |
|     |   |               |               | £             | £             |
|     | Brought forward   |               |               | 10,000        | 10,000        |
|     | Charged/(released) to Statement of Comprehensive Income                                     |               |               | -             | -             |
|     | Carried forward   |               |               | <u>10,000</u> | <u>10,000</u> |
| 20. | CAPITAL COMMITMENTS - GROUP AND CHARITY   |               |               |               |               |
|     | As at the balance sheet date the Charity had no capital commitments for the following year. |               |               |               |               |



## NOTES TO THE FINANCIAL STATEMENTS

FOR THE YEAR ENDED 31 DECEMBER 2021

| 21a. | MOVEMENT IN FUNDS - GROUP<br>CURRENT YEAR  | At<br>1 January<br>2021 | Incoming<br>Resources | Expenditure      | Transfers<br>between 31 December<br>Funds | At<br>31 December<br>2021 |
|------|--|-------------------------|-----------------------|------------------|---|---------------------------|
|      |  | £                       | £                     | £                | £   | £                         |
|      | UNRESTRICTED FUNDS                         |                         |                       |                  |   |                           |
|      | General fund                               | 1,281,722               | 1,237,085             | (883,076)        | -   | 1,635,731                 |
|      | DESIGNATED FUNDS                           |                         |                       |                  |   | -                         |
|      | Capital Build Reserve                      | 374,830                 | -                     | -                | -   | 374,830                   |
|      |  | <u>1,656,552</u>        | <u>1,237,085</u>      | <u>(883,076)</u> | <u>-</u>                                  | <u>2,010,561</u>          |
|      | RESTRICTED FUNDS                           |                         |                       |                  |   |                           |
|      | Capital appeal - Education Centre          | 239,259                 | 6,485                 | (18,558)         | -   | 227,186                   |
|      | Capital appeal - Wildlife Treatment Centre | 100,696                 | 94,969                | (15,591)         | -   | 180,074                   |
|      | Other restricted funds                     | -                       | 37,298                | (2,983)          | -   | 34,315                    |
|      |  | <u>339,955</u>          | <u>138,752</u>        | <u>(37,132)</u>  | <u>-</u>                                  | <u>441,575</u>            |
|      | TOTAL FUNDS                                | <u>1,996,507</u>        | <u>1,375,837</u>      | <u>(920,208)</u> | <u>-</u>                                  | <u>2,452,136</u>          |
| 21b. | MOVEMENT IN FUNDS - GROUP<br>PRIOR YEAR    | At<br>3 January<br>2020 | Incoming<br>Resources | Expenditure      | Transfers<br>between 31 December<br>Funds | At<br>31 December<br>2020 |
|      |  | £                       | £                     | £                | £   | £                         |
|      | UNRESTRICTED FUNDS                         |                         |                       |                  |   |                           |
|      | General fund                               | 1,122,023               | 930,876               | (760,181)        | (10,996)                                  | 1,281,722                 |
|      | DESIGNATED FUNDS                           |                         |                       |                  |   | -                         |
|      | Capital Build Reserve                      | 374,830                 | -                     | -                | -   | 374,830                   |
|      |  | <u>1,496,853</u>        | <u>930,876</u>        | <u>(760,181)</u> | <u>(10,996)</u>                           | <u>1,656,552</u>          |
|      | RESTRICTED FUNDS                           |                         |                       |                  |   |                           |
|      | Capital appeal - Education Centre          | 253,760                 | 19,275                | (36,689)         | 2,913                                     | 239,259                   |
|      | Capital appeal - Wildlife Treatment Centre | -                       | 93,757                | (1,144)          | 8,083                                     | 100,696                   |
|      |  | <u>253,760</u>          | <u>113,032</u>        | <u>(37,833)</u>  | <u>10,996</u>                             | <u>339,955</u>            |
|      | TOTAL FUNDS                                | <u>1,750,613</u>        | <u>1,043,908</u>      | <u>(798,014)</u> | <u>-</u>                                  | <u>1,996,507</u>          |

Descriptions of designated and restricted funds are as follows:

## CAPITAL APPEAL - EDUCATION CENTRE

Capital appeal education centre is a restricted fund created from donations and a grant from Heritage Lottery Fund. This was established to fund the construction and commissioning of the education centre now known as Bluebell Barn.

The transfers into this fund represent the Charity's contribution of 19.26% to the 80.74% received from the Heritage Lottery Fund.

The Heritage Lottery Fund (HLF) (now National Lottery Heritage Fund) hold a charge which expires on 12 June 2037 over a section of 'The Orchard', being the land and property owned by the Charity, and the land on which Bluebell Barn is situated. This secures any potential debts owed to Heritage Lottery Fund.

The terms and conditions of the Heritage Lottery Fund grant state that:

- If the Charity were to sell, let or otherwise part with Bluebell Barn before 12 June 2037 then the Heritage Lottery Fund may require a share of the net proceeds of this transaction.
- If the Charity were to no longer operate then all of the Heritage Lottery Fund grant received to date would be repayable. As at 31 December 2021 the Charity had actually received £275,410 (2020: £275,410) for capital work and £217,342 (2020: 217,342) for activity costs and additional project costs.

## NOTES TO THE FINANCIAL STATEMENTS

FOR THE YEAR ENDED 31 DECEMBER 2021

The award of an HLF grant in 2012 for the "Wildhearts" education programme was a significant boost for the Charity at that time. The award, having a value of over £500,000, was to enable a sustainable education programme based on-site in a converted farm building to be known as Bluebell Barn. As a guarantee for the award the Charity granted the HLF a charge against the freehold land of the site for a period of 25 years (until 2037). In 2020 the HLF agreed to discharge a large portion of this land.

The conversion of the building to provide the Bluebell Barn facility was mainly completed over the period 2012-2015, and the building was signed off in 2016.

## CAPITAL APPEAL - WILDLIFE TREATMENT CENTRE

The Wildlife Treatment Centre is a restricted fund created from donations, grants and legacies. This is to fund the construction of the Charity's new Wildlife Treatment Centre, work on which commenced in October 2020. The Centre comprises a main wing with animal admissions and orphan rearing, offices and staff facilities and a wildlife hospital wing with separate rooms for the care and rehabilitation of different species, ensuring predator and prey are always kept apart.

## OTHER

Small funds donated for restricted purposes and used within the current period. This includes monies raised in order to fund a new van for delivery purposes between shops.

## 22. RELATED PARTY TRANSACTIONS - GROUP AND CHARITY

Mrs P Kidner was a member of the key management personnel of Secret World Wildlife Rescue during the year ended 31 December 2021. Mr D Kidner is the spouse of Mrs P Kidner.

Mrs P Kidner donated a total of £20,700 to the Charity in 2021.

The Charity rents premises from Mr D, Mrs P and Mr S Kidner. Rents are paid at a commercial rate and amounted to £12,100 (2020: £4,575) for 2021 this included additional spaces for parking and room for animal care workers.

Mr S Kidner, son of Mr D and Mrs P Kidner, is employed on a casual basis, by the Charity to fulfil various tasks, including IT, animal care and facilities work. His pay is based on the hours worked at the market rate.

Mr D Kidner is also paid at the market rate for grounds maintenance services each year.

The group controls the wholly owned subsidiary, Secret World Limited and two unincorporated charitable trusts, Bluebell Sett and The Bluebell Sett Charitable Trust.

## 23. RECONCILIATION OF INCOMING RESOURCES TO NET CASH FLOW FROM OPERATING ACTIVITIES

|   | Total<br>Funds<br>2021<br>£ | Total<br>Funds<br>2020<br>£ |
|---|-----------------------------|-----------------------------|
| Net income for the reporting period<br>(as per the Statement of Financial Activities) | 455,629                     | 245,894                     |
| Adjustments for:  |                             |                             |
| Depreciation and amortisation   | 90,347                      | 78,468                      |
| (Increase)/Decrease in stocks   | (10,883)                    | -                           |
| (Increase)/Decrease in debtors  | (4,514)                     | 27,628                      |
| Increase/(Decrease) in creditors  | 12,677                      | (12,924)                    |
| Net cash provided by/(used in) operating activities                                   | 543,256                     | 339,066                     |

## 24. FRC ETHICAL STANDARD - PROVISIONS AVAILABLE FOR SMALL ENTITIES

In common with many other businesses of our size and nature we use our auditors to prepare and submit returns to the tax authorities and assist with the preparation of the financial statements.