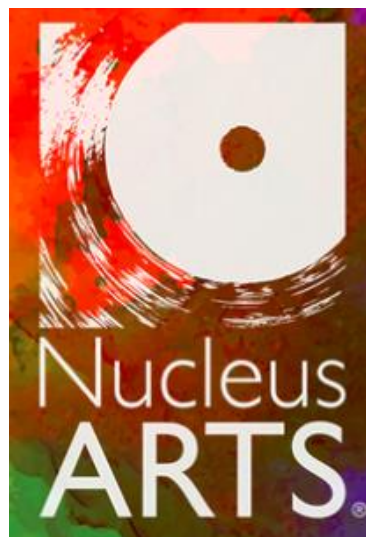
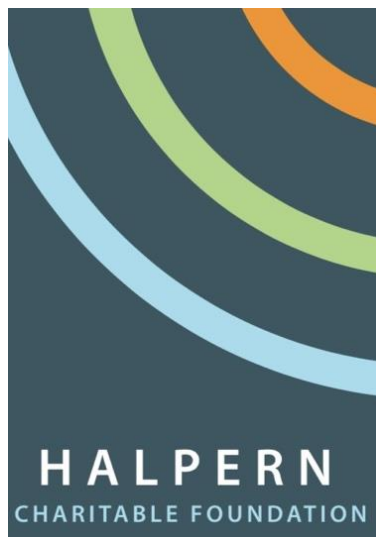


## The Halpern Charitable Foundation



## Trustees' Report and Financial Statements For the Year Ended 5 April 2024



# 2023/24 AT A GLANCE

**18**

Community creative groups

**3**

Public art galleries

**53**

Affordable studios

**Most of our groups are free - the rest are subsidised**

## This year we...



**Provided over 18,000 creative community sessions**

**Held over 40 free exhibitions, and supported hundreds of artists to display their work**



## This year we have launched...



**A new cultural festival**

**Opened a new building**

**Won six awards for health, wellbeing, and community activities**



## We have...



**Supported around 120 partner organisations**

**And represented the creative sector over 20 committees**



[www.Nucleusarts.com](http://www.Nucleusarts.com)



# The Halpern Charitable Foundation

## Table of Contents

**STATEMENT FROM THE CHAIR.....3**

**SUMMARY OF ACHIEVEMENTS IN 2022/23 .....6**

**OBJECTIVES AND ACTIVITIES .....24**

**ABOUT THE HALPERN CHARITABLE FOUNDATION .....24**

**VISION .....24**

**OUR VALUES.....24**

**STRATEGY .....25**

**ARTIST COMMUNITY:.....26**

**SUPPORTING THE CHATHAM MEMORIAL SYNAGOGUE .....28**

**VOLUNTEERS .....28**

**FINANCES AND GOVERNANCE.....28**

**STRUCTURE, GOVERNANCE AND MANAGEMENT .....30**

**TRUSTEES' RESPONSIBILITIES STATEMENT .....32**

**REFERENCE AND ADMINSTARTIVE DETAILS OF THE CHARITY, ITS TRUSTEES  
AND ADVISORS FOR THE YEAR ENDED 5 APRIL 2024.....34**

**INDEPENDENT AUDITORS' REPORT..... 35**

**STATEMENT OF FINANCIAL ACTIVITIES ..... 38**

**BALANCE SHEET ..... 39**

**STATEMENT OF CASH FLOWS .....40**

**NOTES TO THE FINANCIAL STATEMENTS ..... 41**

# The Halpern Charitable Foundation

## Statement from the chair

In 2023/24, The Halpern Charitable Foundation “HCF” / Nucleus Arts navigated a particularly demanding period marked by financial challenges, heightened demand for our services, and significant increases in operational costs. Like many in the charitable sector, we found ourselves caught in a “funding squeeze”—where the need for our services grew sharply while external funding opportunities diminished and inflationary pressures soared. Yet, in the face of these obstacles, HCF rose to the challenge. Through strategic adaptation, strengthened partnerships, and community-centric innovations, we continued to expand our services and even secured multiple prestigious awards recognising our impact.

One of our key strategies this year has been to build and deepen partnerships. By focusing on collaborative opportunities and reinforcing our role as a trusted partner, we have positioned ourselves well to access new funding sources as they emerge. This approach not only strengthens our financial resilience but also allows us to maximise our community impact. We have forged stronger connections with local government agencies, health providers, educational institutions, and arts organisations, leveraging our shared goals to deliver enriched, impactful programs that respond to community needs. These partnerships have been especially significant in light of the rising demand for mental health and wellbeing support, which has become one of our primary focuses.

Our mental health and wellbeing initiatives, in particular, have received notable recognition. This year, we tailored programs specifically aimed at improving mental health outcomes, creating inclusive spaces where individuals of all backgrounds can access arts-based activities and supportive social networks. These efforts were lauded at both local and regional levels, earning awards that affirm our commitment to creative health. By embedding mental health/wellbeing support into our arts programs, we’ve built an environment where participants can safely express themselves, form connections, and benefit from therapeutic creative processes. This recognition reflects our belief in the arts as a powerful tool for fostering resilience, reducing isolation, and nurturing emotional wellbeing.

We also took steps this year to enhance our operational infrastructure. One of our most significant efforts involved implementing energy-saving measures across our facilities. In alignment with our commitment to environmental responsibility, we made investments that will allow us to operate more sustainably while reducing long-term costs. These upgrades include more efficient lighting and heating, which together lower our energy consumption and carbon footprint. This focus on sustainability is part of our broader mission to ensure that our organisation can serve the community responsibly and effectively, now and in the future.

To help offset financial pressures, we also invested in new facilities and resources that will improve our operational efficiency. By expanding our capacity to generate revenue independently, we aim to create a more stable financial foundation that can withstand the fluctuations in external funding availability. This step is a testament to our proactive approach to financial planning—recognising that while grants and donations are invaluable, long-term sustainability requires a diversified funding model. The new facilities have also opened up possibilities for expanded programming, which we look forward to offering in the upcoming year.

## The Halpern Charitable Foundation

As we look ahead, we know that the coming year will likely bring additional challenges, with further increases in demand and continuing financial constraints. However, we remain optimistic. The resilience and adaptability our team has shown over the past year give us confidence that we can continue to navigate these challenges effectively. We are prepared to innovate further, explore new funding streams, and expand our reach across Medway and beyond, ensuring that our services are accessible to all who need them.

On behalf of the Board of Trustees, I extend heartfelt gratitude to our exceptional staff and volunteers. Their unwavering dedication, creativity, and commitment to our mission have been instrumental in making this year a success. The hard work of our team, from our devoted Trustees to our passionate artists and volunteers, is truly inspiring. As we move forward, I am filled with pride and optimism, knowing that HCF/Nucleus Arts will continue to serve as a vital, positive force in our community, meeting every challenge with determination and heart.

Peter Martin  
Chair of Trustees – Halpern Charitable Foundation

## The Halpern Charitable Foundation

'I FELT LIKE I HAD WALKED  
INTO A COLOURFUL,  
CREATIVE WORLD IN WHICH  
TO ENJOY AND EXPLORE!

ACTIVITY PARTICIPANT



'THIS IS GOING TO BE SO  
MUCH FUN.'

ACTIVITY PARTICIPANT



# The Halpern Charitable Foundation

## Summary of Achievements in 2023/24

In 2023/24, we have continued to face significant challenges due to global issues, rising demand for our services, intense budget pressures, and decreased income availability. These constraints impacted the third sector across Medway, where we've proudly held a leadership position, supporting local organisations and communities wherever possible. In response to these difficulties, we embraced innovative strategies to keep our services resilient, resourceful, and impactful.

Our commitment to Medway has led to substantial growth and notable recognition this year. Building on the achievements of 2022/23, we expanded our initiatives and garnered an impressive six awards, demonstrating our dedication to empowering communities and promoting mental health. We received the Healthwatch Recognition Award – Empowering Communities 2024, a prestigious accolade honouring our commitment to uplifting the Medway community. Additionally, we won the Kent Mental Health Awards 2023 and earned a Highly Commended mention in the Kent Mental Wellbeing Awards 2023.

Our work with families and older adults earned us a Finalist spot in the Fantastic For Families, Age-Friendly Outreach 2023 category, affirming our commitment to age-inclusive programming. In recognition of our contributions to mental health, we were Highly Commended as Adult Mental Health Charity of the Year at the A Better Medway Awards 2023. Finally, our workplace initiatives were acknowledged with the Silver Award – Healthy Workplace, also from A Better Medway.

These achievements reflect our unwavering dedication to meeting community needs, overcoming obstacles, and creating a positive, lasting impact across Medway.

### Nucleus Art Centre

Our primary site remains at our original Chatham location, housing the larger of our galleries, the Halpern Gallery, a spacious community room, and facilities like our arts workshop, kiln, and most of our artist studios. This site also hosts Café Nucleus, our award-winning and closest partner, whose presence is invaluable for attracting new visitors. This location enables us to support numerous charities and community groups. We played a pivotal role in establishing groups such as Club Ausome and Chat Connect Create, while others, charities have utilised our subsidised or free spaces, such as the Creative Cabin, to advance their work. It remains at the heart of Chatham highstreet.



We are actively continuing to develop this site to future-proof it, reduce operating costs, and showcase the potential of adapting existing infrastructure. With our significant Arts Council England grant, we have installed solar power, to date saving over 10.6 tons of CO<sub>2</sub> and generating 14.8MWh of electricity. We have also invested in energy-saving upgrades, including a transition from gas, central heating boosters, energy-efficient heating and air

## The Halpern Charitable Foundation

conditioning, and low-energy lighting. Through these efforts, we aim to substantially reduce our carbon footprint and greatly improve energy efficiency.

### HeArt of the Community



Due to ongoing developments at the Pentagon Centre, our primary site in Chatham has seen reduced use this year and closed permanently in November 2024. This site served as a temporary home for the Chatham Youth Centre (the WREC Room) during the summer of 2024 when it faced closure due to the same development activities.

Our HeArt of the Community space, located within Chatham's Pentagon Shopping Centre, has always been dedicated to partnership use. This vital

community hub is ideally positioned to offer partners an affordable space, making possible many events that would otherwise be out of reach, we hope to find alternative spaces in the future.

### Nucleus Hub

The Nucleus Hub on Chatham's Military Road plays a key role in our creative career development pipeline. Partnering with Café Nucleus, it features a welcoming café where artists can display and sell their work, and behind this is a discreet community space and internet café. This small room provides a vital, safe, semi-private area regularly used by therapists and community workers who need a comfortable, non-intimidating public space with a degree of privacy. Small charity and community group partners also use this space frequently for meetings, benefiting from its affordability and accessibility.

Above the café, we offer a suite of subsidised offices supporting small creative businesses. This year, we were thrilled to welcome the remarkable charities Arches Local and Starling Support to the site and look forward to fostering close collaborations with them.



### Maidstone Road

Our discreet site on Chatham's Maidstone Road offers ten supported flats for individuals impacted by mental health challenges. For many residents, this provides their first stable home, giving them a vital opportunity to rebuild their lives. Resident support and building management are provided by our mental health partner, Choice Support, with whom we have recently secured a new 10-year contract, ensuring sustained, high-quality support for years to come.



## The Halpern Charitable Foundation

### Halpern Conservancy Building



The Halpern Conservancy Building, located on Rochester's historic high street, is home to the largest Café Nucleus. This flagship location previously earned both the Taste of Kent's Kent Hospitality Business of the Year and Kent Food and Drink Business of the Year awards, making it officially the top dining destination in the county.

The building plays a crucial role in our charity's partnership and engagement initiatives. Our gallery, the Halpern Pop, focuses on commercial opportunities for our artists,

while also hosting exhibitions, shows and charity fundraisers with partners. The Conservancy also houses our makerspace and digital classroom, the 'LightBox,' which is equipped with 3D printers and pens, a green screen, digital art tools, and other creative making equipment.



### Medway ArtBox



The repurposed red BT Telephone Box, known as the Medway Art Box, offers a unique, street-level gallery for artists and the local community to showcase their work and participate in creative projects. Acquired through BT's Adopt-a-Box scheme, Nucleus Arts officially took ownership of the kiosk in January 2022, transforming it into a dynamic space that encourages artistic expression and local engagement.

Since its launch, the Medway Art Box has hosted a wide range of installations, community exchanges, and collaborative projects.

Moving forward, the Medway Art Box is set to continue its mission as an inclusive and accessible arts hub in the heart of the community, with upcoming projects planned to further involve Medway's residents and local artists. This vibrant kiosk will remain a staple in the community's cultural landscape, offering endless possibilities for creative installations.

### Rainham

We are thrilled to announce our new site in Rainham, Medway, marking an exciting expansion of our work in the area. This partnership with Café Nucleus opens up fresh opportunities, providing not only a vibrant café but also six artist studio spaces, boosting our creative workspace capacity. Establishing a base in Rainham will enable us to deepen our engagement and support for the communities in both Rainham and Gillingham, bringing our services even closer to those we serve.



## The Halpern Charitable Foundation

This new venture with Café Nucleus also offers a valuable income stream for the charity, helping us to sustain and grow our impact across Medway.

*I feel like I'm in another world when I come here (HCF). I can switch off and relax. I'm so glad I found you.*

### Engagement

The past year has truly demonstrated the incredible contribution that we make to both the creative sector and to wellbeing and health across Medway through our extensive programmes of outreach and engagement. The breadth of awards described previously is testament to the impacts that we have been making, and the subsequent range of organisations that want to work with us to deliver these. Our work encompasses all ages and backgrounds, from new parents to the residents of care and nursing homes, all delivered by a dedicated and talented team, who are determined to innovate, collaborate and lead, to ensure that we deliver our work the best possible way for our beneficiaries. Subsequent to the 23/24 financial year, we have been recognised with the title of Kent Community Charity of the Year, and Mayor of Medway's Charity of the Year in recognition of our significant engagement work.

### Evaluation and Development

We are continuing to take a leadership role in evaluation and development of creative health practice. The approaches are:

- 1) The Nucleus Matrix – a 'universal' approach for the planning and evaluation of interventions.
- 2) MIAHAI (Minimum Information About a Health Arts Intervention) – A global language for the communicating, sharing and development of Arts for Health.

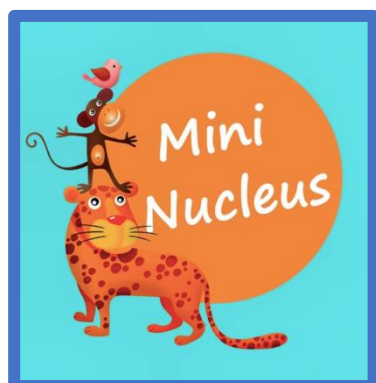
To achieve this, we have joined the Kent and Medway Creative Health Network, and joined the Board of the prestigious Centre for Inclusive Communities and Environments at the University of Greenwich. We were successful in our bid for significant funding for a Medway-based evaluation of creative health activity (starting in July 2024), and the newly established Medway Creative Health Partnership, in association with Medway Public Health and the NHS. We have been trialling the Matrix and MIAHAI with North Kent Mind, MVA, NHS and the Medway Transformation Academy, with the intention that it becomes the default evaluation tool for the VCS sector in Medway. Recently we won funding with partners Future Coders, to develop a publicly accessible version of MIAHAI.

This work was presented at the launch of the NHS's Medway and Swale Social Regeneration Launch Conference, where it was very well received. The work also led to us winning a 2024 Healthwatch Recognition Award for "Empowering Communities" and being invited to the Healthwatch Kent and Medway Advisory Board. We have submitted the Matrix and MIAHAI as a paper to Arts & Health journal, and are working through reviewers' comments.

## The Halpern Charitable Foundation

### Under 18s support

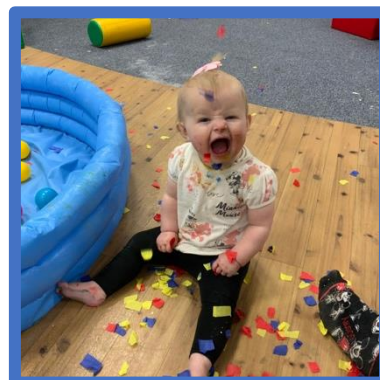
Incorporating our new learning and successes, we continue to develop our programme for younger people.



Our well established weekly Babies and Parents art group, “Mini-Nucleus” (<https://www.nucleusarts.com/mininucleus>), now runs both at our main site and across four Medway Community Hubs (<https://www.nucleusarts.com/mini-nucleus-hub>), extending our reach and impact. This program, designed for children aged 0-4 and their parents, encourages messy play and art activities that foster young children’s social and creative skills. It also provides new parents a much-needed opportunity to connect and

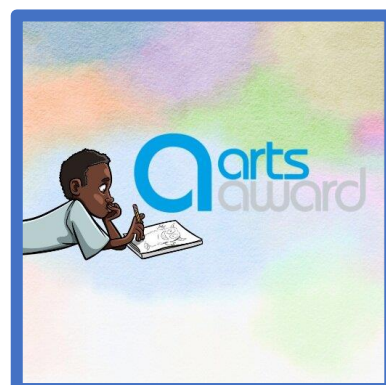
build supportive friendships, helping to combat the isolation and loneliness that often accompany the transition to parenthood.

This year, we’ve again seen beautiful collaborations between our Minis and Teen groups, culminating in the teens building a Christmas installation and grotto to delight their Mini friends!



Young people can progress from Mini Nucleus to our monthly Lego and Art Club (<https://www.nucleusarts.com/lego-art-club>) a lively Saturday morning session where children and their parents can come together to build Lego creations and participate in arts activities. The club is especially popular with dads, providing a relaxed, hands-on environment that encourages playful interaction and creativity. This welcoming space helps develop fine motor skills and fosters bonding through shared creative projects. Due to its appeal, the group is often oversubscribed, highlighting the strong demand for family-oriented, interactive sessions that blend play with art.

Our “Arts Award” (<https://www.nucleusarts.com/artsaward>) program offers courses year-round to support young people with limited educational opportunities, enabling them to earn valuable qualifications and gain first hand career experience by working alongside our resident artists. Thanks to generous funding from the Colyer Fergusson Charitable Trust, we can offer these courses at a highly subsidised rate with small class sizes that ensure personalised support for each participant.



The program includes five levels, starting with the beginner-friendly Explore and Discover stages and progressing to the more advanced Bronze, Silver, and Gold levels. We’re especially proud to support our first Gold level participants this year—an achievement equivalent to high GCSE qualifications



## The Halpern Charitable Foundation

and accredited by Trinity College London. Partnering with local schools and charities, we've been able to deliver this program to some of the most vulnerable young people in the area. In 2023-24, we have also begun collaborating with a foetal alcohol charity to develop Arts Award classes tailored to the needs of their young people.



This year saw the launch of “Junior Doodle and Draw” (<https://www.nucleusarts.com/doodlendraw>) a free Saturday art class for 7-11-year-olds, generously funded by Child Friendly Medway. Guided by Nucleus artist and comic book illustrator Nick Ashton, this engaging program nurtures young creativity with hands-on art techniques. Nick teaches children how to transform their ideas into pictures, emphasising that every child is an artist—and the key to staying one is to keep creating, even when things don’t go as planned.

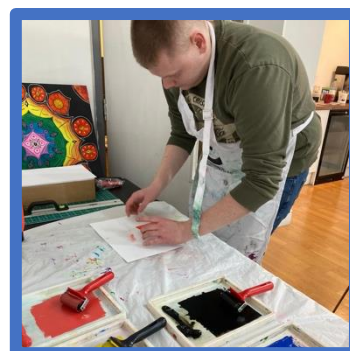
Believing that mistakes are essential to the creative journey, we encourage children to explore, experiment, and grow through their artistic “missteps.” This class offers a supportive environment for young minds to gain confidence in self-expression, develop technical skills, and connect with others who share their love for art. Junior Doodle and Draw aims to inspire a lifelong passion for creativity in each young participant, helping them carry the spirit of an artist into the future.



Our support for young people aged 13-17, ‘TeenArt’ (<https://www.nucleusarts.com/teenart>) and ‘Digital TeenArt’ (<https://www.nucleusarts.com/digital-teen-art-1>) continue to grow and develop.

Both of these groups target young people, to build confidence, community and skills. TeenArt tends to focus on physical activities, such as drawing, painting, costume making etc, whereas Digital

Teen Art focusses on digital skills.



## The Halpern Charitable Foundation



The two groups have continued to enjoy working to support our other events and activities, from creating works for Carnival, FunPalace, and Chinese New Year, to volunteering at events, to working with their mini compatriots in Mini Nucleus and Lego and Art Club. The community and sense of belonging that these



young people have developed, has given them new confidence, and a greater sense of self-worth, that has carried over into their wider lives.



The companion to its junior counterpart, “Doodle and Draw” (<https://www.nucleusarts.com/doodlendraw>) is a fantasy-themed drawing club designed for 11-18 year olds, taking place on Saturday afternoons at Chatham Library. In collaboration with Child Friendly Medway and Medway Libraries, this program has successfully expanded our services to a wider audience. Offering weekend sessions has been key in reaching young people who may not be able to attend weekday activities, while the fantasy theme has proven especially engaging for boys, who are often underrepresented in our programs.

The club provides a creative space for participants to explore imaginative themes, develop their drawing skills, and connect with others in a relaxed and supportive environment. With guidance from local artists, attendees learn various techniques while creating their own fantasy-inspired artwork. This successful initiative continues to grow in popularity, offering a valuable opportunity for young people to express themselves through art in a fun, themed setting.



This year, in addition to working directly with young people, we expanded our engagement with schools. In partnership with Animate Arts and Child Friendly Medway, we delivered “Inspire & Do”, a series of free professional development classes designed to help primary school teachers enhance their creative curriculum. Rather than focusing solely on teaching techniques, the program also provided teachers with valuable resources, including access to further advice, funding opportunities, and other forms of support.

The success of the second Inspire & Do course was overwhelming, benefiting dozens of educators and, by extension, the hundreds of children they teach. This initiative not only improved teachers' ability to integrate creativity into their classrooms but also equipped them with the tools and



## The Halpern Charitable Foundation

networks to continue fostering creative learning in the future. Through this program, we were able to make a lasting impact on both educators and students across the region.



### Over 18s support

Our creative health program for over-18s continues to play a crucial role in addressing the growing crisis in loneliness, wellbeing, and mental health in Medway. As recent surveys reveal, a significant portion of the population in the area struggles with feelings of worthlessness, anxiety, and social isolation—issues that can be as detrimental to health as smoking or excessive drinking. These challenges often go unaddressed, leading to worsening mental health and an increased reliance on already stretched public services.

Our program offers an accessible and inclusive space where individuals can express themselves creatively, build connections, and improve their mental health. Creative activities, such as art, and crafts, provide an outlet for emotions, foster a sense of purpose, and offer opportunities for participants to build relationships with others in similar situations. By integrating creativity into wellbeing, we help individuals tackle isolation, boost self-esteem, and cultivate resilience.

In partnership with local health services, our program ensures that support is tailored to the needs of individuals, reinforcing community connections and offering an alternative to traditional therapies. As demand continues to rise, our creative health program remains vital in addressing the complex issues of mental health, social isolation, and wellbeing in Medway, offering a lifeline to those who need it most.



Designed to support the transition to our adult programme, our new “Digital Art” (<https://www.nucleusarts.com/digital-draw>) group offers relaxed, pressure-free digital drawing workshops for adults aged 18 and over. Held at The Lightbox in our Conservancy building in Rochester, these sessions provide beneficiaries a creative space to explore and develop digital skills their own pace. Participants are provided with iPads, Apple Pencils, and access to the Procreate app, allowing them to experiment with various

digital drawing techniques. Whether beginners or looking to refine their skills, this group offers a welcoming environment to learn, create, and connect with others interested in digital art.

## The Halpern Charitable Foundation



Our weekly “Social Art” club (<https://www.nucleusarts.com/social-art>) remains a flagship initiative, setting the gold standard for our community groups and serving as the model for other activities we offer. Designed for a wide range of participants, it is especially beneficial for individuals with physical and learning disabilities, as well as those facing social isolation due to health challenges.

The club’s success lies in the strong sense of community fostered among its participants. The activities are intentionally designed to be accessible, with a very low barrier to participation, ensuring that everyone can take part regardless of their background or ability. Participants gain a tangible sense of achievement as they learn new skills, develop their creativity, and experience measurable improvements in their wellbeing.

Social Art has become so popular that new spaces often book out within hours, with a waiting list for cancellations. This ongoing demand is a testament to the club’s positive impact and the supportive environment it provides for those who need it most.



Our fortnightly Young at Art (<https://www.nucleusarts.com/youngatart>) group is designed for individuals aged 55 and older who are eager to learn new skills while making new friends. These free classes, led by a professional artist, offer a deeper focus on artistic techniques compared to our other groups, providing participants with the opportunity to develop their creative abilities in a supportive and engaging environment.

Much like our Social Art group, Young at Art has proven to be incredibly popular, with all spaces quickly filled whenever new dates are released. The group offers a valuable opportunity for older adults to stay mentally active, build confidence, and connect with others, all while exploring their artistic potential.

Given the demand for these classes, we are actively seeking funding to expand the Young at Art program and offer it in additional venues outside of Chatham, ensuring that more older adults in the Medway area can access these enriching opportunities.

## The Halpern Charitable Foundation



The “jumpstART” group provides additional support for those over 55, offering a variety of artist-led workshops, including ceramics, resin jewellery, and digital illustration. While not free, the program’s fees are designed to cover the cost of the artist or activity and remain significantly lower than similar local offerings. This group

allows participants to engage in new creative experiences in a supportive environment. We are currently reviewing the success of jumpstART and are considering expanding the program to offer even more opportunities for older adults to explore their creativity and develop new skills.



“Social Saturday” is a new, discreet arts group designed as the successor to the successful “Chatham Connect Create” group, which concluded in 2023. Aimed at particularly vulnerable individuals, this group provides a safe and supportive environment for over-18s to develop new skills while building a sense of community. The smaller, more intimate setting allows for tailored support and deeper connections between participants. Social Saturday continues the mission of its predecessor, offering creative opportunities to those who may face social isolation or other challenges, empowering them to express themselves and engage with others in a meaningful way.

We also deliver weekly craft sessions in a number of care homes across Medway, providing residents with opportunities to engage in creative activities that enhance their wellbeing. These sessions are designed to be accessible and enjoyable, offering a range of craft techniques such as painting, mosaic, and needle felting. The hands-on approach helps residents develop new skills, boost confidence, and improve their mental and emotional health. Through these activities, we aim to reduce feelings of isolation and promote social interaction, while fostering a sense of achievement and creativity in a supportive, relaxed environment tailored to the needs of each care home.

### Other engagement

As always, our engagement activities are in no way limited only to those that we deliver ourselves. Given the scale of demand and need for our work in Medway, HCF works in partnership with dozens of other groups and organisations to support their work, and in some cases, directly delivering activities on behalf of others.

### Events

Our engagement continues with our strong programme of events that continued to develop throughout the year..



## The Halpern Charitable Foundation



Our Programme opened with “The Spirit of Ukraine” (<https://thespiritofukraine.art/>). We supported UK artist Edwina Jaques and Ukrainian artist Gennady Pugachevsky as part of to create two exhibitions at The Halpern Gallery and Swale Media Arts Gallery in May. Their aim was to bring the best of Ukrainian arts to the attention of people in the UK. The exhibitions were widely publicised through numerous media channels, offering further opportunities for the artists to connect with new audiences. Edwina Jaques gave lectures about Ukraine and its passion for the arts at both galleries. In addition to the Ukrainian artists' work, the exhibitions featured poetry, music, photographs, and literature. Workshops were also offered to engage the public and further educate them about the displayed artwork.

In June we supported the Medway Print Festival, an annual event where print-makers from across the area come together to show off their skills. Amongst the highlights of this event were the MPF23 exhibitions “In Print” which took place in the Halpern Gallery, “Prints by The Hazelnut Press” which took place in the POP and “Print Artist Takeover” in the Rochester Lightbox. In addition to the free public exhibitions, we delivered a range of printing workshops, such as; Relief printing at Lego & Art Club; Mono printing at Teen Art; Design a Screen Print at Digital Teen Art; Relief printing at Social Art; Linocut Printmaking Workshop for Beginners; Lino printing onto tote bags at Teen Art; and many others.



As always, July was an exceptionally busy period for the team as we delivered not one but four major events in quick succession.



Chatham Intra.

First of these was the return of our Chatham Carnival took place on Saturday, 8th July, with the aim of building on the success of its inaugural year and firmly establishing the event in Medway's cultural calendar. Engaging 66 partners and over 450 participants in its delivery, this was a vibrant day of celebration featured live music, theatre performances, and a range of stalls showcasing local community organisations and projects.

The Pentagon Centre hosted a variety of activities, including a vintage toy fayre, while Medway Pride Radio kept the atmosphere lively, broadcasting music and entertaining the crowd from the main stage in Military Square. A highlight of the day was the food market, which celebrated local restaurants from

## The Halpern Charitable Foundation

One key change from the first year was the decision to hold a single parade at noon. Starting at the Church Street junction of the High Street, the parade made its way to the Paddock outside the Pentagon entrance, drawing a large crowd. The University of Kent's bOing festival team also joined in, offering an exciting array of street theatre performances throughout the day.

The event was led by the Medway Town Crier, the Mayor, and local celebrity drag queen River Medway, who added a touch of glamour and fun. The Chatham Carnival was a great success, bringing the community together and providing an unforgettable day of culture and entertainment.



Following quickly up on this was the three-day Kent International Arts Conference (<https://www.kartscon.com/>). The event, titled "He(Art): Emotions and Creativity" was held from July 10-12th at the Historic Dockyard in Chatham, Kent. Hosted by the Music & Audio Technology department at the University of Kent, in partnership

with Wernborough College, the University of Kent, and Medway Council, the event brought together artists from around the globe. The conference explored the intersection of emotions and creativity, with excellent feedback from attendees. The event's success was highlighted by a meeting with the Arts Council's relationship manager, who was highly impressed and expressed interest in discussing future funding for both the conference and the He(Art) Creative Foundation. The collaboration and feedback further solidified the conference's place as a significant event in the arts calendar.



Meanwhile we were also supporting Medway Open Studios, a vibrant celebration of local creativity, showcasing the diverse talents of artists across the region. The event invited the public to visit artist studios, including our Chatham studios, offering a unique opportunity to see behind the scenes and interact with creators. The event spanned a wide range of mediums including painting, sculpture, photography, and textiles. It was

not only a chance for the community to engage with art but also to purchase original pieces directly from the artists. The event fostered a sense of community and collaboration, with workshops, demonstrations, and our guided tours adding to the experience.





## The Halpern Charitable Foundation

As well as these events, we were also showcasing Beads of Hope

(<https://www.nucleusarts.com/beadsofhope>), part of the Kent and Medway “Baton of Hope” exhibition. This powerful piece of artwork was showcased at the Turner Contemporary, where it formed part of a wider exhibition aimed at raising awareness about suicide prevention and mental health. The individual bead were produced in workshops with those affected by suicide. The Beads of Hope installation



featured an oversized bead necklace, each bead symbolising a message of support, resilience, and hope for those affected by mental health struggles. Following its debut at the Turner Contemporary, the exhibition toured across Kent and Medway, further amplifying its vital message. The project was instrumental in bringing the community together, promoting conversations around mental health, and offering a platform for individuals to reflect on their experiences. The Baton of Hope exhibition, with its impactful art and storytelling, continued to inspire and support those affected by suicide and mental health issues across the region.



October's Medway Fun Palace continued to build on its legacy of inclusivity, participation, and community engagement. Nucleus Arts had established the first Medway Fun Palace in 2014, and it had grown year on year, with the 2022 event receiving national recognition by winning the prestigious Arts Council-supported Family Arts Activity of the Year Award. The 2023 event marked the 10th Medway Fun Palace organised by HCF.

Held on Saturday, 7th October, Medway Fun Palace transformed the Pentagon community space into a vibrant hub of activities. We worked with 12 partners and around 90 volunteers, including the Dockyard, local universities, theatre groups, and health charities, to deliver a diverse program of interactive experiences. Activities ranged from arts and crafts workshops to interactive science experiments, dance

performances, and storytelling sessions. The event encouraged active participation, offering opportunities for personal growth and creativity.

In addition, Medway Fun Palace 2023 expanded its reach by collaborating with Medway's Libraries on our Flora Project, celebrating the life of Medway botanist Anne Pratt.

Participants created paper flowers for later use in public art spaces, including the Halpern Gallery, Intra Arts Gallery, the Cherry Picnic, the Rochester Eco Hub, and the Sweeps Festival 2024. The event was visited by a delegation from Maidstone Council, who we had been supporting to hold their own events, and it was featured by the national Fun Palace organisation.

## The Halpern Charitable Foundation



October also saw our involvement in the Rochester Art Fair, where we played an active role by hosting a combined stall that celebrated the work of many of our talented artists. We helped showcase and sell their beautiful, original artworks to art lovers, collectors, and the local community. The event provided a fantastic platform for both established and emerging artists to interact directly with visitors, creating meaningful connections and fostering appreciation for their work. The fair itself proved to be a vibrant and exciting event, attracting art enthusiasts from Kent, Surrey, Sussex, London, and beyond. By participating in the Rochester Art Fair, we not only supported our artists in reaching a wider audience but also contributed to the event's success in promoting the arts and encouraging the public to engage with and purchase artwork from across the UK and Europe.



We have also work very closely with Medway Pride and Medway Pride Radio to support the LGBTQ+ community across Medway. And February saw the return of the LGBT History Month exhibition allowed local creatives from the community to show off their talent and celebrate who they are.

Our work with the community, has meant that we are seen as a safe environment by our LGBTQ+ partners, and were delighted to continue to work with Be You to host their youth group on our site.



Our event year culminated with the incredible Chinese New Year Festival. For many years, the Chinese New Year Parade was a key fixture on the cultural landscape of Medway events. Organised by Medway's Kut-O Chinese Association, this hugely significant celebration attracted large crowds to Chatham's High Street, garnering significant press attention and highlighting Medway's Chinese community. Thanks to the organisers' strong ties to the London Chinese Parades, Chatham was able to host visiting acts and performers, making it the second-largest Chinese New Year celebration in the UK.

The event was primarily hosted by the local Chinese community, with support from the international Chinese community, and limited backing from local partners. However, the pandemic, lockdowns in both the UK and China, and the cost-of-living crisis forced the event to be put on hold for a few years.

In 2023, thanks to the generous support of UKSPF funding, we were able to bring the parade back to Chatham, along with a craft market and food stalls, much to the delight of the local community. The event was a huge success, reinvigorating the celebration and bringing back the vibrancy and energy that had been sorely missed. It marked a significant moment for Medway's cultural calendar,





## The Halpern Charitable Foundation

reconnecting the local and international communities and reaffirming the importance of the Chinese New Year Parade to the area. The event attracted thousands of visitors, and excellent press coverage. It was even mentioned in Parliament as an example of good practice

(<https://parliamentlive.tv/event/index/e39a0745-966f-43cc-9a4f-412f9b4ee08f?in=16:59:58>)



### Gallery

Our galleries continued to be incredibly busy over the period, providing over 40 free-to-public exhibitions over the 23/24 period. The majority of these have been artist-led events, or exhibitions by schools and community groups, however we also held special shows for the Summer and Winter exhibitions, Beads of Hope, and the two resident artist shows “Put a Cat in it” and “The Dog Show”. On top of this, we have had a regular programme of events in the Medway Art Box in Rochester (<https://www.nucleusarts.com/blog-medway-art-box>). All of these exhibitions have offered the public the opportunity to engage with contemporary arts from across Medway and North Kent, however there have been some particularly notable activities that warrant a special mention.

### Flora

Flora started as idea - to bring an immersive exhibition in the Halpern Gallery, Chatham, as part of Medway Fun Palace 2023 celebrations. The Flora Project was inspired by the life and works of Anne Pratt, and featured flowers and plants made from recyclable material by members of the Medway/Kent community, both

within our groups and as part of activities delivered across all 15

of Medway’s libraries. Plant life has been depicted by artists for centuries, and Flora explored how nature continues to influence us today, in both creativity and wellbeing.



After the Halpern Gallery exhibition, Flora was displayed in the window of Intra Arts, Chatham as part of the High Streets Heritage Action Zones (HSHAZ) Cultural Engagement Programme 2023, and later featured in both the Rochester Cherry Picnic, and the Rochester Sweeps Festival, where it decorated the railing outside of Rochester Cathedral. <https://www.nucleusarts.com/floraproject>

## The Halpern Charitable Foundation

### TARDIS Yarnbomb!



To mark the 60th anniversary of Doctor Who, Medway Art Box received a TARDIS makeover. Created primarily through crochet, the Gillingham-based community group and yarn shop Unravel & Unwind recreated the iconic sci-fi police box, complete with monsters, props, and memorable outfits from the Doctor Who series. Since June, the group had been meeting a few times each month, with over 20 members contributing to bring the crafted creation to life. It was a collaborative project that showcased the creativity and dedication of the group, drawing on their love for the show and their craft.

<https://www.kentonline.co.uk/medway/news/crocheted-tardis-appears-in-high-street-295611/>

### Summer Exhibition

Our flagship annual Summer Exhibition and Winter Open were open call events, welcoming a diverse range of artistic talent. Artists were encouraged to submit three pieces, with at least one guaranteed a spot in the show, which took place across both galleries, creating an inclusive platform for both emerging and established artists. Over 100 artists participated in each show, representing a wide variety of disciplines, from painting and sculpture to digital art and mixed media installations. The exhibitions celebrated the creativity and individuality of each artist, drawing in large crowds and offering a unique opportunity for the local community to engage with new, exciting, and varied works of art.



### Wider Community Engagement

Our work extends beyond our own work leverages our experience and resources to benefit the wider communities that we serve. By representing the creative community across a wide range of local and regional committees and networks we continue to provide a major voice for the creative community.

We are active members of Creative Medway, the cultural compact for Medway. In 2023, our CEO was again elected back on to the board as one of the Vice-Chairs. We also host the monthly Creative Medway Monthly meet-ups, regular free networking events which bring Medway's artists together to share opportunities and develop collaborations.

We are also a founding member of the Medway Arts Forum, an organisation-led group representing the grass-roots artist community, and we have been involved in a number of initiatives with members of this group.



## The Halpern Charitable Foundation



We hold the vice-chair position in Chatham's Town Forum, the Love Chatham initiative which work to improve the town through events, promotion, and practical improvements.

We are leading members of the MVA Leaders Network, supporting the work of, and providing a voice for charities and community having taken key roles in the transformation academy and alliance initiatives, and leading members of the Transformation Alliance.

We represent the charitable sector on the Medway and Swale Social Prescribing Board, where we work with the NHS and other funders to shape the interaction of the third sector with health providers. We also sit on the Medway and Swale Health and Care Partnership (HACP) and the HaCP Digital and BI Board, where we look at how the NHS and VCS can better work together.

We have supported wider committees such as the Social Isolation Forum and the Medway Innovation Board: here we explore how arts and creativity can play their role in tackling mental health, loneliness and social isolation. We are also leading members of the Mental Health Practitioners group.

We have also continued our ongoing support for the University of Kent Employability rewards scheme, designed to offer opportunities and work experience to high achieving university students. Through this we offer internships, experience days and work-shadowing to inspire art-related graduates.



We are on the board of Child Friendly, a Medway Council program designed to make Medway a more welcoming and supportive place for children, young people, and families. Through a variety of activities and events, the program offers educational support for school-aged children and young adults, helping them to thrive academically and socially. Child-Friendly Medway also prioritises amplifying the voices of young people, ensuring they feel heard and represented. Above all, the program fosters a sense of safety, belonging, and inclusion, helping children feel valued within their community.

We also joined the advisory board of The Institute for Inclusive Communities and Environments (ICE) at the University of Greenwich. ICE promotes inclusivity and reduces inequalities through research and collaboration. Using arts, humanities, and social sciences, ICE works with communities, organisations, and policymakers both in the UK and globally to address pressing social and environmental challenges.

### Summary

I am proud of how HCF has embraced every challenge, staying adaptable and proactive to make the most of every opportunity and stretch our resources to achieve lasting impact. At the heart of Medway's community, we build connections, create meaningful activities, and ensure that arts and creativity serve as a catalyst for positive change across areas such as regeneration, economic growth, and health and wellbeing. Recognised as Medway's trusted partner, we collaborate with diverse organisations including the NHS, local government, educational



## The Halpern Charitable Foundation

institutions, attractions, and business groups. Our “can-do” spirit consistently delivers impactful results, earning us their respect and appreciation.

This success is a testament to our dedicated team of staff and volunteers. From the trustees who guide us with integrity, to our staff who exceed expectations, to the talented artists and community members who treat HCF like family, each individual’s contribution is invaluable. I am grateful and proud to work alongside them.

Every time I speak about HCF, I’m struck by the breadth of our impact and the strength of our reach. It’s an honour to be part of this organisation. While the coming year brings new challenges, I’m confident we will continue to make a difference and eagerly anticipate sharing HCF’s inspiring work.

Dr David Stokes

Chief Executive Officer, The Halpern Charitable Foundation



# The Halpern Charitable Foundation

## Objectives and Activities

### About the Halpern Charitable Foundation

The Halpern Charitable Foundation was established in 2002 with three primary aims; to provide affordable space for artists to work and exhibit in Medway; to help people with mental and/or physical illness/disability; and as a backstop for the Chatham Memorial Synagogue, should it ever be in real financial difficulty with no other avenue left. Since that time the HCF's remit has evolved and grown to:

1. To increase access to the arts across the region through: the provision of affordable work and exhibition space; supporting arts education through outreach and events; advocacy of the arts at partnership groups; and supporting the cultural regeneration of the Medway towns.
2. Helping people affected by mental health and social isolation through: the provision of affordable, stable, housing; the provision of arts and therapy activities; supporting other third sector organisations; and advocacy at partnership groups.
3. Supporting the Chatham Memorial Synagogue with fundraising advice and as a backstop.

### The Foundation's Objects are:

1. The relief of sick persons with mental illness and/or those suffering from a mental or physical disability to include supporting vulnerable people
2. To assist in maintaining, repair, mature, preserve, improve and reconstruct for the benefit of the public the fabric of the Chatham Memorial Synagogue, its monuments, fixtures, fittings, furniture and other chattels
3. To advance and promote the education of the public in the understanding and appreciation of the Arts; in particular by the provision of an Arts Community Centre in Chatham (Nucleus Arts) and by providing support to artists who are unable to pursue their talent because of lack of financial means or financial support or because they may be vulnerable.

### Vision

We believe in a world where everyone can express their creativity, no matter their age, background, status or health. By making the arts open and accessible to all we aim to promote creative thinking, support the creative economy, and use the healing power of the arts to improve mental and physical health

### Our values

- **Community:** We will foster and inspire a community which is inclusive, diverse and accessible, and which always prioritises mutual support.

## The Halpern Charitable Foundation

- **Representation:** We are the voice of artists in Medway, and will do everything we can to understand and represent their best interests.
- **Adaptability:** As the world changes, so will the best ways to improve the lives of people through engagement with the arts. HCF will work to provide the most impactful, relevant support at the right time.
- **Empowerment:** Everyone deserves to feel confident, informed and in control of their and/or their lives. We will utilise the arts to uplift the people in our community to become advocates and to support others.
- **Integrity:** We work for the arts and local community, and will be transparent in what we do and why. We will use our resources when and where they will have the greatest impact.

### Strategy

2024/25 we will see HCF take a major role in Medway's Festival 2024, celebrating the 40-year anniversary of Medway's rebirth following the closure of the Dockyard. Utilising our position within Creative Medway, we will position our activities as central elements of this event, building on our brand recognition with the general public, as well as with partners, funders and statutory bodies. This year will also be an election year, against a background of ongoing austerity/cost-of-living-crisis, so due attention will be paid to capitalise on such opportunities/challenges that this may present.

Financially, we will see HCF reap the financial benefits of the new Rainham site, the collection of donations by Café Nucleus, investments in energy saving technology and improved energy contracts. This will see HCF achieve a balanced budget, with all future expansion to be funded by external investment through grants and partnership. Examples of this include the 'Big Give' Arts award, which will see donations matched by the programme, and the major social prescribing partnership between Medway Council, University of Kent, HCF and Live Music Now, which, if successful, will fund an addition four engagement groups for 18 months.

We will continue to seek opportunities to develop our engagement programme as they arise, working in partnership with organisations such as Child Friendly Medway to fund these activities. We will continue to deliver our existing outreach programme and develop a list of future programmes for delivery should funding become available.

We will conduct a broad needs-assessment to develop an evidence base, to more effectively substantiate future grant applications and the delivery of our work. This will include needs surveys of our artist community, desk-based data listing of public-health, and the collection of data from our events and activities.

We will work with partners to undertake a pilot trial of the Nucleus Matrix and MAIHAI protocols across Medway. This research will inform the future development of the approach and evidence it's utility as a standardised approach to the evaluation of social prescribing activities in Medway. This work will be delivered in partnership with Medway Voluntary Action's Transformation Academy. We will look to develop our relationship with the

## The Halpern Charitable Foundation

university sector, in particular the University of Kent Institute for Creative and Cultural Industries (ICCI), and the University of Greenwich Institute for Inclusive Communities and Environments (ICE) with whom we are looking to become a formal partner organisation. We also aim to develop our relationships with the NHS and Medway Public Health.

We will continue to develop our package of artist support, implementing a range of zero and low-cost initiatives to improve support and retention. We will seek funding for a more substantial creative development programme.

We will publish the children's picture book, 'Mojo, a Medway tale,' which is funded by Child Friendly Medway. The book will be distributed to schools, libraries and children's venues.

Across the year we will host a range of events including Chatham Carnival, OpenStudios, FunPalace, the Summer and Winter Opens, Kent International Arts Conference and the Chatham Chinese festival. We will be leading on a major public participatory arts activity 'Forget-me-not Medway.' This will see the public crocheting thousands of blue flowers in recognition of dementia awareness, to be displayed across major sites in Medway, such as the Dockyard, Cathedral, Libraries and our own galleries. We will also support other arts-related festivals such as Super Saturday, Christmas celebrations, Rapture and others. We will maintain a leadership position with the Creative Medway Cultural Compact, and taking a leading role in the Medway 2024 Cultural celebrations year.

We will be looking at our social media approaches to develop distinctive channels for each of the two galleries and Art Box, for the arts and artist development programmes, for community engagement, as well as an over-all Nucleus Arts channel and an HCF "charity voice" channel. Our CEO will also have a channel too. We will look to be more targeted to key audiences with these channels.

We will continue to review and improve our volunteer recruitment, management and support services. We will continue to work with the Medway Voluntary Action, Transformation Academy to develop resources for volunteers, including the Medway Volunteer Passport and Volunteer Charters.

We will continue to maintain and improve our sites, with the aim of reducing energy usage and our environmental impacts.

We will undertake a review of policies and procedures. In particular we will review the Staff Handbook, HR policies and our financial procedures. We will also progress HCF's transfer to CIO status.

We will support activities such as the University of Kent EP programme, Medway Pride Awards and Medway Youth awards.

We will support our beneficiaries in the following ways:

### **Artist Community:**

### **Nucleus Members**

We will offer a wide and comprehensive package of support for our artists including:

## The Halpern Charitable Foundation

- Affordable studio space.
- Opportunities to exhibit their art.
- Networking opportunities.
- Public engagement opportunities.
- Access to occasional training opportunities.
- Access to workshop space and facilities.
- Access and support for setting up classes and workshops.
- Support in selling their art online.

### **Wider Artist/Creative Community**

We will support the wider arts/creative/maker community through the following activities:

- Offer opportunities to exhibit artwork across.
- Offer access to workshop space and facilities.
- Promote local partner arts events.
- Host and support our own programme of public arts events.
- Host and support local and regional arts networks.
- Advocate for a greater engagement with the arts community through statutory and business communities.
- Engage in regeneration - focusing on presenting Medway as an arts hub.
- Offer additional support through a Creative Associates Programme.

### **General Public/Wider community**

We will utilise the following activities to engage the General Public with the arts/creative world:

- We host a range of public arts events, and work with statutory and business groups to expand and promote these.
- We offer access to art classes, education, facilities and workshops.
- We offer access to free gallery exhibitions.
- We offer a range of creative family sessions.
- Offer affordable meeting and community space.
- Provide volunteering opportunities.
- Provide educational opportunities related to the arts, notably the 'Arts Award,' programme.
- Support the cultural regeneration of Medway.
- We work with Nucleus Cafe to entice the public to our venues, and to provide community space.

### **Support the socially isolated, vulnerable and marginalised including people affected by mental health issues**

We will support socially isolated, vulnerable and marginalised through the following activities:

- Provide affordable, secure, housing for people affected by mental health problems.
- We support the promotion of creative health and social prescribing through the provision of creative workshops



## The Halpern Charitable Foundation

- Provide and expand our own range of outreach creative health activities.
- Provide engagement space for partner organisations to engage with the public.
- Work with and facilitate wider partnerships with partners engaging with vulnerable groups.
- Provide affordable meeting and conference space for partner organisations.
- Work to improve the provision and adoption of creative health activities.

### **Supporting the Chatham Memorial Synagogue**

We will honour the legacy of our founders Hilary and Marie Halpern by continuing support the Chatham Memorial Synagogue through the following ways:

- Provide fundraising resource
- Support the development of a sustainable fundraising strategy

### Volunteers

Working with the MVA Transformation Academy we are developing new rules and approaches to engage new people into volunteering roles across Medway. We have been central to developing a volunteers' training programme and charter, which puts us at the forefront of volunteer support locally.

## Finances and Governance

The Statement of Financial Activities (SoFA) shows total income for the year was £531,519. A significant increase in income compared to the prior year (£402,360). The charity received just over £196k in restricted grants as detailed in the statement of funds note. The value of charitable investments has reduced this year primarily due to market volatility, but we hope that this will improve in 24/25.

Total expenditure amounted to £617,056, a slight increase on £538,675 in the prior year. This has been driven by inflationary pressures, such as energy and staff costs.

The SoFA shows an overall decrease in funds. Total reserves at the end of the year were £4.6m, of which £119,135 are restricted, £4.1m are designated/fixed assets and £0.4m are unrestricted, including shares as detailed in the statement of funds note.

### **Going concern**

After making appropriate enquiries, the trustees have a reasonable expectation that the charity has adequate resources to continue in operational existence for the foreseeable future. For this reason, they continue to adopt the going concern basis in preparing the financial statements. Further details regarding the adoption of the going concern basis can be found in the Accounting Policies.

### **Financial risk management objectives and policies**

The Foundation is aware that despite its fundamental strength a shortfall in income could make it less effective. Causes could be poor returns from investments, poor investment strategy, prolonged recession, prolonged downturn of property market reduces lease values, non-payment of rent. Outcome could be intervention by Charity Commission.

## The Halpern Charitable Foundation

To minimise these risks, HCF practices excellent business management, good procurement and income control. The Trustees oversee statutory financial reporting, investment strategy, audit functions, budgeting and financial risk management. It continues to review its investment strategy and appraises performance regularly against peer group and market indices. We appraise new business opportunities and have proposals to extend our service areas. Shared cost allocation has been reviewed. A long-term maintenance programme (Planned Preventative Maintenance) is being put in place and will be reviewed annually. HCF is fundamentally strong and continues to work on its long-term sustainability.

### Principal risks and uncertainties

HCF has reviewed all principal risks as part of our Board Risks Register, and has undertaken appropriate measures to minimise these risks. This includes:

<b>Risk</b>	<b>Mitigation</b>
Safety risks	Regular reviews of our activities and relevant legislation. Policies in place to ensure appropriate practices, for example, safeguarding of vulnerable people, DBS checks etc. Regular inspections of the site to ensure a safe working environment. Trained first aiders. Good external security and CCTV on site. Up to date risk registers. Close monitoring of the Pandemic situation, and the use of infection mitigation controls
Reputational risks	Clear expectations of conduct with staff and volunteers. Wide involvement in local committees boards and events. Clear thinking around ethics, diversity, environment etc.
Operational risks	Clear staff and volunteers policies. Strong financial procedures. Clear lines of accountability.
Strategic risks	Established strategy Review by Board of Trustees

### Reserves policy

HCF has a policy to maintain free unrestricted reserves of 6-12 months:

- to provide a level of working capital that protects the continuity of our work
- to provide a level of funding for unexpected opportunities
- to provide cover for risks such as unforeseen expenditure or unanticipated loss of income.

The board of trustees will review the above criteria with reference to HCF's strategy and Annual Plan and determine the target level of free reserves to meet these.

## The Halpern Charitable Foundation

In particular, we will retain sufficient reserves:

- to assist in the preservation of the Chatham Memorial Synagogue as per our charitable objectives
- to enable the HCF to cover a further 24 months of essential expenditure as identified by the risk-based method of calculating reserves

The Board of Trustees will at times designate funds from free reserves for significant project costs or replacement of major assets.

### Structure, governance and management

#### **Constitution**

Halpern Charitable Foundation began operating in June 2002, and is governed by a Trust Deed dated March 2003, amended on 20th April 2010.

The charity is unincorporated but incorporated its Trustees on 21st October 2013. The principal objects of the charity are:

- a) the relief of sick persons with mental illness and/or those suffering from a mental or physical disability to include supporting vulnerable people;
- b) to assist in maintaining repair restore preserve improve and reconstruct for the benefit of the public the fabric of the Chatham Memorial Synagogue its monuments fixtures fittings furniture and other chattels;
- c) to advance and promote the education of the public in the understanding and appreciation of the arts in particular by the provision of an Arts Community Centre in Chatham (Nucleus Arts) and by providing support to artists who are unable to pursue their talent because of lack of financial means or financial support or because they may be vulnerable.

There have been no changes in the objectives since the last annual report.

#### **Method of appointment or election of Trustees**

The management of the charity is the responsibility of the Trustees who are elected and co-opted under the terms of the Trust deed.

There should at all times be at least three trustees.

New trustee appointments are made by a resolution passed at a special meeting.

In selecting persons to be appointed, existing trustees take account of any areas of special knowledge relating to the Foundation's activities which could be improved at trustee level as detailed in the Foundation Governance Handbook.



## The Halpern Charitable Foundation

Specific searches are then carried out for persons with the required area of expertise. All prospective trustees are interviewed by one or two existing trustees to ascertain their suitability for the position.

Trustees may serve a three-year term and may be reappointed.

Trustees receive no remuneration but may receive out of pocket expenses.

### **Policies adopted for the induction and training of Trustees**

New trustees are given an induction into the charity, its governance, and specifics of its activities.

Training is regularly sought for all trustees, new and old, as appropriate, and updates from the Charity Commission are always passed on electronically.

### **Pay policy for staff**

As a small employer with limited resources, it is very important that we effectively use the money we have available for remuneration. This policy describes the broad principles that we will follow as an employer when setting and reviewing pay.

This policy applies to all staff working for us either on a casual, fixed term or permanent basis. The organisation does not usually employ agency workers. In the event that we do, we will ensure that pay for longer term agency workers (who are with us for a continuous period of over 12 weeks) is comparable to the pay offered for directly employed staff who carry out comparable work.

Pay policy principles:

- Pay equality

The organisation strives to be an equal opportunity employer. This means our intention is to treat all staff equitably with regards to the terms and conditions of employment offered, including pay. The board will review pay levels from time to time to identify and address any anomaly.

- The living wage (as set by the Living Wage Foundation)

The organisation fully supports the living wage and will aim to pay at this level, subject to affordability. Living wage figures are usually announced annually in November and we will take the figure into account when reviewing pay.

### **Organisational structure and decision making**

The Trustees have ultimate responsibility for the Charity. As a Board, led by the Chair, they ensure that all Strategic decisions are taken appropriately. They then delegate Operational decisions to the Director in line with the HCF Governance Handbook.

## The Halpern Charitable Foundation

### **Related party relationships**

Halpern Charitable Foundation was set up by Hilary Halpern who also had started Halpern Properties Ltd some years earlier. There had, historically, been some overlap of HCF trustees and HPL directors, and HCF undertook some of its activities from within HPL premises. There are no longer any overlapping trustees/ directors.

### **Risk management**

The Trustees have assessed the major risks to which the charity is exposed, in particular those related to the operations and finances of the charity, and are satisfied that systems and procedures are in place to mitigate our exposure to the major risks.

### **Trustees' indemnities**

The charity has purchased insurance to protect the trustees from claims arising from negligent acts, errors or omissions whilst on charity business. The insurance provides cover up to £1,000,000 on any one claim.

### **Trustees' responsibilities statement**

The Trustees are responsible for preparing the Trustees' report and the financial statements in accordance with applicable law and United Kingdom Accounting Standards (United Kingdom Generally Accepted Accounting Practice).

The law applicable to charities in England & Wales requires the Trustees to prepare financial statements for each financial year which give a true and fair view of the state of affairs of the charity and of the incoming resources and application of resources of the charity for that period.

In preparing these financial statements, the Trustees are required to:

- select suitable accounting policies and then apply them consistently;
- observe the methods and principles in the Charities SORP;
- make judgments and accounting estimates that are reasonable and prudent;
- state whether applicable UK Accounting Standards have been followed, subject to any material departures disclosed and explained in the financial statements;
- prepare the financial statements on the going concern basis unless it is inappropriate to presume that the charity will continue in operation.

The Trustees are responsible for keeping proper accounting records that are sufficient to show and explain the charity's transactions and disclose with reasonable accuracy at any time the financial position of the charity and enable them to ensure that the financial statements comply with the Charities Act 2011, the Charity (Accounts and Reports) Regulations 2008 and the provisions of the trust deed. They are also responsible for safeguarding the assets of the charity and hence for taking reasonable steps for the prevention and detection of fraud and other irregularities.

## The Halpern Charitable Foundation

The Trustees are responsible for the maintenance and integrity of the charity and financial information included on the charity's website. Legislation in the United Kingdom governing the preparation and dissemination of financial statements may differ from legislation in other jurisdictions.

This report was approved by the Trustees and signed on their behalf by:

Signed by:  
  
4AB25A889A4049A...

Peter Martin  
Chair of Trustees – Halpern Charitable Foundation

Date: 14 April 2025



## The Halpern Charitable Foundation

### Trustees and Officers

Peter Martin (Chair)

Jacqueline Shicluna

Geoff Harvey

Paula Gregory

Vince Maple

Anil Aggarwal

David Quirke-Thornton

David Stokes (CEO & Company Secretary)

### Chief Executive Officer

David Stokes

### Charity registered number

1096478

### Principal office

272 High Street  
Chatham  
Kent  
ME4 4BP

### Independent Auditors

UHY Hacker Young  
Thames House  
Roman Square  
Sittingbourne  
Kent  
ME10 4BJ

---

## The Halpern Charitable Foundation

---

### Independent Auditors' Report to the Members of The Halpern Charitable Foundation

---

#### Opinion

We have audited the financial statements of The Halpern Charitable Foundation (the 'charity') for the year ended 5 April 2024 which comprise the Statement of financial activities, the Balance sheet, the Statement of cash flows and the related notes, including a summary of significant accounting policies. The financial reporting framework that has been applied in their preparation is applicable law and United Kingdom Accounting Standards, including Financial Reporting Standard 102 'The Financial Reporting Standard applicable in the UK and Republic of Ireland' (United Kingdom Generally Accepted Accounting Practice).

The financial statements have been prepared in accordance with Accounting and Reporting by Charities preparing their accounts in accordance with the Financial Reporting Standards applicable in the UK and Republic of Ireland (FRS 102) in preference to the Accounting and Reporting by Charities: Statement of Recommended Practice issued on 1 April 2005 which is referred to in the extant regulations but has been withdrawn.

This has been done in order for the accounts to provide a true and fair view in accordance with the Generally Accepted Accounting Practice effective for reporting periods beginning on or after 1 January 2015.

In our opinion the financial statements:

- give a true and fair view of the state of the charity's affairs as at 5 April 2024 and of its incoming resources and application of resources for the year then ended;
- have been properly prepared in accordance with United Kingdom Generally Accepted Accounting Practice; and
- have been prepared in accordance with the requirements of the Charities Act 2011.

#### Basis for opinion

We conducted our audit in accordance with International Standards on Auditing (UK) (ISAs (UK)) and applicable law. Our responsibilities under those standards are further described in the Auditors' responsibilities for the audit of the financial statements section of our report. We are independent of the charity in accordance with the ethical requirements that are relevant to our audit of the financial statements in the United Kingdom, including the Financial Reporting Council's Ethical Standard, and we have fulfilled our other ethical responsibilities in accordance with these requirements. We believe that the audit evidence we have obtained is sufficient and appropriate to provide a basis for our opinion.

#### Conclusions relating to going concern

In auditing the financial statements, we have concluded that the Trustees' use of the going concern basis of accounting in the preparation of the financial statements is appropriate.

Based on the work we have performed, we have not identified any material uncertainties relating to events or conditions that, individually or collectively, may cast significant doubt on the charity's ability to continue as a going concern for a period of at least twelve months from when the financial statements are authorised for issue.

Our responsibilities and the responsibilities of the Trustees with respect to going concern are described in the relevant sections of this report.

#### Other information

The other information comprises the information included in the Annual report other than the financial statements and our Auditors' report thereon. The Trustees are responsible for the other information contained within the Annual report. Our opinion on the financial statements does not cover the other information and, except to the extent otherwise explicitly stated in our report, we do not express any form of assurance conclusion thereon. Our responsibility is to read the other information and, in doing so, consider whether the other information is materially inconsistent with the financial statements or our knowledge obtained in the course of the audit, or otherwise appears to be materially misstated. If we identify such material inconsistencies or apparent material misstatements, we are required to determine whether this gives rise to a material misstatement in the financial statements themselves. If, based on the work we have performed, we conclude that there is a material misstatement of this other information, we are required to report that fact.

We have nothing to report in this regard.

---

## The Halpern Charitable Foundation

---

### Independent Auditors' Report to the Members of The Halpern Charitable Foundation (continued)

---

#### Matters on which we are required to report by exception

We have nothing to report in respect of the following matters where the Charities (Accounts and Reports) Regulations 2008 requires us to report to you if, in our opinion:

- the information given in the Trustees' report is inconsistent in any material respect with the financial statements; or
- sufficient accounting records have not been kept; or
- the financial statements are not in agreement with the accounting records and returns; or
- we have not received all the information and explanations we require for our audit.

#### Responsibilities of trustees

As explained more fully in the Trustees' responsibilities statement, the Trustees are responsible for the preparation of the financial statements which give a true and fair view, and for such internal control as the Trustees determine is necessary to enable the preparation of financial statements that are free from material misstatement, whether due to fraud or error.

In preparing the financial statements, the Trustees are responsible for assessing the charity's ability to continue as a going concern, disclosing, as applicable, matters related to going concern and using the going concern basis of accounting unless the Trustees either intend to liquidate the charity or to cease operations, or have no realistic alternative but to do so.

#### Auditors' responsibilities for the audit of the financial statements

We have been appointed as auditor under section 144 of the Charities Act 2011 and report in accordance with the Act and relevant regulations made or having effect thereunder.

Our objectives are to obtain reasonable assurance about whether the financial statements as a whole are free from material misstatement, whether due to fraud or error, and to issue an Auditors' report that includes our opinion. Reasonable assurance is a high level of assurance, but is not a guarantee that an audit conducted in accordance with ISAs (UK) will always detect a material misstatement when it exists. Misstatements can arise from fraud or error and are considered material if, individually or in the aggregate, they could reasonably be expected to influence the economic decisions of users taken on the basis of these financial statements.

Irregularities, including fraud, are instances of non-compliance with laws and regulations. We design procedures in line with our responsibilities, outlined above, to detect material misstatements in respect of irregularities, including fraud. The extent to which our procedures are capable of detecting irregularities, including fraud is detailed below:

#### *How the audit was considered capable of detecting irregularities, including fraud*

Our approach to identifying and assessing the risks of material misstatement in respect of irregularities, including fraud and non-compliance with laws and regulations, was as follows:

- we identified the laws and regulations applicable to the charity through discussions with management, and from our commercial knowledge and experience in the sector;
- we focused on specific laws and regulations which we considered may have a direct material effect on the accounts or the operations of the charity, including the Charities Act 2011;
- we assessed the extent of compliance with the laws and regulations identified above through making enquiries of management and inspecting correspondence; and
- identified laws and regulations were communicated within the audit team and the team remained alert to instances of non-compliance throughout the audit.

We assessed the susceptibility of the charity's accounts to material misstatement, including obtaining an understanding of how fraud might occur, by:

- making enquiries of management as to where they considered there was susceptibility to fraud, their knowledge of actual, suspected and alleged fraud; and
- considering the internal controls in place to mitigate risks of fraud and non-compliance with laws and regulations.



---

## The Halpern Charitable Foundation

---

### Independent Auditors' Report to the Members of The Halpern Charitable Foundation (continued)

---

To address the risk of fraud through management bias and override of controls, we:

- performed analytical procedures to identify any unusual or unexpected relationships;
- tested journal entries to identify unusual transactions;
- assessed whether judgements and assumptions made in determining the accounting estimates set out in the accounting policies were indicative of potential bias; and
- investigated the rationale behind significant or unusual transactions.

In response to the risk of irregularities and non-compliance with laws and regulations, we designed procedures which included, but were not limited to:

- agreeing financial statement disclosures to underlying supporting documentation;
- reading minutes of meetings of those charged with governance; and
- enquiring of management as to actual and potential litigation and claims.

There are inherent limitations in our audit procedures described above. The more removed that laws and regulations are from financial transactions, the less likely it is that we would become aware of non-compliance. Auditing standards also limit the audit procedures required to identify non-compliance with laws and regulations to enquiry of the trustees and other management and the inspection of regulatory and legal correspondence, if any.

Material misstatements that arise due to fraud can be harder to detect than those that arise from error as they may involve deliberate concealment or collusion.

A further description of our responsibilities for the audit of the financial statements is located on the Financial Reporting Council's website at: [www.frc.org.uk/auditorsresponsibilities](http://www.frc.org.uk/auditorsresponsibilities). This description forms part of our Auditors' report.

#### Use of our report

This report is made solely to the charity's trustees, as a body, in accordance with Part 4 of the Charities (Accounts and Reports) Regulations 2008. Our audit work has been undertaken so that we might state to the charity's trustees those matters we are required to state to them in an Auditors' report and for no other purpose. To the fullest extent permitted by law, we do not accept or assume responsibility to anyone other than the charity and its trustees, as a body, for our audit work, for this report, or for the opinions we have formed.

Signed by:  
  
1102ED52BDD84BD...

**UHY Hacker Young**  
Chartered Accountants  
Statutory Auditors  
Thames House  
Roman Square  
Sittingbourne  
Kent  
ME10 4BJ

Date: 15 April 2025

UHY Hacker Young are eligible to act as auditors in terms of section 1212 of the Companies Act 2006.

---

**The Halpern Charitable Foundation**


---

**Statement of financial activities**  
**For the Year Ended 5 April 2024**


---

	<b>Note</b>	<b>Unrestricted funds 2024 £</b>	<b>Restricted funds 2024 £</b>	<b>Total funds 2024 £</b>	<i>Total funds 2023 £</i>
<b>Income from:</b>					
Donations and legacies	4	40,094	196,319	236,413	159,671
Charitable activities	5	255,601	-	255,601	200,598
Investments	6	30,741	-	30,741	42,091
Other income	7	8,764	-	8,764	-
<b>Total income</b>		<b>335,200</b>	<b>196,319</b>	<b>531,519</b>	<b>402,360</b>
<b>Expenditure on:</b>					
Raising funds	8	8,262	-	8,262	11,406
Charitable activities		403,846	204,948	608,794	527,269
<b>Total expenditure</b>		<b>412,108</b>	<b>204,948</b>	<b>617,056</b>	<b>538,675</b>
<b>Net expenditure before net gains/(losses) on investments</b>		<b>(76,908)</b>	<b>(8,629)</b>	<b>(85,537)</b>	<b>(136,315)</b>
Net gains/(losses) on investments		28,480	-	28,480	(154,237)
<b>Net movement in funds</b>		<b>(48,428)</b>	<b>(8,629)</b>	<b>(57,057)</b>	<b>(290,552)</b>
<b>Reconciliation of funds:</b>					
Total funds brought forward		4,562,154	127,764	4,689,918	4,980,470
Net movement in funds		(48,428)	(8,629)	(57,057)	(290,552)
<b>Total funds carried forward</b>		<b>4,513,726</b>	<b>119,135</b>	<b>4,632,861</b>	<b>4,689,918</b>

The Statement of Financial Activities includes all gains and losses recognised in the year.

The notes on pages 41 to 60 form part of these financial statements.

## The Halpern Charitable Foundation

### Balance Sheet As at 5 April 2024

	Note	2024 £	2023 £
<b>Fixed assets</b>			
Tangible assets	13	3,411,319	2,423,998
Investments	14	699,603	1,077,642
		<u>4,110,922</u>	<u>3,501,640</u>
<b>Current assets</b>			
Debtors	15	500,124	244,743
Investments	16	17,659	517,015
Cash at bank and in hand		84,584	479,484
		<u>602,367</u>	<u>1,241,242</u>
Creditors: amounts falling due within one year	17	(80,428)	(52,964)
<b>Net current assets</b>		<u>521,939</u>	<u>1,188,278</u>
<b>Total net assets</b>		<u><u>4,632,861</u></u>	<u><u>4,689,918</u></u>
<b>Charity funds</b>			
Restricted funds	19	119,135	127,764
Unrestricted funds	19	4,513,726	4,562,154
<b>Total funds</b>		<u><u>4,632,861</u></u>	<u><u>4,689,918</u></u>

The financial statements were approved and authorised for issue by the Trustees and signed on their behalf by:

Signed by:  
  
 4AB25A889A4049A...

**Peter Martin**  
 (Chair of Trustees)  
 Date: 14 April 2025

The notes on pages 41 to 60 form part of these financial statements.

---

**The Halpern Charitable Foundation**


---

**Statement of Cash Flows**  
**For the Year Ended 5 April 2024**


---

	<b>Note</b>	<b>2024 £</b>	<b>2023 £</b>
<b>Cash flows from operating activities</b>			
Net cash used in operating activities	21	(303,517)	(92,756)
<b>Cash flows from investing activities</b>			
Dividends, interests and rents from investments		30,741	42,091
Purchase of tangible fixed assets		(1,026,171)	(9,873)
Proceeds from sale of investments		505,171	323,378
Purchase of investments		(98,651)	(49,348)
<b>Net cash (used in)/provided by investing activities</b>		(588,910)	306,248
<b>Change in cash and cash equivalents in the year</b>		(892,427)	213,492
Cash and cash equivalents at the beginning of the year		994,670	781,178
<b>Cash and cash equivalents at the end of the year</b>	22	102,243	994,670

The notes on pages 41 to 60 form part of these financial statements



---

## The Halpern Charitable Foundation

---

### Notes to the Financial Statements For the Year Ended 5 April 2024

---

#### 1. General information

The Halpern Charitable Foundation is a charity registered in England and Wales, charity number 1096478. The principal place of activity is 272 High St, Chatham ME4 4BP. The objects and aims of the Charity are set out in the Trustees' Report. The financial statements are prepared in pounds sterling, being the functional currency of the Charity.

#### 2. Accounting policies

##### 2.1 Basis of preparation of financial statements

The financial statements have been prepared in accordance with the Charities SORP (FRS 102)(second edition) - Accounting and Reporting by Charities: Statement of Recommended Practice applicable to charities preparing their accounts in accordance with the the Financial Reporting Standard applicable in the UK and Republic of Ireland (FRS 102) (January 2022) and the Charities Act 2011.

The financial statements have been prepared to give a 'true and fair' view and have departed from the Charities (Accounts and Reports) Regulations 2008 only to the extent required to provide a 'true and fair' view. This departure has involved following the Charities SORP (FRS 102)(second edition) rather than the Accounting and Reporting by Charities: Statement of Recommended Practice (SORP 2005) which has since been withdrawn.

The Halpern Charitable Foundation meets the definition of a public benefit entity under FRS 102. Assets and liabilities are initially recognised at historical cost or transaction value unless otherwise stated in the relevant accounting policy.

##### 2.2 Going concern

The trustees and CEO assess whether the use of going concern is appropriate i.e. whether there are any material uncertainties related to events or conditions that may cast significant doubt on the ability of the charity to continue as a going concern. The trustees and CEO make this assessment in respect of a period of at least one year from the date of authorisation for issue of the financial statements.

The trustees and CEO have carefully considered whether the charity remains to be a going concern and have concluded that no material uncertainties exist and there is sufficient evidence for the charity to remain a going concern.

##### 2.3 Income

All income is recognised once the Charity has entitlement to the income, it is probable that the income will be received and the amount of income receivable can be measured reliably.

Grants are included in the Statement of financial activities on a receivable basis. The balance of income received for specific purposes but not expended during the period is shown in the relevant funds on the Balance sheet. Where income is received in advance of entitlement of receipt, its recognition is deferred and included in creditors as deferred income. Where entitlement occurs before income is received, the income is accrued.

Interest on funds held on deposit is included when receivable and the amount can be measured reliably by the Charity; this is normally upon notification of the interest paid or payable by the institution with whom the funds are deposited.

Dividends are recognised once the dividend has been declared and notification has been received of the dividend due. This is normally upon notification by our investment advisor of the dividend yield of the investment portfolio.

The Halpern Charitable Foundation

Notes to the Financial Statements  
For the Year Ended 5 April 2024

2. Accounting policies (continued)

2.4 Expenditure

Expenditure is recognised once there is a legal or constructive obligation to transfer economic benefit to a third party, it is probable that a transfer of economic benefits will be required in settlement and the amount of the obligation can be measured reliably. Expenditure is classified by activity. The costs of each activity are made up of the total of direct costs and shared costs, including support costs involved in undertaking each activity. Direct costs attributable to a single activity are allocated directly to that activity. Shared costs which contribute to more than one activity and support costs which are not attributable to a single activity are apportioned between those activities on a basis consistent with the use of resources. Central staff costs are allocated on the basis of time spent, and depreciation charges allocated on the portion of the asset's use.

Expenditure on raising funds includes all expenditure incurred by the Charity to raise funds for its charitable purposes and includes costs of all fundraising activities events and non-charitable trading.

Expenditure on charitable activities is incurred on directly undertaking the activities which further the Charity's objectives, as well as any associated support costs.

All expenditure is inclusive of irrecoverable VAT.

2.5 Taxation

The Halpern Charitable Foundation is considered to pass the tests set out in Paragraph 1 Schedule 6 of the Finance Act 2010 and therefore meets the definition of a charitable trust for UK income tax purposes. Accordingly, the Halpern Charitable Foundation is potentially exempt from taxation in respect of income or capital gains received within categories covered by Part 10 of the Income Tax Act 2007 or Section 256 of the Chargeable Gains Act 1992, to the extent that such income or gains are applied exclusively to charitable purposes. No tax charge has arisen in the year.

2.6 Tangible fixed assets and depreciation

Tangible fixed assets costing £2,500 or more are capitalised and recognised when future economic benefits are probable and the cost or value of the asset can be measured reliably.

Tangible fixed assets are initially recognised at cost. After recognition, under the cost model, tangible fixed assets are measured at cost less accumulated depreciation and any accumulated impairment losses. All costs incurred to bring a tangible fixed asset into its intended working condition should be included in the measurement of cost.

Depreciation is charged so as to allocate the cost of tangible fixed assets less their residual value over their estimated useful lives, using the straight-line method.

Depreciation is provided on the following bases:

Freehold land	- Nil
Freehold property	- 125 years straight line
Property improvements	- 20 years straight line
Plant and machinery	- 5 years straight line
Office equipment	- 5 years straight line
Other fixed assets	- 50 years straight line

2.7 Investments

Fixed asset investments are a form of financial instrument and are initially recognised at their transaction cost and subsequently measured at fair value at the Balance sheet date, unless the value cannot be measured reliably in which case it is measured at cost less impairment. Investment gains and losses, whether realised or unrealised, are combined and presented as 'Gains/(Losses) on investments' in the Statement of financial activities.

Current asset investments are short term, highly liquid investments recognised at their transaction cost. They are not part of the charity's long term investment strategy and are those which are held for resale or pending their sale and cash on deposit with a maturity date of less than one year.

---

## The Halpern Charitable Foundation

---

### Notes to the Financial Statements For the Year Ended 5 April 2024

---

#### 2. Accounting policies (continued)

##### 2.8 Debtors

Trade and other debtors are recognised at the settlement amount. Prepayments are valued at the amount prepaid net of any trade discounts due.

##### 2.9 Cash at bank and in hand

Cash at bank and in hand includes cash and short-term highly liquid investments with a short maturity of three months or less from the date of acquisition or opening of the deposit or similar account.

##### 2.10 Liabilities and provisions

Liabilities are recognised when there is an obligation at the Balance sheet date as a result of a past event, it is probable that a transfer of economic benefit will be required in settlement, and the amount of the settlement can be estimated reliably.

Liabilities are recognised at the amount that the Charity anticipates it will pay to settle the debt or the amount it has received as advanced payments for the goods or services it must provide.

Provisions are measured at the best estimate of the amounts required to settle the obligation. Where the effect of the time value of money is material, the provision is based on the present value of those amounts, discounted at the pre-tax discount rate that reflects the risks specific to the liability. The unwinding of the discount is recognised in the Statement of financial activities as a finance cost.

##### 2.11 Operating leases

Rentals paid under operating leases are charged to the Statement of financial activities on a straight line basis over the lease term.

##### 2.12 Pensions

The Charity operates a defined contribution pension scheme and the pension charge represents the amounts payable by the Charity to the fund in respect of the year.

##### 2.13 Fund accounting

General funds are unrestricted funds which are available for use at the discretion of the Trustees in furtherance of the general objectives of the Charity and which have not been designated for other purposes.

Designated funds comprise unrestricted funds that have been set aside by the Trustees for particular purposes. The aim and use of each designated fund is set out in the notes to the financial statements.

Restricted funds are funds which are to be used in accordance with specific restrictions imposed by donors or which have been raised by the Charity for particular purposes. The costs of raising and administering such funds are charged against the specific fund. The aim and use of each restricted fund is set out in the notes to the financial statements.

Investment income, gains and losses are allocated to the appropriate fund.

The Halpern Charitable Foundation

Notes to the Financial Statements  
For the Year Ended 5 April 2024

3. Critical accounting estimates and areas of judgment

Estimates and judgments are continually evaluated and are based on historical experience and other factors, including expectations of future events that are believed to be reasonable under the circumstances.

Critical accounting estimates and assumptions:

Useful economic life of assets

The charge in respect of periodic depreciation is derived after determining an estimate of an asset’s expected useful life. The useful economic life of an asset is determined at the time the asset is acquired or brought into use and reviewed annually for appropriateness. The lives are based on historical experience together with anticipation of future events. Depreciation policy is detailed in the accounting policy for depreciation.

Allocation of support costs

Support costs not attributable to a single charitable activity are allocated or apportioned on a basis consistent with identified cost drivers for that cost category. Cost drivers utilised include head count, staff time allocation, and effort and judgement is exercised in applying cost drivers to cost categories.

4. Income from donations and legacies

	Unrestricted funds 2024 £	Restricted funds 2024 £	Total funds 2024 £	Total funds 2023 £
Donations	190	-	190	47,271
Grants	39,904	196,319	236,223	112,400
	40,094	196,319	236,413	159,671
Total 2023	51,288	108,383	159,671	



---

**The Halpern Charitable Foundation**


---

**Notes to the Financial Statements  
For the Year Ended 5 April 2024**


---

**5. Income from charitable activities**

	<b>Unrestricted funds 2024 £</b>	<b>Total funds 2024 £</b>	<i>Total funds 2023 £</i>
Nucleus Arts Main Centre	150,116	150,116	130,372
Chatham HeArt	28	28	24
Creative Riverside Hub	25,894	25,894	22,174
Maidstone Road	44,546	44,546	36,881
Halpern Conservancy	13,017	13,017	11,147
The Langton Studios	22,000	22,000	-
	<u>255,601</u>	<u>255,601</u>	<u>200,598</u>
<i>Total 2023</i>	<u>200,598</u>	<u>200,598</u>	

**6. Investment income**

	<b>Unrestricted funds 2024 £</b>	<b>Total funds 2024 £</b>	<i>Total funds 2023 £</i>
Dividend income	29,391	29,391	39,868
Bank interest	1,350	1,350	2,223
	<u>30,741</u>	<u>30,741</u>	<u>42,091</u>
<i>Total 2023</i>	<u>42,091</u>	<u>42,091</u>	

**7. Other income**

	<b>Unrestricted funds 2024 £</b>	<b>Total funds 2024 £</b>	<i>Total funds 2023 £</i>
Insurance claims	8,764	8,764	-

---

**The Halpern Charitable Foundation**


---

**Notes to the Financial Statements  
For the Year Ended 5 April 2024**


---

**8. Investment management costs**

	<b>Unrestricted funds 2024 £</b>	<b>Total funds 2024 £</b>	<i>Total funds 2023 £</i>
Investment management fees	8,262	8,262	11,406
	<hr/>	<hr/>	
<i>Total 2023</i>	<i>11,406</i>	<i>11,406</i>	
	<hr/>	<hr/>	

**9. Analysis of expenditure by activities**

	<b>Activities undertaken directly 2024 £</b>	<b>Support costs 2024 £</b>	<b>Total funds 2024 £</b>	<i>Total funds 2023 £</i>
Nucleus Arts Main Centre	136,552	230,430	366,982	334,936
Chatham HeArt	2,748	5,890	8,638	19,181
Creative Riverside Hub	32,970	70,664	103,634	23,918
Halpern Conservancy	34,802	74,587	109,389	149,234
Synagogue	1,834	3,923	5,757	-
The Langton Studios	4,579	9,815	14,394	-
	<hr/>	<hr/>	<hr/>	<hr/>
	213,485	395,309	608,794	527,269
	<hr/>	<hr/>	<hr/>	
<i>Total 2023</i>	<i>183,996</i>	<i>343,273</i>	<i>527,269</i>	
	<hr/>	<hr/>	<hr/>	

---

**The Halpern Charitable Foundation**


---

**Notes to the Financial Statements  
For the Year Ended 5 April 2024**


---

**9. Analysis of expenditure by activities (continued)**
**Analysis of direct costs**

	<b>Nucleus Arts Main Centre 2024 £</b>	<b>Chatham HeArt 2024 £</b>	<b>Creative Riverside 2024 £</b>	<b>Halpern Conservancy 2024 £</b>	<b>Synagogue 2024 £</b>
Staff costs	58,089	1,502	18,028	19,030	1,001
Staff and agency related costs	3,949	102	1,225	1,293	69
Other direct costs	15,654	397	4,760	5,025	264
Advertising and marketing	4,899	127	1,521	1,605	84
Technology costs	613	16	190	201	12
Maintenance of premises and equipment	2,778	72	862	910	48
Rent and rates	6,927	179	2,150	2,269	119
Energy	5,841	151	1,813	1,913	99
Insurance	4,041	105	1,254	1,324	70
Other premises expenditure	3,264	84	1,013	1,069	59
Bad debts and write offs	30,000	-	-	-	-
Bank charges and interest	497	13	154	163	9
	<u>136,552</u>	<u>2,748</u>	<u>32,970</u>	<u>34,802</u>	<u>1,834</u>
<i>Total 2023</i>	<u><u>109,418</u></u>	<u><u>3,401</u></u>	<u><u>8,138</u></u>	<u><u>63,039</u></u>	<u><u>-</u></u>

The Halpern Charitable Foundation

Notes to the Financial Statements  
For the Year Ended 5 April 2024

9. Analysis of expenditure by activities (continued)

Analysis of direct costs (continued)

	The Langton Studios 2024 £	Total funds 2024 £	Total funds 2023 £
Staff costs	2,504	100,154	74,499
Staff and agency related costs	170	6,808	836
Other direct costs	661	26,761	13,090
Advertising and marketing	211	8,447	222
Technology costs	26	1,058	376
Maintenance of premises and equipment	120	4,790	18,266
Rent and rates	299	11,943	30,104
Energy	252	10,069	39,223
Insurance	174	6,968	55
Other premises expenditure	141	5,630	7,284
Bad debts and write offs	-	30,000	-
Bank charges and interest	21	857	41
	4,579	213,485	183,996
Total 2023	-	183,996	



---

**The Halpern Charitable Foundation**


---

**Notes to the Financial Statements  
For the Year Ended 5 April 2024**


---

**9. Analysis of expenditure by activities (continued)**
**Analysis of support costs**

	<b>Nucleus Arts Main Centre 2024 £</b>	<b>Chatham HeArt 2024 £</b>	<b>Creative Riverside 2024 £</b>	<b>Halpern Conservancy 2024 £</b>	<b>Synagogue 2024 £</b>
Staff costs	107,880	2,790	33,479	35,339	1,859
Depreciation	23,143	561	6,731	7,104	374
Staff and agency related costs	7,333	190	2,276	2,402	126
Advertising and marketing	9,099	235	2,824	2,981	157
Technology costs	1,139	29	354	373	20
Maintenance of premises and equipment	(1,283)	133	1,601	1,690	89
Rent and rates	13,984	333	3,992	4,214	222
Energy	10,846	281	3,366	3,553	187
Insurance	6,931	194	2,329	2,458	129
Other premises expenditure	5,700	157	1,881	1,986	104
Statutory audit	4,246	110	1,318	1,391	72
Accountancy and bookkeeping	8,472	40	479	505	27
Legal fees	2,925	76	908	958	50
Bank charges and interest	923	24	286	302	16
Other support costs	28,485	737	8,840	9,331	491
Governance costs	607	-	-	-	-
	<u>230,430</u>	<u>5,890</u>	<u>70,664</u>	<u>74,587</u>	<u>3,923</u>
<i>Total 2023</i>	<u><u>225,518</u></u>	<u><u>15,780</u></u>	<u><u>15,780</u></u>	<u><u>86,195</u></u>	<u><u>-</u></u>

---

**The Halpern Charitable Foundation**


---

**Notes to the Financial Statements  
For the Year Ended 5 April 2024**


---

**9. Analysis of expenditure by activities (continued)**
**Analysis of support costs (continued)**

	<b>The Langton Studios 2024 £</b>	<b>Total funds 2024 £</b>	<i>Total funds 2023 £</i>
Staff costs	4,650	185,997	174,839
Depreciation	935	38,848	27,642
Staff and agency related costs	316	12,643	12,383
Advertising and marketing	392	15,688	10,376
Technology costs	49	1,964	1,094
Maintenance of premises and equipment	222	2,452	16,908
Rent and rates	554	23,299	5,225
Energy	468	18,701	15,612
Insurance	324	12,365	17,962
Other premises expenditure	261	10,089	2,541
Statutory audit	183	7,320	6,930
Accountancy and bookkeeping	66	9,589	681
Legal fees	126	5,043	6,782
Bank charges and interest	40	1,591	1,396
Other support costs	1,229	49,113	42,902
Governance costs	-	607	-
	<hr/>	<hr/>	<hr/>
	9,815	395,309	343,273
	<hr/>	<hr/>	<hr/>
<i>Total 2023</i>	<hr/>	<hr/>	<hr/>
	-	343,273	
	<hr/>	<hr/>	

**10. Auditors' remuneration**

	<b>2024 £</b>	<i>2023 £</i>
Fees payable to the Charity's auditor for the audit of the Charity's annual accounts	6,050	5,350
Fees payable to the Charity's auditor in respect of:		
Taxation compliance services	150	150
All non-audit services not included above	690	656
	<hr/>	<hr/>

The Halpern Charitable Foundation

Notes to the Financial Statements  
For the Year Ended 5 April 2024

11. Staff costs

	2024 £	2023 £
Wages and salaries	264,189	229,795
Social security costs	16,837	14,199
Contribution to defined contribution pension schemes	5,125	5,344
	<u>286,151</u>	<u>249,338</u>

The average number of persons employed by the Charity during the year was as follows:

	2024 No.	2023 No.
Employees	<u>14</u>	<u>12</u>

The number of employees whose employee benefits (excluding employer pension costs) exceeded £60,000 was:

	2024 No.	2023 No.
In the band £60,001 - £70,000	1	1

Key management personnel comprise the Trustees and Chief Executive. The total amount of employee benefits received by key management personnel, including employer pension and social security contributions total £74,285 (2023: £69,807).

12. Trustees' remuneration and expenses

During the year, no Trustees received any remuneration or other benefits (2023 - £NIL).

During the year ended 5 April 2024, no Trustee expenses have been incurred (2023 - £NIL).

---

**The Halpern Charitable Foundation**


---

**Notes to the Financial Statements  
For the Year Ended 5 April 2024**


---

**13. Tangible fixed assets**

	<b>Freehold property £</b>	<b>Plant and machinery £</b>	<b>Office equipment £</b>	<b>Other fixed assets £</b>	<b>Total £</b>
<b>Cost</b>					
At 6 April 2023	2,615,034	4,047	19,402	12,666	2,651,149
Additions	1,025,333	-	838	-	1,026,171
At 5 April 2024	<u>3,640,367</u>	<u>4,047</u>	<u>20,240</u>	<u>12,666</u>	<u>3,677,320</u>
<b>Depreciation</b>					
At 6 April 2023	205,738	4,047	13,313	4,053	227,151
Charge for the year	35,477	-	3,120	253	38,850
At 5 April 2024	<u>241,215</u>	<u>4,047</u>	<u>16,433</u>	<u>4,306</u>	<u>266,001</u>
<b>Net book value</b>					
At 5 April 2024	<u>3,399,152</u>	<u>-</u>	<u>3,807</u>	<u>8,360</u>	<u>3,411,319</u>
At 5 April 2023	<u>2,409,296</u>	<u>-</u>	<u>6,089</u>	<u>8,613</u>	<u>2,423,998</u>

**14. Fixed asset investments**

	<b>Listed investments £</b>
<b>Valuation</b>	
At 6 April 2023	1,077,643
Additions	98,651
Disposals	(505,171)
Revaluations	28,480
At 5 April 2024	<u>699,603</u>



---

**The Halpern Charitable Foundation**


---

**Notes to the Financial Statements  
For the Year Ended 5 April 2024**


---

	<b>2024</b>	<b>2023</b>
	<b>£</b>	<b>£</b>
<b>Investments at fair value comprise:</b>		
Equities	445,186	620,738
Bonds	149,089	236,015
Alternatives & Multi-Assets	105,328	220,890
	<u>699,603</u>	<u>1,077,643</u>
	<u><u>699,603</u></u>	<u><u>1,077,643</u></u>

**15. Debtors**

	<b>2024</b>	<b>2023</b>
	<b>£</b>	<b>£</b>
<b>Due after more than one year</b>		
Other debtors	421,516	102,723
	<u>421,516</u>	<u>102,723</u>
<b>Due within one year</b>		
Trade debtors	46,074	10,710
Other debtors	21,826	123,918
Prepayments and accrued income	10,708	7,392
	<u>500,124</u>	<u>244,743</u>
	<u><u>500,124</u></u>	<u><u>244,743</u></u>

**16. Current asset investments**

	<b>2024</b>	<b>2023</b>
	<b>£</b>	<b>£</b>
Cash held by portfolio manager	17,659	517,015
	<u>17,659</u>	<u>517,015</u>
	<u><u>17,659</u></u>	<u><u>517,015</u></u>

**17. Creditors: Amounts falling due within one year**

	<b>2024</b>	<b>2023</b>
	<b>£</b>	<b>£</b>
Bank overdrafts	-	1,829
Trade creditors	21,240	17,577
Other taxation and social security	6,232	9,950
Other creditors	6,151	8,408
Accruals and deferred income	46,805	15,200
	<u>80,428</u>	<u>52,964</u>
	<u><u>80,428</u></u>	<u><u>52,964</u></u>

---

**The Halpern Charitable Foundation**


---

**Notes to the Financial Statements  
For the Year Ended 5 April 2024**


---

	<b>2024</b>	<i>2023</i>
	<b>£</b>	<b>£</b>
Deferred income at 6 April 2023	5,193	300
Resources deferred during the year	24,597	5,193
Amounts released from previous periods	(5,193)	(300)
	<u>24,597</u>	<u>5,193</u>
	<u><u>24,597</u></u>	<u><u>5,193</u></u>

Deferred income relates to rental income, gallery exhibitions and grants received for events taken place post year end.

**18. Financial instruments**

	<b>2024</b>	<i>2023</i>
	<b>£</b>	<b>£</b>
<b>Financial assets</b>		
Financial assets measured at fair value through income and expenditure	699,603	1,077,642
	<u><u>699,603</u></u>	<u><u>1,077,642</u></u>

Financial assets measured at fair value through income and expenditure comprise listed investments.

The main form of financial risk faced by the Charity is that of the volatility in equity and investment markets due to wider economic conditions, the attitude of investors to investment risk and changes in sentiment concerning equities, particularly currency risk, and within particular sectors or sub-sectors. The Charity's investment portfolio generates a significant proportion of the Charity's total income which funds its charitable activities. Should this be impacted due to volatility, the Charity is fortunate to have other sufficient liquid assets to fund its operations.

---

**The Halpern Charitable Foundation**


---

**Notes to the Financial Statements  
For the Year Ended 5 April 2024**


---

**19. Statement of funds****Statement of funds - current year**

	<b>Balance at 6 April 2023 £</b>	<b>Income £</b>	<b>Expenditure £</b>	<b>Transfers in/out £</b>	<b>Gains/ (Losses) £</b>	<b>Balance at 5 April 2024 £</b>
<b>Unrestricted funds</b>						
<b>Designated funds</b>						
Tangible fixed asset fund	2,423,998	-	(38,848)	1,026,169	-	3,411,319
Listed investments	1,077,642	-	-	(406,519)	28,480	699,603
	<u>3,501,640</u>	<u>-</u>	<u>(38,848)</u>	<u>619,650</u>	<u>28,480</u>	<u>4,110,922</u>
<b>General funds</b>						
General Funds	1,060,514	335,200	(373,260)	(619,650)	-	402,804
<b>Total Unrestricted funds</b>	<u>4,562,154</u>	<u>335,200</u>	<u>(412,108)</u>	<u>-</u>	<u>28,480</u>	<u>4,513,726</u>
<b>Restricted funds</b>						
Synagogue	57,193	-	-	-	-	57,193
Mental Health & Socially Isolated	32,770	-	-	-	-	32,770
Creative Cabin	1,197	-	-	-	-	1,197
Energy Efficiency	27,874	-	-	-	-	27,874
Arts Award	8,730	24,375	(33,004)	-	-	101
Medway Chinese New Year	-	15,000	(15,000)	-	-	-
Arts Council England	-	144,444	(144,444)	-	-	-
Chatham Town Centre Forum	-	2,500	(2,500)	-	-	-
Medway Chatham Carnival	-	10,000	(10,000)	-	-	-
	<u>127,764</u>	<u>196,319</u>	<u>(204,948)</u>	<u>-</u>	<u>-</u>	<u>119,135</u>
<b>Total of funds</b>	<u>4,689,918</u>	<u>531,519</u>	<u>(617,056)</u>	<u>-</u>	<u>28,480</u>	<u>4,632,861</u>

---

**The Halpern Charitable Foundation**


---

**Notes to the Financial Statements  
For the Year Ended 5 April 2024**


---

**19. Statement of funds (continued)****Statement of funds - prior year**

	<i>Balance at 1 April 2022</i> £	<i>Income</i> £	<i>Expenditure</i> £	<i>Transfers in/out</i> £	<i>Gains/ (Losses)</i> £	<i>Balance at 5 April 2023</i> £
<b>Unrestricted funds</b>						
<b>Designated funds</b>						
Tangible fixed asset fund	2,441,698	-	(27,642)	9,942	-	2,423,998
Listed investments	1,608,632	-	-	(376,753)	(154,237)	1,077,642
	<u>4,050,330</u>	<u>-</u>	<u>(27,642)</u>	<u>(366,811)</u>	<u>(154,237)</u>	<u>3,501,640</u>
<b>General funds</b>						
General Funds	790,430	293,977	(390,704)	366,811	-	1,060,514
<b>Total Unrestricted funds</b>	<u>4,840,760</u>	<u>293,977</u>	<u>(418,346)</u>	<u>-</u>	<u>(154,237)</u>	<u>4,562,154</u>
<b>Restricted funds</b>						
Synagogue	57,193	-	-	-	-	57,193
Mental Health & Socially Isolated	55,180	-	(22,410)	-	-	32,770
Creative Cabin	1,197	-	-	-	-	1,197
Energy Efficiency	-	35,538	(7,664)	-	-	27,874
Arts Award	13,653	25,000	(29,923)	-	-	8,730
Arts Council England	1,000	13,515	(14,515)	-	-	-
Young at Art	1,978	-	(1,978)	-	-	-
Creative Medway	1,500	22,990	(24,490)	-	-	-
Green wall Project	1,166	-	(1,166)	-	-	-
Project activities	6,500	1,340	(7,840)	-	-	-
Fun Palace	-	10,000	(10,000)	-	-	-
Chatham Town Centre Forum	343	-	(343)	-	-	-
	<u>139,710</u>	<u>108,383</u>	<u>(120,329)</u>	<u>-</u>	<u>-</u>	<u>127,764</u>
<b>Total of funds</b>	<u>4,980,470</u>	<u>402,360</u>	<u>(538,675)</u>	<u>-</u>	<u>(154,237)</u>	<u>4,689,918</u>

---

## The Halpern Charitable Foundation

---

### Notes to the Financial Statements For the Year Ended 5 April 2024

---

#### 19. Statement of funds (continued)

##### Designated funds

These funds represent the fixed assets of the charity split between its tangible fixed assets and investments.

##### Unrestricted funds

Funds which are available for use at the discretion of the Trustees in furtherance of the general objectives of the charity and which have not been designated for other purposes. The total fund balance represents the charity's free reserves.

##### Restricted funds

Restricted funds are those held by the charity for a specific purpose. Details of specific restricted funds are:

Synagogue - Mr Halpern left £100,000 in his will to the charity, restricted to the maintenance and upkeep of the Chatham Memorial Synagogue.

Mental Health & Socially Isolated through Art - Mrs Halpern donated £100,000 to the charity, restricted to the provision of mental health support, and support to the socially isolated, through the Arts.

Creative Cabin - Grant for the purchase and upkeep of a Creative Cabin.

Energy Efficiency - Grant to cover the cost of changing the current lighting in Building A and B to LED, to reduce energy costs.

Arts Award - This was towards the Arts Award for a total of £25,000.

Young at Art - Young at Art project grant.

Creative Medway - Money held to support the delivery of Creative Medway. This group is developing the creative strategy and the creative compact for Medway, and represents the creative industries at the regional and local area.

Green Wall Project - Funding to develop and improve the external environment of the Halpern Conservancy Building.

Project Activities - Funding to cover a range of creative activities, workshops and engagement related to our major events.

Fun Palace - Funding to deliver our winter science/arts festival.

Arts Council England - Capital funding for installation of solar panels, new roof for A-block, and a series of smaller improvements to the fabric building.

Medway Chinese New Year - This funding supported the return of the Medway Chinese Festival, the largest Lunar festival in the UK outside of London.

Chatham Town Centre Forum - This funding supported a range of community events in Chatham, primarily the Chatham Carnival.

Medway Chatham Carnival - This funding supported a range of community events in Chatham, primarily the Chatham Carnival and Medway Fun Palace.

##### Transfers between funds

A transfer is made from unrestricted funds to cover restricted project overspends. A transfer is also made between unrestricted funds and designated funds for movements in tangible and investment fixed assets.

---

**The Halpern Charitable Foundation**


---

**Notes to the Financial Statements  
For the Year Ended 5 April 2024**


---

**20. Analysis of net assets between funds****Analysis of net assets between funds - current period**

	<b>Unrestricted funds 2024 £</b>	<b>Restricted funds 2024 £</b>	<b>Total funds 2024 £</b>
Tangible fixed assets	3,411,319	-	3,411,319
Fixed asset investments	699,603	-	699,603
Debtors due after more than one year	421,516	-	421,516
Current assets	61,716	119,135	180,851
Creditors due within one year	(80,428)	-	(80,428)
<b>Total</b>	<b>4,513,726</b>	<b>119,135</b>	<b>4,632,861</b>

**Analysis of net assets between funds - prior period**

	<i>Unrestricted funds 2023 £</i>	<i>Restricted funds 2023 £</i>	<i>Total funds 2023 £</i>
Tangible fixed assets	2,423,998	-	2,423,998
Fixed asset investments	1,077,642	-	1,077,642
Debtors due after more than one year	102,723	-	102,723
Current assets	1,010,755	127,764	1,138,519
Creditors due within one year	(52,964)	-	(52,964)
<b>Total</b>	<b>4,562,154</b>	<b>127,764</b>	<b>4,689,918</b>

**21. Reconciliation of net movement in funds to net cash flow from operating activities**

	<b>2024 £</b>	<b>2023 £</b>
Net expenditure for the period (as per Statement of Financial Activities)	(57,057)	(290,552)
<b>Adjustments for:</b>		
Depreciation charges	38,850	27,573
Gains/(losses) on investments	(28,480)	154,237
Dividends, interests and rents from investments	(30,741)	(42,091)
Decrease/(increase) in debtors	(255,996)	78,713
Increase/(decrease) in creditors	29,907	(20,636)
<b>Net cash used in operating activities</b>	<b>(303,517)</b>	<b>(92,756)</b>



---

**The Halpern Charitable Foundation**


---

**Notes to the Financial Statements  
For the Year Ended 5 April 2024**


---

**22. Analysis of cash and cash equivalents**

	<b>2024</b> £	<i>2023</i> £
Cash in hand	84,584	<i>479,484</i>
Cash held by portfolio manager	17,659	<i>517,015</i>
Overdraft facility repayable on demand	-	<i>(1,829)</i>
<b>Total cash and cash equivalents</b>	<b>102,243</b>	<b><i>994,670</i></b>

**23. Analysis of changes in net debt**

	<b>At 6 April 2023</b> £	<b>Cash flows</b> £	<b>At 5 April 2024</b> £
Cash at bank and in hand	479,484	(394,900)	84,584
Bank overdrafts repayable on demand	(1,829)	1,829	-
Liquid investments	517,015	(499,356)	17,659
	<b>994,670</b>	<b>(892,427)</b>	<b>102,243</b>

**24. Capital commitments**

	<b>2024</b> £	<i>2023</i> £
<b>Contracted for but not provided in these financial statements</b>		
Acquisition of tangible fixed assets	-	<i>24,737</i>

**25. Pension commitments**

The charity operates a defined contributions pension scheme. The assets of the scheme are held separately from those of the charity in an independently administered fund. Contributions totalling £1,005 (2023: £Nil) were owed to the fund at the balance sheet date.

The Halpern Charitable Foundation

Notes to the Financial Statements  
For the Year Ended 5 April 2024

26. Operating lease commitments

At 5 April 2024 the Charity had commitments to make future minimum lease payments under non-cancellable operating leases as follows:

	2024 £	2023 £
Not later than 1 year	30,720	25,953
Later than 1 year and not later than 5 years	61,440	72,000
	<u>92,160</u>	<u>97,953</u>

The following lease payments have been recognised as an expense in the Statement of financial activities:

	2024 £	2023 £
Operating lease rentals	<u>30,993</u>	<u>31,020</u>

27. Related party transactions

The Charity has not entered into any related party transaction during the year, nor are there any outstanding balances owing between related parties and the Charity at 5 April 2024 (2023: none).

28. Post balance sheet events

In December 2024 there was a fire at Nucleus Main Arts Centre, which is located in Chatham High Street, which has damaged part of the infrastructure. This has led to letting of the artists studios being suspended until damages can be rectified. The charity has appropriate insurance in place to recover the resulting loss of income.