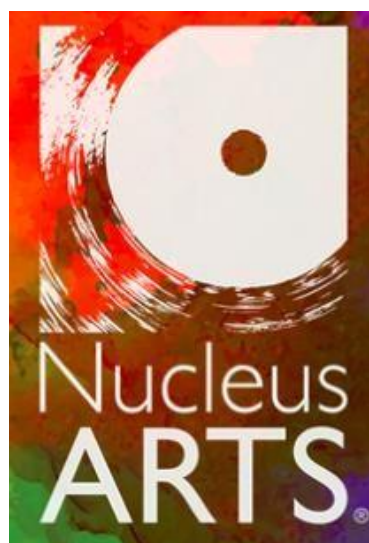


## The Halpern Charitable Foundation



Trustees' Report and Financial Statements  
For the Year Ended 5 April 2022



# 2021/22 AT A GLANCE

9

Community creative groups

3

Public art galleries

48

Affordable studios

Most of our groups are free - the rest are subsidised

## This year we...



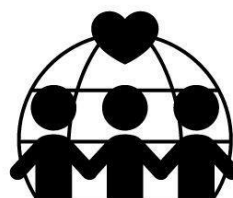
Provided 58 public art exhibitions, including professional artists and community shows

Delivered community festivals, shows activities and even a pantomime



Opened our new gallery in a phone box!

Started THREE new community groups



## We have...



Supported around 100 partner organisations

And represented the creative sector on over 20 committees



[www.Nucleusarts.com](http://www.Nucleusarts.com)



## Table of Contents

<b><u>STATEMENT FROM THE CHAIR</u></b> .....	<b><u>2</u></b>
<b><u>SUMMARY OF ACHIEVEMENTS IN 2021/22</u></b> .....	<b><u>4</u></b>
<b><u>OBJECTIVES AND ACTIVITIES</u></b> .....	<b><u>20</u></b>
<b>ABOUT THE HALPERN CHARITABLE FOUNDATION</b> .....	<b>20</b>
<b>VISION</b> .....	<b>20</b>
<b>OUR VALUES</b> .....	<b>21</b>
<b>STRATEGY</b> .....	<b>21</b>
<b>PLANS FOR 2021/22</b> .....	<b>24</b>
<b>VOLUNTEERS</b> .....	<b>25</b>
<b><u>FINANCES AND GOVERNANCE</u></b> .....	<b><u>25</u></b>
<b>STRUCTURE, GOVERNANCE AND MANAGEMENT</b> .....	<b>27</b>
<b>TRUSTEES' RESPONSIBILITIES STATEMENT</b> .....	<b>30</b>
<b><u>REFERENCE AND ADMINISTRATIVE DETAILS OF THE CHARITY, ITS TRUSTEES AND ADVISORS FOR THE YEAR ENDED 5 APRIL 2022</u></b> .....	<b><u>31</u></b>
<b><u>INDEPENDENT AUDITORS' REPORT</u></b> .....	<b><u>32</u></b>
<b><u>STATEMENT OF FINANCIAL ACTIVITIES</u></b> .....	<b><u>35</u></b>
<b><u>BALANCE SHEET</u></b> .....	<b><u>36</u></b>
<b><u>NOTES TO THE FINANCIAL STATEMENTS</u></b> .....	<b><u>37</u></b>

## Statement from the chair

Welcome to the Halpern Charitable Foundation 2021/22 Annual Report.

As with the previous year any statement about the past year is inevitably going to focus the impact of the Covid-19 pandemic. This crisis has impacted every element of the charity's delivery, for both good and bad. However, against this background, HCF has performed brilliantly, expanding the breadth and scale of the work that they do, and building relationships that will serve the charity well into the future .

As always, community has been at the heart of HCF's work. Every penny that we generate goes towards developing services, improving our facilities for the benefit of our community or strengthening the voice of the creative sector. HCF has created new activities, new events and made use of new approaches to grow the charity even under the challenging times, and I am proud of what they have done. I am particularly proud too of the work that HCF is pioneering relating to embedding evaluation and development into the field of arts for health. This work has such incredible potential to change how the use of arts in a health setting is viewed by the NHS. It is no exaggeration to say that this novel work has the potential to be truly revolutionary.

We know that the next 12 months will bring new challenges. There are dark clouds looming on the horizon that herald a further increase in demand for our services, coupled with greater pressures on finances. However, seeing how well HCF has responded to the pandemic I know that we have the skills, network, and people to see us through.

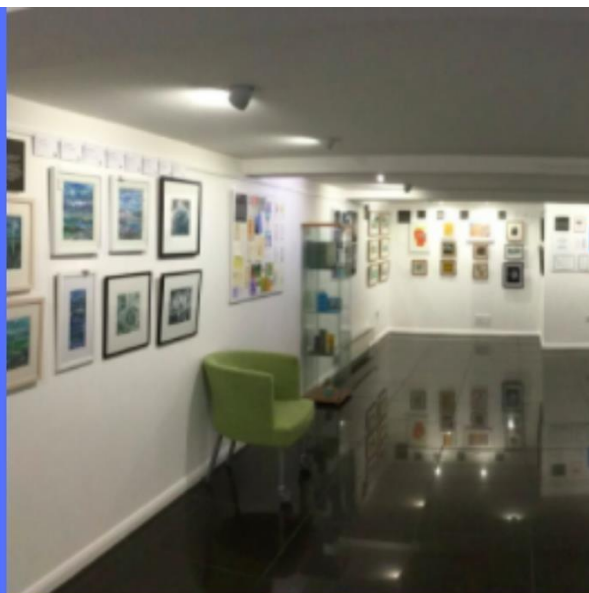
On behalf of the Board of Trustees I would like to thank our dedicated team staff and volunteers for their incredible work over the past twelve months. The ultimate success of our charity comes from our people, and they are our greatest strength.

Peter Martin  
Chair of Trustees – Halpern Charitable Foundation



'I AM THOROUGHLY  
ENJOYING BEING  
INVOLVED WITHIN A  
CREATIVE ENVIRONMENT  
SURROUNDED BY FELLOW  
CREATIVE PEOPLE. AS  
AN ARTIST THIS IS  
INCREDIBLY IMPORTANT FOR  
SELF-DEVELOPMENT AND  
PERSONAL GROWTH'

NUCLEUS STUDIO ARTIST



'FOR ME IT IS THE SOCIAL  
ASPECT THAT I  
MOST LOOK FORWARD TO -  
THE ACTIVITIES,  
THE ART, ARE JUST A  
BONUS'

SOCIAL ART PARTICIPANT



## Summary of Achievements in 2021/22

This year has been another incredible, if challenging year for HCF.

Covid has of course continued to be a major factor for the organisation, particularly for the first part of the year affecting every aspect of our work, from the confidence of our attendees, availability of funding sources, and the health of our volunteers and staff.

Despite this, HCF has massively risen to the challenge, working with community partners large and small to not only deliver our key services, but to actually expand and develop our work.

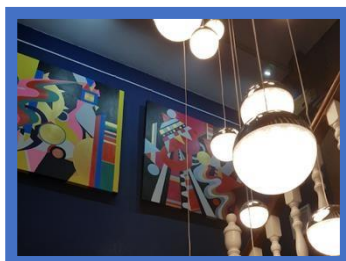
As always, our physical estate is central to our delivery approach.

### Nucleus Art Centre

Our primary site remains our original location in Chatham, home to the larger of our galleries, our large community room and our arts workshop, kiln, and the majority of our artist studios. It is also home to the award-winning Café Nucleus, our closest partner, whose presence is absolutely essential to attracting new visitors. In normal times this site allows us



to support many other charities and community groups. Some groups, such as, Club Ausome and BeLive, we were essential in establishing, whilst others, such as Porchlight, Improving Mental Health Provision and the Paramount Foundation have used our subsidised or free spaces, such as the creative cabin, in order to deliver their work.



During the pandemic we have continued to take opportunities to develop and improve the site, at a time when it would cause less disruption. Our studios have continued to see near-full occupancy throughout the year – and there remains a significant waiting list for creative workspace – something that we are looking expand upon with partners such as Medway Council. The Halpern Gallery has reopened for much of the year, available for community and public shows. It remains a very popular exhibition venue and a crucial resource for supporting local artists and creatives at all stages in their careers, allowing them to build their reputations and exhibit their work affordably and within their local community.

### HeArt of the Community



The HeArt of the Community space that we run, set in Chatham's Pentagon Shopping Centre, is dedicated to partnership use. This essential community space is perfectly placed for partners to use at very low-cost, enabling events that could not otherwise happen. There are many examples of such activities - for example, Rock School, which is delivered alongside the Paramount Foundation and enables children, who would otherwise not get the chance, to receive music

lesson experiences across a range of instruments, inspiring them to engage with music. The local Victim Support branch, Improving Mental Health Provision, and the Prince's Trust all deliver vital support sessions from the site. Local quilting and sewing groups meet there regularly, as do the Medway Art and Craft Adventure CIC and many others, providing community activities that are essential to mental health and wellbeing.

Over the last year, the HeArt space has been a vital open space, enabling in-person meetings, cultural activities, and work space to support Medway's charitable and cultural sectors.

### Nucleus Hub

The Nucleus Hub, located on Chatham's Military Road, is an important part of our pipeline of creative career development. Working with Café Nucleus, the space hosts an inviting and relaxing café, where artists can display their works for sale, whilst towards the rear of this is a somewhat subtle community space and internet café. This little room provides an essential safe, semi-private space. The space is regularly used by those, such as therapists and community workers, who need to meet with clients in a non-threatening public area, with the benefit of some privacy. The space is also regularly used by small charity and community group partners as an area to hold meetings without the cost of hiring a room. Above the café is our suite of subsidised offices supporting small creative business. This year we were delighted to invite the amazing mental health Charity Megan CIC to the site, and look forward to working closely with them.



### Maidstone Road

Our discrete site on Chatham's Maidstone Road provides ten supported flats for those affected by mental health issues. For many of the residents this represents the first stable home that they have had, giving them the opportunity to build lives for themselves. Support

## Trustees' Report for the year ended 5 April 2022

for the residents and the management of the building is delivered through our mental health partner Choice Support.

### Halpern Conservancy Building

The Halpern Conservancy Building is on Rochester's historic high street. The building is home to the newest and biggest Café Nucleus, which recently secured both the Taste of Kent's Kent Hospitality Business of the Year and Kent Food and Drink Business of the Year, making it officially the best place to eat in the county.

Whilst still new, the building contributes significantly to the charity's partnership and engagement work. Our gallery, the Halpern Pop, has a more commercial focus, as needed by our artists, and yet has also hosted community shows, including for schools and fundraisers for other charities. The Conservancy is



also home to our makerspace and digital classroom, the 'LightBox' - a facility featuring equipment such as 3D printers and pens, greenscreen, digital art facilities and small making equipment.

### Medway ArtBox

The Medway ArtBox is our latest and smallest space. This tiny gallery was adopted by HCF to provide public arts access on the Street. Located on Rochester High Street between the Conservancy and the Guildhall Museum, the LightBox has been home to numerous mini-exhibitions, seed swaps engagement activities and art give-aways where members of the public can take home donated pieces.

*I feel like I'm in another world when I come here (HCF). I can switch off and relax. I'm so glad I found you.*

### Engagement

Despite the difficult times our engagement team took a pragmatic and positive approach to ensure that we could continue to deliver and even grow the vital programme of activities that we deliver. This flexible approach meant that we could balance the social and community needs of our participants against the complications and risk-avoidance required to keep our vulnerable people safe. Even as the country has continued to open up, we have sought to maintain that balance, retaining hygiene measures, ventilation, limiting group numbers, and





Trustees' Report  
for the year ended 5 April 2022

retaining online and telephone booking requirements. This approach means that our participants feel safe, and supported at our activities, and as a result, demand remains high.

### **Evaluation and Development**

A major piece of work that we have been working on is around the professionalisation of 'Arts for Health.' The Arts for Health movement is widely recognised as having huge potential for tackling health issues and generating significant savings for national health budgets, but a lack of professional structure and standards, means that it is not considered to be a reliably measurable approach by funders, and as a result this leads to underfunding, lack of support and a lack of development for Arts for Health organisations.

HCF is relatively unusual in the scope of the work that we deliver, from perinatal all the way through life to near-end-of-life wellbeing support (delivered with partners), and encompassing an incredibly diverse range of people. To address this breadth of work we have been developing a suite of tools to ensure that we can share our approaches and evaluations within the team. The approaches are unusual in the sense that they have been developed by practitioners, and are designed to provide objective measures of impact. The approaches are:

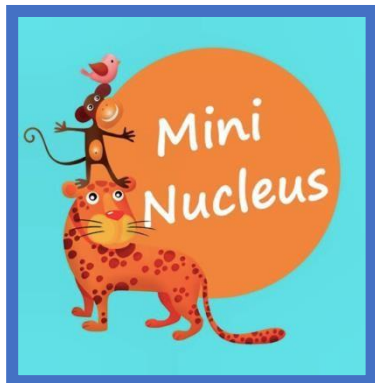
- 1) The Nucleus Matrix – a 'universal' approach for the planning and evaluation of interventions.
- 2) MIAHAI (Minimum Information About a Health Arts Intervention) – A global language for the communicating, sharing and development of Arts for Health.

We presented these approaches at a university seminar, to a wide variety of partner organisations. This elicited a great deal of interest, and as a result we are now working with the University of Kent and the NHS to develop and refine the approaches, with the aim that they might be rolled out across the South East of England as the standard approach. The approaches have also received significant interest from other organisations, and the aim is that this might become the basis of an agreed standard approach to the evaluation and sharing of Arts for Health interventions globally.

### **Under 18s support**

As mentioned above, we are really proud that we can provide services for all age groups, and at all stages of life – whoever you are, you are welcome at Nucleus Arts. Despite the restrictions that Covid has imposed, we have now returned to a full and expanded suite of young people's support.

Trustees' Report  
for the year ended 5 April 2022



Our programme begins with the weekly Babies and Parents art group, 'Mini-Nucleus'. This group that allows 0-4-year-olds and their parents to engage in fun messy play/art activities. The aim of this group is to help the children to develop their social and creative skills, but also to provide new parents an opportunity to socialise with one another, creating new friendship groups and a feeling of community, tackling the significant issues around social isolation and loneliness that can result from the life-changing event that is having a child. This year has seen everything from discos, to a visit from

Father Christmas in our very own Grotto!

Following Mini-Nucleus young people can move on to our monthly 'Lego and Art club', a Saturday morning session where children and their parents can come along and build Lego and engage in arts activities. This group is hugely popular, and is regularly over-subscribed.



Our programme of 'Arts Award' courses (<https://www.nucleusarts.com/artsaward>) which normally run throughout the year, enable us to support young people with limited educational chances to gain both useful qualifications and experience of a career in art by meeting and working with our resident artists. These activities are generously funded by the Colyer Fergusson Charitable Trust, allowing us to run them at a highly subsidised cost and maintain very small class sizes, which benefits the young people we work with. The programme features five different levels from the beginners Explore and Discover levels up to

Bronze, Silver and Gold levels. These latter levels are accredited by Trinity College London and are the equivalent of good GCSE qualifications. This programme was again disrupted by Covid during the 21/22 year, but is now up and running and supplemented by our Discover at Home approach that allows under 11s to complete the introductory level at home. We are looking to expand this programme in 22/23 with a new Digital Arts Award in the Lightbox.

Trustees' Report  
for the year ended 5 April 2022



Our support for young people aged 13-17, 'TeenArt' (<https://www.nucleusarts.com/teenart>) has been a huge success, to the point that we have created a second group, 'Digital TeenArt' (<https://www.nucleusarts.com/digital-teen-art-1>). Both of these groups target young people, to build confidence, community and skills. TeenArt tends to focus on physical activities, such as drawing, painting, costume making etc, whereas Digital Teen Art focusses on digital

skills. As well as individual work, the groups have been involved in significant community activity, such as designing the logos for Medway Youth, and creating backgrounds and costumes for our greenscreen activity at the record-breaking FunPalace 2021, as well as manning the stall and engaging with the thousands of participants.



In addition to these existing activities, there are a number of groups for young people and families that we are aiming to launch in 22/23. These include:

- 1) A trans-arts youth group in partnership with Medway Pride Radio, aimed at encouraging very vulnerable Transsexual youth to feel safe in our spaces and integrate into existing clubs.
- 2) Dungeons and Drawing, an art and drama-based club, in partnership with Medway Libraries and Child Friendly Medway, that will take place weekly from Twydall Library.
- 3) Khudozhniy Klub, an art group for Ukrainian refugee families, in partnership with Medway Help for Ukraine.

We are also seeking funding to expand Mini-Nucleus in other locations.

**Over 18s support**

Demand for our over 18s support continues to grow. Globally, the burden of mental health and loneliness in adults has grown dramatically, and we are seeing that impact in the numbers of people coming to us for support. As a result, we have greatly expanded our provision, creating two new groups, but even with these, our services remain oversubscribed.



Our weekly 'Social Art' club remains one of our most popular groups, and is the standard model on which other activities are based.

This group is aimed at a broad community of people, and is particularly attractive to those with physical and learning difficulties, as well as the socially isolated with health needs. It runs on a weekly basis and is successful due to the strong sense of community that exists within its participants. Activities are always

Trustees' Report  
for the year ended 5 April 2022

designed to be easily accessible with a very low barrier to participation. The participants gain a real sense of achievement, learning new skills and demonstrable improvements in wellbeing.

Our free fortnightly 'Young at Art' group is aimed at anyone aged 55 years and older. These free classes are delivered alongside a professional artist who will teach skills and techniques at a more in-depth level than our other groups. The group remains very popular, with all places booked up rapidly, as are new dates are released. As restrictions on group activities eased, we spoke with this group about their interest in developing a new group with a greater emphasis on skills development, and it was emphatically agreed that there was a demand for this.



This demand was met with the introduction of 'jumpstART'. This artist-led group allows participant to engage in a variety of workshops such as ceramics, resin jewellery and even learning how to digitally illustrate. The group meets monthly at present, and whilst not free, it the charges vary to cover the cost of the artist/activity, and are significantly lower-priced compared to similar activities locally.

The second of the new groups for 21/22 is 'Chat, Connect, Create.' Funded by Porchlight, this weekly group supports a small group of people to develop skills and a sense of community for over 18s but in a smaller, more discrete group. Although very new, the group is already fully subscribed and receiving excellent feedback. We are aim to launch a second Chat, Connect, Create group in 22/23 to meet the growing demand.



### Other engagement

As always, our engagement activities are in no way limited only to those that we deliver ourselves. HCF works in partnership with dozens of other groups and organisations to support their work, and in some cases, directly delivering activities on behalf of others.



## Trustees' Report for the year ended 5 April 2022



One of our best-established partnerships is with Arches Local, Medway's 'Big Local' organisation, whose work targets the very vulnerable populations in Luton and Chatham.

We have delivered a wide range of regular and one-off activities under their banner, or in partnership. These include 'Fit and Fed,' a series of drop-in sessions that take place during school holidays to ensure that children receive good quality sports and creative activities, whilst also ensuring that these children receive a good meal at times when free school meals are

unavailable.

Outside of school holidays we support 'Arts and Crafts at the Arches.' This is a free weekly creative group for families, although delivered broadly in the vein of Social Art. Here participants can drop in and engage in creative activities, build a supportive community, and gain information about additional services and support that they might require.

Other activities delivered with Arches Local, include providing creative sessions within residential home settings. Here we provide much needed community participation to a group that was particularly impacted by the Covid restrictions. As the pandemic starts to stabilise we would be keen to do more to support this group.



Online we continued to develop videos and activities for people to undertake at home, as well as growing our reach through social media platforms.

We continued to use our already established Waghorn Sez brand to deliver a number of programmes of daily creative art challenges through Facebook and Twitter, both for ourselves and

partnering with other organisations. For example, local Asthma Charity, MASH, took over Waghorn Sez for 25 days as part of their 25<sup>th</sup> anniversary celebrations. Such collaborations serve to both support our core audience, who may well benefit from these allied services, but also to reach new audiences for our own groups and activities.





Trustees' Report  
for the year ended 5 April 2022



In addition to online content, we have continued to produce 'Nucleus Social', our 32-page magazine, featuring craft activities, interviews, puzzles, and games; both print and digital versions made available on our website (<https://www.nucleusarts.com/nucleus-social-magazine>).

Working with large numbers of partners, including faith groups, community welfare groups, the new Mutual Aid Road Reps, and Medway's library network, we produced further editions, including special editions commissioned for Medway's public health teams to accompany school food packages. To date over 55,000 copies of the magazine have gone out to vulnerable households across Medway in the past 2 years. The Nucleus Social remains an important vehicle for our wider outreach, and will do for some time. We aim to create a special edition of the magazine for our 20<sup>th</sup> anniversary celebrations in 22/23.

### Events

As with engagement, our programme of events has bounced back stronger than ever.



In June we were honoured to support the regional Estuary Festival, hosting the 'Tales of Lands and Seas' poetry event. This consisted of the of 'The Mermaid of the Estuary' film, as well as poetry and live music activities that were available live and streamed online.

This event was swiftly followed by the Medway Print Festival, an event where print-makers from across the area come together to show off their skills. Amongst of the highlights of this event was a the MPF21 exhibition which took place in the Halpern Gallery at the end of June



*One lady disclosed that she was worried about her test result, and wanted to talk to me (HCF staff) as she had no one else to confide in.*

Trustees' Report  
for the year ended 5 April 2022



Next up, we were heavily involved in supporting Medway Rapture, providing much of the 'Creative' in the Gaming and Creative festival. Over the two days we worked with thousands of participants, providing free gaming-themed art activities, such as bag-stencilling and badge making.

After Rapture we undertook small supporting roles in a wide variety of Medway's summer events programme. From supporting Medway's first in-person Pride, to Electric Medway festival: a hybrid



festival of online activities and physical installations organised by our partners at Sparked Echo, to the Sticks and Stones Festival, through to the Mason Mile. Again, we offered a mixture of practical support, such as providing venue space, promoting opportunities to our community, and marketing of these event, as well as having stalls.

In October we delivered, what was probably the biggest event we have yet delivered, Medway Fun Palace 202. As well as being the largest event HCF has ever run, and was also likely to have been the largest Fun Palace in the world at that time. Taking place at the Pentagon Centre in Chatham, we led a consortium consisting of partners such as Medway Council, Medway Libraries, Fun Palaces, Kent university, MidKent College, Chatham Historic Dockyard, Medway Pride Radio, Rochester Bridge Trust, Medway Youth Service, Child Friendly City, Creative Medway, Medway Youth Council, Skills for Life Trust, Creative Estuary Producers' Network, Ideas Test and many more. We had a strong and full programme of events and activities – including Titan the Robot and Doc Yards Science show. The event was a huge success and engaged over six thousand of people both in the Pentagon, and also hundreds more through parallel events at the library service.



Trustees' Report  
for the year ended 5 April 2022



With Covid risks rising in November, we felt that it was aging important to support the annual Remembrance Day activities in Medway. Working with partners we re-edited our 2020 video of Laurence Binyon's poem 'For the Fallen.' The video featured members of the public, uniformed and community groups and key public figures, of all ages, reading lines from the poem followed by a heads-bowed, minutes silence. The video was played widely online and in local media.

Remembrance was a continuing theme as we support Medway Pride Radio, Kent Police, First Choice Healthcare, Metro and a variety of support groups in celebrating Trans Day of Remembrance. This event saw a number of memorial activities, artworks and talks in the HeArtspace, to acknowledge the lives lost due to hate and bigotry around the world.



On a happier note, we were delighted to support Medway Pride Radio's Do-Good Friday Event. This event saw volunteers using our Chatham site as a base for a wide variety of happiness-generating activities, events and programming. From random acts of kindness, rewards to deserving people (huge thanks to Café Nucleus for providing prizes) to live music, this event crated a lovely buzz as we moved in to the festive season.

Our final event of 2021, was the Intra Panto. This event, delivered in collaboration with Hempstead Players, Medway Pride Radio, Chatham Intra HAZ, and Medway Little Theatre, saw us write, cast and perform a pantomime within six weeks of the idea starting. The final piece was performed live in front of a cast of local families, and recorded for broadcast over the festive break on Pride Radio.

Trustees' Report  
for the year ended 5 April 2022



*I'm a stay-at-home mum so this is the only time I get to meet up with other adults to have a chat*

## Gallery

Our galleries have also been incredibly busy over the period, providing almost 60 free-to-public exhibitions over the 21/22 period. The majority of these have been artist-led events, or exhibitions by schools and community groups. All of these exhibitions have offered the public the opportunity to engage with contemporary arts from across Medway and North Kent, however there have been some particularly notable activities that warrant a special mention.

## Figures

We were honoured to support the work of artists Nigel Adams in his work to mark the human impact of Covid by producing an artwork featuring 100,000 figures, representing the lives lost. This artwork invited artists and community groups to participate, and HCF were delighted to be able to offer facilities, materials and marketing to boost this super-human effort.





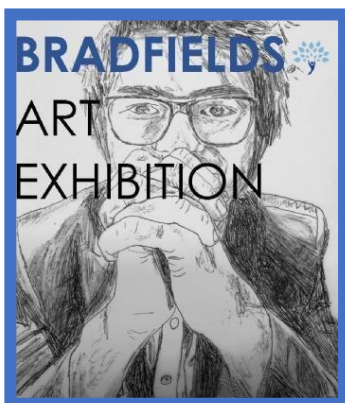


### Medway Pride Exhibition

Celebrating our links with partners at MPR we were very proud to host the annual LGBT+ History month exhibition. This open call to LGBT+ and allied artists was supported by dozens of submissions and a garnered a significant amount of local interest.

### Medway Open Studios

Again, we welcomed the public to explore the hidden creative work spaces and secret studios across Medway as part of a collaborative event. Along the trail you can take part in art activities and events, view exhibitions, talk to the artists, buy art and crafts, and see first-hand the array of artistic talent. In addition to opening our studios we also hosted the event exhibition.



### Bradfield's School

Exhibition of art from Bradfield's Academy a special educational needs school in Chatham. The event is one of the real highlights of our programme, showcasing their student's work, which includes portraits, sculptures, photography.

### Summer Exhibition

The Halpern Gallery's annual Summer Exhibition, is our annual open call event. Artists are encouraged to submit three pieces, one of which will be shown. Around 100 artists took part in this event featuring work from a variety of disciplines.



*Highlight of my week. Wish we could have longer as it gets me away from my loneliness*

### Wider Community Engagement

Another key element of our work related to how we can leverage our experience and resources to benefit the wider communities that we serve. By representing the creative community across a wide range of local and regional committees and networks we are a major voice for the creative community.



Trustees' Report  
for the year ended 5 April 2022

We are active members of the Kent Creative Network and host the monthly North Kent Meetings which returned this year

We are active members of the Council-led Medway Cultural Partnership, which has now been replaced by the Cultural Medway Compact. Here, we chair the important 'Shared Ambition' sub-committee, and play an active role in the central Compact committee.

We are a founding member of the Medway Arts Forum, an organisation-led group representing the grass-roots artist community, and we have been involved in a number of initiatives with members of this group.

We are leading members of the new Medway CAN anti-obesity initiative, a council funded programme aimed at improving health in the area. We hold a position on the steering committee and grants board.



We are leading members of the MVA Leaders Network, supporting the work of, and providing a voice for charities and community having taken key roles in the transformation academy and alliance initiatives.

We represent the charitable sector on the Social Prescribing network where we work with the NHS and other funders to shape the interaction of the third sector with health providers.

We have supported wider committees such as the Social Isolation Forum and the Medway Innovation Board: here we explore how arts and creativity can play their role in tackling mental health, loneliness and social isolation. We are also leading members of the Mental Health Practitioners group.



We continue to play a significant role in supporting Council-led regeneration projects such as the High Street Heritage Action Zone in Chatham Intra. We represent small- and microbusiness and the creative industries on the Medway for Business Forum, and creative business on the Rochester and Chatham Town Forums, vice-chairing the latter.

We have also continued our ongoing support for the University of Kent Employability rewards scheme, designed to offer opportunities and work experience to high achieving university students. Through this we offer internships, experience days and work-shadowing to inspire art-related graduates.

Trustees' Report  
for the year ended 5 April 2022

**Summary**

The past twelve months have continued to be one of the most difficult and challenging periods that charities and society have ever had to face. We have seen incomes affected, groups cancelled or remodelled, demand surging, costs rising, and we have been impacted by staff and volunteer sickness. Yet despite the complexity and impacts of these challenges, HCF has risen to meet them with all the bravery, creativity and passion at our disposal, and as a result the charity has thrived, and even grown what we do.

We have proven to our partners, whether statutory (Medway Council, NHS, Arts Council etc), industry organisations (MVA, Creative Medway, Medway Diversity Forum etc), education (Universities and Schools), or the dozens of charities we work alongside, that we are the 'go-to' partner for delivery in Medway. The number of events and activities we have been asked to support over the 22/23 financial year is incredible. The new community groups and activities planned for the year will see the breadth of our work expand again, supporting Trans youth, Ukrainian refugee families, and significantly more services for vulnerable adults. The programme of research that we are commencing with partners such as the university of Kent, MVA and the NHS, to professionalise the arts-for-health sector should have far reaching, even global, impacts, which we hope will ultimately benefit everyone. This year we are already finalists for two prestigious awards, the regional Kent Community Charity of the Year, and the national Fantastic For Families award, which is testament to this impact.

Of course, this can only happen because of the dedication, imagination and drive of our staff and volunteers. From our Trustee board who set our strategy and keep us in compliance with legislation and rules, our amazing staff team who deliver so much, to such high quality on minimal budgets, and of course our artists and volunteers who give up their time to make everything happen. I am incredibly proud to work with them all.

We know that 22/23 is going to be a challenge, with the immense impact of the cost-of-living crisis, compounded by the war in Ukraine, this is likely to be an even greater than the recent pandemic. We know that demand will go up, whilst we will be buffeted by rising costs, and likely falling incomes. The impacts of this are unclear, but given the resilience of our staff and community, I remain confident that we will continue to thrive.

Dr David Stokes  
Chief Executive Officer, The Halpern Charitable Foundation

Trustees' Report  
for the year ended 5 April 2022

'THERE'S A LOT BEING  
CREATED AT SOCIAL  
ART – NOT JUST THE ART  
ITSELF. FRIENDSHIPS, A  
SENSE OF SELF, AND A  
FEELING OF  
WELLBEING ARE POSITIVE  
OUTCOMES OF THE PROJECT'

VISITING  
JOURNALIST



'I COME HERE AND THE  
WORLD IS  
OUT THERE.'

ACTIVITY PARTICIPANT

## Objectives and Activities

### About the Halpern Charitable Foundation

The Halpern Charitable Foundation was established in 2002 with three primary aims; to provide affordable space for artists to work and exhibit in Medway; to help people with mental and/or physical illness/disability; and as a backstop for the Chatham Memorial Synagogue, should it ever be in real financial difficulty with no other avenue left. Since that time the HCF's remit has evolved and grown to:

1. To increase access to the arts across the region through: the provision of affordable work and exhibition space; supporting arts education through outreach and events; advocacy of the arts at partnership groups; and supporting the cultural regeneration of the Medway towns.
2. Helping people affected by mental health and social isolation through: the provision of affordable, stable, housing; the provision of arts and therapy activities; supporting other third sector organisations; and advocacy at partnership groups.
3. Supporting the Chatham Memorial Synagogue with fundraising advice and as a backstop.

### **The Foundation's Objects are:**

1. The relief of sick persons with mental illness and/or those suffering from a mental or physical disability to include supporting vulnerable people
2. To assist in maintaining, repair, mature, preserve, improve and reconstruct for the benefit of the public the fabric of the Chatham Memorial Synagogue, its monuments, fixtures, fittings, furniture and other chattels
3. To advance and promote the education of the public in the understanding and appreciation of the Arts; in particular by the provision of an Arts Community Centre in Chatham (Nucleus Arts) and by providing support to artists who are unable to pursue their talent because of lack of financial means or financial support or because they may be vulnerable.

### Vision

We believe in a world where everyone can express their creativity, no matter their age, background, status or health. By making the arts open and accessible to all we aim to promote creative thinking, support the creative economy, and use the healing power of the arts to improve mental and physical health



## Trustees' Report for the year ended 5 April 2022

### Our values

- **Community:** We will foster and inspire a community which is inclusive, diverse and accessible, and which always prioritises mutual support.
- **Representation:** We are the voice of artists in Medway, and will do everything we can to understand and represent their best interests.
- **Adaptability:** As the world changes, so will the best ways to improve the lives of people through engagement with the arts. HCF will work to provide the most impactful, relevant support at the right time.
- **Empowerment:** Everyone deserves to feel confident, informed and in control of their and/or their lives. We will utilise the arts to uplift the people in our community to become advocates and to support others.
- **Integrity:** We work for the arts and local community, and will be transparent in what we do and why. We will use our resources when and where they will have the greatest impact.

### Strategy

In 2022/23, we hope to be emerging from the pandemic and instead will be looking to respond to the expected impacts of the cost-of-living crisis. This will have impacts on the charity, our beneficiaries and our partners. We aim, as far as possible, to deliver a strategy to focus on financial sustainability and delivering the vision of the organisation. The plan has four primary delivery strands; **Sustainability, Membership, Engagement, and Recognition**. Whilst outside factors will significantly impact on our ability to drive this forward, the following thinking will guide our actions

**Sustainability** – Whilst HCF is blessed with very generous financial backing resulting in annual dividends and rental income, our expenditure is currently still exceeding our income if investments are excluded, leading to a draw down on these funds. This is only going to get worse due to the massive rises in energy, material and staffing costs. It is essential that we address this situation through both raising income by investment in fundraising, commerce and service delivery, and also by looking to reduce our overheads by setting stricter budgets and investing in energy saving technology. We will also capitalise on our close relationship with the award-winning café Nucleus, in particular by looking to open a new Rainham site which has the potential to generate significant revenue for the charity. We are also looking at investing in energy saving technology, solar tiles, and water saving approaches. We have been offered a significant capital grant from the Arts Council to help with this and are planning on how we might install this.





## Trustees' Report for the year ended 5 April 2022

**Membership** – We will use the next three years to further develop our offer to artists. Working with our community we will develop a package of support that enables them to grow their recognition and businesses. We will develop a range of social and information events, and identify ways to facilitate the sale of artworks online. We will also raise the profile of our gallery and studios, particularly utilising the opportunities of Medway Light Nights, the 2024 Festival, and our work around the evaluation of Arts-for-Health.

**Engagement** – We will be putting significant efforts into the development of our engagement activities. We will seek to increase public attendance at our various festivals and events, including our Chatham Carnival and the Medway Light Nights. We will increase access to arts-related education, and we will work with partners to raise our public profile. We will grow and expand our outreach and support for the socially isolated, seeking grant funding and service contracts to achieve this. By the end of this plans period, we will increase the amount of therapy-related arts-based outreach activity. We will also develop our excellent relationships with the award-winning Cafe Nucleus to continue to entice people to our sites, and convert them to gallery/activity visitors.

**Recognition** -, HCF's name, brand and messaging need to be developed as a priority as this underpins our communications and fundraising. Visually, the look of our materials is already coalescing in to a clean, modern, and professional brand, and we are working to update all of our materials in this way.

We deliver our objects in the following ways:

- Supporting the Arts community

### **Nucleus Members**

We offer a wide and comprehensive package of support for our artists including:

- Affordable studio space.
- Opportunities to exhibit their art.
- Networking opportunities.
- Public engagement opportunities.
- Access to occasional training opportunities.
- Access to workshop space and facilities.
- Access and support for setting up classes and workshops.
- Support in selling their art online.

### **Wider Artist/Creative Community**

We support the wider arts/creative/maker community through the following activities:

- Offer opportunities to exhibit artwork across.
- Offer access to workshop space and facilities.
- Promote local partner arts events.
- Host and support our own programme of public arts events.



Trustees' Report  
for the year ended 5 April 2022

- Host and support local and regional arts networks.
- Advocate for a greater engagement with the arts community through statutory and business communities.
- Engage in regeneration - focusing on presenting Medway as an arts hub.

**General Public/Wider community**

We will utilise the following activities to engage the General Public with the arts/creative world:

- We host a range of public arts events, and work with statutory and business groups to expand and promote these.
- We offer access to art classes, education, facilities and workshops.
- We offer access to free gallery exhibitions.
- We offer a range of creative family sessions.
- Offer affordable meeting and community space.
- Provide volunteering opportunities.
- Provide educational opportunities related to the arts, notably the 'Arts Award,' programme.
- Support the cultural regeneration of Medway.
- Support Medway's 'City of Culture' bid.
- We work with Café Nucleus to entice the public to our venues, and to provide community space.
- Supporting the socially isolated, vulnerable and marginalised including people affected by mental health issues

We support the wider arts/creative/maker community through the following activities:

- Provide affordable, secure, housing for people affected by mental health problems.
- Provide and expand our own range of on-site arts-therapy-related activities – including a range of free events.
- Provide and expand our own range of outreach arts-therapy-related activities.
- Provide engagement space for partner organisations to engage with the public.
- Work with and facilitate wider partnerships with partners engaging with vulnerable groups.
- Provide affordable meeting and conference space for partner organisations.
- Supporting the Chatham Memorial Synagogue



## Trustees' Report for the year ended 5 April 2022

We will honour the legacy of our founders Hilary and Marie Halpern by continuing support the Chatham Memorial Synagogue through the following ways:

- Provide fundraising resource
- Support the development of a sustainable fundraising strategy

### Plans for 2022/23

2022/23 will be a celebratory year for HCF in light of our 20<sup>th</sup> Anniversary, and this will be a major theme for the year. We will host a series of special gallery exhibitions showcasing the artists that we have supported over the past 20 years. We will also hold one or more 'Thank You' events for our supporters and partners. We will also host a celebratory Anniversary event.

At the time of writing the Covid-19 crisis still in full effect, but with some hope for improvement towards the end of the year. We are again, working with a high degree of caution and flexibility whilst aiming to deliver the best service that we can.

With that in mind, it is our intention that during 2022/23 we will seek to further develop our financial growth and stability and are currently exploring a number of opportunities to address this.

We will aim to further expand HCF's outreach services, in particular in those areas where the Cost-of-living crisis and Ukrainian war has created new need. We are currently exploring the possibility of developing new services, and to tackle the expected rise in mental health issues. This work will be funded through grants and contacts.

Across the year we will again host a range of events, including our usual Open Studios, Fun Palace, events. Indeed, we have received a pledge of funding to deliver Fun Palace as major Medway event. We will also support other arts-related festivals such as Medway Light Nights and the Medway Gaming festival, working closely with partners. We will also look to work with partners through our involvement in Love Chatham to deliver a Chatham Carnival.

We will again support activities such as the University of Kent Employability Points programme and Medway Youth awards.

We will continue to develop our package of artist support, implementing further initiatives to improve support and retention. We applied to be an Arts Council National Portfolio Organisation.

We will further expand our local gallery network, looking for wider initiatives with which to engage.

We will deliver a full series of high-quality arts exhibitions across our galleries.

Trustees' Report  
for the year ended 5 April 2022

We will look to formally incorporate the charity.

We will put in significant effort to support major initiatives such as, Medway CAN, Creative Medway and Child Friendly Medway.

## Volunteers

Over the last year we have been in a position to begin to utilise our volunteers again. Our continued support and contact with our volunteers, has meant they were keen and ready to return to their former roles assisting at workshops. We are developing new rules and approaches to engage new people into volunteering roles.

## Finances and Governance

The Statement of Financial Activities (SoFA) shows total income for the year was £401,275, a significant increase in income compared to the prior year (£283,065). The charity received just over £65k in restricted grants as detailed in the statement of funds note, and an additional £11k in Covid support. Income from charitable activities has increased this year primarily as a result of rent-suspensions during the lockdown, and the loss of some tenants during Covid. All of our space is now full, and we expect to see this return in 22/23

Total expenditure amounted to £504,077 an increase on £459,837 in the prior year. Despite the pandemic, our core costs have remained similar, and we have invested heavily in developing our estate during the lockdown periods. We have however achieved some success through our energy saving measures.

The SoFA shows an overall decrease in funds of £27,182. Total reserves at the end of the year were £4.9m, of which £140k are restricted, £4.0m are designated/fixed assets and £790k are unrestricted, including shares as detailed in the statement of funds note.

### Going concern

After making appropriate enquiries, the trustees have a reasonable expectation that the charity has adequate resources to continue in operational existence for the foreseeable future. For this reason, they continue to adopt the going concern basis in preparing the financial statements. Further details regarding the adoption of the going concern basis can be found in the Accounting Policies.

### Financial risk management objectives and policies

The Foundation is aware that despite its fundamental strength a shortfall in income could make it less effective. Causes could be poor returns from investments, poor investment



## Trustees' Report for the year ended 5 April 2022

strategy, prolonged recession, prolonged downturn of property market reduces lease values, non-payment of rent. Outcome could be intervention by Charity Commission.

To minimise these risks, HCF practices excellent business management, good procurement and income control. The Trustees oversee statutory financial reporting, investment strategy, audit functions, budgeting and financial risk management. In 17/18 HCF adopted a new procurement policy and other working policies and these are being monitored for effectiveness. It continues to review its investment strategy and appraises performance regularly against peer group and market indices. We appraise new business opportunities and have proposals to extend our service areas. Shared cost allocation has been reviewed. A long-term maintenance programme (Planned Preventative Maintenance) is being put in place and will be reviewed annually. HCF is fundamentally strong and continues to work on its long-term sustainability.

### Principal risks and uncertainties

HCF has reviewed all principal risks as part of our Board Risks Register, and has undertaken appropriate measures to minimise these risks. This includes:

Risk	Mitigation
Safety risks	<ul style="list-style-type: none"> <li>- Regular reviews of our activities and relevant legislation.</li> <li>- Policies in place to ensure appropriate practices, for example, safeguarding of vulnerable people, DBS checks etc.</li> <li>- Regular inspections of the site to ensure a safe working environment.</li> <li>- Trained first aiders.</li> <li>- Good external security and CCTV on site.</li> <li>- Up to date risk registers.</li> <li>- Close monitoring of the Pandemic situation, and the use of infection mitigation controls</li> </ul>
Reputational risks	<ul style="list-style-type: none"> <li>- Clear expectations of conduct with staff and volunteers.</li> <li>- Wide involvement in local committees' boards and events.</li> <li>- Clear thinking around ethics, diversity, environment etc.</li> </ul>
Operational risks	<ul style="list-style-type: none"> <li>- Clear staff and volunteers policies.</li> <li>- Strong financial procedures.</li> <li>- Clear lines of accountability.</li> </ul>
Strategic risks	<ul style="list-style-type: none"> <li>- Established strategy</li> <li>- Review by Board of Trustees</li> </ul>



Trustees' Report  
for the year ended 5 April 2022

**Reserves policy**

HCF has a policy to maintain free unrestricted reserves of 6-12 months:

- to provide a level of working capital that protects the continuity of our work
- to provide a level of funding for unexpected opportunities
- to provide cover for risks such as unforeseen expenditure or unanticipated loss of income.

The board of trustees will review the above criteria with reference to HCF's strategy and Annual Plan and determine the target level of free reserves to meet these.

In particular, we will retain sufficient reserves:

- to assist in the preservation of the Chatham Memorial Synagogue as per our charitable objectives
- to enable the HCF to cover a further 24 months of essential expenditure as identified by the risk-based method of calculating reserves

The Board of Trustees will at times designate funds from free reserves for significant project costs or replacement of major assets.

Structure, governance and management

**Constitution**

Halpern Charitable Foundation began operating in June 2002, and is governed by a Trust Deed dated March 2003, amended on 20th April 2010.

The charity is unincorporated, but incorporated its Trustees on 21st October 2013. The principal objects of the charity are:

- a) the relief of sick persons with mental illness and/or those suffering from a mental or physical disability to include supporting vulnerable people;
- b) to assist in maintaining repair restore preserve improve and reconstruct for the benefit of the public the fabric of the Chatham Memorial Synagogue its monuments fixtures fittings furniture and other chattels;
- c) to advance and promote the education of the public in the understanding and appreciation of the arts in particular by the provision of an Arts Community Centre in Chatham (Nucleus Arts) and by providing support to artists who are unable to pursue their talent because of lack of financial means or financial support or because they may be vulnerable.

There have been no changes in the objectives since the last annual report.

### **Method of appointment or election of Trustees**

The management of the charity is the responsibility of the Trustees who are elected and co-opted under the terms of the Trust deed.

There should at all times be at least three trustees.

New trustee appointments are made by a resolution passed at a special meeting.

In selecting persons to be appointed, existing trustees take account of any areas of special knowledge relating to the Foundation's activities which could be improved at trustee level as detailed in the Foundation Governance Handbook.

Specific searches are then carried out for persons with the required area of expertise. All prospective trustees are interviewed by one or two existing trustees to ascertain their suitability for the position.

Trustees may serve a three-year term, and may be reappointed.

Trustees receive no remuneration, but may receive out of pocket expenses.

### **Policies adopted for the induction and training of Trustees**

New trustees are given an induction into the charity, its governance, and specifics of its activities.

Training is regularly sought for all trustees, new and old, as appropriate, and updates from the Charity Commission are always passed on electronically.

### **Pay policy for staff**

As a small employer with limited resources, it is very important that we effectively use the money we have available for remuneration. This policy describes the broad principles that we will follow as an employer when setting and reviewing pay.

This policy applies to all staff working for us either on a casual, fixed term or permanent basis. The organisation does not usually employ agency workers. In the event that we do, we will ensure that pay for longer term agency workers (who are with us for a continuous period of over 12 weeks) is comparable to the pay offered for directly employed staff who carry out comparable work.

Pay policy principles:

- Pay equality

Trustees' Report  
for the year ended 5 April 2022

The organisation strives to be an equal opportunity employer. This means our intention is to treat all staff equitably with regards to the terms and conditions of employment offered, including pay. The board will review pay levels from time to time to identify and address any anomaly.

- The living wage (as set by the Living Wage Foundation)

The organisation fully supports the living wage and will aim to pay at this level, subject to affordability. Living wage figures are usually announced annually in November and we will take the figure into account when reviewing pay.

### **Organisational structure and decision making**

The Trustees have ultimate responsibility for the Charity. As a Board, led by the Chair, they ensure that all Strategic decisions are taken appropriately. They then delegate Operational decisions to the Director in line with the HCF Governance Handbook.

### **Related party relationships**

Halpern Charitable Foundation was set up by Hilary Halpern who also had started Halpern Properties Ltd some years earlier. There had, historically, been some overlap of HCF trustees and HPL directors, and HCF undertook some of its activities from within HPL premises. There are no longer any overlapping trustees/ directors.

### **Risk management**

The Trustees have assessed the major risks to which the charity is exposed, in particular those related to the operations and finances of the charity, and are satisfied that systems and procedures are in place to mitigate our exposure to the major risks.

### **Trustees' indemnities**

The charity has purchased insurance to protect the trustees from claims arising from negligent acts, errors or omissions whilst on charity business. The insurance provides cover up to £1,000,000 on any one claim.



Trustees' Report  
for the year ended 5 April 2022

**Trustees' responsibilities statement**

The Trustees are responsible for preparing the Trustees' report and the financial statements in accordance with applicable law and United Kingdom Accounting Standards (United Kingdom Generally Accepted Accounting Practice).

The law applicable to charities in England & Wales requires the Trustees to prepare financial statements for each financial year which give a true and fair view of the state of affairs of the charity and of the incoming resources and application of resources of the charity for that period.

In preparing these financial statements, the Trustees are required to:

- select suitable accounting policies and then apply them consistently;
- observe the methods and principles in the Charities SORP;
- make judgments and accounting estimates that are reasonable and prudent;
- state whether applicable UK Accounting Standards have been followed, subject to any material departures disclosed and explained in the financial statements;
- prepare the financial statements on the going concern basis unless it is inappropriate to presume that the charity will continue in operation.

The Trustees are responsible for keeping proper accounting records that are sufficient to show and explain the charity's transactions and disclose with reasonable accuracy at any time the financial position of the charity and enable them to ensure that the financial statements comply with the Charities Act 2011, the Charity (Accounts and Reports) Regulations 2008 and the provisions of the trust deed. They are also responsible for safeguarding the assets of the charity and hence for taking reasonable steps for the prevention and detection of fraud and other irregularities.

The Trustees are responsible for the maintenance and integrity of the charity and financial information included on the charity's website. Legislation in the United Kingdom governing the preparation and dissemination of financial statements may differ from legislation in other jurisdictions.

This report was approved by the Trustees and signed on their behalf by:

**Peter Martin**  
(Chair of Trustees)

Date: 28 January 2023



# The Halpern Charitable Foundation

## Trustees' Report for the year ended 5 April 2022

## Reference and Administrative Details of the Charity, its Trustees and Advisors for the year ended 5 April 2022

### Trustees

Peter Martin (Chair)  
Jacqueline Shicluna  
Geoff Harvey  
Paula Gregory  
Vince Maple  
Anil Aggarwal (appointed 15 January 2022)  
Sharon Dosanjh  
Charlotte Walker

### Chief Executive Officer

David Stokes

### Charity registered number

1096478

### Principal office

272 High Street  
Chatham  
Kent  
ME4 4BP

### Independent Auditors

UHY Kent LLP t/a UHY Hacker Young  
Thames House  
Roman Square  
Sittingbourne  
Kent  
ME10 4BJ



---

## **The Halpern Charitable Foundation**

---

### **Independent Auditors' Report to the Members of The Halpern Charitable Foundation**

---

#### **Opinion**

We have audited the financial statements of The Halpern Charitable Foundation (the 'charity') for the year ended 5 April 2022 which comprise the Statement of financial activities, the Balance sheet, the Statement of cash flows and the related notes, including a summary of significant accounting policies. The financial reporting framework that has been applied in their preparation is applicable law and United Kingdom Accounting Standards, including Financial Reporting Standard 102 'The Financial Reporting Standard applicable in the UK and Republic of Ireland' (United Kingdom Generally Accepted Accounting Practice).

The financial statements have been prepared in accordance with Accounting and Reporting by Charities preparing their accounts in accordance with the Financial Reporting Standards applicable in the UK and Republic of Ireland (FRS 102) in preference to the Accounting and Reporting by Charities: Statement of Recommended Practice issued on 1 April 2005 which is referred to in the extant regulations but has been withdrawn.

This has been done in order for the accounts to provide a true and fair view in accordance with the Generally Accepted Accounting Practice effective for reporting periods beginning on or after 1 January 2015.

In our opinion the financial statements:

- give a true and fair view of the state of the charity's affairs as at 5 April 2022 and of its incoming resources and application of resources for the year then ended;
- have been properly prepared in accordance with United Kingdom Generally Accepted Accounting Practice; and
- have been prepared in accordance with the requirements of the Charities Act 2011.

#### **Basis for opinion**

We conducted our audit in accordance with International Standards on Auditing (UK) (ISAs (UK)) and applicable law. Our responsibilities under those standards are further described in the Auditors' responsibilities for the audit of the financial statements section of our report. We are independent of the charity in accordance with the ethical requirements that are relevant to our audit of the financial statements in the United Kingdom, including the Financial Reporting Council's Ethical Standard, and we have fulfilled our other ethical responsibilities in accordance with these requirements. We believe that the audit evidence we have obtained is sufficient and appropriate to provide a basis for our opinion.

#### **Conclusions relating to going concern**

In auditing the financial statements, we have concluded that the Trustees' use of the going concern basis of accounting in the preparation of the financial statements is appropriate.

Based on the work we have performed, we have not identified any material uncertainties relating to events or conditions that, individually or collectively, may cast significant doubt on the charity's ability to continue as a going concern for a period of at least twelve months from when the financial statements are authorised for issue.

Our responsibilities and the responsibilities of the Trustees with respect to going concern are described in the relevant sections of this report.

#### **Other information**

The other information comprises the information included in the Annual report other than the financial statements and our Auditors' report thereon. The Trustees are responsible for the other information contained within the Annual report. Our opinion on the financial statements does not cover the other information and, except to the extent otherwise explicitly stated in our report, we do not express any form of assurance conclusion thereon. Our responsibility is to read the other information and, in doing so, consider whether the other information is materially inconsistent with the financial statements or our knowledge obtained in the course of the audit, or otherwise appears to be materially misstated. If we identify such material inconsistencies or apparent material misstatements, we are required to determine whether this gives rise to a material misstatement in the financial statements themselves. If, based on the work we have performed, we conclude that there is a material misstatement of this other information, we are required to report that fact.

We have nothing to report in this regard.

**Independent Auditors' Report to the Members of The Halpern Charitable Foundation (continued)**

---

**Matters on which we are required to report by exception**

We have nothing to report in respect of the following matters where the Charities (Accounts and Reports) Regulations 2008 requires us to report to you if, in our opinion:

- the information given in the Trustees' report is inconsistent in any material respect with the financial statements; or
- sufficient accounting records have not been kept; or
- the financial statements are not in agreement with the accounting records and returns; or
- we have not received all the information and explanations we require for our audit.

**Responsibilities of trustees**

As explained more fully in the Trustees' responsibilities statement, the Trustees are responsible for the preparation of the financial statements which give a true and fair view, and for such internal control as the Trustees determine is necessary to enable the preparation of financial statements that are free from material misstatement, whether due to fraud or error.

In preparing the financial statements, the Trustees are responsible for assessing the charity's ability to continue as a going concern, disclosing, as applicable, matters related to going concern and using the going concern basis of accounting unless the Trustees either intend to liquidate the charity or to cease operations, or have no realistic alternative but to do so.

**Auditors' responsibilities for the audit of the financial statements**

We have been appointed as auditor under section 144 of the Charities Act 2011 and report in accordance with the Act and relevant regulations made or having effect thereunder.

Our objectives are to obtain reasonable assurance about whether the financial statements as a whole are free from material misstatement, whether due to fraud or error, and to issue an Auditors' report that includes our opinion. Reasonable assurance is a high level of assurance, but is not a guarantee that an audit conducted in accordance with ISAs (UK) will always detect a material misstatement when it exists. Misstatements can arise from fraud or error and are considered material if, individually or in the aggregate, they could reasonably be expected to influence the economic decisions of users taken on the basis of these financial statements.

Irregularities, including fraud, are instances of non-compliance with laws and regulations. We design procedures in line with our responsibilities, outlined above, to detect material misstatements in respect of irregularities, including fraud. The extent to which our procedures are capable of detecting irregularities, including fraud is detailed below:

*How the audit was considered capable of detecting irregularities, including fraud*

Our approach to identifying and assessing the risks of material misstatement in respect of irregularities, including fraud and non-compliance with laws and regulations, was as follows:

- we identified the laws and regulations applicable to the charity through discussions with management, and from our commercial knowledge and experience in the sector;
- we focused on specific laws and regulations which we considered may have a direct material effect on the accounts or the operations of the charity, including the Charities Act 2011;
- we assessed the extent of compliance with the laws and regulations identified above through making enquiries of management and inspecting correspondence; and
- identified laws and regulations were communicated within the audit team and the team remained alert to instances of non-compliance throughout the audit.

We assessed the susceptibility of the charity's accounts to material misstatement, including obtaining an understanding of how fraud might occur, by:

- making enquiries of management as to where they considered there was susceptibility to fraud, their knowledge of actual, suspected and alleged fraud; and
- considering the internal controls in place to mitigate risks of fraud and non-compliance with laws and regulations.

---

## **The Halpern Charitable Foundation**

---

### **Independent Auditors' Report to the Members of The Halpern Charitable Foundation (continued)**

---

To address the risk of fraud through management bias and override of controls, we:

- performed analytical procedures to identify any unusual or unexpected relationships;
- tested journal entries to identify unusual transactions;
- assessed whether judgements and assumptions made in determining the accounting estimates set out in the accounting policies were indicative of potential bias; and
- investigated the rationale behind significant or unusual transactions.

In response to the risk of irregularities and non-compliance with laws and regulations, we designed procedures which included, but were not limited to:

- agreeing financial statement disclosures to underlying supporting documentation;
- reading minutes of meetings of those charged with governance; and
- enquiring of management as to actual and potential litigation and claims.

There are inherent limitations in our audit procedures described above. The more removed that laws and regulations are from financial transactions, the less likely it is that we would become aware of non-compliance. Auditing standards also limit the audit procedures required to identify non-compliance with laws and regulations to enquiry of the trustees and other management and the inspection of regulatory and legal correspondence, if any.

Material misstatements that arise due to fraud can be harder to detect than those that arise from error as they may involve deliberate concealment or collusion.

A further description of our responsibilities for the audit of the financial statements is located on the Financial Reporting Council's website at: [www.frc.org.uk/auditorsresponsibilities](http://www.frc.org.uk/auditorsresponsibilities). This description forms part of our Auditors' report.

#### **Use of our report**

This report is made solely to the charity's trustees, as a body, in accordance with Part 4 of the Charities (Accounts and Reports) Regulations 2008. Our audit work has been undertaken so that we might state to the charity's trustees those matters we are required to state to them in an Auditors' report and for no other purpose. To the fullest extent permitted by law, we do not accept or assume responsibility to anyone other than the charity and its trustees, as a body, for our audit work, for this report, or for the opinions we have formed.

#### **UHY Kent LLP t/a UHY Hacker Young**

Chartered Accountants  
Statutory Auditors  
Thames House  
Roman Square  
Sittingbourne  
Kent  
ME10 4BJ

30 January 2023

UHY Kent LLP t/a UHY Hacker Young are eligible to act as auditors in terms of section 1212 of the Companies Act 2006.

## The Halpern Charitable Foundation

### Statement of financial activities For the Year Ended 5 April 2022

	Note	Unrestricted funds 2022 £	Restricted funds 2022 £	Total funds 2022 £	Total funds 2021 £
<b>Income from:</b>					
Donations and legacies	4	89,909	65,537	155,446	123,009
Charitable activities	5	209,196	-	209,196	125,394
Investments	6	36,633	-	36,633	34,662
<b>Total income</b>		<b>335,738</b>	<b>65,537</b>	<b>401,275</b>	<b>283,065</b>
<b>Expenditure on:</b>					
Raising funds	7	10,523	-	10,523	6,945
Charitable activities	8	425,635	67,919	493,554	452,892
<b>Total expenditure</b>		<b>436,158</b>	<b>67,919</b>	<b>504,077</b>	<b>459,837</b>
<b>Net expenditure before net gains on investments</b>		<b>(100,420)</b>	<b>(2,382)</b>	<b>(102,802)</b>	<b>(176,772)</b>
Net gains on investments		75,620	-	75,620	139,566
<b>Net movement in funds</b>		<b>(24,800)</b>	<b>(2,382)</b>	<b>(27,182)</b>	<b>(37,206)</b>
<b>Reconciliation of funds:</b>					
Total funds brought forward		4,865,560	142,092	5,007,652	5,044,858
Net movement in funds		(24,800)	(2,382)	(27,182)	(37,206)
<b>Total funds carried forward</b>	16	<b>4,840,760</b>	<b>139,710</b>	<b>4,980,470</b>	<b>5,007,652</b>

The Statement of Financial Activities includes all gains and losses recognised in the year.

The notes on pages 37 to 51 form part of these financial statements.

---

## The Halpern Charitable Foundation

---

### Balance Sheet As at 5 April 2022

---

	Note	2022 £	2021 £
<b>Fixed assets</b>			
Tangible assets	10	2,441,698	2,454,039
Investments	11	1,608,632	1,287,657
		<u>4,050,330</u>	<u>3,741,696</u>
<b>Current assets</b>			
Debtors	12	220,118	221,184
Investments	13	138,200	383,739
Cash at bank and in hand		642,978	715,884
		<u>1,001,296</u>	<u>1,320,807</u>
Creditors: amounts falling due within one year	14	(71,156)	(54,851)
<b>Net current assets</b>		<u>930,140</u>	<u>1,265,956</u>
<b>Total net assets</b>		<u><u>4,980,470</u></u>	<u><u>5,007,652</u></u>
<b>Charity funds</b>			
Restricted funds	16	139,710	142,092
Unrestricted funds	16	4,840,760	4,865,560
<b>Total funds</b>		<u><u>4,980,470</u></u>	<u><u>5,007,652</u></u>

The financial statements were approved and authorised for issue by the Trustees and signed on their behalf by:

**Peter Martin**  
(Chair of Trustees)  
Date: 28 January 2023

The notes on pages 37 to 51 form part of these financial statements.



**Notes to the Financial Statements  
For the Year Ended 5 April 2022**

---

**1. General information**

The Halpern Charitable Foundation is a charity registered in England and Wales, charity number 1096478. The principal place of activity is 272 High St, Chatham ME4 4BP. The objects and aims of the Charity are set out in the Trustees' Report. The financial statements are prepared in pounds sterling, being the functional currency of the Charity.

**2. Accounting policies****2.1 Basis of preparation of financial statements**

The financial statements have been prepared in accordance with the Charities SORP (FRS 102)(second edition) - Accounting and Reporting by Charities: Statement of Recommended Practice applicable to charities preparing their accounts in accordance with the Financial Reporting Standard applicable in the UK and Republic of Ireland (FRS 102) (effective 1 January 2019), the Financial Reporting Standard applicable in the UK and Republic of Ireland (FRS 102) (January 2022) and the Charities Act 2011.

The financial statements have been prepared to give a 'true and fair' view and have departed from the Charities (Accounts and Reports) Regulations 2008 only to the extent required to provide a 'true and fair' view. This departure has involved following the Charities SORP (FRS 102)(second edition) rather than the Accounting and Reporting by Charities: Statement of Recommended Practice (SORP 2005) which has since been withdrawn.

The Halpern Charitable Foundation meets the definition of a public benefit entity under FRS 102. Assets and liabilities are initially recognised at historical cost or transaction value unless otherwise stated in the relevant accounting policy.

**2.2 Going concern**

The trustees and CEO assess whether the use of going concern is appropriate i.e. whether there are any material uncertainties related to events or conditions that may cast significant doubt on the ability of the charity to continue as a going concern. The trustees and CEO make this assessment in respect of a period of at least one year from the date of authorisation for issue of the financial statements.

The trustees and CEO have carefully considered whether the charity remains to be a going concern and have concluded that there is sufficient evidence for them to remain a going concern.

**2.3 Income**

All income is recognised once the Charity has entitlement to the income, it is probable that the income will be received and the amount of income receivable can be measured reliably.

Grants are included in the Statement of financial activities on a receivable basis. The balance of income received for specific purposes but not expended during the period is shown in the relevant funds on the Balance sheet. Where income is received in advance of entitlement of receipt, its recognition is deferred and included in creditors as deferred income. Where entitlement occurs before income is received, the income is accrued.

Previously income received in respect of Maidstone Road has been classified as investment income. The property at Maidstone Road provides ten supported flats for those affected by mental health issues. As this represents part of the Foundation's charitable objectives, this income has been reclassified as income from charitable activities in these financial statements.

Interest on funds held on deposit is included when receivable and the amount can be measured reliably by the Charity; this is normally upon notification of the interest paid or payable by the institution with whom the funds are deposited.

Dividends are recognised once the dividend has been declared and notification has been received of the dividend due. This is normally upon notification by our investment advisor of the dividend yield of the investment portfolio.

**Notes to the Financial Statements  
For the Year Ended 5 April 2022**

---

**2. Accounting policies (continued)**

**2.4 Expenditure**

Expenditure is recognised once there is a legal or constructive obligation to transfer economic benefit to a third party, it is probable that a transfer of economic benefits will be required in settlement and the amount of the obligation can be measured reliably. Expenditure is classified by activity. The costs of each activity are made up of the total of direct costs and shared costs, including support costs involved in undertaking each activity. Direct costs attributable to a single activity are allocated directly to that activity. Shared costs which contribute to more than one activity and support costs which are not attributable to a single activity are apportioned between those activities on a basis consistent with the use of resources. Central staff costs are allocated on the basis of time spent, and depreciation charges allocated on the portion of the asset's use.

Expenditure on raising funds includes all expenditure incurred by the Charity to raise funds for its charitable purposes and includes costs of all fundraising activities events and non-charitable trading.

Expenditure on charitable activities is incurred on directly undertaking the activities which further the Charity's objectives, as well as any associated support costs.

All expenditure is inclusive of irrecoverable VAT.

**2.5 Taxation**

The Halpern Charitable Foundation is considered to pass the tests set out in Paragraph 1 Schedule 6 of the Finance Act 2010 and therefore meets the definition of a charitable trust for UK income tax purposes. Accordingly, the Halpern Charitable Foundation is potentially exempt from taxation in respect of income or capital gains received within categories covered by Part 10 of the Income Tax Act 2007 or Section 256 of the Chargeable Gains Act 1992, to the extent that such income or gains are applied exclusively to charitable purposes. No tax charge has arisen in the year.

**2.6 Tangible fixed assets and depreciation**

Tangible fixed assets costing £2,500 or more are capitalised and recognised when future economic benefits are probable and the cost or value of the asset can be measured reliably.

Tangible fixed assets are initially recognised at cost. After recognition, under the cost model, tangible fixed assets are measured at cost less accumulated depreciation and any accumulated impairment losses. All costs incurred to bring a tangible fixed asset into its intended working condition should be included in the measurement of cost.

Depreciation is charged so as to allocate the cost of tangible fixed assets less their residual value over their estimated useful lives, using the straight-line method.

Depreciation is provided on the following bases:

Freehold land	- Nil
Freehold property	- 125 years straight line
Property improvements	- 20 years straight line
Plant and machinery	- 5 years straight line
Office equipment	- 5 years straight line
Other fixed assets	- 50 years straight line

**2.7 Investments**

Fixed asset investments are a form of financial instrument and are initially recognised at their transaction cost and subsequently measured at fair value at the Balance sheet date, unless the value cannot be measured reliably in which case it is measured at cost less impairment. Investment gains and losses, whether realised or unrealised, are combined and presented as 'Gains/(Losses) on investments' in the Statement of financial activities.

**Notes to the Financial Statements  
For the Year Ended 5 April 2022**

---

**2. Accounting policies (continued)**

**2.8 Debtors**

Trade and other debtors are recognised at the settlement amount. Prepayments are valued at the amount prepaid net of any trade discounts due.

**2.9 Cash at bank and in hand**

Cash at bank and in hand includes cash and short-term highly liquid investments with a short maturity of three months or less from the date of acquisition or opening of the deposit or similar account.

**2.10 Liabilities and provisions**

Liabilities are recognised when there is an obligation at the Balance sheet date as a result of a past event, it is probable that a transfer of economic benefit will be required in settlement, and the amount of the settlement can be estimated reliably.

Liabilities are recognised at the amount that the Charity anticipates it will pay to settle the debt or the amount it has received as advanced payments for the goods or services it must provide.

Provisions are measured at the best estimate of the amounts required to settle the obligation. Where the effect of the time value of money is material, the provision is based on the present value of those amounts, discounted at the pre-tax discount rate that reflects the risks specific to the liability. The unwinding of the discount is recognised in the Statement of financial activities as a finance cost.

**2.11 Operating leases**

Rentals paid under operating leases are charged to the Statement of financial activities on a straight line basis over the lease term.

**2.12 Pensions**

The Charity operates a defined contribution pension scheme and the pension charge represents the amounts payable by the Charity to the fund in respect of the year.

**2.13 Fund accounting**

General funds are unrestricted funds which are available for use at the discretion of the Trustees in furtherance of the general objectives of the Charity and which have not been designated for other purposes.

Designated funds comprise unrestricted funds that have been set aside by the Trustees for particular purposes. The aim and use of each designated fund is set out in the notes to the financial statements.

Restricted funds are funds which are to be used in accordance with specific restrictions imposed by donors or which have been raised by the Charity for particular purposes. The costs of raising and administering such funds are charged against the specific fund. The aim and use of each restricted fund is set out in the notes to the financial statements.

Investment income, gains and losses are allocated to the appropriate fund.

**Notes to the Financial Statements  
For the Year Ended 5 April 2022**

---

**3. Critical accounting estimates and areas of judgment**

Estimates and judgments are continually evaluated and are based on historical experience and other factors, including expectations of future events that are believed to be reasonable under the circumstances.

Critical accounting estimates and assumptions:

The charity makes estimates and assumptions concerning the future. The resulting accounting estimates and assumptions will, by definition, seldom equal the related actual results. The estimates and assumptions that have a significant risk of causing a material adjustment to the carrying amounts of assets and liabilities within the next financial year are discussed below.

With respect to the next reporting period for the year ended 5 April 2022, the most significant areas of uncertainty that affect the carrying value of assets held by the charity are the level of investment return, particularly in-light of the potential volatility of the investment market due to the ongoing Covid-19 global pandemic throughout 2021.

Changes in accounting estimate:

Included in tangible fixed assets is 'other fixed assets' which comprise a sculpture commissioned specifically for the Foundation in 2007. In previous years the Trustees have not considered it necessary to depreciate the asset due to its specialised nature, however during the year the Trustees reviewed the Useful Economic Lives (UEL) of tangible fixed assets and now consider the asset to have a useful life of 50 years, effective from the date of purchase. A depreciation charge of £3,800 has been processed in these financial statements which is equivalent to 15 years. As this charge is not considered to be material, no prior year adjustment has been considered necessary.

Critical areas of judgment:

There are no significant judgements in the relation to the above accounting policies that have a material impact on the financial statements other than the revaluation of listed investments.

**4. Income from donations and legacies**

	<b>Unrestricted funds 2022 £</b>	<b>Restricted funds 2022 £</b>	<b>Total funds 2022 £</b>	<i>Total funds 2021 £</i>
Donations	16,856	-	16,856	848
Legacies	14,282	-	14,282	-
Grants	48,043	65,537	113,580	82,596
Coronavirus Job Retention Scheme	10,728	-	10,728	39,565
	<hr/> 89,909 <hr/>	<hr/> 65,537 <hr/>	<hr/> 155,446 <hr/>	<hr/> 123,009 <hr/>
<i>Total 2021</i>	<hr/> 84,085 <hr/>	<hr/> 38,924 <hr/>	<hr/> 123,009 <hr/>	

Other than utilising the UK government's Job Retention Scheme, the Charity received no other grants from the government. There were no unfilled conditions or contingencies.

---

**The Halpern Charitable Foundation**

---

**Notes to the Financial Statements  
For the Year Ended 5 April 2022**

---

**5. Income from charitable activities**

	<b>Unrestricted funds 2022 £</b>	<b>Total funds 2022 £</b>	<i>As restated Total funds 2021 £</i>
Nucleus Arts Centre	137,164	137,164	55,695
Chatham HeArt	25	25	132
Chatham Creative Hub	23,316	23,316	16,261
Maidstone Road	36,970	36,970	36,779
Halpern Conservancy	11,721	11,721	16,527
	<hr/>	<hr/>	<hr/>
	209,196	209,196	125,394
	<hr/>	<hr/>	<hr/>
<i>Total 2021 as restated</i>	<hr/>	<hr/>	<hr/>
	125,394	125,394	
	<hr/>	<hr/>	

**6. Investment income**

	<b>Unrestricted funds 2022 £</b>	<b>Total funds 2022 £</b>	<i>As restated Total funds 2021 £</i>
Dividend income	36,567	36,567	33,849
Bank interest	66	66	813
	<hr/>	<hr/>	<hr/>
	36,633	36,633	34,662
	<hr/>	<hr/>	<hr/>
<i>Total 2021 as restated</i>	<hr/>	<hr/>	<hr/>
	34,662	34,662	
	<hr/>	<hr/>	

**7. Investment management costs**

	<b>Unrestricted funds 2022 £</b>	<b>Total funds 2022 £</b>	<i>Total funds 2021 £</i>
Investment management fees	10,523	10,523	6,945
	<hr/>	<hr/>	<hr/>
<i>Total 2021</i>	<hr/>	<hr/>	<hr/>
	6,945	6,945	
	<hr/>	<hr/>	



## The Halpern Charitable Foundation

### Notes to the Financial Statements For the Year Ended 5 April 2022

#### 8. Analysis of expenditure by activities

	Activities undertaken directly 2022 £	Support costs 2022 £	Total funds 2022 £	Total funds 2021 £
Nucleus Arts Centre	112,473	213,371	325,844	264,642
Chatham HeArt	4,040	14,024	18,064	17,687
Chatham Creative Hub	32,625	14,062	46,687	48,177
Halpern Conservancy	25,637	77,322	102,959	119,482
Synagogue	-	-	-	2,904
	<u>174,775</u>	<u>318,779</u>	<u>493,554</u>	<u>452,892</u>
<i>Total 2021</i>	<u>154,975</u>	<u>297,917</u>	<u>452,892</u>	

#### Analysis of direct costs

	Nucleus Arts Centre 2022 £	Chatham HeArt 2022 £	Nucleus Hub 2022 £	Halpern Conservancy 2022 £
Staff costs	55,325	-	-	11,009
Staff and agency related costs	12,918	-	-	-
Other direct costs	22,882	-	-	1,173
Advertising and marketing	777	-	-	-
Technology costs	158	-	-	-
Maintenance of premises and equipment	-	34	1,112	10,390
Rent and rates	10,500	2,818	18,000	1,894
Energy	-	1,188	8,029	(3,992)
Insurance	-	-	3,839	-
Other premises expenditure	9,913	-	1,645	5,154
Bank charges and interest	-	-	-	9
	<u>112,473</u>	<u>4,040</u>	<u>32,625</u>	<u>25,637</u>

Notes to the Financial Statements  
For the Year Ended 5 April 2022

---

8. Analysis of expenditure by activities (continued)

Analysis of direct costs (continued)

	Synagogue 2022 £	Total funds 2022 £	Total funds 2021 £
Staff costs	-	66,334	43,495
Staff and agency related costs	-	12,918	2,335
Other direct costs	-	24,055	5,606
Advertising and marketing	-	777	4,140
Technology costs	-	158	945
Maintenance of premises and equipment	-	11,536	27,345
Rent and rates	-	33,212	32,229
Energy	-	5,225	29,477
Insurance	-	3,839	1,917
Other premises expenditure	-	16,712	7,047
Bank charges and interest	-	9	439
	-	174,775	154,975

## The Halpern Charitable Foundation

### Notes to the Financial Statements For the Year Ended 5 April 2022

#### 8. Analysis of expenditure by activities (continued)

##### Analysis of support costs

	<b>Nucleus Arts Centre 2022 £</b>	<b>Chatham HeArt 2022 £</b>	<b>Nucleus Hub 2022 £</b>	<b>Halpern Conservancy 2022 £</b>	<b>Total funds 2022 £</b>	<i>Total funds 2021 £</i>
Staff costs	97,868	7,528	7,528	37,641	150,565	172,262
Depreciation	22,471	-	-	8,002	30,473	22,042
Staff and agency related costs	-	582	582	1,708	2,872	6,896
Advertising and marketing	7,119	548	586	3,139	11,392	12,128
Technology costs	5,060	171	171	853	6,255	1,596
Maintenance of premises and equipment	16,926	277	277	1,384	18,864	22,124
Rent and rates	2,755	76	76	379	3,286	3,758
Energy	20,379	998	998	4,991	27,366	13,147
Insurance	9,613	729	729	3,644	14,715	14,396
Other premises expenditure	2,381	171	171	857	3,580	3,245
Statutory audit	4,732	364	364	1,820	7,280	4,900
Accountancy and bookkeeping	8,205	631	631	3,156	12,623	12,601
Legal fees	9,594	738	738	3,690	14,760	122
Bad debts and write offs	(758)	-	-	-	(758)	-
Bank charges and interest	1,410	43	43	215	1,711	991
Other support costs	-	1,168	1,168	5,843	8,179	7,565
Governance costs	5,616	-	-	-	5,616	144
	<u>213,371</u>	<u>14,024</u>	<u>14,062</u>	<u>77,322</u>	<u>318,779</u>	<u>297,917</u>

#### 9. Staff costs

	<b>2022 £</b>	<i>2021 £</i>
Wages and salaries	199,589	201,732
Social security costs	12,394	9,842
Contribution to defined contribution pension schemes	4,916	4,183
	<u>216,899</u>	<u>215,757</u>

**Notes to the Financial Statements  
For the Year Ended 5 April 2022**

**9. Staff costs (continued)**

The average number of persons employed by the Charity during the year was as follows:

	<b>2022</b>	<i>2021</i>
	<b>No.</b>	<i>No.</i>
Employees	11	11

No employee received remuneration amounting to more than £60,000 in either year.

The key management personnel of the charity comprises the trustees and CEO. The total aggregate amount of employee benefits (including employer pension contribution and employer national insurance contributions) received by key management personnel for their services to the charity was £65,538 (2021: £64,256).

During the year no Trustees received any remuneration, benefits-in-kind or reimbursement of expenses (2021: £Nil).

**10. Tangible fixed assets**

	<b>Freehold property £</b>	<b>Plant and machinery £</b>	<b>Office equipment £</b>	<b>Other fixed assets £</b>	<b>Total £</b>
<b>Cost</b>					
At 6 April 2021	2,589,238	4,046	17,192	12,666	2,623,142
Additions	18,132	-	-	-	18,132
At 5 April 2022	2,607,370	4,046	17,192	12,666	2,641,274
<b>Depreciation</b>					
At 6 April 2021	157,349	4,046	7,708	-	169,103
Charge for the year	24,092	-	2,581	3,800	30,473
At 5 April 2022	181,441	4,046	10,289	3,800	199,576
<b>Net book value</b>					
At 5 April 2022	2,425,929	-	6,903	8,866	2,441,698
At 5 April 2021	2,431,889	-	9,484	12,666	2,454,039

---

## The Halpern Charitable Foundation

---

### Notes to the Financial Statements For the Year Ended 5 April 2022

---

#### 11. Fixed asset investments

	Listed investments £
<b>Valuation</b>	
At 6 April 2021	1,287,657
Additions	289,673
Disposals	(49,985)
Revaluations	81,287
At 5 April 2022	<u>1,608,632</u>

#### 12. Debtors

	2022 £	2021 £
<b>Due within one year</b>		
Trade debtors	13,693	8,695
Other debtors	183,579	205,701
Prepayments and accrued income	22,846	6,788
	<u>220,118</u>	<u>221,184</u>

#### 13. Current asset investments

	2022 £	2021 £
Unlisted investments (liquid)	<u>138,200</u>	<u>383,739</u>



**Notes to the Financial Statements  
For the Year Ended 5 April 2022**

---

**14. Creditors: Amounts falling due within one year**

	<b>2022</b>	<i>2021</i>
	<b>£</b>	<i>£</i>
Trade creditors	23,984	21,174
Other taxation and social security	7,729	5,791
Other creditors	3,849	736
Accruals and deferred income	35,594	27,150
	<u>71,156</u>	<u>54,851</u>
	<b>2022</b>	<i>2021</i>
	<b>£</b>	<i>£</i>
Deferred income at 6 April 2021	775	1,700
Resources deferred during the year	-	775
Amounts released from previous periods	(775)	(1,700)
	<u>-</u>	<u>775</u>

**15. Financial instruments**

	<b>2022</b>	<i>2021</i>
	<b>£</b>	<i>£</i>
<b>Financial assets</b>		
Financial assets measured at fair value through income and expenditure	<u>1,608,632</u>	<u>1,287,657</u>

Financial assets measured at fair value through income and expenditure comprise fixed asset listed investment shares.

The main form of financial risk faced by the Charity is that of the volatility in equity and investment markets due to wider economic conditions, the attitude of investors to investment risk and changes in sentiment concerning equities, particularly currency risk, and within particular sectors or sub-sectors. The Charity's investment portfolio generates a significant proportion of the Charity's total income which funds its charitable activities. Should this be impacted due to volatility, the Charity is fortunate to have other sufficient liquid assets to fund its operations.

## The Halpern Charitable Foundation

### Notes to the Financial Statements For the Year Ended 5 April 2022

#### 16. Statement of funds

##### Statement of funds - current year

	Balance at 6 April 2021 £	Income £	Expenditure £	Transfers in/out £	Gains/ (Losses) £	Balance at 5 April 2022 £
<b>Unrestricted funds</b>						
<b>Designated funds</b>						
Tangible fixed asset fund	2,454,039	-	(30,473)	18,132	-	2,441,698
Investment share fixed asset	1,287,657	-	-	245,355	75,620	1,608,632
	<u>3,741,696</u>	<u>-</u>	<u>(30,473)</u>	<u>263,487</u>	<u>75,620</u>	<u>4,050,330</u>
<b>General funds</b>						
General Funds	1,123,864	335,738	(405,685)	(263,487)	-	790,430
<b>Total Unrestricted funds</b>	<u>4,865,560</u>	<u>335,738</u>	<u>(436,158)</u>	<u>-</u>	<u>75,620</u>	<u>4,840,760</u>
<b>Restricted funds</b>						
Synagogue	57,193	-	-	-	-	57,193
Mental Health & Socially Isolated through Art	64,500	-	(9,320)	-	-	55,180
Creative Cabin	2,893	-	(1,696)	-	-	1,197
Energy Efficiency	395	-	(395)	-	-	-
Arts Award	10,900	24,276	(21,523)	-	-	13,653
Volunteers	1,567	-	(1,567)	-	-	-
Social Art	500	500	-	-	-	1,000
Lightbox	2,166	-	(2,166)	-	-	-
Young at Art	1,978	-	-	-	-	1,978
Intern	-	1,000	(1,000)	-	-	-
Creative Medway	-	17,500	(16,000)	-	-	1,500
Green wall Project	-	1,166	-	-	-	1,166
Forward Together	-	2,495	(2,495)	-	-	-
Project activities	-	7,424	(924)	-	-	6,500
Fun Palace	-	10,000	(10,000)	-	-	-
Other	-	1,176	(833)	-	-	343
	<u>142,092</u>	<u>65,537</u>	<u>(67,919)</u>	<u>-</u>	<u>-</u>	<u>139,710</u>
<b>Total of funds</b>	<u>5,007,652</u>	<u>401,275</u>	<u>(504,077)</u>	<u>-</u>	<u>75,620</u>	<u>4,980,470</u>

## The Halpern Charitable Foundation

### Notes to the Financial Statements For the Year Ended 5 April 2022

#### 16. Statement of funds (continued)

##### Statement of funds - prior year

	<i>Balance at 1 April 2020</i>	<i>Income</i>	<i>Expenditure</i>	<i>Transfers in/out</i>	<i>Gains/ (Losses)</i>	<i>Balance at 5 April 2021</i>
	£	£	£	£	£	£
<b>Unrestricted funds</b>						
<b>Designated funds</b>						
	2,428,550	-	(22,042)	47,531	-	2,454,039
	923,612	-	-	224,479	139,566	1,287,657
	<u>3,352,162</u>	<u>-</u>	<u>(22,042)</u>	<u>272,010</u>	<u>139,566</u>	<u>3,741,696</u>
<b>General funds</b>						
	1,522,724	244,141	(370,991)	(272,010)	-	1,123,864
<b>Total Unrestricted funds</b>	<u>4,874,886</u>	<u>244,141</u>	<u>(393,033)</u>	<u>-</u>	<u>139,566</u>	<u>4,865,560</u>
<b>Restricted funds</b>						
Synagogue	60,097	-	(2,904)	-	-	57,193
Mental Health & Socially Isolated through Art	86,612	-	(22,112)	-	-	64,500
Creative Cabin	4,485	-	(1,592)	-	-	2,893
Energy Efficiency	395	-	-	-	-	395
Arts Award	7,438	21,775	(18,313)	-	-	10,900
Volunteers	3,845	-	(2,278)	-	-	1,567
Social Art	500	-	-	-	-	500
Lightbox	6,600	2,900	(7,334)	-	-	2,166
Community Engagement	-	7,500	(7,500)	-	-	-
Young at Art	-	2,495	(517)	-	-	1,978
Intern	-	4,254	(4,254)	-	-	-
	<u>169,972</u>	<u>38,924</u>	<u>(66,804)</u>	<u>-</u>	<u>-</u>	<u>142,092</u>
<b>Total of funds</b>	<u>5,044,858</u>	<u>283,065</u>	<u>(459,837)</u>	<u>-</u>	<u>139,566</u>	<u>5,007,652</u>

Notes to the Financial Statements  
For the Year Ended 5 April 2022

---

16. Statement of funds (continued)

Designated funds

These funds represent the fixed assets of the charity split between its tangible fixed assets and investments.

Unrestricted funds

Funds which are available for use at the discretion of the Trustees in furtherance of the general objectives of the charity and which have not been designated for other purposes. The total fund balance represents the charity's free reserves.

Restricted funds

Restricted funds are those held by the charity for a specific purpose. Details of specific restricted funds are:

Synagogue - Mr Halpern left £100,000 in his will to the charity, restricted to the maintenance and upkeep of the Chatham Memorial Synagogue.

Mental Health & Socially Isolated through Art - Mrs Halpern donated £100,000 to the charity, restricted to the provision of mental health support, and support to the socially isolated, through the Arts.

Creative Cabin - Grant for the purchase and upkeep of a Creative Cabin.

Energy Efficiency - Grant to cover the cost of changing the current lighting in Building A and B to LED, to reduce energy costs.

Arts Award - This was towards the Arts Award for a total of £21,775.

Volunteers - To aid in staff welfare, travel and staffing costs of the Charity.

Social Art - In association with Cole Charity.

Lightbox - Grant towards what was the Maker Space project.

Community Engagement - Grant made to cover costs of achieving community engagement.

Young at Art - Young at Art project grant.

Intern - Funds to cover the pay of the intern, taken on at Nucleus Arts.

Creative Medway - Money held to support the delivery of Creative Medway. This group is developing the creative strategy and the creative compact for Medway, and represents the creative industries at the regional and local area.

Green Wall Project - Funding to develop and improve the external environment of the Halpern Conservancy Building.

Forward Together - Funding to produce a one-off art installation to build community and a sense of pride in Medway.

Project Activities - Funding to cover a range of creative activities, workshops and engagement related to our major events.

Fun Palace - Funding to deliver our winter science/arts festival.

Transfers between funds

A transfer is made from unrestricted funds to cover restricted project overspends. A transfer is also made between unrestricted funds and designated funds for movements in tangible and investment fixed assets.

## The Halpern Charitable Foundation

### Notes to the Financial Statements For the Year Ended 5 April 2022

#### 17. Analysis of net assets between funds

##### Analysis of net assets between funds - current year

	Unrestricted funds 2022 £	Restricted funds 2022 £	Total funds 2022 £
Tangible fixed assets	2,441,698	-	2,441,698
Fixed asset investments	1,608,632	-	1,608,632
Current assets	861,586	139,710	1,001,296
Creditors due within one year	(71,156)	-	(71,156)
<b>Total</b>	<b>4,840,760</b>	<b>139,710</b>	<b>4,980,470</b>

##### Analysis of net assets between funds - prior year

	Unrestricted funds 2021 £	Restricted funds 2021 £	Total funds 2021 £
Tangible fixed assets	2,454,039	-	2,454,039
Fixed asset investments	1,287,657	-	1,287,657
Current assets	1,178,715	142,092	1,320,807
Creditors due within one year	(54,851)	-	(54,851)
<b>Total</b>	<b>4,865,560</b>	<b>142,092</b>	<b>5,007,652</b>

#### 18. Pension commitments

The charity operates a defined contributions pension scheme. The assets of the scheme are held separately from those of the charity in an independently administered fund. Contributions totalling £Nil (2021: £673) were owed to the fund at the balance sheet date.

#### 19. Operating lease commitments

At 5 April 2022 the Charity had commitments to make future minimum lease payments under non-cancellable operating leases as follows:

	2022 £	2021 £
Not later than 1 year	24,860	29,810
Later than 1 year and not later than 5 years	72,273	72,684
Later than 5 years	24,000	48,000
	<b>121,133</b>	<b>150,494</b>